

Assessment Report on the

## **2012 SOIL GEOCHEMICAL SURVEY**

on the

### **ASPEN PROPERTY, YUKON**

<b>Grant Number</b>	<b>Claim Name</b>
YF24301 – YF24391	WC 1 – WC 91
YF24398 - YF24461	WC 98 – WC 161
YF24486 - YF24556	WC 186 – WC 256
YF24574 - YF24647	WC 274 – WC 347
YF24659 - YF24735	WC 359 – WC 435
YF24737 - YF24869	WC 437 – WC 569

DAWSON MINING DISTRICT

**Date(s) Worked:** August 19 - August 21, 2012

NTS Map 115J16 and 115I13  
UTM 649,500E; 6,975,500N (NAD 83, Zone 7)

**Prepared by:**

Kendra Johnston, Project Geologist  
Independence Gold Corp.

**Prepared for:**

Independence Gold Corp.  
P.O. Box 11584  
Suite 1410 – 650 West Georgia Street  
Vancouver, British Columbia, V6B4N8

October 30, 2012

## Table of Contents

SUMMARY .....	4
INTRODUCTION .....	4
CLAIM DATA AND OWNERSHIP .....	6
PROPERTY DESCRIPTION .....	8
LOCATION.....	8
CLIMATE AND GEOMORPHOLOGY.....	8
INFRASTRUCTURE .....	8
HISTORY.....	9
PREVIOUS WORK.....	9
RECENT HISTORY.....	9
GEOLOGICAL SETTING .....	10
REGIONAL GEOLOGY .....	10
PROPERTY GEOLOGY .....	10
GEOCHEMISTRY.....	12
SOIL GEOCHEMISTRY .....	12
QUALITY ASSURANCE/QUALITY CONTROL .....	13
DISCUSSIONS AND CONCLUSIONS.....	18
COPPER .....	18
OTHER ELEMENTS.....	18
RECOMMENDATIONS.....	22
REFERENCES .....	23
STATEMENT OF QUALIFICATIONS.....	24
STATEMENT OF EXPENDITURES.....	25

## List of Tables

Table 1 – Aspen Claim Information .....	6
Table 2 – Soil Geochemical Survey Percentile Values .....	13

## List of Figures

Figure 1 – Location Map .....	5
Figure 2 – Aspen Claim Map.....	7
Figure 3 – Regional Geology.....	11
Figure 4 – Grizzly Soil Geochemical Sample Locations .....	14
Figure 4 a – Grizzly Soil Geochemical Sample Locations .....	15
Figure 4 b – Grizzly Soil Geochemical Sample Locations .....	16
Figure 4 c – Grizzly Soil Geochemical Sample Locations.....	17
Figure 5 – 2012 Copper Results on Aspen.....	19
Figure 6 – 2012 Molybdenum Results on Aspen .....	20
Figure 7 – 2012 Gold Results on Aspen.....	21

## List of Appendices

Appendix 1 – Laboratory Assay Certificates and Certification .....	26
Appendix 2 – Weather Log.....	27

## **SUMMARY**

The Aspen property is a relatively new early stage exploration project. Exploration activities over the past two years have focused on targeting gold mineralization by collecting and analysing geochemical soil samples. A total of 279 geochemical soil samples were collected over 12 man days in 2012. Over the past two years a total of 533 geochemical soil samples have been taken on the property. The 2012 geochemical soil survey returned moderate results for copper and molybdenum, as well as weak results for gold.

The property is comprised of 510 quartz claims, located in west-central Yukon approximately 130 kilometres (km) northwest of Carmacks, Yukon and 150 km southeast of Dawson City, Yukon (Figure 1).

## **INTRODUCTION**

This report describes a reconnaissance soil geochemical survey conducted by Independence Gold Corp. (“InGold”) staff on the Aspen property. Soil sampling was conducted by a 4 person crew over 3 days from August 19 to August 21, 2012. The author managed the program from the field camp location. The Statement of Qualifications is contained within this report.

The objective of the geochemical survey was to evaluate the mineral potential of the Aspen property, which is located along a favourable region-scale structural trend. The Aspen property is proximal to recent gold discoveries made by Pacific Ridge Exploration Ltd. (“Pacific Ridge”) and Ethos Gold Corp. (“Ethos”) over the last two seasons.



Figure 1 – Location Map

## CLAIM DATA AND OWNERSHIP

Silver Quest Resources Ltd. (“Silver Quest”) staked the Aspen claims based on recent gold discoveries in the Scroggie and Cripple Creek areas, in September of 2012. The Aspen property comprises 510 contiguous quartz claims and covers a total area of 10,650 hectares (ha). The claim block centres on UTM 649,500E and 6,975,5000N (NAD 83, Zone 7) on NTS map sheet 115J16 and 115I13 as shown on Figure 2. Quartz claims are registered with the Dawson Mining Recorder and are pending transfer of ownership to Independence Gold Corp. Claim data is listed below.

**Table 1 – Aspen Claim Information**

<b>Grant Number</b>	<b>Claim Name</b>	<b>Pending Registered Owner/Operator</b>
YF24301 – YF24391	WC 1 – WC 91	Independence Gold Corp.
YF24398 - YF24461	WC 98 – WC 161	Independence Gold Corp.
YF24486 - YF24556	WC 186 – WC 256	Independence Gold Corp.
YF24574 - YF24647	WC 274 – WC 347	Independence Gold Corp.
YF24659 - YF24735	WC 359 – WC 435	Independence Gold Corp.
YF24737 - YF24869	WC 437 – WC 569	Independence Gold Corp.

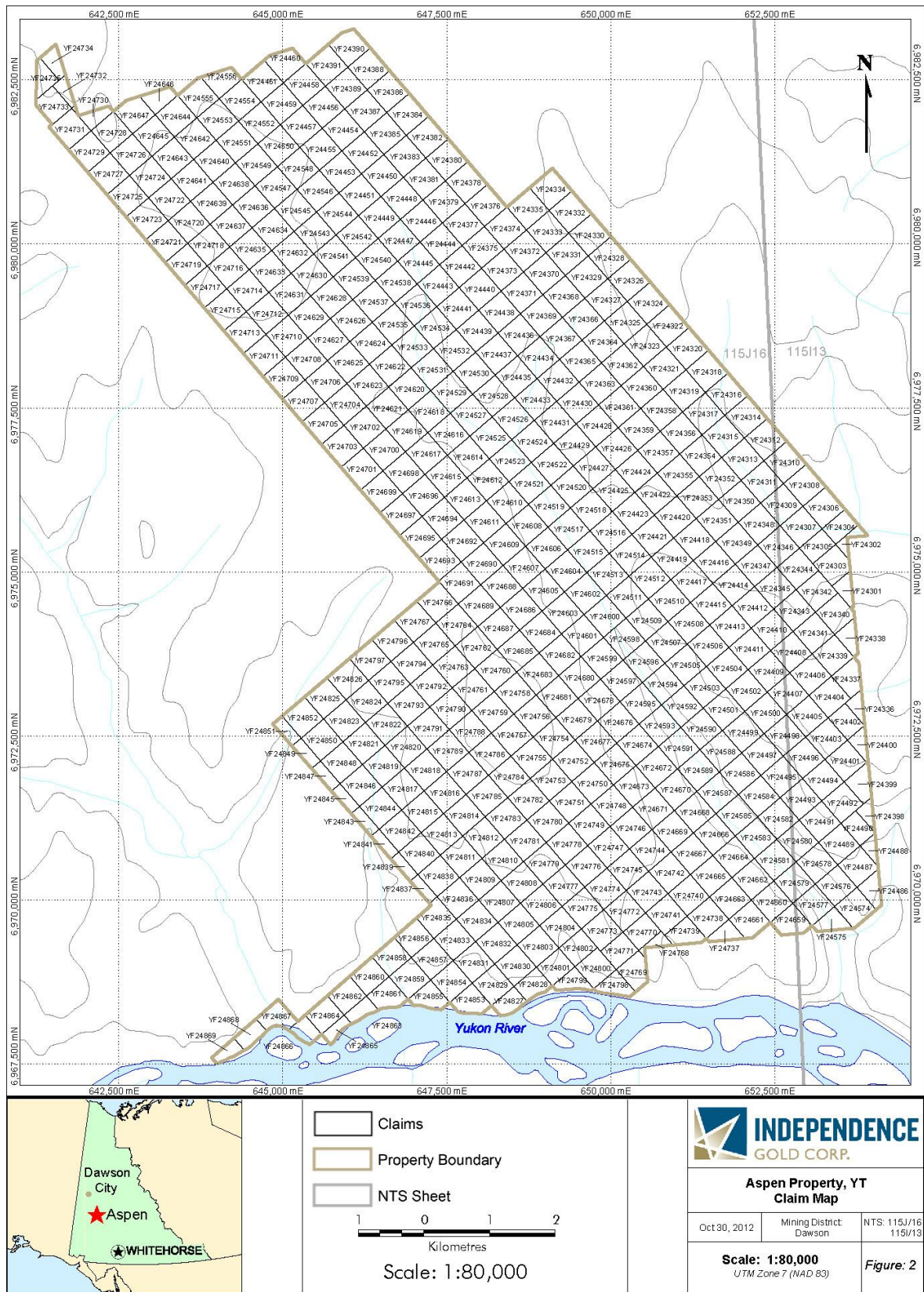


Figure 2 – Aspen Claim Map

## **PROPERTY DESCRIPTION**

### **LOCATION**

The Aspen property is located in the Cripple Creek area of west-central Yukon, approximately 130 km northwest of Carmaks, Yukon and 150 km southeast of Dawson City, Yukon (Figure 1), and adjacent to the northern edge of the Yukon River.

### **CLIMATE AND GEOMORPHOLOGY**

The Aspen property lies within the Dawson Range, an area characterized by its rolling hills. Local elevations range from 450 to 1,130 metres (m) above sea level. The higher elevation areas of the property are thickly vegetated with stunted, aspen, birch and spruce trees; willow and birch brush and thin moss cover. Lower elevations support a mixture of aspen, birch and spruce forest with thick brush, and moss-covered slopes.

Climate in the region is described as sub-arctic with short mild summers and long cold winters. Temperatures this season (June 26 to Aug 24) averaged 11 degrees Celsius, measured daily at 8:30 am. Precipitation was observed almost daily throughout June and July with August and September exhibiting much dryer and sunnier weather. Appendix 2 contains a detailed weather log from the 2012 season.

Due to the mild summer temperatures, permafrost can be found throughout the geographic region. Locally permafrost is discontinuous, depending on slope direction, elevation and drainage patterns. Multiple freeze thaw cycles have resulted in flesenmeer slopes, covered with a thin layer of moss. The Dawson Range remained unglaciated during the Pleistocene, making outcrops rare, and maintaining a soil profile that is relatively in-place. The few outcrops that are present are located along sparsely vegetated ridges and in main creek drainages.

### **INFRASTRUCTURE**

Access to the Aspen property in 2012 was via an A-Star B2 helicopter operated by Northern Air Support of Kelowna and based out of InGold's Independence Creek Camp, approximately 83 km to the west. A variety of fixed-wing operators in Dawson City and Whitehorse are available for hire to transport supplies to various airstrips in the vicinity including Scroggie Creek Casino, Minto and Rude Creek where supplies can be subsequently mobilized by helicopter to the

property. Alternatively, several barge operators are available for hire to barge supplies up the Yukon River from Whitehorse or Carmacks. A barge landing does not currently exist, however one could be built with the appropriate permits.

There are no maintained roads that access to the Aspen property.

## **HISTORY**

### **PREVIOUS WORK**

There are no Minfile occurrences or public records of previous hard rock or placer exploration on or adjacent to the Aspen property.

### **RECENT HISTORY**

During the 2011 season Silver Quest completed a reconnaissance soil sampling program on the Aspen property. The team collected 254 samples from 5 survey lines over 12 man days. One survey line indentified a spot gold anomaly with coincident arsenic and antimony. These areas required more detail sampling to identify anomalous zones (Johnston, 2011).

Archer, Cathro & Associated (1981) Limited (Archer Cathro) staked the near by BDR claims in June 2009 and optioned them to Silver Quest in December 2009. ATAC Resources Ltd. completed a one day soil sample survey with a crew of 3 people in August 2009 on behalf of Archer Cathro. A total of 87 deep auger soil samples were taken at 50 m spaced intervals along 3 lines spaced 100 to 500 m apart. No significant results were returned (Smith, 2010). In 2011, Silver Quest completed 4 man days of soil sampling, collecting 68 samples from two parallel spur lines, with 50 m sample spacing. The highest gold value returned from the 2011 program was 41 parts per billion (ppb) (Congdon, 2011).

Pacific Ridge owns the majority of the claims that lie along strike to the northwest of the Aspen property. This block of claims is more commonly known as the Mariposa property. Pacific Ridge completed a total of 34 holes during their 2011 drilling program, on their highest grade gold-in-soil anomaly, known as the Skookum Main zone. The best intercept was 38.9 m of 2.44 grams per tonne gold in hole 11MP-01 (Brock, 2011). Pacific Ridge's drilling program is located approximately 20 km to the northwest of the Aspen property.

## **GEOLOGICAL SETTING**

### **REGIONAL GEOLOGY**

Aspen is situated within the Yukon-Tanana Terrane approximately 90 km southwest of the Tintina Fault in west-central Yukon. This area is characterized by various pericratonic terranes that were accreted to the ancestral continental margin of North America in the early Jurassic. During the mid-Cretaceous the pericratonic terranes were intruded by a northwest-southeast trending plutonic suite known as the Dawson Range plutonic belt (Hart et al. 2004).

### **PROPERTY GEOLOGY**

The oldest rocks in the area belong to the Devonian to Mississippian Nisling and Snowcap Assemblages (DMP) and are described as mica-quartz-feldspar schists. This rock package surfaces to the north of the Aspen property. Another Devonian to Mississippian package of rocks belonging to the Simpson Range Plutonic Suite (DMgPW) sits to the west of the Aspen property. This package of rocks (DMgPW) is described primarily as K-feldspar rich, granitic orthogneiss. These two packages of rocks underlie the entire Aspen area. To the east sits a large body of upper Triassic rocks belonging to the Povoas Formation (uTrP). These rocks are primarily described as augite or feldspar phyric andesitic basalt flows, breccia, tuff, sandstone and argillite.

The majority of the Aspen property is composed of an early Jurassic pluton that is part of the Aishihik Plutonic Suite (EJgA). This EJgA pluton is described as granodiorite; granite; hornblende diorite to monzodiorite with commonly occurring chlorite alteration and it intrudes the underlying Devonian to Mississippian and Triassic rocks (Figure 3).

No mapping or prospecting was completed during the 2012 project.

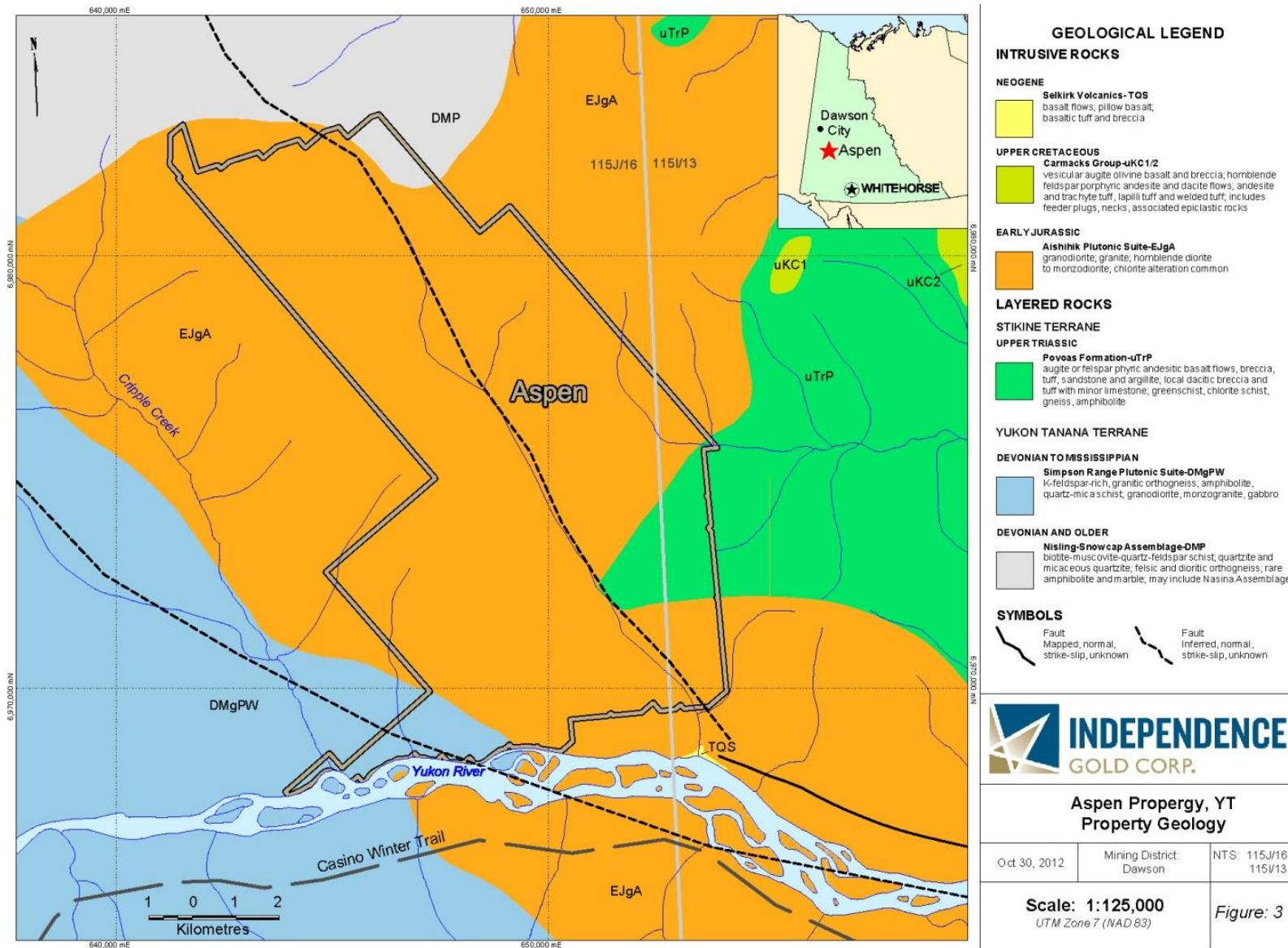


Figure 3 – Regional Geology

## **GEOCHEMISTRY**

### **SOIL GEOCHEMISTRY**

The 2012 exploration program at Aspen consisted of 3 days of work for 4 soil samplers (12 man days). A total of 279 soil samples were collected from 3 ridge top sampling grids. Soil samples were collected at 100 m intervals (Figure 4). No rock samples were taken in this area.

All samplers (InGold employees) were trained to use rigorous sampling procedures when collecting the B-horizon soil samples. Samplers began by removing a 30 centimetre (cm) by 30 cm section of moss mat or vegetative cover. Second, a soil pit of similar dimensions was hand excavated; exposing A and B soil horizon boundaries and reaching the top of the C-horizon where feasible. The depth of the pit varied from 20 cm to 60 cm, depending on horizon thicknesses and sampling conditions. Soil material (300 grams to 400 grams) was collected from the walls of the pit utilizing a clean plastic trowel. Samples were collected in standard KRAFT soil sample bags and transported to the 2012 Independence Creek Camp. At camp all samples were hung and dried for a minimum of 2 days in a heated tent prior to packing for shipment to the laboratory.

All sample locations were rehabilitated by back-filling the soil pit and replacing the moss mat or vegetative cover. This was done to minimize the environmental impact. Locations with permafrost or areas lacking mineral soils were not sampled. Equipment such as shovels and trowels were cleaned between samples. Waterlogged samples were transported to camp in polyurethane bags to minimize cross-contamination. All sample locations were recorded using a hand-held GPS. All maps and UTM coordinates are referenced to the 1983 North American Datum (NAD 83), Zone 7. A complete description of soil type, depth, thickness of the sample, the surrounding environment and the terrain was recorded at each location.

Samples were submitted to SGS Canada Inc. laboratory facility in Vancouver, an ISO 17025 certified facility. Samples were analysed by aqua regia digestion and inductively coupled plasma with optical emission spectroscopy (ICP-OES) analysis for 34-elements. Gold was analysed by fire assay and atomic absorption spectroscopy (FAA313). Assay certificates of analysis, laboratory certification and analytical method summaries are presented in Appendix 1 at the end of this report.

Assay statistics have been determined based on the Independence Gold database which contains 31,003 soil samples collected across the White Gold District. For the purposes of data interpretation, all values that were below the detection limit of the analytical method used were removed from the database (i.e. these sample results were set to null and removed from the count). The resulting assay statistics are listed below (Table 2).

**Table 2 – Soil Geochemical Survey Percentile Values**

	<b>Gold (ppb)</b>	<b>Silver (ppm)</b>	<b>Arsenic (ppm)</b>	<b>Antimony (ppm)</b>	<b>Copper (ppm)</b>	<b>Lead (ppm)</b>	<b>Zinc (ppm)</b>
98 <sup>th</sup> percentile	60.7	1.019	122.45	8	94.946	34	148.02
95 <sup>th</sup> percentile	32	0.61	59.6	3.41	68.1	21	118
88 <sup>th</sup> percentile	18	0.38	25.1	1	50.4	14.3	95
75 <sup>th</sup> percentile	11	0.24	11.9	0.55	38	10.9	79
50 <sup>th</sup> percentile	7	0.14	7.2	0.37	25.4	8	64
Maximum	7,010	17.7	6,730	1,325	718	1,750	1,020
Minimum	1	0.01	0.1	0.05	0.6	0.2	2
Valid Count	12,766	23,156	29,806	23,190	30,728	30,145	30,450

## **QUALITY ASSURANCE/QUALITY CONTROL**

For Quality Assurance-Quality Control (QAQC) purposes, field check samples were inserted into the sample stream every 50 samples. Blanks, comprised of powdered limestone, were inserted on every sample identification number ending in 00; while duplicates were inserted on every sample identification number that ended in 50. Duplicates were acquired from the same soil pit, at the same sample depth and at the same time as the collection of the original sample. The field sample checks were analysed with the rest of the soil samples and resulting values were used to check the consistency of our sampling procedures and the analytical procedures used by SGS Canada Inc. Erroneous QAQC results were investigated and appropriate re-analysis undertaken when necessary. SGS Canada Inc. blanks, duplicates, standards and spikes were also used to confirm the accuracy of the analytical methods and instruments.

Quality Assurance-Quality Control (QAQC) samples for the Aspen property passed without any significant concerns.

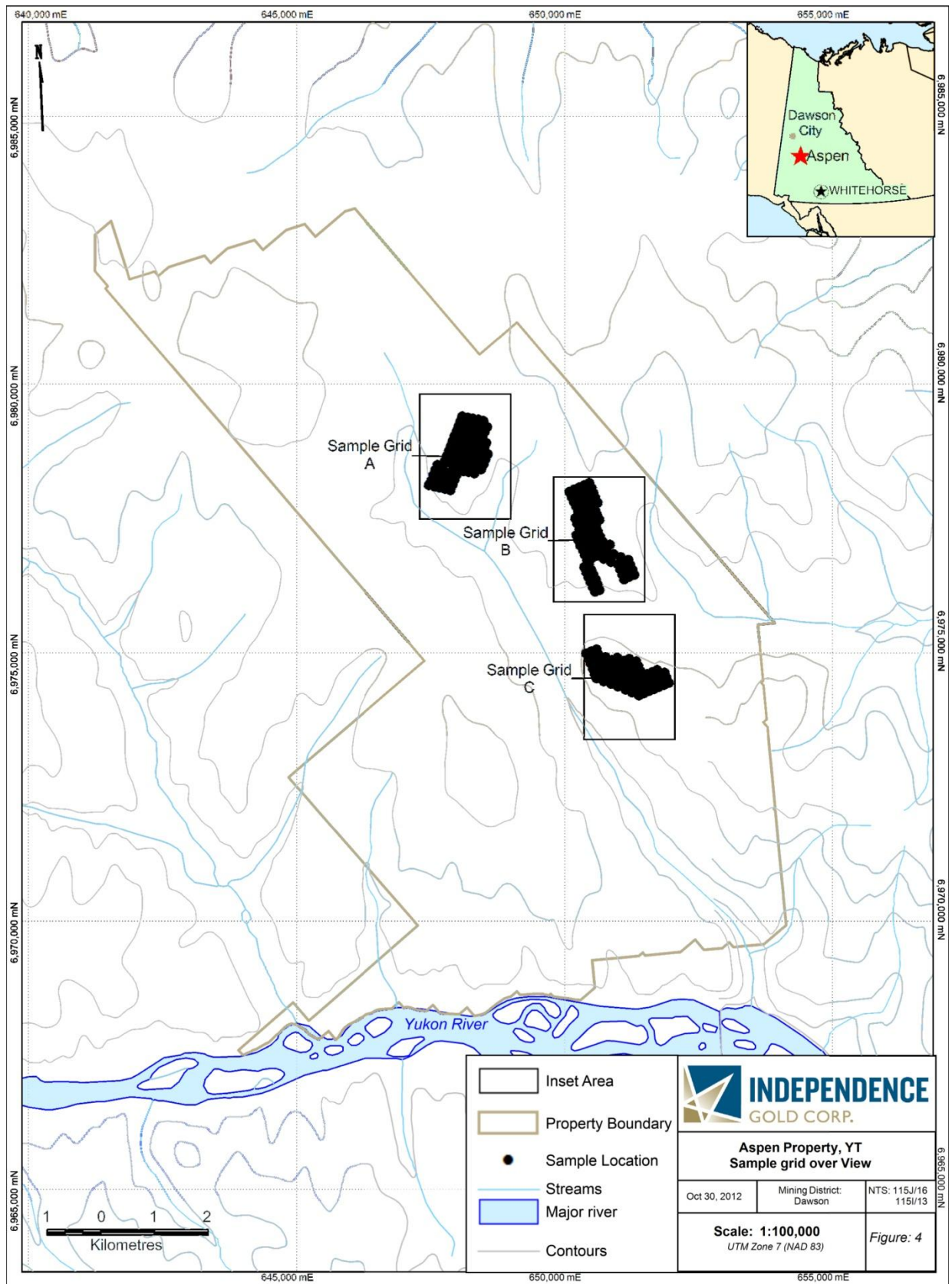


Figure 4 – Grizzly Soil Geochemical Sample Locations



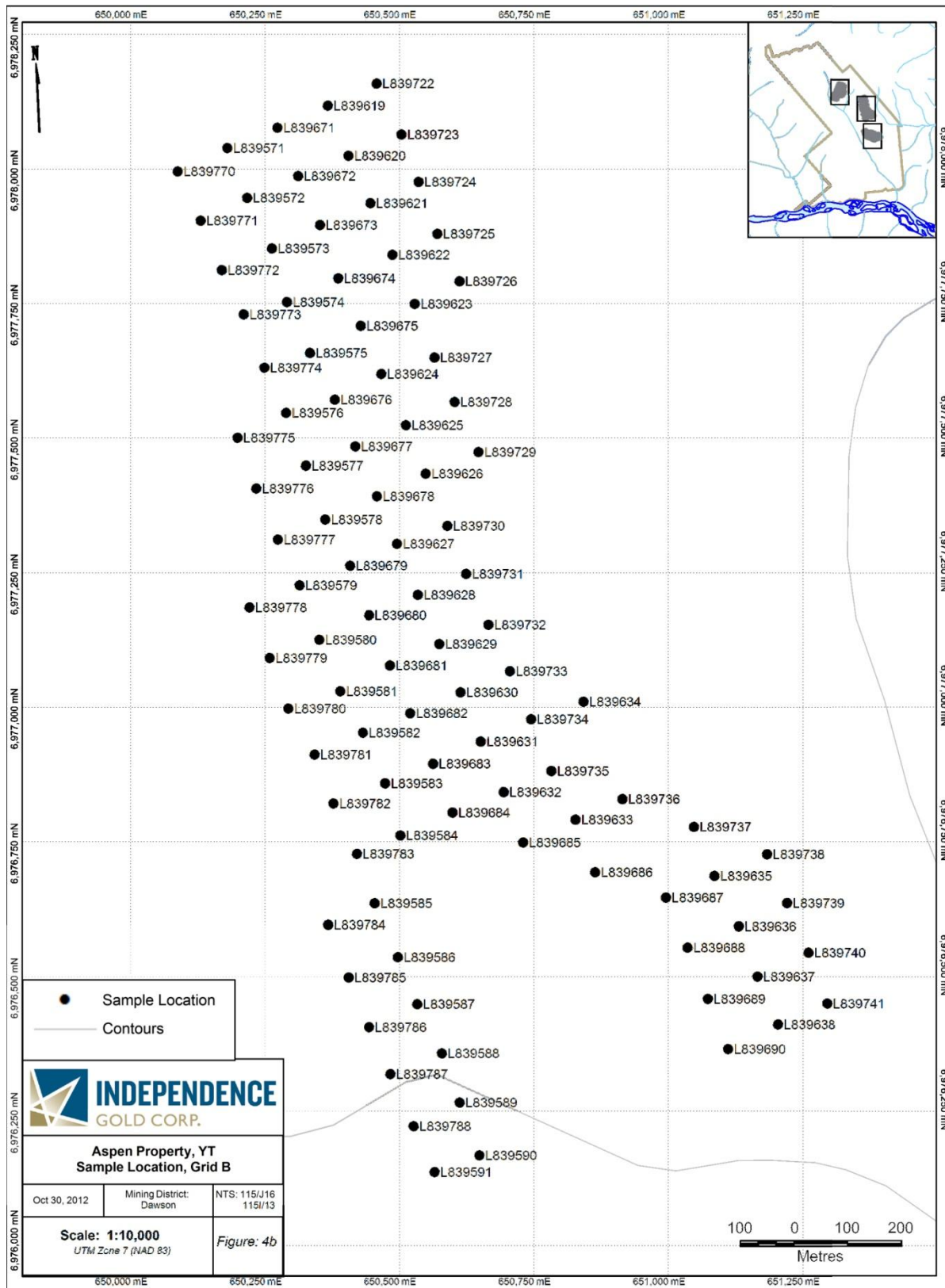


Figure 4 b – Grizzly Soil Geochemical Sample Locations

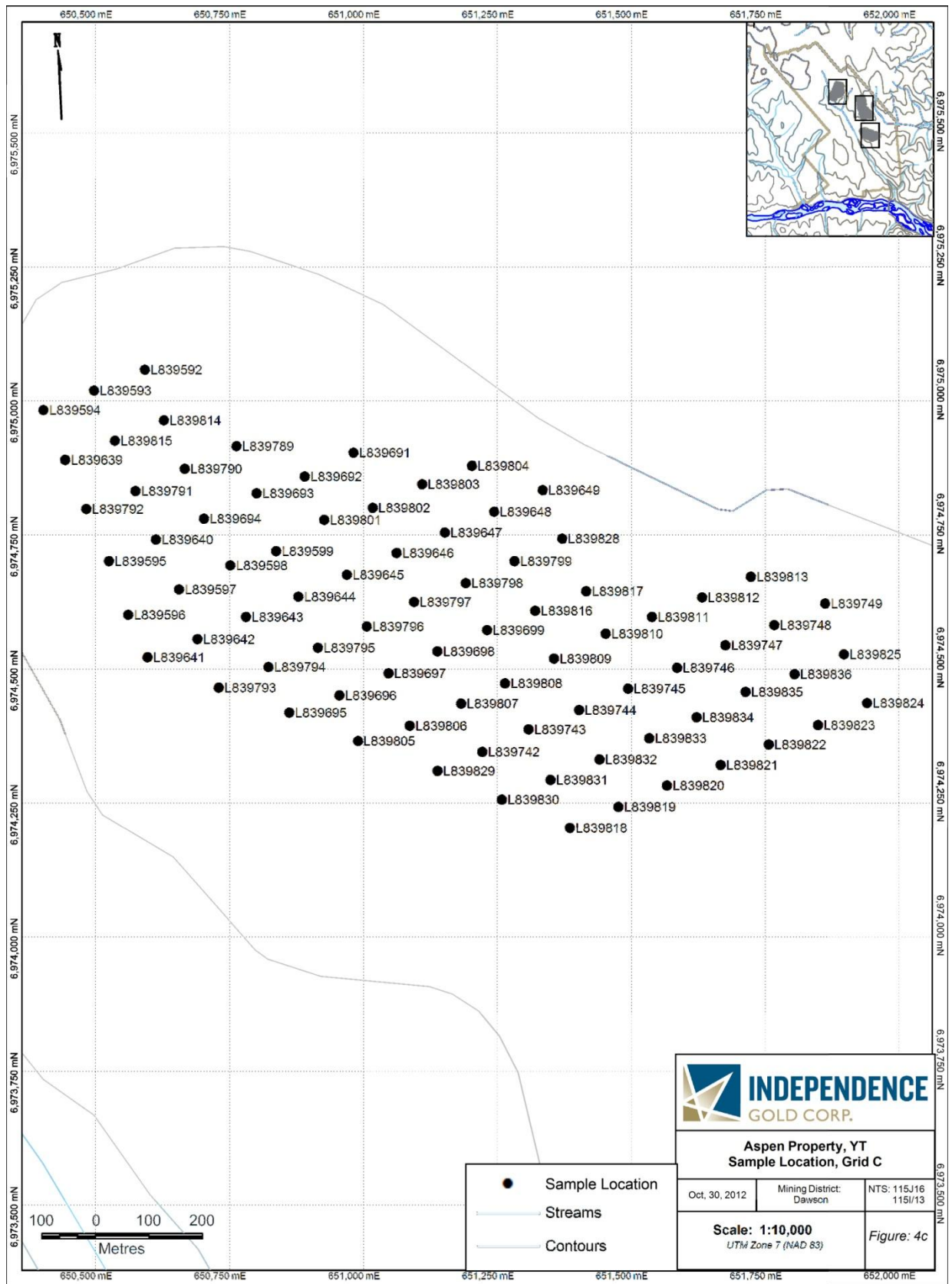


Figure 4 c – Grizzly Soil Geochemical Sample Locations

## **DISCUSSIONS AND CONCLUSIONS**

Soil geochemical survey results from the Aspen property were thematically mapped based on the geochemical statistics above. These geochemical percentiles are calculated based on 31,003 soil samples collected by or for InGold across the White Gold District. Anomalous values returned from the 2012 exploration program on the Aspen property were found to be consistent with the anomalous percentile values of the larger data set.

The 2012 geochemical survey grids focused on sampling the ridge top areas of the Aspen property. Ridge top areas have less cover than other areas of the property and thus samples tend to be a fair representative of the rock material below the surface. Approximately 10% of the Aspen property has now been evaluated for mineral potential; however these samples have been collected at widely spaced intervals, potentially leaving room for mineralization between sampling points. At this level of sampling density, a single anomalous value is of interest. The 2012 exploration program has identified multiple points of interest that could be further investigated

### **COPPER**

There are six samples that returned above the 98<sup>th</sup> percentile (95 parts per million (ppm)) for copper (Figure 5). The highest of these values is 255 ppm. The high copper values cluster around three points, one in each of the three sampling grids. On a property scale, the copper values are discontinuous. More information is required to make significant conclusions.

### **OTHER ELEMENTS**

A variety of other elements were analysed to evaluate the property for mineral potential. Molybdenum (Figure 6) yielded four values greater than the 98<sup>th</sup> percentile (7.1 ppm), while gold (Figure 7) yielded two values greater than the 95<sup>th</sup> percentile (32 ppb). Silver, arsenic, antimony, lead and zinc were also considered but did not produce significant results.

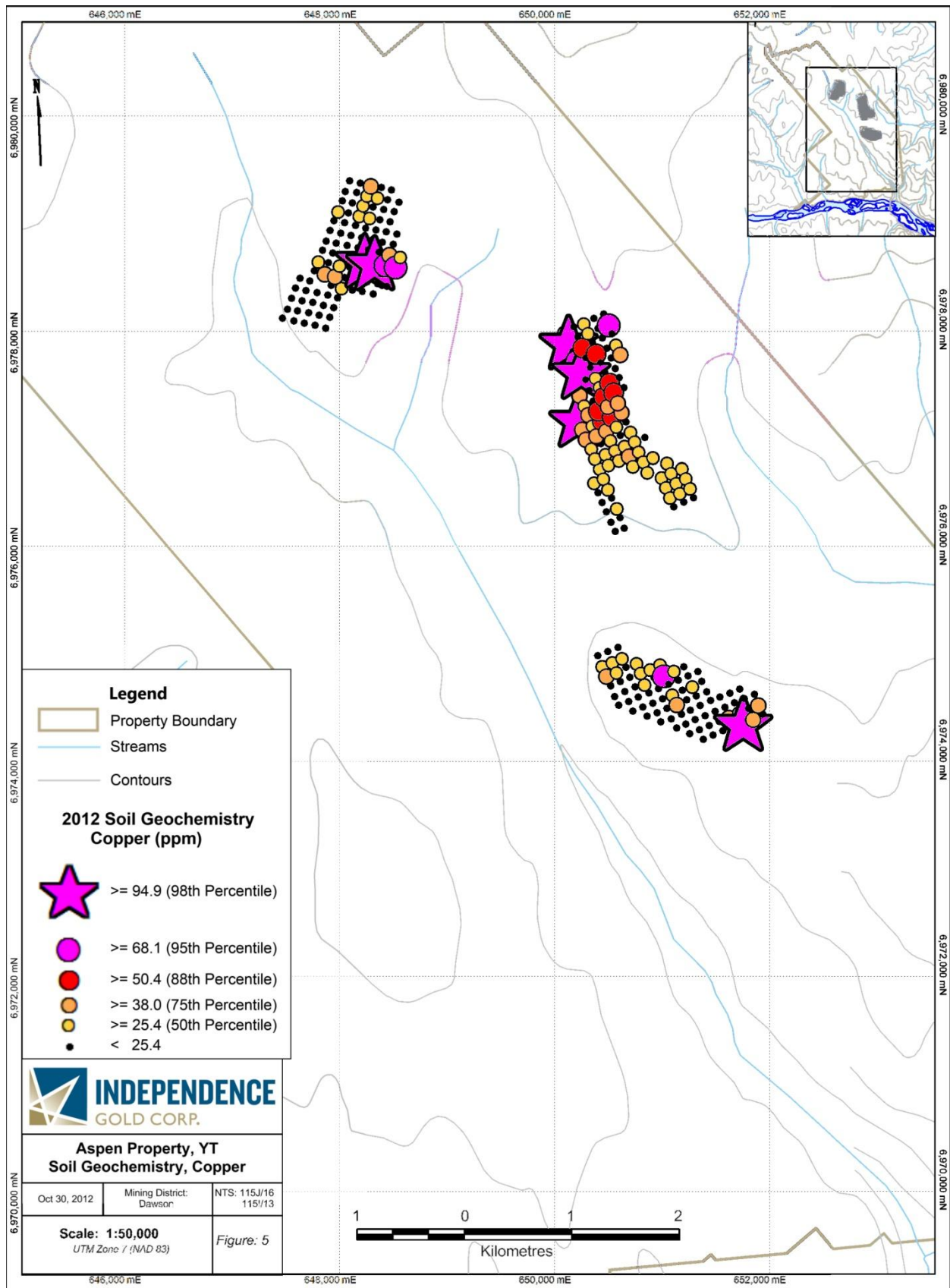


Figure 5 – 2012 Copper Results on Aspen

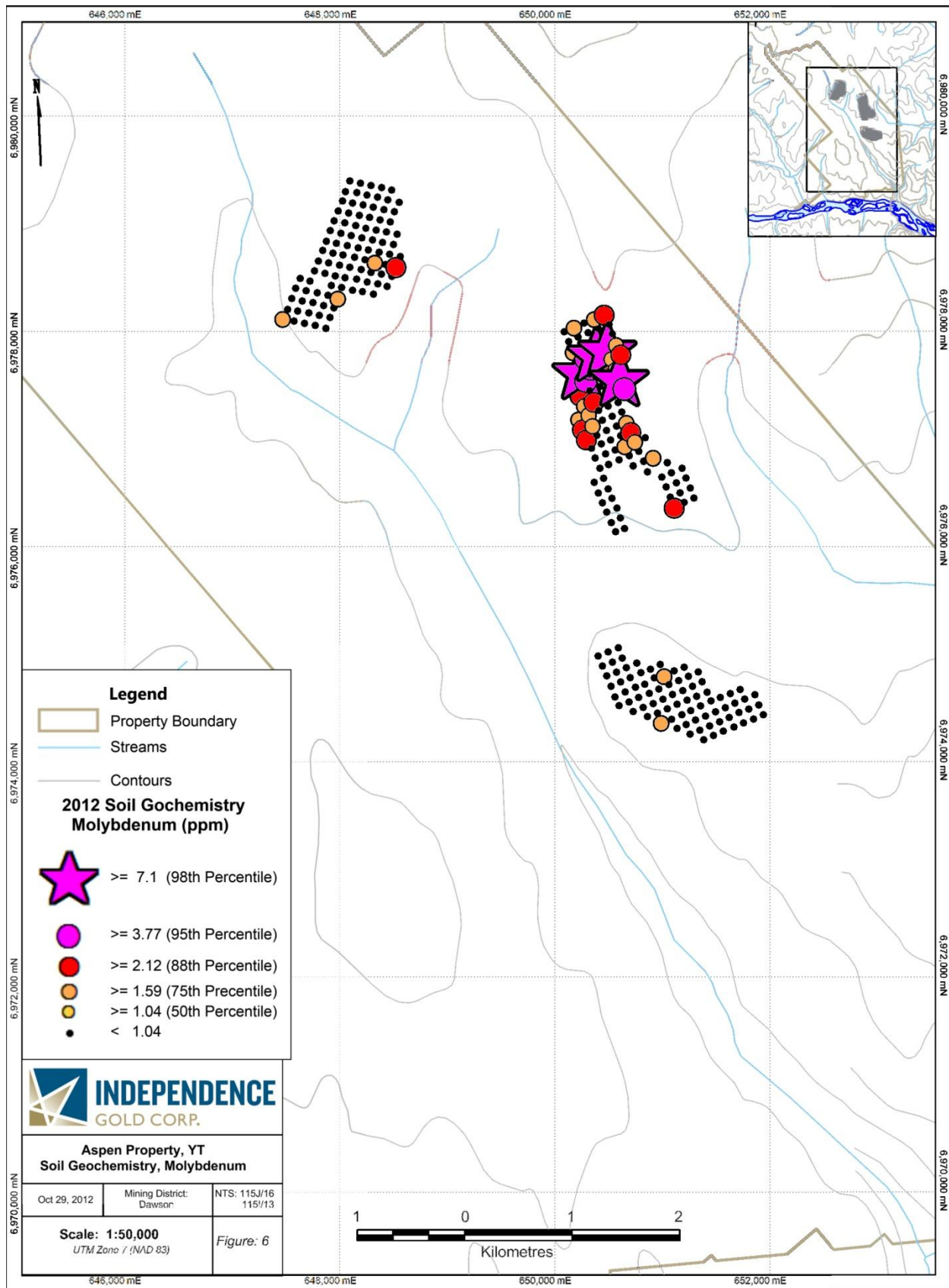


Figure 6 – 2012 Molybdenum Results on Aspen

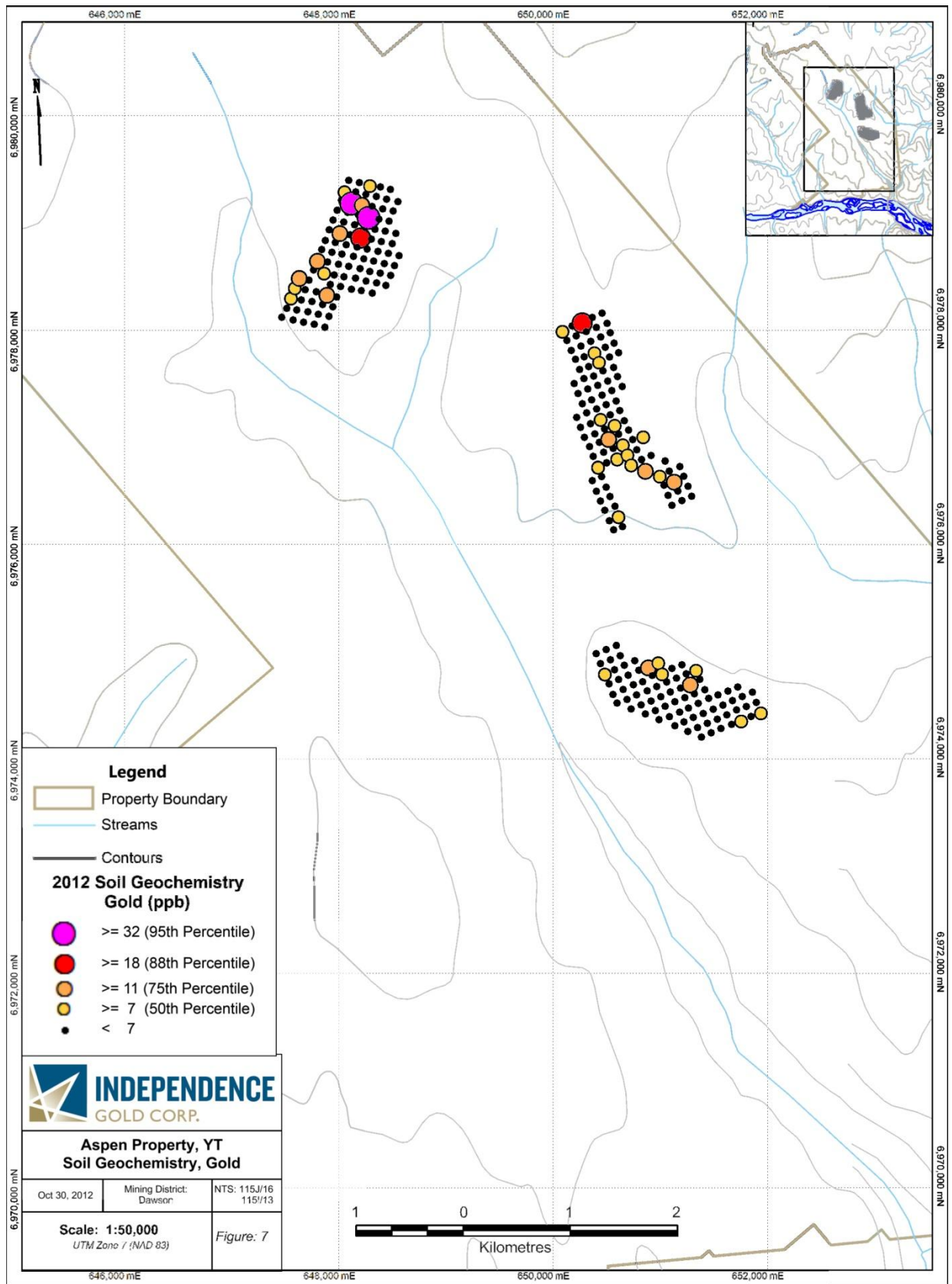


Figure 7 – 2012 Gold Results on Aspen

## RECOMMENDATIONS

Trace element geochemical soil results from 2011 and 2012 exploration programs have failed to produce significant results on the Aspen property. Realizing that the majority of the property is still unexplored the following work is recommended before the property is written off.

- Recent activity in the Yukon has highlighted the importance of structure as an element in controlling mineralization. It is recommended that detailed airborne geophysics including magnetics, radiometrics and electromagnetics be flown over the property to determine the location of possible mineralized structures.
- Secondly, a stream sediment survey is recommended to test for mineralization being carried down slope by seasonal runoff and various forms of periglacial slope movement.

## REFERENCES

Brock, J.S. (2011) Pacific Ridge Drills New Yukon Gold Discovery: First Hole Intersects 2.44 Grams per Tonne Gold Over 38.9 Metres At Mariposa in White Gold District; Pacific Ridge Exploration Ltd News Release, July 28, 2011

Congdon, R.J.F (2011), 2011 Soil Geochemical Survey on the Birdman Property, Yukon, Yukon Geological Survey Assessment Report, Independence Gold Corp.

Gordey, S.P. and Ryan, J.J. (2005) Geology, Stewart River Area (115 N, 115 O and part of 115 J), Yukon Territory. Geological Survey of Canada Open File 4970 1:250,000

Hart, J. R., Goldfarb, R., Lewis, L. L., and Mair, J. L. (2004) The northern Cordilleran mid-Cretaceous plutonic province: Ilmenite/magnetite-series granitoids and intrusion-related mineralization: *Resource Geology*, v. 54, p. 253-280.

Johnston, K. (2011) 2011 Soil Geochemical Survey on the Aspen and Aspen Properties, Yukon, Yukon Geological Survey Assessment Report, Independence Gold Corp.

Smith, H. (2010), Assessment Report describing Soil Geochemical Sampling at the BDR Property, Archer, Cathro & Associates (1981) Limited.

## STATEMENT OF QUALIFICATIONS

I, Kendra A. Johnston, PGeo, BSc, of Suite 206-1550 Barclay Street, Vancouver, British Columbia, hereby certify that:

I am a graduate of the University of Victoria, British Columbia having obtained the degree of Bachelor of Science in Earth and Ocean Science and Geography, 2005.

I am a registered member of the Association of Professional Engineers and Geoscientists of British Columbia (#37719).

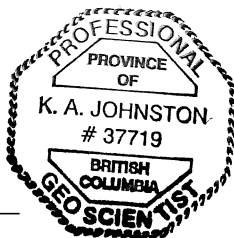
I have been continuously employed in the mineral exploration industry in Canada since 2005.

I am currently employed as a Project Geologist, by Independence Gold Corp. Suite 1410-650 West Georgia Street, Vancouver, British Columbia, Canada, V6B 4N8.

I am the author of the report entitled "2012 Soil Geochemical Survey on the Aspen property" dated October 30, 2012.

I managed and reviewed the geological work on site reported herein.

Dated this 30<sup>th</sup> day of October, 2012.



Kendra A. Johnston, PGeo, BSc

## STATEMENT OF EXPENDITURES

	<u>Quantity</u>	<u>Rate</u>	<u>Cost</u>	
Soil Samples Collected	279	\$ 65.00	\$ 18,135.00	
Sampler day(s)	12	\$ 350.00	\$ 4,200.00	
Prospector day(s)	0	\$ 500.00	\$ -	
Planning and reporting day(s)	4	\$ 500.00	\$ 2,000.00	
Camp Costs (per man day)	16	\$ 500.00	\$ 8,000.00	
Helicopter Hour(s)	10	\$ 1,600.00	\$ 16,000.00	
Helicopter Fuel (drums)	10	\$ 900.00	\$ 9,000.00	
			<u>\$ 57,335.00</u>	
		Supervision: 12%	<u>\$ 6,880.20</u>	
		Total:	<u>\$ 64,215.20</u>	
		Claims Worked: 16	<b>\$ 4,013.45</b>	per claim worked
		Claims Grouped: 510	<b>\$ 125.91</b>	Per claim grouped

Date worked: August 19 - August 21, 2012

Work Completed by: Independence Gold Corp.

**APPENDIX 1**  
**Laboratory Assay Certificates**  
**And Certification**

See Data Folder for Secured Assay Certificates

**APPENDIX 2**  
**Weather Log**

## Independence Gold Corp. 2012 Weather Log

Date	Time	Wind Speed (Avg) km/h	Temp °C	Pressure (hPa)	Pressure Trend	Cloud Cover at Time of Reading	Afternoon Weather
June 26, 2012	8:00 AM	0	18.5	888.7	up	high scattered clouds	heavy rain
June 27, 2012	9:30 AM	2.1	15.2	894.6	down	drizzle and fog	heavy rain
June 28, 2012	9:00 AM	2.9	9.8	898.8	down	high thick cloud and fog	heavy rain
June 29, 2012	8:00 AM	1.7	10.2	898.2	level	high cloud - solid cover	rain
June 30, 2012	9:30 AM	5.2	10.5	895.4		fogged in	heavy rain and fog
July 1, 2012	9:00 AM	4.2	7.8	895.6	level	rain and fog	rain
July 2, 2012	3:00 PM	2.9	11.8	896.4	up	rain and fog	down pour
July 3, 2012	8:30 AM	3.9	9.7	887.4	level	fogged in	sunny with high clouds
July 4, 2012	8:15 AM	3.7	9.9	899.5	level	cloudy	cloudy
July 6, 2012	11:15 AM	3	14	904.7	level	high scattered clouds	none
July 7, 2012	8:25 PM	2	16.7	902.8	down	clear	none
July 8, 2012	7:30 AM	1.7	7.7	907.3	down	clear	sunny 18 degrees
July 9, 2012	8:00 AM	4.3	9.4	906	down	clear	sunny
July 10, 2012	10:30 AM	9.5	7.2	893	level	cloudy and misty	stormy
July 11, 2012	9:00 AM	12	7			stormy - windy - rainy	sunny
July 12, 2012	7:45 AM	1.1	7.5	905	down	clear and sunny	sunny
July 13, 2012	8:15 AM	4.8	9.7	904	level	coudy, light rain	
July 14, 2012	8:30 AM		12.2			sunny	sunny
July 15, 2012	9:00 AM	3.7	11.8	907.5	down	high clouds	sunny
July 16, 2012	8:15 AM	8.5	7.8	908.5	down	fog	rain
July 17, 2012	12:05 PM	2.9	11.2	910.2	level	fog	fog and drizzle
July 18, 2012	11:45 AM	4.6	12.8	907.1	level	sunny with patches of clouds	sunny
July 19, 2012	11:20 AM	3.1	18.2	907.3	down	sunny	sunny
July 20, 2012	8:45 AM	6.9	14.8	903.8	down	high scattered clouds	sunny
July 21, 2012	8:10 AM	2	16.9	904.1	level	high scattered clouds	smoky - first to the north
July 22, 2012	8:15 AM	2.3	14.6	906.6	level	high scattered clouds	sunny
July 23, 2012	8:30 AM	3.2	10.5	904	level	spitting with low clouds	sunny
July 24, 2012	8:15 AM	11.9	11.3	910.5	level	cloudy	high blanket clouds
July 25, 2012	7:45 AM	1.5	10.7	913.5	level	high scattered clouds	showers
July 26, 2012	7:40 AM	0	9.3	909.1	level	clear	sunny
July 27, 2012	11:45 AM	7.2	20	904.2	down	high scattered clouds	thunderstorm
July 28, 2012	7:25 AM	3.4	15.4	904	level	broken mid level couds	showers

## Independence Gold Corp. 2012 Weather Log

Date	Time	Wind Speed (Avg) km/h	Temp °C	Pressure (hPa)	Pressure Trend	Cloud Cover at Time of Reading	Afternoon Weather
July 29, 2012	7:40 AM	4.7	10.3	904.5	level	coudy	sunny
July 30, 2012	8:00 AM	1.7	12.4	900.6	level	cloudy; light rain	showers
July 31, 2012	7:40 AM	12.7	9.3	901	level	broken clouds, drizzle	low cloud, rain
August 1, 2012	11:30 AM	6.9	14.5	902.6	down	clear	sunny
August 2, 2012	8:30 AM	4.1	10.4	899	up	clear and sunny	sunny
August 3, 2012	8:30 AM	0	11.5	905.5	level	rain with high thick clouds	grey and cold
August 4, 2012	7:45 AM	6.5	3.8	910	level	clear	clear
August 6, 2012	7:40 AM	2.8	1.5	906	level	clear	clear
August 7, 2012	8:22 AM	6.5	11.8	905.6	down	high wispy clouds	clear
August 8, 2012	9:00 AM	3.5	11.5	903.5	down	high scattered clouds	clear
August 9, 2012	3:00 PM	?	23	?	?	sunny	sunny
August 10, 2012	3:00 PM	?	20	?	?	sunny	sunny
August 11, 2012	9:00 AM	2.9	11.5	910.4	up	sunny	cloudy
August 12, 2012	9:00 AM	4.5	9.9	908.3	down	sunny	sunny
August 13, 2012	8:30 AM	2.9	10.3	907.8	up	cloudy	few clouds
August 14, 2012	9:40 AM	4.5	14.8	912	down	clear	sunny
August 15, 2012	7:45 AM	1.7	9.8	909.2	level	clear	sunny
August 16, 2012	9:30 AM	5.2	14.1	907.4	level	clear	sunny
August 17, 2012	10:00 AM	3.4	13.4	902.7	down	raining	raining
August 18, 2012	8:45 AM	1.9	8.5	902.7	down	clear	sunny
August 19, 2012	8:15 AM	2	7.1	903.8	level	high scattered clouds	sunny
August 20, 2012	8:15 AM	2.7	6.8	902.6	level	clear with wispy clouds	sunny
August 21, 2012	8:30 AM	1.1	10.5	906.1	level	high thin clouds	cloudy
August 22, 2012	8:30 AM	1.4	6	907.3	level	high wispy clouds	sunny
August 23, 2012	8:30 AM	2.4	3.5	900.5	down	clear	cloudy
August 24, 2012	8:45 AM	2	10.2	902.3	down	cloudy	