

# GEOCHEMICAL REPORT

on the

## **BURNHAM PROJECT**

Dawson, Yukon Territory

BURHAM 1-100

YD 133521-620

NTS # 115O/09,16

Latitude: 63.753° N Longitude: 138.357° W

Dawson Mining District

For  
Ryan Gold Corp.  
Suite 2100  
1 Adelaide Street East  
Toronto, ON M5C 2V9  
Tel: (416) 482-9038

WORK PERFORMED: September 20 & 26, 2011

By  
Isaac Fage  
Ground Truth Exploration Inc.  
Box 70, Dawson, Yukon  
Y0B 1G0

October 23, 2012

---

## **Table of Contents**

1.0 Introduction and Summary .....	3
2.0 Terms of Reference and Source Material .....	4
3.0 Property Location and Description .....	4
4.0 Exploration History .....	5
5.0 Regional Geology .....	6
6.0 2011 Exploration Field Program .....	7
References Cited .....	9

### Maps

Appendix I: Statement of Work Expenditure

Appendix II: Statement of Qualifications

Appendix III: List of Claims

Appendix IV: Soil Sample Location and Assay

## 1.0 Introduction and Summary

### 1.1 Introduction:

On September 20 & 26, 2011, Ryan Gold Corp. Completed a reconnaissance soil sampling program on the BURHAM project. The program consisted of 454 soil samples collected along ridge and spur traverses at 50m sample spacing across the project. The goal of the work was to identify potential gold and/or copper bearing structures outlined by regional magnetic trends and favorable geology.

This phase one soil program did not identify any target areas for follow-up. Soil results from the phase one sampling included maximum values of: Au 12.3ppb and Cu 89.1 ppm.

No further work is planned for the the 2012 field season.

### 1.2 Summary

The BURNHAM project is located in West-Central Yukon within the Dawson Mining District on NTS mapsheet 115O/09 and 115O/16

The BURNHAM property is situated 7km northeast of the confluence Burnham Creek at Dominion Creek, approximately 60 km southeast of Dawson City. The BURNHAM property is geographically centered at a latitude of 64.153° N and longitude of 136.906° W.

The BURNHAM Project is comprised of 100 contiguous quartz claims covering an aggregate area of approximately 2,025 hectares. The claims constituting the BURNHAM project are owned by two parties: BURNHAM 1-100: 45127 Yukon Inc. 30%, Ryan Gold Corp. 70%. 45127 Yukon Inc. is wholly-owned by Ryan Gold Corp.

The BURNHAM Project is located in the Klondike Plateau within the Tintina Gold Belt, which hosts a number of regionally significant gold deposits- most notably the White Gold deposit owned by Kinross Gold Corporation (found 85km to the Southwest).

The White Gold deposit of Kinross Gold Corporation, which contains an indicated resource of 9,797,000 tonnes grading 3.2 g/t Au, primarily mineable by open pit methods using a cutoff of 0.5 g/t Au for open pit and 2.0 g/t Au for underground (*Weiershäuser et al., 2010*) lies 55 km south-southeast of the project. The deposit types for the BURNHAM property may be intrusion related gold to epithermal models, which have been postulated for mineralization at the White Gold deposit on the White property.

There is no historic data on the BURNHAM project, but there are a number of MINFILE occurrences within 5km of the property. None of these projects returned anomalous values for gold.

## **2.0 Terms of Reference and Source Material**

### **2.1 Terms, Definitions and Units**

All geographic coordinates for sample locations and property scale references are reported in the NAD83 datum and projected to Universal Transverse Mercator (UTM) Zone 7. Distances are reported in metric units, including metres (m) and kilometres (km). Any monetary references in this report are reported in Canadian dollars (CAD). Directional references are reported relative to True North. Standard elemental abbreviations are utilized when referring to analytical results, including Gold (Au), Copper (Cu). Unit abbreviations for analytical results are indicated where appropriate, including: parts per million (ppm), parts per billion (ppb), grams per tonne (g/t) and percent (%).

### **2.2 Source Documents**

This report incorporates data from multiple sources including regional geochemical, geological and geophysical studies conducted by the Geological Survey of Canada and Yukon Geological Survey, available in public Open Files. Private Company data that is available in the public domain has also been utilized to create this report. Sources are listed in section 9.

## **3.0 Property Location and Description**

### **3.1 Property Location**

The BURNHAM property is situated 7km northeast of the confluence Burnham Creek at Dominion Creek, approximately 60 km southeast of Dawson City. The BURNHAM property drains almost entirely into an unnamed tributary flowing south into Burnham creek. The BURNHAM property is geographically centered at a latitude of 64.153° N and longitude of 136.906° W. (see figure 1)

### **3.2 Access**

Access to the BURNHAM property is currently restricted to helicopter, based in Dawson City 60 km to the northwest of the BURNHAM. Dawson City is accessed by year-round highway approximately 540 km North from Whitehorse, Yukon. Daily flight service is also available from Whitehorse to Dawson City. From Dawson City, the North Klondike highway can be taken south to Bonanza Creek road and then Dominion road is taken from King Solomon's Dome. Gravel pull-outs on Dominion Creek Road can be used to create a roadside staging area and shorten the helicopter ferry distance for multiple loads to the BURNHAM Project. The nearest practical roadside staging area for this use lies at the general UTM coordinates of: 07 E620000 N7070000. Staging from this location shortens the ferry distance to the property from 60km (at Dawson), to 7km. (see figure 3)

### 3.3 Climate, Physiography and Infrastructure

The BURNHAM Project area has a subarctic continental climate with a summer mean of 10 degrees Celsius and winter mean temperature of -23 degrees Celsius. Summer temperatures can reach up to +35°C and winter temperatures can drop to -55°C.

The BURNHAM Project is located within the Klondike Plateau. Elevations on the project range from 700m to 1190m on the BURNHAM property. The BURNHAM project is completely below the tree line, with a mix of White Spruce, Birch and Poplar on the South, East and West aspects and Black Spruce on the North facing slopes. Approximately 60% of the project area burned by lightning started forest fires in 2004. Discontinuous permafrost occurs throughout the property on the Northerly aspects. The BURNHAM Project area was not affected by the last continental glaciation. Bedrock is typically intensely weathered and near surface, there is very little outcrop exposure on the property (< 2%).

### 3.4 Land Tenure

The BURNHAM Project is comprised of 100 contiguous quartz claims covering an aggregate area of approximately 2,025 hectares. The claims constituting the BURNHAM project are owned by two parties: BURNHAM 1-100: 45127 Yukon Inc. 30%, Ryan Gold Corp. 70%. 45127 Yukon Inc. is wholly-owned by Ryan Gold Corp. (See Figure 2)

#### **BURNHAM Property: List of Claims (as of July 12, 2012)**

<b>Claim Name</b>	<b>Grant Number</b>	<b>Expiry</b>	<b>Status</b>	<b># Claims</b>
BURNHAM 1-100	YD133521-133620	September 15, 2014	Active	100

Total: 100

(See figure 2: Claim Map)

### 4.0 Exploration History

The 2011 soil sampling program on the BURNHAM project was the first intensive examination for mineral potential on this ground. There is very little exploration history on this ground prior to the claims being staked by Ryan Gold Corp. in December 2010.

There is no historic data on the BURNHAM project, but there are a number of MINFILE occurrences within 5km of the property. None of these projects returned anomalous values for gold.

The BURNHAM properties contains 2 stream sediment samples from the Yukon Regional Geochemical Database (2003). Another 4 stream sediment samples have been taken within 2km of the property borders. Anomalous values are found within the BURNHAM property. An anomalous gold silt value (13 ppb) was found near the western border of the property. (see figure 4)

A regional airborne magnetic/radiometric survey was flown by Geological Survey of Canada. This survey identified a magnetic high on the southern half of the BURNHAM property. (see figure 9,10,11)

## 5.0 Regional Geology

Geologically, the BURNHAM project lies within the Yukon-Tanana Terrane. The BURNHAM property is underlain by Devonian-Mississippian metasedimentary rocks which include orthogneiss, amphibolite schist and gneiss and biotite. (See Figure 4)

### Legend Descriptions for BURNHAM Geology: Figure 4 (Gordey, S.P. and Makepeace, A.J. (comp.) 1999: Yukon bedrock geology in Yukon digital geology)

<b>DMc</b>	MARBLE: marble (metacarbonate) derived from pure to impure limestone; associated calc-silicate schist derived from calcareous metapelite
<b>QS</b>	Quaternary Age: Fluvial silt, sand and gravel
<b>DMoga</b>	ORTHOgneiss (OLDER, 363-343 Ma): DMog, undivided orthogneiss; DMogg, pink to orange K-feldspar rich, granitic orthogneiss, commonly with biotite, banded to layered, commonly includes or associated with DMoga; DMoga, mainly K-feldspar augen
<b>DMps</b>	QUARTZ-MICA SCHIST: undivided metasedimentary rocks dominated by metapsammite, semipelite and metapelite; commonly quartz-garnet-biotite-muscovite schist possibly derived from siliceous siltstone; commonly finely interlayered with garnet metapelite;

## **6.0 2011 Exploration Field Program**

### **6.1 Field Program Summary**

This report summarizes the results of the phase one geochemical soil sampling program conducted on the BURNHAM property during September of 2011. Soil sampling was contracted to Ground Truth Exploration Inc. of Dawson, YT and was approved and funded by Ryan Gold Corp. of Toronto, Ontario. Phase one Soil Sampling occurred on September 20<sup>th</sup> and 26<sup>th</sup>. There were 454 soil samples collected on this survey, 387 were collected within the property boundaries and another 67 soils were collected just outside the claim boundaries of each property contiguous with the samples taken on the properties in order to identify anomalous values trending off the claim blocks. The soil sampling program was designed as a comprehensive property wide survey to identify initial exploration targets, specifically anomalous values of gold and copper in soil. All major ridges were traversed and sampled at 50m intervals. Traverses were recommended by Shawn Ryan and project operations were supervised by Isaac Fage, president of Ground Truth Exploration Inc.

### **6.2 Sampling Protocol and Data Handling Procedures**

All sampling traverses are pre-planned, with pre -specified sampling intervals, typically 50m. Field technicians navigate to sample site using handheld GPS units. The soil sampler arrives at each sample site, identifies the most appropriate location to collect the sample and lays out a sheet of plastic (12"x20" ore bag). The soil sample is taken using an Eijklcamp brand hand auger at a depth of between 20cm and 110cm. Samplers strive to consistently collect C-Horizon sample material. Where necessary (rocky or frozen ground) a prospector's pick ('mattock') is used to obtain the sample. The soil is laid out on the sheet of plastic in the order it was recovered from the sample hole. Standardized photos are taken of the sample site- across slope, 5m from sample hole with auger inserted. With the necessary amount of soil (400-500 grams) has been collected, the deepest soil is taken and placed in a bag labeled with the 3-letter project and tagged with a unique barcode ID tag containing a unique 7 digit sample identification number. An aluminum metal tag inscribed with the sample identification number is attached to a rock or branch in a visible area at the sample site along with a length of pink flagging tape.

A field duplicate sample is taken once for every 25 samples. Both samples are given unique Sample identification number. The data for both samples is recorded and a note is made indicating the duplicate and its corresponding sample identification number.

The GPS location of the sample site is recorded with a Garmin GPSMap 60cx or 76cx GPS device in UTM NAD 83 format, and the waypoint is labeled with the project name and the sample identification number.

A weather-proof handheld device equipped with a barcode scanner is used in the field to record the descriptive attributes of the sample collected. this includes: sample identification number (scanned into device at sample site), soil colour, soil horizon, slope, sample depth, ground and tree vegetation and sample quality and any other

relevant information. As well, the GPS coordinates are entered into the handheld device as a secondary backup in case of GPS failure.

Each night in the field, the GPS and Palm PDA devices are downloaded to a laptop computer. The data is verified and mapped on a sampler-by-sampler basis in proprietary database auditing and mapping software. At the end of each day, the crew boss inspects all samples for size and consistency as a quality check. Each sampler then repackages all samples for shipping- barcode scanning them as they are placed into a rice bag which is sealed with a barcoded security zip tie. Samples are shipped from the field to the lab on a daily basis, tracked by the unique ID on each security seal.

A backup of the sample data is made, copied onto a USB memory stick and kept in a separate location from the laptop computer until job completion. Where possible, a backup is also sent via e-mail.

### 6.3 Sample Preparation and Analysis

Samples were processed by Acme Labs in Vancouver with Aqua Regia digestion and analyzed with ICP-MS for 36 elements (Acme Labs 1DX-15 gram). Samples are Dried at 60°C, sieved at -80 mesh.

### 6.4 Interpretation

The BURNHAM project Phase one ridge and spur soil sampling program did not delineate any target areas with anomalous gold and copper values in soil that warrant further exploration on the property at this time.

Gold values in soil up to 12.3 ppb were observed. 5 samples in the survey (454) had observed values over 6.4 ppb Au (99<sup>th</sup> percentile). (see figure 6,9).

A cluster of soil samples with anomalous copper values was observed on the south-central portion of the property with values ranging to a maximum of 89.1 ppm. 5 samples in the survey (454) had observed copper values over 70.3ppm Cu (99<sup>th</sup> percentile). (see figure 8,11)

### 6.5 Recommendations

Further follow up is not required to assess the potential of the anomalous gold and copper observed in the BURNHAM phase one soil program, and no work is planned for the 2012 field season on the property.

## References Cited

**Regional Geology:** Gordey, S.P. and Makepeace, A.J. (comp.) 1999: Yukon bedrock geology in Yukon digital geology, S.P. Gordey and A.J. Makepeace (comp.); Geological Survey of Canada Open File D3826 and Exploration and Geological Services Division, Yukon, Indian and Northern Affairs Canada, Open File 1999-1(D)

**Airborne Geophysics:** F. Kiss (compiler), 2005: 1<sup>st</sup> Vertical Derivative Airborne multisensor geophysical survey; Data was extracted as 200 m grids from ESS-NRCan GDR database and trimmed to the Yukon boundary

**Regional Stream Geochemistry:** Heon, D. (compiler), Yukon Regional Geochemical Database 2003, [http://www.geology.gov.yk.ca/databases\\_gis.html](http://www.geology.gov.yk.ca/databases_gis.html)

**Yukon Minfile Occurrences:** <http://data.geology.gov.yk.ca/>

**Mineral Titles:** Yukon Mining Recorder, Mining Claims Database – [www.yukonminingrecorder.ca](http://www.yukonminingrecorder.ca)

**Topographic data:** NR Canada, CanVec Topographic Database- [www.geogratis.ca](http://www.geogratis.ca)

Additional review of various published scientific and reporting papers on the geology and mineral deposits of the region for indirect reference.

145°0'0"W 140°0'0"W 135°0'0"W 130°0'0"W 125°0'0"W 120°0'0"W

70°0'0"N

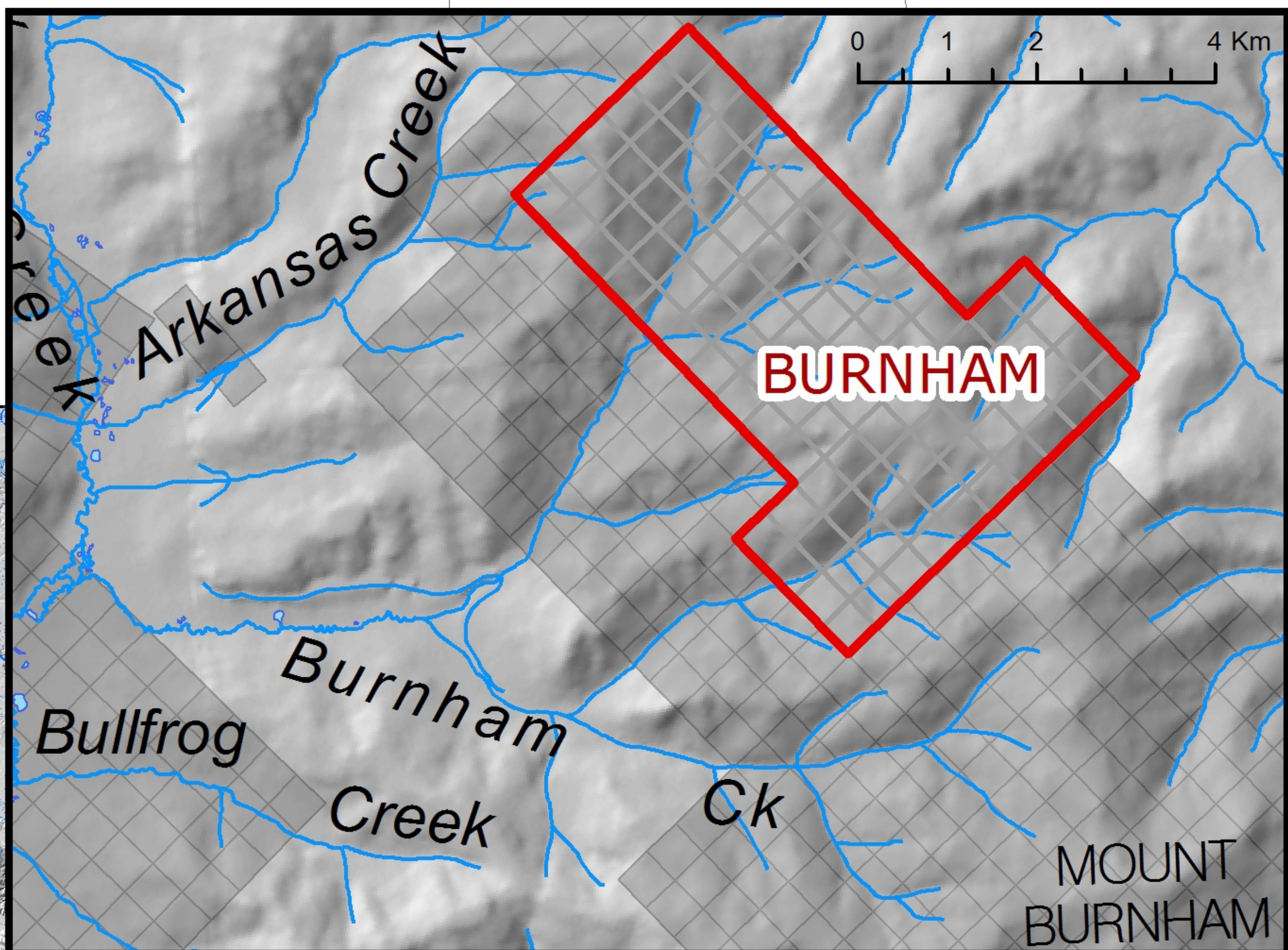
70°0'0"N

N

NTS  
Mapsheet:

<b>Ryan Gold Corp.</b>	
<b>BURNHAM Project Location</b>	
<b>Prepared by:</b> A. Woroniuk	<b>Date:</b> July 2012
<b>Scale:</b> 1 : 5,000,000	<b>Datum:</b> YT Albers

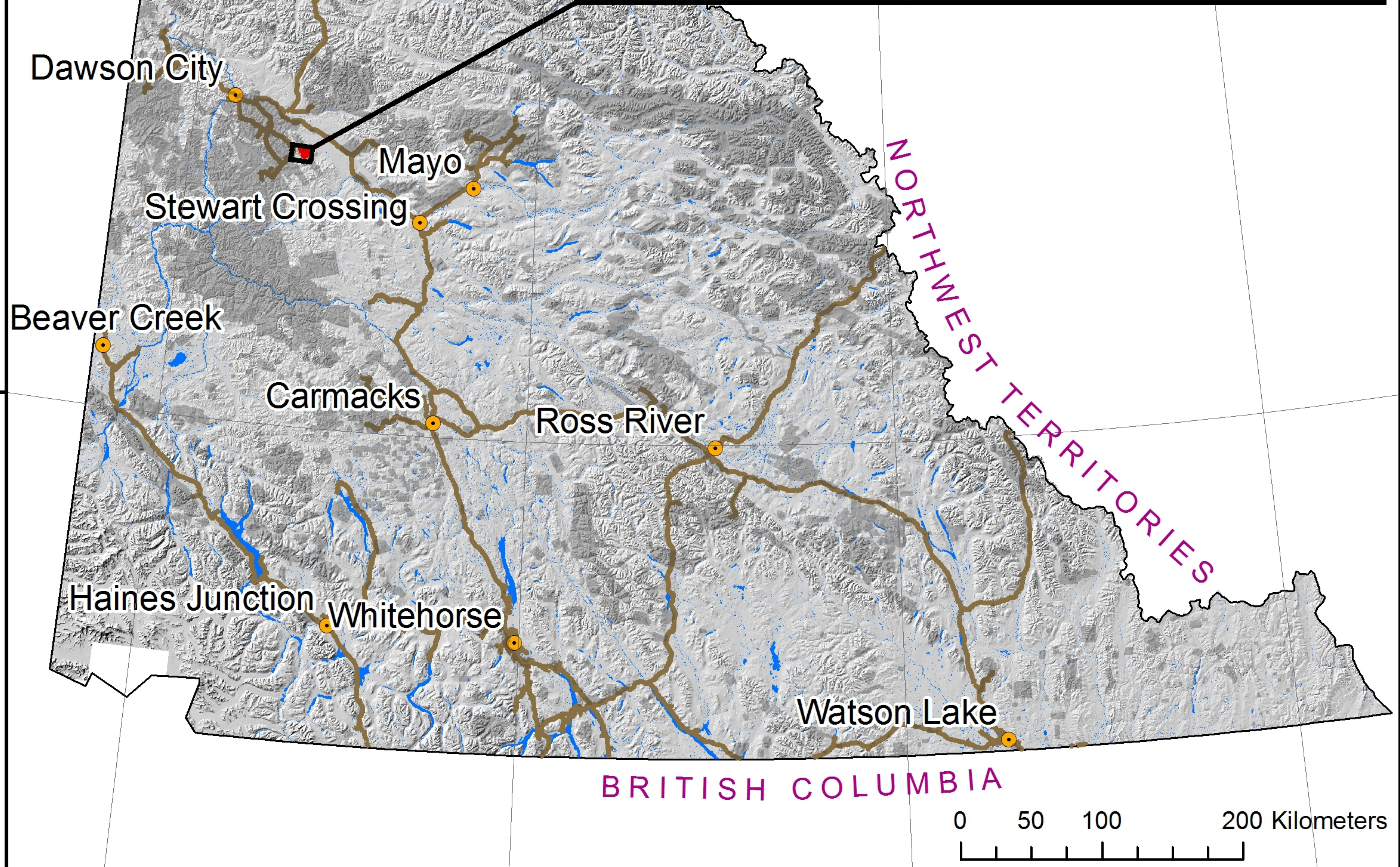
**Figure 1**



66°0'0"N

66°0'0"N

ALASKA



62°0'0"N


62°0'0"N

140°0'0"W 135°0'0"W 130°0'0"W 125°0'0"W


625000.000000

630000.000000

**Legend**

 BURNHAM Boundary

**N**



**NTS**  
**Mapsheet:**  
1150/  
09, 16

**Ryan Gold Corp.**

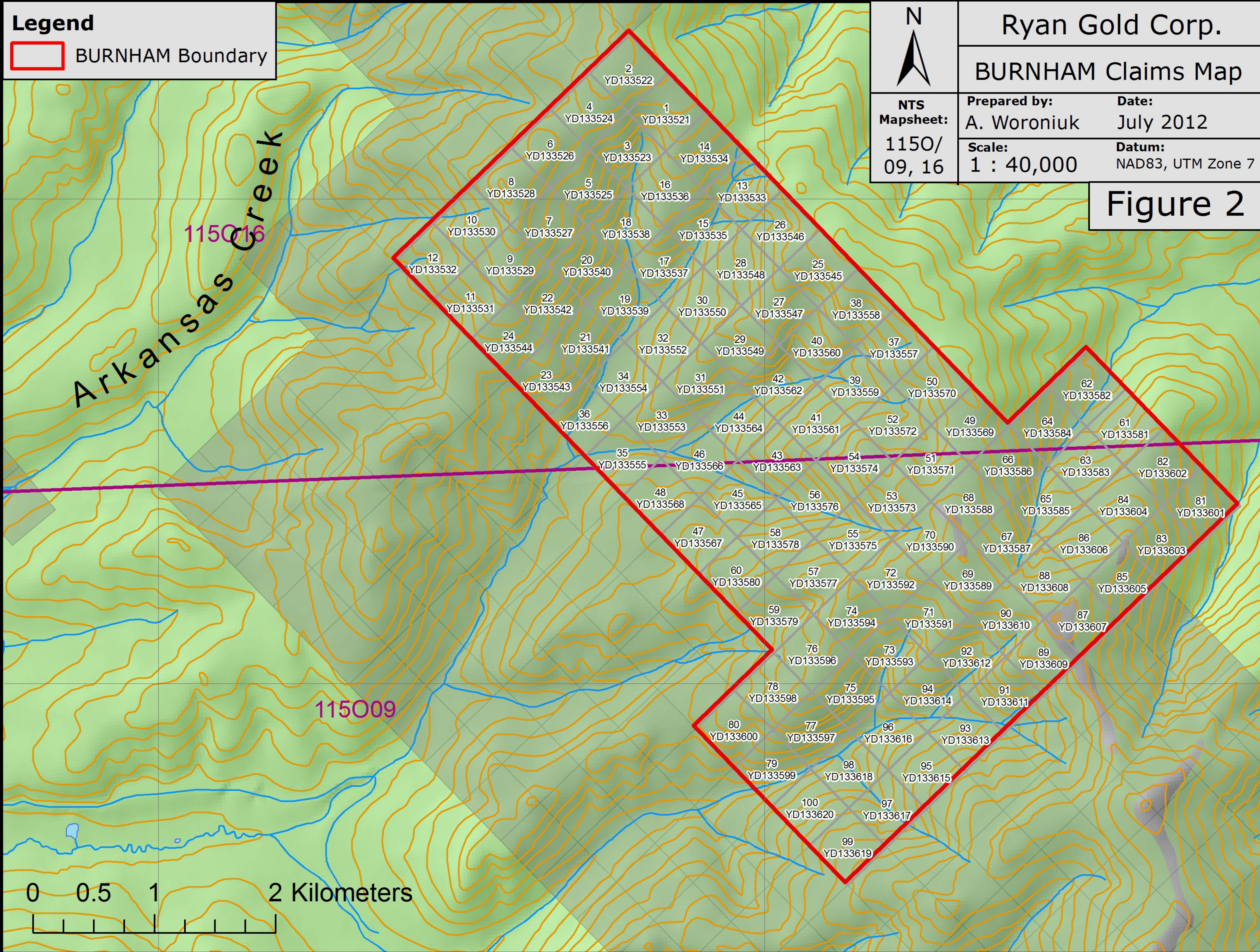
**BURNHAM Claims Map**

<b>Prepared by:</b> A. Woroniuk	<b>Date:</b> July 2012
<b>Scale:</b> 1 : 40,000	<b>Datum:</b> NAD83, UTM Zone 7

**Figure 2**

7074000.000000


7074000.000000



7070000.000000

7070000.000000

0 0.5 1 2 Kilometers



625000.000000

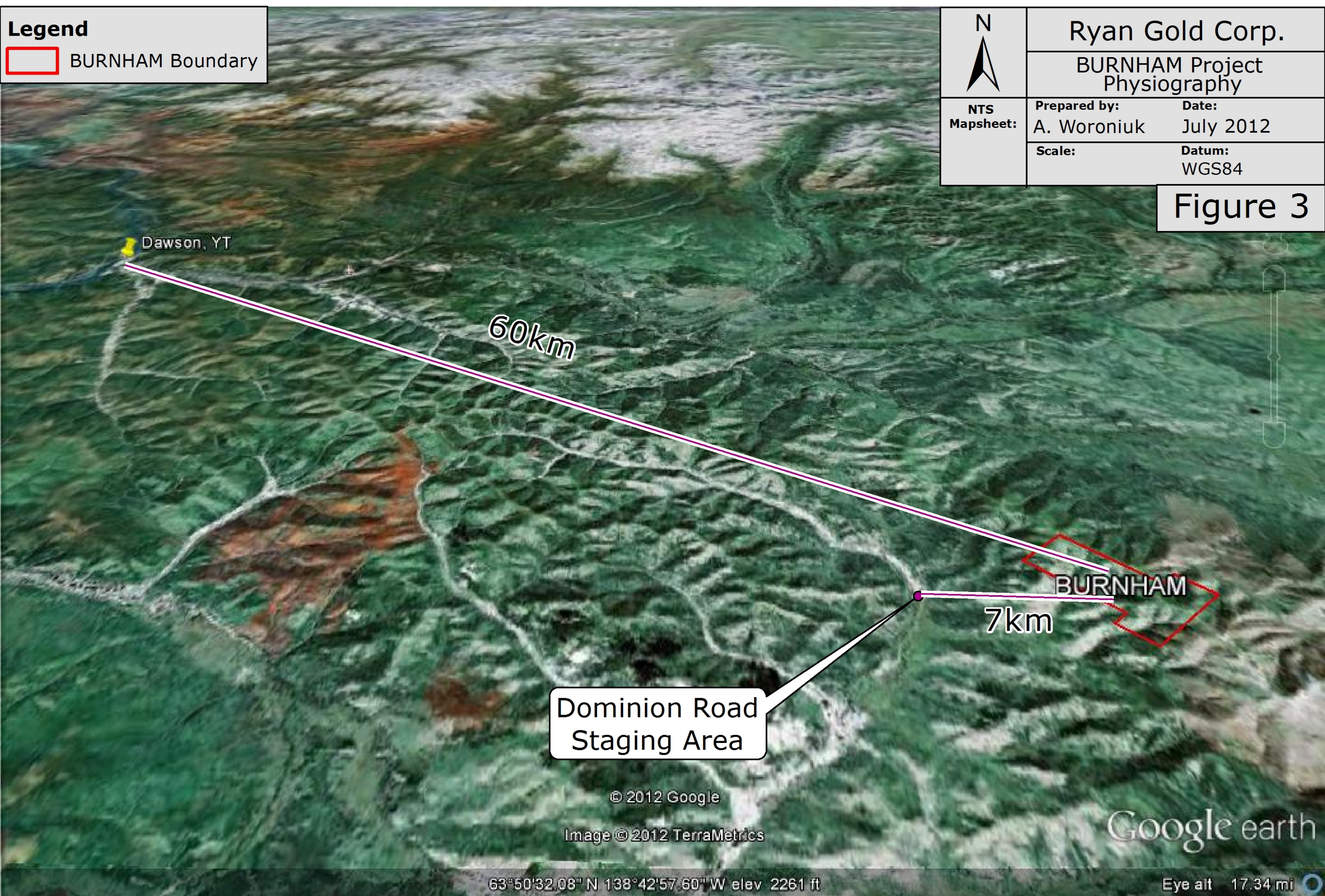
630000.000000

**Legend**  
[Red outline box] BURNHAM Boundary

N  
NTS  
Mapsheet:

Ryan Gold Corp.  
BURNHAM Project  
Physiography  
Prepared by:  
A. Woroniuk  
Date:  
July 2012  
Scale:  
Datum:  
WGS84

Figure 3



Dominion Road  
Staging Area

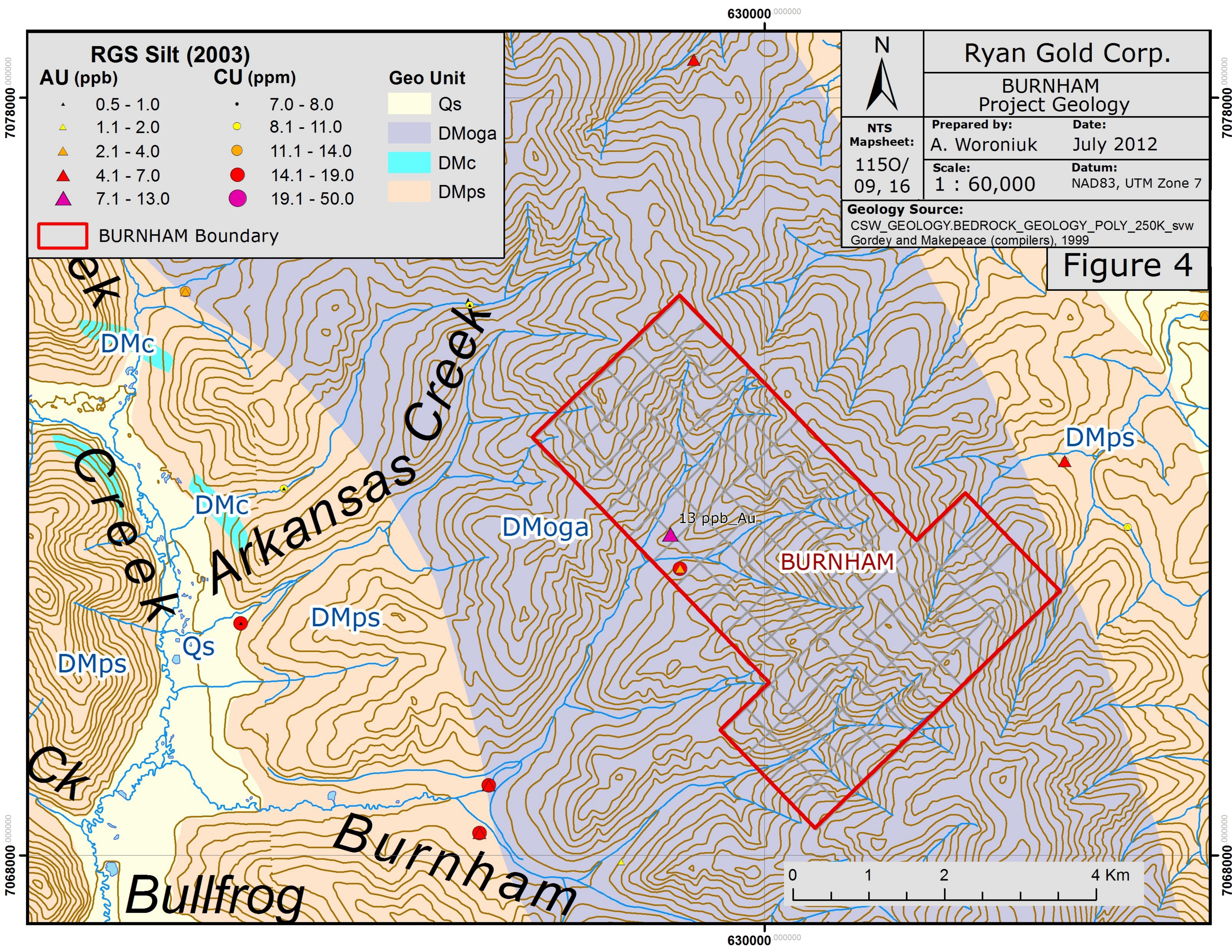
© 2012 Google

Image © 2012 TerraMetrics

Google earth

63°50'32.08" N 138°42'57.60" W elev 2261 ft

Eye alt 17.34 mi



**RGS Silt (2003)**

**AU (ppb)**

**CU (ppm)**

**Geo Unit**

- |   |            |   |             |   |       |
|---|------------|---|-------------|---|-------|
| ▲ | 0.5 - 1.0  | • | 7.0 - 8.0   | □ | Qs    |
| ▲ | 1.1 - 2.0  | ● | 8.1 - 11.0  | □ | DMoga |
| ▲ | 2.1 - 4.0  | ● | 11.1 - 14.0 | □ | DMc   |
| ▲ | 4.1 - 7.0  | ● | 14.1 - 19.0 | □ | DMps  |
| ▲ | 7.1 - 13.0 | ● | 19.1 - 50.0 |   |       |

□ BURNHAM Boundary

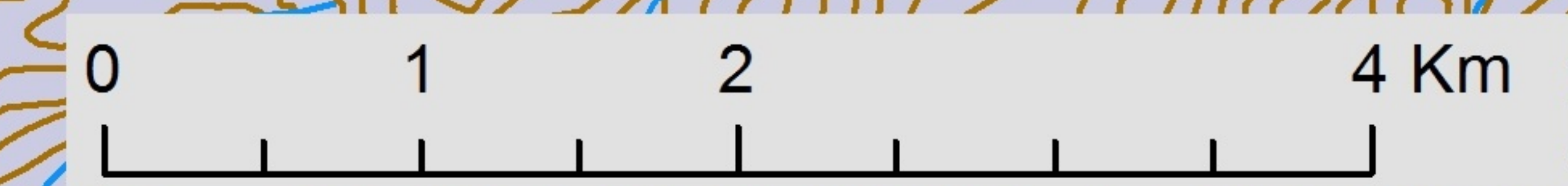
Ryan Gold Corp.

BURNHAM  
Project Geology

NTS Mapsheet: 1150/ 09, 16	Prepared by: A. Woroniuk	Date: July 2012
	Scale: 1 : 60,000	Datum: NAD83, UTM Zone 7

**Geology Source:**  
CSW\_GEOLOGY.BEDROCK\_GEOLOGY\_POLY\_250K\_svw  
Gordey and Makepeace (compilers), 1999

Figure 4



630000 000000

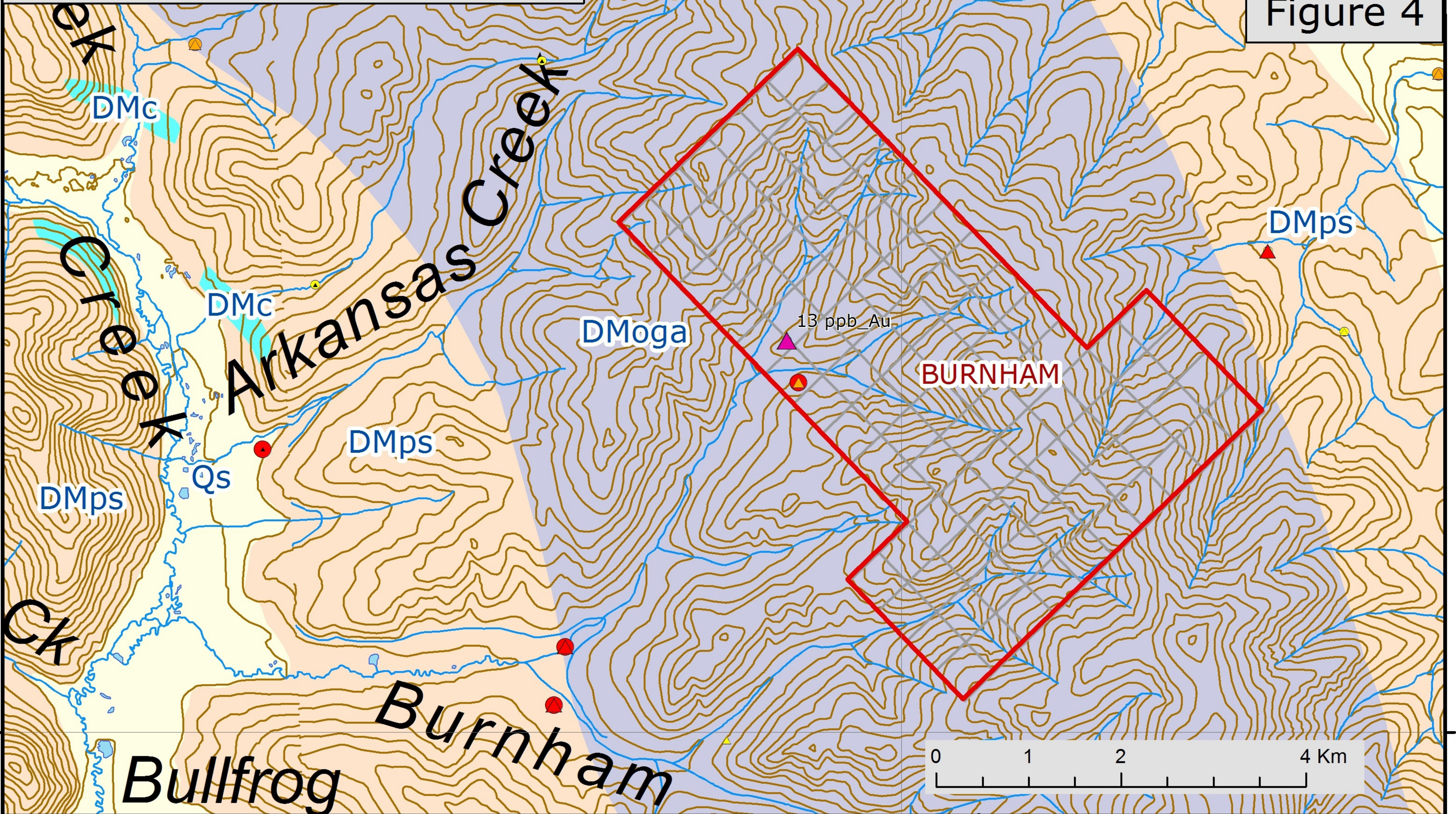
7068000 000000

7068000 000000

7078000 000000

7078000 000000

630000 000000



630000.000000

 BURNHAM Boundary



Ryan Gold Corp.

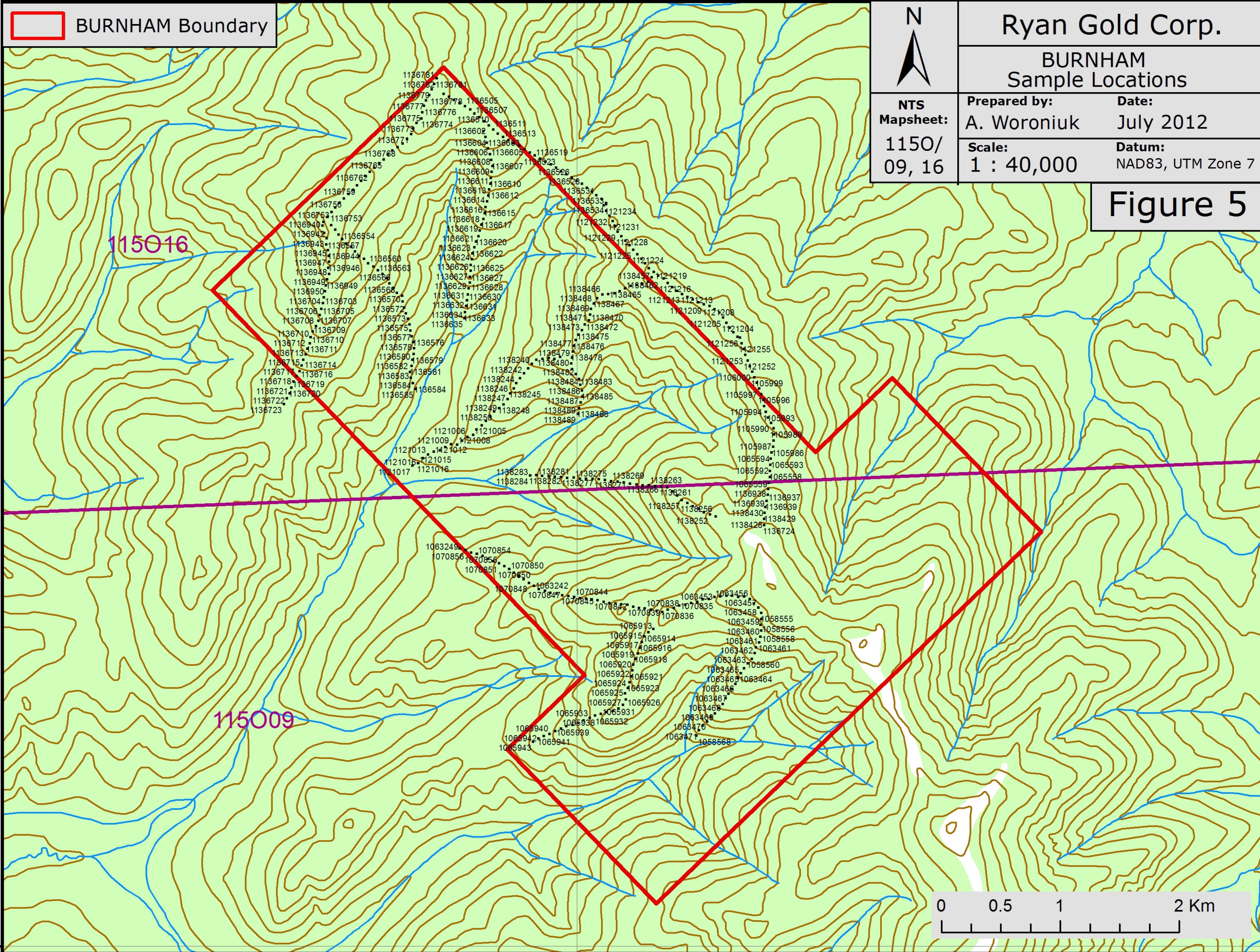
BURNHAM  
Sample Locations

NTS  
Mapsheet:  
1150/  
09, 16

Prepared by:  
A. Woroniuk  
Scale:  
1 : 40,000

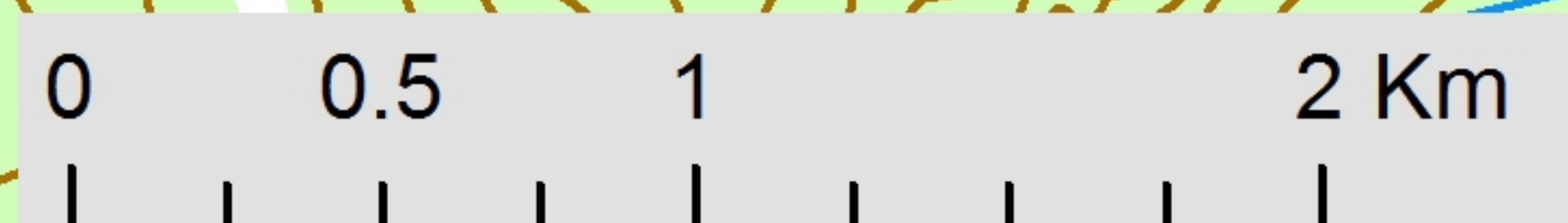
Date:  
July 2012  
Datum:  
NAD83, UTM Zone 7

Figure 5



115016

115009



7068000.000000

630000.000000

7068000.000000

630000 000000

### 2011 BURNHAM Soils

#### Au (ppb)

- < 3.1
  - 3.1 - 6.4 (90th Percentile)
  - > 6.4 (99th Percentile)
- BURNHAM Boundary



## Ryan Gold Corp.

### BURNHAM Gold-in-Soil Results

NTS  
Mapsheet:  
1150/  
09, 16

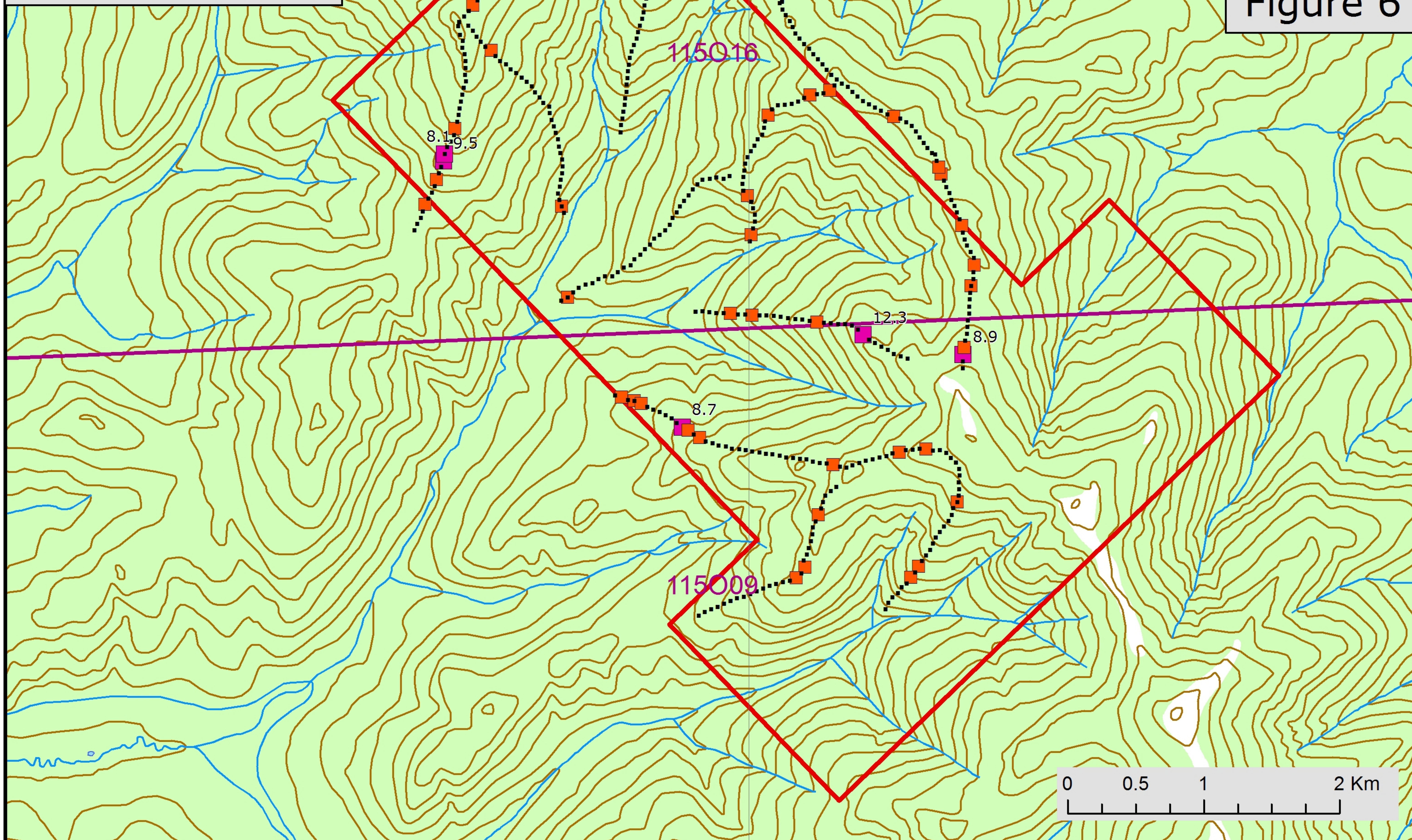
Prepared by:  
A. Woroniuk

Date:  
July 2012

Scale:  
1 : 40,000

Datum:  
NAD83, UTM Zone 7

## Figure 6



630000 000000

630000 000000

### 2011 BURNHAM Soils As (ppm)

- < 11.1
- ▲ 11.1 - 13.6 (90th Percentile)
- ▲ > 13.6 (99th Percentile)
- ▭ BURNHAM Boundary



## Ryan Gold Corp.

### BURNHAM Arsenic-in-Soil Results

NTS  
Mapsheet:  
1150/  
09, 16

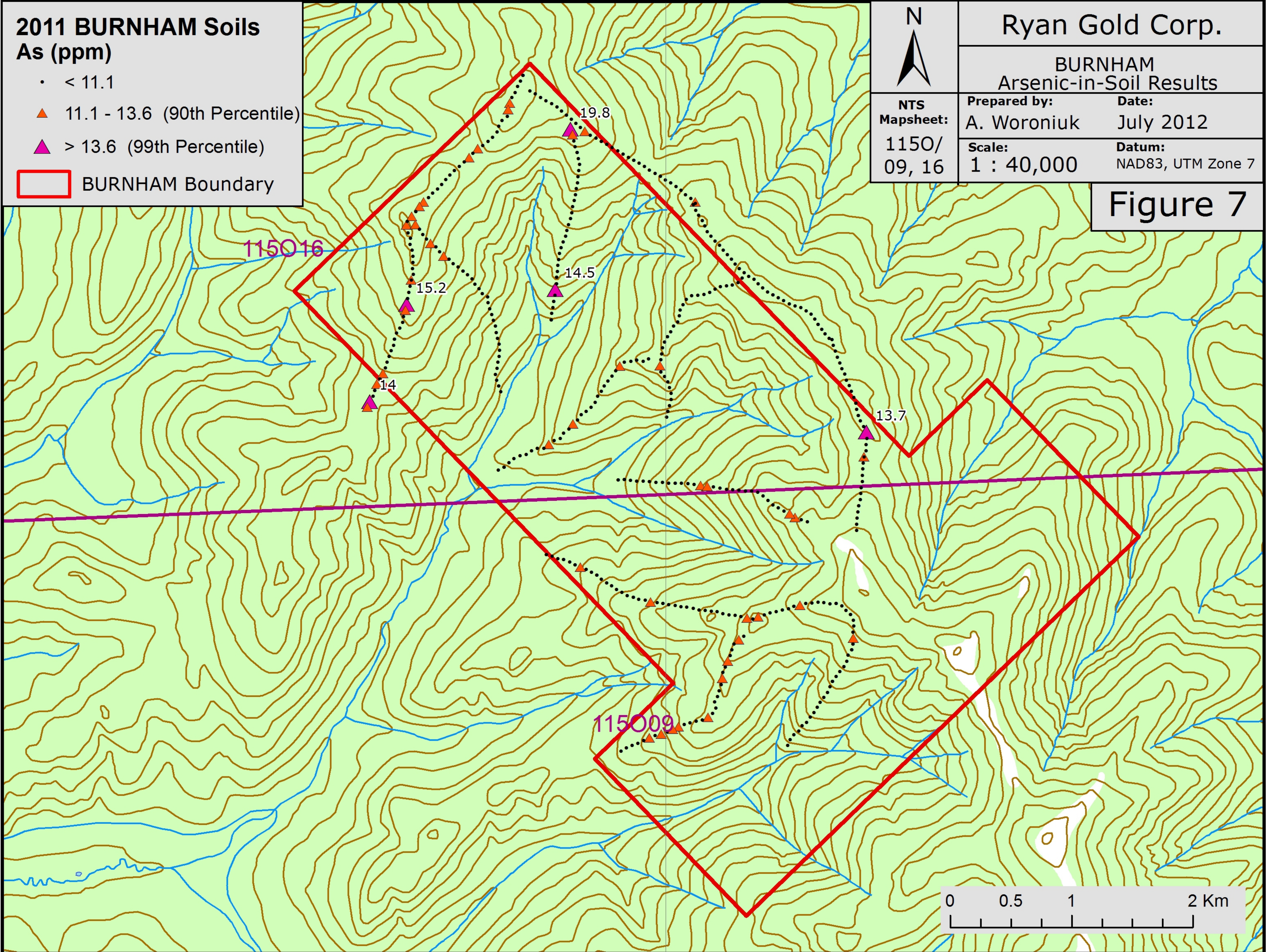
Prepared by:  
A. Woroniuk

Date:  
July 2012

Scale:  
1 : 40,000

Datum:  
NAD83, UTM Zone 7

## Figure 7



630000 000000

630000 000000

### 2011 BURNHAM Soils Cu (ppm)

- < 27.9
- 27.9 - 70.3 (90th Percentile)
- > 70.3 (99th Percentile)
- BURNHAM Boundary



## Ryan Gold Corp.

### BURNHAM Copper-in-Soil Results

NTS  
Mapsheet:  
1150/  
09, 16

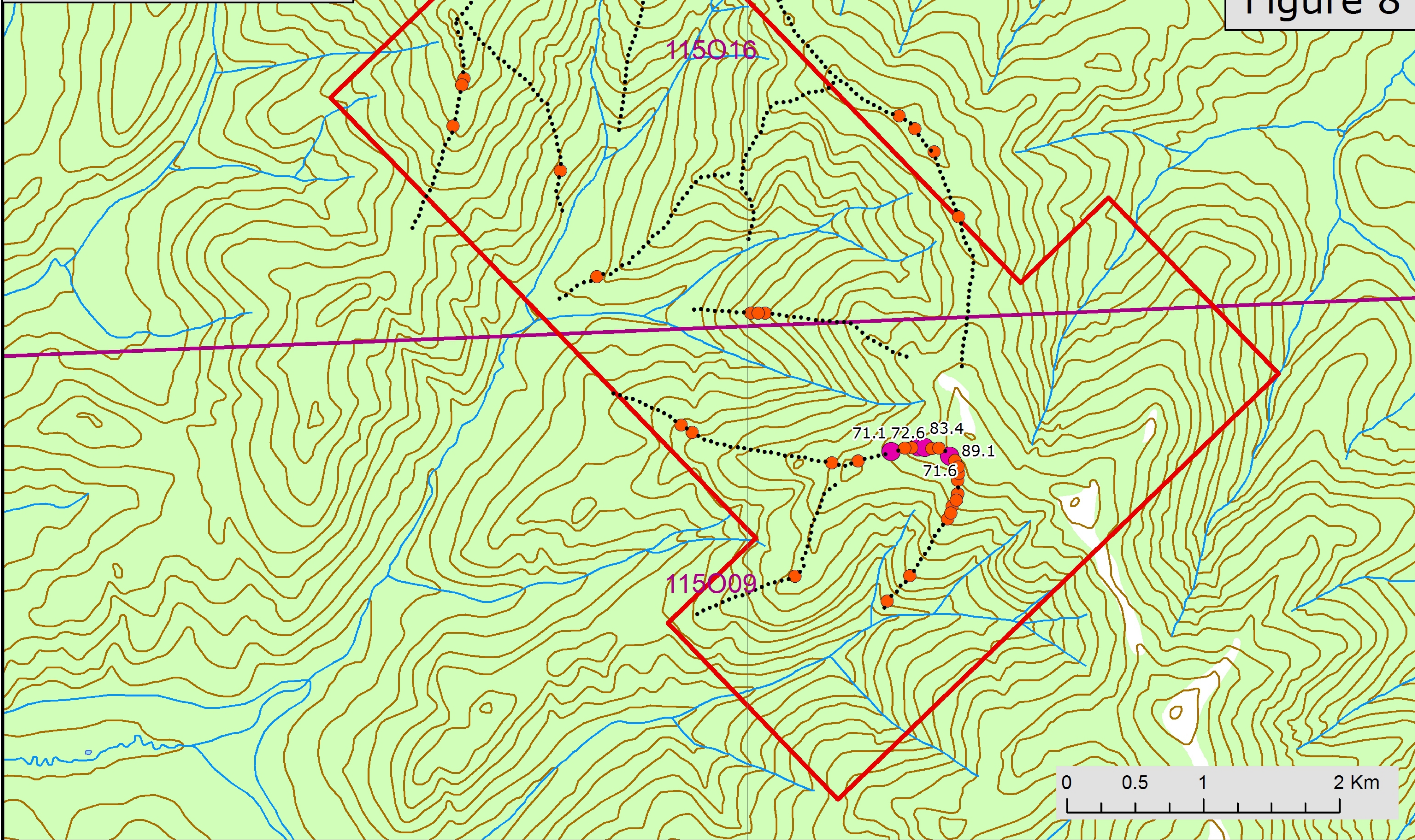
Prepared by:  
A. Woroniuk

Date:  
July 2012

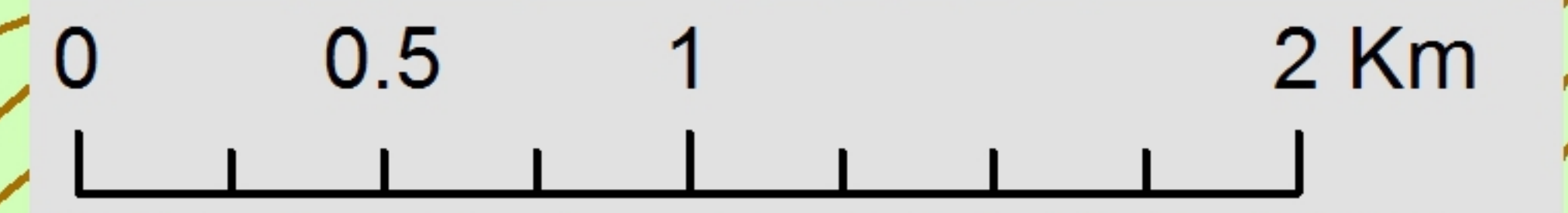
Scale:  
1 : 40,000

Datum:  
NAD83, UTM Zone 7

## Figure 8



630000 000000



630000.000000



Ryan Gold Corp.

BURNHAM  
Gold-over-Mag Results

NTS  
Mapsheet:  
1150/  
09, 16

Prepared by:  
A. Woroniuk

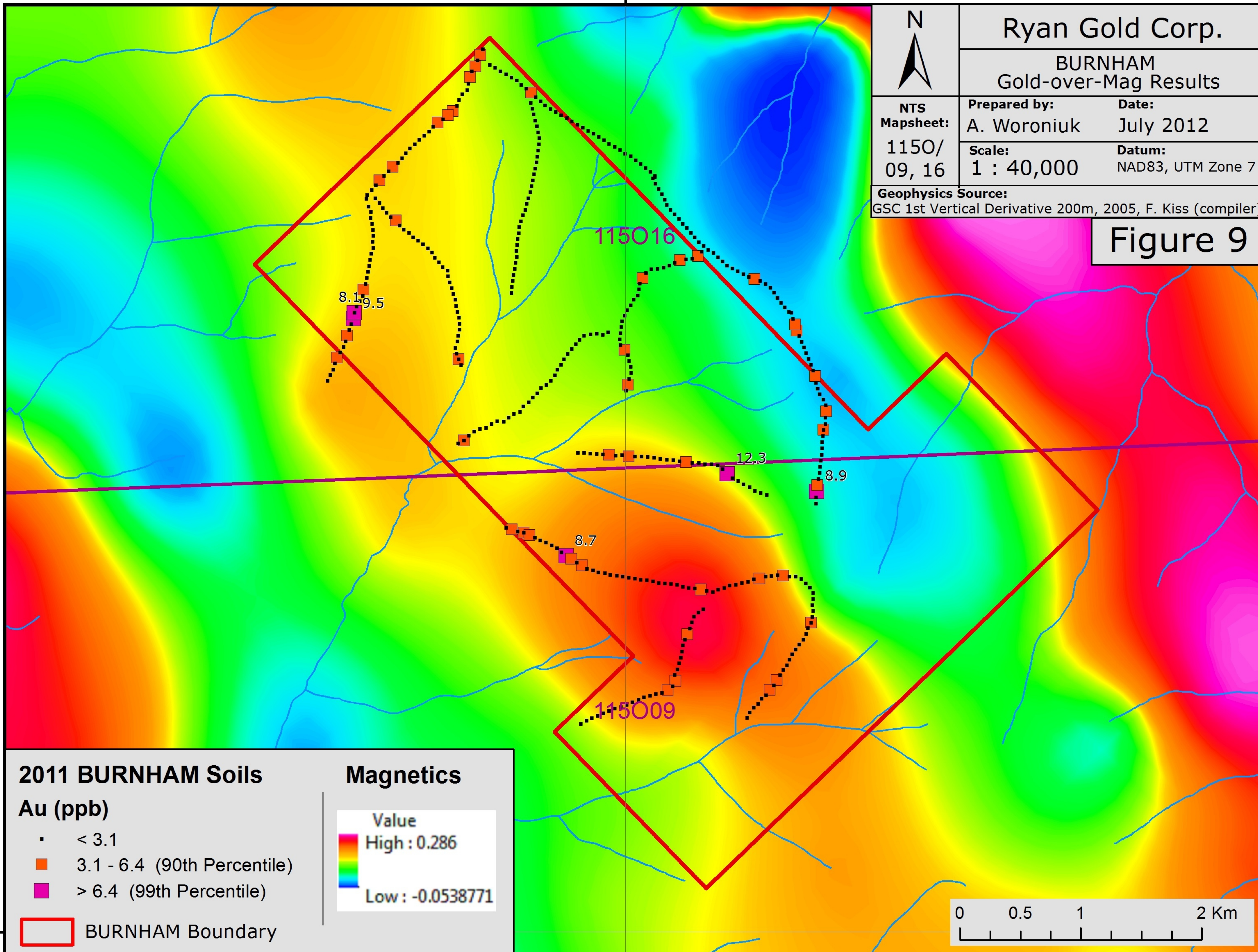
Date:  
July 2012

Scale:  
1 : 40,000

Datum:  
NAD83, UTM Zone 7

Geophysics Source:  
GSC 1st Vertical Derivative 200m, 2005, F. Kiss (compiler)

Figure 9



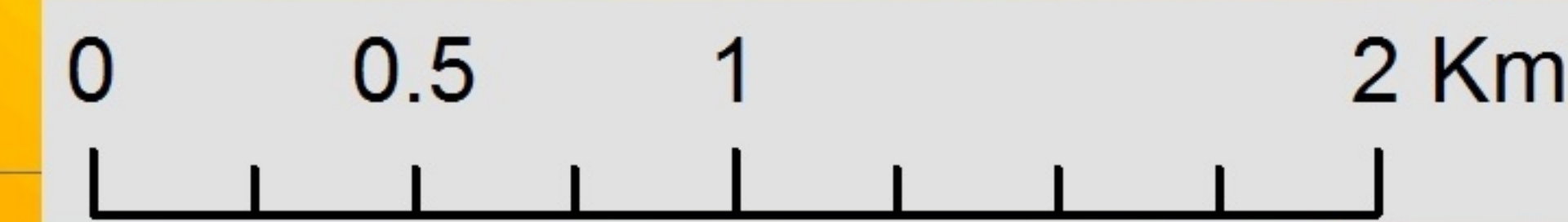
**2011 BURNHAM Soils**

**Au (ppb)**

- < 3.1
- 3.1 - 6.4 (90th Percentile)
- > 6.4 (99th Percentile)

■ BURNHAM Boundary

**Magnetics**

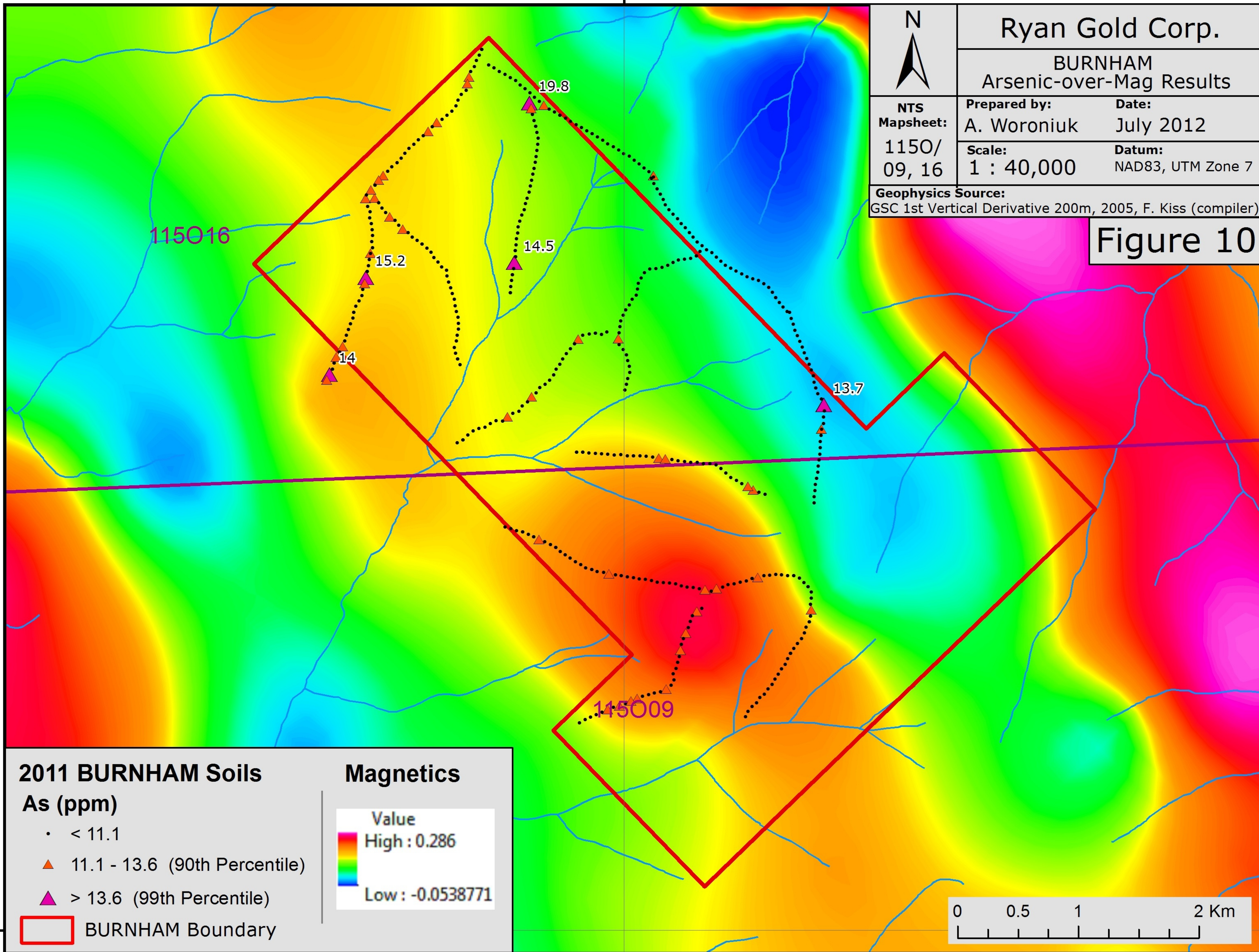


7068000.000000

630000.000000

7068000.000000

630000.000000



Ryan Gold Corp.

BURNHAM  
Arsenic-over-Mag Results

NTS  
Mapsheet:  
1150/  
09, 16

Prepared by:  
A. Woroniuk

Date:  
July 2012

Scale:  
1 : 40,000

Datum:  
NAD83, UTM Zone 7

Geophysics Source:  
GSC 1st Vertical Derivative 200m, 2005, F. Kiss (compiler)

Figure 10

115016

19.8

14.5

15.2

14

13.7

115009

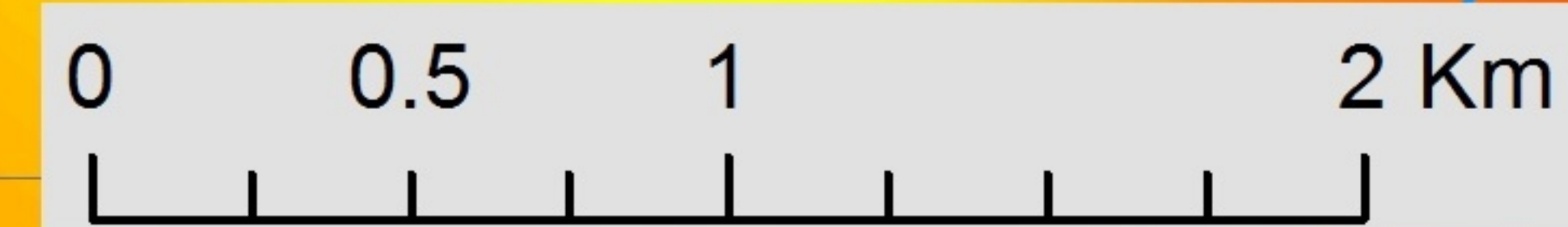
**2011 BURNHAM Soils**

**As (ppm)**

- < 11.1
- ▲ 11.1 - 13.6 (90th Percentile)
- ▲ (purple) > 13.6 (99th Percentile)

□ BURNHAM Boundary

**Magnetics**

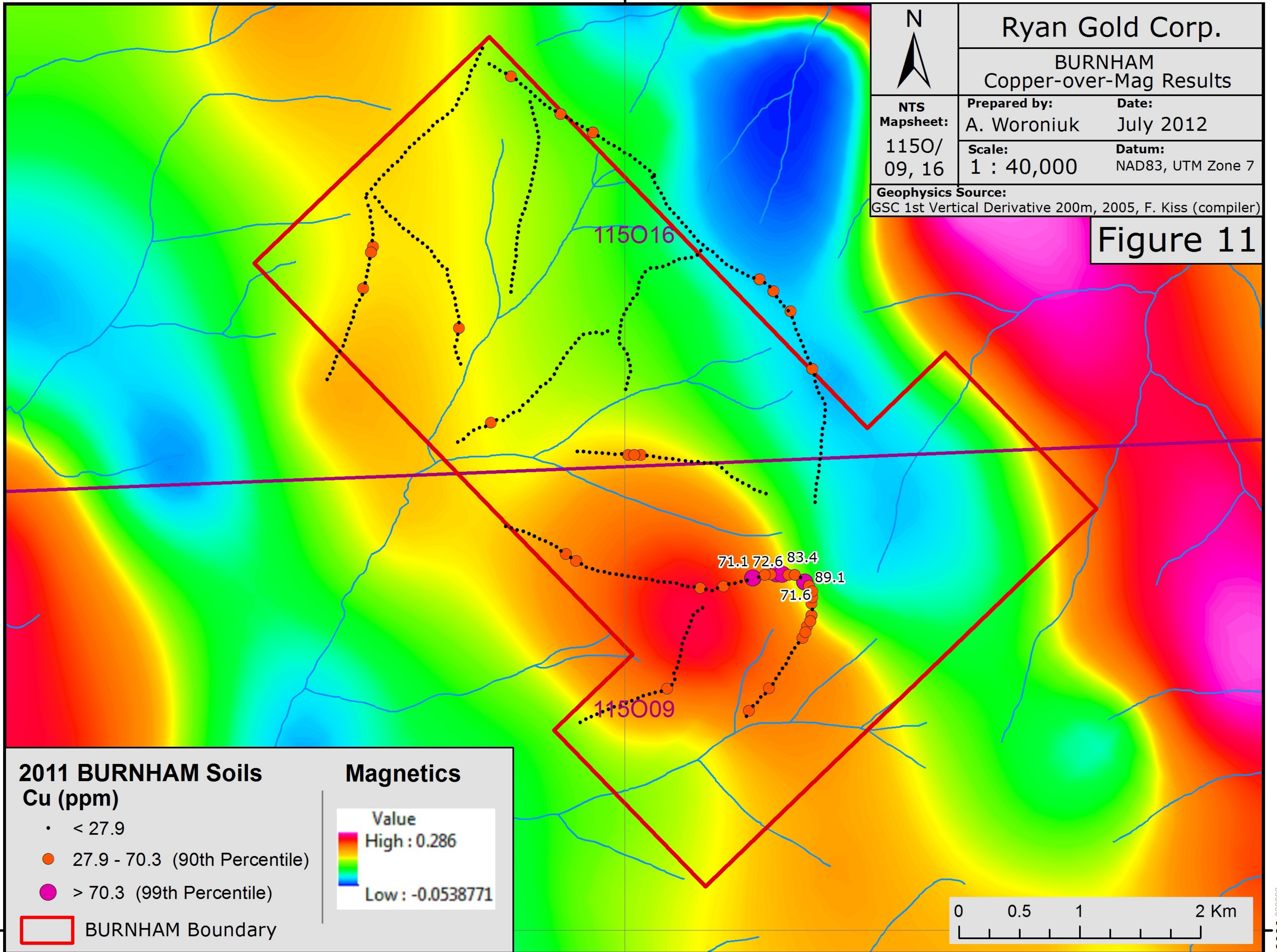


7068000.000000

630000.000000

7068000.000000

630000.000000



Ryan Gold Corp.

BURNHAM  
Copper-over-Mag Results

NTS  
Mapsheet:  
1150/  
09, 16

Prepared by:  
A. Woroniuk

Date:  
July 2012

Scale:  
1 : 40,000

Datum:  
NAD83, UTM Zone 7

Geophysics Source:  
GSC 1st Vertical Derivative 200m, 2005, F. Kiss (compiler)

Figure 11

115016

115009

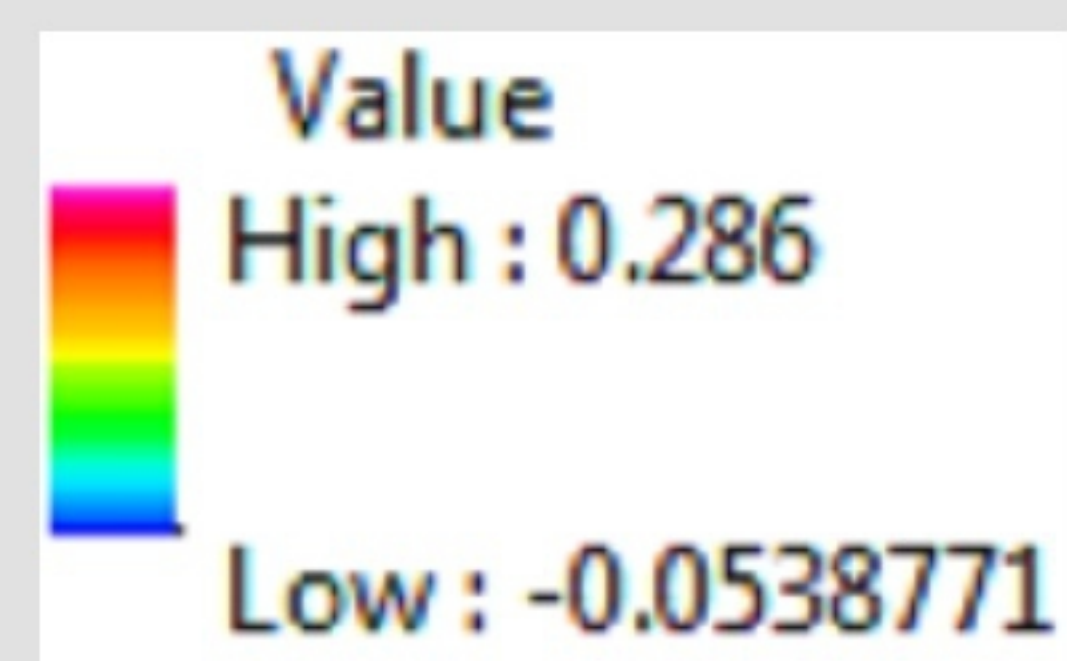
71.1 72.6 83.4  
71.6 89.1

**2011 BURNHAM Soils  
Cu (ppm)**

- < 27.9
- 27.9 - 70.3 (90th Percentile)
- > 70.3 (99th Percentile)

□ BURNHAM Boundary

**Magnetics**



7068000.000000

630000.000000

7068000.000000

## Appendix I : Statement of Work Expenditures

### SOIL SAMPLING PROGRAM:

A total of 15 man days were required to collect a total of 454 soil samples from Sept.20 to 26, 2011

Description		Rate	Unit	Total
<b>WAGES:</b>				
Soil Samplers	per day	\$ 350.00	12	\$ 4,200.00
Project Forman	per day	\$ 400.00	3	\$ 1,200.00
Travel Rate: Soil Sampler	per day	\$ 250.00	0	\$ -
Packing & Prep	per day	\$ 250.00	0	\$ -
Weather Rate: Soil Sampler	per day	\$ 250.00	0	\$ -
Stat Holiday				\$ -
<b>DATA MANAGEMENT &amp; PROCESSING SERVICES:</b>				
GIS/Job Layout/Mapping/Results Plotting	per hour	\$ 75.00	1.5	\$ 112.50
Data Processing: In the field	per hour	\$ 60.00	3	\$ 180.00
Database Management/Chain of Custody, Barcoded Samples	\$0.50/sample	\$ 0.50	454	\$ 227.00
Georeferenced In situ Sample & Sample Site Photos	per sample	\$ 0.50	454	\$ 227.00
<b>CONSUMABLE SAMPLING SUPPLIES:</b>				
Flagging, Metal ID Tags, Sample Bags, Ore Bags, Rice Bags, etc.	per sample	\$ 1.00	454	\$ 454.00
<b>EQUIPMENT RENTAL (per unit, per day):</b>				
Truck Rental: Fuel extra	per day	\$ 150.00	0	\$ -
Fuel	per km	\$ 0.25	0	\$ -
Flat Deck Trailer: 10,000 lbs., 20 ft.	per day	\$ 100.00	0	\$ -
Chainsaw drop kit: 1 per helicopter load, or as required	per day	\$ 35.00	3	\$ 105.00
Iridium Satellite Phone: 1 per crew, charge 10 min/day	per day&min	\$ 35.00	3	\$ 105.00
Radio: ICOM Handheld: 1 per person	per day	\$ 5.00	15	\$ 75.00
Computer/Software: 1 per camp nightly data download	per day	\$ 50.00	2	\$ 100.00
Handheld GPS/Barcode Scanner/Camera/Data Recorder	per day	\$ 15.00	15	\$ 225.00
Camp Satellite Internet	per day	\$ 20.00	1	\$ 20.00
<b>ACCOMODATION and FOOD:</b>				
Remote Camp Fee: full fly camp/kitchen/generator	per man day	\$ 35.00	5	\$ 175.00
Dawson Accomodation Fee: Samplers based in Dawson	per man day	\$ 35.00	0	\$ -
Food	per man day	\$ 50.00	5	\$ 250.00
<b>MOBILIZATION/OPERATIONAL EXPENSES:</b>				\$ 2,166.53
<b>HELICOPTER SUPPORT:</b>				
Trans North Helicopter/ 8.2 Hours @ \$1,575/hour & FUEL				\$12,915.00
<b>ANALYTICAL ANALYSIS COSTS:</b>				
Acme Laboratories, Vancouver, B.C./SOILS	per sample	\$ 22.00	454	\$ 9,988.00
<b>REPORT WRITING:</b>				\$ 1,000.00
SOIL SAMPLING PROGRAM =				<b>\$ 33,725.03</b>

divided by 454= **\$ 74.28**  
PER SAMPLI

**387 soils samples were taken within the claim boundaries of the BURNHAM Property**

**387 soil samples X \$74.28/sample =**

**\$ 28,746.36**  
**PROGRAM TOTAL**  
**SOIL SAMPLING**

## **Appendix II: Statement of Qualifications**

I, Isaac Fage, having my place of residence at 982 - 7<sup>th</sup> Avenue in Dawson City, Yukon Territory do hereby certify that:

1. I obtained an Advanced Diploma in Remote Sensing at the Graduate Level from the Centre for Geographic Sciences, in 2008 and prior to that graduated with a Bachelor of Arts from Dalhousie University in 2002.
2. I am President of Ground Truth Exploration Inc.; the contractor that conducted the exploration field program referred to in this report. I have been employed continuously in the Yukon mineral exploration industry since March 2004.
3. I have directly supervised the field work referred to in this technical report.
4. I have authored this technical report titled: Geochemical Report on the BURNHAM Property (October, 2012)
5. This report has not been prepared for the purposes, nor in full compliance with, National Instrument 43-101.

Respectfully Submitted on this 22<sup>th</sup> day of October, 2012.

---

Isaac Fage

**Appendix III: BURNHAM List of Claims, October 2012**

<b>Grant Number</b>	<b>Status</b>	<b>Claim Name</b>	<b>Claim Owner</b>	<b>Staking Date</b>	<b>Expiry Date</b>	<b>District</b>
YD133521	Active	BURHAM 1	45127 Yukon Inc - 30%, Ryan Gold Corp. - 70%	12/11/2010	9/15/2014	Dawson
YD133522	Active	BURHAM 2	45127 Yukon Inc - 30%, Ryan Gold Corp. - 70%	12/11/2010	9/15/2014	Dawson
YD133523	Active	BURHAM 3	45127 Yukon Inc - 30%, Ryan Gold Corp. - 70%	12/11/2010	9/15/2014	Dawson
YD133524	Active	BURHAM 4	45127 Yukon Inc - 30%, Ryan Gold Corp. - 70%	12/11/2010	9/15/2014	Dawson
YD133525	Active	BURHAM 5	45127 Yukon Inc - 30%, Ryan Gold Corp. - 70%	12/11/2010	9/15/2014	Dawson
YD133526	Active	BURHAM 6	45127 Yukon Inc - 30%, Ryan Gold Corp. - 70%	12/11/2010	9/15/2014	Dawson
YD133527	Active	BURHAM 7	45127 Yukon Inc - 30%, Ryan Gold Corp. - 70%	12/11/2010	9/15/2014	Dawson
YD133528	Active	BURHAM 8	45127 Yukon Inc - 30%, Ryan Gold Corp. - 70%	12/11/2010	9/15/2014	Dawson
YD133529	Active	BURHAM 9	45127 Yukon Inc - 30%, Ryan Gold Corp. - 70%	12/11/2010	9/15/2014	Dawson
YD133530	Active	BURHAM 10	45127 Yukon Inc - 30%, Ryan Gold Corp. - 70%	12/11/2010	9/15/2014	Dawson
YD133531	Active	BURHAM 11	45127 Yukon Inc - 30%, Ryan Gold Corp. - 70%	12/11/2010	9/15/2014	Dawson
YD133532	Active	BURHAM 12	45127 Yukon Inc - 30%, Ryan Gold Corp. - 70%	12/11/2010	9/15/2014	Dawson
YD133533	Active	BURHAM 13	45127 Yukon Inc - 30%, Ryan Gold Corp. - 70%	12/11/2010	9/15/2014	Dawson
YD133534	Active	BURHAM 14	45127 Yukon Inc - 30%, Ryan Gold Corp. - 70%	12/11/2010	9/15/2014	Dawson
YD133535	Active	BURHAM 15	45127 Yukon Inc - 30%, Ryan Gold Corp. - 70%	12/11/2010	9/15/2014	Dawson
YD133536	Active	BURHAM 16	45127 Yukon Inc - 30%, Ryan Gold Corp. - 70%	12/11/2010	9/15/2014	Dawson
YD133537	Active	BURHAM 17	45127 Yukon Inc - 30%, Ryan Gold Corp. - 70%	12/11/2010	9/15/2014	Dawson
YD133538	Active	BURHAM 18	45127 Yukon Inc - 30%, Ryan Gold Corp. - 70%	12/11/2010	9/15/2014	Dawson
YD133539	Active	BURHAM 19	45127 Yukon Inc - 30%, Ryan Gold Corp. - 70%	12/11/2010	9/15/2014	Dawson
YD133540	Active	BURHAM 20	45127 Yukon Inc - 30%, Ryan Gold Corp. - 70%	12/11/2010	9/15/2014	Dawson
YD133541	Active	BURHAM 21	45127 Yukon Inc - 30%, Ryan Gold Corp. - 70%	12/11/2010	9/15/2014	Dawson
YD133542	Active	BURHAM 22	45127 Yukon Inc - 30%, Ryan Gold Corp. - 70%	12/11/2010	9/15/2014	Dawson
YD133543	Active	BURHAM 23	45127 Yukon Inc - 30%, Ryan Gold Corp. - 70%	12/11/2010	9/15/2014	Dawson
YD133544	Active	BURHAM 24	45127 Yukon Inc - 30%, Ryan Gold Corp. - 70%	12/11/2010	9/15/2014	Dawson
YD133545	Active	BURHAM 25	45127 Yukon Inc - 30%, Ryan Gold Corp. - 70%	12/11/2010	9/15/2014	Dawson
YD133546	Active	BURHAM 26	45127 Yukon Inc - 30%, Ryan Gold Corp. - 70%	12/11/2010	9/15/2014	Dawson
YD133547	Active	BURHAM 27	45127 Yukon Inc - 30%, Ryan Gold Corp. - 70%	12/11/2010	9/15/2014	Dawson
YD133548	Active	BURHAM 28	45127 Yukon Inc - 30%, Ryan Gold Corp. - 70%	12/11/2010	9/15/2014	Dawson
YD133549	Active	BURHAM 29	45127 Yukon Inc - 30%, Ryan Gold Corp. - 70%	12/11/2010	9/15/2014	Dawson
YD133550	Active	BURHAM 30	45127 Yukon Inc - 30%, Ryan Gold Corp. - 70%	12/11/2010	9/15/2014	Dawson
YD133551	Active	BURHAM 31	45127 Yukon Inc - 30%, Ryan Gold Corp. - 70%	12/11/2010	9/15/2014	Dawson
YD133552	Active	BURHAM 32	45127 Yukon Inc - 30%, Ryan Gold Corp. - 70%	12/11/2010	9/15/2014	Dawson
YD133553	Active	BURHAM 33	45127 Yukon Inc - 30%, Ryan Gold Corp. - 70%	12/11/2010	9/15/2014	Dawson
YD133554	Active	BURHAM 34	45127 Yukon Inc - 30%, Ryan Gold Corp. - 70%	12/11/2010	9/15/2014	Dawson
YD133555	Active	BURHAM 35	45127 Yukon Inc - 30%, Ryan Gold Corp. - 70%	12/11/2010	9/15/2014	Dawson
YD133556	Active	BURHAM 36	45127 Yukon Inc - 30%, Ryan Gold Corp. - 70%	12/11/2010	9/15/2014	Dawson

**Appendix III: BURNHAM List of Claims, October 2012**

<b>Grant Number</b>	<b>Status</b>	<b>Claim Name</b>	<b>Claim Owner</b>	<b>Staking Date</b>	<b>Expiry Date</b>	<b>District</b>
YD133557	Active	BURHAM 37	45127 Yukon Inc - 30%, Ryan Gold Corp. - 70%	12/11/2010	9/15/2014	Dawson
YD133558	Active	BURHAM 38	45127 Yukon Inc - 30%, Ryan Gold Corp. - 70%	12/11/2010	9/15/2014	Dawson
YD133559	Active	BURHAM 39	45127 Yukon Inc - 30%, Ryan Gold Corp. - 70%	12/11/2010	9/15/2014	Dawson
YD133560	Active	BURHAM 40	45127 Yukon Inc - 30%, Ryan Gold Corp. - 70%	12/11/2010	9/15/2014	Dawson
YD133561	Active	BURHAM 41	45127 Yukon Inc - 30%, Ryan Gold Corp. - 70%	12/11/2010	9/15/2014	Dawson
YD133562	Active	BURHAM 42	45127 Yukon Inc - 30%, Ryan Gold Corp. - 70%	12/11/2010	9/15/2014	Dawson
YD133563	Active	BURHAM 43	45127 Yukon Inc - 30%, Ryan Gold Corp. - 70%	12/11/2010	9/15/2014	Dawson
YD133564	Active	BURHAM 44	45127 Yukon Inc - 30%, Ryan Gold Corp. - 70%	12/11/2010	9/15/2014	Dawson
YD133565	Active	BURHAM 45	45127 Yukon Inc - 30%, Ryan Gold Corp. - 70%	12/11/2010	9/15/2014	Dawson
YD133566	Active	BURHAM 46	45127 Yukon Inc - 30%, Ryan Gold Corp. - 70%	12/11/2010	9/15/2014	Dawson
YD133567	Active	BURHAM 47	45127 Yukon Inc - 30%, Ryan Gold Corp. - 70%	12/11/2010	9/15/2014	Dawson
YD133568	Active	BURHAM 48	45127 Yukon Inc - 30%, Ryan Gold Corp. - 70%	12/11/2010	9/15/2014	Dawson
YD133569	Active	BURHAM 49	45127 Yukon Inc - 30%, Ryan Gold Corp. - 70%	12/11/2010	9/15/2014	Dawson
YD133570	Active	BURHAM 50	45127 Yukon Inc - 30%, Ryan Gold Corp. - 70%	12/11/2010	9/15/2014	Dawson
YD133571	Active	BURHAM 51	45127 Yukon Inc - 30%, Ryan Gold Corp. - 70%	12/11/2010	9/15/2014	Dawson
YD133572	Active	BURHAM 52	45127 Yukon Inc - 30%, Ryan Gold Corp. - 70%	12/11/2010	9/15/2014	Dawson
YD133573	Active	BURHAM 53	45127 Yukon Inc - 30%, Ryan Gold Corp. - 70%	12/11/2010	9/15/2014	Dawson
YD133574	Active	BURHAM 54	45127 Yukon Inc - 30%, Ryan Gold Corp. - 70%	12/11/2010	9/15/2014	Dawson
YD133575	Active	BURHAM 55	45127 Yukon Inc - 30%, Ryan Gold Corp. - 70%	12/11/2010	9/15/2014	Dawson
YD133576	Active	BURHAM 56	45127 Yukon Inc - 30%, Ryan Gold Corp. - 70%	12/11/2010	9/15/2014	Dawson
YD133577	Active	BURHAM 57	45127 Yukon Inc - 30%, Ryan Gold Corp. - 70%	12/11/2010	9/15/2014	Dawson
YD133578	Active	BURHAM 58	45127 Yukon Inc - 30%, Ryan Gold Corp. - 70%	12/11/2010	9/15/2014	Dawson
YD133579	Active	BURHAM 59	45127 Yukon Inc - 30%, Ryan Gold Corp. - 70%	12/11/2010	9/15/2014	Dawson
YD133580	Active	BURHAM 60	45127 Yukon Inc - 30%, Ryan Gold Corp. - 70%	12/11/2010	9/15/2014	Dawson
YD133581	Active	BURHAM 61	45127 Yukon Inc - 30%, Ryan Gold Corp. - 70%	12/11/2010	9/15/2014	Dawson
YD133582	Active	BURHAM 62	45127 Yukon Inc - 30%, Ryan Gold Corp. - 70%	12/11/2010	9/15/2014	Dawson
YD133583	Active	BURHAM 63	45127 Yukon Inc - 30%, Ryan Gold Corp. - 70%	12/11/2010	9/15/2014	Dawson
YD133584	Active	BURHAM 64	45127 Yukon Inc - 30%, Ryan Gold Corp. - 70%	12/11/2010	9/15/2014	Dawson
YD133585	Active	BURHAM 65	45127 Yukon Inc - 30%, Ryan Gold Corp. - 70%	12/11/2010	9/15/2014	Dawson
YD133586	Active	BURHAM 66	45127 Yukon Inc - 30%, Ryan Gold Corp. - 70%	12/11/2010	9/15/2014	Dawson
YD133587	Active	BURHAM 67	45127 Yukon Inc - 30%, Ryan Gold Corp. - 70%	12/11/2010	9/15/2014	Dawson
YD133588	Active	BURHAM 68	45127 Yukon Inc - 30%, Ryan Gold Corp. - 70%	12/11/2010	9/15/2014	Dawson
YD133589	Active	BURHAM 69	45127 Yukon Inc - 30%, Ryan Gold Corp. - 70%	12/11/2010	9/15/2014	Dawson
YD133590	Active	BURHAM 70	45127 Yukon Inc - 30%, Ryan Gold Corp. - 70%	12/11/2010	9/15/2014	Dawson
YD133591	Active	BURHAM 71	45127 Yukon Inc - 30%, Ryan Gold Corp. - 70%	12/10/2010	9/15/2014	Dawson
YD133592	Active	BURHAM 72	45127 Yukon Inc - 30%, Ryan Gold Corp. - 70%	12/10/2010	9/15/2014	Dawson

**Appendix III: BURNHAM List of Claims, October 2012**

<b>Grant Number</b>	<b>Status</b>	<b>Claim Name</b>	<b>Claim Owner</b>	<b>Staking Date</b>	<b>Expiry Date</b>	<b>District</b>
YD133593	Active	BURHAM 73	45127 Yukon Inc - 30%, Ryan Gold Corp. - 70%	12/10/2010	9/15/2014	Dawson
YD133594	Active	BURHAM 74	45127 Yukon Inc - 30%, Ryan Gold Corp. - 70%	12/10/2010	9/15/2014	Dawson
YD133595	Active	BURHAM 75	45127 Yukon Inc - 30%, Ryan Gold Corp. - 70%	12/10/2010	9/15/2014	Dawson
YD133596	Active	BURHAM 76	45127 Yukon Inc - 30%, Ryan Gold Corp. - 70%	12/10/2010	9/15/2014	Dawson
YD133597	Active	BURHAM 77	45127 Yukon Inc - 30%, Ryan Gold Corp. - 70%	12/10/2010	9/15/2014	Dawson
YD133598	Active	BURHAM 78	45127 Yukon Inc - 30%, Ryan Gold Corp. - 70%	12/10/2010	9/15/2014	Dawson
YD133599	Active	BURHAM 79	45127 Yukon Inc - 30%, Ryan Gold Corp. - 70%	12/10/2010	9/15/2014	Dawson
YD133600	Active	BURHAM 80	45127 Yukon Inc - 30%, Ryan Gold Corp. - 70%	12/10/2010	9/15/2014	Dawson
YD133601	Active	BURHAM 81	45127 Yukon Inc - 30%, Ryan Gold Corp. - 70%	12/10/2010	9/15/2014	Dawson
YD133602	Active	BURHAM 82	45127 Yukon Inc - 30%, Ryan Gold Corp. - 70%	12/10/2010	9/15/2014	Dawson
YD133603	Active	BURHAM 83	45127 Yukon Inc - 30%, Ryan Gold Corp. - 70%	12/10/2010	9/15/2014	Dawson
YD133604	Active	BURHAM 84	45127 Yukon Inc - 30%, Ryan Gold Corp. - 70%	12/10/2010	9/15/2014	Dawson
YD133605	Active	BURHAM 85	45127 Yukon Inc - 30%, Ryan Gold Corp. - 70%	12/10/2010	9/15/2014	Dawson
YD133606	Active	BURHAM 86	45127 Yukon Inc - 30%, Ryan Gold Corp. - 70%	12/10/2010	9/15/2014	Dawson
YD133607	Active	BURHAM 87	45127 Yukon Inc - 30%, Ryan Gold Corp. - 70%	12/10/2010	9/15/2014	Dawson
YD133608	Active	BURHAM 88	45127 Yukon Inc - 30%, Ryan Gold Corp. - 70%	12/10/2010	9/15/2014	Dawson
YD133609	Active	BURHAM 89	45127 Yukon Inc - 30%, Ryan Gold Corp. - 70%	12/10/2010	9/15/2014	Dawson
YD133610	Active	BURHAM 90	45127 Yukon Inc - 30%, Ryan Gold Corp. - 70%	12/10/2010	9/15/2014	Dawson
YD133611	Active	BURHAM 91	45127 Yukon Inc - 30%, Ryan Gold Corp. - 70%	12/10/2010	9/15/2014	Dawson
YD133612	Active	BURHAM 92	45127 Yukon Inc - 30%, Ryan Gold Corp. - 70%	12/10/2010	9/15/2014	Dawson
YD133613	Active	BURHAM 93	45127 Yukon Inc - 30%, Ryan Gold Corp. - 70%	12/10/2010	9/15/2014	Dawson
YD133614	Active	BURHAM 94	45127 Yukon Inc - 30%, Ryan Gold Corp. - 70%	12/10/2010	9/15/2014	Dawson
YD133615	Active	BURHAM 95	45127 Yukon Inc - 30%, Ryan Gold Corp. - 70%	12/10/2010	9/15/2014	Dawson
YD133616	Active	BURHAM 96	45127 Yukon Inc - 30%, Ryan Gold Corp. - 70%	12/10/2010	9/15/2014	Dawson
YD133617	Active	BURHAM 97	45127 Yukon Inc - 30%, Ryan Gold Corp. - 70%	12/10/2010	9/15/2014	Dawson
YD133618	Active	BURHAM 98	45127 Yukon Inc - 30%, Ryan Gold Corp. - 70%	12/10/2010	9/15/2014	Dawson
YD133619	Active	BURHAM 99	45127 Yukon Inc - 30%, Ryan Gold Corp. - 70%	12/10/2010	9/15/2014	Dawson
YD133620	Active	BURHAM 100	45127 Yukon Inc - 30%, Ryan Gold Corp. - 70%	12/10/2010	9/15/2014	Dawson

SampleID	Project	Type	NAD83 - UTM Zone 7		Mo_PPM	Cu_PPM	Pb_PPM	Zn_PPM	Ag_PPM	Ni_PPM	Co_PPM	Mn_PPM	Fe_PPM	As_PPM	U_PPM	Au_PPB	Th_PPM	Sr_PPM	Cd_PPM	Sb_PPM	Bi_PPM	V_PPM	Ca_PCT	P_PCT	La_PPM	Cr_PPM	Mg_PCT	Ba_PPM	Tl_PCT	B_PPM	Al_PCT	NA_PCT	K_PCT	W_PPM	Hg_PPM	Se_PPM	Ti_PPM	S_PCT	Ga_PPM	Se_PPM	Te_PPM	Method	Job_Number	SampleDate	Duplicate
			Easting	Northing																																									
1058551	BUR	Soil	631205	7070494	0.9	47.7	6.7	58	0.05	32.8	15.6	298	5	4.8	0.6	2.1	4	15	0.05	0.4	0.2	60	0.17	0.023	12	40	0.65	185	0.108	1	2.13	0.015	0.16	0.5	0.02	3.4	0.2	0.025	6	0.25	0.1	IDX15	DAW11000489	9/26/2011	
1058552	BUR	Soil	631206	7070493	0.7	71.6	13.7	96	0.05	147.5	21.1	312	5.2	3.1	2.1	3.2	14.9	11	0.1	0.2	0.2	115	0.10	0.064	23	165	2.19	621	0.271	0.6	5.76	0.022	1.17	0.2	0.02	4.5	0.6	0.025	16	0.25	0.1	IDX15	DAW11000489	9/26/2011	
1058553	BUR	Soil	631406	7070490	0.9	45.4	10	67	0.05	42.9	16.5	342	3.9	9.3	1.7	2	13.3	15	0.05	0.4	0.4	63	0.21	0.048	32	47	0.69	226	0.131	1	2.51	0.012	0.19	1.2	0.03	5.4	0.2	0.025	8	0.25	0.1	IDX15	DAW11000489	9/26/2011	
1058553	BUR	REP	631406	7070490	0.9	46.2	10.3	66	0.05	43.9	15.7	356	3.47	9.4	1.7	2.6	13.6	15	0.05	0.5	0.4	64	0.21	0.048	33	50	0.72	235	0.129	1	2.51	0.012	0.22	1.2	0.04	5.3	0.3	0.025	8	0.25	0.1	IDX15	DAW11000489	9/26/2011	
1058554	BUR	Soil	631489	7070883	0.9	89.1	9.1	81	0.05	51.5	21.8	339	4.62	3.8	3.9	1.2	10.9	8	0.05	0.2	0.3	90	0.26	0.115	20	73	0.96	199	0.2	0.5	2.85	0.013	0.37	0.05	0.005	5.7	0.2	0.025	11	0.25	0.1	IDX15	DAW11000489	9/26/2011	
1058555	BUR	Soil	631550	7070803	1.4	47.7	9.7	71	0.05	147.9	19.4	450	4.59	2.3	1.2	0.7	5.6	9	0.05	0.2	0.3	82	0.2	0.123	15	163	1.78	95	0.184	1	2.73	0.012	0.19	0.1	0.02	4.8	0.2	0.025	12	0.25	0.1	IDX15	DAW11000489	9/26/2011	
1058555	BUR	REP	631550	7070803	1.4	47.7	9.7	71	0.05	147.9	19.4	450	4.59	2.3	1.2	0.7	5.6	9	0.05	0.2	0.3	82	0.2	0.123	15	163	1.78	95	0.184	1	2.73	0.012	0.19	0.1	0.02	4.8	0.2	0.025	12	0.25	0.1	IDX15	DAW11000489	9/26/2011	
1058557	BUR	Soil	631544	7070804	0.7	62.7	11.2	81	0.05	103.3	23.8	499	4.07	7.2	1.8	0.25	9.1	38	0.05	0.2	0.2	108	0.2	0.157	23	68	1.98	58	0.2	0.5	3.98	0.027	0.35	0.05	0.005	6.9	0.4	0.025	14	0.25	0.1	IDX15	DAW11000489	9/26/2011	
1058557	BUR	REP	631544	7070804	0.7	62.7	11.2	81	0.05	103.3	23.8	499	4.07	7.2	1.8	0.25	9.1	38	0.05	0.2	0.2	108	0.2	0.157	23	68	1.98	58	0.2	0.5	3.98	0.027	0.35	0.05	0.005	6.9	0.4	0.025	14	0.25	0.1	IDX15	DAW11000489	9/26/2011	
1058558	BUR	Soil	631544	7070604	0.7	58.2	9.6	31	0.05	66.9	27.8	526	5.29	2.5	1.1	0.25	5.7	9	0.05	0.05	0.4	71	0.14	0.079	22	66	1.25	241	0.192	0.5	3.25	0.019	1.06	0.6	0.005	7.9	0.7	0.025	8	0.25	0.1	IDX15	DAW11000489	9/26/2011	1058558
1058559	BUR	Soil	631506	7070513	1.1	61.2	10	57	0.05	31.5	13.6	265	28.1	9.1	0.9	1.7	4.3	16	0.05	0.5	0.3	59	0.16	0.046	12	31	0.5	192	0.064	1	2.17	0.01	0.08	0.2	0.02	3.6	0.1	0.025	6	0.25	0.1	IDX15	DAW11000489	9/26/2011	
1058560	BUR	Soil	631471	7070418	1	55.2	15.4	104	0.05	61.4	28.7	949	5.41	1.9	1.3	0.7	6	13	0.05	0.1	0.3	37	0.15	0.071	22	39	0.64	184	0.013	0.5	1.96	0.005	0.15	0.2	0.01	5.2	0.2	0.025	6	0.25	0.1	IDX15	DAW11000489	9/26/2011	
1058561	BUR	Soil	631407	7070337	0.6	26.6	17.3	64	0.05	15	9.7	332	3.1	2.7	2.4	1.8	32.6	15	0.05	0.2	1.6	25	0.43	0.166	36	16	0.4	159	0.047	0.5	2	0.007	2.4	0.1	0.005	2.3	0.2	0.025	7	0.25	0.1	IDX15	DAW11000489	9/26/2011	
1058561	BUR	REP	631407	7070337	0.6	26.6	17.3	64	0.05	15	9.7	332	3.1	2.7	2.4	1.8	32.6	15	0.05	0.2	1.6	25	0.43	0.166	36	16	0.4	159	0.047	0.5	2	0.007	2.4	0.1	0.005	2.3	0.2	0.025	7	0.25	0.1	IDX15	DAW11000489	9/26/2011	
1058562	BUR	Soil	631407	7069753	0.8	23.2	14.4	71	0.05	20.9	10.9	393	3.63	3.2	2.1	0.9	39.6	7	0.1	0.3	1.1	33	0.14	0.061	56	23	0.51	145	0.074	1	2.42	0.006	0.21	0.3	0.02	2.7	0.3	0.025	10	0.25	0.1	IDX15	DAW11000489	9/26/2011	
1058563	BUR	Soil	631304	7070166	0.3	5.4	6.8	19	0.05	7	4.7	99	0.84	2.5	3.3	1.3	32.1	24	0.05	0.1	0.4	14	0.52	0.107	86	10	0.17	87	0.016	0.5	2.46	0.01	0.05	0.4	0.01	2.2	0.05	0.025	6	0.25	0.1	IDX15	DAW11000489	9/26/2011	
1058564	BUR	Soil	631250	7070084	0.9	16.4	19.5	58	0.05	15.9	7.6	274	28.7	7.3	2.4	3.7	24.7	10	0.05	0.4	0.4	38	0.19	0.088	54	25	0.4	160	0.04	1	1.82	0.008	0.11	0.2	0.01	2.3	0.2	0.025	7	0.25	0.1	IDX15	DAW11000489	9/26/2011	
1058565	BUR	Soil	631192	7070003	1	32.3	20.1	66	0.05	107.5	14.8	692	3.75	5.2	5.4	3.3	40.9	27	0.05	0.4	0.3	38	0.44	0.11	89	100	1.11	298	0.091	1	2.61	0.01	0.47	0.4	0.02	5	0.2	0.025	10	0.25	0.1	IDX15	DAW11000489	9/26/2011	
1058566	BUR	Soil	631125	7069930	0.8	17.7	13.2	91	0.05	18.1	11.5	443	4.81	5.6	1.9	1.8	40.4	9	0.05	0.3	0.6	50	0.19	0.086	23	28	0.88	228	0.329	1	3.54	0.013	1.07	0.4	0.005	6	1.2	0.025	15	0.25	0.1	IDX15	DAW11000489	9/26/2011	
1058567	BUR	Soil	631059	7069856	0.8	20.7	13	76	0.05	21.5	9.5	404	4.03	6.6	1.9	1.2	32.8	11	0.05	0.4	0.4	49	0.35	0.148	39	29	0.59	226	0.22	2	2.44	0.009	0.43	0.5	0.02	4.9	0.6	0.025	12	0.25	0.1	IDX15	DAW11000489	9/26/2011	
1058568	BUR	Soil	631007	7069740	1.2	18	18	69	0.05	64.5	10.2	375	3.34	9.9	0.9	2	10.7	22	0.05	0.5	0.9	53	0.24	0.102	14	28	0.55	224	0.12	2	2.4	0.009	0.29	0.2	0.005	3.9	0.3	0.025	8	0.25	0.1	IDX15	DAW11000489	9/26/2011	
1063223	BUR	Soil	631014	7070895	1.5	6.8	5	35	0.05	19.3	9.2	383	4.3	5.4	5.25	20.8	9	0.05	0.2	0.2	28	0.36	0.202	37	17	0.84	128	0.119	1	2.69	0.008	0.66	0.3	0.02	2.1	0.5	0.025	11	0.25	0.1	IDX15	DAW11000489	9/26/2011		
1063224	BUR	Soil	631108	7070922	1.6	21.8	12.4	57	0.05	27.5	18.4	545	4.04	11.5	0.7	4.5	4.4	15	0.05	0.6	0.3	72	0.11	0.055	15	43	0.67	149	0.088	2	2.49	0.008	0.23	0.2	0.03	3.3	0.2	0.025	7	0.25	0.1	IDX15	DAW11000489	9/26/2011	
1063228	BUR	Soil	630911	7070872	1.1	17.3	10.6	59	0.05	18.2	8.9	316	3.12	6.9	1.5	1.3	13.7	12	0.05	0.4	0.3	48	0.15	0.051	30	25	0.44	161	0.084	0.5	2.12	0.007	0.19	0.2	0.02	2.7	0.3	0.025	8	0.25	0.1	IDX15	DAW11000489	9/26/2011	
1063229	BUR	Soil	630815	7070844	0.8	28.9	12.9	68	0.05	22.8	10.6	342	2.8	10.6	1.4	3	9.6	16	0.05	0.6	0.2	54	0.15	0.027	32	32	0.5	223	0.059	0.5	1.73	0.011	0.37	0.2	0.06	5	0.1	0.025	9	0.25	0.1	IDX15	DAW11000489	9/26/2011	
1063230	BUR	Soil	630822	7070832	0.9	30.3	11.2	63	0.05	24.3	11.1	353	2.99	10.2	1.2	2.5	4.5	10.4	0.05	0.6	0.2	63	0.14	0.029	34	34	0.63	243	0.069	1.3	2.48	0.013	0.57	0.3	0.05	4.3	0.2	0.025	9	0.25	0.1	IDX15	DAW11000489	9/26/2011	
1063231	BUR	Soil	630822	7																																									







SampleID	Project	Type	NAD83 - UTM Zone 7		Mo_PPM	Cu_PPM	Pb_PPM	Zn_PPM	Ag_PPM	Ni_PPM	Co_PPM	Mn_PPM	Fe_PCT	As_PPM	U_PPM	Au_PPB	Th_PPM	Sr_PPM	Cd_PPM	Sb_PPM	Bi_PPM	V_PPM	Ca_PCT	P_PCT	La_PPM	Cr_PPM	Mg_PCT	Ba_PPM	Tl_PCT	B_PPM	Al_PCT	NA_PCT	K_PCT	W_PPM	Hg_PPM	Se_PPM	Ti_PPM	S_PCT	Ga_PPM	Se_PPM	Te_PPM	Method	Job_Number	SampleDate	Duplicate
			Easting	Northing																																									
11369447	BUR	Soil	627910	707705	0.8	15.8	22.4	92	0.05	15.1	9.1	359	4.34	8.7	1	0.25	203	8	0.1	0.3	0.4	68	0.1	0.038	14	20	0.58	142	0.073	0.5	2.88	0.006	0.23	0.2	0.02	4.7	0.4	0.025	12	0.25	0.1	1.0X15	DAW11000476	9/20/2011	
11369448	BUR	Soil	627911	707705	0.7	39.5	18.4	104	0.05	12.4	9.1	593	4.62	3.5	1.4	1.1	25.8	4	0.01	0.2	0.4	69	0.1	0.068	18	27	0.78	80	0.018	0.5	2.42	0.006	0.16	0.1	0.01	3.6	0.3	0.025	14	0.25	0.1	1.0X15	DAW11000476	9/20/2011	
11369449	BUR	Soil	627912	707560	1	29.1	10.7	57	0.05	21.9	8	194	2.51	11.3	1.5	20.5	10.8	8	0.05	0.7	0.4	46	0.07	0.02	18	26	0.41	93	0.036	0.5	1.76	0.006	0.07	0.1	0.02	2.8	0.4	0.025	5	0.25	0.1	1.0X15	DAW11000476	9/20/2011	
11369449	BUR	REP	627901	707560	0.9	28.1	15.4	56	0.05	22	7.8	194	2.5	10.4	1.4	0.9	10.5	8	0.05	0.7	0.4	42	0.06	0.019	18	26	0.41	95	0.034	0.5	1.73	0.005	0.06	0.1	0.02	2.9	0.1	0.025	4	0.25	0.1	1.0X15	DAW11000476	9/20/2011	
11369500	BUR	Soil	627891	707558	1	15.2	21.5	105	0.05	15.5	9.3	560	4.22	5.9	1.4	1.2	26.2	7	0.2	0.3	0.6	57	0.09	0.064	11	30	0.55	87	0.006	0.5	2.47	0.005	0.04	0.2	0.03	2.9	0.1	0.025	13	0.6	0.1	1.0X15	DAW11000476	9/20/2011	
1138235	BUR	Soil	629589	7072958	1.2	12	11.8	74	0.05	17.5	10.5	294	2.88	10.3	0.7	0.25	5.5	11	0.1	0.6	0.2	62	0.08	0.031	13	31	0.43	268	0.046	2	2.07	0.007	0.04	0.2	0.005	3.1	0.1	0.025	6	0.25	0.1	1.0X15	DAW11000475	9/26/2011	
1138236	BUR	Soil	629513	7072958	0.9	15.4	11	63	0.05	15.5	9.3	266	2.88	7.9	0.8	1.7	10	10	0.05	0.5	0.2	54	0.11	0.06	13	25	0.43	177	0.009	1	2.2	0.007	0.12	0.2	0.02	2.8	0.2	0.025	7	0.25	0.1	1.0X15	DAW11000475	9/26/2011	
1138237	BUR	Soil	629762	7072948	0.9	14.4	13.8	62	0.05	15.4	9.3	288	2.47	8	0.9	1.7	11.4	9	0.1	0.4	0.4	46	0.03	0.048	13	26	0.39	151	0.009	2	1.94	0.006	0.07	0.2	0.02	2.3	0.1	0.025	6	0.25	0.1	1.0X15	DAW11000475	9/26/2011	
1138237	BUR	REP	629762	7072948	0.7	14.5	13.3	60	0.05	13.9	8.2	288	2.44	7.9	0.9	1	11.4	9	0.1	0.5	0.5	47	0.1	0.048	14	25	0.4	153	0.034	2	2	0.006	0.07	0.2	0.02	2.2	0.1	0.025	6	0.25	0.1	1.0X15	DAW11000475	9/26/2011	
1138238	BUR	Soil	629712	7072940	0.5	8.9	13.3	48	0.05	8.7	5.6	225	2.99	6.8	1	0.25	17	9	0.05	0.2	0.2	33	0.14	0.064	9	16	0.43	105	0.067	0.5	2.35	0.005	0.36	0.2	0.01	3.1	0.4	0.025	9	0.25	0.1	1.0X15	DAW11000475	9/26/2011	
1138239	BUR	Soil	629659	7072931	0.7	9	14	46	0.05	9.3	5.5	189	2.44	5.8	1.8	0.25	10	9	0.05	0.4	0.2	29	0.11	0.047	45	16	0.28	136	0.011	0.5	1.66	0.005	0.06	0.2	0.005	2.9	0.1	0.025	5	0.25	0.1	1.0X15	DAW11000475	9/26/2011	
1138240	BUR	Soil	629621	7072898	0.8	15.2	12	57	0.05	18.5	8.9	259	2.78	11.4	0.7	0.25	10.3	8	0.1	0.7	0.2	51	0.07	0.028	14	30	0.45	165	0.046	2	1.98	0.007	0.06	0.2	0.02	2.6	0.1	0.025	5	0.25	0.1	1.0X15	DAW11000475	9/26/2011	
1138241	BUR	Soil	629755	7072818	0.9	10.4	12.9	118	0.05	17.1	11.5	387	3.37	6.6	0.7	0.25	14.3	10	0.2	0.5	0.3	61	0.11	0.032	11	28	0.45	203	0.073	1	2.47	0.005	0.18	0.3	0.02	3.2	0.2	0.025	9	0.25	0.1	1.0X15	DAW11000475	9/26/2011	
1138242	BUR	Soil	629575	7072818	0.8	10.8	15.5	61	0.05	10.6	8.1	314	4.01	4.7	1.9	0.25	28.7	10	0.05	0.3	0.3	45	0.19	0.082	17	19	0.45	122	0.126	2	2.39	0.005	0.38	0.2	0.03	4.9	0.5	0.025	11	0.25	0.1	1.0X15	DAW11000475	9/26/2011	
1138243	BUR	Soil	629522	7072777	0.8	6.9	14.8	48	0.05	6.3	4.2	179	3.01	3.4	6.6	0.25	43.5	9	0.05	0.3	0.3	53	0.1	0.106	68	16	0.22	145	0.006	0.5	1.57	0.008	0.04	0.05	0.02	3.7	0.05	0.025	6	0.25	0.1	1.0X15	DAW11000475	9/26/2011	
1138244	BUR	Soil	629492	7072735	1	16	10.5	66	0.05	20.9	11.9	404	3.6	7.5	1.3	0.25	19.7	8	0.1	0.5	0.2	48	0.09	0.052	16	24	0.47	157	0.156	2	2.29	0.008	0.43	0.3	0.01	4.6	0.6	0.025	10	0.25	0.1	1.0X15	DAW11000475	9/26/2011	
1138245	BUR	Soil	629469	7072691	1	11	12	50	0.05	15.2	7.7	196	2.94	7.2	1.3	0.25	41.8	6	0.05	0.4	0.2	46	0.06	0.026	23	21	0.38	155	0.084	1	2.11	0.005	0.23	0.2	0.005	4.4	0.3	0.025	7	0.25	0.1	1.0X15	DAW11000475	9/26/2011	
1138246	BUR	Soil	629438	7072651	1.4	11.5	20.2	64	0.1	9.7	6.7	277	3.72	7.2	2.2	0.25	19	16	0.1	0.5	1.1	42	0.07	0.063	10	18	0.23	95	0.016	2	1.49	0.005	0.09	0.2	0.01	2.6	0.2	0.025	6	0.25	0.1	1.0X15	DAW11000475	9/26/2011	
1138248	BUR	Soil	629385	7072558	1.3	15.1	13.3	69	0.05	17.1	10.2	315	3.2	7.8	1.7	0.25	21.8	13	0.05	0.5	0.2	61	0.15	0.066	16	25	0.47	190	0.124	1	2.13	0.007	0.36	0.2	0.01	4.9	0.3	0.025	9	0.25	0.1	1.0X15	DAW11000475	9/26/2011	
1138249	BUR	Soil	629345	7072526	0.6	11.5	11.1	89	0.05	14.8	9.5	385	4.1	5	1.1	0.25	13.4	18	0.05	0.4	0.3	68	0.25	0.136	15	28	0.57	183	0.199	1	2.2	0.008	0.5	0.3	0.01	5.3	0.5	0.025	12	0.25	0.1	1.0X15	DAW11000475	9/26/2011	
1138250	BUR	Soil	629303	7072499	0.7	12.3	13.1	94	0.05	17.1	11.6	635	4.22	6.1	1.2	0.25	11.2	23	0.1	0.4	0.3	70	0.3	0.201	14	30	0.62	288	0.174	2	2.38	0.008	0.56	0.3	0.01	5.9	0.5	0.025	12	0.25	0.1	1.0X15	DAW11000475	9/26/2011	
1138251	BUR	Soil	631169	7071614	1.3	13	13.7	52	0.05	13.8	5.7	245	2.98	7.9	0.8	1.7	5.8	10	0.1	0.5	0.3	58	0.11	0.04	21	25	0.35	113	0.061	0.5	1.77	0.007	0.09	0.2	0.04	2.1	0.2	0.025	8	0.25	0.1	1.0X15	DAW11000475	9/26/2011	
1138252	BUR	Soil	631069	7071614	0.8	14.9	9	63	0.05	14.8	8.2	249	2.98	3.7	1.4	3.7	13.8	12	0.05	0.2	0.2	46	0.11	0.025	34	28	0.46	193	0.05	1	2.07	0.005	0.18	0.2	0.01	3.2	0.2	0.025	7	0.25	0.1	1.0X15	DAW11000475	9/26/2011	
1138253	BUR	Soil	631069	7071614	1.3	16.2	11.8	58	0.05	20.8	9.3	303	2.93	12.2	1.8	1.1	11	11	0.1	0.7	0.2	53	0.11	0.051	17	31	0.42	167	0.056	3	2.26	0.007	0.08	0.2	0.03	3	0.2	0.025	6	0.25	0.1	1.0X15	DAW11000475	9/26/2011	
1138254	BUR	Soil	631025	7071679	1.1	19.2	11.6	64	0.05	23.5	9.6	353	3.01	11.5	1.1	2.1	13.4	11	0.1	0.7	0.2	54	0.11	0.037	22	29	0.5	147	0.057	2	2.08	0.007	0.07	0.2	0.03	2.9	0.1	0.025	6	0.25	0.1	1.0X15	DAW11000475	9/26/2011	
1138255	BUR	Soil	630976	7071701	1.2	26.2	12.1	64	0.05	21.6	9.2	354	3.09	10.5	1.5	2.7	16	17	0.05	0.7	0.3	55	0.16	0.043	41	30	0.48	249	0.065	2	1.76	0.008	0.08	0.2	0.05	4.6	0.7	0.025	6	0.25	0.1	1.0X15	DAW11000475	9/26/2011	