

**Assessment Report  
Geochemical  
For Renewal:  
Filed at Dawson City Mining Recorder  
July 22, 2011**

**Soil Sampling on claims:  
FucO14, Fuc14 & Fuc16  
YD89596, YD89595 & YD89594  
Performed 6<sup>th</sup> & 7<sup>th</sup> of July 2011**

**Dawson City Mining District  
Map Sheet #: 116b03  
Utm to Access:  
07V 586200/ 7100400**

**Registered Owner: Sylvain Montreuil**

**Report Compiled By Erini Petroustas**

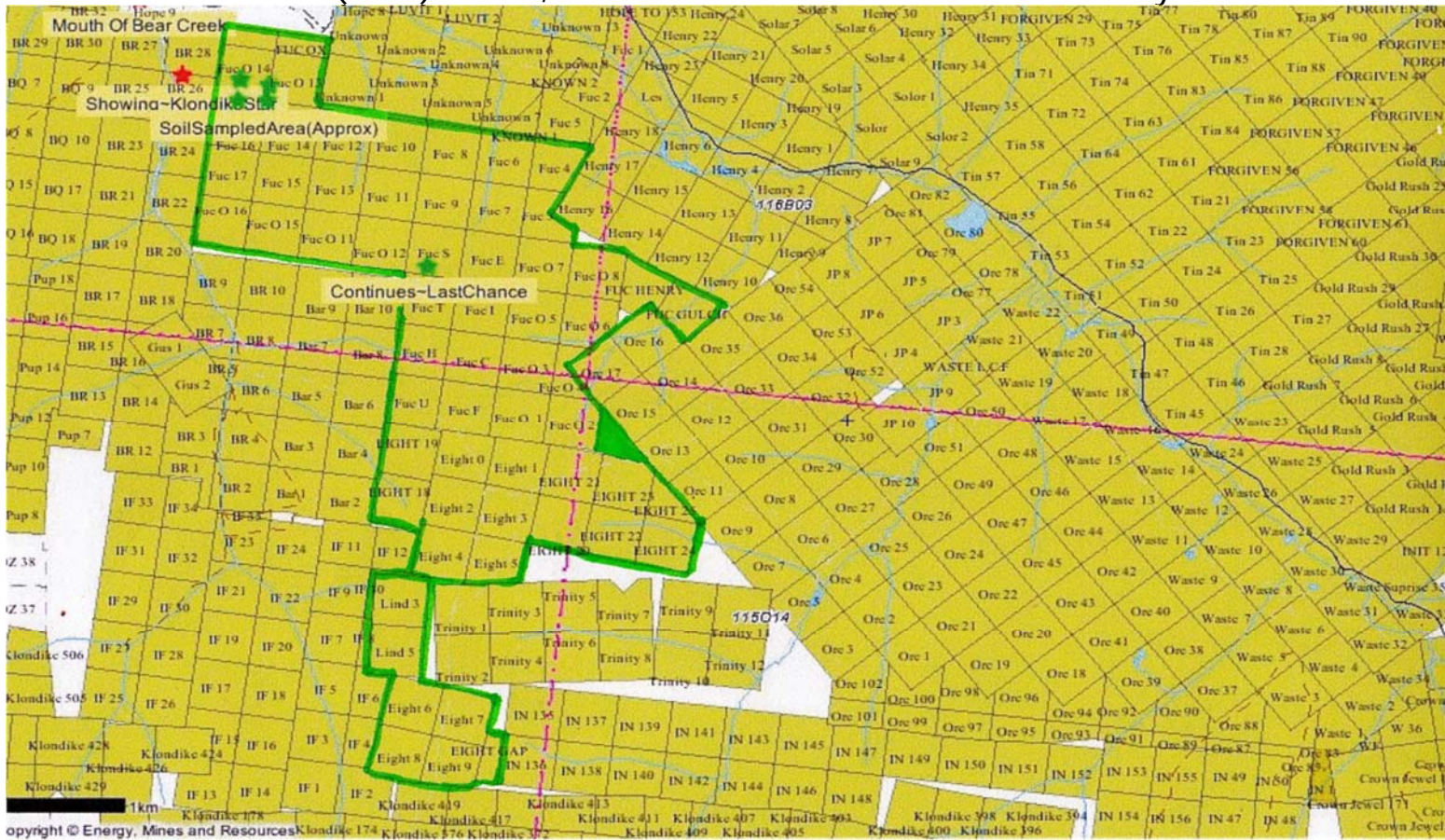
## **Table of Contents**

<b>Location:</b> of Soil Sampling done 6 and 7 <sup>th</sup> July 2011	3
<b>Geology</b>	4
<b>History &amp; Objective</b>	5
<b>Sample Locations &amp; Descriptions</b>	6
<b>Expenditure</b>	7
<b>Assay Results</b>	8
<b>Conclusions &amp; Recommendations</b>	10
<b>Statement of Qualifications</b>	

**Location:** of Soil Sampling done 6 and 7<sup>th</sup> July 2011  
West side of Fuc claims, near Bear Creek. Contact zone on claims FucO14 &Fuc16.

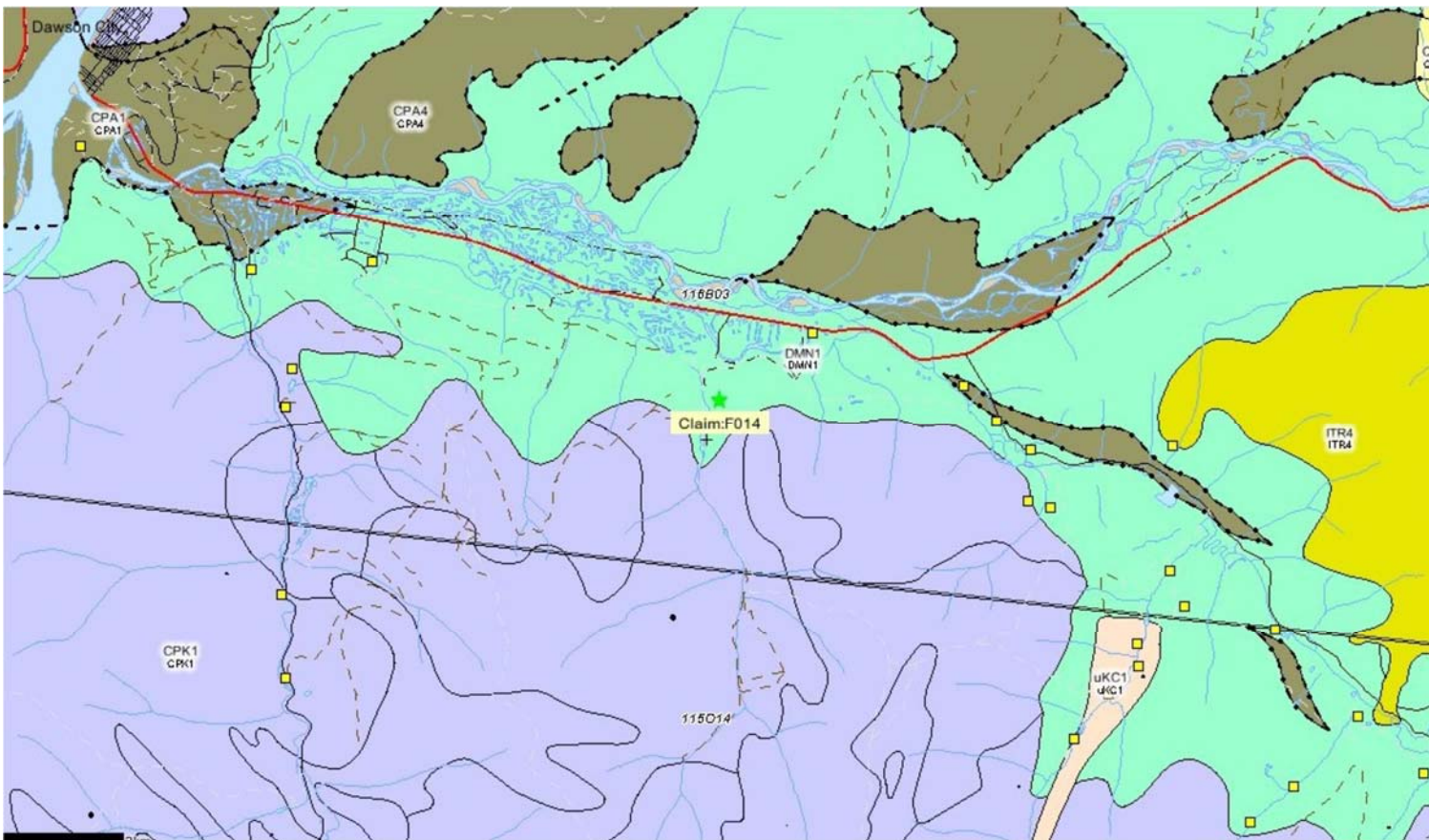


Fuc(hsite) claims, located 10 kilometers from Dawson City.



Green outline comprises 2011's Fuc Grouping ~ #  
**Geology**

Regional Bedrock Terrane Map of area between Dawson City & Hunker Creek, Yukon.



**Brown/Pink**~ Upper Cretaceous mafic and lesser felsic volcanic rocks, mostly Carmacks Group.

**Green**~ Nassina Subterrane: Metamorphosed Paleozoic continental margin, with superimposed Late Devonian & Early Missippian Arc Volcanos & Plutonic rocks.

**Blue**~ Klondike Schist Subterrane: Metamorphosed upper Paleozoic Arc Volcanos & Plutonic (YTp) rocks.

- <50% : 0.5 - 1 ppb
- 50 - 90% : 1 - 8 ppb
- 90 - 95% : 8 - 17 ppb
- 95 - 99% : 17 - 92 ppb
- >99% : 92 - 3130 ppb

(Anomalous soil rating for Au according to Yukon Geological Survey Map, 116B03)<sup>1</sup>

## History

<sup>1</sup> YGS MapMaker Online; <http://maps.gov.yk.ca/imf.jsp?site=YGS>. Au Geochemisrty- Entire Yukon.

“Only if you were suspended in space could you fully appreciate the geological scale of the Tintina Trench. It is painted on the Yukon map like a crude brush stroke on a tattered canvas, running nearly 1,000 kilometres from the Liard Plateau at the British Columbia border to Alaska's Woodchopper Creek. Yet here on Earth, northwestward through the trench toward the Yukon River, it is difficult to fathom the fault line deep below that marks the edge of an ancient North American continent.

Between 120 million and 190 million years ago, the convergence of tectonic plates forced land masses of igneous origin from the west to attach to the much older rocks of North America - some 300 million to 1.8 billion years old - as the continent merged with offshore volcanic islands. In the same period, the land now occupied by Whitehorse was submerged beneath a deep marine basin which gradually filled up with sediments. About 100 million years ago, dinosaurs roamed the freshly formed uplands in what is now the Yukon. About 60 million years ago, after the sea drained away, plates on the south side of the trench began a torturous 450-kilometre journey to the northwest.”<sup>2</sup>

“From Dawson City to Watson Lake, the Tintina Trench continues to host much of the mining and mineral exploration activity that plays such a vital role in the economy of the Yukon.

Mineral deposits are a by-product of the plate tectonic forces that shape the continents. When two tectonic plates come together, one is often pushed beneath the other where it melts deep within the earth. Some of the melted rock floats to the surface as lava, while more of it cools within the crust to form granites.”<sup>3</sup>

### **Objective**

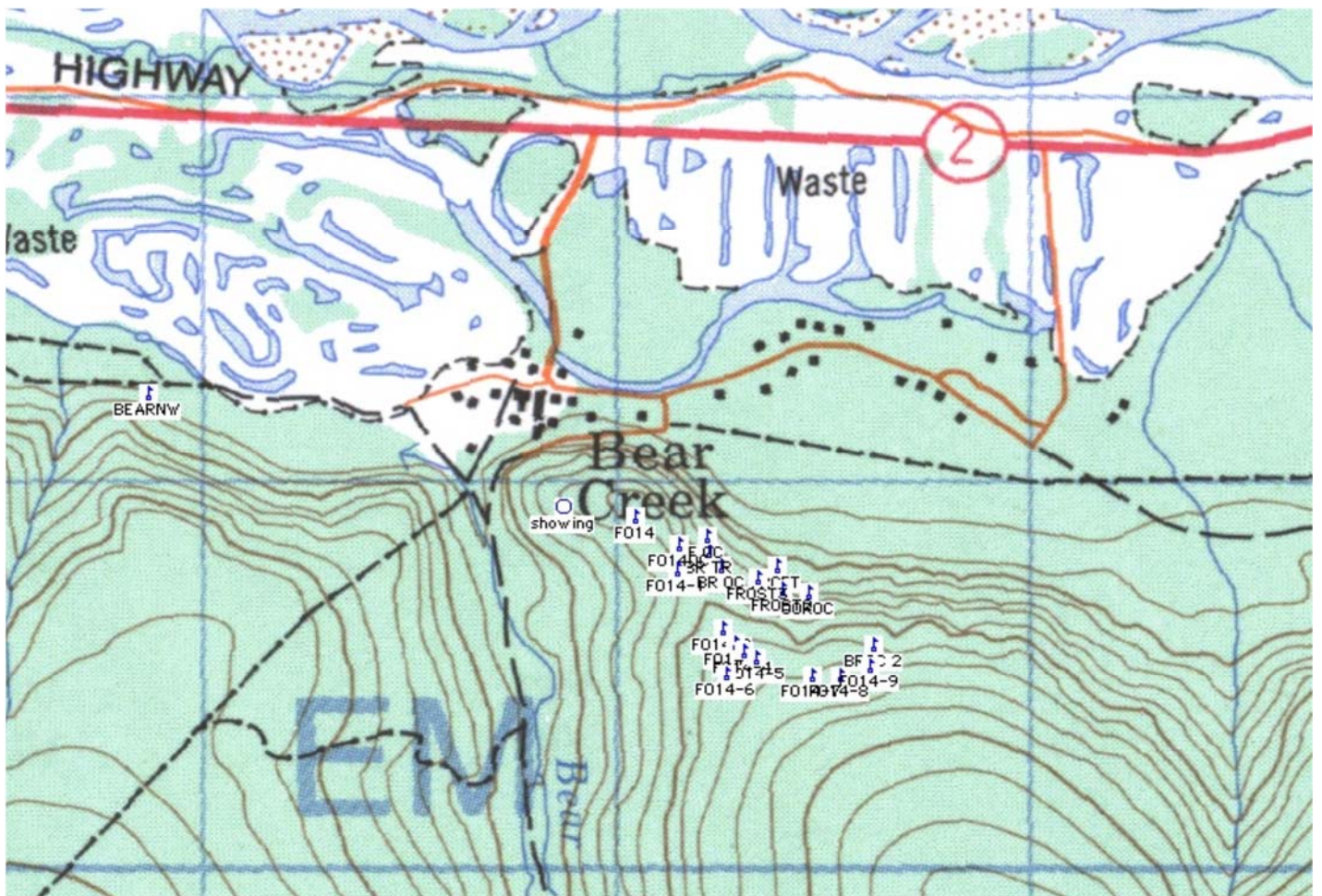
A plausible explanation and our hypothesis for the source of the rich Klondike placer is from “offshooting” fault actions, (directly caused by the Tintina faults proximity), bringing various types of hydrothermal mineral solutions to the earth's surface. The softness and solubility of Klondike Schist Terrane along with minimal glacial disturbance have created loaded quartz vein systems that can be viable targets for shallow surface, high grade mining.

### **Sample Locations & Descriptions**

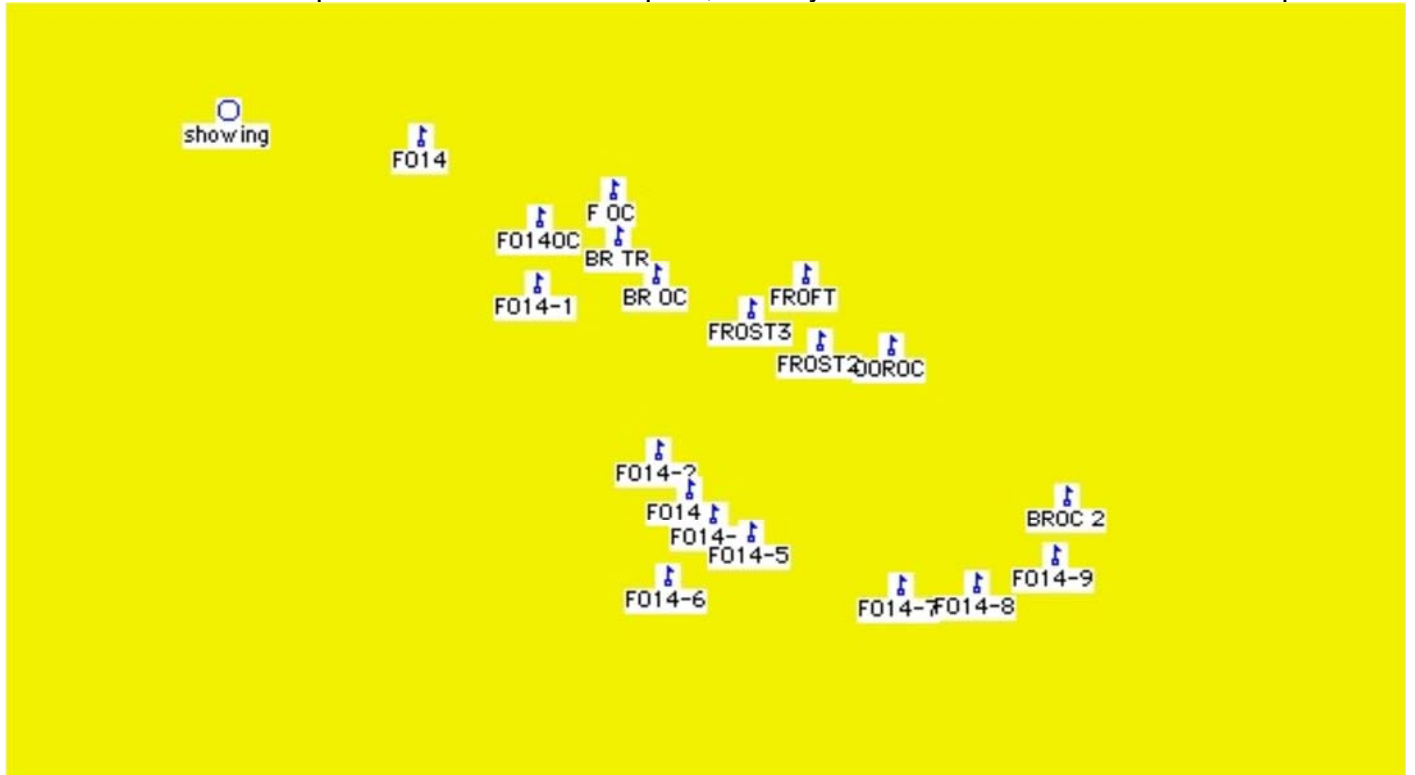
---

<sup>2</sup> Canadian Geographic Magazine; August 2007 issue; “Fault Zone”, by Andrew Findlay.

<sup>3</sup> <http://sightsandsites.ca/central/north-klondike/tintina.html>



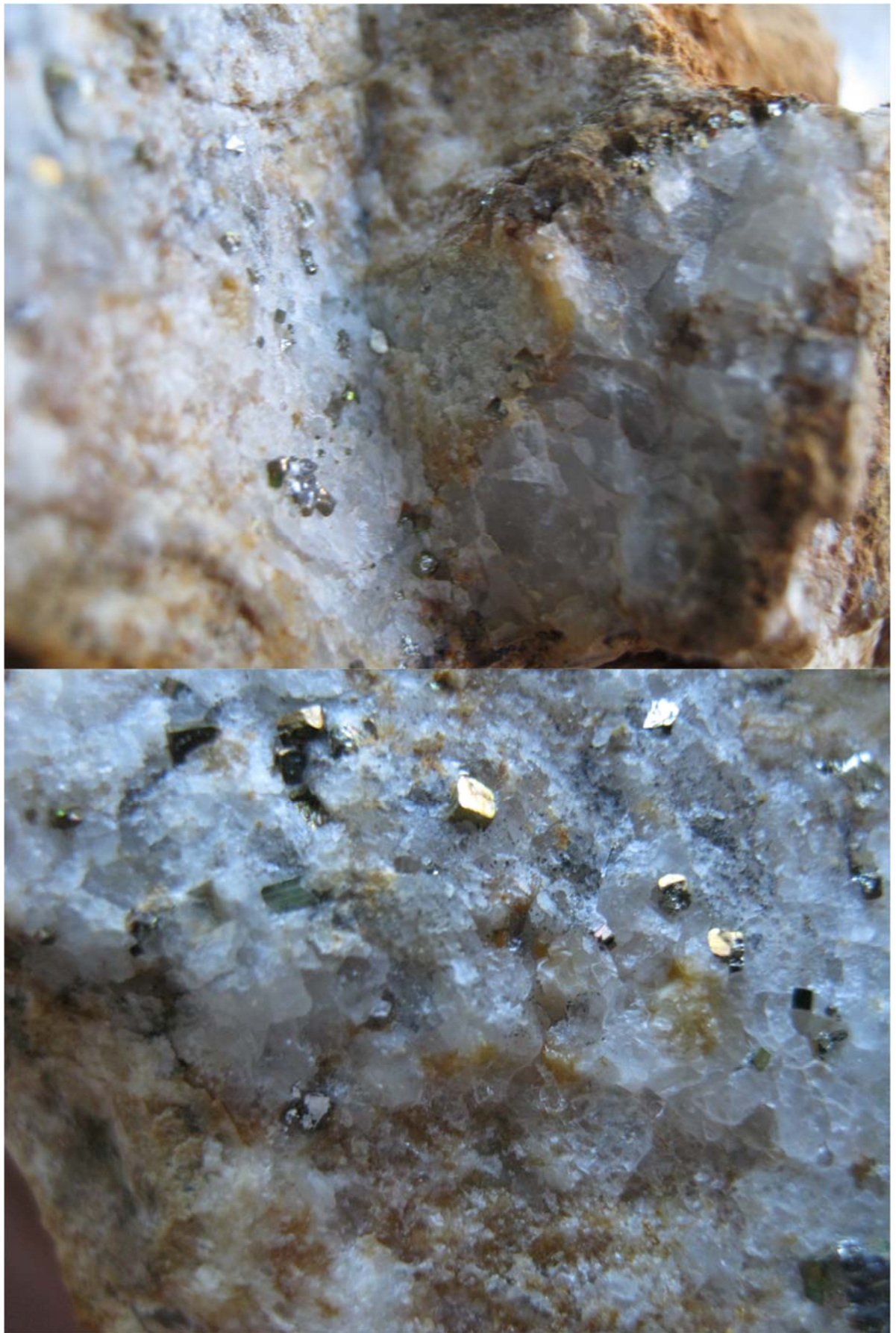
Yellow area is close up of nose that was sampled, directly behind the Old Bear Creek compound.



Nassina Subterranea's contact with the Klondike Schist; South part of the line, produced the best Au anomaly of all 9 samples taken.







Rock specimens sampled from "showing", on claim BR26, with permission, during access (KlondikeGoldCorp's property). Vein trends southeast to Fuc14 where the slight soil anomaly Of 29.7 ppb Au was retrieved.

## **Conclusions & Recommendations**

Further work will be focused on following the outcropping "vein system" that we observe crossing Bear Creek to the southeast. Prospecting work will be done to refine targets for trenching with a small hoe during 2012 and a focus will be on trench sampling to analyze mineralization zones along the various thrust faults observed while prospecting.

## **Statement of Qualifications**

### **Sylvain Montreuil:**

Quartz vein prospector in the Klondike drainage and Indian River, also 60 Mile, Stewart, Peel and Porcupine Rivers for over 20 years. Has been involved in the targeting, prospecting, finds and mining of successful mines all over the Klondike Plateau.

Professionally called upon to stake claims, perform surveys, carry out soil & rock sampling programs and assist geologists with scintillometer and magnometer surveys. For clients as well as on his own ventures, he has been responsible for claim recording and groupings, exploration programs and general property management to maintain claims in good standing by shafting, trenching or drilling.

A ticketed heavy equipment mechanic, welder and millwright. Former partners and employers include Joel White, A1Cat mining, Dave Farley (family), Marty Knutsen, Bob Canamol and most recently Mark Pocklington of GoldBank mining, for whom Sylvain helped target, stake and lead an exploration program on the Leota claim block, that led to the projects successful listing on the TSX venture exchange as GoldBank Mining Corp.

### **Erini Petroutsas:**

Has been employed 9 consecutive summers in the Dawson area as a gold prospector in the field and as geo-tech for drilling projects.

Employment experiences have included being assistant to: Joanna Hodge PhD Geology; Erin O'Brian Masters Geology; Ken Galambos Geologist; Keven Brewer Masters(BusinessAdministration) & BScGeologist. References can be requested from any of the above professionals.