

Manson Creek Resources Ltd.

Assessment Report on the 2012 Induced Polarization Geophysical Survey on the Frog Claims Nadaleen River and NW of Stewart River, Yukon

For quartz claims:

Frog 66 (YC10584)

Frog 69 (YC10587)

Frog 70 (YC10588)

Frog 89 (YD105821)

Frog 160 - 171 (YD156088 - YD156099)

Registered to: Manson Creek Resources Ltd.

For work performed June 12, 2011 to June 21, 2012.

By

Regan Chernish, P. Geol

Operator:

Manson Creek Resources
Suite 800, 808-4th Ave SW
Calgary, Alberta
T2P 3E8

Location:

Nadaleen River, Latitude 64° 01' N, Longitude 133° 12' W

Mining District:

Mayo

NTS:

106 C/03 and 105 N/14

Date:

September xx, 2012

SUMMARY

Manson Creek Resources Ltd contracted Aurora Geosciences Ltd. of Whitehorse Yukon to conduct an Induced Polarization ground geophysical survey on prospective areas on the Tell property in June of 2012. The survey covered the southern area of the claim block hosting seven natural spring gossans outlined by sampling in 2011.

A four-person crew mobilized to the property June 12 and set up an exploration tent camp in the area of the Tell gossan. The geophysical crew then proceeded to brush and survey 4.5 line kilometers by June 21, 2012.

The IP survey identified a large zone of chargeability, interpreted to represent sulfides, that correlates well with the mineralized gossans at surface. The zone of chargeability strikes northwest and has a strike length of over 500 meters as it continues to the northwest and southeast beyond the bounds of the geophysical grid. The anomaly has an apparent width of 100 meters and continues to depth off the pseudo sections. This potentially sulfide bearing anomalous zone is an excellent target for precious metals and has significant size potential. The chargeability zone corresponds with a zone of low resistivity interpreted to represent a hydrothermal alteration zone.

Manson Creek believes the seven Tell property gossans to be of extreme significance due to the number of successful drill discoveries made on similar gossans in the region. ATAC Resources Ltd.'s Ocelot discovery was made by targeting an undrilled natural spring surface gossan with associated strongly anomalous zinc and lead sample results. Like the Ocelot zone, the seven Tell property gossans are located near regional carbonate units within structurally complex geology in and proximal to the Rackla gold belt. The seven Tell property gossans have never been drill tested and each bears similarities to the Ocelot mineralized occurrence announced by ATAC.

TABLE OF CONTENTS

1.0 Introduction.....4
2.0 Property Location and Access.....4
3.0 Claim Information.....4
4.0 History.....6
5.0 Geological Setting.....8
6.0 2012 Exploration Program.....11
7.0 Analytical Procedures.....15
8.0 Results.....15
9.0 Conclusions and Recommendations.....17
10.0 References.....18

FIGURES

1 Property Location Map.....5
2 Claim Map.....7
3 Regional Geology Map.....9
4 Geophysical Grid Map.....12

APPENDICES

Appendix A Statements of Qualifications
Appendix B Statement of Expenditures
Appendix C IP Survey Maps

1.0 INTRODUCTION

Manson Creek's 100% owned Tell property in the northern Selwyn Basin is well over 2,200 hectares with the claims located approximately 140 kilometers east of Mayo, Yukon. The claim block is contiguous to Strategic Metals Ltd. Goz claims and ATAC Resources Ltd. Rau claims. The prominent prospective features of the Tell property is the Tell showing and the six other natural spring gossans located at the southern end of the Tell claim block. The Tell gossan extends over 300 meters and is cored by a 75 meter by 240 meter zone hosting significant zinc values in soil samples ranging from 10,000 to 49,600 parts per million (ppm) along with significant lead values. The six newly discovered gossans are very strongly mineralized with values up to 2.45% zinc, greater than 1,000 ppm nickel, up to 1,816 ppm arsenic and up to 1 g/t silver.

The new active spring gossan discoveries extend over 600 meters, roughly east-west, from the large Tell Zone, and the new inactive gossan discoveries extend down slope (south-southeast) from the Tell zone over 450 meters.

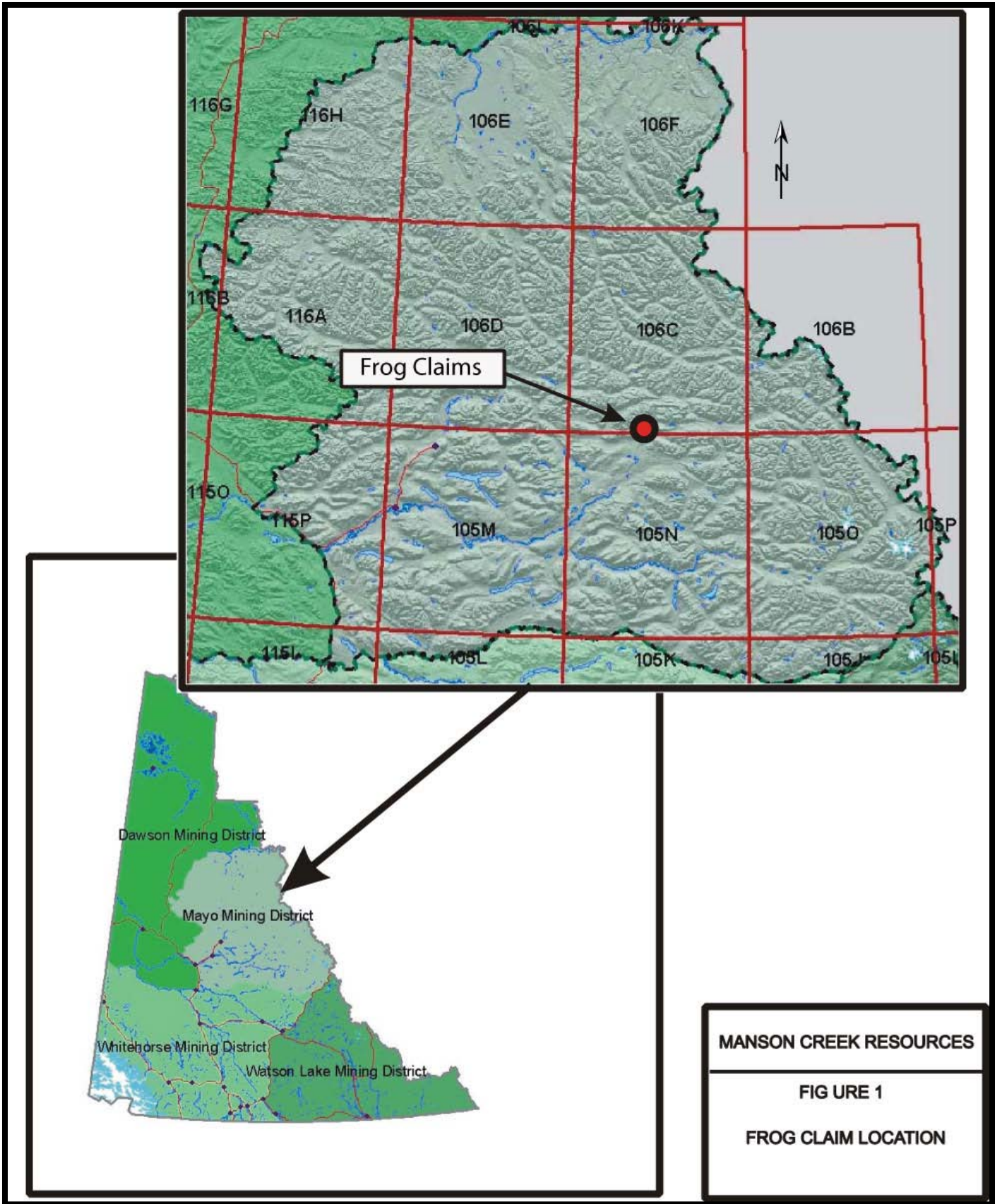
These zones have never been drill tested and each bears similarities to the Ocelot discovery announced by ATAC Resources Ltd. Many of the recent gold and silver discoveries in the region have been made in areas of prominent known, but not drill tested, gossan zones containing anomalous zinc, lead and other pathfinder elements.

2.0 PROPERTY LOCATION AND ACCESS

The Tell property is located in the Mayo Mining District in east-central Yukon (Figure 1). Most of the claims are present within map sheet 106C/03, and some within 105N/14. The property is part of the southern Wernecke Mountains, with peaks that rise abruptly from wide, U-shaped glacially-carved valleys to elevations of ~ 1600 m above sea level. Upland valleys are V-shaped whereas lowland U-shaped valleys contain abundant glacially-deposited overburden. Two westerly flowing rivers flow through the property. The Stewart River coincides with the southern boundary of the property, and Nadaleen River (a tributary to the Stewart River) bisects the central portion of the claim block. The Tell claims are air accessible only, with the closest airport being at Mayo ~140 km west-southwest. The closest operating mine is Alexco Resources' Bellekeno mine in Keno City, ~ 100 km west of the property. There is no local infrastructure to support exploration activities. The fixed-wing accessible Rackla airstrip ~ 18 km north, however, is a useful staging area where other companies have established exploration camps.

3.0 CLAIM INFORMATION

The Tell Property consists of 107 un-surveyed Quartz Claims in the Mayo Mining District that were staked in accordance with the Yukon Quartz Mining Act (Figure 2). The claims are 100% owned by Manson Creek Resources Ltd.



MANSON CREEK RESOURCES

FIGURE 1

FROG CLAIM LOCATION

Claim Name #	Grant Numbers	Expiry Date	Location
Frog 46	YC10564	2015/10/22	Nadaleen River
Frog 55 – 56	YC10573 -YC10574	2015/10/22	Nadaleen River
Frog 66	YC10584	2015/10/22	Nadaleen River
Frog 69 – 70	YC10587 - YC10588	2015/10/22	Nadaleen River
Frog 71 – 159	YD105803 - YD105891	2015/10/20	NW of Stewart River
Frog 160 – 171	YD156088 – YD156099	2012/07/18	NW of Stewart River

4.0 HISTORY

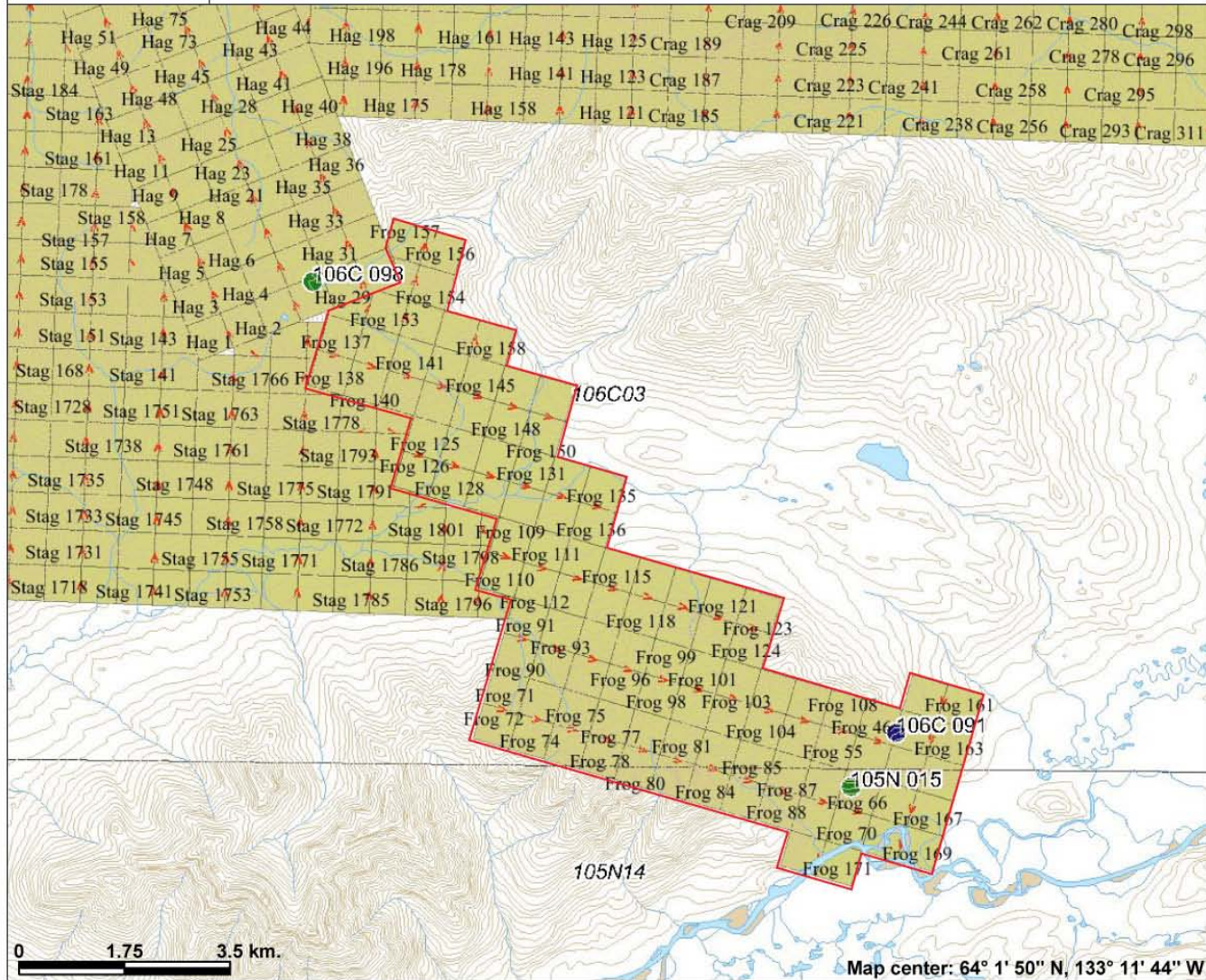
Two MinFile occurrences, 105N 015 and 106C 091 (Deklerk and Traynor, 2005), are present in the southern portion of the Frog property. In 1975, McIntyre Mines Ltd. staked the area around MinFile 105N 015 and named it the Kidd property (claim Y97808). In 1975 and 1976, the company conducted mapping and geochemical sampling to target zinc mineralization. In 1975, the company drilled an 11.3 m Winkie hole that failed to reach its target. In 1991, Kennecott Canada Inc. staked 10 claims (Tell 1-10, claim YB18115) around MinFile 106C 091, which is the site of the Tell gossan. Kennecott conducted a mapping and geochemical sampling program in 1991 that targeted zinc mineralization. The company collected 30 stream sediment samples, 58 soil samples and 5 rock samples. Some samples returned anomalous Zn (up to 20,600 ppm), Mn (24,180 ppm), Cd (276 ppm), Ni (1670 ppm) and Co (432 ppm).

The original Frog claims 1-70 were staked for Manson Creek Resources on July 22, 2002 by Aurora Geosciences Ltd. of Whitehorse, Yukon. In 2004, Aurora Geosciences Ltd. was hired by Manson Creek to conduct a soil-sampling program. A total of 40 samples were collected along two sample lines, with samples collected at 100 m intervals. The southern line samples returned anomalous Ag (1.14 ppm), Ba (3850 ppm), Cu (294 ppm), Ni (214 ppm), Pb (99.1 ppm), Zn (69 ppm) and Co (5.1 ppm). The northern line samples were less anomalous with elevated levels of Zn (268 ppm) and Ba (930 ppm) in a couple of samples.

In 2005, two Manson Creek geologists conducted a reconnaissance program that involved a detailed soil sampling grid over the Tell showing, regional prospecting, and regional stream sediment sampling. A soil sample grid was established over the Tell showing, which is located near the southern margin of the Frog property. Handheld GPS was used to establish a grid center at 591,000 mE, 7,097,600 mN (NAD 27, Zone 8). The grid consisted of four, 400 m long east-west lines spaced 100 m apart. Where practicable, soil samples were collected every 25 m, for a total of 53 samples. Five rock samples were collected from the Tell showing, and regional traverses resulted in the collection of two rock samples and five stream sediment samples. Results of the 2005 field program outlined a 400 m by 400 m zone over the Tell showing with Zn > 100 ppm and Ni > 20 ppm. A higher grade, 240 m by 75 m core had samples with 10,000 – 49,600 ppm Zn and 250 to 2600 ppm Ni. Anomalous Zn and Ni values were also encountered in samples east of the Tell showing, indicating additional zones of potential for a follow-up field program.

A number of the claims were allowed to lapse prior to 2010.

Fig 2: Frog Claims Location



Legend

 Frog Claims

Mineral Occurrences (250K)

-  Anomaly
-  Deposit
-  Drilled Prospect
-  Open Pit Past Producer
-  Open Pit Producer
-  Prospect
-  Showing



Scale: 1:100,000

This map is a user generated static output from an Internet mapping site and is for general reference only. Data layers that appear on this map may or may not be accurate, current, or otherwise reliable. THIS MAP IS NOT TO BE USED FOR NAVIGATION.

A subsequent re-staking and staking of claims Frog 71 – 159 was done on October 20, 2010 by Aurora Geosciences of Whitehorse on behalf of Manson Creek. In the summer of 2011, Aurora Geosciences completed additional staking of claims, Frog 160 – 171, on behalf of the Company on July 19, 2011.

The 2011 exploration program undertaken on the Tell property involved stream sediment sampling of all the main drainages present on the property, geological reconnaissance and prospecting, particularly near the Tell gossan. The program successfully discovered six new natural spring gossans/showings. The discoveries include four well-developed gossans with active mineral spring vents (Crystal Springs, Ash Springs, Roswell and Area 51 Zones), and two inactive natural spring gossan discoveries (Majestic and Corona). The new active spring gossan discoveries extend over 600 meters, roughly east-west, from the large Tell Zone, and the new inactive gossan discoveries extend down slope (south-southeast) from the Tell zone over 450 meters.

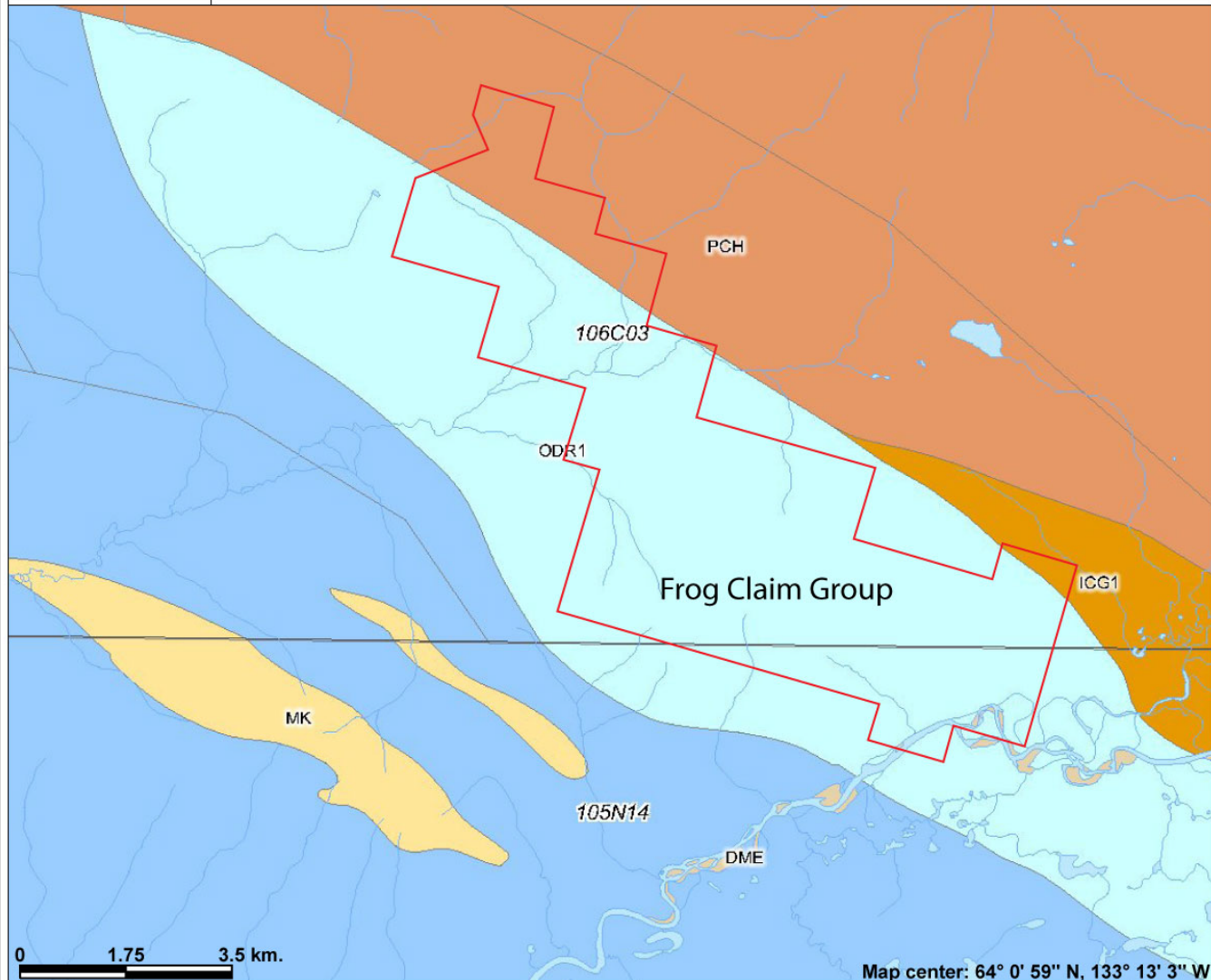
5.0 GEOLOGICAL SETTING

5.1 Regional Geological Setting, Exploration Model and Commodities of Interest

The Tell property lies in the northern part of the Selwyn Basin, which is a late Proterozoic to Paleozoic depositional basin underlying much of eastern Yukon, and is prospective for sedimentary exhalative (SEDEX) and volcanogenic massive sulphide (VMS) deposits. Regional mapping near the Tell property was conducted by S.L. Blusson in 1974, and incorporated into a digital compilation by Gordey and Makepeace (2003). In 2011, the Yukon Geological Survey's (YGS) South Wernecke Mapping project conducted detailed mapping of sheet 106C/03 and updated the regional geology in and around the Tell property. Overlaying the Tell claim boundaries on regional maps for the area indicates that most of the Frog property is underlain by a northwest-southeast trending block of middle to upper Devonian Portrait Lake Formation of the Earn Group (Figure 3). Portrait Lake Formation rocks are comprised of black shales and cherts and could be possibly part of Road River Group. The northeast portion of the claim block resides on Upper Proterozoic to Lower Cambrian Hyland Group clastic sedimentary rocks. To the southwest of the Frog property are extensive Devonian to Mississippian Earn Group clastic sedimentary and felsic volcanic rocks. Located north of the property, the Dawson Thrust is the major regional structure in the area that bounds the Selwyn Basin.

The Selwyn basin formed off-shelf of Ancestral North America (Laurentia) and is bounded by coeval platform carbonates that are host to Mississippi-Valley Type (MVT) Pb-Zn deposits (Goodfellow, 2007). The Selwyn Basin hosts many major SEDEX deposits including the Cambrian-aged Faro deposit (Anvil District), the Silurian-aged Howards Pass deposit (Selwyn Project), and the Devonian-Mississippian-aged Macmillan Pass (Tom and Jason deposits). The Howards Pass deposit in east-central Selwyn Basin is hosted in the Duo Lake Formation and as of September 2011, the Howards Pass deposit contained an indicated resource of 180,686,100 tonnes of 5.25% zinc and 1.38% lead, and an inferred resource of 216,040,100 tonnes of 4.47% zinc and 1.38% lead, both with a 2% zinc cut-off. VMS deposits, such as the nearby Marg deposit, have also formed in Devonian rocks of the Selwyn Basin. As of 2011, Redtail Metals Corp's Marg deposit contained an indicated resource of 3,960,000 tonnes of 1.57% copper, 1.92% lead, 3.90% zinc, 49.40 g/t silver, and 0.79 g/t gold and an Inferred resource of 7,780,000 tonnes

Fig 3: Frog Property - Regional Geology



Legend

Mississippian
MK Keno Hill quartzite

Devono-Mississippian
DME Earn Group shale and felsic volcanics

Ordovician to Silurian
ODR1 Duo Lake Formation shale and chert

Lower Cambrian
ICG1 Gull Lake Formation clastic sedimentary

Upper Proterozoic to Lower Cambrian
PCH Hyland Group grit unit

Scale: 1:100,000

This map is a user generated static output from an Internet mapping site and is for general reference only. Data layers that appear on this map may or may not be accurate, current, or otherwise reliable. THIS MAP IS NOT TO BE USED FOR NAVIGATION.

of 1.12% copper, 1.36% lead, 2.89% zinc, 34.88 g/t silver, and 0.52 g/t gold, both with a 0.50% copper cutoff.

The Tell property is located immediately south of ATAC Resources Ltd. Rau claims, in the Yukon, and the presence of mineralized gossans is considered very significant as Tell natural spring gossans bear similarities to the ATAC gossans. ATAC's Ocelot discovery was made by targeting a natural spring surface gossan with associated strongly anomalous zinc and lead sample results. Like the Ocelot zone, the Tell gossans are located near regional carbonate units within structurally complex geology in and proximal to the Rackla gold belt. Base-metals and precious metal pathfinder elements contained in the mineralized natural spring gossans present on Manson Creek's Frog property suggest the presence of either subsurface Pb-Zn-Ag SEDEX or polymetallic (Cu-Pb-Zn-Ni-Au-Ag) VMS deposits.

5.2 Property Geology and Mineralization

The Tell property is located on the boundary between Upper Proterozoic to Cambrian Hyland Group rocks to the north and Ordovician to Silurian Road River Group and Devonian to Mississippian Earn Group rocks to the south. The northeast edge of the property is composed mainly of a grit unit with some interbedded shale. The grit unit varies from medium- to coarse-grained quartz-rich sandstone to quartz-pebble conglomerate. This suggests that contact between Hyland Group rocks and Road River Group rocks may be 1-3 km further southwest than indicated by regional mapping. Southeast of the grit unit is abundant chert interbedded with variably coloured shale to slate. Minor amounts of limestone were found in the southwest part of the property capping the ridge above the Tell showing, and immediately upslope of the Crystal Springs natural spring gossan.

Besides rare amounts of pyrite, in-situ sulphide mineralization was not encountered at surface in bedrock. All surface mineralization encountered on the property formed as a result of hydrated iron-oxide minerals and significant amounts of trace metal oxide minerals (Zn, Pb, As, Ni, Co, Mn) precipitating from spring water to form gossans. Thus, the gossans are surficial expressions of subsurface mineralization that has been remobilized by spring water. The Tell natural spring gossan has been described as a ferricrete, whereby fluids percolate through surficial geological materials and cement them together by precipitating hydrated iron-oxide minerals. In places, the gossans encountered on the Tell property have incorporated surficial geological materials. Most of the gossans however, are mineral spring water precipitates that have accumulated on top of the ground.

There are no active seeps or springs in the vicinity of the Tell gossan, suggesting that the precipitates are relict, having formed post-deglaciation in the past several hundred to several thousand years. Much of the gossan is brown-orange-red weathered porous rubble with very little in-situ outcrop. All rocks forming the gossan however, display sedimentary textures formed by minerals precipitated in association with microbes. Microbial textures include irregular planar laminated stromatolites, botryoidal bedded stromatolites, and bundles to layers of thin, elongated filaments. These textures are typical of sedimentary environments created in the flow paths of mineral-precipitating springs.

The Tell gossan is the most lithified gossan on the property. Other gossans may have isolated areas containing lithified precipitates, however, sediments around the active springs are still very soft and muddy (and generally bright orange to rusty red). Gossans down-slope of the Tell showing that do not have associated active spring vents are poorly lithified, with the precipitates being soft and soil-like (and generally brown with a rusty-reddish hue).

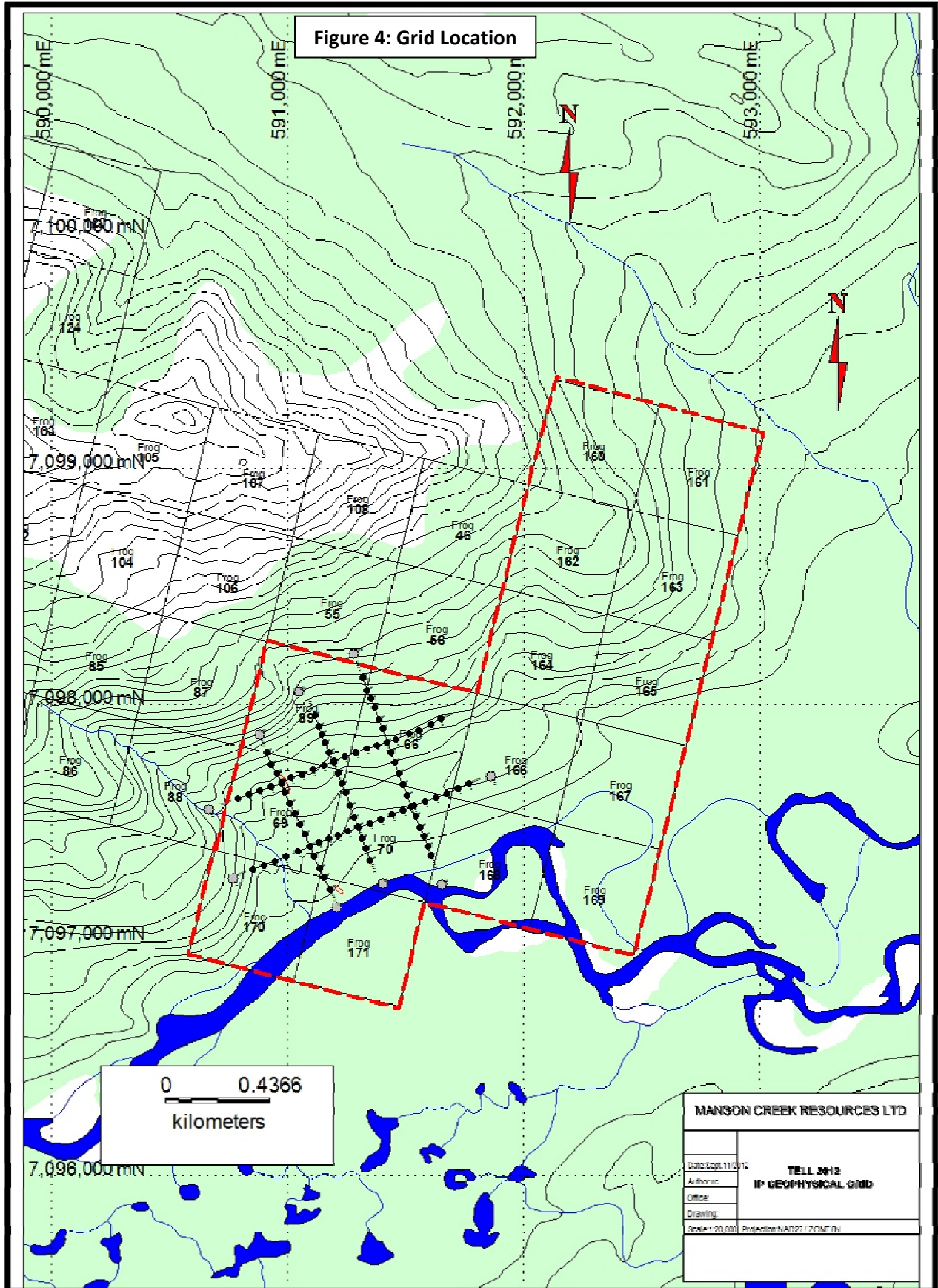
An important component of the 2011 field program was to find the source of anomalous base and trace metals discovered east of the Tell gossan as a result of Manson Creek's 2005 soil sampling program (2005 Samples #279778 to 279781 with 788-21,500 ppm Zn, 47-836 ppm Ni, up to 4,290 ppm Pb). The 2011 field program located the sources of the anomalous metal concentrations and determined that they were precipitates formed from active mineral springs east of the Tell gossan. Four new gossan zones (Crystal Springs, Ash Springs, Roswell, and Area 51) with active cold springs were discovered extending ~600 m east of the Tell gossan, and 2 additional gossan zones (Majestic, Corona) without any active springs were discovered ~450 m down slope (south-southeast) of the Tell gossan (Figure 5). The Majestic and Corona gossans are zones of orange to ochre coloured soil, interpreted to be unlithified hydrated iron oxide spring water precipitates. The lack of active seeps or springs in this zone required geochemical confirmation that the soils were in fact zinc-bearing, spring-derived precipitates. Another gossan zone with active iron seeps called Area 15 was also discovered ~4 km east-northeast from Tell.

The east-west alignment of the four new gossans (and active springs) with the Tell gossan at the base of a small scarp suggests that the springs delineate a relatively small, property-scale normal fault. Normal faults are commonly associated with active springs because the brittle nature of the tensional deformation in the upper crust provides conduits for groundwater to reach the surface (the compressive forces of reverse faulting commonly "lock up" the fault, preventing fluids from travelling along them). The presence of additional gossanous iron oxide soils ~ 450m down slope and southeast of the Tell gossan may also indicate a southeast/northwest trending fault (dextral offset strike-slip fault?) that spring waters emerged from at some point in the past. The Tell gossan would thus pinpoint the intersection of the east-west normal fault and the southeast-northwest trending fault. This intersection would have created a very permeable conduit for spring water (compared to the other springs on the property), which would have allowed for substantial spring water volumes to be emitted from the vents, and the formation of the relatively large, yet inactive, Tell mineral spring gossan.

6.0 2012 EXPLORATION PROGRAM

Aurora Geosciences based in Whitehorse was contracted by Manson Creek Resources Ltd. to conduct an IP geophysical survey on the Tell property in the summer of 2012. Aurora personnel were in the field from June 12th until June 21st, 2012. A fly camp was established on the kill zone located immediately down slope of the Tell Gossan on the south end of the Tell property.

The 2012 exploration program on the Tell Property consisted of 4.5 line kilometers of line cutting/brushing, followed by 4.5 line kilometers of Induced Polarization (IP) ground geophysical survey. The survey covered the area hosting the seven strongly mineralized natural spring gossans outlined in the 2011 work program (Figure 4).



A total of 4.5km of lines were cut and picketed with 50m station spacing and at a line azimuth of 70 degrees (L300 N and L600 N) and 160 degrees (L250 E, L500E and L750E). All lines were then surveyed with an expanding pole dipole IP array and all but L600 N were also surveyed with a modified gradient IP array.

The terrain, though steep in some places, presented no significant barriers to the safe and efficient implementation of the survey on the E-W lines. The N-S lines however were surveyed from the Stewart River in the south to the edge of unsafe steep topography in the north.

Very conductive ground in the northern part of the grid caused low signal to noise and many repeats were required.

6.1 Personnel and Equipment

The following individuals conducted the work program:

Shawn Scott	Crew chief/Line cutter
Bruce Germain	Line cutter/Helper
Mattias Zineli	Helper
Murray Nelson	Helper

The crew was equipped with the following instruments and equipment:

IP receiver	1	Iris Elrec Pro S/N: 2315-275830063-165
IP transmitter	1	GDD TxII 3.6 kW S/N: TX-438
Generator	1	Honda 5kW
IP tool box	1	Repair tools and spare parts
IP Equipment	6km 24 2 2 24	14 gauge wire 50m 10 pin cables Geo-Reels w/spools Speedy winders w/spools Stainless steel electrodes
Laptops with Geosoft IP packages	1	FL-115
4 man Summer camp	1	
Office Box	1	
Chainsaws	3	Husqavarna 353

Chainsaw safety gear	3	Helmet, visor, chaps
Chainsaw tool box	1	Repair tools and spares

Survey Specifications

Line cutting:

Width	1.5 m width maximum and cleared to ground.
Station Spacing	50 m
Station Marking	Marked with tagged half-length pickets. Line/station coordinates written on the tags and stapled to the pickets
Chaining	All stations tight chained, not slope corrected
Alignment and registration	Stations at 200 m intervals located with a non-differential GPS receiver in UTM NAD83 coordinates, averaged for a minimum 60sec with an estimated accuracy of less than 10m.

Induced-Polarization:

Array	Modified pole-dipole array and modified gradient.
Dipole spacing	50 m on all lines
Dipoles Read	N=1 through 10 (10 Channels)
TX	Time domain / 0.125 Hz / 50% duty cycle / reversing polarity (2 s positive -2 s off - 2 s negative - 2 s off)
RX	Receiver sampling: 20 channels / semi-logarithmic channel width / sampled minimum 15 times per reading.
Parameters read	Mt - total chargeability (mV/V) Ro - apparent resistivity M1 to M20 - 20 channel samples of decay curve Vp - Primary voltage Sp - spontaneous potential E - error in chargeability (mV/V)

Noise

Standard deviation of the chargeability to be kept to 5 mV/V or less wherever possible. If this is not possible, readings were repeated multiple times to determine their repeatability.

Stationary Electrodes	Line	Station	UTME NAD83 Z8	UTMN NAD83 Z8
	250	0000	591107	7097315
	250	0850	590781	7098048
	300	-100	590665	7097438
	300	1100	591760	7097872
	500	0050	591301	7097419
	500	0950	590945	7098232
	600	-100	590563	7097731
	750	-050	591551	7097413
	750	850	591179	7098394

7.0 ANALYTICAL PROCEDURES

The data was downloaded nightly from the receiver and imported into Geosoft Oasis Montaj IP package for processing. Every reading was inspected and readings, which did not repeat, were rejected from the database. Apparent resistivity was recalculated using a four-electrode equation assuming a homogeneous earth. Average apparent chargeability was calculated using a weighted mean based on the number of stacks and the standard deviation of the chargeability.

GPS points were created from the target area by means of picketed lines and handheld GPS units to record Rx electrode locations and the location of the stationary electrodes. Any stations not measured by GPS were determined by interpolation.

Pseudosections of apparent chargeability, apparent chargeability error, and apparent resistivity draped over topography were produced with Oasis Montaj.

8.0 RESULTS

The IP survey identified a large zone of chargeability, interpreted to represent sulfides, that correlates well with the mineralized gossans at surface. The zone of chargeability strikes northwest and has a strike

length of over 500 meters as it continues to the northwest and southeast beyond the bounds of the geophysical grid. The anomaly has an apparent width of 100 meters and continues to depth off the pseudo sections. This potentially sulfide bearing anomalous zone is an excellent target for precious metals and has significant size potential. The chargeability zone corresponds with a zone of low resistivity interpreted to represent a hydrothermal alteration zone.

There is a conductive unit that hosts a chargeability high identified in the Tell IP grid. The highest chargeability runs from L750, station 550, through cross line 600, station 650 and then L500, station 700 giving an approximate ESE strike, which is not well correlated to the known gossans that strike slightly north of east.

On L750, the conductivity zone is centered around station 500, is approximately 150 m wide and is bounded to the north and south by a resistive feature. There is a shallow chargeability anomaly on the northern margin of the conductivity feature. The gradient resistivity data, which typically samples deeper than the expanding pole-dipole data, shows the conductive feature extending further to the south and is suggestive of a south dip.

The pseudosection on L500 shows the conductivity feature open to the north with a chargeability high centered at station 700. The gradient resistivity data does show the conductivity feature being closed to the north, again consistent with a south dip.

L250 indicates that the line only went far enough to the north to begin to image the southern margin of the conductivity feature and although there is a rise in the chargeability, it is neither closed off nor of the same tenure as the chargeability highs on lines 500 and 750. An extension to the north of L250 was not considered because the topography becomes increasingly steep and the crew felt it was not safe to survey further.

The cross line 600 is consistent with the above showing the strongest chargeability at the eastern margin of the conductivity feature at station 650.

The cross line 300 was south of the main conductive feature and as the chargeability high was at the northern margin of the high-conductivity zone; cross line 300 did not image the chargeability high. There is a moderate rise in chargeability and decrease in resistivity at the western end of cross line 300 and there is the suggestion of increased chargeability and decreased resistivity at the very southern end of L200. This would be consistent with an ESE strike of another unit at the edge of the grid – significantly, there are gossans also identified at this corner of the grid. The river would pose some challenges to extending the grid to the south, but they are not insurmountable.

9.0 CONCLUSIONS AND RECOMMENDATIONS

The Tell property hosts seven active and inactive mineral spring gossans with strongly anomalous base metal values and numerous precious metals pathfinder elements. The 2012 IP geophysical survey targeted the gossans and revealed a large zone of chargeability, interpreted to represent sulfides, correlates well with the mineralized gossans at surface.

The zone of chargeability strikes northwest and has a strike length of over 500 meters as it continues to the northwest and southeast beyond the bounds of the geophysical grid. The anomaly has an apparent width of 100 meters and continues to depth off the pseudo sections. This potentially sulfide bearing anomalous zone is an excellent target for precious metals and has significant size potential. The chargeability zone corresponds with a zone of low resistivity interpreted to represent a hydrothermal alteration zone.

It is recommended that the geophysical data undergo an inversion and modeling to delineate the anomalies in the subsurface for follow up diamond drilling in 2013. Delineated geophysical drill targets could initially be tested with a small number of relatively deep (~300 – 350 m) diamond drill holes totalling 2,000 meters.

10.0 REFERENCES

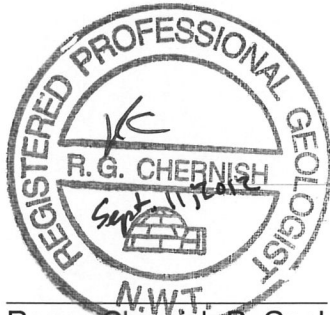
- Blusson, S.L., 1974. Open File 205. Geological Survey of Canada.
- Caron, M., Grasby, S.E., Ryan, M.C., 2008. Spring water trace element geochemistry: A tool for resource assessment and reconnaissance mineral exploration. *Applied Geochemistry*, 23; pp 3561-3578.
- Chernish, R. and Rainey, D., 2011. Assessment Report on the 2011 Geological and Geochemical Sampling Survey on the Frog Claims Nadaleen River and NW of Stewart River, Yukon.
- Colpron, M., 2012. Preliminary observations on the geology of the Rackla Belt, Mount Ferrell map area (NTS 106C/3), Central Yukon. In: *Yukon Exploration and Geology 2011*, K.E. MacFarlane and P.J. Sack (eds.), Yukon Geological Survey, p.27-43.
- Deklerk, R. and Traynor, S. (compilers), 2005. Yukon MINFILE - A database of mineral occurrences, Yukon Geological Survey.
- Goodfellow, W.D. 2007. Base metal metallogeny of the Selwyn Basin, Canada, *in* Goodfellow, W.D., ed., *Mineral Deposits of Canada: A Synthesis of Major Deposit-Types, District Metallogeny, the Evolution of Geological Provinces, and Exploration Methods*: Geological Association of Canada, Mineral Deposits Division, Special Publication No. 5, p. 553-579.
- Gordey, S.P., and Makepeace, A.J., 2003. Yukon Digital Geology, version 2.0, S.P. Gordey and A.J. Makepeace (compilers): Geological Survey of Canada, Open File 1749 and Yukon Geological Survey, Open File 2003-9 (D).
- Kennecott Canada Inc. 1992. Geological and Geochemical Evaluation of the Tell 1- 10 claims, Yukon. Assessment Report 093031, Mayo Mining District.
- Redtail Metals Corp. 2011. Redtail Metals Receives Resource Estimate on Marg Project, Yukon. NR11-02, June 1, 2011.
- Selwyn Resources Ltd. 2011. Selwyn Announces Updated Mineral Resources for Selwyn Project. NR 2011-43, September 12, 2011.
- Yukon Geological Survey. Unknown date. Selwyn Basin Metallogeny. 55 pages.
<http://www.geology.gov.yk.ca/pdf/SelwynBasin.pdf>

APPENDIX A
STATEMENT OF QUALIFICATIONS

CERTIFICATE OF QUALIFICATIONS

I, Regan G. Chernish of 1411-108 Avenue S.W., Calgary, Alberta, hereby certify that:

1. I am a Professional Geologist with a residence and office at the above address,
2. I graduated from the University of Alberta with a Bachelor of Science Degree in Geology (1991),
3. I am a Registered Professional Geoscientist in good standing with the Northwest Territories and Nunavut Association of Professional Engineers and Geoscientists (NAPEG),
4. I have worked as a geologist since my graduation from university,
5. The 2012 work described in this report was carried out under my supervision,
6. I am President and a Director of Manson Creek Resources Ltd. whose address is Suite 800, 808 – 4TH Avenue S.W., Calgary, Alberta, T2P 3E8.



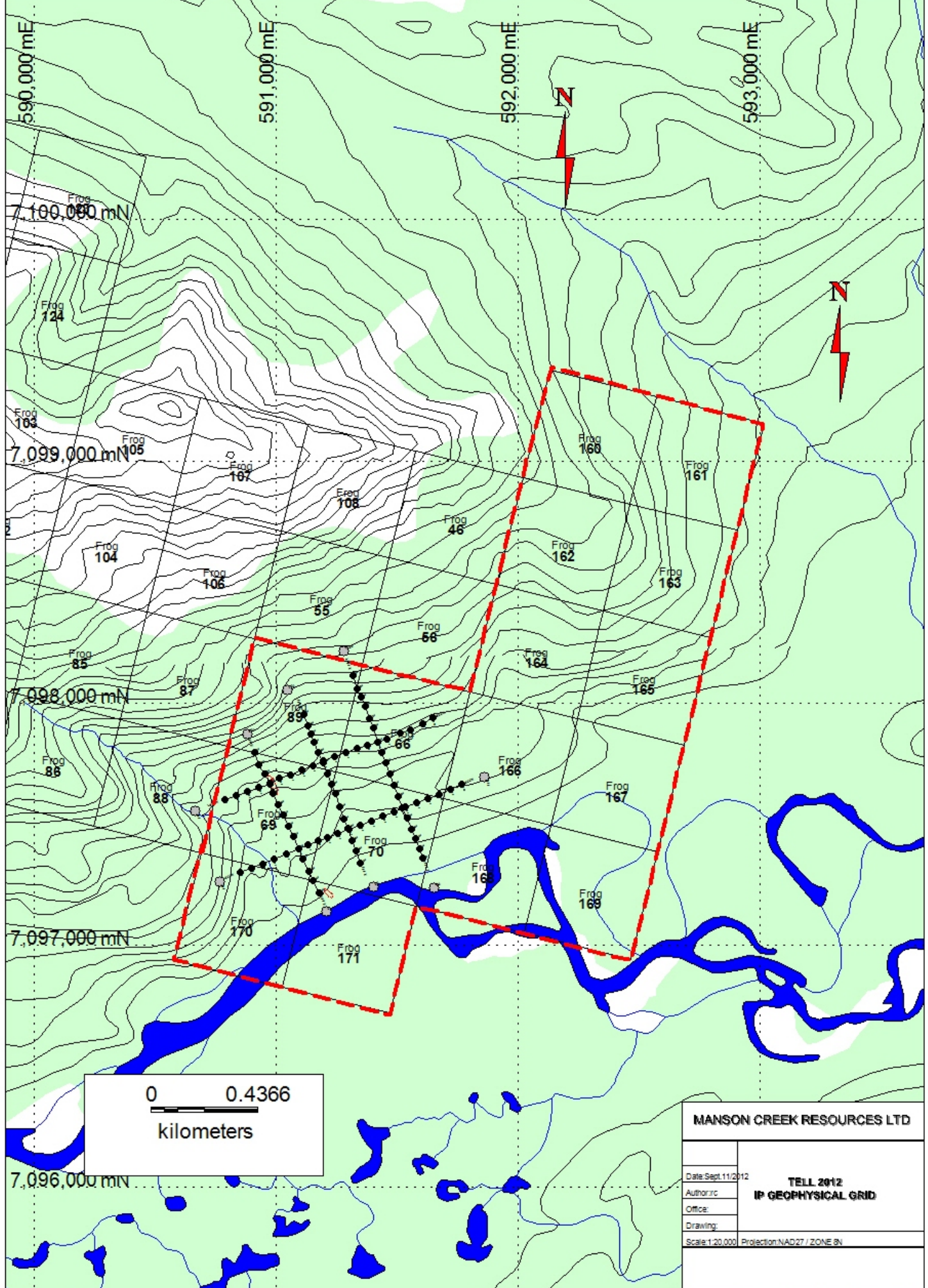
Regan Chernish P. Geol
President and Director

APPENDIX B
STATEMENT OF EXPENDITURES

Expenditures
2012 GEOPHYSICAL SURVEY

DESCRIPTION	COST
Professional Services	
Field Time:	
Geologist 1:	
Geologist 2:	
Field Assistant	
SUBTOTAL	<u>\$0.00</u>
Vehicle Charges	
Truck Rental	
Fuel	
Helicopter Charter	\$6,888.74
Fixed Wing Charter	<u>\$2,245.95</u>
SUBTOTAL	<u>\$9,134.69</u>
Disbursements (GST included)	
Geophysical Survey charges	\$24,947.50
Food	
Satellite Phone	
Field Supplies	
Water Sample Analysis	
Soil Samples	
Rock Samples	
Report Writing	
Expediting	
SUBTOTAL	<u>\$24,947.50</u>
TOTAL	<u>\$34,082.19</u>

APPENDIX C
INDUCED POLARIZATION SURVEY MAPS



590,000 mE 591,000 mE 592,000 mE 593,000 mE

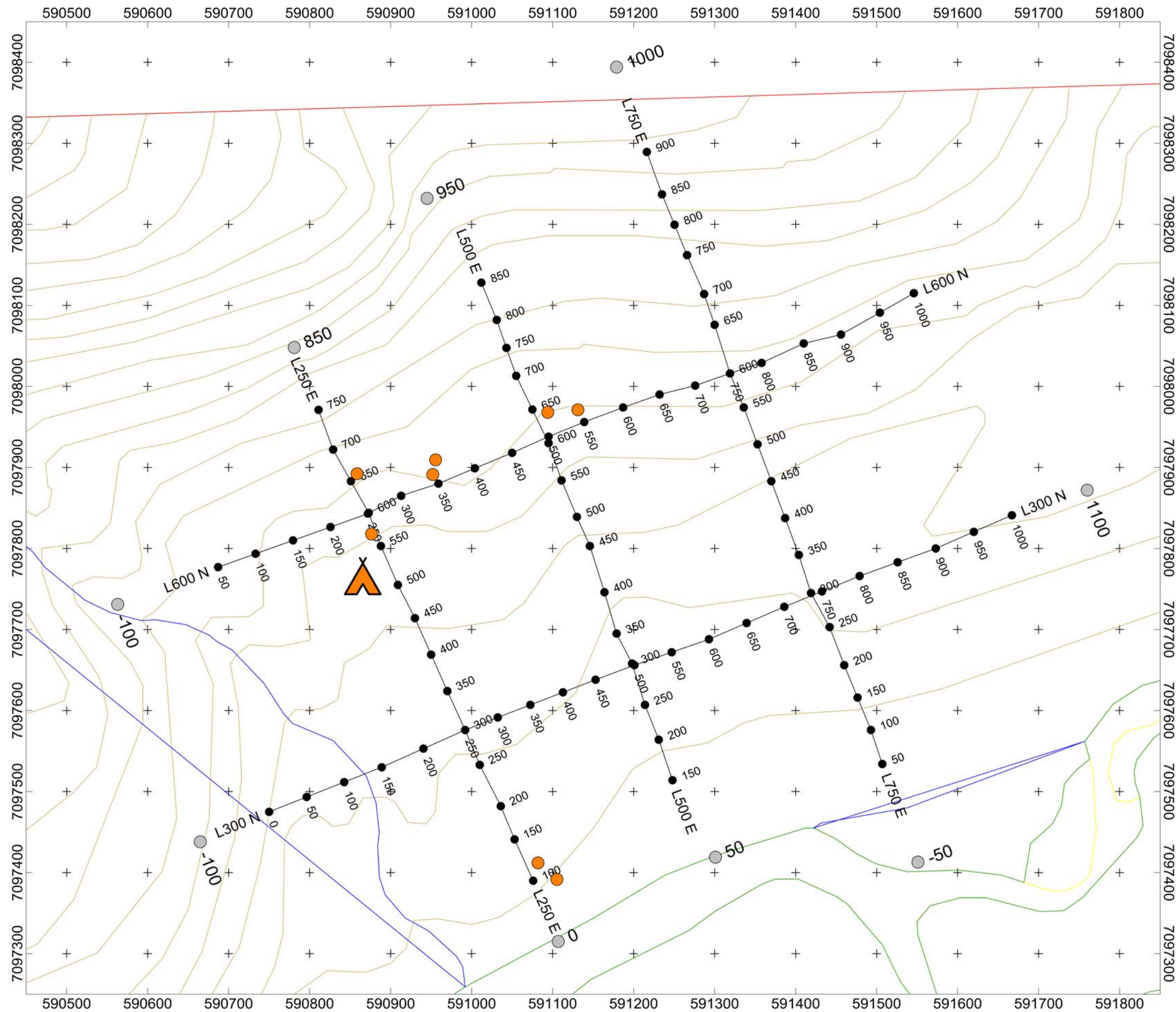
7,100,000 mN
7,099,000 mN
7,098,000 mN
7,097,000 mN
7,096,000 mN





Frog 724
Frog 103
Frog 105
Frog 107
Frog 108
Frog 104
Frog 106
Frog 85
Frog 87
Frog 88
Frog 89
Frog 69
Frog 70
Frog 71
Frog 66
Frog 55
Frog 56
Frog 46
Frog 160
Frog 161
Frog 162
Frog 163
Frog 164
Frog 165
Frog 166
Frog 167
Frog 168
Frog 169
Frog 170
Frog 171

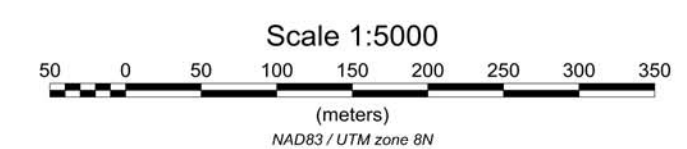
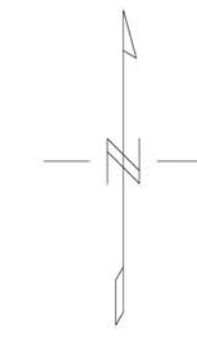
0 0.4366 kilometers

MANSON CREEK RESOURCES LTD

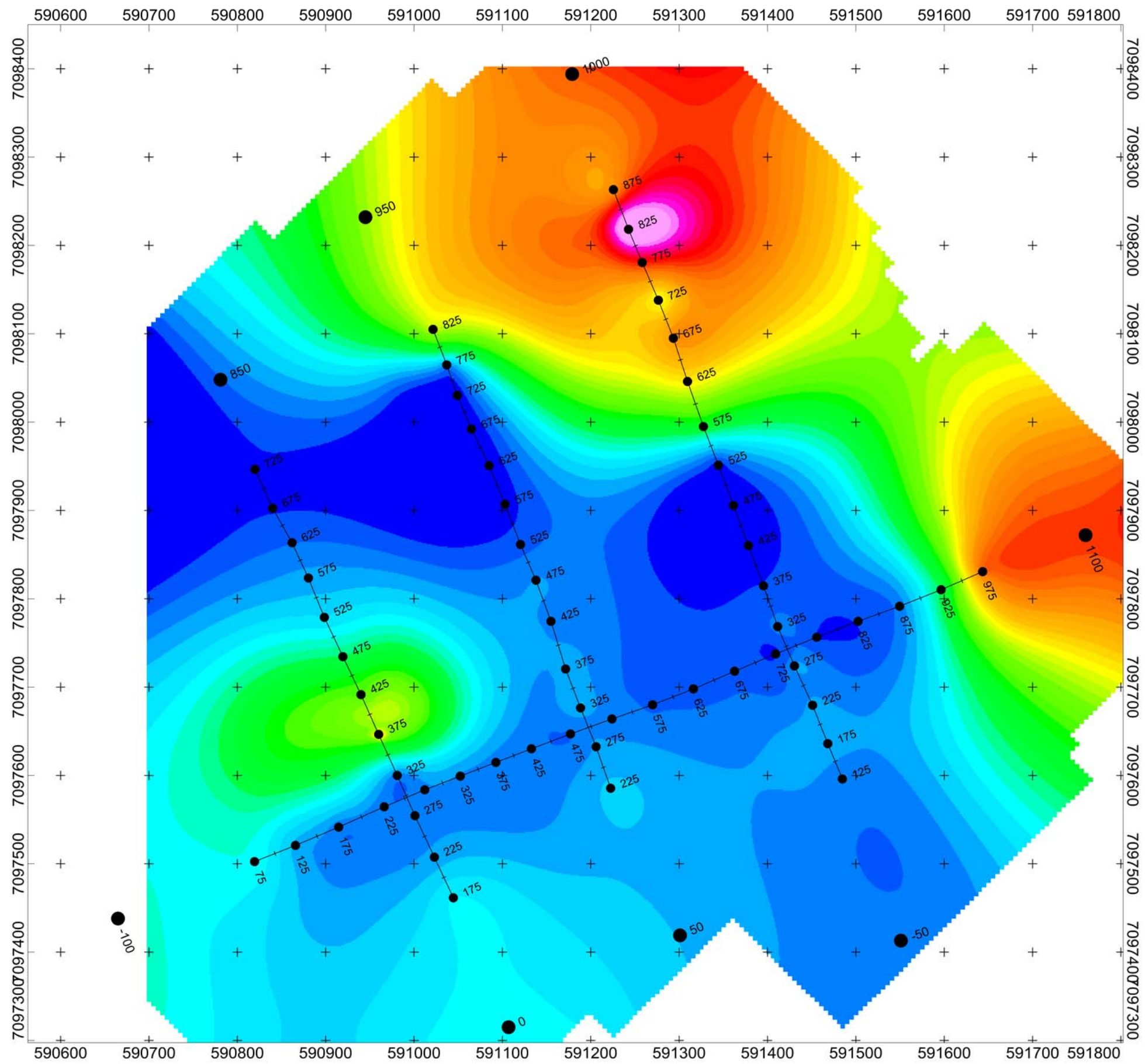
Date: Sept. 11/2012
 Author: **TELL 2012**
 Office: **IP GEOPHYSICAL GRID**
 Drawing:
 Scale: 1:20,000 Projection: NAD27 / ZONE 8N



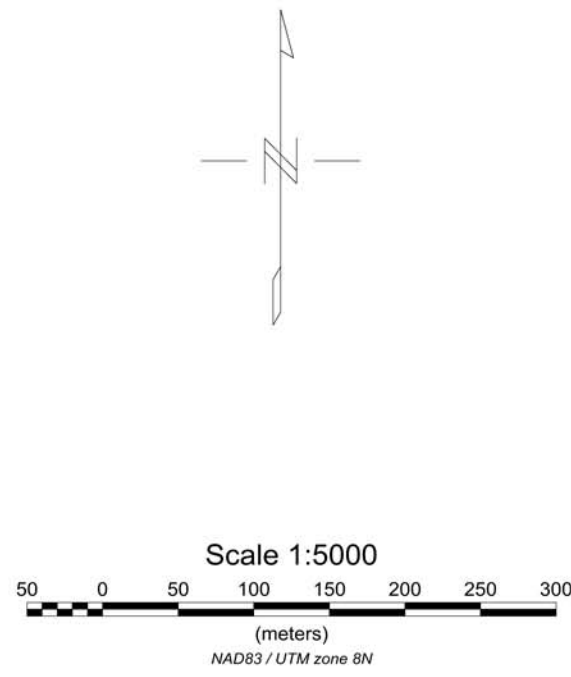
-  Camp
-  Stationary Electrode
-  Gossan
-  Survey Station



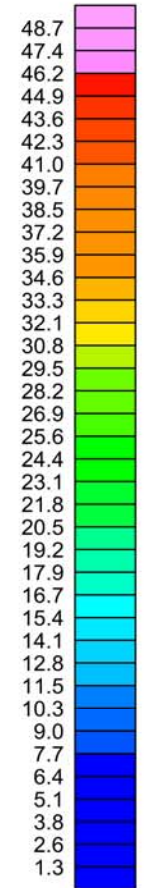
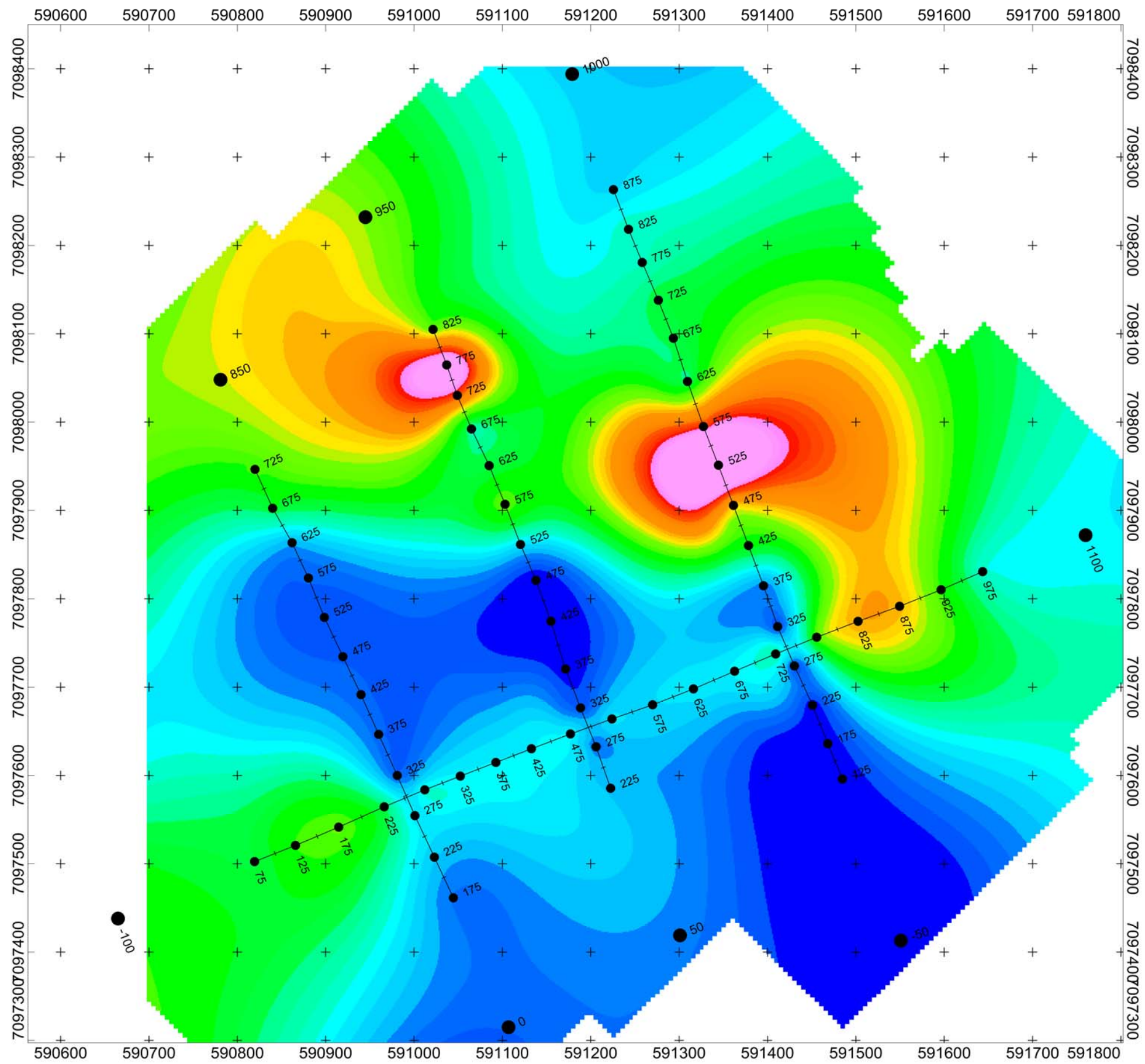
MANSON CREEK RESOURCES	
INDUCED POLARIZATION SURVEY	
Tell Property Grid Map	
FIGURE 4: GRID LOCATION	
Mining District: Mayo	GRID: Local
Date: June 29 2012	Job: NTR-12525-YT
NTS: 105 N/14	Drawn by: SS
AURORA GEOSCIENCES LTD.	



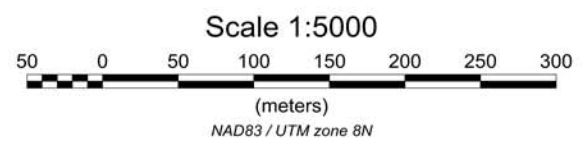
Apparent Resistivity
ohm-m



MANSON CREEK RESOURCES	
INDUCED POLARIZATION SURVEY	
Tell Property	
Gradient - Apparent Resistivity	
Mining District: Mayo	GRID: Local
Date: June 29 2012	Job: NTR-12525-YT
NTS: 105 N/14	Drawn by: SS
AURORA GEOSCIENCES LTD.	

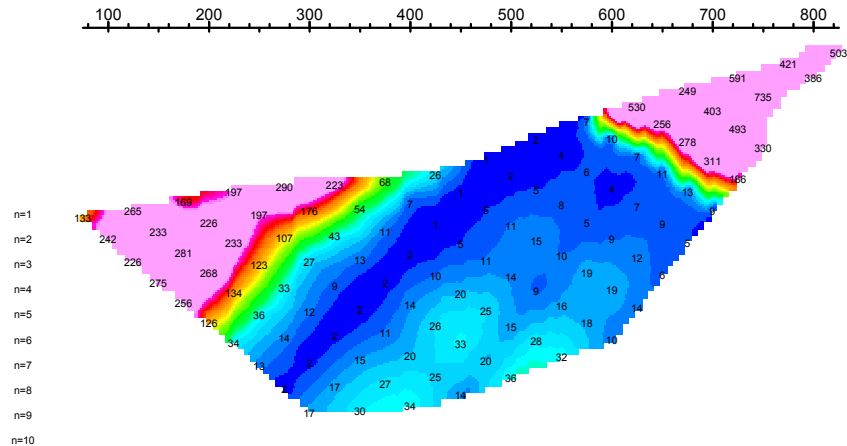


Apparent Chargeability
mV/V

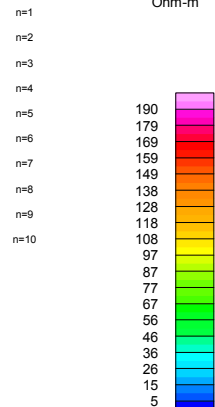


MANSON CREEK RESOURCES	
INDUCED POLARIZATION SURVEY	
Tell Property	
Gradient - Apparent Chargeability	
Mining District: Mayo	GRID: Local
Date: June 29 2012	Job: NTR-12525-YT
NTS: 105 N/14	Drawn by: SS
AURORA GEOSCIENCES LTD.	

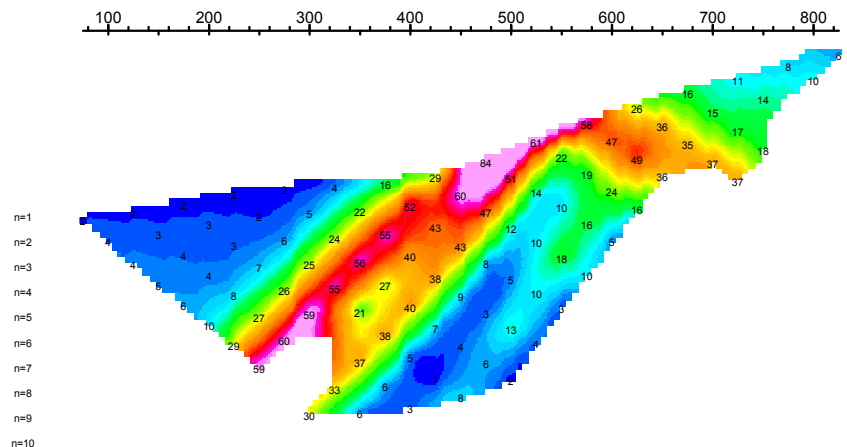
Apparent Resistivity
Ohm-m



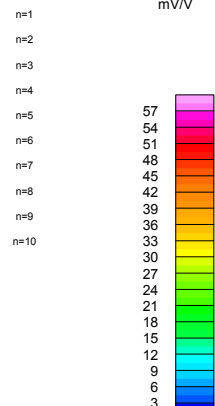
Apparent Resistivity
Ohm-m



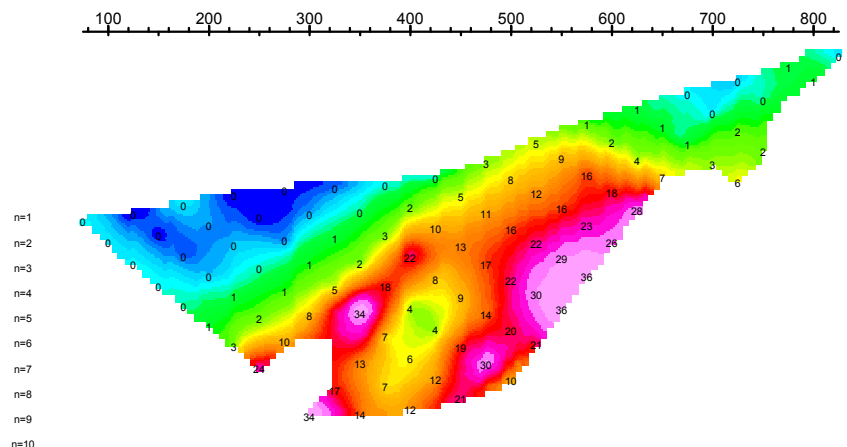
Apparent Chargeability
mV/V



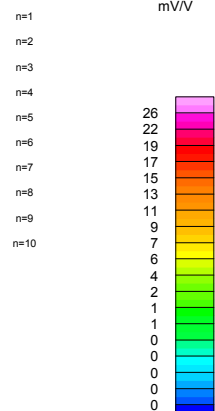
Apparent Chargeability
mV/V



App. Chargeability Err.
mV/V

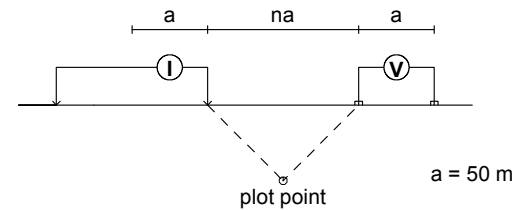


App. Chargeability Err.
mV/V



PSEUDOSECTION PLOTS L750

Modified Pole-Dipole Array



Stationary electrode at -100E (moving E).

Receiver: Iris ElrecPro

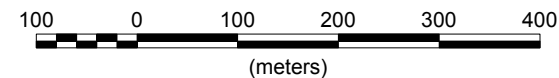
Transmitter: GDD Tx-II 3.6kW

Data File: TELL2012IP.xyz

Dates Surveyed : June 15 - June 21 2012

FIELD

Scale 1:7500



MANSON CREEK RESOURCES

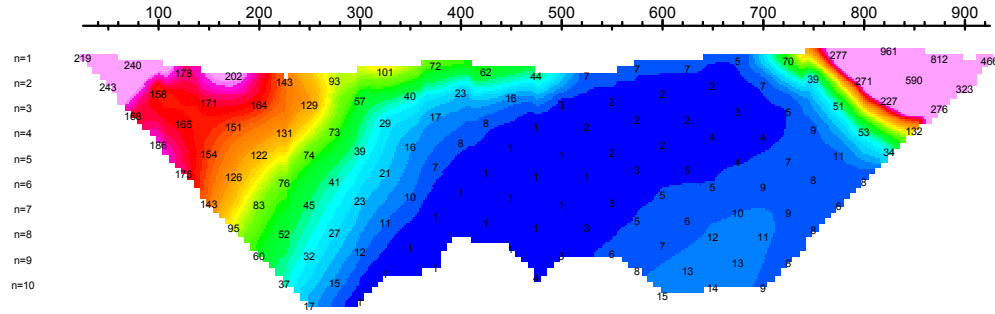
INDUCED POLARIZATION SURVEY
Tell Property
PSEUDOSECTION PLOTS L750

Mining District: Mayo
Date: June 29 2012
NTS: 105 N/14

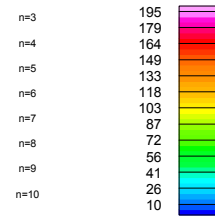
GRID: Local
Job: NTR-12525-YT
Drawn by: SS

AURORA GEOSCIENCES LTD.

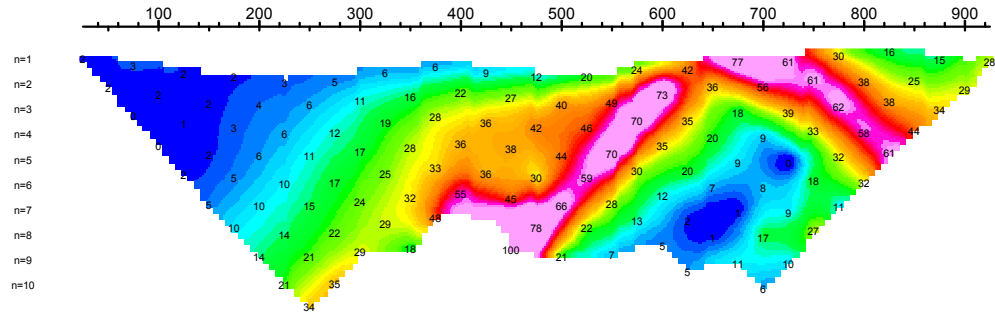
Apparent Resistivity
Ohm-m



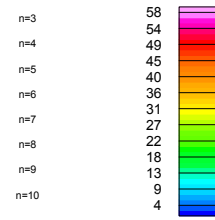
Apparent Resistivity
Ohm-m



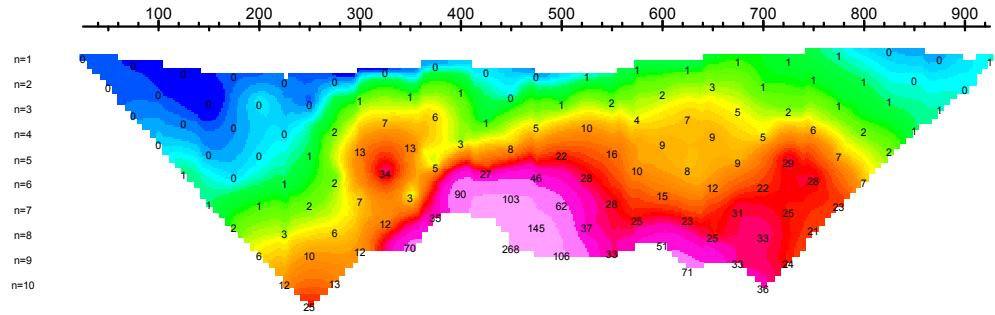
Apparent Chargeability
mV/V



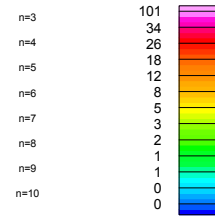
Apparent Chargeability
mV/V



App. Chargeability Err.
mV/V

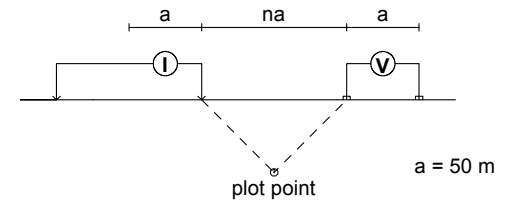


App. Chargeability Err.
mV/V



PSEUDOSECTION PLOTS L600

Modified Pole-Dipole Array



FIELD

Stationary electrode at -100E (moving E).

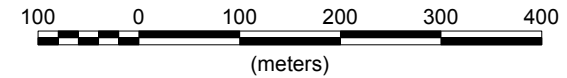
Receiver: Iris ElrecPro

Transmitter: GDD Tx-II 3.6kW

Data File: TELL2012IP.xyz

Dates Surveyed : June 15 - June 21 2012

Scale 1:7500



MANSON CREEK RESOURCES

INDUCED POLARIZATION SURVEY

Tell Property

PSEUDOSECTION PLOTS L600

Mining District: Mayo

Date: June 29 2012

NTS: 105 N/14

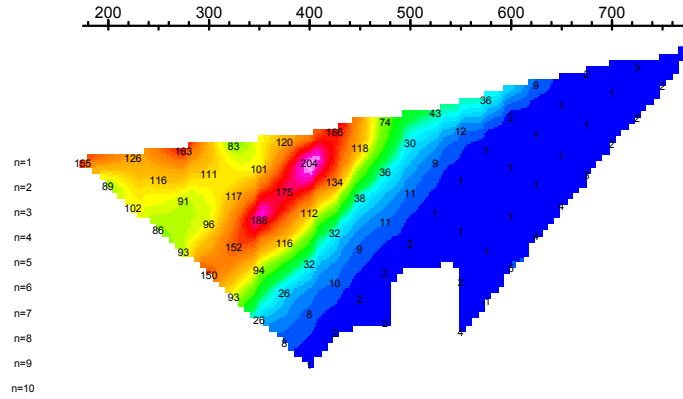
GRID: Local

Job: NTR-12525-YT

Drawn by: SS

AURORA GEOSCIENCES LTD.

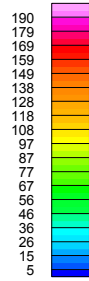
Apparent Resistivity
Ohm-m



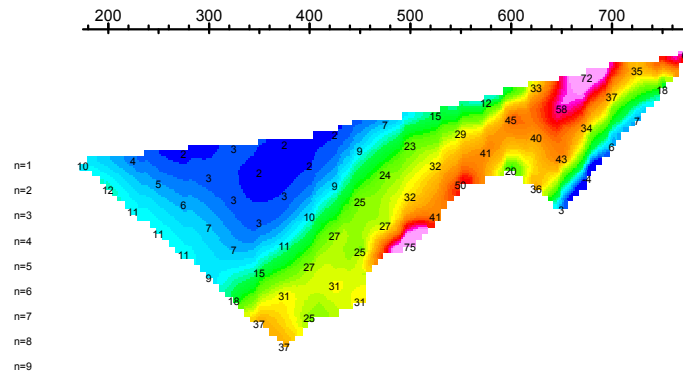
Apparent Resistivity

Ohm-m

n=1
n=2
n=3
n=4
n=5
n=6
n=7
n=8
n=9
n=10



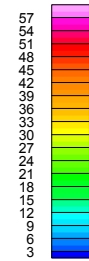
Apparent Chargeability
mV/V



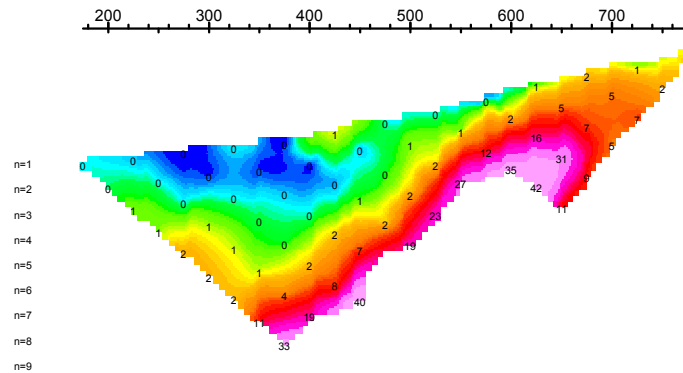
Apparent Chargeability

mV/V

n=1
n=2
n=3
n=4
n=5
n=6
n=7
n=8
n=9



App. Chargeability Err.
mV/V



App. Chargeability Err.

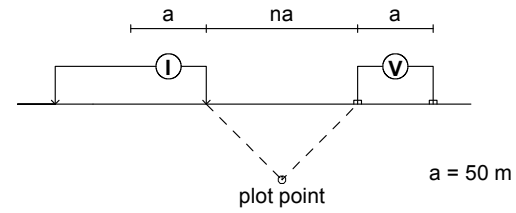
mV/V

n=1
n=2
n=3
n=4
n=5
n=6
n=7
n=8
n=9



PSEUDOSECTION PLOTS L500

Modified Pole-Dipole Array



FIELD

Stationary electrode at -100E (moving E).

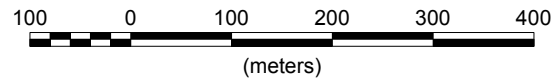
Receiver: Iris ElrecPro

Transmitter: GDD Tx-II 3.6kW

Data File: TELL2012IP.xyz

Dates Surveyed : June 15 - June 21 2012

Scale 1:7500



MANSON CREEK RESOURCES

INDUCED POLARIZATION SURVEY

Tell Property

PSEUDOSECTION PLOTS L500

Mining District: Mayo

Date: June 29 2012

NTS: 105 N/14

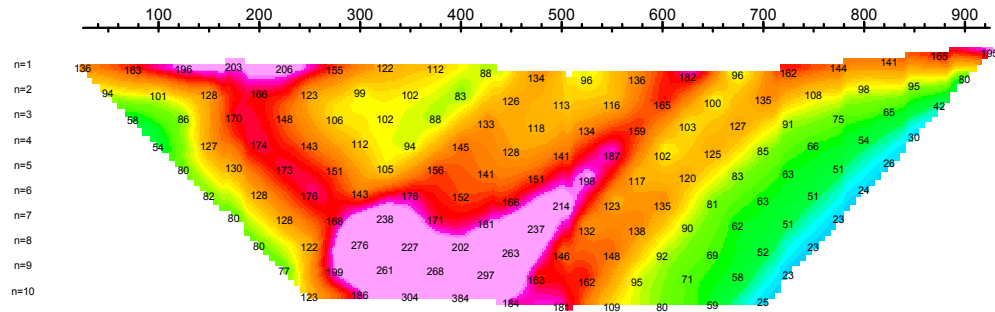
GRID: Local

Job: NTR-12525-YT

Drawn by: SS

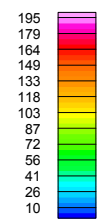
AURORA GEOSCIENCES LTD.

Apparent Resistivity
Ohm-m

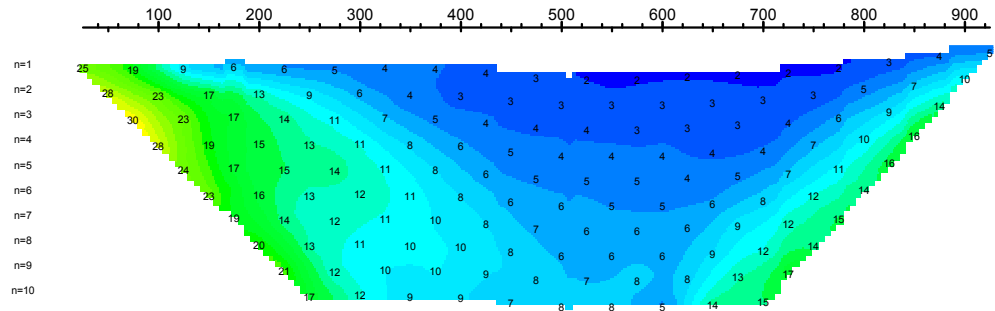


Apparent Resistivity
Ohm-m

n=1
n=2
n=3
n=4
n=5
n=6
n=7
n=8
n=9
n=10

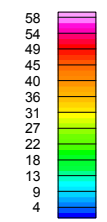


Apparent Chargeability
mV/V

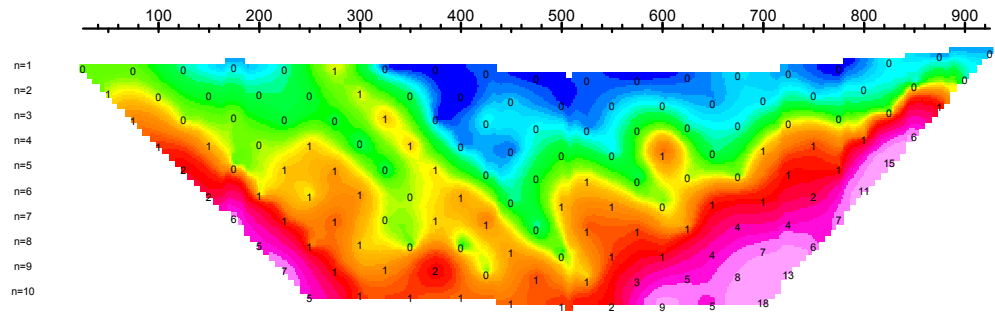


Apparent Chargeability
mV/V

n=1
n=2
n=3
n=4
n=5
n=6
n=7
n=8
n=9
n=10

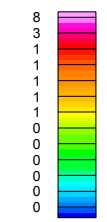


App. Chargeability Err.
mV/V



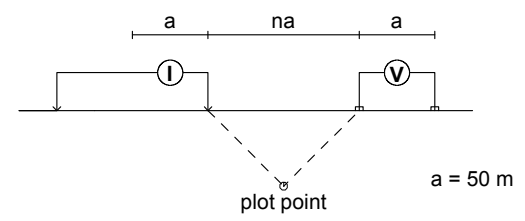
App. Chargeability Err.
mV/V

n=1
n=2
n=3
n=4
n=5
n=6
n=7
n=8
n=9
n=10



PSEUDOSECTION PLOTS L300

Modified Pole-Dipole Array



FIELD

Stationary electrode at -100E (moving E).

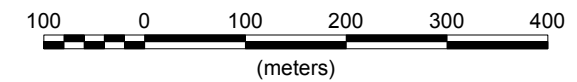
Receiver: Iris ElrecPro

Transmitter: GDD Tx-II 3.6kW

Data File: TELL2012IP.xyz

Dates Surveyed : June 15 - June 21 2012

Scale 1:7500



MANSON CREEK RESOURCES

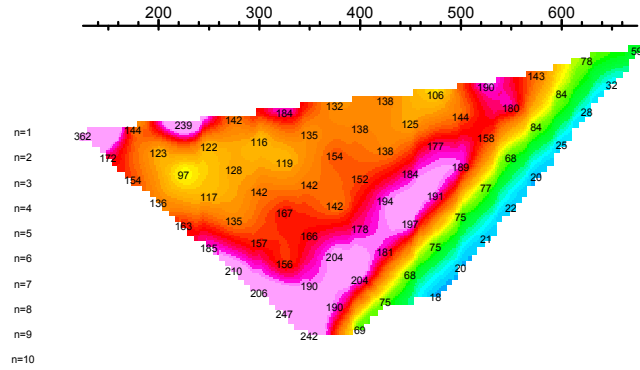
INDUCED POLARIZATION SURVEY
Tell Property
PSEUDOSECTION PLOTS L300

Mining District: Mayo
Date: June 29 2012
NTS: 105 N/14

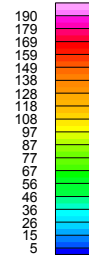
GRID: Local
Job: NTR-12525-YT
Drawn by: SS

AURORA GEOSCIENCES LTD.

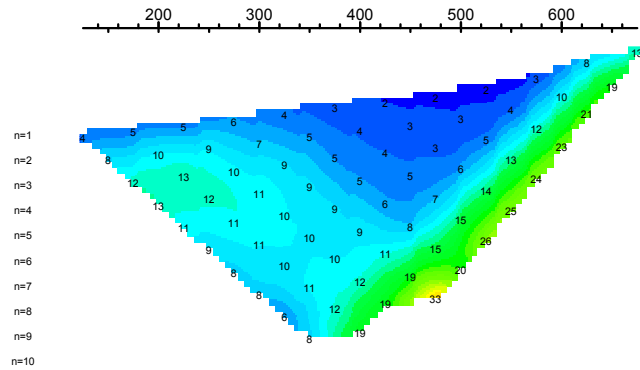
Apparent Resistivity
Ohm-m



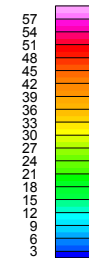
Apparent Resistivity
Ohm-m



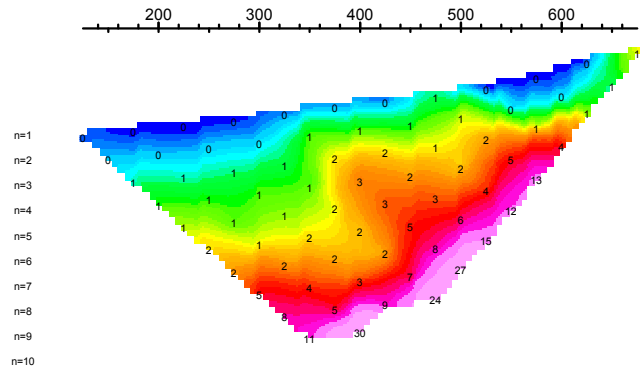
Apparent Chargeability
mV/V



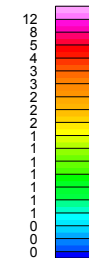
Apparent Chargeability
mV/V



App. Chargeability Err.
mV/V

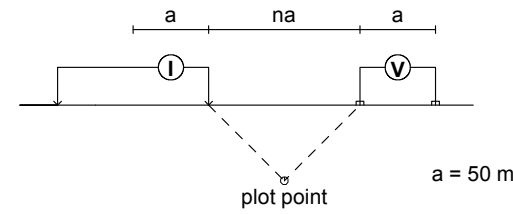


App. Chargeability Err.
mV/V



PSEUDOSECTION PLOTS L250

Modified Pole-Dipole Array



FIELD

Stationary electrode at -100E (moving E).

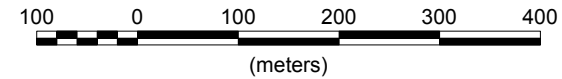
Receiver: Iris ElrecPro

Transmitter: GDD Tx-II 3.6kW

Data File: TELL2012IP.xyz

Dates Surveyed : June 15 - June 21 2012

Scale 1:7500



MANSON CREEK RESOURCES

INDUCED POLARIZATION SURVEY

Tell Property

PSEUDOSECTION PLOTS L250

Mining District: Mayo

Date: June 29 2012

NTS: 105 N/14

GRID: Local

Job: NTR-12525-YT

Drawn by: SS

AURORA GEOSCIENCES LTD.

```

/
/   -----
/   XYZ          EXPORT      [07/03/2012]
/   DATABASE     [.\TELL_FINAL_ PLDP.gdb]
/   -----
/

```

```

/
/   T1X          R1X          R2X          Vp          I          Sp          QC
/===== =====

```

```

//Flight          0
//Date            15/06/2012
Line              600

```

Line	T1X	R1X	R2X	Vp	I	Sp	QC
0	50	100	349.6	1.259	34.6	1	1
0	100	150	106.7	1.259	73.1	1	1
0	150	200	31.2	1.259	-111.8	1	1
0	200	250	17.9	1.259	-12.5	1	1
0	250	300	9.4	1.259	74.5	1	1
0	300	350	5.2	1.259	23.3	1	1
0	350	400	2.4	1.259	16.6	1	1
0	400	450	1.1	1.259	0.2	1	1
0	450	500	0.5	1.259	-18.4	1	1
0	500	550	0.2	1.225	152.4	1	1
50	100	150	390	1.133	87.7	1	1
50	150	200	75.1	1.133	-118.9	1	1
50	200	250	34.6	1.133	5.9	1	1
50	250	300	16.5	1.133	59.5	1	1
50	300	350	8.7	1.133	13.8	1	1
50	350	400	3.7	1.133	24.8	1	1
50	400	450	1.6	1.133	-1.4	1	1
50	450	500	0.7	1.133	-21.5	1	1
50	500	550	0.2	1.133	102.9	1	1
50	550	600	0	1.133	37.3	1	1
100	150	200	353.9	1.324	-117.4	1	1
100	200	250	103.1	1.324	-2.1	1	1
100	250	300	39.7	1.324	76	1	1
100	300	350	18.7	1.324	11.7	1	1
100	350	400	7.2	1.324	22.7	1	1
100	400	450	2.9	1.324	2.3	1	1
100	450	500	1.2	1.324	-23.3	1	1
100	500	550	0.4	1.324	87.9	1	1
100	550	600	0	1.324	42.3	1	1
150	200	250	150.6	0.492	-2.5	1	1
150	250	300	36.6	0.492	72.6	1	1
150	300	350	14.4	0.492	10.2	1	1
150	350	400	4.6	0.492	22.4	1	1
150	400	450	1.6	0.492	-0.4	1	1
150	450	500	0.6	0.492	-21.2	1	1
150	500	550	0.2	0.492	86.9	1	1

```

/-----
/ XYZ EXPORT [07/03/2012]
/ DATABASE [.\TELL_FINAL_ PLDP.gdb]
/-----
/
/ T1X R1X R2X Vp I Sp QC
/=====
150 550 600 0 0.492 42.8 1 1
150 600 650 0 0.446 71.5 1 1
200 250 300 317.4 1.47 136.9 1 1
200 300 350 96.9 1.47 11.9 1 1
200 350 400 26.2 1.47 58.7 1 1
200 400 450 7.9 1.47 9.8 1 1
200 450 500 2.7 1.47 -69.2 1 1
200 500 550 0.8 1.47 87.8 1 1
200 550 600 0.1 1.47 39.7 1 1
200 700 750 0.1 1.47 -137.1 1 1
250 300 350 119.1 0.765 15.4 1 1
250 350 400 23.3 0.765 43.7 1 1
250 400 450 5.7 0.765 -14.5 1 1
250 450 500 1.7 0.765 -32.7 1 1
250 500 550 0.5 0.798 88 1 1
250 550 600 0 0.798 34.9 1 1
250 600 650 0 0.765 29.7 1 1
250 650 700 0 0.765 1.7 1 1
250 700 750 0.1 0.765 -151.3 1 1
300 350 400 137.9 0.858 12.7 1 1
300 400 450 17.5 0.858 4.5 1 1
300 450 500 3.5 0.858 -25 1 1
300 500 550 0.9 0.858 88 1 1
300 550 600 0.1 0.858 35.6 1 1
300 600 650 0 0.771 24.9 1 1
300 650 700 0 0.858 2.3 1 1
300 700 750 0.1 0.829 -114 1 1
350 400 450 165.4 1.421 3.3 1 1
350 450 500 17.1 1.421 -21.7 1 1
350 500 550 2.8 1.421 87.6 1 1
350 550 600 0.2 1.421 36.2 1 1
350 600 650 0.1 1.421 22.6 1 1
350 650 700 0.1 1.421 3.8 1 1
350 700 750 0.2 1.421 -105.8 1 1
350 750 800 0.3 1.421 104.3 1 1
350 800 850 0.4 1.421 -72.4 1 1
350 850 900 0.4 1.421 10.2 1 1
400 450 500 128.2 1.33 -38.6 1 1
400 500 550 10.5 1.33 88.5 1 1
400 550 600 0.5 1.33 36.6 1 1

```

```

/
/ -----
/ XYZ EXPORT [07/03/2012]
/ DATABASE [.\TELL_FINAL_ PLDP.gdb]
/ -----
/
/
/ T1X R1X R2X Vp I Sp QC
/=====

```

T1X	R1X	R2X	Vp	I	Sp	QC
400	600	650	0.2	1.33	20.7	1
400	650	700	0.2	1.33	7.1	1
400	700	750	0.2	1.33	-104.6	1
400	750	800	0.3	1.33	87.9	1
400	800	850	0.4	1.33	-76.5	1
400	850	900	0.5	1.33	9.8	1
400	900	950	0.5	1.33	52.7	1
450	500	550	93	1.336	-15.5	1
450	550	600	2.1	1.352	37	1
450	600	650	0.5	1.336	19.2	1
450	650	700	0.3	1.352	9.8	1
450	700	750	0.3	1.352	-106.5	1
450	750	800	0.4	1.352	80.6	1
450	800	850	0.5	1.352	-81.8	1
450	850	900	0.6	1.385	5.4	1
450	900	950	0.6	1.352	35	1
450	950	1000	0.3	1.359	-81.2	1
500	550	600	15.3	1.228	-23.3	1
500	600	650	1.4	1.228	16.6	1
500	650	700	0.6	1.228	13.2	1
500	700	750	0.5	1.228	-107.7	1
500	750	800	0.5	1.228	77.6	1
500	800	850	0.5	1.228	-86.1	1
500	850	900	0.6	1.228	4.1	1
500	900	950	0.6	1.228	30.2	1
500	950	1000	0.3	1.228	-70.3	1
550	600	650	13	1.208	13.7	1
550	650	700	1.5	1.208	15.6	1
550	700	750	0.6	1.208	-109.8	1
550	750	800	0.7	1.208	77.1	1
550	800	850	0.7	1.208	-91.6	1
550	850	900	0.7	1.208	4	1
550	900	950	0.7	1.208	31.2	1
550	950	1000	0.3	1.208	-65	1
600	650	700	12.5	1.129	16.8	1
600	700	750	1.1	1.129	-110.6	1
600	750	800	1	1.129	74.6	1
600	800	850	0.8	1.129	-94.3	1
600	850	900	0.8	1.129	5.7	1
600	900	950	0.7	1.129	29.1	1

```

/
/  -----
/  XYZ          EXPORT      [07/03/2012]
/  DATABASE    [.\TELL_FINAL_ PLDP.gdb]
/  -----
/
/
/  T1X          R1X          R2X          Vp      I      Sp      QC
/===== =====
600          950          1000          0.3  1.129  -63.3      1      1
650          700          750          13.8 1.479 -114.8      1      1
650          750          800          5.3  1.479   74.8      1      1
650          800          850          2.7  1.479  -99.4      1      1
650          850          900          2.2  1.479   8.6      1      1
650          900          950          1.8  1.479  28.7      1      1
650          950          1000         0.8  1.479 -60.8      1      1
700          750          800          154  1.334  76.8      1      1
700          800          850          37.1 1.334 -103      1      1
700          850          900          18   1.334  11.2      1      1
700          900          950          12.4 1.334  28.9      1      1
700          950          1000         4.5  1.334 -60.4      1      1
750          800          850          772.4 1.244 -105.4      1      1
750          850          900          173.6 1.244  10.5      1      1
750          900          950          81.9  1.244  29.9      1      1
750          950          1000         24.2 1.244 -60.4      1      1
800          850          900          1079.3 0.905 9.3      1      1
800          900          950          275.9 0.905 32.4      1      1
800          950          1000         56.6 0.905 -61.3      1      1
850          900          950          2065.2 1.424 33.7      1      1
850          950          1000         228.6 1.424 -59.6      1      1
900          950          1000         827.5 1.321 -61.3      1      1

```


/ ----- ---
 /
 /
 / ----- ---
 /

	QC_RES	Type	IP[0]	IP[1]	IP[2]	IP[3]	IP[4]	IP[5]	IP[6]	IP[7]	IP[8]
600	0	12.9	28.78	8.17	18.26	34.93	-0.79	17.02	6.98	20.96	4.21
650	1	213.53	181.27	161.74	147.32	136.11	126.67	118.81	109.42	98.36	90.32
650	1	163.76	138.5	123.03	110.77	101.96	94.46	88.13	80.44	72.34	65.96
650	1	113.1	95.69	87.9	77.99	70.17	66.96	61.23	57.49	51.75	44.48
650	1	89.28	77.43	71.36	63.05	58.39	56.62	48.77	46.26	40.96	37.59
650	1	87.71	80.82	75.11	61.53	58.22	55.38	48.58	45.69	43.78	39.54
650	1	74.73	77.29	73.47	60.74	57.31	56.65	50.18	44.79	47.34	39.86
700	0	161.94	137.47	123.48	113.14	104.96	98.27	92.6	85.35	77.64	71.28
700	0	164.34	139.2	124.84	114.25	105.91	98.88	93.46	86.01	77.8	71.57
700	0	165.84	141.21	126.94	115.79	107.42	99.74	94.76	86.79	78.45	72.51
700	0	154.11	131.61	118.78	108.71	100.32	92.86	88.44	81.23	72.43	67.44
700	0	160.88	140.27	125.92	114.15	107.13	100.11	95.9	86.27	77.02	72.05
750	0	86.64	70.78	62.7	57.02	52.49	48.71	45.7	41.88	37.71	34.36
750	0	108.28	89.53	79.49	72.21	66.64	61.86	58.03	53.24	48.11	43.96
750	0	110.06	90.95	80.88	73.59	67.92	63.07	59.16	54.22	49.03	44.81
750	0	122.33	102.21	91.12	82.84	76.79	71.3	67.14	61.74	55.98	51.44
800	0	49.24	38.92	34.31	31.02	28.48	26.42	24.7	22.57	20.3	18.48
800	0	73.34	59.46	52.62	47.71	43.93	40.84	38.22	35.01	31.6	28.8
800	0	94.92	78.38	69.72	63.5	58.58	54.66	51.29	47.1	42.64	39
850	0	47.73	37.63	33.18	29.99	27.55	25.58	23.93	21.86	19.66	17.91
850	0	82.62	67.7	60.17	54.66	50.43	46.99	44.13	40.55	36.7	33.58
900	0	80.43	65.69	58.4	53.15	49.05	45.7	42.89	39.41	35.65	32.63

/

/

/

/

/

/

/

	IP[9]	IP[10]	IP[11]	IP[12]	IP[13]	IP[14]	IP[15]	IP[16]	IP[17]	IP[18]	IP[19]
150	65.41	108.84	123.99	16.68	-66.35	-41.53	25.12	116.85	8.04	-22.45	0.6
150	**	229.17	330.73	528.65	-1.3	**	-50.78	93.75	-78.13	161.46	0.4
200	3.59	3.52	3.19	3.13	3.07	2.49	2.18	1.97	1.86	1.77	135.6
200	6.39	5.88	5.53	5.24	4.74	4.22	3.8	3.46	3.2	2.95	124.3
200	12.88	11.88	11.22	10.52	9.63	8.7	7.95	7.23	6.63	6.19	67.1
200	18.71	17.26	16.07	14.93	13.24	11.8	10.21	9.08	7.72	6.58	33.6
200	25.63	22.6	21.94	20.22	18.37	17.59	16	17.05	16.58	16.48	17
200	35.79	33.89	23.56	24.68	22.46	24.77	24.4	21.6	17.11	14.25	7.4
200	106.47	28.28	74.03	1.35	36.33	16.42	33.85	99.76	12.14	29.01	0.9
200	24.33	26.13	88.81	96.48	15.59	24.94	0.25	-5.74	25.67	34.35	2.4
250	4.84	4.49	4.16	3.92	3.56	3.21	2.91	2.65	2.44	2.25	98.2
250	12.25	11.37	10.63	9.94	9.18	8.17	7.35	6.65	6.17	5.72	57.5
250	21.21	19.55	17.76	16.35	15.54	13.67	11.89	10.49	9.43	8.46	28.1
250	28.34	26.3	24.15	22.72	22.03	18.53	17.28	15.4	14.04	13.81	14
250	32.47	35	25.28	30.42	28.43	22.76	18.25	16.98	19.26	18.01	6.1
250	87.66	74.22	101.63	21.31	73.37	-6.3	45.34	14.55	2.41	28.62	0.8
250	116.09	47.2	291.51	-28.13	-69.36	-51.79	-84.96	33.47	-96.02	-67.05	0.4
250	76.23	147.03	6.57	233.5	110.17	21.66	179.09	-62.88	-2.03	48.12	0.6
250	147.72	166.61	134.39	162.02	87.74	61.2	80.14	-40.69	-39.93	-45.98	2.3
300	6.85	6.33	5.89	5.54	5.04	4.51	4.08	3.73	3.43	3.17	102.5
300	17.12	15.94	14.85	13.84	12.78	11.51	10.35	9.47	8.77	8.13	39.1
300	30.47	28.36	26.4	24.45	22.29	20.17	17.58	16.91	15.3	14.48	15.5
300	39.55	36.13	32.25	34.14	29.39	27.53	22.98	20.58	18.07	20.88	6.5
300	-25.93	37.19	18.46	22.61	41.64	11.76	36.05	11.52	17.3	43.01	0.9
300	-0.89	**	40.53	45.99	149.89	-0.55	102.28	72	34.53	-55.28	0.6
300	69.52	156.84	2.33	67.67	62.38	9.19	-96.25	-5.1	111.32	101.83	0.9
300	-7.66	8.01	14.6	-33.49	22.96	-30.5	15.68	45.94	-2.95	17.93	2.4
350	6.67	6.2	5.77	5.38	4.94	4.43	4.01	3.69	3.37	3.14	73.1
350	23.09	21.09	19.75	18.63	16.92	15.42	14.07	12.81	11.8	10.96	22.6
350	38.96	35.47	33.01	30.5	28.21	25.83	23.3	21.5	19.85	18.22	7.4
350	39.75	37.97	23.53	24.45	25.14	40.22	37.29	4.94	12.49	28.25	1
350	-7.23	28.68	67.43	50.05	38.3	8.59	1.12	-4.13	47.09	12.25	0.7
350	117.14	75.08	18.01	25.26	-3.65	58.97	-1.34	85.58	21.15	62.35	0.8
350	18.77	8.57	34.01	29.46	11.61	23.33	-1.46	5.88	9.95	19	2.2
350	1.46	4.36	2.68	-5	0.38	7.31	-5.76	8.69	21.49	11.88	4.3
350	-8.59	-3.01	2.64	-5.25	-3.16	0.9	-0.85	-2.09	-0.87	1.32	7.1
350	-9.89	-8.43	-4.32	-1.24	1.22	2.44	3.41	3.31	14.29	16.51	10.6
400	9.84	9.04	8.33	8.07	7.1	6.52	5.78	5.3	5.07	4.61	60.6
400	28.65	26.27	24.62	23.57	21.39	19.23	17.44	16.01	14.86	13.45	14.9
400	47.39	44.67	51.01	30.59	29.57	28.31	21.35	27.04	23.84	18.47	1.4

/
/
/
/
/
/
/
/

	IP[9]	IP[10]	IP[11]	IP[12]	IP[13]	IP[14]	IP[15]	IP[16]	IP[17]	IP[18]	IP[19]
600	14.34	22.27	7.59	0.45	4.84	16.51	7.63	8.87	3.97	9.29	5.3
650	83.07	77.13	71.98	67.75	61.7	55.31	50.4	45.67	41.76	38.85	5.9
650	60.14	56.2	52.48	49.08	44.6	39.64	36.05	32.15	29.56	26.85	6.7
650	42.49	39.69	35.63	35	29.74	27.72	24.38	22.14	18.63	17.43	6.8
650	34.2	33.73	30.39	27.97	26.86	24.15	22.17	19.83	16.64	15.26	9.2
650	34.48	33.4	31.6	29.45	24.85	21.71	21.9	18.74	16.43	17.11	11.6
650	37.25	42.03	31.85	25.1	25.91	22.65	17.92	18.84	15.22	15.96	7
700	66.02	61.57	57.75	54.32	50	45.14	41.16	37.84	35.01	32.55	72.5
700	66.1	61.83	57.7	54.51	50.06	44.88	41.02	37.67	34.73	32.46	52.4
700	66.32	62.52	58.08	55.79	50.49	45.03	41.37	37.46	34.84	33.01	50.9
700	62.19	59.01	54.2	52.59	47.06	41.91	38.67	35.08	32.39	30.93	58.3
700	65.66	62.87	58.64	57.49	51.42	44.93	40.75	36.38	33.84	33.42	31.9
750	31.7	29.43	27.44	25.68	23.35	21.05	19.04	17.44	16.12	14.92	390.1
750	40.5	37.6	35.09	32.91	30.16	27.11	24.59	22.49	20.73	19.25	263
750	41.31	38.35	35.9	33.62	30.75	27.72	25.09	22.97	21.12	19.68	248.1
750	47.23	44.12	41.39	38.52	35.38	31.84	29.11	26.6	24.53	22.94	122.1
800	16.98	15.72	14.65	13.7	12.51	11.2	10.13	9.24	8.49	7.85	749.3
800	26.54	24.61	22.96	21.5	19.67	17.63	15.98	14.61	13.45	12.44	574.6
800	36.11	33.5	31.32	29.39	27	24.3	22.02	20.27	18.74	17.36	235.9
850	16.48	15.23	14.19	13.27	12.12	10.84	9.8	8.94	8.2	7.58	911.3
850	31.05	28.83	26.91	25.25	23.18	20.89	18.98	17.37	16.06	14.9	302.6
900	30.12	28	26.18	24.58	22.55	20.3	18.46	16.93	15.62	14.5	393.6

/
/
/
/
/
/
/
/

	ResMeas	Chg	Q	Time	Stack	RsCheck	ColeTau	ColeM	ColeRMS
600	10.61	23.21	2000	23	0.9	0	0	0	"not
650	76.81	1.35	2000	16	0.9	0	0	0	"not
650	56.21	1.38	2000	16	2.8	0	0	0	"not
650	38.81	2.67	2000	16	2.6	0	0	0	"not
650	32.59	6.25	2000	16	0.9	0	0	0	"not
650	32.58	8.12	2000	16	0.9	0	0	0	"not
650	32.28	7.52	2000	16	0.9	0	0	0	"not
700	61.03	0.95	2000	15	2.8	0	0	0	"not
700	61.23	1.01	2000	15	2.6	0	0	0	"not
700	61.81	1.22	2000	15	0.9	0	0	0	"not
700	57.71	1.62	2000	15	0.8	0	0	0	"not
700	61.5	2.26	2000	15	0.9	0	0	0	"not
750	29.51	0.53	2000	19	0.9	0	0	0	"not
750	37.69	0.64	2000	19	0.8	0	0	0	"not
750	38.43	0.64	2000	19	0.8	0	0	0	"not
750	43.91	0.69	2000	19	0.9	0	0	0	"not
800	15.9	0.33	2000	16	0.8	0	0	0	"not
800	24.74	0.46	2000	16	0.8	0	0	0	"not
800	33.51	0.59	2000	16	0.9	0	0	0	"not
850	15.39	0.31	2000	18	0.8	0	0	0	"not
850	28.84	0.49	2000	18	0.9	0	0	0	"not
900	28.04	0.52	2000	15	0.9	0	0	0	"not

/
/
/
/
/
/
/
/
/
/
//Flight
//Date
Line

Table with columns: Name, Overload, RxBat, TxBat, Temp, Date, DayTime, ResCalc. Rows include data for various line numbers (0, 50, 100, 150) and their corresponding values for each parameter.

/

/

/

/

/

/

/

/

/

Name	Overload	RxBat	TxBat	Temp	Date	DayTime	ResCalc
150 used"	0	11.7	0	19.5	15/06/2012	16:35:28	0.9
150 used"	0	11.7	0	19.7	15/06/2012	16:43:49	0.7
200 used"	0	11.7	0	22.1	15/06/2012	16:49:16	140.7
200 used"	0	11.7	0	22.1	15/06/2012	16:49:16	135.6
200 used"	0	11.7	0	22.1	15/06/2012	16:49:16	77.5
200 used"	0	11.7	0	22.1	15/06/2012	16:49:16	41.1
200 used"	0	11.7	0	22.1	15/06/2012	16:49:16	22.1
200 used"	0	11.7	0	22.1	15/06/2012	16:49:16	10.1
200 used"	0	11.7	0	22.1	15/06/2012	16:49:16	1.3
200 used"	0	11.7	0	22.1	15/06/2012	16:49:16	4
250 used"	0	11.7	0	22.7	15/06/2012	17:08:11	100.7
250 used"	0	11.7	0	22.7	15/06/2012	17:08:11	61.4
250 used"	0	11.7	0	22.7	15/06/2012	17:08:11	31.5
250 used"	0	11.7	0	22.7	15/06/2012	17:08:11	16.5
250 used"	0	11.7	0	22.4	15/06/2012	17:10:23	7.5
250 used"	0	11.7	0	22.4	15/06/2012	17:10:23	1
250 used"	0	11.7	0	22.7	15/06/2012	17:08:11	0.6
250 used"	0	11.7	0	22.7	15/06/2012	17:08:11	0.9
250 used"	0	11.7	0	22.7	15/06/2012	17:08:11	3.5
300 used"	0	11.6	0	21.6	15/06/2012	17:28:16	103.3
300 used"	0	11.6	0	21.6	15/06/2012	17:28:16	40.7
300 used"	0	11.6	0	21.6	15/06/2012	17:28:16	16.7
300 used"	0	11.6	0	21.6	15/06/2012	17:28:16	7.3
300 used"	0	11.6	0	21.6	15/06/2012	17:28:16	1.1
300 used"	0	11.7	0	22.1	15/06/2012	17:26:32	0.8
300 used"	0	11.6	0	21.6	15/06/2012	17:28:16	1.1
300 used"	0	11.6	0	21.3	15/06/2012	17:28:10	3.2
350 used"	0	11.5	0	21.9	15/06/2012	17:40:08	74.5
350 used"	0	11.5	0	21.9	15/06/2012	17:40:08	23.7
350 used"	0	11.5	0	21.9	15/06/2012	17:40:08	8
350 used"	0	11.5	0	21.9	15/06/2012	17:39:04	1.1
350 used"	0	11.5	0	21.9	15/06/2012	17:39:04	0.8
350 used"	0	11.5	0	21.9	15/06/2012	17:39:04	1
350 used"	0	11.5	0	21.9	15/06/2012	17:39:04	2.8
350 used"	0	11.5	0	21.9	15/06/2012	17:41:12	5.6
350 used"	0	11.5	0	21.9	15/06/2012	17:40:08	9.7
350 used"	0	11.5	0	21.9	15/06/2012	17:40:08	14.9
400 used"	0	11.5	0	22.2	15/06/2012	17:52:08	61.5
400 used"	0	11.5	0	22.1	15/06/2012	17:53:17	15.5
400 used"	0	11.5	0	22.1	15/06/2012	17:53:17	1.6

/

/

/

/

/

/

/

/

/

Name	Overload	RxBat	TxBat	Temp	Date	DayTime	ResCalc
400 used"	0	11.5	0	22.1	15/06/2012	17:53:17	1
400 used"	0	11.5	0	21.9	15/06/2012	17:54:26	1.2
400 used"	0	11.5	0	22.1	15/06/2012	17:53:17	2.5
400 used"	0	11.5	0	22.1	15/06/2012	17:53:17	4.9
400 used"	0	11.5	0	22.2	15/06/2012	17:52:08	8.5
400 used"	0	11.5	0	21.9	15/06/2012	17:54:26	13
400 used"	0	11.5	0	22.2	15/06/2012	17:52:08	16.3
450 used"	0	11.6	0	25.8	15/06/2012	18:06:32	44.3
450 used"	0	11.6	0	25.9	15/06/2012	18:06:53	3.1
450 used"	0	11.6	0	25.8	15/06/2012	18:06:32	1.6
450 used"	0	11.6	0	25.9	15/06/2012	18:06:53	1.7
450 used"	0	11.6	0	25.9	15/06/2012	18:06:53	2.7
450 used"	0	11.6	0	25.9	15/06/2012	18:06:53	4.9
450 used"	0	11.6	0	25.9	15/06/2012	18:06:53	7.8
450 used"	0	11.6	0	26.3	15/06/2012	18:08:36	12
450 used"	0	11.6	0	25.9	15/06/2012	18:06:53	14.7
450 used"	0	11.6	0	25.8	15/06/2012	18:06:32	9.3
500 used"	0	11.6	0	26.7	15/06/2012	18:20:14	7.9
500 used"	0	11.6	0	26.7	15/06/2012	18:20:14	2.1
500 used"	0	11.6	0	26.7	15/06/2012	18:20:14	2
500 used"	0	11.6	0	26.7	15/06/2012	18:20:15	2.5
500 used"	0	11.6	0	26.7	15/06/2012	18:20:15	4.4
500 used"	0	11.6	0	26.5	15/06/2012	18:20:20	6.6
500 used"	0	11.6	0	26.7	15/06/2012	18:20:15	10.1
500 used"	0	11.6	0	26.7	15/06/2012	18:20:15	12.8
500 used"	0	11.6	0	26.8	15/06/2012	18:21:20	8.2
550 used"	0	11.6	0	25.9	15/06/2012	18:31:32	6.8
550 used"	0	11.6	0	26	15/06/2012	18:30:25	2.3
550 used"	0	11.6	0	26	15/06/2012	18:30:25	2.1
550 used"	0	11.6	0	26	15/06/2012	18:30:25	3.8
550 used"	0	11.6	0	26	15/06/2012	18:30:25	5.7
550 used"	0	11.6	0	26	15/06/2012	18:30:25	8.8
550 used"	0	11.6	0	26	15/06/2012	18:30:25	11
550 used"	0	11.6	0	25.8	15/06/2012	18:32:35	7.6
600 used"	0	11.6	0	24.6	15/06/2012	18:40:55	7
600 used"	0	11.6	0	24.6	15/06/2012	18:40:55	1.9
600 used"	0	11.6	0	24.6	15/06/2012	18:40:55	3.3
600 used"	0	11.6	0	24.6	15/06/2012	18:40:56	4.9
600 used"	0	11.6	0	24.6	15/06/2012	18:40:56	7.5
600 used"	0	11.6	0	24.6	15/06/2012	18:40:56	9.6

/
/
/
/
/
/
/
/

Name	Overload	RxBat	TxBat	Temp	Date	DayTime	ResCalc
600 used"	0	11.6	0	24.6	15/06/2012	18:40:56	6.1
650 used"	0	11.6	0	22.3	15/06/2012	18:53:34	5.9
650 used"	0	11.6	0	22.3	15/06/2012	18:53:34	6.9
650 used"	0	11.6	0	22.3	15/06/2012	18:53:34	7
650 used"	0	11.6	0	22.3	15/06/2012	18:53:34	9.7
650 used"	0	11.6	0	22.3	15/06/2012	18:53:34	12.5
650 used"	0	11.6	0	22.3	15/06/2012	18:53:34	7.7
700 used"	0	11.6	0	21.6	15/06/2012	19:00:28	73
700 used"	0	11.6	0	21.6	15/06/2012	19:00:28	53.4
700 used"	0	11.6	0	21.6	15/06/2012	19:00:28	52.6
700 used"	0	11.6	0	21.6	15/06/2012	19:00:28	61.2
700 used"	0	11.6	0	21.6	15/06/2012	19:00:28	34.1
750 used"	0	11.6	0	20.6	15/06/2012	19:05:20	392.4
750 used"	0	11.6	0	20.6	15/06/2012	19:05:20	267.2
750 used"	0	11.6	0	20.6	15/06/2012	19:05:20	255.3
750 used"	0	11.6	0	20.6	15/06/2012	19:05:20	127.6
800 used"	0	11.6	0	21.1	15/06/2012	19:11:11	753.3
800 used"	0	11.6	0	21.1	15/06/2012	19:11:11	583
800 used"	0	11.6	0	21.1	15/06/2012	19:11:11	242.2
850 used"	0	11.6	0	20.2	15/06/2012	19:15:29	915.6
850 used"	0	11.6	0	20.2	15/06/2012	19:15:29	306.6
900 used"	0	11.6	0	20.2	15/06/2012	19:19:43	395.3

	IP_Avg	MF	N	Stn	X	Y	Z	Topo	T2X
400	48.3	46537.4	4	500	500	1	-100	730	-100
400	55.8	45226	5	525	525	1	-125	733	-100
400	27.8	10940	6	550	550	1	-150	732	-100
400	14.1	2873.8	7	575	575	1	-175	740	-100
400	6.2	728.6	8	600	600	1	-200	740	-100
400	5.9	454.3	9	625	625	1	-225	740	-100
400	-21.1	-1296.8	10	650	650	1	-250	748	-100
450	11.8	266.5	1	475	475	1	-25	733	-100
450	39.9	12959.4	2	500	500	1	-50	730	-100
450	46.6	28449.1	3	525	525	1	-75	733	-100
450	69.4	41256.7	4	550	550	1	-100	732	-100
450	29.8	10940.1	5	575	575	1	-125	740	-100
450	13	2662.4	6	600	600	1	-150	740	-100
450	2.2	277.1	7	625	625	1	-175	740	-100
450	0.6	47.8	8	650	650	1	-200	748	-100
450	10.3	702.3	9	675	675	1	-225	748	-100
450	5.9	626.6	10	700	700	1	-250	748	-100
500	20.5	2586.3	1	525	525	1	-25	733	-100
500	49.2	22980.8	2	550	550	1	-50	732	-100
500	69.6	35708.7	3	575	575	1	-75	740	-100
500	34.6	13880.7	4	600	600	1	-100	740	-100
500	20	4528.6	5	625	625	1	-125	740	-100
500	6.8	1022.3	6	650	650	1	-150	748	-100
500	1.6	158	7	675	675	1	-175	748	-100
500	14.3	1113.8	8	700	700	1	-200	748	-100
500	10.3	1253.3	9	725	725	1	-225	748	-100
550	24.3	3553.7	1	575	575	1	-25	740	-100
550	73.5	31524.8	2	600	600	1	-50	740	-100
550	34.6	16325.7	3	625	625	1	-75	740	-100
550	19.7	5152.8	4	650	650	1	-100	748	-100
550	8.9	1558.4	5	675	675	1	-125	748	-100
550	7.4	842	6	700	700	1	-150	748	-100
550	9.4	850.4	7	725	725	1	-175	748	-100
550	38.2	4998.8	8	750	750	1	-200	755	-100
600	41.7	5925.5	1	625	625	1	-25	740	-100
600	36.1	19425.8	2	650	650	1	-50	748	-100
600	18.3	5472.7	3	675	675	1	-75	748	-100
600	9.2	1886.1	4	700	700	1	-100	748	-100
600	-0.5	-60	5	725	725	1	-125	748	-100
600	18.2	1889.9	6	750	750	1	-150	755	-100

/
/
/
/
/
/
/
/

	IP_Avg	MF	N	Stn	X	Y	Z	Topo	T2X
/=====	=====	=====	=====	=====	=====	=====	=====	=====	=====
600	10.6	1746.4	7	775	775	1	-175	754	-100
650	76.8	12982.2	1	675	675	1	-25	748	-100
650	56.2	8205	2	700	700	1	-50	748	-100
650	38.8	5510.2	3	725	725	1	-75	748	-100
650	32.6	3345.5	4	750	750	1	-100	755	-100
650	32.6	2609.7	5	775	775	1	-125	754	-100
650	32.3	4211.8	6	800	800	1	-150	753	-100
700	61	836	1	725	725	1	-25	748	-100
700	61.2	1147.3	2	750	750	1	-50	755	-100
700	61.8	1175.1	3	775	775	1	-75	754	-100
700	57.7	943.1	4	800	800	1	-100	753	-100
700	61.5	1802.5	5	825	825	1	-125	758	-100
750	29.5	75.2	1	775	775	1	-25	754	-100
750	37.7	141.1	2	800	800	1	-50	753	-100
750	38.4	150.5	3	825	825	1	-75	758	-100
750	43.9	344	4	850	850	1	-100	754	-100
800	15.9	21.1	1	825	825	1	-25	758	-100
800	24.7	42.4	2	850	850	1	-50	754	-100
800	33.5	138.4	3	875	875	1	-75	750	-100
850	15.4	16.8	1	875	875	1	-25	750	-100
850	28.8	94.1	2	900	900	1	-50	745	-100
900	28	70.9	1	925	925	1	-25	748	-100

```

/
/
/
/
/
/
/      UTME_NAD83_Z8  UTMN_NAD83_Z      8 T1_UTME  T1_UTMN  T2_UTME
/=====  =====  =====  =====  =      =====  =====
/
//Flight
//Date
Line
0      590664      7097768      590641 **      590563  7097731
0      590687      7097777      590641 **      590563  7097731
0      590710      7097785      590641 **      590563  7097731
0      590733      7097794      590641 **      590563  7097731
0      590756      7097802      590641 **      590563  7097731
0      590780      7097810      590641 **      590563  7097731
0      590803      7097818      590641 **      590563  7097731
0      590826      7097827      590641 **      590563  7097731
0      590849      7097835      590641 **      590563  7097731
0      590872      7097843      590641 **      590563  7097731
50     590710      7097785      590687 **      590563  7097731
50     590733      7097794      590687 **      590563  7097731
50     590756      7097802      590687 **      590563  7097731
50     590780      7097810      590687 **      590563  7097731
50     590803      7097818      590687 **      590563  7097731
50     590826      7097827      590687 **      590563  7097731
50     590849      7097835      590687 **      590563  7097731
50     590872      7097843      590687 **      590563  7097731
50     590893      7097854      590687 **      590563  7097731
50     590913      7097865      590687 **      590563  7097731
100    590756      7097802      590733.3 **      590563  7097731
100    590780      7097810      590733.3 **      590563  7097731
100    590803      7097818      590733.3 **      590563  7097731
100    590826      7097827      590733.3 **      590563  7097731
100    590849      7097835      590733.3 **      590563  7097731
100    590872      7097843      590733.3 **      590563  7097731
100    590893      7097854      590733.3 **      590563  7097731
100    590913      7097865      590733.3 **      590563  7097731
100    590936      7097873      590733.3 **      590563  7097731
150    590803      7097818      590779.5 **      590563  7097731
150    590826      7097827      590779.5 **      590563  7097731
150    590849      7097835      590779.5 **      590563  7097731
150    590872      7097843      590779.5 **      590563  7097731
150    590893      7097854      590779.5 **      590563  7097731
150    590913      7097865      590779.5 **      590563  7097731
150    590936      7097873      590779.5 **      590563  7097731

```

/
/
/
/
/
/
/
/

	UTME_NAD83_Z8	UTMN_NAD83_Z	8 T1_UTME	T1_UTMN	T2_UTME	
/=====	=====	=====	=====	=	=====	=====
150	590959	7097880	590779.5	**	590563	7097731
150	590982	7097890	590779.5	**	590563	7097731
200	590849	7097835	590825.8	**	590563	7097731
200	590872	7097843	590825.8	**	590563	7097731
200	590893	7097854	590825.8	**	590563	7097731
200	590913	7097865	590825.8	**	590563	7097731
200	590936	7097873	590825.8	**	590563	7097731
200	590959	7097880	590825.8	**	590563	7097731
200	590982	7097890	590825.8	**	590563	7097731
200	591050	7097918	590825.8	**	590563	7097731
250	590893	7097854	590872	**	590563	7097731
250	590913	7097865	590872	**	590563	7097731
250	590936	7097873	590872	**	590563	7097731
250	590959	7097880	590872	**	590563	7097731
250	590982	7097890	590872	**	590563	7097731
250	591004	7097899	590872	**	590563	7097731
250	591027	7097909	590872	**	590563	7097731
250	591050	7097918	590872	**	590563	7097731
250	591073	7097928	590872	**	590563	7097731
300	590936	7097873	590913	**	590563	7097731
300	590959	7097880	590913	**	590563	7097731
300	590982	7097890	590913	**	590563	7097731
300	591004	7097899	590913	**	590563	7097731
300	591027	7097909	590913	**	590563	7097731
300	591050	7097918	590913	**	590563	7097731
300	591073	7097928	590913	**	590563	7097731
300	591095	7097938	590913	**	590563	7097731
350	590982	7097890	590959	**	590563	7097731
350	591004	7097899	590959	**	590563	7097731
350	591027	7097909	590959	**	590563	7097731
350	591050	7097918	590959	**	590563	7097731
350	591073	7097928	590959	**	590563	7097731
350	591095	7097938	590959	**	590563	7097731
350	591117	7097947	590959	**	590563	7097731
350	591139	7097956	590959	**	590563	7097731
350	591163	7097965	590959	**	590563	7097731
350	591187	7097974	590959	**	590563	7097731
400	591027	7097909	591004	**	590563	7097731
400	591050	7097918	591004	**	590563	7097731
400	591073	7097928	591004	**	590563	7097731

/
/
/
/
/
/
/
/

	UTME_NAD83_Z8	UTMN_NAD83_Z	8 T1_UTME	T1_UTMN	T2_UTME	
/=====	=====	=====	=====	=	=====	=====
400	591095	7097938	591004 **	590563	7097731	
400	591117	7097947	591004 **	590563	7097731	
400	591139	7097956	591004 **	590563	7097731	
400	591163	7097965	591004 **	590563	7097731	
400	591187	7097974	591004 **	590563	7097731	
400	591210	7097982	591004 **	590563	7097731	
400	591232	7097990	591004 **	590563	7097731	
450	591073	7097928	591050 **	590563	7097731	
450	591095	7097938	591050 **	590563	7097731	
450	591117	7097947	591050 **	590563	7097731	
450	591139	7097956	591050 **	590563	7097731	
450	591163	7097965	591050 **	590563	7097731	
450	591187	7097974	591050 **	590563	7097731	
450	591210	7097982	591050 **	590563	7097731	
450	591232	7097990	591050 **	590563	7097731	
450	591254	7097996	591050 **	590563	7097731	
450	591276	7098001	591050 **	590563	7097731	
500	591117	7097947	591095 **	590563	7097731	
500	591139	7097956	591095 **	590563	7097731	
500	591163	7097965	591095 **	590563	7097731	
500	591187	7097974	591095 **	590563	7097731	
500	591210	7097982	591095 **	590563	7097731	
500	591232	7097990	591095 **	590563	7097731	
500	591254	7097996	591095 **	590563	7097731	
500	591276	7098001	591095 **	590563	7097731	
500	591298	7098009	591095 **	590563	7097731	
550	591163	7097965	591139 **	590563	7097731	
550	591187	7097974	591139 **	590563	7097731	
550	591210	7097982	591139 **	590563	7097731	
550	591232	7097990	591139 **	590563	7097731	
550	591254	7097996	591139 **	590563	7097731	
550	591276	7098001	591139 **	590563	7097731	
550	591298	7098009	591139 **	590563	7097731	
550	591319	7098016	591139 **	590563	7097731	
600	591210	7097982	591187 **	590563	7097731	
600	591232	7097990	591187 **	590563	7097731	
600	591254	7097996	591187 **	590563	7097731	
600	591276	7098001	591187 **	590563	7097731	
600	591298	7098009	591187 **	590563	7097731	
600	591319	7098016	591187 **	590563	7097731	

/
/
/
/
/
/
/

	UTME_NAD83_Z8	UTMN_NAD83_Z	8 T1_UTME	T1_UTMN	T2_UTME
/=====	=====	=====	=====	=	=====
	=====	=====	=====	=====	=====
600	591339	7098023	591187 **	590563	7097731
650	591254	7097996	591232 **	590563	7097731
650	591276	7098001	591232 **	590563	7097731
650	591298	7098009	591232 **	590563	7097731
650	591319	7098016	591232 **	590563	7097731
650	591339	7098023	591232 **	590563	7097731
650	591358	7098029	591232 **	590563	7097731
700	591298	7098009	591276 **	590563	7097731
700	591319	7098016	591276 **	590563	7097731
700	591339	7098023	591276 **	590563	7097731
700	591358	7098029	591276 **	590563	7097731
700	591384	7098041	591276 **	590563	7097731
750	591339	7098023	591319 **	590563	7097731
750	591358	7098029	591319 **	590563	7097731
750	591384	7098041	591319 **	590563	7097731
750	591410	7098053	591319 **	590563	7097731
800	591384	7098041	591358 **	590563	7097731
800	591410	7098053	591358 **	590563	7097731
800	591433	7098059	591358 **	590563	7097731
850	591433	7098059	591410 **	590563	7097731
850	591456	7098064	591410 **	590563	7097731
900	591480	7098078	591456 **	590563	7097731

```

/
/
/
/
/
/
/===== =====
//Flight
//Date
Line
0      590687      7097777      590733.3      7097793.5      219.2
0      590733.3      7097793.5      590779.5      7097810      243.1
0      590779.5      7097810      590825.8      7097826.5      167.9
0      590825.8      7097826.5      590872      7097843      186
0      590872      7097843      590913      7097865      174.7
0      590913      7097865      590959      7097880      143.1
0      590959      7097880      591004      7097899      94.8
0      591004      7097899      591050      7097918      60.5
0      591050      7097918      591095      7097938      37.2
0      591095      7097938      591139      7097956      17.5
50     590733.3      7097793.5      590779.5      7097810      240.1
50     590779.5      7097810      590825.8      7097826.5      158.1
50     590825.8      7097826.5      590872      7097843      164.9
50     590872      7097843      590913      7097865      154.1
50     590913      7097865      590959      7097880      126.2
50     590959      7097880      591004      7097899      83
50     591004      7097899      591050      7097918      52.4
50     591050      7097918      591095      7097938      32
50     591095      7097938      591139      7097956      14.7
50     591139      7097956      591187      7097974      1.2
100    590779.5      7097810      590825.8      7097826.5      178.3
100    590825.8      7097826.5      590872      7097843      171.1
100    590872      7097843      590913      7097865      151.3
100    590913      7097865      590959      7097880      121.9
100    590959      7097880      591004      7097899      75.9
100    591004      7097899      591050      7097918      45.4
100    591050      7097918      591095      7097938      27.1
100    591095      7097938      591139      7097956      12.4
100    591139      7097956      591187      7097974      1.2
150    590825.8      7097826.5      590872      7097843      202.2
150    590872      7097843      590913      7097865      164.4
150    590913      7097865      590959      7097880      130.6
150    590959      7097880      591004      7097899      74.5
150    591004      7097899      591050      7097918      40.8
150    591050      7097918      591095      7097938      23.2
150    591095      7097938      591139      7097956      10.6

```


/

/

/

/

/

/

 CalcAppRes

/=====

400

400

400

400

400

400

400

450

450

450

450

450

450

450

450

450

450

500

500

500

500

500

500

500

500

500

550

550

550

550

550

550

550

550

600

600

600

600

600

600

```
/
/
/
/
/
/      CalcAppRes
/===== =====
600
650
650
650
650
650
650
700
700
700
700
700
750
750
750
750
800
800
800
850
850
900
```