

**GEOCHEMICAL REPORT ON THE GC, LEOTA CT & CT CLAIMS,
LEOTA CLAIM BLOCK, YUKON TERRITORY, CANADA**

Claim Names/Numbers, Grant Numbers: GC 1 (YD11814), GC 3 (YD11816), GC 4 (YD11817);
Leota CT 2 (YD44262), Leota CT 4 (YD44264), CT 35 (YD11840), CT 36 (YD44225)

NTS Map Sheet 115 O 15

Latitude N63° 58' 33.7", Longitude W138° 53' 28.0"

UTM Coordinates 603225E, 7096050N, Zone 7, NAD83

Dawson Mining District

Registered owners: Mark Pocklington and Ross Weitzel

Work performed: August 26 to August 28, 2011

for

Goldbank Mining Corp.

by

Bohumil (Boris) Molak, PhD., P.Geol (BC)

Nathan Boylan & Kevin Cooper

Date: March 16, 2012

Table of Contents

	page
1. Introduction	3
1.1. Location, Topography and Access	4
1.2. The Claims	4
1.3. Terms of Reference and Disclaimer	4
2. Previous Exploration	5
3. Regional Geology	6
4. Local Geology and Mineralization	7
5. 2011 Soil Geochemistry Survey	9
6. Sample Preparation, Analysis and Quality Assurance	12
7. 2011 Exploration Expenses	28
8. Conclusions and Recommendations	28
9. References	30
10. Statement of Qualifications	32

List of Figures

Fig. 1: Index map with location of GC, Leota CT and CT Claims	5
Fig. 2: Geological Map Leota Claim Block NW, Gor/GC, GC/Ct, Ano Claims	8
Fig. 3: Map of GC/CT Claims	9
Fig. 4: Geological Map: Klondike, Nasina & Anvil Assemblage Contact	10
Fig. 5: Leota GC/CT Claims Area; 2011 Soil Geochemistry Survey	11
Fig. 6: Leota GC/CT Claims, 2011 Soil Geochemistry	14
Fig. 7: GC/CT Claim Block, 3D Image of Au Anomaly	15
Fig. 8: GC/CT Claim Block, 3D Image of Cr Anomaly	15
Fig. 9 a,b,c: Histograms for Gold, Silver and Copper	16
Fig. 10 a,b,c: Histograms for Lead, Zinc and Chromium	17
Fig. 11 a,b,c: Histograms for Nickel, Magnesium and Manganese	18
Fig. 12 a,b: Gold: Original vs Repeat Assays	19
Fig. 13 a,b: Silver: Original vs Repeat Assays	20
Fig. 14 a,b: Copper: Original vs Repeat Assays	21
Fig. 15 a,b: Zinc: Original vs Repeat Assays	22
Fig. 16 a,b: Chromium: Original vs Repeat Assays	23
Fig. 17 a,b: Nickel: Original vs Repeat Assays	24
Fig. 18 a,b: Magnesium: Original vs Repeat Assays	25
Fig. 19 a,b,c: Standards for Gold, Silver and Copper	26
Fig. 20 a,b,c: Standards for Lead, Zinc and Chromium	27

List of Tables

Table 1: Claim Status	4
Table 2: Basic Statistics	12
Table 3: Correlation Matrix	13

Appendices: Appendix I: Sample Coordinates; Appendix II: Assay Certificates.

1. INTRODUCTION

The GC 1, GC 3, GC 4, Leota CT 2, Leota CT 4, CT 35 and CT 36 claims are situated approximately 29 km in a straight line east-southeast of Dawson City, Yukon Territory, Canada. The claims are part of the Leota Claim Block, which lies within the historical Klondike Goldfields in the Dawson Mining District. The Leota Claim Block consists of 1018 contiguous, un-surveyed Quartz mining claims covering an area of about 160 square kilometers. The property owners are M. Pocklington (50%) of Edmonton, Alberta and R. Weitzel (50%) of Whitehorse, Yukon. The owners optioned the claims to Goldbank Mining Corporation (Goldbank) of Vancouver, BC, which acquired a 75 % interest in the Leota Property at the date of this report. In 2010 Goldbank entered into another option agreement with T. McMahon to acquire interest in the Hasenfuss claims adjoining the Leota Claim Block in the southwest and including a historical gold prospect named Alphonse.

A soil sampling program was carried out on the GC 1, GC 3, GC 4, Leota CT 2, Leota CT 4, CT 35 and CT 36 claims (Figs. 1, 2, 3) from August 26 to August 28, 2011 with an objective to detect precious and base metal anomalies as indicators of *in situ* mineralization. A grid of two east - west running lines spaced 100 meters was laid to intersect the contacts between the Klondike Schist and Nasina Schist units and the wedged-in mafic/ultramafic rock unit of the Anvil Group. A GPS unit was used to locate stations and record coordinates. A total of 116 soil samples were collected on the GC, Leota CT and CT claims from the “C” soil horizon using a Dutch auger. The samples were prepared at the AcmeLab prep facility in Dawson City and the analyses were performed at Acme Analytical Laboratories Ltd. in Vancouver.

A roughly north – south running gold anomaly was detected near the centre of the grid. It occurs near a topographic high and it may be associated with weathering resistive rocks, such as a quartz vein or a stringer system or a zone of silicification. A multi-elemental anomaly made up of overlapping chromium-nickel-cobalt-magnesium values occurs in the valley near the western end of the grid. This multi-elemental anomaly indicates a mafic/ultramafic body, which is shown on Fig. 3. Gold does not correlate with any of the chromium group elements, either spatially or statistically. Topographic setting for gold and chromium group elements respectively suggests

that the former associates with the resistive rocks such as quartz veins, stringers or a silicified zone, while the latter appears to associate with a fault zone.

1.1. Location, Access and Topography

GC 1, GC 3, GC 4, Leota CT 2, Leota CT 4, CT 35 and CT 36 claims (GC/CT claims) are situated in the northern part of the Leota Claim Block (LCB), which stretches from 25 to 50 kilometers east and southeast of Dawson City, Yukon Territory. LCB comprises 1018 claims covering an area of more than 210 sq. km, and is part of the historical Klondike Goldfields. The LCB is bordered in the north and east by the Klondike River and Minnie Bell Creek and in the south by the Hunker and Dominion Creeks. Access to the GC/CT claims from Dawson City is by Klondike HW 2 and then by the Hunker Creek road for about 18 km to an ATV trail which runs east for about 1.5 km and then turns north and northwest for approximately 5 km. Topography on the GC/CT claims is gently rolling with the altitudes ranging from 750 at the west branch of Leroy Creek to about 930 meters in the central - western part of the grid.

1.2. The Claims

Table 1: GC, Leota CT and CT claims information; Grouping Certificate HD03048 .

Grant Number	Claim Name	Claim Owner	Expiry Date
YD11814	GC 1	M. Pocklington (50%), R. Weitzel (50%)	2013-04-15
YD11816	GC 3	M. Pocklington (50%), R. Weitzel (50%)	2013-04-15
YD11817	GC 4	M. Pocklington (50%), R. Weitzel (50%)	2013-04-15
YC44262	Leota CT 2	M. Pocklington (50%), R. Weitzel (50%)	2011-10-31
YC44264	Leota CT 4	M. Pocklington (50%), R. Weitzel (50%)	2011-10-31
YD11840	CT 35	M. Pocklington (50%), R. Weitzel (50%)	2012-04-15
YD44225	CT 36	M. Pocklington (50%), R. Weitzel (50%)	2012-04-15

1.3. Terms of Reference

This report summarizes the results of a soil sampling program that was conducted in August 2011 on the selected GC/CT claims. The objective was to detect geochemical anomalies within different rock units and at their contacts and to file the work with the Mining Recorder Office, Yukon Ministry of Energy, Mines and Resources (YDEM). For parts of this report the writer has relied on the Technical Report by Ash (2011), on the Yukon Exploration and Geological Services Division assessment and open file reports, on various geo-scientific publications listed

in the References chapter, on the reports by M. Pocklington and on the YDEMIR Internet applications. The information reported by other experts who are not qualified persons for this report are quoted in the References chapter and are to the best of the writer's knowledge and experience correct and suitable for inclusion in this report. Claim descriptions provided herein have been excerpted from the electronic applications of the YDEMIR and relate to the status as of February 14, 2012. The 2012 statement of work was prepared by Goldbank Mining Corp.

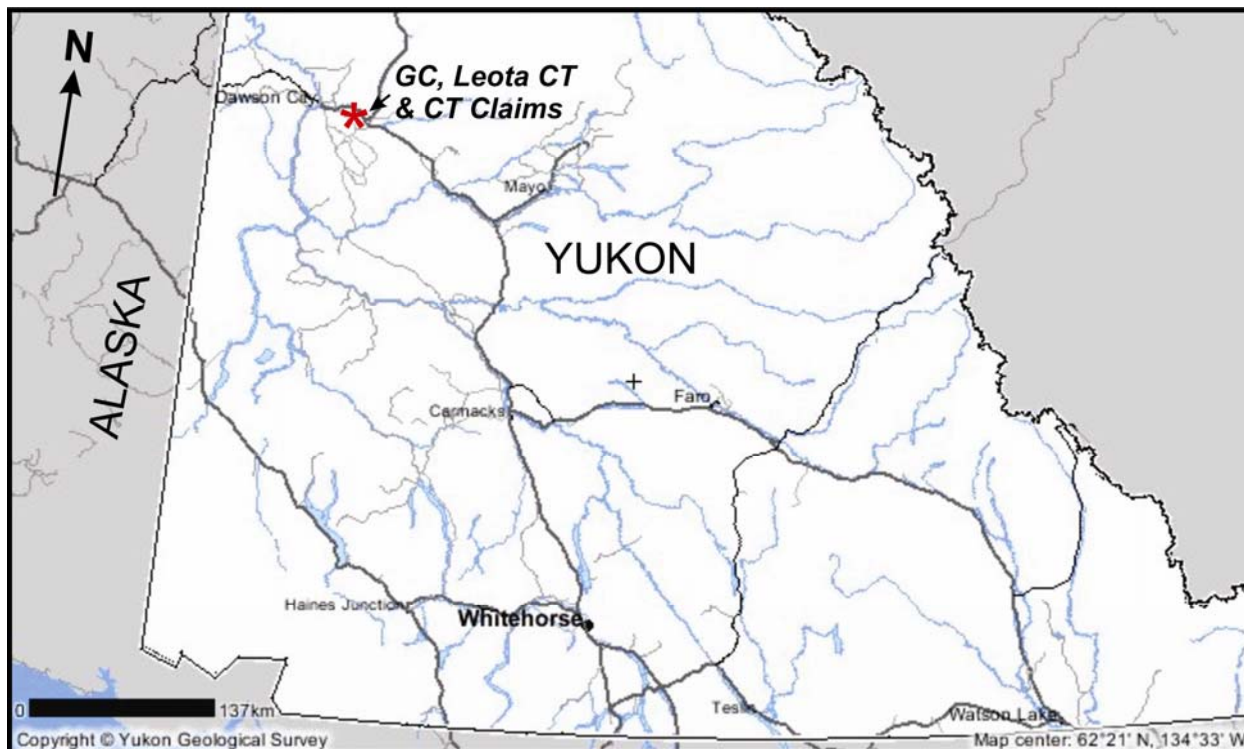


Fig. 1: Index map with location of GC, Leota CT and CT Claims

2. PREVIOUS EXPLORATION

The GC/CT claims area has received little exploration work in the past. Early prospectors and miners focused more on the Goring Creek area situated a few kilometers north. Geologists of the Yukon Geological Survey mapped and investigated the broader area in the past century. Bostock (1942) completed a geological map at 1:250,000 scale, Debicki and co-workers (1985) mapped the area south and east of Dawson City at 1:50,000 scale and Mortensen (1996) completed the map at 1:50,000 scale covering the NTS maps 115 O/13, 14 and parts of 115 O/15 and 16.

Gordey and Makepeace (2003) prepared a Yukon Digital Geology compilation at 1:250,000 scale, which includes the area under study and Gordey and Ryan (2005) released a geological compilation for the Stewart River map sheet (115N&O) based on mapping conducted by themselves, Mortensen and others (Minfile 115 O 159). Geological maps in the MacKenzie et al (2007, 2008) publications are based on the Mortensen map (1996).

Ash (2006) worked in the placer-rich portion of the Klondike Goldfields area for several years and reported ophiolitic rocks that form erosional remnants locally preserved on the high ground, often as isolated klippe. The gold mineralization at Lone Star and White were in his opinion consistently localized within the suture zone contact between hanging wall ophiolitic rocks and footwall plutonic rocks (Ash, 2006; Doherty and Ash, 2005). Work on the Leota property further strengthened his belief that the lode gold mineralization in the Klondike region is structurally and lithologically controlled and spatially associated with the ophiolitic rocks (Ash, 2010).

3. REGIONAL GEOLOGY

The area is situated on the southwest side of the Tintina Trench within the Yukon – Tanana Terrane. The Yukon – Tanana Terrane consists of two main supracrustal and three meta-plutonic assemblages (Mortensen, 1996). The supracrustal assemblages comprise Late Devonian to mid-Mississippian Nasina assemblage and the mid-Permian Klondike Schist assemblage. The Nasina assemblage consists of carbonaceous and non-carbonaceous, quartz-muscovite-chlorite schist and quartzite locally intercalated with mafic schist and amphibolite. The Klondike Schist assemblage mainly comprises felsic schist, micaceous quartzite and quartz-feldspar-biotite-muscovite-(±chlorite) schist. The felsic schist is believed to have been derived from tuffaceous units. Minor chlorite schist, meta-gabbro and marble occur locally.

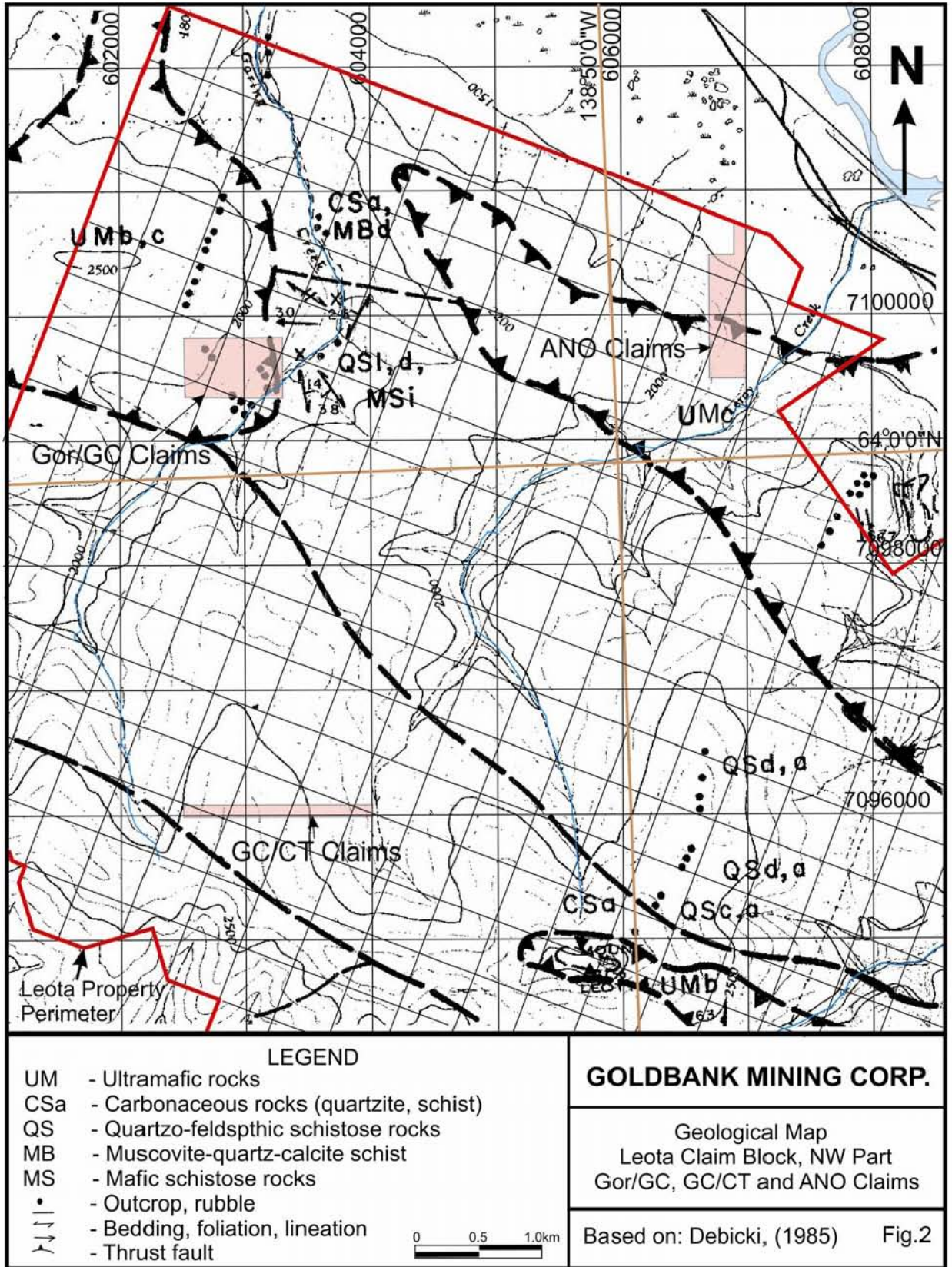
The meta-plutonic assemblages represent ortho-gneisses that underwent penetrative, ductile deformation and metamorphism ranging from middle greenschist to amphibolite facies. The area to the north is underlain by the rock formations belonging to Slide Mountain Terrane. The rock inventory includes greenstone and ultramafic rocks, which generally only display evidence of brittle shearing and open folding (Mortensen, 1996).

According to MacKenzie et al., (2008) the Klondike Goldfield is made up of meta-sedimentary and meta-igneous units belonging to Klondike Schist and Finlayson Assemblages and lesser amount of low-grade metamorphosed ultramafic rocks of the Slide Mountain Terrane. Regional scale thrust faulting in the Early Jurassic stacked these rocks into a series of thrust slices that are locally separated by lenses of sheared ultramafic rocks. They were then uplifted through the brittle-ductile transition in the Jurassic and unconformably overlain by locally derived sedimentary and volcanogenic rocks in the Late Cretaceous (Mortensen, 1996). The Klondike Goldfield was then offset approximately 450 km along the Tintina fault (Gabrielse et al., 2006). Erosion and minor uplift continued in the Late Tertiary and resulted in the deposition of the Pliocene White Channel Gravels and their contained gold deposits (Lowey, 2005).

4. LOCAL GEOLOGY AND MINERALIZATION

The GC/CT claim area is located on the east side of Allgold Creek, approximately 55 km southeast of Dawson City (Fig. 1). According to Debicki (1985) the area is underlain by various facies of quartzo-feldspathic schistose rocks of Triassic or older age (Fig. 2). In Mortensen's map (1996), the GC/CT claim area is made up of units belonging to Nasina Assemblage of Late (?) Devonian to Early Mississippian age, which comprise medium to coarse grained mica schist, commonly garnetiferous, with amphibolite and minor quartzite and conglomerate. The maps in the MacKenzie et al (2007, 2008) publications show the GC/CT claim area is underlain by the Finlayson Assemblage of Devonian to Mississippian age.

In the Gordey and Makepeace (2003) compilation map at 1:250,000 scale the area under study (Fig. 4) is underlain by the Nasina assemblage (abbreviated DMN1), Klondike Schist (abbreviated CPK1) and the Anvil group (abbreviated CPA4). DMN1 comprises dark grey to black, fine grained graphitic and non-graphitic quartzite, grey micaceous quartzite and quartz muscovite (\pm chlorite; \pm feldspar augen) schist, locally garnetiferous; minor graphitic stretched metaconglomerate and meta-grit. CPK1 is composed of tan to rusty and black weathering muscovitic and/or chloritic quartzite and quartz-muscovite-chlorite schist; quartz and/or feldspar



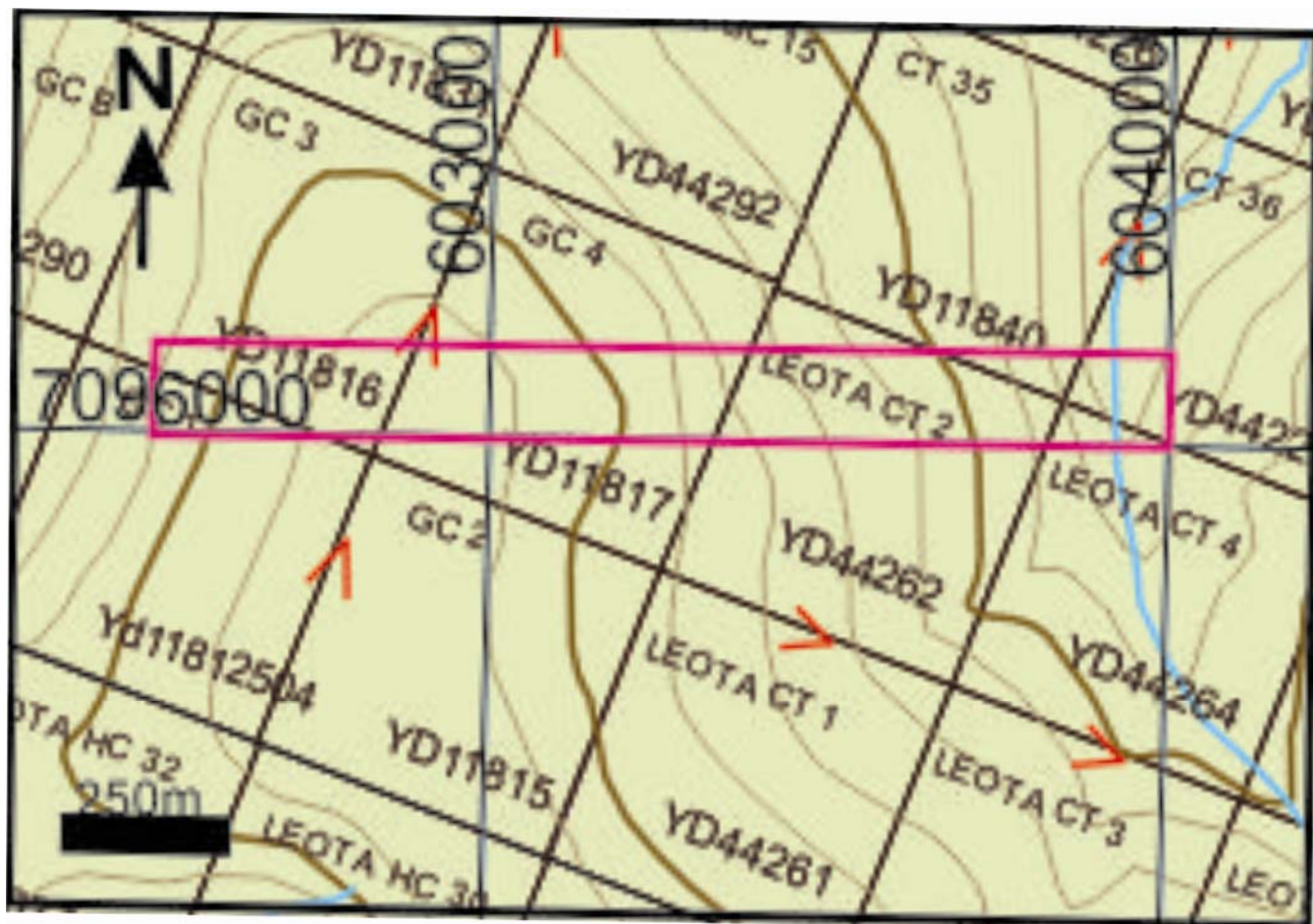


Fig. 3: Map of GC/CT Claims (red rectangle – 2011 soil survey area)

augen-bearing quartz-muscovite (\pm chlorite) schist; includes augen gneiss and amphibolite. CPA4 includes dunite, peridotite, gabbro, pyroxenite, harzburgite and minor diorite, hornblendite and diabase; serpentinite, orange weathering quartz carbonate rock with minor green chromian muscovite, talc-carbonate schist and carbonatized ultramafic rocks.

5. 2011 SOIL GEOCHEMISTRY SURVEY

A geochemical sampling program was carried out on the GC/CT claims during the period August 26 – 28, 2011. The objective of the program was to detect precious and/or the base metal anomalies as indicators of *in situ* mineralization. A grid of two east - west running lines spaced

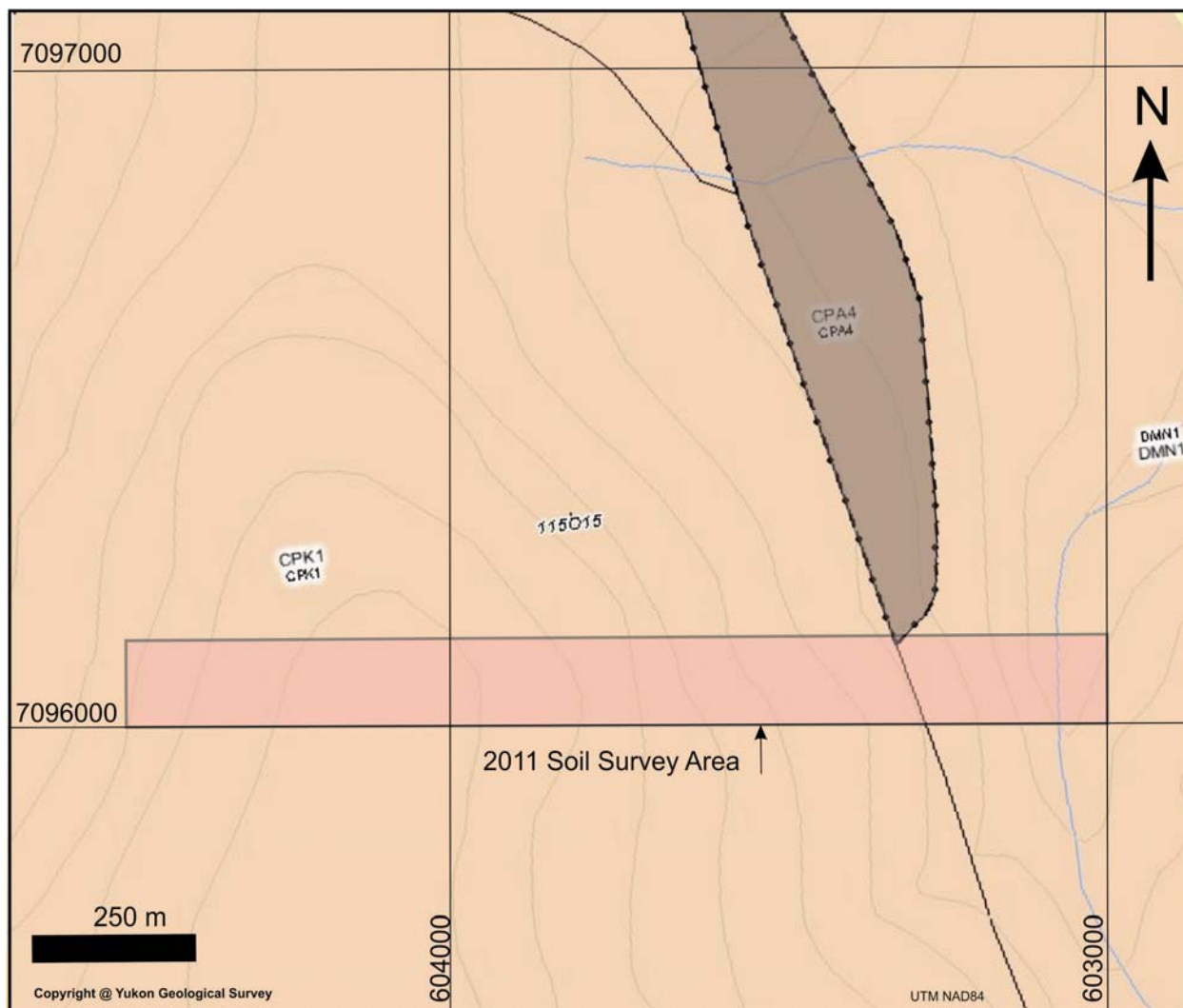
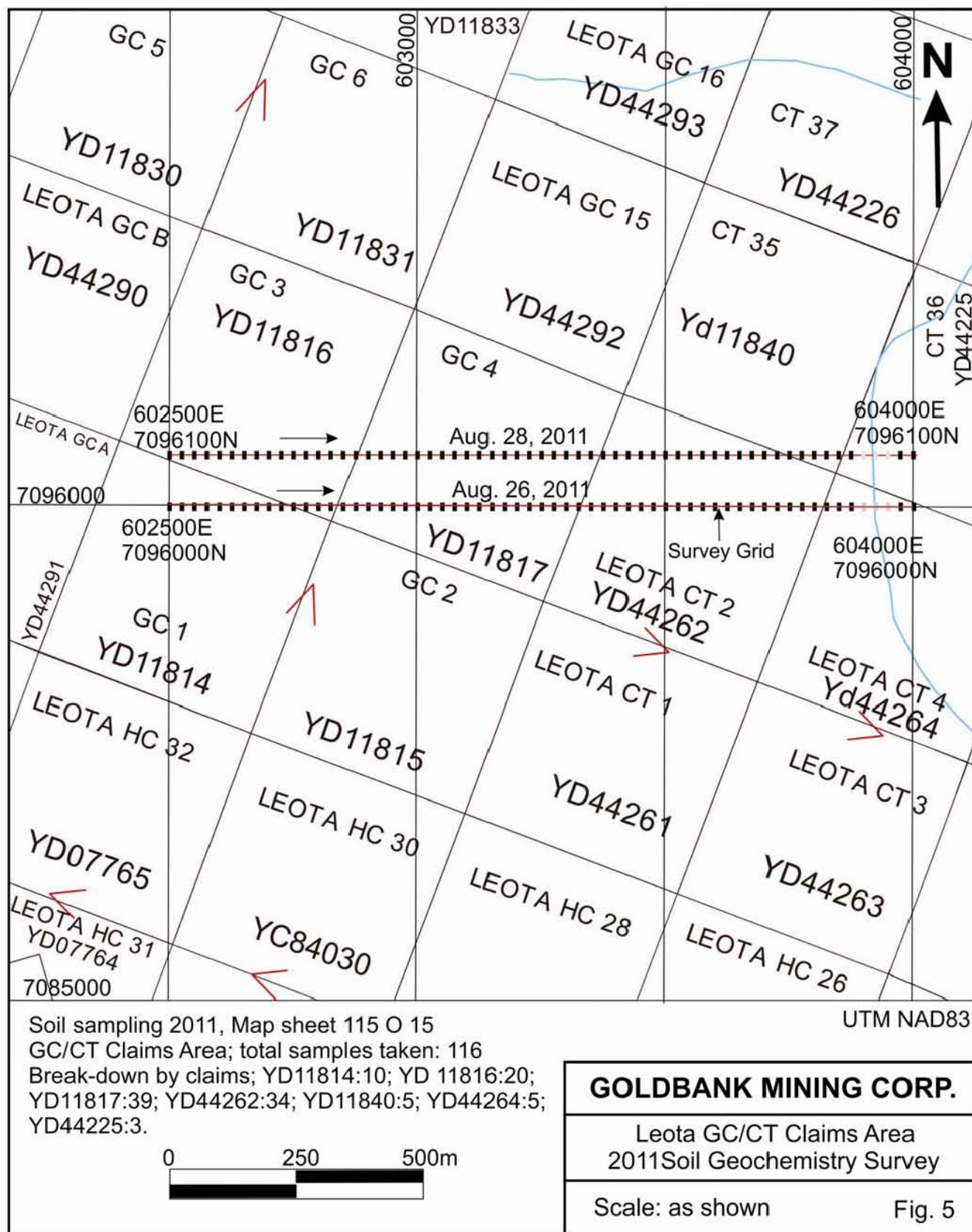


Fig. 4: Geological map: Klondike (CPK1), Nasina (DMN1) & Anvil Assemblage (CPA4) contact (pink rectangle - soil survey grid).

100 meters was laid to intersect contacts between the Klondike Schist, the Nasina Schist units and the wedged-in mafic/ultramafic rock unit of the Anvil Group (Figs. 1 to 5).

A total of 116 soil samples were collected from the “C” soil horizon using a Dutch auger. The samples were placed in pre-numbered Kraft paper bags, closed and sealed with flagging tape. Each station was marked with a pre-numbered flag. A GPS unit was used to locate stations and record coordinates. The writer kept samples in a safe place after collection and personally dispatched the samples to Acme Analytical Laboratories Ltd. (AcmeLabs) facility in Dawson City for preparation. The pulps were then sent to AcmeLabs in Vancouver for analysis.



6. SAMPLE PREPARATION, ANALYSIS AND QUALITY ASSURANCE

AcmeLabs conduct the sample preparation and analyses in accordance with generally accepted analytical laboratory principles and practices. The samples are prepared by drying at 60° C and a sieving 100g to -80 mesh (code SS80) and the analysis is performed on a 30 g pulp using Aqua Regia digestion and Ultratrace ICP-MS analysis (code 1F06) for 53 elements.

The assay certificates and the analytical QA check-ups from AcmeLabs are attached at the back of this report. Basic statistics and the diagrams for precious and base metals, chromium, nickel and other elements were prepared using the Excel program. The contouring and 3D surface mapping was made using the Surfer program of Golden Software Inc. The statistics tables and diagrams are shown below.

The check-up assay results for the original vs repeat assays for gold, silver, copper, lead, zinc, chromium, nickel and magnesium are shown in the graphs in Figs. 12 to 18. The following correlation coefficients were obtained:

Au	Ag	Cu	Pb	Zn	Cr	Ni	Mg
0.89679	0.99655	0.99825	0.99802	0.998928	0.976326	0.996113	0.972143

Table 2: Basic Statistics

Element	Ag	Au	Cu	Pb	Zn	Cr	Ni
Count:	116	116	116	116	116	116	116
50percentile:	153	2.7	50.8	12.36	105.1	23	33.7
75percentile:	212	3.8	68.23	16.22	136.4	27.4	50.3
90percentile:	303	4.9	89.35	21	208.7	32	68.6
95percentile:	440	6.3	103.67	25.19	245.4	74.5	96.4
99percentile:	780	8	124.9	33.88	286.5	107.7	180.9
Minimum:	22	0.2	16.6	4.04	43.6	5.1	16.7
Maximum:	1561	12.1	173.8	53.12	482.2	347.8	247.6
Mean:	190.9138	3.043103	55.91164	14.10629	122.4707	29.5431	45.27931
Median:	153	2.7	51.355	12.38	105.4	23.15	33.7
Geometric Mean:	149.7003	2.548602	50.09515	12.91992	109.3156	23.63586	38.12228
Standard Deviation:	181.0506	1.84241	27.54672	6.763454	67.17246	35.65217	35.49705
Standard Error:	16.81013	0.171063	2.557649	0.627971	6.236806	3.310221	3.295818
Coeff. of Variation:	0.948337	0.605438	0.492683	0.479464	0.548478	1.206785	0.783957
Skewness:	4.524414	1.782881	1.276698	2.459805	2.09922	6.623883	3.266416
Kurtosis:	30.92548	8.080338	5.204683	12.66819	9.45637	56.02972	15.82746

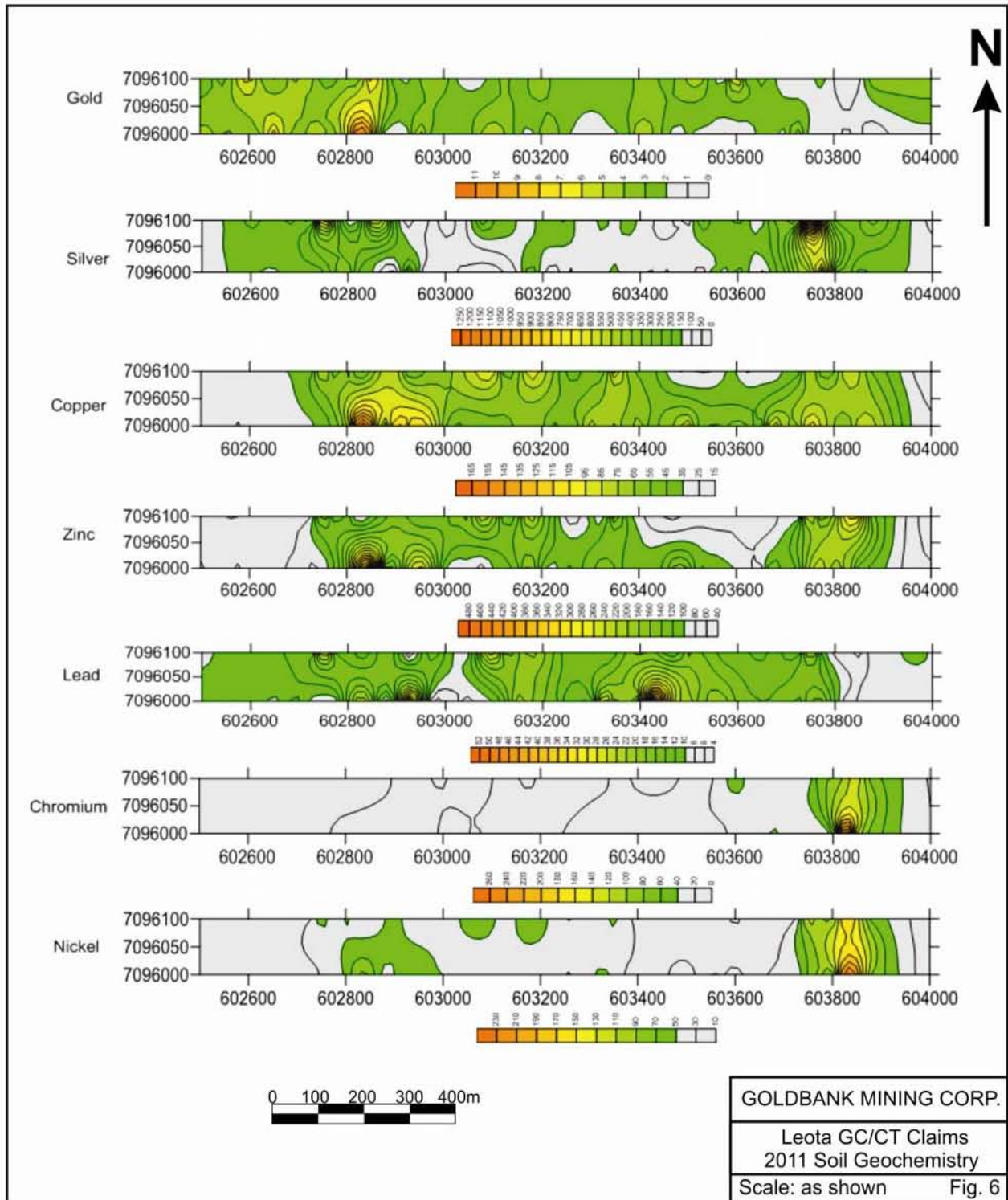
Table 3: Correlation Matrix

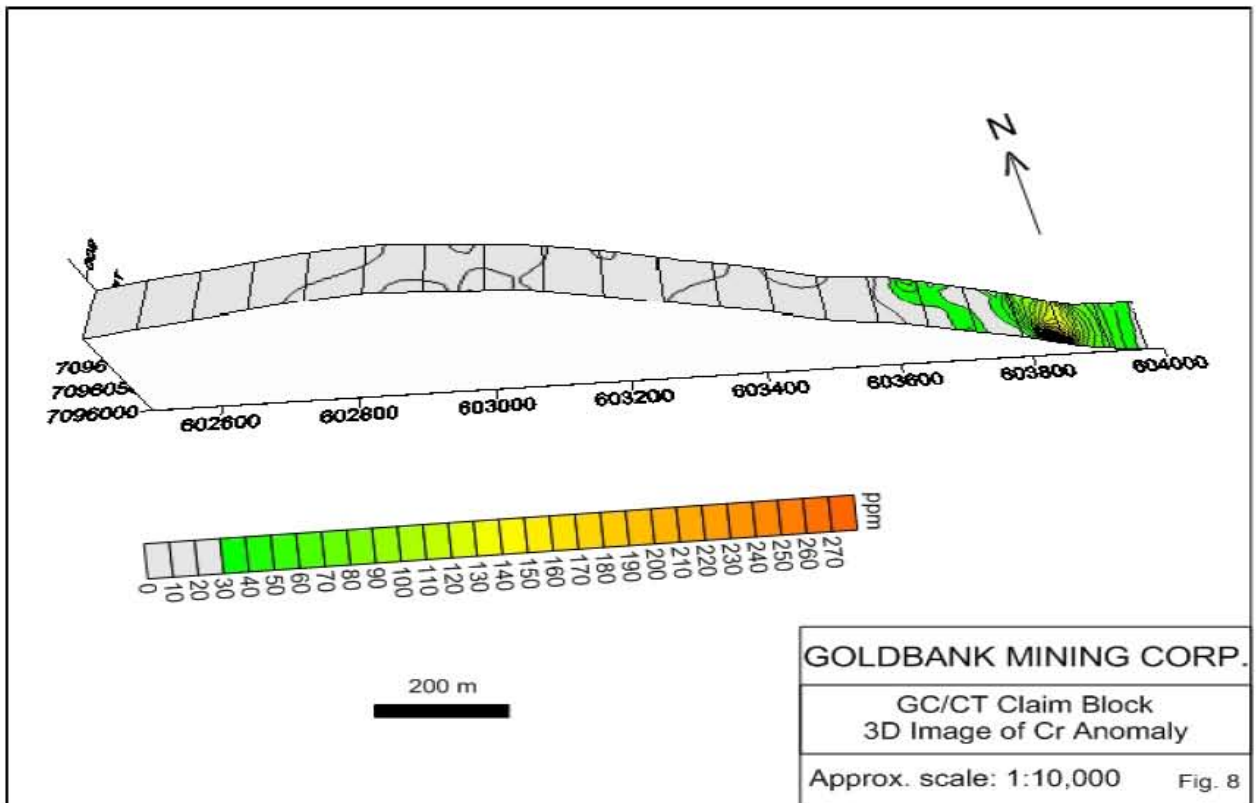
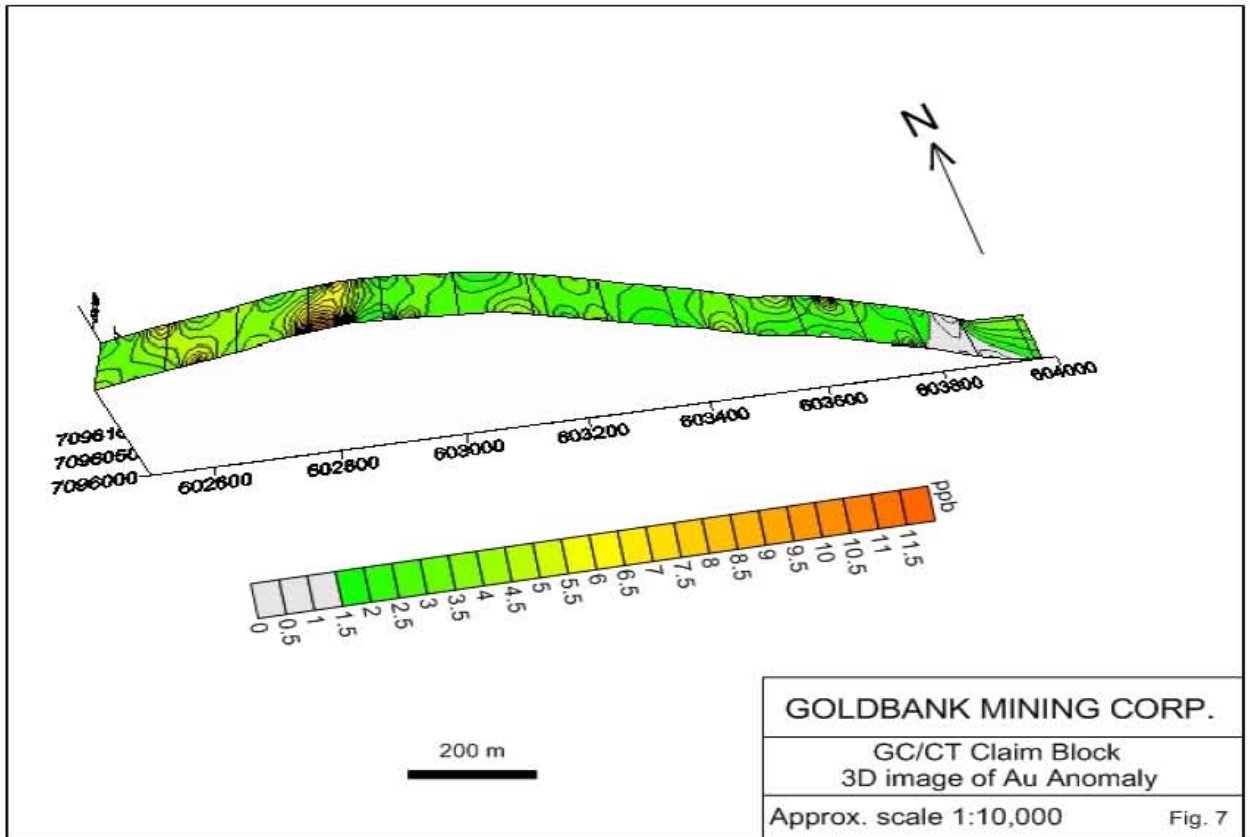
	Au	Ag	Cu	Pb	Zn	Cr	Ni	Mg	Mn
Au	1								
Ag	-0.05765	1							
Cu	0.073925	0.178365	1						
Pb	0.082768	0.214812	0.358895	1					
Zn	0.066719	0.311512	0.830852	0.293205	1				
Cr	-0.19262	0.079586	-0.02655	-0.26621	0.173256	1			
Ni	-0.19552	0.320094	0.48887	-0.05937	0.639488	0.736087	1		
Mg	-0.22001	0.106467	-0.10002	-0.35601	0.11554	0.906893	0.661635	1	
Mn	-0.11685	0.476068	0.453412	0.062716	0.572317	0.256627	0.64825	0.263436	1

The correlation coefficients are very high indicating the assays are reliable and no nugget effects are apparent. Correlation coefficient for gold is slightly lower though, indicating higher susceptibility for such effects in the sample preparation and homogenization for this element. Significant nugget effects disturbing the correlation completely were observed in the assays from Minnie Bell area (Molak, 2012).

The assays of standard DS8 for gold, silver, copper, lead, zinc and chromium with $\pm 10\%$ limits are shown graphically in Figs. 19 and 20. Most assays fall close to the mean value or are within $\pm 10\%$ limits. One DS8 standard assay for gold and one for silver fall slightly off the $+10\%$ limit. The blanks assayed along with the group of samples from GC/CT claims fall all below detection limit for each element.

In conclusion we can state that the assays made by AcmeLabs for this survey meet the industry standards for accuracy and reproducibility and can be relied upon.





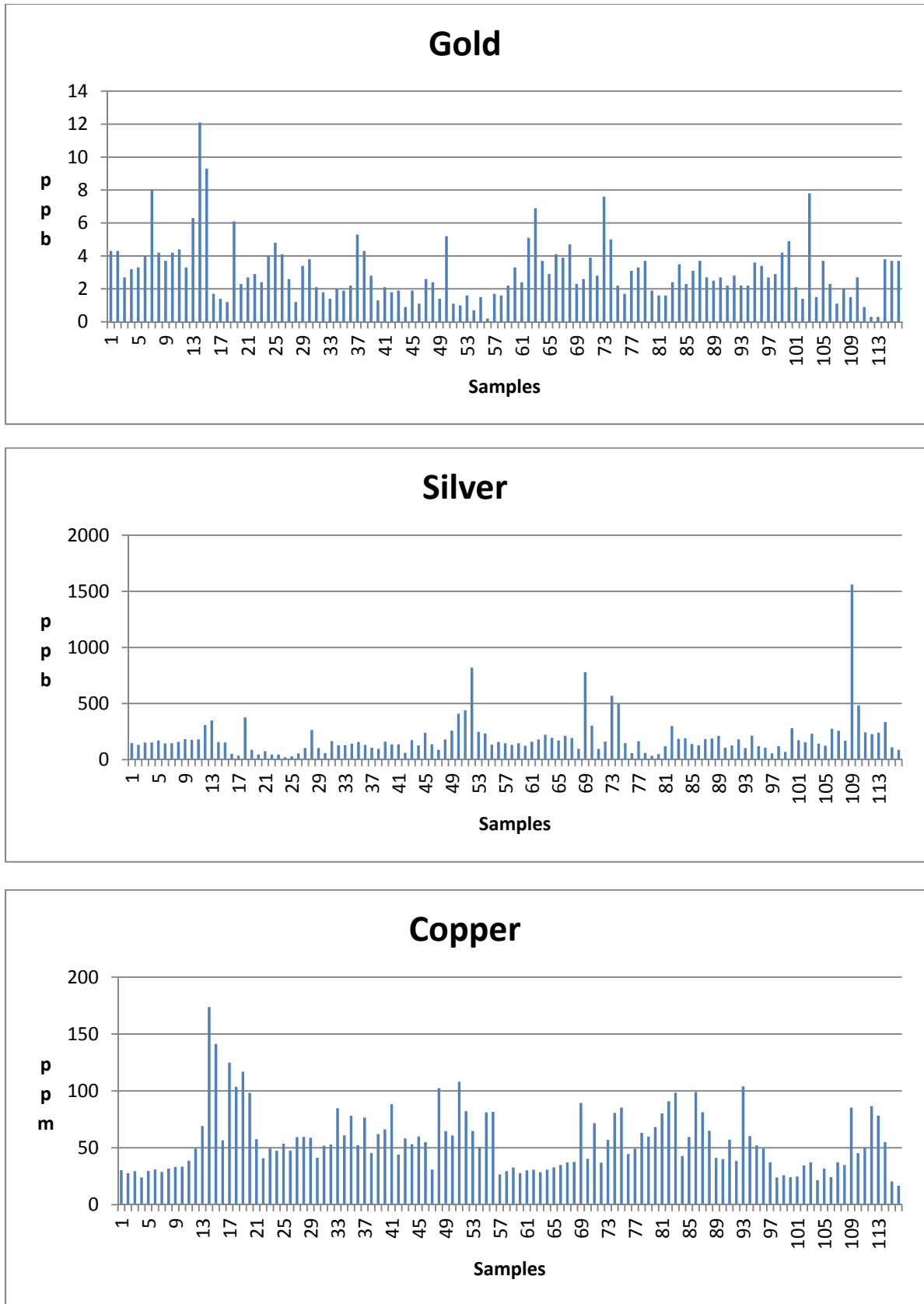


Fig. 9, a,b,c: Histograms for Gold, Silver and Copper

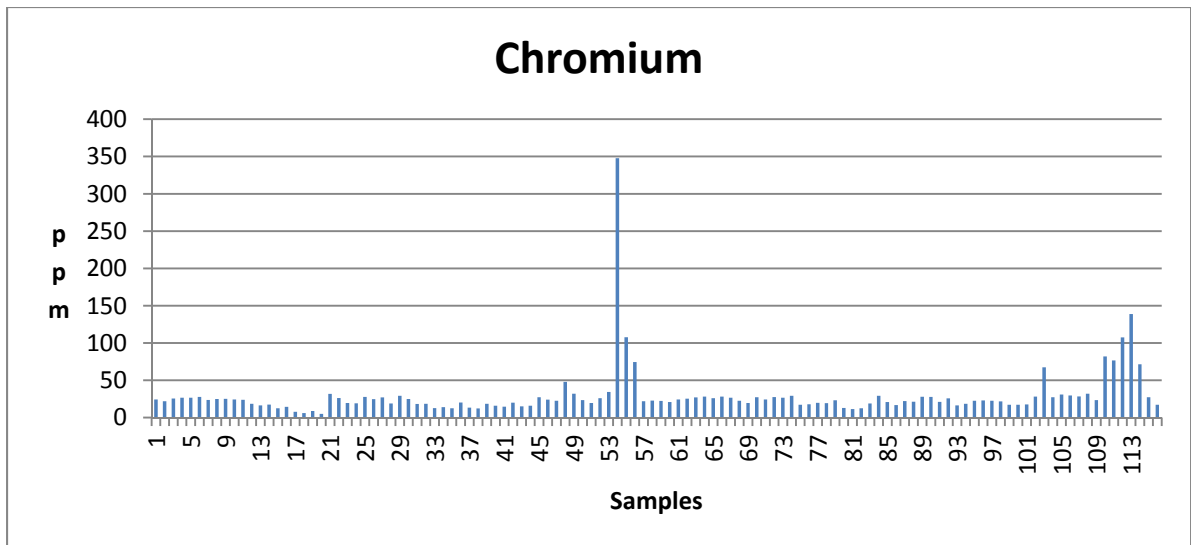
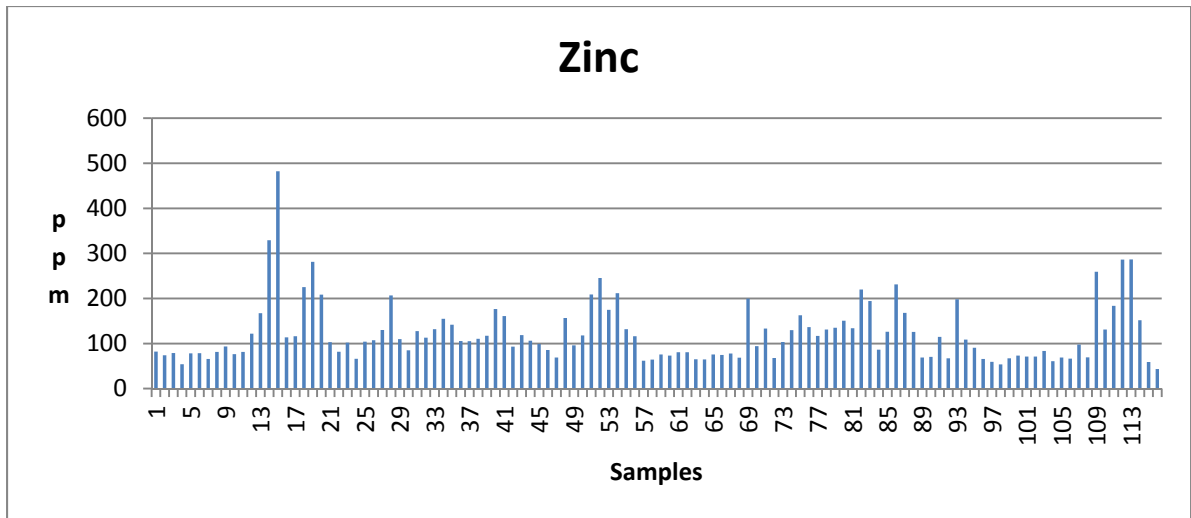
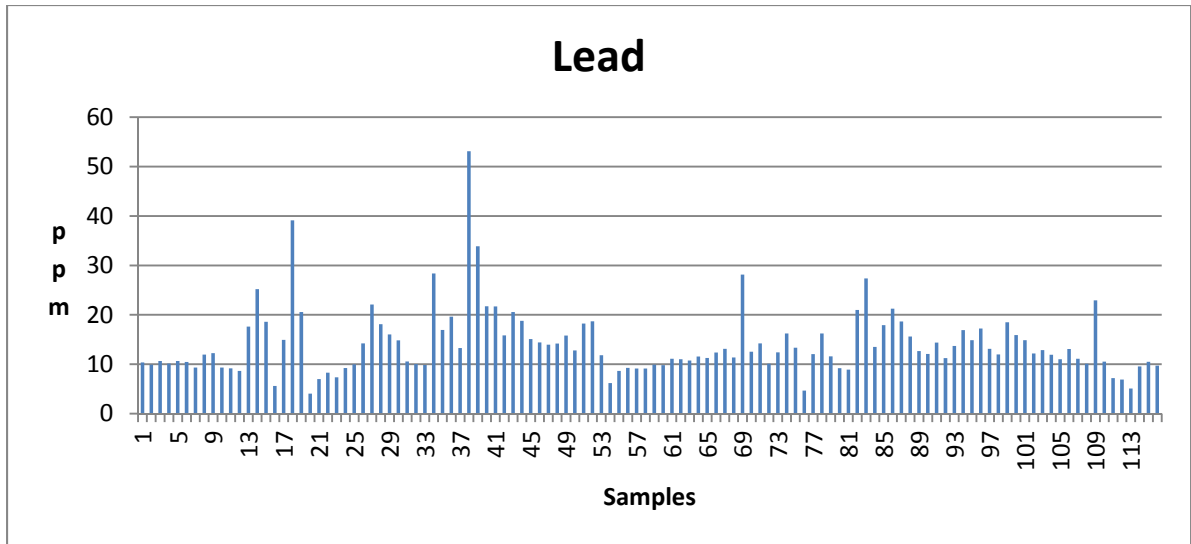


Fig. 10 a,b,c: Histograms for Lead, Zinc and Chromium

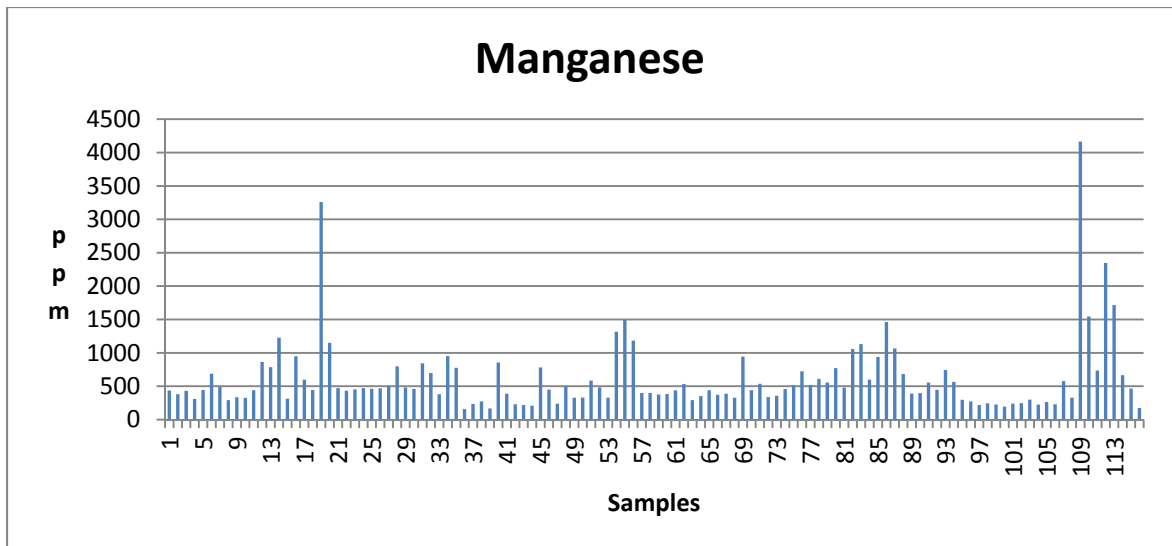
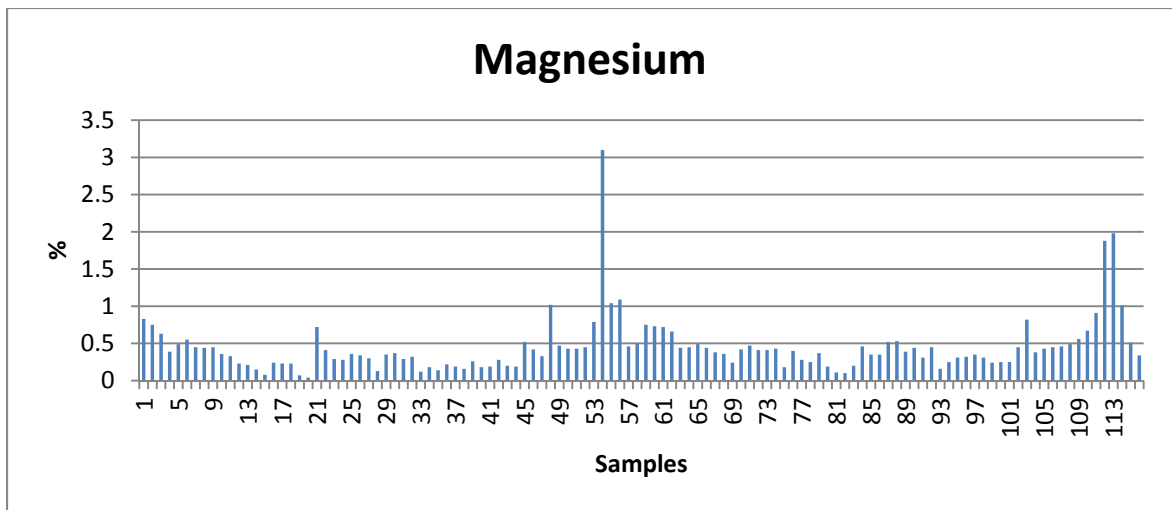
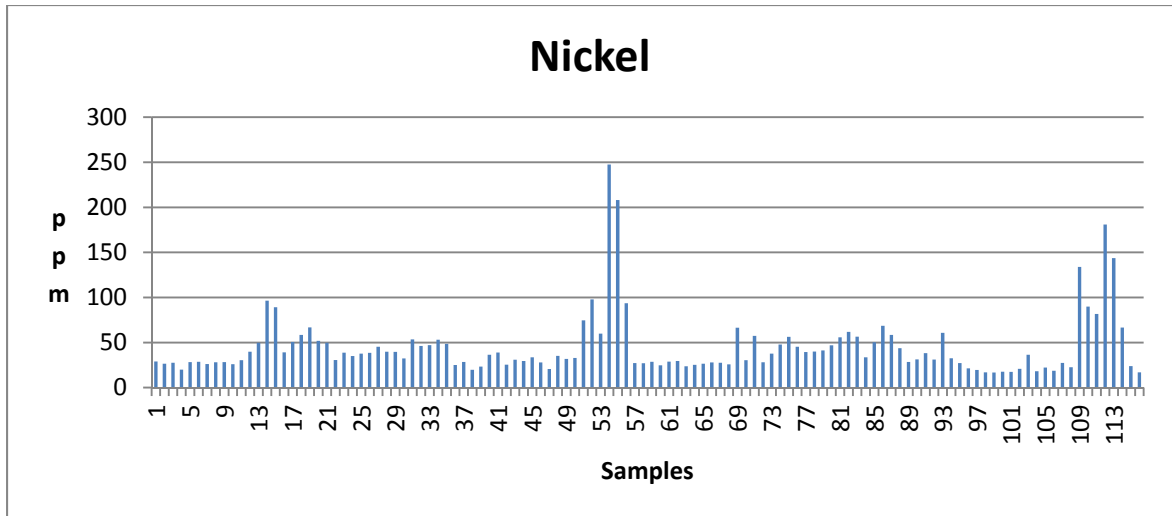


Fig. 11 a,b,c:. Histograms for Nickel, Magnesium and Manganese

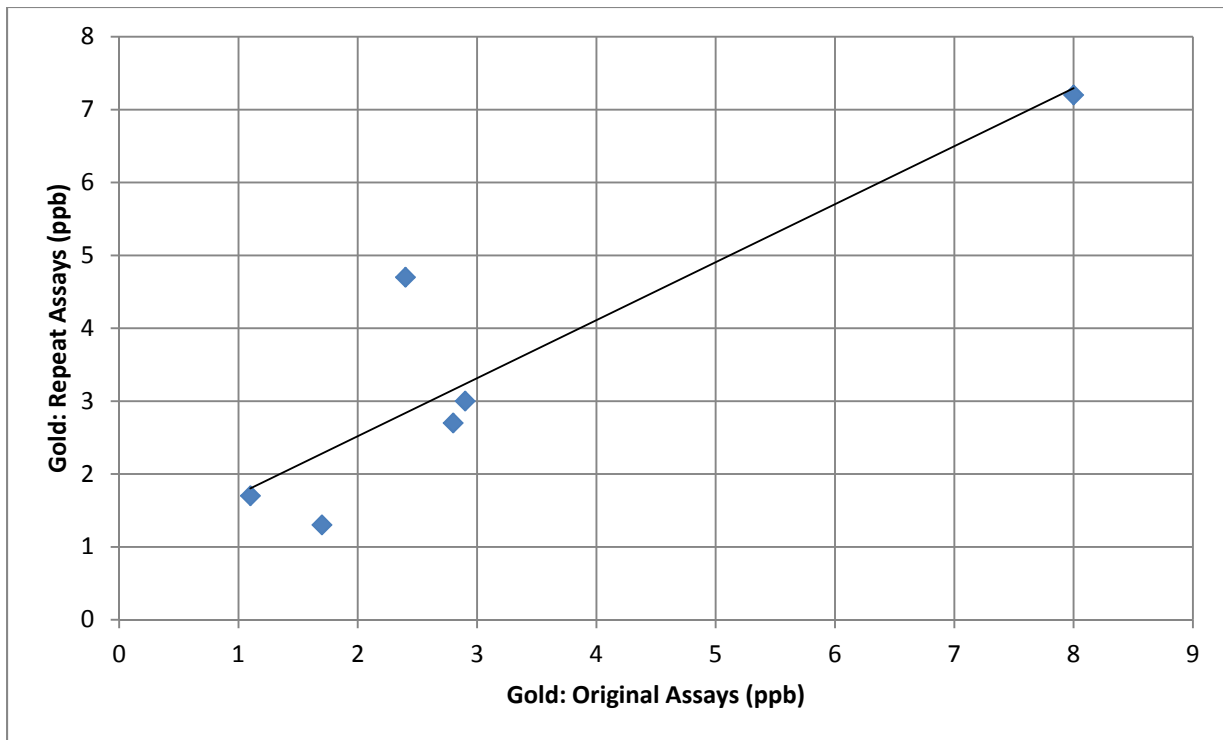


Fig. 12 a, b: Gold: Original vs Repeat Assays. Correlation coefficient 0.89679

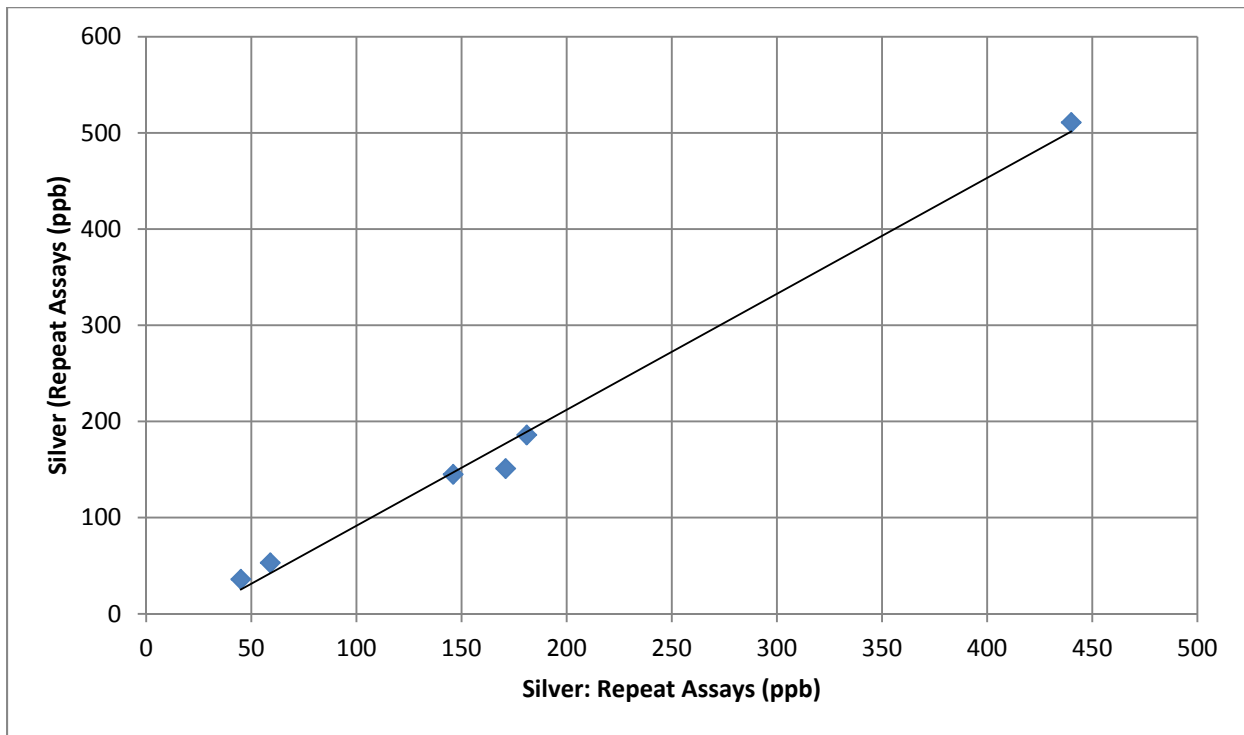
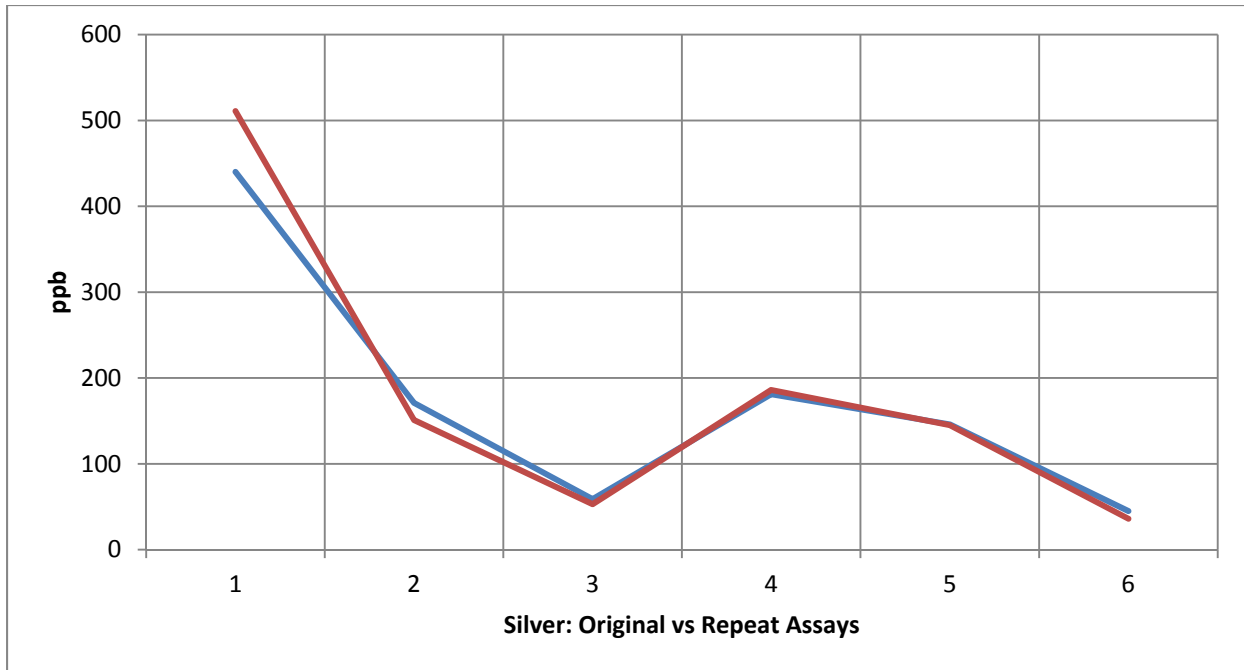


Fig. 13 a, b: Silver: Original vs Repeat Assays. Correlation coefficient 0.99655

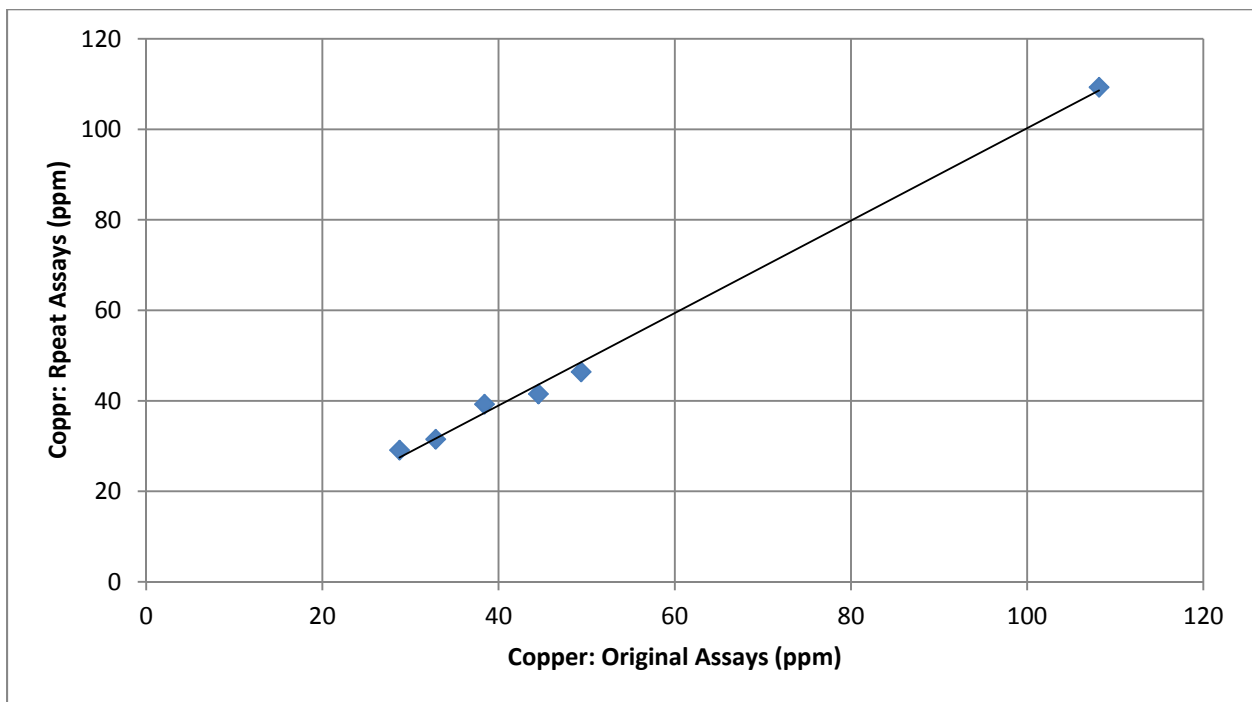
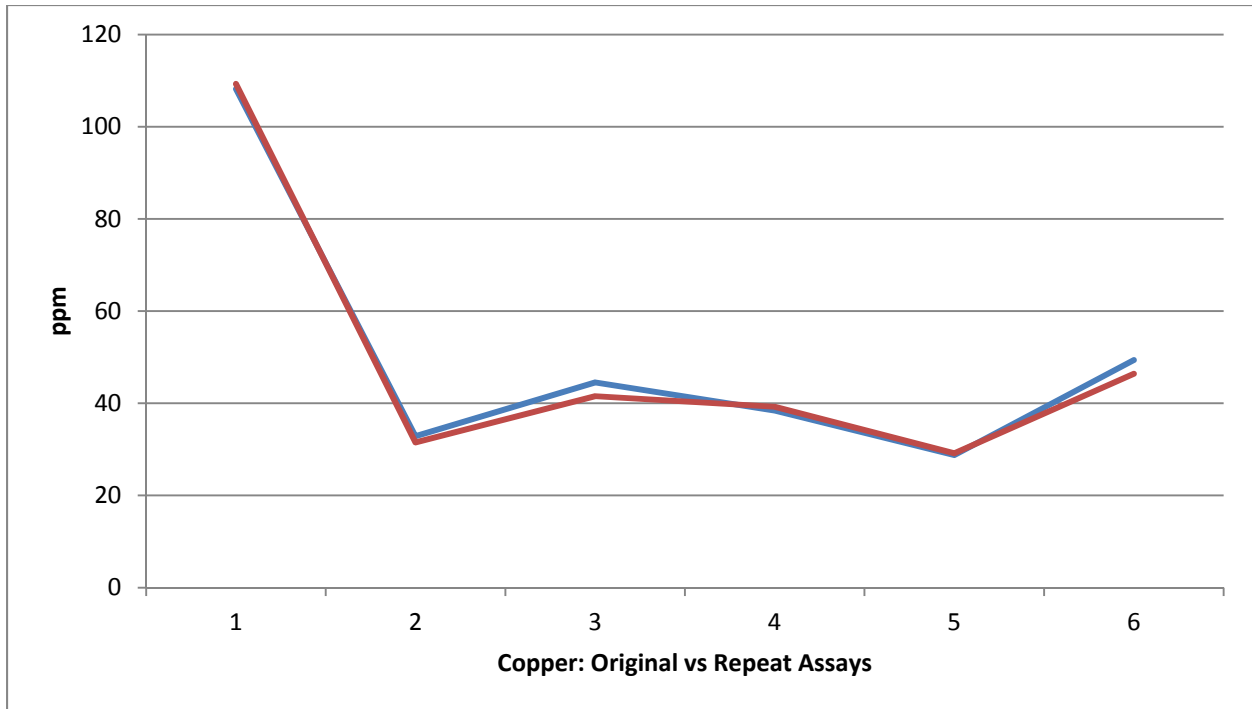


Fig. 14 a, b: Copper: Original vs Repeat Assays. Correlation coefficient 0.99825.

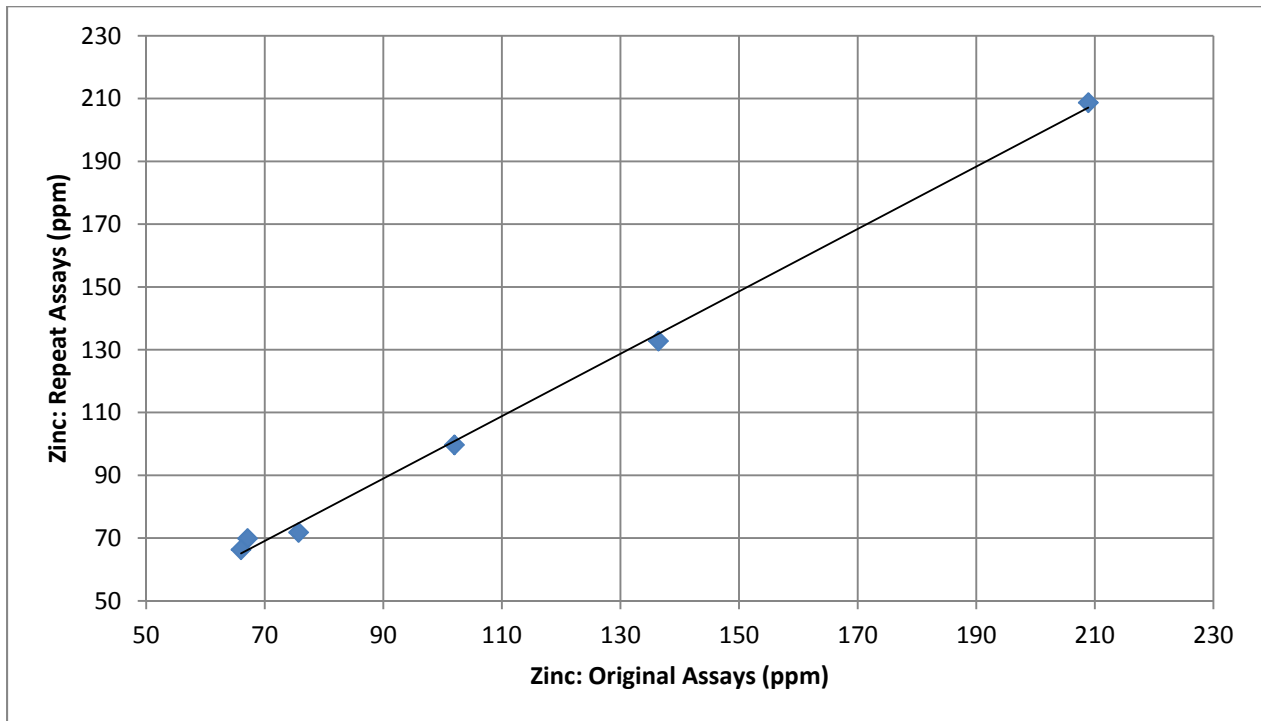
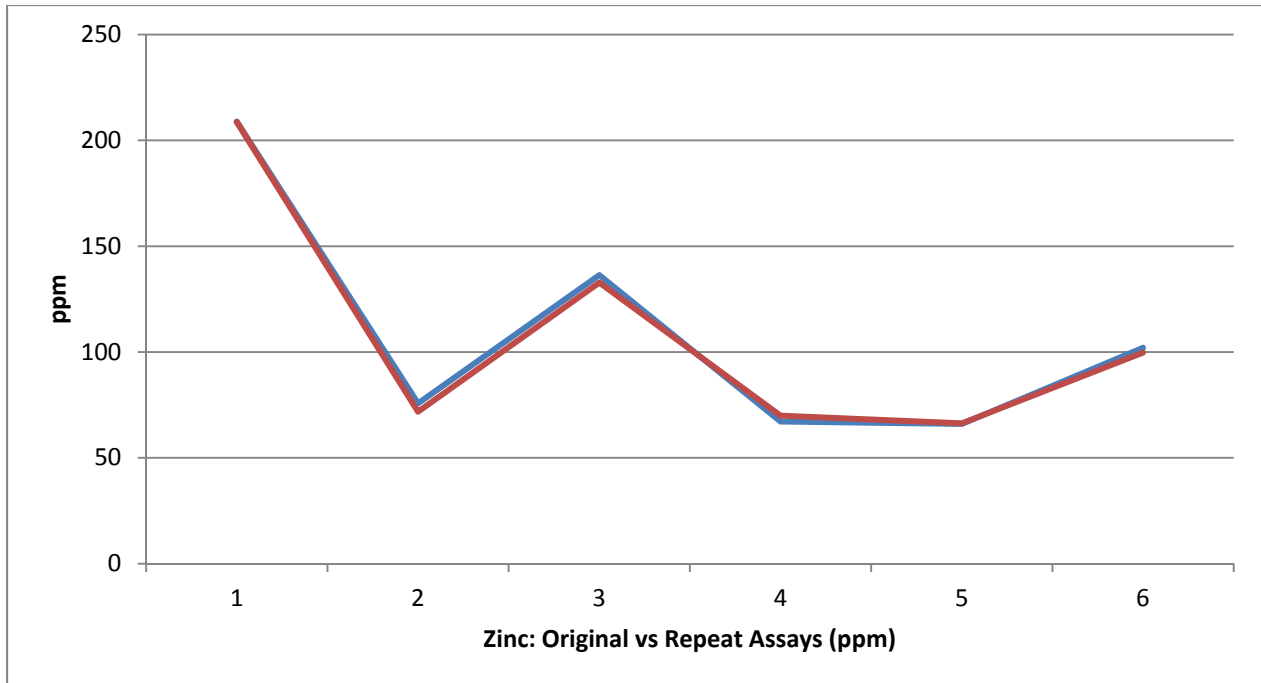


Fig. 15 a, b: Zinc: Original vs Repeat Assays. Correlation coefficient 0.998928.

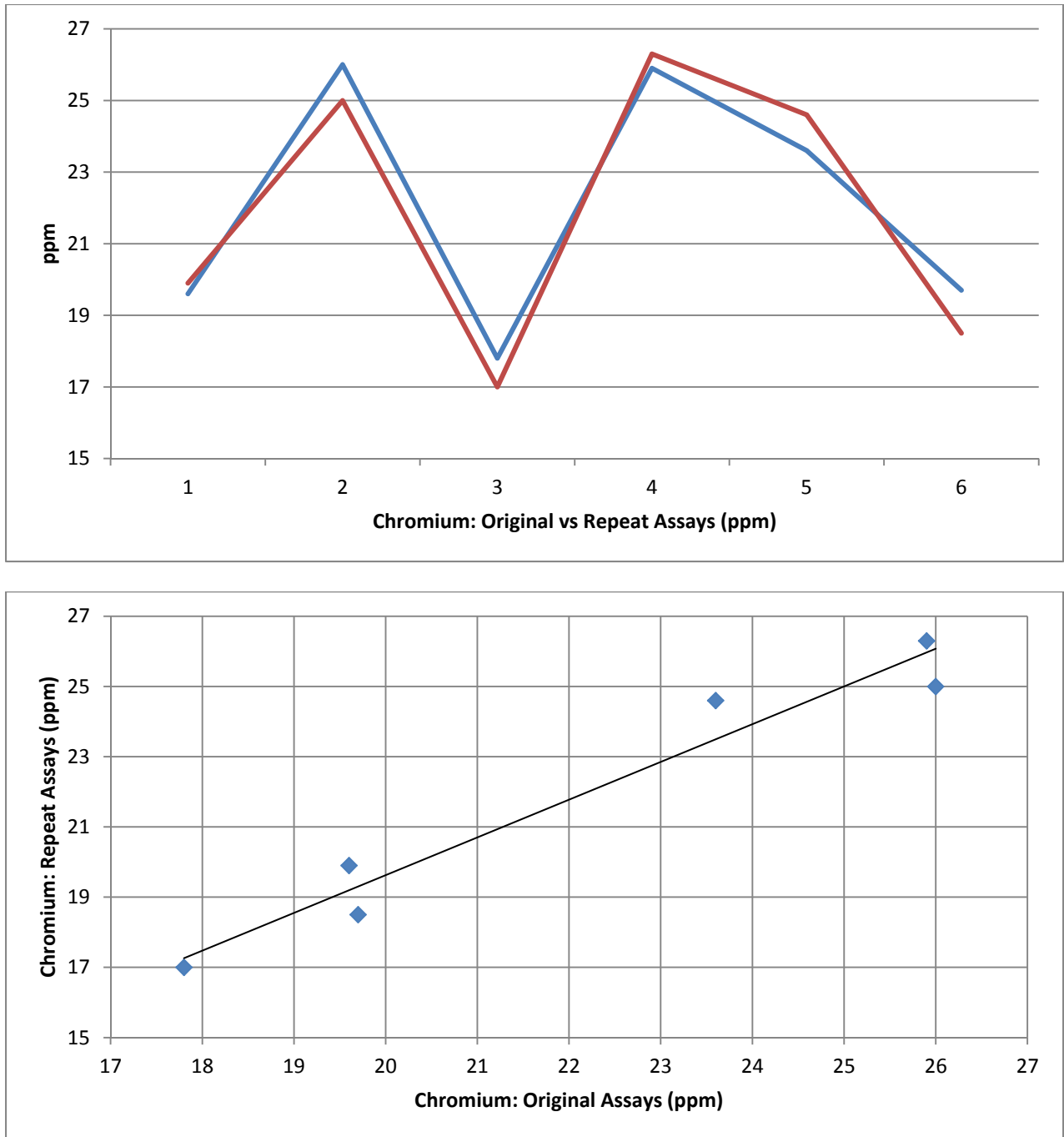


Fig. 16 a, b: Chromium: Original vs Repeat Assays. Correlation coefficient 0.975326.

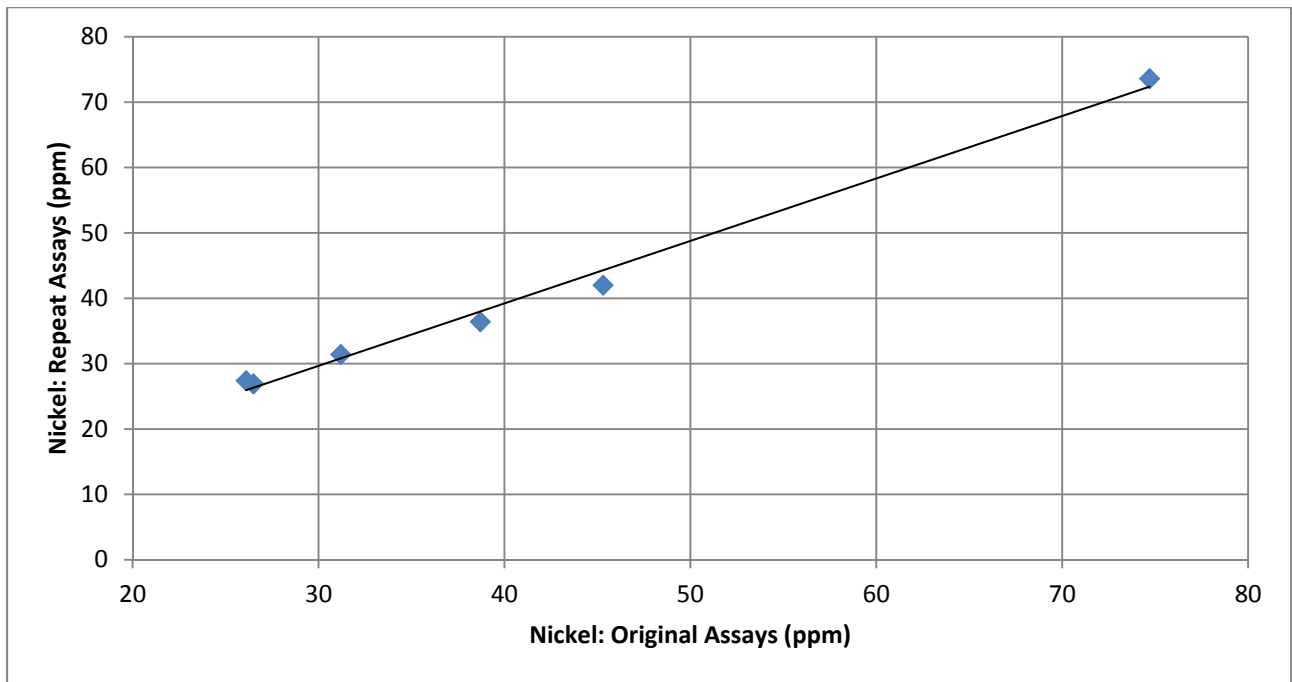
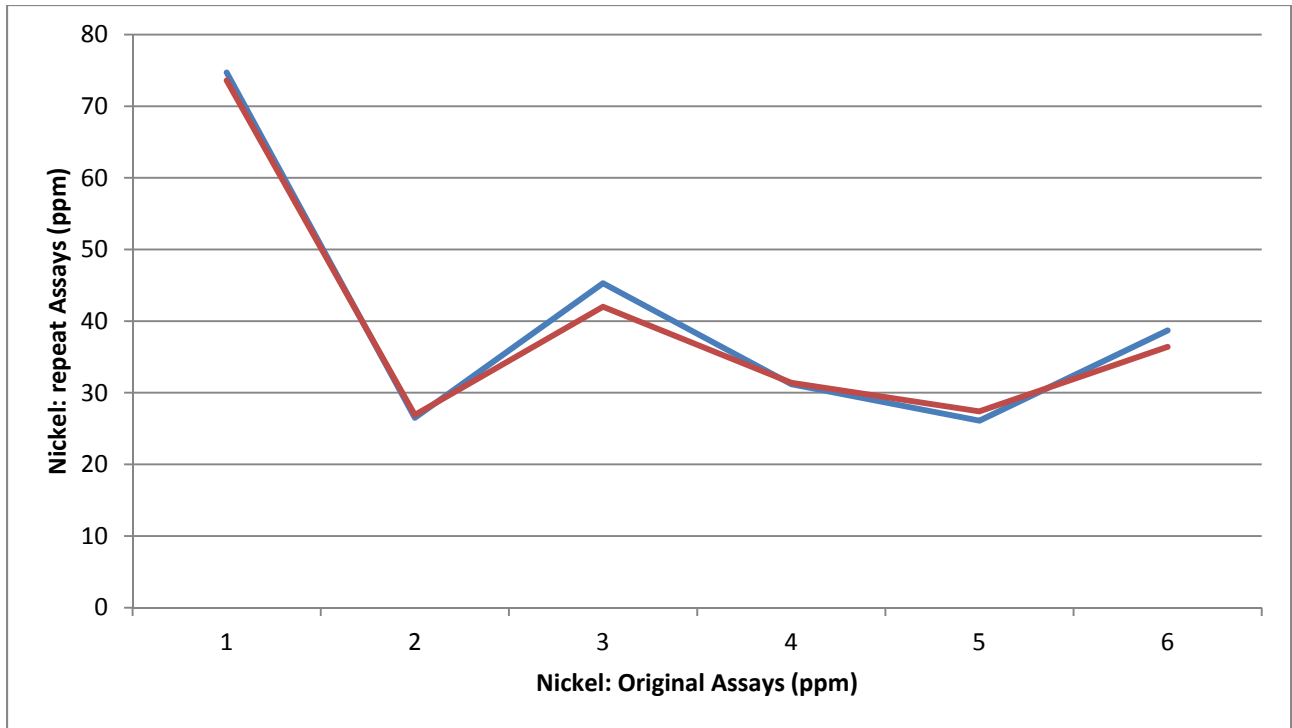


Fig. 17 a, b: Nickel: Original vs Repeat Assays. Correlation coefficient 0.996113.

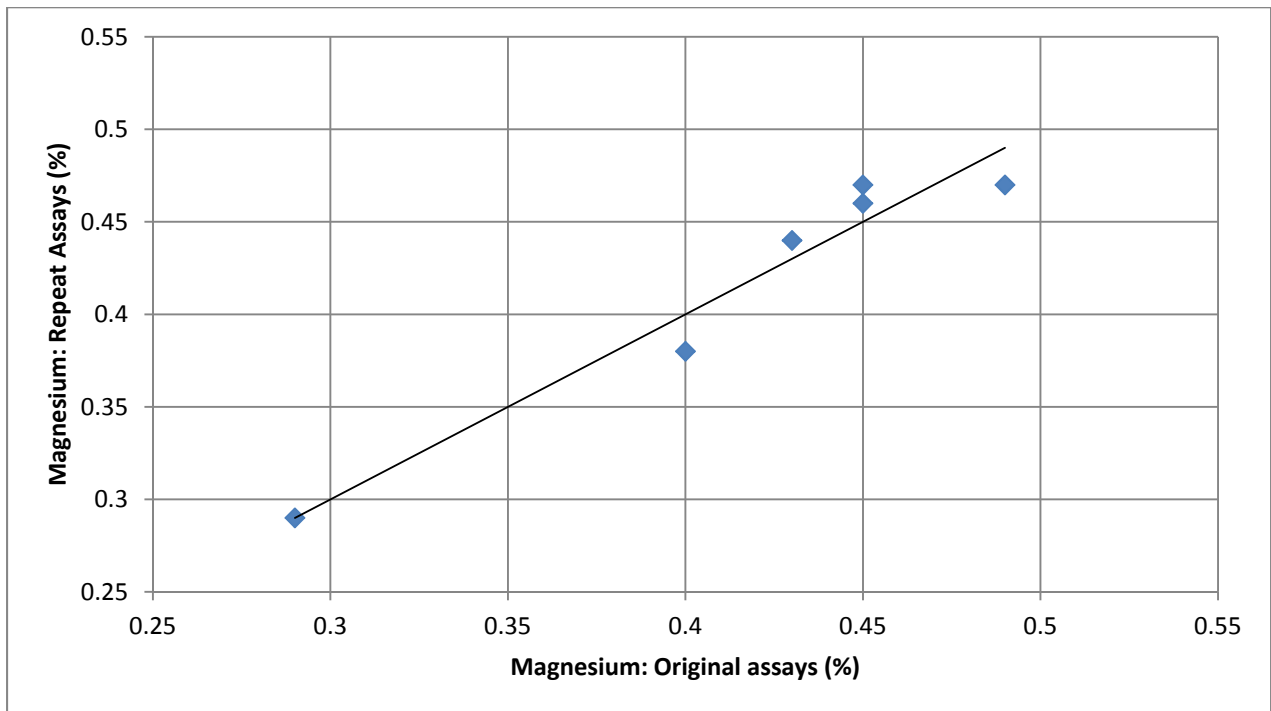
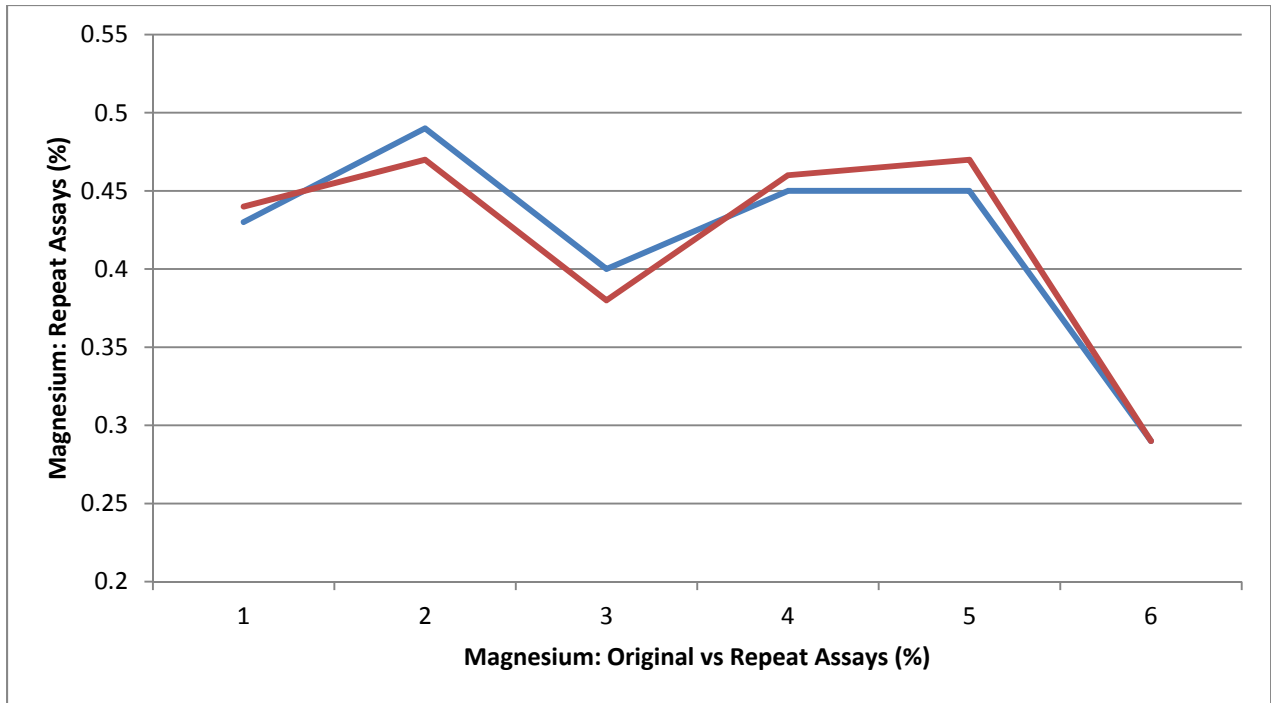


Fig. 18 a, b: Magnesium: Original vs Repeat Assays. Correlation coefficient 0.972143.

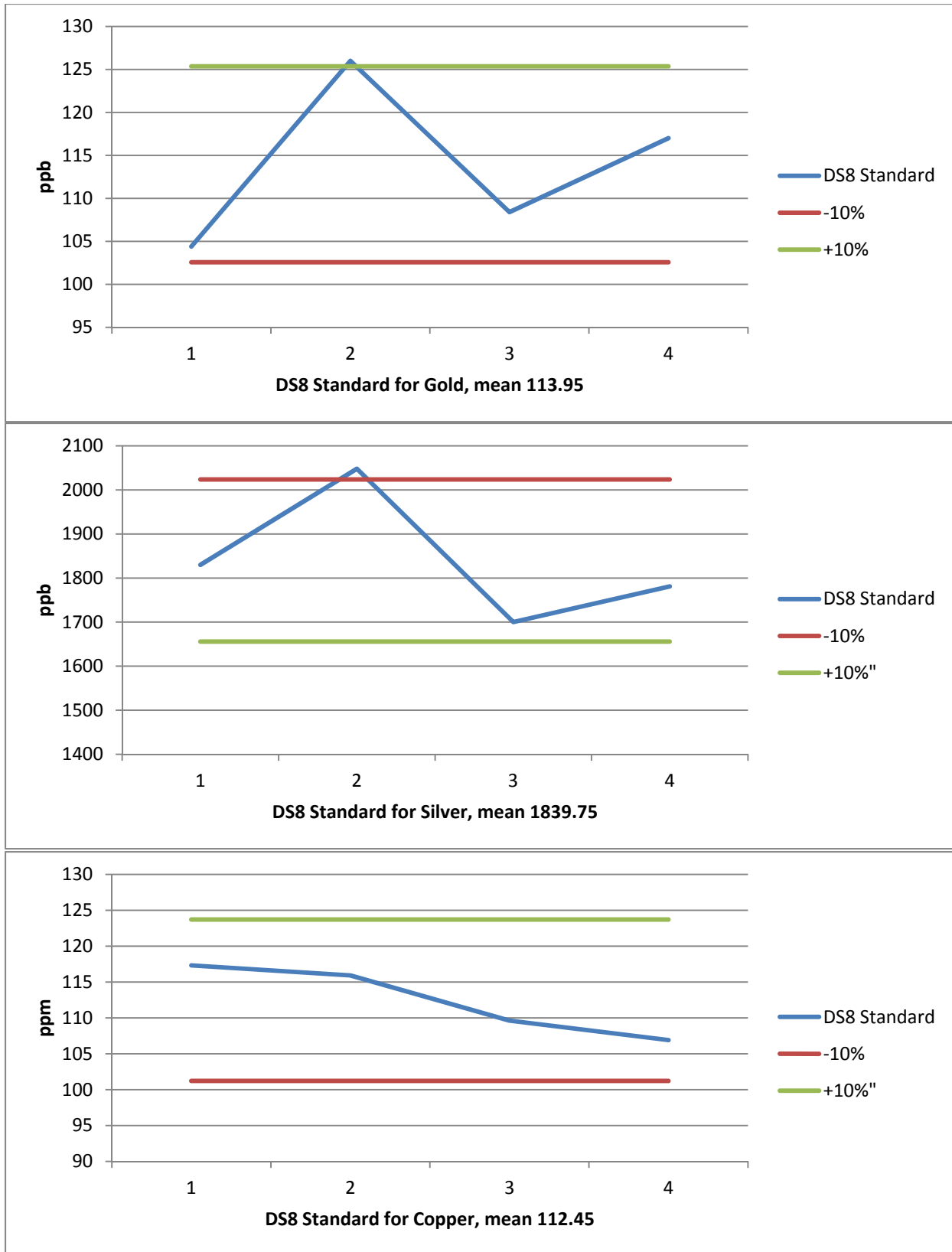


Fig. 19, a,b,c: DS8 Standards for Gold, Silver and Copper

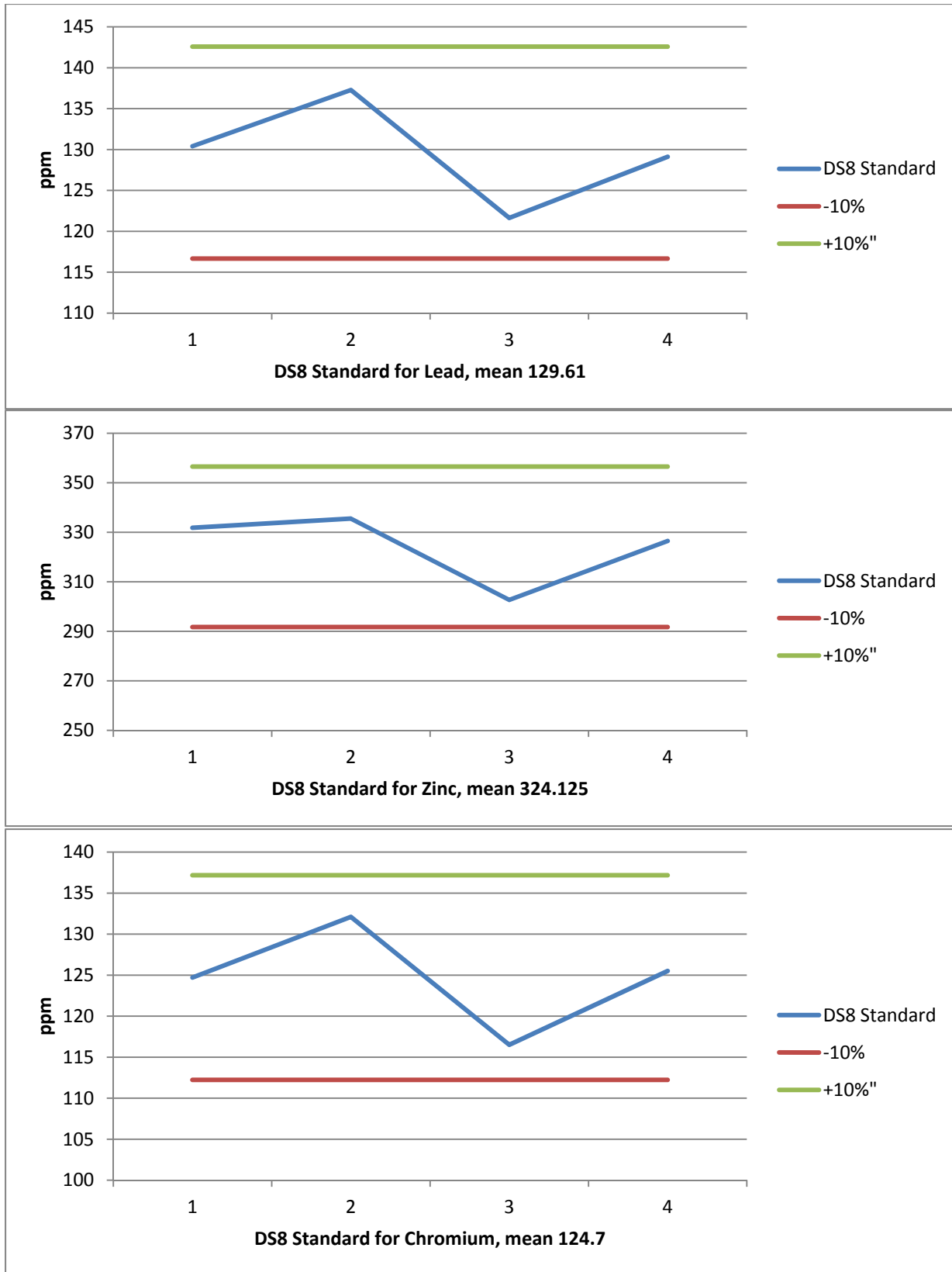


Fig. 20, a,b,c: DS8 Standards for Lead, Zinc and Chromium

7. 2011 EXPLORATION EXPENSES

Geologist (4 days @ \$ 600)	4800.00
Assistants (2 x 5 days x 300)	3000.00
Truck (Mileage, gas, oil)	938.00
Accommodation, food	1400.00
Mob/demob	1000.00
Assays (116 samples)	3480.00
Digitization, report	4000.00
HST 12%	<u>2234.16</u>
Total:	20852.16

8. CONCLUSIONS AND RECOMMENDATIONS

The objectives of the 2011 geochemistry survey on the GC 1, GC 3, GC 4, Leota CT 2, Leota CT 4, CT 35 and CT 36 claims were to detect precious and/or base metals anomalies in soil overlying the Klondike schist, the Nasina Assemblage and the Anvil Group ultramafic (ophiolite?) rocks and their contacts as defined by Mortensen's (1996) geological map (Fig. 3). An additional objective was to test the genetic model that postulates altered ultramafic rocks as the host rocks for the gold mineralization. Only two east – west running soil sampling lines were run (Fig. 5), yet the results reveal several anomalies, which are discussed below.

A distinct gold anomaly was detected near the top of an elevation shown in Figs. 3, 4, 7 and 8. Several smaller gold anomalies occur east and west of the main anomaly. A narrow strip of overlapping Cr, Ni, Co, Mg and Fe anomalies, referred to further as the chromium group anomalies, is located near the western end of the grid (Figs. 6, 8). The chromium group anomaly indicates an ultramafic (ophiolitic?) body striking roughly north – south, roughly coincident with

the CPA4 body according to Mortensen's map (Mortensen, 1996). The CPA4 body appears to extend farther south (Figs. 4 and 6).

Both, gold and chromium group anomalies are open northwards and southwards. While the main gold anomaly occurs close to a topographic elevation indicating weathering resistant rocks, the chromium group anomaly occurs near the valley bottom suggesting a proximity to a fault, or a thrust zone. The former may indicate a quartz vein, a stringer system or a silicification zone (Fig. 5). Although gold does not statistically correlate with base metals, it shows some degree of spatial correlation with these metals, especially with zinc and copper, indicating association with sulphide mineralization (Figs. 6, 9, 10 and Tab. 3).

Gold values do not indicate significant nugget effects, as in the case of Minnie Bell area. Regardless of this, the zone deserves further testing. Copper and zinc somewhat statistically and spatially correlate with nickel as shown by the correlation coefficients 0.48887 and 0.639488, respectively (24 to 41 % of assay values co-vary). The correlation coefficient for the pair Cr and Ni is 0.736087, suggesting 54 % of the values co-vary. These correlations suggest a common occurrence of ore minerals such as chromite, chalcopyrite, sphalerite and pentlandite, some common for the felsic rocks while others are common for the non-altered, ultramafic rock environment.

The soil anomalies for selected elements are shown on the maps and 3D images in Figs. 6 to 8. The gold anomalies neither spatially nor statistically correlate with the chromium group anomalies. Ash (2010) postulated that erosional remnants of the ophiolitic rocks are locally preserved on the high ground, often as isolated klippe and that the gold mineralization at Lone Star and White are consistently localized within the suture zones between the hanging wall ophiolitic rocks and the footwall plutonic rocks. The indicated ultramafic body appears to occupy a fault-controlled structure conformable with the general trend and if there is strongly altered and hydrothermally affected ophiolitic rock associated with it, it does not contain anomalous gold.

The main gold anomaly is recommended for further testing. The area should be searched for outcrops and trenches should be dug across its strike to expose bedrock and to log and sample it in detail.

9. REFERENCES

Ash, C. H., 2005: Ryan showing quartz-vein sampling program, White property; Madalena Ventures Inc., Company Report, 10 p.

Ash, C. H., 2005: Geological Setting of the Klondike Goldfields; “2005 Yukon Geoscience Forum”, Whitehorse Yukon, November 2005, PowerPoint presentation.

Ash, C.H., 2006, Setting of the gold-quartz vein lode source for placers within the Klondike goldfields, west-central Yukon, Canada; *Society of Economic Geologists*, 2006 Keystone Conference May 14-16, Wealth Creation in the Minerals Industry, Poster and extended abstract, p. 109-114.

Ash, C.H., 2006: 2006 geological report on the Henry Property, north east Klondike (Henry 1-6), NTS 116B\03; Assessment Report, Yukon Mining Recorder, 22 p.

Ash, C.H. and Doherty A., 2006: Potential lode source for Klondike placer gold on the Crown Jewel Property, Dawson District, Yukon; International Gold Resources, Internal Company report, 7 p.

Ash C. 2010: Technical report: Leota Gold Project, Klondike Goldfields; for Goldbank Mining Corp.

Bostock H. S., 1942: Geology Map # 711, Ogilvie, Yukon Territory, Dept. of Mines and Res., Scale 1:253,440.

Geochemical Report on the GC, Leota CT & CT Claims, Leota Claim Block, Yukon Territory, Canada

Chapman R. J., Mortensen J. K., Crawford E. C. and Lebarge W. 2010: Microchemical Studies of Placer and Lode Gold in the Klondike District, Yukon, Canada: 1. Evidence for a Small, Gold-Rich, Orogenic Hydrothermal System in the Bonanza and Eldorado Creek Area. *Econ. Geol.*, vol. 105; No. 8; p. 1369-1392.

Debicki, R.L., 1984. Bedrock geology and mineralization of the Klondike area (west), 115 O 14, 15 and 116 B 2, 3; Exploration and Geological Services Division, DIAND, Open File, 1:50,000 scale map with marginal notes.

Debicki, R. L. 1985: Bedrock geology and mineralization of the Klondike area (east), 115 O/9, 10, 11, 14, 15, 16 and 116 B 2; Exploration and Geological Services Division, DIAND, Open File, 1:50,000 scale map with marginal notes.

Doherty, R. A. and Ash, H. C. 2005: Report on the White Property, Dawson Mining District; Madalina Ventures Inc., Tech. Report, 116 p.

Gabrielse H., Murphy D.C. and Mortensen J.K., 2006: Cretaceous and Cenozoic dextral orogeny-parallel displacements, magmatism and paleogeography, north-central Canadian Cordillera. In: Paleogeography of the North American Cordillera: Evidence for and against Large-Scale Displacements; J.W. Haggart, R.J. Enkin and J.W.H. Monger (eds.), Geological Association of Canada, Spec. Paper 46, 255 – 276.

Gordey, S. P. and Makepeace, A. J. 2003: Yukon Digital Geology, version 2.0, S.P. Gordey and A.J. Makepeace (comp); Geological Survey of Canada, Open File 1749 and Yukon Geological Survey, Open File 2003-9 (D).

Gordey, S. P. and Ryan, J. J. 2005: Geology, Stewart River Area (115N, 115 O and part of 115J), Yukon Territory; Geological Survey of Canada, Open File 4970, scale 1:250 000.

Lowey, G.W., 2005: The origin and the evolution of the Klondike goldfields, Yukon, Canada. *Ore Geology Reviews*, Vol. 28, 431 – 450.

Geochemical Report on the GC, Leota CT & CT Claims, Leota Claim Block, Yukon Territory, Canada

MacKenzie, D.J., Craw, D., Mortensen, J.K. and Liverton, T., 2007: Structure of schist in the vicinity of the Klondike goldfield, Yukon . In: Yukon Exploration and Geology 2006, D.S. Emond, L.L. Lewis and L.H. Weston (eds.), Yukon Geological Survey, p. 197-212.

MacKenzie, D.J., Craw, D., Mortensen, J.K. and Liverton, T., 2008: Disseminated gold mineralization associated with orogenic veins in the Klondike Schist, Yukon. In: Yukon Exploration and Geology 2007, D.S. Emond, L.R. Blackburn, R.P. Hill and L.H. Weston (eds.), Yukon Geological Survey, p. 215 - 224.

MacKenzie, D.J., Craw, D.C. and Mortensen, J.K., 2008: Structural controls on orogenic gold mineralisation in the Klondike goldfield, Canada. Mineralium Deposita 43, No. 4, 435 – 448.

Mortensen J.K., 1996: Geological compilation maps of the Northern Stewart River map area Klondike and Sixtymile Districts (115N/15,16; 115O/13,14 and parts of 115O/15,16), 1:50,000 scale. Exploration and Geological Services, Indian and Northern Affairs: Yukon Region, Open file 1996-1 (G).

10. STATEMENT OF QUALIFICATIONS

I, Bohumil (Boris) Molak, Ph.D., P.Geo., do hereby certify that:

1. I am a self-employed Geoscientist residing at 108-5140 Sanders Street, Burnaby, BC., V5H 1T2, Canada.
2. I am a member of the Association of Professional Engineers and Geoscientists of British Columbia (License No. 28600) in good standing.
3. I graduated from the Comenius University of Czechoslovakia with a Bachelor of Science (Mgr.) in Economic Geology in 1970. From the same university I obtained in 1980 the degree Master of Science in Economic Geology (RNDr.) and in 1990 the degree Doctor of Philosophy (CSc.). I have practiced my profession continuously since 1970.

4. My geological practice includes research, prospecting, and exploration for precious, base, ferrous and other metals in Slovakia, Zambia, Cuba, Guinea, Canada, Chile and Argentina.
5. Since July 2003 until present I am a self-employed geo-scientist.
6. I conducted the field work and supervised the exploration program on the GC/CT Claims from August 26 to August 28, 2011.
7. I am responsible for all but item 2011 Exploration Expenses in this report. The sources of all information not based on personal examination are quoted in the References Chapter.
8. As of the date of this Statement I am not aware of any material fact or material change with respect to the subject matter of this report that is not reflected in this report, the omission of which would make the report misleading.
9. I am independent of Goldbank Mining Corp.

Dated at Vancouver, BC, Canada, this 16th day of March, 2012.

Appendix I

GC/CT Claims: Soil Sample Coordinates

Goring South

Line 1			Line 2		
#	Easting	Northing	#	Easting	Northing
1	602500	7096000	62	602500	7096100
2	602525	7096000	63	602525	7096100
3	602550	7096000	64	602550	7096100
4	602575	7096000	65	602575	7096100
5	602600	7096000	66	602600	7096100
6	602625	7096000	67	602625	7096100
7	602650	7096000	68	602650	7096100
8	602675	7096000	69	602675	7096100
9	602700	7096000	70	602700	7096100
10	602725	7096000	71	602725	7096100
11	602750	7096000	72	602750	7096100
12	602775	7096000	73	602775	7096100
13	602800	7096000	74	602800	7096100
14	602825	7096000	75	602825	7096100
15	602850	7096000	76	602850	7096100
16	602875	7096000	77	602875	7096100
17	602900	7096000	78	602900	7096100
18	602925	7096000	79	602925	7096100
19	602950	7096000	80	602950	7096100
20	602975	7096000	81	602975	7096100
21	603000	7096000	82	603000	7096100
22	603025	7096000	83	603025	7096100
23	603050	7096000	84	603050	7096100
24	603075	7096000	85	603075	7096100
25	603100	7096000	86	603100	7096100
26	603125	7096000	87	603125	7096100
27	603150	7096000	88	603150	7096100
28	603175	7096000	89	603175	7096100
29	603200	7096000	90	603200	7096100
30	603225	7096000	91	603225	7096100
31	603250	7096000	92	603250	7096100
32	603275	7096000	93	603275	7096100
33	603300	7096000	94	603300	7096100
34	603325	7096000	95	603325	7096100
35	603350	7096000	96	603350	7096100
36	603375	7096000	97	603375	7096100
37	603400	7096000	98	603400	7096100
38	603425	7096000	99	603425	7096100
39	603450	7096000	100	603450	7096100
40	603475	7096000	101	603475	7096100
41	603500	7096000	102	603500	7096100
42	603525	7096000	103	603525	7096100

Geochemical Report on the GC, Leota CT & CT Claims, Leota Claim Block, Yukon Territory, Canada

43	603550	7096000	104	603550	7096100	
44	603575	7096000	105	603575	7096100	
45	603600	7096000	106	603600	7096100	
46	603625	7096000	107	603625	7096100	
47	603650	7096000	108	603650	7096100	
48	603675	7096000	109	603675	7096100	
49	603700	7096000	110	603700	7096100	
50	603725	7096000	111	603725	7096100	
51	603750	7096000	112	603750	7096100	
52	603775	7096000	113	603775	7096100	
53	603800	7096000	114	603800	7096100	
54	603825	7096000	115	603825	7096100	
55	603850	7096000	116	603850	7096100	
56	603875	7096000	117	603875	7096100	
57	603900	7096000	118	603900	7096100	no sample
58	603925	7096000	119	603925	7096100	no sample
59	603950	7096000	120	603950	7096100	no sample
60	603975	7096000	121	603975	7096100	
61	604000	7096000	122	604000	7096100	

APPENDIX II

Assay Certificates



1020 Cordova St. East Vancouver BC V6A 4A3 Canada

Acme Analytical Laboratories (Vancouver) Ltd.

www.acmelab.com

Client: Northern Dancer
PO Box 2662
Garibaldi Highlands BC V0N1T0 Canada

Submitted By: Dwayne Kress
Receiving Lab: Canada-Dawson City
Received: September 23, 2011
Report Date: November 10, 2011
Page: 1 of 5

CERTIFICATE OF ANALYSIS

DAW11000437.1

CLIENT JOB INFORMATION

Project: GC & CT (Gor South)
Shipment ID: NA
P.O. Number
Number of Samples: 116

SAMPLE DISPOSAL

DISP-PLP Dispose of Pulp After 90 days
DISP-RJT-SOIL Immediate Disposal of Soil Reject

Acme does not accept responsibility for samples left at the laboratory after 90 days without prior written instructions for sample storage or return.

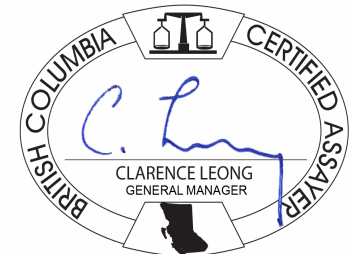
Invoice To: Goldbank Mining Corp.
605 - 889 West Pender St.
Vancouver BC V6C 3B2
Canada

CC: Bohumil (Boris) Molak

SAMPLE PREPARATION AND ANALYTICAL PROCEDURES

Method Code	Number of Samples	Code Description	Test Wgt (g)	Report Status	Lab
Dry at 60C	116	Dry at 60C			VAN
SS80	116	Dry at 60C sieve 100g to -80 mesh			VAN
1F03	116	1:1:1 Aqua Regia digestion Ultratrace ICP-MS analysis	30	Completed	VAN

ADDITIONAL COMMENTS



This report supersedes all previous preliminary and final reports with this file number dated prior to the date on this certificate. Signature indicates final approval; preliminary reports are unsigned and should be used for reference only. All results are considered the confidential property of the client. Acme assumes the liabilities for actual cost of analysis only. Results apply to samples as submitted. ** asterisk indicates that an analytical result could not be provided due to unusually high levels of interference from other elements.



Acme Analytical Laboratories (Vancouver) Ltd.
 1020 Cordova St. East Vancouver BC V6A 4A3 Canada
 Phone (604) 253-3158 Fax (604) 253-1716

www.acmelab.com

Client: **Northern Dancer**
 PO Box 2662
 Garibaldi Highlands BC V0N1T0 Canada

Project: GC & CT (Gor South)
 Report Date: November 10, 2011

Page: 2 of 5 Part 1

CERTIFICATE OF ANALYSIS

DAW11000437.1

Method	1F30	1F30	1F30	1F30	1F30	1F30	1F30	1F30	1F30	1F30	1F30	1F30	1F30	1F30	1F30	1F30	1F30	1F30	1F30	1F30	
Analyte	Mo	Cu	Pb	Zn	Ag	Ni	Co	Mn	Fe	As	U	Au	Th	Sr	Cd	Sb	Bi	V	Ca	P	
Unit	ppm	ppm	ppm	ppm	ppb	ppm	ppm	ppm	%	ppm	ppm	ppb	ppm	ppm	ppm	ppm	ppm	ppm	%	%	
MDL	0.01	0.01	0.01	0.1	2	0.1	0.1	1	0.01	0.1	0.1	0.2	0.1	0.5	0.01	0.02	0.02	2	0.01	0.001	
1	Soil	1.40	30.32	10.36	82.2	147	29.1	9.8	436	2.44	10.6	0.7	4.3	3.8	50.7	0.50	1.04	0.23	42	1.74	0.085
2	Soil	1.24	27.68	9.90	74.0	132	26.5	9.5	381	2.47	12.0	0.5	4.3	3.6	43.8	0.49	0.97	0.18	42	1.48	0.078
3	Soil	1.23	29.48	10.66	78.9	152	27.6	9.8	431	2.51	11.6	0.5	2.7	3.9	30.6	0.37	0.91	0.19	44	0.84	0.082
4	Soil	1.94	23.92	10.15	54.0	153	19.9	8.1	310	2.52	8.4	1.2	3.2	4.0	20.1	0.13	0.50	0.20	47	0.26	0.046
5	Soil	1.38	29.63	10.64	78.4	171	28.3	10.8	444	2.77	12.2	0.7	3.3	4.1	28.9	0.33	0.96	0.19	48	0.40	0.074
6	Soil	1.39	30.97	10.46	78.7	145	28.7	10.5	688	2.70	13.4	0.7	4.0	4.4	32.3	0.38	0.99	0.18	48	0.47	0.091
7	Soil	1.28	28.76	9.32	66.0	146	26.1	9.6	492	2.49	12.8	0.5	8.0	3.9	26.1	0.37	0.85	0.16	45	0.40	0.074
8	Soil	1.75	31.72	11.94	81.3	159	28.2	10.0	293	2.83	12.5	0.8	4.2	5.0	26.9	0.34	0.99	0.20	47	0.39	0.068
9	Soil	1.96	33.18	12.24	93.6	183	28.3	10.8	336	3.11	14.9	0.6	3.7	4.8	26.0	0.48	1.08	0.20	48	0.39	0.082
10	Soil	2.87	33.51	9.32	76.6	176	26.0	9.9	325	3.09	8.2	1.3	4.2	6.2	21.3	0.17	0.64	0.19	44	0.24	0.040
11	Soil	4.88	38.60	9.16	81.6	181	30.4	11.1	440	3.07	7.3	1.1	4.4	5.2	18.2	0.23	0.58	0.20	43	0.19	0.034
12	Soil	8.08	49.31	8.66	122.1	308	39.9	16.6	864	3.39	5.4	1.0	3.3	6.1	13.9	0.72	0.56	0.20	32	0.15	0.052
13	Soil	20.24	69.11	17.61	167.5	349	49.8	15.1	785	3.48	6.1	1.9	6.3	5.1	14.7	1.82	0.70	0.27	33	0.15	0.061
14	Soil	44.41	173.8	25.19	329.3	156	96.4	27.2	1226	5.27	6.7	4.1	12.1	6.2	12.0	2.64	1.00	0.40	43	0.05	0.070
15	Soil	73.34	141.4	18.60	482.2	153	89.1	18.3	315	4.67	3.1	2.8	9.3	6.5	6.9	2.05	0.88	0.44	41	0.03	0.050
16	Soil	4.75	56.60	5.59	113.7	52	39.2	11.6	948	2.87	3.5	1.1	1.7	5.0	11.1	0.49	0.48	0.15	22	0.14	0.066
17	Soil	1.88	124.9	14.94	116.2	35	50.6	9.0	598	2.50	<0.1	0.8	1.4	7.7	1.4	0.44	0.15	0.51	4	0.01	0.026
18	Soil	5.31	103.7	39.13	225.2	376	58.4	10.0	444	3.22	11.5	0.8	1.2	6.8	17.7	1.38	0.29	0.28	5	1.10	0.123
19	Soil	26.52	116.8	20.57	281.2	88	66.8	26.2	3260	4.82	2.8	2.3	6.1	7.3	10.9	1.83	0.46	0.33	16	0.03	0.046
20	Soil	21.09	98.27	4.04	208.7	46	52.0	19.3	1150	3.25	<0.1	1.6	2.3	5.5	4.1	1.36	0.28	0.23	7	0.02	0.038
21	Soil	5.32	57.58	6.98	103.1	75	49.8	18.9	473	5.05	16.5	2.0	2.7	9.8	4.5	0.12	0.32	0.32	37	0.03	0.030
22	Soil	5.61	40.79	8.28	81.9	45	30.6	14.6	434	3.41	11.7	1.3	2.9	6.8	7.1	0.11	0.43	0.23	44	0.05	0.019
23	Soil	5.76	49.37	7.36	102.0	45	38.7	13.5	452	3.57	8.4	1.9	2.4	7.0	5.6	0.17	0.63	0.26	31	0.04	0.021
24	Soil	5.31	47.53	9.23	66.3	22	35.0	9.4	472	2.96	7.4	1.0	4.0	5.6	8.5	0.11	0.59	0.18	34	0.07	0.024
25	Soil	5.47	53.59	9.96	104.1	29	37.7	13.2	462	3.65	8.9	1.7	4.8	6.9	8.4	0.16	0.58	0.24	46	0.05	0.019
26	Soil	6.18	47.50	14.22	107.2	55	38.6	12.8	469	3.50	20.9	1.4	4.1	7.1	10.2	0.30	0.92	0.22	42	0.06	0.025
27	Soil	11.28	59.41	22.07	130.2	103	45.3	10.5	504	3.29	9.4	1.7	2.6	7.2	8.0	0.53	0.53	0.21	47	0.05	0.023
28	Soil	20.71	59.61	18.09	206.8	264	39.8	19.9	798	3.71	12.9	2.0	1.2	3.4	10.3	0.79	0.62	0.34	49	0.03	0.073
29	Soil	5.65	58.88	16.04	109.7	104	39.7	12.7	482	3.32	12.0	1.8	3.4	5.8	17.3	0.88	0.79	0.23	51	0.13	0.027
30	Soil	3.97	41.33	14.83	84.9	59	32.3	10.4	459	2.91	11.0	1.5	3.8	4.8	16.2	0.43	0.66	0.20	42	0.15	0.023

This report supersedes all previous preliminary and final reports with this file number dated prior to the date on this certificate. Signature indicates final approval; preliminary reports are unsigned and should be used for reference only.



1020 Cordova St. East Vancouver BC V6A 4A3 Canada
Phone (604) 253-3158 Fax (604) 253-1716

Acme Analytical Laboratories (Vancouver) Ltd.

www.acmelab.com

Client: **Northern Dancer**
PO Box 2662
Garibaldi Highlands BC V0N1T0 Canada

Project: GC & CT (Gor South)
Report Date: November 10, 2011

Page: 2 of 5 Part 2

CERTIFICATE OF ANALYSIS

DAW11000437.1

Method	Analyte	1F30	1F30	1F30	1F30	1F30	1F30	1F30	1F30	1F30	1F30	1F30	1F30	1F30	1F30	1F30	1F30	
		La	Cr	Mg	Ba	Ti	B	Al	Na	K	W	Sc	Tl	S	Hg	Se	Te	Ga
Unit		ppm	ppm	%	ppm	%	ppm	%	%	%	ppm	ppm	ppm	ppb	ppm	ppm	ppm	
MDL		0.5	0.5	0.01	0.5	0.001	1	0.01	0.001	0.01	0.1	0.1	0.02	0.02	5	0.1	0.02	0.1
1	Soil	13.1	24.3	0.83	533.3	0.048	2	1.16	0.020	0.07	0.3	2.7	0.09	<0.02	32	0.2	0.03	3.3
2	Soil	12.1	21.9	0.75	503.0	0.043	2	1.12	0.019	0.06	0.2	2.6	0.08	<0.02	47	0.2	0.03	2.9
3	Soil	13.5	25.6	0.63	483.8	0.041	2	1.27	0.018	0.05	0.2	3.0	0.08	<0.02	31	0.2	<0.02	3.6
4	Soil	15.6	26.8	0.39	340.9	0.033	2	1.59	0.009	0.04	0.2	3.1	0.07	<0.02	34	0.8	0.04	4.2
5	Soil	14.2	26.8	0.49	437.3	0.045	2	1.37	0.018	0.05	0.2	3.3	0.07	<0.02	42	0.1	0.05	3.5
6	Soil	14.7	27.7	0.55	395.5	0.048	2	1.30	0.020	0.05	0.2	3.2	0.07	<0.02	44	0.2	<0.02	3.5
7	Soil	13.0	23.6	0.45	327.1	0.040	2	1.13	0.018	0.05	0.2	2.7	0.06	<0.02	40	0.3	0.03	2.9
8	Soil	16.1	24.9	0.44	417.9	0.039	2	1.34	0.015	0.04	0.2	3.0	0.06	<0.02	51	0.2	0.05	3.3
9	Soil	15.8	25.1	0.45	434.4	0.041	2	1.39	0.015	0.04	0.2	3.0	0.06	<0.02	45	0.3	0.04	3.5
10	Soil	18.5	24.4	0.36	302.9	0.063	1	1.47	0.010	0.05	0.2	3.3	0.07	<0.02	39	0.4	<0.02	3.7
11	Soil	16.3	23.9	0.33	300.6	0.039	1	1.41	0.008	0.04	0.1	3.2	0.07	<0.02	36	0.8	0.05	3.6
12	Soil	15.8	18.5	0.23	274.7	0.029	<1	0.99	0.007	0.03	0.1	2.8	0.06	<0.02	22	1.9	0.06	2.6
13	Soil	14.1	16.3	0.21	220.5	0.026	<1	0.92	0.007	0.04	0.3	2.7	0.06	<0.02	27	3.2	0.11	2.3
14	Soil	17.5	17.5	0.15	248.4	0.014	<1	1.30	0.004	0.04	0.5	4.5	0.09	<0.02	71	5.8	0.14	2.7
15	Soil	21.8	12.6	0.08	117.0	0.005	<1	0.64	0.003	0.04	0.9	3.4	0.06	<0.02	88	13.0	0.17	1.7
16	Soil	12.6	14.4	0.24	229.5	0.019	<1	0.95	0.007	0.03	0.1	2.4	0.04	<0.02	26	1.0	0.04	2.3
17	Soil	20.2	7.8	0.23	48.3	<0.001	<1	0.40	0.002	0.02	<0.1	3.0	<0.02	<0.02	18	2.8	0.13	1.1
18	Soil	14.6	6.2	0.23	109.3	0.001	<1	0.37	0.005	0.03	0.1	2.1	0.03	<0.02	20	8.4	0.16	0.8
19	Soil	22.4	9.0	0.07	178.7	0.004	<1	0.49	0.005	0.03	0.7	5.0	0.09	<0.02	64	7.0	0.10	1.0
20	Soil	12.9	5.1	0.04	110.2	0.002	<1	0.35	0.004	0.02	0.2	1.7	0.03	<0.02	26	5.7	0.06	0.7
21	Soil	24.3	31.8	0.72	203.1	0.021	<1	2.37	0.002	0.04	<0.1	5.0	0.07	<0.02	34	1.1	0.12	5.8
22	Soil	19.2	26.3	0.41	196.6	0.032	<1	1.87	0.004	0.04	0.1	3.8	0.09	<0.02	28	1.0	0.07	4.7
23	Soil	20.3	19.7	0.29	166.8	0.023	<1	1.36	0.004	0.03	0.1	3.4	0.07	<0.02	26	2.0	0.07	3.4
24	Soil	18.4	19.2	0.28	195.5	0.028	<1	1.17	0.005	0.04	0.2	3.4	0.06	<0.02	42	1.4	0.05	2.9
25	Soil	21.5	27.8	0.36	223.2	0.033	<1	1.81	0.004	0.05	0.1	4.5	0.09	<0.02	47	1.3	0.05	4.4
26	Soil	22.5	24.8	0.34	282.3	0.033	1	1.54	0.006	0.05	0.2	4.4	0.08	<0.02	52	1.4	0.06	3.9
27	Soil	20.8	27.1	0.30	234.2	0.024	<1	1.71	0.004	0.04	0.2	4.0	0.12	<0.02	33	1.9	0.05	4.1
28	Soil	17.1	18.9	0.13	103.1	0.025	1	0.97	0.004	0.05	0.6	1.6	0.12	0.02	10	2.6	0.08	3.8
29	Soil	19.6	29.2	0.35	333.5	0.041	1	1.61	0.007	0.05	0.3	3.6	0.11	<0.02	45	1.0	0.07	4.3
30	Soil	14.9	24.9	0.37	356.1	0.031	<1	1.40	0.006	0.03	0.2	3.3	0.07	<0.02	37	0.6	0.04	3.8

This report supersedes all previous preliminary and final reports with this file number dated prior to the date on this certificate. Signature indicates final approval; preliminary reports are unsigned and should be used for reference only.



Acme Analytical Laboratories (Vancouver) Ltd.
 1020 Cordova St. East Vancouver BC V6A 4A3 Canada
 Phone (604) 253-3158 Fax (604) 253-1716

www.acmelab.com

Client: **Northern Dancer**
 PO Box 2662
 Garibaldi Highlands BC V0N1T0 Canada

Project: GC & CT (Gor South)
 Report Date: November 10, 2011

Page: 3 of 5 Part 1

CERTIFICATE OF ANALYSIS

DAW11000437.1

Method	Analyte	Unit	MDL	1F30 Mo	1F30 Cu	1F30 Pb	1F30 Zn	1F30 Ag	1F30 Ni	1F30 Co	1F30 Mn	1F30 Fe	1F30 As	1F30 U	1F30 Au	1F30 Th	1F30 Sr	1F30 Cd	1F30 Sb	1F30 Bi	1F30 V	1F30 Ca	1F30 P
				ppm	ppm	ppm	ppm	ppb	ppm	ppm	ppm	%	ppm	ppm	ppb	ppm	ppm	ppm	ppm	ppm	ppm	%	%
31	Soil			5.64	51.91	10.57	127.6	165	53.5	18.4	844	3.89	28.8	1.3	2.1	6.7	12.6	1.08	0.48	0.23	26	0.15	0.050
32	Soil			4.64	52.84	10.05	112.9	129	46.2	16.2	697	3.88	9.8	1.2	1.8	6.4	15.9	0.55	0.54	0.22	24	0.18	0.055
33	Soil			6.37	84.78	9.83	132.0	129	47.1	13.1	380	2.74	38.3	1.2	1.4	6.2	13.3	0.67	0.96	0.22	20	0.14	0.056
34	Soil			3.89	60.99	28.38	154.9	143	53.1	16.4	952	4.00	106.6	1.1	2.0	6.8	11.9	0.68	0.68	0.41	21	0.16	0.062
35	Soil			11.04	78.12	16.95	141.7	158	48.5	15.0	776	3.26	45.0	1.9	1.9	5.9	18.3	0.98	1.27	0.80	24	0.12	0.050
36	Soil			5.61	52.28	19.62	105.7	131	25.1	6.2	158	2.86	44.5	1.8	2.2	5.0	11.9	0.25	0.97	0.28	36	0.06	0.023
37	Soil			7.11	76.55	13.28	105.1	106	28.5	6.8	235	2.50	44.4	1.6	5.3	5.7	23.9	0.39	1.17	0.28	26	0.14	0.038
38	Soil			8.93	45.36	53.12	110.4	96	19.8	6.7	272	2.35	113.4	3.7	4.3	19.4	27.2	0.27	1.81	0.60	23	0.10	0.028
39	Soil			9.20	62.09	33.88	117.2	161	23.3	7.9	168	2.74	52.1	5.1	2.8	17.4	19.1	0.36	1.19	1.33	34	0.09	0.032
40	Soil			6.05	66.20	21.73	176.7	135	36.5	11.7	855	2.59	35.7	9.2	1.3	11.1	18.0	0.60	1.39	0.60	24	0.15	0.056
41	Soil			10.84	88.35	21.70	161.1	136	39.0	11.4	387	3.20	26.2	4.6	2.1	8.3	22.5	0.37	1.37	0.40	25	0.13	0.049
42	Soil			5.92	44.01	15.85	93.3	61	25.4	8.1	231	2.66	19.4	3.7	1.8	7.2	18.3	0.22	0.98	0.40	37	0.14	0.029
43	Soil			10.49	58.23	20.55	118.6	174	30.9	7.3	219	3.18	18.2	4.7	1.9	8.9	23.4	0.28	1.15	0.40	29	0.13	0.053
44	Soil			9.15	53.19	18.78	106.3	127	29.5	7.0	208	2.99	17.4	3.5	0.9	8.0	19.2	0.13	1.11	0.38	28	0.12	0.043
45	Soil			5.05	59.93	15.10	99.3	240	33.7	14.0	782	3.16	12.2	2.6	1.9	8.8	26.5	0.58	0.85	0.32	40	0.25	0.057
46	Soil			5.06	55.03	14.40	85.6	138	27.9	10.7	450	2.96	9.9	4.3	1.1	8.2	24.3	0.30	0.77	0.34	39	0.21	0.049
47	Soil			4.97	30.86	13.97	68.9	88	20.7	8.0	240	2.66	12.8	2.9	2.6	6.6	16.0	0.12	0.70	0.22	40	0.13	0.034
48	Soil			7.93	102.5	14.18	156.8	180	35.2	8.1	503	3.19	6.0	4.6	2.4	7.6	19.4	0.30	0.64	0.24	54	0.14	0.039
49	Soil			5.42	64.63	15.80	96.0	258	31.8	8.7	329	2.95	10.5	4.9	1.4	7.5	27.7	0.19	0.89	0.25	46	0.23	0.040
50	Soil			5.70	60.88	12.80	117.9	409	32.9	8.1	330	2.59	7.5	3.5	5.2	7.6	20.3	0.23	0.54	0.25	31	0.15	0.044
51	Soil			9.37	108.2	18.22	208.9	440	74.7	12.7	585	3.05	8.7	4.6	1.1	9.7	15.7	0.58	0.57	0.28	27	0.10	0.048
52	Soil			12.35	82.23	18.68	245.4	820	97.8	11.3	482	3.78	19.1	4.2	1.0	9.8	17.6	0.74	0.75	0.51	38	0.12	0.057
53	Soil			5.89	64.83	11.81	174.8	248	59.9	6.6	328	3.18	13.8	4.1	1.6	9.4	14.8	0.43	0.37	0.26	35	0.12	0.050
54	Soil			4.87	50.80	6.18	211.8	233	247.6	25.5	1315	4.56	72.3	3.9	0.7	7.1	17.7	1.09	0.30	0.14	76	0.30	0.065
55	Soil			5.35	81.11	8.63	131.7	133	208.1	30.8	1494	5.42	74.0	3.5	1.5	3.8	17.0	1.02	0.28	0.14	79	0.17	0.060
56	Soil			5.63	81.59	9.26	116.3	157	93.7	18.7	1185	3.93	26.9	3.1	0.2	6.9	17.2	0.45	0.28	0.15	64	0.26	0.073
60	Soil			0.68	26.56	9.14	61.9	146	27.2	9.3	401	2.16	10.6	0.5	1.7	4.6	27.2	0.29	0.76	0.16	37	0.41	0.077
61	Soil			0.89	29.46	9.14	64.4	132	27.1	9.3	399	2.19	11.9	0.6	1.6	4.7	31.4	0.28	0.90	0.17	37	0.56	0.085
62	Soil			1.11	32.71	9.91	75.9	146	28.6	9.4	376	2.38	12.8	0.5	2.2	4.6	47.0	0.41	0.99	0.18	36	1.55	0.080
63	Soil			1.12	27.84	9.82	73.4	124	24.8	9.3	383	2.25	11.5	0.5	3.3	4.7	44.1	0.42	0.99	0.18	36	1.50	0.080



Acme Analytical Laboratories (Vancouver) Ltd.
 1020 Cordova St. East Vancouver BC V6A 4A3 Canada
 Phone (604) 253-3158 Fax (604) 253-1716

www.acmelab.com

Client: **Northern Dancer**
 PO Box 2662
 Garibaldi Highlands BC V0N1T0 Canada

Project: GC & CT (Gor South)
 Report Date: November 10, 2011

Page: 3 of 5 Part 2

CERTIFICATE OF ANALYSIS

DAW11000437.1

Method	1F30	1F30	1F30	1F30	1F30	1F30	1F30	1F30	1F30	1F30	1F30	1F30	1F30	1F30	1F30	1F30	1F30	
Analyte	La	Cr	Mg	Ba	Ti	B	Al	Na	K	W	Sc	Tl	S	Hg	Se	Te	Ga	
Unit	ppm	ppm	%	ppm	%	ppm	%	%	%	ppm	ppm	ppm	%	ppb	ppm	ppm	ppm	
MDL	0.5	0.5	0.01	0.5	0.001	1	0.01	0.001	0.01	0.1	0.1	0.02	0.02	5	0.1	0.02	0.1	
31	Soil	17.4	18.3	0.29	283.5	0.014	<1	1.05	0.007	0.03	0.2	2.6	0.07	<0.02	18	1.7	0.09	3.1
32	Soil	12.1	18.6	0.32	224.3	0.015	<1	1.14	0.009	0.04	0.2	2.7	0.06	<0.02	18	1.5	0.08	3.0
33	Soil	15.9	12.8	0.12	163.3	0.009	2	0.57	0.006	0.04	0.2	2.4	0.07	<0.02	25	3.7	0.08	1.4
34	Soil	14.0	14.0	0.18	189.5	0.011	<1	0.75	0.007	0.03	0.1	2.5	0.09	<0.02	19	2.8	0.09	2.4
35	Soil	14.9	12.6	0.14	213.6	0.010	<1	0.63	0.006	0.04	0.3	2.9	0.11	<0.02	27	5.2	0.15	1.8
36	Soil	13.5	20.3	0.22	163.2	0.018	<1	1.20	0.004	0.02	0.2	3.0	0.12	<0.02	21	1.7	0.06	2.7
37	Soil	13.4	13.3	0.19	167.4	0.020	<1	0.64	0.006	0.03	1.4	2.4	0.08	<0.02	25	1.0	0.11	2.0
38	Soil	32.3	12.4	0.16	205.0	0.013	2	1.00	0.007	0.08	0.7	2.8	0.58	0.05	26	3.0	0.11	4.2
39	Soil	28.9	18.5	0.26	186.1	0.022	<1	1.30	0.006	0.06	0.7	3.3	0.29	0.03	29	2.4	0.10	4.3
40	Soil	32.4	15.9	0.18	247.0	0.020	<1	0.85	0.006	0.04	1.8	2.9	0.18	<0.02	28	0.6	0.04	2.5
41	Soil	27.0	14.7	0.19	208.2	0.015	<1	0.81	0.006	0.04	0.5	3.1	0.09	<0.02	43	2.9	0.06	2.2
42	Soil	20.4	20.1	0.28	227.0	0.039	<1	1.08	0.007	0.03	0.3	3.2	0.07	<0.02	24	1.1	0.06	3.2
43	Soil	30.0	15.2	0.20	222.1	0.031	<1	0.85	0.007	0.04	0.3	2.8	0.08	<0.02	24	1.9	0.03	2.6
44	Soil	27.8	16.0	0.19	216.2	0.036	<1	0.86	0.006	0.04	0.5	3.0	0.08	<0.02	28	2.3	0.06	2.7
45	Soil	26.6	27.4	0.52	301.6	0.058	<1	1.50	0.010	0.05	0.3	3.7	0.10	<0.02	33	1.2	0.02	4.2
46	Soil	25.7	24.2	0.42	247.9	0.061	1	1.48	0.008	0.04	0.2	3.7	0.07	<0.02	28	0.9	0.04	4.2
47	Soil	20.4	22.7	0.33	235.8	0.037	1	1.27	0.007	0.04	0.3	2.9	0.06	<0.02	24	1.2	0.05	3.4
48	Soil	22.2	47.9	1.02	238.8	0.031	<1	1.70	0.004	0.03	0.2	5.4	0.04	<0.02	23	2.0	0.12	4.6
49	Soil	26.0	32.1	0.47	357.4	0.052	<1	1.50	0.009	0.04	0.2	4.2	0.08	<0.02	26	1.6	0.06	4.2
50	Soil	22.8	23.4	0.43	189.7	0.025	<1	1.06	0.006	0.03	0.2	2.6	0.04	<0.02	25	1.2	0.07	2.9
51	Soil	38.0	19.6	0.43	143.9	0.014	<1	1.01	0.005	0.04	0.2	2.6	0.07	<0.02	10	2.9	0.11	2.6
52	Soil	28.9	26.1	0.45	146.7	0.010	2	1.18	0.006	0.05	0.2	3.2	0.06	0.03	22	3.3	0.13	3.4
53	Soil	30.1	34.5	0.79	127.7	0.020	<1	1.33	0.003	0.02	<0.1	2.9	0.03	<0.02	12	2.0	0.15	3.6
54	Soil	29.6	347.8	3.10	118.2	0.020	<1	3.08	<0.001	0.01	0.1	7.4	0.02	<0.02	15	1.1	0.06	7.5
55	Soil	17.4	107.7	1.04	173.8	0.015	<1	1.87	<0.001	0.04	<0.1	7.5	0.02	<0.02	8	0.3	0.05	4.9
56	Soil	25.0	74.5	1.09	199.8	0.030	<1	1.92	0.002	0.05	0.1	5.8	0.04	<0.02	10	0.7	0.05	5.8
60	Soil	14.4	22.0	0.46	276.1	0.047	<1	1.00	0.019	0.06	0.2	2.9	0.08	<0.02	26	0.3	0.04	2.8
61	Soil	15.7	22.8	0.50	248.3	0.047	1	0.95	0.016	0.06	0.2	3.1	0.08	<0.02	30	0.2	0.03	3.0
62	Soil	14.2	22.5	0.75	408.8	0.046	1	0.97	0.018	0.06	0.2	2.8	0.08	<0.02	36	0.6	0.05	3.1
63	Soil	13.7	21.0	0.73	407.9	0.044	1	0.97	0.017	0.06	0.2	2.8	0.08	<0.02	33	0.2	<0.02	2.9

This report supersedes all previous preliminary and final reports with this file number dated prior to the date on this certificate. Signature indicates final approval; preliminary reports are unsigned and should be used for reference only.



Acme Analytical Laboratories (Vancouver) Ltd.
 1020 Cordova St. East Vancouver BC V6A 4A3 Canada
 Phone (604) 253-3158 Fax (604) 253-1716

www.acmelab.com

Client: **Northern Dancer**
 PO Box 2662
 Garibaldi Highlands BC V0N1T0 Canada

Project: GC & CT (Gor South)
 Report Date: November 10, 2011

Page: 4 of 5 Part 1

CERTIFICATE OF ANALYSIS

DAW11000437.1

Method	Analyte	Unit	MDL	1F30 Mo	1F30 Cu	1F30 Pb	1F30 Zn	1F30 Ag	1F30 Ni	1F30 Co	1F30 Mn	1F30 Fe	1F30 As	1F30 U	1F30 Au	1F30 Th	1F30 Sr	1F30 Cd	1F30 Sb	1F30 Bi	1F30 V	1F30 Ca	1F30 P
				ppm	ppm	ppm	ppm	ppb	ppm	ppm	ppm	%	ppm	ppm	ppb	ppm	ppm	ppm	ppm	ppm	ppm	%	%
64	Soil			1.26	30.21	11.12	80.8	160	28.9	10.6	438	2.45	11.3	0.6	2.4	4.8	37.7	0.33	0.99	0.19	42	1.02	0.080
65	Soil			1.48	30.77	11.02	80.6	180	29.5	10.8	534	2.46	11.1	0.7	5.1	4.9	40.5	0.51	1.06	0.19	43	1.11	0.083
66	Soil			1.55	28.61	10.74	65.2	222	23.7	8.8	293	2.49	8.8	1.1	6.9	2.5	26.8	0.16	0.76	0.23	46	0.32	0.054
67	Soil			1.49	30.70	11.55	64.8	194	25.3	9.5	352	2.59	10.4	1.1	3.7	4.4	29.2	0.17	0.87	0.21	46	0.36	0.055
68	Soil			1.55	32.87	11.27	75.7	171	26.5	10.5	441	2.63	11.8	0.8	2.9	5.0	31.6	0.30	1.02	0.21	45	0.41	0.068
69	Soil			1.89	34.94	12.36	74.6	212	28.0	9.9	372	2.77	11.4	1.0	4.1	5.2	27.9	0.25	0.92	0.24	47	0.34	0.050
70	Soil			3.46	37.16	13.12	78.0	193	27.6	10.2	387	2.59	9.7	1.1	3.9	5.4	23.6	0.28	0.88	0.22	46	0.26	0.042
71	Soil			2.39	37.65	11.36	68.8	97	25.8	9.2	329	2.37	9.0	0.9	4.7	5.0	23.1	0.17	0.73	0.19	39	0.25	0.040
72	Soil			23.69	89.35	28.15	199.7	780	66.5	17.4	943	3.87	7.4	1.7	2.3	5.6	20.4	2.23	1.04	0.24	31	0.26	0.091
73	Soil			3.06	40.39	12.52	94.2	303	30.4	10.4	441	2.82	11.2	0.9	2.6	5.5	26.0	0.22	1.08	0.23	45	0.29	0.050
74	Soil			4.44	71.68	14.21	133.4	95	57.4	11.2	536	3.38	7.9	1.3	3.9	7.5	12.8	0.31	0.62	0.39	33	0.16	0.034
75	Soil			1.49	36.96	10.09	68.1	161	28.2	8.4	339	2.36	10.4	0.7	2.8	4.9	20.3	0.13	0.90	0.18	41	0.26	0.042
76	Soil			6.32	56.85	12.40	103.6	569	37.7	15.5	356	3.27	7.4	1.1	7.6	6.0	9.0	0.31	0.73	0.28	47	0.05	0.019
77	Soil			6.81	80.68	16.22	129.7	496	47.8	15.1	457	3.57	9.6	2.1	5.0	6.9	7.2	0.36	0.64	0.24	51	0.05	0.023
78	Soil			18.57	85.40	13.33	162.7	147	56.4	22.5	514	5.16	5.3	2.7	2.2	8.8	8.5	0.30	0.54	0.48	27	0.04	0.045
79	Soil			10.12	44.52	4.65	136.4	59	45.3	13.2	724	5.11	10.9	1.7	1.7	8.3	3.5	0.10	0.28	0.25	19	0.03	0.035
80	Soil			7.84	49.20	12.05	116.8	164	39.4	14.7	519	3.17	9.8	1.3	3.1	5.1	5.3	0.29	0.68	0.27	30	0.04	0.022
81	Soil			8.41	63.17	16.24	131.0	60	40.1	14.6	611	3.02	12.2	1.3	3.3	6.1	5.5	0.33	0.82	0.23	33	0.03	0.027
82	Soil			6.22	59.90	11.59	135.1	34	41.3	12.0	557	3.38	11.4	1.1	3.7	6.0	11.0	0.26	0.79	0.24	41	0.08	0.027
83	Soil			20.44	68.23	9.20	150.7	50	47.0	13.6	771	3.36	6.3	1.9	1.9	5.6	7.6	0.69	0.59	0.28	23	0.05	0.037
84	Soil			14.81	80.25	8.90	134.0	120	55.8	12.8	479	3.41	11.6	1.4	1.6	6.6	10.1	0.60	0.75	0.13	21	0.04	0.035
85	Soil			15.97	90.95	21.00	219.9	300	61.9	20.7	1058	3.16	20.7	1.4	1.6	4.9	5.2	1.05	0.64	0.16	16	0.02	0.046
86	Soil			21.24	98.48	27.38	194.3	185	56.5	21.6	1130	3.98	24.2	2.9	2.4	5.8	9.2	1.02	0.75	0.26	37	0.05	0.039
87	Soil			3.15	42.83	13.49	86.3	190	33.7	12.5	600	3.07	14.5	0.9	3.5	5.7	22.1	0.22	1.00	0.23	47	0.23	0.036
88	Soil			7.02	59.52	17.91	126.3	140	50.3	16.3	939	3.43	11.3	1.8	2.3	7.3	17.8	0.52	0.68	0.30	36	0.15	0.034
89	Soil			13.27	99.08	21.25	231.4	129	68.6	23.5	1463	4.82	5.4	3.9	3.1	14.2	5.8	0.90	0.43	0.33	22	0.02	0.043
90	Soil			10.65	81.27	18.64	168.0	183	58.4	24.9	1066	4.22	8.6	2.7	3.7	12.8	8.4	0.70	0.37	0.37	28	0.03	0.037
91	Soil			6.43	64.85	15.60	125.7	189	43.8	18.0	684	3.67	9.9	1.9	2.7	11.8	8.9	0.39	0.39	0.31	30	0.04	0.028
92	Soil			2.59	41.16	12.66	69.2	212	28.5	10.3	391	2.81	10.9	2.6	2.5	5.4	17.9	0.17	0.68	0.21	45	0.16	0.021
93	Soil			2.75	40.03	12.09	70.6	106	31.3	9.8	397	2.83	10.7	2.0	2.7	5.9	20.9	0.15	0.66	0.21	42	0.23	0.029

This report supersedes all previous preliminary and final reports with this file number dated prior to the date on this certificate. Signature indicates final approval; preliminary reports are unsigned and should be used for reference only.



1020 Cordova St. East Vancouver BC V6A 4A3 Canada
 Phone (604) 253-3158 Fax (604) 253-1716

Acme Analytical Laboratories (Vancouver) Ltd.

www.acmelab.com

Client: **Northern Dancer**
 PO Box 2662
 Garibaldi Highlands BC V0N1T0 Canada

Project: GC & CT (Gor South)
 Report Date: November 10, 2011

Page: 4 of 5 Part 2

CERTIFICATE OF ANALYSIS

DAW11000437.1

Method	Analyte	1F30	1F30	1F30	1F30	1F30	1F30	1F30	1F30	1F30	1F30	1F30	1F30	1F30	1F30	1F30	1F30	1F30
		La	Cr	Mg	Ba	Ti	B	Al	Na	K	W	Sc	Tl	S	Hg	Se	Te	Ga
Unit		ppm	ppm	%	ppm	%	ppm	%	%	%	ppm	ppm	ppm	ppb	ppm	ppm	ppm	ppm
MDL		0.5	0.5	0.01	0.5	0.001	1	0.01	0.001	0.01	0.1	0.1	0.02	0.02	5	0.1	0.02	0.1
64	Soil	15.9	24.4	0.72	426.1	0.054	1	1.12	0.020	0.06	0.2	3.2	0.09	<0.02	31	0.4	0.02	3.5
65	Soil	17.1	25.5	0.66	530.9	0.051	2	1.21	0.019	0.06	0.4	3.3	0.09	<0.02	37	0.2	0.03	3.6
66	Soil	16.9	27.1	0.44	430.7	0.033	<1	1.54	0.011	0.04	0.2	3.2	0.06	<0.02	45	0.6	0.08	4.4
67	Soil	16.3	28.2	0.45	417.1	0.038	<1	1.47	0.014	0.04	0.2	3.8	0.06	<0.02	38	0.1	0.07	4.3
68	Soil	15.8	26.0	0.49	395.4	0.047	<1	1.31	0.019	0.05	0.2	3.5	0.06	<0.02	25	0.3	0.08	4.0
69	Soil	16.7	28.1	0.44	404.2	0.044	<1	1.53	0.013	0.04	0.2	3.8	0.05	<0.02	44	0.4	0.04	4.1
70	Soil	17.0	26.8	0.38	339.7	0.051	<1	1.35	0.010	0.04	0.2	3.5	0.05	<0.02	34	0.6	0.02	3.8
71	Soil	15.6	22.7	0.36	283.4	0.047	<1	1.16	0.010	0.04	0.2	3.2	0.05	<0.02	31	0.3	0.03	3.3
72	Soil	11.8	19.6	0.24	328.7	0.021	<1	0.93	0.008	0.04	0.3	3.3	0.05	<0.02	39	3.1	0.08	2.5
73	Soil	17.8	27.3	0.42	425.2	0.045	<1	1.46	0.012	0.05	0.2	3.9	0.05	<0.02	45	0.5	0.09	4.0
74	Soil	20.3	24.4	0.47	264.1	0.039	<1	1.51	0.004	0.04	0.2	4.2	0.06	<0.02	37	3.7	0.07	4.1
75	Soil	14.9	27.5	0.41	308.9	0.045	<1	1.16	0.011	0.05	0.2	3.7	0.05	<0.02	33	0.6	<0.02	3.3
76	Soil	16.5	26.7	0.41	227.8	0.038	<1	1.46	0.004	0.03	0.1	4.4	0.08	<0.02	50	1.7	0.08	4.1
77	Soil	17.7	29.2	0.43	234.9	0.035	<1	1.79	0.004	0.04	0.1	6.2	0.10	<0.02	50	1.7	0.04	4.7
78	Soil	20.5	17.2	0.18	185.7	0.017	<1	0.84	0.006	0.03	0.2	3.4	0.06	<0.02	40	2.2	0.14	2.6
79	Soil	19.9	17.8	0.40	150.7	0.004	<1	1.06	0.004	0.02	<0.1	3.0	0.05	<0.02	17	2.8	0.10	3.0
80	Soil	16.8	19.8	0.28	159.3	0.017	<1	1.24	0.004	0.03	0.2	3.3	0.07	<0.02	33	1.5	0.07	3.3
81	Soil	17.8	19.4	0.25	177.0	0.025	6	1.10	0.004	0.03	0.2	4.1	0.07	<0.02	54	2.4	0.07	3.0
82	Soil	17.8	23.3	0.37	298.2	0.033	<1	1.41	0.006	0.04	0.1	4.7	0.07	<0.02	50	1.4	0.04	3.7
83	Soil	14.4	13.0	0.19	166.1	0.018	<1	0.74	0.004	0.03	0.3	3.2	0.06	<0.02	38	2.1	0.10	2.1
84	Soil	17.4	11.4	0.11	166.9	0.006	<1	0.53	0.004	0.03	0.3	2.8	0.09	0.02	25	8.4	0.08	1.5
85	Soil	9.9	12.5	0.10	142.3	0.004	<1	1.10	0.002	0.02	0.4	1.6	0.09	<0.02	24	3.7	0.08	1.7
86	Soil	18.8	18.9	0.20	183.3	0.018	<1	1.27	0.003	0.03	0.5	4.4	0.11	<0.02	46	3.4	0.05	3.2
87	Soil	16.3	29.2	0.46	412.9	0.044	<1	1.38	0.013	0.04	0.2	4.1	0.07	<0.02	46	0.6	0.03	4.2
88	Soil	22.9	20.9	0.35	300.9	0.030	<1	1.19	0.009	0.04	0.2	3.5	0.04	<0.02	39	1.9	0.04	3.4
89	Soil	41.0	16.9	0.35	133.9	0.009	<1	1.05	0.003	0.02	0.2	3.8	0.06	<0.02	32	4.5	0.16	3.1
90	Soil	37.5	22.2	0.52	172.0	0.018	<1	1.43	0.003	0.02	0.2	3.9	0.06	<0.02	19	2.8	0.16	4.0
91	Soil	36.6	21.4	0.53	174.5	0.027	<1	1.40	0.004	0.02	0.1	3.4	0.06	<0.02	21	2.5	0.13	3.9
92	Soil	18.0	27.9	0.39	384.2	0.045	<1	1.48	0.008	0.03	0.2	4.0	0.06	<0.02	48	0.6	0.04	4.2
93	Soil	19.1	27.8	0.44	379.9	0.036	<1	1.35	0.008	0.03	0.1	3.8	0.05	<0.02	41	0.7	0.05	3.8

This report supersedes all previous preliminary and final reports with this file number dated prior to the date on this certificate. Signature indicates final approval; preliminary reports are unsigned and should be used for reference only.



Acme Analytical Laboratories (Vancouver) Ltd.
 1020 Cordova St. East Vancouver BC V6A 4A3 Canada
 Phone (604) 253-3158 Fax (604) 253-1716

www.acmelab.com

Client: **Northern Dancer**
 PO Box 2662
 Garibaldi Highlands BC V0N1T0 Canada

Project: GC & CT (Gor South)
 Report Date: November 10, 2011

Page: 5 of 5 Part 1

CERTIFICATE OF ANALYSIS

DAW11000437.1

Method	Analyte	1F30	1F30	1F30	1F30	1F30	1F30	1F30	1F30	1F30	1F30	1F30	1F30	1F30	1F30	1F30	1F30	1F30	1F30	1F30	1F30
		Mo	Cu	Pb	Zn	Ag	Ni	Co	Mn	Fe	As	U	Au	Th	Sr	Cd	Sb	Bi	V	Ca	P
Unit		ppm	ppm	ppm	ppm	ppb	ppm	ppm	ppm	%	ppm	ppm	ppb	ppm	ppm	ppm	ppm	ppm	ppm	%	%
MDL		0.01	0.01	0.01	0.1	2	0.1	0.1	1	0.01	0.1	0.1	0.2	0.1	0.5	0.01	0.02	0.02	2	0.01	0.001
94	Soil	7.03	57.14	14.39	114.8	126	38.2	13.3	556	3.13	8.0	1.8	2.2	6.2	9.1	0.41	0.45	0.25	34	0.08	0.024
95	Soil	1.66	38.40	11.24	67.1	181	31.2	10.1	449	2.70	12.1	0.9	2.8	4.6	23.3	0.15	0.76	0.22	43	0.32	0.044
96	Soil	10.13	103.9	13.71	198.1	103	60.7	15.9	744	3.41	26.5	2.8	2.2	6.0	13.2	0.51	0.70	1.14	34	0.04	0.033
97	Soil	5.99	60.34	16.90	108.9	213	32.6	10.2	566	2.68	23.7	2.6	2.2	5.1	22.5	0.58	0.88	0.63	31	0.10	0.033
98	Soil	4.70	52.17	14.87	90.8	120	27.3	8.6	298	2.73	18.7	2.4	3.6	5.9	15.5	0.26	0.81	0.57	40	0.08	0.021
99	Soil	4.27	49.40	17.23	66.0	108	21.4	7.4	272	2.56	16.8	2.2	3.4	7.0	13.4	0.19	0.69	0.49	37	0.10	0.018
100	Soil	2.61	37.35	13.12	59.6	56	19.6	6.7	218	2.30	12.8	2.8	2.7	6.7	14.3	0.13	0.68	0.26	37	0.14	0.016
101	Soil	2.99	23.91	11.97	53.7	120	16.9	6.2	245	2.18	12.0	1.1	2.9	4.7	12.5	0.14	0.55	0.29	36	0.11	0.017
102	Soil	2.51	25.80	18.49	67.2	69	16.7	6.1	227	1.91	10.6	3.4	4.2	9.5	13.5	0.19	0.51	0.39	29	0.13	0.018
103	Soil	3.51	24.21	15.90	73.4	280	17.7	5.3	194	2.11	9.4	3.1	4.9	9.8	12.7	0.20	0.48	0.41	29	0.10	0.020
104	Soil	4.11	24.71	14.87	71.3	173	17.4	5.7	239	2.14	9.5	3.3	2.1	8.5	11.1	0.21	0.50	0.36	29	0.09	0.025
105	Soil	3.33	34.47	12.19	71.1	155	20.9	7.5	246	2.34	8.4	4.4	1.4	5.9	16.9	0.18	0.49	0.25	41	0.18	0.032
106	Soil	3.80	37.20	12.85	83.7	232	36.4	8.7	299	2.76	11.2	9.3	7.8	6.2	22.0	0.15	0.54	0.21	45	0.25	0.040
107	Soil	2.84	21.53	11.93	60.9	142	18.2	6.6	226	2.27	9.2	3.1	1.5	5.4	13.5	0.19	0.53	0.21	40	0.14	0.030
108	Soil	3.16	31.71	11.01	69.0	124	22.2	7.3	264	2.30	8.9	4.2	3.7	5.9	11.8	0.22	0.51	0.20	40	0.12	0.023
109	Soil	3.54	24.30	13.09	66.6	275	18.7	7.2	231	2.41	9.3	6.9	2.3	6.5	16.9	0.11	0.41	0.24	44	0.18	0.027
110	Soil	4.59	37.36	11.12	97.8	257	27.4	9.5	577	2.42	7.0	4.0	1.1	5.4	14.7	0.46	0.43	0.20	37	0.15	0.039
111	Soil	2.94	34.93	10.09	69.4	170	22.6	8.1	329	2.28	8.4	6.0	2.0	5.2	17.7	0.11	0.45	0.18	41	0.21	0.037
112	Soil	14.45	85.33	22.92	259.4	1561	134.0	25.7	4164	3.92	7.4	7.9	1.5	8.1	27.1	3.94	0.57	0.35	34	0.11	0.076
113	Soil	5.44	45.33	10.52	131.1	484	89.9	18.8	1546	2.81	13.3	5.1	2.7	5.2	20.7	1.11	0.38	0.24	41	0.22	0.049
114	Soil	3.59	50.35	7.19	183.8	243	81.7	14.1	736	3.77	24.4	3.1	0.9	4.5	14.2	0.75	0.36	0.16	60	0.18	0.047
115	Soil	3.23	86.63	6.91	286.4	227	180.9	37.7	2346	6.26	29.7	3.3	0.3	4.1	22.0	1.58	0.14	0.10	119	0.30	0.062
116	Soil	2.33	78.26	5.09	286.5	241	143.7	32.6	1717	5.85	14.7	3.5	0.3	2.3	23.0	1.17	0.12	0.15	106	0.39	0.061
117	Soil	3.93	55.08	9.55	151.6	335	66.7	13.7	665	3.60	12.4	5.8	3.8	5.1	23.9	0.59	0.31	0.23	66	0.33	0.048
121	Soil	0.85	20.47	10.50	59.1	110	23.9	8.7	466	2.21	20.7	0.9	3.7	2.9	35.4	0.18	0.57	0.16	40	0.63	0.076
122	Soil	0.55	16.60	9.70	43.6	88	17.0	6.3	176	1.39	14.5	0.6	3.7	0.9	23.0	0.14	0.35	0.15	23	0.41	0.076



Acme Analytical Laboratories (Vancouver) Ltd.
 1020 Cordova St. East Vancouver BC V6A 4A3 Canada
 Phone (604) 253-3158 Fax (604) 253-1716

www.acmelab.com

Client: **Northern Dancer**
 PO Box 2662
 Garibaldi Highlands BC V0N1T0 Canada

Project: GC & CT (Gor South)
 Report Date: November 10, 2011

Page: 5 of 5 Part 2

CERTIFICATE OF ANALYSIS

DAW11000437.1

Method	Analyte	1F30	1F30	1F30	1F30	1F30	1F30	1F30	1F30	1F30	1F30	1F30	1F30	1F30	1F30	1F30	1F30	
		La	Cr	Mg	Ba	Ti	B	Al	Na	K	W	Sc	Tl	S	Hg	Se	Te	Ga
Unit		ppm	ppm	%	ppm	%	ppm	%	%	ppm	ppm	ppm	%	ppb	ppm	ppm	ppm	
MDL		0.5	0.5	0.01	0.5	0.001	1	0.01	0.001	0.01	0.1	0.1	0.02	5	0.1	0.02	0.1	
94	Soil	20.4	21.2	0.31	195.4	0.023	<1	1.22	0.004	0.02	2.9	3.7	0.07	<0.02	34	1.9	0.07	3.4
95	Soil	14.5	25.9	0.45	350.8	0.037	<1	1.27	0.013	0.04	0.2	3.5	0.07	<0.02	47	0.3	0.06	3.6
96	Soil	17.6	16.4	0.16	171.6	0.008	<1	0.94	0.003	0.04	0.4	5.1	0.20	<0.02	44	3.8	0.06	2.3
97	Soil	13.8	18.5	0.25	259.6	0.026	<1	0.93	0.006	0.03	0.2	3.1	0.14	<0.02	32	2.2	0.06	2.7
98	Soil	16.1	22.7	0.31	221.6	0.034	<1	1.25	0.006	0.03	0.2	4.1	0.15	<0.02	35	1.7	0.05	3.4
99	Soil	15.2	23.0	0.32	247.4	0.022	<1	1.33	0.005	0.03	0.2	3.3	0.13	<0.02	29	1.2	0.04	3.5
100	Soil	16.8	22.6	0.35	281.4	0.034	<1	1.15	0.007	0.03	0.2	3.5	0.10	<0.02	36	0.7	0.04	3.6
101	Soil	12.4	21.7	0.31	207.9	0.025	5	1.19	0.005	0.03	0.2	2.1	0.10	<0.02	16	0.8	0.03	3.7
102	Soil	15.3	17.3	0.24	191.2	0.025	<1	0.99	0.006	0.04	0.3	2.4	0.14	<0.02	20	0.7	0.03	3.3
103	Soil	17.4	17.2	0.25	198.7	0.022	<1	1.06	0.006	0.03	0.2	2.4	0.15	<0.02	22	1.0	0.04	3.4
104	Soil	18.5	17.6	0.25	186.9	0.022	<1	0.98	0.006	0.03	0.3	2.4	0.12	<0.02	19	1.3	0.04	3.2
105	Soil	17.0	28.3	0.45	250.0	0.027	<1	1.13	0.007	0.03	0.2	3.7	0.07	<0.02	27	0.7	0.04	3.4
106	Soil	17.3	67.4	0.82	254.6	0.031	<1	1.44	0.007	0.03	0.2	4.3	0.06	<0.02	47	1.3	0.02	3.9
107	Soil	14.5	27.4	0.38	244.2	0.027	<1	1.24	0.006	0.03	0.2	2.7	0.08	<0.02	23	1.7	0.04	3.5
108	Soil	15.6	30.9	0.43	212.2	0.024	<1	1.20	0.005	0.03	0.2	3.4	0.06	<0.02	27	1.0	0.04	3.5
109	Soil	16.9	29.8	0.45	265.5	0.030	<1	1.48	0.006	0.03	0.2	3.4	0.09	<0.02	29	1.2	0.02	4.4
110	Soil	17.1	28.4	0.46	175.7	0.022	<1	1.11	0.005	0.02	0.2	3.0	0.05	<0.02	25	1.0	0.06	3.3
111	Soil	15.6	32.0	0.49	251.1	0.028	<1	1.21	0.007	0.03	0.2	3.9	0.05	<0.02	27	0.7	0.05	3.5
112	Soil	24.1	23.4	0.56	278.0	0.017	<1	1.28	0.004	0.03	0.2	2.7	0.05	<0.02	37	1.7	0.06	3.7
113	Soil	20.2	82.0	0.67	271.2	0.028	<1	1.49	0.004	0.03	0.2	3.8	0.06	<0.02	28	1.5	0.04	4.3
114	Soil	15.4	76.7	0.91	234.2	0.039	<1	1.87	0.002	0.04	<0.1	5.5	0.05	<0.02	20	1.1	0.02	5.3
115	Soil	14.2	107.5	1.88	214.2	0.039	<1	2.94	<0.001	0.03	<0.1	16.2	0.02	<0.02	9	0.2	0.05	9.1
116	Soil	9.7	138.9	1.98	223.7	0.134	<1	3.11	<0.001	0.04	<0.1	13.8	0.04	<0.02	5	0.3	<0.02	8.8
117	Soil	19.0	71.5	1.01	278.2	0.047	<1	2.06	0.005	0.04	<0.1	7.1	0.10	<0.02	22	1.0	0.05	5.9
121	Soil	13.1	27.4	0.51	301.3	0.040	1	1.17	0.016	0.05	0.3	2.8	0.07	0.03	27	0.3	<0.02	3.6
122	Soil	6.5	17.2	0.34	221.1	0.012	<1	0.61	0.007	0.02	0.2	0.9	0.02	<0.02	29	0.2	<0.02	2.1



Acme Analytical Laboratories (Vancouver) Ltd.

1020 Cordova St. East Vancouver BC V6A 4A3 Canada
Phone (604) 253-3158 Fax (604) 253-1716

www.acmelab.com

Client: **Northern Dancer**
PO Box 2662
Garibaldi Highlands BC V0N1T0 Canada

Project: GC & CT (Gor South)
Report Date: November 10, 2011

Page: 1 of 1 Part 1

QUALITY CONTROL REPORT

DAW11000437.1

Method	1F30	1F30	1F30	1F30	1F30	1F30	1F30	1F30	1F30	1F30	1F30	1F30	1F30	1F30	1F30	1F30	1F30	1F30	1F30	1F30	
Analyte	Mo	Cu	Pb	Zn	Ag	Ni	Co	Mn	Fe	As	U	Au	Th	Sr	Cd	Sb	Bi	V	Ca	P	
Unit	ppm	ppm	ppm	ppm	ppb	ppm	ppm	ppm	%	ppm	ppm	ppb	ppm	ppm	ppm	ppm	ppm	ppm	%	%	
MDL	0.01	0.01	0.01	0.1	2	0.1	0.1	1	0.01	0.1	0.1	0.2	0.1	0.5	0.01	0.02	0.02	2	0.01	0.001	
Pulp Duplicates																					
7	Soil	1.28	28.76	9.32	66.0	146	26.1	9.6	492	2.49	12.8	0.5	8.0	3.9	26.1	0.37	0.85	0.16	45	0.40	0.074
REP 7	QC	1.33	29.13	9.48	66.3	145	27.4	9.9	508	2.57	13.6	0.5	7.2	4.1	26.7	0.36	0.87	0.16	44	0.42	0.076
23	Soil	5.76	49.37	7.36	102.0	45	38.7	13.5	452	3.57	8.4	1.9	2.4	7.0	5.6	0.17	0.63	0.26	31	0.04	0.021
REP 23	QC	5.40	46.40	7.14	99.7	36	36.4	13.1	435	3.40	8.1	1.8	4.7	6.5	5.3	0.14	0.53	0.23	30	0.03	0.019
51	Soil	9.37	108.2	18.22	208.9	440	74.7	12.7	585	3.05	8.7	4.6	1.1	9.7	15.7	0.58	0.57	0.28	27	0.10	0.048
REP 51	QC	8.98	109.3	18.82	208.7	511	73.6	12.7	587	3.07	7.9	4.8	1.7	10.2	15.6	0.70	0.59	0.31	26	0.10	0.049
68	Soil	1.55	32.87	11.27	75.7	171	26.5	10.5	441	2.63	11.8	0.8	2.9	5.0	31.6	0.30	1.02	0.21	45	0.41	0.068
REP 68	QC	1.41	31.52	11.05	71.8	151	26.9	10.2	415	2.52	11.9	0.7	3.0	4.7	30.5	0.24	0.98	0.20	43	0.39	0.066
79	Soil	10.12	44.52	4.65	136.4	59	45.3	13.2	724	5.11	10.9	1.7	1.7	8.3	3.5	0.10	0.28	0.25	19	0.03	0.035
REP 79	QC	9.53	41.53	4.26	132.8	53	42.0	12.1	664	4.75	10.2	1.6	1.3	8.0	3.4	0.08	0.25	0.22	18	0.02	0.034
95	Soil	1.66	38.40	11.24	67.1	181	31.2	10.1	449	2.70	12.1	0.9	2.8	4.6	23.3	0.15	0.76	0.22	43	0.32	0.044
REP 95	QC	1.76	39.25	11.95	69.9	186	31.4	10.4	468	2.74	13.2	1.0	2.7	4.6	23.8	0.17	0.82	0.25	43	0.33	0.046
Reference Materials																					
STD DS8	Standard	13.61	117.3	130.4	331.8	1830	40.2	7.9	635	2.56	26.3	2.9	104.4	7.7	68.1	2.60	5.95	7.51	42	0.75	0.082
STD DS8	Standard	14.53	115.9	137.3	335.5	2048	41.9	8.3	683	2.86	26.1	3.0	126.0	7.4	67.6	2.44	5.52	6.82	46	0.72	0.087
STD DS8	Standard	12.10	109.6	121.6	302.7	1700	37.3	7.3	605	2.46	24.7	2.8	108.4	6.8	57.8	2.27	5.33	6.53	41	0.67	0.080
STD DS8	Standard	14.32	106.9	129.1	326.5	1781	39.0	7.8	640	2.56	26.2	2.9	117.0	7.3	68.8	2.38	5.37	6.44	43	0.75	0.082
STD DS8 Expected		13.44	110	123	312	1690	38.1	7.5	615	2.46	26	2.8	107	6.89	67.7	2.38	5.7	6.67	41.1	0.7	0.08
BLK	Blank	<0.01	<0.01	<0.01	<0.1	<2	<0.1	<0.1	<1	<0.01	<0.1	<0.1	<0.2	<0.1	<0.5	<0.01	<0.02	<0.02	<2	<0.01	<0.001
BLK	Blank	<0.01	<0.01	<0.01	<0.1	<2	<0.1	<0.1	<1	<0.01	<0.1	<0.1	<0.2	<0.1	<0.5	<0.01	<0.02	<0.02	<2	<0.01	<0.001
BLK	Blank	<0.01	<0.01	<0.01	<0.1	<2	<0.1	<0.1	<1	<0.01	<0.1	<0.1	<0.2	<0.1	<0.5	<0.01	<0.02	<0.02	<2	<0.01	<0.001
BLK	Blank	<0.01	<0.01	<0.01	<0.1	<2	<0.1	<0.1	<1	<0.01	<0.1	<0.1	<0.2	<0.1	<0.5	<0.01	<0.02	<0.02	<2	<0.01	<0.001



Acme Analytical Laboratories (Vancouver) Ltd.

1020 Cordova St. East Vancouver BC V6A 4A3 Canada
 Phone (604) 253-3158 Fax (604) 253-1716

www.acmelab.com

Client: **Northern Dancer**
 PO Box 2662
 Garibaldi Highlands BC V0N1T0 Canada

Project: GC & CT (Gor South)
 Report Date: November 10, 2011

Page: 1 of 1 Part 2

QUALITY CONTROL REPORT

DAW11000437.1

Method	1F30	1F30	1F30	1F30	1F30	1F30	1F30	1F30	1F30	1F30	1F30	1F30	1F30	1F30	1F30	1F30	1F30	
Analyte	La	Cr	Mg	Ba	Ti	B	Al	Na	K	W	Sc	Tl	S	Hg	Se	Te	Ga	
Unit	ppm	ppm	%	ppm	%	ppm	%	%	%	ppm	ppm	ppm	%	ppb	ppm	ppm	ppm	
MDL	0.5	0.5	0.01	0.5	0.001	1	0.01	0.001	0.01	0.1	0.1	0.02	0.02	5	0.1	0.02	0.1	
Pulp Duplicates																		
7	Soil	13.0	23.6	0.45	327.1	0.040	2	1.13	0.018	0.05	0.2	2.7	0.06	<0.02	40	0.3	0.03	2.9
REP 7	QC	13.0	24.6	0.47	338.7	0.040	2	1.12	0.018	0.05	0.3	2.9	0.06	<0.02	48	0.3	0.03	3.1
23	Soil	20.3	19.7	0.29	166.8	0.023	<1	1.36	0.004	0.03	0.1	3.4	0.07	<0.02	26	2.0	0.07	3.4
REP 23	QC	18.3	18.5	0.29	156.3	0.021	<1	1.29	0.004	0.03	<0.1	3.4	0.06	<0.02	26	1.9	0.09	3.2
51	Soil	38.0	19.6	0.43	143.9	0.014	<1	1.01	0.005	0.04	0.2	2.6	0.07	<0.02	10	2.9	0.11	2.6
REP 51	QC	37.8	19.9	0.44	145.2	0.013	<1	1.03	0.004	0.03	0.2	2.7	0.06	<0.02	16	2.3	0.07	2.5
68	Soil	15.8	26.0	0.49	395.4	0.047	<1	1.31	0.019	0.05	0.2	3.5	0.06	<0.02	25	0.3	0.08	4.0
REP 68	QC	15.6	25.0	0.47	383.4	0.046	<1	1.29	0.019	0.05	0.2	3.4	0.06	<0.02	43	0.5	0.03	3.7
79	Soil	19.9	17.8	0.40	150.7	0.004	<1	1.06	0.004	0.02	<0.1	3.0	0.05	<0.02	17	2.8	0.10	3.0
REP 79	QC	18.8	17.0	0.38	140.7	0.004	<1	0.99	0.004	0.02	<0.1	2.9	0.04	<0.02	18	2.5	0.09	3.0
95	Soil	14.5	25.9	0.45	350.8	0.037	<1	1.27	0.013	0.04	0.2	3.5	0.07	<0.02	47	0.3	0.06	3.6
REP 95	QC	14.4	26.3	0.46	367.6	0.035	<1	1.26	0.013	0.04	0.2	3.5	0.06	<0.02	38	0.4	0.04	3.7
Reference Materials																		
STD DS8	Standard	16.7	124.7	0.65	290.7	0.123	2	0.96	0.089	0.43	3.2	2.2	5.78	0.17	215	5.6	5.38	4.8
STD DS8	Standard	16.7	132.1	0.70	281.0	0.123	3	1.04	0.097	0.47	3.1	2.5	5.95	0.18	231	5.7	5.41	5.1
STD DS8	Standard	13.7	116.5	0.60	257.4	0.105	2	0.87	0.080	0.41	2.9	2.1	5.23	0.17	204	5.1	5.00	4.4
STD DS8	Standard	16.6	125.5	0.65	292.3	0.119	3	0.99	0.091	0.43	3.1	2.2	5.58	0.17	222	5.3	5.11	4.9
STD DS8 Expected		14.6	115	0.6045	279	0.113	2.6	0.93	0.0883	0.41	3	2.3	5.4	0.1679	192	5.23	5	4.7
BLK	Blank	<0.5	<0.5	<0.01	<0.5	<0.001	<1	<0.01	<0.001	<0.01	<0.1	<0.1	<0.02	<0.02	<5	<0.1	<0.02	<0.1
BLK	Blank	<0.5	<0.5	<0.01	<0.5	<0.001	<1	<0.01	<0.001	<0.01	<0.1	<0.1	<0.02	<0.02	<5	<0.1	<0.02	<0.1
BLK	Blank	<0.5	<0.5	<0.01	<0.5	<0.001	<1	<0.01	<0.001	<0.01	<0.1	<0.1	<0.02	<0.02	<5	<0.1	<0.02	<0.1
BLK	Blank	<0.5	<0.5	<0.01	<0.5	<0.001	<1	<0.01	<0.001	<0.01	<0.1	<0.1	<0.02	<0.02	<5	<0.1	<0.02	<0.1