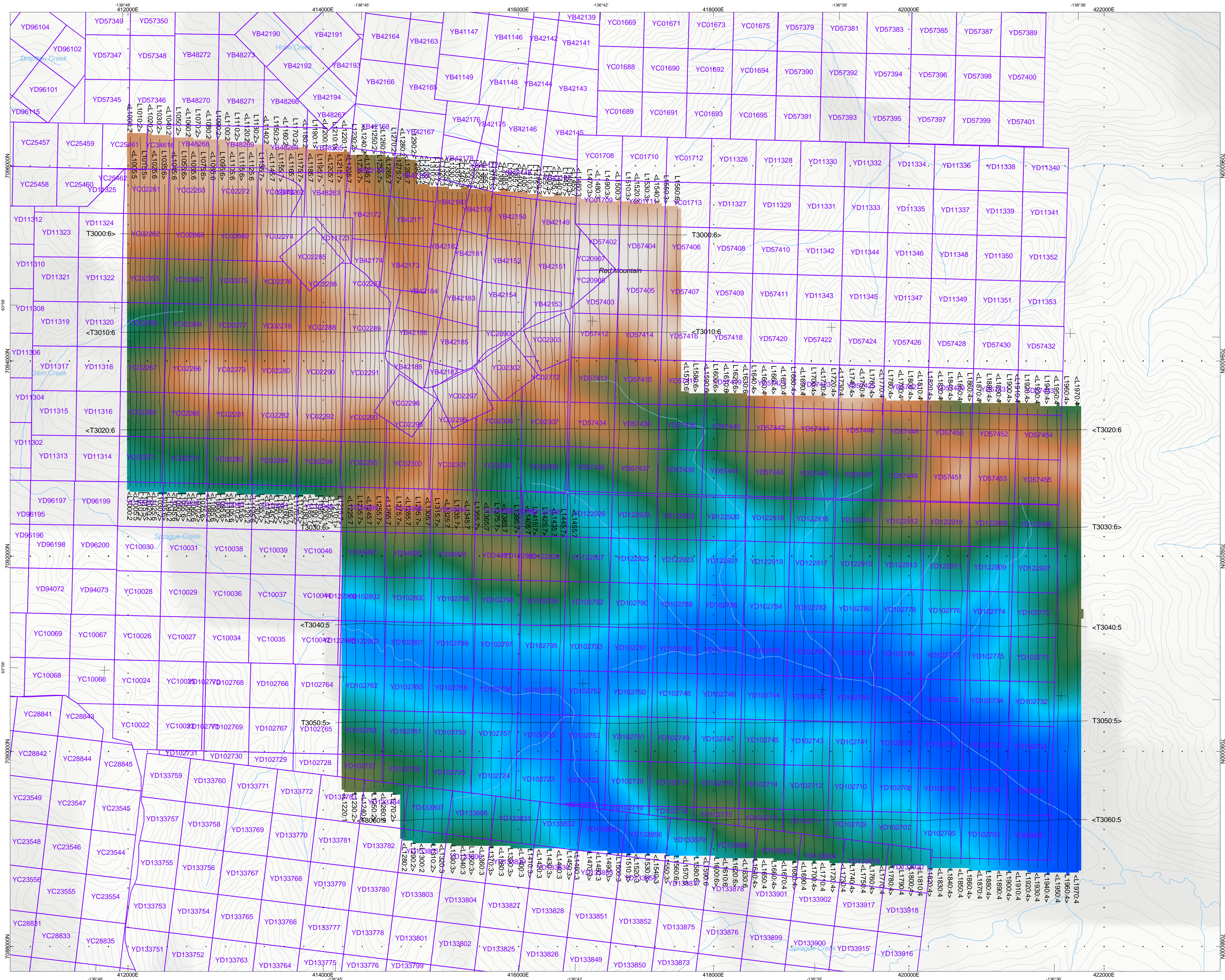


SURVEY SPECIFICATIONS:
 Survey Date: September 18th - September 28th 2011
 Survey Base: Mayo, Yukon Territory
 Aircraft: Aerospatiale A-Star 350 B3 (C-GTEQ)
 Nominal Survey Line Spacing: 50/100 Meters
 Nominal Tie Line Spacing: 1000 Meters
 Nominal Tie Line Direction: N 80° E / N 270° E
 Nominal Terrain Clearance: 156 Meters
 EM Loop: Towed at a mean distance of 35 meters below the Helicopter
 Magnetic Sensor: Towed at a mean distance of 13 meters below the Helicopter
INSTRUMENTS
 Geotech Time Domain Electromagnetic System (VTEM)
 Concentric Rx/Tx Geometry
 Transmitter Loop: Diameter 17.6 Meters, Base Frequency 30 Hz
 Dipole Moment: 247.177 nA
 Transmitter Wave Form: Trapezoid, Pulse Width 3.412 ms.
 Geometrics High Sensitivity Cesium Magnetometer
 Mag Resolution: 0.02 nT at 10 samples/sec
MAP PROJECTION
 Datum: NAD 83
 Projection: Universal Transverse Mercator
 Central Meridian: 135°W (Zone 8N)
 Central Scale Factor: 0.9996
 False Easting/Northing: 500,000/0m
 Major Axis: 6378137.000
 Eccentricity: 0.081819191
 NTS: 115P15



TOPOGRAPHIC LEGEND:
 Streams / Rivers
 Contours
 Mining Claims

Scale 1:20000
 250 0 250 500 750 1000
 (meters)
 NAD83 / UTM zone 8N

The topographic data base was derived from 1:50,000 NRC (<http://www.geogratis.ca>)
 Background shading is derived from Globe DEM data
 Inset data derived from Geocommunity 1:250,000 (<http://data.geocomm.com>)
 Mining claims were derived from Government of Yukon (<http://geomatics.yukon.ca/>)

AM Gold Inc.
Red Mountain Property
Mayo, Yukon Territory
Geotech VTEM System
Digital Elevation Model
(DEM)

Flown and processed by Geotech Ltd.
 245 Industrial Parkway North,
 Aurora, Ontario, Canada L4G 4C4
www.geotech.ca

October 2011