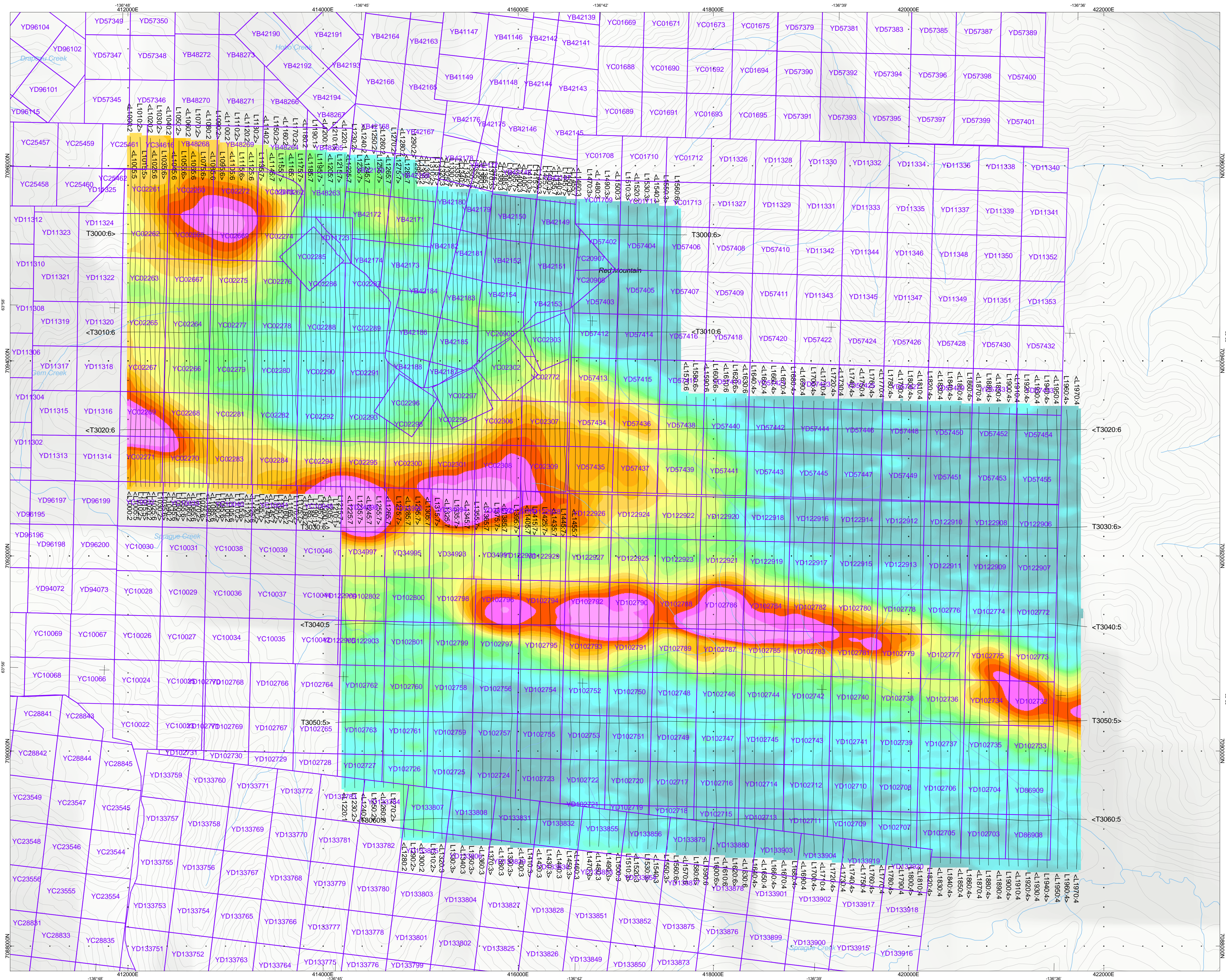


SURVEY SPECIFICATIONS:
Survey Date: September 18th - September 28th 2011
Survey Base: Mayo, Yukon Territory
Aircraft: Aerospaciale A-Star 350 B3 (C-GEQ)
Nominal Survey Line Spacing: 50/100 Meters
Nominal Tie Line Spacing: 1000 Meters
Nominal Tie Line Direction: N 90° E / N 270° E
Nominal Terrain Clearance: 156 Meters
EM Loop: Towed at a mean distance of 35 meters below the Helicopter
Magnetic Sensor: Towed at a mean distance of 13 meters below the Helicopter

INSTRUMENTS
Geotech Time Domain Electromagnetic System (VTEM)
Concentric Rx/Tx Geometry
Transmitter Loop: Diameter 17.6 Meters, Base Frequency 30 Hz
Dipole Moment: 247.177 nA
Transmitter Wave Form: Trapezoid, Pulse Width 3.412 ms.
Geometrics High Sensitivity Cesium Magnetometer
Mag Resolution: 0.02 nT at 10 samples/sec

MAP PROJECTION
Datum: NAD 83
Projection: Universal Transverse Mercator
Central Meridian: 135°W (Zone 8N)
Central Scale Factor: 0.9996
False Easting/Northing: 500,000/0m
Major Axis: 6378137.000
Eccentricity: 0.081819191
NTS: 1:15P15



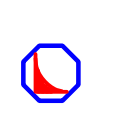
TOPOGRAPHIC LEGEND:

- Streams / Rivers
- Contours
- Mining Claims

Scale 1:20000
250 0 250 500 750 1000
(meters)
NAD83 / UTM zone 8N

The topographic data base was derived from 1:50,000 NRC (http://www.geogratis.ca)
Background shading is derived from Globe DEM data
Inset data derived from Geocommunity 1:250,000 (http://data.geocomm.com)
Mining claims were derived from Government of Yukon (http://geomatics.yukon.ca/)

AM Gold Inc.
Red Mountain Property
Mayo, Yukon Territory
Geotech VTEM System
VTEM B-Field Z Component
Channel 36, Time Gate 2.021 ms



Flown and processed by Geotech Ltd.
245 Industrial Parkway North,
Aurora, Ontario, Canada L4G 4C4
www.geotech.ca

October 2011