

**ASSESSMENT REPORT, 2011 STREAM SEDIMENT SAMPLING
PROGRAM
CHO/CHOC/CHOX/NWP PROPERTY**

MAYO MINING DISTRICT, YUKON, CANADA
NTSMAP SHEETS: 105N/09. 10, 15
UTM-NAD83-Zone 8N-Property Centered-610700E, 7071600N

Claims and Owners:

Claim Name	Claim No.	Grant Number	Registered Owner
CHO	119-128	YD104447-456	Golden Predator Canada Corp.
CHO	189-192	YD104269-272	Golden Predator Canada Corp.
CHO	193-198	YD104441-446	Golden Predator Canada Corp.
CHO	259-268	YD104259-268	Golden Predator Canada Corp.
CHO	485-488	YD104485-488	Golden Predator Canada Corp.
CHO	501-538	YD104501-538	Golden Predator Canada Corp.
CHO	583-629	YD104583-629	Golden Predator Canada Corp.
CHO	799-902	YD104799-902	Golden Predator Canada Corp.
CHOC	19-30	YD104273-284	Golden Predator Canada Corp.
CHO	387-408	YD104225-257	Golden Predator Canada Corp.
CHO	409-421	YD104287-299	Golden Predator Canada Corp.
CHO	422-440	YD104422-440	Golden Predator Canada Corp.
CHO	630-636	YD104630-636	Golden Predator Canada Corp.
Chox	37-64	YE03037-64	Golden Predator Canada Corp.
Chox	85-102	YE03085-102	Golden Predator Canada Corp.
Chox	123-140	YE03123-140	Golden Predator Canada Corp.
Chox	161-226	YE03161-226	Golden Predator Canada Corp.
Chox	273-288	YE03273-288	Golden Predator Canada Corp.
Chox	317-332	YE03317-332	Golden Predator Canada Corp.
Chox	361-376	YE03361-376	Golden Predator Canada Corp.
Chox	411-460	YE03411-460	Golden Predator Canada Corp.
Chox	473-522	YE03473-522	Golden Predator Canada Corp.
NWP	1-121	YD104301-421	Golden Predator Canada Corp.

Total of 695 Claims

PERIOD OF WORK: July 21-22, 24-25, August 19

OPERATOR:

GOLDEN PREDATOR CANADA CORP.
201A-170 Titanium Way
Whitehorse, Yukon
Y1A 0G1

May 3rd, 2012.

Prepared by:

Golden Predator Canada Corp.
Shane Carlos, B.Sc.

TABLE OF CONTENTS

TABLE OF CONTENTS	2
LIST OF FIGURES	2
LIST OF TABLES.....	2
LIST OF APPENDICES	3
1.0 INTRODUCTION	4
2.0 PROPERTY LOCATION AND DESCRIPTION	4
3.0 INFRASTRUCTURE.....	6
4.0 EXPLORATION HISTORY	6
5.0 GEOLOGY	8
5.1 Regional Geology	8
5.2 Property Geology.....	9
5.3 Mineralization.....	10
6.0 EXPLORATION	12
6.1 Exploration Program.....	12
6.2 Sampling Methodology and Protocols.....	12
Stream Geochemical Program	12
Rock Samples	14
6.3 Results	14
Stream Sediments	14
Rocks	Error! Bookmark not defined.
7.0 CONCLUSIONS AND RECOMMENDATIONS	16
8.0 2011 EXPENDITURES	16
9.0 STATEMENT OF AUTHORSHIP	16
10.0 REFERENCES	17

LIST OF FIGURES

Figure 2-1. CHO/CHOC/CHOX/NWP Property Location, Yukon Territory	4
Figure 2-2. CHO/CHOC/CHOX/NWP Project Claim Map	5
Figure 5-1. Regional Geology of the Selwyn Basin.	9
Figure 5-2. Regional Geology, CHO/CHOC/CHOX/NWP Project area.	110
Figure 6-1. Photo-K919761.	13
Figure 6-2. Sample Location Map and Gold in Silt Plots	15

LIST OF TABLES

Table 2-1. CHO/CHOC/CHOX/NWP claim information	6
Table 4-1. Previous Assessment Work.....	7



Table 4-2. Mineral Showings/Anomalies.7
Table 6-1. Anomalous Au in Silts.14
Table 8-1. 2011 Expenditures. 16

LIST OF APPENDICES

Appendix 1 Certificate of Author
Appendix 2 Summary-Stream Sediment/Rock Sample Descriptions
Appendix 3 Assay Certificates
Appendix 4 Description of Analytical Methods and Detection Limits



1.0 INTRODUCTION

The CHO, CHOC, CHOX, and NWP quartz claims form a contiguous block covering an area of 14, 527 hectares, located in the Selwyn Basin in East-Central Yukon. Golden Predator Canada Corp. (Golden Predator) has a 100% undivided interest in the property and is targeting intrusion-related gold systems, and possible skarn and /or Carlin-style gold systems.

This report describes work completed in the 2011 field season from July 21st to 25th and on August 19th which included stream sediment and rock ‘grab’ sampling. The program was designed to follow up on regional government stream geochemical anomalies as a first pass exploration tool to assess the prospective claims.

2.0 PROPERTY LOCATION AND DESCRIPTION

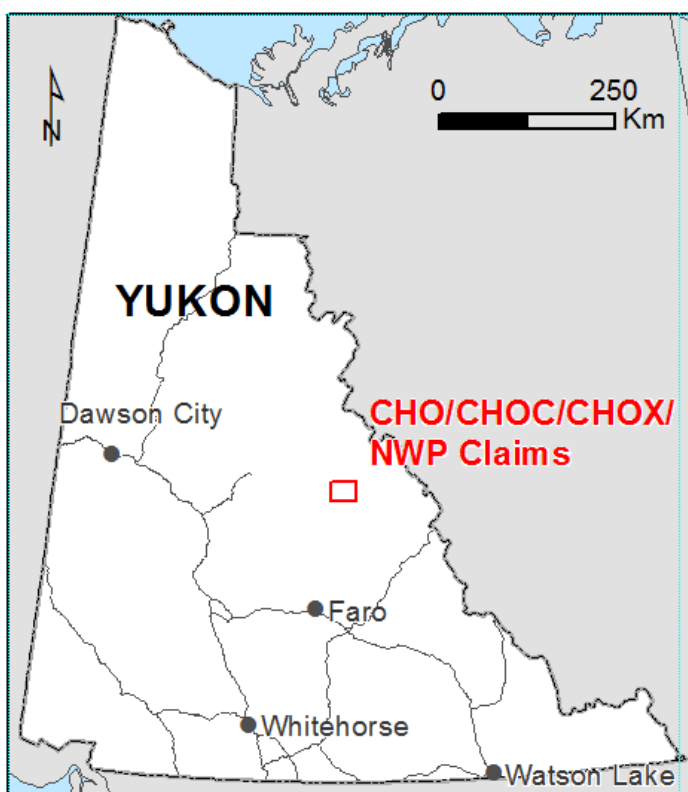
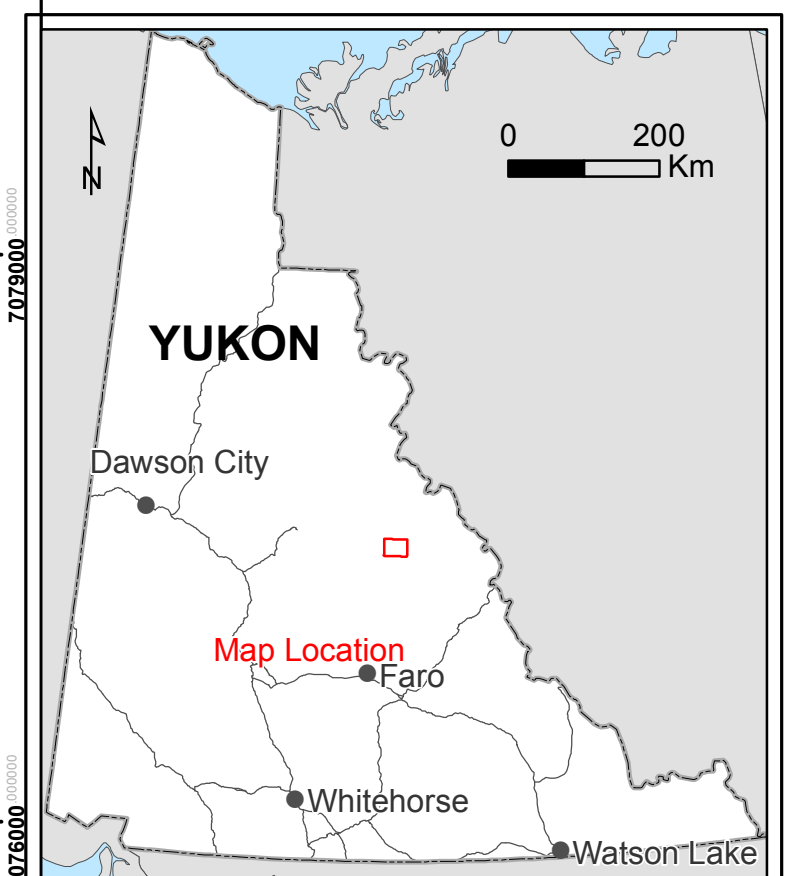
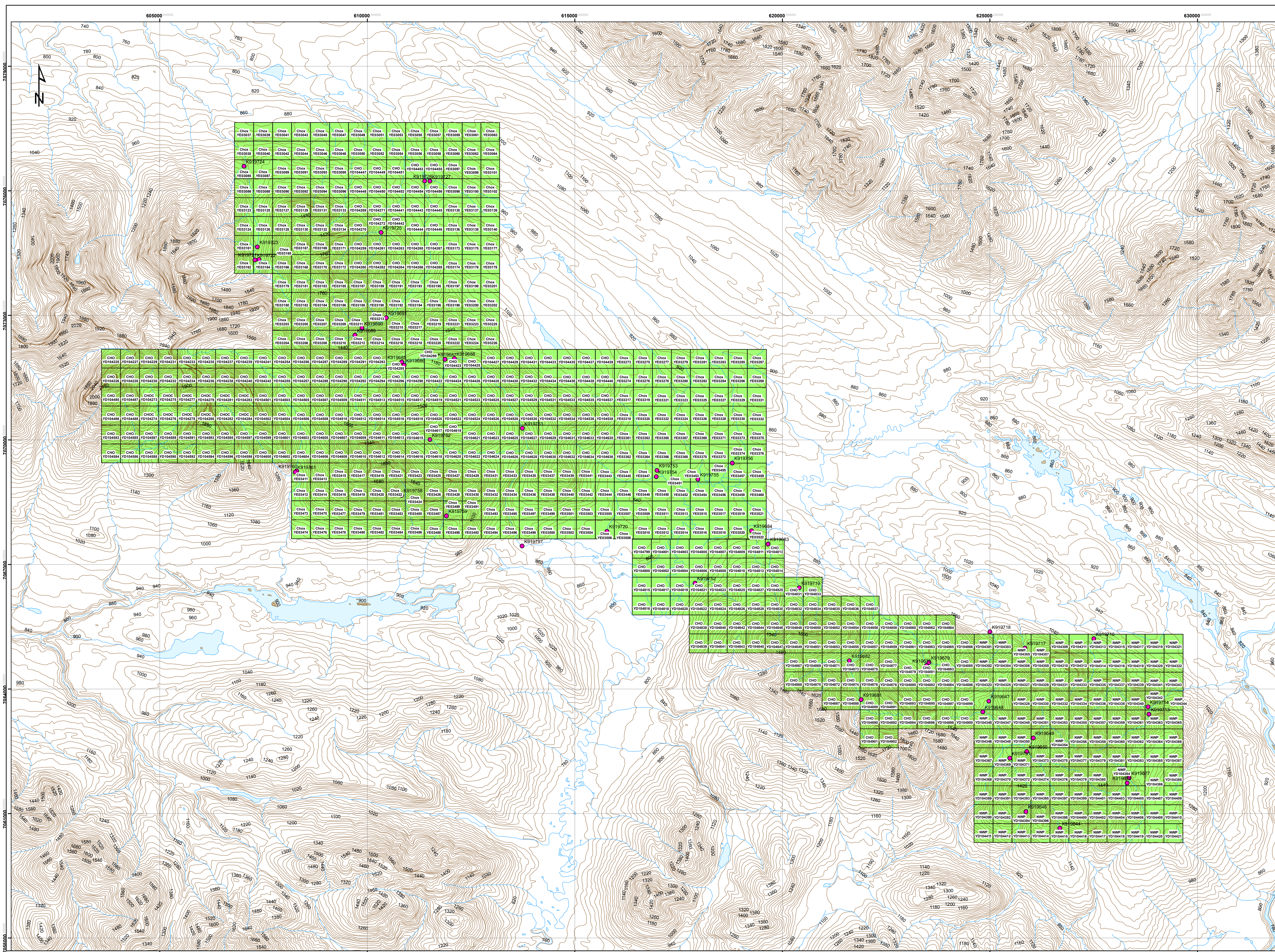


Figure 2-1. CHO/NWP Property Location, Yukon Territory

The claim group lies in East-Central Yukon, 170 kilometers due 013 Azimuth, of the town of Faro, Yukon, (Figure 2-1). The property consists of 695 quartz claims covering an area of 14, 527 hectares (Figure 2-2) and is located in the Mayo Mining District. The property can be reached by approximately 70 minutes of helicopter flight from the town of Ross River and the property is about 124 kilometers from the nearest portion of the North Canol Road. Table 2-1, on page 6 summarizes claim data and lists updated expiry dates dependent upon the acceptance of this report.



- Legend**
- ◊ Quartz Claim
 - Silt Sample Locations

GOLDEN PREDATOR

CHO-NWP PROPERTY

CLAIM MAP

0 600 1,200 2,400
Meters

Scale: 1:40,000	Map ID: --
Draw Date: 2012/04/02	Rev. Date: --
Version: 1	Figure: 2-2
Author: S. Carlos	Of: Ofts
Location: 170 km NINE of Faro, Yukon Territory	
Project: NAD 1983 UTM Zone 8N	
Filename: CHO_NWP_201204_24x36Landscape_ClaimMap	

Table 2-1. CHO/NWP claim information

Claim Name	Claim No.	Grant Number	Registered Owner	New Expiry Date
CHO	119-128	YD104447-456	Golden Predator Canada Corp.	12/10/2012
CHO	189-192	YD104269-272	Golden Predator Canada Corp.	12/10/2012
CHO	193-198	YD104441-446	Golden Predator Canada Corp.	12/10/2012
CHO	259-268	YD104259-268	Golden Predator Canada Corp.	12/10/2012
CHO	485-488	YD104485-488	Golden Predator Canada Corp.	04/11/2012
CHO	501-538	YD104501-538	Golden Predator Canada Corp.	04/11/2012
CHO	583-629	YD104583-629	Golden Predator Canada Corp.	04/11/2012
CHO	799-902	YD104799-902	Golden Predator Canada Corp.	12/10/2012
CHOC	19-30	YD104273-284	Golden Predator Canada Corp.	12/10/2012
CHO	387-408	YD104225-257	Golden Predator Canada Corp.	04/11/2012
CHO	409-421	YD104287-299	Golden Predator Canada Corp.	04/11/2012
CHO	422-440	YD104422-440	Golden Predator Canada Corp.	04/11/2012
CHO	630-636	YD104630-636	Golden Predator Canada Corp.	04/11/2012
Chox	37-64	YE03037-64	Golden Predator Canada Corp.	15/06/2012
Chox	85-102	YE03085-102	Golden Predator Canada Corp.	15/06/2012
Chox	123-140	YE03123-140	Golden Predator Canada Corp.	15/06/2012
Chox	161-226	YE03161-226	Golden Predator Canada Corp.	15/06/2012
Chox	273-288	YE03273-288	Golden Predator Canada Corp.	15/06/2012
Chox	317-332	YE03317-332	Golden Predator Canada Corp.	15/06/2012
Chox	361-376	YE03361-376	Golden Predator Canada Corp.	15/06/2012
Chox	411-460	YE03411-460	Golden Predator Canada Corp.	15/06/2012
Chox	473-522	YE03473-522	Golden Predator Canada Corp.	15/06/2012
NWP	1-121	YD104301-421	Golden Predator Canada Corp.	12/10/2012

3.0 INFRASTRUCTURE

The centre of the property is located at 616768 E, 7068983 N (NAD83, zone 8). The nearest main road is the North Canol located 124 km to the Southeast with access to the nearest town of Ross River, 174 km Southwest. The road is maintained by the Yukon government in the summer months. Also, there appears to be a bush road that could possibly be used for getting closer access to the property from the Canol at the ~173 km point from Ross River. The Plata airstrip is also a good base located at 646661E, 7045398N (NAD83Zone8N), being only 25 km from the South-Eastern edge of the CHO-NWP property.

4.0 EXPLORATION HISTORY

Exploration History of the CHO-NWP Property

The following exploration history of the Property has been compiled from the Yukon Energy and Mines and Resources Library and Yukon Geological Survey MINFILE database. There has been limited exploration work on the Properties. Table 4-1 below lists

the assessment report that is referenced for work done within the boundaries of the Property in whole or in part. Unfortunately, on further investigation the referenced report does not cover the area of the CHO-NWP claims and covers work on different NTS map sheets to the South.

Table 4-1. Previous Assessment Work

Company	Year	AFR No.	Author	Work	Claims	Link
Atlas Explorations Ltd.	1969	019033	M.E. Coates	Mapping & geochem of soils and silts	Dean/Aureole/Bloom	019033.pdf

The mineral occurrences listed on the Yukon Mining and Lands Viewer on the CHO and CHOX claims have brief summaries of historical work which can't be confirmed due to the lack of a correct reference. Relying upon the historical summaries found in the internet 'link' found in the Land Viewer with use of the 'info' selector, (<http://servlet.gov.yk.ca/ygsmin/occurrence.do?occurrenceID=105N+012>) the below data is collected.

On the CHO Property there are two polymetallic vein Ag-Pb-Zn+/-Au showings, Dean (Minfile #105N 010), and Bloom (Minfile #105N012); and a Cu+/-Ag quartz vein showing, Aureole (Minfile #105N011); and a Cu+/-Ag quartz vein float anomaly, Joy (Minfile #105N005). The four mineral occurrences are located within the boundaries of the CHO and CHOX claims in the Northwestern portion of the property. See Figure 5-2, for map locations of these mineral occurrences with relation to the claim boundaries and local geology.

Table 4-2. Mineral Showings/Anomalies

Mineral Showing/Anomaly	NAD83Z8N-Easting	Northing
JOY	605224	7069983
BLOOM	608690	7073353
AUREOLE	609953	7069742
DEAN	611402	7068740

Sourced from: <http://servlet.gov.yk.ca/ygsmin/occurrence.do?occurrenceID=105N+012>

In 1930, Treadwell Yukon Co. Ltd. prospected the Bloom showing area, and reported that arsenopyrite was abundant in the contact aureole around a large stock which cuts Devonian-Mississippian sedimentary rocks.

In 1967, the Dean mineral showing was located, but not staked, by Atlas Exploration Ltd. for the Hess Project (Atlas EL, Quebec Cartier Mg C, and Phillip Bros. (Can) L).

Prospecting and sampling were conducted for this showing in 1968. Minor galena was found in quartz-filled shears cutting Devonian-Mississippian sedimentary rocks near a granodiorite stock.

In 1968, the Aureole and Bloom mineral showings and the Joy anomaly were discovered by Atlas Exploration Ltd. for the Hess Project (Atlas EL, Quebec Cartier Mg C, and Phillip Bros (Can) L). The Joy anomaly consisted of boulders of vein quartz with chalcopyrite mineralization in a creek but the source was not located. Atlas exploration found seven small showings within a 0.8 km radius of the Bloom showing. Four of the showings contain coarse grained molybdenite and minor erythrite in narrow quartz veins. Of the remaining three showings, two are quartz veins with pyrrhotite and minor chalcopyrite and the other is a quartz vein containing galena and erythrite.

5.0 GEOLOGY

5.1 Regional Geology

The property is located in the Selwyn Basin, which is bound on the south by the Tintina Fault (and the Intermontane Superterrane) and bound on the north by the Dawson Thrust Fault and the North American Shelf (Figure 5-1). The Teslin Suture is the zone of deformation between the accreted terrane and the ancient shelf.

The Selwyn Basin stratigraphy consists of late Proterozoic to Palaeozoic marginal basinal and platformal clastic and pelitic sediments from ancient North America. Various aged volcanic piles are stratabound within the sediments. The basin was subjected to rifting during the Proterozoic and again in the late Devonian. During periods of rifting, contemporaneous magmatic rocks were emplaced as volcanics and as thick sill sequences.

By late Jurassic, the rocks of the Intermontane Belt of the Cordillera collided with the passive margin of the North America Shelf, causing compressive tectonics (Murphy, 1997). This resulted in crustal shortening, tight folding, and failure along hinges. Three regionally stacked thrust panels were formed: the Robert Service, Tombstone and Dawson thrust sheets (from oldest to youngest; Murphy, 1997).

The Selwyn Basin is intruded by northwest-trending post-accretionary plutonic mid-Cretaceous suites including the Tungsten, Mayo and Tombstone. The Tungsten suite (97-94 Ma) consists of granitoids with associated sheelite skarn deposits including Mactung and Cantung. The granitoid Mayo Suite occurs northwest of the Tungsten suite and is associated with the intrusion-related gold systems of Dublin Gulch and Clear Creek. Tombstone plutonic suite (92-90 Ma) lies further to the west and closely to the Tintina Fault (Lang et al., 2000). The Tombstone rocks are more alkalic with monzonites and syenites and are associated with U-Th-REE mineralization and intrusion-related gold deposits (Israel et al., 2011).

Mineralization associated with the mid-Cretaceous plutonic suite intrusions includes veins, skarns, stockworks and breccias within, proximal or distal to the intrusions. The most predominant form of mineralization however, is sheeted quartz veins in the intrusions. More often than not, more than one style of mineralization will exist proximal to these intrusions (Abbott et al., 1986).

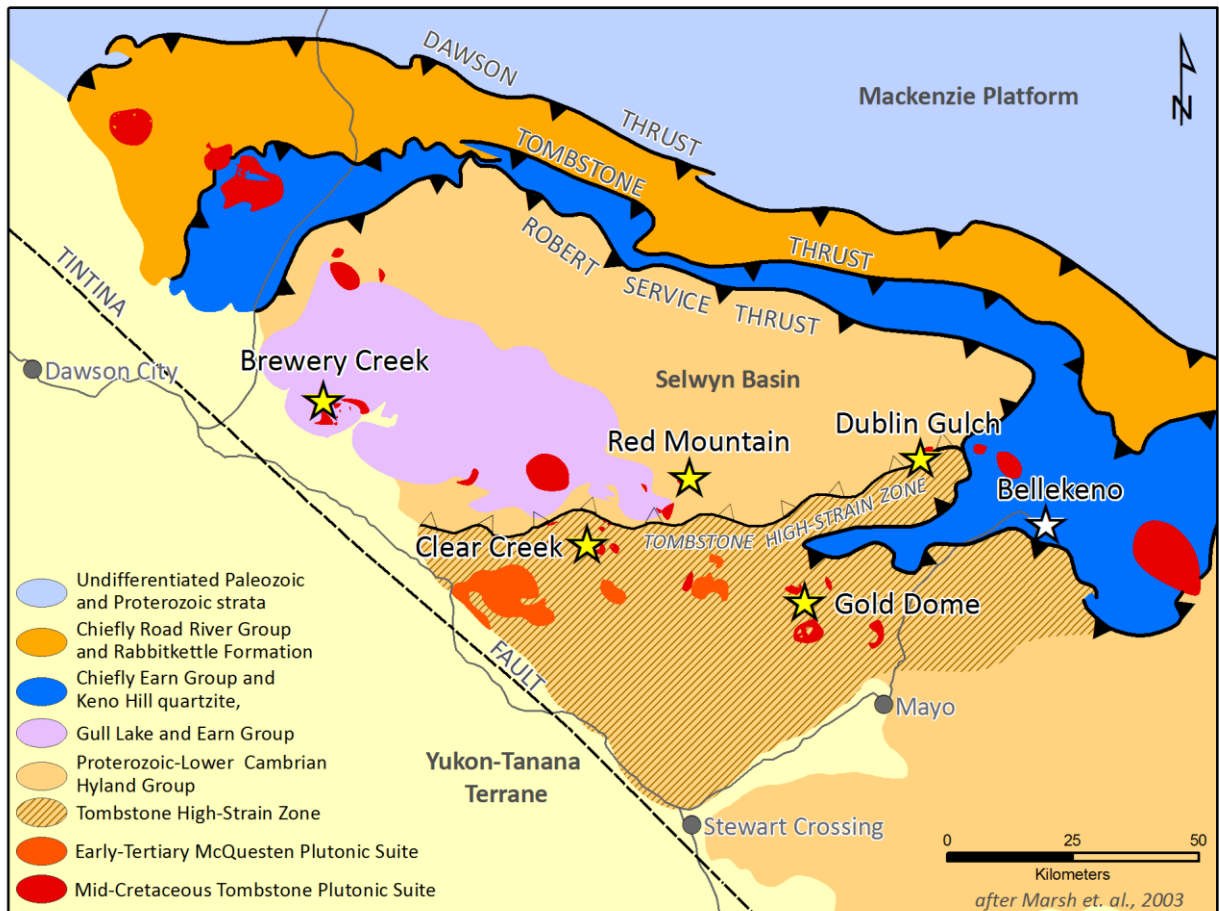


Figure 5-1. Regional Geology of the Selwyn Basin.

5.2 Property Geology

The CHO/CHOC/CHOX/NWP claims predominantly cover the Carboniferous to Permian, Mount Christie Formation, consisting of shales, black chert, slate, siltstone and minor quartzite, limestone and dolostone, (Roots, 1995). These sediments are intruded by the Mid-Cretaceous, Selwyn Suite, quartz monzonite and granodiorite which are specifically targeted by these claims (see Figure 5-2).

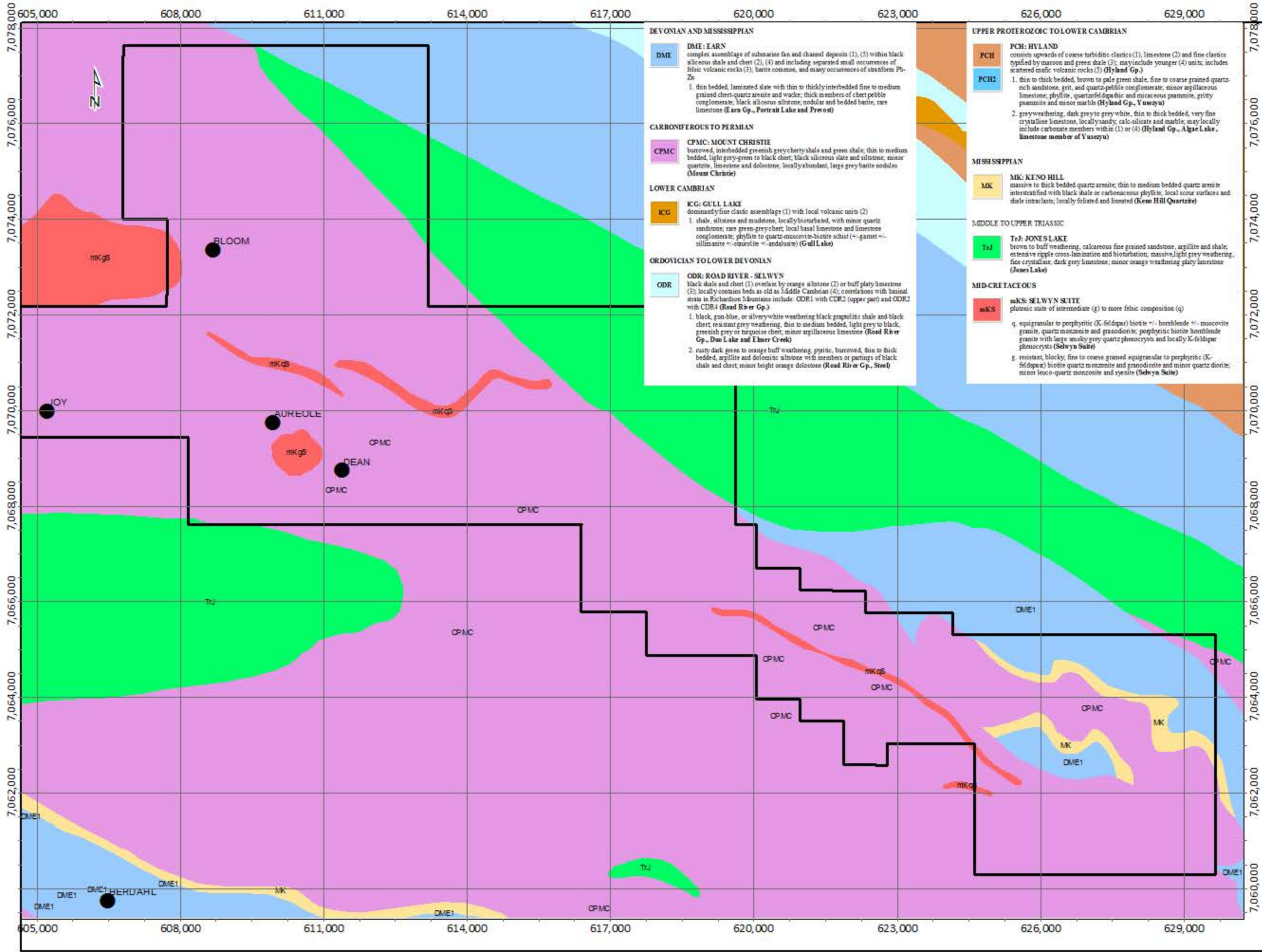
Local variations within the Selwyn Suite intrusions, include more intermediate compositions particularly to the North-West portion of the claim block and appear to be larger plutons and stocks. Narrow, more elongate intrusions of a more felsic composition, from biotite quartz monzonite to syenite occur central to the claim block and the claims follow the long axis of these units.

The North-Eastern edges of the claim block on the CHOX claims covers areas of middle to upper Triassic, Jones Lake Formation, calcareous sandstone, argillite, shale, with extensive cross-lamination and bioturbation, (Roots, 1995). The NWP claims cover portions of Earn Group sediments consisting of laminated slate, black siliceous siltstone, chert pebble conglomerate, arenite, nodular bedded barite, and rare limestone. Mississippian Keno Hill quartzite, black shale or carbonaceous phyllite also occur, (see Figure 5-2).

5.3 Mineralization

The Tintina Gold Belt is a metallogenic region extending from the Yukon into Alaska which hosts several intrusion-related gold deposits including Dublin Gulch, Brewery Creek and Fort Knox. Gold deposits that are spatially and temporally associated with the mid-Cretaceous plutonic suite intrusions, and in the Yukon, form the Tombstone Gold Belt (Goldfarb et al., 2000).

Mineralization on the CHO-NWP claims, as previously mentioned in ‘Exploration History’ is known at the Bloom, Aureole, and Dean mineral showings and found in float at the Joy anomaly. Mineralization consists of disseminated arsenopyrite around Selwyn Suite intrusive stocks, galena in veins and shears, molybdenite, minor chalcopyrite, pyrrhotite and erythrite.



DEVONIAN AND MISSISSIPPIAN

DME: EARN
complex assemblage of submarine fan and channel deposits (1), (5) within black siliceous shale and chert (2), (4) and including separated small occurrences of felsic volcanic rocks (3); barite common, and many occurrences of stromatolite Pb-Zn
1. thin bedded, laminated slate with thin to thickly interbedded fine to medium grained chert-quartz arenite and wacke; thick members of chert pebble conglomerate; black siliceous siltstone; nodular and bedded barite; rare limestone (Earn Gp., Portrait Lake and Prevost)

CARBONIFEROUS TO PERMIAN

CPMC: MOUNT CHRISTIE
burrowed, interbedded greenish grey cherty shale and green shale; thin to medium bedded, light grey-green to black chert; black siliceous slate and siltstone; minor quartzite, limestone and dolomite, locally abundant, large grey barite nodules (Mount Christie)

LOWER CAMBRIAN

ICG: GULL LAKE
dominantly fine clastic assemblage (1) with local volcanic units (2)
1. shale, siltstone and mudstone, locally bioturbated, with minor quartz sandstone; rare green-grey chert; local basal limestone and limestone conglomerate; phyllite to quartz-muscovite-biotite schist (+/- garnet +/- sillimanite +/- staurolite +/- andalusite) (Gull Lake)

ORDOVICIAN TO LOWER DEVONIAN

ODR: ROAD RIVER - SELWYN
black shale and chert (1) overlain by orange siltstone (2) or buff platy limestone (3); locally contains beds as old as Middle Cambrian (4); correlations with basal units in Richardson Mountains include: ODR1 with CDR2 (upper part) and ODR2 with CDR4 (Road River Gp.)
1. black, gun-blue, or silvery white weathering black graptolitic shale and black chert, resistant grey weathering, thin to medium bedded, light grey to black, greenish grey or turquoise chert, minor argillaceous limestone (Road River Gp., Duo Lake and Elmer Creek)
2. rusty dark green to orange buff weathering, pyritic, burrowed, thin to thick bedded, argillite and dolomitic siltstone with members or partings of black shale and chert, minor bright orange dolostone (Road River Gp., Steel)

UPPER PROTEROZOIC TO LOWER CAMBRIAN

PCH: HYLAND
consists upwards of coarse turbiditic clastics (1), limestone (2) and fine clastics typified by maroon and green shale (3); may include younger (4) units; includes scattered mafic volcanic rocks (5) (Hyland Gp.)
1. thin to thick bedded, brown to pale green shale, fine to coarse grained quartz-rich sandstone, grit, and quartz-pebble conglomerate; minor argillaceous limestone, phyllite, quartziferous and micaceous psammite, gritty psammite and minor marble (Hyland Gp., Yusaqva)
2. grey weathering, dark grey to grey white, thin to thick bedded, very fine crystalline limestone, locally sandy, calc-silicate and marble, may locally include carbonate members within (1) or (4) (Hyland Gp., Algae Lake, limestone member of Yusaqva)

MISSISSIPPIAN

MK: KENO HILL
massive to thick bedded quartz arenite; thin to medium bedded quartz arenite interstratified with black shale or carbonaceous phyllite; local scour surfaces and shale intraclasts; locally foliated and laminated (Keno Hill Quartzite)

MIDDLE TO UPPER TRIASSIC

TrJ: JONES LAKE
brown to buff weathering, calcareous fine grained sandstone, argillite and shale; extensive ripple cross-lamination and bioturbation; massive, light grey weathering, fine crystalline, dark grey limestone; minor orange weathering platy limestone (Jones Lake)

MID-CRETACEOUS

mKS: SELWYN SUITE
plutonic suite of intermediate (g) to more felsic composition (q)
q. equigranular to porphyritic (K-feldspar) biotite +/- hornblende +/- muscovite granite, quartz monzonite and granodiorite; porphyritic biotite hornblende granite with large anisole grey quartz phenocrysts and locally K-feldspar phenocrysts (Selwyn Suite)
g. resistant, blocky, fine to coarse grained equigranular to porphyritic (K-feldspar) biotite quartz monzonite and granodiorite and minor quartz diorite; minor leuco-quartz monzonite and syenite (Selwyn Suite)



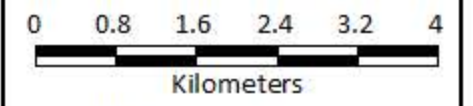
Legend

- ◇ GPD Property Outline
- Minifile Occurrence



CHO-NWP PROPERTY

Local Geology and Minifile Occurrences



Scale:	1:75,000	Map ID:	-
Draw Date:	2012/04/02	Rev. Date:	-
Version:	1	Figure:	5-2
Author:	S. Carlos	Office:	Whitehorse
Location:	170 km NNE of Faro, Yukon Territory		
Projection:	NAD 1983 UTM Zone 8N		
Filename:	CHO_NWP_20120404_11x17_Geology1		

6.0 EXPLORATION

6.1 Exploration Program

The 2011 sampling program was carried out in two stages; the first stage based out of the Rogue Camp, located at the Plata Air strip from July 18 – 24, 2011. The second stage of exploration was carried out from August 6 – 31, 2011, and centered around the camp constructed on the North Canal Road (Jeff Creek Camp). Golden Predator collected 44 silt samples from active stream-beds and 2 rock samples at the later date. Crews of between 9 to 12 samplers, plus a cook and helicopter pilot were based in the Jeff Creek camp constructed by Golden Predator on the North Canal Road. All the work was helicopter assisted using a NOTAR supplied by Fireweed Helicopters of Whitehorse, YT, with daily flight times averaging about 4.6 hours/day for the program.

6.2 Sampling Methodology and Protocols

Stream Geochemical Program

Stream sediment samples were collected at intervals of approximately 750 m along first, second and third order streams, and immediately upstream of confluences. Samples were also collected in the vicinity of historical RGS stream anomalies, to test repeatability.

Each sample was collected from several points along the active stream bed to produce a representative composite sample. The uppermost sediment was discarded to avoid spurious high content of Fe and Mn oxide coating. The active silt and fine to medium sand that has been recently transported by the stream was the target sediment. This type of sediment was generally located: 1) in the lee of large boulders or logs; 2) in low energy pools at the tail-end of bars; and 3) infilling voids below the surface of cobble-gravel bars.

Samples were sieved in the field to a fraction of less than one-eighth inch (<1/8" or 3.36 mm) and placed in labelled, double layered plastic sample bags. Each sample site was flagged and photographed such as in Figure 6-1: K919761 – 410 ppb Au, CHO claims. The sample weights varied between 4-12 kg. Large sample sizes were required to obtain sufficient fine material for the selected assay techniques.

If the drainage contained seasonal stream sediment deposition, but was currently dry, a sediment sample was collected by dry sieving the material. Occasionally the south-facing slopes had underground drainage that sporadically comes to surface, in which case sample spacing sometimes varied.

Sample data was recorded on data cards and included the following: geographic location, sample color, angularity of the clasts, sediment composition (percentage of gravel, sand, silt, clay and organics), slope direction, slope angle, stream flow, vegetation type and comments.



Figure 6-1,
Stream
sediment
sample site
from CHO -
K919761;
410 ppb Au,
with elevated
Sb, Cu and
W.

Samples were transported by air from Jeff Creek camp to Whitehorse by Alkan Air. Samples were delivered by in-house personnel or insured professional expeditors to ALS Chemex's ISO 9001 certified preparation facility in Whitehorse. Samples were dried and screened to 180 microns (80 mesh).

The pulps were analyzed at ALS Chemex's ISO 9001 certified laboratory in North Vancouver using the ultra-trace ME-MS41 package. A 0.5 g sample is digested by aqua regia techniques and 51 elements are analyzed through a combination of ICP-AES and ICP-MS.

The Au-ST44 method was used to analyze gold using a 50 g sample of <80 micron material. This method provides the lowest possible detection limit for gold of 0.0001 – 0.1 ppm, using aqua regia digestion with analysis by ICP-MS. The larger sample size for the gold analysis is used in an effort to reduce potential nugget effects. Samples exceeding the upper limit of Au detection (0.1 ppm) were re-analyzed using Au-OG44, an ore grade assay technique. A 50 g sample of 180 microns sediment is digested in an aqua regia solution and finished with ICP-MS methods to provide an Au detection range between 0.01 – 100 ppm.

ALS completes quality assurance/ quality control (QA/QC) data verification of their assays through internally inserted duplicates, standards and blanks. In addition, Golden Predator's QA/QC program included the insertion of field duplicates, blanks and standard reference material obtained from CDN Resource Laboratories of Langley, BC. Assay certificates are compiled in Appendix 3 and the detailed methodology and detection limits are in Appendix

4. See Figure 6-1 for sample locations and gold geochemical plots from stream sediment samples collected by Golden Predator in 2011.

Rock Samples

A total of 2 rock samples were collected in conjunction with the stream sediment sampling program. Both samples were described as sedimentary rock float. The geographic locations and a description of the rock sample were recorded. See Figure 6-1 for sample locations and Appendix 2 for sample descriptions.

6.3 Results

Stream Sediments

Forty-eight stream sediment samples were collected over multiple drainages on the property as shown in Figure 6-1. Most of the samples have relatively low values of gold, with the majority less than 10 ppb. Eight samples returned highly anomalous values contrasted to background, ranging in value from 29.4 ppb up to 410 ppb, with three samples above 100 ppb gold. See Table 6-1 for a tabulation of the eight anomalous gold in silt values.

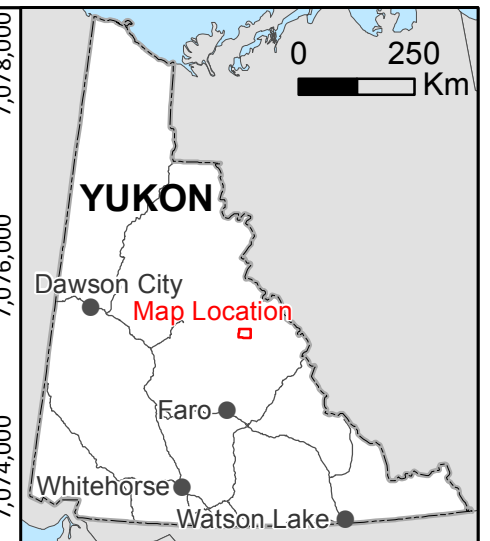
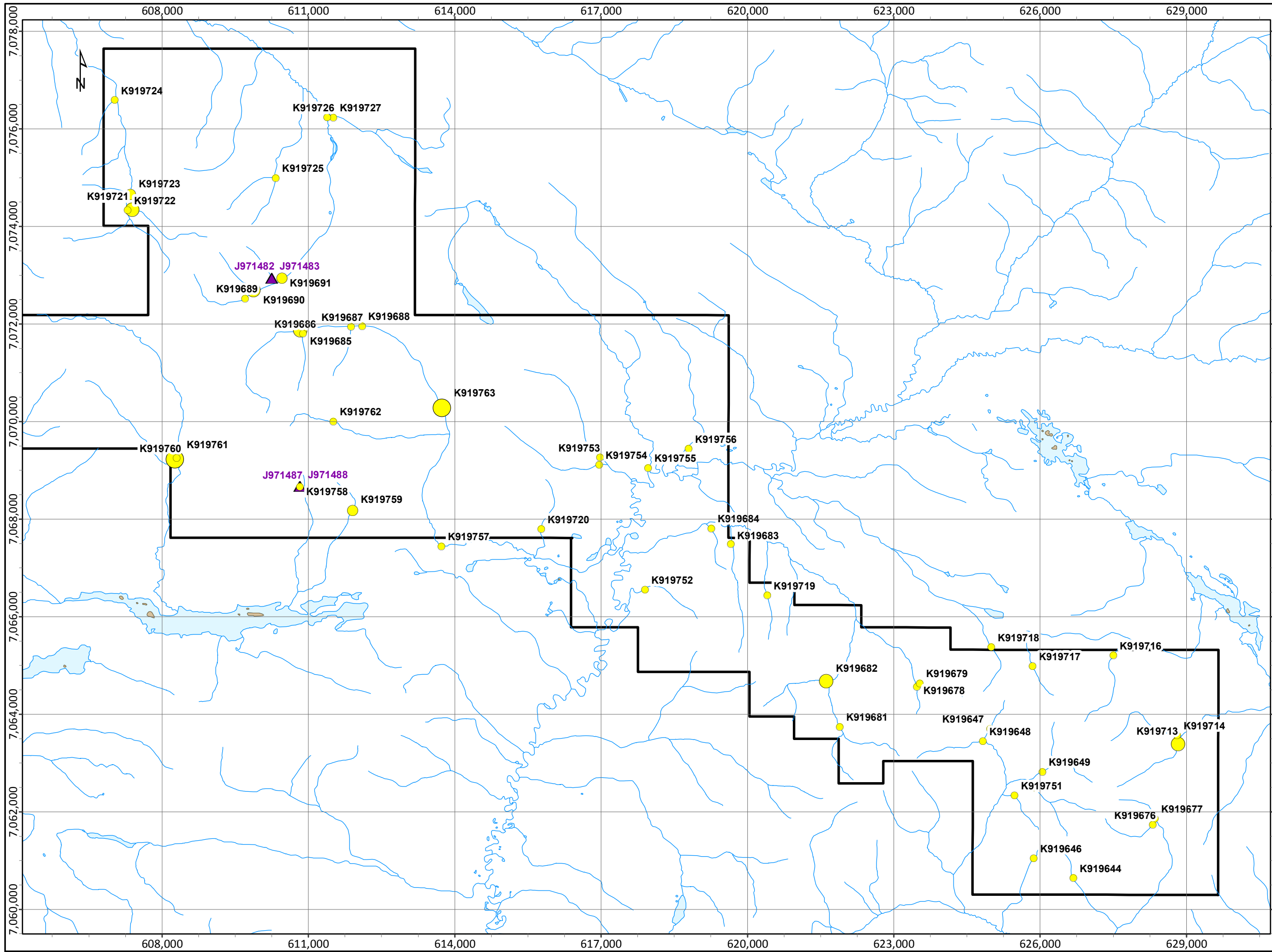
The highest gold value came from sample K919761 and assayed 410 ppb Au with coincident anomalous As-Sb-Pb-Cu-Bi. The second highest, sample K919763 assayed 310 ppb Au but was not relatively strongly anomalous in any other gold indicator elements such as arsenic, or antimony.

Table 6-1. Anomalous Au in Silts

Sample No	Claim Group	Au ppb (Au-ST44)	Au ppb (Au-OG44)	As ppm	Bi ppm	Sb ppm
K919682	CHO	90	90	24.7	0.2	1.81
K919713	NWP	44.8		15.3	0.25	0.86
K919761	CHO	>100	410	638	2.31	17.2
K919763	CHO	>100	310	23.5	0.21	0.81
K919685	CHO	60.9		340	0.67	3.8
K919690	CHOX	>100	<10	492	1.36	5.21
K919721	CHOX	56.2		398	1.46	2.4
K919723	CHOX	29.4		207	0.92	1.46

Sample K919685 assayed above the detection limits of gold and when re-analysed with method Au-OG44 returned less than 10 ppb gold (see Table 6-1 above). The contradicting results have not been resolved with ALS Laboratories as to whether lab error is at fault. The sample is anomalous in arsenic however, and is therefore still prospective for gold mineralization.

Rock Samples

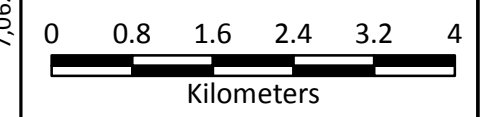


Legend

- ◇ GPD Property Outline
- Au₂₀₁₁_Silts**
- Au_{ppb}**
- 0.05 - 16
- 16.01 - 40
- 40.01 - 101
- 101.01 - 410
- ▲ SEL_Z8_Rock_20111207



CHO-NWP PROPERTY
 Sample Location and Gold in Silt Plots



Scale:	1:75,000	Map ID:	--
Draw Date:	2012/04/02	Rev. Date:	--
Version:	1	Figure:	6--2
Author:	S. Carlos	Office:	Whitehorse
Location:	170 km NNE of Faro, Yukon Territory		
Projection:	NAD 1983 UTM Zone 8N		
Filename:	CHO_NWP_20120402_11x17LandscapeSampleLoc		

Two rock samples collected returned values less than detection limit gold and consisted of shale and sandstone, (see Appendix 2).

7.0 CONCLUSIONS AND RECOMMENDATIONS

Several of the eight highest gold values came from streams either draining or proximal to mid-cretaceous Selwyn suite intrusions, possibly suggesting at least one control on gold mineralization. Sample K919714 with 44.8 ppb gold on a drainage sourced off of Mount Christie sediments and Keno Hill quartzite does not have a mapped intrusive in the area. In general though the plutonic suite probably has a lot to do with the gold in stream silt and will be an important feature of gold mineralization on the property.

Minimal rock sampling in the area returned less than detection limit gold values. More rock sampling will be required in the future.

The highly anomalous gold in silt values justify further work which could include strategic soil sampling, prospecting, rock sampling and geological mapping as a second stage exploration program.

8.0 2011 EXPENDITURES

Expenditures for the 2011 exploration program were \$44,212.00 as summarized in Table 8-1.

Table 8-1. 2011 Expenditures

Expenditure	Units	Unit Cost	Per	Cost
Wages				
Golden Predator-Field Work				\$ 8,200.00
Report Writing	3	\$ 500.00	day	\$ 1,500.00
Transportation				
Helicopter	12	\$ 1,100.00	hour	\$ 13,200.00
Fuel	12	\$ 200.00	hour	\$ 2,400.00
Consumables				
Camp, fixed wing, food, supplies	2	\$ 8,216.00	day	\$ 16,432.00
Sample Assays				
Stream Sediment Samples	44	\$ 55.00	sample	\$ 2,420.00
Rock Samples	2	\$ 30.00	sample	\$ 60.00
Total Expenditures				\$44,212.00

9.0 STATEMENT OF AUTHORSHIP

This Report titled, “Assessment Report, 2011 Stream Sediment Sampling Program, Cho/Choc/Chox/Nwp Property, Mayo Mining Division, Yukon,” and dated May 3rd, 2012 was prepared and signed by the following author:



Shane A. Carlos
Dated: May 3rd, 2012
Whitehorse, Yukon Territory

10.0 REFERENCES

- Abbott, J.G., Gordey, S.P., & Tempelman-Kluit, D.J., 1986. Setting of stratiform, sediment hosted lead-zinc deposits in the Yukon and Northeastern British Columbia; Mineral Deposits of Northern Cordillera, ed. J.A. Morin, The Canadian Institute of Mining and Metallurgy, Special Volume 37, p. 1-18.
- Coates, M.E., 1969. HESS PROJECT. Yukon Assessment Report #019033.
<http://servlet.gov.yk.ca/ygsmin/index.do>
<http://servlet.gov.yk.ca/ygsmin/occurrence.do?occurrenceID=105N+012>
- Goldfarb, R., Hart, C., Miller, M., Miller, L., Farmer, G.L., and Groves, D., 2000. The Tintina Gold Belt: A Global Perspective. *In: The Tintina Gold Belt: Concepts, Exploration and Discoveries*, British Columbia and Yukon Chamber of Mines, Special Volume 2. 5-34.
- Gordey, S.P. and A.J. Makepeace (compilers), 2001. Bedrock Geology, Yukon Territory; Geological Survey of Canada. Open File 3754 and Exploration, Exploration and Geological Services Division, Yukon and Northern Affairs Canada, Open File 2001-1, scale 1: 1,000,000.
- Israel, S., Colpron, M. and T. Fraser, 2011. Overview of Yukon Geology.
www.geology.gov.yk.ca/pdf/Bedrock_Full_Overview.pdf
- Murphy, D., 1997. Geology of the McQuesten River Region, Northern McQuesten and Mayo Map Area, Yukon Territory (115P/14, 15, 16; 105M/13, 14). Bulletin 6, Exploration and Geological Services Division, Yukon Region, Indian and Northern Affairs Canada.
- Roots, C.F., Abbott, J.G., Cecile, M.P. and Gordey, S.P., 1995. Bedrock geology of Lansing Range map area (105N) east half, Hess Mountains, Yukon. Exploration and Geological Services Division, Yukon, Indian and Northern Affairs Canada, Open File 1995-7(G). Map, scale: 1:125,000.

APPENDIX 1
CERTIFICATE OF AUTHOR

Shane Allen Carlos
201A-170 Titanium Way
Whitehorse, Yukon Territory
Canada Y1A 0G1
E-mail: scarlos@goldenpredator.com

Certificate of Author

I, Shane Allen Carlos of, Whitehorse, Yukon Territory, certify that:

1. I graduated from the University of British Columbia with a Bachelor of Science in Earth and Ocean Sciences, in 2009.
2. I have worked in the mineral exploration business for the last 15 years on diamond drill rigs, as a line cutter, soil sampler, claim staker and core logger, with the last 2 years as a geologist for Golden Predator Canada Corp.

Shane Allen Carlos

Whitehorse, Yukon Territory

Dated this 3rd day of May, 2012.

APPENDIX 2
SUMMARY
STREAM SEDIMENT/ROCK SAMPLE
DESCRIPTIONS

CHO/CHOC/CHOX/NWP Sample Descriptions

Sample	Au ppb	Claim	2011 Date	GRID	Easting	Northing	Elevation (m)	Angl	Color	% Gravel	% Sand	% Silt	Slope Direction	Slope Angle	Stream Flow	Comments
K919644	5.1	NWP	07_21	NAD83 Zone8	626687	7060642	1200	SA	GY	6	2	2	SE	3	2	shale, sed. Stone with qtz
K919646	5.2	NWP	07_21	NAD83 Zone8	625870	7061043	1268	SR	BRD	7	2	1	S	3	3	
K919647	3.2	NWP	07_21	NAD83 Zone8	624977	7063702	1231	SR	GY	7	2	1	SW	2	3	
K919648	5.1	NWP	07_21	NAD83 Zone8	624832	7063445	1210	SA	BRL	7	2	1	E	3	3	shale
K919649	5.8	NWP	07_21	NAD83 Zone8	626048	7062817	1208	SA	GYL	7	2	1	SW	3	3	white coating in the creek
K919650	5.1	NWP	07_21	NAD83 Zone8	625890	7062492	1196	SA	BR	7	2	1	NW	3	3	
K919676	4.7	NWP	07_21	NAD83 Zone8	628310	7061733	1299	SA	BRL	8	2		NE	3	4	metaseds, lots of qtz
K919677	11.2	NWP	07_21	NAD83 Zone8	628358	7061856	1299	SA	BRL	8	2		SW	3	3	shale, qtz vns
K919678	2.4	CHO X	07_21	NAD83 Zone8	623476	7064564	1127	SR	BRL	8	2		N	3	4	siltstone
K919679	1	CHO	07_21	NAD83 Zone8	623536	7064634	1128	SR	BRL	7	2	1	NW	3	4	metaseds
K919681	11.1	CHO	07_21	NAD83 Zone8	621898	7063740	1162	SR	BRL	8	2		N	3	4	shale
K919682	90	CHO	07_21	NAD83 Zone8	621619	7064678	1066	SR	BRL	8	2		W	3	4	argillite and siltstone
K919683	4.3	CHO	07_21	NAD83 Zone8	619661	7067490	852	SR	BRL	7	2	1	N	3	4	siltstone and argillite
K919684	2.4	CHO	07_21	NAD83 Zone8	619261	7067809	824	SA	BRL	7	3		NW	2	3	diorite, metaseds
K919685	60.9	CHO	07_22	NAD83 Zone8	610836	7071875	1185	SA	BRL	3	5	1	E	2	4	argillite,granite
K919686	5.8	CHO	07_22	NAD83 Zone8	610888	7071800	1194	SR	BRL	9	1		N	3	4	metaseds,intrusives
K919687	7.2	CHO	07_22	NAD83 Zone8	611873	7071941	1147	R	BRL	8	2		NW	3	4	granite,mafics,quartzite,siltstone
K919688	3	CHO	07_22	NAD83 Zone8	612101	7071956	1133	R	BRL	9	1		E	3	4	metaseds
K919689	12.3	CHO X	07_22	NAD83 Zone8	609704	7072523	1236	SA	BRL	9	1		NE	3	5	argillite,abundant hematite
K919690	101	CHO X	07_22	NAD83 Zone8	609877	7072692	1198	A	OR	9	1		E	4	3	very few fines,small sample,shale
K919691	31.2	CHO X	07_22	NAD83 Zone8	610457	7072938	1113	SA	BRL	7	3		NE	3	5	metaseds,quartzite
K919713	44.8	NWP	07_21	NAD83 Zone8	628835	7063389	1073	SR	GY	7	3		NW	4	5	no time for rock sample. :(phyllite, siltstone, chert, mudstone, moderate to strong qtz vns in some shale boulders.

CHO/CHOC/CHOX/NWP Sample Descriptions

Sample	Au nub	Claim	2011 Date	GRID	Easting	Northing	Elevation (m)	Angl	Color	% Gravel	% Sand	% Silt	Slope Direction	Slope Angle	Stream Flow	Comments
																Quartzite with weak to trace hem, limonite weak to medium .
K919714	5.5	NWP	07_21	NAD83 Zone8	628815	7063567	1058	SR	BR	7	3		NE	4	5	phyllite, minor micro cng, qtzite, shale and weak hem. Minor qtz vns
K919716	2.7	NWP	07_21	NAD83 Zone8	627506	7065206	1006	SR	BR	8	2		N	4	5	phyllite, shale, micro cng, qtzite, minor qtz vns. Weak limonite
K919717	4.5	NWP	07_21	NAD83 Zone8	625848	7064985	1135	SA	BR	2	7		NW	4	5	white foam in stream. Lots of fines. Phyllite, shale and slate. Surficial moderate limonite and goethite alteration. weak hem in minor stockwork qtz vns. Silicified halo around vns. Some course sst.
K919718	3.4	NWP	07_21	NAD83 Zone8	625003	7065376	1096	SR	BR	2	7		NW	3	5	phyllite, qtzite, coure sst, fine sst, argillite, weak qtz vns and tr hem.
K919719	7.3	CHO	07_21	NAD83 Zone8	620412	7066436	1017	SR	BR	7	3		NW	3	5	shale to phyllitic slate. Course sst. Argillite. Minor qtz vns
K919720	4.3	CHO	07_21	NAD83 Zone8	615777	7067795	815	R	BR			8	S	2	3	brown and gray silt and clay in bog.
K919721	56.2	CHO X	07_22	NAD83 Zone8	607392	7074344	1262	SR	BR	4	5		SW	4	5	boulders of diorite and qtzite. Milky film on some rocks. Si? Some rocks are weakly schistose.
K919722	5.9	CHO X	07_22	NAD83 Zone8	607294	7074335	1240	SR	BRL	1	8	1	NW	2	4	diorite, minor slate, qtzite. Minor shistosity on some rocks and weak limonite
K919723	29.4	CHO X	07_22	NAD83 Zone8	607354	7074646	1220	SR	BRL	1	8	1	NW	2	4	minor white foam. Minor qtzite and sst. Mica. Metaseds
K919724	2	CHO X	07_22	NAD83 Zone8	607030	7076590	1036	SR	BRD		8	2	NE	3	3	some fines sitting on organics. Slagte and granitic fines and some mica.
K919725	2.7	CHO	07_22	NAD83 Zone8	610334	7074994	1120	SR	BR	8	2		NW	3	5	phyllite, minor banded qtzite and minor slate
K919726	2	CHO	07_22	NAD83 Zone8	611385	7076234	900	R	GY	1	9		NW	2	4	microcng, sst (course and fine0chert, diorite, and qtz vns
K919727	2.5	CHO	07_22	NAD83 Zone8	611511	7076230	897	R	BRD		5	5	NW	2	4	mud and silt. Boggy
K919751	4.3	NWP	07_21	NAD83 Zone8	625481	7062332	1145	SA	GY	7	2	1	W	2	3	
K919752	4.3	CHO	07_21	NAD83 Zone8	617899	7066550	797	SR	GY	7	2	1	W	2	3	
K919753	1.2	CHO	07_22	NAD83 Zone8	616981	7069261	819	R	BR	4	3	3	SE	2	4	small flooded creek with abundant silt. Lowland
K919754	1.6	CHO	07_22	NAD83 Zone8	616964	7069112	817	R	BR	3	3	3	SE	2	4	flood seds from side banks. Abundant silt
K919755	0.3	CHO	07_22	NAD83 Zone8	617968	7069050	802	R	GY	6	3	1	S	2	1	dry creek, siltstone with abundant qtz float

CHO/CHOC/CHOX/NWP Sample Descriptions

Sample	Au nub	Claim	2011 Date	GRID	Easting	Northing	Elevation (m)	Angl	Color	% Gravel	% Sand	% Silt	Slope Direction	Slope Angle	Stream Flow	Comments
K919756	0.9	CHO	07_22	NAD83 Zone8	618795	7069443	810	R	BR	3	4	3	S	2	2	burn area, found gravel bar in swampy area. Qtz chips
K919757	2.3	CHO	07_22	NAD83 Zone8	613732	7067442	859	R	GY	5	3	2	SE	2	5	mixed lithology, intr, volc, seds, and rusty qtz vn
K919758	13.2	CHO	07_22	NAD83 Zone8	610829	7068662	1481	A	OR	7	2	1	S	4	3	steep slope, rusty ss with py below contact with granite
K919759	19	CHO X	07_22	NAD83 Zone8	611910	7068168	1194	A	GYL	8	1	1	S	4	3	steep creek. Intermittant flow siltstone, granite, qtz vn
K919760	9.2	CHO X	07_22	NAD83 Zone8	608302	7069251	1153	SR	BR	6	3	1	S	3	4	mixed intrusive and metaseds
K919761	410	CHO	07_22	NAD83 Zone8	608265	7069225	1155	SR	BR	6	3	1	E	3	4	mixed granite and meta seds with mica
K919762	4.3	CHO	07_22	NAD83 Zone8	611511	7070002	1300	SA	BR	6	3	1	E	3	5	outcrop of shaley siltstone adjacent
K919763	310	CHO	07_22	NAD83 Zone8	613737	7070277	1031	SR	GY	6	3	1	S	2	5	fast flow, mixed lithology, medased, intr, qtz vn

<p>ANGULARITY</p> <p>WR well rounded</p> <p>R rounded</p> <p>SR subrounded</p> <p>SA subangular</p> <p>A angular</p>	<p>SLOPE ANGLE</p> <p>1 flat (<5°)</p> <p>2 gentle (<5°-15°)</p> <p>3 moderate (<15°-25°)</p> <p>4 steep (>25°)</p>	<p>STREAM FLOW</p> <p>1 dry</p> <p>2 stagnant</p> <p>3 slow</p> <p>4 moderate</p> <p>5 fast</p>	<p>SEDIMENT COMP</p> <p>must add to 10 or 100%</p> <p>>2mm gravel</p> <p>>0.16mm sand</p>
---	--	--	--

CHO/CHOC/CHOX/NWP Sample Descriptions

Rock Samples

Sample	Au ppb	Claim	Date 2011	GRID	Easting	Northing	Elevation (m)	Sample Source	LithoDesc	Comments
J971482	2.5	CHO	Jul- 22	NAD83 Zone8	610248	7072941	1182	float	shale	orange, grey laminated shale, silicified, grass green patches of chlorite?, numerous up to 1cm bedding conform layers of abundant rusty brown compact hematite, representative of outcrop in creek area
J971487	2.5	CHO	Jul- 22	NAD83 Zone8	610826	7068665	1475	Float	sandstone	Sandstone, float, but near source. Quartz veined, very strongly oxidized with 2-3% disseminated and clots of pyrite. Below Minfile mineral occurrence. GPS point LL2011-05. Adjacent to stream sediment sample K919758

APPENDIX 3
ASSAY CERTIFICATES

See Data Files for Secured Assay Certificates

APPENDIX 4
ANALYTICAL METHODS AND
DETECTION LIMITS



Sample Preparation Package

PREP- 41

Standard Preparation: Dry sample and dry- sieve to -180 micron

Sample preparation is the most critical step in the entire laboratory operation. The purpose of preparation is to produce a homogeneous analytical sub-sample that is fully representative of the material submitted to the laboratory.

An entire sample is dried and then dry-sieved using a 180 micron (Tyler 80 mesh) screen. The plus fraction is retained unless disposal is requested. This method is appropriate for soil or sediment samples up to 1 kg in weight.

Method Code	Description
LOG-22	Sample is logged in tracking system and a bar code label is attached.
DRY-22	Low temperature drying of excessively wet samples where the oven temperature is not to exceed 60°C. This method is suitable for more soil and sediment samples that are analyzed for volatile elements.
SCR-41	Sample is dry-sieved to - 180 micron and both the plus and minus fractions are retained.

Revision 02.01
Feb 22, 2010

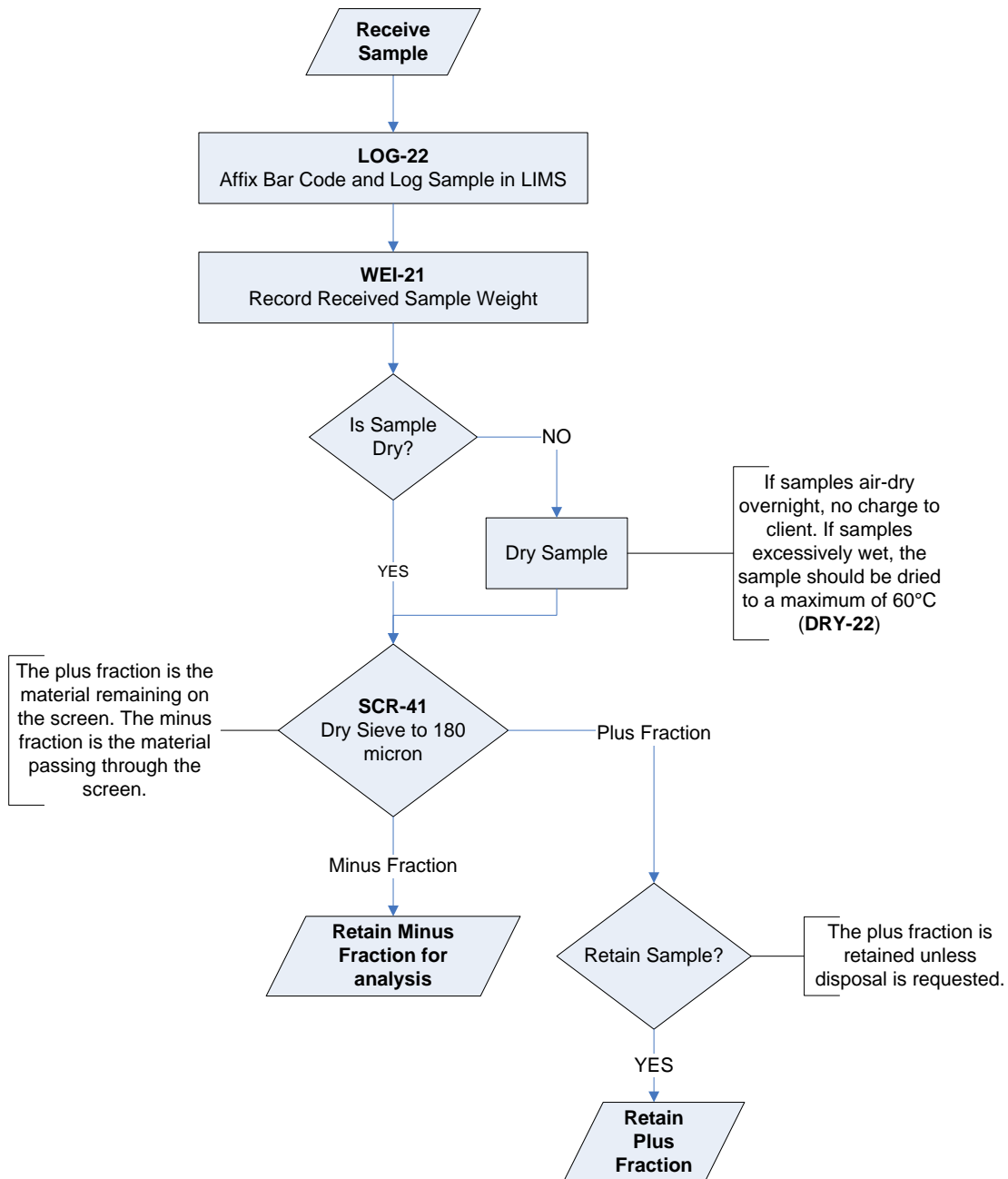
RIGHT SOLUTIONS RIGHT PARTNER

www.alsglobal.com



Sample Preparation Package

Sample Preparation Flowchart Package -PREP- 41



Revision 02.01
Feb 22, 2010

RIGHT SOLUTIONS RIGHT PARTNER

www.alsglobal.com



Geochemical Procedure

ME- MS41

Ultra- Trace Level Methods Using ICP- MS and ICP- AES

Sample Decomposition:

Aqua Regia Digestion (GEO-AR01)

Analytical Method:

Inductively Coupled Plasma-Atomic Emission Spectroscopy (ICP-AES) Inductively Coupled Plasma - Mass Spectrometry (ICP-MS)

A prepared sample (0.50 g) is digested with aqua regia in a graphite heating block. After cooling, the resulting solution is diluted to with deionized water, mixed and analyzed by inductively coupled plasma-atomic emission spectrometry. Following this analysis, the results are reviewed for high concentrations of bismuth, mercury, molybdenum, silver and tungsten and diluted accordingly. Samples are then analysed by ICP-MS for the remaining suite of elements. The analytical results are corrected for inter-element spectral interferences.

Element	Symbol	Units	Lower Limit	Upper Limit
Silver	Ag	ppm	0.01	100
Aluminum	Al	%	0.01	25
Arsenic	As	ppm	0.1	10 000
Gold	Au	ppm	0.2	25
Boron	B	ppm	10	10 000
Barium	Ba	ppm	10	10 000
Beryllium	Be	ppm	0.05	1 000
Bismuth	Bi	ppm	0.01	10 000
Calcium	Ca	%	0.01	25
Cadmium	Cd	ppm	0.01	1 000
Cerium	Ce	ppm	0.02	500
Cobalt	Co	ppm	0.1	10 000
Chromium	Cr	ppm	1	10 000

Revision 04.00
Sep 20, 2006

RIGHT SOLUTIONS RIGHT PARTNER

www.alsglobal.com



Geochemical Procedure

Element	Symbol	Units	Lower Limit	Upper Limit
Cesium	Cs	ppm	0.05	500
Copper	Cu	ppm	0.2	10 000
Iron	Fe	%	0.01	50
Gallium	Ga	ppm	0.05	10 000
Germanium	Ge	ppm	0.05	500
Hafnium	Hf	ppm	0.02	500
Mercury	Hg	ppm	0.01	10 000
Indium	In	ppm	0.005	500
Potassium	K	%	0.01	10
Lanthanum	La	ppm	0.2	10 000
Lithium	Li	ppm	0.1	10 000
Magnesium	Mg	%	0.01	25
Manganese	Mn	ppm	5	50 000
Molybdenum	Mo	ppm	0.05	10 000
Sodium	Na	%	0.01	10
Niobium	Nb	ppm	0.05	500
Nickel	Ni	ppm	0.2	10 000
Phosphorus	P	ppm	10	10 000
Lead	Pb	ppm	0.2	10 000
Rubidium	Rb	ppm	0.1	10 000
Rhenium	Re	ppm	0.001	50
Sulphur	S	%	0.01	10
Antimony	Sb	ppm	0.05	10 000
Scandium	Sc	ppm	0.1	10 000
Selenium	Se	ppm	0.2	1 000
Tin	Sn	ppm	0.2	500
Strontium	Sr	ppm	0.2	10 000

Revision 04.00
Sep 20, 2006

RIGHT SOLUTIONS RIGHT PARTNER

www.alsglobal.com



Geochemical Procedure

Element	Symbol	Units	Lower Limit	Upper Limit
Tantalum	Ta	ppm	0.01	500
Tellurium	Te	ppm	0.01	500
Thorium	Th	ppm	0.2	10000
Titanium	Ti	%	0.005	10
Thallium	Tl	ppm	0.02	10 000
Uranium	U	ppm	0.05	10 000
Vanadium	V	ppm	1	10 000
Tungsten	W	ppm	0.05	10 000
Yttrium	Y	ppm	0.05	500
Zinc	Zn	ppm	2	10 000
Zirconium	Zr	ppm	0.5	500

NOTE: In the majority of geological matrices, data reported from an aqua regia leach should be considered as representing only the leachable portion of the particular analyte.



Geochemical Procedure

Au- OG43, Au- OG44

Determination of Gold by Aqua Regia Digestion / Solvent Extraction - Flame AAS or ICPMS finish

Sample Decomposition:

Aqua regia gold digestion (GEO-AuAR01/02)

Analytical Method:

Inductively coupled mass spectrometry (ICPMS) or Atomic absorption spectrometry (AAS)

A finely pulverised sample (25 – 50 g) is digested in a mixture of 3 parts hydrochloric acid and 1 part nitric acid (aqua regia). This acid mixture generates nascent chlorine and nitrosyl chloride, which will dissolve free gold and gold compounds such as calaverite (AuTe₂).

The dissolved gold is complexed and extracted into Aliquat 336/DIBK and determined by Flame AAS. Alternatively gold is determined by ICPMS directly from the digestion liquor. This method allows for the simple and economical addition of extra elements by running the digestion liquor through the ICPAES or ICPMS.

Note: Samples high in sulphide or carbon content may lead to low gold recoveries unless they are roasted prior to digestion.

Method	Element	Sample Mass	Units	Lower Limit	Upper Limit
Au-OG43	Gold	25 g	ppm	0.01	100
Au-OG44	Gold	50 g	ppm	0.01	100

Revision 01.01
Jun 2, 2005

RIGHT SOLUTIONS RIGHT PARTNER

www.alsglobal.com



Geochemical Procedure

Au- TL43, Au- TL44 Determination of Trace Level Gold by Solvent Extraction – Graphite furnace AAS or ICPMS finish

Sample Decomposition:

Aqua regia gold digestion (GEO-AuAR01/02)

Analytical Method:

Inductively coupled mass spectrometry (ICPMS) or Atomic absorption spectrometry (AAS)

A finely pulverised sample (25 – 50 g) is digested in a mixture of 3 parts hydrochloric acid and 1 part nitric acid (aqua regia). This acid mixture generates nascent chlorine and nitrosyl chloride, which will dissolve free gold and gold compounds such as calaverite, AuTe₂.

The dissolved gold is complexed and extracted either with diisobutyl ketone (DIBK) or Kerosene/DBS and determined by graphite furnace AAS. Alternatively gold is determined by ICPMS directly from the digestion liquor. This method allows for the simple and economical addition of extra elements by running the digestion liquor through the ICPAES or ICPMS.

Note: Samples high in sulphide or carbon content may lead to low gold recoveries unless they are roasted prior to digestion.

Method	Element	Sample Mass	Units	Lower Limit	Upper Limit	Default Overlimit Method
Au-TL43m	Gold	25 g	ppm	0.005	2	Au-OG43
Au-TL44m	Gold	50 g	ppm	0.005	2	Au-OG44

Revision 01.00
Jun 13, 2007

RIGHT SOLUTIONS RIGHT PARTNER

www.alsglobal.com



Sample Preparation Package

PREP- 31

Standard Sample Preparation: Dry, Crush, Split and Pulverize

Sample preparation is the most critical step in the entire laboratory operation. The purpose of preparation is to produce a homogeneous analytical sub-sample that is fully representative of the material submitted to the laboratory.

The sample is logged in the tracking system, weighed, dried and finely crushed to better than 70 % passing a 2 mm (Tyler 9 mesh, US Std. No.10) screen. A split of up to 250 g is taken and pulverized to better than 85 % passing a 75 micron (Tyler 200 mesh, US Std. No. 200) screen. This method is appropriate for rock chip or drill samples.

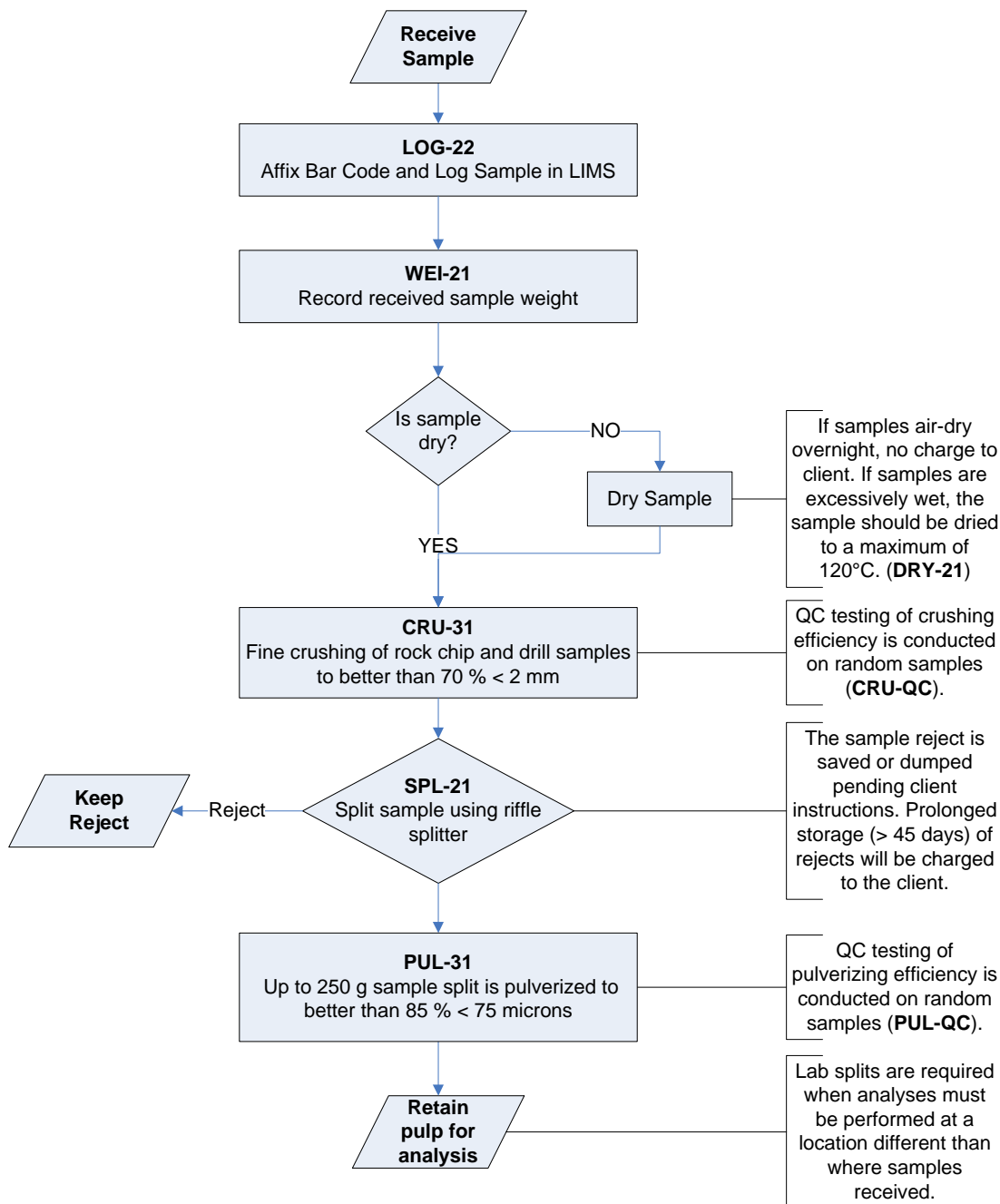
Method Code	Description
LOG-22	Sample is logged in tracking system and a bar code label is attached.
DRY-21	Drying of excessively wet samples in drying ovens. This is the default drying procedure for most rock chip and drill samples.
CRU-31	Fine crushing of rock chip and drill samples to better than 70 % of the sample passing 2 mm.
SPL-21	Split sample using riffle splitter.
PUL-31	A sample split of up to 250 g is pulverized to better than 85 % of the sample passing 75 microns.

Revision 02.03
Feb 22, 2010



Sample Preparation Package

Flow Chart - Sample Preparation Package - PREP- 31 Standard Sample Preparation: Dry, Crush, Split and Pulverize



Revision 02.03
Feb 22, 2010

RIGHT SOLUTIONS RIGHT PARTNER

www.alsglobal.com



Geochemical Procedure

ME- ICP41

Trace Level Methods Using Conventional ICP- AES Analysis

Sample Decomposition:

Nitric Aqua Regia Digestion (GEO-AR01)

Analytical Method:

Inductively Coupled Plasma - Atomic Emission Spectroscopy (ICP - AES)

A prepared sample is digested with aqua regia in a graphite heating block. After cooling, the resulting solution is diluted to 12.5 mL with deionized water, mixed and analyzed by inductively coupled plasma-atomic emission spectrometry. The analytical results are corrected for inter-element spectral interferences.

NOTE: In the majority of geological matrices, data reported from an aqua regia leach should be considered as representing only the leachable portion of the particular analyte.

Element	Symbol	Units	Lower Limit	Upper Limit	Default Overlimit Method
Silver	Ag	ppm	0.2	100	Ag-OG46
Aluminum	Al	%	0.01	25	
Arsenic	As	ppm	2	10000	
Boron	B	ppm	10	10000	
Barium	Ba	ppm	10	10000	
Beryllium	Be	ppm	0.5	1000	
Bismuth	Bi	ppm	2	10000	
Calcium	Ca	%	0.01	25	
Cadmium	Cd	ppm	0.5	1000	
Cobalt	Co	ppm	1	10000	
Chromium	Cr	ppm	1	10000	

Revision 06.02
Apr 20, 2009

RIGHT SOLUTIONS RIGHT PARTNER

www.alsglobal.com



Geochemical Procedure

Element	Symbol	Units	Lower Limit	Upper Limit	Default Overlimit Method
Copper	Cu	ppm	1	10000	Cu-OG46
Iron	Fe	%	0.01	50	
Gallium	Ga	ppm	10	10000	
Mercury	Hg	ppm	1	10000	
Potassium	K	%	0.01	10	
Lanthanum	La	ppm	10	10000	
Magnesium	Mg	%	0.01	25	
Manganese	Mn	ppm	5	50000	
Molybdenum	Mo	ppm	1	10000	
Sodium	Na	%	0.01	10	
Nickel	Ni	ppm	1	10000	
Phosphorus	P	ppm	10	10000	
Lead	Pb	ppm	2	10000	Pb-OG46
Sulfur	S	%	0.01	10	
Antimony	Sb	ppm	2	10000	
Scandium	Sc	ppm	1	10000	
Strontium	Sr	ppm	1	10000	
Thorium	Th	ppm	20	10000	
Titanium	Ti	%	0.01	10	
Thallium	Tl	ppm	10	10000	
Uranium	U	ppm	10	10000	
Vanadium	V	ppm	1	10000	
Tungsten	W	ppm	10	10000	
Zinc	Zn	ppm	2	10000	Zn-OG46

Revision 06.02
Apr 20, 2009

RIGHT SOLUTIONS RIGHT PARTNER

www.alsglobal.com



Geochemical Procedure

Elements listed
below are available upon request

Element	Symbol	Units	Lower Limit	Upper Limit	Default Overlimit Method
Cerium	Ce	ppm	10	10000	
Hafnium	Hf	ppm	10	10000	
Indium	In	ppm	10	10000	
Lithium	Li	ppm	10	10000	
Niobium	Nb	ppm	10	10000	
Rubidium	Rb	ppm	10	10000	
Selenium	Se	ppm	10	10000	
Silicon	Si	ppm	10	10000	
Tin	Sn	ppm	10	10000	
Tantalum	Ta	ppm	10	10000	
Tellurium	Te	ppm	10	10000	
Yttrium	Y	ppm	10	10000	
Zirconium	Zr	ppm	5	10000	

Revision 06.02
Apr 20, 2009

RIGHT SOLUTIONS RIGHT PARTNER

www.alsglobal.com



Fire Assay Procedure

Au- AA23 & Au- AA24 Fire Assay Fusion, AAS Finish

Sample Decomposition:

Fire Assay Fusion (FA-FUS01 & FA-FUS02)

Analytical Method:

Atomic Absorption Spectroscopy (AAS)

A prepared sample is fused with a mixture of lead oxide, sodium carbonate, borax, silica and other reagents as required, inquarted with 6 mg of gold-free silver and then cupelled to yield a precious metal bead.

The bead is digested in 0.5 mL dilute nitric acid in the microwave oven, 0.5 mL concentrated hydrochloric acid is then added and the bead is further digested in the microwave at a lower power setting. The digested solution is cooled, diluted to a total volume of 4 mL with de-mineralized water, and analyzed by atomic absorption spectroscopy against matrix-matched standards.

Method Code	Element	Symbol	Units	Sample Weight (g)	Lower Limit	Upper Limit	Default Overlimit Method
Au-AA23	Gold	Au	ppm	30	0.005	10.0	Au- GRA21
Au-AA24	Gold	Au	ppm	50	0.005	10.0	Au- GRA22

Revision 04.00
Aug 17, 2005

RIGHT SOLUTIONS RIGHT PARTNER

www.alsglobal.com



Fire Assay Procedure

Ag-GRA21, Ag-GRA22, Au-GRA21 and Au-GRA22 Precious Metals Gravimetric Analysis Methods

Sample Decomposition:

Fire Assay Fusion (FA-FUSAG1, FA-FUSAG2, FA-FUSGV1 and FA-FUSGV2)

Analytical Method:

Gravimetric

A prepared sample is fused with a mixture of lead oxide, sodium carbonate, borax, silica and other reagents in order to produce a lead button. The lead button containing the precious metals is cupelled to remove the lead. The remaining gold and silver bead is parted in dilute nitric acid, annealed and weighed as gold. Silver, if requested, is then determined by the difference in weights.

Method Code	Element	Symbol	Units	Sample Weight (g)	Detection Limit	Upper Limit
Ag-GRA21	Silver	Ag	ppm	30	5	10,000
Ag-GRA22	Silver	Ag	ppm	50	5	10,000
Au-GRA21	Gold	Au	ppm	30	0.05	1000
Au-GRA22	Gold	Au	ppm	50	0.05	1000

Revision 03.01
Aug 17, 2005

RIGHT SOLUTIONS RIGHT PARTNER

www.alsglobal.com