

**ASSESSMENT REPORT, 2011 STREAM SEDIMENT SAMPLING
PROGRAM
ILC PROPERTY**

MAYO MINING DIVISION, YUKON, CANADA
NTSMAP SHEETS: 105N/07, 08
UTM-NAD83-Zone 8N-Property Centered-628000E, 7030400N

Claims and Owners:

Claim Name	Claim No.	Grant Number	Registered Owner
ILC	1-2	YD86501-502	Golden Predator Canada Corp.
ILC	3-168	YD85503-668	Golden Predator Canada Corp.

Total of 168 Claims

PERIOD OF WORK:

OPERATOR:

GOLDEN PREDATOR CANADA CORP.
201A-170 Titanium Way
Whitehorse, Yukon
Y1A 0G1

May 28, 2012.

Prepared by:

Golden Predator Canada Corp.
Shane Carlos, B.Sc.

TABLE OF CONTENTS

TABLE OF CONTENTS	2
LIST OF FIGURES	2
LIST OF TABLES.....	2
1.0 INTRODUCTION	4
2.0 PROPERTY LOCATION AND DESCRIPTION	4
3.0 INFRASTRUCTURE.....	6
4.0 EXPLORATION HISTORY	6
5.0 GEOLOGY	7
5.1 Regional Geology	7
5.2 Property Geology.....	8
5.3 Mineralization.....	10
6.0 EXPLORATION	10
6.1 Exploration Program.....	10
6.2 Sampling Methodology and Protocols.....	10
Stream Geochemical Program	10
Rock Samples	11
6.3 Results	13
Stream Sediments	13
7.0 CONCLUSIONS AND RECOMMENDATIONS	13
8.0 2011 EXPENDITURES	13
9.0 STATEMENT OF AUTHORSHIP	15
10.0 REFERENCES.....	15

LIST OF FIGURES

Figure 2-1. ILC Property Location, Yukon Territory	4
Figure 2-2. ILC Project Claim Map.....	5
Figure 5-1. Regional Geology of the Selwyn Basin.	8
Figure 5-2. Regional Geology, ILC Project area.....	90
Figure 6-2. Sample Location Map and Gold in Silt Plots	14

LIST OF TABLES

Table 2-1. ILC claim information.....	6
---------------------------------------	---

Table 8-1. 2011 Expenditures.....14

LIST OF APPENDICES

Appendix 1	Certificate of Author
Appendix 2	Summary-Stream Sediment/Rock Sample Descriptions
Appendix 3	Assay Certificates
Appendix 4	Description of Analytical Methods and Detection Limits



1.0 INTRODUCTION

The ILC quartz claims form a contiguous block covering an area of 3,511.7 hectares, located in the Selwyn Basin in East-Central Yukon. Golden Predator Canada Corp. (Golden Predator) has a 100% undivided interest in the property and is targeting intrusion-related gold systems, and possible skarn and /or Carlin-style gold systems.

This report describes work completed in the 2011 field season on July 23rd, 24th and on August 19th which included stream sediment and rock ‘grab’ sampling. The program was designed to follow up on regional government stream geochemical anomalies as a first pass exploration tool to assess the prospective claims.

2.0 PROPERTY LOCATION AND DESCRIPTION

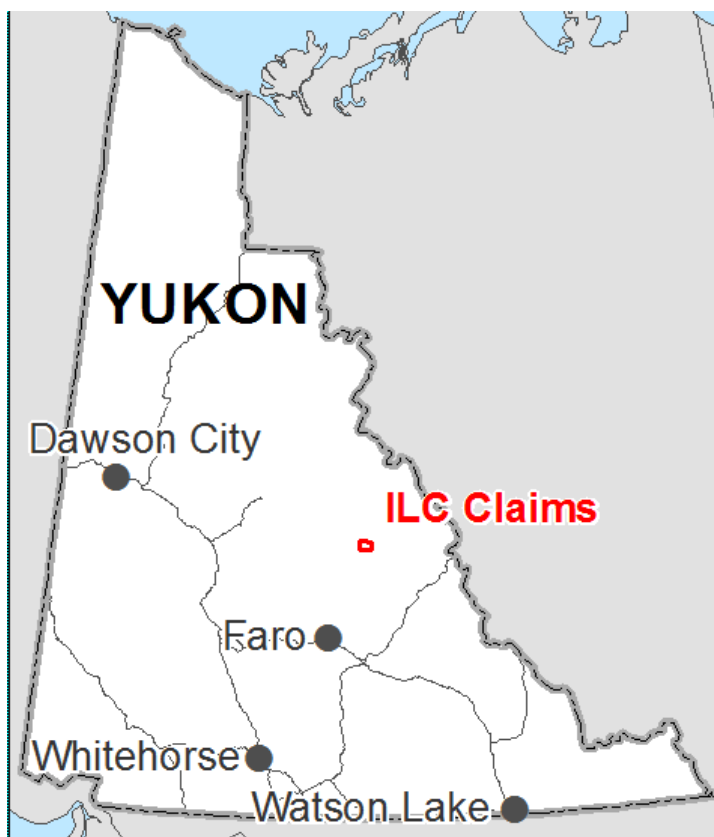
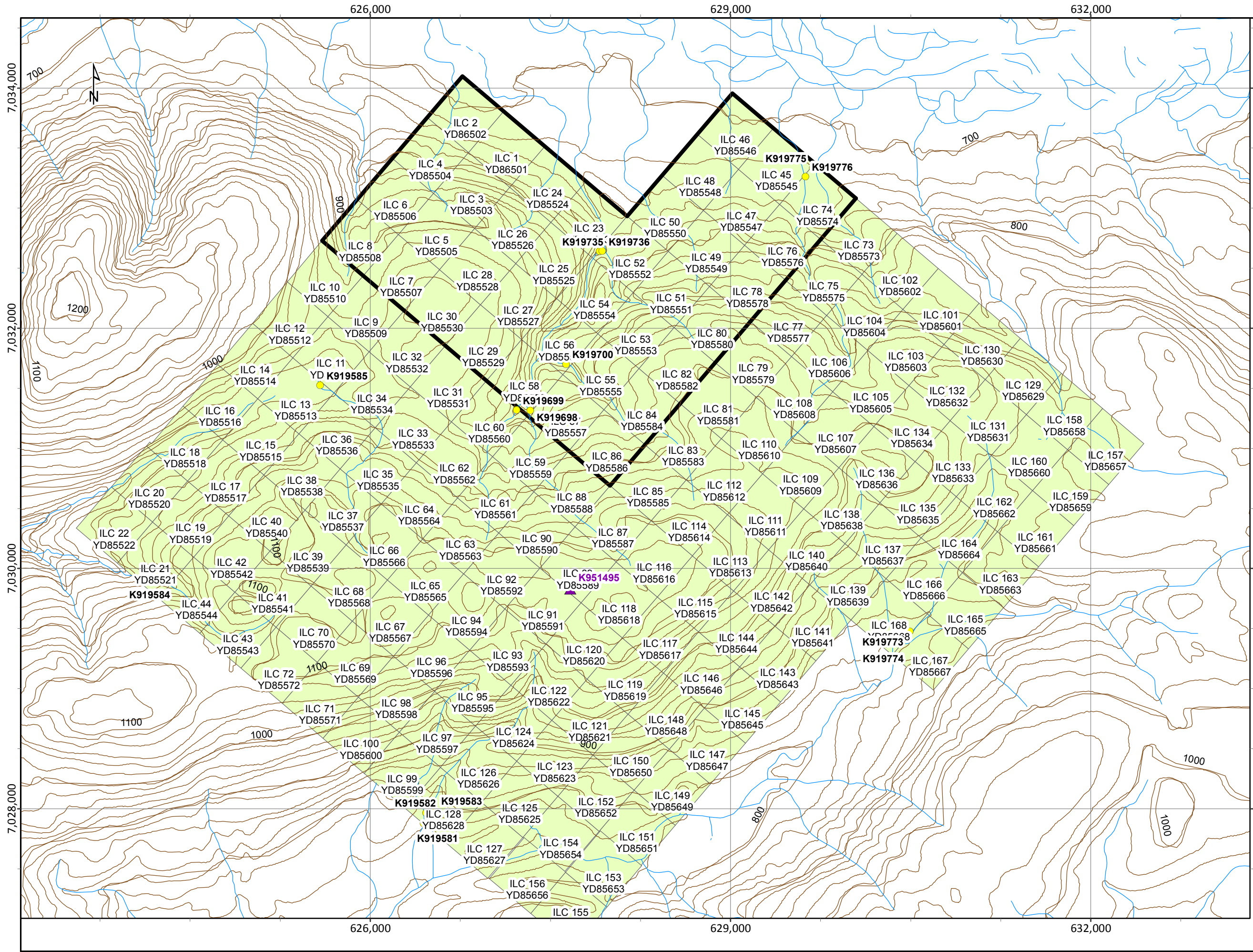


Figure 2-1. ILC Property Location, Yukon Territory

The claim group lies in East-Central Yukon, 139 kilometers North-Northeast, of the town of Faro, Yukon, (Figure 2-1). The property consists of 168 quartz claims covering an area of 3,511.7 hectares (Figure 2-2) and is located in the Mayo Mining District. The property can be reached by approximately 70 minutes of helicopter flight from the town of Ross River and the property is about 110 kilometers from the nearest portion of the North Canol Road.



Legend

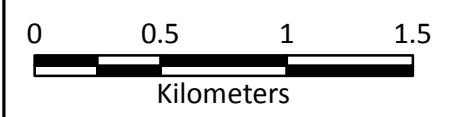
Au_2011_Silts

Au_ppb

- 0.05 - 16
- 16.01 - 40
- 40.01 - 101
- 101.01 - 410
- ▲ SEL_Z8_Rock_2011207
- Claim Outline (work applied)



ILC PROPERTY
 Claim Map and
 Sample Locations



Scale:	1:30,000	Map ID:	--
Draw Date:	2012/04/02	Rev. Date:	--
Version:	1	Figure:	2--2
Author:	S. Carlos	Office:	Whitehorse
Location:	138 km NNE of Faro, Yukon Territory		
Projection:	NAD 1983 UTM Zone 8N		
Filename:	ILC_20120417_11x17_ClaimMap		

Table 2-1, below summarizes claim data and lists updated expiry dates dependent upon the acceptance of this report.

Table 2-1. ILC claim information

Claim Name	Claim No.	Grant Number	Registered Owner	New Expiry Date
ILC	1-8	YD86501-508	Golden Predator Canada Corp.	15/12/2015
ILC	9-22	YD85509-22	Golden Predator Canada Corp.	15/06/2012
ILC	23-30	YD85523-30	Golden Predator Canada Corp.	15/12/2015
ILC	31-44	YD85531-44	Golden Predator Canada Corp.	15/06/2012
ILC	45-58	YD85545-58	Golden Predator Canada Corp.	15/12/2015
ILC	59-73	YD85559-73	Golden Predator Canada Corp.	15/06/2012
ILC	74,76,78,80, 82,84,86	YD85574,76,78,80 82,84,86	Golden Predator Canada Corp.	15/12/2015
ILC	75,77,79,81, 83,85	YD85575,77,79,81, 83,85	Golden Predator Canada Corp.	15/06/2012
ILC	87-168	YD85587-668	Golden Predator Canada Corp.	15/06/2012

3.0 INFRASTRUCTURE

The centre of the property is located at 628000E, 7030400N (NAD83, zone 8). The nearest main road is the North Canol located 110 km to the Southeast with access to the nearest town of Ross River, 174 km Southwest. The road is maintained by the Yukon government in the summer months. There also appears to be a bush road that could possibly be used for getting closer access to the property from the Canol at the ~174 km point from Ross River. The Plata airstrip is also a good base located at 646661E, 7045398N (NAD83Zone8N), being about 23 km North-East of the center of the ILC property.

Another option for access is taking a float plane to Fairweather Lake and hiking in the 4km to the property boundary.

4.0 EXPLORATION HISTORY

Exploration History of the ILC Property

The following exploration history of the ILC property has been compiled from the Yukon Energy and Mines and Resources Library and Yukon Geological Survey MINFILE database.

There is some recorded work on the western edge of the claim block on the Bach claims currently held by Colorado Resources Ltd. Viceroy Exploration staked the Bach claims in 1997 which lie along the western margin of the ILC claims. In 1998 stream silts and soil

sampling returned a consistent gold/mercury/arsenic/antimony association with apparent lineament controls trending ESE and being about one kilometer wide. Large gold in soil anomalies were determined, one with 44 ppb Au over 400m and a second anomaly with 66 ppb gold over 600m in length, (Schulze, 1998).

A few lines of soil sampling from 1998 cover over the ILC property and show gold values all less than 19 ppb Au, but no data is available from the minfile assessment report to show the absolute values.

5.0 GEOLOGY

5.1 Regional Geology

The property is located in the Selwyn Basin, which is bound on the south by the Tintina Fault (and the Intermontane Superterrane) and bound on the north by the Dawson Thrust Fault and the North American Shelf (Figure 5-1). The Teslin Suture is the zone of deformation between the accreted terrane and the ancient shelf.

The Selwyn Basin stratigraphy consists of late Proterozoic to Palaeozoic marginal basinal and platformal clastic and pelitic sediments from ancient North America. Various aged volcanic piles are stratabound within the sediments. The basin was subjected to rifting during the Proterozoic and again in the late Devonian. During periods of rifting, contemporaneous magmatic rocks were emplaced as volcanics and as thick sill sequences.

By late Jurassic, the rocks of the Intermontane Belt of the Cordillera collided with the passive margin of the North America Shelf, causing compressive tectonics (Murphy, 1997). This resulted in crustal shortening, tight folding, and failure along hinges. Three regionally stacked thrust panels were formed: the Robert Service, Tombstone and Dawson thrust sheets (from oldest to youngest; Murphy, 1997).

The Selwyn Basin is intruded by northwest-trending post-accretionary plutonic mid-Cretaceous suites including the Tungsten, Mayo and Tombstone. The Tungsten suite (97-94 Ma) consists of granitoids with associated sheelite skarn deposits including Mactung and Cantung. The granitoid Mayo Suite occurs northwest of the Tungsten suite and is associated with the intrusion-related gold systems of Dublin Gulch and Clear Creek. Tombstone plutonic suite (92-90 Ma) lies further to the west and closely to the Tintina Fault (Lang et al., 2000). The Tombstone rocks are more alkalic with monzonites and syenites and are associated with U-Th-REE mineralization and intrusion-related gold deposits (Israel et al., 2011).

Mineralization associated with the mid-Cretaceous plutonic suite intrusions includes veins, skarns, stockworks and breccias within, proximal or distal to the intrusions. The most predominant form of mineralization however, is sheeted quartz veins in the intrusions.

More often than not, more than one style of mineralization will exist proximal to these intrusions (Abbott et al., 1986).

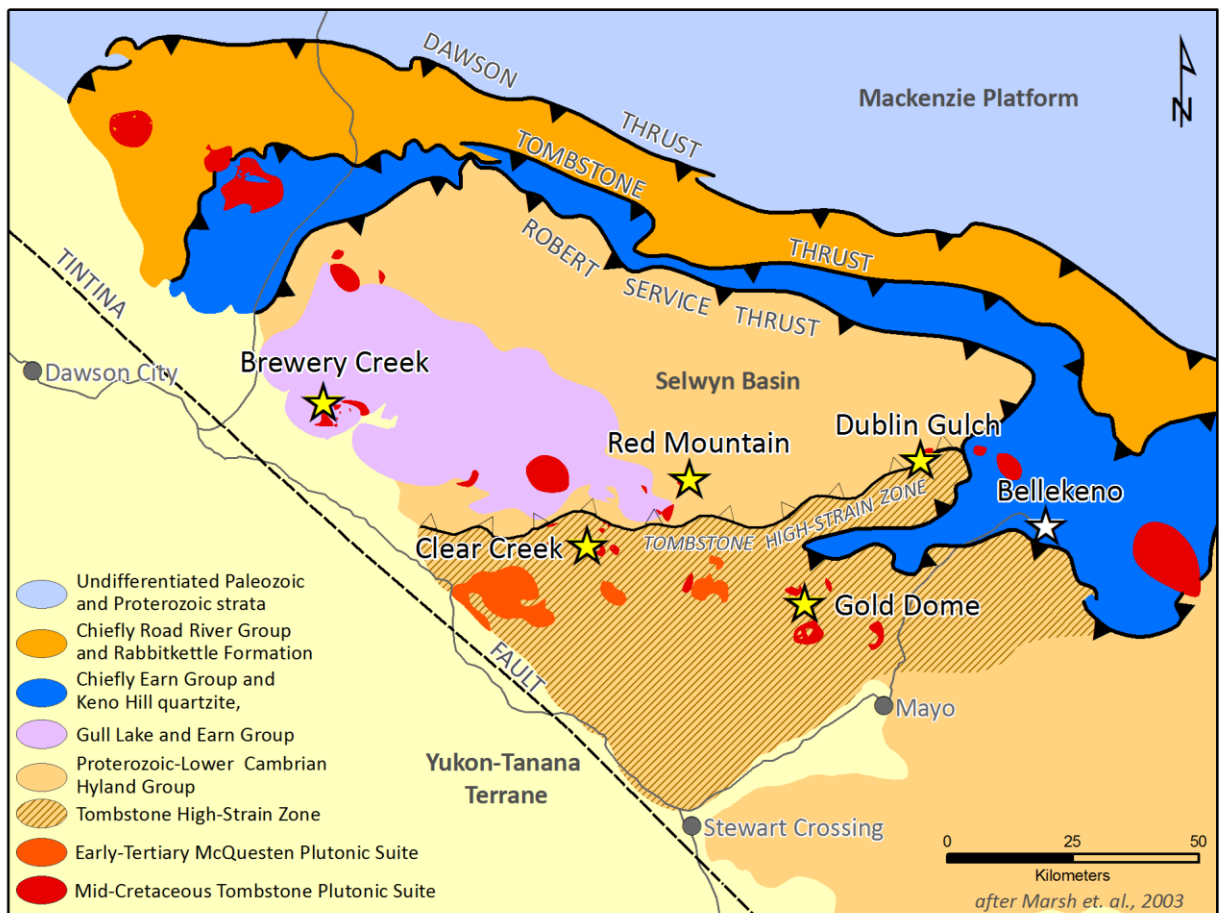
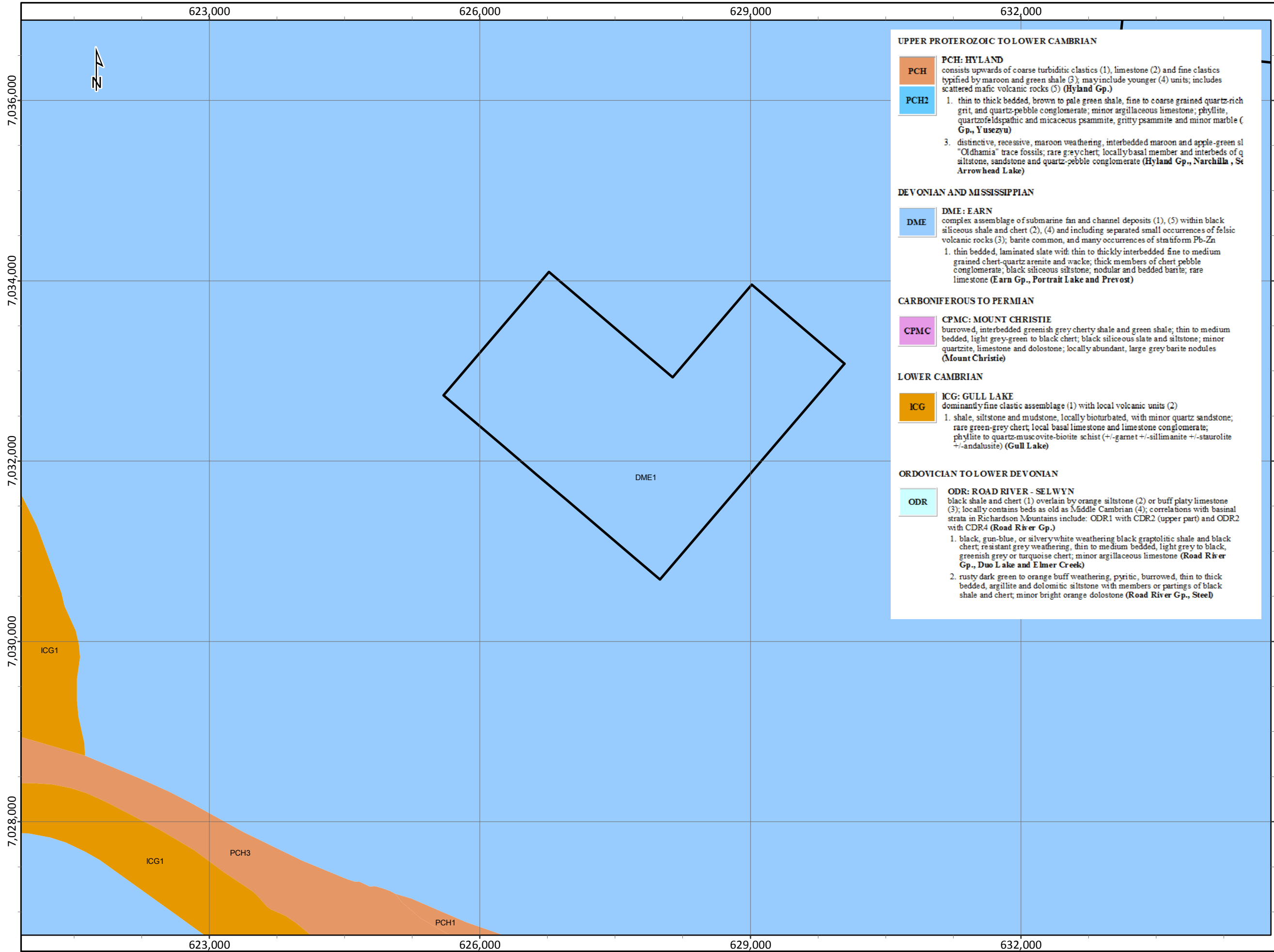


Figure 5-1. Regional Geology of the Selwyn Basin.

More recently discovered styles of mineralization include Carlin-style gold mineralization in Bouvette Formation shallow water limestone, dolomite, and calcareous siltstone of Cambrian to Devonian age, (sourced from ATAC Resources webpage). This occurrence is found 55km north of the town of Mayo.

5.2 Property Geology

The property covers Devonian and Mississippian Earn Group and Portrait Lake/Prevost Group sediments. Sediments include thin bedded, laminated slate, chert-quartz arenite, wacke, thick members of chert-pebble conglomerate, black siliceous siltstone, nodular and bedded barite and rare limestone, (Roots, 1995).



UPPER PROTEROZOIC TO LOWER CAMBRIAN

- PCH: HYLAND**
 consists upwards of coarse turbiditic clastics (1), limestone (2) and fine clastics typified by maroon and green shale (3); may include younger (4) units; includes scattered mafic volcanic rocks (5) (Hyland Gp.)
- PCH2**
- thin to thick bedded, brown to pale green shale, fine to coarse grained quartz-rich grit, and quartz-pebble conglomerate; minor argillaceous limestone; phyllite, quartzofeldspathic and micaceous psammite, gritty psammite and minor marble (Gp., Yusezyu)
 - distinctive, recessive, maroon weathering, interbedded maroon and apple-green siltstone, sandstone and quartz-pebble conglomerate (Hyland Gp., Narchilla, St Arrowhead Lake)

DEVONIAN AND MISSISSIPPIAN

- DME: EARN**
 complex assemblage of submarine fan and channel deposits (1), (5) within black siliceous shale and chert (2), (4) and including separated small occurrences of felsic volcanic rocks (3); barite common, and many occurrences of stratiform Pb-Zn
- thin bedded, laminated slate with thin to thickly interbedded fine to medium grained chert-quartz arenite and wacke; thick members of chert pebble conglomerate; black siliceous siltstone; nodular and bedded barite; rare limestone (Earn Gp., Portrait Lake and Prevost)

CARBONIFEROUS TO PERMIAN

- CPMC: MOUNT CHRISTIE**
 burrowed, interbedded greenish grey cherty shale and green shale; thin to medium bedded, light grey-green to black chert; black siliceous slate and siltstone; minor quartzite, limestone and dolostone; locally abundant, large grey barite nodules (Mount Christie)

LOWER CAMBRIAN

- ICG: GULL LAKE**
 dominantly fine clastic assemblage (1) with local volcanic units (2)
- shale, siltstone and mudstone, locally bioturbated, with minor quartz sandstone; rare green-grey chert; local basal limestone and limestone conglomerate; phyllite to quartz-muscovite-biotite schist (+/- garnet +/- silimanite +/- staurolite +/- andalusite) (Gull Lake)

ORDOVICIAN TO LOWER DEVONIAN

- ODR: ROAD RIVER - SELWYN**
 black shale and chert (1) overlain by orange siltstone (2) or buff platy limestone (3); locally contains beds as old as Middle Cambrian (4); correlations with basal strata in Richardson Mountains include: ODR1 with CDR2 (upper part) and ODR2 with CDR4 (Road River Gp.)
- black, gun-blue, or silverywhite weathering black graptolitic shale and black chert, resistant grey weathering, thin to medium bedded, light grey to black, greenish grey or turquoise chert; minor argillaceous limestone (Road River Gp., Duo Lake and Elmer Creek)
 - rusty dark green to orange buff weathering, pyritic, burrowed, thin to thick bedded, argillite and dolomitic siltstone with members or partings of black shale and chert; minor bright orange dolostone (Road River Gp., Steel)

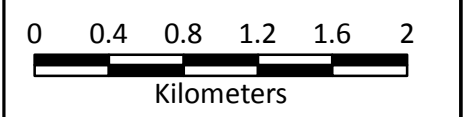


Legend

- GPD Property Outline
- Minfile Occurrence



ILC PROPERTY
 Local Geology and
 Minfile Occurrences



Scale:	1:40,623	Map ID:	--
Draw Date:	2012/04/17	Rev. Date:	--
Version:	1	Figure:	5--2
Author:	S. Carlos	Office:	Whitehorse
Location:	138 km NNE of Faro, Yukon Territory		
Projection:	NAD 1983 UTM Zone 8N		
Filename:	ILC_20120417_11x17_Geology		

5.3 Mineralization

The Tintina Gold Belt is a metallogenic region extending from the Yukon into Alaska which hosts several intrusion-related gold deposits including Dublin Gulch, Brewery Creek and Fort Knox. Gold deposits that are spatially and temporally associated with the mid-

Cretaceous plutonic suite intrusions, and in the Yukon, form the Tombstone Gold Belt (Goldfarb et al., 2000).

The Selwyn Basin is also host to world class sedimentary exhalative districts such as the Anvil District, Macmillan Pass and Howards Pass, (Heon, 2003).

Gold mineralization/anomalies in proximity to chert pebble conglomerate to conglomerate, shale and siltstone occurs ~1.5 km to the north-west of the property on the Bach claims.

6.0 EXPLORATION

6.1 Exploration Program

The 2011 sampling program was carried out in two stages; the first stage based out of the Rogue Camp, located at the Plata Air strip from July 18 – 24, 2011. The second stage of exploration was carried out from August 6 – 31, 2011, and centered around the camp constructed on the North Canal Road (Jeff Creek Camp). Golden Predator collected 14 silt samples from active stream- beds and 1 rock sample at the later date. Crews of between 9 to 12 samplers, plus a cook and helicopter pilot were based in the Jeff Creek camp constructed by Golden Predator on the North Canal Road. All the work was helicopter assisted using a NOTAR supplied by Fireweed Helicopters of Whitehorse, YT, with daily flight times averaging about 4.6 hours/day for the program.

6.2 Sampling Methodology and Protocols

Stream Geochemical Program

Stream sediment samples were collected at intervals of approximately 750 m along first, second and third order streams, and immediately upstream of confluences. Samples were also collected in the vicinity of historical RGS stream anomalies, to test repeatability.

Each sample was collected from several points along the active stream bed to produce a representative composite sample. The uppermost sediment was discarded to avoid spurious high content of Fe and Mn oxide coating. The active silt and fine to medium sand that has been recently transported by the stream was the target sediment. This type of sediment was generally located: 1) in the lee of large boulders or logs; 2) in low energy pools at the tail-end of bars; and 3) infilling voids below the surface of cobble-gravel bars.

Samples were sieved in the field to a fraction of less than one-eighth inch (<1/8” or 3.36 mm) and placed in labelled, double layered plastic sample bags. Each sample site was flagged

and photographed. The sample weights varied between 4-12 kg. Large sample sizes were required to obtain sufficient fine material for the selected assay techniques.

If the drainage contained seasonal stream sediment deposition, but was currently dry, a sediment sample was collected by dry sieving the material. Occasionally the south-facing slopes had underground drainage that sporadically comes to surface, in which case sample spacing sometimes varied.

Sample data was recorded on data cards and included the following: geographic location, sample color, angularity of the clasts, sediment composition (percentage of gravel, sand, silt, clay and organics), slope direction, slope angle, stream flow, vegetation type and comments.

Samples were transported by air from Jeff Creek camp to Whitehorse by Alkan Air. Samples were delivered by in-house personnel or insured professional expeditors to ALS Chemex's ISO 9001 certified preparation facility in Whitehorse. Samples were dried and screened to 180 microns (80 mesh).

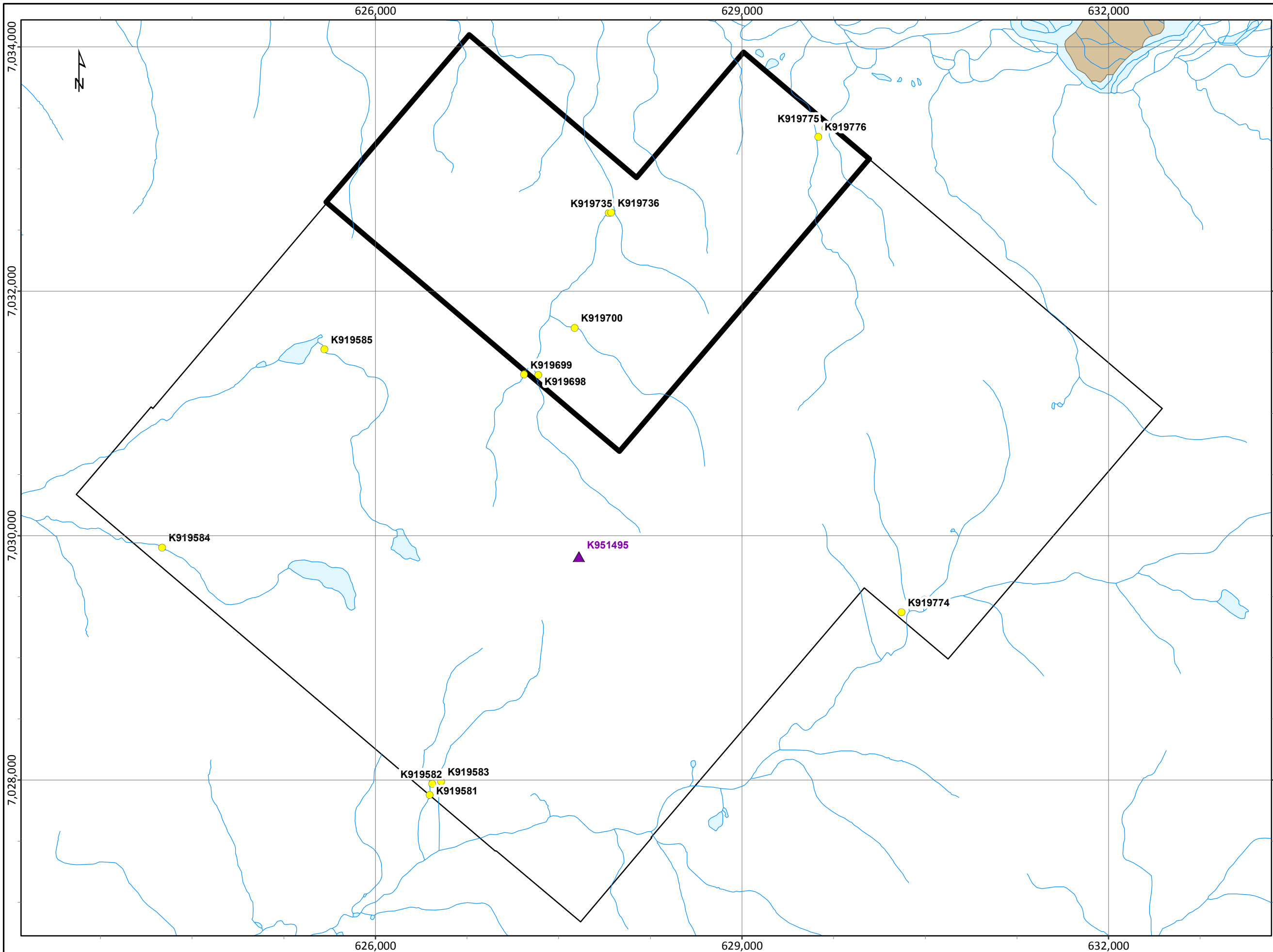
The pulps were analyzed at ALS Chemex's ISO 9001 certified laboratory in North Vancouver using the ultra-trace ME-MS41 package. A 0.5 g sample is digested by aqua regia techniques and 51 elements are analyzed through a combination of ICP-AES and ICP-MS.

The Au-ST44 method was used to analyze gold using a 50 g sample of <80 micron material. This method provides the lowest possible detection limit for gold of 0.0001 – 0.1 ppm, using aqua regia digestion with analysis by ICP-MS. The larger sample size for the gold analysis is used in an effort to reduce potential nugget effects. Samples exceeding the upper limit of Au detection (0.1 ppm) were re-analyzed using Au-OG44, an ore grade assay technique. A 50 g sample of 180 microns sediment is digested in an aqua regia solution and finished with ICP-MS methods to provide an Au detection range between 0.01 – 100 ppm.

ALS completes quality assurance/ quality control (QA/QC) data verification of their assays through internally inserted duplicates, standards and blanks. In addition, Golden Predator's QA/QC program included the insertion of field duplicates, blanks and standard reference material obtained from CDN Resource Laboratories of Langley, BC. Assay certificates are compiled in Appendix 3 and the detailed methodology and detection limits are in Appendix 4. See Figure 6-1 for sample locations and gold geochemical plots from stream sediment samples collected by Golden Predator in 2011.

Rock Samples

A total of 1 rock sample was collected in conjunction with the stream sediment sampling program. This sample was described as quartz veined siltstone. The geographic locations and a description of the rock sample were recorded. See Figure 6-1 for sample locations and Appendix 2 for sample descriptions.

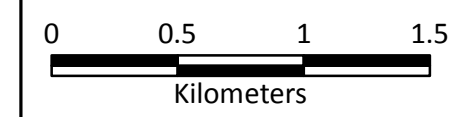


- Legend**
- ◇ GPD Property Outline
 - Reduced Block for Assessment

- Au_2011_Silts**
- Au_ppb**
- 0.05 - 16
 - 16.01 - 40
 - 40.01 - 101
 - 101.01 - 410
- ▲ SEL_Z8_Rock_20111207



ILC PROPERTY
 Sample Location Map
 and Gold in Silt Plots



Scale:	1:30,000	Map ID:	--
Draw Date:	2012/04/02	Rev. Date:	--
Version:	1	Figure:	6--1
Author:	S. Carlos	Office:	Whitehorse
Location:	138 km NNE of Faro, Yukon Territory		
Projection:	NAD 1983 UTM Zone 8N		
Filename:	ILC_20120417_11x17LandscapeSampleLoc		

6.3 Results

Stream Sediments

Fourteen stream sediment samples were collected over multiple drainages on the property as shown in Figure 6-1. The samples have low values of gold, all being less than 5 ppb. A cluster of samples in the north-central to north portion of the property contain an anomalous mercury, antimony, molybdenum association (Samples: K919699, K919700, K919698, K919736, K919735). The values are also about 2-4 times greater than the other sample locations on the property.

Rock Samples

One rock sample was collected in the middle of the ILC Property and is described as quartz veined siltstone. The gold value was less than 2.5 ppb and somewhat anomalous in barium but other elements were at background values, (see Appendix 2 for sample description and Appendix 3 for assay results).

7.0 CONCLUSIONS AND RECOMMENDATIONS

Mercury/antimony/molybdenum associated anomalies should be followed up by traverses along ridges and up stream valleys looking for mineralized float and bedrock as well as geological mapping. Ridge and contour soil sampling could be undertaken.

A preliminary assessment by field mapping would be ideal to determine possible similar geological contacts and structure as is associated with >100ppb gold soil anomalies on the Bach claims only 1.5km to the north-west. A possible east-west mineralized zone on the Bach claims if projected lies on trend with the most northerly corner of the ILC claims (namely ILC claims 1-6) or possible similar stratigraphy may trend to the central portion of the claim block.

A topographic contour soil program should take into account the projection of these possible mineralized trends which may be first refined by ground reconnaissance.

8.0 2011 EXPENDITURES

Expenditures for the 2011 exploration program were \$13, 083.00 as summarized in Table 8-1.

9.0 STATEMENT OF AUTHORSHIP

This Report titled, “Assessment Report, 2011 Stream Sediment Sampling Program, ILC Property, Mayo Mining Division, Yukon, Canada,” and dated May 28th, 2012 was prepared and signed by the following author:

Shane A. Carlos
Dated: May 28th, 2012
Whitehorse, Yukon Territory

10.0 REFERENCES

- Abbott, J.G., Gordey, S.P., & Tempelman-Kluit, D.J., 1986. Setting of stratiform, sediment hosted lead-zinc deposits in the Yukon and Northeastern British Columbia; Mineral Deposits of Northern Cordillera, ed. J.A. Morin, The Canadian Institute of Mining and Metallurgy, Special Volume 37, p. 1-18.
- Carlson, G., 1993. Geological and Geochemical Evaluation of the Spot 1 to 34 Claims, Yukon Assessment Report #093069.
http://virtua.gov.yk.ca:8080/search/query?term_1=093069
- Coates, M.E., 1969. HESS PROJECT. Yukon Assessment Report #019033.
<http://servlet.gov.yk.ca/ygsmin/index.do>
<http://servlet.gov.yk.ca/ygsmin/occurrence.do?occurrenceID=105N+012>
- Goldfarb, R., Hart, C., Miller, M., Miller, L., Farmer, G.L., and Groves, D., 2000. The Tintina Gold Belt: A Global Perspective. *In: The Tintina Gold Belt: Concepts, Exploration and Discoveries*, British Columbia and Yukon Chamber of Mines, Special Volume 2. 5-34.
- Gordey, S.P. and A.J. Makepeace (compilers), 2001. Bedrock Geology, Yukon Territory; Geological Survey of Canada. Open File 3754 and Exploration, Exploration and Geological Services Division, Yukon and Northern Affairs Canada, Open File 2001-1, scale 1: 1,000,000.
- Heon, Daniele, 2003. <http://www.geology.gov.yk.ca/metallogeny/selwyn/intro.html>
- Israel, S., Colpron, M. and T. Fraser, 2011. Overview of Yukon Geology.
www.geology.gov.yk.ca/pdf/Bedrock_Full_Overview.pdf
- MINFILE: 105O 023. http://ygsftp.gov.yk.ca/publications/minfile/text_files/105O&P/105O023.pdf
- Murphy, D., 1997. Geology of the McQuesten River Region, Northern McQuesten and Mayo Map Area, Yukon Territory (115P/14, 15, 16; 105M/13, 14). Bulletin 6, Exploration and Geological Services Division, Yukon Region, Indian and Northern Affairs Canada.

Roots, C.F., Abbott, J.G., Cecile, M.P. and Gordey, S.P., 1995. Bedrock geology of Lansing Range map area (105N) east half, Hess Mountains, Yukon. Exploration and Geological Services Division, Yukon, Indian and Northern Affairs Canada, Open File 1995-7(G). Map, scale: 1:125,000.

Schulze, 1998. Geological and Geochemical Assessemnt Report on the Bach Property.
Assessment Report #093970

APPENDIX 1
CERTIFICATE OF AUTHOR

Shane Allen Carlos
201A-170 Titanium Way
Whitehorse, Yukon Territory
Canada Y1A 0G1
E-mail: scarlos@goldenpredator.com

Certificate of Author

I, Shane Allen Carlos of, Whitehorse, Yukon Territory, certify that:

1. I graduated from the University of British Columbia with a Bachelor of Science in Earth and Ocean Sciences, in 2009.
2. I have worked in the mineral exploration business for the last 15 years on diamond drill rigs, as a line cutter, soil sampler, claim staker and core logger, with the last 2 years as a geologist for Golden Predator Canada Corp.

Shane Allen Carlos

Whitehorse, Yukon Territory

Dated this 28th day of May, 2012.

APPENDIX 2
SUMMARY
STREAM SEDIMENT/ROCK SAMPLE
DESCRIPTIONS

ILC Sample Descriptions

Sample	Au ppb	Claim	2011 Date	GRID	Easting	Northing	Elevation (m)	Angularity	Color	% Gravel	% Sand	% Silt	% Clay	% Organics	Slope Direction	Slope Angle	Stream Flow	Comments
K919773	1.2	ILC	2011_07_23	UTM83-8	630493.1	7029475	854.725	SR	GY	5	5				SW	1	3	
K919774	1.6	ILC	2011_07_23	UTM83-8	630306.5	7029372	845.421	SR	GY	5	5				SW	1	3	creek not where map said, over 100m W
K919775	0.2	ILC	2011_07_23	UTM83-8	629685.2	7033334	719.5	SR	GYD	3	7				N	1	3	very thick willows
K919776	0.3	ILC	2011_07_23	UTM83-8	629624.4	7033263	722.87	SR	GYD	3	7				N	1	3	very thick willows, used axe to get to creek
K919698	0.5	ILC	2011_07_23	UTM83-8	627333	7031313	881.622	SR	BK	3	7				NW	3	4	slate,quartz
K919699	0.5	ILC	2011_07_23	UTM83-8	627217.9	7031318	873.966	SR	BK	2	8				N	3	4	carboniferous shale,altered quartz
K919700	0.4	ILC	2011_07_23	UTM83-8	627631.2	7031701	843.593	SR	BK	5	5				NW	3	3	carboniferous shale,altered quartz
K919735	0.4	ILC	2011_07_23	UTM83-8	627910.3	7032640	760.7	SR	GYD	6	2	2			NE	2	5	phyllite and other metaseds. Occasional qtz vns. No visible mineralization
K919736	0.05	ILC	2011_07_23	UTM83-8	627931.8	7032642	760.284	R	GYD		5	5			NW	3	5	all fines. Metaseds
K919581	1.6	ILC	2011_07_24	UTM83-8	626444.1	7027878	765.834	R	BK		1	6	2	1	S	1	2	stagnant water.
K919582	2.2	ILC	2011_07_24	UTM83-8	626465.3	7027968	778.262	R	GYD	1	3	4	1	1	S	2	3	flat ground, no gravel. Abundant silt
K919583	2.2	ILC	2011_07_24	UTM83-8	626538	7027987	778.762	SR	GYD	3	4	2	1		S	2	3	more sediment and wter, mixed lith, 5% qtz vns
K919584	1.6	ILC	2011_07_24	UTM83-8	624254.4	7029903	952.901	SA	GYD	4	1	2	1	2	NW	3	4	mixed lithologies, argillite, intrusive, 3% qtz vns
K919585	0.9	ILC	2011_07_24	UTM83-8	625583.5	7031524	917.1	SR	GYD	5	2	2		1	W	1	3	swampy area, metaseds, 3% rusty qtz vn chips.
K919588	4.6	ILC	2011_07_24	UTM83-8	635009.8	7036501	894.794	R	BR	1	2	3	1	3	S	2	3	no sediment in creek. Washed a soil sample below tree

ILC Sample Descriptions

ANGULARITY WR well rounded R rounded SR subrounded SA subangular A angular	SLOPE ANGLE 1 flat (<5°) 2 gentle (<5°-15°) 3 moderate (<15°-25°) 4 steep (>25°)	STREAM FLOW 1 dry 2 stagnant 3 slow 4 moderate 5 fast	SEDIMENT COMP must add to 10 or 100% >2mm gravel >0.16mm sand
--	---	---	---

Rock Sample

Sample	Au ppb	Claim	Date 2011	GRID	Easting	Northing	Elevation (m)	Sample Source	LithoDesc	Comments
K951495	2.5	ILC	Jul- 22	NAD83 Zone8	627667	7029826	1126	Subcrop	Siltstone	Area is mostly covered in moss. Samples are few. This metasediment has small quartz veinlets that don't look metamorphic.

APPENDIX 3
ASSAY CERTIFICATES

[See Data files](#)

Assay Results for Sample K951495 (Assay Certificate Missing)

Sample #	K951495
Au_ppb	2.5
Au_ppm	0.0025
Ag_ppm	0.1
Al_%	0.72
As_ppm	8
B_ppm	5
Ba_ppm	1620
Be_ppm	0.25
Bi_ppm	1
Ca_%	0.04
Cd_ppm	0.25
Co_ppm	6
Cr_ppm	14
Cu_ppm	30
Fe_%	1.31
Ga_ppm	5
Hg_ppm	0.5
K_%	0.18
La_ppm	10
Mg_%	0.28
Mn_ppm	320
Mo_ppm	0.5
Na_%	0.02
Ni_ppm	19
P_ppm	180
Pb_ppm	1
S_%	0.13
Sb_ppm	1
Sc_ppm	2
Sr_ppm	13
Th_ppm	10
Ti_%	0.01
Tl_ppm	5
U_ppm	5
V_ppm	17
W_ppm	5
Zn_ppm	18

APPENDIX 4
ANALYTICAL METHODS AND
DETECTION LIMITS



Sample Preparation Package

PREP- 41

Standard Preparation: Dry sample and dry- sieve to -180 micron

Sample preparation is the most critical step in the entire laboratory operation. The purpose of preparation is to produce a homogeneous analytical sub-sample that is fully representative of the material submitted to the laboratory.

An entire sample is dried and then dry-sieved using a 180 micron (Tyler 80 mesh) screen. The plus fraction is retained unless disposal is requested. This method is appropriate for soil or sediment samples up to 1 kg in weight.

Method Code	Description
LOG-22	Sample is logged in tracking system and a bar code label is attached.
DRY-22	Low temperature drying of excessively wet samples where the oven temperature is not to exceed 60°C. This method is suitable for more soil and sediment samples that are analyzed for volatile elements.
SCR-41	Sample is dry-sieved to - 180 micron and both the plus and minus fractions are retained.

Revision 02.01
Feb 22, 2010

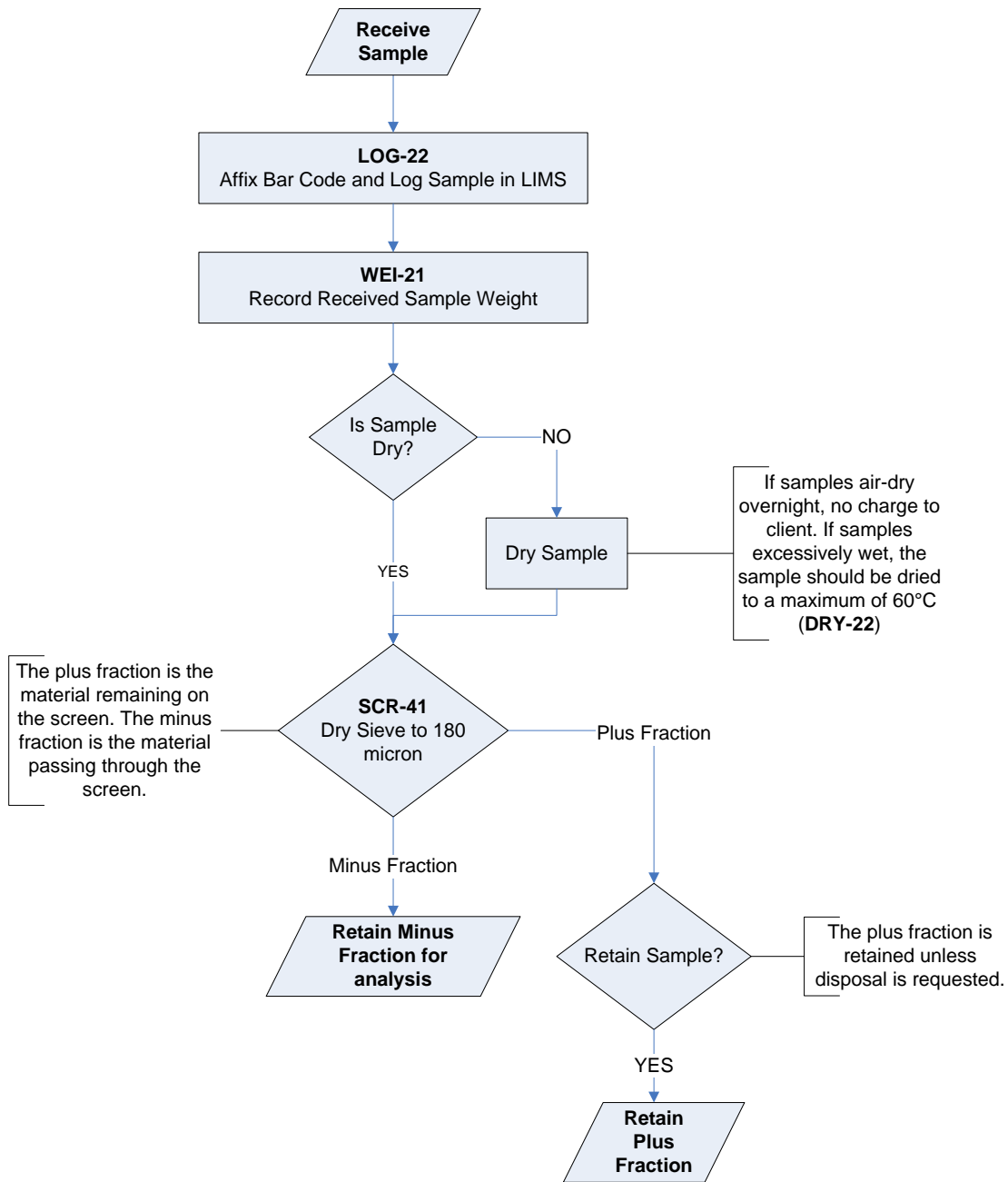
RIGHT SOLUTIONS RIGHT PARTNER

www.alsglobal.com



Sample Preparation Package

Sample Preparation Flowchart Package -PREP- 41



Revision 02.01
Feb 22, 2010



Geochemical Procedure

ME- MS41

Ultra- Trace Level Methods Using ICP- MS and ICP- AES

Sample Decomposition:

Aqua Regia Digestion (GEO-AR01)

Analytical Method:

Inductively Coupled Plasma-Atomic Emission Spectroscopy (ICP-AES) Inductively Coupled Plasma - Mass Spectrometry (ICP-MS)

A prepared sample (0.50 g) is digested with aqua regia in a graphite heating block. After cooling, the resulting solution is diluted to with deionized water, mixed and analyzed by inductively coupled plasma-atomic emission spectrometry. Following this analysis, the results are reviewed for high concentrations of bismuth, mercury, molybdenum, silver and tungsten and diluted accordingly. Samples are then analysed by ICP-MS for the remaining suite of elements. The analytical results are corrected for inter-element spectral interferences.

Element	Symbol	Units	Lower Limit	Upper Limit
Silver	Ag	ppm	0.01	100
Aluminum	Al	%	0.01	25
Arsenic	As	ppm	0.1	10 000
Gold	Au	ppm	0.2	25
Boron	B	ppm	10	10 000
Barium	Ba	ppm	10	10 000
Beryllium	Be	ppm	0.05	1 000
Bismuth	Bi	ppm	0.01	10 000
Calcium	Ca	%	0.01	25
Cadmium	Cd	ppm	0.01	1 000
Cerium	Ce	ppm	0.02	500
Cobalt	Co	ppm	0.1	10 000
Chromium	Cr	ppm	1	10 000

Revision 04.00
Sep 20, 2006

RIGHT SOLUTIONS RIGHT PARTNER

www.alsglobal.com



Geochemical Procedure

Element	Symbol	Units	Lower Limit	Upper Limit
Cesium	Cs	ppm	0.05	500
Copper	Cu	ppm	0.2	10 000
Iron	Fe	%	0.01	50
Gallium	Ga	ppm	0.05	10 000
Germanium	Ge	ppm	0.05	500
Hafnium	Hf	ppm	0.02	500
Mercury	Hg	ppm	0.01	10 000
Indium	In	ppm	0.005	500
Potassium	K	%	0.01	10
Lanthanum	La	ppm	0.2	10 000
Lithium	Li	ppm	0.1	10 000
Magnesium	Mg	%	0.01	25
Manganese	Mn	ppm	5	50 000
Molybdenum	Mo	ppm	0.05	10 000
Sodium	Na	%	0.01	10
Niobium	Nb	ppm	0.05	500
Nickel	Ni	ppm	0.2	10 000
Phosphorus	P	ppm	10	10 000
Lead	Pb	ppm	0.2	10 000
Rubidium	Rb	ppm	0.1	10 000
Rhenium	Re	ppm	0.001	50
Sulphur	S	%	0.01	10
Antimony	Sb	ppm	0.05	10 000
Scandium	Sc	ppm	0.1	10 000
Selenium	Se	ppm	0.2	1 000
Tin	Sn	ppm	0.2	500
Strontium	Sr	ppm	0.2	10 000

Revision 04.00
Sep 20, 2006

RIGHT SOLUTIONS RIGHT PARTNER

www.alsglobal.com



Geochemical Procedure

Element	Symbol	Units	Lower Limit	Upper Limit
Tantalum	Ta	ppm	0.01	500
Tellurium	Te	ppm	0.01	500
Thorium	Th	ppm	0.2	10000
Titanium	Ti	%	0.005	10
Thallium	Tl	ppm	0.02	10 000
Uranium	U	ppm	0.05	10 000
Vanadium	V	ppm	1	10 000
Tungsten	W	ppm	0.05	10 000
Yttrium	Y	ppm	0.05	500
Zinc	Zn	ppm	2	10 000
Zirconium	Zr	ppm	0.5	500

NOTE: In the majority of geological matrices, data reported from an aqua regia leach should be considered as representing only the leachable portion of the particular analyte.



Geochemical Procedure

Au- OG43, Au- OG44

Determination of Gold by Aqua Regia Digestion / Solvent Extraction - Flame AAS or ICPMS finish

Sample Decomposition:

Aqua regia gold digestion (GEO-AuAR01/02)

Analytical Method:

Inductively coupled mass spectrometry (ICPMS) or Atomic absorption spectrometry (AAS)

A finely pulverised sample (25 – 50 g) is digested in a mixture of 3 parts hydrochloric acid and 1 part nitric acid (aqua regia). This acid mixture generates nascent chlorine and nitrosyl chloride, which will dissolve free gold and gold compounds such as calaverite (AuTe₂).

The dissolved gold is complexed and extracted into Aliquat 336/DIBK and determined by Flame AAS. Alternatively gold is determined by ICPMS directly from the digestion liquor. This method allows for the simple and economical addition of extra elements by running the digestion liquor through the ICPAES or ICPMS.

Note: Samples high in sulphide or carbon content may lead to low gold recoveries unless they are roasted prior to digestion.

Method	Element	Sample Mass	Units	Lower Limit	Upper Limit
Au-OG43	Gold	25 g	ppm	0.01	100
Au-OG44	Gold	50 g	ppm	0.01	100

Revision 01.01
Jun 2, 2005

RIGHT SOLUTIONS RIGHT PARTNER

www.alsglobal.com



Geochemical Procedure

Au- TL43, Au- TL44 Determination of Trace Level Gold by Solvent Extraction – Graphite furnace AAS or ICPMS finish

Sample Decomposition:

Aqua regia gold digestion (GEO-AuAR01/02)

Analytical Method:

Inductively coupled mass spectrometry (ICPMS) or Atomic absorption spectrometry (AAS)

A finely pulverised sample (25 – 50 g) is digested in a mixture of 3 parts hydrochloric acid and 1 part nitric acid (aqua regia). This acid mixture generates nascent chlorine and nitrosyl chloride, which will dissolve free gold and gold compounds such as calaverite, AuTe₂.

The dissolved gold is complexed and extracted either with diisobutyl ketone (DIBK) or Kerosene/DBS and determined by graphite furnace AAS. Alternatively gold is determined by ICPMS directly from the digestion liquor. This method allows for the simple and economical addition of extra elements by running the digestion liquor through the ICPAES or ICPMS.

Note: Samples high in sulphide or carbon content may lead to low gold recoveries unless they are roasted prior to digestion.

Method	Element	Sample Mass	Units	Lower Limit	Upper Limit	Default Overlimit Method
Au-TL43m	Gold	25 g	ppm	0.005	2	Au-OG43
Au-TL44m	Gold	50 g	ppm	0.005	2	Au-OG44

Revision 01.00
Jun 13, 2007

RIGHT SOLUTIONS RIGHT PARTNER

www.alsglobal.com



Sample Preparation Package

PREP- 31

Standard Sample Preparation: Dry, Crush, Split and Pulverize

Sample preparation is the most critical step in the entire laboratory operation. The purpose of preparation is to produce a homogeneous analytical sub-sample that is fully representative of the material submitted to the laboratory.

The sample is logged in the tracking system, weighed, dried and finely crushed to better than 70 % passing a 2 mm (Tyler 9 mesh, US Std. No.10) screen. A split of up to 250 g is taken and pulverized to better than 85 % passing a 75 micron (Tyler 200 mesh, US Std. No. 200) screen. This method is appropriate for rock chip or drill samples.

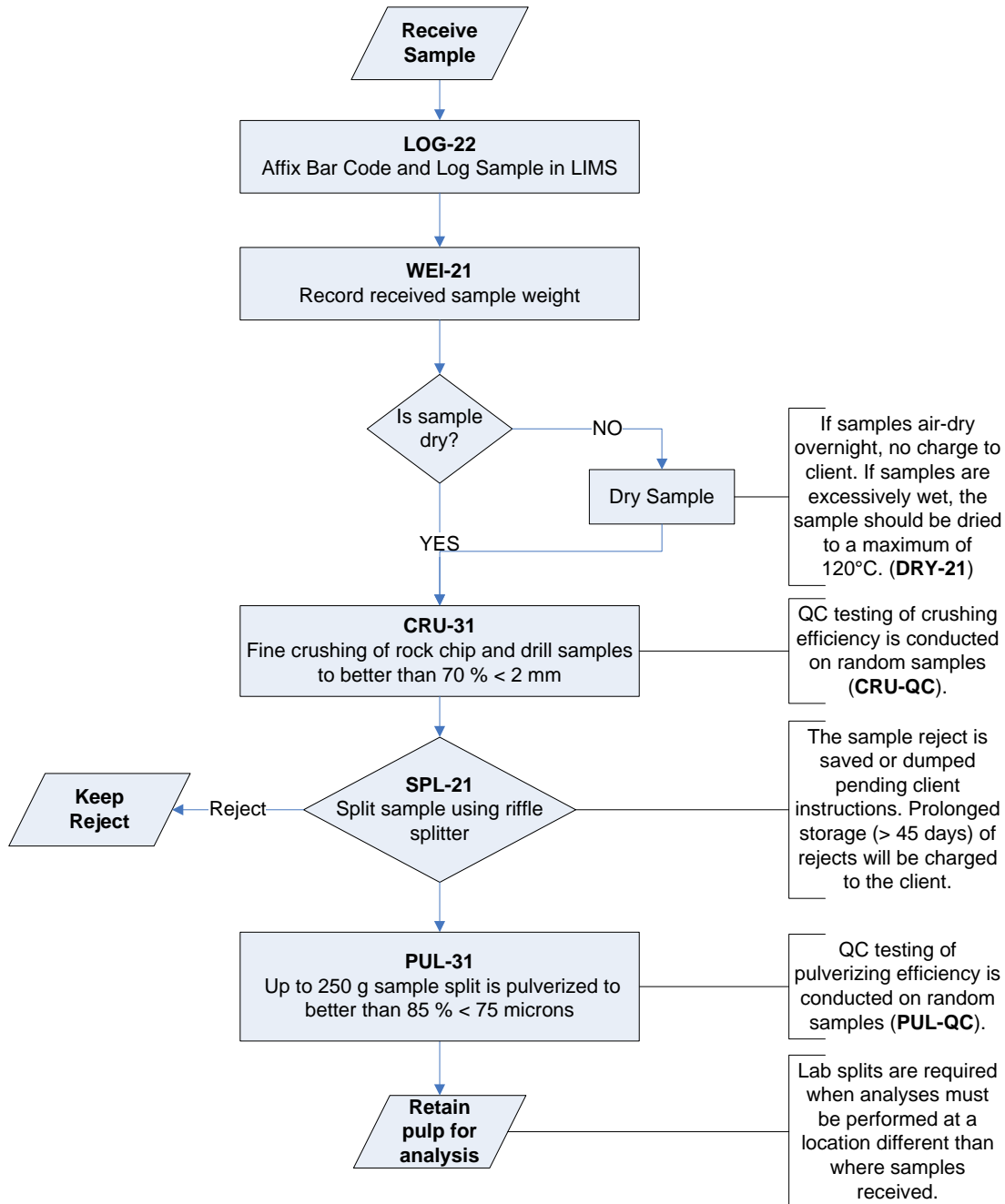
Method Code	Description
LOG-22	Sample is logged in tracking system and a bar code label is attached.
DRY-21	Drying of excessively wet samples in drying ovens. This is the default drying procedure for most rock chip and drill samples.
CRU-31	Fine crushing of rock chip and drill samples to better than 70 % of the sample passing 2 mm.
SPL-21	Split sample using riffle splitter.
PUL-31	A sample split of up to 250 g is pulverized to better than 85 % of the sample passing 75 microns.

Revision 02.03
Feb 22, 2010



Sample Preparation Package

Flow Chart - Sample Preparation Package - PREP- 31 Standard Sample Preparation: Dry, Crush, Split and Pulverize



Revision 02.03
Feb 22, 2010



Geochemical Procedure

ME- ICP41

Trace Level Methods Using Conventional ICP- AES Analysis

Sample Decomposition:

Nitric Aqua Regia Digestion (GEO-AR01)

Analytical Method:

Inductively Coupled Plasma - Atomic Emission Spectroscopy (ICP - AES)

A prepared sample is digested with aqua regia in a graphite heating block. After cooling, the resulting solution is diluted to 12.5 mL with deionized water, mixed and analyzed by inductively coupled plasma-atomic emission spectrometry. The analytical results are corrected for inter-element spectral interferences.

NOTE: In the majority of geological matrices, data reported from an aqua regia leach should be considered as representing only the leachable portion of the particular analyte.

Element	Symbol	Units	Lower Limit	Upper Limit	Default Overlimit Method
Silver	Ag	ppm	0.2	100	Ag-OG46
Aluminum	Al	%	0.01	25	
Arsenic	As	ppm	2	10000	
Boron	B	ppm	10	10000	
Barium	Ba	ppm	10	10000	
Beryllium	Be	ppm	0.5	1000	
Bismuth	Bi	ppm	2	10000	
Calcium	Ca	%	0.01	25	
Cadmium	Cd	ppm	0.5	1000	
Cobalt	Co	ppm	1	10000	
Chromium	Cr	ppm	1	10000	

Revision 06.02
Apr 20, 2009

RIGHT SOLUTIONS RIGHT PARTNER

www.alsglobal.com



Geochemical Procedure

Element	Symbol	Units	Lower Limit	Upper Limit	Default Overlimit Method
Copper	Cu	ppm	1	10000	Cu-OG46
Iron	Fe	%	0.01	50	
Gallium	Ga	ppm	10	10000	
Mercury	Hg	ppm	1	10000	
Potassium	K	%	0.01	10	
Lanthanum	La	ppm	10	10000	
Magnesium	Mg	%	0.01	25	
Manganese	Mn	ppm	5	50000	
Molybdenum	Mo	ppm	1	10000	
Sodium	Na	%	0.01	10	
Nickel	Ni	ppm	1	10000	
Phosphorus	P	ppm	10	10000	
Lead	Pb	ppm	2	10000	Pb-OG46
Sulfur	S	%	0.01	10	
Antimony	Sb	ppm	2	10000	
Scandium	Sc	ppm	1	10000	
Strontium	Sr	ppm	1	10000	
Thorium	Th	ppm	20	10000	
Titanium	Ti	%	0.01	10	
Thallium	Tl	ppm	10	10000	
Uranium	U	ppm	10	10000	
Vanadium	V	ppm	1	10000	
Tungsten	W	ppm	10	10000	
Zinc	Zn	ppm	2	10000	Zn-OG46

Revision 06.02
Apr 20, 2009

RIGHT SOLUTIONS RIGHT PARTNER

www.alsglobal.com



Geochemical Procedure

Elements listed
below are available upon request

Element	Symbol	Units	Lower Limit	Upper Limit	Default Overlimit Method
Cerium	Ce	ppm	10	10000	
Hafnium	Hf	ppm	10	10000	
Indium	In	ppm	10	10000	
Lithium	Li	ppm	10	10000	
Niobium	Nb	ppm	10	10000	
Rubidium	Rb	ppm	10	10000	
Selenium	Se	ppm	10	10000	
Silicon	Si	ppm	10	10000	
Tin	Sn	ppm	10	10000	
Tantalum	Ta	ppm	10	10000	
Tellurium	Te	ppm	10	10000	
Yttrium	Y	ppm	10	10000	
Zirconium	Zr	ppm	5	10000	

Revision 06.02
Apr 20, 2009

RIGHT SOLUTIONS RIGHT PARTNER

www.alsglobal.com



Fire Assay Procedure

Au- AA23 & Au- AA24 Fire Assay Fusion, AAS Finish

Sample Decomposition:

Fire Assay Fusion (FA-FUS01 & FA-FUS02)

Analytical Method:

Atomic Absorption Spectroscopy (AAS)

A prepared sample is fused with a mixture of lead oxide, sodium carbonate, borax, silica and other reagents as required, inquarted with 6 mg of gold-free silver and then cupelled to yield a precious metal bead.

The bead is digested in 0.5 mL dilute nitric acid in the microwave oven, 0.5 mL concentrated hydrochloric acid is then added and the bead is further digested in the microwave at a lower power setting. The digested solution is cooled, diluted to a total volume of 4 mL with de-mineralized water, and analyzed by atomic absorption spectroscopy against matrix-matched standards.

Method Code	Element	Symbol	Units	Sample Weight (g)	Lower Limit	Upper Limit	Default Overlimit Method
Au-AA23	Gold	Au	ppm	30	0.005	10.0	Au- GRA21
Au-AA24	Gold	Au	ppm	50	0.005	10.0	Au- GRA22

Revision 04.00
Aug 17, 2005

RIGHT SOLUTIONS RIGHT PARTNER

www.alsglobal.com



Fire Assay Procedure

Ag-GRA21, Ag-GRA22, Au-GRA21 and Au-GRA22 Precious Metals Gravimetric Analysis Methods

Sample Decomposition:

Fire Assay Fusion (FA-FUSAG1, FA-FUSAG2, FA-FUSGV1 and FA-FUSGV2)

Analytical Method:

Gravimetric

A prepared sample is fused with a mixture of lead oxide, sodium carbonate, borax, silica and other reagents in order to produce a lead button. The lead button containing the precious metals is cupelled to remove the lead. The remaining gold and silver bead is parted in dilute nitric acid, annealed and weighed as gold. Silver, if requested, is then determined by the difference in weights.

Method Code	Element	Symbol	Units	Sample Weight (g)	Detection Limit	Upper Limit
Ag-GRA21	Silver	Ag	ppm	30	5	10,000
Ag-GRA22	Silver	Ag	ppm	50	5	10,000
Au-GRA21	Gold	Au	ppm	30	0.05	1000
Au-GRA22	Gold	Au	ppm	50	0.05	1000

Revision 03.01
Aug 17, 2005

RIGHT SOLUTIONS RIGHT PARTNER

www.alsglobal.com