

LEGEND

Map Projection:

Projection: Universal Transverse Mercator
Central Meridian: 219 Zone 7N
Datum: WGS 84



Survey Dates: June 09, 2012 to June 15, 2012
Survey Base: Gimlex Camp, Indian River, YT
Helicopter Type: Bell 206 BIII Jet Ranger
Registration: C-FZHK
Survey Technology: Magnetic and Radiometric survey

SURVEY PARAMETERS:

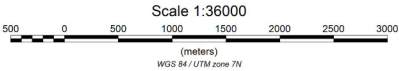
Mean Terrain Clearance: 35 meters
Helicopter: 35 meters
Magnetometer: 35 meters
Spectrometer: 35 meters

Hummer Block:

Survey Line Spacing: 100 meters
Survey Line Direction: 000°-180°
Tie Line Spacing: 1000 meters
Tie Line Direction: 090°-270°

AIRBORNE SYSTEMS:

Scintrex CS-3 Magnetometer Sensor
Configuration: Stinger with 3 axis compensation
Sample Rate: 10 Hz
Sensitivity: 0.01 nT
Gamma Ray Spectrometer
Pico Envirotec GRS-10 Gamma Spectrometer
8.4 liter of NaI synthetic "downward looking" crystals
Sample Rate: 1 Hz

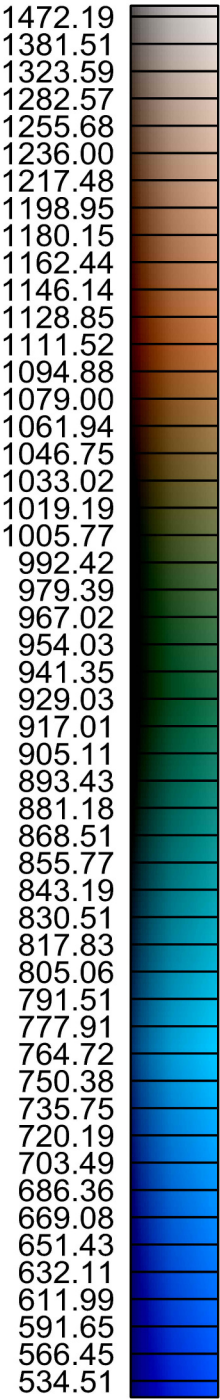
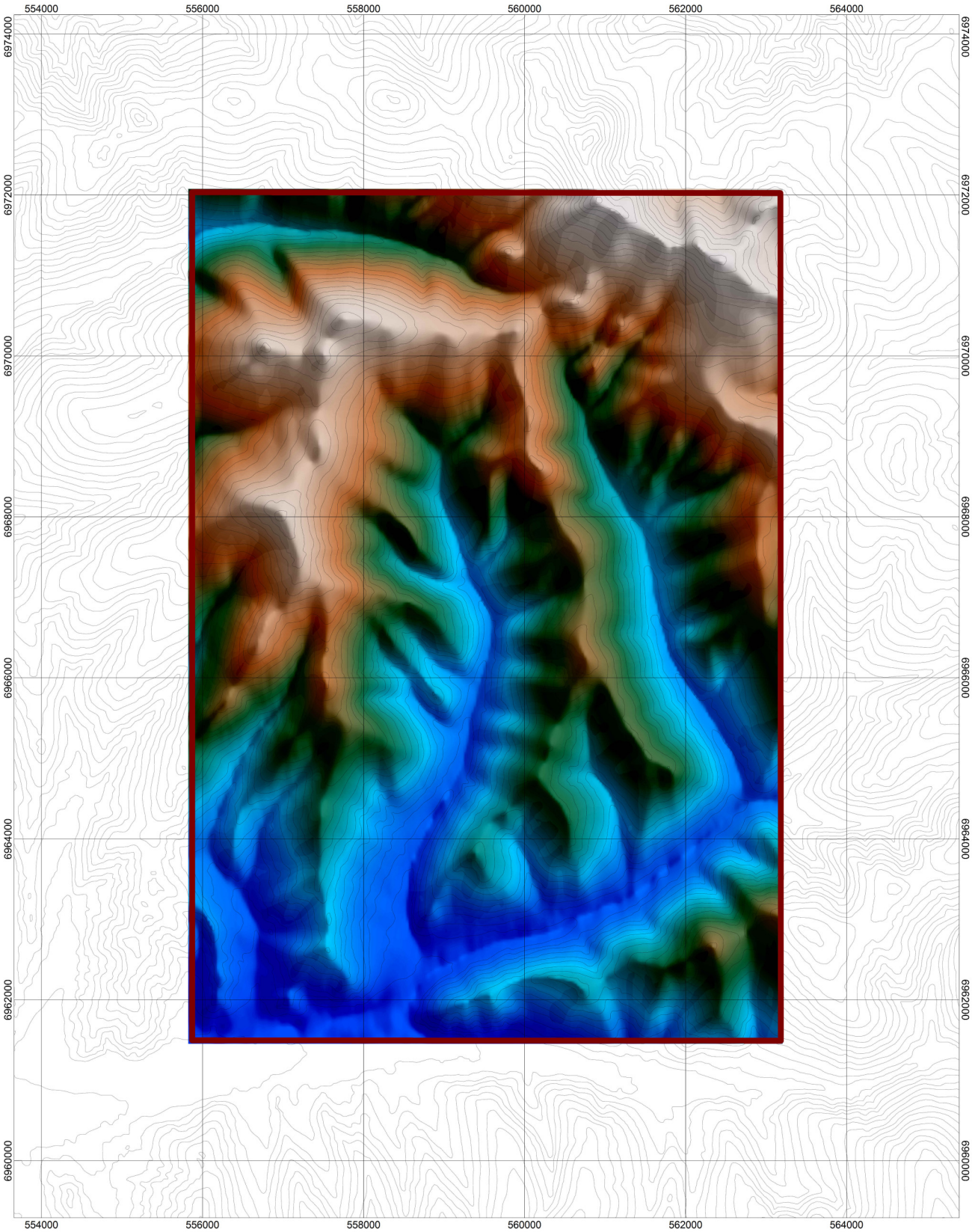


Canadian Dehua International Mines Group Inc.

Hummer Block
Digital Terrain Model
Created By: Precision GeoSurveys Inc.
June 2012



DTM



DTM (m)