

Memorandum Report of 2012 Surface Work

On the

LBM Property

LBM 1 to 20 YE29801 to YE29820

Whitehorse Mining District, Yukon

NTS Sheet 105F04

133°41'W. Lat., 61°01'N. Long.

Recorded to

Mark Fekete

By

Mark Fekete, P.Geo.

and

Marty Huber, B.Sc., G.I.T

December 15, 2012

Table of Contents

<i>Table of Contents</i>	<i>ii</i>
<i>List of Figures</i>	<i>ii</i>
<i>List of Tables</i>	<i>ii</i>
<i>Certificate of Qualifications</i>	<i>iii</i>
<i>Certificate of Qualifications</i>	<i>iv</i>
Introduction and Terms of Reference	1
Location, Property Information and Access	1
Previous Work	5
Geology and Deposit Model	6
2012 Exploration	8
2012 Surface Results	8
Interpretation of Results and Conclusions	9
Recommendations	9
References	10
Appendix A - Statement of Work Expenditures	
Appendix B - Sample Locations and Descriptions	
Appendix C - Analytical Certificates	

List of Figures

Figure 1 - General Location Map	1
Figure 2 - Claim Map	2
Figure 3 - Terrane Map.....	3
Figure 4 - Local Geology Map	4
Figure 5 - Entrance to LBM adit (caved in) with old cabins in foreground.....	6
Figure 6 - Quartz vein with minor galena exposed in old trench above LBM adit	7
Figure 7 - Typical galena in quartz mineralization.....	7
Figure 8 - Sample Locations.....	11
Figure 9 - Anomalous Silver Values in Rocks	12

List of Tables

Table 1 - List of Claims.....	1
Table 2 - Previous Assessment Work Files	5
Table 3 - Yukon MINFILE Showings	5
Table 4 - Location of Previous Workings	5
Table 5 - Soil Sampling Results	8
Table 6 - Estimated Costs.....	9

Certificate of Qualifications

I, Mark Fekete, having my place of residence at 178 Dennison Boulevard in Val d'Or in the Province of Quebec do hereby certify that:

1. I obtained a Bachelor of Science Degree in Geology from the University of British Columbia in 1986, I have been engaged as a Geologist continuously since 1986 and I am a Member in good standing of the Order of Geologists of Quebec (OGQ #553) and the Association of Professional Engineers and Geoscientists of British Columbia (APEGBC #31440), and I am a "qualified person" as defined in Section 1.2 in and for the purposes of National Instrument 43-101;
2. I have visited the LBM property on numerous occasions including most recently in September 2012;
3. I co-wrote and I am, as the senior author and qualified person, responsible for the contents of this technical report entitled "Memorandum Report of 2012 Surface Work on the LBM Property, Whitehorse Mining District, Yukon, NTS Sheet 105F04, 133°41'W., 61°01'N." based on my professional experience, a review of relevant reports and maps made available to me from government and corporate sources and my participation in the work programs described in the report;
4. I am not aware of any material fact or material change with respect to the subject matter of the report that is not disclosed in the report which, by its omission, makes the report misleading;
5. I hold a 100% direct interest in the LBM property as a result of my prior involvement with the property; and
6. I have read, and this report has not been prepared for the purposes, nor in full compliance with, National Instrument 43-101 and according to Form 43-101F1.

Respectfully submitted this 15th day of December 2012,

(s) "*Mark Fekete*"

Mark Fekete, P.Geol.

Certificate of Qualifications

I, Marty Huber, having my place of residence at 16 Flax Mill Dr. Conestogo in the Province of Ontario, do hereby certify that:

1. I obtained a Bachelor of Science Degree in Geology from Acadia University in May 2011, I have been engaged as a Geologist in Training (“GIT”) continuously since May 2011, and I am not a “qualified person” as defined in Section 1.2 in and for the purposes of National Instrument 43-101;
2. I have visited the LBM property most recently in September 2012;
3. I co-wrote this technical report “Memorandum Report of 2012 Surface Work on the LBM Property, Whitehorse Mining District, Yukon, NTS Sheet 105F04, 133°41’W., 61°01’N.” under the supervision of Mark Fekete, P.Geo.;
4. I am not aware of any material fact or material change with respect to the subject matter of the report that is not disclosed in the report which, by its omission, makes the report misleading;
5. I hold no direct interest in the LBM property as a result of my prior involvement with the property; and
6. I have read, and this report has not been prepared for the purposes, nor in full compliance with, National Instrument 43-101 and according to Form 43-101F1.

Respectfully submitted this 15th day of December 2012,

(s) “*Marty Huber*”

Marty Huber, B.Sc., G.I.T.

Introduction and Terms of Reference

Breakaway Exploration Management Inc. (“Breakaway”) was engaged to carry out surface exploration on the LBM property (“LBM” or the “Property”) in Yukon in 2012. This technical report (the “Report”) describes the 2012 work which consisted of rock sampling and a soil geochemical sampling survey. The goal of the survey was to identify areas of anomalous precious or base metal trends in soil that may be related to massive sulphide bearing structures. The main purpose of the Report is to complete statutory assessment work filings required under the Yukon Quartz Mining Act. It is not intended to and does not fully comply with National Instrument 43-101.

Location, Property Information and Access

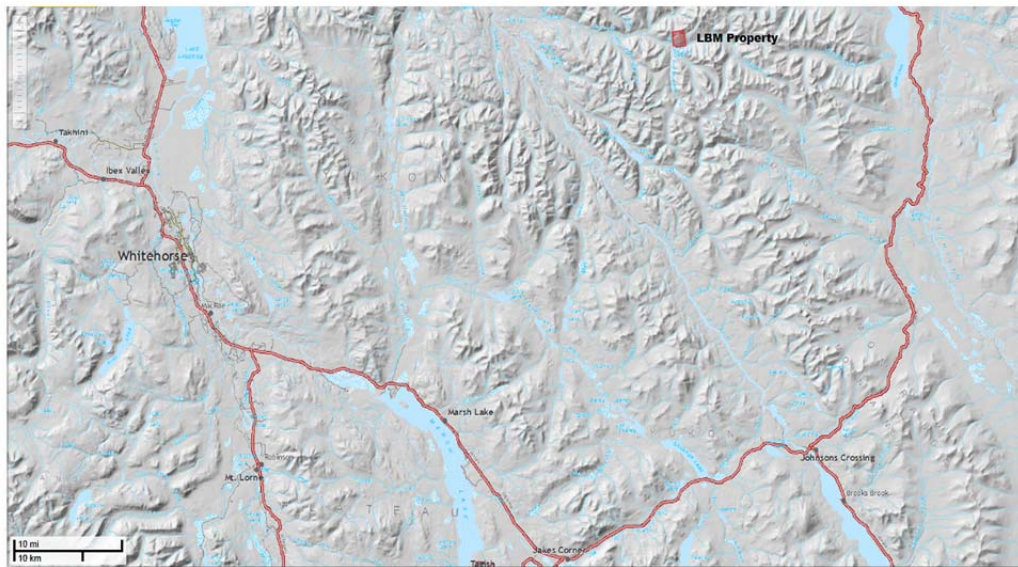
The LBM property is located approximately 80 kilometres east-northeast of Whitehorse in the Salmon Range of Yukon (Figure 1). It covers a section of the Boswell River valley and adjacent uplands approximately 20 kilometres east of the Teslin River. The Property comprises an approximate area of 414 hectares within the Whitehorse Mining Division and is held 100% by Mark Fekete of Val d’Or, Quebec. The approximate centre of the Property is described by 61°01’ North Latitude and 133°41’ West Longitude on N.T.S. Sheets 105F04. In total, the Property includes 20 un-surveyed mineral titles (Figure 2) more fully described in Table 1 below.

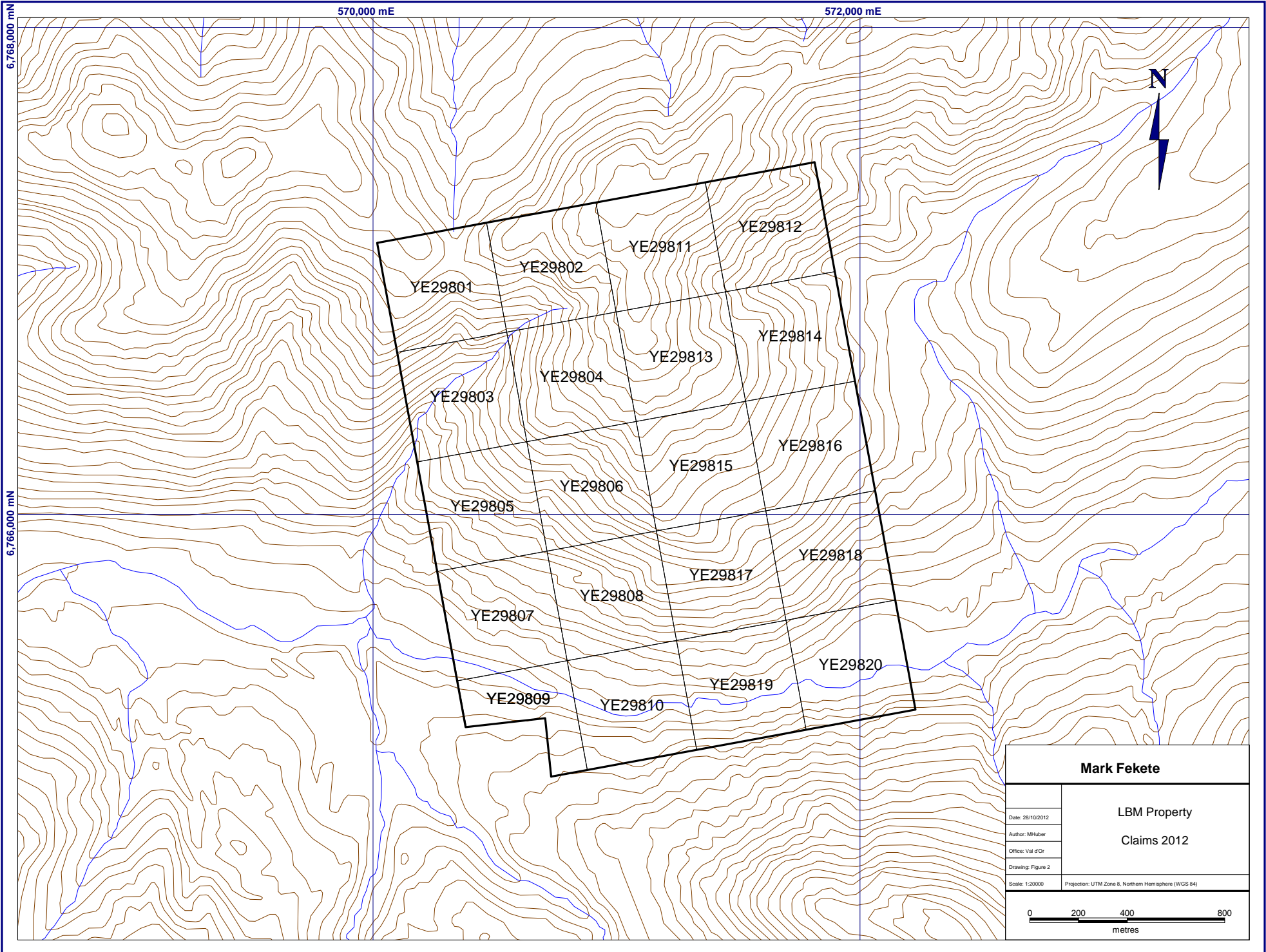
Table 1 - List of Claims

<u>Claim Name</u>	<u>Tag No.</u>	<u>Expiry Date</u>	<u>#</u>
LBM 1 to 20	YE29801 to YE29820	26-Sep-13	20

There is no road access to the Property but there is a 48-kilometre gravel road from the South Canol Road to Tintina Mines’ Red Mountain Project located roughly four kilometres south of the Property. Access to the claims is by helicopter which can be chartered year round from Whitehorse. LBM is located in an isolated part of Yukon with relatively few local resources or infrastructure. The Property can be worked by helicopter from Whitehorse or from an exploration camp set up on or near the Property. A camp can be supported from Whitehorse where a full range of services are locally available including line-cutting, geophysics, drilling, assaying, aircraft charters etc.

Figure 1 - General Location Map





Mark Fekete

Date: 28/10/2012

Author: MHuber

Office: Val d'Or

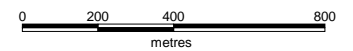
Drawing: Figure 2

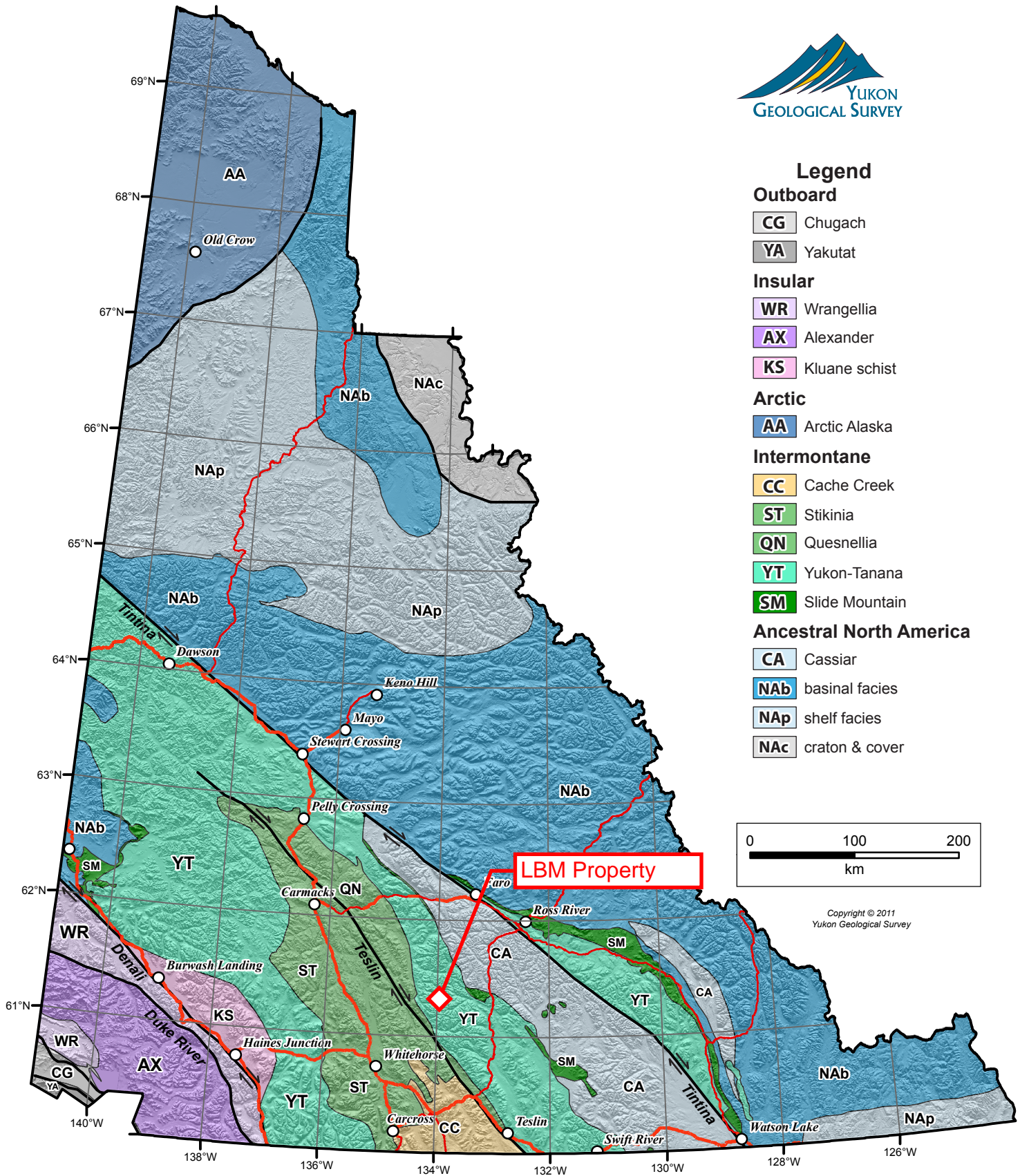
Scale: 1:20000

Projection: UTM Zone 8, Northern Hemisphere (WGS 84)

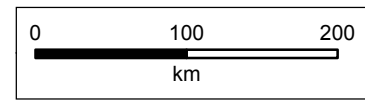
LBM Property

Claims 2012





- Legend**
- Outboard**
- CG Chugach
 - YA Yakutat
- Insular**
- WR Wrangellia
 - AX Alexander
 - KS Kluane schist
- Arctic**
- AA Arctic Alaska
- Intermontane**
- CC Cache Creek
 - ST Stikinia
 - QN Quesnellia
 - YT Yukon-Tanana
 - SM Slide Mountain
- Ancestral North America**
- CA Cassiar
 - NAb basinal facies
 - NAP shelf facies
 - NAC craton & cover



Copyright © 2011
Yukon Geological Survey

Figure 3 - Yukon Tectonic Map

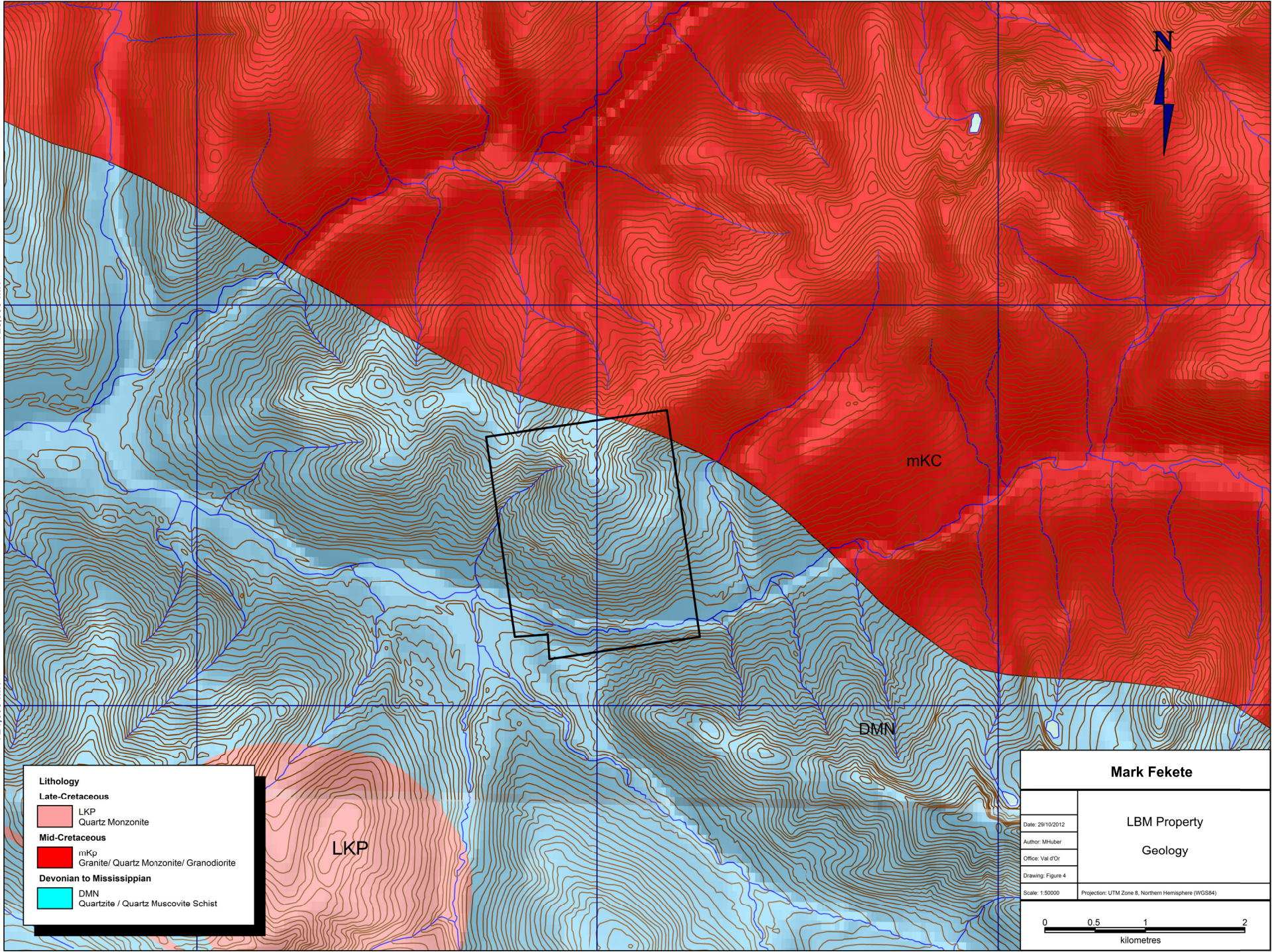
432,000 mE

436,000 mE

440,000 mE

728,000 mN




724,000 mN

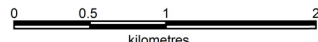


mKC

DMN

LKP

Lithology	
Late-Cretaceous	
	LKP Quartz Monzonite
Mid-Cretaceous	
	mKp Granite/ Quartz Monzonite/ Granodiorite
Devonian to Mississippian	
	DMN Quartzite / Quartz Muscovite Schist

Mark Fekete	
LBM Property	
Geology	
Date: 29/10/2012	
Author: MHuber	
Office: Val d'Or	
Drawing: Figure 4	
Scale: 1:50000	Projection: UTM Zone 8, Northern Hemisphere (WGS84)
	

Previous Work

LBM has an intermittent history of exploration dating back to the 1920s when a few quartz claims were staked that in the 1930s were developed into a high-grading operation with a series of several open cuts and a 36.6m adit (Figure 5). The best description of this work is found in Lees (1936):

“Mineral claims have been staked at various times on the north side of Boswell River at points between 20 and 24 miles from the river mouth, eight having been staked there at recent dates. Quartz veins up to 30 feet wide outcrop in a belt trending north 60 degrees west, which is also the strike of the principal veins. Other veins run in various directions. The belt of veins starts at the granite contact 24 miles upriver and runs diagonally away from the granite downstream. The veins cut schists of the Yukon group and the principal ones dip away from the outcrop of the granite. Numerous open-cuts have been made and one adit 120 feet long has been driven. The adit is in biotite schist and cuts 15 feet of quartz at its inner end. The reported objective of the adit, never attained, was to cut the nearby granite contact. Silver-bearing galena, with occasionally a little molybdenite, occurs in the quartz. Three selected samples of quartz with galena assayed, respectively: silver 45·68 ounces a ton, gold none; silver 22·10 ounces a ton, gold a trace; silver 21·58 ounces a ton, gold a trace.”

The area of the high-grading operation was again explored in the mid-1960s by Boswell River Mines Ltd. Several hand trenches along with geochemical and geophysical surveys were completed (Green, 1966). In the early 1970s El Paso Mining and Milling Co. (AFR No 060856) re-staked the area and completed a geochemical survey which exposed several coincidental lead/silver anomalies with values ranging up to 3,100 parts per million silver (ppm Ag) and 5,300 ppm lead (ppm Pb). Rock samples collected by El Paso ranged up to 23.5 ounces per ton silver (opt Ag).Ton. 13744 Yukon Inc. (AFR. No. 093565) re-staked the area in 1996 and completed line-cutting and a soil geochemical survey in 1997.

Table 2 below lists all known assessment reports that describe work done adjacent to and within the boundaries of the present Property.

Table 2 - Previous Assessment Work Files

Company	Year	AFR No.	Author	Work	Link
El Paso Mining and Milling	1974	060856	B. Taylor	Mapping, soil sampling	060856
Archer, Cathro	1978	090342	Alan R. Archer	Prospecting and Trenching	090342
Amoco Canada Petroleum	1981	090805	Paul Brown	Soil Geochem	090805
Amoco Canada Petroleum	1981	090806	Paul Brown	Soil Geochem	090806
Yukon Revenue Mines ltd.	1982	090937	Gary Lee	Soil Geochem, geophysics	090937
13744 Yukon Inc.	1997	093565	Steven Traynor	Prospecting and Sampling	093565

Three mineral showings documented within or near the Property are listed in Table 3 below.

Table 3 - Yukon MINFILE Showings

MINFILE No.	MINFILE Name	Link
105F002	MOBS	105F 002
105F003	WOPUS	105F 003
105F004	GOPHER	105F 004

The locations of previous trenching and mining on the Property are defined in Table 4 below.

Table 4 - Location of Previous Workings

	UTM mE	UTM mN
Adit	571633	6765435
Open Cut 1	571646	6765479
Open Cut 2	571622	6765510
Open Cut 3	571646	6765479
Open Cut 4	571629	6765492
Open Cut 5	571638	6765466
Open Cut 6	571614	6765500

Geology and Deposit Model

The Property lies within the Yukon-Tanana Terrane (Figure 3) that generally consists of several successions of layered sedimentary and volcanic rocks ranging from Late Proterozoic to Late Permian age that overlay the older Nisling Terrane. These complexly deformed layered rocks have been episodically intruded by various crystalline rocks in the Permian, Jurassic, Cretaceous and Tertiary periods. The intrusive events have been accompanied by volcanic activity especially in the Upper Jurassic to Lower Cretaceous. The Yukon-Tanana has been subjected to numerous prolonged deformational events including subduction and accretion that has led to significant structural thickening. Imbricated allochthonous terranes such as Slide Mountain Terrane are evidenced by altered ultramafic fragments.

The most recent geological mapping and compilation work (Gordey and Makepeace, 1999) in the Salmon Mountain Range (Figure 4) indicates that the LBM area is generally underlain by Devonian and Mississippian metamorphic rocks (DMN) and mid-Cretaceous intrusive rocks (mKqc). Bertram Taylor produced a very thorough geological map in the vicinity of the adit for El Paso Mining and Milling Co. (AFR No 060856). This map indicates that a light brown, often gossanized phyllite forms a northwest trending band between coarse-grained granite to the northwest and dark green volcanic tuff to the southeast. A thin discordant body of ultramafic rock was also noted. The phyllite and volcanic tuff are conformable and belong to Yukon-Tanana. The granite probably belongs to the mid-Cretaceous Big Salmon Complex whereas the ultramafic rock is likely Slide Mountain. Taylor also noted numerous narrow aplite dykes in all of the major rock units noted above as well as a body of fine-grained “dacite”. These minor lithologies are likely phases of the granite.

Mineralization noted to date consists of silver-bearing galena within quartz veins hosted by the phyllite (Figure 6). The quartz veins vary from half a metre to several metres wide and have been followed over distances up to 30 metres. The quartz in the veins is generally white with rusty brown staining along fractures. Galena typically occurs as coarse-grained veins and clumps within the quartz (Figure 7). Massive pyrite has also been noted on the trench dumps. It is suggested by the Authors that the quartz veins may be related to regional fracturing within the Yukon-Tanana rocks caused by the intrusion of the late Cretaceous quartz monzonite stock that hosts the Red Mountain molybdenum porphyry deposit (Kahlert and Brown, 1986) located approximately four kilometres southwest of the Property.

Figure 5 - Entrance to LBM adit (caved in) with old cabins if foreground



Figure 6 - Quartz vein with minor galena exposed in old trench above LBM adit



Figure 7 - Typical galena in quartz mineralization



2012 Exploration

A soil and rock sampling survey was completed on LBM on September 29, 2012 by a four-man crew on foot with a helicopter set-out from Whitehorse. Final results from the analytical work were received on October 29, 2012. Geologist in Training (“GIT”) Marty Huber (the “Junior Author”) compiled the field data into digital maps and wrote this Report up to December 15, 2012. A detailed Statement of Work is included herein as Appendix A. The work was planned under the supervision of Professional Geologist Mark Fekete (the “Senior Author”) and managed on a day-to-day basis by the Junior Author.

A total of 56 deep-auger-type soil samples including field duplicates were collected with hand augers at 50m sample intervals on a pre-determined grid with lines spaced 50m. Sample locations were tagged in the field and recorded with HP iPAQ 200 series field computers running GeoInfoMobile and Tierra Mapper software paired with Holux GPS receivers in map datum UTM WGS84 Zone 8N. Sample locations (Figure 8) and descriptions are included as Appendix B. Soil sample material consisted primarily of sandy colluvium. Sample depths varied from 20 to 80cm with an average depth of 39cm. Soil samples were placed in Kraft-type paper bags with the appropriate sample numbers marked in indelible ink. Batches of samples were subsequently dried, sealed in rice bags and shipped to Acme Analytical Laboratories Ltd. (“Acme”) in Vancouver, B.C. for analysis. Samples were dried and sieved to minus 80 mesh size and analyzed for 36 elements (including gold) by 15 gram Aqua Regia digestion, ICP-MS finish (Appendix C). Acme is accredited under ISO 9001.

A total of nine selected rock samples were collected from the dumps of the old adit and trenches. The samples generally consisted of quartz veins containing coarse-grained galena. One sample of massive pyrite was also selected. Samples were placed in plastic bags and sent to Acme for analysis. Samples were crushed, split and pulverized to minus 200 mesh and analyzed for 24 elements (excluding gold) by ICP-ES with a Hot Aqua Regia digestion. Samples were also analyzed for gold by 30 gram fire assay with an atomic absorption finish. Several of the samples assayed over detection limit for silver. These were subsequently re-analyzed for silver with a 50-gram fire assay with a gravimetric finish. (Appendix C).

It is the Authors’ opinion that the sampling procedures, security measures, sample preparations and analytical methods applied to the soil and rock samples were diligently followed and are adequate to meet industry standards commonly accepted for this level of exploration. The Authors have relied upon the adequacy and accuracy of the analytical results provided by Acme. Independent verification of those results has not been undertaken. The Junior Author reconciled the field data with the analytical results and found no irregularities.

2012 Surface Results

The soil samples returned relatively poor values except for one sample that was over the detection limit of 100ppm Ag (Figure 9). Deep samples were difficult to obtain due to the soil generally consisting of coarse-grained sand which would not stay in the sampling spoon of the auger. Silver, arsenic, copper, nickel, molybdenum, lead, and zinc values were evaluated as calculated percentiles as presented below. Rock samples returned outstanding silver values that range from 17.0gpt Ag up to 2885.0gpt Ag. High lead values were also obtained from the rock samples ranging from 0.16% up to 36% Pb (Figure 9).

Table 5 - Soil Sampling Results

Field	Minimum	Maximum	Mean	Percentile70	Percentile90	Percentile95	Percentile98
Ag ppm	0.05	100.0*	2.18	0.4	1.1	1.7	1.8
As ppm	0.7	94.9	9.25	5.5	16.0	30.6	87.0
Au ppb	0.3	10.1	1.25	1.2	2.5	4.1	8.0
Cu ppm	3.4	480.4	24.87	16.5	28.9	68.4	163.3
Mo ppm	0.6	56.5	4.13	2.9	7.5	12.0	25.4
Ni ppm	4.4	397.2	26.21	16.8	44.7	86.3	108.1
Pb ppm	6.2	7903.3	166.13	18.8	52.7	113.2	274.3
Zn ppm	28.0	1284.0	136.34	114.5	267.5	395.8	596.9

*Over detection limit of 100 ppm Ag

Interpretation of Results and Conclusions

Overall the soil geochemical survey returned poor results and did not assist in identifying potential silver trends. The sandy aspect of the soils prevented the collection of good samples. It appears that the soil profile is dominated by decomposed granite that has slide down from the granite unit found at higher elevations as a talus that masks the phyllite band which hosts the prospective mineralized quartz veins. In order to reach soils derived from the phyllite it would be necessary to collect samples at much deeper depths. This would involve digging pits with a shovel at least one metre deep and then sampling as deep as possible with an auger. This may be found to be impractical as an exploration technique but it is recommended that at least one line of soil sample be collected in this manner to determine if it is a valid method. It is suggested that magnetic and electromagnetic surveys may be more practical for tracing potential silver-bearing structures.

The silver values obtained from the rock samples taken on the property are very high grade and suggest there is significant silver potential on LBM. However, these samples were all selected from the trench dumps. None of them were grab samples from a quartz vein in place. The next step will be to expose an *in situ* quartz vein mineralized with galena and to systematically sample it. Although no production records exist for the LBM adit, the volume of material in the adit dump suggests considerable effort by the workers in the 1930s. Moreover there is evidence for crude smelting on site (i.e. charcoal production and sinter) that suggests that the adit followed a vein that was well enough mineralized with galena to justify the physical effort. Re-opening the adit would be a logical first step towards characterizing the dimension and grade of the galena-bearing quartz vein in the adit.

The rock sample results described in this report and the results obtained by previous workers suggest that the silver potential lies within the phyllite band. Further exploration should be focused on outlining the phyllite band and then surveying it extensively of silver mineralization with geochemical, geophysical, prospecting and sampling surveys.

Recommendations

As a first phase it is recommended that exploration work continue on LBM with five days of mapping, prospecting and sampling in the immediate area of the LBM adit. A test line of deep soil sampling as discussed above should be completed as part of this work. It is also recommended that the LBM adit be re-opened with a heli-portable Can-Dig excavator in order to obtain *in situ* samples. A second phase of line-cutting followed by geophysical, prospecting, mapping and sampling surveys is also recommended over the southern half of the property in order to outline the phyllite band and identify any potential silver-bearing trends within the band.

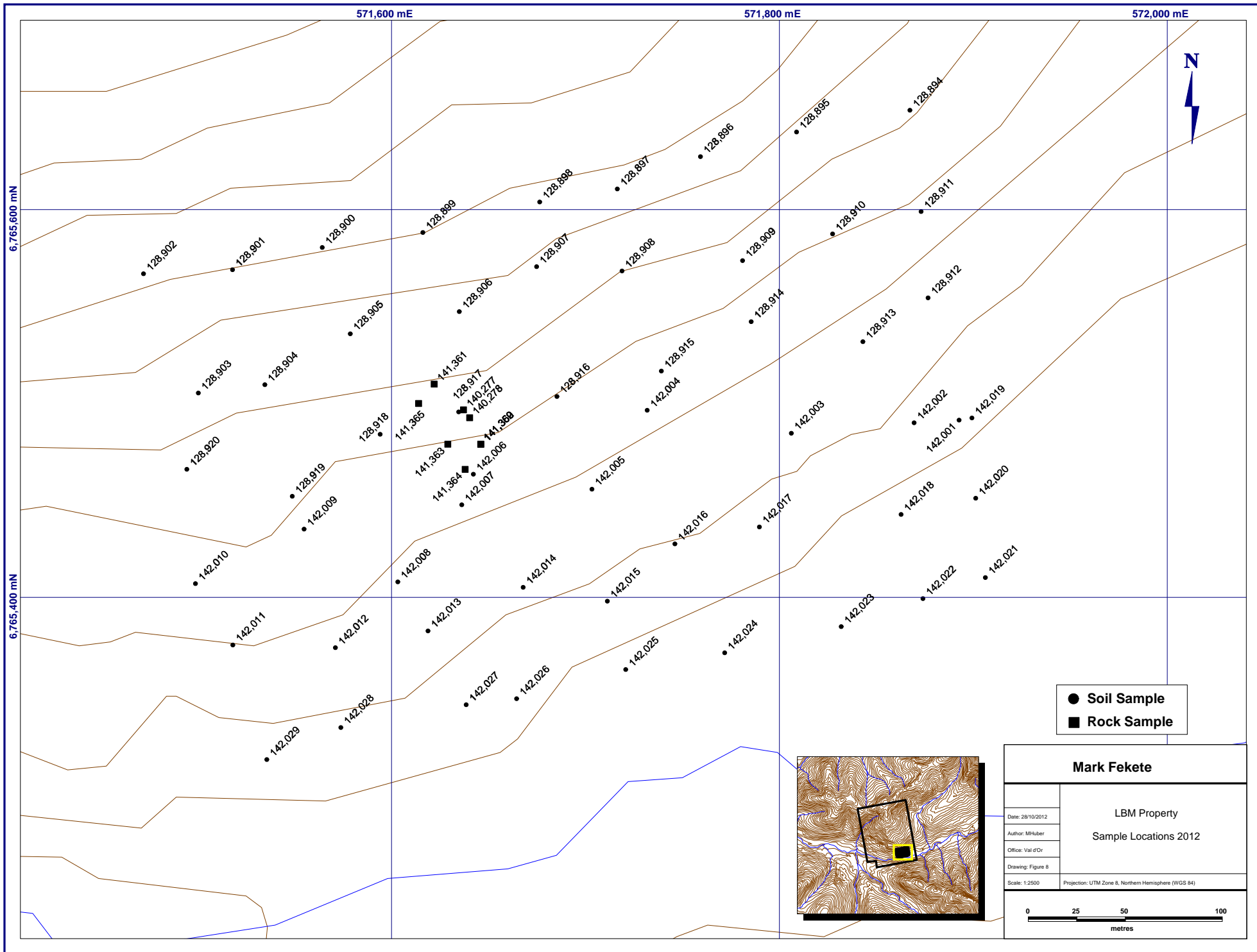
The estimated cost of the first phase is \$25,000 as detailed in Table 6 below. Note that all camp, food, lodging, supplies, transportation, rentals and other incidental expenses are included in the estimated cost.

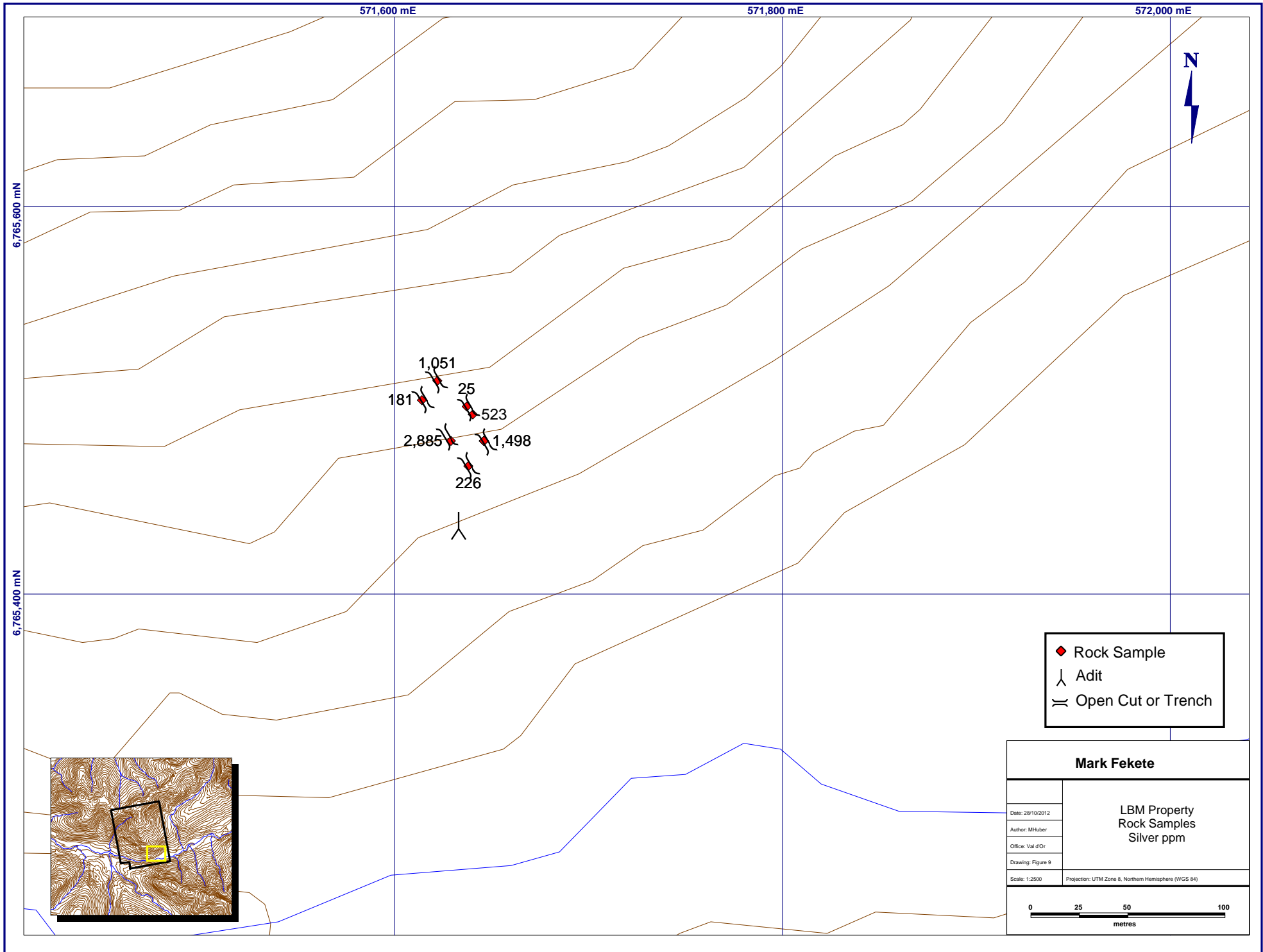
Table 6 - Estimated Costs

Excavator	1	days @	\$1,000	per day	\$1,000
Geologist	6	days @	\$700	per day	\$4,200
Prospector	6	days @	\$700	per day	\$4,200
Helicopter w/ fuel	5	hours @	\$2,000	per hour	\$10,000
Samples	75	samples @	\$25	per sample	\$1,875
Report	1	report @	\$1,000	per report	\$1,000
Subtotal					\$22,275
~15% Contingency					\$2,725
Total					\$25,000

References

- Kahlert, B. and Brown, P. (1986): Geology and mineralization of the Red Mountain porphyry molybdenum deposit, south-central Yukon in Mineral Deposits of Northern Cordillera, J.A. Morin (ed.), Canadian Institute of Mining and Metallurgy Special Volume 37, p.288-297
- Gordey, S.P. and Makepeace, A.J. (1999): Yukon Digital Geology, S.P. Gordey and A.J. Makepeace (comp.); Geological Survey of Canada, Open File D3826; or Exploration and Geological Services Division, Yukon, Indian and Northern Affairs Canada, Open file 1999-1(D).
- Green, L.H. (1966): The Mineral Industry of Yukon Territory and Southwestern Mackenzie, 1965, Geological Survey of Canada Paper 66-31, p.60-62
- Lees, E.J. (1936) Geology of Teslin-Quiet Lake Area, Yukon, Geological Survey of Canada Memoir 203, p.24





Appendix A - Statement of Work Expenditures

APPLICATION FOR A CERTIFICATE OF WORK

I, _____,
_____ of 680 Third Ave, Suite 203 Val d'Or, Quebec J9P 1S5
Phone 819 874-8182
Client I.D. Number: _____
make oath and say that:

Office Date Stamp

1. I am the owner, or agent of the owner, of the mineral claim(s) to which reference is made herein.
2. I have done, or caused to be done, work, on the following mineral claim(s): (Here list claims on which work was actually done by number and name)

SEE ATTACHED SCHEDULE

situated at Boswell River Claim sheet No. 105F04

in the Whitehorse Mining District, to the value of at least 11265.35 dollars,

since the 29TH day of September 20 12,

to represent the following mineral claims under the authority of Grouping Certificate No. _____.
(Here list claims to be renewed in numerical order, by grant number and claim name, showing renewal period requested).

SEE ATTACHED SCHEDULE
PLEASE RENEW ALL CLAIMS TO MARCH 26, 2018

3. The following is a detailed statement of such work: (Set out full particulars of the work done indicating dates work commenced and ended in the twelve months in which such work is required to be done as shown by Section 56).

THE WORK INCLUDED A SOIL SAMPLING PROGRAM WHICH OBTAINED 56 SAMPLES INCLUDING FEILD
DUPLICATES, AS WELL AS SOME PROSPECTING WITH THE COLLECTION OF 9 ROCK SAMPLES.
WORK BEGAN ON THE 29TH OF SEPTEMBER, 2012 AND ENDED ON THE 14TH OF DECEMBER, 2012.

Sworn before me at _____ this _____ day of December 20 12.

Notary Public

Owner or Authorized Agent

Claim List for Cert of Work 2012 LBM

Type	Claim Information				Work Done Geochem	Renewal		
	Grant No.	Claim Name	Claim No.	Expiry Date		Years	Annual Fee	Total
Quartz	YE29801	LBM	1	26-Sep-13		4.5	\$ 5.00	\$ 22.50
Quartz	YE29802	LBM	2	26-Sep-13		4.5	\$ 5.00	\$ 22.50
Quartz	YE29803	LBM	3	26-Sep-13		4.5	\$ 5.00	\$ 22.50
Quartz	YE29804	LBM	4	26-Sep-13		4.5	\$ 5.00	\$ 22.50
Quartz	YE29805	LBM	5	26-Sep-13		4.5	\$ 5.00	\$ 22.50
Quartz	YE29806	LBM	6	26-Sep-13		4.5	\$ 5.00	\$ 22.50
Quartz	YE29807	LBM	7	26-Sep-13		4.5	\$ 5.00	\$ 22.50
Quartz	YE29808	LBM	8	26-Sep-13		4.5	\$ 5.00	\$ 22.50
Quartz	YE29809	LBM	9	26-Sep-13		4.5	\$ 5.00	\$ 22.50
Quartz	YE29810	LBM	10	26-Sep-13		4.5	\$ 5.00	\$ 22.50
Quartz	YE29811	LBM	11	26-Sep-13		4.5	\$ 5.00	\$ 22.50
Quartz	YE29812	LBM	12	26-Sep-13		4.5	\$ 5.00	\$ 22.50
Quartz	YE29813	LBM	13	26-Sep-13		4.5	\$ 5.00	\$ 22.50
Quartz	YE29814	LBM	14	26-Sep-13		4.5	\$ 5.00	\$ 22.50
Quartz	YE29815	LBM	15	26-Sep-13		4.5	\$ 5.00	\$ 22.50
Quartz	YE29816	LBM	16	26-Sep-13		4.5	\$ 5.00	\$ 22.50
Quartz	YE29817	LBM	17	26-Sep-13	\$ 2,816.34	4.5	\$ 5.00	\$ 22.50
Quartz	YE29818	LBM	18	26-Sep-13	\$ 2,816.34	4.5	\$ 5.00	\$ 22.50
Quartz	YE29819	LBM	19	26-Sep-13	\$ 2,816.34	4.5	\$ 5.00	\$ 22.50
Quartz	YE29820	LBM	20	26-Sep-13	\$ 2,816.34	4.5	\$ 5.00	\$ 22.50
Column Total					\$ 11,265.35	90		\$ 450.00
From Statement of Costs					\$ 11,265.35			
Check					\$ -			
Claims with Work					4			
Total Claims					20			
Calculate Work Required for Renewal					\$ 9,000.00	Years * \$100		
Excess (Short)					\$ 2,265.35			
Years to renew 20 claims x 4.5 years					90			
Renwal Fees = 90 years x \$5.00					\$ 450.00			
PLEASE COMMON DATE ALL CLAIMS TO MARCH 26, 2018								
PLEASE GROUP ALL CLAIMS								

Office Use Only

QUARTZ MINING ACT FORM 12 SECTION 55

APPLICATION TO GROUP MINERAL CLAIMS

Whitehorse MINING DISTRICT

Office Date Stamp

I, (We) the undersigned owners or agent(s) of the owners of following mineral claims.

(Additional sheets or an appendix may be used) (Claim names and grant numbers to be listed in sequence eg. TOM 1-40, YC10001 - YC10040)

GRANT NUMBER	CLAIM NAME	MAP SHEET
YE29801-YE29820	LBM 1 - 20	105F04

Give notice of intention to group the said claims for the performance of work and do hereby apply under the provisions of section 55 of the *Quartz Mining Act* for a certificate in form 6.

I (We) hereby certify that the above claims are adjoining as shown on the attached sketch

Dated at Val d'OR

This 14TH day of December, 2012

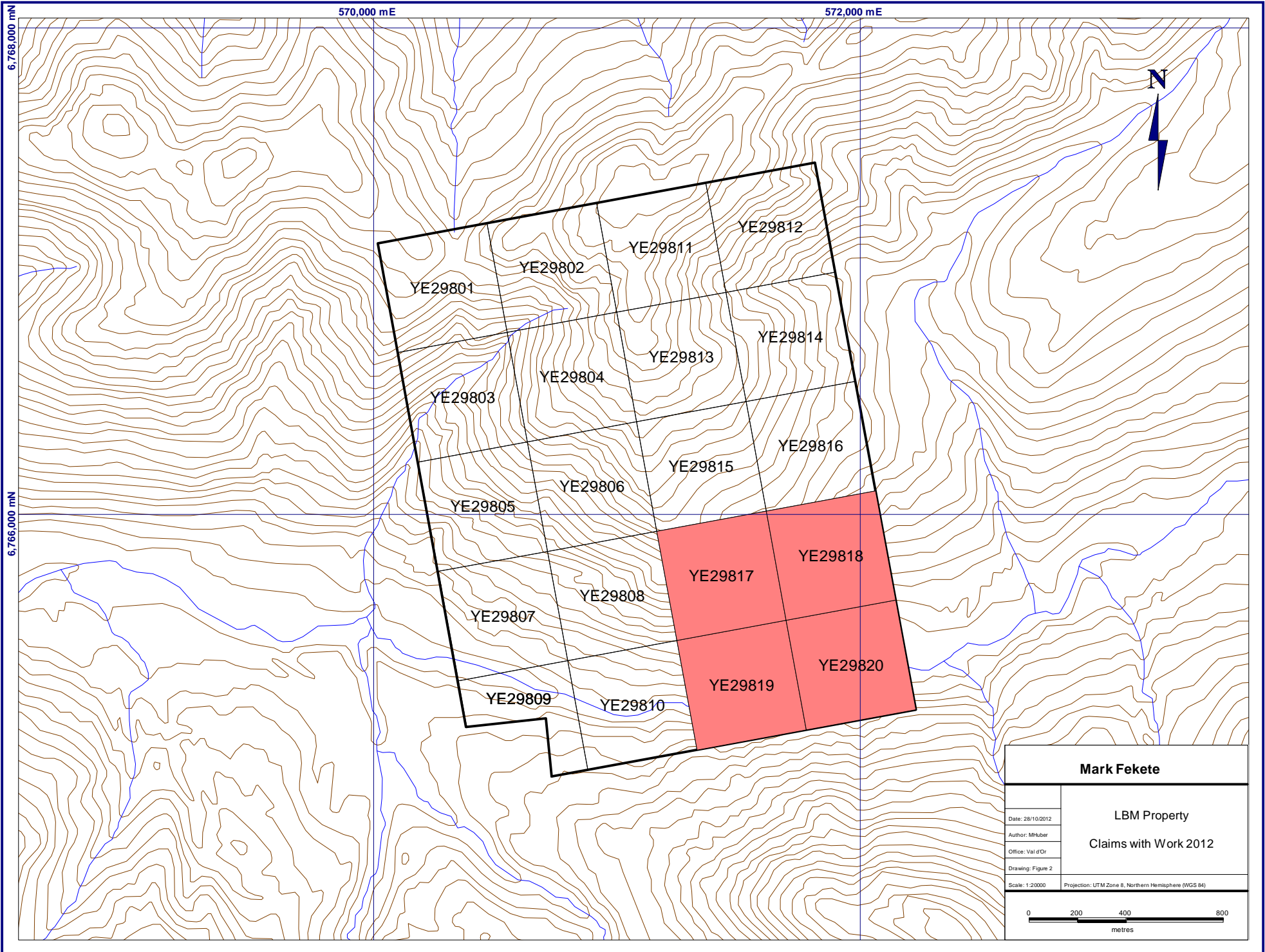
Applicant(s)

Client I.D. Number

Access to Information and Protection of Privacy Act

The personal information requested on this form is collected under the authority of and used for the purpose of administering the *Quartz Mining Act*.

Questions about the collection and use of this information can be directed to the Mining Records Office, Mineral Resources, Department of Energy, Mines and Resources, Yukon Government, Box 2703, Whitehorse, Yukon Territory, Y1A 2C6 (867) 667-3190



Mark Fekete	
Date: 28/10/2012	LBM Property Claims with Work 2012
Author: MHuber	
Office: Val d'Or	
Drawing: Figure 2	
Scale: 1:20000	Projection: UTM Zone 8, Northern Hemisphere (WGS 84)

Appendix B - Sample Locations and Descriptions

Appendix B - Sample Locations and Descriptions

Sample	Date	Sampler	Easting	Northing	EastNorthDatum	Colour	Texture	Terrain	Horizon	Depth	Moisture	Quality	Vegetation
128894	29/09/2012	MartyHuber	571867	6765651	UTMZ8N_WGS84	Brown	Sand	SteepS	C	40	Dry	Good	ForestPine
128895	29/09/2012	MartyHuber	571809	6765640	UTMZ8N_WGS84	Brown	Sand	SteepS	C	40	Dry	Good	ParklandPine
128896	29/09/2012	MartyHuber	571759	6765627	UTMZ8N_WGS84	Brown	Sand	SteepS	C	35	Dry	Good	ParklandPine
128897	29/09/2012	MartyHuber	571716	6765611	UTMZ8N_WGS84	Brown	Sand	SteepS	C	35	Dry	Good	ForestPine
128898	29/09/2012	MartyHuber	571676	6765604	UTMZ8N_WGS84	Brown	Sand	SteepS	C	40	Dry	Good	ForestPine
128899	29/09/2012	MartyHuber	571616	6765588	UTMZ8N_WGS84	Brown	Sand	SteepS	C	40	Dry	Good	ForestPine
128900	29/09/2012	MartyHuber	571564	6765580	UTMZ8N_WGS84	Brown	Sand	SteepS	C	30	Dry	Good	ForestPine
128901	29/09/2012	MartyHuber	571518	6765569	UTMZ8N_WGS84	Brown	Sand	SteepS	C	25	Dry	Good	ForestPine
128902	29/09/2012	MartyHuber	571472	6765567	UTMZ8N_WGS84	Brown	Sand	SteepS	B	25	Dry	Good	ForestPine
128903	29/09/2012	MartyHuber	571500	6765505	UTMZ8N_WGS84	Brown	Silt	SteepS	B	45	Dry	Poor	ForestMixed
128904	29/09/2012	MartyHuber	571535	6765510	UTMZ8N_WGS84	Brown	Silt	SteepS	C	40	Dry	Poor	ForestMixed
128905	29/09/2012	MartyHuber	571579	6765536	UTMZ8N_WGS84	Brown	Silt	ModerateS	B	45	Dry	Poor	ForestMixed
128906	29/09/2012	MartyHuber	571635	6765547	UTMZ8N_WGS84	Brown	Sand	SteepS	C	40	Dry	Good	ForestMixed
128907	29/09/2012	MartyHuber	571675	6765571	UTMZ8N_WGS84	Brown	Sand	SteepS	C	45	Dry	Good	ForestMixed
128908	29/09/2012	MartyHuber	571719	6765568	UTMZ8N_WGS84	Brown	Sand	SteepS	C	45	Dry	Good	ForestMixed
128909	29/09/2012	MartyHuber	571781	6765574	UTMZ8N_WGS84	Brown	Sand	SteepS	C	40	Dry	Good	ForestMixed
128910	29/09/2012	MartyHuber	571827	6765587	UTMZ8N_WGS84	Brown	Sand	SteepS	C	40	Dry	Good	ForestMixed
128911	29/09/2012	MartyHuber	571873	6765599	UTMZ8N_WGS84	Brown	Sand	SteepS	C	40	Dry	Good	ForestMixed
128912	29/09/2012	MartyHuber	571877	6765554	UTMZ8N_WGS84	Brown	Sand	ModerateS	C	35	Dry	Good	ForestMixed
128913	29/09/2012	MartyHuber	571843	6765532	UTMZ8N_WGS84	Brown	Sand	ModerateS	C	35	Dry	Good	ForestMixed
128914	29/09/2012	MartyHuber	571785	6765542	UTMZ8N_WGS84	Brown	Silt	ModerateS	C	40	Dry	Good	ForestMixed
128915	29/09/2012	MartyHuber	571739	6765517	UTMZ8N_WGS84	Brown	Sand	ModerateS	C	40	Dry	Good	ForestMixed
128916	29/09/2012	MartyHuber	571685	6765504	UTMZ8N_WGS84	Brown	Sand	ModerateS	C	40	Dry	Good	ForestMixed
128917	29/09/2012	MartyHuber	571635	6765496	UTMZ8N_WGS84	Brown	Sand	ModerateS	C	90	Dry	Good	ForestMixed
128918	29/09/2012	MartyHuber	571594	6765484	UTMZ8N_WGS84	Brown	Sand	ModerateS	C	45	Dry	Good	ForestMixed
128919	29/09/2012	MartyHuber	571549	6765452	UTMZ8N_WGS84	Brown	Silt	ModerateS	B	20	Dry	Poor	ForestMixed
128920	29/09/2012	MartyHuber	571494	6765466	UTMZ8N_WGS84	Brown	Silt	ModerateS	B	25	Dry	Poor	ForestMixed
142001	29/09/2012	DarrellKraemer	571893	6765491	UTMZ8N_WGS84	BrownLight	Sand	ModerateS	C	40	Dry	Excellent	ForestMixed
142002	29/09/2012	DarrellKraemer	571869	6765490	UTMZ8N_WGS84	BrownLight	Sand	ModerateS	C	40	Dry	Excellent	ForestMixed
142003	29/09/2012	DarrellKraemer	571806	6765485	UTMZ8N_WGS84	BrownLight	Sand	ModerateW	C	40	Dry	Excellent	ForestMixed
142004	29/09/2012	DarrellKraemer	571732	6765497	UTMZ8N_WGS84	BrownLight	Sand	ModerateS	C	30	Dry	Excellent	ForestMixed
142005	29/09/2012	DarrellKraemer	571703	6765456	UTMZ8N_WGS84	BrownLight	Sand	ModerateS	C	40	Dry	Excellent	ForestMixed
142006	29/09/2012	DarrellKraemer	571642	6765463	UTMZ8N_WGS84	BrownLight	Sand	ModerateS	C	45	Dry	Excellent	ForestMixed
142007	29/09/2012	DarrellKraemer	571636	6765448	UTMZ8N_WGS84	RustyRed	Sand	ModerateS	C	50	Dry	Excellent	ForestMixed
142008	29/09/2012	DarrellKraemer	571603	6765408	UTMZ8N_WGS84	Brown	Sand	ModerateS	C	35	Dry	Good	ForestMixed
142009	29/09/2012	DarrellKraemer	571555	6765435	UTMZ8N_WGS84	Brown	Silt	ModerateS	B	25	Dry	Good	ForestMixed

Appendix B - Sample Locations and Descriptions

Sample	Date	Sampler	Easting	Northing	EastNorthDatum	Colour	Texture	Terrain	Horizon	Depth	Moisture	Quality	Vegetation
142010	29/09/2012	DarrellKraemer	571499	6765407	UTMZ8N_WGS84	Brown	Silt	ModerateS	B	35	Dry	Excellent	ForestMixed
142011	29/09/2012	DarrellKraemer	571518	6765375	UTMZ8N_WGS84	Brown	Silt	ModerateS	B	35	Dry	Good	ForestMixed
142012	29/09/2012	DarrellKraemer	571571	6765374	UTMZ8N_WGS84	Brown	Gravel	ModerateS	B	35	Dry	Excellent	ForestMixed
142013	29/09/2012	DarrellKraemer	571619	6765383	UTMZ8N_WGS84	Brown	Sand	ModerateS	C	40	Dry	Good	ForestMixed
142014	29/09/2012	DarrellKraemer	571668	6765405	UTMZ8N_WGS84	Brown	Silt	ModerateS	B	40	Dry	Excellent	ForestMixed
142015	29/09/2012	DarrellKraemer	571711	6765398	UTMZ8N_WGS84	BrownLight	Silt	ModerateS	B	40	Dry	Excellent	ForestMixed
142016	29/09/2012	DarrellKraemer	571746	6765428	UTMZ8N_WGS84	Brown	Silt	ModerateS	B	35	Dry	Good	ForestMixed
142017	29/09/2012	DarrellKraemer	571790	6765436	UTMZ8N_WGS84	Brown	Gravel	ModerateS	B	35	Dry	Excellent	ForestMixed
142018	29/09/2012	DarrellKraemer	571863	6765443	UTMZ8N_WGS84	Brown	Gravel	Flat	C	45	Dry	Excellent	ForestMixed
142019	29/09/2012	DarrellKraemer	571899	6765493	UTMZ8N_WGS84	RustyOrange	Sand	Flat	C	50	Dry	Excellent	ForestMixed
142020	29/09/2012	DarrellKraemer	571901	6765451	UTMZ8N_WGS84	Grey	Clay	Drainage	C	50	Moist	Excellent	ForestMixed
142021	29/09/2012	DarrellKraemer	571906	6765410	UTMZ8N_WGS84	BrownLight	Silt	Drainage	C	45	Dry	Good	ForestMixed
142022	29/09/2012	DarrellKraemer	571874	6765399	UTMZ8N_WGS84	Brown	Gravel	Drainage	C	45	Moist	Excellent	ForestMixed
142023	29/09/2012	DarrellKraemer	571832	6765385	UTMZ8N_WGS84	BrownLight	Silt	Drainage	C	35	Dry	Good	ForestMixed
142024	29/09/2012	DarrellKraemer	571772	6765371	UTMZ8N_WGS84	BrownDark		Drainage	B	80	Moist	Excellent	ForestMixed
142025	29/09/2012	DarrellKraemer	571721	6765363	UTMZ8N_WGS84	Brown	Sand	ModerateS	C	40	Dry	Excellent	ForestMixed
142026	29/09/2012	DarrellKraemer	571664	6765348	UTMZ8N_WGS84	Brown	Sand	ModerateS	C	40	Dry	Good	ForestMixed
142027	29/09/2012	DarrellKraemer	571639	6765345	UTMZ8N_WGS84	Brown	Gravel	ModerateS	B	35	Dry	Excellent	ForestMixed
142028	29/09/2012	DarrellKraemer	571574	6765333	UTMZ8N_WGS84	Brown	Sand	ModerateS	C	35	Dry	Good	ForestMixed
142029	29/09/2012	DarrellKraemer	571536	6765316	UTMZ8N_WGS84	Brown	Silt	ModerateS	B	50	Dry	Good	ForestMixed

Appendix B - Sample Locations and Descriptions

Sample	SampleType	Date	Sampler	Easting	Northing	EastNorthDatum	SampleType	Lithology	MinMin1
140277	Rock	29/09/2012	MartyHuber	571637.1203	6765496.706	UTMZ8N_WGS84	TalusHighGrade		Pyrite
140278	Rock	29/09/2012	MartyHuber	571640.2844	6765492.647	UTMZ8N_WGS84	TrenchChip	VeinQuartz	Galena
141359	Rock	01/10/2012	MarkFekete	571646	6765479	UTMZ8N_WGS84			
141360	Rock	01/10/2012	MarkFekete	571646	6765479	UTMZ8N_WGS84			
141361	Rock	01/10/2012	MarkFekete	571622	6765510	UTMZ8N_WGS84			
141362	Rock	01/10/2012	MarkFekete	571646	6765479	UTMZ8N_WGS84			
141363	Rock	01/10/2012	MarkFekete	571629	6765479	UTMZ8N_WGS84			
141364	Rock	01/10/2012	MarkFekete	571638	6765466	UTMZ8N_WGS84			
141365	Rock	01/10/2012	MarkFekete	571614	6765500	UTMZ8N_WGS84			

Appendix C - Analytical Certificates



1020 Cordova St. East Vancouver BC V6A 4A3 Canada

Acme Analytical Laboratories (Vancouver) Ltd.

www.acmelab.com

Client: Breakaway Expl. Mgmt. Inc.
203 - 680 3rd Ave.
Val d'Or QC J9P 1S5 CANADA

Submitted By: Mark Fekete
Receiving Lab: Canada-Whitehorse
Received: October 01, 2012
Report Date: October 10, 2012
Page: 1 of 3

CERTIFICATE OF ANALYSIS

WHI12000947.1

CLIENT JOB INFORMATION

Project: None Given
Shipment ID:
P.O. Number
Number of Samples: 56

SAMPLE DISPOSAL

DISP-PLP Dispose of Pulp After 90 days
DISP-RJT-SOIL Immediate Disposal of Soil Reject

Acme does not accept responsibility for samples left at the laboratory after 90 days without prior written instructions for sample storage or return.

Invoice To: Breakaway Expl. Mgmt. Inc.
203 - 680 3rd Ave.
Val d'Or QC J9P 1S5
CANADA

CC: Marty Huber

SAMPLE PREPARATION AND ANALYTICAL PROCEDURES

Table with 6 columns: Method Code, Number of Samples, Code Description, Test Wgt (g), Report Status, Lab. Rows include Dry at 60C, SS80, and 1DX2.

ADDITIONAL COMMENTS



This report supersedes all previous preliminary and final reports with this file number dated prior to the date on this certificate. Signature indicates final approval; preliminary reports are unsigned and should be used for reference only. All results are considered the confidential property of the client. Acme assumes the liabilities for actual cost of analysis only. Results apply to samples as submitted. ** asterisk indicates that an analytical result could not be provided due to unusually high levels of interference from other elements.



1020 Cordova St. East Vancouver BC V6A 4A3 Canada
Phone (604) 253-3158 Fax (604) 253-1716

Acme Analytical Laboratories (Vancouver) Ltd.

www.acmelab.com

Client: **Breakaway Expl. Mgmt. Inc.**
203 - 680 3rd Ave.
Val d'Or QC J9P 1S5 CANADA

Project: None Given
Report Date: October 10, 2012

Page: 2 of 3

Part: 1 of 1

CERTIFICATE OF ANALYSIS

WHI12000947.1

Method	Analyte	1DX15	1DX15	1DX15	1DX15	1DX15	1DX15	1DX15	1DX15	1DX15	1DX15	1DX15	1DX15	1DX15	1DX15	1DX15	1DX15	1DX15	1DX15	1DX15	1DX15
		Mo	Cu	Pb	Zn	Ag	Ni	Co	Mn	Fe	As	Au	Th	Sr	Cd	Sb	Bi	V	Ca	P	La
Unit		ppm	ppm	ppm	ppm	ppm	ppm	ppm	%	ppm	ppb	ppm	ppm	ppm	ppm	ppm	ppm	%	%	ppm	
MDL		0.1	0.1	0.1	1	0.1	0.1	0.1	1	0.01	0.5	0.5	0.1	1	0.1	0.1	2	0.01	0.001	1	
128894	Soil	1.0	4.5	9.1	68	0.1	9.2	5.5	449	1.74	1.6	2.7	14.8	16	0.2	0.2	0.8	30	0.21	0.061	15
128895	Soil	0.8	5.2	6.9	28	0.2	10.4	3.8	141	1.63	4.4	2.1	13.5	11	<0.1	0.2	0.6	30	0.19	0.098	20
128896	Soil	0.7	3.5	13.7	88	<0.1	6.4	4.7	399	2.34	4.6	0.7	24.9	12	<0.1	0.2	0.6	30	0.26	0.109	23
128897	Soil	1.3	9.8	17.0	100	0.3	24.0	8.5	419	2.76	11.2	1.6	32.9	19	0.1	0.3	1.0	45	0.26	0.151	36
128898	Soil	1.5	5.6	13.5	148	0.2	11.5	7.2	939	2.57	10.7	1.2	23.1	20	0.2	0.2	0.8	41	0.27	0.080	19
128899	Soil	1.7	7.9	10.5	112	0.1	10.6	7.0	539	2.21	3.3	0.7	15.7	15	0.2	0.3	0.8	42	0.21	0.059	14
128900	Soil	1.9	6.4	22.0	59	0.2	13.1	6.6	361	1.81	5.4	1.4	9.9	12	0.3	0.2	0.8	38	0.20	0.019	10
128901	Soil	2.6	67.8	22.6	191	0.4	98.8	47.8	790	5.29	5.2	<0.5	6.5	44	0.8	0.2	0.6	152	0.37	0.037	10
128902	Soil	5.5	25.9	56.7	243	0.9	53.7	25.7	629	3.32	5.7	1.2	7.1	35	2.4	0.3	2.4	89	0.49	0.042	11
128903	Soil	3.8	12.5	27.3	292	1.6	35.7	33.2	1220	2.19	0.7	<0.5	4.3	18	3.4	0.4	1.2	55	0.23	0.027	9
128904	Soil	1.7	11.7	10.0	171	0.4	14.7	9.9	1399	1.17	1.7	2.1	2.1	14	5.0	0.2	0.5	26	0.21	0.043	7
128905	Soil	1.1	12.1	9.9	51	0.4	12.6	6.6	345	1.35	3.7	<0.5	5.1	11	0.3	0.2	0.5	32	0.13	0.018	13
128906	Soil	3.2	3.8	9.9	46	0.1	5.7	3.4	288	1.52	3.7	<0.5	13.4	11	0.1	0.2	0.4	27	0.17	0.037	13
128907	Soil	1.5	5.2	10.0	49	0.3	8.0	4.5	750	1.54	3.1	<0.5	15.0	17	0.2	0.2	0.5	25	0.23	0.036	16
128908	Soil	0.8	5.6	10.6	68	<0.1	8.3	4.5	471	1.77	3.2	<0.5	19.1	13	<0.1	0.2	0.5	30	0.18	0.049	18
128909	Soil	0.6	5.0	9.0	57	0.1	5.0	3.6	530	1.23	1.7	<0.5	16.2	16	<0.1	0.1	0.4	21	0.22	0.079	23
128910	Soil	0.8	3.4	10.3	112	<0.1	6.7	4.7	411	1.77	2.4	<0.5	28.1	11	0.2	0.2	0.4	27	0.21	0.073	19
128911	Soil	0.6	4.7	9.3	69	<0.1	6.4	4.0	574	1.62	1.6	<0.5	19.6	15	<0.1	<0.1	0.4	28	0.21	0.067	16
128912	Soil	1.2	4.5	12.2	88	0.2	8.7	5.2	339	2.28	3.9	<0.5	24.9	13	<0.1	0.2	0.6	36	0.20	0.062	18
128913	Soil	1.3	5.2	11.4	64	0.5	8.4	4.6	411	1.82	4.1	2.2	16.4	14	0.1	0.2	0.5	28	0.18	0.061	18
128914	Soil	1.9	4.2	11.0	61	<0.1	6.2	4.2	455	1.81	4.2	<0.5	16.5	12	<0.1	0.2	0.6	29	0.18	0.046	15
128915	Soil	2.5	12.6	26.5	124	0.4	14.9	6.7	1606	2.26	28.9	0.6	36.3	22	0.4	0.7	1.2	25	0.37	0.190	143
128916	Soil	5.4	8.7	13.8	50	0.1	6.0	3.9	1046	1.42	4.9	<0.5	13.2	15	0.2	0.2	0.8	21	0.25	0.050	22
128917	Soil	56.5	31.8	7903	45	>100	9.1	3.1	161	4.13	92.7	8.2	26.7	5	1.2	10.0	560.8	17	0.11	0.068	18
128918	Soil	3.8	16.6	290.7	616	1.8	27.8	24.1	572	3.42	4.8	1.2	6.1	17	7.1	0.3	9.2	95	0.27	0.029	8
128919	Soil	15.7	55.8	126.4	386	1.8	82.1	27.9	982	4.60	3.4	0.7	9.6	38	2.7	0.5	4.4	126	0.34	0.058	20
128920	Soil	3.6	17.4	48.7	94	0.6	34.6	14.3	265	2.95	2.9	<0.5	5.3	13	0.6	0.3	2.5	106	0.22	0.020	9
142001	Soil	1.7	4.7	10.8	32	0.2	8.1	3.7	205	1.88	6.0	<0.5	14.9	11	<0.1	0.2	0.9	31	0.18	0.044	22
142002	Soil	1.1	3.7	7.8	44	0.2	4.4	2.9	374	1.20	3.2	0.9	15.7	9	<0.1	0.1	0.7	21	0.12	0.045	14
142003	Soil	2.0	5.0	10.4	37	0.1	8.2	3.4	170	1.56	11.3	<0.5	20.0	13	<0.1	0.3	0.6	28	0.24	0.041	42

This report supersedes all previous preliminary and final reports with this file number dated prior to the date on this certificate. Signature indicates final approval; preliminary reports are unsigned and should be used for reference only.



1020 Cordova St. East Vancouver BC V6A 4A3 Canada
Phone (604) 253-3158 Fax (604) 253-1716

Acme Analytical Laboratories (Vancouver) Ltd.

www.acmelab.com

Client: **Breakaway Expl. Mgmt. Inc.**
203 - 680 3rd Ave.
Val d'Or QC J9P 1S5 CANADA

Project: None Given
Report Date: October 10, 2012

Page: 2 of 3

Part: 2 of 1

CERTIFICATE OF ANALYSIS

WHI12000947.1

Method	Analyte	1DX15	1DX15	1DX15	1DX15	1DX15	1DX15	1DX15	1DX15	1DX15	1DX15	1DX15	1DX15	1DX15	1DX15	1DX15	1DX15
		Cr	Mg	Ba	Ti	B	Al	Na	K	W	Hg	Sc	Tl	S	Ga	Se	Te
Unit		ppm	%	ppm	%	ppm	%	%	ppm	ppm	ppm	ppm	%	ppm	ppm	ppm	ppm
MDL		1	0.01	1	0.001	1	0.01	0.001	0.01	0.1	0.01	0.1	0.05	1	0.5	0.2	
128894	Soil	16	0.27	122	0.088	<1	0.86	0.009	0.15	0.6	0.01	2.3	0.2	<0.05	6	<0.5	<0.2
128895	Soil	16	0.24	92	0.044	<1	0.86	0.007	0.08	0.6	0.02	1.7	0.1	<0.05	4	<0.5	<0.2
128896	Soil	9	0.33	173	0.133	1	1.30	0.009	0.24	0.6	<0.01	4.4	0.6	<0.05	9	<0.5	<0.2
128897	Soil	28	0.44	135	0.088	<1	1.96	0.009	0.14	1.1	0.02	3.5	0.4	<0.05	8	0.8	<0.2
128898	Soil	19	0.31	129	0.082	<1	1.31	0.006	0.19	1.1	0.02	3.1	0.4	<0.05	7	<0.5	<0.2
128899	Soil	20	0.29	126	0.077	<1	1.08	0.007	0.12	0.8	<0.01	2.3	0.2	<0.05	7	<0.5	<0.2
128900	Soil	25	0.33	76	0.080	<1	0.87	0.007	0.11	0.8	<0.01	2.2	0.2	<0.05	5	<0.5	<0.2
128901	Soil	178	2.40	313	0.342	2	3.04	0.026	1.22	0.7	<0.01	11.3	0.8	0.21	11	1.6	<0.2
128902	Soil	53	0.79	129	0.136	2	1.93	0.015	0.30	10.0	<0.01	4.3	0.3	<0.05	8	1.2	<0.2
128903	Soil	35	0.49	138	0.122	<1	1.21	0.011	0.19	0.5	0.01	2.7	0.2	<0.05	7	0.7	<0.2
128904	Soil	12	0.16	112	0.052	<1	0.51	0.014	0.11	0.6	0.01	1.0	<0.1	<0.05	3	<0.5	<0.2
128905	Soil	17	0.25	75	0.065	<1	0.78	0.019	0.09	0.7	0.01	1.4	<0.1	<0.05	4	<0.5	<0.2
128906	Soil	12	0.19	57	0.035	<1	0.88	0.006	0.07	0.5	<0.01	1.8	0.2	<0.05	5	<0.5	<0.2
128907	Soil	13	0.21	119	0.045	<1	0.76	0.008	0.12	0.4	0.01	1.8	0.2	<0.05	4	<0.5	<0.2
128908	Soil	13	0.25	128	0.080	<1	1.01	0.016	0.14	0.6	0.02	2.3	0.2	<0.05	6	<0.5	<0.2
128909	Soil	7	0.18	130	0.060	<1	0.81	0.016	0.14	0.4	0.01	1.6	0.2	<0.05	4	<0.5	<0.2
128910	Soil	13	0.24	124	0.062	<1	1.00	0.011	0.14	0.5	<0.01	2.4	0.3	<0.05	6	<0.5	<0.2
128911	Soil	11	0.23	166	0.084	<1	0.90	0.012	0.17	0.7	0.01	2.4	0.3	<0.05	5	<0.5	<0.2
128912	Soil	16	0.28	100	0.070	<1	1.27	0.007	0.18	0.6	0.02	3.1	0.4	<0.05	8	<0.5	<0.2
128913	Soil	13	0.22	105	0.053	<1	1.01	0.009	0.14	0.5	0.01	2.0	0.3	<0.05	6	<0.5	<0.2
128914	Soil	11	0.24	89	0.077	<1	0.98	0.009	0.21	0.8	<0.01	2.6	0.4	<0.05	6	<0.5	<0.2
128915	Soil	16	0.26	146	0.030	<1	1.50	0.007	0.18	0.7	0.01	3.6	0.4	<0.05	6	0.7	<0.2
128916	Soil	9	0.17	76	0.050	<1	0.78	0.014	0.16	2.2	0.02	1.8	0.2	<0.05	4	<0.5	<0.2
128917	Soil	8	0.14	18	0.034	<1	0.51	0.009	0.14	23.7	0.16	1.8	2.0	0.35	3	13.9	7.7
128918	Soil	93	0.90	104	0.181	<1	1.64	0.014	0.32	2.7	0.01	6.4	0.3	<0.05	7	<0.5	<0.2
128919	Soil	81	0.97	180	0.115	<1	2.76	0.018	0.23	1.4	0.02	5.5	0.3	0.05	9	1.7	<0.2
128920	Soil	74	0.82	114	0.155	<1	1.66	0.016	0.12	2.4	0.01	4.7	0.2	<0.05	9	0.6	<0.2
142001	Soil	14	0.24	44	0.049	<1	0.94	0.009	0.12	0.6	0.01	2.2	0.2	<0.05	5	<0.5	<0.2
142002	Soil	8	0.15	68	0.029	<1	0.72	0.014	0.09	0.4	0.01	1.3	0.1	<0.05	3	<0.5	<0.2
142003	Soil	17	0.30	23	0.044	<1	0.93	0.006	0.08	0.5	0.01	2.3	0.2	<0.05	5	<0.5	<0.2



Acme Analytical Laboratories (Vancouver) Ltd.
 1020 Cordova St. East Vancouver BC V6A 4A3 Canada
 Phone (604) 253-3158 Fax (604) 253-1716

www.acmelab.com

Client: **Breakaway Expl. Mgmt. Inc.**
 203 - 680 3rd Ave.
 Val d'Or QC J9P 1S5 CANADA

Project: None Given
 Report Date: October 10, 2012

Page: 3 of 3

Part: 1 of 1

CERTIFICATE OF ANALYSIS

WHI12000947.1

Method	Analyte	1DX15	1DX15	1DX15	1DX15	1DX15	1DX15	1DX15	1DX15	1DX15	1DX15	1DX15	1DX15	1DX15	1DX15	1DX15	1DX15	1DX15	1DX15	1DX15	1DX15
		Mo	Cu	Pb	Zn	Ag	Ni	Co	Mn	Fe	As	Au	Th	Sr	Cd	Sb	Bi	V	Ca	P	La
Unit		ppm	ppm	ppm	ppm	ppm	ppm	ppm	ppm	%	ppm	ppb	ppm	ppm	ppm	ppm	ppm	ppm	%	%	ppm
MDL		0.1	0.1	0.1	1	0.1	0.1	0.1	1	0.01	0.5	0.5	0.1	1	0.1	0.1	0.1	2	0.01	0.001	1
142004	Soil	1.4	9.5	12.8	131	0.2	7.7	4.2	954	1.56	6.2	<0.5	20.5	19	0.4	0.3	0.6	24	0.31	0.056	27
142005	Soil	2.0	4.3	16.2	76	0.2	7.3	4.4	320	2.01	3.6	<0.5	21.0	13	0.2	0.3	0.7	29	0.20	0.040	11
142006	Soil	1.7	5.5	10.1	47	0.3	8.7	6.0	271	2.24	4.5	<0.5	27.4	9	0.7	0.2	1.1	35	0.24	0.055	29
142007	Soil	26.5	173.7	62.4	1284	1.4	397.2	36.4	943	6.40	94.9	10.1	15.4	93	19.8	8.9	1.2	208	0.96	0.212	29
142008	Soil	5.1	19.5	11.8	298	0.5	19.8	11.4	392	2.83	2.8	1.2	13.2	23	2.7	0.3	0.7	91	0.20	0.036	16
142009	Soil	1.5	7.1	38.4	123	0.4	10.6	7.2	213	1.55	2.0	1.0	5.4	11	0.8	0.3	3.0	47	0.18	0.018	8
142010	Soil	3.3	23.0	108.8	117	0.9	27.7	17.9	759	2.34	4.8	<0.5	8.3	14	1.3	0.4	7.5	64	0.24	0.033	12
142011	Soil	0.7	24.1	7.5	43	0.2	11.7	9.7	191	1.52	0.8	3.4	3.3	10	0.2	0.1	0.5	54	0.23	0.039	6
142012	Soil	1.1	9.6	12.1	101	0.3	20.9	11.9	474	2.20	2.9	<0.5	9.4	12	0.5	0.3	0.6	52	0.35	0.021	12
142013	Soil	1.6	11.0	11.2	100	0.2	15.8	10.3	424	2.03	3.1	2.2	9.4	17	0.7	0.3	0.8	55	0.29	0.021	11
142014	Soil	1.5	17.3	9.3	425	0.7	12.5	12.4	819	1.45	1.6	0.7	3.8	10	8.0	0.1	0.4	33	0.15	0.036	10
142015	Soil	1.1	7.1	8.3	54	0.2	8.6	13.2	445	1.48	2.3	<0.5	6.7	11	0.4	0.2	0.5	32	0.20	0.016	8
142016	Soil	3.7	16.4	30.6	106	0.8	22.6	8.1	1457	2.77	27.1	1.0	48.6	21	0.3	0.4	2.3	37	0.28	0.129	97
142017	Soil	4.2	18.1	26.9	137	0.7	14.8	7.2	1858	2.40	14.8	1.5	29.5	40	0.6	0.5	1.2	29	0.57	0.161	119
142018	Soil	2.0	4.8	13.0	56	0.2	6.5	4.0	434	1.69	5.5	1.0	15.8	9	0.2	0.2	1.0	26	0.13	0.048	16
142019	Soil	2.6	16.5	20.1	95	0.5	24.7	8.3	288	3.32	6.9	0.7	27.9	19	0.8	0.2	2.5	70	0.23	0.085	25
142020	Soil	9.2	13.0	17.6	60	0.2	13.7	6.4	324	2.58	5.4	1.3	21.7	23	0.2	0.2	1.1	43	0.50	0.122	36
142021	Soil	10.7	17.7	19.5	72	<0.1	17.3	6.6	342	2.11	5.5	0.9	22.3	29	0.6	0.2	1.3	44	0.49	0.102	35
142022	Soil	7.5	9.6	15.9	50	0.1	11.4	5.5	327	1.73	4.1	<0.5	20.5	22	0.2	0.1	0.9	35	0.44	0.099	34
142023	Soil	2.6	6.1	15.1	70	0.2	7.9	4.4	584	1.80	17.2	<0.5	22.1	13	0.2	0.5	0.7	24	0.24	0.069	35
142024	Soil	7.5	19.4	28.4	51	1.3	12.9	5.5	428	1.84	35.5	3.0	11.7	26	0.2	0.4	1.2	26	0.62	0.097	397
142025	Soil	2.1	13.9	18.0	170	0.2	13.6	6.9	443	2.86	11.6	<0.5	25.9	20	1.7	0.3	1.4	51	0.33	0.109	30
142026	Soil	1.1	10.8	8.2	91	0.3	16.2	12.0	287	2.22	2.8	<0.5	6.9	13	1.0	0.3	0.5	69	0.25	0.016	9
142027	Soil	0.8	13.5	9.3	59	<0.1	33.9	12.3	234	2.41	3.3	0.8	6.4	14	0.2	0.2	0.5	70	0.29	0.026	8
142028	Soil	0.8	70.1	6.2	101	0.1	55.5	29.6	364	4.99	1.3	6.0	6.2	20	0.2	<0.1	0.2	173	0.63	0.045	14
142029	Soil	1.2	480.4	14.0	125	0.3	109.1	139.6	870	3.38	3.3	1.6	11.9	16	0.2	0.3	0.5	83	0.45	0.056	31



Acme Analytical Laboratories (Vancouver) Ltd.
 1020 Cordova St. East Vancouver BC V6A 4A3 Canada
 Phone (604) 253-3158 Fax (604) 253-1716

www.acmelab.com

Client: **Breakaway Expl. Mgmt. Inc.**
 203 - 680 3rd Ave.
 Val d'Or QC J9P 1S5 CANADA

Project: None Given
 Report Date: October 10, 2012

Page: 3 of 3

Part: 2 of 1

CERTIFICATE OF ANALYSIS

WHI12000947.1

Method	Analyte	1DX15		1DX15		1DX15		1DX15		1DX15		1DX15		1DX15		1DX15		1DX15	
		Cr	Mg	Ba	Ti	B	Al	Na	K	W	Hg	Sc	Tl	S	Ga	Se	Te		
Unit	MDL	ppm	%	ppm	%	ppm	%	%	ppm	ppm	ppm	ppm	%	ppm	ppm	ppm			
		1	0.01	1	0.001	1	0.01	0.001	0.01	0.1	0.01	0.1	0.05	1	0.5	0.2			
142004	Soil	11	0.18	168	0.038	<1	1.01	0.010	0.13	0.5	0.02	2.2	0.3	<0.05	5	<0.5	<0.2		
142005	Soil	14	0.28	55	0.067	<1	1.07	0.006	0.20	0.4	<0.01	2.8	0.4	<0.05	8	<0.5	<0.2		
142006	Soil	13	0.25	46	0.081	<1	0.76	0.007	0.19	1.9	0.01	2.4	0.3	<0.05	6	<0.5	<0.2		
142007	Soil	159	2.93	82	0.039	2	2.71	0.009	0.16	1.5	0.05	7.8	0.5	<0.05	8	10.2	0.2		
142008	Soil	43	0.61	153	0.112	<1	1.21	0.011	0.25	1.0	<0.01	4.6	0.4	0.11	7	2.0	<0.2		
142009	Soil	25	0.31	64	0.082	2	0.71	0.012	0.09	0.7	<0.01	2.2	0.1	<0.05	4	<0.5	<0.2		
142010	Soil	45	0.52	142	0.106	2	1.10	0.012	0.17	1.3	<0.01	3.5	0.2	<0.05	6	<0.5	<0.2		
142011	Soil	24	0.45	57	0.121	2	0.87	0.017	0.05	0.3	<0.01	1.7	<0.1	<0.05	5	<0.5	<0.2		
142012	Soil	37	2.89	118	0.099	6	1.20	0.014	0.19	0.8	<0.01	3.8	0.2	<0.05	5	<0.5	<0.2		
142013	Soil	35	0.41	145	0.089	2	1.02	0.012	0.11	0.5	<0.01	2.9	0.2	<0.05	6	<0.5	<0.2		
142014	Soil	18	0.29	73	0.076	1	0.90	0.021	0.10	1.1	0.01	1.9	0.1	<0.05	4	<0.5	<0.2		
142015	Soil	17	0.27	97	0.089	2	0.78	0.012	0.16	1.4	<0.01	2.1	0.2	<0.05	4	<0.5	<0.2		
142016	Soil	22	0.39	153	0.057	2	2.95	0.019	0.20	0.9	0.02	5.3	0.5	<0.05	10	0.6	<0.2		
142017	Soil	16	0.29	215	0.028	2	1.92	0.010	0.18	0.6	0.02	3.8	0.4	<0.05	7	<0.5	<0.2		
142018	Soil	12	0.19	93	0.038	2	0.85	0.008	0.10	0.6	<0.01	2.3	0.2	<0.05	4	<0.5	<0.2		
142019	Soil	38	0.59	87	0.142	1	1.94	0.009	0.18	1.9	0.03	4.2	0.4	<0.05	9	<0.5	<0.2		
142020	Soil	25	0.52	94	0.115	<1	1.23	0.022	0.15	1.5	<0.01	4.6	0.3	<0.05	6	<0.5	<0.2		
142021	Soil	25	0.52	104	0.113	<1	1.36	0.018	0.18	2.7	0.01	4.3	0.4	<0.05	6	<0.5	<0.2		
142022	Soil	19	0.40	74	0.091	1	1.01	0.020	0.13	1.7	<0.01	3.5	0.3	<0.05	5	<0.5	<0.2		
142023	Soil	14	0.24	69	0.026	1	1.08	0.007	0.13	0.6	0.01	2.6	0.3	<0.05	5	<0.5	<0.2		
142024	Soil	16	0.26	72	0.028	2	1.86	0.021	0.11	0.6	0.05	3.9	0.3	<0.05	6	2.0	<0.2		
142025	Soil	23	0.54	126	0.121	1	1.46	0.014	0.29	1.0	<0.01	4.2	0.4	<0.05	9	<0.5	<0.2		
142026	Soil	41	0.47	138	0.118	2	1.01	0.012	0.15	0.4	<0.01	3.4	0.1	<0.05	6	<0.5	<0.2		
142027	Soil	65	0.77	125	0.130	1	1.48	0.014	0.15	1.0	0.01	3.7	0.2	<0.05	6	<0.5	<0.2		
142028	Soil	150	2.19	138	0.310	1	3.62	0.033	0.30	0.5	<0.01	16.7	0.4	<0.05	14	<0.5	<0.2		
142029	Soil	101	1.13	93	0.155	1	2.85	0.029	0.06	0.4	0.01	5.3	0.3	<0.05	8	<0.5	<0.2		



Acme Analytical Laboratories (Vancouver) Ltd.

1020 Cordova St. East Vancouver BC V6A 4A3 Canada
 Phone (604) 253-3158 Fax (604) 253-1716

www.acmelab.com

Client: **Breakaway Expl. Mgmt. Inc.**
 203 - 680 3rd Ave.
 Val d'Or QC J9P 1S5 CANADA

Project: None Given
 Report Date: October 10, 2012

Page: 1 of 1

Part: 1 of 1

QUALITY CONTROL REPORT

WHI12000947.1

Method	1DX15	1DX15	1DX15	1DX15	1DX15	1DX15	1DX15	1DX15	1DX15	1DX15	1DX15	1DX15	1DX15	1DX15	1DX15	1DX15	1DX15	1DX15	1DX15	1DX15	
Analyte	Mo	Cu	Pb	Zn	Ag	Ni	Co	Mn	Fe	As	Au	Th	Sr	Cd	Sb	Bi	V	Ca	P	La	
Unit	ppm	ppm	ppm	ppm	ppm	ppm	ppm	ppm	%	ppm	ppb	ppm	ppm	ppm	ppm	ppm	ppm	%	%	ppm	
MDL	0.1	0.1	0.1	1	0.1	0.1	0.1	1	0.01	0.5	0.5	0.1	1	0.1	0.1	0.1	2	0.01	0.001	1	
Pulp Duplicates																					
128895	Soil	0.8	5.2	6.9	28	0.2	10.4	3.8	141	1.63	4.4	2.1	13.5	11	<0.1	0.2	0.6	30	0.19	0.098	20
REP 128895	QC	0.7	5.2	7.1	28	0.2	10.0	3.8	147	1.69	4.4	1.7	14.3	11	<0.1	0.2	0.5	31	0.20	0.095	21
128908	Soil	0.8	5.6	10.6	68	<0.1	8.3	4.5	471	1.77	3.2	<0.5	19.1	13	<0.1	0.2	0.5	30	0.18	0.049	18
REP 128908	QC	0.8	5.7	10.4	67	<0.1	8.8	4.5	491	1.87	3.3	0.7	17.5	13	<0.1	0.2	0.5	30	0.20	0.052	19
142011	Soil	0.7	24.1	7.5	43	0.2	11.7	9.7	191	1.52	0.8	3.4	3.3	10	0.2	0.1	0.5	54	0.23	0.039	6
REP 142011	QC	0.6	23.2	7.3	42	0.2	11.7	9.5	194	1.52	0.9	<0.5	3.2	10	0.1	0.1	0.4	54	0.23	0.039	6
142024	Soil	7.5	19.4	28.4	51	1.3	12.9	5.5	428	1.84	35.5	3.0	11.7	26	0.2	0.4	1.2	26	0.62	0.097	397
REP 142024	QC	7.4	19.0	27.6	50	1.2	12.3	5.4	406	1.78	35.0	2.6	13.5	25	0.3	0.4	1.2	25	0.60	0.095	402
Reference Materials																					
STD DS9	Standard	12.6	109.0	118.3	300	1.7	39.0	7.0	569	2.25	25.1	109.6	7.0	70	2.5	5.8	6.7	40	0.71	0.079	13
STD DS9	Standard	12.8	111.0	128.4	307	1.7	39.2	7.5	602	2.36	25.7	115.9	6.9	70	2.3	5.5	7.0	43	0.74	0.080	14
STD DS9 Expected		12.84	108	126	317	1.83	40.3	7.6	575	2.33	25.5	118	6.38	69.6	2.4	4.94	6.32	40	0.7201	0.0819	13.3
BLK	Blank	<0.1	<0.1	<0.1	<1	<0.1	<0.1	<0.1	<1	<0.01	<0.5	<0.5	<0.1	<1	<0.1	<0.1	<0.1	<2	<0.01	<0.001	<1
BLK	Blank	<0.1	<0.1	<0.1	<1	<0.1	<0.1	<0.1	<1	<0.01	<0.5	<0.5	<0.1	<1	<0.1	<0.1	<0.1	<2	<0.01	<0.001	<1



Acme Analytical Laboratories (Vancouver) Ltd.

1020 Cordova St. East Vancouver BC V6A 4A3 Canada
 Phone (604) 253-3158 Fax (604) 253-1716

www.acmelab.com

Client: **Breakaway Expl. Mgmt. Inc.**
 203 - 680 3rd Ave.
 Val d'Or QC J9P 1S5 CANADA

Project: None Given
 Report Date: October 10, 2012

Page: 1 of 1

Part: 2 of 1

QUALITY CONTROL REPORT

WHI12000947.1

Method	Analyte	1DX15	1DX15	1DX15	1DX15	1DX15	1DX15	1DX15	1DX15	1DX15	1DX15	1DX15	1DX15	1DX15	1DX15	1DX15	
		Cr	Mg	Ba	Ti	B	Al	Na	K	W	Hg	Sc	Tl	S	Ga	Se	Te
Unit		ppm	%	ppm	%	ppm	%	%	ppm	ppm	ppm	ppm	%	ppm	ppm	ppm	
MDL		1	0.01	1	0.001	1	0.01	0.001	0.01	0.1	0.01	0.1	0.05	1	0.5	0.2	
Pulp Duplicates																	
128895	Soil	16	0.24	92	0.044	<1	0.86	0.007	0.08	0.6	0.02	1.7	0.1	<0.05	4	<0.5	<0.2
REP 128895	QC	17	0.25	93	0.044	<1	0.86	0.007	0.09	0.5	0.01	1.7	0.1	<0.05	5	<0.5	<0.2
128908	Soil	13	0.25	128	0.080	<1	1.01	0.016	0.14	0.6	0.02	2.3	0.2	<0.05	6	<0.5	<0.2
REP 128908	QC	13	0.27	133	0.085	<1	1.07	0.013	0.14	0.7	<0.01	2.3	0.3	<0.05	6	<0.5	<0.2
142011	Soil	24	0.45	57	0.121	2	0.87	0.017	0.05	0.3	<0.01	1.7	<0.1	<0.05	5	<0.5	<0.2
REP 142011	QC	23	0.46	56	0.122	2	0.83	0.019	0.05	0.2	0.01	1.6	<0.1	<0.05	5	<0.5	<0.2
142024	Soil	16	0.26	72	0.028	2	1.86	0.021	0.11	0.6	0.05	3.9	0.3	<0.05	6	2.0	<0.2
REP 142024	QC	15	0.26	72	0.025	2	1.78	0.022	0.11	0.6	0.05	4.0	0.3	<0.05	6	2.4	<0.2
Reference Materials																	
STD DS9	Standard	114	0.61	295	0.112	2	0.87	0.081	0.38	3.0	0.21	2.5	5.8	0.14	4	4.7	5.0
STD DS9	Standard	124	0.62	308	0.116	2	0.96	0.087	0.40	3.1	0.22	2.5	6.1	0.14	5	5.8	5.4
STD DS9 Expected		121	0.6165	295	0.1108		0.9577	0.0853	0.395	2.89	0.2	2.5	5.3	0.1615	4.59	5.2	5.02
BLK	Blank	<1	<0.01	<1	<0.001	<1	<0.01	<0.001	<0.01	<0.1	<0.01	<0.1	<0.1	<0.05	<1	<0.5	<0.2
BLK	Blank	<1	<0.01	<1	<0.001	<1	<0.01	<0.001	<0.01	<0.1	<0.01	<0.1	<0.1	<0.05	<1	<0.5	<0.2



1020 Cordova St. East Vancouver BC V6A 4A3 Canada

Acme Analytical Laboratories (Vancouver) Ltd.

www.acmelab.com

Client: Breakaway Expl. Mgmt. Inc.
203 - 680 3rd Ave.
Val d'Or QC J9P 1S5 CANADA

Submitted By: Mark Fekete
Receiving Lab: Canada-Whitehorse
Received: October 01, 2012
Report Date: November 13, 2012
Page: 1 of 2

CERTIFICATE OF ANALYSIS

WHI12000946.2

CLIENT JOB INFORMATION

Project: None Given
Shipment ID:
P.O. Number
Number of Samples: 9

SAMPLE DISPOSAL

DISP-PLP Dispose of Pulp After 90 days
DISP-RJT Dispose of Reject After 90 days

Acme does not accept responsibility for samples left at the laboratory after 90 days without prior written instructions for sample storage or return.

SAMPLE PREPARATION AND ANALYTICAL PROCEDURES

Table with 6 columns: Method Code, Number of Samples, Code Description, Test Wgt (g), Report Status, Lab. Rows include R200-250, 7AR2, G601, 7AR.1, and G614.

ADDITIONAL COMMENTS

Version 2 : G614 included.

Invoice To: Breakaway Expl. Mgmt. Inc.
203 - 680 3rd Ave.
Val d'Or QC J9P 1S5
CANADA

CC: Marty Huber



This report supersedes all previous preliminary and final reports with this file number dated prior to the date on this certificate. Signature indicates final approval; preliminary reports are unsigned and should be used for reference only. All results are considered the confidential property of the client. Acme assumes the liabilities for actual cost of analysis only. Results apply to samples as submitted. ** asterisk indicates that an analytical result could not be provided due to unusually high levels of interference from other elements.



Acme Analytical Laboratories (Vancouver) Ltd.
 1020 Cordova St. East Vancouver BC V6A 4A3 Canada
 Phone (604) 253-3158 Fax (604) 253-1716

www.acmelab.com

Client: **Breakaway Expl. Mgmt. Inc.**
 203 - 680 3rd Ave.
 Val d'Or QC J9P 1S5 CANADA

Project: None Given
 Report Date: November 13, 2012

Page: 2 of 2

Part: 1 of 1

CERTIFICATE OF ANALYSIS

WHI12000946.2

Method	WGHT	7AR	7AR	7AR	7AR	7AR	7AR	7AR	7AR	7AR	7AR	7AR	7AR	7AR	7AR	7AR	7AR	7AR	7AR	7AR	
Analyte	Wgt	Mo	Cu	Pb	Zn	Ag	Ni	Co	Mn	Fe	As	Sr	Cd	Sb	Bi	Ca	P	Cr	Mg	Al	
Unit	kg	%	%	%	%	gm/t	%	%	%	%	%	%	%	%	%	%	%	%	%	%	
MDL	0.01	0.001	0.001	0.01	0.01	2	0.001	0.001	0.01	0.01	0.01	0.001	0.001	0.001	0.01	0.01	0.001	0.001	0.01	0.01	
G1-WHI	Prep Blank	<0.01	<0.001	<0.001	<0.01	<0.01	<2	<0.001	<0.001	0.06	2.16	<0.01	0.008	<0.001	<0.001	<0.01	0.58	0.079	0.001	0.61	1.12
G1-WHI	Prep Blank	<0.01	<0.001	<0.001	<0.01	<0.01	<2	<0.001	<0.001	0.06	2.14	<0.01	0.007	<0.001	<0.001	<0.01	0.57	0.078	0.001	0.62	1.13
141359	Rock	0.74	<0.001	0.048	0.16	<0.01	17	0.075	0.004	0.03	57.79	<0.01	<0.001	<0.001	0.002	<0.01	0.02	<0.001	<0.001	<0.01	0.01
141360	Rock	0.61	<0.001	0.002	>4	<0.01	>300	<0.001	<0.001	<0.01	0.79	<0.01	<0.001	0.012	0.002	0.62	<0.01	<0.001	<0.001	<0.01	0.03
141361	Rock	0.93	<0.001	0.004	>4	<0.01	>300	<0.001	<0.001	<0.01	0.77	<0.01	<0.001	0.009	0.002	0.43	<0.01	<0.001	<0.001	<0.01	0.01
141362	Rock	1.33	0.001	0.011	>4	<0.01	>300	0.012	0.011	<0.01	10.42	0.03	<0.001	0.007	0.001	0.39	0.02	0.006	<0.001	<0.01	0.10
141363	Rock	0.95	0.288	0.003	>4	<0.01	>300	<0.001	<0.001	<0.01	4.41	<0.01	<0.001	0.030	0.005	0.97	0.03	0.002	<0.001	<0.01	0.03
141364	Rock	1.46	0.003	0.001	2.77	<0.01	256	<0.001	<0.001	0.01	1.17	<0.01	<0.001	0.002	<0.001	0.09	0.07	0.009	<0.001	0.06	0.09
141365	Rock	1.50	0.066	<0.001	2.22	0.03	203	<0.001	<0.001	<0.01	0.96	<0.01	<0.001	0.003	<0.001	0.08	<0.01	<0.001	0.001	<0.01	0.06
140277	Rock	1.39	<0.001	0.039	0.42	<0.01	42	0.064	0.019	0.02	50.69	<0.01	<0.001	<0.001	0.003	0.01	0.01	<0.001	<0.001	<0.01	0.03
140278	Rock	2.11	<0.001	<0.001	>4	<0.01	>300	<0.001	<0.001	<0.01	0.73	<0.01	<0.001	0.005	<0.001	0.22	<0.01	0.001	<0.001	<0.01	0.04



Acme Analytical Laboratories (Vancouver) Ltd.

1020 Cordova St. East Vancouver BC V6A 4A3 Canada

Phone (604) 253-3158 Fax (604) 253-1716

www.acmelab.com

Client: Breakaway Expl. Mgmt. Inc.

203 - 680 3rd Ave.

Val d'Or QC J9P 1S5 CANADA

Project: None Given

Report Date: November 13, 2012

Page: 2 of 2

Part: 2 of 1

CERTIFICATE OF ANALYSIS

WHI12000946.2

Method	7AR	7AR	7AR	7AR	7AR	G6	7AR.1	G6Gr-50	
Analyte	Na	K	W	Hg	S	Au	Pb	Ag	
Unit	%	%	%	%	%	ppm	%	gm/t	
MDL	0.01	0.01	0.001	0.001	0.05	0.005	0.01	50	
G1-WHI	Prep Blank	0.11	0.53	<0.001	<0.001	<0.05	<0.005		N.A.
G1-WHI	Prep Blank	0.11	0.55	<0.001	<0.001	<0.05	<0.005		N.A.
141359	Rock	<0.01	<0.01	<0.001	<0.001	34.88	<0.005		<50
141360	Rock	<0.01	0.03	<0.001	<0.001	3.10	0.063	14.96	1498
141361	Rock	<0.01	<0.01	<0.001	<0.001	2.15	0.031	11.83	1051
141362	Rock	<0.01	0.06	0.001	<0.001	9.54	0.056	11.62	932
141363	Rock	<0.01	0.02	0.098	<0.001	7.36	0.197	35.97	2885
141364	Rock	<0.01	0.03	0.014	<0.001	0.74	0.015		226
141365	Rock	0.02	0.05	0.001	<0.001	0.79	0.016		181
140277	Rock	<0.01	<0.01	<0.001	<0.001	31.01	<0.005		<50
140278	Rock	<0.01	0.03	<0.001	<0.001	1.20	0.028	6.80	523



Acme Analytical Laboratories (Vancouver) Ltd.

1020 Cordova St. East Vancouver BC V6A 4A3 Canada
 Phone (604) 253-3158 Fax (604) 253-1716

www.acmelab.com

Client: **Breakaway Expl. Mgmt. Inc.**
 203 - 680 3rd Ave.
 Val d'Or QC J9P 1S5 CANADA

Project: None Given
 Report Date: November 13, 2012

Page: 1 of 2

Part: 1 of 1

QUALITY CONTROL REPORT

WHI12000946.2

Method	WGHT	7AR	7AR	7AR	7AR	7AR	7AR	7AR	7AR	7AR	7AR	7AR	7AR	7AR	7AR	7AR	7AR	7AR	7AR	7AR	
Analyte	Wgt	Mo	Cu	Pb	Zn	Ag	Ni	Co	Mn	Fe	As	Sr	Cd	Sb	Bi	Ca	P	Cr	Mg	Al	
Unit	kg	%	%	%	%	gm/t	%	%	%	%	%	%	%	%	%	%	%	%	%	%	
MDL	0.01	0.001	0.001	0.01	0.01	2	0.001	0.001	0.01	0.01	0.01	0.001	0.001	0.001	0.01	0.01	0.001	0.001	0.01	0.01	
Pulp Duplicates																					
140278	Rock	2.11	<0.001	<0.001	>4	<0.01	>300	<0.001	<0.001	<0.01	0.73	<0.01	<0.001	0.005	<0.001	0.22	<0.01	0.001	<0.001	<0.01	0.04
REP 140278	QC		<0.001	<0.001	>4	<0.01	>300	<0.001	<0.001	<0.01	0.85	<0.01	<0.001	0.005	<0.001	0.22	<0.01	0.001	<0.001	<0.01	0.04
Reference Materials																					
STD CCU-1C	Standard																				
STD CDN-ME-9A	Standard		<0.001	0.662	0.01	<0.01	7	0.937	0.017	0.07	11.87	<0.01	0.006	<0.001	<0.001	<0.01	1.39	0.058	0.014	2.87	2.25
STD CDN-ME-14A	Standard		0.002	1.276	0.51	3.09	48	0.002	0.018	0.06	17.77	0.01	<0.001	0.009	0.002	<0.01	0.32	0.013	0.003	0.93	1.14
STD CZN-3	Standard																				
STD GBM997-6	Standard																				
STD OXG99	Standard																				
STD OXK94	Standard																				
STD OXK94	Standard																				
STD PTC-1A	Standard																				
STD OXG99 Expected																					
STD OXK94 Expected																					
STD CDN-ME-9A Expected				0.654	0.01			0.912	0.017	0.067	11.7		0.0063			1.4	0.059	0.014	2.82	2.2	
STD CDN-ME-14A Expected				1.221	0.495	3.1	42	0.002	0.0174	0.06	17.56	0.01	0.009		0.01	0.305	0.013	0.002	0.8835	1.09	
STD CCU-1C Expected																					
STD CZN-3 Expected																					
STD GBM997-6 Expected																					
BLK	Blank																				
BLK	Blank																				
BLK	Blank																				
BLK	Blank		<0.001	<0.001	<0.01	<0.01	<2	<0.001	<0.001	<0.01	<0.01	<0.01	<0.001	<0.001	<0.001	<0.01	<0.01	<0.001	<0.001	<0.01	<0.01
BLK	Blank																				
BLK	Blank																				
BLK	Blank																				
Prep Wash																					
G1-WHI	Prep Blank	<0.01	<0.001	<0.001	<0.01	<0.01	<2	<0.001	<0.001	0.06	2.16	<0.01	0.008	<0.001	<0.001	<0.01	0.58	0.079	0.001	0.61	1.12

This report supersedes all previous preliminary and final reports with this file number dated prior to the date on this certificate. Signature indicates final approval; preliminary reports are unsigned and should be used for reference only.



Acme Analytical Laboratories (Vancouver) Ltd.

1020 Cordova St. East Vancouver BC V6A 4A3 Canada
 Phone (604) 253-3158 Fax (604) 253-1716

www.acmelab.com

Client: Breakaway Expl. Mgmt. Inc.
 203 - 680 3rd Ave.
 Val d'Or QC J9P 1S5 CANADA

Project: None Given
Report Date: November 13, 2012

Page: 1 of 2

Part: 2 of 1

QUALITY CONTROL REPORT

WHI12000946.2

Method		7AR	7AR	7AR	7AR	7AR	G6	7AR.1	G6Gr-50
Analyte		Na	K	W	Hg	S	Au	Pb	Ag
Unit		%	%	%	%	%	ppm	%	gm/t
MDL		0.01	0.01	0.001	0.001	0.05	0.005	0.01	50
Pulp Duplicates									
140278	Rock	<0.01	0.03	<0.001	<0.001	1.20	0.028	6.80	523
REP 140278	QC	<0.01	0.03	<0.001	<0.001	1.20	0.017	6.61	
Reference Materials									
STD CCU-1C	Standard							0.42	
STD CDN-ME-9A	Standard	0.32	0.18	<0.001	<0.001	3.47			
STD CDN-ME-14A	Standard	0.02	0.36	<0.001	<0.001	16.44			
STD CZN-3	Standard							0.11	
STD GBM997-6	Standard							22.11	
STD OXG99	Standard						0.915		
STD OXK94	Standard						3.574		
STD OXK94	Standard						3.876		
STD PTC-1A	Standard							0.05	
STD OXG99 Expected							0.932		
STD OXK94 Expected							3.562		
STD CDN-ME-9A Expected		0.32	0.19			3.46			
STD CDN-ME-14A Expected		0.032	0.35			16.75			
STD CCU-1C Expected								0.34	
STD CZN-3 Expected								0.113	
STD GBM997-6 Expected								23.75	
BLK	Blank						<0.005		
BLK	Blank						0.009		
BLK	Blank						<0.005		
BLK	Blank	<0.01	<0.01	<0.001	<0.001	<0.05			
BLK	Blank							0.02	
BLK	Blank								<50
BLK	Blank								<50
Prep Wash									
G1-WHI	Prep Blank	0.11	0.53	<0.001	<0.001	<0.05	<0.005		N.A.



Acme Analytical Laboratories (Vancouver) Ltd.

1020 Cordova St. East Vancouver BC V6A 4A3 Canada

Phone (604) 253-3158 Fax (604) 253-1716

www.acmelab.com

Client: **Breakaway Expl. Mgmt. Inc.**

203 - 680 3rd Ave.

Val d'Or QC J9P 1S5 CANADA

Project: None Given

Report Date: November 13, 2012

Page: 2 of 2

Part: 1 of 1

QUALITY CONTROL REPORT

WHI12000946.2

	WGHT	7AR	7AR	7AR	7AR	7AR	7AR	7AR	7AR	7AR	7AR	7AR	7AR	7AR	7AR	7AR	7AR	7AR	7AR	7AR	
	Wgt	Mo	Cu	Pb	Zn	Ag	Ni	Co	Mn	Fe	As	Sr	Cd	Sb	Bi	Ca	P	Cr	Mg	Al	
	kg	%	%	%	%	gm/t	%	%	%	%	%	%	%	%	%	%	%	%	%	%	
	0.01	0.001	0.001	0.01	0.01	2	0.001	0.001	0.01	0.01	0.01	0.001	0.001	0.001	0.01	0.01	0.001	0.001	0.01	0.01	
G1-WHI	Prep Blank	<0.01	<0.001	<0.001	<0.01	<0.01	<2	<0.001	<0.001	0.06	2.14	<0.01	0.007	<0.001	<0.001	<0.01	0.57	0.078	0.001	0.62	1.13



Acme Analytical Laboratories (Vancouver) Ltd.

1020 Cordova St. East Vancouver BC V6A 4A3 Canada

Phone (604) 253-3158 Fax (604) 253-1716

www.acmelab.com

Client: Breakaway Expl. Mgmt. Inc.

203 - 680 3rd Ave.

Val d'Or QC J9P 1S5 CANADA

Project: None Given

Report Date: November 13, 2012

Page: 2 of 2

Part: 2 of 1

QUALITY CONTROL REPORT

WHI12000946.2

		7AR	7AR	7AR	7AR	7AR	G6	7AR.1	G6Gr-50
		Na	K	W	Hg	S	Au	Pb	Ag
		%	%	%	%	%	ppm	%	gm/t
		0.01	0.01	0.001	0.001	0.05	0.005	0.01	50
G1-WHI	Prep Blank	0.11	0.55	<0.001	<0.001	<0.05	<0.005		N.A.