

ASSESSMENT REPORT

2012 GEOCHEMICAL PROGRAM

on the

Baker West Property

Whitehorse Mining District, Yukon Territory

for

Goldspike Exploration Inc.

Claims filed for: 'BK' 29 - 56 (YD65629 - YD65656)

NTS Mapsheet: 115K09

UTM Coordinates: E531000, N6949000 (NAD83, Zone 7)

Owner: Goldspike Exploration Inc.

Author: D. Ferraro, HBSc.

Date worked performed: June 27th, 2012

TABLE OF CONTENTS

1.0 Summary	1
2.0 Introduction	2
3.0 Property Location and Access	2
4.0 Topography, Vegetation, and Climate	3
5.0 Property Description	4
6.0 Property History	6
7.0 Geology	
7.1 Regional Geology	6
7.2 Property Geology	6
8.0 2011 Work Program	
8.1 Sampling Method and Approach	9
8.2 Sample Preparation, Analysis, and QA/QC	9
8.3 Results	10
9.0 Conclusions and Recommendations	13
References	14
Statement of Expenditures	15
Certificates of Qualifications.....	16

Figures, Photos, and Tables

Figure 1: General Location of the Baker West Property.....	2
Figure 2: Claim Location Map	5
Figure 3: 1VD Magnetic Interpretation.....	7
Figure 4: Regional Bedrock Geology	8
Figure 5: Sample Location Map	11
Figure 6: Sample Geochemistry - Au.....	12
Photo 1: Example of physiography on the property	3
Photo 2: Sample 1240471 - granodiorite float.....	10
Table 1: List of claims	4

Appendices

Appendix I: Sample Descriptions	17
Appendix II: Soil Sample Assay Certificates	19
Appendix III: Silt Sample Assay Certificates	27
Appendix IV: Rock Sample Assay Certificates	33

1.0 SUMMARY

A 1 day geochemical sampling program was conducted on the Baker West Property on June 27th, 2012. The property is owned 100% by Goldspike Exploration Inc. and consists of 28 contiguous quartz claims located in the Whitehorse Mining District.

The Baker West Property is situated approximately 150 km south-southwest of Dawson City, Yukon and 35 km northeast of the community of Beaver Creek, Yukon. It is located at the headwaters of Caledonia Creek which joins the White River 15 km to the east. The property is not road accessible; however there are bush trails in the area. For the purposes of this program, a helicopter was used based from a field camp.

Geologically, the property is located within Yukon Tanana Terrane, a middle to Upper Paleozoic metamorphosed assemblage which extends from central Alaska through central Yukon to northern British Columbia. It consists of polymetamorphosed and polydeformed metasediments, metavolcanics, and metaplutonic rocks. The Baker West Property covers a major contact between Late Devonian - Mississippian Nasina Series orthogneiss, schist and gneiss and Middle Permian 'Klondike Schist' and phyllite. These units are intruded by Early Jurassic gneiss in the southwest corner of the property. The property covers an area drained by Caledonia Creek which is the location of a 90th percentile anomalous gold silt sample part of a regional GSC-conducted survey.

A total of 36 soil samples, 1 silt sample and 6 rock samples were taken over the duration of the program. No sample returned significantly anomalous results, partially due to poor sampling conditions in the area.

The Baker West Property is located in a geological setting favourable to gold mineralization. The regional and local geology, geophysical features, and lack of previous exploration are all indicators of potential for gold mineralization. Despite this, the 2012 program showed few favourable results. Due to lack of results, poor sampling conditions, and the expense of accessing the property, it is recommended that no further work be done.

2.0 INTRODUCTION

This assessment report has been prepared at the request of Mr. Bruce Durham, president of Goldspike Exploration Inc. of Toronto, Ontario. The report describes the 2012 geochemical and prospecting program on the Baker West Property. Field work was performed by Druid Exploration Inc. of Dawson City, Yukon and the author of this report. The report text and maps were produced by D. Ferraro, of Ferraro Consulting Ltd. of Woodstock, ON.

3.0 PROPERTY LOCATION AND ACCESS

The Baker West Property is situated approximately 150 km south-southwest of Dawson City, Yukon and 35 km northeast of the community of Beaver Creek, Yukon (Figure 1). It is located at the headwaters of Caledonia Creek which joins the White River 15 km to the east. The property is not road accessible; however there are bush trails in the area. For the purposes of this program, a helicopter was used based from a field camp.

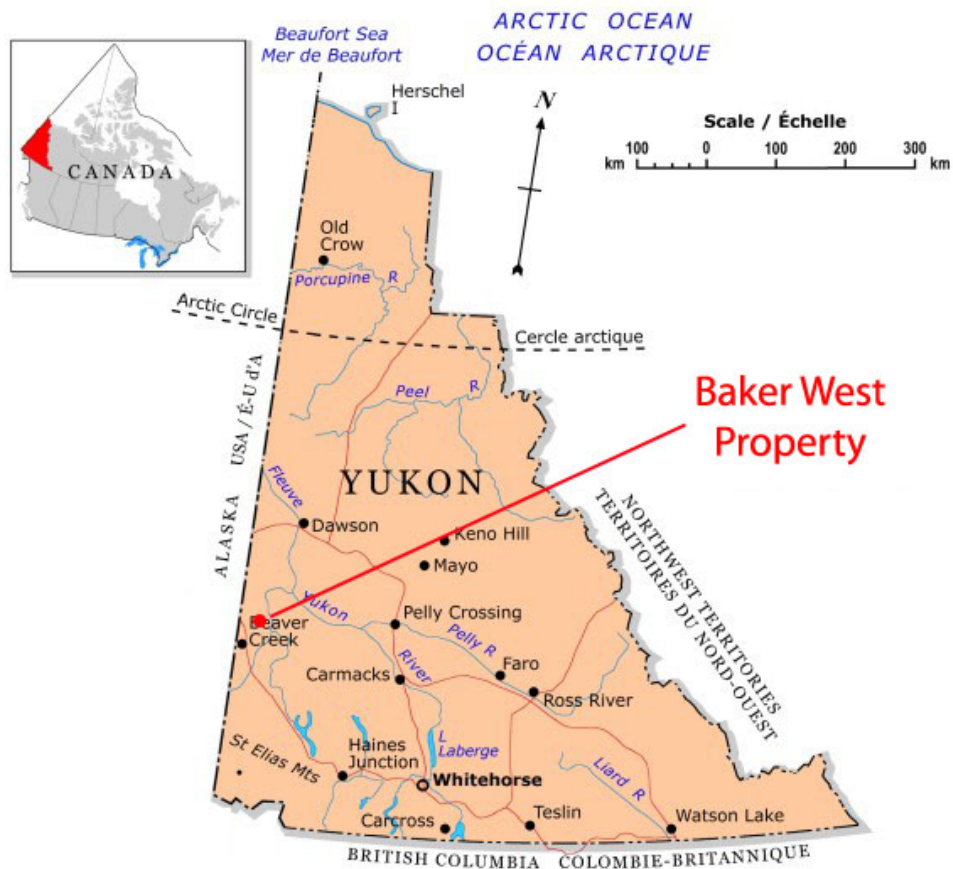


Figure 1: General location of the Baker West Property (modified from NRCAN, 2006).

4.0 TOPOGRAPHY, VEGETATION, AND CLIMATE

The Baker West Property is situated in the Dawson Range, a northwest-trending mountain range in western Yukon stretching over 100 km. Peaks on the west end of the property reach elevations of 4100 ft. Two tributaries of Caledonia Creek drain the property to an elevation of 2700 ft and reach the White River at 1600 ft.

Vegetation consists of black spruce and other evergreen trees on the slopes and thinner evergreen and buckbrush at the higher elevations. Bedrock exposure is limited to ridges and spurs (Photo 1).

The Yukon has a subarctic continental climate with a mean summer temperature of 10 degrees celcius and a mean winter temperature of -23 degrees celcius. Temperature extremes of 35 degrees and -55 degrees celcius are common in the summer and winter, respectively.



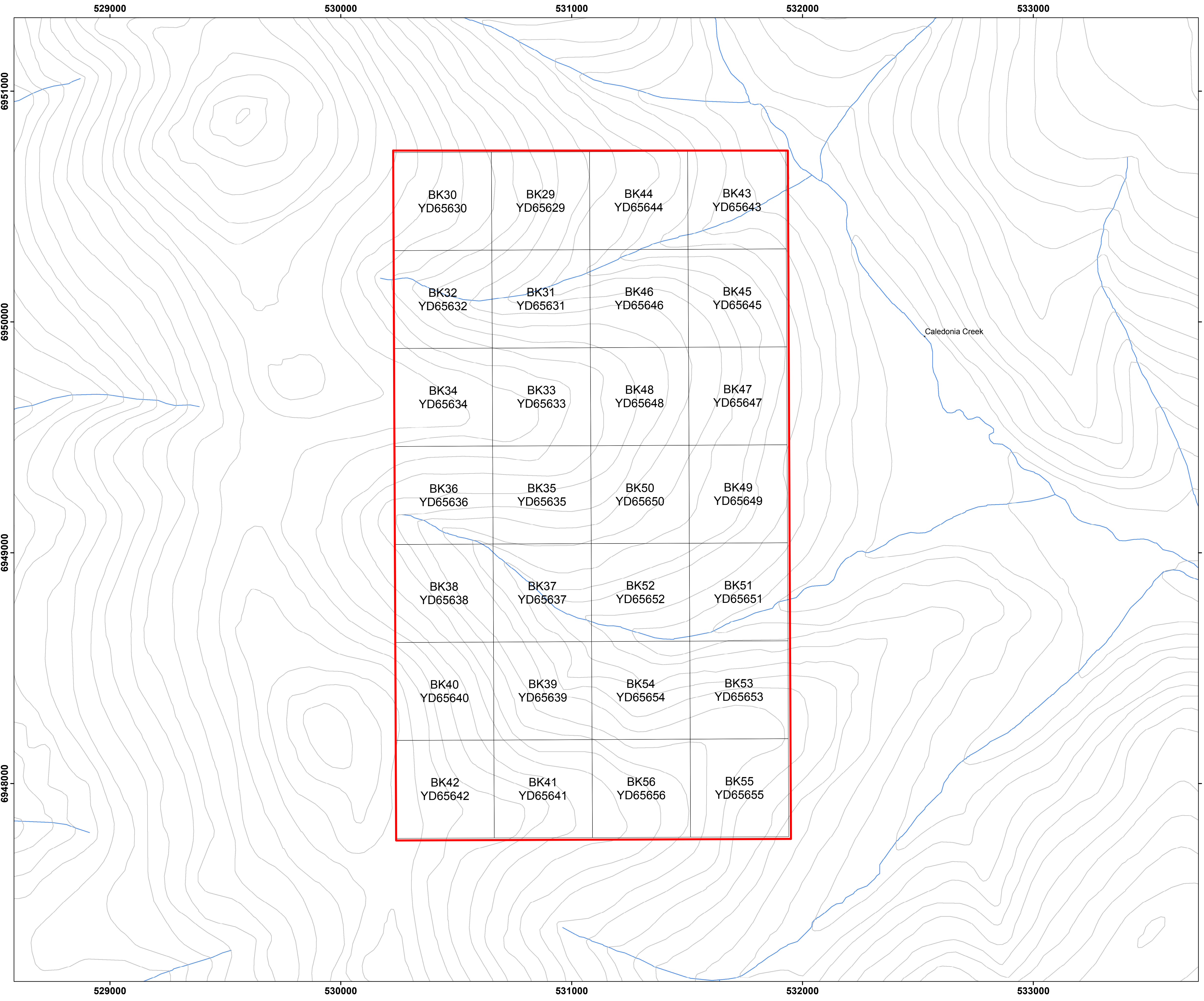
Photo 1: Physiography of the area.

5.0 PROPERTY DESCRIPTION

The Baker West Property consists of 28 contiguous quartz claims in the Whitehorse Mining District. The 28 'BK' claims can be found on NTS mapsheet 115K09 (see Figure 2). The claims are owned 100% by Goldspike Exploration Inc. of Toronto, Ontario. A complete list of the mining claims that make up the Baker West Property is as follows:

Table 1: Claims comprising the Baker West Property.

Claim Name	Claim Number	Grant Number	Claim Owner (100%)	NTS Map Number	Status	Claim Expiry Date
BK	29	YD65629	Goldspike Exploration Inc.	115K09	Active	02/07/2014
BK	30	YD65630	Goldspike Exploration Inc.	115K09	Active	02/07/2014
BK	31	YD65631	Goldspike Exploration Inc.	115K09	Active	02/07/2014
BK	32	YD65632	Goldspike Exploration Inc.	115K09	Active	02/07/2014
BK	33	YD65633	Goldspike Exploration Inc.	115K09	Active	02/07/2014
BK	34	YD65634	Goldspike Exploration Inc.	115K09	Active	02/07/2014
BK	35	YD65635	Goldspike Exploration Inc.	115K09	Active	02/07/2014
BK	36	YD65636	Goldspike Exploration Inc.	115K09	Active	02/07/2014
BK	37	YD65637	Goldspike Exploration Inc.	115K09	Active	02/07/2014
BK	38	YD65638	Goldspike Exploration Inc.	115K09	Active	02/07/2014
BK	39	YD65639	Goldspike Exploration Inc.	115K09	Active	02/07/2014
BK	40	YD65640	Goldspike Exploration Inc.	115K09	Active	02/07/2014
BK	41	YD65641	Goldspike Exploration Inc.	115K09	Active	02/07/2014
BK	42	YD65642	Goldspike Exploration Inc.	115K09	Active	02/07/2014
BK	43	YD65643	Goldspike Exploration Inc.	115K09	Active	02/07/2014
BK	44	YD65644	Goldspike Exploration Inc.	115K09	Active	02/07/2014
BK	45	YD65645	Goldspike Exploration Inc.	115K09	Active	02/07/2014
BK	46	YD65646	Goldspike Exploration Inc.	115K09	Active	02/07/2014
BK	47	YD65647	Goldspike Exploration Inc.	115K09	Active	02/07/2014
BK	48	YD65648	Goldspike Exploration Inc.	115K09	Active	02/07/2014
BK	49	YD65649	Goldspike Exploration Inc.	115K09	Active	02/07/2014
BK	50	YD65650	Goldspike Exploration Inc.	115K09	Active	02/07/2014
BK	51	YD65651	Goldspike Exploration Inc.	115K09	Active	02/07/2014
BK	52	YD65652	Goldspike Exploration Inc.	115K09	Active	02/07/2014
BK	53	YD65653	Goldspike Exploration Inc.	115K09	Active	02/07/2014
BK	54	YD65654	Goldspike Exploration Inc.	115K09	Active	02/07/2014
BK	55	YD65655	Goldspike Exploration Inc.	115K09	Active	02/07/2014
BK	56	YD65656	Goldspike Exploration Inc.	115K09	Active	02/07/2014



Baker West Property

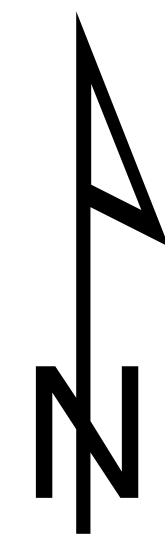
Fig. 2: Claim Location Map

Goldspike Exploration Inc.

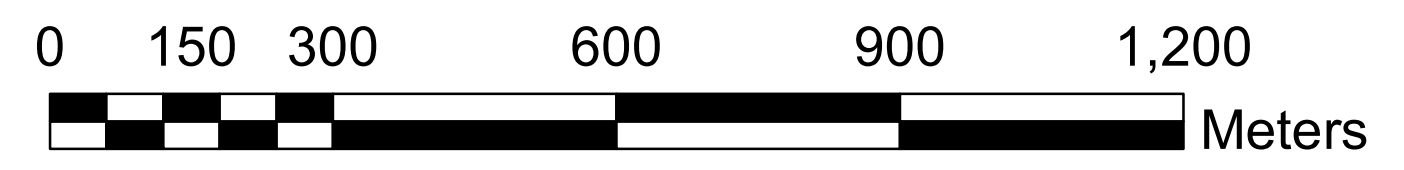
Caledonia Creek area,
Whitehorse Mining District

Legend

- Baker West Property
- Yukon quartz claims



1:8,000



Date: June, 2012
 NTS Mapsheet: 115K09
 Datum: UTM NAD83 Zone 7

6.0 PROPERTY HISTORY

The area has seen very little exploration since the late 1960s, when the discovery of the giant Casino copper-gold porphyry triggered a large staking rush. Ten kilometers to the southeast of the property is the BAKER occurrence: an area of gold anomalous soil samples taken by the Teck Corporation in 2001. The highest assay returned was 190 ppb Au with 680 ppm As and potentially anomalous bismuth (Minfile 115K109).

The Baker West property is located approximately 58 km southwest of Coffee Creek, currently where Kaminak has obtained long intersections of high grade gold in strongly altered north-south faults ranging from a few metres to 50 metres wide across a 600 m corridor, with grades up to 17.1 gpt Au over 15.5 m, and 21.3 gpt Au over 8 m. The property is 70 km southwest of the Underworld/Kinross White Gold property (more than 1 million ounces grading 3.2 gpt Au).

7.0 GEOLOGY

7.1 Regional Geology

The Baker West Property is located in the Yukon-Tanana Terrane, an accreted pericratonic rock sequence that covers a large portion of the Omineca Belt, and extends into Alaska and British Columbia. It is the largest of the Yukon's terranes and hosts gold deposits related to Mesozoic intrusions, including the Sonora Gulch gold deposit and the Casino copper gold and molybdenum porphyry (Chartier, 2012). The Yukon-Tanana Terrane consists of several assemblages of schists and gneisses that were deformed and metamorphosed in the late Paleozoic era. These were intruded by a number of suites of Mesozoic intrusions, including the Dawson Suite intrusions. The Paleozoic rocks are pervasively foliated and contain at least two overprinting rock fabrics. During the Early Jurassic period, the rocks were tectonically stacked along foliation-parallel thrust faults (Hart, 2011). The terrane is cut by the Tintina Fault, a right-lateral strike-slip fault which occurs along the suture zone between the Yukon Tanana Terrane to the southwest and ancestral North America to the northeast.

7.2 Property Geology

The Baker West Property covers a major contact between Late Devonian - Mississippian Nasina Series orthogneiss, schist and gneiss and Middle Permian 'Klondike Schist' and phyllite. These units are intruded by Early Jurassic granodiorite in the southwest corner of the property (Figure 4). All 3 units were observed during field work as float.

Like the Klondike and the rest of the White Gold district, the Baker West Property is in a part of the Yukon that was not glaciated during the last ice age. For this reason, soil and silt geochemistry is very effective in locating gold deposits. There is one GSC-collected regional silt

sample in a tributary Caledonia Creek draining the property east. It is anomalous, in the 90th percentile at 12 ppb Au.

Bremner (2010) interpreted the geophysics of the area in a summary of the Baker West Property:

'A detailed vertical derivative map from the Stevenson Ridge Survey flown by the Yukon Government and the GSC in 2009 suggests that the BK WEST claim block (Target 37) is cut by a major left lateral shear zone up to 6.5 km wide and more than 50 km long. The shear zone runs east-west and appears to offset or truncate a series of parallel northwest-trending structures north of the property. The shear zone in turn is cut in turn by a series of younger north-south and northeast-southwest structures that are not offset (Figure 3).

These lineaments are likely to be important because structure is the dominant feature in the recent major gold discoveries in Yukon's White Gold district, where gold occurs in quartz veins, hydrothermal breccias, and broad shear zones with multiple parallel faults and shears that show up as linear magnetic lows on geophysical maps.

The north-south structures probably correspond to extensional structures that are reported to control the gold mineralization at Coffee Creek. A major north-south structure intersects the shear zone in a magnetic low about 2 square kilometers in size at the head of the anomalous tributary on the BK WEST claim block.'

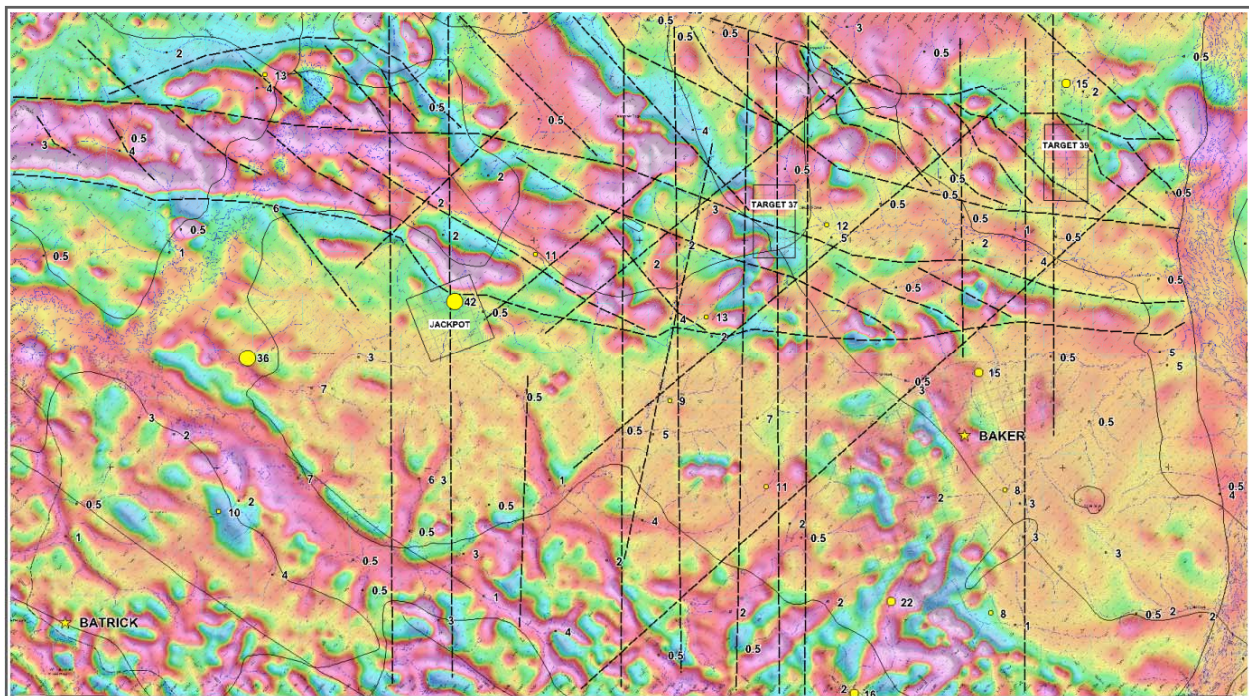


Figure 3: 1VD magnetic interpretation of the Baker West Property area. (Bremner, 2010).

Baker West Property

Fig. 4: Bedrock Geology
 Goldspike Exploration Inc.
 Caledonia Creek area,
 Whitehorse Mining District

Legend

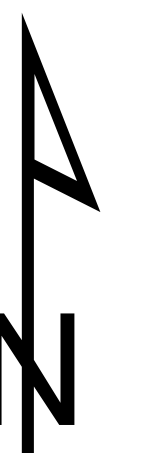
- Goldspike properties
- Yukon quartz claims
- GSC regional silt survey (ppb Au)

Bedrock Geology

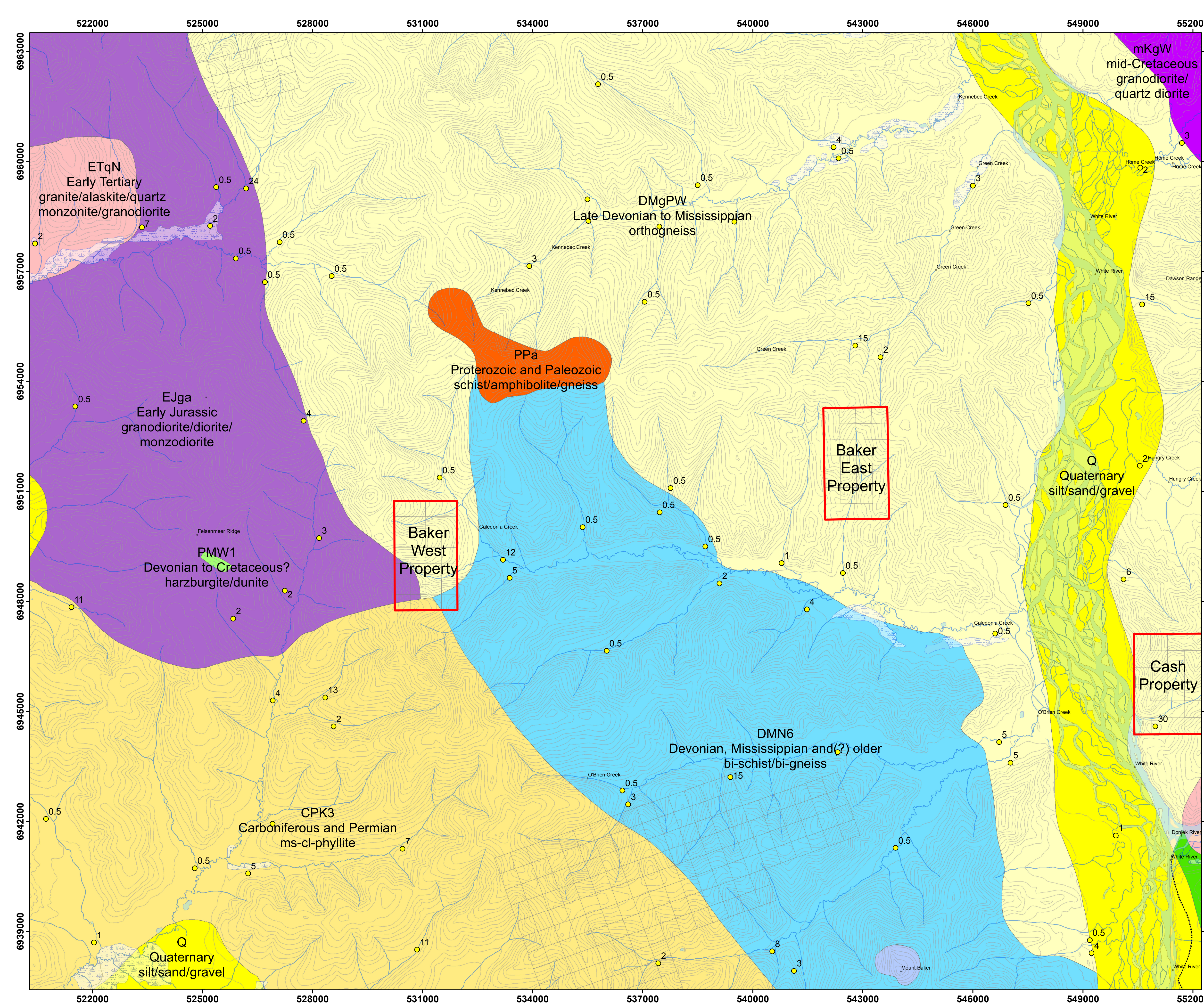
Lithology

- silt/sand/gravel
- mudstone/sandstone/breccia/dacite/rhyolite
- granite/alaskite/quartz monzonite/granodiorite
- granodiorite/quartz diorite
- granodiorite/diorite/monzodiorite
- ms-cl-phyllite
- greenstone/tuff
- harzburgite/dunite
- orthogneiss
- bi-schist/bi-gneiss
- cl-bi-schist/amphibolite/hb-gneiss/phyllite
- Fault lines

1:50,000



Date: June, 2012
 NTS Mapsheet: 115K09, 10, 15, 16
 Datum: UTM NAD83 Zone 7



8.0 2011 WORK PROGRAM

8.1 Sampling Method and Approach

A 1 day geochemical sampling program was conducted on the Baker West Property on June 27th, 2012. Flying out of a field camp, a crew of 2 soil samplers and one geologist collected 36 soil samples, 1 silt sample, and 6 rock samples (see Figure 5 for sample locations). A Hughs 500D helicopter was used for the duration of the program.

A ridge and spur soil sampling program was planned before field work was conducted. Using ArcGIS, soil sample traverses were plotted at 50m spacings and downloaded onto samplers' GPS units. Once in the field, samplers used Dutch augurs to collect an adequate soil sample, preferably from the 'C' horizon, placing it in a Kraft paper bag, marking the location with GPS, and marking the location with flagging tape labeled with the sample number. Sample conditions, environment and attributes were recorded in a field notebook. The GPS units were downloaded daily for plotting in ArcGIS. Soil samples were hung up to dry, then packed and shipped to the lab. Soil sample descriptions can be found in Appendix I.

Silt samples were taken in major creeks and tributaries. A low energy zone of the stream was located and a collapsible shovel, pan, or hand was used to collect a sample. Sample locations were marked with a GPS unit and flagged with the sample number. Sample conditions, environment and attributes were recorded in a field notebook. Silt sample descriptions can be found in Appendix I.

Rock samples were taken based on mineralogy, structure and lithology. Samples were placed inside labeled plastic poly bags with the corresponding sample tag. Sample descriptions were recorded in a field notebook and the location recorded by GPS unit. Sample locations were marked with flagging tape labeled with the sample number. Rock sample descriptions can be found in Appendix I.

8.2 Sample Preparation, Analysis, and QA/QC

The soil and silt samples were dried at 60° C and sieved to -80 mesh (<177 microns). A 15.0 gram sub-sample was digested in hot (95° C) aqua regia (HCl-HNO₃-H₂O); following this, the samples were analysed by inductively-coupled plasma mass spectrometry (ICP-MS) techniques (Acme's Group 1DX2). Multi-elemental analysis of 36 elements was made.

The rock samples were crushed, split to 250 g, pulverized, and a split was sieved to -200 mesh. The same analytical procedure (Acme's Group 1DX2) was used.

Quality control samples from the lab include control blanks, duplicates and standards. Sample blanks (BLK), pulp duplicates and standards (STD DS8) were run with the batch analysis; no problems were noted with analytical accuracy or precision.

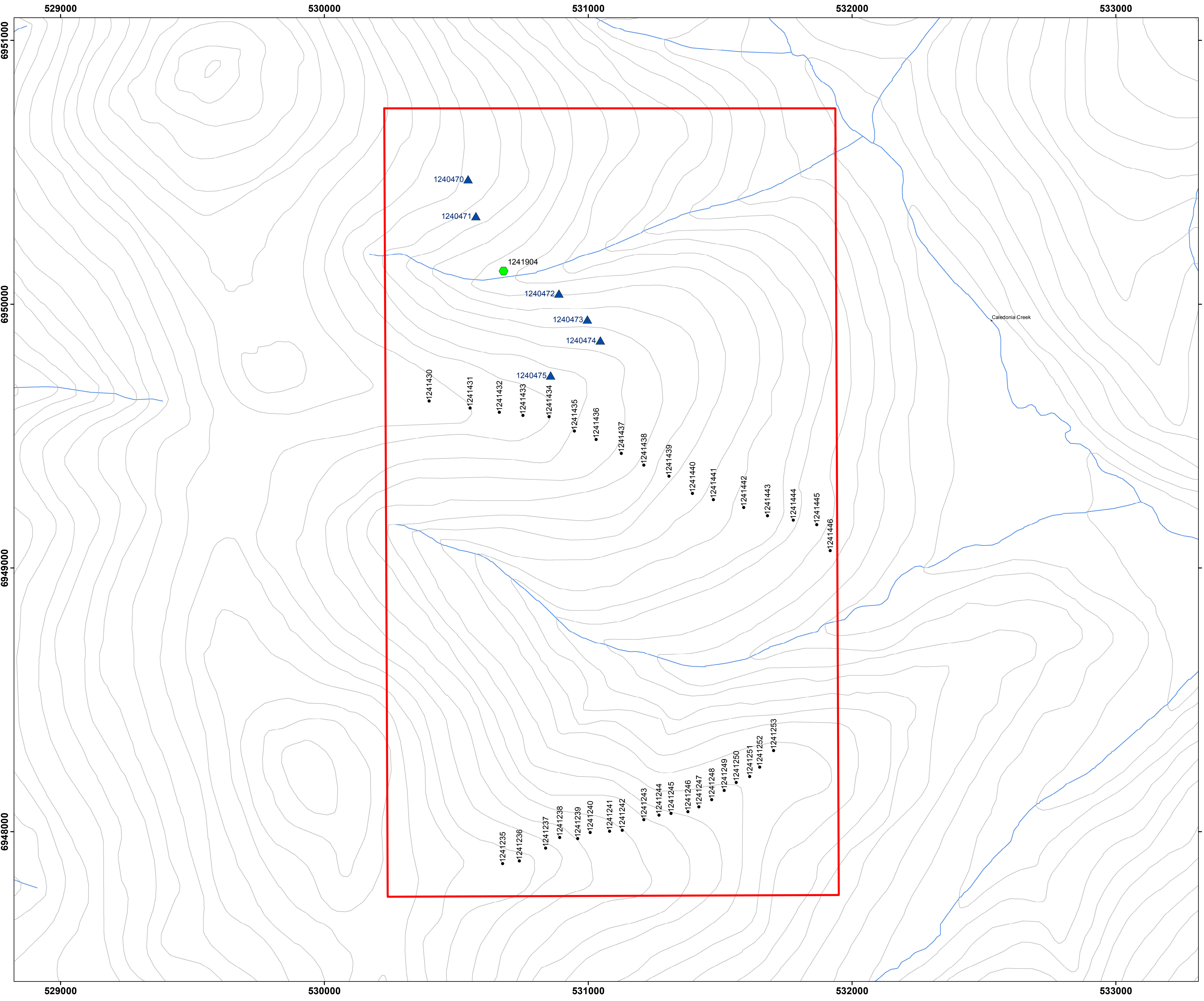
8.3 Results

Thirty-six soil samples were recovered from the property. No sample yielded anomalous gold assays (see Figure 6). Sample 1241245 showed slightly anomalous lead and zinc values at 48.1 ppm Pb and 120 ppm Zn. No other element showed anomalous values for the area.

Prospecting was limited due to lack of outcrop. Samples consisted mostly of float of the diorite intrusive, orthogneiss and Klondike Schist with quartz veining. Photo 2 shows a sample of oxidized granodiorite float. Sample results can be found in appendices II, III and IV.



Photo 2: Sample 1240471: oxidized granodiorite float.



Baker West Property

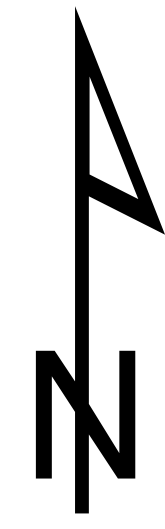
Fig. 5: Sample Location Map

Goldspike Exploration Inc.

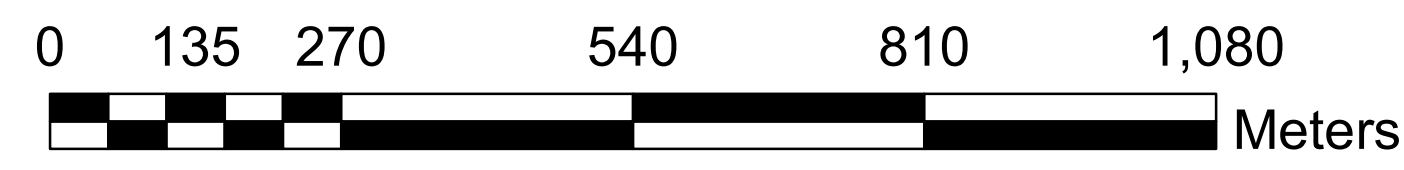
Caledonia Creek area,
Whitehorse Mining District

Legend

- Soil samples
- Silt samples
- ▲ Rock samples
- Baker West Property



1:7,000



Date: June, 2012
 NTS Mapsheet: 115K09
 Datum: UTM NAD83 Zone 7

9.0 CONCLUSIONS AND RECOMMENDATIONS

The Baker West Property is located in a geological setting favourable to gold mineralization. The local and regional geology and geophysical features are indicators of potential for gold mineralization. Furthermore, previous hard rock exploration in the area is very limited.

The 2012 program did not yield favourable gold in soil results. No sample showed significantly anomalous results. However, prospecting was limited by the lack of outcrop.

Due to the lack of results, inadequate sampling conditions, and the expense required to access the claims, it is recommended that no further work be done.

REFERENCES

Bremner, T. (2010): BK West Prospect (Target 37), Baker Area, Summary for YC Syndicate, Goldspike Exploration Inc.

Chartier, D. (2012): Independent Technical Report for the Coffee Gold Project, Yukon, Canada, for Kaminak Gold Corp., Vancouver, BC.

Hart, C. (2011): The Geological Framework of the Yukon Territory, Yukon Geological Survey.

Natural Resources Canada, Atlas, (12/05/2006):
http://atlas.nrcan.gc.ca/auth/english/maps/reference/provincesterritories/yukon_territory/referencemap_image_view (visited 01/02/2012)

Tempelman-Kluit, D.J. (1974): Reconnaissance geology of Aishihik Lake, Snag and part of Stewart River map areas, west-central Yukon (115A, 115F, 115G and 115K). Geological Survey of Canada, Paper 73-41, 97 p.

Yukon Minfile 115K109 (2005): BAKER, Yukon Geological Survey.

STATEMENT OF EXPENDITURES

Costs associated with the Baker West Property Worked June 27th, 2012

UNIT	UNIT PRICE	TOTAL
3 man days	300/day	\$900.00
food	30/man	\$90.00
helicopter	1000/hr	\$2,050.00
helicopter fuel		\$410.00
soil sample assay	\$18x36 samples	\$648.00
silt sample assay	\$18x1 sample	\$18.00
rock sample assay	\$24x6 samples	\$144.00
assessment report		\$2,000.00
consumables		\$200.00
camp costs		\$200.00
TOTAL		\$6,660.00

CERTIFICATE OF QUALIFICATIONS

I, Daniel Ferraro, of 835 Berkshire Dr., Woodstock, Ontario, Canada, certify that:

1. I am a graduate of Lakehead University, 2008, and hold an H. B.Sc. Geology degree.
2. I am an independent geological consultant.
3. I am a member of the Ontario Prospectors Association (2010).
4. I have been employed as a geological assistant for the Ontario Geological Survey and the Geological Survey of Canada during the summers of, respectively, 2006 and 2007.
5. I have been working in the mineral exploration industry since 2008 for Pacific North West Capital Corporation, East West Resources Corporation, Rainy Mountain Royalty Corporation, Black Panther Mining Corporation, White Tiger Mining Corporation, Trillium North Minerals Ltd., Nebu Resources Inc., and Goldspike Exploration Inc.
6. This report was prepared by myself.
7. I have no personal knowledge from the date of this certificate of any material fact or change not reflected in this report.



Daniel Ferraro, H.B.Sc.

Date: Nov. 1, 2012.

Appendix I: Sample Descriptions

Baker West Property Sample Descriptions

UTM NAD 83 Zone 7

SOIL SAMPLES

Sample ID	Easting	Northing	Elevation (m)	Date Taken	Property	Sample Depth (cm)	Horizon	Colour	Composition						Parent Material	Moisture Content	Vegetation Cover	Topo Position
									Organics	Ang. Rock	Gravel	Sand	Silt	Clay				
1241235	530676	6947879	1222	27-Jun-12	BK West	30-40	c	lt brown				50	50		weathered bedrock	moist	alpine	ridge top
1241236	530739	6947888	1205	27-Jun-12	BK West	40-50	c	lt brown				50	50		weathered bedrock	moist	alpine	ridge top
1241237	530839	6947937	1171	27-Jun-12	BK West	20-30	b/c	lt brown	10			30	60		weathered bedrock	moist	alpine	ridge top
1241238	530892	6947978	1150	27-Jun-12	BK West	30-40	c	lt brown				50	50		weathered bedrock	moist	alpine	mid slope
1241239	530960	6947973	1137	27-Jun-12	BK West	30-40	c	lt brown				50	50		weathered bedrock	moist	buck brush	mid slope
1241240	531008	6947996	1128	27-Jun-12	BK West	20-30	c	lt brown				50	50		weathered bedrock	moist	buck brush	mid slope
1241241	531082	6948001	1114	27-Jun-12	BK West	30-40	b/c	lt brown				50	50		weathered bedrock	moist	evergreen forest	mid slope
1241242	531129	6948005	1104	27-Jun-12	BK West	30-40	c	lt brown				60	40		weathered bedrock	moist	buck brush	mid slope
1241243	531211	6948045	1078	27-Jun-12	BK West	20-30	b/c	lt brown				50	50		weathered bedrock	moist	buck brush	mid slope
1241244	531268	6948062	1069	27-Jun-12	BK West	30-40	b/c	lt brown				40	60		weathered bedrock	moist	buck brush	mid slope
1241245	531314	6948069	1063	27-Jun-12	BK West	30-40	c	lt brown				60	40		weathered bedrock	moist	buck brush	mid slope
1241246	531378	6948075	1059	27-Jun-12	BK West	20-30	c	lt brown				60	40		weathered bedrock	moist	buck brush	mid slope
1241247	531420	6948093	1052	27-Jun-12	BK West	30-40	c	lt brown				60	40		weathered bedrock	saturated	buck brush	mid slope
1241248	531468	6948121	1039	27-Jun-12	BK West	30-40	c	lt brown				60	40		weathered bedrock	moist	buck brush	mid slope
1241249	531516	6948156	1031	27-Jun-12	BK West	30-40	c	lt brown				60	40		weathered bedrock	moist	buck brush	mid slope
1241250	531562	6948186	1024	27-Jun-12	BK West	20-30	c	lt brown				60	40		weathered bedrock	moist	buck brush	mid slope
1241251	531613	6948208	1021	27-Jun-12	BK West	30-40	c	lt brown				60	40		weathered bedrock	moist	evergreen forest	plateau
1241252	531651	6948244	1020	27-Jun-12	BK West	50-60	c	lt brown				70	30		weathered bedrock	saturated	evergreen forest	plateau
1241253	531703	6948307	1013	27-Jun-12	BK West	50-60	c	lt brown				70	30		weathered bedrock	moist	buck brush	mid slope
1241430	530397	6949632	1206	27-Jun-12	BK West	30-40	c	lt brown				50	50		weathered bedrock	moist	buck brush	mid slope
1241431	530552	6949606	1196	27-Jun-12	BK West	30-40	c	lt brown				40	60		weathered bedrock	moist	evergreen forest	mid slope
1241432	530663	6949589	1187	27-Jun-12	BK West	30-40	c	lt brown				60	40		weathered bedrock	moist	buck brush	mid slope
1241433	530753	6949578	1177	27-Jun-12	BK West	30-40	c	lt brown				60	40		weathered bedrock	moist	buck brush	mid slope
1241434	530852	6949573	1157	27-Jun-12	BK West	30-40	c	lt brown				60	40		weathered bedrock	moist	buck brush	mid slope
1241435	530948	6949518	1136	27-Jun-12	BK West	20-30	c	lt brown				60	40		weathered bedrock	moist	buck brush	mid slope
1241436	531031	6949486	1115	27-Jun-12	BK West	30-40	b/c	lt brown	10			50	40		weathered bedrock	moist	buck brush	mid slope
1241437	531126	6949434	1079	27-Jun-12	BK West	50-60	c	lt brown				50	50		weathered bedrock	moist	evergreen forest	mid slope
1241438	531211	6949389	1047	27-Jun-12	BK West	50-60	c	lt brown				40	60		weathered bedrock	moist	evergreen forest	mid slope
1241439	531306	6949347	1013	27-Jun-12	BK West	30-40	c	lt brown				60	40		weathered bedrock	moist	evergreen forest	mid slope
1241440	531395	6949282	985	27-Jun-12	BK West	20-30	b/c	lt brown				60	40		weathered bedrock	moist	evergreen forest	mid slope
1241441	531475	6949259	974	27-Jun-12	BK West	30-40	c	lt brown				60	40		weathered bedrock	moist	evergreen forest	mid slope
1241442	531590	6949229	954	27-Jun-12	BK West	50-60	c	lt brown				60	40		weathered bedrock	moist	evergreen forest	mid slope
1241443	531680	6949197	930	27-Jun-12	BK West	20-30	b/c	lt brown	20			40	40		weathered bedrock	moist	evergreen forest	mid slope
1241444	531778	6949181	905	27-Jun-12	BK West	30-40	c	lt brown				40	60		weathered bedrock	moist	evergreen forest	mid slope
1241445	531867	6949164	876	27-Jun-12	BK West	30-40	c	lt brown				60	40		weathered bedrock	moist	evergreen forest	mid slope
1241446	531918	6949065	837	27-Jun-12	BK West	30-40	c	lt brown				60	40		weathered bedrock	moist	evergreen forest	mid slope

SILT SAMPLES

Sample ID	Easting	Northing	Elevation (m)	Date Taken	Property	Sample Environment	Medium	Medium depth (m)	Medium width (m)	Bank type	Water colour
1241904	530679	6950126	725	27-Jun-12	BK West	low energy	creek	0.3	1	organics	clear

ROCK SAMPLES

Sample ID	Easting	Northing	Elevation (m)	Date Taken	Property	Rock Source	Description
1240470	530544	6950474	1121	27-Jun-12	BK West	outcrop	biotitic orthogneiss-diorite contact
1240471	530574	6950334	1082	27-Jun-12	BK West	float	oxidized granodiorite
1240472	530889	6950040	1038	27-Jun-12	BK West	talus	granodiotite, porphyritic
1240473	530997	6949942	1087	27-Jun-12	BK West	talus	mica schist with quartz veining
1240474	531046	6949863	1112	27-Jun-12	BK West	talus	biotite schist with quartz veining, oxidized
1240475	530858	6949730	1152	27-Jun-12	BK West	talus	muscovite-biotite schist with quartz veining, oxidized

Appendix II: Soil Sample Assay Certificates



1020 Cordova St. East Vancouver BC V6A 4A3 Canada

Acme Analytical Laboratories (Vancouver) Ltd.

www.acmelab.com

Client: Goldspike Exploration Inc.
56th Floor - 100 King Street West
Toronto ON M5X 1C9 Canada

Submitted By: Bruce Durham
Receiving Lab: Canada-Dawson City
Received: July 04, 2012
Report Date: August 03, 2012
Page: 1 of 3

CERTIFICATE OF ANALYSIS

DAW12000095.1

CLIENT JOB INFORMATION

Project: BK WEST
Shipment ID: BK West
P.O. Number
Number of Samples: 36

SAMPLE DISPOSAL

STOR-PLP Store After 90 days Invoice for Storage
STOR-RJT-SOIL Store Soil Reject - RJSV Charges Apply

Acme does not accept responsibility for samples left at the laboratory after 90 days without prior written instructions for sample storage or return.

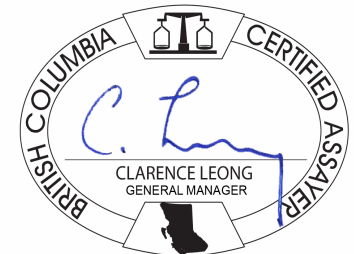
Invoice To: Goldspike Exploration Inc.
56th Floor - 100 King Street West
Toronto ON M5X 1C9
Canada

CC: Daniel Ferraro

SAMPLE PREPARATION AND ANALYTICAL PROCEDURES

Table with 6 columns: Method Code, Number of Samples, Code Description, Test Wgt (g), Report Status, Lab. Rows include methods like Dry at 60C, SS80, RJSV, and 1DX2.

ADDITIONAL COMMENTS



This report supersedes all previous preliminary and final reports with this file number dated prior to the date on this certificate. Signature indicates final approval; preliminary reports are unsigned and should be used for reference only. All results are considered the confidential property of the client. Acme assumes the liabilities for actual cost of analysis only. Results apply to samples as submitted. ** asterisk indicates that an analytical result could not be provided due to unusually high levels of interference from other elements.



Acme Analytical Laboratories (Vancouver) Ltd.
 1020 Cordova St. East Vancouver BC V6A 4A3 Canada
 Phone (604) 253-3158 Fax (604) 253-1716

www.acmelab.com

Client: **Goldspike Exploration Inc.**
 56th Floor - 100 King Street West
 Toronto ON M5X 1C9 Canada

Project: BK WEST
 Report Date: August 03, 2012

Page: 2 of 3

Part: 1 of 2

CERTIFICATE OF ANALYSIS

DAW12000095.1

Method	Analyte	1DX15	1DX15	1DX15	1DX15	1DX15	1DX15	1DX15	1DX15	1DX15	1DX15	1DX15	1DX15	1DX15	1DX15	1DX15	1DX15	1DX15	1DX15	1DX15	1DX15
		Mo	Cu	Pb	Zn	Ag	Ni	Co	Mn	Fe	As	Au	Th	Sr	Cd	Sb	Bi	V	Ca	P	La
Unit	MDL	ppm	ppm	ppm	ppm	ppm	ppm	ppm	%	ppm	ppb	ppm	ppm	ppm	ppm	ppm	ppm	%	%	ppm	
		0.1	0.1	0.1	1	0.1	0.1	0.1	1	0.01	0.5	0.5	0.1	1	0.1	0.1	0.1	2	0.01	0.001	1
1241235	Soil	1.6	23.2	9.1	50	<0.1	24.8	11.2	333	3.44	9.7	4.9	2.4	17	<0.1	0.5	0.2	81	0.21	0.030	8
1241236	Soil	0.8	42.8	9.8	59	0.1	28.5	11.5	368	3.29	5.6	6.2	3.1	21	0.1	0.3	0.1	73	0.32	0.055	12
1241237	Soil	0.5	9.9	3.7	20	<0.1	7.2	3.6	81	1.18	2.7	1.9	0.6	7	<0.1	0.2	<0.1	33	0.08	0.017	3
1241238	Soil	0.8	39.7	7.9	74	<0.1	38.9	17.8	521	3.97	6.7	3.3	3.2	19	0.3	0.3	0.1	82	0.29	0.061	8
1241239	Soil	0.8	35.9	8.3	60	<0.1	32.8	13.7	243	3.64	7.8	3.2	3.0	24	0.2	0.3	0.1	78	0.36	0.057	10
1241240	Soil	0.5	32.7	7.6	63	<0.1	28.8	13.7	360	3.23	4.8	4.4	3.7	25	0.1	0.3	<0.1	73	0.41	0.051	11
1241241	Soil	0.9	25.7	8.3	58	<0.1	26.5	12.8	453	3.22	6.5	1.9	4.5	20	0.2	0.2	0.1	73	0.28	0.038	12
1241242	Soil	0.9	24.1	9.9	74	<0.1	25.0	14.6	620	3.54	7.4	4.3	5.5	16	0.2	0.3	0.2	77	0.23	0.035	11
1241243	Soil	1.0	15.1	13.5	84	0.1	18.3	9.5	483	2.74	4.7	5.9	5.4	18	0.4	0.2	0.2	57	0.28	0.039	15
1241244	Soil	0.6	5.6	4.5	16	<0.1	3.1	1.8	70	0.90	2.4	6.6	0.9	5	<0.1	0.1	<0.1	27	0.05	0.011	2
1241245	Soil	0.5	20.5	48.1	120	0.1	28.9	10.7	617	3.05	4.8	3.8	5.1	17	2.3	0.2	0.2	66	0.27	0.041	17
1241246	Soil	0.6	30.3	25.4	78	0.2	25.6	11.2	321	3.27	6.5	10.0	4.6	22	0.5	0.3	0.2	69	0.34	0.042	17
1241247	Soil	0.6	36.3	23.0	70	0.2	23.6	11.5	326	3.03	6.5	3.9	4.0	19	0.4	0.3	0.2	65	0.32	0.044	11
1241248	Soil	0.8	25.4	14.5	59	<0.1	22.1	14.3	587	3.00	6.2	3.2	3.8	16	0.3	0.3	0.1	66	0.23	0.034	11
1241249	Soil	0.7	38.5	10.0	67	0.1	28.3	14.2	421	3.33	4.5	1.5	5.5	22	0.1	0.3	0.1	64	0.35	0.054	17
1241250	Soil	0.5	32.4	8.6	56	<0.1	24.6	11.3	266	3.11	5.0	1.9	4.5	26	<0.1	0.3	0.1	67	0.36	0.046	14
1241251	Soil	0.8	16.8	5.8	32	<0.1	14.5	6.8	138	2.37	5.7	<0.5	1.9	13	0.1	0.2	<0.1	58	0.17	0.034	6
1241252	Soil	0.6	50.9	3.1	25	<0.1	25.8	11.6	196	2.27	4.0	1.7	0.9	18	<0.1	0.2	<0.1	58	0.47	0.049	3
1241253	Soil	0.7	23.2	4.8	35	<0.1	86.9	14.4	137	2.30	5.9	1.4	0.8	13	<0.1	0.2	<0.1	55	0.25	0.021	3
1241430	Soil	0.6	8.6	4.6	20	<0.1	5.0	3.0	82	1.58	3.6	0.5	0.7	7	<0.1	0.2	<0.1	39	0.08	0.017	3
1241431	Soil	0.4	31.5	5.9	52	<0.1	28.4	11.1	329	3.02	5.2	1.6	2.9	29	<0.1	0.3	<0.1	85	0.45	0.053	12
1241432	Soil	0.4	30.4	5.6	58	<0.1	29.7	12.7	316	3.32	5.0	2.2	3.5	23	<0.1	0.2	<0.1	82	0.37	0.045	12
1241433	Soil	0.5	32.3	5.7	57	<0.1	28.4	10.8	373	3.47	5.7	3.5	3.3	23	<0.1	0.3	<0.1	81	0.38	0.042	12
1241434	Soil	0.8	32.8	7.1	56	<0.1	26.8	10.7	368	3.10	5.9	5.6	4.4	19	0.1	0.3	0.1	81	0.32	0.038	18
1241435	Soil	0.9	30.5	6.5	55	<0.1	26.1	10.2	371	3.24	6.9	1.4	3.2	18	<0.1	0.3	<0.1	86	0.31	0.042	10
1241436	Soil	0.5	16.2	5.3	16	0.2	4.8	1.6	44	0.69	1.5	2.1	0.3	10	0.1	0.1	<0.1	25	0.12	0.017	3
1241437	Soil	1.0	28.9	7.6	52	0.1	23.5	12.4	478	3.01	6.7	3.9	3.6	19	0.2	0.3	0.1	78	0.22	0.030	16
1241438	Soil	0.7	14.4	4.6	34	<0.1	14.6	5.3	143	1.76	3.2	2.6	1.8	11	0.1	0.2	0.1	48	0.14	0.019	5
1241439	Soil	0.8	25.8	5.2	38	0.1	18.9	7.1	186	2.36	4.4	1.6	2.3	16	0.2	0.2	0.1	57	0.25	0.034	12
1241440	Soil	0.7	27.8	6.3	45	0.1	20.7	8.3	204	2.67	5.5	10.4	3.4	21	0.1	0.2	0.1	68	0.32	0.043	15

This report supersedes all previous preliminary and final reports with this file number dated prior to the date on this certificate. Signature indicates final approval; preliminary reports are unsigned and should be used for reference only.



Acme Analytical Laboratories (Vancouver) Ltd.
 1020 Cordova St. East Vancouver BC V6A 4A3 Canada
 Phone (604) 253-3158 Fax (604) 253-1716

www.acmelab.com

Client: **Goldspike Exploration Inc.**
 56th Floor - 100 King Street West
 Toronto ON M5X 1C9 Canada

Project: BK WEST
 Report Date: August 03, 2012

Page: 2 of 3

Part: 2 of 2

CERTIFICATE OF ANALYSIS

DAW1200095.1

Method	Analyte	1DX15	1DX15	1DX15	1DX15	1DX15	1DX15	1DX15	1DX15	1DX15	1DX15	1DX15	1DX15	1DX15	1DX15	1DX15	1DX15	1DX15
		Cr	Mg	Ba	Ti	B	Al	Na	K	W	Hg	Sc	Tl	S	Ga	Se	Sn	Te
Unit		ppm	%	ppm	%	ppm	%	%	%	ppm	ppm	ppm	ppm	%	ppm	ppm	ppm	ppm
MDL		1	0.01	1	0.001	1	0.01	0.001	0.01	0.1	0.01	0.1	0.05	1	0.5	1	0.2	
1241235	Soil	35	0.55	128	0.095	2	2.25	0.015	0.05	0.1	0.02	4.4	<0.1	<0.05	8	<0.5	<1	<0.2
1241236	Soil	39	0.74	113	0.113	2	2.17	0.016	0.11	0.5	0.03	5.5	0.2	<0.05	7	<0.5	<1	<0.2
1241237	Soil	10	0.16	30	0.054	2	0.59	0.016	0.03	<0.1	0.01	1.2	<0.1	<0.05	4	<0.5	<1	<0.2
1241238	Soil	41	0.83	134	0.129	2	2.34	0.018	0.16	0.1	0.03	4.7	0.2	<0.05	7	<0.5	<1	<0.2
1241239	Soil	39	0.72	142	0.127	2	2.12	0.017	0.15	0.1	0.03	5.7	0.2	<0.05	7	0.6	<1	<0.2
1241240	Soil	41	0.80	141	0.156	2	2.10	0.021	0.16	0.1	0.02	6.3	0.2	<0.05	7	<0.5	<1	<0.2
1241241	Soil	34	0.72	138	0.137	2	2.17	0.018	0.12	0.1	0.03	5.2	0.2	<0.05	7	<0.5	<1	<0.2
1241242	Soil	41	0.85	115	0.145	2	2.30	0.017	0.17	0.2	0.02	5.2	0.2	<0.05	8	<0.5	1	<0.2
1241243	Soil	30	0.64	91	0.104	1	1.74	0.014	0.09	0.3	0.03	4.7	0.1	<0.05	7	<0.5	1	<0.2
1241244	Soil	8	0.12	23	0.057	1	0.42	0.016	0.04	<0.1	0.01	1.0	<0.1	<0.05	4	<0.5	<1	<0.2
1241245	Soil	65	1.01	136	0.136	1	1.97	0.017	0.29	0.1	<0.01	6.5	0.2	<0.05	7	<0.5	1	<0.2
1241246	Soil	37	0.82	155	0.145	2	2.35	0.017	0.11	0.1	0.04	7.3	0.1	<0.05	7	<0.5	1	<0.2
1241247	Soil	36	0.78	149	0.132	2	2.23	0.016	0.11	0.1	0.04	5.6	0.1	<0.05	7	<0.5	1	<0.2
1241248	Soil	32	0.63	120	0.129	2	2.00	0.017	0.10	<0.1	0.03	4.5	0.1	<0.05	7	<0.5	<1	<0.2
1241249	Soil	40	0.79	133	0.141	2	2.12	0.020	0.19	0.1	0.02	6.6	0.2	<0.05	7	<0.5	<1	<0.2
1241250	Soil	37	0.77	164	0.141	2	2.38	0.018	0.11	<0.1	0.02	6.8	0.2	<0.05	7	<0.5	<1	<0.2
1241251	Soil	23	0.37	76	0.086	1	1.52	0.020	0.04	<0.1	0.01	2.6	<0.1	<0.05	6	<0.5	<1	<0.2
1241252	Soil	34	0.45	64	0.099	<1	1.64	0.030	0.02	<0.1	0.02	4.9	<0.1	<0.05	5	<0.5	<1	<0.2
1241253	Soil	111	1.05	64	0.141	1	2.02	0.016	0.03	0.2	<0.01	2.4	<0.1	<0.05	7	<0.5	<1	<0.2
1241430	Soil	12	0.15	30	0.065	1	0.91	0.019	0.02	<0.1	0.02	1.5	<0.1	<0.05	4	<0.5	1	<0.2
1241431	Soil	49	0.88	178	0.145	2	2.05	0.021	0.11	0.1	0.02	7.6	0.1	<0.05	6	<0.5	<1	<0.2
1241432	Soil	69	1.04	153	0.175	2	2.49	0.019	0.17	<0.1	0.02	7.2	0.2	<0.05	8	<0.5	<1	<0.2
1241433	Soil	53	1.03	155	0.157	2	2.34	0.016	0.17	<0.1	0.03	7.9	0.1	<0.05	8	<0.5	1	<0.2
1241434	Soil	46	0.79	130	0.151	2	2.13	0.018	0.10	0.1	0.01	5.9	0.1	<0.05	7	<0.5	<1	<0.2
1241435	Soil	42	0.80	127	0.145	2	2.13	0.016	0.08	0.2	0.01	5.2	<0.1	<0.05	8	<0.5	<1	<0.2
1241436	Soil	10	0.09	43	0.048	<1	0.35	0.021	0.03	<0.1	<0.01	1.0	<0.1	<0.05	3	<0.5	<1	<0.2
1241437	Soil	41	0.60	152	0.127	2	2.16	0.019	0.08	<0.1	0.03	5.5	<0.1	<0.05	8	<0.5	1	<0.2
1241438	Soil	24	0.39	56	0.100	<1	1.17	0.017	0.06	<0.1	0.02	2.8	<0.1	<0.05	6	<0.5	<1	<0.2
1241439	Soil	29	0.49	107	0.102	2	1.65	0.018	0.07	<0.1	0.04	4.2	<0.1	<0.05	6	<0.5	<1	<0.2
1241440	Soil	32	0.55	140	0.110	2	2.14	0.019	0.08	0.2	0.03	5.5	<0.1	<0.05	7	<0.5	<1	<0.2



Acme Analytical Laboratories (Vancouver) Ltd.
 1020 Cordova St. East Vancouver BC V6A 4A3 Canada
 Phone (604) 253-3158 Fax (604) 253-1716

www.acmelab.com

Client: **Goldspike Exploration Inc.**
 56th Floor - 100 King Street West
 Toronto ON M5X 1C9 Canada

Project: BK WEST
 Report Date: August 03, 2012

Page: 3 of 3

Part: 1 of 2

CERTIFICATE OF ANALYSIS

DAW12000095.1

Method	Analyte	1DX15	1DX15	1DX15	1DX15	1DX15	1DX15	1DX15	1DX15	1DX15	1DX15	1DX15	1DX15	1DX15	1DX15	1DX15	1DX15	1DX15	1DX15	1DX15	
		Mo	Cu	Pb	Zn	Ag	Ni	Co	Mn	Fe	As	Au	Th	Sr	Cd	Sb	Bi	V	Ca	P	La
Unit		ppm	ppm	ppm	ppm	ppm	ppm	ppm	%	ppm	ppb	ppm	ppm	ppm	ppm	ppm	ppm	%	%	ppm	
MDL		0.1	0.1	0.1	1	0.1	0.1	0.1	1	0.01	0.5	0.5	0.1	1	0.1	0.1	2	0.01	0.001	1	
1241441	Soil	0.6	15.7	5.1	40	<0.1	14.0	7.1	174	2.35	4.1	1.3	3.2	17	<0.1	0.2	<0.1	71	0.30	0.034	9
1241442	Soil	0.5	7.5	2.4	16	<0.1	3.6	1.8	48	0.76	1.6	0.7	0.2	6	<0.1	0.1	<0.1	26	0.05	0.016	2
1241443	Soil	0.9	24.7	7.0	44	0.1	19.8	9.4	218	2.91	6.4	1.6	2.5	19	<0.1	0.3	<0.1	75	0.26	0.029	9
1241444	Soil	0.9	13.9	5.1	29	<0.1	11.3	5.4	123	1.80	4.3	4.2	1.4	12	<0.1	0.1	<0.1	47	0.15	0.017	5
1241445	Soil	1.2	12.8	6.2	42	<0.1	17.0	7.0	200	2.45	5.8	2.6	1.2	14	<0.1	0.3	<0.1	65	0.19	0.018	4
1241446	Soil	0.8	21.7	5.9	44	<0.1	21.6	9.6	219	2.69	6.7	<0.5	2.9	18	<0.1	0.3	0.1	70	0.25	0.035	12



Acme Analytical Laboratories (Vancouver) Ltd.
 1020 Cordova St. East Vancouver BC V6A 4A3 Canada
 Phone (604) 253-3158 Fax (604) 253-1716

www.acmelab.com

Client: Goldspike Exploration Inc.
 56th Floor - 100 King Street West
 Toronto ON M5X 1C9 Canada

Project: BK WEST
Report Date: August 03, 2012

Page: 3 of 3

Part: 2 of 2

CERTIFICATE OF ANALYSIS

DAW12000095.1

Method	Analyte	1DX15	1DX15	1DX15	1DX15	1DX15	1DX15	1DX15	1DX15	1DX15	1DX15	1DX15	1DX15	1DX15	1DX15	1DX15	1DX15	1DX15
		Cr	Mg	Ba	Ti	B	Al	Na	K	W	Hg	Sc	Tl	S	Ga	Se	Sn	Te
Unit		ppm	%	ppm	%	ppm	%	%	ppm	ppm	ppm	ppm	%	ppm	ppm	ppm	ppm	ppm
MDL		1	0.01	1	0.001	1	0.01	0.001	0.01	0.1	0.01	0.1	0.05	1	0.5	1	0.2	
1241441	Soil	30	0.60	95	0.123	<1	1.68	0.018	0.10	0.1	0.02	3.9	<0.1	<0.05	6	<0.5	<1	<0.2
1241442	Soil	7	0.06	23	0.039	<1	0.34	0.019	0.02	0.1	0.02	0.8	<0.1	<0.05	2	<0.5	<1	<0.2
1241443	Soil	34	0.63	119	0.129	1	1.98	0.017	0.08	0.1	0.03	4.4	<0.1	<0.05	7	<0.5	<1	<0.2
1241444	Soil	18	0.34	75	0.084	<1	1.17	0.019	0.06	<0.1	0.02	2.2	<0.1	<0.05	5	<0.5	<1	<0.2
1241445	Soil	24	0.45	70	0.098	1	1.65	0.018	0.05	<0.1	0.01	2.5	<0.1	<0.05	6	<0.5	<1	<0.2
1241446	Soil	33	0.58	110	0.127	1	1.88	0.023	0.09	0.1	0.02	4.0	0.1	<0.05	7	<0.5	<1	<0.2



Acme Analytical Laboratories (Vancouver) Ltd.

1020 Cordova St. East Vancouver BC V6A 4A3 Canada

Phone (604) 253-3158 Fax (604) 253-1716

www.acmelab.com

Client: **Goldspike Exploration Inc.**

56th Floor - 100 King Street West

Toronto ON M5X 1C9 Canada

Project: BK WEST

Report Date: August 03, 2012

Page: 1 of 1

Part: 1 of 2

QUALITY CONTROL REPORT

DAW12000095.1

Method	1DX15	1DX15	1DX15	1DX15	1DX15	1DX15	1DX15	1DX15	1DX15	1DX15	1DX15	1DX15	1DX15	1DX15	1DX15	1DX15	1DX15	1DX15	1DX15	1DX15	
Analyte	Mo	Cu	Pb	Zn	Ag	Ni	Co	Mn	Fe	As	Au	Th	Sr	Cd	Sb	Bi	V	Ca	P	La	
Unit	ppm	ppm	ppm	ppm	ppm	ppm	ppm	ppm	%	ppm	ppb	ppm	ppm	ppm	ppm	ppm	ppm	%	%	ppm	
MDL	0.1	0.1	0.1	1	0.1	0.1	0.1	1	0.01	0.5	0.5	0.1	1	0.1	0.1	0.1	2	0.01	0.001	1	
Pulp Duplicates																					
1241238	Soil	0.8	39.7	7.9	74	<0.1	38.9	17.8	521	3.97	6.7	3.3	3.2	19	0.3	0.3	0.1	82	0.29	0.061	8
REP 1241238	QC	0.9	39.9	8.0	73	<0.1	38.5	17.1	515	3.85	7.2	6.8	3.1	20	0.3	0.3	0.1	83	0.29	0.061	8
1241436	Soil	0.5	16.2	5.3	16	0.2	4.8	1.6	44	0.69	1.5	2.1	0.3	10	0.1	0.1	<0.1	25	0.12	0.017	3
REP 1241436	QC	0.7	16.2	5.5	16	0.3	4.9	1.7	42	0.69	1.5	0.8	0.4	9	0.1	0.1	<0.1	25	0.12	0.018	3
Reference Materials																					
STD DS9	Standard	11.9	99.3	120.0	288	1.8	37.9	6.9	528	2.17	25.1	110.0	6.2	60	2.3	4.9	5.0	38	0.66	0.079	12
STD DS9 Expected		12.84	108	126	317	1.83	40.3	7.6	575	2.33	25.5	118	6.38	69.6	2.4	4.94	6.32	40	0.7201	0.0819	13.3
BLK	Blank	<0.1	<0.1	<0.1	<1	<0.1	<0.1	<0.1	<1	<0.01	<0.5	<0.5	<0.1	<1	<0.1	<0.1	<0.1	<2	<0.01	<0.001	<1



Acme Analytical Laboratories (Vancouver) Ltd.

1020 Cordova St. East Vancouver BC V6A 4A3 Canada

Phone (604) 253-3158 Fax (604) 253-1716

www.acmelab.com

Client: **Goldspike Exploration Inc.**

56th Floor - 100 King Street West

Toronto ON M5X 1C9 Canada

Project: BK WEST

Report Date: August 03, 2012

Page: 1 of 1

Part: 2 of 2

QUALITY CONTROL REPORT

DAW1200095.1

Method	1DX15	1DX15	1DX15	1DX15	1DX15	1DX15	1DX15	1DX15	1DX15	1DX15	1DX15	1DX15	1DX15	1DX15	1DX15	1DX15	1DX15	1DX15
Analyte	Cr	Mg	Ba	Ti	B	Al	Na	K	W	Hg	Sc	Tl	S	Ga	Se	Sn	Te	
Unit	ppm	%	ppm	%	ppm	%	%	%	ppm	ppm	ppm	ppm	%	ppm	ppm	ppm	ppm	
MDL	1	0.01	1	0.001	1	0.01	0.001	0.01	0.1	0.01	0.1	0.1	0.05	1	0.5	1	0.2	
Pulp Duplicates																		
1241238	Soil	41	0.83	134	0.129	2	2.34	0.018	0.16	0.1	0.03	4.7	0.2	<0.05	7	<0.5	<1	<0.2
REP 1241238	QC	40	0.82	131	0.131	2	2.35	0.017	0.16	0.1	0.03	4.7	0.2	<0.05	7	<0.5	<1	<0.2
1241436	Soil	10	0.09	43	0.048	<1	0.35	0.021	0.03	<0.1	<0.01	1.0	<0.1	<0.05	3	<0.5	<1	<0.2
REP 1241436	QC	9	0.09	43	0.047	<1	0.35	0.021	0.03	<0.1	0.02	1.2	<0.1	<0.05	3	<0.5	<1	<0.2
Reference Materials																		
STD DS9	Standard	111	0.58	275	0.101	3	0.88	0.081	0.34	2.9	0.21	2.7	5.3	0.13	4	5.2	6	4.8
STD DS9 Expected		121	0.6165	295	0.1108		0.9577	0.0853	0.395	2.89	0.2	2.5	5.3	0.1615	4.59	5.2		5.02
BLK	Blank	<1	<0.01	<1	<0.001	<1	<0.01	<0.001	<0.01	<0.1	<0.01	<0.1	<0.1	<0.05	<1	<0.5	<1	<0.2

Appendix III: Silt Sample Assay Certificates



1020 Cordova St. East Vancouver BC V6A 4A3 Canada

Acme Analytical Laboratories (Vancouver) Ltd.

www.acmelab.com

Client: Goldspike Exploration Inc.
56th Floor - 100 King Street West
Toronto ON M5X 1C9 Canada

Submitted By: Bruce Durham
Receiving Lab: Canada-Dawson City
Received: July 04, 2012
Report Date: July 29, 2012
Page: 1 of 2

CERTIFICATE OF ANALYSIS

DAW12000096.1

CLIENT JOB INFORMATION

Project: BK WEST
Shipment ID: BK West
P.O. Number
Number of Samples: 1

SAMPLE DISPOSAL

STOR-PLP Store After 90 days Invoice for Storage
STOR-RJT-SOIL Store Soil Reject - RJSV Charges Apply

Acme does not accept responsibility for samples left at the laboratory after 90 days without prior written instructions for sample storage or return.

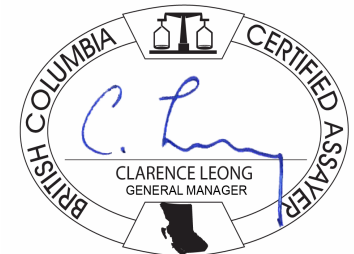
Invoice To: Goldspike Exploration Inc.
56th Floor - 100 King Street West
Toronto ON M5X 1C9
Canada

CC: Daniel Ferraro

SAMPLE PREPARATION AND ANALYTICAL PROCEDURES

Table with 6 columns: Method Code, Number of Samples, Code Description, Test Wgt (g), Report Status, Lab. Rows include Dry at 60C, SS80, RJSV, and 1DX2.

ADDITIONAL COMMENTS



This report supersedes all previous preliminary and final reports with this file number dated prior to the date on this certificate. Signature indicates final approval; preliminary reports are unsigned and should be used for reference only. All results are considered the confidential property of the client. Acme assumes the liabilities for actual cost of analysis only. Results apply to samples as submitted. ** asterisk indicates that an analytical result could not be provided due to unusually high levels of interference from other elements.



Acme Analytical Laboratories (Vancouver) Ltd.
 1020 Cordova St. East Vancouver BC V6A 4A3 Canada
 Phone (604) 253-3158 Fax (604) 253-1716

www.acmelab.com

Client: Goldspike Exploration Inc.
 56th Floor - 100 King Street West
 Toronto ON M5X 1C9 Canada

Project: BK WEST
Report Date: July 29, 2012

Page: 2 of 2

Part: 1 of 2

CERTIFICATE OF ANALYSIS

DAW12000096.1

Method	1DX15	1DX15	1DX15	1DX15	1DX15	1DX15	1DX15	1DX15	1DX15	1DX15	1DX15	1DX15	1DX15	1DX15	1DX15	1DX15	1DX15	1DX15	1DX15	1DX15	
Analyte	Mo	Cu	Pb	Zn	Ag	Ni	Co	Mn	Fe	As	Au	Th	Sr	Cd	Sb	Bi	V	Ca	P	La	
Unit	ppm	ppm	ppm	ppm	ppm	ppm	ppm	ppm	%	ppm	ppb	ppm	ppm	ppm	ppm	ppm	ppm	%	%	ppm	
MDL	0.1	0.1	0.1	1	0.1	0.1	0.1	1	0.01	0.5	0.5	0.1	1	0.1	0.1	0.1	2	0.01	0.001	1	
1241904	Silt	0.6	16.3	4.9	44	<0.1	16.5	7.6	243	1.99	3.4	1.4	2.2	20	<0.1	0.2	0.2	53	0.31	0.036	10



Acme Analytical Laboratories (Vancouver) Ltd.
 1020 Cordova St. East Vancouver BC V6A 4A3 Canada
 Phone (604) 253-3158 Fax (604) 253-1716

www.acmelab.com

Client: Goldspike Exploration Inc.
 56th Floor - 100 King Street West
 Toronto ON M5X 1C9 Canada

Project: BK WEST
Report Date: July 29, 2012

Page: 2 of 2

Part: 2 of 2

CERTIFICATE OF ANALYSIS

DAW1200096.1

Method	1DX15	1DX15	1DX15	1DX15	1DX15	1DX15	1DX15	1DX15	1DX15	1DX15	1DX15	1DX15	1DX15	1DX15	1DX15	1DX15	1DX15	1DX15
Analyte	Cr	Mg	Ba	Ti	B	Al	Na	K	W	Hg	Sc	Tl	S	Ga	Se	Sn	Te	
Unit	ppm	%	ppm	%	ppm	%	%	%	ppm	ppm	ppm	ppm	%	ppm	ppm	ppm	ppm	
MDL	1	0.01	1	0.001	1	0.01	0.001	0.01	0.1	0.01	0.1	0.1	0.05	1	0.5	1	0.2	
1241904	Silt	30	0.51	102	0.108	1	1.43	0.018	0.09	0.1	0.02	3.5	0.1	<0.05	6	<0.5	1	<0.2



Acme Analytical Laboratories (Vancouver) Ltd.
 1020 Cordova St. East Vancouver BC V6A 4A3 Canada
 Phone (604) 253-3158 Fax (604) 253-1716

www.acmelab.com

Client: Goldspike Exploration Inc.
 56th Floor - 100 King Street West
 Toronto ON M5X 1C9 Canada

Project: BK WEST
Report Date: July 29, 2012

Page: 1 of 1

Part: 1 of 2

QUALITY CONTROL REPORT

DAW12000096.1

Method	1DX15	1DX15	1DX15	1DX15	1DX15	1DX15	1DX15	1DX15	1DX15	1DX15	1DX15	1DX15	1DX15	1DX15	1DX15	1DX15	1DX15	1DX15	1DX15	1DX15	
Analyte	Mo	Cu	Pb	Zn	Ag	Ni	Co	Mn	Fe	As	Au	Th	Sr	Cd	Sb	Bi	V	Ca	P	La	
Unit	ppm	ppm	ppm	ppm	ppm	ppm	ppm	ppm	%	ppm	ppb	ppm	ppm	ppm	ppm	ppm	ppm	%	%	ppm	
MDL	0.1	0.1	0.1	1	0.1	0.1	0.1	1	0.01	0.5	0.5	0.1	1	0.1	0.1	0.1	2	0.01	0.001	1	
Pulp Duplicates																					
1241904 Silt	0.6	16.3	4.9	44	<0.1	16.5	7.6	243	1.99	3.4	1.4	2.2	20	<0.1	0.2	0.2	53	0.31	0.036	10	
REP 1241904 QC	0.6	16.5	5.0	43	<0.1	17.1	7.7	248	2.02	3.4	2.6	2.3	21	<0.1	0.2	0.2	55	0.33	0.038	10	
Reference Materials																					
STD DS9 Standard	13.9	108.1	122.0	295	1.7	42.0	7.6	584	2.32	23.7	106.0	6.5	70	2.2	5.5	6.3	40	0.73	0.075	14	
STD DS9 Expected	12.84	108	126	317	1.83	40.3	7.6	575	2.33	25.5	118	6.38	69.6	2.4	4.94	6.32	40	0.7201	0.0819	13.3	
BLK Blank	<0.1	<0.1	<0.1	<1	<0.1	<0.1	<0.1	<1	0.01	<0.5	<0.5	<0.1	<1	<0.1	<0.1	<0.1	<2	<0.01	<0.001	<1	



Acme Analytical Laboratories (Vancouver) Ltd.

1020 Cordova St. East Vancouver BC V6A 4A3 Canada

Phone (604) 253-3158 Fax (604) 253-1716

www.acmelab.com

Client: **Goldspike Exploration Inc.**

56th Floor - 100 King Street West

Toronto ON M5X 1C9 Canada

Project: BK WEST

Report Date: July 29, 2012

Page: 1 of 1

Part: 2 of 2

QUALITY CONTROL REPORT

DAW1200096.1

Method	1DX15	1DX15	1DX15	1DX15	1DX15	1DX15	1DX15	1DX15	1DX15	1DX15	1DX15	1DX15	1DX15	1DX15	1DX15	1DX15	1DX15	1DX15
Analyte	Cr	Mg	Ba	Ti	B	Al	Na	K	W	Hg	Sc	Tl	S	Ga	Se	Sn	Te	
Unit	ppm	%	ppm	%	ppm	%	%	%	ppm	ppm	ppm	ppm	%	ppm	ppm	ppm	ppm	
MDL	1	0.01	1	0.001	1	0.01	0.001	0.01	0.1	0.01	0.1	0.1	0.05	1	0.5	1	0.2	
Pulp Duplicates																		
1241904	Silt	30	0.51	102	0.108	1	1.43	0.018	0.09	0.1	0.02	3.5	0.1	<0.05	6	<0.5	1	<0.2
REP 1241904	QC	31	0.52	103	0.114	2	1.50	0.020	0.10	0.1	0.03	3.7	0.1	<0.05	6	<0.5	<1	<0.2
Reference Materials																		
STD DS9	Standard	130	0.62	290	0.109	3	0.94	0.098	0.35	3.0	0.21	2.5	5.4	0.19	5	5.5	6	5.0
STD DS9 Expected		121	0.6165	295	0.1108		0.9577	0.0853	0.395	2.89	0.2	2.5	5.3	0.1615	4.59	5.2		5.02
BLK	Blank	<1	<0.01	<1	<0.001	<1	<0.01	<0.001	<0.01	<0.1	<0.01	<0.1	<0.1	<0.05	<1	<0.5	<1	<0.2

Appendix IV: Rock Sample Assay Certificates



1020 Cordova St. East Vancouver BC V6A 4A3 Canada

Acme Analytical Laboratories (Vancouver) Ltd.

www.acmelab.com

Client: Goldspike Exploration Inc.

56th Floor - 100 King Street West
Toronto ON M5X 1C9 Canada

Submitted By: Bruce Durham

Receiving Lab: Canada-Whitehorse

Received: July 06, 2012

Report Date: July 20, 2012

Page: 1 of 2

CERTIFICATE OF ANALYSIS

WHI12000243.1

CLIENT JOB INFORMATION

Project: BK WEST
Shipment ID: BK WEST
P.O. Number
Number of Samples: 6

SAMPLE PREPARATION AND ANALYTICAL PROCEDURES

Method Code	Number of Samples	Code Description	Test Wgt (g)	Report Status	Lab
R200-250	6	Crush, split and pulverize 250 g rock to 200 mesh			WHI
3B	6	Fire assay fusion Au by ICP-ES	30	Completed	VAN
1DX	6	1:1:1 Aqua Regia digestion ICP-MS analysis	0.5	Completed	VAN

SAMPLE DISPOSAL

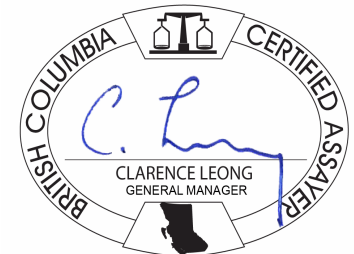
STOR-PLP Store After 90 days Invoice for Storage
STOR-RJT Store After 90 days Invoice for Storage

ADDITIONAL COMMENTS

Acme does not accept responsibility for samples left at the laboratory after 90 days without prior written instructions for sample storage or return.

Invoice To: Goldspike Exploration Inc.
56th Floor - 100 King Street West
Toronto ON M5X 1C9
Canada

CC: Daniel Ferraro



This report supersedes all previous preliminary and final reports with this file number dated prior to the date on this certificate. Signature indicates final approval; preliminary reports are unsigned and should be used for reference only. All results are considered the confidential property of the client. Acme assumes the liabilities for actual cost of analysis only. Results apply to samples as submitted. ** asterisk indicates that an analytical result could not be provided due to unusually high levels of interference from other elements.



Acme Analytical Laboratories (Vancouver) Ltd.
 1020 Cordova St. East Vancouver BC V6A 4A3 Canada
 Phone (604) 253-3158 Fax (604) 253-1716

www.acmelab.com

Client: **Goldspike Exploration Inc.**
 56th Floor - 100 King Street West
 Toronto ON M5X 1C9 Canada

Project: BK WEST
 Report Date: July 20, 2012

Page: 2 of 2

Part: 1 of 2

CERTIFICATE OF ANALYSIS

WHI12000243.1

Method	WGHT	3B	1DX	1DX	1DX	1DX	1DX	1DX	1DX	1DX	1DX	1DX	1DX	1DX	1DX	1DX	1DX	1DX	1DX	1DX	
Analyte	Wgt	Au	Mo	Cu	Pb	Zn	Ag	Ni	Co	Mn	Fe	As	Au	Th	Sr	Cd	Sb	Bi	V	Ca	
Unit	kg	ppb	ppm	ppm	ppm	ppm	ppm	ppm	ppm	ppm	%	ppm	ppb	ppm	ppm	ppm	ppm	ppm	ppm	%	
MDL	0.01	2	0.1	0.1	0.1	1	0.1	0.1	0.1	1	0.01	0.5	0.5	0.1	1	0.1	0.1	0.1	2	0.01	
1240470	Rock	1.26	<2	0.1	25.3	14.9	13	<0.1	14.9	5.0	241	1.24	1.0	<0.5	3.8	39	<0.1	0.1	<0.1	37	1.67
1240471	Rock	0.82	<2	0.2	7.3	1.2	13	<0.1	1.9	2.7	141	1.69	0.9	<0.5	14.0	8	<0.1	<0.1	<0.1	15	0.10
1240472	Rock	0.57	<2	1.0	1.8	2.8	45	<0.1	3.9	0.9	183	1.47	1.0	<0.5	24.2	5	<0.1	<0.1	<0.1	3	0.13
1240473	Rock	0.58	<2	0.1	3.7	0.7	15	<0.1	2.5	1.9	140	1.12	<0.5	<0.5	4.8	3	<0.1	0.1	<0.1	15	0.05
1240474	Rock	0.76	<2	0.2	5.7	2.6	26	<0.1	38.4	6.4	238	1.31	0.9	<0.5	0.9	7	0.2	0.4	2.1	31	0.67
1240475	Rock	0.72	<2	0.5	21.7	3.6	30	<0.1	13.4	6.2	350	2.06	0.6	<0.5	7.4	18	<0.1	<0.1	0.4	38	0.28



Acme Analytical Laboratories (Vancouver) Ltd.
 1020 Cordova St. East Vancouver BC V6A 4A3 Canada
 Phone (604) 253-3158 Fax (604) 253-1716

www.acmelab.com

Client: **Goldspike Exploration Inc.**
 56th Floor - 100 King Street West
 Toronto ON M5X 1C9 Canada

Project: BK WEST
 Report Date: July 20, 2012

Page: 2 of 2

Part: 2 of 2

CERTIFICATE OF ANALYSIS

WHI12000243.1

Method	1DX	1DX	1DX	1DX	1DX	1DX	1DX	1DX	1DX	1DX	1DX	1DX	1DX	1DX	1DX	1DX	1DX	1DX	1DX	
Analyte	P	La	Cr	Mg	Ba	Ti	B	Al	Na	K	W	Hg	Tl	S	Sc	Se	Ga	Sn	Te	
Unit	%	ppm	ppm	%	ppm	%	ppm	%	%	%	ppm	ppm	ppm	%	ppm	ppm	ppm	ppm	ppm	
MDL	0.001	1	1	0.01	1	0.001	20	0.01	0.001	0.01	0.1	0.01	0.1	0.05	0.1	0.5	1	1	1	
1240470	Rock	0.042	8	38	0.50	34	0.112	<20	1.98	0.288	0.08	<0.1	<0.01	<0.1	<0.05	4.0	<0.5	4	22	<0.2
1240471	Rock	0.019	20	3	0.32	70	0.092	<20	0.87	0.085	0.36	0.1	<0.01	0.1	<0.05	5.9	<0.5	5	1	<0.2
1240472	Rock	0.008	36	3	0.05	118	0.048	<20	0.63	0.076	0.29	0.5	<0.01	0.3	<0.05	3.9	<0.5	5	3	<0.2
1240473	Rock	0.012	7	7	0.22	28	0.035	<20	0.43	0.032	0.17	<0.1	<0.01	<0.1	<0.05	2.7	<0.5	3	<1	<0.2
1240474	Rock	0.024	3	108	0.55	33	0.056	<20	0.71	0.087	0.14	<0.1	<0.01	<0.1	<0.05	5.0	<0.5	3	1	<0.2
1240475	Rock	0.011	14	30	0.64	197	0.107	<20	1.57	0.109	0.61	0.1	<0.01	0.2	<0.05	5.7	<0.5	6	<1	<0.2



Acme Analytical Laboratories (Vancouver) Ltd.

1020 Cordova St. East Vancouver BC V6A 4A3 Canada
Phone (604) 253-3158 Fax (604) 253-1716

www.acmelab.com

Client: Goldspike Exploration Inc.
56th Floor - 100 King Street West
Toronto ON M5X 1C9 Canada

Project: BK WEST
Report Date: July 20, 2012

Page: 1 of 1

Part: 1 of 2

QUALITY CONTROL REPORT

WHI12000243.1

Method	WGHT	3B	1DX	1DX	1DX	1DX	1DX	1DX	1DX	1DX	1DX	1DX	1DX	1DX	1DX	1DX	1DX	1DX	1DX	1DX	
Analyte	Wgt	Au	Mo	Cu	Pb	Zn	Ag	Ni	Co	Mn	Fe	As	Au	Th	Sr	Cd	Sb	Bi	V	Ca	
Unit	kg	ppb	ppm	ppm	ppm	ppm	ppm	ppm	ppm	ppm	%	ppm	ppb	ppm	ppm	ppm	ppm	ppm	ppm	%	
MDL	0.01	2	0.1	0.1	0.1	1	0.1	0.1	0.1	1	0.01	0.5	0.5	0.1	1	0.1	0.1	0.1	2	0.01	
Pulp Duplicates																					
1240472	Rock	0.57	<2	1.0	1.8	2.8	45	<0.1	3.9	0.9	183	1.47	1.0	<0.5	24.2	5	<0.1	<0.1	<0.1	3	0.13
REP 1240472	QC	<2																			
Core Reject Duplicates																					
1240475	Rock	0.72	<2	0.5	21.7	3.6	30	<0.1	13.4	6.2	350	2.06	0.6	<0.5	7.4	18	<0.1	<0.1	0.4	38	0.28
DUP 1240475	QC	<2																			
Reference Materials																					
STD DS9	Standard		12.6	112.0	133.3	329	2.0	43.4	7.8	606	2.41	29.1	121.6	6.6	72	2.6	4.7	6.4	41	0.74	
STD OREAS45CA	Standard		1.0	523.8	21.0	61	0.3	264.1	98.1	987	16.45	3.7	48.6	7.4	14	0.1	0.1	0.2	230	0.45	
STD OXC88	Standard	188																			
STD OXG99	Standard	935																			
STD OREAS45CA Expected			1	494	20	60	0.275	240	92	943	15.69	3.8	43	7	15	0.1	0.13	0.19	215	0.4265	
STD DS9 Expected			12.84	108	126	317	1.83	40.3	7.6	575	2.33	25.5	118	6.38	69.6	2.4	4.94	6.32	40	0.7201	
STD OXG99 Expected		932																			
STD OXC88 Expected		203																			
BLK	Blank		<0.1	<0.1	<0.1	<1	<0.1	<0.1	<0.1	<1	<0.01	<0.5	<0.5	<0.1	<1	<0.1	<0.1	<0.1	<2	<0.01	
BLK	Blank	<2																			
BLK	Blank	<2																			
Prep Wash																					
G1-WHI	Prep Blank	<2	0.1	2.0	3.1	46	<0.1	2.8	4.1	606	2.04	<0.5	<0.5	6.3	63	<0.1	<0.1	<0.1	40	0.54	



Acme Analytical Laboratories (Vancouver) Ltd.
 1020 Cordova St. East Vancouver BC V6A 4A3 Canada
 Phone (604) 253-3158 Fax (604) 253-1716

www.acmelab.com

Client: **Goldspike Exploration Inc.**
 56th Floor - 100 King Street West
 Toronto ON M5X 1C9 Canada

Project: BK WEST
 Report Date: July 20, 2012

Page: 1 of 1

Part: 2 of 2

QUALITY CONTROL REPORT

WHI12000243.1

Method	1DX	1DX	1DX	1DX	1DX	1DX	1DX	1DX	1DX	1DX	1DX	1DX	1DX	1DX	1DX	1DX	1DX	1DX	1DX	
Analyte	P	La	Cr	Mg	Ba	Ti	B	Al	Na	K	W	Hg	Tl	S	Sc	Se	Ga	Sn	Te	
Unit	%	ppm	ppm	%	ppm	%	ppm	%	%	%	ppm	ppm	ppm	%	ppm	ppm	ppm	ppm	ppm	
MDL	0.001	1	1	0.01	1	0.001	20	0.01	0.001	0.01	0.1	0.01	0.1	0.05	0.1	0.5	1	1	0.2	
Pulp Duplicates																				
1240472	Rock	0.008	36	3	0.05	118	0.048	<20	0.63	0.076	0.29	0.5	<0.01	0.3	<0.05	3.9	<0.5	5	3	<0.2
REP 1240472	QC																			
Core Reject Duplicates																				
1240475	Rock	0.011	14	30	0.64	197	0.107	<20	1.57	0.109	0.61	0.1	<0.01	0.2	<0.05	5.7	<0.5	6	<1	<0.2
DUP 1240475	QC	0.012	14	31	0.64	201	0.109	<20	1.58	0.113	0.61	0.1	<0.01	0.2	<0.05	5.9	<0.5	6	<1	<0.2
Reference Materials																				
STD DS9	Standard	0.089	13	129	0.65	351	0.110	<20	1.00	0.085	0.41	2.8	0.21	5.9	0.17	2.5	6.2	5	7	5.6
STD OREAS45CA	Standard	0.038	16	784	0.15	171	0.136	<20	3.63	0.008	0.07	<0.1	0.02	0.1	<0.05	45.5	<0.5	20	2	<0.2
STD OXC88	Standard																			
STD OXG99	Standard																			
STD OREAS45CA Expected		0.0385	15.9	709	0.1358	164	0.128		3.592	0.0075	0.0717		0.03	0.07	0.021	39.7	0.5	18.4		
STD DS9 Expected		0.0819	13.3	121	0.6165	330	0.1108		0.9577	0.0853	0.395	2.89	0.2	5.3	0.1615	2.5	5.2	4.59		5.02
STD OXG99 Expected																				
STD OXC88 Expected																				
BLK	Blank	<0.001	<1	<1	<0.01	<1	<0.001	<20	<0.01	<0.001	<0.01	<0.1	<0.01	<0.1	<0.05	<0.1	<0.5	<1	<1	<0.2
BLK	Blank																			
BLK	Blank																			
Prep Wash																				
G1-WHI	Prep Blank	0.083	14	6	0.54	162	0.134	<20	0.98	0.108	0.51	<0.1	<0.01	0.4	<0.05	2.4	<0.5	5	<1	<0.2