

**GEOLOGICAL - GEOCHEMICAL
REPORT**

BATTLE 1- 20 CLAIMS

YC96301 – YC96320

NTS # 115 J / 09

LAT: 62° 42' N

LONG: 138° 19' W

WHITEHORSE MINING DISTRICT

**AUTHOR OF REPORT: Jean-Pierre Londero
WORK PERFORMED BY SELENE HOLDINGS L.P.
WORK PERFORMED August 25-26, 2012**

DATE OF REPORT: November 7th, 2012

Table of Contents

Introduction	4
1. Project location and access	4
2. Property	5
3. Geology	5
4. Work performed/methods	6
4.1 Prospecting.	6
4.2 Stream Sediment Survey	6
4.2.1 Sampling Technique	7
4.2.2 Sample Lab Preparation and Analysis	8
5. Results & Interpretation	8
6. References	9
7. Statement of qualifications	10
8. Appendix	11
8.1 Appendix 1: Claim Map	11
8.2 Appendix 2: Claim List	11
8.3 Appendix 3: Location Map: Stream Sediment Samples	11
8.4 Appendix 4: Stream sediment samples: coordinate and results.	11
8.5 Appendix 5: Assay certificate for stream sediment samples.	11
8.6 Appendix 6: Statement of Expenditure	11

List of Table:

Table 1: Location map..... 4

Table 2: Claim map..... 5

Table 3: Geological map of the Battle Group..... 6

Table 4: Location Map: Stream sediment samples..... 7

Introduction

The 2012 field program consisted of one prospecting day and one day of stream sediment sampling. The aim of the sampling program was to locate and to duplicate the hard-rock source(s) of the two YGS 99th percentile Au stream sediment samples located in Battle Creek. Unfortunately water level in the streams was too high to sample and water flow was too strong to collect a representative sample. Nevertheless, the stream sediment sampling took place in one tributary streams, where water flow and level were deem adequate for sampling.

1. Project location and access

The Battle claims are located 8km south of the Yukon River at the headwaters of Battle Creek in the Northern Dawson range. The claims are located on NTS # 115J/09 in the Whitehorse mining district at latitude 62°42'N and longitude 138°19'W or UTM 636616mE and 6955238mN (NAD83, zone 7).

Access to the Battle claims is by helicopter from the Selene Holdings L.P., White Gold camp. The distance from the White Gold Camp to the Battle property is roughly 70 km and takes approximately 45 minutes by helicopter.

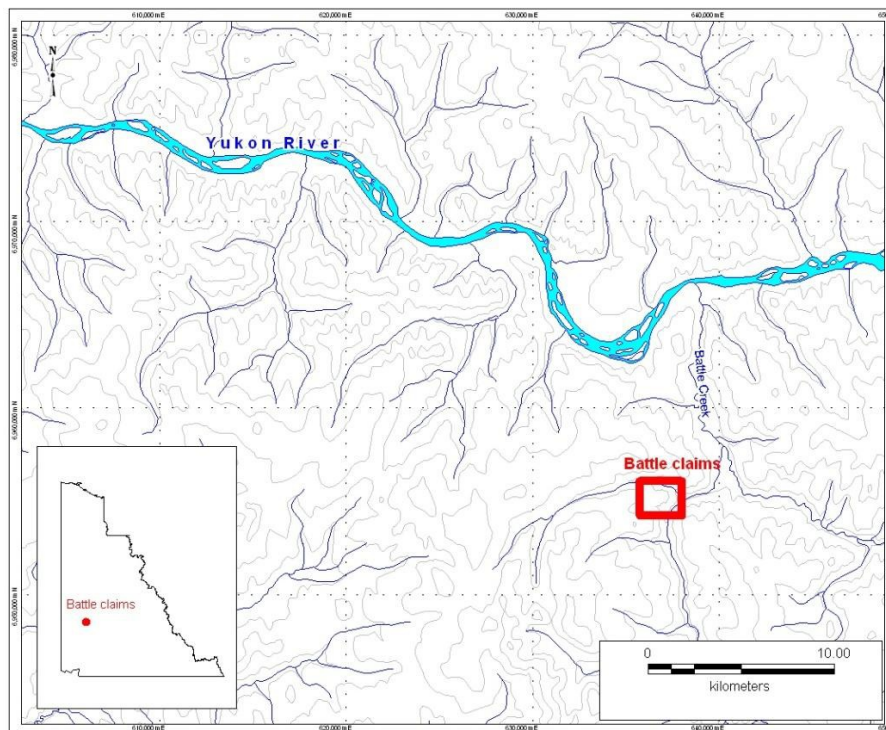


Figure 1 Battle location map.

2. Property

The Battle claim block consists of 20 mineral claims covering an area of ~4.2 km². The claims form a roughly rectangular shape 2.275 by 1.827 kilometers wide.

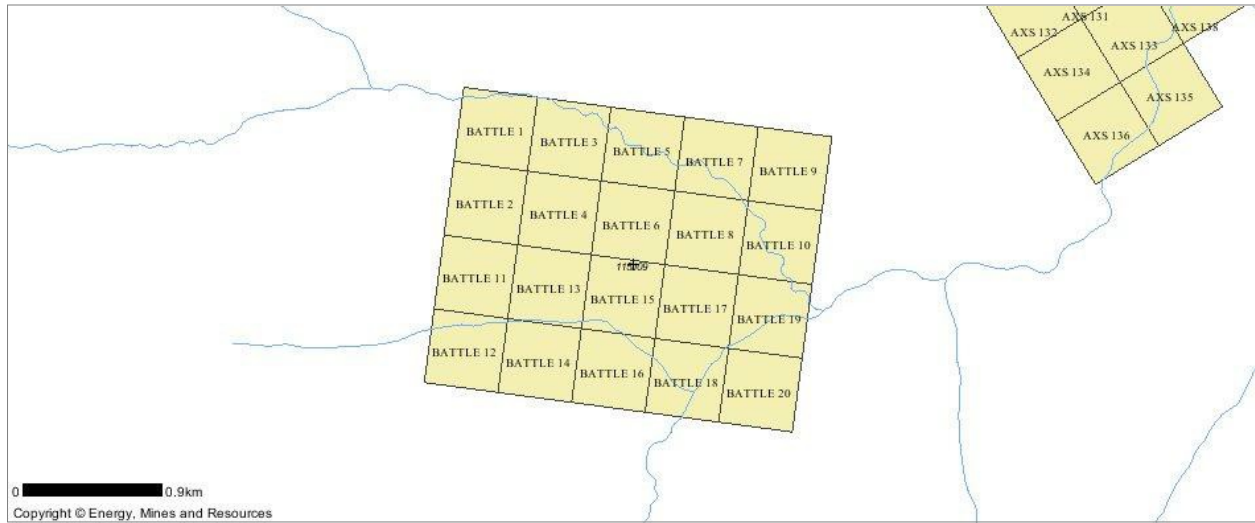


Figure 2 Battle claim names

3. Geology

The Battle claims are located in the mid-Cretaceous Dawson Range batholith. The batholith consists mostly of granitoids and granodiorites intruded by several smaller porphyritic dikes and overlaid by younger extrusive felsic rocks consisting of mostly clay altered flows and flow breccias. Mineralization in the Dawson batholith is associated with late Cretaceous felsic intrusive, e.g. Casino Deposit.

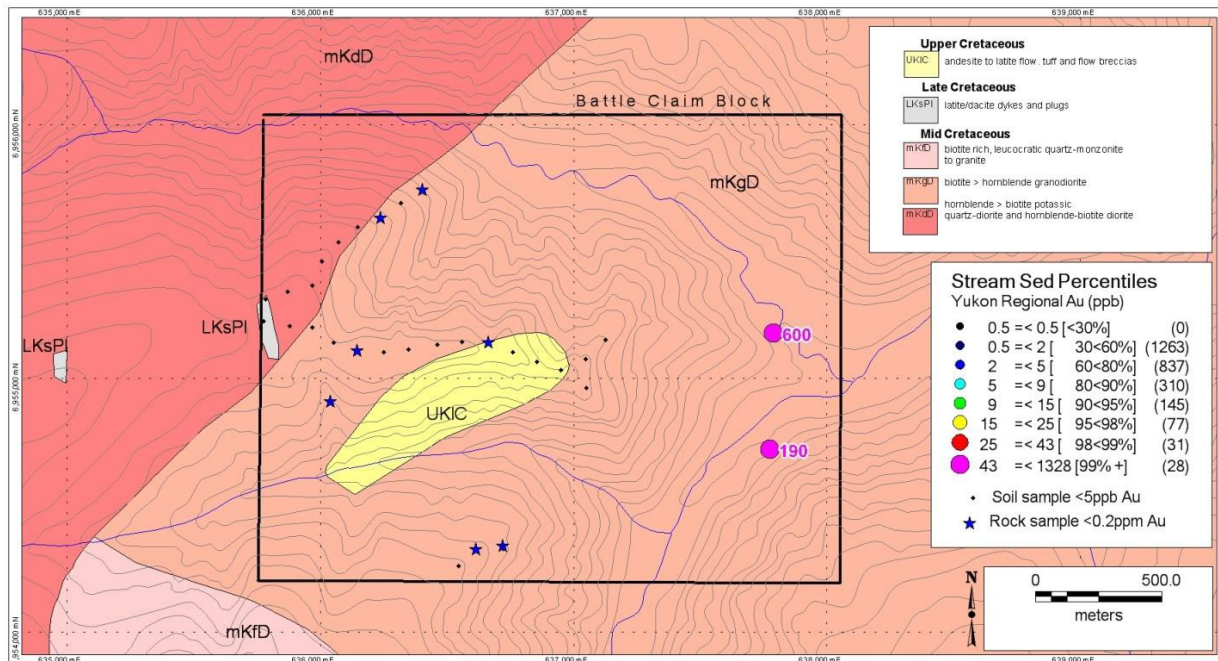


Figure 3 Geological map of the battle claims. Modified from Johnston (1995)

4. Work performed/methods

Two days were spent on the Battle claims. A three man team spend one day prospecting the vicinity of anomalous gold results from stream sediment samples where reported from the Yukon Government and the second day stream sampling in one of the confluent of the larger streams. A total of 11 large stream samples were collected and submitted for analysis to Acme Labs and no rock samples were collected for analysis during the prospecting.

4.1 Prospecting.

One day was spent along the shore line of the 2 streams where government reported gold in silt. The geology in the surrounding area is composed of granodiorite. The unit is characterized by the presence of large amphibole ranging in size from 3 to 5mm. Chloritization of the amphibole is the only alteration observed. No mineralization was encountered. Based on field observation, and previous results from rock sampling in 2009 by Underworld, no additional samples were collected.

4.2 Stream Sediment Survey

A reconnaissance stream sediment survey was undertaken during the 2012 field season. The sampling program was designed to incorporate all streams and creeks within the claim block. Using 1:50,000 National Topographic Service (NTS) maps, sample locations were placed every 250 m along the streams. Due to the low resolution of the streams on the maps, field adjustments were made when necessary; actual samples collected were spaced, on average 200 m apart (figure 4).

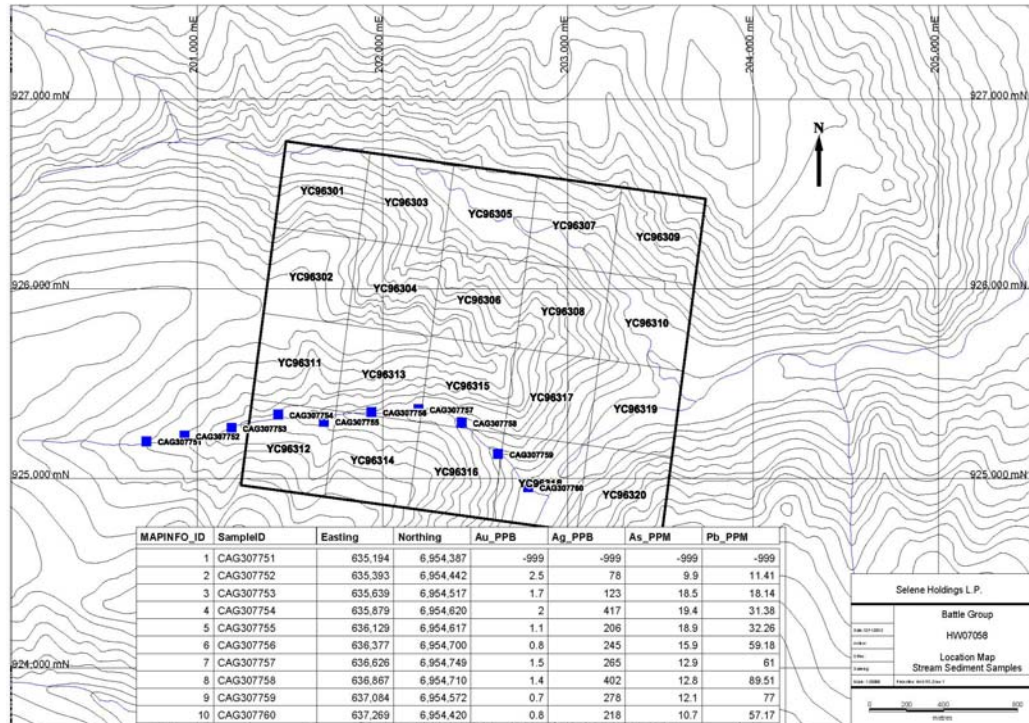


Figure 4: Location Map: Stream Sediment Samples

Selene Holdings L.P. personnel were trained in the proper technique for collecting a representative stream sediment sample.

The gold results are disappointing. The higher gold values encountered is 2 ppb Au.

4.2.1 Sampling Technique

Stream sediment samples were collected from stream locations with the lowest flow velocity, or where sediment concentrated (i.e. behind boulders or at ends of sand bars). Coarse surface boulders were removed from the chosen sample location, and the gravel and finer sediment were dug for sieving. A size 12 mesh sieve was used atop a 5 gallon bucket. The 12 mesh (1.7 mm screen size), was determined to be optimal to remove large cobble and organic matter while allowing a representative sample through. Sediment collected in the bucket was transferred to a labeled plastic sample bag. Ideally, stream sediment sample weights are 8 kg. GPS location and sample number were recorded at each location.

4.2.2 Sample Lab Preparation and Analysis

All stream sediment samples were prepared at Acme Analytical Laboratories Dawson City, YT preparation lab and analyzed by Acme in Vancouver, BC. After drying in a 60°C oven, a 100 g fraction was collected using an 80 mesh sieve (screen size of 0.177 mm). A 15 g split of the original 100 g was used for the analysis.

All stream sediment samples were analyzed using Acme's 1F02 analytical package, which is an ultratrace package with low detection limits. Samples were digested via Aqua Regia, and element concentrations analyzed using an inductively coupled plasma mass spectrometer (ICPMS). Results and analysis certificates were delivered through e-mail or Acme's secure website.

No QA/QC field samples were placed in the sample stream. Kinross relied upon Acme's laboratory QA/QC program to identify any sample or analysis issues.

5. Results & Interpretation

No significant results were found during the property reconnaissance program carried out in the 2012 season on the Battle claims. The initial target at the Battle claims was to find the source of the 99th Au percentile government stream sediment samples shown in Figure 3.

The field observations of the two streams where anomalous gold values are reported by the government are questionable. The two streams where government anomalies are reported are quite large and water flow was too strong to be able to collect a good, representative stream sediment sample. Prospecting along the shore line of the two streams did not outline any mineralized and or altered outcrop/ boulders other than fresh intrusive rocks. The intrusive rocks were previously sampled by Underworld in 2009 and reported deceiving results.

Based on the results and the field observation, the Battle Claims has become a low priority project. A second tentative should be made trying to duplicate government stream sediment sample results if time and budget permitted. Otherwise, no further work is recommended.

6. References

Johnston, S. T. (1995): *Geological compilation with interpretation from geophysical surveys of the northern Dawson Range, central Yukon (115 J/9 & 10; 115 I/12)*. 1:100,000 scale map. Open file 1995-2(G). Indian and northern affairs Canada, exploration and geological services division, Yukon Region.

H.J. Paulsen (2009): Assessment Report – Geological –Geochemical Report (NTS 115J/09). Underworld Resources. Battle 1 – 20 claims. Whitehorse Mining District.

7. Statement of qualifications

I, Jean-Pierre Londero, hereby certify that:

1. I am a professional geologist. I worked on the abovementioned project for Selene Holdings L.P. in 2012.
2. I have worked in gold exploration of the last 29 years.
3. I am a graduate of the University du Quebec, Canada , with a degree in geology (M.Sc 1983).

Dated this 28 of September in Vancouver, BC

Respectfully submitted

Jean-Pierre Londero

8. Appendix

8.1 Appendix 1: Claim Map

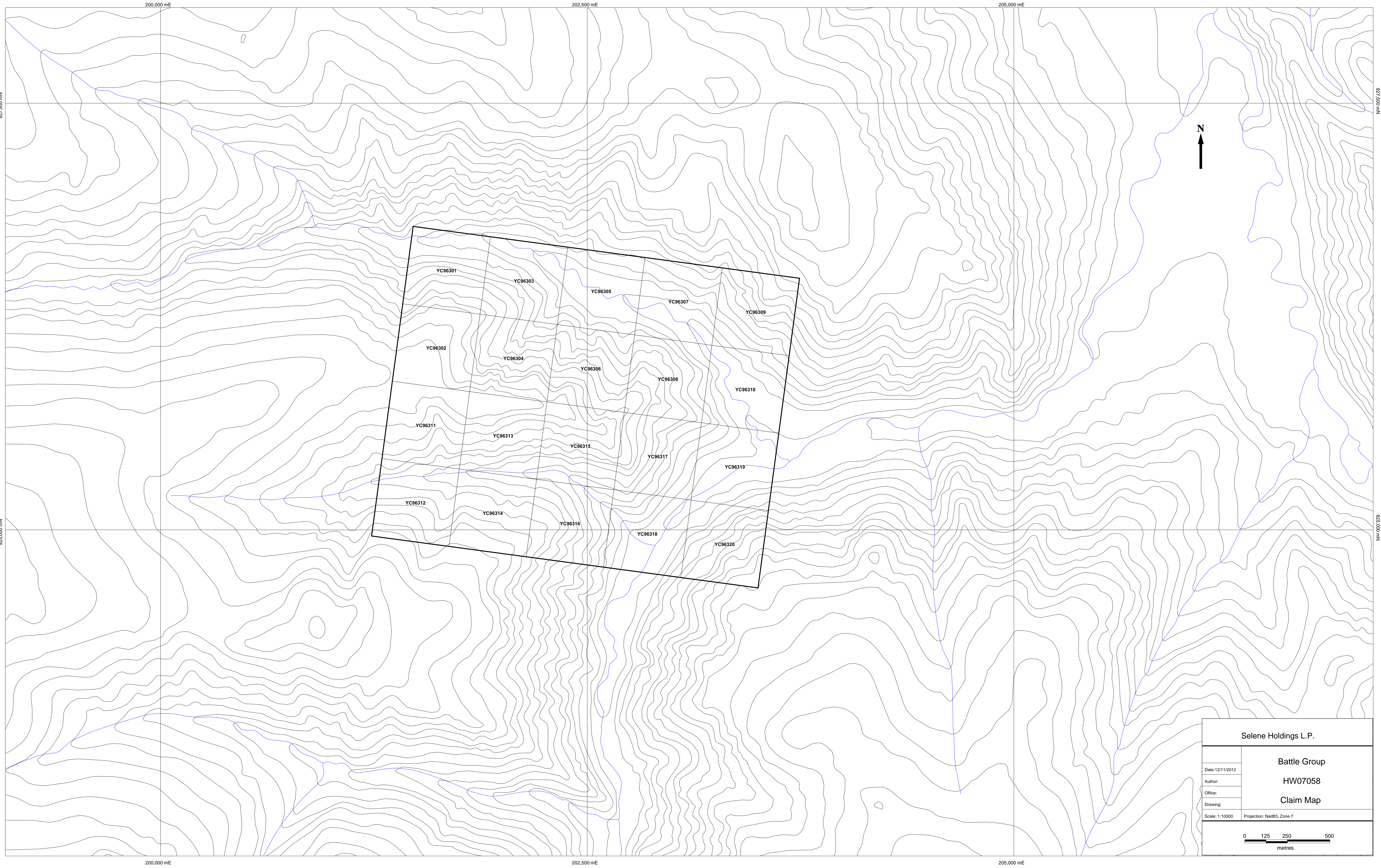
8.2 Appendix 2: Claim List

8.3 Appendix 3: Location Map: Stream Sediment Samples

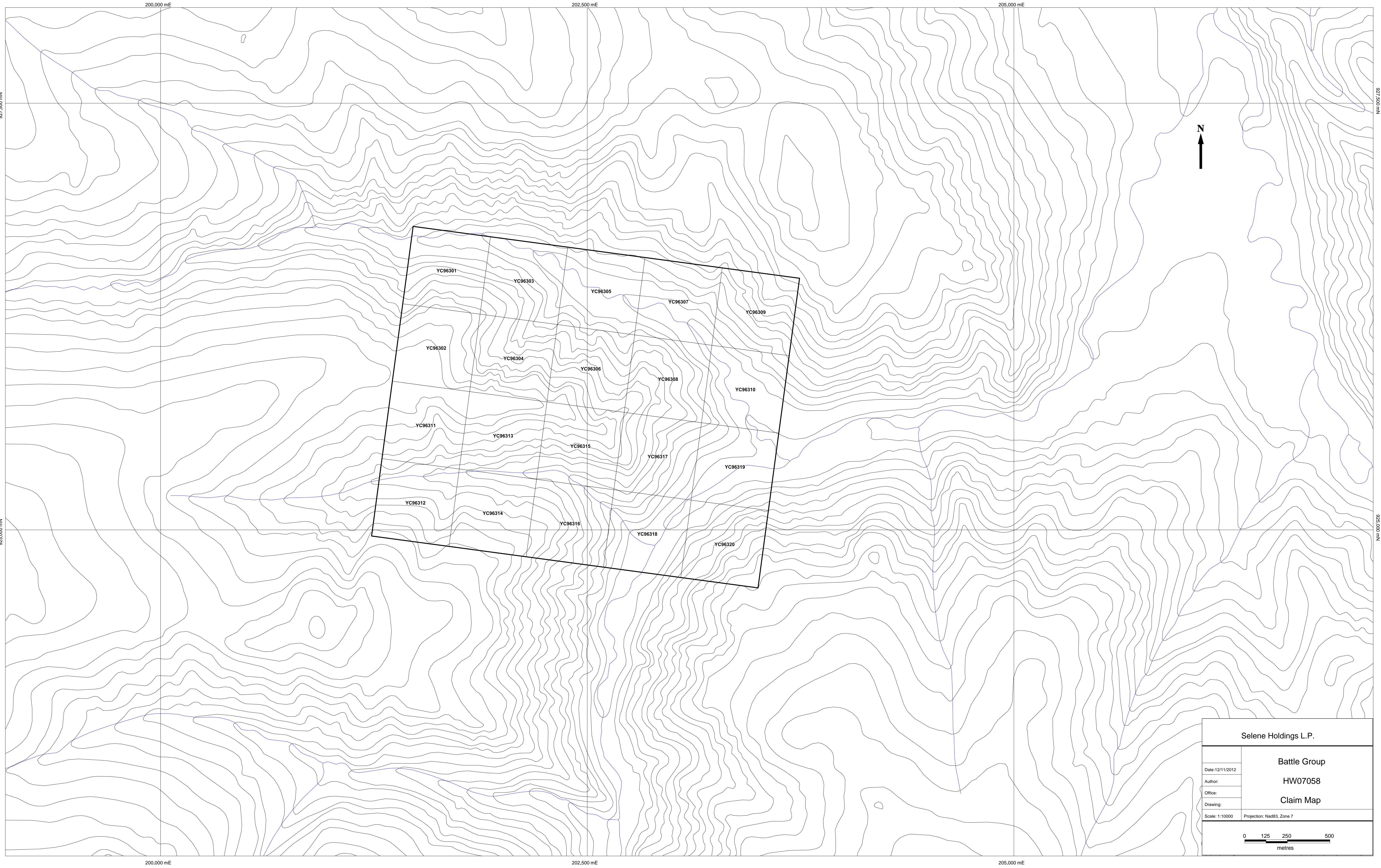
8.4 Appendix 4: Stream sediment samples: coordinate and results.

8.5 Appendix 5: Assay certificate for stream sediment samples.

8.6 Appendix 6: Statement of Expenditure



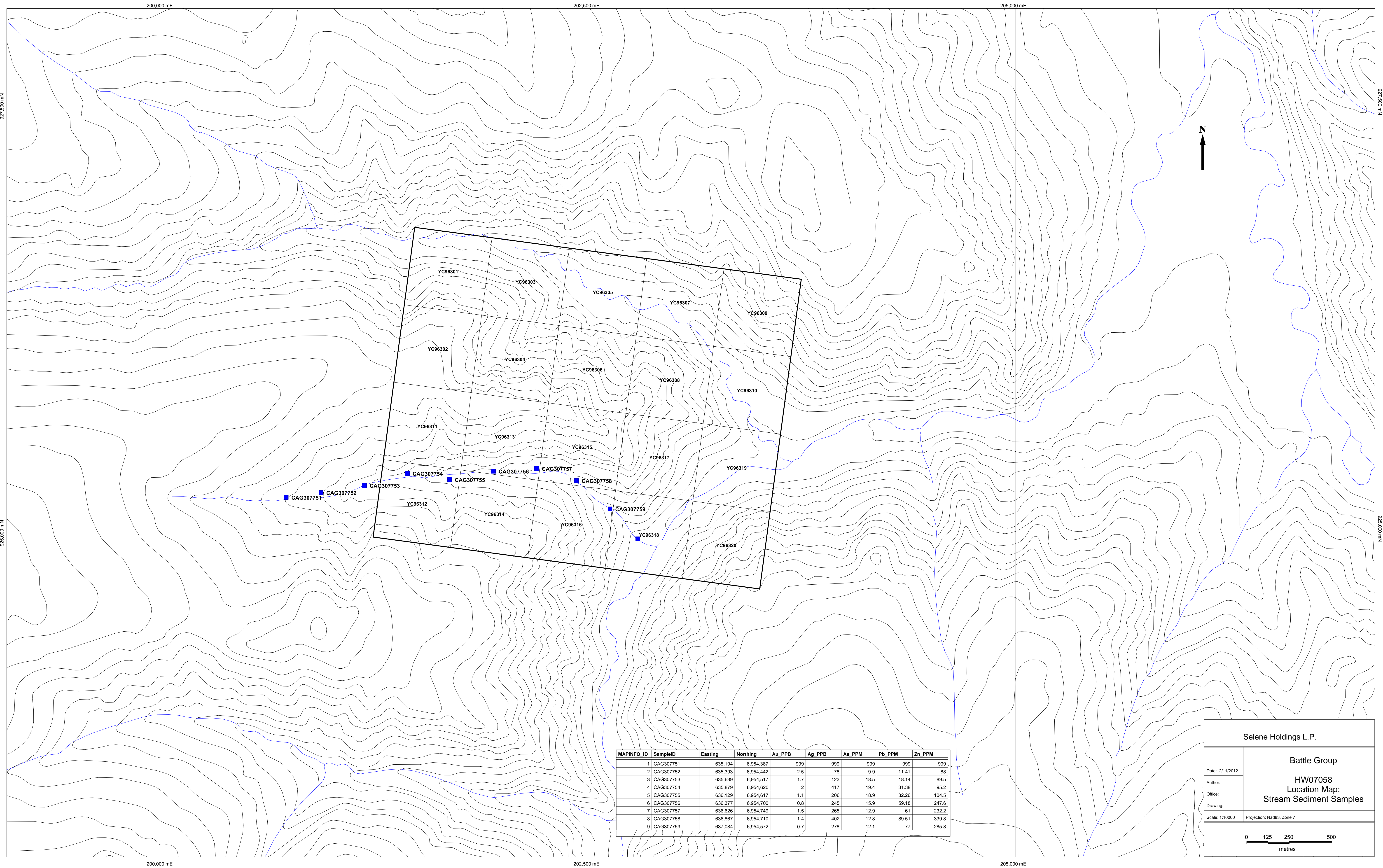
Selene Holdings L.P.	
Date: 12/11/2012	Battle Group
Author:	HW07058
Office:	Claim Map
Drawing:	
Scale: 1:10000	Projection: Nad83, Zone 7
0 125 250 500 metres	



Selene Holdings L.P.	
Date: 12/11/2012	Battle Group
Author:	HW07058
Office:	Claim Map
Drawing:	
Scale: 1:10000	Projection: Nad83, Zone 7
0 125 250 500 metres	

Kinross Gold Corp. / Selene Holdings L.P.
 Whitehorse Mining District
 Battle Group HW07058

Group	Grant #	Claim Name	Current Expiry Date	RENEWAL DATE	NTS Map
BATTLE GROUP #HW07058					
20 claims					
BATTLE	YC96301	BATTLE 1	15-Feb-2013	15-Feb-2017	115J09
BATTLE	YC96302	BATTLE 2	15-Feb-2013	15-Feb-2017	115J09
BATTLE	YC96303	BATTLE 3	15-Feb-2013	15-Feb-2017	115J09
BATTLE	YC96304	BATTLE 4	15-Feb-2013	15-Feb-2017	115J09
BATTLE	YC96305	BATTLE 5	15-Feb-2013	15-Feb-2017	115J09
BATTLE	YC96306	BATTLE 6	15-Feb-2013	15-Feb-2017	115J09
BATTLE	YC96307	BATTLE 7	15-Feb-2013	15-Feb-2017	115J09
BATTLE	YC96308	BATTLE 8	15-Feb-2013	15-Feb-2017	115J09
BATTLE	YC96309	BATTLE 9	15-Feb-2013	15-Feb-2017	115J09
BATTLE	YC96310	BATTLE 10	15-Feb-2013	15-Feb-2017	115J09
BATTLE	YC96311	BATTLE 11	15-Feb-2013	15-Feb-2017	115J09
BATTLE	YC96312	BATTLE 12	15-Feb-2013	15-Feb-2017	115J09
BATTLE	YC96313	BATTLE 13	15-Feb-2013	15-Feb-2017	115J09
BATTLE	YC96314	BATTLE 14	15-Feb-2013	15-Feb-2017	115J09
BATTLE	YC96315	BATTLE 15	15-Feb-2013	15-Feb-2017	115J09
BATTLE	YC96316	BATTLE 16	15-Feb-2013	15-Feb-2017	115J09
BATTLE	YC96317	BATTLE 17	15-Feb-2013	15-Feb-2017	115J09
BATTLE	YC96318	BATTLE 18	15-Feb-2013	15-Feb-2017	115J09
BATTLE	YC96319	BATTLE 19	15-Feb-2013	15-Feb-2017	115J09
BATTLE	YC96320	BATTLE 20	15-Feb-2013	15-Feb-2017	115J09



MAPINFO_ID	SampleID	Easting	Northing	Au_PPb	Ag_PPb	As_PPM	Pb_PPb	Zn_PPM
1	CAG307751	635,194	6,954,387	-999	-999	-999	-999	-999
2	CAG307752	635,393	6,954,442	2.5	78	9.9	11.41	88
3	CAG307753	635,639	6,954,517	1.7	123	18.5	18.14	89.5
4	CAG307754	635,879	6,954,620	2	417	19.4	31.38	95.2
5	CAG307755	636,129	6,954,617	1.1	206	18.9	32.26	104.5
6	CAG307756	636,377	6,954,700	0.8	245	15.9	59.18	247.6
7	CAG307757	636,626	6,954,749	1.5	265	12.9	61	232.2
8	CAG307758	636,867	6,954,710	1.4	402	12.8	89.51	339.8
9	CAG307759	637,084	6,954,572	0.7	278	12.1	77	285.8

Selene Holdings L.P.

Battle Group

HW07058

Location Map:

Stream Sediment Samples

Date: 12/11/2012
 Author:
 Office:
 Drawing:

Scale: 1:10000 Projection: NAD83, Zone 7

0 125 250 500
 metres

Kinross Gold Corp. / Selene Holdings L.P.

Battle Group

HW03322

Stream Sediment Samples

Index	SampleID	Claim	Sampler	Mesh_Size	Date	Easting	Northing
1	CAG307751		JP	12	26-Aug-12	635194	6954387
2	CAG307752		JP	12	26-Aug-12	635393	6954442
3	CAG307753		JP	12	26-Aug-12	635639	6954517
4	CAG307754	YC96312	JP	12	26-Aug-12	635879	6954620
5	CAG307755	YC96312	JP	12	26-Aug-12	636129	6954617
6	CAG307756	YC96313	JP	12	26-Aug-12	636377	6954700
7	CAG307757	YC96313	JP	12	26-Aug-12	636626	6954749
8	CAG307758	YC96315	JP	12	26-Aug-12	636867	6954710
9	CAG307759	YC96316	JP	12	26-Aug-12	637084	6954572
10	CAG307760	YC96318	JP	12	26-Aug-12	637269	6954420

Kinross Gold Corp. / Selene Holdings L.P.
 Battle Group
 HW03322
 Stream Sediment Samples

Index	SampleID	Au_PPb	Ag_PPb	Al_pct	As_PPM	B_PPM	Ba_PPM	Bi_PPM	Ca_pct	Cd_PPM	Co_PPM	Cr_PPM
1	CAG307751	-999	-999	-999	-999	-999	-999	-999	-999	-999	-999	-999
2	CAG307752	2.5	78	1.03	9.9	2	232.1	0.2	0.32	0.25	8.6	10.7
3	CAG307753	1.7	123	0.9	18.5	2	352.5	0.12	0.32	0.27	7.8	10.9
4	CAG307754	2	417	0.72	19.4	1	382.5	0.16	0.36	0.46	9	9.3
5	CAG307755	1.1	206	0.66	18.9	2	438.5	0.17	0.36	0.47	8.6	9.6
6	CAG307756	0.8	245	0.61	15.9	2	539	0.26	0.42	1.86	9.1	7.5
7	CAG307757	1.5	265	0.6	12.9	2	410.2	0.31	0.41	1.79	7.4	7.4
8	CAG307758	1.4	402	0.54	12.8	1	396.7	0.37	0.47	2.92	8.5	6.8
9	CAG307759	0.7	278	0.51	12.1	0.5	384.3	0.29	0.43	2.5	8.3	6.6
10	CAG307760	0.8	218	0.62	10.7	1	405.9	0.25	0.45	1.6	8.3	7.5

Kinross Gold Corp. / Selene Holdings L.P.
 Battle Group
 HW03322
 Stream Sediment Samples

Index	SampleID	Cu_PPM	Fe_pct	Ga_PPM	Hg_PPB	K_pct	La_PPM	Mg_pct	Mn_PPM	Mo_PPM	Na_pct	Ni_PPM
1	CAG307751	-999	-999	-999	-999	-999	-999	-999	-999	-999	-999	-999
2	CAG307752	5.27	2.93	4	14	0.12	31.7	0.43	748	1.8	0.007	7
3	CAG307753	4.98	2.67	3.2	24	0.11	37.6	0.37	690	1.39	0.007	6.6
4	CAG307754	5.58	2.99	2.7	46	0.09	33.2	0.28	869	1.39	0.006	6.6
5	CAG307755	5.89	2.88	2.2	61	0.1	41.3	0.27	821	1.24	0.006	6.6
6	CAG307756	5.74	2.96	2.1	143	0.1	36	0.26	891	1.39	0.006	6.3
7	CAG307757	5.77	2.46	2	129	0.09	32.3	0.25	718	1.12	0.006	5.5
8	CAG307758	6.38	2.52	1.8	210	0.09	29.9	0.25	834	1.07	0.006	5.6
9	CAG307759	5.57	2.65	1.9	148	0.09	32.4	0.23	836	1.03	0.005	5.2
10	CAG307760	6.55	2.71	2.3	116	0.1	31.6	0.28	887	1.16	0.006	5.9

Kinross Gold Corp. / Selene Holdings L.P.
 Battle Group
 HW03322
 Stream Sediment Samples

Index	SampleID	Pb_PPM	P_pct	S_pct	Sb_PPM	Sc_PPM	Se_PPM	Sr_PPM	Te_PPM	Th_PPM	Ti_pct	Tl_PPM
1	CAG307751	-999	-999	-999	-999	-999	-999	-999	-999	-999	-999	-999
2	CAG307752	11.41	0.063	0.01	0.82	3.5	0.05	15.4	0.04	10.2	0.065	0.16
3	CAG307753	18.14	0.063	0.01	0.97	3.4	0.05	40	0.02	13.6	0.048	0.14
4	CAG307754	31.38	0.069	0.04	1.87	3.9	0.05	36.3	0.03	14.9	0.021	0.11
5	CAG307755	32.26	0.069	0.04	1.54	3.9	0.05	40.7	0.03	17.2	0.02	0.12
6	CAG307756	59.18	0.072	0.03	1.42	4.3	0.05	53.7	0.01	17.4	0.008	0.1
7	CAG307757	61	0.062	0.05	1.41	3.8	0.1	50.2	0.01	15.2	0.01	0.1
8	CAG307758	89.51	0.064	0.07	1.53	3.9	0.1	47.5	0.02	15.4	0.008	0.11
9	CAG307759	77	0.066	0.07	1.28	3.9	0.05	42.8	0.01	16.7	0.007	0.1
10	CAG307760	57.17	0.065	0.04	1.16	4.7	0.1	47.5	0.01	15.6	0.014	0.1

Kinross Gold Corp. / Selene Holdings L.P.
Battle Group
HW03322
Stream Sediment Samples

Index	SampleID	U_PPM	V_PPM	W_PPM	Zn_PPM
1	CAG307751	-999	-999	-999	-999
2	CAG307752	1.6	51	1.7	88
3	CAG307753	2.3	44	2.4	89.5
4	CAG307754	2.9	39	1.5	95.2
5	CAG307755	3.2	40	1.6	104.5
6	CAG307756	3.4	36	0.9	247.6
7	CAG307757	3.3	34	1	232.2
8	CAG307758	3.8	33	0.9	339.8
9	CAG307759	3.2	36	1	285.8
10	CAG307760	4.1	39	0.9	216.3



77 Collins Lane Whitehorse YK Y1A 0A8 Canada

Acme Analytical Laboratories (Whitehorse) Ltd.

www.acmelab.com

Client: Selene Holdings LP
Suite 410, 700 W. Pender Street
Vancouver BC V6C 1G8 Canada

Submitted By: Jean-Pierre Londero
Receiving Lab: Canada-Whitehorse
Received: September 06, 2012
Report Date: September 26, 2012
Page: 1 of 2

CERTIFICATE OF ANALYSIS

WHI12000841.1

CLIENT JOB INFORMATION

Project: White Gold
Shipment ID: WG02332012
P.O. Number
Number of Samples: 10

SAMPLE DISPOSAL

STOR-PLP Store After 90 days Invoice for Storage
STOR-RJT-SOIL Store Soil Reject - RJSV Charges Apply

Acme does not accept responsibility for samples left at the laboratory after 90 days without prior written instructions for sample storage or return.

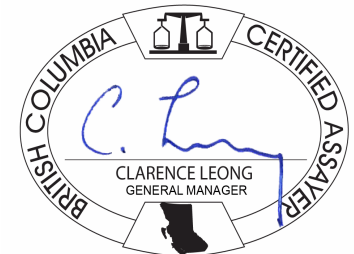
Invoice To: Selene Holdings LP
Suite 410, 700 W. Pender Street
Vancouver BC V6C 1G8
Canada

CC: Keith Fowlow

SAMPLE PREPARATION AND ANALYTICAL PROCEDURES

Table with 6 columns: Method Code, Number of Samples, Code Description, Test Wgt (g), Report Status, Lab. Rows include methods like Dry at 60C, SS80, RJSV, and 1F02.

ADDITIONAL COMMENTS



This report supersedes all previous preliminary and final reports with this file number dated prior to the date on this certificate. Signature indicates final approval; preliminary reports are unsigned and should be used for reference only. All results are considered the confidential property of the client. Acme assumes the liabilities for actual cost of analysis only. Results apply to samples as submitted. ** asterisk indicates that an analytical result could not be provided due to unusually high levels of interference from other elements.



77 Collins Lane Whitehorse YK Y1A 0A8 Canada
Phone 867-393-4725 Fax 867-393-4775

Acme Analytical Laboratories (Whitehorse) Ltd.

www.acmelab.com

Client: **Selene Holdings LP**
Suite 410, 700 W. Pender Street
Vancouver BC V6C 1G8 Canada

Project: White Gold
Report Date: September 26, 2012

Page: 2 of 2

Part: 1 of 1

CERTIFICATE OF ANALYSIS

WHI12000841.1

Method	1F15	1F15	1F15	1F15	1F15	1F15	1F15	1F15	1F15	1F15	1F15	1F15	1F15	1F15	1F15	1F15	1F15	1F15	1F15	1F15	1F15
Analyte	Mo	Cu	Pb	Zn	Ag	Ni	Co	Mn	Fe	As	U	Au	Th	Sr	Cd	Sb	Bi	V	Ca	P	
Unit	ppm	ppm	ppm	ppm	ppb	ppm	ppm	ppm	%	ppm	ppm	ppb	ppm	ppm	ppm	ppm	ppm	ppm	%	%	
MDL	0.01	0.01	0.01	0.1	2	0.1	0.1	1	0.01	0.1	0.1	0.2	0.1	0.5	0.01	0.02	0.02	2	0.01	0.001	
CAG307751	Sediment	I.S.	I.S.	I.S.	I.S.	I.S.	I.S.	I.S.	I.S.	I.S.	I.S.	I.S.	I.S.	I.S.	I.S.	I.S.	I.S.	I.S.	I.S.	I.S.	I.S.
CAG307752	Sediment	1.80	5.27	11.41	88.0	78	7.0	8.6	748	2.93	9.9	1.6	2.5	10.2	15.4	0.25	0.82	0.20	51	0.32	0.063
CAG307753	Sediment	1.39	4.98	18.14	89.5	123	6.6	7.8	690	2.67	18.5	2.3	1.7	13.6	40.0	0.27	0.97	0.12	44	0.32	0.063
CAG307754	Sediment	1.39	5.58	31.38	95.2	417	6.6	9.0	869	2.99	19.4	2.9	2.0	14.9	36.3	0.46	1.87	0.16	39	0.36	0.069
CAG307755	Sediment	1.24	5.89	32.26	104.5	206	6.6	8.6	821	2.88	18.9	3.2	1.1	17.2	40.7	0.47	1.54	0.17	40	0.36	0.069
CAG307756	Sediment	1.39	5.74	59.18	247.6	245	6.3	9.1	891	2.96	15.9	3.4	0.8	17.4	53.7	1.86	1.42	0.26	36	0.42	0.072
CAG307757	Sediment	1.12	5.77	61.00	232.2	265	5.5	7.4	718	2.46	12.9	3.3	1.5	15.2	50.2	1.79	1.41	0.31	34	0.41	0.062
CAG307758	Sediment	1.07	6.38	89.51	339.8	402	5.6	8.5	834	2.52	12.8	3.8	1.4	15.4	47.5	2.92	1.53	0.37	33	0.47	0.064
CAG307759	Sediment	1.03	5.57	77.00	285.8	278	5.2	8.3	836	2.65	12.1	3.2	0.7	16.7	42.8	2.50	1.28	0.29	36	0.43	0.066
CAG307760	Sediment	1.16	6.55	57.17	216.3	218	5.9	8.3	887	2.71	10.7	4.1	0.8	15.6	47.5	1.60	1.16	0.25	39	0.45	0.065



77 Collins Lane Whitehorse YK Y1A 0A8 Canada
 Phone 867-393-4725 Fax 867-393-4775

Acme Analytical Laboratories (Whitehorse) Ltd.

www.acmelab.com

Client: Selene Holdings LP
 Suite 410, 700 W. Pender Street
 Vancouver BC V6C 1G8 Canada

Project: White Gold
Report Date: September 26, 2012

Page: 2 of 2

Part: 2 of 1

CERTIFICATE OF ANALYSIS

WHI12000841.1

Method	1F15	1F15	1F15	1F15	1F15	1F15	1F15	1F15	1F15	1F15	1F15	1F15	1F15	1F15	1F15	1F15	1F15	
Analyte	La	Cr	Mg	Ba	Ti	B	Al	Na	K	W	Sc	Tl	S	Hg	Se	Te	Ga	
Unit	ppm	ppm	%	ppm	%	ppm	%	%	%	ppm	ppm	ppm	%	ppb	ppm	ppm	ppm	
MDL	0.5	0.5	0.01	0.5	0.001	1	0.01	0.001	0.01	0.1	0.1	0.02	0.02	5	0.1	0.02	0.1	
CAG307751	Sediment	I.S.	I.S.	I.S.	I.S.	I.S.	I.S.	I.S.	I.S.	I.S.	I.S.	I.S.	I.S.	I.S.	I.S.	I.S.	I.S.	
CAG307752	Sediment	31.7	10.7	0.43	232.1	0.065	2	1.03	0.007	0.12	1.7	3.5	0.16	<0.02	14	<0.1	0.04	4.0
CAG307753	Sediment	37.6	10.9	0.37	352.5	0.048	2	0.90	0.007	0.11	2.4	3.4	0.14	<0.02	24	<0.1	0.02	3.2
CAG307754	Sediment	33.2	9.3	0.28	382.5	0.021	1	0.72	0.006	0.09	1.5	3.9	0.11	0.04	46	<0.1	0.03	2.7
CAG307755	Sediment	41.3	9.6	0.27	438.5	0.020	2	0.66	0.006	0.10	1.6	3.9	0.12	0.04	61	<0.1	0.03	2.2
CAG307756	Sediment	36.0	7.5	0.26	539.0	0.008	2	0.61	0.006	0.10	0.9	4.3	0.10	0.03	143	<0.1	<0.02	2.1
CAG307757	Sediment	32.3	7.4	0.25	410.2	0.010	2	0.60	0.006	0.09	1.0	3.8	0.10	0.05	129	0.1	<0.02	2.0
CAG307758	Sediment	29.9	6.8	0.25	396.7	0.008	1	0.54	0.006	0.09	0.9	3.9	0.11	0.07	210	0.1	0.02	1.8
CAG307759	Sediment	32.4	6.6	0.23	384.3	0.007	<1	0.51	0.005	0.09	1.0	3.9	0.10	0.07	148	<0.1	<0.02	1.9
CAG307760	Sediment	31.6	7.5	0.28	405.9	0.014	1	0.62	0.006	0.10	0.9	4.7	0.10	0.04	116	0.1	<0.02	2.3



77 Collins Lane Whitehorse YK Y1A 0A8 Canada
 Phone 867-393-4725 Fax 867-393-4775

Acme Analytical Laboratories (Whitehorse) Ltd.

www.acmelab.com

Client: Selene Holdings LP
 Suite 410, 700 W. Pender Street
 Vancouver BC V6C 1G8 Canada

Project: White Gold
Report Date: September 26, 2012

Page: 1 of 1

Part: 1 of 1

QUALITY CONTROL REPORT

WHI12000841.1

Method	1F15	1F15	1F15	1F15	1F15	1F15	1F15	1F15	1F15	1F15	1F15	1F15	1F15	1F15	1F15	1F15	1F15	1F15	1F15	1F15		
Analyte	Mo	Cu	Pb	Zn	Ag	Ni	Co	Mn	Fe	As	U	Au	Th	Sr	Cd	Sb	Bi	V	Ca	P		
Unit	ppm	ppm	ppm	ppm	ppb	ppm	ppm	ppm	%	ppm	ppm	ppb	ppm	ppm	ppm	ppm	ppm	ppm	%	%		
MDL	0.01	0.01	0.01	0.1	2	0.1	0.1	1	0.01	0.1	0.1	0.2	0.1	0.5	0.01	0.02	0.02	2	0.01	0.001		
Pulp Duplicates																						
CAG307760	Sediment	1.16	6.55	57.17	216.3	218	5.9	8.3	887	2.71	10.7	4.1	0.8	15.6	47.5	1.60	1.16	0.25	39	0.45	0.065	
REP CAG307760	QC	1.05	6.23	58.48	214.7	213	5.7	8.0	868	2.66	11.0	4.1	1.8	15.1	46.5	1.60	1.26	0.24	38	0.43	0.064	
Reference Materials																						
STD DS9	Standard	13.44	104.8	119.1	309.2	1897	38.7	7.5	586	2.31	24.6	2.6	131.1	6.2	68.9	2.27	5.17	5.47	40	0.75	0.083	
STD DS9 Expected		12.84	108	126	317	1830	40.3	7.6	575	2.33	25.5	2.69	118	6.38	69.6	2.4	4.94	6.32	40	0.7201	0.0819	
BLK	Blank	<0.01	<0.01	<0.01	<0.1	4	<0.1	<0.1	<1	<0.01	<0.1	<0.1	<0.1	<0.2	<0.1	<0.5	<0.01	<0.02	<0.02	<2	<0.01	<0.001



77 Collins Lane Whitehorse YK Y1A 0A8 Canada
 Phone 867-393-4725 Fax 867-393-4775

Acme Analytical Laboratories (Whitehorse) Ltd.

www.acmelab.com

Client: Selene Holdings LP
 Suite 410, 700 W. Pender Street
 Vancouver BC V6C 1G8 Canada

Project: White Gold
Report Date: September 26, 2012

Page: 1 of 1

Part: 2 of 1

QUALITY CONTROL REPORT

WHI12000841.1

Method	1F15	1F15	1F15	1F15	1F15	1F15	1F15	1F15	1F15	1F15	1F15	1F15	1F15	1F15	1F15	1F15	1F15	
Analyte	La	Cr	Mg	Ba	Ti	B	Al	Na	K	W	Sc	Tl	S	Hg	Se	Te	Ga	
Unit	ppm	ppm	%	ppm	%	ppm	%	%	%	ppm	ppm	ppm	%	ppb	ppm	ppm	ppm	
MDL	0.5	0.5	0.01	0.5	0.001	1	0.01	0.001	0.01	0.1	0.1	0.02	0.02	5	0.1	0.02	0.1	
Pulp Duplicates																		
CAG307760	Sediment	31.6	7.5	0.28	405.9	0.014	1	0.62	0.006	0.10	0.9	4.7	0.10	0.04	116	0.1	<0.02	2.3
REP CAG307760	QC	32.6	7.3	0.27	416.2	0.014	1	0.61	0.006	0.10	0.9	4.6	0.10	0.04	95	0.1	0.03	2.1
Reference Materials																		
STD DS9	Standard	15.0	114.7	0.64	305.6	0.114	3	1.03	0.085	0.41	3.1	2.6	5.75	0.16	226	5.4	5.27	5.0
STD DS9 Expected		13.3	121	0.6165	295	0.1108		0.9577	0.0853	0.395	2.89	2.5	5.3	0.1615	200	5.2	5.02	4.59
BLK	Blank	<0.5	<0.5	<0.01	<0.5	<0.001	<1	<0.01	<0.001	<0.01	<0.1	<0.1	<0.02	<0.02	<5	<0.1	<0.02	<0.1

Kinross Gold Corp. / Selene Holdings L.P.
Whitehorse Mining District
Battle Group - HW07058
Statement of Expenditure

Description	Cost	Unit	Battle HW07058 (20claims)	
			Quantity	Quantity
<u>Professional Fees and Wages</u>				
Trenching				
Geologist (supervised trenching)	\$375.00	Day	0	\$ -
Sampler	\$275.00	Day	0	\$ -
Supervisor (during back-filling of trenches)	\$275.00	Day	0	\$ -
Report redaction, map generation...	\$375.00	Day	0	\$ -
Stream Sediment Sampling Survey				
Geologist	\$450.00	Day	1	\$450
Assistant Geologist	\$275.00	Day	1	\$275
Assistant Geologist	\$275.00	Day	1	\$275
Report redaction, map generation...	\$450.00	Day	1	\$450
Soil Sampling				
Technician	\$300.00	Day	0	\$ -
Technician	\$250.00	Day	0	\$ -
Report redaction, map generation...	\$375.00	Day	0	\$ -
Mapping/Propsecting				
Geologist (mapper)	\$450.00	Day	1	\$450
Assistant Geologist (mapper)	\$275.00	Day	1	\$275
Assistant Geologist (mapper)	\$275.00	Day	1	\$275
Report redaction, map generation, data compilation...	\$450.00	Day	1	\$450
<u>Expenses</u>				
Trenching				
Accomodation geologist (Selene Holdings L.P.)	\$150.00	Day	0	\$ -
Accomodation sampler (Selene Holdings L.P.)	\$150.00	Day	0	\$ -
Accomodation supervisor (Selene Holdings L.P.)	\$150.00	Day	0	\$ -
Accomodation trencherA (Talus Exploration Inc.)	\$150.00	Day	0	\$ -
Accomodation trencherB(Talus Exploration Inc.)	\$150.00	Day	0	\$ -
Aircraft & Helicopter (Fireweeds Helicopter)	\$1,400.00	Hours	0	\$ -
Stream Sediment Sampling Program				
Accomodation Stream Sampler	\$150.00	Day	1	\$150
Accomodation Ass. Stream Sampler	\$150.00	Day	1	\$150
Accomodation Ass. Stream Sampler	\$150.00	Day	1	\$150
Aircraft & Helicopter (Fireweeds Helicopter)	\$1,400.00	Hours	2	\$2,800
Soil Sampling				
Accomodation sampler (Selene Holdings L.P.)	\$150.00	Day	0	\$ -
Accomodation sampler (Selene Holdings L.P.)	\$150.00	Day	0	\$ -
Aircraft & Helicopter (Fireweeds Helicopter)	\$1,400.00	Hours	0	\$ -
Mapping/Prospecting				
Accomodation Geologist	\$150.00	Day	1	\$150
Accomodation Ass. Geologist	\$150.00	Day	1	\$150
Accomodation Ass. Geologist	\$150.00	Day	1	\$150
Aircraft & Helicopter (Fireweeds Helicopter)	\$1,400.00	Hours	2	\$2,800
Chemical Analysis				
Soil Samples	\$21.40	Sample	0	\$ -
Trench samples	\$33.21	Sample	0	\$ -
Stream Sediment Samples	\$24.32	Sample	7	\$ 170.24
Contract Crew				
Trenching (Talus Exploration)	\$11.46	Meter	0	\$ -
Trenching (back-filling Tallus Expl.)	\$11.46	Meter	0	\$ -
TOTAL				\$ 9,570.24