

ASSESSMENT REPORT, 2012 GEOCHEMICAL SAMPLING PROGRAM

ALW PROPERTY

WATSON LAKE MINING DISTRICT, YUKON, CANADA

NTS MAP SHEET: 105I/03, NAD83 ZONE 9

477936 E, 6876484 N (NAD83 zone 9)

CLAIMS AND OWNER:

Claim Name	Number	Grant Number	Registered Owner
ALW	7	YE02007	Golden Predator Canada Corp. - 100%
ALW	9-23	YE02009-YE02023	Golden Predator Canada Corp. - 100%
ALW	35	YE02035	Golden Predator Canada Corp. - 100%
ALW	37-56	YE02037-YE02056	Golden Predator Canada Corp. - 100%
ALW	67-86	YE02067-YE02086	Golden Predator Canada Corp. - 100%
ALW	88	YE02088	Golden Predator Canada Corp. - 100%
ALW	99-114	YE02099-YE02114	Golden Predator Canada Corp. - 100%
ALW	116	YE02116	Golden Predator Canada Corp. - 100%
ALW	129	YE02129	Golden Predator Canada Corp. - 100%
ALW	131-142	YE02131-YE02142	Golden Predator Canada Corp. - 100%
ALW	144	YE02144	Golden Predator Canada Corp. - 100%
ALW	161-172	YE02161-YE02172	Golden Predator Canada Corp. - 100%
ALW	174	YE02174	Golden Predator Canada Corp. - 100%
ALW	193-200	YE02193-YE02200	Golden Predator Canada Corp. - 100%
ALW	202	YE02202	Golden Predator Canada Corp. - 100%

PERIOD OF WORK: JUNE 29, 2012

OPERATOR:

GOLDEN PREDATOR CANADA CORP.

#1 Lindeman Road
Whitehorse, Yukon
Canada Y1A 5Z7

November, 2012

Prepared by:

Gilles Dessureau, M.Sc., P.Geo.

TABLE OF CONTENTS

TABLE OF CONTENTS	2
LIST OF FIGURES	2
LIST OF TABLES	2
LIST OF APPENDICES	3
1.0 INTRODUCTION	4
2.0 PROPERTY LOCATION AND DESCRIPTION	4
3.0 INFRASTRUCTURE, CLIMATE AND PHYSIOGRAPHY	5
4.0 EXPLORATION HISTORY	6
5.0 GEOLOGY	6
5.1 Regional Geology	6
5.2 Property Geology	6
6.0 EXPLORATION.....	8
6.1 Exploration Program.....	8
6.2 Sampling Methodology and Protocols.....	8
6.3 Results.....	10
7.0 CONCLUSIONS AND RECOMMENDATIONS	10
8.0 2011 EXPENDITURES.....	12
9.0 STATEMENT OF AUTHORSHIP	14
10.0 REFERENCES	15

LIST OF FIGURES

Figure 2.1. ALW Property Location, Yukon Territory.....	4
Figure 2.2. ALW Project Claim Map.....	5
Figure 5.1. Regional Geology of the ALW Area.....	8
Figure 6.1. Regional Geology of the ALW area showing Au in soils results.....	10

LIST OF TABLES

Table 2.1. ALW claim information.....	4
Table 8-1. 2012 Expenditures	12

LIST OF APPENDICES

- Appendix 1 Certificate of Author
- Appendix 2 Analytical Summary and Sample Descriptions
- Appendix 3 Assay Certificates
- Appendix 4 Description of Analytical Methods and Detection Limits
- Appendix 5 Soil Geochemical Plots for Select Elements

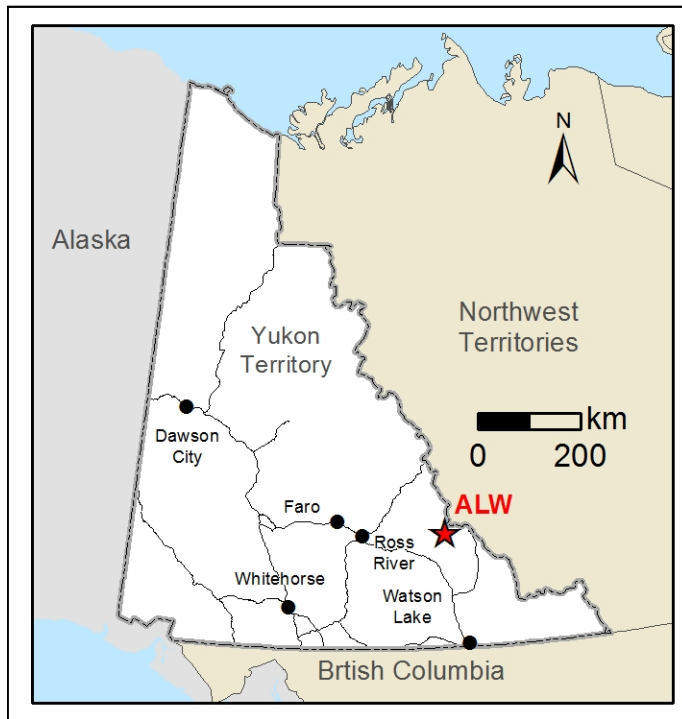
1.0 INTRODUCTION

The ALW property consists of 111 contiguous mineral claims covering an area of approximately 23.1km², and is located in the Logan Mountain in the Selwyn Basin, central Yukon. In 2011, Golden Predator Canada Corp. (Golden Predator) staked the claims and owns a 100% unencumbered interest in the property.

This report describes the results of a 1 day field program where 9 stream sediment samples were collected on the property. The samples were collected under the supervision of Linda Lewis for Golden Predator who was no longer employed by the company at the time the report was written.

2.0 PROPERTY LOCATION AND DESCRIPTION

The property is located in the Logan Mountain, in the Selwyn Basin in central Yukon. The centre



of the property is located at 477936 E, 6876484 N (NAD83 zone 9) on NTS Mapsheet 105I/03. The nearest settlement is the Town of Ross River, which is located approximately 160 km west-southwest of the property (Figure 2-1). The property was accessed by helicopter from Ross River. The property is located in the Watson Lake Mining District, and consists of 111 contiguous mineral claims covering an aggregate area of 23.1km² (Table 2-1, Figure 2-2).

Figure 2.1. ALW Property Location, Yukon Territory

Table 2.1. ALW claim information

Claim Name	Number	Grant Number	Registered Owner	Expiry Date
ALW	7	YE02007	Golden Predator Canada Corp. - 100%	10/6/2013
ALW	9-23	YE02009-YE02023	Golden Predator Canada Corp. - 100%	10/6/2013
ALW	35	YE02035	Golden Predator Canada Corp. - 100%	10/6/2013
ALW	37-56	YE02037-YE02056	Golden Predator Canada Corp. - 100%	10/6/2013
ALW	67-86	YE02067-YE02086	Golden Predator Canada Corp. - 100%	10/6/2013
ALW	88	YE02088	Golden Predator Canada Corp. - 100%	10/6/2013
ALW	99-114	YE02099-YE02114	Golden Predator Canada Corp. - 100%	10/6/2013
ALW	116	YE02116	Golden Predator Canada Corp. - 100%	10/6/2013
ALW	129	YE02129	Golden Predator Canada Corp. - 100%	10/6/2013

ALW	131-142	YE02131-YE02142	Golden Predator Canada Corp. - 100%	10/6/2013
ALW	144	YE02144	Golden Predator Canada Corp. - 100%	10/6/2013
ALW	161-172	YE02161-YE02172	Golden Predator Canada Corp. - 100%	10/6/2013
ALW	174	YE02174	Golden Predator Canada Corp. - 100%	10/6/2013
ALW	193-200	YE02193-YE02200	Golden Predator Canada Corp. - 100%	10/6/2013
ALW	202	YE02202	Golden Predator Canada Corp. - 100%	10/6/2013

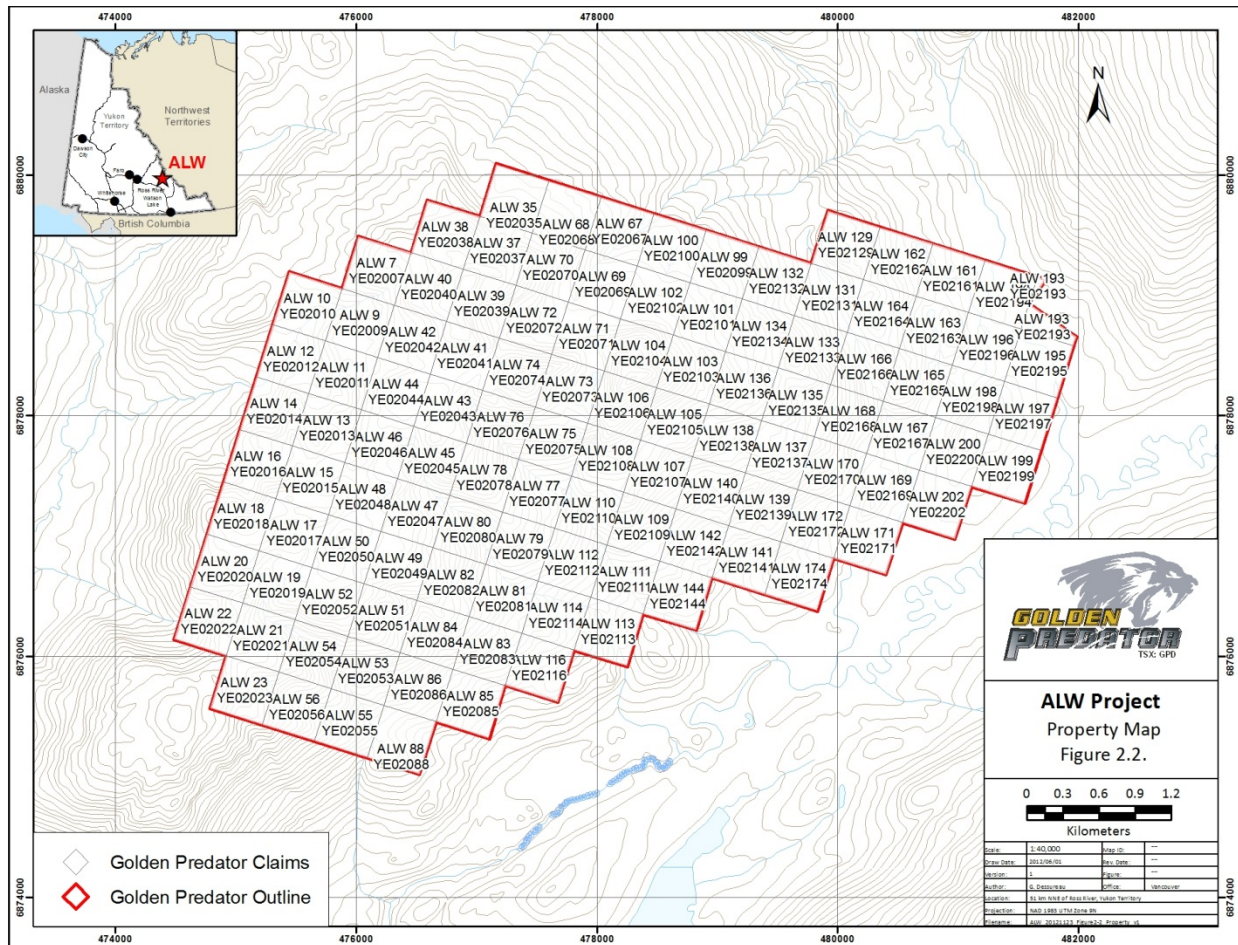


Figure 2.2. ALW Project Claim Map

3.0 INFRASTRUCTURE, CLIMATE AND PHYSIOGRAPHY

The ALW Property is located 160 km east-northeast of Ross River, Yukon and lies approximately 60 km north of the Robert Campbell Highway and 45 km west of the North Canal Road. Ross River is accessible by air from Whitehorse and is approximately 7 hours driving from Whitehorse.

The property lies within the Logan Mountain in the Selwyn Basin, which is characterized by moderate to steep relief with elevations ranging from 800m to 1800m.

The ALW Property is located at approximately 62° north latitude and is subject to a subarctic climate with average temperatures ranging from 15 °C (60 °F) in July to -26 °C (-16 °F) in January with temperatures commonly reaching above 30 °C (86 °F) in the summer and below -40 °C (-40 °F) in the winter. Average annual precipitation for Ross River is 225 mm and the annual frost free days is approximately 110 days. South facing slopes are generally snow free from early May, with frost leaving the ground by the middle to end of May. North facing slopes are generally free of snow by mid to end of May, with permafrost often remaining year-round. The property is near the tree-line and the vegetation is dominated by buck brush and stunted spruce trees.

4.0 EXPLORATION HISTORY

The ALW property itself does not have any documented exploration, however several companies have explored due south of the ALW property looking for skarn-type mineralization as well as SEDEX and possibly VMS-style mineralization.

More recently the Selwyn Basin has been the focus of gold exploration looking for structurally hosted, intrusion related, or epithermal style deposits. The property lies approximately 10km southwest of Goldstrike Resources Ltd's Big One property where samples up to 18.551 g/t Au have been collected (<http://www.goldstrikeresources.com>), approximately 27km west of Ryan Gold's Horn Property (<http://www.ryangold.com>), and approximately 66km away from Northern Tiger's 3 Aces Property (www.northern-tiger.com/).

5.0 GEOLOGY

5.1 Regional Geology

The ALW property covers a thick sequence of Proterozoic and Paleozoic sedimentary rocks of the Selwyn Basin which represent the western margin of ancestral North America.

Several small to medium sized, Mid-Cretaceous, quartz monzonite plutons have intruded the metasediments to the south of the property and have been explored historically for skarn mineralization at or near the thermal aureole of the intrusion.

5.2 Property Geology

The basement rocks underlying the ALW Property consist of Proterozoic clastic rocks of the Selwyn Basin consist of dominantly Hyland Group metasediments (Gordey, S.P., 1992). The Hyland Group is the oldest exposed unit of Selwyn Basin and is divided into two formations: a lower coarse-grained quartz-rich turbidite succession and interbedded shales of the Yusezyu Formation and the overlying maroon to dark grey and green shale and limestone of the Narchilla

Formation. The northern portion of the ALW property is underlain by the Narchilla Formation and the southern portion of the property is underlain by the Yusezyu Formation.

The following description of the Yusezu and Narchilla Formations was taken from the Yukon Geological Survey Website (<http://www.geology.gov.yk.ca/metallogeny/selwyn/intro.html>).

Yusezyu Formation (PCH1)

The Yusezyu Formation consists of several km- thick thick succession of medium to coarse-grained quartzose sandstone and grit to quartz-pebble conglomerate, with interbedded shale and siltstone. The coarse clastics rocks (sandstone, grit, pebble conglomerate) were deposited in submarine fans from sediment gravity flows or turbidites. The uppermost part of the formation is variably calcareous, with silica cement locally replaced by carbonate cement. Limestone is a minor constituent (P_CH2) and can occur throughout the formation but forms a thin, discontinuous member at the top of the formation. The upper part of the Yusezyu Formation is latest Precambrian based on primitive trace fossils from beneath the upper limestone member.

Narchilla Formation (PCH3)

The Narchilla Formation consists of several hundred meters of recessive maroon to dark-blue, grey, brown, buff and green weathering shale and siltstone, interbedded with fine-grained quartzose sandstone. Centimeter-scale colour banding within the shale often forms a characteristic striped pattern. Limestone beds may be present. In northern Lansing map area, the top of the Narchilla Formation contains mafic flows. The age of the Narchilla formation is late Precambrian to Early Cambrian, based on the widespread presence of the Early Cambrian fossil *Oldhamia Radiata* in the upper part of the formation. The Narchilla Formation is interpreted to be deposited below wave base in relatively deep water. The basal contact with the underlying Yusezyu Formation is considered conformable. The top of the formation is defined at the conformable (-) base of the limestone conglomerate, buff slate, or volcanoclastic rocks of the Gull Lake Formation.

The Hyland Group consists of thick turbidite deposits. The Yusezyu Formation is probably reworked from a pre-existing sedimentary source, perhaps itself derived from a granitic and possibly high-grade metamorphic terrane. Sedimentary textures suggest rapid erosion and deposition as sediment gravity flows (turbidites), such as in submarine fans, in shallow to moderate water depth. Sedimentary structures in the Narchilla Formation are consistent with gravity flows (turbidites). Limited paleocurrent data suggest a west or southwest source for the Hyland Group. Cambrian mafic sills intrude the Hyland Group and may be feeders to overlying Cambro-Ordovician basalts.

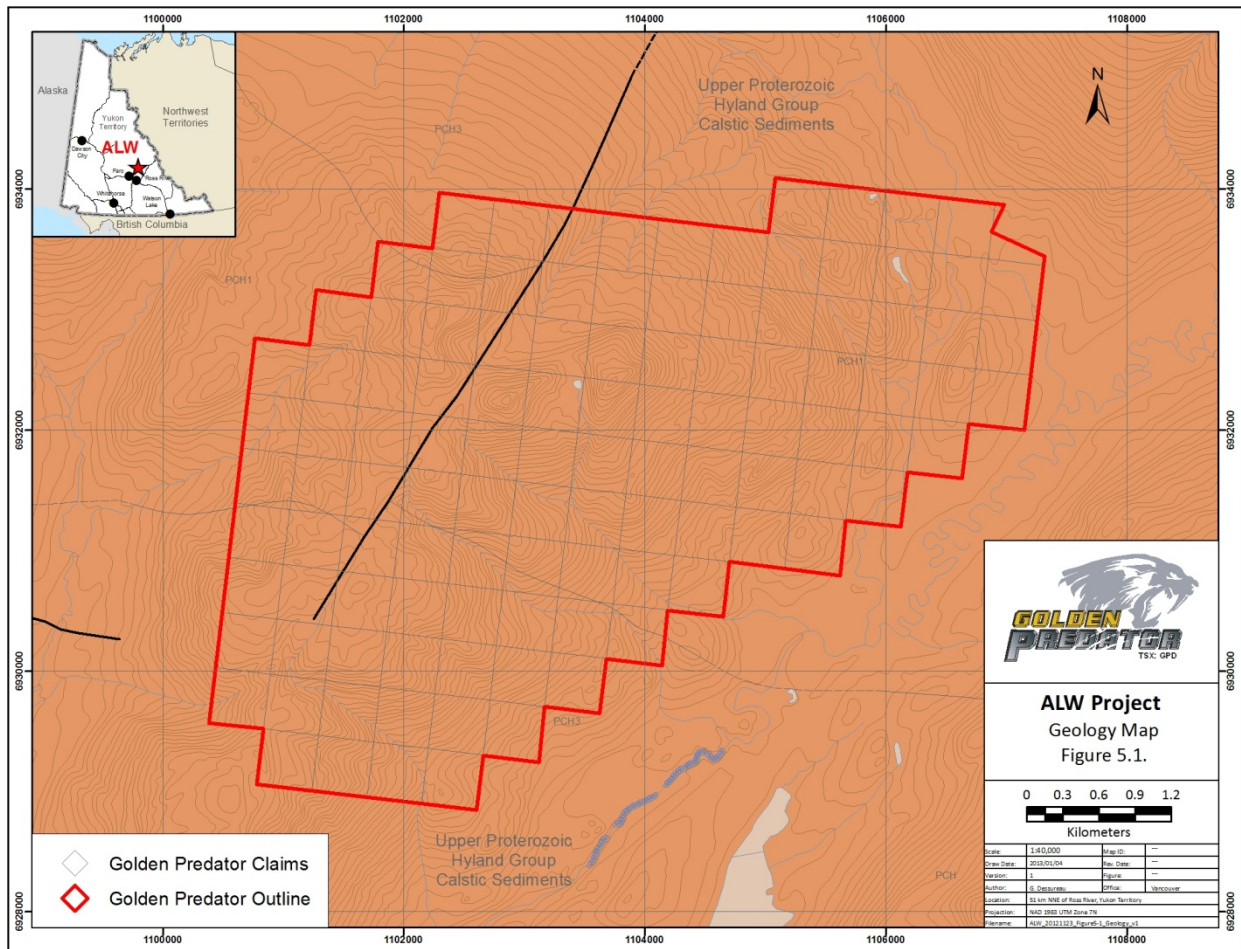


Figure 5.1. Regional Geology of the ALW Area.

6.0 EXPLORATION

6.1 Exploration Program

A 2 man field crew access the property for 1 day on June 29th, 2012 and collected a total of 9 stream sediment samples. The field crew accessed the property via helicopter from Ross River and returned to Ross River after collecting the samples. A description of the collection process is discussed below.

6.2 Sampling Methodology and Protocols

Stream Geochemical Program

Stream sediment samples were collected under the supervision of Linda Lewis along first, second and third order streams, and immediately upstream of confluences.

Each sample was collected from several points along the active stream bed to produce a representative composite sample. The uppermost sediment was discarded to avoid spurious high content of Fe and Mn oxide coating. The active silt and fine to medium sand that has been recently transported by the stream was the target sediment. This type of sediment was generally located: 1) in the lee of large boulders or logs; 2) in low energy pools at the tail-end of bars; and 3) infilling voids below the surface of cobble-gravel bars.

Samples were sieved in the field to a fraction of less than one-eighth inch (<1/8" or 3.36 mm) and placed in labeled, double layered plastic sample bags. Sample sites were flagged and photographed. The sample weights varied between 4-12 kg. Large sample sizes were required to obtain sufficient fine material for the selected assay techniques.

If the drainage contained seasonal stream sediment deposition, but was currently dry, a sediment sample was collected by dry sieving the material. Occasionally the south-facing slopes had underground drainage that sporadically comes to surface, in which case sample spacing sometimes varied.

Sample data was recorded on data cards and included the following: geographic location, sample color, angularity of the clasts, sediment composition (percentage of gravel, sand, silt, clay and organics), slope direction, slope angle, stream flow, vegetation type and comments. Sample data is summarized in Appendix 3.

Samples were transported by air from the property to Whitehorse via helicopter. Samples were delivered by in-house personnel or insured professional expeditors to ALS Chemex's ISO 9001 certified preparation facility in Whitehorse. Samples were dried and screened to 180 microns (80 mesh).

The pulps were analyzed at ALS Chemex's ISO 9001 certified laboratory in North Vancouver using the ultra-trace ME-MS41 package. A 0.5 g sample is digested by aqua regia techniques and 51 elements are analyzed through a combination of ICP-AES and ICP-MS.

The Au-ST44 method was used to analyze gold using a 50 g sample of <80 micron material. This method provides the lowest possible detection limit for gold of 0.0001 – 0.1 ppm, using aqua regia digestion with analysis by ICP-MS. The larger sample size for the gold analysis is used in an effort to reduce potential nugget effects. Samples exceeding the upper limit of Au detection (0.1 ppm) were re-analyzed using Au-OG44, an ore grade assay technique. A 50 g sample of 180 microns sediment is digested in an aqua regia solution and finished with ICP-MS methods to provide an Au detection range between 0.01 – 100 ppm.

ALS completes quality assurance/ quality control (QA/QC) data verification of their assays through internally inserted duplicates, standards and blanks. In addition, Golden Predator

followed a protocol for sample quality control and quality assurance throughout the regional exploration program. The QA/QC program involved the regular insertion of field duplicates, blanks and standard reference material into each stream sediment batch.

6.3 Results

Results from the 2012 stream sediment sampling program outline a small zone with weakly anomalous gold (two samples that returned values between 0.0681 and 0.0962ppm) associated with the Yusezyu Formation. These samples lie on a possible WNW trending structure represented by a variation in topography. (Figure 6.1 and Appendix 5).

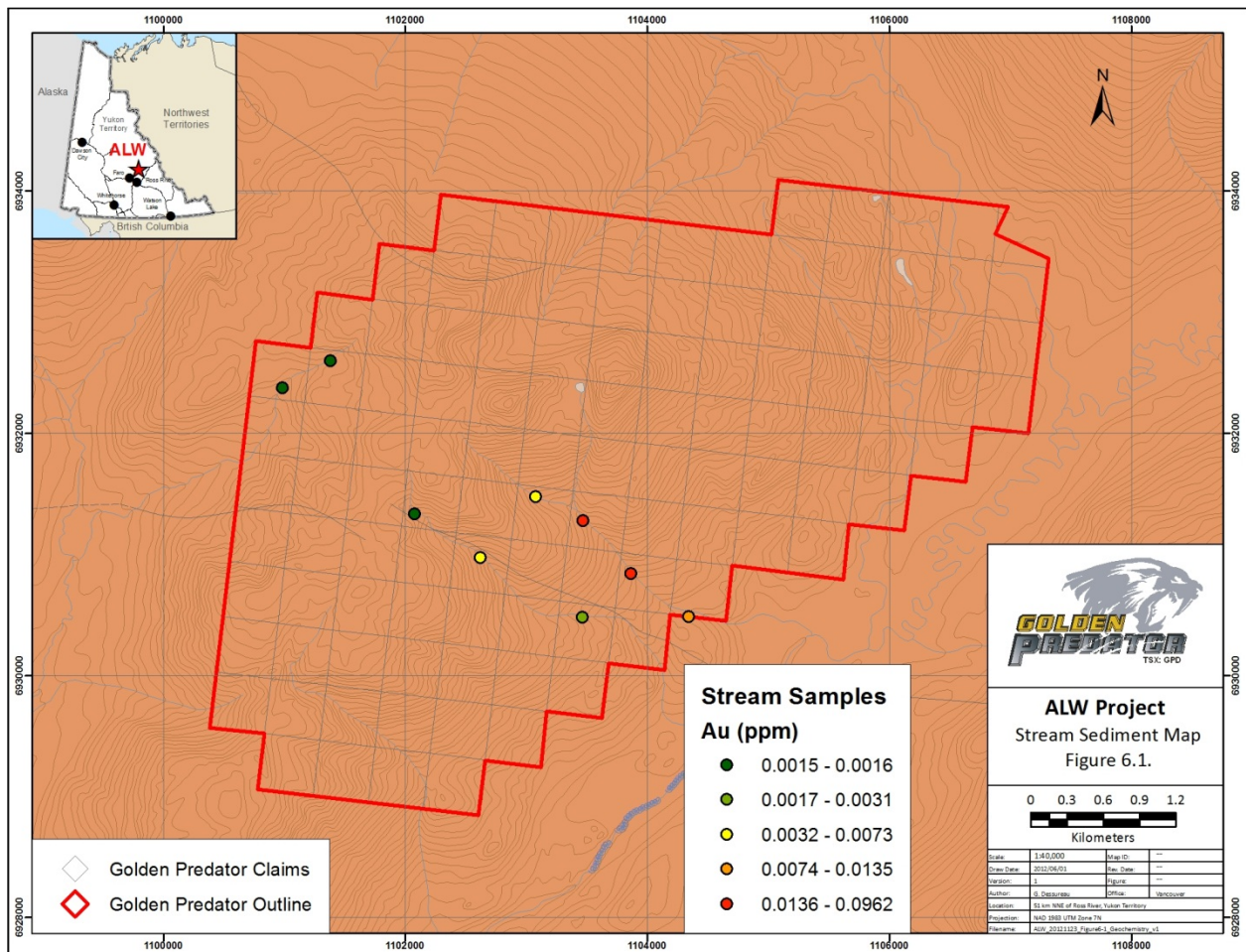


Figure 6.1. Regional Geology of the ALW area showing Au in soils results.

7.0 CONCLUSIONS AND RECOMMENDATIONS

The ALW Property consists of 111 contiguous mineral claims covering an area of approximately 23.1 km², located in the Logan Mountains, in the Selwyn Basin, central Yukon. Golden Predator is exploring the property for structure-hosted, intrusion related gold deposits or epithermal gold deposits.

The 2011 stream sediment sample program consisted of 9 stream sediment samples collected on several creeks within the claim group. The maximum gold assayed in the stream sediment samples was 0.0962 ppm Au and the sample downstream assayed 0.0681ppm Au.

The work completed on the ALW Property for 2012 is insufficient to truly evaluate the property for its gold potential and therefore follow-up work consisting of prospecting and mapping is recommended to investigate the sources of the geochemical anomalies.

8.0 2011 EXPENDITURES

Expenditures for the 2012 exploration program were \$13,972.50 as summarized in Table 8-1.

Table 8-1. 2012 Expenditures

Expenditure June 25 - July 5, 2012	Units	Unit Cost	Per	Cost
Golden Predator Corp. for detail breakdown, see below	9	\$1,552.50	sample	\$ 13,972.50
DETAIL COST BREAKDOWN				
Expenditure June 25 - July 5, 2012	Units	Unit Cost	Per	Cost
Wages				
Golden Predator				
June 25 - Program planning	1	\$ 500.00	day	\$ 500.00
June 26 - Prep field gear, travel to Faro	1	\$ 550.00	day	\$ 550.00
June 29 - Field	1	\$ 550.00	day	\$ 550.00
June 30 - Travel Faro to Whitehorse	1	\$ 550.00	day	\$ 550.00
July 4 - Data entry, sample sort, samples to lab	1	\$ 500.00	day	\$ 500.00
July 5 - Certificate of Work	1	\$ 500.00	day	\$ 500.00
Report Writing	3	\$ 500.00	day	\$ 1,500.00
Wages				
Contractor - Rafe Exploration Inc.				
June 29 - Field	3	\$ 450.00	day	\$ 1,350.00
Transportation				
Trans North Jet Ranger - June 29	4.1	\$ 990.00	hour	\$ 4,059.00
Fuel from Ross River Base	560	\$ 1.40	litre	\$ 784.00
Food & Accommodation in Faro	4	\$ 100.00	night	\$ 400.00
Consumables				
Field supplies - sample bags, safety equip, etc		\$ 50.00		\$ 50.00
Communications - rental				
4 handheld radios	4	\$ 14.12	1/2 week	\$ 56.50
4 satellite phones	4	\$ 37.50	1/2 week	\$ 150.00
Golden Predator Travel Costs in Yukon (June 26, June 30)				
Meals (2 days x 1 person x \$65/day)	2	\$ 65.00	day	\$ 130.00
Truck rental (1 truck x 3 days x \$100/day)	3	\$ 100.00	day	\$ 300.00
Truck fuel (Whitehorse, Faro, Carmacks)		\$ 233.00		\$ 233.00
Rafex Exploration Travel Costs in Yukon (June 26, June 30)				
June 26 - 1/2 day travel rate for crew	0.5	\$ 450.00	day	\$ 225.00
June 29 - 1/2 day travel rate for crew	0.5	\$ 450.00	day	\$ 225.00
Truck rental (2 days x \$120/day)	2	\$ 120.00	day	\$ 240.00

Truck fuel 0.60/km 1200 \$ 0.60 km \$ 720.00

Analytical

Stream sediment samples 9 \$ 40.00 sample \$ 320.00

QA/QC samples 2 \$ 40.00 sample \$ 80.00

Total \$ 13,972.50

Total Number of Samples 9

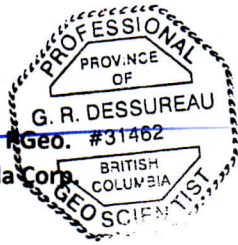
Cost Per Sample \$ 1,552.50

Signed,



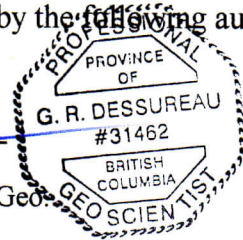
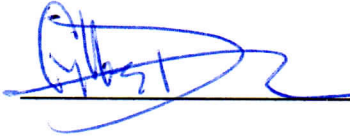
Gilles Dessureau M.Sc., Geo. #31462

Golden Predator Canada Corp



9.0 STATEMENT OF AUTHORSHIP

This Report titled "Assessment Report, 2012 Geochemical Sampling Program ALW Property, Watson Lake Mining District, Yukon, Canada ", and dated January 11th, 2013 was prepared and signed by the following author:



Gilles Dessureau, M.Sc., P. Geo.

Dated: January 11, 2013

Vancouver, British Columbia

10.0 REFERENCES

Gordey, S P, 1992. Geology, South Nahanni River area, Northwest Territories-Yukon Territory, Geological Survey of Canada, Preliminary Map, 1-1992

Murphy, D.C., & Heon, D., 1994. Geology and Mineral Occurrences of Sprague Creek Map Area (NTS 115P/15), western Selwyn Basin, Yukon. In: Yukon Exploration and Geology 1993, Exploration and Geological Services Division, Yukon, Indian and Northern Affairs Canada, p. 29-46.

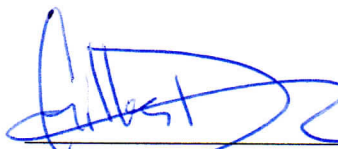
Appendix 1
Statement of Qualifications

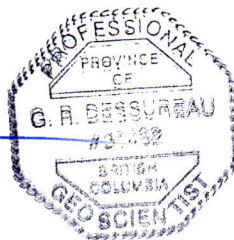
Gilles R. Dessureau, M.Sc., P.Geo
11th Floor, 888 Dunsmuir
Vancouver, British Columbia
Canada V6C 3K4
Telephone: 604-648-4653
E-mail: gillesd@goldenpredator.com

CERTIFICATE OF AUTHOR

I, Gilles Dessureau of 11th Floor, 888 Dunsmuir, Vancouver, British Columbia, certify that:

1. I graduated from St. Mary's University in Halifax, Nova Scotia with a Bachelor of Science with Honors in Geology in 1998 and I graduated from Laurentian University in Sudbury, Ontario with a Masters of Science in Geology in 2003.
2. I have worked in the mineral exploration industry continuously since 2003, in Ontario, Quebec, British Columbia, and The Yukon Territory, Canada, and intermittently since 1996 in Ontario and Nova Scotia during my education and training.
3. I am a registered member of the Association of Profession Engineers and Geoscientists of British Columbia, since August 2007. Membership number 31462.
4. I have been a full time employee of Golden Predator Canada Corp. since December, 2009.
5. I am author of this Report "Assessment Report, 2011 Geochemical Sampling Program MXS Property, Dawson Mining Division, Yukon, Canada; dated May 7th, 2012;" and
6. I have reviewed the geological data and am not aware of any material facts or change in facts at the time this certification is dated.


Gilles R. Dessureau, M.Sc., P.Geo.



Vancouver, British Columbia
Dated this 11th Day of January, 2013

Appendix 2
Analytical Summary

Sample ID	Sample Code	Program Code	Coords Orig Grid Code	Coords X	Coords Y	Coords Z	Sample By	Sample Date	Ag (ppm)	As (ppm)	Au (ppm)	Bi (ppm)	Cu (ppm)	Pb (ppm)	Sb (ppm)	Zn (ppm)
AA050420	SSed	2012	UTM83-9	476466.37	6877552.69	1535.696	Rafex	29-Jun-12	0.084	24.2	0.0015	0.6	29.6	38.4	5.39	99.5
AA050421	SSed	2012	UTM83-9	476931.89	6877099.53	1359.271	Rafex	29-Jun-12	0.08	35.5	0.0057	0.56	31	32.5	6.18	90.1
AA050422	SSed	2012	UTM83-9	477667.27	6876465.84	1135.915	Rafex	29-Jun-12	0.045	18.4	0.0031	0.37	22.8	23.7	3.15	76
AA050476	SSed	2012	UTM83-9	477470.58	6877510.89	1258.269	Llews	29-Jun-12	0.064	46.5	0.0073	0.36	19.45	22.2	6.22	71.3
AA050477	SSed	2012	UTM83-9	477816.76	6877242.8	1227.877	Llews	29-Jun-12	0.051	37.8	0.0962	0.35	18.05	24.7	2.62	71.1
AA050478	SSed	2012	UTM83-9	478125.87	6876744.71	1088.505	Llews	29-Jun-12	0.039	29.4	0.0681	0.29	18.75	22.5	2.08	66.2
AA050479	SSed	2012	UTM83-9	478528.02	6876309.01	963.92	Llews	29-Jun-12	0.035	19.85	0.0135	0.3	18.15	20.9	1.855	67
AA050480	SSed	2012	UTM83-9	476016.34	6878921.22	1553.665	Llews	29-Jun-12	0.11	8.08	0.0016	0.37	29.4	29.5	0.569	83
AA050481	SSed	2012	UTM83-9	475588.34	6878772.98	1478.882	Llews	29-Jun-12	0.089	13.35	0.0016	0.48	26.3	32.4	2.28	96.8

Appendix 3
Assay Certificates



ALS Canada Ltd.
2103 Dollarton Hwy
North Vancouver BC V7H 0A7
Phone: 604 984 0221 Fax: 604 984 0218 www.alsglobal.com

To: GOLDEN PREDATOR CANADA CORP.
C/O PREDATOR MINING GROUP
888 DUNSMUIR STREET, 11TH FLOOR
VANCOUVER BC V6C 3K4

Page: 1
Finalized Date: 22- JUL- 2012
Account: GOPRED

CERTIFICATE WH12154768

Project: REL Project- Steam Sediment
P.O. No.: ALW- 2012- NK- 2302
This report is for 11 Stream Sediment samples submitted to our lab in Whitehorse, YT, Canada on 4- JUL- 2012.

The following have access to data associated with this certificate:

MIKE BURKE
LINDA LEWIS

ANDREW CALDWELL
MIKE MASLOWSKI

JACK COTE
BILL SHERIFF

SAMPLE PREPARATION

ALS CODE	DESCRIPTION
WEI- 21	Received Sample Weight
LOG- 22	Sample login - Rcd w/o BarCode
LOG- 24	Pulp Login - Rcd w/o Barcode
SCR- 41	Screen to - 180um and save both
DRY- 22	Drying - Maximum Temp 60C

ANALYTICAL PROCEDURES

ALS CODE	DESCRIPTION	INSTRUMENT
Au- ST43	Super Trace Au - 25g AR	ICP- MS
ME- MS41L	51 anal. aqua regia ICPMS	

To: GOLDEN PREDATOR CANADA CORP.
ATTN: ANDREW CALDWELL
C/O PREDATOR MINING GROUP
888 DUNSMUIR STREET, 11TH FLOOR
VANCOUVER BC V6C 3K4

This is the Final Report and supersedes any preliminary report with this certificate number. Results apply to samples as submitted. All pages of this report have been checked and approved for release.

***** See Appendix Page for comments regarding this certificate *****

Signature:



Colin Ramshaw, Vancouver Laboratory Manager



ALS Canada Ltd.
 2103 Dollarton Hwy
 North Vancouver BC V7H 0A7
 Phone: 604 984 0221 Fax: 604 984 0218 www.alsglobal.com

To: GOLDEN PREDATOR CANADA CORP.
 C/O PREDATOR MINING GROUP
 888 DUNSMUIR STREET, 11TH FLOOR
 VANCOUVER BC V6C 3K4

Page: 2 - A
 Total # Pages: 2 (A - D)
 Plus Appendix Pages
 Finalized Date: 22-JUL-2012
 Account: GOPRED

Project: REL Project- Steam Sediment

CERTIFICATE OF ANALYSIS WH12154768

Sample Description	Method Analyte Units LOR	WEI- 21 Recvd Wt. kg	Au- ST43 Au ppm	ME- MS41L Au ppm	ME- MS41L Ag ppm	ME- MS41L Al %	ME- MS41L As ppm	ME- MS41L B ppm	ME- MS41L Ba ppm	ME- MS41L Be ppm	ME- MS41L Bi ppm	ME- MS41L Ca %	ME- MS41L Cd ppm	ME- MS41L Ce ppm	ME- MS41L Co ppm	ME- MS41L Cr ppm
		0.02	0.0001	0.0002	0.002	0.01	0.02	10	0.5	0.05	0.01	0.01	0.01	0.02	0.1	0.5
AA050420		3.03	0.0015	0.0011	0.084	0.57	24.2	<10	29.5	0.54	0.60	0.19	0.10	20.7	17.6	9.0
AA050421		3.65	0.0057	0.0055	0.080	0.53	35.5	<10	34.3	0.56	0.56	0.20	0.06	21.0	16.3	8.6
AA050422		4.20	0.0031	0.0030	0.045	0.76	18.40	<10	38.1	0.56	0.37	0.22	0.05	26.8	12.5	9.8
AA050476		3.87	0.0073	0.0290	0.064	0.62	46.5	<10	15.9	0.43	0.36	0.22	0.06	29.0	11.1	7.5
AA050477		3.09	0.0962	0.0045	0.051	0.64	37.8	<10	21.2	0.48	0.35	0.23	0.05	44.2	11.6	7.0
AA050478		4.41	0.0681	0.0028	0.039	0.67	29.4	<10	17.4	0.52	0.29	0.37	0.05	40.8	12.2	8.4
AA050479		3.07	0.0135	0.0138	0.035	0.74	19.85	<10	20.0	0.41	0.30	0.31	0.05	38.9	10.7	9.2
AA050480		2.82	0.0016	0.0006	0.110	1.14	8.08	<10	69.5	1.14	0.37	0.22	0.12	18.00	11.8	15.3
AA050481		3.33	0.0016	0.0005	0.089	0.82	13.35	<10	32.6	0.82	0.48	0.15	0.10	27.8	14.8	9.9
AA050482		0.10	0.0101	0.0574	0.801	0.50	232	<10	92.6	0.98	8.92	16.75	2.23	22.7	4.7	22.3
AA050483		0.10	0.0011	0.0032	0.423	1.13	3.57	<10	85.5	0.21	0.08	0.75	0.21	10.85	9.8	21.2



ALS Canada Ltd.
 2103 Dollarton Hwy
 North Vancouver BC V7H 0A7
 Phone: 604 984 0221 Fax: 604 984 0218 www.alsglobal.com

To: GOLDEN PREDATOR CANADA CORP.
 C/O PREDATOR MINING GROUP
 888 DUNSMUIR STREET, 11TH FLOOR
 VANCOUVER BC V6C 3K4

Page: 2 - B
 Total # Pages: 2 (A - D)
 Plus Appendix Pages
 Finalized Date: 22-JUL-2012
 Account: GOPRED

Project: REL Project- Steam Sediment

CERTIFICATE OF ANALYSIS WH12154768

Sample Description	Method Analyte Units LOR	ME- MS41L	ME- MS41L	ME- MS41L	ME- MS41L	ME- MS41L	ME- MS41L	ME- MS41L	ME- MS41L	ME- MS41L	ME- MS41L	ME- MS41L	ME- MS41L	ME- MS41L	ME- MS41L	
		Cs ppm	Cu ppm	Fe %	Ga ppm	Ge ppm	Hf ppm	Hg ppm	In ppm	K %	La ppm	Li ppm	Mg %	Mn ppm	Mo ppm	Na %
AA050420		4.25	29.6	4.01	1.69	0.11	0.03	0.033	0.027	0.03	9.1	26.2	0.20	516	0.30	0.02
AA050421		4.29	31.0	3.84	1.59	0.12	0.03	0.030	0.023	0.03	9.1	23.4	0.20	452	0.37	0.02
AA050422		2.90	22.8	3.11	2.41	0.12	0.04	0.020	0.019	0.03	13.3	33.7	0.28	393	0.27	0.02
AA050476		3.71	19.45	2.94	1.89	0.11	0.05	0.013	0.017	0.03	14.5	27.2	0.21	320	0.24	0.01
AA050477		2.75	18.05	2.78	1.99	0.14	0.04	0.012	0.019	0.03	21.2	23.4	0.21	317	0.24	0.02
AA050478		1.35	18.75	2.78	2.23	0.13	0.07	0.014	0.016	0.03	21.6	27.4	0.28	385	0.20	0.02
AA050479		1.35	18.15	2.72	2.35	0.13	0.07	0.007	0.017	0.03	19.9	29.9	0.30	322	0.21	0.02
AA050480		6.76	29.4	3.02	3.49	0.11	0.06	0.027	0.022	0.05	8.2	30.5	0.33	544	0.60	0.02
AA050481		4.65	26.3	3.58	2.52	0.13	0.05	0.029	0.025	0.03	14.0	36.6	0.25	381	0.33	0.02
AA050482		2.56	78.9	2.38	3.25	0.15	0.21	2.34	0.667	0.15	15.7	6.3	3.24	1570	75.9	0.03
AA050483		0.32	23.4	2.08	4.34	0.15	0.30	0.046	0.020	0.07	5.1	7.8	0.50	309	3.33	0.08



ALS Canada Ltd.
 2103 Dollarton Hwy
 North Vancouver BC V7H 0A7
 Phone: 604 984 0221 Fax: 604 984 0218 www.alsglobal.com

To: GOLDEN PREDATOR CANADA CORP.
 C/O PREDATOR MINING GROUP
 888 DUNSMUIR STREET, 11TH FLOOR
 VANCOUVER BC V6C 3K4

Page: 2 - C
 Total # Pages: 2 (A - D)
 Plus Appendix Pages
 Finalized Date: 22- JUL- 2012
 Account: GOPRED

Project: REL Project- Steam Sediment

CERTIFICATE OF ANALYSIS WH12154768

Sample Description	Method Analyte Units LOR	ME- MS41L	ME- MS41L	ME- MS41L	ME- MS41L	ME- MS41L	ME- MS41L	ME- MS41L	ME- MS41L	ME- MS41L	ME- MS41L	ME- MS41L	ME- MS41L	ME- MS41L	ME- MS41L	
		Nb ppm	Ni ppm	P %	Pb ppm	Rb ppm	Re ppm	S %	Sb ppm	Sc ppm	Se ppm	Sn ppm	Sr ppm	Ta ppm	Te ppm	Th ppm
		0.05	0.1	0.001	0.01	0.1	0.001	0.01	0.005	0.1	0.1	0.2	0.2	0.01	0.01	
AA050420		0.06	31.4	0.045	38.4	3.2	0.001	0.07	5.39	2.8	0.5	0.2	20.8	<0.01	0.05	6.0
AA050421		0.06	30.5	0.051	32.5	2.7	0.001	0.05	6.18	2.9	0.4	0.2	28.3	<0.01	0.03	6.7
AA050422		0.07	24.0	0.040	23.7	3.4	0.001	0.03	3.15	2.1	0.5	0.2	30.8	<0.01	0.04	6.6
AA050476		0.08	22.4	0.038	22.2	3.3	0.001	0.03	6.22	1.9	0.3	0.2	21.7	<0.01	0.02	5.5
AA050477		0.08	22.2	0.037	24.7	4.1	0.001	0.03	2.62	1.8	0.2	0.2	26.2	<0.01	0.05	7.4
AA050478		<0.05	23.7	0.040	22.5	2.7	<0.001	0.05	2.08	1.7	0.5	0.2	29.9	<0.01	0.04	9.6
AA050479		0.06	21.5	0.038	20.9	3.1	0.001	0.03	1.855	1.6	0.3	0.2	27.4	<0.01	0.02	9.0
AA050480		0.25	22.5	0.077	29.5	6.8	<0.001	0.05	0.569	1.6	0.5	0.3	23.7	<0.01	0.02	1.8
AA050481		0.11	26.9	0.041	32.4	3.8	<0.001	0.03	2.28	2.3	0.8	0.2	16.6	<0.01	0.02	5.2
AA050482		0.05	76.1	0.113	22.3	13.6	0.059	0.95	7.32	4.1	3.3	3.4	209	<0.01	0.42	3.8
AA050483		0.19	19.4	0.052	2.35	3.6	0.002	0.05	0.364	4.7	0.5	0.5	32.2	<0.01	0.04	1.1



ALS Canada Ltd.
 2103 Dollarton Hwy
 North Vancouver BC V7H 0A7
 Phone: 604 984 0221 Fax: 604 984 0218 www.alsglobal.com

To: GOLDEN PREDATOR CANADA CORP.
 C/O PREDATOR MINING GROUP
 888 DUNSMUIR STREET, 11TH FLOOR
 VANCOUVER BC V6C 3K4

Page: 2 - D
 Total # Pages: 2 (A - D)
 Plus Appendix Pages
 Finalized Date: 22- JUL- 2012
 Account: GOPRED

Project: REL Project- Steam Sediment

CERTIFICATE OF ANALYSIS WH12154768

Sample Description	Method Analyte Units LOR	ME- MS41L	ME- MS41L	ME- MS41L	ME- MS41L	ME- MS41L	ME- MS41L	ME- MS41L	ME- MS41L
		Ti %	Ti ppm	U ppm	V ppm	W ppm	Y ppm	Zn ppm	Zr ppm
		0.001	0.02	0.05	1	0.01	0.05	0.1	0.5
AA050420		0.002	0.06	1.89	6	0.06	6.73	99.5	1.3
AA050421		0.002	0.03	1.89	6	0.05	6.20	90.1	1.7
AA050422		0.002	0.02	1.29	7	0.05	5.13	76.0	1.7
AA050476		0.002	0.02	1.09	5	0.04	5.28	71.3	1.5
AA050477		0.002	0.02	0.98	6	0.04	5.20	71.1	1.9
AA050478		0.002	0.02	0.74	5	0.03	5.03	66.2	3.8
AA050479		0.002	<0.02	0.75	6	0.03	4.71	67.0	3.3
AA050480		0.011	0.05	3.25	18	0.07	9.41	83.0	1.6
AA050481		0.004	0.02	2.12	8	0.04	7.98	96.8	1.9
AA050482		0.004	0.91	14.85	139	16.65	19.95	401	9.3
AA050483		0.117	0.06	0.31	48	23.5	7.35	34.9	8.7



ALS Canada Ltd.
2103 Dollarton Hwy
North Vancouver BC V7H 0A7
Phone: 604 984 0221 Fax: 604 984 0218 www.alsglobal.com

To: GOLDEN PREDATOR CANADA CORP.
C/O PREDATOR MINING GROUP
888 DUNSMUIR STREET, 11TH FLOOR
VANCOUVER BC V6C 3K4

Page: Appendix 1
Total # Appendix Pages: 1
Finalized Date: 22- JUL- 2012
Account: GOPRED

Project: REL Project- Steam Sediment

CERTIFICATE OF ANALYSIS WH12154768

Method	CERTIFICATE COMMENTS
ME- MS41L ME- MS41L	Interference: Ca > 10% on ICP- MS As, ICP- AES results shown. Gold determinations by this method are semi- quantitative due to the small sample weight used (0.5g).

Appendix 4
Analytical Methods and
Detection Limits

GEOCHEMICAL PROCEDURE

ME- MS41

ULTRA- TRACE LEVEL METHODS USING ICP- MS AND ICP- AES

SAMPLE DECOMPOSITION

Aqua Regia Digestion (GEO-AR01)

ANALYTICAL METHOD

Inductively Coupled Plasma-Atomic Emission Spectroscopy (ICP-AES)

Inductively Coupled Plasma - Mass Spectrometry (ICP-MS)

A prepared sample (0.50 g) is digested with aqua regia in a graphite heating block. After cooling, the resulting solution is diluted to with deionized water, mixed and analyzed by inductively coupled plasma-atomic emission spectrometry. Following this analysis, the results are reviewed for high concentrations of bismuth, mercury, molybdenum, ment spectral interferences.

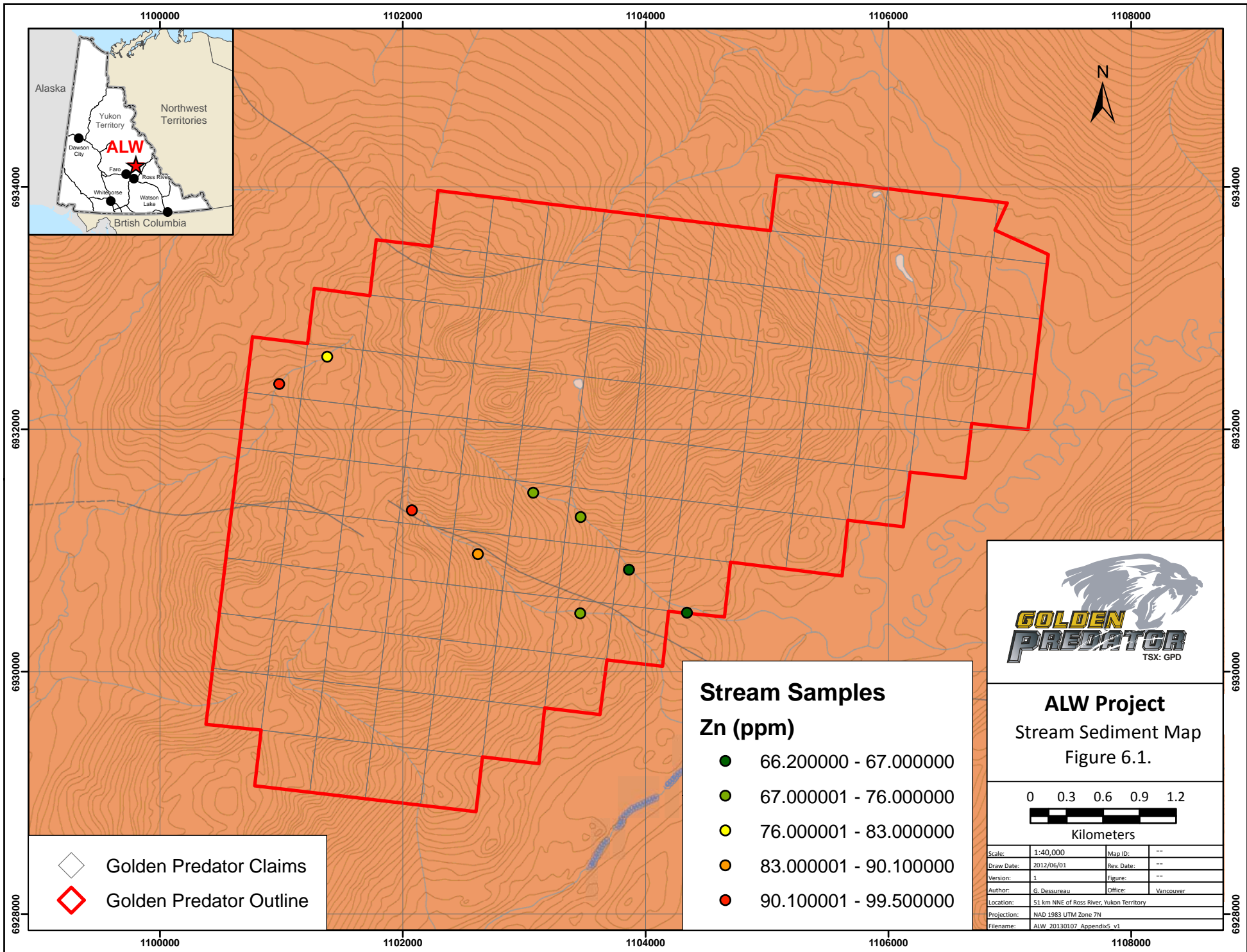
ELEMENT	SYMBOL	UNITS	LOWER LIMIT	UPPER LIMIT
Silver	Ag	ppm	0.01	100
Aluminum	Al	%	0.01	25
Arsenic	As	ppm	0.1	10 000
Gold	Au	ppm	0.2	25
Boron	B	ppm	10	10 000
Barium	Ba	ppm	10	10 000
Beryllium	Be	ppm	0.05	1 000
Bismuth	Bi	ppm	0.01	10 000
Calcium	Ca	%	0.01	25
Cadmium	Cd	ppm	0.01	1 000
Cerium	Ce	ppm	0.02	500
Cobalt	Co	ppm	0.1	10 000
Chromium	Cr	ppm	1	10 000
Cesium	Cs	ppm	0.05	500
Copper	Cu	ppm	0.2	10 000
Iron	Fe	%	0.01	50
Gallium	Ga	ppm	0.05	10 000
Germanium	Ge	ppm	0.05	500
Hafnium	Hf	ppm	0.02	500

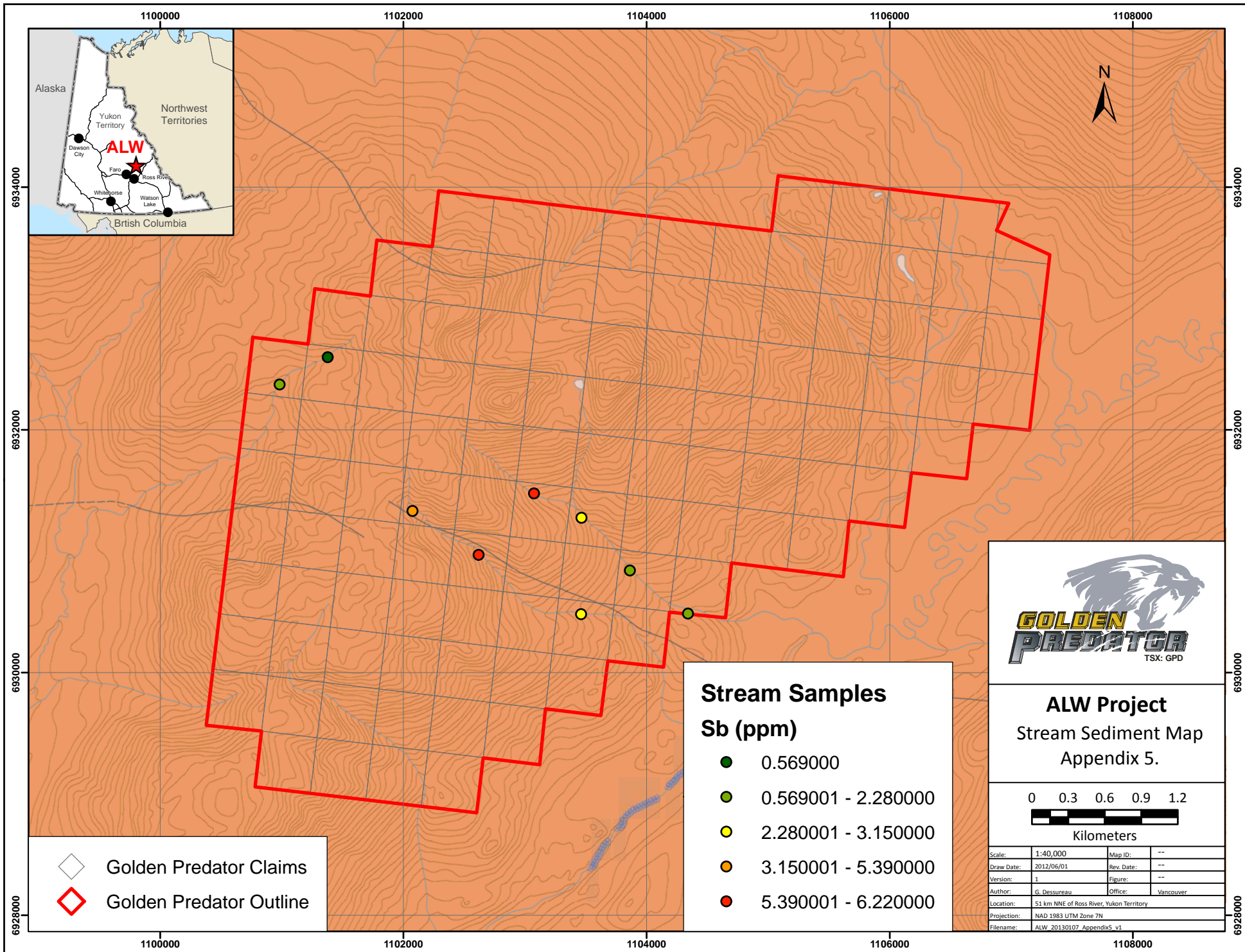
ME- MS41



ELEMENT	SYMBOL	UNITS	LOWER LIMIT	UPPER LIMIT
Mercury	Hg	ppm	0.01	10 000
Indium	In	ppm	0.005	500
Potassium	K	%	0.01	10
Lanthanum	La	ppm	0.2	10 000
Lithium	Li	ppm	0.1	10 000
Magnesium	Mg	%	0.01	25
Manganese	Mn	ppm	5	50 000
Molybdenum	Mo	ppm	0.05	10 000
Sodium	Na	%	0.01	10
Niobium	Nb	ppm	0.05	500
Nickel	Ni	ppm	0.2	10 000
Phosphorus	P	ppm	10	10 000
Lead	Pb	ppm	0.2	10 000
Rubidium	Rb	ppm	0.1	10 000
Rhenium	Re	ppm	0.001	50
Sulphur	S	%	0.01	10
Antimony	Sb	ppm	0.05	10 000
Scandium	Sc	ppm	0.1	10 000
Selenium	Se	ppm	0.2	1 000
Tin	Sn	ppm	0.2	500
Strontium	Sr	ppm	0.2	10 000
Tantalum	Ta	ppm	0.01	500
Tellurium	Te	ppm	0.01	500
Thorium	Th	ppm	0.2	10000
Titanium	Ti	%	0.005	10
Thallium	Tl	ppm	0.02	10 000
Uranium	U	ppm	0.05	10 000
Vanadium	V	ppm	1	10 000
Tungsten	W	ppm	0.05	10 000
Yttrium	Y	ppm	0.05	500
Zinc	Zn	ppm	2	10 000
Zirconium	Zr	ppm	0.5	500

NOTE: In the majority of geological matrices, data reported from an aqua regia leach should be considered as representing only the leachable portion of the particular analyte.

Appendix 5
Soil Geochemical Plots
for Select Elements










 Golden Predator Claims
 Golden Predator Outline

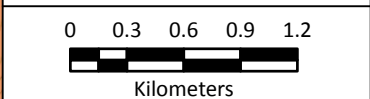
Stream Samples

Sb (ppm)

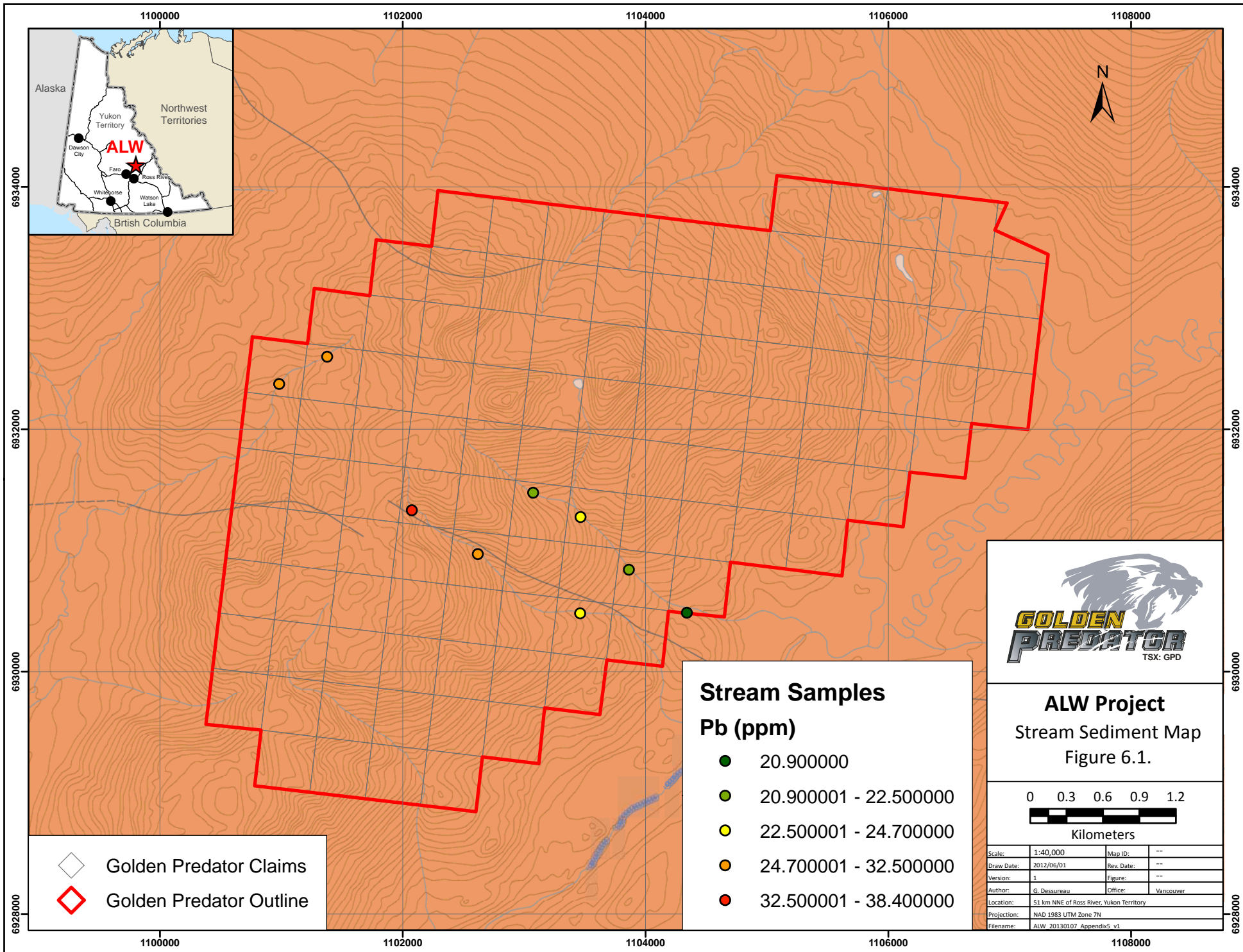
-  0.569000
-  0.569001 - 2.280000
-  2.280001 - 3.150000
-  3.150001 - 5.390000
-  5.390001 - 6.220000










ALW Project
 Stream Sediment Map
 Appendix 5.

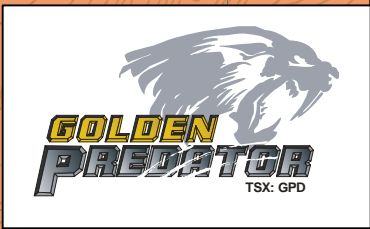


Scale:	1:40,000	Map ID:	--
Draw Date:	2012/06/01	Rev. Date:	--
Version:	1	Figure:	--
Author:	G. Dessureau	Office:	Vancouver
Location:	51 km NNE of Ross River, Yukon Territory		
Projection:	NAD 1983 UTM Zone 7N		
Filename:	ALW_20130107_Appendix5_v1		

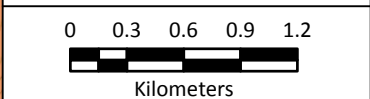


-  Golden Predator Claims
-  Golden Predator Outline

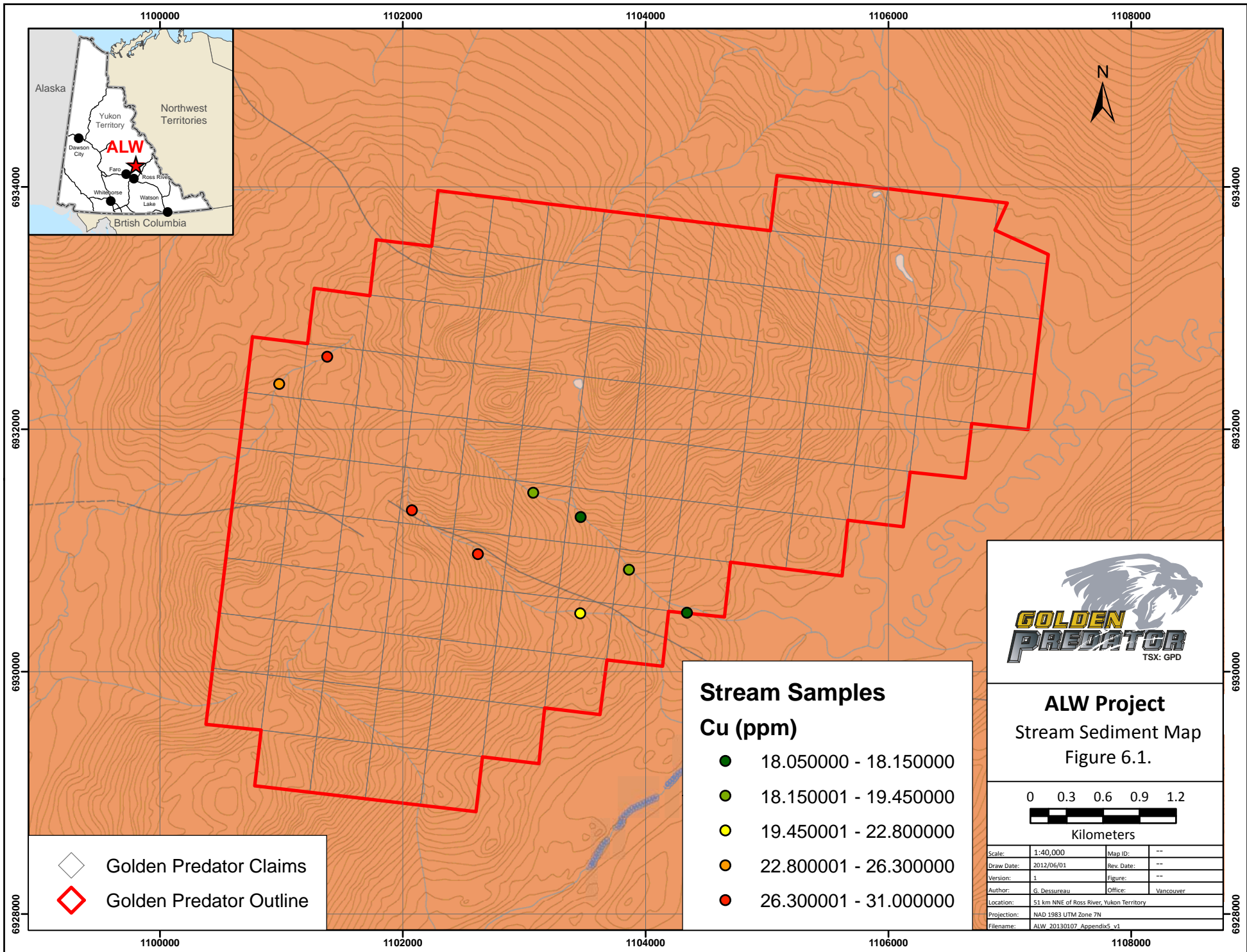
Stream Samples	
Pb (ppm)	
	20.900000
	20.900001 - 22.500000
	22.500001 - 24.700000
	24.700001 - 32.500000
	32.500001 - 38.400000



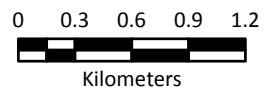
ALW Project
Stream Sediment Map
Figure 6.1.



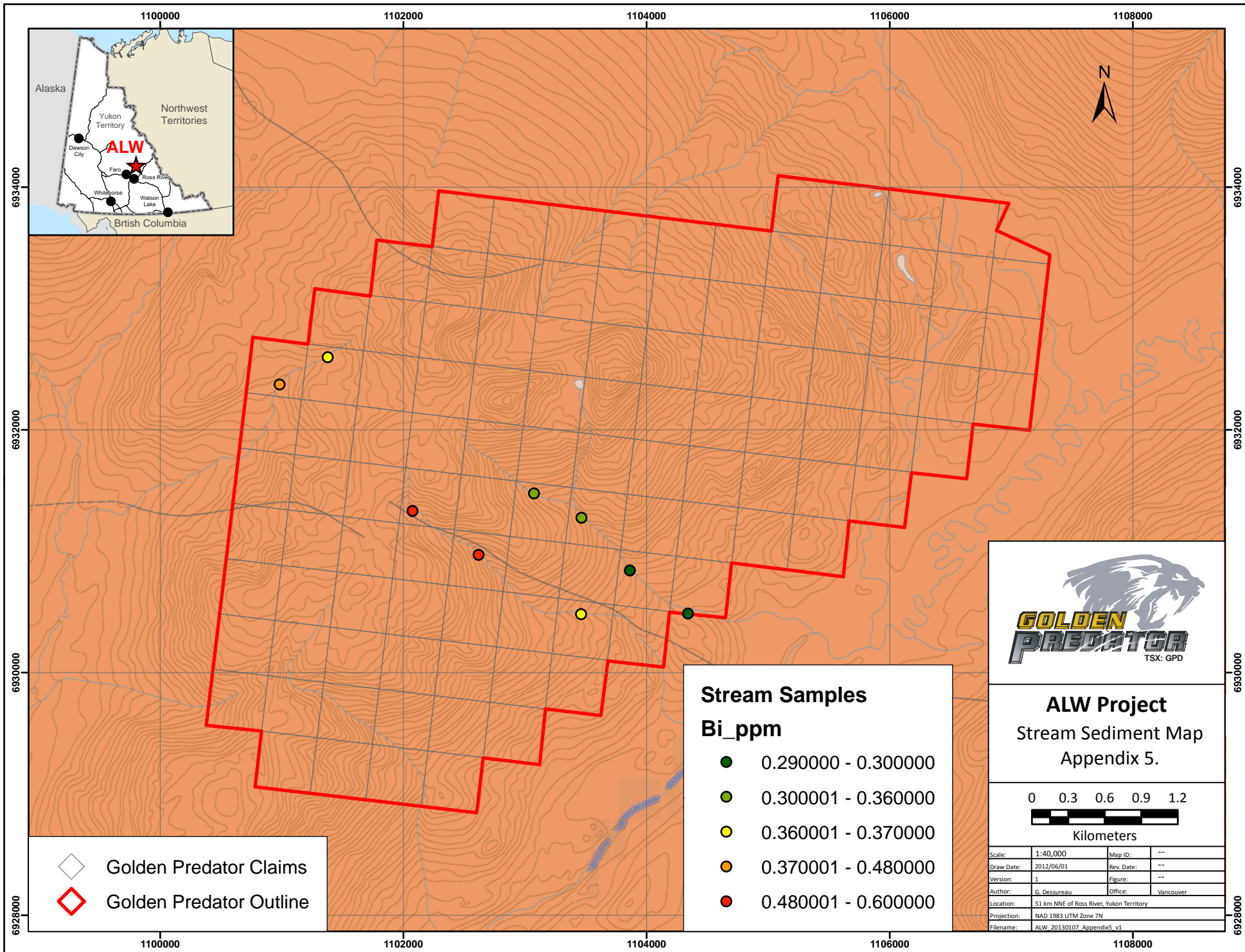
Scale:	1:40,000	Map ID:	--
Draw Date:	2012/06/01	Rev. Date:	--
Version:	1	Figure:	--
Author:	G. Dessureau	Office:	Vancouver
Location:	51 km NNE of Ross River, Yukon Territory		
Projection:	NAD 1983 UTM Zone 7N		
Filename:	ALW_20130107_Appendix5_v1		





ALW Project
Stream Sediment Map
Figure 6.1.








Scale:	1:40,000	Map ID:	--
Draw Date:	2012/06/01	Rev. Date:	--
Version:	1	Figure:	--
Author:	G. Dessureau	Office:	Vancouver
Location:	51 km NNE of Ross River, Yukon Territory		
Projection:	NAD 1983 UTM Zone 7N		
Filename:	ALW_20130107_Appendix5_v1		



 Golden Predator Claims
 Golden Predator Outline

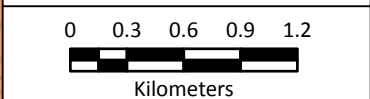
Stream Samples

Bi_ppm

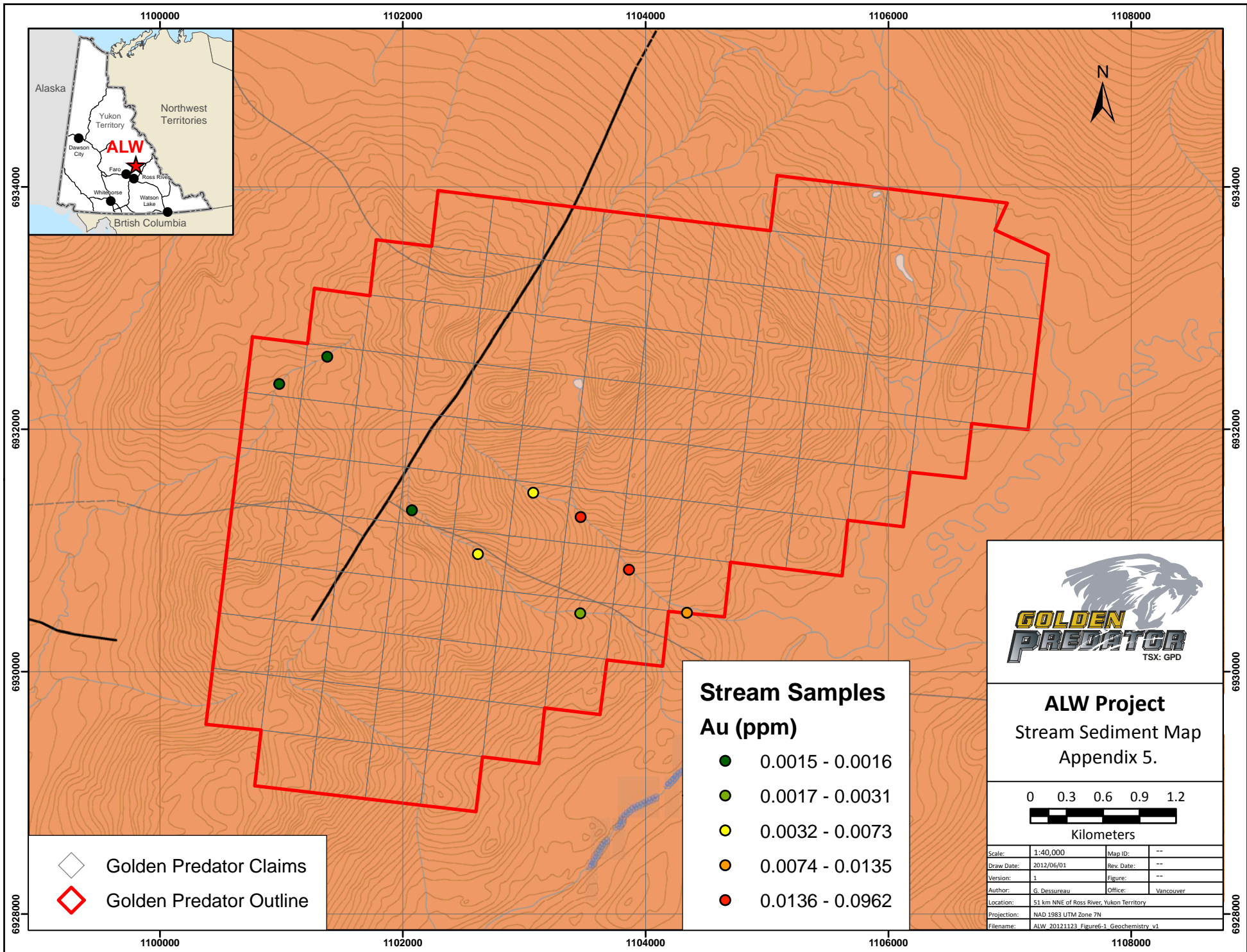
-  0.290000 - 0.300000
-  0.300001 - 0.360000
-  0.360001 - 0.370000
-  0.370001 - 0.480000
-  0.480001 - 0.600000





ALW Project
 Stream Sediment Map
 Appendix 5.








Scale:	1:40,000	Map ID:	--
Draw Date:	2012/06/01	Rev. Date:	--
Version:	1	Figure:	--
Author:	G. Dessureau	Office:	Vancouver
Location:	51 km NNE of Ross River, Yukon Territory		
Projection:	NAD 1983 UTM Zone 7N		
Filename:	ALW_20130107_Appendix5_v1		



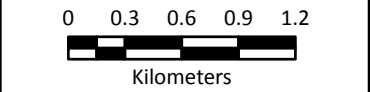
 Golden Predator Claims
 Golden Predator Outline

Stream Samples
Au (ppm)

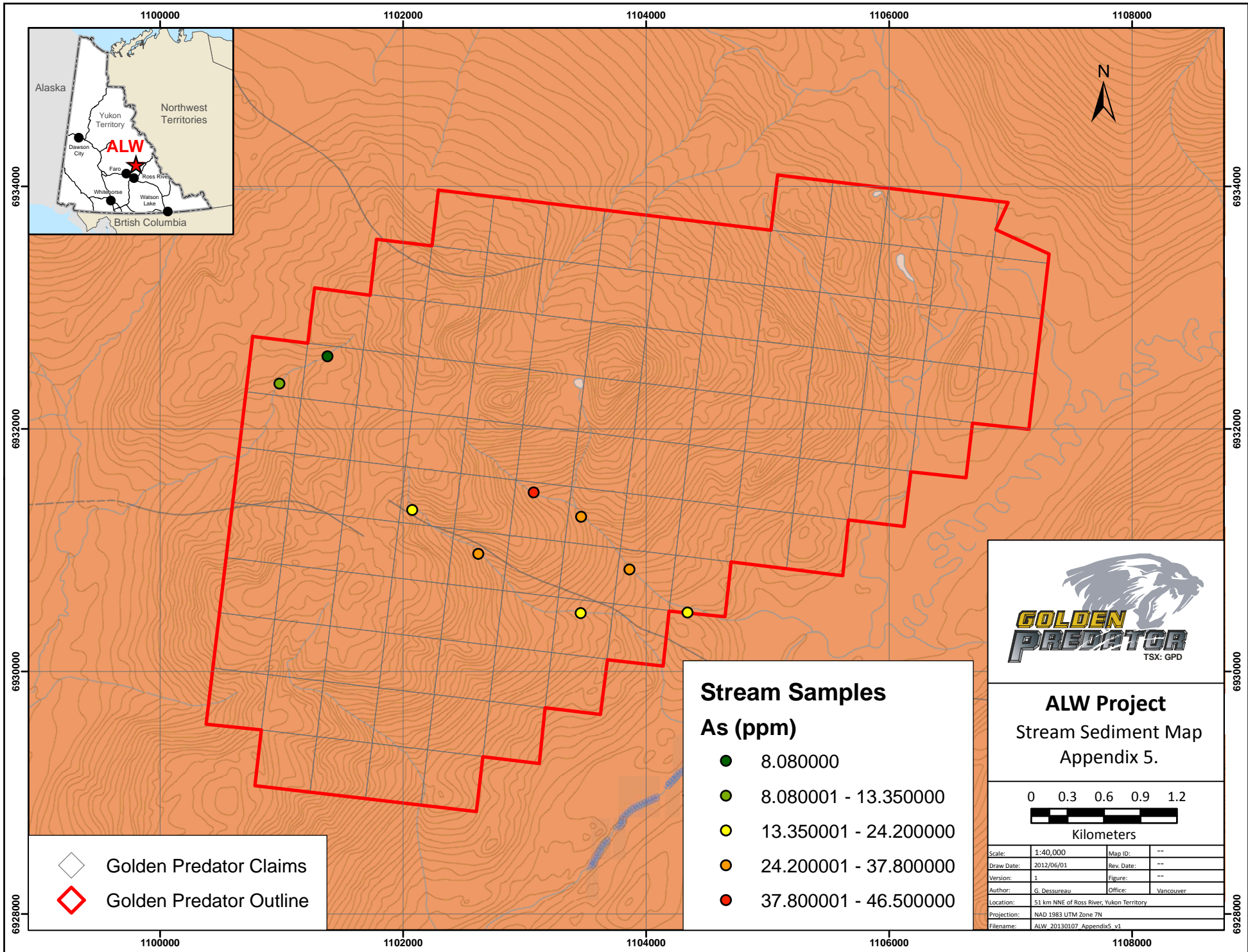
-  0.0015 - 0.0016
-  0.0017 - 0.0031
-  0.0032 - 0.0073
-  0.0074 - 0.0135
-  0.0136 - 0.0962





ALW Project
Stream Sediment Map
Appendix 5.








Scale:	1:40,000	Map ID:	--
Draw Date:	2012/06/01	Rev. Date:	--
Version:	1	Figure:	--
Author:	G. Dessureau	Office:	Vancouver
Location:	51 km NNE of Ross River, Yukon Territory		
Projection:	NAD 1983 UTM Zone 7N		
Filename:	ALW_20121123_Figure6-1_Geochemistry_v1		



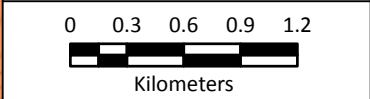
-  Golden Predator Claims
-  Golden Predator Outline

Stream Samples
As (ppm)

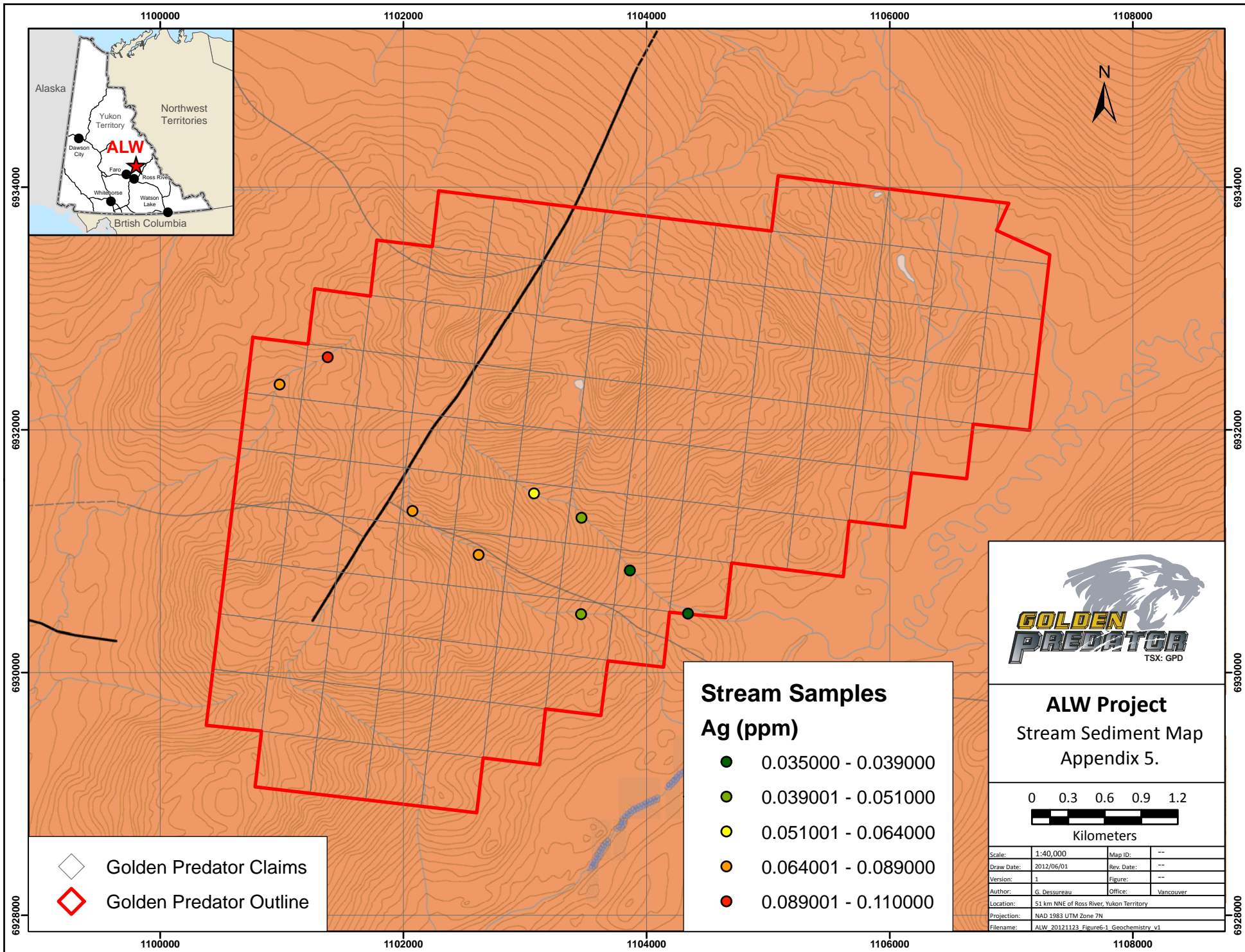
-  8.080000
-  8.080001 - 13.350000
-  13.350001 - 24.200000
-  24.200001 - 37.800000
-  37.800001 - 46.500000





ALW Project
Stream Sediment Map
Appendix 5.









Scale:	1:40,000	Map ID:	--
Draw Date:	2012/06/01	Rev. Date:	--
Version:	1	Figure:	--
Author:	G. Dessureau	Office:	Vancouver
Location:	51 km NNE of Ross River, Yukon Territory		
Projection:	NAD 1983 UTM Zone 7N		
Filename:	ALW_20130107_Appendix5_v1		



 Golden Predator Claims
 Golden Predator Outline

Stream Samples
Ag (ppm)

-  0.089001 - 0.110000
-  0.064001 - 0.089000
-  0.051001 - 0.064000
-  0.039001 - 0.051000
-  0.035000 - 0.039000



ALW Project
Stream Sediment Map
Appendix 5.

0 0.3 0.6 0.9 1.2
Kilometers

Scale:	1:40,000	Map ID:	--
Draw Date:	2012/06/01	Rev. Date:	--
Version:	1	Figure:	--
Author:	G. Dessureau	Office:	Vancouver
Location:	51 km NNE of Ross River, Yukon Territory		
Projection:	NAD 1983 UTM Zone 7N		
Filename:	ALW_20121123_Figure6-1_Geochemistry_v1		

6934000
6932000
6930000
6928000

6934000
6932000
6930000
6928000

110000 1102000 1104000 1106000 1108000