

ASSESSMENT REPORT
2011 GEOCHEMICAL SAMPLING PROGRAM

BBK PROPERTY
WHITEHORSE MINING DIVISION, YUKON, CANADA

NTS Map Sheets: 105D15 and 105E02
520668E, 6765654N (NAD83-8)

Claims and Owner

Name	Claim Number		Owner
	From	To	
BBK	1	9	Golden Predator Canada Corp. - 100%
BBK	10	20	Golden Predator Canada Corp. - 100%
BBK	21	34	Golden Predator Canada Corp. - 100%
BBK	35	53	Golden Predator Canada Corp. - 100%
BBK	54	68	Golden Predator Canada Corp. - 100%
BBK	69	82	Golden Predator Canada Corp. - 100%
BBK	83	102	Golden Predator Canada Corp. - 100%
BBK	117	126	Golden Predator Canada Corp. - 100%
BBK	151	160	Golden Predator Canada Corp. - 100%
BBK	185	204	Golden Predator Canada Corp. - 100%
BBK	219	300	Golden Predator Canada Corp. - 100%
BBK	301		Golden Predator Canada Corp. - 100%
BBK	302		Golden Predator Canada Corp. - 100%
BBK	303		Golden Predator Canada Corp. - 100%
BBK	304		Golden Predator Canada Corp. - 100%
BBK	305		Golden Predator Canada Corp. - 100%
BBK	306		Golden Predator Canada Corp. - 100%

Period of Work: Summer 2011 and Winter 2012

Owner and Operator:

Golden Predator Canada Corp.

1 Lindeman Road

Whitehorse, YT

Y1A 5Z7

December 12, 2012

Prepared by:

Golden Predator Canada Corp.

Shaun O'Connor, B.Sc.

Introduction

This report summarizes the 2011-2012 stream, soil and rock sampling program on the BBK property. BBK comprises 101 quartz claims, representing an area of around 20.2 square km in south central Yukon. The claims are wholly owned by Golden Predator Canada Corp. and are located entirely within the Whitehorse Mining District.

Sampling was performed by Golden Predator staff and contractors. Data in this report comes from public sources and field work.

Location and Claim Description



BBK is located around 43 km northeast of Whitehorse, encompassing Teslin Mountain and its surrounding foothills. The approximate center of the block is 520668, 6765654 (UTM NAD83-8).

The property is located on map sheets 105D15 and 105E02. See table 1 for a list of claim names, numbers and ownership information.

Access and Physiography

The property is south of the historic Livingstone trail but is inaccessible by road. Access in 2011 was by helicopter from Whitehorse and a camp at Little Violet creek, east of the property near Livingstone. The nearest infrastructure to the property is the North Klondike highway and associated transmission lines, around 35 km away at the southern end of Lake Laberge.

Teslin Mountain is located along the drainage divide between the Yukon river to the west and the Big Salmon river to the east. It is part of the Yukon Southern Lakes ecoregion. Elevations in the area range from 1080 to 1940 m.

The following is from the Yukon Southern Lakes section of Yukon Ecoregions Working Group (2004).

The last glaciation in the area was the McConnell (26.5 to 10.0 ka). Glaciofluvial terraces overly thick, hummocky glaciofluvial and glaciolacustrine deposits in valley floors to the south, with steeper topography in the north covered by thin till with some colluvium.

Average precipitation is around 200 to 325 mm annually, most of which falls as snow. Average temperatures are -25 degrees C in January and around 10 degrees C in July, primarily a result of lower temperatures at elevation. Snow cover is present from late October to early April.

Soils, where developed, are brunisolic (intermediate between colluvium and mature soils). Thick deposits of windblown loess and White River tephra are present locally, confounding soil sampling where present.

Vegetation consists of open mixed and pine forests at lower elevations, with sparse subalpine fir and shrub birch predominant along ridges and spurs.

Table 1: List of Claims

Grant Number		Status	Name	Claim Number		Owner	Expiry
From	To			From	To		
YD142801		Active	BBK	1		Golden Predator Canada Corp.	07/03/2014
YD142802		Active	BBK	2		Golden Predator Canada Corp.	07/03/2014
YD142803		Active	BBK	3		Golden Predator Canada Corp.	07/03/2014
YD142804		Active	BBK	4		Golden Predator Canada Corp.	07/03/2014
YD142805		Active	BBK	5		Golden Predator Canada Corp.	07/03/2014
YD142806		Active	BBK	6		Golden Predator Canada Corp.	07/03/2014
YD142807		Active	BBK	7		Golden Predator Canada Corp.	07/03/2014
YD142808		Active	BBK	8		Golden Predator Canada Corp.	07/03/2014
YD142809		Active	BBK	9		Golden Predator Canada Corp.	07/03/2014
YD142810	YD142820	Active	BBK	10	20	Golden Predator Canada Corp.	07/03/2014
YD142821	YD142834	Active	BBK	21	34	Golden Predator Canada Corp.	07/03/2013
YD142835	YD142853	Active	BBK	35	53	Golden Predator Canada Corp.	07/03/2014
YD142854	YD142868	Active	BBK	54	68	Golden Predator Canada Corp.	07/03/2013
YD142869	YD142882	Active	BBK	69	82	Golden Predator Canada Corp.	07/03/2014
YD142883	YD142902	Active	BBK	83	102	Golden Predator Canada Corp.	07/03/2013
YD142917	YD142926	Active	BBK	117	126	Golden Predator Canada Corp.	07/03/2013
YD142951	YD142960	Active	BBK	151	160	Golden Predator Canada Corp.	07/03/2013
YD142985	YD143004	Active	BBK	185	204	Golden Predator Canada Corp.	07/03/2013
YD143019	YD143100	Active	BBK	219	300	Golden Predator Canada Corp.	07/03/2013
YD146869		Active	BBK	301		Golden Predator Canada Corp.	07/03/2013
YD146870		Active	BBK	302		Golden Predator Canada Corp.	07/03/2013
YD146871		Active	BBK	303		Golden Predator Canada Corp.	07/03/2013
YD146872		Active	BBK	304		Golden Predator Canada Corp.	07/03/2013
YD146873		Active	BBK	305		Golden Predator Canada Corp.	07/03/2013
YD146874		Active	BBK	306		Golden Predator Canada Corp.	07/03/2013

Exploration History

Table 2: Summary of Exploration

Year	Work	Company	Minfile
1975	Mapping and soil sampling	Dome-Cominco Syndicate	105E 025
1982	Mapping and sampling	Inco	105E 050
1988	Unknown	E. Kreft	105E 055

Perhaps due to a tendency to ignore prospects close to home, the area between Lake Laberge and the Livingstone placer district is relatively underexplored compared to the more active camps in the Yukon. Nevertheless, the area has seen scattered exploration for nickel, Cu-(Au,Mo) porphyry targets, and gold.

More recently, Piercey (2005) identified a hematite-magnetite iron formation interlayered with Joe Mountain basalts to the south of the claim block during a geologic mapping program.

Geologic Setting

Rocks underlying the BBK claims are part of the Stikinia terrane, an island arc package accreted to North America during the Late Jurassic. The terrane is locally intruded by Early to Mid Cretaceous plutons (Nelson and Colpron, 2007). Stikinian arc rocks include the Late Triassic-Jurassic Lewes River group of volcanic and sedimentary rocks and the Jurassic Laberge sedimentary group.

BBK is underlain by the Joe Mountain volcanics, which at an age of 228 to 237 Ma are one of the oldest Stikinian assemblages (Piercey, 2005). Joe Mountain is made up of coarsely cumulate hornblende gabbro and diorite to microdiorite intruding a sequence of basalts, andesites and associated sedimentary beds and debris flows. The intrusive rocks are interpreted as synvolcanic, with a presumed volcanic center approximately located near Joe Mountain to the southeast of the BBK property (Piercey, 2005; Hart and Hunt, 1994). Chemically, the volcanics are identified as tholeiitic with a mid-ocean ridge or back arc affinity (Piercey, 2005). The package is cut by dioritic to felsitic dykes, likely associated with the plutons nearby (Hart and Hunt, 1994). The Joe Mountain formation has undergone little to no regional exploration, but is locally hornfelsed around plutons. There is chemical evidence to suggest the JMF has experienced the seafloor alteration associated with VMS mineralization (Piercey, 2005).

Locally, the Joe Mountain formation at BBK likely consists of andesitic flows and breccias with interbedded debris flows and pillow basalts, intruded by massive microdiorite, hornblende gabbro and diorite (Hart and Hunt, 1994).

Intrusive rocks to the southwest of the claim block are part of the McClintock pluton, a coarse grained biotite-hornblende granodiorite body with a K-Ar date of 118 Ma (Hart and Hunt, 1994). The pluton to the northeast has been included in the Whitehorse suite (105-112 Ma) of biotite quartz monzonite and granites (Gordey and Makepeace, 1999).

Hart and Hunt also described the structural geology of the Joe mountain area. Two sets of folds, one trending NW and the other E, were noted in outcrops. Shears and brittle faults occur throughout the JMF. The BBK property is located near the Lake Laberge fault zone, a series of NNW trending faults and parallel splays. Steep, north-trending faults, interpreted as Riedel (R1) faults, link the regional NNW faults within the Lake Laberge fault zone and underneath BBK. The map pattern of these faults and cross-faults suggest a strike slip system, but sense of motion is locally east side up.

Mineralization

The BBK area was identified as prospective by a factor analysis of regional stream geochemistry information. Historically, Hart and Hunt (1994) pointed out numerous anomalous Au silt values in the area. The most interesting showings in the area are polymetallic veins and quartz-Au stringers associated with northerly trending faults and felsic dykes in the Joe Mountain formation (for example,

minfiles 105D 051, 105D 197 and 105D 203). Based on Hart and Hunt's interpretation of these northerly trending faults as Riedel shears and their inferred strike-slip and dip-slip motion, the Joe Mountain-Teslin Mountain area may be part of a positive flower structure within the Lake Laberge fault zone, a dilational feature that would provide an ideal structural host for gold-quartz veins. Historic reports of jasperoids and chalcedonic breccias at the property (see Minfile 105E 050) are encouraging evidence for epizonal gold mineralization.

Exploration

Exploration in 2011-2012 consisted of stream sediment sampling followed up by auger soil sampling.

Stream sediment samples were collected along 750 m intervals and immediately upstream of any confluences. Active silt and fine to medium sand that has been recently transported was the target sediment. Samples were sieved in the field with a 6 mesh (~1/8") screen and placed in plastic sample bags. If a drainage contained seasonal stream sediment deposition but was currently dry, a sample was collected by dry sieving the material. Samples were transported from the Little Violet Creek camp to Whitehorse by Alkan Air, and were delivered to ALS Chemex by Golden Predator personnel.

Auger sampling was conducted using a 20 kg handheld gasoline-powered drill, optimized for drilling in frozen ground. A permafrost-specific carbide-tipped 30 mm diameter bit was rotated to a depth of 85 cm below the surface. The bit was withdrawn and the sample of soil and pulverized rock was retrieved from the lowest 30 cm of the auger flights (usually 200-400g of soil). This sample was then placed in a fabric sample bag.

Soil sampling was designed to follow up on anomalous silts at the northwestern corner of the property.

Discussion

Out of eleven streams draining the Teslin Mountain massif, five produced silt samples with >15 ppb Au. Anomalous streams are distributed around the entire block. Weakly anomalous As-Sb values are associated with elevated gold in silts.

These streams likely drain Joe Mountain volcanics. Topography and distal geologic mapping suggest a northerly fault through the centre of the claim block and the area drained by the anomalous streams. No streams were taken from the area around the Whitehorse plutonic suite intrusion to the northeast.

Soils failed to define anomalous areas near the 50 ppb Au silt sample at the northwestern corner of the property. Soil sampling was very limited in its extent, and possible permafrost and colluvial cover on the northern slopes may have obscured anomalous material. Ridge and spur soil sampling is also a relatively inefficient method for following up regional stream sampling.

Further Work

Prospecting and geologic mapping should be conducted to identify faults and felsic dykes on the claim block, with soil sampling on ridges above anomalous streams. Further silt samples and bank sampling should be considered in order to narrow target areas.

Conclusions

Silt sampling on the BBK block identified a broadly defined Au anomaly in an area underlain by volcanics of the Joe Mountain formation, intruded by two plutonic suites and likely cut by northerly trending splays of the Laberge fault zone. Similar rocks to the south host numerous Au-quartz vein showings associated with regional dilational fault zones, and the area has seen little exploration to date.

References

Gordey, S.P. and Makepeace, A.J. (comp.) 1999: Yukon bedrock geology in Yukon digital geology, S.P. Gordey and A.J. Makepeace (comp.); Geological Survey of Canada Open File D3826 and Exploration and Geological Services Division, Yukon, Indian and Northern Affairs Canada, Open File 1999-1(D)

Hart, C.J.R. and Hunt, J.A., 1994. Geology of the Joe Mountain map area (105D/15), southern Yukon Territory. In: Yukon Exploration and Geology, 1993, Exploration and Geological Services Division, Yukon, Indian and Northern Affairs Canada, p. 47-66.

Nelson, J.L. and Colpron, M., 2007. Tectonics and metallogeny of the Canadian and Alaskan Cordillera, 1.8 Ga to present. In: Mineral Deposits of Canada: A Synthesis of Major Deposit Types, District Metallogeny, the Evolution of Geological Provinces, and Exploration Methods, W.D. Goodfellow (ed.), Mineral Deposit Division, Geological Association of Canada, Special Publication 5, p. 755-791.

Piercey, S.J., 2005. Reconnaissance geological and geochemical studies of the Joe Mountain Formation, Joe Mountain region (NTS 105D/15), Yukon. In: Yukon Exploration and Geology 2004, D.S. Emond, L.L. Lewis and G.D. Bradshaw (eds.), Yukon Geological Survey, p. 213-226.

Yukon Ecoregions Working Group, 2004. Yukon Coastal Plain. In: Ecoregions of the Yukon Territory: Biophysical properties of Yukon landscapes, C.A.S. Smith, J.C. Meikle and C.F. Roots (eds.), Agriculture and Agri-Food Canada, PARC Technical Bulletin No. 04-01, Summerland, British Columbia, p. 63-72.

Shaun O'Connor
1 Lindeman Rd.
Whitehorse, YT
867-633-4653
soconnor@goldenpredator.com

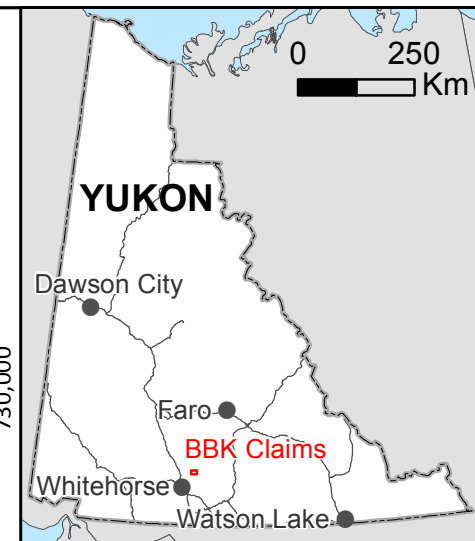
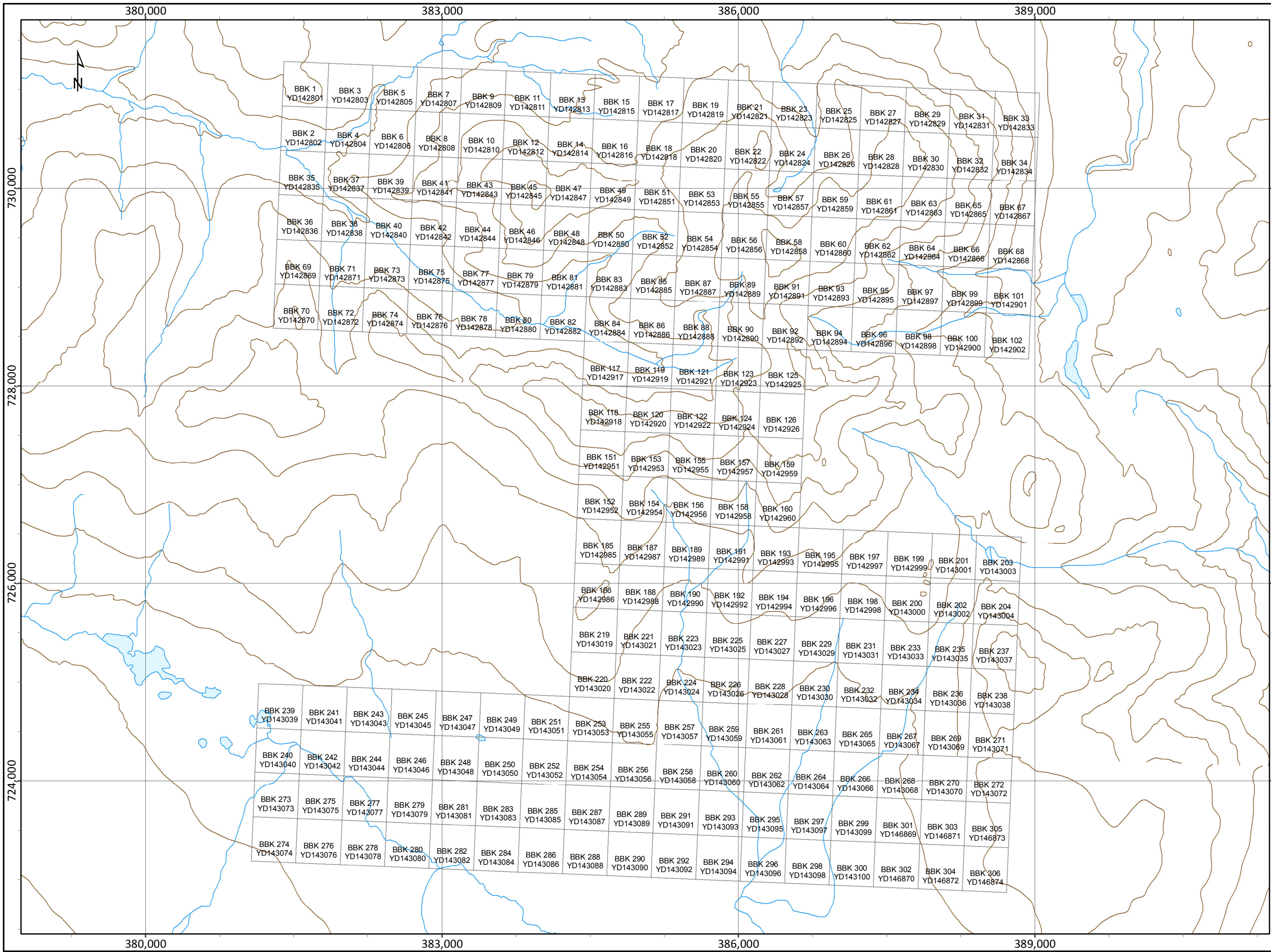
Certificate of Authorship

I, Shaun O'Connor of Whitehorse, YT certify that:

1. I am a graduate of Carleton University, Ottawa, ON with a B.Sc. (Hons.) in Earth Sciences.
2. I have worked in mineral exploration and geologic mapping in the Yukon for 6 years.
3. I am author of the preceding report.



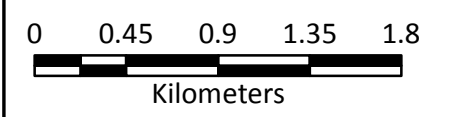
Shaun O'Connor, B.Sc.
Whitehorse, YT
December 12th, 2012

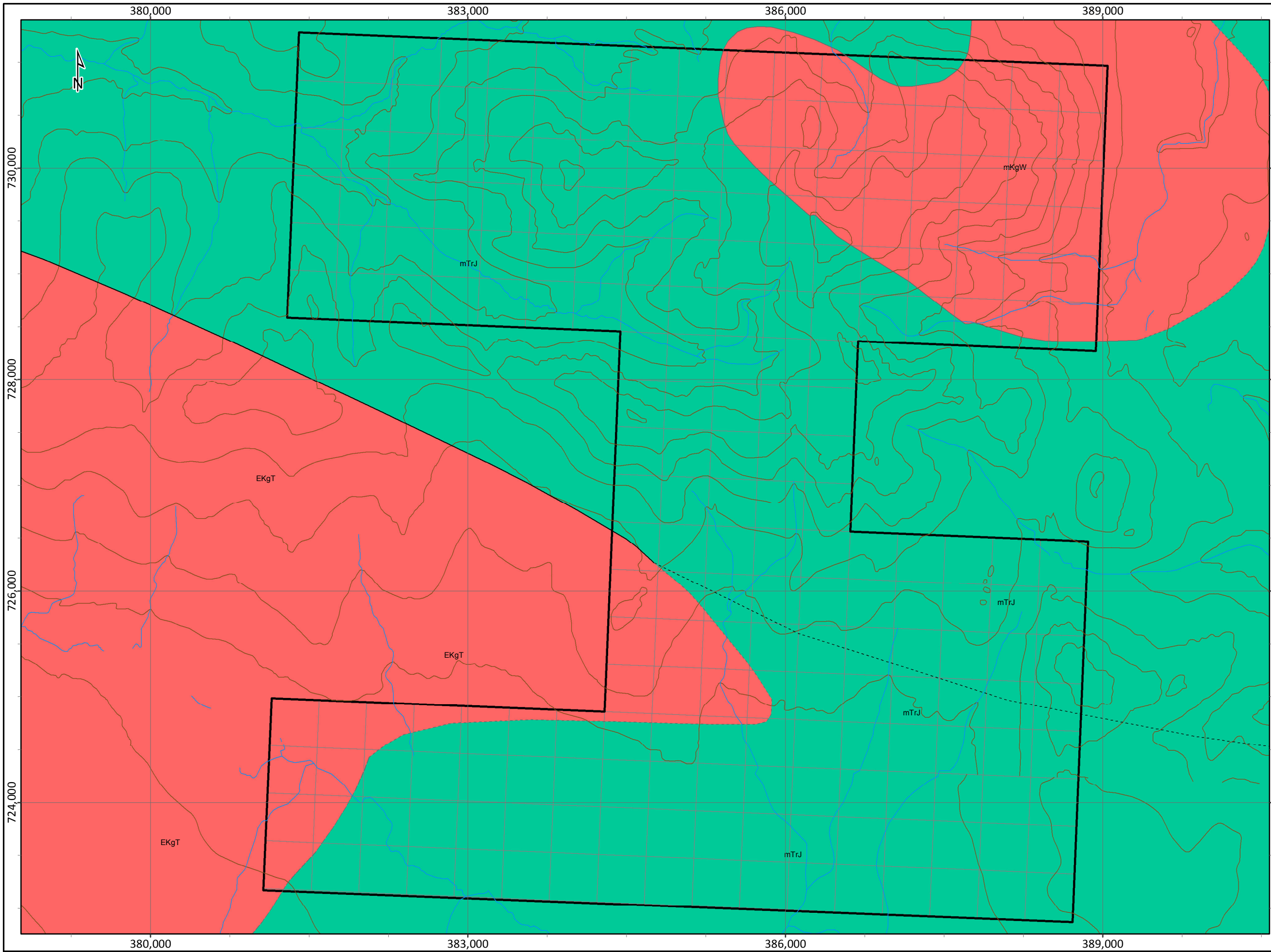


Legend

◇ Quartz Claim

BBK Claims Location Map





MID-CRETACEOUS

mKqW: WHITEHORSE SUITE:
 biotite quartz-monzonite, biotite granite and leucogranite, pink granophyric quartz monzonite, porphyritic biotite leucogranite, locally porphyritic (K-feldspar) hornblende monzonite to syenite, and locally porphyritic leucocratic quartz monzonite

EARLY CRETACEOUS

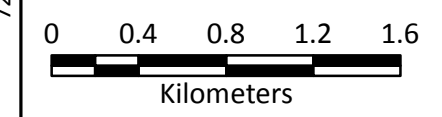
EKgT: TESLIN SUITE:
 leucocratic, fine to coarse-grained, equigranular, hornblende-biotite granite, granodiorite, quartz monzonite and quartz monzodiorite, locally with sparse grey and pink potassium feldspar phenocrysts; associated aplitic phases and dykes (Teslin Suite)

MIDDLE TRIASSIC

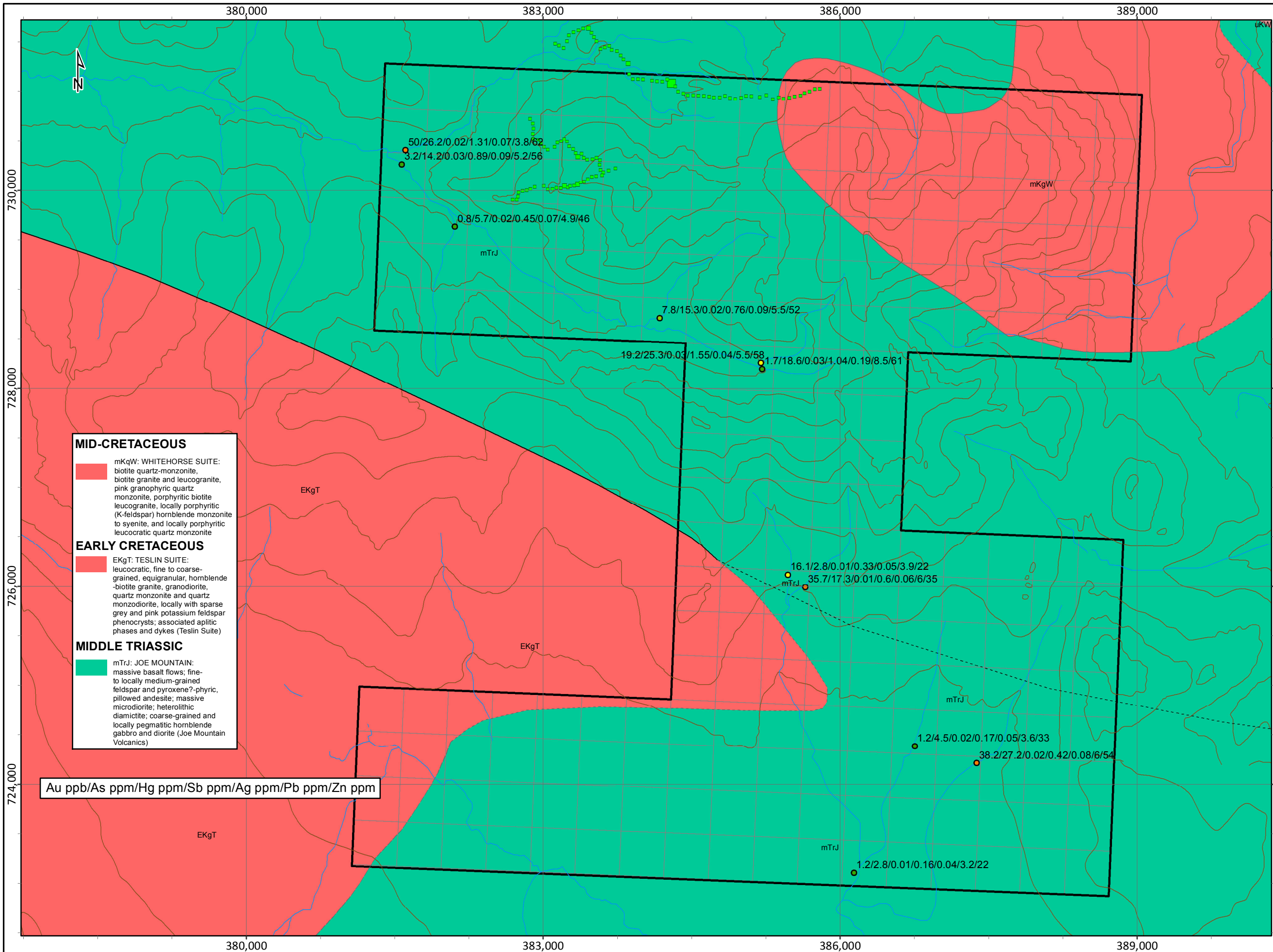
mTrJ: JOE MOUNTAIN:
 massive basalt flows; fine- to locally medium-grained feldspar and pyroxene?-phyric, pillowed andesite; massive microdiorite; heterolithic diamicrite; coarse-grained and locally pegmatitic hornblende gabbro and diorite (Joe Mountain Volcanics)



Local Geology



Scale:	1:34,650	Map ID:	--
Draw Date:		Rev. Date:	--
Version:	1	Figure:	--
Author:		Office:	
Location:			
Projection:	NAD 1983 Yukon Albers		
Filename:	BBK 20121101_geology		

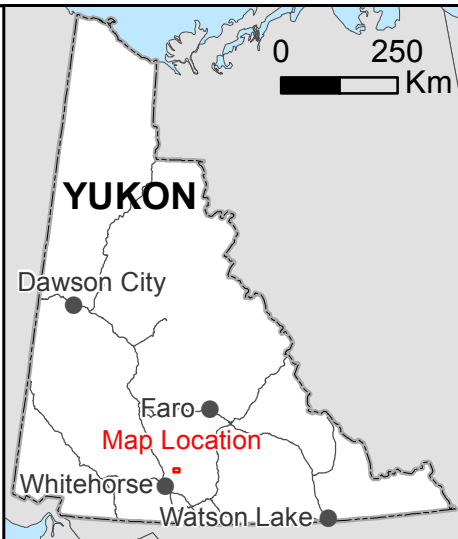


MID-CRETACEOUS
 mKqW: WHITEHORSE SUITE:
 biotite quartz-monzonite,
 biotite granite and leucogranite,
 pink granophyric quartz
 monzonite, porphyritic biotite
 leucogranite, locally porphyritic
 (K-feldspar) hornblende monzonite
 to syenite, and locally porphyritic
 leucocratic quartz monzonite

EARLY CRETACEOUS
 EKgT: TESLIN SUITE:
 leucocratic, fine to coarse-
 grained, equigranular, hornblende
 -biotite granite, granodiorite,
 quartz monzonite and quartz
 monzodiorite, locally with sparse
 grey and pink potassium feldspar
 phenocrysts; associated aplitic
 phases and dykes (Teslin Suite)

MIDDLE TRIASSIC
 mTrJ: JOE MOUNTAIN:
 massive basalt flows; fine-
 to locally medium-grained
 feldspar and pyroxene?-phyric,
 pillowed andesite; massive
 microdiorite; heterolithic
 diamicite; coarse-grained and
 locally pegmatitic hornblende
 gabbro and diorite (Joe Mountain
 Volcanics)

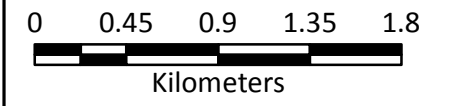
Au ppb/As ppm/Hg ppm/Sb ppm/Ag ppm/Pb ppm/Zn ppm



- Legend**
- Rock Samples (Au ppb)**
- ▲ 0 - 100
 - ▲ 101 - 250
 - ▲ 251 - 500
 - ▲ 501 - 1078
- Silt Samples (Au ppb)**
- 0.05 - 5
 - 5 - 15
 - 15 - 25
 - 25 - 50
 - 50 - 860
- Auger Soils (Au ppb)**
- 0.0 - 5.0
 - 5.1 - 10.0
 - 10.1 - 25.0
 - 25.1 - 50.0
 - 50.1 - 248.4



BBK Samples



Scale:	1:37,091	Map ID:	--
Draw Date:		Rev. Date:	--
Version:	1	Figure:	--
Author:		Office:	
Location:			
Projection:	NAD 1983 Yukon Albers		
Filename:	BBK 20121101 samples		



Acme Analytical Laboratories (Vancouver) Ltd.
1020 Cordova St. East Vancouver BC V6A 4A3 Canada

www.acmelab.com

Client: Golden Predator Canada Corp.
11th Floor, 888 Dunsmuir Street
Vancouver BC V6C 3K4 Canada

Submitted By: Andrew Caldwell
Receiving Lab: Canada-Whitehorse
Received: March 08, 2012
Report Date: March 21, 2012
Page: 1 of 12

CERTIFICATE OF ANALYSIS

WHI12000008.1

CLIENT JOB INFORMATION

Project: LIVINGSTONE
Shipment ID: SRV-2012-AC-2140
P.O. Number
Number of Samples: 320

SAMPLE DISPOSAL

RTRN-PLP Return
RTRN-RJT Return

Acme does not accept responsibility for samples left at the laboratory after 90 days without prior written instructions for sample storage or return.

Invoice To: Predator Mining Group
11th Floor- 888 Dunsmuir Street
Vancouver BC V6C 3K4
Canada

CC: Jack Cote
Linda Lewis

SAMPLE PREPARATION AND ANALYTICAL PROCEDURES

Method Code	Number of Samples	Code Description	Test Wgt (g)	Report Status	Lab
Dry at 60C	320	Dry at 60C			WHI
SS80	320	Dry at 60C sieve 100g to -80 mesh			WHI
1DX2	320	1:1:1 Aqua Regia digestion ICP-MS analysis	15	Completed	VAN
RJSV	320	Saving all or part of Soil Reject			WHI

ADDITIONAL COMMENTS



This report supersedes all previous preliminary and final reports with this file number dated prior to the date on this certificate. Signature indicates final approval; preliminary reports are unsigned and should be used for reference only. All results are considered the confidential property of the client. Acme assumes the liabilities for actual cost of analysis only. Results apply to samples as submitted. *** asterisk indicates that an analytical result could not be provided due to unusually high levels of interference from other elements.



Acme Analytical Laboratories (Vancouver) Ltd.
 1020 Cordova St. East Vancouver BC V6A 4A3 Canada
 Phone (604) 253-3158 Fax (604) 253-1716

www.acmelab.com

Client: **Golden Predator Canada Corp.**
 11th Floor, 888 Dunsmuir Street
 Vancouver BC V6C 3K4 Canada

Project: LIVINGSTONE
 Report Date: March 21, 2012

Page: 2 of 12 Part 1

CERTIFICATE OF ANALYSIS

WHI12000008.1

Method	Analyte	Unit	MDL	1DX15	1DX15	1DX15	1DX15	1DX15	1DX15	1DX15	1DX15	1DX15	1DX15	1DX15	1DX15	1DX15	1DX15	1DX15	1DX15	1DX15	1DX15		
				Mo	Cu	Pb	Zn	Ag	Ni	Co	Mn	Fe	As	Au	Th	Sr	Cd	Sb	Bi	V	Ca	P	La
				ppm	ppm	ppm	ppm	ppm	ppm	%	ppm	ppb	ppm	ppm	ppm	ppm	ppm	%	%	ppm			
K954001	Soil			0.8	44.2	28.3	51	0.4	38.4	16.5	546	2.81	3.9	<0.5	1.3	43	0.3	0.5	<0.1	73	3.59	0.060	7
K954002	Soil			0.8	40.8	32.5	55	0.5	33.8	14.8	451	2.80	5.8	0.9	2.9	14	0.2	0.6	0.1	80	0.69	0.067	6
K954003	Soil			0.5	41.8	36.8	59	0.4	27.7	15.0	525	3.00	3.6	<0.5	1.4	14	0.2	0.8	<0.1	80	0.71	0.113	5
K954004	Soil			0.5	37.1	6.2	52	0.2	35.4	16.5	579	2.89	4.1	1.8	1.1	17	0.2	0.4	<0.1	87	0.46	0.052	5
K954005	Soil			0.1	6.1	4.9	29	0.2	8.5	6.4	282	1.64	0.7	<0.5	2.6	135	<0.1	<0.1	0.2	55	0.48	0.083	5
K954006	Soil			<0.1	8.9	14.9	30	<0.1	11.9	8.1	312	2.08	2.3	<0.5	2.7	49	<0.1	0.2	<0.1	67	0.56	0.080	6
K954007	Soil			0.2	6.5	5.2	38	0.2	11.8	8.4	461	2.11	2.7	<0.5	1.5	24	<0.1	0.3	<0.1	60	0.34	0.081	6
K954008	Soil			<0.1	2.9	2.0	25	<0.1	6.3	5.2	232	1.51	<0.5	<0.5	2.9	60	<0.1	<0.1	<0.1	53	0.50	0.088	5
K954009	Soil			3.2	27.4	9.3	42	0.3	6.5	3.1	224	3.07	2.1	<0.5	2.0	34	0.1	0.1	0.3	43	0.04	0.077	7
K954010	Soil			1.5	16.5	26.1	71	0.2	25.7	8.5	405	1.94	4.5	<0.5	7.4	23	0.7	0.2	0.6	50	0.27	0.045	14
K954011	Soil			0.4	6.6	10.8	73	0.2	5.4	2.1	113	0.67	1.5	<0.5	6.2	5	0.3	<0.1	0.4	16	0.05	0.015	8
K954012	Soil			0.6	9.9	10.7	69	0.2	10.2	4.7	328	1.50	1.2	<0.5	8.7	8	0.5	<0.1	0.4	38	0.15	0.055	14
K954013	Soil			<0.1	7.7	9.6	40	0.2	2.7	3.5	301	0.99	<0.5	<0.5	12.8	10	<0.1	<0.1	4.0	23	0.13	0.045	20
K954014	Soil			1.7	18.7	6.5	126	0.1	15.4	5.1	1315	1.30	1.2	<0.5	10.7	10	4.3	0.1	0.6	35	0.18	0.061	18
K954015	Soil			7.0	28.4	9.6	73	0.2	29.8	9.5	402	2.40	3.0	2.6	3.3	14	1.3	0.2	0.6	79	0.22	0.035	9
K954016	Soil			1.6	32.4	26.3	84	0.2	36.2	11.4	403	2.53	3.5	0.9	1.9	17	0.6	0.3	0.4	76	0.20	0.053	11
K954017	Soil			1.8	16.7	11.4	60	0.1	6.3	2.9	227	1.18	0.6	<0.5	8.2	7	0.4	<0.1	0.4	28	0.15	0.062	22
K954018	Soil			5.5	60.0	11.7	365	0.2	57.1	6.6	386	3.93	0.8	<0.5	4.8	36	1.8	<0.1	0.2	238	0.25	0.046	17
K954019	Soil			1.3	27.2	9.3	80	0.2	46.5	11.9	364	2.65	4.0	0.6	3.1	16	0.4	0.3	0.2	84	0.17	0.028	10
K954020	Soil			3.1	21.5	4.9	44	0.4	7.0	2.5	194	1.81	<0.5	<0.5	4.4	19	0.2	<0.1	0.6	111	0.14	0.045	15
K954021	Soil			0.5	19.8	8.8	38	0.2	25.4	11.5	251	1.72	0.6	<0.5	4.9	117	0.2	<0.1	0.1	42	2.05	0.071	9
K954022	Soil			0.3	14.5	7.3	47	0.3	17.7	12.1	545	2.62	12.4	0.9	2.8	24	<0.1	0.8	<0.1	71	0.43	0.085	8
K954023	Soil			5.5	23.0	7.4	159	0.3	48.9	9.3	254	2.10	3.9	<0.5	2.3	14	2.1	0.3	0.2	84	0.23	0.028	7
K954024	Soil			2.5	15.0	6.9	120	0.4	25.8	8.6	432	1.84	0.7	<0.5	2.9	45	0.8	<0.1	0.1	94	0.47	0.050	13
K954025	Soil			2.4	27.4	9.5	94	0.3	48.5	11.5	379	2.92	4.8	<0.5	2.9	23	0.7	0.3	0.1	88	0.24	0.052	10
K954026	Soil			32.9	44.4	50.0	318	0.7	21.0	5.2	151	1.93	<0.5	<0.5	1.1	30	23.4	0.3	0.3	244	0.14	0.040	5
K954027	Soil			7.3	29.5	164.2	57	0.7	32.3	7.2	230	2.73	2.0	0.9	2.9	48	0.7	0.3	2.2	66	0.15	0.070	9
K954301	Soil			0.6	65.3	9.0	58	0.6	28.4	24.9	961	4.26	9.6	0.9	0.9	110	0.3	0.3	<0.1	166	2.36	0.036	3
K954302	Soil			1.3	26.0	11.3	40	0.1	26.5	13.4	366	2.83	19.3	3.0	2.0	19	0.2	1.0	0.1	81	0.26	0.042	10
K954303	Soil			1.1	42.2	8.2	99	0.1	41.5	39.5	1650	5.94	25.9	1.8	0.7	19	0.2	1.3	<0.1	183	0.61	0.076	6

This report supersedes all previous preliminary and final reports with this file number dated prior to the date on this certificate. Signature indicates final approval; preliminary reports are unsigned and should be used for reference only.



1020 Cordova St. East Vancouver BC V6A 4A3 Canada
 Phone (604) 253-3158 Fax (604) 253-1716

Acme Analytical Laboratories (Vancouver) Ltd.

www.acmelab.com

Client: **Golden Predator Canada Corp.**
 11th Floor, 888 Dunsmuir Street
 Vancouver BC V6C 3K4 Canada

Project: LIVINGSTONE
 Report Date: March 21, 2012

Page: 2 of 12 Part 2

CERTIFICATE OF ANALYSIS

WHI12000008.1

Method	Analyte	Unit	MDL	1DX15	1DX15	1DX15	1DX15	1DX15	1DX15	1DX15	1DX15	1DX15	1DX15	1DX15	1DX15	1DX15	1DX15		
				Cr	Mg	Ba	Ti	B	Al	Na	K	W	Hg	Sc	Tl	S	Ga	Se	Te
				ppm	%	ppm	%	ppm	%	ppm	%	ppm	%	ppm	%	ppm	ppm		
K954001	Soil			83	1.55	205	0.099	<1	1.62	0.020	0.09	1.1	0.02	6.1	<0.1	<0.05	5	<0.5	<0.2
K954002	Soil			65	1.07	132	0.095	1	1.35	0.026	0.10	1.7	0.01	5.1	0.1	<0.05	5	<0.5	<0.2
K954003	Soil			52	1.32	144	0.065	<1	1.54	0.023	0.13	1.5	0.02	5.4	<0.1	<0.05	6	<0.5	<0.2
K954004	Soil			87	1.40	106	0.117	1	1.78	0.021	0.12	1.1	0.01	5.0	<0.1	<0.05	5	<0.5	<0.2
K954005	Soil			24	0.50	88	0.087	<1	0.78	0.046	0.08	2.1	<0.01	2.4	<0.1	<0.05	4	<0.5	<0.2
K954006	Soil			35	0.62	58	0.080	<1	0.87	0.050	0.06	1.3	<0.01	3.0	<0.1	<0.05	4	<0.5	<0.2
K954007	Soil			32	0.74	41	0.077	<1	1.12	0.032	0.05	1.7	<0.01	3.1	<0.1	<0.05	5	<0.5	<0.2
K954008	Soil			23	0.45	69	0.082	<1	0.64	0.040	0.05	1.8	<0.01	1.4	<0.1	<0.05	3	<0.5	<0.2
K954009	Soil			35	0.47	142	0.032	<1	1.05	0.061	0.21	11.4	<0.01	1.5	0.4	0.25	3	1.4	<0.2
K954010	Soil			31	0.66	128	0.080	1	1.35	0.016	0.22	9.0	0.01	3.1	0.3	<0.05	5	0.6	<0.2
K954011	Soil			9	0.12	40	0.023	<1	0.45	0.021	0.08	7.6	0.01	1.1	0.1	<0.05	2	<0.5	<0.2
K954012	Soil			19	0.43	63	0.102	<1	0.96	0.019	0.34	6.3	0.01	2.9	0.4	<0.05	5	<0.5	<0.2
K954013	Soil			7	0.32	79	0.095	<1	0.73	0.067	0.48	11.7	<0.01	3.0	0.7	<0.05	4	<0.5	<0.2
K954014	Soil			19	0.35	225	0.039	<1	0.85	0.011	0.11	4.1	<0.01	2.6	0.2	<0.05	3	<0.5	<0.2
K954015	Soil			39	0.63	159	0.085	<1	1.48	0.019	0.13	5.3	0.01	3.6	0.2	<0.05	4	0.7	<0.2
K954016	Soil			51	0.74	132	0.072	<1	1.72	0.017	0.17	3.8	0.02	3.4	0.2	<0.05	5	0.7	<0.2
K954017	Soil			11	0.33	65	0.082	<1	0.72	0.033	0.33	6.4	<0.01	2.4	0.4	<0.05	4	<0.5	<0.2
K954018	Soil			62	1.50	125	0.114	<1	3.09	0.053	0.76	3.9	<0.01	7.0	1.0	<0.05	9	3.6	<0.2
K954019	Soil			57	0.86	175	0.095	<1	1.87	0.016	0.14	4.5	0.02	4.2	0.2	<0.05	6	<0.5	<0.2
K954020	Soil			23	0.51	79	0.131	<1	0.86	0.065	0.35	2.8	<0.01	4.0	0.4	0.16	3	2.5	<0.2
K954021	Soil			36	0.74	68	0.092	1	3.81	0.209	0.53	7.1	<0.01	2.5	0.5	0.07	10	<0.5	<0.2
K954022	Soil			36	0.84	82	0.056	<1	1.24	0.023	0.08	2.5	0.04	4.2	<0.1	<0.05	5	<0.5	<0.2
K954023	Soil			65	0.73	121	0.062	<1	1.25	0.029	0.12	5.8	<0.01	3.2	0.2	0.05	4	1.9	<0.2
K954024	Soil			38	0.66	68	0.074	<1	1.64	0.070	0.42	5.1	0.01	3.5	0.4	0.07	6	1.0	<0.2
K954025	Soil			106	0.97	213	0.109	<1	1.80	0.033	0.12	3.6	0.04	4.2	0.2	<0.05	6	0.8	<0.2
K954026	Soil			35	0.32	115	0.065	<1	0.85	0.036	0.15	10.7	0.06	1.8	0.4	0.08	3	14.9	<0.2
K954027	Soil			52	0.46	167	0.070	<1	0.95	0.057	0.07	6.2	0.02	2.9	0.2	0.18	3	3.3	0.2
K954301	Soil			77	1.89	27	0.171	4	4.72	0.023	0.09	0.7	0.03	21.3	<0.1	<0.05	10	<0.5	<0.2
K954302	Soil			38	0.54	83	0.066	1	1.51	0.021	0.07	1.0	0.03	5.0	0.1	<0.05	5	<0.5	<0.2
K954303	Soil			55	0.70	61	0.111	5	2.15	0.043	0.08	0.3	0.07	18.5	0.1	<0.05	8	<0.5	<0.2

This report supersedes all previous preliminary and final reports with this file number dated prior to the date on this certificate. Signature indicates final approval; preliminary reports are unsigned and should be used for reference only.



1020 Cordova St. East Vancouver BC V6A 4A3 Canada
 Phone (604) 253-3158 Fax (604) 253-1716

Acme Analytical Laboratories (Vancouver) Ltd.

www.acmelab.com

Client: **Golden Predator Canada Corp.**
 11th Floor, 888 Dunsmuir Street
 Vancouver BC V6C 3K4 Canada

Project: LIVINGSTONE
 Report Date: March 21, 2012

Page: 3 of 12 Part 1

CERTIFICATE OF ANALYSIS

WHI12000008.1

Method	Analyte	Unit	MDL	1DX15	1DX15	1DX15	1DX15	1DX15	1DX15	1DX15	1DX15	1DX15	1DX15	1DX15	1DX15	1DX15	1DX15	1DX15	1DX15	1DX15	1DX15		
				Mo	Cu	Pb	Zn	Ag	Ni	Co	Mn	Fe	As	Au	Th	Sr	Cd	Sb	Bi	V	Ca	P	La
				ppm	ppm	ppm	ppm	ppm	ppm	%	ppb	ppm	ppm	ppm	ppm	ppm	ppm	%	%	ppm			
				0.1	0.1	0.1	1	0.1	0.1	0.01	0.5	0.5	0.1	1	0.1	0.1	0.1	2	0.01	0.001	1		
K954028	Soil			6.1	20.6	7.9	50	0.6	8.9	3.0	274	2.77	2.8	0.6	2.1	9	0.2	0.2	0.1	66	0.06	0.042	5
K954029	Soil			5.5	9.9	4.6	17	0.6	1.0	0.8	202	2.76	<0.5	0.9	1.4	7	<0.1	0.1	0.5	72	<0.01	0.036	3
K954030	Soil			10.6	27.7	13.7	41	0.8	4.4	1.3	253	4.27	<0.5	1.9	3.6	24	0.1	0.1	0.2	292	0.04	0.065	7
K954031	Soil			8.5	46.0	4.9	92	0.8	11.6	4.3	337	3.79	<0.5	4.1	1.6	30	0.4	<0.1	0.1	114	0.22	0.065	4
K954032	Soil			1.8	26.5	11.0	41	1.0	9.5	3.3	190	4.58	0.8	0.7	1.3	20	0.1	0.3	<0.1	89	0.13	0.112	5
K954033	Soil			3.1	45.3	8.2	166	0.4	40.1	8.9	340	2.53	3.1	2.2	2.4	17	0.7	0.3	0.2	100	0.23	0.039	7
K954034	Soil			10.3	29.4	20.5	137	0.4	34.2	8.2	214	1.76	1.8	4.9	1.6	30	0.9	0.3	0.7	77	0.21	0.036	6
K954035	Soil			3.1	19.0	5.7	108	0.3	17.9	7.4	275	1.56	0.9	2.9	2.4	13	0.5	<0.1	0.3	63	0.14	0.034	6
K954036	Soil			6.8	21.4	7.9	40	0.6	1.9	1.4	432	3.33	<0.5	5.4	1.1	16	<0.1	<0.1	0.2	195	0.07	0.049	2
K954037	Soil			0.9	7.5	10.7	42	0.2	7.6	5.2	310	1.84	1.6	2.2	1.3	27	0.1	0.2	0.2	43	0.10	0.067	18
K954038	Soil			1.4	19.8	6.7	55	0.2	24.3	8.2	295	1.83	2.1	1.1	6.4	13	0.2	0.1	0.2	61	0.18	0.047	13
K954039	Soil			1.5	15.8	6.4	49	0.3	19.3	6.8	253	1.81	1.9	1.1	1.8	20	0.3	0.2	0.8	65	0.20	0.048	7
K954040	Soil			1.3	16.5	6.7	63	0.2	14.1	5.9	303	1.92	2.0	1.6	1.7	9	0.2	0.2	0.4	64	0.12	0.043	6
K954041	Soil			1.6	20.2	8.2	55	0.6	22.7	8.3	307	2.18	2.4	1.6	1.4	21	0.2	0.2	0.3	77	0.28	0.079	11
K954042	Soil			1.5	24.2	6.7	62	0.2	35.0	10.0	313	2.21	2.0	1.3	3.3	30	0.2	0.1	0.3	72	0.39	0.036	9
K954043	Soil			0.6	9.0	5.9	40	0.1	111.0	10.7	280	1.56	1.3	1.3	12.7	12	0.2	<0.1	0.1	37	0.14	0.041	12
K954044	Soil			0.4	5.6	7.2	46	0.1	9.6	4.6	287	1.41	0.6	<0.5	9.3	13	0.1	<0.1	0.1	40	0.21	0.068	29
K954045	Soil			1.2	15.8	7.8	45	0.1	16.4	6.7	316	1.55	1.8	0.7	3.7	10	0.1	0.2	0.2	49	0.14	0.030	11
K954046	Soil			1.2	17.9	11.6	58	0.6	24.0	7.9	340	1.79	2.4	1.2	5.3	20	0.3	0.1	0.2	56	0.13	0.039	12
K954047	Soil			1.6	20.8	7.9	58	0.2	29.0	8.8	332	2.02	2.5	0.8	2.7	15	0.2	0.2	0.3	75	0.17	0.041	10
K954048	Soil			3.4	49.2	6.2	57	0.3	32.4	9.8	345	2.09	1.1	<0.5	2.7	26	0.3	<0.1	0.2	132	0.53	0.054	5
K954049	Soil			1.8	21.3	5.2	55	0.3	27.3	8.5	326	2.10	2.5	<0.5	2.1	17	0.2	0.2	0.3	113	0.26	0.052	7
K954050	Soil			0.4	5.0	12.0	37	0.1	5.3	3.9	238	1.20	0.8	<0.5	4.9	19	<0.1	<0.1	0.1	26	0.19	0.051	14
K954351	Soil			0.6	35.4	4.6	80	0.2	35.7	20.7	703	4.79	5.9	<0.5	1.3	18	0.2	0.6	<0.1	167	0.66	0.049	6
K954352	Soil			0.7	31.2	6.5	65	0.3	25.0	16.9	517	3.71	6.7	<0.5	7.2	13	0.1	0.8	<0.1	126	0.90	0.059	8
K954353	Soil			0.2	29.3	2.9	55	0.2	27.2	16.8	590	3.34	4.5	<0.5	1.3	22	0.2	0.4	<0.1	97	0.70	0.040	4
K954354	Soil			0.6	33.5	5.3	64	0.2	28.3	20.0	863	4.20	9.2	1.2	3.0	14	0.2	0.6	<0.1	130	0.55	0.060	9
K954355	Soil			0.7	34.1	6.6	56	0.5	28.5	16.3	663	3.21	6.9	5.9	2.2	21	0.2	0.5	<0.1	99	0.62	0.057	9
K954356	Soil			0.5	41.1	3.5	80	0.2	36.1	21.3	873	4.86	3.6	0.7	1.2	18	0.3	0.1	<0.1	146	1.28	0.062	6
K954357	Soil			0.6	26.3	6.6	47	0.1	24.5	14.2	440	3.04	6.3	1.6	3.1	18	0.1	0.6	<0.1	100	0.57	0.058	10

This report supersedes all previous preliminary and final reports with this file number dated prior to the date on this certificate. Signature indicates final approval; preliminary reports are unsigned and should be used for reference only.



1020 Cordova St. East Vancouver BC V6A 4A3 Canada
 Phone (604) 253-3158 Fax (604) 253-1716

Acme Analytical Laboratories (Vancouver) Ltd.

www.acmelab.com

Client: **Golden Predator Canada Corp.**
 11th Floor, 888 Dunsmuir Street
 Vancouver BC V6C 3K4 Canada

Project: LIVINGSTONE
 Report Date: March 21, 2012

Page: 3 of 12 Part 2

CERTIFICATE OF ANALYSIS

WHI12000008.1

Method	Analyte	Unit	MDL	1DX15	1DX15	1DX15	1DX15	1DX15	1DX15	1DX15	1DX15	1DX15	1DX15	1DX15	1DX15	1DX15	1DX15		
				Cr	Mg	Ba	Ti	B	Al	Na	K	W	Hg	Sc	Tl	S	Ga	Se	Te
				ppm	%	ppm	%	ppm	%	ppm	ppm	ppm	ppm	ppm	%	ppm	ppm		
				1	0.01	1	0.001	1	0.01	0.001	0.01	0.1	0.01	0.1	0.05	1	0.5		
K954028	Soil			18	0.46	152	0.049	<1	0.81	0.016	0.21	7.4	0.01	3.6	0.5	0.11	3	4.1	<0.2
K954029	Soil			11	0.46	223	0.046	<1	0.59	0.031	0.40	4.4	<0.01	3.2	1.0	0.44	3	9.0	<0.2
K954030	Soil			132	1.11	199	0.086	<1	1.27	0.049	0.90	4.6	<0.01	6.1	1.1	0.60	6	12.0	<0.2
K954031	Soil			16	0.61	263	0.071	<1	1.33	0.041	0.47	9.7	0.01	4.8	1.1	0.55	4	6.7	<0.2
K954032	Soil			72	0.65	219	0.063	<1	0.96	0.019	0.36	7.6	0.02	3.8	0.6	0.18	4	4.7	<0.2
K954033	Soil			42	0.60	183	0.076	<1	1.55	0.020	0.17	7.1	0.01	4.7	0.2	<0.05	5	1.8	<0.2
K954034	Soil			29	0.47	160	0.057	1	1.16	0.015	0.11	8.7	0.03	2.5	0.2	0.06	4	2.6	<0.2
K954035	Soil			25	0.38	137	0.043	1	0.88	0.018	0.15	9.6	0.02	2.2	0.2	<0.05	3	2.2	<0.2
K954036	Soil			25	1.13	439	0.106	<1	1.42	0.041	0.66	4.7	<0.01	10.3	0.8	0.36	6	7.3	<0.2
K954037	Soil			24	0.36	109	0.025	<1	1.50	0.012	0.12	7.8	0.05	1.1	0.4	<0.05	7	<0.5	<0.2
K954038	Soil			36	0.54	151	0.075	<1	1.16	0.019	0.18	7.1	0.02	3.0	0.2	<0.05	4	<0.5	<0.2
K954039	Soil			32	0.48	176	0.076	<1	1.11	0.017	0.13	5.4	0.06	2.4	0.2	<0.05	5	<0.5	<0.2
K954040	Soil			25	0.47	79	0.066	<1	1.07	0.017	0.07	4.7	0.04	3.1	0.2	<0.05	5	<0.5	<0.2
K954041	Soil			38	0.53	174	0.072	1	1.29	0.020	0.16	5.1	0.03	2.5	0.2	<0.05	6	<0.5	<0.2
K954042	Soil			47	0.73	232	0.091	1	1.70	0.028	0.20	5.2	0.01	3.2	0.2	<0.05	5	0.7	<0.2
K954043	Soil			44	1.25	105	0.045	<1	0.84	0.019	0.15	4.7	0.01	2.5	0.2	<0.05	3	<0.5	<0.2
K954044	Soil			18	0.45	129	0.081	<1	0.88	0.040	0.38	6.2	<0.01	2.7	0.5	<0.05	5	<0.5	<0.2
K954045	Soil			27	0.44	122	0.054	<1	1.03	0.013	0.12	8.4	<0.01	2.1	0.2	<0.05	4	<0.5	<0.2
K954046	Soil			32	0.50	231	0.072	<1	1.17	0.019	0.18	8.8	0.02	2.7	0.2	<0.05	4	<0.5	<0.2
K954047	Soil			41	0.58	148	0.068	<1	1.42	0.019	0.14	5.3	0.03	3.2	0.2	<0.05	5	<0.5	<0.2
K954048	Soil			40	0.66	171	0.097	<1	1.39	0.046	0.14	5.9	0.02	3.7	<0.1	<0.05	4	1.3	<0.2
K954049	Soil			40	0.58	149	0.080	<1	1.32	0.026	0.11	6.1	0.02	3.2	0.1	<0.05	5	<0.5	<0.2
K954050	Soil			13	0.33	75	0.012	<1	1.06	0.015	0.10	6.1	0.01	1.4	0.2	<0.05	4	<0.5	<0.2
K954351	Soil			72	1.48	85	0.304	3	2.42	0.029	0.05	0.6	0.03	11.3	<0.1	<0.05	11	<0.5	<0.2
K954352	Soil			43	1.16	64	0.227	2	1.82	0.119	0.07	1.0	0.01	7.9	<0.1	<0.05	7	<0.5	<0.2
K954353	Soil			43	1.27	125	0.161	3	2.05	0.038	0.05	0.8	<0.01	6.8	<0.1	<0.05	7	<0.5	<0.2
K954354	Soil			53	1.09	100	0.216	2	2.26	0.028	0.05	1.1	0.02	8.7	<0.1	<0.05	8	<0.5	<0.2
K954355	Soil			52	0.93	109	0.109	2	1.90	0.034	0.06	2.0	0.03	6.5	<0.1	<0.05	7	<0.5	<0.2
K954356	Soil			73	2.06	77	0.327	3	2.78	0.047	0.02	0.9	0.06	10.0	<0.1	<0.05	10	<0.5	<0.2
K954357	Soil			47	0.90	69	0.158	2	1.43	0.038	0.04	1.9	0.02	5.9	<0.1	<0.05	6	<0.5	<0.2

This report supersedes all previous preliminary and final reports with this file number dated prior to the date on this certificate. Signature indicates final approval, preliminary reports are unsigned and should be used for reference only.



1020 Cordova St. East Vancouver BC V6A 4A3 Canada
 Phone (604) 253-3158 Fax (604) 253-1716

Acme Analytical Laboratories (Vancouver) Ltd.

www.acmelab.com

Client: Golden Predator Canada Corp.
 11th Floor, 888 Dunsmuir Street
 Vancouver BC V6C 3K4 Canada

Project: LIVINGSTONE
Report Date: March 21, 2012

Page: 4 of 12 Part 1

CERTIFICATE OF ANALYSIS

WH12000008.1

Method	Analyte	Unit	MDL	1DX15	1DX15	1DX15	1DX15	1DX15	1DX15	1DX15	1DX15	1DX15	1DX15	1DX15	1DX15	1DX15	1DX15	1DX15	1DX15	1DX15	1DX15		
				Mo	Cu	Pb	Zn	Ag	Ni	Co	Mn	Fe	As	Au	Th	Sr	Cd	Sb	Bi	V	Ca	P	La
				ppm	ppm	ppm	ppm	ppm	ppm	ppm	ppm	ppm	ppm	ppm	ppm	ppm	ppm	ppm	ppm	ppm	ppm		
				0.1	0.1	0.1	1	0.1	0.1	0.1	1	0.01	0.5	0.5	0.1	1	0.1	0.1	0.1	2	0.01	0.001	1
K954358	Soil			0.4	21.5	7.0	44	0.3	16.5	10.6	298	2.40	3.4	0.9	1.0	14	0.1	0.3	<0.1	80	0.50	0.053	8
K954359	Soil			0.6	21.5	3.7	44	0.1	24.2	12.7	396	2.84	5.1	<0.5	9.0	14	0.2	0.4	<0.1	92	0.46	0.065	17
K954360	Soil			0.6	36.5	5.4	49	0.3	32.9	16.4	588	3.43	6.5	4.9	2.8	18	0.1	0.5	<0.1	115	0.71	0.054	9
K954361	Soil			1.0	39.6	10.8	67	0.2	30.2	18.5	783	4.05	7.3	4.5	7.1	19	0.1	0.5	<0.1	125	0.75	0.063	13
K954362	Soil			0.7	33.4	7.1	53	0.4	30.7	16.5	616	3.42	10.3	1.1	3.3	16	0.2	0.7	<0.1	103	0.61	0.050	10
K954363	Soil			0.6	26.1	7.1	46	0.3	31.9	13.5	402	2.76	7.0	2.0	3.1	18	0.1	0.5	<0.1	83	0.57	0.055	9
K954364	Soil			0.5	44.5	5.3	64	0.4	40.0	21.2	665	4.16	6.2	3.4	2.4	21	0.2	0.5	<0.1	133	0.88	0.056	8
K954365	Soil			0.6	31.8	8.7	46	0.6	31.2	16.1	532	3.47	6.9	1.1	3.5	17	<0.1	0.5	<0.1	116	0.53	0.056	11
K954366	Soil			1.0	27.3	5.9	46	0.3	32.4	13.6	519	2.72	5.9	10.0	3.5	20	0.2	0.4	0.1	73	0.66	0.071	14
K954367	Soil			0.5	35.8	6.6	47	0.2	34.6	16.6	558	3.33	5.6	0.9	3.2	18	0.1	0.4	<0.1	114	0.80	0.054	9
K954368	Soil			1.1	33.8	6.3	48	0.5	33.6	13.0	430	2.94	6.7	2.2	3.6	17	0.2	0.6	<0.1	98	0.47	0.046	11
K954369	Soil			0.6	19.1	19.0	45	0.3	22.2	11.7	447	2.85	3.7	0.7	7.0	16	0.1	0.3	<0.1	94	0.80	0.075	14
K954370	Soil			1.0	39.7	9.0	54	0.4	32.5	18.6	1611	3.01	7.7	2.4	2.8	22	0.2	0.7	0.1	97	0.59	0.054	7
K954371	Soil			0.7	29.0	10.2	50	0.2	23.0	11.7	375	2.72	7.0	1.3	3.3	13	0.2	0.4	0.1	82	0.37	0.046	8
K954372	Soil			0.6	45.9	4.9	61	0.2	20.1	15.1	542	3.79	5.5	1.1	2.6	82	0.2	0.5	0.1	146	1.02	0.054	6
K954373	Soil			0.8	29.7	8.0	40	0.4	23.8	9.9	209	2.35	7.7	2.1	3.8	14	0.1	0.6	0.1	75	0.28	0.046	12
K954374	Soil			0.6	29.1	4.6	80	0.2	24.7	19.4	680	4.38	10.1	2.4	1.8	24	0.2	0.6	<0.1	147	1.34	0.075	6
K954651	Soil			0.7	20.3	7.8	38	0.4	17.4	10.1	338	2.10	7.5	2.2	1.1	12	0.1	0.5	0.2	52	0.26	0.039	7
K954652	Soil			0.7	24.7	43.7	57	0.1	49.0	15.9	619	2.59	2.1	<0.5	21.6	88	0.2	0.2	0.2	38	1.99	0.142	89
K954653	Soil			0.8	25.7	10.9	43	0.5	21.6	12.1	344	2.58	8.4	1.8	3.2	14	0.1	0.6	0.3	74	0.35	0.051	12
K954654	Soil			0.8	40.8	64.6	67	0.5	31.7	17.3	471	2.94	15.8	3.2	3.0	17	0.3	0.7	0.3	79	0.48	0.053	13
K954655	Soil			0.9	37.6	19.1	71	0.5	28.2	15.0	650	2.93	10.6	1.8	1.2	25	0.3	0.9	0.4	78	0.87	0.093	9
K954656	Soil			0.4	34.5	31.3	47	0.8	24.1	16.6	426	2.47	14.6	2.4	2.2	31	0.2	0.7	0.2	84	1.05	0.070	8
K954657	Soil			0.6	38.9	7.9	69	0.3	23.7	9.6	525	2.20	10.0	2.2	1.2	27	0.3	1.0	0.4	48	1.02	0.090	10
K954658	Soil			0.4	32.9	46.3	80	0.6	38.5	15.7	899	3.32	18.9	1.2	0.6	42	0.3	1.4	<0.1	51	3.41	0.060	5
K954659	Soil			0.5	24.7	6.4	66	0.3	25.5	14.9	569	2.81	13.1	1.5	2.3	12	0.1	0.8	<0.1	71	0.50	0.060	6
K954660	Soil			0.8	33.2	37.4	52	0.4	31.6	16.7	522	3.07	13.8	2.1	1.3	21	0.1	0.9	0.2	94	0.48	0.048	6
K954661	Soil			0.6	39.1	8.5	50	0.3	35.3	16.9	477	3.00	13.0	2.4	1.3	22	0.1	0.8	0.3	98	0.79	0.055	6
K954662	Soil			0.5	33.2	124.6	51	0.5	27.7	15.7	561	3.00	9.6	5.3	0.7	21	0.2	0.6	0.1	89	0.62	0.057	5
K954663	Soil			0.5	55.2	8.5	55	0.5	35.8	19.7	687	3.48	9.7	2.2	1.2	32	0.2	0.7	0.7	107	1.46	0.053	5

This report supersedes all previous preliminary and final reports with this file number dated prior to the date on this certificate. Signature indicates final approval; preliminary reports are unsigned and should be used for reference only.



1020 Cordova St. East Vancouver BC V6A 4A3 Canada
 Phone (604) 253-3158 Fax (604) 253-1716

Acme Analytical Laboratories (Vancouver) Ltd.

www.acmelab.com

Client: **Golden Predator Canada Corp.**
 11th Floor, 888 Dunsmuir Street
 Vancouver BC V6C 3K4 Canada

Project: LIVINGSTONE
 Report Date: March 21, 2012

Page: 4 of 12 Part 2

CERTIFICATE OF ANALYSIS

WHI12000008.1

Method	Analyte	Unit	MDL	1DX15	1DX15	1DX15	1DX15	1DX15	1DX15	1DX15	1DX15	1DX15	1DX15	1DX15	1DX15	1DX15	1DX15		
				Cr	Mg	Ba	Ti	B	Al	Na	K	W	Hg	Sc	Ti	S	Ga	Se	Te
				ppm	%	ppm	%	ppm	%	ppm	%	ppm	ppm	ppm	ppm	%	ppm	ppm	ppm
				1	0.01	1	0.001	1	0.01	0.001	0.01	0.1	0.01	0.1	0.1	0.05	1	0.5	0.2
K954358	Soil			32	0.73	67	0.151	2	1.58	0.028	0.04	1.3	0.05	3.5	0.1	<0.05	6	<0.5	<0.2
K954359	Soil			47	0.90	84	0.156	2	1.60	0.041	0.12	2.2	0.01	5.5	<0.1	<0.05	6	<0.5	<0.2
K954360	Soil			65	1.27	81	0.143	2	1.80	0.042	0.04	1.7	0.02	8.2	<0.1	<0.05	6	<0.5	<0.2
K954361	Soil			65	1.37	112	0.155	2	2.33	0.038	0.06	1.5	0.04	10.0	0.1	<0.05	8	<0.5	<0.2
K954362	Soil			59	1.07	85	0.135	2	1.81	0.053	0.06	1.8	0.02	7.8	<0.1	<0.05	6	<0.5	<0.2
K954363	Soil			49	0.86	94	0.122	1	1.46	0.056	0.06	2.3	0.02	5.3	<0.1	<0.05	5	<0.5	<0.2
K954364	Soil			73	1.55	101	0.215	3	2.20	0.064	0.04	1.1	0.02	8.3	<0.1	<0.05	8	<0.5	<0.2
K954365	Soil			55	1.03	103	0.160	2	1.85	0.032	0.04	1.9	0.03	7.7	<0.1	<0.05	6	<0.5	<0.2
K954366	Soil			48	0.94	100	0.127	1	1.33	0.039	0.06	3.4	0.02	5.6	<0.1	<0.05	5	<0.5	<0.2
K954367	Soil			75	1.29	95	0.143	3	2.01	0.044	0.04	1.2	<0.01	8.4	<0.1	<0.05	6	<0.5	<0.2
K954368	Soil			56	0.97	88	0.095	2	1.93	0.023	0.05	1.8	0.03	7.0	<0.1	<0.05	6	<0.5	<0.2
K954369	Soil			39	0.94	76	0.112	2	1.27	0.081	0.08	1.6	0.02	6.3	<0.1	<0.05	5	<0.5	<0.2
K954370	Soil			59	1.02	112	0.123	3	1.58	0.034	0.04	1.9	0.03	6.9	<0.1	<0.05	6	<0.5	<0.2
K954371	Soil			43	0.84	78	0.125	2	1.53	0.024	0.05	1.6	0.02	5.7	<0.1	<0.05	6	<0.5	<0.2
K954372	Soil			35	1.17	65	0.212	3	2.59	0.220	0.04	0.8	0.02	6.6	<0.1	<0.05	8	<0.5	<0.2
K954373	Soil			42	0.63	87	0.086	1	1.43	0.020	0.05	2.1	0.02	4.4	<0.1	<0.05	5	<0.5	<0.2
K954374	Soil			33	1.24	124	0.193	2	1.79	0.150	0.05	1.0	0.02	12.0	<0.1	<0.05	7	<0.5	<0.2
K954651	Soil			31	0.53	58	0.051	1	1.16	0.039	0.05	6.6	0.03	3.8	<0.1	<0.05	5	<0.5	<0.2
K954652	Soil			59	1.45	103	0.012	4	1.54	0.032	0.13	0.7	0.04	3.6	<0.1	<0.05	5	<0.5	<0.2
K954653	Soil			46	0.68	60	0.081	1	1.37	0.049	0.07	4.6	0.03	4.1	<0.1	<0.05	5	<0.5	<0.2
K954654	Soil			55	0.92	72	0.055	2	1.66	0.037	0.06	3.7	0.02	7.6	<0.1	<0.05	6	<0.5	<0.2
K954655	Soil			49	0.79	119	0.055	3	1.57	0.053	0.08	2.3	0.05	5.3	0.1	0.08	6	<0.5	<0.2
K954656	Soil			39	0.78	111	0.108	2	1.43	0.110	0.06	2.9	0.03	6.8	<0.1	<0.05	5	<0.5	<0.2
K954657	Soil			36	0.58	120	0.024	2	1.23	0.018	0.06	1.8	0.05	4.9	<0.1	0.08	5	<0.5	<0.2
K954658	Soil			47	1.09	46	0.008	3	1.36	0.020	0.06	1.8	0.05	7.8	<0.1	0.06	5	0.6	<0.2
K954659	Soil			49	0.92	57	0.083	2	1.33	0.035	0.07	3.2	0.11	6.0	<0.1	<0.05	5	<0.5	<0.2
K954660	Soil			50	1.05	93	0.104	2	1.84	0.051	0.08	3.1	0.06	5.4	<0.1	<0.05	6	<0.5	<0.2
K954661	Soil			67	0.98	92	0.110	2	1.73	0.129	0.07	1.8	0.05	7.1	<0.1	<0.05	6	<0.5	<0.2
K954662	Soil			56	1.08	70	0.104	2	1.70	0.061	0.07	1.7	0.06	5.4	<0.1	<0.05	6	<0.5	<0.2
K954663	Soil			71	1.56	69	0.097	3	2.15	0.065	0.07	1.6	0.04	10.3	<0.1	<0.05	6	<0.5	<0.2

This report supersedes all previous preliminary and final reports with this file number dated prior to the date on this certificate. Signature indicates final approval; preliminary reports are unsigned and should be used for reference only.



1020 Cordova St. East Vancouver BC V6A 4A3 Canada
 Phone (604) 253-3158 Fax (604) 253-1716

Acme Analytical Laboratories (Vancouver) Ltd.

www.acmelab.com

Client: **Golden Predator Canada Corp.**
 11th Floor, 888 Dunsmuir Street
 Vancouver BC V6C 3K4 Canada

Project: LIVINGSTONE
 Report Date: March 21, 2012

Page: 5 of 12 Part 1

CERTIFICATE OF ANALYSIS

WHI12000008.1

Method	Analyte	Unit	MDL	1DX15 Mo	1DX15 Cu	1DX15 Pb	1DX15 Zn	1DX15 Ag	1DX15 Ni	1DX15 Co	1DX15 Mn	1DX15 Fe	1DX15 As	1DX15 Au	1DX15 Th	1DX15 Sr	1DX15 Cd	1DX15 Sb	1DX15 Bi	1DX15 V	1DX15 Ca	1DX15 P	1DX15 La
				ppm	ppm	ppm	ppm	ppm	ppm	ppm	ppm	%	ppm	ppb	ppm	ppm	ppm	ppm	ppm	ppm	%	%	ppm
				0.1	0.1	0.1	1	0.1	0.1	0.1	1	0.01	0.5	0.5	0.1	1	0.1	0.1	0.1	2	0.01	0.001	1
K954664	Soil			0.6	26.5	49.6	71	0.3	40.3	18.2	582	3.01	17.7	1.4	6.2	44	0.4	0.9	0.2	75	0.71	0.097	34
K954665	Soil			0.9	44.8	11.3	141	0.2	39.4	19.4	612	3.46	16.9	2.7	3.4	26	1.0	0.9	0.2	90	0.60	0.066	16
K954666	Soil			0.8	32.8	20.8	47	0.2	36.6	15.6	485	2.67	9.8	0.6	4.8	40	<0.1	0.7	0.1	79	0.86	0.071	20
K954667	Soil			0.7	24.6	4.9	63	0.7	22.9	13.4	550	2.80	7.2	1.0	0.6	16	0.1	0.6	0.1	91	0.49	0.060	5
K954668	Soil			1.1	40.7	24.6	64	0.5	30.5	19.1	685	3.11	14.6	1.2	0.9	23	0.2	0.9	0.1	85	0.83	0.069	7
K954669	Soil			0.9	32.0	4.5	87	0.5	28.9	16.7	666	3.52	13.1	<0.5	0.7	16	0.2	0.9	<0.1	87	0.59	0.053	5
K954670	Soil			1.3	41.2	63.2	106	0.4	32.9	14.0	785	2.70	42.3	2.6	0.9	21	0.4	1.4	0.2	52	0.71	0.059	8
K954671	Soil			1.2	52.7	5.8	81	0.5	116.3	28.9	1167	3.92	34.1	1.5	1.1	53	0.3	0.8	0.1	97	0.89	0.083	9
K954672	Soil			1.1	59.9	41.7	76	0.5	29.8	18.8	761	3.65	37.0	2.6	1.3	28	0.2	1.0	0.2	105	0.87	0.059	8
K954673	Soil			0.6	45.5	3.4	58	0.3	27.9	20.1	728	3.79	9.3	0.7	1.4	27	0.2	0.3	<0.1	112	0.74	0.025	5
K954674	Soil			0.7	34.1	9.5	41	0.7	27.0	15.0	461	2.66	13.5	2.7	2.2	15	0.1	0.8	<0.1	78	0.47	0.045	7
K954675	Soil			0.6	35.0	3.5	51	0.4	29.5	21.5	385	3.76	8.8	1.6	2.3	19	0.2	0.4	<0.1	102	0.61	0.052	8
K954676	Soil			0.4	42.8	12.9	98	0.1	22.9	14.7	726	3.48	21.4	4.4	0.6	5	0.2	0.8	<0.1	59	0.20	0.026	4
K954677	Soil			0.8	66.3	4.9	56	0.1	39.8	20.8	714	3.98	14.7	3.2	1.1	16	0.1	0.7	0.1	108	0.45	0.055	7
K954678	Soil			1.0	47.8	84.2	54	0.3	27.7	16.4	708	3.18	9.9	4.7	1.1	24	0.2	0.6	<0.1	84	0.55	0.063	8
K954679	Soil			0.6	31.4	10.7	37	0.3	21.3	11.5	352	2.16	6.6	2.0	2.7	70	<0.1	0.4	<0.1	58	0.55	0.044	12
K954680	Soil			0.9	26.1	43.6	59	0.3	29.0	20.1	593	3.71	15.3	1.0	1.6	40	0.1	0.7	0.2	126	1.13	0.055	6
K954681	Soil			0.5	21.9	6.5	48	0.2	113.0	17.9	706	3.37	8.9	1.8	0.9	19	<0.1	1.0	0.1	80	0.63	0.050	6
K954682	Soil			0.7	16.6	6.3	78	0.4	27.3	16.5	602	3.29	13.7	2.4	1.3	17	0.2	0.6	0.1	79	0.55	0.041	6
K954683	Soil			0.6	29.3	6.4	50	0.2	33.2	18.0	540	3.27	12.6	3.6	1.2	15	0.2	0.8	0.2	105	0.50	0.042	7
K954684	Soil			0.9	29.1	10.8	61	0.7	28.0	19.0	941	3.30	9.8	2.0	0.8	40	0.2	0.6	0.3	108	1.03	0.084	6
K954685	Soil			0.9	26.4	5.7	44	0.5	26.6	17.0	514	3.24	13.2	3.3	0.8	18	0.1	0.7	0.2	97	0.85	0.051	5
K954686	Soil			1.1	30.5	5.8	48	0.3	27.4	20.5	699	3.49	15.0	5.1	1.0	15	0.1	0.8	0.2	93	0.44	0.047	7
K954687	Soil			0.8	38.4	7.5	59	0.5	32.7	20.4	681	3.63	13.1	1.2	1.3	19	0.2	0.7	<0.1	103	0.71	0.051	8
K954688	Soil			0.8	30.3	9.6	54	0.3	25.8	16.1	582	2.87	8.0	1.7	2.7	18	0.1	0.4	0.1	82	0.92	0.058	13
K954689	Soil			0.3	69.0	3.4	48	0.9	32.6	21.3	767	3.56	4.0	2.5	0.5	31	0.1	0.3	<0.1	96	2.17	0.031	2
K954690	Soil			1.1	27.9	6.8	46	0.4	27.0	15.0	506	3.10	9.5	7.7	1.0	12	0.1	0.8	0.1	93	0.48	0.039	6
K954691	Soil			0.3	60.4	2.6	60	<0.1	60.2	29.1	975	5.06	4.3	3.4	0.5	18	0.1	0.4	<0.1	141	1.14	0.032	2
K954692	Soil			1.4	26.2	6.1	37	0.2	23.2	14.4	432	3.09	12.2	2.2	1.8	10	<0.1	1.1	0.1	87	0.33	0.047	8
K954693	Soil			1.0	32.6	8.9	45	0.3	27.7	14.6	451	3.01	9.5	4.5	2.4	11	<0.1	0.5	0.1	87	0.31	0.046	9

This report supersedes all previous preliminary and final reports with this file number dated prior to the date on this certificate. Signature indicates final approval; preliminary reports are unsigned and should be used for reference only.



1020 Cordova St. East Vancouver BC V6A 4A3 Canada
 Phone (604) 253-3158 Fax (604) 253-1716

Acme Analytical Laboratories (Vancouver) Ltd.

www.acmelab.com

Client: **Golden Predator Canada Corp.**
 11th Floor, 888 Dunsmuir Street
 Vancouver BC V6C 3K4 Canada

Project: LIVINGSTONE
 Report Date: March 21, 2012

Page: 5 of 12 Part 2

CERTIFICATE OF ANALYSIS **WHI12000008.1**

Method	Analyte	Unit	MDL	1DX15	1DX15	1DX15	1DX15	1DX15	1DX15	1DX15	1DX15	1DX15	1DX15	1DX15	1DX15	1DX15	1DX15		
				Cr	Mg	Ba	Ti	B	Al	Na	K	W	Hg	Sc	Tl	S	Ga	Se	Te
				ppm	%	ppm	%	ppm	%	ppm	%	ppm	%	ppm	%	ppm	ppm		
				1	0.01	1	0.001	1	0.01	0.001	0.01	0.1	0.01	0.1	0.05	0.2			
K954664	Soil			57	1.36	90	0.051	3	1.74	0.037	0.12	2.3	0.02	5.3	<0.1	<0.05	6	<0.5	<0.2
K954665	Soil			63	1.24	97	0.077	3	1.78	0.042	0.08	1.8	0.03	7.7	<0.1	<0.05	6	<0.5	<0.2
K954666	Soil			68	1.13	78	0.073	2	1.46	0.066	0.09	1.5	0.02	7.2	<0.1	<0.05	5	<0.5	<0.2
K954667	Soil			36	0.63	96	0.072	2	1.00	0.060	0.13	2.3	0.03	4.9	<0.1	<0.05	5	<0.5	<0.2
K954668	Soil			59	0.91	88	0.071	3	1.44	0.039	0.07	3.0	0.05	7.7	<0.1	<0.05	5	<0.5	<0.2
K954669	Soil			53	1.10	49	0.109	3	1.80	0.047	0.08	3.1	0.04	7.9	<0.1	<0.05	7	<0.5	<0.2
K954670	Soil			44	0.67	67	0.027	3	1.33	0.033	0.08	3.3	0.05	6.1	<0.1	<0.05	5	<0.5	<0.2
K954671	Soil			157	1.40	130	0.084	3	2.18	0.045	0.09	1.4	0.05	8.9	0.1	<0.05	7	<0.5	<0.2
K954672	Soil			51	1.12	95	0.066	3	2.00	0.076	0.11	1.6	0.04	9.1	0.1	<0.05	8	<0.5	<0.2
K954673	Soil			72	0.97	86	0.043	2	2.23	0.088	0.05	1.3	0.03	13.2	<0.1	<0.05	6	<0.5	<0.2
K954674	Soil			46	0.69	51	0.103	2	1.30	0.053	0.05	2.6	0.01	6.3	<0.1	<0.05	5	<0.5	<0.2
K954675	Soil			43	1.24	50	0.157	2	1.81	0.062	0.05	1.2	0.05	7.0	<0.1	<0.05	7	<0.5	<0.2
K954676	Soil			41	0.14	25	0.010	3	0.49	0.014	0.03	2.6	0.86	7.6	<0.1	<0.05	2	<0.5	<0.2
K954677	Soil			81	1.03	61	0.046	3	1.81	0.027	0.05	0.9	0.04	11.6	<0.1	0.11	6	<0.5	<0.2
K954678	Soil			58	0.83	70	0.057	3	1.71	0.035	0.05	2.2	0.03	9.5	<0.1	<0.05	6	<0.5	<0.2
K954679	Soil			43	0.70	97	0.058	5	1.71	0.043	0.07	1.7	0.04	4.5	<0.1	<0.05	4	<0.5	<0.2
K954680	Soil			67	0.99	84	0.186	2	1.98	0.076	0.09	2.0	0.05	8.6	<0.1	0.05	7	<0.5	<0.2
K954681	Soil			101	1.61	69	0.078	3	1.48	0.081	0.06	1.7	0.04	5.5	<0.1	<0.05	5	<0.5	<0.2
K954682	Soil			50	1.11	105	0.062	2	1.72	0.055	0.17	2.5	0.04	5.9	0.1	<0.05	8	<0.5	<0.2
K954683	Soil			52	0.94	87	0.097	1	1.68	0.051	0.08	2.6	0.02	6.0	<0.1	<0.05	6	<0.5	<0.2
K954684	Soil			66	0.92	117	0.076	2	2.21	0.172	0.09	1.5	0.11	7.0	<0.1	<0.05	7	<0.5	<0.2
K954685	Soil			51	0.80	59	0.074	1	1.77	0.115	0.07	2.5	0.02	6.3	<0.1	<0.05	7	<0.5	<0.2
K954686	Soil			49	0.92	78	0.062	<1	1.60	0.046	0.07	2.3	0.04	7.4	<0.1	<0.05	7	<0.5	<0.2
K954687	Soil			51	1.08	80	0.093	1	1.74	0.086	0.08	2.0	0.01	7.5	<0.1	<0.05	6	<0.5	<0.2
K954688	Soil			45	0.91	100	0.080	2	1.60	0.142	0.13	1.7	0.02	6.2	<0.1	<0.05	6	<0.5	<0.2
K954689	Soil			66	1.95	54	0.103	3	2.66	0.110	0.12	1.1	0.02	7.0	<0.1	<0.05	6	<0.5	<0.2
K954690	Soil			51	0.80	76	0.084	<1	1.43	0.061	0.07	2.7	0.03	5.4	<0.1	<0.05	6	<0.5	<0.2
K954691	Soil			115	2.49	57	0.052	1	2.80	0.028	0.05	0.7	<0.01	13.0	<0.1	<0.05	7	<0.5	<0.2
K954692	Soil			41	0.60	65	0.063	<1	1.35	0.045	0.06	3.4	0.03	5.3	<0.1	<0.05	5	<0.5	<0.2
K954693	Soil			46	0.63	68	0.064	<1	1.49	0.036	0.08	2.2	0.03	4.7	0.1	<0.05	5	<0.5	<0.2

This report supersedes all previous preliminary and final reports with this file number dated prior to the date on this certificate. Signature indicates final approval; preliminary reports are unsigned and should be used for reference only.



1020 Cordova St. East Vancouver BC V6A 4A3 Canada
 Phone (604) 253-3158 Fax (604) 253-1716

Acme Analytical Laboratories (Vancouver) Ltd.

www.acmelab.com

Client: **Golden Predator Canada Corp.**
 11th Floor, 888 Dunsmuir Street
 Vancouver BC V6C 3K4 Canada

Project: LIVINGSTONE
 Report Date: March 21, 2012

Page: 6 of 12 Part 1

CERTIFICATE OF ANALYSIS

WHI12000008.1

Method	Analyte	Unit	MDL	1DX15	1DX15	1DX15	1DX15	1DX15	1DX15	1DX15	1DX15	1DX15	1DX15	1DX15	1DX15	1DX15	1DX15	1DX15	1DX15	1DX15	1DX15		
				Mo	Cu	Pb	Zn	Ag	Ni	Co	Mn	Fe	As	Au	Th	Sr	Cd	Sb	Bi	V	Ca	P	La
				ppm	ppm	ppm	ppm	ppm	ppm	%	ppm	ppb	ppm	ppm	ppm	ppm	ppm	%	%	ppm			
K954694	Soil			0.8	38.8	5.8	41	0.1	30.1	14.8	473	2.77	13.0	2.0	1.2	14	0.1	0.6	0.1	78	0.39	0.042	7
K954695	Soil			0.8	23.5	6.4	56	<0.1	32.0	15.7	531	3.07	13.6	1.2	0.7	8	<0.1	0.6	<0.1	68	0.26	0.049	8
K954696	Soil			1.3	48.1	4.0	69	0.5	27.4	16.2	874	3.46	23.3	0.5	0.7	20	0.3	0.9	<0.1	80	0.91	0.046	4
K954697	Soil			0.9	26.5	6.0	33	0.7	23.4	12.1	413	2.35	10.8	3.5	0.7	16	0.1	0.6	<0.1	72	0.44	0.054	6
K954698	Soil			0.6	38.1	7.1	50	0.6	27.3	15.5	601	2.81	13.0	1.7	1.4	27	<0.1	0.7	<0.1	85	0.54	0.036	6
K954699	Soil			0.5	49.6	9.8	50	0.6	35.3	19.8	640	3.25	15.0	1.2	1.2	53	0.1	0.5	<0.1	118	1.07	0.039	4
K954700	Soil			0.5	32.6	20.8	58	0.4	30.6	17.0	854	3.12	14.8	4.1	2.8	25	0.3	1.0	<0.1	76	0.72	0.085	18
K960051	Soil			0.2	7.9	6.8	28	0.7	4.7	3.3	155	0.81	1.5	<0.5	1.2	6	<0.1	<0.1	1.1	13	0.08	0.033	5
K960052	Soil			0.3	24.1	7.4	50	0.5	10.7	7.6	544	2.18	3.2	2.8	2.7	34	0.2	<0.1	0.3	38	1.44	0.057	9
K960053	Soil			0.3	18.8	7.2	34	0.6	10.8	6.9	325	1.42	3.0	154.6	0.9	5	<0.1	0.1	1.0	27	0.14	0.043	4
K960054	Soil			0.7	11.5	7.4	45	0.7	10.7	6.4	273	1.66	5.4	1.8	3.0	25	0.2	0.2	0.7	30	0.18	0.058	15
K960055	Soil			0.8	32.9	11.1	54	0.5	17.2	10.1	464	2.30	8.5	5.8	3.3	10	0.2	0.2	0.7	40	0.17	0.055	13
K960056	Soil			0.5	8.0	6.3	36	0.4	7.8	5.2	247	1.52	3.5	<0.5	5.9	7	0.1	0.2	0.7	22	0.15	0.059	14
K960057	Soil			0.8	36.6	12.5	53	0.5	17.5	9.3	455	2.14	6.8	7.1	4.2	9	0.1	0.3	0.7	36	0.15	0.052	13
K960058	Soil			0.3	11.3	11.7	41	0.4	11.9	6.2	261	1.67	3.8	1.6	6.1	8	0.1	0.4	1.0	23	0.18	0.069	16
K960059	Soil			0.6	19.5	10.4	58	0.3	15.1	14.6	629	3.28	44.0	3.3	3.3	6	0.2	16.4	0.2	47	0.10	0.050	10
K960060	Soil			0.4	24.2	6.5	47	0.4	12.2	10.5	527	2.57	53.2	3.0	2.8	10	0.1	5.3	0.1	39	0.16	0.054	11
K960061	Soil			0.7	49.9	15.7	67	0.6	17.4	12.8	496	2.40	214.1	13.1	3.7	7	0.3	12.2	0.4	28	0.10	0.046	12
K960062	Soil			0.6	43.3	10.6	55	0.5	14.3	12.5	633	2.67	80.0	8.9	3.7	17	0.4	8.7	0.3	38	0.74	0.050	12
K960063	Soil			1.0	27.4	7.1	45	0.4	15.3	16.8	971	2.84	39.8	3.1	3.0	12	0.2	5.5	0.2	46	0.21	0.072	9
K960064	Soil			1.1	25.0	9.5	44	0.8	20.3	9.1	457	2.33	40.1	2.8	3.8	8	0.1	4.6	0.3	37	0.11	0.039	14
K960065	Soil			0.5	8.4	7.5	47	0.3	7.1	4.1	263	1.27	18.0	0.9	6.6	6	0.1	1.7	0.3	13	0.10	0.039	18
K960066	Soil			3.5	142.0	9.1	84	0.9	27.6	24.6	1001	5.05	86.3	16.3	2.0	12	0.2	24.6	0.3	59	0.34	0.072	12
K960067	Soil			0.6	24.3	10.1	43	0.7	30.1	12.4	377	2.36	23.2	3.6	7.5	10	<0.1	1.9	0.2	30	0.18	0.061	26
K960068	Soil			0.3	41.6	5.0	55	0.2	15.2	12.8	541	2.65	5.8	4.1	2.9	14	0.1	0.8	0.7	48	0.31	0.066	9
K960069	Soil			0.6	12.1	8.2	38	0.7	13.5	9.8	511	1.94	8.2	4.0	3.5	7	<0.1	0.6	0.3	38	0.13	0.090	12
K960070	Soil			0.6	20.8	7.3	45	0.4	29.2	11.4	366	2.39	16.8	19.4	6.5	9	<0.1	1.4	0.3	33	0.18	0.073	17
K960071	Soil			0.7	26.8	10.6	51	0.4	47.7	17.2	570	2.84	45.3	28.6	7.9	12	<0.1	4.2	0.3	38	0.22	0.091	25
K960072	Soil			0.7	27.1	6.6	45	0.8	36.6	14.2	493	2.55	12.9	3.3	4.2	11	0.1	1.8	0.5	43	0.27	0.101	14
K960073	Soil			1.2	31.8	7.9	63	0.4	53.5	21.9	634	3.37	20.3	14.0	6.6	34	0.2	3.2	0.3	50	0.98	0.134	28

This report supersedes all previous preliminary and final reports with this file number dated prior to the date on this certificate. Signature indicates final approval; preliminary reports are unsigned and should be used for reference only.



1020 Cordova St. East Vancouver BC V6A 4A3 Canada
 Phone (604) 253-3158 Fax (604) 253-1716

Acme Analytical Laboratories (Vancouver) Ltd.

www.acmelab.com

Client: **Golden Predator Canada Corp.**
 11th Floor, 888 Dunsmuir Street
 Vancouver BC V6C 3K4 Canada

Project: LIVINGSTONE
 Report Date: March 21, 2012

Page: 6 of 12 Part 2

CERTIFICATE OF ANALYSIS

WHI12000008.1

Method	Analyte	Unit	MDL	1DX15	1DX15	1DX15	1DX15	1DX15	1DX15	1DX15	1DX15	1DX15	1DX15	1DX15	1DX15	1DX15	1DX15		
				Cr	Mg	Ba	Ti	B	Al	Na	K	W	Hg	Sc	Tl	S	Ga	Se	Te
				ppm	%	ppm	%	ppm	%	ppm	%	ppm	ppm	ppm	ppm	%	ppm	ppm	ppm
				1	0.01	1	0.001	1	0.01	0.001	0.01	0.1	0.01	0.1	0.1	0.05	1	0.5	0.2
K954694	Soil			46	0.57	81	0.055	<1	1.41	0.033	0.06	1.8	0.02	5.4	<0.1	<0.05	5	<0.5	<0.2
K954695	Soil			37	0.45	54	0.030	<1	1.06	0.035	0.05	2.1	0.04	6.1	<0.1	<0.05	4	<0.5	<0.2
K954696	Soil			49	0.69	78	0.042	<1	1.26	0.054	0.07	2.9	0.08	9.4	0.1	<0.05	5	<0.5	<0.2
K954697	Soil			43	0.56	92	0.073	<1	1.29	0.041	0.08	3.4	0.05	3.8	<0.1	<0.05	5	<0.5	<0.2
K954698	Soil			59	0.87	84	0.090	<1	1.73	0.065	0.10	1.9	0.02	4.7	<0.1	<0.05	6	<0.5	<0.2
K954699	Soil			77	1.47	107	0.140	2	2.73	0.156	0.20	1.1	0.03	7.3	<0.1	<0.05	8	<0.5	<0.2
K954700	Soil			42	0.87	65	0.017	2	1.80	0.041	0.06	1.2	0.05	6.3	<0.1	<0.05	6	<0.5	<0.2
K960051	Soil			11	0.22	28	0.029	<1	0.50	0.023	0.13	7.9	<0.01	0.9	0.2	<0.05	2	<0.5	<0.2
K960052	Soil			19	0.74	395	0.064	<1	1.10	0.014	0.24	3.4	<0.01	3.8	0.1	<0.05	4	<0.5	<0.2
K960053	Soil			22	0.60	64	0.015	<1	0.86	0.024	0.06	7.2	<0.01	1.9	<0.1	<0.05	3	<0.5	<0.2
K960054	Soil			18	0.46	74	0.062	<1	1.23	0.014	0.19	5.2	<0.01	1.8	0.2	<0.05	5	<0.5	<0.2
K960055	Soil			33	0.87	100	0.069	<1	1.55	0.011	0.18	4.0	<0.01	2.9	0.2	<0.05	5	<0.5	<0.2
K960056	Soil			14	0.39	56	0.068	<1	1.01	0.017	0.24	5.8	<0.01	1.6	0.2	<0.05	4	<0.5	<0.2
K960057	Soil			28	0.83	86	0.056	<1	1.35	0.013	0.13	6.5	<0.01	2.9	0.2	<0.05	5	<0.5	<0.2
K960058	Soil			17	0.47	70	0.085	<1	1.26	0.010	0.23	6.2	<0.01	2.1	0.3	<0.05	4	<0.5	<0.2
K960059	Soil			18	0.73	104	0.006	<1	1.22	0.006	0.08	3.8	0.11	5.2	0.1	<0.05	3	<0.5	<0.2
K960060	Soil			15	0.74	98	0.016	<1	1.32	0.009	0.07	3.5	0.04	3.7	<0.1	<0.05	4	<0.5	<0.2
K960061	Soil			17	0.49	74	0.009	<1	0.99	0.006	0.09	5.4	0.11	2.6	<0.1	<0.05	3	<0.5	<0.2
K960062	Soil			17	0.73	185	0.013	<1	1.24	0.007	0.11	4.0	0.04	4.1	<0.1	<0.05	4	<0.5	<0.2
K960063	Soil			28	0.92	194	0.025	<1	1.27	0.006	0.10	2.4	0.08	3.3	<0.1	<0.05	4	<0.5	<0.2
K960064	Soil			23	0.44	66	0.031	<1	1.03	0.006	0.10	3.7	0.02	2.3	0.1	<0.05	4	<0.5	<0.2
K960065	Soil			9	0.25	44	0.022	<1	0.62	0.018	0.15	6.3	<0.01	0.9	0.2	<0.05	3	<0.5	<0.2
K960066	Soil			10	0.43	279	0.006	<1	1.04	0.004	0.07	2.8	0.09	5.5	<0.1	<0.05	3	0.7	0.6
K960067	Soil			32	0.57	68	0.028	<1	1.18	0.008	0.08	4.0	0.01	2.4	<0.1	<0.05	4	<0.5	<0.2
K960068	Soil			16	0.85	228	0.031	3	1.32	0.021	0.22	2.7	<0.01	4.4	<0.1	<0.05	5	<0.5	<0.2
K960069	Soil			23	0.39	53	0.042	2	0.88	0.009	0.12	3.2	0.03	2.0	0.1	<0.05	5	<0.5	<0.2
K960070	Soil			34	0.66	82	0.020	2	1.23	0.007	0.12	5.1	0.01	2.9	0.1	<0.05	5	<0.5	<0.2
K960071	Soil			52	0.79	92	0.022	3	1.35	0.012	0.09	4.1	0.02	3.8	<0.1	<0.05	4	<0.5	0.3
K960072	Soil			44	0.79	59	0.034	2	1.20	0.014	0.12	5.7	0.04	3.0	0.1	<0.05	5	<0.5	<0.2
K960073	Soil			50	1.12	124	0.026	2	1.43	0.008	0.07	4.1	0.06	5.0	<0.1	<0.05	6	<0.5	<0.2

This report supersedes all previous preliminary and final reports with this file number dated prior to the date on this certificate. Signature indicates final approval; preliminary reports are unsigned and should be used for reference only.



1020 Cordova St. East Vancouver BC V6A 4A3 Canada

Acme Analytical Laboratories (Vancouver) Ltd.

www.acmelab.com

Client: **Golden Predator Canada Corp.**
11th Floor, 888 Dunsmuir Street
Vancouver BC V6C 3K4 Canada

Submitted By: Andrew Caldwell
Receiving Lab: Canada-Whitehorse
Received: March 05, 2012
Report Date: March 28, 2012
Page: 1 of 12

CERTIFICATE OF ANALYSIS

WHI12000010.1

CLIENT JOB INFORMATION

Project: LIVINGSTONE
Shipment ID: SRV-2012-AC-2140
P.O. Number
Number of Samples: 302

SAMPLE DISPOSAL

RTRN-PLP Return
RTRN-RJT Return

Acme does not accept responsibility for samples left at the laboratory after 90 days without prior written instructions for sample storage or return.

Invoice To: Predator Mining Group
11th Floor- 888 Dunsmuir Street
Vancouver BC V6C 3K4
Canada

CC: Jack Cote
Linda Lewis

SAMPLE PREPARATION AND ANALYTICAL PROCEDURES

Method Code	Number of Samples	Code Description	Test Wgt (g)	Report Status	Lab
Dry at 60C	302	Dry at 60C			WHI
SS80	302	Dry at 60C sieve 100g to -80 mesh			WHI
1DX2	302	1:1:1 Aqua Regia digestion ICP-MS analysis	15	Completed	VAN
RJSV	302	Saving all or part of Soil Reject			WHI

ADDITIONAL COMMENTS



This report supersedes all previous preliminary and final reports with this file number dated prior to the date on this certificate. Signature indicates final approval; preliminary reports are unsigned and should be used for reference only. All results are considered the confidential property of the client. Acme assumes the liabilities for actual cost of analysis only. Results apply to samples as submitted. *** asterisk indicates that an analytical result could not be provided due to unusually high levels of interference from other elements.



1020 Cordova St. East Vancouver BC V6A 4A3 Canada
 Phone (604) 253-3158 Fax (604) 253-1716

Acme Analytical Laboratories (Vancouver) Ltd.

www.acmelab.com

Client:

Golden Predator Canada Corp.

11th Floor, 888 Dunsmuir Street
 Vancouver BC V6C 3K4 Canada

Project:

LIVINGSTONE

Report Date:

March 28, 2012

Page:

7 of 12 Part 1

CERTIFICATE OF ANALYSIS

WHI12000010.1

Method	Analyte	1DX15	1DX15	1DX15	1DX15	1DX15	1DX15	1DX15	1DX15	1DX15	1DX15	1DX15	1DX15	1DX15	1DX15	1DX15	1DX15	1DX15	1DX15	1DX15	1DX15
		Mo	Cu	Pb	Zn	Ag	Ni	Co	Mn	Fe	As	Au	Th	Sr	Cd	Sb	Bi	V	Ca	P	La
Unit		ppm	ppm	ppm	ppm	ppm	ppm	ppm	ppm	%	ppb	ppm	ppm	ppm	ppm	ppm	ppm	%	%	ppm	
MDL		0.1	0.1	0.1	1	0.1	0.1	0.1	1	0.01	0.5	0.5	0.1	1	0.1	0.1	2	0.01	0.001	1	
K960750	Soil	<0.1	30.3	2.9	42	0.2	527.0	43.7	828	4.06	1.4	<0.5	0.5	15	<0.1	0.1	<0.1	87	0.62	0.074	2
K960801	Soil	1.6	26.2	6.5	69	0.3	28.9	9.7	328	2.34	3.2	1.5	5.5	15	0.2	0.2	0.3	69	0.24	0.051	11
K960802	Soil	1.5	21.8	5.4	68	0.2	30.7	9.1	384	2.08	3.0	1.5	4.0	14	0.3	0.2	0.3	60	0.22	0.051	9
K960803	Soil	0.3	4.2	4.6	40	0.1	4.7	3.6	239	1.31	0.7	<0.5	11.3	10	<0.1	<0.1	0.1	31	0.23	0.087	20
K960804	Soil	1.3	22.3	8.8	61	0.2	28.6	9.3	315	2.12	2.3	1.9	6.7	12	0.2	0.2	0.4	63	0.22	0.054	10
K960805	Soil	<0.1	3.7	6.7	22	0.1	35.2	4.4	144	0.80	0.7	<0.5	11.5	7	<0.1	<0.1	<0.1	18	0.13	0.050	19
K960806	Soil	6.1	38.9	7.4	393	0.4	43.7	10.3	449	2.22	5.4	3.0	2.3	14	4.5	0.3	0.3	87	0.23	0.058	6
K960807	Soil	0.2	7.6	12.9	44	0.2	3.0	3.7	263	1.14	1.4	0.8	19.6	12	0.1	<0.1	0.2	28	0.22	0.082	29
K960808	Soil	<0.1	4.5	5.4	34	0.1	2.1	3.3	276	1.15	<0.5	<0.5	24.8	28	<0.1	<0.1	<0.1	28	0.33	0.074	35
K960809	Soil	0.3	20.5	3.1	38	0.2	15.0	11.1	452	2.08	4.5	1.6	2.3	29	<0.1	0.5	<0.1	51	0.47	0.098	6
K960810	Soil	0.1	3.9	2.6	39	<0.1	9.4	8.1	469	1.84	1.1	<0.5	2.9	26	<0.1	<0.1	<0.1	54	0.45	0.109	5
K960811	Soil	0.1	3.2	3.2	52	<0.1	11.6	10.1	662	2.38	0.7	1.0	1.9	29	<0.1	0.1	<0.1	55	0.37	0.093	4
K960812	Soil	0.1	7.5	4.1	47	0.1	14.7	10.7	578	2.31	1.9	2.3	2.4	63	0.1	0.2	<0.1	56	0.91	0.088	6
K960813	Soil	<0.1	3.3	3.3	32	0.1	7.5	6.4	309	1.73	0.6	0.8	2.8	42	<0.1	<0.1	<0.1	51	0.50	0.075	5
K960814	Soil	0.2	2.7	5.9	37	<0.1	9.9	8.2	525	2.25	1.5	0.9	2.8	29	<0.1	0.2	<0.1	64	0.34	0.083	5
K960815	Soil	0.2	10.4	3.9	46	0.2	15.5	11.0	441	2.60	4.8	1.5	2.0	23	<0.1	0.4	<0.1	65	0.37	0.075	5
K960816	Soil	0.2	14.7	3.9	43	<0.1	15.0	11.2	520	2.54	7.9	6.2	2.5	20	<0.1	0.6	<0.1	62	0.34	0.079	6
K960817	Soil	0.5	35.1	6.6	45	0.3	19.8	13.0	334	3.02	3.1	2.4	4.3	33	<0.1	0.3	<0.1	111	0.63	0.123	15
K960818	Soil	0.4	28.2	4.8	41	0.4	28.3	12.6	387	2.59	4.5	2.9	3.4	32	0.1	0.5	<0.1	85	1.16	0.066	11
K960819	Soil	0.5	30.3	8.1	53	0.4	24.4	14.4	572	2.99	5.1	1.4	5.4	24	<0.1	0.4	<0.1	93	0.62	0.068	12
K960820	Soil	0.5	34.9	4.9	39	0.4	30.7	13.2	295	2.66	5.7	1.2	3.8	40	<0.1	0.5	<0.1	92	1.09	0.082	10
K960821	Soil	0.5	34.7	4.4	40	0.5	26.6	13.3	345	2.65	7.2	1.6	3.6	29	<0.1	0.6	<0.1	86	0.60	0.059	10
K960822	Soil	1.5	22.1	10.6	51	0.3	20.3	12.3	661	2.76	3.6	0.6	4.8	27	0.2	0.4	<0.1	80	0.59	0.089	17
K960823	Soil	1.3	28.3	11.5	57	0.8	24.8	14.5	608	3.39	4.2	0.7	7.6	28	0.2	0.4	<0.1	94	0.84	0.093	19
K960824	Soil	0.5	60.3	5.4	59	0.5	45.2	20.0	581	3.21	8.1	3.3	2.0	47	0.1	0.4	<0.1	110	1.35	0.056	9
K960825	Soil	0.8	35.0	4.7	50	0.3	30.1	15.7	536	2.70	24.2	0.7	2.2	31	0.1	3.2	0.3	85	1.01	0.082	12
K960826	Soil	0.7	43.2	6.1	53	0.5	34.3	16.6	433	2.86	5.5	1.7	5.7	43	0.2	0.5	<0.1	84	0.86	0.069	11
K960827	Soil	1.1	32.5	4.2	64	0.4	23.5	11.2	504	2.17	2.7	0.9	2.3	35	0.4	0.3	<0.1	86	0.66	0.104	15
K960828	Soil	0.7	33.7	6.9	58	0.4	29.9	14.2	578	2.85	5.5	2.2	4.5	29	0.2	0.7	<0.1	89	0.78	0.085	14
K960829	Soil	0.8	36.1	6.5	46	0.4	24.8	13.2	407	2.97	7.6	1.9	6.7	41	0.1	0.6	<0.1	94	0.61	0.092	17

This report supersedes all previous preliminary and final reports with this file number dated prior to the date on this certificate. Signature indicates final approval; preliminary reports are unsigned and should be used for reference only.



1020 Cordova St. East Vancouver BC V6A 4A3 Canada
 Phone (604) 253-3158 Fax (604) 253-1716

Acme Analytical Laboratories (Vancouver) Ltd.

www.acmelab.com

Client: **Golden Predator Canada Corp.**
 11th Floor, 888 Dunsmuir Street
 Vancouver BC V6C 3K4 Canada

Project: LIVINGSTONE
 Report Date: March 28, 2012

Page: 7 of 12 Part 2

CERTIFICATE OF ANALYSIS

WHI12000010.1

Method	Analyte	Unit	MDL	1DX15	1DX15	1DX15	1DX15	1DX15	1DX15	1DX15	1DX15	1DX15	1DX15	1DX15	1DX15	1DX15	1DX15		
				Cr	Mg	Ba	Ti	B	Al	Na	K	W	Hg	Sc	Tl	S	Ga	Se	Te
				ppm	%	ppm	%	ppm	%	ppm	%	ppm	ppm	ppm	ppm	ppm	ppm		
				1	0.01	1	0.001	1	0.01	0.001	0.01	0.1	0.01	0.1	0.05	1	0.5		
K960750	Soil			506	5.79	134	0.048	2	2.12	0.003	0.05	0.2	0.01	11.9	<0.1	<0.05	7	<0.5	<0.2
K960801	Soil			43	0.69	179	0.080	1	1.62	0.025	0.19	4.4	0.01	4.4	0.3	0.05	5	<0.5	<0.2
K960802	Soil			40	0.70	216	0.081	<1	1.51	0.017	0.20	4.4	<0.01	4.0	0.2	<0.05	4	<0.5	<0.2
K960803	Soil			13	0.35	121	0.067	1	0.68	0.031	0.41	5.1	0.01	2.7	0.5	<0.05	4	<0.5	<0.2
K960804	Soil			39	0.69	140	0.077	<1	1.46	0.025	0.20	4.1	<0.01	3.9	0.3	<0.05	5	<0.5	<0.2
K960805	Soil			42	0.34	91	0.038	<1	0.55	0.022	0.23	5.2	<0.01	1.7	0.3	<0.05	3	<0.5	<0.2
K960806	Soil			44	0.64	181	0.065	1	1.34	0.016	0.12	5.0	0.02	3.6	0.2	0.20	5	2.9	<0.2
K960807	Soil			10	0.35	115	0.080	<1	0.75	0.033	0.42	5.1	<0.01	2.7	0.5	<0.05	4	<0.5	<0.2
K960808	Soil			8	0.34	132	0.079	<1	0.67	0.044	0.44	6.2	<0.01	3.1	0.5	<0.05	4	<0.5	<0.2
K960809	Soil			34	0.83	81	0.053	<1	1.14	0.028	0.06	5.8	<0.01	3.6	<0.1	<0.05	4	<0.5	<0.2
K960810	Soil			25	0.92	38	0.084	1	1.01	0.037	0.05	2.4	<0.01	4.2	<0.1	<0.05	5	<0.5	<0.2
K960811	Soil			31	1.23	93	0.049	1	1.05	0.039	0.05	2.6	0.02	7.4	<0.1	<0.05	5	<0.5	<0.2
K960812	Soil			30	1.06	299	0.044	<1	1.15	0.026	0.07	2.4	<0.01	5.4	<0.1	<0.05	5	<0.5	<0.2
K960813	Soil			26	0.51	53	0.067	2	0.75	0.063	0.08	3.9	0.02	2.4	<0.1	<0.05	4	<0.5	<0.2
K960814	Soil			31	0.75	55	0.066	<1	0.91	0.033	0.05	2.8	0.01	3.0	<0.1	<0.05	5	<0.5	<0.2
K960815	Soil			39	0.92	75	0.055	<1	1.43	0.020	0.05	3.1	0.02	4.5	<0.1	<0.05	6	<0.5	<0.2
K960816	Soil			34	0.85	86	0.043	1	1.51	0.023	0.06	3.2	0.01	4.2	<0.1	<0.05	5	<0.5	<0.2
K960817	Soil			39	1.00	97	0.069	2	1.51	0.072	0.09	2.1	0.01	4.5	<0.1	<0.05	6	<0.5	<0.2
K960818	Soil			62	0.96	103	0.094	5	2.12	0.065	0.09	1.6	0.03	7.0	0.1	<0.05	6	<0.5	<0.2
K960819	Soil			46	0.97	105	0.061	1	1.88	0.063	0.05	1.8	0.02	6.0	<0.1	<0.05	7	<0.5	<0.2
K960820	Soil			53	0.69	119	0.063	8	1.86	0.083	0.10	1.9	0.03	3.7	<0.1	<0.05	6	<0.5	<0.2
K960821	Soil			49	0.78	104	0.072	4	1.80	0.052	0.06	2.2	0.01	5.2	<0.1	<0.05	5	<0.5	<0.2
K960822	Soil			40	0.88	171	0.053	2	1.45	0.049	0.07	1.6	0.03	4.8	<0.1	<0.05	7	<0.5	<0.2
K960823	Soil			49	1.03	101	0.062	2	1.59	0.066	0.07	1.2	0.01	7.4	<0.1	<0.05	7	<0.5	<0.2
K960824	Soil			117	1.46	83	0.139	3	3.03	0.080	0.07	1.2	0.04	8.2	<0.1	<0.05	7	<0.5	<0.2
K960825	Soil			59	0.86	116	0.052	43	1.88	0.042	0.09	2.0	0.03	5.6	<0.1	<0.05	5	<0.5	<0.2
K960826	Soil			51	0.94	126	0.074	2	2.20	0.106	0.10	2.1	0.03	6.2	<0.1	0.13	7	0.6	<0.2
K960827	Soil			35	0.70	102	0.036	2	1.27	0.077	0.21	2.1	0.03	3.4	0.1	<0.05	4	<0.5	<0.2
K960828	Soil			49	0.91	106	0.065	2	1.54	0.029	0.09	1.9	0.03	6.2	<0.1	<0.05	5	<0.5	<0.2
K960829	Soil			46	0.89	87	0.052	2	1.68	0.053	0.05	2.1	0.02	6.6	<0.1	<0.05	6	<0.5	<0.2

This report supersedes all previous preliminary and final reports with this file number dated prior to the date on this certificate. Signature indicates final approval; preliminary reports are unsigned and should be used for reference only.



1020 Cordova St. East Vancouver BC V6A 4A3 Canada
 Phone (604) 253-3158 Fax (604) 253-1716

Acme Analytical Laboratories (Vancouver) Ltd.

www.acmelab.com

Client:

Golden Predator Canada Corp.
 11th Floor, 888 Dunsmuir Street
 Vancouver BC V6C 3K4 Canada

Project:

LIVINGSTONE

Report Date:

March 28, 2012

Page:

8 of 12 Part 1

CERTIFICATE OF ANALYSIS

WHI12000010.1

Method	Analyte	Unit	MDL	1DX15	1DX15	1DX15	1DX15	1DX15	1DX15	1DX15	1DX15	1DX15	1DX15	1DX15	1DX15	1DX15	1DX15	1DX15	1DX15	1DX15	1DX15		
				Mo	Cu	Pb	Zn	Ag	Ni	Co	Mn	Fe	As	Au	Th	Sr	Cd	Sb	Bi	V	Ca	P	La
				ppm	ppm	ppm	ppm	ppm	ppm	ppm	ppm	ppm	ppm	ppm	ppm	ppm	ppm	ppm	%	%	ppm		
				0.1	0.1	0.1	1	0.1	0.1	0.1	1	0.01	0.5	0.5	0.1	1	0.1	0.1	2	0.01	0.001	1	
K960830	Soil			0.6	37.7	9.4	53	0.3	34.6	15.6	458	3.28	6.9	2.3	4.5	29	<0.1	0.6	0.2	106	0.63	0.063	14
K960831	Soil			0.5	34.3	3.9	31	<0.1	21.0	10.9	206	2.25	2.1	<0.5	5.5	20	<0.1	0.2	<0.1	84	0.60	0.159	16
K960832	Soil			0.2	64.3	2.8	55	0.2	43.8	22.3	757	4.42	3.0	2.0	0.9	14	0.5	0.8	<0.1	202	2.23	0.031	4
K960833	Soil			0.6	36.7	4.6	50	0.1	37.3	15.7	443	3.15	7.4	2.3	3.3	27	0.2	0.6	<0.1	107	0.55	0.064	11
K960834	Soil			0.5	53.8	5.7	47	0.2	31.7	16.0	394	3.31	5.1	1.6	4.9	26	0.2	0.9	0.1	112	0.69	0.077	12
K960835	Soil			0.5	35.1	5.3	46	0.3	30.5	13.0	409	2.66	13.4	<0.5	3.8	43	<0.1	0.9	0.1	83	0.63	0.064	12
K960836	Soil			0.5	29.8	5.6	44	0.3	30.0	13.0	346	2.89	6.8	1.6	3.8	24	<0.1	0.6	<0.1	99	0.54	0.064	12
K960837	Soil			0.5	28.4	2.7	82	0.8	19.6	21.5	620	5.67	2.7	<0.5	1.3	13	0.2	0.2	<0.1	135	1.07	0.127	7
K960838	Soil			0.4	38.1	5.0	48	0.5	31.2	14.3	402	3.13	6.3	1.1	3.8	27	0.2	0.5	<0.1	98	0.54	0.059	12
K960839	Soil			0.6	46.5	5.3	49	0.3	28.9	17.5	395	2.86	6.0	1.7	4.4	23	<0.1	0.5	<0.1	92	0.58	0.072	13
K960840	Soil			0.5	36.0	4.9	42	0.2	27.7	13.3	542	2.94	5.5	1.1	3.9	21	0.2	0.4	<0.1	99	0.65	0.064	12
K960841	Soil			0.5	35.3	4.3	47	0.4	30.8	17.0	522	3.54	5.6	<0.5	2.3	23	0.1	0.4	<0.1	119	0.66	0.052	9
K960842	Soil			0.4	29.5	4.9	50	0.2	25.2	13.8	517	2.88	6.5	0.7	3.2	17	0.2	0.5	<0.1	90	0.47	0.054	11
K960843	Soil			0.6	30.0	4.8	54	0.2	24.4	16.1	652	3.49	6.6	1.3	2.6	16	<0.1	0.5	<0.1	118	0.63	0.051	10
K960844	Soil			0.5	30.9	5.7	44	0.7	24.8	14.3	446	3.28	5.5	<0.5	2.9	15	0.1	0.5	<0.1	147	0.47	0.051	7
K960845	Soil			0.9	23.5	6.3	36	0.1	20.7	10.5	294	2.42	3.2	<0.5	10.0	18	<0.1	0.3	<0.1	79	0.38	0.063	17
K960846	Soil			0.5	23.2	5.4	37	0.2	21.3	11.5	342	2.71	5.3	11.2	4.2	16	<0.1	0.5	<0.1	96	0.48	0.072	15
K960847	Soil			0.6	31.3	5.4	44	0.2	25.1	14.3	443	3.05	5.5	1.2	4.4	18	<0.1	0.5	<0.1	103	0.53	0.064	13
K960848	Soil			0.5	28.0	5.7	46	0.1	22.7	13.3	448	2.88	6.2	1.8	3.9	18	0.1	0.5	<0.1	96	0.53	0.062	11
K960849	Soil			0.5	35.1	4.1	41	0.1	20.2	13.8	459	3.62	4.7	2.9	3.9	17	<0.1	0.4	<0.1	93	0.47	0.064	12
K960850	Soil			0.6	31.4	6.4	49	0.1	24.9	15.0	527	3.16	7.4	2.7	4.9	22	<0.1	0.7	<0.1	105	0.60	0.068	15
K960851	Soil			0.5	7.7	5.9	34	0.4	9.3	4.9	200	1.40	2.5	0.5	3.4	8	<0.1	0.3	0.2	31	0.12	0.040	9
K960852	Soil			1.5	29.4	9.6	66	0.3	24.5	8.6	424	1.80	4.4	<0.5	7.1	12	0.2	0.8	0.3	30	0.27	0.099	18
K960853	Soil			1.0	19.5	7.3	56	0.1	23.7	10.2	481	2.18	3.7	<0.5	4.0	9	0.1	0.5	0.3	33	0.16	0.050	14
K960854	Soil			1.5	21.8	8.9	54	0.3	27.2	9.6	406	2.13	5.4	1.2	5.0	12	0.1	0.8	0.4	36	0.18	0.052	18
K960855	Soil			1.2	16.1	9.2	45	0.2	19.6	7.7	281	2.18	6.4	4.4	1.9	11	0.1	0.5	0.5	44	0.19	0.064	15
K960856	Soil			0.6	14.7	5.2	50	0.1	17.2	8.6	336	2.03	2.1	<0.5	3.6	24	0.1	0.2	0.5	48	0.31	0.069	13
K960857	Soil			1.6	19.0	11.3	50	0.2	19.4	9.3	412	2.03	4.2	<0.5	4.6	9	<0.1	0.4	0.3	30	0.15	0.047	15
K960858	Soil			3.4	19.9	9.9	41	0.2	14.6	7.2	359	1.61	2.8	<0.5	5.6	8	<0.1	0.4	0.6	32	0.11	0.032	18
K960859	Soil			0.4	19.3	8.2	52	0.3	4.6	3.2	298	0.91	1.9	0.7	7.8	5	0.3	0.8	0.8	10	0.12	0.036	18

This report supersedes all previous preliminary and final reports with this file number dated prior to the date on this certificate. Signature indicates final approval, preliminary reports are unsigned and should be used for reference only.



Acme Analytical Laboratories (Vancouver) Ltd.
 1020 Cordova St. East Vancouver BC V6A 4A3 Canada
 Phone (604) 253-3158 Fax (604) 253-1716

www.acmelab.com

Client: **Golden Predator Canada Corp.**
 11th Floor, 888 Dunsmuir Street
 Vancouver BC V6C 3K4 Canada

Project: LIVINGSTONE
 Report Date: March 28, 2012

Page: 8 of 12 Part 2

CERTIFICATE OF ANALYSIS

WHI12000010.1

Method Analyte Unit MDL	1DX15	1DX15	1DX15	1DX15	1DX15	1DX15	1DX15	1DX15	1DX15	1DX15	1DX15	1DX15	1DX15	1DX15	1DX15	1DX15	1DX15
	Cr ppm	Mg %	Ba ppm	Ti %	B ppm	Al %	Na %	K ppm	W ppm	Hg ppm	Sc ppm	Tl ppm	S %	Ga ppm	Se ppm	Te ppm	
	1	0.01	1	0.001	1	0.01	0.001	0.01	0.1	0.01	0.1	0.1	0.05	1	0.5	0.2	
K960830	Soil	81	1.04	97	0.083	2	1.92	0.031	0.05	1.6	0.03	8.0	<0.1	<0.05	7	<0.5	<0.2
K960831	Soil	37	0.80	63	0.049	1	0.98	0.049	0.16	0.8	<0.01	2.4	0.1	<0.05	4	<0.5	<0.2
K960832	Soil	103	2.22	44	0.198	11	3.77	0.013	0.02	0.4	0.02	21.3	<0.1	<0.05	10	<0.5	<0.2
K960833	Soil	87	1.02	84	0.085	2	1.63	0.035	0.04	1.3	0.01	7.5	<0.1	<0.05	6	<0.5	<0.2
K960834	Soil	55	0.96	87	0.107	2	1.61	0.076	0.06	1.5	0.04	5.8	<0.1	<0.05	6	<0.5	<0.2
K960835	Soil	58	0.73	186	0.057	4	1.89	0.062	0.09	1.3	0.02	6.0	0.1	<0.05	5	<0.5	<0.2
K960836	Soil	73	0.97	87	0.083	3	1.63	0.040	0.05	1.5	0.02	6.4	<0.1	<0.05	5	<0.5	<0.2
K960837	Soil	22	1.18	38	0.287	2	1.50	0.049	0.02	1.5	<0.01	7.9	<0.1	0.12	8	<0.5	<0.2
K960838	Soil	63	1.08	105	0.096	2	1.75	0.042	0.05	1.5	0.03	7.2	<0.1	<0.05	6	<0.5	<0.2
K960839	Soil	49	0.84	107	0.097	1	1.48	0.043	0.05	1.7	0.03	6.6	<0.1	0.14	5	<0.5	<0.2
K960840	Soil	60	0.93	77	0.100	2	1.52	0.052	0.05	1.4	0.01	7.2	<0.1	<0.05	5	<0.5	<0.2
K960841	Soil	57	1.11	92	0.164	2	1.71	0.068	0.04	2.2	0.02	7.2	<0.1	<0.05	7	<0.5	<0.2
K960842	Soil	46	0.86	76	0.133	1	1.49	0.032	0.04	1.5	0.01	6.6	<0.1	<0.05	5	<0.5	<0.2
K960843	Soil	48	0.98	92	0.215	1	1.83	0.027	0.04	1.1	0.02	8.3	<0.1	<0.05	7	<0.5	<0.2
K960844	Soil	55	0.88	75	0.151	2	1.57	0.050	0.05	1.5	0.02	6.0	<0.1	<0.05	6	<0.5	<0.2
K960845	Soil	41	0.72	76	0.112	<1	1.09	0.048	0.14	2.5	0.02	4.1	0.1	<0.05	5	<0.5	<0.2
K960846	Soil	48	0.65	73	0.096	1	1.20	0.028	0.04	1.7	0.01	5.3	<0.1	<0.05	4	<0.5	<0.2
K960847	Soil	51	0.81	90	0.101	<1	1.30	0.038	0.05	1.4	0.02	6.3	<0.1	<0.05	5	<0.5	<0.2
K960848	Soil	47	0.83	96	0.129	1	1.38	0.029	0.06	1.5	0.01	6.1	<0.1	<0.05	5	<0.5	<0.2
K960849	Soil	44	0.78	70	0.082	<1	1.20	0.038	0.05	1.4	0.01	5.4	<0.1	<0.05	5	<0.5	<0.2
K960850	Soil	53	0.84	94	0.131	1	1.49	0.035	0.04	1.4	<0.01	7.4	<0.1	<0.05	6	<0.5	<0.2
K960851	Soil	17	0.37	45	0.052	<1	1.03	0.011	0.15	5.9	0.03	1.9	0.2	<0.05	5	<0.5	<0.2
K960852	Soil	20	0.44	110	0.042	<1	0.85	0.015	0.14	5.2	0.04	2.4	0.2	<0.05	3	<0.5	<0.2
K960853	Soil	23	0.62	70	0.027	<1	1.07	0.009	0.09	5.0	<0.01	2.4	0.1	<0.05	3	<0.5	<0.2
K960854	Soil	28	0.55	93	0.045	<1	1.12	0.010	0.09	5.2	0.02	2.6	0.1	<0.05	4	<0.5	<0.2
K960855	Soil	32	0.52	70	0.044	<1	1.44	0.008	0.08	2.3	0.02	2.1	0.1	<0.05	5	<0.5	<0.2
K960856	Soil	31	0.71	92	0.077	<1	1.23	0.043	0.12	4.0	0.01	3.5	0.1	<0.05	4	<0.5	<0.2
K960857	Soil	22	0.51	56	0.048	<1	1.08	0.011	0.13	8.7	0.01	2.0	0.2	<0.05	4	<0.5	<0.2
K960858	Soil	20	0.52	62	0.040	<1	0.96	0.011	0.12	10.2	0.01	2.3	0.2	<0.05	3	<0.5	<0.2
K960859	Soil	8	0.13	51	0.008	<1	0.48	0.019	0.11	4.0	0.01	0.7	0.1	<0.05	2	<0.5	<0.2

This report supersedes all previous preliminary and final reports with this file number dated prior to the date on this certificate. Signature indicates final approval; preliminary reports are unsigned and should be used for reference only.



ALS Canada Ltd.
 2103 Dollarton Hwy
 North Vancouver BC V7H 0A7
 Phone: 604 984 0221 Fax: 604 984 0218 www.alsglobal.com

To: **GOLDEN PREDATOR CANADA CORP.**
888 DUNSMUIR STREET
11TH FLOOR
VANCOUVER BC V6C 3K4

Page: 1
 Finalized Date: 26-JUL-2011
 Account: GOPRED

CERTIFICATE WH11109441

Project: Stream seds
 P.O. No.: GPD2011LIV003
 This report is for 100 Stream Sediment samples submitted to our lab in Whitehorse, YT, Canada on 16-JUN-2011.
 The following have access to data associated with this certificate:


MIKE BURKE LINDA LEWIS	ANDREW CALDWELL MIKE MASLOWSKI	JACK COTE
---------------------------	-----------------------------------	-----------

SAMPLE PREPARATION	
ALS CODE	DESCRIPTION
WEI-21	Received Sample Weight
LOG-21d	Sample logging - ClientBarCode Dup
SPL-34	Pulp Splitting Charge
LOG-22	Sample login - Rcd w/o BarCode
LOG-23	Pulp Login - Rcvd with Barcode
SCR-41	Screen to -180um and save both

ANALYTICAL PROCEDURES		
ALS CODE	DESCRIPTION	INSTRUMENT
Au-OG44	Ore Grade Au - 50g AR	ICP-MS
Au-ST44	Super Trace Au - 50g AR	ICP-MS
ME-MS41	51 anal. aqua regia ICPMS	

To: **GOLDEN PREDATOR CANADA CORP.**
ATTN: JACK COTE
888 DUNSMUIR STREET
11TH FLOOR
VANCOUVER BC V6C 3K4

This is the Final Report and supersedes any preliminary report with this certificate number. Results apply to samples as submitted. All pages of this report have been checked and approved for release.

Signature: 
 Colin Ramshaw, Vancouver Laboratory Manager



ALS Canada Ltd.
 2103 Dollarton Hwy
 North Vancouver BC V7H 0A7
 Phone: 604 984 0221 Fax: 604 984 0218 www.alsglobal.com

To: GOLDEN PREDATOR CANADA CORP.
 888 DUNSMUIR STREET
 11TH FLOOR
 VANCOUVER BC V6C 3K4

Page: 3 - A
 Total # Pages: 4 (A - D)
 Plus Appendix Pages
 Finalized Date: 26-JUL-2011
 Account: GOPRED

Project: Stream seds

CERTIFICATE OF ANALYSIS WH11109441

Sample Description	Method Analyte Units LOR	WEI-21	Au-ST44	ME-MS41	ME-MS41	ME-MS41	ME-MS41	ME-MS41	ME-MS41	ME-MS41	ME-MS41	ME-MS41	ME-MS41	ME-MS41	ME-MS41	ME-MS41
		Recvd Wt. kg .02	Au ppm 0.0001	Ag ppm 0.01	Al % 0.01	As ppm 0.1	Au ppm 0.2	B ppm 10	Ba ppm 10	Be ppm 0.05	Bi ppm 0.01	Ca % 0.01	Cd ppm 0.01	Ce ppm 0.02	Co ppm 0.1	Cr ppm 1
K735236		6.14	0.0022	0.15	1.52	48.0	<0.2	<10	200	0.25	0.17	0.57	0.21	19.85	14.0	55
K735237		5.52	0.0027	0.13	0.97	24.9	<0.2	<10	120	0.21	0.15	2.11	0.23	22.9	8.5	31
K735238		9.42	0.0013	0.09	1.59	10.6	<0.2	<10	60	0.22	0.11	0.57	0.26	22.0	13.4	63
K735239		<0.02	0.0021	0.05	1.56	10.5	<0.2	<10	70	0.25	0.08	0.54	0.27	18.60	13.2	59
K735240		4.64	0.0020	0.06	0.80	9.0	<0.2	<10	70	0.20	0.10	0.63	0.15	18.45	6.9	29
K735274		4.92	0.0032	0.06	1.04	2.3	<0.2	<10	40	0.90	0.56	0.43	0.09	63.0	3.8	14
K735275		4.40	0.0104	0.02	0.67	1.7	<0.2	<10	50	0.32	0.29	0.41	0.08	45.8	4.3	18
K735276		5.34	0.0018	0.03	0.67	4.4	<0.2	<10	140	0.19	0.10	0.73	0.20	18.45	10.5	55
K735277		6.36	0.0020	0.02	1.46	5.3	<0.2	<10	70	0.32	0.05	1.02	0.10	16.60	14.8	31
K735278		4.80	0.0021	0.02	1.33	5.9	<0.2	<10	150	0.31	0.06	1.12	0.20	15.30	11.3	28
K735279		4.72	0.0062	0.03	1.39	5.3	<0.2	<10	100	0.29	0.07	0.99	0.10	15.95	12.3	27
K735280		0.22	0.0030	0.19	0.96	3.3	<0.2	<10	70	0.18	0.06	0.58	0.16	9.64	7.1	29
K735281		6.26	0.0030	0.04	1.30	8.7	<0.2	<10	120	0.43	0.05	2.25	0.16	17.70	13.2	28
K735282		5.02	0.0030	0.03	1.38	5.8	<0.2	10	100	0.40	0.09	1.40	0.14	18.45	12.6	31
K735283		4.92	0.0015	0.04	1.37	7.2	<0.2	<10	150	0.32	0.07	0.99	0.15	20.1	11.9	33
K735284		5.00	0.0018	0.03	1.27	5.7	<0.2	<10	150	0.36	0.06	1.29	0.13	15.55	11.2	24
K735285		6.38	0.0012	0.03	1.00	4.8	<0.2	<10	100	0.20	0.06	0.74	0.13	14.55	9.0	31
K735286		5.22	0.0021	0.03	0.92	4.5	<0.2	<10	100	0.23	0.04	0.81	0.10	14.65	8.3	32
K735287		5.66	0.0033	0.06	1.17	5.5	<0.2	<10	150	0.31	0.08	2.04	0.27	15.30	11.4	42
K735288		6.74	0.0068	0.06	1.18	13.1	<0.2	<10	150	0.33	0.07	1.30	0.20	18.00	13.8	42
K735289		5.54	0.0139	0.04	0.93	5.5	<0.2	<10	110	0.27	0.05	0.70	0.11	18.20	9.2	33
K735290		5.40	0.0075	0.03	0.69	11.0	<0.2	<10	120	0.32	0.06	0.60	0.07	18.05	8.4	43
K735291		6.40	0.0023	0.03	0.81	8.5	<0.2	<10	240	0.39	0.07	1.04	0.10	19.15	10.8	22
K735292		5.14	0.0035	0.04	0.86	19.1	<0.2	<10	160	0.34	0.08	0.69	0.11	20.9	10.5	28
K735293		4.36	0.0305	0.04	0.64	164.0	<0.2	<10	150	0.30	0.10	0.43	0.09	20.7	11.2	23
K735294		10.96	0.0047	0.03	0.82	11.7	<0.2	<10	130	0.20	0.07	0.62	0.09	15.70	10.8	29
K735295		<0.02	0.0050	0.03	0.86	13.8	<0.2	<10	150	0.24	0.06	0.65	0.11	16.40	12.5	33
K735296		6.56	0.0161	0.05	0.68	2.8	<0.2	<10	80	0.14	0.15	0.40	0.11	38.5	6.5	41
K735297		4.90	0.0357	0.06	0.86	17.3	<0.2	<10	90	0.25	0.18	0.50	0.24	39.7	11.5	57
K735298		7.02	0.0382	0.08	1.12	27.2	<0.2	<10	150	0.22	0.14	0.64	0.34	21.9	13.3	40
K735299		4.84	0.0012	0.05	0.72	4.5	<0.2	<10	100	0.18	0.09	0.47	0.14	30.5	6.4	28
K735300		7.04	0.0012	0.04	0.62	2.8	<0.2	<10	100	0.15	0.10	0.40	0.09	30.0	5.1	20
K735311		5.96	0.0013	0.05	0.90	3.0	<0.2	<10	90	0.51	1.36	0.53	0.21	39.4	10.2	25
K735312		4.98	0.0005	0.06	0.73	4.5	<0.2	<10	80	0.25	0.21	0.44	0.28	25.4	8.8	24
K735313		5.66	0.0015	0.06	0.86	5.4	<0.2	<10	100	0.33	0.25	0.52	0.19	26.4	10.4	28
K735314		4.12	0.0011	0.05	1.45	8.9	<0.2	<10	150	0.41	0.08	1.03	0.26	22.6	14.5	34
K735315		0.16	0.0395	0.68	0.50	234	<0.2	<10	90	1.10	9.22	15.75	2.15	22.6	4.4	23
K735316		7.40	0.0108	0.06	1.57	10.6	<0.2	<10	180	0.47	0.11	1.04	0.36	26.2	19.2	40
K735317		5.76	0.0040	0.03	1.27	5.9	<0.2	<10	100	0.38	0.05	1.83	0.16	18.60	12.1	33
K735318		3.74	0.0018	0.03	1.17	3.9	<0.2	<10	100	0.30	0.05	1.05	0.13	18.45	10.1	26



ALS Canada Ltd.
 2103 Dollarton Hwy
 North Vancouver BC V7H 0A7
 Phone: 604 984 0221 Fax: 604 984 0218 www.alsglobal.com

To: GOLDEN PREDATOR CANADA CORP.
 888 DUNSMUIR STREET
 11TH FLOOR
 VANCOUVER BC V6C 3K4

Page: 3 - B
 Total # Pages: 4 (A - D)
 Plus Appendix Pages
 Finalized Date: 26-JUL-2011
 Account: GOPRED

Project: Stream seds

CERTIFICATE OF ANALYSIS WH11109441

Sample Description	Method Analyte Units LOR	ME-MS41	ME-MS41	ME-MS41	ME-MS41	ME-MS41	ME-MS41	ME-MS41	ME-MS41	ME-MS41	ME-MS41	ME-MS41	ME-MS41	ME-MS41	ME-MS41	
		Cs ppm	Cu ppm	Fe %	Ga ppm	Ge ppm	Hf ppm	Hg ppm	In ppm	K %	La ppm	Li ppm	Mg %	Mn ppm	Mo ppm	Na %
K735236		2.09	52.5	3.05	5.03	0.08	0.03	<0.01	0.015	0.20	10.9	17.5	1.00	477	0.69	0.03
K735237		1.03	32.4	2.15	3.43	0.08	0.06	<0.01	0.011	0.09	13.2	10.7	0.57	332	0.64	0.04
K735238		0.84	32.9	3.43	5.47	0.11	0.09	0.01	0.018	0.06	11.2	14.8	1.11	436	1.85	0.02
K735239		0.82	28.1	3.34	5.33	0.09	0.10	<0.01	0.017	0.06	9.5	14.4	1.09	426	0.79	0.02
K735240		0.98	19.7	1.69	2.92	0.05	0.04	<0.01	0.009	0.05	9.6	8.3	0.53	282	0.37	0.02
K735274		7.78	7.3	1.54	4.35	0.10	<0.02	0.03	0.012	0.16	30.8	42.9	0.33	199	0.18	0.01
K735275		2.84	6.1	1.21	2.65	0.08	0.03	<0.01	0.009	0.06	23.0	17.0	0.38	157	0.23	0.02
K735276		6.62	21.3	2.76	2.31	<0.05	0.03	0.02	0.010	0.04	9.2	6.2	0.65	264	0.44	0.01
K735277		0.26	16.6	3.85	6.61	0.11	0.41	<0.01	0.022	0.02	7.0	10.6	1.10	437	0.38	0.01
K735278		0.30	36.1	3.36	5.01	0.11	0.27	0.10	0.022	0.04	6.0	9.7	0.92	592	0.54	0.02
K735279		0.32	23.0	3.11	5.18	0.10	0.23	0.01	0.021	0.03	6.7	10.6	0.94	404	0.44	0.01
K735280		0.30	20.5	1.95	3.54	0.08	0.23	0.01	0.015	0.06	4.1	7.2	0.47	291	3.86	0.04
K735281		0.40	44.6	3.30	5.33	0.10	0.35	0.01	0.024	0.03	7.5	10.8	0.98	503	0.62	0.01
K735282		0.36	36.6	3.49	5.27	0.13	0.25	0.02	0.021	0.03	8.6	10.4	1.03	396	0.61	0.01
K735283		0.42	29.9	3.20	4.77	0.07	0.14	0.02	0.016	0.04	9.5	10.2	0.81	616	0.49	0.02
K735284		0.35	33.1	3.21	4.68	0.10	0.20	0.02	0.021	0.04	6.9	9.5	0.95	444	0.44	0.02
K735285		0.56	16.4	2.40	3.60	0.07	0.08	0.01	0.015	0.03	6.7	7.6	0.67	331	0.51	0.01
K735286		0.57	13.9	2.20	3.21	0.05	0.10	0.02	0.011	0.04	6.7	6.5	0.60	462	0.99	0.01
K735287		0.70	30.0	2.46	4.12	0.10	0.09	0.06	0.018	0.07	8.1	7.8	0.78	690	0.61	0.03
K735288		0.63	33.4	2.71	4.35	0.11	0.09	0.13	0.018	0.07	8.6	7.6	0.83	863	0.86	0.03
K735289		0.48	13.8	2.34	3.66	0.11	0.13	0.07	0.014	0.04	10.0	7.1	0.57	281	0.37	0.02
K735290		4.92	14.9	3.22	3.22	0.11	0.03	0.04	0.013	0.06	10.1	7.5	0.45	295	0.26	0.01
K735291		12.55	20.7	2.62	3.10	0.10	0.02	0.08	0.017	0.13	11.0	7.8	0.59	523	0.50	0.01
K735292		12.85	26.6	2.69	3.12	0.11	0.02	0.06	0.017	0.10	11.6	8.7	0.57	477	0.37	0.01
K735293		7.85	24.7	2.47	1.99	0.10	0.02	0.14	0.015	0.08	10.1	5.3	0.46	443	0.40	0.01
K735294		6.25	35.4	2.20	2.70	0.10	0.02	0.02	0.011	0.06	7.7	7.3	0.68	370	0.29	0.02
K735295		6.99	33.8	2.29	2.95	0.09	0.02	0.11	0.013	0.06	8.0	7.7	0.72	391	0.31	0.02
K735296		1.07	15.5	2.83	2.96	0.11	0.03	0.01	0.009	0.04	23.3	5.7	0.40	212	0.46	0.01
K735297		1.86	26.4	4.72	4.26	0.13	0.03	0.01	0.011	0.05	25.0	9.3	0.60	364	4.49	0.01
K735298		3.84	27.1	4.33	4.11	0.10	0.03	0.02	0.016	0.03	14.8	10.9	0.71	664	1.57	0.02
K735299		1.21	8.5	1.91	2.95	0.11	0.02	0.02	0.010	0.02	18.6	7.6	0.45	458	0.60	0.01
K735300		0.85	8.6	1.29	2.56	0.09	0.02	0.01	0.024	0.03	18.0	6.2	0.37	185	0.56	0.01
K735311		2.54	15.2	2.18	3.28	0.11	0.08	0.02	0.013	0.08	18.5	16.5	0.50	552	0.94	0.02
K735312		1.36	15.7	2.08	2.71	0.11	0.09	0.01	0.013	0.05	12.9	8.0	0.42	446	0.78	0.02
K735313		0.98	21.6	2.19	2.76	0.10	0.12	0.01	0.015	0.06	12.9	7.7	0.49	435	0.75	0.02
K735314		0.63	36.0	3.10	5.28	0.10	0.15	0.04	0.020	0.05	11.2	10.8	0.87	927	0.77	0.02
K735315		2.58	76.5	2.27	3.13	0.12	0.21	2.01	0.617	0.15	14.7	5.9	3.13	1560	74.0	0.02
K735316		0.71	43.0	3.48	5.78	0.12	0.22	0.06	0.029	0.07	12.2	10.8	0.94	904	0.99	0.02
K735317		0.35	34.5	3.05	4.90	0.14	0.30	0.03	0.020	0.04	9.7	8.5	0.84	510	0.75	0.02
K735318		0.29	24.1	2.50	4.81	0.11	0.19	0.03	0.016	0.04	9.4	8.2	0.67	402	0.40	0.02



ALS Canada Ltd.
 2103 Dollarton Hwy
 North Vancouver BC V7H 0A7
 Phone: 604 984 0221 Fax: 604 984 0218 www.alsglobal.com

To: GOLDEN PREDATOR CANADA CORP.
 888 DUNSMUIR STREET
 11TH FLOOR
 VANCOUVER BC V6C 3K4

Page: 3 - C
 Total # Pages: 4 (A - D)
 Plus Appendix Pages
 Finalized Date: 26-JUL-2011
 Account: GOPRED

Project: Stream sed

CERTIFICATE OF ANALYSIS WH11109441

Sample Description	Method	ME-MS41	ME-MS41	ME-MS41	ME-MS41	ME-MS41	ME-MS41	ME-MS41	ME-MS41	ME-MS41	ME-MS41	ME-MS41	ME-MS41	ME-MS41	ME-MS41	
	Analyte Units LOR	Nb ppm 0.05	Ni ppm 0.2	P ppm 10	Pb ppm 0.2	Rb ppm 0.1	Re ppm 0.001	S % 0.01	Sb ppm 0.05	Sc ppm 0.1	Se ppm 0.2	Sn ppm 0.2	Sr ppm 0.2	Ta ppm 0.01	Te ppm 0.01	Th ppm 0.2
K735236		0.58	38.1	960	5.0	12.9	<0.001	0.01	1.85	5.6	0.5	0.3	44.7	<0.01	0.03	3.4
K735237		0.59	23.7	820	4.7	7.1	<0.001	0.01	1.40	3.4	0.8	0.3	132.0	<0.01	0.02	4.5
K735238		0.50	32.2	730	3.9	4.5	0.001	<0.01	0.75	6.4	0.9	0.3	36.0	<0.01	0.05	5.3
K735239		0.54	31.5	660	3.6	4.4	<0.001	<0.01	0.69	6.4	0.6	0.3	36.1	<0.01	0.03	3.2
K735240		0.63	22.0	590	4.6	4.6	<0.001	<0.01	0.55	3.2	0.4	<0.001	32.3	<0.01	0.02	3.2
K735274		1.39	7.6	1280	5.0	29.4	<0.001	0.01	0.47	2.1	1.1	1.1	41.0	<0.01	0.01	9.4
K735275		0.92	13.1	960	3.0	13.0	<0.001	<0.01	0.14	2.0	0.7	0.5	20.4	<0.01	<0.01	10.7
K735276		0.57	38.8	710	3.8	5.7	<0.001	0.02	0.68	3.5	0.8	0.3	22.4	<0.01	0.02	3.0
K735277		1.02	20.8	840	2.7	3.4	<0.001	<0.01	0.17	7.4	0.5	0.6	22.7	<0.01	0.02	1.3
K735278		0.95	21.5	710	4.4	6.2	<0.001	0.01	0.33	6.9	0.6	0.5	28.0	<0.01	0.01	1.0
K735279		1.07	20.5	780	3.5	3.6	<0.001	0.01	0.22	6.6	0.5	0.5	25.0	<0.01	0.01	1.2
K735280		0.24	20.6	490	2.2	2.7	0.001	0.04	0.26	4.0	0.4	0.4	28.1	<0.01	0.01	0.9
K735281		0.43	24.3	700	3.3	2.2	<0.001	<0.01	0.43	8.3	0.5	0.5	41.5	<0.01	0.01	1.2
K735282		0.95	24.0	720	3.6	3.4	0.001	0.01	0.30	7.7	0.7	0.5	31.4	<0.01	0.01	1.4
K735283		1.20	20.6	850	4.0	4.6	0.001	0.02	0.32	6.4	0.5	0.4	36.2	<0.01	0.02	1.7
K735284		0.87	18.9	710	3.6	3.2	0.001	0.02	0.29	7.1	0.8	0.4	33.0	<0.01	0.04	1.1
K735285		0.59	22.7	640	3.6	3.9	0.001	0.01	0.36	4.1	0.5	0.3	31.3	<0.01	0.01	1.5
K735286		0.57	20.0	780	2.8	3.2	0.001	0.01	0.34	3.9	0.5	0.3	30.9	<0.01	0.01	1.5
K735287		1.06	31.3	730	5.5	5.6	0.002	0.05	0.47	5.2	1.1	0.3	65.1	<0.01	0.03	1.5
K735288		0.89	28.2	780	4.7	6.3	0.002	0.04	0.55	5.9	0.3	0.3	51.0	<0.01	0.02	1.6
K735289		1.16	21.6	800	3.4	4.0	0.001	0.03	0.30	3.9	0.3	0.3	31.3	<0.01	0.01	2.1
K735290		0.71	13.5	1280	3.3	5.8	<0.001	0.02	0.96	3.5	0.4	0.3	32.8	<0.01	0.02	2.6
K735291		0.69	13.9	1010	4.2	11.7	0.002	0.04	1.53	4.7	0.8	0.3	42.5	<0.01	0.02	2.5
K735292		0.60	16.2	1360	4.1	8.3	<0.001	0.04	1.73	4.7	0.5	0.3	30.3	<0.01	0.02	2.2
K735293		0.42	19.7	930	5.3	7.0	<0.001	0.03	4.06	3.6	<0.2	0.2	19.7	<0.01	0.03	2.9
K735294		0.49	21.0	1270	2.5	4.8	<0.001	0.05	0.80	3.8	0.3	0.2	24.9	<0.01	0.02	1.8
K735295		0.56	23.3	1320	2.7	5.3	<0.001	0.05	0.85	4.3	<0.2	0.2	27.1	<0.01	0.01	1.9
K735296		0.57	12.9	820	3.9	4.8	<0.001	<0.01	0.33	2.2	<0.2	0.2	13.7	<0.01	0.03	7.6
K735297		0.94	22.5	970	6.0	5.6	0.001	0.01	0.60	3.9	0.6	0.3	15.1	<0.01	0.05	16.3
K735298		0.70	23.1	680	6.0	5.3	0.002	0.04	0.42	4.5	0.7	0.3	24.9	<0.01	0.04	2.6
K735299		0.94	13.9	700	3.6	5.3	0.001	0.02	0.17	2.5	0.4	0.2	16.3	<0.01	0.02	8.1
K735300		0.96	12.0	780	3.2	4.7	<0.001	0.02	0.16	2.3	<0.2	0.2	15.0	<0.01	0.01	7.2
K735311		0.83	23.2	950	6.7	11.7	<0.001	0.02	0.09	3.2	0.5	0.5	36.0	<0.01	0.02	5.1
K735312		0.67	24.0	780	6.9	7.5	<0.001	0.02	0.11	2.5	0.3	0.3	31.4	<0.01	0.03	3.4
K735313		0.68	28.3	860	7.0	6.5	0.001	0.01	0.19	3.6	0.8	0.3	33.3	<0.01	0.04	3.7
K735314		1.71	24.9	930	4.9	5.2	0.001	0.02	0.43	6.4	0.6	0.4	39.7	<0.01	0.02	2.0
K735315		0.06	72.3	1070	21.4	14.4	0.052	0.92	6.82	3.6	3.2	3.0	200	<0.01	0.39	3.5
K735316		1.54	31.6	870	6.7	5.2	0.001	0.02	0.56	7.6	0.5	0.5	42.7	<0.01	0.02	2.7
K735317		0.70	21.1	810	3.8	2.6	0.001	0.02	0.36	6.1	0.5	0.4	50.8	<0.01	0.02	1.7
K735318		1.47	16.8	720	3.2	3.8	0.001	0.03	0.18	5.2	0.4	0.4	42.9	<0.01	0.02	27.6



ALS Canada Ltd.
 2103 Dollarton Hwy
 North Vancouver BC V7H 0A7
 Phone: 604 984 0221 Fax: 604 984 0218 www.alsglobal.com

To: GOLDEN PREDATOR CANADA CORP.
 888 DUNSMUIR STREET
 11TH FLOOR
 VANCOUVER BC V6C 3K4

Page: 3 - D
 Total # Pages: 4 (A - D)
 Plus Appendix Pages
 Finalized Date: 26-JUL-2011
 Account: GOPRED

Project: Stream seds

CERTIFICATE OF ANALYSIS WH11109441

Sample Description	Method Analyte Units LOR	ME-MS41	ME-MS41	ME-MS41	ME-MS41	ME-MS41	ME-MS41	ME-MS41	ME-MS41	Au-OG44
		Ti %	Ti ppm	U ppm	V ppm	W ppm	Y ppm	Zn ppm	Zr ppm	Au ppm
		0.005	0.02	0.05	1	0.05	0.05	2	0.5	0.01
K735236		0.102	0.13	0.80	79	0.19	7.22	56	1.0	
K735237		0.068	0.07	0.62	49	1.51	7.05	40	2.3	
K735238		0.112	0.06	0.65	81	0.15	8.38	62	3.4	
K735239		0.111	0.05	0.49	78	0.15	8.11	60	3.3	
K735240		0.049	0.05	0.46	39	0.22	5.06	36	1.1	
K735274		0.058	0.22	27.0	28	0.49	14.80	37	<0.5	
K735275		0.048	0.09	3.00	26	2.19	9.78	28	0.9	
K735276		0.043	0.06	0.46	56	0.39	5.58	38	0.8	
K735277		0.258	0.02	0.30	121	0.36	10.40	66	13.7	
K735278		0.195	0.02	0.35	121	0.12	7.53	64	7.5	
K735279		0.193	0.02	0.37	104	0.08	7.64	57	7.8	
K735280		0.096	0.04	0.24	43	10.05	6.10	34	6.3	
K735281		0.167	0.03	0.33	109	0.08	11.15	51	12.9	
K735282		0.201	0.03	0.39	122	0.08	10.05	59	9.6	
K735283		0.145	0.04	0.48	97	0.12	7.47	56	5.4	
K735284		0.160	0.03	0.35	97	0.07	9.38	49	7.6	
K735285		0.084	0.03	0.31	63	0.13	4.95	45	3.1	
K735286		0.082	0.04	0.29	59	0.12	5.23	41	3.1	
K735287		0.090	0.06	0.38	63	0.28	7.60	59	3.1	
K735288		0.094	0.07	0.45	78	0.30	7.41	54	3.4	
K735289		0.095	0.04	0.38	61	0.12	6.28	44	4.6	
K735290		0.048	0.05	0.76	97	0.11	7.65	30	0.9	
K735291		0.041	0.11	0.48	48	0.13	8.53	45	0.6	
K735292		0.037	0.09	0.99	63	0.15	9.82	44	0.5	
K735293		0.025	0.07	0.58	37	0.17	5.56	41	0.5	
K735294		0.042	0.04	0.49	47	0.12	4.95	33	0.5	
K735295		0.048	0.06	0.56	52	0.63	5.56	37	0.6	
K735296		0.066	0.05	1.05	73	2.17	4.75	22	0.8	
K735297		0.066	0.07	2.44	109	11.55	8.35	35	0.8	
K735298		0.064	0.07	2.06	72	0.42	8.94	54	0.7	
K735299		0.066	0.05	1.88	46	1.96	5.51	33	0.8	
K735300		0.056	0.05	3.93	31	1.52	4.96	22	0.8	
K735311		0.051	0.08	4.20	44	2.50	10.05	46	4.0	
K735312		0.049	0.06	1.06	45	0.17	6.20	57	4.1	
K735313		0.037	0.06	0.90	36	0.32	7.58	55	5.1	
K735314		0.131	0.05	0.59	88	0.30	9.50	62	5.5	
K735315		0.005	0.87	14.65	147	14.75	20.2	413	8.3	
K735316		0.149	0.06	0.67	102	0.21	10.65	65	7.0	
K735317		0.155	0.03	0.48	103	0.08	9.83	48	10.8	
K735318		0.140	0.03	2.76	83	0.09	7.70	43	6.6	



ALS Canada Ltd.
 2103 Dollarton Hwy
 North Vancouver BC V7H 0A7
 Phone: 604 984 0221 Fax: 604 984 0218 www.alsglobal.com

To: GOLDEN PREDATOR CANADA CORP.
 888 DUNSMUIR STREET
 11TH FLOOR
 VANCOUVER BC V6C 3K4

Page: 4 - A
 Total # Pages: 4 (A - D)
 Plus Appendix Pages
 Finalized Date: 26-JUL-2011
 Account: GOPRED

Project: Stream seds

CERTIFICATE OF ANALYSIS WH11109441

Sample Description	Method Analyte Units LOR	WEI-21	Au-ST44	ME-MS41	ME-MS41	ME-MS41	ME-MS41	ME-MS41	ME-MS41	ME-MS41	ME-MS41	ME-MS41	ME-MS41	ME-MS41	ME-MS41	ME-MS41
		Recvd Wt. kg	Au ppm	Ag ppm	Al %	As ppm	Au ppm	B ppm	Ba ppm	Be ppm	Bi ppm	Ca %	Cd ppm	Ce ppm	Co ppm	Cr ppm
		.02	0.0001	0.01	0.01	0.1	0.2	10	10	0.05	0.01	0.01	0.01	0.02	0.1	1
K735319		7.74	0.0058	0.03	1.31	6.6	<0.2	<10	160	0.41	0.05	2.07	0.16	18.70	11.2	30
K735320		4.38	0.0093	0.06	1.03	6.9	<0.2	<10	130	0.26	0.07	0.91	0.20	15.55	9.7	31
K735321		3.90	0.0093	0.04	1.06	5.0	<0.2	<10	110	0.23	0.06	0.74	0.16	13.15	9.4	38
K735322		5.42	0.0014	0.07	1.49	5.8	<0.2	<10	230	0.37	0.08	0.98	0.51	22.5	11.1	39
K735323		5.40	0.0205	0.07	1.19	8.1	<0.2	<10	110	0.35	0.07	1.00	0.23	16.80	11.8	47
K735324		5.60	0.0032	0.07	1.54	13.3	<0.2	<10	240	0.54	0.07	0.93	0.28	15.05	20.8	48
K735325		5.86	0.0028	0.03	0.99	3.0	<0.2	<10	100	0.15	0.05	0.63	0.08	8.85	18.3	40
K735326		4.62	>0.1000	0.06	1.22	36.9	<0.2	<10	240	0.29	0.08	0.57	0.20	18.85	15.7	49
K735327		5.28	0.0247	0.05	1.54	37.7	<0.2	<10	250	0.21	0.04	0.54	0.12	8.97	15.6	61
K735328		5.78	0.0223	0.07	1.80	66.6	<0.2	<10	360	0.32	0.04	0.70	0.28	12.35	21.0	73
K735329		8.00	0.0046	0.06	1.37	7.3	<0.2	<10	270	0.28	0.09	0.75	0.26	14.35	17.0	40
K735330		<0.02	0.0024	0.06	1.36	7.5	<0.2	<10	270	0.31	0.08	0.74	0.25	13.85	17.5	39
K735331		4.96	0.0017	0.19	2.08	18.6	<0.2	<10	130	0.54	0.23	0.62	0.34	26.3	22.2	53
K735332		6.10	0.0192	0.04	1.43	25.3	<0.2	<10	70	0.41	0.15	0.72	0.25	25.8	24.2	55
K735333		5.16	0.0078	0.09	1.30	15.3	<0.2	<10	80	0.30	0.15	0.44	0.28	25.6	11.9	39
K735334		5.00	0.0008	0.07	1.03	5.7	<0.2	<10	140	0.23	0.16	0.38	0.11	26.0	9.1	43
K735335		5.64	0.0032	0.09	1.40	14.2	<0.2	<10	110	0.31	0.14	0.60	0.17	23.3	15.8	48
K735336		6.70	>0.1000	0.07	1.10	26.2	<0.2	<10	90	0.21	0.10	0.51	0.28	24.7	12.9	83
K735359		6.36	0.0620	0.08	1.14	23.3	<0.2	<10	140	0.25	0.10	0.84	0.17	24.9	9.2	47
K735218		Not Recvd														



ALS Canada Ltd.
 2103 Dollarton Hwy
 North Vancouver BC V7H 0A7
 Phone: 604 984 0221 Fax: 604 984 0218 www.alsglobal.com

To: GOLDEN PREDATOR CANADA CORP.
 888 DUNSMUIR STREET
 11TH FLOOR
 VANCOUVER BC V6C 3K4

Page: 4 - B
 Total # Pages: 4 (A - D)
 Plus Appendix Pages
 Finalized Date: 26-JUL-2011
 Account: GOPRED

Project: Stream seds

CERTIFICATE OF ANALYSIS WH11109441

Sample Description	Method Analyte Units LOR	ME-MS41	ME-MS41	ME-MS41	ME-MS41	ME-MS41	ME-MS41	ME-MS41	ME-MS41	ME-MS41	ME-MS41	ME-MS41	ME-MS41	ME-MS41	ME-MS41	
		Cs ppm	Cu ppm	Fe %	Ga ppm	Ge ppm	Hf ppm	Hg ppm	In ppm	K %	La ppm	Li ppm	Mg %	Mn ppm	Mo ppm	Na %
		0.05	0.2	0.01	0.05	0.05	0.02	0.01	0.005	0.01	0.2	0.1	0.01	5	0.05	0.01
K735319		0.35	35.2	3.15	5.03	0.13	0.34	0.03	0.020	0.04	9.0	8.5	0.87	557	0.54	0.02
K735320		0.45	24.2	2.28	3.87	0.10	0.06	0.04	0.014	0.05	7.6	6.7	0.59	486	0.70	0.02
K735321		0.34	20.9	2.34	4.03	0.09	0.06	0.03	0.013	0.04	6.7	6.4	0.72	495	0.55	0.02
K735322		0.71	27.9	2.52	4.48	0.10	0.05	0.05	0.016	0.05	11.8	11.9	0.60	789	0.83	0.02
K735323		0.75	34.1	2.85	4.70	0.10	0.07	0.07	0.020	0.05	8.5	8.6	0.76	387	0.68	0.02
K735324		16.90	60.8	3.37	4.47	0.09	0.02	0.04	0.022	0.08	9.3	15.0	1.03	591	0.53	0.02
K735325		2.75	71.1	2.66	2.98	0.09	<0.02	0.01	0.008	0.06	4.0	8.1	0.90	285	0.23	0.03
K735326		2.33	35.4	3.21	4.20	0.09	0.03	0.03	0.018	0.07	9.0	10.2	0.91	769	0.60	0.01
K735327		2.27	60.8	2.40	3.98	0.08	<0.02	0.01	0.012	0.04	4.2	10.9	1.14	527	0.34	0.01
K735328		4.30	76.6	3.39	4.68	0.10	<0.02	0.02	0.012	0.06	5.5	13.0	1.36	2070	0.81	0.01
K735329		5.86	73.4	2.83	4.04	0.09	<0.02	0.01	0.014	0.09	6.9	11.5	1.14	616	0.45	0.02
K735330		5.89	76.3	2.86	4.13	0.09	<0.02	0.01	0.015	0.09	6.7	12.0	1.13	616	0.73	0.02
K735331		6.73	52.0	3.51	6.53	0.11	0.03	0.03	0.023	0.08	13.3	13.8	0.85	589	0.67	0.03
K735332		2.76	37.7	4.64	6.22	0.13	0.08	0.03	0.027	0.05	13.8	9.8	0.83	513	0.87	0.03
K735333		3.17	29.4	2.63	4.86	0.15	0.02	0.02	0.022	0.04	14.9	11.6	0.63	408	1.62	0.02
K735334		3.89	24.0	3.21	3.81	0.13	<0.02	0.02	0.016	0.07	14.6	11.5	0.45	305	1.51	0.02
K735335		3.04	31.7	3.66	5.61	0.16	0.04	0.03	0.023	0.07	12.5	13.2	0.77	364	0.80	0.03
K735336		2.66	27.8	4.49	4.31	0.17	0.03	0.02	0.021	0.04	14.3	12.1	0.70	601	1.35	0.01
K735359		1.36	30.5	2.76	4.20	0.20	0.06	0.01	0.018	0.15	14.5	10.5	0.84	332	0.56	0.02
K735218																



ALS Canada Ltd.
 2103 Dollarton Hwy
 North Vancouver BC V7H 0A7
 Phone: 604 984 0221 Fax: 604 984 0218 www.alsglobal.com

To: GOLDEN PREDATOR CANADA CORP.
 888 DUNSMUIR STREET
 11TH FLOOR
 VANCOUVER BC V6C 3K4

Page: 4 - C
 Total # Pages: 4 (A - D)
 Plus Appendix Pages
 Finalized Date: 26-JUL-2011
 Account: GOPRED

Project: Stream seds

CERTIFICATE OF ANALYSIS WH11109441

Sample Description	Method Analyte Units LOR	ME-MS41	ME-MS41	ME-MS41	ME-MS41	ME-MS41	ME-MS41	ME-MS41	ME-MS41	ME-MS41	ME-MS41	ME-MS41	ME-MS41	ME-MS41	ME-MS41	ME-MS41
		Nb ppm	Ni ppm	P ppm	Pb ppm	Rb ppm	Re ppm	S %	Sb ppm	Sc ppm	Se ppm	Sn ppm	Sr ppm	Ta ppm	Te ppm	Th ppm
		0.05	0.2	10	0.2	0.1	0.001	0.01	0.05	0.1	0.2	0.2	0.2	0.01	0.01	0.2
K735319		0.76	21.1	730	3.7	3.0	<0.001	0.01	0.30	7.0	0.3	0.4	47.7	<0.01	0.01	1.6
K735320		0.91	22.4	810	4.9	5.2	0.001	0.02	0.34	4.1	0.4	0.3	34.3	<0.01	0.03	1.1
K735321		0.70	29.4	760	4.8	4.3	0.001	0.02	0.20	3.5	0.2	0.2	31.6	<0.01	0.02	1.0
K735322		1.22	24.0	830	4.0	6.6	0.003	0.04	0.28	4.2	0.8	0.4	45.2	<0.01	0.03	1.0
K735323		1.01	31.0	770	5.4	5.5	0.001	0.03	0.39	5.8	0.8	0.3	38.8	<0.01	0.03	1.3
K735324		0.64	37.6	1690	4.4	8.6	<0.001	0.04	0.99	6.5	0.8	0.3	42.0	<0.01	0.04	0.9
K735325		0.33	21.6	1460	1.7	3.8	<0.001	0.01	0.32	4.2	0.3	0.2	24.5	<0.01	0.02	0.8
K735326		0.95	29.7	990	3.5	7.2	0.002	0.03	1.06	4.9	0.6	0.3	28.6	<0.01	0.04	2.2
K735327		0.52	25.5	1040	1.8	5.3	0.001	0.02	0.97	5.2	0.2	0.2	24.6	<0.01	0.02	0.6
K735328		0.58	33.7	1110	1.8	6.3	0.001	0.02	0.94	6.4	0.5	0.2	31.3	<0.01	0.02	0.7
K735329		0.61	24.8	1390	3.9	8.4	0.001	0.03	0.41	4.4	0.5	0.2	32.9	<0.01	0.03	0.9
K735330		0.61	25.0	1400	3.9	8.6	0.001	0.03	0.43	4.5	0.6	0.2	33.6	<0.01	0.03	0.9
K735331		0.89	36.7	920	8.5	8.7	<0.001	0.03	1.04	7.3	0.8	0.4	22.1	<0.01	0.04	1.5
K735332		0.73	33.1	840	5.5	4.3	<0.001	0.02	1.55	7.1	0.5	0.5	17.2	<0.01	0.03	3.3
K735333		0.65	27.2	660	5.5	5.4	0.001	0.03	0.76	5.1	0.5	0.3	17.6	<0.01	0.02	1.6
K735334		0.62	20.2	650	4.9	8.1	0.001	0.02	0.45	4.9	0.5	0.3	15.0	<0.01	0.02	3.5
K735335		0.76	28.6	740	5.2	6.3	0.001	0.02	0.89	6.7	0.7	0.4	17.9	<0.01	0.02	3.4
K735336		0.58	33.3	750	3.8	4.2	0.001	0.02	1.31	6.1	1.1	0.3	16.9	<0.01	0.01	3.6
K735359		0.65	27.8	730	4.8	8.9	0.001	0.01	0.98	5.0	0.7	0.2	40.4	<0.01	0.02	6.9
K735218																



ALS Canada Ltd.
 2103 Dollarton Hwy
 North Vancouver BC V7H 0A7
 Phone: 604 984 0221 Fax: 604 984 0218 www.alsglobal.com

To: GOLDEN PREDATOR CANADA CORP.
 888 DUNSMUIR STREET
 11TH FLOOR
 VANCOUVER BC V6C 3K4

Page: 4 - D
 Total # Pages: 4 (A - D)
 Plus Appendix Pages
 Finalized Date: 26-JUL-2011
 Account: GOPRED

Project: Stream seds

CERTIFICATE OF ANALYSIS WH11109441

Sample Description	Method Analyte Units LOR	ME-MS41 Ti %	ME-MS41 Tl ppm	ME-MS41 U ppm	ME-MS41 V ppm	ME-MS41 W ppm	ME-MS41 Y ppm	ME-MS41 Zn ppm	ME-MS41 Zr ppm	Au-OG44 Au ppm
		0.005	0.02	0.05	1	0.05	0.05	2	0.5	0.01
K735319		0.172	0.03	0.40	108	0.06	9.90	48	11.7	
K735320		0.078	0.04	0.45	63	0.15	7.29	48	2.1	
K735321		0.074	0.03	0.29	66	0.13	5.23	51	2.3	
K735322		0.097	0.07	0.68	73	0.18	9.24	90	1.4	
K735323		0.094	0.05	0.38	84	0.21	7.79	55	2.4	
K735324		0.046	0.08	1.16	69	0.22	11.95	83	<0.5	
K735325		0.058	0.03	0.17	75	0.12	3.52	27	<0.5	
K735326		0.060	0.04	0.72	63	0.24	6.15	53	0.8	0.10
K735327		0.044	0.03	0.41	55	0.12	4.40	49	<0.5	
K735328		0.050	0.04	0.43	72	0.13	6.29	64	<0.5	
K735329		0.066	0.07	0.66	68	0.21	6.73	59	0.5	
K735330		0.064	0.07	0.62	68	4.14	7.27	58	0.5	
K735331		0.101	0.14	1.36	88	0.50	14.45	61	0.8	
K735332		0.163	0.08	1.11	125	0.27	13.35	58	2.3	
K735333		0.071	0.09	1.05	70	3.64	12.00	52	0.6	
K735334		0.060	0.07	2.49	87	1.28	9.68	46	<0.5	
K735335		0.127	0.08	1.79	97	0.68	13.05	56	1.1	
K735336		0.073	0.07	0.73	117	1.90	9.36	62	0.9	0.05
K735359		0.074	0.08	0.74	70	0.18	7.12	49	2.0	
K735218										

***** See Appendix Page for comments regarding this certificate *****