

**ASSESSMENT REPORT: 2011 GEOCHEMICAL SAMPLING PROGRAM ON THE
JOP PROPERTY, WHITEHORSE MINING DIVISION, YUKON, CANADA**

Prepared by Shaun O'Connor, B.Sc. for **Golden Predator Canada Corp.**

NTS Map Sheets: 105E10 and 105E15

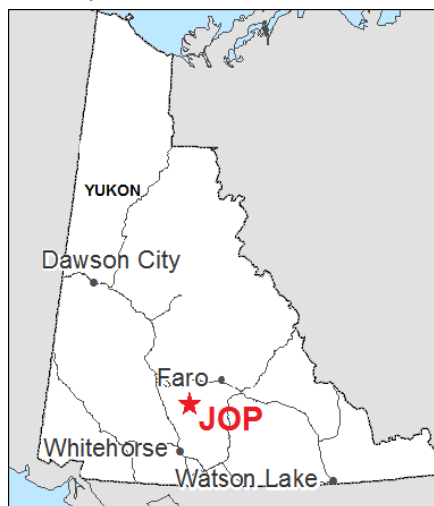
513167 E, 6842971 N (NAD83-8)

Period of Work: Summer 2011 and Winter 2012

Grant # From	Grant # To	Name	# From	# To	OWNER_NAME
YD40574		JOP	174		Golden Predator Canada Corp. - 100%
YD40576		JOP	176		Golden Predator Canada Corp. - 100%
YD40595	YD40624	JOP	195	224	Golden Predator Canada Corp. - 100%
YD40643	YD40672	JOP	243	272	Golden Predator Canada Corp. - 100%
YD40691	YD40720	JOP	291	320	Golden Predator Canada Corp. - 100%
YD40739	YD40768	JOP	339	368	Golden Predator Canada Corp. - 100%
YD40787	YD40816	JOP	387	416	Golden Predator Canada Corp. - 100%
YD40818		JOP	418		Golden Predator Canada Corp. - 100%
YD40820		JOP	420		Golden Predator Canada Corp. - 100%
YD40822		JOP	422		Golden Predator Canada Corp. - 100%
YD40824		JOP	424		Golden Predator Canada Corp. - 100%
YD40826		JOP	426		Golden Predator Canada Corp. - 100%
YD40828		JOP	428		Golden Predator Canada Corp. - 100%
YD40830		JOP	430		Golden Predator Canada Corp. - 100%
YD40832		JOP	432		Golden Predator Canada Corp. - 100%
YD40835	YD40880	JOP	435	480	Golden Predator Canada Corp. - 100%
YD40883	YD40928	JOP	483	528	Golden Predator Canada Corp. - 100%
YD40931	YD40963	JOP	531	563	Golden Predator Canada Corp. - 100%
YD40965		JOP	565		Golden Predator Canada Corp. - 100%
YD40967		JOP	567		Golden Predator Canada Corp. - 100%
YD40969		JOP	569		Golden Predator Canada Corp. - 100%
YD40971		JOP	571		Golden Predator Canada Corp. - 100%
YD40973		JOP	573		Golden Predator Canada Corp. - 100%
YD40975		JOP	575		Golden Predator Canada Corp. - 100%
YD40979		JOP	579		Golden Predator Canada Corp. - 100%
YD40981		JOP	581		Golden Predator Canada Corp. - 100%
YD40983		JOP	583		Golden Predator Canada Corp. - 100%
YD40985		JOP	585		Golden Predator Canada Corp. - 100%
YD40987		JOP	587		Golden Predator Canada Corp. - 100%
YD40989		JOP	589		Golden Predator Canada Corp. - 100%
YD40991		JOP	591		Golden Predator Canada Corp. - 100%
YD40993	YD41005	JOP	593	605	Golden Predator Canada Corp. - 100%
YD41007		JOP	607		Golden Predator Canada Corp. - 100%
YD41009		JOP	609		Golden Predator Canada Corp. - 100%
YD41041	YD41052	JOP	641	652	Golden Predator Canada Corp. - 100%
YD41091	YD41100	JOP	691	700	Golden Predator Canada Corp. - 100%

Introduction

This report summarizes the 2011 exploration program on the JOP claims, Yukon. JOP was staked in winter 2011 as part of a regional play around the historic Livingstone placer district and associated regional structures. Sampling for this program was performed by Golden Predator personnel, and data in this report is from field work and public databases.



Claim Information

JOP consists of 390 claims (around 78 km square) in the south-central Yukon. All claims are owned by Golden Predator Canada Corp. The block is located approximately 67 km southeast of Carmacks, 115 km north-northeast of Whitehorse, and about 15 km northwest of the Livingstone airstrip. The approximate center of the block is 513167, 6842971 (UTM NAD83-8). It is located on NTS map sheets 105E/10 and 105E/15.

See table 1 and map in appendix for claim information and locations.

Table 1: Claim information for JOP

Grant Number From	Grant Number To	Status	Name	Claim # From	Claim # To	Expires
YD40574		Active	JOP	174		01/04/2013
YD40576		Active	JOP	176		01/04/2013
YD40595	YD40624	Active	JOP	195	224	01/04/2013
YD40643	YD40672	Active	JOP	243	272	01/04/2013
YD40691	YD40720	Active	JOP	291	320	01/04/2013
YD40739	YD40768	Active	JOP	339	368	01/04/2013
YD40787	YD40816	Active	JOP	387	416	01/04/2013
YD40818		Active	JOP	418		01/04/2013

Access and Physiography

Access for the 2011 exploration program was by helicopter from a camp at Little Violet creek, near the Livingstone airstrip. The area can be accessed via winter road from the South Canol highway and has historically been reached via winter road from the eastern shore of Lake Laberge.

The claim block is part of the Yukon Plateau ecozone (Yukon Ecoregions Working Group, 2004). The last glaciation in the area was the McConnell, from 26.5 to 10.0 thousand years ago. Glaciofluvial terraces overly thick, hummocky glaciofluvial and glaciolacustrine deposits in valley floors to the south, with

steeper topography in the north covered by thin till with some colluvium. Valleys on the property are filled with a mix of fluvial, colluvial and morainal material, with a mix of colluvium and till at high elevations (Klassen and Morrison, 1987).

Average precipitation is around 200 to 325 mm annually, most of which falls as snow. Average temperatures are -25 degrees C in January and around 10 degrees C in July, primarily a result of lower temperatures at elevation. Snow cover is present from late October to early April.

Soils, where developed, are brunisolic (intermediate between colluvium and mature soils). In addition to till cover, thick deposits of windblown loess and White River tephra are present locally, further confounding soil sampling.

Vegetation consists of thick mixed and pine forests at lower elevations, with sparse subalpine fir and shrub birch predominant along ridges and spurs.

Exploration History

A single minfile occurrence (SEMENOF, 105E 014) can be found near the property. The occurrence is marked within the current claim block, but the showing is actually located further to the north.

The area was staked and prospected in the early 70's, with interest in nickel and copper mineralization in Semenof basalts and presumably gold associated with placer deposits in the Livingstone district. The area was again staked in the late 80's and Noranda optioned the property in 1987.

The claims centred on a showing of fractured and altered lapilli tuffs belonging to the Semenof formation. Noranda conducted soil sampling, ground geophysics, mapping and trenching on the claims. Hand sampling identified a pod of high grade (29 ppm Au, 40 ppm Ag) mineralization in propylitically altered lapilli tuff.

The propylitic fracture zone contained disseminated bornite, malachite, azurite and visible gold. The best sample returned values of 29 ppm Au, >4% Cu, 40 ppm Ag and 12 ppm As. Trench sampling underneath the site of this sample produced sporadic low grade values, with an overall value of 150 ppb Au and 640 ppm Cu over 24 m.

The high grade sample occurs in a pod of propylitically altered fractured andesitic lapilli tuff, part of a larger, linear zone of similar alteration. The very strong alteration associated with the high grade sample was limited in its three dimensional extent, cutting out above the trench floor. Other samples taken within the altered trend were unimpressive. The linear zone was located near the boundary with the Boswell limestones to the east and was associated with a magnetic low. It is unclear what, if any, relationship a Triassic(?) diorite body to the west of the showing has to mineralization, although samples taken near it were not anomalous.

Geology

JOP is located within the Semenof Hills block, a fault-bounded assemblage of Pennsylvanian and Pliocene volcano-sedimentary rocks identified by Tempelman-Kluit during mapping in the Laberge area (Tempelman-Kluit, 1984). Semenof formation basalts, andesites and tuffs are in contact with Boswell formation volcanics and limestones. Both units are intruded by mid Cretaceous granites. Triassic diorites and upper Cretaceous volcanics also occur within the Semenof Hills block, as well as the Pliocene Walsh Creek conglomerates and rhyolites to the northeast.

The Semenof Hills block has been included in Quesnellia terrane (Gordey and Makepeace, 1999), but its true affiliation is unclear and it has variably been included in Slide Mountain and may be related to Yukon-Tanana terrane (Simard and Devine, 2003). It is fault-bounded, separated from Stikinia to the west by the Teslin fault and from Yukon-Tanana terrane in the east by the Big Salmon fault.

Locally, Noranda identified a sequence of basalts, andesites, hornblende-feldspar porphyries, and tuffaceous equivalents in contact with limestones and chert (Copland, 1987). Likely part of the Semenof and Boswell formations, respectively, these units are consistent with Tempelman-Kluit's map of the area (Tempelman-Kluit, 1984). Noranda also mapped dykes of quartz-feldspar porphyry, quartz diorite and monzonite that cut the volcanic and sedimentary units, as well as an ovoid diorite body more than a kilometer long west of the Semenof showing. These units could be related to the middle Cretaceous granite body mapped to the southeast of the showing and/or the Triassic Headless Plug diorites to the northwest.

Mineralization

The JOP claims were staked to cover an area drained by streams with anomalous gold in silt values, as well as a favorable factor analysis indication. An epithermal target in Semenof formation volcanics was postulated based on previously identified alteration and gold showings in the area, combined with scattered anomalous stream sediment values.

Epithermal deposits often have an extensive zone of propylitic alteration distal to a precious metal rich core. They are usually associated with magnetic lows due to hydrothermal destruction of magnetite in host rocks. They have a signature with variously anomalous amounts of Au-Ag-As-Hg-Sb-Cu (Panteleyev, 1996).

Exploration

35 silt samples and 5 rock samples were collected during the 2011 field season.

An attempt to locate the Semenof showing was made but was unsuccessful. Sampling was planned to provide a reconnaissance level geochemical picture of the block to guide future exploration in the area. Rock samples were collected during the course of silt sampling or to follow up on anomalous silt samples.

Stream sediment samples were collected along 750 m intervals and immediately upstream of any confluences. Active silt and fine to medium sand that has been recently transported was the target sediment. Samples were sieved in the field with a 6 mesh (~1/8") screen and placed in plastic sample bags. If a drainage contained seasonal stream sediment deposition but was currently dry, a sample was collected by dry sieving the material. Samples were transported from the Little Violet Creek camp to Whitehorse by Alkan Air, and were delivered to ALS Chemex by Golden Predator personnel.

Results and Discussion

Two silt samples were anomalous for gold.

Sample K735323 was collected just to the west of the central part of the claim block and contained 20.5 ppb Au, with background levels of other elements. Three hand samples were taken from mafic volcanics above the silt sample site, but did not contain anomalous amounts of gold or other elements.

Sample K735184 was collected at the eastern margin of the claim block and contained 31.1 ppb Au. The sample site is near the mapped contact between the Semenof and Boswell formations, and the sample description indicates fragmental rocks nearby.

Gold-silver-copper mineralization at the Semenof showing near the JOP claims occurs in propylitized andesitic tuffs near the boundary between Semenof volcanics and the Boswell limestone, and may be related to emplacement of Triassic or Cretaceous intrusive bodies mapped in the area. A silt sample, part of the Yukon regional geochemical data set, taken directly downstream from the actual location of the showing contained only background levels of all precious and base metals, as well as pathfinder elements. Klassen and Morrison (1987) describe valleys in the area as being filled with a mixture of till, colluvium and reworked fluvial material, and even ridge tops as being covered in till. Till cover may have obscured the anomaly at Semenof and by extension may obscure other anomalies at JOP. Conversely, spot gold anomalies in silt samples taken at JOP may have come from glacial material and may not represent anomalous bedrock.

Sample K735184 was anomalous for Au and was collected in an area with fragmental volcanics very close to the mapped contact between the Semenof and Boswell formations. If mineralization at Semenof is related to the contact between these two units, a similar zone may exist near the sample site and perhaps between the two areas.

Conclusions

2011 silt sampling at JOP produced two samples with anomalous Au values, one of which occurs in a similar lithologic setting to that of the epithermal? Au-Ag-Cu mineralization at the Semenof showing to the northwest.

Till covered valleys and slopes complicate geochemical reconnaissance on the claim block. Silt samples may not represent underlying bedrock.

Followup work should focus on prospecting and mapping in the area where sample K735184 was collected, with particular attention paid to altered tuffs near the boundary between volcanic and sedimentary rocks.

References

Copland, H., 1987. Geological, geochemical, & geophysical report on the SEM 1-28 claims, DAVE 1-10 claims, and SEM 11 claim. Yukon Assessment Report #091968. Accessed from <http://yma.gov.yk.ca/091968.pdf>.

Klassen, R.W. and Morison, S.R., 1987, Surficial Geology, Laberge, Yukon Territory. Geological Survey of Canada Map, Vol. 8-1985, 1 colored map (1:250,000 scale).

Panteleyev, A. (1996): Epithermal Au-Ag-Cu: High Sulphidation, in Selected British Columbia Mineral Deposit Profiles, Volume 2 - Metallic Deposits, Lefebvre, D.V. and Höy, T., Editors, British Columbia Ministry of Employment and Investment, Open File 1996-13, pages 37-39.

Simard, R.-L. and Devine, F., 2003. Preliminary geology of the southern Semenof Hills, central Yukon (105E/1,7,8). In: Yukon Exploration and Geology 2002, D.S. Emond and L.L. Lewis (eds.), Exploration and Geological Services Division, Yukon Region, Indian and Northern Affairs Canada, p. 213-222.

Tempelman-Kluit, D.J., 1984, Geology, Laberge (105E) and Carmacks (115I), Yukon Territory. Geological Survey of Canada, Open File 1101 (two 1:250,000 maps and legend).

Yukon Ecoregions Working Group, 2004. Yukon Plateau Central. In: Ecoregions of the Yukon Territory: Biophysical properties of Yukon landscapes, C.A.S. Smith, J.C. Meikle and C.F. Roots (eds.), Agriculture and Agri-Food Canada, PARC Technical Bulletin No. 04-01, Summerland, British Columbia, p. 63-72.

Shaun O'Connor
1 Lindeman Rd.
Whitehorse, YT
867-633-4653
soconnor@goldenpredator.com

Certificate of Authorship

I, Shaun O'Connor of Whitehorse, YT certify that:

1. I am a graduate of Carleton University, Ottawa, ON with a B.Sc. (Hons.) in Earth Sciences.
2. I have worked in mineral exploration and geologic mapping in the Yukon for 6 years.
3. I am author of the preceding report.



Shaun O'Connor, B.Sc.
Whitehorse, YT
December 12th, 2012



ALS Canada Ltd.
 2103 Dollarton Hwy
 North Vancouver BC V7H 0A7
 Phone: 604 984 0221 Fax: 604 984 0218 www.alsglobal.com

To: **GOLDEN PREDATOR CANADA CORP.**
888 DUNSMUIR STREET
11TH FLOOR
VANCOUVER BC V6C 3K4

Page: 1
 Finalized Date: 26-JUL-2011
 Account: GOPRED

CERTIFICATE WH11109441

Project: Stream seds
 P.O. No.: GPD2011LIV003
 This report is for 100 Stream Sediment samples submitted to our lab in Whitehorse, YT, Canada on 16-JUN-2011.
 The following have access to data associated with this certificate:


MIKE BURKE LINDA LEWIS	ANDREW CALDWELL MIKE MASLOWSKI	JACK COTE
---------------------------	-----------------------------------	-----------

SAMPLE PREPARATION	
ALS CODE	DESCRIPTION
WEI-21	Received Sample Weight
LOG-21d	Sample logging - ClientBarCode Dup
SPL-34	Pulp Splitting Charge
LOG-22	Sample login - Rcd w/o BarCode
LOG-23	Pulp Login - Rcvd with Barcode
SCR-41	Screen to -180um and save both

ANALYTICAL PROCEDURES		
ALS CODE	DESCRIPTION	INSTRUMENT
Au-OG44	Ore Grade Au - 50g AR	ICP-MS
Au-ST44	Super Trace Au - 50g AR	ICP-MS
ME-MS41	51 anal. aqua regia ICPMS	

To: **GOLDEN PREDATOR CANADA CORP.**
ATTN: JACK COTE
888 DUNSMUIR STREET
11TH FLOOR
VANCOUVER BC V6C 3K4

This is the Final Report and supersedes any preliminary report with this certificate number. Results apply to samples as submitted. All pages of this report have been checked and approved for release.

Signature: 
 Colin Ramshaw, Vancouver Laboratory Manager



ALS Canada Ltd.
 2103 Dollarton Hwy
 North Vancouver BC V7H 0A7
 Phone: 604 984 0221 Fax: 604 984 0218 www.alsglobal.com

To: GOLDEN PREDATOR CANADA CORP.
 888 DUNSMUIR STREET
 11TH FLOOR
 VANCOUVER BC V6C 3K4

Page: 2 - A
 Total # Pages: 4 (A - D)
 Plus Appendix Pages
 Finalized Date: 26-JUL-2011
 Account: GOPRED

Project: Stream seds

CERTIFICATE OF ANALYSIS WH11109441

Sample Description	Method Analyte Units LOR	WEI-21	Au-ST44	ME-MS41	ME-MS41	ME-MS41	ME-MS41	ME-MS41	ME-MS41	ME-MS41	ME-MS41	ME-MS41	ME-MS41	ME-MS41	ME-MS41	ME-MS41
		Recvd Wt. kg .02	Au ppm 0.0001	Ag ppm 0.01	Al % 0.01	As ppm 0.1	Au ppm 0.2	B ppm 10	Ba ppm 10	Be ppm 0.05	Bi ppm 0.01	Ca % 0.01	Cd ppm 0.01	Ce ppm 0.02	Co ppm 0.1	Cr ppm 1
K735176		7.40	0.0009	0.04	0.61	1.4	<0.2	<10	30	0.10	0.07	0.32	0.19	21.2	6.3	9
K735177		5.86	0.0012	0.06	0.78	3.5	<0.2	<10	40	0.18	0.16	0.35	0.32	33.4	9.4	14
K735178		7.80	0.0478	0.04	0.94	3.7	<0.2	<10	130	0.35	0.10	0.46	0.17	28.7	10.7	28
K735179		6.94	0.0020	0.05	1.58	9.9	<0.2	<10	150	0.36	0.08	1.21	0.23	25.7	17.6	35
K735180		5.76	0.0016	0.03	1.27	4.4	<0.2	<10	120	0.31	0.06	0.86	0.13	18.55	10.0	25
K735181		5.00	0.0024	0.03	1.31	5.7	<0.2	<10	80	0.38	0.08	1.02	0.16	18.65	11.4	26
K735182		6.54	0.0034	0.03	1.61	7.1	<0.2	<10	100	0.44	1.57	1.21	0.21	22.6	15.6	40
K735183		5.08	0.0029	0.03	1.26	3.9	<0.2	<10	80	0.32	0.05	1.01	0.07	17.55	10.0	25
K735184		7.82	0.0311	0.02	1.43	5.5	<0.2	<10	80	0.41	0.08	1.15	0.14	18.15	13.1	37
K735185		5.84	0.0022	0.03	1.51	7.3	<0.2	<10	130	0.31	0.05	1.03	0.12	16.70	16.3	55
K735186		6.02	0.0013	0.04	0.97	4.8	<0.2	<10	110	0.25	0.05	0.90	0.11	14.60	8.7	37
K735187		7.06	0.0017	0.27	0.65	24.8	<0.2	<10	80	0.18	0.21	0.25	1.93	18.25	10.0	26
K735188		6.58	0.0012	0.11	0.88	8.0	<0.2	<10	90	0.17	0.07	0.45	0.47	12.90	14.3	62
K735189		6.74	0.0011	0.17	0.75	14.4	<0.2	<10	180	0.19	0.10	0.76	0.66	15.75	12.3	44
K735190		6.26	0.0004	0.08	0.91	6.0	<0.2	<10	60	0.13	0.09	0.40	0.27	12.70	9.8	60
K735191		6.70	0.0025	0.11	0.92	43.4	<0.2	<10	460	0.36	0.08	0.63	0.47	17.25	16.7	49
K735192		5.66	0.0011	0.14	1.79	6.4	<0.2	<10	110	0.31	0.07	1.31	0.45	16.55	11.3	52
K735193		7.04	0.0008	0.05	1.89	4.0	<0.2	<10	90	0.26	0.05	0.81	0.19	15.60	13.8	46
K735194		7.24	0.0011	0.09	1.53	4.9	<0.2	<10	90	0.26	0.06	1.54	0.21	14.80	10.5	43
K735195		0.18	0.0012	0.19	1.06	3.8	<0.2	<10	80	0.20	0.05	0.66	0.16	10.45	7.3	30
K735196		5.84	0.0045	0.06	2.05	30.4	<0.2	<10	60	0.25	0.07	0.68	0.26	16.60	19.9	74
K735197		5.90	0.0034	0.11	2.25	25.8	<0.2	10	60	0.36	0.07	1.06	0.32	15.10	21.3	85
K735205		5.30	0.0016	0.05	1.05	7.9	<0.2	<10	220	0.66	0.11	0.72	0.25	36.7	12.0	41
K735219		6.16	0.0014	0.05	0.53	4.3	<0.2	<10	40	0.21	0.23	0.47	0.22	47.5	7.9	16
K735220		6.88	0.0014	0.15	0.75	7.6	<0.2	<10	20	0.19	0.18	0.82	0.27	30.2	10.4	19
K735221		6.86	0.0057	0.11	0.63	5.0	<0.2	<10	20	0.15	0.17	0.59	0.19	26.3	8.5	17
K735222		5.04	0.0008	0.06	0.53	4.3	<0.2	<10	40	0.19	0.22	3.06	0.29	25.9	5.7	16
K735223		4.04	0.0038	0.07	1.72	6.3	<0.2	<10	220	0.40	0.10	1.10	0.26	16.95	17.9	28
K735224		7.06	0.0039	0.03	1.62	4.6	<0.2	10	120	0.30	0.06	1.06	0.09	13.70	13.6	23
K735225		6.60	0.0043	0.04	1.16	6.6	<0.2	<10	140	0.34	0.05	2.66	0.13	17.85	12.6	30
K735226		4.62	0.0013	0.06	1.34	8.8	<0.2	<10	180	0.30	0.11	0.88	0.18	19.45	12.3	31
K735227		6.46	0.0009	0.04	1.19	4.9	<0.2	<10	110	0.23	0.06	0.72	0.15	19.10	10.3	27
K735228		5.54	0.0009	0.03	1.15	3.7	<0.2	<10	90	0.25	0.10	0.78	0.13	17.65	9.7	31
K735229		4.42	0.0079	0.13	0.93	5.2	<0.2	<10	50	0.27	0.17	0.45	1.10	38.6	9.9	23
K735230		0.16	>0.1000	0.16	0.17	471	0.2	<10	1920	0.19	0.16	1.10	0.35	2.36	2.5	23
K735231		6.12	0.0508	0.16	0.64	11.6	<0.2	<10	40	0.20	0.16	0.36	0.33	27.2	11.7	19
K735232		4.94	0.0027	0.11	0.99	4.4	<0.2	<10	100	0.20	0.12	0.38	0.26	27.2	10.9	28
K735233		5.28	0.0179	0.14	0.81	22.5	<0.2	<10	60	0.22	0.16	0.35	0.39	27.7	9.8	20
K735234		5.12	0.0010	0.08	0.79	4.8	<0.2	<10	70	0.24	0.13	0.53	0.28	42.2	7.3	21
K735235		4.52	0.0021	0.09	1.23	32.0	<0.2	<10	100	0.23	0.11	0.48	0.20	20.9	10.6	48



ALS Canada Ltd.
 2103 Dollarton Hwy
 North Vancouver BC V7H 0A7
 Phone: 604 984 0221 Fax: 604 984 0218 www.alsglobal.com

To: GOLDEN PREDATOR CANADA CORP.
 888 DUNSMUIR STREET
 11TH FLOOR
 VANCOUVER BC V6C 3K4

Page: 2 - B
 Total # Pages: 4 (A - D)
 Plus Appendix Pages
 Finalized Date: 26-JUL-2011
 Account: GOPRED

Project: Stream seds

CERTIFICATE OF ANALYSIS WH11109441

Sample Description	Method Analyte Units LOR	ME-MS41	ME-MS41	ME-MS41	ME-MS41	ME-MS41	ME-MS41	ME-MS41	ME-MS41	ME-MS41	ME-MS41	ME-MS41	ME-MS41	ME-MS41	ME-MS41	
		Cs ppm	Cu ppm	Fe %	Ga ppm	Ge ppm	Hf ppm	Hg ppm	In ppm	K %	La ppm	Li ppm	Mg %	Mn ppm	Mo ppm	Na %
		0.05	0.2	0.01	0.05	0.05	0.02	0.01	0.005	0.01	0.2	0.1	0.01	5	0.05	0.01
K735176		0.49	6.6	1.48	2.02	0.05	0.03	0.02	0.007	0.04	11.1	5.1	0.41	289	0.19	<0.01
K735177		0.64	16.1	2.29	2.58	0.07	0.04	0.01	0.011	0.05	17.0	7.6	0.49	342	0.49	<0.01
K735178		0.46	13.1	2.45	2.75	0.07	0.17	0.01	0.016	0.04	13.9	7.0	0.59	382	0.49	0.02
K735179		0.61	35.8	3.76	5.83	0.09	0.19	0.03	0.025	0.06	12.6	12.7	1.02	792	0.81	0.02
K735180		0.42	23.5	2.59	4.81	0.08	0.12	0.02	0.019	0.04	8.9	10.2	0.70	457	0.36	0.01
K735181		0.32	27.0	3.23	5.45	0.12	0.26	0.03	0.021	0.04	9.4	10.7	0.79	323	0.53	0.01
K735182		0.52	34.4	4.41	6.43	0.14	0.29	0.06	0.027	0.05	10.5	12.7	1.05	647	0.69	0.02
K735183		0.30	19.3	2.73	4.95	0.09	0.24	0.01	0.018	0.04	8.7	9.8	0.82	343	0.39	0.01
K735184		0.37	30.3	4.05	5.80	0.13	0.27	0.02	0.022	0.04	8.6	10.3	0.89	448	0.59	0.02
K735185		0.57	24.1	3.65	5.66	0.10	0.14	0.04	0.020	0.05	7.9	10.3	1.22	388	0.73	0.02
K735186		0.47	17.3	2.22	3.64	0.07	0.08	0.03	0.014	0.04	7.5	7.2	0.65	418	0.53	0.02
K735187		3.37	30.3	2.66	1.82	0.06	0.03	0.01	0.020	0.04	9.6	6.7	0.39	413	3.42	0.01
K735188		4.11	32.9	2.31	2.64	0.06	0.03	0.01	0.012	0.04	6.4	7.7	0.71	330	1.06	0.01
K735189		4.25	29.6	2.73	2.34	0.06	0.03	0.02	0.015	0.05	8.4	6.4	0.58	454	1.58	0.01
K735190		1.83	25.9	2.02	2.45	0.07	0.03	0.01	0.014	0.03	6.6	7.0	0.71	237	0.95	0.01
K735191		11.20	45.7	3.76	3.38	0.07	<0.02	0.05	0.021	0.07	8.8	8.9	0.59	776	0.58	0.01
K735192		2.01	49.5	3.42	5.93	0.09	0.05	0.04	0.023	0.08	10.7	18.8	1.14	466	0.69	0.02
K735193		0.50	24.8	3.61	7.02	0.08	0.10	0.03	0.023	0.05	8.4	23.2	1.26	393	0.38	0.01
K735194		0.77	37.3	2.99	5.36	0.08	0.07	0.03	0.021	0.07	8.5	18.2	1.00	323	0.64	0.02
K735195		0.30	20.7	2.05	4.07	0.07	0.22	0.02	0.016	0.06	4.7	7.7	0.49	320	4.06	0.05
K735196		2.09	47.0	4.32	7.23	0.12	0.10	0.01	0.026	0.06	9.2	17.4	1.60	525	0.67	0.01
K735197		3.35	62.2	4.40	7.83	0.12	0.09	0.05	0.033	0.06	8.9	19.9	1.71	515	0.92	0.01
K735205		1.49	81.4	3.84	3.68	0.06	0.04	0.02	0.019	0.07	18.3	11.6	0.61	526	1.31	0.01
K735219		1.41	12.4	1.97	2.17	0.06	0.03	0.01	0.009	0.07	24.3	8.5	0.38	277	0.62	<0.01
K735220		0.41	30.7	2.47	2.27	0.06	0.07	0.01	0.014	0.03	14.9	11.1	0.43	218	0.87	<0.01
K735221		0.43	20.7	2.05	1.93	0.06	0.06	0.02	0.009	0.04	13.2	6.6	0.41	206	0.58	<0.01
K735222		1.34	15.5	1.62	2.15	0.06	0.04	0.01	0.011	0.06	14.3	10.3	0.41	159	0.68	0.01
K735223		0.59	84.6	3.70	6.10	0.07	0.06	0.04	0.017	0.09	8.1	12.2	1.08	2080	0.82	0.03
K735224		0.40	42.8	3.33	5.62	0.07	0.14	0.01	0.017	0.06	6.0	12.0	1.09	533	0.35	0.02
K735225		0.37	40.3	3.60	4.22	0.10	0.27	0.02	0.021	0.04	8.5	8.8	1.07	571	0.60	0.01
K735226		0.72	27.9	2.75	4.53	0.05	0.06	0.05	0.018	0.05	9.5	11.2	0.73	872	0.75	0.01
K735227		0.65	20.3	2.35	4.30	0.07	0.08	0.01	0.016	0.04	9.5	9.5	0.70	368	0.52	0.01
K735228		0.44	19.8	2.51	4.40	0.07	0.09	0.02	0.016	0.03	8.8	8.3	0.65	342	0.34	0.01
K735229		2.06	16.5	2.40	3.08	0.05	0.02	<0.01	0.011	0.07	20.2	14.4	0.60	269	0.91	<0.01
K735230		0.38	62.0	3.88	0.80	<0.05	0.36	2.91	0.007	0.06	1.6	2.2	0.02	105	16.80	0.01
K735231		1.47	19.4	2.35	2.08	0.05	0.03	<0.01	0.009	0.06	13.9	6.3	0.48	277	0.69	<0.01
K735232		2.62	19.4	2.11	3.00	0.05	<0.02	<0.01	0.012	0.14	12.9	11.2	0.73	253	0.51	<0.01
K735233		3.58	17.7	2.15	2.48	<0.05	0.02	<0.01	0.011	0.07	14.0	9.9	0.55	381	0.72	<0.01
K735234		1.76	13.0	1.93	2.77	0.06	0.03	<0.01	0.011	0.10	22.1	11.3	0.48	353	0.49	0.01
K735235		1.20	31.0	2.72	4.16	0.07	0.05	<0.01	0.017	0.09	11.7	13.5	0.89	389	0.77	0.01



ALS Canada Ltd.
 2103 Dollarton Hwy
 North Vancouver BC V7H 0A7
 Phone: 604 984 0221 Fax: 604 984 0218 www.alsglobal.com

To: GOLDEN PREDATOR CANADA CORP.
 888 DUNSMUIR STREET
 11TH FLOOR
 VANCOUVER BC V6C 3K4

Page: 2 - C
 Total # Pages: 4 (A - D)
 Plus Appendix Pages
 Finalized Date: 26-JUL-2011
 Account: GOPRED

Project: Stream seds

CERTIFICATE OF ANALYSIS WH11109441

Sample Description	Method Analyte Units LOR	ME-MS41	ME-MS41	ME-MS41	ME-MS41	ME-MS41	ME-MS41	ME-MS41	ME-MS41	ME-MS41	ME-MS41	ME-MS41	ME-MS41	ME-MS41	ME-MS41	ME-MS41
		Nb ppm	Ni ppm	P ppm	Pb ppm	Rb ppm	Re ppm	S %	Sb ppm	Sc ppm	Se ppm	Sn ppm	Sr ppm	Ta ppm	Te ppm	Th ppm
K735176		0.22	13.9	830	4.3	4.1	0.001	0.02	0.08	1.0	0.7	0.2	22.3	<0.01	0.01	2.9
K735177		0.35	23.2	800	8.7	6.4	<0.001	0.02	0.16	1.4	1.0	0.3	22.3	<0.01	0.04	3.4
K735178		0.28	25.9	670	6.3	5.3	<0.001	0.01	0.15	3.7	0.6	0.3	63.1	<0.01	0.02	3.4
K735179		1.50	27.8	870	4.9	4.9	0.001	0.03	0.56	7.4	0.9	0.5	41.6	<0.01	0.01	2.6
K735180		1.18	18.4	740	3.4	4.9	<0.001	0.02	0.31	5.4	0.6	0.4	30.7	0.01	0.01	1.7
K735181		1.21	19.8	740	4.2	4.0	<0.001	0.01	0.38	6.2	0.9	0.5	30.4	0.01	<0.01	1.7
K735182		1.20	24.8	860	4.4	7.2	<0.001	0.01	0.45	8.6	0.7	0.6	32.2	0.01	0.02	2.2
K735183		1.22	17.4	690	3.0	3.7	<0.001	0.02	0.26	5.7	0.3	0.5	25.9	<0.01	0.01	2.1
K735184		1.11	20.2	760	3.7	4.7	0.001	0.02	0.46	7.5	0.9	0.6	33.5	<0.01	0.02	1.6
K735185		0.91	45.5	860	4.2	5.5	<0.001	0.04	0.46	5.9	0.7	0.4	36.6	<0.01	0.01	1.6
K735186		0.78	23.9	650	3.2	4.1	0.001	0.04	0.38	4.2	0.5	0.3	40.0	<0.01	0.02	1.5
K735187		0.29	32.7	590	20.2	3.3	0.001	0.04	1.79	1.8	1.9	0.2	13.3	<0.01	0.07	3.1
K735188		0.51	34.7	610	4.4	3.7	<0.001	0.03	0.83	3.8	1.0	0.2	15.7	<0.01	0.03	1.5
K735189		0.49	30.0	770	8.8	4.1	0.001	0.03	1.22	3.6	1.5	0.2	24.7	<0.01	0.03	3.1
K735190		0.46	33.6	490	5.0	3.5	0.001	0.01	0.46	3.0	0.6	0.2	13.5	<0.01	0.01	1.8
K735191		0.56	33.1	910	7.8	9.4	<0.001	0.04	5.86	6.8	1.4	0.3	20.7	<0.01	0.02	0.8
K735192		0.80	26.4	780	4.6	8.7	<0.001	0.07	0.50	7.0	1.5	0.3	78.6	<0.01	0.03	1.0
K735193		0.88	24.8	510	3.8	7.0	0.001	0.02	0.21	7.2	0.7	0.4	50.6	<0.01	0.01	1.6
K735194		0.88	25.2	650	5.5	5.9	0.001	0.04	0.39	6.3	1.2	0.3	77.8	<0.01	<0.01	1.4
K735195		0.28	21.1	470	2.4	2.8	0.001	0.05	0.32	4.0	0.4	0.4	27.8	<0.01	0.03	1.0
K735196		0.90	38.7	660	4.2	4.7	0.001	0.03	1.34	8.8	1.0	0.3	22.4	0.01	0.02	3.6
K735197		0.78	50.5	740	5.6	5.7	0.001	0.04	1.45	11.2	1.6	0.4	33.6	<0.01	0.03	1.9
K735205		0.98	24.1	880	5.6	6.9	0.001	0.01	0.79	6.0	0.7	0.5	38.1	<0.01	0.03	14.1
K735219		0.86	17.4	1140	6.2	7.4	<0.001	0.01	0.27	1.7	0.6	0.5	17.7	<0.01	0.02	9.7
K735220		0.24	31.9	840	8.8	2.6	<0.001	0.01	0.23	1.4	1.5	0.2	30.5	<0.01	0.05	4.9
K735221		0.25	23.6	960	8.0	2.9	<0.001	0.01	0.19	1.3	1.0	0.2	24.2	<0.01	0.05	4.4
K735222		1.23	16.1	760	5.2	8.6	0.001	0.03	0.31	2.0	1.5	0.5	68.0	<0.01	0.04	4.4
K735223		1.05	23.1	890	3.0	8.6	0.001	0.02	0.26	7.1	0.8	0.4	58.4	<0.01	0.04	1.4
K735224		0.75	16.7	820	2.7	4.7	<0.001	0.01	0.25	7.3	0.6	0.4	45.3	<0.01	0.03	1.1
K735225		0.29	20.9	740	3.2	1.8	<0.001	0.01	0.32	7.6	0.3	0.4	52.4	<0.01	0.02	1.5
K735226		1.16	23.1	790	4.7	5.7	0.001	0.02	0.39	5.3	0.6	0.4	38.7	<0.01	0.02	2.1
K735227		0.84	20.2	810	3.3	4.7	<0.001	0.01	0.34	4.8	0.5	0.3	28.5	<0.01	0.02	5.1
K735228		1.06	19.6	730	3.1	4.9	<0.001	0.01	0.27	4.6	0.5	0.4	38.9	<0.01	0.01	1.5
K735229		0.66	31.0	1210	10.0	10.0	0.001	0.02	0.30	2.0	0.9	0.4	22.8	<0.01	0.02	5.0
K735230		0.13	17.0	60	17.4	2.8	0.001	0.15	26.2	0.7	1.7	2.7	31.6	<0.01	0.08	0.8
K735231		0.40	25.9	1150	12.3	5.3	0.001	0.01	0.79	1.5	0.9	0.2	15.0	<0.01	0.02	5.2
K735232		0.54	25.1	1130	9.6	12.9	<0.001	0.01	0.42	2.4	0.6	0.3	16.6	<0.01	0.01	3.4
K735233		0.48	23.8	880	13.3	7.3	<0.001	0.01	0.85	1.6	1.1	0.2	18.0	<0.01	0.02	3.5
K735234		0.94	19.4	1410	7.3	12.0	0.001	0.01	0.66	2.3	1.0	0.4	20.7	<0.01	0.01	9.0
K735235		0.68	31.6	760	5.5	7.5	<0.001	0.01	1.18	4.7	0.7	0.3	30.4	<0.01	0.02	3.5



ALS Canada Ltd.
 2103 Dollarton Hwy
 North Vancouver BC V7H 0A7
 Phone: 604 984 0221 Fax: 604 984 0218 www.alsglobal.com

To: GOLDEN PREDATOR CANADA CORP.
 888 DUNSMUIR STREET
 11TH FLOOR
 VANCOUVER BC V6C 3K4

Page: 2 - D
 Total # Pages: 4 (A - D)
 Plus Appendix Pages
 Finalized Date: 26-JUL-2011
 Account: GOPRED

Project: Stream seds

CERTIFICATE OF ANALYSIS WH11109441

Sample Description	Method Analyte Units LOR	ME-MS41	ME-MS41	ME-MS41	ME-MS41	ME-MS41	ME-MS41	ME-MS41	ME-MS41	Au-OG44
		Ti %	Ti ppm	U ppm	V ppm	W ppm	Y ppm	Zn ppm	Zr ppm	Au ppm
		0.005	0.02	0.05	1	0.05	0.05	2	0.5	0.01
K735176		0.015	0.04	0.30	13	0.08	4.80	40	1.2	
K735177		0.019	0.05	0.51	22	0.97	6.30	61	1.4	
K735178		0.027	0.05	0.64	51	0.08	6.86	59	6.8	
K735179		0.158	0.05	0.60	102	0.16	10.30	62	7.5	
K735180		0.145	0.04	0.39	82	0.13	7.59	50	4.4	
K735181		0.193	0.04	0.53	109	0.11	9.04	56	9.9	
K735182		0.258	0.04	0.45	152	0.13	10.75	75	12.5	
K735183		0.191	0.02	0.38	85	0.23	8.33	40	9.1	
K735184		0.258	0.04	0.49	140	0.36	9.93	60	11.7	
K735185		0.129	0.05	0.42	92	0.27	6.95	66	5.7	
K735186		0.090	0.04	0.40	62	0.16	6.12	40	3.1	
K735187		0.021	0.05	1.00	37	0.22	5.00	198	1.4	
K735188		0.068	0.06	0.44	58	0.28	6.00	51	0.9	
K735189		0.050	0.06	0.54	60	1.11	6.91	104	1.5	
K735190		0.061	0.05	0.68	45	2.30	4.93	53	0.8	
K735191		0.049	0.33	0.41	103	0.69	9.26	72	<0.5	
K735192		0.102	0.07	0.75	84	0.17	9.88	97	1.4	
K735193		0.130	0.06	0.41	88	0.13	7.36	78	3.3	
K735194		0.099	0.09	0.43	69	0.28	8.53	63	2.3	
K735195		0.112	0.05	0.29	47	11.55	7.06	35	7.2	
K735196		0.165	0.05	1.70	110	0.19	12.40	78	3.5	
K735197		0.154	0.07	0.59	115	0.20	15.10	104	3.3	
K735205		0.066	0.05	2.06	102	0.66	8.12	62	1.1	
K735219		0.031	0.06	10.15	31	0.26	7.81	37	1.6	
K735220		0.013	0.03	0.55	24	0.07	5.08	77	4.2	
K735221		0.017	0.03	0.42	22	0.07	5.12	55	3.7	
K735222		0.033	0.07	0.69	25	0.74	6.63	40	1.5	
K735223		0.131	0.06	0.29	102	0.13	7.61	65	2.1	
K735224		0.150	0.03	0.30	105	0.13	6.91	58	4.3	
K735225		0.135	0.02	0.43	124	0.07	8.09	48	9.2	
K735226		0.093	0.06	0.57	65	0.20	6.87	51	2.2	
K735227		0.100	0.04	0.64	62	0.10	6.13	53	3.1	
K735228		0.112	0.03	0.36	76	0.10	5.23	48	3.3	
K735229		0.035	0.07	1.20	27	0.07	7.32	114	0.6	
K735230		0.011	10.35	1.06	11	3.80	2.12	18	11.1	0.16
K735231		0.027	0.05	0.65	22	1.42	6.12	66	1.8	
K735232		0.044	0.12	1.07	25	0.07	7.04	65	0.5	
K735233		0.027	0.07	0.94	23	0.07	6.23	67	0.7	
K735234		0.048	0.11	1.90	32	0.15	7.95	47	1.1	
K735235		0.074	0.07	0.62	65	0.15	6.56	50	1.4	



ALS Canada Ltd.
 2103 Dollarton Hwy
 North Vancouver BC V7H 0A7
 Phone: 604 984 0221 Fax: 604 984 0218 www.alsglobal.com

To: GOLDEN PREDATOR CANADA CORP.
 888 DUNSMUIR STREET
 11TH FLOOR
 VANCOUVER BC V6C 3K4

Page: 3 - A
 Total # Pages: 4 (A - D)
 Plus Appendix Pages
 Finalized Date: 26-JUL-2011
 Account: GOPRED

Project: Stream seds

CERTIFICATE OF ANALYSIS WH11109441

Sample Description	Method Analyte Units LOR	WEI-21	Au-ST44	ME-MS41	ME-MS41	ME-MS41	ME-MS41	ME-MS41	ME-MS41	ME-MS41	ME-MS41	ME-MS41	ME-MS41	ME-MS41	ME-MS41	ME-MS41
		Recvd Wt. kg	Au ppm	Ag ppm	Al %	As ppm	Au ppm	B ppm	Ba ppm	Be ppm	Bi ppm	Ca %	Cd ppm	Ce ppm	Co ppm	Cr ppm
		.02	0.0001	0.01	0.01	0.1	0.2	10	10	0.05	0.01	0.01	0.01	0.02	0.1	1
K735236		6.14	0.0022	0.15	1.52	48.0	<0.2	<10	200	0.25	0.17	0.57	0.21	19.85	14.0	55
K735237		5.52	0.0027	0.13	0.97	24.9	<0.2	<10	120	0.21	0.15	2.11	0.23	22.9	8.5	31
K735238		9.42	0.0013	0.09	1.59	10.6	<0.2	<10	60	0.22	0.11	0.57	0.26	22.0	13.4	63
K735239		<0.02	0.0021	0.05	1.56	10.5	<0.2	<10	70	0.25	0.08	0.54	0.27	18.60	13.2	59
K735240		4.64	0.0020	0.06	0.80	9.0	<0.2	<10	70	0.20	0.10	0.63	0.15	18.45	6.9	29
K735274		4.92	0.0032	0.06	1.04	2.3	<0.2	<10	40	0.90	0.56	0.43	0.09	63.0	3.8	14
K735275		4.40	0.0104	0.02	0.67	1.7	<0.2	<10	50	0.32	0.29	0.41	0.08	45.8	4.3	18
K735276		5.34	0.0018	0.03	0.67	4.4	<0.2	<10	140	0.19	0.10	0.73	0.20	18.45	10.5	55
K735277		6.36	0.0020	0.02	1.46	5.3	<0.2	<10	70	0.32	0.05	1.02	0.10	16.60	14.8	31
K735278		4.80	0.0021	0.02	1.33	5.9	<0.2	<10	150	0.31	0.06	1.12	0.20	15.30	11.3	28
K735279		4.72	0.0062	0.03	1.39	5.3	<0.2	<10	100	0.29	0.07	0.99	0.10	15.95	12.3	27
K735280		0.22	0.0030	0.19	0.96	3.3	<0.2	<10	70	0.18	0.06	0.58	0.16	9.64	7.1	29
K735281		6.26	0.0030	0.04	1.30	8.7	<0.2	<10	120	0.43	0.05	2.25	0.16	17.70	13.2	28
K735282		5.02	0.0030	0.03	1.38	5.8	<0.2	10	100	0.40	0.09	1.40	0.14	18.45	12.6	31
K735283		4.92	0.0015	0.04	1.37	7.2	<0.2	<10	150	0.32	0.07	0.99	0.15	20.1	11.9	33
K735284		5.00	0.0018	0.03	1.27	5.7	<0.2	<10	150	0.36	0.06	1.29	0.13	15.55	11.2	24
K735285		6.38	0.0012	0.03	1.00	4.8	<0.2	<10	100	0.20	0.06	0.74	0.13	14.55	9.0	31
K735286		5.22	0.0021	0.03	0.92	4.5	<0.2	<10	100	0.23	0.04	0.81	0.10	14.65	8.3	32
K735287		5.66	0.0033	0.06	1.17	5.5	<0.2	<10	150	0.31	0.08	2.04	0.27	15.30	11.4	42
K735288		6.74	0.0068	0.06	1.18	13.1	<0.2	<10	150	0.33	0.07	1.30	0.20	18.00	13.8	42
K735289		5.54	0.0139	0.04	0.93	5.5	<0.2	<10	110	0.27	0.05	0.70	0.11	18.20	9.2	33
K735290		5.40	0.0075	0.03	0.69	11.0	<0.2	<10	120	0.32	0.06	0.60	0.07	18.05	8.4	43
K735291		6.40	0.0023	0.03	0.81	8.5	<0.2	<10	240	0.39	0.07	1.04	0.10	19.15	10.8	22
K735292		5.14	0.0035	0.04	0.86	19.1	<0.2	<10	160	0.34	0.08	0.69	0.11	20.9	10.5	28
K735293		4.36	0.0305	0.04	0.64	164.0	<0.2	<10	150	0.30	0.10	0.43	0.09	20.7	11.2	23
K735294		10.96	0.0047	0.03	0.82	11.7	<0.2	<10	130	0.20	0.07	0.62	0.09	15.70	10.8	29
K735295		<0.02	0.0050	0.03	0.86	13.8	<0.2	<10	150	0.24	0.06	0.65	0.11	16.40	12.5	33
K735296		6.56	0.0161	0.05	0.68	2.8	<0.2	<10	80	0.14	0.15	0.40	0.11	38.5	6.5	41
K735297		4.90	0.0357	0.06	0.86	17.3	<0.2	<10	90	0.25	0.18	0.50	0.24	39.7	11.5	57
K735298		7.02	0.0382	0.08	1.12	27.2	<0.2	<10	150	0.22	0.14	0.64	0.34	21.9	13.3	40
K735299		4.84	0.0012	0.05	0.72	4.5	<0.2	<10	100	0.18	0.09	0.47	0.14	30.5	6.4	28
K735300		7.04	0.0012	0.04	0.62	2.8	<0.2	<10	100	0.15	0.10	0.40	0.09	30.0	5.1	20
K735311		5.96	0.0013	0.05	0.90	3.0	<0.2	<10	90	0.51	1.36	0.53	0.21	39.4	10.2	25
K735312		4.98	0.0005	0.06	0.73	4.5	<0.2	<10	80	0.25	0.21	0.44	0.28	25.4	8.8	24
K735313		5.66	0.0015	0.06	0.86	5.4	<0.2	<10	100	0.33	0.25	0.52	0.19	26.4	10.4	28
K735314		4.12	0.0011	0.05	1.45	8.9	<0.2	<10	150	0.41	0.08	1.03	0.26	22.6	14.5	34
K735315		0.16	0.0395	0.68	0.50	234	<0.2	<10	90	1.10	9.22	15.75	2.15	22.6	4.4	23
K735316		7.40	0.0108	0.06	1.57	10.6	<0.2	<10	180	0.47	0.11	1.04	0.36	26.2	19.2	40
K735317		5.76	0.0040	0.03	1.27	5.9	<0.2	<10	100	0.38	0.05	1.83	0.16	18.60	12.1	33
K735318		3.74	0.0018	0.03	1.17	3.9	<0.2	<10	100	0.30	0.05	1.05	0.13	18.45	10.1	26



ALS Canada Ltd.
 2103 Dollarton Hwy
 North Vancouver BC V7H 0A7
 Phone: 604 984 0221 Fax: 604 984 0218 www.alsglobal.com

To: GOLDEN PREDATOR CANADA CORP.
 888 DUNSMUIR STREET
 11TH FLOOR
 VANCOUVER BC V6C 3K4

Page: 3 - B
 Total # Pages: 4 (A - D)
 Plus Appendix Pages
 Finalized Date: 26-JUL-2011
 Account: GOPRED

Project: Stream seds

CERTIFICATE OF ANALYSIS WH11109441

Sample Description	Method Analyte Units LOR	ME-MS41	ME-MS41	ME-MS41	ME-MS41	ME-MS41	ME-MS41	ME-MS41	ME-MS41	ME-MS41	ME-MS41	ME-MS41	ME-MS41	ME-MS41	ME-MS41	
		Cs ppm	Cu ppm	Fe %	Ga ppm	Ge ppm	Hf ppm	Hg ppm	In ppm	K %	La ppm	Li ppm	Mg %	Mn ppm	Mo ppm	Na %
K735236		2.09	52.5	3.05	5.03	0.08	0.03	<0.01	0.015	0.20	10.9	17.5	1.00	477	0.69	0.03
K735237		1.03	32.4	2.15	3.43	0.08	0.06	<0.01	0.011	0.09	13.2	10.7	0.57	332	0.64	0.04
K735238		0.84	32.9	3.43	5.47	0.11	0.09	0.01	0.018	0.06	11.2	14.8	1.11	436	1.85	0.02
K735239		0.82	28.1	3.34	5.33	0.09	0.10	<0.01	0.017	0.06	9.5	14.4	1.09	426	0.79	0.02
K735240		0.98	19.7	1.69	2.92	0.05	0.04	<0.01	0.009	0.05	9.6	8.3	0.53	282	0.37	0.02
K735274		7.78	7.3	1.54	4.35	0.10	<0.02	0.03	0.012	0.16	30.8	42.9	0.33	199	0.18	0.01
K735275		2.84	6.1	1.21	2.65	0.08	0.03	<0.01	0.009	0.06	23.0	17.0	0.38	157	0.23	0.02
K735276		6.62	21.3	2.76	2.31	<0.05	0.03	0.02	0.010	0.04	9.2	6.2	0.65	264	0.44	0.01
K735277		0.26	16.6	3.85	6.61	0.11	0.41	<0.01	0.022	0.02	7.0	10.6	1.10	437	0.38	0.01
K735278		0.30	36.1	3.36	5.01	0.11	0.27	0.10	0.022	0.04	6.0	9.7	0.92	592	0.54	0.02
K735279		0.32	23.0	3.11	5.18	0.10	0.23	0.01	0.021	0.03	6.7	10.6	0.94	404	0.44	0.01
K735280		0.30	20.5	1.95	3.54	0.08	0.23	0.01	0.015	0.06	4.1	7.2	0.47	291	3.86	0.04
K735281		0.40	44.6	3.30	5.33	0.10	0.35	0.01	0.024	0.03	7.5	10.8	0.98	503	0.62	0.01
K735282		0.36	36.6	3.49	5.27	0.13	0.25	0.02	0.021	0.03	8.6	10.4	1.03	396	0.61	0.01
K735283		0.42	29.9	3.20	4.77	0.07	0.14	0.02	0.016	0.04	9.5	10.2	0.81	616	0.49	0.02
K735284		0.35	33.1	3.21	4.68	0.10	0.20	0.02	0.021	0.04	6.9	9.5	0.95	444	0.44	0.02
K735285		0.56	16.4	2.40	3.60	0.07	0.08	0.01	0.015	0.03	6.7	7.6	0.67	331	0.51	0.01
K735286		0.57	13.9	2.20	3.21	0.05	0.10	0.02	0.011	0.04	6.7	6.5	0.60	462	0.99	0.01
K735287		0.70	30.0	2.46	4.12	0.10	0.09	0.06	0.018	0.07	8.1	7.8	0.78	690	0.61	0.03
K735288		0.63	33.4	2.71	4.35	0.11	0.09	0.13	0.018	0.07	8.6	7.6	0.83	863	0.86	0.03
K735289		0.48	13.8	2.34	3.66	0.11	0.13	0.07	0.014	0.04	10.0	7.1	0.57	281	0.37	0.02
K735290		4.92	14.9	3.22	3.22	0.11	0.03	0.04	0.013	0.06	10.1	7.5	0.45	295	0.26	0.01
K735291		12.55	20.7	2.62	3.10	0.10	0.02	0.08	0.017	0.13	11.0	7.8	0.59	523	0.50	0.01
K735292		12.85	26.6	2.69	3.12	0.11	0.02	0.06	0.017	0.10	11.6	8.7	0.57	477	0.37	0.01
K735293		7.85	24.7	2.47	1.99	0.10	0.02	0.14	0.015	0.08	10.1	5.3	0.46	443	0.40	0.01
K735294		6.25	35.4	2.20	2.70	0.10	0.02	0.02	0.011	0.06	7.7	7.3	0.68	370	0.29	0.02
K735295		6.99	33.8	2.29	2.95	0.09	0.02	0.11	0.013	0.06	8.0	7.7	0.72	391	0.31	0.02
K735296		1.07	15.5	2.83	2.96	0.11	0.03	0.01	0.009	0.04	23.3	5.7	0.40	212	0.46	0.01
K735297		1.86	26.4	4.72	4.26	0.13	0.03	0.01	0.011	0.05	25.0	9.3	0.60	364	4.49	0.01
K735298		3.84	27.1	4.33	4.11	0.10	0.03	0.02	0.016	0.03	14.8	10.9	0.71	664	1.57	0.02
K735299		1.21	8.5	1.91	2.95	0.11	0.02	0.02	0.010	0.02	18.6	7.6	0.45	458	0.60	0.01
K735300		0.85	8.6	1.29	2.56	0.09	0.02	0.01	0.024	0.03	18.0	6.2	0.37	185	0.56	0.01
K735311		2.54	15.2	2.18	3.28	0.11	0.08	0.02	0.013	0.08	18.5	16.5	0.50	552	0.94	0.02
K735312		1.36	15.7	2.08	2.71	0.11	0.09	0.01	0.013	0.05	12.9	8.0	0.42	446	0.78	0.02
K735313		0.98	21.6	2.19	2.76	0.10	0.12	0.01	0.015	0.06	12.9	7.7	0.49	435	0.75	0.02
K735314		0.63	36.0	3.10	5.28	0.10	0.15	0.04	0.020	0.05	11.2	10.8	0.87	927	0.77	0.02
K735315		2.58	76.5	2.27	3.13	0.12	0.21	2.01	0.617	0.15	14.7	5.9	3.13	1560	74.0	0.02
K735316		0.71	43.0	3.48	5.78	0.12	0.22	0.06	0.029	0.07	12.2	10.8	0.94	904	0.99	0.02
K735317		0.35	34.5	3.05	4.90	0.14	0.30	0.03	0.020	0.04	9.7	8.5	0.84	510	0.75	0.02
K735318		0.29	24.1	2.50	4.81	0.11	0.19	0.03	0.016	0.04	9.4	8.2	0.67	402	0.40	0.02



ALS Canada Ltd.
 2103 Dollarton Hwy
 North Vancouver BC V7H 0A7
 Phone: 604 984 0221 Fax: 604 984 0218 www.alsglobal.com

To: GOLDEN PREDATOR CANADA CORP.
 888 DUNSMUIR STREET
 11TH FLOOR
 VANCOUVER BC V6C 3K4

Page: 3 - C
 Total # Pages: 4 (A - D)
 Plus Appendix Pages
 Finalized Date: 26-JUL-2011
 Account: GOPRED

Project: Stream seds

CERTIFICATE OF ANALYSIS WH11109441

Sample Description	Method	ME-MS41	ME-MS41	ME-MS41	ME-MS41	ME-MS41	ME-MS41	ME-MS41	ME-MS41	ME-MS41	ME-MS41	ME-MS41	ME-MS41	ME-MS41	ME-MS41	
	Analyte Units LOR	Nb ppm 0.05	Ni ppm 0.2	P ppm 10	Pb ppm 0.2	Rb ppm 0.1	Re ppm 0.001	S % 0.01	Sb ppm 0.05	Sc ppm 0.1	Se ppm 0.2	Sn ppm 0.2	Sr ppm 0.2	Ta ppm 0.01	Te ppm 0.01	Th ppm 0.2
K735236		0.58	38.1	960	5.0	12.9	<0.001	0.01	1.85	5.6	0.5	0.3	44.7	<0.01	0.03	3.4
K735237		0.59	23.7	820	4.7	7.1	<0.001	0.01	1.40	3.4	0.8	0.3	132.0	<0.01	0.02	4.5
K735238		0.50	32.2	730	3.9	4.5	0.001	<0.01	0.75	6.4	0.9	0.3	36.0	<0.01	0.05	5.3
K735239		0.54	31.5	660	3.6	4.4	<0.001	<0.01	0.69	6.4	0.6	0.3	36.1	<0.01	0.03	3.2
K735240		0.63	22.0	590	4.6	4.6	<0.001	<0.01	0.55	3.2	0.4	<0.001	32.3	<0.01	0.02	3.2
K735274		1.39	7.6	1280	5.0	29.4	<0.001	0.01	0.47	2.1	1.1	1.1	41.0	<0.01	0.01	9.4
K735275		0.92	13.1	960	3.0	13.0	<0.001	<0.01	0.14	2.0	0.7	0.5	20.4	<0.01	<0.01	10.7
K735276		0.57	38.8	710	3.8	5.7	<0.001	0.02	0.68	3.5	0.8	0.3	22.4	<0.01	0.02	3.0
K735277		1.02	20.8	840	2.7	3.4	<0.001	<0.01	0.17	7.4	0.5	0.6	22.7	<0.01	0.02	1.3
K735278		0.95	21.5	710	4.4	6.2	<0.001	0.01	0.33	6.9	0.6	0.5	28.0	<0.01	0.01	1.0
K735279		1.07	20.5	780	3.5	3.6	<0.001	0.01	0.22	6.6	0.5	0.5	25.0	<0.01	0.01	1.2
K735280		0.24	20.6	490	2.2	2.7	0.001	0.04	0.26	4.0	0.4	0.4	28.1	<0.01	0.01	0.9
K735281		0.43	24.3	700	3.3	2.2	<0.001	<0.01	0.43	8.3	0.5	0.5	41.5	<0.01	0.01	1.2
K735282		0.95	24.0	720	3.6	3.4	0.001	0.01	0.30	7.7	0.7	0.5	31.4	<0.01	0.01	1.4
K735283		1.20	20.6	850	4.0	4.6	0.001	0.02	0.32	6.4	0.5	0.4	36.2	<0.01	0.02	1.7
K735284		0.87	18.9	710	3.6	3.2	0.001	0.02	0.29	7.1	0.8	0.4	33.0	<0.01	0.04	1.1
K735285		0.59	22.7	640	3.6	3.9	0.001	0.01	0.36	4.1	0.5	0.3	31.3	<0.01	0.01	1.5
K735286		0.57	20.0	780	2.8	3.2	0.001	0.01	0.34	3.9	0.5	0.3	30.9	<0.01	0.01	1.5
K735287		1.06	31.3	730	5.5	5.6	0.002	0.05	0.47	5.2	1.1	0.3	65.1	<0.01	0.03	1.5
K735288		0.89	28.2	780	4.7	6.3	0.002	0.04	0.55	5.9	0.3	0.3	51.0	<0.01	0.02	1.6
K735289		1.16	21.6	800	3.4	4.0	0.001	0.03	0.30	3.9	0.3	0.3	31.3	<0.01	0.01	2.1
K735290		0.71	13.5	1280	3.3	5.8	<0.001	0.02	0.96	3.5	0.4	0.3	32.8	<0.01	0.02	2.6
K735291		0.69	13.9	1010	4.2	11.7	0.002	0.04	1.53	4.7	0.8	0.3	42.5	<0.01	0.02	2.5
K735292		0.60	16.2	1360	4.1	8.3	<0.001	0.04	1.73	4.7	0.5	0.3	30.3	<0.01	0.02	2.2
K735293		0.42	19.7	930	5.3	7.0	<0.001	0.03	4.06	3.6	<0.2	0.2	19.7	<0.01	0.03	2.9
K735294		0.49	21.0	1270	2.5	4.8	<0.001	0.05	0.80	3.8	0.3	0.2	24.9	<0.01	0.02	1.8
K735295		0.56	23.3	1320	2.7	5.3	<0.001	0.05	0.85	4.3	<0.2	0.2	27.1	<0.01	0.01	1.9
K735296		0.57	12.9	820	3.9	4.8	<0.001	<0.01	0.33	2.2	<0.2	0.2	13.7	<0.01	0.03	7.6
K735297		0.94	22.5	970	6.0	5.6	0.001	0.01	0.60	3.9	0.6	0.3	15.1	<0.01	0.05	16.3
K735298		0.70	23.1	680	6.0	5.3	0.002	0.04	0.42	4.5	0.7	0.3	24.9	<0.01	0.04	2.6
K735299		0.94	13.9	700	3.6	5.3	0.001	0.02	0.17	2.5	0.4	0.2	16.3	<0.01	0.02	8.1
K735300		0.96	12.0	780	3.2	4.7	<0.001	0.02	0.16	2.3	<0.2	0.2	15.0	<0.01	0.01	7.2
K735311		0.83	23.2	950	6.7	11.7	<0.001	0.02	0.09	3.2	0.5	0.5	36.0	<0.01	0.02	5.1
K735312		0.67	24.0	780	6.9	7.5	<0.001	0.02	0.11	2.5	0.3	0.3	31.4	<0.01	0.03	3.4
K735313		0.68	28.3	860	7.0	6.5	0.001	0.01	0.19	3.6	0.8	0.3	33.3	<0.01	0.04	3.7
K735314		1.71	24.9	930	4.9	5.2	0.001	0.02	0.43	6.4	0.6	0.4	39.7	<0.01	0.02	2.0
K735315		0.06	72.3	1070	21.4	14.4	0.052	0.92	6.82	3.6	3.2	3.0	200	<0.01	0.39	3.5
K735316		1.54	31.6	870	6.7	5.2	0.001	0.02	0.56	7.6	0.5	0.5	42.7	<0.01	0.02	2.7
K735317		0.70	21.1	810	3.8	2.6	0.001	0.02	0.36	6.1	0.5	0.4	50.8	<0.01	0.02	1.7
K735318		1.47	16.8	720	3.2	3.8	0.001	0.03	0.18	5.2	0.4	0.4	42.9	<0.01	0.02	27.6

***** See Appendix Page for comments regarding this certificate *****



ALS Canada Ltd.
 2103 Dollarton Hwy
 North Vancouver BC V7H 0A7
 Phone: 604 984 0221 Fax: 604 984 0218 www.alsglobal.com

To: GOLDEN PREDATOR CANADA CORP.
 888 DUNSMUIR STREET
 11TH FLOOR
 VANCOUVER BC V6C 3K4

Page: 3 - D
 Total # Pages: 4 (A - D)
 Plus Appendix Pages
 Finalized Date: 26-JUL-2011
 Account: GOPRED

Project: Stream seds

CERTIFICATE OF ANALYSIS WH11109441

Sample Description	Method Analyte Units LOR	ME-MS41	ME-MS41	ME-MS41	ME-MS41	ME-MS41	ME-MS41	ME-MS41	ME-MS41	Au-OG44
		Ti %	Ti ppm	U ppm	V ppm	W ppm	Y ppm	Zn ppm	Zr ppm	Au ppm
		0.005	0.02	0.05	1	0.05	0.05	2	0.5	0.01
K735236		0.102	0.13	0.80	79	0.19	7.22	56	1.0	
K735237		0.068	0.07	0.62	49	1.51	7.05	40	2.3	
K735238		0.112	0.06	0.65	81	0.15	8.38	62	3.4	
K735239		0.111	0.05	0.49	78	0.15	8.11	60	3.3	
K735240		0.049	0.05	0.46	39	0.22	5.06	36	1.1	
K735274		0.058	0.22	27.0	28	0.49	14.80	37	<0.5	
K735275		0.048	0.09	3.00	26	2.19	9.78	28	0.9	
K735276		0.043	0.06	0.46	56	0.39	5.58	38	0.8	
K735277		0.258	0.02	0.30	121	0.36	10.40	66	13.7	
K735278		0.195	0.02	0.35	121	0.12	7.53	64	7.5	
K735279		0.193	0.02	0.37	104	0.08	7.64	57	7.8	
K735280		0.096	0.04	0.24	43	10.05	6.10	34	6.3	
K735281		0.167	0.03	0.33	109	0.08	11.15	51	12.9	
K735282		0.201	0.03	0.39	122	0.08	10.05	59	9.6	
K735283		0.145	0.04	0.48	97	0.12	7.47	56	5.4	
K735284		0.160	0.03	0.35	97	0.07	9.38	49	7.6	
K735285		0.084	0.03	0.31	63	0.13	4.95	45	3.1	
K735286		0.082	0.04	0.29	59	0.12	5.23	41	3.1	
K735287		0.090	0.06	0.38	63	0.28	7.60	59	3.1	
K735288		0.094	0.07	0.45	78	0.30	7.41	54	3.4	
K735289		0.095	0.04	0.38	61	0.12	6.28	44	4.6	
K735290		0.048	0.05	0.76	97	0.11	7.65	30	0.9	
K735291		0.041	0.11	0.48	48	0.13	8.53	45	0.6	
K735292		0.037	0.09	0.99	63	0.15	9.82	44	0.5	
K735293		0.025	0.07	0.58	37	0.17	5.56	41	0.5	
K735294		0.042	0.04	0.49	47	0.12	4.95	33	0.5	
K735295		0.048	0.06	0.56	52	0.63	5.56	37	0.6	
K735296		0.066	0.05	1.05	73	2.17	4.75	22	0.8	
K735297		0.066	0.07	2.44	109	11.55	8.35	35	0.8	
K735298		0.064	0.07	2.06	72	0.42	8.94	54	0.7	
K735299		0.066	0.05	1.88	46	1.96	5.51	33	0.8	
K735300		0.056	0.05	3.93	31	1.52	4.96	22	0.8	
K735311		0.051	0.08	4.20	44	2.50	10.05	46	4.0	
K735312		0.049	0.06	1.06	45	0.17	6.20	57	4.1	
K735313		0.037	0.06	0.90	36	0.32	7.58	55	5.1	
K735314		0.131	0.05	0.59	88	0.30	9.50	62	5.5	
K735315		0.005	0.87	14.65	147	14.75	20.2	413	8.3	
K735316		0.149	0.06	0.67	102	0.21	10.65	65	7.0	
K735317		0.155	0.03	0.48	103	0.08	9.83	48	10.8	
K735318		0.140	0.03	2.76	83	0.09	7.70	43	6.6	



ALS Canada Ltd.
 2103 Dollarton Hwy
 North Vancouver BC V7H 0A7
 Phone: 604 984 0221 Fax: 604 984 0218 www.alsglobal.com

To: GOLDEN PREDATOR CANADA CORP.
 888 DUNSMUIR STREET
 11TH FLOOR
 VANCOUVER BC V6C 3K4

Page: 4 - A
 Total # Pages: 4 (A - D)
 Plus Appendix Pages
 Finalized Date: 26-JUL-2011
 Account: GOPRED

Project: Stream seds

CERTIFICATE OF ANALYSIS WH11109441

Sample Description	Method Analyte Units LOR	WEI-21	Au-ST44	ME-MS41	ME-MS41	ME-MS41	ME-MS41	ME-MS41	ME-MS41	ME-MS41	ME-MS41	ME-MS41	ME-MS41	ME-MS41	ME-MS41	ME-MS41
		Recvd Wt. kg	Au ppm	Ag ppm	Al %	As ppm	Au ppm	B ppm	Ba ppm	Be ppm	Bi ppm	Ca %	Cd ppm	Ce ppm	Co ppm	Cr ppm
		.02	0.0001	0.01	0.01	0.1	0.2	10	10	0.05	0.01	0.01	0.01	0.02	0.1	1
K735319		7.74	0.0058	0.03	1.31	6.6	<0.2	<10	160	0.41	0.05	2.07	0.16	18.70	11.2	30
K735320		4.38	0.0093	0.06	1.03	6.9	<0.2	<10	130	0.26	0.07	0.91	0.20	15.55	9.7	31
K735321		3.90	0.0093	0.04	1.06	5.0	<0.2	<10	110	0.23	0.06	0.74	0.16	13.15	9.4	38
K735322		5.42	0.0014	0.07	1.49	5.8	<0.2	<10	230	0.37	0.08	0.98	0.51	22.5	11.1	39
K735323		5.40	0.0205	0.07	1.19	8.1	<0.2	<10	110	0.35	0.07	1.00	0.23	16.80	11.8	47
K735324		5.60	0.0032	0.07	1.54	13.3	<0.2	<10	240	0.54	0.07	0.93	0.28	15.05	20.8	48
K735325		5.86	0.0028	0.03	0.99	3.0	<0.2	<10	100	0.15	0.05	0.63	0.08	8.85	18.3	40
K735326		4.62	>0.1000	0.06	1.22	36.9	<0.2	<10	240	0.29	0.08	0.57	0.20	18.85	15.7	49
K735327		5.28	0.0247	0.05	1.54	37.7	<0.2	<10	250	0.21	0.04	0.54	0.12	8.97	15.6	61
K735328		5.78	0.0223	0.07	1.80	66.6	<0.2	<10	360	0.32	0.04	0.70	0.28	12.35	21.0	73
K735329		8.00	0.0046	0.06	1.37	7.3	<0.2	<10	270	0.28	0.09	0.75	0.26	14.35	17.0	40
K735330		<0.02	0.0024	0.06	1.36	7.5	<0.2	<10	270	0.31	0.08	0.74	0.25	13.85	17.5	39
K735331		4.96	0.0017	0.19	2.08	18.6	<0.2	<10	130	0.54	0.23	0.62	0.34	26.3	22.2	53
K735332		6.10	0.0192	0.04	1.43	25.3	<0.2	<10	70	0.41	0.15	0.72	0.25	25.8	24.2	55
K735333		5.16	0.0078	0.09	1.30	15.3	<0.2	<10	80	0.30	0.15	0.44	0.28	25.6	11.9	39
K735334		5.00	0.0008	0.07	1.03	5.7	<0.2	<10	140	0.23	0.16	0.38	0.11	26.0	9.1	43
K735335		5.64	0.0032	0.09	1.40	14.2	<0.2	<10	110	0.31	0.14	0.60	0.17	23.3	15.8	48
K735336		6.70	>0.1000	0.07	1.10	26.2	<0.2	<10	90	0.21	0.10	0.51	0.28	24.7	12.9	83
K735359		6.36	0.0620	0.08	1.14	23.3	<0.2	<10	140	0.25	0.10	0.84	0.17	24.9	9.2	47
K735218		Not Recvd														



ALS Canada Ltd.
 2103 Dollarton Hwy
 North Vancouver BC V7H 0A7
 Phone: 604 984 0221 Fax: 604 984 0218 www.alsglobal.com

To: GOLDEN PREDATOR CANADA CORP.
 888 DUNSMUIR STREET
 11TH FLOOR
 VANCOUVER BC V6C 3K4

Page: 4 - B
 Total # Pages: 4 (A - D)
 Plus Appendix Pages
 Finalized Date: 26-JUL-2011
 Account: GOPRED

Project: Stream seds

CERTIFICATE OF ANALYSIS WH11109441

Sample Description	Method Analyte Units LOR	ME-MS41	ME-MS41	ME-MS41	ME-MS41	ME-MS41	ME-MS41	ME-MS41	ME-MS41	ME-MS41	ME-MS41	ME-MS41	ME-MS41	ME-MS41	ME-MS41	
		Cs ppm	Cu ppm	Fe %	Ga ppm	Ge ppm	Hf ppm	Hg ppm	In ppm	K %	La ppm	Li ppm	Mg %	Mn ppm	Mo ppm	Na %
		0.05	0.2	0.01	0.05	0.05	0.02	0.01	0.005	0.01	0.2	0.1	0.01	5	0.05	0.01
K735319		0.35	35.2	3.15	5.03	0.13	0.34	0.03	0.020	0.04	9.0	8.5	0.87	557	0.54	0.02
K735320		0.45	24.2	2.28	3.87	0.10	0.06	0.04	0.014	0.05	7.6	6.7	0.59	486	0.70	0.02
K735321		0.34	20.9	2.34	4.03	0.09	0.06	0.03	0.013	0.04	6.7	6.4	0.72	495	0.55	0.02
K735322		0.71	27.9	2.52	4.48	0.10	0.05	0.05	0.016	0.05	11.8	11.9	0.60	789	0.83	0.02
K735323		0.75	34.1	2.85	4.70	0.10	0.07	0.07	0.020	0.05	8.5	8.6	0.76	387	0.68	0.02
K735324		16.90	60.8	3.37	4.47	0.09	0.02	0.04	0.022	0.08	9.3	15.0	1.03	591	0.53	0.02
K735325		2.75	71.1	2.66	2.98	0.09	<0.02	0.01	0.008	0.06	4.0	8.1	0.90	285	0.23	0.03
K735326		2.33	35.4	3.21	4.20	0.09	0.03	0.03	0.018	0.07	9.0	10.2	0.91	769	0.60	0.01
K735327		2.27	60.8	2.40	3.98	0.08	<0.02	0.01	0.012	0.04	4.2	10.9	1.14	527	0.34	0.01
K735328		4.30	76.6	3.39	4.68	0.10	<0.02	0.02	0.012	0.06	5.5	13.0	1.36	2070	0.81	0.01
K735329		5.86	73.4	2.83	4.04	0.09	<0.02	0.01	0.014	0.09	6.9	11.5	1.14	616	0.45	0.02
K735330		5.89	76.3	2.86	4.13	0.09	<0.02	0.01	0.015	0.09	6.7	12.0	1.13	616	0.73	0.02
K735331		6.73	52.0	3.51	6.53	0.11	0.03	0.03	0.023	0.08	13.3	13.8	0.85	589	0.67	0.03
K735332		2.76	37.7	4.64	6.22	0.13	0.08	0.03	0.027	0.05	13.8	9.8	0.83	513	0.87	0.03
K735333		3.17	29.4	2.63	4.86	0.15	0.02	0.02	0.022	0.04	14.9	11.6	0.63	408	1.62	0.02
K735334		3.89	24.0	3.21	3.81	0.13	<0.02	0.02	0.016	0.07	14.6	11.5	0.45	305	1.51	0.02
K735335		3.04	31.7	3.66	5.61	0.16	0.04	0.03	0.023	0.07	12.5	13.2	0.77	364	0.80	0.03
K735336		2.66	27.8	4.49	4.31	0.17	0.03	0.02	0.021	0.04	14.3	12.1	0.70	601	1.35	0.01
K735359		1.36	30.5	2.76	4.20	0.20	0.06	0.01	0.018	0.15	14.5	10.5	0.84	332	0.56	0.02
K735218																



ALS Canada Ltd.
 2103 Dollarton Hwy
 North Vancouver BC V7H 0A7
 Phone: 604 984 0221 Fax: 604 984 0218 www.alsglobal.com

To: GOLDEN PREDATOR CANADA CORP.
 888 DUNSMUIR STREET
 11TH FLOOR
 VANCOUVER BC V6C 3K4

Page: 4 - C
 Total # Pages: 4 (A - D)
 Plus Appendix Pages
 Finalized Date: 26-JUL-2011
 Account: GOPRED

Project: Stream seds

CERTIFICATE OF ANALYSIS WH11109441

Sample Description	Method Analyte Units LOR	ME-MS41	ME-MS41	ME-MS41	ME-MS41	ME-MS41	ME-MS41	ME-MS41	ME-MS41	ME-MS41	ME-MS41	ME-MS41	ME-MS41	ME-MS41	ME-MS41	ME-MS41
		Nb ppm	Ni ppm	P ppm	Pb ppm	Rb ppm	Re ppm	S %	Sb ppm	Sc ppm	Se ppm	Sn ppm	Sr ppm	Ta ppm	Te ppm	Th ppm
		0.05	0.2	10	0.2	0.1	0.001	0.01	0.05	0.1	0.2	0.2	0.2	0.01	0.01	0.2
K735319		0.76	21.1	730	3.7	3.0	<0.001	0.01	0.30	7.0	0.3	0.4	47.7	<0.01	0.01	1.6
K735320		0.91	22.4	810	4.9	5.2	0.001	0.02	0.34	4.1	0.4	0.3	34.3	<0.01	0.03	1.1
K735321		0.70	29.4	760	4.8	4.3	0.001	0.02	0.20	3.5	0.2	0.2	31.6	<0.01	0.02	1.0
K735322		1.22	24.0	830	4.0	6.6	0.003	0.04	0.28	4.2	0.8	0.4	45.2	<0.01	0.03	1.0
K735323		1.01	31.0	770	5.4	5.5	0.001	0.03	0.39	5.8	0.8	0.3	38.8	<0.01	0.03	1.3
K735324		0.64	37.6	1690	4.4	8.6	<0.001	0.04	0.99	6.5	0.8	0.3	42.0	<0.01	0.04	0.9
K735325		0.33	21.6	1460	1.7	3.8	<0.001	0.01	0.32	4.2	0.3	0.2	24.5	<0.01	0.02	0.8
K735326		0.95	29.7	990	3.5	7.2	0.002	0.03	1.06	4.9	0.6	0.3	28.6	<0.01	0.04	2.2
K735327		0.52	25.5	1040	1.8	5.3	0.001	0.02	0.97	5.2	0.2	0.2	24.6	<0.01	0.02	0.6
K735328		0.58	33.7	1110	1.8	6.3	0.001	0.02	0.94	6.4	0.5	0.2	31.3	<0.01	0.02	0.7
K735329		0.61	24.8	1390	3.9	8.4	0.001	0.03	0.41	4.4	0.5	0.2	32.9	<0.01	0.03	0.9
K735330		0.61	25.0	1400	3.9	8.6	0.001	0.03	0.43	4.5	0.6	0.2	33.6	<0.01	0.03	0.9
K735331		0.89	36.7	920	8.5	8.7	<0.001	0.03	1.04	7.3	0.8	0.4	22.1	<0.01	0.04	1.5
K735332		0.73	33.1	840	5.5	4.3	<0.001	0.02	1.55	7.1	0.5	0.5	17.2	<0.01	0.03	3.3
K735333		0.65	27.2	660	5.5	5.4	0.001	0.03	0.76	5.1	0.5	0.3	17.6	<0.01	0.02	1.6
K735334		0.62	20.2	650	4.9	8.1	0.001	0.02	0.45	4.9	0.5	0.3	15.0	<0.01	0.02	3.5
K735335		0.76	28.6	740	5.2	6.3	0.001	0.02	0.89	6.7	0.7	0.4	17.9	<0.01	0.02	3.4
K735336		0.58	33.3	750	3.8	4.2	0.001	0.02	1.31	6.1	1.1	0.3	16.9	<0.01	0.01	3.6
K735359		0.65	27.8	730	4.8	8.9	0.001	0.01	0.98	5.0	0.7	0.2	40.4	<0.01	0.02	6.9
K735218																



ALS Canada Ltd.
 2103 Dollarton Hwy
 North Vancouver BC V7H 0A7
 Phone: 604 984 0221 Fax: 604 984 0218 www.alsglobal.com

To: **GOLDEN PREDATOR CANADA CORP.**
888 DUNSMUIR STREET
11TH FLOOR
VANCOUVER BC V6C 3K4

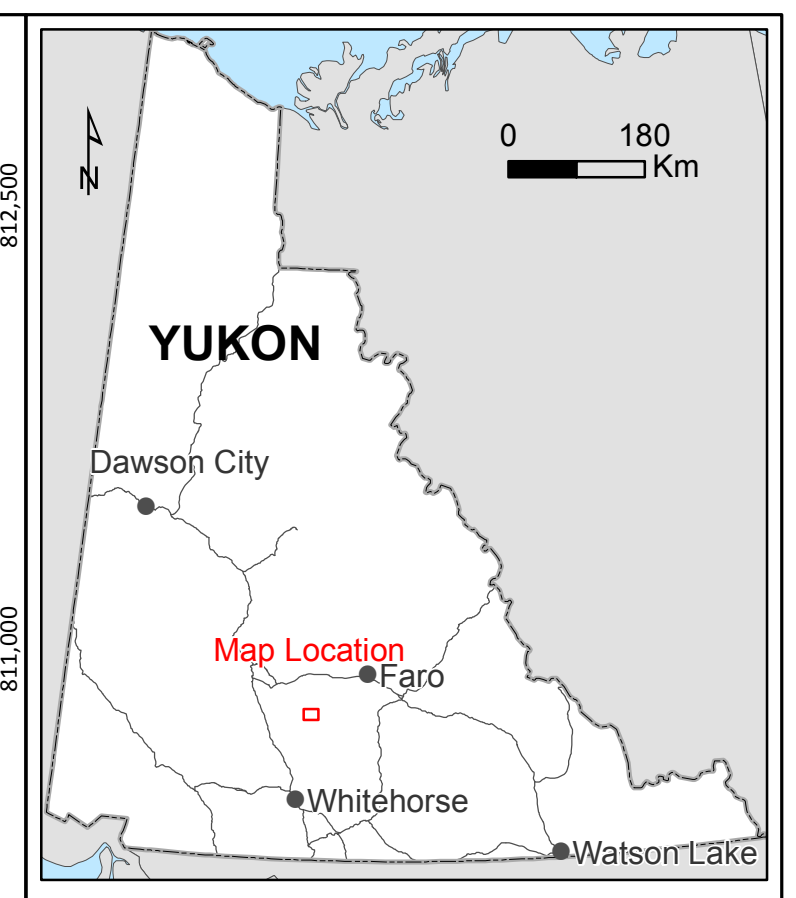
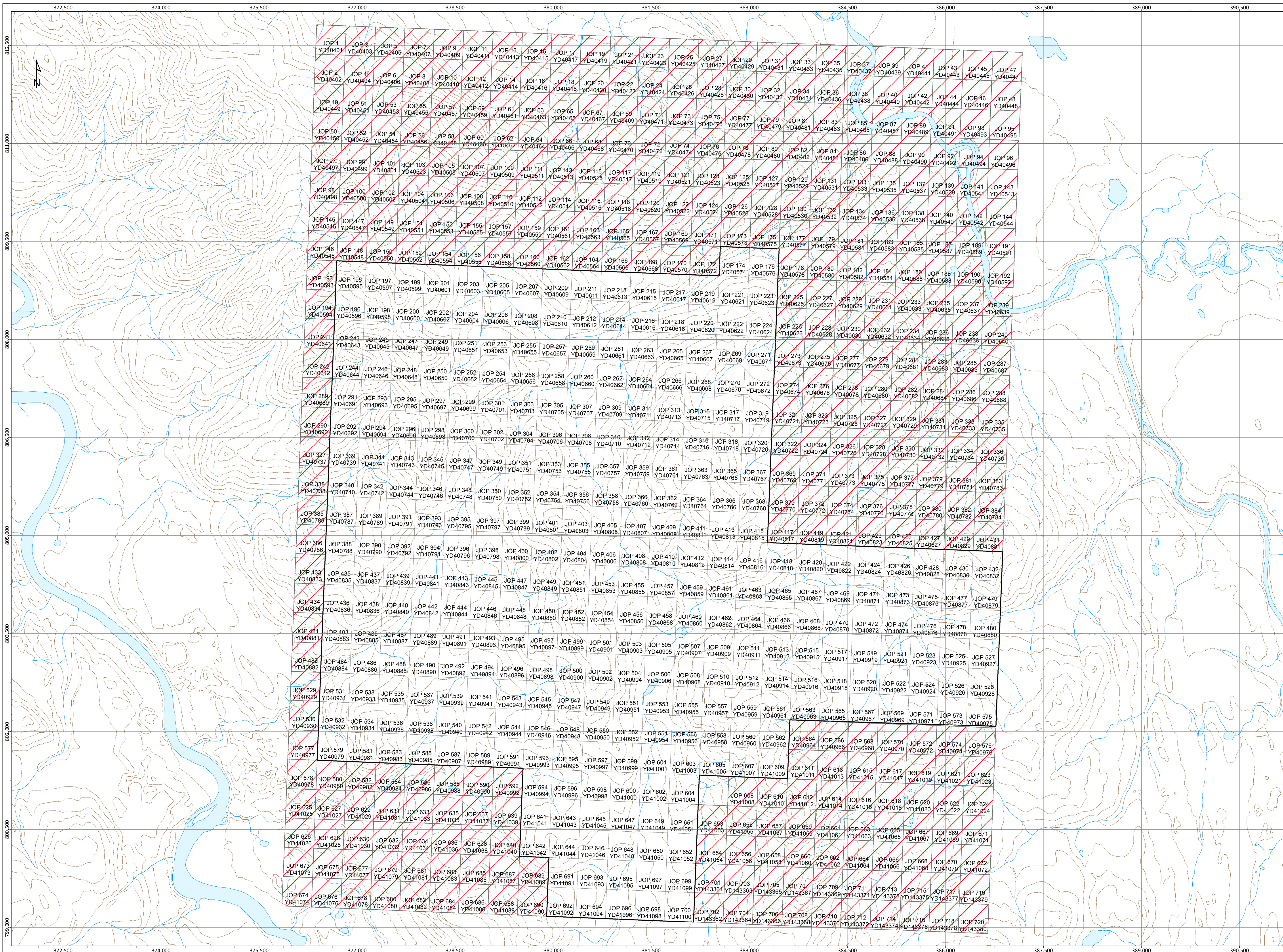
Page: 4 - D
 Total # Pages: 4 (A - D)
 Plus Appendix Pages
 Finalized Date: 26-JUL-2011
 Account: GOPRED

Project: Stream seds

CERTIFICATE OF ANALYSIS WH11109441

Sample Description	Method Analyte Units LOR	ME-MS41 Ti %	ME-MS41 Tl ppm	ME-MS41 U ppm	ME-MS41 V ppm	ME-MS41 W ppm	ME-MS41 Y ppm	ME-MS41 Zn ppm	ME-MS41 Zr ppm	Au-OG44 Au ppm
		0.005	0.02	0.05	1	0.05	0.05	2	0.5	0.01
K735319		0.172	0.03	0.40	108	0.06	9.90	48	11.7	
K735320		0.078	0.04	0.45	63	0.15	7.29	48	2.1	
K735321		0.074	0.03	0.29	66	0.13	5.23	51	2.3	
K735322		0.097	0.07	0.68	73	0.18	9.24	90	1.4	
K735323		0.094	0.05	0.38	84	0.21	7.79	55	2.4	
K735324		0.046	0.08	1.16	69	0.22	11.95	83	<0.5	
K735325		0.058	0.03	0.17	75	0.12	3.52	27	<0.5	
K735326		0.060	0.04	0.72	63	0.24	6.15	53	0.8	0.10
K735327		0.044	0.03	0.41	55	0.12	4.40	49	<0.5	
K735328		0.050	0.04	0.43	72	0.13	6.29	64	<0.5	
K735329		0.066	0.07	0.66	68	0.21	6.73	59	0.5	
K735330		0.064	0.07	0.62	68	4.14	7.27	58	0.5	
K735331		0.101	0.14	1.36	88	0.50	14.45	61	0.8	
K735332		0.163	0.08	1.11	125	0.27	13.35	58	2.3	
K735333		0.071	0.09	1.05	70	3.64	12.00	52	0.6	
K735334		0.060	0.07	2.49	87	1.28	9.68	46	<0.5	
K735335		0.127	0.08	1.79	97	0.68	13.05	56	1.1	
K735336		0.073	0.07	0.73	117	1.90	9.36	62	0.9	0.05
K735359		0.074	0.08	0.74	70	0.18	7.12	49	2.0	
K735218										

***** See Appendix Page for comments regarding this certificate *****

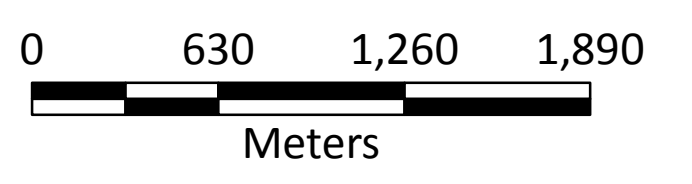


Legend

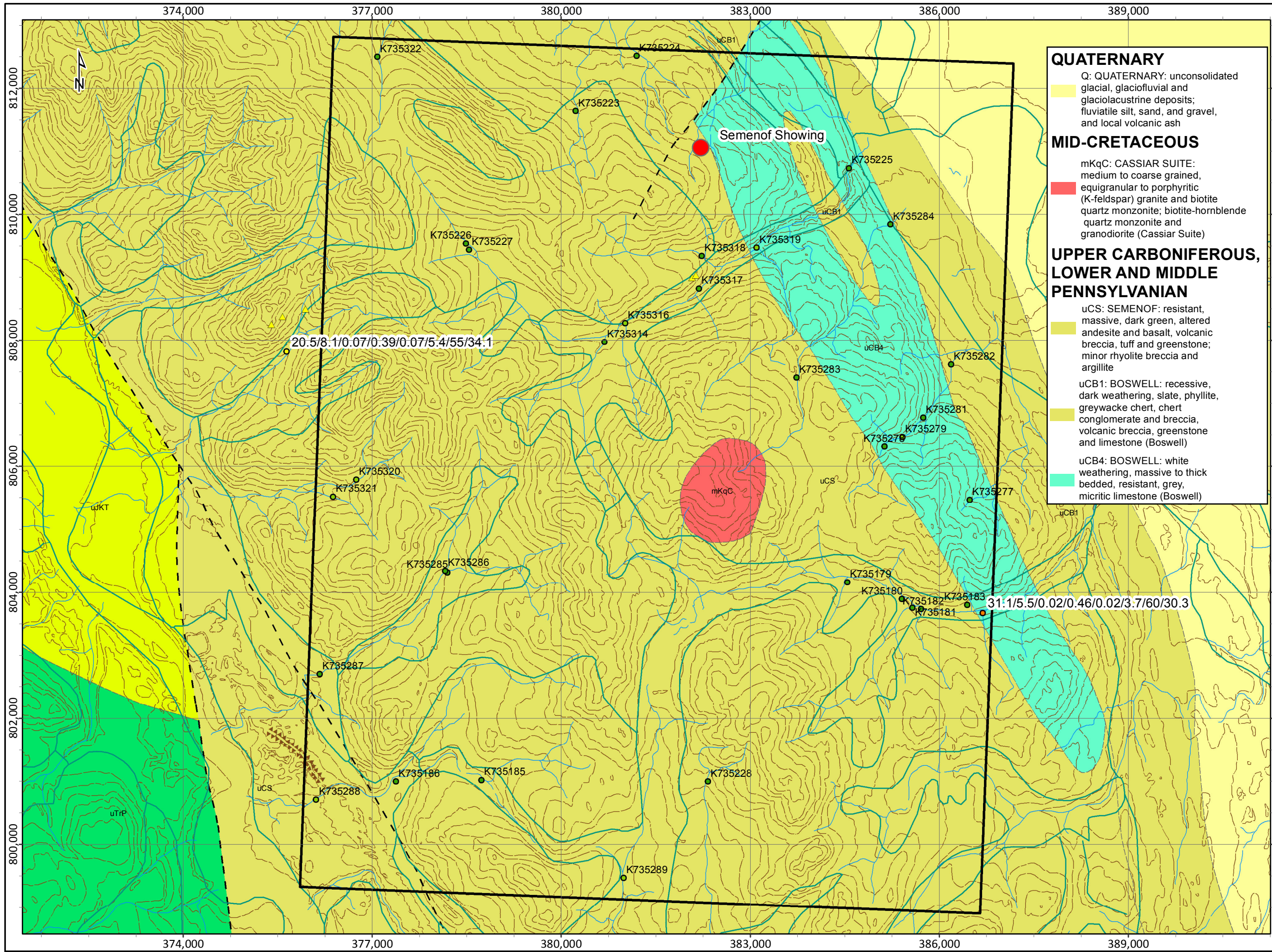
- Quartz Claim
- Expired Claim



JOP Claims



Scale:	1:25,593	Map ID:	--
Draw Date:	2012/11/13	Rev. Date:	--
Version:	1	Figure:	--
Author:	S. O'Connor	Ofbs	Whitehorse
Location:	19 km southwest of Quiet Lake		
Project:	NAD 1983 Yukon Albers		
Filename:	JOP_20121101_claim		



QUATERNARY
 Q: QUATERNARY: unconsolidated glacial, glaciofluvial and glaciolacustrine deposits; fluvial silt, sand, and gravel, and local volcanic ash

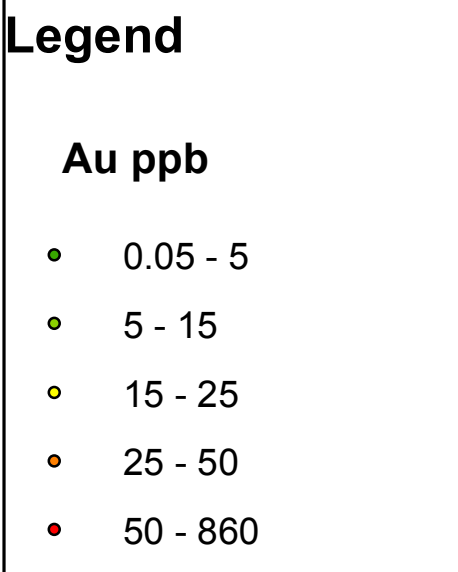
MID-CRETACEOUS
 mKqC: CASSIAR SUITE: medium to coarse grained, equigranular to porphyritic (K-feldspar) granite and biotite quartz monzonite; biotite-hornblende quartz monzonite and granodiorite (Cassiar Suite)

UPPER CARBONIFEROUS, LOWER AND MIDDLE PENNSYLVANIAN

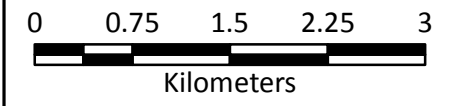
uCS: SEMENOF: resistant, massive, dark green, altered andesite and basalt, volcanic breccia, tuff and greenstone; minor rhyolite breccia and argillite

uCB1: BOSWELL: recessive, dark weathering, slate, phyllite, greywacke chert, chert conglomerate and breccia, volcanic breccia, greenstone and limestone (Boswell)

uCB4: BOSWELL: white weathering, massive to thick bedded, resistant, grey, micritic limestone (Boswell)



JOP Sample Sites



Scale:	1:58,068	Map ID:	--
Draw Date:		Rev. Date:	--
Version:	1	Figure:	--
Author:		Office:	
Locator:			
Projector:	NAD 1983 Yukon Albers		
Filename:	JOP_20121101_samples		