

ASSESSMENT REPORT
2011 GEOCHEMICAL SAMPLING PROGRAM

ELI PROPERTY
WHITEHORSE MINING DIVISION, YUKON, CANADA

NTS Map Sheet: 105F03
587294 E, 6786721 N (NAD83-8)

Claims and Owner

Claim Name	Claim Nbr FROM	Claim Nbr TO	Grant Number FROM	Grant Number TO	Owner
ELI	3	4	YD41883	YD41884	Golden Predator Canada Corp. - 100%
ELI	9	18	YD41889	YD41898	Golden Predator Canada Corp. - 100%
ELI	21	54	YD36161	YD36194	Golden Predator Canada Corp. - 100%
ELI	55		YD143385		Golden Predator Canada Corp. - 100%
ELI	57		YD143387		Golden Predator Canada Corp. - 100%
ELI	59		YD143389		Golden Predator Canada Corp. - 100%
ELI	61		YD143391		Golden Predator Canada Corp. - 100%
ELI	63		YD143393		Golden Predator Canada Corp. - 100%
ELI	65		YD143395		Golden Predator Canada Corp. - 100%

Period of Work: July 2011

Owner and Operator:

Golden Predator Canada Corp.
1 Lindeman Road
Whitehorse, YT
Y1A 5Z7

December 12, 2012

Prepared by:

Golden Predator Canada Corp.
Shaun O'Connor, B.Sc.

Introduction

This report summarizes the 2011 stream sampling program at the ELI property in south-central Yukon. 5 silt samples were collected as a part of a regional geochemical reconnaissance program. Sampling was performed by Golden Predator staff. Data in this report was collected from field work and public sources.



Figure 1: Location of ELI property, Yukon.

Claim and Property Description

The ELI property consists of 52 contiguous quartz claims, totalling approximately 10.4 square km in area. The property is located around 10 km west of the northern end of Quiet Lake. The approximate centre of the property is 520668, 6786721 (NAD83-8). ELI is found on NTS map sheet 105F/03. See table 1 for a list of claims and ownership information. See figure 2 for claim locations.

Claim Name	Claim Nbr FROM	Claim Nbr TO	Grant Number FROM	Grant Number TO	Owner	Expiry Date	Total Nbr Claims
ELI	3	4	YD41883	YD41884	Golden Predator Canada Corp. - 100%	11/04/2013	2
ELI	9	18	YD41889	YD41898	Golden Predator Canada Corp. - 100%	11/04/2013	10
ELI	21	54	YD36161	YD36194	Golden Predator Canada Corp. - 100%	11/04/2013	34
ELI	55		YD143385		Golden Predator Canada Corp. - 100%	11/04/2013	1
ELI	57		YD143387		Golden Predator Canada Corp. - 100%	11/04/2013	1
ELI	59		YD143389		Golden Predator Canada Corp. - 100%	11/04/2013	1
ELI	61		YD143391		Golden Predator Canada Corp. - 100%	11/04/2013	1
ELI	63		YD143393		Golden Predator Canada Corp. - 100%	11/04/2013	1
ELI	65		YD143395		Golden Predator Canada Corp. - 100%	11/04/2013	1

Access

Access for the 2011 program was by helicopter from a camp at Little Violet creek near the Livingstone airstrip, west of ELI. It is currently unknown if alternative access is possible, but given the remote location of the claim block and lack of historical exploration in the area, passable trails or roads seem unlikely. The nearest infrastructure to the property is the South Canol road, an unpaved, seasonal road 15 km to the east.

Physiography

The ELI property is found in the Pelly Mountains ecozone (Yukon Ecoregions Working Group, 2004). Elevations range from 600-2400 masl, but are a gentler 1300 to 1700 masl on the property. The Pelly Mountains ecozone is covered by boreal coniferous forests of primarily white spruce. The area was last glaciated during the McConnell glaciation (22.5 to 10 ka), which resulted in rugged alpine glacial features at high elevations and valleys filled with glaciofluvial and lacustrine gravels and silts. Average temperatures in January are -20° C and +10° C in July.

Previous Work

No historical mineral exploration work is recorded near the claim block.

Geology

The area around ELI was last mapped in 1977 by Templeman-Kluit as part of a regional program in the Quiet Lake and Finlayson Lake areas (Templeman-Kluit, 1977). He included the area in the Omineca Crystalline terrane, and it was subsequently ascribed to the Cassiar Platform by compilers Gordey and Makepeace (1999). Templeman-Kluit described muscovite-biotite granodiorite gneiss, locally with augen, in uncertain contact with Siluro-Devonian siltstones, schists, quartzites and limestones.

Westberg et al. (2008) mapped an area of similar geology to the northwest. It was noted that the granodiorite gneiss was assigned a Paleozoic age by Templeman-Kluit based off a single U-Pb zircon age and the presence of local high strain foliations. An affinity with the Quiet Lake pluton was discussed, based off the presence of local foliation in Quiet Lake, poor geochronological control of the granodiorites, and a "complex" zircon assemblage in the Quiet Lake pluton. It was concluded that further work was needed to determine the definitive age and association of this unit.

Mineralization

The ELI claims were staked to cover an anomalous area identified during factor analysis of regional geochemical data in the southern Yukon. Due to the lack of historic exploration in the area and current poor geologic control, it is unclear what sort of mineralization might be possible at ELI.

Exploration

Five silt samples were collected on the property in 2011.

Stream sediment samples were collected along 750 m intervals and immediately upstream of any confluences. Active silt and fine to medium sand that has been recently transported was the target sediment. Samples were sieved in the field with a 6 mesh (~1/8") screen and placed in plastic sample bags. If a drainage contained seasonal stream sediment deposition but was currently dry, a sample was

collected by dry sieving the material. Samples were transported from the Little Violet Creek camp to Whitehorse by Alkan Air, and were delivered to ALS Chemex by Golden Predator personnel. Stream samples were dried at the lab, then screened to -180 mesh and a 50 g sample analyte collected for analysis. Samples were digested using aqua regia and analyzed for Au and other elements by ICP-MS.

Discussion

Compared to other stream geochemical data in the Cassiar Platform, two samples on ELI are above the 95th percentile for Au. Percentiles are inherently qualitative statistics, and the slight elevation in Au should be considered in light of the background levels of other pathfinder elements.

Conclusions

Given the lack of geologic control of the area, further work should focus on geologic mapping and prospecting to determine what, if any, favorable rock types and structures may exist on the claims.

References

Gordey, S.P. and Makepeace, A.J. (comp.) 1999: Yukon bedrock geology in Yukon digital geology, S.P. Gordey and A.J. Makepeace (comp.); Geological Survey of Canada Open File D3826 and Exploration and Geological Services Division, Yukon, Indian and Northern Affairs Canada, Open File 1999-1(D)

Templeman-Kluit, D.J., 1977. Geology of Quiet Lake and Finlayson Lake map areas, Yukon. Territory (I05F and G), Geol. Surv. Can. Open File 486.

Westberg, E., Colpron, M. and Gibson, D., 2009. Bedrock geology of western 'Mendocina Creek' (NTS 105F/5) and eastern Livingstone Creek (NTS 105E/8) areas, south-central Yukon. In: Yukon Exploration and Geology 2008, L.H. Weston, L.R. Blackburn and L.L. Lewis (eds.), Yukon Geological Survey, p. 227-239.

Yukon Ecoregions Working Group, 2004. Yukon Coastal Plain. In: Ecoregions of the Yukon Territory: Biophysical properties of Yukon landscapes, C.A.S. Smith, J.C. Meikle and C.F. Roots (eds.), Agriculture and Agri-Food Canada, PARC Technical Bulletin No. 04-01, Summerland, British Columbia, p. 63-72.

ELI Project Statement of Expenditures

March 4, 2012

Phase 1 - May 27 - June 15, 2011

(Field work done June 9, 2011)

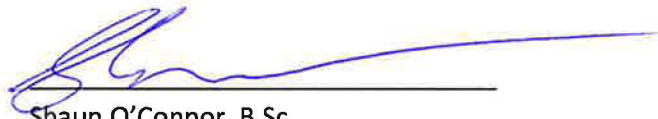
Expenditure	Units	Unit Cost	Per	Cost
Wages				
			stream sed	
Golden Predator Canada Corp.	5	\$ 224.14	sample	\$ 1,120.70
Management and report writing	2	\$ 500.00	day	\$ 1,000.00
Transportation				
Helicopter	5	\$ 308.17	sample	\$ 1,540.85
Fuel	5	\$ 78.49	sample	\$ 392.45
Consumables				
Camp, food, fixed wing etc.	5	\$ 162.20	sample	811.00
Samples				
Stream Sediment Samples	5	\$ 55.00	sample	\$ 275.00
Total			\$	5,140.00

Shaun O'Connor
1 Lindeman Rd.
Whitehorse, YT
867-633-4653
soconnor@goldenpredator.com

Certificate of Authorship

I, Shaun O'Connor of Whitehorse, YT certify that:

1. I am a graduate of Carleton University, Ottawa, ON with a B.Sc. (Hons.) in Earth Sciences.
 2. I have worked in mineral exploration and geologic mapping in the Yukon for 6 years.
 3. I am author of the preceding report.
-



Shaun O'Connor, B.Sc.
Whitehorse, YT
December 12th, 2012



ALS Canada Ltd.
 2103 Dollarton Hwy
 North Vancouver BC V7H 0A7
 Phone: 604 984 0221 Fax: 604 984 0218 www.alsglobal.com

To: **GOLDEN PREDATOR CANADA CORP.**
888 DUNSMUIR STREET
11TH FLOOR
VANCOUVER BC V6C 3K4

Page: 1
 Finalized Date: 26-JUL-2011
 Account: GOPRED

CERTIFICATE WH11109441

Project: Stream sed
 P.O. No.: GPD2011LIV003
 This report is for 100 Stream Sediment samples submitted to our lab in Whitehorse, YT, Canada on 16-JUN-2011.
 The following have access to data associated with this certificate:

MIKE BURKE LINDA LEWIS	ANDREW CALDWELL MIKE MASLOWSKI	JACK COTE
---------------------------	-----------------------------------	-----------

SAMPLE PREPARATION	
ALS CODE	DESCRIPTION
WEI-21	Received Sample Weight
LOG-21d	Sample logging - ClientBarCode Dup
SPL-34	Pulp Splitting Charge
LOG-22	Sample login - Rcd w/o BarCode
LOG-23	Pulp Login - Rcvd with Barcode
SCR-41	Screen to -180um and save both

ANALYTICAL PROCEDURES		
ALS CODE	DESCRIPTION	INSTRUMENT
Au-OG44	Ore Grade Au - 50g AR	ICP-MS
Au-ST44	Super Trace Au - 50g AR	ICP-MS
ME-MS41	51 anal. aqua regia ICPMS	

To: **GOLDEN PREDATOR CANADA CORP.**
ATTN: JACK COTE
888 DUNSMUIR STREET
11TH FLOOR
VANCOUVER BC V6C 3K4

This is the Final Report and supersedes any preliminary report with this certificate number. Results apply to samples as submitted. All pages of this report have been checked and approved for release.

Signature: 
 Colin Ramshaw, Vancouver Laboratory Manager



ALS Canada Ltd.
 2103 Dollarton Hwy
 North Vancouver BC V7H 0A7
 Phone: 604 984 0221 Fax: 604 984 0218 www.alsglobal.com

To: GOLDEN PREDATOR CANADA CORP.
 888 DUNSMUIR STREET
 11TH FLOOR
 VANCOUVER BC V6C 3K4

Page: 3 - A
 Total # Pages: 4 (A - D)
 Plus Appendix Pages
 Finalized Date: 26-JUL-2011
 Account: GOPRED

Project: Stream seds

CERTIFICATE OF ANALYSIS WH11109441

Sample Description	Method Analyte Units LOR	WEI-21	Au-ST44	ME-MS41	ME-MS41	ME-MS41	ME-MS41	ME-MS41	ME-MS41	ME-MS41	ME-MS41	ME-MS41	ME-MS41	ME-MS41	ME-MS41	
		Recvd Wt. kg	Au ppm	Ag ppm	Al %	As ppm	Au ppm	B ppm	Ba ppm	Be ppm	Bi ppm	Ca %	Cd ppm	Ce ppm	Co ppm	Cr ppm
		.02	0.0001	0.01	0.01	0.1	0.2	10	10	0.05	0.01	0.01	0.01	0.02	0.1	1
K735236		6.14	0.0022	0.15	1.52	48.0	<0.2	<10	200	0.25	0.17	0.57	0.21	19.85	14.0	55
K735237		5.52	0.0027	0.13	0.97	24.9	<0.2	<10	120	0.21	0.15	2.11	0.23	22.9	8.5	31
K735238		9.42	0.0013	0.09	1.59	10.6	<0.2	<10	60	0.22	0.11	0.57	0.26	22.0	13.4	63
K735239		<0.02	0.0021	0.05	1.56	10.5	<0.2	<10	70	0.25	0.08	0.54	0.27	18.60	13.2	59
K735240		4.64	0.0020	0.06	0.80	9.0	<0.2	<10	70	0.20	0.10	0.63	0.15	18.45	6.9	29
K735274		4.92	0.0032	0.06	1.04	2.3	<0.2	<10	40	0.90	0.56	0.43	0.09	63.0	3.8	14
K735275		4.40	0.0104	0.02	0.67	1.7	<0.2	<10	50	0.32	0.29	0.41	0.08	45.8	4.3	18
K735276		5.34	0.0018	0.03	0.67	4.4	<0.2	<10	140	0.19	0.10	0.73	0.20	18.45	10.5	55
K735277		6.36	0.0020	0.02	1.46	5.3	<0.2	<10	70	0.32	0.05	1.02	0.10	16.60	14.8	31
K735278		4.80	0.0021	0.02	1.33	5.9	<0.2	<10	150	0.31	0.06	1.12	0.20	15.30	11.3	28
K735279		4.72	0.0062	0.03	1.39	5.3	<0.2	<10	100	0.29	0.07	0.99	0.10	15.95	12.3	27
K735280		0.22	0.0030	0.19	0.96	3.3	<0.2	<10	70	0.18	0.06	0.58	0.16	9.64	7.1	29
K735281		6.26	0.0030	0.04	1.30	8.7	<0.2	<10	120	0.43	0.05	2.25	0.16	17.70	13.2	28
K735282		5.02	0.0030	0.03	1.38	5.8	<0.2	10	100	0.40	0.09	1.40	0.14	18.45	12.6	31
K735283		4.92	0.0015	0.04	1.37	7.2	<0.2	<10	150	0.32	0.07	0.99	0.15	20.1	11.9	33
K735284		5.00	0.0018	0.03	1.27	5.7	<0.2	<10	150	0.36	0.06	1.29	0.13	15.55	11.2	24
K735285		6.36	0.0012	0.03	1.00	4.8	<0.2	<10	100	0.20	0.06	0.74	0.13	14.55	9.0	31
K735286		5.22	0.0021	0.03	0.92	4.5	<0.2	<10	100	0.23	0.04	0.81	0.10	14.65	8.3	32
K735287		5.66	0.0033	0.06	1.17	5.5	<0.2	<10	150	0.31	0.08	2.04	0.27	15.30	11.4	42
K735288		6.74	0.0068	0.06	1.18	13.1	<0.2	<10	150	0.33	0.07	1.30	0.20	18.00	13.8	42
K735289		5.54	0.0139	0.04	0.93	5.5	<0.2	<10	110	0.27	0.05	0.70	0.11	18.20	9.2	33
K735290		5.40	0.0075	0.03	0.69	11.0	<0.2	<10	120	0.32	0.06	0.60	0.07	18.05	8.4	43
K735291		6.40	0.0023	0.03	0.81	8.5	<0.2	<10	240	0.39	0.07	1.04	0.10	19.15	10.8	22
K735292		5.14	0.0035	0.04	0.86	19.1	<0.2	<10	160	0.34	0.08	0.69	0.11	20.9	10.5	28
K735293		4.36	0.0305	0.04	0.64	164.0	<0.2	<10	150	0.30	0.10	0.43	0.09	20.7	11.2	23
K735294		10.96	0.0047	0.03	0.82	11.7	<0.2	<10	130	0.20	0.07	0.62	0.09	15.70	10.8	29
K735295		<0.02	0.0050	0.03	0.86	13.8	<0.2	<10	150	0.24	0.06	0.65	0.11	16.40	12.5	33
K735296		6.56	0.0161	0.05	0.68	2.8	<0.2	<10	80	0.14	0.15	0.40	0.11	38.5	6.5	41
K735297		4.90	0.0357	0.06	0.86	17.3	<0.2	<10	90	0.25	0.18	0.50	0.24	39.7	11.5	57
K735298		7.02	0.0382	0.08	1.12	27.2	<0.2	<10	150	0.22	0.14	0.64	0.34	21.9	13.3	40
K735299		4.84	0.0012	0.05	0.72	4.5	<0.2	<10	100	0.18	0.09	0.47	0.14	30.5	6.4	28
K735300		7.04	0.0012	0.04	0.62	2.8	<0.2	<10	100	0.15	0.10	0.40	0.09	30.0	5.1	20
K735311		5.96	0.0013	0.05	0.90	3.0	<0.2	<10	90	0.51	1.36	0.53	0.21	39.4	10.2	25
K735312		4.98	0.0005	0.06	0.73	4.5	<0.2	<10	80	0.25	0.21	0.44	0.28	25.4	8.8	24
K735313		5.66	0.0015	0.06	0.86	5.4	<0.2	<10	100	0.33	0.25	0.52	0.19	26.4	10.4	28
K735314		4.12	0.0011	0.05	1.45	8.9	<0.2	<10	150	0.41	0.08	1.03	0.26	22.6	14.5	34
K735315		0.16	0.0395	0.68	0.50	234	<0.2	<10	90	1.10	9.22	15.75	2.15	22.6	4.4	23
K735316		7.40	0.0108	0.06	1.57	10.6	<0.2	<10	180	0.47	0.11	1.04	0.36	26.2	19.2	40
K735317		5.76	0.0040	0.03	1.27	5.9	<0.2	<10	100	0.38	0.05	1.83	0.16	18.60	12.1	33
K735318		3.74	0.0018	0.03	1.17	3.9	<0.2	<10	100	0.30	0.05	1.05	0.13	18.45	10.1	26



ALS Canada Ltd.
 2103 Dollarton Hwy
 North Vancouver BC V7H 0A7
 Phone: 604 984 0221 Fax: 604 984 0218 www.alsglobal.com

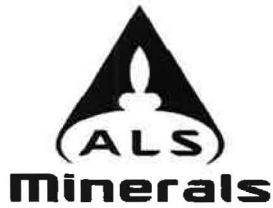
To: GOLDEN PREDATOR CANADA CORP.
 888 DUNSMUIR STREET
 11TH FLOOR
 VANCOUVER BC V6C 3K4

Page: 3 - B
 Total # Pages: 4 (A - D)
 Plus Appendix Pages
 Finalized Date: 26-JUL-2011
 Account: GOPRED

Project: Stream seds

CERTIFICATE OF ANALYSIS WH11109441

Sample Description	Method Analyte Units LOR	ME-MS41	ME-MS41	ME-MS41	ME-MS41	ME-MS41	ME-MS41	ME-MS41	ME-MS41	ME-MS41	ME-MS41	ME-MS41	ME-MS41	ME-MS41	ME-MS41	
		Cs ppm	Cu ppm	Fe %	Ga ppm	Ge ppm	Hf ppm	Hg ppm	In ppm	K %	La ppm	Li ppm	Mg %	Mn ppm	Mo ppm	Na %
		0.05	0.2	0.01	0.05	0.05	0.02	0.01	0.005	0.01	0.2	0.1	0.01	5	0.05	0.01
K735236		2.09	52.5	3.05	5.03	0.08	0.03	<0.01	0.015	0.20	10.9	17.5	1.00	477	0.69	0.03
K735237		1.03	32.4	2.15	3.43	0.08	0.06	<0.01	0.011	0.09	13.2	10.7	0.57	332	0.64	0.04
K735238		0.84	32.9	3.43	5.47	0.11	0.09	0.01	0.018	0.06	11.2	14.8	1.11	436	1.85	0.02
K735239		0.82	28.1	3.34	5.33	0.09	0.10	<0.01	0.017	0.06	9.5	14.4	1.09	426	0.79	0.02
K735240		0.98	19.7	1.69	2.92	0.05	0.04	<0.01	0.009	0.05	9.6	8.3	0.53	282	0.37	0.02
K735274		7.78	7.3	1.54	4.35	0.10	<0.02	0.03	0.012	0.16	30.8	42.9	0.33	199	0.18	0.01
K735275		2.84	6.1	1.21	2.65	0.08	0.03	<0.01	0.009	0.06	23.0	17.0	0.38	157	0.23	0.02
K735276		6.62	21.3	2.76	2.31	<0.05	0.03	0.02	0.010	0.04	9.2	6.2	0.65	264	0.44	0.01
K735277		0.26	16.6	3.85	6.61	0.11	0.41	<0.01	0.022	0.02	7.0	10.6	1.10	437	0.38	0.01
K735278		0.30	36.1	3.36	5.01	0.11	0.27	0.10	0.022	0.04	6.0	9.7	0.92	592	0.54	0.02
K735279		0.32	23.0	3.11	5.18	0.10	0.23	0.01	0.021	0.03	6.7	10.6	0.94	404	0.44	0.01
K735280		0.30	20.5	1.95	3.54	0.08	0.23	0.01	0.015	0.06	4.1	7.2	0.47	291	3.86	0.04
K735281		0.40	44.6	3.30	5.33	0.10	0.35	0.01	0.024	0.03	7.5	10.8	0.98	503	0.62	0.01
K735282		0.36	36.6	3.49	5.27	0.13	0.25	0.02	0.021	0.03	8.6	10.4	1.03	396	0.61	0.01
K735283		0.42	29.9	3.20	4.77	0.07	0.14	0.02	0.016	0.04	9.5	10.2	0.81	616	0.49	0.02
K735284		0.35	33.1	3.21	4.68	0.10	0.20	0.02	0.021	0.04	6.9	9.5	0.95	444	0.44	0.02
K735285		0.56	16.4	2.40	3.60	0.07	0.08	0.01	0.015	0.03	6.7	7.6	0.67	331	0.51	0.01
K735286		0.57	13.9	2.20	3.21	0.05	0.10	0.02	0.011	0.04	6.7	6.5	0.60	462	0.99	0.01
K735287		0.70	30.0	2.46	4.12	0.10	0.09	0.06	0.018	0.07	8.1	7.8	0.78	690	0.61	0.03
K735288		0.63	33.4	2.71	4.35	0.11	0.09	0.13	0.018	0.07	8.6	7.6	0.83	863	0.86	0.03
K735289		0.48	13.8	2.34	3.66	0.11	0.13	0.07	0.014	0.04	10.0	7.1	0.57	281	0.37	0.02
K735290		4.92	14.9	3.22	3.22	0.11	0.03	0.04	0.013	0.06	10.1	7.5	0.45	295	0.26	0.01
K735291		12.55	20.7	2.62	3.10	0.10	0.02	0.08	0.017	0.13	11.0	7.8	0.59	523	0.50	0.01
K735292		12.85	26.6	2.69	3.12	0.11	0.02	0.06	0.017	0.10	11.6	8.7	0.57	477	0.37	0.01
K735293		7.85	24.7	2.47	1.99	0.10	0.02	0.14	0.015	0.08	10.1	5.3	0.46	443	0.40	0.01
K735294		6.25	35.4	2.20	2.70	0.10	0.02	0.02	0.011	0.06	7.7	7.3	0.68	370	0.29	0.02
K735295		6.99	33.8	2.29	2.95	0.09	0.02	0.11	0.013	0.06	8.0	7.7	0.72	391	0.31	0.02
K735296		1.07	15.5	2.83	2.96	0.11	0.03	0.01	0.009	0.04	23.3	5.7	0.40	212	0.46	0.01
K735297		1.86	26.4	4.72	4.26	0.13	0.03	0.01	0.011	0.05	25.0	9.3	0.60	364	4.49	0.01
K735298		3.84	27.1	4.33	4.11	0.10	0.03	0.02	0.016	0.03	14.8	10.9	0.71	664	1.57	0.02
K735299		1.21	8.5	1.91	2.95	0.11	0.02	0.02	0.010	0.02	18.6	7.6	0.45	458	0.60	0.01
K735300		0.85	8.6	1.29	2.56	0.09	0.02	0.01	0.024	0.03	18.0	6.2	0.37	185	0.56	0.01
K735311		2.54	15.2	2.18	3.28	0.11	0.08	0.02	0.013	0.08	18.5	16.5	0.50	552	0.94	0.02
K735312		1.36	15.7	2.08	2.71	0.11	0.09	0.01	0.013	0.05	12.9	8.0	0.42	446	0.78	0.02
K735313		0.98	21.6	2.19	2.76	0.10	0.12	0.01	0.015	0.06	12.9	7.7	0.49	435	0.75	0.02
K735314		0.63	36.0	3.10	5.28	0.10	0.15	0.04	0.020	0.05	11.2	10.8	0.87	927	0.77	0.02
K735315		2.58	76.5	2.27	3.13	0.12	0.21	2.01	0.617	0.15	14.7	5.9	3.13	1560	74.0	0.02
K735316		0.71	43.0	3.48	5.78	0.12	0.22	0.06	0.029	0.07	12.2	10.8	0.94	904	0.99	0.02
K735317		0.35	34.5	3.05	4.90	0.14	0.30	0.03	0.020	0.04	9.7	8.5	0.84	510	0.75	0.02
K735318		0.29	24.1	2.50	4.81	0.11	0.19	0.03	0.016	0.04	9.4	8.2	0.67	402	0.40	0.02



ALS Canada Ltd.
 2103 Dollarton Hwy
 North Vancouver BC V7H 0A7
 Phone: 604 984 0221 Fax: 604 984 0218 www.alsglobal.com

To: GOLDEN PREDATOR CANADA CORP.
 888 DUNSMUIR STREET
 11TH FLOOR
 VANCOUVER BC V6C 3K4

Page: 3 - C
 Total # Pages: 4 (A - D)
 Plus Appendix Pages
 Finalized Date: 26-JUL-2011
 Account: GOPRED

Project: Stream seds

CERTIFICATE OF ANALYSIS WH11109441

Sample Description	Method Analyte Units LOR	ME-MS41	ME-MS41	ME-MS41	ME-MS41	ME-MS41	ME-MS41	ME-MS41	ME-MS41	ME-MS41	ME-MS41	ME-MS41	ME-MS41	ME-MS41	ME-MS41	
		Nb ppm	Ni ppm	P ppm	Pb ppm	Rb ppm	Re ppm	S %	Sb ppm	Sc ppm	Se ppm	Sn ppm	Sr ppm	Ta ppm	Te ppm	Th ppm
		0.05	0.2	10	0.2	0.1	0.001	0.01	0.05	0.1	0.2	0.2	0.2	0.01	0.01	0.2
K735236		0.58	38.1	960	5.0	12.9	<0.001	0.01	1.85	5.6	0.5	0.3	44.7	<0.01	0.03	3.4
K735237		0.59	23.7	820	4.7	7.1	<0.001	0.01	1.40	3.4	0.8	0.3	132.0	<0.01	0.02	4.5
K735238		0.50	32.2	730	3.9	4.5	0.001	<0.01	0.75	6.4	0.9	0.3	36.0	<0.01	0.05	5.3
K735239		0.54	31.5	660	3.6	4.4	<0.001	<0.01	0.69	6.4	0.6	0.3	36.1	<0.01	0.03	3.2
K735240		0.63	22.0	590	4.6	4.6	<0.001	<0.01	0.55	3.2	0.4	0.2	32.3	<0.01	0.02	3.2
K735274		1.39	7.6	1280	5.0	29.4	<0.001	0.01	0.47	2.1	1.1	1.1	41.0	<0.01	0.01	9.4
K735275		0.92	13.1	960	3.0	13.0	<0.001	<0.01	0.14	2.0	0.7	0.5	20.4	<0.01	<0.01	10.7
K735276		0.57	38.8	710	3.8	5.7	<0.001	0.02	0.68	3.5	0.8	0.3	22.4	<0.01	0.02	3.0
K735277		1.02	20.8	840	2.7	3.4	<0.001	<0.01	0.17	7.4	0.5	0.6	22.7	<0.01	0.02	1.3
K735278		0.95	21.5	710	4.4	6.2	<0.001	0.01	0.33	6.9	0.6	0.5	28.0	<0.01	0.01	1.0
K735279		1.07	20.5	780	3.5	3.6	<0.001	0.01	0.22	6.6	0.5	0.5	25.0	<0.01	0.01	1.2
K735280		0.24	20.6	490	2.2	2.7	0.001	0.04	0.26	4.0	0.4	0.4	28.1	<0.01	0.01	0.9
K735281		0.43	24.3	700	3.3	2.2	<0.001	<0.01	0.43	8.3	0.5	0.5	41.5	<0.01	0.01	1.2
K735282		0.95	24.0	720	3.6	3.4	0.001	0.01	0.30	7.7	0.7	0.5	31.4	<0.01	0.01	1.4
K735283		1.20	20.6	850	4.0	4.6	0.001	0.02	0.32	6.4	0.5	0.4	36.2	<0.01	0.02	1.7
K735284		0.87	18.9	710	3.6	3.2	0.001	0.02	0.29	7.1	0.8	0.4	33.0	<0.01	0.04	1.1
K735285		0.59	22.7	640	3.6	3.9	0.001	0.01	0.36	4.1	0.5	0.3	31.3	<0.01	0.01	1.5
K735286		0.57	20.0	780	2.8	3.2	0.001	0.01	0.34	3.9	0.5	0.3	30.9	<0.01	0.01	1.5
K735287		1.06	31.3	730	5.5	5.6	0.002	0.05	0.47	5.2	1.1	0.3	65.1	<0.01	0.03	1.5
K735288		0.89	28.2	780	4.7	6.3	0.002	0.04	0.55	5.9	0.3	0.3	51.0	<0.01	0.02	1.6
K735289		1.16	21.6	800	3.4	4.0	0.001	0.03	0.30	3.9	0.3	0.3	31.3	<0.01	0.01	2.1
K735290		0.71	13.5	1280	3.3	5.8	<0.001	0.02	0.96	3.5	0.4	0.3	32.8	<0.01	0.02	2.6
K735291		0.69	13.9	1010	4.2	11.7	0.002	0.04	1.53	4.7	0.8	0.3	42.5	<0.01	0.02	2.5
K735292		0.60	16.2	1360	4.1	8.3	<0.001	0.04	1.73	4.7	0.5	0.3	30.3	<0.01	0.02	2.2
K735293		0.42	19.7	930	5.3	7.0	<0.001	0.03	4.06	3.6	<0.2	0.2	19.7	<0.01	0.03	2.9
K735294		0.49	21.0	1270	2.5	4.8	<0.001	0.05	0.80	3.8	0.3	0.2	24.9	<0.01	0.02	1.8
K735295		0.56	23.3	1320	2.7	5.3	<0.001	0.05	0.85	4.3	<0.2	0.2	27.1	<0.01	0.01	1.9
K735296		0.57	12.9	820	3.9	4.8	<0.001	<0.01	0.33	2.2	<0.2	0.2	13.7	<0.01	0.03	7.6
K735297		0.94	22.5	970	6.0	5.6	0.001	0.01	0.60	3.9	0.6	0.3	15.1	<0.01	0.05	16.3
K735298		0.70	23.1	680	6.0	5.3	0.002	0.04	0.42	4.5	0.7	0.3	24.9	<0.01	0.04	2.6
K735299		0.94	13.9	700	3.6	5.3	0.001	0.02	0.17	2.5	0.4	0.2	16.3	<0.01	0.02	8.1
K735300		0.96	12.0	780	3.2	4.7	<0.001	0.02	0.16	2.3	<0.2	0.2	15.0	<0.01	0.01	7.2
K735311		0.83	23.2	950	6.7	11.7	<0.001	0.02	0.09	3.2	0.5	0.5	36.0	<0.01	0.02	5.1
K735312		0.67	24.0	780	6.9	7.5	<0.001	0.02	0.11	2.5	0.3	0.3	31.4	<0.01	0.03	3.4
K735313		0.68	28.3	860	7.0	6.5	0.001	0.01	0.19	3.6	0.8	0.3	33.3	<0.01	0.04	3.7
K735314		1.71	24.9	930	4.9	5.2	0.001	0.02	0.43	6.4	0.6	0.4	39.7	<0.01	0.02	2.0
K735315		0.06	72.3	1070	21.4	14.4	0.052	0.92	6.82	3.6	3.2	3.0	200	<0.01	0.39	3.5
K735316		1.54	31.6	870	6.7	5.2	0.001	0.02	0.56	7.6	0.5	0.5	42.7	<0.01	0.02	2.7
K735317		0.70	21.1	810	3.8	2.6	0.001	0.02	0.36	6.1	0.5	0.4	50.8	<0.01	0.02	1.7
K735318		1.47	16.8	720	3.2	3.8	0.001	0.03	0.18	5.2	0.4	0.4	42.9	<0.01	0.02	27.6



ALS Canada Ltd.
 2103 Dollarton Hwy
 North Vancouver BC V7H 0A7
 Phone: 604 984 0221 Fax: 604 984 0218 www.alsglobal.com

To: GOLDEN PREDATOR CANADA CORP.
 888 DUNSMUIR STREET
 11TH FLOOR
 VANCOUVER BC V6C 3K4

Page: 3 - D
 Total # Pages: 4 (A - D)
 Plus Appendix Pages
 Finalized Date: 26-JUL-2011
 Account: GOPRED

Project: Stream seds

CERTIFICATE OF ANALYSIS WH11109441

Sample Description	Method Analyte Units LOR	ME-MS41	ME-MS41	ME-MS41	ME-MS41	ME-MS41	ME-MS41	ME-MS41	ME-MS41	Au-OG44
		Ti %	Ti ppm	U ppm	V ppm	W ppm	Y ppm	Zn ppm	Zr ppm	Au ppm
		0.005	0.02	0.05	1	0.05	0.05	2	0.5	0.01
K735236		0.102	0.13	0.80	79	0.19	7.22	56	1.0	
K735237		0.068	0.07	0.62	49	1.51	7.05	40	2.3	
K735238		0.112	0.06	0.65	81	0.15	8.38	62	3.4	
K735239		0.111	0.05	0.49	78	0.15	8.11	60	3.3	
K735240		0.049	0.05	0.46	39	0.22	5.06	36	1.1	
K735274		0.058	0.22	27.0	28	0.49	14.80	37	<0.5	
K735275		0.048	0.09	3.00	26	2.19	9.78	28	0.9	
K735276		0.043	0.06	0.46	56	0.39	5.58	38	0.8	
K735277		0.258	0.02	0.30	121	0.36	10.40	66	13.7	
K735278		0.195	0.02	0.35	121	0.12	7.53	64	7.5	
K735279		0.193	0.02	0.37	104	0.08	7.64	57	7.8	
K735280		0.096	0.04	0.24	43	10.05	6.10	34	6.3	
K735281		0.167	0.03	0.33	109	0.08	11.15	51	12.9	
K735282		0.201	0.03	0.39	122	0.08	10.05	59	9.6	
K735283		0.145	0.04	0.48	97	0.12	7.47	56	5.4	
K735284		0.160	0.03	0.35	97	0.07	9.38	49	7.6	
K735285		0.084	0.03	0.31	63	0.13	4.95	45	3.1	
K735286		0.082	0.04	0.29	59	0.12	5.23	41	3.1	
K735287		0.090	0.06	0.38	63	0.28	7.60	59	3.1	
K735288		0.094	0.07	0.45	78	0.30	7.41	54	3.4	
K735289		0.095	0.04	0.38	61	0.12	6.28	44	4.6	
K735290		0.048	0.05	0.76	97	0.11	7.65	30	0.9	
K735291		0.041	0.11	0.48	48	0.13	8.53	45	0.6	
K735292		0.037	0.09	0.99	63	0.15	9.82	44	0.5	
K735293		0.025	0.07	0.58	37	0.17	5.56	41	0.5	
K735294		0.042	0.04	0.49	47	0.12	4.95	33	0.5	
K735295		0.048	0.06	0.56	52	0.63	5.56	37	0.6	
K735296		0.066	0.05	1.05	73	2.17	4.75	22	0.8	
K735297		0.066	0.07	2.44	109	11.55	8.35	35	0.8	
K735298		0.064	0.07	2.06	72	0.42	8.94	54	0.7	
K735299		0.066	0.05	1.88	46	1.96	5.51	33	0.8	
K735300		0.056	0.05	3.93	31	1.52	4.96	22	0.8	
K735311		0.051	0.08	4.20	44	2.50	10.05	46	4.0	
K735312		0.049	0.06	1.06	45	0.17	6.20	57	4.1	
K735313		0.037	0.06	0.90	36	0.32	7.58	55	5.1	
K735314		0.131	0.05	0.59	88	0.30	9.50	62	5.5	
K735315		0.005	0.87	14.65	147	14.75	20.2	413	8.3	
K735316		0.149	0.06	0.67	102	0.21	10.65	65	7.0	
K735317		0.155	0.03	0.48	103	0.08	9.83	48	10.8	
K735318		0.140	0.03	2.76	83	0.09	7.70	43	6.6	



ALS Canada Ltd.
 2103 Dollarton Hwy
 North Vancouver BC V7H 0A7
 Phone: 604 984 0221 Fax: 604 984 0218 www.alsglobal.com

To: GOLDEN PREDATOR CANADA CORP.
 888 DUNSMUIR STREET
 11TH FLOOR
 VANCOUVER BC V6C 3K4

Page: 4 - A
 Total # Pages: 4 (A - D)
 Plus Appendix Pages
 Finalized Date: 26-JUL-2011
 Account: GOPRED

Project: Stream seds

CERTIFICATE OF ANALYSIS WH11109441

Sample Description	Method Analyte Units LOR	WEI-21	Au-ST44	ME-MS41	ME-MS41	ME-MS41	ME-MS41	ME-MS41	ME-MS41	ME-MS41	ME-MS41	ME-MS41	ME-MS41	ME-MS41	ME-MS41	
		Recvd Wt. kg	Au ppm	Ag ppm	Al %	As ppm	Au ppm	B ppm	Ba ppm	Be ppm	Bi ppm	Ca %	Cd ppm	Ce ppm	Co ppm	Cr ppm
		.02	0.0001	0.01	0.01	0.1	0.2	10	10	0.05	0.01	0.01	0.01	0.02	0.1	1
K735319		7.74	0.0058	0.03	1.31	6.6	<0.2	<10	160	0.41	0.05	2.07	0.16	18.70	11.2	30
K735320		4.38	0.0093	0.06	1.03	6.9	<0.2	<10	130	0.26	0.07	0.91	0.20	15.55	9.7	31
K735321		3.90	0.0093	0.04	1.06	5.0	<0.2	<10	110	0.23	0.06	0.74	0.16	13.15	9.4	38
K735322		5.42	0.0014	0.07	1.49	5.8	<0.2	<10	230	0.37	0.08	0.98	0.51	22.5	11.1	39
K735323		5.40	0.0205	0.07	1.19	8.1	<0.2	<10	110	0.35	0.07	1.00	0.23	16.80	11.8	47
K735324		5.60	0.0032	0.07	1.54	13.3	<0.2	<10	240	0.54	0.07	0.93	0.28	15.05	20.8	48
K735325		5.86	0.0028	0.03	0.99	3.0	<0.2	<10	100	0.15	0.05	0.63	0.08	8.85	18.3	40
K735326		4.62	>0.1000	0.06	1.22	36.9	<0.2	<10	240	0.29	0.08	0.57	0.20	18.85	15.7	49
K735327		5.28	0.0247	0.05	1.54	37.7	<0.2	<10	250	0.21	0.04	0.54	0.12	8.97	15.6	61
K735328		5.78	0.0223	0.07	1.80	66.6	<0.2	<10	360	0.32	0.04	0.70	0.28	12.35	21.0	73
K735329		8.00	0.0046	0.06	1.37	7.3	<0.2	<10	270	0.28	0.09	0.75	0.26	14.35	17.0	40
K735330		<0.02	0.0024	0.06	1.36	7.5	<0.2	<10	270	0.31	0.08	0.74	0.25	13.85	17.5	39
K735331		4.96	0.0017	0.19	2.08	18.6	<0.2	<10	130	0.54	0.23	0.62	0.34	26.3	22.2	53
K735332		6.10	0.0192	0.04	1.43	25.3	<0.2	<10	70	0.41	0.15	0.72	0.25	25.8	24.2	55
K735333		5.16	0.0078	0.09	1.30	15.3	<0.2	<10	80	0.30	0.15	0.44	0.28	25.6	11.9	39
K735334		5.00	0.0008	0.07	1.03	5.7	<0.2	<10	140	0.23	0.16	0.38	0.11	26.0	9.1	43
K735335		5.64	0.0032	0.09	1.40	14.2	<0.2	<10	110	0.31	0.14	0.60	0.17	23.3	15.8	48
K735336		6.70	>0.1000	0.07	1.10	26.2	<0.2	<10	90	0.21	0.10	0.51	0.28	24.7	12.9	83
K735359		6.36	0.0620	0.08	1.14	23.3	<0.2	<10	140	0.25	0.10	0.84	0.17	24.9	9.2	47
K735218		Not Recvd														



ALS Canada Ltd.
 2103 Dollarton Hwy
 North Vancouver BC V7H 0A7
 Phone: 604 984 0221 Fax: 604 984 0218 www.alsglobal.com

To: GOLDEN PREDATOR CANADA CORP.
 888 DUNSMUIR STREET
 11TH FLOOR
 VANCOUVER BC V6C 3K4

Page: 4 - B
 Total # Pages: 4 (A - D)
 Plus Appendix Pages
 Finalized Date: 26-JUL-2011
 Account: GOPRED

Project: Stream seds

CERTIFICATE OF ANALYSIS WH11109441

Sample Description	Method Analyte Units LOR	ME-MS41	ME-MS41	ME-MS41	ME-MS41	ME-MS41	ME-MS41	ME-MS41	ME-MS41	ME-MS41	ME-MS41	ME-MS41	ME-MS41	ME-MS41	ME-MS41	
		Cs ppm	Cu ppm	Fe %	Ga ppm	Ge ppm	Hf ppm	Hg ppm	In ppm	K %	La ppm	Li ppm	Mg %	Mn ppm	Mo ppm	Na %
		0.05	0.2	0.01	0.05	0.05	0.02	0.01	0.005	0.01	0.2	0.1	0.01	5	0.05	0.01
K735319		0.35	35.2	3.15	5.03	0.13	0.34	0.03	0.020	0.04	9.0	8.5	0.87	557	0.54	0.02
K735320		0.45	24.2	2.28	3.87	0.10	0.06	0.04	0.014	0.05	7.6	6.7	0.59	486	0.70	0.02
K735321		0.34	20.9	2.34	4.03	0.09	0.06	0.03	0.013	0.04	6.7	6.4	0.72	495	0.55	0.02
K735322		0.71	27.9	2.52	4.48	0.10	0.05	0.05	0.016	0.05	11.8	11.9	0.60	789	0.83	0.02
K735323		0.75	34.1	2.85	4.70	0.10	0.07	0.07	0.020	0.05	8.5	8.6	0.76	387	0.68	0.02
K735324		16.90	60.8	3.37	4.47	0.09	0.02	0.04	0.022	0.08	9.3	15.0	1.03	591	0.53	0.02
K735325		2.75	71.1	2.66	2.98	0.09	<0.02	0.01	0.008	0.06	4.0	8.1	0.90	285	0.23	0.03
K735326		2.33	35.4	3.21	4.20	0.09	0.03	0.03	0.018	0.07	9.0	10.2	0.91	769	0.60	0.01
K735327		2.27	60.8	2.40	3.98	0.08	<0.02	0.01	0.012	0.04	4.2	10.9	1.14	527	0.34	0.01
K735328		4.30	76.6	3.39	4.68	0.10	<0.02	0.02	0.012	0.06	5.5	13.0	1.36	2070	0.81	0.01
K735329		5.86	73.4	2.83	4.04	0.09	<0.02	0.01	0.014	0.09	6.9	11.5	1.14	616	0.45	0.02
K735330		5.89	76.3	2.86	4.13	0.09	<0.02	0.01	0.015	0.09	6.7	12.0	1.13	616	0.73	0.02
K735331		6.73	52.0	3.51	6.53	0.11	0.03	0.03	0.023	0.08	13.3	13.8	0.85	589	0.67	0.03
K735332		2.76	37.7	4.64	6.22	0.13	0.08	0.03	0.027	0.05	13.8	9.8	0.83	513	0.87	0.03
K735333		3.17	29.4	2.63	4.86	0.15	0.02	0.02	0.022	0.04	14.9	11.6	0.63	408	1.62	0.02
K735334		3.89	24.0	3.21	3.81	0.13	<0.02	0.02	0.016	0.07	14.6	11.5	0.45	305	1.51	0.02
K735335		3.04	31.7	3.66	5.61	0.16	0.04	0.03	0.023	0.07	12.5	13.2	0.77	364	0.80	0.03
K735336		2.66	27.8	4.49	4.31	0.17	0.03	0.02	0.021	0.04	14.3	12.1	0.70	601	1.35	0.01
K735359		1.36	30.5	2.76	4.20	0.20	0.06	0.01	0.018	0.15	14.5	10.5	0.84	332	0.56	0.02
K735218																



ALS Canada Ltd.
 2103 Dollarton Hwy
 North Vancouver BC V7H 0A7
 Phone: 604 984 0221 Fax: 604 984 0218 www.alsglobal.com

To: GOLDEN PREDATOR CANADA CORP.
 888 DUNSMUIR STREET
 11TH FLOOR
 VANCOUVER BC V6C 3K4

Page: 4 - C
 Total # Pages: 4 (A - D)
 Plus Appendix Pages
 Finalized Date: 26-JUL-2011
 Account: GOPRED

Project: Stream seds

CERTIFICATE OF ANALYSIS WH11109441

Sample Description	Method Analyte Units LOR	ME-MS41	ME-MS41	ME-MS41	ME-MS41	ME-MS41	ME-MS41	ME-MS41	ME-MS41	ME-MS41	ME-MS41	ME-MS41	ME-MS41	ME-MS41	ME-MS41	
		Nb ppm	Ni ppm	P ppm	Pb ppm	Rb ppm	Re ppm	S %	Sb ppm	Sc ppm	Se ppm	Sn ppm	Sr ppm	Ta ppm	Te ppm	Th ppm
K735319		0.76	21.1	730	3.7	3.0	<0.001	0.01	0.30	7.0	0.3	0.4	47.7	<0.01	0.01	1.6
K735320		0.91	22.4	810	4.9	5.2	0.001	0.02	0.34	4.1	0.4	0.3	34.3	<0.01	0.03	1.1
K735321		0.70	29.4	760	4.8	4.3	0.001	0.02	0.20	3.5	0.2	0.2	31.6	<0.01	0.02	1.0
K735322		1.22	24.0	830	4.0	6.6	0.003	0.04	0.28	4.2	0.8	0.4	45.2	<0.01	0.03	1.0
K735323		1.01	31.0	770	5.4	5.5	0.001	0.03	0.39	5.8	0.8	0.3	38.8	<0.01	0.03	1.3
K735324		0.64	37.6	1690	4.4	8.6	<0.001	0.04	0.99	6.5	0.8	0.3	42.0	<0.01	0.04	0.9
K735325		0.33	21.6	1460	1.7	3.8	<0.001	0.01	0.32	4.2	0.3	0.2	24.5	<0.01	0.02	0.8
K735326		0.95	29.7	990	3.5	7.2	0.002	0.03	1.06	4.9	0.6	0.3	28.6	<0.01	0.04	2.2
K735327		0.52	25.5	1040	1.8	5.3	0.001	0.02	0.97	5.2	0.2	0.2	24.6	<0.01	0.02	0.6
K735328		0.58	33.7	1110	1.8	6.3	0.001	0.02	0.94	6.4	0.5	0.2	31.3	<0.01	0.02	0.7
K735329		0.61	24.8	1390	3.9	8.4	0.001	0.03	0.41	4.4	0.5	0.2	32.9	<0.01	0.03	0.9
K735330		0.61	25.0	1400	3.9	8.6	0.001	0.03	0.43	4.5	0.6	0.2	33.6	<0.01	0.03	0.9
K735331		0.89	36.7	920	8.5	8.7	<0.001	0.03	1.04	7.3	0.8	0.4	22.1	<0.01	0.04	1.5
K735332		0.73	33.1	840	5.5	4.3	<0.001	0.02	1.55	7.1	0.5	0.5	17.2	<0.01	0.03	3.3
K735333		0.65	27.2	660	5.5	5.4	0.001	0.03	0.76	5.1	0.5	0.3	17.6	<0.01	0.02	1.6
K735334		0.62	20.2	650	4.9	8.1	0.001	0.02	0.45	4.9	0.5	0.3	15.0	<0.01	0.02	3.5
K735335		0.76	28.6	740	5.2	6.3	0.001	0.02	0.89	6.7	0.7	0.4	17.9	<0.01	0.02	3.4
K735336		0.58	33.3	750	3.8	4.2	0.001	0.02	1.31	6.1	1.1	0.3	16.9	<0.01	0.01	3.6
K735359		0.65	27.8	730	4.8	8.9	0.001	0.01	0.98	5.0	0.7	0.2	40.4	<0.01	0.02	6.9
K735218																



ALS Canada Ltd.
 2103 Dollarton Hwy
 North Vancouver BC V7H 0A7
 Phone: 604 984 0221 Fax: 604 984 0218 www.alsglobal.com

To: GOLDEN PREDATOR CANADA CORP.
 888 DUNSMUIR STREET
 11TH FLOOR
 VANCOUVER BC V6C 3K4

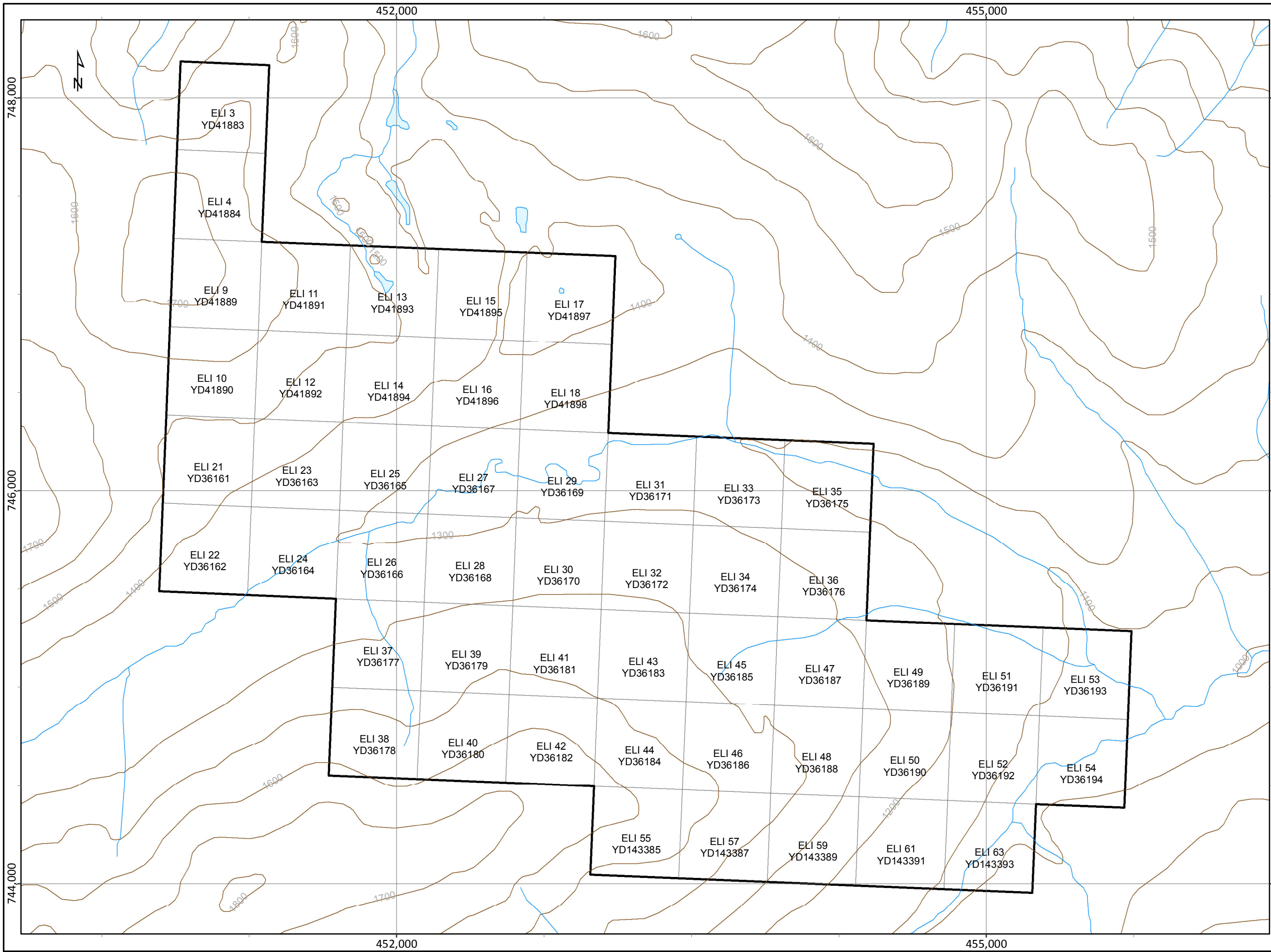
Page: 4 - D
 Total # Pages: 4 (A - D)
 Plus Appendix Pages
 Finalized Date: 26-JUL-2011
 Account: GOPRED

Project: Stream seds

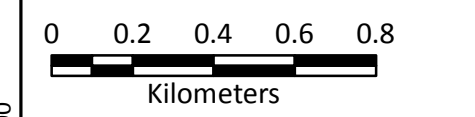
CERTIFICATE OF ANALYSIS WH11109441

Sample Description	Method Analyte Units LOR	ME-MS41 Ti %	ME-MS41 Ti ppm	ME-MS41 U ppm	ME-MS41 V ppm	ME-MS41 W ppm	ME-MS41 Y ppm	ME-MS41 Zn ppm	ME-MS41 Zr ppm	Au-OG44 Au ppm
		0.005	0.02	0.05	1	0.05	0.05	2	0.5	0.01
K735319		0.172	0.03	0.40	108	0.06	9.90	48	11.7	
K735320		0.078	0.04	0.45	63	0.15	7.29	48	2.1	
K735321		0.074	0.03	0.29	66	0.13	5.23	51	2.3	
K735322		0.097	0.07	0.68	73	0.18	9.24	90	1.4	
K735323		0.094	0.05	0.38	84	0.21	7.79	55	2.4	
K735324		0.046	0.08	1.16	69	0.22	11.95	83	<0.5	
K735325		0.058	0.03	0.17	75	0.12	3.52	27	<0.5	
K735326		0.060	0.04	0.72	63	0.24	6.15	53	0.8	0.10
K735327		0.044	0.03	0.41	55	0.12	4.40	49	<0.5	
K735328		0.050	0.04	0.43	72	0.13	6.29	64	<0.5	
K735329		0.066	0.07	0.66	68	0.21	6.73	59	0.5	
K735330		0.064	0.07	0.62	68	4.14	7.27	58	0.5	
K735331		0.101	0.14	1.36	88	0.50	14.45	61	0.8	
K735332		0.163	0.08	1.11	125	0.27	13.35	58	2.3	
K735333		0.071	0.09	1.05	70	3.64	12.00	52	0.6	
K735334		0.060	0.07	2.49	87	1.28	9.68	46	<0.5	
K735335		0.127	0.08	1.79	97	0.68	13.05	56	1.1	
K735336		0.073	0.07	0.73	117	1.90	9.36	62	0.9	0.05
K735359		0.074	0.08	0.74	70	0.18	7.12	49	2.0	
K735218										

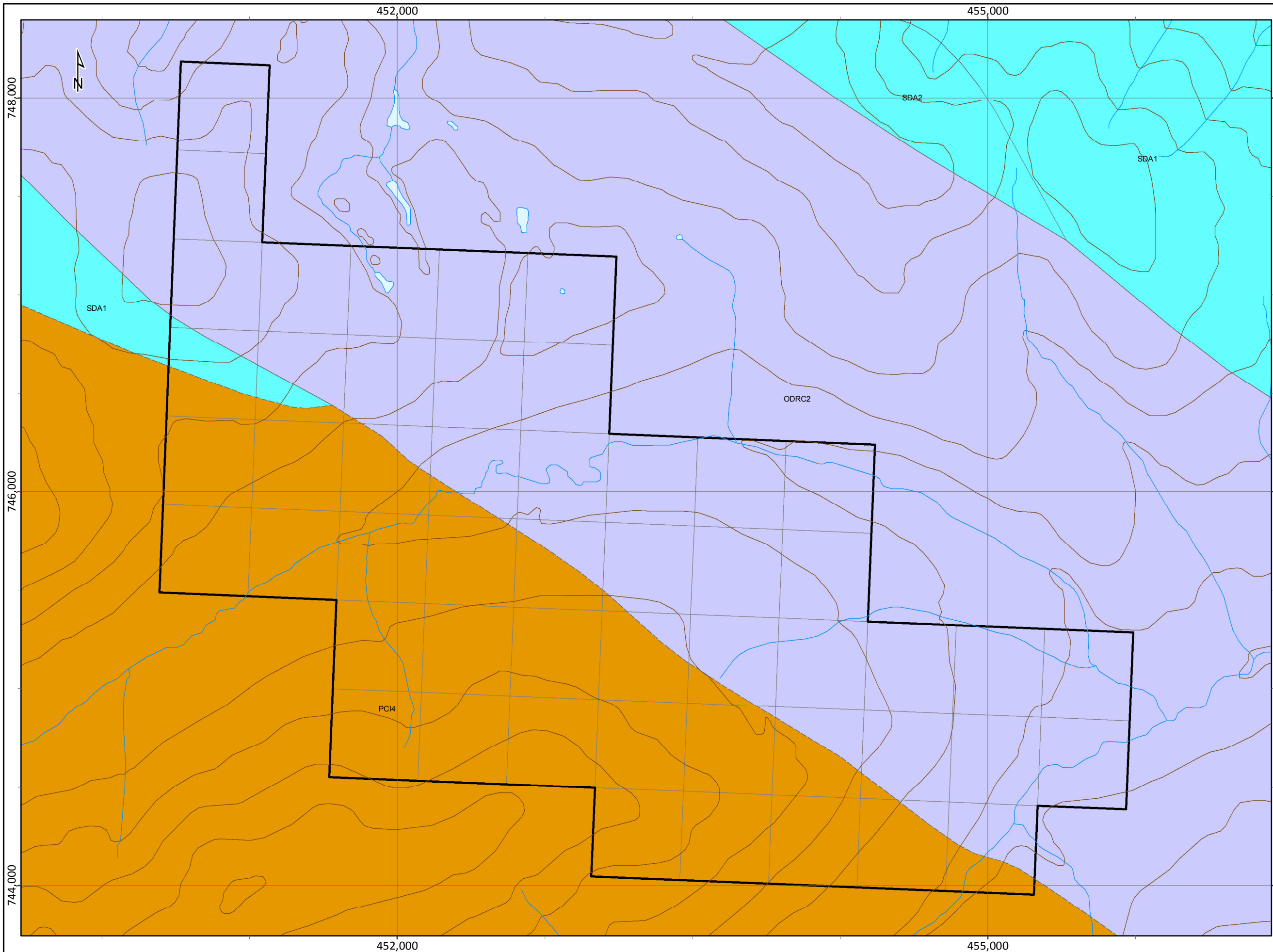
***** See Appendix Page for comments regarding this certificate *****



ELI Claim Locations



Scale:	1:18,647	Map ID:	--
Draw Date:		Rev. Date:	--
Version:	1	Figure:	--
Author:		Office:	
Locator:			
Projection:	NAD 1983 Yukon Albers		
Filename:	ELI_20121101_samples		



ORDOVICIAN TO DEVONIAN

ODRC2: ROAD RIVER - CASSIAR: recessive, dark grey to black "sooty" limy or dolomitic thin-bedded to platy graphitic siltstone and fine grained impure quartzite with interbedded graphitic silty shale (Nasina)

MIDDLE SILURIAN TO MIDDLE DEVONIAN

SDA2: ASKIN: medium grey to buff weathering, medium to thick bedded dolostone, silty and sandy dolostone, limestone; medium to thick bedded, medium grained mature orthoquartzite; dolomitized laminated mudstone and dolostone (Askin Gp.)

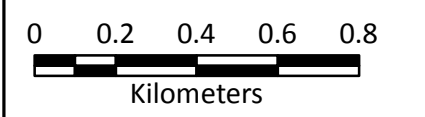
UPPER PROTEROZOIC TO LOWER CAMBRIAN

PCI4: INGENIKA: thin bedded slate, siltstone, quartzite and minor limestone with local medium to coarse grained, feldspathic sandstone to orthoquartzite; muscovite biotite garnet schist, micaceous quartzite, minor amphibolite and marble; rare granodiorite gneiss (Ketza Gp., Harvey Gp.)

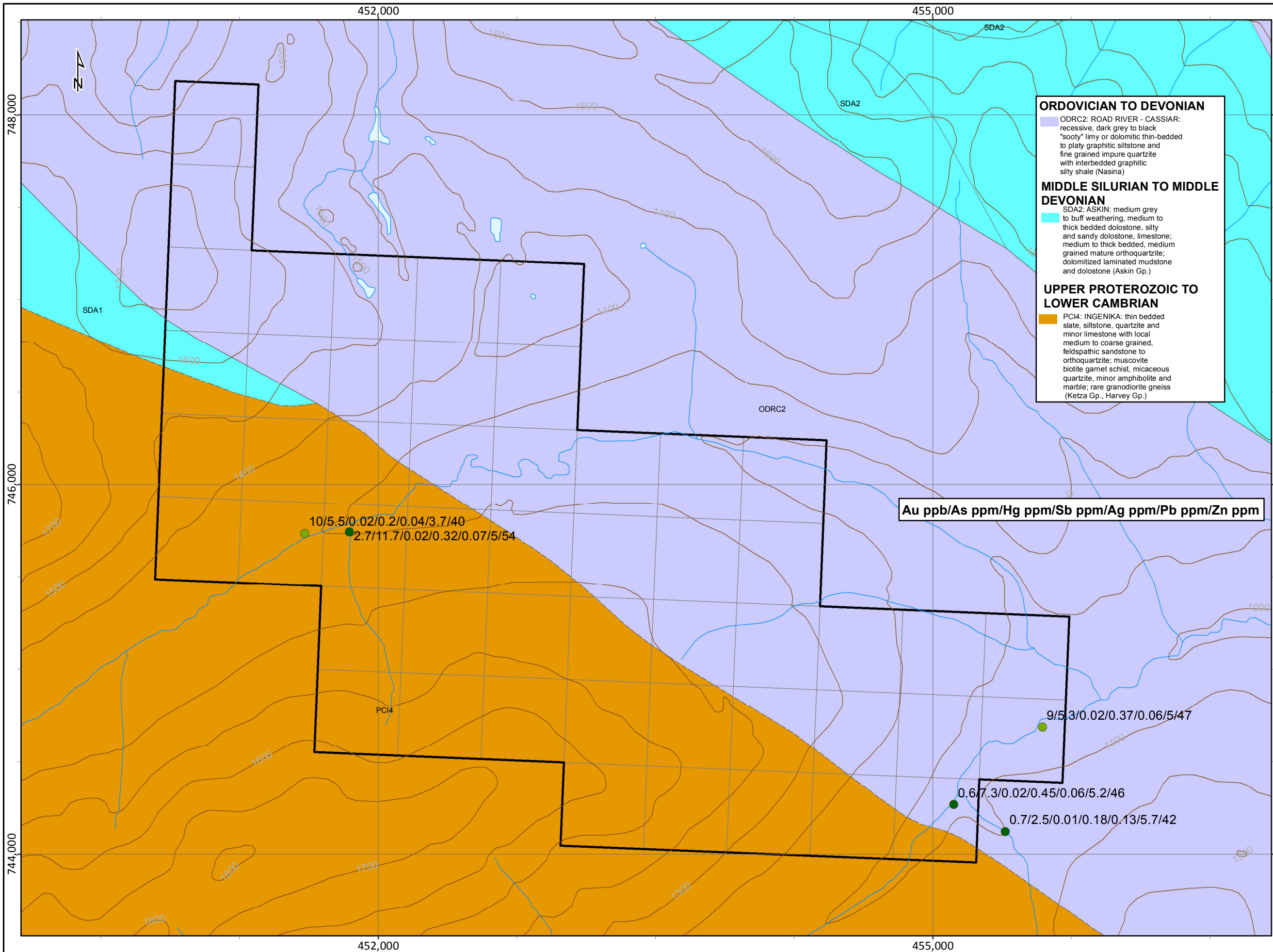


Geology

(After Cordey and McKepeace, 2004)



Scale:	1:18,647	Map ID:	--
Draw Date:		Rev. Date:	--
Version:	1	Figure:	--
Author:		Office:	
Location:			
Projection:	NAD 1983 Yukon Albers		
Filename:	ELI_20121101_geology		



Legend

Rock Samples (Au ppb)

- ▲ 0 - 100
- ▲ 101 - 250
- ▲ 251 - 500
- ▲ 501 - 1078

Silt Samples (Au ppb)

- 0.05 - 5
- 5 - 15
- 15 - 25
- 25 - 50
- 50 - 860

Au ppb/As ppm/Hg ppm/Sb ppm/Ag ppm/Pb ppm/Zn ppm



Sample Sites (Au)



Scale:	1:19,864	Map ID:	--
Draw Date:		Rev. Date:	--
Version:	1	Figure:	--
Author:		Office:	
Location:			
Projection:	NAD 1983 Yukon Albers		
Filename:	ELI_20121101_samples		