

ASSESSMENT REPORT

2012 GEOCHEMICAL PROGRAM

on the

Jackpot Property

Whitehorse Mining District, Yukon Territory

for

Goldspike Exploration Inc.

Claims filed for: 'JACKPOT' 1-30 (YD 47071 - YD47100), 'JACKPOT' 31-36 (YD47063 - YD47068)

NTS Mapsheet: 115K10

UTM Coordinates: E518000, N6945000 (NAD83, Zone 7)

Owner: Goldspike Exploration Inc.

Author: D. Ferraro, HBSc.

Date worked performed: June 29th, 2012

TABLE OF CONTENTS

1.0 Summary	1
2.0 Introduction	2
3.0 Property Location and Access	2
4.0 Topography, Vegetation, and Climate	3
5.0 Property Description	4
6.0 Property History	7
7.0 Geology	
7.1 Regional Geology	7
7.2 Property Geology	7
8.0 2011 Work Program	
8.1 Sampling Method and Approach	10
8.2 Sample Preparation, Analysis, and QA/QC	10
8.3 Results	11
9.0 Conclusions and Recommendations	14
References	15
Statement of Expenditures	16
Certificates of Qualifications	17

Figures, Photos, and Tables

Figure 1: General Location of the Jackpot Property	2
Figure 2: Claim Location Map	6
Figure 3: 1VD Magnetic Interpretation	8
Figure 4: Regional Bedrock Geology	9
Figure 5: Sample Location Map	12
Figure 6: Sample Geochemistry - Au	13
Photo 1: Example of physiography on the Property	3
Photo 2: Sample 1240485 - biotite schist	11
Table 1: List of claims	4

Appendices

Appendix I: Sample Descriptions	18
Appendix II: Soil Sample Assay Certificates	21
Appendix III: Silt Sample Assay Certificates	31
Appendix IV: Rock Sample Assay Certificates	37

1.0 SUMMARY

A 1 day geochemical sampling program was conducted on the Jackpot Property on June 29th, 2012. The property is owned 100% by Goldspike Exploration Inc. and consists of 36 contiguous quartz claims located in the Whitehorse Mining District.

The Jackpot Property is situated near Scottie Creek, 30km north of the community of Beaver Creek, Yukon, approximately 160 km south-southwest of Dawson City, and 17 km from the Alaskan border. Although it is only 15 km from the Alaska Highway, the property is not road accessible. For the purposes of this program, a helicopter was used based from a field camp.

Geologically, the property is located within Yukon Tanana Terrane, a middle to Upper Paleozoic metamorphosed assemblage which extends from central Alaska through central Yukon to northern British Columbia. It consists of polymetamorphosed and polydeformed metasediments, metavolcanics, and metaplutonic rocks. The property is underlain by Carboniferous to Permian muscovite-chlorite phyllite (Klondike schist). This unit is intruded by a large, Early Jurassic-age granodiorite unit 2 km north of the property. The property is also 10 km south of a large, mid-Cretaceous granite pluton.

A total of 82 soil samples, 4 silt samples, and 1 rock sample were taken over the duration of the program. No sample returned anomalous results, which may be partially due to poor sampling conditions in the area.

The Jackpot Property is located in a geological setting favourable to gold mineralization. The regional and local geology, geophysical features, and lack of previous exploration are all indicators of potential for gold mineralization. Despite this, the 2012 program showed no favourable results. Due to lack of results, poor sampling conditions, and the expense of accessing the property, it is recommended that no further work be done.

2.0 INTRODUCTION

This assessment report has been prepared at the request of Mr. Bruce Durham, president of Goldspike Exploration Inc. of Toronto, Ontario. The report describes the 2012 geochemical and prospecting program on the Jackpot Property. Field work was performed by Druid Exploration Inc. of Dawson City, Yukon and the author of this report. The report text and maps were produced by D. Ferraro, of Ferraro Consulting Ltd. of Woodstock, ON.

3.0 PROPERTY LOCATION AND ACCESS

The Jackpot Property is situated near Scottie Creek, 30km north of the community of Beaver Creek, Yukon, approximately 160 km south-southwest of Dawson City, and 17 km from the Alaskan border (Figure 1). Although it is only 15 km from the Alaska Highway, the property is not road accessible. For the purposes of this program, a helicopter was used based from a field camp.

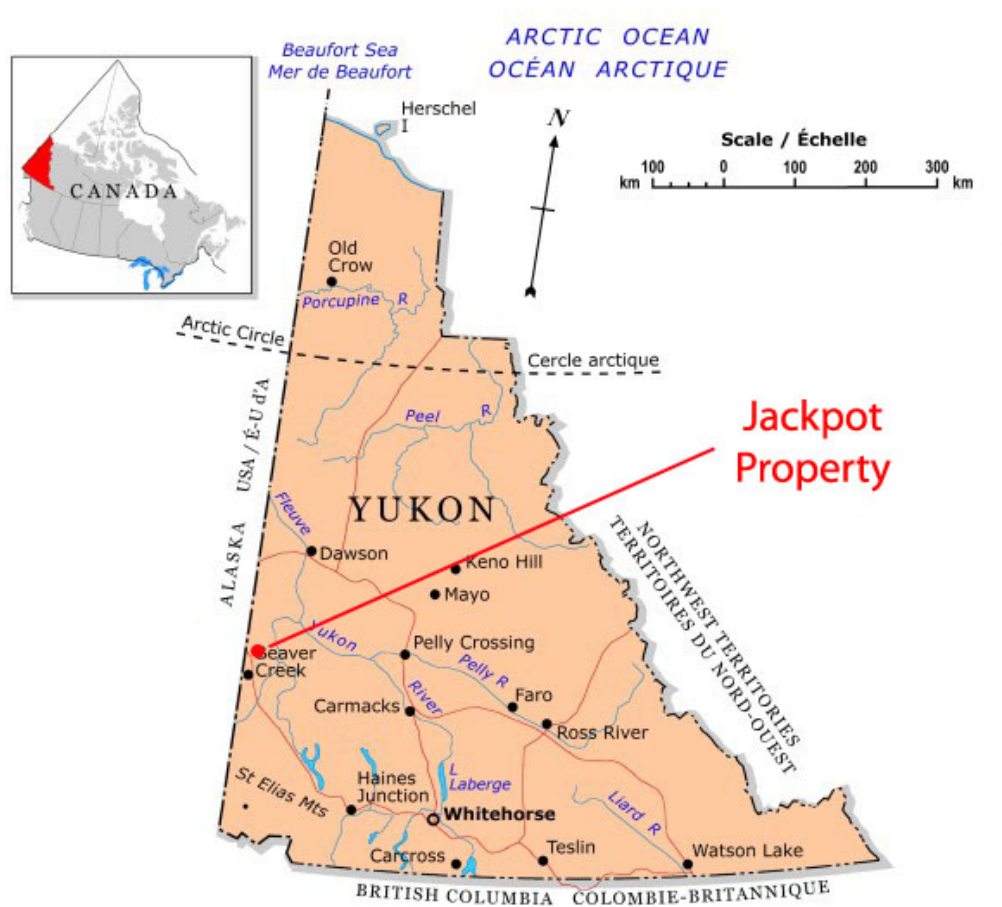


Figure 1: General location of the Jackpot Property (modified from NRCAN, 2006).

4.0 TOPOGRAPHY, VEGETATION, AND CLIMATE

The Jackpot Property is situated in the Dawson Range, a northwest-trending mountain range in western Yukon stretching over 100 km. Peaks in the west and southern ends of the property reach elevations of 3300 ft. Numerous tributaries drain these areas and meet at an elevation of 2000 ft.

Vegetation consists of black spruce and other evergreen trees on the slopes and thinner evergreen and buckbrush at the higher elevations. Mountain tops are rounded and vegetated with almost no bedrock exposure.

The Yukon has a subarctic continental climate with a mean summer temperature of 10 degrees celcius and a mean winter temperature of -23 degrees c elcius. Temperature extremes of 35 degrees and -55 degrees celcius are common in the summer and winter, respectively.



Photo 1: Example of physiography of the area.

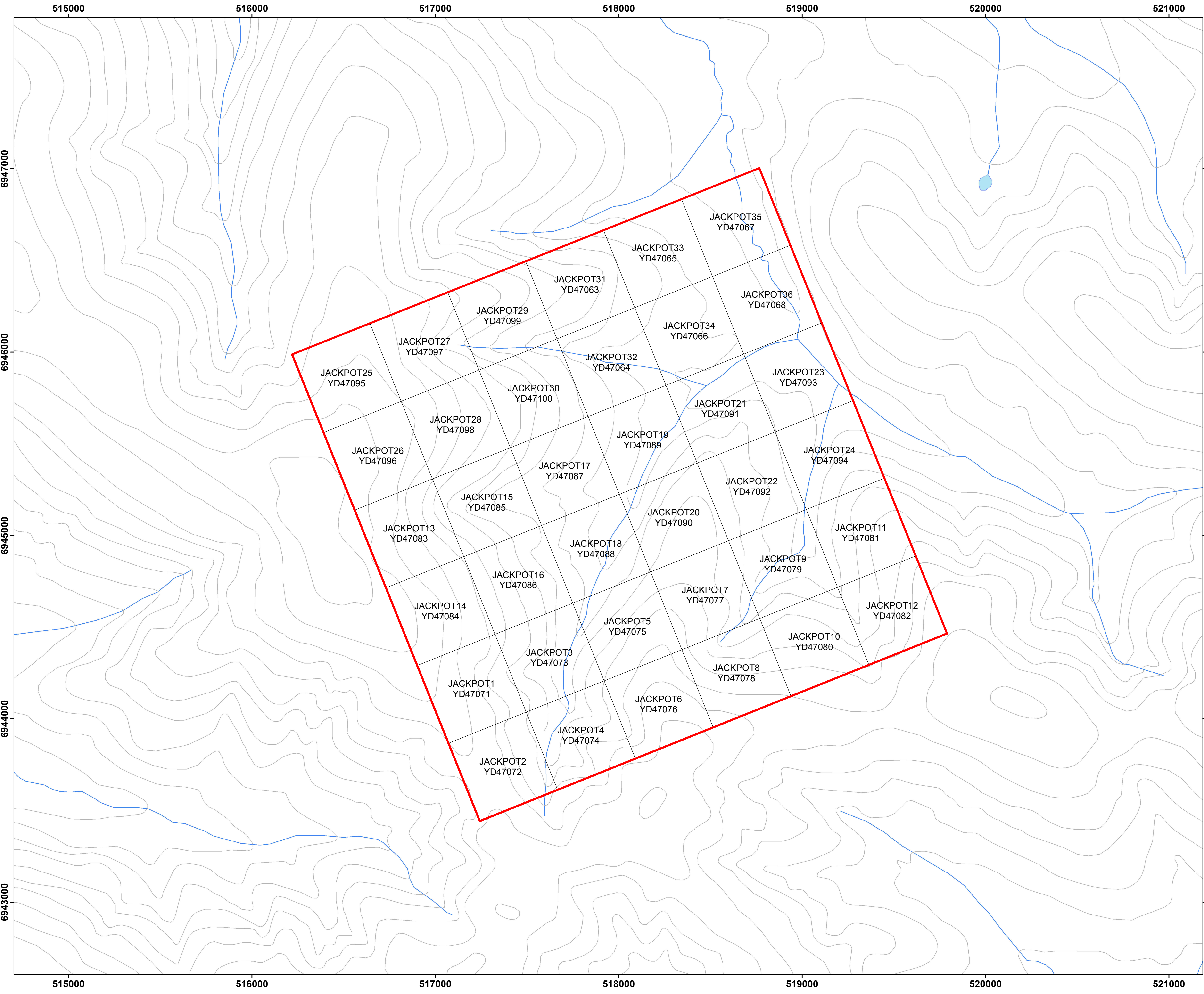
5.0 PROPERTY DESCRIPTION

The Jackpot Property consists of 36 contiguous quartz claims in the Whitehorse Mining District. The 36 'JACKPOT' claims can be found on NTS mapsheets 115K10 (see Figure 2). The claims are owned 100% by Goldspike Exploration Inc. of Toronto, Ontario. A complete list of the mining claims that make up the Jackpot Property is as follows:

Table 1: Claims comprising the Jackpot Property.

Claim Name	Claim Number	Grant Number	Claim Owner (100%)	Status	NTS Map Number	Claim Expiry Date
JACKPOT	1	YD47071	Goldspike Exploration Inc.	Active	115K10	26/05/2016
JACKPOT	2	YD47072	Goldspike Exploration Inc.	Active	115K10	26/05/2016
JACKPOT	3	YD47073	Goldspike Exploration Inc.	Active	115K10	26/05/2016
JACKPOT	4	YD47074	Goldspike Exploration Inc.	Active	115K10	26/05/2016
JACKPOT	5	YD47075	Goldspike Exploration Inc.	Active	115K10	26/05/2016
JACKPOT	6	YD47076	Goldspike Exploration Inc.	Active	115K10	26/05/2016
JACKPOT	7	YD47077	Goldspike Exploration Inc.	Active	115K10	26/05/2016
JACKPOT	8	YD47078	Goldspike Exploration Inc.	Active	115K10	26/05/2016
JACKPOT	9	YD47079	Goldspike Exploration Inc.	Active	115K10	26/05/2016
JACKPOT	10	YD47080	Goldspike Exploration Inc.	Active	115K10	26/05/2016
JACKPOT	11	YD47081	Goldspike Exploration Inc.	Active	115K10	26/05/2016
JACKPOT	12	YD47082	Goldspike Exploration Inc.	Active	115K10	26/05/2016
JACKPOT	13	YD47083	Goldspike Exploration Inc.	Active	115K10	26/05/2016
JACKPOT	14	YD47084	Goldspike Exploration Inc.	Active	115K10	26/05/2016
JACKPOT	15	YD47085	Goldspike Exploration Inc.	Active	115K10	26/05/2016
JACKPOT	16	YD47086	Goldspike Exploration Inc.	Active	115K10	26/05/2016
JACKPOT	17	YD47087	Goldspike Exploration Inc.	Active	115K10	26/05/2016
JACKPOT	18	YD47088	Goldspike Exploration Inc.	Active	115K10	26/05/2016
JACKPOT	19	YD47089	Goldspike Exploration Inc.	Active	115K10	26/05/2016
JACKPOT	20	YD47090	Goldspike Exploration Inc.	Active	115K10	26/05/2016
JACKPOT	21	YD47091	Goldspike Exploration Inc.	Active	115K10	26/05/2016
JACKPOT	22	YD47092	Goldspike Exploration Inc.	Active	115K10	26/05/2016
JACKPOT	23	YD47093	Goldspike Exploration Inc.	Active	115K10	26/05/2016
JACKPOT	24	YD47094	Goldspike Exploration Inc.	Active	115K10	26/05/2016
JACKPOT	25	YD47095	Goldspike Exploration Inc.	Active	115K10	26/05/2016
JACKPOT	26	YD47096	Goldspike Exploration Inc.	Active	115K10	26/05/2016
JACKPOT	27	YD47097	Goldspike Exploration Inc.	Active	115K10	26/05/2016
JACKPOT	28	YD47098	Goldspike Exploration Inc.	Active	115K10	26/05/2016
JACKPOT	29	YD47099	Goldspike Exploration Inc.	Active	115K10	26/05/2016
JACKPOT	30	YD47100	Goldspike Exploration Inc.	Active	115K10	26/05/2016
JACKPOT	31	YD47063	Goldspike Exploration Inc.	Active	115K10	26/05/2016

JACKPOT	32	YD47064	Goldspike Exploration Inc.	Active	115K10	26/05/2016
JACKPOT	33	YD47065	Goldspike Exploration Inc.	Active	115K10	26/05/2016
JACKPOT	34	YD47066	Goldspike Exploration Inc.	Active	115K10	26/05/2016
JACKPOT	35	YD47067	Goldspike Exploration Inc.	Active	115K10	26/05/2016
JACKPOT	36	YD47068	Goldspike Exploration Inc.	Active	115K10	26/05/2016



Jackpot Property

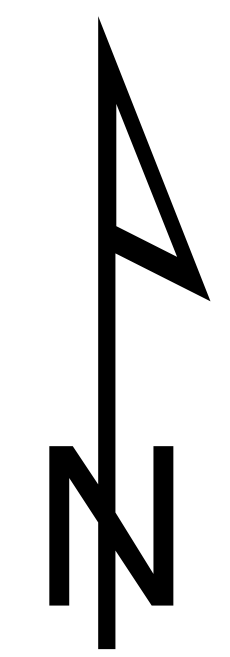
Fig. 2: Claim Location Map

Goldspike Exploration Inc.

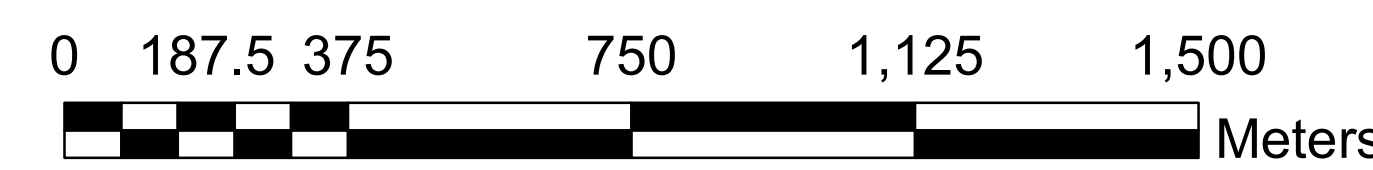
Scottie Creek area,
Whitehorse Mining District

Legend

- Jackpot Property
- Yukon quartz claims



1:10,000



Date: June, 2012
 NTS Mapsheet: 115K10
 Datum: UTM NAD83 Zone 7

6.0 PROPERTY HISTORY

The area has seen very little exploration since the late 1960s, when the discovery of the giant Casino copper-gold porphyry triggered a large staking rush. Twenty kilometers to the west-southwest of the property is the BAKER occurrence: an area of gold anomalous soil samples taken by the Teck Corporation in 2001. The highest assay returned was 190 ppb Au with 680 ppm As with potentially anomalous bismuth (Minfile 115K109).

Claims were also staked 18 km to the northwest at Starvation Mountain in 1956 and restaked in 1976. No results were noted (Minfile 115K087).

7.0 GEOLOGY

7.1 Regional Geology

The Jackpot Property is located in the Yukon-Tanana Terrane, an accreted pericratonic rock sequence that covers a large portion of the Omineca Belt, and extends into Alaska and British Columbia. It is the largest of the Yukon's terranes and hosts gold deposits related to Mesozoic intrusions, including the Sonora Gulch gold deposit and the Casino copper gold and molybdenum porphyry (Chartier, 2012). The Yukon-Tanana Terrane consists of several assemblages of schists and gneisses that were deformed and metamorphosed in the late Paleozoic era. These were intruded by a number of suites of Mesozoic intrusions, including the Dawson Suite intrusions. The Paleozoic rocks are pervasively foliated and contain at least two overprinting rock fabrics. During the Early Jurassic period, the rocks were tectonically stacked along foliation-parallel thrust faults (Hart, 2011). The terrane is cut by the Tintina Fault, a right-lateral strike-slip fault which occurs along the suture zone between the Yukon Tanana Terrane to the southwest and ancestral North America to the northeast.

7.2 Property Geology

The Jackpot Property is underlain by primarily by Carboniferous to Permian muscovite-chlorite phyllite, commonly known as 'Klondike schist' (Figure 4). This unit is intruded by a large, Early Jurassic age granodiorite unit 2 km north of the property. The property is also 10 km south of a large mid-Cretaceous granite pluton (Tempelman-Kluit, 1974). Mid-Cretaceous intrusions are the most commonly documented source of gold in the Tintina Gold Belt, including the Fort Knox and Pogo deposits (AK), and the Casino, Nucleus and Mt. Nansen deposits (Yukon).

Like the Klondike and the rest of the White Gold district, the Jackpot Property is in a part of the Yukon that was not glaciated during the last ice age. For this reason, soil and silt geochemistry is very effective in locating gold deposits. There is one GSC-collected regional silt sample in the on the property. It is anomalous, in the 98th percentile at 42 ppb Au.

Bremner (2010) interpreted the geophysics of the area in a summary of the Jackpot Property:

'A detailed magnetic derivative map from the Stevenson Ridge airborne geophysical survey flown by the Yukon Government and the GSC in 2009 shows that the anomalous 42 ppb silt sample was taken in an area of low magnetic relief near the contact of what appears to be a 2.5 x 5 km buried intrusion, on the edge of a large magnetic body of early Jurassic granodiorite, diorite and monzonite that is mapped 2 km north of the property (Figure 3).

On a large scale, these lithologic and magnetic units appear to show an internal shear fabric with a left lateral sense of movement.

The 1st vertical derivative magnetic map shows weakly defined regional northwest-southeast, and north-south lineaments intersecting a stronger east-west lineament near the 42 ppb gold anomaly.

These lineaments may be important because structure is the dominant feature in the recent major gold discoveries in Yukon's White Gold district, where gold occurs in quartz veins, hydrothermal breccias, and broad shear zones with multiple parallel faults and shears that show up as linear magnetic lows on geophysical maps.'

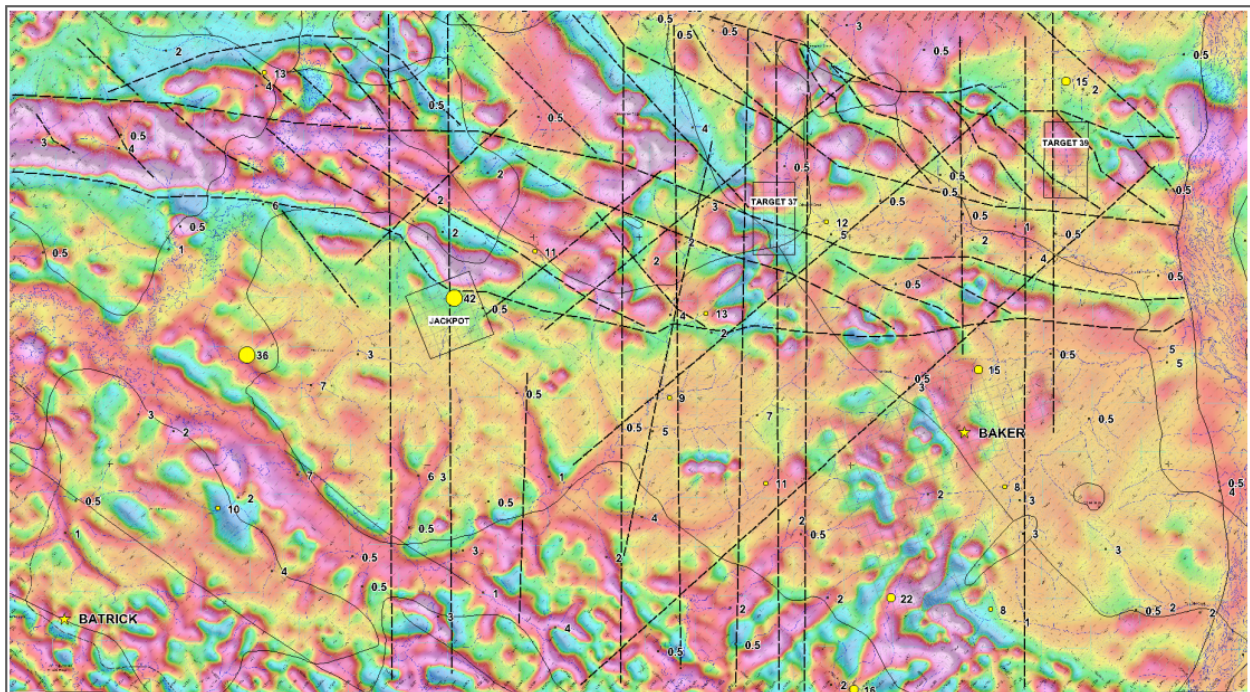


Figure 3: 1VD magnetic interpretation of the Jackpot Property area. (Bremner, 2010).

Jackpot Property

Fig. 4: Bedrock Geology
Goldspike Exploration Inc.

Scottie Creek area,
Whitehorse Mining District

Legend

- Goldspike properties
- Yukon quartz claims

Regional stream geochem

Au (ppb)

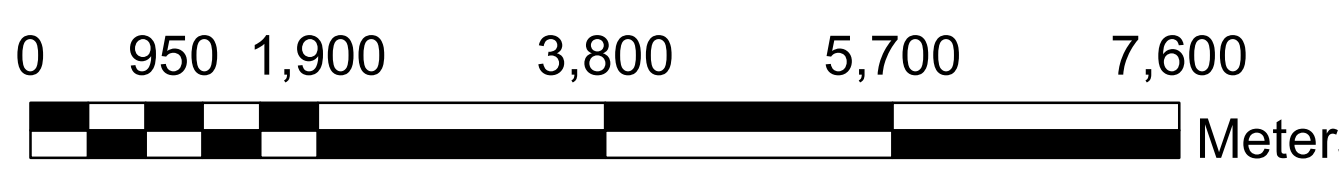
- 0.0 - 15.0
- 15.1 - 74.0
- 74.1 - 215.0
- 215.1 - 482.0
- 482.1 - 1170.0

Bedrock geology

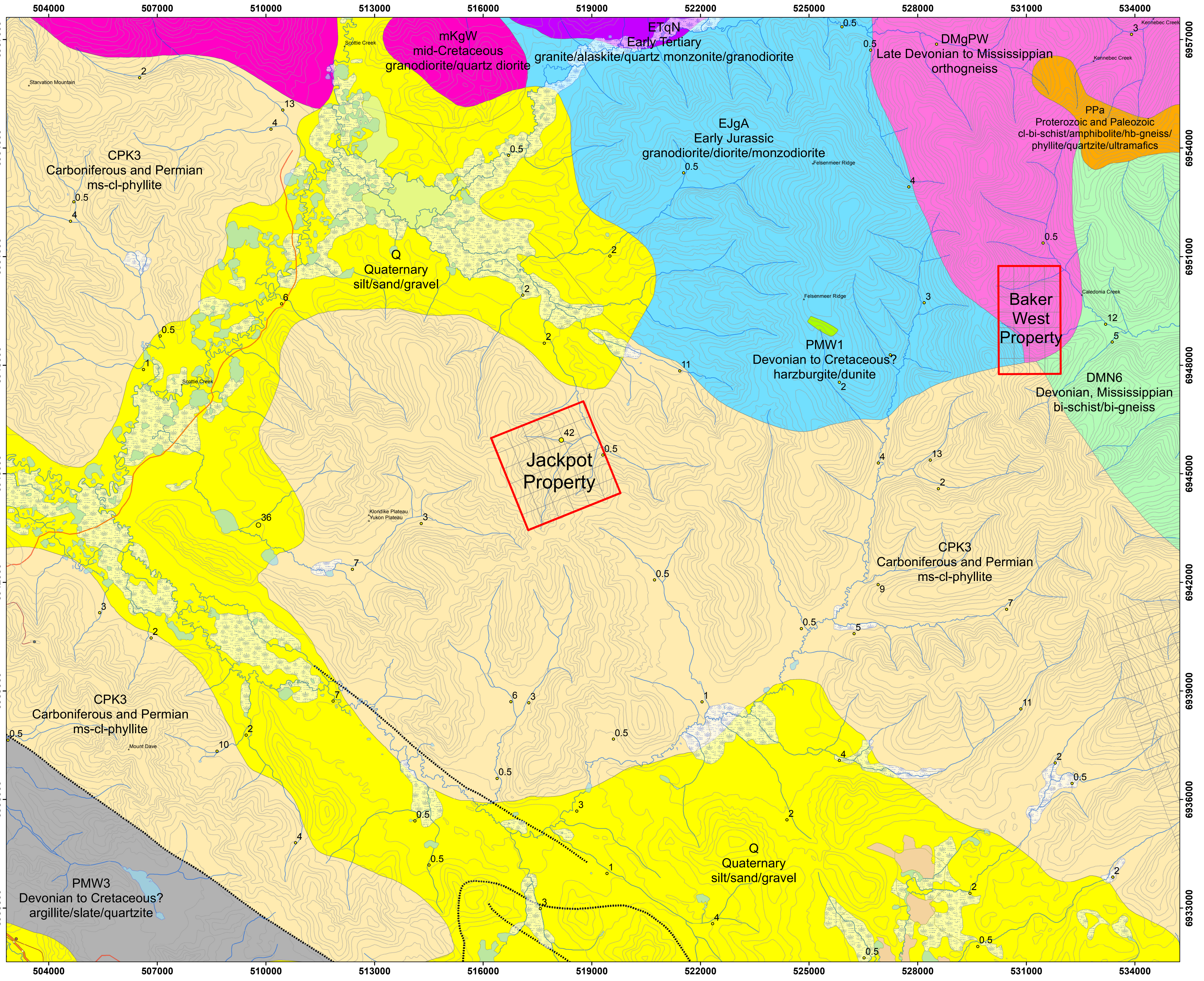
Rock Type

- silt/sand/gravel
- granodiorite/diorite/monzodiorite
- granite/alaskite/quartz monzonite/granodiorite
- harzburgite/dunite
- bi-schist/bi-gneiss
- orthogneiss
- argillite/slate/quartzite
- granodiorite/quartz diorite
- ms-cl-phyllite
- cl-bi-schist/amphibolite/hb-gneiss/phyllite
- Fault lines

1:50,000



Date: June, 2012
NTS Mapsheet: 115K10
Datum: UTM NAD83 Zone 7



8.0 2011 WORK PROGRAM

8.1 Sampling Method and Approach

A 1 day geochemical sampling program was conducted on the Jackpot Property on June 29th, 2012. Flying out of a field camp, a crew of 2 soil samplers and one geologist collected 82 soil samples, 4 silt samples and 1 rock sample (see Figure 5 for sample locations). A Hughs 500D helicopter was used for the duration of the program.

A ridge and spur soil sampling program was planned before field work was conducted. Using ArcGIS, soil sample traverses were plotted at 50m spacings and downloaded onto samplers' GPS units. Once in the field, samplers used Dutch augurs to collect an adequate soil sample, preferably from the 'C' horizon, placing it in a Kraft paper bag, marking the location with GPS, and marking the location with flagging tape labeled with the sample number. Sample conditions, environment and attributes were recorded in a field notebook. The GPS units were downloaded daily for plotting in ArcGIS. Soil samples were hung up to dry, then packed and shipped to the lab. Soil sample descriptions can be found in Appendix I.

Silt samples were taken in major creeks and tributaries. A low energy zone of the stream was located and a collapsible shovel, pan, or hand was used to collect a sample. Sample locations were marked with a GPS unit and flagged with the sample number. Sample conditions, environment and attributes were recorded in a field notebook. Silt sample descriptions can be found in Appendix I.

Rock samples were taken based on mineralogy, structure and lithology. Samples were placed inside labeled plastic poly bags with the corresponding sample tag. Sample descriptions were recorded in a field notebook and the location recorded by GPS unit. Sample locations were marked with flagging tape labeled with the sample number. Rock sample descriptions can be found in Appendix I.

8.2 Sample Preparation, Analysis, and QA/QC

The soil and silt samples were dried at 60° C and sieved to -80 mesh (<177 microns). A 15.0 gram sub-sample was digested in hot (95° C) aqua regia (HCl-HNO₃-H₂O); following this, the samples were analysed by inductively-coupled plasma mass spectrometry (ICP-MS) techniques (Acme's Group 1DX2). Multi-elemental analysis of 36 elements was made.

The rock samples were crushed, split to 250 g, pulverized, and a split was sieved to -200 mesh. The same analytical procedure (Acme's Group 1DX2) was used.

Quality control samples from the lab include control blanks, duplicates and standards. Sample blanks (BLK), pulp duplicates and standards (STD DS8) were run with the batch analysis; no problems were noted with analytical accuracy or precision.

8.3 Results

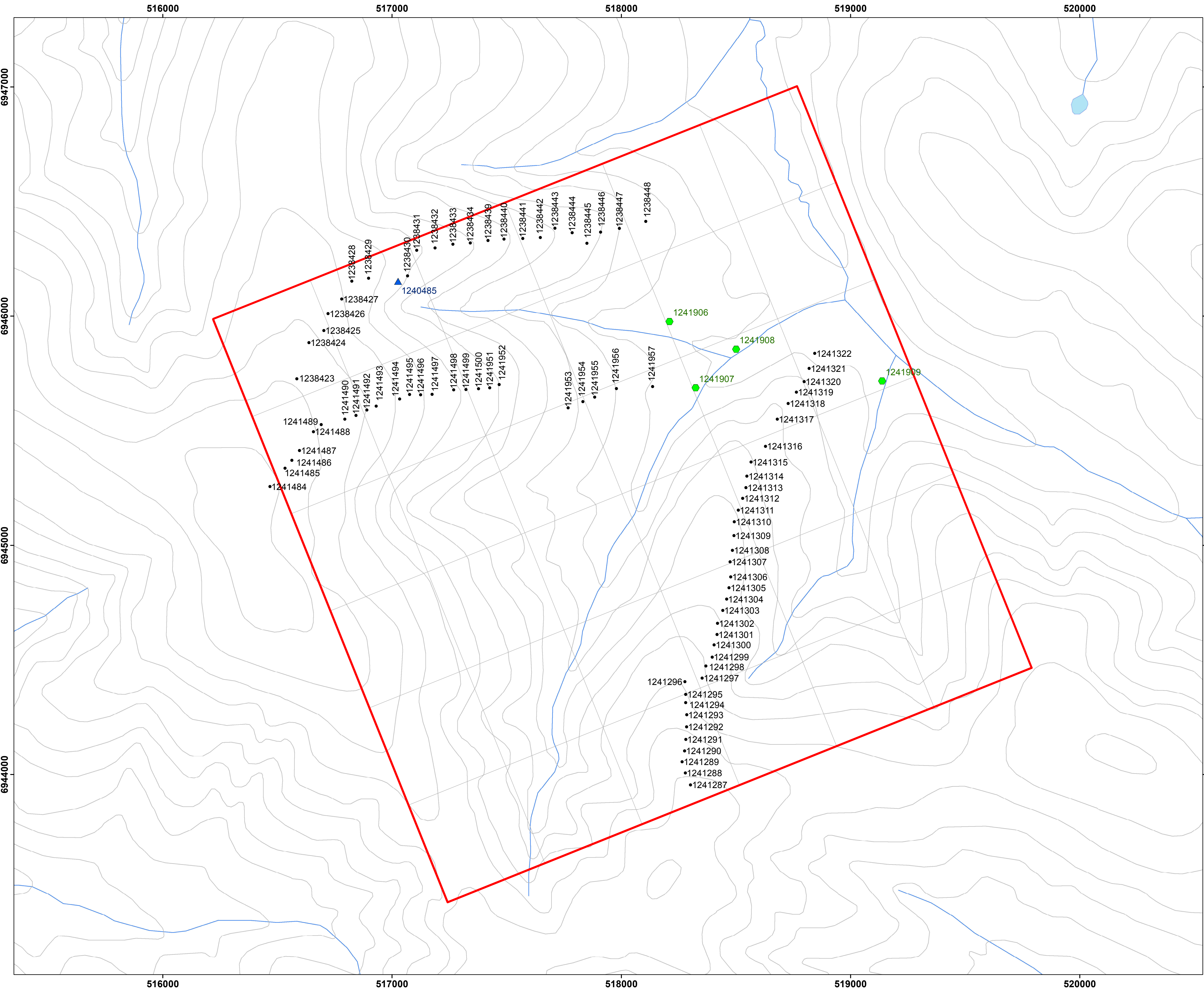
Eighty-two soil samples were recovered from the property. The highest gold result returned from assays was 12.9 ppb Au (see Figure 6). No other elements showed anomalous values. Manganese is fairly elevated across the property. Sampling conditions were not ideal due to frozen ground and permafrost. See Appendix I for soil sample results.

The four silt samples showed no anomalous values. See Appendix III for silt sample results.

Only one rock sample (float) was recovered from the property. It is an oxidized biotite schist with quartz (Photo 2). See Appendix IV for results.



Photo 2: Sample 1240485: oxidized biotite schist.



Jackpot Property

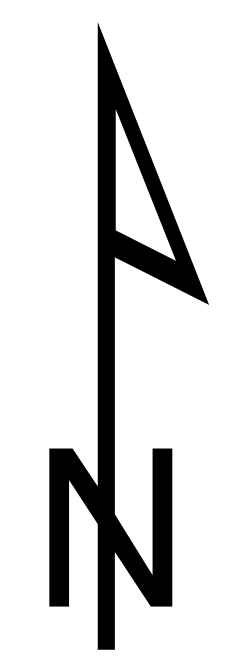
Fig. 5: Sample Location Map

Goldspike Exploration Inc.

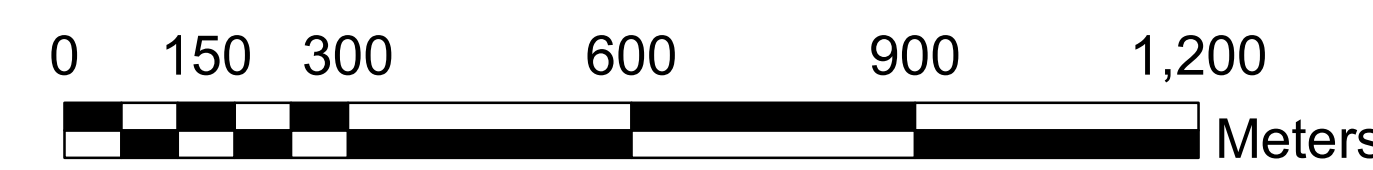
Scottie Creek area,
Whitehorse Mining District

Legend

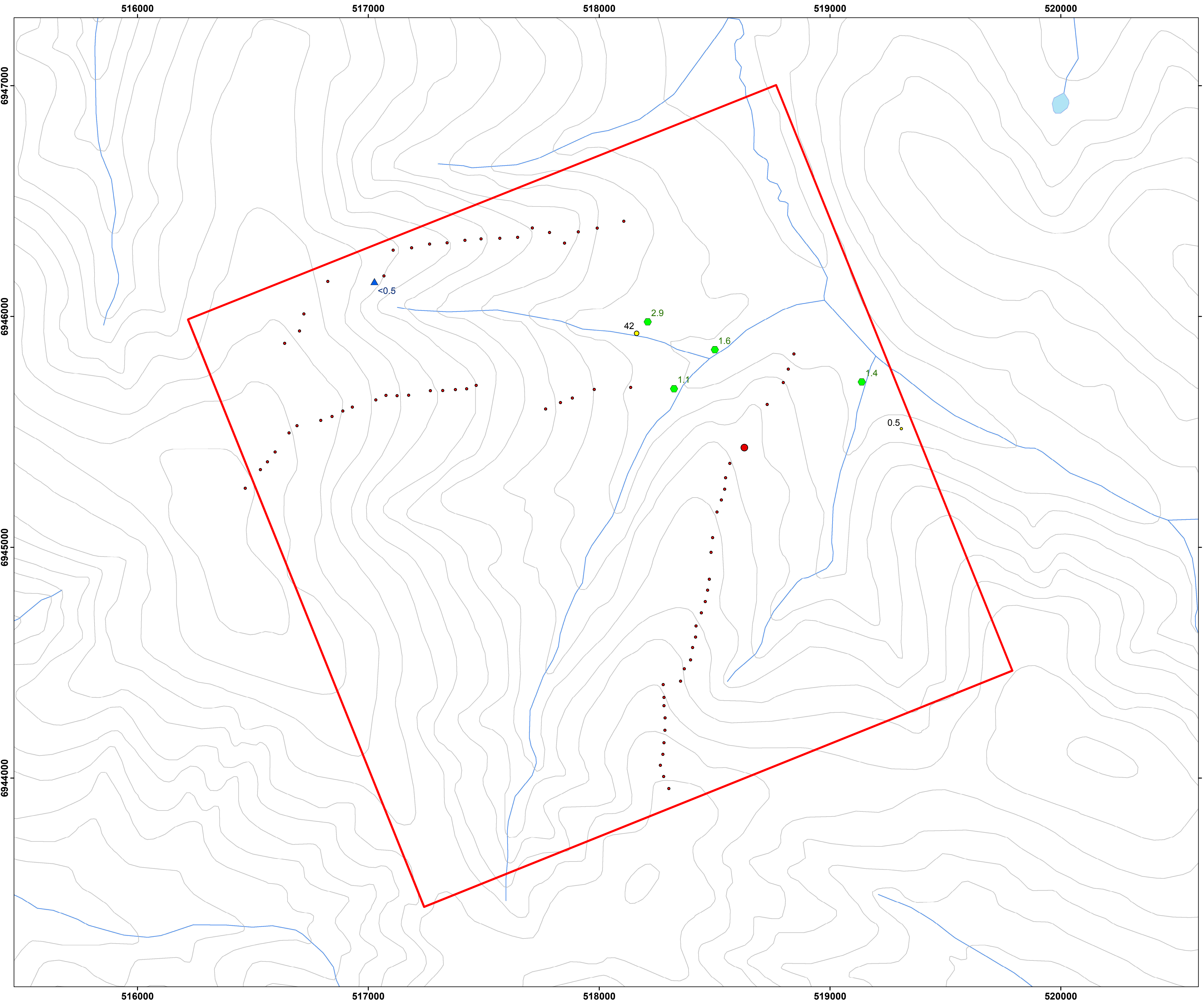
- Soil samples
- Silt samples
- ▲ Rock samples
- Jackpot Property
- Yukon quartz claims



1:8,000



Date: June, 2012
 NTS Mapsheet: 115K10
 Datum: UTM NAD83 Zone 7



Jackpot Property

Fig. 6: Sample Geochemistry
- Gold

Goldspike Exploration Inc.
Scottie Creek area,
Whitehorse Mining District

Legend

Soil samples

Au (ppb)

- 0.6 - 10.0
- 10.1 - 12.9
- Silt samples (ppb Au)
- Rock samples (ppb Au)

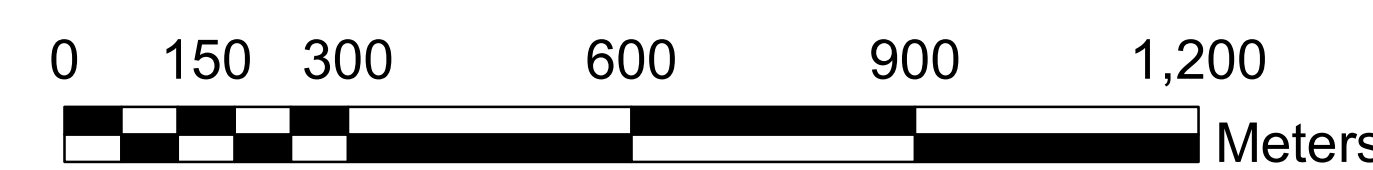
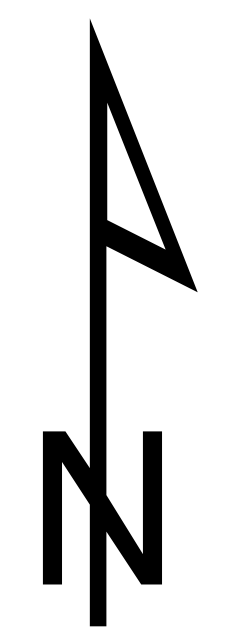
Jackpot Property

GSC Regional stream geochem

Au (ppb)

- 0.0 - 15.0
- 15.1 - 74.0
- 74.1 - 215.0
- 215.1 - 482.0
- 482.1 - 1170.0

1:8,000



Date: June, 2012
NTS Mapsheet: 115K10
Datum: UTM NAD83 Zone 7

9.0 CONCLUSIONS AND RECOMMENDATIONS

The Jackpot Property is located in a geological setting favourable to gold mineralization. The local and regional geology and geophysical features are indicators of potential for gold mineralization. Furthermore, previous hard rock exploration in the area is very limited.

The 2012 program did not yield favourable gold in soil results. The highest sample returned was quite low at 12.9 ppb Au. However, sampling conditions were less than ideal likely due to north-facing slopes. Much of the ground was frozen, and samplers frequently ran into permafrost. Prospecting was also limited due to the absence of outcrop on the property.

In addition to the geological setting, the Jackpot Property was staked to cover the 98th percentile GSC-collected silt anomaly. The area around this tributary was adequately sampled. Due to the lack of results, inadequate sampling conditions, and the expense required to access the claims, it is recommended that no further work be done.

REFERENCES

Bremner, T. (2010): Jackpot Prospect, Snag area, Summary, for YC Syndicate, Goldspike Exploration Inc.

Chartier, D. (2012): Independent Technical Report for the Coffee Gold Project, Yukon, Canada, for Kaminak Gold Corp., Vancouver, BC.

Hart, C. (2011): The Geological Framework of the Yukon Territory, Yukon Geological Survey.

Natural Resources Canada, Atlas, (12/05/2006):
http://atlas.nrcan.gc.ca/auth/english/maps/reference/provincesterritories/yukon_territory/referencemap_image_view (visited 01/02/2012)

Tempelman-Kluit, D.J. (1974): Reconnaissance geology of Aishihik Lake, Snag and part of Stewart River map areas, west-central Yukon (115A, 115F, 115G and 115K). Geological Survey of Canada, Paper 73-41, 97 p.

Yukon Minfile 115K087 (1995): STARVATION, Yukon Geological Survey.

Yukon Minfile 115K109 (2005): BAKER, Yukon Geological Survey.

STATEMENT OF EXPENDITURES

Costs associated with the Jackpot Property Worked June 29th, 2012

UNIT	UNIT PRICE	COST
2 samplers	300/day	\$600.00
1 geologist	500/day	\$500.00
cook	300/day	\$300.00
food	30/man	\$90.00
helicopter	975/hr	\$3,608.00
helicopter fuel		\$740.00
soil sample assay	\$18x82 samples	\$1,472.00
soil sample assay	\$18x4 samples	\$72.00
rock sample assay	\$24x1 sample	\$24.00
assessment report		\$2,000.00
consumables		\$200.00
truck rental	150/day	\$150.00
truck fuel	50/day	\$50.00
camp rental		\$1,000.00
TOTAL		\$10,806.00

CERTIFICATE OF QUALIFICATIONS

I, Daniel Ferraro, of 835 Berkshire Dr., Woodstock, Ontario, Canada, certify that:

1. I am a graduate of Lakehead University, 2008, and hold an H. B.Sc. Geology degree.
2. I am an independent geological consultant.
3. I am a member of the Ontario Prospectors Association (2010).
4. I have been employed as a geological assistant for the Ontario Geological Survey and the Geological Survey of Canada during the summers of, respectively, 2006 and 2007.
5. I have been working in the mineral exploration industry since 2008 for Pacific North West Capital Corporation, East West Resources Corporation, Rainy Mountain Royalty Corporation, Black Panther Mining Corporation, White Tiger Mining Corporation, Trillium North Minerals Ltd., Nebu Resources Inc., and Goldspike Exploration Inc.
6. This report was prepared by myself.
7. I have no personal knowledge from the date of this certificate of any material fact or change not reflected in this report.



Daniel Ferraro, H.B.Sc.

Date: Nov. 1, 2012.

Appendix I: Sample Descriptions

JACKPOT Property Sample Descriptions

UTM NAD 83 Zone 7

SOIL SAMPLES

Sample ID	Easting	Northing	Elevation (m)	Date Taken	Property	Sample Depth (cm)	Horizon	Colour	Composition						Parent Material	Moisture Content	Vegetation Cover	Topo Position
									Organics	Ang-Rock	Gravel	Sand	Silt	Clay				
1241484	516468	6945255	1022	29-Jun-12	JAC	20-30	b/c	lt brown	5	20				75	loess - organics	partially frozen	evergreen forest	mid slope
1241485	516533	6945336	1011	29-Jun-12	JAC	30-40	b/c	dk brown	20	20				60	loess - organics	partially frozen	evergreen forest	mid slope
1241486	516564	6945370	1003	29-Jun-12	JAC	30-40	b	dk brown	60					40	loess - organics	partially frozen	evergreen forest	ridge top
1241487	516597	6945412	1000	29-Jun-12	JAC	20-30	b	dk brown	70					30	loess - organics	partially frozen	evergreen forest	mid slope
1241488	516657	6945495	988	29-Jun-12	JAC	20-30	b/c	lt brown	20					80	loess - organics	partially frozen	evergreen forest	mid slope
1241489	516692	6945526	985	29-Jun-12	JAC	20-30	b	dk brown	70					30	loess - organics	partially frozen	evergreen forest	mid slope
1241490	516794	6945549	963	29-Jun-12	JAC	50-60	c	lt brown		20				80	loess - organics	partially frozen	evergreen forest	mid slope
1241491	516843	6945566	954	29-Jun-12	JAC	20-30	b/c	lt brown	30	10				60	loess - organics	partially frozen	evergreen forest	mid slope
1241492	516890	6945590	945	29-Jun-12	JAC	30-40	b/c	dk brown	40					60	loess - organics	moist	evergreen forest	mid slope
1241493	516931	6945607	937	29-Jun-12	JAC	30-40	b/c	dk brown	40					60	loess - organics	moist	evergreen forest	mid slope
1241494	517033	6945638	920	29-Jun-12	JAC	40-50	c	lt brown		20				80	loess - organics	moist	evergreen forest	mid slope
1241495	517077	6945657	908	29-Jun-12	JAC	50-60	b/c	dk brown	35					65	loess - organics	moist	evergreen forest	mid slope
1241496	517125	6945656	896	29-Jun-12	JAC	30-40	b/c	dk brown	40					60	loess - organics	moist	deciduous forest	mid slope
1241497	517175	6945658	892	29-Jun-12	JAC	30-40	b/c	dk brown	30					70	loess - organics	moist	deciduous forest	mid slope
1241498	517269	6945678	867	29-Jun-12	JAC	30-40	b	dk brown	80					20	loess - organics	moist	deciduous forest	mid slope
1241499	517323	6945679	858	29-Jun-12	JAC	40-50	b/c	dk brown	30					70	loess - organics	moist	deciduous forest	mid slope
1241500	517378	6945683	845	29-Jun-12	JAC	30-40	b/c	lt brown	10	10				80	loess - organics	moist	deciduous forest	mid slope
1241951	517427	6945686	833	29-Jun-12	JAC	40-50	c	dk brown	20					80	loess - organics	moist	deciduous forest	mid slope
1241952	517468	6945701	822	29-Jun-12	JAC	30-40	b/c	dk brown	40					60	loess - organics	moist	deciduous forest	mid slope
1241953	517769	6945599	747	29-Jun-12	JAC	20-30	a/b	dk brown	90					10	loess - organics	frozen	deciduous forest	mid slope
1241954	517833	6945626	733	29-Jun-12	JAC	20-30	a/b	dk brown	90					10	loess - organics	frozen	deciduous forest	mid slope
1241955	517884	6945646	720	29-Jun-12	JAC	50-60	b/c	dk grey	20					80	loess - organics	partially frozen	deciduous forest	ridge top
1241956	517979	6945683	704	29-Jun-12	JAC	30-40	b	dk brown	60					40	loess - organics	partially frozen	deciduous forest	mid slope
1241957	518137	6945692	673	29-Jun-12	JAC	30-40	b	dk brown	65					35	loess - organics	partially frozen	deciduous forest	mid slope
1241287	518302	6943954	928	29-Jun-12	JAC	30-40	c	lt brown				60	40	weathered bedrock	partially frozen	evergreen forest	ridge top	
1241288	518280	6944006	924	29-Jun-12	JAC	20-30	c	lt brown				60	40	weathered bedrock	saturated	evergreen forest	ridge top	
1241289	518266	6944055	917	29-Jun-12	JAC	30-40	b/c	lt brown				70	30	weathered bedrock	partially frozen	evergreen forest	ridge top	
1241290	518276	6944102	908	29-Jun-12	JAC	30-40	b/c	lt brown				80	20	weathered bedrock	saturated	evergreen forest	mid slope	
1241291	518282	6944152	897	29-Jun-12	JAC	30-40	b/c	lt brown				40	60	weathered bedrock	partially frozen	evergreen forest	mid slope	
1241292	518285	6944207	885	29-Jun-12	JAC	30-40	c	lt brown				60	40	weathered bedrock	partially frozen	evergreen forest	mid slope	
1241293	518286	6944260	875	29-Jun-12	JAC	20-30	b/c	lt brown				20	80	weathered bedrock	frozen	evergreen forest	mid slope	
1241294	518281	6944313	866	29-Jun-12	JAC	50-60	c	lt brown				50	50	weathered bedrock	saturated	evergreen forest	mid slope	
1241295	518282	6944349	860	29-Jun-12	JAC	30-40	c	lt brown				40	20	weathered bedrock	saturated	evergreen forest	mid slope	
1241296	518278	6944404	852	29-Jun-12	JAC	20-30	b/c	dk brown				50	50	weathered bedrock	saturated	evergreen forest	mid slope	
1241297	518353	6944420	830	29-Jun-12	JAC	30-40	c	lt brown				60	40	weathered bedrock	moist	evergreen forest	mid slope	
1241298	518369	6944473	821	29-Jun-12	JAC	20-30	b/c	lt brown				60	40	weathered bedrock	partially frozen	deciduous forest	mid slope	
1241299	518397	6944511	813	29-Jun-12	JAC	50-60	c	lt brown				60	40	weathered bedrock	saturated	deciduous forest	mid slope	
1241300	518405	6944565	807	29-Jun-12	JAC	30-40	b/c	lt brown				40	60	weathered bedrock	partially frozen	deciduous forest	mid slope	
1241301	518418	6944610	804	29-Jun-12	JAC	20-30	b/c	lt brown				60	40	weathered bedrock	saturated	deciduous forest	mid slope	
1241302	518420	6944659	801	29-Jun-12	JAC	20-30	b/c	lt brown		20		40	40	weathered bedrock	frozen	evergreen forest	mid slope	
1241303	518443	6944715	793	29-Jun-12	JAC	20-30	c	lt brown				80	20	weathered bedrock	saturated	evergreen forest	mid slope	
1241304	518460	6944764	786	29-Jun-12	JAC	30-40	c	lt brown				50	50	weathered bedrock	saturated	evergreen forest	mid slope	
1241305	518470	6944814	783	29-Jun-12	JAC	40-50	c	lt brown				60	40	weathered bedrock	moist	evergreen forest	mid slope	
1241306	518477	6944861	781	29-Jun-12	JAC	30-40	c	lt brown				50	50	weathered bedrock	saturated	evergreen forest	mid slope	
1241307	518475	6944927	779	29-Jun-12	JAC	20-30	c	lt brown				50	50	weathered bedrock	saturated	evergreen forest	mid slope	
1241308	518485	6944977	776	29-Jun-12	JAC	20-30	c	lt brown				50	50	weathered bedrock	saturated	evergreen forest	mid slope	
1241309	518492	6945041	772	29-Jun-12	JAC	30-40	c	dk brown				50	50	weathered bedrock	moist	evergreen forest	mid slope	
1241310	518493	6945102	769	29-Jun-12	JAC	20-30	b/c	lt brown				50	50	weathered bedrock	saturated	evergreen forest	mid slope	
1241311	518511	6945152	766	29-Jun-12	JAC	20-30	b/c	lt brown				60	40	weathered bedrock	moist	evergreen forest	mid slope	
1241312	518530	6945204	762	29-Jun-12	JAC	20-30	b/c	dk brown				50	50	weathered bedrock	partially frozen	evergreen forest	mid slope	

Sample ID	Easting	Northing	Elevation (m)	Date Taken	Property	Sample Depth (cm)	Horizon	Colour	Composition						Parent Material	Moisture Content	Vegetation Cover	Topo Position
									Organics	Ang-Rock	Gravel	Sand	Silt	Clay				
1241313	518544	6945251	757	29-Jun-12	JAC	20-30	b/c	lt brown		20		40	40		weathered bedrock	partially frozen	evergreen forest	mid slope
1241314	518548	6945301	753	29-Jun-12	JAC	20-30	b/c	lt brown		20		40	40		weathered bedrock	partially frozen	evergreen forest	mid slope
1241315	518566	6945363	746	29-Jun-12	JAC	20-30	b/c	lt brown	10			90			weathered bedrock	frozen	evergreen forest	mid slope
1241316	518630	6945431	730	29-Jun-12	JAC	20-30	b/c	lt brown		10		60	30		weathered bedrock	partially frozen	evergreen forest	mid slope
1241317	518681	6945550	712	29-Jun-12	JAC	20-30	b/c	lt brown	10	10		80			weathered bedrock	partially frozen	evergreen forest	mid slope
1241318	518728	6945618	699	29-Jun-12	JAC	20-30	b/c	lt brown				40	60		weathered bedrock	moist	evergreen forest	mid slope
1241319	518764	6945668	691	29-Jun-12	JAC	20-30	b/c	lt brown				40	60		weathered bedrock	saturated	evergreen forest	mid slope
1241320	518798	6945713	677	29-Jun-12	JAC	20-30	b/c	dk brown	10			60	30		weathered bedrock	dry	evergreen forest	mid slope
1241321	518820	6945771	663	29-Jun-12	JAC	40-50	c	lt brown		10		30	60		weathered bedrock	moist	evergreen forest	mid slope
1241322	518844	6945837	650	29-Jun-12	JAC	30-40	c	dk brown				40	60		weathered bedrock	moist	evergreen forest	mid slope
1238423	516585	6945726	981	29-Jun-12	JAC	40-50	b/c	dk brown	30	20		20	30		weathered bedrock	frozen	buck brush	ridge top
1238424	516638	6945883	964	29-Jun-12	JAC	50-60	b/c	dk brown	20	20		30	30		weathered bedrock	frozen	buck brush	ridge top
1238425	516703	6945937	948	29-Jun-12	JAC	50-60	c	lt brown	10	20		30	40		weathered bedrock	frozen	buck brush	ridge top
1238426	516721	6946010	938	29-Jun-12	JAC	50-60	c	lt brown	10	20		40	30		weathered bedrock	frozen	buck brush	ridge top
1238427	516781	6946074	923	29-Jun-12	JAC	40-50	b/c	dk brown	20	10		40	30		weathered bedrock	frozen	buck brush	mid slope
1238428	516825	6946151	914	29-Jun-12	JAC	40-50	b/c	dk brown	30	20		20	30		weathered bedrock	frozen	deciduous forest	mid slope
1238429	516898	6946165	900	29-Jun-12	JAC	50-60	b/c	lt brown	10	10		50	30		weathered bedrock	partially frozen	deciduous forest	mid slope
1238430	517068	6946175	862	29-Jun-12	JAC	50-60	b/c	dk brown	30	10		30	30		weathered bedrock	moist	buck brush	mid slope
1238431	517108	6946287	864	29-Jun-12	JAC	50-60	c	lt brown		20		40	40		weathered bedrock	moist	deciduous forest	mid slope
1238432	517188	6946297	852	29-Jun-12	JAC	30-40	b/c	lt brown	10			20	50	20	weathered bedrock	moist	deciduous forest	mid slope
1238433	517266	6946313	840	29-Jun-12	JAC	40-50	c	lt brown	10	20		10	40	20	weathered bedrock	moist	deciduous forest	mid slope
1238434	517342	6946318	829	29-Jun-12	JAC	40-50	c	lt brown	10	20		50	20		weathered bedrock	moist	deciduous forest	mid slope
1238439	517419	6946329	817	29-Jun-12	JAC	40-50	c	lt brown	10	20		50	20		weathered bedrock	moist	deciduous forest	mid slope
1238440	517489	6946335	804	29-Jun-12	JAC	40-50	c	lt brown	10	30		40	20		weathered bedrock	moist	deciduous forest	mid slope
1238441	517570	6946338	794	29-Jun-12	JAC	40-50	c	lt brown		20		60	20		weathered bedrock	dry	deciduous forest	mid slope
1238442	517647	6946342	783	29-Jun-12	JAC	50-60	c	lt brown		10		60	30		weathered bedrock	moist	deciduous forest	mid slope
1238443	517711	6946383	775	29-Jun-12	JAC	50-60	c	lt brown	10	20		20	50		weathered bedrock	moist	deciduous forest	mid slope
1238444	517786	6946363	764	29-Jun-12	JAC	40-50	b/c	lt brown	30	10		30	30		weathered bedrock	partially frozen	deciduous forest	mid slope
1238445	517850	6946317	751	29-Jun-12	JAC	40-50	c	lt brown		20		40	40		weathered bedrock	moist	deciduous forest	mid slope
1238446	517910	6946366	743	29-Jun-12	JAC	40-50	b/c	lt brown	10	10		50	30		weathered bedrock	moist	deciduous forest	mid slope
1238447	517992	6946382	728	29-Jun-12	JAC	50-60	c	lt brown		20		40	40		weathered bedrock	moist	deciduous forest	mid slope
1238448	518107	6946412	704	29-Jun-12	JAC	30-40	b	lt brown	20	10		40	30		weathered bedrock	frozen	deciduous forest	mid slope

SILT SAMPLES

Sample ID	Easting	Northing	Elevation (m)	Date Taken	Property	Sample Environment	Medium	Medium depth (m)	Medium width (m)	Bank type	Water colour
1241906	518210	6945976	669	29-Jun-12	JAC	low energy	creek	0.3	0.5	organics	clear
1241907	518324	6945687	660	29-Jun-12	JAC	low energy	creek	0.2	1.3	organics	clear
1241908	518500	6945856	646	29-Jun-12	JAC	low energy	creek	0.4	2	organics	clear
1241909	519138	6945716	642	29-Jun-12	JAC	low energy	creek	0.2	0.5	organics	clear

ROCK SAMPLES

Sample ID	Easting	Northing	Elevation (m)	Date Taken	Property	Rock Source	Description
1240485	517026	6946151	867	29-Jun-12	JAC	float	biotite schist with quartz vein, oxidized, no min

Appendix II: Soil Sample Assay Certificates



1020 Cordova St. East Vancouver BC V6A 4A3 Canada

Acme Analytical Laboratories (Vancouver) Ltd.

www.acmelab.com

Client: Goldspike Exploration Inc.
56th Floor - 100 King Street West
Toronto ON M5X 1C9 Canada

Submitted By: Bruce Durham
Receiving Lab: Canada-Dawson City
Received: July 05, 2012
Report Date: July 18, 2012
Page: 1 of 4

CERTIFICATE OF ANALYSIS

DAW12000100.1

CLIENT JOB INFORMATION

Project: JAC
Shipment ID: Jackpot
P.O. Number
Number of Samples: 82

SAMPLE DISPOSAL

STOR-PLP Store After 90 days Invoice for Storage
STOR-RJT-SOIL Store Soil Reject - RJSV Charges Apply

Acme does not accept responsibility for samples left at the laboratory after 90 days without prior written instructions for sample storage or return.

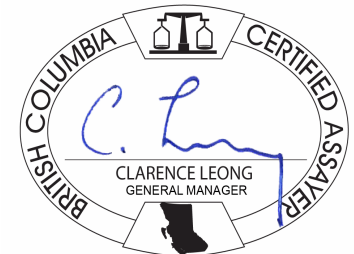
Invoice To: Goldspike Exploration Inc.
56th Floor - 100 King Street West
Toronto ON M5X 1C9
Canada

CC: Daniel Ferraro

SAMPLE PREPARATION AND ANALYTICAL PROCEDURES

Table with 6 columns: Method Code, Number of Samples, Code Description, Test Wgt (g), Report Status, Lab. Rows include methods like Dry at 60C, SS80, RJSV, and 1DX2.

ADDITIONAL COMMENTS



This report supersedes all previous preliminary and final reports with this file number dated prior to the date on this certificate. Signature indicates final approval; preliminary reports are unsigned and should be used for reference only. All results are considered the confidential property of the client. Acme assumes the liabilities for actual cost of analysis only. Results apply to samples as submitted. ** asterisk indicates that an analytical result could not be provided due to unusually high levels of interference from other elements.



Acme Analytical Laboratories (Vancouver) Ltd.
 1020 Cordova St. East Vancouver BC V6A 4A3 Canada
 Phone (604) 253-3158 Fax (604) 253-1716

www.acmelab.com

Client: **Goldspike Exploration Inc.**
 56th Floor - 100 King Street West
 Toronto ON M5X 1C9 Canada

Project: JAC
 Report Date: July 18, 2012

Page: 2 of 4

Part: 1 of 2

CERTIFICATE OF ANALYSIS

DAW12000100.1

Method Analyte	Unit	MDL	1DX15	1DX15	1DX15	1DX15	1DX15	1DX15	1DX15	1DX15	1DX15	1DX15	1DX15	1DX15	1DX15	1DX15	1DX15	1DX15	1DX15	1DX15	1DX15	1DX15
			Mo	Cu	Pb	Zn	Ag	Ni	Co	Mn	Fe	As	Au	Th	Sr	Cd	Sb	Bi	V	Ca	P	La
			ppm	ppm	ppm	ppm	ppm	ppm	ppm	%	ppm	ppb	ppm	ppm	ppm	ppm	ppm	%	%	%	ppm	
			0.1	0.1	0.1	1	0.1	0.1	0.1	1	0.01	0.5	0.5	0.1	1	0.1	0.1	2	0.01	0.001	1	
1241484	Soil		0.6	32.4	8.6	52	<0.1	28.2	12.2	344	3.08	7.6	3.4	2.6	30	0.2	0.5	0.2	85	0.41	0.053	12
1241485	Soil		0.8	27.6	16.5	58	<0.1	24.4	12.9	455	3.01	8.2	1.9	4.3	31	<0.1	0.4	0.2	78	0.46	0.055	12
1241486	Soil		0.7	25.0	10.1	50	<0.1	22.3	10.9	334	2.63	5.8	4.4	2.0	27	0.1	0.3	0.1	77	0.43	0.047	8
1241487	Soil		0.9	21.4	8.8	43	0.1	16.8	8.7	301	2.21	5.7	3.6	1.2	31	<0.1	0.3	0.1	60	0.38	0.058	8
1241488	Soil		1.1	27.1	11.5	48	0.2	17.3	11.2	473	2.59	8.5	5.7	2.7	27	<0.1	0.4	0.2	69	0.37	0.040	23
1241489	Soil		0.7	20.7	9.2	34	0.2	15.4	5.4	139	1.80	5.4	7.8	1.7	32	<0.1	0.3	0.1	43	0.42	0.043	17
1241490	Soil		0.9	24.0	14.6	62	<0.1	25.5	12.7	425	3.17	9.1	3.5	4.9	30	0.2	0.4	0.1	86	0.45	0.053	12
1241491	Soil		0.6	20.7	12.9	47	<0.1	20.3	11.2	390	2.66	6.4	3.6	3.4	30	<0.1	0.4	0.1	72	0.45	0.060	9
1241492	Soil		0.7	21.7	11.3	43	0.1	16.5	8.3	337	2.24	7.5	4.9	2.3	26	0.1	0.3	0.1	60	0.37	0.039	14
1241493	Soil		1.1	30.1	15.1	43	0.2	21.0	14.7	523	2.37	8.1	3.6	2.5	51	0.2	0.4	0.2	58	0.69	0.074	31
1241494	Soil		0.8	21.7	14.2	54	<0.1	20.7	10.6	403	2.74	8.7	6.8	3.1	38	0.2	0.4	0.1	76	0.57	0.040	11
1241495	Soil		0.8	25.5	12.8	50	0.1	21.1	10.2	311	2.65	7.3	1.4	3.2	34	0.1	0.4	0.1	70	0.44	0.053	17
1241496	Soil		0.8	18.8	11.7	56	<0.1	20.4	12.4	460	2.82	8.4	3.1	3.0	30	0.1	0.3	0.1	81	0.43	0.047	9
1241497	Soil		0.8	27.0	15.5	52	<0.1	21.7	11.5	385	2.92	10.3	2.0	3.6	30	0.1	0.3	0.2	76	0.39	0.046	12
1241498	Soil		0.8	27.0	10.8	46	0.1	20.1	10.9	346	2.56	7.7	3.8	1.9	33	0.1	0.3	0.2	64	0.41	0.057	12
1241499	Soil		0.7	23.0	11.9	41	0.1	17.8	8.0	208	2.33	7.6	4.0	2.4	30	0.1	0.3	0.2	62	0.37	0.050	11
1241500	Soil		0.3	16.8	10.3	45	<0.1	15.0	7.5	225	2.20	8.1	1.4	4.7	31	0.1	0.2	<0.1	62	0.43	0.057	13
1241951	Soil		0.7	19.8	10.4	47	<0.1	19.6	9.2	296	2.74	8.5	5.0	2.5	28	<0.1	0.3	0.1	80	0.36	0.046	10
1241952	Soil		0.8	23.5	11.7	32	<0.1	13.8	5.6	126	1.80	4.6	4.6	2.0	29	0.1	0.3	0.1	43	0.31	0.041	14
1241953	Soil		0.8	19.5	9.4	45	<0.1	15.6	13.7	526	2.33	6.0	0.8	2.1	32	0.1	0.3	0.1	70	0.41	0.056	8
1241954	Soil		0.7	21.4	6.0	47	<0.1	18.1	13.1	567	2.64	5.8	9.1	1.5	38	0.1	0.3	<0.1	78	0.53	0.062	8
1241955	Soil		0.4	25.4	5.3	46	<0.1	19.2	9.7	418	2.53	4.9	3.9	1.7	47	0.1	0.4	<0.1	77	0.82	0.048	7
1241956	Soil		0.4	21.7	4.9	49	<0.1	20.3	8.6	281	2.50	5.6	4.6	1.9	45	<0.1	0.4	<0.1	73	0.70	0.067	9
1241957	Soil		0.4	33.3	4.9	45	<0.1	23.8	10.8	385	2.77	6.0	8.5	2.0	42	<0.1	0.4	<0.1	79	0.70	0.067	8
1241287	Soil		0.8	30.4	6.4	47	<0.1	27.2	12.2	399	3.13	8.1	4.6	2.2	32	<0.1	0.4	<0.1	87	0.40	0.054	9
1241288	Soil		0.8	23.0	7.8	47	<0.1	23.8	11.0	316	3.13	8.4	5.1	2.5	27	<0.1	0.4	0.1	88	0.34	0.042	9
1241289	Soil		0.8	27.4	9.9	50	<0.1	25.7	11.9	353	3.21	7.5	3.0	3.7	30	0.1	0.4	0.1	84	0.40	0.043	13
1241290	Soil		0.5	28.0	12.0	49	<0.1	26.3	11.2	386	2.94	11.2	5.3	5.5	32	<0.1	0.4	0.2	75	0.40	0.039	16
1241291	Soil		0.7	21.5	9.2	43	0.1	17.9	7.6	235	2.28	7.2	0.8	1.9	25	0.1	0.4	0.1	65	0.31	0.042	10
1241292	Soil		0.8	27.8	21.2	62	0.1	23.6	12.1	475	3.22	13.6	4.3	4.5	28	0.2	0.4	0.2	84	0.38	0.053	15

This report supersedes all previous preliminary and final reports with this file number dated prior to the date on this certificate. Signature indicates final approval; preliminary reports are unsigned and should be used for reference only.



Acme Analytical Laboratories (Vancouver) Ltd.
 1020 Cordova St. East Vancouver BC V6A 4A3 Canada
 Phone (604) 253-3158 Fax (604) 253-1716

www.acmelab.com

Client: **Goldspike Exploration Inc.**
 56th Floor - 100 King Street West
 Toronto ON M5X 1C9 Canada

Project: JAC
 Report Date: July 18, 2012

Page: 2 of 4

Part: 2 of 2

CERTIFICATE OF ANALYSIS

DAW12000100.1

Method	Analyte	Unit	MDL	1DX15	1DX15	1DX15	1DX15	1DX15	1DX15	1DX15	1DX15	1DX15	1DX15	1DX15	1DX15	1DX15	1DX15	1DX15		
				Cr	Mg	Ba	Ti	B	Al	Na	K	W	Hg	Sc	Tl	S	Ga	Se	Sn	Te
				ppm	%	ppm	%	ppm	%	ppm	%	ppm	ppm	ppm	ppm	%	ppm	ppm	ppm	
				1	0.01	1	0.001	1	0.01	0.001	0.01	0.1	0.01	0.1	0.05	1	0.5	1	0.2	
1241484	Soil			35	0.71	192	0.118	1	2.27	0.020	0.05	0.1	0.03	5.1	0.1	<0.05	6	<0.5	<1	<0.2
1241485	Soil			33	0.64	166	0.092	<1	2.08	0.016	0.06	<0.1	0.02	5.0	<0.1	<0.05	6	<0.5	2	<0.2
1241486	Soil			32	0.62	137	0.117	2	1.81	0.018	0.05	0.1	0.03	4.1	<0.1	<0.05	6	0.9	1	<0.2
1241487	Soil			26	0.45	142	0.070	<1	1.58	0.019	0.05	0.1	0.02	3.4	<0.1	<0.05	5	<0.5	1	<0.2
1241488	Soil			27	0.42	152	0.074	<1	1.65	0.020	0.05	0.1	0.03	4.6	<0.1	<0.05	6	0.7	1	<0.2
1241489	Soil			22	0.39	133	0.067	<1	1.42	0.021	0.04	<0.1	0.04	3.6	<0.1	<0.05	4	0.8	2	<0.2
1241490	Soil			35	0.71	169	0.111	1	2.21	0.018	0.05	<0.1	0.02	4.8	<0.1	<0.05	6	0.6	2	<0.2
1241491	Soil			29	0.59	123	0.105	2	1.69	0.018	0.06	0.2	0.02	4.0	<0.1	<0.05	5	0.6	3	<0.2
1241492	Soil			25	0.44	117	0.081	<1	1.50	0.019	0.05	<0.1	0.03	3.4	<0.1	<0.05	5	<0.5	3	<0.2
1241493	Soil			31	0.46	183	0.059	2	2.05	0.020	0.06	0.1	0.07	5.4	0.1	<0.05	6	0.7	1	<0.2
1241494	Soil			33	0.59	142	0.110	<1	1.87	0.018	0.06	0.1	0.01	4.0	<0.1	<0.05	6	0.7	3	<0.2
1241495	Soil			33	0.56	154	0.098	<1	1.95	0.018	0.06	0.1	0.03	4.9	<0.1	<0.05	6	0.8	2	<0.2
1241496	Soil			31	0.63	132	0.120	2	1.79	0.018	0.06	<0.1	0.03	4.0	<0.1	<0.05	6	<0.5	2	<0.2
1241497	Soil			33	0.60	158	0.098	<1	2.08	0.019	0.07	<0.1	0.02	4.2	<0.1	<0.05	6	<0.5	4	<0.2
1241498	Soil			30	0.49	177	0.082	2	2.05	0.021	0.05	<0.1	0.04	4.5	<0.1	<0.05	6	<0.5	<1	<0.2
1241499	Soil			28	0.50	133	0.091	<1	1.78	0.018	0.05	0.1	0.03	4.2	<0.1	<0.05	6	0.8	3	<0.2
1241500	Soil			27	0.54	97	0.111	1	1.31	0.021	0.05	0.1	0.01	3.4	<0.1	<0.05	4	0.6	<1	<0.2
1241951	Soil			28	0.59	125	0.117	<1	1.87	0.018	0.06	<0.1	0.01	3.9	<0.1	<0.05	6	<0.5	2	<0.2
1241952	Soil			22	0.36	121	0.065	2	1.35	0.020	0.06	<0.1	0.03	3.3	<0.1	<0.05	4	0.8	2	<0.2
1241953	Soil			25	0.51	110	0.099	<1	1.31	0.025	0.06	<0.1	0.01	2.9	<0.1	<0.05	5	<0.5	2	<0.2
1241954	Soil			28	0.60	124	0.102	2	1.51	0.032	0.04	0.1	0.03	4.0	<0.1	<0.05	5	<0.5	<1	<0.2
1241955	Soil			28	0.63	130	0.124	3	1.46	0.042	0.05	<0.1	0.01	4.4	<0.1	<0.05	5	<0.5	<1	<0.2
1241956	Soil			29	0.67	108	0.115	1	1.44	0.046	0.05	0.1	0.03	4.1	<0.1	<0.05	4	0.5	<1	<0.2
1241957	Soil			30	0.71	109	0.107	2	1.46	0.044	0.05	0.1	0.01	4.6	<0.1	<0.05	5	<0.5	<1	<0.2
1241287	Soil			35	0.68	156	0.122	<1	2.22	0.023	0.04	<0.1	0.02	5.0	<0.1	<0.05	7	0.8	<1	<0.2
1241288	Soil			35	0.65	146	0.120	2	2.37	0.020	0.04	<0.1	0.03	5.0	<0.1	<0.05	7	<0.5	<1	<0.2
1241289	Soil			34	0.67	166	0.110	2	2.22	0.018	0.06	<0.1	0.02	5.0	<0.1	<0.05	7	<0.5	<1	<0.2
1241290	Soil			33	0.69	154	0.107	2	1.84	0.018	0.09	<0.1	<0.01	5.3	<0.1	<0.05	5	<0.5	<1	<0.2
1241291	Soil			27	0.47	132	0.084	1	1.62	0.018	0.07	<0.1	0.03	3.7	<0.1	<0.05	6	0.7	<1	<0.2
1241292	Soil			33	0.66	181	0.101	1	2.30	0.016	0.09	<0.1	0.02	5.4	<0.1	<0.05	7	<0.5	1	<0.2

This report supersedes all previous preliminary and final reports with this file number dated prior to the date on this certificate. Signature indicates final approval; preliminary reports are unsigned and should be used for reference only.



Acme Analytical Laboratories (Vancouver) Ltd.
 1020 Cordova St. East Vancouver BC V6A 4A3 Canada
 Phone (604) 253-3158 Fax (604) 253-1716

www.acmelab.com

Client: **Goldspike Exploration Inc.**
 56th Floor - 100 King Street West
 Toronto ON M5X 1C9 Canada

Project: JAC
 Report Date: July 18, 2012

Page: 3 of 4

Part: 1 of 2

CERTIFICATE OF ANALYSIS

DAW12000100.1

Method	Analyte	1DX15	1DX15	1DX15	1DX15	1DX15	1DX15	1DX15	1DX15	1DX15	1DX15	1DX15	1DX15	1DX15	1DX15	1DX15	1DX15	1DX15	1DX15	1DX15	
		Mo	Cu	Pb	Zn	Ag	Ni	Co	Mn	Fe	As	Au	Th	Sr	Cd	Sb	Bi	V	Ca	P	La
Unit		ppm	ppm	ppm	ppm	ppm	ppm	ppm	%	ppm	ppb	ppm	ppm	ppm	ppm	ppm	ppm	%	%	ppm	
MDL		0.1	0.1	0.1	1	0.1	0.1	0.1	1	0.01	0.5	0.5	0.1	1	0.1	0.1	2	0.01	0.001	1	
1241293	Soil	0.9	15.8	15.0	45	0.1	14.2	8.4	369	2.29	8.4	3.3	2.4	19	<0.1	0.4	0.1	75	0.24	0.035	12
1241294	Soil	0.7	23.4	12.9	46	0.1	20.6	8.5	327	2.70	8.2	2.8	3.7	27	0.1	0.4	<0.1	74	0.36	0.041	21
1241295	Soil	0.9	22.2	13.6	47	<0.1	26.7	12.4	380	3.19	7.6	4.8	4.8	26	<0.1	0.5	0.1	87	0.35	0.043	10
1241296	Soil	0.4	8.9	6.9	14	<0.1	3.9	1.9	67	0.75	2.0	1.2	0.2	13	<0.1	0.1	0.3	20	0.13	0.023	5
1241297	Soil	0.7	10.4	10.4	31	<0.1	11.4	5.5	197	1.93	14.9	2.7	2.6	15	<0.1	0.4	0.3	55	0.18	0.022	8
1241298	Soil	0.9	23.7	15.8	40	0.1	15.2	8.7	316	2.29	7.5	3.1	2.2	24	<0.1	0.4	0.2	58	0.25	0.043	16
1241299	Soil	0.6	20.1	10.8	54	<0.1	20.3	10.2	354	3.11	7.3	6.9	4.7	34	0.2	0.3	0.2	78	0.49	0.059	15
1241300	Soil	0.9	19.2	11.2	35	<0.1	13.4	9.7	552	2.32	6.2	3.3	3.5	28	<0.1	0.3	0.2	56	0.30	0.026	20
1241301	Soil	0.6	20.5	16.0	47	<0.1	18.4	9.7	417	2.53	5.9	1.3	4.8	33	0.2	0.4	0.2	68	0.45	0.057	15
1241302	Soil	0.7	24.5	12.6	38	0.1	15.6	6.9	227	2.18	9.0	1.2	2.9	23	0.1	0.3	0.2	56	0.28	0.030	11
1241303	Soil	0.6	25.9	17.8	50	<0.1	20.6	10.9	398	2.87	10.1	4.7	4.9	37	0.1	0.3	0.3	69	0.49	0.056	20
1241304	Soil	0.8	23.4	14.4	46	<0.1	20.5	9.8	360	2.73	7.9	2.2	3.1	38	0.1	0.4	0.2	67	0.44	0.042	15
1241305	Soil	0.4	18.9	16.1	39	<0.1	15.6	9.2	317	2.16	4.6	4.0	5.0	34	0.1	0.3	0.1	55	0.45	0.050	19
1241306	Soil	0.5	18.7	12.8	46	<0.1	19.7	10.7	318	2.82	7.4	1.6	4.2	36	<0.1	0.4	0.1	74	0.49	0.038	11
1241307	Soil	1.0	26.0	14.6	53	<0.1	18.7	13.2	487	2.89	7.4	<0.5	4.0	36	0.2	0.3	0.2	65	0.44	0.048	15
1241308	Soil	0.6	19.5	13.4	50	<0.1	18.2	9.7	323	2.37	4.3	2.2	3.6	34	<0.1	0.3	0.1	61	0.46	0.048	12
1241309	Soil	0.7	22.8	19.0	44	<0.1	17.6	14.4	439	2.94	8.4	3.4	7.6	33	0.1	0.4	0.2	68	0.42	0.041	23
1241310	Soil	0.8	21.2	13.2	45	<0.1	18.2	12.9	462	2.83	8.1	<0.5	3.9	31	<0.1	0.4	0.1	79	0.41	0.045	12
1241311	Soil	0.6	25.8	12.2	44	<0.1	18.1	11.1	306	2.57	5.7	4.5	3.2	31	<0.1	0.3	0.1	67	0.38	0.038	13
1241312	Soil	0.7	21.6	11.8	47	<0.1	17.6	11.6	352	2.76	10.7	4.4	3.4	34	0.1	0.4	0.2	73	0.46	0.041	17
1241313	Soil	0.7	23.0	12.8	48	<0.1	19.8	10.3	312	2.74	6.6	1.0	2.8	35	0.1	0.4	0.1	74	0.46	0.045	16
1241314	Soil	0.6	22.5	10.6	45	<0.1	20.5	9.9	313	2.83	7.3	8.6	3.4	36	<0.1	0.3	0.1	74	0.46	0.043	12
1241315	Soil	0.4	26.5	11.1	49	<0.1	22.0	11.9	394	2.77	7.7	2.4	4.8	42	0.1	0.4	0.1	75	0.61	0.056	22
1241316	Soil	0.7	22.9	11.3	54	<0.1	29.4	17.7	551	3.24	6.7	12.9	3.6	36	<0.1	0.4	0.1	89	0.51	0.067	12
1241317	Soil	0.8	43.8	5.3	54	<0.1	29.8	19.1	554	3.53	5.7	<0.5	1.9	36	0.2	0.3	<0.1	94	0.60	0.061	7
1241318	Soil	0.6	32.6	5.1	54	<0.1	25.7	15.2	487	3.69	5.5	0.7	2.0	43	<0.1	0.3	<0.1	99	0.71	0.087	11
1241319	Soil	0.7	33.2	5.9	49	<0.1	26.6	15.3	497	3.42	5.7	<0.5	4.0	41	0.1	0.3	<0.1	94	0.69	0.091	17
1241320	Soil	1.1	23.5	9.6	49	<0.1	16.2	10.2	653	2.57	5.9	1.0	3.2	17	0.1	0.3	0.1	70	0.21	0.026	12
1241321	Soil	0.6	31.4	16.0	60	<0.1	26.4	12.7	514	2.93	8.4	5.6	7.0	40	0.2	0.5	0.1	73	0.55	0.062	37
1241322	Soil	0.6	21.8	10.5	48	<0.1	17.6	8.8	306	2.53	7.4	3.9	4.6	34	<0.1	0.4	0.1	64	0.46	0.059	20

This report supersedes all previous preliminary and final reports with this file number dated prior to the date on this certificate. Signature indicates final approval; preliminary reports are unsigned and should be used for reference only.



Acme Analytical Laboratories (Vancouver) Ltd.
 1020 Cordova St. East Vancouver BC V6A 4A3 Canada
 Phone (604) 253-3158 Fax (604) 253-1716

www.acmelab.com

Client: **Goldspike Exploration Inc.**
 56th Floor - 100 King Street West
 Toronto ON M5X 1C9 Canada

Project: JAC
 Report Date: July 18, 2012

Page: 3 of 4

Part: 2 of 2

CERTIFICATE OF ANALYSIS

DAW12000100.1

Method	Analyte	1DX15	1DX15	1DX15	1DX15	1DX15	1DX15	1DX15	1DX15	1DX15	1DX15	1DX15	1DX15	1DX15	1DX15	1DX15	1DX15	1DX15
		Cr	Mg	Ba	Ti	B	Al	Na	K	W	Hg	Sc	Tl	S	Ga	Se	Sn	Te
Unit		ppm	%	ppm	%	ppm	%	%	%	ppm	ppm	ppm	ppm	%	ppm	ppm	ppm	ppm
MDL		1	0.01	1	0.001	1	0.01	0.001	0.01	0.1	0.01	0.1	0.01	0.05	1	0.5	1	0.2
1241293	Soil	24	0.44	88	0.090	<1	1.34	0.015	0.08	0.1	0.01	3.1	<0.1	<0.05	6	<0.5	1	<0.2
1241294	Soil	32	0.56	172	0.095	1	2.09	0.017	0.07	<0.1	0.01	5.4	0.1	<0.05	6	<0.5	<1	<0.2
1241295	Soil	48	0.75	172	0.113	1	2.36	0.017	0.08	<0.1	<0.01	4.5	<0.1	<0.05	6	<0.5	<1	<0.2
1241296	Soil	9	0.12	46	0.037	<1	0.41	0.019	0.05	<0.1	0.01	1.1	<0.1	<0.05	3	<0.5	2	<0.2
1241297	Soil	19	0.37	65	0.092	<1	1.13	0.017	0.07	<0.1	0.02	2.6	<0.1	<0.05	5	<0.5	1	<0.2
1241298	Soil	23	0.40	120	0.079	<1	1.60	0.017	0.09	<0.1	0.02	3.5	<0.1	<0.05	6	<0.5	2	<0.2
1241299	Soil	32	0.67	159	0.115	2	1.96	0.021	0.08	<0.1	0.02	4.6	<0.1	<0.05	6	<0.5	<1	<0.2
1241300	Soil	20	0.34	132	0.070	2	1.43	0.021	0.06	<0.1	0.02	3.3	<0.1	<0.05	5	0.5	1	<0.2
1241301	Soil	29	0.55	152	0.093	2	1.64	0.020	0.09	<0.1	0.03	3.8	<0.1	<0.05	5	<0.5	2	<0.2
1241302	Soil	23	0.38	144	0.077	2	1.71	0.021	0.06	0.1	0.03	3.2	<0.1	<0.05	6	<0.5	<1	<0.2
1241303	Soil	31	0.56	185	0.111	2	2.01	0.021	0.10	<0.1	0.03	5.1	<0.1	<0.05	6	<0.5	<1	<0.2
1241304	Soil	30	0.50	163	0.094	2	2.17	0.022	0.07	0.1	0.03	4.6	<0.1	<0.05	7	<0.5	1	<0.2
1241305	Soil	26	0.48	127	0.110	<1	1.43	0.025	0.09	<0.1	0.01	4.2	<0.1	<0.05	4	<0.5	1	<0.2
1241306	Soil	32	0.61	168	0.115	1	2.07	0.020	0.07	<0.1	0.02	4.7	<0.1	<0.05	6	0.6	1	<0.2
1241307	Soil	32	0.53	151	0.100	2	2.02	0.020	0.07	0.2	0.04	4.7	<0.1	<0.05	7	<0.5	1	<0.2
1241308	Soil	29	0.56	145	0.113	2	1.85	0.026	0.05	0.1	0.02	4.3	<0.1	<0.05	6	<0.5	1	<0.2
1241309	Soil	30	0.48	213	0.079	1	2.14	0.021	0.10	0.2	<0.01	5.5	<0.1	<0.05	7	<0.5	2	<0.2
1241310	Soil	31	0.51	159	0.118	2	1.97	0.024	0.07	<0.1	0.02	4.6	<0.1	<0.05	6	<0.5	2	<0.2
1241311	Soil	29	0.50	167	0.111	2	2.09	0.024	0.05	0.1	0.02	4.7	<0.1	<0.05	6	<0.5	3	<0.2
1241312	Soil	30	0.55	156	0.115	2	2.15	0.029	0.06	<0.1	0.03	4.8	<0.1	<0.05	7	<0.5	<1	<0.2
1241313	Soil	32	0.54	143	0.125	2	1.98	0.023	0.06	<0.1	0.03	4.6	<0.1	<0.05	6	<0.5	3	<0.2
1241314	Soil	32	0.55	154	0.128	2	2.11	0.027	0.06	<0.1	0.03	4.9	<0.1	<0.05	6	<0.5	1	<0.2
1241315	Soil	32	0.64	174	0.129	<1	2.01	0.029	0.07	<0.1	0.03	6.5	<0.1	<0.05	6	0.6	<1	<0.2
1241316	Soil	45	0.88	148	0.144	<1	2.35	0.023	0.10	<0.1	0.02	4.8	<0.1	<0.05	8	<0.5	2	<0.2
1241317	Soil	48	0.85	142	0.154	<1	2.26	0.027	0.07	<0.1	0.02	6.1	<0.1	<0.05	7	<0.5	1	<0.2
1241318	Soil	38	1.12	167	0.190	<1	2.68	0.034	0.32	0.2	0.01	5.1	0.2	<0.05	7	<0.5	1	<0.2
1241319	Soil	43	1.11	210	0.192	<1	2.43	0.028	0.35	0.2	0.02	6.1	0.3	<0.05	7	<0.5	<1	<0.2
1241320	Soil	28	0.41	85	0.112	1	1.73	0.025	0.05	<0.1	0.03	3.3	0.1	<0.05	6	<0.5	<1	<0.2
1241321	Soil	43	0.70	164	0.141	1	2.17	0.035	0.12	<0.1	0.07	7.1	0.2	<0.05	7	<0.5	2	<0.2
1241322	Soil	28	0.56	122	0.113	1	1.64	0.031	0.09	0.1	0.06	5.0	0.1	<0.05	6	<0.5	<1	<0.2

This report supersedes all previous preliminary and final reports with this file number dated prior to the date on this certificate. Signature indicates final approval; preliminary reports are unsigned and should be used for reference only.



Acme Analytical Laboratories (Vancouver) Ltd.
 1020 Cordova St. East Vancouver BC V6A 4A3 Canada
 Phone (604) 253-3158 Fax (604) 253-1716

www.acmelab.com

Client: **Goldspike Exploration Inc.**
 56th Floor - 100 King Street West
 Toronto ON M5X 1C9 Canada

Project: JAC
 Report Date: July 18, 2012

Page: 4 of 4

Part: 1 of 2

CERTIFICATE OF ANALYSIS

DAW12000100.1

Method	Analyte	1DX15	1DX15	1DX15	1DX15	1DX15	1DX15	1DX15	1DX15	1DX15	1DX15	1DX15	1DX15	1DX15	1DX15	1DX15	1DX15	1DX15	1DX15	1DX15	
		Mo	Cu	Pb	Zn	Ag	Ni	Co	Mn	Fe	As	Au	Th	Sr	Cd	Sb	Bi	V	Ca	P	La
Unit		ppm	ppm	ppm	ppm	ppm	ppm	ppm	%	ppm	ppb	ppm	ppm	ppm	ppm	ppm	ppm	%	%	ppm	
MDL		0.1	0.1	0.1	1	0.1	0.1	0.1	1	0.01	0.5	0.5	0.1	1	0.1	0.1	2	0.01	0.001	1	
1238423	Soil	0.7	22.1	8.8	49	<0.1	20.7	9.3	233	2.64	6.7	<0.5	2.3	35	<0.1	0.4	0.1	72	0.45	0.058	9
1238424	Soil	0.9	29.2	14.9	71	<0.1	35.4	17.7	677	3.39	9.3	8.5	4.1	39	<0.1	0.4	0.1	82	0.52	0.071	11
1238425	Soil	0.8	30.0	9.0	57	<0.1	47.1	15.5	510	3.41	7.3	2.6	3.1	32	0.1	0.4	<0.1	88	0.50	0.068	9
1238426	Soil	0.8	50.3	6.8	64	<0.1	100.0	31.0	855	4.80	3.3	2.5	2.8	48	0.1	0.1	<0.1	112	0.69	0.128	9
1238427	Soil	0.9	39.4	7.8	69	<0.1	35.2	25.1	862	4.49	4.8	<0.5	3.5	57	0.2	0.2	<0.1	133	0.87	0.197	15
1238428	Soil	1.0	53.9	4.9	40	0.1	26.5	15.6	507	2.49	5.5	4.6	1.0	35	0.3	0.3	<0.1	62	0.60	0.069	8
1238429	Soil	1.2	76.0	6.3	50	0.1	29.5	13.0	367	3.57	7.2	<0.5	1.7	35	0.1	0.4	0.1	101	0.49	0.033	7
1238430	Soil	0.8	40.4	3.8	55	<0.1	25.8	16.9	610	3.57	5.2	1.7	1.4	48	0.2	0.3	<0.1	90	0.78	0.087	9
1238431	Soil	1.2	52.2	4.9	59	<0.1	37.3	25.7	610	4.60	5.3	0.6	1.8	34	<0.1	0.3	<0.1	98	0.77	0.080	7
1238432	Soil	0.9	34.2	6.3	51	<0.1	30.7	17.4	470	3.35	7.2	0.7	1.7	29	<0.1	0.3	<0.1	89	0.49	0.041	6
1238433	Soil	1.2	39.1	7.0	51	<0.1	29.0	16.3	420	3.40	7.8	3.2	1.5	31	<0.1	0.4	<0.1	97	0.49	0.034	5
1238434	Soil	0.4	46.4	4.2	49	<0.1	28.8	19.2	456	3.57	5.0	2.6	2.0	37	<0.1	0.2	<0.1	88	0.63	0.048	9
1238439	Soil	0.7	55.4	4.9	59	<0.1	36.0	20.6	553	4.05	5.3	2.0	1.9	37	<0.1	0.3	0.1	117	0.77	0.057	10
1238440	Soil	0.6	44.3	4.3	58	<0.1	36.7	21.8	497	4.10	5.8	2.1	1.7	33	<0.1	0.3	<0.1	117	0.81	0.062	8
1238441	Soil	0.6	48.1	6.5	51	<0.1	32.2	15.8	438	3.47	5.8	1.9	1.9	41	<0.1	0.3	<0.1	93	0.89	0.055	10
1238442	Soil	0.9	30.3	6.1	50	<0.1	25.5	14.4	402	3.32	6.8	0.9	1.7	35	<0.1	0.3	<0.1	97	0.63	0.035	9
1238443	Soil	0.6	65.6	2.6	71	<0.1	52.9	39.6	782	5.03	4.1	2.8	1.2	26	<0.1	0.2	<0.1	123	0.84	0.085	6
1238444	Soil	0.7	37.3	4.2	45	0.1	30.5	18.7	689	3.07	4.2	4.5	1.1	27	0.1	0.2	<0.1	83	0.83	0.048	7
1238445	Soil	0.5	48.9	5.6	49	<0.1	32.3	16.8	472	3.39	7.4	6.6	2.2	36	<0.1	0.3	<0.1	102	0.88	0.041	10
1238446	Soil	0.7	63.9	5.3	76	<0.1	30.8	18.9	504	3.78	4.5	3.2	2.1	34	<0.1	0.3	<0.1	117	0.96	0.066	9
1238447	Soil	0.5	42.7	6.5	52	<0.1	47.9	18.4	494	3.78	4.4	2.9	2.3	36	<0.1	0.2	<0.1	116	0.92	0.077	11
1238448	Soil	0.5	31.4	4.7	45	<0.1	23.1	12.1	337	2.92	6.1	3.6	1.8	36	<0.1	0.3	<0.1	96	0.67	0.051	8



Acme Analytical Laboratories (Vancouver) Ltd.
 1020 Cordova St. East Vancouver BC V6A 4A3 Canada
 Phone (604) 253-3158 Fax (604) 253-1716

www.acmelab.com

Client: **Goldspike Exploration Inc.**
 56th Floor - 100 King Street West
 Toronto ON M5X 1C9 Canada

Project: JAC
 Report Date: July 18, 2012

Page: 4 of 4

Part: 2 of 2

CERTIFICATE OF ANALYSIS

DAW12000100.1

Method	Analyte	1DX15	1DX15	1DX15	1DX15	1DX15	1DX15	1DX15	1DX15	1DX15	1DX15	1DX15	1DX15	1DX15	1DX15	1DX15	1DX15	1DX15
		Cr	Mg	Ba	Ti	B	Al	Na	K	W	Hg	Sc	Tl	S	Ga	Se	Sn	Te
Unit		ppm	%	ppm	%	ppm	%	%	ppm	ppm	ppm	ppm	%	ppm	ppm	ppm	ppm	ppm
MDL		1	0.01	1	0.001	1	0.01	0.001	0.01	0.1	0.01	0.1	0.05	1	0.5	1	1	0.2
1238423	Soil	29	0.58	140	0.094	2	1.87	0.023	0.05	0.1	0.04	4.4	<0.1	<0.05	6	<0.5	<1	<0.2
1238424	Soil	42	0.74	168	0.122	2	2.26	0.021	0.08	0.1	0.04	5.4	0.1	<0.05	7	<0.5	1	<0.2
1238425	Soil	56	1.03	153	0.145	<1	2.22	0.019	0.08	0.1	0.01	5.2	0.1	<0.05	7	<0.5	1	<0.2
1238426	Soil	134	2.98	181	0.185	1	3.04	0.012	0.51	0.2	<0.01	4.9	0.4	<0.05	10	<0.5	<1	<0.2
1238427	Soil	56	2.39	191	0.153	3	2.99	0.016	0.46	0.2	0.02	6.6	0.4	<0.05	9	<0.5	<1	<0.2
1238428	Soil	37	0.77	140	0.082	<1	1.45	0.028	0.05	0.1	0.03	4.1	<0.1	<0.05	5	<0.5	<1	<0.2
1238429	Soil	43	0.78	151	0.157	1	2.50	0.020	0.05	<0.1	0.02	5.7	<0.1	<0.05	8	<0.5	<1	<0.2
1238430	Soil	39	1.30	179	0.150	<1	2.29	0.020	0.18	0.1	0.03	5.5	0.1	<0.05	6	<0.5	<1	<0.2
1238431	Soil	65	1.30	175	0.193	<1	2.38	0.025	0.14	<0.1	0.02	7.5	<0.1	<0.05	7	<0.5	2	<0.2
1238432	Soil	47	0.89	167	0.164	<1	2.36	0.020	0.06	0.1	0.02	4.9	<0.1	<0.05	6	<0.5	2	<0.2
1238433	Soil	44	0.78	165	0.174	<1	2.44	0.019	0.06	0.1	0.01	4.9	<0.1	<0.05	7	<0.5	2	<0.2
1238434	Soil	49	0.97	143	0.191	<1	2.26	0.027	0.05	<0.1	0.03	7.8	<0.1	<0.05	7	<0.5	<1	<0.2
1238439	Soil	85	1.12	144	0.210	1	2.64	0.037	0.06	<0.1	0.02	8.8	0.1	<0.05	8	<0.5	1	<0.2
1238440	Soil	79	1.19	128	0.239	2	2.58	0.027	0.07	<0.1	0.02	7.4	<0.1	<0.05	7	<0.5	1	<0.2
1238441	Soil	51	0.87	126	0.180	2	2.01	0.054	0.06	<0.1	0.04	7.3	<0.1	<0.05	6	<0.5	2	<0.2
1238442	Soil	43	0.64	162	0.179	1	2.32	0.033	0.04	<0.1	0.02	5.6	<0.1	<0.05	8	<0.5	<1	<0.2
1238443	Soil	106	1.79	101	0.238	<1	2.85	0.023	0.29	<0.1	0.01	9.3	<0.1	<0.05	7	<0.5	<1	<0.2
1238444	Soil	49	0.83	133	0.181	<1	2.15	0.025	0.06	<0.1	0.03	5.0	<0.1	<0.05	6	<0.5	<1	<0.2
1238445	Soil	50	0.86	149	0.206	1	2.27	0.037	0.05	<0.1	0.03	6.8	<0.1	<0.05	6	<0.5	<1	<0.2
1238446	Soil	53	1.18	147	0.237	<1	2.33	0.031	0.11	0.1	0.02	6.6	<0.1	<0.05	7	<0.5	<1	<0.2
1238447	Soil	90	1.61	310	0.198	1	2.54	0.034	0.39	0.1	0.03	6.5	0.3	<0.05	8	<0.5	1	<0.2
1238448	Soil	35	0.66	114	0.152	1	1.71	0.048	0.05	0.1	0.02	4.4	<0.1	<0.05	5	<0.5	<1	<0.2



Acme Analytical Laboratories (Vancouver) Ltd.

1020 Cordova St. East Vancouver BC V6A 4A3 Canada
Phone (604) 253-3158 Fax (604) 253-1716

www.acmelab.com

Client: Goldspike Exploration Inc.
56th Floor - 100 King Street West
Toronto ON M5X 1C9 Canada

Project: JAC
Report Date: July 18, 2012

Page: 1 of 1

Part: 1 of 2

QUALITY CONTROL REPORT

DAW12000100.1

Method	Analyte	Unit	MDL	1DX15 Mo	1DX15 Cu	1DX15 Pb	1DX15 Zn	1DX15 Ag	1DX15 Ni	1DX15 Co	1DX15 Mn	1DX15 Fe	1DX15 As	1DX15 Au	1DX15 Th	1DX15 Sr	1DX15 Cd	1DX15 Sb	1DX15 Bi	1DX15 V	1DX15 Ca	1DX15 P	1DX15 La
				ppm	ppm	ppm	ppm	ppm	ppm	ppm	ppm	%	ppm	ppb	ppm	ppm	ppm	ppm	ppm	ppm	%	%	ppm
				0.1	0.1	0.1	1	0.1	0.1	0.1	1	0.01	0.5	0.5	0.1	1	0.1	0.1	0.1	2	0.01	0.001	1
Pulp Duplicates																							
1241487	Soil			0.9	21.4	8.8	43	0.1	16.8	8.7	301	2.21	5.7	3.6	1.2	31	<0.1	0.3	0.1	60	0.38	0.058	8
REP 1241487	QC			0.9	22.8	9.1	44	0.1	17.1	8.6	296	2.23	5.9	5.1	1.2	32	0.1	0.3	0.1	58	0.40	0.056	9
1241290	Soil			0.5	28.0	12.0	49	<0.1	26.3	11.2	386	2.94	11.2	5.3	5.5	32	<0.1	0.4	0.2	75	0.40	0.039	16
REP 1241290	QC			0.5	29.3	12.7	50	<0.1	26.7	11.4	398	3.03	11.8	5.6	5.5	32	<0.1	0.4	0.2	77	0.39	0.040	16
1241302	Soil			0.7	24.5	12.6	38	0.1	15.6	6.9	227	2.18	9.0	1.2	2.9	23	0.1	0.3	0.2	56	0.28	0.030	11
REP 1241302	QC			0.6	24.7	12.8	38	0.2	14.6	7.0	238	2.33	9.0	0.7	2.8	23	0.1	0.4	0.2	55	0.30	0.030	11
1238426	Soil			0.8	50.3	6.8	64	<0.1	100.0	31.0	855	4.80	3.3	2.5	2.8	48	0.1	0.1	<0.1	112	0.69	0.128	9
REP 1238426	QC			0.9	51.5	7.1	68	<0.1	103.1	32.1	899	5.09	3.3	<0.5	3.0	48	0.2	0.2	<0.1	114	0.68	0.138	9
Reference Materials																							
STD DS9	Standard			14.0	114.5	124.6	319	1.8	42.4	8.0	622	2.44	24.0	150.2	6.6	74	2.3	5.5	6.2	48	0.77	0.084	15
STD DS9	Standard			11.8	101.5	117.6	302	1.8	37.3	7.0	541	2.15	26.1	117.7	5.8	74	2.4	6.5	7.1	38	0.64	0.080	12
STD DS9	Standard			13.2	105.3	125.9	303	1.8	40.3	7.3	612	2.34	27.9	115.6	6.5	84	2.5	6.8	7.4	38	0.76	0.086	13
STD DS9	Standard			13.9	112.3	118.4	299	1.8	42.2	8.1	602	2.36	24.2	112.8	6.4	69	2.3	5.2	5.4	49	0.75	0.080	14
STD DS9 Expected				12.84	108	126	317	1.83	40.3	7.6	575	2.33	25.5	118	6.38	69.6	2.4	4.94	6.32	40	0.7201	0.0819	13.3
BLK	Blank			<0.1	0.5	0.1	<1	<0.1	0.4	0.1	4	0.03	<0.5	<0.5	<0.1	<1	<0.1	<0.1	<0.1	<2	<0.01	<0.001	<1
BLK	Blank			<0.1	<0.1	<0.1	<1	<0.1	<0.1	<0.1	<1	<0.01	<0.5	<0.5	<0.1	<1	<0.1	<0.1	<0.1	<2	<0.01	<0.001	<1
BLK	Blank			<0.1	<0.1	<0.1	<1	<0.1	<0.1	<0.1	<1	<0.01	<0.5	<0.5	<0.1	<1	<0.1	<0.1	<0.1	<2	<0.01	<0.001	<1
BLK	Blank			<0.1	<0.1	<0.1	<1	<0.1	<0.1	<0.1	<1	<0.01	<0.5	<0.5	<0.1	<1	<0.1	<0.1	<0.1	4	<0.01	<0.001	<1



Acme Analytical Laboratories (Vancouver) Ltd.
 1020 Cordova St. East Vancouver BC V6A 4A3 Canada
 Phone (604) 253-3158 Fax (604) 253-1716

www.acmelab.com

Client: **Goldspike Exploration Inc.**
 56th Floor - 100 King Street West
 Toronto ON M5X 1C9 Canada

Project: JAC
 Report Date: July 18, 2012

Page: 1 of 1

Part: 2 of 2

QUALITY CONTROL REPORT

DAW12000100.1

Method	1DX15	1DX15	1DX15	1DX15	1DX15	1DX15	1DX15	1DX15	1DX15	1DX15	1DX15	1DX15	1DX15	1DX15	1DX15	1DX15	1DX15	1DX15
Analyte	Cr	Mg	Ba	Ti	B	Al	Na	K	W	Hg	Sc	Tl	S	Ga	Se	Sn	Te	
Unit	ppm	%	ppm	%	ppm	%	%	%	ppm	ppm	ppm	ppm	%	ppm	ppm	ppm	ppm	
MDL	1	0.01	1	0.001	1	0.01	0.001	0.01	0.1	0.01	0.1	0.1	0.05	1	0.5	1	0.2	
Pulp Duplicates																		
1241487	Soil	26	0.45	142	0.070	<1	1.58	0.019	0.05	0.1	0.02	3.4	<0.1	<0.05	5	<0.5	1	<0.2
REP 1241487	QC	26	0.46	143	0.071	2	1.58	0.020	0.05	<0.1	0.04	3.3	<0.1	<0.05	6	0.9	<1	<0.2
1241290	Soil	33	0.69	154	0.107	2	1.84	0.018	0.09	<0.1	<0.01	5.3	<0.1	<0.05	5	<0.5	<1	<0.2
REP 1241290	QC	33	0.66	159	0.111	<1	1.80	0.018	0.09	<0.1	0.01	5.5	<0.1	<0.05	5	<0.5	<1	<0.2
1241302	Soil	23	0.38	144	0.077	2	1.71	0.021	0.06	0.1	0.03	3.2	<0.1	<0.05	6	<0.5	<1	<0.2
REP 1241302	QC	25	0.37	145	0.079	1	1.66	0.024	0.07	0.1	0.03	3.6	<0.1	<0.05	6	<0.5	<1	<0.2
1238426	Soil	134	2.98	181	0.185	1	3.04	0.012	0.51	0.2	<0.01	4.9	0.4	<0.05	10	<0.5	<1	<0.2
REP 1238426	QC	140	3.08	178	0.188	1	3.29	0.011	0.51	0.2	<0.01	4.9	0.4	<0.05	10	<0.5	1	<0.2
Reference Materials																		
STD DS9	Standard	134	0.65	302	0.128	2	1.02	0.089	0.37	3.2	0.19	2.8	5.7	0.23	5	6.2	6	5.3
STD DS9	Standard	114	0.60	296	0.101	2	0.85	0.079	0.37	2.9	0.22	2.4	5.1	0.08	4	5.2	7	5.3
STD DS9	Standard	117	0.65	333	0.108	2	0.98	0.099	0.37	3.1	0.21	2.9	5.4	0.15	5	5.5	7	5.2
STD DS9	Standard	132	0.61	282	0.129	2	0.93	0.078	0.34	3.0	0.19	2.3	5.7	0.13	5	5.5	6	5.5
STD DS9 Expected		121	0.6165	295	0.1108		0.9577	0.0853	0.395	2.89	0.2	2.5	5.3	0.1615	4.59	5.2		5.02
BLK	Blank	1	<0.01	<1	<0.001	<1	0.02	<0.001	<0.01	<0.1	<0.01	<0.1	<0.1	<0.05	<1	<0.5	<1	<0.2
BLK	Blank	<1	<0.01	<1	<0.001	<1	<0.01	<0.001	<0.01	<0.1	<0.01	<0.1	<0.1	<0.05	<1	<0.5	<1	<0.2
BLK	Blank	<1	<0.01	<1	<0.001	<1	<0.01	<0.001	<0.01	<0.1	<0.01	<0.1	<0.1	<0.05	<1	<0.5	<1	<0.2
BLK	Blank	<1	<0.01	<1	<0.001	<1	<0.01	<0.001	<0.01	<0.1	<0.01	<0.1	<0.1	<0.05	<1	<0.5	<1	<0.2

Appendix III: Silt Sample Assay Certificates



1020 Cordova St. East Vancouver BC V6A 4A3 Canada

Acme Analytical Laboratories (Vancouver) Ltd.

www.acmelab.com

Client: Goldspike Exploration Inc.
56th Floor - 100 King Street West
Toronto ON M5X 1C9 Canada

Submitted By: Bruce Durham
Receiving Lab: Canada-Dawson City
Received: July 05, 2012
Report Date: July 29, 2012
Page: 1 of 2

CERTIFICATE OF ANALYSIS

DAW12000101.1

CLIENT JOB INFORMATION

Project: JAC
Shipment ID: SEA Soils 1
P.O. Number
Number of Samples: 4

SAMPLE DISPOSAL

STOR-PLP Store After 90 days Invoice for Storage
STOR-RJT-SOIL Store Soil Reject - RJSV Charges Apply

Acme does not accept responsibility for samples left at the laboratory after 90 days without prior written instructions for sample storage or return.

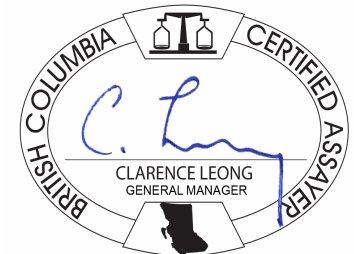
Invoice To: Goldspike Exploration Inc.
56th Floor - 100 King Street West
Toronto ON M5X 1C9
Canada

CC: Daniel Ferraro

SAMPLE PREPARATION AND ANALYTICAL PROCEDURES

Table with 6 columns: Method Code, Number of Samples, Code Description, Test Wgt (g), Report Status, Lab. Rows include methods like Dry at 60C, SS80, RJSV, and 1DX2.

ADDITIONAL COMMENTS



This report supersedes all previous preliminary and final reports with this file number dated prior to the date on this certificate. Signature indicates final approval; preliminary reports are unsigned and should be used for reference only. All results are considered the confidential property of the client. Acme assumes the liabilities for actual cost of analysis only. Results apply to samples as submitted. ** asterisk indicates that an analytical result could not be provided due to unusually high levels of interference from other elements.



Acme Analytical Laboratories (Vancouver) Ltd.
 1020 Cordova St. East Vancouver BC V6A 4A3 Canada
 Phone (604) 253-3158 Fax (604) 253-1716

www.acmelab.com

Client: Goldspike Exploration Inc.
 56th Floor - 100 King Street West
 Toronto ON M5X 1C9 Canada

Project: JAC
Report Date: July 29, 2012

Page: 2 of 2

Part: 1 of 2

CERTIFICATE OF ANALYSIS

DAW12000101.1

Method	Analyte	1DX15	1DX15	1DX15	1DX15	1DX15	1DX15	1DX15	1DX15	1DX15	1DX15	1DX15	1DX15	1DX15	1DX15	1DX15	1DX15	1DX15	1DX15	1DX15	
		Mo	Cu	Pb	Zn	Ag	Ni	Co	Mn	Fe	As	Au	Th	Sr	Cd	Sb	Bi	V	Ca	P	La
Unit		ppm	ppm	ppm	ppm	ppm	ppm	ppm	ppm	%	ppm	ppb	ppm	ppm	ppm	ppm	ppm	ppm	%	%	ppm
MDL		0.1	0.1	0.1	1	0.1	0.1	0.1	1	0.01	0.5	0.5	0.1	1	0.1	0.1	0.1	2	0.01	0.001	1
1241906	Silt	0.5	25.6	4.4	50	<0.1	27.6	11.8	372	2.70	4.4	2.9	1.8	40	0.1	0.3	<0.1	81	0.91	0.065	9
1241907	Silt	0.3	20.1	4.7	47	<0.1	20.8	9.9	316	2.36	4.2	1.1	1.7	36	<0.1	0.2	<0.1	64	0.72	0.054	8
1241908	Silt	0.3	22.0	4.5	47	<0.1	25.0	10.9	319	2.48	3.6	1.6	1.7	36	<0.1	0.2	<0.1	70	0.78	0.061	8
1241909	Silt	0.4	25.2	5.2	52	<0.1	24.2	12.2	431	2.70	4.5	1.4	2.0	39	<0.1	0.3	<0.1	72	0.79	0.065	10



Acme Analytical Laboratories (Vancouver) Ltd.
 1020 Cordova St. East Vancouver BC V6A 4A3 Canada
 Phone (604) 253-3158 Fax (604) 253-1716

www.acmelab.com

Client: Goldspike Exploration Inc.
 56th Floor - 100 King Street West
 Toronto ON M5X 1C9 Canada

Project: JAC
Report Date: July 29, 2012

Page: 2 of 2

Part: 2 of 2

CERTIFICATE OF ANALYSIS

DAW12000101.1

Method	Analyte	1DX15	1DX15	1DX15	1DX15	1DX15	1DX15	1DX15	1DX15	1DX15	1DX15	1DX15	1DX15	1DX15	1DX15	1DX15	1DX15	1DX15
		Cr	Mg	Ba	Ti	B	Al	Na	K	W	Hg	Sc	Tl	S	Ga	Se	Sn	Te
Unit		ppm	%	ppm	%	ppm	%	%	ppm	ppm	ppm	ppm	%	ppm	ppm	ppm	ppm	ppm
MDL		1	0.01	1	0.001	1	0.01	0.001	0.01	0.1	0.01	0.1	0.05	1	0.5	1	0.2	
1241906	Silt	38	0.83	97	0.125	3	1.48	0.050	0.07	0.1	0.04	4.2	<0.1	<0.05	5	<0.5	<1	<0.2
1241907	Silt	27	0.67	94	0.103	2	1.41	0.045	0.05	<0.1	0.02	3.8	<0.1	<0.05	4	<0.5	<1	<0.2
1241908	Silt	35	0.77	95	0.114	3	1.47	0.039	0.06	<0.1	0.02	4.0	<0.1	<0.05	5	<0.5	<1	<0.2
1241909	Silt	32	0.72	109	0.117	3	1.52	0.048	0.06	0.1	0.04	4.4	<0.1	<0.05	5	<0.5	<1	<0.2



Acme Analytical Laboratories (Vancouver) Ltd.
 1020 Cordova St. East Vancouver BC V6A 4A3 Canada
 Phone (604) 253-3158 Fax (604) 253-1716

www.acmelab.com

Client: Goldspike Exploration Inc.
 56th Floor - 100 King Street West
 Toronto ON M5X 1C9 Canada

Project: JAC
Report Date: July 29, 2012

Page: 1 of 1

Part: 1 of 2

QUALITY CONTROL REPORT

DAW12000101.1

Method	1DX15	1DX15	1DX15	1DX15	1DX15	1DX15	1DX15	1DX15	1DX15	1DX15	1DX15	1DX15	1DX15	1DX15	1DX15	1DX15	1DX15	1DX15	1DX15	1DX15	
Analyte	Mo	Cu	Pb	Zn	Ag	Ni	Co	Mn	Fe	As	Au	Th	Sr	Cd	Sb	Bi	V	Ca	P	La	
Unit	ppm	ppm	ppm	ppm	ppm	ppm	ppm	ppm	%	ppm	ppb	ppm	ppm	ppm	ppm	ppm	ppm	%	%	ppm	
MDL	0.1	0.1	0.1	1	0.1	0.1	0.1	1	0.01	0.5	0.5	0.1	1	0.1	0.1	0.1	2	0.01	0.001	1	
Reference Materials																					
STD DS9	Standard	13.9	108.1	122.0	295	1.7	42.0	7.6	584	2.32	23.7	106.0	6.5	70	2.2	5.5	6.3	40	0.73	0.075	14
STD DS9 Expected		12.84	108	126	317	1.83	40.3	7.6	575	2.33	25.5	118	6.38	69.6	2.4	4.94	6.32	40	0.7201	0.0819	13.3
BLK	Blank	<0.1	<0.1	<0.1	<1	<0.1	<0.1	<0.1	<1	0.01	<0.5	<0.5	<0.1	<1	<0.1	<0.1	<0.1	<2	<0.01	<0.001	<1



Acme Analytical Laboratories (Vancouver) Ltd.
 1020 Cordova St. East Vancouver BC V6A 4A3 Canada
 Phone (604) 253-3158 Fax (604) 253-1716

www.acmelab.com

Client: Goldspike Exploration Inc.
 56th Floor - 100 King Street West
 Toronto ON M5X 1C9 Canada

Project: JAC
Report Date: July 29, 2012

Page: 1 of 1

Part: 2 of 2

QUALITY CONTROL REPORT

DAW12000101.1

Method	1DX15	1DX15	1DX15	1DX15	1DX15	1DX15	1DX15	1DX15	1DX15	1DX15	1DX15	1DX15	1DX15	1DX15	1DX15	1DX15	1DX15	
Analyte	Cr	Mg	Ba	Ti	B	Al	Na	K	W	Hg	Sc	Tl	S	Ga	Se	Sn	Te	
Unit	ppm	%	ppm	%	ppm	%	%	%	ppm	ppm	ppm	ppm	%	ppm	ppm	ppm	ppm	
MDL	1	0.01	1	0.001	1	0.01	0.001	0.01	0.1	0.01	0.1	0.1	0.05	1	0.5	1	0.2	
Reference Materials																		
STD DS9	Standard	130	0.62	290	0.109	3	0.94	0.098	0.35	3.0	0.21	2.5	5.4	0.19	5	5.5	6	5.0
STD DS9 Expected		121	0.6165	295	0.1108		0.9577	0.0853	0.395	2.89	0.2	2.5	5.3	0.1615	4.59	5.2		5.02
BLK	Blank	<1	<0.01	<1	<0.001	<1	<0.01	<0.001	<0.01	<0.1	<0.01	<0.1	<0.1	<0.05	<1	<0.5	<1	<0.2

Appendix IV: Rock Sample Assay Certificates



1020 Cordova St. East Vancouver BC V6A 4A3 Canada

Acme Analytical Laboratories (Vancouver) Ltd.

www.acmelab.com

Client: Goldspike Exploration Inc.
56th Floor - 100 King Street West
Toronto ON M5X 1C9 Canada

Submitted By: Bruce Durham
Receiving Lab: Canada-Whitehorse
Received: July 06, 2012
Report Date: July 20, 2012
Page: 1 of 2

CERTIFICATE OF ANALYSIS

WHI12000245.1

CLIENT JOB INFORMATION

Project: JAC
Shipment ID: Jackpot
P.O. Number
Number of Samples: 1

SAMPLE DISPOSAL

STOR-PLP Store After 90 days Invoice for Storage
STOR-RJT Store After 90 days Invoice for Storage

Acme does not accept responsibility for samples left at the laboratory after 90 days without prior written instructions for sample storage or return.

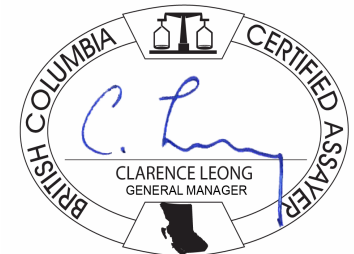
Invoice To: Goldspike Exploration Inc.
56th Floor - 100 King Street West
Toronto ON M5X 1C9
Canada

CC: Daniel Ferraro

SAMPLE PREPARATION AND ANALYTICAL PROCEDURES

Table with 6 columns: Method Code, Number of Samples, Code Description, Test Wgt (g), Report Status, Lab. Contains 3 rows of sample analysis data.

ADDITIONAL COMMENTS



This report supersedes all previous preliminary and final reports with this file number dated prior to the date on this certificate. Signature indicates final approval; preliminary reports are unsigned and should be used for reference only. All results are considered the confidential property of the client. Acme assumes the liabilities for actual cost of analysis only. Results apply to samples as submitted. ** asterisk indicates that an analytical result could not be provided due to unusually high levels of interference from other elements.



Acme Analytical Laboratories (Vancouver) Ltd.
 1020 Cordova St. East Vancouver BC V6A 4A3 Canada
 Phone (604) 253-3158 Fax (604) 253-1716

www.acmelab.com

Client: Goldspike Exploration Inc.
 56th Floor - 100 King Street West
 Toronto ON M5X 1C9 Canada

Project: JAC
 Report Date: July 20, 2012

Page: 2 of 2

Part: 1 of 2

CERTIFICATE OF ANALYSIS

WHI12000245.1

Method	WGHT	3B	1DX	1DX	1DX	1DX	1DX	1DX	1DX	1DX	1DX	1DX	1DX	1DX	1DX	1DX	1DX	1DX	1DX	1DX	
Analyte	Wgt	Au	Mo	Cu	Pb	Zn	Ag	Ni	Co	Mn	Fe	As	Au	Th	Sr	Cd	Sb	Bi	V	Ca	
Unit	kg	ppb	ppm	ppm	ppm	ppm	ppm	ppm	ppm	ppm	%	ppm	ppb	ppm	ppm	ppm	ppm	ppm	ppm	%	
MDL	0.01	2	0.1	0.1	0.1	1	0.1	0.1	0.1	1	0.01	0.5	0.5	0.1	1	0.1	0.1	0.1	2	0.01	
1240485	Rock	0.82	<2	0.4	29.6	51.1	14	0.2	16.1	9.7	411	1.34	2.9	<0.5	1.6	58	<0.1	0.1	0.3	53	2.28



Acme Analytical Laboratories (Vancouver) Ltd.
 1020 Cordova St. East Vancouver BC V6A 4A3 Canada
 Phone (604) 253-3158 Fax (604) 253-1716

www.acmelab.com

Client: Goldspike Exploration Inc.
 56th Floor - 100 King Street West
 Toronto ON M5X 1C9 Canada

Project: JAC
Report Date: July 20, 2012

Page: 2 of 2

Part: 2 of 2

CERTIFICATE OF ANALYSIS

WHI12000245.1

Method	1DX	1DX	1DX	1DX	1DX	1DX	1DX	1DX	1DX	1DX	1DX	1DX	1DX	1DX	1DX	1DX	1DX	1DX	1DX	
Analyte	P	La	Cr	Mg	Ba	Ti	B	Al	Na	K	W	Hg	Tl	S	Sc	Se	Ga	Sn	Te	
Unit	%	ppm	ppm	%	ppm	%	ppm	%	%	%	ppm	ppm	ppm	%	ppm	ppm	ppm	ppm	ppm	
MDL	0.001	1	1	0.01	1	0.001	20	0.01	0.001	0.01	0.1	0.01	0.1	0.05	0.1	0.5	1	1	1	
1240485	Rock	0.090	6	42	0.78	34	0.054	<20	0.83	0.107	0.06	0.1	<0.01	<0.1	<0.05	3.9	<0.5	2	<1	<0.2



Acme Analytical Laboratories (Vancouver) Ltd.
 1020 Cordova St. East Vancouver BC V6A 4A3 Canada
 Phone (604) 253-3158 Fax (604) 253-1716

www.acmelab.com

Client: Goldspike Exploration Inc.
 56th Floor - 100 King Street West
 Toronto ON M5X 1C9 Canada

Project: JAC
 Report Date: July 20, 2012

Page: 1 of 1

Part: 1 of 2

QUALITY CONTROL REPORT

WHI12000245.1

Method	WGHT	3B	1DX	1DX	1DX	1DX	1DX	1DX	1DX	1DX	1DX	1DX	1DX	1DX	1DX	1DX	1DX	1DX	1DX	1DX
Analyte	Wgt	Au	Mo	Cu	Pb	Zn	Ag	Ni	Co	Mn	Fe	As	Au	Th	Sr	Cd	Sb	Bi	V	Ca
Unit	kg	ppb	ppm	ppm	ppm	ppm	ppm	ppm	ppm	ppm	%	ppm	ppb	ppm	ppm	ppm	ppm	ppm	ppm	%
MDL	0.01	2	0.1	0.1	0.1	1	0.1	0.1	0.1	1	0.01	0.5	0.5	0.1	1	0.1	0.1	0.1	2	0.01
Reference Materials																				
STD DS9	Standard		12.3	120.5	120.5	303	1.6	45.6	8.5	570	2.35	25.6	87.8	6.4	63	2.3	4.0	5.4	41	0.71
STD OREAS45CA	Standard		1.0	520.1	20.0	59	0.3	255.2	105.8	947	16.75	3.6	40.7	7.4	14	0.1	0.1	0.2	220	0.41
STD OXC88	Standard	188																		
STD OXG99	Standard	935																		
STD OREAS45CA Expected			1	494	20	60	0.275	240	92	943	15.69	3.8	43	7	15	0.1	0.13	0.19	215	0.4265
STD DS9 Expected			12.84	108	126	317	1.83	40.3	7.6	575	2.33	25.5	118	6.38	69.6	2.4	4.94	6.32	40	0.7201
STD OXG99 Expected		932																		
STD OXC88 Expected		203																		
BLK	Blank		<0.1	<0.1	<0.1	<1	<0.1	<0.1	<0.1	<1	<0.01	<0.5	<0.5	<0.1	<1	<0.1	<0.1	<0.1	<2	<0.01
BLK	Blank	<2																		
BLK	Blank	<2																		
Prep Wash																				
G1-WHI	Prep Blank	<2	0.2	3.9	2.9	48	<0.1	2.4	4.8	614	2.06	2.4	<0.5	4.9	66	<0.1	<0.1	<0.1	39	0.57



Acme Analytical Laboratories (Vancouver) Ltd.
 1020 Cordova St. East Vancouver BC V6A 4A3 Canada
 Phone (604) 253-3158 Fax (604) 253-1716

www.acmelab.com

Client: **Goldspike Exploration Inc.**
 56th Floor - 100 King Street West
 Toronto ON M5X 1C9 Canada

Project: JAC
 Report Date: July 20, 2012

Page: 1 of 1

Part: 2 of 2

QUALITY CONTROL REPORT

WHI12000245.1

Method	1DX	1DX	1DX	1DX	1DX	1DX	1DX	1DX	1DX	1DX	1DX	1DX	1DX	1DX	1DX	1DX	1DX	1DX	1DX	1DX
Analyte	P	La	Cr	Mg	Ba	Ti	B	Al	Na	K	W	Hg	Tl	S	Sc	Se	Ga	Sn	Te	
Unit	%	ppm	ppm	%	ppm	%	ppm	%	%	%	ppm	ppm	ppm	%	ppm	ppm	ppm	ppm	ppm	
MDL	0.001	1	1	0.01	1	0.001	20	0.01	0.001	0.01	0.1	0.01	0.1	0.05	0.1	0.5	1	1	0.2	
Reference Materials																				
STD DS9 Standard	0.081	12	130	0.61	292	0.121	<20	0.95	0.082	0.40	2.5	0.21	4.9	0.17	2.3	4.3	4	6	4.9	
STD OREAS45CA Standard	0.033	17	845	0.11	173	0.158	<20	3.76	0.006	0.08	<0.1	0.04	<0.1	<0.05	42.8	0.5	18	2	<0.2	
STD OXC88 Standard																				
STD OXG99 Standard																				
STD OREAS45CA Expected	0.0385	15.9	709	0.1358	164	0.128		3.592	0.0075	0.0717		0.03	0.07	0.021	39.7	0.5	18.4			
STD DS9 Expected	0.0819	13.3	121	0.6165	330	0.1108		0.9577	0.0853	0.395	2.89	0.2	5.3	0.1615	2.5	5.2	4.59		5.02	
STD OXG99 Expected																				
STD OXC88 Expected																				
BLK Blank	<0.001	<1	<1	<0.01	<1	<0.001	<20	<0.01	<0.001	<0.01	<0.1	<0.01	<0.1	<0.05	<0.1	<0.5	<1	<1	<0.2	
BLK Blank																				
BLK Blank																				
Prep Wash																				
G1-WHI Prep Blank	0.084	12	4	0.53	163	0.161	<20	1.04	0.112	0.54	<0.1	<0.01	0.3	<0.05	2.6	<0.5	5	<1	<0.2	