

GEOCHEMICAL REPORT

on the

BEAVER PROJECT

Whitehorse, Yukon Territory

BEAVER 1-18 YC 60347-60364
BEAVER 19-144 YD 133929-134054

NTS # 115G/02

Latitude: 61.173° N Longitude: 138.825° W

Whitehorse Mining District

For
Ryan Gold Corp.
Suite 2100
1 Adelaide Street East
Toronto, ON M5C 2V9
Tel: (416) 482-9038

WORK PERFORMED: July 13, 2011

By
Isaac Fage
Ground Truth Exploration Inc.
Box 70, Dawson, Yukon
Y0B 1G0

October 22, 2012

Table of Contents

1.0 Introduction and Summary	3
2.0 Terms of Reference and Source Material	4
3.0 Property Location and Description	5
4.0 Exploration History	6
5.0 Regional Geology	7
6.0 2011 Exploration Field Program	9
References Cited	11
Maps	12
Appendix I: Statement of Work Expenditure	
Appendix II: Statement of Qualifications	
Appendix III: List of Claims	
Appendix IV: Soil Sample Location and Assay	

1.0 Introduction and Summary

1.1 Introduction:

On July 13, 2011, Ryan Gold Corp. Completed a reconnaissance soil sampling program on the BEAVER project. The program consisted of 105 soil samples collected along 2 grids, both at 50m sample spacing by 100m line spacing. The goal of the work was to identify potential gold and/or copper bearing structures outlined by regional magnetic trends and favorable geology.

This phase one soil program did not identify any gold target areas for follow-up. Soil results from the phase one sampling included maximum gold-in-soil values of 34.6ppb and copper-in-soil values of 378 ppm.

No further work soil work was completed in the 2012 field season.

1.2 Summary

The BEAVER project is located in Southwest Yukon within the Whitehorse Mining District on NTS mapsheet 115G/02

The BEAVER property is situated 22km South-southeast of the community of Burwash Landing. The BEAVER property is geographically centered at a latitude of 61.173° N and longitude of 138.825° W.

The BEAVER Project is comprised of two claim blocks. The claim block in the east (Beaver 7-144) contains 138 contiguous quartz claims covering an aggregate area of approximately 2872 hectares. The claim blocks in the west (BEAVER 1-6) contains 6 contiguous quartz claims covering an aggregate area of approximately 121.5 hectares. The claim block to the east (BEAVER 7-144) contains 138 contiguous quartz claims covering an aggregate area of approximate 2750 hectares. The claims constituting the BEAVER project are owned by two parties: BEAVER 1-144: 45127 Yukon Inc. 30%, Ryan Gold Corp. 70%. 45127 Yukon Inc. is wholly-owned by Ryan Gold Corp.

The BEAVER Project is located in the Klondike Plateau within the Tintina Gold Belt, which hosts a number of regionally significant gold deposits- most notably the White Gold deposit owned by Kinross Gold Corporation (found 85km to the Southwest).

The Wellgreen project of Prophecy Platinum, which contains an indicated resource of 14.4 million tonnes grading 0.99g/t Pt and 0.51 g/t Au., primarily mineable by open pit methods using a cutoff of 0.5 g/t Au for open pit and 2.0 g/t Au for underground (Weiershäuser et al., 2010) lies 45km to the northwest of the project.

There is no historic data in the MINFILE database on any of the claims comprising the BEAVER project. The area surrounding the southeast claim block shows the CONGDON (Spy Showing) occurrence within 2km of the property (MINFILE #115G003 & #115G084). Geochemical sampling was done in the area in 1987 by Polestar

Exploration, in 1995 by Inco and in 2000 by Santoy Resources Ltd. An airborne EM and magnetometer survey was also done in 1996 by Inco.

2.0 Terms of Reference and Source Material

2.1 Terms, Definitions and Units

All geographic coordinates for sample locations and property scale references are reported in the NAD83 datum and projected to Universal Transverse Mercator (UTM) Zone 7. Distances are reported in metric units, including metres (m) and kilometres (km). Any monetary references in this report are reported in Canadian dollars (CAD). Directional references are reported relative to True North. Standard elemental abbreviations are utilized when referring to analytical results, including Gold (Au), Copper (Cu). Unit abbreviations for analytical results are indicated where appropriate, including: parts per million (ppm), parts per billion (ppb), grams per tonne (g/t) and percent (%).

2.2 Source Documents

This report incorporates data from multiple sources including regional geochemical, geological and geophysical studies conducted by the Geological Survey of Canada and Yukon Geological Survey, available in public Open Files. Private Company data that is available in the public domain has also been utilized to create this report. Sources are listed in section 9.

3.0 Property Location and Description

3.1 Property Location

The BEAVER property is situated 22km South-southeast of the community of Burwash Landing. The BEAVER property is geographically centered at a latitude of 61.173° N and longitude of 138.825° W. (see figure 1)

3.2 Access

Access to the BEAVER property is currently restricted to helicopter, with the nearest helicopter base located in Haines Junction 80 km to the southeast of the BEAVER. Haines Junction is accessed by year-round highway approximately 155 km west from Whitehorse, Yukon. Pull-outs on the Alaska Highway can be used to create a roadside staging area and shorten the helicopter ferry distance for multiple loads to the BEAVER Project. Staging from the Alaska Highway shortens the ferry distance to the property from 80km (at Haines Junction), to 6km. (see figure 3)

3.3 Climate, Physiography and Infrastructure

The BEAVER Project area has a summer mean of approx.. 10 degrees Celsius and winter mean temperature of approx.. -20 degrees Celsius. Summer temperatures can reach up to +32°C and winter temperatures can drop to -55°C.

The BEAVER Project is located on the edge of the Shakwak Trench in the Donjak range. Elevations range from 1125m to 2300m on the BEAVER property. The BEAVER project is almost entirely above the tree line. Some trees may be found in creeks and drainages on the property. Some discontinuous permafrost occurs on the property on the Northerly aspects. Bedrock is near surface, with large amounts of exposed outcrop on the property.

3.4 Land Tenure

The BEAVER Project is comprised of two claim blocks. The claim block in the east (Beaver 7-144) contains 138 contiguous quartz claims covering an aggregate area of approximately 2872 hectares. The claim blocks in the west (BEAVER 1-6) contains 6 contiguous quartz claims covering an aggregate area of approximately 121.5 hectares. The claim block to the east (BEAVER 7-144) contains 138 contiguous quartz claims covering an aggregate area of approximate 2750 hectares. The claims constituting the BEAVER project are owned by two parties: BEAVER 1-144: 45127 Yukon Inc. 30%, Ryan Gold Corp. 70%. 45127 Yukon Inc. is wholly-owned by Ryan Gold Corp. (See Figure 2)

BEAVER Property: List of Claims (as of July 12, 2012)

Claim Name	Grant Number	Expiry	Status	# Claims
BEAVER 1-18	YC60347-60364	February 10, 2013	Active	18
BEAVER 19-144	YD133929-134054	February 10, 2013	Active	126

Total: 144

(See figure 2: Claim Map)

4.0 Exploration History

The 2011 soil sampling program on the BEAVER project was following up on geochemical prospects defined by Santoy resources in 1999 and 2000 (Yukon assessment report #094164 by L.A. Tulk). There are other historical records of exploration being done in the area surrounding the BEAVER project.

There is no historic data in the MINFILE database on any of the claims comprising the BEAVER project itself. The area surrounding the southeast claim block shows the CONGDON (Spy Showing) occurrence within 2km of the property (MINFILE #115G003 & #115G084). Geochemical sampling was done in the area in 1987 by Polestar Exploration, in 1995 by Inco and in 2000 by Santoy Resources Ltd. An airborne EM and magnetometer survey was also done in 1996 by Inco. Grab samples collected by Inco returned results up to 1.0g/t Au and 1.4g/t Pt.

The BEAVER properties contains 3 stream sediment samples from the Yukon Regional Geochemical Database (2003). The silt sample taken from Bock's Creek on the northwest end of the eastern claim block returned the highest gold value (11ppb; 99th percentile) of any silt sample taken within 20km of the property (76 samples). Anomalous values are found within the BEAVER property. An anomalous gold silt value (13 ppb) was found near the western border of the property. (see figure 4)

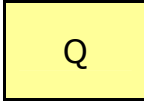
A regional airborne magnetic/radiometric survey was flown by Geological Survey of Canada. This survey identified a magnetic high on the southeastern half of the BEAVER property. (see figure 8)

5.0 Regional Geology

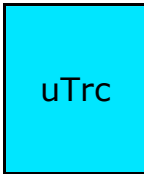
Geologically, the BEAVER project lies within the Wrangellia Terrane. The BEAVER property is mostly underlain by Pennsylvanian-Lower Permian sedimentary/volcanic rocks which include breccia, argillite, agglomerate, basalt, and andesite. Parts of the project are underlain by Upper Jurassic-Lower Cretaceous sedimentary rocks which include shale, argillite, phyllite, siltstone, and sandstone. (See Figure 4)

Legend Descriptions for BEAVER Geology: Figure 4 (Gordey, S.P. and Makepeace, A.J. (comp.) 1999: Yukon bedrock geology in Yukon digital geology)

CPS1	tuff, breccia, argillite, agglomerate, augite-phyric basaltic to andesitic flows (Station Cr. Fm); succeeded by thin-bedded argillite, siltstone, minor greywacke and conglomerate and local thin basaltic flows, breccia and tuff (Hasen Cr. Fm) (Skolai Gp., Station Creek and Hasen Creek)
CPS2	buff bioclastic limestone, calcarenite
JKD1	interbedded light to dark buff-grey lithic greywacke, sandstone, siltstone, thin dark grey shale, argillite, phyllite and conglomerate; rare tuff (Dezadeash)
MW	fine to medium grained, hornblende biotite granodiorite and porphyritic (K-feldspar) hornblende granodiorite; medium grained, uniform biotite diorite and pyroxene gabbro; sub-volcanic hornblende biotite rhyolite, rhyodacite, dacite, and trachyte (Wrangell Suite)
NW1	rusty red-brown, phyric and non-phyric basaltic andesite flows (minor pillow lava), interbedded with felsic tuff, volcanic sandstone and conglomerate; acid pyroclastics related to intra-Wrangell intrusions; thin basaltic andesite and andesite flows (Wrangell Lavas)
OA	yellow-buff to grey-buff sandstone, pebbly sandstone, polymictic conglomerate, siltstone, mudstone; minor brown-grey carbonaceous shale and thin lignitic coal; mostly fluvial and lacustrine deposits, local debris-flow deposits; some shallow marine (Aphitheatre ; Kulthieth)
PTrk1	medium grey-green, massive, medium grained, pyroxene gabbro and greenstone sills; sheeny black peridotite, rare dunite (Kluane-type Mafic-Ultramafics; Squaw Datlasaka Ranges Gabbro-Diabase Sills)



unconsolidated glacial, glaciofluvial and glaciolacustrine deposits; fluvial silt, sand, and gravel, and local volcanic ash, in part with cover of soil and organic deposits



thin interbedded light to dark grey argillaceous limestone and dark grey argillite; massive light grey limestone, limestone breccia and darker grey, well-bedded limestone; white to creamy-white gypsum and anhydrite (**McCarthy, Chitstone and Nizina limestones**)



amygdaloidal basaltic and andesitic flows, with local tuff, breccia, shale and thin-bedded bioclastic limestone; volcanic breccia, pillow lava and conglomerate at base; locally includes dark grey phyllite and minor thin grey limestone of Middle Triassic (**Nicolai Greenstone**)

6.0 2011 Exploration Field Program

6.1 Field Program Summary

This report summarizes the results of the phase one geochemical soil sampling program conducted on the BEAVER property during July of 2011. Soil sampling was contracted to Ground Truth Exploration Inc. of Dawson, YT and was approved and funded by Ryan Gold Corp. of Toronto, Ontario. Phase one Soil Sampling occurred on July 13th. There were 105 soil samples collected on this survey, 101 were collected within the property boundaries and another 4 soils were collected just outside the claim boundaries of each property contiguous with the samples taken on the properties in order to identify anomalous values trending off the claim blocks. The soil sampling program was designed as a comprehensive property wide survey to identify initial exploration targets, specifically anomalous values of gold and copper in soil. A grid was laid down using GIS software and sampled at 50m intervals by 100m line spacing. Grid locations were recommended by Shawn Ryan and project operations were supervised by Isaac Fage, president of Ground Truth Exploration Inc.

6.2 Sampling Protocol and Data Handling Procedures

All sampling traverses are pre-planned, with pre -specified sampling intervals, typically 50m. Field technicians navigate to sample site using handheld GPS units. The soil sampler arrives at each sample site, identifies the most appropriate location to collect the sample and lays out a sheet of plastic (12"x20" ore bag). The soil sample is taken using an Eijklcamp brand hand auger at a depth of between 20cm and 110cm. Samplers strive to consistently collect C-Horizon sample material. Where necessary (rocky or frozen ground) a prospector's pick ('mattock') is used to obtain the sample. The soil is laid out on the sheet of plastic in the order it was recovered from the sample hole. Standardized photos are taken of the sample site- across slope, 5m from sample hole with auger inserted. With the necessary amount of soil (400-500 grams) has been collected, the deepest soil is taken and placed in a bag labeled with the 3-letter project and tagged with a unique barcode ID tag containing a unique 7 digit sample identification number. An aluminum metal tag inscribed with the sample identification number is attached to a rock or branch in a visible area at the sample site along with a length of pink flagging tape.

A field duplicate sample is taken once for every 25 samples. Both samples are given unique Sample identification number. The data for both samples is recorded and a note is made indicating the duplicate and its corresponding sample identification number.

The GPS location of the sample site is recorded with a Garmin GPSMap 60cx or 76cx GPS device in UTM NAD83 format, and the waypoint is labeled with the project name and the sample identification number.

A weather-proof handheld device equipped with a barcode scanner is used in the field to record the descriptive attributes of the sample collected. this includes: sample identification number (scanned into device at sample site), soil colour, soil horizon, slope, sample depth, ground and tree vegetation and sample quality and any other

relevant information. As well, the GPS coordinates are entered into the handheld device as a secondary backup in case of GPS failure.

Each night in the field, the GPS and Palm PDA devices are downloaded to a laptop computer. The data is verified and mapped on a sampler-by-sampler basis in proprietary database auditing and mapping software. At the end of each day, the crew boss inspects all samples for size and consistency as a quality check. Each sampler then repackages all samples for shipping- barcode scanning them as they are placed into a rice bag which is sealed with a barcoded security zip tie. Samples are shipped from the field to the lab on a daily basis, tracked by the unique ID on each security seal.

A backup of the sample data is made, copied onto a USB memory stick and kept in a separate location from the laptop computer until job completion. Where possible, a backup is also sent via e-mail.

6.3 Sample Preparation and Analysis

Samples were processed by Acme Labs in Vancouver with Aqua Regia digestion and analyzed with ICP-MS for 36 elements (Acme Labs 1DX-15 gram). Samples are Dried at 60°C, sieved at -80 mesh.

6.4 Interpretation

The BEAVER project Phase one grid soil sampling program delineated possible target areas with anomalous gold and copper values in soil that warrant further exploration on the property at this time. Further geological mapping is recommended.

Gold values in soil up to 34.6 ppb were observed. 2 samples in the survey (105) had observed values over 24.6 ppb Au (99th percentile). (see figure 6,8,10).

A cluster of soil samples with anomalous copper values was observed on the southeast portion of the property with values ranging to a maximum of 378 ppm. 2 samples in the survey (105) had observed copper values over 282.55ppm Cu (99th percentile). (see figure 6)

6.5 Recommendations

The BEAVER project Phase one grid soil sampling program delineated possible target areas with anomalous gold and copper values in soil that warrant further exploration on the property. Further geological mapping is recommended.

References Cited

Regional Geology: Gordey, S.P. and Makepeace, A.J. (comp.) 1999: Yukon bedrock geology in Yukon digital geology, S.P. Gordey and A.J. Makepeace (comp.); Geological Survey of Canada Open File D3826 and Exploration and Geological Services Division, Yukon, Indian and Northern Affairs Canada, Open File 1999-1(D)

Airborne Geophysics: Shives, R. B. K.; Carson, J. M.; Ford, K. L.; Holman, P. B.; Gordey, S.; Abbott, G., 2002: Airborne multisensor geophysical survey; Geological Survey of Canada, Open File, 4309

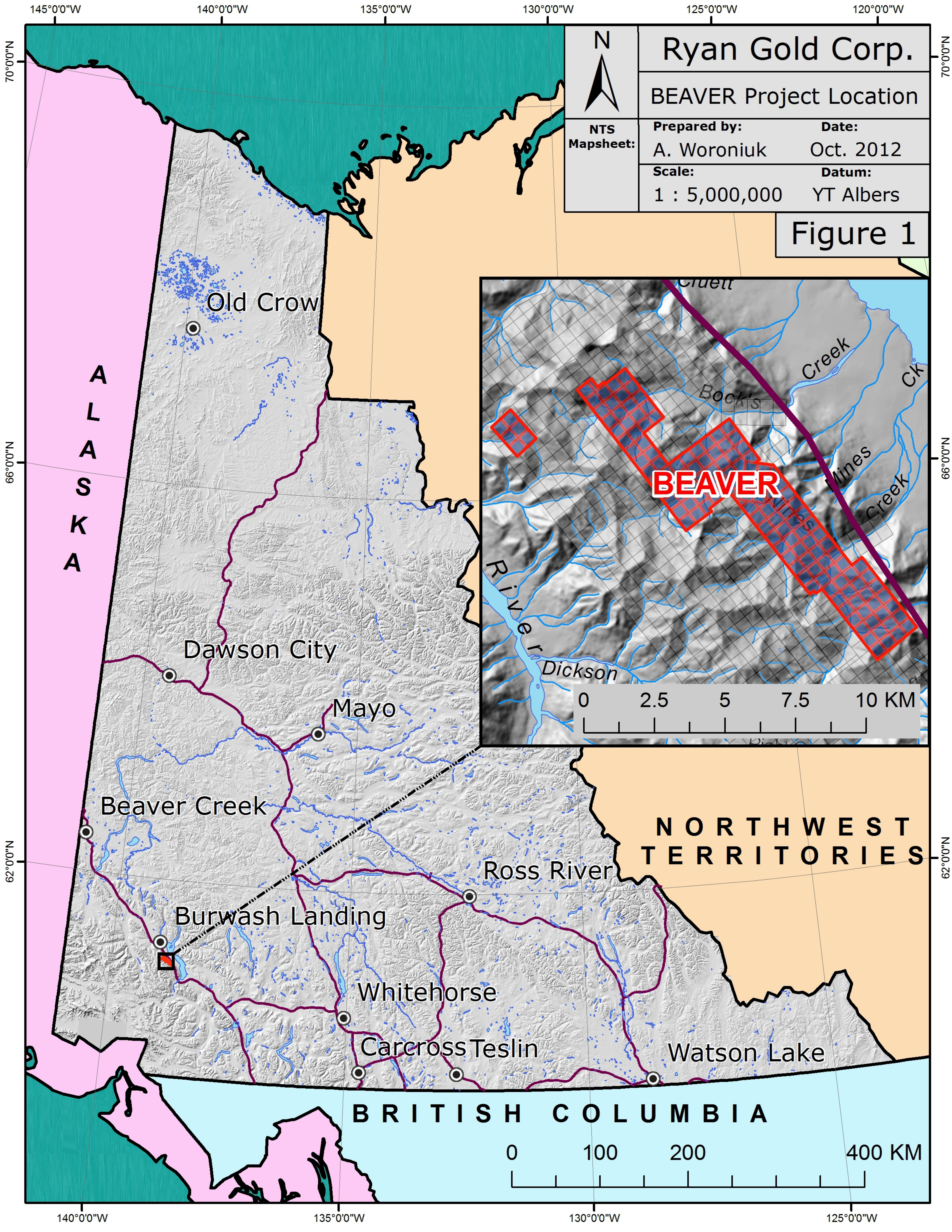
Regional Stream Geochemistry: Heon, D. (compiler), Yukon Regional Geochemical Database 2003, http://www.geology.gov.yk.ca/databases_gis.html

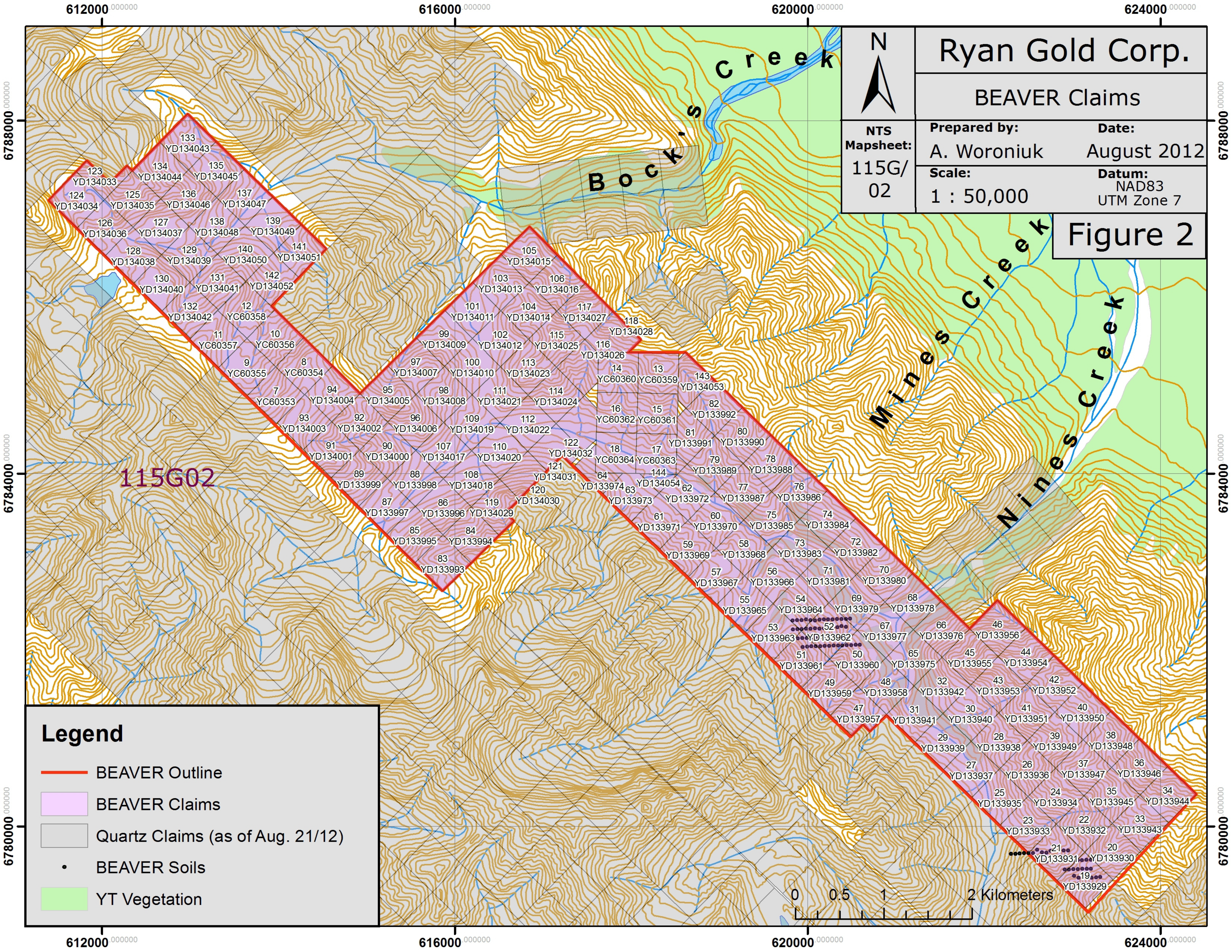
Yukon Minfile Occurrences: <http://data.geology.gov.yk.ca/>

Mineral Titles: Yukon Mining Recorder, Mining Claims Database – www.yukonminingrecorder.ca

Topographic data: NR Canada, CanVec Topographic Database- www.geogratis.ca

Additional review of various published scientific and reporting papers on the geology and mineral deposits of the region for indirect reference.






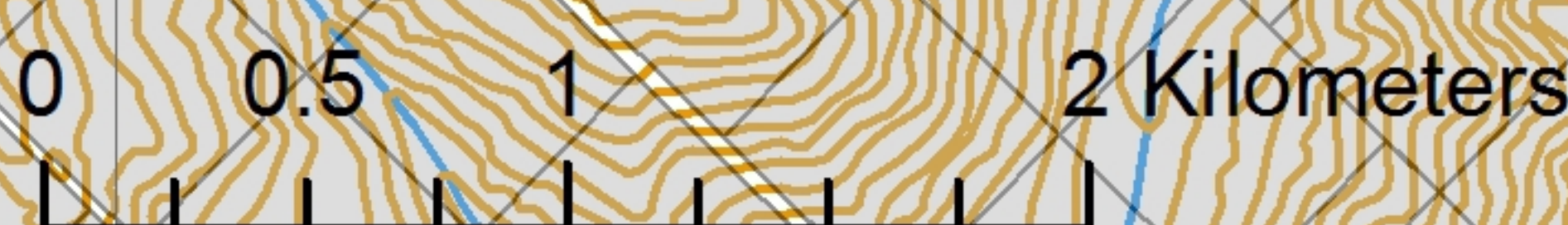
		Ryan Gold Corp.	
		BEAVER Claims	
NTS Mapsheet: 115G/ 02	Prepared by:	Date:	
	A. Woroniuk	August 2012	
	Scale:	Datum:	
	1 : 50,000	NAD83 UTM Zone 7	

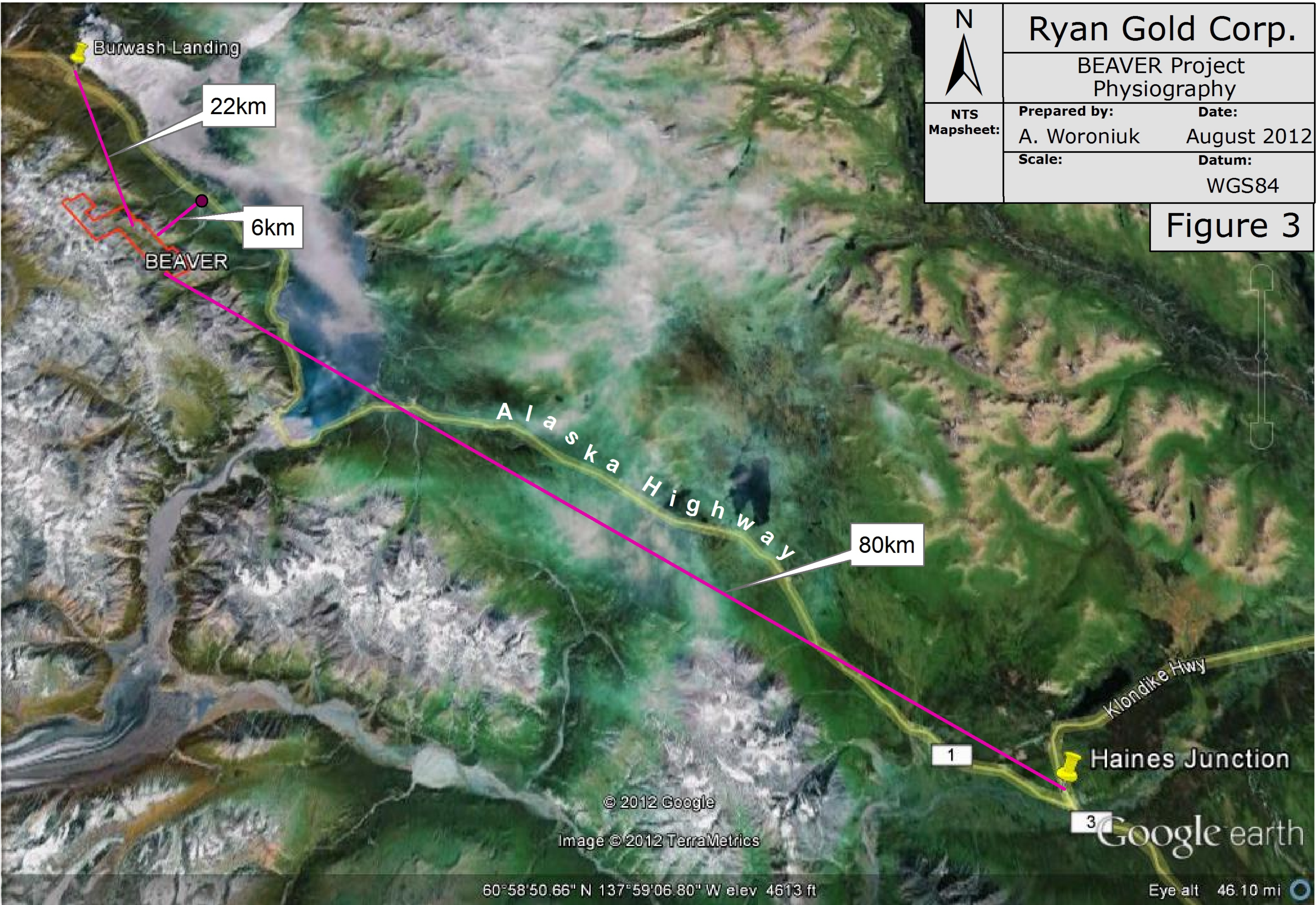
Figure 2

115G02

Legend

- BEAVER Outline
- BEAVER Claims
- Quartz Claims (as of Aug. 21/12)
- BEAVER Soils
- YT Vegetation





	<h1>Ryan Gold Corp.</h1>	
	<h2>BEAVER Project Physiography</h2>	
NTS Mapsheet:	Prepared by: A. Woroniuk	Date: August 2012
	Scale:	Datum: WGS84

Figure 3

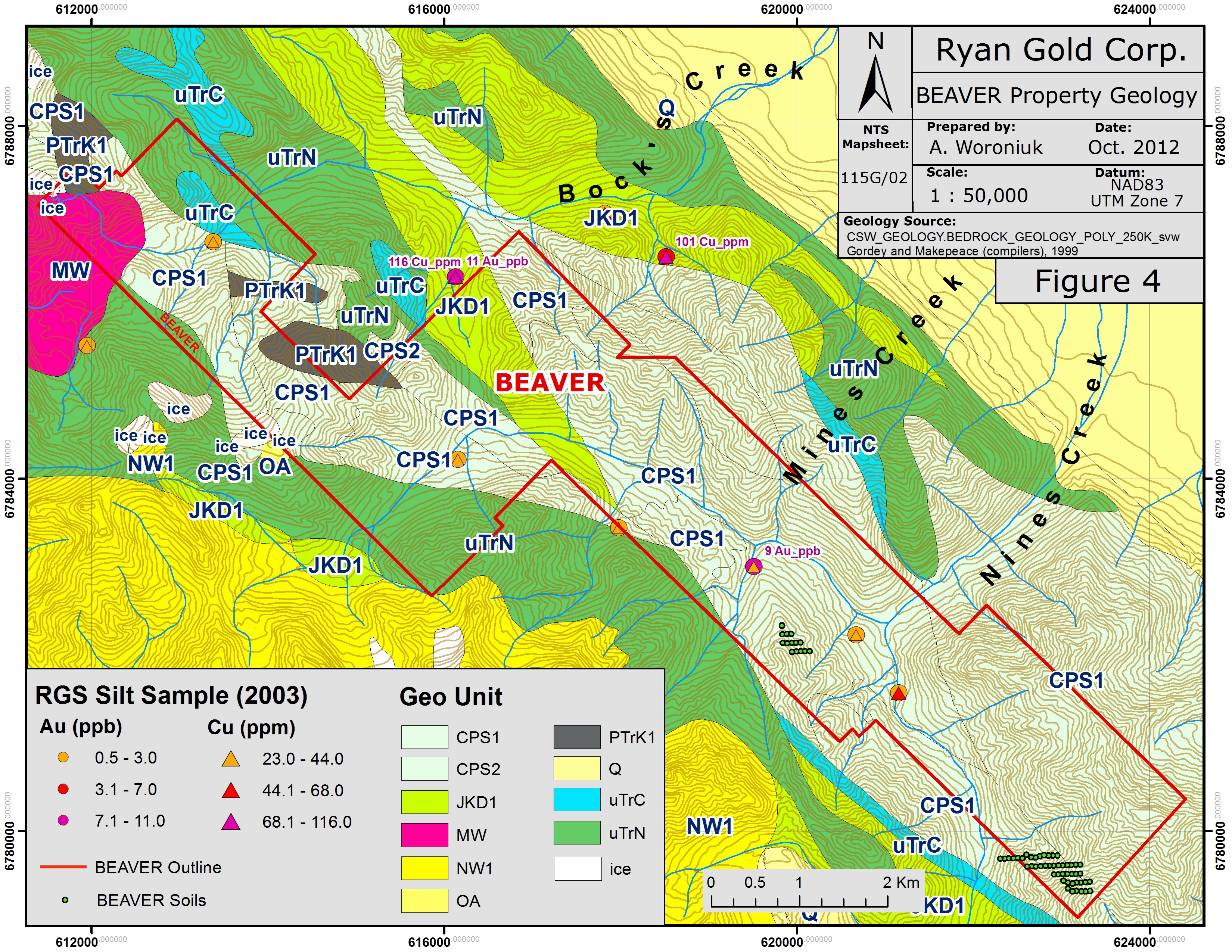
© 2012 Google

Image © 2012 TerraMetrics

Google earth

60°58'50.66" N 137°59'06.80" W elev 4613 ft

Eye alt 46.10 mi



Ryan Gold Corp.

BEAVER Property Geology

NTS Mapsheet: 115G/02	Prepared by: A. Woroniuk	Date: Oct. 2012
	Scale: 1 : 50,000	Datum: NAD83 UTM Zone 7

Geology Source:
CSW_GEOLOGY.BEDROCK_GEOLOGY_POLY_250K_svw
Gordey and Makepeace (compilers), 1999

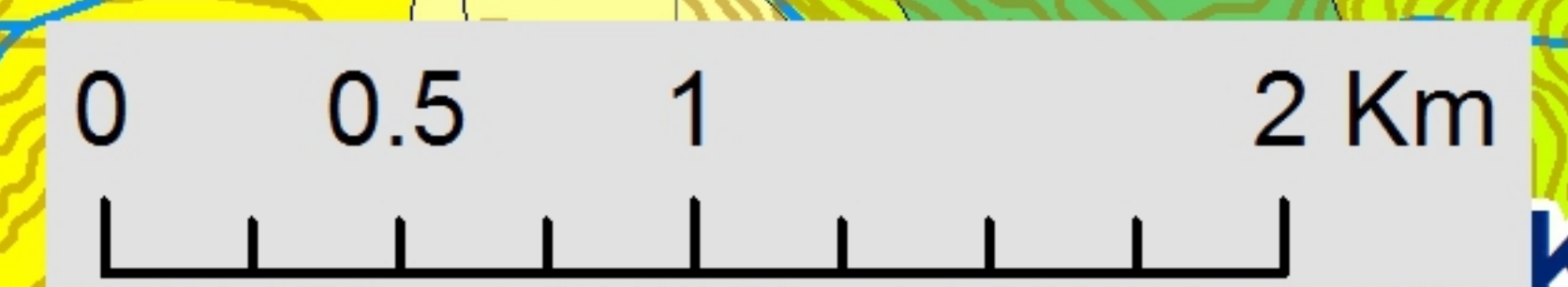
Figure 4

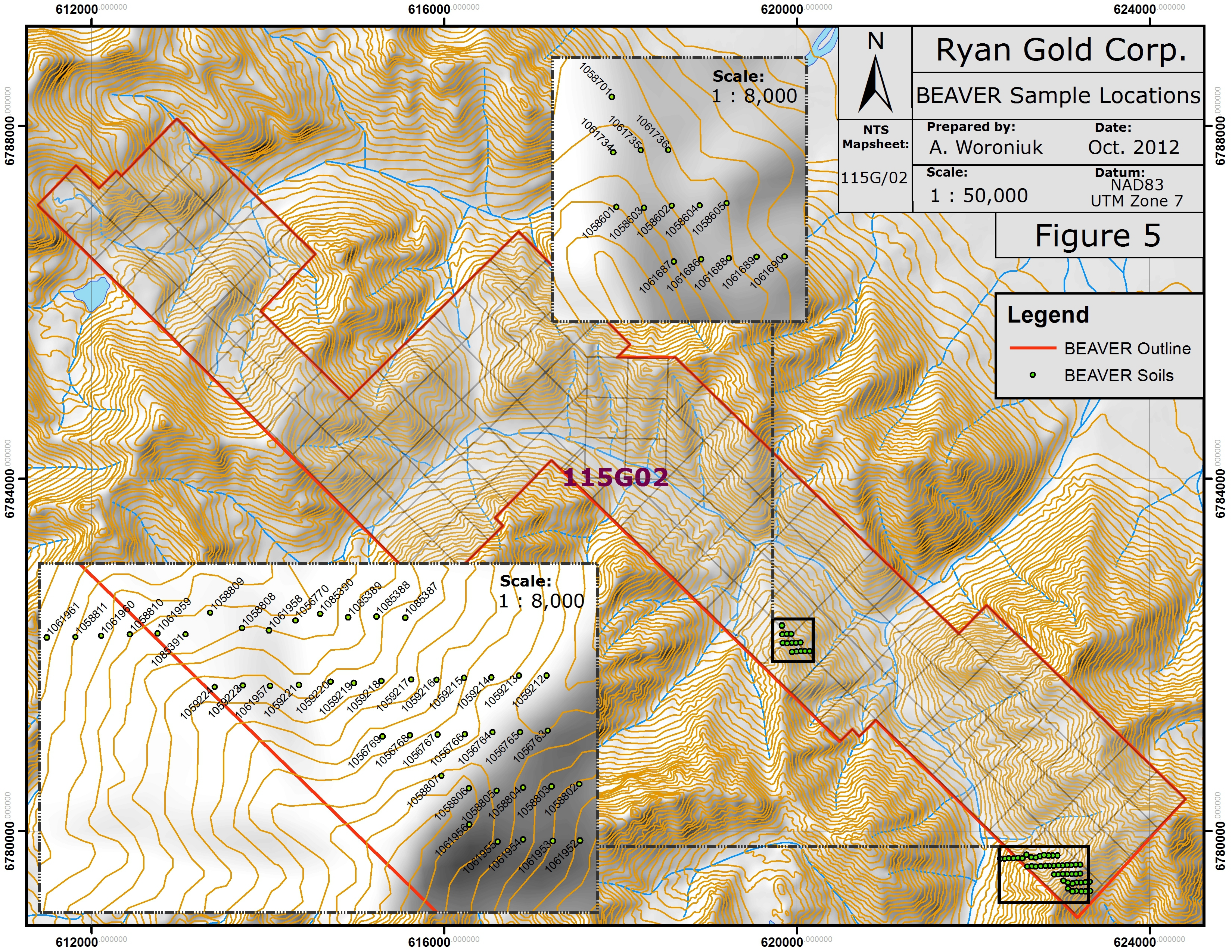
RGS Silt Sample (2003)

Au (ppb)		Cu (ppm)	
●	0.5 - 3.0	▲	23.0 - 44.0
●	3.1 - 7.0	▲	44.1 - 68.0
●	7.1 - 11.0	▲	68.1 - 116.0
—	BEAVER Outline	●	BEAVER Soils

Geo Unit

 CPS1	 PTrK1
 CPS2	 Q
 JKD1	 uTrC
 MW	 uTrN
 NW1	 ice
 OA	





Ryan Gold Corp.

BEAVER Sample Locations



**NTS
Mapsheet:**
115G/02

Prepared by:
A. Woroniuk

Date:
Oct. 2012

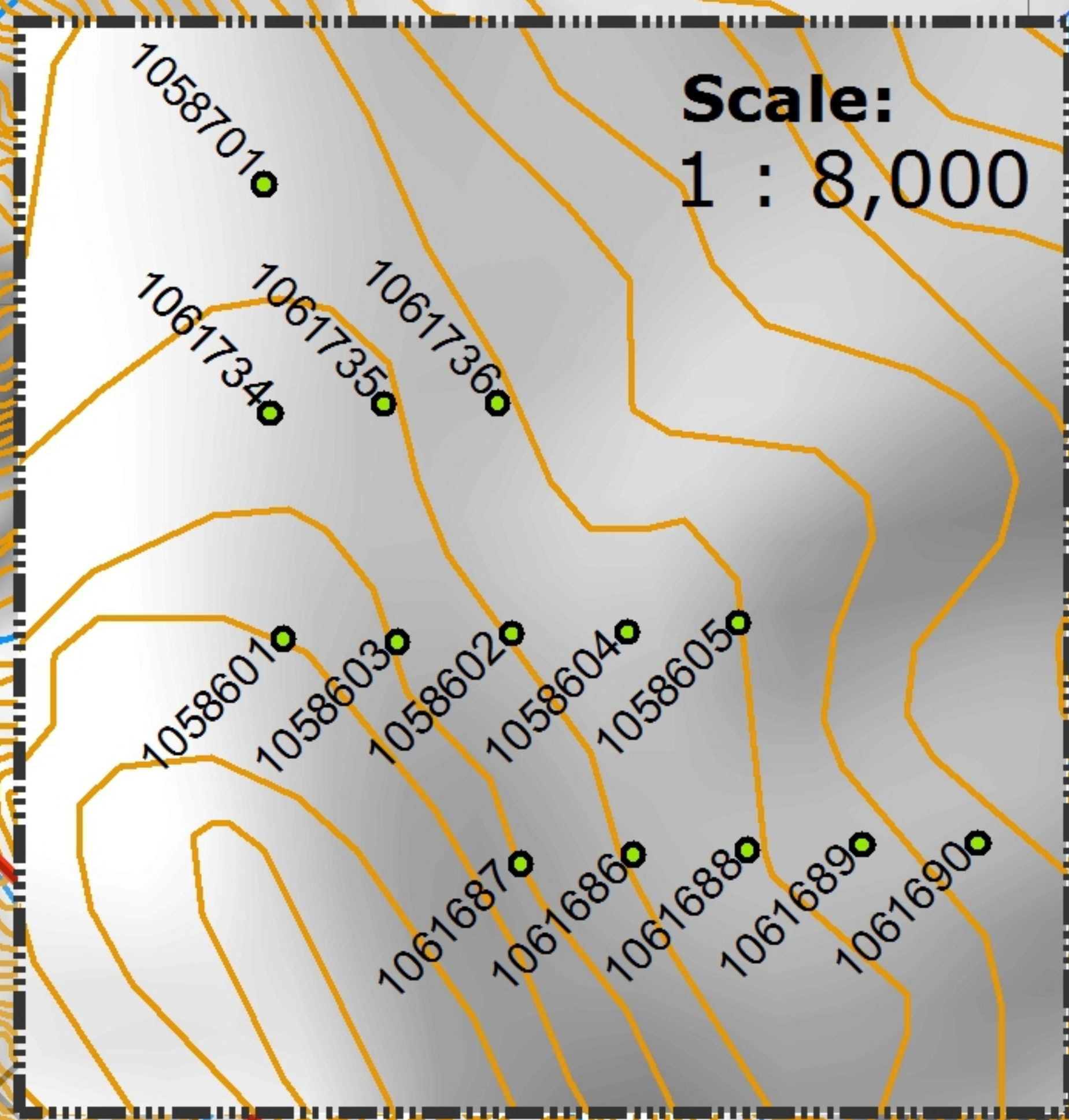
Scale:
1 : 50,000

Datum:
NAD83
UTM Zone 7

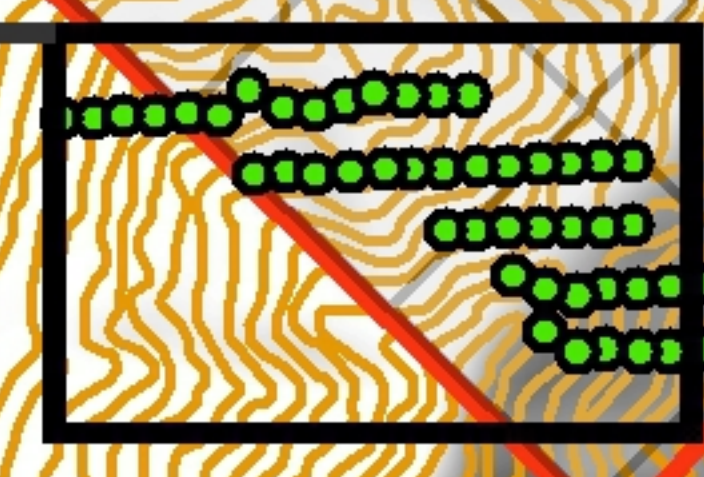
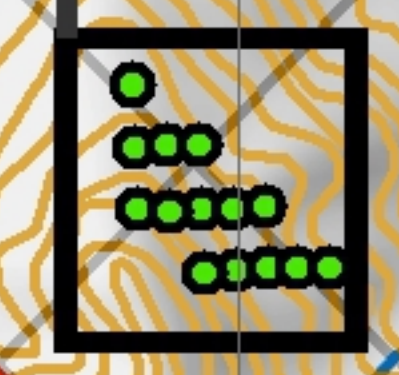
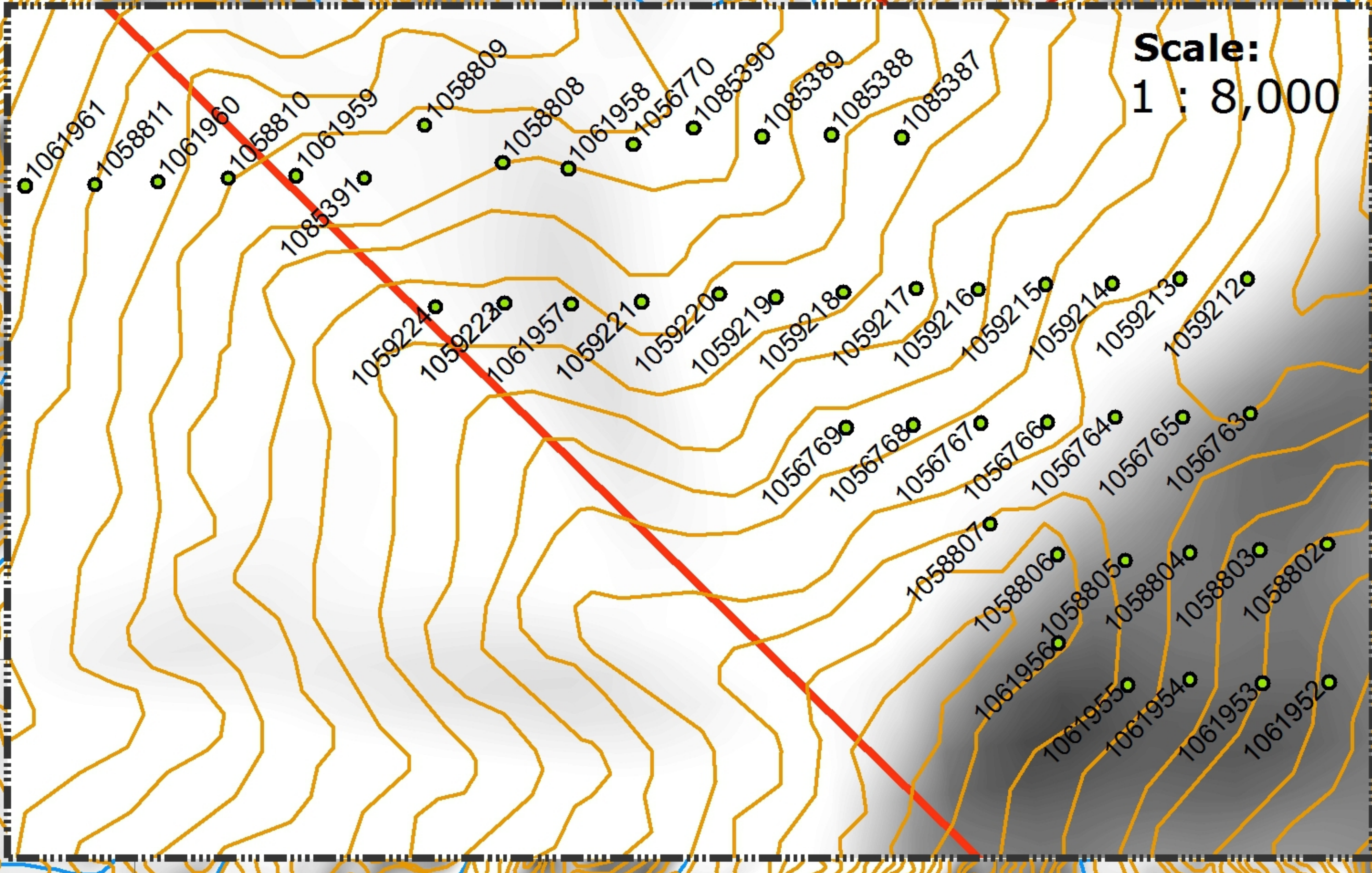
Figure 5

Legend

- BEAVER Outline
- BEAVER Soils



115G02



612000.000000

616000.000000

620000.000000

624000.000000

6788000.000000

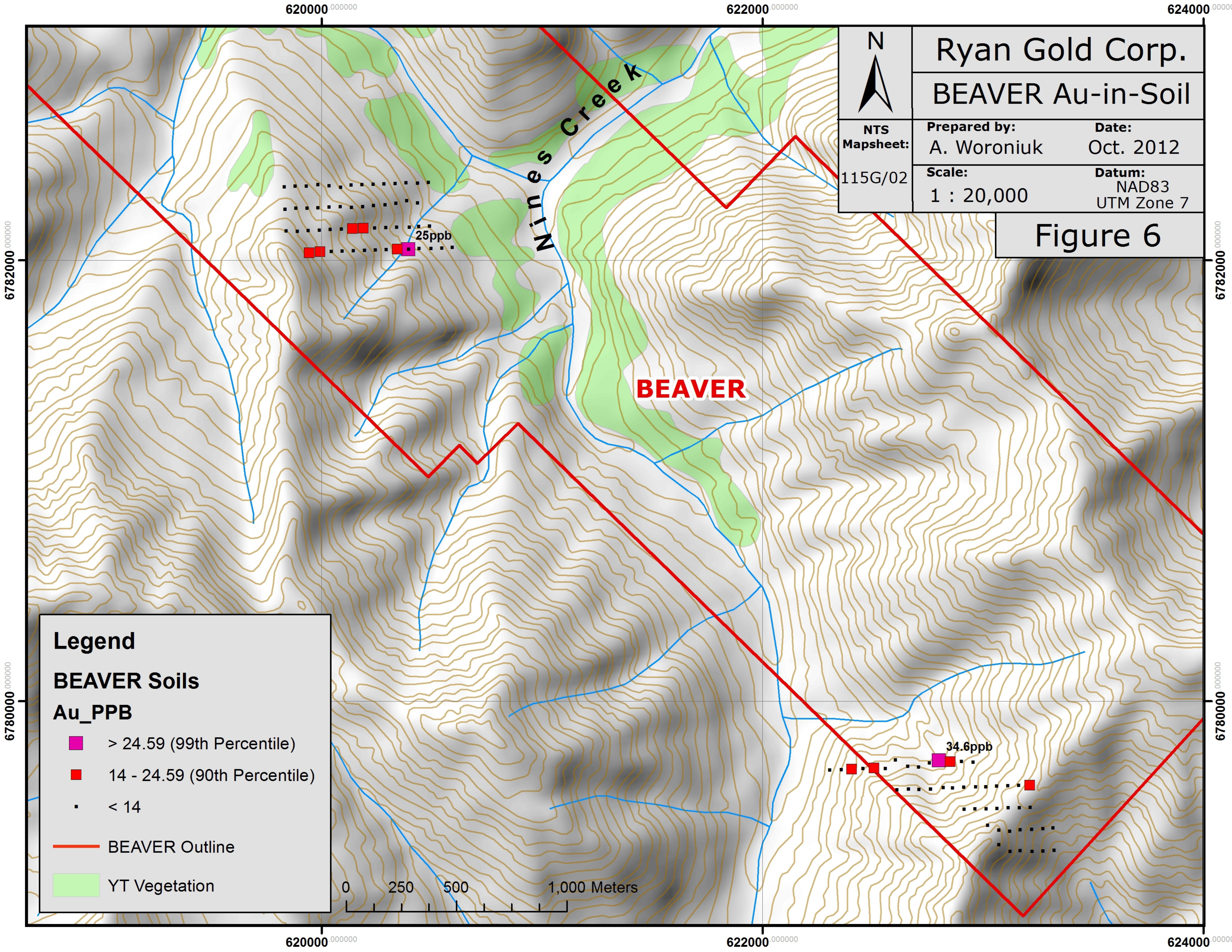
6788000.000000

6784000.000000

6784000.000000

6780000.000000

6780000.000000



Ryan Gold Corp.
BEAVER Au-in-Soil



**NTS
 Mapsheet:**
 115G/02

Prepared by:
 A. Woroniuk

Date:
 Oct. 2012

Scale:
 1 : 20,000

Datum:
 NAD83
 UTM Zone 7

Figure 6

Legend

BEAVER Soils

Au_PPB

- > 24.59 (99th Percentile)
- 14 - 24.59 (90th Percentile)
- < 14

BEAVER Outline

YT Vegetation

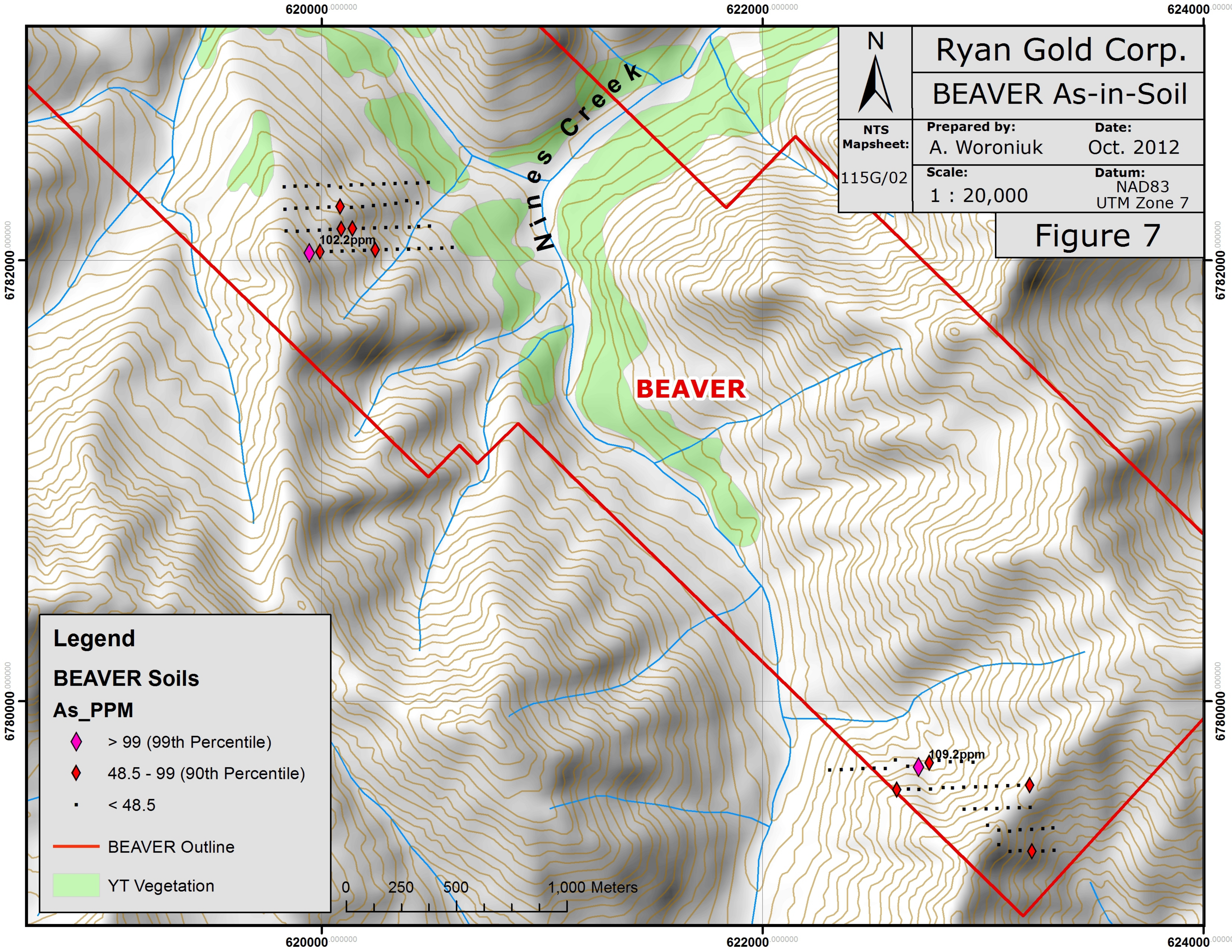


25ppb

34.6ppb

BEAVER

Wines Creek



Ryan Gold Corp.
BEAVER As-in-Soil



**NTS
 Mapsheet:**
 115G/02

Prepared by:
 A. Woroniuk

Date:
 Oct. 2012

Scale:
 1 : 20,000

Datum:
 NAD83
 UTM Zone 7

Figure 7

Legend

BEAVER Soils

As_PPM

- ◆ > 99 (99th Percentile)
- ◆ 48.5 - 99 (90th Percentile)
- < 48.5

— BEAVER Outline

■ YT Vegetation



102.2ppm

109.2ppm

Wines Creek

BEAVER

6782000

6782000

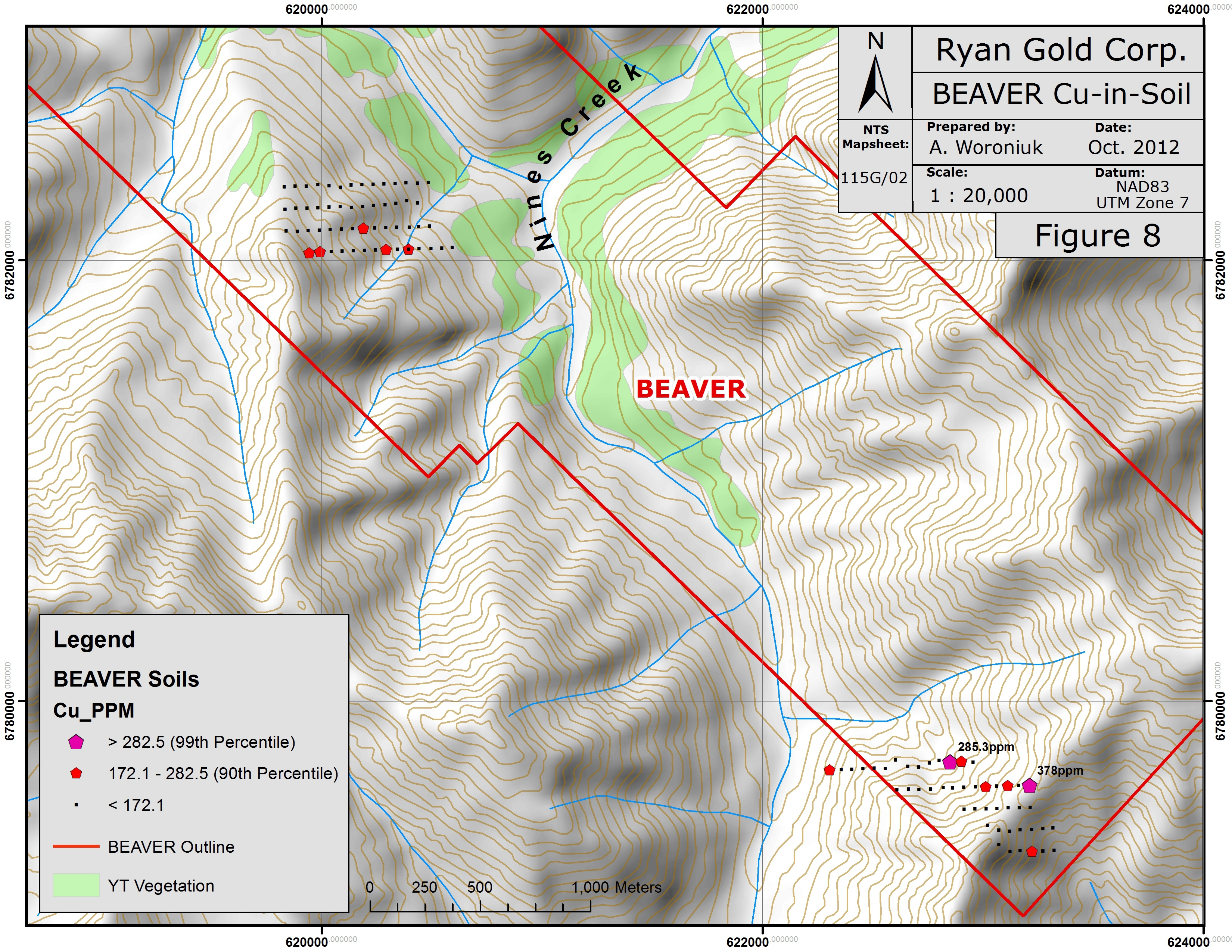
6780000

6780000

620000

622000

624000



	Ryan Gold Corp.	
	BEAVER Cu-in-Soil	
NTS Mapsheet: 115G/02	Prepared by: A. Woroniuk	Date: Oct. 2012
	Scale: 1 : 20,000	Datum: NAD83 UTM Zone 7

Figure 8

Legend

BEAVER Soils

Cu_PPM

- > 282.5 (99th Percentile)
- 172.1 - 282.5 (90th Percentile)
- < 172.1

BEAVER Outline

YT Vegetation

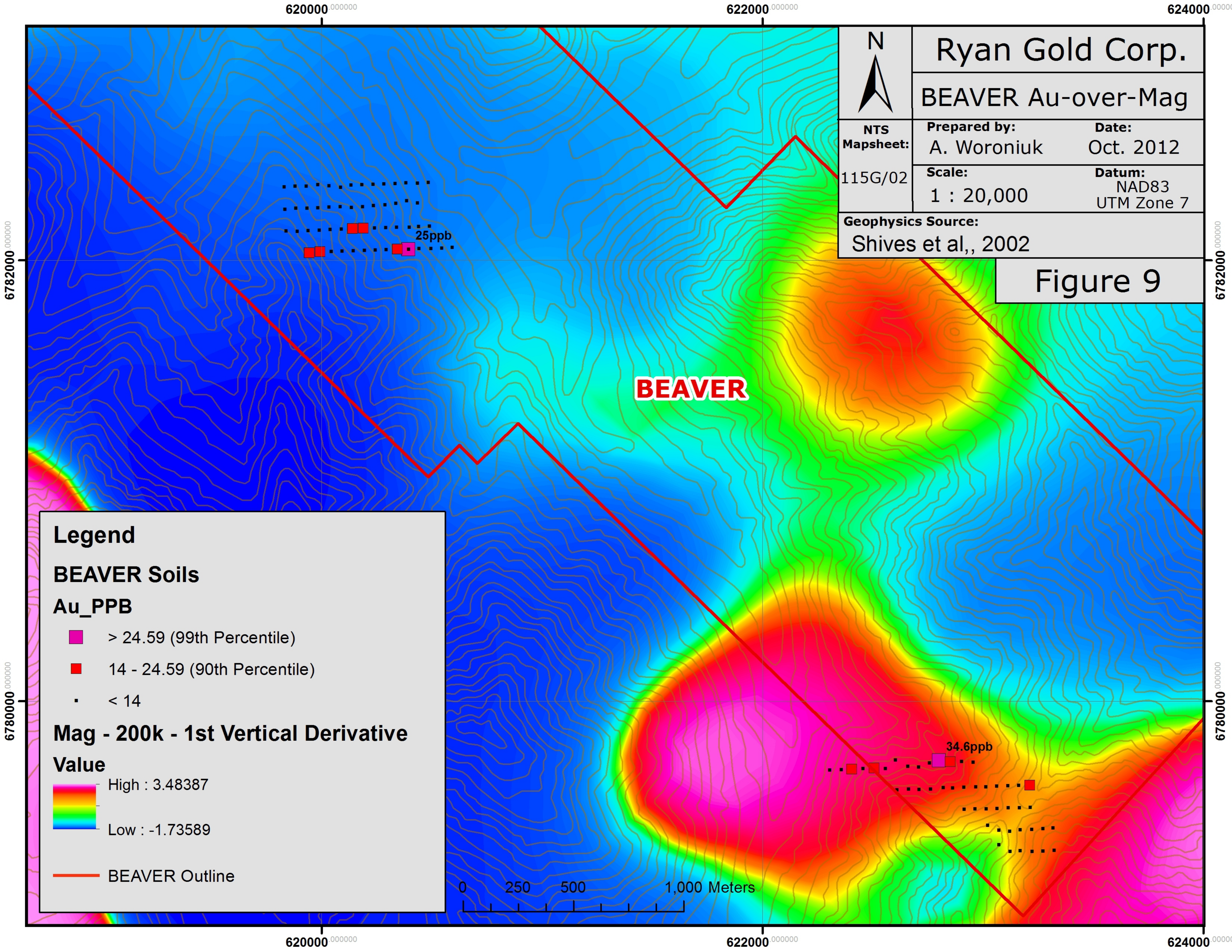
0 250 500 1,000 Meters

285.3ppm

378ppm

Wines Creek

BEAVER



	Ryan Gold Corp.	
	BEAVER Au-over-Mag	
NTS Mapsheet: 115G/02	Prepared by: A. Woroniuk	Date: Oct. 2012
	Scale: 1 : 20,000	Datum: NAD83 UTM Zone 7
Geophysics Source: Shives et al., 2002		

Figure 9

Legend

BEAVER Soils

Au_PPb

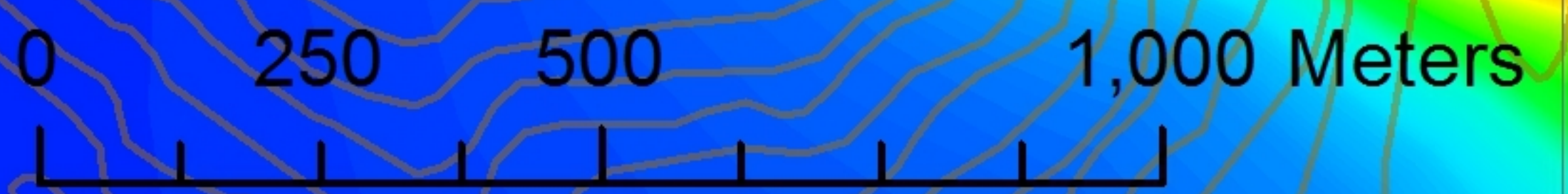
- > 24.59 (99th Percentile)
- 14 - 24.59 (90th Percentile)
- < 14

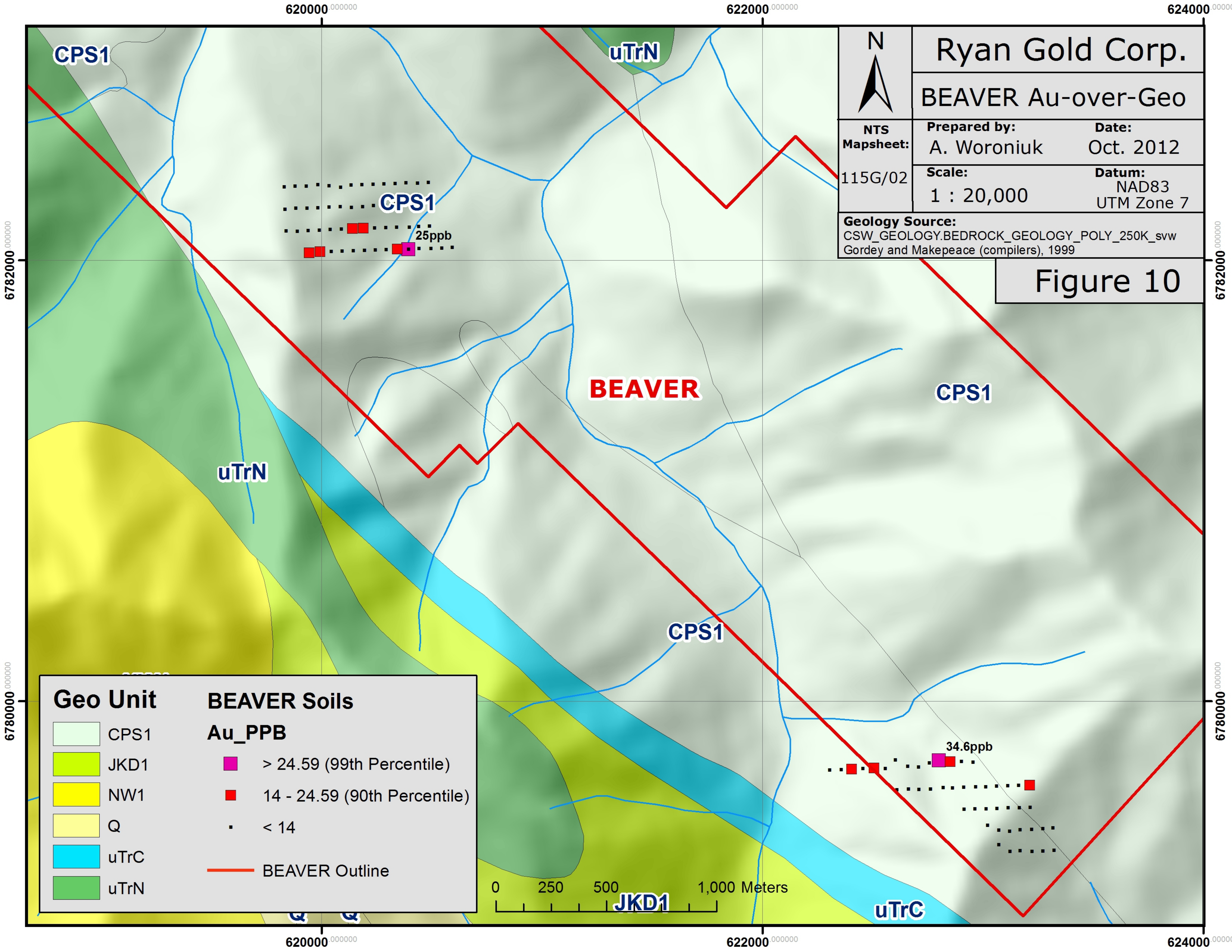
Mag - 200k - 1st Vertical Derivative Value

High : 3.48387

Low : -1.73589

— BEAVER Outline





Appendix I : Statement of Work Expenditure

CONTRACTOR: GROUND TRUTH EXPLORATION INC., Dawson City, YK					
WAGES:					
Soil Samplers	per day	\$ 350.00	7	\$	2,450.00
Project Forman	per day	\$ 400.00	2	\$	800.00
Soil Samplers: Weather/Stand by Rate	per day	\$ 250.00	10	\$	2,500.00
Stat Holiday					
DATA MANAGEMENT & PROCESSING SERVICES:					
GIS/Job Layout/Mapping/Results Plotting	per hour	\$ 75.00	2	\$	150.00
Data Processing: In the field	per hour	\$ 60.00	2	\$	120.00
Database Management/Chain of Custody, Barcoded Samples	\$0.50/sample	\$ 0.50	105	\$	52.50
Georeferenced In situ Sample & Sample Site Photos	per sample	\$ 0.50	105	\$	52.50
CONSUMABLE SAMPLING SUPPLIES:					
Flagging, Metal ID Tags, Sample Bags, Ore Bags, Rice Bags, etc.	per sample	\$ 1.00	105	\$	105.00
EQUIPMENT RENTAL (per unit, per day):					
Chainsaw drop kit: 1 per helicopter load, or as required	per day	\$ 35.00	2	\$	70.00
Iridium Satellite Phone: 1 per crew, charge 10 min/day	per day&min	\$ 35.00	2	\$	70.00
Radio: ICOM Handheld: 1 per person	per day	\$ 5.00	9	\$	45.00
Computer/Software: 1 per camp nightly data download	per day	\$ 50.00	1	\$	50.00
Handheld GPS/Barcode Scanner/Camera/Data Recorder	per day	\$ 15.00	9	\$	135.00
ACCOMODATION and FOOD:					
Remote Camp Fee: full fly camp/kitchen/generator	per man day	\$ 35.00	9	\$	315.00
Dawson Accomodation Fee: Samplers based in Dawson	per man day	\$ 35.00		\$	-
Food	per man day	\$ 50.00	9	\$	450.00
MOBILIZATION/OPERATIONAL CHARGES					\$ 518.11
HELICOPTER SUPPORT:					
Trans North - 1.8 hours @ \$1575/hour + FUEL				\$	3,365.10
ANALYTICAL ANALYSIS COSTS:					
Acme Laboratories, Vancouver, B.C./SOILS	per sample	\$ 22.00	105	\$	2,310.00
REPORT WRITING:					\$ 1,000.00
SOIL SAMPLING PROGRAM =				\$	14,558.21
\$14,558.21 divided by 105 SAMPLES =				\$	138.65
					COST PER SAMPLE
<u>ELIGIBLE EXPENSES</u>					
101 SAMPLES WERE TAKEN WITHIN THE BOUNDARIES OF THE BEAVER CLAIMS =				\$	14,003.61

Appendix II: Statement of Qualifications

I, Isaac Fage, having my place of residence at 982 - 7th Avenue in Dawson City, Yukon Territory do hereby certify that:

1. I obtained an Advanced Diploma in Remote Sensing at the Graduate Level from the Centre for Geographic Sciences, in 2008 and prior to that graduated with a Bachelor of Arts from Dalhousie University in 2002.
2. I am President of Ground Truth Exploration Inc.; the contractor that conducted the exploration field program referred to in this report. I have been employed continuously in the Yukon mineral exploration industry since March 2004.
3. I have directly supervised the field work referred to in this technical report.
4. I have authored this technical report titled: Geochemical Report on the BEAVER Property (October, 2012)
5. This report has not been prepared for the purposes, nor in full compliance with, National Instrument 43-101.

Respectfully Submitted on this 22th day of October, 2012.

Isaac Fage

Appendix III: BEAVER List of Claims, October 2012

Grant Number	Status	RegType	Claim Name	Claim #	Claim Owner	Staking Date	Expiry Date	District
YC60347	Active	Quartz	BEAVER	1	45127 Yukon Inc - 30%, Ryan Gold Corp. - 70%	4/20/2007	2/10/2013	Whitehorse
YC60348	Active	Quartz	BEAVER	2	45127 Yukon Inc - 30%, Ryan Gold Corp. - 70%	4/20/2007	2/10/2013	Whitehorse
YC60349	Active	Quartz	BEAVER	3	45127 Yukon Inc - 30%, Ryan Gold Corp. - 70%	4/20/2007	2/10/2013	Whitehorse
YC60350	Active	Quartz	BEAVER	4	45127 Yukon Inc - 30%, Ryan Gold Corp. - 70%	4/20/2007	2/10/2013	Whitehorse
YC60351	Active	Quartz	BEAVER	5	45127 Yukon Inc - 30%, Ryan Gold Corp. - 70%	4/20/2007	2/10/2013	Whitehorse
YC60352	Active	Quartz	BEAVER	6	45127 Yukon Inc - 30%, Ryan Gold Corp. - 70%	4/20/2007	2/10/2013	Whitehorse
YC60353	Active	Quartz	BEAVER	7	45127 Yukon Inc - 30%, Ryan Gold Corp. - 70%	4/20/2007	2/10/2013	Whitehorse
YC60354	Active	Quartz	BEAVER	8	45127 Yukon Inc - 30%, Ryan Gold Corp. - 70%	4/20/2007	2/10/2013	Whitehorse
YC60355	Active	Quartz	BEAVER	9	45127 Yukon Inc - 30%, Ryan Gold Corp. - 70%	4/20/2007	2/10/2013	Whitehorse
YC60356	Active	Quartz	BEAVER	10	45127 Yukon Inc - 30%, Ryan Gold Corp. - 70%	4/20/2007	2/10/2013	Whitehorse
YC60357	Active	Quartz	BEAVER	11	45127 Yukon Inc - 30%, Ryan Gold Corp. - 70%	4/20/2007	2/10/2013	Whitehorse
YC60358	Active	Quartz	BEAVER	12	45127 Yukon Inc - 30%, Ryan Gold Corp. - 70%	4/20/2007	2/10/2013	Whitehorse
YC60359	Active	Quartz	BEAVER	13	45127 Yukon Inc - 30%, Ryan Gold Corp. - 70%	4/20/2007	2/10/2013	Whitehorse
YC60360	Active	Quartz	BEAVER	14	45127 Yukon Inc - 30%, Ryan Gold Corp. - 70%	4/20/2007	2/10/2013	Whitehorse
YC60361	Active	Quartz	BEAVER	15	45127 Yukon Inc - 30%, Ryan Gold Corp. - 70%	4/20/2007	2/10/2013	Whitehorse
YC60362	Active	Quartz	BEAVER	16	45127 Yukon Inc - 30%, Ryan Gold Corp. - 70%	4/20/2007	2/10/2013	Whitehorse
YC60363	Active	Quartz	BEAVER	17	45127 Yukon Inc - 30%, Ryan Gold Corp. - 70%	4/20/2007	2/10/2013	Whitehorse
YC60364	Active	Quartz	BEAVER	18	45127 Yukon Inc - 30%, Ryan Gold Corp. - 70%	4/20/2007	2/10/2013	Whitehorse
YD133929	Active	Quartz	BEAVER	19	45127 Yukon Inc - 30%, Ryan Gold Corp. - 70%	2/9/2011	2/10/2013	Whitehorse
YD133930	Active	Quartz	BEAVER	20	45127 Yukon Inc - 30%, Ryan Gold Corp. - 70%	2/9/2011	2/10/2013	Whitehorse
YD133931	Active	Quartz	BEAVER	21	45127 Yukon Inc - 30%, Ryan Gold Corp. - 70%	2/9/2011	2/10/2013	Whitehorse
YD133932	Active	Quartz	BEAVER	22	45127 Yukon Inc - 30%, Ryan Gold Corp. - 70%	2/9/2011	2/10/2013	Whitehorse
YD133933	Active	Quartz	BEAVER	23	45127 Yukon Inc - 30%, Ryan Gold Corp. - 70%	2/9/2011	2/10/2013	Whitehorse
YD133934	Active	Quartz	BEAVER	24	45127 Yukon Inc - 30%, Ryan Gold Corp. - 70%	2/9/2011	2/10/2013	Whitehorse
YD133935	Active	Quartz	BEAVER	25	45127 Yukon Inc - 30%, Ryan Gold Corp. - 70%	2/9/2011	2/10/2013	Whitehorse
YD133936	Active	Quartz	BEAVER	26	45127 Yukon Inc - 30%, Ryan Gold Corp. - 70%	2/9/2011	2/10/2013	Whitehorse
YD133937	Active	Quartz	BEAVER	27	45127 Yukon Inc - 30%, Ryan Gold Corp. - 70%	2/9/2011	2/10/2013	Whitehorse
YD133938	Active	Quartz	BEAVER	28	45127 Yukon Inc - 30%, Ryan Gold Corp. - 70%	2/9/2011	2/10/2013	Whitehorse
YD133939	Active	Quartz	BEAVER	29	45127 Yukon Inc - 30%, Ryan Gold Corp. - 70%	2/9/2011	2/10/2013	Whitehorse
YD133940	Active	Quartz	BEAVER	30	45127 Yukon Inc - 30%, Ryan Gold Corp. - 70%	2/9/2011	2/10/2013	Whitehorse
YD133941	Active	Quartz	BEAVER	31	45127 Yukon Inc - 30%, Ryan Gold Corp. - 70%	2/9/2011	2/10/2013	Whitehorse
YD133942	Active	Quartz	BEAVER	32	45127 Yukon Inc - 30%, Ryan Gold Corp. - 70%	2/9/2011	2/10/2013	Whitehorse
YD133943	Active	Quartz	BEAVER	33	45127 Yukon Inc - 30%, Ryan Gold Corp. - 70%	2/9/2011	2/10/2013	Whitehorse
YD133944	Active	Quartz	BEAVER	34	45127 Yukon Inc - 30%, Ryan Gold Corp. - 70%	2/9/2011	2/10/2013	Whitehorse
YD133945	Active	Quartz	BEAVER	35	45127 Yukon Inc - 30%, Ryan Gold Corp. - 70%	2/9/2011	2/10/2013	Whitehorse
YD133946	Active	Quartz	BEAVER	36	45127 Yukon Inc - 30%, Ryan Gold Corp. - 70%	2/9/2011	2/10/2013	Whitehorse

Appendix III: BEAVER List of Claims, October 2012

Grant Number	Status	RegType	Claim Name	Claim #	Claim Owner	Staking Date	Expiry Date	District
YD133983	Active	Quartz	BEAVER	73	45127 Yukon Inc - 30%, Ryan Gold Corp. - 70%	2/9/2011	2/10/2013	Whitehorse
YD133984	Active	Quartz	BEAVER	74	45127 Yukon Inc - 30%, Ryan Gold Corp. - 70%	2/9/2011	2/10/2013	Whitehorse
YD133985	Active	Quartz	BEAVER	75	45127 Yukon Inc - 30%, Ryan Gold Corp. - 70%	2/9/2011	2/10/2013	Whitehorse
YD133986	Active	Quartz	BEAVER	76	45127 Yukon Inc - 30%, Ryan Gold Corp. - 70%	2/9/2011	2/10/2013	Whitehorse
YD133987	Active	Quartz	BEAVER	77	45127 Yukon Inc - 30%, Ryan Gold Corp. - 70%	2/9/2011	2/10/2013	Whitehorse
YD133988	Active	Quartz	BEAVER	78	45127 Yukon Inc - 30%, Ryan Gold Corp. - 70%	2/9/2011	2/10/2013	Whitehorse
YD133989	Active	Quartz	BEAVER	79	45127 Yukon Inc - 30%, Ryan Gold Corp. - 70%	2/9/2011	2/10/2013	Whitehorse
YD133990	Active	Quartz	BEAVER	80	45127 Yukon Inc - 30%, Ryan Gold Corp. - 70%	2/9/2011	2/10/2013	Whitehorse
YD133991	Active	Quartz	BEAVER	81	45127 Yukon Inc - 30%, Ryan Gold Corp. - 70%	2/9/2011	2/10/2013	Whitehorse
YD133992	Active	Quartz	BEAVER	82	45127 Yukon Inc - 30%, Ryan Gold Corp. - 70%	2/9/2011	2/10/2013	Whitehorse
YD133993	Active	Quartz	BEAVER	83	45127 Yukon Inc - 30%, Ryan Gold Corp. - 70%	2/7/2011	2/10/2013	Whitehorse
YD133994	Active	Quartz	BEAVER	84	45127 Yukon Inc - 30%, Ryan Gold Corp. - 70%	2/7/2011	2/10/2013	Whitehorse
YD133995	Active	Quartz	BEAVER	85	45127 Yukon Inc - 30%, Ryan Gold Corp. - 70%	2/7/2011	2/10/2013	Whitehorse
YD133996	Active	Quartz	BEAVER	86	45127 Yukon Inc - 30%, Ryan Gold Corp. - 70%	2/7/2011	2/10/2013	Whitehorse
YD133997	Active	Quartz	BEAVER	87	45127 Yukon Inc - 30%, Ryan Gold Corp. - 70%	2/7/2011	2/10/2013	Whitehorse
YD133998	Active	Quartz	BEAVER	88	45127 Yukon Inc - 30%, Ryan Gold Corp. - 70%	2/7/2011	2/10/2013	Whitehorse
YD133999	Active	Quartz	BEAVER	89	45127 Yukon Inc - 30%, Ryan Gold Corp. - 70%	2/7/2011	2/10/2013	Whitehorse
YD134000	Active	Quartz	BEAVER	90	45127 Yukon Inc - 30%, Ryan Gold Corp. - 70%	2/7/2011	2/10/2013	Whitehorse
YD134001	Active	Quartz	BEAVER	91	45127 Yukon Inc - 30%, Ryan Gold Corp. - 70%	2/7/2011	2/10/2013	Whitehorse
YD134002	Active	Quartz	BEAVER	92	45127 Yukon Inc - 30%, Ryan Gold Corp. - 70%	2/7/2011	2/10/2013	Whitehorse
YD134003	Active	Quartz	BEAVER	93	45127 Yukon Inc - 30%, Ryan Gold Corp. - 70%	2/7/2011	2/10/2013	Whitehorse
YD134004	Active	Quartz	BEAVER	94	45127 Yukon Inc - 30%, Ryan Gold Corp. - 70%	2/7/2011	2/10/2013	Whitehorse
YD134005	Active	Quartz	BEAVER	95	45127 Yukon Inc - 30%, Ryan Gold Corp. - 70%	2/7/2011	2/10/2013	Whitehorse
YD134006	Active	Quartz	BEAVER	96	45127 Yukon Inc - 30%, Ryan Gold Corp. - 70%	2/7/2011	2/10/2013	Whitehorse
YD134007	Active	Quartz	BEAVER	97	45127 Yukon Inc - 30%, Ryan Gold Corp. - 70%	2/7/2011	2/10/2013	Whitehorse
YD134008	Active	Quartz	BEAVER	98	45127 Yukon Inc - 30%, Ryan Gold Corp. - 70%	2/7/2011	2/10/2013	Whitehorse
YD134009	Active	Quartz	BEAVER	99	45127 Yukon Inc - 30%, Ryan Gold Corp. - 70%	2/7/2011	2/10/2013	Whitehorse
YD134010	Active	Quartz	BEAVER	100	45127 Yukon Inc - 30%, Ryan Gold Corp. - 70%	2/7/2011	2/10/2013	Whitehorse
YD134011	Active	Quartz	BEAVER	101	45127 Yukon Inc - 30%, Ryan Gold Corp. - 70%	2/7/2011	2/10/2013	Whitehorse
YD134012	Active	Quartz	BEAVER	102	45127 Yukon Inc - 30%, Ryan Gold Corp. - 70%	2/7/2011	2/10/2013	Whitehorse
YD134013	Active	Quartz	BEAVER	103	45127 Yukon Inc - 30%, Ryan Gold Corp. - 70%	2/7/2011	2/10/2013	Whitehorse
YD134014	Active	Quartz	BEAVER	104	45127 Yukon Inc - 30%, Ryan Gold Corp. - 70%	2/7/2011	2/10/2013	Whitehorse
YD134015	Active	Quartz	BEAVER	105	45127 Yukon Inc - 30%, Ryan Gold Corp. - 70%	2/7/2011	2/10/2013	Whitehorse
YD134016	Active	Quartz	BEAVER	106	45127 Yukon Inc - 30%, Ryan Gold Corp. - 70%	2/7/2011	2/10/2013	Whitehorse
YD134017	Active	Quartz	BEAVER	107	45127 Yukon Inc - 30%, Ryan Gold Corp. - 70%	2/7/2011	2/10/2013	Whitehorse
YD134018	Active	Quartz	BEAVER	108	45127 Yukon Inc - 30%, Ryan Gold Corp. - 70%	2/7/2011	2/10/2013	Whitehorse

Appendix III: BEAVER List of Claims, October 2012

Grant Number	Status	RegType	Claim Name	Claim #	Claim Owner	Staking Date	Expiry Date	District
YD134019	Active	Quartz	BEAVER	109	45127 Yukon Inc - 30%, Ryan Gold Corp. - 70%	2/7/2011	2/10/2013	Whitehorse
YD134020	Active	Quartz	BEAVER	110	45127 Yukon Inc - 30%, Ryan Gold Corp. - 70%	2/7/2011	2/10/2013	Whitehorse
YD134021	Active	Quartz	BEAVER	111	45127 Yukon Inc - 30%, Ryan Gold Corp. - 70%	2/7/2011	2/10/2013	Whitehorse
YD134022	Active	Quartz	BEAVER	112	45127 Yukon Inc - 30%, Ryan Gold Corp. - 70%	2/7/2011	2/10/2013	Whitehorse
YD134023	Active	Quartz	BEAVER	113	45127 Yukon Inc - 30%, Ryan Gold Corp. - 70%	2/7/2011	2/10/2013	Whitehorse
YD134024	Active	Quartz	BEAVER	114	45127 Yukon Inc - 30%, Ryan Gold Corp. - 70%	2/7/2011	2/10/2013	Whitehorse
YD134025	Active	Quartz	BEAVER	115	45127 Yukon Inc - 30%, Ryan Gold Corp. - 70%	2/7/2011	2/10/2013	Whitehorse
YD134026	Active	Quartz	BEAVER	116	45127 Yukon Inc - 30%, Ryan Gold Corp. - 70%	2/7/2011	2/10/2013	Whitehorse
YD134027	Active	Quartz	BEAVER	117	45127 Yukon Inc - 30%, Ryan Gold Corp. - 70%	2/7/2011	2/10/2013	Whitehorse
YD134028	Active	Quartz	BEAVER	118	45127 Yukon Inc - 30%, Ryan Gold Corp. - 70%	2/7/2011	2/10/2013	Whitehorse
YD134029	Active	Quartz	BEAVER	119	45127 Yukon Inc - 30%, Ryan Gold Corp. - 70%	2/9/2011	2/10/2013	Whitehorse
YD134030	Active	Quartz	BEAVER	120	45127 Yukon Inc - 30%, Ryan Gold Corp. - 70%	2/9/2011	2/10/2013	Whitehorse
YD134031	Active	Quartz	BEAVER	121	45127 Yukon Inc - 30%, Ryan Gold Corp. - 70%	2/9/2011	2/10/2013	Whitehorse
YD134032	Active	Quartz	BEAVER	122	45127 Yukon Inc - 30%, Ryan Gold Corp. - 70%	2/9/2011	2/10/2013	Whitehorse
YD134033	Active	Quartz	BEAVER	123	45127 Yukon Inc - 30%, Ryan Gold Corp. - 70%	2/9/2011	2/10/2013	Whitehorse
YD134034	Active	Quartz	BEAVER	124	45127 Yukon Inc - 30%, Ryan Gold Corp. - 70%	2/9/2011	2/10/2013	Whitehorse
YD134035	Active	Quartz	BEAVER	125	45127 Yukon Inc - 30%, Ryan Gold Corp. - 70%	2/9/2011	2/10/2013	Whitehorse
YD134036	Active	Quartz	BEAVER	126	45127 Yukon Inc - 30%, Ryan Gold Corp. - 70%	2/9/2011	2/10/2013	Whitehorse
YD134037	Active	Quartz	BEAVER	127	45127 Yukon Inc - 30%, Ryan Gold Corp. - 70%	2/9/2011	2/10/2013	Whitehorse
YD134038	Active	Quartz	BEAVER	128	45127 Yukon Inc - 30%, Ryan Gold Corp. - 70%	2/9/2011	2/10/2013	Whitehorse
YD134039	Active	Quartz	BEAVER	129	45127 Yukon Inc - 30%, Ryan Gold Corp. - 70%	2/9/2011	2/10/2013	Whitehorse
YD134040	Active	Quartz	BEAVER	130	45127 Yukon Inc - 30%, Ryan Gold Corp. - 70%	2/9/2011	2/10/2013	Whitehorse
YD134041	Active	Quartz	BEAVER	131	45127 Yukon Inc - 30%, Ryan Gold Corp. - 70%	2/9/2011	2/10/2013	Whitehorse
YD134042	Active	Quartz	BEAVER	132	45127 Yukon Inc - 30%, Ryan Gold Corp. - 70%	2/9/2011	2/10/2013	Whitehorse
YD134043	Active	Quartz	BEAVER	133	45127 Yukon Inc - 30%, Ryan Gold Corp. - 70%	2/7/2011	2/10/2013	Whitehorse
YD134044	Active	Quartz	BEAVER	134	45127 Yukon Inc - 30%, Ryan Gold Corp. - 70%	2/7/2011	2/10/2013	Whitehorse
YD134045	Active	Quartz	BEAVER	135	45127 Yukon Inc - 30%, Ryan Gold Corp. - 70%	2/7/2011	2/10/2013	Whitehorse
YD134046	Active	Quartz	BEAVER	136	45127 Yukon Inc - 30%, Ryan Gold Corp. - 70%	2/7/2011	2/10/2013	Whitehorse
YD134047	Active	Quartz	BEAVER	137	45127 Yukon Inc - 30%, Ryan Gold Corp. - 70%	2/7/2011	2/10/2013	Whitehorse
YD134048	Active	Quartz	BEAVER	138	45127 Yukon Inc - 30%, Ryan Gold Corp. - 70%	2/7/2011	2/10/2013	Whitehorse
YD134049	Active	Quartz	BEAVER	139	45127 Yukon Inc - 30%, Ryan Gold Corp. - 70%	2/7/2011	2/10/2013	Whitehorse
YD134050	Active	Quartz	BEAVER	140	45127 Yukon Inc - 30%, Ryan Gold Corp. - 70%	2/7/2011	2/10/2013	Whitehorse
YD134051	Active	Quartz	BEAVER	141	45127 Yukon Inc - 30%, Ryan Gold Corp. - 70%	2/7/2011	2/10/2013	Whitehorse
YD134052	Active	Quartz	BEAVER	142	45127 Yukon Inc - 30%, Ryan Gold Corp. - 70%	2/7/2011	2/10/2013	Whitehorse
YD134053	Active	Quartz	BEAVER	143	45127 Yukon Inc - 30%, Ryan Gold Corp. - 70%	2/9/2011	2/10/2013	Whitehorse

Appendix III: BEAVER List of Claims, October 2012

Grant Number	Status	RegType	Claim Name	Claim #	Claim Owner	Staking Date	Expiry Date	District
YD134054	Active	Quartz	BEAVER	144	45127 Yukon Inc - 30%, Ryan Gold Corp. - 70%	2/9/2011	2/10/2013	Whitehorse

NAD 83 - UTM Zone 7																																												
Sample_ID	Project	Type	Easting	Northing	Mo_PPM	Cu_PPM	Pb_PPM	Zn_PPM	Ag_PPM	Ni_PPM	Co_PPM	Mn_PPM	Fe_PCT	Cd_PPM	As_PPM	U_PPM	Au_PPM	Th_PPM	Cg_PPM	Sb_PPM	Bi_PPM	V_PPM	Ca_PCT	P_PCT	Cr_PPM	Mg_PPM	Ti_PCT	B_PPM	Al_PCT	Na_PCT	K_PCT	W_PPM	Hg_PPM	Se_PPM	Tl_PPM	S_PCT	Ga_PPM	Sc_PPM	Te_PPM	Method	Job_Number	Duplicate		
1056763	BN	Soil	623215	6779519	1	155.4	7.8	81	0.1	23.2	28.1	1224	4.8	11.3	0.4	3.6	1.3	89	0.4	0.3	0.05	145	2.82	0.087	6	42	1.99	116	0.142	18	4.06	0.014	0.13	0.1	0.02	10.9	0.05	0.025	9	0.25	0.1	10DX15	WHH1001113	
1056764	BN	Soil	623115	6779516	1.2	126.5	7.1	92	0.2	94.5	34.3	1125	5.3	14	0.5	3.7	1.7	49	0.3	0.3	0.05	139	1.54	0.089	9	172	2.99	106	0.117	19	3.27	0.014	0.07	0.05	0.02	14.4	0.05	0.025	8	0.25	0.1	10DX15	WHH1001113	
1056765	BN	Soil	623165	6779515	0.7	75.2	1.8	34	0.05	78.5	28.7	994	4.4	48.4	0.1	2	0.7	58	0.05	0.6	0.05	123	5.51	0.072	3	146	1.16	128	0.006	9	2.95	0.007	0.04	0.05	0.15	24.1	0.05	0.025	5	0.25	0.1	10DX15	WHH1001113	
1056766	BN	Soil	623265	6779513	2.7	89.7	18.2	115	0.4	47.8	21.1	1291	3.5	22.6	0.7	0.9	3.9	120	0.1	0.7	0.2	39	1.41	0.064	15	32	0.54	238	0.005	25	0.72	0.12	0.11	0.05	0.35	5.4	0.05	0.14	2	1	0.1	10DX15	WHH1001113	
1056767	BN	Soil	623015	6779512	1.9	116.3	16.8	147	0.2	53.4	22.8	1359	3.76	17.6	0.5	0.25	3.9	6.1	0.1	0.9	0.2	38	0.74	0.051	26	39	0.71	70	0.0005	14	1.47	0.006	0.07	0.05	0.21	3.4	0.05	0.09	4	1.1	0.1	10DX15	WHH1001113	
1056768	BN	Soil	622965	6779511	1.8	145.3	16.8	147	0.3	65.3	39.2	1379	6.94	15.1	0.6	0.25	3.8	78	0.2	0.6	0.2	122	1.86	0.098	29	124	3	106	0.0005	21	3.69	0.009	0.04	0.05	0.77	22.4	0.05	0.1	10	0.8	0.1	10DX15	WHH1001113	
1056769	BN	Soil	622915	6779509	3.5	128.6	27.1	188	0.5	68.3	30.4	1554	4.77	18.5	1.2	2.5	5	92	0.3	2.3	0.3	53	2.4	0.055	31	21	0.72	323	0.001	27	1.85	0.015	0.15	0.05	0.28	11.1	0.05	0.2	6	2.1	0.1	10DX15	WHH1001113	
1056770	BN	Soil	622757	6779719	0.3	112.7	2.8	80	0.05	64	31	1548	5.75	12.2	0.2	1.7	0.7	63	0.05	0.3	0.05	128	2.42	0.066	7	76	1.63	109	0.013	50	0.68	0.015	0.06	0.05	0.13	20.2	0.05	0.025	3	0.25	0.1	10DX15	WHH1001113	
1058601	BN	Soil	619840	6782133	0.1	58.2	1.2	52	0.05	227.4	46.4	880	5.16	4.4	0.05	1.3	0.2	28	0.05	0.2	0.05	67	2.25	0.015	1	321	5.9	23	0.066	10	3.41	0.015	0.005	0.05	0.005	7.1	0.05	0.025	8	0.25	0.1	10DX15	WHH1001113	
1058602	BN	Soil	619940	6782135	0.6	89.5	3.3	68	0.1	138	42	746	5.07	5.4	0.3	3.4	0.6	44	0.2	0.3	0.05	65	1.49	0.03	3	151	4	34	0.071	41	2.85	0.007	0.06	0.05	0.01	6.1	0.05	0.025	7	0.25	0.1	10DX15	WHH1001113	
1058603	BN	Soil	619890	6782132	0.4	153.9	0.8	61	0.05	63.5	35.9	934	5.69	9.1	0.05	4.6	0.2	37	0.1	0.5	0.05	136	2.72	0.015	1	17	1.95	12	0.129	22	2.88	0.033	0.04	0.04	0.02	7.7	0.05	0.025	8	0.25	0.1	10DX15	WHH1001113	
1058604	BN	Soil	619991	6782136	0.05	48	0.4	37	0.05	243.5	66.9	674	5.02	0.7	0.05	4.7	0.1	41	0.05	0.05	0.05	136	2.72	0.015	1	169	6.05	10	0.025	4	3.31	0.064	0.03	0.05	0.05	3.9	0.05	0.025	6	0.25	0.1	10DX15	WHH1001113	
1058605	BN	Soil	620040	6782140	0.2	83.8	0.7	45	0.05	148	39.1	665	3.91	16.3	0.05	1.5	0.2	41	0.05	0.6	0.05	76	1.31	0.019	0	271	13.2	35	0.064	24	2.55	0.022	0.2	0.005	8.1	0.05	0.025	5	0.25	0.1	10DX15	WHH1001113		
1058618	BN	Soil	620091	6782142	0.5	120.5	6.1	603	0.1	193.6	72.8	1877	7.45	55.1	0.05	7.5	0.2	50	1.2	0.8	0.05	139	5.15	0.044	2	290	3.06	429	0.047	30	2.25	0.012	0.02	0.4	0.38	16.3	0.05	0.025	7	0.25	0.1	10DX15	WHH1001113	
1058620	BN	Soil	620141	6782144	0.9	165.1	4	70	0.1	76.5	61.2	1317	5.75	65.9	0.4	15	0.6	56	0.3	1.4	0.05	128	3.75	0.033	4	146	2.1	91	0.164	30	2.14	0.011	0.04	0.05	0.15	13.8	0.05	0.025	7	0.25	0.1	10DX15	WHH1001113	
1058620	BN	REP	620141	6782144	1	156	3.9	67	0.2	73.5	61.3	1353	5.79	64.7	0.3	15	0.6	56	0.4	1.4	0.05	129	4.17	0.032	4	150	2.2	95	0.168	32	2.13	0.011	0.04	0.05	0.14	14.7	0.05	0.025	7	0.25	0.1	10DX15	WHH1001113	
1058622	BN	Soil	620490	6782155	1.6	114.9	9	118	0.3	76.4	32.7	828	3.39	20.7	0.7	3.3	1	53	0.4	1.1	0.2	91	1.39	0.068	11	93	1.59	157	0.07	16	2.03	0.018	0.06	0.1	0.15	6.8	0.05	0.06	6	1.2	0.1	10DX15	WHH1001113	
1058623	BN	Soil	620490	6782155	1.6	110.5	9.2	115	0.2	76.9	29.5	828	4.3	19.4	0.7	3.2	1.2	50	0.4	1	0.1	94	1.46	0.064	10	93	1.62	131	0.09	17	2.09	0.019	0.06	0.1	0.15	6.7	0.05	0.08	6	0.9	0.1	10DX15	DAW1002025	1058623
1058628	BN	Soil	620441	6782153	1.4	122	10.5	117	0.2	81.1	35.5	1058	5.22	23.6	0.5	5.7	1.1	41	0.4	0.8	0.1	113	1.29	0.052	8	95	1.89	128	0.116	21	2.32	0.02	0.05	0.2	0.09	8.7	0.05	0.025	7	0.8	0.1	10DX15	WHH1001113	
1058629	BN	Soil	620441	6782141	1.1	110.9	5.5	67	0.2	69.6	30.3	837	4.43	17.6	0.2	5.7	0.6	75	0.2	0.6	0.05	80	2.76	0.076	7	93	1.96	175	0.043	22	2.02	0.007	0.08	0.05	0.05	9	0.05	0.025	6	0.25	0.1	10DX15	WHH1001113	
1058630	BN	Soil	620291	6782149	0.9	99.3	5.7	73	0.2	85.2	33.6	857	4.65	28.6	0.2	6.5	0.7	54	0.3	0.7	0.05	87	2.04	0.069	9	117	2.26	183	0.071	30	2.17	0.022	0.09	0.1	0.08	9	0.05	0.025	6	0.25	0.1	10DX15	WHH1001113	
1058631	BN	Soil	620341	6782150	0.6	131.6	9.7	75	0.2	55.7	41.5	1093	5.38	33.4	0.3	7.4	0.7	51	0.3	1.3	0.05	141	3.3	0.081	8	86	2.3	95	0.195	266	0.269	0.016	0.03	0.4	0.15	13.4	0.05	0.025	10	0.25	0.1	10DX15	WHH1001113	
1058633	BN	Soil	620399	6782150	1.6	116.3	11.5	95	0.2	89.3	36.9	1045	5.0	24.3	0.5	6.7	0.8	43	0.4	0.9	0.1	111	1.23	0.04	10	110	2.04	130	0.075	16	2.41	0.022	0.06	0.05	0.31	9.6	0.05	0.025	7	0.25	0.1	10DX15	WHH1001113	
1058634	BN	Soil	620190	6782145	2.9	212.3	5.9	99	0.3	76.9	77	1399	7.03	40.6	0.3	2.1	0.5	34	1	1.4	0.05	148	3.27	0.055	4	114	2	53	0.225	20	2.27	0.011	0.03	0.6	0.07	10.9	0.2	0.025	9	0.5	0.1	10DX15	WHH1001113	
1058701	BN	Soil	619831	6782333	0.7	167.9	6.5	87	0.2	107.7	48.6	1208	7.04	13.3	0.3	4.9	0.7	29	0.1	0.7	0.05	169	1.94	0.024	4	130	4.17	37	0.134	9	3.67	0.021	0.03	0.05	0.03	19.1	0.05	0.025	10	0.25	0.1	10DX15	WHH1001113	
1058702	BN	Soil	619881	6782336	0.9	133.6	4.1	89	0.1	180	43.8	783	5.36	7.3	0.3	3.3	0.6	33	0.2	0.3	0.05	99	1.32	0.036	4	270	4	45	0.1	11	3.28	0.022	0.03	0.1	0.03	8.5	0.05	0.025	7	0.8	0.1	10DX15	WHH1001113	
1058703	BN	Soil	619931	6782336	3	119.9	8.9	104	0.2	110.2	33	1218	4.87	38.7	0.2	8.5	1	34	0.2	1.1	0.1	83	1.25	0.044	6	159	1.9	392	0.031	28	1.8	0.016	0.1	0.1	0.4	10.4	0.05	0.025	4	0.9	0.1	10DX15	WHH1001113	
1058704	BN	Soil	619981	6782344	1.4	63	3.2	57	0.2																																			

		NAD 83 - UTM Zone 7																																										
Sample_ID	Project	Type	Easting	Northing	Mo_PPM	Cu_PPM	Pb_PPM	Zn_PPM	Ag_PPM	Ni_PPM	Co_PPM	Mn_PPM	Fe_PCT	As_PPM	U_PPM	Au_PPB	Th_PPM	Sr_PPM	Cd_PPM	Sb_PPM	Bi_PPM	V_PPM	Ca_PCT	P_PCT	La_PPM	Cr_PPM	Mg_PCT	Ba_PPM	Ti_PCT	B_PPM	Al_PCT	Na_PCT	K_PCT	W_PPM	Hg_PPM	Sc_PPM	Tl_PPM	S_PCT	Ga_PPM	Se_PPM	Te_PPM	Method	Job_Number	Duplicate
1061951	BNI	Soil	623323	6779323	2.8	38.9	1.4	98	0.05	71.7	41.7	1471	8.32	6.3	0.2	1.3	1.7	67	0.05	0.1	0.05	247	3.94	0.133	6	247	5.35	702	0.036	9	5.86	0.005	0.07	0.05	0.02	23.2	0.05	0.025	13	0.25	0.1	1DX15	WHH1001113	
1061952	BNI	Soil	623273	6779320	0.9	70.9	8.7	80	0.2	24.6	16.1	1311	2.59	44.2	0.2	3.4	1.2	135	0.05	0.6	0.2	25	2.89	0.043	6	13	0.35	280	0.0005	11	0.49	0.005	0.17	0.05	0.14	4.6	0.05	0.1	2	0.25	0.1	1DX15	WHH1001113	
1061952	BNI	REF	623273	6779320	1	72.8	8.5	83	0.2	24.8	15.8	1315	2.56	43.9	0.3	5.4	1.2	136	0.1	0.7	0.2	25	2.84	0.045	6	13	0.36	299	0.0005	15	0.52	0.005	0.18	0.05	0.16	4.6	0.05	0.1	2	0.7	0.1	1DX15	WHH1001113	
1061953	BNI	Soil	623224	6779319	8.2	172	51.5	202	0.8	61.7	38.1	1308	5.06	49.7	1.3	3.7	7.8	52	0.3	2.9	0.5	42	2.02	0.053	41	20	0.72	128	0.0005	10	1.84	0.005	0.07	0.05	0.46	9.2	0.05	0.17	4	4	0.2	1DX15	WHH1001113	
1061954	BNI	Soil	623170	6779322	61.1	134.2	36	79	0.7	204.8	66.5	3689	10.23	40	0.7	1.3	2.5	287	0.8	7.7	0.3	85	3.73	0.085	38	118	1.27	157	0.002	16	1.98	0.012	0.11	0.2	0.94	21.2	0.2	0.67	6	2.5	0.1	1DX15	WHH1001113	
1061955	BNI	Soil	623124	6779318	2.4	145.8	14.9	147	0.3	67.1	29.5	1437	4.58	18.8	0.3	1.2	2.5	28	0.3	2.6	0.3	47	1.27	0.069	24	39	0.83	174	0.001	19	1.56	0.007	0.25	0.05	0.2	7.6	0.2	0.025	5	0.6	0.1	1DX15	WHH1001113	
1061956	BNI	Soil	623073	6779349	6.5	87.3	34.6	183	0.3	67.7	36.8	3621	5.49	22.4	0.5	7.3	3.3	78	0.6	3.2	0.2	72	2.52	0.066	22	39	1.38	416	0.001	24	1.04	0.017	0.12	0.05	0.16	11.3	0.4	0.08	4	1	0.1	1DX15	WHH1001113	
1061957	BNI	Soil	622711	6779600	7.3	60.7	20.1	129	0.2	25	12	987	4.02	7	0.5	0.25	7.3	32	0.2	0.6	0.3	23	0.94	0.043	46	12	0.81	103	0.0005	11	1.73	0.005	0.07	0.05	0.13	1.8	0.05	0.12	4	0.6	0.1	1DX15	WHH1001113	
1061958	BNI	Soil	622709	6779701	3.3	47.8	15.9	90	0.2	19.9	10.8	1095	2.09	109.2	0.5	4.2	2	95	0.3	0.7	0.2	28	1.96	0.038	7	10	0.46	335	0.0005	34	0.81	0.009	0.13	0.05	0.9	4.1	0.1	0.025	3	0.25	0.1	1DX15	WHH1001113	
1061959	BNI	Soil	622507	6779696	6.3	160.2	34.2	178	0.6	93.6	47.4	2087	5.73	35.1	0.5	11.4	3.2	42	0.4	3.2	0.2	74	1.65	0.062	35	60	1.31	190	0.02	15	1.86	0.011	0.11	0.05	0.28	11.6	0.2	0.07	6	0.25	0.2	1DX15	WHH1001113	
1061960	BNI	Soil	622405	6779691	3.9	133.8	40.7	451	0.4	83.5	41.5	2787	7.16	34.6	0.8	15.5	6.5	39	1	2	0.2	115	1.13	0.091	56	60	1.39	197	0.013	26	1.76	0.031	0.05	0.05	0.2	15.8	0.05	0.16	9	1.2	0.1	1DX15	WHH1001113	
1061961	BNI	Soil	622306	6779688	2.2	257.8	16.6	228	0.3	79.6	29.7	1673	4.92	23.3	0.6	5.8	0.9	44	0.4	1.3	0.1	95	1.73	0.096	36	77	1.44	250	0.018	17	1.74	0.017	0.06	0.05	0.06	8.5	0.05	0.1	7	0.8	0.1	1DX15	WHH1001113	
1085387	BNI	Soil	622956	6779724	1.3	146	7.2	74	0.2	90.7	44	1211	5.84	41.9	0.3	4.5	1.3	71	0.3	3.9	0.05	196	5.12	0.077	8	152	2.5	98	0.041	34	3.38	0.013	0.09	0.05	0.69	23.4	0.05	0.025	9	0.6	0.1	1DX15	WHH1001113	
1085388	BNI	Soil	622904	6779726	0.7	187.2	12.5	75	0.1	182.1	44.3	1013	5.31	7.3	0.2	3.9	1	88	0.4	0.2	0.05	143	4.11	0.08	4	276	4.68	65	0.167	274	3.2	0.024	0.03	0.1	0.05	12.6	0.05	0.025	8	0.25	0.1	1DX15	WHH1001113	
1085389	BNI	Soil	622853	6779725	1.4	285.3	10.2	92	0.3	94.6	61.5	1489	7.49	19.6	0.2	14.5	0.7	123	0.4	0.2	0.05	200	3.8	0.107	5	199	5.25	43	0.197	27	4.17	0.015	0.03	0.2	0.04	19.5	0.05	0.05	9	0.8	0.1	1DX15	WHH1001113	
1085390	BNI	Soil	622802	6779731	0.8	152.8	6.4	77	0.2	132.7	45.9	1026	5.66	13.1	0.2	34.6	0.8	101	0.3	0.2	0.05	153	3.14	0.08	5	244	4.17	52	0.183	68	3.37	0.014	0.03	0.1	0.02	12.5	0.05	0.025	9	0.25	0.1	1DX15	WHH1001113	
1085391	BNI	Soil	622558	6779694	3	124.6	25.4	162	0.4	48.2	28.4	1205	4.49	23.1	0.5	5.6	4.1	28	0.2	1.7	0.3	45	0.97	0.055	30	23	0.91	109	0.003	10	1.87	0.009	0.08	0.05	0.18	6.2	0.05	0.025	5	1	0.1	1DX15	WHH1001113	