

NTS 115I/03  
Lat: 62° 07" N  
Long: 137° 27' W

**ASSESSMENT REPORT**  
on the  
**CAR PROPERTY**

Car 1 to 44 - YD127635 to YD127678  
Car 45 to 59 - YD112087 to YD112101

Whitehorse Mining District, Yukon, Canada

Reconnaissance Geology, Geochemical Rock and Soil, and Prospecting Surveys

Work Period: 3 July 2011

for

**YES EXPLORATION SYNDICATE INC (Operator)**  
Suite 1018 – 475 Howe Street  
Vancouver, BC V6C2B3  
604-986-5275

by

Edward Harrington, B.Sc., P.Geo.

**RELIANCE GEOLOGICAL SERVICES INC**  
3476 Dartmoor Place, Vancouver, BC, V5S 4G2  
Tel: 604-984-3663 Fax: 604-437-9531

18 June 2012

## **TABLE of CONTENTS**

1.0	INTRODUCTION .....	1
2.0	DESCRIPTIONS, LOCATIONS and OWNERSHIP of CLAIMS.....	1
3.0	ACCESSIBILITY, CLIMATE, and PHYSIOGRAPHY .....	4
4.0	GEOLOGICAL SETTING .....	4
4.1	Regional Geology and Structure.....	4
4.2	Property Geology.....	7
5.0	HISTORY.....	9
5.1	Area History .....	9
5.2	Previous Work .....	9
6.0	OBJECTIVES and SCOPE of WORK .....	10
6.1	Survey Method and Equipment .....	10
6.2	Description of Surveys.....	13
7.0	INTERPRETATIONS and CONCLUSIONS .....	14
7.1	Interpretations.....	14
7.2	Conclusions .....	14
8.0	REFERENCES.....	15
	CERTIFICATE of QUALIFICATIONS.....	16

## **LIST of FIGURES**

Figure 1	Regional Location .....	2
Figure 2	Claim Location and Topography .....	3
Figure 3	Regional Geology.....	5
Figure 4	Property Geology .....	8
Figure 5	Prospecting Traverse - West.....	11
Figure 6	Prospecting Traverse - East.....	12

## **LIST of TABLES**

Table 1	Rock Sample Descriptions.....	13
Table 2	Selected Soil Sample Results .....	13

## **LIST of APPENDICES**

APPENDIX A	Cost Statement
APPENDIX B	Claim Data
APPENDIX C	Reconnaissance Traverse Details
APPENDIX D	Rock Assay Certificate
APPENDIX E	Soil Assay Certificate

## **1.0 INTRODUCTION**

This Assessment Report outlines work carried out on the CAR Property (the "Property"), which is located in the Whitehorse Mining District, Yukon.

This Assessment Report summarizes previous work, and describes geological, geochemical rock and soil sampling, and prospecting surveys carried out on 3 July 2011. This report is based on geological and geochemical reports, a compilation of published and unpublished data, maps, and reports made by cited persons.

The author is a "qualified person" within the meaning of National Instrument 43-101 of the Canadian Securities Administrators.

## **2.0 DESCRIPTIONS, LOCATIONS, and OWNERSHIP of CLAIMS**

The claims comprising the Property are located in the Whitehorse Mining District of Yukon, Canada, as shown on Map Sheets NTS 115I/03. The Property area is centered at latitude 62°07' North, longitude 137°27' West, and UTM 6889500 m North, and UTM 372000 m East (Figures 1 and 2).

The Property is located approximately 60 kilometers west of the village of Carmacks and 200 kilometers northwest of the city of Whitehorse. Whitehorse is the main regional supply center for personnel and equipment.

The assessment work area consists of a contiguous block of 59 quartz claims totaling approximately 1,232 hectares ("ha"). Claim information is presented in Appendix B.



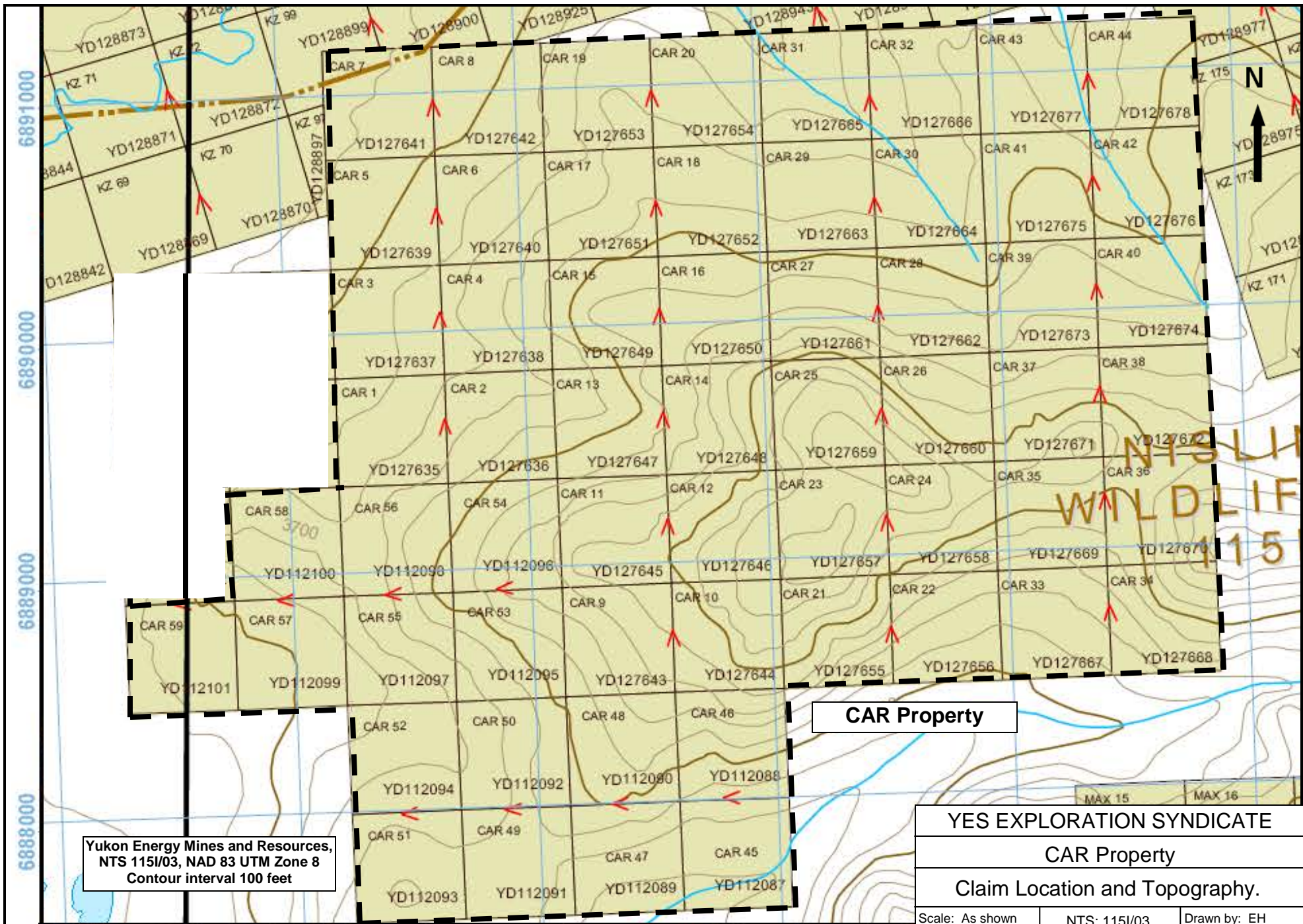
**YES EXPLORATION SYNDICATE**

**CAR Property**

**Regional Location**

Scale: As shown	NTS: 1151/03	Drawn by: EH
Date: Nov 2011	QP: E. Harrington	Figure: 1

*E. Harrington, B.Sc, P.Geo.*



Yukon Energy Mines and Resources,  
 NTS 115I/03, NAD 83 UTM Zone 8  
 Contour interval 100 feet

**CAR Property**

YES EXPLORATION SYNDICATE		
CAR Property		
Claim Location and Topography.		
Scale: As shown	NTS: 115I/03	Drawn by: EH
Date: Nov 2011	QP: E. Harrington	Figure: 2
<i>E. Harrington, B.Sc, P.Geo.</i>		

137°30'0"W

370000 0 371000 372000 1 kilometer

### **3.0 ACCESSIBILITY, CLIMATE, and PHYSIOGRAPHY**

Access to the area is by helicopter from the village of Carmacks. Alternatively, a fuel cache can be established at the Mt Nansen mine site. The mine site is approximately 1 hour driving time from Carmacks. Personnel can access the mine site by road and then be disbursed by helicopter.

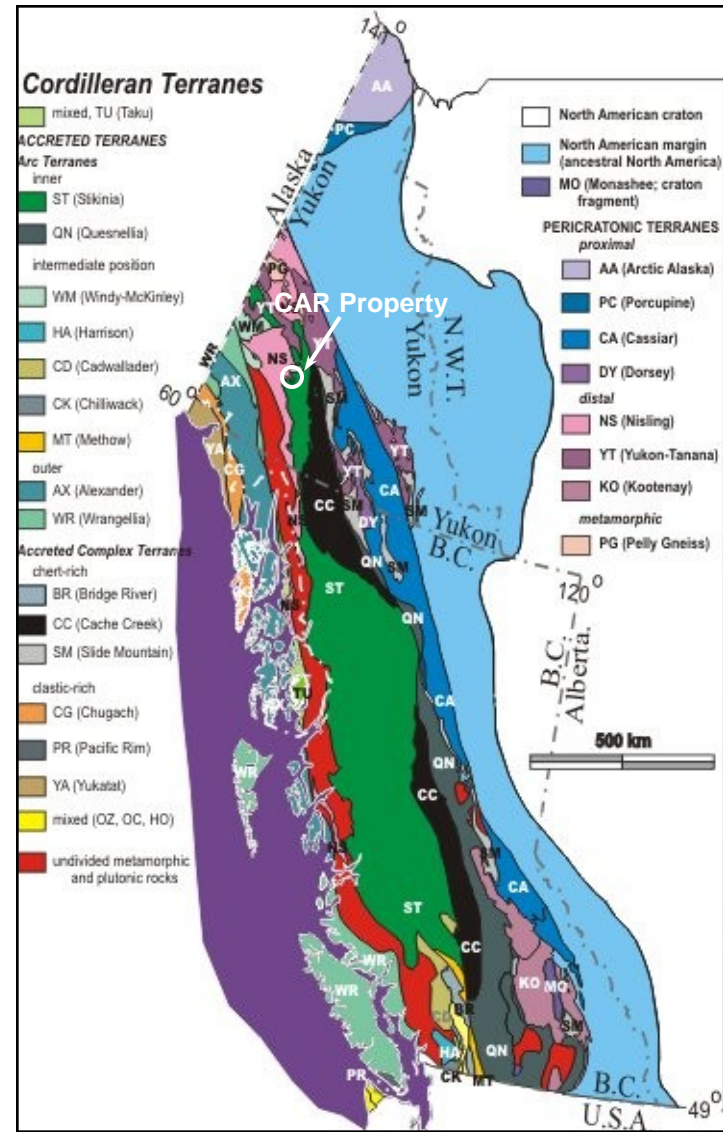
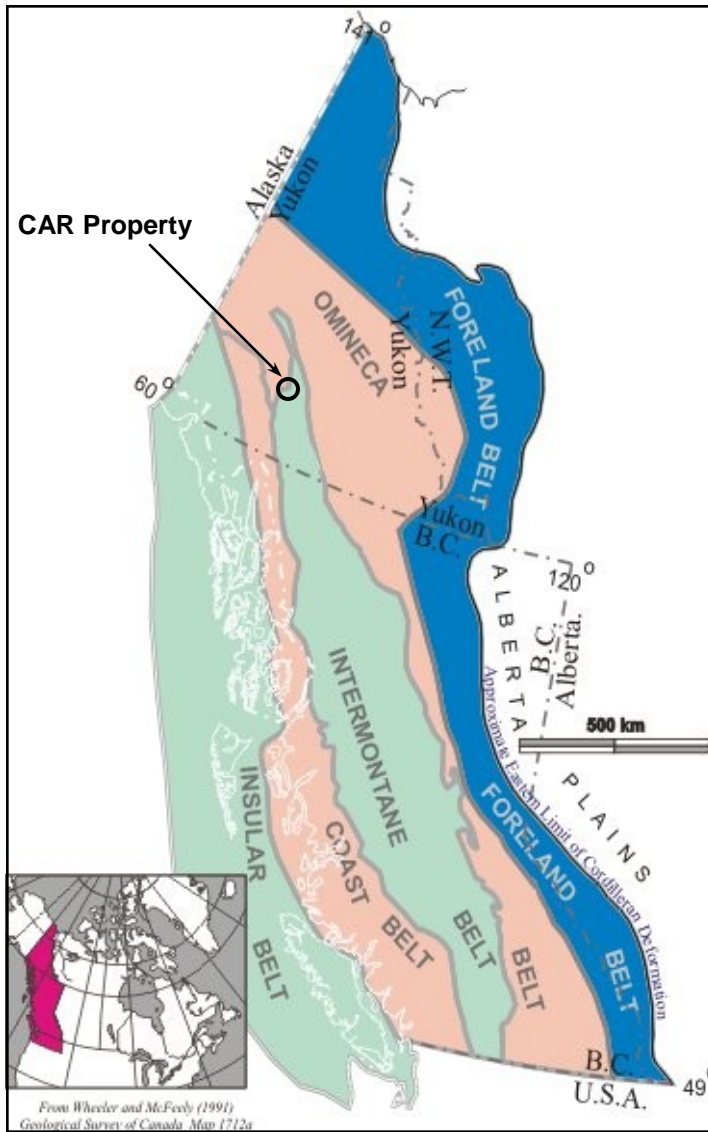
The Property is on gently rolling to steep terrain with elevations ranging from 1,021 meters (3,350 feet) to 540 meters (1,463 feet). Vegetation cover is variable, ranging from relatively open grassed areas to areas with jack pine, alder, and scrub undergrowth. Summers are generally warm, while winters are cold. Depending on the type of work, the work season can be year round.

### **4.0 GEOLOGICAL SETTING**

#### **4.1 Regional Geology and Structure (Figure 3)**

In general, Yukon geology consists of two lithological components, which are separated by the Tintina Trench. Rocks northeast of the Tintina Trench are predominantly sedimentary, from 300 million to >1 billion years old, and represent the ancient margin of North America. Rocks southwest of the Tintina Trench are mainly igneous and metamorphic, from 20 to 350 million years old, and represent numerous crustal fragments called accreted terranes that have an uncertain place of origin. The Dawson Mountain Range, which includes the subject Property, is located in the area southwest of the Tintina Trench.

The Yukon-Tanana Composite Terrane ("YTT") is the largest of Yukon's terranes and is composed of several metamorphic rock assemblages, which were originally sedimentary but have been metamorphosed at extremely high temperatures and pressures corresponding to crustal depths of 25 kilometers.



(After Geological Survey of Canada, 2005)

<b>YES EXPLORATION SYNDICATE</b>		
<b>CAR Property</b>		
<b>Regional Geology</b>		
Scale: As shown	NTS: 1151/03	Drawn by: EH
Date: Jan 2012	QP: E. Harrington	Figure: 3
<b>E. Harrington, B.Sc, P.Geo.</b>		

The Intermontane Superterrane is composed of five dissimilar terranes that were amalgamated approximately 180 million years ago: Stikinia, Quesnellia, Slide Mountain, Cache Creek, and Windy-McKinley. Stikinia is the largest terrane in the Cordillera, but in Yukon is restricted to the area of the Intermontane Belt.

The Dawson Range generally comprises rocks of the Yukon-Tanana Composite Terrane and Stikinia Intermontane Superterrane. The Dawson Range is part of the Yukon Plateau Physiographic Province, and is characterized by moderately rugged topography with elevations from 900 to over 2000 meters. The Dawson Range has extensive placer and lode gold production, and is commonly referred to as the "Dawson Range gold belt". This belt comprises a northwesterly trend of placer gold occurrences, porphyry copper-gold deposits, and gold-bearing polymetallic epithermal veins. The oldest rocks exposed in the Dawson Range Gold Belt are Paleozoic YTT rocks, consisting of an assemblage of Paleozoic Yukon Group schist, gneiss, and amphibolite, and a Triassic assemblage of andesite to basalt flows, tuffs, and breccias, which are intruded by granitic batholiths. Granitic rocks intruded during Early Jurassic metamorphic/plutonic events.

The Aishihik Batholith underlies much of the district. Triassic to Lower Jurassic in age, the Aishihik intrusive body ranges in composition from dark grey granodiorite to pink quartz monzonite and porphyritic quartz monzonite. Tertiary and Eocene volcanic rocks unconformably overlie the granitic bodies. Volcanic rocks consist primarily of felsic tuffs, flows and breccias, are cut by dark green mafic volcanic plugs and dikes. Cretaceous- to Tertiary-age volcanic rocks host lode gold deposits in the Dawson Range. Lode mineralization consists of epithermal to mesothermal gold-bearing quartz-chalcedony vein systems in faults and fracture zones associated with felsic intrusives. Ring dikes and fault zones were developed during caldera collapse.

In the Dawson Range, gold mineralization occurs in quartz veins and fractures formed during the intrusion of quartz feldspar porphyry and breccia bodies. Alteration zones vary from narrow seams of clay gouge along the margins of individual quartz veins to wide areas of propylitic and argillic alteration around intrusive breccias. Sericite and pyrite are common accessory minerals.

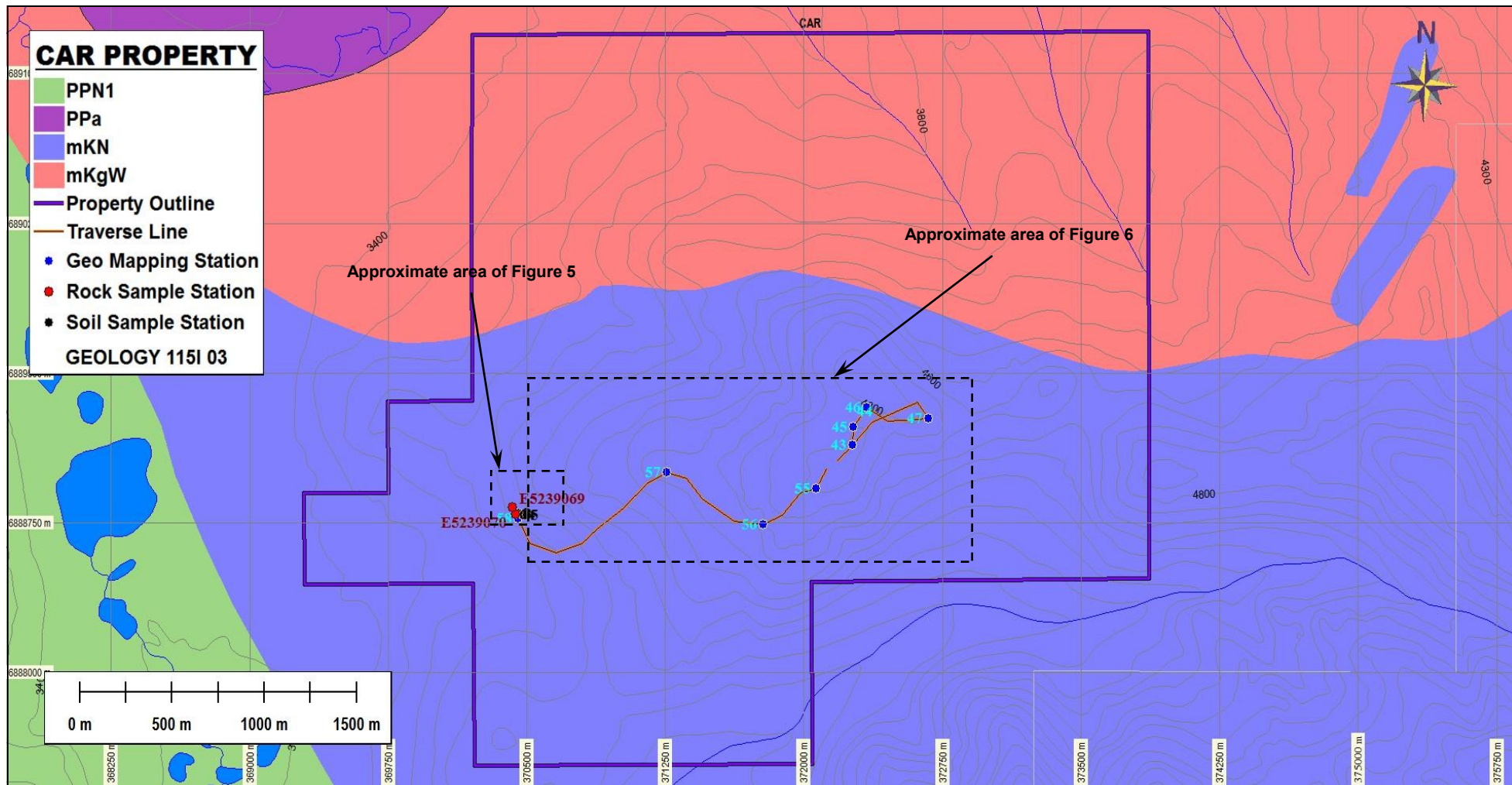
Cretaceous to Paleocene rocks of the region comprise two major plutonic-volcanic events:

1. The Cretaceous Mount Nansen event includes the Dawson Range Batholith, Casino Granodiorite, Coffee Creek Granite, and the Mount Nansen intermediate to felsic volcanic suite, and
2. The late Cretaceous to Paleocene Carmacks event is represented by subvolcanic and volcanic mafic to felsic rocks that intrude or unconformably overlie all other units.

Cretaceous to Paleocene Carmacks intrusives and volcanics have a close spatial relationship with the older granitoids and a spatial-temporal relationship with known gold mineralization. In Yukon, gold mineralization is generally related to Carmacks volcanic units and to same-age hydrothermal alteration, suggesting a genetic link between gold mineralization and hotspot-related hydrothermal activity.

#### **4.2 Property Geology**

Property lithology consists of Mid Cretaceous-aged (approximately 90-130 million years ago) granodiorite intrusive rocks in contact with Mid Cretaceous andesite volcanics. Interpreted from Landsat images, a large northwest-trending fault structure situated immediately to the west of the Property. A prominent northeast-trending fault structures cuts across the southeastern CAR claims.



- mKN** Mesozoic  
Mid Cretaceous (90-110 Ma)  
Volcanic, Andesite/dacite/breccia/tuff/rhyolite/porphyry/dike
- mKgW** Mesozoic  
Mid Cretaceous (105-112 Ma)  
Plutonic, Granodiorite-quartz diorite
- PPN1** Upper Proterozoic/Paleozoic  
Metamorphic, biotite-musc-qtz schist, quartzite, orthogneiss, and amphibolite
- PPa** Upper Proterozoic/Paleozoic  
Metamorphic (mafic-ultramafic), chlorite-biotite schist, amphibolite, and hornblende gneiss

<b>YES EXPLORATION SYNDICATE</b>		
<b>CAR Property</b>		
<b>Property Geology</b>		
Scale: As shown	NTS: 115I/03	Drawn by: EH
Date: June 2012	QP: E. Harrington	Figure: 4
<b>E. Harrington, B.Sc, P.Geo.</b>		

## **5.0 HISTORY**

### **5.1 Area History**

In the late 1970s, an airborne geophysical magnetic survey and reconnaissance-style geological mapping and stream sediment sampling were conducted in the region by the GSC. No stream sediment geochemical anomalies have been identified in streams draining the Property, and no detailed geological mapping has been carried out since.

### **5.2 Previous Work**

The historical airborne magnetic survey shows that the Property is situated over a magnetic high, near the intersection of the two fault structures. The GSC regional stream sediment sampling returned a 17 ppb gold anomaly from a creek draining the northern part of the Property.

Part of the CAR Property was covered by the Phoebe mineral occurrence, which was first staked in 1946 and worked sporadically through to the late 1990s. In the summer of 1996, BYG Natural Resources Ltd carried out a large geophysical program on parts of the eastern portion of the Phoebe property. BYG followed up the geophysics program with several individual soil sampling grids.

The Phoebe occurrence straddles a contact between Cassino granodiorite and Mount Nansen volcanics. Minor garnet-diopside skarn occurs in this vicinity, but no mineralization was reported. BYG established three grids; grids (1, 2 and 3) and then carried out ground VLF-EM and total field magnetics geophysical programs on each grid. Numerous VLF-EM conductors and magnetic anomalies were found, but the lack of detailed geological mapping made interpretation difficult. BYG carried out preliminary soil sampling on two separate grids. One of the grids returned several spot Au anomalies, but further work was cancelled when the company encountered financial problems.

## **6.0 OBJECTIVES and SCOPE of WORK**

The deposit models for the Property are epithermal gold-silver and/or porphyry copper-gold. The objectives of reported assessment work were to carry out reconnaissance-style geological and geochemical surveys to outline areas of alteration and mineralization that would suggest the presence of epithermal or porphyry deposits.

### **6.1 Survey Method and Equipment**

A survey crew, consisting of a geologist, a prospector, and a geotechnician, carried out GPS-controlled traverses designed to provide reconnaissance-style coverage of ridge areas where outcrop was more likely to be encountered. Soil samples were taken using a hand-powered ratcheting auger. Samples targeted the "C" horizon, with hole depth generally in the range of 0.4 to 0.6 meters.

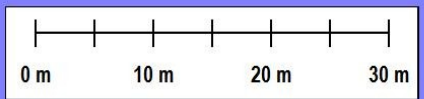
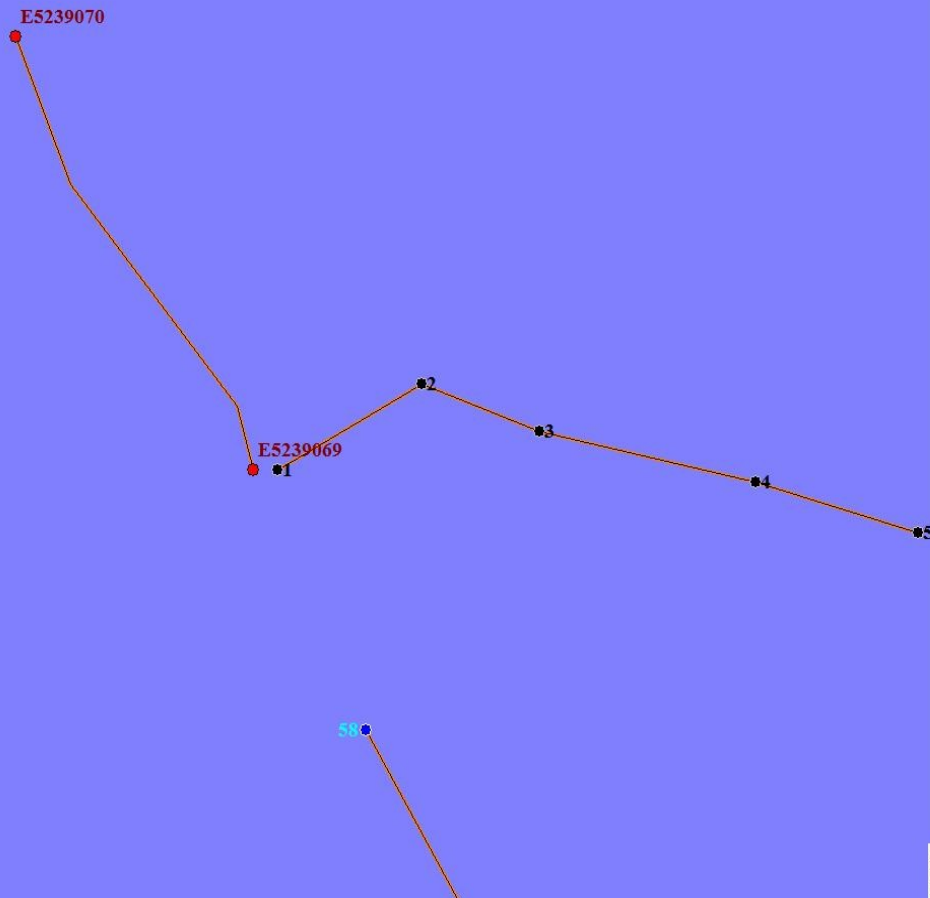
Samples were placed in uniquely identified kraft paper bags, and allowed to dry before being delivered to Inspectorate Labs, Whitehorse, Yukon, for preparation and analysis.

Rock samples were selected to best show the desired geological occurrence. Samples were sealed in uniquely identified clear plastic bags and delivered to Inspectorate Labs, Whitehorse, Yukon, for preparation and analysis.

A Juno handheld field computer was used to enter both soil and geological data. Traverse details and mapping points are provided in Figures 4, 5, and 6, and Appendix C.

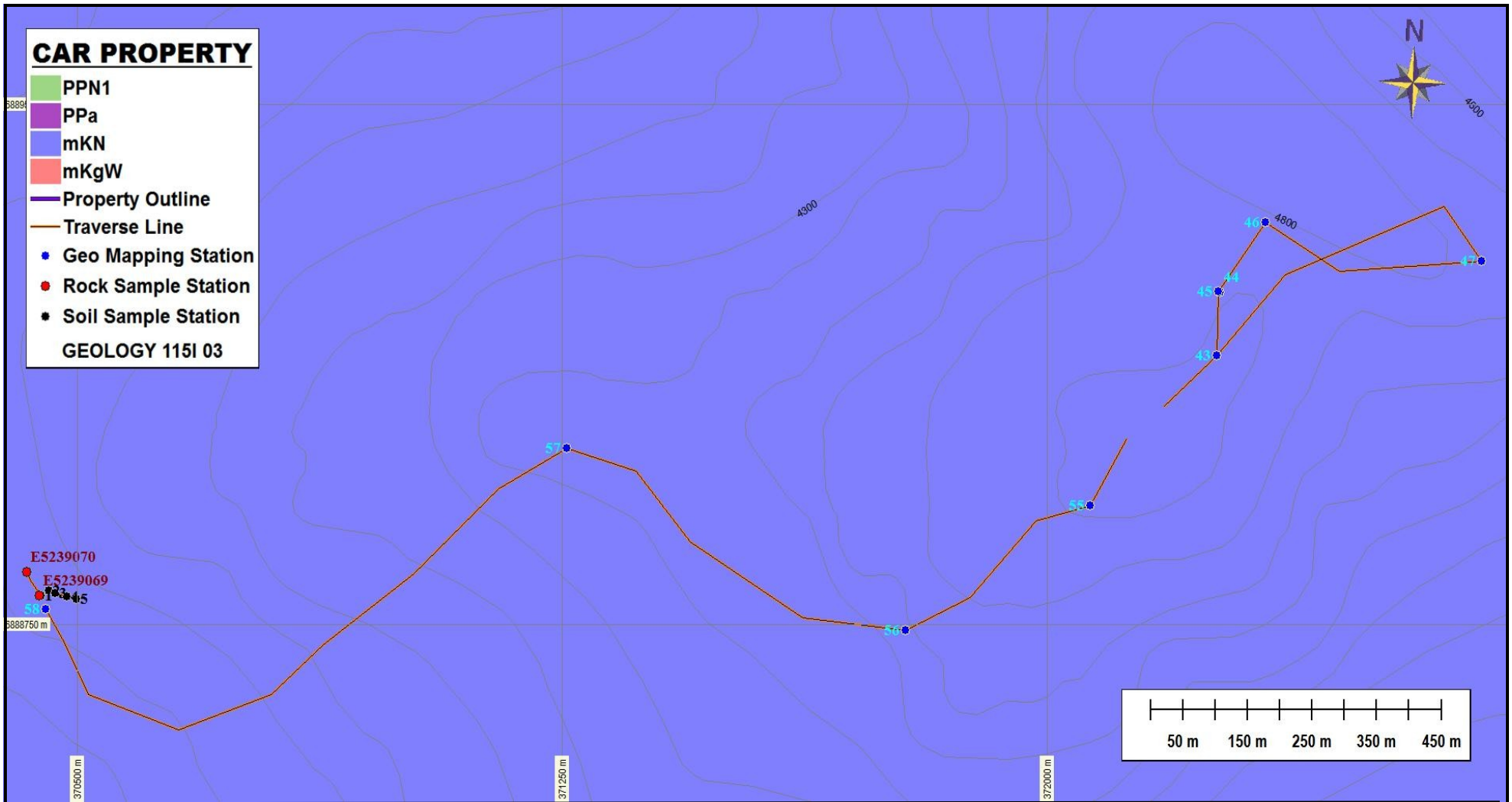
**CAR PROPERTY**

- PPN1
  - PPa
  - mKN
  - mKgW
  - Property Outline
  - Traverse Line
  - Geo Mapping Station
  - Rock Sample Station
  - Soil Sample Station
- GEOLOGY 115I 03**



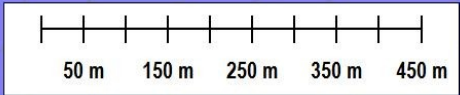
**mKN** Mesozoic  
 Mid Cretaceous (90-110 Ma)  
 Volcanic, Andesite/dacite/breccia/tuff/rhyolite/porphyry/dike

<b>YES EXPLORATION SYNDICATE</b>		
<b>CAR Property</b>		
<b>Prospecting Traverse - West</b>		
Scale: As shown	NTS: 115I/03	Drawn by: EH
Date: June 2012	QP: E. Harrington	Figure: 5
<i>E. Harrington, B.Sc, P.Geo.</i>		



**CAR PROPERTY**

- PPN1
  - PPa
  - mKN
  - mKgW
  - Property Outline
  - Traverse Line
  - Geo Mapping Station
  - Rock Sample Station
  - Soil Sample Station
- GEOLOGY 115I 03**



**mKN** Mesozoic  
 Mid Cretaceous (90-110 Ma)  
 Volcanic, Andesite/dacite/breccia/tuff/rhyolite/porphyry/dike

<b>YES EXPLORATION SYNDICATE</b>		
<b>CAR Property</b>		
<b>Prospecting Traverses - East</b>		
Scale: As shown	NTS: 115I/03	Drawn by: EH
Date: June 2012	QP: E. Harrington	Figure: 6
<i>E. Harrington, B.Sc, P.Geo.</i>		

## 6.2 Description of Surveys

The 2011 work program on the CAR consisted of taking two rock samples, five soil samples, and carrying out approximately three kilometers of prospecting traverses.

**Table 1: Rock Sample Details**

Sample	Location		Type	Description
	Easting	Northing		
E5239069	370445	6888795	Select	Rhyolite breccia hosted in fine gr dk grey to greenish black andesite (possibly diabase).
E5239070	370422	6888826	Select	Siliceous dike. Vuggy with rust stains. Disseminated sulfides <<1% showing alteration to hematite

Results from the two rock samples were not significant for either gold and silver, or for pathfinder elements.

**Table1: Selected Soil Sample Results**

Sample	Au	Ag	As	Cd	Cu	Mn	Mo	Ni	Pb	Sb	Zn
Car1	<0.005	<0.1	74	<0.5	35	89	4	2	60	6	377
Car2	0.008	0.3	40	1.5	37	792	2	20	219	4	700
Car3	<0.005	<0.1	40	<0.5	28	394	2	7	159	3	555
Car4	<0.005	<0.1	30	0.7	14	336	<1	7	33	<2	133
Car5	0.005	<0.1	40	<0.5	16	193	<1	16	20	<2	133

Soil samples returned anomalous values for arsenic, lead, and zinc. Lead and zinc were strongly anomalous. Values for gold, silver, cadmium, copper, manganese, molybdenum, nickel, and antimony ranged from slightly to moderately elevated.

## **7.0 INTERPRETATIONS and CONCLUSIONS**

### **7.1 Interpretations**

Prospecting in the surveyed area shows that the lithology consists of Mid Cretaceous-aged (approximately 90-130 million years ago) granodiorite intrusive rocks in contact with Mid Cretaceous andesite volcanics. Volcanic rocks show hematite staining and local epidote formation and quartz stringers. The presence of epidote suggests that the area may be subject to propylitic alteration.

### **7.2 Conclusions**

Only a small portion of the Property area was covered by the reconnaissance surveys. Soil sample results show indications of elevated to anomalous pathfinder elements, and slightly elevated values for gold and silver. These pathfinder elements could indicate either hydrothermal- or porphyry-style mineralization.

Interpreted from Landsat images, a large northwest-trending fault structure situated immediately to the west of the Property. A prominent northeast-trending fault structures cuts across the southeastern CAR claims. The historical airborne magnetic survey shows that the Property is situated over a magnetic high, near the intersection of the two fault structures.

The presence of plumbing system and elevated to anomalous mineralization suggests that the CAR Property has potential to host an epithermal or porphyry mineral deposit.

## 8.0 REFERENCES

Hart, C. 2002:

The Geological Framework of the Yukon Territory. Yukon Geological Survey. <http://www.geology.gov.yk.ca/>

Tempelman-Kluit, D.J., and Currie, R., 1978:

Reconnaissance rock geochemistry of Aishihik Lake, Snag and Stewart River map-areas in the Yukon Crystalline Terrance, Geological Survey of Canada, Paper 77-8.

Smuk., K.A., 1999:

Mettalogeny of Epithermal Gold and Base Metal Veins of the Southern Dawson Range, Yukon,.M.Sc. Thesis, McGill University.

Colpron, M., 2011:

Geological Compilation of Whitehorse Trough, Geoscience Map 2011-1, Yukon Geological Survey, Energy, Mines and Resources, Yukon.

**Edward Harrington, B.Sc., P.Geo.**

3476 Dartmoor Place, Vancouver, BC, V5S 4G2  
Tel: (604) 437-9538 Email: ed.harrington.geo@gmail.com

**CERTIFICATE OF AUTHOR**

I, Edward D. Harrington, do hereby certify that:

1. I graduated with a B.Sc. degree in Geology from Acadia University, Wolfville, Nova Scotia in 1971.
2. I am a Member in good standing with the Association of Professional Engineers and Geoscientists of British Columbia, License #23328.
3. I have pursued my career as a geologist for over thirty years in Canada, the western United States, the Sultanate of Oman, Mexico, Argentina, Peru, and Australia.
4. I have read the definition of “qualified person” set out in National Instrument 43-101 (“NI 43-101”) and certify that by reason of my education, affiliation with a professional association as defined in NI 43-101, and past relevant work experience, I fulfill the requirements to be a “qualified person” for the purposes of NI 43-101.
5. I am responsible for the preparation of the assessment report titled “Assessment Report on the CAR Property, Whitehorse Mining District, Yukon, Canada” and dated 18 June 2012 (the “Assessment Report”)

Dated this 18<sup>th</sup> day of June 2012



Edward D. Harrington, B.Sc., P.Geo.

**APPENDIX A**

**Cost Statement**

### CAR property - Mineral Exploration Expenditures - 2011

Supplier	Invoice #	Amount	Applied to Project
RELIANCE GEOLOGICAL SERVICES INC	A11-859-01	\$ 5,329.16	\$ 5,329.16
NOKUYUKON HOLDINGS LTD	14	\$ 10,500.00	\$ 816.13
<b>TOTAL (INCLUDES GST)</b>			<b>\$ 6,145.29</b>

# Nokuyukon Holdings Ltd

110 Falcon Drive  
Whitehorse, Yukon Y1A 6C7  
Canada

# INVOICE

Invoice No.: 14  
Date: 08/01/2011  
Page: 1

**Sold to:**

YES Exploration Syndicate Inc  
Tony Simon  
Vancouver, BC

**Ship to:**

YES Exploration Syndicate Inc  
Tony Simon  
Vancouver, BC

Business No.: 87245 7015RP0001

Item No.	Unit	Quantity	Description	Tax	Unit Price	Amount
			OPERATIONAL PHASE: Project preparation and work conducted July 1- 31, 2011.	G		10,000.00
			Subtotal:			10,000.00
			G - GST 5%			500.00
			GST			
<b>Comment:</b>					<b>Total Amount</b>	10,500.00

# RELIANCE GEOLOGICAL SERVICES INC

3476 Dartmoor Place, Vancouver, BC

Canada V5S 4G2

info@reliancegeological.com

www.RelianceGeological.com

Tel: 604-984-3663

Fax: 604-437-9531

## INVOICE

No. A11-859-01

30 November 2011

### YES Exploration Syndicate Inc

418 East 14th Street

North Vancouver, BC V7L 2N8

Attn: **T. Simon**

### Re: J859 - CAR Property, Whitehorse MD, Yukon

Field Personnel:	Field Days	Days	Rate	Sub-total	
	Prospecting, Reconnaissance geology				
Geologist:					
E. Harrington, PGeo	July 3	0.50	800.00	\$ 400.00	
Prospector:					
J. Skales	July 3	0.50	600.00	<u>300.00</u>	\$ 700.00
Office Personnel:					
General research:					
E. Harrington, PGeo		0.50	800.00	\$ 400.00	
Report preparation:					
E. Harrington, PGeo		0.75	800.00	600.00	
Other:					
					<u>1,000.00</u>
Ground Exploration	included in Field Personnel totals				
Geological mapping:		-	-	\$ -	
Reconnaissance:		-	-	-	
Prospecting:		-	-	<u>-</u>	-
Geochemical Surveying:					
Contract, per soil sample		5	48.00	\$ 240.00	
Rock samples included in Field Personnel totals					
Lab costs, soils		5	25.99	129.95	
Lab costs, rocks		2	31.11	<u>62.22</u>	432.17

Mobe/Demobe Costs: in Yukon  
(allocated among 33 properties)



**APPENDIX B**

**Claim Data**

UTM Locations		Claim Name	Grant Number	Owner Name	Staking Date	Expiry Date	District
Eastings	Northing						
370433	6889590	CAR 1	YD127635	YES Exploration Syndicate	22-Jan-11	2-Feb-13	Whitehorse
370890	6889593	CAR 2	YD127636	YES Exploration Syndicate	22-Jan-11	2-Feb-13	Whitehorse
370430	6890047	CAR 3	YD127637	YES Exploration Syndicate	22-Jan-11	2-Feb-13	Whitehorse
370888	6890050	CAR 4	YD127638	YES Exploration Syndicate	22-Jan-11	2-Feb-13	Whitehorse
370428	6890504	CAR 5	YD127639	YES Exploration Syndicate	22-Jan-11	2-Feb-13	Whitehorse
370885	6890507	CAR 6	YD127640	YES Exploration Syndicate	22-Jan-11	2-Feb-13	Whitehorse
370425	6890961	CAR 7	YD127641	YES Exploration Syndicate	22-Jan-11	2-Feb-13	Whitehorse
370882	6890964	CAR 8	YD127642	YES Exploration Syndicate	22-Jan-11	2-Feb-13	Whitehorse
371352	6888681	CAR 9	YD127643	YES Exploration Syndicate	22-Jan-11	2-Feb-13	Whitehorse
371810	6888684	CAR 10	YD127644	YES Exploration Syndicate	22-Jan-11	2-Feb-13	Whitehorse
371350	6889138	CAR 11	YD127645	YES Exploration Syndicate	22-Jan-11	2-Feb-13	Whitehorse
371807	6889141	CAR 12	YD127646	YES Exploration Syndicate	22-Jan-11	2-Feb-13	Whitehorse
371347	6889595	CAR 13	YD127647	YES Exploration Syndicate	22-Jan-11	2-Feb-13	Whitehorse
371805	6889598	CAR 14	YD127648	YES Exploration Syndicate	22-Jan-11	2-Feb-13	Whitehorse
371345	6890052	CAR 15	YD127649	YES Exploration Syndicate	22-Jan-11	2-Feb-13	Whitehorse
371802	6890055	CAR 16	YD127650	YES Exploration Syndicate	22-Jan-11	2-Feb-13	Whitehorse
371342	6890509	CAR 17	YD127651	YES Exploration Syndicate	22-Jan-11	2-Feb-13	Whitehorse
371800	6890512	CAR 18	YD127652	YES Exploration Syndicate	22-Jan-11	2-Feb-13	Whitehorse
371340	6890966	CAR 19	YD127653	YES Exploration Syndicate	22-Jan-11	2-Feb-13	Whitehorse
371797	6890969	CAR 20	YD127654	YES Exploration Syndicate	22-Jan-11	2-Feb-13	Whitehorse
372267	6888686	CAR 21	YD127655	YES Exploration Syndicate	22-Jan-11	2-Feb-13	Whitehorse
372724	6888689	CAR 22	YD127656	YES Exploration Syndicate	22-Jan-11	2-Feb-13	Whitehorse
372264	6889143	CAR 23	YD127657	YES Exploration Syndicate	22-Jan-11	2-Feb-13	Whitehorse
372722	6889146	CAR 24	YD127658	YES Exploration Syndicate	22-Jan-11	2-Feb-13	Whitehorse
372262	6889600	CAR 25	YD127659	YES Exploration Syndicate	22-Jan-11	2-Feb-13	Whitehorse
372719	6889603	CAR 26	YD127660	YES Exploration Syndicate	22-Jan-11	2-Feb-13	Whitehorse
372259	6890057	CAR 27	YD127661	YES Exploration Syndicate	22-Jan-11	2-Feb-13	Whitehorse
372717	6890060	CAR 28	YD127662	YES Exploration Syndicate	22-Jan-11	2-Feb-13	Whitehorse
372257	6890514	CAR 29	YD127663	YES Exploration Syndicate	22-Jan-11	2-Feb-13	Whitehorse
372714	6890517	CAR 30	YD127664	YES Exploration Syndicate	22-Jan-11	2-Feb-13	Whitehorse
372254	6890971	CAR 31	YD127665	YES Exploration Syndicate	22-Jan-11	2-Feb-13	Whitehorse
372712	6890973	CAR 32	YD127666	YES Exploration Syndicate	22-Jan-11	2-Feb-13	Whitehorse

373181	6888691	CAR 33	YD127667	YES Exploration Syndicate	22-Jan-11	2-Feb-13	Whitehorse
373639	6888694	CAR 34	YD127668	YES Exploration Syndicate	22-Jan-11	2-Feb-13	Whitehorse
373179	6889148	CAR 35	YD127669	YES Exploration Syndicate	22-Jan-11	2-Feb-13	Whitehorse
373636	6889151	CAR 36	YD127670	YES Exploration Syndicate	22-Jan-11	2-Feb-13	Whitehorse
373176	6889605	CAR 37	YD127671	YES Exploration Syndicate	22-Jan-11	2-Feb-13	Whitehorse
373634	6889608	CAR 38	YD127672	YES Exploration Syndicate	22-Jan-11	2-Feb-13	Whitehorse
373174	6890062	CAR 39	YD127673	YES Exploration Syndicate	22-Jan-11	2-Feb-13	Whitehorse
373631	6890065	CAR 40	YD127674	YES Exploration Syndicate	22-Jan-11	2-Feb-13	Whitehorse
373171	6890519	CAR 41	YD127675	YES Exploration Syndicate	22-Jan-11	2-Feb-13	Whitehorse
373629	6890522	CAR 42	YD127676	YES Exploration Syndicate	22-Jan-11	2-Feb-13	Whitehorse
373169	6890976	CAR 43	YD127677	YES Exploration Syndicate	22-Jan-11	2-Feb-13	Whitehorse
373626	6890978	CAR 44	YD127678	YES Exploration Syndicate	22-Jan-11	2-Feb-13	Whitehorse
371815	6887770	CAR 45	YD112087	YES Exploration Syndicate	10-Jun-11	14-Jun-13	Whitehorse
371812	6888227	CAR 46	YD112088	YES Exploration Syndicate	10-Jun-11	14-Jun-13	Whitehorse
371357	6887768	CAR 47	YD112089	YES Exploration Syndicate	10-Jun-11	14-Jun-13	Whitehorse
371355	6888224	CAR 48	YD112090	YES Exploration Syndicate	10-Jun-11	14-Jun-13	Whitehorse
370900	6887765	CAR 49	YD112091	YES Exploration Syndicate	10-Jun-11	14-Jun-13	Whitehorse
370898	6888222	CAR 50	YD112092	YES Exploration Syndicate	10-Jun-11	14-Jun-13	Whitehorse
370443	6887763	CAR 51	YD112093	YES Exploration Syndicate	10-Jun-11	14-Jun-13	Whitehorse
370440	6888219	CAR 52	YD112094	YES Exploration Syndicate	10-Jun-11	14-Jun-13	Whitehorse
370895	6888679	CAR 53	YD112095	YES Exploration Syndicate	10-Jun-11	14-Jun-13	Whitehorse
370893	6889136	CAR 54	YD112096	YES Exploration Syndicate	10-Jun-11	14-Jun-13	Whitehorse
370438	6888676	CAR 55	YD112097	YES Exploration Syndicate	10-Jun-11	14-Jun-14	Whitehorse
370435	6889133	CAR 56	YD112098	YES Exploration Syndicate	10-Jun-11	14-Jun-13	Whitehorse
369981	6888674	CAR 57	YD112099	YES Exploration Syndicate	10-Jun-11	14-Jun-13	Whitehorse
369978	6889131	CAR 58	YD112100	YES Exploration Syndicate	10-Jun-11	14-Jun-13	Whitehorse
369523	6888671	CAR 59	YD112101	YES Exploration Syndicate	10-Jun-11	14-Jun-13	Whitehorse

**APPENDIX C**

**Reconnaissance Geological Traverses**

LABEL	Easting	Northing	Alteration	Angular_Ro	Clay	Fault	Feat_Name
43	372263	6889139					GEO_MAPP
44	372268	6889230					GEO_MAPP
45	372266	6889231					GEO_MAPP
46	372339	6889330	fresh				GEO_MAPP
47	372673	6889274					GEO_MAPP
55	372067	6888922	minor epidote				GEO_MAPP
56	371781	6888742	minor epidote			none notice	GEO_MAPP
57	371257	6889005	none notice			none notice	GEO_MAPP
58	370451	6888772	rhyolite appears bleached			appears to be rhyolite dike	GEO_MAPP
1	370444	6888792		25	1		SOIL
2	370456	6888799		30	1		SOIL
3	370466	6888795		30	1		SOIL
4	370485	6888791		20	1		SOIL
5	370498	6888787		20	1		SOIL
	372263	6889139					GEO_MAPP
	372268	6889230					GEO_MAPP
	372266	6889231					GEO_MAPP
	372339	6889330	fresh				GEO_MAPP
	372673	6889274					GEO_MAPP
e5239069	370442	6888792	hematite stain				GEO_MAPP
e5239070	370422	6888826	pyrite altered to hematite				GEO_MAPP

LABEL	Fractures	Grain_Size	Gravel	Igneous_Ro	Mineraliza	Moisture_C	Organics
43				Volcanic			
44							
45							
46		Fine		Volcanic			
47				Volcanic			
55	epidote along minor quartz stringers	Fine		Volcanic			
56	none notice	Fine		Volcanic			
57	none notice	Fine		Volcanic			
58	none notice	Fine		Volcanic	Disseminated		
1			1			Moist	1
2			1			Moist	1
3			1			Moist	1
4			1			Moist	1
5			1			Moist	1
				Volcanic			
		Fine		Volcanic			
				Volcanic			
e5239069		Fine		Volcanic			
e5239070		Fine			Disseminated		

LABEL	Parent_Mat	Rock_Color	Rock_Textu	Rock_Type	Sample_Co2	Sample_Col
43		andecite	wk porph			
44						
45						
46		dk grey	massive	andesite		
47		dk grey	wk porph	andesite		
55		dark	crystalline	basalt		
56		dark	crystalline	basalt		
57		dark	crystalline	Basalt		
58		White Rusty	Aphanitic cryptocrystalline	Rhyolite		
1	Weathered Bedrock				Red/Brown	Red/Brown
2	Weathered Bedrock				Red/Brown	Red/Brown
3	Weathered Bedrock				Rusty	Red/Brown
4	Weathered Bedrock				Blue	Brown
5	Weathered Bedrock					Brown
		andecite	wk porph			
		dk grey	massive	andesite		
		dk grey	wk porph	andesite		
e5239069		buff; cream pink		rhyolite		
e5239070		lt green-grey	cryptocrystalline; hornfels	rhyolite		

LABEL	Sample_Dep	Sample__ID	Sand	Silt	Soil_Horiz	Strike	Sulfides_O	Topography
43								
44								
45								
46								
47								
55		NO SAMPLE - MAPPING					none notice	Ridge Top
56		NO SAMPLE - Mapping					none notice	Mid Slope
57		NO SAMPLE - Mapping					none notice	Bench
58		NO SAMPLE - Mapping				NW	py; completely oxidzed	Bench
1	30-40		75	1	C			Mid Slope
2	30-40		60	10	C			Mid Slope
3	30-40		60	10	C			Mid Slope
4	30-40		60	20	C			Mid Slope
5	30-40		50	30	C			Mid Slope
e5239069		e5239069						
e5239070		e5239070					pyrite	Mid Slope

LABEL	Vegetation	Veins	
43			
44			
45			
46			
47			
55		Stringer	
56			
57			
58			Kill zone has formed over area
1	Moss		
2	Moss		
3	Moss		
4	Evergreen Forest		
5	Evergreen Forest		
e5239069			
e5239070			

**APPENDIX D**

**Rock Assay Certificate**



# Certificate of Analysis

## 11-360-05135-01

Inspectorate Exploration & Mining Services Ltd.  
 #200 - 11620 Horseshoe Way  
 Richmond, British Columbia V7A 4V5 Canada  
 Phone: 604-272-7818

<p style="text-align: center;"><b>Distribution List</b></p> <p>Attention: Tony Simon          418 East 14th Street          North Vancouver, BC V7L 2N8          Phone: 604-984-3663          EMail: reliancegeo@telus.net</p>	<p style="text-align: center;">Submitted By: <b>Reliance Geological Services</b>  <b>418 East 14th Street</b>  <b>North Vancouver, BC V7L 2N8</b></p> <p style="text-align: center;">Date Received: 07/18/2011          Date Completed: 08/08/2011          Invoice:</p> <p style="text-align: center;">Attention: <b>Tony Simon</b></p> <p style="text-align: center;">Description: <b>Yes Exploration Syndicate</b></p> <table border="1" style="width: 100%; border-collapse: collapse; margin-top: 10px;"> <thead> <tr> <th style="text-align: left;">Location</th> <th style="text-align: left;">Samples</th> <th style="text-align: left;">Type</th> <th style="text-align: left;">Preparation Description</th> </tr> </thead> <tbody> <tr> <td>Whitehorse, YT</td> <td style="text-align: center;">13</td> <td>Rock</td> <td>SP-RX-2K/Rock/Chips/Drill Core</td> </tr> </tbody> </table> <table border="1" style="width: 100%; border-collapse: collapse; margin-top: 10px;"> <thead> <tr> <th style="text-align: left;">Location</th> <th style="text-align: left;">Method</th> <th style="text-align: left;">Description</th> </tr> </thead> <tbody> <tr> <td>Vancouver, BC</td> <td>30-AR-TR</td> <td>30 Element, Aqua Regia, ICP, Trace Level</td> </tr> <tr> <td>Vancouver, BC</td> <td>Au-IAT-AA</td> <td>Au, IAT Fire Assay, AAS</td> </tr> </tbody> </table>	Location	Samples	Type	Preparation Description	Whitehorse, YT	13	Rock	SP-RX-2K/Rock/Chips/Drill Core	Location	Method	Description	Vancouver, BC	30-AR-TR	30 Element, Aqua Regia, ICP, Trace Level	Vancouver, BC	Au-IAT-AA	Au, IAT Fire Assay, AAS
Location	Samples	Type	Preparation Description															
Whitehorse, YT	13	Rock	SP-RX-2K/Rock/Chips/Drill Core															
Location	Method	Description																
Vancouver, BC	30-AR-TR	30 Element, Aqua Regia, ICP, Trace Level																
Vancouver, BC	Au-IAT-AA	Au, IAT Fire Assay, AAS																

The results of this assay were based solely upon the content of the sample submitted. Any decision to invest should be made only after the potential investment value of the claim or deposit has been determined based on the results of assays of multiple samples of geologic materials collected by the prospective investor or by a qualified person selected by him and based on an evaluation of all engineering data which is available concerning any proposed project. For our complete terms and conditions please see our website at [www.inspectorate.com](http://www.inspectorate.com).

By \_\_\_\_\_  
**Mike Caron, Lab Manager**



**INSPECTORATE**

A Bureau Veritas Group Company

#200 - 11620 Horseshoe Way

Richmond, British Columbia V7A 4V5  
Canada

# Certificate of Analysis

11-360-05135-01

Reliance Geological Services  
418 East 14th Street  
North Vancouver, BC V7L 2N8

Sample Description	Sample Type	Au Au-1A T-AA ppm 0.005	Ag 30-AR-TR ppm 0.1	Al 30-AR-TR % 0.01	As 30-AR-TR ppm 5	Ba 30-AR-TR ppm 10	Bi 30-AR-TR ppm 2	Ca 30-AR-TR % 0.01	Cd 30-AR-TR ppm 0.5	Co 30-AR-TR ppm 1	Cr 30-AR-TR ppm 1	Cu 30-AR-TR ppm 1	Fe 30-AR-TR % 0.01	Hg 30-AR-TR ppm 3	K 30-AR-TR % 0.01
E5239069	Rock	0.005	<0.1	0.48	6	63	<2	0.04	<0.5	1	63	7	0.59	<3	0.19
E5239070	Rock	<0.005	<0.1	0.30	<5	48	<2	0.15	0.6	<1	65	8	0.24	<3	0.11



**INSPECTORATE**

A Bureau Veritas Group Company

#200 - 11620 Horseshoe Way

Richmond, British Columbia V7A 4V5  
Canada

# Certificate of Analysis

11-360-05135-01

Reliance Geological Services  
418 East 14th Street  
North Vancouver, BC V7L 2N8

Sample Description	Sample Type	La	Mg	Mn	Mo	Na	Ni	P	Pb	Sb	Sc	Sr	Ti	Tl	V
		30-AR-TR ppm	30-AR-TR %	30-AR-TR ppm	30-AR-TR ppm	30-AR-TR %	30-AR-TR ppm	30-AR-TR ppm	30-AR-TR ppm	30-AR-TR ppm	30-AR-TR ppm	30-AR-TR ppm	30-AR-TR ppm	30-AR-TR %	30-AR-TR ppm
		2	0.01	5	1	0.01	1	10	2	2	1	1	0.01	10	1
E5239069	Rock	15	0.05	104	<1	0.07	2	68	26	<2	<1	5	<0.01	<10	2
E5239070	Rock	9	0.02	97	<1	0.10	3	61	14	<2	<1	12	<0.01	<10	2



**INSPECTORATE**

A Bureau Veritas Group Company

#200 - 11620 Horseshoe Way

Richmond, British Columbia V7A 4V5  
Canada

# Certificate of Analysis

11-360-05135-01

Reliance Geological Services  
418 East 14th Street  
North Vancouver, BC V7L 2N8

Sample Description	Sample Type	W	Zn	Zr
		30-AR-TR ppm	30-AR-TR ppm	30-AR-TR ppm
E5239069	Rock	<10	92	13
E5239070	Rock	<10	60	12

**APPENDIX E**

**Soil Assay Certificate**

# Certificate of Analysis

## 11-360-05031-01

<p style="text-align: center;"><b>Distribution List</b></p> <p>Attention: Ed Harrington 3476 Dartmoor Place Vancouver, BC V5S 4G2 Phone: 604-437-9538 EMail: ed.harrington.geo@gmail.com</p>	<p style="text-align: center;">Submitted By: <b>Reliance Geological Services</b> <b>3476 Dartmoor Place</b> <b>Vancouver, BC V5S 4G2</b></p> <p style="text-align: center;">Date Received: 07/08/2011 Date Completed: 08/02/2011 Invoice:</p> <p style="text-align: center;">Attention: <b>Ed Harrington</b></p> <p style="text-align: center;">Description: <b>Yes Exploration Syndicate</b></p> <table border="1" style="width: 100%; border-collapse: collapse; margin-top: 10px;"> <thead> <tr> <th style="text-align: left;">Location</th> <th style="text-align: left;">Samples</th> <th style="text-align: left;">Type</th> <th style="text-align: left;">Preparation Description</th> </tr> </thead> <tbody> <tr> <td>Whitehorse, YT</td> <td>56</td> <td>Soil</td> <td>SP-SS-1K/Soils, Humus Sediments 1kg dried, sieved and riffle split</td> </tr> </tbody> </table> <table border="1" style="width: 100%; border-collapse: collapse; margin-top: 10px;"> <thead> <tr> <th style="text-align: left;">Location</th> <th style="text-align: left;">Method</th> <th style="text-align: left;">Description</th> </tr> </thead> <tbody> <tr> <td>Vancouver, BC</td> <td>30-AR-TR</td> <td>30 Element, Aqua Regia, ICP, Trace Level</td> </tr> <tr> <td>Vancouver, BC</td> <td>Au-1AT-AA</td> <td>Au, 1AT Fire Assay, AAS</td> </tr> </tbody> </table>	Location	Samples	Type	Preparation Description	Whitehorse, YT	56	Soil	SP-SS-1K/Soils, Humus Sediments 1kg dried, sieved and riffle split	Location	Method	Description	Vancouver, BC	30-AR-TR	30 Element, Aqua Regia, ICP, Trace Level	Vancouver, BC	Au-1AT-AA	Au, 1AT Fire Assay, AAS
Location	Samples	Type	Preparation Description															
Whitehorse, YT	56	Soil	SP-SS-1K/Soils, Humus Sediments 1kg dried, sieved and riffle split															
Location	Method	Description																
Vancouver, BC	30-AR-TR	30 Element, Aqua Regia, ICP, Trace Level																
Vancouver, BC	Au-1AT-AA	Au, 1AT Fire Assay, AAS																

The results of this assay were based solely upon the content of the sample submitted. Any decision to invest should be made only after the potential investment value of the claim or deposit has been determined based on the results of assays of multiple samples of geologic materials collected by the prospective investor or by a qualified person selected by him and based on an evaluation of all engineering data which is available concerning any proposed project. For our complete terms and conditions please see our website at [www.inspectorate.com](http://www.inspectorate.com).

By   
**Mike Caron, Lab Manager**



**INSPECTORATE**

A Bureau Veritas Group Company

#200 - 11620 Horseshoe Way

Richmond, British Columbia V7A 4V5  
Canada

# Certificate of Analysis

11-360-05031-01

Reliance Geological Services

3476 Dartmoor Place

Vancouver, BC V5S 4G2

Sample Description	Sample Type	Au	Ag	Al	As	Ba	Bi	Ca	Cd	Co	Cr	Cu	Fe	Hg	K
		Au-1A T-AA ppm 0.005	30-AR-TR ppm 0.1	30-AR-TR % 0.01	30-AR-TR ppm 5	30-AR-TR ppm 10	30-AR-TR ppm 2	30-AR-TR % 0.01	30-AR-TR ppm 0.5	30-AR-TR ppm 1	30-AR-TR ppm 1	30-AR-TR ppm 1	30-AR-TR % 0.01	30-AR-TR ppm 3	30-AR-TR % 0.01
Car1	Soil	<0.005	<0.1	1.04	74	60	<2	0.09	<0.5	2	4	35	1.45	<3	0.06
Car2	Soil	0.008	0.3	2.12	40	88	<2	0.16	1.5	10	26	37	2.77	<3	0.17
Car3	Soil	<0.005	<0.1	1.13	40	39	<2	0.07	<0.5	6	10	28	1.71	<3	0.09
Car4	Soil	<0.005	<0.1	1.62	30	123	<2	0.38	0.7	3	9	14	2.00	<3	0.12
Car5	Soil	0.005	<0.1	1.21	40	130	<2	0.16	<0.5	6	19	16	1.88	<3	0.13



**INSPECTORATE**

A Bureau Veritas Group Company

#200 - 11620 Horseshoe Way

Richmond, British Columbia V7A 4V5  
Canada

# Certificate of Analysis

11-360-05031-01

Reliance Geological Services

3476 Dartmoor Place

Vancouver, BC V5S 4G2

Sample Description	Sample Type	La	Mg	Mn	Mo	Na	Ni	P	Pb	Sb	Sc	Sr	Ti	Tl	V
		30-AR-TR ppm	30-AR-TR %	30-AR-TR ppm	30-AR-TR ppm	30-AR-TR %	30-AR-TR ppm	30-AR-TR ppm	30-AR-TR ppm	30-AR-TR ppm	30-AR-TR ppm	30-AR-TR ppm	30-AR-TR ppm	30-AR-TR %	30-AR-TR ppm
		2	0.01	5	1	0.01	1	10	2	2	1	1	0.01	10	1
Car1	Soil	10	0.16	89	4	<0.01	2	57	60	6	<1	8	<0.01	<10	14
Car2	Soil	10	0.37	792	2	0.01	20	161	219	4	3	15	0.02	<10	39
Car3	Soil	12	0.17	394	2	0.01	7	131	159	3	1	6	<0.01	<10	18
Car4	Soil	38	0.35	336	<1	0.01	7	128	33	<2	2	23	<0.01	<10	15
Car5	Soil	11	0.39	193	<1	0.01	16	79	20	<2	2	13	0.03	<10	33



**INSPECTORATE**

A Bureau Veritas Group Company

#200 - 11620 Horseshoe Way

Richmond, British Columbia V7A 4V5  
Canada

# Certificate of Analysis

11-360-05031-01

Reliance Geological Services

3476 Dartmoor Place

Vancouver, BC V5S 4G2

Sample Description	Sample Type	W	Zn	Zr
		30-AR-TR ppm 10	30-AR-TR ppm 2	30-AR-TR ppm 2
Car1	Soil	<10	377	<2
Car2	Soil	<10	700	9
Car3	Soil	<10	555	4
Car4	Soil	<10	133	4
Car5	Soil	<10	133	<2