

NTS 115H/09
Lat 61° 38' 30" N
Long 136° 10' W

ASSESSMENT REPORT

on the

ICE PROPERTY

ICE 1 to 56 - YD124031 to YD154086
ICE 61 to 64 - YD154091 to YD154094

Whitehorse Mining District, Yukon, Canada

Reconnaissance Geological, Geochemical and Prospecting Surveys

Work Period: 4 October 2011

for

OLYMPIC RESOURCES LTD

Suite 602 – 595 Howe Street
Vancouver, BC, V6C 2T2
Phone: 604-629-7083

and

YES EXPLORATION SYNDICATE INC (Operator)

Suite 1018 – 475 Howe Street
Vancouver, BC V6C2B3
Phone: 604-986-5275

by

Edward Harrington, B.Sc., P.Geo.

RELIANCE GEOLOGICAL SERVICES INC

3476 Dartmoor Place, Vancouver, BC, V5S 4G2
Tel: 604-984-3663 Fax: 604-437-9531

18 June 2012

TABLE of CONTENTS

1.0	INTRODUCTION	1
2.0	DESCRIPTIONS, LOCATIONS and OWNERSHIP of CLAIMS	1
3.0	ACCESSIBILITY, CLIMATE, and PHYSIOGRAPHY	4
4.0	GEOLOGICAL SETTING	4
4.1	Regional Geology and Structure	4
4.2	Property Geology	7
5.0	HISTORY	8
5.1	Previous Work	8
6.0	OBJECTIVES and SCOPE of WORK	10
6.1	Survey Method and Equipment	10
6.2	Description of Surveys	10
7.0	INTERPRETATIONS and CONCLUSIONS	15
7.1	Interpretations	15
7.2	Conclusions	16
8.0	REFERENCES	17
	CERTIFICATE of QUALIFICATIONS	18

LIST of FIGURES

Figure 1	Regional Location	2
Figure 2	Claim Location and Topography	3
Figure 3	Regional Geology	6
Figure 4	Property Geology	9
Figure 5	Prospecting Traverses	11
Figure 6	Soil Results - Au, Mo, and Cu	19
Figure 7	Soil Results – Ag and Cu	20
Figure 8	Structural Interpretation	30
Figure 9	Crown Mineral Grants	32

LIST of TABLES

Table 1	Selected Rock Sample Results	14
---------	------------------------------------	----

LIST of APPENDICES

APPENDIX A	Cost Statement
APPENDIX B	Claim Data
APPENDIX C	Reconnaissance Traverse Details and Soil and Rock Sample Locations
APPENDIX D	Rock Assay Certificate
APPENDIX E	Soil Assay Certificate

1.0 INTRODUCTION

This Assessment Report outlines work carried out on the ICE Property (the "Property"), which is located in the Whitehorse Mining District, Yukon.

This Assessment Report summarizes previous work, and describes geological, geochemical rock and soil sampling, and prospecting surveys carried out on 4 October 2011. This report is based on geological and geochemical reports, a compilation of published and unpublished data, maps, and reports made by cited persons.

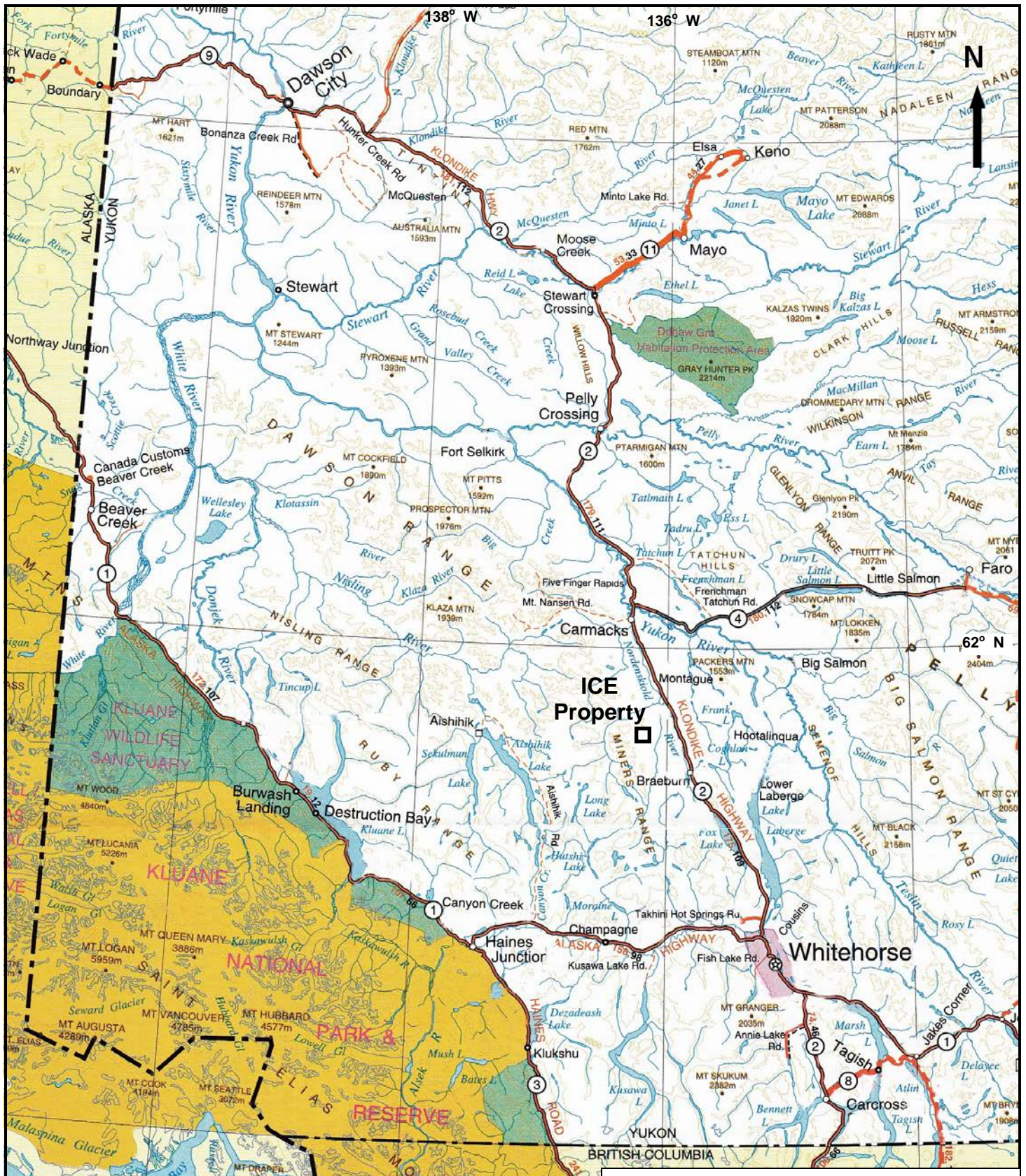
The author is a "qualified person" within the meaning of National Instrument 43-101 of the Canadian Securities Administrators.

2.0 DESCRIPTIONS, LOCATIONS, and OWNERSHIP of CLAIMS

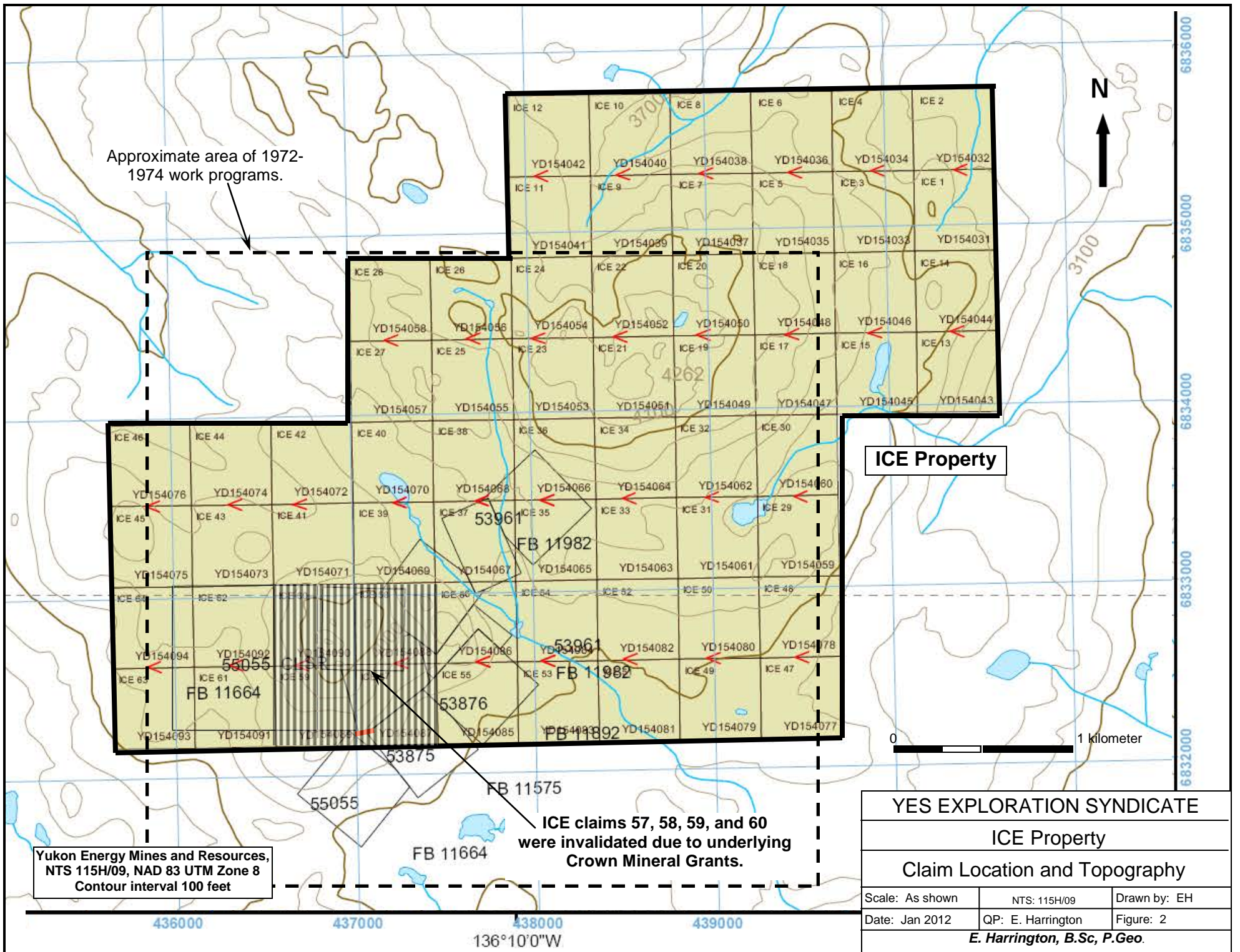
The claims comprising the Property are located in the Whitehorse Mining District of Yukon, Canada, as shown on Map Sheet NTS 115H/09. The Property area is centered at latitude 61° 38' 30" North, longitude 136° 10' West, and UTM 6,834,000 m North, and UTM 438,000 m East (NAD 83, UTM Zone 8) (Figures 1 and 2).

The Property is located approximately 51 kilometers south of the village of Carmacks and 117 kilometers northwest of the city of Whitehorse. Whitehorse is the main regional supply center for personnel and equipment.

The assessment work area consists of a contiguous block of 60 unsurveyed quartz claims totaling approximately 1,253 hectares ("ha"). Claim information is presented in Appendix B.



YES EXPLORATION SYNDICATE		
ICE Property		
Regional Location		
Scale: As shown	NTS: 115H/09	Drawn by: EH
Date: Nov 2011	QP: E. Harrington	Figure: 1
<i>E. Harrington, B.Sc, P.Geo.</i>		



Approximate area of 1972-1974 work programs.

ICE Property

0 1 kilometer

Yukon Energy Mines and Resources,
NTS 115H/09, NAD 83 UTM Zone 8
Contour interval 100 feet

ICE claims 57, 58, 59, and 60
were invalidated due to underlying
Crown Mineral Grants.

YES EXPLORATION SYNDICATE		
ICE Property		
Claim Location and Topography		
Scale: As shown	NTS: 115H/09	Drawn by: EH
Date: Jan 2012	QP: E. Harrington	Figure: 2
E. Harrington, B.Sc, P.Geo.		

436000 437000 438000 439000
136°10'0"W

6836000
6835000
6834000
6833000
6832000

YES Exploration Syndicate Inc (“YES”) is the registered and beneficial owner of the claims comprising the ICE Property. Olympic Resources Ltd (“Olympic”), by an option agreement effectively dated 16 September 2011 (“Agreement”), can earn a 100% interest in the ICE Property, net of a 3% net smelter return (“NSR”) in favor of YES.

3.0 ACCESSIBILITY, CLIMATE, and PHYSIOGRAPHY

The Property can be accessed by helicopter from Carmacks, Yukon. A grass-covered air strip is located at Braeburn, on Highway 2. The airstrip is capable of accommodating light aircraft, and is situated approximately 15 kilometers east of the Property. Property access would be possible by helicopter from the Braeburn airstrip. It would be necessary to establish a fuel cache for extended flying away from Carmacks.

The Property is on rolling, occasionally steep terrain with elevations ranging from 945 meters (3,100 feet) to 1,300 meters (4,262 feet).

Vegetation cover is variable, ranging from relatively open grassed areas to areas with jack pine, alder, and scrub undergrowth. Summers are generally warm, while winters are cold. Depending on the type of work, the work season can be year round.

4.0 GEOLOGICAL SETTING

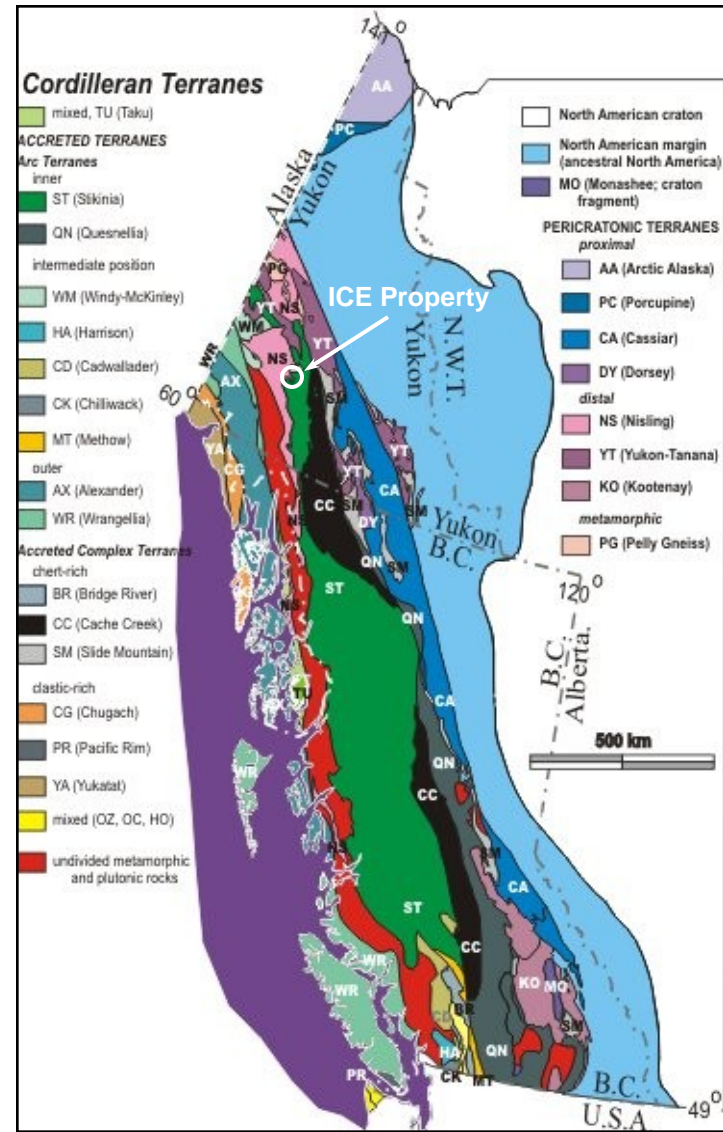
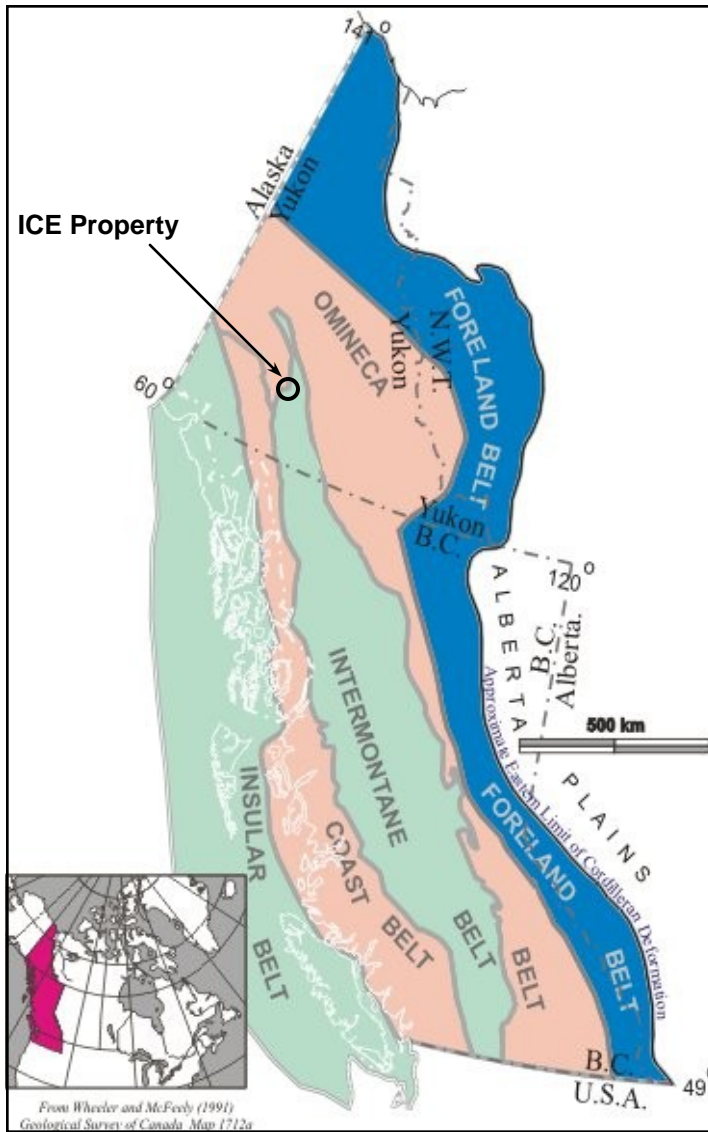
4.1 Regional Geology and Structure (Figure 3)

In general, Yukon geology consists of two lithological components, which are separated by the Tintina Trench.

Rocks northeast of the Tintina Trench are predominantly sedimentary, from 300 million to >1 billion years old, and represent the ancient margin of North America. Rocks southwest of the Tintina Trench are mainly igneous and metamorphic, from 20 to 350 million years old, and represent numerous crustal fragments called accreted terranes that have an uncertain place of origin. The Dawson Mountain Range, which includes the subject Property, is located in the area southwest of the Tintina Trench.

The Yukon-Tanana Composite Terrane ("YTT") is the largest of Yukon's terranes and is composed of several metamorphic rock assemblages, which were originally sedimentary but have been metamorphosed at extremely high temperatures and pressures corresponding to crustal depths of approximately 25 kilometers. The Intermontane Superterrane is composed of five dissimilar terranes that were amalgamated approximately 180 million years ago: Stikinia, Quesnellia, Slide Mountain, Cache Creek, and Windy-McKinley. Stikinia is the largest terrane in the Cordillera, but in Yukon is restricted to the area of the Intermontane Belt.

The Dawson Range generally comprises rocks of the Yukon-Tanana Composite Terrane and Stikinia Intermontane Superterrane. The Dawson Range is part of the Yukon Plateau Physiographic Province, and is characterized by moderately rugged topography with elevations from 900 to over 2000 meters. The Dawson Range has extensive placer and lode gold production, and is commonly referred to as the "Dawson Range gold belt". This belt comprises a northwesterly trend of placer gold occurrences, porphyry copper-gold deposits, and gold-bearing polymetallic epithermal veins. The oldest rocks exposed in the Dawson Range Gold Belt are Paleozoic YTT rocks, consisting of an assemblage of Paleozoic Yukon Group schist, gneiss, and amphibolite, and a Triassic assemblage of andesite to basalt flows, tuffs, and breccias, intruded by granitic batholiths.



(After Geological Survey of Canada, 2005)

YES EXPLORATION SYNDICATE		
ICE Property		
Regional Geology		
Scale: As shown	NTS: 115H09	Drawn by: EH
Date: Jan 2012	QP: E. Harrington	Figure: 3
E. Harrington, B.Sc, P.Geo.		

Granitic rocks intruded during Early Jurassic metamorphic/plutonic events. The Aishihik Batholith underlies much of the district. Triassic to Lower Jurassic in age, the Aishihik intrusive body ranges in composition from dark grey granodiorite to pink quartz monzonite and porphyritic quartz monzonite. Tertiary and Eocene volcanic rocks unconformably overlie the granitic bodies. Volcanic rocks consist primarily of felsic tuffs, flows and breccias, are cut by dark green mafic volcanic plugs and dikes. Cretaceous- to Tertiary-age volcanic rocks host lode gold deposits in the Dawson Range.

Lode mineralization consists of epithermal to mesothermal gold-bearing quartz-chalcedony vein systems in faults and fracture zones associated with felsic intrusives. Ring dikes and fault zones were developed during caldera collapse.

In the Dawson Range, gold mineralization occurs in quartz veins and fractures formed during the intrusion of quartz feldspar porphyry and breccia bodies. Alteration zones vary from narrow seams of clay gouge along the margins of individual quartz veins to wide areas of propylitic and argillic alteration around intrusive breccias. Sericite and pyrite are common accessory minerals.

Cretaceous to Paleocene rocks of the region comprise two major plutonic-volcanic events:

1. The Cretaceous Mount Nansen event includes the Dawson Range Batholith, Casino Granodiorite, Coffee Creek Granite, and the Mount Nansen intermediate to felsic volcanic suite, and
2. The late Cretaceous to Paleocene Carmacks event is represented by subvolcanic and volcanic mafic to felsic rocks that intrude or unconformably overlie all other units.

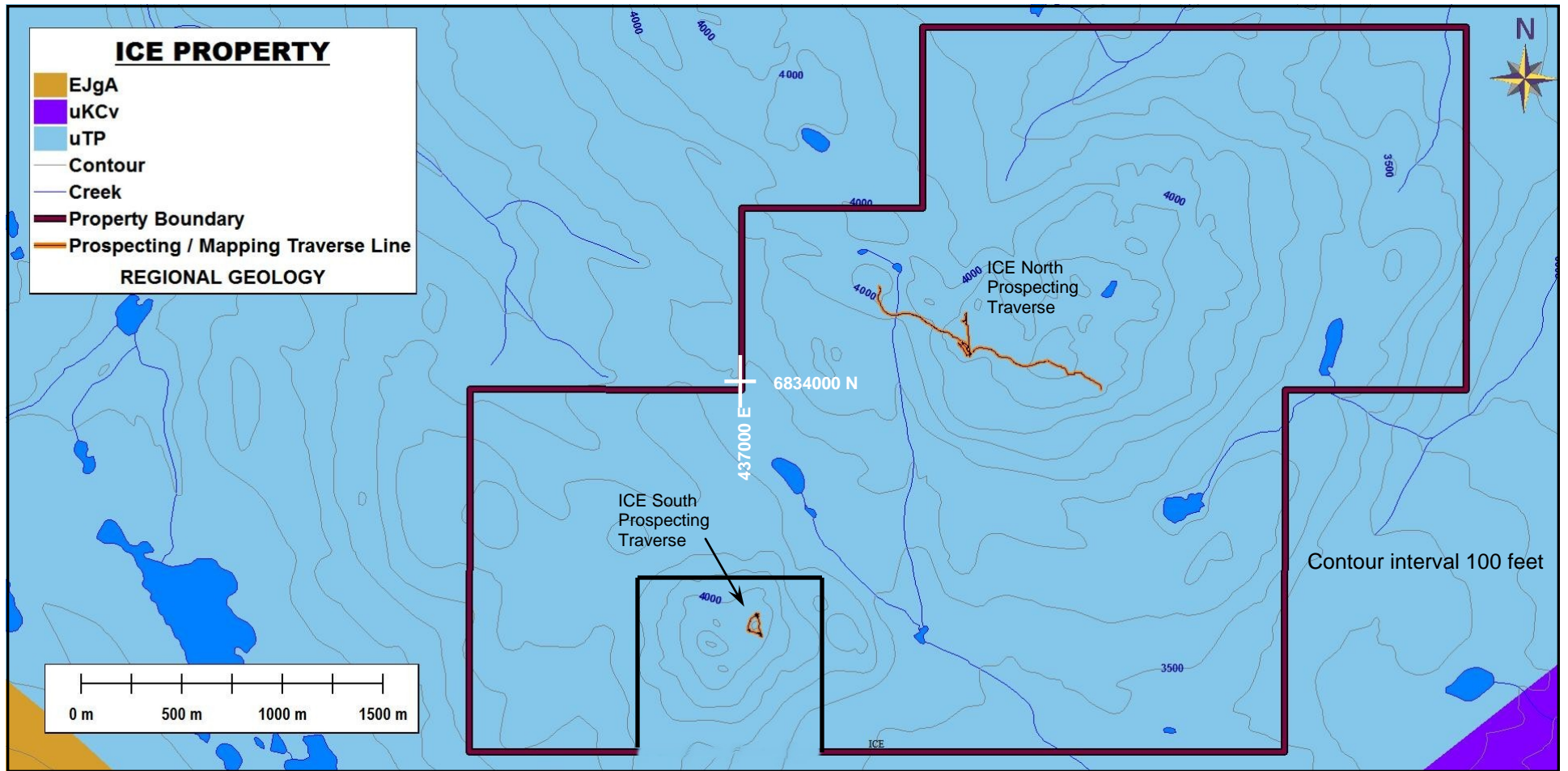
Cretaceous to Paleocene Carmacks intrusives and volcanics have a close spatial relationship with the older granitoids and a spatial-temporal relationship with known gold mineralization. In Yukon, gold mineralization is generally related to Carmacks volcanic units and to same-age hydrothermal alteration, suggesting a genetic link between gold mineralization and hotspot-related hydrothermal activity.

4.2 Property Geology

Lithology predominantly comprises Mesozoic Upper Triassic and older rocks. Andesite basalt flows are common, containing augite and feldspar phenocrysts. As well, tuffs, sandstone, and mudstone are interbedded with andesite. Volcanic and sedimentary rocks have been metamorphosed to greenschist, chlorite schist, chlorite-augite-feldspar gneiss, and amphibolite.

The Mack's prospect in the southern portion of the ICE Property consists of a massive magnetite skarn showing strong malachite and azurite (copper oxides) mineralization. Underlying the skarn is andesite showing epidote formation, possibly due to propylitic alteration, and traces of disseminated sulfides.

To the north, in the area of the ICE North prospecting traverses, andesite in outcrop shows gossanous alteration and contains up to 15% disseminated pyrite. The andesite is fine-grained and very siliceous.



- uKcV** Mesozoic
Upper Cretaceous (97-145 Ma)
Carmacks Group - basic and felsic volcanic succession, olivine basalt, hornblende-feldspar porphyry, andesite and dacite flows
- EJgA** Mesozoic
Late Triassic - Early Jurassic (178-223 Ma)
Aishihik Suite - intermediate granitoids, diorite to gabbro, biotite-hornblende granodiorite, gneisses, K-spar megacrysts
- uTP** Mesozoic
Upper Triassic and older (241 + Ma)
Povoas Fm - andesitic basalt flows, breccia, tuffs, sandstone, and mudstone, schists, gneiss, and amphibolite

YES EXPLORATION SYNDICATE		
ICE Property		
Property Geology		
Scale: As shown	NTS: 115H/09	Drawn by: ML, EH
Date: Jan 2012	QP: E. Harrington	Figure: 4
E. Harrington, B.Sc, P.Geo.		

5.0 HISTORY

5.1 Area History

The Mack's copper showing, located in the southwestern portion of the current ICE Property, was discovered in the early 1900s and was explored by trenching and a 38 foot adit. The copper showing consists of a massive magnetite skarn showing strong concentrations of malachite and azurite (copper oxide) mineralization. In 1910, some of the original claims were surveyed and became mineral grants (Figure 9). In 1964, a two-track dirt road was constructed to the mining leases from the Klondike Highway. In 1965, four holes were drilled totaling 860 feet. Drilling showed that the skarn was approximately 200 feet thick, with a northeasterly dip of 45°.

5.2 Previous Work

In 1972, a work program of soil sampling and geological mapping was carried out by the South Yukon Joint Venture Group. Soil sampling was carried out at 200-foot intervals on lines spaced 400 feet apart. Samples were analyzed for copper, molybdenum, and silver. Soil sampling outlined an elliptical area (situated in the area of the current ICE 21 claim) approximately 1,700 feet long and 1,000 feet wide with copper soil values ranging from 21 to 541 ppm copper. Two rock samples showing chalcopyrite, taken from Triassic andesitic volcanics within the anomalous area, returned 108 and 122 ppm copper. Bleached, pyritized and weakly leached zones up to 50 feet wide and 200 feet long occur. A chip sample of bleached material returned 183 ppm copper (Archer 1973).

In 1973, B.A. Copper Mines Ltd carried out a work program consisting of one diamond drill hole totaling 1,001 feet (location unknown). The hole intersected weakly brecciated, dark green, aphanitic, Triassic andesitic volcanics containing numerous phenocrysts of fine, white feldspar and scattered fresh, black phenocrysts of hornblende.

Bleached zones showing weak clay-carbonate alteration and chloritic alteration of hornblende were reported to be common from 80 to 760 feet.

Pyrite was reported to occur throughout the core as weak disseminations and narrow fracture fillings, and was slightly more abundant in and near bleached zones. Trace chalcopyrite occurred occasionally with pyrite. The core was strongly magnetic, but showed only minor megascopic magnetite. The arithmetic average of copper assays from bleached zones (80-760 feet) was 300 ppm. The average of the remainder of the hole (0 to 80 feet and 760 to 1001 feet) was 140 ppm copper. Mineralization was not considered significant.

6.0 OBJECTIVES and SCOPE of WORK

The deposit models for the Property are epithermal gold-silver and/or porphyry copper-gold. The objective of the recommended work programs is to outline potentially economic gold mineralization on the ICE Property.

6.1 Survey Method and Equipment

Soil sampling was carried out using ratchet-type manual soil augers. Sample locations were GPS controlled. The "C" soil horizon was targeted as the optimum sampled zone, and each soil sample was placed in a uniquely identified kraft paper sample bag. Samples were air-dried and delivered to Inspectorate Laboratory, Whitehorse, Yukon, where samples were prepared for analysis.

Rock samples were placed in uniquely identified plastic bags and delivered to Inspectorate Laboratory, Whitehorse, Yukon, where samples were prepared for analysis.

Prepared soil and rock samples were then shipped to Inspectorate Laboratory, Vancouver, BC, where samples were analyzed using the 30-element Aqua-Regia ICP (30-AR-TR) and gold 1-assay ton, fire assay with AA finish (Au-1AT-AA) methods.

6.2 Description of Surveys

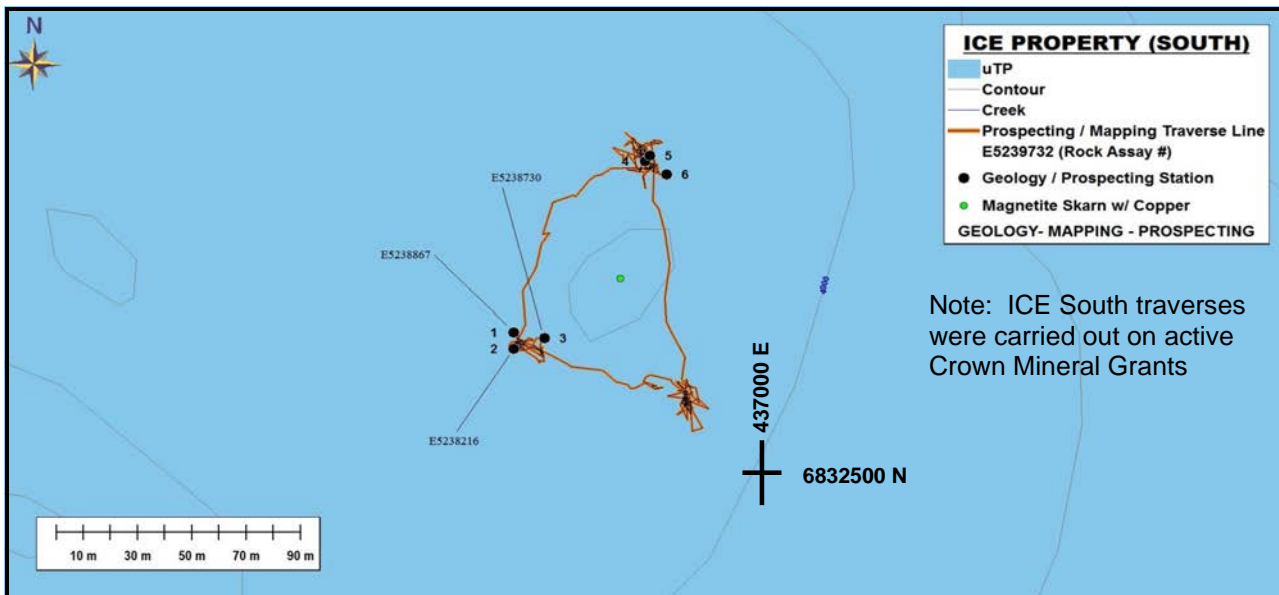
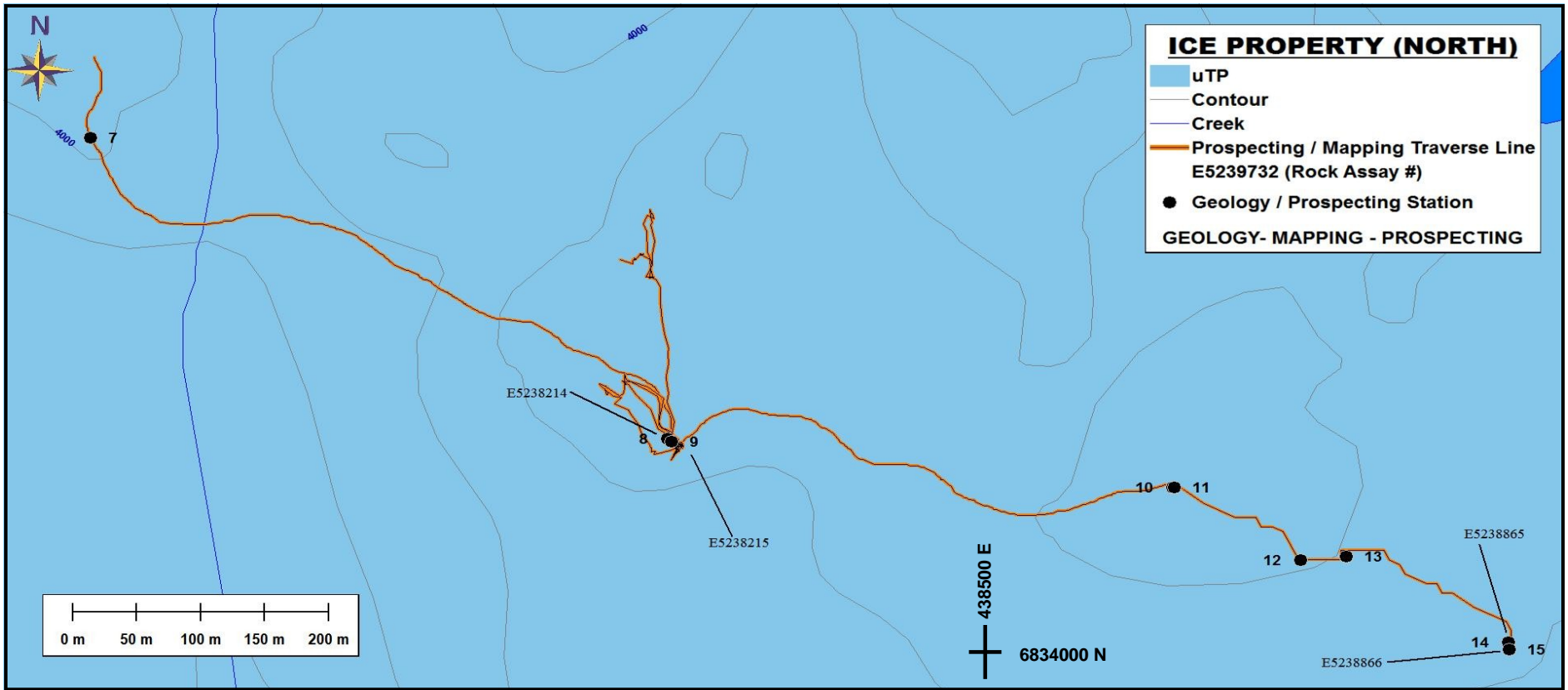
In 2011, YES carried out an exploration program consisting of 122 geochemical soil samples, 7 geochemical rock samples, and approximately 2 kilometers of prospecting and reconnaissance geological traverses on the Property.

Soil sampling covered approximately 12% of the Property. Gold values in soils ranged from <0.005 to 0.419 ppm. Silver ranged from <0.1 to 4.7 ppm (4.7 g/t). Copper values ranged from 5 to 949 ppm. Significant gold values were concentrated in the central portion of the Property, and were closely associated with silver. Copper values are spread throughout the sampled area, and do not appear to be associated with either gold or silver values. Slightly elevated molybdenum values occur in the western portion of the sampled area.

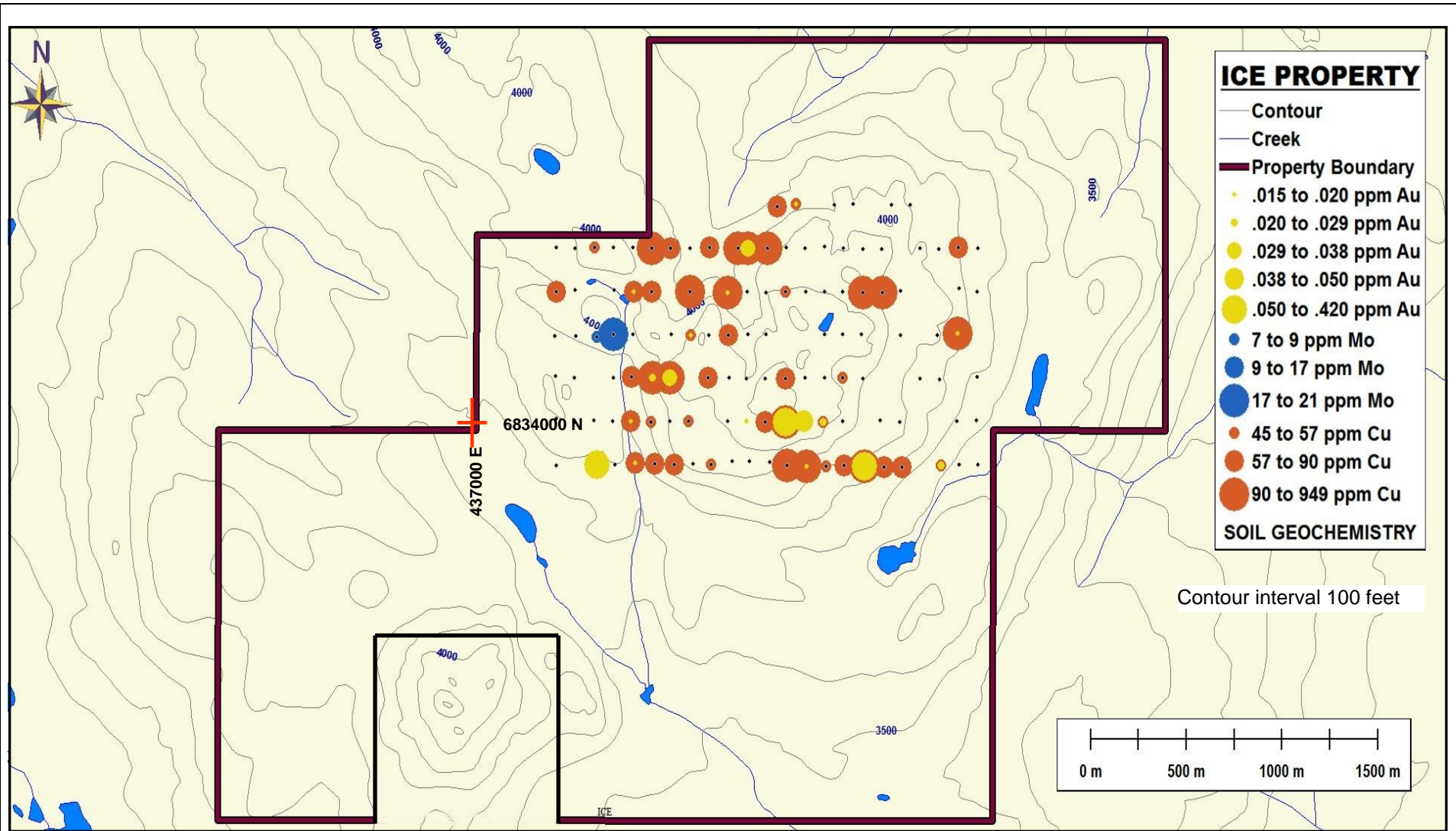
Table 1: Rock Sample Details

Easting	Northing	Sample	Property	Composite Field Rock Description
438142	6834156	E5238214	ICE	Volcanic gossan. Fine disseminated grey aphanitic andesite pyrite 15-20%. Mid slope
438146	6834153	E5238215	ICE	Volcanic gossan. Fine, massive grey aphanitic andesite, pyrite with possible arsenopyrite. Mid Slope
437044	6832778	E5238216	ICE	Metamorphic. Massive Skarn - magnetite w/ Cu oxide, skarn massive, malachite; chrysocolla.
437055	6832782	E5238730	ICE	Metamorphic. Magnetite skarn black to dark brown massive malachite on fractures.
438798	6833978	E5238865	ICE	Volcanic. Weakly chloritic, green, highly oxidized. Andesite with iron oxidation. Sample collected from historical drill pad.
438798	6833972	E5238866	ICE	Plutonic. Siliceous grey-green aphanitic andesite. Pyrite sample from historical drill site.
437044	6832784	E5238867	ICE	Metamorphic. Skarn, massive magnetite. Malachite, Azurite and possible cuprite.

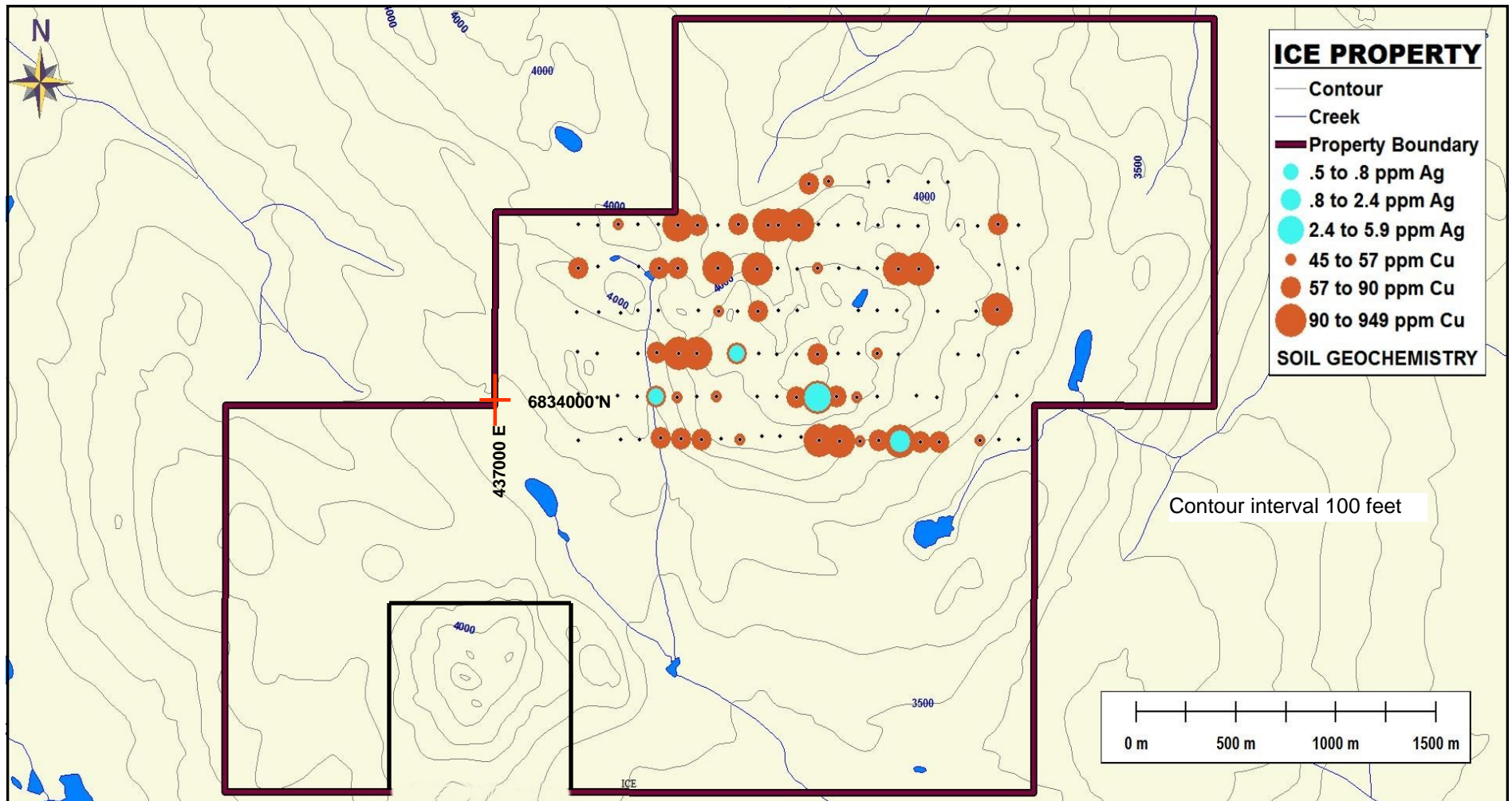
Note: Bolded cells show samples taken within the active Crown Mineral Leases.



YES EXPLORATION SYNDICATE		
ICE Property		
Prospecting and Geological Traverses		
Scale: As shown	NTS: 115H/09	Drawn by: ML, EH
Date: Jan 2012	QP: E. Harrington	Figure: 5
E. Harrington, B.Sc, P.Geo.		



YES EXPLORATION SYNDICATE		
ICE Property		
Soil Sampling - Au, Mo, and Cu		
Scale: As shown	NTS: 115H/09	Drawn by: ML, EH
Date: Jan 2012	QP: E. Harrington	Figure: 6
<i>E. Harrington, B.Sc, P.Geo.</i>		



YES EXPLORATION SYNDICATE		
ICE Property		
Soil Sampling - Ag and Cu		
Scale: As shown	NTS: 115H/09	Drawn by: ML, EH
Date: Jan 2012	QP: E. Harrington	Figure: 7
<i>E. Harrington, B.Sc, P.Geo.</i>		

Selected analyses results follow:

Table 2: Selected Rock Sample Results

Sample	Assay Results ppm							
	Gold	Silver	Arsenic	Barium	Copper	Moly	Lead	Antimony
E5238865	0.194	1.3	135	75	82	2	25	<2
E5238866	0.095	1.0	65	16	424	2	12	<2
E5238867	0.093	16.9	13	<10	>10 K	3	30	5
E5238214	0.027	1.6	<5	47	446	10	4	<2
E5238215	0.075	8.7	18	18	3042	3	10	2
E5238216	0.044	2.6	6	<10	6359	<1	25	<2
E5238730	0.019	2.4	10	<10	4541	1	19	3

Note: Shaded cells show samples taken within the active Crown Mineral Leases.

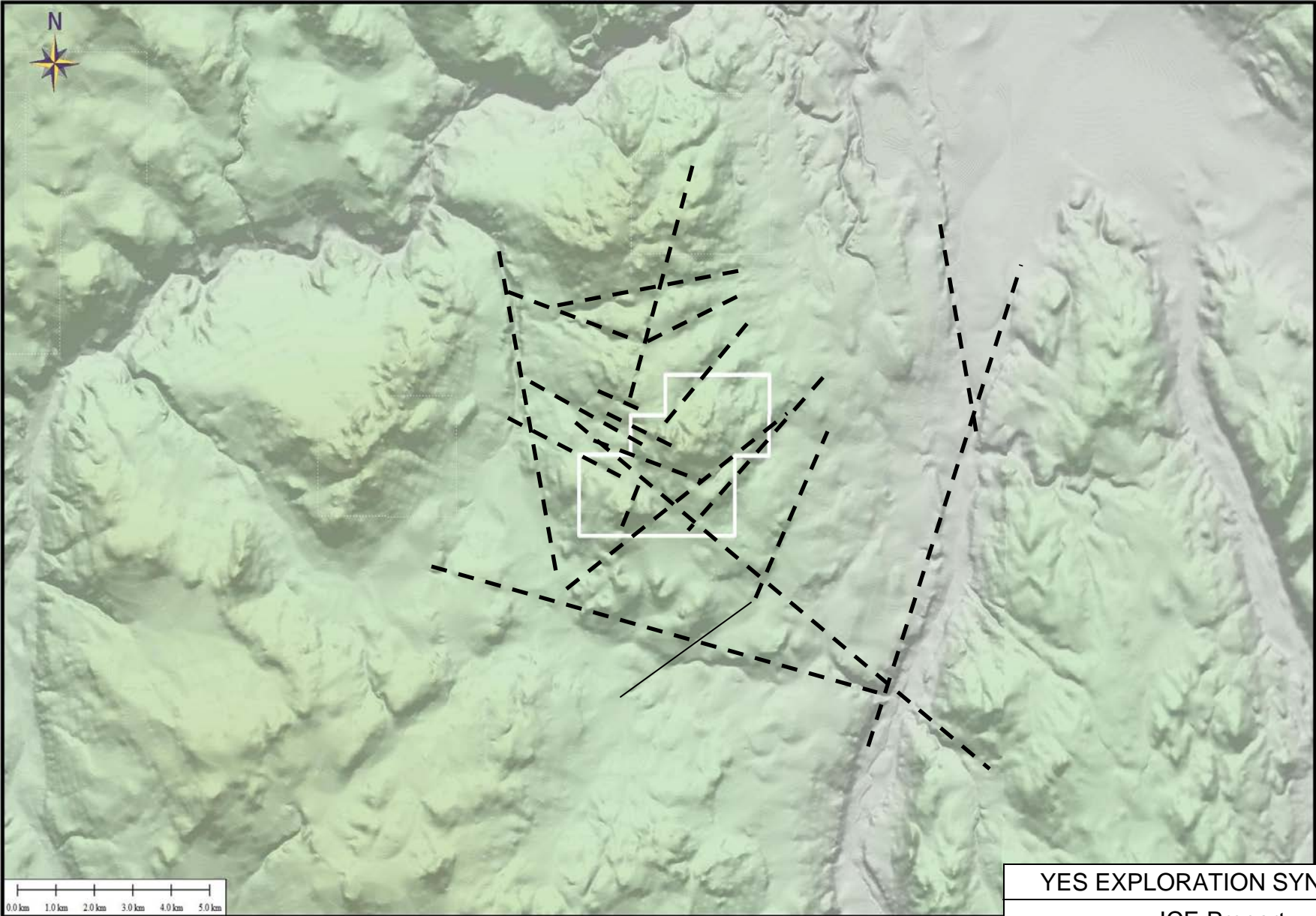
Rock samples taken on the ICE North prospecting traverse show elevated to anomalous values for gold, silver, and copper. Gold values range from 0.027 to 0.194 ppm, silver from 1.0 to 8.7 ppm, and copper from 82 to 3,042 ppm.

In the area of the ICE South prospecting traverse, which lies within active Crown Mineral Grants, gold values ranged from 0.019 to 0.093 ppm, silver ranged from 2.4 to 16.9 ppm, and copper from 4,541 to >10,000 ppm. Sample 528867 (>10,000 ppm) was re-assayed and returned 1.17% copper. All three rock samples taken in the ICE South area were taken from massive magnetite skarn showing strong malachite and azurite staining, as well as minor disseminated copper sulfides.

7.0 INTERPRETATIONS and CONCLUSIONS

7.1 Interpretations

Soil analyses results from the 2011 work program show significant gold, silver, and copper anomalies scattered across the central portion of the Property. Gold and silver values appear to be related. Copper is more widely spread than both gold and silver, and does not appear to be closely associated with either.



YES EXPLORATION SYNDICATE

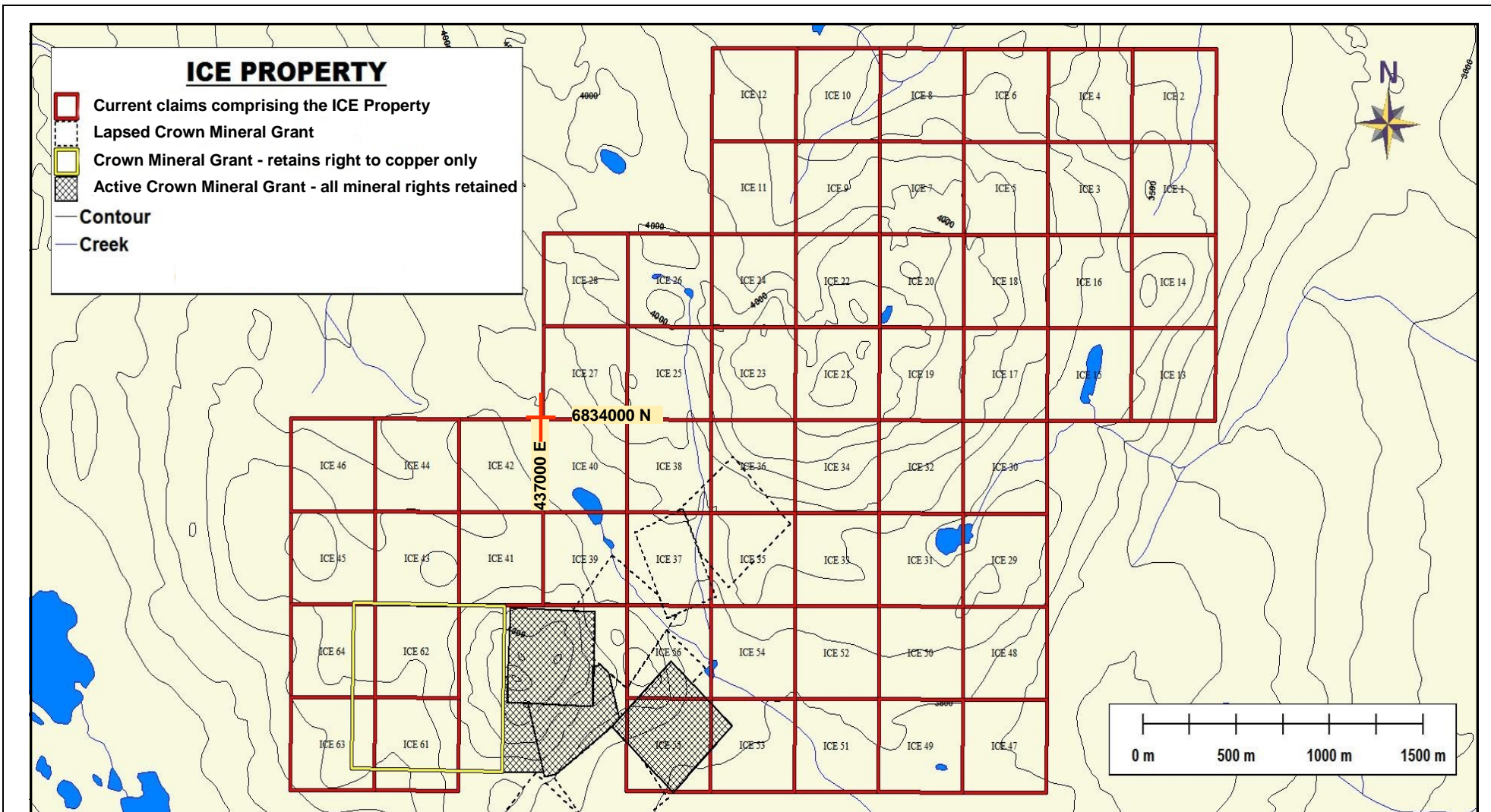
ICE Property

Structural Interpretation

Scale: As shown NTS: 115H/09 Drawn by: ML, EH

Date: Jan 2012 QP: E. Harrington Figure: 8

E. Harrington, B.Sc, P.Geo.



Note:

The lapsed Crown Mineral Grants are shown on Yukon government produced claim maps, but no longer carry any active mineral rights.

Active Crown Mineral Grants retain all mineral rights for the holder of the grants and are closed to general staking. As some of the claim posts for ICE claims 57, 58, 59, and 60 were established on closed ground, these four ICE claims are void.

The large Crown Mineral Grant to the west, outlined in yellow, is still active, but only the mineral rights for copper are retained by the holder of the grant.

YES EXPLORATION SYNDICATE		
ICE Property		
Crown Mineral Grants		
Scale: As shown	NTS: 115H/09	Drawn by: ML, EH
Date: Jan 2012	QP: E. Harrington	Figure: 9
<i>E. Harrington, B.Sc, P.Geo.</i>		

Historical drilling shows that the massive magnetite skarn in the ICE South area is approximately 200 feet thick and dips in a northeasterly direction at -45° . The northern extent of the skarn was never determined, and it could possibly underlie the ICE North area where the soil sampling program returned significant copper mineralization. Andesites in the ICE North area show gossanous alteration and contain up to 15% disseminated pyrite. The andesites also show chloritic alteration.

Skarn alteration is commonly associated with alkali-type porphyry intrusions. Copper skarn mineralization, related to porphyry intrusions, tends to be large, low-grade, and emplaced at relatively high structural levels in the depositional system. The skarn-porphyry relationship may lead to zoning, whereby copper-gold-silver-rich mineralization occurs in a central zone, followed outward by gold-silver, and then lead-zinc-silver. Commonly, intrusions are multi-phase and show associated hydrothermal and/or intrusive breccias. Drilling in 1965 showed brecciated andesite underlying the massive magnetite skarn.

Figure 8 shows a series of northwest- and northeast-trending lineaments cutting the central Property area. These lineaments may indicate fracturing and/or faulting, which may have created a plumbing system capable of carrying and depositing mineralizing fluids.

Figure 9 shows Crown Mineral Grants located in the southwest portion of the Property. The grants were established in the early 1900s. Five grants are active. Four of the grants possess all mineral rights, and are therefore not currently available for exploration or exploitation. A fifth grant is active, but retains mineral rights to copper only. As one of the deposit models for the Property is a copper-gold system, the presence of historical copper workings is a good indicator for possible associated gold mineralization.

7.2 Conclusions

The ICE Property has potential to host an economic gold deposit for the following reasons:

- A structural interpretation shows northwest- and northeast-trending lineaments intersecting on the Property. Fractures and faults would provide a suitable location for gold precipitation. The movement of gold-bearing hydrothermal fluid through a plumbing system, with the subsequent deposition of the gold from solution, would be necessary for the creation of a gold deposit;
- Significant gold, silver, and copper in soil anomalies occur on the Property;
- Siliceous volcanic rocks in the ICE North area show gossanous alteration and contain up to 15% pyrite and traces of other sulfides;
- Significant gold, silver, and copper mineralization was returned by rock sampling; and
- The presence of a massive magnetite skarn in the southwestern portion of the Property could be related to underlying intrusive activity.

8.0 REFERENCES

- Archer, A.R., 1973:
Geological and Geochemical Report on ALP 3-73 Claims, Whitehorse Mining District, Yukon Territory, for B.A. Copper Ltd, Yukon Assessment Report 019810.
- Archer, A.R., 1974:
Summary Report, Diamond Drill Program on ALP Claim Property, Whitehorse Mining District, Yukon Territory, for B.A. Copper Ltd, Yukon Assessment Report 061042.
- Hart, C. 2002:
The Geological Framework of the Yukon Territory. Yukon Geological Survey. <http://www.geology.gov.yk.ca/>
- Middleton, R.S., 2009:
Report on the Mount Nansen Property and Tawa Property, for Guinness Exploration Inc.
- Panteleyev, A., 1986:
A Canadian Cordilleran Model for Epithermal Gold-Silver Deposits: Geoscience Canada, v. 123.
- Smuk., K.A., 1999:
Metallurgy of Epithermal Gold and Base Metal Veins of the Southern Dawson Range, Yukon,.M.Sc. Thesis, McGill University.
- Yukon Mineral Property Update ("YMPU"), 2008:
Mount Nansen Property, accessed 17 August 2011 at:
<http://miningyukon.com/Documents/Why%20Yukon/Mineral%20Property%20Profiles/Mount%20Nansen%20Property.pdf>

Edward Harrington, B.Sc., P.Geo.
3476 Dartmoor Place, Vancouver, BC, V5S 4G2
Tel: (604) 437-9538 Email: ed.harrington.geo@gmail.com

CERTIFICATE OF AUTHOR

I, Edward D. Harrington, do hereby certify that:

1. I graduated with a B.Sc. degree in Geology from Acadia University, Wolfville, Nova Scotia in 1971.
2. I am a Member in good standing with the Association of Professional Engineers and Geoscientists of British Columbia, License #23328.
3. I have pursued my career as a geologist for over thirty years in Canada, the western United States, the Sultanate of Oman, Mexico, Argentina, Peru, and Australia.
4. I have read the definition of “qualified person” set out in National Instrument 43-101 (“NI 43-101”) and certify that by reason of my education, affiliation with a professional association as defined in NI 43-101, and past relevant work experience, I fulfill the requirements to be a “qualified person” for the purposes of NI 43-101.
5. I am responsible for the preparation of the assessment report titled “Assessment Report on the ICE Property, Whitehorse Mining District, Yukon, Canada” and dated 18 June 2012 (the “Assessment Report”)

Dated this 18th day of June 2012



Edward D. Harrington, B.Sc., P.Geo.

APPENDIX A

Cost Statement

ICE property - Mineral Exploration Expenditures - 2011

Supplier	Invoice #	Amount	Applied to Project
RELIANCE GEOLOGICAL SERVICES INC	A11-883-01	\$ 15,118.59	\$ 15,118.59
NOKUYUKON HOLDINGS LTD	18	\$ 10,500.00	\$ 1,131.13
TOTAL (INCLUDES GST)			\$ 16,249.72

Nokuyukon Holdings Ltd

110 Falcon Drive
Whitehorse, Yukon Y1A 6C7
Canada

INVOICE

Invoice No.: 18
Date: 11/01/2011
Page: 1

Sold to:

YES Exploration Syndicate Inc
Tony Simon
Vancouver, BC

Ship to:

YES Exploration Syndicate Inc
Tony Simon
Vancouver, BC

Business No.: 87245 7015RP0001

Item No.	Unit	Quantity	Description	Tax	Unit Price	Amount
			OPERATIONAL PHASE:Project preparation and work conducted October 1 - 31, 2011	G		10,000.00
			Subtotal:			10,000.00
			G - GST 5% GST			500.00
Comment:					Total Amount	10,500.00

RELIANCE GEOLOGICAL SERVICES INC

3476 Dartmoor Place, Vancouver, BC

Canada V5S 4G2

info@reliancegeological.com

www.RelianceGeological.com

Tel: 604-984-3663

Fax: 604-437-9531

INVOICE

No. A11-883-01

30 November 2011

YES Exploration Syndicate Inc

418 East 14th Street

North Vancouver, BC V7L 2N8

Attn: **T. Simon**

Re: J883 - ICE Property, Whitehorse MD, Yukon

Field Personnel:	Field Days	Days	Rate	Sub-total	
	Prospecting, Reconnaissance geology				
Geologist:					
E. Harrington, PGeo	Oct 4	1.00	800.00	\$ 800.00	
Prospector:					
J. Skales	Oct 4	1.00	600.00	<u>600.00</u>	\$ 1,400.00
Office Personnel:					
General research:					
E. Harrington, PGeo		0.50	800.00	\$ 400.00	
Report preparation:					
E. Harrington, PGeo		0.75	800.00	600.00	
Other:					<u>1,000.00</u>
Ground Exploration	included in Field Personnel totals				
Geological mapping:		-	-	\$ -	
Reconnaissance:		-	-	-	
Prospecting:		-	-	<u>-</u>	-
Geochemical Surveying:					
Contract, per soil sample		122	48.00	\$ 5,856.00	
Rock samples included in Field Personnel totals					
Lab costs, soils		122	25.99	3,170.78	
Lab costs, rocks		7	31.11	<u>217.77</u>	9,244.55

Mobe/Demobe Costs: in Yukon
(allocated among 33 properties)

Air transport				\$	-	
Vehicle rental					148.22	
Time					151.52	
Food & accomm					43.94	
Other					-	343.68
						<hr/>

Project Costs:

Vehicle rental				\$	-	
Fuel	Allocated among 33	1.00	51.16		51.16	
Helicopter	properties	0.80	1,032.47		825.98	
Heli Fuel	"	0.80	224.29		179.43	
Other					-	1,056.57
						<hr/>

Food & Accom: (day rate used for convenience)

Hotel & meals	incl M Lindsay of YES	0.50	435.00	\$	217.50	217.50
(Hotel Carmacks)						

Misc:

Communications	Allocated among 33	-	-	\$	-	
GPS and software	properties	1.50	10.00		15.00	
Other (security tags, supplies)	"	1.00	54.79		54.79	69.79
						<hr/>

Sub-total \$ 13,332.09

Contractor markup 1,066.57
 GST/HST 5% R# 13849 1303 719.93

Total Expenditures \$ 15,118.59

APPENDIX B
Claim Data

UTM Location		Claim Name	Grant Number	Owner Name	Staking Date	Expiry Date	District
Eastings	Northing						
440384	6835081	ICE 1	YD154031	YES Exploration Syndicate	9-Jan-11	1-Feb-14	Whitehorse
440385	6835531	ICE 2	YD154032	YES Exploration Syndicate	9-Jan-11	1-Feb-14	Whitehorse
439934	6835082	ICE 3	YD154033	YES Exploration Syndicate	9-Jan-11	1-Feb-14	Whitehorse
439935	6835532	ICE 4	YD154034	YES Exploration Syndicate	9-Jan-11	1-Feb-14	Whitehorse
439484	6835083	ICE 5	YD154035	YES Exploration Syndicate	9-Jan-11	1-Feb-14	Whitehorse
439485	6835533	ICE 6	YD154036	YES Exploration Syndicate	9-Jan-11	1-Feb-14	Whitehorse
439034	6835084	ICE 7	YD154037	YES Exploration Syndicate	9-Jan-11	1-Feb-14	Whitehorse
439036	6835534	ICE 8	YD154038	YES Exploration Syndicate	9-Jan-11	1-Feb-14	Whitehorse
438585	6835086	ICE 9	YD154039	YES Exploration Syndicate	9-Jan-11	1-Feb-15	Whitehorse
438586	6835535	ICE 10	YD154040	YES Exploration Syndicate	9-Jan-11	1-Feb-15	Whitehorse
438135	6835087	ICE 11	YD154041	YES Exploration Syndicate	9-Jan-11	1-Feb-15	Whitehorse
438136	6835537	ICE 12	YD154042	YES Exploration Syndicate	9-Jan-11	1-Feb-15	Whitehorse
440381	6834181	ICE 13	YD154043	YES Exploration Syndicate	10-Jan-11	1-Feb-14	Whitehorse
440383	6834631	ICE 14	YD154044	YES Exploration Syndicate	10-Jan-11	1-Feb-14	Whitehorse
439932	6834182	ICE 15	YD154045	YES Exploration Syndicate	10-Jan-11	1-Feb-14	Whitehorse
439933	6834632	ICE 16	YD154046	YES Exploration Syndicate	10-Jan-11	1-Feb-14	Whitehorse
439482	6834183	ICE 17	YD154047	YES Exploration Syndicate	10-Jan-11	1-Feb-15	Whitehorse
439483	6834633	ICE 18	YD154048	YES Exploration Syndicate	10-Jan-11	1-Feb-15	Whitehorse
439032	6834185	ICE 19	YD154049	YES Exploration Syndicate	10-Jan-11	1-Feb-15	Whitehorse
439033	6834635	ICE 20	YD154050	YES Exploration Syndicate	10-Jan-11	1-Feb-15	Whitehorse
438582	6834186	ICE 21	YD154051	YES Exploration Syndicate	10-Jan-11	1-Feb-15	Whitehorse
438583	6834636	ICE 22	YD154052	YES Exploration Syndicate	10-Jan-11	1-Feb-15	Whitehorse
438132	6834187	ICE 23	YD154053	YES Exploration Syndicate	10-Jan-11	1-Feb-15	Whitehorse
438134	6834637	ICE 24	YD154054	YES Exploration Syndicate	10-Jan-11	1-Feb-15	Whitehorse
437682	6834188	ICE 25	YD154055	YES Exploration Syndicate	10-Jan-11	1-Feb-15	Whitehorse
437684	6834638	ICE 26	YD154056	YES Exploration Syndicate	10-Jan-11	1-Feb-15	Whitehorse
437233	6834190	ICE 27	YD154057	YES Exploration Syndicate	10-Jan-11	1-Feb-15	Whitehorse
437234	6834639	ICE 28	YD154058	YES Exploration Syndicate	10-Jan-11	1-Feb-15	Whitehorse
439479	6833284	ICE 29	YD154059	YES Exploration Syndicate	9-Jan-11	1-Feb-14	Whitehorse
439481	6833734	ICE 30	YD154060	YES Exploration Syndicate	9-Jan-11	1-Feb-15	Whitehorse
439030	6833285	ICE 31	YD154061	YES Exploration Syndicate	9-Jan-11	1-Feb-14	Whitehorse
439031	6833735	ICE 32	YD154062	YES Exploration Syndicate	9-Jan-11	1-Feb-15	Whitehorse

438580	6833286	ICE 33	YD154063	YES Exploration Syndicate	9-Jan-11	1-Feb-15	Whitehorse
438581	6833736	ICE 34	YD154064	YES Exploration Syndicate	9-Jan-11	1-Feb-15	Whitehorse
438130	6833287	ICE 35	YD154065	YES Exploration Syndicate	9-Jan-11	1-Feb-15	Whitehorse
438131	6833737	ICE 36	YD154066	YES Exploration Syndicate	9-Jan-11	1-Feb-15	Whitehorse
437680	6833289	ICE 37	YD154067	YES Exploration Syndicate	9-Jan-11	1-Feb-15	Whitehorse
437681	6833738	ICE 38	YD154068	YES Exploration Syndicate	9-Jan-11	1-Feb-15	Whitehorse
437230	6833290	ICE 39	YD154069	YES Exploration Syndicate	9-Jan-11	1-Feb-15	Whitehorse
437231	6833740	ICE 40	YD154070	YES Exploration Syndicate	9-Jan-11	1-Feb-15	Whitehorse
436780	6833291	ICE 41	YD154071	YES Exploration Syndicate	9-Jan-11	1-Feb-15	Whitehorse
436782	6833741	ICE 42	YD154072	YES Exploration Syndicate	9-Jan-11	1-Feb-15	Whitehorse
436331	6833292	ICE 43	YD154073	YES Exploration Syndicate	9-Jan-11	1-Feb-15	Whitehorse
436332	6833742	ICE 44	YD154074	YES Exploration Syndicate	9-Jan-11	1-Feb-15	Whitehorse
435881	6833293	ICE 45	YD154075	YES Exploration Syndicate	9-Jan-11	1-Feb-15	Whitehorse
435882	6833743	ICE 46	YD154076	YES Exploration Syndicate	9-Jan-11	1-Feb-15	Whitehorse
439477	6832384	ICE 47	YD154077	YES Exploration Syndicate	9-Jan-11	1-Feb-14	Whitehorse
439478	6832834	ICE 48	YD154078	YES Exploration Syndicate	9-Jan-11	1-Feb-14	Whitehorse
439027	6832385	ICE 49	YD154079	YES Exploration Syndicate	9-Jan-11	1-Feb-14	Whitehorse
439028	6832835	ICE 50	YD154080	YES Exploration Syndicate	9-Jan-11	1-Feb-14	Whitehorse
438577	6832386	ICE 51	YD154081	YES Exploration Syndicate	9-Jan-11	1-Feb-15	Whitehorse
438578	6832836	ICE 52	YD154082	YES Exploration Syndicate	9-Jan-11	1-Feb-15	Whitehorse
438127	6832388	ICE 53	YD154083	YES Exploration Syndicate	9-Jan-11	1-Feb-15	Whitehorse
438129	6832838	ICE 54	YD154084	YES Exploration Syndicate	9-Jan-11	1-Feb-15	Whitehorse
437678	6832389	ICE 55	YD154085	YES Exploration Syndicate	9-Jan-11	1-Feb-15	Whitehorse
437679	6832839	ICE 56	YD154086	YES Exploration Syndicate	9-Jan-11	1-Feb-15	Whitehorse
436328	6832393	ICE 61	YD154091	YES Exploration Syndicate	9-Jan-11	1-Feb-15	Whitehorse
436329	6832842	ICE 62	YD154092	YES Exploration Syndicate	9-Jan-11	1-Feb-15	Whitehorse
435878	6832394	ICE 63	YD154093	YES Exploration Syndicate	9-Jan-11	1-Feb-15	Whitehorse
435880	6832844	ICE 64	YD154094	YES Exploration Syndicate	9-Jan-11	1-Feb-15	Whitehorse

APPENDIX C
Reconnaissance Traverse Details and
Soil Sample Locations

Easting	Northing	Station	Sample	Property	Composite Field Rock Description
437044	6832784	1	E5238867	ICE	METAMORPHIC SKARN BLACK MASSIVE MAGNETITE -MALACHITE-AZURITE POSSIBLE CUPRITE
437044	6832778	2	E5238216	ICE	METAMORPHIC Massive Skarn - magnetite w/ Cu oxides Skarn Massive Malachite; chrysocolla Ridge Top
437055	6832782	3	E5238730	ICE	METAMORPHIC magnetite skarn black to dark brown massive malachite on fractures Mid Slope
437092	6832852	4		ICE	METAMORPHIC Massive SKARN Massive MAGNETITE SKARN MAGNETITE
437094	6832854	5		ICE	METAMORPHIC Massive magnetite skarn black to dark brown
437100	6832846	6	Mapping	ICE	METAMORPHIC Massive Skarn Massive Fault Magnetite Ridge Top Massive magnetite
437693	6834418	7		ICE	SEDIMENTARY Course Mixture RUSTY CONGLOMERATE Clastic IRON CEMENTED CONGLOMERATE
438142	6834156	8	E5238214	ICE	IGNEOUS Volcanic gossan Fine Disseminated grey Aphanitic andesite pyrite 15-20% Mid Slope
438146	6834153	9	E5238215	ICE	IGNEOUS Volcanic gossan Fine Massive grey Aphanitic andesite prite with possible arsenopyrite Mid Slope
438536	6834113	10		ICE	IGNEOUS Volcanic Disseminated Green Aphanitic ANDESITE Massive MINOR PYRITE
438537	6834113	11		ICE	IGNEOUS Volcanic Mixture greenish-grey Phaneritic andesite
438636	6834050	12		ICE	IGNEOUS Volcanic Mixture greenish-grey Phaneritic andesite
438672	6834052	13		ICE	IGNEOUS Volcanic WEAKLY CHLORITIC DARK GREEN Aphanitic ANDESITE MINOR <0.5% PYRITE
438798	6833978	14	E5238865	ICE	IGNEOUS Volcanic WEAKLY CHLORITIC Green HIGHLY OXIDIZED ANDESITE IRON OXIDATION SAMPLE COLLECTED FROM OLD DRILL PAD
438798	6833972	15	E5238866	ICE	IGNEOUS Plutonic SILICEOUS Disseminated GRAY-GREEN Aphanitic SILICEOUS ANDESITE PYRITE SAMPLE FROM OLD DRILL PAD SITE

Easting	Northing	Property	Sample ID
438586	6835005	ICE	ICE 1
438684	6835014	ICE	ICE 2
438886	6835012	ICE	ICE 4
438981	6835016	ICE	ICE 5
439184	6835012	ICE	ICE 7
439282	6835012	ICE	ICE 8
437430	6834815	ICE	ICE 9
437530	6834811	ICE	ICE 10
437632	6834815	ICE	ICE 11
437730	6834815	ICE	ICE 12
437831	6834815	ICE	ICE 13
437930	6834811	ICE	ICE 14
438030	6834813	ICE	ICE 15
438132	6834813	ICE	ICE 16
438234	6834814	ICE	ICE 17
438383	6834810	ICE	ICE 18
438431	6834809	ICE	ICE 19
438534	6834810	ICE	ICE 20
438632	6834813	ICE	ICE 21
438733	6834812	ICE	ICE 22
438832	6834820	ICE	ICE 23
438931	6834812	ICE	ICE 24
439034	6834807	ICE	ICE 25
439133	6834808	ICE	ICE 26
439333	6834810	ICE	ICE 28
439431	6834808	ICE	ICE 29
439530	6834813	ICE	ICE 30
439633	6834810	ICE	ICE 31
437432	6834610	ICE	ICE 32
437530	6834620	ICE	ICE 33
437732	6834618	ICE	ICE 35
437835	6834612	ICE	ICE 36
437930	6834611	ICE	ICE 37

Easting	Northing	Property	Sample ID
438131	6834612	ICE	ICE 39
438328	6834607	ICE	ICE 41
438430	6834612	ICE	ICE 42
438525	6834608	ICE	ICE 43
438630	6834610	ICE	ICE 44
438733	6834609	ICE	ICE 45
438832	6834610	ICE	ICE 46
438929	6834613	ICE	ICE 47
439032	6834608	ICE	ICE 48
439135	6834607	ICE	ICE 49
439231	6834616	ICE	ICE 50
439536	6834626	ICE	ICE 53
439629	6834611	ICE	ICE 54
437426	6834405	ICE	ICE 55
437533	6834408	ICE	ICE 56
437642	6834401	ICE	ICE 57
437731	6834413	ICE	ICE 58
437833	6834414	ICE	ICE 59
438031	6834415	ICE	ICE 61
438133	6834410	ICE	ICE 62
438230	6834409	ICE	ICE 63
438331	6834409	ICE	ICE 64
438432	6834416	ICE	ICE 65
438529	6834413	ICE	ICE 66
438833	6834414	ICE	ICE 69
438927	6834413	ICE	ICE 70
439025	6834413	ICE	ICE 71
439232	6834410	ICE	ICE 73
439422	6834410	ICE	ICE 75
439528	6834418	ICE	ICE 76
437427	6834222	ICE	ICE 78
437528	6834213	ICE	ICE 79
437732	6834216	ICE	ICE 81

Easting	Northing	Property	Sample ID
437823	6834217	ICE	ICE 82
437934	6834214	ICE	ICE 83
438025	6834213	ICE	ICE 84
438227	6834216	ICE	ICE 86
438333	6834214	ICE	ICE 87
438426	6834210	ICE	ICE 88
438523	6834209	ICE	ICE 89
438631	6834211	ICE	ICE 90
438730	6834212	ICE	ICE 91
438832	6834213	ICE	ICE 92
438928	6834213	ICE	ICE 93
439033	6834212	ICE	ICE 94
439330	6834210	ICE	ICE 97
439433	6834206	ICE	ICE 98
439630	6834217	ICE	ICE 100
437432	6834028	ICE	ICE 101
437525	6834011	ICE	ICE 102
437626	6834019	ICE	ICE 103
437727	6834012	ICE	ICE 104
437820	6834014	ICE	ICE 105
437925	6834008	ICE	ICE 106
438023	6834013	ICE	ICE 107
438123	6834012	ICE	ICE 108
438327	6834014	ICE	ICE 110
438426	6834013	ICE	ICE 111
438525	6834010	ICE	ICE 112
438627	6834011	ICE	ICE 113
438724	6834016	ICE	ICE 114
438824	6834012	ICE	ICE 115
438927	6834014	ICE	ICE 116
439124	6834016	ICE	ICE 118
439225	6834011	ICE	ICE 119
439523	6834013	ICE	ICE 122

Easting	Northing	Property	Sample ID
439625	6834017	ICE	ICE 123
437432	6833812	ICE	ICE 124
437643	6833813	ICE	ICE 126
437737	6833812	ICE	ICE 127
437844	6833821	ICE	ICE 128
437945	6833816	ICE	ICE 129
438047	6833815	ICE	ICE 130
438145	6833816	ICE	ICE 131
438240	6833814	ICE	ICE 132
438350	6833829	ICE	ICE 133
438442	6833828	ICE	ICE 134
438545	6833824	ICE	ICE 135
438637	6833811	ICE	ICE 136
438740	6833806	ICE	ICE 137
438839	6833805	ICE	ICE 138
438936	6833810	ICE	ICE 139
439040	6833806	ICE	ICE 140
439144	6833804	ICE	ICE 141
439236	6833804	ICE	ICE 142
439440	6833811	ICE	ICE 144
439536	6833813	ICE	ICE 145
439633	6833813	ICE	ICE 146

APPENDIX D
Rock Assay Certificate



INSPECTORATE

A Bureau Veritas Group Company

Certificate of Analysis

11-360-08669-01

Inspectorate Exploration & Mining Services Ltd.
#200 - 11620 Horseshoe Way
Richmond, British Columbia V7A 4V5 Canada
Phone: 604-272-7818

Distribution List

Attention: E. Harrington
3476 Dartmoor Place
Vancouver, BC V5S 4G2
Phone: 604/43795383
EMail: ed.harrington.geo@gmail.com

Submitted By: **Reliance Geological Services Ltd**
3476 Dartmoor Place
Vancouver, BC V5S 4G2

Date Received: 11/10/2011
Date Completed: 11/25/2011
Invoice:

Attention: **E. Harrington**

Project: **Olympic Project**
Client Reference: **Olympic Rock**
Description: **Olympic Project**

Location	Samples	Type	Preparation Description
Whitehorse, YT	29	Rock	SP-RX-2K/Rock/Chips/Drill Core

Location	Method	Description
Vancouver, BC	30-AR-TR	30 Element, Aqua Regia, ICP, Trace Level
Vancouver, BC	Cu-AR-OR-AA	Cu, Ore Grade, AQR, AA
Vancouver, BC	Au-1AT-AA	Au, 1AT Fire Assay, AAS
Vancouver, BC	Hg-AR-TR-CVAA	Hg, AQR, CVAA, Trace Levels

The results of this assay were based solely upon the content of the sample submitted. Any decision to invest should be made only after the potential investment value of the claim or deposit has been determined based on the results of assays of multiple samples of geologic materials collected by the prospective investor or by a qualified person selected by him and based on an evaluation of all engineering data which is available concerning any proposed project. For our complete terms and conditions please see our website at www.inspectorate.com.

For and on behalf of **Inspectorate Exploration and Mining Services Ltd**

By 
Michael Caron - Operations Manager



INSPECTORATE

A Bureau Veritas Group Company

#200 - 11620 Horseshoe Way

Richmond, British Columbia V7A 4V5
Canada

Certificate of Analysis

11-360-08669-01

Reliance Geological Services Ltd

3476 Dartmoor Place

Vancouver, BC V5S 4G2

Sample Description	Sample Type	Au Au-1A T-AA ppm 0.005	Cu Cu-AR-OR-AA % 0.01	Ag 30-AR-TR ppm 0.1	Al 30-AR-TR % 0.01	As 30-AR-TR ppm 5	Ba 30-AR-TR ppm 10	Bi 30-AR-TR ppm 2	Ca 30-AR-TR % 0.01	Cl 30-AR-TR ppm 0.5	Co 30-AR-TR ppm 1	Cr 30-AR-TR ppm 1	Cu 30-AR-TR ppm 1	Fe 30-AR-TR % 0.01	K 30-AR-TR % 0.01
E5238730	Rock	0.019		2.4	0.66	10	<10	<2	0.57	1.6	51	12	4541	>10	0.04
E5238865	Rock	0.194		1.3	4.30	135	75	<2	0.05	<0.5	8	17	82	>10	0.85
E5238866	Rock	0.095		1.0	1.87	65	16	<2	0.07	<0.5	42	30	424	8.78	0.68
E5238867	Rock	0.093	1.17	16.9	1.47	13	<10	<2	0.32	0.9	79	21	>10000	>10	0.05
E5238214	Rock	0.027		1.6	1.63	<5	47	<2	2.05	<0.5	6	33	446	2.62	0.04
E5238215	Rock	0.075		8.7	1.76	18	18	9	1.15	<0.5	41	23	3042	6.38	0.09
E5238216	Rock	0.044		2.6	0.39	6	<10	<2	0.70	2.5	26	9	6359	>10	0.04



INSPECTORATE

A Bureau Veritas Group Company

#200 - 11620 Horseshoe Way

Richmond, British Columbia V7A 4V5
Canada

Certificate of Analysis

11-360-08669-01

Reliance Geological Services Ltd

3476 Dartmoor Place

Vancouver, BC V5S 4G2

Sample Description	Sample Type	La	Mg	Mn	Mo	Na	Ni	P	Pb	Sb	Sc	Sr	Ti	Tl	V
		30-AR-TR ppm	30-AR-TR %	30-AR-TR ppm	30-AR-TR ppm	30-AR-TR %	30-AR-TR ppm	30-AR-TR ppm	30-AR-TR ppm	30-AR-TR ppm	30-AR-TR ppm	30-AR-TR ppm	30-AR-TR ppm	30-AR-TR %	30-AR-TR ppm
		2	0.01	5	1	0.01	1	10	2	2	1	1	0.01	10	1
E5238730	Rock	<2	0.23	589	1	0.02	41	593	19	3	2	9	0.01	<10	74
E5238865	Rock	<2	2.16	1008	2	0.03	4	555	25	<2	14	14	0.05	<10	255
E5238866	Rock	<2	1.24	247	2	0.04	13	314	12	<2	10	5	0.07	<10	144
E5238867	Rock	<2	0.55	952	3	0.02	48	724	30	5	3	5	<0.01	<10	92
E5238214	Rock	2	0.24	575	10	0.24	17	1371	4	<2	3	78	0.12	<10	78
E5238215	Rock	2	0.47	304	3	0.28	18	1238	10	2	6	48	0.14	<10	100
E5238216	Rock	<2	0.12	703	<1	0.02	42	240	25	<2	<1	6	0.02	<10	47



INSPECTORATE

A Bureau Veritas Group Company

#200 - 11620 Horseshoe Way

Richmond, British Columbia V7A 4V5
Canada

Certificate of Analysis

11-360-08669-01

Reliance Geological Services Ltd

3476 Dartmoor Place

Vancouver, BC V5S 4G2

Sample Description	Sample Type	W	Zn	Zr	Hg
		30-AR-TR ppm 10	30-AR-TR ppm 2	30-AR-TR ppm 2	Hg-AR-TR-CYAA ppm 0.01
E5238730	Rock	<10	60	3	0.07
E5238865	Rock	<10	94	<2	0.09
E5238866	Rock	<10	57	<2	0.08
E5238867	Rock	<10	102	3	0.12
E5238214	Rock	<10	40	5	0.06
E5238215	Rock	<10	71	5	0.08
E5238216	Rock	<10	32	3	0.06

APPENDIX E
Soil Assay Certificate



INSPECTORATE

A Bureau Veritas Group Company

Certificate of Analysis

11-360-08661-01

Inspectorate Exploration & Mining Services Ltd.
#200 - 11620 Horseshoe Way
Richmond, British Columbia V7A 4V5 Canada
Phone: 604-272-7818

Distribution List

Attention: E. Harrington
3476 Dartmoor Place
Vancouver, BC V5S 4G2
Phone: 604/43795383
EMail: ed.harrington.geo@gmail.com

Submitted By: **Reliance Geological Services Ltd**
3476 Dartmoor Place
Vancouver, BC V5S 4G2

Date Received: 10/24/2011
Date Completed: 11/14/2011
Invoice:

Attention: **E. Harrington**

Project: **Olympic Project**
Client Reference: **ICE Soils**
Description: **Olympic Project**

Location	Samples	Type	Preparation Description
Whitehorse, YT	122	Soil	SP-SS-1K/Soils, Humus Sediments 1kg dried, sieved and riffle split

Location	Method	Description
Vancouver, BC	30-AR-TR	30 Element, Aqua Regia, ICP, Trace Level
Vancouver, BC	Au-1AT-AA	Au, 1AT Fire Assay, AAS
Vancouver, BC	Hg-AR-TR-CVAA	Hg, AQR, CVAA, Trace Levels

The results of this assay were based solely upon the content of the sample submitted. Any decision to invest should be made only after the potential investment value of the claim or deposit has been determined based on the results of assays of multiple samples of geologic materials collected by the prospective investor or by a qualified person selected by him and based on an evaluation of all engineering data which is available concerning any proposed project. For our complete terms and conditions please see our website at www.inspectorate.com.

For and on behalf of **Inspectorate Exploration and Mining Services Ltd**

By 
Michael Caron - Operations Manager



INSPECTORATE

A Bureau Veritas Group Company

#200 - 11620 Horseshoe Way

Richmond, British Columbia V7A 4V5
Canada

Certificate of Analysis

11-360-08661-01

Reliance Geological Services Ltd

3476 Dartmoor Place

Vancouver, BC V5S 4G2

Sample Description	Sample Type	Au	Ag	Al	As	Ba	Bi	Ca	Cd	Co	Cr	Cu	Fe	K	La
		Au-1A T-AA ppm 0.005	30-AR-TR ppm 0.1	30-AR-TR % 0.01	30-AR-TR ppm 5	30-AR-TR ppm 10	30-AR-TR ppm 2	30-AR-TR % 0.01	30-AR-TR ppm 0.5	30-AR-TR ppm 1	30-AR-TR ppm 1	30-AR-TR ppm 1	30-AR-TR % 0.01	30-AR-TR % 0.01	30-AR-TR ppm 2
ICE 47	Soil	0.005	<0.1	1.21	<5	127	<2	0.80	<0.5	8	14	44	1.70	0.07	7
ICE 48	Soil	<0.005	0.3	1.17	<5	64	<2	0.90	<0.5	7	11	105	1.66	0.12	6
ICE 49	Soil	0.013	<0.1	3.70	6	74	<2	0.51	<0.5	18	16	130	5.91	0.28	7
ICE 50	Soil	<0.005	<0.1	1.27	5	100	<2	0.29	<0.5	6	21	15	1.74	0.05	7
ICE 53	Soil	<0.005	<0.1	1.24	5	129	<2	0.51	<0.5	6	19	18	1.77	0.05	7
ICE 54	Soil	<0.005	<0.1	0.78	<5	80	<2	0.95	<0.5	5	13	25	1.32	0.08	7
ICE 55	Soil	<0.005	<0.1	0.54	<5	48	<2	0.36	<0.5	3	4	12	0.88	0.05	8
ICE 56	Soil	<0.005	<0.1	1.06	<5	126	<2	0.48	<0.5	3	14	16	1.34	0.07	7
ICE 57	Soil	0.008	<0.1	1.96	15	244	<2	0.57	<0.5	12	39	12	2.96	0.28	22
ICE 58	Soil	0.005	<0.1	1.40	10	128	<2	0.37	<0.5	9	21	22	1.87	0.14	8
ICE 59	Soil	<0.005	<0.1	1.95	<5	201	<2	0.37	0.5	13	29	41	2.45	0.24	20
ICE 61	Soil	<0.005	0.1	0.67	<5	90	<2	0.33	<0.5	5	8	39	1.01	0.02	5
ICE 62	Soil	0.016	<0.1	1.47	<5	84	<2	0.42	<0.5	10	10	49	2.08	0.07	3
ICE 63	Soil	0.006	<0.1	1.54	<5	128	<2	0.42	<0.5	9	10	43	1.77	0.06	6
ICE 64	Soil	0.007	<0.1	1.60	6	148	<2	0.46	<0.5	9	18	57	2.29	0.07	8
ICE 65	Soil	<0.005	<0.1	0.78	<5	90	<2	0.24	<0.5	4	9	30	1.02	0.04	4
ICE 66	Soil	<0.005	<0.1	1.06	<5	93	<2	0.74	<0.5	8	13	28	1.50	0.05	5
ICE 69	Soil	<0.005	<0.1	0.37	<5	52	<2	0.28	<0.5	3	4	12	0.58	0.03	3
ICE 70	Soil	0.010	<0.1	2.70	9	126	<2	0.44	<0.5	12	24	36	3.35	0.07	6
ICE 71	Soil	0.005	<0.1	2.26	6	124	<2	0.40	<0.5	11	21	42	2.89	0.08	8
ICE 73	Soil	<0.005	<0.1	1.16	5	103	<2	0.30	<0.5	6	17	13	1.67	0.04	6
ICE 74	Soil	<0.005	<0.1	1.47	<5	162	<2	0.26	<0.5	6	16	16	1.83	0.07	5
ICE 75	Soil	<0.005	<0.1	1.62	<5	116	<2	0.26	<0.5	7	17	18	2.01	0.06	4
ICE 76	Soil	0.019	<0.1	1.83	6	113	<2	0.74	<0.5	10	22	90	2.90	0.09	12
ICE 78	Soil	<0.005	<0.1	0.98	<5	141	<2	0.56	<0.5	4	11	25	1.39	0.04	12
ICE 79	Soil	0.007	<0.1	2.52	10	174	<2	0.50	<0.5	10	18	29	3.03	0.08	6
ICE 81	Soil	<0.005	<0.1	0.66	<5	75	<2	0.43	<0.5	5	7	18	1.11	0.03	6
ICE 82	Soil	0.009	<0.1	1.53	10	123	<2	0.47	<0.5	11	18	61	2.14	0.10	10
ICE 83	Soil	0.021	<0.1	2.43	18	131	<2	0.34	<0.5	15	22	97	3.56	0.16	11
ICE 84	Soil	0.031	0.1	5.26	12	159	<2	0.99	<0.5	30	24	212	4.83	0.13	3
ICE 86	Soil	0.006	0.5	1.48	6	190	<2	0.29	<0.5	13	18	58	2.11	0.06	6
ICE 87	Soil	<0.005	<0.1	0.21	<5	27	<2	0.09	<0.5	<1	2	5	0.16	0.02	<2
ICE 88	Soil	0.008	<0.1	0.29	<5	41	<2	0.36	<0.5	2	3	14	0.42	0.03	3
ICE 89	Soil	0.008	<0.1	1.28	<5	125	<2	0.31	<0.5	8	17	32	1.78	0.07	6
ICE 90	Soil	0.013	<0.1	1.06	<5	90	<2	0.48	<0.5	11	13	79	1.80	0.08	6
ICE 91	Soil	0.008	0.2	0.91	<5	74	<2	0.23	<0.5	8	8	36	1.56	0.06	3
ICE 92	Soil	0.007	<0.1	1.56	5	132	<2	0.49	<0.5	8	20	43	2.30	0.10	8
ICE 93	Soil	0.011	<0.1	1.79	7	97	<2	0.33	<0.5	11	23	51	2.39	0.10	7
ICE 94	Soil	0.014	<0.1	1.15	<5	119	<2	0.59	<0.5	7	19	38	1.71	0.06	10
ICE 97	Soil	0.010	<0.1	1.65	<5	151	<2	0.28	<0.5	7	17	17	2.05	0.05	6



INSPECTORATE

A Bureau Veritas Group Company

#200 - 11620 Horseshoe Way

Richmond, British Columbia V7A 4V5
Canada

Certificate of Analysis

11-360-08661-01

Reliance Geological Services Ltd

3476 Dartmoor Place

Vancouver, BC V5S 4G2

Sample Description	Sample Type	Au	Ag	Al	As	Ba	Bi	Ca	Cd	Co	Cr	Cu	Fe	K	La
		Au-1A T-AA ppm 0.005	30-AR-TR ppm 0.1	30-AR-TR % 0.01	30-AR-TR ppm 5	30-AR-TR ppm 10	30-AR-TR ppm 2	30-AR-TR % 0.01	30-AR-TR ppm 0.5	30-AR-TR ppm 1	30-AR-TR ppm 1	30-AR-TR ppm 1	30-AR-TR % 0.01	30-AR-TR % 0.01	30-AR-TR ppm 2
ICE 98	Soil	0.006	<0.1	1.58	6	156	<2	0.43	<0.5	8	21	20	2.05	0.06	7
ICE 100	Soil	0.006	<0.1	1.69	8	140	<2	0.66	<0.5	9	25	32	2.48	0.08	11
ICE 101	Soil	<0.005	<0.1	1.71	6	129	<2	0.50	<0.5	8	21	17	1.97	0.07	12
ICE 102	Soil	0.009	<0.1	1.14	10	147	<2	1.03	<0.5	10	19	37	2.77	0.09	28
ICE 103	Soil	<0.005	<0.1	1.39	7	132	<2	0.43	<0.5	8	19	15	1.95	0.06	16
ICE 104	Soil	0.006	<0.1	1.40	10	174	<2	0.79	<0.5	7	18	29	2.10	0.06	16
ICE 105	Soil	0.017	0.7	1.04	19	222	3	1.09	0.7	13	10	78	1.65	0.05	5
ICE 106	Soil	0.008	<0.1	1.63	6	160	<2	0.50	<0.5	9	20	48	2.28	0.09	9
ICE 107	Soil	0.005	<0.1	1.46	<5	113	<2	0.45	<0.5	10	15	28	1.96	0.06	5
ICE 108	Soil	0.011	<0.1	2.30	6	201	<2	0.67	<0.5	16	18	50	2.45	0.23	6
ICE 110	Soil	0.006	0.1	0.61	<5	84	<2	0.22	<0.5	4	6	18	0.86	0.03	3
ICE 111	Soil	0.016	<0.1	1.32	6	170	<2	0.62	<0.5	8	23	30	2.06	0.07	11
ICE 112	Soil	0.007	<0.1	1.43	7	97	<2	0.31	<0.5	13	18	60	2.25	0.17	5
ICE 113	Soil	0.419	5.9	3.46	22	168	<2	0.50	0.6	23	64	949	5.40	0.98	3
ICE 114	Soil	0.049	0.2	1.93	8	242	<2	0.57	<0.5	25	21	65	2.70	0.14	8
ICE 115	Soil	0.022	<0.1	1.71	7	143	<2	0.72	<0.5	11	18	46	2.86	0.08	7
ICE 116	Soil	0.009	<0.1	1.70	7	97	<2	0.29	<0.5	8	17	30	2.27	0.09	5
ICE 118	Soil	0.009	<0.1	1.21	5	134	<2	0.75	<0.5	7	19	25	1.72	0.06	9
ICE 119	Soil	0.008	<0.1	1.37	<5	174	<2	0.58	<0.5	8	19	33	2.14	0.06	9
ICE 122	Soil	0.007	<0.1	1.34	<5	142	<2	0.74	<0.5	8	21	40	1.71	0.06	6
ICE 123	Soil	0.008	<0.1	0.78	<5	73	<2	0.22	<0.5	5	13	13	1.29	0.05	7
ICE 124	Soil	0.006	<0.1	0.24	<5	155	<2	1.71	<0.5	3	4	13	0.53	0.02	3
ICE 126	Soil	0.053	<0.1	1.37	18	89	<2	0.34	<0.5	8	14	21	2.17	0.04	12
ICE 127	Soil	<0.005	<0.1	1.37	<5	113	<2	0.33	<0.5	6	21	11	1.79	0.09	5
ICE 128	Soil	0.019	<0.1	0.88	25	121	<2	0.67	<0.5	6	11	58	1.64	0.05	7
ICE 129	Soil	0.010	<0.1	1.28	6	106	<2	0.66	<0.5	7	21	84	1.96	0.13	9
ICE 130	Soil	0.011	0.3	1.87	11	99	<2	0.42	<0.5	14	18	60	2.37	0.25	6
ICE 131	Soil	<0.005	<0.1	1.38	9	61	<2	0.15	<0.5	6	14	27	2.98	0.04	9
ICE 132	Soil	0.008	<0.1	1.38	8	94	<2	0.31	<0.5	7	19	47	2.16	0.09	6
ICE 133	Soil	<0.005	<0.1	0.99	<5	117	<2	0.45	<0.5	5	11	15	1.44	0.06	5
ICE 134	Soil	<0.005	<0.1	1.60	<5	127	<2	0.39	<0.5	9	19	23	2.00	0.10	5
ICE 135	Soil	<0.005	<0.1	1.37	5	102	<2	0.36	<0.5	8	20	17	2.06	0.20	5
ICE 136	Soil	<0.005	<0.1	0.50	<5	60	<2	0.63	<0.5	4	5	104	0.78	0.06	7
ICE 137	Soil	0.015	0.2	1.01	5	102	<2	1.59	<0.5	9	14	94	1.58	0.13	9
ICE 138	Soil	0.010	<0.1	1.11	6	101	<2	0.62	<0.5	8	14	50	1.85	0.14	8
ICE 139	Soil	0.013	<0.1	1.13	5	106	<2	0.61	<0.5	8	14	86	1.78	0.10	7
ICE 140	Soil	0.051	2.2	1.35	11	74	<2	0.79	<0.5	18	10	147	2.72	0.31	5
ICE 141	Soil	0.009	<0.1	1.61	7	98	<2	0.65	<0.5	11	17	65	2.66	0.18	14
ICE 142	Soil	0.006	<0.1	1.56	9	73	<2	0.47	<0.5	9	23	59	2.56	0.25	11
ICE 144	Soil	0.021	<0.1	0.93	<5	122	<2	1.09	<0.5	7	15	52	1.52	0.09	11



INSPECTORATE

A Bureau Veritas Group Company

#200 - 11620 Horseshoe Way

Richmond, British Columbia V7A 4V5
Canada

Certificate of Analysis

11-360-08661-01

Reliance Geological Services Ltd

3476 Dartmoor Place

Vancouver, BC V5S 4G2

Sample Description	Sample Type	Au Au-1A T-AA ppm 0.005	Ag 30-AR-TR ppm 0.1	Al 30-AR-TR % 0.01	As 30-AR-TR ppm 5	Ba 30-AR-TR ppm 10	Bi 30-AR-TR ppm 2	Ca 30-AR-TR % 0.01	Cd 30-AR-TR ppm 0.5	Co 30-AR-TR ppm 1	Cr 30-AR-TR ppm 1	Cu 30-AR-TR ppm 1	Fe 30-AR-TR % 0.01	K 30-AR-TR % 0.01	La 30-AR-TR ppm 2
ICE 145	Soil	<0.005	<0.1	0.38	<5	79	<2	1.09	<0.5	3	5	13	0.63	0.05	3
ICE 146	Soil	0.012	<0.1	0.53	<5	95	<2	1.27	<0.5	2	11	14	0.61	0.03	5



INSPECTORATE

A Bureau Veritas Group Company

#200 - 11620 Horseshoe Way

Richmond, British Columbia V7A 4V5
Canada

Certificate of Analysis

11-360-08661-01

Reliance Geological Services Ltd

3476 Dartmoor Place

Vancouver, BC V5S 4G2

Sample Description	Sample Type	Mg	Mn	Mo	Na	Ni	P	Pb	Sb	Sc	Zr	Ti	Tl	V	W
		30-AR-TR %	30-AR-TR ppm	30-AR-TR ppm	30-AR-TR %	30-AR-TR ppm	30-AR-TR ppm	30-AR-TR ppm	30-AR-TR ppm	30-AR-TR ppm	30-AR-TR ppm	30-AR-TR ppm	30-AR-TR %	30-AR-TR ppm	30-AR-TR ppm
		0.01	5	1	0.01	1	10	2	2	1	1	0.01	10	1	10
ICE 1	Soil	0.61	452	<1	0.04	16	564	6	<2	6	56	0.07	<10	60	<10
ICE 2	Soil	0.94	531	<1	0.04	13	690	4	<2	5	49	0.11	<10	86	<10
ICE 4	Soil	0.23	184	<1	0.04	6	186	3	<2	2	21	0.03	<10	36	<10
ICE 5	Soil	0.58	436	<1	0.02	11	289	5	<2	4	35	0.05	<10	75	<10
ICE 7	Soil	0.48	567	<1	0.02	10	277	5	<2	4	31	0.03	<10	59	<10
ICE 8	Soil	0.11	138	<1	0.02	4	149	4	<2	1	14	0.04	<10	27	<10
ICE 9	Soil	0.41	416	<1	0.02	11	488	4	<2	3	32	0.07	<10	47	<10
ICE 10	Soil	0.39	279	<1	0.02	11	532	3	<2	3	26	0.07	<10	39	<10
ICE 11	Soil	0.36	465	<1	0.03	9	322	4	<2	3	32	0.05	<10	49	<10
ICE 12	Soil	0.53	454	<1	0.02	12	308	5	<2	4	43	0.06	<10	59	<10
ICE 13	Soil	0.30	440	2	0.03	10	372	4	<2	2	32	0.06	<10	43	<10
ICE 14	Soil	0.33	351	1	0.04	15	1047	4	<2	4	74	0.03	<10	42	<10
ICE 15	Soil	0.39	343	<1	0.04	13	561	4	<2	4	52	0.04	<10	41	<10
ICE 16	Soil	0.35	140	<1	0.03	12	284	4	<2	4	57	0.05	<10	41	<10
ICE 17	Soil	0.37	372	<1	0.04	11	548	2	<2	4	47	0.04	<10	38	<10
ICE 18	Soil	0.83	515	<1	0.08	14	454	<2	<2	6	77	0.05	<10	69	<10
ICE 19	Soil	1.17	698	<1	0.12	17	212	3	<2	10	80	0.09	<10	106	<10
ICE 20	Soil	0.61	456	<1	0.04	11	452	9	<2	4	49	0.06	<10	61	<10
ICE 21	Soil	0.07	248	<1	0.03	2	616	3	<2	<1	14	0.02	<10	13	<10
ICE 22	Soil	0.56	328	<1	0.02	11	281	6	<2	3	34	0.03	<10	65	<10
ICE 23	Soil	0.05	32	<1	0.03	2	222	<2	<2	<1	8	0.02	<10	15	<10
ICE 24	Soil	0.18	291	<1	0.04	5	665	<2	<2	1	33	0.03	<10	20	<10
ICE 25	Soil	0.35	214	<1	0.03	7	289	3	<2	2	19	0.07	<10	41	<10
ICE 26	Soil	0.46	283	<1	0.02	11	145	7	<2	3	21	0.06	<10	66	<10
ICE 28	Soil	0.47	284	<1	0.02	8	212	5	<2	3	25	0.02	<10	58	<10
ICE 29	Soil	0.43	204	<1	0.02	10	240	5	<2	2	18	0.06	<10	45	<10
ICE 30	Soil	0.19	661	<1	0.03	7	1112	<2	<2	2	83	0.02	<10	27	<10
ICE 31	Soil	0.43	228	<1	0.02	13	437	5	<2	3	27	0.07	<10	44	<10
ICE 32	Soil	0.60	435	<1	0.07	16	1254	5	<2	7	94	0.07	<10	67	<10
ICE 33	Soil	0.61	405	<1	0.03	10	536	6	<2	3	48	0.07	<10	70	<10
ICE 35	Soil	0.26	339	2	0.05	10	750	3	<2	2	56	0.03	<10	29	<10
ICE 36	Soil	0.54	389	<1	0.05	15	507	5	<2	5	55	0.05	<10	60	<10
ICE 37	Soil	0.55	438	1	0.04	10	362	3	<2	3	40	0.07	<10	54	<10
ICE 39	Soil	0.60	656	<1	0.05	12	597	3	<2	6	65	0.07	<10	63	<10
ICE 41	Soil	0.56	672	2	0.03	14	469	5	<2	4	32	0.05	<10	57	<10
ICE 42	Soil	0.28	254	<1	0.04	7	474	<2	<2	2	37	0.03	<10	30	<10
ICE 43	Soil	0.59	334	<1	0.03	14	171	5	<2	5	41	0.04	<10	66	<10
ICE 44	Soil	0.44	378	<1	0.05	7	703	3	<2	3	57	0.05	<10	45	<10
ICE 45	Soil	0.09	182	<1	0.04	3	670	<2	<2	<1	35	0.03	<10	17	<10
ICE 46	Soil	0.06	38	<1	0.04	2	320	<2	<2	<1	16	0.03	<10	14	<10



INSPECTORATE

A Bureau Veritas Group Company

#200 - 11620 Horseshoe Way

Richmond, British Columbia V7A 4V5
Canada

Certificate of Analysis

11-360-08661-01

Reliance Geological Services Ltd

3476 Dartmoor Place

Vancouver, BC V5S 4G2

Sample Description	Sample Type	Mg	Mn	Mo	Na	Ni	P	Pb	Sb	Sc	Zr	Ti	Tl	V	W
		30-AR-TR % 0.01	30-AR-TR ppm 5	30-AR-TR ppm 1	30-AR-TR % 0.01	30-AR-TR ppm 1	30-AR-TR ppm 10	30-AR-TR ppm 2	30-AR-TR ppm 2	30-AR-TR ppm 1	30-AR-TR ppm 1	30-AR-TR % 0.01	30-AR-TR ppm 10	30-AR-TR ppm 1	30-AR-TR ppm 10
ICE 47	Soil	0.42	352	<1	0.04	9	774	4	<2	3	62	0.05	<10	41	<10
ICE 48	Soil	0.37	266	<1	0.05	8	448	<2	<2	3	51	0.05	<10	43	<10
ICE 49	Soil	1.96	779	<1	0.03	11	162	4	<2	8	39	0.19	<10	149	<10
ICE 50	Soil	0.42	245	<1	0.02	11	351	3	<2	3	26	0.06	<10	44	<10
ICE 53	Soil	0.38	235	<1	0.03	11	416	4	<2	3	38	0.05	<10	45	<10
ICE 54	Soil	0.31	262	<1	0.04	11	578	8	<2	3	54	0.04	<10	33	<10
ICE 55	Soil	0.11	64	<1	0.05	4	552	<2	<2	1	44	0.04	<10	25	<10
ICE 56	Soil	0.25	104	1	0.03	6	465	5	<2	2	81	0.05	<10	35	<10
ICE 57	Soil	0.25	616	8	0.03	14	719	8	<2	10	97	0.13	<10	51	<10
ICE 58	Soil	0.36	431	21	0.04	13	536	4	<2	3	47	0.08	<10	42	<10
ICE 59	Soil	0.30	960	1	0.03	14	947	5	<2	4	54	0.08	<10	37	<10
ICE 61	Soil	0.08	275	1	0.03	7	801	8	<2	<1	34	0.02	<10	19	<10
ICE 62	Soil	0.45	320	<1	0.03	8	219	4	<2	3	42	0.05	<10	52	<10
ICE 63	Soil	0.49	310	<1	0.05	9	332	4	<2	2	44	0.05	<10	45	<10
ICE 64	Soil	0.60	320	<1	0.03	11	508	6	<2	4	49	0.07	<10	59	<10
ICE 65	Soil	0.20	161	<1	0.04	7	357	<2	<2	1	24	0.04	<10	28	<10
ICE 66	Soil	0.39	242	<1	0.04	7	679	5	<2	2	54	0.06	<10	42	<10
ICE 69	Soil	0.07	161	<1	0.04	3	638	<2	<2	<1	23	0.03	<10	15	<10
ICE 70	Soil	0.81	420	<1	0.03	14	209	5	<2	6	50	0.03	<10	89	<10
ICE 71	Soil	0.68	395	<1	0.04	13	244	5	<2	7	51	0.03	<10	82	<10
ICE 73	Soil	0.43	233	<1	0.02	10	284	3	<2	3	32	0.05	<10	44	<10
ICE 74	Soil	0.40	289	<1	0.02	9	234	5	<2	3	33	0.03	<10	49	<10
ICE 75	Soil	0.43	271	<1	0.02	10	228	5	<2	3	32	0.03	<10	51	<10
ICE 76	Soil	0.72	441	<1	0.03	13	464	5	<2	9	67	0.03	<10	74	<10
ICE 78	Soil	0.23	260	<1	0.04	8	925	3	<2	3	69	0.03	<10	28	<10
ICE 79	Soil	0.47	303	<1	0.03	11	804	4	<2	5	61	0.05	<10	77	<10
ICE 81	Soil	0.17	157	<1	0.05	4	682	<2	<2	2	48	0.04	<10	31	<10
ICE 82	Soil	0.41	354	<1	0.04	12	515	5	<2	4	47	0.06	<10	57	<10
ICE 83	Soil	0.70	437	<1	0.04	18	210	14	<2	6	55	0.05	<10	79	<10
ICE 84	Soil	0.78	685	7	0.16	28	365	5	<2	9	101	0.12	<10	112	<10
ICE 86	Soil	0.32	939	<1	0.02	12	600	8	<2	2	34	0.04	<10	52	<10
ICE 87	Soil	0.04	16	<1	0.03	1	247	<2	<2	<1	12	0.02	<10	5	<10
ICE 88	Soil	0.09	159	<1	0.04	3	571	<2	<2	<1	29	0.02	<10	11	<10
ICE 89	Soil	0.39	215	<1	0.03	11	467	4	<2	3	33	0.06	<10	46	<10
ICE 90	Soil	0.41	263	<1	0.04	9	784	4	<2	3	47	0.05	<10	43	<10
ICE 91	Soil	0.27	421	<1	0.02	5	363	4	<2	2	23	0.05	<10	40	<10
ICE 92	Soil	0.61	300	<1	0.03	12	890	5	<2	3	38	0.08	<10	56	<10
ICE 93	Soil	0.55	290	<1	0.02	15	332	6	<2	4	34	0.08	<10	55	<10
ICE 94	Soil	0.41	281	<1	0.03	12	518	5	<2	4	46	0.06	<10	42	<10
ICE 97	Soil	0.47	290	<1	0.02	10	271	5	<2	4	38	0.03	<10	55	<10



INSPECTORATE

A Bureau Veritas Group Company

#200 - 11620 Horseshoe Way

Richmond, British Columbia V7A 4V5
Canada

Certificate of Analysis

11-360-08661-01

Reliance Geological Services Ltd

3476 Dartmoor Place

Vancouver, BC V5S 4G2

Sample Description	Sample Type	Mg	Mn	Mo	Na	Ni	P	Pb	Sb	Sc	Zr	Ti	Tl	V	W
		30-AR-TR %	30-AR-TR ppm	30-AR-TR ppm	30-AR-TR %	30-AR-TR ppm	30-AR-TR ppm	30-AR-TR ppm	30-AR-TR ppm	30-AR-TR ppm	30-AR-TR ppm	30-AR-TR ppm	30-AR-TR %	30-AR-TR ppm	30-AR-TR ppm
		0.01	5	1	0.01	1	10	2	2	1	1	0.01	10	1	10
ICE 98	Soil	0.49	380	<1	0.02	13	430	5	<2	4	41	0.06	<10	52	<10
ICE 100	Soil	0.53	354	<1	0.03	18	216	7	<2	6	66	0.03	<10	59	<10
ICE 101	Soil	0.45	253	<1	0.02	11	723	5	<2	4	66	0.05	<10	47	<10
ICE 102	Soil	0.41	481	<1	0.03	14	1697	5	<2	6	98	0.03	<10	44	<10
ICE 103	Soil	0.39	370	<1	0.02	10	884	3	<2	4	52	0.05	<10	44	<10
ICE 104	Soil	0.42	400	<1	0.04	11	1157	5	<2	5	84	0.03	<10	46	<10
ICE 105	Soil	0.27	8270	1	0.05	23	1053	3	<2	2	100	0.03	<10	36	<10
ICE 106	Soil	0.50	400	<1	0.04	13	566	4	<2	4	57	0.05	<10	52	<10
ICE 107	Soil	0.34	686	<1	0.03	10	338	6	<2	3	47	0.05	<10	49	<10
ICE 108	Soil	0.80	605	<1	0.13	13	582	4	<2	3	69	0.06	<10	66	<10
ICE 110	Soil	0.15	298	<1	0.03	4	422	2	<2	<1	22	0.03	<10	24	<10
ICE 111	Soil	0.49	346	<1	0.03	15	884	3	<2	4	50	0.06	<10	46	<10
ICE 112	Soil	0.49	441	<1	0.03	11	514	5	<2	3	39	0.07	<10	54	<10
ICE 113	Soil	1.46	386	<1	0.08	13	710	31	<2	7	100	0.10	<10	140	<10
ICE 114	Soil	0.51	1369	<1	0.03	15	415	7	<2	4	64	0.06	<10	68	<10
ICE 115	Soil	0.71	758	<1	0.04	12	871	7	<2	5	65	0.03	<10	68	<10
ICE 116	Soil	0.47	388	<1	0.03	11	356	6	<2	3	35	0.05	<10	57	<10
ICE 118	Soil	0.45	328	<1	0.03	12	700	4	<2	4	50	0.06	<10	42	<10
ICE 119	Soil	0.50	567	<1	0.03	12	538	5	<2	5	44	0.04	<10	56	<10
ICE 122	Soil	0.38	414	<1	0.03	13	283	6	<2	3	51	0.06	<10	43	<10
ICE 123	Soil	0.24	205	<1	0.03	8	397	3	<2	2	25	0.04	<10	34	<10
ICE 124	Soil	0.15	579	<1	0.04	7	680	<2	<2	<1	252	0.02	<10	13	<10
ICE 126	Soil	0.28	214	1	0.03	9	288	6	<2	3	56	0.02	<10	43	<10
ICE 127	Soil	0.40	173	<1	0.02	11	329	5	<2	2	36	0.06	<10	46	<10
ICE 128	Soil	0.27	295	3	0.05	9	886	4	<2	3	69	0.03	<10	36	<10
ICE 129	Soil	0.45	285	<1	0.04	14	490	4	<2	5	48	0.06	<10	44	<10
ICE 130	Soil	0.42	426	<1	0.03	14	357	6	<2	3	46	0.05	<10	56	<10
ICE 131	Soil	0.30	172	<1	0.03	12	209	3	<2	4	25	0.01	<10	50	<10
ICE 132	Soil	0.48	328	<1	0.03	12	307	6	<2	3	40	0.04	<10	48	<10
ICE 133	Soil	0.25	237	<1	0.03	8	186	4	<2	2	35	0.04	<10	34	<10
ICE 134	Soil	0.42	326	<1	0.03	12	282	4	<2	2	43	0.04	<10	50	<10
ICE 135	Soil	0.44	388	<1	0.02	11	263	5	<2	3	34	0.06	<10	49	<10
ICE 136	Soil	0.20	329	<1	0.04	7	562	<2	<2	2	35	0.03	<10	21	<10
ICE 137	Soil	0.47	882	<1	0.03	14	606	3	<2	2	111	0.02	<10	37	<10
ICE 138	Soil	0.40	370	<1	0.03	10	312	4	<2	4	45	0.04	<10	43	<10
ICE 139	Soil	0.40	296	<1	0.03	10	621	3	<2	2	51	0.03	<10	42	<10
ICE 140	Soil	0.55	580	<1	0.04	10	331	6	<2	5	55	0.04	<10	61	<10
ICE 141	Soil	0.57	876	<1	0.03	13	301	6	<2	6	46	0.03	<10	58	<10
ICE 142	Soil	0.51	408	<1	0.02	14	197	5	<2	7	32	0.05	<10	59	<10
ICE 144	Soil	0.39	455	<1	0.03	15	391	9	<2	3	66	0.03	<10	34	<10



INSPECTORATE

A Bureau Veritas Group Company

#200 - 11620 Horseshoe Way

Richmond, British Columbia V7A 4V5
Canada

Certificate of Analysis

11-360-08661-01

Reliance Geological Services Ltd

3476 Dartmoor Place

Vancouver, BC V5S 4G2

Sample Description	Sample Type	Mg	Mn	Mo	Na	Ni	P	Pb	Se	Sc	Sr	Ti	Tl	V	W
		30-AR-TR %	30-AR-TR ppm	30-AR-TR ppm	30-AR-TR %	30-AR-TR ppm	30-AR-TR ppm	30-AR-TR ppm	30-AR-TR ppm	30-AR-TR ppm	30-AR-TR ppm	30-AR-TR ppm	30-AR-TR %	30-AR-TR ppm	30-AR-TR ppm
		0.01	5	1	0.01	1	10	2	2	1	1	0.01	10	1	10
ICE 145	Soil	0.18	543	<1	0.03	4	557	3	<2	<1	66	0.02	<10	16	<10
ICE 146	Soil	0.21	337	<1	0.02	7	807	3	<2	<1	90	0.02	<10	13	<10



INSPECTORATE

A Bureau Veritas Group Company

#200 - 11620 Horseshoe Way

Richmond, British Columbia V7A 4V5
Canada

Certificate of Analysis

11-360-08661-01

Reliance Geological Services Ltd

3476 Dartmoor Place

Vancouver, BC V5S 4G2

Sample Description	Sample Type	Zn	Zr	Hg
		30-AR-TR ppm 2	30-AR-TR ppm 2	Hg-AR-TR-CVAA ppm 0.01
ICE 1	Soil	47	<2	0.15
ICE 2	Soil	54	<2	0.08
ICE 4	Soil	21	<2	0.04
ICE 5	Soil	48	<2	0.06
ICE 7	Soil	38	<2	0.06
ICE 8	Soil	16	<2	0.04
ICE 9	Soil	38	<2	0.04
ICE 10	Soil	30	<2	0.02
ICE 11	Soil	29	<2	0.03
ICE 12	Soil	39	3	0.03
ICE 13	Soil	28	<2	0.03
ICE 14	Soil	30	<2	0.12
ICE 15	Soil	46	<2	0.05
ICE 16	Soil	43	7	0.02
ICE 17	Soil	27	<2	0.05
ICE 18	Soil	35	<2	0.03
ICE 19	Soil	54	3	0.05
ICE 20	Soil	41	<2	0.04
ICE 21	Soil	7	<2	0.03
ICE 22	Soil	42	<2	0.03
ICE 23	Soil	7	<2	<0.01
ICE 24	Soil	24	<2	0.03
ICE 25	Soil	26	<2	<0.01
ICE 26	Soil	41	<2	<0.01
ICE 28	Soil	38	<2	<0.01
ICE 29	Soil	30	<2	<0.01
ICE 30	Soil	26	<2	0.06
ICE 31	Soil	34	<2	<0.01
ICE 32	Soil	57	7	0.03
ICE 33	Soil	45	<2	0.03
ICE 35	Soil	27	<2	0.04
ICE 36	Soil	49	<2	0.02
ICE 37	Soil	30	<2	0.01
ICE 39	Soil	41	<2	0.05
ICE 41	Soil	49	<2	0.05
ICE 42	Soil	17	<2	0.03
ICE 43	Soil	41	<2	0.06
ICE 44	Soil	31	<2	0.05
ICE 45	Soil	9	<2	0.01
ICE 46	Soil	6	<2	<0.01



INSPECTORATE

A Bureau Veritas Group Company

#200 - 11620 Horseshoe Way

Richmond, British Columbia V7A 4V5
Canada

Certificate of Analysis

11-360-08661-01

Reliance Geological Services Ltd

3476 Dartmoor Place

Vancouver, BC V5S 4G2

Sample Description	Sample Type	Zn	Zr	Hg
		30-AR-TR ppm 2	30-AR-TR ppm 2	Hg-AR-TR-CVAA ppm 0.01
ICE 47	Soil	31	<2	0.05
ICE 48	Soil	21	<2	0.02
ICE 49	Soil	67	4	0.02
ICE 50	Soil	30	<2	<0.01
ICE 53	Soil	37	<2	0.01
ICE 54	Soil	40	<2	0.04
ICE 55	Soil	11	<2	<0.01
ICE 56	Soil	26	<2	<0.01
ICE 57	Soil	117	24	<0.01
ICE 58	Soil	44	<2	<0.01
ICE 59	Soil	94	4	0.02
ICE 61	Soil	14	<2	0.07
ICE 62	Soil	33	<2	0.02
ICE 63	Soil	25	<2	0.02
ICE 64	Soil	39	<2	0.02
ICE 65	Soil	17	<2	<0.01
ICE 66	Soil	28	<2	<0.01
ICE 69	Soil	8	<2	0.01
ICE 70	Soil	52	<2	<0.01
ICE 71	Soil	47	<2	<0.01
ICE 73	Soil	29	<2	<0.01
ICE 74	Soil	35	<2	<0.01
ICE 75	Soil	38	<2	<0.01
ICE 76	Soil	53	2	0.06
ICE 78	Soil	26	<2	0.03
ICE 79	Soil	50	<2	0.02
ICE 81	Soil	21	<2	<0.01
ICE 82	Soil	43	<2	0.03
ICE 83	Soil	65	<2	0.06
ICE 84	Soil	38	<2	0.04
ICE 86	Soil	45	<2	0.02
ICE 87	Soil	2	<2	<0.01
ICE 88	Soil	6	<2	<0.01
ICE 89	Soil	29	<2	<0.01
ICE 90	Soil	38	<2	0.04
ICE 91	Soil	21	<2	<0.01
ICE 92	Soil	38	<2	<0.01
ICE 93	Soil	40	<2	<0.01
ICE 94	Soil	30	<2	0.01
ICE 97	Soil	36	<2	<0.01



INSPECTORATE

A Bureau Veritas Group Company

#200 - 11620 Horseshoe Way

Richmond, British Columbia V7A 4V5
Canada

Certificate of Analysis

11-360-08661-01

Reliance Geological Services Ltd

3476 Dartmoor Place

Vancouver, BC V5S 4G2

Sample Description	Sample Type	Zn	Zr	Hg
		30-AR-TR ppm 2	30-AR-TR ppm 2	Hg-AR-TR-CVAA ppm 0.01
ICE 98	Soil	37	<2	<0.01
ICE 100	Soil	46	<2	0.05
ICE 101	Soil	39	3	<0.01
ICE 102	Soil	54	8	0.02
ICE 103	Soil	35	3	<0.01
ICE 104	Soil	45	<2	0.06
ICE 105	Soil	54	<2	0.12
ICE 106	Soil	52	<2	0.05
ICE 107	Soil	39	<2	0.03
ICE 108	Soil	47	<2	0.03
ICE 110	Soil	15	<2	<0.01
ICE 111	Soil	45	<2	0.02
ICE 112	Soil	41	<2	<0.01
ICE 113	Soil	107	<2	0.03
ICE 114	Soil	96	<2	0.02
ICE 115	Soil	69	<2	0.02
ICE 116	Soil	46	<2	<0.01
ICE 118	Soil	33	<2	<0.01
ICE 119	Soil	47	<2	0.01
ICE 122	Soil	30	<2	<0.01
ICE 123	Soil	23	<2	<0.01
ICE 124	Soil	8	<2	<0.01
ICE 126	Soil	38	3	0.03
ICE 127	Soil	36	<2	<0.01
ICE 128	Soil	54	<2	0.11
ICE 129	Soil	53	2	0.04
ICE 130	Soil	63	<2	<0.01
ICE 131	Soil	44	<2	0.02
ICE 132	Soil	42	<2	<0.01
ICE 133	Soil	27	<2	0.01
ICE 134	Soil	42	<2	<0.01
ICE 135	Soil	48	<2	<0.01
ICE 136	Soil	19	<2	0.05
ICE 137	Soil	30	<2	0.10
ICE 138	Soil	34	<2	0.03
ICE 139	Soil	36	<2	0.03
ICE 140	Soil	42	<2	0.04
ICE 141	Soil	58	<2	0.02
ICE 142	Soil	50	3	0.02
ICE 144	Soil	41	2	0.05



INSPECTORATE

A Bureau Veritas Group Company

#200 - 11620 Horseshoe Way

Richmond, British Columbia V7A 4V5
Canada

Certificate of Analysis

11-360-08661-01

Reliance Geological Services Ltd

3476 Dartmoor Place

Vancouver, BC V5S 4G2

Sample Description	Sample Type	Zn	Zr	Hg
		30-AR-TR ppm	30-AR-TR ppm	Hg-AR-TR-CVAA ppm
		2	2	0.01
ICE 145	Soil	17	<2	<0.01
ICE 146	Soil	23	<2	0.02



INSPECTORATE

A Bureau Veritas Group Company

#200 - 11620 Horseshoe Way

Richmond, British Columbia V7A 4V5
Canada

Certificate of Analysis

11-360-08661-01

Reliance Geological Services Ltd

3476 Dartmoor Place

Vancouver, BC V5S 4G2

Sample Description	Sample Type	Au	Ag	Al	As	Ba	Bi	Ca	Cd	Co	Cr	Cu	Fe	K	La
		Au-1A T-AA ppm 0.005	30-AR-TR ppm 0.1	30-AR-TR % 0.01	30-AR-TR ppm 5	30-AR-TR ppm 10	30-AR-TR ppm 2	30-AR-TR % 0.01	30-AR-TR ppm 0.5	30-AR-TR ppm 1	30-AR-TR ppm 1	30-AR-TR ppm 1	30-AR-TR % 0.01	30-AR-TR % 0.01	30-AR-TR ppm 2
ICE 1	Soil		<0.1	1.65	8	131	<2	0.68	<0.5	11	23	75	2.53	0.10	11
ICE 1 Dup			<0.1	1.60	7	128	<2	0.68	<0.5	11	22	73	2.42	0.09	11
QCV1110-02265-0002-BLK			<0.1	<0.01	<5	<10	<2	<0.01	<0.5	<1	<1	<1	<0.01	<0.01	<2
STD-CDN-ME-6 expected			101									6130			
STD-CDN-ME-6 result			>100									6178			
ICE 21	Soil		<0.1	0.35	<5	43	<2	0.16	<0.5	3	3	19	0.45	0.02	3
ICE 21 Dup			<0.1	0.35	<5	42	<2	0.16	<0.5	3	3	18	0.46	0.02	2
QCV1110-02265-0005-BLK			<0.1	<0.01	<5	<10	<2	<0.01	<0.5	<1	<1	<1	<0.01	<0.01	<2
STD-O REA S92-2A expected			0.7							16		2352			
STD-OREAS92-2A result			0.4							16		2395			
ICE 43	Soil		<0.1	1.81	8	92	<2	0.39	<0.5	9	23	36	2.63	0.06	8
ICE 43 Dup			<0.1	1.78	8	90	<2	0.39	<0.5	9	22	35	2.58	0.06	7
QCV1110-02265-0008-BLK			<0.1	<0.01	<5	<10	<2	<0.01	<0.5	<1	<1	<1	<0.01	<0.01	<2
STD-CDN-ME-6 expected			101									6130			
STD-CDN-ME-6 result			>100									6403			
ICE 64	Soil		<0.1	1.60	6	148	<2	0.46	<0.5	9	18	57	2.29	0.07	8
ICE 64 Dup			<0.1	1.62	6	150	<2	0.48	<0.5	9	18	59	2.35	0.07	8
QCV1110-02265-0011-BLK			<0.1	<0.01	<5	<10	<2	<0.01	<0.5	<1	<1	<1	<0.01	<0.01	<2
STD-CDN-ME-6 expected			101									6130			
STD-CDN-ME-6 result			>100									6293			
ICE 88	Soil		<0.1	0.29	<5	41	<2	0.36	<0.5	2	3	14	0.42	0.03	3
ICE 88 Dup			<0.1	0.29	<5	41	<2	0.36	<0.5	2	4	14	0.42	0.03	3
QCV1110-02265-0014-BLK			<0.1	<0.01	<5	<10	<2	<0.01	<0.5	<1	<1	<1	<0.01	<0.01	<2
STD-O REA S92-2A expected			0.7							16		2352			
STD-OREAS92-2A result			0.4							15		2381			
ICE 110	Soil		0.1	0.61	<5	84	<2	0.22	<0.5	4	6	18	0.86	0.03	3
ICE 110 Dup			<0.1	0.59	<5	82	<2	0.22	<0.5	4	5	17	0.87	0.03	3
QCV1110-02265-0017-BLK			<0.1	<0.01	<5	<10	<2	<0.01	<0.5	<1	<1	<1	<0.01	<0.01	<2
STD-CDN-ME-12 expected			52.5									4280			
STD-CDN-ME-12 result			50.9									4387			
ICE 132	Soil		<0.1	1.38	8	94	<2	0.31	<0.5	7	19	47	2.16	0.09	6
ICE 132 Dup			<0.1	1.36	7	90	<2	0.31	<0.5	7	18	45	2.07	0.09	6
QCV1110-02265-0020-BLK			<0.1	<0.01	<5	<10	<2	<0.01	<0.5	<1	<1	<1	<0.01	<0.01	<2
STD-CDN-ME-6 expected			101									6130			
STD-CDN-ME-6 result			>100									6147			
QCV1110-02265-0022-BLK			<0.1	<0.01	<5	<10	<2	<0.01	<0.5	<1	<1	<1	<0.01	<0.01	<2
STD-O REA S92-2A expected			0.7							16		2352			
STD-OREAS92-2A result			0.2							8		25			
ICE 1	Soil	0.009													
ICE 1 Dup		0.010													



INSPECTORATE

A Bureau Veritas Group Company

#200 - 11620 Horseshoe Way

Richmond, British Columbia V7A 4V5
Canada

Certificate of Analysis

11-360-08661-01

Reliance Geological Services Ltd

3476 Dartmoor Place

Vancouver, BC V5S 4G2

Sample Description	Sample Type	Au	Ag	Al	As	Ba	Bi	Ca	Cd	Co	Cr	Cu	Fe	K	La
		Au-1A T-AA ppm	30-AR-TR ppm	30-AR-TR %	30-AR-TR ppm	30-AR-TR ppm	30-AR-TR ppm	30-AR-TR ppm	30-AR-TR %	30-AR-TR ppm	30-AR-TR ppm	30-AR-TR ppm	30-AR-TR ppm	30-AR-TR %	30-AR-TR %
ICE 21	Soil	0.008			5	10	2	0.01	0.5	1	1	1	0.01	0.01	
ICE 21 Dup		<0.005													
QCV1110-02266-0004-BLK		<0.005													
ICE 43	Soil	0.007													
ICE 43 Dup		0.009													
ICE 64	Soil	0.007													
ICE 64 Dup		0.012													
STD-OxG84 expected		0.922													
STD-OxG84 result		0.947													
QCV1110-02266-0008-BLK		<0.005													
ICE 88	Soil	0.008													
ICE 88 Dup		0.009													
ICE 110	Soil	0.006													
ICE 110 Dup		<0.005													
STD-OxI81 expected		1.807													
STD-OxI81 result		1.781													
QCV1110-02266-0012-BLK		0.005													
ICE 132	Soil	0.008													
ICE 132 Dup		0.007													
QCV1110-02266-0014-BLK		<0.005													
STD-OxD87 expected		0.417													
STD-OxD87 result		0.409													



INSPECTORATE

A Bureau Veritas Group Company

#200 - 11620 Horseshoe Way

Richmond, British Columbia V7A 4V5
Canada

Certificate of Analysis

11-360-08661-01

Reliance Geological Services Ltd

3476 Dartmoor Place

Vancouver, BC V5S 4G2

Sample Description	Sample Type	Mg	Mn	Mo	Na	Ni	P	Pb	Sb	Sc	Sr	Ti	Tl	V	W
		30-AR-TR %	30-AR-TR ppm	30-AR-TR ppm	30-AR-TR %	30-AR-TR ppm	30-AR-TR ppm	30-AR-TR ppm	30-AR-TR ppm	30-AR-TR ppm	30-AR-TR ppm	30-AR-TR ppm	30-AR-TR %	30-AR-TR ppm	30-AR-TR ppm
ICE 1	Soil	0.61	452	<1	0.04	16	564	6	<2	6	56	0.07	<10	60	<10
ICE 1 Dup		0.60	450	<1	0.04	16	565	5	<2	6	55	0.06	<10	58	<10
QCV1110-02265-0002-BLK		<0.01	<5	<1	<0.01	<1	<10	<2	<2	<1	<1	<0.01	<10	<1	<10
STD-CDN-ME-6 expected								10200							
STD-CDN-ME-6 result								9913							
ICE 21	Soil	0.07	248	<1	0.03	2	616	3	<2	<1	14	0.02	<10	13	<10
ICE 21 Dup		0.07	246	<1	0.04	2	602	3	<2	<1	14	0.02	<10	13	<10
QCV1110-02265-0005-BLK		<0.01	<5	<1	<0.01	<1	<10	<2	<2	<1	<1	<0.01	<10	<1	<10
STD-O REA S92-2A expected								9							
STD-OREAS92-2A result								11							
ICE 43	Soil	0.59	334	<1	0.03	14	171	5	<2	5	41	0.04	<10	66	<10
ICE 43 Dup		0.58	327	<1	0.03	14	176	7	<2	4	40	0.04	<10	63	<10
QCV1110-02265-0008-BLK		<0.01	<5	<1	<0.01	<1	<10	<2	<2	<1	<1	<0.01	<10	<1	<10
STD-CDN-ME-6 expected								10200							
STD-CDN-ME-6 result								9857							
ICE 64	Soil	0.60	320	<1	0.03	11	508	6	<2	4	49	0.07	<10	59	<10
ICE 64 Dup		0.60	320	<1	0.03	11	505	5	<2	4	49	0.08	<10	62	<10
QCV1110-02265-0011-BLK		<0.01	<5	<1	<0.01	<1	<10	<2	<2	<1	<1	<0.01	<10	<1	<10
STD-CDN-ME-6 expected								10200							
STD-CDN-ME-6 result								>10000							
ICE 88	Soil	0.09	159	<1	0.04	3	571	<2	<2	<1	29	0.02	<10	11	<10
ICE 88 Dup		0.09	158	<1	0.04	3	585	<2	<2	<1	29	0.02	<10	11	<10
QCV1110-02265-0014-BLK		<0.01	<5	<1	<0.01	<1	<10	<2	<2	<1	<1	<0.01	<10	<1	<10
STD-O REA S92-2A expected								9							
STD-OREAS92-2A result								13							
ICE 110	Soil	0.15	298	<1	0.03	4	422	2	<2	<1	22	0.03	<10	24	<10
ICE 110 Dup		0.14	295	<1	0.03	4	433	3	<2	<1	21	0.03	<10	23	<10
QCV1110-02265-0017-BLK		<0.01	<5	<1	<0.01	<1	<10	<2	<2	<1	<1	<0.01	<10	<1	<10
STD-CDN-ME-12 expected								2220							
STD-CDN-ME-12 result								2163							
ICE 132	Soil	0.48	328	<1	0.03	12	307	6	<2	3	40	0.04	<10	48	<10
ICE 132 Dup		0.47	324	<1	0.03	12	297	5	<2	3	39	0.04	<10	46	<10
QCV1110-02265-0020-BLK		<0.01	<5	<1	<0.01	<1	<10	<2	<2	<1	<1	<0.01	<10	<1	<10
STD-CDN-ME-6 expected								10200							
STD-CDN-ME-6 result								9840							
QCV1110-02265-0022-BLK		<0.01	<5	<1	<0.01	<1	<10	<2	<2	<1	<1	<0.01	<10	<1	<10
STD-O REA S92-2A expected								9							
STD-OREAS92-2A result								7							



INSPECTORATE

A Bureau Veritas Group Company

#200 - 11620 Horseshoe Way

Richmond, British Columbia V7A 4V5
Canada

Certificate of Analysis

11-360-08661-01

Reliance Geological Services Ltd

3476 Dartmoor Place

Vancouver, BC V5S 4G2

Sample Description	Sample Type	Zn	Zr	Hg
		30-AR-TR ppm 2	30-AR-TR ppm 2	Hg-AR-TR-CVAA ppm 0.01
ICE 1	Soil	47	<2	
ICE 1 Dup		45	<2	
QCV110-02265-0002-BLK		<2	<2	
STD-CDN-ME-6 expected		5170		
STD-CDN-ME-6 result		4858		
ICE 21	Soil	7	<2	
ICE 21 Dup		7	<2	
QCV110-02265-0005-BLK		<2	<2	
STD-O REA S92-2A expected		81		
STD-OREAS92-2A result		80		
ICE 43	Soil	41	<2	
ICE 43 Dup		40	<2	
QCV110-02265-0008-BLK		<2	<2	
STD-CDN-ME-6 expected		5170		
STD-CDN-ME-6 result		4833		
ICE 64	Soil	39	<2	
ICE 64 Dup		38	<2	
QCV110-02265-0011-BLK		<2	<2	
STD-CDN-ME-6 expected		5170		
STD-CDN-ME-6 result		4983		
ICE 88	Soil	6	<2	
ICE 88 Dup		6	<2	
QCV110-02265-0014-BLK		<2	<2	
STD-O REA S92-2A expected		81		
STD-OREAS92-2A result		78		
ICE 110	Soil	15	<2	
ICE 110 Dup		15	<2	
QCV110-02265-0017-BLK		<2	<2	
STD-CDN-ME-12 expected		2750		
STD-CDN-ME-12 result		2715		
ICE 132	Soil	42	<2	
ICE 132 Dup		41	<2	
QCV110-02265-0020-BLK		<2	<2	
STD-CDN-ME-6 expected		5170		
STD-CDN-ME-6 result		4931		
QCV110-02265-0022-BLK		<2	<2	
STD-O REA S92-2A expected		81		
STD-OREAS92-2A result		192		
ICE 1	Soil			0.15
ICE 1 Dup				0.14



INSPECTORATE

A Bureau Veritas Group Company

#200 - 11620 Horseshoe Way

Richmond, British Columbia V7A 4V5
Canada

Certificate of Analysis

11-360-08661-01

Reliance Geological Services Ltd

3476 Dartmoor Place

Vancouver, BC V5S 4G2

Sample Description	Sample Type	Zn	Zr	Hg
		30-AR-TR ppm 2	30-AR-TR ppm 2	Hg-AR-TR-CVAA ppm 0.01
QCV1110-02267-0002-BLK				<0.01
ICE 21	Soil			0.03
ICE 21 Dup				0.01
QCV1110-02267-0005-BLK				<0.01
ICE 43	Soil			0.06
ICE 43 Dup				0.03
QCV1110-02267-0008-BLK				<0.01
ICE 64	Soil			0.02
ICE 64 Dup				0.02
QCV1110-02267-0011-BLK				<0.01
ICE 88	Soil			<0.01
ICE 88 Dup				<0.01
QCV1110-02267-0014-BLK				<0.01
ICE 110	Soil			<0.01
ICE 110 Dup				<0.01
QCV1110-02267-0017-BLK				<0.01
ICE 132	Soil			<0.01
ICE 132 Dup				<0.01
QCV1110-02267-0020-BLK				<0.01
QCV1110-02267-0022-BLK				<0.01
STD-DS-1 expected				82.00
STD-DS-1 result				82.48