

**GEOLOGICAL and GEOCHEMICAL
ASSESSMENT REPORT
on the
DONJEK PROJECT**

Don 1-20, 29-34	YB46996-47015, YC18523, 31-36
Wolv 1-10, 12,14,16,18,20-21,23	YB46972-81, 83, 85,87,89,91-92,94
Wolv 25-28	YC18509-12
Jek 1-31, 32-137	YE69201-30, YE69069, 232-337
Jek 140-155	YD88002-YD87987

NTS: 115G/5 & 12

Latitude 61°32'N Longitude 139°50'W

Whitehorse Mining District

Work performed between September 17 and 21, 2011

For :

Mr. Bill Harris
Box 31293
Whitehorse, YT
Y1A 4Z2

By:
Jean Pautler, P.Geo.
JP Exploration Services Inc.
#103-108 Elliott Street
Whitehorse, Yukon
Y1A 6C4

June 9, 2012

SUMMARY:

The 4200 hectare Donjek Project, NTS map sheets 115G/5 & 12, lies within the Kluane Ultramafic Belt and is located approximately 15 km southerly from the Donjek River bridge on the Alaska Highway, 125 km northwest of Haines Junction, and 285 km northwest of Whitehorse, Yukon Territory. The property is situated in the Whitehorse Mining District at a latitude and longitude of 61°32'N, 139°50'W. Access is by helicopter with highway access to within 15 km of the property. Mr. Bill Harris of Whitehorse, Yukon funded the current program.

The Donjek Project covers magnetic and electromagnetic anomalies on trend and within the same sequence of Pennsylvanian to Triassic rocks which host the nickel-copper-platinum group element (Ni-Cu-PGE) Wellgreen deposit, 12 km to the southeast. The Wellgreen deposit represents the most advanced property within the Kluane Ultramafic Belt, with historic production (1972-1973) of 171,652 tonnes grading 2.23% Ni, 1.39% Cu, 0.073% Co, and 2.15 g/t Pt and Pd and a resource outlined in the late 1980's of 49.9 million tonnes grading 0.36% Ni, 0.35% Cu, 0.51 g/t Pt and 0.34 g/t Pd. The Wellgreen deposit emphasizes the excellent potential for large tonnage nickel-copper-PGE deposits in the Kluane Ultramafic Belt.

The Donjek property partly covers the Sexsmith Minfile drilled prospect as documented by the Yukon Geological Survey as Minfile Number 115G 033. Old core at the showing, situated in an overburden covered area north of Wolverine Creek near its confluence with the Donjek River, reportedly consists of fine grained siltstone and/or ultramafic rock containing disseminated chalcopyrite.

The 2011 work program consisted of mapping and prospecting with concurrent rock geochemical sampling, in an attempt to determine if the stratigraphy hosting the Wellgreen deposit continued onto the Donjek Project. Exploration on the Donjek Project has been hampered by lack of exposure and thick overburden cover.

The Donjek Project was found to be underlain by a sequence of Pennsylvanian(?) and Permian sedimentary rocks of the Hasen Creek Formation, overlain by volcanic rocks assigned to the Upper Triassic Nikolai formation. The sequence is intruded by ultramafic and gabbroic rocks of the Triassic age Kluane mafic-ultramafic complex, possibly at the contact between the Hasen Creek and Station Creek Formations. This stratigraphy is the same as the stratigraphy hosting the Wellgreen deposit. Diorite, possibly of the Cretaceous age Kluane Ranges suite intrudes the above.

In 2011, pyrite was noted within a serpentized peridotite sill along Wolverine Creek and copper values were found to be associated with hornfelsed siltstone. The best nickel and PGE values of 271.2 ppm Ni, 17 ppb Pt and 10 ppb Pd in 2011 were returned from the serpentized ultramafic sill with 5% pyrite along Wolverine Creek, trending 040°/35°SW. Rusty, limonitic, hornfelsed sedimentary rock contained anomalous copper values of 808.9 and 803.6 ppm Cu.

An airborne Z-TEM electromagnetic survey is recommended over the property to detect any conductors. In addition a conventional soil survey using mattocks and hand augers, to get below the ash horizon, is recommended over the JEK 33-38 claims over the projection of ultramafic rocks exposed along Wolverine Creek. The program is expected to cost approximately \$100,000.

TABLE OF CONTENTS

	Page
SUMMARY.....	i
1.0 LOCATION AND ACCESS.....	1
2.0 LEGAL DESCRIPTION.....	1
3.0 PHYSIOGRAPHY	3
4.0 HISTORY	3
5.0 2011 WORK PROGRAM.....	4
6.0 GEOLOGY	4
6.1 Regional.....	4
6.2 Property.....	6
6.3 Mineralization and Alteration.....	6
7.0 GEOCHEMISTRY	10
7.1 Procedure.....	10
7.2 Results	10
8.0 CONCLUSIONS AND RECOMMENDATIONS	10

LIST OF FIGURES

	Page
Figure 1	Location Map1
Figure 2	Claim Map.....2
Figure 3	Regional Geology Map.....5
Figure 4	Donjek Area Geology Map7
Legend for Figure 48
Figure 5	Property Geology and 2011 Sample Locations.....9

TABLES

Table 1:	Claim data.....2
----------	------------------

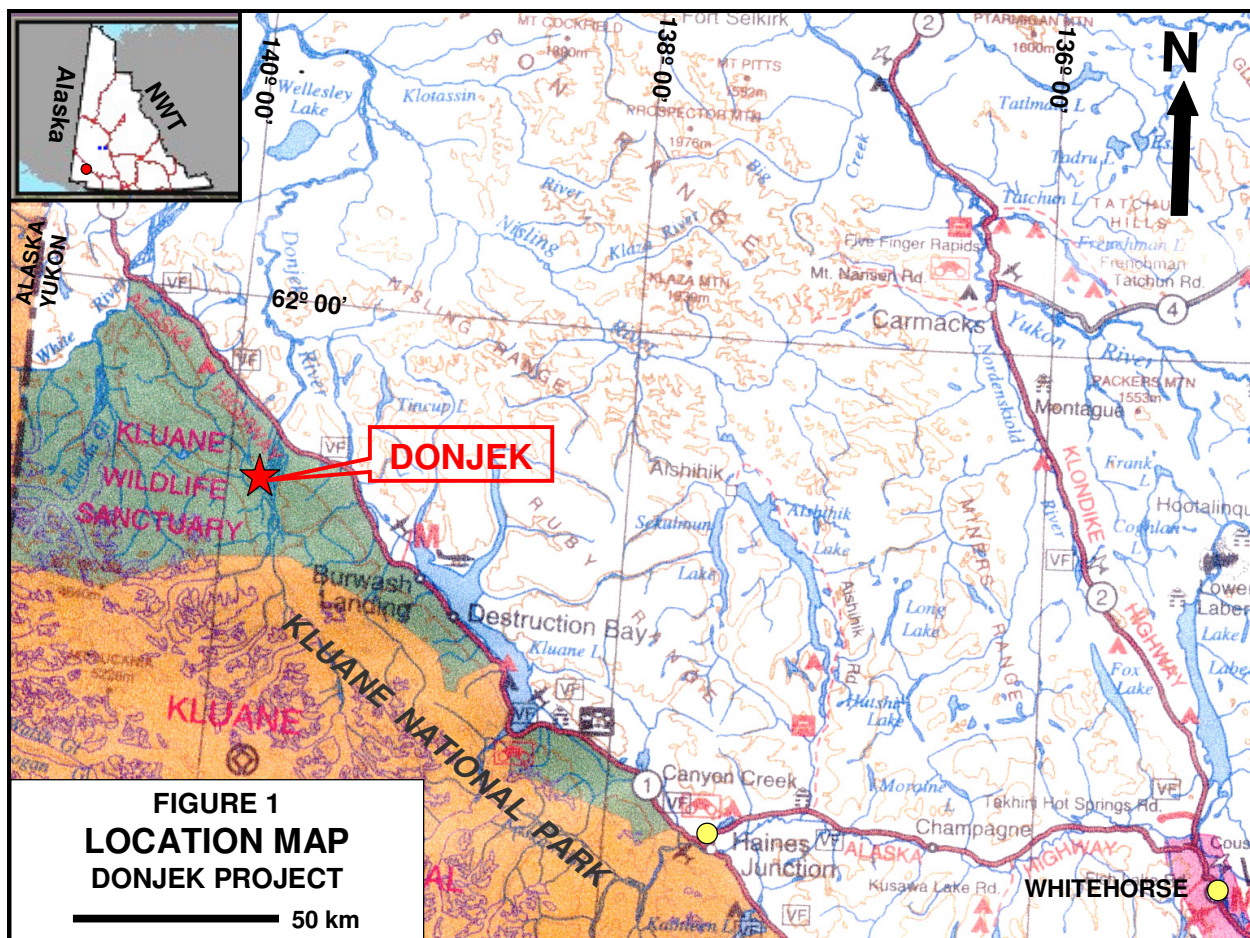
APPENDICES

Appendix I	Selected References
Appendix II	Statement of Claims
Appendix III	Sample Descriptions
Appendix IV	Geochemical Procedure and Results
Appendix V	Statement of Expenditures
Appendix VI	Statement of Qualifications

1.0 LOCATION AND ACCESS (Figure 1)

The Donjek Project, NTS map sheets 115G/5 & 12, lies 15 km southerly from the Donjek River bridge on the Alaska Highway, 40 km by road northwest of Burwash Landing, approximately 125 km northwest of Haines Junction and 285 km northwest of Whitehorse, Yukon Territory (Figure 1). The property is centered at a latitude of 62°25'N and a longitude of 139°50'W.

Access is by helicopter, which is available in Haines Junction. The Donjek River bridge, situated along the paved Alaska Highway (Highway 1) from Whitehorse is a suitable staging site for helicopter access to the project area. A bulldozer trail, in poor condition, extends to Arch Creek, seven km east of the property on the east side of the Donjek River.



2.0 LEGAL DESCRIPTION (Figure 2)

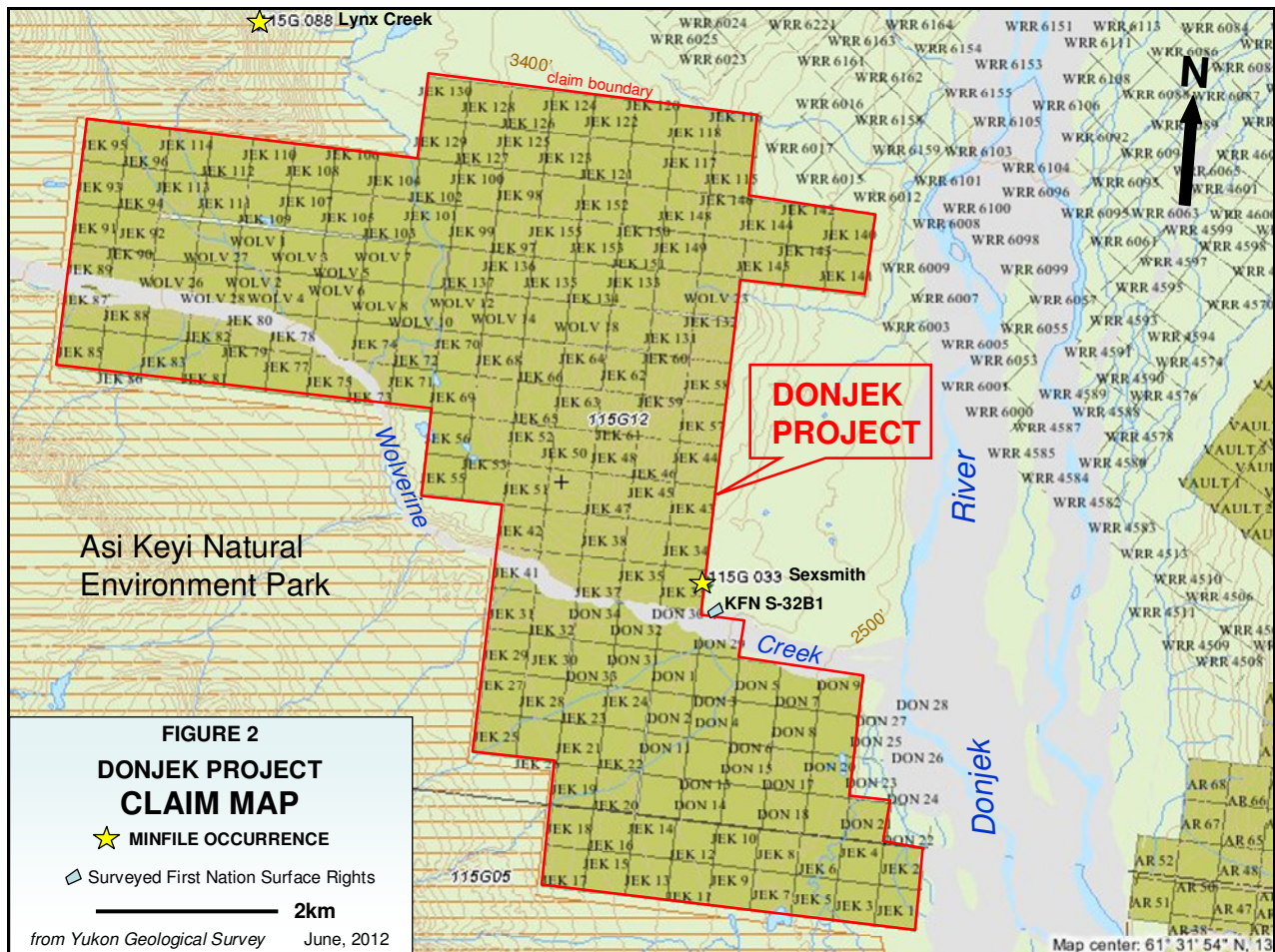
The Donjek Project consists of 201 contiguous claims covering an area of approximately 4200 hectares in the Whitehorse Mining District (Figure 2). The project is situated within the Klondike Wildlife Sanctuary within which mining is allowed (Figure 1). Asi Keyi Natural

Environment Park, in which claims are not allowed, surrounds the western claim boundary (Figure 2). A small parcel of land with cabins (KFN S-32B1), with surface rights only, is held by the Kluane First Nation just north of the Don 29 claim. The current program, completed between September 17 and 21, 2011, was operated by Mr. Bill Harris of Whitehorse, Yukon. A table summarizing pertinent claim data follows and complete details are shown in Appendix II:

TABLE 1: Claim data

Claim Name	Grant No.	No. of Claims	Registered Owner	Staking Date	New Expiry Date
Don 1-20	YB46996-47015	20	StrataGold Corp.	03/07/1994	13/04/2015*
Don 21	YC18523	1	StrataGold Corp.	03/07/1994	13/04/2015*
Don 29-34	YC18531-36	6	StrataGold Corp.	26/02/2000	07/03/2015*
Wolv 1-10, 12	YB46972-81, 83	11	StrataGold Corp.	03/07/1994	13/04/2015*
Wolv 14,16,18,20-21,23	YB46985,87,89,91-92,94	6	StrataGold Corp.	03/07/1994	13/04/2015*
Wolv 25-28	YC18509-12	4	StrataGold Corp.	26/02/2000	07/06/2015*
Jek 1-31	YE69201-30, YE69069	31	Bill Harris	24/07/2011	18/08/2012
Jek 32-137	YE69232-337	106	Bill Harris	24-26/07/2011	18/08/2012
Jek 140-155	YD88002-YD87987	16	Gerald Asp	21/09/2011	13/10/2012
TOTAL		201			

*new expiry date based on acceptance of this report



3.0 PHYSIOGRAPHY AND CLIMATE (Figures 1 and 2)

The property is transected by Wolverine Creek, just west of the Donjek River within the Kluane Ranges of the St. Elias Mountains (*Figure 2*). Elevations range from a low of 2500 feet along the Donjek River to 4500 feet on the hill north of Wolverine Creek. Most slopes are gentle except for the southeastern slopes of the hill. Outcrop exposure on the property is <1% but does occur along Wolverine Creek and as isolated bluffs along the hillside. The area is heavily tree covered by spruce and lesser poplar.

The area has a northern interior climate strongly influenced by the St. Elias Mountains. The area is known for high winds which constantly blow from the mountains into the Shakwak Valley. Winter temperatures average less than -20° Celsius while summer temperatures average 20° Celsius but range up to 30° Celsius. The exploration season extends from mid May to October.

4.0 HISTORY (Figure 3)

The Donjek Project partly covers the Sexsmith drilled prospect (Minfile Number 115G 033), a Minfile occurrence as documented by the Yukon Geological Survey (*Deklerk, 2009*). A summary of the work completed by various operators is tabulated below:

- | | |
|-----------|---|
| 1953 | Staked by Canalask Nickel Mines Ltd. to cover an aeromagnetic anomaly, discovered by Lundberg Exploration Ltd. during a regional survey following the discovery of the Wellgreen Deposit, and explored with ground magnetic and self-potential surveys. The anomaly, situated in an overburden covered area north of Wolverine Creek near its confluence with the Donjek River, returned interesting zones of anomalous self potential and was subsequently drilled but no report filed. Old core at the showing reportedly consists of fine grained siltstone (<i>Davidson, 1988</i>) and/or ultramafic rock (<i>Duncan and Tupper, 2002a & b</i>) containing disseminated chalcopyrite. |
| 1973 | Re-staked by the Nickel Syndicate (Canadian Superior Exploration Ltd., Aquitaine, Home Oil Ltd. and Getty Minerals Ltd.) (<i>Deklerk, 2009</i>). |
| 1987-8 | Ground geophysics by Harjay Exploration Ltd. in 1988 identified a northwest-trending VLF-EM anomaly coincident with the west edge of a strong magnetic high which appears to outline a contact (<i>Davidson, 1988</i>). |
| 1994-2001 | An airborne electromagnetic/resistivity/magnetic survey was completed in 1996 by Dighem for Expatriate Resources Ltd. (<i>Chung, 1997</i>), followed by mapping, prospecting, soil and stream sediment sampling by the Donjek Joint Venture (Expatriate and Strategic Metals Ltd.) (<i>Duncan and Tupper, 2002a & b</i>). The geophysical survey delineated a strong magnetic high and several moderately weak or broad conductors, and the mapping outlined pyritic mafic and ultramafic rocks, including peridotite, gabbro, diorite and andesite flows. |

- 2002-3 Claims optioned to Midnight Mines Ltd. (Bill Harris) in 2002 and claims transferred to StrataGold Corporation as part of a reorganization of Expatriate Resources, with option retained (*Deklerk, 2009*).
- 2004 Re-interpretation of 1965-6 Geological Survey of Canada total magnetic field data by Aurora Geosciences Ltd. identified a large magnetic anomaly suggestive of an ultramafic source (*Power, 2004*).

5.0 2011 WORK PROGRAM

A total of 5 man-days were spent on the Donjek Project, between September 17 and 21, 2011. The 2011 work program consisted of mapping and prospecting with concurrent rock geochemical sampling, in an attempt to determine if the stratigraphy hosting the Wellgreen deposit continued onto the Donjek Project. Exploration on the Donjek Project has been hampered by lack of exposure and thick overburden cover. Control was provided by GPS and topographic maps. The mapping program is discussed under sections 6.2 "Property Geology" and 6.3 "Mineralization and Alteration" and the geochemistry under section 7.0 "Geochemistry". Mapping is shown in Figure 5 with sample locations and traverses, and sample descriptions are shown in Appendix III.

6.0 GEOLOGY

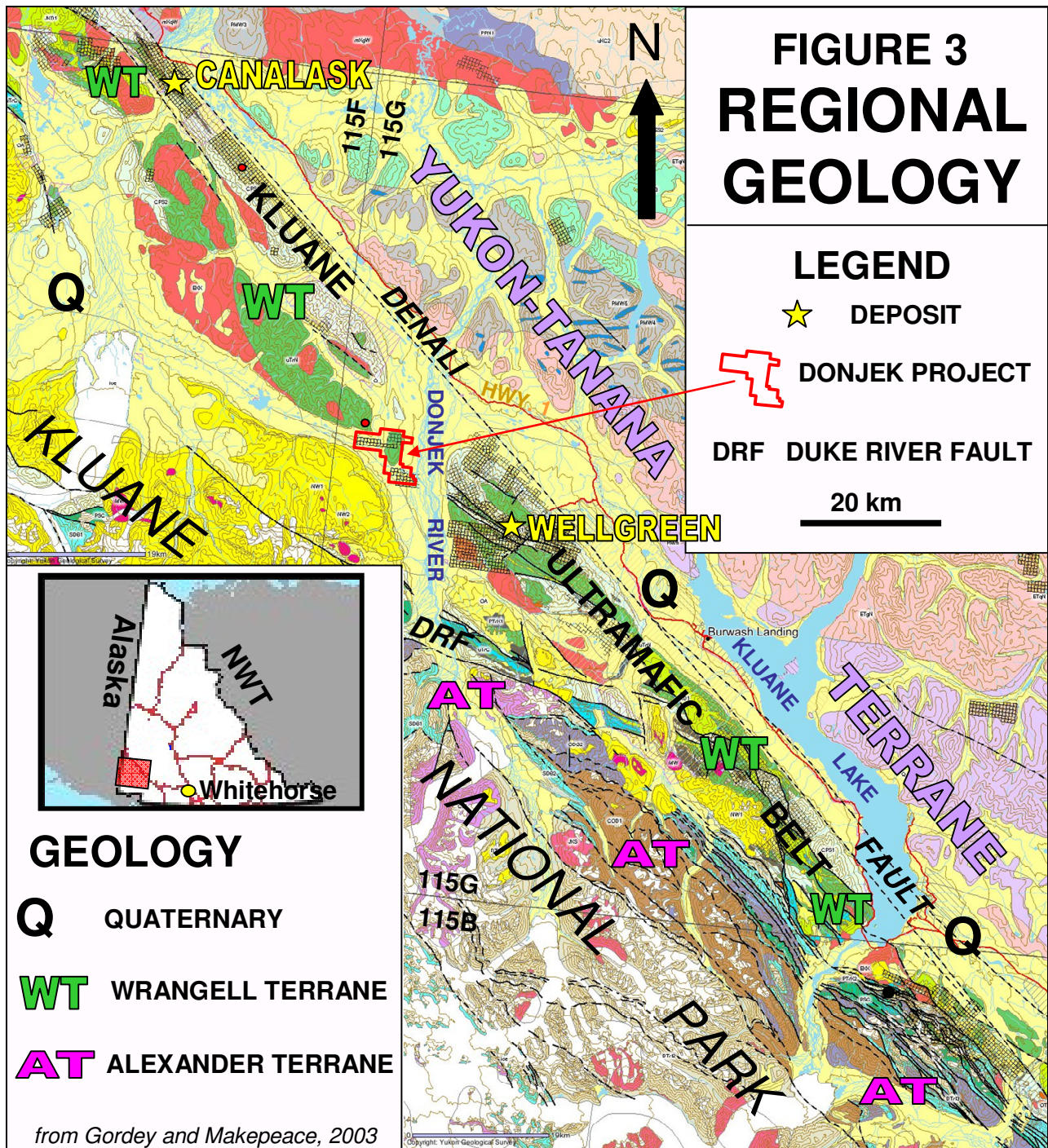
6.1 Regional (Figures 3 and 4)

The Donjek Project lies within a displaced portion of the Wrangell Terrane bounded by the 290° trending Duke River Fault to the south and the 310° Denali Fault System to the north (*Figure 3*). The regional area has been mapped by Campbell and Dodds (1979) and compiled by Gordey and Makepeace (2003), with additional mapping and compilation by Israel (2004).

Regionally, the Donjek Project is situated within the 600 km long Kluane Ultramafic Belt (*Figure 3*), which is characterized by Triassic aged mafic (gabbro to diorite) to ultramafic (commonly peridotite) sills that are referred to as the Kluane mafic-ultramafic suite. The Kluane mafic-ultramafic suite hosts a number of magmatic nickel (Ni) - copper (Cu) - platinum group element (PGE) ± gold (Au) occurrences within the Wrangell Terrane from Northern British Columbia, through Yukon and into Alaska.

The mafic-ultramafic intrusions in the belt are sill-like bodies that preferentially intrude the country rock sequences at or near the contact between the Hasen Creek Formation (tuffs, mafic volcanics, argillite and limestone) and Station Creek Formation (tuffs, pyritic black tuff, mafic volcanics and argillite), part of the Pennsylvanian(?) to Permian Skolai Group (*Figure 4*). Many of the ultramafic sills have marginal gabbro phases at their bases and upper contacts that appear to be preferentially mineralized. The Kluane Belt nickel-copper-PGE occurrences are particularly enriched in the rarer platinum group

elements osmium, iridium, ruthenium and rhodium. Previous exploration within the belt primarily focused on the nickel-copper potential.



The Kluane Belt is considered one of the largest nickel-copper-PGE mineralized mafic-ultramafic trends in North America, second only to the nickeliferous intrusions from the Circum-Superior Belt, which includes the Thompson Nickel Belt. Similarities in the geologic setting have also been drawn to that of the Noril'sk Talnakh region of Siberia, the world's largest nickel-copper-PGE producing area.

The Wellgreen deposit represents the most advanced property within the Kluane Belt, with historic production (1972-1973) of 171,652 tonnes grading 2.23% Ni, 1.39% Cu, 0.073% Co, and 2.15 g/t Pt and Pd and a resource outlined in the late 1980's of 49.9 million tonnes grading 0.36% Ni, 0.35% Cu, 0.51 g/t Pt and 0.34 g/t Pd. The Wellgreen deposit emphasizes the excellent potential for large tonnage nickel-copper-PGE deposits in the Kluane Ultramafic Belt.

6.2 Property (Figures 4 and 5)

Due to extensive overburden the government geology shows the property to be underlain by the Upper Triassic Nikolai Formation (mafic volcanic rocks with minor clastic rocks and limestone), surrounded by unconsolidated Quaternary deposits (*Figure 4*). The Donjek Project is underlain by a sequence of Pennsylvanian(?) and Permian sedimentary rocks of the Hasen Creek Formation, overlain by volcanic rocks assigned to the Upper Triassic Nikolai Formation. The sequence is intruded by ultramafic and gabbroic rocks of the Triassic age Kluane mafic-ultramafic complex and diorite, possibly of the Cretaceous age Kluane Ranges suite.

Mapping in 2011 (*Figure 5*) uncovered siltstone and mudstone of the Hasen Creek Formation, locally hornfelsed, along Wolverine Creek. Bedding was observed at 035-040°/35°SE. Minor andesite porphyry encountered may represent volcanic rocks of the underlying Station Creek Formation, but could be volcanic intervals within, or Nikolai dykes cutting, the Hasen Creek Formation. Numerous gabbro to peridotite outcrops of the Kluane Ultramafic suite were encountered along Wolverine Creek, with one definite sill trending 040°/50°SE, and other exposures possibly constituting part of a larger body. Two occurrences of diorite were noted, which either may belong to the Cretaceous Kluane Ranges suite, or represent a less mafic variant of the Kluane Ultramafic suite.

The higher ground north of Wolverine Creek was underlain by volcanic rocks of the Upper Triassic Nikolai Formation. The dominant lithology was amygdaloidal basalt with lesser andesite tuff-breccia.

6.3 Mineralization and Alteration

The Donjek Project covers magnetic and electromagnetic anomalies within the same sequence of Pennsylvanian to Triassic rocks which host the nickel-copper-platinum group element (Ni - Cu - PGE) Wellgreen deposit, 12 km to the southeast. The property partly covers the Sexsmith Minfile drilled prospect (*Figure 4*) as documented by the Yukon Geological Survey as Minfile Number 115G 033 (*Deklerk, 2009*). Old core at the showing, situated in an overburden covered area north of Wolverine Creek near its confluence with the Donjek River, reportedly consists of fine grained siltstone (*Davidson, 1988*) and/or ultramafic rock (*Duncan and Tupper, 2002a & b*) containing disseminated chalcopyrite. The core is reportedly located north of the old cabin (on KFN S-32B1?) on Wolverine Creek.

In 2011, pyrite was noted within a serpentinized peridotite sill along Wolverine Creek and copper values were associated with hornfelsed siltstone (*Figure 5*).

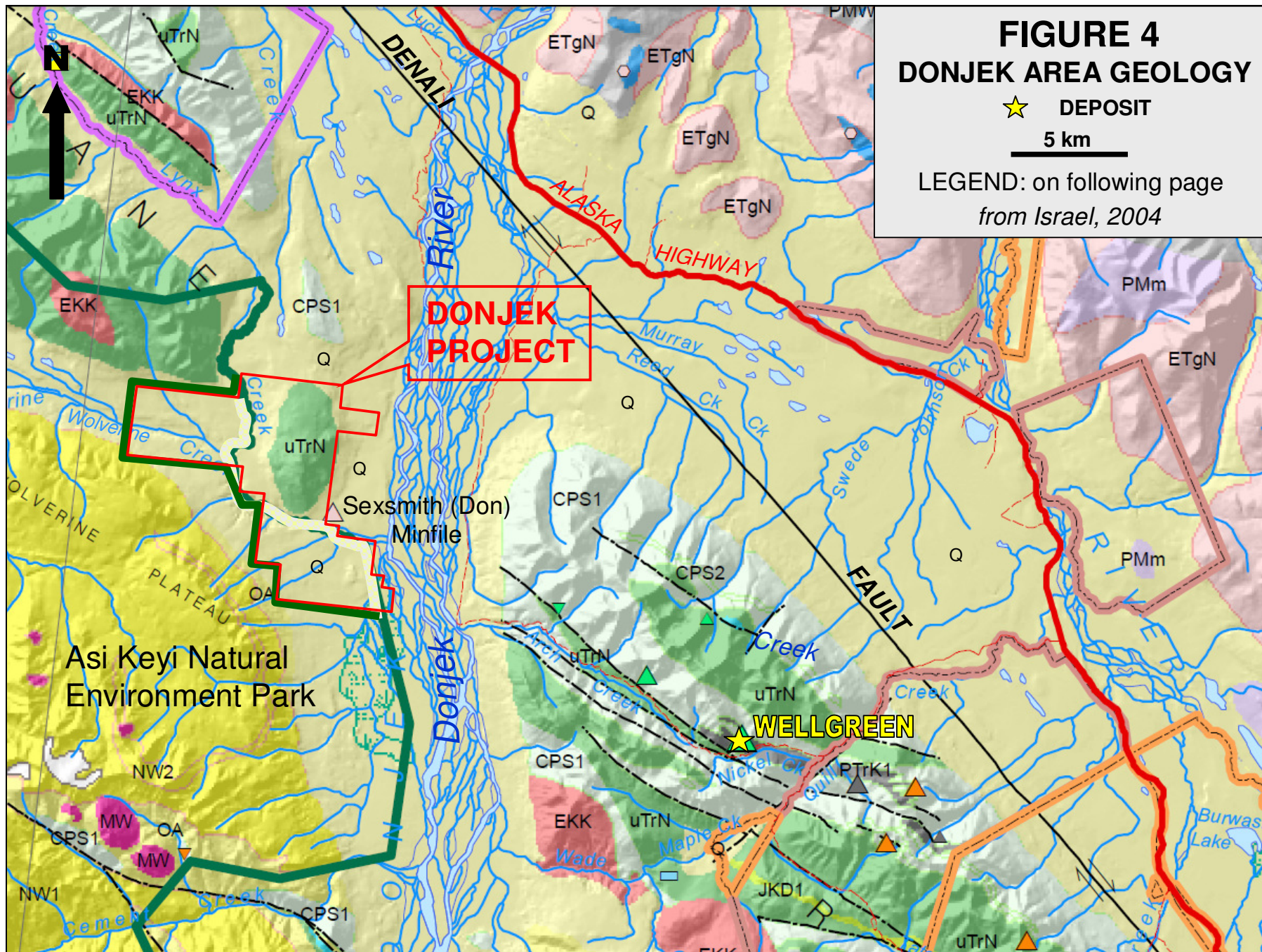


FIGURE 4
DONJEK AREA GEOLOGY

★ DEPOSIT

5 km

LEGEND: on following page
from Israel, 2004

QUATERNARY

Q **Q: QUATERNARY**
unconsolidated glacial, glaciofluvial and glaciolacustrine deposits; fluvial silt, sand, and gravel, and local volcanic ash, in part with cover of soil and organic deposits

MIOCENE TO PLIOCENE AND (?) YOUNGER

NW **NW: WRANGELL LAVAS**
mafic to felsic volcanic rocks (1) with local conglomerate (2)

MID TO LATE MIOCENE

MW **MW: WRANGELL SUITE**
fine- to medium- grained, hornblende +/- biotite granodiorite and porphyritic (K-feldspar) hornblende granodiorite; medium-grained, uniform biotite diorite and pyroxene gabbro; subvolcanic hornblende +/- biotite rhyolite, rhyodacite, dacite, and trachyte

OLIGOCENE

OT **OT: TKOPE SUITE**
light pinkish-grey, medium- to coarse-grained, homogeneous, biotite and/or hornblende granite (locally miarolitic); lesser light creamy-grey biotite-hornblende granodiorite, dark grey biotite-hornblende quartz diorite and gabbro diorite

PALEOCENE TO OLIGOCENE

OA **OA: AMPHITHEATRE**
yellow-buff to grey-buff sandstone, pebbly sandstone, polymictic conglomerate, siltstone and mudstone; minor brown-grey carbonaceous shale and thin lignitic coal; mostly fluvial and lacustrine deposits, local debris-flow deposits; some shallow marine (Amphitheatre; Kulthieth)

EOCENE

ES **ES: SEWARD SUITE**
non- to weakly foliated, light to mid-brownish-grey, medium-grained, biotite- and hornblende-biotite tonalite and granodiorite; rarer granite and quartz diorite

LATE EARLY CRETACEOUS

EKK **EKK: KLUANE RANGES SUITE**
mid-grey, medium- to coarse-grained, biotite-hornblende granodiorite, quartz diorite, quartz monzonite, and hornblende diorite

EKP **EKP: PYROXENITE CREEK ULTRAMAFIC**
medium-grained hornblende pyroxene gabbro, and biotite-hornblende diorite; olivine and hornblende clinopyroxene

UPPER JURASSIC TO LOWER CRETACEOUS

JKD **JKD: DEZADEASH**
clastic succession (1) but locally including undifferentiated younger strata (2)

LATE JURASSIC TO EARLIEST CRETACEOUS

JKS **JKS: SAINT ELIAS SUITE**
nonporphyritic and porphyritic (K-feldspar), biotite-hornblende granodiorite; lesser nonporphyritic biotite and/or hornblende tonalite; locally includes biotite-hornblende quartz monzonite, quartz diorite, granite, and quartz monzonite

CRETACEOUS AND (?) OLDER

KY **KY: YAKUTAT**
greywacke and conglomerate in thick members or interbedded with siltstone, argillite, or slate; melange with blocks (to several km) of greenstone, limestone, marble, granitic rocks, chert, and greywacke in a matrix of cherty and tuffaceous pelite (Yakutat Gp.)

KV **KV: VALDEZ**
dark grey argillite and greywacke; includes granitoid dykes, sills, and locally plugs, green pillow lava, breccia, and tuff; metamorphosed equivalents include brown schists, granitoid gneisses and dark green amphibolite (Valdez Gp.)

UPPER TRIASSIC

uTrC **uTrC: CHITISTONE**
thin interbedded light to dark grey argillaceous limestone and dark grey argillite; massive light grey limestone, limestone breccia and darker grey, well-bedded limestone; white to creamy white gypsum and anhydrite (McCarthy, Chitstone and Nizina limestones)

uTrN **uTrN: NIKOLAI**
amygdaloidal basaltic and andesitic flows, with local tuff, breccia, shale and thin-bedded bioclastic limestone; volcanic breccia, pillow lava and conglomerate at base; locally includes dark grey phyllite and minor thin grey limestone of Middle Triassic (Nicolai Greenstone)

PENNSYLVANIAN TO (?) LOWER PERMIAN

CPS **CPS: SKOLAI**
volcanic rocks succeeded upward by clastic strata (1) and including minor limestone (2)

LATE TRIASSIC AND (?) OLDER

PTrK **PTrK: KLUANE ULTRAMAFIC SUITE**
mafic to ultramafic intrusions in 1) Wrangell Terrane and 2) Alexander Terrane

LATE PENNSYLVANIAN TO EARLY PERMIAN

CPI **CPI: ICEFIELD RANGES SUITE (270-290 MA)**
mid- to dark greenish-grey, medium-grained, nonfoliated and foliated, biotite-hornblende quartz monzonite-quartz diorite-diorite, veined and intruded by leucocratic granodiorite and quartz syenite (agmatite); pink hornblende syenite (Icefield Ranges Suite)

PALEOZOIC, (?) DEVONIAN AND/OR YOUNGER

PSC **PSC: STEELE CREEK**
massive medium- to coarse-grained, rusty grey-green hornblende pyroxene gabbro, minor medium grained gabbro-diorite and gabbro-pegmatite intrusions; rare pods of black peridotite; screens of flows, volcanoclastic rocks, minor argillite, and rare chert (Mt. Cairnes Gabbro-Greenstone Complex; Steele Ck-Mt. Constantine Gabbro Complex)

DEVONIAN TO UPPER TRIASSIC AND (?) OLDER

DTrI **DTrI: ICEFIELD**
a grouping of diverse, dominantly upper Paleozoic partly equivalent strata subdivided into three dominant facies including pelitic rocks (1), carbonate (2), and volcanic rocks (3)

SILURIAN AND DEVONIAN

SDB **SDB: BULLION**
a grouping of carbonate (1) and clastic (2) strata that may be partly equivalent

LOWER ORDOVICIAN TO DEVONIAN AND (?) OLDER

ODG **ODG: GOATHERD**
a grouping of carbonate (1) and clastic (2) strata that may be in part equivalent

CAMBRIAN TO ORDOVICIAN AND (?) YOUNGER

COD **COD: DONJEK**
greywacke greenstone assemblage (1) with minor carbonate (2)

7.0 GEOCHEMISTRY (Figure 5)

7.1 Procedure

A total of 6 rock samples were collected from the property during the 2010 program for geochemical analysis. All samples were located and recorded by GPS in the field using UTM coordinates, Nad 83 datum, Zone 7 projection. Sample descriptions, locations and select results (Au, Ag, Ni, Cu, Pt and Pd) are documented in Appendix III and locations are plotted on Figure 5. Complete results are outlined in Appendix IV.

The rock samples consisted of grab samples of rusty, altered and sulphide bearing zones encountered during mapping and prospecting. The samples were placed in clear plastic sample bags, numbered and secured in the field.

Samples were delivered by the author to the Whitehorse sample preparation facility of Acme Analytical Laboratories Ltd., then internally sent to their facility in Vancouver, British Columbia for analysis. Samples were analyzed for Al, Sb, As, Ba, Bi, B, Cd, Ca, Cr, Co, Cu, Ga, Au, Fe, La, Pb, Mg, Mn, Hg, Mo, Na, Ni, P, Ag, K, Sc, Sr, S, Tl, Th, Ti, Sn, W, U, V and Zn by ICP-MS, a 36 element ICP package which involves a nitric-aqua regia digestion using 15g (1DX-15) and a mass spectrometry finish. Gold, platinum and palladium were analyzed by Acme's Group 3B-ES, 30g analysis, which involves a fire assay pre-concentration with an ICP-emission spectrometry (ICP-ES) finish. Acme is an ISO 9001:2008 accredited facility, certificate number FM 63007. Quality control procedures were implemented at the laboratory, involving the regular insertion of blanks and standards and repeat analyses.

7.2 Results

The best nickel and PGE values of 271.2 ppm Ni, 17 ppb Pt and 10 ppb Pd were returned from a serpentinized ultramafic sill with 5% pyrite along Wolverine Creek (Sample 116093). The sill was found to trend 040°/35°SW. Rusty, limonitic, hornfelsed sedimentary rock contained anomalous copper values of 808.9 and 803.6 ppm Cu (Samples 116096 and 116097).

8.0 CONCLUSIONS AND RECOMMENDATIONS

There is good potential for the discovery of magmatic nickel (Ni) - copper (Cu) - platinum group element (PGE) ±gold (Au) mineralization, similar to that of the Wellgreen deposit, on the Donjek Project which lies 12 km to the northwest along trend.

The Donjek Project covers magnetic and electromagnetic anomalies within the same sequence of Pennsylvanian to Triassic rocks which host the Wellgreen deposit, 12 km to the southeast. The property partly covers the Sexsmith Minfile drilled prospect as

documented by the Yukon Geological Survey as Minfile Number 115G 033. Old core at the showing, situated in an overburden covered area north of Wolverine Creek near its confluence with the Donjek River, reportedly consists of fine grained siltstone and/or ultramafic rock containing disseminated chalcopyrite.

The Donjek Project was found to be underlain by a sequence of Pennsylvanian(?) and Permian sedimentary rocks of the Hasen Creek Formation, overlain by volcanic rocks assigned to the Upper Triassic Nikolai formation. The sequence is intruded by ultramafic and gabbroic rocks of the Triassic age Kluane mafic-ultramafic complex, possibly at the contact between the Hasen Creek and Station Creek Formations. Diorite, possibly of the Cretaceous age Kluane Ranges suite intrudes the above. Exploration on the Donjek Project has been hampered by lack of exposure and thick overburden cover.

In 2011, pyrite was noted within a serpentinized peridotite sill along Wolverine Creek and copper values were found to be associated with hornfelsed siltstone (*Figure 5*). The best nickel and PGE values of 271.2 ppm Ni, 17 ppb Pt and 10 ppb Pd in 2011 were returned from the serpentinized ultramafic sill with 5% pyrite along Wolverine Creek, trending 040°/35°SW. Rusty, limonitic, hornfelsed sedimentary rock contained anomalous copper values of 808.9 and 803.6 ppm Cu.

An airborne Z-TEM electromagnetic survey is recommended over the property to detect any conductors. In addition a 610 sample conventional soil survey using mattocks and hand augers, to get below the ash horizon, is recommended over the JEK 33-38 claims over the projection of ultramafic rocks exposed along Wolverine Creek. Samples should be collected every 25m on east-west lines, spaced 100m apart. The airborne survey is expected to cost approximately \$60,000 and the soils \$40,000.

APPENDIX I: Selected References

- Campbell, S.W., 1976. Nickel-copper-sulfide deposits in Kluane Ranges, (115 F, G) Exploration and Geological Services Division, Yukon, Indian and Northern Affairs Canada, Open File 1976-10.
- Campbell, R.B. and Dodds, C.J., 1979. Geology, Kluane Lake area (115G and F(E ½)). Geological Survey of Canada Open File 829. 1:125,000 map and legend.
- Chung, L.E., 1997. Airborne geophysical survey on the Donjek Project areas. Report prepared by Dighem for Expatriate Resources Ltd. Assessment Report #093662.
- Davidson, G.S., 1988. Assessment Report on the SF 1-32 mineral claims. Report for Harjay Exploration Ltd. Assessment Report #092578.
- Deklerk, R., 2009. The MINFILE Manual. Yukon Geological Survey, CD-ROM.
- Duncan R.A. and Tucker, T.L., 2002b. 2001 assessment report on the Wolv 2, 4, 6, 8, 10, 12, 14, 16, 27 & 28. Report for Expatriate Resources Ltd. Assessment Report #094253.
- 2002a. 2001 assessment report on the Don 1-6, 11-19, 29-34. Report for Expatriate Resources Ltd. Assessment Report #094240.
- Gordey, S.P. and Makepeace, A.J., 2003. Yukon Digital Geology, version 2.0, S.P. Gordey and A.J. Makepeace (comp). Geological Survey of Canada, Open File 1749 and Yukon Geological Survey, Open File 2003-9 (D).
- Greene, A.R., Scoates, J.S., Weis, D. and Israel, S., 2005. Flood basalts of the Wrangellia Terrane, southwest Yukon: Implications for the formation of oceanic plateaus, continental crust and Ni-Cu- PGE mineralization. In: Yukon Exploration and Geology 2004, D.S. Emond, L.L. Lewis and G.D. Bradshaw (eds.), Yukon Geological Survey, p. 109-120.
- Hulbert, L. J., 1997. Geology and metallogeny of the Kluane Mafic-Ultramafic Belt Yukon Territory, Canada: Eastern Wrangellia – a new Ni-Cu-PGE metallogenic terrane. Geological Survey of Canada, Bulletin 506.
- Israel, S. and Cobbett, R., 2008. Kluane Ranges bedrock geology, White River area (Parts of NTS 115F/9, 15 and 16; 115G/12 and 115K/1, 2). In: Yukon Exploration and Geology 2007, D.S. Emond, L.R. Blackburn, R.P. Hill and L.H. Weston (eds.), Yukon Geological Survey, p. 153-167.

- Israel, S., 2004. Geology of Southwestern Yukon (1:250,000 scale). Yukon Geological Survey, Open File 2004-16.
- Israel, S., and Van Zeyl, D.P., 2005. Preliminary geology of the Quill Creek map area, southwest Yukon parts of NTS 115G/5, 6 and 12. In: Yukon Exploration and Geology 2004, D.S. Emond, L.L. Lewis and G.D. Bradshaw (eds.), Yukon Geological Survey, p. 129-146.
2004. Preliminary geological map of the Quill Creek map area, (parts of NTS 115G/5, 6 and 12), southwest Yukon (1:50 000 scale). Yukon Geological Survey, Open File 2004-20.
- Muller, J.E. 1967. Kluane Lake map-area, Yukon Territory (115G, 115F E ½). Geological Survey of Canada, Memoir 340, 137 p.
- Power, M., 2004. Midnight Mines Ltd. Inversion of aeromagnetic data in the area of the Wolv & Don properties, Donjek River Area, Yukon Territory. Assessment Report # 094466.
- Yukon Exploration and Geology, 1983, p. 247.

Appendix II: Statement of Claims

Grant Number	Claim Name	Claim No.	Claim Owner	Record Date	Expiry Date
YB46996	DON	1	StrataGold Corporation - 100%	14/07/1994	13/01/2015
YB46997	DON	2	StrataGold Corporation - 100%	14/07/1994	13/01/2015
YB46998	DON	3	StrataGold Corporation - 100%	14/07/1994	13/01/2015
YB46999	DON	4	StrataGold Corporation - 100%	14/07/1994	13/01/2015
YB47000	DON	5	StrataGold Corporation - 100%	14/07/1994	13/01/2015
YB47001	DON	6	StrataGold Corporation - 100%	14/07/1994	13/01/2015
YB47002	DON	7	StrataGold Corporation - 100%	14/07/1994	13/04/2015
YB47003	DON	8	StrataGold Corporation - 100%	14/07/1994	13/04/2015
YB47004	DON	9	StrataGold Corporation - 100%	14/07/1994	13/04/2015
YB47005	DON	10	StrataGold Corporation - 100%	14/07/1994	13/04/2015
YB47006	DON	11	StrataGold Corporation - 100%	14/07/1994	13/01/2015
YB47007	DON	12	StrataGold Corporation - 100%	14/07/1994	13/01/2015
YB47008	DON	13	StrataGold Corporation - 100%	14/07/1994	13/01/2015
YB47009	DON	14	StrataGold Corporation - 100%	14/07/1994	13/01/2015
YB47010	DON	15	StrataGold Corporation - 100%	14/07/1994	13/01/2015
YB47011	DON	16	StrataGold Corporation - 100%	14/07/1994	13/01/2015
YB47012	DON	17	StrataGold Corporation - 100%	14/07/1994	13/01/2015
YB47013	DON	18	StrataGold Corporation - 100%	14/07/1994	13/01/2015
YB47014	DON	19	StrataGold Corporation - 100%	14/07/1994	13/01/2015
YB47015	DON	20	StrataGold Corporation - 100%	14/07/1994	13/04/2015
YC18531	DON	29	StrataGold Corporation - 100%	07/03/2000	07/03/2015
YC18532	DON	30	StrataGold Corporation - 100%	07/03/2000	07/03/2015
YC18533	DON	31	StrataGold Corporation - 100%	07/03/2000	07/03/2015
YC18534	DON	32	StrataGold Corporation - 100%	07/03/2000	07/03/2015
YC18535	DON	33	StrataGold Corporation - 100%	07/03/2000	07/03/2015
YC18536	DON	34	StrataGold Corporation - 100%	07/03/2000	07/03/2015
YC18523	DON	21	StrataGold Corporation - 100%	07/03/2000	07/06/2015
YB46972	WOLV	1	StrataGold Corporation - 100%	14/07/1994	13/04/2015
YB46973	WOLV	2	StrataGold Corporation - 100%	14/07/1994	13/01/2015
YB46974	WOLV	3	StrataGold Corporation - 100%	14/07/1994	13/04/2015
YB46975	WOLV	4	StrataGold Corporation - 100%	14/07/1994	13/01/2015
YB46976	WOLV	5	StrataGold Corporation - 100%	14/07/1994	13/04/2015
YB46977	WOLV	6	StrataGold Corporation - 100%	14/07/1994	13/01/2015
YB46978	WOLV	7	StrataGold Corporation - 100%	14/07/1994	13/04/2015
YB46979	WOLV	8	StrataGold Corporation - 100%	14/07/1994	13/01/2015
YB46980	WOLV	9	StrataGold Corporation - 100%	14/07/1994	13/04/2015
YB46981	WOLV	10	StrataGold Corporation - 100%	14/07/1994	13/01/2015
YB46983	WOLV	12	StrataGold Corporation - 100%	14/07/1994	13/01/2015
YB46985	WOLV	14	StrataGold Corporation - 100%	14/07/1994	13/01/2015
YB46987	WOLV	16	StrataGold Corporation - 100%	14/07/1994	13/01/2015
YB46989	WOLV	18	StrataGold Corporation - 100%	14/07/1994	13/04/2015
YB46991	WOLV	20	StrataGold Corporation - 100%	14/07/1994	13/04/2015
YB46992	WOLV	21	StrataGold Corporation - 100%	14/07/1994	13/04/2015
YB46994	WOLV	23	StrataGold Corporation - 100%	14/07/1994	13/04/2015
YC18509	WOLV	25	StrataGold Corporation - 100%	07/03/2000	07/06/2015
YC18510	WOLV	26	StrataGold Corporation - 100%	07/03/2000	07/06/2015
YC18511	WOLV	27	StrataGold Corporation - 100%	07/03/2000	07/03/2015
YC18512	WOLV	28	StrataGold Corporation - 100%	07/03/2000	07/03/2015

Grant Number	Claim Name	Claim No.	Claim Owner	Record Date	Expiry Date
YE69201	JEK	1	Bill Harris - 100%	18/08/2011	18/08/2012
YE69202	JEK	2	Bill Harris - 100%	18/08/2011	18/08/2012
YE69203	JEK	3	Bill Harris - 100%	18/08/2011	18/08/2012
YE69204	JEK	4	Bill Harris - 100%	18/08/2011	18/08/2012
YE69205	JEK	5	Bill Harris - 100%	18/08/2011	18/08/2012
YE69206	JEK	6	Bill Harris - 100%	18/08/2011	18/08/2012
YE69207	JEK	7	Bill Harris - 100%	18/08/2011	18/08/2012
YE69208	JEK	8	Bill Harris - 100%	18/08/2011	18/08/2012
YE69209	JEK	9	Bill Harris - 100%	18/08/2011	18/08/2012
YE69210	JEK	10	Bill Harris - 100%	18/08/2011	18/08/2012
YE69211	JEK	11	Bill Harris - 100%	18/08/2011	18/08/2012
YE69212	JEK	12	Bill Harris - 100%	18/08/2011	18/08/2012
YE69213	JEK	13	Bill Harris - 100%	18/08/2011	18/08/2012
YE69214	JEK	14	Bill Harris - 100%	18/08/2011	18/08/2012
YE69215	JEK	15	Bill Harris - 100%	18/08/2011	18/08/2012
YE69216	JEK	16	Bill Harris - 100%	18/08/2011	18/08/2012
YE69217	JEK	17	Bill Harris - 100%	18/08/2011	18/08/2012
YE69218	JEK	18	Bill Harris - 100%	18/08/2011	18/08/2012
YE69219	JEK	19	Bill Harris - 100%	18/08/2011	18/08/2012
YE69220	JEK	20	Bill Harris - 100%	18/08/2011	18/08/2012
YE69221	JEK	21	Bill Harris - 100%	18/08/2011	18/08/2012
YE69222	JEK	22	Bill Harris - 100%	18/08/2011	18/08/2012
YE69223	JEK	23	Bill Harris - 100%	18/08/2011	18/08/2012
YE69224	JEK	24	Bill Harris - 100%	18/08/2011	18/08/2012
YE69225	JEK	25	Bill Harris - 100%	18/08/2011	18/08/2012
YE69226	JEK	26	Bill Harris - 100%	18/08/2011	18/08/2012
YE69227	JEK	27	Bill Harris - 100%	18/08/2011	18/08/2012
YE69228	JEK	28	Bill Harris - 100%	18/08/2011	18/08/2012
YE69229	JEK	29	Bill Harris - 100%	18/08/2011	18/08/2012
YE69230	JEK	30	Bill Harris - 100%	18/08/2011	18/08/2012
YE69069	JEK	31	Bill Harris - 100%	18/08/2011	18/08/2012
YE69232	JEK	32	Bill Harris - 100%	18/08/2011	18/08/2012
YE69233	JEK	33	Bill Harris - 100%	18/08/2011	18/08/2012
YE69234	JEK	34	Bill Harris - 100%	18/08/2011	18/08/2012
YE69235	JEK	35	Bill Harris - 100%	18/08/2011	18/08/2012
YE69236	JEK	36	Bill Harris - 100%	18/08/2011	18/08/2012
YE69237	JEK	37	Bill Harris - 100%	18/08/2011	18/08/2012
YE69238	JEK	38	Bill Harris - 100%	18/08/2011	18/08/2012
YE69239	JEK	39	Bill Harris - 100%	18/08/2011	18/08/2012
YE69240	JEK	40	Bill Harris - 100%	18/08/2011	18/08/2012
YE69241	JEK	41	Bill Harris - 100%	18/08/2011	18/08/2012
YE69242	JEK	42	Bill Harris - 100%	18/08/2011	18/08/2012
YE69243	JEK	43	Bill Harris - 100%	18/08/2011	18/08/2012
YE69244	JEK	44	Bill Harris - 100%	18/08/2011	18/08/2012
YE69245	JEK	45	Bill Harris - 100%	18/08/2011	18/08/2012
YE69246	JEK	46	Bill Harris - 100%	18/08/2011	18/08/2012
YE69247	JEK	47	Bill Harris - 100%	18/08/2011	18/08/2012
YE69248	JEK	48	Bill Harris - 100%	18/08/2011	18/08/2012
YE69249	JEK	49	Bill Harris - 100%	18/08/2011	18/08/2012
YE69250	JEK	50	Bill Harris - 100%	18/08/2011	18/08/2012
YE69251	JEK	51	Bill Harris - 100%	18/08/2011	18/08/2012
YE69252	JEK	52	Bill Harris - 100%	18/08/2011	18/08/2012
YE69253	JEK	53	Bill Harris - 100%	18/08/2011	18/08/2012

YE69305	JEK	105	Bill Harris - 100%	18/08/2011	18/08/2012
YE69306	JEK	106	Bill Harris - 100%	18/08/2011	18/08/2012
YE69307	JEK	107	Bill Harris - 100%	18/08/2011	18/08/2012
YE69308	JEK	108	Bill Harris - 100%	18/08/2011	18/08/2012
YE69309	JEK	109	Bill Harris - 100%	18/08/2011	18/08/2012
YE69310	JEK	110	Bill Harris - 100%	18/08/2011	18/08/2012
YE69311	JEK	111	Bill Harris - 100%	18/08/2011	18/08/2012
YE69312	JEK	112	Bill Harris - 100%	18/08/2011	18/08/2012
YE69313	JEK	113	Bill Harris - 100%	18/08/2011	18/08/2012
YE69314	JEK	114	Bill Harris - 100%	18/08/2011	18/08/2012
YE69315	JEK	115	Bill Harris - 100%	18/08/2011	18/08/2012
YE69316	JEK	116	Bill Harris - 100%	18/08/2011	18/08/2012
YE69317	JEK	117	Bill Harris - 100%	18/08/2011	18/08/2012
YE69318	JEK	118	Bill Harris - 100%	18/08/2011	18/08/2012
YE69319	JEK	119	Bill Harris - 100%	18/08/2011	18/08/2012
YE69320	JEK	120	Bill Harris - 100%	18/08/2011	18/08/2012
YE69321	JEK	121	Bill Harris - 100%	18/08/2011	18/08/2012
YE69322	JEK	122	Bill Harris - 100%	18/08/2011	18/08/2012
YE69323	JEK	123	Bill Harris - 100%	18/08/2011	18/08/2012
YE69324	JEK	124	Bill Harris - 100%	18/08/2011	18/08/2012
YE69325	JEK	125	Bill Harris - 100%	18/08/2011	18/08/2012
YE69326	JEK	126	Bill Harris - 100%	18/08/2011	18/08/2012
YE69327	JEK	127	Bill Harris - 100%	18/08/2011	18/08/2012
YE69328	JEK	128	Bill Harris - 100%	18/08/2011	18/08/2012
YE69329	JEK	129	Bill Harris - 100%	18/08/2011	18/08/2012
YE69330	JEK	130	Bill Harris - 100%	18/08/2011	18/08/2012
YE69331	JEK	131	Bill Harris - 100%	18/08/2011	18/08/2012
YE69332	JEK	132	Bill Harris - 100%	18/08/2011	18/08/2012
YE69333	JEK	133	Bill Harris - 100%	18/08/2011	18/08/2012
YE69334	JEK	134	Bill Harris - 100%	18/08/2011	18/08/2012
YE69335	JEK	135	Bill Harris - 100%	18/08/2011	18/08/2012
YE69336	JEK	136	Bill Harris - 100%	18/08/2011	18/08/2012
YE69337	JEK	137	Bill Harris - 100%	18/08/2011	18/08/2012
YD88002	JEK	140	Gerald Asp - 100%	13/10/2011	13/10/2012
YD88001	JEK	141	Gerald Asp - 100%	13/10/2011	13/10/2012
YD88000	JEK	142	Gerald Asp - 100%	13/10/2011	13/10/2012
YD87999	JEK	143	Gerald Asp - 100%	13/10/2011	13/10/2012
YD87998	JEK	144	Gerald Asp - 100%	13/10/2011	13/10/2012
YD87997	JEK	145	Gerald Asp - 100%	13/10/2011	13/10/2012
YD87996	JEK	146	Gerald Asp - 100%	13/10/2011	13/10/2012
YD87995	JEK	147	Gerald Asp - 100%	13/10/2011	13/10/2012
YD87994	JEK	148	Gerald Asp - 100%	13/10/2011	13/10/2012
YD87993	JEK	149	Gerald Asp - 100%	13/10/2011	13/10/2012
YD87992	JEK	150	Gerald Asp - 100%	13/10/2011	13/10/2012
YD87991	JEK	151	Gerald Asp - 100%	13/10/2011	13/10/2012
YD87990	JEK	152	Gerald Asp - 100%	13/10/2011	13/10/2012
YD87989	JEK	153	Gerald Asp - 100%	13/10/2011	13/10/2012
YD87988	JEK	154	Gerald Asp - 100%	13/10/2011	13/10/2012
YD87987	JEK	155	Gerald Asp - 100%	13/10/2011	13/10/2012

APPENDIX III: Sample Descriptions

DONJEK PROJECT, YT										
2011 SAMPLE DESCRIPTIONS AND RESULTS - JP										
SAMPLE	Nad 83, Zone 7		ELEV.			Au	Ag	Pt/Pd	Ni	Cu
NUMBER	EASTING	NORTHING	(m)	TYPE	DESCRIPTION	ppb	ppm	ppb	ppm	ppm
116093	561511	6821293	818	rock grab	serpentinized ultramafic sill with 5% pyrite just above 116094	6	<0.1	17/10	271.2	73.4
116094	561510	6821292	817	rock grab	minor pyrite in serpentinized ultramafic sill trending 040/50SE, nonmagnetic; hanging wall is magnetic andesite feldspar porphyry and footwall is hornfelsed sedimentary unit	<2	<0.1	12/6	135.3	76.9
116095	561476	6821304	815	rock grab	rusty hornfelsed sedimentary rock with trace pyrite; bedding at 035-040/35SE	4	0.4	<3/<2	1.5	89.1
116096	561421	6821316	812	rock grab	rusty, strongly limonitic grunge in fracture fillings in hornfelsed sedimentary rock	10	0.7	<3/3	7.7	808.9
116097	562047	6821071	809	rock grab	rusty hornfelsed sedimentary rock with strong limonite coating in outcrop on south side of Wolverine Creek	8	0.4	<3/3	44.6	803.6
116098	561351	6821330	815	rock grab	rusty orange hornfels with minor pyrite	<2	0.1	<3/<2	23.4	39

APPENDIX IV

Geochemical Procedure and Results

Acme Analytical Laboratories Ltd.

GEOCHEMICAL PROCEDURES

SAMPLE PREPARATION

SOIL, SEDIMENT AND VEGETATION SAMPLES

SS80 Dry at 60°C, sieve (up to) 100 g to -80 mesh

ROCK AND DRILL CORE

R150 Crush 1 kg to 70% passing 10 mesh, split 250 g and pulverize to 95% passing 150 mesh

GROUP 1DX: ICP & ICP-MS ANALYSIS – AQUA REGIA

Sample splits of 0.5g are leached in hot (95°C) Aqua Regia. A larger split size (30g) is used for more representative Au analysis. Refractory and graphitic samples can limit Au solubility. Solubility of some elements* will be limited by mineral species present. A total of 36 elements are assayed in the ICP-MS analysis.

* Al, B, Ba, Ca, Cr, Fe, Ga, Hg‡, K, La, Mg, Mn, Na, Sr, Th, Ti, Tl‡, U, V, W,

GROUP 3B-MS AU & PGMs BY FIRE GEOCHEM

A lead-collection fire-assay 30g fusion for total sample decomposition, digestion of the Ag dore bead and ICP-MS (Group 3B-MS) analysis. Group 6 precious metals assay recommended for Au or PGMs over 1000 ppb.

Group 3B-MS Detection Limits

Au 1 ppb, **Pt** 0.1 ppb, **Pd** 0.5 ppb, **(Rh)** (0.1 ppb)

Au* detection limit may vary due to natural contamination in commercial flux and sample size.

(Rh) available at client's request, results are qualitative to semi-quantitative depending on nature of samples.

Note: Sulphide-rich samples require a 15g or smaller sample for proper fusion.

APPENDIX V
Statement of Expenditures

Wages:	J. Pautler	2 days @ 850.00/day	\$1,700.00
	Derrick Strickland	1 day @ 600.00/day	600.00
	Bill Harris	2 days @ 500.00/day	<u>1,000.00</u>
	Sept 17 & 21, 2011	Total: 5 man-days	\$ 3,300.00
Mobilization/Demobilization:			500.00
Geochemistry:	6 rocks	@ 75/ea. Au, ICP, PGE	200.00
	5 assays	@13/ea.	65.00
	freight		<u>50.00</u>
		Total: (includes shipping)	315.00
Equipment Rental:	Trucks	2 days @ 125/day	250.00
	Sat Phone	2 days @ 20.00/day	40.00
	Radios	5 md @ 10/each	<u>50.00</u>
		Total:	340.00
Fuel:			300.00
Helicopter:	Kluane Helicopters, Haines Jct. Yukon Territory		4,713.09
Meals and Accommodation:	5 man days @ \$150/md		750.00
Field Supplies:	(flagging tape, batteries, sample bags, markers)		50.00
Maps and Copies:			50.00
Report & Drafting:			<u>4,500.00</u>
GRAND TOTAL:			\$14,818.09
Total applied for assessment:			\$14,400.00

APPENDIX VI
STATEMENT OF QUALIFICATION

I, Jean Marie Pautler, do hereby certify that:

- 1) I, Jean Marie Pautler of 103-108 Elliott Street, Whitehorse, Yukon Territory am self-employed as a consultant geologist and authored this report.
- 2) I am a graduate of Laurentian University, Sudbury, Ontario with an Honours B.Sc. degree in geology (May, 1980).
- 3) I am a registered member of the Association of Professional Engineers and Geoscientists of British Columbia, Registration Number 19804.
- 4) I am a geologist with more than thirty years of experience in the Canadian Cordillera.
- 5) I was involved in the 2011 program on the Donjek Project between September 17 and 21, 2011.
- 6) I have no direct or indirect interest in the Donjek Project, which is the subject of this report.

Jean Pautler, P.Geol.
JP Exploration Services Inc.
#103-108 Elliott St
Whitehorse, Yukon
Y1A 6C4