

ARCHER, CATHRO & ASSOCIATES (1981) LIMITED
1016 - 510 West Hastings Street
Vancouver, B.C. V6B1L8

Telephone: 604-688-2568

Fax: 604-688-2578

ASSESSMENT REPORT

describing

SOIL GEOCHEMICAL SAMPLING

at the

ROSE PROPERTY

Rose 1-60 YD58591-YD58650

NTS 105K/5

Latitude 62°20'N; Longitude 133°33'W

located in the

Whitehorse Mining District
Yukon Territory

prepared by

Archer, Cathro & Associates (1981) Limited

for

SILVER RANGE RESOURCES LTD.

by

M. R. Dumala, P.Eng.

April 2012

CONTENTS

INTRODUCTION	1
PROPERTY LOCATION, CLAIM DATA AND ACCESS	1
HISTORY AND PREVIOUS WORK	1
GEOMORPHOLOGY AND CLIMATE	2
GEOLOGY	3
SOIL GEOCHEMISTRY	5
DISCUSSION AND CONCLUSIONS	5
REFERENCES	7

APPENDICES

- I STATEMENTS OF QUALIFICATIONS
- II CERTIFICATES OF ANALYSIS

FIGURES

<u>No.</u>	<u>Description</u>	<u>Follows Page</u>
1	Property Location	1
2	Claim Locations	1
3	Tectonic Setting	3
4	Geology	5
5	2011 Sample Locations	5
6	Gold Geochemistry	5
7	Silver Geochemistry	5
8	Copper Geochemistry	5
9	Cobalt Geochemistry	5

TABLES

I	Regional Lithologies in the Rose Mountain Area	3
---	--	---

INTRODUCTION

The Rose property lies on the southwest flank of the Anvil lead-zinc district in southeastern Yukon. It was staked in the spring of 2010 to cover anomalous gold values reported by a reconnaissance-scale stream sediment survey. The property is owned by Silver Range Resources Ltd.

This report describes a geochemical sampling program conducted on August 21, 2011 by Archer, Cathro and Associates (1981) Limited on behalf of Silver Range Resources Ltd. The author interpreted all data from this project and his Statement of Qualifications is in Appendix I.

PROPERTY LOCATION, CLAIM DATA AND ACCESS

The Rose property comprises 60 contiguous mineral claims, located in southeastern Yukon at latitude 62°20' north and longitude 133°33' west on NTS map sheet 105K/5 (Figure 1). The property covers an area of about 1200 hectares (12 km²). The claims are registered with the Whitehorse Mining Recorder in the name of Archer Cathro, which holds them in trust for Silver Range Resources Ltd. Specifics concerning claim registration are tabulated below, while the locations of individual claims are shown on Figure 2.

<u>Claim Name</u>	<u>Grant Number</u>	<u>Expiry Date*</u>
Rose 1-60	YD58591-YD58650	March 13, 2015

*Expiry date includes 2011 work which has been filed for assessment credit but not yet accepted.

Access to the property was provided by a Bell 206B helicopter operated by Trans North Helicopters from the Faro airport, which is located approximately 20 km southeast of the property. The crew stayed at the Archer Cathro crew house in Faro.

The community of Faro is the local supply centre. The closest road access is a bush trail that extends 18 km northwest from Faro to within 2 km of the property.

HISTORY AND PREVIOUS WORK

The property area was mapped at 1:250,000 scale in 1987 by the Geological Survey of Canada (Gordey and Irwin, 1987) and again in 2001 when the Yukon Geological Survey mapped the Anvil District (NTS map sheet K/2, 3, 5, 6, 7, 11) at 1:100,000 scale (Pigage 2004).


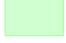


There are five known stratiform massive sulphide deposits in the Anvil district, with a total inventory of 120.1 million tonnes averaging 9.3% combined zinc and lead (Pigage, 1999). Three of the five deposits have been mined, the Faro, Vangora and Grum deposits. The Faro mine site is located 12.5 km to the east of the Rose property. Due to the close proximity to Anvil deposits, previous exploration activity in the area focused on lead-zinc. The area has received little exploration for other metals, including gold and silver.

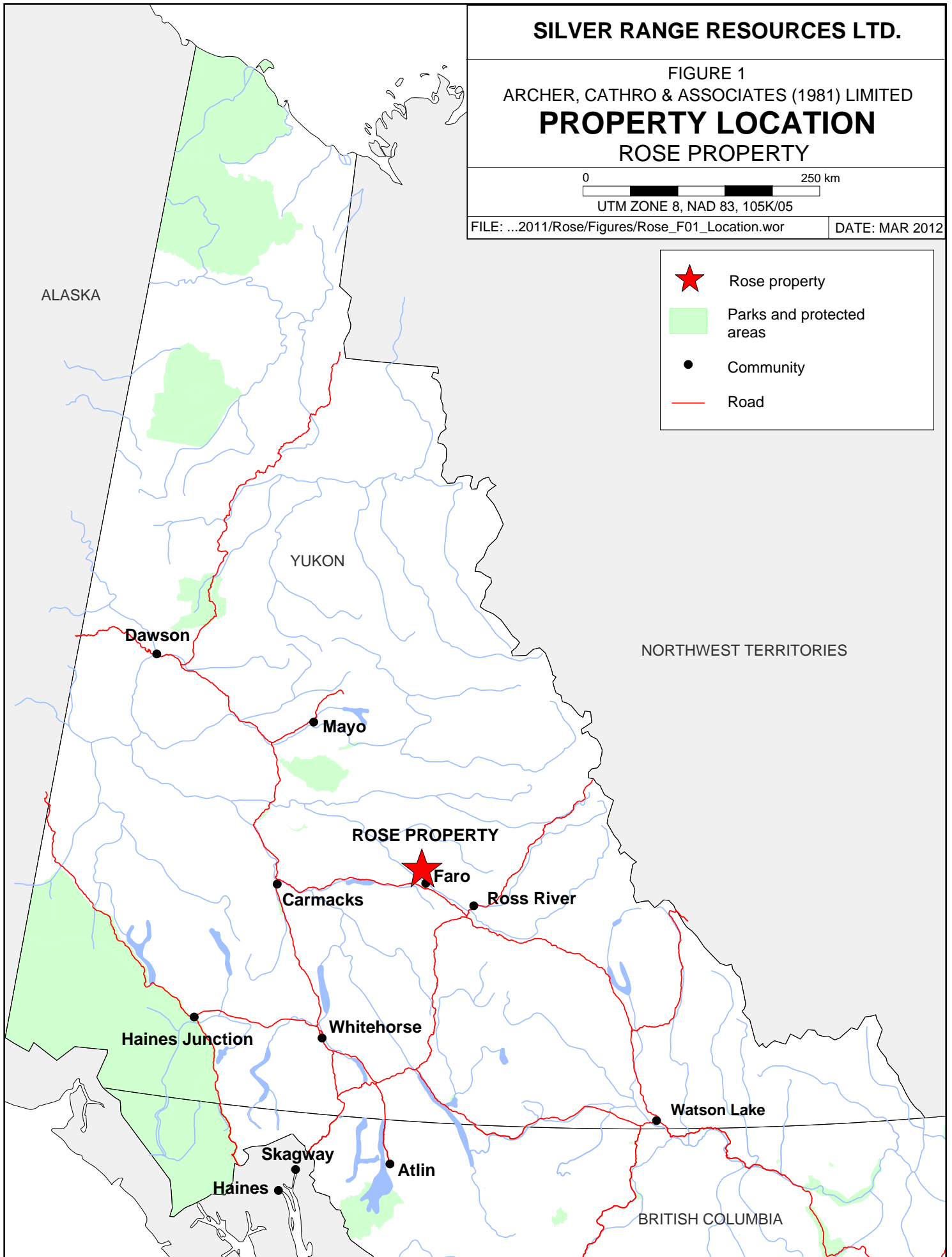
SILVER RANGE RESOURCES LTD.

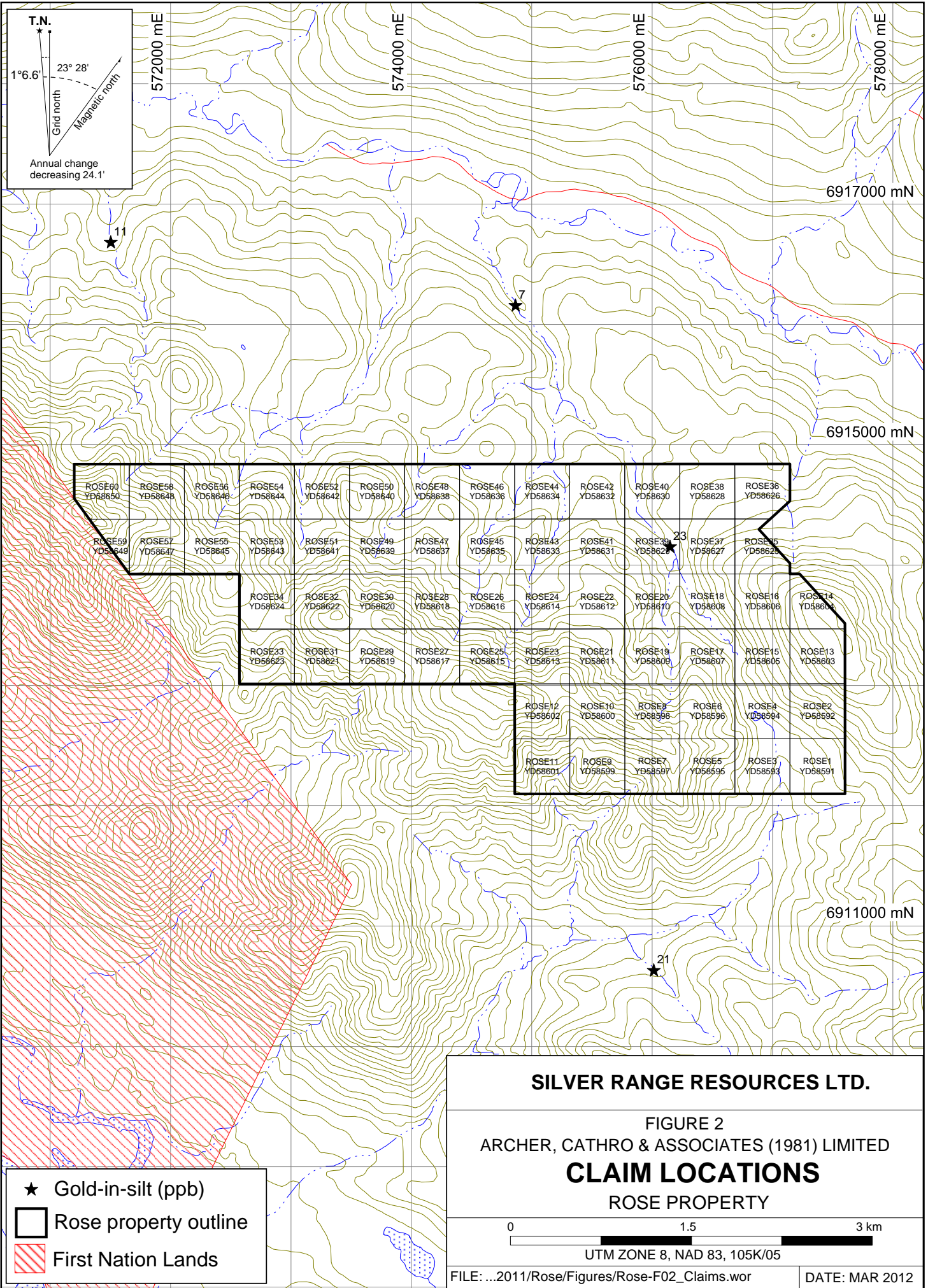
FIGURE 1
ARCHER, CATHRO & ASSOCIATES (1981) LIMITED
PROPERTY LOCATION
ROSE PROPERTY

0 250 km
UTM ZONE 8, NAD 83, 105K/05

FILE: ...2011/Rose/Figures/Rose_F01_Location.wor DATE: MAR 2012

-  Rose property
-  Parks and protected areas
-  Community
-  Road





In 1982, Cypress Anvil Mining Corporation conducted an exploration program on its Urn property, which overlapped part of the current Rose property and extended further to the southeast. The Urn property comprised 131 contiguous claims. Sampling revealed two or three barite beds that ranged from 5 to 12 m thick over a possible strike length of 3.7 km. The barite beds are hosted in the Devonian-Carboniferous age Mount Aho Group. An independent prospector currently holds two claims, which cover the centre of the barite occurrence with the remaining length extending northeast into the Rose property and southeast onto unstaked ground.

In 1988, Curragh Resources Inc. conducted an exploration program on its Northwest Faro project, located approximately 3 km northeast of the Rose property. That program consisted of regional mapping and one drill hole. The purpose of the drill hole was to test the boundary between the Vangora and Mt. Mye Formations. This transition zone is the same stratigraphic interval that contains the Anvil district deposits. No mineralization was intersected in the drill hole.

In 1998 the Geological Survey of Canada collected six stream sediment samples from creeks near the property (Figure 2). The highest gold value (23 ppb) came from a large creek draining the east side of the property. Strategic Metals Ltd. staked the Rose property in 2010 to cover this anomalous stream sediment sample.

Stream sediment samples collected by Strategic Metals in 2010 yielded some significant gold and copper anomalies. The best gold value was 40 ppb, while the highest copper value was 338 ppm. A large creek draining the eastern part of the property and a smaller creek to the west returned most of the strongly anomalous gold values. Soil samples collected in 2010 returned slightly elevated gold values, mostly on the eastern portion of the claim block and a cluster of moderately to strongly anomalous silver and antimony values. The peak soil values were 18 ppb gold, 135 ppm copper, 5 ppm silver (Phillips and Eaton, 2011).

In the summer 2011, ownership of the property was transferred from Strategic Metals to Silver Range Resources as part of a spin-out of assets.

GEOMORPHOLOGY AND CLIMATE

The Rose property lies immediately north of the Tintina Trench within the Anvil Range of the Pelly Mountains. Creeks draining the property flow into the Pelly River, which ultimately connects to the Pacific Ocean via the Yukon River.

Local elevations on the property range from 1200 to 1800 m above sea level. Topographic relief is steep along the southern side of the property, which lies above treeline. Elsewhere, relief is gentle. Outcrops are common above treeline, but are limited to creek banks at lower elevations. The property setting is sub alpine. Vegetation on lower slopes and valley floors comprises black spruce and alder with an understory of low shrubs, moss and grass. Permafrost is extensive due to the thick moss cover. Valley bottoms in the area are blanketed by varying thicknesses of glaciofluvial outwash and glacial till from the late Wisconsin, McConnell glaciation.

The climate in the Rose area is typical of northern continental regions with long, cold winters, truncated fall and spring seasons and short, mild summers. The property is mostly snow free from early May to late September.

GEOLOGY

The Rose property lies on the southwest flank of the Anvil district (Figure 3), where rocks of the Cordilleran Miogeocline are juxtaposed against the Yukon-Tanana Terrane, the easternmost of the accreted terranes in the Canadian Cordillera.

The Cordilleran Miogeocline is a predominantly sedimentary package of Precambrian to Middle Jurassic rocks that were deposited along the western margin of ancestral North America (Pigage, 1999). Rocks older than Jurassic are assumed to have been part of a west to southwest facing marine passive margin of ancestral North America, while sedimentary rocks younger than Jurassic represent a depositional linkage to Cordilleran deformation that resulted from exotic terranes being accreted onto North America (Pigage, 1999). Table 1 summarizes rock units that occur near the Rose property.

Table 1 – Regional Lithologies of the Rose Mountain Area (After Pigage, 2001)

Unit	Map name	Age	Description
Yukon-Tanana Terrane			
Nasina Assemblage	Pyq	Devonian-Mississippian	Medium to dark grey, locally gritty, muscovite meta-quartzite to quartzose schists containing bands of greywacke, gabbro and phyllite and some eclogite lenses.
Cordilleran Miogeocline			
Faro Peak Formation	TFP	Triassic	Resistant, massive, polymictic conglomerate, interbedded with: carbonaceous shale or siltstone; fine grained limestone; grey, green, red or black bedded chert; sandstone; and mafic greywacke and aphanitic basalt.
Anvil Range Group	PARG	Permian	Epidotized, locally hematitic, dark green, resistant, massive, poorly foliated basalt or brecciated basalt containing lesser grey, green, red and black bedded chert and pale green epivolcaniclastic sandstone or conglomerate.
	PZum	Permian	Mafic and ultramafic intrusive rocks including serpentinite, harzburgite, gabbro and diabase; locally extensively sheared.
Rose Mountain	CPRm	Carboniferous-	Pale green, tan-weathering, bedded

SILVER RANGE RESOURCES LTD.

FIGURE 3

ARCHER, CATHRO & ASSOCIATES (1981) LIMITED

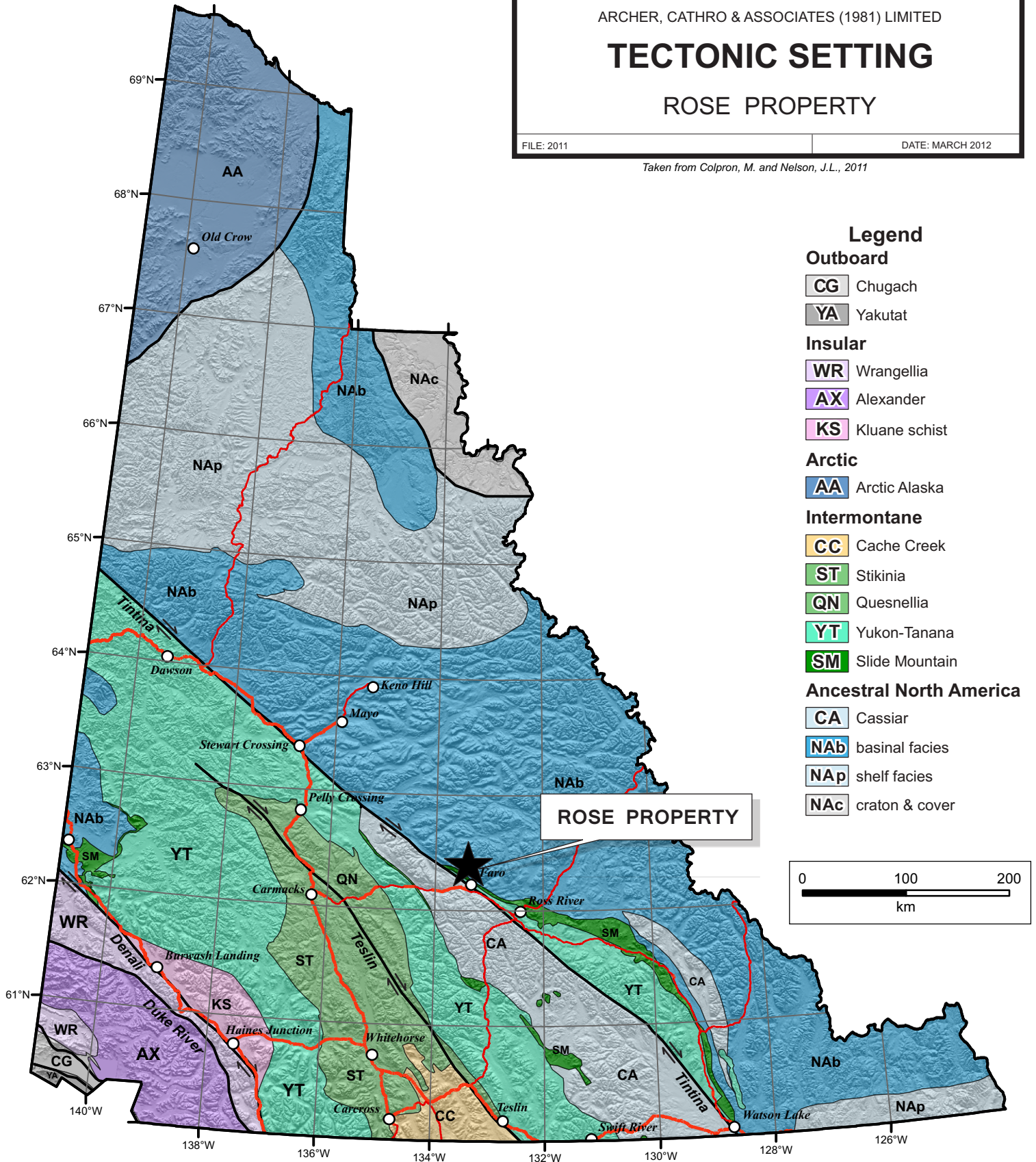
TECTONIC SETTING

ROSE PROPERTY

FILE: 2011

DATE: MARCH 2012

Taken from Colpron, M. and Nelson, J.L., 2011



Formation		Permian	phyllitic chert interbedded with lesser maroon chert and argillite, especially near the top of unit; also contains minor black bedded chert, black chert-pebble conglomerate, siltstone, limestone and argillite.
Mount Aho Group	DCMAb	Devonian-Carboniferous	Dark grey to black, noncalcareous, siliceous argillite and bedded chert with lesser grey siltstone, sandstone, chert pebble conglomerate, and rhythmically bedded limestone; also contains silvery cream, tan-weathering, bedded phyllitic chert with light grey barite beds.
	DCMAg	Devonian-Carboniferous	Pale green, noncalcerous argillite and bedded chert with lesser pale green shale chip and siltstone breccia, grey sandstone, and grey to green chert pebble conglomerate. locally contains maroon argillite and bedded chert, especially near the bottom and top of the unit, and silvery cream, tan-weathering, bedded phyllitic chert with light barite beds.
Swim Lakes Formation	SDSL	Silurian-Devonian	Dark grey to black argillite with lesser medium to pale grey siltstone and fine sandstone, medium grey limestone and basalt flows; locally contains middle Devonian limestone beds with 2-hole crinoid macrofossils
Menzie Creek Formation	OSMCb	Ordovician-Silurian	Undivided dark grey green, foliated basalt; includes massive and pillowed locally amygdaloidal flows and heterolithic or monolithic breccias with lesser limestone, argillite and tuff.
	OSMCg	Ordovician-Silurian	Dark green, locally magnetic, coarse to fine-grained, massive to foliated gabbro with lesser pyroxenite; subvolcanic dykes and sills to Menzie Creek basalts (OSMCb); enclosing phyllites locally display thin contact metamorphic aureoles
Vangorda Formation	COVp	Cambrian-Ordovician	Soft, silvery grey, calcarous phyllite with lesser medium crystalline grey marble, dark grey to black phyllite, and dark green gabbro sills and dykes; greenschist facies.

The Rose property is underlain by units of the Cordilleran Miogeocline, which range from Swim Lakes Formation in the northeast corner upward to Anvil Range Group in the southwest corner (Figure 4). The units are relatively homoclinal, striking northwest and dipping gently to the southwest. There are no intrusive rocks on the property and the closest known pluton is the Anvil Range Batholith, 4 km to the northeast. A high angle fault cuts east-northeasterly through the property. Unit contacts across this fault show about 500 m of apparent dextral offset; however, similar displacement of contacts could have resulted from predominately dip-slip movement with the east side down. This fault may be related to the Tintina Fault, a major transcurrent structure whose movement in late Cretaceous and early Tertiary resulted in 460 km of dextral offset. The Tintina Fault lies 6 km to the southwest of the property.

SOIL GEOCHEMISTRY

Geochemical sampling in 2011 comprised 147 soil samples collected at 100 m intervals along contour lines at three elevations (approximately 1400 m, 1525 m and 1615 m) on the western side of the property. Soil sample locations are shown on Figure 5.

A handheld GPS was used to control sample spacing. Samples were placed into individually pre-numbered Kraft paper bags. Wooden lath, wrapped in orange flagging was used to mark sample sites. Sample numbers are etched onto an aluminum tag and affixed to each lath.

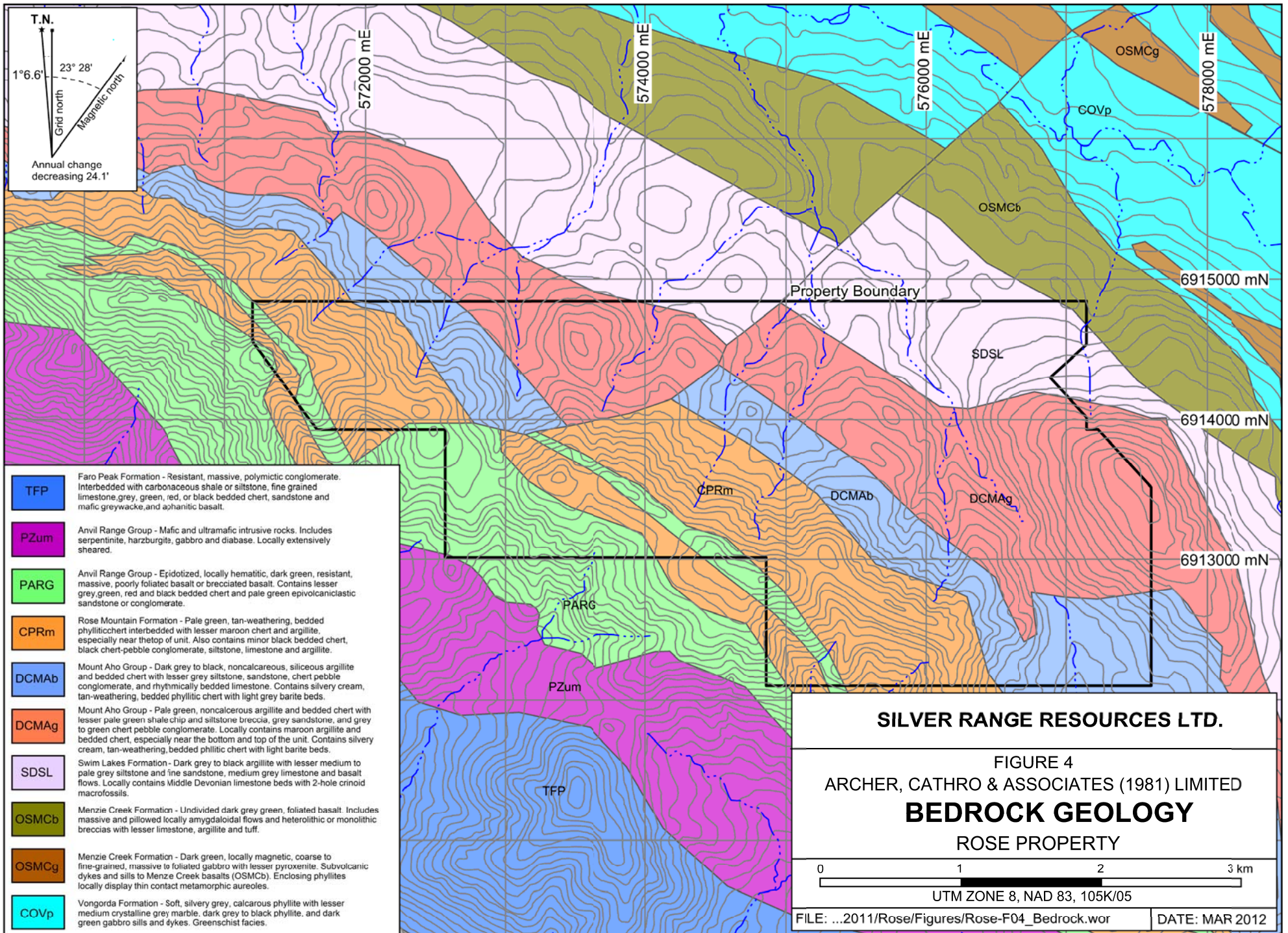
The soil samples were sent to ALS Minerals, where they were dried and then dry-sieved using a 180 micron screen. Splits of the fine fraction were digested with aqua regia before being analyzed for 51 elements by a combination of inductively coupled plasma with mass spectroscopy and atomic emission spectroscopy (ME-MS41). A 25 g split of the fine fraction was also taken and digested with aqua regia before being analyzed for gold by inductively coupled mass (Au-TL43). Certificates of Analysis can be found in Appendix III. Soil and stream sediment sample results from both the 2010 and 2011 sampling are illustrated on Figures 6 through 9.

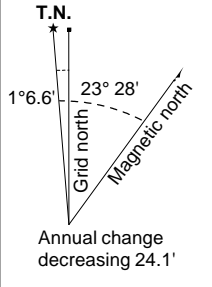
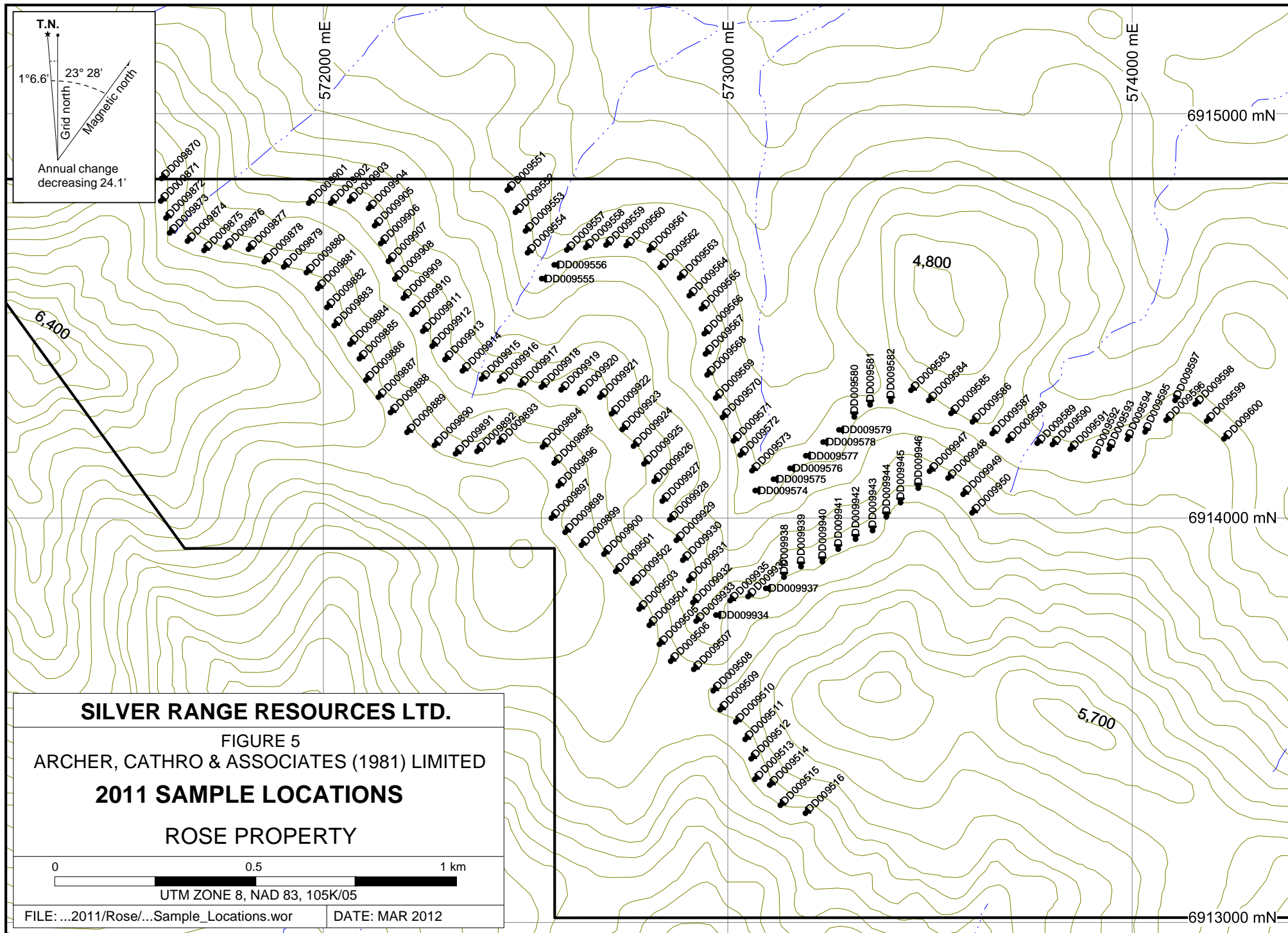
Samples collected on the northeastern slope of a ridge, located along the southwest edge of the property, produced peak values for gold (123 ppb), silver (8.87 g/t) and cobalt (118 ppm). Nearby samples also yielded weakly anomalous results. The peak copper value (295 ppm) came from a sample collected on the upper contour line, further to the northwest along this ridge.

DISCUSSION AND CONCLUSIONS

The 2011 exploration program was designed to extend the 2010 contour soil sample coverage to the west and to test for the source of anomalous stream sediment samples located near the property boundary.

Contour soil sampling identified a cluster of samples yielding anomalous gold values along a ridge near the southwestern property boundary. These anomalies could be related to the fault that cross-cuts the property. Values for gold, silver and copper tend to be higher on the upper contour lines. This may be due in part to poor quality soil samples caused by extensive permafrost found below tree line, lower on the hillside.





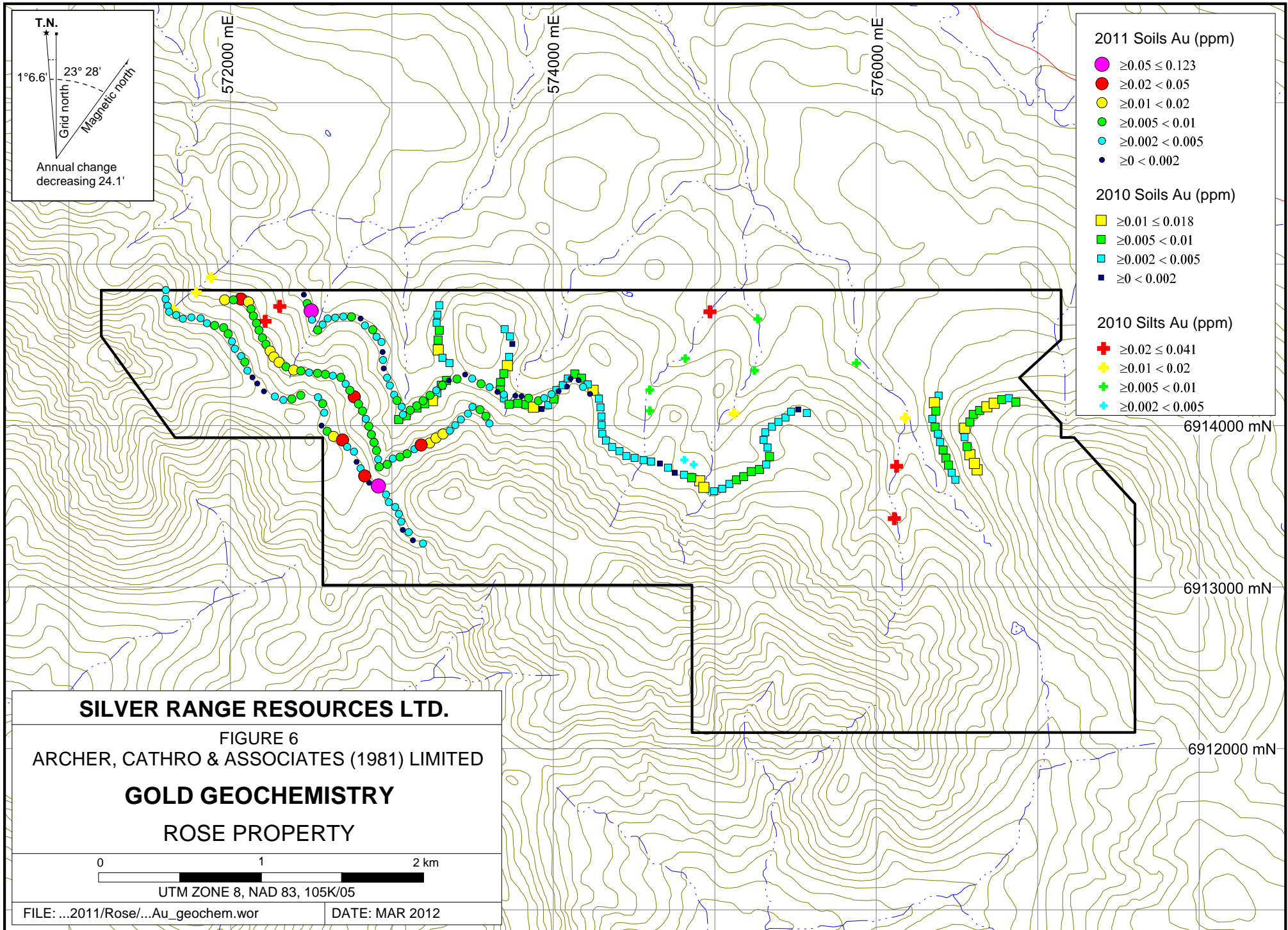
6,400

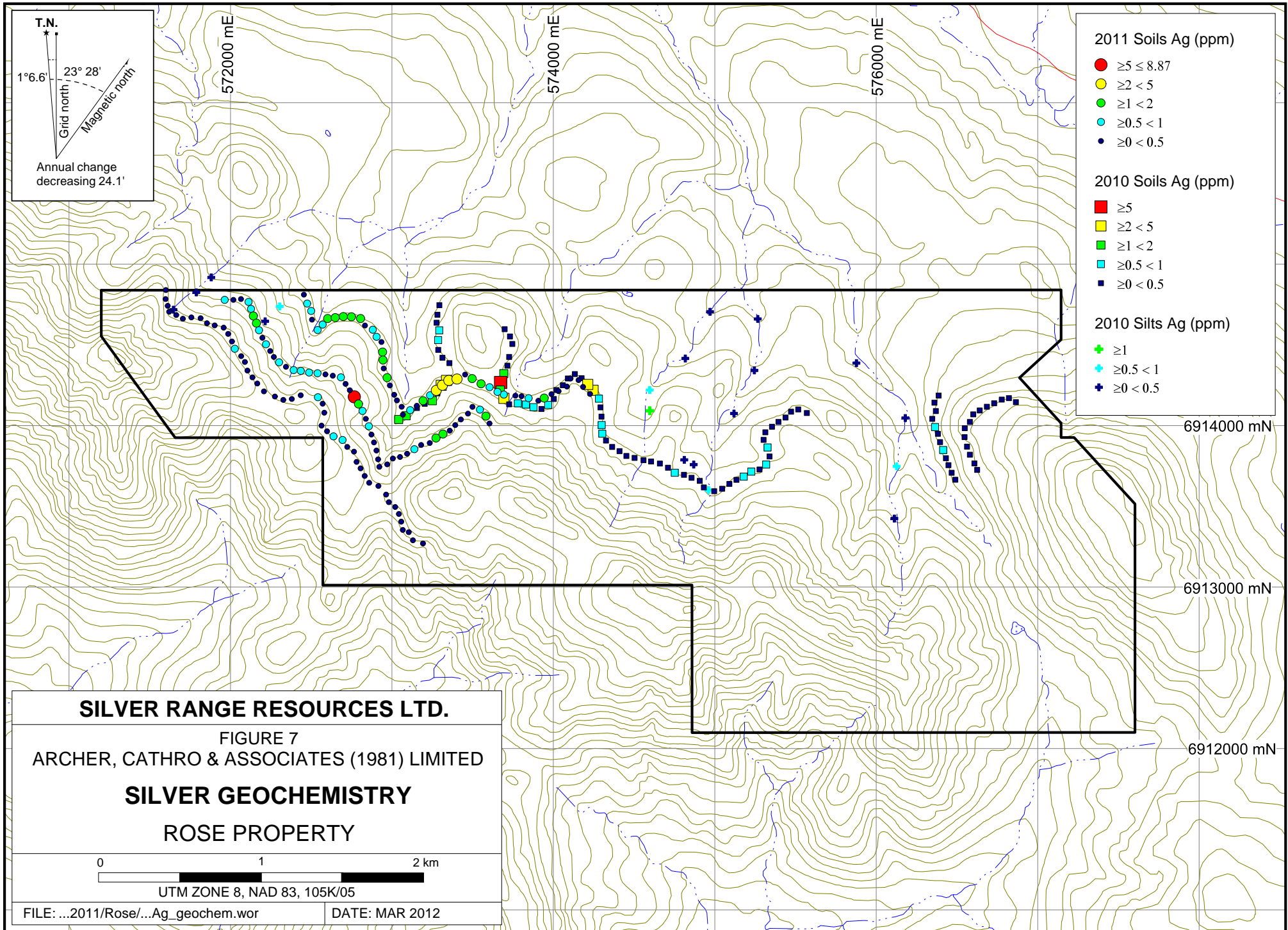
4,800

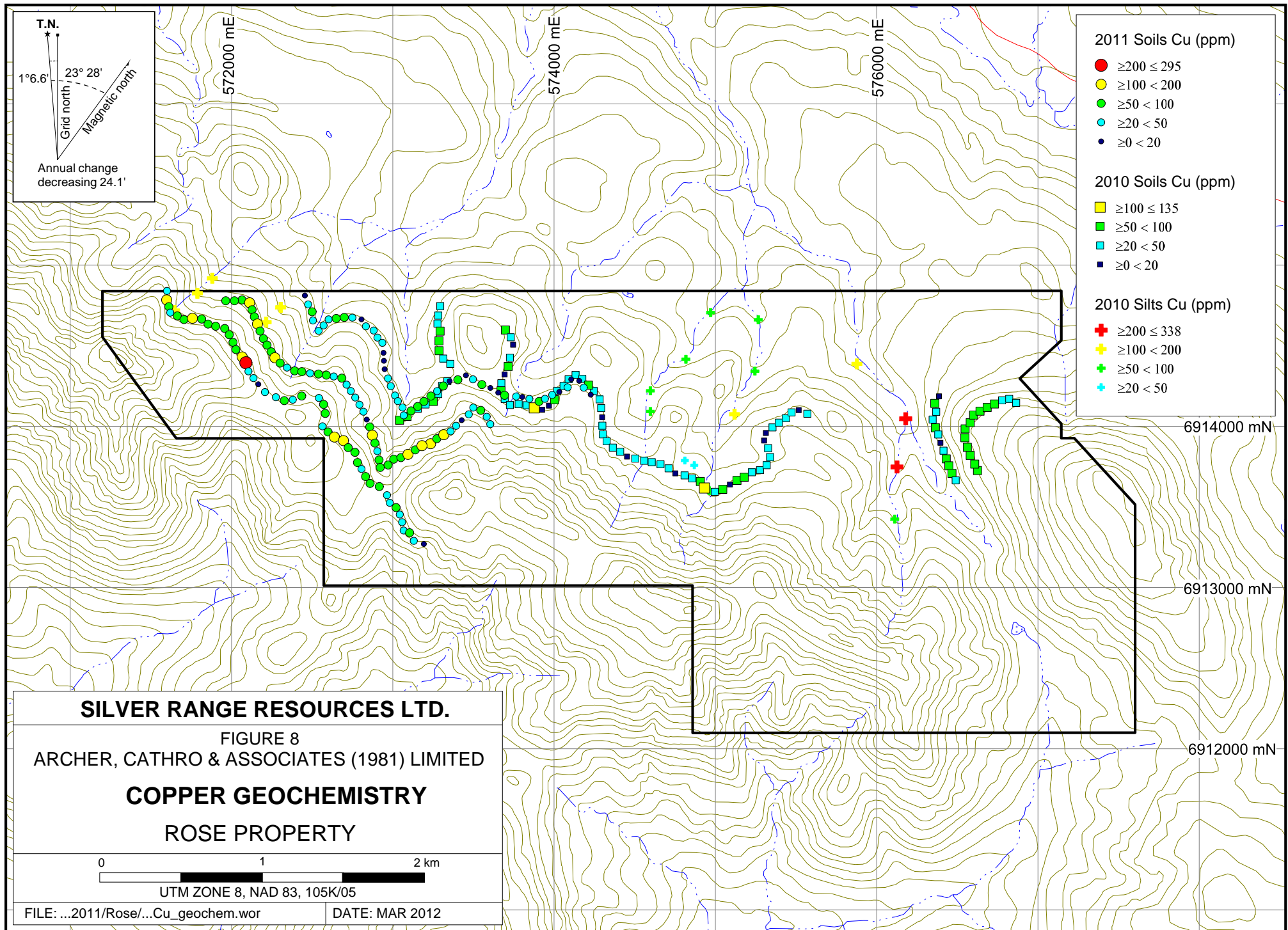
5,700

572000 mE 573000 mE 574000 mE 6915000 mN 6914000 mN 6913000 mN

DD009870 DD009871 DD009872 DD009873 DD009874 DD009875 DD009876 DD009877 DD009878 DD009879 DD009880 DD009881 DD009882 DD009883 DD009884 DD009885 DD009886 DD009887 DD009888 DD009889 DD009890 DD009891 DD009892 DD009893 DD009894 DD009895 DD009896 DD009897 DD009898 DD009899 DD009900 DD009901 DD009902 DD009903 DD009904 DD009905 DD009906 DD009907 DD009908 DD009909 DD009910 DD009911 DD009912 DD009913 DD009914 DD009915 DD009916 DD009917 DD009918 DD009919 DD009920 DD009921 DD009922 DD009923 DD009924 DD009925 DD009926 DD009927 DD009928 DD009929 DD009930 DD009931 DD009932 DD009933 DD009934 DD009935 DD009936 DD009937 DD009938 DD009939 DD009940 DD009941 DD009942 DD009943 DD009944 DD009945 DD009946 DD009947 DD009948 DD009949 DD009950 DD009951 DD009952 DD009953 DD009954 DD009955 DD009956 DD009957 DD009958 DD009959 DD009960 DD009961 DD009962 DD009963 DD009964 DD009965 DD009966 DD009967 DD009968 DD009969 DD009970 DD009971 DD009972 DD009973 DD009974 DD009975 DD009976 DD009977 DD009978 DD009979 DD009980 DD009981 DD009982 DD009983 DD009984 DD009985 DD009986 DD009987 DD009988 DD009989 DD009990 DD009991 DD009992 DD009993 DD009994 DD009995 DD009996 DD009997 DD009998 DD009999







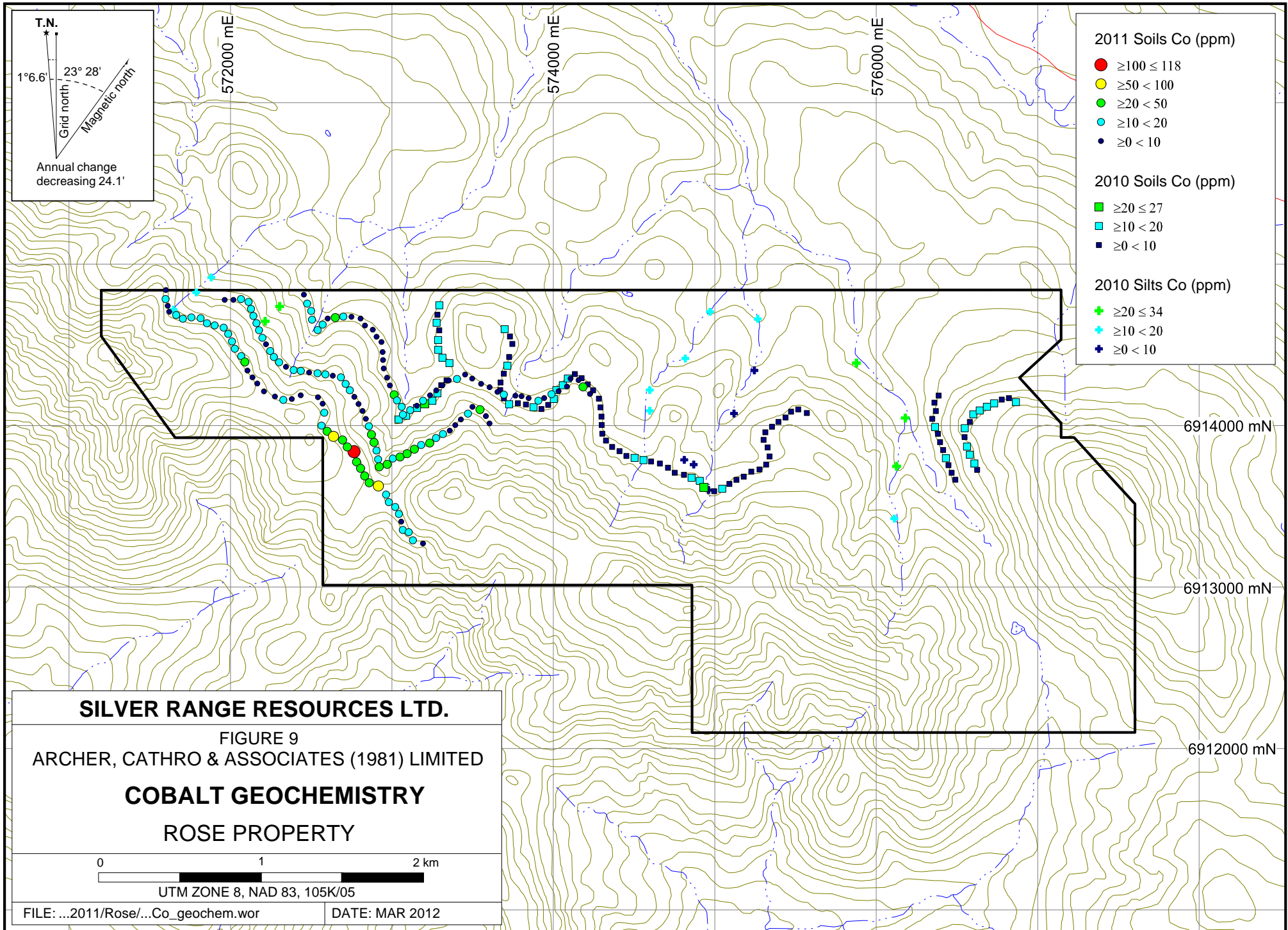
SILVER RANGE RESOURCES LTD.

FIGURE 8
 ARCHER, CATHRO & ASSOCIATES (1981) LIMITED
COPPER GEOCHEMISTRY
 ROSE PROPERTY

0 1 2 km

UTM ZONE 8, NAD 83, 105K/05

FILE: ...2011/Rose/...Cu_geochem.wor DATE: MAR 2012



Prospecting and mapping should be conducted around anomalous soil sample sites. Additional contour soil sampling should also be completed in the cirque located in the southeast corner of the property where two anomalous silt samples were collected in 2010.

Respectfully submitted,

ARCHER, CATHRO & ASSOCIATES (1981) LIMITED

Matthew R. Dumala, P.Eng.

REFERENCES

- Colpron, M. and Nelson, J.L.,
 2011 A Digital Atlas of Terranes for the Northern Cordillera. Accessed online from Yukon Geological Survey (www.geology.gov.yk.ca).
- Nelson, J.L. and Colpron, M.
 2007 Tectonics and metallogeny of the Canadian and Alaskan Cordillera, 1.8 Ga to present; *in* Mineral Deposits of Canada: A Synthesis of Major Deposit Types, District Metallogeny, the Evolution of Geological Provinces, and Exploration Methods; W.D. Goodfellow (ed.), Mineral Deposit Division, Geological Association of Canada, Special Publication 5, p. 755-791. Available at: http://gsc.nrcan.gc.ca/mindep/synth_prov/cord/pdf/nelson_colpron_cordillera_n_metallogeny.pdf
- Pigage, L.C.
 2004 Bedrock geology compilation of the Anvil District (parts of NTS 105K/2, 3, 5, 6, 7 and 11), central Yukon; Yukon Geological Survey, Bulletin 15, 103.
- Pigage, L.C.
 2001 Geological map of Anvil District (NTS 105K/2, 3, 5, 6, 7, 11), central Yukon (1:100 000 scale); Exploration and Geological Services Division, Yukon Region, Indian and Northern Affairs Canada, Open File 2001-31.
- Phillips, R. and Eaton, S.
 2011 Assessment Report Describing Stream Sediment and Soil Geochemical Sampling at the Rose Property; prepared for Strategic Metals Ltd.
- Pigage, L.C.
 1999 Preliminary geology of Rose Mountain, Anvil District, central Yukon (105K/05). *In*: Yukon Exploration and Geology 1998, C.F. Roots and D.S. Emond (eds.); Exploration and Geological Services Division, Yukon, Indian and Northern Affairs Canada, p. 91-103.

APPENDIX I
STATEMENTS OF QUALIFICATIONS

STATEMENT OF QUALIFICATIONS

I, Matthew R. Dumala, geological engineer, with business addresses in Vancouver, British Columbia and Whitehorse, Yukon Territory and residential address in Burnaby, British Columbia, do hereby certify that:

1. I graduated from the University of British Columbia in 2002 with a B.A.Sc in Geological Engineering, Option 1, mineral and fuel exploration.
2. I registered as a Professional Engineer in the Province of British Columbia on November 14, 2008 (License Number 32783).
3. From 2003 to present, I have been actively engaged in mineral exploration in the Yukon Territory.
4. I have personally participated in the fieldwork reported herein.

Matthew R. Dumala, P.Eng.

APPENDIX II
CERTIFICATES OF ANALYSIS



ALS Canada Ltd.
 2103 Dollarton Hwy
 North Vancouver BC V7H 0A7
 Phone: 604 984 0221 Fax: 604 984 0218 www.alsglobal.com

To: **SILVER RANGE RESOURCES LTD.**
C/ O ARCHER, CATHRO & ASSOCIATES (1981) LIMITED
1016- 510 W HASTINGS ST
VANCOUVER BC V6B 1L8

Page: 1
Finalized Date: 3- OCT- 2011
This copy reported on
11- NOV- 2011
Account: RANSIL

CERTIFICATE WH11170113

Project: Silver Range - Rose
 P.O. No.:
 This report is for 147 Soil samples submitted to our lab in Whitehorse, YT, Canada on 24- AUG- 2011.
 The following have access to data associated with this certificate:


DOUG EATON	SARAH EATON	JOAN MARIACHER
BRUCE YOUNGMAN		

SAMPLE PREPARATION	
ALS CODE	DESCRIPTION
WEI- 21	Received Sample Weight
LOG- 22	Sample login - Rcd w/o BarCode
SCR- 41	Screen to - 180um and save both

ANALYTICAL PROCEDURES		
ALS CODE	DESCRIPTION	INSTRUMENT
Au- TL43	Trace Level Au - 25g AR	ICP- MS
ME- MS41	51 anal. aqua regia ICPMS	

To: **SILVER RANGE RESOURCES LTD.**
ATTN: JOAN MARIACHER
C/ O ARCHER, CATHRO & ASSOCIATES (1981) LIMITED
1016- 510 W HASTINGS ST
VANCOUVER BC V6B 1L8

This is the Final Report and supersedes any preliminary report with this certificate number. Results apply to samples as submitted. All pages of this report have been checked and approved for release.

Signature: 
 Colin Ramshaw, Vancouver Laboratory Manager



ALS Canada Ltd.
 2103 Dollarton Hwy
 North Vancouver BC V7H 0A7
 Phone: 604 984 0221 Fax: 604 984 0218 www.alsglobal.com

To: SILVER RANGE RESOURCES LTD.
 C/ O ARCHER, CATHRO & ASSOCIATES (1981)
 LIMITED
 1016- 510 W HASTINGS ST
 VANCOUVER BC V6B 1L8

Page: 2 - A
 Total # Pages: 5 (A - D)
 Plus Appendix Pages
 Finalized Date: 3- OCT- 2011
 Account: RANSIL

Project: Silver Range - Rose

CERTIFICATE OF ANALYSIS WH11170113

Sample Description	Method Analyte Units LOR	WEI- 21	Au- TL43	ME- MS41	ME- MS41	ME- MS41	ME- MS41	ME- MS41	ME- MS41	ME- MS41	ME- MS41	ME- MS41	ME- MS41	ME- MS41	ME- MS41	
		Recvd Wt. kg	Au ppm	Ag ppm	Al %	As ppm	Au ppm	B ppm	Ba ppm	Be ppm	Bi ppm	Ca %	Cd ppm	Ce ppm	Co ppm	Cr ppm
DD009501		0.02	0.001	0.01	0.01	0.1	0.2	10	10	0.05	0.01	0.01	0.01	0.02	0.1	1
DD009501		0.22	0.002	0.12	2.93	6.3	<0.2	<10	2880	0.45	0.05	0.62	0.42	16.00	42.5	84
DD009502		0.22	0.003	0.10	2.90	11.9	<0.2	<10	750	0.76	0.05	1.10	0.67	18.05	118.0	1060
DD009503		0.20	0.001	0.10	2.44	6.6	<0.2	<10	340	0.49	0.12	0.37	0.26	22.7	23.4	87
DD009504		0.16	0.004	0.22	1.64	40.6	<0.2	<10	430	0.41	0.20	0.68	0.37	20.5	20.3	60
DD009505		0.18	0.021	0.42	1.43	109.0	<0.2	<10	670	0.40	0.09	0.67	0.23	16.55	29.6	50
DD009506		0.20	0.001	0.19	1.53	24.7	<0.2	<10	730	0.39	0.13	0.44	0.27	15.95	36.1	136
DD009507		0.22	0.123	0.44	1.54	235	<0.2	<10	1140	0.44	0.06	1.51	0.41	9.40	95.0	167
DD009508		0.20	0.002	0.12	1.43	9.4	<0.2	<10	310	0.39	0.20	0.24	0.13	24.3	12.3	75
DD009509		0.20	0.003	0.07	1.32	9.2	<0.2	<10	290	0.34	0.15	0.23	0.25	32.0	13.2	46
DD009510		0.22	0.002	0.37	1.90	13.0	<0.2	<10	940	0.64	0.19	0.22	0.15	40.9	16.6	49
DD009511		0.18	0.004	0.22	1.16	10.4	<0.2	<10	520	0.40	0.22	0.26	0.28	22.6	11.8	34
DD009512		0.14	0.003	0.19	1.34	10.7	<0.2	<10	660	0.49	0.18	0.25	0.09	23.1	8.9	30
DD009513		0.18	0.001	0.06	1.81	7.2	<0.2	<10	400	0.34	0.16	0.57	0.22	21.5	16.6	54
DD009514		0.24	0.004	0.21	1.97	22.5	<0.2	<10	800	0.44	0.13	0.91	0.23	21.0	19.4	61
DD009515		0.22	0.001	0.06	1.86	4.1	<0.2	<10	620	0.29	0.09	0.66	0.18	15.65	17.8	50
DD009516		0.20	0.002	0.14	0.61	6.1	<0.2	<10	480	0.25	0.09	0.11	0.08	14.60	4.0	11
DD009551		0.24	<0.001	0.18	0.51	5.3	<0.2	<10	70	0.06	0.13	0.03	0.07	12.50	3.2	16
DD009552		0.30	0.005	0.76	0.67	11.6	<0.2	<10	510	0.24	0.21	0.09	0.29	28.5	12.4	18
DD009553		0.26	0.067	0.71	1.32	12.0	<0.2	<10	1250	0.43	0.40	0.37	1.08	35.4	17.3	41
DD009554		0.24	0.003	0.28	1.10	9.2	<0.2	<10	1040	0.38	0.21	0.68	0.71	29.4	11.3	32
DD009555		0.30	0.005	0.64	1.06	10.6	<0.2	<10	1280	0.30	0.37	0.16	0.57	36.4	14.9	27
DD009556		0.32	0.004	0.89	1.00	7.0	<0.2	<10	990	0.35	0.29	0.21	0.39	38.4	12.9	22
DD009557		0.18	0.002	1.19	0.71	7.7	<0.2	<10	290	0.20	0.21	0.11	0.85	30.7	8.4	22
DD009558		0.38	0.002	1.40	0.73	17.4	<0.2	<10	190	0.49	0.32	0.22	3.22	50.2	24.6	18
DD009559		0.30	0.004	1.57	0.42	24.5	<0.2	<10	270	0.46	0.44	0.12	1.60	41.5	18.5	15
DD009560		0.28	0.005	1.92	0.57	23.0	<0.2	<10	280	0.31	0.28	0.13	1.08	28.0	6.3	22
DD009561		0.26	0.001	1.18	0.80	5.7	<0.2	<10	220	0.16	0.18	0.06	0.25	19.15	3.4	22
DD009562		0.26	0.002	0.37	0.79	8.4	<0.2	<10	350	0.29	0.18	0.08	0.68	18.70	4.7	13
DD009563		0.36	0.005	0.78	0.31	13.9	<0.2	<10	150	0.21	0.22	0.07	0.54	25.9	7.4	6
DD009564		0.30	0.002	0.55	1.00	6.9	<0.2	<10	440	0.34	0.14	0.23	0.45	24.0	6.0	25
DD009565		0.40	0.003	0.45	1.01	9.1	<0.2	<10	370	0.27	0.15	0.37	0.62	31.8	8.1	37
DD009566		0.26	0.001	1.08	0.39	4.1	<0.2	<10	140	0.07	0.07	0.09	0.28	7.69	2.2	15
DD009567		0.20	0.002	1.03	0.58	2.5	<0.2	<10	180	0.09	0.08	0.28	0.51	12.10	5.1	22
DD009568		0.24	0.001	0.15	0.30	2.9	<0.2	<10	70	0.10	0.10	0.04	0.11	11.75	1.9	6
DD009569		0.26	0.003	1.32	0.31	12.8	<0.2	<10	110	0.19	0.18	0.03	0.67	25.2	3.1	6
DD009570		0.22	0.002	0.43	0.70	5.7	<0.2	<10	570	0.19	0.13	0.38	0.56	14.20	7.4	30
DD009571		0.32	0.003	0.13	1.43	11.9	<0.2	<10	520	0.42	0.13	0.27	0.38	26.2	21.2	117
DD009572		0.34	0.006	0.07	1.07	9.9	<0.2	<10	360	0.24	0.11	0.40	0.59	19.00	11.9	103
DD009573		0.34	0.003	0.37	1.08	10.4	<0.2	<10	860	0.31	0.12	0.43	0.69	16.35	10.3	54
DD009574		0.28	0.003	0.48	0.89	29.1	<0.2	<10	340	0.35	0.26	0.14	0.44	30.6	14.1	42

Comments: ***Corrected copy with Project name changed from Silver Range - Keg to Silver Range - Rose***

***** See Appendix Page for comments regarding this certificate *****



ALS Canada Ltd.
 2103 Dollarton Hwy
 North Vancouver BC V7H 0A7
 Phone: 604 984 0221 Fax: 604 984 0218 www.alsglobal.com

To: SILVER RANGE RESOURCES LTD.
 C/ O ARCHER, CATHRO & ASSOCIATES (1981)
 LIMITED
 1016- 510 W HASTINGS ST
 VANCOUVER BC V6B 1L8

Page: 2 - B
 Total # Pages: 5 (A - D)
 Plus Appendix Pages
 Finalized Date: 3- OCT- 2011
 Account: RANSIL

Project: Silver Range - Rose

CERTIFICATE OF ANALYSIS WH11170113

Sample Description	Method Analyte Units LOR	ME- MS41	ME- MS41	ME- MS41	ME- MS41	ME- MS41	ME- MS41	ME- MS41	ME- MS41	ME- MS41	ME- MS41	ME- MS41	ME- MS41	ME- MS41	ME- MS41	
		Cs ppm	Cu ppm	Fe %	Ga ppm	Ge ppm	Hf ppm	Hg ppm	In ppm	K %	La ppm	Li ppm	Mg %	Mn ppm	Mo ppm	Na %
DD009501		4.47	89.7	6.32	11.35	0.09	0.13	0.48	0.051	0.04	6.0	21.6	2.02	1370	0.52	0.01
DD009502		3.22	80.0	7.57	11.70	0.13	0.10	0.18	0.045	0.02	8.6	34.2	3.26	2570	3.94	0.01
DD009503		2.16	57.2	4.83	8.27	0.07	0.07	0.14	0.068	0.03	10.4	18.3	1.40	1090	0.75	<0.01
DD009504		1.98	35.1	4.13	5.43	0.06	0.04	0.09	0.036	0.07	11.1	17.2	0.70	1020	1.10	0.01
DD009505		1.12	81.1	6.66	4.69	0.09	0.06	0.14	0.051	0.06	9.0	12.1	0.65	1070	0.88	0.01
DD009506		1.09	51.4	6.39	5.22	0.07	0.05	0.06	0.052	0.05	6.8	12.0	1.05	1520	0.99	0.01
DD009507		3.62	95.5	7.15	3.68	0.08	0.07	1.60	0.051	0.08	4.2	15.0	1.46	2620	0.84	0.01
DD009508		1.92	20.8	2.77	5.49	0.05	0.02	0.07	0.024	0.06	13.4	14.9	0.69	377	1.35	<0.01
DD009509		1.65	29.8	2.63	4.20	0.06	0.03	0.03	0.020	0.06	14.3	13.3	0.76	491	1.27	0.01
DD009510		3.62	52.9	3.76	5.70	0.08	0.07	0.10	0.038	0.05	21.5	18.2	0.79	1170	1.62	<0.01
DD009511		1.93	26.0	2.88	5.11	0.05	<0.02	0.09	0.028	0.07	12.9	12.2	0.39	1660	2.00	<0.01
DD009512		2.16	27.5	2.42	4.87	0.05	0.02	0.09	0.024	0.05	15.2	13.1	0.46	680	1.92	0.01
DD009513		6.80	42.2	3.29	6.47	0.06	0.05	0.05	0.026	0.08	10.0	19.9	1.02	895	1.01	0.01
DD009514		6.06	54.6	3.94	7.06	0.08	0.07	0.06	0.035	0.07	12.2	22.1	1.29	1700	0.95	0.01
DD009515		4.83	47.0	3.41	7.14	0.06	0.08	0.04	0.026	0.05	6.5	20.0	1.30	1530	0.74	0.02
DD009516		1.36	11.6	1.15	2.30	<0.05	<0.02	0.06	0.012	0.04	7.5	3.4	0.12	349	1.54	0.01
DD009551		0.80	8.9	1.31	3.61	<0.05	<0.02	0.01	0.009	0.03	6.6	3.1	0.14	183	1.12	0.01
DD009552		0.81	42.7	2.54	2.40	0.05	0.02	0.03	0.023	0.05	14.3	8.4	0.21	481	2.20	0.01
DD009553		1.56	52.9	3.60	4.19	0.08	0.05	0.04	0.029	0.07	17.6	24.6	0.67	474	2.80	0.01
DD009554		1.11	47.3	2.62	3.72	0.11	0.04	0.04	0.027	0.05	15.0	17.9	0.46	547	1.73	0.04
DD009555		1.52	40.9	3.08	3.52	0.11	0.02	0.13	0.037	0.07	17.6	12.2	0.25	832	2.75	0.03
DD009556		1.59	34.5	2.36	3.59	0.11	0.05	0.11	0.033	0.06	18.3	15.1	0.23	481	2.02	0.03
DD009557		1.38	24.4	2.23	3.52	0.11	<0.02	0.10	0.024	0.07	15.3	9.8	0.18	287	2.99	0.02
DD009558		1.09	75.9	3.98	2.77	0.12	<0.02	0.05	0.032	0.06	24.5	9.4	0.17	1460	7.80	0.02
DD009559		0.71	86.3	3.80	1.91	0.12	<0.02	0.05	0.036	0.10	22.2	3.2	0.06	1600	13.45	0.02
DD009560		0.56	49.5	2.75	2.47	0.10	<0.02	0.07	0.032	0.12	14.6	6.0	0.17	292	16.35	0.02
DD009561		1.07	15.4	1.36	4.57	0.08	<0.02	0.10	0.015	0.04	9.3	3.4	0.19	137	2.14	0.02
DD009562		0.75	28.5	1.87	2.78	0.09	<0.02	0.06	0.019	0.07	8.6	6.0	0.14	177	5.17	0.03
DD009563		0.57	41.1	1.66	1.48	0.10	<0.02	0.07	0.021	0.07	13.6	1.4	0.03	285	7.74	0.02
DD009564		1.07	31.1	1.67	3.53	0.09	<0.02	0.07	0.019	0.05	10.9	7.7	0.33	299	1.24	0.04
DD009565		0.93	31.4	2.29	3.83	0.12	<0.02	0.04	0.024	0.06	14.8	10.4	0.51	272	1.93	0.03
DD009566		0.54	11.1	0.80	1.84	0.08	<0.02	0.08	0.009	0.04	3.9	1.9	0.10	66	1.67	0.04
DD009567		1.01	14.6	0.93	2.36	0.07	<0.02	0.06	0.010	0.05	5.9	4.1	0.22	323	1.00	0.04
DD009568		0.64	11.8	0.89	2.04	0.07	<0.02	0.01	0.009	0.03	5.9	0.6	0.02	47	1.02	0.04
DD009569		0.65	38.7	1.68	1.54	0.11	<0.02	0.07	0.025	0.07	14.0	1.7	0.02	45	23.8	0.03
DD009570		1.02	24.9	1.69	2.87	0.09	<0.02	0.04	0.018	0.05	7.3	5.8	0.26	303	1.86	0.03
DD009571		1.59	34.9	3.28	5.09	0.11	0.03	0.04	0.030	0.05	11.3	14.8	1.26	706	0.95	0.03
DD009572		1.01	20.5	2.50	4.35	0.09	<0.02	0.03	0.021	0.05	8.6	11.1	0.81	282	0.93	0.03
DD009573		1.38	32.2	2.36	3.92	0.10	0.02	0.04	0.023	0.04	8.0	8.6	0.60	350	1.12	0.04
DD009574		1.78	44.5	3.56	3.49	0.10	<0.02	0.03	0.027	0.08	15.1	6.2	0.31	563	5.59	0.02

Comments: ***Corrected copy with Project name changed from Silver Range - Keg to Silver Range - Rose***

***** See Appendix Page for comments regarding this certificate *****



ALS Canada Ltd.
 2103 Dollarton Hwy
 North Vancouver BC V7H 0A7
 Phone: 604 984 0221 Fax: 604 984 0218 www.alsglobal.com

To: SILVER RANGE RESOURCES LTD.
 C/ O ARCHER, CATHRO & ASSOCIATES (1981)
 LIMITED
 1016- 510 W HASTINGS ST
 VANCOUVER BC V6B 1L8

Page: 2 - C
 Total # Pages: 5 (A - D)
 Plus Appendix Pages
 Finalized Date: 3- OCT- 2011
 Account: RANSIL

Project: Silver Range - Rose

CERTIFICATE OF ANALYSIS WH11170113

Sample Description	Method Analyte Units LOR	ME- MS41	ME- MS41	ME- MS41	ME- MS41	ME- MS41	ME- MS41	ME- MS41	ME- MS41	ME- MS41	ME- MS41	ME- MS41	ME- MS41	ME- MS41	ME- MS41	
		Nb ppm	Ni ppm	P ppm	Pb ppm	Rb ppm	Re ppm	S %	Sb ppm	Sc ppm	Se ppm	Sn ppm	Sr ppm	Ta ppm	Te ppm	Th ppm
DD009501		0.14	64.3	680	3.9	3.4	0.001	<0.01	0.65	23.1	0.9	0.4	26.3	0.01	0.01	0.8
DD009502		0.14	1655	530	7.0	2.4	0.001	0.11	0.93	29.2	1.2	0.4	39.0	0.01	0.03	1.0
DD009503		0.52	73.4	990	5.8	5.3	0.001	0.04	0.80	18.7	1.0	0.4	27.2	0.01	0.02	1.1
DD009504		0.77	46.3	1300	10.1	10.3	<0.001	0.08	1.20	11.1	1.1	0.4	56.4	0.01	0.03	0.8
DD009505		0.48	64.0	750	6.9	4.5	0.001	0.08	2.56	24.5	1.7	0.3	35.0	0.01	0.04	1.3
DD009506		0.44	88.1	1000	6.8	7.4	<0.001	0.07	1.68	23.0	0.8	0.3	36.5	0.01	0.03	1.0
DD009507		0.19	206	440	12.4	4.5	<0.001	0.06	10.25	42.3	1.0	0.2	226	0.01	0.06	0.7
DD009508		0.74	57.7	790	11.6	8.7	<0.001	0.02	0.62	2.9	0.6	0.5	17.1	<0.01	0.03	0.5
DD009509		1.00	83.0	570	8.0	6.8	<0.001	<0.01	0.66	4.2	0.6	0.4	15.8	<0.01	0.02	2.8
DD009510		0.65	37.6	890	12.3	7.9	<0.001	0.02	1.19	9.1	1.0	0.4	21.9	0.01	0.03	1.7
DD009511		0.52	22.0	900	13.7	9.5	<0.001	0.04	0.77	2.1	0.6	0.5	21.4	<0.01	0.03	0.2
DD009512		0.49	20.7	750	13.9	8.6	<0.001	0.03	0.68	2.1	0.7	0.4	22.3	<0.01	0.02	0.4
DD009513		0.78	35.0	660	8.6	9.5	<0.001	0.04	0.44	5.5	0.7	0.4	25.4	0.01	0.02	0.9
DD009514		0.66	38.5	870	7.8	12.6	<0.001	0.04	0.74	10.6	1.0	0.4	47.9	0.01	0.03	1.0
DD009515		0.57	27.6	780	4.1	7.3	0.001	0.05	0.29	6.9	0.7	0.3	25.3	0.01	0.02	0.5
DD009516		0.26	7.8	560	8.4	4.5	<0.001	0.02	0.52	0.7	0.4	0.2	13.7	<0.01	0.01	0.2
DD009551		0.27	11.0	440	6.2	4.9	<0.001	<0.01	0.43	0.7	0.4	0.3	6.1	<0.01	0.01	<0.2
DD009552		0.23	33.3	770	12.4	5.4	0.001	0.06	1.52	1.2	1.3	0.2	19.1	<0.01	0.06	0.7
DD009553		0.87	58.3	1050	15.9	6.8	0.001	0.03	2.05	3.9	1.3	0.3	33.2	0.01	0.06	3.5
DD009554		0.59	43.9	780	11.9	7.2	<0.001	0.05	1.20	2.8	1.2	0.3	41.4	<0.01	0.07	1.7
DD009555		0.37	34.5	1140	23.7	9.4	0.001	0.06	1.30	2.4	0.8	0.3	17.5	<0.01	0.11	1.5
DD009556		0.36	33.2	1010	18.7	12.5	0.001	0.05	0.97	2.0	1.0	0.3	19.4	<0.01	0.08	1.1
DD009557		0.32	28.9	1050	13.5	9.1	<0.001	0.07	1.28	0.7	0.8	0.3	15.1	<0.01	0.07	0.3
DD009558		0.21	75.8	1740	23.8	5.5	0.003	0.05	4.66	2.4	3.2	0.3	49.3	<0.01	0.17	3.8
DD009559		0.12	54.6	1480	29.7	6.5	0.002	0.18	10.90	2.0	5.9	0.3	90.1	<0.01	0.23	3.4
DD009560		0.25	34.8	1450	17.4	6.6	<0.001	0.23	9.17	1.2	4.0	0.3	111.0	<0.01	0.14	1.3
DD009561		0.12	13.0	720	7.7	7.6	<0.001	0.04	0.68	0.2	0.5	0.4	10.8	<0.01	0.06	<0.2
DD009562		0.19	20.2	790	11.6	7.5	<0.001	0.08	1.89	0.4	0.9	0.2	21.9	<0.01	0.06	0.2
DD009563		0.11	20.8	810	13.8	5.4	<0.001	0.07	5.96	0.8	1.7	0.2	30.7	<0.01	0.11	0.7
DD009564		0.40	30.4	860	10.2	7.0	<0.001	0.04	0.81	1.4	0.6	0.3	23.0	<0.01	0.03	0.2
DD009565		0.71	37.0	940	8.6	6.8	0.002	0.03	1.38	2.5	0.9	0.4	30.1	<0.01	0.05	1.1
DD009566		<0.05	10.2	570	3.5	3.8	<0.001	0.04	0.85	0.1	0.8	0.2	14.1	<0.01	0.03	<0.2
DD009567		0.29	17.0	720	4.7	5.6	0.001	0.06	0.41	0.8	0.5	0.2	24.6	<0.01	0.02	<0.2
DD009568		0.13	6.4	400	5.1	4.1	<0.001	0.03	0.59	0.2	0.2	0.2	8.4	<0.01	0.03	<0.2
DD009569		0.08	36.8	870	18.5	5.4	<0.001	0.13	6.12	0.6	3.1	0.2	89.7	<0.01	0.09	0.7
DD009570		0.25	26.8	690	7.4	6.2	0.001	0.04	0.85	0.9	0.6	0.3	30.2	<0.01	0.05	<0.2
DD009571		0.77	138.0	730	6.3	7.4	<0.001	0.03	0.94	7.9	1.1	0.4	20.8	<0.01	0.04	2.0
DD009572		0.60	70.0	630	4.7	8.8	<0.001	0.03	0.78	3.1	0.3	0.4	21.5	<0.01	0.04	0.7
DD009573		0.47	52.3	1070	6.9	5.8	<0.001	0.07	0.99	3.5	0.8	0.3	30.6	<0.01	0.02	0.6
DD009574		0.25	46.2	1250	16.9	7.7	0.001	0.06	2.72	1.7	1.5	0.3	28.8	<0.01	0.09	0.6

Comments: ***Corrected copy with Project name changed from Silver Range - Keg to Silver Range - Rose***

***** See Appendix Page for comments regarding this certificate *****



ALS Canada Ltd.
 2103 Dollarton Hwy
 North Vancouver BC V7H 0A7
 Phone: 604 984 0221 Fax: 604 984 0218 www.alsglobal.com

To: SILVER RANGE RESOURCES LTD.
 C/ O ARCHER, CATHRO & ASSOCIATES (1981)
 LIMITED
 1016- 510 W HASTINGS ST
 VANCOUVER BC V6B 1L8

Page: 2 - D
 Total # Pages: 5 (A - D)
 Plus Appendix Pages
 Finalized Date: 3- OCT- 2011
 Account: RANSIL

Project: Silver Range - Rose

CERTIFICATE OF ANALYSIS WH11170113

Sample Description	Method Analyte Units LOR	ME- MS41	ME- MS41	ME- MS41	ME- MS41	ME- MS41	ME- MS41	ME- MS41	ME- MS41
		Ti %	Ti ppm	U ppm	V ppm	W ppm	Y ppm	Zn ppm	Zr ppm
		0.005	0.02	0.05	1	0.05	0.05	2	0.5
DD009501		0.007	0.13	0.29	165	0.05	21.3	89	2.1
DD009502		0.005	0.17	0.20	140	0.06	26.0	93	1.2
DD009503		0.018	0.10	0.57	120	0.12	21.6	68	0.6
DD009504		0.025	0.11	0.74	82	0.21	16.10	93	0.5
DD009505		0.012	0.14	0.57	104	0.12	20.3	81	0.7
DD009506		0.013	0.12	0.44	132	0.11	13.60	84	0.6
DD009507		0.005	0.23	0.17	121	0.06	18.85	125	0.9
DD009508		0.035	0.13	0.79	59	0.33	5.32	53	<0.5
DD009509		0.065	0.11	0.82	52	0.38	7.57	65	0.8
DD009510		0.025	0.15	1.41	74	0.46	20.1	62	0.8
DD009511		0.038	0.14	0.82	60	0.52	5.52	60	<0.5
DD009512		0.025	0.18	0.85	46	0.26	8.48	54	<0.5
DD009513		0.104	0.11	0.51	81	0.18	8.45	56	1.5
DD009514		0.091	0.09	0.80	99	0.17	18.65	63	1.7
DD009515		0.141	0.07	0.41	91	0.12	12.00	52	2.8
DD009516		0.019	0.12	0.49	20	0.14	2.74	25	<0.5
DD009551		0.022	0.05	0.29	28	0.13	1.11	27	<0.5
DD009552		0.019	0.19	0.70	30	0.07	4.15	95	<0.5
DD009553		0.045	0.14	1.20	41	0.44	8.15	171	1.2
DD009554		0.025	0.19	0.80	30	0.20	9.09	114	0.9
DD009555		0.014	0.23	1.33	32	0.16	6.15	132	0.7
DD009556		0.010	0.17	1.23	28	0.10	6.22	108	<0.5
DD009557		0.012	0.11	0.94	32	0.12	2.93	112	<0.5
DD009558		0.009	0.17	2.56	37	0.23	10.15	351	0.6
DD009559		0.005	0.35	2.64	44	0.06	7.48	244	0.6
DD009560		0.011	0.57	1.94	75	0.13	5.74	175	<0.5
DD009561		0.009	0.13	0.87	38	0.18	2.23	41	<0.5
DD009562		0.010	0.13	1.13	25	0.08	5.41	95	<0.5
DD009563		0.006	0.22	1.25	16	<0.05	5.01	102	<0.5
DD009564		0.027	0.10	0.73	30	0.13	6.79	51	<0.5
DD009565		0.040	0.12	0.82	40	0.39	7.62	80	<0.5
DD009566		0.009	0.08	0.80	28	0.24	3.06	21	<0.5
DD009567		0.015	0.11	0.78	21	0.12	2.84	33	<0.5
DD009568		0.014	0.09	0.31	19	0.06	1.17	29	<0.5
DD009569		0.007	0.33	2.66	36	0.06	5.67	179	<0.5
DD009570		0.019	0.10	0.70	31	0.08	3.97	74	<0.5
DD009571		0.037	0.10	0.66	60	0.26	8.94	81	1.0
DD009572		0.029	0.07	0.43	48	0.12	3.87	69	<0.5
DD009573		0.026	0.11	0.76	48	0.08	6.47	67	0.8
DD009574		0.013	0.16	1.05	45	0.16	5.00	176	<0.5

Comments: ***Corrected copy with Project name changed from Silver Range - Keg to Silver Range - Rose***

***** See Appendix Page for comments regarding this certificate *****



ALS Canada Ltd.
 2103 Dollarton Hwy
 North Vancouver BC V7H 0A7
 Phone: 604 984 0221 Fax: 604 984 0218 www.alsglobal.com

To: SILVER RANGE RESOURCES LTD.
 C/ O ARCHER, CATHRO & ASSOCIATES (1981)
 LIMITED
 1016- 510 W HASTINGS ST
 VANCOUVER BC V6B 1L8

Page: 3 - A
 Total # Pages: 5 (A - D)
 Plus Appendix Pages
 Finalized Date: 3- OCT- 2011
 Account: RANSIL

Project: Silver Range - Rose

CERTIFICATE OF ANALYSIS WH11170113

Sample Description	Method Analyte Units LOR	WEI- 21	Au- TL43	ME- MS41	ME- MS41	ME- MS41	ME- MS41	ME- MS41	ME- MS41	ME- MS41	ME- MS41	ME- MS41	ME- MS41	ME- MS41	ME- MS41	ME- MS41
		Recvd Wt. kg	Au ppm	Ag ppm	Al %	As ppm	Au ppm	B ppm	Ba ppm	Be ppm	Bi ppm	Ca %	Cd ppm	Ce ppm	Co ppm	Cr ppm
DD009575		0.02	0.001	0.01	0.01	0.1	0.2	10	10	0.05	0.01	0.01	0.01	0.02	0.1	1
DD009575		0.36	0.006	0.85	1.01	32.9	<0.2	<10	960	0.55	0.29	0.41	0.53	31.4	15.7	29
DD009576		0.24	0.006	0.08	0.68	9.8	<0.2	<10	110	0.19	0.16	0.08	0.33	15.05	7.9	33
DD009577		0.36	0.007	1.81	0.39	24.9	<0.2	<10	320	0.45	0.28	0.50	2.80	27.9	11.8	13
DD009578		0.36	0.005	0.92	0.80	23.0	<0.2	<10	490	0.52	0.25	0.25	1.17	25.0	9.1	17
DD009579		0.30	0.003	3.05	0.79	7.2	<0.2	<10	350	0.30	0.17	0.16	0.44	13.15	3.7	20
DD009580		0.40	0.006	3.16	1.11	10.3	<0.2	<10	590	0.49	0.22	0.30	2.17	25.0	7.6	30
DD009581		0.30	0.001	2.72	0.30	2.1	<0.2	<10	50	0.06	0.06	0.03	0.08	5.24	1.0	7
DD009582		0.30	0.009	2.16	0.82	12.4	<0.2	<10	340	0.53	0.28	0.85	1.22	20.6	12.1	19
DD009583		0.24	0.001	0.26	0.33	1.2	<0.2	<10	240	0.09	0.07	0.32	0.21	5.78	2.8	5
DD009584		0.34	0.002	1.08	0.45	11.2	<0.2	<10	500	0.26	0.31	0.21	1.21	29.5	4.1	16
DD009585		0.24	0.006	1.36	0.94	11.2	<0.2	<10	490	0.54	0.24	0.26	2.33	26.6	7.6	29
DD009586		0.34	0.003	0.62	0.40	6.5	<0.2	<10	300	0.17	0.12	0.34	0.48	13.95	2.9	8
DD009587		0.30	0.001	0.92	0.35	1.6	<0.2	<10	60	0.08	0.07	0.05	0.13	4.44	1.3	6
DD009588		0.34	0.004	0.97	0.96	10.2	<0.2	<10	800	0.37	0.21	0.21	0.85	27.1	19.5	25
DD009589		0.24	0.001	0.13	0.93	13.3	<0.2	<10	180	0.19	0.23	0.05	0.19	24.7	4.7	33
DD009590		0.24	0.001	0.29	0.49	2.4	<0.2	<10	320	0.14	0.08	0.07	0.26	9.23	2.0	11
DD009591		0.24	0.005	0.87	0.83	12.1	<0.2	<10	610	0.28	0.19	0.52	0.97	18.20	4.9	17
DD009592		0.30	0.006	0.45	0.63	22.0	<0.2	<10	590	0.38	0.26	0.28	1.03	23.9	12.8	18
DD009593		0.28	0.002	1.30	0.69	3.7	<0.2	<10	460	0.20	0.11	0.17	0.22	12.20	3.2	14
DD009594		0.26	0.002	0.19	1.32	13.7	<0.2	<10	350	0.32	0.20	0.13	0.37	31.1	11.6	50
DD009595		0.26	0.001	0.11	0.58	3.7	<0.2	<10	160	0.17	0.07	0.07	0.08	12.70	3.9	22
DD009596		0.34	0.001	0.11	0.99	7.5	<0.2	<10	180	0.25	0.15	0.08	0.25	24.0	7.7	27
DD009597		0.32	0.001	0.06	0.88	7.0	<0.2	<10	190	0.16	0.25	0.08	0.10	26.5	3.0	15
DD009598		0.36	0.001	0.05	1.08	17.4	<0.2	<10	370	0.17	0.33	0.05	0.09	29.2	6.2	22
DD009599		0.42	0.004	0.11	1.56	13.4	<0.2	<10	370	0.44	0.20	0.17	0.32	46.2	21.5	49
DD009600		0.34	0.001	0.30	0.90	6.3	<0.2	<10	300	0.15	0.22	0.04	0.10	22.0	2.4	17
DD009870		0.20	0.002	0.33	0.91	15.0	<0.2	<10	430	0.30	0.30	0.19	0.24	31.9	9.6	27
DD009871		0.24	0.004	0.30	1.20	18.8	<0.2	<10	600	0.36	0.26	0.13	0.29	36.0	12.8	27
DD009872		0.14	0.002	0.34	0.78	7.9	<0.2	<10	320	0.19	0.19	0.12	0.28	17.65	6.6	19
DD009873		0.22	0.002	0.10	0.80	6.7	<0.2	<10	200	0.19	0.14	0.07	0.08	16.75	5.7	14
DD009874		0.18	0.004	0.23	1.14	14.1	<0.2	<10	390	0.30	0.27	0.19	0.18	29.7	12.6	22
DD009875		0.22	0.004	0.14	1.26	10.9	<0.2	<10	660	0.35	0.25	0.11	0.16	30.9	12.4	23
DD009876		0.18	0.004	0.17	1.47	9.8	<0.2	<10	1070	0.33	0.27	0.13	0.11	42.5	12.3	21
DD009877		0.20	0.003	0.11	1.38	8.9	<0.2	<10	1180	0.43	0.28	0.19	0.12	43.7	13.4	19
DD009878		0.20	0.002	0.09	1.06	7.6	<0.2	<10	560	0.35	0.25	0.10	0.14	31.1	12.4	19
DD009879		0.16	0.005	0.21	0.93	9.9	<0.2	<10	760	0.31	0.24	0.10	0.18	30.9	19.8	16
DD009880		0.16	0.006	0.34	1.20	12.2	<0.2	<10	770	0.30	0.30	0.03	0.16	49.0	10.7	26
DD009881		0.18	0.005	0.31	1.05	11.0	<0.2	<10	520	0.27	0.26	0.06	0.18	39.4	11.8	24
DD009882		0.18	0.004	0.47	1.05	11.3	<0.2	<10	630	0.22	0.26	0.06	0.17	41.2	11.7	23
DD009883		0.16	0.002	0.53	0.66	10.1	<0.2	<10	500	0.24	0.27	0.35	0.23	21.9	10.6	17

Comments: ***Corrected copy with Project name changed from Silver Range - Keg to Silver Range - Rose***

***** See Appendix Page for comments regarding this certificate *****



ALS Canada Ltd.
 2103 Dollarton Hwy
 North Vancouver BC V7H 0A7
 Phone: 604 984 0221 Fax: 604 984 0218 www.alsglobal.com

To: SILVER RANGE RESOURCES LTD.
 C/ O ARCHER, CATHRO & ASSOCIATES (1981)
 LIMITED
 1016- 510 W HASTINGS ST
 VANCOUVER BC V6B 1L8

Page: 3 - B
 Total # Pages: 5 (A - D)
 Plus Appendix Pages
 Finalized Date: 3- OCT- 2011
 Account: RANSIL

Project: Silver Range - Rose

CERTIFICATE OF ANALYSIS WH11170113

Sample Description	Method Analyte Units LOR	ME- MS41	ME- MS41	ME- MS41	ME- MS41	ME- MS41	ME- MS41	ME- MS41	ME- MS41	ME- MS41	ME- MS41	ME- MS41	ME- MS41	ME- MS41	ME- MS41	
		Cs ppm	Cu ppm	Fe %	Ga ppm	Ge ppm	Hf ppm	Hg ppm	In ppm	K %	La ppm	Li ppm	Mg %	Mn ppm	Mo ppm	Na %
DD009575		1.66	67.1	3.77	3.83	0.11	0.05	0.08	0.039	0.08	14.9	8.2	0.44	904	7.24	0.03
DD009576		1.07	59.1	2.59	3.68	0.08	<0.02	0.02	0.022	0.04	7.5	4.9	0.20	380	2.50	0.03
DD009577		0.95	89.2	2.81	1.47	0.09	0.03	0.23	0.027	0.10	13.1	2.9	0.23	562	13.95	0.02
DD009578		1.21	57.3	2.67	2.73	0.11	0.06	0.11	0.028	0.07	12.2	5.2	0.20	554	8.66	0.03
DD009579		0.86	24.0	1.38	3.19	0.07	<0.02	0.27	0.014	0.06	7.0	4.3	0.14	222	4.64	0.04
DD009580		1.14	65.9	2.11	3.77	0.09	<0.02	0.46	0.022	0.07	12.4	8.6	0.35	351	6.40	0.03
DD009581		0.35	8.5	0.56	1.88	0.08	<0.02	0.03	0.007	0.03	2.9	0.5	0.02	25	1.72	0.04
DD009582		0.98	71.0	2.09	2.81	0.11	0.07	0.27	0.027	0.06	10.5	5.9	0.24	393	8.06	0.03
DD009583		0.38	12.6	0.77	1.72	0.07	<0.02	0.02	0.007	0.04	2.8	3.4	0.08	133	0.45	0.05
DD009584		1.41	31.6	2.03	2.77	0.12	<0.02	0.08	0.023	0.10	15.3	3.0	0.09	71	9.56	0.03
DD009585		1.14	89.2	2.28	3.81	0.12	<0.02	0.21	0.027	0.08	15.0	7.1	0.22	317	7.86	0.03
DD009586		0.53	19.9	1.12	2.10	0.08	0.04	0.16	0.012	0.04	7.9	2.8	0.10	80	8.45	0.03
DD009587		0.37	7.4	0.63	1.88	0.06	<0.02	0.01	0.006	0.02	2.3	1.1	0.05	44	0.87	0.04
DD009588		1.62	75.3	2.98	4.14	0.09	<0.02	0.08	0.027	0.06	10.5	7.3	0.44	2750	5.60	0.03
DD009589		0.82	21.6	2.21	6.95	0.08	<0.02	0.03	0.015	0.04	11.9	2.7	0.19	232	2.11	0.02
DD009590		0.68	15.4	0.74	1.99	<0.05	<0.02	0.03	0.008	0.04	4.4	2.1	0.07	111	0.81	0.03
DD009591		1.05	36.9	1.81	3.04	<0.05	<0.02	0.09	0.018	0.07	9.1	7.8	0.22	194	2.57	0.02
DD009592		1.44	85.7	2.99	2.29	0.06	0.04	0.06	0.026	0.07	11.9	5.0	0.21	809	6.90	0.01
DD009593		0.92	21.0	1.13	2.73	<0.05	<0.02	0.08	0.011	0.05	6.4	3.8	0.15	129	1.37	0.02
DD009594		0.98	40.1	3.16	5.75	0.06	<0.02	0.03	0.027	0.06	16.3	12.1	0.69	431	2.21	0.01
DD009595		0.57	15.6	1.17	2.49	<0.05	<0.02	0.02	0.011	0.03	6.6	4.0	0.22	91	0.92	0.02
DD009596		0.89	32.0	2.29	4.75	<0.05	0.02	0.03	0.022	0.04	10.5	10.0	0.39	427	1.42	0.02
DD009597		0.91	17.2	1.42	6.00	0.05	<0.02	0.02	0.013	0.03	13.6	3.3	0.14	163	1.87	0.01
DD009598		1.07	17.8	2.89	8.59	0.08	<0.02	0.02	0.018	0.05	14.9	4.8	0.23	506	2.87	0.01
DD009599		0.93	43.7	3.12	4.87	0.11	0.05	0.02	0.028	0.05	21.1	12.2	0.74	1080	2.02	0.01
DD009600		0.88	17.6	1.33	4.86	0.05	<0.02	0.07	0.015	0.04	11.6	3.7	0.11	110	1.82	0.01
DD009870		1.22	37.3	2.60	5.64	0.07	<0.02	0.09	0.020	0.07	13.2	8.3	0.31	959	2.24	0.01
DD009871		1.83	104.0	2.79	4.72	0.09	0.02	0.08	0.027	0.07	16.2	14.8	0.41	1740	2.85	0.01
DD009872		1.35	50.3	1.92	3.85	0.06	<0.02	0.06	0.016	0.05	8.4	5.3	0.19	809	2.02	0.01
DD009873		0.88	45.1	1.39	3.47	0.05	<0.02	0.03	0.013	0.04	7.7	5.1	0.19	738	1.28	0.02
DD009874		1.69	89.0	2.38	4.59	0.08	0.02	0.07	0.021	0.05	13.2	8.8	0.35	1420	3.07	0.01
DD009875		1.67	82.8	2.46	4.95	0.08	0.02	0.07	0.022	0.06	13.3	11.0	0.36	1660	2.73	0.01
DD009876		2.26	111.0	2.43	5.12	0.09	0.03	0.04	0.021	0.06	19.4	11.2	0.46	1780	4.16	0.02
DD009877		2.08	66.4	2.30	5.14	0.09	0.03	0.04	0.023	0.05	20.8	7.9	0.35	1680	2.55	0.02
DD009878		2.43	69.5	2.25	4.53	0.07	<0.02	0.04	0.019	0.05	14.4	6.8	0.27	1100	2.48	0.02
DD009879		2.36	94.7	2.19	3.96	0.08	0.02	0.06	0.021	0.05	14.5	6.7	0.24	1450	2.47	0.02
DD009880		2.35	94.5	3.08	5.14	0.11	0.02	0.05	0.033	0.07	25.3	9.3	0.36	464	2.63	0.01
DD009881		2.70	59.8	2.73	4.27	0.09	<0.02	0.06	0.025	0.06	20.1	9.8	0.33	522	2.17	0.01
DD009882		2.71	73.6	2.87	4.29	0.10	0.02	0.06	0.026	0.07	20.9	8.7	0.31	453	2.62	0.01
DD009883		1.67	56.2	1.99	3.32	0.06	0.02	0.19	0.019	0.09	10.7	3.7	0.17	1640	3.65	0.01

Comments: ***Corrected copy with Project name changed from Silver Range - Keg to Silver Range - Rose***

***** See Appendix Page for comments regarding this certificate *****



ALS Canada Ltd.
 2103 Dollarton Hwy
 North Vancouver BC V7H 0A7
 Phone: 604 984 0221 Fax: 604 984 0218 www.alsglobal.com

To: SILVER RANGE RESOURCES LTD.
 C/ O ARCHER, CATHRO & ASSOCIATES (1981)
 LIMITED
 1016- 510 W HASTINGS ST
 VANCOUVER BC V6B 1L8

Page: 3 - C
 Total # Pages: 5 (A - D)
 Plus Appendix Pages
 Finalized Date: 3- OCT- 2011
 Account: RANSIL

Project: Silver Range - Rose

CERTIFICATE OF ANALYSIS WH11170113

Sample Description	Method Analyte Units LOR	ME- MS41	ME- MS41	ME- MS41	ME- MS41	ME- MS41	ME- MS41	ME- MS41	ME- MS41	ME- MS41	ME- MS41	ME- MS41	ME- MS41	ME- MS41	ME- MS41	
		Nb	Ni	P	Pb	Rb	Re	S	Sb	Sc	Se	Sn	Sr	Ta	Te	Th
		ppm	ppm	ppm	ppm	ppm	ppm	%	ppm	ppm	ppm	ppm	ppm	ppm	ppm	ppm
		0.05	0.2	10	0.2	0.1	0.001	0.01	0.05	0.1	0.2	0.2	0.2	0.01	0.01	0.2
DD009575		0.23	42.4	1210	19.2	7.4	0.001	0.10	3.72	4.4	2.8	0.3	61.1	<0.01	0.10	1.7
DD009576		0.37	31.5	610	7.2	9.7	<0.001	0.04	1.53	1.5	0.6	0.3	10.6	<0.01	0.04	0.3
DD009577		0.11	59.6	1210	21.1	5.8	0.003	0.12	6.17	3.0	3.8	0.2	59.4	<0.01	0.15	3.1
DD009578		0.25	36.7	1280	14.7	9.2	0.001	0.08	3.32	2.5	2.2	0.3	40.5	<0.01	0.11	1.3
DD009579		0.21	13.9	1250	8.2	8.1	0.001	0.06	1.53	0.4	1.4	0.3	25.4	<0.01	0.05	<0.2
DD009580		0.37	42.8	1400	10.5	8.7	<0.001	0.06	2.69	1.3	2.3	0.4	33.0	<0.01	0.07	0.4
DD009581		0.09	4.1	400	2.4	2.2	<0.001	0.03	0.87	0.1	2.2	0.2	10.5	<0.01	0.03	<0.2
DD009582		0.47	67.3	1240	12.4	6.6	0.001	0.08	8.35	2.7	3.0	0.3	48.8	<0.01	0.11	0.8
DD009583		0.28	8.4	400	4.2	2.4	<0.001	0.02	0.54	0.7	0.3	<0.2	20.0	<0.01	0.01	0.2
DD009584		0.16	24.7	1160	48.3	9.9	<0.001	0.13	12.20	0.7	6.0	0.4	142.5	<0.01	0.08	0.8
DD009585		0.27	39.7	1460	15.6	9.1	0.001	0.07	2.63	0.8	2.4	0.3	39.2	<0.01	0.10	0.2
DD009586		0.23	19.5	1040	7.0	4.6	0.003	0.04	2.37	0.7	1.0	0.2	26.0	<0.01	0.04	0.5
DD009587		0.08	3.5	360	2.6	2.5	<0.001	0.02	0.43	0.1	0.6	0.2	8.2	<0.01	0.01	<0.2
DD009588		0.19	35.1	1120	13.1	6.4	0.001	0.06	2.23	2.2	0.7	0.3	22.6	<0.01	0.08	0.3
DD009589		0.53	26.0	560	8.8	7.0	<0.001	0.03	0.89	0.9	0.5	0.7	8.6	<0.01	0.06	0.2
DD009590		0.27	7.9	490	3.8	6.3	<0.001	0.03	0.44	0.8	0.5	0.2	14.0	<0.01	0.02	<0.2
DD009591		0.29	21.7	990	13.0	9.1	0.001	0.07	2.33	1.3	2.0	0.3	58.4	<0.01	0.07	0.3
DD009592		0.20	50.6	1070	19.8	6.7	0.001	0.06	4.77	2.8	2.4	0.2	51.3	<0.01	0.10	1.0
DD009593		0.23	12.8	990	7.9	7.0	<0.001	0.07	0.75	0.9	0.8	0.2	27.0	<0.01	0.03	<0.2
DD009594		0.62	46.1	770	13.8	7.9	<0.001	0.03	1.08	2.6	0.7	0.4	13.8	<0.01	0.04	0.8
DD009595		0.23	16.2	510	4.7	3.9	<0.001	0.03	0.38	1.0	0.3	0.2	8.9	<0.01	0.02	0.2
DD009596		0.97	24.8	440	12.1	7.3	<0.001	0.03	0.62	2.9	0.4	0.4	10.8	<0.01	0.03	2.1
DD009597		0.52	8.9	330	12.8	7.9	<0.001	0.02	0.47	0.8	0.4	0.7	17.5	<0.01	0.03	0.2
DD009598		1.28	17.1	500	14.7	11.4	<0.001	0.02	2.13	1.7	0.4	0.8	9.9	<0.01	0.06	1.2
DD009599		0.68	52.6	930	15.3	8.9	<0.001	0.02	1.17	3.5	0.9	0.3	19.6	<0.01	0.04	4.6
DD009600		0.28	11.1	440	12.0	9.5	<0.001	0.02	0.56	0.6	0.7	0.5	16.6	<0.01	0.03	<0.2
DD009870		0.65	23.8	770	14.3	11.7	<0.001	0.08	0.95	1.2	0.6	0.6	19.8	<0.01	0.07	0.4
DD009871		0.29	49.0	850	17.6	9.9	<0.001	0.07	1.99	1.5	1.1	0.3	44.6	<0.01	0.12	0.5
DD009872		0.21	24.3	980	10.2	9.2	<0.001	0.10	0.89	0.5	0.8	0.3	21.3	<0.01	0.07	<0.2
DD009873		0.17	15.7	610	7.9	6.2	<0.001	0.05	0.56	0.6	0.5	0.3	9.0	<0.01	0.05	<0.2
DD009874		0.22	32.8	990	16.8	9.7	<0.001	0.08	1.24	0.8	0.9	0.3	27.6	<0.01	0.07	<0.2
DD009875		0.24	31.2	950	16.6	11.0	<0.001	0.08	0.99	1.0	0.9	0.4	18.1	<0.01	0.08	0.2
DD009876		0.24	33.6	1020	19.3	9.7	<0.001	0.07	0.89	1.1	1.0	0.3	19.0	<0.01	0.08	0.4
DD009877		0.29	24.7	900	28.8	10.1	<0.001	0.07	0.70	1.7	0.8	0.3	26.7	<0.01	0.07	0.8
DD009878		0.21	29.6	830	19.1	11.3	<0.001	0.06	0.71	1.0	0.6	0.4	14.1	<0.01	0.07	0.2
DD009879		0.19	50.0	830	18.8	9.2	<0.001	0.05	0.85	1.1	0.7	0.3	19.2	<0.01	0.08	0.3
DD009880		0.25	41.9	900	17.4	10.8	0.001	0.11	2.14	1.4	1.4	0.3	53.6	<0.01	0.15	0.6
DD009881		0.46	40.1	610	17.1	9.7	<0.001	0.06	1.43	1.5	1.2	0.3	31.9	<0.01	0.09	0.7
DD009882		0.41	40.5	690	18.8	9.6	<0.001	0.08	1.49	1.5	1.5	0.3	55.8	<0.01	0.12	1.0
DD009883		0.35	23.6	1480	17.7	10.9	<0.001	0.14	1.14	1.2	1.0	0.3	37.3	<0.01	0.07	0.3

Comments: ***Corrected copy with Project name changed from Silver Range - Keg to Silver Range - Rose***

***** See Appendix Page for comments regarding this certificate *****



ALS Canada Ltd.
 2103 Dollarton Hwy
 North Vancouver BC V7H 0A7
 Phone: 604 984 0221 Fax: 604 984 0218 www.alsglobal.com

To: SILVER RANGE RESOURCES LTD.
 C/ O ARCHER, CATHRO & ASSOCIATES (1981)
 LIMITED
 1016- 510 W HASTINGS ST
 VANCOUVER BC V6B 1L8

Page: 3 - D
 Total # Pages: 5 (A - D)
 Plus Appendix Pages
 Finalized Date: 3- OCT- 2011
 Account: RANSIL

Project: Silver Range - Rose

CERTIFICATE OF ANALYSIS WH11170113

Sample Description	Method Analyte Units LOR	ME- MS41	ME- MS41	ME- MS41	ME- MS41	ME- MS41	ME- MS41	ME- MS41	ME- MS41
		Ti %	Ti ppm	U ppm	V ppm	W ppm	Y ppm	Zn ppm	Zr ppm
		0.005	0.02	0.05	1	0.05	0.05	2	0.5
DD009575		0.009	0.25	1.57	50	0.09	9.97	145	2.2
DD009576		0.031	0.10	0.74	52	0.17	2.62	130	<0.5
DD009577		0.007	0.26	2.75	40	0.06	11.90	326	1.7
DD009578		0.009	0.22	1.85	37	0.09	9.87	178	2.2
DD009579		0.012	0.24	2.08	70	0.17	4.56	65	<0.5
DD009580		0.015	0.36	3.20	73	0.17	11.20	274	<0.5
DD009581		0.014	0.08	0.57	23	0.06	0.89	20	<0.5
DD009582		0.015	0.20	2.93	47	0.14	13.30	295	2.4
DD009583		0.019	0.03	0.23	14	<0.05	2.27	42	<0.5
DD009584		0.009	0.92	1.53	124	0.10	3.71	218	<0.5
DD009585		0.016	0.23	3.48	80	0.16	15.00	151	<0.5
DD009586		0.016	0.20	1.35	41	0.07	4.85	93	1.0
DD009587		0.016	0.07	0.36	22	0.07	1.04	18	<0.5
DD009588		0.013	0.18	1.15	55	0.11	6.02	100	<0.5
DD009589		0.032	0.12	0.67	71	0.45	2.52	47	<0.5
DD009590		0.018	0.07	0.52	20	0.09	2.32	25	<0.5
DD009591		0.012	0.20	1.31	33	0.10	4.93	103	<0.5
DD009592		0.009	0.18	1.42	37	0.07	8.70	192	1.2
DD009593		0.015	0.14	0.88	25	0.09	3.51	39	<0.5
DD009594		0.030	0.11	0.63	48	0.15	6.37	77	<0.5
DD009595		0.016	0.05	0.38	22	0.07	2.20	28	<0.5
DD009596		0.037	0.08	0.47	38	0.14	4.45	51	0.5
DD009597		0.037	0.10	0.48	46	0.19	2.86	27	<0.5
DD009598		0.068	0.13	0.54	78	0.31	2.45	51	<0.5
DD009599		0.027	0.12	0.76	46	0.13	6.51	96	1.2
DD009600		0.020	0.13	0.63	35	0.13	2.15	30	<0.5
DD009870		0.032	0.09	0.66	49	0.25	2.37	68	<0.5
DD009871		0.013	0.09	0.88	33	0.16	4.77	122	<0.5
DD009872		0.011	0.06	0.68	31	0.09	2.88	69	<0.5
DD009873		0.018	0.06	0.52	27	0.30	2.71	42	<0.5
DD009874		0.015	0.09	0.84	34	0.11	5.73	81	<0.5
DD009875		0.015	0.09	0.81	35	0.12	5.53	79	<0.5
DD009876		0.010	0.09	0.80	28	0.11	7.75	84	<0.5
DD009877		0.014	0.08	0.93	30	0.07	6.13	80	0.5
DD009878		0.019	0.09	0.93	33	0.18	4.23	79	<0.5
DD009879		0.016	0.10	0.81	27	0.11	4.06	109	<0.5
DD009880		0.013	0.12	1.08	35	0.08	3.88	116	<0.5
DD009881		0.021	0.11	0.83	35	0.16	3.17	112	<0.5
DD009882		0.016	0.11	0.84	32	0.08	3.17	115	<0.5
DD009883		0.017	0.10	0.97	29	0.16	4.13	86	<0.5

Comments: ***Corrected copy with Project name changed from Silver Range - Keg to Silver Range - Rose***

***** See Appendix Page for comments regarding this certificate *****



ALS Canada Ltd.
 2103 Dollarton Hwy
 North Vancouver BC V7H 0A7
 Phone: 604 984 0221 Fax: 604 984 0218 www.alsglobal.com

To: SILVER RANGE RESOURCES LTD.
 C/ O ARCHER, CATHRO & ASSOCIATES (1981)
 LIMITED
 1016- 510 W HASTINGS ST
 VANCOUVER BC V6B 1L8

Page: 4 - A
 Total # Pages: 5 (A - D)
 Plus Appendix Pages
 Finalized Date: 3- OCT- 2011
 Account: RANSIL

Project: Silver Range - Rose

CERTIFICATE OF ANALYSIS WH11170113

Sample Description	Method Analyte Units LOR	WEI- 21	Au- TL43	ME- MS41	ME- MS41	ME- MS41	ME- MS41	ME- MS41	ME- MS41	ME- MS41	ME- MS41	ME- MS41	ME- MS41	ME- MS41	ME- MS41	
		Recvd Wt. kg	Au ppm	Ag ppm	Al %	As ppm	Au ppm	B ppm	Ba ppm	Be ppm	Bi ppm	Ca %	Cd ppm	Ce ppm	Co ppm	Cr ppm
DD009884		0.20	0.003	0.27	1.38	10.9	<0.2	<10	3790	0.36	0.39	0.08	0.39	31.5	19.1	18
DD009885		0.20	0.006	0.26	1.47	27.2	<0.2	<10	8360	0.47	1.02	0.12	0.29	50.1	25.6	18
DD009886		0.18	0.002	0.16	0.51	8.2	<0.2	<10	470	0.19	0.18	0.35	0.34	21.5	9.2	12
DD009887		0.20	0.001	0.15	0.75	9.1	<0.2	<10	240	0.22	0.26	0.12	0.19	23.6	7.7	17
DD009888		0.18	<0.001	0.05	0.35	1.4	<0.2	<10	50	0.08	0.05	0.08	0.08	6.00	2.4	5
DD009889		0.16	0.001	0.06	1.02	11.1	<0.2	<10	170	0.22	0.32	0.05	0.11	30.5	5.0	20
DD009890		0.16	0.003	0.19	1.25	8.4	<0.2	<10	430	0.37	0.21	0.07	0.11	29.9	7.2	23
DD009891		0.24	0.004	0.11	0.97	11.7	<0.2	<10	170	0.32	0.19	0.11	0.21	29.4	13.5	17
DD009892		0.20	0.008	0.33	0.60	29.0	<0.2	<10	680	0.17	0.21	0.11	0.10	20.6	4.4	9
DD009893		0.18	0.005	0.44	1.26	17.5	<0.2	<10	990	0.34	0.26	0.17	0.17	22.4	9.3	20
DD009894		0.18	0.002	0.55	0.37	35.6	<0.2	<10	260	0.11	0.17	0.09	0.12	15.70	5.5	14
DD009895		0.22	0.005	0.41	0.83	23.3	<0.2	<10	570	0.27	0.24	0.09	0.13	23.2	7.5	22
DD009896		0.14	0.003	0.42	0.84	28.3	<0.2	<10	420	0.31	0.33	0.17	0.61	26.0	13.4	21
DD009897		0.16	0.001	0.16	0.97	7.9	<0.2	<10	340	0.17	0.08	1.27	0.28	8.23	10.1	28
DD009898		0.24	0.007	0.33	2.69	34.4	<0.2	<10	340	0.32	0.05	0.60	0.28	15.40	38.7	42
DD009899		0.20	0.019	0.90	2.87	145.5	<0.2	<10	2060	0.36	0.06	1.33	0.30	15.85	78.2	81
DD009900		0.20	0.032	0.63	1.84	197.5	<0.2	<10	1010	0.40	0.10	0.95	0.35	17.55	37.8	60
DD009901		0.10	0.010	0.52	0.61	6.4	<0.2	<10	1340	0.12	0.14	0.13	0.22	14.95	5.4	11
DD009902		0.18	0.009	0.46	0.63	8.5	<0.2	<10	830	0.16	0.20	0.07	0.13	19.05	9.6	12
DD009903		0.20	0.023	0.35	0.78	26.0	<0.2	<10	1270	0.22	0.25	0.06	0.17	25.8	12.6	16
DD009904		0.28	0.011	0.50	1.20	19.5	<0.2	<10	1730	0.36	0.33	0.11	0.35	30.5	15.6	28
DD009905		0.20	0.007	0.90	1.01	14.8	<0.2	<10	1860	0.29	0.26	0.23	0.28	25.8	12.3	25
DD009906		0.20	0.009	1.35	0.91	12.7	<0.2	<10	1860	0.24	0.26	0.24	0.71	19.70	13.3	22
DD009907		0.26	0.009	1.04	1.21	17.0	<0.2	<10	2460	0.32	0.35	0.21	0.29	36.1	15.0	24
DD009908		0.20	0.008	0.81	0.78	12.5	<0.2	<10	3080	0.17	0.31	0.14	0.25	29.8	11.5	16
DD009909		0.20	0.009	0.29	0.67	24.3	<0.2	<10	1750	0.21	0.25	0.09	0.28	31.0	10.4	18
DD009910		0.22	0.007	0.76	0.94	12.5	<0.2	<10	3320	0.29	0.26	0.13	0.22	26.2	9.4	22
DD009911		0.22	0.019	0.45	1.20	15.4	<0.2	<10	2600	0.25	0.34	0.29	0.13	22.9	15.0	29
DD009912		0.22	0.011	0.32	1.07	12.3	<0.2	<10	2370	0.23	0.28	0.20	0.17	23.2	16.5	26
DD009913		0.24	0.013	0.78	0.65	22.8	<0.2	<10	2740	0.17	0.25	0.20	0.25	23.2	14.7	17
DD009914		0.20	0.005	0.24	0.53	7.3	<0.2	<10	930	0.13	0.15	0.18	0.13	13.50	8.6	22
DD009915		0.22	0.010	0.50	0.91	23.0	<0.2	<10	3230	0.29	0.31	0.27	0.45	33.4	17.1	22
DD009916		0.20	0.007	0.82	1.17	15.9	<0.2	<10	2260	0.31	0.27	0.26	0.42	28.9	13.5	27
DD009917		0.18	0.003	0.69	0.69	8.8	<0.2	<10	1350	0.19	0.17	0.47	0.23	21.5	7.3	23
DD009918		0.22	0.009	0.54	0.88	13.8	<0.2	<10	3480	0.23	0.25	0.44	0.29	29.4	16.4	15
DD009919		0.20	0.006	0.15	1.38	12.6	<0.2	<10	2110	0.44	0.21	0.33	0.33	27.3	18.0	40
DD009920		0.16	0.004	0.25	1.17	14.7	<0.2	<10	340	0.46	0.36	0.12	0.14	32.9	9.2	28
DD009921		0.26	0.006	0.73	0.97	11.4	<0.2	<10	590	0.43	0.22	0.54	0.24	23.7	14.9	35
DD009922		0.20	0.004	0.42	0.87	12.0	<0.2	<10	470	0.32	0.26	0.59	0.42	23.5	11.2	19
DD009923		0.24	0.007	0.49	1.01	23.5	<0.2	<10	1190	0.38	0.28	0.35	0.13	24.5	15.8	23

Comments: ***Corrected copy with Project name changed from Silver Range - Keg to Silver Range - Rose***

***** See Appendix Page for comments regarding this certificate *****



ALS Canada Ltd.
 2103 Dollarton Hwy
 North Vancouver BC V7H 0A7
 Phone: 604 984 0221 Fax: 604 984 0218 www.alsglobal.com

To: SILVER RANGE RESOURCES LTD.
 C/ O ARCHER, CATHRO & ASSOCIATES (1981)
 LIMITED
 1016- 510 W HASTINGS ST
 VANCOUVER BC V6B 1L8

Page: 4 - B
 Total # Pages: 5 (A - D)
 Plus Appendix Pages
 Finalized Date: 3- OCT- 2011
 Account: RANSIL

Project: Silver Range - Rose

CERTIFICATE OF ANALYSIS WH11170113

Sample Description	Method Analyte Units LOR	ME- MS41	ME- MS41	ME- MS41	ME- MS41	ME- MS41	ME- MS41	ME- MS41	ME- MS41	ME- MS41	ME- MS41	ME- MS41	ME- MS41	ME- MS41	ME- MS41	
		Cs ppm	Cu ppm	Fe %	Ga ppm	Ge ppm	Hf ppm	Hg ppm	In ppm	K %	La ppm	Li ppm	Mg %	Mn ppm	Mo ppm	Na %
DD009884		1.87	126.5	2.96	4.04	0.09	0.02	0.10	0.046	0.07	14.5	6.8	0.19	1460	6.44	0.03
DD009885		2.14	295	4.73	3.36	0.15	0.05	0.05	0.089	0.14	22.6	5.7	0.18	1830	9.07	0.07
DD009886		1.19	36.2	1.41	2.34	0.06	0.04	0.10	0.017	0.06	9.6	1.7	0.08	890	3.29	0.01
DD009887		1.30	36.2	2.06	4.48	0.06	<0.02	0.06	0.018	0.06	10.2	2.9	0.14	827	2.55	0.01
DD009888		0.46	11.6	0.86	2.07	<0.05	<0.02	0.04	0.005	0.02	2.6	0.8	0.05	112	0.53	0.02
DD009889		1.54	21.2	2.01	6.64	0.07	<0.02	0.04	0.021	0.04	13.4	3.3	0.16	347	1.92	0.01
DD009890		1.60	46.3	1.91	4.59	0.07	0.02	0.05	0.025	0.05	13.2	8.0	0.34	368	2.34	0.01
DD009891		2.12	62.1	2.31	3.98	<0.05	0.02	0.03	0.019	0.05	12.4	6.8	0.27	1580	3.39	0.02
DD009892		1.60	42.6	1.44	2.69	0.08	<0.02	0.06	0.021	0.05	11.0	2.8	0.09	342	2.01	0.03
DD009893		4.23	77.8	2.50	4.20	0.10	0.02	0.07	0.036	0.07	12.4	8.4	0.23	841	2.10	0.03
DD009894		1.72	40.6	1.88	2.67	0.09	<0.02	0.09	0.024	0.06	8.4	1.3	0.06	1060	1.97	0.02
DD009895		1.75	65.8	2.78	3.02	0.09	<0.02	0.07	0.036	0.06	13.5	6.7	0.21	856	2.70	0.02
DD009896		1.52	53.6	2.57	3.51	0.10	<0.02	0.09	0.028	0.08	11.4	6.1	0.21	2490	3.90	0.02
DD009897		1.59	31.8	2.13	3.46	0.09	0.04	0.11	0.026	0.04	4.1	7.1	0.45	636	0.70	0.03
DD009898		2.20	82.1	6.62	9.89	0.14	0.07	0.07	0.073	0.04	5.5	19.6	1.80	1680	0.37	0.02
DD009899		3.24	161.5	7.67	7.83	0.16	0.08	0.07	0.080	0.06	5.6	27.6	2.10	1770	0.54	0.02
DD009900		2.60	124.0	8.78	5.51	0.17	0.09	0.12	0.070	0.07	8.6	13.3	1.04	1720	0.65	0.02
DD009901		1.47	59.4	1.34	2.17	0.08	<0.02	0.12	0.018	0.06	7.8	2.9	0.11	397	1.35	0.03
DD009902		1.69	95.8	2.02	2.58	0.09	<0.02	0.09	0.020	0.06	9.7	4.8	0.11	1490	1.55	0.03
DD009903		1.80	96.8	2.97	2.31	0.10	0.02	0.09	0.032	0.07	15.0	7.9	0.17	1480	4.60	0.02
DD009904		2.73	114.5	3.26	3.54	0.11	0.03	0.15	0.042	0.09	18.0	11.8	0.27	1780	7.97	0.02
DD009905		2.37	65.4	2.91	3.46	0.10	0.02	0.09	0.031	0.07	15.2	10.3	0.20	1830	4.09	0.02
DD009906		2.46	75.2	2.47	3.14	0.09	<0.02	0.12	0.026	0.09	11.4	7.9	0.15	2780	3.68	0.02
DD009907		4.51	111.5	3.74	3.18	0.12	0.04	0.15	0.043	0.09	21.0	11.0	0.24	2500	5.89	0.02
DD009908		2.88	98.0	3.24	1.70	0.11	0.03	0.09	0.031	0.08	11.6	5.5	0.12	1360	5.83	0.01
DD009909		1.81	67.0	2.75	2.08	0.10	0.02	0.09	0.029	0.07	17.6	5.1	0.09	1490	3.96	0.01
DD009910		1.69	61.8	2.52	2.98	0.09	0.02	0.12	0.030	0.09	15.5	5.6	0.15	1550	4.52	0.01
DD009911		2.64	88.2	3.07	4.30	0.10	0.02	0.08	0.038	0.07	13.3	11.4	0.33	2350	6.70	0.02
DD009912		2.21	113.0	2.73	3.13	0.10	0.03	0.06	0.034	0.06	13.6	12.1	0.36	1960	9.45	0.02
DD009913		1.79	90.2	3.38	1.65	0.11	0.03	0.10	0.037	0.05	14.2	4.2	0.10	2040	4.77	0.01
DD009914		1.34	45.3	1.73	2.32	0.08	<0.02	0.06	0.017	0.05	6.7	4.1	0.14	1240	2.86	0.03
DD009915		1.98	83.7	3.36	2.27	0.12	0.05	0.10	0.034	0.08	20.3	7.4	0.21	1640	3.88	0.02
DD009916		2.66	77.0	3.15	3.03	0.12	0.04	0.09	0.033	0.07	18.3	9.8	0.27	1400	3.07	0.02
DD009917		1.49	41.8	2.17	2.39	0.10	0.02	0.07	0.021	0.05	13.6	4.8	0.13	560	2.89	0.03
DD009918		2.11	92.7	3.39	2.12	0.12	0.06	0.08	0.031	0.07	17.4	4.8	0.13	1320	2.84	0.02
DD009919		1.84	74.0	3.32	4.51	0.12	0.03	0.05	0.035	0.07	15.6	18.8	0.47	2510	2.46	0.02
DD009920		2.54	49.9	3.60	4.16	0.12	0.02	0.07	0.045	0.08	14.7	12.8	0.21	887	2.92	0.02
DD009921		1.58	54.4	2.95	3.11	0.12	0.13	0.15	0.039	0.07	14.8	15.6	0.34	1840	2.88	0.02
DD009922		2.17	41.1	2.57	3.19	0.10	0.03	0.05	0.031	0.07	12.9	10.4	0.21	947	2.41	0.03
DD009923		1.76	44.5	2.72	3.60	0.10	0.03	0.07	0.036	0.07	13.2	8.5	0.21	1980	2.91	0.02

Comments: ***Corrected copy with Project name changed from Silver Range - Keg to Silver Range - Rose***

***** See Appendix Page for comments regarding this certificate *****



ALS Canada Ltd.
 2103 Dollarton Hwy
 North Vancouver BC V7H 0A7
 Phone: 604 984 0221 Fax: 604 984 0218 www.alsglobal.com

To: SILVER RANGE RESOURCES LTD.
 C/ O ARCHER, CATHRO & ASSOCIATES (1981)
 LIMITED
 1016- 510 W HASTINGS ST
 VANCOUVER BC V6B 1L8

Page: 4 - C
 Total # Pages: 5 (A - D)
 Plus Appendix Pages
 Finalized Date: 3- OCT- 2011
 Account: RANSIL

Project: Silver Range - Rose

CERTIFICATE OF ANALYSIS WH11170113

Sample Description	Method Analyte Units LOR	ME- MS41	ME- MS41	ME- MS41	ME- MS41	ME- MS41	ME- MS41	ME- MS41	ME- MS41	ME- MS41	ME- MS41	ME- MS41	ME- MS41	ME- MS41	ME- MS41	
		Nb ppm	Ni ppm	P ppm	Pb ppm	Rb ppm	Re ppm	S %	Sb ppm	Sc ppm	Se ppm	Sn ppm	Sr ppm	Ta ppm	Te ppm	Th ppm
DD009884		0.38	75.4	1140	18.1	8.8	<0.001	0.10	0.99	1.8	1.3	0.3	23.1	<0.01	0.15	0.3
DD009885		0.22	106.5	790	35.7	8.7	<0.001	0.08	2.09	11.3	2.1	0.2	61.4	0.01	0.42	2.8
DD009886		0.34	17.4	1380	12.0	7.4	<0.001	0.17	1.05	1.4	1.1	0.2	37.0	<0.01	0.06	0.5
DD009887		0.23	16.7	1100	14.6	11.0	<0.001	0.10	0.91	0.5	0.7	0.5	13.8	<0.01	0.06	<0.2
DD009888		0.14	4.1	610	2.5	3.3	<0.001	0.04	0.16	0.3	0.2	<0.2	9.2	<0.01	0.01	<0.2
DD009889		0.42	14.4	600	12.3	9.5	<0.001	0.06	0.73	0.9	0.5	0.7	7.0	<0.01	0.06	<0.2
DD009890		0.26	26.6	1290	11.5	9.8	<0.001	0.10	1.11	0.7	0.9	0.4	10.9	<0.01	0.05	0.2
DD009891		0.30	24.8	830	13.9	7.0	<0.001	0.04	1.40	1.8	0.8	0.3	10.9	<0.01	0.07	0.6
DD009892		0.25	17.5	840	11.4	6.4	<0.001	0.07	2.35	0.9	1.0	0.2	26.7	<0.01	0.11	<0.2
DD009893		0.43	37.4	1220	15.7	12.9	<0.001	0.10	2.42	1.9	1.3	0.4	28.3	<0.01	0.08	0.2
DD009894		0.10	26.0	1020	6.9	6.8	<0.001	0.08	2.76	0.6	1.1	0.4	16.8	<0.01	0.08	<0.2
DD009895		0.33	47.8	760	12.5	7.8	<0.001	0.08	4.33	1.5	1.6	0.3	20.6	<0.01	0.13	0.3
DD009896		0.50	31.8	940	21.9	11.4	<0.001	0.09	2.15	1.8	1.2	0.4	20.1	<0.01	0.10	0.3
DD009897		0.48	19.4	1220	4.2	4.6	<0.001	0.18	0.52	5.0	1.1	0.2	92.7	<0.01	0.02	0.3
DD009898		0.18	38.3	1180	8.1	3.7	0.001	0.14	0.47	21.9	1.2	0.3	44.0	0.01	0.02	0.6
DD009899		0.18	85.1	1080	11.7	4.5	<0.001	0.26	1.81	28.6	1.6	0.2	96.5	0.01	0.04	0.4
DD009900		0.41	53.8	990	10.8	5.6	0.001	0.19	2.50	29.9	2.4	0.2	80.6	0.01	0.05	0.9
DD009901		0.25	19.1	1310	11.8	5.0	<0.001	0.12	0.82	0.7	1.1	0.2	19.8	<0.01	0.04	<0.2
DD009902		0.21	29.6	940	11.0	7.0	<0.001	0.09	0.97	1.0	1.0	0.2	15.5	<0.01	0.07	0.2
DD009903		0.34	52.9	730	13.9	7.9	<0.001	0.10	5.37	2.1	2.2	0.2	25.7	<0.01	0.10	1.5
DD009904		0.43	62.4	1020	18.3	11.9	<0.001	0.09	3.00	3.0	2.1	0.3	32.7	<0.01	0.09	1.3
DD009905		0.43	49.4	1070	14.0	11.7	<0.001	0.10	2.22	1.9	1.5	0.3	35.2	<0.01	0.08	0.6
DD009906		0.39	52.5	1160	16.6	11.1	<0.001	0.13	2.36	1.3	1.6	0.3	36.2	<0.01	0.08	0.2
DD009907		0.35	81.3	890	20.6	9.6	0.001	0.08	2.49	3.6	2.4	0.3	59.2	<0.01	0.10	2.5
DD009908		0.18	68.4	860	16.4	6.4	0.001	0.11	1.84	2.4	2.2	0.2	50.8	<0.01	0.10	1.9
DD009909		0.25	54.9	910	13.7	7.4	<0.001	0.11	3.72	1.8	1.8	0.2	45.1	<0.01	0.06	0.9
DD009910		0.37	48.5	1100	12.9	8.6	<0.001	0.11	2.03	1.5	1.6	0.3	31.4	<0.01	0.07	0.4
DD009911		0.38	56.4	1010	18.1	9.6	<0.001	0.10	3.40	1.6	1.6	0.3	70.9	<0.01	0.13	0.6
DD009912		0.36	85.0	840	14.1	6.8	0.001	0.10	2.07	2.0	1.9	0.2	59.5	<0.01	0.14	1.4
DD009913		0.16	86.4	1130	20.7	4.8	<0.001	0.07	5.71	3.0	2.4	<0.2	58.3	<0.01	0.08	1.6
DD009914		0.13	39.7	880	9.9	4.2	<0.001	0.07	1.25	0.7	1.0	0.2	28.7	<0.01	0.06	<0.2
DD009915		0.33	69.8	1040	18.6	6.6	0.001	0.09	3.60	3.7	1.6	0.2	30.4	<0.01	0.08	2.0
DD009916		0.35	62.0	1370	17.5	8.6	<0.001	0.08	2.12	2.7	1.8	0.3	35.9	<0.01	0.07	1.0
DD009917		0.27	36.4	1110	10.5	6.6	<0.001	0.09	1.57	1.3	1.5	0.2	43.5	<0.01	0.04	0.2
DD009918		0.29	60.0	1060	17.5	7.1	<0.001	0.09	3.01	3.8	1.9	0.2	59.0	<0.01	0.07	1.6
DD009919		0.46	75.5	1290	13.3	9.1	<0.001	0.09	1.56	3.1	1.5	0.3	44.3	<0.01	0.06	1.0
DD009920		0.54	52.4	1230	17.3	14.8	0.001	0.08	2.06	2.2	1.9	0.4	21.6	<0.01	0.14	0.6
DD009921		0.35	62.5	1200	13.1	11.9	0.001	0.08	2.19	3.8	3.3	0.2	40.5	<0.01	0.09	2.2
DD009922		0.42	40.6	1080	13.4	12.5	<0.001	0.08	1.84	2.1	1.3	0.3	43.4	<0.01	0.07	0.8
DD009923		0.52	44.9	1220	16.9	12.0	<0.001	0.09	3.07	2.9	2.1	0.4	44.5	<0.01	0.07	1.1

Comments: ***Corrected copy with Project name changed from Silver Range - Keg to Silver Range - Rose***

***** See Appendix Page for comments regarding this certificate *****



ALS Canada Ltd.
 2103 Dollarton Hwy
 North Vancouver BC V7H 0A7
 Phone: 604 984 0221 Fax: 604 984 0218 www.alsglobal.com

To: SILVER RANGE RESOURCES LTD.
 C/ O ARCHER, CATHRO & ASSOCIATES (1981)
 LIMITED
 1016- 510 W HASTINGS ST
 VANCOUVER BC V6B 1L8

Page: 4 - D
 Total # Pages: 5 (A - D)
 Plus Appendix Pages
 Finalized Date: 3- OCT- 2011
 Account: RANSIL

Project: Silver Range - Rose

CERTIFICATE OF ANALYSIS WH11170113

Sample Description	Method Analyte Units LOR	ME- MS41	ME- MS41	ME- MS41	ME- MS41	ME- MS41	ME- MS41	ME- MS41	ME- MS41
		Ti %	Ti ppm	U ppm	V ppm	W ppm	Y ppm	Zn ppm	Zr ppm
		0.005	0.02	0.05	1	0.05	0.05	2	0.5
DD009884		0.014	0.13	0.95	35	0.16	5.04	154	<0.5
DD009885		0.009	0.31	0.94	36	<0.05	11.85	226	1.0
DD009886		0.010	0.08	0.68	18	0.08	4.83	76	0.9
DD009887		0.012	0.10	0.57	39	0.14	2.07	70	<0.5
DD009888		0.026	0.04	0.24	25	<0.05	0.81	19	<0.5
DD009889		0.026	0.17	0.55	55	0.46	2.12	49	<0.5
DD009890		0.008	0.16	0.80	30	0.09	4.75	61	<0.5
DD009891		0.028	0.11	0.52	37	0.11	5.12	94	0.5
DD009892		0.015	0.11	0.68	19	0.15	3.79	39	<0.5
DD009893		0.016	0.15	0.83	32	0.17	7.82	99	<0.5
DD009894		0.012	0.08	0.47	38	0.13	1.82	67	<0.5
DD009895		0.021	0.12	0.79	33	0.26	4.22	110	<0.5
DD009896		0.025	0.19	0.58	37	0.18	4.02	88	<0.5
DD009897		0.018	0.06	0.33	54	0.08	5.97	48	1.1
DD009898		0.007	0.05	0.19	167	0.07	24.2	82	1.4
DD009899		<0.005	0.10	0.09	152	0.06	23.7	94	1.2
DD009900		0.010	0.11	0.30	151	0.10	33.0	77	1.3
DD009901		0.010	0.08	0.61	21	0.26	3.65	52	<0.5
DD009902		0.016	0.09	0.72	22	0.10	4.34	63	<0.5
DD009903		0.012	0.13	0.77	20	0.18	4.03	145	0.6
DD009904		0.013	0.17	1.41	28	0.16	9.81	156	0.7
DD009905		0.015	0.14	1.05	29	0.16	5.67	121	<0.5
DD009906		0.015	0.15	1.17	28	0.31	4.91	124	<0.5
DD009907		0.010	0.21	1.39	24	0.12	9.75	191	1.0
DD009908		0.006	0.15	1.03	13	0.44	7.12	168	0.8
DD009909		0.011	0.19	0.89	19	0.21	5.36	130	<0.5
DD009910		0.014	0.14	1.00	27	0.14	6.07	103	<0.5
DD009911		0.012	0.13	0.84	29	0.17	4.06	117	<0.5
DD009912		0.012	0.09	0.82	23	0.15	5.53	167	1.0
DD009913		0.006	0.17	1.29	14	0.10	9.41	191	0.8
DD009914		0.014	0.07	0.51	23	0.09	2.49	71	<0.5
DD009915		0.013	0.15	1.26	21	0.11	14.50	163	1.0
DD009916		0.015	0.11	1.34	27	0.18	13.55	159	0.8
DD009917		0.018	0.07	0.83	24	0.12	8.75	76	<0.5
DD009918		0.014	0.17	1.04	18	0.27	11.90	148	2.0
DD009919		0.019	0.18	0.78	44	0.14	8.31	149	0.8
DD009920		0.023	0.17	1.09	42	0.24	9.39	110	<0.5
DD009921		0.010	0.17	1.13	26	0.11	10.35	134	3.4
DD009922		0.017	0.14	1.09	29	0.13	8.38	109	0.6
DD009923		0.015	0.25	1.08	33	0.16	5.98	99	0.8

Comments: ***Corrected copy with Project name changed from Silver Range - Keg to Silver Range - Rose***

**** See Appendix Page for comments regarding this certificate ****



ALS Canada Ltd.
 2103 Dollarton Hwy
 North Vancouver BC V7H 0A7
 Phone: 604 984 0221 Fax: 604 984 0218 www.alsglobal.com

To: SILVER RANGE RESOURCES LTD.
 C/ O ARCHER, CATHRO & ASSOCIATES (1981)
 LIMITED
 1016- 510 W HASTINGS ST
 VANCOUVER BC V6B 1L8

Page: 5 - A
 Total # Pages: 5 (A - D)
 Plus Appendix Pages
 Finalized Date: 3- OCT- 2011
 Account: RANSIL

Project: Silver Range - Rose

CERTIFICATE OF ANALYSIS WH11170113

Sample Description	Method Analyte Units LOR	WEI- 21	Au- TL43	ME- MS41	ME- MS41	ME- MS41	ME- MS41	ME- MS41	ME- MS41	ME- MS41	ME- MS41	ME- MS41	ME- MS41	ME- MS41	ME- MS41	
		Recvd Wt. kg	Au ppm	Ag ppm	Al %	As ppm	Au ppm	B ppm	Ba ppm	Be ppm	Bi ppm	Ca %	Cd ppm	Ce ppm	Co ppm	Cr ppm
		0.02	0.001	0.01	0.01	0.1	0.2	10	10	0.05	0.01	0.01	0.01	0.02	0.1	1
DD009924		0.18	0.027	8.87	0.50	16.9	<0.2	<10	290	0.30	0.23	0.09	0.33	16.35	1.8	31
DD009925		0.16	0.008	1.07	0.35	9.0	<0.2	<10	170	0.14	0.20	0.09	0.20	15.35	2.5	19
DD009926		0.18	0.007	0.90	0.37	14.4	<0.2	<10	270	0.17	0.20	0.10	0.18	15.80	2.9	21
DD009927		0.20	0.003	0.48	0.66	11.6	<0.2	<10	180	0.13	0.17	0.10	0.16	15.60	5.9	47
DD009928		0.24	0.009	0.66	0.79	37.1	<0.2	<10	440	0.50	0.35	0.27	0.92	32.1	18.3	44
DD009929		0.26	0.008	0.22	2.44	44.8	<0.2	<10	1520	0.64	0.17	0.45	0.25	33.1	34.5	120
DD009930		0.22	0.005	0.14	2.38	13.7	<0.2	<10	920	0.38	0.10	0.56	0.17	13.60	21.0	93
DD009931		0.16	0.006	0.18	1.66	15.6	<0.2	<10	500	0.37	0.13	1.00	0.24	15.15	16.6	53
DD009932		0.20	0.003	0.17	1.38	8.5	<0.2	<10	390	0.37	0.11	0.72	0.16	17.40	13.9	53
DD009933		0.26	0.009	0.29	1.85	30.1	<0.2	<10	1330	0.42	0.06	0.73	0.22	14.35	34.2	53
DD009934		0.18	0.006	0.21	1.97	22.4	<0.2	<10	1350	0.40	0.09	0.83	0.31	18.20	29.6	73
DD009935		0.18	0.003	0.25	1.96	13.6	<0.2	<10	880	0.69	0.18	0.59	0.25	32.0	18.6	57
DD009936		0.26	0.006	0.15	2.50	47.9	<0.2	<10	2090	0.51	0.09	0.35	0.26	24.9	31.1	88
DD009937		0.24	0.005	0.16	1.72	13.6	<0.2	<10	1200	0.51	0.20	0.42	0.19	44.0	24.7	54
DD009938		0.14	0.002	0.60	0.46	9.8	<0.2	<10	760	0.18	0.19	0.36	0.83	17.90	24.3	23
DD009939		0.24	0.032	0.49	1.55	101.0	<0.2	<10	1710	0.35	0.21	0.37	0.16	35.4	19.9	44
DD009940		0.20	0.014	0.36	1.77	33.8	<0.2	<10	1600	0.57	0.26	0.42	0.69	46.3	31.0	54
DD009941		0.28	0.011	1.73	0.82	30.2	<0.2	<10	600	0.43	0.20	1.01	0.56	22.7	10.8	40
DD009942		0.22	0.013	1.14	0.70	30.0	<0.2	<10	670	0.53	0.26	0.90	0.96	33.0	17.8	31
DD009943		0.24	0.004	0.29	0.51	12.9	<0.2	<10	210	0.19	0.12	0.17	0.21	12.55	5.2	17
DD009944		0.20	0.004	0.39	0.65	10.0	<0.2	<10	320	0.28	0.15	0.18	0.39	15.45	7.5	43
DD009945		0.14	0.002	0.21	0.48	2.9	<0.2	<10	220	0.21	0.09	1.06	0.38	8.60	3.4	9
DD009946		0.28	0.004	0.31	0.70	9.4	<0.2	<10	290	0.53	0.23	0.92	0.44	28.9	13.1	15
DD009947		0.26	0.004	0.43	0.80	8.1	<0.2	<10	310	0.40	0.23	1.07	0.37	20.4	9.1	16
DD009948		0.32	0.005	0.84	0.87	17.2	<0.2	<10	270	0.62	0.34	0.12	0.71	43.7	21.1	21
DD009949		0.32	0.007	1.08	0.74	13.5	<0.2	<10	370	0.45	0.26	0.44	0.42	27.6	9.7	23
DD009950		0.20	0.003	0.28	0.90	11.7	<0.2	<10	330	0.39	0.22	0.32	0.28	21.8	8.2	21

Comments: ***Corrected copy with Project name changed from Silver Range - Keg to Silver Range - Rose***

***** See Appendix Page for comments regarding this certificate *****



ALS Canada Ltd.
 2103 Dollarton Hwy
 North Vancouver BC V7H 0A7
 Phone: 604 984 0221 Fax: 604 984 0218 www.alsglobal.com

To: SILVER RANGE RESOURCES LTD.
 C/ O ARCHER, CATHRO & ASSOCIATES (1981)
 LIMITED
 1016- 510 W HASTINGS ST
 VANCOUVER BC V6B 1L8

Page: 5 - B
 Total # Pages: 5 (A - D)
 Plus Appendix Pages
 Finalized Date: 3- OCT- 2011
 Account: RANSIL

Project: Silver Range - Rose

CERTIFICATE OF ANALYSIS WH11170113

Sample Description	Method Analyte Units LOR	ME- MS41	ME- MS41	ME- MS41	ME- MS41	ME- MS41	ME- MS41	ME- MS41	ME- MS41	ME- MS41	ME- MS41	ME- MS41	ME- MS41	ME- MS41	ME- MS41	
		Cs ppm	Cu ppm	Fe %	Ga ppm	Ge ppm	Hf ppm	Hg ppm	In ppm	K %	La ppm	Li ppm	Mg %	Mn ppm	Mo ppm	Na %
		0.05	0.2	0.01	0.05	0.05	0.02	0.01	0.005	0.01	0.2	0.1	0.01	5	0.05	0.01
DD009924		1.50	33.9	1.36	2.88	0.12	<0.02	0.22	0.028	0.09	13.1	1.6	0.05	79	7.49	0.03
DD009925		1.49	21.0	1.33	2.96	0.09	<0.02	0.10	0.016	0.09	9.8	1.7	0.05	108	2.50	0.03
DD009926		1.26	27.3	1.55	2.78	0.09	<0.02	0.15	0.023	0.11	10.2	1.3	0.04	153	3.41	0.02
DD009927		1.15	16.0	2.21	4.35	0.09	<0.02	0.06	0.017	0.06	8.6	4.1	0.23	241	1.79	0.02
DD009928		1.24	75.8	3.84	2.67	0.13	<0.02	0.06	0.044	0.10	16.1	7.8	0.39	815	7.88	0.02
DD009929		3.27	108.0	5.94	7.44	0.11	0.07	0.08	0.065	0.08	13.3	23.3	1.72	1750	2.02	0.02
DD009930		1.92	55.6	4.50	7.44	0.09	0.04	0.07	0.049	0.04	5.3	21.0	1.51	966	0.77	0.03
DD009931		1.77	45.2	3.77	6.23	0.09	0.03	0.12	0.046	0.05	7.3	14.5	0.79	948	1.13	0.03
DD009932		2.39	50.4	2.78	4.97	0.10	0.03	0.08	0.038	0.05	8.6	11.8	0.72	632	0.66	0.03
DD009933		2.49	96.3	7.23	6.57	0.12	0.05	0.23	0.072	0.04	6.3	12.1	1.18	1320	0.83	0.03
DD009934		2.64	67.7	5.60	6.51	0.12	0.05	0.10	0.058	0.07	7.6	16.6	1.37	1620	0.96	0.02
DD009935		3.76	91.4	4.34	6.50	0.13	0.03	0.11	0.046	0.06	14.4	15.4	0.87	1260	1.26	0.02
DD009936		3.16	71.8	6.36	8.71	0.12	0.03	0.10	0.062	0.05	9.7	17.8	1.46	1580	1.00	0.02
DD009937		2.32	107.5	3.73	6.13	0.13	0.06	0.07	0.043	0.06	16.1	15.7	1.13	2010	1.77	0.02
DD009938		2.61	59.7	2.14	3.00	0.08	<0.02	0.17	0.022	0.07	6.1	2.7	0.17	6200	2.57	0.02
DD009939		2.72	112.0	4.90	5.66	0.12	0.04	0.08	0.046	0.08	15.4	13.6	0.84	1640	2.59	0.02
DD009940		3.08	161.5	4.77	6.27	0.13	0.03	0.14	0.047	0.08	16.8	15.6	1.03	3430	2.65	0.02
DD009941		1.02	80.7	2.91	2.92	0.10	0.05	0.18	0.034	0.07	12.4	6.9	0.40	509	9.00	0.02
DD009942		1.51	101.0	3.09	2.59	0.10	0.09	0.15	0.039	0.08	16.0	5.7	0.33	1080	6.54	0.02
DD009943		1.28	31.8	1.38	2.58	0.08	<0.02	0.08	0.020	0.05	5.5	2.4	0.09	401	3.00	0.03
DD009944		1.09	29.9	1.96	3.26	0.09	<0.02	0.07	0.022	0.06	7.0	5.3	0.23	524	5.37	0.02
DD009945		0.74	18.7	0.99	1.69	0.08	0.03	0.11	0.017	0.04	4.3	1.5	0.21	236	1.03	0.02
DD009946		0.85	36.6	3.28	2.58	0.09	0.04	0.10	0.030	0.09	13.8	6.7	0.42	824	1.79	0.02
DD009947		1.11	40.7	2.73	2.69	0.09	0.06	0.15	0.028	0.09	9.7	7.2	0.39	575	3.71	0.02
DD009948		1.45	69.8	4.00	3.07	0.12	0.02	0.15	0.032	0.11	19.7	9.4	0.20	2380	11.95	0.01
DD009949		1.07	41.1	3.03	3.17	0.11	0.03	0.21	0.027	0.12	14.1	7.7	0.28	697	7.81	0.02
DD009950		1.39	30.6	2.27	4.44	0.09	<0.02	0.05	0.025	0.07	10.4	6.9	0.25	656	4.14	0.02

Comments: ***Corrected copy with Project name changed from Silver Range - Keg to Silver Range - Rose***

***** See Appendix Page for comments regarding this certificate *****



ALS Canada Ltd.
 2103 Dollarton Hwy
 North Vancouver BC V7H 0A7
 Phone: 604 984 0221 Fax: 604 984 0218 www.alsglobal.com

To: SILVER RANGE RESOURCES LTD.
 C/ O ARCHER, CATHRO & ASSOCIATES (1981)
 LIMITED
 1016- 510 W HASTINGS ST
 VANCOUVER BC V6B 1L8

Page: 5 - C
 Total # Pages: 5 (A - D)
 Plus Appendix Pages
 Finalized Date: 3- OCT- 2011
 Account: RANSIL

Project: Silver Range - Rose

CERTIFICATE OF ANALYSIS WH11170113

Sample Description	Method Analyte Units LOR	ME- MS41	ME- MS41	ME- MS41	ME- MS41	ME- MS41	ME- MS41	ME- MS41	ME- MS41	ME- MS41	ME- MS41	ME- MS41	ME- MS41	ME- MS41	ME- MS41	
		Nb ppm	Ni ppm	P ppm	Pb ppm	Rb ppm	Re ppm	S %	Sb ppm	Sc ppm	Se ppm	Sn ppm	Sr ppm	Ta ppm	Te ppm	Th ppm
DD009924		<0.05	8.7	1730	26.1	9.2	0.001	0.17	2.22	0.5	10.2	0.3	111.5	<0.01	0.24	<0.2
DD009925		0.11	11.5	1430	13.2	9.2	<0.001	0.13	1.58	0.6	2.1	0.4	45.9	<0.01	0.10	<0.2
DD009926		0.14	13.1	1640	14.1	11.2	<0.001	0.21	2.18	0.6	3.2	0.4	53.4	<0.01	0.15	<0.2
DD009927		0.38	28.5	600	7.9	10.7	<0.001	0.06	0.99	1.0	1.1	0.5	17.3	<0.01	0.04	<0.2
DD009928		0.21	81.4	1410	30.8	8.5	<0.001	0.15	6.14	2.7	3.6	0.3	107.5	<0.01	0.17	1.5
DD009929		0.44	91.1	890	10.3	7.1	<0.001	0.06	2.99	16.9	1.6	0.5	36.0	<0.01	0.05	2.7
DD009930		0.30	54.0	670	6.2	5.1	<0.001	0.06	0.93	10.6	1.0	0.4	30.8	<0.01	0.01	1.0
DD009931		0.61	41.0	1050	6.8	7.4	<0.001	0.12	0.86	10.7	1.5	0.4	52.0	<0.01	0.03	0.7
DD009932		0.54	57.3	790	5.2	7.6	<0.001	0.08	1.97	12.3	1.5	0.4	50.8	<0.01	0.01	0.7
DD009933		0.25	62.8	720	7.0	4.0	<0.001	0.11	1.67	27.2	2.0	0.4	38.5	<0.01	0.03	1.2
DD009934		0.29	64.7	960	9.1	5.3	0.001	0.11	1.36	21.6	1.6	0.3	40.8	<0.01	0.02	1.1
DD009935		0.55	45.1	1230	11.1	7.9	<0.001	0.09	0.87	14.0	1.8	0.5	45.8	<0.01	0.04	1.2
DD009936		0.22	60.9	900	8.1	5.9	<0.001	0.07	1.57	21.5	1.8	0.4	29.8	<0.01	0.02	1.1
DD009937		0.16	58.7	660	14.6	4.7	0.001	0.06	1.60	9.6	1.8	0.3	25.2	<0.01	0.05	2.0
DD009938		0.19	19.9	1560	19.4	6.3	0.001	0.20	1.19	0.8	0.6	0.3	28.0	<0.01	0.06	<0.2
DD009939		0.25	50.3	1070	22.8	6.1	0.001	0.07	9.04	8.6	1.2	0.3	34.7	<0.01	0.07	2.4
DD009940		0.26	61.5	1230	42.2	6.7	<0.001	0.08	2.49	10.2	2.0	0.4	43.3	<0.01	0.09	2.0
DD009941		0.26	47.0	1250	15.5	5.8	0.001	0.15	5.76	5.9	3.4	0.3	91.2	<0.01	0.10	1.4
DD009942		0.22	67.3	1200	18.4	5.9	0.002	0.10	5.25	5.2	2.6	0.3	86.7	<0.01	0.09	2.2
DD009943		0.23	20.1	840	7.4	4.8	<0.001	0.09	1.05	0.8	0.4	0.2	20.6	<0.01	<0.01	<0.2
DD009944		0.26	37.6	950	9.4	7.6	<0.001	0.09	1.75	0.9	0.8	0.4	22.6	<0.01	0.03	0.2
DD009945		0.32	9.5	1890	4.6	4.5	0.001	0.22	0.52	1.2	0.6	0.2	60.6	<0.01	0.01	0.3
DD009946		0.32	37.1	1030	12.5	8.2	<0.001	0.11	1.94	3.9	1.7	0.3	52.0	<0.01	0.03	1.1
DD009947		0.41	29.4	1070	18.4	8.6	<0.001	0.13	1.88	2.4	1.4	0.3	61.9	<0.01	0.08	1.3
DD009948		0.29	60.3	1370	32.6	9.1	<0.001	0.11	4.06	2.5	2.2	0.3	62.4	<0.01	0.20	3.1
DD009949		0.39	35.1	1160	20.8	10.2	0.001	0.14	3.40	3.0	2.1	0.4	67.2	<0.01	0.11	1.8
DD009950		0.24	21.8	1090	13.5	10.9	<0.001	0.08	2.30	0.8	1.1	0.5	38.8	<0.01	0.09	0.2

Comments: ***Corrected copy with Project name changed from Silver Range - Keg to Silver Range - Rose***

***** See Appendix Page for comments regarding this certificate *****



ALS Canada Ltd.
 2103 Dollarton Hwy
 North Vancouver BC V7H 0A7
 Phone: 604 984 0221 Fax: 604 984 0218 www.alsglobal.com

To: SILVER RANGE RESOURCES LTD.
 C/ O ARCHER, CATHRO & ASSOCIATES (1981)
 LIMITED
 1016- 510 W HASTINGS ST
 VANCOUVER BC V6B 1L8

Page: 5 - D
 Total # Pages: 5 (A - D)
 Plus Appendix Pages
 Finalized Date: 3- OCT- 2011
 Account: RANSIL

Project: Silver Range - Rose

CERTIFICATE OF ANALYSIS WH11170113

Sample Description	Method Analyte Units LOR	ME- MS41	ME- MS41	ME- MS41	ME- MS41	ME- MS41	ME- MS41	ME- MS41	ME- MS41
		Ti %	Ti ppm	U ppm	V ppm	W ppm	Y ppm	Zn ppm	Zr ppm
		0.005	0.02	0.05	1	0.05	0.05	2	0.5
DD009924		<0.005	0.81	3.22	125	0.11	9.34	28	<0.5
DD009925		0.009	0.27	1.28	44	0.12	3.10	48	<0.5
DD009926		0.008	0.26	1.69	59	0.12	2.43	48	<0.5
DD009927		0.027	0.12	0.63	60	0.20	2.31	33	<0.5
DD009928		0.018	0.27	1.48	34	0.17	12.15	161	<0.5
DD009929		0.026	0.23	0.76	112	0.11	15.40	103	1.7
DD009930		0.015	0.12	0.33	126	0.07	8.51	67	1.0
DD009931		0.024	0.12	0.60	90	0.11	14.15	60	0.9
DD009932		0.024	0.11	0.52	59	0.11	19.50	44	1.2
DD009933		0.010	0.17	0.25	156	0.06	21.5	90	1.1
DD009934		0.025	0.12	0.36	122	0.20	28.3	80	1.4
DD009935		0.026	0.13	1.08	93	0.19	32.9	57	0.8
DD009936		0.012	0.10	0.38	139	0.09	30.9	91	0.8
DD009937		0.023	0.11	0.34	71	0.05	15.45	88	1.7
DD009938		0.015	0.16	0.55	37	0.13	2.71	68	<0.5
DD009939		0.015	0.10	0.60	62	0.15	12.65	113	1.3
DD009940		0.017	0.16	0.67	74	0.16	20.4	136	0.8
DD009941		0.013	0.26	2.28	71	0.27	20.0	159	2.3
DD009942		0.010	0.20	2.31	38	0.09	20.1	189	3.4
DD009943		0.021	0.08	0.48	23	0.15	3.23	45	<0.5
DD009944		0.019	0.16	0.89	33	0.17	4.57	66	<0.5
DD009945		0.017	0.07	0.67	16	0.08	3.94	39	1.3
DD009946		0.013	0.10	1.00	20	0.08	19.95	82	1.6
DD009947		0.018	0.13	2.08	24	0.09	9.53	81	2.3
DD009948		0.016	0.33	2.13	38	0.19	10.00	147	0.8
DD009949		0.017	0.25	2.62	55	0.13	11.95	92	1.8
DD009950		0.018	0.17	1.36	43	0.27	5.54	73	<0.5

Comments: ***Corrected copy with Project name changed from Silver Range - Keg to Silver Range - Rose***

***** See Appendix Page for comments regarding this certificate *****



ALS Canada Ltd.
2103 Dollarton Hwy
North Vancouver BC V7H 0A7
Phone: 604 984 0221 Fax: 604 984 0218 www.alsglobal.com

To: **SILVER RANGE RESOURCES LTD.**
C/ O ARCHER, CATHRO & ASSOCIATES (1981)
LIMITED
1016- 510 W HASTINGS ST
VANCOUVER BC V6B 1L8

Page: Appendix 1
Total # Appendix Pages: 1
Finalized Date: 3- OCT- 2011
Account: RANSIL

Project: Silver Range - Rose

CERTIFICATE OF ANALYSIS WH11170113

Method	CERTIFICATE COMMENTS
ME- MS41	Gold determinations by this method are semi- quantitative due to the small sample weight used (0.5g).