

2011 ASSESSMENT REPORT

ON THE GONZO CLAIMS

AT FORT SELKIRK AREA

N^{TS} Map Sheet No: 115I/13

Latitude: 62° 50' N Longitude: 137° 59' W

Dawson Mining District
YUKON TERRITORY

Work date: June 01, 2011 to December 24, 2011

Claims owner: Canadian Dehua International Mines Group Inc.
820-1130 West Pender Street, Vancouver, BC, Canada V6E 4A4

By: Raymond Xie
Date: April 30, 2012

Canadian Dehua International Mines Group Inc.
Address: #820 1130 West Pender St. Vancouver
BC Canada V6E 4A4
Phone: (604) 697 0118

TABLE OF CONTENTS

Page

1. INTRODUCTION.....	2
2. PHYSIOGRAPHY AND ACCESS.....	3
3. LEGAL DESCRIPTION.....	3
4. HISTORY WORK.....	4
5. WORK DONE IN 2011.....	4
6. CONCLUSIONS AND RECOMMENDATIONS.....	11

Appendix

- Appendix I Statement of Expenditure
- Appendix II Statement of Qualifications
- Appendix III Sample Analysis Results

List of figures:

- Fig 1** Geographic location of GONZO claims
- Fig 2** Gonzo claim group map
- Fig 3** Prospecting targets in GONZO property
- Fig 4** Gonzo property graphic copper content in soil
- Fig 5** Copper, gold, Fs anomaly in GONZO property

1. INTRODUCTIN

Gonzo Claims Group (Gonzo Property), including 241 claims, situated along the Yukon River, is located approximately 116 km northwest of Carmacks, and 57 km west of the Minto airstrip. NTS Map Sheet is 115I/13. The property is 100 % held by Canadian Dehua International Mines Group Inc. (Dehua Mines), located within Fort Selkirk area, in Dawson Mining District, Yukon Territory. Its latitude and longitude are 62°50' N, 137°59' W respectively. In 2011, geological, IP survey and soil sampling programs were employed by Dehua mines to explore Cu, Au deposit on more than ten targets within Gonzo Claims Group based on the work of 2010.

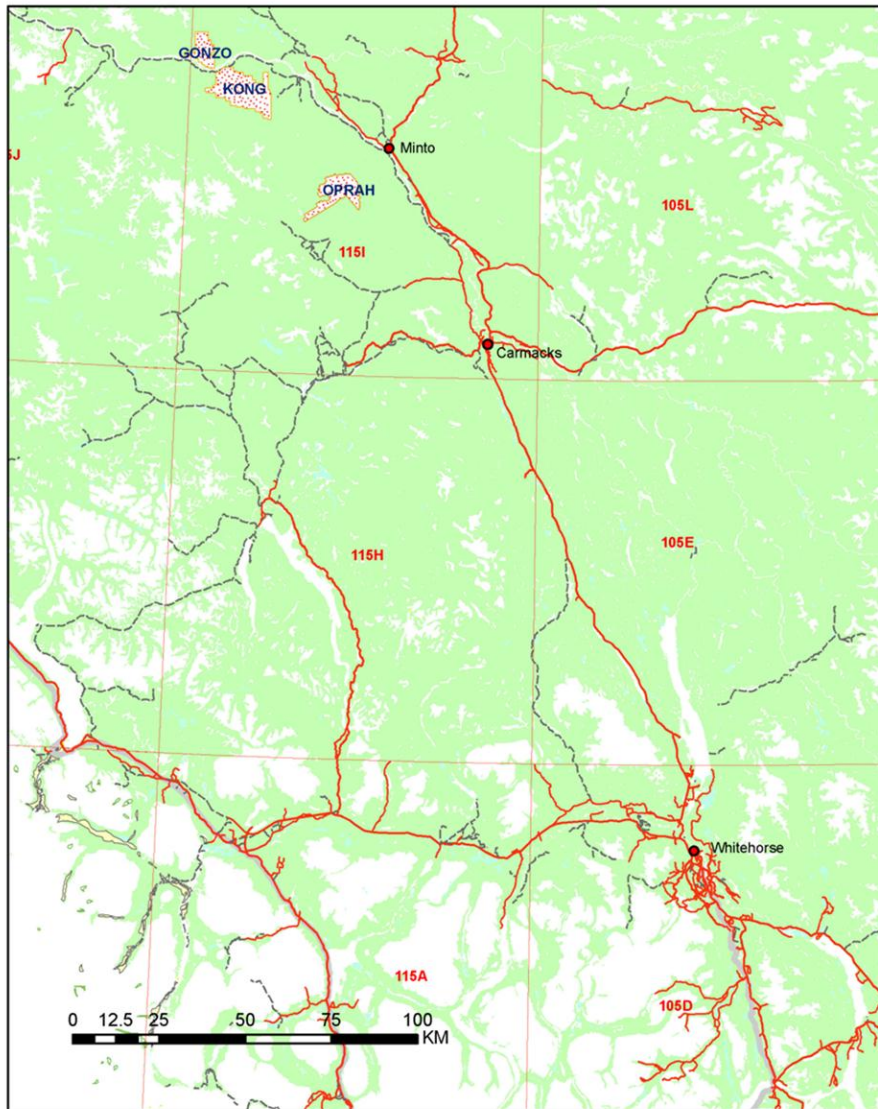


Fig 1 Geographic location of GONZO claims

2. PHYSIOGRAPHY AND ACCESS

The claims lie within the east edge of Dawson Range, Southwestern Yukon. The topography is moderate with long sinuous ridges incised by narrow valleys heading down varied directions to larger swampy creek valleys, as such Yukon River. Vegetation consists of moss, birch, poplar, and spruce with thick alder and buck brush. Elevations range from 400m to 1180 m generally.

Access to Gonzo property was by helicopter from Carmacks, Yukon. There is all weather road access to Minto, where it is approximately 57 km away southeast to Gonzo Property. There are trails access across the whole property but no vehicle access to the property. Helicopter access service is generally available from Carmacks, Yukon.

3. LEGAL DESCRIPTION

Gonzo Claims Group (Gonzo Property), including 241 claims (refer table 1,fig 2), 100 % held by Canadian Dehua International Mines Group Inc. (Dehua Mines), located within Fort Selkirk area, in Dawson Mining District, Yukon Territory. Its latitude and longitude are 62 °44' N, 137 °42' W.

Sixty months were renewed, based on the work done last year and acceptance of this report, which will validate the claims to a new date following. Table 1 showing pertinent claims date follows.

Table 1 Gonzo Claims Group

Grant Number	claim name	claims	expiration date	period renew to
YD21101-YD21140	Gonzo 01-40	40	Dec. 25, 2012	Dec. 25, 2016
YD55265-YD55275	Gonzo 45-55	11	Dec. 25, 2012	Dec. 25, 2016
YD55288-YD55303	Gonzo 68-83	16	Dec. 25, 2012	Dec. 25, 2016
YD55316-YD55335	Gonzo 96-115	20	Dec. 25, 2012	Dec. 25, 2016
YD55344-YD55370	Gonzo 124-150	27	Dec. 25, 2012	Dec. 25, 2016
YD55381-YD55416	Gonzo 161-196	36	Dec. 25, 2012	Dec. 25, 2016
YD55626-YD55641	Gonzo 406-421	16	Dec. 25, 2012	Dec. 25, 2016
YD55668-YD55683	Gonzo 448-463	16	Dec. 25, 2012	Dec. 25, 2016
YD55710-YD55725	Gonzo 490-505	16	Dec. 25, 2012	Dec. 25, 2016
YD55752-YD55759	Gonzo 532-539	8	Dec. 25, 2012	Dec. 25, 2016
YD106455-YD106456	Gonzo 540-541	2	Dec. 25, 2012	Dec. 25, 2016
YD55762-YD55767	Gonzo 542-547	6	Dec. 25, 2012	Dec. 25, 2016
YD58931-YD58956	Gonzo 574-599	26	Dec. 25, 2012	Dec. 25, 2016

4. HISTORY WORK

- 1975 and 1976 Kerr Addison Mines Ltd. collected Induced Polarization (IP) data on their WON claims that lie predominately within Dehua's Gonzo Claims. In addition to the geophysical surveys they drilled 5 diamond drill holes within the survey area (Yukon MINFILE #115I 081). The approximate location of DDH #1 is shown as a feature on all maps while the WON claims are illustrated in Figure 1B. Assay results are not present with the drill log for DDH #1, however the drill log and assessment work indicate the presence of pyrite and pyrrhotite in the intrusive rocks.
- 1977, Sinclair carried out geological mapping in the vicinity of the Minto deposit, as well as reconnaissance-level geochemical studies of intrusive rocks in the area.
- 1984, a 1:250 000-scale geological map of the Carmacks map sheet was published by Tempelman-Kluit.
- 2001, a low-level airborne magnetic and radiometric survey was flown over the entire Minto-Williams Creek area by the Geological Survey of Canada and the Yukon Geology Program (Shives et al., 2002). No geological interpretation of this new geophysical data set has yet been published.
- 2003, stream sedimentary analyses of this regional area from the Yukon Regional Geochemical Database (Yukon geological Survey) have done, which may provide some sight.
- 2010, Dehua Mines has employed airborne magnetic-radiometric survey by Precision GeoSurveys Ltd for field data information collection. The geophysical data was interpreted by Mira and Aurora Geosciences. Aurora Geosciences and Mira Geosciences conducted data processing and interpretation separately on behalf of Dehua Mines based on exploration targeting requirement.

5. WORK DONE IN 2011

In 2011, Dehua Mines carried out ground exploration works in Gonzo claims property which include geological, IP survey and soil sampling based on the high precision airborne magnetic survey flown in 2010 .

The work in 2011 composed 3 periods:

March-May: Preparations

June-Early Oct: Field work

Oct.-Dec: Indoor paper work

Aurora Geosciences delineated more than 10 different levels of exploration targets in within Gonzo Property based on geophysical interpretation (fig 3). The aeromagnetic anomalies for each target range generally less than 300m × 300m. One kilometer of soil sampling and IP survey line applied through the center of each aeromagnetic anomaly areas.

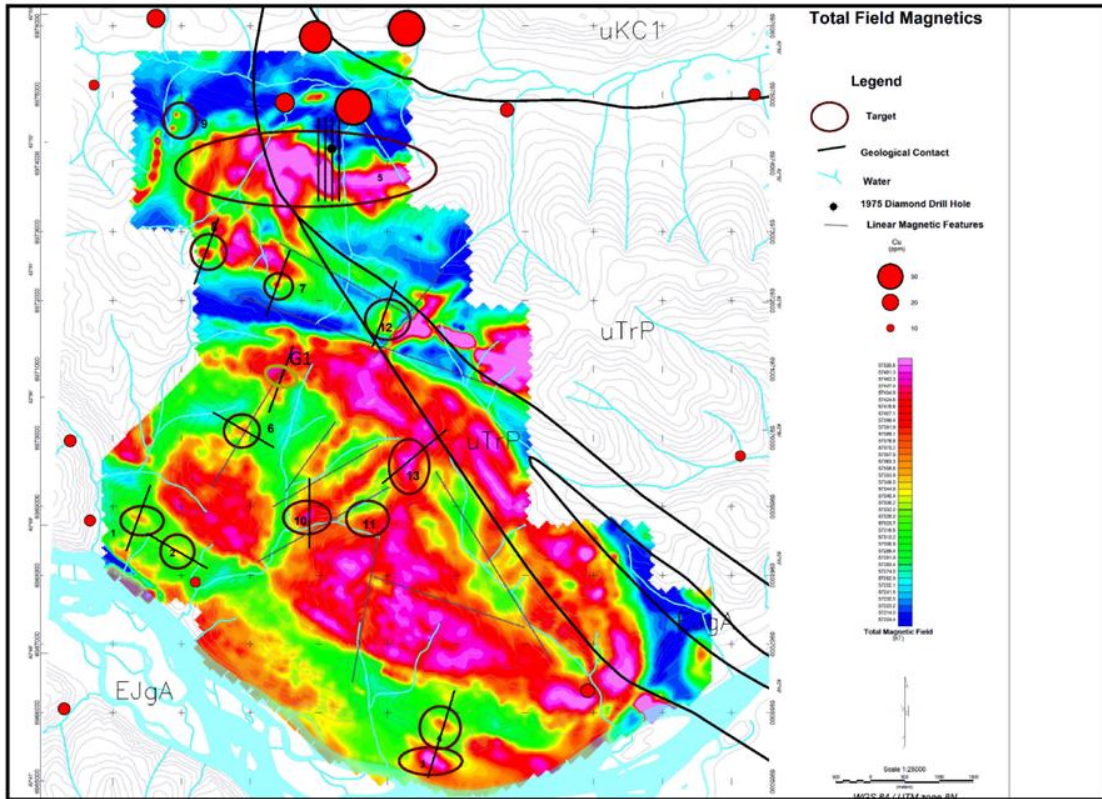


Figure 3 Prospecting targets in GONZO property

5.1 Soil sampling and geophysical data acquisition

Sampling was along 1 km section line, spacing 50 m, 21 samples per line (Table 2).

Tools: gasoline-powered and manual soil sampling auger.

Sampling depth: Try to reach to the original residual - the soil B-C or C layer. C layer is in situ weathering products sandy soil, including original rock fragments.

For various reasons, sampling do not always reaches to required layer. The reasons attributed to:

- Ice and permafrost;
- Ancient alluvial river bed;
- Glacial deposits;
- Moorland and thick layer of talus in valleys

IP method (Induced polarization)

Instruments:

SQ-3C dual-frequency IP transmitter and receiver. The instrument is small, lightweight, no bulky power supply unit, particularly suitable in mountains of dense vegetation.

Data acquisition:

Take the same section with soil sampling survey;

Gradient method;

AB spacing: The average length was 1 km, varied depending on operating conditions (topography, ground resistivity, etc.).

MN: 25m

Data collected within the middle of 1 / 2 AB, collecting 20-35 data per line (Table2).

Acquired data of chargeability and apparent resistivity in each measuring point

Problems:

- Frozen, rain, poor ground conductivity conditions will affect the stability and quality of data;
- Imprecise positioning in forests reducing the reliability of data

Table 2 2011 field work statistics

campsite	targets	IP		soil sampling	
		line	survey points	line	samples
GC2	G01	1	20	1	21
	G02	1	20	1	21
	G03-04	1	34	1	23
	G06	1	20	1	21
	G10	1	20	1	21
	G13	1	24	1	21
GC3	G05	3	91	2	44
	G07	1	7	1	21
	G08	1	13	1	21
	G12	1	18	1	21
	G1*	1	20	1	21
	subtotal	13	287	12	256

* Targets provide by Mira Geosciences

5.2 Data analysis and collation

Practice has proved that copper deposit as the porphyry and hydrothermal type have a primary halo elements combination of Cu, Mo, Au, Ag, Bi, Hg, As, Sb, Pb, Zn. We use such element and/or their association to assess the targets.

Table 3 and fig 4 show the element content distribution within Gonzo claim group.

Table 3 Statistical analysis of elements content in soil

element	Au	Ag	Cu	Mo	Pb	Zn	Bi	Hg	As	Sb	
GONZO	max	0.09	2.77	436	96.9	172	387	17.5	0.21	279	7.59
	min	0	0.01	5.4	0.19	0.9	28.7	0.01	0	0.6	0.05
	mean	0.0069	0.183	58.03	4.89	8.76	78.97	0.448	0.022	10.39	0.701
	median	0.005	0.11	29.6	0.77	5.9	72.4	0.09	0.02	6.6	0.56
	Standard deviation	0.009	0.258	65.94	12.4	14.32	37.39	1.79	0.02	23.56	0.66

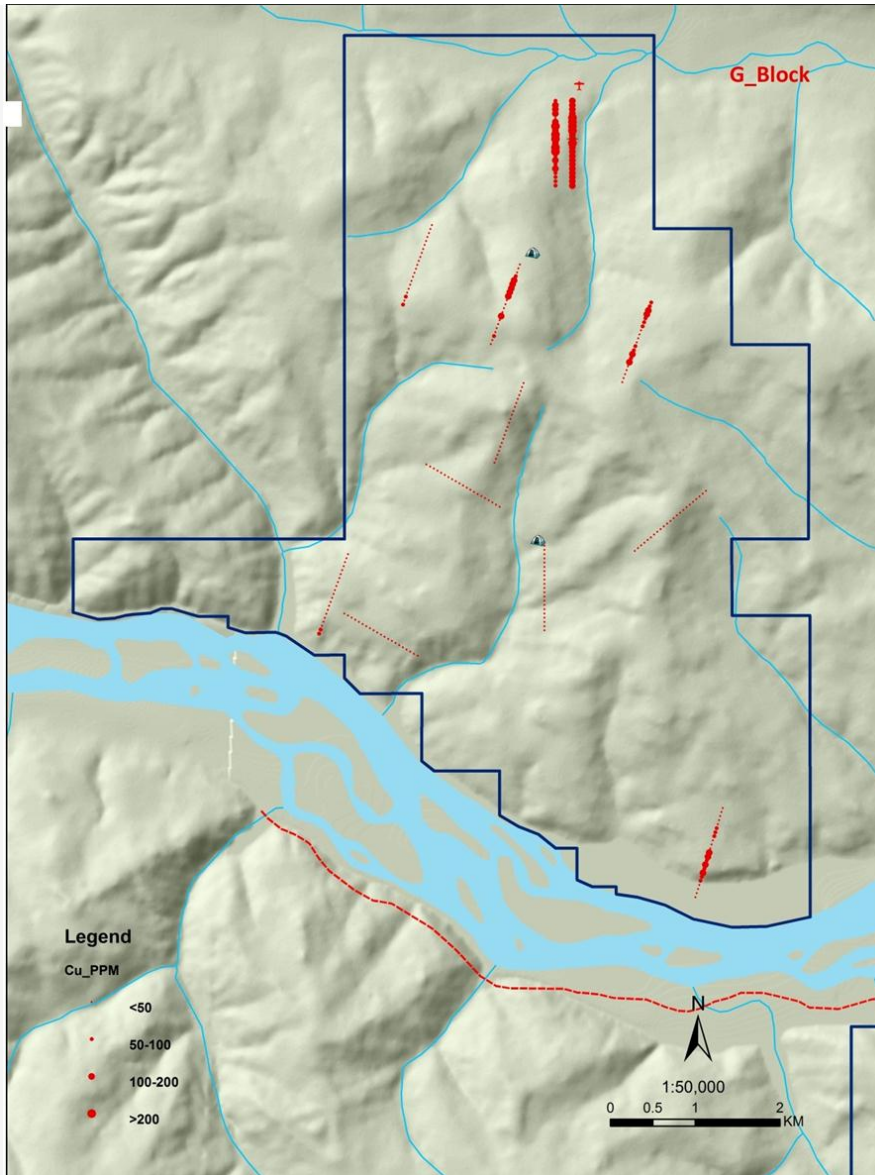


Fig 4 Gonzo property graphic copper content in soil

5.3 Definition of the background and anomaly boundaries

- Section graphic method
- Histogram solution
- Calculation

Calculate the normal background value C_0 and average variance S , according to the formula:

$$Ca = Co \pm KS$$

K is the reliability coefficient, a is the reliability. S : Standard deviation When $a = 0.05$, $K = 1.96$; $a = 0.01$ when, $K = 3$; $a = 0.1$, when, $K = 1.65$. Generally take $K = 2$, to determine the lower limit of abnormal.

- Comparison method

Based on the above methods and calculations, boundaries of background value of each element and obvious abnormalities in prospecting areas were determined as followings (Table 4).

Table 4 Background and anomaly boundaries of elements

element	Au	Ag	Cu	Mo	Pb	Zn	Bi	Hg	As	Sb
background	/	0.082	30.69	0.906	6.179	67.03	0.086	0.023	6.147	0.429
Low limit of anomaly	/	0.29	72.2	5.377	11.83	112	0.183	0.385	15.37	1.198

*Calculated after eliminating unreliable and obvious anomaly high value data

Geophysical Data: Taking Consideration of climate, ground frosting, grounding resistance and the current intensity, signal stability, the obtained geophysical raw data is classified into three levels: reliable, acceptable, not reliable.

Table 5 indicates the statistical parameters and background value of chargeability (F_s) in prospecting area.

Table 5 The F_s statistical parameters and background of various areas

		F_s (%)	F_s background value*
GONZO	max	9.68	1.95
	min	1.3	
	mean	3.47	
	Standard deviation	2.10	

*Calculated after eliminating unreliable and obvious anomaly high value data

Prospecting experiences proved even chargeability slightly higher than the background rate of the value; do not rule out the possibility of mineralization. Currently, there is no generally accepted method of determining the boundaries of IP anomaly. According to background value and data variations, take 2.40 as the lower limit for IP anomaly.

5.4 Exploration target selection

5.4.1 Criteria of the target evaluation

- Indicator elements content in soil: copper, molybdenum, gold;
- Element content value of soil analysis (filter by background, weak anomaly and strong anomaly).Re Table 6

Table 6 Different intensity of soil elements and abnormal values range

Element	Au	Ag	Cu	Mo	Pb	Zn	Bi	Hg	As	Sb
background	0.001	0.082	30.69	0.906	6.179	67.03	0.086	0.023	6.147	0.429
Lower limit of weak anomaly	0.005	0.29	72.2	5.377	11.83	112	0.183	0.385	15.37	1.198
Upper limit of weak anomaly	0.01	0.394	92.96	7.55	14.66	134.42	0.23	0.57	19.99	1.58

- Metal content: Metals participated in the calculation including copper, lead, zinc, molybdenum. Copper, zinc content in the same order of magnitude; molybdenum, lead content in one lower level. To participated in the calculation, the expansion of an order of magnitude for Mo,Pb.
- Chargeability (F_s).

Anomalies lower limit: $F_s = 2.40$

Weak anomalies: $F_s = 2.40-2.80$

Strong anomalies: $F_s \Rightarrow 2.80$

- Representation, geochemical data reliability;
- Others: mineralization signs, former focused exploration areas, registered MINFILE location;

5.4.2 Targets classification

- A:** With strong, continuous geochemical and geophysical survey point anomalies. Or accompany with other particularly high indicator elements. Data are reliable.
- B:** With both strong geophysical and geochemical survey point anomalies which are not in sequence (discontinuous). Data are reliable.
- C:** Only with strong, discontinuous geochemical anomalies;
- D:** There is a weak soil geochemical anomaly and IP anomaly;
- E:** Measured line with only strong geophysical anomaly;
- F:** With only weak geophysical anomaly;
- G:** No any anomaly

According to the above standards and conditions, made the following statistics on the raw data:

Gold content that greater than 30ppb of the survey point);

Silver content greater than 0.20ppm of the survey point);

Copper content > 93 ppm of the survey point (strong anomaly);

Metal amount >335ppm of the survey point;

$F_s > 2.8\%$ of the survey point (strong anomaly);

According to the above classification criteria, statistics results and definition of strong, weak anomalies, targets are graded as shown in table 7 and fig 5.

Table 7 List of targets grading

Target grade	A	B	C	D	E	F	G
GONZO	G05		G07		G08	G10	G1
	G12		G03-04			G13	G06
						G01	G02

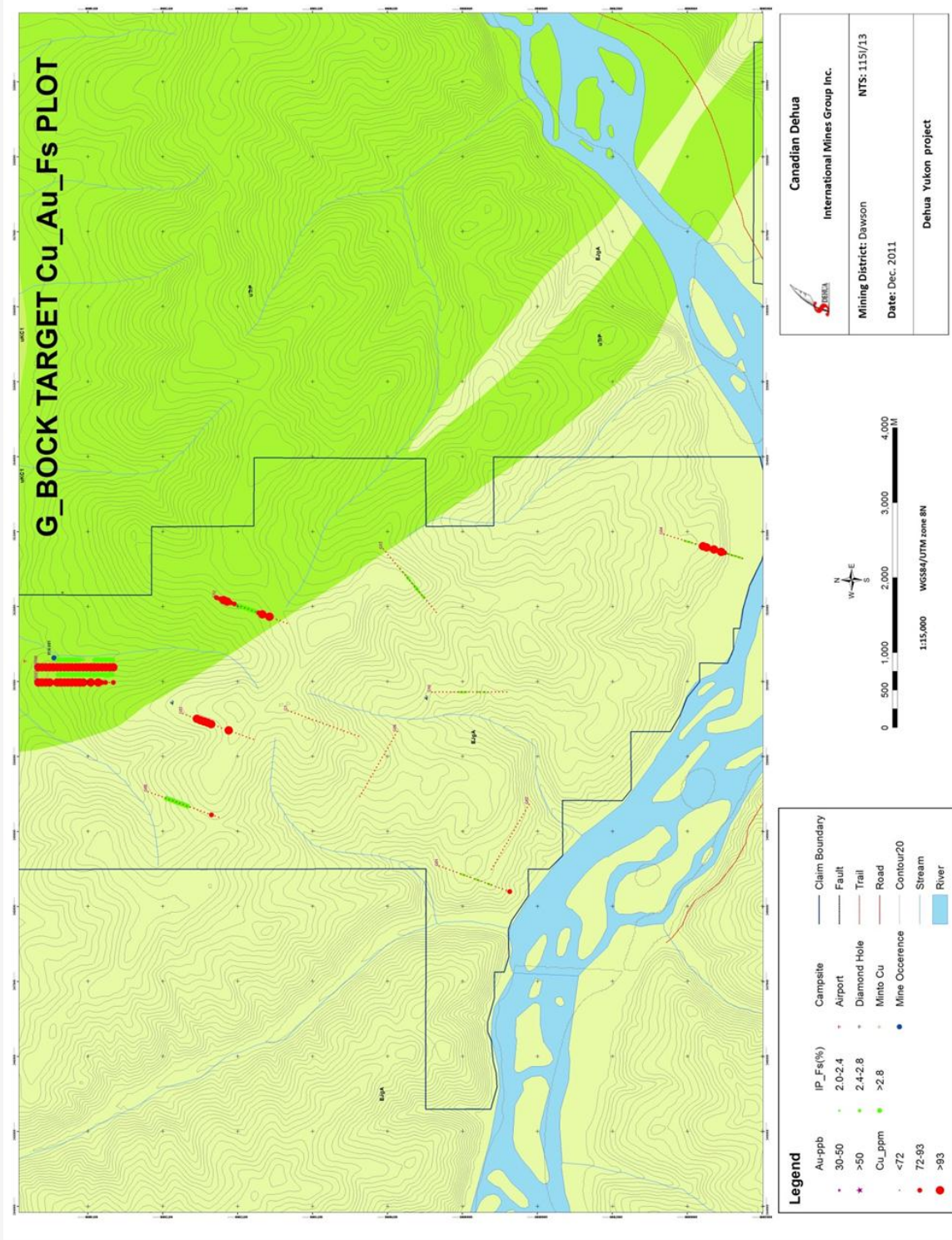


Fig 5 Copper, gold, *Fs* anomaly in GONZO property

6. CONCLUSIONS AND RECOMMENDATIONS

6.1 Key targets: G05-G12-G07

Soil metal elements (including Cu, Mo, Pb, Zn, Au, Ag, As, Bi, Sb) and *Fs* of continuous survey points greatly exceed the background value for the strong anomaly, and consistent with the stream sediment elements high value area.

The plot had been drilled in 1975-1976, drilling depth was only 100m or so. No significant mineralization was found except pyritization. Nevertheless, it cannot be denied significance as potential exploration target.

6.2 Next work recommendations for G05-G12-G07

- a. Collect exploration, particularly drilling data done before;
- b. Expand the add exploration lines, to determine the anomaly boundary;
- c. Cutting lines, to facilitate the work, and improve positioning accuracy;
- d. Stake eastward and northward from boundary of assets;
- e. Conduct geophysical depth sounding, to determine the depth of geological body that causes the anomaly.
- f. Drilling if possible;

Reference

- Energy, Mines and Resources of Yukon, Schedule of Representation Work & Quartz Grouping Guidelines, Quartz Mining Act Section 55 & 56 January 2010.
- Reza Tafti and James K. Mortensen, 2004, Early Jurassic porphyry (?) copper (-gold) deposits at Minto and Williams Creek, Carmacks Copper Belt, western Yukon, MDRU Earth and Ocean Science UBC, In: Yukon Exploration and Geology 2003, D.S. Emond and L.L. Lewis (eds.), Yukon Geological Survey, p. 290-191.
- Precision GeoSurveys Inc. Airborne Geological survey Report Gonzo-Block Property report.
- Aurora Geosciences Ltd. G Block Airborne Magnetic Interpretation Report.
- Mira Geosciences Ltd. Integrated Geologic, Magnetic and Radiometric Cu-Au-Mo Targeting on the G, K and O Block Properties near Carmacks, Yukon Territory, Canada.

Appendix I

Statement of Expenditure for Gonzo Property Claims Group

Expenditures on Gonzo Claims Group Property in period of March 21 to December 24, 2011: **\$119721.04.**

Total Expenditure Applied for Gonzo Property work Assessment in this period:
\$ 100,380

2011 Working Expenditure on Gonzo Claims

item	unit cost	unit	amount
Helicopter rent payment	\$1280/hour	25hours	32,000
Manpower expense	\$350/day/person	9 person,20days	63,000
Accommodation	\$50/day	9 person,20days	9,000
Tool and equipment	300/day	20days	6,000
Transportation			1,200
Communication			
Other supplies			
Consulting			
Sample assay			5,121.04
Office supplies			
Insurance			2,500
Safety and labor protection			900

Total:\$119721.04

119,721.04

Appendix II

Statement of Qualification

I, Rongju Xie, do hereby certify that:

I am a geologist employed by *Canadian Dehua International Mine Group Inc.* and Dehua's Yukon project manager.

I graduated from *Guilin University of Technology*, Guilin, Guangxi, China in 1984, granted B.Sc. in geology.

In 1987, I acquired M.Sc. degree from *China University of Geosciences (Wuhan)*;

In 2000, I acquired PhD in Geosciences from *Central South University*, Changsha, China.

I studied in Geology and worked in mineral prospecting more than 20 years, and have related working experience both in China and Canada.

I involved in Dehua's exploration project in Yukon from the beginning, and carried out data collection, assessment report composition of this one.

Rongju Xie

Geologist
Canadian Dehua International Mines Group Inc.

Appendix III

Sample Analysis Results (Separated documents)



CLIENT NAME: CANADIAN KAILUAN DEHUA MINES CO.LTD
820-1130 WEST PENDER STREET
VANCOUVER, BC V6E4A4

ATTENTION TO: VINCENT LI

PROJECT NO:

AGAT WORK ORDER: 11Y528370

SOLID ANALYSIS REVIEWED BY: David Tye, General Manager, Mining Operations

DATE REPORTED: Sep 30, 2011

PAGES (INCLUDING COVER): 48

Should you require any information regarding this analysis please contact your client services representative at (905) 501 9998, or at 1-800-856-6261

*NOTES

All samples are stored at no charge for 90 days. Please contact the lab if you require additional sample storage time.



Certificate of Analysis

AGAT WORK ORDER: 11Y528370

PROJECT NO:

5623 McADAM ROAD
MISSISSAUGA, ONTARIO
CANADA L4Z 1N9
TEL (905)501-9998
FAX (905)501-0589
<http://www.agatlabs.com>

CLIENT NAME: CANADIAN KAILUAN DEHUA MINES CO.LTD

ATTENTION TO: VINCENT LI

Aqua Regia Digest - Metals Package, ICP/ICP-MS finish (201074)

DATE SAMPLED: Sep 14, 2011

DATE RECEIVED: Sep 13, 2011

DATE REPORTED: Sep 30, 2011

SAMPLE TYPE: Soil

Analyte:	Ag	Al	As	Au	B	Ba	Be	Bi	Ca	Cd	Ce	Co	Cr	Cs
Unit:	ppm	%	ppm	ppm	ppm	ppm	ppm	ppm	%	ppm	ppm	ppm	ppm	ppm
Sample Description	RDL:	0.01	0.01	0.1	0.01	5	1	0.05	0.01	0.01	0.01	0.1	0.5	0.05
G040001 (-)	0.11	1.11	8.1	<0.01	<5	361	0.30	0.10	2.97	0.14	26.0	8.4	26.1	0.67
G040003 (-)	0.14	1.07	5.8	<0.01	<5	442	0.29	0.10	3.90	0.19	27.6	7.0	27.2	0.65
G040005 (-)	0.07	1.22	9.4	<0.01	<5	383	0.34	0.12	2.08	0.14	28.8	9.2	28.5	0.68
G040007 (-)	0.08	0.81	6.2	0.01	<5	227	0.25	0.08	0.92	0.16	23.9	7.1	24.7	0.61
G040009 (-)	0.09	0.78	8.9	0.01	<5	277	0.25	0.08	2.19	0.17	24.6	7.5	22.4	0.56
G040011 (-)	0.08	1.24	8.7	<0.01	<5	236	0.42	0.09	1.05	0.11	26.1	11.5	39.1	0.96
G040013 (-)	0.24	1.53	10.8	<0.01	<5	365	0.41	0.12	3.48	0.07	30.6	10.1	35.6	0.74
G040015 (-)	0.16	2.02	10.5	0.01	<5	325	0.55	0.12	3.03	0.07	32.4	11.7	42.6	0.72
G040017 (-)	0.08	0.76	6.1	<0.01	<5	298	0.24	0.09	0.70	0.23	26.9	6.1	22.8	0.58
G040019 (-)	0.15	1.67	8.7	<0.01	<5	358	0.47	0.10	5.11	0.12	34.2	10.6	37.3	0.72
G040021 (-)	0.13	1.33	6.1	<0.01	<5	356	0.40	0.08	6.91	0.08	25.3	9.0	37.6	0.59
G040023 (-)	0.12	2.17	5.8	<0.01	<5	203	0.39	0.04	1.97	0.06	19.9	17.1	69.2	0.38
G040025 (-)	0.10	1.85	4.6	<0.01	<5	299	0.23	0.05	1.83	0.05	15.7	12.7	29.6	0.85
G040027 (-)	0.13	1.58	10.3	<0.01	<5	257	0.28	0.07	3.30	0.07	22.0	10.7	33.5	0.45
G040029 (-)	0.14	2.57	11.1	<0.01	<5	179	0.50	0.06	0.84	0.06	20.7	16.7	133	0.56
G040031 (-)	0.28	2.11	7.2	<0.01	<5	201	0.56	0.07	2.35	0.11	23.0	16.2	50.9	0.77
G040033 (-)	0.20	2.34	6.0	<0.01	<5	257	0.47	0.07	0.93	0.16	32.0	15.6	35.4	0.97
G040035 (-)	0.25	1.70	12.8	0.01	<5	235	0.44	0.07	3.13	0.16	34.0	11.5	25.6	0.90
G040037 (-)	0.11	1.36	6.3	<0.01	<5	220	0.35	0.10	0.72	0.12	31.6	11.4	33.1	0.88
G040039 (-)	0.12	0.80	9.5	0.03	<5	326	0.26	0.14	2.33	0.15	25.6	7.2	23.7	0.63
G040041 (-)	0.09	0.74	7.9	<0.01	<5	227	0.26	0.08	2.23	0.28	22.7	6.7	19.1	0.64
G040043 (-)	0.07	0.68	7.1	<0.01	<5	213	0.22	0.07	1.93	0.22	21.7	6.3	18.3	0.53
G040045 (-)	0.08	0.82	7.2	<0.01	<5	248	0.26	0.08	2.98	0.25	20.7	7.4	19.8	0.60
G060001 (-)	0.09	1.96	6.4	<0.01	<5	462	0.35	0.10	2.32	0.11	27.6	10.2	27.4	1.04
G060003 (-)	0.05	1.54	4.3	<0.01	<5	301	0.27	0.05	0.72	0.06	26.1	7.5	20.5	0.69
G060005 (-)	0.07	2.31	3.1	<0.01	<5	335	0.30	0.03	0.93	0.03	20.3	8.3	10.4	0.96
G060007 (-)	0.06	2.84	3.3	<0.01	<5	357	0.43	0.03	1.45	0.02	24.8	4.9	10.6	1.01
G060009 (-)	0.04	2.63	2.5	<0.01	<5	379	0.38	0.02	1.11	0.03	24.6	8.0	7.6	1.13
G060011 (-)	0.06	1.93	4.1	<0.01	<5	424	0.24	0.05	0.70	0.03	20.3	7.9	13.7	1.91
G060013 (-)	0.07	2.17	4.7	<0.01	<5	341	0.37	0.06	0.60	0.04	32.5	7.5	18.3	1.47
G060015 (-)	0.07	2.42	2.8	<0.01	<5	340	0.34	0.03	0.93	0.03	33.6	7.1	9.2	2.61
G060017 (-)	0.07	1.49	7.1	0.01	<5	203	0.31	0.08	0.48	0.05	24.6	8.3	27.7	0.86

Certified By:



Certificate of Analysis

AGAT WORK ORDER: 11Y528370

PROJECT NO:

5623 McADAM ROAD
MISSISSAUGA, ONTARIO
CANADA L4Z 1N9
TEL (905)501-9998
FAX (905)501-0589
<http://www.agatlabs.com>

CLIENT NAME: CANADIAN KAILUAN DEHUA MINES CO.LTD

ATTENTION TO: VINCENT LI

Aqua Regia Digest - Metals Package, ICP/ICP-MS finish (201074)

DATE SAMPLED: Sep 14, 2011

DATE RECEIVED: Sep 13, 2011

DATE REPORTED: Sep 30, 2011

SAMPLE TYPE: Soil

Analyte:	Ag	Al	As	Au	B	Ba	Be	Bi	Ca	Cd	Ce	Co	Cr	Cs
Unit:	ppm	%	ppm	ppm	ppm	ppm	ppm	ppm	%	ppm	ppm	ppm	ppm	ppm
Sample Description	RDL:	0.01	0.01	0.1	0.01	5	1	0.05	0.01	0.01	0.01	0.1	0.5	0.05
G060019 (-)	0.05	2.66	2.7	<0.01	<5	365	0.42	0.03	0.95	0.02	27.1	6.9	10.2	1.31
G060021 (-)	0.05	2.50	2.7	<0.01	<5	382	0.33	0.02	0.65	0.02	31.2	8.2	10.3	1.23
G060023 (-)	0.06	2.05	3.2	<0.01	<5	541	0.30	0.03	1.06	0.06	25.1	7.8	9.2	1.82
G060025 (-)	0.05	2.16	4.0	<0.01	<5	362	0.38	0.04	1.12	0.03	25.0	9.4	11.3	1.00
G060027 (-)	0.06	2.13	4.1	<0.01	<5	477	0.38	0.09	0.94	0.03	31.6	7.6	16.4	1.49
G060029 (-)	0.06	1.56	4.7	<0.01	<5	329	0.27	0.08	0.50	0.04	26.4	6.3	25.2	0.68
G060031 (-)	0.11	1.18	5.5	<0.01	<5	319	0.26	0.08	0.56	0.12	29.4	6.2	21.7	0.53
G060033 (-)	0.16	1.07	5.2	<0.01	<5	219	0.24	0.08	0.58	0.16	25.3	6.0	25.3	0.60
G060035 (-)	0.07	0.96	5.4	<0.01	<5	221	0.27	0.09	0.55	0.15	28.5	6.3	24.1	0.63
G060037 (-)	0.07	1.14	5.0	0.03	<5	232	0.22	0.08	0.61	0.10	28.4	5.7	24.8	0.54
G060039 (-)	0.11	1.07	5.8	<0.01	<5	215	0.19	0.09	0.66	0.09	27.3	6.1	27.6	0.62
G060041 (-)	0.10	0.87	4.3	<0.01	<5	219	0.18	0.07	0.78	0.08	22.4	4.5	18.1	0.84
G100001 (-)	0.14	1.27	5.8	<0.01	<5	238	0.24	0.08	0.52	0.07	23.4	6.8	22.4	0.77
G100003 (-)	0.08	1.22	3.9	<0.01	<5	216	0.27	0.05	0.53	0.06	25.0	7.4	19.7	0.74
G100005 (-)	0.05	1.26	2.6	<0.01	<5	311	0.27	0.03	0.63	0.05	26.5	6.6	14.5	0.66
G100007 (-)	0.07	1.75	4.2	<0.01	<5	289	0.43	0.04	0.80	0.09	34.1	8.1	18.9	0.96
G100009 (-)	0.14	1.35	7.0	<0.01	<5	305	0.31	0.11	1.89	0.14	27.7	9.6	27.0	0.79
G100011 (-)	0.07	1.12	6.1	<0.01	<5	374	0.25	0.09	0.63	0.25	30.1	8.0	24.2	0.48
G100013 (-)	0.13	1.12	8.0	<0.01	<5	298	0.29	0.12	0.63	0.21	31.9	8.8	25.1	0.54
G100015 (-)	0.07	1.42	4.6	<0.01	<5	297	0.29	0.05	0.62	0.08	33.4	8.3	21.2	0.73
G100017 (-)	0.10	1.19	2.7	<0.01	<5	269	0.21	0.03	0.74	0.08	23.5	7.4	16.2	0.68
G100019 (-)	0.03	1.21	2.6	0.06	<5	238	0.22	0.03	0.67	0.04	22.2	5.6	16.7	0.62
G100021 (-)	0.04	2.19	4.9	<0.01	<5	388	0.34	0.04	0.77	0.04	30.7	8.6	19.6	0.98
G100023 (-)	0.11	2.46	3.1	<0.01	<5	627	0.31	0.06	0.76	0.04	21.6	9.8	16.2	1.05
G100025 (-)	0.07	2.37	2.1	<0.01	<5	502	0.25	0.02	1.85	0.04	24.2	9.7	7.0	0.64
G100027 (-)	0.07	2.72	4.4	<0.01	<5	453	0.29	0.05	1.12	0.06	19.8	11.2	15.5	1.04
G100029 (-)	0.12	1.19	5.9	<0.01	<5	245	0.27	0.09	1.01	0.26	24.2	7.2	24.0	0.52
G100031 (-)	0.09	0.87	7.1	<0.01	<5	274	0.24	0.08	0.56	0.12	23.6	7.2	24.3	0.45
G100033 (-)	0.07	1.32	7.7	0.01	<5	248	0.31	0.09	0.59	0.08	23.1	7.4	24.9	0.57
G100035 (-)	0.05	1.25	8.9	<0.01	<5	274	0.34	0.11	0.51	0.05	27.2	7.6	28.2	0.46
G100037 (-)	0.12	1.30	7.1	<0.01	<5	332	0.32	0.10	0.77	0.18	33.2	8.5	28.8	0.58
G100039 (-)	0.11	1.17	6.4	<0.01	<5	449	0.25	0.09	1.57	0.16	29.5	8.0	26.5	0.62

Certified By:



Certificate of Analysis

AGAT WORK ORDER: 11Y528370

PROJECT NO:

5623 McADAM ROAD
MISSISSAUGA, ONTARIO
CANADA L4Z 1N9
TEL (905)501-9998
FAX (905)501-0589
<http://www.agatlabs.com>

CLIENT NAME: CANADIAN KAILUAN DEHUA MINES CO.LTD

ATTENTION TO: VINCENT LI

Aqua Regia Digest - Metals Package, ICP/ICP-MS finish (201074)

DATE SAMPLED: Sep 14, 2011

DATE RECEIVED: Sep 13, 2011

DATE REPORTED: Sep 30, 2011

SAMPLE TYPE: Soil

Analyte:	Ag	Al	As	Au	B	Ba	Be	Bi	Ca	Cd	Ce	Co	Cr	Cs
Unit:	ppm	%	ppm	ppm	ppm	ppm	ppm	ppm	%	ppm	ppm	ppm	ppm	ppm
Sample Description	RDL:	0.01	0.01	0.1	0.01	5	1	0.05	0.01	0.01	0.01	0.1	0.5	0.05
G100041 (-)	0.14	1.19	7.4	<0.01	<5	273	0.28	0.10	0.66	0.07	29.1	6.3	26.2	0.64
G10001 (-)	0.05	2.57	3.1	<0.01	<5	373	0.49	0.04	0.75	0.06	51.6	8.4	14.8	2.15
G10003 (-)	0.04	2.29	2.0	<0.01	<5	367	0.45	0.03	0.71	0.04	48.2	7.6	7.9	1.01
G10005 (-)	0.06	2.41	3.2	<0.01	<5	234	0.46	0.04	0.42	0.04	25.8	7.1	11.0	1.33
G10007 (-)	0.06	2.49	9.6	<0.01	<5	221	0.49	0.12	0.25	0.06	22.1	8.1	32.8	0.94
G10009 (-)	0.06	2.13	8.7	<0.01	<5	205	0.43	0.12	0.31	0.05	21.9	7.9	28.8	0.85
G10011 (-)	0.05	2.53	3.9	<0.01	<5	177	0.57	0.06	0.95	0.04	25.4	7.2	14.5	0.84
G10013 (-)	0.07	2.03	6.0	0.01	<5	184	0.43	0.07	0.29	0.05	20.4	7.5	20.6	1.22
G10015 (-)	0.06	2.44	2.1	0.02	<5	228	0.49	0.04	0.96	0.03	24.9	7.8	5.1	1.24
G10017 (-)	0.08	2.62	4.1	<0.01	<5	328	0.65	0.06	0.80	0.03	31.2	7.3	13.7	1.23
G10019 (-)	0.07	1.50	7.6	<0.01	<5	192	0.41	0.10	0.40	0.05	34.3	7.7	29.1	0.81
G10021 (-)	0.07	1.65	9.7	<0.01	<5	151	0.42	0.13	0.31	0.05	28.1	7.4	34.3	0.90
G10023 (-)	0.05	1.50	5.0	<0.01	<5	223	0.41	0.06	0.52	0.04	51.7	7.0	18.8	1.53
G10025 (-)	0.06	2.14	4.0	<0.01	<5	247	0.35	0.06	0.56	0.03	32.6	7.5	15.8	1.17
G10027 (-)	0.09	2.24	4.5	<0.01	<5	136	0.48	0.05	0.87	0.04	40.1	7.8	15.0	0.57
G10029 (-)	0.08	2.92	3.6	<0.01	<5	243	0.54	0.03	1.37	0.03	43.9	8.3	9.9	0.78
G10031 (-)	0.08	1.84	7.7	<0.01	<5	211	0.41	0.09	0.53	0.04	31.3	7.7	26.6	0.97
G10033 (-)	0.05	2.01	5.5	<0.01	<5	211	0.40	0.07	0.60	0.04	20.2	7.7	18.3	2.54
G10035 (-)	0.08	1.66	7.3	0.01	<5	143	0.39	0.08	0.49	0.04	38.4	5.9	23.1	0.91
G10037 (-)	0.05	2.22	3.2	<0.01	<5	238	0.46	0.04	0.94	0.02	31.2	6.8	10.2	1.32
G10039 (-)	0.09	2.38	6.3	<0.01	<5	196	0.52	0.08	0.57	0.03	38.3	8.6	25.5	1.12
G10041 (-)	0.08	2.52	7.6	<0.01	<5	254	0.55	0.08	0.47	0.03	34.7	9.2	24.2	1.64
G120001 (-)	0.14	2.26	4.9	0.01	<5	255	0.23	0.07	0.65	0.07	17.0	10.9	31.2	0.97
G120003 (-)	0.13	2.09	7.4	0.01	<5	289	0.25	0.10	0.64	0.07	20.3	10.0	40.3	1.09
G120005 (-)	0.31	2.34	2.5	<0.01	<5	379	0.19	0.07	1.65	0.39	11.8	14.2	102	2.01
G120007 (-)	0.25	2.85	3.2	<0.01	<5	332	0.19	0.06	0.83	0.25	15.0	14.9	20.5	1.47
G120009 (-)	0.18	2.76	3.6	<0.01	<5	354	0.20	0.05	2.04	0.24	8.70	16.1	49.0	1.28
G120011 (-)	0.21	1.56	3.1	<0.01	<5	465	0.26	0.06	2.28	0.21	15.4	10.3	42.3	0.82
G120013 (-)	0.20	1.98	8.3	<0.01	<5	319	0.36	0.13	0.81	0.30	26.0	10.4	35.7	0.92
G120015 (-)	0.13	1.66	6.6	<0.01	<5	224	0.19	0.10	0.63	0.12	20.9	6.2	34.3	1.10
G120017 (-)	0.12	1.59	6.5	<0.01	<5	137	0.15	0.09	0.71	0.08	17.3	8.3	34.2	0.69
G120019 (-)	0.11	1.65	5.7	<0.01	<5	190	0.17	0.09	0.70	0.10	20.9	8.5	31.4	0.90

Certified By:



Certificate of Analysis

AGAT WORK ORDER: 11Y528370

PROJECT NO:

5623 McADAM ROAD
MISSISSAUGA, ONTARIO
CANADA L4Z 1N9
TEL (905)501-9998
FAX (905)501-0589
<http://www.agatlabs.com>

CLIENT NAME: CANADIAN KAILUAN DEHUA MINES CO.LTD

ATTENTION TO: VINCENT LI

Aqua Regia Digest - Metals Package, ICP/ICP-MS finish (201074)

DATE SAMPLED: Sep 14, 2011

DATE RECEIVED: Sep 13, 2011

DATE REPORTED: Sep 30, 2011

SAMPLE TYPE: Soil

Analyte:	Ag	Al	As	Au	B	Ba	Be	Bi	Ca	Cd	Ce	Co	Cr	Cs
Unit:	ppm	%	ppm	ppm	ppm	ppm	ppm	ppm	%	ppm	ppm	ppm	ppm	ppm
Sample Description	RDL:	0.01	0.01	0.1	0.01	5	1	0.05	0.01	0.01	0.01	0.1	0.5	0.05
G120021 (-)	0.16	1.37	4.9	<0.01	<5	197	0.16	0.09	0.66	0.14	16.5	5.2	23.2	0.73
G120023 (-)	0.12	1.61	5.3	<0.01	<5	161	0.17	0.10	0.54	0.11	19.7	6.9	28.0	0.78
G120025 (-)	0.12	1.84	6.1	<0.01	<5	272	0.28	0.10	0.62	0.15	24.1	10.7	28.4	0.82
G120027 (-)	0.14	2.02	4.5	<0.01	<5	230	0.22	0.07	0.83	0.14	18.4	11.9	32.2	1.04
G120029 (-)	0.14	2.22	4.6	<0.01	<5	268	0.26	0.08	0.65	0.10	21.1	11.8	29.4	1.22
G120031 (-)	0.22	1.58	6.7	<0.01	<5	193	0.36	0.09	0.92	0.29	25.8	14.7	35.8	1.53
G120033 (-)	0.04	2.51	0.6	<0.01	<5	288	0.28	0.01	1.04	0.05	25.0	22.1	0.9	3.05
G120035 (-)	0.04	1.32	2.8	<0.01	<5	263	0.23	0.06	0.29	0.05	18.6	5.6	14.1	1.20
G120037 (-)	0.05	1.09	6.4	<0.01	<5	169	0.30	0.09	0.24	0.04	28.4	5.8	20.4	1.01
G120039 (-)	0.06	1.56	5.8	<0.01	<5	258	0.30	0.10	0.34	0.04	30.2	6.6	21.9	1.18
G120041 (-)	0.05	1.61	6.1	<0.01	<5	298	0.38	0.10	0.37	0.04	35.3	7.1	24.2	1.09
G050011 (-)	0.35	1.95	24.0	0.01	<5	194	0.40	0.07	0.60	0.16	8.54	21.4	83.9	3.94
G050013 (-)	0.36	2.84	279	<0.01	<5	496	0.36	0.12	0.65	2.17	11.0	18.2	12.7	3.43
G050015 (-)	0.08	3.46	4.3	<0.01	<5	322	0.24	0.05	0.75	0.10	5.46	26.4	33.3	5.98
G050017 (-)	0.46	2.49	17.9	<0.01	<5	163	0.27	0.18	0.94	0.35	7.69	34.7	168	4.91
G050019 (-)	0.64	2.29	14.3	<0.01	<5	343	0.22	0.13	0.72	0.61	11.1	24.1	25.8	3.29
G050021 (-)	0.64	2.35	14.2	0.01	<5	362	0.23	0.14	0.74	0.62	11.5	23.5	25.3	3.45
G050023 (-)	1.74	2.59	16.3	0.02	<5	334	0.20	16.8	0.63	3.20	6.97	16.8	60.0	3.07
G050025 (-)	2.77	2.65	16.6	<0.01	<5	248	0.41	17.5	0.61	2.31	18.5	7.9	20.6	2.84
G050027 (-)	0.29	2.53	5.8	<0.01	<5	401	0.30	1.99	0.66	0.53	18.2	9.6	33.2	2.62
G050029 (-)	0.29	1.99	10.0	0.09	<5	181	0.22	2.11	0.44	0.33	15.0	12.2	30.4	1.65
G050031 (-)	0.15	2.18	9.6	<0.01	<5	286	0.22	1.98	0.60	0.23	14.3	13.9	21.4	2.26
G050033 (-)	0.15	1.33	10.2	<0.01	<5	224	0.26	2.73	0.50	0.21	20.8	10.3	23.9	1.16
G050035 (-)	0.26	1.57	10.6	<0.01	<5	233	0.27	1.44	0.54	0.17	23.5	9.8	33.2	1.37
G050037 (-)	0.25	1.78	3.7	<0.01	<5	257	0.17	2.51	0.60	0.46	14.8	13.6	28.6	2.50
G050039 (-)	0.17	1.63	6.6	<0.01	<5	172	0.19	1.58	0.51	0.29	16.2	11.1	25.4	1.49
G050041 (-)	0.18	1.65	7.0	<0.01	<5	175	0.20	1.63	0.51	0.29	15.0	11.1	25.3	1.37
G050043 (-)	0.32	1.83	4.4	<0.01	<5	170	0.19	1.50	0.73	0.98	15.6	12.0	19.5	2.07
G050045 (-)	0.48	1.89	9.7	0.01	<5	207	0.21	1.36	0.75	0.55	15.1	14.6	23.3	1.65
G050047 (-)	0.78	1.83	6.6	<0.01	<5	206	0.23	5.02	0.69	1.93	15.3	17.1	25.8	2.25
G050049 (-)	0.55	2.42	11.4	<0.01	<5	203	0.33	2.96	0.54	0.89	16.2	13.0	36.6	2.09
G050051 (-)	0.47	2.17	6.7	<0.01	<5	199	0.48	13.7	0.65	0.80	20.9	11.7	28.0	1.62

Certified By:



Certificate of Analysis

AGAT WORK ORDER: 11Y528370

PROJECT NO:

5623 McADAM ROAD
MISSISSAUGA, ONTARIO
CANADA L4Z 1N9
TEL (905)501-9998
FAX (905)501-0589
<http://www.agatlabs.com>

CLIENT NAME: CANADIAN KAILUAN DEHUA MINES CO.LTD

ATTENTION TO: VINCENT LI

Aqua Regia Digest - Metals Package, ICP/ICP-MS finish (201074)

DATE SAMPLED: Sep 14, 2011

DATE RECEIVED: Sep 13, 2011

DATE REPORTED: Sep 30, 2011

SAMPLE TYPE: Soil

Analyte:	Ag	Al	As	Au	B	Ba	Be	Bi	Ca	Cd	Ce	Co	Cr	Cs
Unit:	ppm	%	ppm	ppm	ppm	ppm	ppm	ppm	%	ppm	ppm	ppm	ppm	ppm
Sample Description	RDL:	0.01	0.01	0.1	0.01	5	1	0.05	0.01	0.01	0.01	0.1	0.5	0.05
O110001 (-)	0.02	1.51	2.4	<0.01	<5	118	0.40	0.05	0.62	0.02	29.5	8.0	18.3	0.67
O110003 (-)	0.02	3.38	13.2	0.01	<5	319	1.27	0.04	1.79	0.03	108	22.1	37.6	2.79
O110005 (-)	0.07	2.31	10.2	<0.01	<5	136	0.73	0.18	0.71	0.05	31.2	8.9	42.5	0.44
O110007 (-)	0.06	2.86	8.8	<0.01	<5	453	0.86	0.15	0.65	0.03	37.7	9.9	33.4	0.96
O110009 (-)	0.04	2.90	11.3	<0.01	<5	545	0.77	0.22	0.57	0.12	29.4	10.0	58.2	0.56
O110011 (-)	0.05	1.97	4.4	<0.01	<5	88	1.15	0.02	1.32	0.07	57.5	19.6	38.5	0.30
O110013 (-)	0.13	1.95	4.2	<0.01	<5	220	1.26	0.02	1.46	0.07	44.7	18.8	73.8	0.85
O110015 (-)	0.05	1.21	7.1	<0.01	<5	289	0.47	0.10	0.50	0.03	21.2	6.1	25.0	0.65
O110017 (-)	0.06	2.60	3.4	<0.01	<5	99	1.10	0.03	0.72	0.05	41.6	16.6	56.0	0.35
O110019 (-)	0.07	1.78	7.9	<0.01	<5	210	0.99	0.06	3.76	0.16	61.7	15.7	57.2	2.66
O110021 (-)	0.10	3.55	6.9	<0.01	<5	1490	1.74	0.11	1.50	0.02	57.6	12.7	28.4	3.30
O110023 (-)	0.10	2.03	5.7	<0.01	<5	364	0.89	0.21	1.11	0.08	35.6	10.0	27.1	0.90
O110025 (-)	0.06	1.78	6.7	<0.01	<5	226	0.62	0.13	0.76	0.06	30.0	7.9	28.0	0.83
O110027 (-)	0.08	3.70	10.8	<0.01	<5	341	0.91	0.04	1.38	0.04	49.3	17.4	18.7	0.93
O110029 (-)	0.06	2.96	6.6	<0.01	<5	717	1.48	0.14	1.07	0.04	48.2	12.1	37.0	1.69
O110031 (-)	0.08	2.78	5.1	<0.01	<5	568	1.21	0.14	1.04	0.06	45.3	13.4	41.6	1.77
O110033 (-)	0.15	2.20	8.8	<0.01	<5	399	1.02	0.13	1.39	0.11	48.5	14.2	39.0	1.05
O110035 (-)	3.43	2.32	11.0	0.03	<5	190	0.58	0.06	0.72	0.08	39.6	9.7	18.1	1.62
O110037 (-)	0.08	3.77	10.1	<0.01	<5	211	0.98	0.02	1.80	0.03	68.5	14.1	12.8	1.67
O110039 (-)	0.07	4.36	20.4	<0.01	<5	230	2.08	0.03	1.92	0.05	93.9	23.8	21.3	1.99
O110041 (-)	0.06	5.44	25.5	<0.01	<5	215	1.01	0.02	3.31	0.02	59.7	8.7	10.2	0.55
O150001 (-)	0.12	0.97	7.6	<0.01	<5	155	0.41	0.21	0.55	0.18	25.5	7.0	28.7	0.67
O150003 (-)	0.04	1.14	7.9	<0.01	<5	131	0.22	0.09	0.37	0.06	15.8	10.0	27.6	0.53
O150005 (-)	0.12	1.45	7.5	<0.01	<5	223	0.42	0.11	0.71	0.18	30.1	8.3	30.7	0.74
O150007 (-)	0.14	1.60	8.1	0.01	<5	210	0.43	0.12	0.75	0.23	31.7	8.7	33.4	0.77
O150009 (-)	0.13	1.64	8.4	<0.01	<5	217	0.51	0.12	0.55	0.13	29.9	7.7	37.1	0.90
O150011 (-)	0.05	2.57	10.1	<0.01	<5	404	0.90	0.14	0.74	0.16	46.5	16.7	52.9	1.32
O150013 (-)	0.07	1.78	9.7	<0.01	<5	244	0.44	0.13	0.49	0.05	22.6	9.1	38.6	0.64
O150015 (-)	0.19	1.58	11.2	<0.01	<5	250	1.24	0.34	0.82	0.15	77.9	8.6	20.5	0.62
O150017 (-)	0.05	2.02	6.3	<0.01	<5	164	1.18	0.53	0.45	0.06	51.7	7.1	14.0	3.02
O150019 (-)	0.04	1.38	12.2	<0.01	<5	128	0.35	0.29	0.31	0.07	28.5	6.3	21.8	1.15
O150021 (-)	0.04	1.85	10.6	<0.01	<5	320	0.93	0.27	0.76	0.04	47.4	29.3	56.2	2.99

Certified By:



Certificate of Analysis

AGAT WORK ORDER: 11Y528370

PROJECT NO:

5623 McADAM ROAD
MISSISSAUGA, ONTARIO
CANADA L4Z 1N9
TEL (905)501-9998
FAX (905)501-0589
<http://www.agatlabs.com>

CLIENT NAME: CANADIAN KAILUAN DEHUA MINES CO.LTD

ATTENTION TO: VINCENT LI

Aqua Regia Digest - Metals Package, ICP/ICP-MS finish (201074)

DATE SAMPLED: Sep 14, 2011

DATE RECEIVED: Sep 13, 2011

DATE REPORTED: Sep 30, 2011

SAMPLE TYPE: Soil

Analyte:	Ag	Al	As	Au	B	Ba	Be	Bi	Ca	Cd	Ce	Co	Cr	Cs
Unit:	ppm	%	ppm	ppm	ppm	ppm	ppm	ppm	%	ppm	ppm	ppm	ppm	ppm
Sample Description RDL:	0.01	0.01	0.1	0.01	5	1	0.05	0.01	0.01	0.01	0.01	0.1	0.5	0.05
O150023 (-)	0.04	1.65	8.3	<0.01	<5	219	0.56	0.19	0.46	0.04	28.8	8.0	27.8	1.37
O150025 (-)	0.11	1.43	7.2	<0.01	<5	275	0.50	0.13	0.94	0.16	28.8	8.9	25.7	0.71
O150027 (-)	0.13	1.83	8.2	0.02	<5	305	0.54	0.15	0.86	0.17	36.9	10.1	32.1	0.82
O150029 (-)	0.11	1.63	8.8	<0.01	<5	227	0.45	0.13	2.03	0.15	35.6	8.8	28.0	1.09
O150031 (-)	0.11	1.72	7.6	<0.01	<5	328	0.56	0.15	0.76	0.10	34.6	8.2	31.5	0.79
O150033 (-)	0.11	1.82	8.0	<0.01	<5	330	0.58	0.15	0.65	0.09	32.8	8.7	31.6	0.91
O150035 (-)	0.08	1.40	5.2	<0.01	<5	351	0.78	0.17	0.48	0.05	33.4	7.7	25.0	1.23
O150037 (-)	0.13	1.17	5.8	<0.01	<5	316	1.19	0.29	0.50	0.07	42.8	7.7	19.4	2.65
O150039 (-)	0.03	1.36	7.2	<0.01	<5	357	1.17	0.31	0.32	0.03	44.6	8.4	21.7	2.34
O150041 (-)	0.04	1.65	9.0	<0.01	<5	356	0.93	0.30	0.55	0.05	42.3	8.4	25.0	1.84
O24A0001 (-)	0.04	1.24	5.0	<0.01	<5	117	0.33	0.09	0.18	0.09	22.2	7.4	20.2	0.91
O24A0003 (-)	0.03	1.83	11.8	<0.01	<5	151	0.46	0.03	0.68	0.02	26.8	12.6	22.0	0.96
O24A0005 (-)	0.03	3.56	27.2	<0.01	16	281	1.01	0.06	1.15	0.04	70.1	21.2	30.2	4.93
O24A0007 (-)	0.07	3.14	12.5	<0.01	<5	230	0.91	0.09	1.00	0.06	41.2	16.4	42.8	1.65
O24A0009 (-)	0.07	2.40	5.9	0.02	5	764	1.30	0.17	1.59	0.04	45.2	12.2	27.5	5.11
O24A0011 (-)	0.09	2.77	11.8	0.01	<5	1180	1.93	0.19	1.32	0.07	51.6	13.7	27.5	3.21
O24A0013 (-)	0.07	2.32	8.7	0.01	<5	474	1.57	0.18	1.30	0.07	41.9	12.7	37.3	1.34
O24A0015 (-)	0.09	2.78	7.3	<0.01	<5	315	0.95	0.19	0.77	0.11	38.9	13.8	44.4	1.23
O24A0017 (-)	0.07	3.62	8.7	<0.01	<5	544	0.78	0.02	2.50	0.03	45.8	13.2	10.2	1.25
O24A0019 (-)	0.05	3.95	8.9	<0.01	<5	282	0.61	0.02	2.71	0.03	27.0	9.1	4.0	0.43
O24A0021 (-)	0.12	0.50	2.3	0.01	14	458	0.20	0.03	4.30	0.15	7.64	3.1	7.6	0.25
O24A0023 (-)	0.11	2.35	7.1	0.01	<5	405	1.00	0.16	1.29	0.11	34.8	11.0	36.5	0.92
O24A0025 (-)	0.19	1.88	5.9	0.02	<5	284	0.54	0.11	1.56	0.32	30.8	9.6	32.5	1.17
O24A0027 (-)	0.04	0.20	0.5	<0.01	<5	67	<0.05	0.01	0.47	0.02	3.77	1.0	1.6	0.06
O24A0029 (-)	0.03	0.26	0.2	<0.01	<5	76	0.10	0.01	0.37	0.01	13.9	1.0	1.6	0.07
O24A0031 (-)	0.19	0.19	0.4	<0.01	<5	45	0.05	0.02	0.34	0.01	3.92	0.9	1.6	0.06
O24A0033 (-)	0.17	1.86	6.4	<0.01	<5	394	0.50	0.12	1.48	0.31	45.9	9.1	28.6	1.24
O24A0035 (-)	0.13	1.61	8.2	<0.01	<5	181	0.49	0.12	0.64	0.13	32.2	10.6	33.1	0.80
O24A0037 (-)	0.09	1.09	6.8	<0.01	<5	138	0.37	0.08	0.56	0.12	24.8	9.2	28.5	0.57
O24A0039 (-)	0.09	1.13	5.3	0.01	<5	154	0.42	0.08	0.58	0.13	24.9	7.7	28.3	0.59
O24A0041 (-)	0.11	1.43	8.2	<0.01	<5	218	0.50	0.10	0.75	0.13	27.7	10.3	28.7	0.58
O24A0043 (-)	0.14	1.66	10.8	<0.01	<5	235	0.54	0.11	0.68	0.12	29.2	10.0	29.6	0.91

Certified By:



Certificate of Analysis

AGAT WORK ORDER: 11Y528370

PROJECT NO:

5623 McADAM ROAD
MISSISSAUGA, ONTARIO
CANADA L4Z 1N9
TEL (905)501-9998
FAX (905)501-0589
<http://www.agatlabs.com>

CLIENT NAME: CANADIAN KAILUAN DEHUA MINES CO.LTD

ATTENTION TO: VINCENT LI

Aqua Regia Digest - Metals Package, ICP/ICP-MS finish (201074)

DATE SAMPLED: Sep 14, 2011		DATE RECEIVED: Sep 13, 2011					DATE REPORTED: Sep 30, 2011					SAMPLE TYPE: Soil				
Analyte:	Ag	Al	As	Au	B	Ba	Be	Bi	Ca	Cd	Ce	Co	Cr	Cs		
Unit:	ppm	%	ppm	ppm	ppm	ppm	ppm	ppm	%	ppm	ppm	ppm	ppm	ppm		
Sample Description	RDL:	0.01	0.01	0.1	0.01	5	1	0.05	0.01	0.01	0.01	0.1	0.5	0.05		
O24A0045 (-)	0.08	1.32	7.4	<0.01	<5	208	0.50	0.10	0.64	0.13	27.1	8.4	32.0	0.74		
O24A0047 (-)	0.06	1.46	7.0	<0.01	<5	259	0.46	0.10	0.42	0.06	28.2	7.4	32.9	0.80		
O24A0049 (-)	0.04	1.99	5.9	<0.01	<5	169	0.45	0.06	0.74	0.04	26.2	10.4	22.9	0.78		

Certified By:



Certificate of Analysis

AGAT WORK ORDER: 11Y528370

PROJECT NO:

5623 McADAM ROAD
MISSISSAUGA, ONTARIO
CANADA L4Z 1N9
TEL (905)501-9998
FAX (905)501-0589
<http://www.agatlabs.com>

CLIENT NAME: CANADIAN KAILUAN DEHUA MINES CO.LTD

ATTENTION TO: VINCENT LI

Aqua Regia Digest - Metals Package, ICP/ICP-MS finish (201074)

DATE SAMPLED: Sep 14, 2011

DATE RECEIVED: Sep 13, 2011

DATE REPORTED: Sep 30, 2011

SAMPLE TYPE: Soil

Analyte:	Cu	Fe	Ga	Ge	Hf	Hg	In	K	La	Li	Mg	Mn	Mo	Na
Unit:	ppm	%	ppm	ppm	ppm	ppm	ppm	%	ppm	ppm	%	ppm	ppm	%
Sample Description RDL:	0.1	0.01	0.05	0.05	0.02	0.01	0.005	0.01	0.1	0.1	0.01	1	0.05	0.01
G040001 (-)	37.9	2.22	3.37	0.08	0.09	0.03	0.020	0.08	13.5	8.5	0.67	409	0.84	0.02
G040003 (-)	28.2	1.95	3.17	0.07	0.13	0.03	0.020	0.06	13.8	8.5	0.71	367	0.79	0.03
G040005 (-)	41.6	2.34	3.68	0.08	0.18	0.04	0.022	0.07	15.1	9.0	0.67	386	1.21	0.02
G040007 (-)	28.8	2.03	2.77	0.09	0.10	0.03	0.016	0.05	12.7	6.4	0.55	407	0.74	0.02
G040009 (-)	23.6	2.23	2.72	0.08	0.06	0.03	0.018	0.06	12.7	5.8	0.57	433	0.58	0.02
G040011 (-)	58.3	2.89	4.04	0.10	0.25	0.04	0.023	0.06	13.9	7.8	0.76	584	0.91	0.02
G040013 (-)	52.1	2.49	4.38	0.07	0.09	0.06	0.024	0.06	16.5	9.8	0.69	449	0.99	0.02
G040015 (-)	65.3	2.91	5.52	0.09	0.26	0.08	0.027	0.05	18.5	10.9	0.75	417	1.13	0.02
G040017 (-)	20.3	1.99	2.55	0.09	0.10	0.02	0.014	0.06	14.1	6.6	0.57	309	0.81	0.02
G040019 (-)	48.5	2.63	4.69	0.06	0.11	0.06	0.026	0.06	17.6	10.5	0.82	428	1.08	0.03
G040021 (-)	49.7	2.41	3.80	0.05	0.06	0.05	0.023	0.07	14.0	9.1	0.90	477	0.83	0.03
G040023 (-)	166	4.17	8.59	0.12	0.10	0.06	0.035	0.05	11.4	13.5	1.62	965	0.75	0.03
G040025 (-)	101	3.32	6.01	0.09	0.06	0.04	0.014	0.18	8.8	12.3	1.21	629	1.05	0.02
G040027 (-)	83.4	2.60	4.56	0.07	0.06	0.05	0.015	0.06	12.1	9.9	0.94	424	0.65	0.02
G040029 (-)	127	3.96	7.87	0.13	0.21	0.02	0.023	0.13	11.9	13.9	1.27	542	1.23	0.02
G040031 (-)	72.2	3.83	7.49	0.11	0.05	0.04	0.029	0.12	12.5	14.3	1.82	955	0.94	0.02
G040033 (-)	153	3.45	7.48	0.11	0.09	0.02	0.020	0.10	16.2	14.2	1.43	1060	0.91	0.01
G040035 (-)	89.8	2.86	5.25	0.09	0.05	0.06	0.020	0.10	19.1	9.8	0.95	577	1.03	0.02
G040037 (-)	50.7	2.61	4.61	0.10	0.07	0.02	0.019	0.29	16.1	9.6	0.88	671	0.76	0.02
G040039 (-)	29.8	2.15	2.77	0.08	0.07	0.02	0.016	0.08	13.6	6.9	0.56	361	0.74	0.02
G040041 (-)	24.0	1.89	2.57	0.08	0.12	0.04	0.018	0.08	12.0	6.2	0.69	434	0.74	0.03
G040043 (-)	20.6	1.93	2.38	0.08	0.10	0.03	0.016	0.06	11.4	5.6	0.60	397	0.68	0.02
G040045 (-)	25.2	2.02	2.64	0.07	0.08	0.03	0.020	0.05	10.8	6.2	0.73	479	0.70	0.03
G060001 (-)	36.7	3.31	5.60	0.09	0.37	0.03	0.024	0.20	13.8	11.8	0.82	673	0.71	0.03
G060003 (-)	27.7	3.12	4.80	0.10	0.14	0.02	0.015	0.39	15.3	7.8	0.71	480	0.42	0.01
G060005 (-)	23.0	3.64	7.82	0.11	0.10	0.01	0.009	1.10	9.4	14.2	1.09	773	0.21	0.01
G060007 (-)	18.1	2.00	5.01	0.09	0.07	0.03	0.009	0.50	17.1	8.7	0.62	421	0.21	0.09
G060009 (-)	18.8	3.55	8.35	0.11	0.08	<0.01	0.008	0.99	15.6	16.7	1.12	814	0.22	0.02
G060011 (-)	27.0	3.58	6.65	0.11	0.13	0.02	0.011	0.96	11.9	15.3	1.04	787	0.35	0.02
G060013 (-)	21.5	3.27	6.36	0.11	0.11	0.01	0.013	0.84	14.2	12.8	0.87	594	0.52	0.01
G060015 (-)	15.4	3.35	6.74	0.10	0.09	<0.01	0.008	1.09	12.7	13.6	1.07	737	0.24	0.01
G060017 (-)	30.1	2.99	4.52	0.11	0.18	0.03	0.019	0.36	13.8	8.9	0.71	496	0.50	0.02

Certified By:



Certificate of Analysis

AGAT WORK ORDER: 11Y528370

PROJECT NO:

5623 McADAM ROAD
MISSISSAUGA, ONTARIO
CANADA L4Z 1N9
TEL (905)501-9998
FAX (905)501-0589
<http://www.agatlabs.com>

CLIENT NAME: CANADIAN KAILUAN DEHUA MINES CO.LTD

ATTENTION TO: VINCENT LI

Aqua Regia Digest - Metals Package, ICP/ICP-MS finish (201074)

DATE SAMPLED: Sep 14, 2011

DATE RECEIVED: Sep 13, 2011

DATE REPORTED: Sep 30, 2011

SAMPLE TYPE: Soil

Analyte:	Cu	Fe	Ga	Ge	Hf	Hg	In	K	La	Li	Mg	Mn	Mo	Na	
Unit:	ppm	%	ppm	ppm	ppm	ppm	ppm	%	ppm	ppm	%	ppm	ppm	%	
Sample Description	RDL:	0.1	0.01	0.05	0.05	0.02	0.01	0.005	0.01	0.1	0.1	0.01	1	0.05	0.01
G060019 (-)	17.6	3.34	6.86	0.09	0.09	<0.01	0.009	0.98	13.5	14.1	0.94	664	0.33	0.02	
G060021 (-)	21.9	3.85	7.95	0.10	0.10	<0.01	0.009	1.26	18.1	14.7	1.21	863	0.25	0.02	
G060023 (-)	19.9	3.37	7.11	0.10	0.11	0.01	0.009	0.80	13.6	14.6	1.07	907	0.26	0.02	
G060025 (-)	19.9	3.61	7.08	0.09	0.13	0.01	0.011	0.52	11.9	14.9	0.95	779	0.51	0.01	
G060027 (-)	25.5	3.65	6.63	0.10	0.19	0.01	0.014	0.74	18.3	12.4	1.01	736	0.39	0.02	
G060029 (-)	20.5	2.64	4.36	0.10	0.24	<0.01	0.017	0.20	16.5	7.2	0.59	335	0.47	0.01	
G060031 (-)	18.6	2.27	3.55	0.10	0.25	0.01	0.016	0.14	16.0	6.9	0.43	409	0.51	0.02	
G060033 (-)	21.7	2.76	3.48	0.12	0.23	0.01	0.017	0.13	13.6	6.8	0.45	308	0.53	0.02	
G060035 (-)	20.5	2.75	3.63	0.10	0.25	0.02	0.016	0.12	15.1	7.7	0.44	293	0.57	0.02	
G060037 (-)	21.9	2.89	3.55	0.10	0.16	0.01	0.014	0.14	15.1	6.2	0.48	312	0.55	0.02	
G060039 (-)	18.9	3.36	3.44	0.12	0.21	<0.01	0.016	0.10	14.3	6.1	0.46	336	0.72	0.02	
G060041 (-)	18.9	1.53	3.20	0.08	0.11	0.01	0.014	0.08	12.1	6.6	0.36	208	0.34	0.02	
G100001 (-)	19.8	2.35	4.38	0.09	0.13	0.02	0.018	0.15	12.7	8.2	0.51	307	0.66	0.02	
G100003 (-)	25.3	2.29	4.10	0.11	0.12	0.01	0.016	0.28	12.3	6.8	0.51	408	0.47	0.01	
G100005 (-)	21.1	2.35	4.72	0.12	0.17	0.01	0.012	0.31	15.8	7.2	0.59	468	0.39	0.01	
G100007 (-)	27.4	2.97	6.31	0.14	0.20	0.01	0.015	0.44	19.6	10.7	0.75	709	0.54	0.02	
G100009 (-)	40.0	2.42	4.23	0.09	0.16	0.03	0.022	0.11	14.1	9.1	0.73	552	0.81	0.03	
G100011 (-)	19.2	2.49	3.32	0.10	0.24	0.02	0.018	0.08	15.3	6.9	0.44	897	1.30	0.02	
G100013 (-)	22.3	2.37	3.25	0.10	0.25	0.02	0.021	0.09	16.0	7.3	0.48	421	0.77	0.02	
G100015 (-)	28.8	2.64	4.47	0.11	0.21	0.03	0.016	0.28	13.2	7.1	0.63	749	0.58	0.02	
G100017 (-)	24.3	2.52	4.15	0.09	0.15	0.02	0.012	0.34	12.3	6.2	0.65	568	0.42	0.02	
G100019 (-)	26.5	2.34	4.01	0.10	0.15	0.02	0.011	0.25	12.2	6.2	0.57	426	0.32	0.02	
G100021 (-)	37.3	3.72	7.02	0.12	0.11	0.03	0.016	0.58	18.7	10.7	0.92	622	0.56	0.02	
G100023 (-)	26.3	3.95	7.79	0.10	0.07	<0.01	0.015	0.90	9.5	11.3	1.13	804	0.60	0.01	
G100025 (-)	21.6	4.44	8.75	0.12	0.06	0.02	0.011	0.67	13.7	15.3	1.22	1230	0.25	0.02	
G100027 (-)	29.1	5.03	9.66	0.12	0.11	0.02	0.016	0.97	11.4	15.4	1.53	1030	0.47	0.02	
G100029 (-)	19.5	2.24	3.64	0.06	0.07	0.12	0.020	0.10	12.7	8.1	0.50	560	0.74	0.02	
G100031 (-)	16.1	2.36	2.70	0.09	0.10	0.02	0.016	0.06	12.3	5.5	0.43	532	0.74	0.02	
G100033 (-)	23.5	2.82	3.88	0.09	0.12	0.02	0.020	0.22	12.0	8.5	0.63	379	0.76	0.02	
G100035 (-)	21.0	2.66	3.52	0.09	0.16	0.02	0.021	0.08	13.9	7.8	0.53	394	0.72	0.02	
G100037 (-)	24.3	2.55	3.79	0.08	0.32	0.02	0.021	0.10	16.6	7.8	0.51	490	1.09	0.02	
G100039 (-)	22.9	2.98	3.66	0.07	0.11	0.21	0.019	0.14	14.8	7.9	0.66	465	0.87	0.02	

Certified By:



Certificate of Analysis

AGAT WORK ORDER: 11Y528370

PROJECT NO:

5623 McADAM ROAD
MISSISSAUGA, ONTARIO
CANADA L4Z 1N9
TEL (905)501-9998
FAX (905)501-0589
<http://www.agatlabs.com>

CLIENT NAME: CANADIAN KAILUAN DEHUA MINES CO.LTD

ATTENTION TO: VINCENT LI

Aqua Regia Digest - Metals Package, ICP/ICP-MS finish (201074)

DATE SAMPLED: Sep 14, 2011

DATE RECEIVED: Sep 13, 2011

DATE REPORTED: Sep 30, 2011

SAMPLE TYPE: Soil

Analyte:	Cu	Fe	Ga	Ge	Hf	Hg	In	K	La	Li	Mg	Mn	Mo	Na	
Unit:	ppm	%	ppm	ppm	ppm	ppm	ppm	%	ppm	ppm	%	ppm	ppm	%	
Sample Description	RDL:	0.1	0.01	0.05	0.05	0.02	0.01	0.005	0.01	0.1	0.1	0.01	1	0.05	0.01
G100041 (-)		20.8	2.54	3.70	0.08	0.12	0.04	0.019	0.12	15.6	8.1	0.55	349	0.64	0.02
G10001 (-)		17.0	3.84	8.49	0.11	0.15	0.02	0.013	0.59	25.3	23.0	1.20	942	0.36	0.02
G10003 (-)		13.1	3.38	9.29	0.11	0.17	0.01	0.013	0.29	22.7	26.0	0.97	1030	0.22	0.02
G10005 (-)		12.5	3.01	7.27	0.08	0.17	<0.01	0.015	0.37	14.0	20.6	0.88	624	0.28	0.02
G10007 (-)		23.4	3.29	5.58	0.07	0.22	0.05	0.030	0.09	11.4	12.8	0.66	343	0.81	0.01
G10009 (-)		18.4	3.01	5.74	0.08	0.19	<0.01	0.026	0.11	11.0	14.2	0.63	315	0.73	0.01
G10011 (-)		13.2	2.98	7.71	0.08	0.13	<0.01	0.017	0.12	12.7	18.3	0.73	490	0.41	0.01
G10013 (-)		17.0	3.01	5.91	0.08	0.13	0.02	0.020	0.35	9.5	15.7	0.72	449	0.58	<0.01
G10015 (-)		13.7	3.42	8.41	0.10	0.13	<0.01	0.010	0.94	13.8	24.1	1.10	985	0.20	0.01
G10017 (-)		14.5	2.77	8.73	0.09	0.18	<0.01	0.015	0.65	13.7	18.3	0.83	676	0.33	0.01
G10019 (-)		27.8	2.64	4.68	0.09	0.25	0.01	0.021	0.19	20.3	10.9	0.64	403	0.66	0.02
G10021 (-)		21.2	2.88	4.41	0.08	0.19	0.01	0.027	0.18	13.5	10.1	0.56	291	0.77	0.01
G10023 (-)		19.2	2.53	5.55	0.10	0.18	0.01	0.015	0.28	21.2	13.6	0.65	389	0.52	0.01
G10025 (-)		21.1	3.07	6.85	0.10	0.12	<0.01	0.017	0.71	16.1	20.2	0.85	680	0.51	0.01
G10027 (-)		24.8	3.21	7.36	0.10	0.13	<0.01	0.016	0.21	21.2	15.9	0.82	651	0.42	0.01
G10029 (-)		25.8	3.72	10.9	0.13	0.18	0.01	0.014	0.35	22.1	20.5	0.93	920	0.23	0.02
G10031 (-)		25.7	3.08	5.93	0.09	0.17	<0.01	0.024	0.30	14.8	13.5	0.69	453	0.74	0.01
G10033 (-)		20.0	2.84	6.23	0.08	0.13	<0.01	0.017	0.56	8.6	17.4	0.78	584	0.61	0.01
G10035 (-)		22.8	2.59	5.07	0.09	0.15	<0.01	0.020	0.19	16.0	10.1	0.57	322	0.52	0.01
G10037 (-)		19.5	2.75	7.30	0.08	0.13	<0.01	0.012	0.37	15.3	18.4	0.84	598	0.29	0.01
G10039 (-)		32.7	3.74	7.42	0.10	0.12	0.02	0.021	0.66	18.4	16.0	1.01	720	0.55	0.01
G10041 (-)		25.8	3.79	8.03	0.11	0.22	0.01	0.023	0.82	15.6	19.2	1.02	668	0.56	0.01
G120001 (-)		91.4	3.70	5.58	0.08	0.13	0.02	0.022	0.15	9.1	10.3	1.03	503	0.62	0.02
G120003 (-)		78.6	3.31	5.38	0.08	0.05	0.02	0.028	0.08	11.2	11.5	0.95	480	0.68	0.02
G120005 (-)		117	3.41	5.69	0.07	0.05	0.03	0.019	0.37	6.5	9.3	1.42	734	0.60	0.02
G120007 (-)		120	3.94	6.01	0.08	0.03	0.02	0.018	0.56	9.0	13.3	1.66	663	0.50	0.01
G120009 (-)		83.7	4.11	4.35	0.05	0.06	0.03	0.012	0.47	4.2	10.8	1.71	969	1.21	0.01
G120011 (-)		92.7	2.27	3.70	<0.05	0.11	0.06	0.017	0.04	8.0	7.8	0.75	661	1.00	0.02
G120013 (-)		65.0	3.07	5.00	0.07	0.10	0.02	0.028	0.05	13.6	10.5	0.72	390	0.91	0.02
G120015 (-)		31.3	2.51	4.15	0.06	0.02	0.03	0.021	0.04	11.2	8.2	0.59	203	0.71	0.02
G120017 (-)		34.6	2.91	4.32	0.07	0.08	<0.01	0.020	0.05	9.1	7.2	0.68	309	1.86	0.02
G120019 (-)		35.0	2.90	4.65	0.07	<0.02	0.02	0.021	0.05	11.1	7.6	0.64	193	0.59	0.02

Certified By:



Certificate of Analysis

AGAT WORK ORDER: 11Y528370

PROJECT NO:

5623 McADAM ROAD
MISSISSAUGA, ONTARIO
CANADA L4Z 1N9
TEL (905)501-9998
FAX (905)501-0589
<http://www.agatlabs.com>

CLIENT NAME: CANADIAN KAILUAN DEHUA MINES CO.LTD

ATTENTION TO: VINCENT LI

Aqua Regia Digest - Metals Package, ICP/ICP-MS finish (201074)

DATE SAMPLED: Sep 14, 2011

DATE RECEIVED: Sep 13, 2011

DATE REPORTED: Sep 30, 2011

SAMPLE TYPE: Soil

Analyte:	Cu	Fe	Ga	Ge	Hf	Hg	In	K	La	Li	Mg	Mn	Mo	Na
Unit:	ppm	%	ppm	ppm	ppm	ppm	ppm	%	ppm	ppm	%	ppm	ppm	%
Sample Description RDL:	0.1	0.01	0.05	0.05	0.02	0.01	0.005	0.01	0.1	0.1	0.01	1	0.05	0.01
G120021 (-)	32.8	2.10	3.91	0.06	<0.02	0.04	0.018	0.05	8.9	6.5	0.48	198	0.87	0.02
G120023 (-)	55.4	2.59	4.08	0.07	<0.02	0.02	0.020	0.05	10.6	8.1	0.60	239	0.80	0.02
G120025 (-)	72.5	3.23	4.62	0.08	0.04	0.03	0.025	0.07	12.7	9.9	0.75	368	0.89	0.03
G120027 (-)	114	3.65	4.65	0.09	0.16	0.02	0.023	0.23	10.3	9.8	0.99	388	0.91	0.03
G120029 (-)	85.4	3.99	5.80	0.08	0.05	0.02	0.027	0.18	11.0	15.4	0.95	441	1.21	0.02
G120031 (-)	111	4.30	4.52	0.10	0.03	0.04	0.041	0.15	14.0	8.7	0.83	827	1.82	0.02
G120033 (-)	15.1	4.41	10.5	0.11	0.05	<0.01	0.040	0.95	11.8	22.3	2.01	489	0.85	0.02
G120035 (-)	36.1	2.31	3.99	0.08	0.03	0.02	0.027	0.09	12.6	9.9	0.76	675	0.57	<0.01
G120037 (-)	19.8	1.97	3.63	0.08	0.09	0.02	0.021	0.06	15.2	9.7	0.36	225	1.17	<0.01
G120039 (-)	14.3	2.64	5.13	0.09	0.05	0.02	0.019	0.15	15.3	12.9	0.56	363	0.76	0.01
G120041 (-)	16.1	2.68	5.11	0.08	0.05	0.04	0.022	0.07	19.1	16.3	0.58	346	0.68	0.01
G050011 (-)	194	6.65	6.76	0.10	0.06	0.02	0.067	0.18	5.0	5.7	0.95	942	1.18	0.01
G050013 (-)	131	5.89	9.09	0.14	0.07	0.01	0.076	1.02	5.8	16.2	1.31	1080	5.60	0.02
G050015 (-)	112	6.65	8.68	0.12	0.07	<0.01	0.025	1.04	2.6	15.0	2.35	1640	1.20	0.02
G050017 (-)	181	6.95	6.12	0.10	0.07	<0.01	0.046	0.45	3.7	14.6	2.15	1390	1.04	<0.01
G050019 (-)	294	6.71	7.51	0.14	0.10	0.01	0.042	0.44	7.1	11.7	1.15	1670	2.97	0.02
G050021 (-)	282	6.86	7.41	0.13	0.09	0.01	0.041	0.45	7.6	11.4	1.20	1640	2.93	0.02
G050023 (-)	338	5.61	7.19	0.13	0.18	0.03	0.168	0.38	4.0	13.5	1.66	949	26.3	0.05
G050025 (-)	340	5.19	8.09	0.14	0.12	0.03	0.199	0.28	12.3	10.9	0.82	874	96.9	0.07
G050027 (-)	196	5.38	7.65	0.14	0.16	0.02	0.077	0.54	11.7	11.9	1.01	720	46.8	0.06
G050029 (-)	150	3.82	5.70	0.10	0.10	0.01	0.045	0.19	8.6	14.1	0.73	420	58.8	0.02
G050031 (-)	247	4.82	5.97	0.10	0.12	0.01	0.040	0.24	7.7	11.8	0.95	410	64.7	0.03
G050033 (-)	116	3.37	4.39	0.09	0.13	0.01	0.030	0.11	11.7	8.6	0.56	481	43.7	0.02
G050035 (-)	160	3.36	4.83	0.09	0.12	0.01	0.032	0.12	12.9	10.5	0.68	412	51.9	0.03
G050037 (-)	199	4.55	5.91	0.11	0.07	0.01	0.037	0.51	8.1	10.2	0.84	530	33.7	0.04
G050039 (-)	120	3.65	5.37	0.09	0.08	0.01	0.035	0.24	8.7	10.4	0.68	415	27.7	0.03
G050041 (-)	119	3.70	5.67	0.09	0.08	0.01	0.036	0.24	7.5	12.1	0.68	410	28.0	0.03
G050043 (-)	112	3.57	5.86	0.09	0.07	0.02	0.033	0.25	8.3	9.3	0.65	623	14.1	0.04
G050045 (-)	130	4.37	5.71	0.09	0.04	0.02	0.044	0.21	7.7	7.0	0.64	567	9.28	0.03
G050047 (-)	169	4.80	5.60	0.10	0.08	0.02	0.075	0.29	8.4	8.7	0.68	663	6.52	0.02
G050049 (-)	105	4.59	7.25	0.10	0.08	0.02	0.052	0.26	8.8	12.3	0.82	510	9.89	0.02
G050051 (-)	124	4.08	5.89	0.11	0.25	0.05	0.042	0.14	11.6	10.1	0.72	1080	16.9	0.03

Certified By:



Certificate of Analysis

AGAT WORK ORDER: 11Y528370

PROJECT NO:

5623 McADAM ROAD
MISSISSAUGA, ONTARIO
CANADA L4Z 1N9
TEL (905)501-9998
FAX (905)501-0589
<http://www.agatlabs.com>

CLIENT NAME: CANADIAN KAILUAN DEHUA MINES CO.LTD

ATTENTION TO: VINCENT LI

Aqua Regia Digest - Metals Package, ICP/ICP-MS finish (201074)

DATE SAMPLED: Sep 14, 2011

DATE RECEIVED: Sep 13, 2011

DATE REPORTED: Sep 30, 2011

SAMPLE TYPE: Soil

Analyte:	Cu	Fe	Ga	Ge	Hf	Hg	In	K	La	Li	Mg	Mn	Mo	Na
Unit:	ppm	%	ppm	ppm	ppm	ppm	ppm	%	ppm	ppm	%	ppm	ppm	%
Sample Description RDL:	0.1	0.01	0.05	0.05	0.02	0.01	0.005	0.01	0.1	0.1	0.01	1	0.05	0.01
O110001 (-)	13.0	3.50	9.38	0.10	0.02	<0.01	0.018	0.45	12.9	7.8	0.82	252	0.71	0.02
O110003 (-)	669	7.00	16.8	0.18	0.13	0.01	0.115	0.90	70.0	13.9	1.78	1020	0.35	0.02
O110005 (-)	28.8	2.89	8.35	0.10	0.35	0.02	0.041	0.11	12.7	12.0	0.80	336	0.54	0.04
O110007 (-)	29.7	3.85	8.77	0.09	0.37	0.02	0.050	0.23	18.2	14.0	1.13	521	0.47	0.03
O110009 (-)	30.9	3.27	8.01	0.09	0.32	0.01	0.056	0.09	13.6	12.6	0.74	430	0.46	0.05
O110011 (-)	43.3	5.89	6.84	0.14	0.62	0.01	0.054	0.06	27.6	12.8	2.15	1180	1.08	0.04
O110013 (-)	45.3	6.30	7.38	0.12	0.12	0.05	0.062	0.08	22.7	12.0	1.96	817	1.05	0.05
O110015 (-)	23.9	2.25	4.04	0.08	0.09	0.01	0.025	0.10	11.6	7.4	0.47	280	0.54	0.03
O110017 (-)	44.2	5.84	10.5	0.16	0.18	0.06	0.061	0.04	31.8	18.1	1.78	611	0.84	0.02
O110019 (-)	36.5	3.91	7.13	0.09	0.22	0.02	0.052	0.38	30.9	6.0	0.83	1300	0.63	0.02
O110021 (-)	80.5	3.42	8.34	0.10	0.46	0.02	0.043	0.55	33.2	8.1	1.11	736	0.35	0.08
O110023 (-)	50.0	3.17	7.02	0.11	0.99	0.01	0.046	0.25	20.0	7.9	0.81	705	0.43	0.05
O110025 (-)	26.6	2.73	6.33	0.10	0.41	0.02	0.037	0.15	17.6	9.9	0.71	373	0.41	0.03
O110027 (-)	57.0	6.01	14.2	0.11	0.12	<0.01	0.102	0.29	15.6	16.9	1.69	1060	0.44	0.01
O110029 (-)	46.1	3.61	8.89	0.11	0.42	0.02	0.049	0.30	28.8	8.8	0.90	681	0.49	0.03
O110031 (-)	43.9	3.67	8.88	0.11	0.58	0.02	0.047	0.22	24.0	10.5	0.86	701	0.46	0.04
O110033 (-)	34.3	3.33	7.88	0.10	0.48	0.02	0.045	0.11	25.1	8.7	0.63	905	0.34	0.03
O110035 (-)	87.7	3.72	11.7	0.10	0.03	0.46	0.029	0.65	19.2	15.2	1.18	421	0.69	0.01
O110037 (-)	11.6	4.87	14.7	0.13	0.10	0.01	0.059	0.39	21.9	17.7	1.59	947	0.27	0.02
O110039 (-)	14.8	6.81	21.8	0.18	0.23	0.02	0.124	0.15	65.2	29.4	3.19	2500	0.34	0.02
O110041 (-)	6.9	2.65	16.7	0.07	0.07	0.01	0.041	0.20	17.0	12.4	0.93	606	0.20	0.02
O150001 (-)	30.9	2.52	3.20	0.07	0.09	0.03	0.024	0.06	14.0	7.1	0.41	329	1.01	0.02
O150003 (-)	16.3	2.53	4.24	0.07	0.06	0.03	0.023	0.05	7.5	9.3	0.48	313	0.96	0.01
O150005 (-)	34.7	2.60	4.56	0.08	0.15	0.04	0.026	0.06	15.4	9.2	0.52	332	0.55	0.02
O150007 (-)	40.4	2.90	5.03	0.09	0.23	0.03	0.028	0.08	16.4	10.8	0.59	358	0.59	0.03
O150009 (-)	37.2	2.92	4.93	0.09	0.21	0.05	0.030	0.07	17.3	9.4	0.49	312	0.85	0.02
O150011 (-)	61.5	4.24	7.84	0.10	0.31	0.02	0.043	0.11	23.1	13.2	1.08	1070	0.95	0.02
O150013 (-)	21.5	2.87	5.68	0.08	0.11	0.02	0.031	0.05	12.5	12.6	0.56	323	0.85	0.02
O150015 (-)	35.0	2.30	7.09	0.15	0.18	0.27	0.045	0.08	62.3	13.7	0.33	190	1.25	0.02
O150017 (-)	19.6	2.53	8.53	0.09	0.15	0.07	0.042	0.10	32.8	12.1	0.52	220	0.83	0.01
O150019 (-)	20.3	2.37	6.46	0.07	0.05	<0.01	0.030	0.07	14.6	12.0	0.48	207	1.28	0.02
O150021 (-)	39.7	4.32	5.39	0.11	0.18	<0.01	0.030	0.10	21.0	23.8	3.08	805	1.03	0.03

Certified By:



Certificate of Analysis

AGAT WORK ORDER: 11Y528370

PROJECT NO:

5623 McADAM ROAD
MISSISSAUGA, ONTARIO
CANADA L4Z 1N9
TEL (905)501-9998
FAX (905)501-0589
<http://www.agatlabs.com>

CLIENT NAME: CANADIAN KAILUAN DEHUA MINES CO.LTD

ATTENTION TO: VINCENT LI

Aqua Regia Digest - Metals Package, ICP/ICP-MS finish (201074)

DATE SAMPLED: Sep 14, 2011

DATE RECEIVED: Sep 13, 2011

DATE REPORTED: Sep 30, 2011

SAMPLE TYPE: Soil

Analyte:	Cu	Fe	Ga	Ge	Hf	Hg	In	K	La	Li	Mg	Mn	Mo	Na
Unit:	ppm	%	ppm	ppm	ppm	ppm	ppm	%	ppm	ppm	%	ppm	ppm	%
Sample Description RDL:	0.1	0.01	0.05	0.05	0.02	0.01	0.005	0.01	0.1	0.1	0.01	1	0.05	0.01
O150023 (-)	17.0	2.44	6.69	0.09	0.04	0.01	0.032	0.07	14.7	12.8	0.49	542	0.68	0.02
O150025 (-)	24.0	2.35	4.92	0.08	0.06	0.02	0.027	0.05	15.7	10.2	0.51	398	0.56	0.02
O150027 (-)	32.5	3.08	5.94	0.09	0.10	0.04	0.033	0.07	18.9	11.8	0.60	477	0.58	0.02
O150029 (-)	25.4	2.90	5.47	0.09	0.12	0.03	0.029	0.09	18.6	11.0	0.64	460	0.56	0.03
O150031 (-)	27.6	2.84	5.86	0.08	0.08	0.03	0.033	0.07	19.1	12.0	0.57	355	0.49	0.02
O150033 (-)	26.2	3.03	6.20	0.09	0.10	0.04	0.035	0.07	17.8	11.9	0.57	377	0.53	0.02
O150035 (-)	18.3	2.75	4.78	0.09	0.15	0.05	0.037	0.08	20.5	8.3	0.36	264	0.40	0.01
O150037 (-)	18.4	3.07	4.41	0.10	0.11	0.08	0.052	0.11	24.6	6.0	0.22	361	0.45	0.01
O150039 (-)	19.3	3.47	5.16	0.09	0.14	0.10	0.056	0.10	18.5	4.7	0.22	604	0.68	<0.01
O150041 (-)	23.6	3.34	5.86	0.09	0.07	0.04	0.044	0.11	19.7	7.0	0.30	400	0.69	0.01
O24A0001 (-)	13.2	2.99	10.1	0.09	<0.02	0.01	0.025	0.20	10.2	7.4	0.62	291	0.68	0.02
O24A0003 (-)	16.9	3.83	9.05	0.11	0.04	0.04	0.033	0.61	17.3	15.2	1.26	530	0.85	0.03
O24A0005 (-)	12.7	13.1	15.0	0.22	0.28	<0.01	0.080	1.32	44.7	22.7	2.49	1400	0.76	0.02
O24A0007 (-)	44.8	7.18	11.3	0.14	1.07	<0.01	0.054	0.33	18.3	9.8	1.48	456	0.66	0.05
O24A0009 (-)	42.8	3.30	7.17	0.10	0.27	0.02	0.056	0.35	25.3	6.5	0.66	441	0.47	0.05
O24A0011 (-)	54.8	3.58	8.25	0.11	0.70	<0.01	0.045	0.49	26.5	10.0	0.98	712	0.56	0.04
O24A0013 (-)	67.0	2.51	6.59	0.09	0.65	0.01	0.036	0.26	22.3	11.1	0.79	625	0.30	0.06
O24A0015 (-)	32.1	3.77	8.77	0.10	0.82	0.01	0.057	0.31	19.8	13.9	0.99	927	0.52	0.04
O24A0017 (-)	24.5	3.91	12.3	0.12	0.13	<0.01	0.045	0.53	16.2	15.7	1.50	1010	0.15	0.05
O24A0019 (-)	8.0	2.30	12.6	0.11	0.06	<0.01	0.019	0.28	11.0	11.2	0.88	493	0.19	0.03
O24A0021 (-)	25.3	0.72	1.87	<0.05	0.06	0.08	0.008	0.03	5.2	2.4	0.24	368	0.49	0.02
O24A0023 (-)	34.2	3.09	7.77	0.09	0.37	0.02	0.046	0.15	19.3	14.3	0.88	536	0.44	0.03
O24A0025 (-)	27.2	2.54	6.85	0.08	0.33	0.01	0.031	0.13	17.3	12.3	0.66	374	0.18	0.05
O24A0027 (-)	8.6	0.36	1.07	<0.05	0.03	<0.01	<0.005	0.03	2.0	1.0	0.05	30	0.09	0.07
O24A0029 (-)	13.5	0.30	1.19	<0.05	<0.02	0.02	<0.005	0.04	12.7	1.5	0.06	27	0.07	0.07
O24A0031 (-)	6.4	0.32	0.99	<0.05	0.02	<0.01	<0.005	0.03	1.9	0.9	0.04	30	0.07	0.08
O24A0033 (-)	48.0	2.81	6.80	0.09	0.21	0.05	0.032	0.30	30.3	14.0	0.81	460	0.21	0.02
O24A0035 (-)	36.3	2.88	5.49	0.10	0.23	0.04	0.028	0.11	18.2	13.5	0.61	412	0.67	0.02
O24A0037 (-)	32.6	2.32	3.69	0.09	0.24	0.01	0.019	0.09	13.7	8.5	0.42	330	0.61	0.02
O24A0039 (-)	28.0	2.00	3.89	0.09	0.28	0.01	0.021	0.10	13.5	10.0	0.44	236	0.56	0.02
O24A0041 (-)	26.7	2.35	4.97	0.08	0.10	0.03	0.025	0.06	15.0	12.2	0.49	443	0.75	0.02
O24A0043 (-)	38.5	2.75	5.81	0.09	0.14	0.05	0.026	0.08	17.4	14.5	0.65	434	0.59	0.03

Certified By:



Certificate of Analysis

AGAT WORK ORDER: 11Y528370

PROJECT NO:

5623 McADAM ROAD
MISSISSAUGA, ONTARIO
CANADA L4Z 1N9
TEL (905)501-9998
FAX (905)501-0589
<http://www.agatlabs.com>

CLIENT NAME: CANADIAN KAILUAN DEHUA MINES CO.LTD

ATTENTION TO: VINCENT LI

Aqua Regia Digest - Metals Package, ICP/ICP-MS finish (201074)

DATE SAMPLED: Sep 14, 2011

DATE RECEIVED: Sep 13, 2011

DATE REPORTED: Sep 30, 2011

SAMPLE TYPE: Soil

Analyte:	Cu	Fe	Ga	Ge	Hf	Hg	In	K	La	Li	Mg	Mn	Mo	Na	
Unit:	ppm	%	ppm	ppm	ppm	ppm	ppm	%	ppm	ppm	%	ppm	ppm	%	
Sample Description	RDL:	0.1	0.01	0.05	0.05	0.02	0.01	0.005	0.01	0.1	0.1	0.01	1	0.05	0.01
O24A0045 (-)		27.3	2.28	4.35	0.08	0.15	0.04	0.023	0.07	14.8	9.7	0.46	386	0.53	0.03
O24A0047 (-)		25.7	2.20	4.96	0.08	0.06	0.02	0.024	0.07	15.5	12.5	0.49	297	0.65	0.03
O24A0049 (-)		18.7	3.23	7.96	0.08	0.04	<0.01	0.026	0.22	13.8	17.6	0.81	470	0.63	0.03

Certified By:



Certificate of Analysis

AGAT WORK ORDER: 11Y528370

PROJECT NO:

5623 McADAM ROAD
MISSISSAUGA, ONTARIO
CANADA L4Z 1N9
TEL (905)501-9998
FAX (905)501-0589
<http://www.agatlabs.com>

CLIENT NAME: CANADIAN KAILUAN DEHUA MINES CO.LTD

ATTENTION TO: VINCENT LI

Aqua Regia Digest - Metals Package, ICP/ICP-MS finish (201074)

DATE SAMPLED: Sep 14, 2011

DATE RECEIVED: Sep 13, 2011

DATE REPORTED: Sep 30, 2011

SAMPLE TYPE: Soil

Analyte:	Nb	Ni	P	Pb	Rb	Re	S	Sb	Sc	Se	Sn	Sr	Ta	Te
Unit:	ppm	ppm	ppm	ppm	ppm	ppm	%	ppm	ppm	ppm	ppm	ppm	ppm	ppm
Sample Description RDL:	0.05	0.2	10	0.1	0.1	0.001	0.005	0.05	0.1	0.2	0.2	0.2	0.01	0.01
G040001 (-)	1.02	26.1	586	5.9	6.9	<0.001	0.050	0.88	3.7	0.3	0.4	90.2	<0.01	0.02
G040003 (-)	1.38	25.1	599	5.3	6.4	<0.001	0.066	1.11	3.4	0.2	0.4	123	<0.01	0.03
G040005 (-)	0.80	35.1	342	6.6	6.7	<0.001	0.036	1.22	4.2	0.3	0.5	73.5	<0.01	0.03
G040007 (-)	0.68	25.2	674	4.4	4.8	<0.001	0.018	0.74	3.1	<0.2	0.3	33.8	<0.01	0.02
G040009 (-)	0.69	18.8	773	5.5	5.1	<0.001	0.049	0.69	3.5	0.3	0.3	81.1	<0.01	0.03
G040011 (-)	0.94	40.9	335	5.1	5.6	<0.001	0.021	1.39	6.4	0.3	0.5	49.3	<0.01	0.02
G040013 (-)	1.64	29.8	403	6.2	8.7	<0.001	0.059	1.34	5.5	0.4	0.5	90.4	<0.01	0.03
G040015 (-)	1.17	35.2	165	6.3	6.6	<0.001	0.050	2.09	7.3	0.4	0.6	85.1	<0.01	0.04
G040017 (-)	0.67	22.3	623	4.8	4.5	<0.001	0.018	0.72	2.6	0.2	0.3	33.7	<0.01	0.02
G040019 (-)	2.48	34.8	406	6.0	7.3	<0.001	0.090	1.32	5.8	0.4	0.6	139	<0.01	0.03
G040021 (-)	1.38	29.3	319	4.7	6.6	<0.001	0.109	1.18	4.7	0.4	0.4	179	<0.01	0.02
G040023 (-)	0.58	28.5	1150	6.9	3.3	<0.001	0.031	1.09	10.1	0.3	0.8	67.4	<0.01	0.03
G040025 (-)	0.82	19.6	557	3.2	11.8	<0.001	0.030	0.54	4.3	0.3	0.4	46.1	<0.01	0.02
G040027 (-)	1.09	24.1	469	5.2	4.5	<0.001	0.057	0.82	4.1	0.4	0.3	71.2	<0.01	0.02
G040029 (-)	1.22	47.4	546	5.7	6.5	<0.001	0.017	1.24	8.4	0.4	0.9	59.3	<0.01	0.04
G040031 (-)	1.05	26.6	879	5.1	7.4	<0.001	0.051	0.87	8.2	0.3	0.5	48.6	<0.01	0.03
G040033 (-)	1.52	26.1	1030	8.7	6.2	<0.001	0.069	0.72	5.1	0.2	2.6	69.7	<0.01	0.03
G040035 (-)	1.14	25.6	792	5.5	4.7	<0.001	0.089	0.81	4.7	0.5	0.4	87.5	<0.01	0.02
G040037 (-)	1.33	21.9	1410	6.1	12.4	<0.001	0.017	0.56	4.0	0.3	0.4	39.3	<0.01	0.03
G040039 (-)	0.98	22.1	820	5.6	6.2	<0.001	0.045	0.90	3.0	0.3	0.4	67.6	<0.01	0.03
G040041 (-)	0.70	18.2	709	5.0	5.3	0.001	0.066	0.75	3.5	0.3	0.3	94.4	<0.01	0.02
G040043 (-)	0.57	15.9	736	4.9	4.6	0.001	0.044	0.67	3.3	<0.2	0.3	88.1	<0.01	0.02
G040045 (-)	0.71	19.0	737	5.4	4.4	<0.001	0.061	0.70	4.0	0.3	0.3	124	<0.01	0.02
G060001 (-)	0.54	25.1	827	6.1	17.2	<0.001	0.030	0.92	4.3	0.2	0.6	61.9	<0.01	0.02
G060003 (-)	0.80	16.1	1300	3.7	19.4	<0.001	0.010	0.44	3.5	0.2	0.4	41.2	<0.01	0.02
G060005 (-)	1.27	5.9	2200	2.8	53.9	<0.001	0.014	0.21	2.3	<0.2	0.5	94.6	<0.01	<0.01
G060007 (-)	0.58	5.7	960	4.1	26.3	<0.001	0.018	0.25	2.4	0.2	0.3	190	<0.01	<0.01
G060009 (-)	0.90	4.7	2030	3.5	47.0	<0.001	0.014	0.20	2.0	0.2	0.4	188	<0.01	<0.01
G060011 (-)	0.79	12.0	1580	3.2	51.7	<0.001	0.011	0.38	2.5	0.2	0.4	62.3	<0.01	0.01
G060013 (-)	1.02	12.6	1160	4.3	44.4	<0.001	0.009	0.38	3.2	<0.2	0.5	84.7	<0.01	0.01
G060015 (-)	0.97	5.4	1740	3.2	49.9	<0.001	0.013	0.13	2.3	<0.2	0.3	124	<0.01	<0.01
G060017 (-)	0.73	19.4	1060	4.9	21.0	<0.001	0.007	0.64	4.4	0.3	0.4	40.0	<0.01	0.02

Certified By:



Certificate of Analysis

AGAT WORK ORDER: 11Y528370

PROJECT NO:

5623 McADAM ROAD
MISSISSAUGA, ONTARIO
CANADA L4Z 1N9
TEL (905)501-9998
FAX (905)501-0589
<http://www.agatlabs.com>

CLIENT NAME: CANADIAN KAILUAN DEHUA MINES CO.LTD

ATTENTION TO: VINCENT LI

Aqua Regia Digest - Metals Package, ICP/ICP-MS finish (201074)

DATE SAMPLED: Sep 14, 2011

DATE RECEIVED: Sep 13, 2011

DATE REPORTED: Sep 30, 2011

SAMPLE TYPE: Soil

Analyte:	Nb	Ni	P	Pb	Rb	Re	S	Sb	Sc	Se	Sn	Sr	Ta	Te
Unit:	ppm	ppm	ppm	ppm	ppm	ppm	%	ppm	ppm	ppm	ppm	ppm	ppm	ppm
Sample Description RDL:	0.05	0.2	10	0.1	0.1	0.001	0.005	0.05	0.1	0.2	0.2	0.2	0.01	0.01
G060019 (-)	1.05	5.3	1610	3.3	45.7	<0.001	0.014	0.18	2.2	<0.2	0.4	165	<0.01	<0.01
G060021 (-)	0.97	8.3	1340	2.3	64.4	<0.001	0.009	0.21	2.2	<0.2	0.4	93.7	<0.01	<0.01
G060023 (-)	0.94	10.5	2220	2.8	50.8	<0.001	0.015	0.26	2.4	0.2	0.3	118	<0.01	<0.01
G060025 (-)	1.07	10.0	2430	5.1	28.9	<0.001	0.014	0.25	2.0	0.2	0.4	51.0	<0.01	0.01
G060027 (-)	1.14	14.7	1890	3.5	46.0	<0.001	0.014	0.39	4.1	0.3	0.5	98.9	<0.01	0.01
G060029 (-)	0.71	10.1	653	4.8	15.0	<0.001	0.008	0.45	3.1	<0.2	0.6	37.9	<0.01	0.02
G060031 (-)	0.88	14.7	1080	4.9	10.4	<0.001	0.009	0.53	3.0	0.2	0.4	35.2	<0.01	0.02
G060033 (-)	0.73	16.2	902	4.7	9.2	<0.001	0.011	0.52	2.6	<0.2	0.4	30.3	<0.01	0.02
G060035 (-)	1.01	14.3	970	4.6	9.3	<0.001	0.010	0.54	3.1	<0.2	0.4	32.0	<0.01	0.01
G060037 (-)	1.15	16.5	942	4.2	8.6	<0.001	0.012	0.51	2.6	0.2	0.4	36.6	<0.01	0.02
G060039 (-)	0.93	15.6	905	4.1	7.8	<0.001	0.012	0.58	2.6	<0.2	0.5	36.5	<0.01	0.02
G060041 (-)	1.52	9.7	813	4.1	10.6	<0.001	0.037	0.34	2.7	0.2	0.3	60.9	<0.01	<0.01
G100001 (-)	1.15	14.9	780	4.7	13.4	<0.001	0.009	0.48	2.9	<0.2	0.5	37.6	<0.01	0.02
G100003 (-)	1.09	16.3	1120	3.6	18.0	<0.001	0.009	0.41	2.9	0.2	0.4	41.6	<0.01	0.01
G100005 (-)	0.65	10.3	1170	2.7	19.5	<0.001	0.009	0.35	3.3	0.2	0.4	46.7	<0.01	<0.01
G100007 (-)	0.67	21.1	1370	4.9	25.5	<0.001	0.011	0.46	4.0	0.3	0.4	66.7	<0.01	<0.01
G100009 (-)	1.00	26.2	705	6.1	10.4	<0.001	0.028	0.83	3.8	0.2	0.5	75.7	<0.01	0.02
G100011 (-)	0.88	20.6	876	5.7	6.6	<0.001	0.011	0.75	2.8	0.2	0.4	40.8	<0.01	0.02
G100013 (-)	0.82	22.8	843	6.4	6.3	<0.001	0.010	0.80	3.1	0.2	0.4	28.8	<0.01	0.02
G100015 (-)	0.71	24.9	963	4.1	18.3	<0.001	0.011	0.50	3.5	0.2	0.4	34.0	<0.01	0.01
G100017 (-)	0.74	15.4	1560	2.7	18.2	<0.001	0.015	0.30	2.7	<0.2	0.3	38.8	<0.01	0.01
G100019 (-)	0.66	16.3	1240	2.5	14.3	<0.001	0.009	0.36	2.8	0.2	0.3	38.8	<0.01	0.01
G100021 (-)	0.85	17.9	1290	3.9	24.8	<0.001	0.011	0.79	3.5	0.4	0.5	65.4	<0.01	0.01
G100023 (-)	1.26	11.1	1580	3.9	46.2	<0.001	0.013	0.24	2.7	<0.2	0.5	56.5	<0.01	0.01
G100025 (-)	1.19	4.6	3350	3.2	27.1	<0.001	0.023	0.27	2.3	0.2	0.4	107	<0.01	<0.01
G100027 (-)	1.13	12.7	2170	5.1	41.4	<0.001	0.016	0.34	3.3	0.3	0.5	73.9	<0.01	0.01
G100029 (-)	1.50	17.6	734	5.2	9.4	<0.001	0.057	0.52	3.2	0.4	0.4	54.2	<0.01	0.02
G100031 (-)	0.79	17.6	740	4.7	4.6	<0.001	0.012	0.64	2.7	0.3	0.3	32.8	<0.01	0.02
G100033 (-)	0.89	19.7	793	5.2	13.1	<0.001	0.011	0.63	3.5	0.3	0.4	36.4	<0.01	0.02
G100035 (-)	0.83	20.1	569	6.0	6.8	<0.001	0.009	0.66	3.8	0.4	0.4	33.7	<0.01	0.02
G100037 (-)	1.12	25.4	862	6.1	7.4	<0.001	0.013	0.87	3.5	0.2	0.5	40.6	<0.01	0.02
G100039 (-)	1.02	20.4	797	5.1	9.2	<0.001	0.031	0.83	2.7	0.3	0.4	57.2	<0.01	0.02

Certified By:



Certificate of Analysis

AGAT WORK ORDER: 11Y528370

PROJECT NO:

5623 McADAM ROAD
MISSISSAUGA, ONTARIO
CANADA L4Z 1N9
TEL (905)501-9998
FAX (905)501-0589
<http://www.agatlabs.com>

CLIENT NAME: CANADIAN KAILUAN DEHUA MINES CO.LTD

ATTENTION TO: VINCENT LI

Aqua Regia Digest - Metals Package, ICP/ICP-MS finish (201074)

DATE SAMPLED: Sep 14, 2011

DATE RECEIVED: Sep 13, 2011

DATE REPORTED: Sep 30, 2011

SAMPLE TYPE: Soil

Analyte:	Nb	Ni	P	Pb	Rb	Re	S	Sb	Sc	Se	Sn	Sr	Ta	Te	
Unit:	ppm	ppm	ppm	ppm	ppm	ppm	%	ppm	ppm	ppm	ppm	ppm	ppm	ppm	
Sample Description	RDL:	0.05	0.2	10	0.1	0.1	0.001	0.005	0.05	0.1	0.2	0.2	0.2	0.01	0.01
G100041 (-)	1.26	19.7	913	5.9	9.7	<0.001	0.016	0.63	3.5	0.3	0.4	40.3	<0.01	0.02	
G10001 (-)	0.97	7.8	1420	4.8	51.5	<0.001	0.010	0.32	3.5	0.4	0.5	61.5	<0.01	<0.01	
G10003 (-)	0.95	5.9	1350	7.5	28.4	<0.001	0.009	0.22	2.8	0.3	0.5	105	<0.01	<0.01	
G10005 (-)	1.63	8.4	442	6.0	34.0	<0.001	0.007	0.25	2.0	0.2	0.6	91.3	<0.01	0.01	
G10007 (-)	1.11	20.9	320	8.0	9.7	<0.001	0.007	0.80	3.2	0.3	0.6	29.4	<0.01	0.03	
G10009 (-)	1.10	19.3	609	7.6	13.2	<0.001	0.006	0.63	2.9	<0.2	0.7	35.2	<0.01	0.02	
G10011 (-)	1.39	7.1	834	9.6	10.8	<0.001	0.013	0.38	2.2	0.2	0.6	113	<0.01	0.01	
G10013 (-)	1.29	16.3	466	6.2	28.7	<0.001	0.006	0.56	2.0	0.2	0.5	50.2	<0.01	0.02	
G10015 (-)	1.34	4.4	1970	5.0	60.5	<0.001	0.013	0.17	1.8	<0.2	0.5	61.3	<0.01	<0.01	
G10017 (-)	1.25	13.0	1340	8.6	48.1	<0.001	0.011	0.32	3.0	<0.2	0.5	235	<0.01	0.01	
G10019 (-)	0.71	19.1	730	6.1	15.3	<0.001	0.007	0.67	4.7	0.4	0.5	39.9	<0.01	0.02	
G10021 (-)	1.04	22.7	439	7.4	15.8	<0.001	0.006	0.80	3.3	0.3	0.5	33.4	<0.01	0.02	
G10023 (-)	1.08	9.6	849	4.7	20.4	<0.001	0.008	0.51	3.8	0.2	0.4	92.6	<0.01	0.01	
G10025 (-)	1.39	11.2	1380	4.4	51.8	<0.001	0.010	0.38	2.4	<0.2	0.5	31.6	<0.01	0.01	
G10027 (-)	1.52	8.1	1770	9.9	16.3	<0.001	0.012	0.42	2.4	0.2	0.5	64.5	<0.01	0.01	
G10029 (-)	1.19	4.6	1660	9.8	21.1	<0.001	0.017	0.38	3.2	0.3	0.5	154	<0.01	<0.01	
G10031 (-)	1.27	15.8	989	6.6	26.1	<0.001	0.009	0.64	4.1	0.3	0.6	37.1	<0.01	0.02	
G10033 (-)	1.31	13.3	1120	5.7	42.1	<0.001	0.010	0.42	2.4	<0.2	0.5	54.5	<0.01	0.01	
G10035 (-)	0.89	14.8	821	6.1	14.0	<0.001	0.009	0.58	4.7	0.2	0.6	58.5	<0.01	0.03	
G10037 (-)	0.89	6.0	1420	6.3	28.4	<0.001	0.012	0.27	2.3	<0.2	0.5	150	<0.01	<0.01	
G10039 (-)	1.43	17.3	1060	6.9	40.0	<0.001	0.010	0.54	4.2	0.2	0.6	53.6	<0.01	0.02	
G10041 (-)	1.36	16.4	932	5.9	54.5	<0.001	0.009	0.54	5.1	0.2	0.6	49.8	<0.01	0.02	
G120001 (-)	0.70	18.1	592	3.2	8.2	<0.001	0.009	0.60	5.4	0.3	0.4	23.9	<0.01	0.03	
G120003 (-)	0.97	21.0	520	4.2	7.5	<0.001	0.012	0.63	5.4	0.4	0.9	24.7	<0.01	0.04	
G120005 (-)	1.10	36.0	819	3.2	23.5	<0.001	0.060	0.43	5.2	0.5	0.5	37.1	<0.01	0.04	
G120007 (-)	1.53	21.6	691	2.6	24.0	<0.001	0.020	0.35	3.9	0.4	0.8	26.7	<0.01	0.01	
G120009 (-)	1.27	22.2	629	2.6	18.8	0.001	0.094	0.42	2.8	1.5	0.4	45.9	0.01	0.02	
G120011 (-)	1.46	25.6	670	3.1	4.6	0.004	0.242	0.65	4.0	2.8	0.3	57.4	0.02	0.01	
G120013 (-)	1.69	25.0	575	6.2	6.6	<0.001	0.035	0.95	5.6	0.6	0.7	36.7	<0.01	0.03	
G120015 (-)	1.37	17.6	575	5.5	5.9	<0.001	0.034	0.62	4.1	0.3	0.5	28.4	<0.01	0.02	
G120017 (-)	1.41	15.5	602	5.2	5.9	<0.001	0.017	0.58	3.7	0.3	0.8	31.2	<0.01	0.03	
G120019 (-)	1.28	16.3	585	5.0	6.8	<0.001	0.038	0.41	4.5	0.3	0.5	31.1	<0.01	0.02	

Certified By:



Certificate of Analysis

AGAT WORK ORDER: 11Y528370

PROJECT NO:

5623 McADAM ROAD
MISSISSAUGA, ONTARIO
CANADA L4Z 1N9
TEL (905)501-9998
FAX (905)501-0589
<http://www.agatlabs.com>

CLIENT NAME: CANADIAN KAILUAN DEHUA MINES CO.LTD

ATTENTION TO: VINCENT LI

Aqua Regia Digest - Metals Package, ICP/ICP-MS finish (201074)

DATE SAMPLED: Sep 14, 2011

DATE RECEIVED: Sep 13, 2011

DATE REPORTED: Sep 30, 2011

SAMPLE TYPE: Soil

Analyte:	Nb	Ni	P	Pb	Rb	Re	S	Sb	Sc	Se	Sn	Sr	Ta	Te
Unit:	ppm	ppm	ppm	ppm	ppm	ppm	%	ppm	ppm	ppm	ppm	ppm	ppm	ppm
Sample Description RDL:	0.05	0.2	10	0.1	0.1	0.001	0.005	0.05	0.1	0.2	0.2	0.2	0.01	0.01
G120021 (-)	0.90	9.5	719	4.4	5.5	<0.001	0.063	0.40	2.2	0.3	0.4	32.2	<0.01	0.02
G120023 (-)	1.20	12.2	773	5.5	6.6	<0.001	0.020	0.56	3.4	0.2	0.8	24.9	<0.01	0.03
G120025 (-)	1.28	19.4	747	5.0	7.1	<0.001	0.020	0.65	4.8	0.4	0.5	30.6	<0.01	0.03
G120027 (-)	0.67	21.9	844	3.3	10.1	<0.001	0.017	0.65	6.1	0.3	0.8	30.4	<0.01	0.04
G120029 (-)	1.12	17.1	658	4.7	10.4	<0.001	0.026	0.55	5.1	0.5	0.5	25.0	<0.01	0.07
G120031 (-)	0.91	30.5	1090	5.5	8.6	<0.001	0.028	1.28	8.5	0.5	1.1	36.1	<0.01	0.05
G120033 (-)	0.88	3.1	2500	0.9	23.6	<0.001	0.013	0.12	5.4	0.3	0.7	28.9	<0.01	0.01
G120035 (-)	0.43	17.6	351	4.7	7.0	<0.001	0.008	0.41	4.7	0.3	0.4	17.0	<0.01	0.04
G120037 (-)	0.94	13.7	369	6.5	8.8	<0.001	0.005	1.07	2.6	0.2	0.6	19.6	<0.01	0.03
G120039 (-)	1.41	12.8	562	5.5	18.7	<0.001	0.008	0.41	2.5	0.3	0.6	24.0	<0.01	0.02
G120041 (-)	1.32	11.6	507	6.2	9.0	<0.001	0.008	0.49	3.3	0.3	0.7	26.3	<0.01	0.02
G050011 (-)	0.13	46.3	986	2.4	9.6	<0.001	0.011	1.60	13.5	1.0	0.6	20.7	<0.01	0.18
G050013 (-)	0.34	10.6	880	116	36.2	<0.001	0.012	0.87	9.0	0.8	0.9	33.4	<0.01	0.12
G050015 (-)	0.21	16.2	886	2.8	50.8	<0.001	0.011	0.37	4.9	0.5	0.4	28.3	<0.01	0.07
G050017 (-)	0.11	83.7	798	6.2	19.7	<0.001	0.015	0.71	13.1	0.7	0.4	29.3	<0.01	0.08
G050019 (-)	0.18	24.1	738	5.4	19.2	<0.001	0.012	0.67	13.0	0.7	0.5	26.3	<0.01	0.08
G050021 (-)	0.17	17.9	698	5.4	18.8	<0.001	0.013	0.68	11.9	0.7	0.5	25.9	<0.01	0.09
G050023 (-)	0.25	35.5	542	172	26.3	0.003	0.137	0.99	10.9	1.0	1.0	71.2	<0.01	0.43
G050025 (-)	0.40	27.5	619	72.1	23.1	0.011	0.119	1.16	10.5	2.0	1.8	66.6	<0.01	0.67
G050027 (-)	0.48	26.3	657	28.1	29.4	0.002	0.017	0.72	8.7	1.4	0.8	44.9	<0.01	0.19
G050029 (-)	0.73	19.3	510	9.5	20.4	0.003	0.091	0.84	5.0	0.8	0.7	39.4	<0.01	0.08
G050031 (-)	0.53	16.6	553	6.4	18.1	0.011	0.131	0.70	6.6	1.0	0.6	47.7	<0.01	0.08
G050033 (-)	0.90	13.6	675	8.6	12.1	0.004	0.065	1.01	4.1	0.6	0.9	42.7	<0.01	0.07
G050035 (-)	1.07	16.5	608	7.9	12.1	0.006	0.087	1.05	4.9	0.8	0.7	43.5	<0.01	0.08
G050037 (-)	1.01	14.7	679	5.6	40.5	0.004	0.287	0.35	5.7	0.8	0.8	50.9	<0.01	0.10
G050039 (-)	0.89	15.0	565	6.7	20.1	0.002	0.099	0.48	4.6	0.7	0.7	36.8	<0.01	0.09
G050041 (-)	0.89	14.5	558	6.8	21.0	0.002	0.101	0.49	4.6	0.7	0.7	38.5	<0.01	0.09
G050043 (-)	0.96	13.3	494	7.4	27.4	<0.001	0.036	0.45	5.5	0.5	0.6	37.1	<0.01	0.07
G050045 (-)	0.83	16.7	447	11.0	19.5	<0.001	0.050	1.07	7.8	0.6	1.2	38.9	<0.01	0.11
G050047 (-)	0.70	19.1	587	22.0	18.0	<0.001	0.032	2.27	9.6	0.6	0.7	44.7	<0.01	0.17
G050049 (-)	0.86	23.2	452	16.2	21.5	<0.001	0.045	1.13	5.4	0.9	0.8	67.7	<0.01	0.55
G050051 (-)	0.93	27.2	485	38.3	15.3	<0.001	0.028	0.77	5.6	1.0	0.7	50.5	<0.01	0.76

Certified By:



Certificate of Analysis

AGAT WORK ORDER: 11Y528370

PROJECT NO:

5623 McADAM ROAD
MISSISSAUGA, ONTARIO
CANADA L4Z 1N9
TEL (905)501-9998
FAX (905)501-0589
<http://www.agatlabs.com>

CLIENT NAME: CANADIAN KAILUAN DEHUA MINES CO.LTD

ATTENTION TO: VINCENT LI

Aqua Regia Digest - Metals Package, ICP/ICP-MS finish (201074)

DATE SAMPLED: Sep 14, 2011

DATE RECEIVED: Sep 13, 2011

DATE REPORTED: Sep 30, 2011

SAMPLE TYPE: Soil

Analyte:	Nb	Ni	P	Pb	Rb	Re	S	Sb	Sc	Se	Sn	Sr	Ta	Te
Unit:	ppm	ppm	ppm	ppm	ppm	ppm	%	ppm	ppm	ppm	ppm	ppm	ppm	ppm
Sample Description RDL:	0.05	0.2	10	0.1	0.1	0.001	0.005	0.05	0.1	0.2	0.2	0.2	0.01	0.01
O110001 (-)	0.29	5.4	2140	2.3	27.7	<0.001	0.010	0.12	5.2	<0.2	1.3	25.5	<0.01	0.01
O110003 (-)	0.23	10.2	5280	3.8	58.4	<0.001	0.026	0.21	18.9	0.5	2.6	58.7	<0.01	<0.01
O110005 (-)	2.15	7.2	456	9.2	8.8	<0.001	0.012	0.21	7.1	<0.2	1.3	122	<0.01	0.02
O110007 (-)	0.57	13.3	617	8.7	27.2	<0.001	0.012	0.41	8.4	0.3	1.2	90.4	<0.01	0.02
O110009 (-)	0.70	6.8	268	8.8	8.1	<0.001	0.010	0.23	9.0	<0.2	1.4	437	<0.01	0.03
O110011 (-)	1.87	9.1	1860	7.0	7.5	<0.001	0.015	0.13	6.0	0.5	1.7	87.6	<0.01	<0.01
O110013 (-)	1.16	10.7	1350	4.3	13.1	<0.001	0.031	0.18	14.8	0.7	1.3	129	<0.01	<0.01
O110015 (-)	0.98	12.4	497	4.4	9.6	<0.001	0.012	0.47	4.4	<0.2	0.8	41.0	<0.01	0.02
O110017 (-)	0.23	13.5	1210	6.5	3.5	<0.001	0.011	0.39	9.2	0.5	1.2	46.0	<0.01	<0.01
O110019 (-)	0.45	8.7	1770	10.7	36.0	<0.001	0.056	0.53	10.9	0.3	1.2	96.7	<0.01	0.02
O110021 (-)	0.53	9.0	1640	11.2	55.0	<0.001	0.022	0.35	6.0	0.3	1.9	1610	<0.01	0.03
O110023 (-)	2.27	5.9	1050	11.9	23.1	<0.001	0.016	0.27	6.1	0.2	1.8	684	0.01	0.03
O110025 (-)	0.86	12.9	963	6.4	13.8	<0.001	0.012	0.47	6.0	<0.2	1.1	479	<0.01	0.02
O110027 (-)	0.28	11.2	2850	7.1	14.4	<0.001	0.022	0.61	12.3	0.2	1.7	100	<0.01	<0.01
O110029 (-)	0.94	11.0	910	12.6	34.7	<0.001	0.018	0.39	8.5	0.3	1.6	648	<0.01	0.03
O110031 (-)	0.66	12.1	910	13.2	32.8	<0.001	0.016	0.43	8.8	0.2	1.7	469	<0.01	0.02
O110033 (-)	3.13	15.2	764	10.9	17.8	<0.001	0.056	0.59	8.4	0.5	1.2	157	<0.01	0.03
O110035 (-)	0.56	9.1	1810	6.3	51.6	<0.001	0.015	1.65	6.1	<0.2	1.5	32.7	<0.01	0.02
O110037 (-)	0.36	8.9	2580	7.3	37.8	<0.001	0.026	0.39	7.4	<0.2	1.2	132	<0.01	<0.01
O110039 (-)	0.67	11.2	2260	11.1	15.9	<0.001	0.026	0.28	14.4	0.4	1.9	114	<0.01	<0.01
O110041 (-)	0.10	5.9	1120	5.7	8.2	<0.001	0.044	0.11	6.1	<0.2	0.7	264	<0.01	<0.01
O150001 (-)	0.78	21.3	738	4.5	6.0	<0.001	0.014	0.89	4.3	0.4	0.4	40.9	<0.01	0.02
O150003 (-)	0.89	15.3	409	4.7	6.5	<0.001	0.008	0.51	3.0	<0.2	0.5	32.2	<0.01	0.02
O150005 (-)	1.35	24.5	610	5.0	8.4	<0.001	0.021	0.82	4.9	0.4	0.6	48.9	<0.01	0.02
O150007 (-)	1.41	24.2	808	6.2	9.9	<0.001	0.022	0.98	5.4	0.4	0.8	49.3	<0.01	0.02
O150009 (-)	0.98	22.0	653	5.0	10.2	<0.001	0.013	0.86	6.3	0.4	0.6	43.7	<0.01	0.02
O150011 (-)	0.65	51.0	909	9.1	13.7	<0.001	0.014	0.81	9.4	0.5	1.4	62.5	<0.01	0.02
O150013 (-)	1.25	18.6	310	5.8	8.2	<0.001	0.012	0.57	4.8	0.2	0.7	41.9	<0.01	0.02
O150015 (-)	0.70	14.8	421	12.9	8.2	<0.001	0.041	0.90	6.5	1.2	1.2	55.8	<0.01	0.03
O150017 (-)	0.25	7.6	247	14.2	13.8	<0.001	0.009	0.39	5.8	0.3	1.6	36.5	<0.01	0.03
O150019 (-)	0.63	8.2	359	7.1	9.9	<0.001	0.008	0.32	4.0	<0.2	1.2	21.8	<0.01	0.02
O150021 (-)	0.61	197	1260	6.2	13.0	<0.001	0.011	0.23	3.6	0.2	1.1	42.3	<0.01	0.02

Certified By:



Certificate of Analysis

AGAT WORK ORDER: 11Y528370

PROJECT NO:

5623 McADAM ROAD
MISSISSAUGA, ONTARIO
CANADA L4Z 1N9
TEL (905)501-9998
FAX (905)501-0589
<http://www.agatlabs.com>

CLIENT NAME: CANADIAN KAILUAN DEHUA MINES CO.LTD

ATTENTION TO: VINCENT LI

Aqua Regia Digest - Metals Package, ICP/ICP-MS finish (201074)

DATE SAMPLED: Sep 14, 2011

DATE RECEIVED: Sep 13, 2011

DATE REPORTED: Sep 30, 2011

SAMPLE TYPE: Soil

Analyte:	Nb	Ni	P	Pb	Rb	Re	S	Sb	Sc	Se	Sn	Sr	Ta	Te
Unit:	ppm	ppm	ppm	ppm	ppm	ppm	%	ppm	ppm	ppm	ppm	ppm	ppm	ppm
Sample Description RDL:	0.05	0.2	10	0.1	0.1	0.001	0.005	0.05	0.1	0.2	0.2	0.2	0.01	0.01
O150023 (-)	0.96	15.3	305	7.1	13.1	<0.001	0.012	0.51	4.8	0.2	0.8	36.1	<0.01	0.02
O150025 (-)	1.45	18.1	615	6.3	7.2	<0.001	0.039	0.59	4.2	0.5	0.6	67.9	<0.01	0.02
O150027 (-)	1.68	24.8	615	6.8	9.8	<0.001	0.030	0.89	5.3	0.5	0.8	56.9	<0.01	0.03
O150029 (-)	1.15	20.7	543	6.2	11.4	<0.001	0.035	0.76	4.6	0.3	0.7	69.3	<0.01	0.03
O150031 (-)	1.45	22.2	497	6.9	8.8	<0.001	0.024	0.77	5.3	0.4	0.8	48.3	<0.01	0.03
O150033 (-)	1.43	19.2	469	7.1	10.4	<0.001	0.020	0.74	5.8	0.4	0.8	46.3	<0.01	0.03
O150035 (-)	1.04	12.8	391	7.5	11.7	<0.001	0.011	0.49	7.0	0.3	0.8	36.8	<0.01	0.02
O150037 (-)	0.51	12.0	736	9.9	15.6	<0.001	0.011	0.51	9.1	0.3	1.0	29.8	<0.01	0.03
O150039 (-)	0.44	12.4	332	11.5	14.6	<0.001	0.007	0.59	8.7	0.4	1.1	42.4	<0.01	0.03
O150041 (-)	0.86	11.7	419	10.0	15.6	<0.001	0.012	0.63	7.1	0.3	1.2	43.0	<0.01	0.03
O24A0001 (-)	0.71	6.9	719	4.2	28.3	<0.001	0.010	0.29	3.8	<0.2	1.1	18.4	<0.01	0.01
O24A0003 (-)	0.83	8.3	1960	2.5	37.9	<0.001	0.010	0.30	6.7	<0.2	1.4	28.8	<0.01	0.01
O24A0005 (-)	0.59	13.7	2310	7.8	104	<0.001	0.015	0.47	11.2	0.2	1.7	61.9	<0.01	0.01
O24A0007 (-)	2.78	10.5	695	12.8	32.5	<0.001	0.016	0.42	12.3	0.2	2.8	36.9	<0.01	0.03
O24A0009 (-)	0.47	9.1	1090	8.7	47.6	<0.001	0.044	0.47	8.6	0.4	1.6	132	<0.01	0.04
O24A0011 (-)	0.50	8.8	1580	12.9	54.4	<0.001	0.017	0.54	6.0	0.2	1.7	1090	<0.01	0.05
O24A0013 (-)	0.73	13.9	1360	13.0	35.8	<0.001	0.020	0.39	7.9	0.3	1.3	1110	<0.01	0.04
O24A0015 (-)	0.67	12.0	535	9.9	36.0	<0.001	0.013	0.39	9.7	0.3	1.4	389	<0.01	0.03
O24A0017 (-)	0.19	5.2	4960	4.2	22.7	<0.001	0.034	0.18	8.6	0.2	0.8	185	<0.01	<0.01
O24A0019 (-)	0.22	2.6	2840	4.7	7.2	<0.001	0.037	0.06	3.0	<0.2	0.5	214	<0.01	<0.01
O24A0021 (-)	0.47	4.1	779	1.7	3.2	<0.001	0.255	0.58	1.6	1.2	0.2	387	0.07	0.01
O24A0023 (-)	2.58	15.2	788	9.4	20.3	<0.001	0.037	0.65	7.7	0.5	1.2	264	<0.01	0.03
O24A0025 (-)	1.58	16.9	916	6.4	17.2	<0.001	0.118	0.71	5.6	0.7	0.7	98.9	<0.01	0.02
O24A0027 (-)	0.16	0.8	419	0.7	1.2	<0.001	0.057	0.06	0.4	<0.2	<0.2	41.9	<0.01	<0.01
O24A0029 (-)	0.19	0.9	372	0.5	1.9	<0.001	0.032	0.07	1.0	<0.2	<0.2	32.3	<0.01	<0.01
O24A0031 (-)	0.16	0.8	351	0.5	1.0	<0.001	0.020	<0.05	0.3	<0.2	<0.2	36.2	<0.01	<0.01
O24A0033 (-)	1.74	16.9	1050	6.2	30.3	<0.001	0.121	0.69	5.8	0.7	0.7	137	<0.01	0.02
O24A0035 (-)	1.11	22.6	626	5.8	10.5	<0.001	0.015	0.97	5.7	0.3	0.7	50.2	<0.01	0.02
O24A0037 (-)	1.09	16.8	613	4.2	7.4	<0.001	0.018	0.76	4.8	0.2	0.4	36.0	<0.01	0.02
O24A0039 (-)	1.11	17.9	600	4.0	8.1	<0.001	0.017	0.63	5.2	0.3	0.5	37.0	<0.01	0.02
O24A0041 (-)	1.54	18.5	504	5.5	6.9	<0.001	0.031	0.70	5.1	0.7	0.6	49.9	<0.01	0.02
O24A0043 (-)	1.34	23.6	547	5.6	10.5	<0.001	0.019	0.89	5.1	<0.2	0.8	44.7	<0.01	0.03

Certified By:



Certificate of Analysis

AGAT WORK ORDER: 11Y528370

PROJECT NO:

5623 McADAM ROAD
MISSISSAUGA, ONTARIO
CANADA L4Z 1N9
TEL (905)501-9998
FAX (905)501-0589
<http://www.agatlabs.com>

CLIENT NAME: CANADIAN KAILUAN DEHUA MINES CO.LTD

ATTENTION TO: VINCENT LI

Aqua Regia Digest - Metals Package, ICP/ICP-MS finish (201074)

DATE SAMPLED: Sep 14, 2011

DATE RECEIVED: Sep 13, 2011

DATE REPORTED: Sep 30, 2011

SAMPLE TYPE: Soil

Analyte:	Nb	Ni	P	Pb	Rb	Re	S	Sb	Sc	Se	Sn	Sr	Ta	Te
Unit:	ppm	ppm	ppm	ppm	ppm	ppm	%	ppm	ppm	ppm	ppm	ppm	ppm	ppm
Sample Description	RDL:	0.05	0.2	10	0.1	0.1	0.001	0.005	0.05	0.1	0.2	0.2	0.2	0.01
O24A0045 (-)	0.86	19.3	723	5.4	9.2	<0.001	0.013	0.84	5.4	0.2	0.5	46.5	<0.01	0.02
O24A0047 (-)	0.74	18.9	520	5.3	9.0	<0.001	0.008	0.54	5.1	0.2	0.7	32.6	<0.01	0.03
O24A0049 (-)	0.77	12.3	1750	4.0	20.3	<0.001	0.012	0.29	3.2	<0.2	0.8	39.2	<0.01	0.01

Certified By:



Certificate of Analysis

AGAT WORK ORDER: 11Y528370

PROJECT NO:

5623 McADAM ROAD
MISSISSAUGA, ONTARIO
CANADA L4Z 1N9
TEL (905)501-9998
FAX (905)501-0589
<http://www.agatlabs.com>

CLIENT NAME: CANADIAN KAILUAN DEHUA MINES CO.LTD

ATTENTION TO: VINCENT LI

Aqua Regia Digest - Metals Package, ICP/ICP-MS finish (201074)

DATE SAMPLED: Sep 14, 2011

DATE RECEIVED: Sep 13, 2011

DATE REPORTED: Sep 30, 2011

SAMPLE TYPE: Soil

Analyte:	Th	Ti	Tl	U	V	W	Y	Zn	Zr
Unit:	ppm	%	ppm	ppm	ppm	ppm	ppm	ppm	ppm
Sample Description RDL:	0.1	0.005	0.02	0.05	0.5	0.05	0.05	0.5	0.5
G040001 (-)	4.0	0.084	0.08	0.62	56.2	0.28	8.65	48.5	5.1
G040003 (-)	4.1	0.094	0.07	0.70	53.9	0.58	8.21	46.5	7.0
G040005 (-)	4.4	0.088	0.08	0.57	61.2	0.37	10.3	56.0	9.8
G040007 (-)	3.9	0.073	0.06	0.70	52.6	0.39	7.65	33.9	5.3
G040009 (-)	3.0	0.064	0.07	0.60	59.6	0.17	7.65	34.8	2.4
G040011 (-)	3.7	0.120	0.09	0.59	72.6	0.29	11.2	50.8	12.9
G040013 (-)	4.0	0.092	0.08	0.76	67.8	0.44	10.2	42.4	5.1
G040015 (-)	4.6	0.116	0.07	0.64	82.1	0.39	14.4	43.7	13.5
G040017 (-)	4.4	0.066	0.06	0.64	49.5	0.78	6.94	38.1	4.5
G040019 (-)	4.1	0.122	0.08	1.19	68.6	0.40	11.1	43.4	6.7
G040021 (-)	2.9	0.077	0.07	0.68	65.5	0.25	11.0	43.8	3.0
G040023 (-)	2.3	0.150	0.03	0.52	116	0.19	11.6	66.9	4.1
G040025 (-)	2.4	0.207	0.10	0.64	84.2	0.32	6.69	68.7	2.4
G040027 (-)	3.0	0.117	0.05	0.65	69.0	0.27	7.68	44.0	2.3
G040029 (-)	2.7	0.246	0.05	0.70	100	1.10	7.43	78.1	9.5
G040031 (-)	3.4	0.098	0.07	0.56	105	0.59	7.51	76.4	1.7
G040033 (-)	3.9	0.076	0.05	0.93	74.2	3.10	7.29	151	2.1
G040035 (-)	2.8	0.067	0.07	0.85	76.0	0.80	8.92	49.7	1.6
G040037 (-)	4.4	0.102	0.09	0.55	62.5	0.49	6.79	77.2	3.6
G040039 (-)	4.1	0.065	0.08	0.87	57.1	0.95	7.75	36.4	3.2
G040041 (-)	3.3	0.059	0.08	0.70	49.0	0.19	7.03	36.2	4.7
G040043 (-)	3.4	0.058	0.07	0.64	50.0	0.21	7.00	33.9	4.3
G040045 (-)	2.9	0.061	0.08	0.68	52.8	0.21	7.68	37.2	3.8
G060001 (-)	4.2	0.163	0.14	0.50	69.4	0.33	7.93	82.6	16.6
G060003 (-)	3.5	0.151	0.14	0.50	64.4	0.19	7.43	73.9	6.6
G060005 (-)	3.3	0.234	0.31	0.43	70.3	0.33	4.00	130	3.3
G060007 (-)	3.1	0.079	0.16	0.80	40.3	0.07	9.34	58.0	3.1
G060009 (-)	2.8	0.215	0.27	0.55	66.9	0.08	7.61	130	2.5
G060011 (-)	3.0	0.216	0.33	0.60	72.7	0.12	7.47	121	3.9
G060013 (-)	4.3	0.175	0.27	0.64	65.1	0.20	4.83	101	4.3
G060015 (-)	3.6	0.202	0.31	0.45	64.2	0.08	4.15	112	3.1
G060017 (-)	3.4	0.128	0.15	0.65	67.4	0.26	12.6	68.6	7.4

Certified By:



Certificate of Analysis

AGAT WORK ORDER: 11Y528370

PROJECT NO:

5623 McADAM ROAD
MISSISSAUGA, ONTARIO
CANADA L4Z 1N9
TEL (905)501-9998
FAX (905)501-0589
<http://www.agatlabs.com>

CLIENT NAME: CANADIAN KAILUAN DEHUA MINES CO.LTD

ATTENTION TO: VINCENT LI

Aqua Regia Digest - Metals Package, ICP/ICP-MS finish (201074)

DATE SAMPLED: Sep 14, 2011

DATE RECEIVED: Sep 13, 2011

DATE REPORTED: Sep 30, 2011

SAMPLE TYPE: Soil

Analyte:	Th	Ti	Tl	U	V	W	Y	Zn	Zr
Unit:	ppm	%	ppm	ppm	ppm	ppm	ppm	ppm	ppm
Sample Description RDL:	0.1	0.005	0.02	0.05	0.5	0.05	0.05	0.5	0.5
G060019 (-)	4.5	0.188	0.27	0.50	58.1	0.13	3.56	108	3.0
G060021 (-)	5.2	0.268	0.39	0.40	69.1	0.42	3.51	128	3.0
G060023 (-)	3.7	0.210	0.34	0.51	62.5	0.23	6.96	111	3.8
G060025 (-)	3.2	0.179	0.19	0.55	72.0	0.24	4.88	125	3.5
G060027 (-)	4.2	0.197	0.29	0.99	70.0	1.96	12.0	111	6.2
G060029 (-)	4.0	0.127	0.11	0.68	61.4	0.26	5.63	60.2	9.0
G060031 (-)	4.3	0.100	0.07	0.53	56.0	0.47	7.89	54.7	9.5
G060033 (-)	4.1	0.091	0.08	0.55	69.5	0.49	7.11	56.5	8.5
G060035 (-)	4.2	0.090	0.08	0.53	69.8	0.47	7.15	55.1	8.6
G060037 (-)	4.2	0.101	0.07	0.60	71.0	1.20	6.30	57.0	6.7
G060039 (-)	5.4	0.095	0.08	1.48	77.0	1.17	5.54	53.4	6.5
G060041 (-)	3.1	0.075	0.07	1.42	43.6	0.19	5.58	37.8	4.0
G100001 (-)	3.4	0.101	0.11	0.60	57.2	0.17	5.51	53.4	5.4
G100003 (-)	3.5	0.117	0.13	0.45	59.2	0.24	5.44	63.5	5.5
G100005 (-)	3.2	0.136	0.13	0.55	54.4	0.20	6.02	69.0	7.4
G100007 (-)	3.6	0.148	0.16	0.61	66.1	0.64	9.49	98.5	9.7
G100009 (-)	3.8	0.090	0.10	0.52	65.0	0.37	9.17	66.8	7.5
G100011 (-)	4.5	0.085	0.06	0.61	63.2	0.57	7.35	58.8	9.1
G100013 (-)	4.9	0.086	0.06	0.50	50.8	0.29	7.70	55.3	9.5
G100015 (-)	3.4	0.136	0.13	0.40	61.0	0.18	7.47	65.6	10.0
G100017 (-)	2.8	0.143	0.13	0.44	55.6	0.11	5.94	68.8	5.8
G100019 (-)	3.0	0.130	0.10	0.41	52.0	0.13	8.08	58.4	6.9
G100021 (-)	3.8	0.192	0.17	0.74	80.6	0.30	12.7	108	5.6
G100023 (-)	3.0	0.243	0.26	0.46	77.7	0.21	3.85	129	2.9
G100025 (-)	3.0	0.275	0.16	0.60	81.8	0.15	5.63	149	2.1
G100027 (-)	2.5	0.291	0.26	0.83	93.2	0.14	6.91	161	4.3
G100029 (-)	3.2	0.090	0.07	11.8	54.3	0.32	7.09	61.2	2.9
G100031 (-)	3.7	0.072	0.05	0.59	58.9	0.71	6.25	38.2	3.8
G100033 (-)	4.0	0.109	0.10	0.59	61.2	0.16	5.78	61.6	5.6
G100035 (-)	4.4	0.085	0.06	0.76	62.7	0.54	7.86	51.0	6.9
G100037 (-)	5.1	0.119	0.07	0.57	64.3	0.36	9.13	58.2	13.0
G100039 (-)	4.7	0.108	0.08	0.67	72.7	0.90	7.34	62.4	5.3

Certified By:



Certificate of Analysis

AGAT WORK ORDER: 11Y528370

PROJECT NO:

5623 McADAM ROAD
MISSISSAUGA, ONTARIO
CANADA L4Z 1N9
TEL (905)501-9998
FAX (905)501-0589
<http://www.agatlabs.com>

CLIENT NAME: CANADIAN KAILUAN DEHUA MINES CO.LTD

ATTENTION TO: VINCENT LI

Aqua Regia Digest - Metals Package, ICP/ICP-MS finish (201074)

DATE SAMPLED: Sep 14, 2011

DATE RECEIVED: Sep 13, 2011

DATE REPORTED: Sep 30, 2011

SAMPLE TYPE: Soil

Analyte:	Th	Ti	Tl	U	V	W	Y	Zn	Zr
Unit:	ppm	%	ppm	ppm	ppm	ppm	ppm	ppm	ppm
Sample Description RDL:	0.1	0.005	0.02	0.05	0.5	0.05	0.05	0.5	0.5
G100041 (-)	4.4	0.097	0.09	0.75	64.5	0.36	9.16	59.0	4.9
G10001 (-)	6.2	0.282	0.41	1.26	71.1	0.12	13.2	169	4.8
G10003 (-)	6.9	0.190	0.20	1.56	61.1	0.35	9.90	147	4.3
G10005 (-)	5.4	0.197	0.24	0.89	55.4	0.14	4.42	110	4.6
G10007 (-)	5.4	0.110	0.11	0.83	69.3	0.37	3.40	65.6	7.9
G10009 (-)	4.4	0.105	0.10	0.68	65.7	0.40	3.68	66.7	6.4
G10011 (-)	4.6	0.164	0.08	1.20	51.8	0.14	4.57	93.8	4.2
G10013 (-)	6.1	0.144	0.21	0.75	61.9	0.28	3.12	89.4	4.4
G10015 (-)	10.4	0.233	0.37	1.16	59.8	0.14	4.65	153	3.5
G10017 (-)	6.5	0.164	0.29	1.02	53.7	0.44	4.05	114	5.1
G10019 (-)	5.5	0.112	0.13	1.61	63.0	0.31	8.40	67.9	8.7
G10021 (-)	5.7	0.108	0.14	0.74	70.1	0.51	3.41	62.4	7.4
G10023 (-)	5.4	0.128	0.15	0.97	59.7	0.16	7.59	68.5	6.2
G10025 (-)	7.3	0.187	0.32	0.79	61.3	0.71	4.16	111	3.9
G10027 (-)	7.5	0.177	0.09	1.12	57.1	0.24	5.02	122	4.9
G10029 (-)	6.5	0.217	0.13	2.20	61.2	0.10	12.7	138	4.6
G10031 (-)	5.2	0.136	0.17	0.96	69.1	0.41	4.49	80.1	6.2
G10033 (-)	4.7	0.154	0.28	0.71	58.3	0.31	3.51	91.0	4.2
G10035 (-)	4.4	0.088	0.09	1.00	54.4	0.20	7.13	63.9	6.1
G10037 (-)	4.9	0.120	0.15	0.96	50.1	0.25	5.38	95.9	3.6
G10039 (-)	5.9	0.195	0.26	0.93	81.2	0.20	4.77	120	5.6
G10041 (-)	6.9	0.210	0.34	0.82	77.2	0.35	4.59	113	8.1
G120001 (-)	2.3	0.168	0.07	0.59	105	0.30	8.02	59.8	6.1
G120003 (-)	3.1	0.120	0.09	0.85	91.9	0.30	7.69	63.6	2.4
G120005 (-)	1.5	0.182	0.09	0.77	90.9	0.47	7.14	60.8	1.9
G120007 (-)	1.8	0.164	0.19	0.83	95.3	0.17	8.82	70.8	1.4
G120009 (-)	1.0	0.173	0.31	0.94	91.4	0.24	3.46	85.1	1.9
G120011 (-)	1.8	0.089	0.08	1.48	65.3	0.17	9.86	35.6	4.3
G120013 (-)	3.9	0.140	0.09	1.40	77.5	0.59	11.1	59.8	5.2
G120015 (-)	2.4	0.103	0.10	0.78	65.0	0.24	5.31	48.5	0.9
G120017 (-)	2.9	0.141	0.07	0.55	94.8	0.32	4.19	49.0	3.6
G120019 (-)	2.1	0.121	0.08	0.66	104	0.31	5.00	42.7	0.6

Certified By:



Certificate of Analysis

AGAT WORK ORDER: 11Y528370

PROJECT NO:

5623 McADAM ROAD
MISSISSAUGA, ONTARIO
CANADA L4Z 1N9
TEL (905)501-9998
FAX (905)501-0589
<http://www.agatlabs.com>

CLIENT NAME: CANADIAN KAILUAN DEHUA MINES CO.LTD

ATTENTION TO: VINCENT LI

Aqua Regia Digest - Metals Package, ICP/ICP-MS finish (201074)

DATE SAMPLED: Sep 14, 2011

DATE RECEIVED: Sep 13, 2011

DATE REPORTED: Sep 30, 2011

SAMPLE TYPE: Soil

Analyte:	Th	Ti	Tl	U	V	W	Y	Zn	Zr
Unit:	ppm	%	ppm	ppm	ppm	ppm	ppm	ppm	ppm
Sample Description RDL:	0.1	0.005	0.02	0.05	0.5	0.05	0.05	0.5	0.5
G120021 (-)	0.4	0.069	0.07	0.67	56.7	0.27	3.98	28.7	<0.5
G120023 (-)	2.4	0.120	0.07	0.65	76.6	0.25	4.52	50.8	0.6
G120025 (-)	3.2	0.138	0.08	0.92	81.7	0.22	7.69	55.4	2.2
G120027 (-)	2.7	0.183	0.10	0.54	103	0.35	7.64	63.9	6.2
G120029 (-)	2.8	0.186	0.11	0.77	96.5	0.31	7.52	78.3	2.3
G120031 (-)	2.7	0.082	0.19	0.74	98.0	0.20	13.7	86.8	1.1
G120033 (-)	1.5	0.247	0.17	0.31	181	0.10	13.2	62.3	1.5
G120035 (-)	2.5	0.071	0.09	0.60	46.2	0.49	9.68	59.3	1.6
G120037 (-)	4.9	0.068	0.10	1.25	43.9	0.50	4.50	52.9	4.6
G120039 (-)	4.3	0.122	0.15	1.04	58.2	0.39	5.84	73.3	2.6
G120041 (-)	5.1	0.103	0.11	1.13	59.4	0.62	6.00	63.2	2.3
G050011 (-)	1.2	0.052	0.26	0.67	153	0.36	9.17	108	2.2
G050013 (-)	1.8	0.225	0.34	0.81	113	0.43	8.56	182	2.7
G050015 (-)	0.8	0.277	0.41	0.28	205	1.31	4.22	110	2.6
G050017 (-)	0.5	0.112	0.24	0.15	157	0.21	9.32	97.0	1.2
G050019 (-)	1.3	0.192	0.20	0.76	222	0.59	10.2	112	3.4
G050021 (-)	1.2	0.191	0.20	0.76	212	0.59	9.98	105	3.3
G050023 (-)	1.3	0.214	0.46	0.92	181	7.80	13.4	387	4.7
G050025 (-)	2.9	0.124	0.33	2.36	132	14.5	21.2	272	3.7
G050027 (-)	2.8	0.235	0.41	1.32	153	8.77	16.3	161	5.2
G050029 (-)	2.2	0.148	0.23	0.79	102	5.22	5.77	87.8	3.5
G050031 (-)	1.9	0.185	0.22	0.97	135	4.81	6.38	76.9	4.2
G050033 (-)	4.0	0.124	0.13	1.49	84.6	7.49	6.49	60.8	5.2
G050035 (-)	3.9	0.146	0.16	1.84	91.3	3.20	8.27	64.5	4.9
G050037 (-)	1.9	0.221	0.32	1.11	128	7.91	6.77	83.5	2.1
G050039 (-)	2.2	0.162	0.21	0.81	103	5.22	5.84	76.3	2.8
G050041 (-)	2.1	0.162	0.21	0.77	102	5.43	5.92	75.8	2.9
G050043 (-)	1.8	0.151	0.21	1.04	97.2	6.63	6.03	79.1	1.8
G050045 (-)	1.5	0.119	0.19	0.62	112	3.41	7.45	87.9	1.2
G050047 (-)	1.8	0.120	0.21	0.85	113	14.2	9.31	113	1.8
G050049 (-)	1.9	0.150	0.23	0.79	106	9.23	7.45	102	2.2
G050051 (-)	3.1	0.124	0.21	1.23	88.7	50.9	9.23	88.6	4.6

Certified By:



Certificate of Analysis

AGAT WORK ORDER: 11Y528370

PROJECT NO:

5623 McADAM ROAD
MISSISSAUGA, ONTARIO
CANADA L4Z 1N9
TEL (905)501-9998
FAX (905)501-0589
<http://www.agatlabs.com>

CLIENT NAME: CANADIAN KAILUAN DEHUA MINES CO.LTD

ATTENTION TO: VINCENT LI

Aqua Regia Digest - Metals Package, ICP/ICP-MS finish (201074)

DATE SAMPLED: Sep 14, 2011

DATE RECEIVED: Sep 13, 2011

DATE REPORTED: Sep 30, 2011

SAMPLE TYPE: Soil

Analyte:	Th	Ti	Tl	U	V	W	Y	Zn	Zr
Unit:	ppm	%	ppm	ppm	ppm	ppm	ppm	ppm	ppm
Sample Description RDL:	0.1	0.005	0.02	0.05	0.5	0.05	0.05	0.5	0.5
O110001 (-)	1.7	0.095	0.12	0.44	131	3.21	4.11	32.2	1.1
O110003 (-)	9.0	0.129	0.31	1.75	174	0.28	35.0	149	2.8
O110005 (-)	2.1	0.217	0.15	1.43	97.6	0.72	5.75	49.8	12.2
O110007 (-)	4.0	0.109	0.21	1.28	93.4	0.23	8.39	56.1	11.0
O110009 (-)	2.5	0.151	0.19	1.80	106	0.49	4.93	60.2	10.3
O110011 (-)	4.4	0.631	0.03	0.91	184	0.50	20.9	110	24.8
O110013 (-)	3.5	0.287	0.05	0.72	189	0.14	24.5	95.1	5.4
O110015 (-)	3.4	0.085	0.07	0.50	59.5	0.17	5.39	31.5	4.3
O110017 (-)	3.8	0.100	0.02	1.38	161	0.07	32.8	105	6.2
O110019 (-)	5.4	0.081	0.21	1.38	128	0.25	19.0	92.8	10.6
O110021 (-)	5.8	0.164	0.34	1.87	107	0.20	16.3	61.9	15.9
O110023 (-)	3.5	0.295	0.16	2.07	100	0.44	11.0	64.3	30.1
O110025 (-)	4.0	0.152	0.12	1.07	79.6	0.26	8.81	51.1	15.4
O110027 (-)	3.4	0.070	0.06	0.67	140	0.18	7.57	129	2.7
O110029 (-)	5.0	0.176	0.24	1.85	101	0.28	11.5	69.9	16.5
O110031 (-)	5.3	0.196	0.23	1.89	103	0.23	12.7	62.7	22.9
O110033 (-)	5.3	0.176	0.14	3.64	97.6	0.40	15.2	55.1	18.7
O110035 (-)	4.1	0.135	0.24	0.70	111	1.88	6.62	61.0	1.1
O110037 (-)	5.9	0.165	0.11	1.38	114	0.08	8.67	89.8	2.5
O110039 (-)	14.8	0.221	0.05	2.61	167	0.14	22.8	161	3.4
O110041 (-)	3.8	0.071	0.04	0.62	64.7	0.13	5.28	54.8	2.1
O150001 (-)	3.6	0.064	0.07	1.22	65.5	0.26	9.18	53.3	4.1
O150003 (-)	2.4	0.078	0.05	0.53	65.6	0.23	2.85	44.3	3.3
O150005 (-)	3.9	0.098	0.08	1.01	64.6	0.29	10.7	50.9	7.1
O150007 (-)	4.6	0.109	0.08	0.84	71.2	0.20	11.6	56.4	10.8
O150009 (-)	4.4	0.097	0.10	1.10	75.7	0.31	11.6	56.0	9.4
O150011 (-)	7.3	0.142	0.16	1.32	102	0.20	10.3	80.7	15.9
O150013 (-)	3.7	0.102	0.07	1.09	72.8	0.20	5.90	46.5	5.6
O150015 (-)	12.4	0.014	0.11	6.68	60.7	3.74	60.7	52.2	5.9
O150017 (-)	12.6	0.010	0.17	2.38	55.3	<0.05	9.67	69.2	5.3
O150019 (-)	7.6	0.039	0.08	0.96	72.7	6.54	5.04	52.0	1.9
O150021 (-)	5.0	0.212	0.10	0.74	106	0.24	10.7	67.1	9.3

Certified By:



Certificate of Analysis

AGAT WORK ORDER: 11Y528370

PROJECT NO:

5623 McADAM ROAD
MISSISSAUGA, ONTARIO
CANADA L4Z 1N9
TEL (905)501-9998
FAX (905)501-0589
<http://www.agatlabs.com>

CLIENT NAME: CANADIAN KAILUAN DEHUA MINES CO.LTD

ATTENTION TO: VINCENT LI

Aqua Regia Digest - Metals Package, ICP/ICP-MS finish (201074)

DATE SAMPLED: Sep 14, 2011

DATE RECEIVED: Sep 13, 2011

DATE REPORTED: Sep 30, 2011

SAMPLE TYPE: Soil

Analyte:	Th	Ti	Tl	U	V	W	Y	Zn	Zr
Unit:	ppm	%	ppm	ppm	ppm	ppm	ppm	ppm	ppm
Sample Description RDL:	0.1	0.005	0.02	0.05	0.5	0.05	0.05	0.5	0.5
O150023 (-)	4.6	0.065	0.12	0.93	66.1	0.18	4.82	51.5	2.1
O150025 (-)	3.2	0.084	0.07	4.10	61.1	0.67	8.91	37.1	2.4
O150027 (-)	4.6	0.116	0.09	3.19	75.3	0.43	11.6	57.4	4.6
O150029 (-)	5.2	0.115	0.11	0.70	72.6	0.22	10.4	51.6	5.5
O150031 (-)	4.3	0.097	0.08	1.55	70.2	0.20	11.3	52.0	3.4
O150033 (-)	5.0	0.107	0.09	1.36	74.1	0.21	11.2	54.0	4.7
O150035 (-)	7.0	0.075	0.10	1.19	67.5	0.14	15.4	49.8	7.3
O150037 (-)	10.0	0.027	0.15	1.64	64.8	0.21	19.1	59.2	5.9
O150039 (-)	10.6	0.023	0.16	1.43	71.0	0.28	7.42	62.9	6.7
O150041 (-)	8.2	0.035	0.15	1.50	77.3	2.20	8.11	55.4	2.9
O24A0001 (-)	1.7	0.104	0.10	0.54	95.1	1.42	4.17	51.2	0.5
O24A0003 (-)	4.9	0.177	0.18	0.81	106	1.35	5.74	56.5	1.3
O24A0005 (-)	8.1	0.407	0.48	1.71	347	1.33	9.53	145	7.1
O24A0007 (-)	6.3	0.678	0.21	3.44	149	0.59	10.0	80.3	43.1
O24A0009 (-)	3.8	0.073	0.54	1.35	105	0.11	18.2	76.6	9.2
O24A0011 (-)	4.8	0.205	0.51	2.65	84.4	0.51	12.2	79.2	19.4
O24A0013 (-)	3.3	0.158	0.25	1.52	76.6	0.32	12.9	49.0	17.6
O24A0015 (-)	4.5	0.249	0.23	1.66	105	0.31	13.0	68.6	33.2
O24A0017 (-)	1.8	0.178	0.11	0.58	105	0.10	10.4	80.2	2.7
O24A0019 (-)	1.5	0.163	0.03	0.59	78.2	0.12	5.35	45.5	1.4
O24A0021 (-)	0.3	0.038	0.03	5.53	31.4	0.13	4.09	10.1	2.2
O24A0023 (-)	4.1	0.160	0.19	3.53	89.6	0.21	12.4	54.5	15.8
O24A0025 (-)	4.1	0.146	0.07	2.60	79.3	0.18	9.76	49.6	10.8
O24A0027 (-)	0.2	0.027	<0.02	1.10	15.0	0.07	0.91	5.1	1.3
O24A0029 (-)	0.4	0.025	0.02	0.36	13.2	<0.05	4.50	5.3	0.9
O24A0031 (-)	0.1	0.028	<0.02	0.08	11.6	0.06	0.84	3.8	1.1
O24A0033 (-)	4.9	0.151	0.19	3.34	97.2	0.78	14.5	62.1	7.6
O24A0035 (-)	4.3	0.120	0.10	0.64	72.3	0.22	10.6	52.4	10.0
O24A0037 (-)	3.2	0.090	0.07	0.71	60.3	0.45	8.33	39.6	9.4
O24A0039 (-)	3.2	0.094	0.07	0.49	55.0	0.33	8.75	36.3	10.7
O24A0041 (-)	3.2	0.096	0.06	3.04	61.3	0.30	9.60	36.5	4.9
O24A0043 (-)	4.0	0.117	0.10	0.69	72.5	0.57	11.2	49.4	6.9

Certified By:



Certificate of Analysis

AGAT WORK ORDER: 11Y528370

PROJECT NO:

5623 McADAM ROAD
MISSISSAUGA, ONTARIO
CANADA L4Z 1N9
TEL (905)501-9998
FAX (905)501-0589
<http://www.agatlabs.com>

CLIENT NAME: CANADIAN KAILUAN DEHUA MINES CO.LTD

ATTENTION TO: VINCENT LI

Aqua Regia Digest - Metals Package, ICP/ICP-MS finish (201074)

DATE SAMPLED: Sep 14, 2011

DATE RECEIVED: Sep 13, 2011

DATE REPORTED: Sep 30, 2011

SAMPLE TYPE: Soil

Analyte:	Th	Ti	Tl	U	V	W	Y	Zn	Zr	
Unit:	ppm	%	ppm	ppm	ppm	ppm	ppm	ppm	ppm	
Sample Description	RDL:	0.1	0.005	0.02	0.05	0.5	0.05	0.5	0.5	
O24A0045 (-)		3.8	0.086	0.08	0.53	59.3	0.18	9.65	43.6	7.8
O24A0047 (-)		3.7	0.095	0.08	0.70	61.0	0.21	9.47	41.2	3.3
O24A0049 (-)		3.3	0.141	0.10	1.00	90.5	3.45	4.64	54.6	1.3

Comments: RDL - Reported Detection Limit

Certified By:



Certificate of Analysis

AGAT WORK ORDER: 11Y528370

PROJECT NO:

5623 McADAM ROAD
MISSISSAUGA, ONTARIO
CANADA L4Z 1N9
TEL (905)501-9998
FAX (905)501-0589
<http://www.agatlabs.com>

CLIENT NAME: CANADIAN KAILUAN DEHUA MINES CO.LTD

ATTENTION TO: VINCENT LI

Fire Assay - Trace Au, ICP-OES finish (202052)

DATE SAMPLED: Sep 14, 2011

DATE RECEIVED: Sep 13, 2011

DATE REPORTED: Sep 30, 2011

SAMPLE TYPE: Soil

Sample Description	Analyte:	Sample	Au
	Unit:	Login Weight	ppm
RDL:	kg	0.01	0.001
G040001 (-)		0.29	0.007
G040003 (-)		0.30	0.006
G040005 (-)		0.32	0.008
G040007 (-)		0.43	0.015
G040009 (-)		0.32	0.014
G040011 (-)		0.40	0.007
G040013 (-)		0.31	0.009
G040015 (-)		0.29	0.010
G040017 (-)		0.37	0.004
G040019 (-)		0.33	0.007
G040021 (-)		0.33	0.008
G040023 (-)		0.39	0.006
G040025 (-)		0.30	0.005
G040027 (-)		0.36	0.006
G040029 (-)		0.35	0.004
G040031 (-)		0.38	0.008
G040033 (-)		0.33	0.005
G040035 (-)		0.34	0.011
G040037 (-)		0.38	0.004
G040039 (-)		0.31	0.031
G040041 (-)		0.33	0.004
G040043 (-)		0.33	0.009
G040045 (-)		0.32	0.005
G060001 (-)		0.33	0.005
G060003 (-)		0.37	0.005
G060005 (-)		0.33	0.005
G060007 (-)		0.27	0.004
G060009 (-)		0.32	0.006
G060011 (-)		0.33	0.004
G060013 (-)		0.32	0.003
G060015 (-)		0.33	0.005
G060017 (-)		0.35	0.015

Certified By:



Certificate of Analysis

AGAT WORK ORDER: 11Y528370

PROJECT NO:

5623 McADAM ROAD
MISSISSAUGA, ONTARIO
CANADA L4Z 1N9
TEL (905)501-9998
FAX (905)501-0589
<http://www.agatlabs.com>

CLIENT NAME: CANADIAN KAILUAN DEHUA MINES CO.LTD

ATTENTION TO: VINCENT LI

Fire Assay - Trace Au, ICP-OES finish (202052)

DATE SAMPLED: Sep 14, 2011

DATE RECEIVED: Sep 13, 2011

DATE REPORTED: Sep 30, 2011

SAMPLE TYPE: Soil

Sample Description	Analyte:	Sample	Au
	RDL:	Login Weight	ppm
	Unit:	kg	
G060019 (-)		0.36	0.002
G060021 (-)		0.33	0.002
G060023 (-)		0.33	0.003
G060025 (-)		0.38	0.003
G060027 (-)		0.37	0.005
G060029 (-)		0.37	0.004
G060031 (-)		0.30	0.008
G060033 (-)		0.37	0.004
G060035 (-)		0.37	0.004
G060037 (-)		0.37	0.029
G060039 (-)		0.35	0.005
G060041 (-)		0.22	0.009
G100001 (-)		0.32	0.008
G100003 (-)		0.31	0.008
G100005 (-)		0.02	0.004
G100007 (-)		0.32	0.008
G100009 (-)		0.29	0.007
G100011 (-)		0.30	0.006
G100013 (-)		0.27	0.008
G100015 (-)		0.28	0.004
G100017 (-)		0.37	0.004
G100019 (-)		0.29	0.055
G100021 (-)		0.30	0.005
G100023 (-)		0.30	0.002
G100025 (-)		0.30	0.003
G100027 (-)		0.31	0.004
G100029 (-)		0.16	0.004
G100031 (-)		0.26	0.004
G100033 (-)		0.34	0.011
G100035 (-)		0.29	0.006
G100037 (-)		0.27	0.007
G100039 (-)		0.30	0.007

Certified By:



Certificate of Analysis

AGAT WORK ORDER: 11Y528370

PROJECT NO:

5623 McADAM ROAD
 MISSISSAUGA, ONTARIO
 CANADA L4Z 1N9
 TEL (905)501-9998
 FAX (905)501-0589
<http://www.agatlabs.com>

CLIENT NAME: CANADIAN KAILUAN DEHUA MINES CO.LTD

ATTENTION TO: VINCENT LI

Fire Assay - Trace Au, ICP-OES finish (202052)

DATE SAMPLED: Sep 14, 2011

DATE RECEIVED: Sep 13, 2011

DATE REPORTED: Sep 30, 2011

SAMPLE TYPE: Soil

Sample Description	Analyte:	Sample	Au
	RDL:	Login Weight	ppm
	Unit:	kg	
G100041 (-)		0.35	0.006
G10001 (-)		0.48	0.003
G10003 (-)		0.46	0.002
G10005 (-)		0.44	0.006
G10007 (-)		0.36	0.003
G10009 (-)		0.43	0.006
G10011 (-)		0.40	0.003
G10013 (-)		0.44	0.011
G10015 (-)		0.44	0.018
G10017 (-)		0.43	0.008
G10019 (-)		0.44	0.005
G10021 (-)		0.31	0.004
G10023 (-)		0.43	0.004
G10025 (-)		0.53	0.009
G10027 (-)		0.45	0.003
G10029 (-)		0.40	0.003
G10031 (-)		0.40	0.003
G10033 (-)		0.37	0.003
G10035 (-)		0.40	0.012
G10037 (-)		0.42	0.003
G10039 (-)		0.39	0.003
G10041 (-)		0.41	0.002
G120001 (-)		0.34	0.011
G120003 (-)		0.42	0.010
G120005 (-)		0.32	0.005
G120007 (-)		0.33	0.004
G120009 (-)		0.30	0.009
G120011 (-)		0.13	0.009
G120013 (-)		0.23	0.006
G120015 (-)		0.24	0.004
G120017 (-)		0.36	0.004
G120019 (-)		0.22	0.005

Certified By:



Certificate of Analysis

AGAT WORK ORDER: 11Y528370

PROJECT NO:

5623 McADAM ROAD
MISSISSAUGA, ONTARIO
CANADA L4Z 1N9
TEL (905)501-9998
FAX (905)501-0589
<http://www.agatlabs.com>

CLIENT NAME: CANADIAN KAILUAN DEHUA MINES CO.LTD

ATTENTION TO: VINCENT LI

Fire Assay - Trace Au, ICP-OES finish (202052)

DATE SAMPLED: Sep 14, 2011

DATE RECEIVED: Sep 13, 2011

DATE REPORTED: Sep 30, 2011

SAMPLE TYPE: Soil

Sample Description	Analyte:	Sample	Au
	Unit:	Login Weight	ppm
RDL:	kg	0.01	0.001
G120021 (-)		0.15	0.007
G120023 (-)		0.23	0.005
G120025 (-)		0.27	0.006
G120027 (-)		0.26	0.004
G120029 (-)		0.23	0.006
G120031 (-)		0.24	0.006
G120033 (-)		0.35	0.004
G120035 (-)		0.37	0.004
G120037 (-)		0.39	0.003
G120039 (-)		0.39	0.003
G120041 (-)		0.39	0.004
G050011 (-)		0.38	0.012
G050013 (-)		0.38	0.005
G050015 (-)		0.33	0.007
G050017 (-)		0.33	0.006
G050019 (-)		0.40	0.007
G050021 (-)		0.37	0.010
G050023 (-)		0.37	0.015
G050025 (-)		0.41	0.006
G050027 (-)		0.39	0.005
G050029 (-)		0.41	0.091
G050031 (-)		0.49	0.004
G050033 (-)		0.49	0.003
G050035 (-)		0.39	0.004
G050037 (-)		0.37	0.006
G050039 (-)		0.44	0.003
G050041 (-)		0.45	0.004
G050043 (-)		0.44	0.003
G050045 (-)		0.43	0.010
G050047 (-)		0.41	0.006
G050049 (-)		0.56	0.004
G050051 (-)		0.47	0.006

Certified By:



Certificate of Analysis

AGAT WORK ORDER: 11Y528370

PROJECT NO:

5623 McADAM ROAD
MISSISSAUGA, ONTARIO
CANADA L4Z 1N9
TEL (905)501-9998
FAX (905)501-0589
<http://www.agatlabs.com>

CLIENT NAME: CANADIAN KAILUAN DEHUA MINES CO.LTD

ATTENTION TO: VINCENT LI

Fire Assay - Trace Au, ICP-OES finish (202052)

DATE SAMPLED: Sep 14, 2011

DATE RECEIVED: Sep 13, 2011

DATE REPORTED: Sep 30, 2011

SAMPLE TYPE: Soil

Sample Description	Analyte:	Sample	Au
	RDL:	Login Weight	ppm
	Unit:	kg	
O110001 (-)		0.39	0.002
O110003 (-)		0.37	0.014
O110005 (-)		0.34	0.002
O110007 (-)		0.37	0.006
O110009 (-)		0.39	0.003
O110011 (-)		0.39	0.003
O110013 (-)		0.42	0.004
O110015 (-)		0.40	0.004
O110017 (-)		0.36	0.005
O110019 (-)		0.39	0.004
O110021 (-)		0.34	0.009
O110023 (-)		0.38	0.006
O110025 (-)		0.38	0.008
O110027 (-)		0.35	0.002
O110029 (-)		0.37	0.004
O110031 (-)		0.42	0.004
O110033 (-)		0.34	0.006
O110035 (-)		0.36	0.030
O110037 (-)		0.43	0.006
O110039 (-)		0.45	0.003
O110041 (-)		0.45	0.003
O150001 (-)		0.49	0.004
O150003 (-)		0.46	0.006
O150005 (-)		0.46	0.005
O150007 (-)		0.57	0.012
O150009 (-)		0.54	0.005
O150011 (-)		0.37	0.006
O150013 (-)		0.38	0.005
O150015 (-)		0.27	0.005
O150017 (-)		0.43	0.005
O150019 (-)		0.44	0.002
O150021 (-)		0.46	0.003

Certified By:



Certificate of Analysis

AGAT WORK ORDER: 11Y528370

PROJECT NO:

5623 McADAM ROAD
MISSISSAUGA, ONTARIO
CANADA L4Z 1N9
TEL (905)501-9998
FAX (905)501-0589
<http://www.agatlabs.com>

CLIENT NAME: CANADIAN KAILUAN DEHUA MINES CO.LTD

ATTENTION TO: VINCENT LI

Fire Assay - Trace Au, ICP-OES finish (202052)

DATE SAMPLED: Sep 14, 2011

DATE RECEIVED: Sep 13, 2011

DATE REPORTED: Sep 30, 2011

SAMPLE TYPE: Soil

Sample Description	Analyte:	Sample	Au
	Unit:	Login Weight	ppm
RDL:	kg	0.01	0.001
O150023 (-)		0.43	0.007
O150025 (-)		0.17	0.005
O150027 (-)		0.34	0.017
O150029 (-)		0.54	0.009
O150031 (-)		0.53	0.005
O150033 (-)		0.54	0.005
O150035 (-)		0.54	0.005
O150037 (-)		0.46	0.005
O150039 (-)		0.36	0.007
O150041 (-)		0.42	0.004
O24A0001 (-)		0.40	0.003
O24A0003 (-)		0.39	0.002
O24A0005 (-)		0.41	0.003
O24A0007 (-)		0.46	0.003
O24A0009 (-)		0.37	0.015
O24A0011 (-)		0.43	0.011
O24A0013 (-)		0.33	0.010
O24A0015 (-)		0.37	0.004
O24A0017 (-)		0.43	0.005
O24A0019 (-)		0.46	<0.001
O24A0021 (-)		0.18	0.014
O24A0023 (-)		0.38	0.012
O24A0025 (-)		0.22	0.019
O24A0027 (-)		0.13	<0.001
O24A0029 (-)		0.23	<0.001
O24A0031 (-)		0.17	<0.001
O24A0033 (-)		0.19	0.007
O24A0035 (-)		0.56	0.008
O24A0037 (-)		0.29	0.008
O24A0039 (-)		0.28	0.012
O24A0041 (-)		0.37	0.007
O24A0043 (-)		0.32	0.006

Certified By:



Certificate of Analysis

AGAT WORK ORDER: 11Y528370

PROJECT NO:

5623 McADAM ROAD
 MISSISSAUGA, ONTARIO
 CANADA L4Z 1N9
 TEL (905)501-9998
 FAX (905)501-0589
<http://www.agatlabs.com>

CLIENT NAME: CANADIAN KAILUAN DEHUA MINES CO.LTD

ATTENTION TO: VINCENT LI

Fire Assay - Trace Au, ICP-OES finish (202052)

DATE SAMPLED: Sep 14, 2011

DATE RECEIVED: Sep 13, 2011

DATE REPORTED: Sep 30, 2011

SAMPLE TYPE: Soil

Sample Description	Analyte:	Sample	Au
	RDL:	Login Weight	
	Unit:	kg	ppm
O24A0045 (-)		0.46	0.004
O24A0047 (-)		0.46	0.004
O24A0049 (-)		0.43	0.005

Comments: RDL - Reported Detection Limit

Certified By:



Quality Assurance

CLIENT NAME: CANADIAN KAILUAN DEHUA MINES CO.LTD

AGAT WORK ORDER: 11Y528370

PROJECT NO:

ATTENTION TO: VINCENT LI

Solid Analysis											
RPT Date: Sep 30, 2011		REPLICATE				Method Blank	REFERENCE MATERIAL				
PARAMETER	Batch	Sample Id	Original	Rep #1	RPD		Result Value	Expect Value	Recovery	Acceptable Limits	
										Lower	Upper
Fire Assay - Trace Au, ICP-OES finish (202052)											
Au	1	2697475	0.0097	0.0089	8.6%	< 0.001	0.0828	0.0849	98%	80%	120%
Aqua Regia Digest - Metals Package, ICP/ICP-MS finish (201074)											
Ag	1	2697363	0.11	0.11	0.0%	0.01				80%	120%
Al	1	2697388	2.31	2.38	3.0%	< 0.01				80%	120%
As	1	2697363	8.1	8.2	1.2%	0.3				80%	120%
Au	1	2697475	0.01	< 0.01		< 0.01	0.0828	0.0849	98%	80%	120%
B	1	2697363	< 5	< 5	0.0%	< 5				80%	120%
Ba	1	2697388	335	338	0.9%	< 1				80%	120%
Be	1	2697363	0.302	0.310	2.6%	< 0.05				80%	120%
Bi	1	2697363	0.10	0.10	0.0%	< 0.01				80%	120%
Ca	1	2697388	0.930	0.959	3.1%	< 0.01				80%	120%
Cd	1	2697363	0.144	0.147	2.1%	< 0.01				80%	120%
Ce	1	2697363	26.0	25.7	1.2%	< 0.01				80%	120%
Co	1	2697363	8.37	8.34	0.4%	< 0.1				80%	120%
Cr	1	2697388	10.4	11.2	7.4%	< 0.5				80%	120%
Cs	1	2697363	0.67	0.65	3.0%	< 0.05				80%	120%
Cu	1	2697388	23.0	24.1	4.7%	< 0.1	4191	4700	89%	80%	120%
Fe	1	2697388	3.64	3.79	4.0%	< 0.01				80%	120%
Ga	1	2697363	3.37	3.33	1.2%	< 0.05				80%	120%
Ge	1	2697363	0.08	0.08	0.0%	0.05				80%	120%
Hf	1	2697363	0.09	0.09	0.0%	< 0.02				80%	120%
Hg	1	2697363	0.03	0.03	0.0%	< 0.01				80%	120%
In	1	2697363	0.0199	0.0190	4.6%	< 0.005				80%	120%
K	1	2697388	1.10	1.14	3.6%	< 0.01				80%	120%
La	1	2697363	13.5	13.4	0.7%	< 0.1				80%	120%
Li	1	2697363	8.5	8.7	2.3%	< 0.1				80%	120%
Mg	1	2697388	1.09	1.09	0.0%	< 0.01				80%	120%
Mn	1	2697388	773	765	1.0%	< 1				80%	120%
Mo	1	2697363	0.836	0.831	0.6%	< 0.05				80%	120%
Na	1	2697388	0.01	0.01	0.0%	< 0.01				80%	120%
Nb	1	2697363	1.02	1.03	1.0%	< 0.05				80%	120%
Ni	1	2697388	5.9	5.9	0.0%	< 0.2				80%	120%
P	1	2697388	2200	2210	0.5%	< 10				80%	120%
Pb	1	2697363	5.94	6.01	1.2%	0.1				80%	120%
Rb	1	2697363	6.9	6.8	1.5%	< 0.1				80%	120%
Re	1	2697363	< 0.001	< 0.001	0.0%	< 0.001				80%	120%
S	1	2697388	0.014	0.014	0.0%	< 0.005				80%	120%
Sb	1	2697363	0.878	0.861	2.0%	< 0.05				80%	120%
Sc	1	2697363	3.7	3.7	0.0%	< 0.1				80%	120%
Se	1	2697363	0.3	0.3	0.0%	< 0.2				80%	120%
Sn	1	2697363	0.4	0.4	0.0%	< 0.2				80%	120%
Sr	1	2697363	90.2	89.7	0.6%	< 0.2	288	390	74%	80%	120%
Ta	1	2697363	< 0.01	< 0.01	0.0%	< 0.01				80%	120%



Quality Assurance

CLIENT NAME: CANADIAN KAILUAN DEHUA MINES CO.LTD

AGAT WORK ORDER: 11Y528370

PROJECT NO:

ATTENTION TO: VINCENT LI

Solid Analysis (Continued)												
RPT Date: Sep 30, 2011			REPLICATE				Method Blank	REFERENCE MATERIAL				
PARAMETER	Batch	Sample Id	Original	Rep #1	RPD	Result Value		Expect Value	Recovery	Acceptable Limits		
							Lower			Upper		
Te	1	2697363	0.02	0.03		< 0.01				80%	120%	
Th	1	2697363	3.97	3.89	2.0%	< 0.1				80%	120%	
Ti	1	2697388	0.234	0.241	2.9%	< 0.005				80%	120%	
Tl	1	2697363	0.08	0.08	0.0%	< 0.02				80%	120%	
U	1	2697363	0.620	0.635	2.4%	< 0.05				80%	120%	
V	1	2697388	70.3	72.4	2.9%	< 0.5				80%	120%	
W	1	2697363	0.28	0.42		< 0.05				80%	120%	
Y	1	2697363	8.65	8.68	0.3%	< 0.05		7		80%	120%	
Zn	1	2697388	130	134	3.0%	< 0.5				80%	120%	
Zr	1	2697363	5.1	5.0	2.0%	< 0.5				80%	120%	
Fire Assay - Trace Au, ICP-OES finish (202052)												
Au	1	2697488	0.0064	0.0080	22.2%	< 0.001	0.0814	0.0849	96%	80%	120%	
Fire Assay - Trace Au, ICP-OES finish (202052)												
Au	1	2697499	0.005	0.005	0.0%	< 0.001	0.0847	0.0849	100%	80%	120%	
Fire Assay - Trace Au, ICP-OES finish (202052)												
Au	1	2697513	0.006	0.019		< 0.001	0.968	0.922	105%	80%	120%	
Fire Assay - Trace Au, ICP-OES finish (202052)												
Au	1	2697525	0.017	0.010		< 0.001	0.0847	0.0849	100%	80%	120%	
Fire Assay - Trace Au, ICP-OES finish (202052)												
Au	1	2697538	0.011	0.005		< 0.001	0.0855	0.0849	101%	80%	120%	
Fire Assay - Trace Au, ICP-OES finish (202052)												
Au	1	2697549	0.007	0.009	25.0%	< 0.001				80%	120%	
Fire Assay - Trace Au, ICP-OES finish (202052)												
Au	1	2697556	0.0042	0.0048	13.3%	< 0.001				80%	120%	
Aqua Regia Digest - Metals Package, ICP/ICP-MS finish (201074)												
Ag	1	2697388	0.071	0.079	10.7%	0.03				80%	120%	
Al	1	2697413	1.12	1.14	1.8%	< 0.01				80%	120%	
As	1	2697388	3.1	3.0	3.3%	< 0.1				80%	120%	
Au	1	2697488	< 0.01	< 0.01	0.0%	< 0.01	0.0814	0.0849	96%	80%	120%	
B	1	2697388	< 5	< 5	0.0%	< 5				80%	120%	
Ba	1	2697413	298	299	0.3%	< 1				80%	120%	
Be	1	2697388	0.30	0.30	0.0%	< 0.05				80%	120%	
Bi	1	2697388	0.03	0.03	0.0%	< 0.01				80%	120%	
Ca	1	2697413	0.63	0.64	1.6%	< 0.01				80%	120%	
Cd	1	2697388	0.03	0.03	0.0%	< 0.01				80%	120%	
Ce	1	2697388	20.3	21.6	6.2%	< 0.01				80%	120%	
Co	1	2697388	8.3	8.4	1.2%	< 0.1				80%	120%	
Cr	1	2697413	25.1	24.6	2.0%	< 0.5				80%	120%	
Cs	1	2697388	0.961	0.990	3.0%	< 0.05				80%	120%	



Quality Assurance

CLIENT NAME: CANADIAN KAILUAN DEHUA MINES CO.LTD

AGAT WORK ORDER: 11Y528370

PROJECT NO:

ATTENTION TO: VINCENT LI

Solid Analysis (Continued)											
RPT Date: Sep 30, 2011		REPLICATE				Method Blank	REFERENCE MATERIAL				
PARAMETER	Batch	Sample Id	Original	Rep #1	RPD		Result Value	Expect Value	Recovery	Acceptable Limits	
						Lower				Upper	
Cu	1	2697413	22.3	22.2	0.4%	< 0.1	3869	4700	82%	80%	120%
Fe	1	2697413	2.37	2.38	0.4%	< 0.01				80%	120%
Ga	1	2697388	7.82	7.46	4.7%	< 0.05				80%	120%
Ge	1	2697388	0.106	0.103	2.9%	< 0.05				80%	120%
Hf	1	2697388	0.105	0.107	1.9%	< 0.02				80%	120%
Hg	1	2697388	0.01	< 0.01		< 0.01				80%	120%
In	1	2697388	0.009	0.009	0.0%	< 0.005				80%	120%
K	1	2697413	0.09	0.09	0.0%	< 0.01				80%	120%
La	1	2697388	9.41	10.1	7.1%	< 0.1				80%	120%
Li	1	2697388	14.2	14.1	0.7%	< 0.1				80%	120%
Mg	1	2697413	0.48	0.47	2.1%	< 0.01				80%	120%
Mn	1	2697413	421	422	0.2%	< 1				80%	120%
Mo	1	2697388	0.21	0.20	4.9%	< 0.05				80%	120%
Na	1	2697413	0.02	0.02	0.0%	< 0.01				80%	120%
Nb	1	2697388	1.27	1.25	1.6%	< 0.05				80%	120%
Ni	1	2697413	22.8	22.9	0.4%	< 0.2				80%	120%
P	1	2697413	843	845	0.2%	< 10				80%	120%
Pb	1	2697388	2.84	2.87	1.1%	< 0.1				80%	120%
Rb	1	2697388	53.9	53.1	1.5%	< 0.1				80%	120%
Re	1	2697388	< 0.001	< 0.001	0.0%	< 0.001				80%	120%
S	1	2697413	0.0099	0.0095	4.1%	< 0.005				80%	120%
Sb	1	2697388	0.21	0.21	0.0%	< 0.05				80%	120%
Sc	1	2697388	2.3	2.3	0.0%	< 0.1				80%	120%
Se	1	2697388	< 0.2	< 0.2	0.0%	< 0.2				80%	120%
Sn	1	2697388	0.5	0.5	0.0%	< 0.2				80%	120%
Sr	1	2697388	94.6	92.1	2.7%	< 0.2	288	390	74%	80%	120%
Ta	1	2697388	< 0.01	< 0.01	0.0%	< 0.01				80%	120%
Te	1	2697388	< 0.01	< 0.01	0.0%	< 0.01				80%	120%
Th	1	2697388	3.32	3.89	15.8%	< 0.1				80%	120%
Ti	1	2697413	0.086	0.086	0.0%	< 0.005				80%	120%
Tl	1	2697388	0.312	0.317	1.6%	< 0.02				80%	120%
U	1	2697388	0.43	0.44	2.3%	< 0.05				80%	120%
V	1	2697413	50.8	50.6	0.4%	< 0.5				80%	120%
W	1	2697388	0.33	0.15		< 0.05				80%	120%
Y	1	2697388	4.00	4.01	0.2%	< 0.05		7		80%	120%
Zn	1	2697413	55.3	54.6	1.3%	< 0.5				80%	120%
Zr	1	2697388	3.3	3.3	0.0%	< 0.5				80%	120%
Aqua Regia Digest - Metals Package, ICP/ICP-MS finish (201074)											
Ag	1	2697413	0.131	0.139	5.9%	0.02				80%	120%
Al	1	2697438	1.65	1.68	1.8%	< 0.01				80%	120%
As	1	2697413	8.0	7.9	1.3%	< 0.1				80%	120%
Au	1	2697499	< 0.01	< 0.01	0.0%	< 0.01	0.0847	0.0849	100%	80%	120%
B	1	2697413	< 5	< 5	0.0%	< 5				80%	120%



Quality Assurance

CLIENT NAME: CANADIAN KAILUAN DEHUA MINES CO.LTD

AGAT WORK ORDER: 11Y528370

PROJECT NO:

ATTENTION TO: VINCENT LI

Solid Analysis (Continued)												
RPT Date: Sep 30, 2011			REPLICATE				Method Blank	REFERENCE MATERIAL				
PARAMETER	Batch	Sample Id	Original	Rep #1	RPD	Result Value		Expect Value	Recovery	Acceptable Limits		
										Lower	Upper	
Ba	1	2697438	151	156	3.3%	< 1				80%	120%	
Be	1	2697413	0.287	0.264	8.3%	< 0.05				80%	120%	
Bi	1	2697413	0.115	0.109	5.4%	< 0.01				80%	120%	
Ca	1	2697438	0.31	0.31	0.0%	< 0.01				80%	120%	
Cd	1	2697413	0.21	0.21	0.0%	< 0.01				80%	120%	
Ce	1	2697413	31.9	32.0	0.3%	< 0.01				80%	120%	
Co	1	2697413	8.82	8.95	1.5%	< 0.1				80%	120%	
Cr	1	2697438	34.3	32.6	5.1%	< 0.5				80%	120%	
Cs	1	2697413	0.54	0.55	1.8%	< 0.05				80%	120%	
Cu	1	2697438	21.2	20.5	3.4%	< 0.1	4322	4700	92%	80%	120%	
Fe	1	2697438	2.88	2.91	1.0%	< 0.01				80%	120%	
Ga	1	2697413	3.25	3.27	0.6%	< 0.05				80%	120%	
Ge	1	2697413	0.102	0.117	13.7%	< 0.05				80%	120%	
Hf	1	2697413	0.25	0.26	3.9%	< 0.02				80%	120%	
Hg	1	2697413	0.023	0.029	23.1%	< 0.01				80%	120%	
In	1	2697413	0.0206	0.0201	2.5%	< 0.005				80%	120%	
K	1	2697438	0.18	0.18	0.0%	< 0.01				80%	120%	
La	1	2697413	16.0	15.9	0.6%	< 0.1				80%	120%	
Li	1	2697413	7.33	7.49	2.2%	< 0.1				80%	120%	
Mg	1	2697438	0.560	0.566	1.1%	< 0.01				80%	120%	
Mn	1	2697438	291	279	4.2%	< 1				80%	120%	
Mo	1	2697413	0.77	0.80	3.8%	< 0.05				80%	120%	
Na	1	2697438	0.01	0.01	0.0%	< 0.01				80%	120%	
Nb	1	2697413	0.816	0.777	4.9%	< 0.05				80%	120%	
Ni	1	2697438	22.7	21.8	4.0%	< 0.2				80%	120%	
P	1	2697438	439	407	7.6%	< 10				80%	120%	
Pb	1	2697413	6.4	6.4	0.0%	< 0.1				80%	120%	
Rb	1	2697413	6.28	6.57	4.5%	< 0.1				80%	120%	
Re	1	2697413	< 0.001	< 0.001	0.0%	< 0.001				80%	120%	
S	1	2697438	0.0064	0.0068	6.1%	< 0.005				80%	120%	
Sb	1	2697413	0.801	0.828	3.3%	< 0.05				80%	120%	
Sc	1	2697413	3.1	3.1	0.0%	< 0.1				80%	120%	
Se	1	2697413	0.2	0.2	0.0%	< 0.2				80%	120%	
Sn	1	2697413	0.4	0.4	0.0%	< 0.2				80%	120%	
Sr	1	2697413	28.8	30.0	4.1%	< 0.2	290	390	74%	80%	120%	
Ta	1	2697413	< 0.01	< 0.01	0.0%	< 0.01				80%	120%	
Te	1	2697413	0.02	0.02	0.0%	< 0.01				80%	120%	
Th	1	2697413	4.91	4.82	1.8%	< 0.1				80%	120%	
Ti	1	2697438	0.108	0.110	1.8%	< 0.005				80%	120%	
Tl	1	2697413	0.064	0.065	1.6%	< 0.02				80%	120%	
U	1	2697413	0.50	0.50	0.0%	< 0.05				80%	120%	
V	1	2697438	70.1	67.0	4.5%	< 0.5				80%	120%	
W	1	2697413	0.29	0.43	< 0.05					80%	120%	
Y	1	2697413	7.70	7.90	2.6%	< 0.05		7		80%	120%	



Quality Assurance

CLIENT NAME: CANADIAN KAILUAN DEHUA MINES CO.LTD

AGAT WORK ORDER: 11Y528370

PROJECT NO:

ATTENTION TO: VINCENT LI

Solid Analysis (Continued)												
RPT Date: Sep 30, 2011			REPLICATE				Method Blank	REFERENCE MATERIAL				
PARAMETER	Batch	Sample Id	Original	Rep #1	RPD	Result Value		Expect Value	Recovery	Acceptable Limits		
										Lower	Upper	
Zn	1	2697438	62.4	59.2	5.3%	< 0.5				80%	120%	
Zr	1	2697413	9.5	9.8	3.1%	< 0.5				80%	120%	
Aqua Regia Digest - Metals Package, ICP/ICP-MS finish (201074)												
Ag	1	2697438	0.074	0.082	10.3%	0.01				80%	120%	
Al	1	2697463	2.22	2.23	0.4%	< 0.01				80%	120%	
As	1	2697438	9.7	10.1	4.0%	0.2				80%	120%	
Au	1	2697513	< 0.01	0.02		< 0.01	0.968	0.922	105%	80%	120%	
B	1	2697438	< 5	< 5	0.0%	< 5				80%	120%	
Ba	1	2697463	268	271	1.1%	< 1				80%	120%	
Be	1	2697438	0.42	0.46	9.1%	< 0.05				80%	120%	
Bi	1	2697438	0.126	0.120	4.9%	< 0.01				80%	120%	
Ca	1	2697463	0.647	0.642	0.8%	< 0.01				80%	120%	
Cd	1	2697438	0.051	0.044	14.7%	< 0.01				80%	120%	
Ce	1	2697438	28.1	27.1	3.6%	< 0.01				80%	120%	
Co	1	2697438	7.41	7.55	1.9%	< 0.1				80%	120%	
Cr	1	2697463	29.4	30.9	5.0%	< 0.5				80%	120%	
Cs	1	2697438	0.90	0.79	13.0%	< 0.05				80%	120%	
Cu	1	2697463	85.4	90.0	5.2%	< 0.1	4132	4700	88%	80%	120%	
Fe	1	2697463	3.99	4.05	1.5%	< 0.01				80%	120%	
Ga	1	2697438	4.41	4.77	7.8%	< 0.05				80%	120%	
Ge	1	2697438	0.08	0.08	0.0%	< 0.05				80%	120%	
Hf	1	2697438	0.188	0.180	4.3%	< 0.02				80%	120%	
Hg	1	2697438	0.01	0.01	0.0%	< 0.01				80%	120%	
In	1	2697438	0.027	0.027	0.0%	< 0.005				80%	120%	
K	1	2697463	0.18	0.18	0.0%	< 0.01				80%	120%	
La	1	2697438	13.5	12.8	5.3%	< 0.1				80%	120%	
Li	1	2697438	10.1	11.3	11.2%	< 0.1				80%	120%	
Mg	1	2697463	0.952	0.962	1.0%	< 0.01				80%	120%	
Mn	1	2697463	441	462	4.7%	< 1				80%	120%	
Mo	1	2697438	0.77	0.77	0.0%	< 0.05				80%	120%	
Na	1	2697463	0.02	0.02	0.0%	< 0.01				80%	120%	
Nb	1	2697438	1.04	1.02	1.9%	< 0.05				80%	120%	
Ni	1	2697463	17.1	18.6	8.4%	< 0.2				80%	120%	
P	1	2697463	658	691	4.9%	< 10				80%	120%	
Pb	1	2697438	7.4	7.2	2.7%	< 0.1				80%	120%	
Rb	1	2697438	15.8	16.3	3.1%	< 0.1				80%	120%	
Re	1	2697438	< 0.001	< 0.001	0.0%	< 0.001				80%	120%	
S	1	2697463	0.026	0.026	0.0%	< 0.005				80%	120%	
Sb	1	2697438	0.80	0.76	5.1%	< 0.05				80%	120%	
Sc	1	2697438	3.34	3.50	4.7%	< 0.1				80%	120%	
Se	1	2697438	0.3	0.3	0.0%	< 0.2				80%	120%	
Sn	1	2697438	0.5	0.5	0.0%	< 0.2				80%	120%	
Sr	1	2697438	33.4	34.9	4.4%	< 0.2	303	390	78%	80%	120%	



Quality Assurance

CLIENT NAME: CANADIAN KAILUAN DEHUA MINES CO.LTD

AGAT WORK ORDER: 11Y528370

PROJECT NO:

ATTENTION TO: VINCENT LI

Solid Analysis (Continued)												
RPT Date: Sep 30, 2011			REPLICATE				Method Blank	REFERENCE MATERIAL				
PARAMETER	Batch	Sample Id	Original	Rep #1	RPD	Result Value		Expect Value	Recovery	Acceptable Limits		
							Lower			Upper		
Ta	1	2697438	< 0.01	< 0.01	0.0%	< 0.01				80%	120%	
Te	1	2697438	0.02	0.02	0.0%	< 0.01				80%	120%	
Th	1	2697438	5.7	5.5	3.6%	< 0.1				80%	120%	
Ti	1	2697463	0.186	0.183	1.6%	< 0.005				80%	120%	
TI	1	2697438	0.136	0.130	4.5%	< 0.02				80%	120%	
U	1	2697438	0.735	0.688	6.6%	< 0.05				80%	120%	
V	1	2697463	96.5	99.9	3.5%	< 0.5				80%	120%	
W	1	2697438	0.51	0.43	17.0%	< 0.05				80%	120%	
Y	1	2697438	3.41	3.37	1.2%	< 0.05		7		80%	120%	
Zn	1	2697463	78.3	81.7	4.3%	< 0.5				80%	120%	
Zr	1	2697438	7.4	7.3	1.4%	< 0.5				80%	120%	
Aqua Regia Digest - Metals Package, ICP/ICP-MS finish (201074)												
Ag	1	2697463	0.14	0.14	0.0%	0.01				80%	120%	
As	1	2697463	4.6	5.2	12.2%	0.3				80%	120%	
Au	1	2697525	0.02	0.01		< 0.01	0.0847	0.0849	100%	80%	120%	
B	1	2697463	< 5	< 5	0.0%	< 5				80%	120%	
Be	1	2697463	0.263	0.302	13.8%	< 0.05				80%	120%	
Bi	1	2697463	0.08	0.08	0.0%	< 0.01				80%	120%	
Cd	1	2697463	0.10	0.11	9.5%	< 0.01				80%	120%	
Ce	1	2697463	21.1	21.0	0.5%	< 0.01				80%	120%	
Co	1	2697463	11.8	12.8	8.1%	< 0.1				80%	120%	
Cs	1	2697463	1.22	1.20	1.7%	< 0.05				80%	120%	
Cu	1					< 0.1	4118	4700	88%	80%	120%	
Ga	1	2697463	5.80	6.36	9.2%	< 0.05				80%	120%	
Ge	1	2697463	0.08	0.08	0.0%	< 0.05				80%	120%	
Hf	1	2697463	0.05	0.05	0.0%	< 0.02				80%	120%	
Hg	1	2697463	0.02	0.02	0.0%	< 0.01				80%	120%	
In	1	2697463	0.0272	0.0300	9.8%	< 0.005				80%	120%	
La	1	2697463	11.0	10.7	2.8%	< 0.1				80%	120%	
Li	1	2697463	15.4	17.2	11.0%	< 0.1				80%	120%	
Mo	1	2697463	1.21	1.34	10.2%	< 0.05				80%	120%	
Nb	1	2697463	1.12	1.11	0.9%	< 0.05				80%	120%	
Pb	1	2697463	4.7	4.7	0.0%	< 0.1				80%	120%	
Rb	1	2697463	10.4	11.3	8.3%	< 0.1				80%	120%	
Re	1	2697463	< 0.001	< 0.001	0.0%	< 0.001				80%	120%	
Sb	1	2697463	0.55	0.56	1.8%	< 0.05				80%	120%	
Sc	1	2697463	5.1	5.5	7.5%	< 0.1				80%	120%	
Se	1	2697463	0.52	0.58	10.9%	< 0.2				80%	120%	
Sn	1	2697463	0.53	0.55	3.7%	< 0.2				80%	120%	
Sr	1	2697463	25.0	26.6	6.2%	< 0.2	293	390	75%	80%	120%	
Ta	1	2697463	< 0.01	< 0.01	0.0%	< 0.01				80%	120%	
Te	1	2697463	0.066	0.058	12.9%	< 0.01				80%	120%	
Th	1	2697463	2.81	2.87	2.1%	< 0.1				80%	120%	
TI	1	2697463	0.11	0.11	0.0%	< 0.02				80%	120%	



Quality Assurance

CLIENT NAME: CANADIAN KAILUAN DEHUA MINES CO.LTD

AGAT WORK ORDER: 11Y528370

PROJECT NO:

ATTENTION TO: VINCENT LI

Solid Analysis (Continued)												
RPT Date: Sep 30, 2011			REPLICATE				Method Blank	REFERENCE MATERIAL				
PARAMETER	Batch	Sample Id	Original	Rep #1	RPD	Result Value		Expect Value	Recovery	Acceptable Limits		
							Lower			Upper		
U	1	2697463	0.77	0.77	0.0%	< 0.05				80%	120%	
W	1	2697463	0.31	0.37	17.6%	< 0.05				80%	120%	
Y	1	2697463	7.52	7.91	5.1%	< 0.05		7		80%	120%	
Zr	1	2697463	2.35	2.38	1.3%	< 0.5				80%	120%	
Aqua Regia Digest - Metals Package, ICP/ICP-MS finish (201074)												
Ag	1	2697488	0.78	0.81	3.8%	< 0.01				80%	120%	
As	1	2697488	6.56	6.44	1.8%	< 0.1				80%	120%	
Au	1	2697538	0.01	< 0.01		< 0.01	0.0855	0.0849	101%	80%	120%	
B	1	2697488	< 5	< 5	0.0%	< 5				80%	120%	
Be	1	2697488	0.23	0.23	0.0%	< 0.05				80%	120%	
Bi	1	2697488	5.02	5.12	2.0%	< 0.01				80%	120%	
Cd	1	2697488	1.93	2.03	5.1%	< 0.01				80%	120%	
Ce	1	2697488	15.3	15.9	3.8%	< 0.01				80%	120%	
Co	1	2697488	17.1	16.5	3.6%	< 0.1				80%	120%	
Cs	1	2697488	2.25	2.27	0.9%	< 0.05				80%	120%	
Cu	1					< 0.1	4152	4700	88%	80%	120%	
Ga	1	2697488	5.60	5.53	1.3%	< 0.05				80%	120%	
Ge	1	2697488	0.10	0.10	0.0%	< 0.05				80%	120%	
Hf	1	2697488	0.08	0.08	0.0%	< 0.02				80%	120%	
Hg	1	2697488	0.02	0.02	0.0%	< 0.01				80%	120%	
In	1	2697488	0.075	0.078	3.9%	< 0.005				80%	120%	
La	1	2697488	8.43	8.71	3.3%	< 0.1				80%	120%	
Li	1	2697488	8.68	8.59	1.0%	< 0.1				80%	120%	
Mo	1	2697488	6.52	6.60	1.2%	< 0.05				80%	120%	
Nb	1	2697488	0.70	0.70	0.0%	< 0.05				80%	120%	
Pb	1	2697488	22.0	22.5	2.2%	< 0.1				80%	120%	
Rb	1	2697488	18.0	18.0	0.0%	< 0.1				80%	120%	
Re	1	2697488	< 0.001	< 0.001	0.0%	< 0.001				80%	120%	
Sb	1	2697488	2.27	2.32	2.2%	< 0.05				80%	120%	
Sc	1	2697488	9.63	9.72	0.9%	< 0.1				80%	120%	
Se	1	2697488	0.63	0.69	9.1%	< 0.2				80%	120%	
Sn	1	2697488	0.7	0.7	0.0%	< 0.2				80%	120%	
Sr	1	2697488	44.7	44.6	0.2%	< 0.2	282	390	72%	80%	120%	
Ta	1	2697488	< 0.01	< 0.01	0.0%	< 0.01				80%	120%	
Te	1	2697488	0.173	0.177	2.3%	< 0.01				80%	120%	
Th	1	2697488	1.84	1.85	0.5%	< 0.1				80%	120%	
Tl	1	2697488	0.213	0.217	1.9%	< 0.02				80%	120%	
U	1	2697488	0.85	0.85	0.0%	< 0.05				80%	120%	
W	1	2697488	14.2	15.5	8.8%	< 0.05				80%	120%	
Y	1	2697488	9.31	9.33	0.2%	< 0.05		7		80%	120%	
Zr	1	2697488	1.8	1.8	0.0%	< 0.5				80%	120%	
Aqua Regia Digest - Metals Package, ICP/ICP-MS finish (201074)												
Ag	1	2697513	0.041	0.031	27.8%	< 0.01				80%	120%	



Quality Assurance

CLIENT NAME: CANADIAN KAILUAN DEHUA MINES CO.LTD

AGAT WORK ORDER: 11Y528370

PROJECT NO:

ATTENTION TO: VINCENT LI

Solid Analysis (Continued)												
RPT Date: Sep 30, 2011			REPLICATE				Method Blank	REFERENCE MATERIAL				
PARAMETER	Batch	Sample Id	Original	Rep #1	RPD	Result Value		Expect Value	Recovery	Acceptable Limits		
							Lower			Upper		
As	1	2697513	7.86	7.70	2.1%	< 0.1				80%	120%	
Au	1	2697549	< 0.01	< 0.01	0.0%	< 0.01				80%	120%	
B	1	2697513	< 5	< 5	0.0%	< 5				80%	120%	
Be	1	2697513	0.22	0.21	4.7%	< 0.05				80%	120%	
Bi	1	2697513	0.088	0.085	3.5%	< 0.01				80%	120%	
Cd	1	2697513	0.056	0.054	3.6%	< 0.01				80%	120%	
Ce	1	2697513	15.8	15.0	5.2%	< 0.01				80%	120%	
Co	1	2697513	9.96	9.64	3.3%	< 0.1				80%	120%	
Cs	1	2697513	0.534	0.504	5.8%	< 0.05				80%	120%	
Cu	1					< 0.1	3890	4700	83%	80%	120%	
Ga	1	2697513	4.24	4.13	2.6%	< 0.05				80%	120%	
Ge	1	2697513	0.07	0.07	0.0%	< 0.05				80%	120%	
Hf	1	2697513	0.06	0.06	0.0%	< 0.02				80%	120%	
Hg	1	2697513	0.03	0.04	28.6%	< 0.01				80%	120%	
In	1	2697513	0.0233	0.0242	3.8%	< 0.005				80%	120%	
La	1	2697513	7.5	7.8	3.9%	< 0.1				80%	120%	
Li	1	2697513	9.35	9.70	3.7%	< 0.1				80%	120%	
Mo	1	2697513	0.96	0.93	3.2%	< 0.05				80%	120%	
Nb	1	2697513	0.885	0.809	9.0%	< 0.05				80%	120%	
Pb	1	2697513	4.7	4.6	2.2%	< 0.1				80%	120%	
Rb	1	2697513	6.5	6.0	8.0%	< 0.1				80%	120%	
Re	1	2697513	< 0.001	< 0.001	0.0%	< 0.001				80%	120%	
Sb	1	2697513	0.506	0.525	3.7%	< 0.05				80%	120%	
Sc	1	2697513	2.96	2.81	5.2%	< 0.1				80%	120%	
Se	1	2697513	< 0.2	< 0.2	0.0%	< 0.2				80%	120%	
Sn	1	2697513	0.5	0.5	0.0%	< 0.2				80%	120%	
Sr	1	2697513	32.2	30.6	5.1%	< 0.2	277	390	71%	80%	120%	
Ta	1	2697513	< 0.01	< 0.01	0.0%	< 0.01				80%	120%	
Te	1	2697513	0.02	0.02	0.0%	< 0.01				80%	120%	
Th	1	2697513	2.4	2.2	8.7%	< 0.1				80%	120%	
Tl	1	2697513	0.05	0.05	0.0%	< 0.02				80%	120%	
U	1	2697513	0.53	0.49	7.8%	< 0.05				80%	120%	
W	1	2697513	0.23	0.38		< 0.05				80%	120%	
Y	1	2697513	2.85	2.67	6.5%	< 0.05		7		80%	120%	
Zr	1	2697513	3.28	3.00	8.9%	< 0.5				80%	120%	
Aqua Regia Digest - Metals Package, ICP/ICP-MS finish (201074)												
Ag	1	2697538	0.086	0.083	3.6%	< 0.01				80%	120%	
As	1	2697538	11.8	11.7	0.9%	< 0.1				80%	120%	
Au	1	2697556	< 0.01	< 0.01	0.0%	< 0.01				80%	120%	
B	1	2697538	< 5	< 5	0.0%	< 5				80%	120%	
Be	1	2697538	1.93	2.03	5.1%	< 0.05				80%	120%	
Bi	1	2697538	0.19	0.19	0.0%	< 0.01				80%	120%	
Cd	1	2697538	0.073	0.075	2.7%	< 0.01				80%	120%	
Ce	1	2697538	51.6	54.6	5.6%	< 0.01				80%	120%	

Quality Assurance

CLIENT NAME: CANADIAN KAILUAN DEHUA MINES CO.LTD

AGAT WORK ORDER: 11Y528370

PROJECT NO:

ATTENTION TO: VINCENT LI

Solid Analysis (Continued)												
RPT Date: Sep 30, 2011			REPLICATE				Method Blank	REFERENCE MATERIAL				
PARAMETER	Batch	Sample Id	Original	Rep #1	RPD	Result Value		Expect Value	Recovery	Acceptable Limits		
							Lower			Upper		
Co	1	2697538	13.7	13.8	0.7%	< 0.1				80%	120%	
Cs	1	2697538	3.21	3.22	0.3%	< 0.05				80%	120%	
Cu	1					< 0.1	3933	4700	84%	80%	120%	
Ga	1	2697538	8.25	8.19	0.7%	< 0.05				80%	120%	
Ge	1	2697538	0.11	0.10	9.5%	< 0.05				80%	120%	
Hf	1	2697538	0.70	0.68	2.9%	< 0.02				80%	120%	
Hg	1	2697538	< 0.01	0.01		< 0.01				80%	120%	
In	1	2697538	0.045	0.045	0.0%	< 0.005				80%	120%	
La	1	2697538	26.5	28.1	5.9%	< 0.1				80%	120%	
Li	1	2697538	10.0	11.1	10.4%	< 0.1				80%	120%	
Mo	1	2697538	0.564	0.603	6.7%	< 0.05				80%	120%	
Nb	1	2697538	0.495	0.444	10.9%	< 0.05				80%	120%	
Pb	1	2697538	12.9	13.7	6.0%	< 0.1				80%	120%	
Rb	1	2697538	54.4	53.8	1.1%	< 0.1				80%	120%	
Re	1	2697538	< 0.001	< 0.001	0.0%	< 0.001				80%	120%	
Sb	1	2697538	0.54	0.53	1.9%	< 0.05				80%	120%	
Sc	1	2697538	5.97	5.89	1.3%	< 0.1				80%	120%	
Se	1	2697538	0.2	0.2	0.0%	< 0.2				80%	120%	
Sn	1	2697538	1.7	1.7	0.0%	< 0.2				80%	120%	
Sr	1	2697538	1090	1130	3.6%	< 0.2	301	390	77%	80%	120%	
Ta	1	2697538	< 0.01	< 0.01	0.0%	< 0.01				80%	120%	
Te	1	2697538	0.051	0.059	14.5%	< 0.01				80%	120%	
Th	1	2697538	4.8	4.9	2.1%	< 0.1				80%	120%	
Tl	1	2697538	0.514	0.528	2.7%	< 0.02				80%	120%	
U	1	2697538	2.65	2.67	0.8%	< 0.05				80%	120%	
W	1	2697538	0.506	0.494	2.4%	< 0.05				80%	120%	
Y	1	2697538	12.2	12.4	1.6%	< 0.05		7		80%	120%	
Zr	1	2697538	19.4	18.5	4.7%	< 0.5				80%	120%	
Aqua Regia Digest - Metals Package, ICP/ICP-MS finish (201074)												
Cu	1					< 0.1	3947	4700	84%	80%	120%	
Mo	1					< 0.05	354	280	127%	80%	120%	
Sr	1					< 0.2	280	390	72%	80%	120%	
Aqua Regia Digest - Metals Package, ICP/ICP-MS finish (201074)												
Co	1					< 0.1	5.9	5.0	118%	80%	120%	
Cu	1					< 0.1	3905	4700	83%	80%	120%	
Mo	1					< 0.05	329	280	117%	80%	120%	
Sr	1					< 0.2	298	390	76%	80%	120%	
Aqua Regia Digest - Metals Package, ICP/ICP-MS finish (201074)												
Mo	1					< 0.05	359	280	128%	80%	120%	
Sr	1					< 0.2	274	390	70%	80%	120%	
Aqua Regia Digest - Metals Package, ICP/ICP-MS finish (201074)												
Mo	1					< 0.05	351	280	125%	80%	120%	



Quality Assurance

CLIENT NAME: CANADIAN KAILUAN DEHUA MINES CO.LTD

AGAT WORK ORDER: 11Y528370

PROJECT NO:

ATTENTION TO: VINCENT LI

Solid Analysis (Continued)

RPT Date: Sep 30, 2011		REPLICATE				Method Blank	REFERENCE MATERIAL				
PARAMETER	Batch	Sample Id	Original	Rep #1	RPD		Result Value	Expect Value	Recovery	Acceptable Limits	
									Lower	Upper	
Sr	1					< 0.2	286	390	73%	80%	120%
Aqua Regia Digest - Metals Package, ICP/ICP-MS finish (201074)											
Mo	1					< 0.05	345	280	123%	80%	120%
Sr	1					< 0.2	280	390	72%	80%	120%
Aqua Regia Digest - Metals Package, ICP/ICP-MS finish (201074)											
Mo	1					< 0.05	351	280	125%	80%	120%
Sr	1					< 0.2	294	390	75%	80%	120%
Aqua Regia Digest - Metals Package, ICP/ICP-MS finish (201074)											
Mo	1					< 0.05	351	280	126%	80%	120%
Sr	1					< 0.2	307	390	79%	80%	120%

Certified By: _____

Method Summary

CLIENT NAME: CANADIAN KAILUAN DEHUA MINES CO.LTD

AGAT WORK ORDER: 11Y528370

PROJECT NO:

ATTENTION TO: VINCENT LI

PARAMETER	AGAT S.O.P	LITERATURE REFERENCE	ANALYTICAL TECHNIQUE
Solid Analysis			
Ag	MIN-200-12017		ICP-MS
Al	MIN-200-12017		ICP/OES
As	MIN-200-12017		ICP-MS
Au	MIN-200-12017		ICP-MS
B	MIN-200-12017		ICP/OES
Ba	MIN-200-12017		ICP-MS
Be	MIN-200-12017		ICP-MS
Bi	MIN-200-12017		ICP-MS
Ca	MIN-200-12017		ICP/OES
Cd	MIN-200-12017		ICP-MS
Ce	MIN-200-12017		ICP-MS
Co	MIN-200-12017		ICP-MS
Cr	MIN-200-12017		ICP/OES
Cs	MIN-200-12017		ICP-MS
Cu	MIN-200-12017		ICP-MS
Fe	MIN-200-12017		ICP/OES
Ga	MIN-200-12017		ICP-MS
Ge	MIN-200-12017		ICP-MS
Hf	MIN-200-12017		ICP-MS
Hg	MIN-200-12017		ICP-MS
In	MIN-200-12017		ICP-MS
K	MIN-200-12017		ICP/OES
La	MIN-200-12017		ICP-MS
Li	MIN-200-12017		ICP-MS
Mg	MIN-200-12017		ICP/OES
Mn	MIN-200-12017		ICP/OES
Mo	MIN-200-12017		ICP-MS
Na	MIN-200-12017		ICP/OES
Nb	MIN-200-12017		ICP-MS
Ni	MIN-200-12017		ICP-MS
P	MIN-200-12017		ICP/OES
Pb	MIN-200-12017		ICP-MS
Rb	MIN-200-12017		ICP-MS
Re	MIN-200-12017		ICP-MS
S	MIN-200-12017		ICP/OES
Sb	MIN-200-12017		ICP-MS
Sc	MIN-200-12017		ICP-MS
Se	MIN-200-12017		ICP-MS
Sn	MIN-200-12017		ICP-MS
Sr	MIN-200-12017		ICP-MS
Ta	MIN-200-12017		ICP-MS
Te	MIN-200-12017		ICP-MS
Th	MIN-200-12017		ICP-MS
Ti	MIN-200-12017		ICP/OES
Tl	MIN-200-12017		ICP-MS
U	MIN-200-12017		ICP-MS
V	MIN-200-12017		ICP/OES
W	MIN-200-12017		ICP-MS
Y	MIN-200-12017		ICP-MS

Method Summary

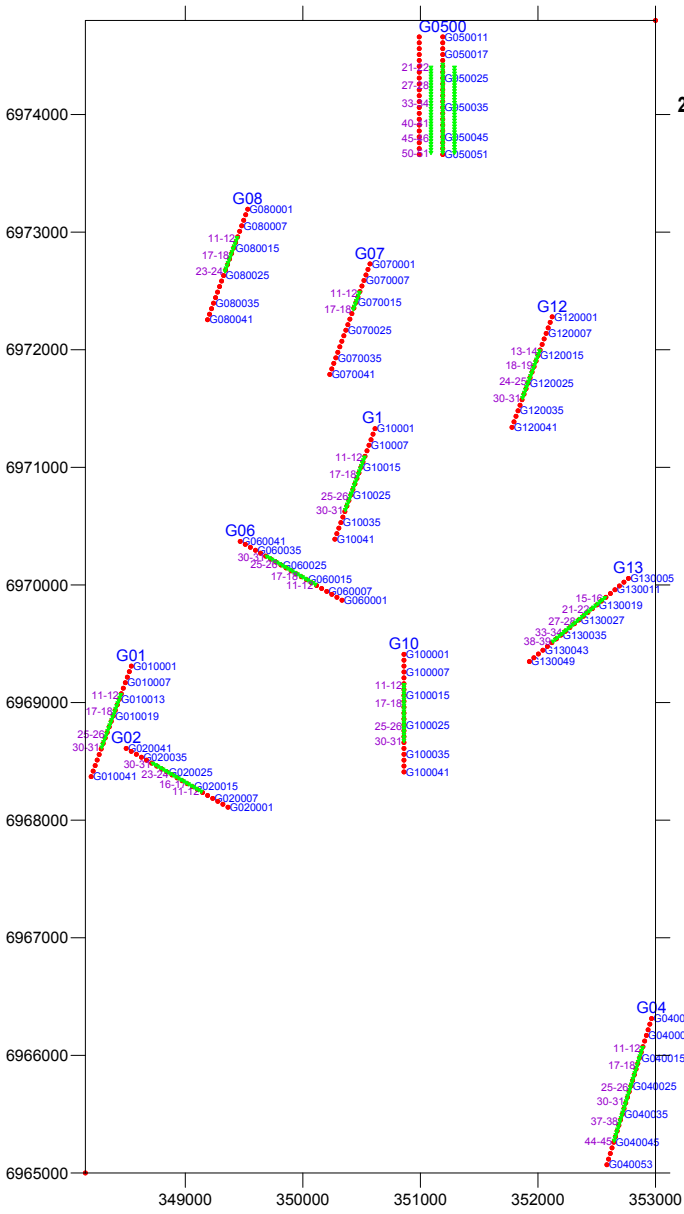
CLIENT NAME: CANADIAN KAILUAN DEHUA MINES CO.LTD

AGAT WORK ORDER: 11Y528370

PROJECT NO:

ATTENTION TO: VINCENT LI

PARAMETER	AGAT S.O.P	LITERATURE REFERENCE	ANALYTICAL TECHNIQUE
Zn	MIN-200-12017		ICP-MS
Zr	MIN-200-12017		ICP-MS
Sample Login Weight	MIN-12009		BALANCE
Au	MIN-200-12006	BUGBEE, E: A Textbook of Fire Assaying	ICP-OES



2011 Soil Sampling and IP Survey Location

Gonzo Claim Group



soil sample position and number

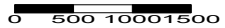


IP survey position and number



WGS 1984 / UTM ZONE 8N

NTS 115113



CANADIAN DEHUA INTERNATIONAL MINES GROUP INC.

2011