



ALS Canada Ltd.
2103 Dollarton Hwy
North Vancouver BC V7H 0A7
Phone: 604 984 0221 Fax: 604 984 0218 www.alsglobal.com

To: GOLDEN PREDATOR CANADA CORP.
888 DUNSMUIR STREET
11TH FLOOR
VANCOUVER BC V6C 3K4

Page: 1
Finalized Date: 14-OCT-2011
Account: GOPRED

CERTIFICATE FA11193207

Project: Brewery Creek-1811 4/6

P.O. No.: BRC-2011-JC-1811

This report is for 35 Percussion samples submitted to our lab in Fairbanks, AK, USA on 18-AUG-2011.

The following have access to data associated with this certificate:

TYLER BOURNE
JACK COTE
BRUCE OTTO

MIKE BURKE
GILLES DESSUREAU
BILL SHERIFF

ANDREW CALDWELL
MIKE MASLOWSKI

SAMPLE PREPARATION

ALS CODE	DESCRIPTION
WEI-21	Received Sample Weight
LOG-21	Sample logging - ClientBarCode
CRU-31	Fine crushing - 70% <2mm
SPL-21	Split sample - riffle splitter
PUL-31	Pulverize split to 85% <75 um
LOG-23	Pulp Login - Rcvd with Barcode
TRA-21	Transfer sample
CRU-QC	Crushing QC Test
PUL-QC	Pulverizing QC Test
DRY-21	High Temperature Drying

ANALYTICAL PROCEDURES

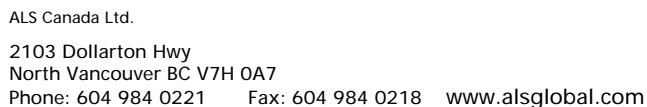
ALS CODE	DESCRIPTION	INSTRUMENT
Au-AA23	Au 30g FA-AA finish	AAS
ME-ICP41	35 Element Aqua Regia ICP-AES	ICP-AES

To: GOLDEN PREDATOR CANADA CORP.
ATTN: JACK COTE
888 DUNSMUIR STREET
11TH FLOOR
VANCOUVER BC V6C 3K4

This is the Final Report and supersedes any preliminary report with this certificate number. Results apply to samples as submitted. All pages of this report have been checked and approved for release.

Signature:

Colin Ramshaw, Vancouver Laboratory Manager



Page: 2 - A
Total # Pages: 2 (A - C)
Finalized Date: 14-OCT-2011
Account: GOPRED

CERTIFICATE OF ANALYSIS FA11193207

Sample Description	Method Analyte Units LOR	WEI-21	Au-AA23	ME-ICP41	ME-ICP41	ME-ICP41	ME-ICP41	ME-ICP41	ME-ICP41	ME-ICP41	ME-ICP41	ME-ICP41	ME-ICP41	ME-ICP41	ME-ICP41	ME-ICP41
		Recvd Wt.	Au	Ag	Al	As	B	Ba	Be	Bi	Ca	Cd	Co	Cr	Cu	Fe
		kg	ppm	ppm	%	ppm	ppm	ppm	ppm	ppm	%	ppm	ppm	ppm	ppm	ppm
		0.02	0.005	0.2	0.01	2	10	10	0.5	2	0.01	0.5	1	1	1	0.01
L801399		5.37	1.845	0.8	0.58	5560	<10	80	0.6	<2	4.43	0.8	11	24	42	4.19
L801400		0.14	0.435	<0.2	1.21	57	<10	120	<0.5	<2	1.38	<0.5	6	28	49	2.97
L801401		10.54	0.302	0.4	0.54	1290	<10	430	0.7	<2	3.37	<0.5	10	20	34	3.46
L801402		9.53	0.029	<0.2	0.59	100	<10	310	0.8	<2	3.89	<0.5	13	25	31	4.28
L801403		11.05	0.107	0.8	0.41	137	<10	100	0.6	<2	3.35	<0.5	10	16	45	2.94
L801404		10.33	0.210	0.5	0.55	691	10	80	0.6	<2	2.97	<0.5	8	18	40	2.83
L801405		11.47	0.027	0.2	0.63	229	10	330	0.7	<2	4.33	<0.5	21	40	48	5.10
L801406		13.35	0.023	<0.2	2.11	73	10	260	0.7	<2	5.05	<0.5	26	77	49	6.34
L801407		16.19	0.039	0.2	2.38	64	10	160	0.7	<2	4.93	<0.5	24	66	62	5.86
L801408		13.02	0.056	0.5	2.19	107	10	90	0.8	<2	3.75	<0.5	25	56	69	6.08
L801409		14.70	0.060	0.3	3.09	119	<10	180	0.5	<2	6.60	<0.5	32	143	77	5.41
L801410		0.55	<0.005	<0.2	0.15	2	<10	40	<0.5	<2	19.7	<0.5	1	2	6	0.54
L801411		14.70	0.053	0.2	3.44	107	10	380	0.6	<2	5.01	<0.5	35	209	87	5.30
L801412		15.44	0.050	0.3	3.44	81	10	240	0.5	<2	6.68	<0.5	33	214	85	5.44
L801413		13.83	0.048	0.2	3.96	87	10	660	0.6	<2	5.59	<0.5	34	219	91	5.88
L801414		13.45	0.035	0.2	3.54	47	10	990	0.6	<2	5.29	<0.5	31	203	81	5.40
L801415		10.41	0.027	<0.2	3.83	32	<10	880	0.6	<2	5.97	<0.5	33	187	76	5.69
L801416		2.85	0.017	<0.2	4.22	26	10	1670	0.6	<2	5.58	<0.5	35	231	88	6.04
L801417		14.13	0.028	<0.2	4.13	38	10	1470	0.6	<2	5.58	<0.5	38	272	91	6.12
L801418		13.34	0.024	0.2	3.70	29	10	1050	0.6	<2	4.17	<0.5	35	228	81	5.45
L801419		12.88	0.049	0.4	2.48	55	<10	50	0.6	<2	3.84	0.9	26	159	85	4.82
L801420		0.14	1.450	0.3	1.33	10	<10	120	<0.5	<2	0.78	<0.5	7	31	341	3.30
L801421		16.26	0.084	0.2	2.07	83	<10	150	0.6	<2	3.65	<0.5	23	111	79	4.78
L801422		15.16	0.055	0.3	1.84	69	<10	170	0.6	<2	2.08	<0.5	17	82	72	4.12
L801423		15.09	0.026	0.2	1.48	20	<10	220	0.6	<2	1.35	<0.5	12	37	58	3.28
L801424		11.96	0.007	0.2	4.03	6	<10	1280	0.7	<2	2.87	<0.5	38	26	87	8.93
L801425		13.64	0.070	0.4	3.06	54	<10	1100	0.7	<2	3.30	<0.5	29	26	78	7.05
L801426		15.85	0.037	<0.2	3.12	28	10	1500	0.8	<2	3.87	<0.5	30	30	72	7.38
L801427		14.30	0.024	0.3	3.42	22	<10	1480	0.7	2	3.25	<0.5	32	21	64	8.08
L801428		10.95	0.056	0.3	2.94	62	<10	830	0.6	<2	3.12	<0.5	27	25	64	6.81
L801429		12.97	0.016	0.3	2.17	23	<10	580	<0.5	<2	15.2	<0.5	26	30	67	4.74
L801430		0.51	<0.005	0.2	0.07	<2	<10	30	<0.5	<2	20.5	<0.5	2	1	2	0.45
L801431		19.19	0.046	<0.2	3.30	33	<10	1240	0.7	<2	4.58	<0.5	34	46	93	8.27
L801432		17.43	0.047	0.2	2.63	49	<10	930	0.7	<2	3.79	<0.5	27	31	78	6.57
L801433		14.16	0.033	0.4	2.43	34	<10	200	0.6	<2	4.56	<0.5	23	27	72	6.14



2103 Dollarton Hwy
North Vancouver BC V7H 0A7

Phone: 604 984 0221 Fax: 604 984 0218 www.alsqglobal.com

**To: GOLDEN PREDATOR CANADA CORP.
888 DUNSMUIR STREET
11TH FLOOR
VANCOUVER BC V6C 3K4**

Page: 2 - B
Total # Pages: 2 (A - C)
Finalized Date: 14-OCT-2011
Account: GOPRED

Project: Brewery Creek-1811 4/6

CERTIFICATE OF ANALYSIS FA11193207

Sample Description	Method Analyte Units LOR	ME-ICP41	ME-ICP41	ME-ICP41	ME-ICP41	ME-ICP41	ME-ICP41	ME-ICP41	ME-ICP41	ME-ICP41	ME-ICP41	ME-ICP41	ME-ICP41	ME-ICP41	ME-ICP41	ME-ICP41
		Ga	Hg	K	La	Mg	Mn	Mo	Na	Ni	P	Pb	S	Sb	Sc	Sr
		ppm 10	ppm 1	% 0.01	ppm 10	% 0.01	ppm 5	ppm 1	% 0.01	ppm 1	ppm 10	ppm 2	% 0.01	ppm 2	ppm 1	ppm 1
L801399		<10	7	0.12	20	1.61	835	3	0.01	28	2170	36	2.37	40	13	481
L801400		<10	<1	0.09	<10	0.57	413	9	0.08	32	740	4	0.12	<2	4	41
L801401		<10	4	0.15	30	1.29	719	4	0.01	26	1500	24	1.30	18	10	356
L801402		<10	3	0.13	50	1.66	1000	2	0.01	20	1640	33	0.42	5	17	381
L801403		<10	2	0.17	10	1.28	455	5	0.01	34	2510	17	2.09	13	4	225
L801404		<10	2	0.22	10	0.96	455	4	0.01	34	3420	13	2.20	17	4	188
L801405		<10	1	0.25	10	1.96	705	2	0.01	55	1400	7	1.23	10	10	192
L801406		10	1	0.23	20	2.15	828	1	0.02	62	1910	4	0.77	6	14	152
L801407		10	1	0.23	10	1.86	831	5	0.01	61	1900	5	1.93	26	11	151
L801408		10	1	0.29	10	1.64	606	2	0.01	68	2130	7	3.12	2	12	139
L801409		10	1	0.14	10	3.84	854	2	0.03	116	2350	4	1.44	5	16	204
L801410		<10	<1	0.12	<10	12.45	287	<1	0.01	3	270	2	0.05	<2	1	51
L801411		10	1	0.16	20	4.73	779	4	0.03	128	1510	3	0.72	7	20	171
L801412		10	1	0.13	20	5.24	956	2	0.03	134	1360	3	0.77	2	21	242
L801413		10	1	0.13	20	5.60	870	2	0.04	140	1350	3	0.65	<2	22	175
L801414		10	1	0.12	20	5.04	782	3	0.03	139	1420	2	0.53	4	20	153
L801415		10	<1	0.11	20	5.97	892	1	0.02	128	1370	5	0.53	<2	20	248
L801416		10	<1	0.12	20	6.13	901	1	0.03	150	1370	2	0.43	2	22	196
L801417		10	<1	0.11	20	6.07	903	1	0.03	152	1380	3	0.53	<2	24	180
L801418		10	<1	0.10	20	5.44	757	2	0.03	141	1460	5	0.40	5	22	211
L801419		10	1	0.11	20	3.40	624	3	0.03	100	1140	8	1.50	4	13	232
L801420		<10	<1	0.11	<10	0.58	437	21	0.10	33	550	9	0.20	2	5	38
L801421		10	<1	0.12	20	2.33	635	3	0.04	71	1120	7	1.88	2	10	118
L801422		10	1	0.19	10	1.97	413	4	0.03	57	1040	6	1.24	7	8	92
L801423		10	<1	0.15	20	1.29	277	2	0.02	50	440	6	1.08	3	3	66
L801424		20	<1	0.09	30	4.76	1035	1	0.08	29	1860	<2	0.39	3	21	181
L801425		20	1	0.14	20	3.25	1240	3	0.07	31	1700	<2	0.46	7	17	250
L801426		20	<1	0.19	20	3.06	1355	1	0.08	28	1600	3	0.27	3	19	307
L801427		20	1	0.12	30	3.34	1220	1	0.07	23	1900	<2	0.34	<2	19	241
L801428		20	1	0.15	20	2.65	868	3	0.05	30	1860	3	0.50	6	13	247
L801429		10	<1	0.13	20	1.57	1995	1	0.04	33	1260	<2	0.48	2	14	658
L801430		<10	<1	0.03	<10	12.45	207	<1	0.02	1	610	<2	0.03	2	<1	51
L801431		20	<1	0.10	20	3.53	1200	1	0.08	45	1560	<2	0.42	2	23	273
L801432		10	<1	0.15	20	2.73	925	2	0.07	38	1620	3	0.48	5	16	231
L801433		10	<1	0.14	20	2.09	893	1	0.04	44	1160	4	1.15	2	12	239



ALS Canada Ltd.
 2103 Dollarton Hwy
 North Vancouver BC V7H 0A7
 Phone: 604 984 0221 Fax: 604 984 0218 www.alsglobal.com

To: GOLDEN PREDATOR CANADA CORP.
 888 DUNSMUIR STREET
 11TH FLOOR
 VANCOUVER BC V6C 3K4

Page: 2 - C
 Total # Pages: 2 (A - C)
 Finalized Date: 14-OCT-2011
 Account: GOPRED

Project: Brewery Creek-1811 4/6

CERTIFICATE OF ANALYSIS FA11193207

Sample Description	Method Analyte Units LOR	ME-ICP41	ME-ICP41	ME-ICP41	ME-ICP41	ME-ICP41	ME-ICP41	ME-ICP41
		Th	Ti	Ti	U	V	W	Zn
		ppm 20	% 0.01	ppm 10	ppm 10	ppm 1	ppm 10	ppm 2
L801399		<20	<0.01	<10	<10	49	<10	161
L801400		<20	0.11	<10	<10	50	<10	55
L801401		<20	<0.01	<10	<10	37	<10	100
L801402		20	<0.01	<10	<10	48	<10	97
L801403		<20	<0.01	<10	<10	26	<10	106
L801404		<20	<0.01	<10	<10	30	<10	85
L801405		<20	<0.01	<10	<10	55	<10	88
L801406		<20	0.01	<10	<10	113	<10	91
L801407		<20	0.01	<10	<10	140	<10	120
L801408		<20	0.01	<10	<10	115	<10	131
L801409		<20	0.01	<10	<10	171	<10	73
L801410		<20	0.01	<10	<10	4	<10	24
L801411		<20	0.01	<10	<10	182	<10	99
L801412		<20	0.01	<10	<10	190	<10	75
L801413		<20	0.01	<10	<10	203	<10	76
L801414		<20	0.01	<10	<10	186	<10	93
L801415		<20	0.01	<10	<10	193	<10	71
L801416		<20	0.02	<10	<10	212	<10	79
L801417		<20	0.02	<10	<10	223	<10	76
L801418		<20	0.01	<10	<10	218	<10	93
L801419		<20	0.01	<10	<10	195	<10	176
L801420		<20	0.13	<10	<10	59	<10	51
L801421		<20	0.02	<10	<10	170	<10	77
L801422		<20	0.01	<10	<10	115	<10	83
L801423		<20	0.01	<10	<10	55	<10	42
L801424		<20	0.02	<10	<10	330	<10	107
L801425		<20	0.02	<10	<10	253	<10	109
L801426		<20	0.04	<10	<10	280	<10	109
L801427		<20	0.02	<10	<10	274	<10	99
L801428		<20	0.01	<10	<10	212	<10	91
L801429		<20	0.01	<10	<10	176	<10	39
L801430		<20	<0.01	<10	10	4	<10	22
L801431		<20	0.03	<10	<10	294	<10	105
L801432		<20	0.02	<10	<10	229	<10	110
L801433		<20	0.01	<10	<10	192	<10	86