



ALS Canada Ltd.  
2103 Dollarton Hwy  
North Vancouver BC V7H 0A7  
Phone: 604 984 0221 Fax: 604 984 0218 www.alsglobal.com

To: GOLDEN PREDATOR CANADA CORP.  
888 DUNSMUIR STREET  
11TH FLOOR  
VANCOUVER BC V6C 3K4

Page: 1  
Finalized Date: 12-OCT-2011  
Account: GOPRED

**CERTIFICATE FA11193204**

Project: Brewery Creek-1811 1/6

P.O. No.: BRC-2011-JC-1811

This report is for 35 Percussion samples submitted to our lab in Fairbanks, AK, USA on 18-AUG-2011.

The following have access to data associated with this certificate:

TYLER BOURNE  
JACK COTE  
BRUCE OTTO

MIKE BURKE  
GILLES DESSUREAU  
BILL SHERIFF

ANDREW CALDWELL  
MIKE MASLOWSKI

**SAMPLE PREPARATION**

ALS CODE	DESCRIPTION
WEI-21	Received Sample Weight
LOG-21	Sample logging - ClientBarCode
CRU-31	Fine crushing - 70% <2mm
SPL-21	Split sample - riffle splitter
PUL-31	Pulverize split to 85% <75 um
LOG-23	Pulp Login - Rcvd with Barcode
TRA-21	Transfer sample
CRU-QC	Crushing QC Test
PUL-QC	Pulverizing QC Test
DRY-21	High Temperature Drying

**ANALYTICAL PROCEDURES**

ALS CODE	DESCRIPTION	INSTRUMENT
Au-AA23	Au 30g FA-AA finish	AAS
ME-ICP41	35 Element Aqua Regia ICP-AES	ICP-AES

To: GOLDEN PREDATOR CANADA CORP.  
ATTN: JACK COTE  
888 DUNSMUIR STREET  
11TH FLOOR  
VANCOUVER BC V6C 3K4

This is the Final Report and supersedes any preliminary report with this certificate number. Results apply to samples as submitted. All pages of this report have been checked and approved for release.

Signature:

Colin Ramshaw, Vancouver Laboratory Manager



2103 Dollarton Hwy  
North Vancouver BC V7H 0A7

Phone: 604 984 0221      Fax: 604 984 0218      [www.alsglobal.com](http://www.alsglobal.com)

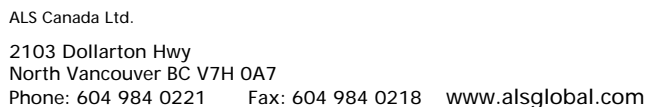
To: GOLDEN PREDATOR CANADA CORP.  
888 DUNSMUIR STREET  
11TH FLOOR  
VANCOUVER BC V6C 3K4

Page: 2 - A  
Total # Pages: 2 (A - C)  
Finalized Date: 12-OCT-2011  
Account: GOPRED

Project: Brewery Creek-1811 1/6

**CERTIFICATE OF ANALYSIS    FA11193204**

Sample Description	Method Analyte Units LOR	WEI-21	Au-AA23	ME-ICP41	ME-ICP41	ME-ICP41	ME-ICP41	ME-ICP41	ME-ICP41	ME-ICP41	ME-ICP41	ME-ICP41	ME-ICP41	ME-ICP41	ME-ICP41	ME-ICP41
		Recvd Wt.	Au	Ag	Al	As	B	Ba	Be	Bi	Ca	Cd	Co	Cr	Cu	Fe
		kg	ppm	ppm	%	ppm	ppm	ppm	ppm	ppm	%	ppm	ppm	ppm	ppm	ppm
		0.02	0.005	0.2	0.01	2	10	10	0.5	2	0.01	0.5	1	1	1	0.01
L801294		11.60	0.024	<0.2	0.59	47	<10	470	0.7	2	0.09	<0.5	7	10	70	2.03
L801295		12.54	0.008	<0.2	0.63	16	<10	480	0.7	3	0.15	<0.5	8	9	49	1.55
L801296		4.02	0.009	<0.2	0.54	15	<10	360	0.5	2	0.10	<0.5	5	8	47	1.24
L801297		10.65	0.021	0.3	0.59	24	<10	540	0.5	3	0.45	<0.5	5	11	51	1.49
L801298		5.98	0.033	<0.2	0.79	82	10	490	1.0	3	0.23	<0.5	6	17	53	1.60
L801299		5.51	0.035	<0.2	0.88	77	10	500	1.0	2	0.20	<0.5	7	16	51	1.76
L801300		0.15	1.645	0.3	1.28	10	<10	110	<0.5	2	0.73	<0.5	7	28	332	3.22
L801301		14.54	0.017	<0.2	0.94	21	10	550	0.8	3	0.19	<0.5	10	17	53	2.45
L801302		10.59	0.014	0.2	0.85	21	10	500	0.8	3	0.21	0.5	9	15	53	2.35
L801303		14.24	0.014	0.2	1.11	20	10	490	0.8	3	1.45	<0.5	10	18	54	2.39
L801304		17.03	0.013	0.3	0.96	20	10	710	1.0	2	2.85	0.5	11	14	50	2.21
L801305		17.99	0.017	0.2	0.72	16	10	520	0.7	2	0.80	<0.5	9	14	59	2.20
L801306		16.95	0.018	0.3	0.79	27	10	640	0.9	3	1.28	<0.5	12	14	62	2.89
L801307		14.23	0.011	<0.2	0.92	56	10	760	0.9	3	1.97	<0.5	12	15	44	3.01
L801308		10.30	0.186	<0.2	0.95	2270	10	380	0.9	3	4.38	<0.5	11	16	38	2.63
L801309		18.27	0.045	0.2	0.80	620	10	470	0.8	3	2.72	<0.5	9	12	47	2.25
L801310		0.65	<0.005	<0.2	0.13	10	<10	50	<0.5	3	18.2	<0.5	2	4	4	0.46
L801311		13.97	0.010	<0.2	0.81	98	10	280	0.8	3	3.56	<0.5	8	10	47	2.20
L801312		11.64	0.007	<0.2	0.71	55	10	350	0.7	2	2.67	<0.5	6	9	30	1.96
L801313		16.32	0.012	<0.2	0.70	72	10	370	0.7	2	1.69	<0.5	7	9	44	2.32
L801314		9.63	0.010	0.3	0.96	35	10	300	1.0	2	2.56	<0.5	10	14	53	2.35
L801315		10.11	0.008	0.4	0.93	51	10	370	0.8	<2	3.98	<0.5	7	14	42	2.44
L801316		6.58	0.019	0.4	1.16	97	20	380	1.0	<2	2.79	<0.5	9	19	52	2.32
L801317		10.23	0.007	0.6	1.09	28	20	430	1.0	<2	1.28	<0.5	8	18	50	2.01
L801318		11.78	0.018	0.5	0.74	53	10	350	0.7	<2	1.16	<0.5	7	12	45	1.97
L801319		7.15	0.043	0.2	0.80	247	10	550	0.6	<2	3.48	<0.5	5	12	36	1.98
L801320		0.13	5.09	97.7	1.09	79	<10	70	<0.5	3	0.62	29.6	9	37	75	2.77
L801321		7.57	0.011	0.3	0.74	189	10	770	0.6	<2	2.94	<0.5	6	12	42	2.02
L801322		7.38	0.007	0.2	0.80	58	10	620	0.6	<2	2.94	<0.5	6	11	34	1.82
L801323		9.96	0.006	<0.2	0.82	43	10	660	0.8	<2	4.72	<0.5	7	14	30	2.12
L801324		5.49	0.005	0.4	0.83	14	10	340	0.8	<2	2.84	<0.5	8	13	41	1.71
L801325		14.57	0.006	0.5	0.84	12	20	330	0.8	<2	2.40	0.5	7	13	45	1.97
L801326		15.73	<0.005	0.3	0.77	7	20	140	0.7	<2	5.53	0.6	7	12	31	2.33
L801327		10.87	0.005	0.2	1.08	20	20	400	0.9	<2	3.26	<0.5	7	16	36	1.92
L801328		14.02	<0.005	0.4	0.80	7	20	130	0.7	<2	4.66	<0.5	7	13	35	2.23



Page: 2 - B  
Total # Pages: 2 (A - C)  
Finalized Date: 12-OCT-2011  
Account: GOPRED

**CERTIFICATE OF ANALYSIS    FA11193204**

Sample Description	Method Analyte Units LOR	ME-ICP41	ME-ICP41	ME-ICP41	ME-ICP41	ME-ICP41	ME-ICP41	ME-ICP41	ME-ICP41	ME-ICP41	ME-ICP41	ME-ICP41	ME-ICP41	ME-ICP41	ME-ICP41	ME-ICP41
		Ga	Hg	K	La	Mg	Mn	Mo	Na	Ni	P	Pb	S	Sb	Sc	Sr
		ppm 10	ppm 1	% 0.01	ppm 10	% 0.01	ppm 5	ppm 1	% 0.01	ppm 1	ppm 10	ppm 2	% 0.01	ppm 2	ppm 1	ppm 1
L801294		<10	<1	0.29	20	0.07	338	1	<0.01	18	310	6	0.05	4	3	24
L801295		<10	<1	0.32	10	0.06	238	1	<0.01	18	570	5	0.05	4	3	30
L801296		<10	1	0.28	10	0.05	98	1	<0.01	14	410	3	0.04	2	2	34
L801297		<10	1	0.29	20	0.05	100	3	<0.01	19	1960	8	0.07	4	2	97
L801298		<10	<1	0.38	20	0.15	139	1	<0.01	17	540	7	0.08	4	3	66
L801299		<10	1	0.41	20	0.13	181	1	<0.01	21	510	7	0.05	4	3	57
L801300		<10	1	0.11	<10	0.56	415	20	0.08	30	530	7	0.08	<2	4	38
L801301		<10	1	0.42	20	0.11	384	2	<0.01	31	530	9	0.04	7	4	55
L801302		<10	1	0.39	20	0.10	394	3	<0.01	32	610	8	0.04	7	4	47
L801303		<10	1	0.48	10	0.26	400	2	<0.01	27	460	7	0.05	8	4	55
L801304		<10	1	0.43	20	0.88	460	4	<0.01	31	710	11	0.16	9	5	86
L801305		<10	1	0.34	10	0.31	261	2	<0.01	28	830	6	0.13	7	3	64
L801306		<10	1	0.37	10	0.36	521	4	<0.01	41	840	9	0.09	9	4	63
L801307		<10	1	0.42	10	0.90	723	4	0.01	32	410	9	0.12	9	5	55
L801308		<10	1	0.43	10	2.11	541	2	0.01	33	200	12	0.36	13	6	108
L801309		<10	1	0.36	10	1.08	356	1	<0.01	28	130	10	0.10	9	6	53
L801310		<10	<1	0.09	<10	11.30	194	<1	0.01	2	180	<2	0.03	<2	<1	50
L801311		<10	<1	0.36	10	1.53	372	1	0.01	20	120	6	0.32	6	5	78
L801312		<10	<1	0.33	10	1.11	365	1	<0.01	17	130	6	0.17	5	5	68
L801313		<10	<1	0.31	10	0.47	318	2	<0.01	25	150	7	0.08	6	5	39
L801314		<10	1	0.43	10	1.26	280	2	<0.01	45	150	12	0.44	8	6	70
L801315		<10	1	0.40	10	1.84	456	2	0.01	39	220	12	0.58	7	5	96
L801316		<10	1	0.49	10	1.37	378	3	0.01	38	290	10	0.45	6	5	80
L801317		<10	1	0.46	10	0.59	228	4	0.01	42	210	13	0.21	7	5	51
L801318		<10	1	0.32	10	0.39	334	2	0.01	25	140	8	0.21	5	4	34
L801319		<10	<1	0.33	10	1.44	627	1	0.01	16	230	5	0.16	5	4	159
L801320		10	2	0.15	10	0.45	323	487	0.08	28	420	903	1.08	148	4	57
L801321		<10	<1	0.31	10	0.97	615	2	0.01	20	300	6	0.09	5	4	132
L801322		<10	<1	0.34	<10	1.25	467	1	0.01	22	230	6	0.16	4	4	90
L801323		<10	<1	0.34	10	2.10	683	2	0.01	21	300	7	0.47	4	5	110
L801324		<10	<1	0.37	10	1.30	420	1	0.01	24	250	8	0.51	4	5	75
L801325		<10	<1	0.39	<10	1.14	335	3	0.01	29	380	10	0.93	4	5	78
L801326		<10	<1	0.38	10	2.99	724	3	0.01	21	230	6	1.44	3	5	163
L801327		<10	<1	0.48	10	1.67	562	2	0.01	22	230	6	0.65	4	5	95
L801328		<10	<1	0.39	10	2.43	599	9	0.01	28	360	10	1.68	2	5	150



ALS Canada Ltd.  
 2103 Dollarton Hwy  
 North Vancouver BC V7H 0A7  
 Phone: 604 984 0221 Fax: 604 984 0218 www.alsglobal.com

To: GOLDEN PREDATOR CANADA CORP.  
 888 DUNSMUIR STREET  
 11TH FLOOR  
 VANCOUVER BC V6C 3K4

Page: 2 - C  
 Total # Pages: 2 (A - C)  
 Finalized Date: 12-OCT-2011  
 Account: GOPRED

Project: Brewery Creek-1811 1/6

**CERTIFICATE OF ANALYSIS FA11193204**

Sample Description	Method Analyte Units LOR	ME-ICP41	ME-ICP41	ME-ICP41	ME-ICP41	ME-ICP41	ME-ICP41	ME-ICP41
		Th	Ti	Ti	U	V	W	Zn
		ppm 20	% 0.01	ppm 10	ppm 10	ppm 1	ppm 10	ppm 2
L801294		<20	<0.01	<10	<10	11	<10	88
L801295		<20	<0.01	<10	<10	10	<10	74
L801296		<20	<0.01	<10	<10	10	<10	63
L801297		<20	<0.01	<10	<10	30	<10	98
L801298		<20	0.01	<10	<10	19	<10	60
L801299		<20	0.01	<10	<10	19	<10	75
L801300		<20	0.12	<10	<10	56	<10	49
L801301		<20	<0.01	<10	<10	21	<10	120
L801302		<20	<0.01	<10	<10	24	<10	124
L801303		<20	<0.01	<10	<10	24	<10	109
L801304		<20	<0.01	<10	<10	25	<10	104
L801305		<20	<0.01	<10	<10	20	<10	99
L801306		<20	<0.01	<10	<10	24	<10	116
L801307		<20	<0.01	<10	<10	19	<10	92
L801308		<20	<0.01	<10	<10	19	<10	97
L801309		<20	<0.01	<10	<10	15	<10	87
L801310		<20	<0.01	<10	<10	2	<10	26
L801311		<20	<0.01	<10	<10	12	<10	58
L801312		<20	<0.01	<10	<10	10	<10	51
L801313		<20	<0.01	<10	<10	9	<10	76
L801314		<20	<0.01	<10	<10	21	<10	114
L801315		<20	<0.01	<10	<10	21	<10	87
L801316		<20	<0.01	<10	<10	25	<10	91
L801317		<20	<0.01	<10	<10	26	<10	109
L801318		<20	<0.01	<10	<10	18	<10	98
L801319		<20	<0.01	<10	<10	16	<10	51
L801320		<20	0.08	<10	<10	56	20	2800
L801321		<20	<0.01	<10	<10	15	<10	59
L801322		<20	<0.01	<10	<10	30	<10	99
L801323		<20	<0.01	<10	<10	18	<10	101
L801324		<20	<0.01	<10	<10	19	<10	122
L801325		<20	<0.01	<10	<10	36	<10	119
L801326		<20	<0.01	<10	<10	28	<10	103
L801327		<20	<0.01	<10	<10	26	<10	99
L801328		<20	<0.01	<10	<10	26	<10	91