

ARCHER, CATHRO & ASSOCIATES (1981) LIMITED  
1016 – 510 West Hastings Street  
Vancouver, B.C. V6B1L8

Telephone: 604-688-2568

Fax: 604-688-2578

---

**ASSESSMENT REPORT**

describing

**PROSPECTING AND GEOCHEMICAL SAMPLING**

at the

**BLACK PROPERTY**

Black 1-56 YC63668-YC63723

NTS 115P/14

Latitude 63°56'N; Longitude 137°13'W

in the

Dawson Mining District  
Yukon Territory

prepared by

Archer, Cathro & Associates (1981) Limited

for

**MILL CITY GOLD CORP.**  
and  
**STRATEGIC METALS LTD.**

by

C.J. Chung, B.Sc. Geology, GIT

December 2011

## **CONTENTS**

INTRODUCTION	1
PROPERTY LOCATION, CLAIM DATA AND ACCESS	1
HISTORY AND PREVIOUS WORK	1
GEOMORPHOLOGY	2
REGIONAL GEOLOGY	2
PROPERTY GEOLOGY	4
REGIONAL MINERALIZATION	5
PROPERTY MINERALIZATION	6
STREAM SEDIMENT AND SOIL GEOCHEMISTRY	6
DISCUSSION AND CONCLUSIONS	7
REFERENCES	8

## **APPENDICES**

- I STATEMENT OF QUALIFICATIONS
- II ROCK SAMPLE DESCRIPTIONS
- III CERTIFICATES OF ANALYSIS

## **FIGURES**

<u>No.</u>	<u>Description</u>	<u>Follows Page</u>
1	Property Location	1
2	Claim Locations	1
3	Total Magnetic Intensity	1
4	Regional Geology	2
5	Property Geology	4
6	Sample Locations	6
7	Gold Geochemistry	6
8	Arsenic Geochemistry	6
9	Silver Geochemistry	6
10	Copper Geochemistry	6

## **TABLES**

<u>No.</u>	<u>Description</u>	<u>Page</u>
I	Regional Lithological Units	3

## **INTRODUCTION**

The Black property is one of six properties (Black, Ham, Hobo, Marny, Ross and Track) that comprise the Tombstone Gold Project of central Yukon. The properties were staked to cover stratigraphy that is prospective for gold enriched skarn deposits associated with Tombstone Suite intrusions. This suite of plutons forms an arcuate belt that extends across Yukon into Alaska. A number of these intrusions are associated with precious metal deposits (Tombstone Gold Belt). The Black property is owned by Strategic Metals Ltd. and is under option to Mill City Gold Corp.

This report describes prospecting and geochemical sampling on the Black property conducted on June 1 and 2, 2011 by Archer, Cathro & Associates (1981) Limited on behalf of Mill City Gold. The author compiled and interpreted the 2011 data and her Statement of Qualifications appears in Appendix I.

## **PROPERTY LOCATION, CLAIM DATA AND ACCESS**

The Black property consists of 56 contiguous mineral claims, which are located on NTS map sheet 115P/14 at latitude 63°56' north and longitude 137°13' west (Figure 1). The property covers an area of approximately 1100 ha (11 sq. km). The claims are registered with the Dawson Mining Recorder in the name of Archer Cathro, which holds them in trust for Strategic Metals. Specifics concerning claim registration are tabulated below, while the locations of individual claims are shown on Figure 2.

<u>Claim Name</u>	<u>Grant Number</u>	<u>Expiry Date</u>
Black 1-56	YC63668-YC63723	February 9, 2014*

\* Expiry date does not include 2011 work that has not yet been filed for assessment credit.

Access to the property was provided by a Bell 206B helicopter operated by Fireweed Helicopters Ltd. from the Klondike River Lodge, located near Dawson City. The closest road access points are from the Brewery Creek Mine on the North Klondike Road, which lies 65 km west of the property and from the Clear Creek Road, located 10 km to the southwest.

## **HISTORY AND PREVIOUS WORK**

The area now covered by the Black property was first staked by Mattagami Lake Exploration Limited in June 1980 as the Fiona claims. In 1981, it conducted a small program of geochemical sampling and geological mapping. That program did not identify any significant geochemical anomalies or mineralization and the claims were allowed to lapse without further work (Biczok, 1982).

In 2009, ATAC Resources Ltd. staked the Black property and conducted a helicopter-borne magnetic and variable time domain electromagnetic (VTEM) survey. A total of 251 line km were flown over the Black property (Figure 3). Several magnetic lows and two main electromagnetic anomalies were identified during this program, and further work was recommended (Gregory, 2009).

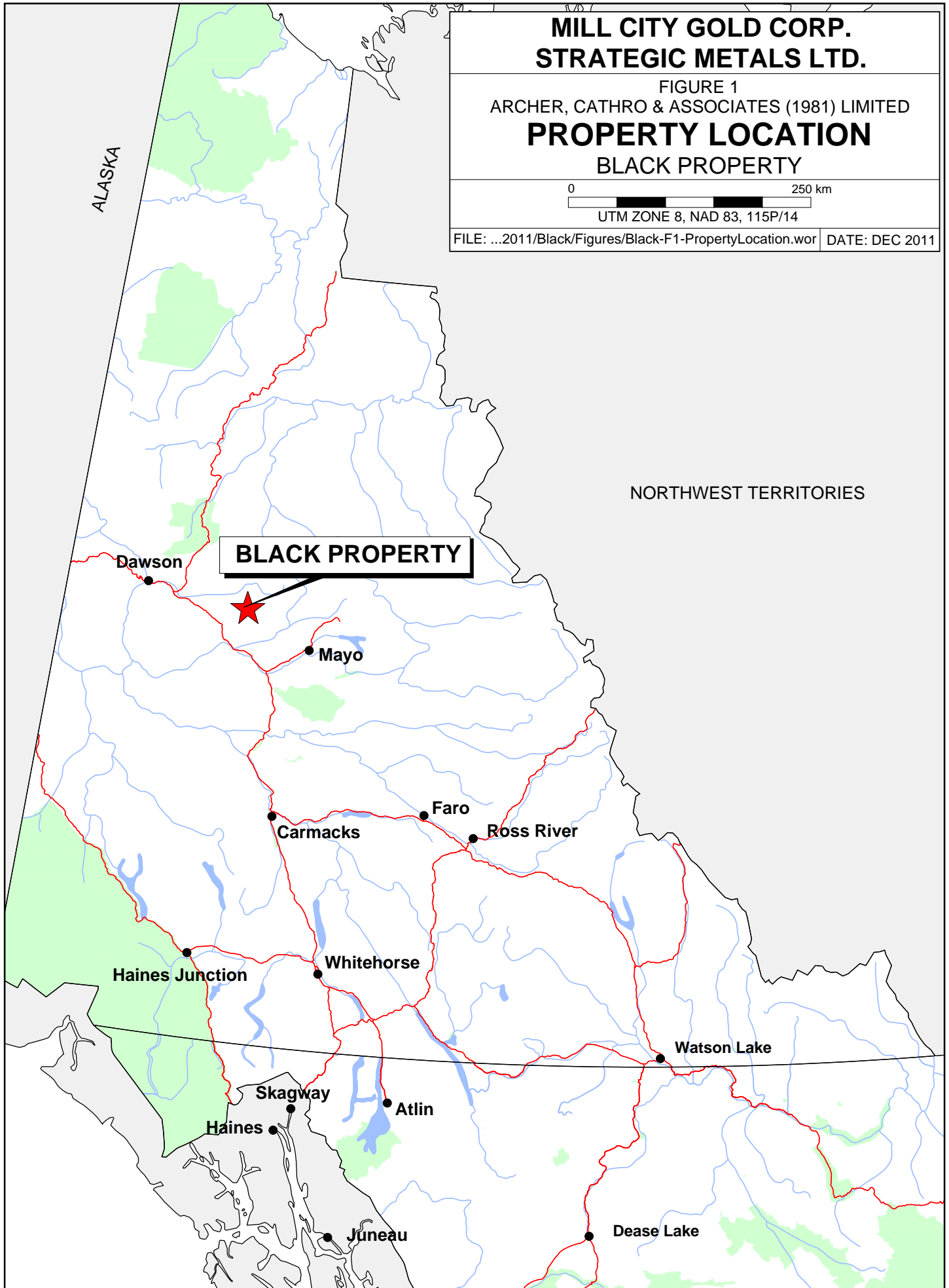
**MILL CITY GOLD CORP.  
STRATEGIC METALS LTD.**

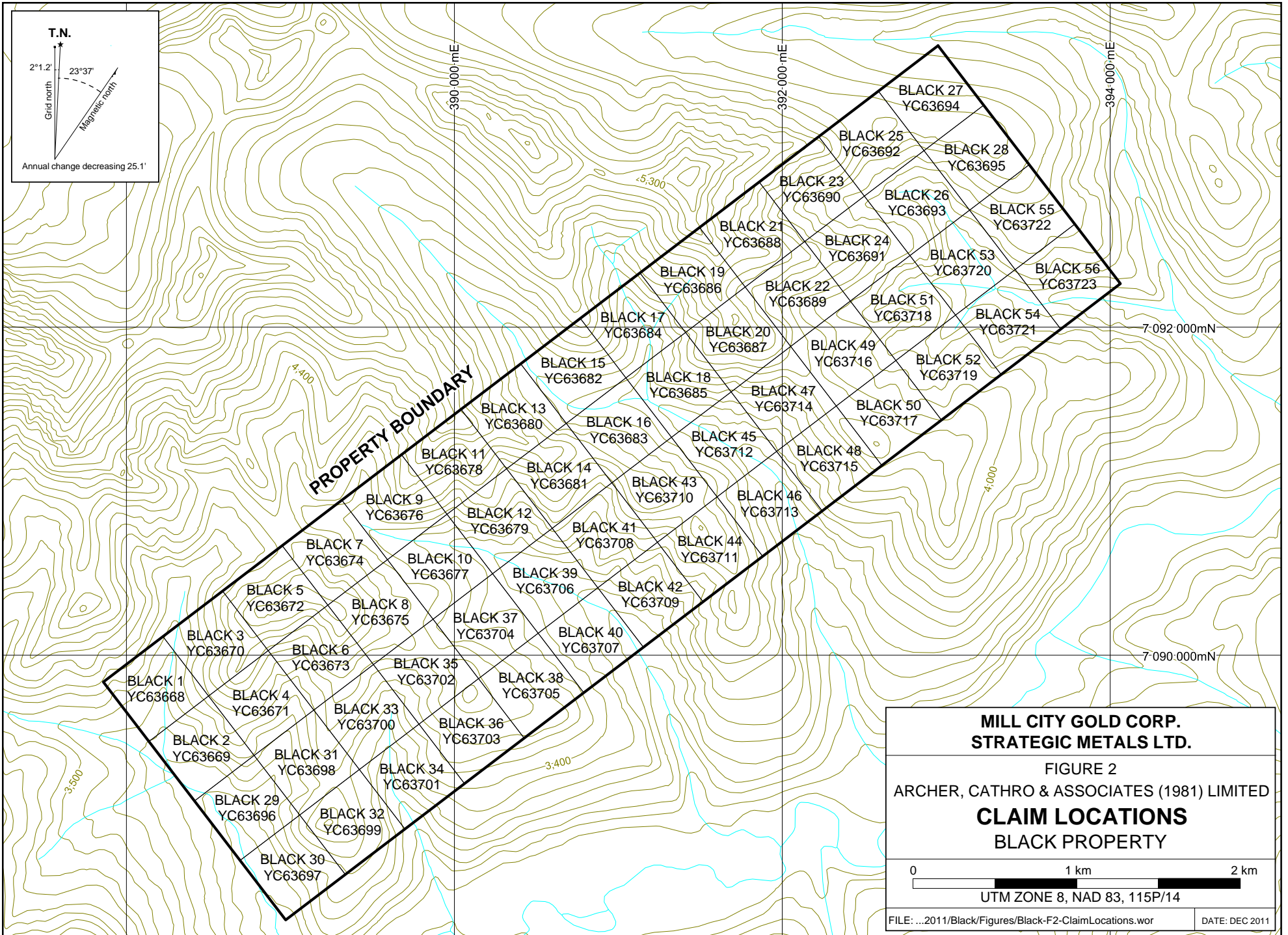
FIGURE 1  
ARCHER, CATHRO & ASSOCIATES (1981) LIMITED  
**PROPERTY LOCATION**  
BLACK PROPERTY

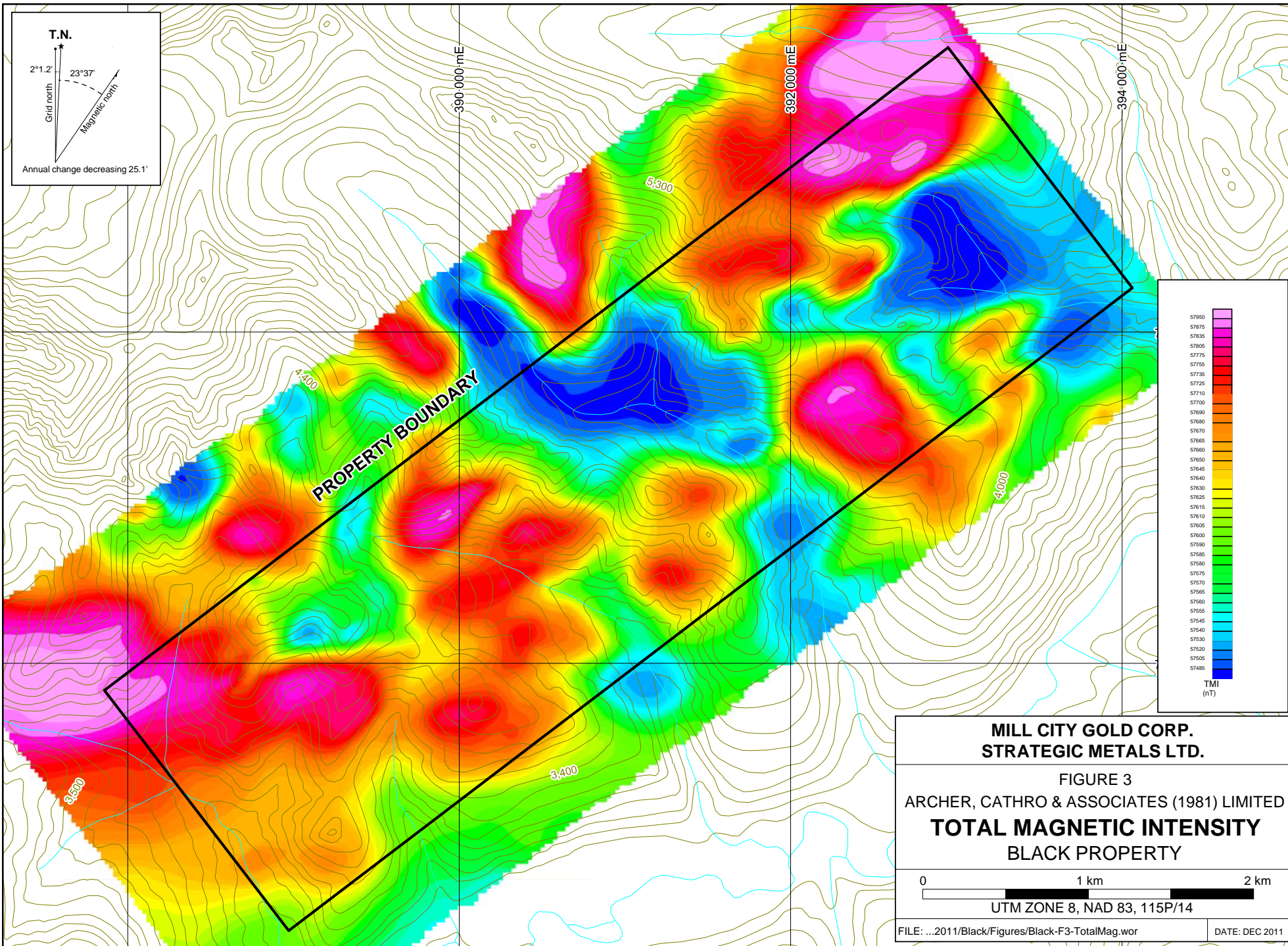
0 250 km

UTM ZONE 8, NAD 83, 115P/14

FILE: ...2011/Black/Figures/Black-F1-PropertyLocation.wor DATE: DEC 2011







In May 2010, Strategic Metals purchased the Black property from ATAC Resources.

In April 2011, Mill City Gold signed an option purchase agreement with Strategic Metals.

### **GEOMORPHOLOGY**

The Black property is located in the Syenite Range of the Ogilvie Mountains. It is drained by creeks that flow into the Little South Klondike River, which ultimately connects to the Pacific Ocean via the Klondike and Yukon Rivers.

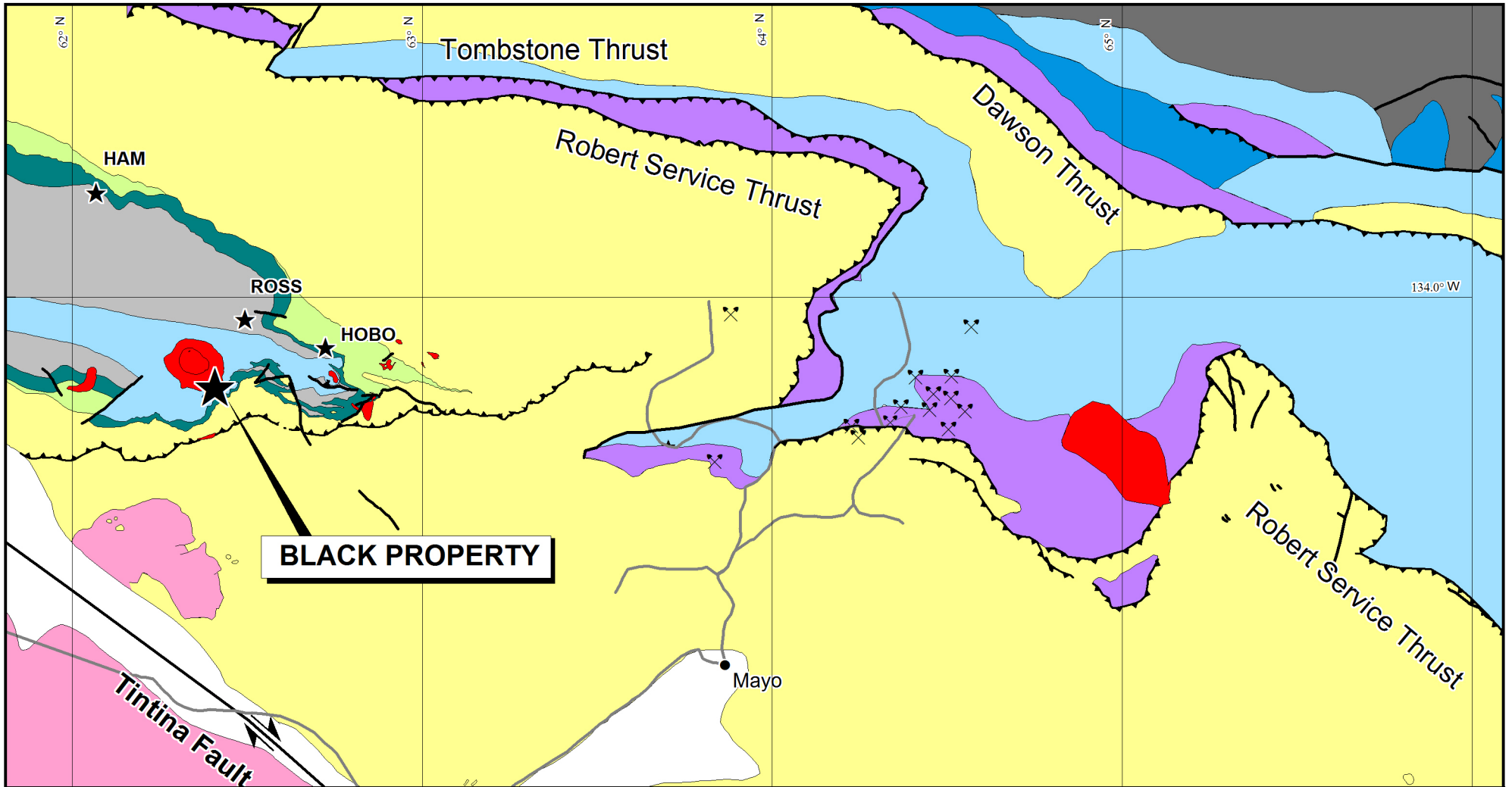
The terrain on the Black property consists of rolling hills, with local steep bluffs along streams and on the flanks of some of the higher ridges. Elevations range from 880 m to 1615 m above sea level (asl). Most of the property lies below treeline, which is at about 1450 m asl in the area. Spruce and pine, with lesser birch and cottonwood, are common at lower elevations particularly near creeks. At moderate elevations on south-facing slopes, willows, poplars, stunted conifers, grass and buckbrush are prevalent, while moss, scrub alder and buckbrush dominate north-facing slopes. At higher elevations, rare moss or grass grow on mostly unvegetated talus slopes. Outcrop is moderately abundant on the property.

### **REGIONAL GEOLOGY**

The Tombstone Gold Project properties are located northeast of the Tintina Fault in an area where Mid-Cretaceous Tombstone Suite plutons intrude sedimentary rocks of Selwyn Basin (Figure 4). Selwyn Basin is a tectonic element composed of deep water clastic sediments, chert and minor carbonate accumulated along the North American continental margin during Paleozoic time (Pigage, 2004).

The Tombstone Suite comprises a belt of batholiths, stocks, plugs, dykes and sills that were emplaced approximately 91 million years ago, after the most recent deformation event. The Tombstone Suite consists of metaluminous, subalkaline to locally alkaline, mainly intermediate to felsic intrusions of Mid-Cretaceous age (Mortensen et al, 2000). These reduced intrusions are often associated with precious metal mineralization (Hart, 2007). The larger intrusions are often surrounded by extensive metamorphic aureoles featuring hornfels in shaly units and skarn in limy units. Another belt of granitic intrusions (the Late Cretaceous McQuesten Suite) partially overlaps the belt of Tombstone Suite intrusions.

The Black property lies along the southern edge of the Tombstone Suite Lost Horses Stock. The stock is an eight kilometre diameter, sub-circular body with a granitic core that grades outward to coarse, porphyritic syenite. The Lost Horses Stock and other, smaller intrusions in the area cut a package of folded and thrust imbricated sediments. The thrust faults, which trend west-northwest and verge toward the northeast, were formed by large-scale plate convergence during Jurassic and Cretaceous (160 to 130 Ma) times (Fingler, 2005). Regional-scale maps show three major thrust faults but there are also many smaller sub-parallel structures in the area. The closest of the major thrust faults is the Robert Service Thrust, the surface trace of which lies about 40 km north of the property. The major thrusts pushed units of Selwyn Basin over shallow water stratigraphy of Mackenzie Platform and resulted in local imbrication of these two tectonic elements (Figure 4).



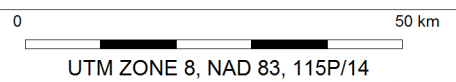
- Overburden
- McQuesten Suite intrusions - two-mica granite
- Tombstone Suite intrusions - granite, granodiorite and syenite
- Upper Triassic syn-orogenic clastics
- Keno Hill Quartzite - metamorphosed sandstone, shale and phyllite
- Earn Group - shale, chert and pebble conglomerate
- Road River Group - shale, chert and siltstone
- Rabbitkettle Formation - basinal limestone

- Gull Lake Formation - shale, sandstone and conglomerate
- Hyland Group - schist, sandstone, shale and limestone
- Bouvette Formation - limestone and shale
- Gillespie Lake Group - dolostone and sandstone
- ✕ Former mine
- High angle fault
- Thrust fault
- Major transcurrent fault
- Road

Modified from: Roots in Cathro (2006)

**MILL CITY GOLD CORP.  
STRATEGIC METALS LTD.**

FIGURE 4  
ARCHER, CATHRO & ASSOCIATES (1981) LIMITED  
**REGIONAL GEOLOGY**  
BLACK PROPERTY



Units belonging to the Mackenzie Platform are exposed in the northeast part of the area (Figure 3). The basement to this package is composed of rocks belonging to Gillespie Lake Group of the Early Proterozoic Wernecke Supergroup. These rocks were deformed prior to the Racklan Orogeny (1600 million years ago). They are unconformably overlain by Cambrian to Devonian Bouvette Formation.

Selwyn Basin stratigraphy in the region is floored by Neoproterozoic to Cambrian Hyland Group. The remainder of the section is a relatively conformable sequence consisting of Cambrian Gull Lake Formation, Upper Cambrian to Ordovician Rabbitkettle Formation, Ordovician to Silurian Road River Group, Devonian to Mississippian Earn Group and Mississippian Keno Hill Quartzite. The section is cut by granite, granodiorite and syenite of the Tombstone Suite and two-mica granites of the McQuesten Suite. It is locally capped by Permian and Triassic rocks of the Mt. Christie and Jones Lake Formations.

The main lithologies in area are briefly described in Table I.

**Table I - Regional Lithological Units (after Roots *in* Cathro 2006)**

<u>Tectonic Element</u>	<u>Age (Ma)</u>	<u>Unit and Lithologies</u>
<u>Rocks of Ancestral North America</u>		
Mackenzie Platform	1800 - 1700	Gillespie Lake Group: orange-brown dolostone and sandstone.
Mackenzie Platform	540 - 390	Bouvette Formation: white and grey limestone with rare black shale.
Selwyn Basin	750? - 530	Hyland Group: brown quartz-mica schist, with rare limestone.
Selwyn Basin	530 - 500	Gull Lake Formation: brown and green shale, sandstone, conglomerate and volcanic tuff.
Selwyn Basin	500 - 480	Rabbitkettle Formation: thin bedded, silty limestone and grey lustrous calcareous phyllite; limestone intraclast breccia and conglomerate.
Selwyn Basin	480 - 390	Road River Group: black shale, chert and limy siltstone.
<u>Rocks formed before mountain-building</u>		
	390 - 350	Earn Group: black shale and chert with lesser pebble conglomerate, sandstone and grit.
	340	Keno Hill Quartzite: grey metamorphosed sandstone, minor black shale and phyllite.
<u>Rocks formed during mountain-building</u>		
	200 - 250	Jones Lake and Mt. Christie Formations: sandstone, brown shale and dark limestone.

<u>Rocks formed after mountain-building</u>		
	90 - 94	Tombstone Suite intrusions: granite, granodiorite and syenite.
	62 - 67	McQuesten Suite intrusions: granite with two types of mica.
<u>Sediments younger than 3 Ma</u>		
	0 - 3	Overburden: ice-deposited sand and gravel; river silt.

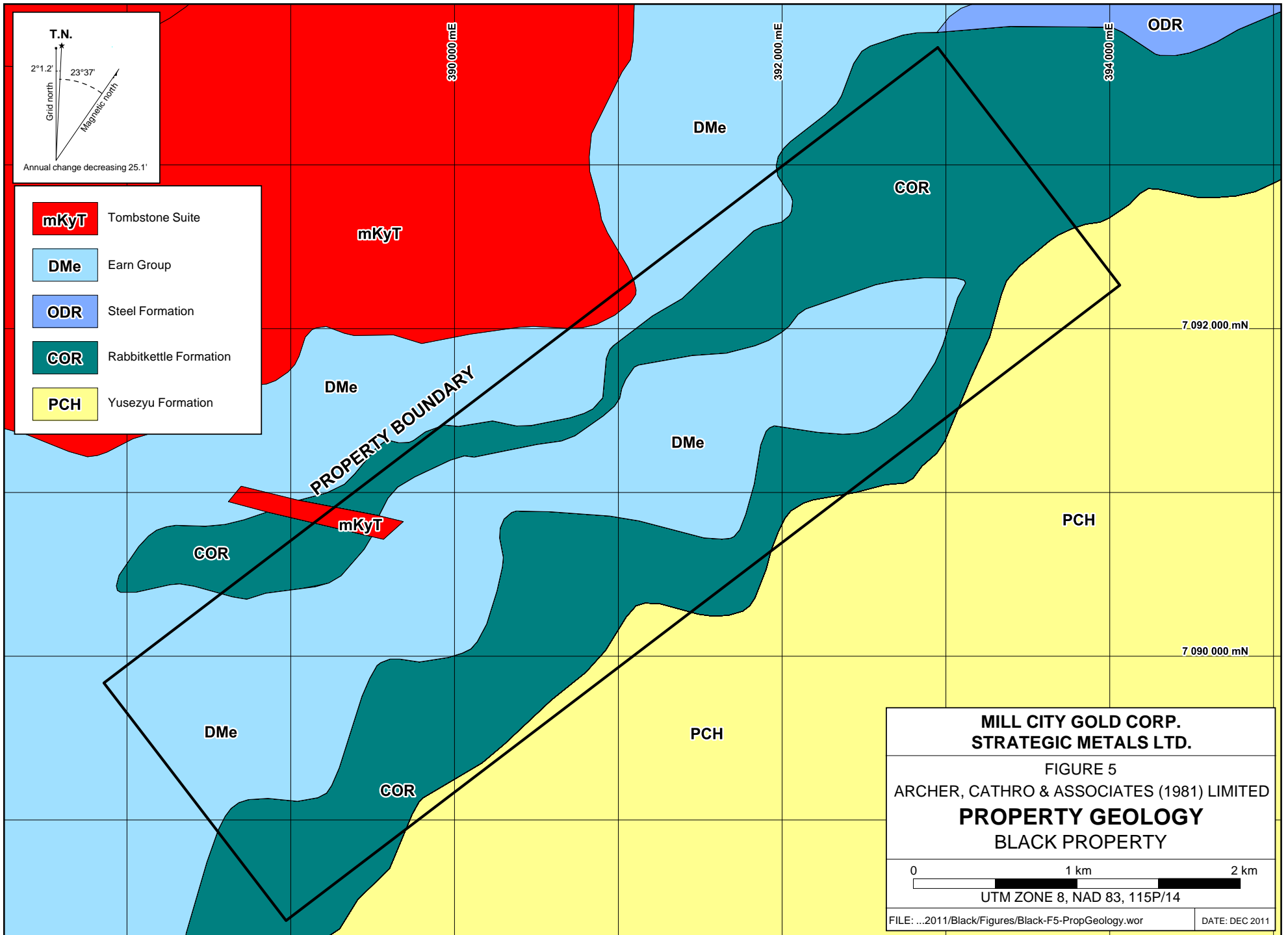
### **PROPERTY GEOLOGY**

No detailed mapping has been performed by Mill City Gold on the Black property. Descriptions of the intrusives are from Eaton and Eaton (2008) while the descriptions of the sedimentary rocks are based on mapping by Murphy, et al., (1996). Figure 5 illustrates the property geology as compiled by Gordey and Makepeace (2003).

The property lies on the southeastern side of the Lost Horses Stock and overlies Selwyn Basin stratigraphy assigned to the Earn Group, Road River Group, Rabbitkettle Formation and Hyland Group. The outer portion of the Lost Horses Stock is dominantly syenite containing approximately 65% potassium feldspar, up to 20% hornblende and 10% biotite. Potassium feldspar is always the dominant mineral and usually occurs as megacrysts averaging three centimetres in length. Rusty weathering quartz-chlorite xenoliths are common close to contacts with surrounding sedimentary rocks. The stock contains a granitic core, which is composed of quartz syenite and a range of tourmaline-bearing granites. The rim and core of the stock are distinguished primarily by variations in quartz content, with the proportion of quartz increasing toward the centre. The main intrusion occurs on the north edge of the property. A smaller, east-west trending, elongate plug is mapped in the northwestern part of the property.

The youngest sediments on the property belong to Earn Group and consist of grey to black shale/phyllite, siltstone, sandstone and chert pebble conglomerate. Earn Group is unconformably underlain by Rabbitkettle Formation, which comprises calcareous phyllites, thin-to medium-bedded marble/dolomitic marble and rare limestone pebble conglomerate. The basal unit is Upper Proterozoic to Lower Cambrian Yusezyu Formation of the Hyland Group, which consists of foliated blue grey and chalky white feldspar pebble sandstone.

The sediments are broadly folded. An anticline in the northern part of the property features a narrow east-northeast trending band of the Rabbitkettle Formation that is flanked by Earn Group on both sides. A second, wider band of Rabbitkettle Formation is exposed in the southern part of the property on the southern limb of a west-northwesterly plunging syncline. Both limbs of Rabbitkettle Formation reach the synclinal fold hinge east of the property. The rest of the claim block is underlain by Earn Group, except for a small area of Yusezyu Formation on its southern margin.



## REGIONAL MINERALIZATION

The Tintina Gold Belt is a 1600 km long by 300 km wide metallogenic district that extends across Yukon and Alaska. It hosts a broad range of gold and silver deposits related to Mid- and Late Cretaceous granitic intrusions. The Tombstone Gold Belt (TGB) forms an 800 km long by 50 km wide band within the Tintina Gold Belt. It is distinguishable as a separate entity because it is particularly prolific and its deposits are all associated with reduced plutons of the Mid-Cretaceous Tombstone Suite. The TGB stretches from western Northwest Territories to Dawson City in western Yukon, where it is offset to the Fairbanks District of Alaska by about 400 km of post-intrusion displacement along the Tintina Fault (Gabrielse, 1985 and Lang et al., 2000).

A simplified model has been prepared by Hart et al. (2000) to illustrate different types of gold bearing mineral deposits associated with Tombstone Suite intrusions. The following paragraphs briefly characterize the types of mineralization that may occur on the Black property and offer examples of deposits hosting similar types of mineralization elsewhere in the TGB.

Intrusion-hosted mineralization comprises: 1) arrays of sheeted, low sulphide, quartz±carbonate veins; or 2) disseminations of gold and accompanying sulphide minerals in weakly altered zones within the intrusions. The veins may be pegmatitic in part and are generally concentrated in the roof or margin zones of the pluton. The best example of intrusion-hosted sheeted vein mineralization is the Fort Knox Deposit in the Fairbanks District of Alaska. Production from 1996 through 2008 was 4.61 million ounces (130,691 kg) of gold from 163 million tonnes of ore (Henderson et al., 2008). A noteworthy Yukon example of sheeted vein type mineralization is the Eagle Zone of the Dublin Gulch Deposit. This zone contains 222 million tonnes of indicated mineral resource grading 0.68 g/t gold and 78 million tonnes of inferred mineral resource grading 0.60 g/t gold (Mosher et al., 2011). The best documented Yukon example of disseminated intrusion-hosted type mineralization are some of the zones that comprise the recently decommissioned Brewery Creek Mine, which lies approximately 60 km northwest of the Black property. At the Brewery Creek Mine a total of 9.46 million tonnes of ore at an average grade of 1.53 g/t gold was heap leached from 1996 through 2000 (Diment and Simpson, 2003).

Proximal country-rock hosted mineralization includes skarns, replacements and disseminations in thermally metamorphosed and metasomatized aureoles that surround Tombstone Suite plutons. Gold bearing skarns are locally developed within limy units and consist of coarse grained silicate assemblages dominated by pyroxene and garnet with lesser wollastonite, tremolite, and axinite. Sulphide assemblages are pyrrhotite and chalcopyrite with late pyrite, bismuthinite and gold or argentinian gold overprints. The Marn, Horn and Mike Lake copper-gold skarn occurrences are the best documented Yukon examples of proximal skarns. Respectively, they are located 112 km to the northwest, 106 km to the northwest and 68 km to the northwest of the Black property. Tungsten dominated skarns are associated with the Dublin Gulch Deposit but do not themselves contain significant amounts of gold. Replacement and disseminated gold mineralization has been reported in reactive sedimentary rocks within hornfelsed aureoles of several intrusions but there are few well explored examples. Mineralogy within hornfels is typified by coarse grained pyrrhotite, arsenopyrite and pyrite as irregular blebs and replacements.

Discrete quartz-sulphide veins are found within plutons, in proximal country rocks and in distal units. Mineralogy is dominated by quartz and late stage sulphide assemblages with varying amounts of pyrite, arsenopyrite, stibnite, galena and sphalerite. Although they can host high grade sections, grades are typically sporadic in veins and their tonnage potential is limited.

### **PROPERTY MINERALIZATION**

The Black property is underlain by units containing carbonate rocks, most notably the Rabbitkettle Formation, and is located near a Tombstone Suite intrusion. This setting is a favourable for skarn formation.

During their 1981 program, Mattagami collected 33 rock samples. Most of those samples returned background to weakly anomalous values with up to 40 ppb gold, up to 1.8 ppm silver and up to 70 ppm copper.

In 2011, Mill City Gold collected two rock samples from the Black property. Sample locations and results for gold, arsenic, silver and copper are plotted on Figures 6 to 10. Rock sample descriptions are given in Appendix II while Certificates of Analysis are provided in Appendix III.

Rock sample sites on the property were marked with orange flagging tape labeled with the sample number. The location of each sample was determined using a handheld GPS unit. Multi-element analyses for rock samples were carried out at ALS Chemex in Whitehorse, Yukon and/or North Vancouver, B.C. Each sample was dried, fine crushed to better than 70% passing 2 mm and a 250 g split was pulverized to better than 85% passing 75 microns. The fine fraction was analyzed for 51 elements using an aqua regia digestion followed by inductively coupled plasma combined with mass spectroscopy and atomic emission spectroscopy (ME-MS41). An additional 25 g charge was further analyzed for gold by aqua regia digestion with inductively coupled plasma mass spectroscopy finish (Au-TL44).

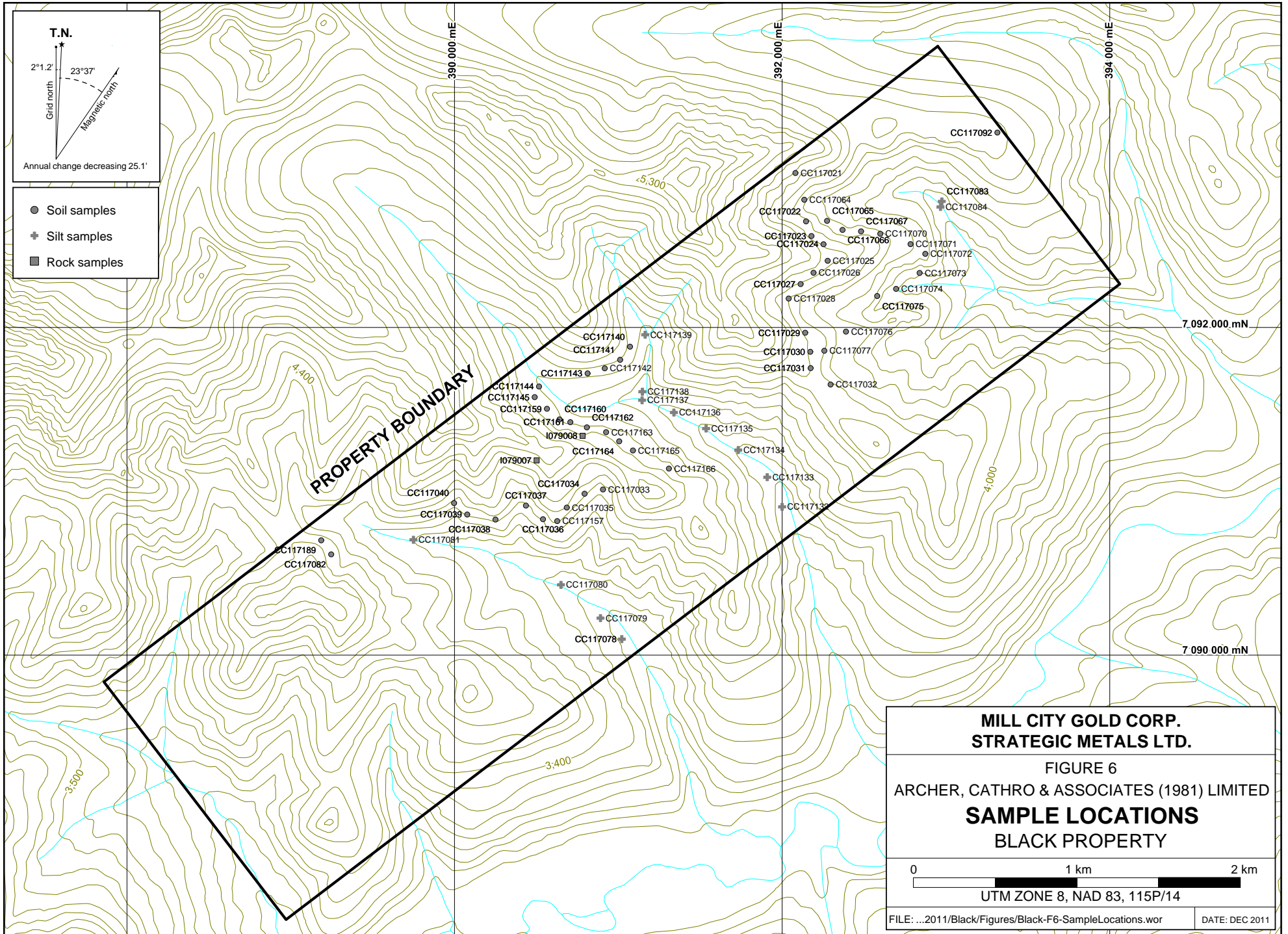
The two rock samples collected on the property in 2011 comprise rusty diorite with quartz veining that contain trace amounts of finely disseminated sulphides. Both samples yielded background values for gold (up to 1 ppb), arsenic (up to 70.6 ppm), silver (up to 0.37 ppm) and copper (up to 46 ppm).

### **STREAM SEDIMENT AND SOIL GEOCHEMISTRY**

Limited geochemical sampling conducted by Mattagami within the area now covered by the Black property returned subdued results, with the majority of the samples yielding values below detection limits.

In 2011, Mill City Gold collected 14 stream sediment and 50 soil samples. Sample locations and results for gold, arsenic, silver and copper are plotted on Figures 6 to 10, respectively. Certificates of Analysis are given in Appendix III.

Stream sediment samples were collected from creeks by hand, while soil samples were collected from 10 to 40 cm deep holes dug by hand-held auger. All samples were placed into individually



**T.N.**

Grid north  
2°1.2'  
23°37'  
Magnetic north

Annual change decreasing 25.1'

- Soil samples
- ⊕ Silt samples
- Rock samples

**PROPERTY BOUNDARY**

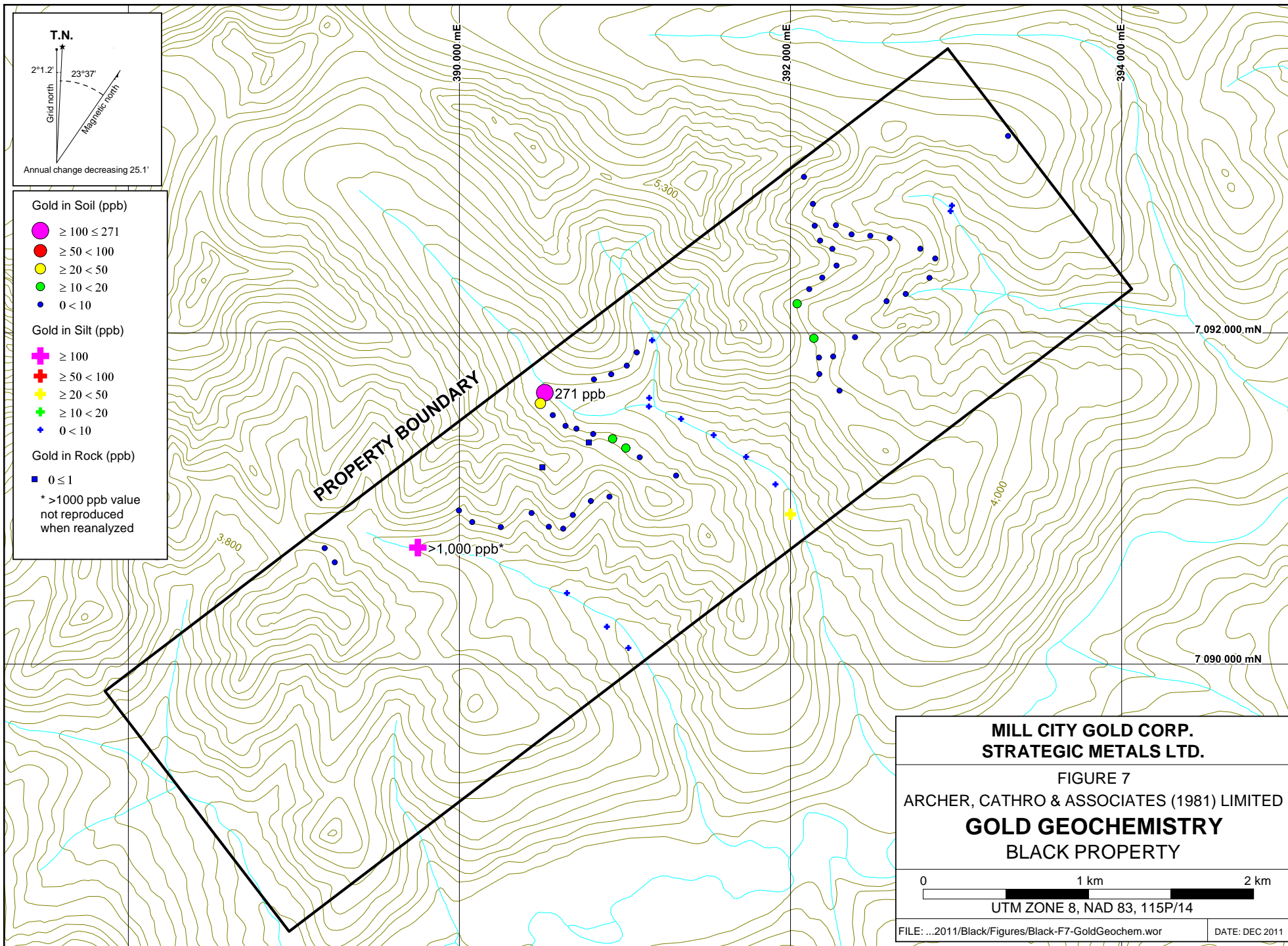
**MILL CITY GOLD CORP.  
STRATEGIC METALS LTD.**

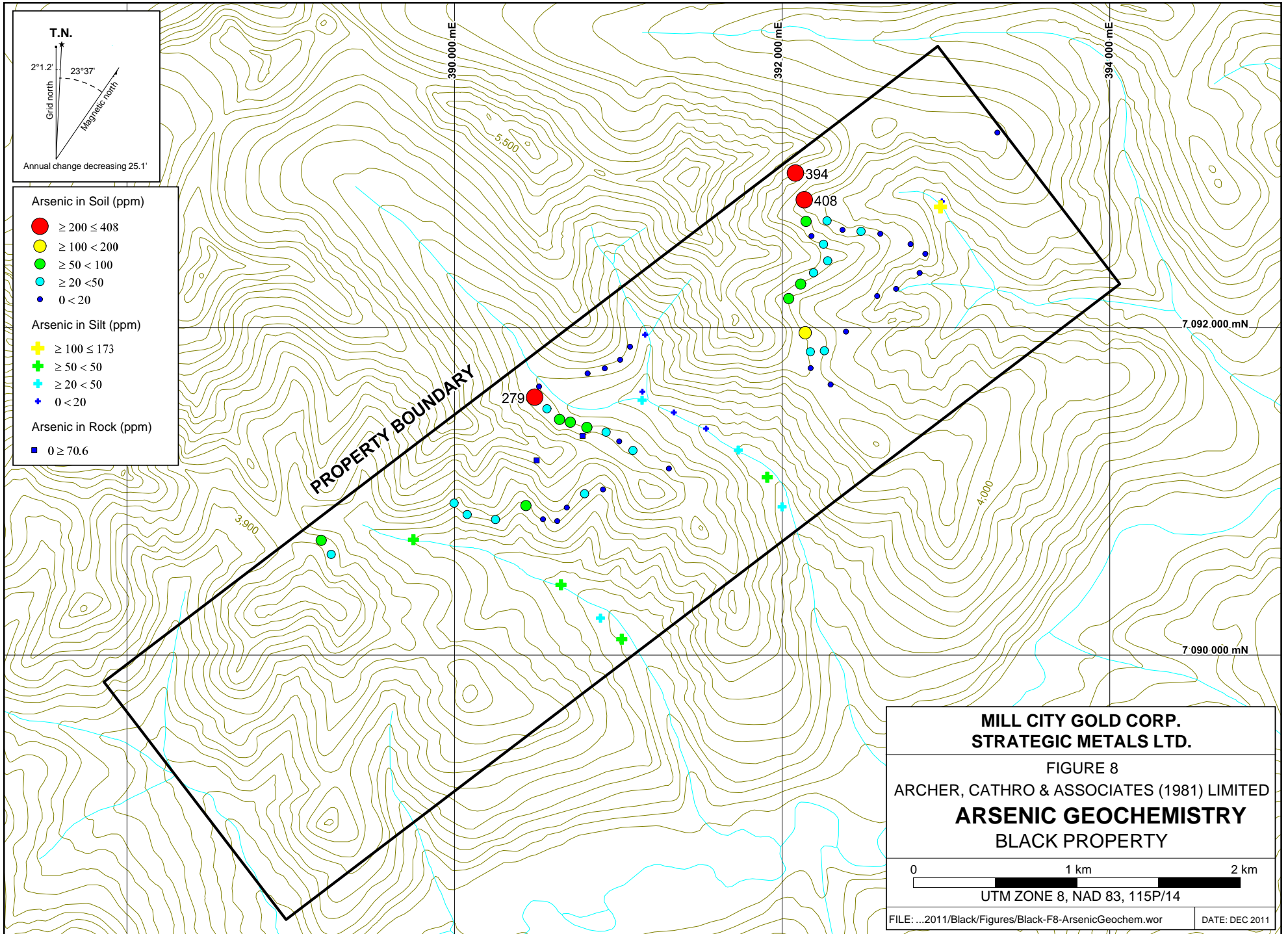
FIGURE 6  
ARCHER, CATHRO & ASSOCIATES (1981) LIMITED  
**SAMPLE LOCATIONS**  
BLACK PROPERTY

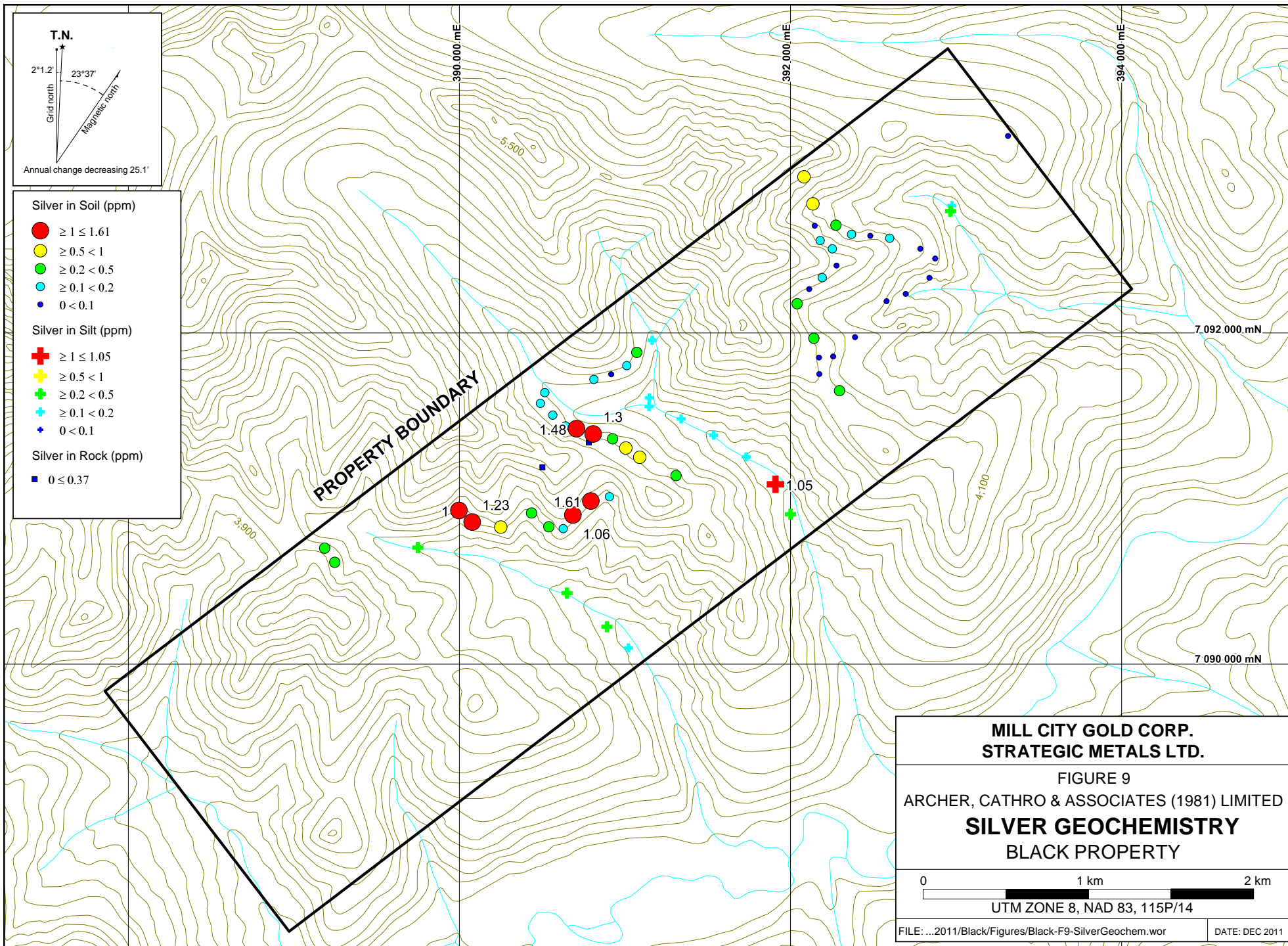
0 1 km 2 km

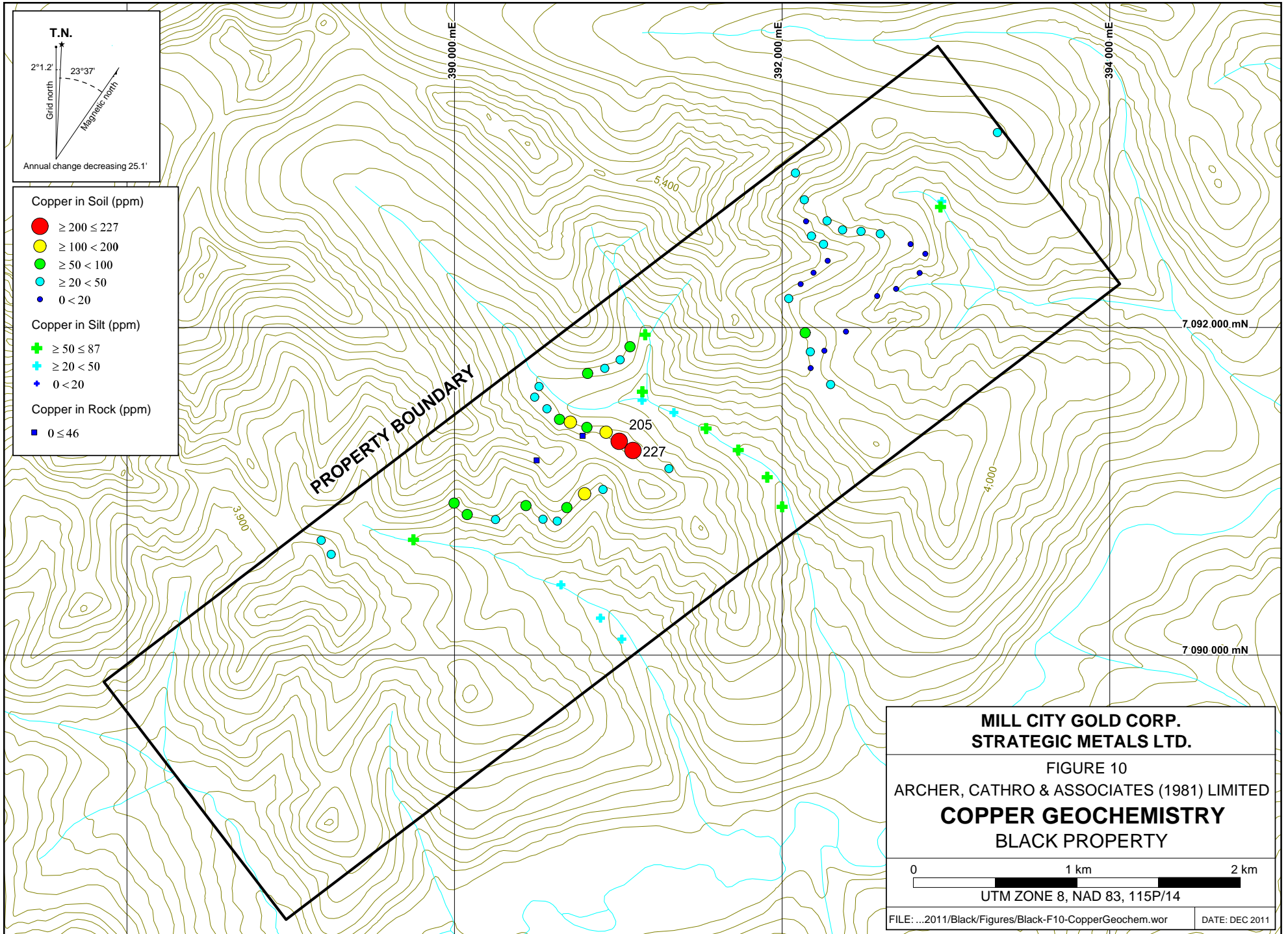
UTM ZONE 8, NAD 83, 115P/14

FILE: ...2011/Black/Figures/Black-F6-SampleLocations.wor DATE: DEC 2011









pre-numbered Kraft paper bags. Sample sites are marked by aluminum tags inscribed with the sample numbers and affixed to 0.5 m wooden lath that were driven into the ground. All sample locations were recorded using hand-held GPS units.

All samples were sent to ALS Chemex in Whitehorse, Yukon and/or Vancouver, B.C., where they were dried, screened to -180 microns, and then analyzed for 51 elements using an aqua regia digestion followed by inductively coupled plasma combined with mass spectroscopy and atomic emission spectroscopy (ME-MS41). An additional 25 g charge was further analysed for gold by aqua regia digestion with inductively coupled plasma mass spectroscopy finish (Au-TL43).

Most of the stream sediment samples returned background values for arsenic (up to 408 ppm) and copper (up to 87 ppm) and weakly elevated gold (up to 29 ppb) and silver (up to 1.05 ppm). One stream sediment sample yielded over 1000 ppb gold, but the value was not reproduced when the sample was reanalyzed.

The soil samples returned background to strongly anomalous values for gold (up to 271 ppb), arsenic (up to 408 ppm), silver (up to 1.61 ppm), and copper (up to 227 ppm).

The anomalous stream sediment and soil values are mostly concentrated in the centre of the property, near a syenite dyke and magnetic high.

### **DISCUSSION AND CONCLUSIONS**

The Black property has several interesting magnetic and electromagnetic anomalies that were identified by previous workers. Geochemical sampling performed by Mill City Gold in 2011 returned elevated values for gold, arsenic, silver and copper near a magnetic high, which could mark a skarn zone related to a syenite dyke.

Additional exploration is required on the Black property to constrain the extent, nature and source(s) of the stream sediment and soil geochemical anomalies. It is important to note that the geochemical sampling program conducted by Mill City Gold was performed in the spring and that frozen ground may have contributed to low metal values reported in some areas. It is recommended that additional stream sediment and soil sampling take place in mid to late summer when seasonal melt is at its maximum. Specific work targets should include: tightly spaced grid soil sampling over the magnetic lows and the surrounding magnetic highs; systematic prospecting and hand trenching to follow up the highest geochemical values; and detailed geological mapping near the porphyry dyke and in the vicinity of geochemical and geophysical anomalies.

Respectfully submitted,

ARCHER, CATHRO & ASSOCIATES (1981) LIMITED

Crystal J. Chung, B.Sc. Geology, GIT

## REFERENCES

- Biczok, J.  
1982 Fiona 1-47, 69 Claims Geology and Geochemistry, Mattagami Lake Exploration Limited; Assessment Report 090984.
- Cathro, R.J.  
2006 Great mining camps of Canada: Announcing a new series; *Geoscience Canada*, v. 33, no. 2, pp 56-59.
- Diment, R.M. and Simpson, R.G.  
2003 Brewery Creek Gold Project, Yukon Territory, Canada: private report for Viceroy Resources Corporation.
- Eaton, S. and Eaton, D.  
2008 Assessment Report Describing Diamond Drilling at the Hopeful Property, ATAC Resources.
- Fingler, J.  
2005 Private geological report on the McQuesten Property for Alexco Resources Corp; published in the Alexco prospectus available from [[http://www.sedar.com/issuers/issuers\\_en.htm](http://www.sedar.com/issuers/issuers_en.htm)].
- Gabrielse, H  
1985 Major dextral transcurrent displacements along the Northern Rocky Mountain Trench and related lineaments in north-central British Columbia, *Geological Survey of America Bulletin*, v. 96, p. 1-14.
- Gordey, S.P., and Makepeace, A.J. (comp.)  
2003 Yukon digital geology, version 2.0; Geological Survey of Canada, Open File 1749 and Yukon Geological Survey, Open File 2003-9 (D).
- Gregory, D.  
2009 Assessment Report Describing VTEM and Magnetic Geophysical Surveys at the Lost Horses Project, ATAC Resources Ltd.
- Hart, C.J.R.  
2007 Reduced Intrusion - Related Gold Systems; *in* Mineral Deposits of Canada; Geological Association of Canada, Mineral Deposits Division, Special Publication No. 5, pp 95-112.
- Hart, C.J.R., Baker, T. and Burke, M.  
2000 New Exploration Concepts for Country-Rock-Hosted, Intrusion-Related Gold Systems: Tintina Gold Belt in Yukon; *in* the Tintina Gold Belt: Concepts, Exploration and Discoveries; British Columbia and Yukon Chamber of Mines, Special Volume 2, pp 145-171

- Henderson, R.D., Quandt, D., Ekstrom, C., Triebel, K.  
 2008 Technical report of the Fort Knox and True North Deposits, Fairbanks North Star Borough, Alaska, USA: private report for Fairbanks Gold Mining Incorporation.
- Lang, J.R., Baker, T., Hart C.J.R., and Mortensen, J.K.  
 2000 An exploration model for intrusive-related gold systems; Society of Economic Geologists Newsletter; No 40, January 2000.
- Mortensen, J.K, Hart, C.J.R, Murphy, D.C and Heffernan, S.  
 2000 Temporal Evolution of Early and Mid-Cretaceous Magnetism in the Tintina Gold Belt; *in the Tintina Gold Belt: Concepts, Exploration and Discoveries*; British Columbia and Yukon Chamber of Mines, Special Volume 2, pp 49-58.
- Mosher, G., Triebel, K.  
 2011 Technical Report for the Eagle Zone, Dublin Gulch Project, Yukon Territory; prepared for Victoria Gold Corp. by Wardrop.
- Murphy, D.C., Heon, D., and Hart, J.A.  
 1996 Geological map of Clear Creek area, western Selwyn Basin, Yukon; Exploration and Geological Service Division, Yukon, Indian and Northern Affairs Canada, Geoscience Map 1996-1, 1:50000 scale.
- Pigage, L.C.  
 2004 Bedrock geology compilation of the Anvil District (parts of 105K/2, 3, 5, 7 and 11), central Yukon; Yukon Geological Survey; Bulletin 15.

**APPENDIX I**  
**STATEMENT OF QUALIFICATIONS**

## **STATEMENT OF QUALIFICATIONS**

I, Crystal J Chung, geologist, with business addresses in Vancouver, British Columbia and Whitehorse, Yukon Territory and residential address in Burnaby, British Columbia do hereby certify that:

1. I graduated from the University of British Columbia in 2005 with a B.Sc. majoring in Earth and Ocean Sciences (Geology).
2. From 2004 to present, I have been actively engaged in mineral exploration in British Columbia, Alaska and the Yukon Territory.
3. I am a Geoscientist in Training (GIT) with the Association of Professional Engineers and Geoscientists of British Columbia (Member Number 138321).
4. I have personally reviewed and interpreted all data resulting from this work.

Crystal J Chung, B.Sc., GIT

**APPENDIX II**  
**ROCK SAMPLE DESCRIPTIONS**

---

**Rock Sample Descriptions**Project: TombstoneProperty: Black

---

Sample Number:	Grid East:	E	Grid North:	N	Type:	Dimension:
I079007	UTM:	390501 E	UTM:	7091189 N	Sample Width:	Abundance:
	Elevation:	m				

Comments: Rusty diorite outcrop with quartz veining. Rusty zone 1.5m width, within unaltered diorite outcrop.

---

Sample Number:	Grid East:	E	Grid North:	N	Type:	Dimension:
I079008	UTM:	390782 E	UTM:	7091339 N	Sample Width:	Abundance:
	Elevation:	m				

Comments: Rusty diorite with fine disseminated sulphide, 30X70m area rusty, near source talus zone.

---

**APPENDIX III**  
**CERTIFICATES OF ANALYSIS**



ALS Canada Ltd.  
 2103 Dollarton Hwy  
 North Vancouver BC V7H 0A7  
 Phone: 604 984 0221 Fax: 604 984 0218 www.alsglobal.com

To: **ARCHER, CATHRO AND ASSOCIATES (1981) LIMITED**  
**1016- 510 W HASTINGS ST**  
**VANCOUVER BC V6B 1L8**

Page: 1  
 Finalized Date: 16- JUN- 2011  
 Account: F

**CERTIFICATE WH11103062**

Project: Tombstone Gold - Black  
 P.O. No.:  
 This report is for 2 Rock samples submitted to our lab in Whitehorse, YT, Canada on 8- JUN- 2011.  
 The following have access to data associated with this certificate:  
 DOUG EATON                      SARAH EATON                      JOAN MARIACHER

SAMPLE PREPARATION	
ALS CODE	DESCRIPTION
WEI- 21	Received Sample Weight
LOG- 22	Sample login - Rcd w/o BarCode
CRU- QC	Crushing QC Test
CRU- 31	Fine crushing - 70% < 2mm
PUL- QC	Pulverizing QC Test
SPL- 21	Split sample - riffle splitter
PUL- 31	Pulverize split to 85% < 75 um

ANALYTICAL PROCEDURES		
ALS CODE	DESCRIPTION	INSTRUMENT
Au- TL44	Trace Level Au - 50 g AR	ICP- MS
ME- MS41	51 anal. aqua regia ICPMS	

To: **ARCHER, CATHRO AND ASSOCIATES (1981) LIMITED**  
**ATTN: JOAN MARIACHER**  
**1016- 510 W HASTINGS ST**  
**VANCOUVER BC V6B 1L8**

This is the Final Report and supersedes any preliminary report with this certificate number. Results apply to samples as submitted. All pages of this report have been checked and approved for release.

**Signature:**   
 Colin Ramshaw, Vancouver Laboratory Manager



ALS Canada Ltd.  
 2103 Dollarton Hwy  
 North Vancouver BC V7H 0A7  
 Phone: 604 984 0221 Fax: 604 984 0218 www.alsglobal.com

To: ARCHER, CATHRO AND ASSOCIATES (1981)  
 LIMITED  
 1016- 510 W HASTINGS ST  
 VANCOUVER BC V6B 1L8

Page: 2 - A  
 Total # Pages: 2 (A - D)  
 Plus Appendix Pages  
 Finalized Date: 16- JUN- 2011  
 Account: F

Project: Tombstone Gold - Black

**CERTIFICATE OF ANALYSIS WH11103062**

Sample Description	Method Analyte Units LOR	WEI- 21 Recvd Wt. kg	Au- TL44 Au ppm	ME- MS41 Ag ppm	ME- MS41 Al %	ME- MS41 As ppm	ME- MS41 Au ppm	ME- MS41 B ppm	ME- MS41 Ba ppm	ME- MS41 Be ppm	ME- MS41 Bi ppm	ME- MS41 Ca %	ME- MS41 Cd ppm	ME- MS41 Ce ppm	ME- MS41 Co ppm	ME- MS41 Cr ppm
		0.02	0.001	0.01	0.01	0.1	0.2	10	10	0.05	0.01	0.01	0.01	0.02	0.1	1
1079007		0.59	0.001	0.37	1.03	70.6	<0.2	<10	260	1.02	1.60	0.64	0.69	45.5	2.7	23
1079008		0.32	0.001	0.19	0.57	11.2	<0.2	<10	80	0.62	0.36	0.46	0.62	79.8	15.9	17



ALS Canada Ltd.  
 2103 Dollarton Hwy  
 North Vancouver BC V7H 0A7  
 Phone: 604 984 0221 Fax: 604 984 0218 www.alsglobal.com

To: ARCHER, CATHRO AND ASSOCIATES (1981)  
 LIMITED  
 1016- 510 W HASTINGS ST  
 VANCOUVER BC V6B 1L8

Page: 2 - B  
 Total # Pages: 2 (A - D)  
 Plus Appendix Pages  
 Finalized Date: 16- JUN- 2011  
 Account: F

Project: Tombstone Gold - Black

**CERTIFICATE OF ANALYSIS WH11103062**

Sample Description	Method Analyte Units LOR	ME- MS41 Cs ppm 0.05	ME- MS41 Cu ppm 0.2	ME- MS41 Fe % 0.01	ME- MS41 Ga ppm 0.05	ME- MS41 Ge ppm 0.05	ME- MS41 Hf ppm 0.02	ME- MS41 Hg ppm 0.01	ME- MS41 In ppm 0.005	ME- MS41 K % 0.01	ME- MS41 La ppm 0.2	ME- MS41 Li ppm 0.1	ME- MS41 Mg % 0.01	ME- MS41 Mn ppm 5	ME- MS41 Mo ppm 0.05	ME- MS41 Na % 0.01
1079007		2.08	46.0	2.02	3.30	0.17	0.21	0.03	0.007	0.09	23.8	9.7	0.26	88	1.43	0.09
1079008		0.68	12.1	2.07	3.45	0.21	0.66	0.01	0.007	0.15	41.1	7.6	0.20	137	2.46	0.07



ALS Canada Ltd.  
 2103 Dollarton Hwy  
 North Vancouver BC V7H 0A7  
 Phone: 604 984 0221 Fax: 604 984 0218 www.alsglobal.com

To: ARCHER, CATHRO AND ASSOCIATES (1981)  
 LIMITED  
 1016- 510 W HASTINGS ST  
 VANCOUVER BC V6B 1L8

Page: 2 - C  
 Total # Pages: 2 (A - D)  
 Plus Appendix Pages  
 Finalized Date: 16- JUN- 2011  
 Account: F

Project: Tombstone Gold - Black

**CERTIFICATE OF ANALYSIS WH11103062**

Sample Description	Method Analyte Units LOR	ME- MS41 Nb ppm	ME- MS41 Ni ppm	ME- MS41 P ppm	ME- MS41 Pb ppm	ME- MS41 Rb ppm	ME- MS41 Re ppm	ME- MS41 S %	ME- MS41 Sb ppm	ME- MS41 Sc ppm	ME- MS41 Se ppm	ME- MS41 Sn ppm	ME- MS41 Sr ppm	ME- MS41 Ta ppm	ME- MS41 Te ppm	ME- MS41 Th ppm
1079007		0.74	13.8	1460	26.2	5.9	<0.001	0.09	1.92	1.5	5.7	1.2	71.6	<0.01	0.08	11.6
1079008		2.02	51.1	800	13.8	8.1	0.002	0.96	1.02	1.7	1.7	0.5	52.8	0.01	0.10	24.5

\*\*\*\*\* See Appendix Page for comments regarding this certificate \*\*\*\*\*



ALS Canada Ltd.  
 2103 Dollarton Hwy  
 North Vancouver BC V7H 0A7  
 Phone: 604 984 0221 Fax: 604 984 0218 www.alsglobal.com

To: ARCHER, CATHRO AND ASSOCIATES (1981)  
 LIMITED  
 1016- 510 W HASTINGS ST  
 VANCOUVER BC V6B 1L8

Page: 2 - D  
 Total # Pages: 2 (A - D)  
 Plus Appendix Pages  
 Finalized Date: 16- JUN- 2011  
 Account: F

Project: Tombstone Gold - Black

**CERTIFICATE OF ANALYSIS WH11103062**

Sample Description	Method Analyte Units LOR	ME- MS41 Ti %	ME- MS41 Ti ppm	ME- MS41 U ppm	ME- MS41 V ppm	ME- MS41 W ppm	ME- MS41 Y ppm	ME- MS41 Zn ppm	ME- MS41 Zr ppm
		0.005	0.02	0.05	1	0.05	0.05	2	0.5
1079007		0.059	0.05	1.03	12	0.38	6.46	40	10.0
1079008		0.107	0.08	4.09	22	0.63	13.95	111	21.0

\*\*\*\*\* See Appendix Page for comments regarding this certificate \*\*\*\*\*



ALS Canada Ltd.  
2103 Dollarton Hwy  
North Vancouver BC V7H 0A7  
Phone: 604 984 0221 Fax: 604 984 0218 www.alsglobal.com

To: ARCHER, CATHRO AND ASSOCIATES (1981)  
LIMITED  
1016- 510 W HASTINGS ST  
VANCOUVER BC V6B 1L8

Page: Appendix 1  
Total # Appendix Pages: 1  
Finalized Date: 16- JUN- 2011  
Account: F

Project: Tombstone Gold - Black

**CERTIFICATE OF ANALYSIS WH11103062**

Method	CERTIFICATE COMMENTS
ME- MS41	Gold determinations by this method are semi- quantitative due to the small sample weight used (0.5g).



ALS Canada Ltd.  
 2103 Dollarton Hwy  
 North Vancouver BC V7H 0A7  
 Phone: 604 984 0221 Fax: 604 984 0218 www.alsglobal.com

To: **ARCHER, CATHRO AND ASSOCIATES (1981) LIMITED**  
**1016- 510 W HASTINGS ST**  
**VANCOUVER BC V6B 1L8**

Page: 1  
 Finalized Date: 24- JUN- 2011  
 Account: F

**CERTIFICATE WH11103061**

Project: Tombstone Gold Black  
 P.O. No.:  
 This report is for 65 Soil samples submitted to our lab in Whitehorse, YT, Canada on 8- JUN- 2011.  
 The following have access to data associated with this certificate:  
 DOUG EATON                      SARAH EATON                      JOAN MARIACHER

SAMPLE PREPARATION	
ALS CODE	DESCRIPTION
WEI- 21	Received Sample Weight
LOG- 22	Sample login - Rcd w/o BarCode
SCR- 41	Screen to - 180um and save both

ANALYTICAL PROCEDURES		
ALS CODE	DESCRIPTION	INSTRUMENT
Au- TL43	Trace Level Au - 25g AR	ICP- MS
ME- MS41	51 anal. aqua regia ICPMS	
Au- OG43	Ore Grade Au - 25g AR	ICP- MS

To: **ARCHER, CATHRO AND ASSOCIATES (1981) LIMITED**  
**ATTN: JOAN MARIACHER**  
**1016- 510 W HASTINGS ST**  
**VANCOUVER BC V6B 1L8**

This is the Final Report and supersedes any preliminary report with this certificate number. Results apply to samples as submitted. All pages of this report have been checked and approved for release.

**Signature:**   
 Colin Ramshaw, Vancouver Laboratory Manager



ALS Canada Ltd.  
 2103 Dollarton Hwy  
 North Vancouver BC V7H 0A7  
 Phone: 604 984 0221 Fax: 604 984 0218 www.alsglobal.com

To: ARCHER, CATHRO AND ASSOCIATES (1981)  
 LIMITED  
 1016- 510 W HASTINGS ST  
 VANCOUVER BC V6B 1L8

Page: 2 - A  
 Total # Pages: 3 (A - D)  
 Plus Appendix Pages  
 Finalized Date: 24- JUN- 2011  
 Account: F

Project: Tombstone Gold Black

**CERTIFICATE OF ANALYSIS WH11103061**

Sample Description	Method Analyte Units LOR	WEI- 21	Au- TL43	ME- MS41	ME- MS41	ME- MS41	ME- MS41	ME- MS41	ME- MS41	ME- MS41	ME- MS41	ME- MS41	ME- MS41	ME- MS41	ME- MS41	
		Recvd Wt. kg	Au ppm	Ag ppm	Al %	As ppm	Au ppm	B ppm	Ba ppm	Be ppm	Bi ppm	Ca %	Cd ppm	Ce ppm	Co ppm	Cr ppm
CC117021		0.02	0.001	0.01	0.01	0.1	0.2	10	10	0.05	0.01	0.01	0.01	0.02	0.1	1
CC117022		0.38	0.006	0.74	1.43	394	<0.2	<10	490	0.86	0.69	0.27	2.16	20.8	8.8	34
CC117023		0.32	0.001	0.05	1.20	93.4	<0.2	<10	70	0.30	1.27	0.06	0.23	20.7	3.2	22
CC117024		0.35	0.002	0.11	1.88	16.5	<0.2	<10	130	0.67	0.32	0.09	0.16	23.8	5.8	32
CC117025		0.44	0.003	0.16	2.56	42.6	<0.2	<10	340	1.62	0.59	0.36	0.23	28.5	9.8	39
CC117026		0.33	0.001	0.07	1.76	28.0	<0.2	<10	100	0.52	0.24	0.08	0.23	20.4	5.4	25
CC117027		0.37	0.007	0.12	1.69	31.3	<0.2	<10	170	0.94	0.33	0.14	0.23	22.3	9.7	31
CC117028		0.26	0.002	0.06	1.39	52.0	<0.2	<10	140	0.52	0.54	0.11	0.30	22.9	4.9	27
CC117029		0.31	0.013	0.37	1.83	81.9	<0.2	<10	370	1.49	0.49	0.75	7.89	28.0	10.9	32
CC117030		0.38	0.014	0.39	3.05	162.5	<0.2	<10	350	1.38	0.53	0.37	0.53	26.2	13.9	38
CC117031		0.47	0.005	0.08	1.79	39.8	<0.2	<10	170	0.74	0.28	0.20	0.17	28.5	5.9	29
CC117032		0.50	0.001	0.05	2.45	12.8	<0.2	<10	200	0.85	0.20	0.12	0.24	28.7	9.5	33
CC117033		0.34	0.002	0.40	1.94	9.1	<0.2	<10	220	0.56	0.18	0.50	0.35	17.95	4.1	39
CC117034		0.20	0.002	0.19	2.83	8.5	<0.2	<10	2730	1.52	0.12	1.75	0.34	38.8	13.8	53
CC117035		0.27	0.001	1.61	2.80	24.8	<0.2	<10	330	2.00	0.32	1.32	3.37	68.1	27.0	133
CC117036		0.36	0.002	1.06	2.69	19.5	<0.2	<10	950	1.21	0.23	1.02	1.97	35.4	16.1	58
CC117037		0.28	0.001	0.42	2.73	18.3	<0.2	<10	790	1.13	0.33	0.63	0.78	33.8	18.8	54
CC117038		0.36	0.004	0.45	2.40	98.6	<0.2	<10	760	1.24	0.62	2.05	0.59	27.8	16.0	80
CC117039		0.22	0.002	0.90	5.50	23.5	<0.2	<10	290	2.92	0.29	1.43	0.27	47.6	34.6	83
CC117040		0.32	0.002	1.23	2.54	33.6	<0.2	<10	240	1.48	0.25	0.24	2.15	23.5	8.7	68
CC117064		0.32	0.001	1.00	3.89	23.9	<0.2	<10	960	1.19	0.16	0.25	3.34	33.2	42.5	61
CC117065		0.26	0.003	0.63	1.90	408	<0.2	<10	310	1.15	1.52	0.40	5.80	21.9	11.2	46
CC117066		0.22	0.002	0.28	1.93	37.2	<0.2	<10	110	1.52	0.25	0.58	0.28	25.8	8.2	29
CC117067		0.18	0.003	0.15	1.78	14.2	<0.2	<10	150	0.83	0.22	0.16	0.21	20.3	6.7	29
CC117070		0.07	<0.001	0.08	2.76	22.8	<0.2	<10	450	0.64	0.13	0.62	0.33	20.9	20.0	50
CC117071		0.21	<0.001	0.11	2.82	9.8	<0.2	<10	390	1.09	0.14	0.32	0.46	35.4	20.8	46
CC117072		0.33	0.002	0.04	1.95	9.2	<0.2	<10	200	0.58	0.18	0.70	0.10	27.8	7.5	27
CC117073		0.24	0.001	0.02	2.23	4	<0.2	<10	280	0.88	0.08	14.10	0.06	29.4	6.0	26
CC117074		0.22	0.001	0.03	2.75	6	<0.2	<10	570	1.02	0.10	12.20	0.08	26.9	8.3	30
CC117075		0.21	0.001	0.07	3.36	10.3	<0.2	<10	470	1.10	0.13	7.41	0.20	25.1	8.1	40
CC117076		0.19	0.001	0.04	3.40	4	<0.2	<10	430	1.29	0.11	10.65	0.12	31.9	7.9	36
CC117077		0.18	0.002	0.06	2.75	19.9	<0.2	<10	320	1.06	0.23	0.30	0.15	23.6	7.1	41
CC117078		0.26	0.001	0.07	2.21	33.4	<0.2	<10	320	0.62	0.29	0.16	0.19	34.5	7.0	37
CC117079		0.47	0.003	0.16	1.53	61.7	<0.2	<10	680	1.22	0.44	1.01	16.75	74.4	21.3	32
CC117080		0.38	0.002	0.22	1.81	43.3	<0.2	<10	460	1.06	0.42	0.93	23.8	42.9	18.7	33
CC117081		0.23	0.001	0.31	2.35	51.9	<0.2	<10	1040	0.71	0.13	1.32	16.55	32.5	48.4	49
CC117082		0.41	>1.00	0.24	1.72	65.0	<0.2	<10	440	2.80	0.81	1.12	15.00	104.5	70.8	29
CC117083		0.24	0.003	0.23	1.53	28.8	<0.2	<10	120	1.08	0.89	0.09	0.30	26.3	6.9	24
CC117084		0.15	0.001	0.17	1.68	4.7	<0.2	<10	180	0.67	0.18	1.62	0.27	49.8	12.3	25
CC117092		0.12	0.004	0.46	1.79	173.0	<0.2	<10	430	1.11	0.71	1.29	17.40	26.7	13.1	32
CC117092		0.16	0.005	0.07	1.57	15.2	<0.2	<10	180	0.93	0.22	0.20	0.17	53.5	8.1	29

\*\*\*\*\* See Appendix Page for comments regarding this certificate \*\*\*\*\*



ALS Canada Ltd.  
 2103 Dollarton Hwy  
 North Vancouver BC V7H 0A7  
 Phone: 604 984 0221 Fax: 604 984 0218 www.alsglobal.com

To: ARCHER, CATHRO AND ASSOCIATES (1981)  
 LIMITED  
 1016- 510 W HASTINGS ST  
 VANCOUVER BC V6B 1L8

Page: 2 - B  
 Total # Pages: 3 (A - D)  
 Plus Appendix Pages  
 Finalized Date: 24- JUN- 2011  
 Account: F

Project: Tombstone Gold Black

**CERTIFICATE OF ANALYSIS WH11103061**

Sample Description	Method Analyte Units LOR	ME- MS41	ME- MS41	ME- MS41	ME- MS41	ME- MS41	ME- MS41	ME- MS41	ME- MS41	ME- MS41	ME- MS41	ME- MS41	ME- MS41	ME- MS41	ME- MS41	
		Cs ppm	Cu ppm	Fe %	Ga ppm	Ge ppm	Hf ppm	Hg ppm	In ppm	K %	La ppm	Li ppm	Mg %	Mn ppm	Mo ppm	Na %
CC117021		4.13	38.1	2.49	5.14	0.09	0.02	0.05	0.027	0.06	10.7	18.0	0.39	445	7.69	0.01
CC117022		2.76	12.0	2.35	8.34	0.07	0.02	0.05	0.015	0.05	10.6	11.4	0.23	120	1.91	0.01
CC117023		3.09	20.0	2.66	9.36	0.09	0.03	0.04	0.022	0.08	12.3	24.1	0.54	219	2.06	0.01
CC117024		5.04	22.0	2.75	8.90	0.20	0.03	0.03	0.018	0.25	14.6	34.8	1.27	273	0.84	0.01
CC117025		2.81	10.5	2.52	6.80	0.07	0.03	0.06	0.018	0.04	10.5	19.6	0.33	224	1.31	0.01
CC117026		2.55	18.3	2.33	6.58	0.08	0.02	0.03	0.017	0.07	10.3	21.9	0.61	397	1.21	0.01
CC117027		3.35	15.8	2.42	6.81	0.08	0.02	0.04	0.018	0.06	11.3	16.8	0.43	206	1.48	0.01
CC117028		6.25	45.9	2.57	6.57	0.10	0.03	0.05	0.024	0.07	16.2	21.9	0.50	525	6.69	0.02
CC117029		5.47	59.9	2.57	10.70	0.15	0.10	0.04	0.024	0.20	14.0	37.7	1.59	243	3.93	0.03
CC117030		3.27	21.4	2.34	7.40	0.10	0.02	0.03	0.018	0.10	15.0	25.2	0.71	137	1.60	0.01
CC117031		1.54	18.8	3.08	6.52	0.10	0.08	0.03	0.024	0.10	14.8	31.3	0.66	291	1.53	0.01
CC117032		2.39	47.4	2.05	9.03	0.11	0.02	0.05	0.024	0.24	10.5	23.3	0.83	155	5.29	0.01
CC117033		3.03	21.6	3.29	10.55	0.15	0.06	0.04	0.032	0.18	21.7	41.1	1.06	544	1.21	0.11
CC117034		6.74	105.5	5.02	11.60	0.28	0.19	0.05	0.048	0.36	34.6	26.4	1.44	423	8.46	0.04
CC117035		4.16	63.2	3.79	8.01	0.20	0.09	0.06	0.042	0.21	19.2	33.7	0.82	339	3.90	0.06
CC117036		4.27	37.9	4.02	9.24	0.17	0.04	0.03	0.042	0.24	18.0	36.0	0.97	288	3.07	0.05
CC117037		4.75	56.7	2.65	9.67	0.19	0.18	0.04	0.029	0.20	15.1	35.0	1.45	311	2.30	0.06
CC117038		3.33	47.7	5.19	12.10	0.28	0.09	0.04	0.033	0.27	25.4	34.3	1.04	837	1.50	0.28
CC117039		4.24	54.5	3.72	9.76	0.14	0.13	0.08	0.040	0.10	13.8	28.2	0.52	204	12.45	0.04
CC117040		4.42	85.7	6.75	11.30	0.21	0.12	0.04	0.066	0.15	16.6	49.3	0.81	407	11.95	0.09
CC117064		10.40	31.7	3.27	7.47	0.11	0.02	0.04	0.028	0.08	10.7	40.7	0.62	322	7.30	0.02
CC117065		4.78	32.7	2.19	7.05	0.13	0.04	0.03	0.019	0.10	13.2	30.2	0.76	200	1.53	0.02
CC117066		3.11	22.0	2.46	7.24	0.09	0.02	0.04	0.020	0.08	10.6	27.3	0.64	215	1.59	0.01
CC117067		2.00	27.7	3.53	9.63	0.13	0.02	0.05	0.026	0.12	9.6	29.8	0.95	350	1.20	0.03
CC117070		1.46	24.7	3.43	6.90	0.12	0.04	0.04	0.026	0.12	16.2	31.0	0.66	574	1.13	0.03
CC117071		1.17	13.2	2.40	6.82	0.10	0.03	0.03	0.027	0.04	12.5	18.4	0.81	221	0.58	0.02
CC117072		0.89	9.2	1.73	6.41	0.14	0.08	0.02	0.023	0.08	16.6	21.6	1.78	317	0.18	0.06
CC117073		1.89	12.1	1.86	8.76	0.15	0.07	0.04	0.026	0.33	13.2	22.4	1.70	302	0.28	0.15
CC117074		3.45	14.8	2.19	10.85	0.13	0.10	0.04	0.031	0.19	13.4	34.8	1.97	287	0.49	0.20
CC117075		2.17	11.7	2.06	10.40	0.16	0.06	0.03	0.033	0.18	16.6	35.3	1.82	317	0.33	0.24
CC117076		4.57	18.0	2.74	10.25	0.09	0.02	0.04	0.028	0.06	11.5	34.2	1.52	179	1.33	0.01
CC117077		2.85	18.5	2.59	9.32	0.11	0.02	0.05	0.023	0.13	17.1	17.0	0.96	285	1.60	0.01
CC117078		5.08	35.3	3.34	5.85	0.18	0.07	0.04	0.025	0.20	38.9	24.5	0.87	4930	7.74	0.03
CC117079		5.13	34.8	2.75	6.41	0.15	0.04	0.05	0.023	0.18	24.9	21.5	1.43	6650	8.66	0.02
CC117080		5.00	42.6	8.30	7.97	0.19	0.03	0.05	0.033	0.16	17.6	29.9	1.08	9140	19.35	0.06
CC117081		9.25	63.8	2.71	5.99	0.21	0.04	0.09	0.024	0.22	67.3	34.5	0.62	948	3.41	0.02
CC117082		3.06	26.5	2.98	5.84	0.10	<0.02	0.06	0.020	0.11	12.7	17.5	0.33	216	1.60	0.01
CC117083		0.95	31.0	2.75	4.93	0.13	0.11	0.06	0.026	0.05	26.4	30.7	1.32	371	0.49	0.01
CC117084		10.75	64.2	2.60	5.53	0.14	0.03	0.07	0.026	0.10	14.4	31.1	0.90	333	4.48	0.03
CC117092		4.37	26.5	2.68	6.12	0.14	0.02	0.04	0.021	0.11	27.5	18.0	0.52	246	1.05	0.01

\*\*\*\*\* See Appendix Page for comments regarding this certificate \*\*\*\*\*



ALS Canada Ltd.  
 2103 Dollarton Hwy  
 North Vancouver BC V7H 0A7  
 Phone: 604 984 0221 Fax: 604 984 0218 www.alsglobal.com

To: ARCHER, CATHRO AND ASSOCIATES (1981)  
 LIMITED  
 1016- 510 W HASTINGS ST  
 VANCOUVER BC V6B 1L8

Page: 2 - C  
 Total # Pages: 3 (A - D)  
 Plus Appendix Pages  
 Finalized Date: 24- JUN- 2011  
 Account: F

Project: Tombstone Gold Black

**CERTIFICATE OF ANALYSIS WH11103061**

Sample Description	Method Analyte Units LOR	ME- MS41	ME- MS41	ME- MS41	ME- MS41	ME- MS41	ME- MS41	ME- MS41	ME- MS41	ME- MS41	ME- MS41	ME- MS41	ME- MS41	ME- MS41	ME- MS41	
		Nb ppm	Ni ppm	P ppm	Pb ppm	Rb ppm	Re ppm	S %	Sb ppm	Sc ppm	Se ppm	Sn ppm	Sr ppm	Ta ppm	Te ppm	Th ppm
CC117021		0.39	38.0	1300	12.7	12.2	0.001	0.10	22.7	0.9	2.8	0.4	29.3	<0.01	0.12	0.3
CC117022		1.39	9.7	310	11.9	9.7	<0.001	0.03	1.27	2.0	0.8	0.7	11.1	<0.01	0.10	1.4
CC117023		1.28	18.7	450	10.8	16.0	<0.001	0.04	1.30	2.7	0.9	0.8	16.9	<0.01	0.08	1.8
CC117024		1.00	29.7	560	7.8	22.9	<0.001	0.01	2.06	4.3	0.6	0.6	78.7	<0.01	0.10	3.4
CC117025		1.35	12.5	350	11.4	14.0	<0.001	0.02	0.85	2.9	0.6	0.5	10.9	0.01	0.05	2.6
CC117026		0.56	20.1	660	9.7	16.8	<0.001	0.05	2.32	1.7	0.7	0.4	17.7	<0.01	0.07	0.4
CC117027		0.86	14.8	470	10.0	20.8	<0.001	0.03	2.37	1.8	0.7	0.6	18.1	<0.01	0.09	0.5
CC117028		0.56	47.0	1220	13.8	15.9	0.001	0.09	3.07	1.7	2.2	0.5	48.0	0.01	0.10	0.2
CC117029		1.72	35.6	900	12.9	22.4	<0.001	0.09	2.15	4.6	1.3	0.6	66.1	0.01	0.15	3.3
CC117030		0.80	17.3	590	8.6	18.2	<0.001	0.04	1.00	2.4	0.9	0.5	30.8	<0.01	0.05	0.8
CC117031		1.42	19.2	690	10.3	17.5	<0.001	0.04	0.89	4.4	1.0	0.4	18.1	0.02	0.04	4.3
CC117032		0.22	21.1	2900	10.7	22.0	0.001	0.09	1.36	0.6	1.9	0.6	110.5	<0.01	0.06	<0.2
CC117033		12.75	25.9	770	5.5	21.7	<0.001	0.11	0.83	5.5	1.4	0.9	132.5	0.02	0.02	1.3
CC117034		3.63	97.1	1350	19.5	76.6	0.002	0.25	4.85	8.8	4.5	1.0	128.5	0.02	0.05	6.1
CC117035		3.21	53.5	1310	11.5	23.3	0.001	0.24	4.03	7.0	3.0	0.4	194.5	0.02	0.05	2.7
CC117036		4.88	45.3	980	11.2	25.0	0.001	0.22	2.55	5.1	2.0	0.5	134.0	0.01	0.05	2.1
CC117037		4.46	54.4	950	8.5	28.8	0.001	0.09	2.16	5.1	1.8	0.4	127.5	0.01	0.05	2.8
CC117038		7.03	110.0	1090	8.0	23.6	<0.001	0.44	1.54	9.3	2.4	0.5	270	0.04	0.06	4.6
CC117039		2.44	67.7	660	15.7	21.8	<0.001	0.23	5.51	4.5	4.0	0.7	98.5	0.01	0.09	2.7
CC117040		1.93	91.3	1870	11.2	17.8	0.001	0.53	4.32	9.2	3.7	0.4	126.5	0.02	0.09	2.0
CC117064		0.74	49.8	1240	11.5	18.4	0.002	0.09	8.79	2.0	2.4	0.4	44.3	0.01	0.17	0.3
CC117065		0.91	33.8	680	7.7	14.2	<0.001	0.04	3.18	5.1	1.3	0.4	60.2	0.02	0.04	2.1
CC117066		0.82	20.1	820	8.7	11.7	<0.001	0.07	1.38	2.4	0.9	0.5	23.5	<0.01	0.06	0.5
CC117067		2.14	33.0	1200	4.9	9.9	<0.001	0.09	0.81	6.9	0.8	0.5	99.6	0.03	0.04	0.4
CC117070		3.74	44.5	970	8.4	15.4	<0.001	0.06	1.09	5.7	0.9	0.6	53.3	0.04	0.04	2.0
CC117071		0.90	18.4	440	12.4	7.7	<0.001	0.02	0.41	3.4	0.4	0.6	55.1	<0.01	0.02	2.8
CC117072		0.62	12.4	900	6.6	12.1	<0.001	0.04	0.16	3.1	0.4	0.6	455	<0.01	<0.01	2.7
CC117073		1.26	15.5	820	8.9	34.2	<0.001	0.06	0.49	4.1	0.5	0.8	462	<0.01	0.01	3.0
CC117074		2.91	16.6	850	8.9	24.7	<0.001	0.14	0.64	4.8	1.1	0.8	389	0.01	0.03	2.8
CC117075		2.01	16.4	750	9.2	20.6	<0.001	0.04	0.25	5.8	0.3	0.7	417	<0.01	<0.01	3.4
CC117076		1.05	19.0	470	10.1	11.2	<0.001	0.04	2.31	3.3	0.4	0.8	49.2	<0.01	0.03	1.3
CC117077		0.91	18.0	550	10.7	19.0	<0.001	0.04	0.80	2.4	0.6	0.8	23.0	<0.01	0.03	0.9
CC117078		1.29	155.5	1970	26.2	22.6	0.002	0.06	6.37	3.7	1.9	0.8	71.3	<0.01	0.05	12.1
CC117079		1.08	170.0	1280	9.8	24.2	0.002	0.05	5.30	4.1	2.5	0.6	75.7	<0.01	0.03	5.9
CC117080		2.09	101.0	1970	6.2	14.0	0.004	0.16	3.09	6.4	7.8	0.5	183.0	0.01	0.03	2.6
CC117081		2.69	144.0	2770	15.9	36.0	0.007	0.09	2.01	3.5	6.9	1.0	86.0	<0.01	0.04	12.9
CC117082		1.24	16.8	690	13.1	13.4	<0.001	0.06	1.12	1.6	1.3	0.6	27.5	<0.01	0.08	0.6
CC117083		0.35	27.7	1080	13.2	5.8	0.001	0.05	1.07	3.8	1.2	0.3	82.4	<0.01	0.02	3.9
CC117084		1.01	184.5	1360	12.6	15.4	0.012	0.15	8.22	2.8	5.6	0.5	82.9	<0.01	0.08	1.2
CC117092		1.13	21.4	830	11.7	20.2	<0.001	0.01	2.40	3.5	0.6	0.8	16.2	<0.01	0.04	2.7



ALS Canada Ltd.  
 2103 Dollarton Hwy  
 North Vancouver BC V7H 0A7  
 Phone: 604 984 0221 Fax: 604 984 0218 www.alsglobal.com

To: ARCHER, CATHRO AND ASSOCIATES (1981)  
 LIMITED  
 1016- 510 W HASTINGS ST  
 VANCOUVER BC V6B 1L8

Page: 2 - D  
 Total # Pages: 3 (A - D)  
 Plus Appendix Pages  
 Finalized Date: 24- JUN- 2011  
 Account: F

Project: Tombstone Gold Black

**CERTIFICATE OF ANALYSIS WH11103061**

Sample Description	Method Analyte Units LOR	ME- MS41	ME- MS41	ME- MS41	ME- MS41	ME- MS41	ME- MS41	ME- MS41	ME- MS41	Au- OG43
		Ti %	Ti ppm	U ppm	V ppm	W ppm	Y ppm	Zn ppm	Zr ppm	Au ppm
		0.005	0.02	0.05	1	0.05	0.05	2	0.5	0.01
CC117021		0.021	0.30	3.84	146	0.29	7.74	206	<0.5	
CC117022		0.083	0.20	0.58	72	0.26	2.05	30	0.8	
CC117023		0.103	0.17	0.88	78	0.30	3.75	54	1.0	
CC117024		0.093	0.30	1.02	60	0.58	5.70	50	0.8	
CC117025		0.061	0.15	0.59	63	0.35	2.58	37	0.8	
CC117026		0.051	0.13	0.77	52	0.34	3.55	62	<0.5	
CC117027		0.061	0.13	0.80	60	0.35	3.23	51	0.5	
CC117028		0.035	0.22	4.05	133	0.45	10.70	361	<0.5	
CC117029		0.107	0.36	3.63	77	0.26	7.30	109	4.1	
CC117030		0.069	0.22	1.10	62	0.20	3.82	54	0.6	
CC117031		0.078	0.14	0.83	58	0.22	3.33	61	2.7	
CC117032		0.015	0.30	2.85	157	0.13	7.01	77	<0.5	
CC117033		0.126	0.17	0.71	83	0.18	10.60	90	1.9	
CC117034		0.189	0.90	2.81	221	0.30	14.70	406	10.5	
CC117035		0.098	0.39	2.12	92	0.25	14.05	131	3.6	
CC117036		0.087	0.25	0.85	70	0.29	6.35	81	1.5	
CC117037		0.123	0.30	1.53	168	0.29	13.95	145	8.3	
CC117038		0.156	0.25	0.53	86	0.70	17.70	152	2.5	
CC117039		0.090	0.48	4.32	321	0.31	9.10	266	6.8	
CC117040		0.087	0.34	2.69	180	0.14	9.06	201	4.2	
CC117064		0.046	0.26	2.73	161	0.36	6.61	382	<0.5	
CC117065		0.069	0.17	1.53	47	0.32	13.55	88	1.0	
CC117066		0.060	0.13	1.07	54	0.31	4.55	61	0.5	
CC117067		0.097	0.11	0.48	102	0.23	5.04	71	0.5	
CC117070		0.089	0.11	0.63	64	0.27	7.21	99	0.8	
CC117071		0.042	0.14	0.56	47	0.26	4.43	44	1.1	
CC117072		0.044	0.11	0.52	22	0.06	10.85	37	2.6	
CC117073		0.071	0.19	0.78	30	0.08	10.60	43	3.0	
CC117074		0.101	0.21	1.71	45	0.14	10.90	58	4.2	
CC117075		0.105	0.19	0.67	41	0.17	11.15	43	2.7	
CC117076		0.052	0.27	0.82	70	0.18	4.05	55	0.6	
CC117077		0.089	0.24	1.40	79	0.20	4.04	64	0.9	
CC117078		0.067	0.37	4.40	71	0.34	13.45	430	3.7	
CC117079		0.068	0.46	5.05	73	0.20	12.85	557	1.7	
CC117080		0.074	0.41	4.50	119	0.83	10.55	373	1.6	
CC117081		0.102	0.39	20.8	59	0.42	30.1	666	1.9	<0.01
CC117082		0.054	0.21	1.12	52	0.27	3.49	53	0.6	
CC117083		0.013	0.08	1.04	25	0.24	15.85	85	4.0	
CC117084		0.050	0.26	15.25	82	0.50	15.05	1960	1.2	
CC117092		0.077	0.27	1.76	54	0.44	9.97	67	0.6	



ALS Canada Ltd.  
 2103 Dollarton Hwy  
 North Vancouver BC V7H 0A7  
 Phone: 604 984 0221 Fax: 604 984 0218 www.alsglobal.com

To: ARCHER, CATHRO AND ASSOCIATES (1981)  
 LIMITED  
 1016- 510 W HASTINGS ST  
 VANCOUVER BC V6B 1L8

Page: 3 - A  
 Total # Pages: 3 (A - D)  
 Plus Appendix Pages  
 Finalized Date: 24- JUN- 2011  
 Account: F

Project: Tombstone Gold Black

**CERTIFICATE OF ANALYSIS WH11103061**

Sample Description	Method Analyte Units LOR	WEI- 21 Recvd Wt. kg	Au- TL43 Au ppm	ME- MS41 Ag ppm	ME- MS41 Al %	ME- MS41 As ppm	ME- MS41 Au ppm	ME- MS41 B ppm	ME- MS41 Ba ppm	ME- MS41 Be ppm	ME- MS41 Bi ppm	ME- MS41 Ca %	ME- MS41 Cd ppm	ME- MS41 Ce ppm	ME- MS41 Co ppm	ME- MS41 Cr ppm
CC117132		0.28	0.029	0.42	2.02	28.4	<0.2	<10	550	2.46	0.35	1.26	4.83	131.5	23.3	40
CC117133		0.24	<0.001	1.05	2.43	54.9	<0.2	<10	980	2.65	0.35	0.93	7.33	103.5	40.2	53
CC117134		0.32	<0.001	0.18	2.20	20.8	<0.2	<10	1400	2.35	0.23	1.03	2.00	123.5	24.0	42
CC117135		0.35	0.001	0.16	1.77	16.6	<0.2	10	220	2.82	0.29	1.40	3.18	161.0	30.6	35
CC117136		0.37	0.005	0.13	1.89	17.5	<0.2	<10	230	3.11	0.37	1.28	2.32	165.0	29.0	34
CC117137		0.35	<0.001	0.16	1.99	21.2	<0.2	<10	230	2.99	0.21	1.15	4.20	157.0	46.3	31
CC117138		0.32	0.001	0.17	1.62	14.9	<0.2	<10	190	3.10	0.17	1.44	1.40	157.5	15.7	39
CC117139		0.35	0.002	0.10	1.46	12.8	<0.2	<10	170	2.58	0.14	1.36	1.05	173.0	15.0	39
CC117140		0.25	0.006	0.29	1.98	19.0	<0.2	<10	400	1.41	0.21	0.71	1.22	57.3	18.7	40
CC117141		0.23	0.003	0.15	1.61	13.9	<0.2	<10	200	0.81	0.24	0.18	1.08	29.4	7.2	35
CC117142		0.23	0.003	0.09	1.71	11.9	<0.2	<10	210	1.49	0.16	0.31	0.17	57.4	11.7	36
CC117143		0.16	0.004	0.17	2.15	17.8	<0.2	<10	370	1.76	0.26	0.66	0.18	61.2	17.9	60
CC117144		0.29	0.271	0.13	1.67	17.5	<0.2	<10	200	2.24	0.21	1.15	0.98	167.5	13.7	37
CC117145		0.31	0.033	0.18	1.78	279	<0.2	<10	190	1.78	4.13	0.32	0.32	41.5	14.2	26
CC117157		0.20	0.001	0.14	4.48	6.5	<0.2	<10	1140	0.88	0.14	0.50	0.55	22.6	32.8	83
CC117158		0.29	0.003	0.42	2.05	56.6	<0.2	<10	260	0.70	0.47	0.82	0.52	20.9	8.6	33
CC117159		0.17	0.007	0.10	2.15	33.0	<0.2	<10	250	1.41	0.50	0.14	0.23	48.0	11.0	46
CC117160		0.19	0.002	0.18	1.90	76.5	<0.2	<10	190	1.02	0.91	0.25	0.47	34.1	9.4	46
CC117161		0.26	0.008	1.48	3.90	51.6	<0.2	<10	450	1.89	0.32	2.17	0.43	105.0	136.5	73
CC117162		0.21	0.005	1.30	4.20	53.1	<0.2	<10	720	2.74	0.54	1.44	3.77	44.8	42.8	51
CC117163		0.22	0.011	0.47	3.40	23.0	<0.2	<10	510	1.38	0.45	1.09	1.17	26.5	12.5	43
CC117164		0.23	0.012	0.78	3.07	16.8	<0.2	<10	440	1.41	0.20	1.32	1.01	23.3	6.0	44
CC117165		0.29	0.004	0.90	2.83	23.6	<0.2	<10	260	1.45	0.24	1.40	0.89	20.7	8.2	59
CC117166		0.30	0.002	0.21	2.41	12.7	<0.2	<10	920	0.94	0.15	0.46	0.23	40.1	16.6	49
CC117189		0.28	0.003	0.23	1.44	66.7	<0.2	<10	430	0.77	0.84	0.14	0.20	25.4	7.0	21

\*\*\*\*\* See Appendix Page for comments regarding this certificate \*\*\*\*\*



ALS Canada Ltd.  
 2103 Dollarton Hwy  
 North Vancouver BC V7H 0A7  
 Phone: 604 984 0221 Fax: 604 984 0218 www.alsglobal.com

To: ARCHER, CATHRO AND ASSOCIATES (1981)  
 LIMITED  
 1016- 510 W HASTINGS ST  
 VANCOUVER BC V6B 1L8

Page: 3 - B  
 Total # Pages: 3 (A - D)  
 Plus Appendix Pages  
 Finalized Date: 24- JUN- 2011  
 Account: F

Project: Tombstone Gold Black

**CERTIFICATE OF ANALYSIS WH11103061**

Sample Description	Method Analyte Units LOR	ME- MS41	ME- MS41	ME- MS41	ME- MS41	ME- MS41	ME- MS41	ME- MS41	ME- MS41	ME- MS41	ME- MS41	ME- MS41	ME- MS41	ME- MS41	ME- MS41	
		Cs ppm	Cu ppm	Fe %	Ga ppm	Ge ppm	Hf ppm	Hg ppm	In ppm	K %	La ppm	Li ppm	Mg %	Mn ppm	Mo ppm	Na %
CC117132		9.51	60.6	4.23	7.23	0.24	0.05	0.07	0.030	0.31	72.7	30.8	0.74	824	5.78	0.08
CC117133		9.03	87.0	6.46	8.59	0.26	0.08	0.07	0.046	0.35	57.3	33.5	0.78	1430	15.70	0.08
CC117134		9.92	52.9	3.83	8.36	0.25	0.06	0.03	0.029	0.39	66.3	33.8	0.89	629	3.43	0.05
CC117135		12.35	51.6	3.06	6.92	0.25	0.04	0.05	0.021	0.28	91.8	32.7	0.67	863	1.85	0.05
CC117136		12.05	46.3	3.29	7.29	0.26	0.05	0.03	0.019	0.33	92.7	36.5	0.70	894	1.89	0.05
CC117137		11.50	39.6	3.04	7.04	0.25	0.04	0.05	0.018	0.28	90.6	35.8	0.59	1090	1.86	0.05
CC117138		13.10	61.3	3.57	7.49	0.26	0.09	0.03	0.024	0.34	94.7	35.2	0.96	487	1.62	0.04
CC117139		12.50	52.0	3.37	7.18	0.26	0.09	0.02	0.026	0.30	92.5	34.1	0.91	485	1.45	0.03
CC117140		6.86	50.6	3.53	7.04	0.15	0.02	0.03	0.031	0.20	25.5	21.0	0.76	477	2.74	0.02
CC117141		3.43	22.3	2.62	6.84	0.10	<0.02	0.03	0.024	0.08	15.6	15.3	0.45	216	2.02	0.01
CC117142		4.92	30.3	2.93	7.11	0.14	0.03	0.03	0.020	0.08	33.0	23.7	0.63	285	1.22	0.01
CC117143		12.10	83.0	4.13	10.85	0.17	0.04	0.03	0.027	0.26	33.1	35.2	1.08	377	2.83	0.02
CC117144		12.25	35.1	3.43	7.85	0.24	0.04	0.03	0.022	0.25	91.2	33.5	0.61	638	1.96	0.04
CC117145		4.65	32.9	3.21	5.54	0.11	0.03	0.04	0.026	0.10	21.5	20.7	0.44	518	1.40	0.01
CC117157		1.46	35.4	6.90	17.60	0.12	<0.02	0.04	0.049	0.13	10.2	45.6	2.31	569	2.21	0.02
CC117158		2.86	30.2	2.70	7.38	0.11	0.02	0.05	0.020	0.11	11.1	47.8	0.95	173	5.88	0.02
CC117159		4.43	40.1	3.42	7.13	0.13	0.13	0.01	0.017	0.58	23.8	33.1	0.71	240	1.89	0.01
CC117160		4.26	52.6	3.59	6.38	0.10	<0.02	0.03	0.034	0.23	18.5	19.5	0.50	328	2.10	0.02
CC117161		16.65	119.0	8.33	5.99	0.24	0.12	0.02	0.059	0.16	54.1	42.8	0.65	2010	5.45	0.15
CC117162		8.41	68.8	4.59	7.70	0.17	0.04	0.04	0.049	0.36	25.0	29.4	0.56	570	13.25	0.09
CC117163		5.23	106.0	2.71	8.79	0.15	0.03	0.02	0.035	0.50	15.3	28.8	1.09	248	4.26	0.05
CC117164		4.08	205	2.65	9.91	0.17	0.03	0.03	0.040	0.65	14.7	28.1	1.49	133	7.49	0.03
CC117165		5.73	227	2.21	8.84	0.14	0.06	0.02	0.037	0.27	11.7	27.2	1.15	162	4.66	0.03
CC117166		2.40	30.7	3.58	9.33	0.10	0.02	0.02	0.035	0.27	19.7	22.5	0.78	417	2.36	0.02
CC117189		5.09	35.7	3.66	6.27	0.07	<0.02	0.02	0.023	0.14	13.6	18.9	0.36	234	2.50	0.02

\*\*\*\*\* See Appendix Page for comments regarding this certificate \*\*\*\*\*



ALS Canada Ltd.  
 2103 Dollarton Hwy  
 North Vancouver BC V7H 0A7  
 Phone: 604 984 0221 Fax: 604 984 0218 www.alsglobal.com

To: ARCHER, CATHRO AND ASSOCIATES (1981)  
 LIMITED  
 1016- 510 W HASTINGS ST  
 VANCOUVER BC V6B 1L8

Page: 3 - C  
 Total # Pages: 3 (A - D)  
 Plus Appendix Pages  
 Finalized Date: 24- JUN- 2011  
 Account: F

Project: Tombstone Gold Black

**CERTIFICATE OF ANALYSIS WH11103061**

Sample Description	Method Analyte Units LOR	ME- MS41	ME- MS41	ME- MS41	ME- MS41	ME- MS41	ME- MS41	ME- MS41	ME- MS41	ME- MS41	ME- MS41	ME- MS41	ME- MS41	ME- MS41	ME- MS41	
		Nb ppm	Ni ppm	P ppm	Pb ppm	Rb ppm	Re ppm	S %	Sb ppm	Sc ppm	Se ppm	Sn ppm	Sr ppm	Ta ppm	Te ppm	Th ppm
CC117132		3.12	62.6	3210	15.7	41.2	0.002	0.13	3.73	4.2	5.2	1.1	118.0	0.01	0.04	13.5
CC117133		3.23	86.6	2620	21.2	37.4	0.002	0.25	10.35	4.7	9.4	1.0	147.5	0.02	0.06	11.9
CC117134		4.12	48.5	2800	14.3	45.5	0.001	0.10	3.02	4.8	3.2	1.1	96.2	0.01	0.04	15.7
CC117135		3.33	54.3	3580	15.3	50.5	0.002	0.08	1.24	3.6	4.9	1.2	95.8	<0.01	0.02	11.6
CC117136		3.36	44.9	3820	15.3	52.7	0.002	0.05	1.22	3.8	2.7	1.2	93.3	0.01	0.02	18.5
CC117137		3.46	63.6	3380	14.0	46.2	0.001	0.06	1.10	3.6	4.0	1.2	99.5	<0.01	0.03	12.3
CC117138		3.02	32.4	4080	20.4	58.9	0.001	0.04	1.49	4.6	2.4	1.3	76.4	<0.01	0.02	20.6
CC117139		2.53	26.3	4390	21.4	57.9	0.001	0.02	1.11	4.4	1.7	1.2	74.5	<0.01	0.03	21.0
CC117140		1.71	57.6	1890	9.7	26.6	0.001	0.11	1.58	4.9	1.6	0.6	96.7	0.01	0.06	4.0
CC117141		1.65	18.6	590	10.9	19.6	0.001	0.02	0.80	2.5	0.4	0.7	26.0	<0.01	0.04	1.2
CC117142		2.16	21.0	980	11.1	19.9	<0.001	0.02	0.64	3.4	0.5	0.8	23.5	<0.01	0.02	4.3
CC117143		4.71	34.6	1930	14.3	72.8	<0.001	0.06	0.94	5.8	0.9	1.1	55.0	<0.01	0.05	9.0
CC117144		2.93	18.5	3660	15.8	49.4	<0.001	0.05	1.18	3.6	2.7	1.3	87.4	<0.01	0.02	12.8
CC117145		1.26	26.3	1050	15.1	14.4	<0.001	0.03	1.36	2.7	1.3	0.6	51.7	0.01	0.48	3.2
CC117157		4.87	57.1	790	8.0	11.7	0.001	0.06	0.69	11.1	0.5	1.2	66.6	<0.01	0.01	1.0
CC117158		1.16	32.6	620	18.7	14.3	0.006	0.09	1.48	3.1	2.8	0.6	71.1	0.01	0.07	2.2
CC117159		2.15	34.0	750	16.0	49.1	0.001	0.10	1.67	3.0	1.4	1.0	37.1	<0.01	0.07	9.3
CC117160		0.73	24.9	1160	20.6	22.7	<0.001	0.12	2.12	1.4	1.7	0.9	144.5	<0.01	0.08	0.4
CC117161		1.66	182.5	1970	32.0	11.9	0.001	0.07	4.56	11.5	5.7	0.4	412	0.01	0.09	6.4
CC117162		4.38	101.0	1250	22.1	20.7	0.001	0.27	6.46	4.1	5.7	0.8	371	0.01	0.13	4.2
CC117163		1.00	50.7	1860	11.5	36.8	<0.001	0.12	3.07	2.1	3.0	0.7	159.5	<0.01	0.11	0.7
CC117164		0.49	45.6	3420	16.4	42.1	<0.001	0.15	4.13	1.4	3.6	0.6	289	<0.01	0.09	0.3
CC117165		1.56	66.6	2250	10.9	25.9	0.001	0.01	2.93	5.1	2.5	0.7	111.5	0.01	0.08	2.9
CC117166		5.85	28.4	760	10.5	22.8	<0.001	0.06	2.76	4.8	0.7	0.8	70.9	0.01	0.03	2.9
CC117189		1.06	18.6	690	22.6	14.4	<0.001	0.20	4.11	1.7	1.8	0.6	179.5	<0.01	0.12	1.4

\*\*\*\*\* See Appendix Page for comments regarding this certificate \*\*\*\*\*



ALS Canada Ltd.  
 2103 Dollarton Hwy  
 North Vancouver BC V7H 0A7  
 Phone: 604 984 0221 Fax: 604 984 0218 www.alsglobal.com

To: ARCHER, CATHRO AND ASSOCIATES (1981)  
 LIMITED  
 1016- 510 W HASTINGS ST  
 VANCOUVER BC V6B 1L8

Page: 3 - D  
 Total # Pages: 3 (A - D)  
 Plus Appendix Pages  
 Finalized Date: 24- JUN- 2011  
 Account: F

Project: Tombstone Gold Black

**CERTIFICATE OF ANALYSIS WH11103061**

Sample Description	Method Analyte Units LOR	ME- MS41	ME- MS41	ME- MS41	ME- MS41	ME- MS41	ME- MS41	ME- MS41	ME- MS41	Au- OG43
		Ti %	Ti ppm	U ppm	V ppm	W ppm	Y ppm	Zn ppm	Zr ppm	Au ppm
		0.005	0.02	0.05	1	0.05	0.05	2	0.5	0.01
CC117132		0.134	0.45	14.95	111	0.77	27.0	332	3.1	
CC117133		0.140	0.80	19.30	201	0.91	24.3	483	5.5	
CC117134		0.141	0.36	14.85	90	0.65	23.8	189	3.5	
CC117135		0.138	0.35	26.9	76	0.70	35.0	213	2.4	
CC117136		0.157	0.38	14.70	82	0.90	30.4	206	3.3	
CC117137		0.131	0.35	16.20	72	0.65	33.8	263	2.3	
CC117138		0.170	0.42	16.90	92	0.74	28.1	172	6.1	
CC117139		0.164	0.38	13.30	90	0.64	24.8	141	5.8	
CC117140		0.111	0.27	2.32	96	0.28	11.65	226	0.8	
CC117141		0.088	0.18	1.41	76	0.34	4.07	69	0.5	
CC117142		0.121	0.26	2.49	72	0.62	8.57	58	1.3	
CC117143		0.294	0.49	3.34	136	0.53	10.75	87	1.9	
CC117144		0.141	0.33	16.45	85	0.51	22.4	111	2.2	
CC117145		0.059	0.17	1.93	49	0.49	6.96	79	1.3	
CC117157		0.167	0.10	0.48	215	0.30	3.66	128	<0.5	
CC117158		0.072	0.18	1.84	68	0.36	4.59	120	1.0	
CC117159		0.108	0.46	1.21	55	0.16	6.06	110	7.5	
CC117160		0.050	0.25	1.29	67	0.14	6.15	89	<0.5	
CC117161		0.097	0.52	5.18	72	0.18	55.9	238	4.8	
CC117162		0.115	0.61	4.53	157	0.27	18.65	461	2.1	
CC117163		0.071	0.55	3.14	119	0.27	8.06	299	1.2	
CC117164		0.050	0.53	5.82	159	0.15	13.60	234	0.9	
CC117165		0.097	0.46	2.61	171	0.28	12.35	240	2.3	
CC117166		0.112	0.18	0.66	81	0.27	7.17	89	1.0	
CC117189		0.050	0.37	1.15	54	0.25	3.51	74	<0.5	

\*\*\*\*\* See Appendix Page for comments regarding this certificate \*\*\*\*\*



ALS Canada Ltd.  
2103 Dollarton Hwy  
North Vancouver BC V7H 0A7  
Phone: 604 984 0221 Fax: 604 984 0218 www.alsglobal.com

To: ARCHER, CATHRO AND ASSOCIATES (1981)  
LIMITED  
1016- 510 W HASTINGS ST  
VANCOUVER BC V6B 1L8

Page: Appendix 1  
Total # Appendix Pages: 1  
Finalized Date: 24- JUN- 2011  
Account: F

Project: Tombstone Gold Black

**CERTIFICATE OF ANALYSIS WH11103061**

Method	CERTIFICATE COMMENTS
ME- MS41 ME- MS41	Interference: Ca > 10% on ICP- MS As, ICP- AES results shown. Gold determinations by this method are semi- quantitative due to the small sample weight used (0.5g).

Statement of Expenditures  
Black 1-56 Mineral Claims  
January 26, 2012

Labour

D. Eaton (geologist) May to November 2011 – 6 hours @ \$110/hour	\$ 739.20
C. Chung (geologist) November 2011 – 22 hours @ \$85/hour	2,094.40
S. Eaton (geologist) May to December 2011 – 5 hours @ \$85/hour	476.00
M. Kammerer (field assistant) June 2011 – 4 days @ \$552.50/day	2,475.20
S. McDonald (field assistant) November 2011 – 6 hours @ \$47/hour	315.84
L. Smith (field assistant) December 2011 – 24 hours @ \$48/hour	1,290.24
J. Chila (field assistant) June 2011 – 4 days @ \$340/day	1,523.20
K. Didlick (field assistant) June 2011 – 4 days @ \$340/day	1,523.20
S. Dosch (field assistant) June 2011 – 4 days @ \$340/day	<u>1,523.20</u>
	11,960.48

Expenses (including management fee)

Field room and board – 8 days @ \$125/day	1,209.60
Fireweed Helicopters – 6 hrs Bell 206B @ \$1050/hr plus fuel	8,230.12
ALS Chemex	<u>1,862.11</u>
	11,301.83

Total	<u><u>\$23,262.31</u></u>
-------	---------------------------

