

095955

ASSESSMENT REPORT  
on the  
2011 GEOCHEMICAL PROGRAM  
on the



**Fresno Property**

Dawson Mining District, Yukon Territory

**For**

**Goldspike Exploration Inc.**

5600 – 100 King Street West  
Toronto, Ontario  
M5X 1C9

**Exploration on claims:** Fresno 2, Fresno 4, Fresno 6, Fresno 11, Fresno 12, Fresno 19, Fresno 21, Fresno 22, Fresno 23, Fresno 25

**Work filed on:** Fresno 1 - 28 (Grant Numbers YD14071 - YD14098)

NTS:	116B/04
LATITUDE:	64° 13' 12" N
LONGITUDE:	139° 53' 12" W
DATE of WORK:	June 17, 2011
AUTHOR:	A. Koffyberg, PGeo
CONSULTANTS:	Druid Exploration Inc and Discovery Consultants
DATE of REPORT	November 30, 2011

## TABLE OF CONTENTS

	Page
1.0 SUMMARY .....	1
2.0 INTRODUCTION .....	2
3.0 LOCATION AND ACCESS .....	2
4.0 TOPOGRAPHY, VEGETATION & CLIMATE .....	2
5.0 PROPERTY DESCRIPTION .....	4
6.0 EXPLORATION HISTORY .....	6
7.0 GEOLOGY	
7.1 Regional Geology .....	6
7.2 Property Geology .....	7
8.0 2011 WORK PROGRAM	
8.1 Sampling Method and Approach .....	9
8.2 Sample Preparation, Analysis, QA/QC .....	10
8.3 Results .....	10
9.0 DISCUSSION AND CONCLUSIONS .....	16
10.0 RECOMMENDATIONS .....	17
11.0 REFERENCES .....	18
12.0 STATEMENT OF COSTS .....	19
13.0 STATEMENT OF QUALIFICATIONS .....	20

## LIST OF FIGURES

FIGURE 1	Property Location .....	3
FIGURE 2	Claim Locations (1:20,000).....	5
FIGURE 3	Regional Geology (1:100,000) .....	8
FIGURE 4	Sample Locations (1:20,000).....	14
FIGURE 5	Soil Geochemistry: Gold (1:20,000).....	15

## LIST OF TABLES

TABLE 1	Tenure Description.....	4
---------	-------------------------	---

## LIST OF PHOTOS

PHOTO 1	Soil sample 1208084.....	11
PHOTO 2	Location of silt sample 1205210 .....	12
PHOTO 3	Outcrop near Fresno Creek .....	12
PHOTO 4	Rock sample 1205211 .....	13

## APPENDICES

APPENDIX I	SOIL DESCRIPTIONS
APPENDIX II	SILT DESCRIPTIONS
APPENDIX III	ROCK DESCRIPTION
APPENDIX IV	SOIL GEOCHEMISTRY - ANALYTICAL RESULTS
APPENDIX V	SILT GEOCHEMISTRY - ANALYTICAL RESULTS
APPENDIX VI	ROCK GEOCHEMISTRY - ANALYTICAL RESULTS

## **1.0 SUMMARY**

A first pass prospecting and soil/silt sampling program was carried out on the Fresno Property ("Property") on June 17, 2011. The Property is 100% owned by Goldspike Exploration Inc. ("Goldspike"), and consists of 28 contiguous quartz mineral claims, covering an area of approximately 585 hectares in the Dawson Mining District.

Located in the west-central part of the Yukon Territory, the Property is situated along a section of Fresno Creek, a tributary of the Yukon River. It is located 45 kilometres northwest of Dawson City, and 2 km northeast of the Top of the Word Highway. It is best accessed with the use of a helicopter, although it is possible to hike in from the highway to the southwest corner of the Property.

Geologically, the Property lies within the Yukon-Tanana tectonic terrane. The area covered by the Property covers the northeast trending contact between the Klondike Schist Assemblage, and the older sequence of Devonian-Mississippian Nasina Series rocks. The Klondike Schist is a widespread Middle to Late Permian unit of siliciclastic meta-sedimentary rocks along with bimodal meta-volcanic rocks. The Nasina Series consist of quartzite, garnet quartzite, and quartz-muscovite-biotite schist.

In total, 58 reconnaissance soil samples, 5 silt samples and 1 rock sample were collected and sent for analysis. The soil survey effectively evaluated only a portion of the Property. All soil samples contain gold values of less than 20 ppb Au. The highest values are 16 and 10 ppb Au. However, a series of 4 soil samples (1205167 - 1205170) contain anomalous base metals, straddling the southeast claim boundary at the confluence of Fresno Creek and two of its tributaries. Maximum values of 122 ppm Cu, 280 ppm Ni, 698 ppm Zn and 428 ppm Pb occur along a distance of 300 m upslope from the confluence, with a relief of about 400 m.

The five silt samples all returned values of below 4 ppb Au and did not carry any other significant geochemical signature. The anomalous gold value from the GSC silt sediment sample along Fresno Creek and its tributaries could not be reproduced, although this is a common occurrence with small sized, low energy silt samples.

Any further work should include a soil sample grid over the base metal anomaly. The hillside should be prospected and rock samples should be collected. A ground magnetometer survey is highly recommended, since some VMS deposits are associated with a strong magnetic signature.

## **2.0 INTRODUCTION**

This assessment report has been prepared at the request of Mr. Bruce Durham, president of Goldspike of Toronto, Ontario. The report describes the 2011 prospecting program on the Property. Field work was performed by Druid Exploration Inc. ("Druid") of Whitehorse, Yukon. The report text was written by A. Koffyberg, PGeo, of Discovery Consultants ("Discovery"), of Vernon, BC. The maps for the report were prepared by C. Jones of Druid and by Discovery.

## **3.0 LOCATION AND ACCESS**

The Property is located in west-central Yukon, approximately 45 kilometres northwest of Dawson City (Figure 1). The centre of the Property lies at latitude 64° 13' 12" N, and longitude 139° 53' 12" W and the Property is situated along part of Fresno Creek. It lies 17 km southeast of the formerly producing asbestos mine owned by Clinton Creek. Goldspike also owns a neighbouring property called Fresno B, situated about 2 km northeast of the Property near the confluence of the Fresno Creek and the Yukon River.

The Property can be reached from Dawson City, northwest along The Top of the World Highway (Highway 9). The claim block lies 2 km northeast of the highway and the southern part of the Property can be accessed by hiking in from the highway. Alternatively, the use of a helicopter gives access to most parts of the Property.

## **4.0 TOPOGRAPHY, VEGETATION & CLIMATE**

Physiographically, the Property is situated within the Klondike Plateau, and located south of the Yukon River. The terrain is moderately mountainous. Topography is locally rugged with occasional cliffs and moderately to deeply incised creek valleys. Within the Property, elevations range from about 460 metres along Fresno Creek to 1060 m along a ridge in the southwest corner of the Property. Fresno Creek drains northeast into the Yukon River, which flows northwesterly into the state of Alaska, and continues westward through the state into the Pacific Ocean.

The area is unglaciated, and outcrop is typically less than 1% of the area. Permafrost is likely to be continuous throughout the Property. Vegetation in the area consists of a moderately open deciduous/evergreen forest of spruce, paper birch and occasional lodgepole pine, with scrub birch and willow along valley bottoms.

## **2.0 INTRODUCTION**

This assessment report has been prepared at the request of Mr. Bruce Durham, president of Goldspike of Toronto, Ontario. The report describes the 2011 prospecting program on the Property. Field work was performed by Druid Exploration Inc. ("Druid") of Whitehorse, Yukon. The report text was written by A. Koffyberg, PGeo, of Discovery Consultants ("Discovery"), of Vernon, BC. The maps for the report were prepared by C. Jones of Druid and by Discovery.

## **3.0 LOCATION AND ACCESS**

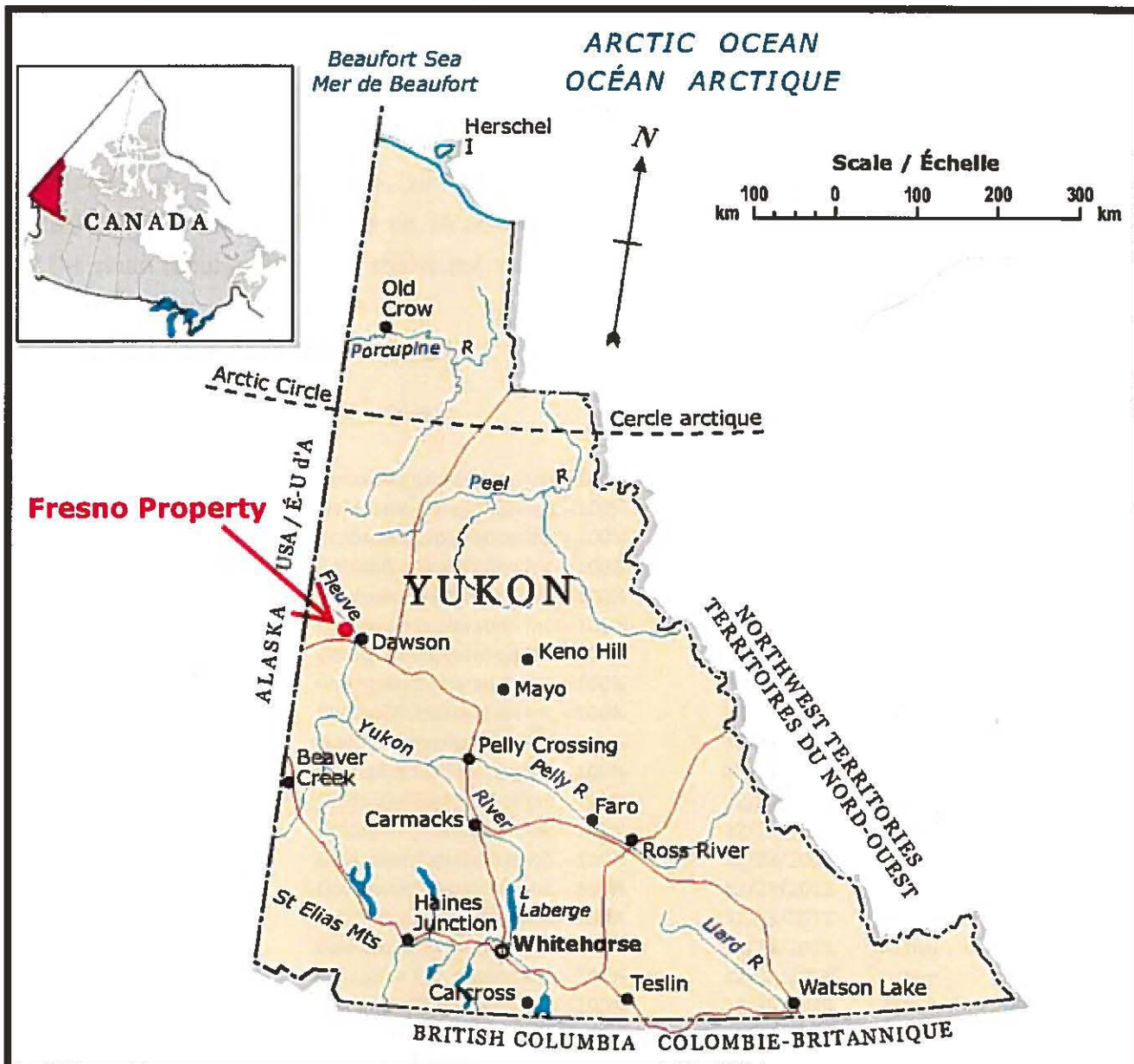
The Property is located in west-central Yukon, approximately 45 kilometres northwest of Dawson City (Figure 1). The centre of the Property lies at latitude 64° 13' 12" N, and longitude 139° 53' 12" W and the Property is situated along part of Fresno Creek. It lies 17 km southeast of the formerly producing asbestos mine owned by Clinton Creek. Goldspike also owns a neighbouring property called Fresno B, situated about 2 km northeast of the Property near the confluence of the Fresno Creek and the Yukon River.

The Property can be reached from Dawson City, northwest along The Top of the World Highway (Highway 9). The claim block lies 2 km northeast of the highway and the southern part of the Property can be accessed by hiking in from the highway. Alternatively, the use of a helicopter gives access to most parts of the Property.

## **4.0 TOPOGRAPHY, VEGETATION & CLIMATE**

Physiographically, the Property is situated within the Klondike Plateau, and located south of the Yukon River. The terrain is moderately mountainous. Topography is locally rugged with occasional cliffs and moderately to deeply incised creek valleys. Within the Property, elevations range from about 460 metres along Fresno Creek to 1060 m along a ridge in the southwest corner of the Property. Fresno Creek drains northeast into the Yukon River, which flows northwesterly into the state of Alaska, and continues westward through the state into the Pacific Ocean.

The area is unglaciated, and outcrop is typically less than 1% of the area. Permafrost is likely to be continuous throughout the Property. Vegetation in the area consists of a moderately open deciduous/evergreen forest of spruce, paper birch and occasional lodgepole pine, with scrub birch and willow along valley bottoms.



## FRESNO PROPERTY

Goldspike Exploration Inc.

Fig 1 Property Location

November 30, 2011

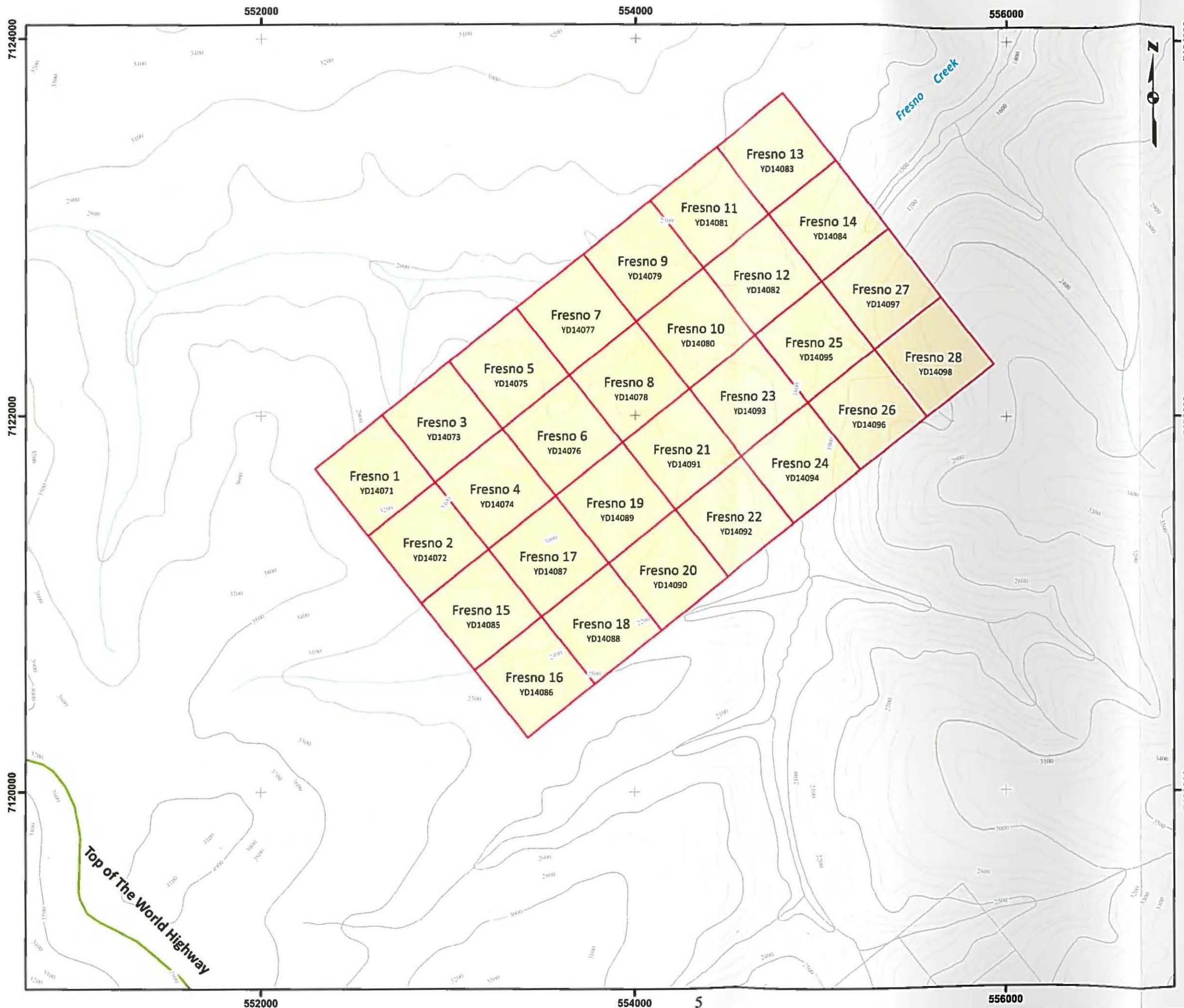
## 5.0 PROPERTY DESCRIPTION

The Property consists of a block of 28 contiguous quartz mineral claims. The claim block stretches about 3.25 km east-west, and 1.8 km north-south, covering an area of approximately 585 hectares in the Dawson Mining District (Figure 2). All claims are recorded in the name of Goldstrike of Toronto, Ontario, which owns 100% of the claims. A small geochemical and prospecting program was done on 10 of the claims as shown on Table 1, which lists the details of the claim tenures. Figure 2 shows the location of the claims.

**TABLE 1: Tenure Description**

Claim Name	Grant Number	Claim Owner	Expiry Date	Status	NTS
Fresno 1	YD14071	Goldspike Exploration Inc. - 100%	12/23/2013	Active	116B04
Fresno 2 *	YD14072	Goldspike Exploration Inc. - 100%	12/23/2013	Active	116B04
Fresno 3	YD14073	Goldspike Exploration Inc. - 100%	12/23/2013	Active	116B04
Fresno 4 *	YD14074	Goldspike Exploration Inc. - 100%	12/23/2013	Active	116B04
Fresno 5	YD14075	Goldspike Exploration Inc. - 100%	12/23/2013	Active	116B04
Fresno 6 *	YD14076	Goldspike Exploration Inc. - 100%	12/23/2013	Active	116B04
Fresno 7	YD14077	Goldspike Exploration Inc. - 100%	12/23/2013	Active	116B04
Fresno 8	YD14078	Goldspike Exploration Inc. - 100%	12/23/2013	Active	116B04
Fresno 9	YD14079	Goldspike Exploration Inc. - 100%	12/23/2013	Active	116B04
Fresno 10	YD14080	Goldspike Exploration Inc. - 100%	12/23/2013	Active	116B04
Fresno 11 *	YD14081	Goldspike Exploration Inc. - 100%	12/23/2013	Active	116B04
Fresno 12 *	YD14082	Goldspike Exploration Inc. - 100%	12/23/2013	Active	116B04
Fresno 13	YD14083	Goldspike Exploration Inc. - 100%	12/23/2013	Active	116B04
Fresno 14	YD14084	Goldspike Exploration Inc. - 100%	12/23/2013	Active	116B04
Fresno 15	YD14085	Goldspike Exploration Inc. - 100%	12/23/2013	Active	116B04
Fresno 16	YD14086	Goldspike Exploration Inc. - 100%	12/23/2013	Active	116B04
Fresno 17	YD14087	Goldspike Exploration Inc. - 100%	12/23/2013	Active	116B04
Fresno 18	YD14088	Goldspike Exploration Inc. - 100%	12/23/2013	Active	116B04
Fresno 19 *	YD14089	Goldspike Exploration Inc. - 100%	12/23/2013	Active	116B04
Fresno 20	YD14090	Goldspike Exploration Inc. - 100%	12/23/2013	Active	116B04
Fresno 21 *	YD14091	Goldspike Exploration Inc. - 100%	12/23/2013	Active	116B04
Fresno 22 *	YD14092	Goldspike Exploration Inc. - 100%	12/23/2013	Active	116B04
Fresno 23 *	YD14093	Goldspike Exploration Inc. - 100%	12/23/2013	Active	116B04
Fresno 24	YD14094	Goldspike Exploration Inc. - 100%	12/23/2013	Active	116B04
Fresno 25 *	YD14095	Goldspike Exploration Inc. - 100%	12/23/2013	Active	116B04
Fresno 26	YD14096	Goldspike Exploration Inc. - 100%	12/23/2013	Active	116B04
Fresno 27	YD14097	Goldspike Exploration Inc. - 100%	12/23/2013	Active	116B04
Fresno 28	YD14098	Goldspike Exploration Inc. - 100%	12/23/2013	Active	116B04

\* Claim on which work was done



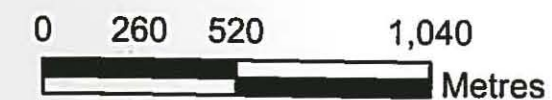
**Legend**

 Fresno Claims

**Fresno Property**  
Goldspike Exploration Inc.

**Fig. 2 Claim Locations**

November 30, 2011



Scale 1:20,000  
UTM NAD 83 (Zone 7) 116B  
Elevation in Feet

## **6.0 EXPLORATION HISTORY**

No exploration work has been previously done on the Property. The Geological Survey of Canada ("GSC") conducted a regional silt stream sediment program throughout the Yukon Territory in the 1970s and 1980s, which included sampling streams within the Property boundary. The data was re-analysed and re-released in 2006 and has become available on the Yukon government website ([www.geology.gov.yk.ca](http://www.geology.gov.yk.ca)).

The TOP Property, centred about 10 km to the southeast of the Property, was explored by Nordac Resources Ltd. ("Nordac") during the mid-1990s. In 1995, Nordac carried out a geochemical soil and silt sampling program, to follow up on strong copper-lead-zinc anomalies outlined by Archer Cathro and Associates (1981) Ltd, from previously undisclosed work the company had done in the 1970s and 1980s. Prospecting discovered a magnetite-rich horizon within a sequence of felsic volcanic rocks, which carried anomalous copper-lead-zinc in rocks along roads cuts along the southeast end of the claim block, suggesting volcanogenic massive sulphide (VMS) mineralization. Soil sampling outlined a copper-lead-zinc anomaly along the ridge crest overlying the magnetite-rich horizon. A trenching program in 1998 outlined, within trench 98-1, a 1.4 m section consisting of siliceous quartz-muscovite schist, containing 250 ppm Cu, 1,980 ppm Pb, 2,830 ppm Zn, 4,490 ppm Mn and 2,160 ppm Ba.

## **7.0 GEOLOGY**

### **7.1 Regional Geology**

The Property lies within the Yukon-Tanana tectonic terrane of the Intermontane Belt, and lies southwest of the Tintina Fault. The Tintina Fault marks the boundary between strata of the ancestral North America to the northeast, and the high-grade metamorphic rocks of the allochthonous Yukon-Tanana terrane to the southwest (Figure 3).

The oldest rocks in the area consist of the Devonian-Mississippian Nasina Series rocks (unit DMN1 and DMN2), which comprise quartzite, garnet quartzite, and quartz-muscovite-biotite schist and lesser marble. A second, regionally significant unit is the Klondike Schist (unit CPK1), which is a widespread Carboniferous to Late Permian unit of siliciclastic meta-sedimentary rocks along with bimodal meta-volcanic rocks (Mortensen, 1996). Based on what is known of the regional structure and metamorphic stratigraphy, the contact between the Nasina rocks and the Klondike Schist appears to be discordant.

Mafic and ultramafic igneous rocks (units CPA1 and CPA4) are generally assigned to the Slide Mountain tectonic terrane, and are Carboniferous to Permian in age. These rocks form

discontinuous lenses and slabs in fault (thrust fault) contact with the surrounding units.

A small mid-Cretaceous plug (mKgW) intrudes the Nasina Series northeast of the Property. Upper Cretaceous volcanic rocks (uKC2) occur north of the Yukon River.

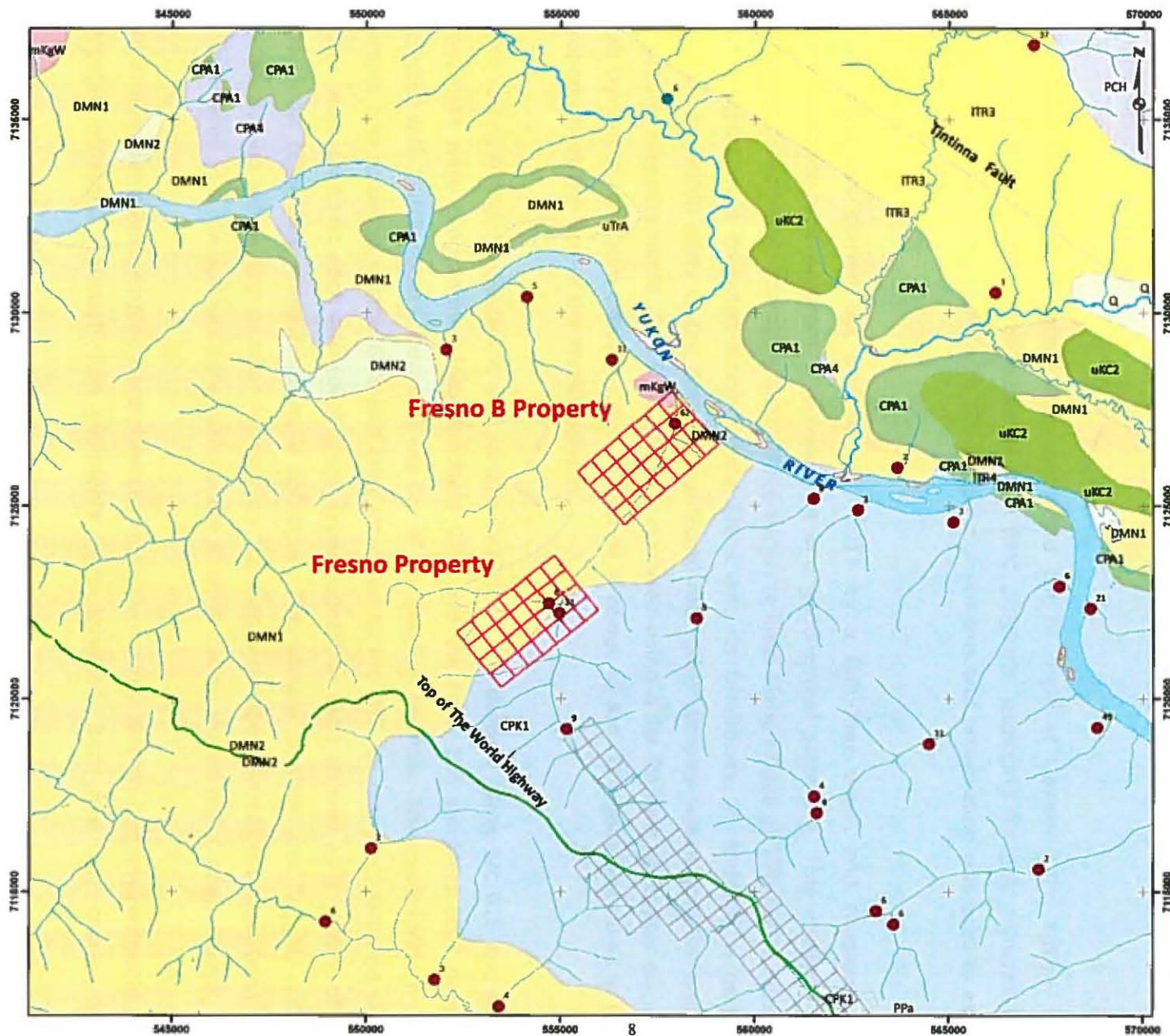
The area was excluded from continental glaciation during the Pleistocene, and there are indications of deep weathering from the Tertiary to the present.

## **7.2 Property Geology**

The area covered by the Property covers the northeast trending contact between the Klondike Schist Assemblage (to the southeast), and the older sequence of Devonian-Mississippian Nasina Series rocks (to the northwest).

The Fresno mineral occurrence (Yukon Minfile 116M 041) occurs to the southeast of the Property on Strategic Metals Ltd's TOP property, although the published UTM coordinates place it within the Property. It was discovered near the headwaters of Fresno Creek by Nordac Resources in 1995 and described as a copper-zinc massive sulphide occurrence within the Klondike Schist Assemblage rocks.

Regional-scale silt stream sediment surveying carried out by the GSC in the 1970s and 1980s was re-analysed and re-published in 2006. The work resulted in a gold-in-silt anomaly (98<sup>th</sup> percentile) of 31 ppb along Fresno Creek. A second weaker antimony-in-silt anomaly (90<sup>th</sup> percentile) was located close to the gold-in-silt anomaly. The Property covers these anomalies as well as the possible inferred source.



### Legend

● RGS silt (Au in ppb)

### Geology\_Bedrock

#### REG\_UNIT

Q	<b>Quaternary</b> sand/silt/gravel
ITR3	<b>Paleogene</b> shale/siltstone/conglom/coal
uKC2	<b>Cretaceous</b> tuff/plugs/necks/flows/porphyry
mKgW	granodiorite/qtz diorite
uTrA	<b>Triassic</b> argillite/sandstone/limestone
CPA1	<b>Carboniferous/Permian</b> basalt/diorite/gabbro/greenstone
CPA4	dunite/peridotite/serpentine
CPK1	quartzite/schist/gneiss/ amphibolite
DMN1	<b>Devonian/Mississippian</b> quartzite/qtz-ms schist
DMN2	marble
PCH	<b>Upper Proterozoic/Lower Cambrian</b> shale/siltstone/sandstone/ limestone

## Fresno Property Goldspike Exploration Inc.

Fig. 3 Regional Geology  
November 30, 2011



Scale 1:100,000  
UTM NAD 83 (Zone 7) 116B

## **8.0 2011 WORK PROGRAM**

### **8.1 Sampling Method and Approach**

Because the area was not glaciated in the last ice age, gold placers, and soil and silt geochemical surveys can be effective in locating gold deposits, in particular along mountain ridges and crests where soils are less likely to be deep. There are no areas of thick till, glacial outwash gravels or lacustrine sediments to mask the subcrop. However, in parts of the Yukon, loess deposits, which mask subcrop, can hamper soil sampling. Local colluvium can also present problems in the sampling of residual bedrock. In unglaciated areas geochemical anomalies have local sources, in contrast to glaciated areas where down-ice mineral trains can smear out anomalies over larger areas.

The 2011 exploration program was contracted out to Druid of Dawson City, Yukon, which conducted a first pass, reconnaissance-type field program, exploring for gold mineralization. Ridgeline soil sampling along with silt sampling of streams and prospecting was used to explore the Property.

Field work was carried out on June 17, 2011 by a four-man crew, and consisted of a reconnaissance-type program of prospecting and geochemical sampling. This involved three samplers collecting soil samples along three separate lines along ridges at 100-metre intervals. Silt samples were collected along Fresno Creek and its tributaries. In addition, a geologist prospected within parts of the Property, collected rock grab samples where possible and took structural measurements. The Property was accessed using a Jet Ranger helicopter owned by Heli Dynamics Ltd. from Dawson City, a distance of about 45 km. The geologist hiked in to the Property from the Top of the World highway.

Prior to beginning the fieldwork, soil sample locations were derived using Arc GIS and sample waypoints were programmed into handheld GPSs. In the field, the samplers took deep soil samples with Dutch augers, targeting the top of the residual bedrock. The exact location of the sample was recorded on the GPS and later imported to Arc GIS for mapping. Detailed sample notes were taken at each site (depth, soil type, vegetation etc.) as well as a picture of each site. Kraft bags were used for sample collection. The sample location was flagged with the corresponding Acme tag number written on the flagging tape. Permafrost conditions were encountered at a few soil locations, particularly at north-facing slopes within deep valleys.

Silt stream sediment samples were collected from low energy stream bed environments along targeted streams. Although fine sediments were targeted, both fine and coarse stream

sediments were taken at each site where fines were lacking. Stream sediments were taken by hand with no sieves. Detailed notes were taken at each sample site.

In total, 58 reconnaissance soil samples, 5 silt samples and 1 rock sample were sent for analysis. Samples were placed in rice bags and shipped to Acme Analytical Laboratories Ltd ("Acme") in Whitehorse for sample preparation. Acme then shipped the prepared samples to its Vancouver lab for analysis. Soil, silt and rock descriptions are given in Appendices I, II and III, respectively.

## **8.2 Sample Preparation, Analysis and QA/QC**

The soil and silt samples were dried at 60° C and sieved to -80 mesh (<177 microns). A 15.0 gram sub-sample was digested in hot (95° C) aqua regia (HCl-HNO<sub>3</sub>-H<sub>2</sub>O); following this, the samples were analysed by inductively-coupled plasma mass spectrometry (ICP-MS) techniques (Acme's Group 1DX2). Multi-elemental analysis of 36 elements was made.

The rock sample was crushed, split to 250 g, pulverized, and a split was sieved to -200 mesh. The same analytical procedure (Acme's Group 1DX2) was used.

Quality control samples from the lab include control blanks, duplicates and standards. Sample blanks (BLK), pulp duplicates and standards (STD DS8) were run with the batch analysis; no problems were noted with analytical accuracy or precision. Analytical results for the soil, silt and rock samples are given in Appendices IV, V and VI, respectively.

## **8.3 Results**

Sample locations and IDs of the soil, silt and rock samples are shown on Figure 4. The geochemical results for gold values, as a bubble map, are shown on Figure 5.

### **SOILS**

Three ridges and spurs were traversed across and near the Property, on the west side of Fresno Creek. The highest gold values are 16 ppb Au (sample 1205419) and 10 ppb Au (sample 1208084), shown on Photo 1. However, 6 samples have arsenic values of >25 ppm As. A series of 6 out of 7 consecutive samples (1205164 - 1205170 except for 1205169) contain high values of arsenic ranging from 19 to 63 ppm As. A second series of 2 samples (1208088 and 1208089) along a different ridge have the highest values of 381 and 45 ppm As. These two samples are close to (about 250 m) and upslope from the site of the anomalous GSC silt sample of 31 ppb collected in Fresno Creek.

Antimony and bismuth values are all generally low.

A series of 4 consecutive soil samples (1205167 - 1205170) contain anomalous base metals, near the claim boundary at the confluence of Fresno Creek and two of its tributaries. Maximum values of 122 ppm Cu, 280 ppm Ni, 698 ppm Zn and 428 ppm Pb occur along a distance of 300 m upslope from the confluence, with a relief of about 400 m. Three of these samples form part of the anomalous arsenic series mentioned above.



Photo 1: Soil sample 1208084, which carries 10 ppb Au. Located along a ridge at UTM 554370E, 7122009N

### **SILTS**

The five silt samples all return values of below 4 ppb Au and do not carry any other significant geochemical signature. The anomalous gold value from the GSC silt sediment samples along Fresno Creek and its tributaries could not be reproduced. Photo 2 shows the silt sample location along Fresno Creek.

### **ROCKS**

The rock sample consists of weathered grey schist with no visible mineralization, and was taken from a large outcrop along the valley wall of Fresno Creek (Photos 3 and 4). The geochemistry indicates insignificant gold and base metal values.



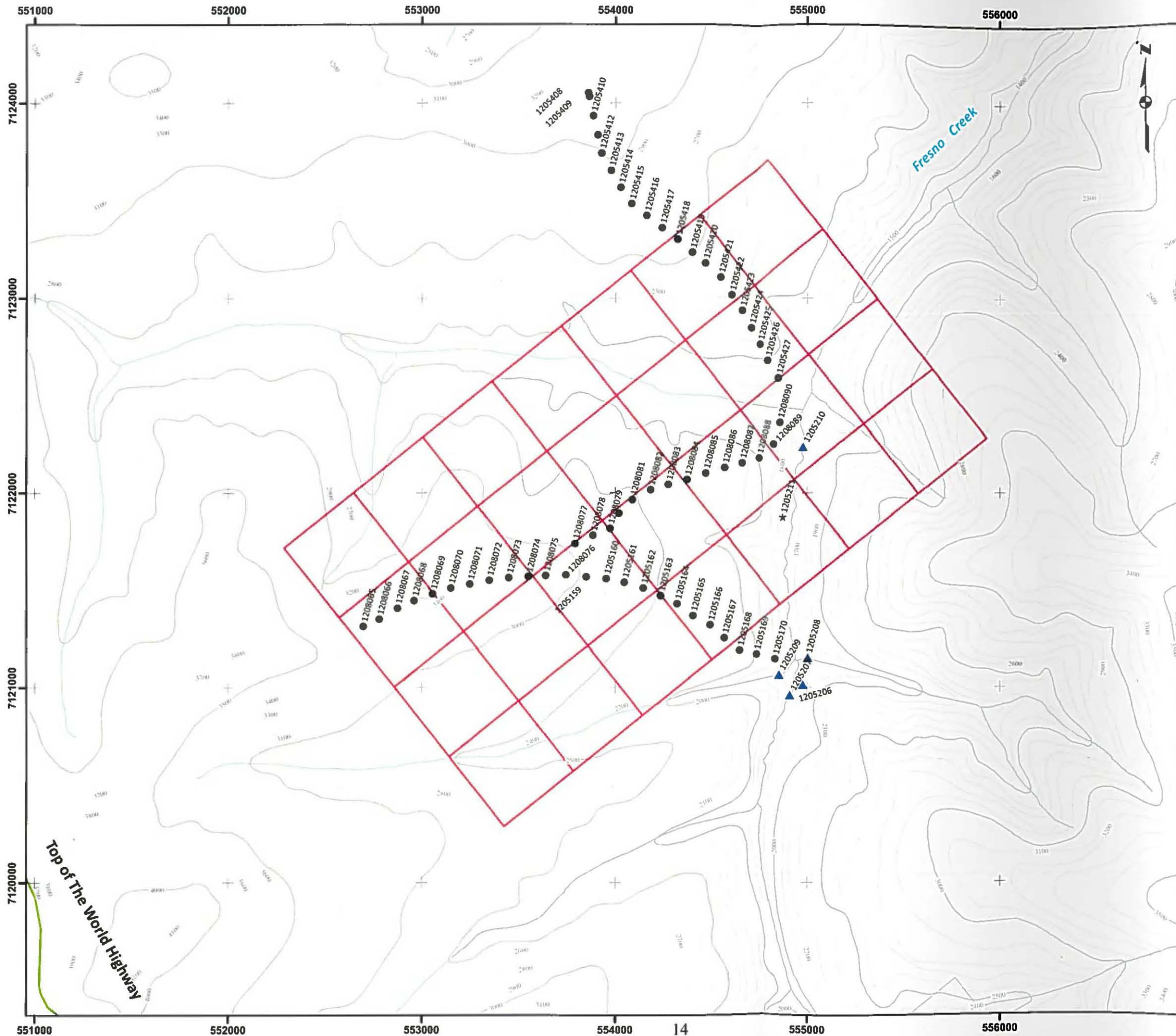
Photo 2: Location of silt sample 1205210. Located along Fresno Creek at UTM 554942E, 7122234N. This location is also the site of the GSC silt sample that carried 31 ppb Au.



Photo 3: Outcrop near Fresno Creek, at UTM 554873E, 7121874N



Photo 4: Rock sample 1205211 taken from the outcrop



### Legend

- ★ Rock
- ▲ Silt
- Soil

## Fresno Property Goldspike Exploration Inc.

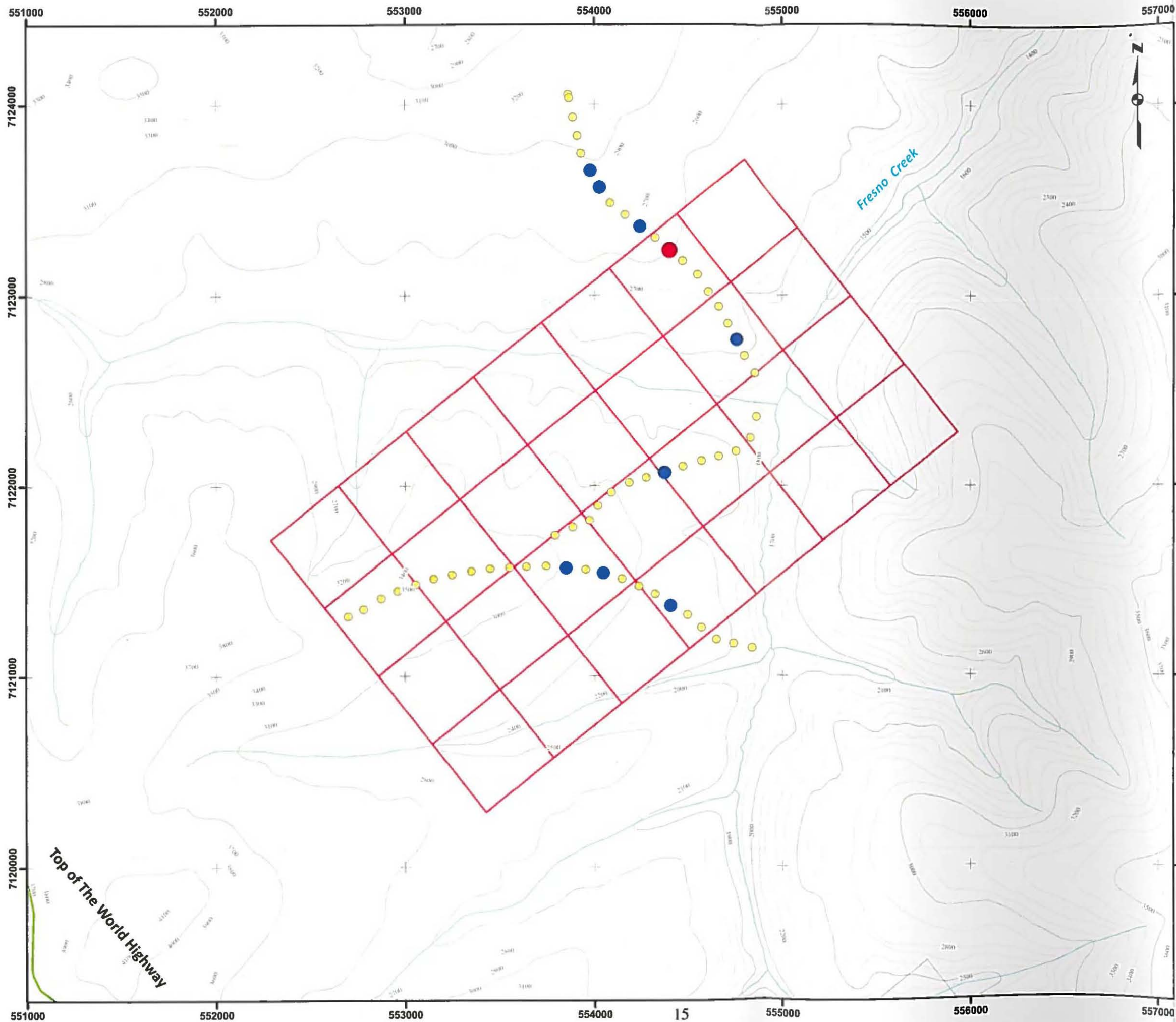
Fig. 4 Sample Locations

November 30, 2011

0 262.5 525 1,050



Scale 1:20,000  
UTM NAD 83 (Zone 7) 116B  
Elevation in Feet



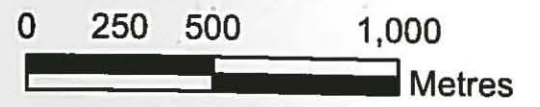
**Legend**

- Au in soils**
- 0.2 - 5.0 ppb
  - 5.1 - 15.0 ppb
  - >15.0 ppb

**Fresno Property**  
**Goldspike Exploration Inc.**

**Fig. 5 Soil Geochemistry: Gold**

November 30, 2011



Scale 1:20,000  
 UTM NAD 83 (Zone 7) 116B

Elevation in Feet

## **9.0 DISCUSSION AND CONCLUSIONS**

The Property was staked for its gold potential. The combination of anomalous GSC stream sediment samples and favourable lithology indicated a good potential for gold mineralization on the Property. The gold values in the silts obtained by the GSC (Figure 4) could not be duplicated. However, the non-duplication of gold values in standard sample silt samples is a common occurrence.

The reconnaissance soil sampling program was limited to three spurs and thus the extent to which the Property was fully explored is limited. The highest gold values are 15.6 and 10.2 ppb Au. Although these values can be considered to be moderately anomalous, they do not preclude the possibility that gold mineralization may occur on the Property.

A series of 6 consecutive soil samples have arsenic values of >25 ppm As, with a maximum of 63 ppm As. A second series of 2 samples along a different ridge have the highest values of 381 and 45 ppm As. These two samples are about 250 m upslope from the site of the anomalous GSC silt sample of 31 ppb, collected along Fresno Creek. Arsenic may be a path finder element for gold and thus, may increase the potential for the presence of gold mineralization.

A significant base metal (Cu-Pb-Zn) anomaly was discovered from the soil program, suggesting the presence of a possible volcanogenic massive sulphide (VMS) deposit. Part of the arsenic anomaly overlaps this anomaly.

This type of deposit was outlined by Nordac Resources in their 1995 to 1999 exploration programs on the TOP Property. In addition to the Fresno mineral occurrence, Nordac delineated anomalous base-metal values in soils and silts for a strike length of several kilometres to the northwest (AR 093535). This Cu-Pb-Zn anomaly is located about 3 km north from the northern boundary of the TOP Property.

## 10.0 RECOMMENDATIONS

Any further work should include a soil sample grid over the base metal anomaly. The hillside should be prospected and rock samples should be collected. A ground magnetometer survey is highly recommended, since some VMS deposits are associated with a strong magnetic signature.

For any further silt surveys, consideration should be given to collecting sediments from the high energy environment in the stream bed. This would necessitate field sieving gravels to -20 mesh.

Analysis of soil samples (after drying) by an XRF analyzer, before being shipped for laboratory analysis, should be considered. This would facilitate a much more rapid follow up of anomalies.

**Respectfully submitted,**

A. Koffyberg  


---

A. Koffyberg, P. Geo  
Discovery Consultants  
Vernon, BC  
November 30, 2011

## **11.0 REFERENCES**

Bond, J. (2011): An overview of Yukon Surficial Geology and its application to mineral exploration; Dawson Rocks Presentation, Yukon Geological Survey

Carne, R.C. (1999): Report on the Excavator Trenching on the TOP Property, Dawson Mining District, Yukon Territory, for Nordac Resources Ltd.; AR 093952

Carne, R.C. (1996a): Geochemical Survey Report on the TOP Property, Dawson Mining District, Yukon Territory, for Nordac Resources Ltd.; AR 093535

Carne, R.C. (1996b): Geochemical Survey Report on the FRESNO Property, Dawson Mining District, Yukon Territory, for Nordac Resources Ltd.; AR 093533

Heaton, T.C. and Carne, R.C. (1997): Report on the Geochemical Survey and Trenching on the TOP Property, Dawson Mining District, Yukon Territory, for Nordac Resources Ltd.; AR 093765

Mortensen, J.K. (1996): Geological Compilation Maps of the northern Stewart River Map Area, Klondike and Sixty Mile Districts (115N/15,16; 115O/13,14; and parts of 115O15, 16) Exploration and Geological Services Division, Yukon Region, Indian and Northern Affairs Canada, Open File 1996-1 (G), p. 43.

Yukon Minfile 116B 041. [www.geology.gov.yk.ca/publications/minfile](http://www.geology.gov.yk.ca/publications/minfile)



### 13.0 STATEMENT OF QUALIFICATIONS

I, **Agnes Koffyberg, PGeo**, of Discovery Consultants, 201-2928 29<sup>th</sup> Street, Vernon, BC,

DO HEREBY CERTIFY that:

1. I am a geologist in mineral exploration and am employed by Discovery Consultants, Vernon, BC.
2. I graduated with a B.Sc. degree in combined Geological Sciences/Chemistry from Brock University in 1987. In addition, I have obtained a M.Sc. in Geology from the University of Alberta in 1994.
3. I am a member of the Association of Professional Engineers and Geoscientists of BC, registration number 31384, and am a member of the Association of Professional Engineers, Geologists and Geophysicists of Alberta, registration number M60148.
4. I have worked as a geologist for a total of 14 years since graduation from university.
5. This report is based upon knowledge of the Property gained from a review of existing industry and government reports.

**Signed and dated this thirtieth day of November, 2011 in Vernon, BC**

A. Koffyberg  


**Agnes Koffyberg, PGeo**  
Discovery Consultants

APPENDIX I - Soil Descriptions

Fresno Property  
Soil Sample Description  
2011

Date	Lab Tag Number	UTM		Elev (m)	Sample Depth (cm)	Horizon	Colour	Sample Composition (%)						Parent Material	
		Easting	Northing					Organics	Ang. Rock	Gravel	Sand	Silt	Clay		
17-Jun-11	1205408	553860	7124053	992	20-30	b/c	dark brown		15	15	30			30	organic
17-Jun-11	1205409	553864	7124034	987	30-40	b/c	light brown								n/a
17-Jun-11	1205410	553884	7123935	968	20-30	b/c	light brown								n/a
17-Jun-11	1205411	553908	7123838	952	40-50	b/c	light brown		25	25	25			25	n/a
17-Jun-11	1205412	553928	7123744	934	20-30	b/c	light brown		40	40	5			5	n/a
17-Jun-11	1205413	553977	7123655	915	20-30	b/c	light brown		25	25	25			25	n/a
17-Jun-11	1205414	554027	7123568	893	20-30	b/c	light brown		40	40	5			5	n/a
17-Jun-11	1205415	554083	7123485	864	20-30	b/c	light brown		40	40	5			5	n/a
17-Jun-11	1205416	554161	7123424	843	20-30	b/c	light brown		40	40	5			5	n/a
17-Jun-11	1205417	554240	7123362	818	20-30	b/c	light brown		25	25	25			25	n/a
17-Jun-11	1205418	554321	7123303	794	20-30	b/c	light brown		25	25	25			25	n/a
17-Jun-11	1205419	554397	7123236	767	20-30	b/c	light brown		25	25	25			25	n/a
17-Jun-11	1205420	554465	7123181	744	20-30	b/c	light brown		25	25	25			25	n/a
17-Jun-11	1205421	554545	7123109	716	30-40	b/c	light brown			40	30			30	n/a
17-Jun-11	1205422	554602	7123019	695	20-30	b/c	light brown		25	25	25			25	n/a
17-Jun-11	1205423	554657	7122940	677	20-30	b/c	light brown		25	25	25			25	n/a
17-Jun-11	1205424	554705	7122852	658	20-30	b/c	light brown		25	25	25			25	n/a
17-Jun-11	1205425	554752	7122767	635	20-30	b/c	light brown		10	10	40			40	n/a
17-Jun-11	1205426	554793	7122684	603	20-30	b/c	light brown		10	10	40			40	n/a
17-Jun-11	1205427	554850	7122593	557	20-30	b/c	light brown		10	10	40			40	n/a
17-Jun-11	1205159	553850	7121568	885	30-40	b/c	light brown		30				70		weathered bedrock
17-Jun-11	1205160	553953	7121560	861	50-60	c	light brown		10				40	50	weathered bedrock
17-Jun-11	1205161	554046	7121541	835	60-70	c	light brown		10				50	40	weathered bedrock
17-Jun-11	1205162	554144	7121511	805	50-60	b/c	light brown		30				70		weathered bedrock
17-Jun-11	1205163	554234	7121472	772	40-50	c	grey		30				70		weathered bedrock
17-Jun-11	1205164	554320	7121430	749	20-30	c	brown		30				70		weathered bedrock
17-Jun-11	1205165	554402	7121369	728	20-30	c	brown		30				70		weathered bedrock
17-Jun-11	1205166	554491	7121322	709	30-40	c	brown		25		50		25		weathered bedrock
17-Jun-11	1205167	554565	7121255	687	60-70	c	brown		40		20		40		weathered bedrock
17-Jun-11	1205168	554644	7121191	661	70-80	c	brown		25		25		50		weathered bedrock
17-Jun-11	1205169	554734	7121170	632	50-60	c	brown		30		30		40		weathered bedrock
17-Jun-11	1205170	554833	7121146	569	40-50	c	brown	20	30				50		colluvium
17-Jun-11	1208065	552698	7121315	1061	30-40	c	light brown						50	50	weather bedrock
17-Jun-11	1208066	552781	7121352	1049	20-30	b/c	light brown		10				50	40	weather bedrock
17-Jun-11	1208067	552875	7121408	1042	20-30	c	light brown		10				60	30	weather bedrock

APPENDIX I - Soil Descriptions

Date	Lab Tag Number	UTM		Elev (m)	Sample Depth (cm)	Horizon	Colour	Sample Composition (%)						Parent Material
		Eastings	Northing					Organics	Ang. Rock	Gravel	Sand	Silt	Clay	
17-Jun-11	1208068	552961	7121447	1048	40-50	c	light brown					50	50	weather bedrock
17-Jun-11	1208069	553056	7121482	1060	50-60	c	light brown		10			30	60	weather bedrock
17-Jun-11	1208070	553150	7121511	1052	40-50	c	light brown		5			45	50	weather bedrock
17-Jun-11	1208071	553248	7121532	1034	40-50	c	light brown					40	60	weather bedrock
17-Jun-11	1208072	553349	7121551	1021	50-60	c	light brown		5			30	65	weather bedrock
17-Jun-11	1208073	553450	7121564	1011	60-70	c	light brown		5			45	50	weather bedrock
17-Jun-11	1208074	553551	7121570	996	50-60	c	light brown		5			35	60	weather bedrock
17-Jun-11	1208075	553641	7121575	971	30-40	b/c	light brown	5				45	50	weather bedrock
17-Jun-11	1208076	553744	7121579	929	50-60	c	light brown		5	5		40	60	weather bedrock
17-Jun-11	1208077	553792	7121740	890	30-40	c	light brown		5	20		50	25	weather bedrock
17-Jun-11	1208078	553885	7121783	863	60-70	c	light brown		15	5		50	30	weather bedrock
17-Jun-11	1208079	553973	7121819	835	70-80	c	light brown		5			50	45	weather bedrock
17-Jun-11	1208080	554018	7121896	814	40-50	c	light brown					50	50	weather bedrock
17-Jun-11	1208081	554088	7121966	788	30-40	b/c	light brown					50	50	weather bedrock
17-Jun-11	1208082	554183	7122017	764	60-70	c	light brown					70	30	weather bedrock
17-Jun-11	1208083	554273	7122044	744	40-50	c	light brown					70	30	weather bedrock
17-Jun-11	1208084	554370	7122069	724	40-50	c	yellowish orange					60	40	weather bedrock
17-Jun-11	1208085	554467	7122102	705	50-60	c	yellowish orange		5			65	35	weather bedrock
17-Jun-11	1208086	554565	7122132	682	40-50	c	yellowish orange		20			70	10	weather bedrock
17-Jun-11	1208087	554656	7122155	649	>80	c	light brown		20	20		60		weather bedrock
17-Jun-11	1208088	554748	7122182	608	60-70	c	light brown		20	20		60		weather bedrock
17-Jun-11	1208089	554825	7122252	579	40-50	c	light brown		10	10		80		weather bedrock
17-Jun-11	1208090	554857	7122364	541	>80	c	light brown		20	20		60		weather bedrock

APPENDIX II - Silt Descriptions

Fresno Property  
Silt Sample Description  
2011

Date	Lab Tag Number	UTM		Elev (m)	Sample Environment	Medium	Medium Width	Bank Type
		Easting	Northing					
17-Jun-11	1205206	554978	7121013	540	low energy	stream	2-3m	organic/fluvial
17-Jun-11	1205207	554911	7120959	540	bar	stream	2-3m	organic/fluvial
17-Jun-11	1205208	555004	7121151	534	bar	stream	1.5m	organic/fluvial
17-Jun-11	1205209	554855	7121063	549	low energy	stream	1.0m	organic/bedrock
17-Jun-11	1205210	554942	7122234	490	bar	stream	3-4m	organic/fluvial

APPENDIX III - Rock Descriptions

Fresno Property  
Rock Sample Description  
2011

Date	Lab Tag Number	UTM		Elev (m)	Sampler	Type	Sample Description
		Easting	Northing				
17-Jun-11	1205211	554874	7121874	510	C. Jones	outcrop	weathered grey schist, large outcrop along creek valley wall, 68/72, near verticle bedding or foliations?

**Goldspike Exploration Inc.**  
**Fresno Property**

**Soil Results (2011)**

Sample ID	Acme Labs Report #	<u>UTM</u>		1DX15	1DX15	1DX15	1DX15	1DX15	1DX15	1DX15	1DX15	1DX15	1DX15	1DX15
		East	North	Au ppb	Ag ppm	As ppm	Sb ppm	Cu ppm	Pb ppm	Zn ppm	Mo ppm	Ni ppm	Co ppm	Mn ppm
				0.5	0.1	0.5	0.1	0.1	0.1	1	0.1	0.1	0.1	1
1205159	WH11000289	553850	7121568	5.1	0.1	10.9	0.9	42.1	12.4	68	1.8	28.7	9.3	726
1205160	WH11000289	553953	7121560	3.9	<0.1	11.2	1.0	41.8	11.7	71	1.7	32.5	10.7	735
1205161	WH11000289	554046	7121541	5.9	0.2	12.4	0.9	42.3	12.4	75	1.2	68.4	13.6	828
1205162	WH11000289	554144	7121511	4.9	0.2	12.6	0.9	39.0	13.4	74	1.5	42.9	12.4	600
1205163	WH11000289	554234	7121472	3.3	<0.1	14.5	0.8	37.0	11.6	72	1.5	45.5	11.6	574
1205164	WH11000289	554320	7121430	4.0	0.1	31.9	0.8	55.4	12.6	88	1.5	79.3	16.8	856
1205165	WH11000289	554402	7121369	5.8	0.3	36.2	1.3	68.9	17.2	132	1.9	112.7	16.5	819
1205166	WH11000289	554491	7121322	3.8	<0.1	13.1	0.7	27.8	10.9	58	1.3	37.9	9.5	348
1205167	WH11000289	554565	7121255	3.6	0.2	62.7	1.3	67.2	22.5	121	2.5	75.9	11.5	701
1205168	WH11000289	554644	7121191	1.5	0.1	25.5	0.8	109.2	22.0	111	0.7	95.0	22.1	755
1205169	WH11000289	554734	7121170	0.8	0.3	8.2	0.6	91.8	428.9	698	0.7	105.1	36.4	1847
1205170	WH11000289	554833	7121146	1.6	0.5	19.5	0.5	122.3	59.3	94	0.6	280.0	43.8	817
1205408	WH11000289	553860	7124053	1.0	0.2	7.4	0.7	32.8	11.0	76	2.8	21.1	6.3	481
1205409	WH11000289	553864	7124034	1.1	0.1	3.7	0.2	10.0	10.9	38	1.2	11.1	3.3	156
1205410	WH11000289	553884	7123935	2.3	<0.1	7.1	0.7	27.4	12.1	49	2.0	21.3	7.6	221
1205411	WH11000289	553908	7123838	4.2	0.1	9.2	0.7	28.8	17.3	64	1.1	28.8	9.9	322
1205412	WH11000289	553928	7123744	1.2	0.1	4.2	0.6	28.5	14.3	64	1.6	27.0	7.5	215
1205413	WH11000289	553977	7123655	7.2	0.2	7.9	0.6	17.4	11.7	53	1.1	21.7	7.8	204
1205414	WH11000289	554027	7123568	5.2	<0.1	4.9	0.4	13.6	18.4	54	0.7	16.3	6.0	182
1205415	WH11000289	554083	7123485	2.2	<0.1	3.9	0.5	21.6	18.4	71	0.6	22.9	8.3	183
1205416	WH11000289	554161	7123424	1.9	0.2	5.6	0.5	17.4	20.0	60	0.9	23.1	9.3	391
1205417	WH11000289	554240	7123362	5.5	0.6	8.3	0.9	19.3	19.6	67	1.0	23.0	6.9	250
1205418	WH11000289	554321	7123303	1.1	<0.1	5.0	1.0	26.5	31.8	120	0.6	23.6	6.4	190
1205419	WH11000289	554397	7123236	15.6	0.1	10.1	1.5	21.4	30.5	95	0.8	19.3	10.1	374
1205420	WH11000289	554465	7123181	1.8	0.2	4.7	0.9	20.1	16.5	69	1.5	17.8	8.6	1042

APPENDIX IV - Soil Geochemistry - Analytical Results

1DX15 Fe %	1DX15 Th ppm	1DX15 Sr ppm	1DX15 Cd ppm	1DX15 Bi ppm	1DX15 V ppm	1DX15 Ca %	1DX15 P %	1DX15 La ppm	1DX15 Cr ppm	1DX15 Mg %	1DX15 Ba ppm	1DX15 Ti %	1DX15 B ppm	1DX15 Al %	1DX15 Na %	1DX15 K %
0.01	0.1	1	0.1	0.1	2	0.01	0.001	1	1	0.01	1	0.001	1	0.01	0.001	0.01
2.74	4.4	21	0.1	0.2	55	0.17	0.021	17	33	0.52	364	0.045	<1	1.69	0.011	0.06
2.88	5.3	24	<0.1	0.2	60	0.23	0.025	18	39	0.55	445	0.059	1	1.92	0.015	0.06
3.01	4.5	28	0.2	0.2	59	0.38	0.051	15	67	1.26	390	0.049	<1	2.06	0.014	0.05
3.19	5.1	24	0.2	0.2	67	0.25	0.036	17	50	0.76	400	0.057	<1	2.01	0.014	0.06
3.25	4.8	25	<0.1	0.2	64	0.30	0.032	17	54	0.78	369	0.061	<1	1.98	0.013	0.05
3.92	5.6	26	0.2	0.2	69	0.31	0.055	18	94	1.28	325	0.067	<1	2.20	0.010	0.07
3.89	8.0	30	0.2	0.2	58	0.45	0.096	28	125	1.60	347	0.038	<1	2.37	0.010	0.09
2.73	4.7	24	<0.1	0.2	58	0.28	0.032	16	53	0.67	330	0.058	<1	1.90	0.011	0.05
3.24	9.2	27	0.4	0.4	50	0.28	0.069	19	63	0.65	350	0.021	<1	1.57	0.009	0.06
4.31	3.3	28	0.4	<0.1	123	0.48	0.064	13	78	1.38	283	0.094	<1	2.52	0.013	0.16
5.64	0.5	19	2.8	0.4	167	0.52	0.083	3	167	3.54	823	0.194	<1	3.72	0.016	0.90
3.81	1.7	31	0.3	<0.1	79	0.89	0.038	5	477	4.05	88	0.081	1	2.94	0.011	0.07
2.89	3.2	9	0.2	0.3	49	0.07	0.049	23	19	0.33	126	0.025	<1	1.76	0.007	0.06
1.42	8.0	5	<0.1	0.2	23	0.04	0.017	16	13	0.19	86	0.011	<1	1.22	0.005	0.07
2.52	9.3	11	<0.1	0.2	44	0.08	0.018	28	29	0.40	166	0.036	<1	1.82	0.011	0.06
2.96	10.9	15	<0.1	0.2	50	0.10	0.020	28	30	0.52	216	0.054	<1	2.09	0.010	0.09
3.42	15.1	6	<0.1	0.3	29	0.04	0.026	56	25	0.61	106	0.015	<1	2.14	0.007	0.17
2.94	9.5	8	<0.1	0.2	44	0.07	0.020	29	29	0.49	144	0.020	<1	2.30	0.007	0.06
2.59	13.3	6	<0.1	0.2	22	0.04	0.022	45	16	0.34	110	0.006	<1	1.67	0.006	0.09
3.74	18.9	6	<0.1	0.3	23	0.04	0.020	58	19	0.56	103	0.007	<1	1.92	0.006	0.14
2.91	11.0	13	<0.1	0.2	34	0.14	0.038	36	25	0.45	134	0.030	<1	1.54	0.007	0.17
2.79	9.5	9	0.1	0.2	42	0.08	0.022	24	29	0.43	112	0.019	<1	2.03	0.007	0.13
3.00	15.4	7	0.1	0.3	22	0.05	0.026	50	20	0.38	106	0.009	<1	1.70	0.007	0.16
2.71	15.9	12	0.2	0.3	24	0.08	0.028	42	21	0.38	74	0.011	<1	1.52	0.007	0.15
2.79	11.6	9	0.1	0.3	31	0.08	0.063	40	20	0.34	131	0.019	<1	1.22	0.009	0.13

APPENDIX IV - Soil Geochemistry - Analytical Results

1DX15 W ppm 0.1	1DX15 Hg ppm 0.01	1DX15 Sc ppm 0.1	1DX15 Tl ppm 0.1	1DX15 S % 0.05	1DX15 Ga ppm 1	1DX15 Se ppm 0.5	1DX15 Te ppm 0.2
0.2	0.04	4.0	<0.1	<0.05	5	0.5	<0.2
0.2	0.05	5.0	<0.1	<0.05	5	0.5	<0.2
0.2	0.05	5.0	<0.1	<0.05	6	<0.5	<0.2
0.2	0.05	5.3	<0.1	<0.05	6	0.6	<0.2
0.2	0.03	5.0	<0.1	<0.05	6	<0.5	<0.2
0.1	0.03	5.6	<0.1	<0.05	7	<0.5	<0.2
<0.1	0.04	4.7	<0.1	<0.05	7	0.8	<0.2
0.1	0.04	4.5	<0.1	<0.05	5	<0.5	<0.2
0.3	0.02	3.5	<0.1	<0.05	5	0.8	<0.2
<0.1	0.03	7.6	0.2	<0.05	8	<0.5	<0.2
0.1	0.02	6.4	0.7	<0.05	10	1.0	<0.2
0.1	0.03	8.2	0.2	<0.05	6	0.9	<0.2
0.1	0.03	1.9	0.2	<0.05	6	0.8	<0.2
<0.1	0.01	1.1	0.1	<0.05	3	<0.5	<0.2
0.1	0.03	3.1	0.1	<0.05	4	0.8	<0.2
<0.1	0.04	4.1	0.1	<0.05	5	0.5	<0.2
<0.1	0.02	2.4	0.3	<0.05	6	<0.5	<0.2
0.1	0.03	2.4	0.1	<0.05	5	<0.5	<0.2
<0.1	0.02	1.8	0.2	<0.05	4	<0.5	<0.2
<0.1	0.01	2.5	0.2	<0.05	5	0.6	<0.2
<0.1	0.02	2.2	0.2	<0.05	4	<0.5	<0.2
0.1	0.02	2.1	0.1	<0.05	5	0.5	<0.2
<0.1	0.02	2.3	0.2	<0.05	4	<0.5	<0.2
<0.1	0.03	2.4	0.2	<0.05	4	<0.5	<0.2
<0.1	0.02	2.3	0.1	<0.05	5	<0.5	<0.2

APPENDIX IV - Soil Geochemistry - Analytical Results

Sample ID	Acme Labs Report #	<u>UTM</u>		1DX15	1DX15	1DX15	1DX15	1DX15	1DX15	1DX15	1DX15	1DX15	1DX15	1DX15
				Au	Ag	As	Sb	Cu	Pb	Zn	Mo	Ni	Co	Mn
		East	North	ppb	ppm	ppm	ppm	ppm	ppm	ppm	ppm	ppm	ppm	ppm
				0.5	0.1	0.5	0.1	0.1	0.1	1	0.1	0.1	0.1	1
1205421	WH11000289	554545	7123109	2.2	<0.1	4.7	2.5	32.4	10.1	58	1.1	24.7	9.6	259
1205422	WH11000289	554602	7123019	1.6	<0.1	12.4	2.3	77.3	76.0	166	2.1	36.1	9.7	304
1205423	WH11000289	554657	7122940	3.0	<0.1	4.5	1.1	26.5	14.6	69	0.7	21.7	7.0	159
1205424	WH11000289	554705	7122852	2.9	<0.1	9.1	1.0	53.0	17.9	126	0.7	58.8	16.2	727
1205425	WH11000289	554752	7122767	6.0	0.2	12.5	0.8	24.7	20.1	68	1.5	21.2	6.0	290
1205426	WH11000289	554793	7122684	3.4	0.2	14.5	1.0	34.9	29.4	81	1.9	25.2	6.5	498
1205427	WH11000289	554850	7122593	1.8	0.2	16.9	0.7	11.2	12.4	36	1.9	21.4	3.0	97
1208065	WH11000289	552698	7121315	3.5	<0.1	11.4	0.9	37.3	10.4	71	1.3	27.7	10.8	522
1208066	WH11000289	552781	7121352	4.4	0.1	19.1	0.7	46.9	9.2	73	2.5	28.2	11.9	1181
1208067	WH11000289	552875	7121408	4.4	<0.1	7.9	0.6	32.8	15.5	145	1.7	46.2	17.4	1025
1208068	WH11000289	552961	7121447	4.4	<0.1	13.9	1.1	32.4	11.9	61	1.3	28.6	11.3	582
1208069	WH11000289	553056	7121482	3.9	<0.1	12.5	0.9	36.3	11.7	66	1.6	27.5	12.5	759
1208070	WH11000289	553150	7121511	0.9	0.1	11.0	0.7	25.4	11.9	58	1.5	23.4	9.5	462
1208071	WH11000289	553248	7121532	3.0	<0.1	10.3	0.7	34.9	10.7	67	1.5	24.2	9.6	467
1208072	WH11000289	553349	7121551	3.8	<0.1	9.7	0.9	47.0	11.3	75	1.3	33.8	14.4	720
1208073	WH11000289	553450	7121564	5.0	0.2	12.5	1.1	54.5	12.3	88	1.8	39.0	12.3	585
1208074	WH11000289	553551	7121570	3.0	0.1	13.5	1.1	33.8	12.3	75	1.7	32.6	9.8	447
1208075	WH11000289	553641	7121575	2.3	0.3	6.1	0.5	17.6	10.7	75	1.2	20.7	9.9	1282
1208076	WH11000289	553744	7121579	1.0	0.1	11.3	0.7	22.9	12.1	65	1.1	27.8	10.1	524
1208077	WH11000289	553792	7121740	2.4	0.1	9.5	0.6	22.5	11.6	50	1.9	17.3	7.2	708
1208078	WH11000289	553885	7121783	2.3	0.1	11.3	0.8	49.6	11.5	79	1.9	29.4	9.7	955
1208079	WH11000289	553973	7121819	4.6	0.2	12.5	0.8	46.8	14.7	97	1.5	33.3	11.0	880
1208080	WH11000289	554018	7121896	2.4	0.3	11.9	1.1	56.6	13.8	126	1.1	59.8	15.4	945
1208081	WH11000289	554088	7121966	2.9	0.5	9.9	1.0	48.3	43.6	211	1.1	53.9	12.3	995
1208082	WH11000289	554183	7122017	<0.5	<0.1	14.8	0.6	30.1	56.1	209	0.5	21.0	8.2	206
1208083	WH11000289	554273	7122044	2.4	<0.1	9.3	0.7	30.6	63.9	202	1.1	18.1	7.5	172
1208084	WH11000289	554370	7122069	10.2	0.1	13.0	0.8	31.5	40.1	86	2.1	20.5	7.6	340
1208085	WH11000289	554467	7122102	4.9	0.1	7.4	0.5	11.5	41.5	93	1.2	6.4	2.0	189
1208086	WH11000289	554565	7122132	1.5	<0.1	10.2	0.8	17.5	17.5	57	1.2	18.9	7.6	297
1208087	WH11000289	554656	7122155	<0.5	<0.1	12.8	0.6	10.1	27.9	61	1.5	15.9	6.2	341

APPENDIX IV - Soil Geochemistry - Analytical Results

1DX15 Fe %	1DX15 Th ppm	1DX15 Sr ppm	1DX15 Cd ppm	1DX15 Bi ppm	1DX15 V ppm	1DX15 Ca %	1DX15 P %	1DX15 La ppm	1DX15 Cr ppm	1DX15 Mg %	1DX15 Ba ppm	1DX15 Ti %	1DX15 B ppm	1DX15 Al %	1DX15 Na %	1DX15 K %
0.01	0.1	1	0.1	0.1	2	0.01	0.001	1	1	0.01	1	0.001	1	0.01	0.001	0.01
2.84	13.1	17	<0.1	0.3	34	0.15	0.021	41	25	0.47	165	0.028	<1	1.56	0.012	0.11
3.72	13.5	12	0.1	0.5	38	0.10	0.035	49	35	0.61	124	0.027	<1	2.14	0.006	0.23
2.65	10.8	11	<0.1	0.3	33	0.09	0.020	39	23	0.46	93	0.034	<1	1.69	0.009	0.15
3.91	13.9	23	0.3	0.3	40	0.26	0.038	46	46	0.74	247	0.053	<1	1.78	0.010	0.22
2.66	13.3	10	0.1	0.3	35	0.08	0.021	41	21	0.39	215	0.033	<1	1.60	0.008	0.12
2.61	8.8	11	0.1	0.3	32	0.08	0.029	32	23	0.36	295	0.018	<1	1.56	0.008	0.11
1.62	12.2	11	0.1	0.1	34	0.09	0.016	38	22	0.27	113	0.018	<1	0.96	0.008	0.13
2.79	4.3	25	0.2	0.2	60	0.23	0.051	18	32	0.61	328	0.066	<1	1.88	0.013	0.07
3.21	1.9	12	0.2	0.2	64	0.07	0.057	16	32	0.57	154	0.030	<1	2.47	0.008	0.08
4.04	6.3	22	0.3	0.1	63	0.23	0.076	37	59	0.89	266	0.032	<1	2.53	0.006	0.10
3.14	5.0	21	0.3	0.2	61	0.18	0.052	15	37	0.53	279	0.048	2	2.15	0.010	0.07
2.97	4.7	16	<0.1	0.3	63	0.11	0.065	18	38	0.56	252	0.060	1	2.13	0.010	0.05
2.72	3.7	14	0.1	0.3	58	0.11	0.050	15	33	0.49	177	0.051	2	1.95	0.007	0.06
2.87	3.2	21	0.2	0.3	63	0.16	0.045	15	34	0.54	233	0.055	1	1.90	0.009	0.07
3.16	4.4	31	0.1	0.2	68	0.25	0.045	17	38	0.72	365	0.070	<1	2.07	0.010	0.08
3.28	4.1	37	0.2	0.2	66	0.30	0.054	17	35	0.67	377	0.064	2	1.88	0.014	0.09
2.93	5.4	16	<0.1	0.2	63	0.12	0.025	13	38	0.57	195	0.068	2	1.99	0.009	0.07
2.58	2.5	21	0.2	0.3	62	0.19	0.087	10	28	0.42	443	0.043	<1	1.87	0.009	0.07
2.76	4.2	27	0.2	0.2	57	0.25	0.027	11	34	0.48	462	0.049	1	1.87	0.011	0.08
2.30	1.5	13	0.2	0.3	55	0.13	0.047	13	26	0.28	107	0.053	1	1.28	0.007	0.07
2.62	4.5	18	0.2	0.2	48	0.17	0.046	17	30	0.46	308	0.056	<1	1.46	0.010	0.08
3.04	4.6	21	0.2	0.2	54	0.29	0.056	18	38	0.54	415	0.051	<1	1.74	0.013	0.08
3.27	4.3	25	0.6	0.2	56	1.03	0.076	18	52	0.79	330	0.046	2	1.84	0.017	0.09
2.58	3.2	26	0.8	0.9	46	1.18	0.066	20	55	0.70	304	0.032	<1	1.55	0.014	0.07
2.78	12.7	13	1.0	0.4	36	0.23	0.047	41	25	0.54	160	0.024	<1	1.66	0.006	0.14
1.95	8.8	13	0.3	0.5	38	0.12	0.027	30	25	0.36	81	0.027	<1	1.36	0.007	0.10
3.09	11.8	12	0.5	0.4	59	0.10	0.036	20	34	0.47	128	0.041	<1	2.31	0.010	0.08
1.69	27.5	13	0.2	0.4	12	0.11	0.022	89	9	0.43	206	0.006	<1	1.43	0.006	0.14
2.81	10.7	16	<0.1	0.2	48	0.12	0.033	30	38	0.50	184	0.044	<1	2.02	0.009	0.08
2.19	12.7	11	0.2	0.3	33	0.09	0.057	67	26	0.32	133	0.019	<1	1.35	0.007	0.12

APPENDIX IV - Soil Geochemistry - Analytical Results

1DX15 W ppm 0.1	1DX15 Hg ppm 0.01	1DX15 Sc ppm 0.1	1DX15 Tl ppm 0.1	1DX15 S % 0.05	1DX15 Ga ppm 1	1DX15 Se ppm 0.5	1DX15 Te ppm 0.2
<0.1	0.02	3.6	0.2	<0.05	5	0.5	<0.2
<0.1	0.01	3.4	0.3	<0.05	6	0.7	<0.2
<0.1	0.01	2.2	0.2	<0.05	5	<0.5	<0.2
<0.1	0.03	5.2	0.2	<0.05	6	0.7	<0.2
<0.1	0.02	3.0	0.2	<0.05	5	<0.5	<0.2
<0.1	0.02	2.3	0.1	<0.05	5	0.6	0.2
0.1	0.01	1.4	0.1	<0.05	4	<0.5	<0.2
0.2	0.05	5.0	0.1	<0.05	5	<0.5	<0.2
0.1	0.04	2.8	0.1	<0.05	7	0.9	<0.2
<0.1	0.02	4.6	0.2	<0.05	9	0.7	<0.2
0.2	0.05	4.3	<0.1	<0.05	5	<0.5	<0.2
0.2	0.06	5.0	0.1	<0.05	6	<0.5	<0.2
0.2	0.05	3.7	0.2	<0.05	5	<0.5	<0.2
0.1	0.04	4.0	0.1	<0.05	6	0.6	<0.2
0.1	0.05	5.7	0.1	<0.05	6	0.9	<0.2
0.1	0.06	4.6	0.1	<0.05	6	<0.5	<0.2
0.2	0.03	3.5	0.1	<0.05	5	<0.5	<0.2
0.1	0.02	2.3	0.2	<0.05	6	<0.5	<0.2
0.2	0.02	2.7	0.1	<0.05	5	<0.5	<0.2
0.1	0.04	1.7	0.1	<0.05	6	<0.5	<0.2
0.1	0.03	3.7	<0.1	<0.05	5	<0.5	<0.2
0.2	0.05	4.4	<0.1	<0.05	5	<0.5	<0.2
0.2	0.06	4.0	0.1	<0.05	5	0.6	<0.2
0.1	0.04	2.9	<0.1	<0.05	4	0.7	<0.2
0.1	0.02	2.3	0.2	<0.05	5	<0.5	<0.2
0.1	0.01	1.8	0.2	<0.05	5	<0.5	<0.2
0.1	0.03	2.8	0.2	<0.05	7	<0.5	<0.2
<0.1	0.01	2.2	0.2	<0.05	4	<0.5	<0.2
0.1	0.03	4.0	0.1	<0.05	5	<0.5	<0.2
0.1	0.02	1.7	0.1	<0.05	4	0.5	<0.2

APPENDIX IV - Soil Geochemistry - Analytical Results

Sample ID	Acme Labs Report #	<u>UTM</u>		1DX15	1DX15	1DX15	1DX15	1DX15	1DX15	1DX15	1DX15	1DX15	1DX15	1DX15
		East	North	Au ppb	Ag ppm	As ppm	Sb ppm	Cu ppm	Pb ppm	Zn ppm	Mo ppm	Ni ppm	Co ppm	Mn ppm
				0.5	0.1	0.5	0.1	0.1	0.1	1	0.1	0.1	0.1	1
1208088	WH11000289	554748	7122182	3.7	1.9	45.3	1.4	20.1	37.7	93	3.9	24.3	9.5	512
1208089	WH11000289	554825	7122252	3.0	1.2	381.5	1.2	22.2	31.5	135	2.3	32.4	12.5	1057
1208090	WH11000289	554857	7122364	<0.5	0.1	9.7	0.5	7.6	37.5	46	1.8	9.2	4.9	244
<u>Pulp Duplicates:</u>														
1205168	WH11000289			1.5	0.1	25.5	0.8	109.2	22.0	111	0.7	95.0	22.1	755
1205168	WH11000289			1.3	0.1	25.6	0.8	109.1	21.7	110	0.8	96.1	22.7	741
1205427	WH11000289			1.8	0.2	16.9	0.7	11.2	12.4	36	1.9	21.4	3.0	97
1205427	WH11000289			0.8	0.2	17.1	0.7	10.6	12.4	36	1.9	21.2	2.8	99
1208081	WH11000289			2.9	0.5	9.9	1.0	48.3	43.6	211	1.1	53.9	12.3	995
1208081	WH11000289			5.4	0.5	10.0	1.2	46.5	42.2	206	1.1	52.1	12.2	961
<u>Lab Standards:</u>														
STD DS8	WH11000289			103.4	1.7	24.7	5.8	102.4	120.6	313	13.9	37.4	7.0	601
STD DS8	WH11000289			109.7	1.7	25.0	5.9	104.5	121.4	327	13.0	38.2	7.4	621
STD DS8	WH11000289			111.5	1.9	26.3	6.2	103.0	119.1	318	12.3	36.0	7.1	579
STD DS8	WH11000289			99.1	1.8	24.7	6.1	101.3	127.0	299	13.2	37.1	7.4	593
<u>Lab Analytical Blank:</u>														
BLK	WH11000289			<0.5	<0.1	<0.5	<0.1	<0.1	<0.1	<1	<0.1	<0.1	<0.1	<1
BLK	WH11000289			<0.5	<0.1	<0.5	<0.1	<0.1	<0.1	<1	<0.1	<0.1	<0.1	<1

APPENDIX IV - Soil Geochemistry - Analytical Results

1DX15 Fe %	1DX15 Th ppm	1DX15 Sr ppm	1DX15 Cd ppm	1DX15 Bi ppm	1DX15 V ppm	1DX15 Ca %	1DX15 P %	1DX15 La ppm	1DX15 Cr ppm	1DX15 Mg %	1DX15 Ba ppm	1DX15 Ti %	1DX15 B ppm	1DX15 Al %	1DX15 Na %	1DX15 K %
0.01	0.1	1	0.1	0.1	2	0.01	0.001	1	1	0.01	1	0.001	1	0.01	0.001	0.01
2.98	23.8	28	0.3	0.3	26	0.17	0.052	59	32	1.67	155	0.009	<1	2.32	0.007	0.21
3.67	13.7	30	0.4	0.3	44	0.30	0.073	31	39	1.64	295	0.095	<1	2.30	0.013	0.30
2.28	11.5	17	0.1	0.3	40	0.14	0.040	55	17	0.22	126	0.013	<1	1.34	0.009	0.11
4.31	3.3	28	0.4	<0.1	123	0.48	0.064	13	78	1.38	283	0.094	<1	2.52	0.013	0.16
4.39	3.3	28	0.5	0.1	123	0.49	0.066	13	81	1.39	281	0.095	<1	2.59	0.011	0.17
1.62	12.2	11	0.1	0.1	34	0.09	0.016	38	22	0.27	113	0.018	<1	0.96	0.008	0.13
1.60	12.3	11	0.1	0.1	34	0.09	0.016	38	21	0.26	110	0.018	<1	0.91	0.007	0.12
2.58	3.2	26	0.8	0.9	46	1.18	0.066	20	55	0.70	304	0.032	<1	1.55	0.014	0.07
2.56	3.2	25	0.6	0.9	43	1.19	0.066	20	53	0.70	303	0.031	2	1.48	0.014	0.07
2.46	6.9	73	2.2	6.4	41	0.70	0.074	15	113	0.63	278	0.121	3	0.94	0.095	0.42
2.46	7.1	76	2.2	6.5	42	0.71	0.080	17	117	0.65	281	0.130	2	0.99	0.102	0.43
2.37	6.6	71	2.1	6.6	40	0.69	0.081	15	110	0.59	275	0.116	3	0.87	0.086	0.42
2.34	6.5	73	2.3	6.8	40	0.64	0.081	14	107	0.61	283	0.113	3	0.86	0.087	0.40
<0.01	<0.1	<1	<0.1	<0.1	<2	<0.01	<0.001	<1	<1	<0.01	<1	<0.001	<1	<0.01	<0.001	<0.01
<0.01	<0.1	<1	<0.1	<0.1	<2	<0.01	<0.001	<1	<1	<0.01	<1	<0.001	<1	<0.01	<0.001	<0.01

APPENDIX IV - Soil Geochemistry - Analytical Results

1DX15 W ppm 0.1	1DX15 Hg ppm 0.01	1DX15 Sc ppm 0.1	1DX15 Tl ppm 0.1	1DX15 S % 0.05	1DX15 Ga ppm 1	1DX15 Se ppm 0.5	1DX15 Te ppm 0.2
<0.1	0.01	2.8	0.3	<0.05	6	1.0	<0.2
0.1	0.02	2.4	0.5	<0.05	7	0.7	<0.2
0.1	<0.01	1.5	0.2	<0.05	5	0.7	<0.2
<0.1	0.03	7.6	0.2	<0.05	8	<0.5	<0.2
<0.1	0.03	7.8	0.3	<0.05	8	<0.5	<0.2
0.1	0.01	1.4	0.1	<0.05	4	<0.5	<0.2
0.1	<0.01	1.4	<0.1	<0.05	4	<0.5	<0.2
0.1	0.04	2.9	<0.1	<0.05	4	0.7	<0.2
0.1	0.05	2.8	<0.1	<0.05	4	<0.5	<0.2
3.1	0.21	2.3	5.4	0.18	5	5.8	4.7
3.1	0.20	2.6	5.7	0.19	5	4.9	5.1
3.1	0.20	1.9	5.3	0.23	5	5.7	5.2
3.0	0.20	2.0	5.4	0.13	4	5.2	5.0
<0.1	<0.01	<0.1	<0.1	<0.05	<1	<0.5	<0.2
<0.1	<0.01	<0.1	<0.1	<0.05	<1	<0.5	<0.2

APPENDIX V - Silt Geochemistry - Analytical Results

Goldspike Exploration Inc.  
Fresno Property

Silt Results (2011)

Sample ID	Acme Labs Report #	<u>UTM</u>		1DX15	1DX15	1DX15	1DX15	1DX15	1DX15	1DX15	1DX15	1DX15	1DX15	1DX15	1DX15
		East	North	Au ppb 0.5	Ag ppm 0.1	As ppm 0.5	Sb ppm 0.1	Cu ppm 0.1	Pb ppm 0.1	Zn ppm 1	Mo ppm 0.1	Ni ppm 0.1	Co ppm 0.1	Mn ppm 1	Fe % 0.01
1205206	WH11000289	554978	7121013	3.2	0.5	18.0	1.0	30.7	54.7	169	1.4	66.5	14.5	1104	2.55
1205207	WH11000289	554911	7120959	1.6	0.4	18.8	1.0	26.6	40.4	146	1.1	80.8	13.7	962	2.34
1205208	WH11000289	555004	7121151	2.0	0.4	16.3	1.0	34.4	24.5	161	1.9	62.2	18.4	648	3.22
1205209	WH11000289	554855	7121063	2.0	0.3	21.4	1.0	45.1	29.4	144	1.2	106.7	16.5	737	2.86
1205210	WH11000289	554942	7122234	2.2	0.3	12.9	1.0	27.9	39.3	126	1.1	60.4	12.3	447	2.29
<u>Pulp Duplicates:</u>															
1205208	WH11000289			2.0	0.4	16.3	1.0	34.4	24.5	161	1.9	62.2	18.4	648	3.22
1205208	WH11000289			1.6	0.3	16.3	1.1	36.1	24.1	168	1.8	67.3	18.7	658	3.40
<u>Lab Standard:</u>															
STD DS8	WH11000289			103.4	1.7	24.7	5.8	102.4	120.6	313	13.9	37.4	7.0	601	2.46
STD DS8	WH11000289			109.7	1.7	25.0	5.9	104.5	121.4	327	13.0	38.2	7.4	621	2.46
STD DS8	WH11000289			111.5	1.9	26.3	6.2	103.0	119.1	318	12.3	36.0	7.1	579	2.37
STD DS8	WH11000289			99.1	1.8	24.7	6.1	101.3	127.0	299	13.2	37.1	7.4	593	2.34
<u>Lab Analytical Blank:</u>															
BLK	WH11000289			<0.5	<0.1	<0.5	<0.1	<0.1	<0.1	<1	<0.1	<0.1	<0.1	<1	<0.01
BLK	WH11000289			<0.5	<0.1	<0.5	<0.1	<0.1	<0.1	<1	<0.1	<0.1	<0.1	<1	<0.01

APPENDIX V - Silt Geochemistry - Analytical Results

1DX15 Th ppm 0.1	1DX15 Sr ppm 1	1DX15 Cd ppm 0.1	1DX15 Bi ppm 0.1	1DX15 V ppm 2	1DX15 Ca % 0.01	1DX15 P % 0.001	1DX15 La ppm 1	1DX15 Cr ppm 1	1DX15 Mg % 0.01	1DX15 Ba ppm 1	1DX15 Ti % 0.001	1DX15 B ppm 1	1DX15 Al % 0.01	1DX15 Na % 0.001	1DX15 K % 0.01	1DX15 W ppm 0.1
4.8	69	2.3	0.3	35	0.73	0.068	31	60	0.78	312	0.033	1	1.48	0.009	0.11	0.2
5.5	50	2.2	0.3	33	0.57	0.065	27	68	0.88	250	0.033	<1	1.35	0.008	0.09	0.2
5.0	54	2.2	0.2	62	0.66	0.076	22	117	1.60	323	0.089	<1	2.03	0.011	0.18	0.1
3.9	35	1.3	0.3	50	0.57	0.077	19	86	1.03	228	0.042	1	1.52	0.008	0.08	0.1
5.7	42	1.0	0.3	35	0.50	0.065	22	68	0.95	223	0.038	1	1.34	0.008	0.09	0.2
5.0	54	2.2	0.2	62	0.66	0.076	22	117	1.60	323	0.089	<1	2.03	0.011	0.18	0.1
5.0	54	2.2	0.2	63	0.67	0.082	22	122	1.62	324	0.094	1	2.07	0.011	0.18	0.2
6.9	73	2.2	6.4	41	0.70	0.074	15	113	0.63	278	0.121	3	0.94	0.095	0.42	3.1
7.1	76	2.2	6.5	42	0.71	0.080	17	117	0.65	281	0.130	2	0.99	0.102	0.43	3.1
6.6	71	2.1	6.6	40	0.69	0.081	15	110	0.59	275	0.116	3	0.87	0.086	0.42	3.1
6.5	73	2.3	6.8	40	0.64	0.081	14	107	0.61	283	0.113	3	0.86	0.087	0.40	3.0
<0.1	<1	<0.1	<0.1	<2	<0.01	<0.001	<1	<1	<0.01	<1	<0.001	<1	<0.01	<0.001	<0.01	<0.1
<0.1	<1	<0.1	<0.1	<2	<0.01	<0.001	<1	<1	<0.01	<1	<0.001	<1	<0.01	<0.001	<0.01	<0.1

APPENDIX V - Silt Geochemistry - Analytical Results

1DX15 Hg ppm 0.01	1DX15 Sc ppm 0.1	1DX15 Ti ppm 0.1	1DX15 S % 0.05	1DX15 Ga ppm 1	1DX15 Se ppm 0.5	1DX15 Te ppm 0.2
0.08	2.8	0.2	<0.05	4	1.2	<0.2
0.06	2.6	<0.1	<0.05	4	0.6	<0.2
0.02	3.7	0.2	0.06	6	0.8	<0.2
0.04	3.5	<0.1	0.06	4	0.6	0.2
0.03	2.5	<0.1	<0.05	4	1.2	<0.2
0.02	3.7	0.2	0.06	6	0.8	<0.2
0.03	3.8	0.2	0.07	6	0.9	<0.2
0.21	2.3	5.4	0.18	5	5.8	4.7
0.20	2.6	5.7	0.19	5	4.9	5.1
0.20	1.9	5.3	0.23	5	5.7	5.2
0.20	2.0	5.4	0.13	4	5.2	5.0
<0.01	<0.1	<0.1	<0.05	<1	<0.5	<0.2
<0.01	<0.1	<0.1	<0.05	<1	<0.5	<0.2

APPENDIX VI - Rock Geochemistry - Analytical Results

Goldspike Exploration Inc.  
Fresno Property

Rock Results (2011)

Sample ID	Acme Labs Report #	<u>UTM</u>		Sample Weight kg	1DX15	1DX15	1DX15	1DX15	1DX15	1DX15	1DX15	1DX15	1DX15	1DX15	1DX15
		East	North		Au ppb	Ag ppm	As ppm	Sb ppm	Cu ppm	Pb ppm	Zn ppm	Mo ppm	Ni ppm	Co ppm	Mn ppm
					0.5	0.1	0.5	0.1	0.1	0.1	1	0.1	0.1	0.1	1
1205211	WH11000290	554874	7121874	0.01	0.5	0.1	0.5	0.1	0.1	0.1	1	0.1	0.1	0.1	1
<u>Lab Standard:</u>															
STD DS8	WH11000290				123.0	1.8	26.6	6.3	120.5	129.3	331	13.9	39.6	7.7	620
STD DS8	WH11000290				107.3	1.7	27.1	5.9	119.4	123.8	323	13.9	39.5	7.7	622
<u>Lab Prep Blank:</u>															
G1	WH11000290				<0.5	<0.1	1.9	<0.1	1.6	3.3	46	0.1	3.6	4.1	515
<u>Lab Analytical Blank:</u>															
BLK	WH11000290				<0.5	<0.1	<0.5	<0.1	<0.1	<0.1	<1	<0.1	<0.1	<0.1	<1

APPENDIX VI - Rock Geochemistry - Analytical Results

1DX15 Fe %	1DX15 Th ppm	1DX15 Sr ppm	1DX15 Cd ppm	1DX15 Bi ppm	1DX15 V ppm	1DX15 Ca %	1DX15 P %	1DX15 La ppm	1DX15 Cr ppm	1DX15 Mg %	1DX15 Ba ppm	1DX15 Ti %	1DX15 B ppm	1DX15 Al %	1DX15 Na %	1DX15 K %
0.01	0.1	1	0.1	0.1	2	0.01	0.001	1	1	0.01	1	0.001	1	0.01	0.001	0.01
0.01	0.1	1	0.1	0.1	2	0.01	0.001	1	1	0.01	1	0.001	1	0.01	0.001	0.01
2.54	7.5	67	2.5	7.2	43	0.72	0.077	15	120	0.62	289	0.129	3	0.92	0.087	0.41
2.50	7.2	66	2.4	6.9	42	0.73	0.078	15	120	0.61	279	0.131	2	0.94	0.089	0.41
1.77	5.2	58	<0.1	<0.1	35	0.46	0.073	10	15	0.53	208	0.135	<1	0.93	0.077	0.46
<0.01	<0.1	<1	<0.1	<0.1	<2	<0.01	<0.001	<1	<1	<0.01	<1	<0.001	<1	<0.01	<0.001	<0.01

1DX15 W ppm 0.1	1DX15 Hg ppm 0.01	1DX15 Sc ppm 0.1	1DX15 Tl ppm 0.1	1DX15 S % 0.05	1DX15 Ga ppm 1	1DX15 Se ppm 0.5	1DX15 Te ppm 0.2
0.1	0.01	0.1	0.1	0.05	1	0.5	0.2
2.9	0.23	2.0	5.2	0.17	5	5.3	5.0
2.9	0.20	2.2	5.1	0.17	5	4.9	4.7
<0.1	<0.01	1.9	0.2	<0.05	5	<0.5	<0.2
<0.1	<0.01	<0.1	<0.1	<0.05	<1	<0.5	<0.2