

ASSESSMENT REPORT

**GEOLOGICAL AND GEOCHEMICAL
SAMPLING AT THE RUBY CREEK
PROPERTY, INDIAN RIVER, YUKON.**

Sanatana Resources Inc.

Quartz Claims preceded by BJM, FEN and PEBBLE

NTS Sheet Claim Sheets 1150/11 and 1150/14

Dawson Mining District, Yukon Territory.

Latitude: 63° 33' 8" Longitude: 139° 54' 8"

Work Performed: August and September, 2010

Prepared by
KIVI Geoscience Inc.
Kevin Kivi, PGeol.

December 2, 2011

Table of Contents

Contents

Introduction	3
Location and Access	3
Property	4
Historical Bedrock Gold.....	4
Work Program.....	5
Quaternary Geology and Gold Mineralization.....	5
Alluvial Gold	5
Pebble Count Samples	6
Geology and Gold Mineralization	9
Rotary Panned Rock and Gravel Samples	9
Discussion and Recommendations	10
Certificate of Author	12

Tables

Table 1	Correlation relationships based on lithology.	Page 7
---------	---	--------

Figures

Figure 1	Ruby Creek, or Boulder Property Location Map	Page 3
Figure 2	Pebble Counts on Air Photo	Page 8
Figure 3	Gold colors panned from rock and gravel samples	Page 10

Appendices

Appendix A	Active Quartz Claims and Claim Map with Traverses
Appendix B	List of Personnel
Appendix C	Geological Sample Location, Description and Assays
Appendix D	Statement of Costs

Introduction

This report describes work programs consisting of geological mapping and sampling on the Ruby Creek (formerly Boulder) Property, located south of Indian River, about 30km south of Dawson City, Yukon. Sanatana Resources Inc signed a letter of intent with Northern Exposures Inc to acquire 368 Quartz Claims known as the Ruby Creek Property, in exchange for certain payments and work.

Work consisted of prospecting, geological mapping, quaternary studies, and rock and gravel sampling to evaluate bedrock gold potential on the property. The quartz claims underlie and are adjacent to active placer claims that are being mined for gold by Northern Exposures Inc.

This report is prepared to satisfy assessment requirements under the Yukon Quartz Mining Act for work completed August and September 2010.

Location and Access

The Ruby Creek property is located 30 km south of Dawson City along and south of Indian River centered on Ruby Creek in Dawson Mining District in Yukon Territory, Claim Sheet NTS 115O/14 and 115O/11. The centre of the claims is UTM NAD83, Zone 7, 7072300N and 584500E (figure 1).

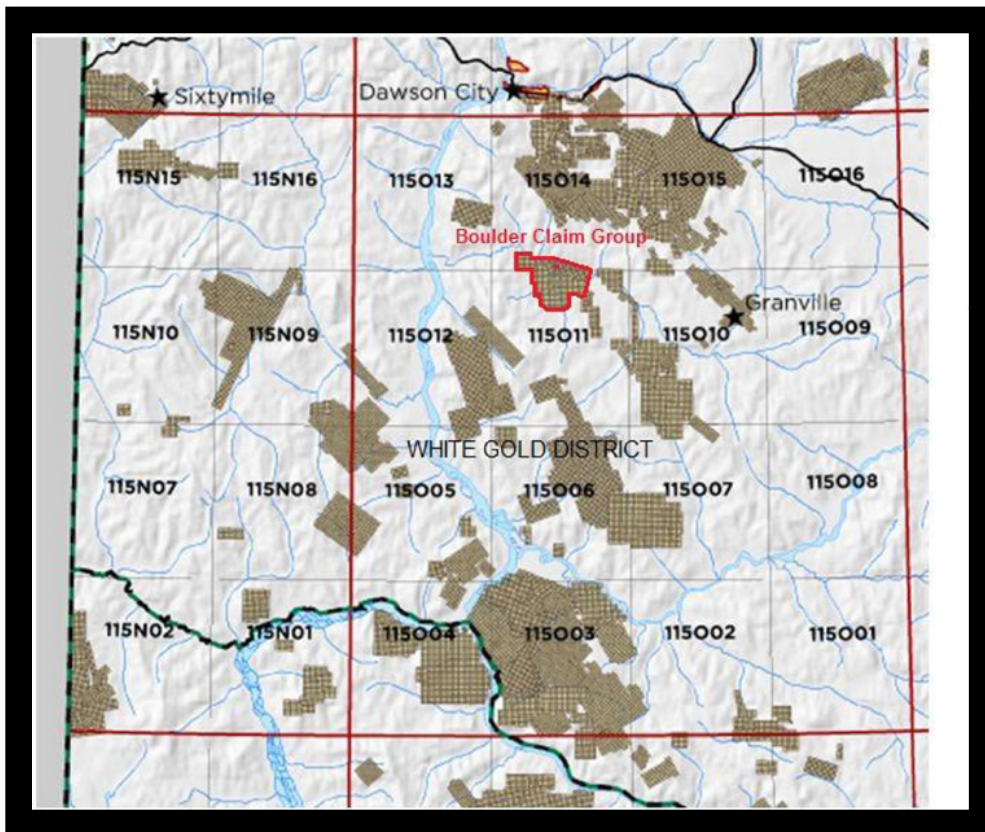


Figure 1: Ruby Creek (or Boulder) Property Location Map.

The property is road accessible from the Bonanza Creek road south of Dawson City. Many parts of the property are accessible using ATV's on old trails and cut lines from which GPS traverse lines can be walked. Remote claims are accessed using helicopter.

Property

The Ruby Creek Property consists of 358 Quartz claims, which are registered 100% to Northern Exposures Inc., of Lac La Biche, AB. A list of active claims with expiry date is provided in Appendix A.

The property is also co-incident with active placer mining, which provided a comfortable camp to work from, and allowed geologists to study locally derived alluvial gold.

Historical Bedrock Gold

John W. Leonard in 1897, wrote the following passage about Indian River:

“Quartz Creek and Indian Creek are reached from the heads of Bonanza and Hunker and they have also some prospects. The country is slate and mica schist. Many of the nuggets are full of quartz. Iron rock is found with them, and pieces of stratified rock containing iron are found showing plainly on their sides the matrices of gold nuggets. Some fair-bearing quartz has been discovered, but no rich free gold-bearing rock in place. The mineral belt seems to run northeast and southwest, if one may judge from the creeks, and to be about ten miles wide. It seems to parallel the main range of mountains about 100 miles distant from it.”

Gold-bearing conglomerates were also recognized by the McKinnon brothers who reported 10g/T from a pit just east of the Ruby Creek claims in the 1900's. Later the GSC returned 3 g/T in the 1940's. Boulder Mining Company reported panning gold from conglomerates, and staked the current property on that basis.

Boulder reported bedrock gold from a sonic drill hole completed by Overburden Drilling Management Ltd on the property. 1601 grains of small, delicate, high fineness (900) gold was interpreted to be from local bedrock, which led to quartz claim staking in 2004. Boulder Mining Corporation's news release from 2005 follows:

“John H. McAdam, President of Boulder Mining Corporation (TSX VENTURE:BDR) and John Brock, President of Western Prospector Group Ltd. (TSX VENTURE:WNP) report that a drill sample from one of the holes on the Indian River Gold Project yielded a high number (1601) of gold grains. Whereas the number of gold grains is not unexpected, the form of the grains is highly unusual. Unlike typical gold grains in alluvial deposits, approximately 80% of the grains recovered and studied by Overburden Drilling Management are pristine delicate grains. Such delicate gold grains cannot survive transportation in an alluvial environment intact and so it is concluded that these gold grains are in situ. Therefore, it is believed this hole drilled into gold mineralization in the bedrock.

Overburden Drilling Management recovered these gold grains by tabling techniques, which extracts only particles that have been liberated from the host rock. Therefore there is likely to be more gold contained in the overall sample. In light of the above, and given the sample straddled the gravel-bedrock interface

the grade of the bedrock portion cannot yet be determined. A sample of bedrock core below this intersection was archived and it will be sent out for assay. The bedrock is about 10 metres below surface.

The fineness of the pristine gold is around 900 being somewhat higher than is normal in Indian River alluvial gold grains indicating a new or different local source of gold. The recovery of heavy minerals from the pitting and drilling programs has also provided additional surprises, including the presence of relatively undamaged galena, pyrite and malachite minerals which were found in several different locations across the property. The presence of these minerals suggests there may be a local hydrothermal mineralizing event for containing both gold and some base metals. Distinctive alteration minerals have also been observed adhered to some of the pristine gold grains and this may be a useful exploration guide.”

Work Program

Sanatana Resources Inc contracted KIVI Geoscience Inc (Thunder Bay ON) and Minconsult Exploration (Coldstream, BC) to prospect, map and sample as much of the Ruby Creek property as possible using ATV trails and cut lines. A four-person crew was mobilized to Ruby Creek on two occasions in 2010. A small helicopter budget was also assigned for regional mapping and sampling. The objective of exploration was to locate gold-bearing bedrock or hydrothermally altered rocks that might lead the company to economic mineralization beneath the current thick blanket of river gravel that covers the property.

Exploration was completed in two phases, an initial reconnaissance phase, where alluvial gold and gravel deposits were studied and sampled to determine the presences of locally derived gold and its genesis. Crews also visited and sampled as much of the property as possible, mapping and sampling bedrock where available, and discovered large quartz veins that cut Albian conglomerate.

Quaternary Geology and Gold Mineralization

Alluvial Gold

The Indian River area is a famous gold placer mining area of the Klondike from which 1M ounces of gold has been mined. An old river dredge sits along the main road to Indian River, reminding visitors of the area's rich, and long-lived gold mining history. Placer mining is still practiced today by several independent operators.

The Ruby Creek property, like much of the Klondike is not glaciated and is covered with thick gravel deposits. It has been suggested that gravel was deposited very quickly during torrent flows from sudden glacial lake bursts that deposited thick river gravel sequences to much deeper levels than are present today. Suspended gravel deposits high up hillsides and valleys along Indian River suggest earlier sediment levels in the Indian River valley. Research suggests these Klondike gravels were derived from the east. Some gravels are barren, and others are loaded with coarse gold.

Indian River gold nuggets include a significant population with features that suggest low transport distances. Work was conducted on alluvial deposits and gold nuggets to try and unravel transport history of these possibly local grains.

Pebble Count Samples

Fifteen pebble count samples were collected from gravel deposits in various locations on the property; some locations are known to produce gold.

Gravel is shoveled into a screen, where fine material passes through, leaving larger pebbles on top. These pebbles are collected in a container or sample bag. The sample is later washed and laid out on a flat surface where sorting, and grouping of similar pebbles occurs, and each group is counted and input into a spreadsheet. Lithological groups are stored in Ziploc bags, so they can be referred to again if necessary.

A large spreadsheet of pebble counts was built and interpreted using a correlation matrix of lithologies.

Local pebbles that correlate to bedrock mapped near the property are chlorite schist, biotite schist, biotite sericite schist, sandstone, conglomerate, andesite (from nearby volcano Haystack mountain), limestone, and garnet-gneiss.

Local pebbles found in the correlation matrix may predict other local rock types that have not yet been mapped. Ironstone, green chert, and ultramafics are high interest pebbles that have not yet been mapped in outcrop in the area.

Table 1: Correlation relationships based on lithology.

Strong Correlations:				
Ultramafic	<i>andesite</i>	<i>cordierite schist</i>	<i>green chert</i>	<i>mafic gneiss</i>
mudstone	<i>black chert</i>			
ironstone	<i>chlorite schist</i>			
syenite	<i>limestone</i>			
siltstone	<i>conglomerate</i>			
biotite sericite schist	<i>Albian sandstone conglomerate</i>			
mafic gneiss	<i>cordierite schist</i>	<i>green chert</i>		
<i>andesite</i>	cordierite schist	green chert	mafic gneiss	ultramafic
Weak Correlations:				
<i>andesite</i>	chlorite schist	ironstone	muscovite schist	
<i>basalt</i>	conglomerate	pegmatite	siltstone	
<i>biotite schist</i>	limestone	muscovite schist	syenite	
<i>black chert</i>	chert	sandstone		
<i>chert</i>	garnet gneiss	siltstone		
<i>chlorite schist</i>	granite	granodiorite diorite	qtz ser schist	sandstone
<i>conglomerate</i>	granodiorite diorite	mudstone		
<i>cordierite schist</i>	gneiss	muscovite schist		
<i>dacite rhyolite</i>	pegmatite			
<i>gneiss</i>	mafic gneiss			
<i>granite</i>	mudstone			
<i>granodiorite diorite</i>	siltstone			
<i>ironstone</i>	mafic gneiss	ultramafic		
<i>limestone</i>	quartzite			
<i>mafic gneiss</i>	muscovite schist			
<i>qtz ser schist</i>	quartz			

Graphical display of normalized pebble data is a better way to show the spatial relationship between samples, as those with similar composition light up with similar colours (Figure 1). This display may help map gravel types, and show locally derived gravels, like samples collected along Ruby and Diversion creeks. Each gravel deposit is highly sensitive to relative elevation, as these gravels are interpreted to have been deposited as lateral sheets in the Indian River valley.

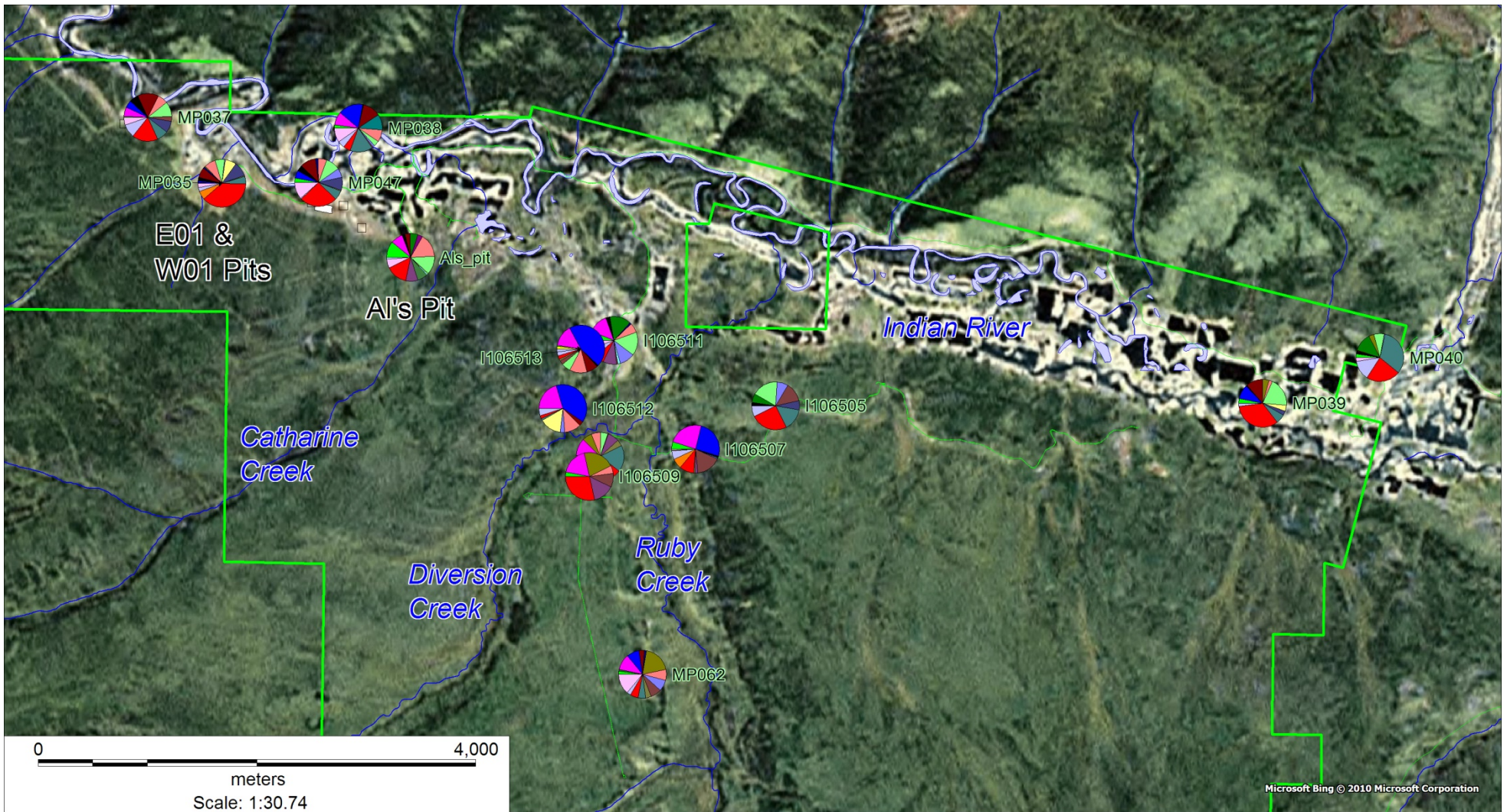


Figure 2: Pebble Counts on Air Photo; Related Gravel deposits show similar pebble lithologies (colours). W01 & E01 are in the same location at 440m elevation near Indian River, and Northern Exposure's Pit is upstream on the south bank of Indian River at 420m elevation. Samples from Diversion Creek and Ruby Creek are similar, with over 50% magenta and blue, likely evidence of locally sourced gravel

Pebble counts close to Indian River are heterolithic, with a smaller regional component than samples collected near tributaries. At Catharine and Diversion Creeks, gravel may contain 30-50% locally derived content. The local component of tributary and associated gravels requires more study, and a higher density of pebble samples is required to do this.

Gravel deposit complexity can be seen in Northern Exposure's pit. Torrent flows, created when a glacial lake bursts, is proposed, which deposited Klondike gravels derived from the east high up hillsides in the current Indian River valley. These torrent-flow deposits later mixed with locally derived gravel from the headwaters of Catharine Creek to form gold-bearing gravel currently placer mined on the property. Deep lake-bottom sediments below the pay gravel in Al's pit suggest a lake was present, and then disappeared to allow high-energy pay gravel to be deposited by a river, then flooded again for deposition of overlying lake sediments above pay gravel.

Lithologies reported in a pebble count, and the high garnet load in heavy mineral concentrates suggests Al's Pit has a high content of locally derived material. Regional pebbles like black chert also suggest there is a regional component as well, so there may also be distal gold present. Delicate textures of gold grains and complex quartz and lithic-bearing gold nuggets are compelling evidence that some gold is also locally derived. If Klondike gravel deposits uphill from Al's pit do not contain gold, then the gold may be derived from a local source sampled by Catharine Creek.

Geology and Gold Mineralization

Property geology is represented in digitized form after Bostock (1942), and in a scan of GSC Open File 4970 (2005). Geological mapping by Sanatana has shown that more geological detail can be realized from property scale mapping.

Sanatana geological mapping extended conglomerate units to the west, and provided detail on adjacent ridges, suggesting that chlorite schist, biotite schist, quartz sericite schist on adjacent ridges also underlies Albian conglomerate on the Ruby Creek property.

The property has not been glaciated, and therefore rocks found on hillsides, erode and are transported downhill, and report to stream pebble count samples. These rock types form a significant cobble and pebble content in streambed and associated sediments based on pebble counts completed by Sanatana.

Gold mineralization may similarly be transported downhill in alluvial fans. "Ugly" gold, consisting of gold nuggets with attached quartz and iron formation have been found during alluvial mining on the property. Delicate nuggets form part of the gold population. Both these textures suggest low transport distances, suggesting that a proximal bedrock gold source is possible.

Significant bedrock gold mineralization has not yet been found on the property, but geological mapping of surrounding ridges reveals quartz-sericite schist and other rocks commonly associated with gold mineralization. Assays are provided for rock samples collected in Appendix C.

Rotary Panned Rock and Gravel Samples

Five samples (between 10-20 liters each) were collected from conglomerate and hematitic sandstone on the property. The samples purpose was to determine if samples contain coarse gold that might be missed by conventional assay methods.

The samples were crushed (when necessary), screened to -2mm, and panned using a 1m diameter rotary panner. Gold was then concentrated in a gold pan, and individual gold grains were counted.

Using this technique Sanatana confirmed gold in conglomerates and hematitic sandstone, which proves paleo-placer style bedrock gold mineralization, occurs on the property. This technique does not provide gold grade, simply a yes/no answer. Further sampling is required to determine grade.

Conglomerates from McKinnon Creek and Ruby Creek area returned 5 and 7 gold colours, respectively, and hematitic sandstone near Ruby Creek returned 2 colours (a rock sample from the same location returned an assay of 0.08 g/T Au). One gold colour was found in a modern gravel sample from Diversion Creek. (Figure 2)

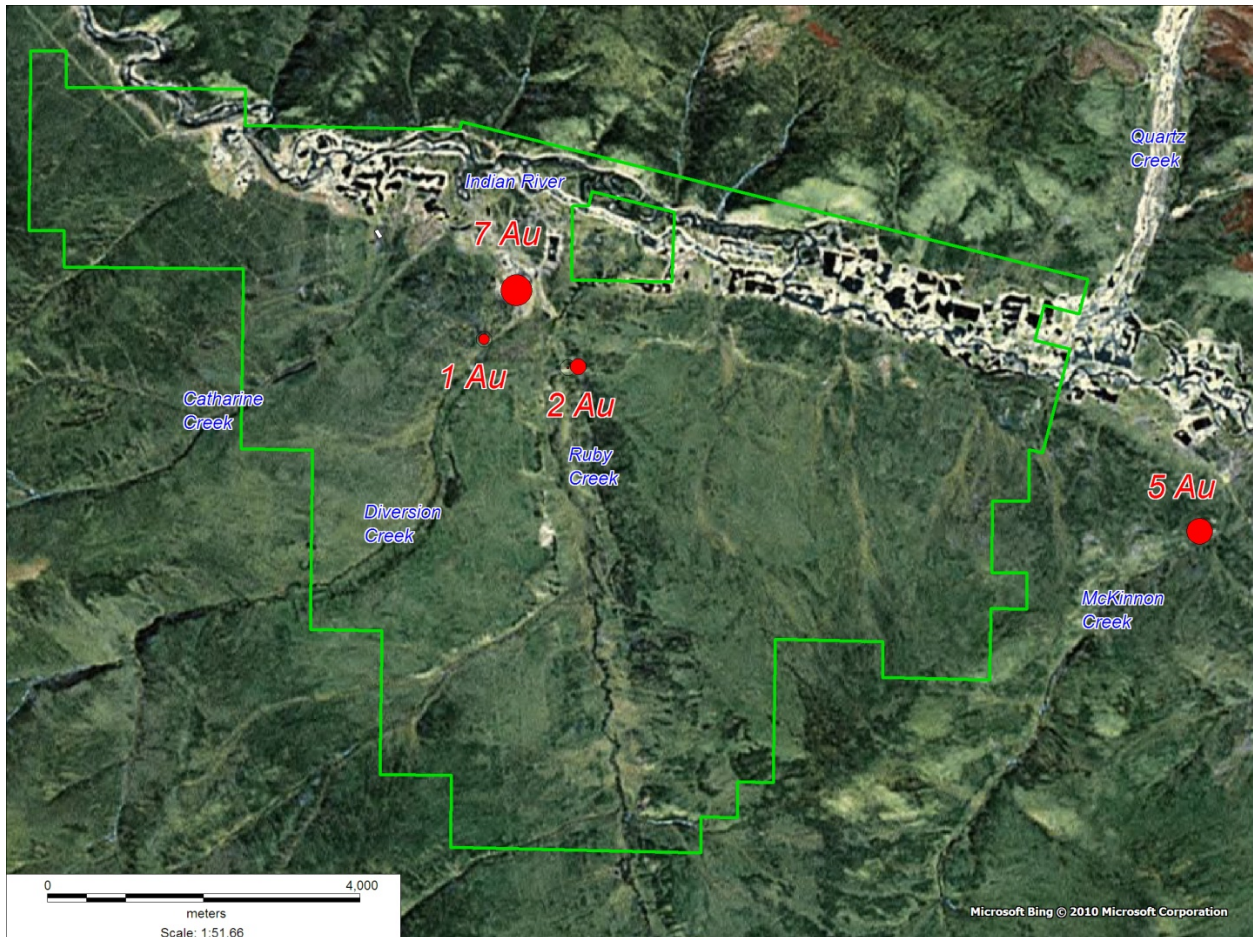


Figure 3: Gold colours panned from rock and gravel samples, with property outline in green.

Discussion and Recommendations

John W. Leonard in 1897 first reported on gold with quartz, iron stone and stratified rock attached to gold nugget recovered from Quartz creek and Indian Creek. Since this time, prospectors have scoured the land in this area trying to locate surface showings bearing gold. No significant discoveries were made.

In 2005, Boulder Mining reported 1601 gold grains from a sonic drill hole on the current property. 80% of the gold grains recovered from this sample contained pristine gold textures, unlike mechanically

flattened gold grains in alluvial deposits. The gold also has fineness of 900, which is somewhat higher than Indian River alluvial gold. The drill collar was located in the field, and it there is no evidence that Boulder followed up on this bedrock gold discovery with a diamond drill hole.

Prospecting and sampling by Sanatana shows that gravels at Catharine and Diversion creek may contain as much as 30-50% locally derived gravel, and significantly less heterolithic gravel derived from the extensive torrent-flow gravels. The high garnet load of heavy mineral samples collected in Al's pit, suggests a high component of locally derived sediment.

Gold colors were recovered from 20 kg samples of conglomerate and sandstone that were crushed and panned using a 1m diameter rotary pan. A modern gravel sample from Diversion creek also returned one gold color. Assays of small rock samples are not likely to return gold in these rocks, as the distribution of gold in paleo-placer deposits would likely be similar to modern examples, where only large mini-bulk and bulk samples can determine their grade.

Sanatana was successful and confirming that conglomerate and sandstone deposits that underlay modern gravels on the Ruby Creek property are gold-bearing, however sampling methods were not adequate to determine gold grade of these rocks.

Respectfully Submitted,

“Kevin Kivi”

Kevin R. Kivi, P.Geol.
KIVI Geoscience Inc.
December 2, 2011

Certificate of Author

Kevin Robert Kivi, P.Geol.

KIVI Geoscience Inc.

307 Euclid Ave., Suite 463, Thunder Bay ON P7E 6G6

Phone (604) 628-2397 Fax (604) 628-2479

Email: kivik@shawcable.com

I Kevin Robert Kivi, P.Geol., (P.Geol. in NWT) am a Professional Geoscientist, employed by KIVI Geoscience Inc., of Thunder Bay, Ontario.

I am:

- a practising member of the Association of Professional Geoscientists of Ontario (APGO), Registration 0326, and currently elected councillor for NW Ontario;
- a member of the Association of Professional Engineers, Geologists and Geophysicists of the Northwest Territories (NAPEGG), Registration L821;
- a member of the Association of Professional Engineers and Geoscientists of the Province of Manitoba (APEGM), Registration 25680.
- A member of the Association of Professional Engineers and Geoscientists of Saskatchewan (APEGS), Registration #13687.

I graduated from Lakehead University, Thunder Bay with a Bachelor of Science Geology (4 year programme) in 1983, and I have practiced in my profession continuously since 1983. Since 1983 I have been involved in:

- gold exploration with Ovaltex Inc. along the Cadillac Break in Rouyn and Val D'Or, Quebec in winters of 1984, 1985 and 1986, and between 1986-1988 in NW Ontario.
- diamond exploration with BP Resources Inc – Selco Division in Ontario, Quebec, Manitoba and NWT in summers of 1984, 1985 and 1988;
- gold and base metals exploration in NW Ontario with Rio Algom Exploration between 1988 and 1992.
- diamond exploration with Kennecott Canada Exploration between 1992-1994 at Lac De Gras, NWT, Diamond Laboratory Manager between 1995-2000 in Thunder Bay, Ontario, diamond exploration 2000-2004 in Wawa in Archean lamprophyric volcanoclastic rocks and Group 2 kimberlites, March-June 2004, Exploration Manager at Diavik Diamond Mines Ltd, Lac De Gras, NT.
- 2004 to present: Geological consultant specializing in diamond, gold and base metal exploration in Canada and Brazil. My current clients include Amarillo Gold Corp, Sanatana Resources Inc, and Orebot Inc.

I supervised exploration on the Ruby Creek Property, Yukon and wrote this assessment report.

Dated at Thunder Bay, ON, CANADA this 2nd day of December 2011.

KIVI Geoscience Inc.

Per: "Kevin Kivi"

Kevin R. Kivi, P.Geol., President

Appendix A: Active Quartz Claims and Claim Map with Traverses

Claim name and number	Grant number	Claim expiry date
BJM 47	YC35254	October 14, 2011
BJM 48	YC35255	October 14, 2011
BJM 49	YC35256	October 14, 2011
BJM 50	YC35257	October 14, 2011
BJM 51	YC35258	October 14, 2011
BJM 52	YC35259	October 14, 2011
BJM 53	YC35260	October 14, 2011
BJM 54	YC35261	October 14, 2011
BJM 55	YC35262	October 14, 2011
BJM 56	YC35263	October 14, 2011
BJM 57	YC35264	October 14, 2011
BJM 63	YC35266	October 14, 2011
BJM 64	YC35267	October 14, 2011
BJM 65	YC35268	October 14, 2011
BJM 66	YC35269	October 14, 2011
BJM 67	YC35270	October 14, 2011
BJM 68	YC35271	October 14, 2011
BJM 69	YC35272	October 14, 2011
FEN 5	YC33151	June 15, 2011
FEN 6	YC33152	June 15, 2011
FEN 7	YC33153	June 15, 2011
FEN 8	YC33154	June 15, 2011

Claim name and number	Grant number	Claim expiry date
FEN 9	YC33155	June 15, 2011
FEN 10	YC33156	June 15, 2011
FEN 11	YC33157	June 15, 2011
FEN 12	YC33158	June 15, 2011
FEN 13	YC33159	June 15, 2011
FEN 14	YC33160	June 15, 2011
FEN 15	YC33161	June 15, 2011
FEN 16	YC33162	June 15, 2011
FEN 17	YC33163	June 15, 2011
FEN 18	YC33164	June 15, 2011
FEN 19	YC33165	June 15, 2011
FEN 20	YC33166	June 15, 2011
FEN 21	YC33167	June 15, 2011
FEN 22	YC33168	June 15, 2011
FEN 23	YC33169	June 15, 2011
FEN 24	YC33170	June 15, 2011
FEN 25	YC33171	June 15, 2011
FEN 26	YC33172	June 15, 2011
FEN 27	YC33173	June 15, 2011
FEN 28	YC33174	June 15, 2011
FEN 29	YC33175	June 15, 2011
FEN 30	YC33176	June 15, 2011
FEN 31	YC33177	June 15, 2011
FEN 32	YC33178	June 15, 2011
FEN 33	YC33179	June 15, 2011

Claim name and number	Grant number	Claim expiry date
FEN 34	YC33180	June 15, 2011
FEN 35	YC33181	June 15, 2011
FEN 36	YC33182	June 15, 2011
FEN 37	YC33183	June 15, 2011
FEN 38	YC33184	June 15, 2011
FEN 39	YC33185	June 15, 2011
FEN 40	YC33186	June 15, 2011
FEN 41	YC33187	June 15, 2011
FEN 42	YC33188	June 15, 2011
FEN 43	YC33189	June 15, 2011
FEN 44	YC33190	June 15, 2011
FEN 45	YC33191	June 15, 2011
FEN 46	YC33192	June 15, 2011
FEN 47	YC33193	June 15, 2011
FEN 48	YC33194	June 15, 2011
FEN 49	YC33195	June 15, 2011
FEN 50	YC33196	June 15, 2011
FEN 51	YC33197	June 15, 2011
FEN 52	YC33198	June 15, 2011
FEN 53	YC33199	June 15, 2011
FEN 54	YC33200	June 15, 2011
FEN 55	YC33201	June 15, 2011
FEN 56	YC33202	June 15, 2011
FEN 57	YC33203	June 15, 2011
FEN 58	YC33204	June 15, 2011

Claim name and number	Grant number	Claim expiry date
FEN 59	YC33205	June 15, 2011
FEN 60	YC33206	June 15, 2011
FEN 61	YC33207	June 15, 2011
FEN 62	YC33208	June 15, 2011
FEN 63	YC33209	June 15, 2011
FEN 64	YC33210	June 15, 2011
FEN 65	YC33211	June 15, 2011
FEN 66	YC33212	June 15, 2011
FEN 67	YC33213	June 15, 2011
FEN 68	YC33214	June 15, 2011
FEN 69	YC33215	June 15, 2011
FEN 70	YC33216	June 15, 2011
FEN 71	YC33217	June 15, 2011
FEN 72	YC33218	June 15, 2011
FEN 73	YC33219	June 15, 2011
FEN 74	YC33220	June 15, 2011
FEN 75	YC33221	June 15, 2011
FEN 76	YC33222	June 15, 2011
FEN 77	YC33223	June 15, 2011
FEN 78	YC33224	June 15, 2011
FEN 79	YC33225	June 15, 2011
FEN 80	YC33226	June 15, 2011
FEN 81	YC33227	June 15, 2011
FEN 82	YC33228	June 15, 2011
FEN 83	YC33229	June 15, 2011

Claim name and number	Grant number	Claim expiry date
FEN 84	YC33230	June 15, 2011
FEN 85	YC33231	June 15, 2011
FEN 86	YC33232	June 15, 2011
FEN 87	YC33233	June 15, 2011
FEN 88	YC33234	June 15, 2011
FEN 89	YC33235	June 15, 2011
FEN 90	YC33236	June 15, 2011
FEN 91	YC33237	June 15, 2011
FEN 92	YC33238	June 15, 2011
FEN 93	YC33239	June 15, 2011
FEN 94	YC33240	June 15, 2011
FEN 95	YC33241	June 15, 2011
FEN 96	YC33242	June 15, 2011
FEN 97	YC33243	June 15, 2011
FEN 98	YC33244	June 15, 2011
FEN 99	YC33245	June 15, 2011
FEN 100	YC33246	June 15, 2011
FEN 101	YC33247	June 15, 2011
FEN 102	YC33248	June 15, 2011
FEN 103	YC33249	June 15, 2011
FEN 104	YC33250	June 15, 2011
FEN 105	YC33251	June 15, 2011
FEN 106	YC33252	June 15, 2011
FEN 107	YC33253	June 15, 2011
FEN 108	YC33254	June 15, 2011

Claim name and number	Grant number	Claim expiry date
FEN 109	YC33255	June 15, 2011
FEN 110	YC33256	June 15, 2011
FEN 111	YC33257	June 15, 2011
FEN 112	YC33258	June 15, 2011
FEN 113	YC33259	June 15, 2011
FEN 114	YC33260	June 15, 2011
FEN 115	YC33261	June 15, 2011
FEN 116	YC33262	June 15, 2011
FEN 121	YC33267	June 15, 2011
FEN 122	YC33268	June 15, 2011
FEN 123	YC33269	June 15, 2011
FEN 124	YC33270	June 15, 2011
FEN 125	YC33271	June 15, 2011
FEN 126	YC33272	June 15, 2011
FEN 127	YC33273	June 15, 2011
FEN 128	YC33274	June 15, 2011
FEN 129	YC33275	June 15, 2011
FEN 130	YC33276	June 15, 2011
FEN 131	YC33277	June 15, 2011
FEN 132	YC33278	June 15, 2011
FEN 133	YC33279	June 15, 2011
FEN 134	YC33280	June 15, 2011
FEN 135	YC33281	June 15, 2011
FEN 136	YC33282	June 15, 2011
FEN 137	YC33283	June 15, 2011

Claim name and number	Grant number	Claim expiry date
FEN 138	YC33284	June 15, 2011
FEN 139	YC33285	June 15, 2011
FEN 140	YC33286	June 15, 2011
FEN 141	YC33287	June 15, 2011
FEN 142	YC33288	June 15, 2011
FEN 143	YC33289	June 15, 2011
FEN 144	YC33290	June 15, 2011
FEN 145	YC33291	June 15, 2011
FEN 146	YC33292	June 15, 2011
FEN 147	YC33293	June 15, 2011
FEN 148	YC33294	June 15, 2011
FEN 149	YC33295	June 15, 2011
FEN 150	YC33296	June 15, 2011
FEN 155	YC33301	June 15, 2011
FEN 156	YC33302	June 15, 2011
FEN 157	YC33303	June 15, 2011
FEN 158	YC33304	June 15, 2011
FEN 159	YC33305	June 15, 2011
FEN 160	YC33306	June 15, 2011
FEN 161	YC33307	June 15, 2011
FEN 162	YC33308	June 15, 2011
FEN 163	YC33309	June 15, 2011
FEN 164	YC33310	June 15, 2011
FEN 165	YC33311	June 15, 2011
FEN 166	YC33312	June 15, 2011

Claim name and number	Grant number	Claim expiry date
FEN 167	YC33313	June 15, 2011
FEN 168	YC33314	June 15, 2011
FEN 169	YC33315	June 15, 2011
FEN 170	YC33316	June 15, 2011
FEN 171	YC33317	June 15, 2011
FEN 172	YC33318	June 15, 2011
FEN 173	YC33319	June 15, 2011
FEN 174	YC33320	June 15, 2011
FEN 175	YC33321	June 15, 2011
FEN 176	YC33322	June 15, 2011
FEN 177	YC33323	June 15, 2011
FEN 178	YC33324	June 15, 2011
FEN 179	YC33325	June 15, 2011
FEN 180	YC33326	June 15, 2011
FEN 181	YC33327	June 15, 2011
FEN 182	YC33328	June 15, 2011
FEN 183	YC33329	June 15, 2011
FEN 189	YC33335	June 15, 2011
FEN 190	YC33336	June 15, 2011
FEN 191	YC33337	June 15, 2011
FEN 192	YC33338	June 15, 2011
FEN 193	YC33339	June 15, 2011
FEN 194	YC33340	June 15, 2011
FEN 195	YC33341	June 15, 2011
FEN 196	YC33342	June 15, 2011

Claim name and number	Grant number	Claim expiry date
FEN 197	YC33343	June 15, 2011
FEN 198	YC33344	June 15, 2011
FEN 199	YC33345	June 15, 2011
FEN 200	YC33346	June 15, 2011
FEN 201	YC33347	June 15, 2011
FEN 202	YC33348	June 15, 2011
FEN 203	YC33349	June 15, 2011
FEN 204	YC33350	June 15, 2011
FEN 205	YC33351	June 15, 2011
FEN 206	YC33352	June 15, 2011
FEN 207	YC33353	June 15, 2011
FEN 208	YC33354	June 15, 2011
FEN 209	YC33355	June 15, 2011
FEN 210	YC33356	June 15, 2011
FEN 211	YC33357	June 15, 2011
FEN 212	YC33358	June 15, 2011
FEN 213	YC33359	June 15, 2011
FEN 214	YC33360	June 15, 2011
FEN 215	YC33361	June 15, 2011
FEN 225	YC33371	June 15, 2011
FEN 227	YC33373	June 15, 2011
FEN 229	YC33375	June 15, 2011
FEN 231	YC33377	June 15, 2011
FEN 232	YC33378	June 15, 2011
FEN 233	YC33379	June 15, 2011

Claim name and number	Grant number	Claim expiry date
FEN 234	YC33380	June 15, 2011
FEN 235	YC33381	June 15, 2011
FEN 236	YC33382	June 15, 2011
FEN 237	YC33383	June 15, 2011
FEN 238	YC33384	June 15, 2011
FEN 239	YC33385	June 15, 2011
FEN 240	YC33386	June 15, 2011
FEN 241	YC33387	June 15, 2011
FEN 242	YC33388	June 15, 2011
FEN 243	YC33389	June 15, 2011
FEN 244	YC33390	June 15, 2011
FEN 245	YC33391	June 15, 2011
FEN 246	YC33392	June 15, 2011
FEN 263	YC33409	June 15, 2011
FEN 264	YC33410	June 15, 2011
FEN 265	YC33411	June 15, 2011
FEN 266	YC33412	June 15, 2011
FEN 267	YC33413	June 15, 2011
FEN 268	YC33414	June 15, 2011
FEN 269	YC33415	June 15, 2011
FEN 270	YC33416	June 15, 2011
FEN 271	YC33417	June 15, 2011
FEN 272	YC33418	June 15, 2011
FEN 273	YC33419	June 15, 2011
FEN 274	YC33420	June 15, 2011

Claim name and number	Grant number	Claim expiry date
FEN 275	YC33421	June 15, 2011
FEN 276	YC33422	June 15, 2011
FEN 291	YC33437	June 15, 2011
FEN 292	YC33438	June 15, 2011
FEN 293	YC33439	June 15, 2011
FEN 294	YC33440	June 15, 2011
FEN 295	YC33441	June 15, 2011
FEN 296	YC33442	June 15, 2011
FEN 297	YC33443	June 15, 2011
FEN 298	YC33444	June 15, 2011
FEN 299	YC33445	June 15, 2011
FEN 300	YC33446	June 15, 2011
FEN 301	YC33447	June 15, 2011
FEN 302	YC33448	June 15, 2011
FEN 303	YC33449	June 15, 2011
FEN 304	YC33450	June 15, 2011
FEN 305	YC33451	June 15, 2011
FEN 306	YC33452	June 15, 2011
FEN 319	YC33465	June 15, 2011
FEN 321	YC33467	June 15, 2011
FEN 323	YC33469	June 15, 2011
FEN 324	YC33470	June 15, 2011
FEN 325	YC33471	June 15, 2011
FEN 327	YC33473	June 15, 2011
FEN 329	YC33475	June 15, 2011

Claim name and number	Grant number	Claim expiry date
FEN 330	YC33476	June 15, 2011
FEN 331	YC33477	June 15, 2011
FEN 332	YC33478	June 15, 2011
FEN 343	YC33489	June 15, 2011
FEN 346	YC33491	June 15, 2011
FEN 347	YC33492	June 15, 2011
FEN 348	YC33493	June 15, 2011
FEN 521	YC33667	June 15, 2011
FEN 523	YC33669	June 15, 2011
FEN 524	YC33670	June 15, 2011
FEN 525	YC33671	June 15, 2011
FEN 526	YC33672	June 15, 2011
FEN 527	YC33673	June 15, 2011
FEN 528	YC33674	June 15, 2011
FEN 529	YC33675	June 15, 2011
FEN 530	YC33676	June 15, 2011
FEN 531	YC33677	June 15, 2011
FEN 532	YC33678	June 15, 2011
FEN 533	YC33679	June 15, 2011
FEN 534	YC33680	June 15, 2011
FEN 535	YC33681	June 15, 2011
FEN 536	YC33682	June 15, 2011
FEN 537	YC33683	June 15, 2011
FEN 538	YC33684	June 15, 2011
FEN 539	YC33685	June 15, 2011

Claim name and number	Grant number	Claim expiry date
FEN 540	YC33686	June 15, 2011
FEN 541	YC33687	June 15, 2011
FEN 542	YC33688	June 15, 2011
FEN 543	YC33689	June 15, 2011
FEN 544	YC33690	June 15, 2011
FEN 1121	YC35116	September 16, 2011
FEN 1122	YC35117	September 16, 2011
FEN 1123	YC35118	September 16, 2011
FEN 1124	YC35119	September 16, 2011
FEN 1125	YC35120	September 16, 2011
FEN 1126	YC35121	September 16, 2011
FEN 1127	YC35122	September 16, 2011
FEN 1128	YC35123	September 16, 2011
FEN 1129	YC35124	September 16, 2011
FEN 1130	YC35125	September 16, 2011
FEN 1135	YC35130	September 16, 2011
FEN 1136	YC35131	September 16, 2011
FEN 1137	YC35132	September 16, 2011
FEN 1138	YC35133	September 16, 2011
FEN 1139	YC35134	September 16, 2011
FEN 1140	YC35135	September 16, 2011
FEN 1141	YC35136	September 16, 2011
FEN 1142	YC35137	September 16, 2011
FEN 1143	YC35138	September 16, 2011
FEN 1144	YC35139	September 16, 2011

Claim name and number	Grant number	Claim expiry date
FEN 1150	YC35145	September 16, 2011
FEN 1151	YC35146	September 16, 2011
FEN 1152	YC35147	September 16, 2011
FEN 1153	YC35148	September 16, 2011
FEN 1154	YC35149	September 16, 2011
FEN 1155	YC35150	September 16, 2011
FEN 1156	YC35151	September 16, 2011
FEN 1157	YC35152	September 16, 2011
FEN 1158	YC35153	September 16, 2011
FEN 1159	YC35154	September 16, 2011
PEBBLE 1	YC33109	June 15, 2011
PEBBLE 2	YC33110	June 15, 2011
PEBBLE 3	YC33111	June 15, 2011
PEBBLE 4	YC33112	June 15, 2011
PEBBLE 5	YC33113	June 15, 2011
PEBBLE 6	YC33114	June 15, 2011
PEBBLE 7	YC33115	June 15, 2011
PEBBLE 8	YC33116	June 15, 2011
PEBBLE 9	YC33117	June 15, 2011
PEBBLE 10	YC33118	June 15, 2011
PEBBLE 11	YC33119	June 15, 2011
PEBBLE 12	YC33120	June 15, 2011
PEBBLE 13	YC33121	June 15, 2011
PEBBLE 14	YC33122	June 15, 2011
PEBBLE 15	YC33123	June 15, 2011

Claim name and number	Grant number	Claim expiry date
PEBBLE 16	YC33124	June 15, 2011
PEBBLE 17	YC33125	June 15, 2011
PEBBLE 18	YC33126	June 15, 2011
PEBBLE 19	YC33127	June 15, 2011
PEBBLE 20	YC33128	June 15, 2011
PEBBLE 21	YC33129	June 15, 2011
PEBBLE 22	YC33130	June 15, 2011
PEBBLE 23	YC33131	June 15, 2011
PEBBLE 24	YC33132	June 15, 2011
PEBBLE 25	YC33133	June 15, 2011
PEBBLE 26	YC33134	June 15, 2011
PEBBLE 27	YC33135	June 15, 2011
PEBBLE 28	YC33136	June 15, 2011
PEBBLE 29	YC33137	June 15, 2011
PEBBLE 30	YC33138	June 15, 2011
PEBBLE 31	YC33139	June 15, 2011
PEBBLE 32	YC33140	June 15, 2011
PEBBLE 33	YC33141	June 15, 2011
PEBBLE 34	YC33142	June 15, 2011
PEBBLE 35	YC33143	June 15, 2011
PEBBLE 36	YC33144	June 15, 2011

Appendix B: List of Personnel

Name	Position	Date worked
Kevin Kivi, P.Geol.	KGI Geologist	Aug. 6-14, Sept19-Oct 2, 2010
Troy Gill, PGeo.	Sanatana Geologist	Sept19-Oct 2, 2010
Buddy Doyle	VP Exploration Sanatana	Sept 23-24, 2010
Peter Miles	President Sanatana	Sept 23-24, 2010
Dave Jackson	Geological Technician	Aug. 6-14, Sept19-Oct 2, 2010
Nicholas Gust	Geological Technician	Aug. 6-14, Sept19-Oct 2, 2010
Michelle Palmes	Geological Technician	Aug. 6-14, Sept19-Oct 2, 2010
Karl Scholz	Expediter/Camp Support	Aug. 6-14, Sept19-Oct 2, 2010

Appendix C: Geological Sample Location, Description and Assays

E_NAD83	N_NAD83	DATUM	ZONE	Elevation	Waypoint	Sample	Lithology	Notes
593414	7067601	NAD 83	7V	495	K08		Pebble Conglomerate	Pebble conglomerate subcrop boulder in local overburden, which is identical to clast size/components (red flag)
593286	7067541	NAD 83	7V	498	K09		Sandstone	Coarse sandstone 85% broken quartz pebbles, 2mm diameter, rarely 4mm
592162	7066566	NAD 83	7V	535	K10		Quartz Pebble Conglomerate	Quartz pebble conglomerate and coarse quartz sandstone, bedding 300-30
592082	7066578	NAD 83	7V	546	K11		Quartz Pebble Conglomerate	Open poplar area of thin overburden and shallow outcrop of quartz pebble conglomerate
591866	7066058	NAD 83	7V	547	K12		Andesite	Dozer push on east side of trail exposes andesite lava, west side of cliff is likely andesite too
593678	7067755	NAD 83	7V	490	K13		Quartz Pebble Conglomerate	Clast supported quartz pebble conglomerate, 95% 1-3 cm sub-rounded to rounded quartz cobbles, rare 3 mm grey schist
576206	7069073	NAD 83	7V	999		1		
576265	7067772	NAD 83	7V	983		2	chlorite schist	
576579	7066210	NAD 83	7V	985		3	chlorite schist	Chlorite schist, trace pyrite, some ankerite alteration locally, subcrop

E_NAD83	N_NAD83	DATUM	ZONE	Elevation	Waypoint	Sample	Lithology	Notes
578743	7066941	NAD 83	7V	804	4	I106523	biotite chlorite schist	grey yellow biotite chlorite schist with 20% cream carbonate alteration, rare quartz veins, subcrop
578554	7066797	NAD 83	7V	826	5	I106524	quartz carbonate	quartz carbonate veining in many spots over 100m area in pyritic sandstone
577994	7066413	NAD 83	7V	875	6		quartz-ankerite vein	quartz ankerite quartz altered schistose siltstones
577994	7066413	NAD 83	7V	875	6a	I106525	ultramafic	fine grained ultramafic subcrop
575378	7064970	NAD 83	7V	1183	7		sericite chlorite schist	
575788	7064447	NAD 83	7V	1203	8			
575801	7064394	NAD 83	7V	1207	9			
575728	7064514	NAD 83	7V	1205	10			
575715	7064503	NAD 83	7V	1186	11			
575712	7064518	NAD 83	7V	1195	12		garnet biotite quartz gneiss	garnet biotite quartz gneiss with 30 cm quartz vein on headwaters of Diversion Creek
575908	7064408	NAD 83	7V	1140	13		biotite schist	biotite schist talus, some quartz gabbro
576332	7063883	NAD 83	7V	1172	14		biotite schist	biotite schist talus
576100	7063551	NAD 83	7V	1261	15		greywacke	biotite schist, crenulation cleavage, talus slope
576962	7063380	NAD 83	7V	1158	16		biotite schist	biotite schist talus, minor rust from biotite

E_NAD83	N_NAD83	DATUM	ZONE	Elevation	Waypoint	Sample	Lithology	Notes
577355	7063067	NAD 83	7V	1177	17		metapelite	biotite schist 240-20, metapelite and recrystallized quartzite
577916	7062692	NAD 83	7V	1179	18		sandstone	cherty sandstone, bedding 290-48, with 8mm pink garnets
577916	7062692	NAD 83	7V	1179	18	I106514	greywacke	biotite schist greywacke, rusty with 1% py (late), bedding and schistosity at 310-75E, hand specimen taken
577902	7062740	NAD 83	7V	1175	19		quartz vein	1m quartz vein, photo taken with 1m quartz vein and collapsed pingo and ruby/indian river placer in background
578283	7063332	NAD 83	7V	1038	20		quartz-biotite-gneiss	quartz-biotite gneiss basement, 160-20 gneissosity
578547	7062256	NAD 83	7V	1151	21	I106527	quartz vein	
579342	7061996	NAD 83	7V	1045	22		biotite-quartz-garnet gneiss	biotite-quartz-garnet gneiss
583141	7061961	NAD 83	7V	632	23	I106528	quartz-sericite schist	creek cobbles all local recrystallized sandstone with sericite and muscovite, weak rusty fractures
586771	7061034	NAD 83	7V	608	24		Andesite	identified from helicopter - no landing site
587720	7062188	NAD 83	7V	626	25		Albian sandstone	
587706	7062220	NAD 83	7V	627	26		pebble conglomerate	
587690	7062247	NAD 83	7V	628	27		Albian sandstone	slump with Albian sandstone talus
589379	7071547	NAD 83	7V	450	MP001		Andesite	

E_NAD83	N_NAD83	DATUM	ZONE	Elevation	Waypoint	Sample	Lithology	Notes
588605	7071551	NAD 83	7V	462	MP002		Quartz-mica Schist	
588005	7071542	NAD 83	7V	468	MP003		Quartz-mica Schist	
587920	7071569	NAD 83	7V	472	MP004		Mica Schist	
587743	7071567	NAD 83	7V	475	MP005		Sericite Schist	
586385	7071977	NAD 83	7V	425	MP006		Muscovite-biotite augen schist	
586153	7072091	NAD 83	7V	425	MP007		Biotite-quartz gneiss	
583645	7072620	NAD 83	7V	421	MP008		Sericite Schist	
583597	7072609	NAD 83	7V	421	MP009		quartz sericite schist	
583527	7072578	NAD 83	7V	420	MP010		quartz sericite schist	
583523	7072566	NAD 83	7V	427	MP011		quartz sericite schist	
583448	7072509	NAD 83	7V	424	MP012		quartz sericite schist	
582400	7072558	NAD 83	7V	422	MP013		biotite schist	
581248	7072493	NAD 83	7V	416	MP016		biotite schist	
581409	7072228	NAD 83	7V	419	MP017		gneiss	
582580	7071528	NAD 83	7V	442	MP018		sandstone	
582419	7071733	NAD 83	7V	438	MP019		biotite schist	
590866	7070172	NAD 83	7V	443	MP021		Quartz Pebble Conglomerate	
591335	7070285	NAD 83	7V	439	MP022		Sandstone	

E_NAD83	N_NAD83	DATUM	ZONE	Elevation	Waypoint	Sample	Lithology	Notes
584187	7069160	NAD 83	7V	490	MP023		Sandstone	
584150	7069119	NAD 83	7V	493	MP024		Sandstone	
584044	7069045	NAD 83	7V	487	MP025		quartzite	
585316	7067630	NAD 83	7V	489	MP026		conglomerate	
585628	7069595	NAD 83	7V	474	MP027		Sandstone	
585690	7069498	NAD 83	7V	477	MP028		conglomerate	
585566	7069589	NAD 83	7V	459	MP030		biotite schist	
584643	7070620	NAD 83	7V	438	MP031		biotite-quartz schist	
576201	7069076	NAD 83	7V	980	MP041		quartz	
576343	7067036	NAD 83	7V	1015	MP042		quartz	
576343	7067036	NAD 83	7V	1015	MP043		diorite	
577907	7066659	NAD 83	7V	856	MP044		chlorite schist	
575894	7065940	NAD 83	7V	1076	MP045		quartz	
575400	7065442	NAD 83	7V	1172	MP046		chlorite sericite schist	
575492	7064372	NAD 83	7V	1238	MP048		chlorite sericite schist	
575533	7063839	NAD 83	7V	1333	MP049		chlorite sericite schist	
576134	7064053	NAD 83	7V	1191	MP050		chlorite sericite schist	
576394	7063555	NAD 83	7V	1190	MP051		chlorite sericite schist	
576641	7063442	NAD 83	7V	1178	MP052		chlorite sericite schist	

E_NAD83	N_NAD83	DATUM	ZONE	Elevation	Waypoint	Sample	Lithology	Notes
577147	7063325	NAD 83	7V	1160	MP053		chlorite sericite schist	
577494	7062904	NAD 83	7V	1182	MP054		gneiss	
577883	7062701	NAD 83	7V	1182	MP055		garnet biotite quartz gneiss	
578293	7062389	NAD 83	7V	1157	MP056		biotite schist	
578913	7062200	NAD 83	7V	1107	MP057		chlorite sericite schist	
579595	7062126	NAD 83	7V	1015	MP058		greywacke	
579610	7062125	NAD 83	7V	1015	MP059		greywacke	
581393	7062371	NAD 83	7V	934	MP060		greywacke	
587228	7063903	NAD 83	7V	559	MP061		Albian sandstone	
587744	7071566	NAD 83	7V			I106901	quartz	2 m quartz vein, fault zone at 330-40, slight rusty sericite alteration, no sulphides observed
583650	7072623	NAD 83	7V			I106902	metaquartzite	metaquartzite silica-sericite altered, minor rust, trace weathered pyrite
583653	7072623	NAD 83	7V			I106903	metaquartzite	metaquartzite silica-sericite altered, minor rust, trace weathered pyrite
583597	7072607	NAD 83	7V			I106904	quartz sericite schist	quartz sericite schist, possible skarn, same site as Boulder sample z-666

E_NAD83	N_NAD83	DATUM	ZONE	Elevation	Waypoint	Sample	Lithology	Notes
584867	7070572	NAD83	7V			I106501	Pebble Conglomerate	Angular polymictic quartz-pebble conglomerate, 40% angular <2 cm clasts quartz, 30% grey rounded metasediments 3-6mm, marker pebbles are 2mm beige quartzite and 2mm round jasper
						IRC-04-10	Quartz pebble conglomerate	90% <2 cm quartz clasts, some angular sandstone, cobbles in dozer puch beside road
590083	7065598				KK30		Quartz pebble conglomerate	Quartz pebble conglomerate with 5-10% grey lithic fragments
589375	7066148				KK31		Andesite	Andesite float, hornblende plagioclase porphyritic, weakly magnetic
					M03		Sandstone	cobbles of sandstone float observed in silty loess
586539	7064711				KK32	I106530	Pebble Sandstone	1m subrounded pebble sandstone, 90% 1mm angular quartz crains with rare sub-rounded lithic mudstone and brown siltstone clasts 1-2 cm in size
586072	7064740				KK33	I106531	Quartz	20 cm beige quartz cobble, angular, no sulphides
585983	7067907	NAD83	7V		KK34			Small west draining creek in burned forest that cuts into overburden revealing fault-suite rocks
585983	7067907	NAD83	7V		KK34	I106532	Sandstone	carbon-bearing sandstone with minor pyrite

E_NAD83	N_NAD83	DATUM	ZONE	Elevation	Waypoint	Sample	Lithology	Notes
585983	7067907	NAD83	7V		KK34	I106533	Siltstone	Fine grained dark grey siltstone (or basalt) with bluish purple iron stain in fractures
585983	7067907	NAD83	7V		KK34	I106534	Sandstone	Greenish sandstone, hematitic fractures, mica-bearing
585983	7067907	NAD83	7V		KK34	I106535	Sandstone	Carbonaceous sandstone
					MP102	I106536	Siltstone	Dark green fine grained siltstone
					MP102	I106537	gossan	black and beige Fe-rich gossan rock, no carbonate
585983	7067907	NAD83	7V		KK34	I106538	Sandstone	Green hematitic sandstone
					KK40	I106539	quartz	Overtured tree with grey-brown silt and angular white quartz
583383	7066766	NAD83	7V		KK41	I106540	quartz	Quartz in overtured tree on plateau, light brown silt
584124	7067195	NAD83	7V		KK42		sandstone	Shallow dozer push at end of cut line exposes 90% angular yellow-weathered sandstone, locally hematitic on surface
583927	7065793	NAD83	7V		KK44	I106541	quartz	large rusty quartz cobble, rounded, rusty, likely from pyrite although no sulphides observed
582753	7064464	NAD83	7V		KK50	I106542	quartz	several 0.5m quartz veins exposed through muskeg moss on side hill, Quartz is deep red, rusty, no sulphides
582754	7064451	NAD83	7V		KK51	I106543	quartz	0.5 by 1m quartz outcrop rusty and hematitic along fractures

E_NAD83	N_NAD83	DATUM	ZONE	Elevation	Waypoint	Sample	Lithology	Notes
582769	7064457	NAD83	7V		KK52	I106544	quartz	0.5 m rusty quartz outcrop, possible cinnabar and hematite mineralization
582809	7064497	NAD83	7V		KK53	I106545	Quartz Pebble Conglomerate	Quartz pebble conglomerate, limonite and hematite staining, polymictic with 5-10% lithics, similar to McKinnon Conglomerate
582809	7064497	NAD83	7V		KK53	I106546	quartz	Quartz vein rusty, limonitic, 3 m downhill from conglomerate outcrop
582898	7064548	NAD83	7V		KK54		sandstone	sandstone cobble in silt
5805558	7072436	NAD83	7V		IR-04-44		biotite schist	Au-bearing bedrock 1601 delicate gold grains from sonic drill hole
					NG3	I106851	biotite schist	biotite schist and white saccharoidal quartz
					NG4	I106852	chlorite schist	chlorite schist and grey saccharoidal quartz vein
					NG2	I106939	sandstone	
					NG5	I106940	conglomerate	Lithic conglomerate
591995	7070590	NAD83	7V		TG	I106941	quartz	Grants showing, grey quartz vein with chloritic seams
583546	7072584	NAD83	7V			I106751	quartz sericite schist	40 m channel sample
						I106752	quartz sericite schist	40 m channel sample
						I106753	quartz sericite schist	40 m channel sample
						I106754	quartz sericite schist	40 m channel sample

E_NAD83	N_NAD83	DATUM	ZONE	Elevation	Waypoint	Sample	Lithology	Notes
						I106755	quartz sericite schist	40 m channel sample
						I106756	quartz sericite schist	40 m channel sample
						I106757	quartz sericite schist	40 m channel sample
						I106758	quartz sericite schist	40 m channel sample
						I106759	quartz sericite schist	40 m channel sample
						I106760	quartz sericite schist	40 m channel sample
						I106761	quartz sericite schist	40 m channel sample
						I106762	quartz sericite schist	40 m channel sample
						I106763	quartz sericite schist	40 m channel sample
						I106764	quartz sericite schist	40 m channel sample
						I106765	quartz sericite schist	40 m channel sample
						I106766	quartz sericite schist	40 m channel sample
						I106767	quartz sericite schist	40 m channel sample
						I106768	quartz sericite schist	40 m channel sample
						I106769	quartz sericite schist	40 m channel sample
						I106770	quartz sericite schist	40 m channel sample
						I106771	quartz sericite schist	40 m channel sample
						I106772	quartz sericite schist	40 m channel sample
						I106773	quartz sericite schist	40 m channel sample

E_NAD83	N_NAD83	DATUM	ZONE	Elevation	Waypoint	Sample	Lithology	Notes
						I106774	quartz sericite schist	40 m channel sample
						I106775	quartz sericite schist	40 m channel sample
						I106780	quartz sericite schist	40 m channel sample
						I106781	quartz sericite schist	40 m channel sample
						I106782	quartz sericite schist	40 m channel sample
						I106783	quartz sericite schist	40 m channel sample
						I106784	quartz sericite schist	40 m channel sample
						I106785	quartz sericite schist	40 m channel sample
						I106789	quartz sericite schist	40 m channel sample
						I106790	quartz sericite schist	40 m channel sample
583514	7072562	NAD83	7V			I106791	quartz sericite schist	40 m channel sample
586551	7064688	NAD83	7V		MP101	I106930	sandstone	Float on east side Ruby Creek just at bottom of plateau, medium to coarse grained sandstone, very well sorted
586045	7067904	NAD83	7V		MP102			Same as KK34
582249	7069666	NAD83	7V		MP103		quartzite	fairly angular quartzite on east side of Kathleen Creek, mica schist, coarse grained sugary texture, light grey beige
582119	7069535	NAD83	7V		MP104	I106931	quartzite	limonitic quartzite
582119	7069535	NAD83	7V		MP104	I106932	quartz	quartz vein on hill on E side Kathleen Creek

E_NAD83	N_NAD83	DATUM	ZONE	Elevation	Waypoint	Sample	Lithology	Notes
582119	7069535	NAD83	7V		MP104	I106933	quartz	quartz vein on hill on E side Kathleen Creek
582037	7069494	NAD83	7V		MP105	I106934	quartz	more quartz on pile east of kathleen Creek
581748	7069333	NAD83	7V		MP106			east end of pile
581749	7069295	NAD83	7V		MP107		quartzite	quartzite with minor carbonaceous flecks and seams in N/S E/W (?) trending trench just around the corner of rock pile hill from MP104
584605	7063417	NAD83	7V		MP108	I106935	quartz	quartz cobble with manganese oxide (weak) in middle of 3 pits along second creek at Diversion along Ruby line
584353	7063209	NAD83	7V		MP109		quartz biotite garnet gneiss	quartz biotite garnet gneiss on North side of creek
583166	7072441	NAD83	7V		MP110	I106936	quartz vein	quartz biotite garnet gneiss dug out pit cut into hill on north road very close to bridge
583166	7072441	NAD83	7V		MP110	I106938	quartz vein	sugary quartz vein in same pit, weak muscovite
584507	7072257	NAD83	7V		MP111			placer pit on north side of road
584933	7072318	NAD83	7V		MP112	I106937	quartz vein	placer pit high and steep into hill on the north side of the main road, darker grey - grey fine grained biotite schist, en echelon quartz veining, quartz orthoclase muscovite vein

Sampchar	E_NAD83z	N_NAD83_rockname	description	Au_FA_ppm	Ag_ppm	Al_pct
I106901	587744	7071566	quartz vein	0.0025	0.07	0.19
I106902	583650	7072623	metaquartzite	0.0025	0.03	0.26
I106903	583653	7072623	metaquartzite	0.0025	0.05	0.26
I106904	583597	7072607	quartz sericite schist	0.082	0.11	0.47
I106905	583527	7072578	quartz sericite schist	0.0025	0.31	0.4
I106906	583527	7072578	quartz sericite schist	0.0025	0.24	1.79
I106907	583448	7072509	quartz mica schist	0.0025	0.57	0.32
I106502	592663	7067230	quartz pebble conglomerate	0.0025	0.04	0.23
I106503	593206	7067500	quartz pebble conglomerate	0.0025	0.09	0.18
I106508	585563	7069589	sandstone	0.0025	0.07	2.7
I106514	577916	7062692	greywacke	0.0025	0.08	1.57
I106517	584150	7069119	sandstone	0.0025	0.07	1.81
I106518	585690	7069498	conglomerate	0.015	0.08	1.97
I106519	584643	7070620	biotite-quartz schist	0.0025	0.14	2.35
I106520	585628	7069595	sandstone	0.0025	0.1	1.08
I106521	584044	7069045	sandstone	0.0025	0.04	0.35
I106909	576201	7069076	quartz	0.0025	0.03	0.35
I106910	576343	7067036	quartz	0.0025	0.01	0.07
I106912	577907	7066659	quartz-sericite schist	0.0025	0.22	0.87
I106913	575894	7065940	quartz	0.0025	0.01	0.41
I106916	575533	7063839	chl-ser schist and qv	0.0025	0.05	0.2
I106922	577883	7062701	qv and bio schist	0.0025	0.03	0.57
I106923	578293	7062389	quartz vein	0.0025	0.04	0.3
I106927	581393	7062371	quartz vein and greywacke	0.0025	0.04	0.37
I106523	578743	7066941	quartz	0.0025	0.01	0.04
I106524	578554	7066797	quartz	0.0025	0.01	0.09
I106525	577994	7066413	quartz	0.0025	0.17	0.24
			garnet biotite quartz gneiss with 30 cm quartz vein on headwaters of Diversion Creek			
I106526	575712	7064518	garnet biotite quartz gneiss	0.0025	0.01	0.01
I106527	578547	7062256	quartz	0.0025	0.01	0.05
I106528	583141	7061961	quartz sericite schist	0.0025	0.11	0.21
I106522	577994	7066413	ultramafic		0.75	0.63
I106928	583141	7061961	quartz-sericite schist	0.0025	0.04	0.22

Sampchar	As_ppm	Au_ppm	B_ppm	Ba_ppm	Be_ppm	Bi_ppm	Ca_pct	Cd_ppm	Ce_ppm	Co_ppm	Cr_ppm	Cs_ppm
I106901	1.8	0.1	5	460	0.1	0.09	0.14	0.04	5.29	2.5	13	0.27
I106902	1.9	0.1	5	80	0.2	0.06	0.01	0.08	9.42	1.4	11	0.29
I106903	1.7	0.1	5	80	0.19	0.04	0.01	0.06	10.85	1.4	44	0.39
I106904	0.3	0.1	5	10	0.47	5.44	0.17	0.05	17.75	1.1	9	0.6
I106905	4.8	0.1	5	280	0.4	0.26	0.03	0.04	38.7	1.2	8	0.6
I106906	3.5	0.1	5	230	1.13	0.29	0.2	3.06	75.5	22.8	47	5.95
I106907	2.2	0.1	5	100	0.1	0.15	0.01	0.04	11.7	0.4	14	0.27
I106502	0.9	0.1	5	80	0.05	0.04	0.01	0.01	8.78	0.8	8	0.06
I106503	10.8	0.1	5	70	0.025	0.28	0.03	0.11	7.25	2.8	11	0.06
I106508	0.5	0.1	5	550	0.55	0.11	0.54	0.29	18.05	16.3	47	1.64
I106514	0.6	0.1	5	160	0.26	0.14	0.1	0.02	22.6	4.1	17	2.95
I106517	4.2	0.1	5	200	0.73	0.06	0.2	0.29	28.5	11.6	34	0.99
I106518	6.7	0.1	5	1300	0.45	0.06	0.12	0.12	58.3	13.9	36	0.72
I106519	0.4	0.1	5	410	0.38	0.09	0.18	0.59	30.8	10.7	30	1.46
I106520	5.9	0.1	5	340	0.34	0.05	0.05	0.13	8.99	8.5	11	0.27
I106521	3	0.1	5	110	0.09	0.01	0.01	0.02	10.05	1.1	19	0.36
I106909	1	0.1	5	470	0.19	0.01	0.3	0.04	9.03	2.3	20	0.52
I106910	1	0.1	5	20	0.025	0.005	0.01	0.01	0.47	0.8	13	0.025
I106912	1.4	0.1	5	770	0.23	0.86	0.04	0.1	19.65	3.7	43	1.88
I106913	0.7	0.1	5	680	0.14	0.01	0.06	0.01	12.2	9.7	15	1.02
I106916	0.6	0.1	5	3220	0.025	0.01	0.005	0.03	1.9	0.7	17	0.07
I106922	0.3	0.1	5	110	0.08	0.09	0.84	0.03	3.41	1.5	45	0.26
I106923	0.2	0.1	5	50	0.025	0.03	0.02	0.01	9.93	1.1	17	0.78
I106927	0.4	0.1	5	380	0.025	0.02	0.12	0.02	3.81	1.5	29	0.6
I106523	0.3	0.1	5	10	0.025	0.005	0.01	0.005	0.31	0.3	55	0.08
I106524	0.3	0.1	5	10	0.025	0.02	0.005	0.01	0.42	0.7	12	0.11
I106525	1	0.1	5	80	0.36	0.05	0.01	0.08	4.35	1.1	15	0.18
I106526	0.6	0.1	5	5	0.025	0.005	0.005	0.005	0.24	0.2	44	0.025
I106527	0.5	0.1	5	10	0.025	0.01	0.005	0.005	0.87	0.3	11	0.09
I106528	0.8	0.1	5	760	0.06	0.04	0.01	0.02	7.61	0.4	11	0.22
I106522	0.7	0.1	5	420	0.33	0.12	0.16	0.09	13.2	0.6	118	0.89
I106928	2.1	0.1	5	80	0.92	0.005	0.02	0.13	14.95	8.1	4	0.84

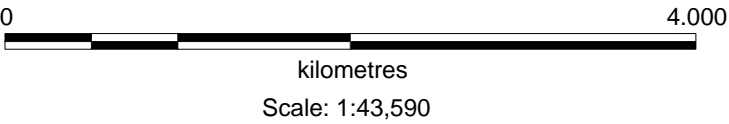
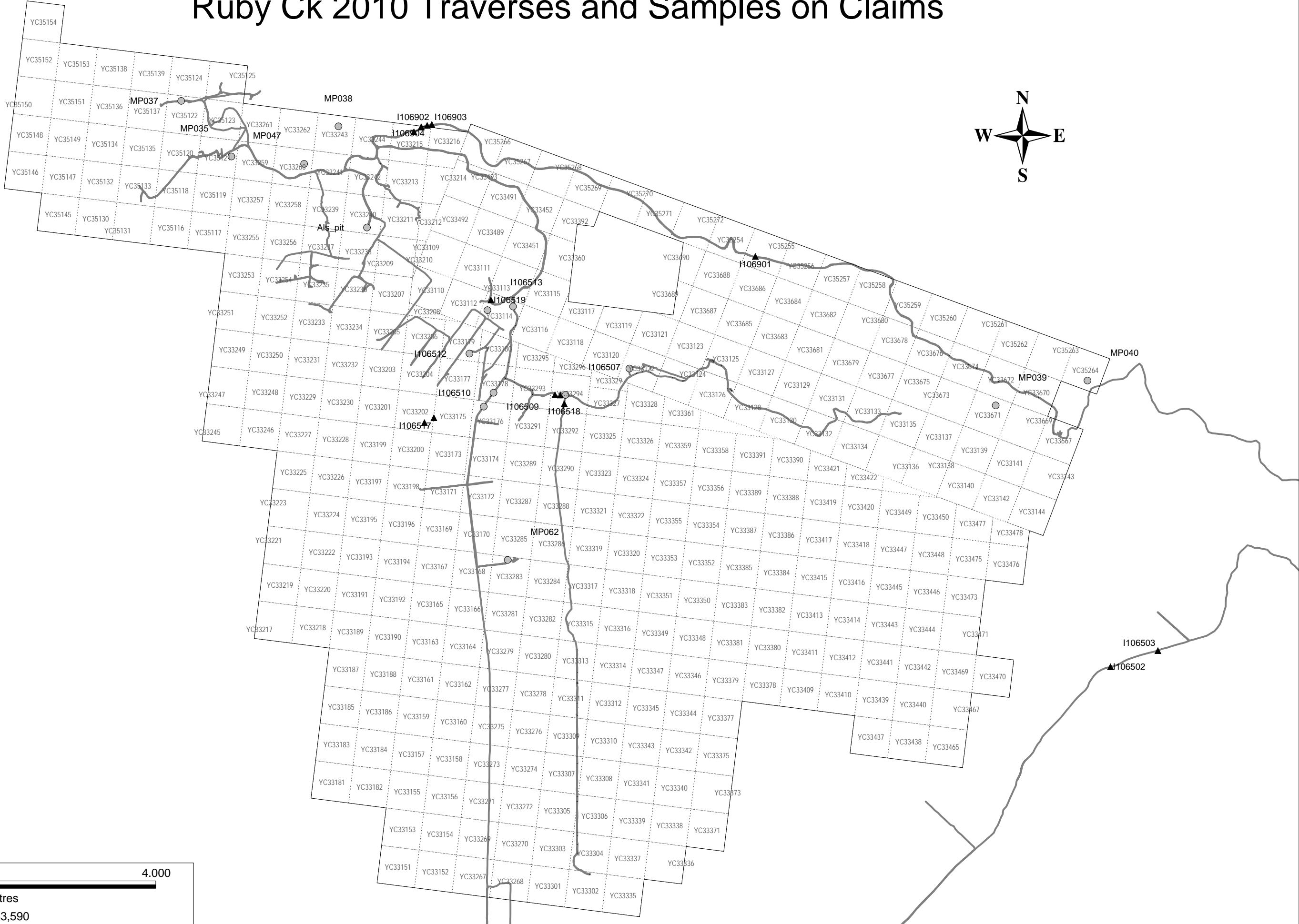
Sampchar	Cu_ppm	Fe_pct	Ga_ppm	Ge_ppm	Hf_ppm	Hg_ppm	In_ppm	K_pct	La_ppm	Li_ppm	Mg_pct	Mn_ppm
I106901	16.5	0.78	0.55	0.025	0.03	0.005	0.0025	0.07	2.4	1	0.02	128
I106902	6.2	1.05	0.78	0.025	0.15	0.01	0.0025	0.11	3.6	1.8	0.01	66
I106903	12.5	0.93	0.87	0.025	0.1	0.01	0.0025	0.1	4.3	1.8	0.01	58
I106904	2.8	0.37	1.57	0.025	0.29	0.005	0.0025	0.24	7.3	2	0.01	229
I106905	20.3	2.38	1.8	0.025	0.09	0.07	0.01	0.43	15.4	13.1	0.01	60
I106906	87.4	4.06	5.79	0.12	0.27	0.09	0.0025	0.76	33	19.5	0.49	1780
I106907	3.1	0.37	1.12	0.025	0.13	0.17	0.0025	0.19	5.8	1	0.02	29
I106502	3.1	0.65	0.79	0.025	0.06	0.005	0.0025	0.08	3.8	1	0.04	73
I106503	32.5	0.82	0.76	0.025	0.03	0.01	0.0025	0.07	3	0.5	0.04	90
I106508	22.9	5.5	9.3	0.09	0.2	0.02	0.0025	0.22	7.3	12.7	0.6	1000
I106514	11.5	2.41	4.02	0.025	0.09	0.005	0.01	0.67	12.1	23.9	0.51	60
I106517	12.7	3.5	7.78	0.06	0.18	0.06	0.0025	0.18	12.7	13.3	0.28	822
I106518	10.8	5.05	7.23	0.11	0.16	0.06	0.0025	0.14	23.7	29.9	0.15	477
I106519	16.1	4.62	7.06	0.07	0.14	0.31	0.0025	0.2	12.6	18.6	0.57	437
I106520	7.7	2.16	3.71	0.025	0.14	0.06	0.0025	0.15	3.6	8.4	0.11	479
I106521	1.7	0.52	1.02	0.025	0.07	0.005	0.0025	0.09	4.4	2.6	0.02	70
I106909	27.9	1.31	2.65	0.025	0.04	0.005	0.0025	0.1	4.1	1.9	0.08	727
I106910	2.3	0.47	0.31	0.025	0.01	0.005	0.0025	0.01	0.2	0.6	0.01	59
I106912	23.8	1.49	2.97	0.025	0.11	0.005	0.035	0.46	10.3	12	0.24	84
I106913	4.7	0.91	2.33	0.025	0.06	0.005	0.0025	0.2	4.1	10.3	0.23	487
I106916	11.2	0.75	0.78	0.025	0.02	0.005	0.0025	0.06	0.8	0.6	0.01	60
I106922	4.6	0.67	1.42	0.025	0.02	0.005	0.0025	0.07	2.9	3.1	0.05	155
I106923	4.4	0.87	1.01	0.025	0.02	0.005	0.0025	0.12	4.8	5.1	0.09	60
I106927	6.1	1.06	1.51	0.025	0.01	0.005	0.0025	0.12	1.7	6.1	0.11	133
I106523	2.4	0.42	0.17	0.025	0.01	0.005	0.0025	0.01	0.2	0.5	0.01	45
I106524	3.2	0.59	0.33	0.025	0.01	0.005	0.0025	0.01	0.2	0.7	0.01	66
I106525	96.7	5.2	2.12	0.025	0.02	0.005	0.0025	0.12	2.6	1	0.05	162
I106526	2.9	0.28	0.09	0.025	0.01	0.005	0.0025	0.005	0.1	0.1	0.005	29
I106527	1.6	0.52	0.23	0.025	0.01	0.005	0.0025	0.02	0.4	0.6	0.02	50
I106528	6	0.56	1.12	0.025	0.04	0.005	0.0025	0.12	3.3	1.7	0.04	37
I106522	32.9	0.99	3.8	0.025	0.11	0.01	0.018	0.2	9.1	6.4	0.42	96
I106928	2.6	0.83	0.55	0.025	0.07	0.005	0.0025	0.11	7.1	0.7	0.01	127

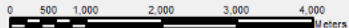
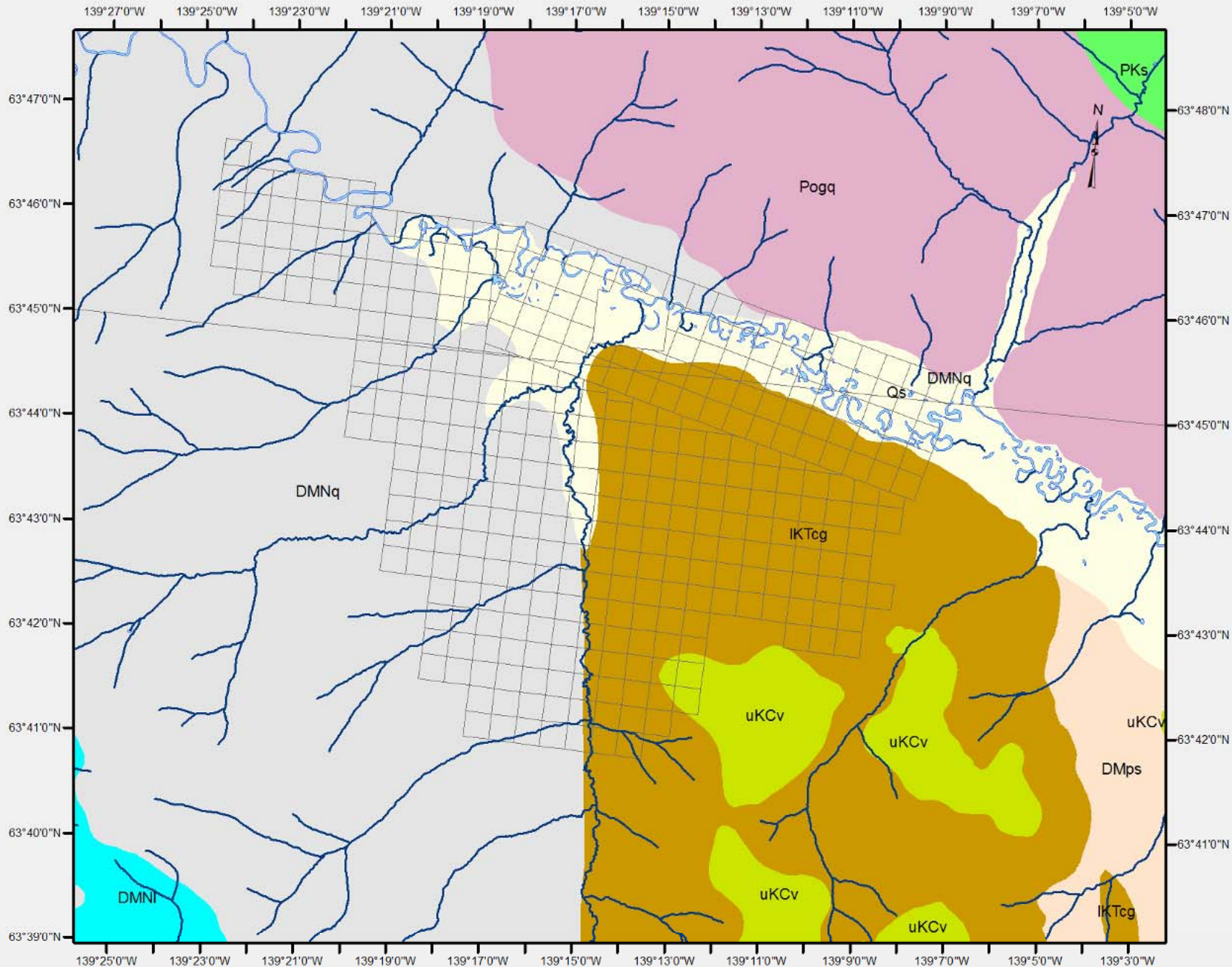
Sampchar	Mo_ppm	Na_pct	Nb_ppm	Ni_ppm	P_ppm	Pb_ppm	Rb_ppm	Re_ppm	S_pct	Sb_ppm	Sc_ppm	Se_ppm
I106901	0.95	0.005	0.07	9.5	80	1.9	4.6	0.0005	0.01	0.14	0.5	0.2
I106902	0.3	0.005	0.1	8.8	30	3.9	5.8	0.0005	0.005	0.08	0.4	0.1
I106903	0.52	0.005	0.09	4.8	50	3.9	5.8	0.0005	0.005	0.11	0.6	0.4
I106904	0.14	0.01	0.23	1.8	710	8.1	17.2	0.0005	0.005	0.05	1.1	0.2
I106905	0.79	0.005	0.05	6.3	680	152	17.1	0.0005	0.51	0.62	1.2	2.9
I106906	4.3	0.005	0.35	93.1	780	25	57.2	0.004	0.52	2.74	5.7	2.2
I106907	2.49	0.005	0.07	1.9	90	9.5	9	0.0005	0.04	0.46	0.9	1.2
I106502	0.14	0.005	0.07	1.8	20	3.4	3.9	0.0005	0.005	0.1	0.6	0.1
I106503	0.51	0.005	0.13	10.3	40	9.3	3.3	0.0005	0.08	0.31	0.5	0.1
I106508	0.17	0.005	0.13	46.3	930	15.8	22.2	0.0005	0.005	0.27	6	0.6
I106514	0.34	0.005	0.97	7.1	510	4.3	54.3	0.0005	0.005	0.025	3.2	0.4
I106517	0.26	0.005	0.06	38.4	540	9.2	9.9	0.0005	0.005	0.42	6	0.4
I106518	0.43	0.005	0.06	34.7	450	9.6	12	0.0005	0.005	0.42	4	0.4
I106519	0.09	0.005	0.08	39.6	150	11.9	22.8	0.0005	0.005	0.36	5.2	0.4
I106520	1.44	0.005	0.08	20.9	140	10.4	9	0.0005	0.005	0.7	2.3	0.2
I106521	0.47	0.005	0.05	3.2	40	1.7	5.3	0.0005	0.005	0.18	0.7	0.1
I106909	0.2	0.005	0.29	16.5	1460	2.3	7	0.0005	0.005	0.07	1.3	0.1
I106910	0.22	0.005	0.08	2.4	10	0.6	0.7	0.0005	0.005	0.06	0.2	0.1
I106912	0.85	0.005	0.9	12.7	230	50	33.4	0.0005	0.01	0.1	1.9	0.6
I106913	0.3	0.005	0.16	11.4	310	4	15.8	0.0005	0.005	0.06	1.5	0.1
I106916	0.3	0.005	0.14	3	30	1	2.8	0.001	0.02	0.05	0.4	0.7
I106922	0.54	0.005	0.3	3.8	700	2.2	5	0.0005	0.005	0.025	0.8	0.1
I106923	0.22	0.005	0.27	2.2	80	1.1	9.4	0.0005	0.005	0.025	0.8	0.1
I106927	0.43	0.005	0.52	7.8	180	0.9	8.6	0.0005	0.005	0.025	1.3	0.2
I106523	0.5	0.005	0.06	2.3	10	0.2	0.5	0.0005	0.005	0.025	0.1	0.1
I106524	0.18	0.005	0.08	3.1	20	0.8	1.4	0.0005	0.01	0.025	0.3	0.1
I106525	1.73	0.005	0.12	2.6	880	3.7	4.4	0.0005	0.13	0.21	1.2	1.5
I106526	0.39	0.005	0.025	1.8	10	0.3	0.2	0.0005	0.005	0.025	0.1	0.1
I106527	0.13	0.005	0.09	1.2	20	0.3	1.7	0.0005	0.005	0.025	0.2	0.1
I106528	0.64	0.005	0.1	1.2	50	1.5	6.9	0.001	0.04	0.12	0.7	0.5
I106522	5.24	0.005	0.08	14.3	1380	3.1	18.3	0.001	0.03	0.15	1.7	1.6
I106928	0.57	0.005	0.05	21	10	8.4	4.8	0.0005	0.02	0.29	0.8	0.2

Sampchar	Sn_ppm	Sr_ppm	Ta_ppm	Te_ppm	Th_ppm	Ti_pct	Tl_ppm	U_ppm	V_ppm	W_ppm	Y_ppm	Zn_ppm
I106901	2	5.5	0.005	0.01	1	0.0025	0.07	0.35	4	0.26	2.43	8
I106902	0.2	6.1	0.005	0.005	2.7	0.005	0.05	0.98	5	0.09	3.36	17
I106903	0.1	8.8	0.005	0.005	3.7	0.0025	0.06	1.08	6	0.06	5.77	33
I106904	0.7	2	0.01	0.22	5	0.0025	0.08	1.24	1	0.53	7.65	5
I106905	0.2	19.7	0.005	0.03	8	0.0025	0.32	5.2	4	0.16	4.16	62
I106906	1	4	0.01	0.06	14.5	0.078	0.68	3.16	56	0.22	23.1	294
I106907	0.3	6.2	0.005	0.04	1.8	0.0025	0.13	0.39	13	0.24	2.23	10
I106502	0.2	1.8	0.005	0.005	1.4	0.0025	0.03	0.34	3	0.025	1.91	7
I106503	0.2	1.9	0.005	0.12	1.1	0.0025	0.03	0.22	3	0.16	1.18	33
I106508	0.8	18.4	0.005	0.01	4.5	0.033	0.18	1.1	53	0.025	13.1	126
I106514	0.4	7.1	0.005	0.05	8.9	0.099	0.35	1.1	31	0.07	4.58	18
I106517	0.9	19.6	0.005	0.01	6.3	0.011	0.11	0.94	49	0.025	13.3	66
I106518	0.6	27	0.005	0.01	11.4	0.006	0.11	1.43	44	0.025	7.2	63
I106519	0.7	30.2	0.005	0.01	4.8	0.022	0.22	0.96	44	0.025	9.56	95
I106520	0.4	7.2	0.005	0.01	2	0.0025	0.08	0.67	16	0.05	3.28	47
I106521	0.2	2.1	0.005	0.005	1.7	0.0025	0.05	0.33	4	0.025	1.45	7
I106909	0.2	43.9	0.005	0.02	0.8	0.013	0.05	0.32	15	0.025	4.8	14
I106910	0.1	1.2	0.005	0.005	0.1	0.0025	0.01	0.025	1	0.13	0.21	3
I106912	0.3	3.8	0.005	0.27	4.4	0.09	0.33	1.16	36	0.15	2.5	73
I106913	0.2	4.1	0.005	0.01	1.4	0.025	0.1	0.37	9	0.06	2.56	23
I106916	0.2	19.5	0.005	0.01	0.5	0.0025	0.02	0.09	13	0.14	0.71	7
I106922	0.2	26.5	0.005	0.02	0.5	0.018	0.03	0.12	6	0.06	1.72	8
I106923	0.1	2.3	0.005	0.01	1.3	0.018	0.05	0.25	8	0.025	0.95	4
I106927	0.3	8	0.005	0.01	0.8	0.044	0.04	0.25	16	0.19	1.65	11
I106523	0.1	0.6	0.005	0.005	0.1	0.0025	0.01	0.025	1	0.025	0.09	1
I106524	0.1	0.2	0.005	0.005	0.1	0.0025	0.01	0.05	3	0.025	0.15	2
I106525	0.2	6.7	0.005	0.04	0.6	0.0025	0.06	1.12	80	0.09	0.65	19
I106526	0.1	0.3	0.005	0.005	0.1	0.0025	0.01	0.025	1	0.025	0.09	1
I106527	0.1	0.3	0.005	0.005	0.1	0.0025	0.01	0.025	2	0.025	0.08	1
I106528	0.2	6.1	0.005	0.03	1.2	0.009	0.06	0.36	7	0.12	0.84	4
I106522	0.3	5.4	0.005	0.07	1.9	0.02	0.14	6.07	452	0.29	15.5	77
I106928	0.1	5.6	0.005	0.005	1.8	0.0025	0.07	1.52	3	0.025	4.92	58

Sampchar	Zr_ppm
I106901	1.1
I106902	5.6
I106903	3.8
I106904	5.4
I106905	3.3
I106906	10.7
I106907	5.9
I106502	2.1
I106503	1.6
I106508	5.3
I106514	4.1
I106517	5.1
I106518	4.8
I106519	3.8
I106520	5.3
I106521	3.4
I106909	1.8
I106910	0.25
I106912	5.2
I106913	2.4
I106916	0.8
I106922	0.7
I106923	0.7
I106927	0.7
I106523	0.25
I106524	0.6
I106525	0.9
I106526	0.25
I106527	0.25
I106528	1.7
I106522	7.6
I106928	2.7

Ruby Ck 2010 Traverses and Samples on Claims





Ruby Creek Property Regional Geology

Ruby Creek Property
Regional Geology
Nad 83, Yukon Albers Projection

Regional Geology Legend (from S.P. Gordey and J.J. Ryan, GSC Open File 4970)

UNIT	AGE	DESCRIPTION
Qs	Quaternary	Fluvial silt, sand and gravel
uKCv	Upper Cretaceous	CARMACKS GROUP: rhyodacite and dacite, commonly biotite and hornblende phyric, dominated by lesser andesite and basalt; minor rhyolite
IKTcg	Lower Cretaceous	TANTALUS(?) FORMATION: clast-supported pebble to cobble conglomerate with clasts of vein quartz and foliated quartzite
PKs	Permian	KLONDIKE SCHIST: muscovite-chlorite-quartz-feldspar schist, chlorite schist, chlorite phyllonite; local cleaved lapilli tuff with preserved primary texture, probably derived from Pv
Pogq	Permian	ORTHOgneiss (YOUNGER, 264-259 Ma): Pog, undivided orthogneiss; Pogg, pink to orange K-feldspar rich, granitic orthogneiss, commonly includes or associated with Poga; Poga, mainly K-feldspar augen orthogneiss, exhibits various states of strain
DMNq	Devonian to Mississippian?	NASINA ASSEMBLAGE:DMNq, fine-grained, dark-grey to black carbonaceous quartzite and metapelite; DMNI, marble
DMps	Devonian to Mississippian?	QUARTZ-MICA SCHIST: undivided metasedimentary rocks dominated by metapsammite, semipelite and metapelite; commonly quartz-garnet-biotite-muscovite schist possibly derived from siliceous siltstone; commonly finely interlayered with garnet metapelite;

Appendix D: Statement of Costs

Statement of Expenditures

Program Ruby Creek Property
 Company Sanatana Resources Inc
 Claim Names BJM, FEN and PEBBLE Claims
 Claim Location NTS Sheet Claim Sheets 1150/11 and 1150/14
 Work Dates August 6-14, 2010

ITEM	DETAILS	AMOUNT/RATE	TOTAL COSTS
Project Management	June 2010	\$800/day	\$ 6,250.00
Project Management	TG: August 2010	\$800/day	\$ 9,375.00
GIS Work	Geo consulting - Yukon claims	\$75/hour	\$ 500.00
GIS Work	GIS compilation: Boulder Claims, Yukon	\$75/hour	\$ 600.00
P.Geo Supervision	Geo Consulting & Expenses: Yukon Claims	\$750/day plus expenses	\$ 21,256.52
Labour	Expediting - Mincon	\$500/day	\$ 2,761.96
Labour	Expediting - Mincon V.Dunning	\$500/day	\$ 2,408.13
Labour	Exploration Contractors: July 11-16, 2010	\$500/day	\$ 23,164.48
Air Charters	Helicopter Charter: Aug 14 & 15, 2010	Fireweed - Dawson	\$ 7,707.30
Air Charters	Helicopter charters: July11-12, 2010	Fireweed - Dawson	\$ 1,289.40
Camp Accom and Meals	Camp Stay - 48 man days Aug 5 to 15, 2010	Indian River Camp	\$ 7,200.00
Field Equipment	ATV Rental - camp	4 ATVs - Dawson	\$ 4,200.00
Field Equipment	Radio Rental: 6 pcs Aug 4-23, 2010	Whitehorse	\$ 925.00
Field Equipment	rental vehicles	Pickup from Whitehorse	\$ 3,978.64
Field Supplies	supplies	Dawson	\$ 734.11
Laboratory Fees	Cert: WH10116811 ALS Chemex	ALS Whitehorse	\$ 2,995.72
	SANATANA RESOURCES INC	TOTAL EXPENDITURES	\$ 95,346.26

Statement of Expenditures

Program Ruby Creek Property
 Company Sanatana Resources Inc
 Claim Names BJM, FEN and PEBBLE Claims
 Claim Location NTS Sheet Claim Sheets 1150/11 and 1150/14
 Work Dates September 19- October 2, 2010

ITEM	DETAILS	AMOUNT/RATE	TOTAL COSTS
Project Management	September 2010	\$800/day	\$ 12,500.00
Project Management	October 2010	\$800/day	\$ 12,500.00
Project Management	Exploration - Proj Mgmt	\$800/day	\$ 4,000.00
P.Geo Supervision	Geo Consulting: Sept 5 - Oct 12, 2010	\$750/day plus expenses	\$ 15,010.00
P.Geo Supervision	Assessment Report	\$750/day plus expenses	\$ 5,175.00
GIS Work	Yukon Map Generation	\$75/hour	\$ 187.50
Labour	Expediting - contractor	\$500/day	\$ 1,022.26
Labour	Exploration Consultant/Contractor (Sept 20-Oct 2)	\$500/day	\$ 14,768.94
Labour	Karl Scholtz - Expediter	\$500/day	\$ 690.00
Air Charters	Alkan Air: Fixed Wing Charter: PM & BD Dawson to W/Horse	Dawson- Whitehorse	\$ 2,300.00
Air Charters	alkan charter (o/s from prev invoice)	Dawson- Whitehorse	\$ 173.25
Air Charters	Flights/Transport - Mincon Crew - Alkan Air	Dawson- Whitehorse	\$ 1,689.46
Air Charters	Heli Charter: Sept 23, 2010 PM & BD	Trans North - Dawson	\$ 745.80
Air Charters	Trans North Helicopters: Charter PM & BD	Trans North - Dawson	\$ 1,857.87
Ground Travel	Taxi - Yukon trip PM&BD		\$ 65.00
Accom & Meals	Hotel/Meals - Yukon trip PM&BD		\$ 898.60
Accom & Meals	meals - crew		\$ 133.23
Accom & Meals	Riverview Hotel - W/Horse PM & BD		\$ 198.00
Accom & Meals	Trav & Accom various		\$ 920.64
Camp Accom and Meals	Camp Accom - TG & Crew (mincon)		\$ 5,550.00
Field Equipment	communication - radio rental	Whitehorse	\$ 90.00
Field Equipment	ground rental - ATV	Dawson	\$ 3,200.00
Field Equipment	Quad Rental (9days @ \$125)	Indian River camp	\$ 1,125.00
Field Equipment	Radio Rentals (x6)	Whitehorse	\$ 971.25
Field Equipment	Truck Rentals	Whitehorse	\$ 3,116.38
Field Supplies	camp fuel	Dawson	\$ 66.64
Field Supplies	Camp fuel	Dawson	\$ 459.81
Field Supplies	Gas - gr rentals	Dawson	\$ 60.50
Field Supplies	Supplies	Dawson	\$ 106.97
Field Supplies	Supplies/Consumables	Dawson	\$ 519.75
Laboratory Fees	Cert # WH10141576 - Boulder - ALS Chemex	ALS - Whitehorse	\$ 7,172.31
	SANATANA RESOURCES INC	TOTAL EXPENDITURES	\$ 97,274.16