

ASSESSMENT REPORT, 2011 GEOCHEMICAL SAMPLING PROGRAM

SOCN PROPERTY

WHITEHORSE MINING DIVISION, YUKON, CANADA

NTS MAP SHEET: 105J/14, NAD83 ZONE 9

396000 E, 6964460 N (NAD83)

CLAIMS AND OWNER:

Claim Name	Number	Grant Number	Registered Owner
SOCN	1	YD123002	Golden Predator Canada Corp. - 100%
SOCN	2 - 30	YD122932 to YD122960	Golden Predator Canada Corp. - 100%

PERIOD OF WORK: AUGUST 24, 2011

OWNER AND OPERATOR:

GOLDEN PREDATOR CANADA CORP.

11th Floor, 888 Dunsmuir Street

Vancouver, BC

June 18th, 2012

Prepared by:

Golden Predator Canada Corp.

Erin O'Brien, M.Sc., P.Geo.

TABLE OF CONTENTS

TABLE OF CONTENTS	II
LIST OF FIGURES	II
LIST OF TABLES	II
LIST OF APPENDICES	III
1.0 INTRODUCTION	1
2.0 PROPERTY LOCATION AND DESCRIPTION	1
3.0 INFRASTRUCTURE, CLIMATE AND PHYSIOGRAPHY	3
4.0 EXPLORATION HISTORY	3
5.0 GEOLOGY	3
5.1 Regional Geology	3
5.2 Property Geology	4
6.0 EXPLORATION.....	6
6.1 Exploration Program.....	6
6.2 Sampling Methodology and Protocols.....	6
Stream Geochemical Program	6
6.3 Results.....	7
Stream Sediments.....	7
7.0 CONCLUSIONS AND RECOMMENDATIONS	9
8.0 2011 EXPENDITURES	9
9.0 STATEMENT OF AUTHORSHIP	9
10.0 REFERENCES	10

LIST OF FIGURES

Figure 2-1. SOCN Property Location, Yukon Territory	1
Figure 2-2. SOCN Project Claim Map.....	2
Figure 5-1. Regional Geology of the Selwyn Basin.	4
Figure 5-2. Regional Geology with Sample Locations, SOCN Project area.	5

LIST OF TABLES

Table 2-1. SOCN Claim Information.....	1
Table 8-1. 2011 Expenditures	9



LIST OF APPENDICES

Appendix 1	Certificate of Author
Appendix 2	Analytical Summary and Sample Descriptions
Appendix 3	Assay Certificates
Appendix 4	Description of Analytical Methods and Detection Limits
Appendix 5	Silt Geochemical Plots for Select Elements



1.0 INTRODUCTION

The SOCN property consists of 30 contiguous mineral claims covering an area of 600 hectares, located in the Selwyn Basin in eastern central Yukon. Golden Predator Canada Corp. (Golden Predator) has a 100% undivided interest in the property and is targeting possible Carlin-style gold systems.

This report describes the work completed in the 2011 field season on August 24th which consisted of stream sediment sampling.

2.0 PROPERTY LOCATION AND DESCRIPTION

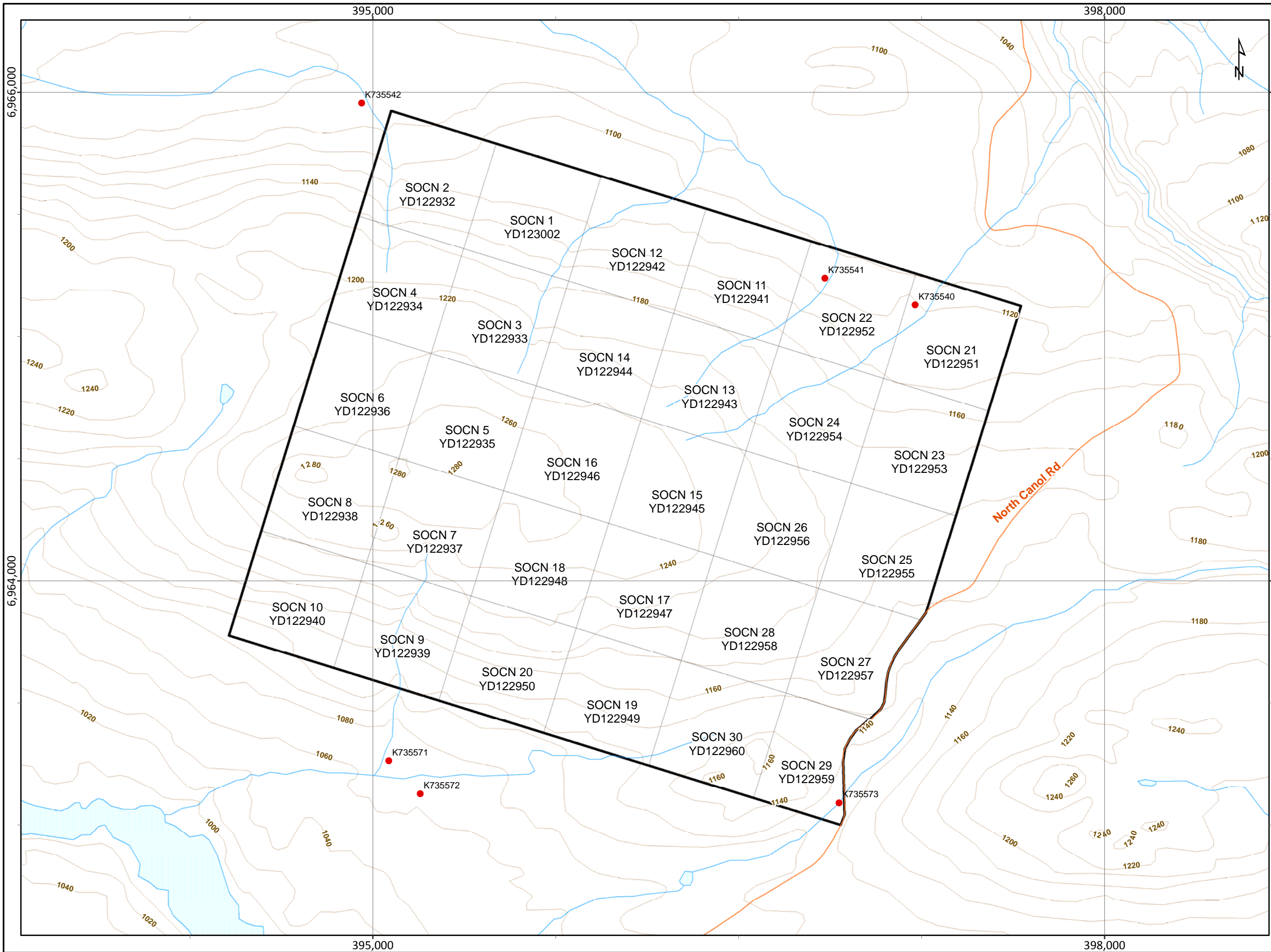


The property is located on in eastern central Yukon. It lies 115 km northeast of Ross River, YT (Figure 2-1). It is accessed by 45 minute helicopter trip from Ross River. The North Canol Road demarks the southeastern edge of the property. The property is located in the Whitehorse Mining District, and consists of 30 contiguous mineral claims covering an aggregate area of 600 hectares (Table 2-1, Figure 2-2).

Figure 2-1. SOCN Property Location, Yukon Territory

Table 2-1. SOCN Claim Information

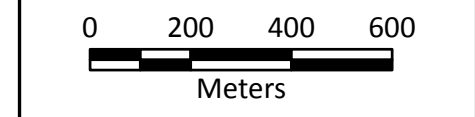
Claim Name	Claim Number	Grant Number	Registered Owner	Expiry Date
SOCN	1	YD123002	Golden Predator Canada Corp. - 100%	14/07/2012
SOCN	2 - 30	YD122932 to YD122960	Golden Predator Canada Corp. - 100%	14/07/2012



- ### Legend
- GPD Property Outline
 - Quartz Claim
 - Stream Sediment Location
 - Watercourse
 - Elevation (20 m contour)



SOCN Project Claim Map with Stream Sediment Locations



Scale:	1:15,000	Map ID:	--
Draw Date:	2012/06/15	Rev. Date:	--
Version:	1	Figure:	2-2
Author:	E. O'Brien	Office:	Vancouver
Location:	115 km NE of Ros River, Yukon Territory		
Projection:	NAD 1983 UTM Zone 9N		
Filename:	SOCN_2011_Claim		

3.0 INFRASTRUCTURE, CLIMATE AND PHYSIOGRAPHY

The centre of the property is located at 396000 E, 6964460 N (NAD83, zone 9). The nearest settlement accessible by road is Ross River, which is located ~140 km to the southwest along the North Canol gravel road. The road is maintained by the Yukon government in the summer months.

The property lies within the Taiga Cordillera ecoregion in the rugged Selwyn and southern Mackenzie mountains. The climate is continental modified by mountain setting. In the ecoregion, the mean annual temperature for major valley systems is approximately -4.5°C with a summer mean of 9.5°C and a winter mean of -19.5°C. Mean annual precipitation varies from 600 mm at lower elevations up to 750 mm at higher elevations (<http://ecozones.ca/english/region/171.html>).

The ecoregion is characterized by alpine tundra at upper elevations and by subalpine open woodland vegetation at lower elevations. Alpine vegetation occurs outside of talus slopes and includes lichens, dwarf willows, shrubs and grasses. Subalpine vegetation includes discontinuous stunted white spruce, and occasional alpine fir and lodgepole pine, with willow, dwarf birch, shrubs and grasses. (<http://ecozones.ca/english/region/171.html>).

The glaciated Selwyn Mountains are composed of broad, northwesterly-trending ranges and valleys. Alpine and valley glaciers occur, and there is extensive, discontinuous permafrost. Elevations on the property range from 1,120 to 1,280 metres above mean sea level.

4.0 EXPLORATION HISTORY

There is no known historical work on the SOCN. Minfile 105J012, the Rog drilled prospect, is located 5 km east of the property. Work on the ROG in 1971 and 1972 by Hudson Bay Exploration and Development Company Ltd. included grid soil sampling which outlined a 460 x 90 m zinc anomaly. The anomaly was trenched and five drill holes were completed for a total of 273 m. Road River Group weakly pyritic graphitic argillite and cherty argillite with elevated zinc backgrounds was attributed to the soil anomaly. The claims were allowed to lapse and were restaked in 1990 by Cominco Limited, who performed a soil geochemical survey in 1991.

5.0 GEOLOGY

5.1 Regional Geology

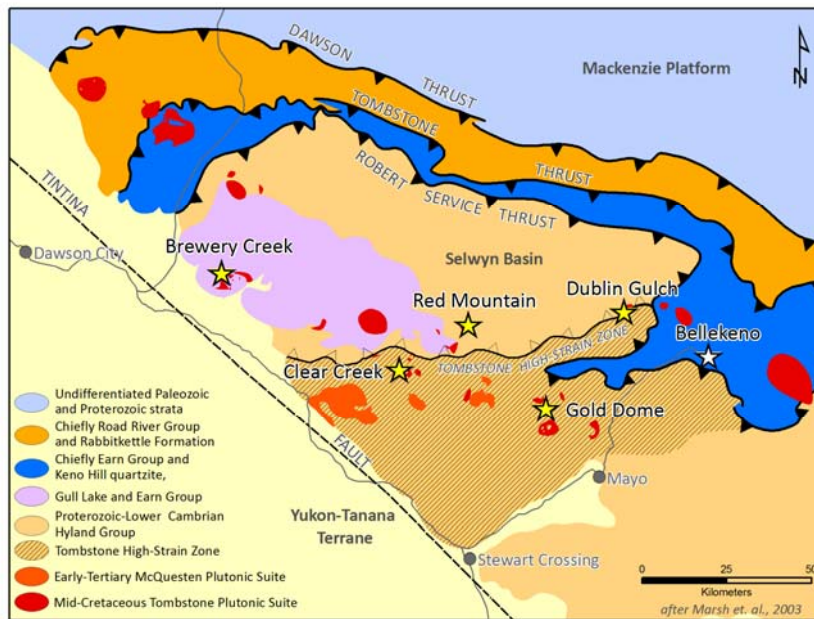
The property is located in the eastern edge of the Selwyn Basin. The Selwyn Basin is bound on the south by the Tintina Fault (and the Intermontane Superterrane) and bound on the north by the Dawson Thrust Fault and the North American Shelf (Figure 5-1).

The Selwyn Basin stratigraphy consists of late Proterozoic to Palaeozoic marginal basinal and platformal clastic and pelitic sediments from ancient North America. Various aged volcanic piles are stratabound within the sediments. The basin was subjected to rifting during the Proterozoic

and again in the late Devonian. During periods of rifting, contemporaneous magmatic rocks were emplaced as volcanics and as thick sill sequences.

By late Jurassic, the rocks of the Intermontane Belt of the Cordillera collided with the passive margin of the North America Shelf, causing compressive tectonics (Murphy, 1997). This resulted in crustal shortening, tight folding, and failure along hinges. Three regionally stacked thrust panels were formed: the Robert Service, Tombstone and Dawson thrust sheets (from oldest to youngest; Murphy, 1997).

The Selwyn Basin is intruded by northwest-trending post-accretionary plutonic mid-Cretaceous suites including the Tungsten, Mayo and Tombstone. The Tungsten suite (97-94 Ma) consists of granitoids with associated sheelite skarn deposits including Mactung and Cantung. The granitoid Mayo Suite occurs northwest of the Tungsten suite and is associated with the intrusion-related gold systems of Dublin Gulch and Clear Creek. Tombstone plutonic suite (92-90 Ma) lies further to the west and closely to the Tintina Fault (Lang et al., 2000). The Tombstone rocks are more alkalic with monzonites and syenites and are associated with U-Th-REE mineralization and intrusion-related gold deposits (Israel et al., 2011).

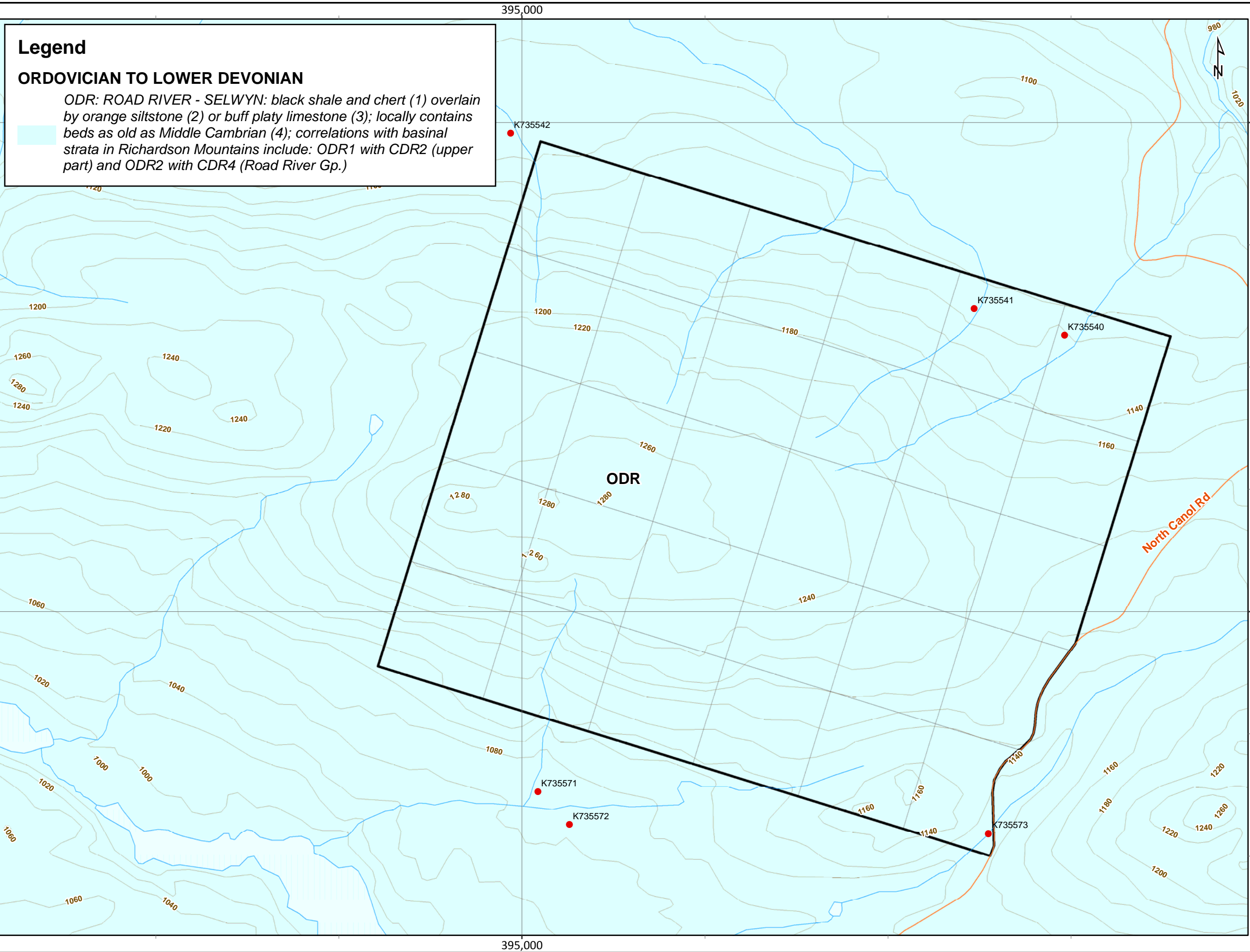


Mineralization associated with the mid-Cretaceous plutonic suite intrusions includes veins, skarns, stockworks and breccias within, proximal or distal to the intrusions. The most predominant form of mineralization however, is sheeted quartz veins in the intrusions. More often than not, more than one style of mineralization will exist proximal to these intrusions (Abbott et al., 1986).

Figure 5-1. Regional Geology of the Selwyn Basin.

5.2 Property Geology

The property is underlain by Palaeozoic rocks comprised of Ordovician to Lower Devonian Road River Group black shale and chert (ORD). Figure 5-2 illustrates the regional geology at SOCN and the stream sediment sample locations.



Legend

ORDOVICIAN TO LOWER DEVONIAN

ODR: ROAD RIVER - SELWYN: black shale and chert (1) overlain by orange siltstone (2) or buff platy limestone (3); locally contains beds as old as Middle Cambrian (4); correlations with basinal strata in Richardson Mountains include: ODR1 with CDR2 (upper part) and ODR2 with CDR4 (Road River Gp.)

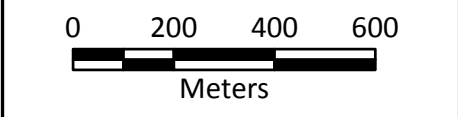


Legend

- ◊ GPD Property Outline
- ◊ Quartz Claim
- Stream Sediment Location
- ~ Watercourse
- Elevation (20 m contour)



SOCN Project
Regional Geology with
Stream Sediment Locations



Scale:	1:15,000	Map ID:	--
Draw Date:	2012/06/15	Rev. Date:	--
Version:	1	Figure:	5-2
Author:	E. O'Brien	Office:	Vancouver
Location:	115 km NE of Ros River, Yukon Territory		
Projection:	NAD 1983 UTM Zone 9N		
Filename:	SOCN_2011_Bedrock		

6.0 EXPLORATION

6.1 Exploration Program

The 2011 exploration program at SOCN was carried out on August 24th. Golden Predator collected nine silt samples from active stream beds. Crews of between nine to twelve samplers, plus a cook and helicopter pilot were based in the Jeff Creek camp constructed by Golden Predator on the North Canol Road. All the work was helicopter assisted using a NOTAR supplied by Fireweed Helicopters of Whitehorse, YT, with daily flight times averaging about 4.6 hours/day for the program.

6.2 Sampling Methodology and Protocols

Stream Geochemical Program

Stream sediment samples were collected along first, second and third order streams, and immediately upstream of confluences. Samples were also collected in the vicinity of historical RGS stream anomalies, to test repeatability.

Each sample was collected from several points along the active stream bed to produce a representative composite sample. The uppermost sediment was discarded to avoid spurious high content of Fe and Mn oxide coating. The active silt and fine to medium sand that has been recently transported by the stream was the target sediment. This type of sediment was generally located: 1) in the lee of large boulders or logs; 2) in low energy pools at the tail-end of bars; and 3) infilling voids below the surface of cobble-gravel bars.

Samples were sieved in the field to a fraction of less than one-eighth inch (<1/8" or 3.36 mm) and placed in labelled, double layered plastic sample bags. Sample sites were flagged and photographed. The sample weights varied between 4-12 kg. Large sample sizes were required to obtain sufficient fine material for the selected assay techniques.

If the drainage contained seasonal stream sediment deposition, but was currently dry, a sediment sample was collected by dry sieving the material. Occasionally the south-facing slopes had underground drainage that sporadically daylighted, in those situations sample spacing was more varied.

Sample data was recorded on data cards and included the following: geographic location, sample color, angularity of the clasts, sediment composition (percentage of gravel, sand, silt, clay and organics), slope direction, slope angle, stream flow, vegetation type and comments.

Samples were transported by air from Jeff Creek camp to Whitehorse by Alkan Air. Samples were delivered by in-house personnel or insured professional expeditors to ALS Chemex's ISO 9001 certified preparation facility in Whitehorse. Samples were dried and screened to 180 microns (80 mesh).

The pulps were analyzed at ALS Chemex's ISO 9001 certified laboratory in North Vancouver using the ultra-trace ME-MS41 package. A 0.5 g sample is digested by aqua regia techniques and 51 elements are analyzed through a combination of ICP-AES and ICP-MS.

The Au-ST44 method was used to analyze gold using a 50 g sample of <80 micron material. This method provides the lowest possible detection limit for gold of 0.0001 – 0.1 ppm, using aqua regia digestion with analysis by ICP-MS. The larger sample size for the gold analysis is used in an effort to reduce potential nugget effects. Samples exceeding the upper limit of Au detection (0.1 ppm) were re-analyzed using Au-OG44, an ore grade assay technique. A 50 g sample of 180 microns sediment is digested in an aqua regia solution and finished with ICP-MS methods to provide an Au detection range between 0.01 – 100 ppm.

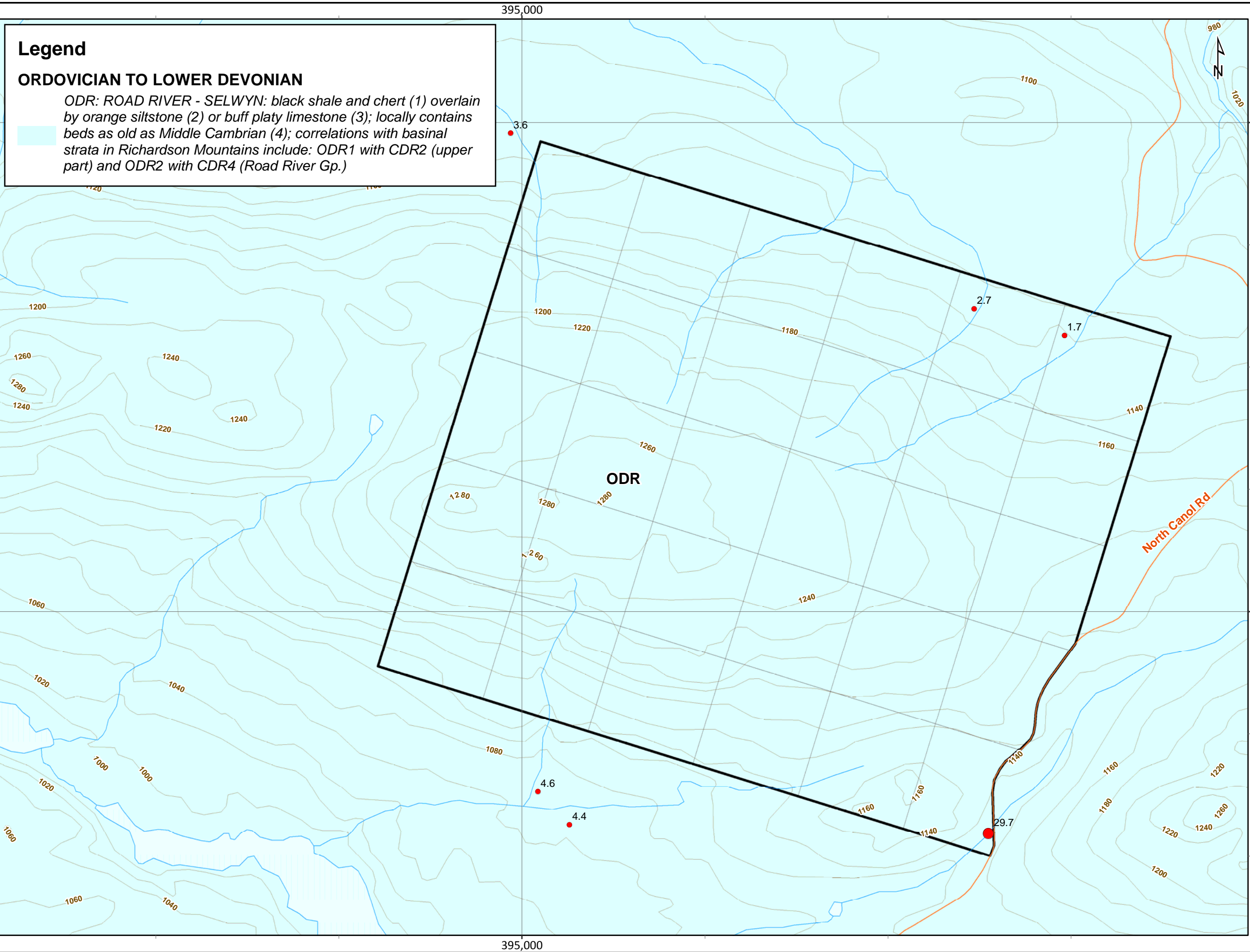
ALS completes quality assurance/ quality control (QA/QC) data verification of their assays through internally inserted duplicates, standards and blanks. In addition, Golden Predator's QA/QC program included the insertion of field duplicates, blanks and standard reference material obtained from CDN Resource Laboratories of Langley, BC. Assay certificates are compiled in Appendix 3 and the detailed methodology and detection limits are in Appendix 4. Appendix 5 presents the sample locations geochemical plots for select elements for the stream sediment samples collected by Golden Predator in 2011.

This stream sediment sampling program was completed in conjunction with seven other Golden Predator properties south of the North Canal Road in the Selwyn Basin. Because the geology is fairly similar for all projects, samples from the entire stream sediment dataset were grouped together and were ranked by percentile to determine statistical anomalies for the region. The dataset consists of 104 stream samples. For elements where there was sufficient statistical spread, five divisions were used to plot the geochemical data. These were: 0-75th percentile; 75-90; 90-95; 95-98; and 98-100th percentiles. When there was insufficient statistical spread, the last two divisions were combined so that the uppermost division plotted values in the 95-100th percentile (e.g. Au and Ag).

6.3 Results

Stream Sediments

Results from the stream sampling program outline one single-element geochemical anomaly. The geochemical plot for gold in stream sediments identified one anomalous sample relative to the overall dataset (Figure 6-1). The sample assayed 29.7 ppb Au, which is in the 95th+ percentile for the region. The sample however was taken down-gradient of the North Canal Road. No suitable sample material was found up-gradient of the road crossing due to stagnant water conditions and a preponderance of organic material in the drainage. As such, this anomaly may be related to road construction or road-related activities and at this time must be suspected to be contamination.



Legend

ORDOVICIAN TO LOWER DEVONIAN

ODR: ROAD RIVER - SELWYN: black shale and chert (1) overlain by orange siltstone (2) or buff platy limestone (3); locally contains beds as old as Middle Cambrian (4); correlations with basinal strata in Richardson Mountains include: ODR1 with CDR2 (upper part) and ODR2 with CDR4 (Road River Gp.)



Legend

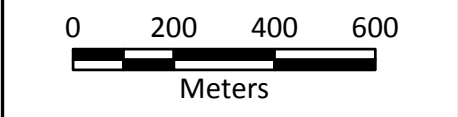
- ◊ GPD Property Outline
- ◊ Quartz Claim
- ~ Watercourse
- Elevation (20 m contour)

Au (ppb)

- 0.1 - 5.6
- 5.7 - 7.7
- 7.8 - 9.0
- 9.1 - 41.9



SOCN Project
Regional Geology with Gold in Silts



Scale:	1:15,000	Map ID:	--
Draw Date:	2012/06/15	Rev. Date:	--
Version:	1	Figure:	6-1
Author:	E. O'Brien	Office:	Vancouver
Location:	115 km NE of Ros River, Yukon Territory		
Projection:	NAD 1983 UTM Zone 9N		
Filename:	SOCN_2011_BedrockwAu		

A second sample is weakly (75-90th percentile) anomalous in arsenic at 44.1 ppm. This drainage occurs immediately west of the anomalous gold drainage.

7.0 CONCLUSIONS AND RECOMMENDATIONS

The SOCN property consists of 30 contiguous mineral claims covering an area of 600 hectares in Road River Group sediments located in the Selwyn Basin of eastern Yukon. The property is in the grassroots stages of exploration and has perspective Carlin-style gold systems.

The 2011 field program included the collection of six stream samples. The stream sediment program highlighted one anomalous gold anomaly, however the sample was collected down-gradient of the North Canal Road and may have been contaminated from road construction or subsequent activities. Stream sampling on this property had limited success due to marshy ground conditions. Soil samples collected on higher ground is recommended for any follow up work.

8.0 2011 EXPENDITURES

Expenditures for the 2011 exploration program were \$6,627.00 as summarized in Table 8-1.

Table 8-1. 2011 Expenditures

Expenditure	Units	Unit Cost	Per	Cost
Wages				
Golden Predator	0.5	\$ 2,7000	day	\$ 1,350.00
Report Writing	2	\$ 500.00	day	\$ 1,000.00
Transportation				
Helicopter	1.6	\$ 1,100.00	hour	\$ 1,760.00
Fuel	1.6	\$ 300.00	hour	\$ 480.00
Consumables				
Camp, fixed wing, food, supplies	0.5	\$ 3,414	day	\$ 1,707.00
Sample Assays				
Stream Sediment Samples	15	\$ 55.00	sample	\$ 825.00
Total Expenditures				\$6,627.00

9.0 STATEMENT OF AUTHORSHIP

This Report titled "Assessment Report, 2011 Geochemical Sampling Program, SOCN Project, Whitehorse Mining Division, Yukon Territory, Canada", and dated June 18th, 2012 was prepared and signed by the following author:



Erin O'Brien, M.Sc., P.Geol.
Dated: June 18th, 2012
Vancouver, British Columbia



10.0 REFERENCES

- Abbott, J.G., Gordey, S.P., & Tempelman-Kluit, D.J., 1986. Setting of stratiform, sediment hosted lead-zinc deposits in the Yukon and Northeastern British Columbia; Mineral Deposits of Northern Cordillera, ed. J.A. Morin, The Canadian Institute of Mining and Metallurgy, Special Volume 37, p. 1-18.
- Goldfarb, R., Hart, C., Miller, M., Miller, L., Farmer, G.L., and Groves, D., 2000. The Tintina Gold Belt: A Global Perspective. *In*: The Tintina Gold Belt: Concepts, Exploration and Discoveries, British Columbia and Yukon Chamber of Mines, Special Volume 2. 5-34.
- Gordey, S.P. and A.J. Makepeace (compilers), 2001. Bedrock Geology, Yukon Territory; Geological Survey of Canada. Open File 3754 and Exploration, Exploration and Geological Services Division, Yukon and Northern Affairs Canada, Open File 2001-1, scale 1: 1,000,000.
- Hulstein, R. and F. Andersen, 1999. Assessment report on the 1998 Geological and Geochemical Investigation of the Wall Property. Mayo Mining District, Yukon Territory NTS 105O/8. Assessment Report 093976.
- Israel, S., Colpron, M. and T. Fraser, 2011. Overview of Yukon Geology.
www.geology.gov.yk.ca/pdf/Bedrock_Full_Overview.pdf
- McLaughlin, A.D., 1983. Assessment report Wall 1-24 Claims; Yukon Territory. Assessment Report 091494.
- Murphy, D., 1997. Geology of the McQuesten River Region, Northern McQuesten and Mayo Map Area, Yukon Territory (115P/14, 15, 16; 105M/13, 14). Bulletin 6, Exploration and Geological Services Division, Yukon Region, Indian and Northern Affairs Canada.

Appendix 1
Certificate of Author

Erin Kathleen O'Brien
11th Floor, 888 Dunsmuir
Vancouver, British Columbia
Canada V6C 3K4
Telephone: 778-928-7232
E-mail: eobrien@goldenpredator.com

CERTIFICATE OF AUTHOR

I, Erin Kathleen O'Brien of 11th Floor, 888 Dunsmuir, Vancouver, British Columbia, certify that:

1. I am a graduate of McGill University of Quebec with a B.Sc. Joint Major in Geology and Environmental Studies, in 1994 and a M.Sc. in Geology from the University of New Brunswick in 1996;
2. I have practiced my profession as a mineral exploration or environmental geologist with Caracle Creek International Consultants Inc., Golder Associates Ltd., Morrow Environmental Consultants Inc. (SNC Lavalin Environment) and as a geological consultant for 15 years, where I have been involved with the geological exploration of precious and base metal properties and deposits in a variety of capacities;
3. I have been operating a business as a geological consultant under my own name since 1996, and consulted for Golden Predator Canada Corp. between September, 2009 and March 2010. I became a full time employee of Golden Predator Canada Corp. in April, 2010.
4. I am a Professional Geoscientist registered with the Association of Professional Geoscientists and Engineers of British Columbia and have been since 2001;
5. I am author of this report "Assessment Report, 2011 Geochemical Sampling Program SOCN, Whitehorse Mining Division, Yukon, Canada; dated June 18th, 2012;" and
6. I have reviewed the geological data and am not aware of any material facts or change in facts at the time this certification is dated.


Erin Kathleen O'Brien, M.Sc., P.Geol.

Vancouver, British Columbia
Dated this 18th Day of June, 2012



Appendix 2
Analytical Summary

Stream Sediment
Sample Descriptions

Sample No.	Sample Date 2011	Datum - Zone	Easting	Northing	Elevation (m)	Angularity	Color	Gravel	Sand	Silt	Organics	Slope Dir	Slope Angl	Stream Flow	Comments	Au (ppb)
K735573	Aug-24	UTM83-9	396911	6963092	1103	SR	BRD	70	30	0		S	2	5	sample location in swamp so had to go up stream near road. Tried to get sample above road to avoid contamination of sample, but only organics so had to take it below. Metaseds	29.7
K735571	Aug-24	UTM83-9	395065	6963263	1060	SR	BRD	60	20	0	20	SE	4	3	almost no water. Pockets of fines on moss. Metaseds	4.6
K735572	Aug-24	UTM83-9	395194	6963128	1055	SA	BRD	40	50	0	10	S	3	4	metaseds, lots of mica. Creek is slightly off from GPS. Lots of marshy areas around	4.4
K735542	Aug-24	UTM83-9	394953	6965956	1063	SA	BRD	20	60	10		E	2	3	sed rocks	3.6
K735541	Aug-24	UTM83-9	396853	6965239	1112	SA	GVD	20	60	10		E	2	2	mica, sed rocks	2.7
K735540	Aug-24	UTM83-9	397223	6965129	1117	SA	BRD	50	40	10		NE	1	2	mica, sed rocks	1.7

Color			
D	dark	YE	yellow
L	light	OR	orange
GY	grey	GR	green
BK	black	PK	pink
RD	red	TA	tan
BR	brown	CW	cream
RBR	red brown		

Clast angularity	
WR	well rounded
R	rounded
SR	subrounded
SA	subangular
A	angular

Key

Slope Angle	
1	flat (<5°)
2	gentle (<5-15°)
3	moderate (<15-25°)
4	steep (>25°)

Stream Flow	
1	dry
2	stagnant
3	slow
4	moderate
5	fast

Appendix 3

Assay Certificates

Only a portion of these
results pertain to this report



ALS Canada Ltd.
2103 Dollarton Hwy
North Vancouver BC V7H 0A7
Phone: 604 984 0221 Fax: 604 984 0218 www.alsglobal.com

To: GOLDEN PREDATOR CANADA CORP.
888 DUNSMUIR STREET
11TH FLOOR
VANCOUVER BC V6C 3K4

Page: 1
Finalized Date: 25-OCT-2011
Account: GOPRED

CERTIFICATE WH1173045

Project: Selwyn
P.O. No.: GPD2011SELWYN006
This report is for 101 Stream Sediment samples submitted to our lab in Whitehorse, YT, Canada on 29-AUG-2011.

The following have access to data associated with this certificate:

MIKE BURKE
LINDA LEWIS

ANDREW CALDWELL
MIKE MASLOWSKI

JACK COTE
BRUCE OTTO

SAMPLE PREPARATION

ALS CODE	DESCRIPTION
WEI-21	Received Sample Weight
LOG-21d	Sample logging - ClientBarCode Dup
SPL-34	Pulp Splitting Charge
LOG-22	Sample login - Rcd w/o BarCode
LOG-23	Pulp Login - Rcvd with Barcode
SCR-41	Screen to -180um and save both

ANALYTICAL PROCEDURES

ALS CODE	DESCRIPTION	INSTRUMENT
Au-ST44	Super Trace Au - 50g AR	ICP-MS
ME-MS41	51 anal. aqua regia ICPMS	

To: GOLDEN PREDATOR CANADA CORP.
ATTN: JACK COTE
888 DUNSMUIR STREET
11TH FLOOR
VANCOUVER BC V6C 3K4

This is the Final Report and supersedes any preliminary report with this certificate number. Results apply to samples as submitted. All pages of this report have been checked and approved for release.

Signature:



Colin Ramshaw, Vancouver Laboratory Manager



ALS Canada Ltd.
 2103 Dollarton Hwy
 North Vancouver BC V7H 0A7
 Phone: 604 984 0221 Fax: 604 984 0218 www.alsglobal.com

To: GOLDEN PREDATOR CANADA CORP.
 888 DUNSMUIR STREET
 11TH FLOOR
 VANCOUVER BC V6C 3K4

Page: 2 - A
 Total # Pages: 4 (A - D)
 Plus Appendix Pages
 Finalized Date: 25-OCT-2011
 Account: GOPRED

Project: Selwyn

CERTIFICATE OF ANALYSIS WH11173045

Sample Description	Method Analyte Units LOR	WEI-21	Au-ST44	ME-MS41	ME-MS41	ME-MS41	ME-MS41	ME-MS41	ME-MS41	ME-MS41	ME-MS41	ME-MS41	ME-MS41	ME-MS41	ME-MS41	
		Recvd Wt. kg	Au ppm	Ag ppm	Al %	As ppm	Au ppm	B ppm	Ba ppm	Be ppm	Bi ppm	Ca %	Cd ppm	Ce ppm	Co ppm	Cr ppm
K735450		7.20	0.0032	1.22	0.74	19.8	<0.2	<10	1670	0.72	0.13	0.51	3.02	13.10	6.2	21
K735460		6.88	0.0036	0.85	0.66	23.1	<0.2	<10	1470	0.78	0.18	0.46	9.19	18.30	9.1	22
K735461		5.76	0.0062	1.62	0.70	49.5	<0.2	<10	1480	1.27	0.32	0.40	12.05	25.8	9.8	25
K735462		6.56	0.0035	0.71	0.80	24.7	<0.2	<10	790	0.70	0.23	0.36	5.72	25.6	7.9	18
K735463		6.76	0.0042	1.39	0.66	40.4	<0.2	<10	1060	0.86	0.18	0.51	10.65	20.8	9.4	27
K735464		9.86	0.0027	1.63	0.67	28.3	<0.2	<10	1080	0.84	0.12	0.62	30.2	24.5	9.9	34
K735465		<0.02	0.0023	1.63	0.69	29.1	<0.2	<10	1080	0.87	0.13	0.62	30.3	24.7	10.3	35
K735466		6.54	0.0035	0.79	0.95	24.0	<0.2	<10	720	0.81	0.22	0.47	6.06	25.3	11.0	25
K735467		6.90	0.0026	0.82	0.83	36.9	<0.2	<10	1120	0.69	0.16	0.46	7.91	24.8	7.6	23
K735468		6.20	0.0419	1.19	1.85	51.0	<0.2	<10	1260	2.16	0.15	0.45	99.0	21.3	63.2	24
K735501		7.12	0.0024	0.72	0.40	69.6	<0.2	<10	260	0.24	0.06	0.08	1.06	3.71	6.9	19
K735502		5.90	0.0067	1.32	0.87	16.6	<0.2	<10	1630	0.56	0.14	0.41	5.18	10.10	5.2	21
K735503		4.90	0.0026	1.25	1.91	73.9	<0.2	<10	1150	1.66	0.11	0.19	11.75	11.65	101.5	20
K735504		7.08	0.0024	1.10	0.36	14.7	<0.2	<10	1270	0.19	0.12	0.10	0.57	3.87	3.6	13
K735505		5.92	0.0017	1.54	1.98	55.0	<0.2	<10	700	1.19	0.12	0.09	2.81	7.17	4.4	20
K735506		7.52	0.0011	1.69	0.27	28.7	<0.2	<10	210	0.22	0.08	0.07	1.03	3.85	0.8	17
K735507		7.14	0.0022	2.28	0.76	33.2	<0.2	<10	1370	0.54	0.13	0.19	2.69	8.83	2.6	23
K735508		6.32	0.0018	0.88	0.29	21.0	<0.2	<10	60	0.15	0.07	0.06	0.38	2.77	1.9	19
K735509		6.28	0.0023	0.76	0.77	22.2	<0.2	<10	1440	0.54	0.12	0.05	1.40	6.27	3.2	12
K735510		6.16	0.0044	1.51	3.66	67.5	<0.2	<10	430	0.97	0.15	0.06	0.48	8.17	7.7	29
K735511		6.68	0.0014	1.16	0.77	63.4	<0.2	<10	1530	1.14	0.10	0.27	6.54	8.57	27.7	16
K735512		6.36	0.0016	4.29	0.48	21.5	<0.2	<10	1180	0.54	0.11	0.21	1.69	9.23	1.0	35
K735513		5.84	0.0017	0.52	1.27	43.4	<0.2	<10	1080	0.77	0.24	0.51	5.93	16.70	18.3	14
K735514		9.30	0.0015	0.53	0.84	39.2	<0.2	<10	1350	0.52	0.11	0.55	10.40	16.50	16.6	13
K735515		<0.02	0.0016	0.57	0.81	44.2	<0.2	<10	1270	0.64	0.15	0.56	11.30	14.80	17.6	13
K735516		6.16	0.0013	0.59	1.94	26.5	<0.2	<10	820	1.04	0.22	0.40	1.92	25.9	13.4	20
K735517		5.80	0.0020	0.94	0.70	17.9	<0.2	<10	1260	0.64	0.16	0.47	9.19	11.20	9.3	14
K735518		6.78	0.0012	0.86	0.70	16.0	<0.2	<10	1090	0.51	0.16	0.46	4.44	12.65	7.9	15
K735519		7.22	0.0013	0.50	0.85	17.1	<0.2	<10	1340	0.73	0.16	0.47	4.16	13.95	15.4	14
K735520		6.88	0.0072	0.52	0.79	12.5	<0.2	<10	430	0.67	0.21	0.37	1.46	17.35	8.9	16
K735521		5.96	0.0041	1.61	0.78	16.5	<0.2	<10	440	0.70	0.17	0.51	18.40	15.00	7.6	20
K735522		7.00	0.0054	1.04	0.71	15.2	<0.2	<10	480	0.70	0.18	0.39	4.95	18.50	7.8	17
K735523		6.54	0.0032	0.51	1.18	18.8	<0.2	<10	490	0.78	0.22	0.60	2.36	29.1	11.6	19
K735524		5.92	0.0051	0.75	1.35	60.6	<0.2	<10	720	2.35	0.29	0.36	49.8	35.2	37.2	18
K735525		6.86	0.0063	0.80	0.70	30.3	<0.2	<10	670	0.91	0.25	<0.2	3.52	25.9	14.6	19
K735526		7.96	0.0598	0.64	1.30	195.5	<0.2	<10	590	1.03	2.43	0.39	4.11	28.6	10.8	20
K735527		6.24	0.0047	1.79	0.82	20.2	<0.2	<10	770	0.74	0.19	0.73	11.60	11.90	6.1	21
K735528		6.04	0.0034	1.19	0.73	17.1	<0.2	<10	990	0.60	0.17	0.51	5.24	11.45	6.6	19
K735529		6.26	0.0056	2.31	0.83	23.4	<0.2	<10	600	0.75	0.22	0.40	5.97	26.2	11.6	27
K735530		0.10	0.0016	0.25	1.02	3.9	<0.2	<10	80	0.21	0.06	0.64	0.18	10.80	7.2	32



ALS Canada Ltd.
 2103 Dollarton Hwy
 North Vancouver BC V7H 0A7
 Phone: 604 984 0221 Fax: 604 984 0218 www.alsglobal.com

To: GOLDEN PREDATOR CANADA CORP.
 888 DUNSMUIR STREET
 11TH FLOOR
 VANCOUVER BC V6C 3K4

Page: 2 - B
 Total # Pages: 4 (A - D)
 Plus Appendix Pages
 Finalized Date: 25-OCT-2011
 Account: GOPRED

Project: Selwyn

CERTIFICATE OF ANALYSIS WH11173045

Sample Description	Method	ME-MS41	ME-MS41	ME-MS41	ME-MS41	ME-MS41	ME-MS41	ME-MS41	ME-MS41	ME-MS41	ME-MS41	ME-MS41	ME-MS41	ME-MS41	ME-MS41	
	Analyte Units LOR	Cs ppm 0.05	Cu ppm 0.2	Fe % 0.01	Ga ppm 0.05	Ge ppm 0.05	Hf ppm 0.02	Hg ppm 0.01	In ppm 0.005	K % 0.01	La ppm 0.2	Li ppm 0.1	Mg % 0.01	Mn ppm 5	Mo ppm 0.05	Na % 0.01
K735450		0.87	52.6	2.53	2.70	0.07	0.03	0.32	0.027	0.07	6.8	8.3	0.14	328	10.10	0.02
K735460		0.85	75.1	2.32	2.62	0.08	0.04	0.24	0.026	0.10	9.2	8.0	0.22	762	16.45	0.02
K735461		1.33	127.0	2.98	3.02	0.11	0.04	0.57	0.037	0.14	14.3	7.5	0.16	448	53.0	0.02
K735462		1.07	41.0	1.94	2.84	0.06	0.03	0.16	0.020	0.09	13.3	12.4	0.19	617	10.50	0.02
K735463		0.90	103.0	2.69	2.46	0.10	0.03	0.55	0.033	0.09	12.0	5.0	0.16	432	14.40	0.01
K735464		0.71	97.2	2.42	2.78	0.11	0.04	0.23	0.024	0.10	14.8	4.8	0.14	759	26.1	0.02
K735465		0.72	97.5	2.41	2.90	0.11	0.04	0.24	0.025	0.10	15.1	5.0	0.14	762	25.8	0.02
K735466		1.15	69.0	2.46	3.48	0.08	0.03	0.22	0.027	0.10	13.8	11.4	0.32	663	9.03	0.02
K735467		0.95	70.4	2.73	2.88	0.09	0.04	0.40	0.031	0.07	13.6	7.0	0.21	686	6.11	0.02
K735468		0.93	362	2.98	3.01	0.12	0.10	0.61	0.030	0.08	12.9	7.9	0.16	18450	35.6	0.02
K735501		0.98	42.4	10.35	1.32	0.17	0.03	0.21	0.054	0.04	1.7	1.3	0.02	272	74.9	0.01
K735502		1.39	43.7	1.97	2.70	0.07	0.03	0.67	0.024	0.08	5.4	5.9	0.11	479	8.64	0.02
K735503		1.37	79.6	4.77	2.82	0.14	0.06	20.2	0.025	0.07	5.7	5.8	0.08	6190	118.0	0.02
K735504		2.10	61.4	3.97	1.24	0.07	0.03	0.66	0.032	0.06	1.6	0.7	0.03	153	7.43	0.01
K735505		1.14	135.0	2.83	2.36	0.11	0.07	0.41	0.035	0.16	3.8	3.2	0.05	186	21.7	0.01
K735506		1.21	42.3	13.70	1.90	0.23	0.02	0.20	0.030	0.08	2.1	0.5	0.01	23	31.6	0.01
K735507		1.10	92.3	2.41	2.62	0.12	0.03	0.40	0.034	0.10	4.9	2.6	0.06	78	24.8	0.01
K735508		1.38	34.8	15.55	1.13	0.20	0.02	0.38	0.034	0.05	1.3	0.8	0.01	61	23.3	0.01
K735509		1.96	55.4	2.88	1.42	0.07	0.03	0.35	0.031	0.05	2.9	3.5	0.05	108	12.10	0.01
K735510		2.61	91.7	3.71	2.66	0.10	0.08	0.32	0.094	0.05	3.5	12.9	0.12	271	16.55	0.01
K735511		1.87	88.2	3.67	1.98	0.10	0.04	0.59	0.023	0.07	4.8	3.5	0.04	1490	32.7	0.02
K735512		1.05	93.7	1.43	2.64	0.14	0.03	1.01	0.024	0.09	6.5	1.7	0.03	34	27.5	0.01
K735513		1.45	30.0	4.98	3.16	0.10	0.03	0.14	0.022	0.07	7.5	17.7	0.23	1840	30.7	0.03
K735514		0.86	32.8	3.95	2.28	0.08	0.04	0.28	0.023	0.06	7.5	9.7	0.15	2180	12.65	0.02
K735515		0.91	33.5	4.09	2.33	0.06	0.04	0.33	0.029	0.05	7.2	11.2	0.15	2270	12.80	0.01
K735516		2.46	17.8	3.28	5.15	0.08	0.02	0.14	0.036	0.11	12.1	33.8	0.29	1200	6.93	0.02
K735517		1.28	63.8	2.28	1.98	0.07	0.03	0.28	0.033	0.08	6.0	7.7	0.12	619	10.10	0.01
K735518		1.20	41.8	2.43	2.26	0.05	0.02	0.26	0.031	0.06	5.9	9.9	0.14	420	7.21	0.01
K735519		1.13	40.8	3.29	2.19	0.06	0.04	0.23	0.030	0.06	7.0	13.7	0.15	750	7.50	0.01
K735520		1.23	60.4	2.53	2.89	0.06	0.04	0.20	0.030	0.10	9.4	12.4	0.21	581	4.09	0.01
K735521		0.86	74.1	1.96	2.51	0.07	0.02	0.35	0.026	0.08	8.7	5.9	0.12	591	9.85	0.01
K735522		0.94	61.9	2.33	2.41	0.07	0.03	0.21	0.028	0.10	9.5	7.4	0.14	473	7.88	0.01
K735523		1.54	44.1	2.58	4.14	0.08	0.05	0.23	0.030	0.15	14.7	23.1	0.57	723	4.06	0.01
K735524		1.94	157.5	2.77	3.54	0.12	0.04	0.29	0.035	0.12	20.0	17.9	0.23	14900	15.70	0.01
K735525		1.78	101.5	3.02	3.01	0.08	0.02	0.38	0.040	0.14	15.5	7.1	0.18	2130	8.33	0.01
K735526		2.87	77.7	2.57	4.80	0.08	0.02	0.12	0.040	0.13	15.4	18.2	0.37	665	7.42	0.01
K735527		0.82	63.9	1.85	2.36	0.06	0.05	0.47	0.026	0.08	6.4	6.6	0.16	678	9.56	0.01
K735528		0.84	61.1	2.10	2.44	0.06	0.02	0.33	0.024	0.08	6.2	7.3	0.19	324	9.19	0.01
K735529		1.17	86.8	2.68	3.27	0.08	0.02	0.35	0.036	0.09	15.6	9.9	0.17	805	11.75	0.01
K735530		0.32	21.7	2.01	3.94	0.09	0.27	0.03	0.016	0.06	4.8	7.5	0.46	313	4.06	0.05



ALS Canada Ltd.
 2103 Dollarton Hwy
 North Vancouver BC V7H 0A7
 Phone: 604 984 0221 Fax: 604 984 0218 www.alsglobal.com

To: GOLDEN PREDATOR CANADA CORP.
 888 DUNSMUIR STREET
 11TH FLOOR
 VANCOUVER BC V6C 3K4

Page: 2 - C
 Total # Pages: 4 (A - D)
 Plus Appendix Pages
 Finalized Date: 25-OCT-2011
 Account: GOPRED

Project: Selwyn

CERTIFICATE OF ANALYSIS WH11173045

Sample Description	Method Analyte Units LOR	ME-MS41	ME-MS41	ME-MS41	ME-MS41	ME-MS41	ME-MS41	ME-MS41	ME-MS41	ME-MS41	ME-MS41	ME-MS41	ME-MS41	ME-MS41	ME-MS41	
		Nb ppm	Ni ppm	P ppm	Pb ppm	Rb ppm	Re ppm	S %	Sb ppm	Sc ppm	Se ppm	Sn ppm	Sr ppm	Ta ppm	Te ppm	Th ppm
		0.05	0.2	10	0.2	0.1	0.001	0.01	0.05	0.1	0.2	0.2	0.2	0.01	0.01	0.2
K735450		0.29	38.7	2520	11.1	9.3	0.004	0.06	4.06	3.0	4.8	0.4	150.5	<0.01	0.12	1.0
K735460		0.52	111.5	1100	12.5	14.0	0.006	0.07	6.94	2.7	4.8	0.4	80.2	<0.01	0.10	1.4
K735461		0.32	145.5	1320	19.4	15.7	0.002	0.08	15.45	4.0	7.1	0.7	88.8	0.01	0.15	1.1
K735462		0.57	71.0	1240	10.8	13.2	0.005	0.02	3.20	2.4	2.4	0.5	48.6	<0.01	0.06	1.7
K735463		0.22	108.5	2110	13.4	11.9	0.009	0.09	7.82	2.7	7.2	0.4	102.5	<0.01	0.14	0.8
K735464		0.33	289	2480	10.3	13.9	0.008	0.12	9.40	2.4	8.4	0.5	118.5	0.01	0.14	1.3
K735465		0.33	295	2460	10.6	14.0	0.008	0.12	9.32	2.4	8.3	0.5	116.5	<0.01	0.13	1.2
K735466		0.60	105.0	1580	13.6	16.4	0.006	0.05	4.58	2.9	3.4	0.4	82.1	<0.01	0.11	1.7
K735467		0.24	100.5	2740	14.0	11.1	0.007	0.16	2.89	2.7	4.3	0.3	105.5	<0.01	0.12	1.4
K735468		0.18	946	2710	12.7	10.1	0.007	0.21	5.68	3.5	7.8	0.3	131.5	0.01	0.14	2.0
K735501		0.14	17.3	5650	5.2	4.9	0.007	0.66	24.6	5.5	12.1	0.2	67.6	<0.01	0.14	1.1
K735502		0.24	101.0	2720	12.4	14.5	0.013	0.07	2.77	1.8	4.6	0.4	147.0	<0.01	0.11	0.4
K735503		0.34	108.0	8770	9.7	11.6	0.006	0.14	13.40	2.8	15.7	0.3	112.5	0.01	0.21	1.2
K735504		0.05	16.4	1310	9.1	7.3	0.006	0.27	3.05	4.6	3.4	0.2	81.7	<0.01	0.07	2.0
K735505		0.23	29.7	6600	13.8	13.6	0.010	0.43	8.14	3.4	13.3	0.4	101.0	0.01	0.20	1.0
K735506		0.13	10.2	3250	8.2	7.4	0.017	1.46	14.95	3.1	20.9	0.3	67.9	<0.01	0.22	1.0
K735507		0.17	27.5	4160	12.7	10.5	0.008	0.22	12.10	3.0	18.7	0.5	217	<0.01	0.24	0.7
K735508		0.14	9.7	2480	5.7	5.6	0.008	1.63	8.33	3.6	6.7	0.2	88.3	<0.01	0.08	1.1
K735509		0.13	18.7	1400	10.2	8.1	0.006	0.17	3.17	3.2	5.2	0.3	58.2	<0.01	0.10	1.1
K735510		0.30	29.0	5740	13.1	10.3	0.004	0.61	2.69	15.2	9.0	0.3	66.8	0.01	0.10	1.7
K735511		0.11	102.0	5790	8.0	9.7	0.013	0.12	8.34	2.8	9.0	0.3	115.5	<0.01	0.13	1.0
K735512		0.12	18.2	3610	10.2	10.2	0.015	0.18	12.80	2.5	16.7	0.5	170.0	<0.01	0.27	0.6
K735513		0.60	168.0	1930	9.4	14.8	0.008	0.04	2.03	2.2	3.0	0.4	47.7	<0.01	0.05	1.3
K735514		0.41	140.0	1720	9.5	10.7	0.008	0.05	2.37	2.7	2.9	0.3	65.6	<0.01	0.07	2.0
K735515		0.36	146.0	1800	10.6	9.2	0.011	0.05	2.78	2.5	3.1	0.3	66.4	<0.01	0.06	2.0
K735516		0.85	53.1	1010	14.2	23.8	0.011	0.04	1.45	2.5	3.4	0.6	37.3	<0.01	0.03	1.1
K735517		0.19	157.0	1850	13.3	9.9	0.006	0.11	4.49	2.4	5.8	0.3	103.5	<0.01	0.11	1.1
K735518		0.24	75.5	1680	10.8	10.0	0.008	0.06	3.21	2.4	3.7	0.3	96.8	<0.01	0.09	1.2
K735519		0.29	154.0	1190	11.2	9.5	0.008	0.06	2.38	2.6	2.6	0.3	68.0	<0.01	0.06	1.9
K735520		0.26	57.3	1070	15.0	13.3	0.003	0.05	1.94	2.5	1.7	0.3	50.3	<0.01	0.09	1.5
K735521		0.24	256	1880	11.6	10.6	0.006	0.05	4.06	1.9	4.9	0.4	85.1	<0.01	0.08	0.9
K735522		0.21	70.1	1510	12.0	9.6	0.003	0.05	3.62	2.5	3.9	0.3	58.6	<0.01	0.07	1.3
K735523		0.34	58.7	1900	14.7	17.0	0.005	0.05	1.61	2.6	2.7	0.4	64.2	<0.01	0.06	2.6
K735524		0.22	1175	1930	22.1	15.9	0.007	0.11	5.54	2.3	4.0	0.5	55.8	<0.01	0.12	1.5
K735525		0.14	83.1	1590	27.6	10.9	0.003	0.17	8.19	2.0	3.9	0.6	61.2	<0.01	0.11	0.8
K735526		0.78	95.3	1450	45.3	17.3	0.003	0.06	5.96	3.2	3.0	0.9	62.1	<0.01	0.13	2.6
K735527		0.22	150.0	1270	12.8	10.9	0.005	0.06	4.97	2.3	4.6	0.4	95.3	<0.01	0.10	0.9
K735528		0.32	77.7	1260	11.2	8.1	0.008	0.06	4.68	2.7	4.5	0.4	78.8	<0.01	0.11	1.3
K735529		0.23	130.5	1870	14.9	9.8	0.007	0.08	5.30	1.8	6.1	0.5	81.1	<0.01	0.14	0.6
K735530		0.22	23.7	500	2.5	3.1	0.002	0.04	0.36	4.2	0.6	0.4	29.1	<0.01	0.03	1.1



ALS Canada Ltd.
 2103 Dollarton Hwy
 North Vancouver BC V7H 0A7
 Phone: 604 984 0221 Fax: 604 984 0218 www.alsglobal.com

To: GOLDEN PREDATOR CANADA CORP.
 888 DUNSMUIR STREET
 11TH FLOOR
 VANCOUVER BC V6C 3K4

Page: 2 - D
 Total # Pages: 4 (A - D)
 Plus Appendix Pages
 Finalized Date: 25-OCT-2011
 Account: GOPRED

Project: Selwyn

CERTIFICATE OF ANALYSIS WH11173045

Sample Description	Method Analyte Units LOR	ME-MS41	ME-MS41	ME-MS41	ME-MS41	ME-MS41	ME-MS41	ME-MS41	
		Ti	Ti	U	V	W	Y	Zn	Zr
		%	ppm	ppm	ppm	ppm	ppm	ppm	ppm
		0.005	0.02	0.05	1	0.05	0.05	2	0.5
K735450		0.007	0.29	3.14	137	0.17	14.50	203	0.5
K735460		0.018	0.34	5.63	179	0.11	16.35	1220	1.1
K735461		0.010	0.94	13.30	307	0.29	33.2	886	0.8
K735462		0.019	0.26	5.00	105	0.48	10.75	767	0.5
K735463		0.008	0.43	8.97	203	0.18	17.05	949	0.6
K735464		0.013	0.64	8.36	311	0.18	19.45	2790	0.9
K735465		0.013	0.66	8.77	322	0.79	19.10	2930	0.8
K735466		0.021	0.27	6.83	125	1.17	12.45	883	0.8
K735467		0.011	0.26	5.48	141	0.10	11.75	712	1.0
K735468		<0.005	0.38	17.65	179	0.13	50.0	4920	2.7
K735501		<0.005	0.34	2.86	275	0.08	7.38	134	0.8
K735502		0.008	0.35	3.56	115	0.10	11.20	515	0.5
K735503		0.009	1.93	4.08	437	0.24	18.80	499	1.5
K735504		<0.005	0.50	1.86	33	<0.05	6.45	81	2.0
K735505		0.007	0.64	4.32	185	0.20	16.80	199	2.2
K735506		<0.005	0.50	3.73	280	0.10	7.33	88	1.0
K735507		0.005	0.74	5.95	208	0.25	14.05	115	0.6
K735508		<0.005	0.45	1.54	338	<0.05	4.11	62	0.7
K735509		<0.005	0.24	2.46	69	0.10	8.47	164	0.7
K735510		0.005	0.41	7.50	198	0.14	11.30	133	1.7
K735511		<0.005	1.10	6.01	219	0.12	16.40	456	0.8
K735512		0.005	0.66	8.22	315	0.26	17.40	79	0.5
K735513		0.015	0.25	8.75	98	2.21	10.40	925	0.6
K735514		0.008	0.20	2.38	87	1.38	9.74	779	1.1
K735515		0.009	0.21	2.33	87	0.12	10.60	807	1.2
K735516		0.015	0.29	3.11	57	0.43	10.95	331	0.6
K735517		0.006	0.32	3.74	97	0.27	15.20	974	0.8
K735518		0.007	0.25	3.40	73	0.13	11.20	553	0.7
K735519		0.006	0.21	1.96	57	1.25	11.50	845	1.1
K735520		0.012	0.14	1.70	56	0.09	10.25	259	1.1
K735521		0.010	0.41	5.88	131	0.11	14.35	2590	0.8
K735522		0.009	0.26	3.45	93	0.09	14.60	527	0.9
K735523		0.015	0.20	2.35	70	0.07	12.00	301	1.5
K735524		0.010	0.32	3.22	92	0.07	32.2	2770	1.2
K735525		0.006	0.27	2.75	71	0.05	11.90	313	0.6
K735526		0.034	0.32	6.44	125	0.22	12.15	555	0.5
K735527		0.008	0.47	4.10	179	0.08	17.85	1820	1.3
K735528		0.010	0.28	3.22	129	0.13	14.95	760	0.7
K735529		0.011	0.52	5.64	149	0.14	18.30	830	0.5
K735530		0.105	0.06	0.29	48	11.80	7.60	48	7.2



ALS Canada Ltd.
 2103 Dollarton Hwy
 North Vancouver BC V7H 0A7
 Phone: 604 984 0221 Fax: 604 984 0218 www.alsglobal.com

To: GOLDEN PREDATOR CANADA CORP.
 888 DUNSMUIR STREET
 11TH FLOOR
 VANCOUVER BC V6C 3K4

Page: 3 - A
 Total # Pages: 4 (A - D)
 Plus Appendix Pages
 Finalized Date: 25-OCT-2011
 Account: GOPRED

Project: Selwyn

CERTIFICATE OF ANALYSIS WH11173045

Sample Description	Method	WEI-21	Au-ST44	ME-MS41	ME-MS41	ME-MS41	ME-MS41	ME-MS41	ME-MS41	ME-MS41	ME-MS41	ME-MS41	ME-MS41	ME-MS41	ME-MS41	
	Analyte	Recvd Wt.	Au	Ag	Al	As	Au	B	Ba	Be	Bi	Ca	Cd	Ce	Co	Cr
Units		kg	ppm	ppm	%	ppm	ppm	ppm	ppm	ppm	ppm	%	ppm	ppm	ppm	ppm
LOR		0.02	0.0001	0.01	0.01	0.1	0.2	10	10	0.05	0.01	0.01	0.01	0.02	0.1	1
K735531		6.54	0.0068	0.75	0.62	19.7	<0.2	<10	430	0.69	0.22	0.46	3.46	24.0	12.3	17
K735532		7.12	0.0061	1.82	0.85	29.4	<0.2	<10	840	0.58	0.17	0.56	18.85	17.95	10.8	23
K735533		8.92	0.0044	1.15	0.81	28.1	<0.2	<10	680	0.85	0.19	0.42	9.14	25.0	12.4	25
K735534		5.58	0.0056	1.10	1.03	24.6	<0.2	<10	710	0.93	0.22	0.44	8.95	30.0	13.4	27
K735535		6.64	0.0019	0.23	1.18	26.3	<0.2	<10	370	0.84	0.26	0.36	1.75	50.4	14.7	19
K735536		6.18	0.0012	0.22	1.09	43.7	<0.2	<10	190	0.58	0.23	0.33	2.35	40.9	12.5	16
K735537		6.76	0.0026	0.39	0.64	14.5	<0.2	<10	550	0.45	0.17	0.38	3.13	28.0	12.0	8
K735538		5.94	0.0034	0.56	0.66	19.0	<0.2	<10	640	0.77	0.24	0.65	7.07	34.6	12.8	10
K735539		6.34	0.0042	0.76	0.64	19.1	<0.2	<10	510	0.77	0.24	0.75	5.38	39.4	11.7	10
K735540		6.86	0.0017	0.73	1.08	26.9	<0.2	<10	690	0.77	0.27	0.36	2.89	23.9	13.0	24
K735541		5.92	0.0027	0.84	0.86	11.7	<0.2	<10	390	0.39	0.18	0.13	0.46	17.75	2.2	18
K735542		6.96	0.0036	1.09	1.08	19.6	<0.2	<10	760	0.77	0.26	0.38	3.39	26.2	7.7	23
K735543		7.54	0.0013	0.26	0.97	12.1	<0.2	<10	700	0.81	0.11	0.48	0.95	17.85	15.7	10
K735544		7.46	0.0015	0.34	0.83	9.0	<0.2	<10	590	0.56	0.09	0.35	0.72	13.55	13.0	10
K735545		0.12	0.0785	0.15	1.23	52.8	0.2	<10	120	0.27	0.11	1.38	0.38	12.90	7.3	28
K735546		5.68	0.0041	1.46	0.73	49.3	<0.2	<10	990	0.58	0.14	0.72	7.10	13.80	6.0	22
K735547		5.62	0.0087	1.37	1.20	24.0	<0.2	<10	880	0.77	0.30	0.28	7.61	24.6	15.3	22
K735548		6.70	0.0054	0.89	1.74	64.3	<0.2	<10	1040	1.06	0.32	0.49	2.96	32.8	22.6	27
K735549		6.94	0.0091	1.62	0.62	28.9	<0.2	<10	1090	0.91	0.22	0.52	35.4	21.1	43.1	23
K735550		6.76	0.0055	0.71	0.81	19.9	<0.2	<10	830	0.69	0.23	0.33	10.10	20.9	10.6	20
K735551		7.92	0.0042	0.43	1.41	47.2	<0.2	<10	1200	0.81	0.15	0.09	0.76	12.55	21.3	13
K735552		8.62	0.0027	0.69	0.49	34.3	<0.2	<10	800	0.31	0.16	0.03	0.46	7.64	2.1	12
K735553		7.62	0.0018	0.41	0.71	13.9	<0.2	<10	850	0.48	0.14	0.74	1.30	13.55	7.0	11
K735554		8.76	0.0025	1.35	0.69	18.9	<0.2	<10	1160	0.83	0.16	0.53	13.45	11.00	15.8	16
K735555		8.04	0.0018	1.42	0.85	28.8	<0.2	<10	850	0.72	0.18	0.51	4.43	18.20	15.9	17
K735556		8.12	0.0017	0.47	0.64	22.8	<0.2	<10	890	0.29	0.15	0.55	3.46	11.00	6.0	12
K735557		6.74	0.0041	0.86	0.65	66.4	<0.2	<10	1260	0.50	0.10	0.55	6.05	10.50	5.2	16
K735558		7.18	0.0028	0.72	0.64	23.3	<0.2	<10	800	0.56	0.10	0.58	13.15	22.9	10.4	22
K735559		8.26	0.0039	1.46	0.63	26.4	<0.2	<10	710	0.63	0.08	0.73	16.75	13.65	10.8	30
K735560		7.44	0.0049	0.99	0.71	23.9	<0.2	<10	860	0.84	0.17	0.47	11.00	18.75	11.3	23
K735561		8.22	0.0057	1.06	0.61	31.1	<0.2	<10	770	0.72	0.13	0.46	10.00	16.30	17.4	22
K735562		7.08	0.0067	1.08	0.78	23.1	<0.2	<10	600	0.71	0.11	0.50	15.75	18.30	10.4	21
K735563		8.64	0.0059	1.13	0.90	23.1	<0.2	<10	500	0.64	0.14	0.45	6.59	14.65	9.4	27
K735564		7.80	0.0057	0.45	0.81	14.3	<0.2	<10	740	0.48	0.19	0.42	1.55	23.8	10.0	16
K735565		0.14	0.0026	0.17	0.97	3.5	<0.2	<10	80	0.14	<0.01	0.60	0.18	9.74	7.6	29
K735566		8.48	0.0049	0.45	0.87	30.4	<0.2	<10	690	0.66	0.14	0.33	4.12	21.4	12.4	24
K735567		7.64	0.0027	0.32	1.71	159.0	<0.2	<10	180	1.24	0.28	0.48	2.10	42.2	21.7	19
K735568		7.64	0.0022	0.13	1.42	95.0	<0.2	<10	200	1.06	0.39	0.35	1.71	53.7	16.3	19
K735569		8.56	0.0006	0.13	0.75	14.4	<0.2	<10	950	0.49	0.25	0.74	1.24	21.8	13.9	13
K735570		7.20	0.0031	0.43	0.83	18.3	<0.2	<10	1020	0.44	0.18	0.40	3.31	34.2	14.2	12



ALS Canada Ltd.
 2103 Dollarton Hwy
 North Vancouver BC V7H 0A7
 Phone: 604 984 0221 Fax: 604 984 0218 www.alsglobal.com

To: GOLDEN PREDATOR CANADA CORP.
 888 DUNSMUIR STREET
 11TH FLOOR
 VANCOUVER BC V6C 3K4

Page: 3 - B
 Total # Pages: 4 (A - D)
 Plus Appendix Pages
 Finalized Date: 25-OCT-2011
 Account: GOPRED

Project: Selwyn

CERTIFICATE OF ANALYSIS WH11173045

Sample Description	Method Analyte Units LOR	ME-MS41	ME-MS41	ME-MS41	ME-MS41	ME-MS41	ME-MS41	ME-MS41	ME-MS41	ME-MS41	ME-MS41	ME-MS41	ME-MS41	ME-MS41	ME-MS41	
		Cs	Cu	Fe	Ga	Ge	Hf	Hg	In	K	La	Li	Mg	Mn	Mo	Na
		ppm	ppm	%	ppm	ppm	ppm	ppm	ppm	%	ppm	ppm	%	ppm	ppm	%
		0.05	0.2	0.01	0.05	0.05	0.02	0.01	0.005	0.01	0.2	0.1	0.01	5	0.05	0.01
K735531		2.26	78.3	2.76	2.79	0.07	0.02	0.14	0.032	0.10	13.2	8.7	0.17	1660	6.70	0.01
K735532		0.82	43.3	2.21	3.13	0.09	0.03	0.64	0.024	0.08	10.1	8.3	0.18	700	19.85	0.01
K735533		1.13	94.9	2.85	2.92	0.10	0.02	0.57	0.031	0.12	14.7	9.6	0.22	1780	19.40	0.01
K735534		1.08	83.5	2.79	3.30	0.09	0.03	0.42	0.035	0.11	17.0	12.0	0.31	914	11.25	0.01
K735535		2.35	32.0	3.11	3.93	0.09	0.03	0.03	0.028	0.08	24.5	26.8	0.39	793	2.52	0.01
K735536		3.38	25.5	3.06	4.47	0.08	0.02	0.02	0.026	0.06	21.3	23.4	0.52	593	2.06	0.01
K735537		2.13	29.2	2.51	2.08	0.06	0.02	0.13	0.027	0.05	14.1	9.8	0.14	1700	4.70	0.01
K735538		2.52	47.7	2.78	1.89	0.09	0.03	0.16	0.038	0.07	17.4	7.7	0.12	1200	9.04	0.01
K735539		2.49	51.0	2.72	1.90	0.09	0.03	0.18	0.039	0.08	19.9	6.6	0.10	838	10.90	0.01
K735540		1.21	42.6	3.01	4.36	0.06	<0.02	0.15	0.027	0.10	12.2	14.8	0.22	2830	15.10	0.01
K735541		1.19	21.0	1.14	3.63	<0.05	<0.02	0.23	0.014	0.09	9.6	9.3	0.16	53	3.31	0.01
K735542		1.24	58.1	2.05	3.87	0.06	0.02	0.31	0.027	0.12	14.3	12.4	0.23	694	7.29	0.01
K735543		1.27	27.4	3.79	1.96	0.06	0.03	0.24	0.021	0.08	7.2	13.7	0.14	557	4.45	0.01
K735544		1.30	21.6	2.06	1.90	0.05	0.02	0.28	0.017	0.06	6.4	12.8	0.11	290	2.87	0.01
K735545		0.49	50.5	2.99	4.67	0.09	0.32	0.37	0.024	0.10	6.2	8.9	0.57	410	10.10	0.08
K735546		0.88	42.3	2.23	2.77	0.06	<0.02	0.47	0.017	0.09	7.8	7.7	0.13	1530	21.5	0.01
K735547		2.30	34.4	2.19	4.27	0.06	<0.02	0.46	0.026	0.12	10.7	15.7	0.20	2700	10.95	0.01
K735548		2.28	27.4	4.43	5.07	0.07	0.02	0.26	0.031	0.14	16.2	24.8	0.29	1110	13.80	0.02
K735549		1.12	135.0	3.62	2.39	0.09	0.02	0.40	0.044	0.12	11.3	5.2	0.26	5300	20.7	0.01
K735550		1.00	57.0	2.98	2.93	0.07	0.02	0.16	0.031	0.09	10.7	8.0	0.18	792	9.79	0.01
K735551		2.78	35.4	4.41	2.32	0.10	0.05	0.19	0.027	0.05	5.8	12.6	0.13	811	14.60	0.01
K735552		2.34	28.2	3.82	1.98	0.09	0.02	0.20	0.026	0.07	4.0	5.3	0.06	55	11.90	0.01
K735553		0.57	21.4	2.86	2.04	0.10	0.07	0.16	0.024	0.05	6.1	9.9	0.17	459	3.50	0.02
K735554		1.24	82.4	2.37	2.00	0.12	0.04	0.28	0.028	0.11	6.1	6.5	0.10	1310	13.90	0.02
K735555		1.44	56.3	4.15	2.67	0.14	0.04	0.34	0.028	0.09	9.9	12.6	0.15	936	15.60	0.02
K735556		0.95	37.1	3.71	1.89	0.09	0.06	0.39	0.024	0.05	5.1	7.8	0.12	522	10.95	0.01
K735557		0.68	62.0	3.85	2.55	0.10	0.07	0.44	0.017	0.06	5.8	4.9	0.13	6310	39.5	0.01
K735558		0.89	63.8	2.44	2.32	0.07	0.04	0.36	0.024	0.09	13.1	6.1	0.16	1450	14.95	0.01
K735559		0.57	80.8	1.94	2.30	0.09	0.04	0.47	0.021	0.09	8.3	4.2	0.11	1050	21.6	0.01
K735560		0.72	94.3	2.39	2.60	0.06	0.03	0.44	0.034	0.11	9.9	7.3	0.12	1000	13.10	0.01
K735561		0.73	110.5	3.89	2.25	0.10	0.04	0.32	0.027	0.11	8.8	5.0	0.11	4830	18.50	0.01
K735562		0.72	83.8	2.52	2.46	0.08	0.04	0.44	0.025	0.10	10.1	5.9	0.12	1200	16.45	0.01
K735563		1.21	73.3	2.47	3.51	0.06	0.04	0.34	0.027	0.10	8.1	8.9	0.16	723	13.35	0.01
K735564		1.12	51.9	2.55	2.84	0.06	0.04	0.27	0.029	0.09	12.6	11.8	0.23	650	5.12	0.01
K735565		0.30	22.2	1.96	3.83	0.08	0.24	0.07	0.015	0.06	4.4	7.1	0.45	300	4.24	0.05
K735566		1.07	112.0	4.44	2.82	0.09	0.04	0.31	0.032	0.13	11.5	9.1	0.26	1520	8.59	0.01
K735567		10.30	49.5	4.04	5.45	0.10	0.04	0.04	0.029	0.10	23.5	40.7	0.49	884	2.12	0.02
K735568		16.20	39.4	4.01	4.76	0.10	0.04	0.04	0.026	0.07	29.6	35.0	0.41	811	1.17	0.01
K735569		2.91	57.2	3.67	1.81	0.10	0.09	0.12	0.060	0.07	9.4	20.9	0.28	491	11.95	0.01
K735570		2.91	54.9	3.04	2.28	0.07	0.05	0.16	0.037	0.06	17.2	15.2	0.25	2160	7.93	0.01



ALS Canada Ltd.
 2103 Dollarton Hwy
 North Vancouver BC V7H 0A7
 Phone: 604 984 0221 Fax: 604 984 0218 www.alsglobal.com

To: GOLDEN PREDATOR CANADA CORP.
 888 DUNSMUIR STREET
 11TH FLOOR
 VANCOUVER BC V6C 3K4

Page: 3 - C
 Total # Pages: 4 (A - D)
 Plus Appendix Pages
 Finalized Date: 25-OCT-2011
 Account: GOPRED

Project: Selwyn

CERTIFICATE OF ANALYSIS WH11173045

Sample Description	Method Analyte Units LOR	ME-MS41	ME-MS41	ME-MS41	ME-MS41	ME-MS41	ME-MS41	ME-MS41	ME-MS41	ME-MS41	ME-MS41	ME-MS41	ME-MS41	ME-MS41	ME-MS41	
		Nb ppm	Ni ppm	P ppm	Pb ppm	Rb ppm	Re ppm	S %	Sb ppm	Sc ppm	Se ppm	Sn ppm	Sr ppm	Ta ppm	Te ppm	Th ppm
		0.05	0.2	10	0.2	0.1	0.001	0.01	0.05	0.1	0.2	0.2	0.2	0.01	0.01	0.2
K735531		0.24	71.3	1620	14.6	10.1	0.008	0.08	2.66	1.9	4.2	0.4	59.4	<0.01	0.09	0.7
K735532		0.27	171.5	2730	11.7	9.4	0.016	0.05	4.82	2.1	9.1	0.5	61.9	<0.01	0.10	1.0
K735533		0.16	125.5	1790	13.1	10.8	0.009	0.12	7.28	2.6	6.2	0.3	110.0	<0.01	0.13	1.5
K735534		0.23	155.5	1820	14.8	11.3	0.007	0.06	4.96	3.3	4.1	0.4	100.0	<0.01	0.14	2.4
K735535		0.28	39.4	740	37.3	10.1	0.001	0.02	2.23	3.0	1.4	0.4	38.2	<0.01	0.05	4.1
K735536		0.27	33.5	690	60.2	10.3	0.001	0.03	3.03	1.8	1.1	0.3	25.3	<0.01	0.04	2.3
K735537		0.15	71.6	1070	23.6	7.7	0.005	0.04	2.34	2.2	2.1	0.3	48.4	<0.01	0.05	2.7
K735538		0.15	86.3	2130	28.2	9.9	0.007	0.05	3.62	3.2	3.1	0.3	69.6	<0.01	0.08	3.3
K735539		0.14	74.1	2880	24.6	10.7	0.007	0.02	3.61	3.7	3.5	0.3	80.2	<0.01	0.08	3.6
K735540		0.49	38.4	1350	11.5	16.3	0.007	0.04	3.48	1.8	4.1	0.6	47.2	<0.01	0.11	0.8
K735541		0.50	14.9	970	8.4	14.4	0.005	0.02	1.22	1.4	1.6	0.5	29.0	<0.01	0.03	0.9
K735542		0.51	44.2	1450	10.9	15.3	0.004	0.02	3.05	2.7	2.7	0.5	59.9	<0.01	0.08	1.7
K735543		0.19	83.4	1830	7.0	9.3	0.006	0.04	0.94	3.0	2.9	0.3	36.5	<0.01	0.02	3.0
K735544		0.27	65.1	1190	6.2	9.5	0.006	0.05	0.85	2.2	2.8	0.3	30.9	<0.01	0.02	1.9
K735545		0.23	35.3	760	3.3	4.8	0.004	0.12	1.01	5.1	1.0	1.8	40.0	<0.01	0.04	1.4
K735546		0.33	98.4	4910	8.3	12.0	0.006	0.07	3.77	1.9	7.9	0.4	83.7	<0.01	0.09	0.9
K735547		0.41	58.8	1450	11.4	23.0	0.006	0.07	3.41	1.6	4.7	0.6	56.5	<0.01	0.22	0.5
K735548		1.00	65.1	1980	12.6	23.7	0.009	0.05	2.76	3.6	4.3	0.8	52.6	<0.01	0.08	2.9
K735549		0.11	446	1370	14.5	9.6	0.011	0.14	8.14	4.5	7.0	0.3	110.0	<0.01	0.12	2.7
K735550		0.30	125.5	1550	14.1	12.6	0.009	0.05	3.30	1.9	3.2	0.4	58.1	<0.01	0.09	0.7
K735551		0.38	31.9	2270	10.9	10.2	0.004	0.14	4.16	3.8	4.1	0.3	30.5	0.01	0.05	1.9
K735552		0.26	12.6	830	10.8	9.2	0.020	0.16	5.06	3.1	5.8	0.3	24.7	<0.01	0.07	1.2
K735553		0.27	28.4	1510	9.2	7.8	0.009	0.06	0.87	3.1	2.5	0.2	56.5	<0.01	0.05	2.4
K735554		0.17	210	2440	13.9	10.5	0.007	0.19	6.14	2.9	8.4	0.3	139.0	0.01	0.21	1.2
K735555		0.44	118.0	1940	11.6	12.4	0.011	0.08	4.37	3.2	6.1	0.4	91.9	0.01	0.11	2.7
K735556		0.43	53.7	2190	9.9	8.2	0.011	0.08	5.25	2.5	10.8	0.3	61.9	0.01	0.05	1.7
K735557		0.45	91.3	2500	9.6	8.1	0.014	0.14	4.19	1.9	12.8	0.3	69.9	<0.01	0.06	0.7
K735558		0.38	154.0	2570	11.5	9.9	0.008	0.10	4.88	2.5	5.4	0.3	96.0	<0.01	0.09	1.9
K735559		0.34	228	3110	11.2	9.3	0.008	0.08	5.69	2.6	7.9	0.4	106.0	<0.01	0.11	1.0
K735560		0.26	122.0	2310	19.4	10.2	0.005	0.19	4.75	2.0	4.7	0.4	138.5	<0.01	0.17	0.7
K735561		0.29	218	2370	13.0	9.8	0.005	0.18	5.70	3.0	7.0	0.3	133.0	0.01	0.12	1.2
K735562		0.32	188.0	2390	13.2	10.5	0.006	0.10	4.71	2.8	5.9	0.3	99.9	<0.01	0.11	1.2
K735563		0.40	95.4	1920	16.3	11.9	0.004	0.07	3.59	2.2	3.6	0.5	80.6	<0.01	0.09	0.6
K735564		0.40	58.6	1490	11.8	9.8	0.005	0.07	2.00	2.6	2.5	0.4	48.4	<0.01	0.06	1.5
K735565		0.33	21.5	480	2.5	3.0	0.001	0.05	0.29	4.2	0.5	0.3	27.0	<0.01	0.01	1.1
K735566		0.36	88.6	1850	13.9	9.7	0.005	0.19	3.70	2.9	4.8	0.2	125.0	<0.01	0.12	2.0
K735567		1.67	56.5	1100	34.6	13.3	0.003	0.06	7.47	3.3	1.7	0.5	75.1	0.01	0.02	5.0
K735568		0.94	37.4	780	30.8	9.3	0.001	0.05	24.9	2.0	1.0	0.4	51.8	<0.01	0.02	4.7
K735569		0.33	94.6	2280	14.4	7.9	0.013	0.11	1.17	6.4	3.6	0.3	101.5	0.01	0.05	6.5
K735570		0.30	86.9	1050	21.3	6.9	0.006	0.08	2.69	3.5	2.8	0.2	56.4	<0.01	0.06	2.8



ALS Canada Ltd.
 2103 Dollarton Hwy
 North Vancouver BC V7H 0A7
 Phone: 604 984 0221 Fax: 604 984 0218 www.alsglobal.com

To: GOLDEN PREDATOR CANADA CORP.
 888 DUNSMUIR STREET
 11TH FLOOR
 VANCOUVER BC V6C 3K4

Page: 3 - D
 Total # Pages: 4 (A - D)
 Plus Appendix Pages
 Finalized Date: 25-OCT-2011
 Account: GOPRED

Project: Selwyn

CERTIFICATE OF ANALYSIS WH11173045

Sample Description	Method Analyte Units LOR	ME-MS41	ME-MS41	ME-MS41	ME-MS41	ME-MS41	ME-MS41	ME-MS41	ME-MS41
		Ti %	Ti ppm	U ppm	V ppm	W ppm	Y ppm	Zn ppm	Zr ppm
		0.005	0.02	0.05	1	0.05	0.05	2	0.5
K735531		0.010	0.22	2.18	59	0.10	11.70	486	<0.5
K735532		0.014	0.31	3.74	184	0.09	10.40	1040	0.8
K735533		0.008	0.43	8.72	197	0.11	19.10	749	0.8
K735534		0.008	0.35	7.86	156	0.54	18.25	1050	1.0
K735535		0.010	0.10	1.52	33	0.10	9.76	210	1.1
K735536		0.025	0.07	1.40	45	0.16	7.58	372	0.8
K735537		0.006	0.17	1.36	23	0.05	9.93	340	0.9
K735538		0.005	0.27	2.02	29	0.06	18.80	663	1.0
K735539		<0.005	0.27	2.31	28	0.05	23.0	539	1.0
K735540		0.014	0.24	2.34	148	0.48	10.60	292	<0.5
K735541		0.013	0.23	1.66	86	1.06	5.42	91	<0.5
K735542		0.013	0.27	4.39	126	0.50	13.80	270	0.7
K735543		0.006	0.25	1.50	38	0.11	14.40	364	0.6
K735544		0.009	0.27	1.36	41	0.14	9.16	249	<0.5
K735545		0.111	0.61	0.57	52	0.74	9.54	60	8.9
K735546		0.015	0.28	4.43	218	0.24	9.96	829	0.5
K735547		0.017	0.31	1.91	190	0.41	9.20	378	<0.5
K735548		0.025	0.35	2.29	156	1.30	12.20	517	0.6
K735549		<0.005	0.41	7.85	173	0.06	21.7	3000	0.9
K735550		0.014	0.29	7.85	107	0.17	11.90	988	0.5
K735551		0.005	0.54	2.32	60	0.17	11.25	209	1.2
K735552		<0.005	0.40	2.43	91	0.11	5.38	60	0.6
K735553		<0.005	0.16	1.07	30	<0.05	11.35	134	1.6
K735554		0.005	0.43	6.66	140	0.15	20.1	1200	0.8
K735555		0.009	0.30	5.64	104	0.15	14.20	635	0.8
K735556		0.006	0.17	2.72	70	0.13	10.60	279	1.3
K735557		0.009	0.22	6.97	110	0.17	9.87	411	1.8
K735558		0.006	0.27	5.22	154	0.17	15.80	1100	1.1
K735559		0.007	0.40	7.64	228	0.16	18.30	2210	0.9
K735560		0.006	0.32	12.05	173	0.12	20.6	865	0.6
K735561		0.006	0.34	5.52	152	0.14	19.25	799	0.9
K735562		0.007	0.30	10.05	149	0.12	19.50	1570	0.8
K735563		0.007	0.33	5.38	160	0.17	14.20	813	0.6
K735564		0.010	0.14	2.50	59	1.40	11.50	350	0.9
K735565		0.096	0.06	0.28	43	11.30	6.82	32	7.1
K735566		0.006	0.15	6.07	104	0.15	14.30	359	1.2
K735567		0.042	0.10	8.48	42	0.41	16.70	223	0.9
K735568		0.023	0.08	4.56	31	0.15	14.60	229	0.7
K735569		<0.005	0.22	1.27	17	0.05	24.3	233	3.3
K735570		0.005	0.31	2.19	25	0.06	13.20	299	1.0



ALS Canada Ltd.
 2103 Dollarton Hwy
 North Vancouver BC V7H 0A7
 Phone: 604 984 0221 Fax: 604 984 0218 www.alsglobal.com

To: GOLDEN PREDATOR CANADA CORP.
 888 DUNSMUIR STREET
 11TH FLOOR
 VANCOUVER BC V6C 3K4

Page: 4 - A
 Total # Pages: 4 (A - D)
 Plus Appendix Pages
 Finalized Date: 25-OCT-2011
 Account: GOPRED

Project: Selwyn

CERTIFICATE OF ANALYSIS WH11173045

Sample Description	Method Analyte Units LOR	WEI-21	Au-ST44	ME-MS41	ME-MS41	ME-MS41	ME-MS41	ME-MS41	ME-MS41	ME-MS41	ME-MS41	ME-MS41	ME-MS41	ME-MS41	ME-MS41	
		Recvd Wt. kg	Au ppm	Ag ppm	Al %	As ppm	Au ppm	B ppm	Ba ppm	Be ppm	Bi ppm	Ca %	Cd ppm	Ce ppm	Co ppm	Cr ppm
		0.02	0.0001	0.01	0.01	0.1	0.2	10	10	0.05	0.01	0.01	0.01	0.02	0.1	1
K735571		8.58	0.0046	0.74	1.05	26.5	<0.2	<10	740	0.83	0.16	0.38	4.65	18.30	12.4	23
K735572		8.22	0.0044	0.53	1.11	44.1	<0.2	<10	640	0.84	0.09	0.37	3.42	15.60	21.2	18
K735573		7.66	0.0297	0.37	0.78	34.1	<0.2	<10	790	0.54	0.12	0.35	2.21	15.30	14.5	14
K735574		7.36	0.0016	0.23	0.93	71.3	<0.2	<10	650	1.07	0.08	0.47	4.54	11.00	29.9	9
K735575		7.50	0.0030	0.37	0.97	39.3	<0.2	<10	1090	0.74	0.17	0.50	6.92	16.00	23.3	14
K735576		8.58	0.0087	0.43	1.11	34.0	<0.2	<10	1430	0.65	0.23	0.46	4.49	18.95	16.0	18
K735577		7.74	0.0023	0.34	1.22	23.5	<0.2	<10	760	0.54	0.19	0.46	2.06	23.8	9.9	21
K735578		6.64	0.0032	0.37	1.87	72.3	<0.2	<10	970	0.84	0.28	0.27	0.55	18.75	19.5	27
K735579		7.40	0.0043	1.23	0.70	62.8	<0.2	<10	1240	0.72	0.18	0.67	29.1	22.7	7.5	28
K735580		0.12	0.0115	0.51	0.51	258	<0.2	<10	110	0.63	8.30	17.70	2.21	22.5	4.5	24
K735581		7.36	0.0015	0.51	1.26	50.5	<0.2	<10	190	0.44	0.27	0.53	5.03	26.4	3.7	23
K735582		6.28	0.0034	0.58	2.46	208	<0.2	<10	420	0.82	1.45	0.72	12.70	72.0	16.4	43
K735583		7.16	0.0024	0.50	1.41	74.3	<0.2	<10	480	0.62	0.55	0.63	7.45	43.8	8.0	30
K735584		6.12	0.0026	0.86	4.04	142.5	<0.2	<10	310	4.93	0.95	0.44	136.0	57.7	326	35
K735585		7.84	0.0038	0.86	1.25	183.5	<0.2	<10	800	0.99	1.18	0.77	42.1	32.7	10.6	40
K919995		0.14	0.0016	0.12	0.98	3.9	<0.2	<10	80	0.30	<0.01	0.61	0.26	10.75	7.5	29
K919996		5.70	0.0012	0.45	1.03	21.0	<0.2	<10	820	0.34	0.13	0.30	1.05	6.93	10.8	12
K919997		7.56	0.0029	0.19	1.46	17.0	<0.2	<10	1310	0.67	0.18	0.29	5.93	20.6	44.1	11
K919998		8.22	0.0024	0.54	1.15	18.4	<0.2	<10	1010	0.41	0.15	0.06	0.36	13.55	3.5	14
K919999		8.82	0.0023	0.42	1.55	74.9	<0.2	<10	1100	0.65	0.15	0.07	0.58	13.20	4.5	14
K920000		9.24	0.0015	0.52	0.78	29.2	<0.2	<10	970	0.29	0.12	0.02	0.66	9.24	2.5	12

***** See Appendix Page for comments regarding this certificate *****



ALS Canada Ltd.
 2103 Dollarton Hwy
 North Vancouver BC V7H 0A7
 Phone: 604 984 0221 Fax: 604 984 0218 www.alsglobal.com

To: GOLDEN PREDATOR CANADA CORP.
 888 DUNSMUIR STREET
 11TH FLOOR
 VANCOUVER BC V6C 3K4

Page: 4 - B
 Total # Pages: 4 (A - D)
 Plus Appendix Pages
 Finalized Date: 25-OCT-2011
 Account: GOPRED

Project: Selwyn

CERTIFICATE OF ANALYSIS WH11173045

Sample Description	Method	ME-MS41	ME-MS41	ME-MS41	ME-MS41	ME-MS41	ME-MS41	ME-MS41	ME-MS41	ME-MS41	ME-MS41	ME-MS41	ME-MS41	ME-MS41	ME-MS41	
	Analyte	Cs	Cu	Fe	Ga	Ge	Hf	Hg	In	K	La	Li	Mg	Mn	Mo	Na
Units		ppm	ppm	%	ppm	ppm	ppm	ppm	ppm	%	ppm	ppm	%	ppm	ppm	%
LOR		0.05	0.2	0.01	0.05	0.05	0.02	0.01	0.005	0.01	0.2	0.1	0.01	5	0.05	0.01
K735571		1.78	89.7	2.87	3.64	0.07	0.03	0.41	0.030	0.15	9.5	11.1	0.19	924	9.28	0.01
K735572		1.84	63.1	7.17	3.12	0.11	0.04	0.53	0.024	0.12	8.0	8.9	0.15	1780	11.25	0.01
K735573		2.14	43.4	4.96	2.71	0.08	0.03	0.24	0.022	0.10	7.7	8.1	0.14	3100	17.80	0.01
K735574		1.91	33.2	9.21	1.98	0.11	0.04	0.37	0.019	0.08	5.8	6.6	0.11	2100	31.0	0.01
K735575		1.59	38.7	4.52	3.18	0.07	0.04	0.62	0.029	0.12	7.9	9.2	0.16	2020	17.30	0.01
K735576		2.56	51.4	4.42	3.38	0.08	0.04	0.36	0.035	0.13	9.4	10.8	0.22	3610	9.66	0.02
K735577		1.45	27.2	2.49	3.96	0.06	0.03	0.17	0.023	0.11	11.9	18.9	0.27	903	8.05	0.01
K735578		2.58	20.4	8.36	5.70	0.10	0.02	0.29	0.030	0.11	9.5	16.2	0.23	1360	15.80	0.01
K735579		1.38	80.4	3.39	2.31	0.10	0.03	0.52	0.030	0.09	13.2	5.1	0.16	929	14.60	0.02
K735580		2.46	72.9	2.43	2.99	0.07	0.21	2.02	0.688	0.15	14.4	4.3	3.40	1680	75.7	0.02
K735581		1.63	22.5	1.18	3.93	0.06	<0.02	0.10	0.015	0.04	13.9	13.9	0.24	156	3.21	0.03
K735582		7.77	42.8	3.46	8.53	0.14	0.05	0.08	0.073	0.47	35.0	34.8	0.88	1960	9.33	0.09
K735583		3.86	41.4	2.34	5.02	0.10	0.02	0.22	0.035	0.21	24.1	20.0	0.46	624	7.27	0.05
K735584		3.57	1515	6.52	5.90	0.28	0.25	0.08	0.042	0.16	47.4	14.5	0.39	19350	51.9	0.02
K735585		3.77	200	2.86	4.66	0.14	0.03	0.14	0.044	0.14	18.7	13.1	0.46	723	14.60	0.04
K919995		0.32	23.9	1.94	4.02	0.07	0.28	0.05	0.016	0.06	4.9	8.8	0.45	303	4.21	0.05
K919996		2.12	17.7	4.77	2.33	0.09	0.04	0.15	0.027	0.05	2.9	9.2	0.24	768	6.15	0.04
K919997		2.30	80.1	3.71	2.37	0.12	0.09	0.12	0.036	0.06	9.1	18.3	0.27	3580	9.84	0.04
K919998		2.98	26.7	2.40	2.81	0.06	0.02	0.29	0.023	0.05	7.2	11.6	0.15	99	6.43	0.04
K919999		2.66	32.8	6.46	2.49	0.11	0.04	0.24	0.033	0.06	6.5	8.6	0.12	110	17.25	0.04
K920000		2.07	31.9	3.65	1.82	0.07	0.03	0.18	0.026	0.05	4.6	4.7	0.06	87	10.10	0.04



ALS Canada Ltd.
 2103 Dollarton Hwy
 North Vancouver BC V7H 0A7
 Phone: 604 984 0221 Fax: 604 984 0218 www.alsglobal.com

To: GOLDEN PREDATOR CANADA CORP.
 888 DUNSMUIR STREET
 11TH FLOOR
 VANCOUVER BC V6C 3K4

Page: 4 - C
 Total # Pages: 4 (A - D)
 Plus Appendix Pages
 Finalized Date: 25-OCT-2011
 Account: GOPRED

Project: Selwyn

CERTIFICATE OF ANALYSIS WH11173045

Sample Description	Method Analyte Units LOR	ME-MS41	ME-MS41	ME-MS41	ME-MS41	ME-MS41	ME-MS41	ME-MS41	ME-MS41	ME-MS41	ME-MS41	ME-MS41	ME-MS41	ME-MS41	ME-MS41	
		Nb ppm	Ni ppm	P ppm	Pb ppm	Rb ppm	Re ppm	S %	Sb ppm	Sc ppm	Se ppm	Sn ppm	Sr ppm	Ta ppm	Te ppm	Th ppm
		0.05	0.2	10	0.2	0.1	0.001	0.01	0.05	0.1	0.2	0.2	0.2	0.01	0.01	0.2
K735571		0.66	60.3	1710	13.6	16.3	0.007	0.06	3.33	2.8	5.3	0.5	64.2	<0.01	0.09	1.2
K735572		0.82	79.9	2490	9.3	17.0	0.008	0.06	2.50	3.3	8.3	0.4	51.9	<0.01	0.07	2.3
K735573		0.71	56.0	2420	12.1	11.9	0.004	0.07	2.64	2.5	3.9	1.2	55.3	<0.01	0.06	2.1
K735574		0.57	204	1600	7.6	15.2	0.005	0.07	2.72	2.2	3.8	0.3	44.8	0.01	0.04	1.8
K735575		0.84	174.5	1420	13.9	15.5	0.007	0.07	3.97	3.4	5.6	0.5	57.7	<0.01	0.09	2.5
K735576		0.95	94.8	1690	13.2	16.2	0.010	0.09	3.05	3.4	5.7	0.5	55.1	<0.01	0.10	2.6
K735577		1.27	50.9	1570	12.0	18.0	0.009	0.06	2.13	2.6	3.1	0.7	48.8	<0.01	0.03	2.1
K735578		1.30	35.5	1540	12.8	19.3	0.011	0.05	2.99	2.4	4.7	0.8	42.5	<0.01	0.09	1.0
K735579		0.55	229	3160	12.4	12.9	0.013	0.13	8.01	2.3	8.6	0.5	126.0	<0.01	0.17	1.1
K735580		0.23	72.1	1200	19.6	14.3	0.058	1.01	7.00	4.1	3.7	3.2	222	0.01	0.31	3.3
K735581		0.68	29.6	1960	21.7	7.4	0.005	0.05	2.88	0.8	2.4	0.6	36.5	0.01	0.03	0.4
K735582		5.04	80.9	1350	97.6	52.9	0.004	0.05	5.23	5.7	4.0	2.3	45.6	<0.01	0.05	13.7
K735583		2.24	75.0	1630	39.0	28.6	0.006	0.06	4.57	3.2	3.7	1.3	62.3	<0.01	0.07	5.5
K735584		1.12	1100	1770	21.7	17.8	0.006	0.27	17.50	2.5	12.1	0.7	62.4	0.03	0.19	4.4
K735585		1.02	403	2680	27.3	21.9	0.005	0.18	34.3	2.2	10.9	1.6	102.5	<0.01	0.31	1.7
K919995		0.32	22.2	480	2.5	3.1	0.002	0.05	0.37	4.2	0.5	0.4	28.6	<0.01	0.02	1.2
K919996		0.20	43.4	1600	8.7	11.7	0.004	0.06	2.64	2.4	4.5	0.3	28.2	<0.01	0.05	1.4
K919997		0.10	210	1200	14.3	7.1	0.005	0.14	1.45	5.2	2.5	0.3	58.7	0.02	0.07	2.8
K919998		0.51	20.1	780	11.2	11.8	0.003	0.06	2.36	2.2	3.6	0.4	21.7	<0.01	0.04	0.9
K919999		0.45	23.8	3260	11.2	10.7	0.004	0.21	3.53	3.6	5.4	0.4	38.1	0.01	0.06	1.6
K920000		0.27	11.7	860	8.6	8.6	0.010	0.12	3.34	2.7	4.9	0.3	19.8	<0.01	0.05	1.4



ALS Canada Ltd.
 2103 Dollarton Hwy
 North Vancouver BC V7H 0A7
 Phone: 604 984 0221 Fax: 604 984 0218 www.alsglobal.com

To: GOLDEN PREDATOR CANADA CORP.
 888 DUNSMUIR STREET
 11TH FLOOR
 VANCOUVER BC V6C 3K4

Page: 4 - D
 Total # Pages: 4 (A - D)
 Plus Appendix Pages
 Finalized Date: 25-OCT-2011
 Account: GOPRED

Project: Selwyn

CERTIFICATE OF ANALYSIS WH11173045

Sample Description	Method Analyte Units LOR	ME-MS41	ME-MS41	ME-MS41	ME-MS41	ME-MS41	ME-MS41	ME-MS41	ME-MS41
		Ti %	Ti ppm	U ppm	V ppm	W ppm	Y ppm	Zn ppm	Zr ppm
		0.005	0.02	0.05	1	0.05	0.05	2	0.5
K735571		0.013	0.23	3.34	141	0.53	12.35	347	0.6
K735572		0.012	0.25	2.42	110	0.38	12.00	515	1.3
K735573		0.014	0.18	2.00	83	0.33	8.26	287	0.7
K735574		0.009	0.66	3.18	66	0.26	14.05	1200	0.9
K735575		0.013	0.47	3.79	95	0.43	9.99	643	1.1
K735576		0.018	0.31	2.59	81	0.40	10.70	590	0.8
K735577		0.029	0.20	1.86	113	0.48	8.38	414	0.6
K735578		0.024	0.22	1.73	166	0.74	7.90	249	<0.5
K735579		0.016	0.47	13.80	187	0.24	16.90	2110	0.6
K735580		<0.005	0.68	12.20	147	16.40	21.2	449	9.2
K735581		0.045	0.15	17.65	78	0.51	5.47	246	<0.5
K735582		0.232	0.52	22.1	90	4.76	13.20	888	1.3
K735583		0.114	0.34	10.65	108	1.04	11.55	898	0.7
K735584		0.044	0.37	56.9	148	2.54	212	8690	4.5
K735585		0.051	0.48	9.50	198	0.39	15.95	3990	0.7
K919995		0.101	0.07	0.40	44	10.85	7.17	57	7.7
K919996		<0.005	0.29	1.05	50	0.05	5.28	216	1.3
K919997		<0.005	0.24	1.79	21	0.07	46.6	786	1.5
K919998		0.010	0.48	1.22	59	0.25	5.20	136	0.5
K919999		0.005	0.46	2.01	107	0.53	14.25	178	1.0
K920000		<0.005	0.31	2.28	75	2.62	7.68	69	0.8



ALS Canada Ltd.
2103 Dollarton Hwy
North Vancouver BC V7H 0A7
Phone: 604 984 0221 Fax: 604 984 0218 www.alsglobal.com

To: GOLDEN PREDATOR CANADA CORP.
888 DUNSMUIR STREET
11TH FLOOR
VANCOUVER BC V6C 3K4

Page: Appendix 1
Total # Appendix Pages: 1
Finalized Date: 25-OCT-2011
Account: GOPRED

Project: Selwyn

CERTIFICATE OF ANALYSIS WH1173045

Method	CERTIFICATE COMMENTS
ME-MS41 ME-MS41	Interference: Ca>10% on ICP-MS As,ICP-AES results shown. Gold determinations by this method are semi-quantitative due to the small sample weight used (0.5g).

Appendix 4
Analytical Methods and
Detection Limits



Sample Preparation Package

PREP- 41

Standard Preparation: Dry sample and dry- sieve to -180 micron

Sample preparation is the most critical step in the entire laboratory operation. The purpose of preparation is to produce a homogeneous analytical sub-sample that is fully representative of the material submitted to the laboratory.

An entire sample is dried and then dry-sieved using a 180 micron (Tyler 80 mesh) screen. The plus fraction is retained unless disposal is requested. This method is appropriate for soil or sediment samples up to 1 kg in weight.

Method Code	Description
LOG-22	Sample is logged in tracking system and a bar code label is attached.
DRY-22	Low temperature drying of excessively wet samples where the oven temperature is not to exceed 60°C. This method is suitable for more soil and sediment samples that are analyzed for volatile elements.
SCR-41	Sample is dry-sieved to - 180 micron and both the plus and minus fractions are retained.

Revision 02.01
Feb 22, 2010

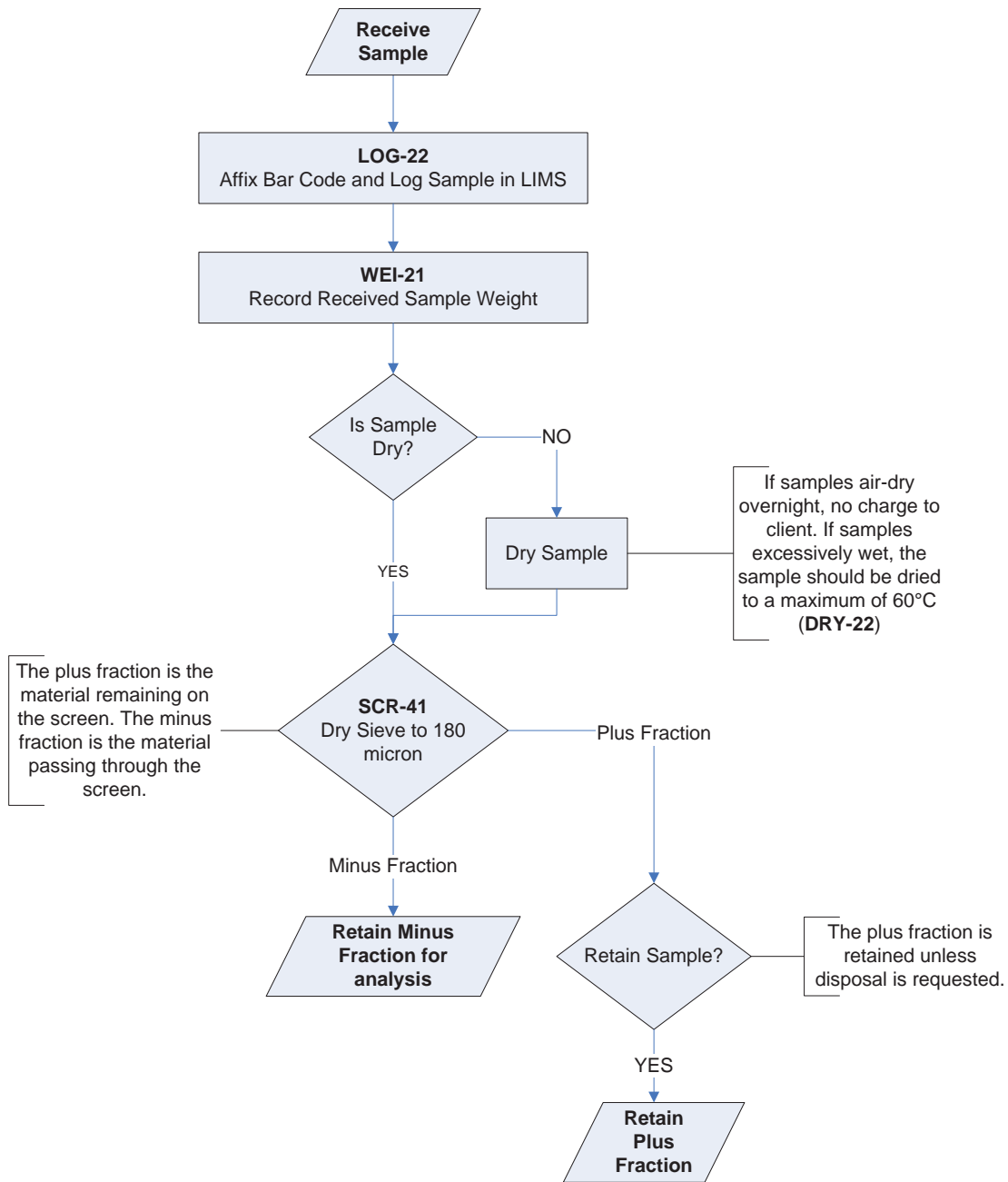
RIGHT SOLUTIONS RIGHT PARTNER

www.alsglobal.com



Sample Preparation Package

Sample Preparation Flowchart Package -PREP- 41



Revision 02.01
Feb 22, 2010

RIGHT SOLUTIONS RIGHT PARTNER

www.alsglobal.com



Geochemical Procedure

ME- MS41

Ultra- Trace Level Methods Using ICP- MS and ICP- AES

Sample Decomposition:

Aqua Regia Digestion (GEO-AR01)

Analytical Method:

Inductively Coupled Plasma-Atomic Emission Spectroscopy (ICP-AES) Inductively Coupled Plasma - Mass Spectrometry (ICP-MS)

A prepared sample (0.50 g) is digested with aqua regia in a graphite heating block. After cooling, the resulting solution is diluted to with deionized water, mixed and analyzed by inductively coupled plasma-atomic emission spectrometry. Following this analysis, the results are reviewed for high concentrations of bismuth, mercury, molybdenum, silver and tungsten and diluted accordingly. Samples are then analysed by ICP-MS for the remaining suite of elements. The analytical results are corrected for inter-element spectral interferences.

Element	Symbol	Units	Lower Limit	Upper Limit
Silver	Ag	ppm	0.01	100
Aluminum	Al	%	0.01	25
Arsenic	As	ppm	0.1	10 000
Gold	Au	ppm	0.2	25
Boron	B	ppm	10	10 000
Barium	Ba	ppm	10	10 000
Beryllium	Be	ppm	0.05	1 000
Bismuth	Bi	ppm	0.01	10 000
Calcium	Ca	%	0.01	25
Cadmium	Cd	ppm	0.01	1 000
Cerium	Ce	ppm	0.02	500
Cobalt	Co	ppm	0.1	10 000
Chromium	Cr	ppm	1	10 000

Revision 04.00
Sep 20, 2006

RIGHT SOLUTIONS RIGHT PARTNER

www.alsglobal.com



Geochemical Procedure

Element	Symbol	Units	Lower Limit	Upper Limit
Cesium	Cs	ppm	0.05	500
Copper	Cu	ppm	0.2	10 000
Iron	Fe	%	0.01	50
Gallium	Ga	ppm	0.05	10 000
Germanium	Ge	ppm	0.05	500
Hafnium	Hf	ppm	0.02	500
Mercury	Hg	ppm	0.01	10 000
Indium	In	ppm	0.005	500
Potassium	K	%	0.01	10
Lanthanum	La	ppm	0.2	10 000
Lithium	Li	ppm	0.1	10 000
Magnesium	Mg	%	0.01	25
Manganese	Mn	ppm	5	50 000
Molybdenum	Mo	ppm	0.05	10 000
Sodium	Na	%	0.01	10
Niobium	Nb	ppm	0.05	500
Nickel	Ni	ppm	0.2	10 000
Phosphorus	P	ppm	10	10 000
Lead	Pb	ppm	0.2	10 000
Rubidium	Rb	ppm	0.1	10 000
Rhenium	Re	ppm	0.001	50
Sulphur	S	%	0.01	10
Antimony	Sb	ppm	0.05	10 000
Scandium	Sc	ppm	0.1	10 000
Selenium	Se	ppm	0.2	1 000
Tin	Sn	ppm	0.2	500
Strontium	Sr	ppm	0.2	10 000

Revision 04.00
Sep 20, 2006

RIGHT SOLUTIONS RIGHT PARTNER

www.alsglobal.com



Geochemical Procedure

Element	Symbol	Units	Lower Limit	Upper Limit
Tantalum	Ta	ppm	0.01	500
Tellurium	Te	ppm	0.01	500
Thorium	Th	ppm	0.2	10000
Titanium	Ti	%	0.005	10
Thallium	Tl	ppm	0.02	10 000
Uranium	U	ppm	0.05	10 000
Vanadium	V	ppm	1	10 000
Tungsten	W	ppm	0.05	10 000
Yttrium	Y	ppm	0.05	500
Zinc	Zn	ppm	2	10 000
Zirconium	Zr	ppm	0.5	500

NOTE: In the majority of geological matrices, data reported from an aqua regia leach should be considered as representing only the leachable portion of the particular analyte.

Revision 04.00
Sep 20, 2006

RIGHT SOLUTIONS RIGHT PARTNER

www.alsglobal.com



Geochemical Procedure

Au- TL43, Au- TL44

Determination of Trace Level Gold by Solvent Extraction – Graphite furnace AAS or ICPMS finish

Sample Decomposition:

Aqua regia gold digestion (GEO-AuAR01/02)

Analytical Method:

Inductively coupled mass spectrometry (ICPMS) or Atomic absorption spectrometry (AAS)

A finely pulverised sample (25 – 50 g) is digested in a mixture of 3 parts hydrochloric acid and 1 part nitric acid (aqua regia). This acid mixture generates nascent chlorine and nitrosyl chloride, which will dissolve free gold and gold compounds such as calaverite, AuTe₂.

The dissolved gold is complexed and extracted either with diisobutyl ketone (DIBK) or Kerosene/DBS and determined by graphite furnace AAS. Alternatively gold is determined by ICPMS directly from the digestion liquor. This method allows for the simple and economical addition of extra elements by running the digestion liquor through the ICPAES or ICPMS.

Note: Samples high in sulphide or carbon content may lead to low gold recoveries unless they are roasted prior to digestion.

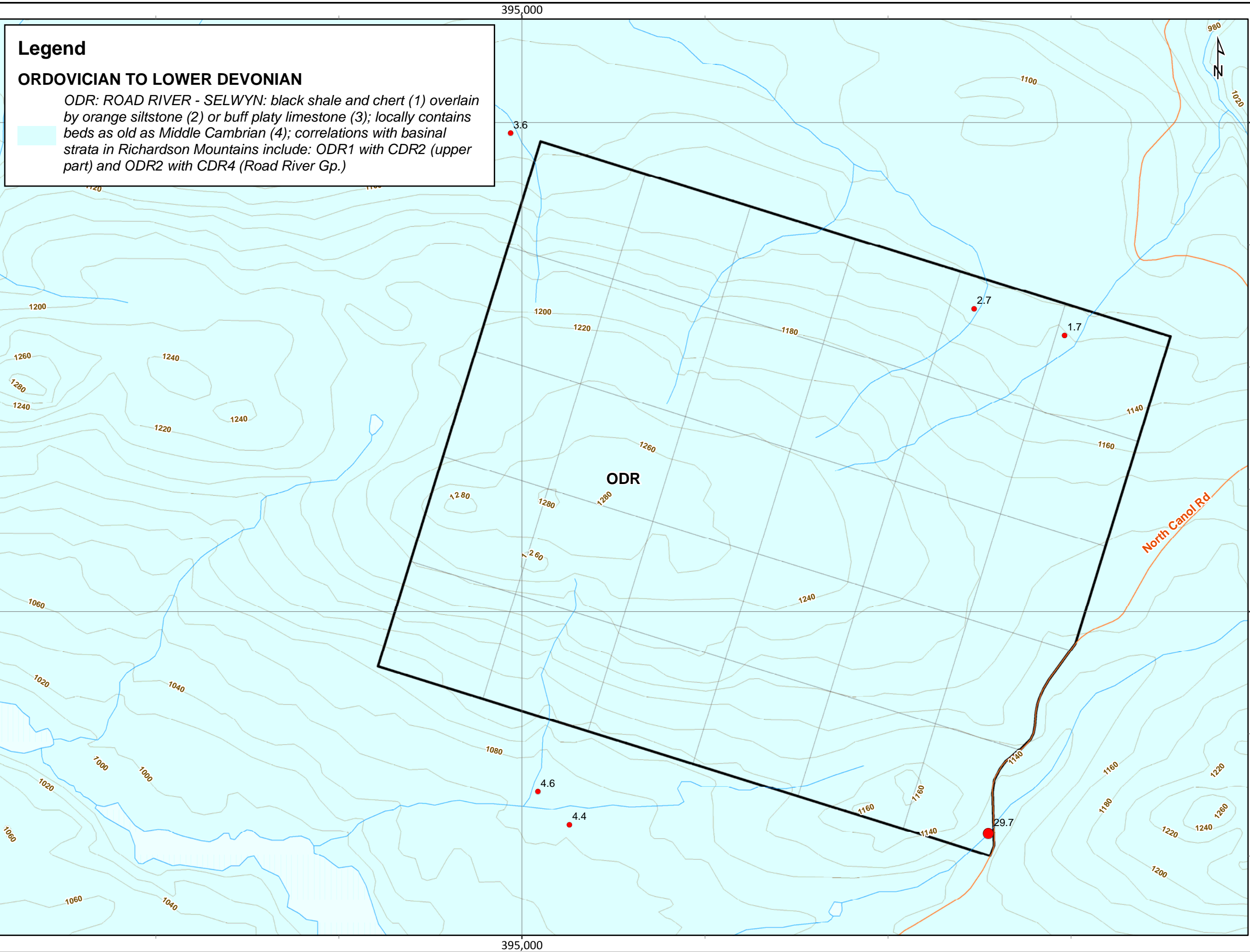
Method	Element	Sample Mass	Units	Lower Limit	Upper Limit	Default Overlimit Method
Au-TL43m	Gold	25 g	ppm	0.005	2	Au-OG43
Au-TL44m	Gold	50 g	ppm	0.005	2	Au-OG44

Revision 01.00
Jun 13, 2007

RIGHT SOLUTIONS RIGHT PARTNER

www.alsglobal.com

Appendix 5
Silt Geochemical Plots
for Select Elements



Legend

ORDOVICIAN TO LOWER DEVONIAN

ODR: ROAD RIVER - SELWYN: black shale and chert (1) overlain by orange siltstone (2) or buff platy limestone (3); locally contains beds as old as Middle Cambrian (4); correlations with basinal strata in Richardson Mountains include: ODR1 with CDR2 (upper part) and ODR2 with CDR4 (Road River Gp.)



Legend

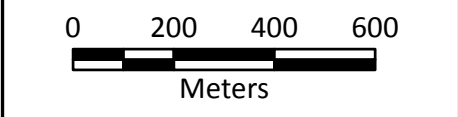
- ◊ GPD Property Outline
- ◊ Quartz Claim with Grant ID
- ~ Watercourse
- Elevation (20 m contour)

Au (ppb)

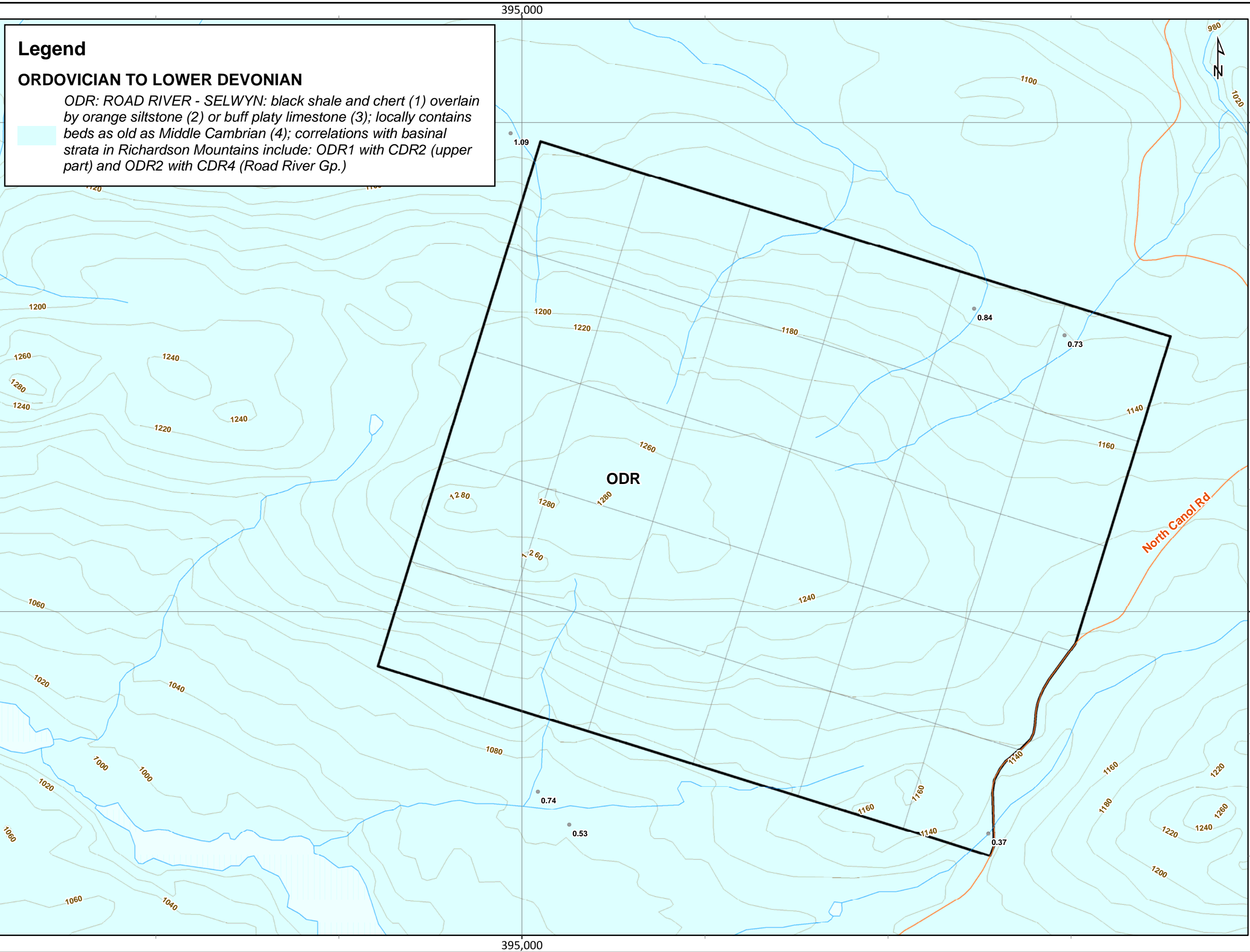
- 0.1 - 5.6
- 5.7 - 7.7
- 7.8 - 9.0
- 9.1 - 41.9



SOCN Project
Regional Geology with
Stream Sediment Locations



Scale:	1:15,000	Map ID:	--
Draw Date:	2012/06/15	Rev. Date:	--
Version:	1	Figure:	Appendix 5-1
Author:	E. O'Brien	Office:	Vancouver
Location:	115 km NE of Ros River, Yukon Territory		
Projection:	NAD 1983 UTM Zone 9N		
Filename:	SOCN_2011_Au		



Legend

ORDOVICIAN TO LOWER DEVONIAN

ODR: ROAD RIVER - SELWYN: black shale and chert (1) overlain by orange siltstone (2) or buff platy limestone (3); locally contains beds as old as Middle Cambrian (4); correlations with basinal strata in Richardson Mountains include: ODR1 with CDR2 (upper part) and ODR2 with CDR4 (Road River Gp.)



Legend

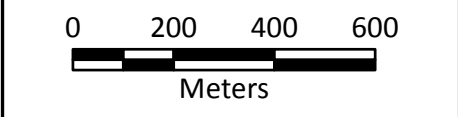
- ◊ GPD Property Outline
- ◊ Quartz Claim with Grant ID
- ~ Watercourse
- Elevation (20 m contour)

Ag (ppm) Silts

- 0.03 - 1.10
- 1.11 - 1.60
- 1.61 - 1.90
- 1.91 - 3.00



SOCN Project
Regional Geology with
Stream Sediment Locations

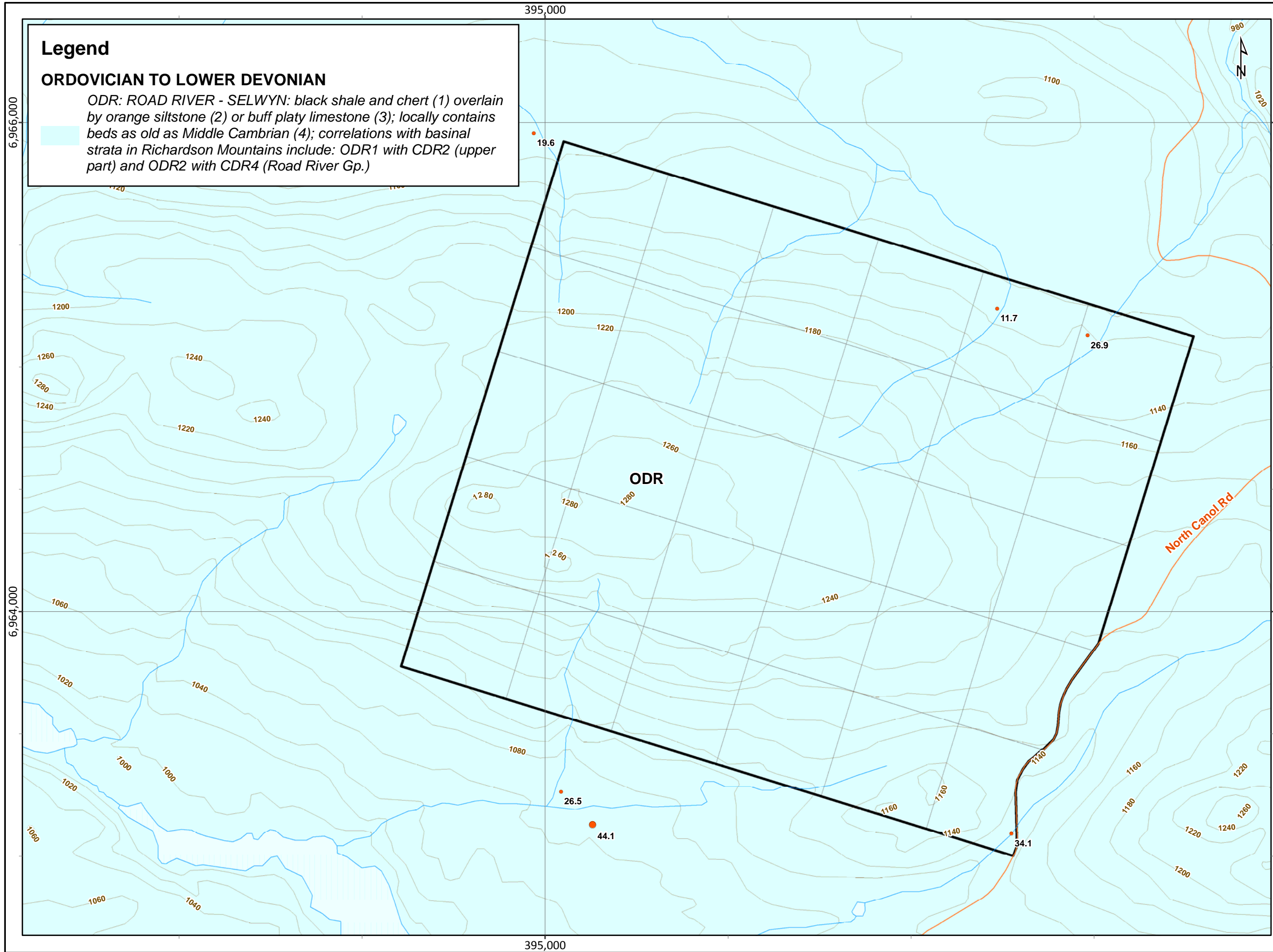


Scale:	1:15,000	Map ID:	--
Draw Date:	2012/06/15	Rev. Date:	--
Version:	1	Figure:	Appendix 5-2
Author:	E. O'Brien	Office:	Vancouver
Location:	115 km NE of Ros River, Yukon Territory		
Projection:	NAD 1983 UTM Zone 9N		
Filename:	SOCN_2011_Ag		

Legend

ORDOVICIAN TO LOWER DEVONIAN

ODR: ROAD RIVER - SELWYN: black shale and chert (1) overlain by orange siltstone (2) or buff platy limestone (3); locally contains beds as old as Middle Cambrian (4); correlations with basinal strata in Richardson Mountains include: ODR1 with CDR2 (upper part) and ODR2 with CDR4 (Road River Gp.)



Legend

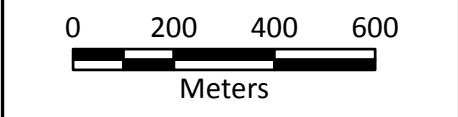
- ◊ GPD Property Outline
- ◊ Quartz Claim with Grant ID
- ~ Watercourse
- ~ Elevation (20 m contour)

As (ppm) Silts

- 3.5 - 39.4
- 39.5 - 60.8
- 60.9 - 80.8
- 80.9 - 207.3
- 207.4 - 310.0



SOCN Project
Regional Geology with
Stream Sediment Locations



Scale:	1:15,000	Map ID:	--
Draw Date:	2012/06/15	Rev. Date:	--
Version:	1	Figure:	Appendix 5-3
Author:	E. O'Brien	Office:	Vancouver
Location:	115 km NE of Ros River, Yukon Territory		
Projection:	NAD 1983 UTM Zone 9N		
Filename:	SOCN_2011_As		