



ASSESSMENT REPORT ON THE 2011 GEOCHEMICAL SURVEY OF THE AWB 1-116 CLAIMS

Whitehorse Mining District, Yukon Territory

Anvil Range area

NTS map sheet 105K 12

133° 55' W, 61° 34' N

YD103701-YD103802	AWB 1- 102
YD55813-YD55826	AWB 103- 116

Soil survey conducted September 24- 27 2011

Owner and Operator:
Redtail Metals Corp
11th floor, 888 Dunsmuir
Vancouver, B.C., V6C 3K4

May 16, 2012

By Danièle Héon, B.Sc., P. Geo.

TABLE OF CONTENTS

Assessment Report on the 2011 Geochemical Survey of the AWB 1-116 claims.....	i
Summary.....	1
Introduction.....	1
Rationale.....	1
Location and access	1
Property claim status.....	2
Regional geology.....	4
Mineral Potential.....	4
Property-scale geology	7
Previous work	7
Description of 2011 work program.....	8
Methodology	8
Assay Methodology	9
Work done	9
Results	10
Interpretation, Conclusions and Recommendations	17
References	17
Statement of qualifications	18
Appendices	19
Appendix 1 - Minfile description	20
Occurrence Details.....	20
Work History.....	20
Related References.....	20
Capsule	21
Appendix 2- Sample Location Map.....	22
Appendix 3- Claim data.....	25
Appendix 4- Soil Sample data	26
Appendix 5- Assay certificates.....	27
Appendix 6- Statement of Expenditures.....	28

Figure 1 General Location Map	2
Figure 2 AWB claim map and Soil Survey Location.....	3
Figure 3 Regional Geology Map.....	5
Figure 4 Planned soil lines- 2011	9
Figure 5 Zn Soil Geochemistry	11
Figure 6 As Soil Geochemistry	12
Figure 7 Au (ppb) Soil Geochemistry	13
Figure 8 Cu Soil Geochemistry	14
Figure 9 Sb Soil Geochemistry	15
Figure 10 Pb soil Geochemistry	16

SUMMARY

A total of 116 claims were recorded on February 21, 2011. The target for this property was a historical zinc-copper skarn occurrence (Minfile 105K 111, Union) associated with weak multi-element RGS anomalies in the area. The claims cover clastic and calcareous rocks of Selwyn Basin, in the contact aureole of the Anvil Batholith. A reconnaissance soil survey was contracted out to Aurora Geosciences Ltd, a consulting firm based in Whitehorse. A total of 4 days of soil sampling were spent on the property between September 24 and 27th 2011, including one weather day. A 4- person crew collected a total of 101 soil samples. Daily helicopter set-outs were done from Faro. The early winter conditions greatly impeded the work, snow and ice covered the ground making some steep talus sections dangerous; snowy and foggy conditions impeded access.

Metal response was moderate, but point to the potential of additional skarn mineralization.

INTRODUCTION

RATIONALE

This report documents the 2011 fieldwork done on the AWB claims, for the purpose of meeting assessment requirements. It describes the soil sampling reconnaissance program that was designed to provide a first pass approach over potentially favourable stratigraphy, in an area that had limited work done over a small skarn occurrence, but that otherwise has seen very little exploration.

Zinc skarn mineralization is documented in an assessment report (UNION OIL COMPANY OF CANADA LTD, Apr/81. Assessment Report #090831 by W.E. Brereton). This sole assessment report on this occurrence includes a geology map covering a small area (less than four claims) and the results of a small hand trenching program. . Discontinuous skarn bands outcropped along 180m of strike length and graded up up to 3.5% Cu, 5.5% Zn, 150 ppm (4.38 oz/t)Ag, 0.4% WO₃ in hand samples, chip samples were of lower grade.

A reconnaissance soil programs was proposed to test possible extensions of the known mineralization and also to test several geological environments. Results were not very conclusive due to the limited area sampled.

A follow-up soil sampling, mapping and prospecting program is recommended.

LOCATION AND ACCESS

The claim block is located 47 km northwest of Faro, in the Whitehorse mining district. Access was by helicopter chartered from the Trans North Helicopters base in Faro. The soil sampling crew commuted daily to the property from Faro.

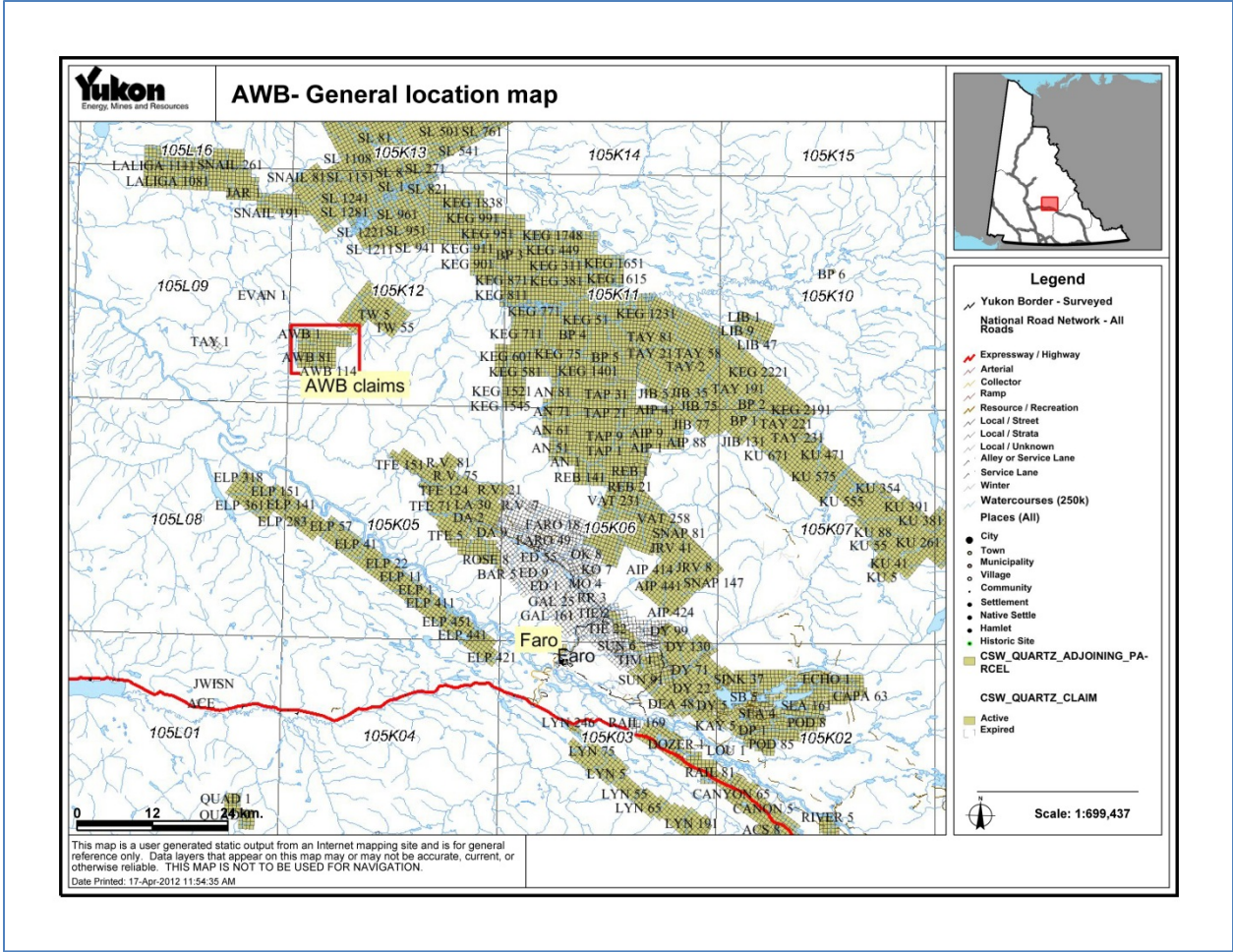


FIGURE 1 GENERAL LOCATION MAP

PROPERTY CLAIM STATUS

The AWB property consists of 116 quartz claims wholly owned by Redtail Metals Corp, all located on NTS map 105K 12. Detailed claim data is found in Appendix 3.

TABLE 1 CLAIM STATUS

Claim name/number	Grant number	Expiry date *
AWB 1- 102	YD103701- 802	21/02/2014
AWB 103- 116	YD55813- 826	21/02/2-14

*pending acceptance of this filing

Redtail Metals- AWB claims

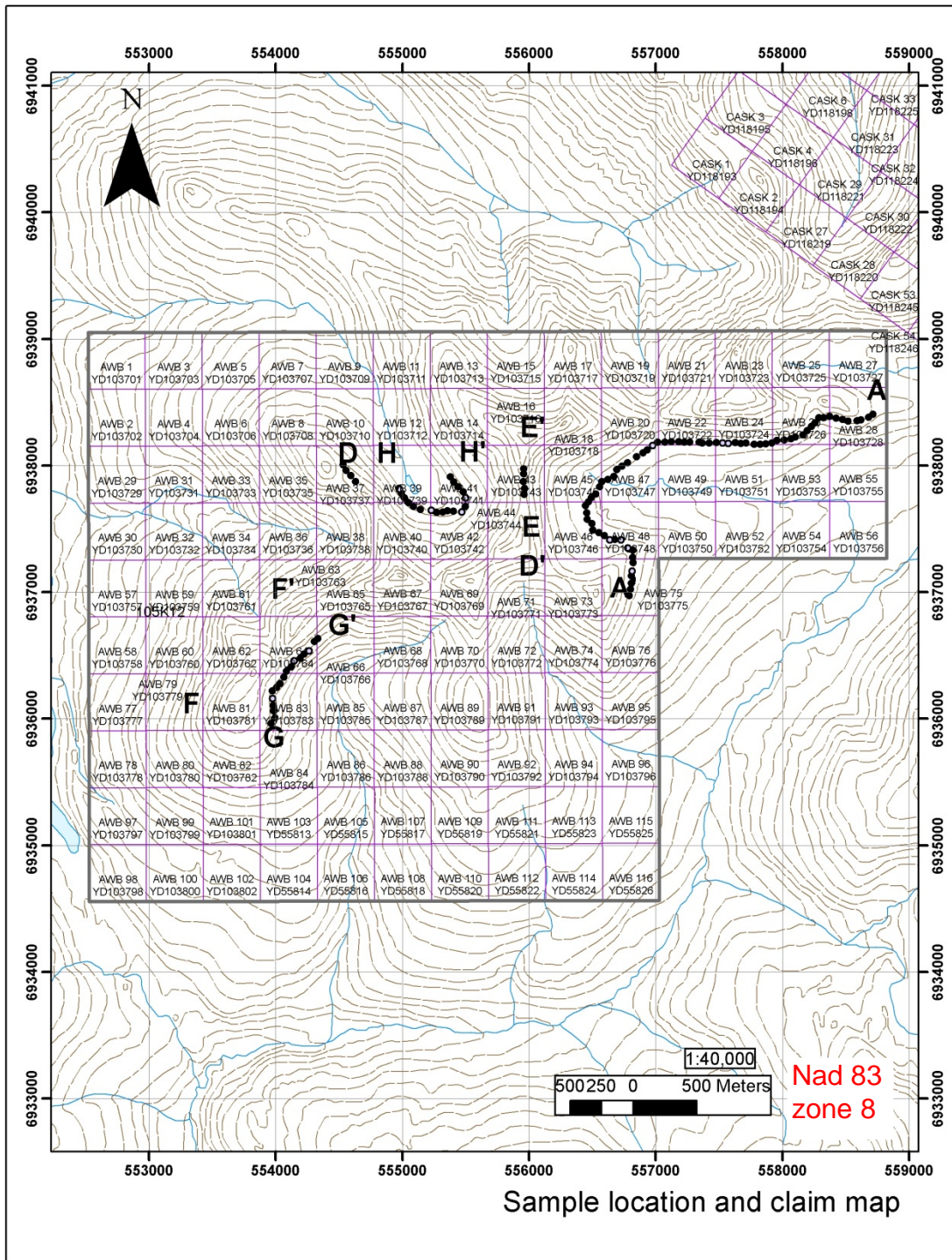


FIGURE 2 AWB CLAIM MAP AND SOIL SURVEY LOCATION

REGIONAL GEOLOGY

Stratigraphic descriptions are taken from a compilation of Selwyn Basin metallogeny downloaded from the YGS website.

The AWB claims are underlain by sedimentary rocks of Selwyn Basin, which are intruded by the mid-Cretaceous Anvil Batholith. The claim block is located approximately 12 km northeast of the Tintina Fault.

The oldest rocks in the property area are the shales, mudstones and sandstones of the Lower Cambrian Gull Lake Formation (equivalent to the Mount Mye Fm of Anvil district stratigraphy). The Gull Lake Formation is subdivided into three members: 1) a thin, basal, discontinuous limestone conglomerate with local archeocyathid clasts; 2) a dominant middle member of orange- to rust-brown-weathering laminated slate and siltstone to very-fine grained sandstone; and 3) an upper member of resistant, grey-weathering, thick-bedded, wispy-laminated, bioturbated calcareous to non-calcareous and dolomitic siltstone and mudstone. It locally contains mafic sills, flows or volcanoclastic rocks.

These rocks are overlain by the Upper Cambrian to Ordovician limestones of the Rabbitkettle Formation which host the skarn mineralization on the property. At its type locality, the Rabbitkettle Formation consists of recessive, platy to thin-bedded, light-grey- to tan-weathering, wavy-banded or nodular limestone, silty limestone and siltstone. Elsewhere, other facies include: grey-orange weathering, grey, finely crystalline nodular limestone; thin-bedded, orange weathering, dark, finely crystalline argillaceous limestone; brick-red weathering, sugary, sandy dolostone; quartz sandstone and intraformational conglomerate; green volcanic tuff; and grey-green-weathering, laminated grey tuffaceous shale and variably argillaceous limestone. Regionally, the base of the Rabbitkettle is marked by an unconformity interpreted to represent an episode of rifting.

This sedimentary sequence is overlain by mafic alkaline volcanic rocks of the Cambrian to Silurian Marmot Formation, consisting mainly of amygdaloidal basaltic flows and breccias.

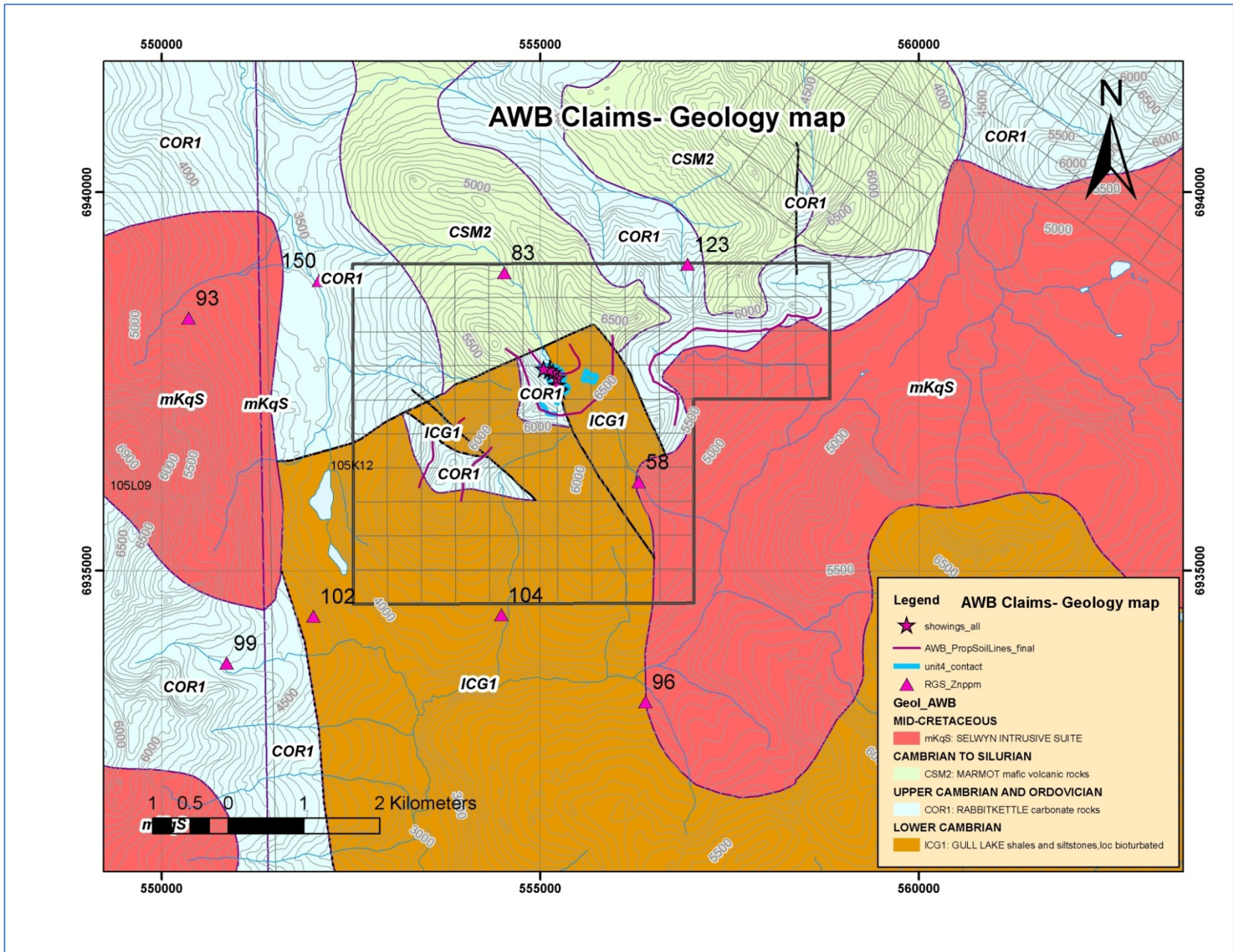
The sedimentary and volcanic rocks are intruded by the mid-Cretaceous Anvil Range Batholith, a large granodiorite-granite-quartz monzonite batholith dated at 109Ma. The AWB claims overlap the contact between the batholith and the Selwyn Basin succession. A contact metamorphic aureole is described. See map and legend below for detailed rock descriptions.

MINERAL POTENTIAL

In Anvil district stratigraphy, the Gull Lake Fm correlates with the Mount Mye Fm and The Rabbitkettle Fm correlates with the Upper Vangorda Fm. The Anvil Range SEDEX deposits occur at the transitional upper part of the Mount Mye Formation (Gull Lake) or at the Mount Mye/ Vangorda Fm contact. This stratigraphic interval is present on the property.

The Rabbitkettle Fm hosts the Mahtin skarn occurrence (Minfile 115P 007), as well as some of the vein-hosted mineralization at the Mike Lake property (Minfile 116A 013), all these mineralized occurrences are associated with Cretaceous intrusions. The AWB claims are located in a similar geological setting as those properties, and therefore have potential for skarn and intrusive-related gold mineralization. No gold mineralization was found to date in the Anvil Batholith portion of the property, but previous exploration pre-dates exploration for Fort-Knox type gold deposits. Although there are no gold indicators to date on the property, the potential for this type of deposit therefore still has not been evaluated.

FIGURE 3 REGIONAL GEOLOGY MAP



AWB Claims- Detailed Geological Legend

MID-CRETACEOUS

mKS

mKS: SELWYN SUITE

plutonic suite of intermediate (g) to more felsic composition (q) and rarely syenitic (y); equivalent felsic dykes (f); complete compositional gradation so that these designations are somewhat arbitrary

- q. equigranular to porphyritic (K-feldspar) biotite +/- hornblende +/- muscovite granite, quartz monzonite and granodiorite; porphyritic biotite hornblende granite with large smoky grey quartz phenocrysts and locally K-feldspar phenocrysts (**Selwyn Suite**)

CAMBRIAN TO SILURIAN

CSM

CSM: MARMOT

lower Paleozoic mostly mafic volcanics, in locally thick accumulations (1) - (6) but also of common occurrence as undifferentiated thin scattered members within other units (e.g. COR, OSR)

2. amygdaloidal basaltic flows and breccias; mostly subaqueous; thick, flow-banded rhyolite and felsite, includes breccia and tuff (**Marmot**)

UPPER CAMBRIAN AND ORDOVICIAN

COR

COR: RABBITKETTLE

basinal limestone (1) that may locally include older and younger basinal pelitic strata undivided

1. thin bedded, wavy banded, silty limestone and grey lustrous calcareous phyllite; limestone intraclast breccia and conglomerate; massive to laminated, grey quartzose siltstone and chert and rare black slate; local mafic flows, breccia, and tuff (**Rabbitkettle**)

LOWER CAMBRIAN

ICG

ICG: GULL LAKE

dominantly fine clastic assemblage (1) with local volcanic units (2)

1. shale, siltstone and mudstone, locally bioturbated, with minor quartz sandstone; rare green-grey chert; local basal limestone and limestone conglomerate; phyllite to quartz-muscovite-biotite schist (+/- garnet +/- sillimanite +/- staurolite +/- andalusite) (**Gull Lake**)

PROPERTY-SCALE GEOLOGY

The fieldwork did not include any geological work so the property geology is derived from the information provided by the regional geology map and from assessment report 090831.

The claim block overlaps the contact between the Anvil Batholith and the Selwyn basin succession. From the regional map, it appears that the Rabbitkettle Formation occurs in fault-bounded blocks, and that one of these faults acts as locus to the known skarn occurrences.

From assessment report 090831: *"The skarn-hornfels rocks of interest herein are exposed in the head of a local valley predominantly on Claim Barb 4. They comprise a sequence consisting primarily of various limy skarn rocks including crystalline graphitic limestone and well laminated calc-silicate hornfels including garnetiferous, cherty and argillitic varieties. These rocks are overlain and underlain by non-calcareous sericitic phyllite. A relative major unit of distinctive red-weathering calcareous phyllite is interbedded with the skarn rocks. Coarse-grained limy amphibolite is a minor lithology."*

The assessment report continues on to describe overlying volcanic rocks of the Menzie Creek Formation (Marmot volcanics on the regional map), as well as underlying non-calcareous quartzose phyllites (Gull Lake Formation?). The sub-Rabbitkettle unconformity may be present on the property.

Rocks are folded, with steep dip on the eastern part of the claims (closer to the intrusion) and gentler dips towards the west. Faulting and brecciation occurs along N-S and E-W trend. Occurrences of "intrusive chert" are described, which may refer to silica veining showing epithermal textures.

The mineralization occurs in discontinuous pods and is hosted by massive to banded, brown weathering, greenish diopside-apatite-quartz-garnet-calcite skarn. At least five different beds, up to 2m in true thickness, are mineralized, these are usually associated with crystalline limestone and limy skarn but one showing occurs in a central calcareous phyllite.

The property-scale map (Figs 5 to 9) show the approximate location of the calc-silicate hornfels/skarn beds in light blue, as outlined in the assessment report, with the mineralized occurrences outlined by pink stars.

PREVIOUS WORK

A 14-day reconnaissance program was conducted in 1980 for Union Oil Co Ltd. on a portion of what was then the Barb property. Assessment report 090831 (Brereton, 1980) describes the results of that work. The work was centered on Barb 4 claim, with some work covering part of Barb 6 and Barb 8.

Mapping and prospecting outlined skarn mineralization in carbonate rocks assigned to the Rabbitkettle/ Vangorda formation. Skarn mineralogy consists of diopside-apatite-quartz-garnet-calcite in distinct greenish beds. The mineralization occurs in a series of thin discontinuous greenish skarn beds, adjacent to the Anvil Batholith. Mineralization consists of patches and lenses of po-py-cp-sph-asp (-mo), locally concentrated in lenses and patches at the top of bed. A strong Cu-Ag correlation has been noted. Minor scheelite is present.

It seems that poor outcrop and folding pattern complicate the interpretation of the distribution of the mineralization, i.e. it is unclear if different occurrences are at the same stratigraphic level or not.

Discontinuous skarn bands outcropped along 180m of strike length. A total of 8 discontinuous chip samples were taken across four different outcropping areas: four samples across the Discovery horizon at the Main, Lower and

South showings, and four chip samples across the Upper showing. The most significant results are listed below in Table 2.

TABLE 2 CHIP SAMPLES, SIGNIFICANT RESULTS

Sample no	Length (m)	Showing	Zn%
80R-1070	1.5	Upper	0.31
80R-1074	1.1	Main	3.35
80R-1074a	1.0	Main	0.26
80R-1075	1.7	Lower	0.57
80R-1076	1.8	South	0.16

A total of 37 hand grab samples were taken from chip-sampled outcrop exposures as well as from float and rubble. The highest values were 3.5% Cu, 5.5% Zn, 4.38oz Ag, and 0.4% WO₃, with a total of 12 samples grading > 1% Zn. The Rubble showing graded up to 0.4% W. An area to the east of the main showings gave results > 1% Zn in grab samples, no chip samples were taken in this area.

A total of 8 silt samples were taken in the creeks draining the main cirque, these show weakly anomalous values in Cu, Pb, Zn, Ag and W in the showing area. The most significant values are 675 ppm Cu and 10ppm W (sample 80S-1037), 325 ppm Zn (sample 80S-1032).

None of the assays were anomalous in gold. Assays for Sb were not reported.

No assay certificates nor sample descriptions are included in the assessment report.

DESCRIPTION OF 2011 WORK PROGRAM

A 4-person crew from Aurora geosciences collected 101 soil samples between September 24 and 27th 2011. A minimum of contour soil lines was proposed in order to test a variety of geological environments. A total of 101 samples were collected and assayed. No geologist was on site during this work program.

METHODOLOGY

Contour lines were planned to traverse potentially favourable stratigraphy. Lines were traversed by foot using an integrated hand-held GPS/computer as navigation tool. This instrument, a Juno by Trimble, consists of a hand-held non-differential GPS integrated with a palm computer equipped for data collection and with a camera.

Samplers navigated to waypoints supplied by Redtail Metals. Lines were not flagged; only the sample sites/stations were marked with blue and orange flagging and with a labelled tyvek tag. At each sample site, a hole was dug with a soil auger or a mattock. The target was the bottom of the B horizon, where developed. The soil was collected in a paper Kraft bag; the geographic location, sample characteristics were recorded and a sample photograph was collected.

Although the samples were assigned to a soil horizon (mostly B or C), most sample were also described as till being the parent material. There is therefore some uncertainty as to the nature of the sample. Sample depth was measured as depth below the vegetative mat.

Field duplicates were planned to be collected at frequency of every 50 samples. These consisted of a second sample collected from a separate pit located within a few meters from the original sample site.

Samples were shipped out with the crew to Whitehorse, in rice bags sealed with security tags. These were stored in Aurora's care until they were shipped to Acme Laboratories in Whitehorse by Predator Mining Group staff.

ASSAY METHODOLOGY

Samples were analysed by ICP-MS (Acme Group 1DX2) whereby a 15g sample of pulp is leached in a hot Aqua Regia solution and analysed for a suite of 36 elements. Any samples that would return gold grades > 1g/t, or over-limit grades for Cu, Pb or Zn were to be re-analysed by a more appropriate assay method.

WORK DONE

-Line A tested the contact between the Rabbitkettle limestone and the Anvil Batholith.

-Lines D and E skirted the rim of the cirque containing the known mineralization and cross-cut most of the stratigraphy occurring on the claims, including a regional scale fault that corresponds to the location of the known showings. This fault is also the eastern contact between the main lense of Rabbitkettle Formation and the Gull Lake Formation. These lines were left mostly unsampled due to hazardous winter conditions.

Lines F and G targeted another sliver of Rabbitkettle limestone, also fault bounded on one side. Only line G was sampled.

-Line H was ran at the base of the mineralized cirque, downslope from the known mineralization.

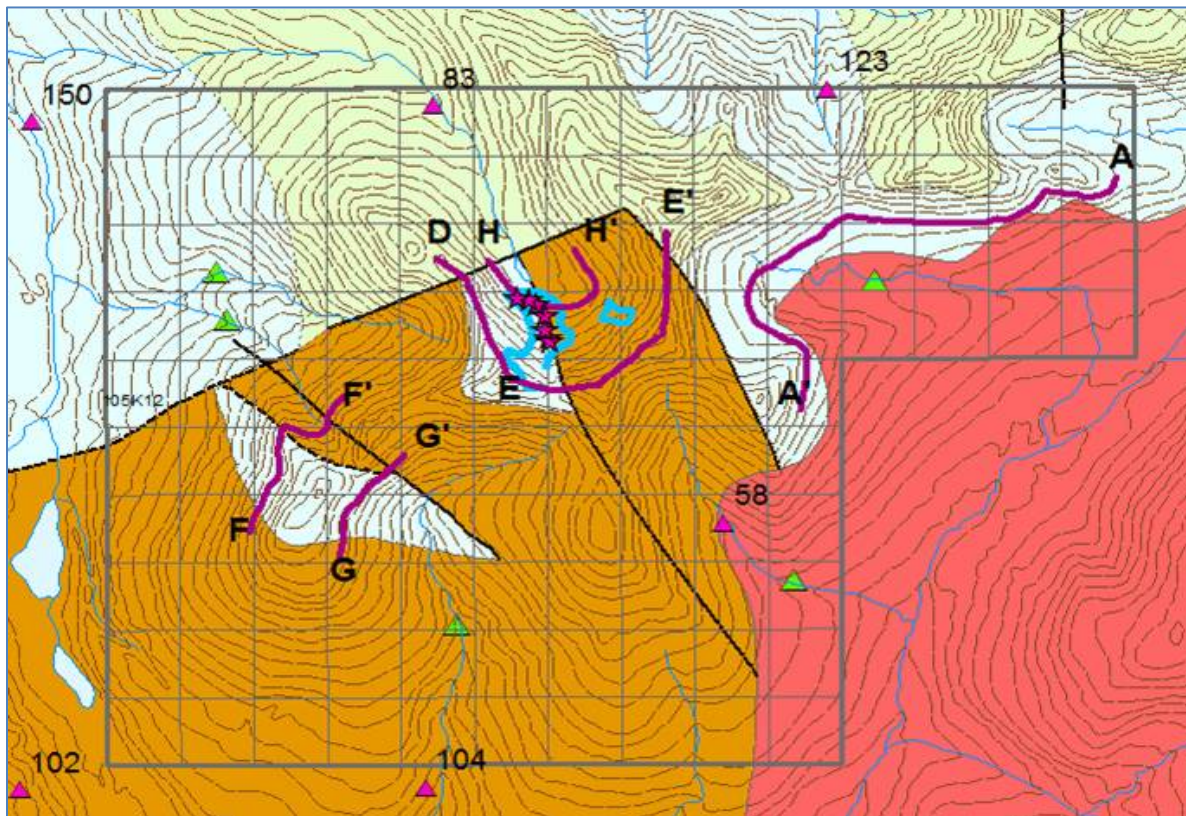


FIGURE 4 PLANNED SOIL LINES- 2011

RESULTS

Soil assay results show moderate metal response, and point to a few areas worthy of further work:

- Line H, located at the base of the mineralized cirque, is characterized by relatively high Zn, Pb and As confirming the anomalous metal content of that area. Extremely high Sb values (255.8 and 427.7 ppm) occur at the western end of this line, adjacent to high Cu values, pointing to potential Sb mineralization.
- The northeastern end of line E, located on top of the ridge, east of the showing, shows a multi-element soil anomaly. Elevated Zn-As-Cu values point to a possible skarn target, and should be investigated.
- Line G crossed an area mapped as a fault-bounded lense of Rabbitkettle Formation. Spread over a few sample sites, high Zn and As and moderate Cu, Pb and Sb values point to a potential skarn target in this area.
- Line A was ran parallel to the contact between the Rabbitkettle limestone and the Anvil Batholith. This line shows moderate As-Au-Cu-Pb at its eastern end, and one elevated Cu result near its western end.
- The most significant Au result is 53.2 ppb located in the Marmot volcanics, at the northern end of line D.
- The highest Pb value (75ppm) correspond to high Cu (198ppm).
- The Ag values were very low, with the highest sample grading 1ppm (not displayed). This is surprising in light of the fact that multi-ounce silver values were reported in grab samples in assessment report 090831.

FIGURE 5 ZN SOIL GEOCHEMISTRY

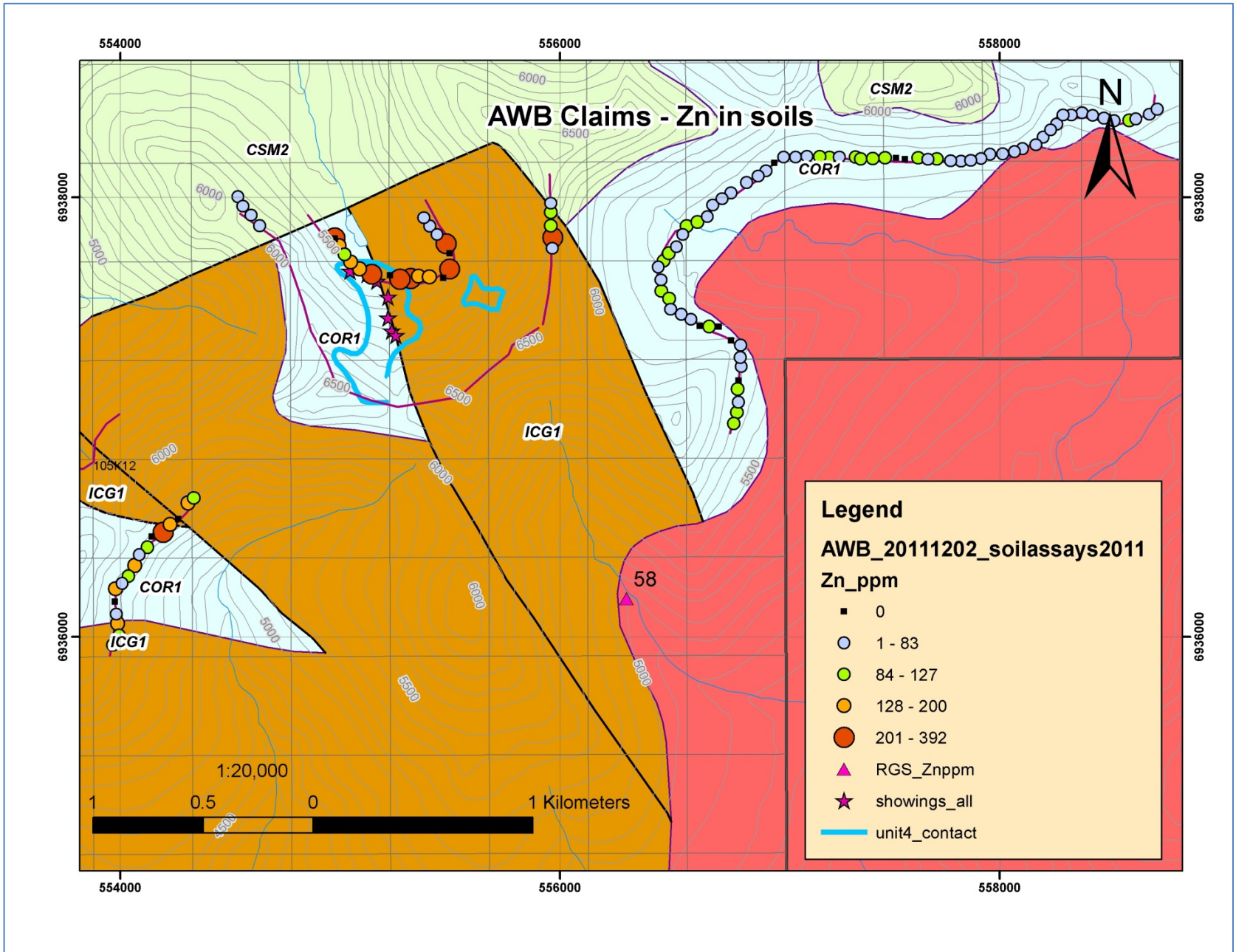


FIGURE 6 AS SOIL GEOCHEMISTRY

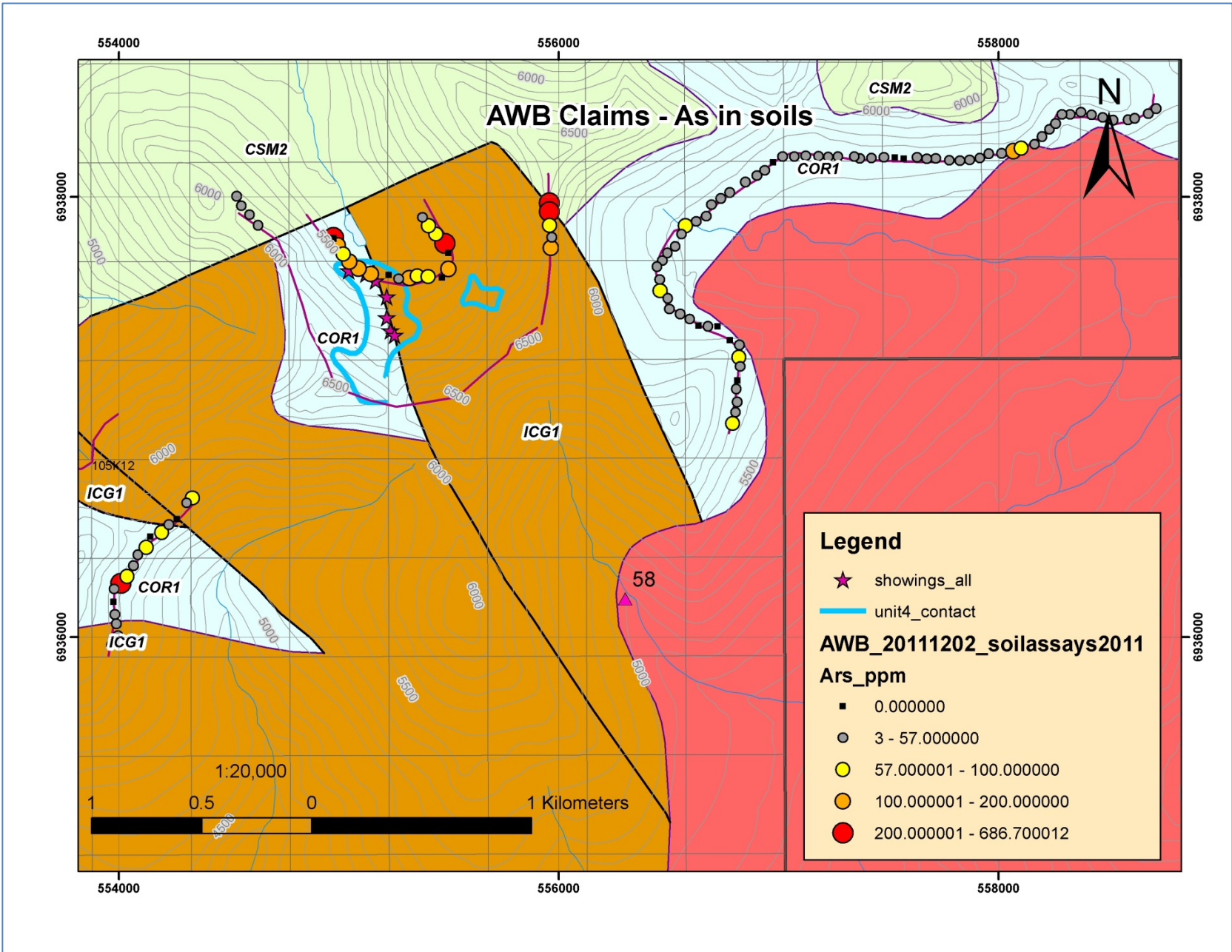


FIGURE 7 AU (ppb) SOIL GEOCHEMISTRY

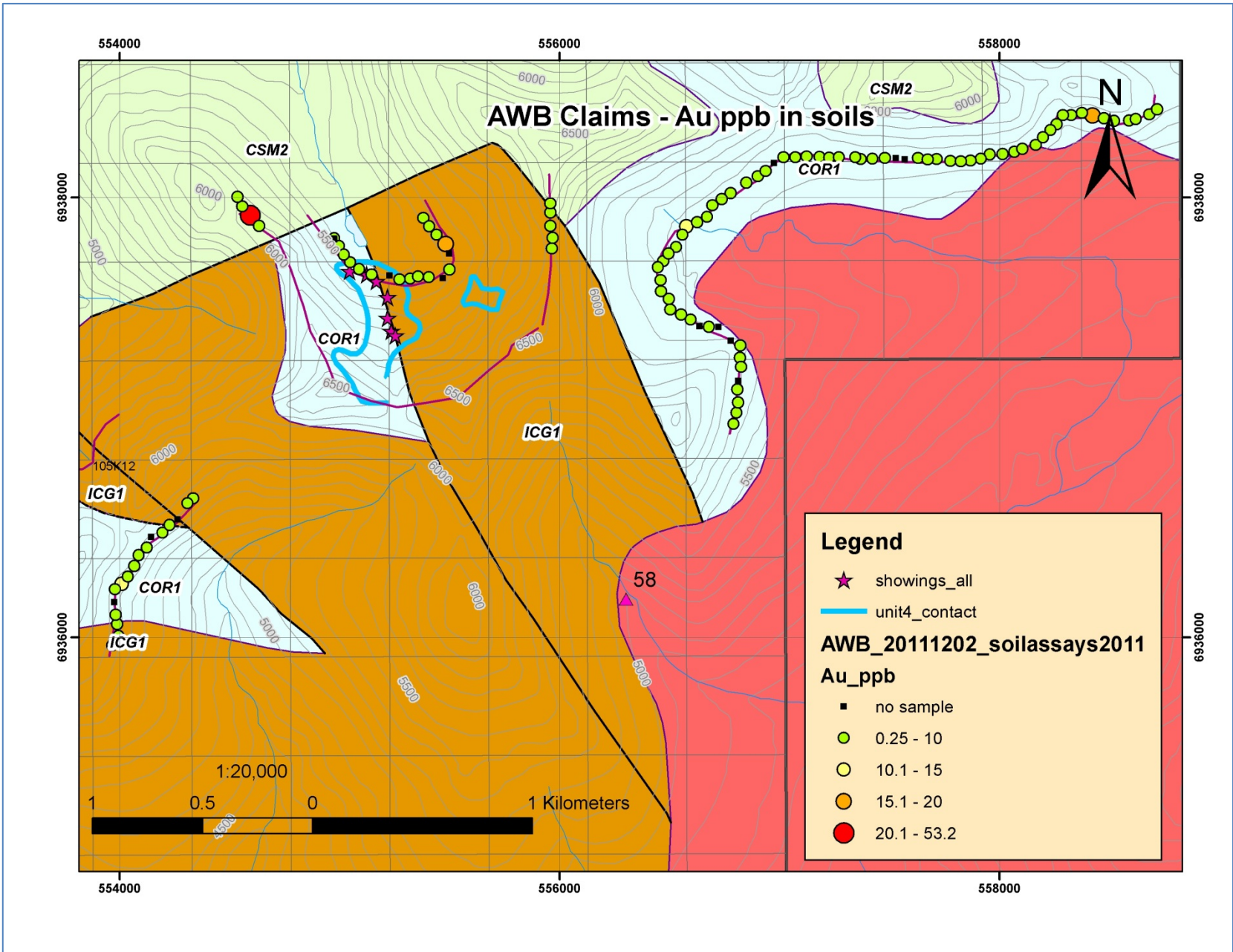


FIGURE 8 CU SOIL GEOCHEMISTRY

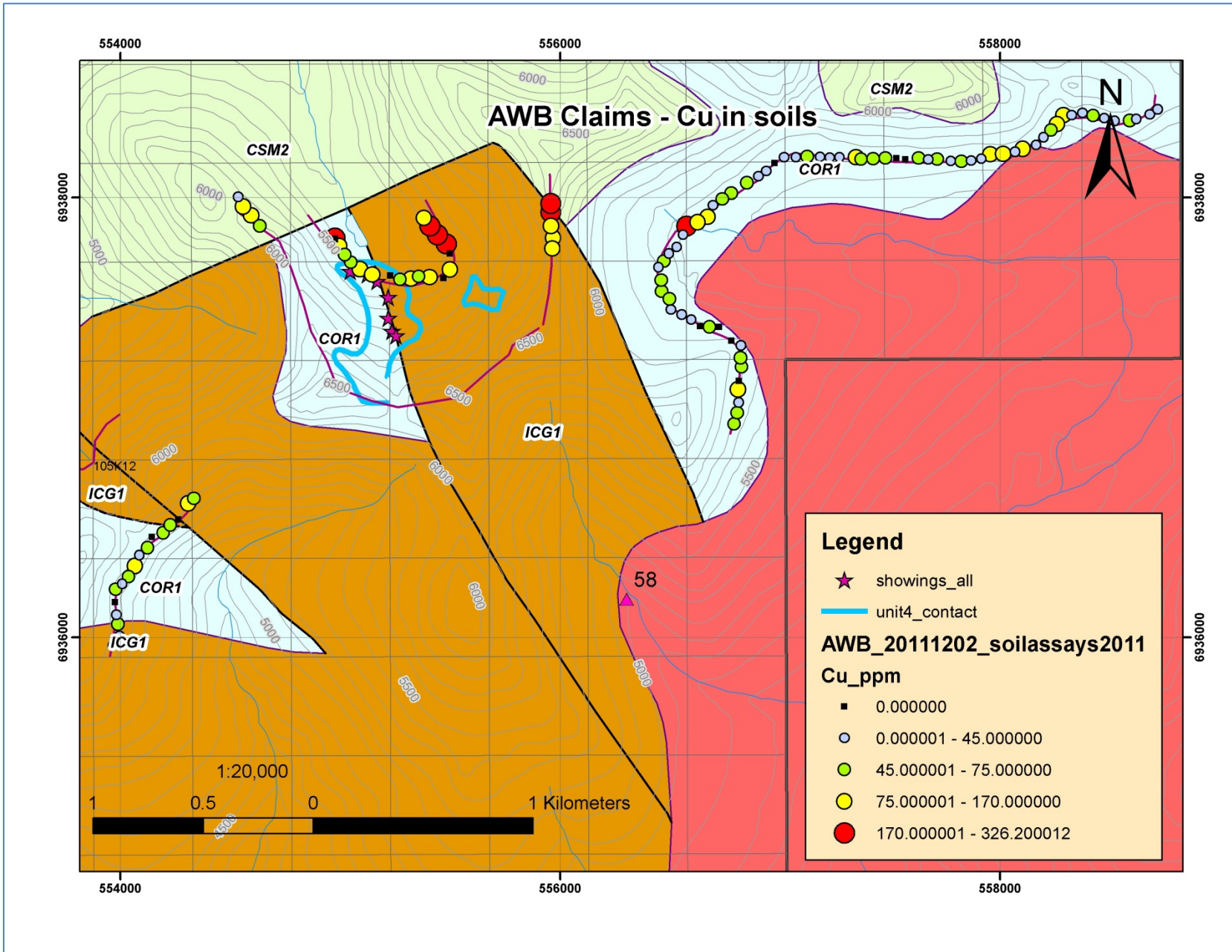


FIGURE 9 SB SOIL GEOCHEMISTRY

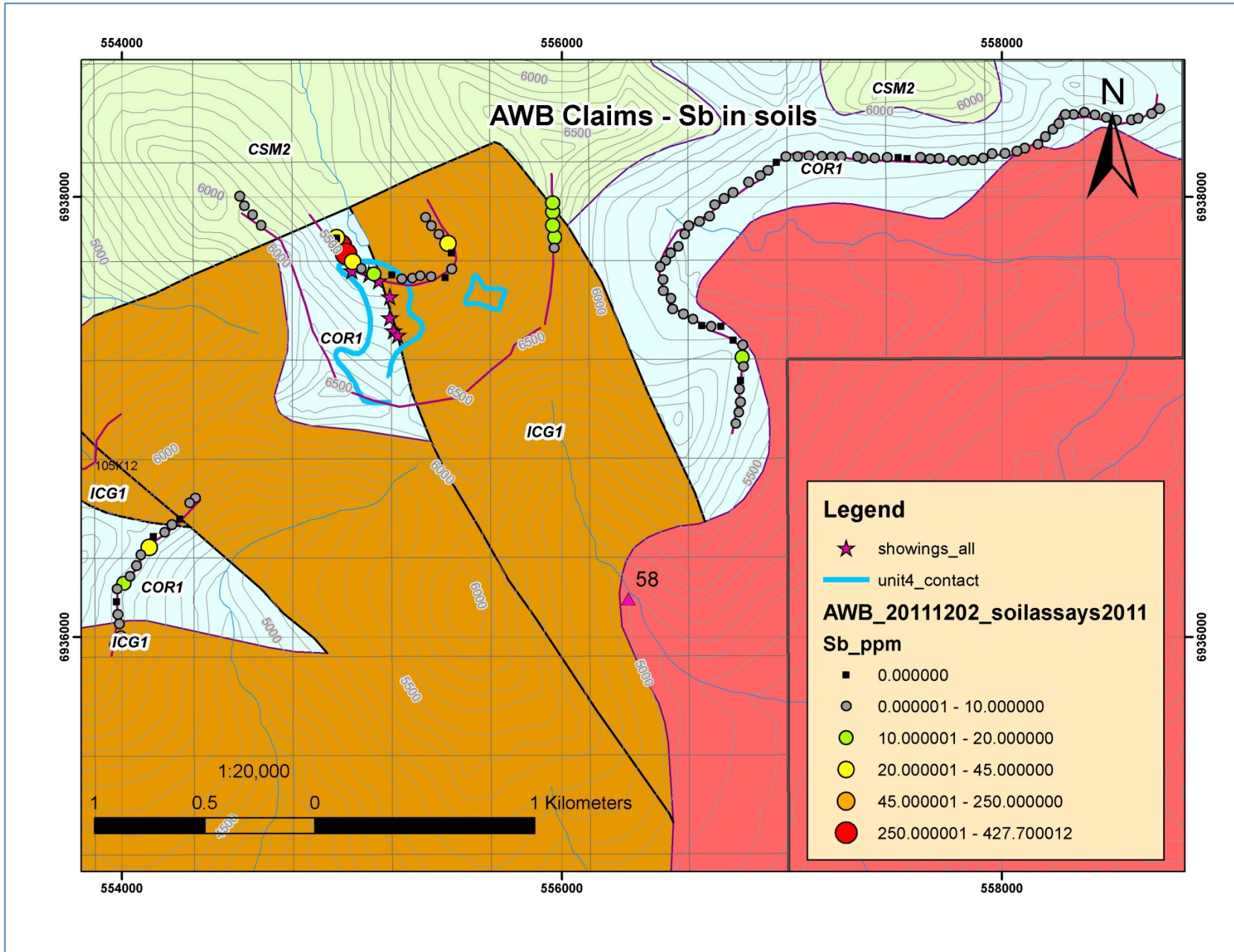
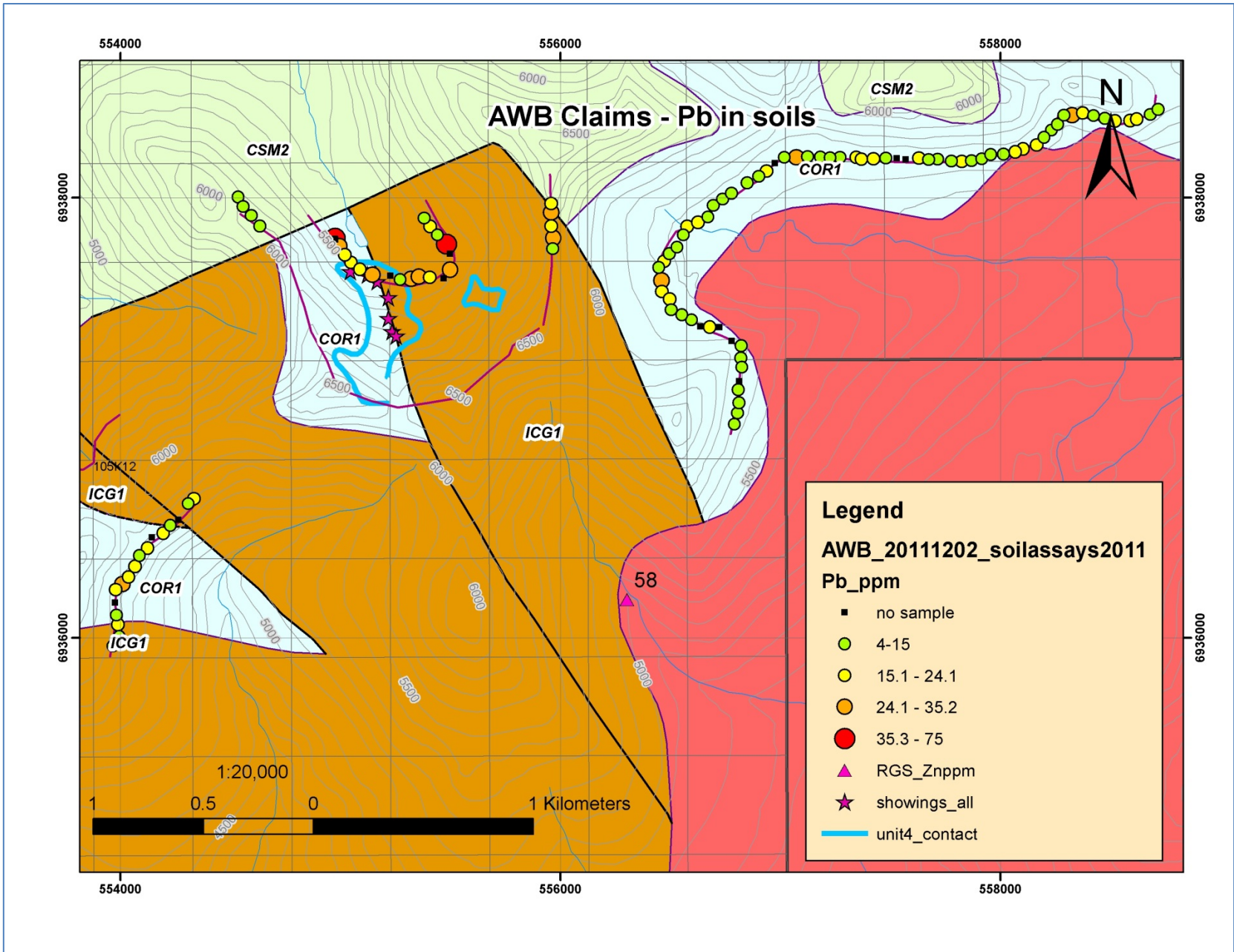


FIGURE 10 PB SOIL GEOCHEMISTRY



INTERPRETATION, CONCLUSIONS AND RECOMMENDATIONS

The results of the 2011 soil survey confirm the anomalous metal signature in soils of the known mineralization, and point to the potential of additional skarn mineralization, both to the east of the known showing and in the southernmost lens of Rabbitkettle limestone.

The survey coverage was not as extensive as what was originally planned. In order to properly test the area, ground-truthing of the regional geology map, prospecting and investigations of the soil anomalies located on lines E, G and H should be investigated.

Potential for Intrusive-hosted gold mineralization has not been tested nor has the potential for SEDEX mineralization at the Gull Lake/ Rabbitkettle contact. Potential for these deposit types is probably low.

A ground mag-VLF survey would be an inexpensive way to test for buried pyrrhotite-bearing skarn mineralization.

REFERENCES

-Digital data as provided by the Yukon Geological Survey, in particular:

- Deklerk, R. (compiler), 2003. Yukon MINFILE 2003 – A database of mineral occurrences. Yukon Geological Survey.
- Gordey, S.P., Makepeace, A.J., (compilers), , [2003-9\(D\), Open File \(Geological - Bedrock\); Yukon Digital Geology \(version 2\)](#) Yukon Geological Survey.
- YGS, The geological framework of the Yukon Territory, pdf document, <http://www.geology.gov.yk.ca/pdf/SelwynBasin.pdf> downloaded on May 10 2012.
- YGS, Anvil district, http://www.geology.gov.yk.ca/metallogeny/selwyn/anvil_text.html, downloaded on May 10, 2012

-UNION OIL COMPANY OF CANADA LTD, Apr/81. Assessment Report #090831 by W.E. Brereton.

STATEMENT OF QUALIFICATIONS

I, Danièle Héon, of:

12 Marigold Place
Whitehorse, YT
Y1A 6A2

hereby certify that:

1. I am a geologist with Redtail Metals Corp, with head office address at 11th floor, 888 Dunsmuir, Vancouver, B.C.
2. I am a graduate of McGill University, Montréal, Québec, with a degree in geology (B.Sc., 1983) and have been involved in geology and mineral exploration in Canada since 1979 and in the Yukon since 1990.
3. I am registered as a professional geoscientist with the Ordre des Géologues du Québec (no. 1510).
4. I am a member of the Yukon Chamber of Mines and of the Society of Economic Geology.
5. I am the author of this report on the AWB claims and that I have compiled the data and supervised the work described but have not personally visited the property.
6. This report is intended to satisfy assessment requirements only.

Signed:

Danièle Héon, B.Sc. P.Geol.

Date: May 16 2012

APPENDICES

APPENDIX 1 - MINFILE DESCRIPTION

OCCURRENCE DETAILS

Occurrence Number

105K 111

Occurrence Name

UNION

Occurrence Type

Hard-rock

Status

Showing

Aliases: BARB, STONE

Deposit Type(s): W Skarn

Location(s): 62°33'51" N - 133°55'43" W

NTS Mapsheet(s): 105K12

WORK HISTORY

Date	Work Type	Comment
------	-----------	---------

12/31/1980	Geology	
------------	---------	--

12/31/1980	Other	
------------	-------	--

RELATED REFERENCES

Number	Reference Type	Document Type	Title
Faro000051	Property File Collection	Geoscience Map (Geological - Bedrock)	Geological Map - TwoPete Mountain

CAPSULE

Work History

Staked as Stone cl (95408) in Nov/65 by Golden Gate EL. Restaked as Barb cl (YA50999) in Jul/80 by Union OC of Can L, which performed mapping and geochem sampling later in the year.

Capsule Geology

The claims were staked on skarn float and outcrop that assays up to 3.5% Cu, 5.4% Zn, 150 ppm Ag and 0.5% WO₃. The mineralization consists of pyrrhotite, pyrite, chalcopyrite, sphalerite, arsenopyrite, scheelite and molybdenite. Skarn bands up to 2 m thick have formed in limy petitic beds within a sequence of Lower Cambrian Gull Lake Formation and Cambro-Ordovician sedimentary rocks near the margin of the mid-Cretaceous Anvil Batholith. Channel samples returned low assays.

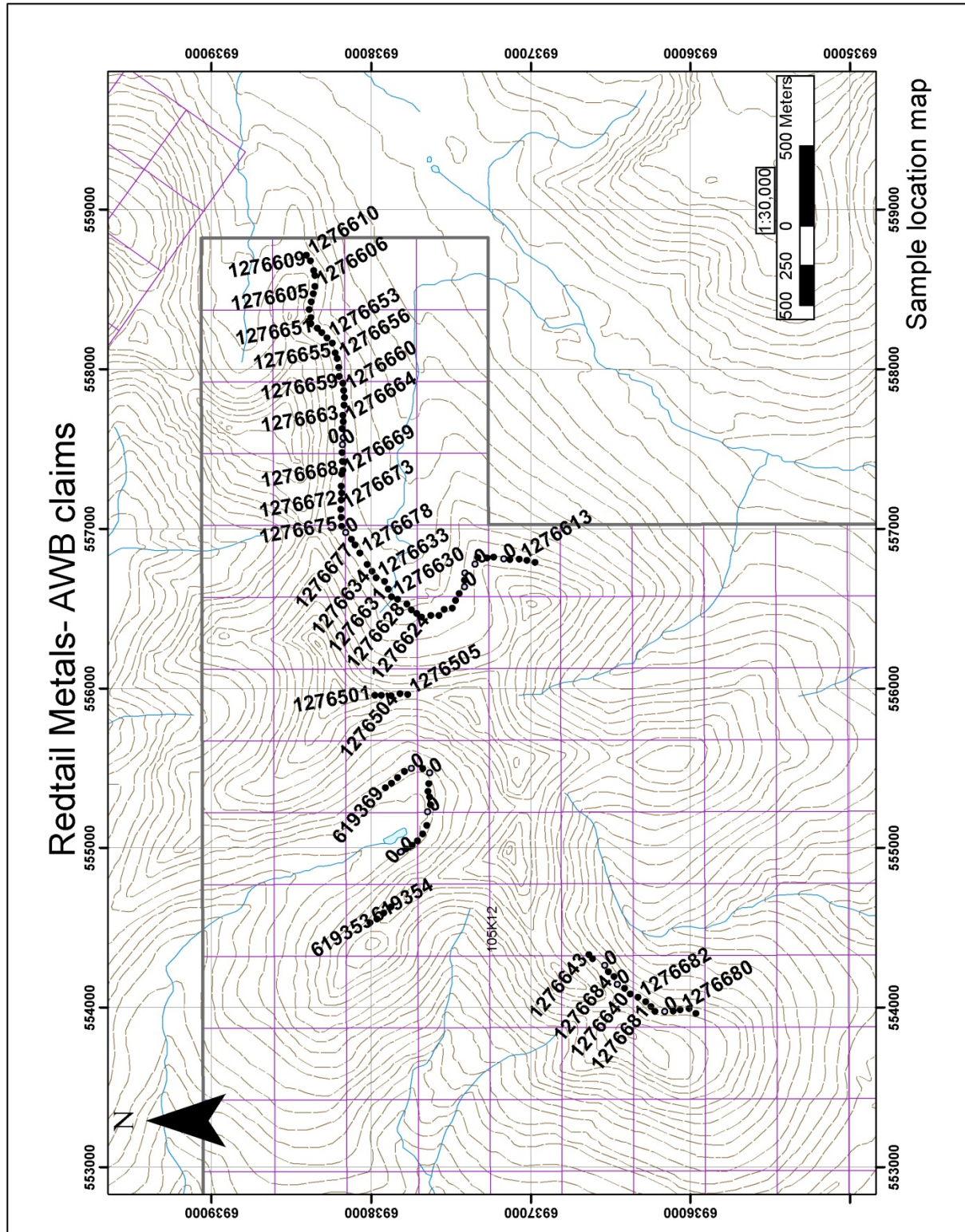
References

UNION OIL COMPANY OF CANADA LTD, Apr/81. Assessment Report #090831 by W.E. Brereton.

YUKON EXPLORATION AND GEOLOGY 1981, p. 155.

APPENDIX 2- SAMPLE LOCATION MAP

Redtail Metals- AWB claims



APPENDIX 3- CLAIM DATA

District	Grant Number	Claim Name	Claim Nbr	Claim Owner	Operation Recording Date	Staking Date	ClaimExpiry Date	Status	NTS MapNumber
Whitehorse	YD103701	AWB	1	Redtail Metals Corp. - 100%	21/02/2011	14/02/2011	21/02/2014	Application Pending	105K12
Whitehorse	YD103702	AWB	2	Redtail Metals Corp. - 100%	21/02/2011	14/02/2011	21/02/2014	Application Pending	105K12
Whitehorse	YD103703	AWB	3	Redtail Metals Corp. - 100%	21/02/2011	14/02/2011	21/02/2014	Application Pending	105K12
Whitehorse	YD103704	AWB	4	Redtail Metals Corp. - 100%	21/02/2011	14/02/2011	21/02/2014	Application Pending	105K12
Whitehorse	YD103705	AWB	5	Redtail Metals Corp. - 100%	21/02/2011	14/02/2011	21/02/2014	Application Pending	105K12
Whitehorse	YD103706	AWB	6	Redtail Metals Corp. - 100%	21/02/2011	14/02/2011	21/02/2014	Application Pending	105K12
Whitehorse	YD103707	AWB	7	Redtail Metals Corp. - 100%	21/02/2011	14/02/2011	21/02/2014	Application Pending	105K12
Whitehorse	YD103708	AWB	8	Redtail Metals Corp. - 100%	21/02/2011	14/02/2011	21/02/2014	Application Pending	105K12
Whitehorse	YD103709	AWB	9	Redtail Metals Corp. - 100%	21/02/2011	14/02/2011	21/02/2014	Application Pending	105K12
Whitehorse	YD103710	AWB	10	Redtail Metals Corp. - 100%	21/02/2011	14/02/2011	21/02/2014	Application Pending	105K12
Whitehorse	YD103711	AWB	11	Redtail Metals Corp. - 100%	21/02/2011	14/02/2011	21/02/2014	Application Pending	105K12
Whitehorse	YD103712	AWB	12	Redtail Metals Corp. - 100%	21/02/2011	14/02/2011	21/02/2014	Application Pending	105K12
Whitehorse	YD103713	AWB	13	Redtail Metals Corp. - 100%	21/02/2011	14/02/2011	21/02/2014	Application Pending	105K12
Whitehorse	YD103714	AWB	14	Redtail Metals Corp. - 100%	21/02/2011	14/02/2011	21/02/2014	Application Pending	105K12
Whitehorse	YD103715	AWB	15	Redtail Metals Corp. - 100%	21/02/2011	14/02/2011	21/02/2014	Application Pending	105K12
Whitehorse	YD103716	AWB	16	Redtail Metals Corp. - 100%	21/02/2011	14/02/2011	21/02/2014	Application Pending	105K12
Whitehorse	YD103717	AWB	17	Redtail Metals Corp. - 100%	21/02/2011	14/02/2011	21/02/2014	Application Pending	105K12
Whitehorse	YD103718	AWB	18	Redtail Metals Corp. - 100%	21/02/2011	14/02/2011	21/02/2014	Application Pending	105K12
Whitehorse	YD103719	AWB	19	Redtail Metals Corp. - 100%	21/02/2011	14/02/2011	21/02/2014	Application Pending	105K12
Whitehorse	YD103720	AWB	20	Redtail Metals Corp. - 100%	21/02/2011	14/02/2011	21/02/2014	Application Pending	105K12
Whitehorse	YD103721	AWB	21	Redtail Metals Corp. - 100%	21/02/2011	14/02/2011	21/02/2014	Application Pending	105K12
Whitehorse	YD103722	AWB	22	Redtail Metals Corp. - 100%	21/02/2011	14/02/2011	21/02/2014	Application Pending	105K12
Whitehorse	YD103723	AWB	23	Redtail Metals Corp. - 100%	21/02/2011	14/02/2011	21/02/2014	Application Pending	105K12
Whitehorse	YD103724	AWB	24	Redtail Metals Corp. - 100%	21/02/2011	14/02/2011	21/02/2014	Application Pending	105K12
Whitehorse	YD103725	AWB	25	Redtail Metals Corp. - 100%	21/02/2011	14/02/2011	21/02/2014	Application Pending	105K12
Whitehorse	YD103726	AWB	26	Redtail Metals Corp. - 100%	21/02/2011	14/02/2011	21/02/2014	Application Pending	105K12
Whitehorse	YD103727	AWB	27	Redtail Metals Corp. - 100%	21/02/2011	14/02/2011	21/02/2014	Application Pending	105K12
Whitehorse	YD103728	AWB	28	Redtail Metals Corp. - 100%	21/02/2011	14/02/2011	21/02/2014	Application Pending	105K12
Whitehorse	YD103729	AWB	29	Redtail Metals Corp. - 100%	21/02/2011	14/02/2011	21/02/2014	Application Pending	105K12
Whitehorse	YD103730	AWB	30	Redtail Metals Corp. - 100%	21/02/2011	14/02/2011	21/02/2014	Application Pending	105K12
Whitehorse	YD103731	AWB	31	Redtail Metals Corp. - 100%	21/02/2011	14/02/2011	21/02/2014	Application Pending	105K12

District	Grant Number	Claim Name	Claim Nbr	Claim Owner	Operation Recording Date	Staking Date	ClaimExpiry Date	Status	NTS MapNumber
Whitehorse	YD103732	AWB	32	Redtail Metals Corp. - 100%	21/02/2011	14/02/2011	21/02/2014	Application Pending	105K12
Whitehorse	YD103733	AWB	33	Redtail Metals Corp. - 100%	21/02/2011	14/02/2011	21/02/2014	Application Pending	105K12
Whitehorse	YD103734	AWB	34	Redtail Metals Corp. - 100%	21/02/2011	14/02/2011	21/02/2014	Application Pending	105K12
Whitehorse	YD103735	AWB	35	Redtail Metals Corp. - 100%	21/02/2011	14/02/2011	21/02/2014	Application Pending	105K12
Whitehorse	YD103736	AWB	36	Redtail Metals Corp. - 100%	21/02/2011	14/02/2011	21/02/2014	Application Pending	105K12
Whitehorse	YD103737	AWB	37	Redtail Metals Corp. - 100%	21/02/2011	14/02/2011	21/02/2014	Application Pending	105K12
Whitehorse	YD103738	AWB	38	Redtail Metals Corp. - 100%	21/02/2011	14/02/2011	21/02/2014	Application Pending	105K12
Whitehorse	YD103739	AWB	39	Redtail Metals Corp. - 100%	21/02/2011	14/02/2011	21/02/2014	Application Pending	105K12
Whitehorse	YD103740	AWB	40	Redtail Metals Corp. - 100%	21/02/2011	14/02/2011	21/02/2014	Application Pending	105K12
Whitehorse	YD103741	AWB	41	Redtail Metals Corp. - 100%	21/02/2011	14/02/2011	21/02/2014	Application Pending	105K12
Whitehorse	YD103742	AWB	42	Redtail Metals Corp. - 100%	21/02/2011	14/02/2011	21/02/2014	Application Pending	105K12
Whitehorse	YD103743	AWB	43	Redtail Metals Corp. - 100%	21/02/2011	14/02/2011	21/02/2014	Application Pending	105K12
Whitehorse	YD103744	AWB	44	Redtail Metals Corp. - 100%	21/02/2011	14/02/2011	21/02/2014	Application Pending	105K12
Whitehorse	YD103745	AWB	45	Redtail Metals Corp. - 100%	21/02/2011	14/02/2011	21/02/2014	Application Pending	105K12
Whitehorse	YD103746	AWB	46	Redtail Metals Corp. - 100%	21/02/2011	14/02/2011	21/02/2014	Application Pending	105K12
Whitehorse	YD103747	AWB	47	Redtail Metals Corp. - 100%	21/02/2011	14/02/2011	21/02/2014	Application Pending	105K12
Whitehorse	YD103748	AWB	48	Redtail Metals Corp. - 100%	21/02/2011	14/02/2011	21/02/2014	Application Pending	105K12
Whitehorse	YD103749	AWB	49	Redtail Metals Corp. - 100%	21/02/2011	14/02/2011	21/02/2014	Application Pending	105K12
Whitehorse	YD103750	AWB	50	Redtail Metals Corp. - 100%	21/02/2011	14/02/2011	21/02/2014	Application Pending	105K12
Whitehorse	YD103751	AWB	51	Redtail Metals Corp. - 100%	21/02/2011	14/02/2011	21/02/2014	Application Pending	105K12
Whitehorse	YD103752	AWB	52	Redtail Metals Corp. - 100%	21/02/2011	14/02/2011	21/02/2014	Application Pending	105K12
Whitehorse	YD103753	AWB	53	Redtail Metals Corp. - 100%	21/02/2011	14/02/2011	21/02/2014	Application Pending	105K12
Whitehorse	YD103754	AWB	54	Redtail Metals Corp. - 100%	21/02/2011	14/02/2011	21/02/2014	Application Pending	105K12
Whitehorse	YD103755	AWB	55	Redtail Metals Corp. - 100%	21/02/2011	14/02/2011	21/02/2014	Application Pending	105K12
Whitehorse	YD103756	AWB	56	Redtail Metals Corp. - 100%	21/02/2011	14/02/2011	21/02/2014	Application Pending	105K12
Whitehorse	YD103757	AWB	57	Redtail Metals Corp. - 100%	21/02/2011	14/02/2011	21/02/2014	Application Pending	105K12
Whitehorse	YD103758	AWB	58	Redtail Metals Corp. - 100%	21/02/2011	14/02/2011	21/02/2014	Application Pending	105K12
Whitehorse	YD103759	AWB	59	Redtail Metals Corp. - 100%	21/02/2011	14/02/2011	21/02/2014	Application Pending	105K12
Whitehorse	YD103760	AWB	60	Redtail Metals Corp. - 100%	21/02/2011	14/02/2011	21/02/2014	Application Pending	105K12
Whitehorse	YD103761	AWB	61	Redtail Metals Corp. - 100%	21/02/2011	14/02/2011	21/02/2014	Application Pending	105K12
Whitehorse	YD103762	AWB	62	Redtail Metals Corp. - 100%	21/02/2011	14/02/2011	21/02/2014	Application Pending	105K12

District	Grant Number	Claim Name	Claim Nbr	Claim Owner	Operation Recording Date	Staking Date	ClaimExpiry Date	Status	NTS MapNumber
Whitehorse	YD103763	AWB	63	Redtail Metals Corp. - 100%	21/02/2011	14/02/2011	21/02/2014	Application Pending	105K12
Whitehorse	YD103764	AWB	64	Redtail Metals Corp. - 100%	21/02/2011	14/02/2011	21/02/2014	Application Pending	105K12
Whitehorse	YD103765	AWB	65	Redtail Metals Corp. - 100%	21/02/2011	14/02/2011	21/02/2014	Application Pending	105K12
Whitehorse	YD103766	AWB	66	Redtail Metals Corp. - 100%	21/02/2011	14/02/2011	21/02/2014	Application Pending	105K12
Whitehorse	YD103767	AWB	67	Redtail Metals Corp. - 100%	21/02/2011	14/02/2011	21/02/2014	Application Pending	105K12
Whitehorse	YD103768	AWB	68	Redtail Metals Corp. - 100%	21/02/2011	14/02/2011	21/02/2014	Application Pending	105K12
Whitehorse	YD103769	AWB	69	Redtail Metals Corp. - 100%	21/02/2011	14/02/2011	21/02/2014	Application Pending	105K12
Whitehorse	YD103770	AWB	70	Redtail Metals Corp. - 100%	21/02/2011	14/02/2011	21/02/2014	Application Pending	105K12
Whitehorse	YD103771	AWB	71	Redtail Metals Corp. - 100%	21/02/2011	14/02/2011	21/02/2014	Application Pending	105K12
Whitehorse	YD103772	AWB	72	Redtail Metals Corp. - 100%	21/02/2011	14/02/2011	21/02/2014	Application Pending	105K12
Whitehorse	YD103773	AWB	73	Redtail Metals Corp. - 100%	21/02/2011	14/02/2011	21/02/2014	Application Pending	105K12
Whitehorse	YD103774	AWB	74	Redtail Metals Corp. - 100%	21/02/2011	14/02/2011	21/02/2014	Application Pending	105K12
Whitehorse	YD103775	AWB	75	Redtail Metals Corp. - 100%	21/02/2011	14/02/2011	21/02/2014	Application Pending	105K12
Whitehorse	YD103776	AWB	76	Redtail Metals Corp. - 100%	21/02/2011	14/02/2011	21/02/2014	Application Pending	105K12
Whitehorse	YD103777	AWB	77	Redtail Metals Corp. - 100%	21/02/2011	14/02/2011	21/02/2014	Application Pending	105K12
Whitehorse	YD103778	AWB	78	Redtail Metals Corp. - 100%	21/02/2011	14/02/2011	21/02/2014	Application Pending	105K12
Whitehorse	YD103779	AWB	79	Redtail Metals Corp. - 100%	21/02/2011	14/02/2011	21/02/2014	Application Pending	105K12
Whitehorse	YD103780	AWB	80	Redtail Metals Corp. - 100%	21/02/2011	14/02/2011	21/02/2014	Application Pending	105K12
Whitehorse	YD103781	AWB	81	Redtail Metals Corp. - 100%	21/02/2011	14/02/2011	21/02/2014	Application Pending	105K12
Whitehorse	YD103782	AWB	82	Redtail Metals Corp. - 100%	21/02/2011	14/02/2011	21/02/2014	Application Pending	105K12
Whitehorse	YD103783	AWB	83	Redtail Metals Corp. - 100%	21/02/2011	14/02/2011	21/02/2014	Application Pending	105K12
Whitehorse	YD103784	AWB	84	Redtail Metals Corp. - 100%	21/02/2011	14/02/2011	21/02/2014	Application Pending	105K12
Whitehorse	YD103785	AWB	85	Redtail Metals Corp. - 100%	21/02/2011	14/02/2011	21/02/2014	Application Pending	105K12
Whitehorse	YD103786	AWB	86	Redtail Metals Corp. - 100%	21/02/2011	14/02/2011	21/02/2014	Application Pending	105K12
Whitehorse	YD103787	AWB	87	Redtail Metals Corp. - 100%	21/02/2011	14/02/2011	21/02/2014	Application Pending	105K12
Whitehorse	YD103788	AWB	88	Redtail Metals Corp. - 100%	21/02/2011	14/02/2011	21/02/2014	Application Pending	105K12
Whitehorse	YD103789	AWB	89	Redtail Metals Corp. - 100%	21/02/2011	14/02/2011	21/02/2014	Application Pending	105K12
Whitehorse	YD103790	AWB	90	Redtail Metals Corp. - 100%	21/02/2011	14/02/2011	21/02/2014	Application Pending	105K12
Whitehorse	YD103791	AWB	91	Redtail Metals Corp. - 100%	21/02/2011	14/02/2011	21/02/2014	Application Pending	105K12
Whitehorse	YD103792	AWB	92	Redtail Metals Corp. - 100%	21/02/2011	14/02/2011	21/02/2014	Application Pending	105K12
Whitehorse	YD103793	AWB	93	Redtail Metals Corp. - 100%	21/02/2011	14/02/2011	21/02/2014	Application Pending	105K12

District	Grant Number	Claim Name	Claim Nbr	Claim Owner	Operation Recording Date	Staking Date	ClaimExpiry Date	Status	NTS MapNumber
Whitehorse	YD103794	AWB	94	Redtail Metals Corp. - 100%	21/02/2011	14/02/2011	21/02/2014	Application Pending	105K12
Whitehorse	YD103795	AWB	95	Redtail Metals Corp. - 100%	21/02/2011	14/02/2011	21/02/2014	Application Pending	105K12
Whitehorse	YD103796	AWB	96	Redtail Metals Corp. - 100%	21/02/2011	14/02/2011	21/02/2014	Application Pending	105K12
Whitehorse	YD103797	AWB	97	Redtail Metals Corp. - 100%	21/02/2011	14/02/2011	21/02/2014	Application Pending	105K12
Whitehorse	YD103798	AWB	98	Redtail Metals Corp. - 100%	21/02/2011	14/02/2011	21/02/2014	Application Pending	105K12
Whitehorse	YD103799	AWB	99	Redtail Metals Corp. - 100%	21/02/2011	14/02/2011	21/02/2014	Application Pending	105K12
Whitehorse	YD103800	AWB	100	Redtail Metals Corp. - 100%	21/02/2011	14/02/2011	21/02/2014	Application Pending	105K12
Whitehorse	YD103801	AWB	101	Redtail Metals Corp. - 100%	21/02/2011	14/02/2011	21/02/2014	Application Pending	105K12
Whitehorse	YD103802	AWB	102	Redtail Metals Corp. - 100%	21/02/2011	14/02/2011	21/02/2014	Application Pending	105K12
Whitehorse	YD55813	AWB	103	Redtail Metals Corp. - 100%	21/02/2011	14/02/2011	21/02/2014	Application Pending	105K12
Whitehorse	YD55814	AWB	104	Redtail Metals Corp. - 100%	21/02/2011	14/02/2011	21/02/2014	Application Pending	105K12
Whitehorse	YD55815	AWB	105	Redtail Metals Corp. - 100%	21/02/2011	14/02/2011	21/02/2014	Application Pending	105K12
Whitehorse	YD55816	AWB	106	Redtail Metals Corp. - 100%	21/02/2011	14/02/2011	21/02/2014	Application Pending	105K12
Whitehorse	YD55817	AWB	107	Redtail Metals Corp. - 100%	21/02/2011	14/02/2011	21/02/2014	Application Pending	105K12
Whitehorse	YD55818	AWB	108	Redtail Metals Corp. - 100%	21/02/2011	14/02/2011	21/02/2014	Application Pending	105K12
Whitehorse	YD55819	AWB	109	Redtail Metals Corp. - 100%	21/02/2011	14/02/2011	21/02/2014	Application Pending	105K12
Whitehorse	YD55820	AWB	110	Redtail Metals Corp. - 100%	21/02/2011	14/02/2011	21/02/2014	Application Pending	105K12
Whitehorse	YD55821	AWB	111	Redtail Metals Corp. - 100%	21/02/2011	14/02/2011	21/02/2014	Application Pending	105K12
Whitehorse	YD55822	AWB	112	Redtail Metals Corp. - 100%	21/02/2011	14/02/2011	21/02/2014	Application Pending	105K12
Whitehorse	YD55823	AWB	113	Redtail Metals Corp. - 100%	21/02/2011	14/02/2011	21/02/2014	Application Pending	105K12
Whitehorse	YD55824	AWB	114	Redtail Metals Corp. - 100%	21/02/2011	14/02/2011	21/02/2014	Application Pending	105K12
Whitehorse	YD55825	AWB	115	Redtail Metals Corp. - 100%	21/02/2011	14/02/2011	21/02/2014	Application Pending	105K12
Whitehorse	YD55826	AWB	116	Redtail Metals Corp. - 100%	21/02/2011	14/02/2011	21/02/2014	Application Pending	105K12

APPENDIX 4- SOIL SAMPLE DATA

AWB- 2011 soil data

	B	C	D	E	J	K	L	M	N	O	P	Q	R	S	T	U	V	Y	Z
1	Sample	UTM E NAD 83	UTM N Nad 83	Elev m	Sample Depth	Horizon Sampled	Depth within horizon	Sample	Organic s %	Sand %	Silt %	Clay %	Clasts	Parent Material	Moisture	Vegetation	Terrain	No Sam ple	Comments
2	619351	554594	6937919	1827	40-50	B/C	>30	Colour	5	25	30	20	20	Weathered bedrock	Dry	Alpine	Ridge Top		next to old claim post
3	619352	554632	6937872	1820	20-30	B/C	20-25	Light Brown	20	10	25	35	10	Weathered bedrock	Dry	Alpine	Ridge Top		
4	619353	554556	6937961	1824	50-60	B/C	25-30	Light Brown	20	10	25	35	10	Weathered bedrock	Dry	Alpine	Ridge Top		
5	619354	554534	6938005	1806	30-40	B/C	20-25	Light Brown	10	10	35	35	10	Weathered bedrock	Dry	Alpine	Ridge Top		
6	619355	554975	6937816	1682	50-60	B/C	>30	Light Brown	10	10	25	35	20	Talus/colluvium	Moist	Alpine	Mid Slope		
7	619356	554995	6937780	1680	50-60	B/C	>30	Light Brown	5	10	25	35	25	Weathered bedrock	Moist	Alpine	Mid Slope		
8	619357	555019	6937741	1675	30-40	B/C	25-30	Light Brown	5	10	25	35	25	Weathered bedrock	Moist	Alpine	Mid Slope		poor gps accuracy; next to steep hill
9	619358	555047	6937707	1680	30-40	C	25-30	Light Brown	0	20	25	35	20	Weathered bedrock	Moist	Alpine	Mid Slope		
10	619359	555089	6937675	1685	30-40	B/C	25-30	Light Brown	10	20	20	30	20	Weathered bedrock	Dry	Alpine	Mid Slope		
11	619360	555144	6937650	1680	30-40	B/C	25-30	Light Brown	5	20	20	25	30	Weathered bedrock	Moist	None	Mid Slope		
12	619361	555272	6937627	1682	30-40	B	25-30	Light Brown	0	35	30	15	20	Talus/colluvium	Dry	Alpine	Mid Slope		off line due staying with the contour
13	619362	555321	6937632	1690	60-70	B/C	>30	Light Brown	0	20	30	30	20	Talus/colluvium	Moist	Alpine	Mid Slope		very rocky sample
14	619363	555356	6937642	1679	40-50	B/C	>30	Light Brown	0	20	30	30	20	Weathered bedrock	Dry	Alpine	Mid Slope		
15	619364	555405	6937638	1669	40-50	B/C	>30	Light Brown	0	25	25	35	25	Weathered bedrock	Moist	Alpine	Mid Slope		may be off line due to GPS unreliability
16	619365	555498	6937674	1696	20-30	B/C	15-20	Light Brown	0	35	25	10	30	Talus/colluvium	Dry	Alpine	Mid Slope		lots of little clasts
17	619366	555481	6937789	1686	60-70	B/C	>30	Light Brown	0	15	35	40	10	(glacio)-lacustrine	Wet	Alpine	Mid Slope		lots of clay
18	619367	555441	6937832	1691	60-70	B/C	>30	Light Brown	0	10	35	45	10	(glacio)-lacustrine	Wet	Alpine	Mid Slope		
19	619368	555407	6937870	1674	60-70	B	>30	Light Brown	10	10	35	45	10	(glacio)-lacustrine	Wet	Alpine	Mid Slope		
20	619369	555379	6937907	1681	50-60	B	>30	Light Brown	10	10	35	45	10	(glacio)-lacustrine	Wet	Alpine	Mid Slope		
21	1276501	555958	6937975	704	30-40	C	25-30							Weathered bedrock	Frozen	Alpine	Ridge Top		trimble failed no data recovered, coords are approximate
22	1276502	555958	6937934	705	30-40	C	25-30							Weathered bedrock	Frozen	Alpine	Ridge Top		trimble failed no data recovered, coords are approximate
23	1276503	555957	6937873	703	30-40	C	25-30							Weathered bedrock	Frozen	Alpine	Ridge Top		trimble failed no data recovered, coords are approximate

AWB- 2011 soil data

	B	C	D	E	J	K	L	M	N	O	P	Q	R	S	T	U	V	Y	Z
24	1276504	555967	6937818	709	30-40	C	25-30							Weathered bedrock	Frozen	Alpine	Ridge Top		trimble failed no data recovered, coords are approximate
25	1276505	555964	6937769	741	30-40	C	25-30							Weathered bedrock	Frozen	Alpine	Ridge Top		trimble failed no data recovered, coords are approximate
26	1276601	558288	6938375	1678	50-60	B	>30	Light Brown	0	20	30	35	15	Talus/colluvium	Moist	Alpine	Mid Slope		
27	1276602	558325	6938375	1664	30-40	B	>30	Light Brown	5	20	30	40	15	Talus/colluvium	Moist	Alpine	Mid Slope		
28	1276603	558376	6938386	1681	50-60	B	>30	Light Brown	5	20	30	30	15	Talus/colluvium	Dry	Alpine	Mid Slope		
29	1276604	558424	6938373	1673	50-60	B	>30	Light Brown	0	15	35	30	20	Talus/colluvium	Moist	Alpine	Mid Slope		
30	1276605	558475	6938361	1673	50-60	B	>30	Light Brown	10	10	30	35	15	Talus/colluvium	Moist	Alpine	Mid Slope		
31	1276606	558521	6938350	1674	60-70	B/C	10-15	Light Brown	0	20	30	30	20	Talus/colluvium	Moist	Alpine	Mid Slope		
32	1276607	558591	6938351	1677	50-60	A/B	>30	Light Brown	20	5	25	30	20	Talus/colluvium	Moist	Alpine	Mid Slope		bad sampling organics boulders
33	1276608	558620	6938359	1684	40-50	B	>30	Light Brown	15	15	25	30	15	Talus/colluvium	Moist	Alpine	Mid Slope		lots of organic and rocks
34	1276609	558681	6938380	1679	40-50	A/B	>30	Dark Brown	20	15	25	30	15	Talus/colluvium	Dry	Alpine	Mid Slope		l
35	1276610	558716	6938403	1678	40-50	B	>30	Dark Brown	10	20	25	35	10	Talus/colluvium	Moist	Alpine	Mid Slope		
36	1276611	556791	6936971	1773	50-60	C	>30	Dark Brown	20	20	20	20	20	Talus/colluvium	Moist	Alpine	Mid Slope		
37	1276612	556804	6937022	1768	40-50	A/B	>30	Dark Brown	20	20	20	20	20	Talus/colluvium	Partially Frozen	Alpine	Mid Slope		
38	1276613	556810	6937069	1772	40-50	B	>30	Dark Brown	5	20	30	35	10	Talus/colluvium	Partially Frozen	Alpine	Mid Slope		
39	1276614	556809	6937128	1769	40-50	A/B	>30	Dark Brown	5	20	30	35	10	Talus/colluvium	Partially Frozen	Alpine	Mid Slope		
40	1276615	556824	6937230	1790	40-50	B	>30	Light Brown	0	20	35	35	10	Talus/colluvium	Partially Frozen	Alpine	Mid Slope		
41	1276616	556820	6937272	1771	50-60	B	>30	Light Brown	0	20	35	35	10	Talus/colluvium	Partially Frozen	Alpine	Mid Slope		
42	1276617	556821	6937328	1778	50-60	B	>30	Light Brown	5	15	35	35	10	Talus/colluvium	Partially Frozen	Alpine	Mid Slope		
43	1276618	556679	6937414	1752	50-60	B	>30	Light Brown	0	20	35	35	10	Talus/colluvium	Partially Frozen	Alpine	Mid Slope		
44	1276619	556597	6937445	1733	50-60	B	>30	Light Brown	0	20	35	35	10	Talus/colluvium	Partially Frozen	Alpine	Mid Slope		
45	1276620	556552	6937469	1716	40-50	B	>30	Light Brown	0	20	35	35	10	Talus/colluvium	Partially Frozen	Alpine	Mid Slope		
46	1276621	556503	6937491	1711	40-50	B	>30	Light Brown	15	15	20	30	20	Talus/colluvium	Partially Frozen	Alpine	Mid Slope		
47	1276622	556496	6937539	1717	50-60	B	>30	Light Brown	0	20	30	30	20	Talus/colluvium	Partially Frozen	Alpine	Valley Lowland		
48	1276623	556460	6937573	1706	50-60	B	>30	Light Brown	0	20	30	30	20	Talus/colluvium	Partially Frozen	Alpine	Valley Lowland		boulder field . off line.

AWB- 2011 soil data

	B	C	D	E	J	K	L	M	N	O	P	Q	R	S	T	U	V	Y	Z
49	1276624	556458	6937624	1709	40-50	B	>30	Light Brown	0	20	30	30	20	Talus/colluvium	Partially Frozen	Alpine	Valley Lowland		
50	1276625	556448	6937683	1705	40-50	B	>30	Light Brown	10	20	20	30	20	Talus/colluvium	Partially Frozen	Alpine	Valley Lowland		
51	1276626	556471	6937712	1694	40-50	B	>30	Light Brown	0	20	30	30	20	Talus/colluvium	Partially Frozen	Alpine	Valley Lowland		
52	1276627	556495	6937747	1704	50-60	B	>30	Light Brown	15	20	30	30	15	Talus/colluvium	Partially Frozen	Alpine	Valley Lowland		
53	1276628	556530	6937775	1691	50-60	B	>30	Light Brown	15	20	30	30	15	Talus/colluvium	Partially Frozen	Alpine	Valley Lowland		
54	1276629	556559	6937832	1688	50-60	B	>30	Light Brown	5	20	30	30	15	Talus/colluvium	Partially Frozen	Alpine	Valley Lowland		
55	1276630	556576	6937871	1678	50-60	B	>30	Light Brown	5	10	40	30	15	Talus/colluvium	Partially Frozen	Alpine	Valley Lowland		
56	1276631	556625	6937890	1681	50-60	B	>30	Light Brown	5	10	40	35	10	Talus/colluvium	Moist	Alpine	Valley Lowland		
57	1276632	556671	6937912	1679	50-60	B	>30	Light Brown	5	10	40	35	10	Talus/colluvium	Moist	Alpine	Valley Lowland		
58	1276633	556695	6937966	1681	50-60	B	>30	Light Brown	5	10	40	35	10	Talus/colluvium	Moist	Alpine	Valley Lowland		
59	1276634	556736	6937993	1678	30-40	B	>30	Light Brown	5	10	40	35	10	Talus/colluvium	Moist	Alpine	Valley Lowland		
60	1276635	556778	6938022	1675	40-50	B	>30	Light Brown	10	10	30	35	15	Talus/colluvium	Moist	Alpine	Valley Lowland		
61	1276636	553994	6936007	1703	>70	B	>30	Dark Brown	10	10	35	40	5	Talus/colluvium	Moist	Alpine	Mid Slope		
62	1276637	553981	6936104	1691	60-70	B	>30	Light Brown	20	10	30	35	5	Talus/colluvium	Dry	Alpine	Mid Slope		
63	1276638	553976	6936219	1719	60-70	B	>30	Light Brown	0	15	30	35	20	Talus/colluvium	Dry	Alpine	Mid Slope		
64	1276639	554037	6936277	1694	>70	B/C	>30	Dark Grey	0	15	30	40	15	Talus/colluvium	Moist	Alpine	Mid Slope		
65	1276640	554086	6936374	1694	30-40	B	>30	Dark Brown	10	15	30	30	15	Talus/colluvium	Moist	Alpine	Mid Slope		lots of clasts.
66	1276641	554226	6936512	1699	60-70	B	>30	Light Brown	20	20	30	20	20	Talus/colluvium	Moist	Alpine	Mid Slope		bad sampling. organics and rocks.
67	1276642	554308	6936610	1681	50-60	B	>30	Light Brown	0	20	30	30	20	Talus/colluvium	Moist	Alpine	Mid Slope		off line. boulder field .
68	1276643	554333	6936633	1707	40-50	B	>30	Light Brown	10	20	30	20	20	Talus/colluvium	Dry	Alpine	Mid Slope		lots of clasts.
69	1276651	558260	6938334	1679	50-60	B	>30	Light Brown	0	40	25	20	15	Talus/colluvium	Moist	Alpine	Mid Slope		
70	1276652	558232	6938308	1678	50-60	B	>30	Light Brown	0	30	35	20	15	Talus/colluvium	Moist	Alpine	Mid Slope		
71	1276653	558199	6938275	1682	40-50	B	>30	Light Brown	5	25	30	30	10	Talus/colluvium	Moist	Alpine	Mid Slope		
72	1276654	558165	6938240	1678	30-40	B	>30	Dark Brown	20	15	30	30	5	Talus/colluvium	Moist	Alpine	Mid Slope		rocky thin soil dug 10 holes
73	1276655	558104	6938222	1681	30-40	B/C	>30	Light Brown	5	10	35	45	5	Talus/colluvium	Moist	Alpine	Mid Slope		highly ferrous mineralization in floating pieces

AWB- 2011 soil data

	B	C	D	E	J	K	L	M	N	O	P	Q	R	S	T	U	V	Y	Z
74	1276656	558069	6938210	1686	50-60	B	>30	Dark Brown	5	10	45	40	0	Talus/colluvium	Moist	Alpine	Mid Slope		
75	1276657	558014	6938199	1684	30-40	B	>30	Dark Brown	15	10	30	40	5	Talus/colluvium	Moist	Alpine	Mid Slope		
76	1276658	557956	6938197	1684	50-60	B	>30	Dark Brown	5	5	30	50	10	Talus/colluvium	Moist	Alpine	Mid Slope		highly organic; in a drainage system
77	1276659	557915	6938176	1677	30-40	B	>30	Light Brown	5	15	35	40	10	Talus/colluvium	Moist	Alpine	Mid Slope		
78	1276660	557869	6938169	1671	30-40	B/C	>30	Light Brown	10	30	30	15	15	Talus/colluvium	Moist	Alpine	Mid Slope		
79	1276661	557824	6938165	1669	40-50	B	>30	Dark Brown	10	20	30	25	15	Talus/colluvium	Moist	Alpine	Mid Slope		
80	1276662	557777	6938168	1668	20-30	B	>30	Light Brown	5	25	30	25	15	Talus/colluvium	Moist	Alpine	Mid Slope		
81	1276663	557714	6938175	1680	50-60	B	10-15	Dark Brown	20	5	20	20	35	Talus/colluvium	Moist	Alpine	Mid Slope		scattered large rocks on surface slide area
82	1276664	557673	6938173	1683	60-70	B	>30	Dark Brown	20	10	25	35	10	Talus/colluvium	Moist	Alpine	Mid Slope		very rocky with organic hard sample
83	1276665	557629	6938181	1683	20-30	A/B	05-10	Light Brown	20	10	20	30	20	Talus/colluvium	Moist	Alpine	Mid Slope		5 sample holes could not get more then 30 cm mostly top soil
84	1276666	557478	6938180	1685	50-60	B	15-20	Dark Brown	5	10	25	50	10	Talus/colluvium	Moist	Alpine	Mid Slope		edge of a pre-existing hole
85	1276667	557423	6938177	1673	40-50	B	>30	Dark Brown	30	10	30	20	10	Talus/colluvium	Moist	Alpine	Mid Slope		
86	1276668	557368	6938175	1682	30-40	B	>30	Dark Brown	20	20	30	20	10	Talus/colluvium	Moist	Alpine	Mid Slope		creek side
87	1276669	557344	6938183	1680	40-50	B	>30	Dark Brown	20	5	30	35	10	Talus/colluvium	Moist	Alpine	Mid Slope		
88	1276670	557270	6938184	1675	30-40	B	20-25	Light Brown	20	5	25	40	10	Talus/colluvium	Moist	Alpine	Mid Slope		
89	1276671	557227	6938183	1674	30-40	B	20-25	Light Brown	30	5	20	40	5	Talus/colluvium	Moist	Alpine	Mid Slope		
90	1276672	557182	6938185	1679	40-50	B	>30	Light Brown	20	10	20	40	10	Talus/colluvium	Moist	Alpine	Mid Slope		
91	1276673	557124	6938187	1669	20-30	B	20-25	Light Brown	20	10	20	40	10	Talus/colluvium	Moist	Alpine	Mid Slope		
92	1276674	557073	6938184	1664	30-40	B	25-30	Light Brown	0	40	20	30	10	Talus/colluvium	Moist	Alpine	Mid Slope		small quartz pieces and beach sand like materials
93	1276675	557017	6938183	1674	30-40	A/B	20-25	Light Brown	10	40	15	25	10	Talus/colluvium	Moist	Alpine	Mid Slope		distinct light thin layer
94	1276676	556936	6938121	1669	40-50	A/B	>30	Light Brown	10	10	20	40	20	Talus/colluvium	Moist	None	Mid Slope		
95	1276677	556901	6938098	1677	30-40	A/B	25-30	Light Brown	15	5	20	40	20	Talus/colluvium	Moist	None	Mid Slope		
96	1276678	556849	6938068	1683	30-40	A/B	25-30	Light Brown	30	10	20	20	20	Talus/colluvium	Moist	None	Mid Slope		
97	1276679	553965	6935963	1699	30-40	C	>30	Light Brown	5	10	10	35	40	Talus/colluvium	Wet	Alpine	Mid Slope		large mineralized rocks

AWB- 2011 soil data

	B	C	D	E	J	K	L	M	N	O	P	Q	R	S	T	U	V	Y	Z
98	1276680	553987	6936061	1703	40-50	B	>30	Light Brown	0	20	25	35	20	Talus/colluvium	Moist	Alpine	Mid Slope		under a rock slide
99	1276681	554007	6936245	1713	40-50	B/C	>30	Light Brown	0	25	30	20	25	Talus/colluvium	Moist	Alpine	Mid Slope		extreme grade
100	1276682	554066	6936326	1694	40-50	B/C	>30	Light Brown	0	15	35	25	25	Talus/colluvium	Moist	Alpine	Mid Slope		
101	1276683	554123	6936409	1696	50-60	B	>30	Dark Grey	5	15	30	20	30	Talus/colluvium	Moist	Alpine	Mid Slope		
102	1276684	554194	6936477	1691	30-40	B	20-25	Dark Brown	0	10	10	20	60	Talus/colluvium	Moist	Alpine	Mid Slope		very rocky
103	no sampl	555227	6937648	1681	50-60	C	10-15	Light Brown	0	0	0	0	0	Talus/colluvium	Dry	Alpine	Mid Slope	1	getting nothing but rocks, no soil, looks to be an area of a slide, hard to tell due to snow coverage
104	no sampl	557570	6938176	1696	20-30	A/B	<1	Dark Grey	0	0	0	0	0	Talus/colluvium	Moist	Alpine	Mid Slope	1	top soil solid boulders tried 5 holes
105	no sampl	557529	6938181	1687	20-30	A/B	<1	Dark Grey	0	0	0	0	0	Talus/colluvium	Moist	Alpine	Mid Slope	1	same as previous station
106	no sampl	554144	6936458	1694	30-40	B	>30	Dark Brown	10	15	30	30	15	Talus/colluvium	Moist	Alpine	Mid Slope	1	clasts and organic soil
107	no sampl	556813	6937168	1772	40-50	A/B	>30	Dark Brown	5	20	30	35	10	Talus/colluvium	Partially Frozen	Alpine	Mid Slope	1	snow frozen rocks
108	no sampl	555470	6937634	1679	40-50	B/C	>30	Light Brown	0	25	25	35	25	Weathered bedrock	Moist	Alpine	Mid Slope	1	boulder field from a slide unable to get sample
109	no sampl	553975	6936161	1703	40-50	B	>30	Light Brown	0	0	0	0	0	Talus/colluvium	Moist	Alpine	Mid Slope	1	boulder field large area of coverage
110	no sampl	556779	6937351	1792	50-60	B	>30	Light Brown	5	15	35	35	10	Talus/colluvium	Partially Frozen	Alpine	Mid Slope	1	frozen soil
111	no sampl	556723	6937413	1762	50-60	B	>30	Light Brown	5	15	35	35	10	Talus/colluvium	Partially Frozen	Alpine	Mid Slope	1	frozen cliff.
112	no sampl	556636	6937416	1749	50-60	B	>30	Light Brown	0	20	35	35	10	Talus/colluvium	Partially Frozen	Alpine	Mid Slope	1	frozen
113	no sampl	555498	6937747	1678	20-30	B/C	15-20	Light Brown	0	35	25	10	30	Talus/colluvium	Dry	Alpine	Mid Slope	1	h16 boulder area multiple spots with no soil off line due to gps
114	no sampl	556976	6938159	1674	0-10	A/B	20-25	Light Brown	0	0	0	0	0	Talus/colluvium	Moist	None	Mid Slope	1	rock slide 100m boulder field
115	no sampl	554977	6937810	1679	30-40	B/C	20-25	Light Brown	10	10	35	35	10	Weathered bedrock	Dry	Alpine	Ridge Top	1	snow covered talus slope too dangerous
116	no sampl	554976	6937814	1679	30-40	B/C	20-25	Light Brown	10	10	35	35	10	Weathered bedrock	Dry	Alpine	Ridge Top	1	too steep and slippery to steep and rocky to pull sample
117	no sampl	554264	6936537	1695	30-40	B	20-25	Dark Brown	0	10	10	20	60	Talus/colluvium	Moist	Alpine	Mid Slope	1	

APPENDIX 5- ASSAY CERTIFICATES



1020 Cordova St. East Vancouver BC V6A 4A3 Canada

Acme Analytical Laboratories (Vancouver) Ltd.

www.acmelab.com

Client: Redtail Metals Corp
11 Floor- 888 Dunsmuir St
Vancouver BC V6C 3K4 Canada

Submitted By: Greg Dawson
Receiving Lab: Canada-Whitehorse
Received: September 23, 2011
Report Date: November 27, 2011
Page: 1 of 5

CERTIFICATE OF ANALYSIS

WHI11001719.1

CLIENT JOB INFORMATION

Project: AWB
Shipment ID: AWB-2011-S-001
P.O. Number: Quotation NA-11-435
Number of Samples: 101

SAMPLE DISPOSAL

STOR-PLP Store After 90 days Invoice for Storage
DISP-RJT-SOIL Immediate Disposal of Soil Reject

Acme does not accept responsibility for samples left at the laboratory after 90 days without prior written instructions for sample storage or return.

Invoice To: Redtail Metals Corp
11 Floor- 888 Dunsmuir St
Vancouver BC V6C 3K4
Canada

CC: Jack Cote
Andrew Caldwell
Gilles Dessureau

SAMPLE PREPARATION AND ANALYTICAL PROCEDURES

Method Code	Number of Samples	Code Description	Test Wgt (g)	Report Status	Lab
Dry at 60C	101	Dry at 60C			WHI
SS80	101	Dry at 60C sieve 100g to -80 mesh			WHI
1DX2	101	1:1:1 Aqua Regia digestion ICP-MS analysis	15	Completed	VAN

ADDITIONAL COMMENTS



This report supersedes all previous preliminary and final reports with this file number dated prior to the date on this certificate. Signature indicates final approval; preliminary reports are unsigned and should be used for reference only. All results are considered the confidential property of the client. Acme assumes the liabilities for actual cost of analysis only. Results apply to samples as submitted. ** asterisk indicates that an analytical result could not be provided due to unusually high levels of interference from other elements.



Acme Analytical Laboratories (Vancouver) Ltd.
 1020 Cordova St. East Vancouver BC V6A 4A3 Canada
 Phone (604) 253-3158 Fax (604) 253-1716

www.acmelab.com

Client: **Redtail Metals Corp**
 11 Floor- 888 Dunsmuir St
 Vancouver BC V6C 3K4 Canada

Project: AWB
 Report Date: November 27, 2011

Page: 2 of 5 Part 1

CERTIFICATE OF ANALYSIS

WHI11001719.1

Method Analyte	Unit	MDL	1DX15	1DX15	1DX15	1DX15	1DX15	1DX15	1DX15	1DX15	1DX15	1DX15	1DX15	1DX15	1DX15	1DX15	1DX15	1DX15	1DX15	1DX15	1DX15	
			Mo	Cu	Pb	Zn	Ag	Ni	Co	Mn	Fe	As	Au	Th	Sr	Cd	Sb	Bi	V	Ca	P	La
			ppm	ppm	ppm	ppm	ppm	ppm	ppm	%	ppm	ppb	ppm	ppm	ppm	ppm	ppm	ppm	%	%	ppm	
			0.1	0.1	0.1	1	0.1	0.1	0.1	1	0.01	0.5	0.5	0.1	1	0.1	0.1	2	0.01	0.001	1	
1276601	Soil		1.0	88.4	10.3	65	0.1	61.3	21.3	422	3.65	9.2	2.1	5.2	29	0.2	0.7	0.5	93	0.46	0.083	17
1276602	Soil		1.1	39.2	26.9	81	0.1	40.8	14.1	459	2.87	12.4	3.7	9.6	35	0.3	6.7	0.5	55	0.48	0.070	23
1276603	Soil		1.1	41.7	21.3	83	0.1	57.4	18.8	781	3.30	21.7	2.3	15.6	29	0.2	3.8	0.4	53	0.70	0.088	40
1276604	Soil		0.7	60.9	14.6	81	0.1	47.8	17.2	548	3.27	10.5	15.7	10.2	52	0.2	3.4	0.5	64	0.72	0.071	32
1276605	Soil		0.6	37.4	11.0	63	0.1	40.4	14.2	396	2.65	9.2	2.4	7.2	48	0.1	0.6	0.4	63	0.73	0.049	22
1276606	Soil		0.6	34.5	15.6	65	<0.1	32.0	13.7	470	2.78	10.1	1.9	14.6	37	<0.1	1.6	0.3	62	0.65	0.034	25
1276607	Soil		1.3	51.1	20.9	86	0.2	51.5	15.9	548	3.51	11.0	3.7	11.4	70	0.2	3.2	0.4	66	1.23	0.061	29
1276608	Soil		0.5	25.5	16.1	71	<0.1	37.0	11.7	452	2.78	10.2	1.3	10.2	65	0.2	0.7	0.4	58	0.85	0.042	22
1276609	Soil		0.8	28.6	11.0	71	0.1	43.0	12.7	436	2.70	11.8	2.1	5.0	39	0.3	0.8	0.4	56	0.60	0.061	18
1276610	Soil		0.6	14.9	6.7	35	<0.1	13.6	6.6	553	1.36	3.9	<0.5	0.6	18	0.1	0.5	0.2	29	0.19	0.071	9
1276611	Soil		1.8	71.2	13.7	120	0.2	55.1	14.8	269	3.19	70.0	2.4	5.1	73	0.5	1.1	1.8	58	1.07	0.100	21
1276612	Soil		2.8	64.8	13.0	122	0.2	52.1	15.1	374	2.97	46.7	3.5	2.5	46	0.4	1.3	2.3	73	0.37	0.108	21
1276613	Soil		1.2	39.4	4.8	47	0.1	23.6	7.8	149	1.70	18.5	2.7	0.8	24	0.2	0.4	1.2	46	0.19	0.062	9
1276614	Soil		2.5	79.1	10.7	127	0.2	66.6	14.9	312	3.21	53.2	2.6	4.7	55	0.5	1.8	3.5	57	0.51	0.074	21
1276615	Soil		1.1	64.5	7.6	68	0.2	34.0	11.9	325	3.20	39.5	4.4	4.2	29	0.2	3.2	2.0	46	0.24	0.073	21
1276616	Soil		0.9	51.4	12.8	66	0.5	30.3	12.3	387	3.34	83.6	5.3	5.2	22	0.1	10.2	1.4	30	0.18	0.061	28
1276617	Soil		1.0	25.5	10.7	62	0.1	26.4	10.2	423	2.66	24.7	3.9	6.1	17	0.2	1.5	0.5	46	0.22	0.061	20
1276618	Soil		1.0	52.4	17.9	94	<0.1	38.6	21.9	850	3.97	44.0	6.6	10.7	20	<0.1	2.7	1.5	37	0.15	0.072	30
1276619	Soil		0.8	36.4	13.4	76	<0.1	32.3	16.7	790	3.16	41.0	3.5	6.6	18	<0.1	1.7	0.8	33	0.14	0.054	21
1276620	Soil		0.4	25.8	5.7	40	<0.1	14.2	6.9	204	2.13	14.1	1.9	1.7	13	<0.1	0.5	0.4	50	0.14	0.066	10
1276621	Soil		0.9	36.1	14.1	83	<0.1	34.1	16.0	557	3.17	32.0	2.6	5.0	16	0.3	1.3	0.9	45	0.16	0.074	20
1276622	Soil		1.6	54.8	15.4	107	0.1	56.7	17.9	461	3.75	39.2	4.5	4.7	37	0.2	1.5	2.0	52	0.32	0.076	26
1276623	Soil		1.4	60.0	17.7	117	0.1	46.1	21.3	636	3.73	65.2	2.1	5.4	25	0.5	2.7	0.8	44	0.16	0.071	25
1276624	Soil		1.2	54.4	28.7	74	0.1	23.5	22.7	589	3.52	56.8	1.5	1.9	25	0.1	2.0	0.5	36	0.08	0.068	21
1276625	Soil		0.8	17.7	13.8	78	<0.1	14.1	7.1	365	2.64	11.9	1.8	2.8	11	0.2	0.9	0.4	41	0.14	0.059	12
1276626	Soil		1.0	49.6	20.1	109	0.1	42.0	20.7	694	3.68	48.0	3.8	12.4	26	0.2	2.7	0.7	50	0.25	0.075	34
1276627	Soil		0.9	32.5	13.5	93	<0.1	28.4	13.1	576	2.98	27.8	1.9	13.2	18	0.3	1.8	0.6	46	0.23	0.081	27
1276628	Soil		0.9	26.2	13.3	74	<0.1	21.1	10.0	396	2.42	20.5	3.1	3.6	15	0.1	1.4	0.5	40	0.16	0.076	16
1276629	Soil		0.6	24.6	14.7	78	<0.1	19.7	9.6	518	2.87	25.0	8.5	12.3	16	0.2	1.3	0.7	44	0.21	0.077	23
1276630	Soil		1.3	191.6	21.7	113	0.3	113.2	39.5	504	5.31	80.2	10.8	2.4	34	0.3	0.8	1.4	168	0.70	0.099	12

This report supersedes all previous preliminary and final reports with this file number dated prior to the date on this certificate. Signature indicates final approval; preliminary reports are unsigned and should be used for reference only.



Acme Analytical Laboratories (Vancouver) Ltd.
 1020 Cordova St. East Vancouver BC V6A 4A3 Canada
 Phone (604) 253-3158 Fax (604) 253-1716

www.acmelab.com

Client: **Redtail Metals Corp**
 11 Floor- 888 Dunsmuir St
 Vancouver BC V6C 3K4 Canada

Project: AWB
 Report Date: November 27, 2011

Page: 2 of 5 Part 2

CERTIFICATE OF ANALYSIS

WHI11001719.1

Method	Analyte	1DX15	1DX15	1DX15	1DX15	1DX15	1DX15	1DX15	1DX15	1DX15	1DX15	1DX15	1DX15	1DX15	1DX15	1DX15	1DX15
		Cr	Mg	Ba	Ti	B	Al	Na	K	W	Hg	Sc	Tl	S	Ga	Se	Te
Unit		ppm	%	ppm	%	ppm	%	%	ppm	ppm	ppm	ppm	%	ppm	ppm	ppm	ppm
MDL		1	0.01	1	0.001	1	0.01	0.001	0.01	0.1	0.01	0.1	0.05	1	0.5	0.2	
1276601	Soil	71	1.00	306	0.151	2	2.20	0.019	0.21	1.0	<0.01	6.4	0.3	<0.05	7	<0.5	<0.2
1276602	Soil	43	0.81	188	0.082	2	2.00	0.016	0.15	0.6	0.03	4.9	0.4	<0.05	6	<0.5	<0.2
1276603	Soil	54	1.00	215	0.117	1	2.10	0.019	0.38	0.7	0.03	7.1	0.7	<0.05	8	0.6	<0.2
1276604	Soil	51	1.29	170	0.111	2	2.23	0.023	0.23	0.7	0.04	6.8	0.4	<0.05	8	<0.5	<0.2
1276605	Soil	52	1.10	193	0.132	2	2.48	0.030	0.17	0.5	0.03	5.1	0.3	0.05	9	<0.5	<0.2
1276606	Soil	52	1.17	152	0.115	<1	2.52	0.027	0.26	0.4	0.02	6.1	0.3	<0.05	9	<0.5	<0.2
1276607	Soil	53	1.33	140	0.103	2	2.84	0.026	0.28	0.4	0.08	6.7	0.8	0.07	10	0.7	<0.2
1276608	Soil	53	1.25	178	0.147	2	2.90	0.042	0.22	0.8	0.02	5.0	0.3	<0.05	10	<0.5	<0.2
1276609	Soil	49	0.87	220	0.118	1	2.79	0.038	0.17	0.3	0.04	4.3	0.3	<0.05	9	<0.5	<0.2
1276610	Soil	17	0.31	107	0.034	<1	1.26	0.020	0.06	0.2	0.02	1.1	0.1	0.05	5	<0.5	<0.2
1276611	Soil	59	0.97	152	0.067	2	2.20	0.042	0.14	1.5	0.02	3.2	0.4	0.14	7	1.1	<0.2
1276612	Soil	67	0.98	158	0.066	2	2.76	0.027	0.11	1.2	0.03	3.3	0.3	0.08	9	1.0	<0.2
1276613	Soil	28	0.38	83	0.050	<1	1.19	0.027	0.05	0.7	0.02	1.3	0.4	0.06	4	<0.5	<0.2
1276614	Soil	75	1.04	161	0.067	1	2.25	0.028	0.16	1.6	0.02	3.3	0.6	0.06	7	0.6	<0.2
1276615	Soil	40	0.47	94	0.047	<1	1.42	0.019	0.15	0.7	0.03	2.8	0.6	<0.05	5	0.5	<0.2
1276616	Soil	24	0.30	99	0.020	<1	1.15	0.011	0.11	0.8	0.04	2.7	0.8	0.07	4	<0.5	<0.2
1276617	Soil	29	0.48	117	0.066	1	1.45	0.009	0.11	0.7	0.03	3.2	0.3	<0.05	5	0.5	<0.2
1276618	Soil	29	0.51	68	0.031	<1	1.73	0.010	0.16	0.4	0.02	3.9	0.4	<0.05	7	<0.5	<0.2
1276619	Soil	26	0.48	78	0.035	<1	1.52	0.014	0.11	0.3	0.01	3.4	0.2	<0.05	6	<0.5	<0.2
1276620	Soil	16	0.26	37	0.062	<1	0.94	0.017	0.05	0.3	<0.01	1.3	0.1	<0.05	4	<0.5	<0.2
1276621	Soil	35	0.56	89	0.058	<1	1.89	0.012	0.14	0.6	0.01	3.1	0.3	<0.05	6	0.6	<0.2
1276622	Soil	60	0.93	104	0.048	<1	2.34	0.019	0.13	1.0	0.03	3.9	0.4	<0.05	8	0.8	<0.2
1276623	Soil	36	0.62	79	0.037	<1	1.95	0.014	0.10	0.4	0.02	3.2	0.3	<0.05	6	0.5	<0.2
1276624	Soil	25	0.42	57	0.022	<1	1.62	0.020	0.06	0.3	0.01	1.6	0.3	0.07	5	0.5	<0.2
1276625	Soil	18	0.38	70	0.039	1	1.70	0.006	0.09	0.3	0.02	2.5	0.2	<0.05	7	0.6	<0.2
1276626	Soil	36	0.68	136	0.082	<1	2.03	0.011	0.18	0.6	0.02	5.1	0.4	<0.05	7	<0.5	<0.2
1276627	Soil	27	0.59	129	0.082	<1	1.83	0.008	0.16	1.2	0.02	4.3	0.3	<0.05	7	<0.5	<0.2
1276628	Soil	22	0.43	75	0.054	<1	1.53	0.013	0.12	0.5	0.02	2.5	0.2	<0.05	6	<0.5	<0.2
1276629	Soil	23	0.52	118	0.086	<1	1.86	0.010	0.19	0.4	<0.01	4.4	0.4	<0.05	7	<0.5	<0.2
1276630	Soil	137	2.06	259	0.170	<1	4.22	0.027	0.31	0.2	0.01	9.0	0.4	0.05	13	0.8	<0.2

This report supersedes all previous preliminary and final reports with this file number dated prior to the date on this certificate. Signature indicates final approval; preliminary reports are unsigned and should be used for reference only.



Acme Analytical Laboratories (Vancouver) Ltd.
 1020 Cordova St. East Vancouver BC V6A 4A3 Canada
 Phone (604) 253-3158 Fax (604) 253-1716

www.acmelab.com

Client: **Redtail Metals Corp**
 11 Floor- 888 Dunsmuir St
 Vancouver BC V6C 3K4 Canada

Project: AWB
 Report Date: November 27, 2011

Page: 3 of 5 Part 1

CERTIFICATE OF ANALYSIS

WHI11001719.1

Method Analyte	Unit	MDL	1DX15	1DX15	1DX15	1DX15	1DX15	1DX15	1DX15	1DX15	1DX15	1DX15	1DX15	1DX15	1DX15	1DX15	1DX15	1DX15	1DX15	1DX15	1DX15	
			Mo	Cu	Pb	Zn	Ag	Ni	Co	Mn	Fe	As	Au	Th	Sr	Cd	Sb	Bi	V	Ca	P	La
			ppm	ppm	ppm	ppm	ppm	ppm	ppm	%	ppm	ppb	ppm	ppm	ppm	ppm	ppm	ppm	%	%	ppm	
			0.1	0.1	0.1	1	0.1	0.1	0.1	1	0.01	0.5	0.5	0.1	1	0.1	0.1	0.1	2	0.01	0.001	1
1276631	Soil		1.2	80.7	17.9	87	0.2	78.0	22.0	539	3.88	54.0	2.1	5.2	31	0.1	1.4	0.9	100	0.69	0.084	17
1276632	Soil		1.0	107.8	9.0	66	0.2	114.0	28.3	316	3.87	41.3	2.1	2.1	50	0.1	1.4	0.5	128	0.67	0.082	11
1276633	Soil		1.1	31.0	13.9	68	<0.1	26.9	11.5	502	2.79	22.1	2.1	3.6	18	0.2	1.6	0.6	54	0.29	0.056	15
1276634	Soil		1.4	62.2	12.0	63	0.1	75.2	20.1	346	3.84	8.9	4.7	4.8	58	0.1	1.1	0.4	105	0.79	0.083	19
1276635	Soil		1.4	74.0	11.6	81	0.2	73.4	21.2	446	4.10	12.1	7.4	5.2	44	0.2	1.2	0.6	109	0.76	0.074	21
1276636	Soil		1.2	25.4	9.1	86	<0.1	32.9	12.7	344	3.11	16.1	3.9	4.2	33	0.4	0.4	0.2	48	0.35	0.052	18
1276637	Soil		0.3	21.7	6.0	41	<0.1	12.6	5.1	98	1.13	6.7	<0.5	0.7	24	0.4	0.1	0.1	31	0.22	0.049	6
1276638	Soil		1.3	56.7	21.4	142	0.2	79.4	27.9	593	4.42	45.9	2.9	11.5	77	0.6	5.6	0.9	58	1.72	0.071	43
1276639	Soil		4.5	55.7	20.9	105	0.2	55.5	18.0	369	4.03	77.3	0.6	6.8	67	0.2	6.1	0.5	111	0.43	0.058	27
1276640	Soil		8.9	18.1	9.6	52	0.8	7.1	2.5	106	1.13	11.6	<0.5	0.8	20	0.4	2.4	0.1	27	0.14	0.066	10
1276641	Soil		6.2	48.1	13.9	145	0.7	36.2	16.2	332	3.06	35.0	1.8	1.9	116	3.2	5.3	0.3	53	0.73	0.120	17
1276642	Soil		12.4	79.6	12.6	142	0.9	55.2	23.1	334	4.09	54.0	2.8	6.3	28	1.8	9.3	0.4	56	0.20	0.099	22
1276643	Soil		13.4	50.4	18.4	103	1.0	27.4	9.9	331	3.42	67.8	6.9	4.7	20	0.6	9.7	0.4	65	0.13	0.113	18
619351	Soil		0.6	88.0	5.4	76	0.1	69.0	29.4	1758	5.87	15.0	53.2	2.0	50	0.3	0.8	0.2	83	8.44	0.110	10
619352	Soil		1.0	45.7	9.6	57	<0.1	82.5	21.4	357	2.87	18.1	2.6	3.3	21	0.3	0.9	0.1	75	0.33	0.074	13
619353	Soil		1.0	79.7	9.4	57	0.1	49.9	20.7	415	3.17	10.8	2.0	2.5	22	0.3	0.9	0.1	87	0.32	0.090	13
619354	Soil		1.0	41.9	12.0	60	<0.1	50.5	16.1	364	2.96	10.2	0.7	4.2	21	0.4	1.3	0.2	81	0.31	0.069	13
619355	Soil		2.0	198.4	75.0	275	0.8	103.6	38.4	695	6.33	686.7	8.0	12.0	69	1.3	37.3	10.6	48	0.47	0.087	51
619356	Soil		1.7	100.5	28.6	146	0.4	67.4	40.8	1016	5.78	122.2	6.8	13.5	33	0.4	427.7	8.4	29	0.15	0.064	58
619357	Soil		0.9	68.8	18.4	110	0.1	57.5	32.4	1075	5.15	60.9	0.5	8.9	23	0.1	255.8	0.5	24	0.08	0.052	42
619358	Soil		1.3	75.0	21.9	143	0.4	71.0	38.7	1180	5.65	106.5	1.4	13.7	21	0.4	34.7	1.3	25	0.11	0.061	39
619359	Soil		4.6	112.8	21.7	195	0.3	80.9	36.1	653	6.02	130.1	2.8	15.0	51	1.0	5.3	2.3	61	0.24	0.098	54
619360	Soil		3.3	102.5	27.4	202	0.4	98.1	38.1	712	5.35	132.6	2.2	12.0	69	1.5	17.8	1.9	57	0.51	0.092	45
619361	Soil		1.8	64.7	12.4	218	0.2	31.3	12.2	397	2.04	53.4	1.2	5.0	1769	3.3	3.2	1.9	35	11.82	0.041	16
619362	Soil		3.3	137.9	31.7	322	0.6	99.1	34.3	882	5.42	164.1	5.8	8.4	69	2.6	6.9	4.0	74	0.76	0.098	36
619363	Soil		1.4	59.3	31.2	193	0.2	52.7	19.2	560	3.45	66.4	1.9	4.1	57	0.6	2.9	1.0	47	0.34	0.067	24
619364	Soil		1.2	85.3	19.0	148	0.2	90.5	26.6	628	4.87	64.6	1.0	5.9	45	0.5	6.0	0.9	81	0.46	0.090	22
619365	Soil		3.0	90.3	31.1	223	0.4	56.1	26.8	825	3.83	130.1	5.9	7.7	840	2.5	8.9	3.3	40	4.83	0.077	26
619366	Soil		2.9	261.9	66.6	251	0.9	93.7	35.7	758	5.91	416.8	17.8	5.8	62	1.7	38.1	25.4	98	0.56	0.079	33
619367	Soil		1.3	228.8	13.8	74	0.4	102.4	47.8	464	5.91	78.1	1.9	2.2	50	0.4	2.9	0.8	163	0.73	0.103	10

This report supersedes all previous preliminary and final reports with this file number dated prior to the date on this certificate. Signature indicates final approval; preliminary reports are unsigned and should be used for reference only.



Acme Analytical Laboratories (Vancouver) Ltd.
 1020 Cordova St. East Vancouver BC V6A 4A3 Canada
 Phone (604) 253-3158 Fax (604) 253-1716

www.acmelab.com

Client: **Redtail Metals Corp**
 11 Floor- 888 Dunsmuir St
 Vancouver BC V6C 3K4 Canada

Project: AWB
 Report Date: November 27, 2011

Page: 3 of 5 Part 2

CERTIFICATE OF ANALYSIS

WHI11001719.1

Method	Analyte	1DX15	1DX15	1DX15	1DX15	1DX15	1DX15	1DX15	1DX15	1DX15	1DX15	1DX15	1DX15	1DX15	1DX15	1DX15	1DX15
		Cr	Mg	Ba	Ti	B	Al	Na	K	W	Hg	Sc	Tl	S	Ga	Se	Te
Unit		ppm	%	ppm	%	ppm	%	%	ppm	ppm	ppm	ppm	%	ppm	ppm	ppm	ppm
MDL		1	0.01	1	0.001	1	0.01	0.001	0.01	0.1	0.01	0.1	0.05	1	0.5	0.2	
1276631	Soil	97	1.40	183	0.117	<1	2.88	0.018	0.25	0.3	0.01	7.5	0.3	<0.05	10	0.8	<0.2
1276632	Soil	127	1.36	229	0.125	<1	3.25	0.039	0.30	0.1	0.02	8.0	0.3	0.05	11	<0.5	<0.2
1276633	Soil	33	0.57	147	0.078	2	1.83	0.013	0.15	0.4	<0.01	3.3	0.3	<0.05	7	0.5	<0.2
1276634	Soil	104	1.63	291	0.139	1	2.36	0.051	0.15	0.3	0.02	7.0	0.2	<0.05	9	0.7	<0.2
1276635	Soil	104	1.52	315	0.125	1	2.61	0.032	0.17	0.4	0.01	7.5	0.2	<0.05	10	0.7	<0.2
1276636	Soil	42	0.64	238	0.091	<1	2.08	0.014	0.17	0.3	0.01	3.5	0.2	<0.05	7	<0.5	<0.2
1276637	Soil	18	0.29	95	0.052	2	0.97	0.039	0.12	<0.1	0.02	1.6	0.1	0.08	4	<0.5	<0.2
1276638	Soil	54	0.86	247	0.044	2	2.09	0.038	0.39	0.2	0.09	7.2	1.5	<0.05	8	<0.5	<0.2
1276639	Soil	72	1.29	406	0.075	1	2.80	0.020	0.41	0.2	0.12	6.7	1.6	0.05	11	0.7	<0.2
1276640	Soil	11	0.07	38	0.025	<1	0.49	0.024	0.03	0.1	0.08	0.7	0.4	<0.05	2	1.3	<0.2
1276641	Soil	32	0.40	111	0.035	2	1.46	0.016	0.09	0.3	0.06	1.9	0.5	0.07	5	1.9	<0.2
1276642	Soil	35	0.55	100	0.047	1	1.52	0.009	0.08	0.5	0.04	2.7	0.5	<0.05	5	2.5	<0.2
1276643	Soil	35	0.39	94	0.052	1	1.41	0.011	0.08	0.4	0.07	2.1	0.5	<0.05	6	2.9	<0.2
619351	Soil	38	2.81	183	0.084	3	1.99	0.012	0.12	0.7	0.03	7.0	0.1	0.06	6	<0.5	<0.2
619352	Soil	58	0.86	144	0.127	1	2.25	0.016	0.17	0.3	0.02	4.2	0.2	<0.05	6	<0.5	<0.2
619353	Soil	42	0.79	159	0.109	1	1.92	0.012	0.22	0.2	0.04	4.6	0.1	<0.05	6	<0.5	<0.2
619354	Soil	45	0.88	162	0.114	1	2.07	0.014	0.19	0.5	0.08	5.0	0.1	<0.05	6	<0.5	<0.2
619355	Soil	61	0.80	88	0.055	3	1.72	0.019	0.14	0.4	0.05	6.3	0.4	<0.05	5	1.0	<0.2
619356	Soil	32	0.72	49	0.014	<1	1.89	0.009	0.08	0.3	0.03	2.8	0.3	<0.05	6	<0.5	<0.2
619357	Soil	29	0.61	41	0.012	3	1.71	0.012	0.05	<0.1	0.02	2.1	0.2	<0.05	5	<0.5	<0.2
619358	Soil	30	0.67	28	0.013	<1	1.58	0.006	0.05	0.2	0.02	2.6	0.4	<0.05	5	<0.5	<0.2
619359	Soil	61	1.04	83	0.038	<1	2.47	0.028	0.19	1.2	0.02	4.7	0.5	0.10	7	1.5	<0.2
619360	Soil	57	1.01	70	0.033	2	2.27	0.017	0.12	1.1	0.02	5.2	0.5	<0.05	7	1.1	<0.2
619361	Soil	21	0.48	57	0.015	3	1.17	0.018	0.08	0.3	<0.01	2.7	0.2	<0.05	4	0.6	<0.2
619362	Soil	75	1.05	124	0.063	2	2.73	0.031	0.17	1.1	0.03	6.6	0.6	0.12	9	0.9	<0.2
619363	Soil	40	0.64	104	0.042	1	2.05	0.029	0.09	0.3	0.03	3.5	0.2	<0.05	6	0.6	<0.2
619364	Soil	83	0.97	135	0.100	1	2.11	0.020	0.16	0.7	0.03	6.2	0.3	<0.05	7	<0.5	<0.2
619365	Soil	30	0.68	84	0.032	9	1.60	0.028	0.09	0.6	0.02	3.7	0.3	0.08	5	0.5	<0.2
619366	Soil	66	1.18	206	0.114	2	3.18	0.020	0.30	0.9	0.02	7.7	0.6	0.06	10	1.1	0.4
619367	Soil	79	1.51	304	0.195	1	4.25	0.024	0.66	0.1	0.02	11.5	0.5	<0.05	13	0.6	<0.2



Acme Analytical Laboratories (Vancouver) Ltd.
 1020 Cordova St. East Vancouver BC V6A 4A3 Canada
 Phone (604) 253-3158 Fax (604) 253-1716

www.acmelab.com

Client: **Redtail Metals Corp**
 11 Floor- 888 Dunsmuir St
 Vancouver BC V6C 3K4 Canada

Project: AWB
 Report Date: November 27, 2011

Page: 4 of 5 Part 1

CERTIFICATE OF ANALYSIS

WHI11001719.1

Method	Analyte	Unit	MDL	1DX15	1DX15	1DX15	1DX15	1DX15	1DX15	1DX15	1DX15	1DX15	1DX15	1DX15	1DX15	1DX15	1DX15	1DX15	1DX15	1DX15	1DX15		
				Mo	Cu	Pb	Zn	Ag	Ni	Co	Mn	Fe	As	Au	Th	Sr	Cd	Sb	Bi	V	Ca	P	La
				ppm	ppm	ppm	ppm	ppm	ppm	ppm	ppm	ppm	ppm	ppm	ppm	ppm	ppm	ppm	ppm	ppm	ppm		
				0.1	0.1	0.1	1	0.1	0.1	0.1	1	0.01	0.5	0.5	0.1	1	0.1	0.1	2	0.01	0.001	1	
619368	Soil			2.2	226.6	16.1	83	0.3	118.8	50.7	450	5.82	66.6	1.3	2.0	38	0.3	2.4	0.6	156	0.61	0.097	10
619369	Soil			1.0	102.9	9.6	61	0.2	66.7	27.0	425	3.58	36.9	1.8	1.2	28	0.2	3.4	0.4	100	0.40	0.082	11
1276651	Soil			0.7	78.7	11.4	73	<0.1	51.6	19.7	621	3.61	12.3	2.8	11.3	24	0.2	0.8	0.2	72	0.57	0.075	25
1276652	Soil			1.1	45.8	13.9	70	0.1	33.4	11.0	413	3.33	20.5	<0.5	7.0	19	<0.1	1.6	0.4	62	0.27	0.055	28
1276653	Soil			0.9	22.4	13.0	72	<0.1	19.6	11.0	538	2.89	11.4	<0.5	4.8	18	0.2	0.6	0.2	54	0.21	0.054	25
1276654	Soil			1.0	39.4	16.8	55	<0.1	41.3	14.7	342	2.89	10.0	6.5	4.5	20	0.2	0.6	0.3	66	0.26	0.054	13
1276655	Soil			1.2	103.5	24.0	82	0.2	93.5	31.0	532	4.52	67.4	<0.5	12.0	27	0.1	0.7	1.7	113	0.65	0.086	22
1276656	Soil			1.4	33.2	19.8	66	0.1	24.6	11.5	451	2.89	177.0	0.6	4.8	20	0.2	0.6	0.4	64	0.34	0.057	26
1276657	Soil			1.3	77.9	11.9	73	0.1	66.2	21.5	417	3.80	14.6	1.3	4.6	30	0.2	0.6	0.4	101	0.72	0.070	17
1276658	Soil			0.8	87.0	8.5	70	0.1	89.2	20.7	346	3.28	10.7	2.4	4.2	59	0.2	0.6	0.7	87	1.17	0.067	20
1276659	Soil			0.7	25.1	12.4	67	<0.1	28.2	10.2	459	2.62	12.5	1.1	10.1	19	0.2	0.7	0.3	48	0.39	0.063	24
1276660	Soil			0.7	28.5	12.6	63	<0.1	35.7	10.3	345	2.43	14.5	0.5	10.2	23	0.1	0.7	0.3	50	0.39	0.085	28
1276661	Soil			1.0	60.5	18.4	81	0.1	65.6	16.6	511	3.95	14.0	0.5	7.9	82	0.2	1.1	0.6	78	0.84	0.067	22
1276662	Soil			0.7	26.0	12.5	67	0.1	25.7	9.8	483	2.64	11.2	2.7	11.5	37	0.1	0.9	0.3	45	0.51	0.083	26
1276663	Soil			1.0	58.9	12.9	88	0.1	60.4	19.6	494	3.74	18.8	8.3	7.4	185	0.3	0.7	0.5	64	1.48	0.047	21
1276664	Soil			0.5	43.1	6.8	69	0.1	38.7	13.2	424	2.28	8.2	1.1	0.7	65	0.7	0.4	0.2	52	0.66	0.080	10
1276665	Soil			1.9	73.4	16.8	111	0.2	59.9	23.5	629	4.13	16.3	2.5	6.8	199	0.6	2.0	0.8	74	1.73	0.084	26
1276666	Soil			0.8	56.8	14.1	101	0.3	48.4	16.5	472	3.50	12.0	2.6	5.0	96	0.3	1.4	0.8	64	1.37	0.080	24
1276667	Soil			0.9	47.6	16.4	86	0.2	42.2	15.5	423	3.64	20.1	2.3	6.4	119	0.2	4.0	0.6	66	1.16	0.054	26
1276668	Soil			1.2	60.3	16.7	97	0.2	54.5	21.6	553	4.50	22.2	4.0	9.8	80	0.2	7.5	0.5	73	1.15	0.066	36
1276669	Soil			0.6	78.9	17.5	125	0.3	56.0	21.8	505	4.05	18.7	2.9	5.5	148	0.5	0.8	0.6	78	1.74	0.078	21
1276670	Soil			1.1	27.6	12.2	75	0.1	32.8	10.9	451	2.77	10.3	1.9	1.1	23	0.2	2.5	0.3	55	0.20	0.089	17
1276671	Soil			0.6	35.3	12.2	88	<0.1	40.7	14.4	308	3.65	12.0	2.1	4.9	108	<0.1	0.6	0.6	79	1.05	0.047	17
1276672	Soil			0.7	40.0	13.8	86	0.1	36.0	12.6	344	3.44	8.6	3.6	5.9	117	0.1	0.4	0.9	83	0.96	0.055	21
1276673	Soil			0.7	45.3	9.7	72	0.1	38.6	15.6	482	3.56	6.5	2.3	5.7	153	0.1	0.3	0.6	76	0.95	0.066	22
1276674	Soil			0.8	27.9	31.2	83	0.2	15.5	8.1	504	2.72	8.5	1.8	17.6	47	0.1	0.7	0.6	40	0.55	0.051	39
1276675	Soil			1.0	28.0	10.6	46	<0.1	19.0	6.8	286	1.94	10.9	1.0	0.8	18	<0.1	0.7	0.2	47	0.26	0.065	12
1276676	Soil			1.5	37.6	19.5	75	<0.1	39.7	15.6	685	3.57	20.7	<0.5	2.4	51	0.1	1.6	0.4	78	0.60	0.080	16
1276677	Soil			1.3	39.4	13.6	73	<0.1	35.4	14.0	359	3.54	10.5	1.2	5.1	79	<0.1	0.9	0.2	75	0.53	0.061	18
1276678	Soil			0.9	45.2	14.7	66	0.2	37.3	13.9	454	2.85	25.6	<0.5	0.9	26	0.4	1.4	0.5	69	0.43	0.081	12

This report supersedes all previous preliminary and final reports with this file number dated prior to the date on this certificate. Signature indicates final approval; preliminary reports are unsigned and should be used for reference only.



Acme Analytical Laboratories (Vancouver) Ltd.
 1020 Cordova St. East Vancouver BC V6A 4A3 Canada
 Phone (604) 253-3158 Fax (604) 253-1716

www.acmelab.com

Client: **Redtail Metals Corp**
 11 Floor- 888 Dunsmuir St
 Vancouver BC V6C 3K4 Canada

Project: AWB
 Report Date: November 27, 2011

Page: 4 of 5 Part 2

CERTIFICATE OF ANALYSIS

WHI11001719.1

Method Analyte Unit MDL	1DX15	1DX15	1DX15	1DX15	1DX15	1DX15	1DX15	1DX15	1DX15	1DX15	1DX15	1DX15	1DX15	1DX15	1DX15	1DX15	1DX15
	Cr ppm	Mg %	Ba ppm	Ti %	B ppm	Al %	Na %	K %	W ppm	Hg ppm	Sc ppm	Tl ppm	S %	Ga ppm	Se ppm	Te ppm	
	1	0.01	1	0.001	1	0.01	0.001	0.01	0.1	0.01	0.1	0.1	0.05	1	0.5	0.2	
619368	Soil	101	1.43	266	0.193	1	4.10	0.020	0.53	0.1	0.03	10.1	0.3	0.07	12	0.6	<0.2
619369	Soil	67	1.06	220	0.113	1	2.79	0.021	0.17	0.2	0.03	5.8	0.2	0.06	9	0.7	<0.2
1276651	Soil	57	0.88	331	0.155	<1	2.02	0.011	0.27	0.4	<0.01	6.9	0.3	<0.05	8	<0.5	<0.2
1276652	Soil	40	0.66	187	0.117	2	2.02	0.013	0.16	0.5	0.01	4.9	0.3	<0.05	7	<0.5	<0.2
1276653	Soil	29	0.59	144	0.110	<1	2.05	0.012	0.19	0.3	0.01	3.6	0.3	<0.05	8	<0.5	<0.2
1276654	Soil	49	0.63	156	0.115	1	1.77	0.016	0.13	1.0	0.02	4.3	0.3	<0.05	7	<0.5	<0.2
1276655	Soil	80	1.38	373	0.242	1	2.48	0.020	0.37	1.1	0.02	7.1	0.4	<0.05	9	<0.5	<0.2
1276656	Soil	39	0.61	154	0.096	1	1.85	0.014	0.14	0.3	0.02	4.1	0.2	<0.05	8	<0.5	<0.2
1276657	Soil	79	1.05	260	0.146	1	2.17	0.020	0.19	0.4	0.02	7.2	0.2	<0.05	8	<0.5	<0.2
1276658	Soil	96	1.31	260	0.089	<1	2.22	0.032	0.18	0.2	0.02	6.1	0.3	<0.05	8	<0.5	<0.2
1276659	Soil	31	0.61	210	0.129	<1	1.55	0.017	0.21	0.4	<0.01	4.9	0.3	<0.05	7	<0.5	<0.2
1276660	Soil	35	0.60	146	0.108	<1	1.54	0.013	0.18	0.4	0.02	4.2	0.2	<0.05	6	<0.5	<0.2
1276661	Soil	94	1.35	287	0.115	1	2.56	0.027	0.30	0.3	0.02	7.1	0.3	<0.05	10	<0.5	<0.2
1276662	Soil	28	0.62	175	0.118	<1	1.42	0.016	0.26	0.5	0.04	4.9	0.3	<0.05	6	<0.5	<0.2
1276663	Soil	69	1.37	202	0.098	1	3.29	0.060	0.46	0.4	0.02	6.9	0.4	0.06	10	<0.5	<0.2
1276664	Soil	56	0.78	174	0.062	2	1.84	0.030	0.13	0.2	0.02	2.7	0.2	0.07	7	<0.5	<0.2
1276665	Soil	63	1.33	240	0.078	3	2.97	0.041	0.35	0.5	0.03	6.9	0.4	0.08	10	0.8	<0.2
1276666	Soil	65	1.43	211	0.091	3	2.91	0.049	0.31	0.6	0.03	6.0	0.4	0.07	10	<0.5	<0.2
1276667	Soil	61	1.33	193	0.111	2	2.96	0.052	0.20	0.6	0.02	7.2	0.4	0.07	10	0.7	<0.2
1276668	Soil	69	1.47	175	0.103	3	2.51	0.046	0.31	0.5	0.03	10.0	0.6	<0.05	9	<0.5	<0.2
1276669	Soil	71	2.03	203	0.105	2	3.23	0.043	0.25	0.2	0.03	6.9	0.4	<0.05	11	<0.5	<0.2
1276670	Soil	40	0.60	117	0.053	1	1.96	0.012	0.13	0.4	0.03	2.4	0.3	<0.05	7	<0.5	<0.2
1276671	Soil	68	1.60	222	0.134	<1	3.50	0.032	0.22	0.4	0.01	6.5	0.3	<0.05	12	<0.5	<0.2
1276672	Soil	63	1.56	168	0.118	<1	3.33	0.046	0.20	0.3	0.02	6.3	0.3	<0.05	11	<0.5	<0.2
1276673	Soil	71	1.73	236	0.125	1	3.14	0.059	0.28	0.3	0.01	6.1	0.4	<0.05	11	<0.5	<0.2
1276674	Soil	25	0.63	121	0.062	<1	1.70	0.017	0.12	0.3	0.03	4.5	0.3	<0.05	7	<0.5	<0.2
1276675	Soil	26	0.31	118	0.034	<1	1.54	0.016	0.07	0.2	0.02	1.5	0.1	<0.05	6	<0.5	<0.2
1276676	Soil	66	0.90	203	0.076	<1	2.35	0.011	0.16	0.3	0.02	3.7	0.3	0.07	10	<0.5	<0.2
1276677	Soil	67	1.51	205	0.111	<1	2.73	0.020	0.28	0.2	0.01	5.8	0.3	<0.05	10	<0.5	<0.2
1276678	Soil	54	0.64	173	0.072	1	2.18	0.016	0.20	0.3	0.03	2.8	0.3	0.07	7	<0.5	<0.2



Acme Analytical Laboratories (Vancouver) Ltd.
 1020 Cordova St. East Vancouver BC V6A 4A3 Canada
 Phone (604) 253-3158 Fax (604) 253-1716

www.acmelab.com

Client: **Redtail Metals Corp**
 11 Floor- 888 Dunsmuir St
 Vancouver BC V6C 3K4 Canada

Project: AWB
 Report Date: November 27, 2011

Page: 5 of 5 Part 1

CERTIFICATE OF ANALYSIS

WHI11001719.1

	Method	Analyte	1DX15	1DX15	1DX15	1DX15	1DX15	1DX15	1DX15	1DX15	1DX15	1DX15	1DX15	1DX15	1DX15	1DX15	1DX15	1DX15	1DX15	1DX15	1DX15	
			Mo	Cu	Pb	Zn	Ag	Ni	Co	Mn	Fe	As	Au	Th	Sr	Cd	Sb	Bi	V	Ca	P	La
		Unit	ppm	ppm	ppm	ppm	ppm	ppm	ppm	%	ppm	ppb	ppm	ppm	ppm	ppm	ppm	ppm	%	%	ppm	
		MDL	0.1	0.1	0.1	1	0.1	0.1	0.1	1	0.01	0.5	0.5	0.1	1	0.1	0.1	2	0.01	0.001	1	
1276679	Soil		1.1	32.6	13.4	102	0.1	39.4	16.1	456	3.62	21.5	1.8	4.1	29	0.5	0.5	0.3	53	0.29	0.060	15
1276680	Soil		0.5	60.7	17.9	158	0.2	70.8	25.3	460	3.93	23.5	6.8	8.2	170	1.3	0.3	0.3	74	1.48	0.098	26
1276681	Soil		3.1	34.8	33.3	75	0.9	32.1	10.7	162	3.44	437.4	10.7	11.8	101	<0.1	13.5	8.7	43	0.36	0.047	30
1276682	Soil		3.9	90.9	22.7	142	0.4	156.6	29.7	457	4.59	43.9	0.9	7.2	99	0.7	4.1	0.4	93	0.80	0.089	29
1276683	Soil		9.6	45.5	18.1	109	0.9	28.3	8.3	201	3.11	88.1	3.0	2.6	50	1.4	40.4	0.7	43	0.09	0.070	31
1276684	Soil		3.3	63.4	17.2	221	0.5	84.2	33.6	411	4.25	91.7	6.3	3.6	133	5.5	7.3	0.3	68	0.63	0.099	24
1276501	Soil		1.3	319.0	22.1	78	0.5	126.5	69.4	637	8.54	363.9	0.8	1.4	44	0.1	14.5	1.5	198	0.38	0.119	8
1276502	Soil		1.0	326.2	31.0	96	0.7	132.2	57.1	636	8.06	231.4	2.8	1.4	64	0.3	15.7	4.7	168	0.52	0.102	8
1276503	Soil		0.7	77.2	23.3	102	0.2	47.3	28.6	524	5.06	64.8	1.1	9.5	39	<0.1	12.5	0.5	35	0.13	0.088	47
1276504	Soil		0.8	135.2	35.2	392	0.2	204.6	114.9	5730	8.71	26.9	2.0	11.2	15	0.9	14.0	0.3	23	0.07	0.085	61
1276505	Soil		0.9	82.2	13.4	53	0.2	15.7	7.0	236	6.33	150.8	3.6	5.3	34	<0.1	6.0	0.4	36	0.05	0.085	19



Acme Analytical Laboratories (Vancouver) Ltd.
 1020 Cordova St. East Vancouver BC V6A 4A3 Canada
 Phone (604) 253-3158 Fax (604) 253-1716

www.acmelab.com

Client: **Redtail Metals Corp**
 11 Floor- 888 Dunsmuir St
 Vancouver BC V6C 3K4 Canada

Project: AWB
 Report Date: November 27, 2011

Page: 5 of 5 Part 2

CERTIFICATE OF ANALYSIS

WHI11001719.1

Method	Analyte	1DX15	1DX15	1DX15	1DX15	1DX15	1DX15	1DX15	1DX15	1DX15	1DX15	1DX15	1DX15	1DX15	1DX15	1DX15	1DX15
		Cr	Mg	Ba	Ti	B	Al	Na	K	W	Hg	Sc	Tl	S	Ga	Se	Te
Unit		ppm	%	ppm	%	ppm	%	%	ppm	ppm	ppm	ppm	%	ppm	ppm	ppm	ppm
MDL		1	0.01	1	0.001	1	0.01	0.001	0.01	0.1	0.01	0.1	0.05	1	0.5	0.2	
1276679	Soil	44	0.73	288	0.089	1	2.44	0.015	0.24	0.3	0.02	3.9	0.3	<0.05	7	<0.5	<0.2
1276680	Soil	96	1.64	301	0.146	<1	3.97	0.166	0.75	0.2	0.01	6.0	0.7	<0.05	13	<0.5	<0.2
1276681	Soil	36	0.62	182	0.036	<1	1.29	0.032	0.29	0.7	0.29	4.4	3.8	0.17	6	0.8	<0.2
1276682	Soil	190	1.67	271	0.076	<1	2.40	0.030	0.25	0.2	0.04	6.1	0.8	0.06	7	1.1	<0.2
1276683	Soil	29	0.31	106	0.023	<1	1.20	0.007	0.08	0.3	0.08	2.0	1.3	0.06	4	1.3	<0.2
1276684	Soil	41	0.67	161	0.039	1	2.17	0.016	0.14	0.3	0.05	3.4	0.6	0.09	6	1.0	<0.2
1276501	Soil	71	1.21	323	0.187	2	3.98	0.024	0.69	0.1	0.03	16.4	0.7	0.09	14	0.7	<0.2
1276502	Soil	84	1.26	346	0.210	1	4.43	0.045	0.64	0.5	0.04	11.7	0.6	0.26	13	1.4	<0.2
1276503	Soil	36	0.77	75	0.045	<1	2.20	0.020	0.34	<0.1	0.03	3.1	0.6	0.12	6	0.6	<0.2
1276504	Soil	23	0.34	29	0.009	<1	1.33	0.004	0.03	0.1	0.07	3.0	0.2	<0.05	4	<0.5	<0.2
1276505	Soil	21	0.30	72	0.030	<1	1.13	0.053	0.05	0.2	0.04	1.5	0.2	0.24	5	<0.5	<0.2



Acme Analytical Laboratories (Vancouver) Ltd.

1020 Cordova St. East Vancouver BC V6A 4A3 Canada
 Phone (604) 253-3158 Fax (604) 253-1716

www.acmelab.com

Client: **Redtail Metals Corp**
 11 Floor- 888 Dunsmuir St
 Vancouver BC V6C 3K4 Canada

Project: AWB

Report Date: November 27, 2011

Page: 1 of 1 Part 1

QUALITY CONTROL REPORT

WHI11001719.1

Method	1DX15	1DX15	1DX15	1DX15	1DX15	1DX15	1DX15	1DX15	1DX15	1DX15	1DX15	1DX15	1DX15	1DX15	1DX15	1DX15	1DX15	1DX15	1DX15	1DX15	
Analyte	Mo	Cu	Pb	Zn	Ag	Ni	Co	Mn	Fe	As	Au	Th	Sr	Cd	Sb	Bi	V	Ca	P	La	
Unit	ppm	ppm	ppm	ppm	ppm	ppm	ppm	ppm	%	ppm	ppb	ppm	ppm	ppm	ppm	ppm	ppm	%	%	ppm	
MDL	0.1	0.1	0.1	1	0.1	0.1	0.1	1	0.01	0.5	0.5	0.1	1	0.1	0.1	0.1	2	0.01	0.001	1	
Pulp Duplicates																					
1276602	Soil	1.1	39.2	26.9	81	0.1	40.8	14.1	459	2.87	12.4	3.7	9.6	35	0.3	6.7	0.5	55	0.48	0.070	23
REP 1276602	QC	1.0	39.8	22.0	73	0.1	39.8	13.9	446	2.83	12.5	2.3	9.6	34	0.2	6.6	0.6	55	0.41	0.063	22
1276636	Soil	1.2	25.4	9.1	86	<0.1	32.9	12.7	344	3.11	16.1	3.9	4.2	33	0.4	0.4	0.2	48	0.35	0.052	18
REP 1276636	QC	1.1	23.5	8.3	82	<0.1	30.9	12.1	327	2.90	15.3	2.1	4.1	31	0.3	0.5	0.2	45	0.32	0.050	18
619361	Soil	1.8	64.7	12.4	218	0.2	31.3	12.2	397	2.04	53.4	1.2	5.0	1769	3.3	3.2	1.9	35	11.82	0.041	16
REP 619361	QC	2.0	67.4	13.5	240	0.2	35.4	13.5	432	2.27	57.5	1.3	5.4	2025	3.9	3.7	2.0	38	13.18	0.044	18
1276657	Soil	1.3	77.9	11.9	73	0.1	66.2	21.5	417	3.80	14.6	1.3	4.6	30	0.2	0.6	0.4	101	0.72	0.070	17
REP 1276657	QC	1.3	77.1	11.8	77	0.1	66.5	22.0	420	3.85	15.1	3.5	4.7	31	0.1	0.5	0.4	102	0.77	0.072	17
1276663	Soil	1.0	58.9	12.9	88	0.1	60.4	19.6	494	3.74	18.8	8.3	7.4	185	0.3	0.7	0.5	64	1.48	0.047	21
REP 1276663	QC	0.8	57.2	12.8	86	0.2	60.2	20.2	489	3.78	18.9	2.8	7.0	183	0.2	0.7	0.5	63	1.47	0.050	21
1276679	Soil	1.1	32.6	13.4	102	0.1	39.4	16.1	456	3.62	21.5	1.8	4.1	29	0.5	0.5	0.3	53	0.29	0.060	15
REP 1276679	QC	1.2	31.4	13.5	99	0.1	37.5	14.9	436	3.51	21.4	2.4	4.2	29	0.4	0.5	0.2	54	0.26	0.059	16
Reference Materials																					
STD DS8	Standard	13.3	113.2	127.6	348	2.0	41.5	7.9	651	2.75	28.1	119.9	6.3	68	2.5	5.9	6.4	45	0.72	0.088	16
STD DS8	Standard	12.8	100.7	117.4	286	1.7	36.1	7.0	595	2.31	25.0	100.8	6.7	69	2.4	5.4	6.4	41	0.67	0.079	17
STD DS8	Standard	14.8	114.5	124.4	304	1.8	38.9	7.7	615	2.42	25.6	105.6	7.2	71	2.6	5.4	6.4	44	0.71	0.078	17
STD DS8 Expected		13.44	110	123	312	1.69	38.1	7.5	615	2.46	26	107	6.89	67.7	2.38	5.7	6.67	41.1	0.7	0.08	14.6
BLK	Blank	<0.1	<0.1	<0.1	<1	<0.1	<0.1	<0.1	<1	0.01	<0.5	<0.5	<0.1	<1	<0.1	<0.1	<0.1	<2	<0.01	<0.001	<1
BLK	Blank	<0.1	<0.1	<0.1	<1	<0.1	<0.1	<0.1	<1	<0.01	<0.5	<0.5	<0.1	<1	<0.1	<0.1	<0.1	<2	<0.01	<0.001	<1
BLK	Blank	<0.1	<0.1	<0.1	<1	<0.1	<0.1	<0.1	<1	<0.01	<0.5	<0.5	<0.1	<1	<0.1	<0.1	<0.1	<2	<0.01	<0.001	<1



Acme Analytical Laboratories (Vancouver) Ltd.

1020 Cordova St. East Vancouver BC V6A 4A3 Canada
 Phone (604) 253-3158 Fax (604) 253-1716

www.acmelab.com

Client: **Redtail Metals Corp**
 11 Floor- 888 Dunsmuir St
 Vancouver BC V6C 3K4 Canada

Project: AWB

Report Date: November 27, 2011

Page: 1 of 1 Part 2

QUALITY CONTROL REPORT

WHI11001719.1

Method	1DX15	1DX15	1DX15	1DX15	1DX15	1DX15	1DX15	1DX15	1DX15	1DX15	1DX15	1DX15	1DX15	1DX15	1DX15	1DX15	1DX15
Analyte	Cr	Mg	Ba	Ti	B	Al	Na	K	W	Hg	Sc	Tl	S	Ga	Se	Te	
Unit	ppm	%	ppm	%	ppm	%	%	%	ppm	ppm	ppm	ppm	%	ppm	ppm	ppm	
MDL	1	0.01	1	0.001	1	0.01	0.001	0.01	0.1	0.01	0.1	0.1	0.05	1	0.5	0.2	
Pulp Duplicates																	
1276602	Soil	43	0.81	188	0.082	2	2.00	0.016	0.15	0.6	0.03	4.9	0.4	<0.05	6	<0.5	<0.2
REP 1276602	QC	41	0.71	171	0.085	2	1.82	0.014	0.14	0.6	0.04	4.7	0.4	<0.05	7	0.7	<0.2
1276636	Soil	42	0.64	238	0.091	<1	2.08	0.014	0.17	0.3	0.01	3.5	0.2	<0.05	7	<0.5	<0.2
REP 1276636	QC	40	0.62	230	0.085	<1	1.88	0.013	0.15	0.3	0.02	3.2	0.2	<0.05	6	<0.5	<0.2
619361	Soil	21	0.48	57	0.015	3	1.17	0.018	0.08	0.3	<0.01	2.7	0.2	<0.05	4	0.6	<0.2
REP 619361	QC	23	0.53	62	0.014	4	1.25	0.020	0.08	0.4	<0.01	2.9	0.2	<0.05	4	<0.5	0.2
1276657	Soil	79	1.05	260	0.146	1	2.17	0.020	0.19	0.4	0.02	7.2	0.2	<0.05	8	<0.5	<0.2
REP 1276657	QC	79	1.07	261	0.146	2	2.16	0.021	0.20	0.4	0.02	7.3	0.2	<0.05	8	<0.5	<0.2
1276663	Soil	69	1.37	202	0.098	1	3.29	0.060	0.46	0.4	0.02	6.9	0.4	0.06	10	<0.5	<0.2
REP 1276663	QC	69	1.39	201	0.097	<1	3.35	0.058	0.43	0.4	0.02	6.8	0.4	<0.05	11	<0.5	<0.2
1276679	Soil	44	0.73	288	0.089	1	2.44	0.015	0.24	0.3	0.02	3.9	0.3	<0.05	7	<0.5	<0.2
REP 1276679	QC	45	0.71	291	0.089	<1	2.24	0.015	0.23	0.3	0.02	3.9	0.3	<0.05	7	<0.5	<0.2
Reference Materials																	
STD DS8	Standard	122	0.62	306	0.128	3	0.93	0.093	0.44	3.1	0.22	2.7	5.5	0.17	5	5.2	5.3
STD DS8	Standard	111	0.59	283	0.127	3	0.93	0.112	0.40	2.8	0.18	2.7	4.9	0.16	5	4.4	4.9
STD DS8	Standard	124	0.61	283	0.133	2	0.96	0.102	0.41	2.9	0.19	3.0	5.3	0.09	5	4.7	4.8
STD DS8 Expected		115	0.6045	279	0.113	2.6	0.93	0.0883	0.41	3	0.192	2.3	5.4	0.1679	4.7	5.23	5
BLK	Blank	<1	<0.01	<1	<0.001	<1	<0.01	<0.001	<0.01	<0.1	<0.01	<0.1	<0.1	<0.05	<1	<0.5	<0.2
BLK	Blank	<1	<0.01	<1	<0.001	<1	<0.01	<0.001	<0.01	<0.1	<0.01	<0.1	<0.1	<0.05	<1	<0.5	<0.2
BLK	Blank	<1	<0.01	<1	<0.001	<1	<0.01	<0.001	<0.01	<0.1	<0.01	<0.1	<0.1	<0.05	<1	<0.5	<0.2

APPENDIX 6- STATEMENT OF EXPENDITURES

Redtail Metals- AWB claimss
Statement of Expenditures- 2011

	AWB total
Contract geochemical survey	\$10,070.00
Helicopter	\$11,380.45
Project management and report writing	\$2,000
Acme Labs Soil Assays	<u>\$1,988.65</u>
total	\$25,439.10

total number of samples: 101

Signed:

Danièle Héon B.Sc, P.Geo.

Dated: May 16, 2012