

ASSESSMENT REPORT ON JUNE 2011 FIELD WORK ON THE POL1-153 QUARTZ MINERAL CLAIM GROUP,

Mayo Mining District Yukon Territory Canada
Map sheet 106D/06

POL1-3 YD16811-13, POL4-30 YD113954-80, POL 31-40 YD16791-
YD16800, POL41-153 YD113981-YD114093.

Coordinates central area: 64° 25' 10.9" N, 135° 03' 21.5" W
UTM: 8V 4 97 303E, 71 43 785N, NAD 83

For
Blind Creek Resources Ltd
Floor 1500, 675 West Hastings Street, Vancouver, V6B 1N2, CANADA
Tel: 1-604-669-6463, Fax 1-604-669-3041

BY
Nicholas Clive Aspinall, P.Eng
3A Diamond Way, Whitehorse, Yukon Territory, Y1A 6G4
Tel: 867-456-4334, Cell: 867-335-2662
Field Office
Box 22, Pillman Hill, Atlin, BC, V0W 1A0
Tel: 250-651-0001: Fax: 250-651-0002
E-mail: ncaspinall@gmail.com

Field work: June 2011:
Report 15th March 2012-02-12

Table of Contents

Summary	3
Introduction and Terms of Reference	4
Reliance on Other Experts	4
Property Description and Location	4
Accessibility, Climate, Local Resources, Infrastructure and Physiography	5
History	5
Geological Setting	5
Project Geology	5
Mineral Deposit Type	6
Mineralization	6
Exploration	6
Drilling	6
Sample Method and Approach	6
Sample Preparation, Analysis and Security	6
Data Verification	7
Adjacent Properties	7
Mineral Processing and Metallurgical Testing	8
Mineral Resource and Mineral Reserve Estimates	8
Other Relevant Data	8
Interpretation and conclusions	8
Recommendations	8
Statement of Costs	
References	10
Tables	
Table 1	4
Table 2	8
Appendices	
Figures	
Analytical Data	
Cost of 2011 work and Quartz Claim Data	
Certificate and Consent of Author	

Summary

The objective of staking the Pol 1-153 claim Group in 2010 was to acquire mineral claims within the newly named Yukon Carlin Gold Trend, now as then still in its theoretical infancy, after 2009 discoveries by ATAC Resources Ltd in the vicinity of Kathleen Lakes, map sheets 106D/07 and 106D/08

A total of 23 silt samples were collected during the 2011 season, four of which show elevated zinc analytical returns. These elevated returns do not show corresponding elevated lead or silver values, but are believed to be indicating a zinc source to the Northwest. Sixteen other silt samples collected show weak anomalous returns in zinc, possibly indicating scavenging by vegetative matter in this low lying swampy environment.

It is recommended additional stream silt sampling in selected areas be carried out, in addition to prospecting focusing on creek boulder tracing and analytical testing of these creek boulders.

Introduction and Terms of Reference

The 2011 field work and this assessment report on the Pol Claim Group, Mayo Mining District, Central Yukon, Canada was commissioned by Mr. Frank Callaghan, President and CEO of Blind Creek Resources Ltd, (referred henceforth as BCR or the Company) with offices at 1500th floor, 675 West Hastings Street, Vancouver, V6B 1N2, British Columbia, Canada.

The objective of staking the Pol 1-153 claim Group in 2010 was to acquire mineral claims within the newly named Yukon Carlin Gold Trend, now as then still in its theoretical infancy, after 2009 discoveries by ATAC Resources Ltd in the vicinity of Kathleen Lakes, map sheets 106D/07 and 106D/08

Reliance on Other Experts

The following experts assisted in the completion of assessment work and this report.

- Mr Frank Callaghan of the Company, for providing necessary funding
- John Witham, pilot for Peak Helicopters Ltd for exemplary rotary skills
- Peak Helicopters Ltd for helicopter services
- Alfred Berleth, Halfway Lakes, Silver Trail Inn, Mayo, Yukon for accommodation
- Eco Tech Laboratories, 2953 Shuswap Road, Kamloops, BC for analytical support
- Anke Woodworth of Terracad GIS Systems Ltd, 3rd floor, 675 West Hastings, Street, Vancouver, V6B 1N2, British Columbia, Canada.
- The Services of the Mayo Mining Recorders Office, Mayo, Yukon.
- Various geological assessment reports, and Geological Survey of Canada and the Yukon Geological Survey reports as itemized in the appendices.

Property Description and Location

The Pol 1-53 quartz claims are located 78 kilometres NE of Mayo, Yukon. Coordinates central to the area are: 64° 25' 10.9" N, 135° 03' 21.5" W

UTM: 8V 4 97 303E, 71 43 785N, NAD 83

Figures 1, 2 & 3.

Table 1

Blind Creek Resources Ltd Pol1-53 Quartz Claims, Mayo Mining District, Yukon							
Claim ID	Grant #	Recorded	Work 2011	Good to	# qtz claims	hectares	Acres
POL1-3	YD168110-13	21/10/2010	Done	21/10/2012	3	60.57	149.61
POL4-30	YD113954-80	21/10/2010	Done	21/10/2012	27	545.13	1,346.47
POL31-40	YD16791-800	21/10/2010	Done	21/10/2012	10	201.90	498.69
POL41-153	YD113981-4093	21/10/2010	Done	21/10/2012	113	2,281.47	5,635.23
Total					153	3,089.07	7,630.00

The claims are located in a valley area drained by Police Creek, and located immediately west of Carpenter Creek. Figure 3.

Accessibility, Climate, Local Resources, Infrastructure and Physiography

The claims are accessible by helicopter.

The mountains of this ecoregion act as a second major barrier to air masses off the Gulf of Alaska inland. The barrier generates a wet belt, especially along the southern slopes. Mean annual temperatures are near -6° C. Mean January temperatures are near -25° C and in July near 8° C. The area straddles a continuous permafrost zone.

Local resources consist of scattered strands of boreal forest in valley bottoms along the southern fringes of the region. The mountainous regions consist primarily of alpine tundra. Larger wild-life consists of grizzly bear, wolverine and Dall sheep, indicating a healthy mammal ecosystem.

Physiography of the area is mountainous featuring steep mountain slopes, with higher peaks in the 5500 foot range. Police Creek drains the centre of the property¹, Figure 3.

History

There is no recorded geological work or prospecting within the claim area. Adjacent claims are currently held by Atac Resources Ltd and Monster Mining Ltd, both being Vancouver junior mining companies/

Geological Setting

Morphologic evidence of previous glaciation is widespread and mainly related to the Reid, (ca.200 Ka) and the McConnell, (ca. 23 Ka) glacial periods;

Sedimentary rocks within the Mackenzie Mountain region in which the property lies range from Early Protozoic to Middle Jurassic, a 1.6 billion year sedimentary record exposed in only a few places in Canada. Sandstone, siltstone and a prominently weathered orange-brown, thinly bedded dolomite, older than 1.750 Ma, constitute the Wernecke Supergroup, (citation: Delaney, 1981).

Succeeding units, including dark coloured shale, thick and thin bedded dolomite and sandstone comprise the overlying Fifteenmile (citation: Thompson, 1995) and Pinguicula (Citation: Thorkelson and Wallace, 1985) formations in the western half of the region, and Mackenzie Mountain Supergroup east of the Snake River. From 750 to about 600 Ma maroon shale, sandstone and conglomerate reflect widespread rifting, (citation. Mustard and Roots, 1997) and glaciation, (citation: Eisbacher, 1981)².

Project Geology

The project area lies within the Cordilleran Foreland Fold and Thrust Belt, (citation: Gabrielse and Yorath-editors, 1991). Resistant carbonate protrudes as steep and rugged ridges, clearly defining mountain scale folds, while recessive siltstone, shale and major faults underlie intervening valleys.

¹ Parc Technical Bulletin 04-01

² ibid

The project areas is primarily covered by swamp and low valley terrain. There are no known outcrops within the work area.

Mineral Deposit Type

No known mineral deposit type is known on the property. The property a region lies in a region where recorded lead Mississippi valley type prospects, Ocelot replacement Pb-Zn-Ag type deposits, Blende Pb-Zn-Ag type deposits, Cu-Pb-Ag vein type prospects, and possibly Carlin Type gold prospects exist.

Mineralization

No mineralization is known on the property.

2011 Exploration

A team of five sampled the property during one day in June 2011, Figure 4.

A total of 23 silt samples were collected, four of which show elevated zinc analytical returns. These elevated returns do not show corresponding elevated lead or silver values, but are believed to be indicating a zinc source to the NW. Sixteen silt samples collected show weak anomalous returns in zinc, possibly indicating scavenging by vegetative matter in this low lying swampy environment, Figure 5.

Drilling

No diamond drilling was carried out in 2011, and no records show drilling was ever carried out on the property.

Sample Method and Approach

Silts are primarily from colluvial parent materials derived from a variety of lithologies of sedimentary and metamorphic origin.

Procedure was to pre-select stream traverses and silt locations using OZI EXPLORER software on map plots downloaded from Yukon ETOPO maps. Sample locations were then downloaded onto Garmin map 76CSX GPS units. With pre-prepared sample location maps crews knew exactly where to traverse, and collect soil samples.

All crews had hand-held radios for communication with other teams and the helicopter pilot.

At the end of the day, sample locations were down loaded into new computer files.

Sample Preparation, Analysis and Security

After the sampling program, all samples were packed and driven vehicle Company vehicle and supervision to Whitehorse, Yukon Territory, and deposited with the senior technician at the Eco-Tech Laboratory Sample Preparation Laboratory. Until delivered to the laboratory, samples were kept under the writer's custody.

Samples were processed into pulps and rejects at this laboratory before the pulps being shipped to the main Eco Tech Laboratory at 10041 Dallas, Drive Kamloops, British Columbia, V2C 6T4.

Analytical data pertaining to this survey are lodged in appendices.

SAMPLE PREPARATION

Samples (minimum sample size 250g) are catalogued and logged into the sample-tracking database. Samples are transferred into a drying oven and dried. Soils are prepared by sieving through an 80-mesh screen to obtain a minus 80-mesh fraction. Samples are flagged with the relevant mesh. Rock samples are crushed on a Terminator jaw crusher to -10 mesh. A 250 gram sub sample of the crushed material is pulverized on a ring mill pulverizer ensuring that 95% passes through a -150 mesh screen. The sub sample is rolled, homogenized and bagged in a pre-numbered bag. A barren gravel blank is prepared before each job in the sample prep to be analyzed for trace contamination along with the processed samples

GOLD FIRE ASSAY: GEOCHEM .

A 15/30/50 g sample size is fire assayed along with certified reference materials using appropriate fluxes. The flux used is pre-mixed, purchased from Anachemia which contains Cookson Granular Litharge. (Silver and Gold Free). The ratios are 66% Litharge, 24% Sodium Carbonate, 2.7% Borax, 7.3% Silica. (The charges may be adjusted based on the sample). Flux weight per fusion is 150g. Purified Silver Nitrate or inquarts for the necessary silver addition is used for inquartation. The resultant dore bead is parted and then digested with nitric acid followed by hydrochloric acid solutions and then analyzed on an atomic absorption instrument (Perkin Elmer/Thermo S-Series AA instrument). Over-range geochem values (Detection limit 5-1000ppb) for rocks are re-analyzed using gold assay methods. Appropriate certified reference material and repeat/re-split samples (Quality Control Components) accompany the samples on the data sheet for quality control assessment.

ICP-AES AQUA REGIS DIGESTION.

A 0.5 gram sample is digested with a 3:1:2 (HCl: HN0₃: H₂O) solution in a water bath at 95°C. The sample is then diluted to 10ml with water. All solutions used during the digestion process contain beryllium, which acts as an internal standard for the ICP run. The sample is analyzed on a Thermo IRIS Intrepid II XSP ICP unit. Certified reference material is used to check the performance of the machine and to ensure that proper digestion occurred in the wet lab. QC samples are run along with the client samples to ensure no machine drift occurred or instrumentation issues occurred during the run procedure. Repeat samples (every batch of 10 or less) and re-splits (every batch of 35 or less) are also run to ensure proper weighing and digestion occurred. Results are collated by computer and are printed along with accompanying quality control data (repeats, re-splits, and standards). Any of the base metal elements (Ag, Cu, Pb, Zn) that are over limit (>1.0%) are run as an ore grade assay.

Data Verification

Samples were analyzed by an Canadian Industry recognized analytical laboratory, and the author is satisfied work was done accurately

Adjacent Properties

There are 7 prospects of interest close by. These are:

1. Elliot Ridge, (Cu, Pb-vein)
2. Carpenter, (Pb-Mississippi)

3. Grey Copper Hill, (Ag,Pb-vein)
4. Silver Hill, (Pb-Mississippi)
5. Settlemeir, (unknown)
6. White Hill, (Pb,Zn,, Cu, -vein)
7. Mckay Hill, (Pb-vein)

Mineral Processing and Metallurgical Testing

During 2011 there was no metallurgical work done on material from the work area

Mineral Resource and Mineral Reserve Estimates

The 2011 work area does not include a mineral reserve estimate.

Other Relevant Data

To the best of my knowledge there are no recognized mineral showings or relevant data within the work area other than those already mentioned in this report

Interpretation and conclusions

A total of 23 silt samples were collected during the 2011 season, four of which show elevated zinc analytical returns. These elevated returns do not show corresponding elevated lead or silver values, but are believed to be indicating a zinc source to the Northwest. Sixteen other silt samples collected show weak anomalous returns in zinc, possibly indicating scavenging by vegetative matter in this low lying swampy environment.

Recommendations

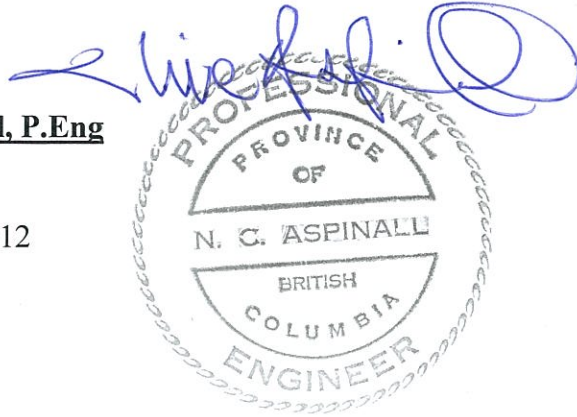
It is recommended additional silt sampling be made in selected areas, in addition to prospecting focusing on creek boulder tracing and analytical testing of these creek boulders. A budget is tabulated in Table 2.

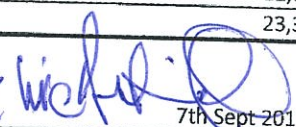
Table 2

Working Budget for the Pol Claims , Central Yukon, 2012		
Geologist,	2 days at \$500 per day	1,000.00
Two field Assistants	2 days at \$480 per day	960.00
Meals and accommodation	4 man days at \$100 per day	400
Mobilization, demobilization	Ex-Atlin, B.C.	5000
Helicopter	5000 per day, 2 days	10,000
Analyses	50 samples at \$30	1500
Report	2 days at \$500 per day	1000
maps and figures		1500
Sub-total		21,360.00
Company management at 10%		2,136.00
Total		\$23,496.00

Clive Aspinal, P.Eng
Geologist

15th March, 2012



Helicopter Support		Date.2011 hrs		Total
		26-Jun	4.7	
		27-Jun	4	
			<u>8.7</u>	
Rate	\$1050 p/h 8,7 hours			
Fuel	\$268.40 8.7 hrs		\$ 9,135.00	
Total Hel. Expense			\$ 2,335.08	
			\$ 11,470.08	11,470.08
Personnel One day sampling				
Support	Man 1 \$ 280 per day	one day	\$ 280	
	Man 2 \$280 per day	one day	\$ 280	
	Man 3 \$250 per day	one day	\$ 250	
	Man 4 \$250 per Day	one day	\$ 250	
	Man 5 \$200 per day	one day	\$ 200	
	Man 6 \$250 per day	one day	\$ 250	
	Man 7 \$500 per day	one day	\$ 500	
			<u>\$ 2,010.00</u>	2,010
Geological	Man 8 \$250 per day	one day	\$ 250	
Prospecting	Man 2 \$500 per day	one day	\$ 500	
Support			<u>\$ 750.00</u>	750
Meals and Accommodation		9 man days /\$167 per man day	\$ 1,503.00	1,503
Analytical	30 Silt Samples	\$27.00 Each	\$ 810.00	810
	5 Rock Samples	\$30 Each	\$ 150.00	150
Vehicles	3 vehicles	1.5 days	\$288	288
Mobilization/Demobilization Atlin Mayo		Logistics & Fuel		4,000
Administration Head office 10%		2169.3		2,169
Total	153 Claims	\$152.6 per claim		11,680
Request 1 years work per claim				23,361
Name	Name Agent			
Witness	Signed		7th Sept 2011	

References

Boyle, R. W., (1965). Geology, Geochemistry and Origin of the Lead-Zinc-Silver Deposits of the Keno hill-Galena hill Area, Yukon Territory, (with short descriptions of the tin, tungsten and gold deposits). Bulletin 111. Geological Survey of Canada, Department of Mines and Technical Surveys.

Bostock, H.S., (1957). Yukon Territory, Selected Field Reports of the Geological Survey of Canada 1898-1933. Department of Mines and Technical Surveys. Geological Survey of Canada Memoir 284.

Green, L.H., (1971). Geology of Mayo Lake, Scougle Creek and Mcquesten Lake Map-Areas, Yukon Territory, Geological Survey of Canada. Department of Energy, Mines and Resources, Memoir 357.

Price, Barry, J., (2010, amended edition) Technical Report, Blende Project, Beaver River Area, Nash Creek Map Area 106D 07 Latitude: 64° 24' 39" N/Longitude: 134° 40' 21" W For: Blind Creek Resources Ltd, 1500 - 675 West Hastings Street, Vancouver, British Columbia, V6B 1N2, Canada

Smith, C.A.S., Meikle, J.C., AND Roots, C.F., (2004). Ecoregions of the Yukon Territory, Biophysical Properties of the Yukon Landscapes, Yukon Ecoregions Working Group, PARC Technical Bulletin 04-01

Van Tassel, Robert. (1966). Geological and Geochemical Report on the VU Mineral Claims, Allen Creek, (Sheet No.9/105M14 and 105M15) Lat 63 57N. Long 135.00W

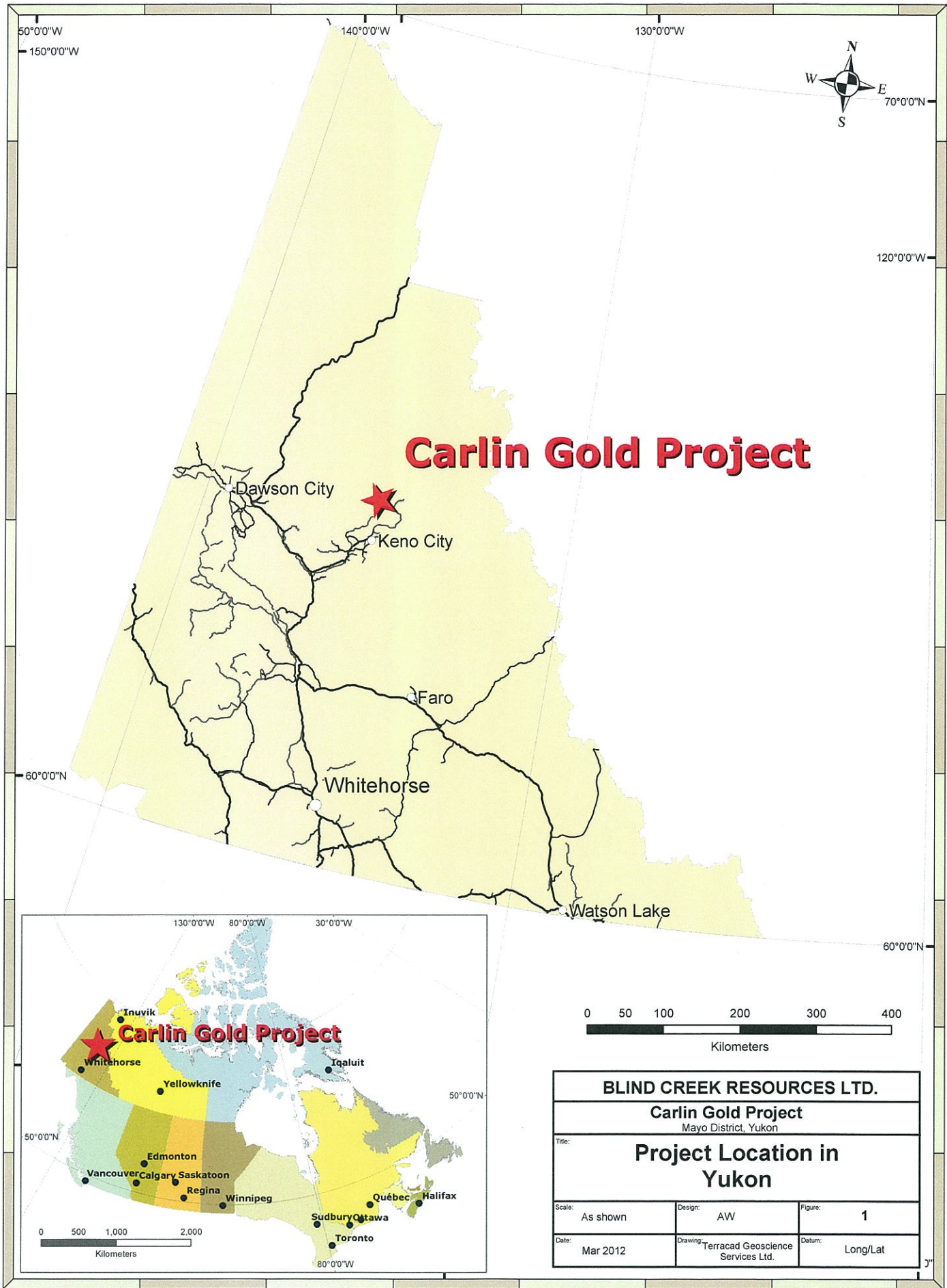
Van Tassel, Robert. (1965). Geological and Geochemical Report on the T Mineral Claims, North Fork Granite Creek, (sheet 105M14) Lat: 63 12 N Long 135 00 W.

Silveritz, George., (1980) Assessment Report Soil Geochemistry of the Silver Hawk Claims, 106D/6 135 16 W 64 26 N, Mayo M.D. A/R 090649

Silveritz, George., (1979) Geology of the the Silver Hawk Claims, 106D/6 135 16 W 64 26 N, Mayo M.D. A/R 090568

Yukon minfiles, Nash Creek files.

Figures



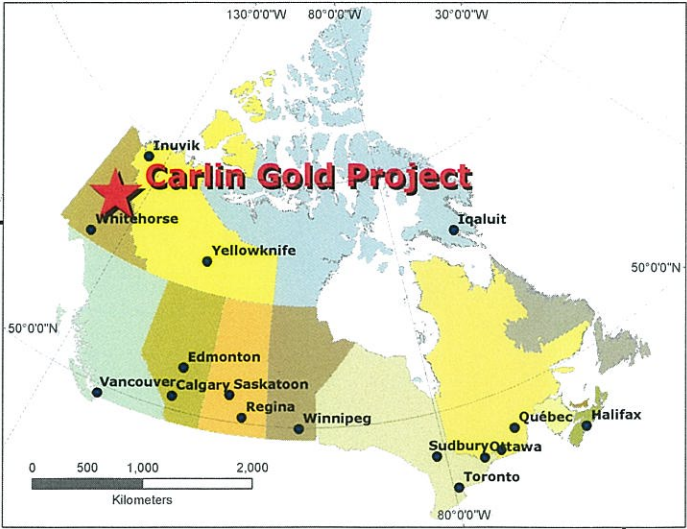
Carlin Gold Project

Dawson City
Keno City

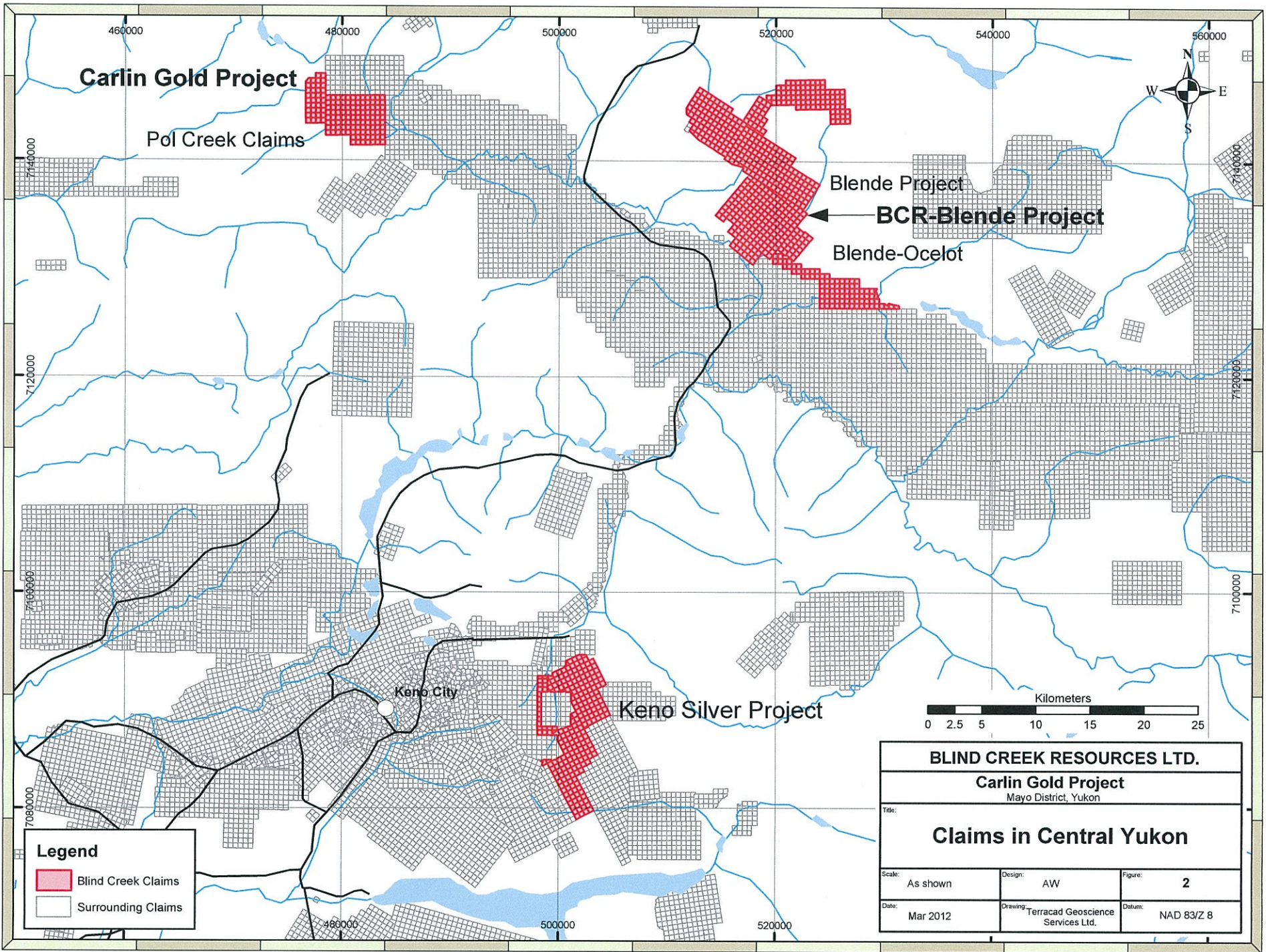
Faro

Whitehorse

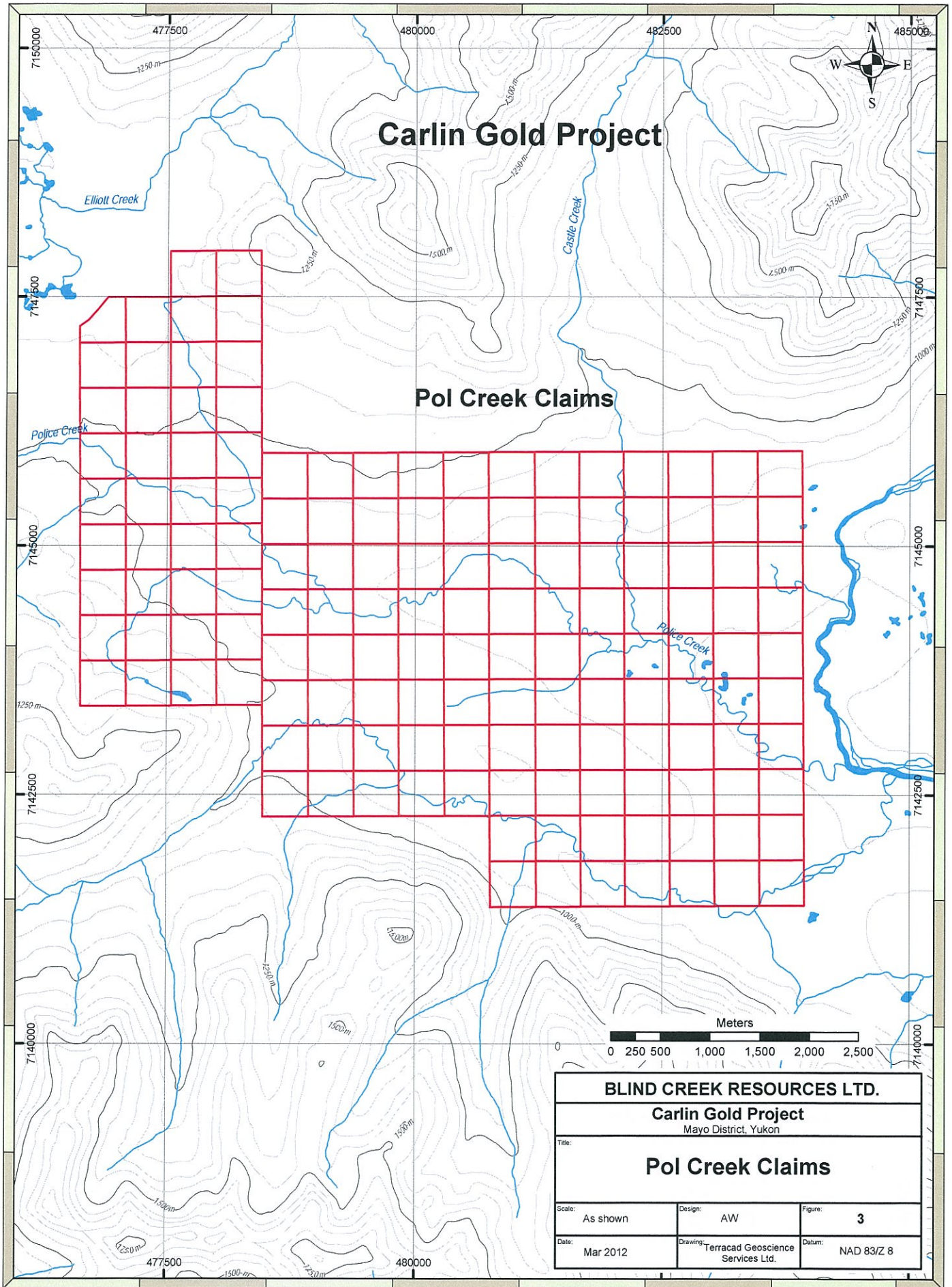
Watson Lake



BLIND CREEK RESOURCES LTD.		
Carlin Gold Project Mayo District, Yukon		
Title: Project Location in Yukon		
Scale: As shown	Design: AW	Figure: 1
Date: Mar 2012	Drawing: Terracad Geoscience Services Ltd.	Datum: Long/Lat



BLIND CREEK RESOURCES LTD.		
Carlin Gold Project Mayo District, Yukon		
Title: Claims in Central Yukon		
Scale: As shown	Design: AW	Figure: 2
Date: Mar 2012	Drawing: Terracad Geoscience Services Ltd.	Datum: NAD 83/Z 8



Carlin Gold Project

Pol Creek Claims

BLIND CREEK RESOURCES LTD.

Carlin Gold Project
Mayo District, Yukon

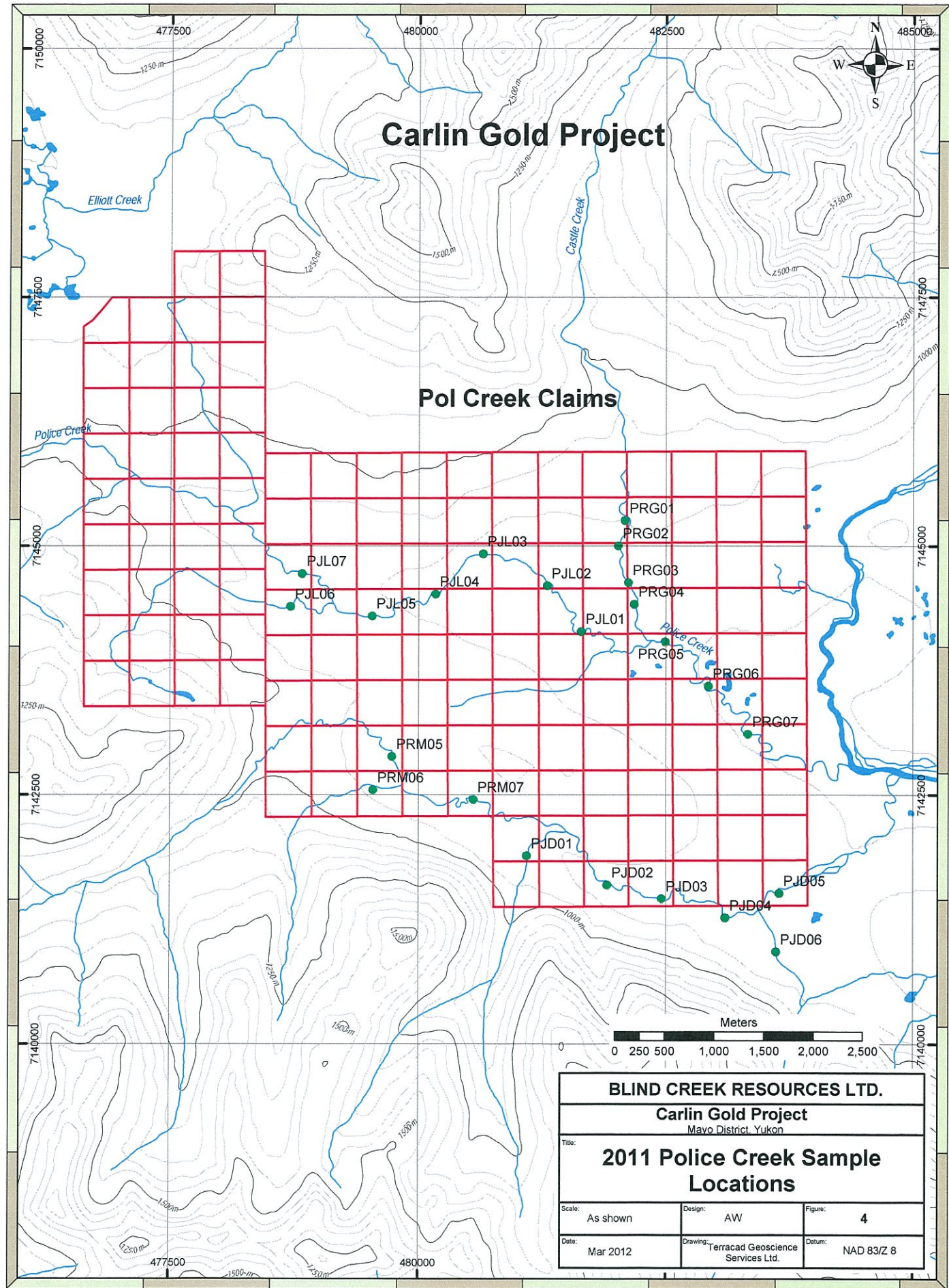
Title:
Pol Creek Claims

Scale: As shown	Design: AW	Figure: 3
-----------------	------------	------------------

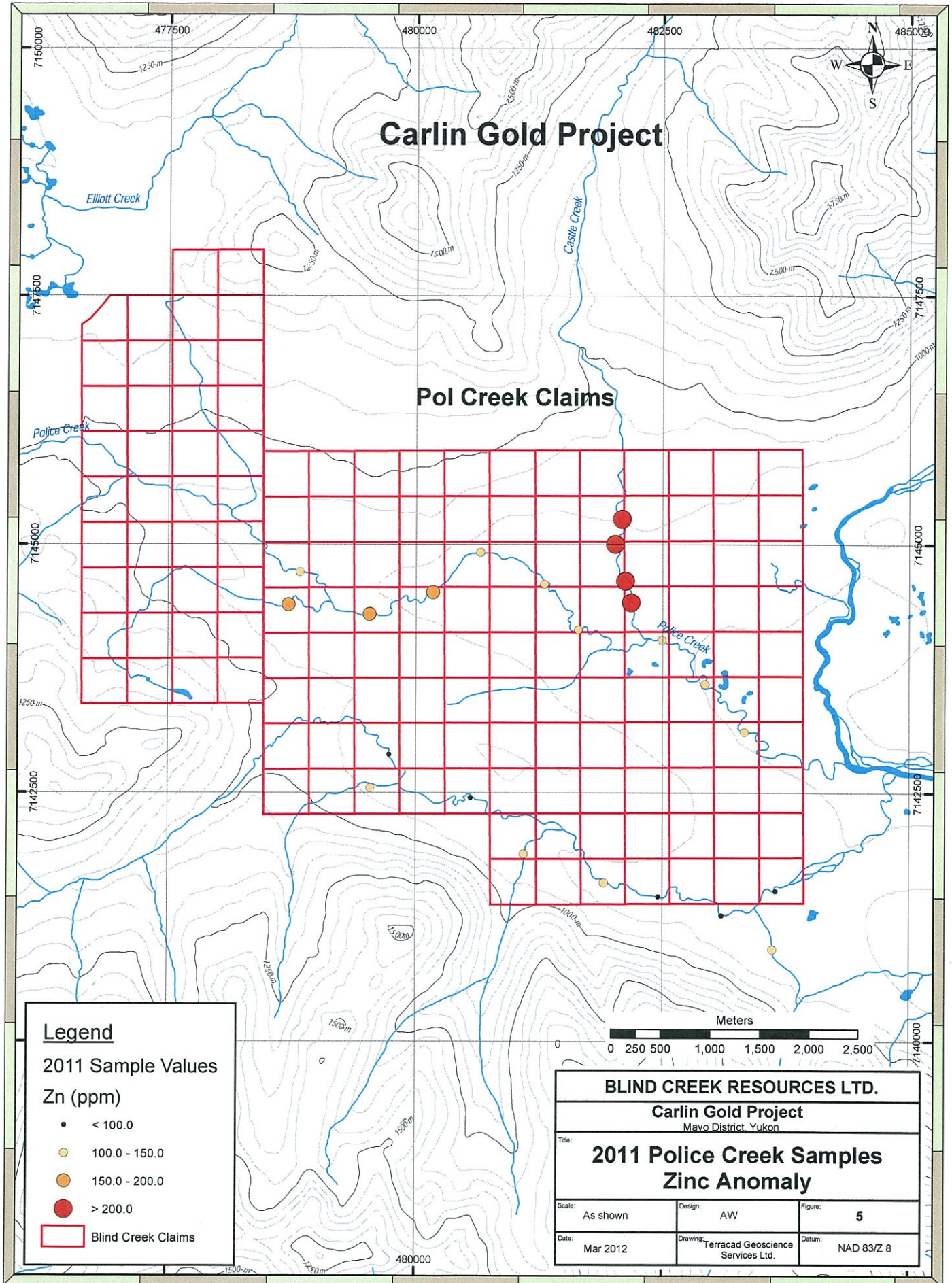
Date: Mar 2012	Drawing: Terracad Geoscience Services Ltd.	Datum: NAD 83/Z 8
----------------	--	-------------------

Carlin Gold Project

Pol Creek Claims



BLIND CREEK RESOURCES LTD.		
Carlin Gold Project Mavo District, Yukon		
Title: 2011 Police Creek Sample Locations		
Scale: As shown	Design: AW	Figure: 4
Date: Mar 2012	Drawing: Terracad Geoscience Services Ltd.	Datum: NAD 83/Z 8



Carlin Gold Project

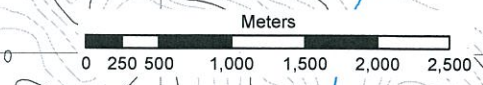
Pol Creek Claims

Legend

2011 Sample Values
Zn (ppm)

- < 100.0
- 100.0 - 150.0
- 150.0 - 200.0
- > 200.0

Blind Creek Claims



BLIND CREEK RESOURCES LTD.		
Carlin Gold Project Mavo District, Yukon		
Title: 2011 Police Creek Samples Zinc Anomaly		
Scale: As shown	Design: AW	Figure: 5
Date: Mar 2012	Drawing: Terracad Geoscience Services Ltd.	Datum: NAD 83/Z 8

Analytical Data

Eco Tech Laboratory Ltd.
10041 Dallas Drive
Kamloops, BC
V2C 6T4 Canada
Tel + 250 573 5700
Fax + 250 573 4557
Toll Free + 1 877 573 5755
www.stewartgroupglobal.com



StewartGroup
Geochemical & Assay

CERTIFICATE OF ANALYSIS AW 2011-8178

Blind Creek Resources
c/o Clive Aspinall
3A Diamond Way
Whitehorse, YT
Y1A 6G4

2-Sep-11

No. of samples received: 35
Sample Type: Soil
Project: Pol Blende
Shipment #: Pol_Blende
Submitted by: Clive Aspinall

ET #.	Tag #	Au (ppb)
1	PNCA01	5
2	PNCA02	<5
3	PNCA03	<5
4	PNCA04	<5
5	PNCA05	5
6	PNCA06	10
7	PNCA07	<5
8	PRG01	<5
9	PRG02	<5
10	PRG03	5
11	PRG04	5
12	PRG05	5
13	PRG06	5
14	PRG07	<5
15	PJL1	<5
16	PJL2	<5
17	PJL3	5
18	PJL4	5
19	PJL5	5
20	PJL6	5
21	PJL7	5
22	PJD1	5
23	PJD2	5
24	PJD3	5
25	PJD4	15
26	PJD5	5
27	PJD6	5
28	PRM5	5
29	PRM6	5

All business is undertaken subject to the Company's General Conditions of Business which are available on request. Registered Office: Eco Tech Laboratory Ltd., 100041 Dallas Drive, Kamloops, BC V2C 6T4 Canada.

Eco Tech Laboratory Ltd.
10041 Dallas Drive
Kamloops, BC
V2C 6T4 Canada
Tel + 250 573 5700
Fax + 250 573 4557
Toll Free + 1 877 573 5755
www.stewartgroupglobal.com



StewartGroup
Geochemical & Assay

Blind Creek Resources AW11-8178

2-Sep-11

ET #.	Tag #	Au (ppb)
30	PRM7	15
31	NCA41	<5
32	NCA43	10
33	NCA72	35
34	NCA73	5
35	NCA36	5

QC DATA:

Repeat:

1	PNCA01	<5
10	PRG03	5
19	PJL5	5
29	PRM6	<5

Standard:

OXG84	925
-------	-----

FA Geochem/AA Finish

NM/cr/el
XLS/11


ECO TECH LABORATORY LTD.
Norman Monteith
B.C. Certified Assayer

Blind Creek Resources Ltd Silt Geochemistry Survey Police Creek, Yukon, Sheet 106D06										Jun-11 Datum		NAD83
item#	Sample ID	Sector	Easting	Northing	Date	Au ppb	Ag ppm	As ppm	Cu ppm	Pb ppm	Zn ppm	
1	PRG01	8W	482086	7145255	28/06/2011	<5	0.2		10	28	54	216
2	PRG02	8W	482017	7145001	28/06/2011	<5	0.4		10	40	78	268
3	PRG03	8W	482120	7144632	28/06/2011	5	0.2		10	34	63	238
4	PRG04	8W	482179	7144415	28/06/2011	5	<0.2		10	36	72	210
5	PRG05	8W	482493	7144038	28/06/2011	5	<0.2		10	24	33	134
6	PRG06	8W	482928	7143593	28/06/2011	5	<0.2		5	18	24	118
7	PRG07	8W	483324	7143111	28/06/2011	<5	<0.2		5	24	33	132
8	PJL01	8W	481643	7144140	28/06/2011	<5	<0.2		5	20	24	120
9	PJL02	8W	481300	7144600	28/06/2011	5	<0.2		5	22	27	130
10	PJL03	8W	480654	7144919	28/06/2011	5	<0.2		5	22	24	138
11	PJL04	8W	480170	7144517	28/06/2011	5	<0.2		10	34	33	154
12	PJL05	8W	479528	7144296	28/06/2011	5	<0.2		10	22	27	160
13	PJL06	8W	478708	7144392	28/06/2011	5	<0.2		10	34	42	164
17	PJD01	8W	481095	7141886	28/06/2011	5	<0.2		<5	22	27	110
18	PJD02	8W	481907	7141596	28/06/2011	5	<0.2		5	26	21	110
19	PJD03	8W	482456	7141458	28/06/2011	5	<0.2		<5	24	18	100
20	PJD04	8W	483096	7141267	28/06/2011	15	<0.2		5	22	18	94
21	PJD05	8W	483639	7141512	28/06/2011	5	<0.2		5	22	21	96
22	PJD06	8W	483606	7140927	28/06/2011	5	<0.2		10	28	21	104
23	PJL07	8W	478824	7144721	28/06/2011	15	<0.2		5	42	15	106
14	PRM05	8W	479730	7142885	28/06/2011	5	<0.2		5	24	18	100
15	PRM06	8W	479539	7142549	28/06/2011	5	<0.2		10	28	21	110
16	PRM07	8W	480556	7142452	28/06/2011	15	<0.2		5	22	18	94



Anomalous
Weakly anomalous
Not anomalous

2-Sep-11

Stewart Group
ECO TECH LABORATORY LTD.
 10041 Dallas Drive
KAMLOOPS, B.C.
 V2C 6T4
www.stewartgroupglobal.com

ICP CERTIFICATE OF ANALYSIS AW 2011-8178

Blind Creek Resources
c/o Clive Aspinnall
 3A Diamond Way
Whitehorse, YT
 Y1A 6G4

Phone: 250-573-5700
 Fax : 250-573-4557

No. of samples received: 35
 Sample Type: Soil
Project: Pol Blende
Shipment #: Pol_Blende
 Submitted by: Clive Aspinnall

Values in ppm unless otherwise reported

Et #.	Tag #	Ag	Al%	As	Ba	Be	Bi	Ca%	Cd	Co	Cr	Cu	Fe%	Hg	K%	La	Li	Mg%	Mn	Mo	Na%	Ni	P	Pb	S%	Sb	Sc	Se	Sn	Sr	Ti%	U	V	W	Y	Zn
1	PNCA01	<0.2	3.43	5	432	2	<5	1.81	<1	46	58	62	7.76	<5	0.55	24	40	2.98	1115	1	0.05	35	4050	15	<0.01	<5	3	<10	<5	100	0.32	<5	136	<5	9	104
2	PNCA02	<0.2	0.63	5	100	<1	<5	0.48	<1	13	8	40	3.54	<5	0.03	12	6	0.36	1685	<1	0.03	16	520	18	0.03	<5	2	<10	<5	6	<0.01	<5	14	<5	14	44
3	PNCA03	1.0	0.82	55	106	<1	5	2.89	<1	50	16	98	5.33	<5	0.06	8	8	1.39	2200	2	0.04	59	920	39	0.10	15	7	<10	<5	30	0.02	<5	42	<5	13	254
4	PNCA04	0.2	1.02	15	196	<1	<5	0.35	<1	17	16	24	4.14	<5	0.05	8	8	0.18	1790	3	0.03	18	820	60	0.06	<5	1	<10	<5	20	0.02	<5	42	<5	7	176
5	PNCA05	<0.2	1.51	10	114	1	<5	0.91	<1	14	30	12	3.84	<5	0.04	14	8	0.49	1705	2	0.03	15	1220	42	0.10	<5	2	<10	<5	10	0.02	<5	78	<5	15	120
6	PNCA06	0.2	1.35	5	324	<1	<5	1.03	<1	9	24	32	2.36	<5	0.05	10	14	0.98	305	1	0.03	16	1040	36	0.10	<5	2	<10	<5	18	0.03	<5	38	<5	7	106
7	PNCA07	0.2	0.92	10	182	<1	<5	>10	2	13	38	32	1.86	<5	0.06	6	10	7.47	560	5	0.03	41	990	54	0.01	<5	1	<10	<5	42	0.02	<5	64	<5	6	420
8	PRG01	0.2	0.86	10	128	<1	<5	8.45	1	14	30	28	1.96	<5	0.05	8	8	4.40	520	4	0.02	29	990	54	<0.01	<5	2	<10	<5	52	0.05	<5	58	<5	8	216
9	PRG02	0.4	1.03	10	126	<1	<5	7.80	1	16	34	40	2.23	<5	0.05	8	10	4.50	575	5	0.03	38	1040	78	<0.01	<5	2	<10	<5	42	0.05	<5	68	<5	9	268
10	PRG03	0.2	0.82	10	118	<1	<5	9.61	1	14	30	34	2.00	<5	0.04	6	8	4.92	650	5	0.02	33	1010	63	<0.01	<5	1	<10	<5	58	0.03	<5	54	<5	8	238
11	PRG04	<0.2	1.19	10	142	<1	<5	7.82	1	18	48	36	2.67	<5	0.04	8	10	4.86	845	4	0.03	39	890	72	<0.01	<5	3	<10	<5	34	0.07	<5	70	<5	7	210
12	PRG05	<0.2	1.30	10	184	<1	<5	6.07	<1	18	50	24	2.90	<5	0.05	12	16	3.77	670	2	0.03	34	1370	33	<0.01	<5	3	<10	<5	48	0.12	<5	64	<5	7	134
13	PRG06	<0.2	1.20	5	156	<1	<5	6.58	<1	17	44	18	2.61	<5	0.05	12	16	3.97	550	2	0.03	30	1350	24	<0.01	<5	2	<10	<5	46	0.13	<5	60	<5	6	118
14	PRG07	<0.2	1.29	5	176	<1	<5	6.28	<1	18	46	24	2.79	<5	0.05	12	16	3.91	600	2	0.03	33	1270	33	<0.01	<5	3	<10	<5	46	0.12	<5	64	<5	7	132
15	PJL1	<0.2	1.36	5	192	<1	<5	4.54	<1	19	48	20	3.00	<5	0.06	14	18	3.02	670	2	0.03	33	1470	24	0.01	<5	3	<10	<5	54	0.14	<5	64	<5	7	120
16	PJL2	<0.2	1.36	5	200	<1	<5	4.74	<1	20	48	22	3.00	<5	0.06	14	18	3.06	605	1	0.03	35	1490	27	<0.01	<5	3	<10	<5	52	0.14	<5	64	<5	7	130
17	PJL3	<0.2	1.35	5	226	<1	<5	4.04	<1	19	48	22	3.01	<5	0.07	14	18	2.61	750	1	0.03	35	1450	24	0.02	<5	3	<10	<5	54	0.14	<5	64	<5	7	138
18	PJL4	<0.2	1.63	10	306	<1	<5	2.38	<1	22	56	34	3.67	<5	0.10	12	22	1.61	1320	2	0.03	42	1310	33	0.08	<5	3	<10	<5	76	0.07	<5	68	<5	7	154
19	PJL5	<0.2	1.35	10	226	<1	<5	3.84	<1	19	50	22	3.16	<5	0.08	12	18	2.56	880	2	0.03	37	1440	27	0.02	<5	2	<10	<5	56	0.10	<5	62	<5	7	160
20	PJL6	<0.2	1.89	10	358	<1	<5	3.09	<1	28	70	34	4.42	<5	0.11	16	26	2.57	830	2	0.04	50	1550	42	0.03	<5	4	<10	<5	58	0.13	<5	84	<5	8	164
21	PJL7	<0.2	1.61	<5	236	<1	<5	1.37	<1	20	64	22	3.33	<5	0.06	18	22	1.42	355	<1	0.03	34	1770	27	0.04	<5	3	<10	<5	58	0.17	<5	74	<5	8	110
22	PJD1	<0.2	1.71	5	216	<1	<5	2.59	<1	25	96	26	3.73	<5	0.07	20	20	2.16	535	1	0.04	50	2070	21	0.03	<5	3	<10	<5	66	0.19	<5	92	<5	8	110
23	PJD2	<0.2	1.64	<5	198	<1	<5	3.64	<1	25	92	24	3.58	<5	0.07	20	18	2.74	475	1	0.03	46	2190	18	0.01	<5	3	<10	<5	68	0.22	<5	92	<5	8	100
24	PJD3	<0.2	1.63	5	198	<1	<5	4.07	<1	25	96	22	3.75	<5	0.07	20	18	3.00	640	1	0.03	44	2360	18	0.01	<5	3	<10	<5	72	0.22	<5	92	<5	8	94
25	PJD4	<0.2	1.59	5	192	<1	<5	4.81	<1	25	94	22	4.07	<5	0.07	20	18	3.42	625	2	0.04	44	2460	21	0.02	<5	3	<10	<5	76	0.23	<5	96	<5	8	96
26	PJD5	<0.2	1.80	10	232	<1	<5	4.35	<1	28	100	28	4.20	<5	0.09	20	20	3.25	915	2	0.04	49	2270	21	0.02	<5	4	<10	<5	74	0.24	<5	102	<5	8	104
27	PJD6	<0.2	2.98	5	336	1	<5	2.55	<1	42	126	42	6.43	<5	0.23	24	28	3.19	905	2	0.05	52	3540	15	0.05	<5	4	<10	<5	112	0.35	<5	152	<5	9	106
28	PRM5	<0.2	1.75	5	242	<1	<5	2.00	<1	25	96	24	4.00	<5	0.07	20	20	2.00	745	1	0.04	50	2080	18	0.02	<5	3	<10	<5	66	0.18	<5	92	<5	8	100
29	PRM6	<0.2	1.67	10	246	<1	<5	1.99	<1	24	92	28	3.91	<5	0.08	18	18	1.89	810	1	0.04	48	1920	21	0.03	<5	3	<10	<5	62	0.18	<5	90	<5	8	110
30	PRM7	<0.2	1.77	5	224	<1	<5	2.24	<1	26	108	22	4.16	<5	0.07	24	20	2.12	565	1	0.04	47	2620	18	0.02	<5	4	<10	<5	76	0.23	<5	104	<5	9	94

Et #.	Tag #	Ag	Al%	As	Ba	Be	Bi	Ca%	Cd	Co	Cr	Cu	Fe%	Hg	K%	La	Li	Mg%	Mn	Mo	Na%	Ni	P	Pb	S%	Sb	Sc	Se	Sn	Sr	Ti%	U	V	W	Y	Zn
31	NCA41	0.8	2.35	50	20	1	<5	7.38	1	14	22	26	2.75	<5	0.26	2	62	6.12	1165	2	0.03	21	250	537	0.01	10	4	<10	<5	16	0.05	<5	34	<5	6	1884
32	NCA43	0.4	2.38	20	80	<1	10	0.56	2	39	36	374	8.76	<5	0.07	10	36	2.08	1225	2	0.05	51	600	90	0.03	5	11	<10	<5	8	0.04	<5	158	<5	14	1688
33	NCA72	<0.2	1.70	130	138	<1	15	1.07	<1	70	6	194	>10	<5	0.03	16	18	0.84	2280	3	0.08	20	2350	57	0.06	25	13	<10	<5	46	<0.01	<5	230	<5	21	190
34	NCA73	2.8	0.11	15	54	<1	<5	>10	7	11	2	20	2.08	<5	<0.01	2	2	7.86	1155	1	0.03	17	380	2421	0.02	<5	<1	<10	<5	32	<0.01	<5	14	<5	6	2050
35	NCA36	0.8	0.57	10	32	<1	40	0.03	<1	3	4	58	>10	<5	0.05	10	<2	0.06	65	5	0.25	6	820	33	0.54	10	2	30	<5	2	0.03	<5	32	<5	3	62

QC DATA:

Repeat:

1	PNCA01	<0.2	3.53	5	440	2	5	1.87	<1	47	60	62	7.79	<5	0.56	24	40	3.00	1110	1	0.05	35	4070	21	<0.01	<5	3	<10	<5	100	0.34	<5	140	<5	9	106
10	PRG03	0.4	0.84	10	124	<1	<5	9.30	1	14	30	34	2.01	<5	0.05	8	8	4.77	640	5	0.02	32	980	66	<0.01	<5	2	<10	<5	56	0.04	<5	56	<5	8	234
19	PJL5	<0.2	1.41	10	242	<1	<5	3.99	<1	20	52	26	3.24	<5	0.08	14	18	2.66	880	2	0.03	37	1450	27	0.03	<5	3	<10	<5	58	0.13	<5	66	<5	7	164
28	PRM5	<0.2	1.80	5	246	<1	<5	2.05	<1	26	96	24	4.05	<5	0.07	20	20	2.02	760	1	0.04	49	2050	21	0.02	<5	4	<10	<5	66	0.21	<5	94	<5	8	100

Standard:

TILL3		1.4	1.07	85	42	<1	<5	0.57	<1	14	60	22	2.10	<5	0.05	11	16	0.62	310	1	0.03	33	480	24	0.03	<5	4	<10	<5	16	0.06	<5	39	<5	6	44
TILL3		1.6	1.10	85	42	<1	<5	0.58	<1	14	64	22	2.00	<5	0.04	11	16	0.61	325	1	0.02	32	470	21	0.04	<5	3	<10	<5	14	0.06	<5	40	<5	6	40

ICP: Aqua Regia Digest / ICP- AES Finish.

NM/cr/el
 dt/2_8178S
 XLS/11


ECO TECH LABORATORY LTD.
 Norman Monteith
 B.C. Certified Assayer

Cost of 2011 field work and Quartz Claim Data

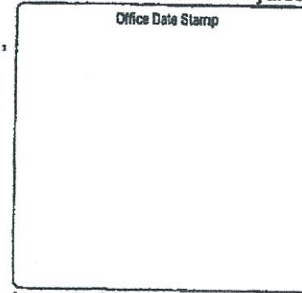
Cost Statement. Assessment Work: POL Quartz Claims, Sheet 106D/106, Mayo Mining District YT June 2011

Helicopter Support		Date.2011	hrs		Total
		26-Jun	4.7		
		27-Jun	4		
			<u>8.7</u>		
Rate		\$1050 p/h 8,7 hours		\$ 9,135.00	
Fuel		\$268.40 8.7 hrs		\$ 2,335.08	
Total Heli. Expense				\$ 11,470.08	11,470.08
Personnel Support		One day sampling			
Man	1	\$ 280 per day	one day	\$ 280	
Man	2	\$280 per day	one day	\$ 280	
Man	3	\$250 per day	one day	\$ 250	
Man	4	\$250 per Day	one day	\$ 250	
Man	5	\$200 per day	one day	\$ 200	
Man	6	\$250 per day	one day	\$ 250	
Man	7	\$500 per day	one day	\$ 500	
				<u>\$ 2,010.00</u>	2,010
Geological Prospecting Support	Man	8	\$250 per day	one day	\$ 250
	Man	2	\$500 per day	one day	\$ 500
				<u>\$ 750.00</u>	750
Meals and Accommodation		9 man days	/S167 per man day	\$ 1,503.00	1,503
Analytical		30 Silt Samples	\$27.00 Each	\$ 810.00	810
		5 Rock Samples	\$30 Each	\$ 150.00	150
Vehicles		3 vehicles	1.5 days	\$288	288
Mobilization/Demobilization Atlin Mayo		Logistics & Fuel			4,000
Administration Head office 10%		2169.3			2,169
					11,680
Total		153 Claims	\$152.6 per claim		23,361

Request 1 years work per claim

Name _____ Name Agent _____
 Witness _____ Signed _____ 7th Sept 2011

I, Nicholas Clive Aspinall
_____ of 3A Diamond Way, Whitehorse, YT
Phone 867-456-4334
make oath and say that:



- I am the owner, or agent of the owner, of the mineral claim(s) to which reference is made herein.
- I have done, or caused to be done, work, on the following mineral claim(s): (Here list claims on which work was actually done by number and name)
4005-4006
YD11200-YD11200(POL65-66), YD16792(POL32), YE16799-YD16800(POL39-40), YD113981-YD113982(POL41-42)
3989
YD113986(POL46), YD11200(POL49), YD113991(POL51), YD113994-YD113995(POL54-55), YD113998(POL58)
4042
YD114017(POL77), YD114020(POL80), YD114024-YD114025(POL84-85), YD114030(POL90), YD11200(POL102)
19
Total number of claims 21, worth of work each claim \$1,110.57

situated at Police Creek Claim sheet No. 106D06
In the Mayo Mining District, to the value of at least \$23,322 dollars,
since the 19th day of October 2010

to represent the following mineral claims under the authority of Grouping Certificate No. _____ (Here list claims to be renewed in numerical order, by grant number and claim name, showing renewal period requested).

YD16811-YD16813(POL1-3), YD113954-YD113980(POL4-30), YD16791-YD16800(POL31-40)
YD113981-YD114093(POL41-153)
Please renew one year on each claim
New Expiring Date 2013/10/18

3. The following is a detailed statement of such work: (Set out full particulars of the work done indicating dates work commenced and ended in the twelve months in which such work is required to be done as shown by Section 56).

Work Dates: Start 26th June 2011, End 28th June 2011
1) Prospecting
2) Geochemical Soil Sampling
One year worth of work

Sworn before me at WHITEHORSE this 11 day of AUGUST 2011

[Signature] Notary Public [Signature] Owner or Authorized Agent

Accuracy Information and Protection of Privacy Act
The personal information requested on this form is collected under the authority of and used for the purpose of administering the Quartz Mining Act. Questions about the collection and use of this information can be directed to the Mining Records Office, Mineral Resources, Department of Energy, Mines and Resources, Yukon Government, Box 2703, Whitehorse, Yukon Territory, Y1A 2C6 (867) 667-3190
YG(50490) F2 04/2003

Note: Four Corrections seen and made on 16 September 11 Clive Aspinall

Note: Four Corrections made on 16 Sept 11

Office Use Only

QUARTZ MINING ACT FORM 12 SECTION 55
APPLICATION TO GROUP MINERAL CLAIMS

Page 1 of 1

Mayo MINING DISTRICT

Office Date Stamp

Ref: Blind Creek Resources Inc

I, (We) the undersigned owners or agent(s) of the owners of following mineral claims.

(Additional sheets or an appendix may be used) (Claim names and grant numbers to be listed in sequence eg. TOM 1-40, YC10001 - YC10040)

GRANT NUMBER	CLAIM NAME	MAP SHEET
YD16811 - YD16813	PDL 1-3	106706
YD113954 - YD113980	PDL 4-30	" "
YD16791 - YD16800	PDL 31-40	" "
YD113981 - YD114093	PDL 41-153	" "

Give notice of intention to group the said claims for the performance of work and do hereby apply under the provisions of section 55 of the Quartz Mining Act for a certificate in form 6.

Total number of claims 153

I (We) hereby certify that the above claims are adjoining as shown on the attached sketch

Dated at WHITEHORSE

This 11 day of AUGUST, 2011

[Signature]
Applicant(s)

Claim Status Report

22 July 2011

Claim Name and Nbr	Grant No.	Expiry Date	Registered Owner	% Owned	NTS #s
P B 1 - 88	YE41201 - YE41288	2012/06/27	Blind Creek Resources Ltd.	100.00	106D08, 106D07
BCR 1 - 2	YC97801 - YC97802	2011/09/20	Blind Creek Resources Ltd.	100.00	106D07
BCR 5 - 24	YD71105 - YD71124	2011/09/20	Blind Creek Resources Ltd.	100.00	106D07
BCR 33 - 54	YD71133 - YD71154	2011/09/20	Blind Creek Resources Ltd.	100.00	106D07
BCR 67 - 92	YD71167 - YD71192	2011/09/20	Blind Creek Resources Ltd.	100.00	106D07
BCR 99 - 102	YD71199 - YD71202	2011/09/20	Blind Creek Resources Ltd.	100.00	106D07
BCR 103 - 104	YD71103 - YD71104	2011/09/20	Blind Creek Resources Ltd.	100.00	106D07
BCR 105 - 126	YD71205 - YD71226	2011/09/20	Blind Creek Resources Ltd.	100.00	106D07
BCR 129 - 156	YD71229 - YD71256	2011/09/20	Blind Creek Resources Ltd.	100.00	106D07
BCR 159 - 202	YD71259 - YD71302	2011/09/20	Blind Creek Resources Ltd.	100.00	106D07
BCR 203 - 204	YD71203 - YD71204	2011/09/20	Blind Creek Resources Ltd.	100.00	106D07
P H 1 - 15	YE37501 - YE37515	2012/03/15	Blind Creek Resources Ltd.	100.00	105D07
P H 16 - 100	YE37216 - YE37300	2012/03/15	Blind Creek Resources Ltd.	100.00	105M15
LJ 1 - 54	YD114101 - YD114154	2011/10/18	Blind Creek Resources Ltd.	100.00	105M15, 105M14
LJ 55 - 58	YD16855 - YD16858	2011/10/18	Blind Creek Resources Ltd.	100.00	106D07
LJ 59 - 86	YD16759 - YD16786	2011/10/18	Blind Creek Resources Ltd.	100.00	106D07
P M 1 - 22	YE37401 - YE37422	2012/06/09	Blind Creek Resources Ltd.	100.00	106D08
P M 41 - 44	YE41541 - YE41544	2012/06/17	Blind Creek Resources Ltd.	100.00	105M14, 105M15
P M 53 - 72	YE41553 - YE41572	2012/06/17	Blind Creek Resources Ltd.	100.00	105M14
P M 75 - 88	YE41575 - YE41588	2012/06/17	Blind Creek Resources Ltd.	100.00	105M14, 105M15
P M Fr. 45 - 51	YE41545 - YE41551	2012/06/17	Blind Creek Resources Ltd.	100.00	105M15, 105M14
R Max 1 - 64	YC50636 - YC50699	2020/08/23	Blind Creek Resources Ltd.	100.00	105M14
R Max 66 - 77	YC50700 - YC50711	2020/08/23	Blind Creek Resources Ltd.	100.00	106D07
R Max 78 - 85	YC50712 - YC50719	2016/08/23	Blind Creek Resources Ltd.	100.00	106D07
R Max 86 - 91	YC50720 - YC50725	2020/08/23	Blind Creek Resources Ltd.	100.00	106D07
R Max 92 - 99	YC50726 - YC50733	2016/08/23	Blind Creek Resources Ltd.	100.00	106D07
R Max 100 - 105	YC50734 - YC50739	2020/08/23	Blind Creek Resources Ltd.	100.00	106D07
R Max 106 - 113	YC50740 - YC50747	2016/08/23	Blind Creek Resources Ltd.	100.00	106D07
R Max 114 - 153	YC50748 - YC50787	2020/08/23	Blind Creek Resources Ltd.	100.00	106D07
R Max 154 - 161	YC54978 - YC54985	2016/12/08	Blind Creek Resources Ltd.	100.00	106D07
R Mix 1 - 16	YC09985 - YC10000	2020/03/28	Blind Creek Resources Ltd.	100.00	106D07
P POL 1 - 3	YD16811 - YD16813	2011/10/18	Blind Creek Resources Ltd.	100.00	106D06
P POL 4 - 30	YD113954 - YD113980	2011/10/18	Blind Creek Resources Ltd.	100.00	106D06
P POL 31 - 40	YD16791 - YD16800	2011/10/18	Blind Creek Resources Ltd.	100.00	106D06

Left column indicator legend:

R - Indicates the claim is on one or more pending renewal(s).
P - Indicates the claim is pending.

Right column indicator legend:

L - Indicates the Quartz Lease.
F - Indicates Full Quartz fraction (25+ acres)
P - Indicates Partial Quartz fraction (<25 acres)

Total claims selected : 1053

D - Indicates Placer Discovery
C - Indicates Placer Codiscovery
B - Indicates Placer Fraction

Claim Status Report

22 July 2011

Claim Name and Nbr	Grant No.	Expiry Date	Registered Owner	% Owned	NIS #s
P POL 41 - 153	YD113981 - YD114093	2011/10/18	Blind Creek Resources Ltd.	100.00	106D06
R Trax 1 - 28	YC39822 - YC39849	2019/09/21	Blind Creek Resources Ltd.	100.00	106D07
R Trix 1 - 46	YC11723 - YC11768	2020/04/21	Blind Creek Resources Ltd.	100.00	106D07
R Trix 47 - 56	YC32293 - YC32302	2022/09/21	Blind Creek Resources Ltd.	100.00	106D07
P W 1 - 22	YE37301 - YE37322	2012/03/21	Blind Creek Resources Ltd.	100.00	105M15
P W 25 - 26	YD10625 - YD10626	2012/03/21	Blind Creek Resources Ltd.	100.00	105M15
P W 27 - 100	YE37327 - YE37400	2012/03/21	Blind Creek Resources Ltd.	100.00	105M15, 105M14
P WW 59 - 60	YD16859 - YD16860	2012/03/21	Blind Creek Resources Ltd.	100.00	105M15
P X 15 - 40	YD16815 - YD16840	2012/06/27	Blind Creek Resources Ltd.	100.00	106D07, 106D08
P X Fr. 95	YC97795	2012/06/06	Blind Creek Resources Ltd.	100.00	105M15

P

Criteria(s) used for search:

CLAIM DISTRICT: 1000003 CLAIM STATUS: ACTIVE & PENDING OWNER(S): BLIND CREEK RESOURCES LTD.
REGULATION TYPE: QUARTZ

Left column indicator legend:

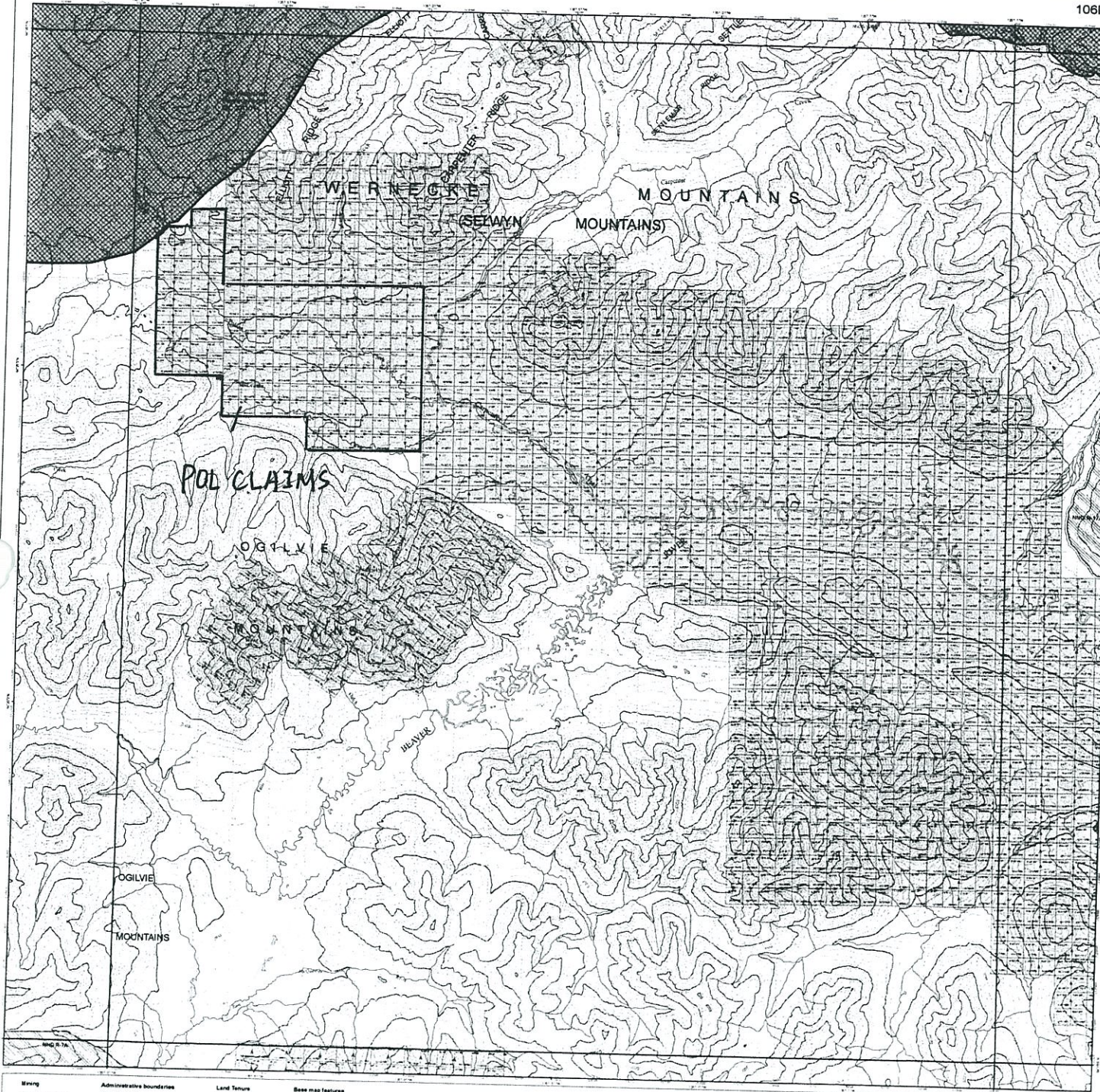
- R - Indicates the claim is on one or more pending renewal(s).
- P - Indicates the claim is pending.

Right column indicator legend:

- L - Indicates the Quartz Lease.
- F - Indicates Full Quartz fraction (25+ acres)
- P - Indicates Partial Quartz fraction (<25 acres)

Total claims selected : 1053

- D - Indicates Placer Discovery
- C - Indicates Placer Codiscovery
- B - Indicates Placer Fraction



106D06 MINING CLAIMS

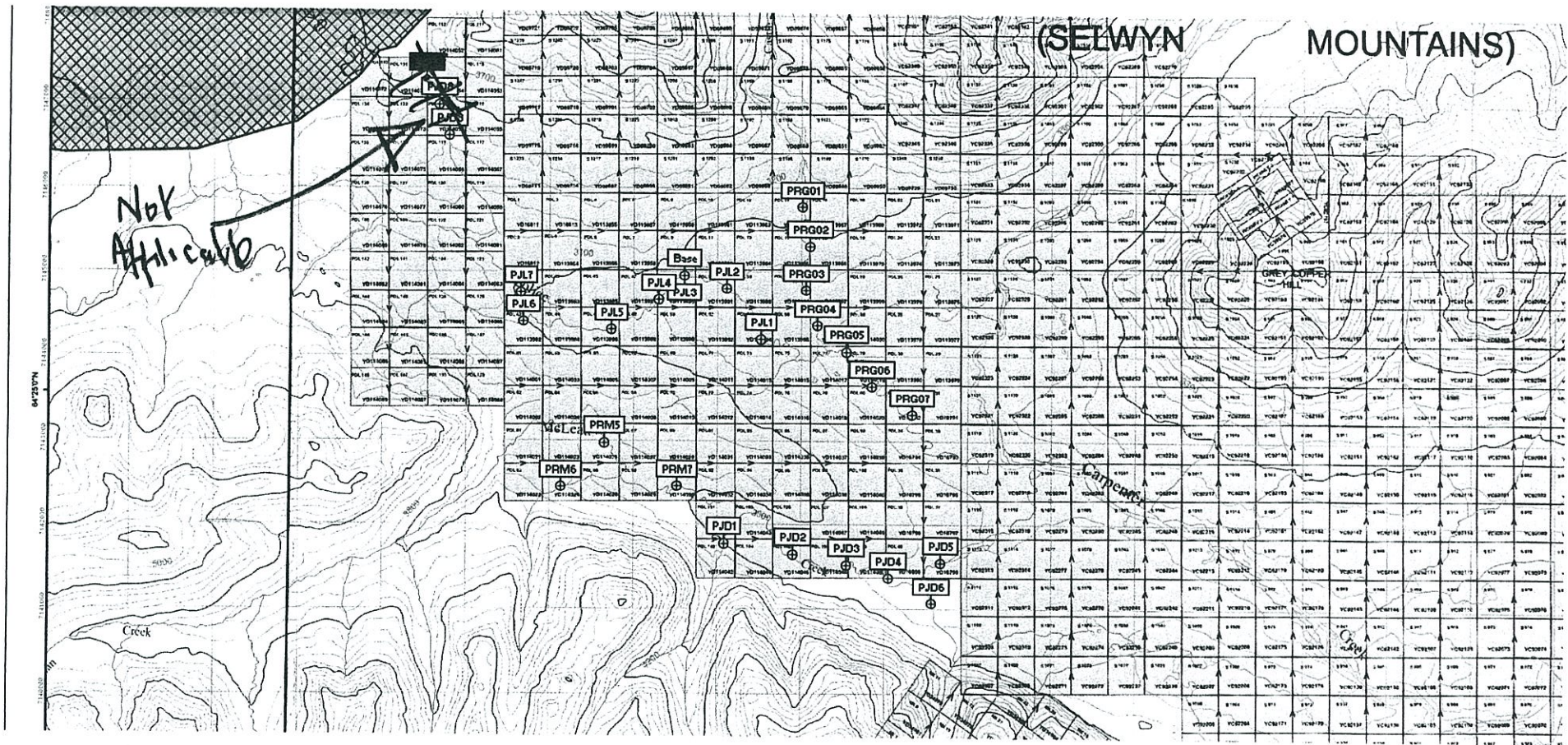
Legend:

- Mining:**
 - Placer mining claims: Unpatented, Patented
 - Quartz veins & dikes
 - Coal Tenure: Coal Lease, Coal Right
- Administrative boundaries:**
 - Partly and protected areas
 - Partly status unpatented lands
 - Partly status patented lands
 - Partly status unpatented lands
- Land Tenure:**
 - Land applications
 - Land Dispositions: Lease, Conveyance
 - Agriculture Land: Pasture, Forest
 - Legal survey
- Base map features:**
 - Highway routes
 - Hydrography: Stream, Lake, Pond
 - Topographic: Contour, Spot Elevation

Scale: 1:50,000
 Date: April 16, 2011
 North American Datum 1983
 UTM Zone 18QDG

Grid coordinates: 106D12, 106D11, 106D10, 106D09, 106D08, 106D07, 106D06, 106D05, 106D04

Ref: Blind Creek Resources map



Ref: Blind Cree Resources log
 Location: Silt samples
 and Prospecting traverses

Certificate of Authorship

I, Nicholas Clive ASPINALL, P.Eng of Pillman Hill, the community of Atlin British Columbia, and 3A Diamond Way, Whitehorse, Yukon do hereby certify that:

I am an independent consulting geologist with offices at the above addresses

I am a graduate of McGill University, Montreal, Quebec, with B.Sc degree in Geology (1964), and a Masters degree (1987) from the Camborne School of Mines, Cornwall, England, in Mining Geology.

I am registered member in good standing of the Associations of Professional Engineers and Geoscientists in the province of British Columbia.

I have practiced mineral exploration for 47 years since graduation from McGill University. I am familiar with the geology of the Atlin area since 1966 and have an office based in Atlin from 1968.

I have no direct material interest in Blind Creek Resources Ltd mineral tenures, but own \$5000 shares of Blind Creek Resources Ltd.

I am the author of Report. ASSESSMENT REPORT ON JUNE 2011 FIELD WORK ON THE POL1-153 QUARTZ MINERAL CLAIM GROUP, Mayo Mining District Yukon Territory Canada
Map sheet 106D/06, POL1-3 YD16811-13, POL4-30 YD113954-80, POL 31-40 YD16791-YD16800, POL41-153 YD113981-YD114093., Coordinates central area: 64° 25' 10.9" N, 135° 03' 21.5" W
UTM: 8V 4 97 303E, 71 43 785N, NAD 83 For Blind Creek Resources Ltd Floor 1500, 675 West Hastings Street, Vancouver, V6B 1N2, CANADA

Originally Signed by

N. CLIVE ASPINALL, M.Sc, P.Eng.
Geologist

Dated 15th March 2012

