

ARCHER, CATHRO & ASSOCIATES (1981) LIMITED
1016 - 510 West Hastings Street
Vancouver, B.C. V6B1L8

Telephone: 604-688-2568

Fax: 604-688-2578

ASSESSMENT REPORT

describing

GEOCHEMICAL SAMPLING

at the

QQQ PROPERTY

QQQ 1-16 YD57169-YD57184

NTS 115J/06

Latitude 62°21'N; Longitude 139°05'W

located in the

Whitehorse Mining District
Yukon Territory

prepared by

Archer, Cathro & Associates (1981) Limited

for

WOLVERINE MINERALS CORP.
and
STRATEGIC METALS LTD.

by

A. Mitchell, B.Sc., Geology

January 2012

CONTENTS

INTRODUCTION	1
PROPERTY LOCATION, CLAIM DATA AND ACCESS	1
HISTORY AND PREVIOUS WORK	1
GEOMORPHOLOGY AND CLIMATE	2
REGIONAL GEOLOGY	2
PROPERTY GEOLOGY	3
SIEVE SILT GEOCHEMISTRY	3
DISCUSSION AND CONCLUSIONS	3

APPENDICES

I	STATEMENT OF QUALIFICATIONS
II	CERTIFICATES OF ANALYSIS

FIGURES

<u>No.</u>	<u>Description</u>	<u>Follows Page</u>
1	Location	1
2	Claim Locations	1
3	Tectonic Setting	2
4	Regional Geology	2
5	Sample Locations	3
6	Gold Geochemistry	3
7	Arsenic Geochemistry	3
8	Copper Geochemistry	3
9	Zinc Geochemistry	3

INTRODUCTION

The QQQ property lies within the Dawson Range Gold Belt of western Yukon. It was staked to cover a moderate copper-gold anomaly reported from historical stream sediment sampling. Wolverine Minerals Corp. can earn a 100% interest in the property subject to an option agreement with Strategic Metals Ltd.

This report describes sieve silt sampling conducted on August 5, 2011 by Archer, Cathro & Associates (1981) Limited on behalf of Wolverine. The author interpreted all data from this project and his Statement of Qualifications is in Appendix I.

PROPERTY LOCATION, CLAIM DATA AND ACCESS

The QQQ property consists of 16 contiguous mineral claims, which are located on NTS map sheet 115J/06 at latitude 62°21' north and longitude 139°05' west (Figure 1). The property covers an area of approximately 330 ha (3.3 sq km). The claims are registered with the Whitehorse Mining Recorder in the name of Archer Cathro, which holds them in trust for Strategic. Specifics concerning claim registration are tabulated below, while the locations of individual claims are shown on Figure 2.

<u>Claim Name</u>	<u>Grant Number</u>	<u>Expiry Date*</u>
QQQ 1-16	YD57169-YD57184	April 15, 2015

* Expiry date does not include 2011 work that has not yet been filed for assessment credit.

Access to and from the property was provided by a Bell 206B helicopter owned and operated by Capital Helicopters (1995) Inc. of Whitehorse, from a temporary base at Rockhaven Resources Ltd.'s Klaza property located near the former Mount Nansen Mine. The Klaza property lies about 100 km southeast of the QQQ property and 70 km by road west of the community of Carmacks.

HISTORY AND PREVIOUS WORK

In 1969, Archer Cathro performed regional exploration in the Dawson Range district for the Dawson Range Joint Venture (DRJV). During that program, two samples were taken from the creek that drains the QQQ property. Those samples returned 15 and 13 ppm copper and 17 and 24 ppm lead. Four other samples were collected from drainages outside the current claim boundaries. Those samples yielded up to 30 ppm copper, up to 3 ppm molybdenum and up to 25 ppm lead (Cathro and Culbert, 1969). No gold analyses were done during this program.

In 1980, Archer Cathro did work in the Dawson Range as part of the NAT Joint Venture (NAT JV), which comprised Chevron Canada Limited and Armco Mineral Exploration Ltd. Part of the NAT JV program involved reanalyses of over 5000 previously collected geochemical sample splits for gold, silver, arsenic and lead. Two of the samples previously collected were on the unnamed creek draining the QQQ property. Those samples returned 46 and 22 ppb gold and

**WOLVERINE MINERALS CORP.
STRATEGIC METALS LTD.**


FIGURE 1
ARCHER, CATHRO & ASSOCIATES (1981) LIMITED
LOCATION
QQQ PROPERTY

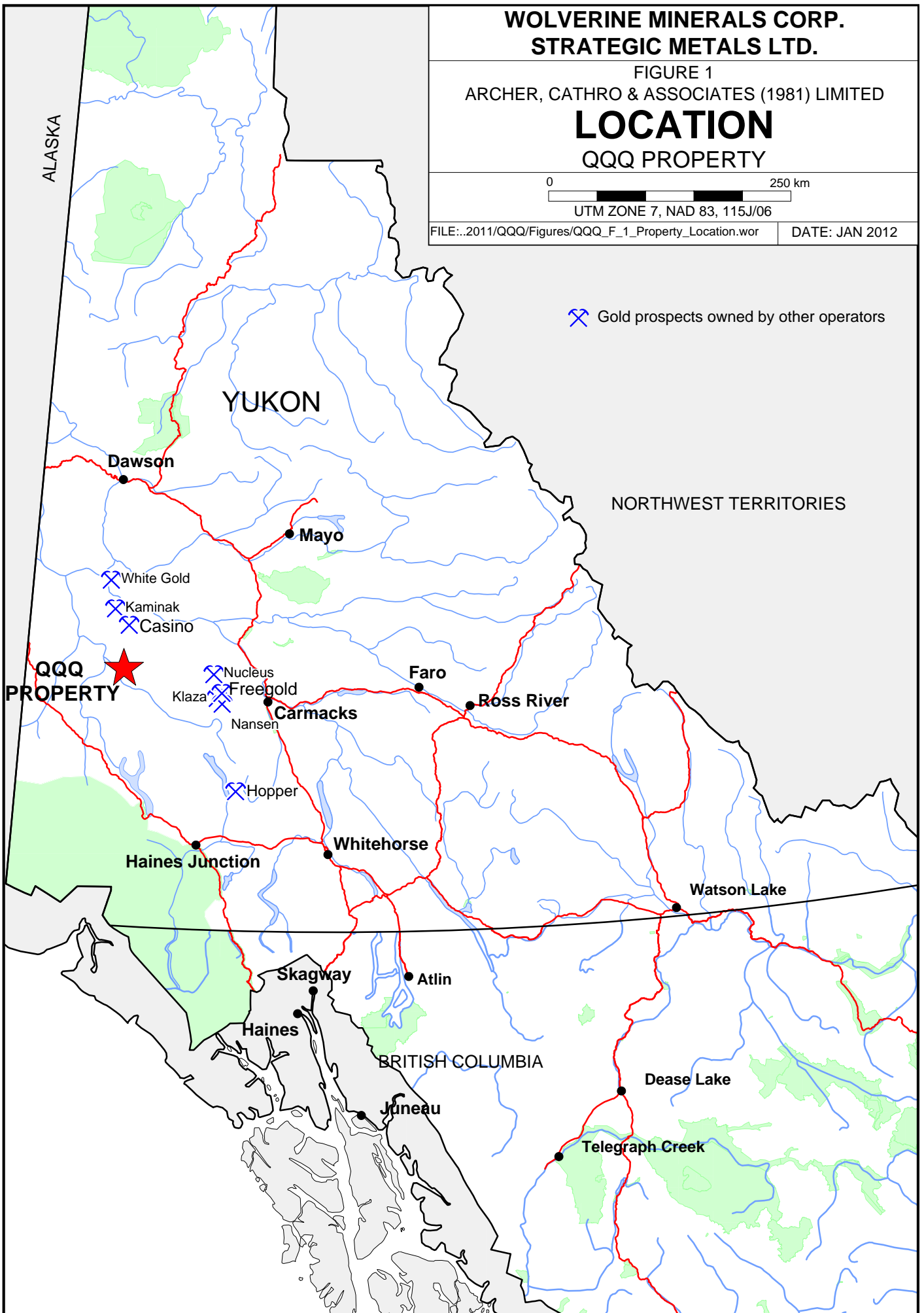
0 250 km

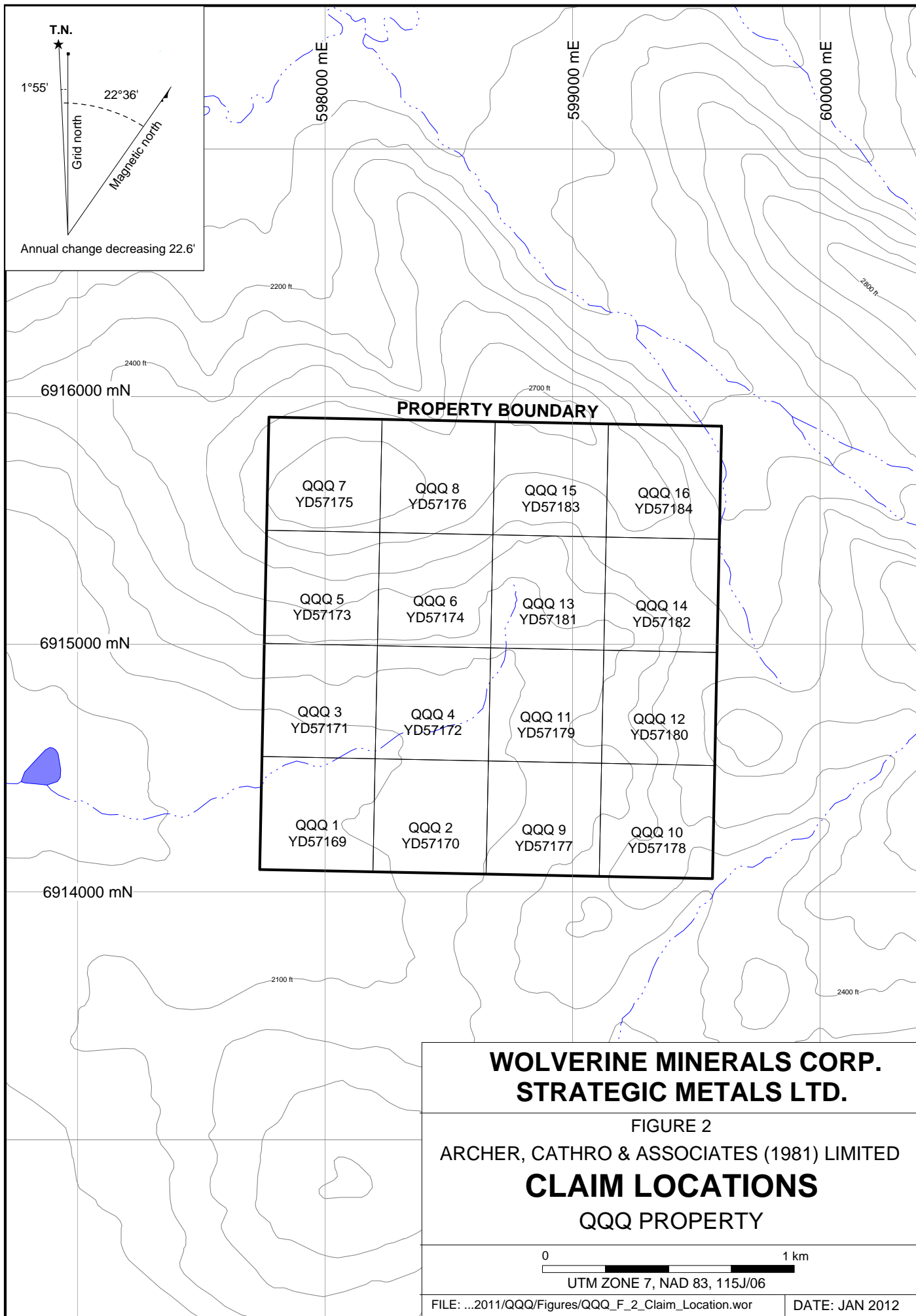
UTM ZONE 7, NAD 83, 115J/06

FILE:..2011/QQQ/Figures/QQQ_F_1_Property_Location.wor

DATE: JAN 2012

 Gold prospects owned by other operators





**WOLVERINE MINERALS CORP.
STRATEGIC METALS LTD.**

FIGURE 2
ARCHER, CATHRO & ASSOCIATES (1981) LIMITED
CLAIM LOCATIONS
QQQ PROPERTY

0 1 km
UTM ZONE 7, NAD 83, 115J/06

background values for other metals. One sample taken southeast of the property yielded 7 ppb gold and background values for other metals (Archer and Onasick, 1980).

In 1986, the Geological Survey of Canada (GSC) conducted a low-density stream sediment and water sampling survey on NTS map sheet 115J (Friske et al., 1986). No samples were taken from the property or creeks draining the property.

Strategic staked the QQQ claims in April 2010 to cover the drainages that yielded the historical gold-in-silt anomalies. That year, Strategic completed one day of geochemical surveying, which yielded one anomalous gold-in-soil value (69 ppb) with background to moderately anomalous values for arsenic (up to 34 ppm), copper (up to 52 ppm) and zinc (up to 135 ppm). Background to weakly anomalous lead values (up to 19 ppm) were also found on the property (Smith, 2011). Wolverine signed an optional purchase agreement with Strategic in September 2010.

GEOMORPHOLOGY AND CLIMATE

The QQQ property is situated in the southern part of the Dawson Range and is drained by creeks that flow southwest into the Nisling River, which connects to the Pacific Ocean via the Yukon River. The property is believed to have been unglaciated during the Pliocene and Pleistocene; however, it is surrounded by glacial valleys.

The property mostly covers the southwest facing slope of a low ridge. Elevations are about 640 to 820 m above sea level. Outcrop is rare or non-existent. The entire property is below treeline. Vegetation on the property is moderately abundant and comprises mature spruce trees with an understorey of low shrubs and moss.

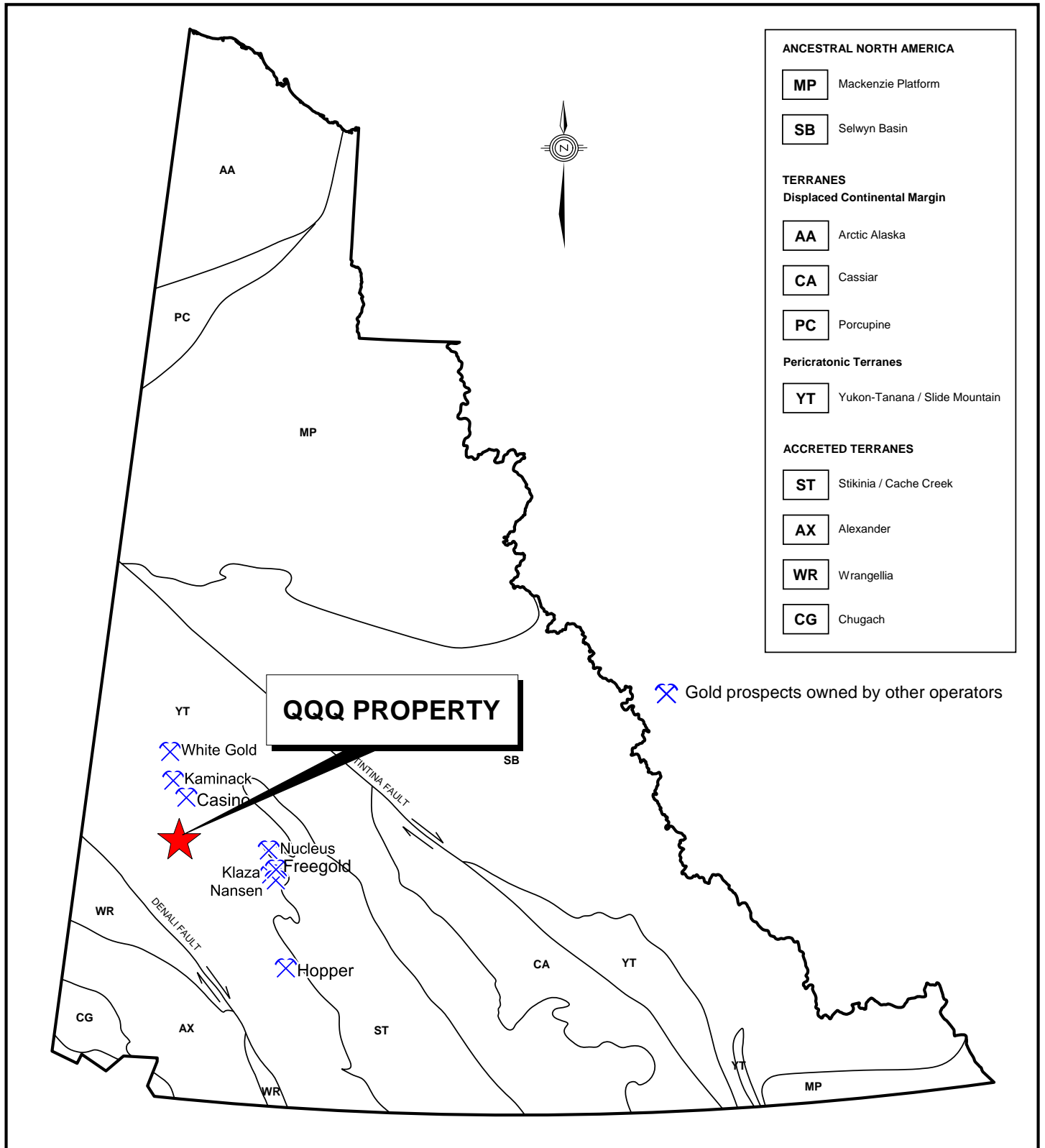
The climate in the QQQ area is typical of northern continental regions with long, cold winters, truncated fall and spring seasons and short, mild summers. Although summers are relatively mild, arctic cold fronts often cover the area and snowfall can occur in any month. The property is mostly snow free from early May to mid-October.

REGIONAL GEOLOGY

The QQQ property is located within the Yukon-Tanana Terrane (YTT) as shown on Figure 3. The YTT represents a continental arc that developed along the ancient Pacific margin of North America from late Devonian to Permian.

In 1974, the GSC published a geological map of the Snag area (NTS map sheet 115J) at 1:250,000 scale (Tempelman-Kluit, 1974). Gordey and Makepeace (2003) later completed a Yukon-wide geological compilation, which updated lithological unit names in the QQQ area.

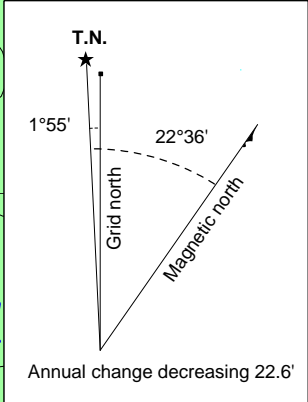
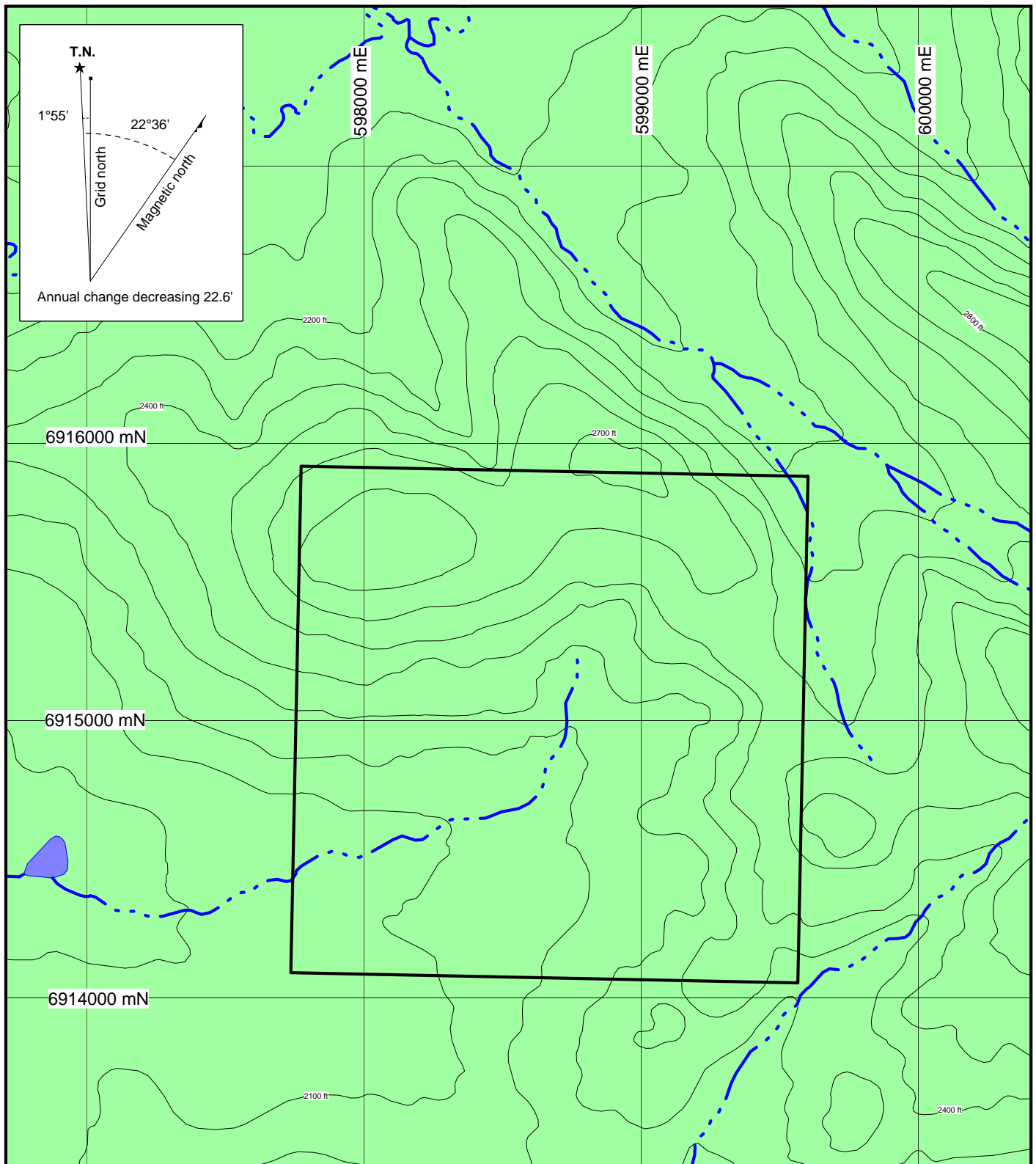
The area is underlain by the Devonian to Mississippian Nasina Assemblage (Figure 4). Regionally this assemblage comprises black-weathering, massive, dark grey to black strongly graphitic quartzite with lesser grey micaceous quartzite and quartz-mica schist. Alternating light and dark grey laminations are commonly seen.



**WOLVERINE MINERALS CORP.
STRATEGIC METALS LTD.**

FIGURE 3
ARCHER, CATHRO & ASSOCIATES (1981) LIMITED
TECTONIC SETTING
QQQ PROPERTY

0 200 km
UTM ZONE 7, NAD 83, 115J/06



6916000 mN

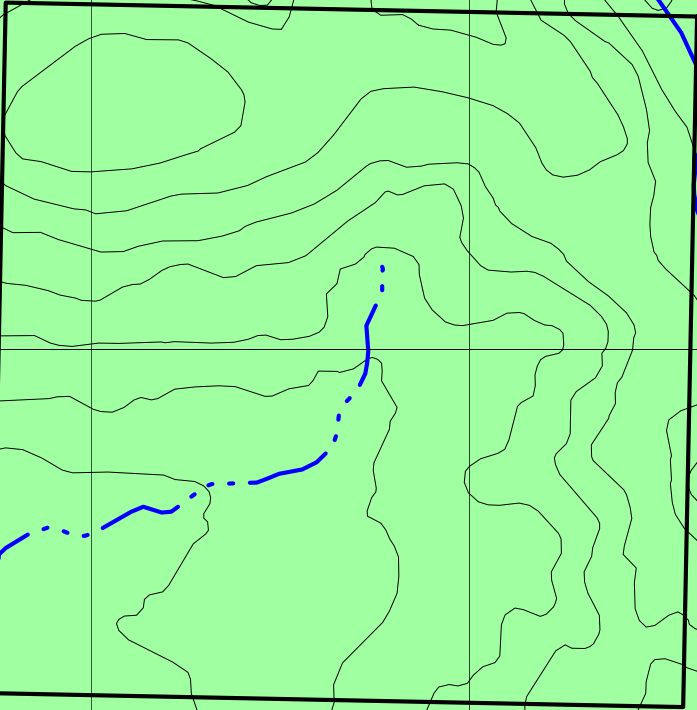
6915000 mN

6914000 mN

598000 mE

599000 mE

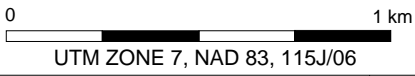
600000 mE



**WOLVERINE MINERALS CORP.
STRATEGIC METALS LTD.**

FIGURE 4
ARCHER, CATHRO & ASSOCIATES (1981) LIMITED
REGIONAL GEOLOGY
QQQ PROPERTY

DMN: NASINA
Black-weathering, massive, dark grey to black strongly graphitic quartzite with lesser grey micaceous quartzite and quartz mica schist; commonly shows alternating light and dark grey colour lamination.



PROPERTY GEOLOGY

No detailed geological mapping has been done on the QQQ property.

No mineral occurrences are known on the property.

SIEVE SILT GEOCHEMISTRY

In 2011, Wolverine collected three sieve silt samples from the property. Sample locations are plotted on Figure 5, while results for gold, arsenic, copper and zinc are illustrated thematically on Figures 6 to 9, respectively. Certificates of Analysis are provided in Appendix II.

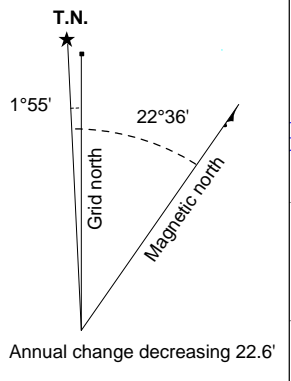
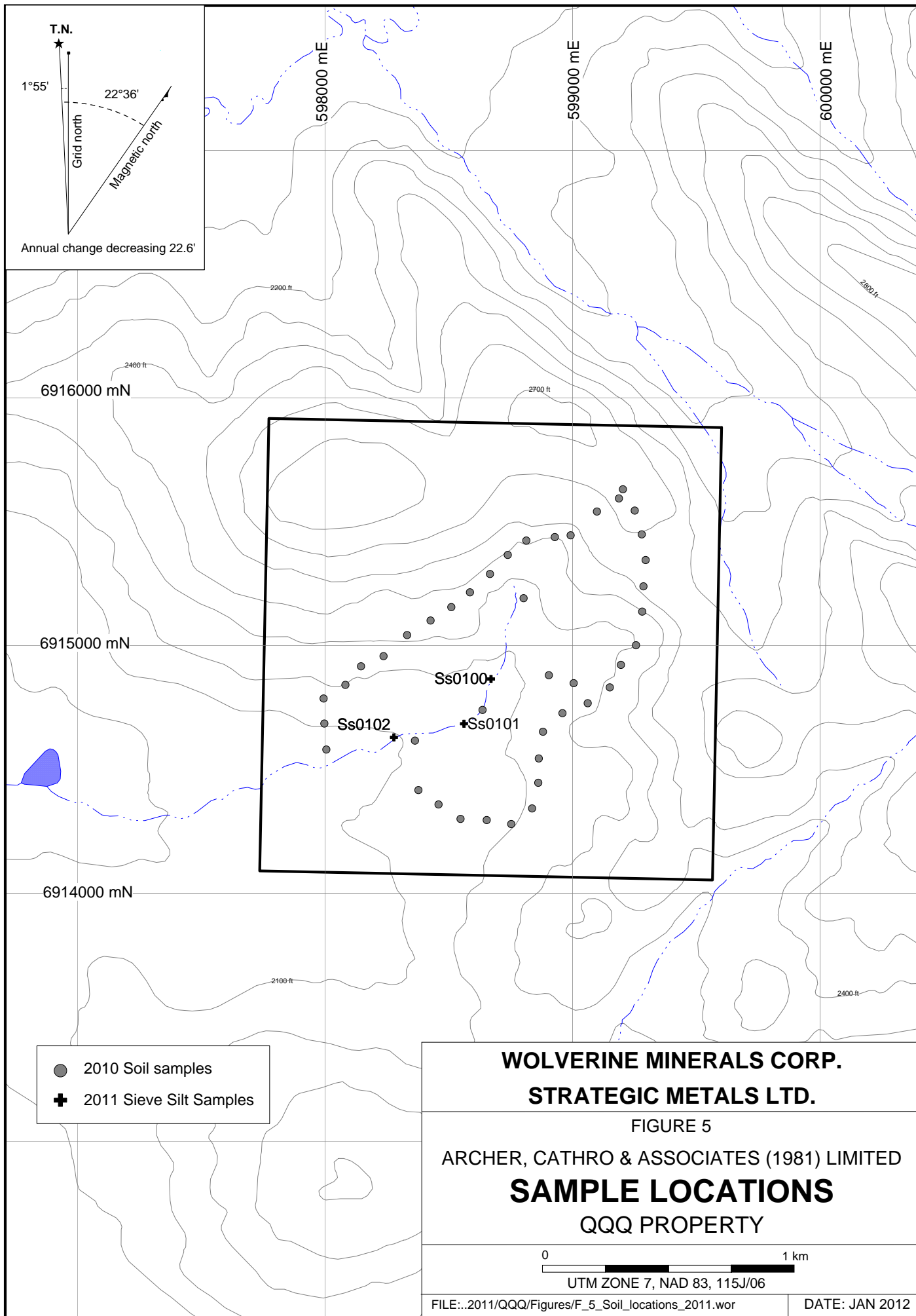
W.R. (Bill) Gilmour from Discovery Consultants of Vernon, British Columbia provided instructions and equipment for collecting the samples. The crew collected up to three kilograms of material from specific locations based on flow rates and geomorphological characteristics. Each sample was placed into a large heavy-plastic bag and then double-bagged for safe transport. Sample sites are marked with aluminum tags inscribed with sample numbers and affixed to 0.5 m wooden lath that were driven into the ground. All sample locations were recorded using hand-held GPS units.

The sieve silt samples were sent to Acme Labs in Vancouver, B.C. where they were dried and sieved to -80 mesh. Special instructions were given to sieve entire sample weight, not only 0.5 kg, which is standard practice at Acme. Once sieved, the sample was divided using a micro splitter to produce a 30 g sub-sample that was analyzed by aqua regia digestion and ultra-trace inductively coupled plasma-mass spectrometry.

Samples returned background values for gold (up to 7.1 ppb), arsenic (up to 3.7 ppm), copper (up to 8.56 ppm), lead (up to 4.14 ppm), zinc (up to 50.2 ppm) and all other gold pathfinder elements.

DISCUSSION AND CONCLUSIONS

Sieve silt geochemistry performed by Wolverine on the QQQ property was unable to confirm the anomalous historic values of 46 and 22 ppb gold-in-silt. Due to the relative paucity of soil samples on the property and the difficulty of obtaining good quality samples, future work maybe warranted if significant discoveries continue to be made in the Dawson Range Gold Belt. If new cost effective techniques are developed to test beneath thick colluvium, they should be used instead of traditional sampling procedures.



6916000 mN

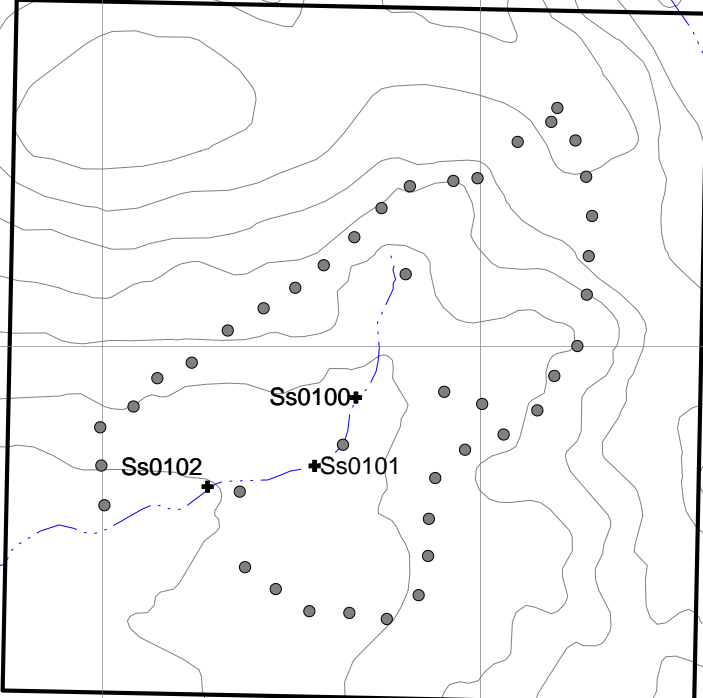
6915000 mN

6914000 mN

598000 mE

599000 mE

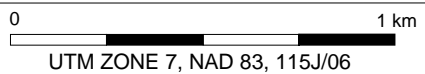
600000 mE

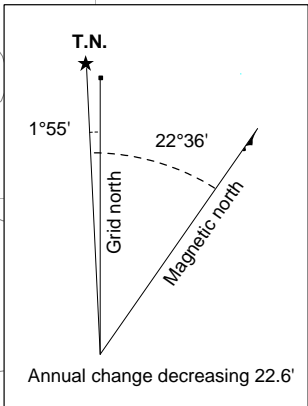
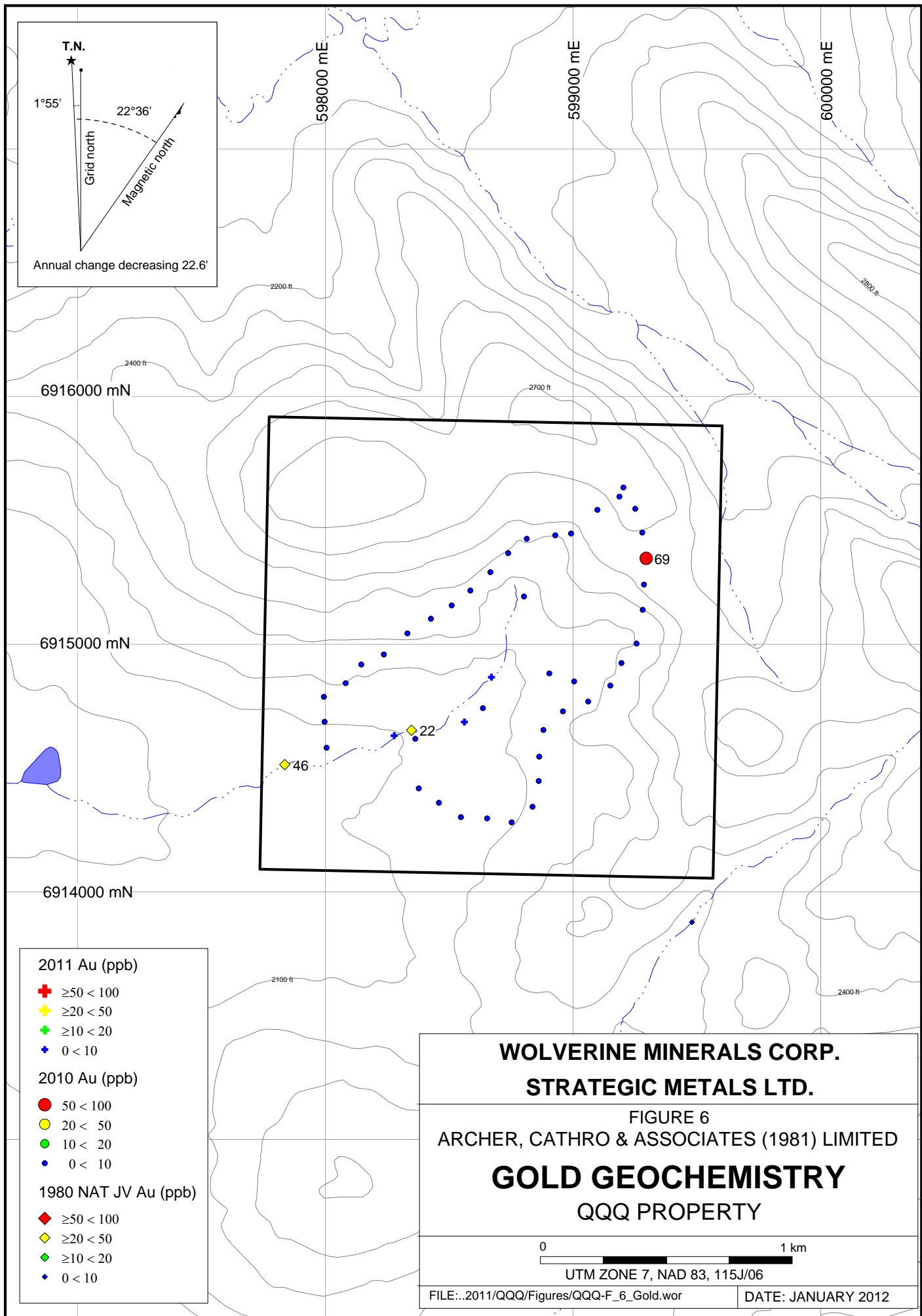


- 2010 Soil samples
- ⊕ 2011 Sieve Silt Samples

**WOLVERINE MINERALS CORP.
 STRATEGIC METALS LTD.**

FIGURE 5
 ARCHER, CATHRO & ASSOCIATES (1981) LIMITED
SAMPLE LOCATIONS
 QQQ PROPERTY





- 2011 Au (ppb)**
- ⊕ ≥50 < 100
 - ⊕ ≥20 < 50
 - ⊕ ≥10 < 20
 - ⊕ 0 < 10
- 2010 Au (ppb)**
- 50 < 100
 - 20 < 50
 - 10 < 20
 - 0 < 10
- 1980 NAT JV Au (ppb)**
- ◆ ≥50 < 100
 - ◆ ≥20 < 50
 - ◆ ≥10 < 20
 - ◆ 0 < 10

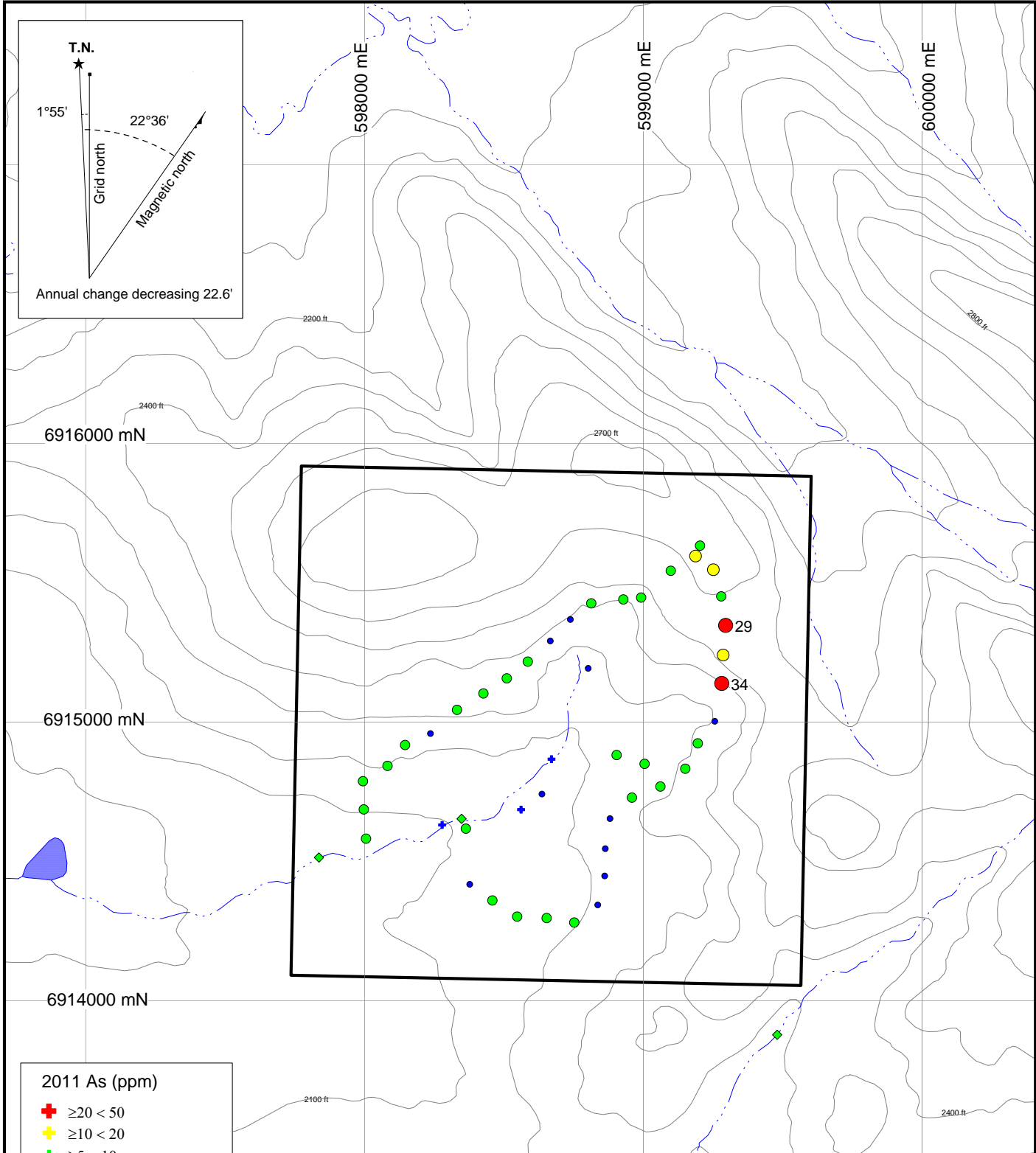
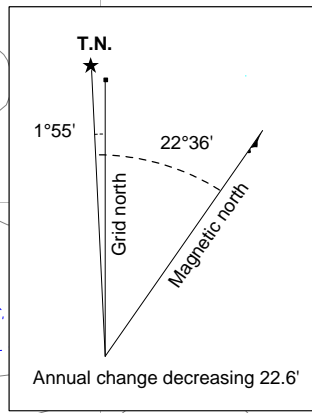
WOLVERINE MINERALS CORP.
STRATEGIC METALS LTD.

FIGURE 6
ARCHER, CATHRO & ASSOCIATES (1981) LIMITED
GOLD GEOCHEMISTRY
QQQ PROPERTY

0 1 km

UTM ZONE 7, NAD 83, 115J/06

FILE:..2011/QQQ/Figures/QQQ-F_6_Gold.wor DATE: JANUARY 2012



- 2011 As (ppm)**
- ⊕ ≥20 < 50
 - ⊕ ≥10 < 20
 - ⊕ ≥5 < 10
 - ⊕ 0 < 5
- 2010 As (ppm)**
- ≥20 < 50
 - ≥10 < 20
 - ≥5 < 10
 - 0 < 5
- 1980 NAT JV As (ppm)**
- ◆ ≥20 < 50
 - ◆ ≥10 < 20
 - ◆ ≥5 < 10
 - ◆ 0 < 5

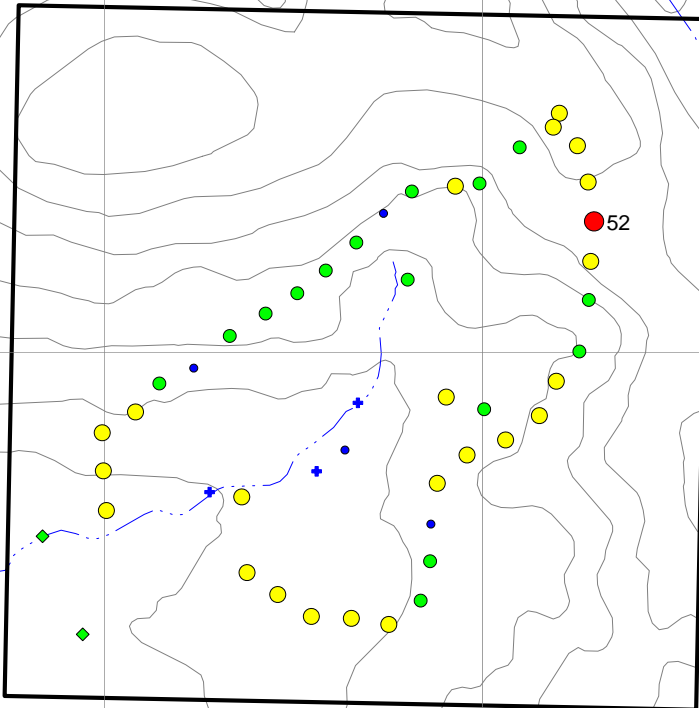
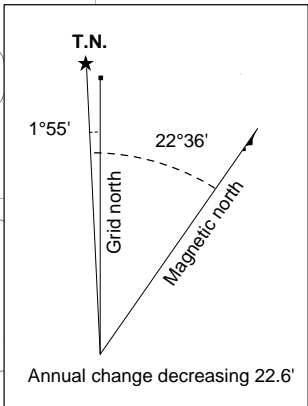
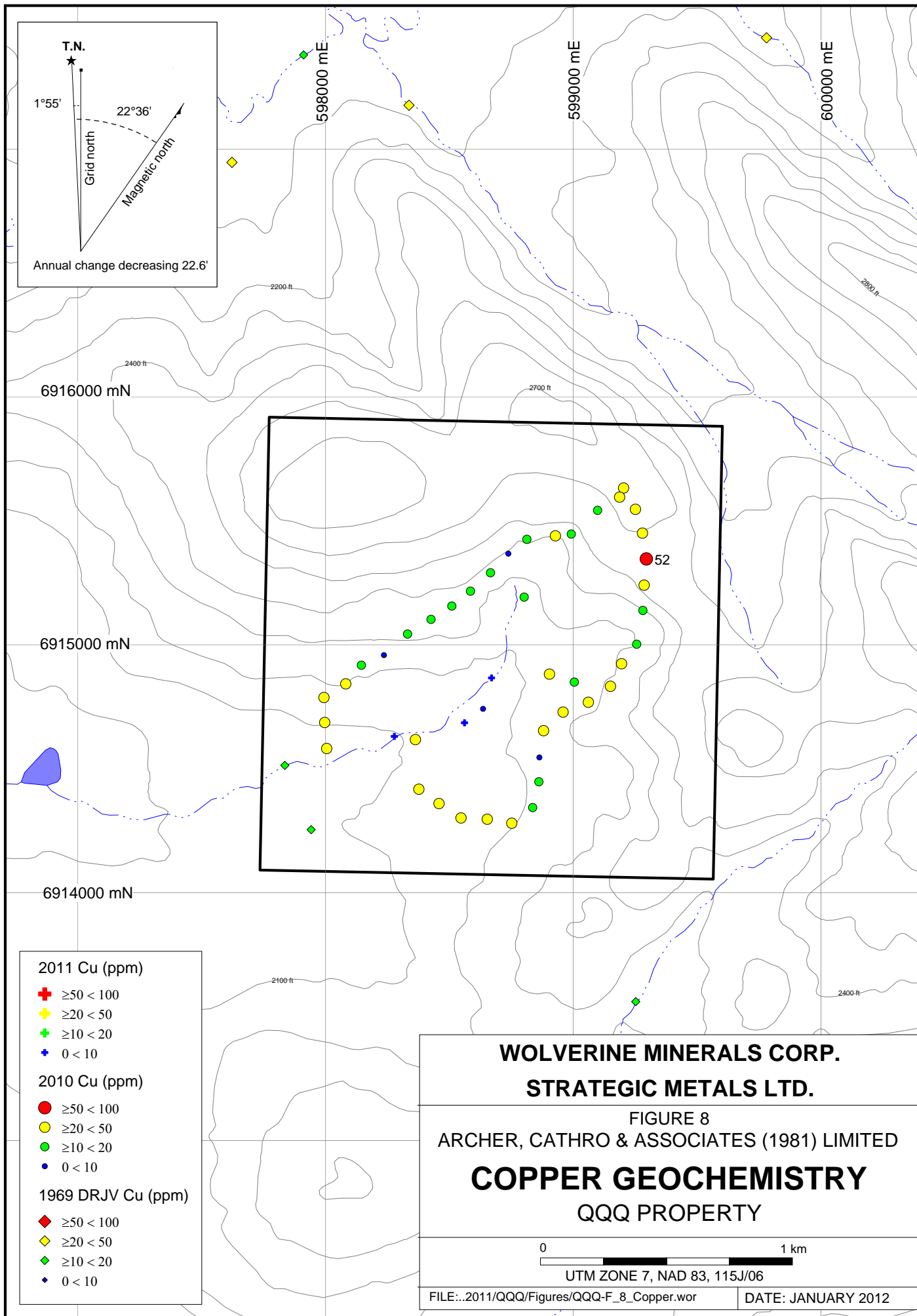
**WOLVERINE MINERALS CORP.
STRATEGIC METALS LTD.**

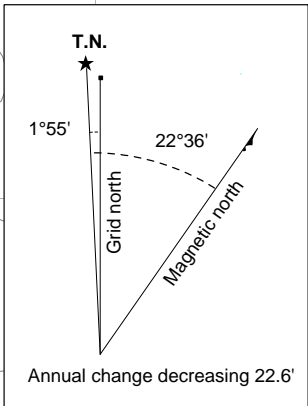
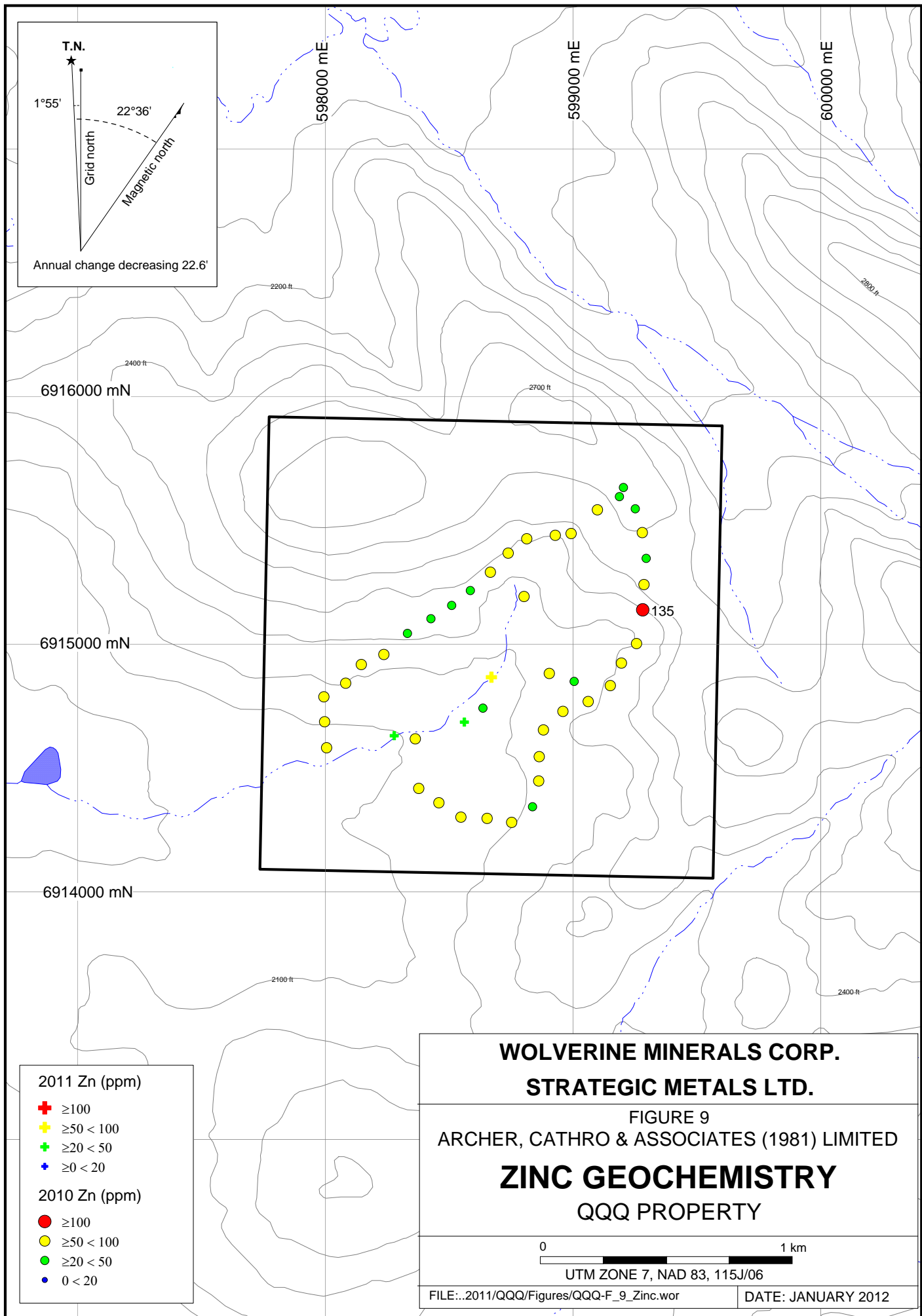
FIGURE 7
ARCHER, CATHRO & ASSOCIATES (1981) LIMITED
ARSENIC GEOCHEMISTRY
QQQ PROPERTY

0 1 km

UTM ZONE 7, NAD 83, 115J/06

FILE:..2011/QQQ/Figures/QQQ-F_7_Arsenic.wor DATE: JANUARY 2012





**WOLVERINE MINERALS CORP.
STRATEGIC METALS LTD.**

FIGURE 9
ARCHER, CATHRO & ASSOCIATES (1981) LIMITED

**ZINC GEOCHEMISTRY
QQQ PROPERTY**



UTM ZONE 7, NAD 83, 115J/06

Respectfully submitted,

ARCHER, CATHRO & ASSOCIATES (1981) LIMITED

A. Mitchell, B.Sc., Geology

REFERENCES

- Archer, A. R. and Onasick, E.P.
1980 NAT Joint Venture Final Report; Internal report prepared by Archer, Cathro & Associates Ltd. for Chevron Canada Limited and Armco Mineral Exploration Ltd.
- Cathro, R.J. and Culbert, R.E.
1969 Summary report on the 1969 field program; Dawson Range Joint Venture Project, Yukon Territory.
- Friske, P.W.B., Hornbrook, E.H.W., Lynch, J.J., McCurdy, M.W., Gross, H., Galletta, A.C. and Durham, C.C.
1986 Regional stream sediment and water geochemical reconnaissance data (115J); Geological Survey of Canada, Open File 1363.
- Gordey, S.P. and Makepeace, A.J. (compilers)
2003 Yukon digital geology, version 2.0, Geological Survey of Canada, Open File 1749 and Yukon Geological Survey, Open File 2003-9 (D).
- Smith, H.
2011 Assessment report describing 2010 geochemical sampling on the AAA property prepared for Wolverine Mineral Corp. and Strategic Metals Ltd.
- Tempelman-Kluit, D.J.
1974 Geology Snag, Yukon Territory (cartographic material), Geological Survey of Canada, map 16-1973, NTS 115J.

APPENDIX I
STATEMENT OF QUALIFICATIONS

STATEMENT OF QUALIFICATIONS

I, Andrew Mitchell, geologist, with business addresses in Whitehorse, Yukon Territory and Vancouver, British Columbia and residential address in Vancouver, British Columbia, hereby certify that:

1. I graduated from the University of British Columbia in 2010 with a B.Sc. in Earth and Environmental Sciences.
2. From 2010 to present, I have been actively engaged in mineral exploration in Yukon Territory.
3. I have interpreted all data resulting from this work.

A. Mitchell, B.Sc., Geology

APPENDIX II
CERTIFICATES OF ANALYSIS



1020 Cordova St. East Vancouver BC V6A 4A3 Canada

Acme Analytical Laboratories (Vancouver) Ltd.

www.acmelab.com

Client: Archer, Cathro & Assoc. (1981) Ltd.
1016 - 510 W. Hastings St.
Vancouver BC V6B 1L8 Canada

Submitted By: Joan Mariacher
Receiving Lab: Canada-Whitehorse
Received: August 05, 2011
Report Date: September 12, 2011
Page: 1 of 2

CERTIFICATE OF ANALYSIS

WHI11001032.1

CLIENT JOB INFORMATION

Project: QQQ
Shipment ID:
P.O. Number
Number of Samples: 3

SAMPLE DISPOSAL

STOR-PLP Store After 90 days Invoice for Storage
DISP-RJT-SOIL Immediate Disposal of Soil Reject

Acme does not accept responsibility for samples left at the laboratory after 90 days without prior written instructions for sample storage or return.

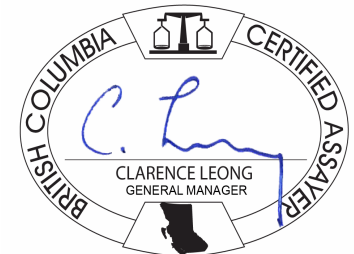
Invoice To: Archer, Cathro & Assoc. (1981) Ltd.
1016 - 510 W. Hastings St.
Vancouver BC V6B 1L8
Canada

CC: Heather Smith

SAMPLE PREPARATION AND ANALYTICAL PROCEDURES

Table with 6 columns: Method Code, Number of Samples, Code Description, Test Wgt (g), Report Status, Lab. Rows include Dry at 60C, SS80, and 1F03.

ADDITIONAL COMMENTS



This report supersedes all previous preliminary and final reports with this file number dated prior to the date on this certificate. Signature indicates final approval; preliminary reports are unsigned and should be used for reference only. All results are considered the confidential property of the client. Acme assumes the liabilities for actual cost of analysis only. Results apply to samples as submitted. ** asterisk indicates that an analytical result could not be provided due to unusually high levels of interference from other elements.



Acme Analytical Laboratories (Vancouver) Ltd.
 1020 Cordova St. East Vancouver BC V6A 4A3 Canada
 Phone (604) 253-3158 Fax (604) 253-1716

www.acmelab.com

Client: **Archer, Cathro & Assoc. (1981) Ltd.**
 1016 - 510 W. Hastings St.
 Vancouver BC V6B 1L8 Canada

Project: QQQ
 Report Date: September 12, 2011

Page: 2 of 2 Part 1

CERTIFICATE OF ANALYSIS

WHI11001032.1

Method	1F30	1F30	1F30	1F30	1F30	1F30	1F30	1F30	1F30	1F30	1F30	1F30	1F30	1F30	1F30	1F30	1F30	1F30	1F30	1F30	
Analyte	Mo	Cu	Pb	Zn	Ag	Ni	Co	Mn	Fe	As	U	Au	Th	Sr	Cd	Sb	Bi	V	Ca	P	
Unit	ppm	ppm	ppm	ppm	ppb	ppm	ppm	ppm	%	ppm	ppm	ppb	ppm	ppm	ppm	ppm	ppm	ppm	%	%	
MDL	0.01	0.01	0.01	0.1	2	0.1	0.1	1	0.01	0.1	0.1	0.2	0.1	0.5	0.01	0.02	0.02	2	0.01	0.001	
550100	Soil	0.38	7.80	4.14	50.2	30	9.6	7.4	283	2.20	3.7	0.5	7.1	2.2	35.7	0.08	0.15	0.06	40	0.57	0.063
550101	Soil	0.21	8.56	3.21	45.7	27	12.9	7.2	237	2.01	3.4	0.5	2.6	2.2	29.1	0.06	0.15	0.05	39	0.59	0.071
550102	Soil	0.30	8.39	3.71	43.9	32	10.9	8.2	431	2.02	3.7	0.5	5.1	1.9	37.4	0.09	0.17	0.05	41	0.66	0.065



Acme Analytical Laboratories (Vancouver) Ltd.
 1020 Cordova St. East Vancouver BC V6A 4A3 Canada
 Phone (604) 253-3158 Fax (604) 253-1716

www.acmelab.com

Client: **Archer, Cathro & Assoc. (1981) Ltd.**
 1016 - 510 W. Hastings St.
 Vancouver BC V6B 1L8 Canada

Project: QQQ
 Report Date: September 12, 2011

Page: 2 of 2 Part 2

CERTIFICATE OF ANALYSIS

WHI11001032.1

Method	1F30	1F30	1F30	1F30	1F30	1F30	1F30	1F30	1F30	1F30	1F30	1F30	1F30	1F30	1F30	1F30	1F30	
Analyte	La	Cr	Mg	Ba	Ti	B	Al	Na	K	W	Sc	Tl	S	Hg	Se	Te	Ga	
Unit	ppm	ppm	%	ppm	%	ppm	%	%	%	ppm	ppm	ppm	%	ppb	ppm	ppm	ppm	
MDL	0.5	0.5	0.01	0.5	0.001	1	0.01	0.001	0.01	0.1	0.1	0.02	0.02	5	0.1	0.02	0.1	
550100	Soil	9.9	13.5	0.37	147.2	0.042	<1	1.33	0.014	0.05	0.1	2.1	0.05	<0.02	8	<0.1	<0.02	4.1
550101	Soil	9.1	18.5	0.47	100.7	0.059	<1	1.25	0.023	0.05	0.2	2.2	0.05	<0.02	5	0.1	0.03	3.7
550102	Soil	9.2	17.4	0.42	133.2	0.064	<1	1.30	0.020	0.04	0.2	2.3	0.04	<0.02	7	<0.1	<0.02	4.3



Acme Analytical Laboratories (Vancouver) Ltd.

1020 Cordova St. East Vancouver BC V6A 4A3 Canada

Phone (604) 253-3158 Fax (604) 253-1716

www.acmelab.com

Client: **Archer, Cathro & Assoc. (1981) Ltd.**

1016 - 510 W. Hastings St.

Vancouver BC V6B 1L8 Canada

Project: QQQ

Report Date: September 12, 2011

Page: 1 of 1 Part 1

QUALITY CONTROL REPORT

WHI11001032.1

Method	1F30	1F30	1F30	1F30	1F30	1F30	1F30	1F30	1F30	1F30	1F30	1F30	1F30	1F30	1F30	1F30	1F30	1F30	1F30	1F30	1F30
Analyte	Mo	Cu	Pb	Zn	Ag	Ni	Co	Mn	Fe	As	U	Au	Th	Sr	Cd	Sb	Bi	V	Ca	P	
Unit	ppm	ppm	ppm	ppm	ppb	ppm	ppm	ppm	%	ppm	ppm	ppb	ppm	ppm	ppm	ppm	ppm	ppm	%	%	
MDL	0.01	0.01	0.01	0.1	2	0.1	0.1	1	0.01	0.1	0.1	0.2	0.1	0.5	0.01	0.02	0.02	2	0.01	0.001	
Reference Materials																					
STD DS8	Standard	12.80	91.14	121.2	291.6	1713	35.4	7.0	594	2.37	22.2	2.4	108.3	6.0	63.6	1.95	4.61	5.48	40	0.70	0.071
STD DS8 Expected		13.44	110	123	312	1690	38.1	7.5	615	2.46	26	2.8	107	6.89	67.7	2.38	5.7	6.67	41.1	0.7	0.08
BLK	Blank	<0.01	<0.01	<0.01	<0.1	<2	<0.1	<0.1	<1	<0.01	<0.1	<0.1	<0.1	<0.1	<0.5	<0.01	<0.02	<0.02	<2	<0.01	<0.001



Acme Analytical Laboratories (Vancouver) Ltd.

1020 Cordova St. East Vancouver BC V6A 4A3 Canada

Phone (604) 253-3158 Fax (604) 253-1716

www.acmelab.com

Client: **Archer, Cathro & Assoc. (1981) Ltd.**

1016 - 510 W. Hastings St.

Vancouver BC V6B 1L8 Canada

Project: QQQ

Report Date: September 12, 2011

Page: 1 of 1 Part 2

QUALITY CONTROL REPORT

WHI11001032.1

Method	1F30	1F30	1F30	1F30	1F30	1F30	1F30	1F30	1F30	1F30	1F30	1F30	1F30	1F30	1F30	1F30	1F30	
Analyte	La	Cr	Mg	Ba	Ti	B	Al	Na	K	W	Sc	Tl	S	Hg	Se	Te	Ga	
Unit	ppm	ppm	%	ppm	%	ppm	%	%	%	ppm	ppm	ppm	%	ppb	ppm	ppm	ppm	
MDL	0.5	0.5	0.01	0.5	0.001	1	0.01	0.001	0.01	0.1	0.1	0.02	0.02	5	0.1	0.02	0.1	
Reference Materials																		
STD DS8	Standard	14.1	117.3	0.59	235.7	0.100	2	0.91	0.092	0.41	3.0	1.8	5.32	0.16	201	4.9	5.10	4.9
STD DS8 Expected		14.6	115	0.6045	279	0.113	2.6	0.93	0.0883	0.41	3	2.3	5.4	0.1679	192	5.23	5	4.7
BLK	Blank	<0.5	<0.5	<0.01	<0.5	<0.001	<1	<0.01	<0.001	<0.01	<0.1	<0.1	<0.02	<0.02	<5	<0.1	<0.02	<0.1

QW28780

ARCHER, CATHRO & ASSOCIATES (1981) LIMITED
1016 – 510 West Hastings Street
Vancouver, B.C. V6B 1L8

Telephone: 604-688-2568

Fax: 604-688-2578

AFFIDAVIT



I, Joan Mariacher, of Vancouver, B.C. make oath and say:

That to the best of my knowledge the attached Statement of Expenditures for exploration work on the QQQ 1-16 mineral claims on Claim Sheet 115J/6 is accurate.


Joan Mariacher

Sworn before me at Vancouver, B.C.

this 15th day of April 2011.


Barrister & Solicitor

IAN J. TALBOT
Barrister & Solicitor
281 East 5th Street
North Vancouver
British Columbia
Canada V7L 1L8

Statement of Expenditures
 QQQ 1-16 Mineral Claims
 April 14, 2011

Labour

H. Smith (geologist) January to April 2011 – 2 1/2 hrs @ \$90/hr	\$ 252.00
O. Fu (geologist) January to April 2011 – 30 hrs @ \$50.30/hr	1,690.08
T. Epp (field assistant) July 2011 – 1 day @ \$328/day	367.36
B. Alladice (field assistant) July 2011 – 1 day @ \$304/day	<u>340.48</u>
	2,649.92

Expenses

Field room and board – 2 manday @ \$125/manday	280.00
Capital Helicopters	3,013.50
ALS Chemex	<u>952.85</u>
	4,246.35
 Total	 <u>\$6,896.27</u>



CAPITAL HELICOPTERS (1995) INC.

Suite 3 - 25 Pilgrim Place, Whitehorse, Y.T. Y1A 6E6
 Phone: (867) 668-6200 Fax: (867) 668-6201
 capitalheli@polarcom.com



Charter and Contract Service

INVOICE

NO. 11306-11311

DATE 16/07/2010

PAGE 1 of 1

SOLD TO

Archer Cathro
 Suite 1016, 510 West Hastings
 Vancouver, B. C. V6B 1L8

SHIP TO

Archer Cathro
 Suite 1016, 510 West Hastings
 Vancouver, B. C. V6B 1L8



ITEM NO.	QUANTITY	UNIT	DESCRIPTION	GST PST	UNIT PRICE	AMOUNT
July 7	4.1	hrs	DDD Klaza camp-S/O and P/U Klotassen 1.2 Selwyn 2.9	G	mmm	4,202.50
July 8	3.6	hrs	EEE Klaza camp-S/O and P/U Klotassen 1.4 Selwyn 2.2	G	mmm	3,690.00
July 9	5.2	hrs	PPP Klaza camp-S/O and P/U Klotassen 2.8 Selwyn 2.4	G	kkk	5,330.00
July 10	3.4	hrs	CCC Klaza camp-S/O and P/U Klotassen 1.4 Selwyn 2.0	G	ooo	3,485.00
July 12	1.8	hrs	1.0 BBB 0.8 Klaza camp-S/O and P/U Klotassen 3 Selwyn 1.0	G		1,845.00
July 14/13	5.2	hrs	HHH Klaza camp-S/O and P/U Klotassen 3. Selwyn 2.2	G	jjj	5,330.00
July 15 OK	2.8	hrs	BBB Klaza camp-S/O and P/U Klotassen 2.8 Selwyn 1.	G		2,870.00
	26.1					
			G - GST 5.00%			
			GST			1,337.63
<p>Handwritten notes: 14.4 Klotassen - 14260.00, 11.7 Selwyn - 11992.50, MAOV</p>						
Capital Helicopters (1995) Inc. GST: #899587984						
Thank You! Your Business Is Appreciated! Fuel Price includes Federal and Yukon Tax						28,090.13
						TOTAL ↓

3.8 HA BBB - 4089.75
 1.4 J CCC - 1506.75
 1.2 J DDD - 1291.50
 1.4 J EEE - 1506.75
 3.0 J HHH - 3228.75
 0.8 J III - 861.00
 2.8 J PPP - 3013.50
 2.2 J JJJ - 2367.75
 2.4 J KKK - 2583.00
 5.1 J MMM - 5488.88
 2.0 J OOO - 2152.50



ALS Canada Ltd.
 2103 Dollarton Hwy
 North Vancouver BC V7H 0A7
 Phone: 604 984 0221 Fax: 604 984 0218 www.alsglobal.com

To: STRATEGIC METALS LTD.
 C/O ARCHER, CATHRO & ASSOCIATES (1981) LIMITED
 1016-510 W HASTINGS ST
 VANCOUVER BC V6B 1L8

INVOICE NUMBER 2111765

BILLING INFORMATION

Certificate: **VA10098840**
 Sample Type: **Soil**
 Account: **MTT**
 Date: **30-JUL-2010**
 Project: **KLOTASSIN** AA
 P.O. No.: **QQQ**
 Quote: **ALSM-CW10-010-F**
 Terms: **Net 30 Days** C1
 Comments:

QUANTITY	CODE	ANALYSED FOR DESCRIPTION	UNIT PRICE	TOTAL
43	PREP-41	Dry, Sieve (180 um) Soil	0.96	41.28
9.44	PREP-41	Weight Charge (kg) - Dry, Sieve (180 um) Soil	1.80	16.99
43	Au-ICP21	Au 30g FA ICP-AES Finish	11.06	475.58
43	ME-ICP41	35 Element Aqua Regia ICP-AES	4.92	211.56
43	GEO-AR01	Aqua regia digestion	2.45	105.35

Klotassin
AA

To: STRATEGIC METALS LTD.
 ATTN: JOAN MARIACHER
 C/O ARCHER, CATHRO & ASSOCIATES (1981) LIMITED
 1016-510 W HASTINGS ST
 VANCOUVER BC V6B 1L8

SUBTOTAL (CAD) \$ 850.76
 R100938885 HST BC \$ 102.09
TOTAL PAYABLE (CAD) \$ 952.85

Please Remit Payments To :
ALS Canada Ltd.
 2103 Dollarton Hwy
 North Vancouver BC V7H 0A7

Payment may be made by: Cheque or Bank Transfer

Beneficiary Name: ALS Canada Ltd.
 Bank: Royal Bank of Canada
 SWIFT: ROYCCAT2
 Address: Vancouver, BC, CAN
 Account: 003-00010-1001098

