

ARCHER, CATHRO & ASSOCIATES (1981) LIMITED
1016 - 510 West Hastings Street
Vancouver, B.C. V6B1L8

Telephone: 604-688-2568

Fax: 604-688-2578

ASSESSMENT REPORT

describing

GEOCHEMICAL SAMPLING

at the

PPP PROPERTY

PPP 1-16 YD57185-YD57200

NTS 115J/06

Latitude 62°17'N; Longitude 139°02'W

located in the

Whitehorse Mining District
Yukon Territory

prepared by

Archer, Cathro & Associates (1981) Limited

for

WOLVERINE MINERALS CORP.

and

STRATEGIC METALS LTD.

by

A. Mitchell, B.Sc., Geology
January 2012

CONTENTS

INTRODUCTION	1
PROPERTY LOCATION, CLAIM DATA AND ACCESS	1
HISTORY AND PREVIOUS WORK	1
GEOMORPHOLOGY AND CLIMATE	2
REGIONAL GEOLOGY	2
PROPERTY GEOLOGY	3
SIEVE SILT GEOCHEMISTRY	3
DISCUSSION AND CONCLUSIONS	3
REFERENCES	5

APPENDICES

I	STATEMENT OF QUALIFICATIONS
II	CERTIFICATES OF ANALYSIS

FIGURES

<u>No.</u>	<u>Description</u>	<u>Follows Page</u>
1	Location	1
2	Claim Locations	1
3	Tectonic Setting	2
4	Regional Geology	2
5	Sample Locations	3

INTRODUCTION

The PPP property was staked to cover a moderately anomalous gold value reported from historical stream sediment sampling. The property lies within the Dawson Range Gold Belt of western Yukon. Wolverine Minerals Corp. can earn a 100% interest in the property subject to an option agreement with Strategic Metals Ltd.

This report describes sieve silt sampling conducted on August 5, 2011 by Archer, Cathro & Associates (1981) Limited on behalf of Wolverine. The author interpreted all data from this project and his Statement of Qualifications is in Appendix I.

PROPERTY LOCATION, CLAIM DATA AND ACCESS

The PPP property consists of 16 contiguous mineral claims, which are located on NTS map sheet 115J/06 at latitude 62°17' north and longitude 139°02' west (Figure 1). The property covers an area of approximately 330 ha (3.3 sq. km.). The claims are registered with the Whitehorse Mining Recorder in the name of Archer Cathro, which holds them in trust for Strategic. Specifics concerning claim registration are tabulated below, while the locations of individual claims are shown on Figure 2.

<u>Claim Name</u>	<u>Grant Number</u>	<u>Expiry Date*</u>
PPP 1-16	YD57185-YD57200	April 15, 2015

* Expiry date does not include 2011 work that has not yet been filed for assessment credit.

Access to and from the property was provided by a Bell 206B helicopter owned and operated by Capital Helicopters (1995) Inc. of Whitehorse, from a temporary base at Rockhaven Resources Ltd.'s Klaza property located near the former Mount Nansen Mine. The Klaza property lies about 95 km southeast of the PPP property and 70 km by road west of the community of Carmacks.

HISTORY AND PREVIOUS WORK

In 1969, Archer Cathro performed regional exploration in the Dawson Range district for the Dawson Range Joint Venture (DRJV). During that program, two samples were taken just outside the PPP claims from creeks draining property. Those samples returned 16 and 24 ppm copper, 17 and 24 ppm lead and nil molybdenum (Cathro and Culbert, 1969). No gold analyses were done during this program.

In 1980, Archer Cathro did work in the Dawson Range as part of the NAT Joint Venture (NAT JV), which comprised Chevron Canada Limited and Armco Mineral Exploration Ltd. Part of the NAT JV program involved reanalyses of over 5000 previously collected geochemical sample splits for gold, silver, arsenic and lead. One of the samples collected by DRJV near the current PPP property returned 32 ppb gold when reanalyzed (Archer and Onasick, 1980).

In 1986, the Geological Survey of Canada (GSC) conducted a low-density stream sediment and

**WOLVERINE MINERALS CORP.
STRATEGIC METALS LTD.**

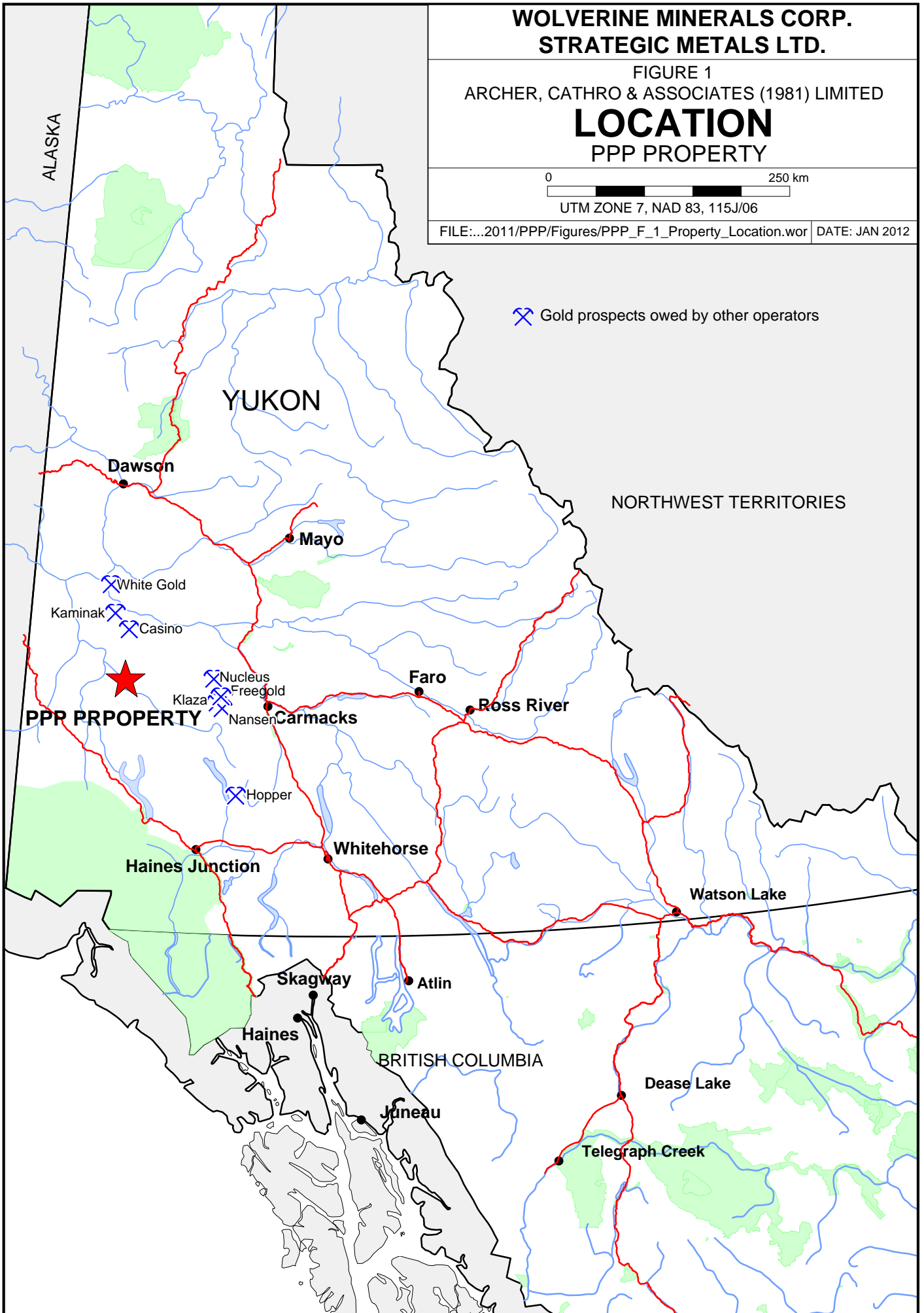
FIGURE 1
ARCHER, CATHRO & ASSOCIATES (1981) LIMITED

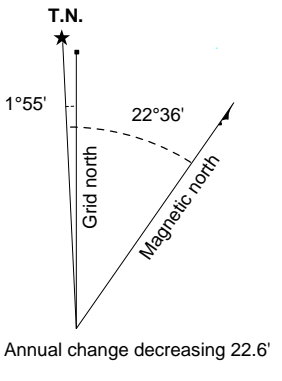
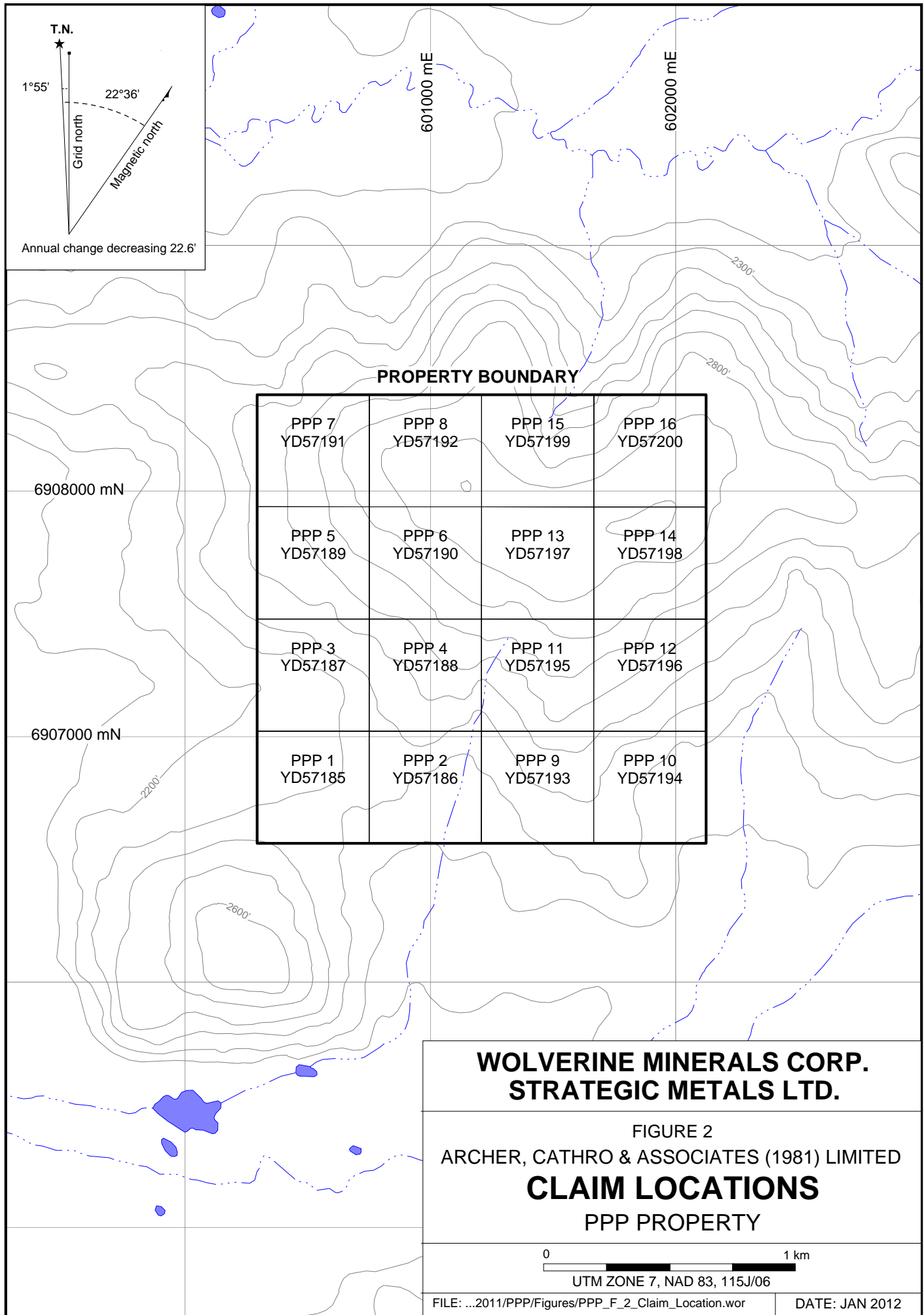
**LOCATION
PPP PROPERTY**

0 250 km

UTM ZONE 7, NAD 83, 115J/06

FILE:....2011/PPP/Figures/PPP_F_1_Property_Location.wor DATE: JAN 2012



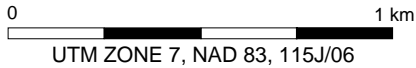


PROPERTY BOUNDARY

PPP 7 YD57191	PPP 8 YD57192	PPP 15 YD57199	PPP 16 YD57200
PPP 5 YD57189	PPP 6 YD57190	PPP 13 YD57197	PPP 14 YD57198
PPP 3 YD57187	PPP 4 YD57188	PPP 11 YD57195	PPP 12 YD57196
PPP 1 YD57185	PPP 2 YD57186	PPP 9 YD57193	PPP 10 YD57194

**WOLVERINE MINERALS CORP.
 STRATEGIC METALS LTD.**

FIGURE 2
 ARCHER, CATHRO & ASSOCIATES (1981) LIMITED
CLAIM LOCATIONS
 PPP PROPERTY



water sampling survey on NTS map sheet 115J (Friske et al., 1986). Two samples were taken in the vicinity of the PPP property. One sample to the north yielded weakly anomalous values for zinc (48 ppm) and background values for other metals, while another to the south produced weakly anomalous values for copper (45 ppm) and background values for all other metals.

Strategic staked the PPP claims in April 2010 to cover the headwaters of the drainage that yielded the historical gold-in-silt anomaly. That year, Strategic completed one day of geochemical sampling (Smith, 2011). This work returned background to weakly anomalous values for gold (up to 17 ppb), arsenic (up to 31 ppm), copper (up to 48 ppm), lead (up to 26 ppm) and zinc (up to 141 ppm). Wolverine signed an optional purchase agreement with Strategic in September 2010.

GEOMORPHOLOGY AND CLIMATE

The PPP property is situated in the southern part of the Dawson Range and is drained by creeks that flow into the Nisling River, which ultimately connects to the Pacific Ocean via the Yukon River. The property is believed to have been unglaciated during the Pliocene and Pleistocene; however, it is surrounded by glacial valleys.

The property straddles a northeast-trending ridge. Slopes on the property range from moderate to steep and elevations are about 700 to 900 m above sea level (asl). Outcrop is rare and limited to creek gullies.

The property lies below treeline, which is approximately 1400 m in the area. Vegetation is moderately abundant, with mature spruce and poplar trees surrounded by an understorey of low shrubs and moss, giving way to grass and shrubs on some south facing slopes.

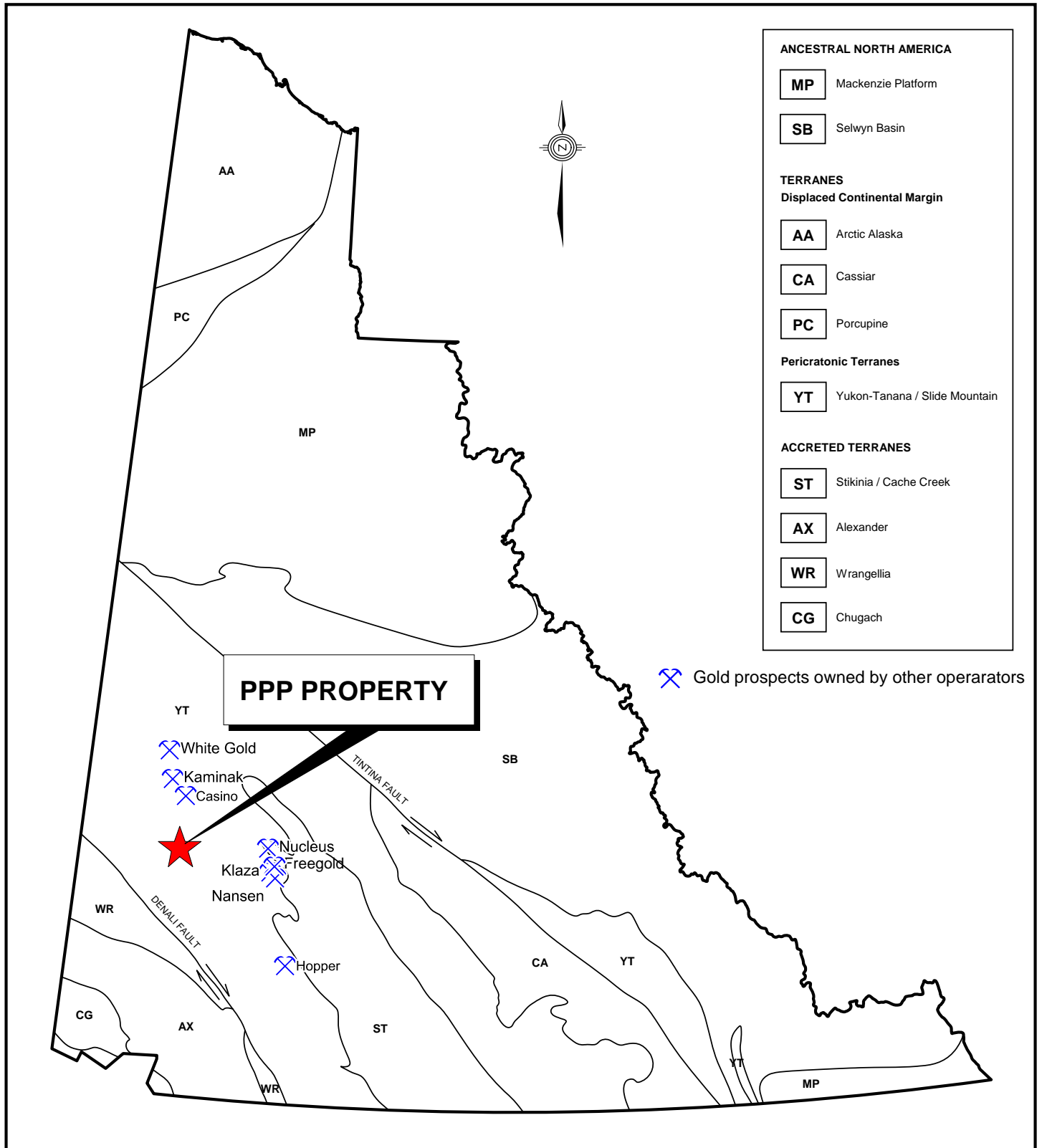
The climate in the PPP area is typical of northern continental regions with long, cold winters, truncated fall and spring seasons and short, mild summers. Although summers are relatively mild, arctic cold fronts often cover the area and snowfall can occur in any month. The property is mostly snow free from early May to mid-October.

REGIONAL GEOLOGY

The PPP property is located within the Yukon-Tanana Terrane (YTT) as shown on Figure 3. The YTT represents a continental arc that developed along the ancient Pacific margin of North America from Late Devonian to Permian.

In 1974, the GSC published a geological map of the Snag area (NTS map sheet 115J) at 1:250,000 scale (Tempelman-Kluit, 1974). Gordey and Makepeace (2003) later completed a Yukon-wide geological compilation, which updated lithological unit names in the PPP area.

The area is mapped as Devonian to Mississippian Nasina Group (Figure 4). Typically this group includes black-weathered, massive, dark grey to black strongly graphitic quartzite with lesser grey micaceous quartzite and quartz-mica schist. Rocks commonly show alternating light and dark grey colour laminations



ANCESTRAL NORTH AMERICA	
MP	Mackenzie Platform
SB	Selwyn Basin
TERRANES	
Displaced Continental Margin	
AA	Arctic Alaska
CA	Cassiar
PC	Porcupine
Pericratonic Terranes	
YT	Yukon-Tanana / Slide Mountain
ACCRETED TERRANES	
ST	Stikinia / Cache Creek
AX	Alexander
WR	Wrangellia
CG	Chugach

Gold prospects owned by other operators

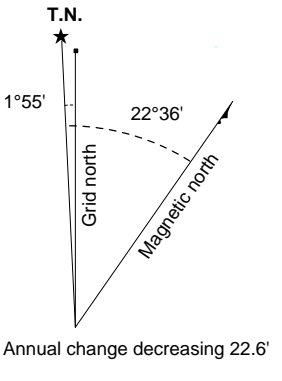
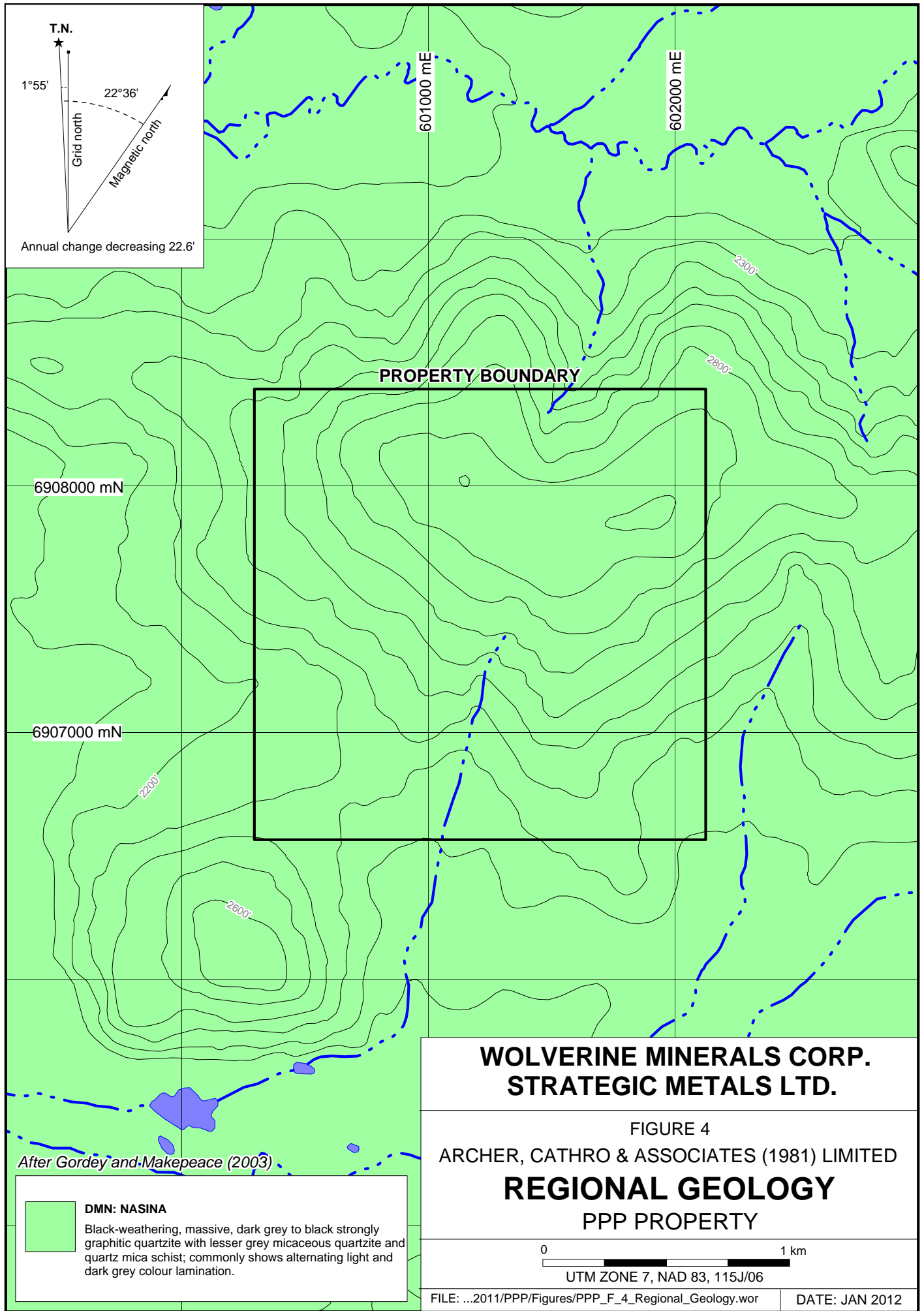
PPP PROPERTY



**WOLVERINE MINERALS CORP.
STRATEGIC METALS LTD.**

FIGURE 3
ARCHER, CATHRO & ASSOCIATES (1981) LIMITED
TECTONIC SETTING
PPP PROPERTY

0 200 km
UTM ZONE 7, NAD 83, 115J/06



PROPERTY BOUNDARY

6908000 mN

6907000 mN

601000 mE

602000 mE

**WOLVERINE MINERALS CORP.
STRATEGIC METALS LTD.**

FIGURE 4
ARCHER, CATHRO & ASSOCIATES (1981) LIMITED
REGIONAL GEOLOGY
PPP PROPERTY

After Gordey and Makepeace (2003)

DMN: NASINA
Black-weathering, massive, dark grey to black strongly graphitic quartzite with lesser grey micaceous quartzite and quartz mica schist; commonly shows alternating light and dark grey colour lamination.

0 1 km
UTM ZONE 7, NAD 83, 115J/06

PROPERTY GEOLOGY

No detailed geological mapping has been done on the PPP property. The following description of property geology is based on published data discussed in the previous section.

There are no reported mineral occurrences on the property.

SIEVE SILT GEOCHEMISTRY

In 2011, Wolverine collected three sieve silt samples from the property. Sample locations are plotted on Figure 5 and Certificates of Analysis are provided in Appendix II.

W.R. (Bill) Gilmour from Discovery Consultants of Vernon, British Columbia provided instructions and equipment for collecting the samples. The crew collected up to three kilograms of material from specific locations based on flow rates and geomorphological characteristics. Each sample was placed into a large heavy-plastic bag and then double-bagged for safe transport. Sample sites are marked with aluminum tags inscribed with sample numbers and affixed to 0.5 m wooden lath that were driven into the ground. All sample locations were recorded using hand-held GPS units.

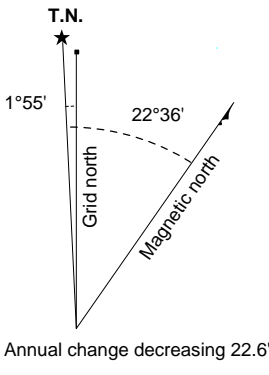
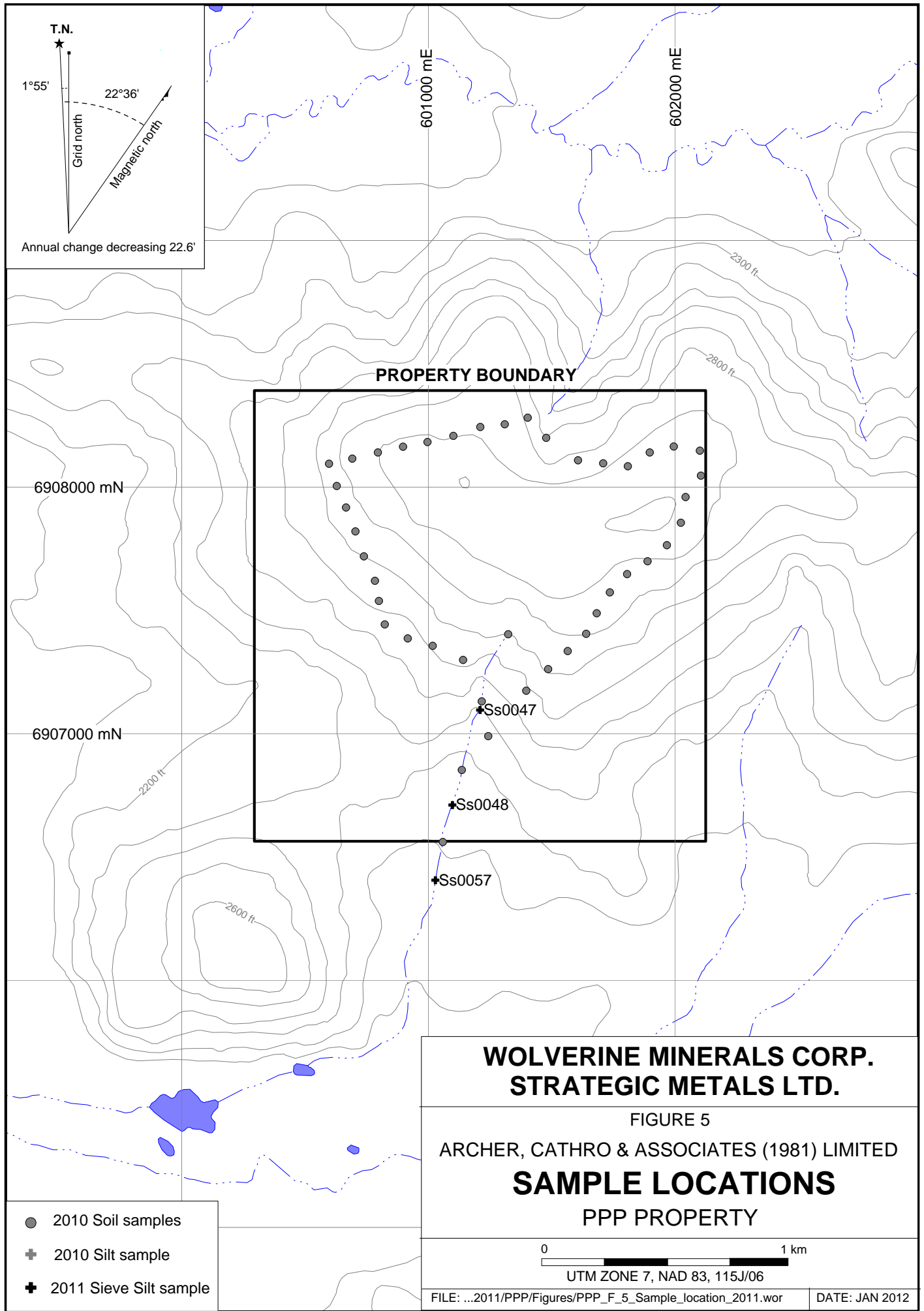
The sieve silt samples were sent to Acme Labs in Vancouver, B.C. where they were dried and sieved to -80 mesh. Special instructions were given to sieve entire sample weight, not only 0.5 kg, which is standard practice at Acme. Once sieved, the sample was divided using a micro splitter to produce a 30 g sub-sample that was analyzed by aqua regia digestion and ultra-trace inductively coupled plasma-mass spectrometry.

Samples returned background values for gold (up to 15.5 ppb), arsenic (up to 5.3 ppm), copper (up to 20.35 ppm), lead (up to 10.19 ppm), zinc (up to 60.9 ppm) and all other gold pathfinder elements.

DISCUSSION AND CONCLUSIONS

Sieve silt geochemistry performed by Wolverine on the PPP property failed to confirm the source of the 32 ppb gold stream sediment value or the weakly anomalous copper, lead and zinc values. Due to thick vegetation coverage and a low density of sampling on the property, additional work may be warranted on a low priority basis depending on future economics and results from nearby exploration programs.

If additional work is conducted, it should include mapping and prospecting to determine if quartz-feldspar porphyry dykes, sills and breccias – which are significant mineralizers on nearby properties – are present on the PPP property.



PROPERTY BOUNDARY

6908000 mN

6907000 mN

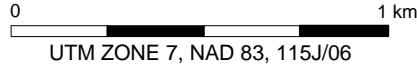
**WOLVERINE MINERALS CORP.
 STRATEGIC METALS LTD.**

FIGURE 5

ARCHER, CATHRO & ASSOCIATES (1981) LIMITED

**SAMPLE LOCATIONS
 PPP PROPERTY**

- 2010 Soil samples
- + 2010 Silt sample
- ⊕ 2011 Sieve Silt sample



Respectfully submitted,
ARCHER, CATHRO & ASSOCIATES (1981) LIMITED

A. Mitchell, B.Sc., Geology

REFERENCES

- Archer, A. R. and Onasick, E.P.
1980 NAT Joint Venture Final Report; Internal report prepared by Archer, Cathro & Associates Ltd. for Chevron Canada Limited and Armco Mineral Exploration Ltd.
- Cathro, R.J. and Culbert, R.E.
1969 Summary report on the 1969 field program; Dawson Range Joint Venture Project, Yukon Territory.
- Friske, P.W.B., Hornbrook, E.H.W., Lynch, J.J., McCurdy, M.W., Gross, H., Galletta, A.C. and Durham, C.C.
1986 Regional stream sediment and water geochemical reconnaissance data (115J); Geological Survey of Canada, Open File 1363.
- Gordey, S.P. and Makepeace, A.J. (compilers)
2003 Yukon digital geology, version 2.0, Geological Survey of Canada, Open File 1749 and Yukon Geological Survey, Open File 2003-9 (D).
- Smith, H.
2011 Assessment report describing 2010 geochemical sampling on the PPP property prepared for Wolverine Mineral Corp. and Strategic Metals Ltd.
- Tempelman-Kluit, D.J.
1974 Geology Snag, Yukon Territory (cartographic material), Geological Survey of Canada, map 16-1973, NTS 115J.

APPENDIX I
STATEMENT OF QUALIFICATIONS

STATEMENT OF QUALIFICATIONS

I, Andrew Mitchell, geologist, with business addresses in Whitehorse, Yukon Territory and Vancouver, British Columbia and residential address in Vancouver, British Columbia, hereby certify that:

1. I graduated from the University of British Columbia in 2010 with a B.Sc. in Earth and Environmental Sciences.
2. From 2010 to present, I have been actively engaged in mineral exploration in Yukon Territory.
3. I have interpreted all data resulting from this work.

A. Mitchell, B.Sc., Geology

APPENDIX II
CERTIFICATES OF ANALYSIS



1020 Cordova St. East Vancouver BC V6A 4A3 Canada

Acme Analytical Laboratories (Vancouver) Ltd.

www.acmelab.com

Client: Archer, Cathro & Assoc. (1981) Ltd.
1016 - 510 W. Hastings St.
Vancouver BC V6B 1L8 Canada

Submitted By: Joan Mariacher
Receiving Lab: Canada-Whitehorse
Received: August 09, 2011
Report Date: September 18, 2011
Page: 1 of 2

CERTIFICATE OF ANALYSIS

WHI11001033.1

CLIENT JOB INFORMATION

Project: PPP
Shipment ID:
P.O. Number
Number of Samples: 3

SAMPLE DISPOSAL

STOR-PLP Store After 90 days Invoice for Storage
DISP-RJT-SOIL Immediate Disposal of Soil Reject

Acme does not accept responsibility for samples left at the laboratory after 90 days without prior written instructions for sample storage or return.

Invoice To: Archer, Cathro & Assoc. (1981) Ltd.
1016 - 510 W. Hastings St.
Vancouver BC V6B 1L8
Canada

CC: Heather Smith

SAMPLE PREPARATION AND ANALYTICAL PROCEDURES

Method Code	Number of Samples	Code Description	Test Wgt (g)	Report Status	Lab
Dry at 60C	3	Dry at 60C			WHI
SS80	3	Dry at 60C sieve 100g to -80 mesh			WHI
1F03	3	1:1:1 Aqua Regia digestion Ultratrace ICP-MS analysis	30	Completed	VAN

ADDITIONAL COMMENTS



This report supersedes all previous preliminary and final reports with this file number dated prior to the date on this certificate. Signature indicates final approval; preliminary reports are unsigned and should be used for reference only. All results are considered the confidential property of the client. Acme assumes the liabilities for actual cost of analysis only. Results apply to samples as submitted. ** asterisk indicates that an analytical result could not be provided due to unusually high levels of interference from other elements.



Acme Analytical Laboratories (Vancouver) Ltd.
 1020 Cordova St. East Vancouver BC V6A 4A3 Canada
 Phone (604) 253-3158 Fax (604) 253-1716

www.acmelab.com

Client: **Archer, Cathro & Assoc. (1981) Ltd.**
 1016 - 510 W. Hastings St.
 Vancouver BC V6B 1L8 Canada

Project: PPP
 Report Date: September 18, 2011

Page: 2 of 2 Part 1

CERTIFICATE OF ANALYSIS

WHI11001033.1

Method	1F30	1F30	1F30	1F30	1F30	1F30	1F30	1F30	1F30	1F30	1F30	1F30	1F30	1F30	1F30	1F30	1F30	1F30	1F30	1F30	
Analyte	Mo	Cu	Pb	Zn	Ag	Ni	Co	Mn	Fe	As	U	Au	Th	Sr	Cd	Sb	Bi	V	Ca	P	
Unit	ppm	ppm	ppm	ppm	ppb	ppm	ppm	ppm	%	ppm	ppm	ppb	ppm	ppm	ppm	ppm	ppm	ppm	%	%	
MDL	0.01	0.01	0.01	0.1	2	0.1	0.1	1	0.01	0.1	0.1	0.2	0.1	0.5	0.01	0.02	0.02	2	0.01	0.001	
550047	Soil	1.72	20.35	10.19	60.9	61	11.6	8.0	312	2.71	4.4	0.7	1.7	3.5	46.4	0.17	0.29	0.16	58	0.61	0.077
550048	Soil	0.50	15.45	4.11	45.9	44	15.4	8.2	280	2.15	4.3	0.6	15.5	2.7	45.3	0.09	0.21	0.07	51	0.66	0.081
550057	Soil	0.48	14.34	4.26	46.1	38	15.8	8.5	429	2.28	5.3	0.6	2.4	2.8	44.3	0.10	0.22	0.07	51	0.66	0.083



Acme Analytical Laboratories (Vancouver) Ltd.
 1020 Cordova St. East Vancouver BC V6A 4A3 Canada
 Phone (604) 253-3158 Fax (604) 253-1716

www.acmelab.com

Client: **Archer, Cathro & Assoc. (1981) Ltd.**
 1016 - 510 W. Hastings St.
 Vancouver BC V6B 1L8 Canada

Project: PPP
 Report Date: September 18, 2011

Page: 2 of 2 Part 2

CERTIFICATE OF ANALYSIS

WHI11001033.1

Method	1F30	1F30	1F30	1F30	1F30	1F30	1F30	1F30	1F30	1F30	1F30	1F30	1F30	1F30	1F30	1F30	1F30	
Analyte	La	Cr	Mg	Ba	Ti	B	Al	Na	K	W	Sc	Tl	S	Hg	Se	Te	Ga	
Unit	ppm	ppm	%	ppm	%	ppm	%	%	%	ppm	ppm	ppm	%	ppb	ppm	ppm	ppm	
MDL	0.5	0.5	0.01	0.5	0.001	1	0.01	0.001	0.01	0.1	0.1	0.02	0.02	5	0.1	0.02	0.1	
550047	Soil	17.3	26.6	0.46	215.7	0.030	1	1.32	0.011	0.07	0.2	3.5	0.04	<0.02	12	0.3	0.04	4.0
550048	Soil	13.1	23.7	0.47	139.7	0.078	1	1.24	0.024	0.05	0.4	2.7	0.03	<0.02	9	0.2	<0.02	3.6
550057	Soil	12.7	25.6	0.47	147.9	0.074	<1	1.20	0.023	0.05	0.4	2.7	0.03	<0.02	8	0.3	<0.02	3.5



Acme Analytical Laboratories (Vancouver) Ltd.

1020 Cordova St. East Vancouver BC V6A 4A3 Canada

Phone (604) 253-3158 Fax (604) 253-1716

www.acmelab.com

Client: **Archer, Cathro & Assoc. (1981) Ltd.**

1016 - 510 W. Hastings St.

Vancouver BC V6B 1L8 Canada

Project: PPP

Report Date: September 18, 2011

Page: 1 of 1 Part 1

QUALITY CONTROL REPORT

WHI11001033.1

Method	1F30	1F30	1F30	1F30	1F30	1F30	1F30	1F30	1F30	1F30	1F30	1F30	1F30	1F30	1F30	1F30	1F30	1F30	1F30	1F30	1F30
Analyte	Mo	Cu	Pb	Zn	Ag	Ni	Co	Mn	Fe	As	U	Au	Th	Sr	Cd	Sb	Bi	V	Ca	P	
Unit	ppm	ppm	ppm	ppm	ppb	ppm	ppm	ppm	%	ppm	ppm	ppb	ppm	ppm	ppm	ppm	ppm	ppm	%	%	
MDL	0.01	0.01	0.01	0.1	2	0.1	0.1	1	0.01	0.1	0.1	0.2	0.1	0.5	0.01	0.02	0.02	2	0.01	0.001	
Reference Materials																					
STD DS8	Standard	12.56	109.1	111.4	296.2	1661	37.3	7.4	599	2.46	27.1	2.5	99.4	6.3	59.6	2.30	5.25	6.30	41	0.72	0.079
STD DS8 Expected		13.44	110	123	312	1690	38.1	7.5	615	2.46	26	2.8	107	6.89	67.7	2.38	5.7	6.67	41.1	0.7	0.08
BLK	Blank	<0.01	<0.01	<0.01	<0.1	<2	<0.1	<0.1	<1	<0.01	<0.1	<0.1	<0.2	<0.1	<0.5	<0.01	<0.02	<0.02	<2	<0.01	<0.001



Acme Analytical Laboratories (Vancouver) Ltd.

1020 Cordova St. East Vancouver BC V6A 4A3 Canada

Phone (604) 253-3158 Fax (604) 253-1716

www.acmelab.com

Client: **Archer, Cathro & Assoc. (1981) Ltd.**

1016 - 510 W. Hastings St.

Vancouver BC V6B 1L8 Canada

Project: PPP

Report Date: September 18, 2011

Page: 1 of 1 Part 2

QUALITY CONTROL REPORT

WHI11001033.1

Method	1F30	1F30	1F30	1F30	1F30	1F30	1F30	1F30	1F30	1F30	1F30	1F30	1F30	1F30	1F30	1F30	1F30	
Analyte	La	Cr	Mg	Ba	Ti	B	Al	Na	K	W	Sc	Tl	S	Hg	Se	Te	Ga	
Unit	ppm	ppm	%	ppm	%	ppm	%	%	%	ppm	ppm	ppm	%	ppb	ppm	ppm	ppm	
MDL	0.5	0.5	0.01	0.5	0.001	1	0.01	0.001	0.01	0.1	0.1	0.02	0.02	5	0.1	0.02	0.1	
Reference Materials																		
STD DS8	Standard	14.0	115.8	0.62	262.3	0.110	4	0.92	0.089	0.42	2.8	2.1	4.92	0.16	164	5.0	4.68	4.3
STD DS8 Expected		14.6	115	0.6045	279	0.113	2.6	0.93	0.0883	0.41	3	2.3	5.4	0.1679	192	5.23	5	4.7
BLK	Blank	<0.5	<0.5	<0.01	<0.5	<0.001	<1	<0.01	<0.001	<0.01	<0.1	<0.1	<0.02	<0.02	<5	<0.1	<0.02	<0.1

QW 28779

ARCHER, CATHRO & ASSOCIATES (1981) LIMITED
1016 – 510 West Hastings Street
Vancouver, B.C. V6B 1L8

Telephone: 604-688-2568

Fax: 604-688-2578

AFFIDAVIT



I, Joan Mariacher, of Vancouver, B.C. make oath and say:

That to the best of my knowledge the attached Statement of
Expenditures for exploration work on the PPP 1-16 mineral claims
on Claim Sheet 115J/6 is accurate.


Joan Mariacher

Sworn before me at Vancouver, B.C.

this 15th day of April 2011.



Barrister & Solicitor

IAN J. TALBOT
Barrister & Solicitor
281 East 5th Street
North Vancouver
British Columbia
Canada V7L 1L8

Statement of Expenditures
PPP 1-16 Mineral Claims
April 14, 2011

Labour

H. Smith (geologist) January to April 2011 – 2 hrs @ \$90/hr	\$ 201.60
O. Fu (geologist) January to April 2011 – 26 hrs @ \$50.30/hr	1,464.74
T. Epp (field assistant) July 2011 – 1 day @ \$328/day	367.36
B. Alladice (field assistant) July 2011 – 1 day @ \$304/day	<u>340.48</u>
	2,374.18

Expenses

Field room and board – 2 manday @ \$125/manday	280.00
Capital Helicopters	3,121.13
ALS Chemex	<u>954.11</u>
	4,355.24

Total	<u>\$6,729.42</u>
-------	-------------------

CAPITAL HELICOPTERS (1995) INC.

Suite 3 - 25 Pilgrim Place, Whitehorse, Y.T. Y1A 6E6
 Phone: (867) 668-6200 Fax: (867) 668-6201
 capitalheli@polarcom.com



Charter and Contract Service

INVOICE

NO. 11329

DATE 05/07/2010

PAGE 1 of 1

SOLD TO

Archer Cathro
 Suite 1016, 510 West Hastings
 Vancouver, B. C. V6B 1L8

SHIP TO

Archer Cathro
 Suite 1016, 510 West Hastings
 Vancouver, B. C. V6B 1L8

ITEM NO.	QUANTITY	UNIT	DESCRIPTION	GST PST	UNIT PRICE	AMOUNT	
July 1	2.0	hrs	Nansen-DDD-S/O and P/U	G	1,025.00	2,050.00	
July 2	1.1	hrs	Nerland-Nansen-DDD-S/O and P/U Taylor	G	1,025.00	1,127.50	
July 3	2.9	hrs	Nansen-DDD-S/O and P/U Taylor	G	1,025.00	2,972.50	
			G - GST 5.00%			<u>650.</u>	
			GST			307.51	
Capital Helicopters (1995) Inc GST: #899587984							
Thank You! Your Business Is Appreciated! Fuel Price includes Federal and Yukon Tax						TOTAL ↓	6,457.51

A Kletman NA 02

3.1 AX - DDD - 3336.38
 2.9 A - PPP - 3121.13



ALS Chemex

EXCELLENCE IN ANALYTICAL CHEMISTRY

ALS Canada Ltd

2103 Dollarton Hwy
North Vancouver BC V7H 0A7

Phone: 604 984 0221 Fax: 604 984 0218 www.alschemex.com

To: STRATEGIC METALS LTD.
C/O ARCHER, CATHRO & ASSOCIATES (1981) LIMITED
1016-510 W HASTINGS ST
VANCOUVER BC V6B 1L8

INVOICE NUMBER 2107231

BILLING INFORMATION

Certificate: **VA10093074**
Sample Type: **Soil**
Account: **MTT**
Date: **23-JUL-2010**
Project: **KLOTASSIN** *AKP*
P.O. No.: **PPP**
Quote: **ALSM-CW10-010-F**
Terms: **Net 30 Days** **C1**
Comments:

ANALYSED FOR			UNIT	TOTAL
QUANTITY	CODE	DESCRIPTION	PRICE	
43	PREP-41	Dry, Sieve (180 um) Soil	0.96	41.28
10.06	PREP-41	Weight Charge (kg) - Dry, Sieve (180 um) Soil	1.80	18.11
43	Au-ICP21	Au 30g FA ICP-AES Finish	11.06	475.58
43	ME-ICP41	35 Element Aqua Regia ICP-AES	4.92	211.56
43	GEO-AR01	Aqua regia digestion	2.45	105.35

*Klotassin
NA 20*

SUBTOTAL (CAD) \$ 851.88

R100938885 HST BC \$ 102.23

TOTAL PAYABLE (CAD) \$ 954.11

To: **STRATEGIC METALS LTD.**
ATTN: JOAN MARIACHER
C/O ARCHER, CATHRO & ASSOCIATES (1981) LIMITED
1016-510 W HASTINGS ST
VANCOUVER BC V6B 1L8

Payment may be made by: Cheque or Bank Transfer

Beneficiary Name: ALS Canada Ltd.
Bank: Royal Bank of Canada
SWIFT: ROYCCAT2
Address: Vancouver, BC, CAN
Account: 003-00010-1001098

Please Remit Payments To :

ALS Canada Ltd.

2103 Dollarton Hwy
North Vancouver BC V7H 0A7