

ARCHER, CATHRO & ASSOCIATES (1981) LIMITED  
1016 - 510 West Hastings Street  
Vancouver, B.C. V6B1L8

Telephone: 604-688-2568

Fax: 604-688-2578

---

**ASSESSMENT REPORT**

describing

**GEOCHEMICAL SAMPLING**

at the

**HHH PROPERTY**

HHH 1-51     YD56861-YD56911  
52-63     YD06088-YD06099

NTS 115J/07

Latitude 62°25'N; Longitude 138°54'W

located in the

Whitehorse Mining District  
Yukon Territory

prepared by

Archer, Cathro & Associates (1981) Limited

for

**WOLVERINE MINERALS CORP.**  
and  
**STRATEGIC METALS LTD.**

by

A. Mitchell, B.Sc.  
January 2012

## **CONTENTS**

INTRODUCTION	1
PROPERTY LOCATION, CLAIM DATA AND ACCESS	1
HISTORY AND PREVIOUS WORK	1
GEOMORPHOLOGY AND CLIMATE	2
REGIONAL GEOLOGY	2
PROPERTY GEOLOGY	3
SIEVE SILT GEOCHEMISTRY	3
DISCUSSION AND CONCLUSIONS	4
REFERENCES	5

## **APPENDICES**

I	STATEMENT OF QUALIFICATIONS
II	CERTIFICATES OF ANALYSIS

## **FIGURES**

<u>No.</u>	<u>Description</u>	<u>Follows Page</u>
1	Property Location	1
2	Claim Locations	1
3	Tectonic Setting	2
4	Regional Geology	2
5	Sample Locations	3

## **TABLES**

I	Lithological Units	3
---	--------------------	---

## **INTRODUCTION**

The HHH property lies near the centre of the Dawson Range Gold Belt in western Yukon (Figure 1). The property was staked to cover strongly anomalous gold and lead values reported from historical geochemical sampling. Wolverine Minerals Corp. can earn a 100% interest in the property subject to an option agreement with Strategic Metals Ltd.

This report describes a one day sieve silt sampling program that was conducted by Archer, Cathro & Associates (1981) Limited on August 3, 2011 on behalf of Strategic. The author interpreted all data from this program and his Statement of Qualifications is in Appendix I.

## **PROPERTY LOCATION, CLAIM DATA AND ACCESS**

The HHH property consists of 63 contiguous mineral claims, which are located on NTS map sheet 115J/07 at latitude 62°25' north and longitude 138°54' west (Figure 1). The property covers an area of approximately 1280 ha (12.8 sq km). The claims are registered with the Whitehorse Mining Recorder in the name of Archer Cathro, which holds them in trust for Strategic. Specifics concerning claim registration are tabulated below, while the locations of individual claims are shown on Figure 2.

<u>Claim Name</u>	<u>Grant Number</u>	<u>Expiry Date*</u>
HHH 1-51	YD56861-YD56911	April 15, 2012
52-63	YD06088-YD06099	April 15, 2012

\* Expiry dates do not include 2011 work that has not yet been filed for assessment credit.

Access to and from the HHH property was by a Bell 206B helicopter owned and operated by Capital Helicopters (1995) Inc. of Whitehorse, from a temporary base at the Klaza property located near the former Mount Nansen Mine. The Klaza property lies 86 km southeast of the HHH property and 70 km by road west of the community of Carmacks.

## **HISTORY AND PREVIOUS WORK**

In 1969, Archer Cathro performed regional exploration in the Dawson Range district for the Dawson Range Joint Venture (DRJV). During that exploration program four stream sediment samples were collected from creeks draining the HHH property. Those samples were analyzed for copper, lead and molybdenum. Values up to 33 ppm copper, 2 ppm molybdenum and 33 ppm lead were reported (Cathro, 1969). No gold analyses were done during this program.

In 1980, Archer Cathro worked once more in the Dawson Range, this time on behalf of the NAT Joint Venture (NAT JV) which comprised Chevron Canada Limited and Armco Mineral Exploration Ltd. The NAT JV program involved reanalyses of splits from over 5000 previously collected samples for gold, silver, arsenic and lead, plus follow up geochemical sampling. None of the samples taken during the 1969 program were reanalyzed, but five additional stream sediment samples were collected from creeks draining the HHH property. Those samples yielded values up to 62 ppb gold, 4 ppm silver, 39 ppm arsenic and 33 ppm lead (Archer and

**WOLVERINE MINERALS CORP.  
STRATEGIC METALS LTD.**

FIGURE 1

ARCHER, CATHRO & ASSOCIATES (1981) LIMITED

**PROPERTY LOCATION**

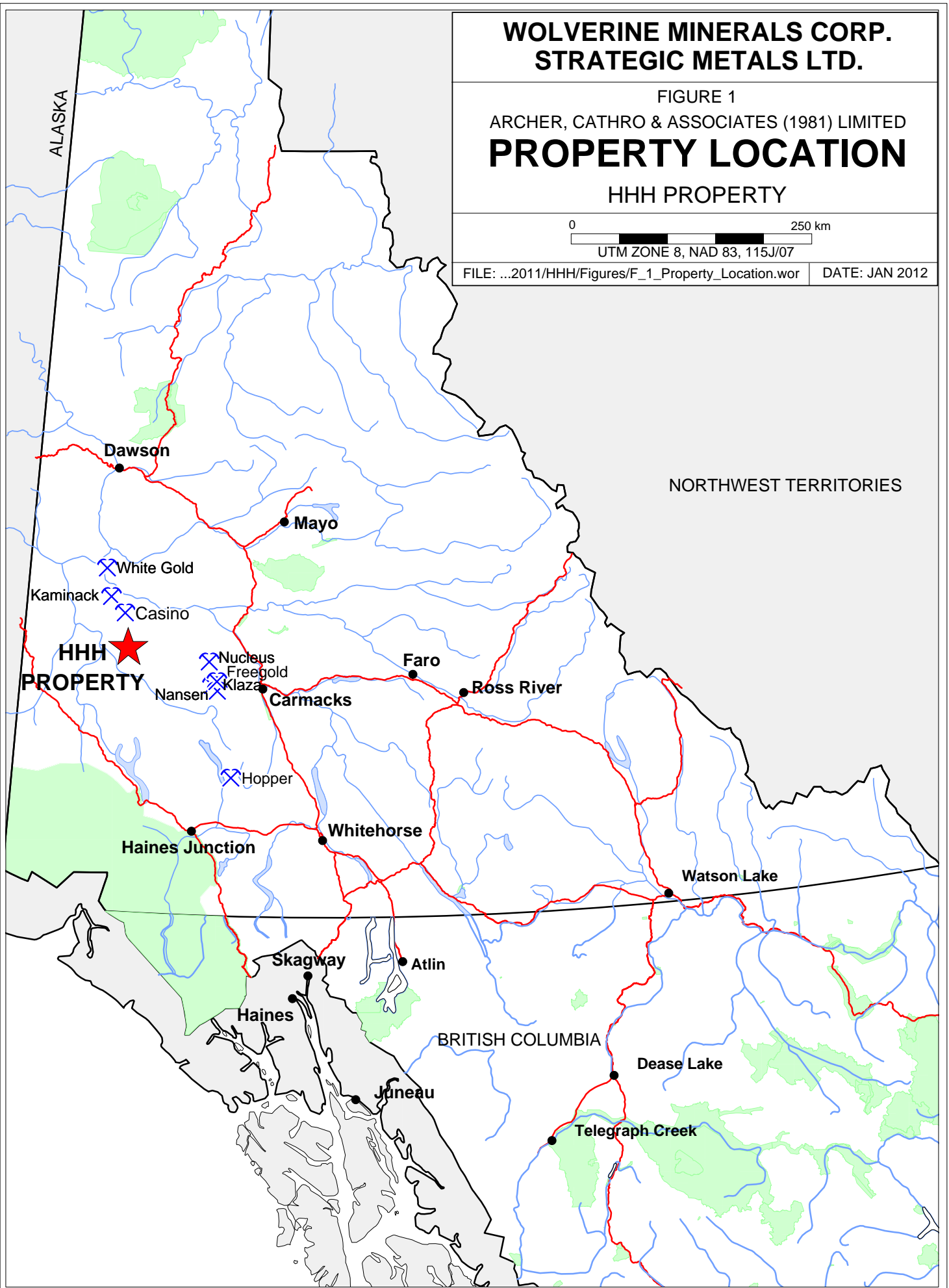
HHH PROPERTY

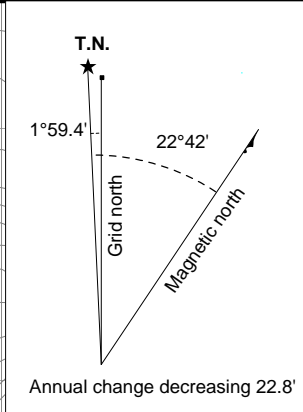
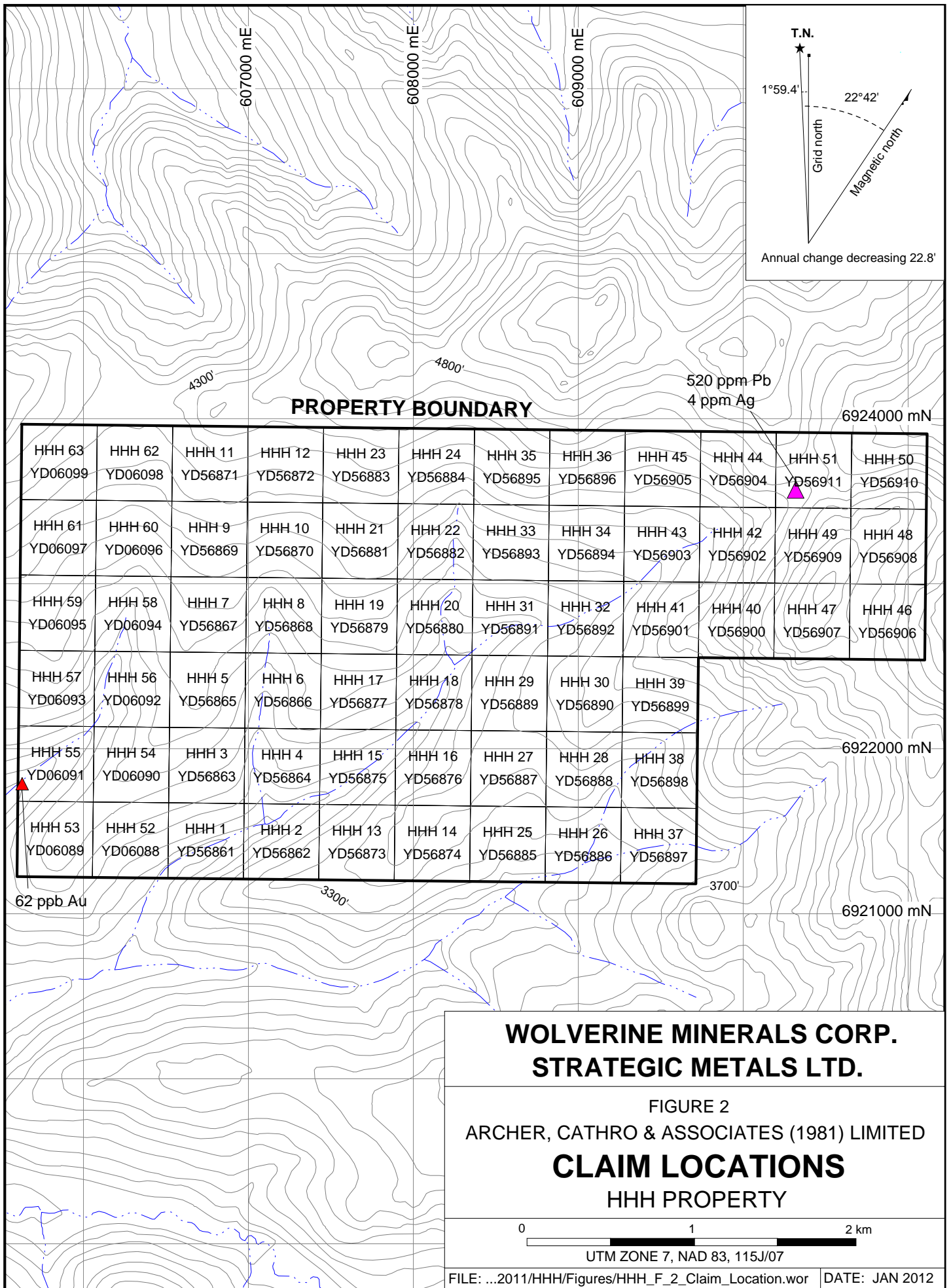
0 250 km

UTM ZONE 8, NAD 83, 115J/07

FILE: ...2011/HHH/Figures/F\_1\_Property\_Location.wor

DATE: JAN 2012





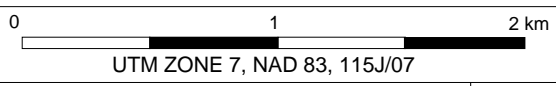
**PROPERTY BOUNDARY**

520 ppm Pb  
 4 ppm Ag

HHH 63 YD06099	HHH 62 YD06098	HHH 11 YD56871	HHH 12 YD56872	HHH 23 YD56883	HHH 24 YD56884	HHH 35 YD56895	HHH 36 YD56896	HHH 45 YD56905	HHH 44 YD56904	HHH 51 YD56911	HHH 50 YD56910
HHH 61 YD06097	HHH 60 YD06096	HHH 9 YD56869	HHH 10 YD56870	HHH 21 YD56881	HHH 22 YD56882	HHH 33 YD56893	HHH 34 YD56894	HHH 43 YD56903	HHH 42 YD56902	HHH 49 YD56909	HHH 48 YD56908
HHH 59 YD06095	HHH 58 YD06094	HHH 7 YD56867	HHH 8 YD56868	HHH 19 YD56879	HHH 20 YD56880	HHH 31 YD56891	HHH 32 YD56892	HHH 41 YD56901	HHH 40 YD56900	HHH 47 YD56907	HHH 46 YD56906
HHH 57 YD06093	HHH 56 YD06092	HHH 5 YD56865	HHH 6 YD56866	HHH 17 YD56877	HHH 18 YD56878	HHH 29 YD56889	HHH 30 YD56890	HHH 39 YD56899			
HHH 55 YD06091	HHH 54 YD06090	HHH 3 YD56863	HHH 4 YD56864	HHH 15 YD56875	HHH 16 YD56876	HHH 27 YD56887	HHH 28 YD56888	HHH 38 YD56898			
HHH 53 YD06089	HHH 52 YD06088	HHH 1 YD56861	HHH 2 YD56862	HHH 13 YD56873	HHH 14 YD56874	HHH 25 YD56885	HHH 26 YD56886	HHH 37 YD56897			

**WOLVERINE MINERALS CORP.  
 STRATEGIC METALS LTD.**

FIGURE 2  
 ARCHER, CATHRO & ASSOCIATES (1981) LIMITED  
**CLAIM LOCATIONS**  
 HHH PROPERTY



Onasick, 1980). One soil sample collected from a saddle in the northeastern part of the current property returned 520 ppm lead with 4 ppm silver (Figure 2).

In 1986, the Geological Survey of Canada (GSC) conducted a low density stream sediment and water sampling survey on NTS map sheet 115J (Friske et al., 1986). Although this survey encompassed the HHH area, none of the creeks draining the property were sampled.

Strategic staked the HHH claims in April 2010 based on the historical geochemical results. That year, Strategic completed geochemical sampling, which yielded background or near background values for all metals (Smith, 2011). Wolverine signed an optional purchase agreement with Strategic in September 2010.

### **GEOMORPHOLOGY AND CLIMATE**

The HHH property is situated in the central part of the Dawson Range and covers an area with moderate to steep slopes. The property is drained by tributaries joining the Nisling River, which ultimately connects to the Pacific Ocean via the Yukon River. Most of the Dawson Range escaped Pleistocene glaciation and, as a result, the landscapes are usually mature with dendritic drainages forming radial fans off the flanks of upland domes.

Elevations range from about 850 to 1615 m above sea level (asl). Approximately 80% of the property lies above treeline. Vegetation at lower elevations feature moss, dense buckbrush and spruce trees while vegetation at higher elevations is characterized by moss and grass cover. Outcrop is moderately abundant on ridge crests and locally along both anomalous drainages.

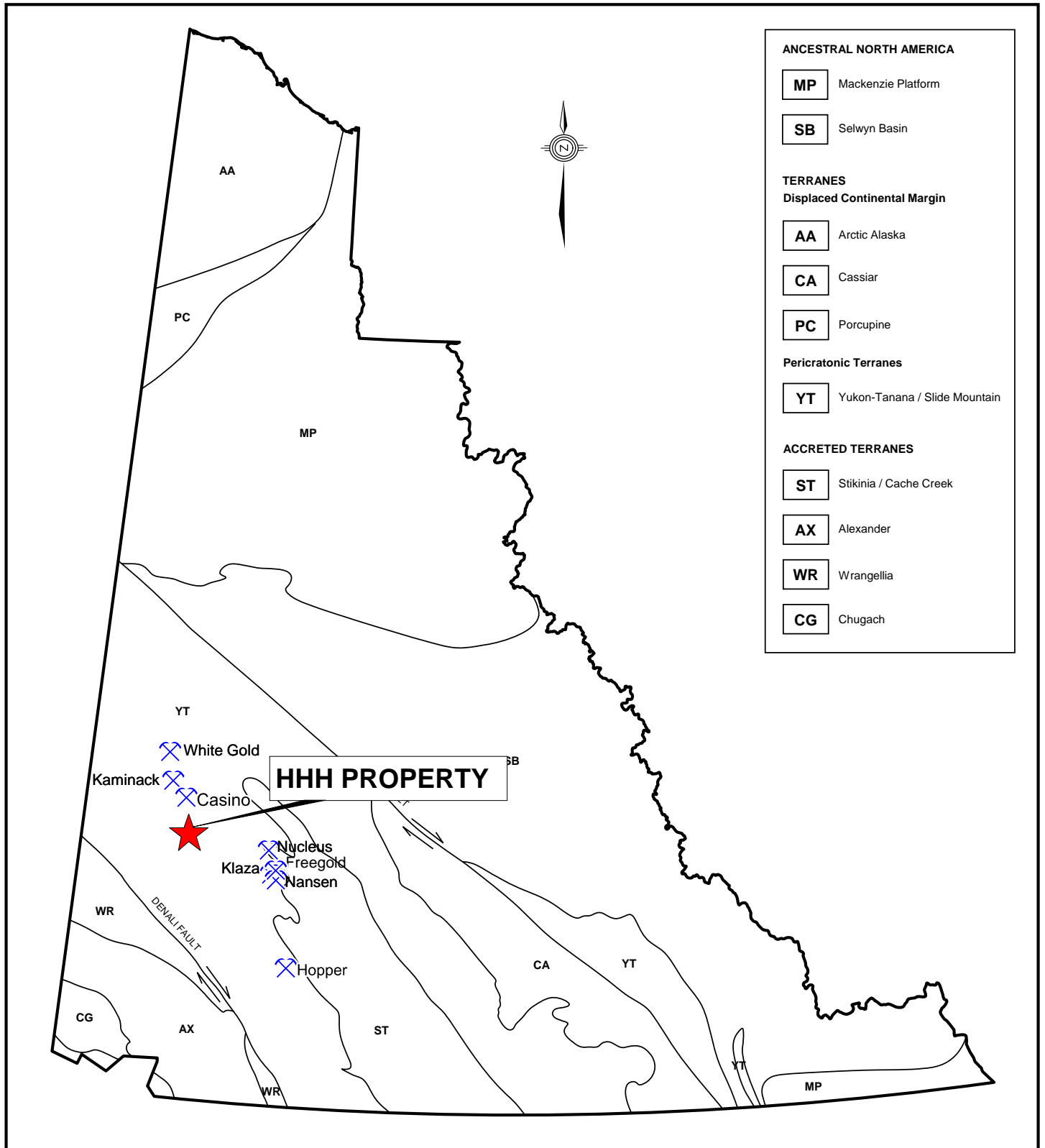
Soil profiles in the Dawson Range are complex compared to most places in Yukon. On hillsides and valley bottoms, the soil profile from surface to bedrock typically consists of the following: a layer of organic matter, which ranges from 10 to 50 cm thick; a layer of 2000 year old volcanic ash from the Mount Churchill eruption, which varies from 0 to 20 cm thick; a layer comprised of loess mixed with soliflucted B and C-horizon residual soil, which ranges from 0 to more than 100 cm thick; and a layer of C-horizon residual soil.

Climate in the HHH area is typical of northern continental regions with long, cold winters, truncated fall and spring seasons and short, mild summers. Although summers are relatively mild, arctic cold fronts often cover the area and snowfall can occur in any month.

### **REGIONAL GEOLOGY**

In 1974, the GSC published a geological map of the Snag area (NTS map sheet 115J) at 1:250,000 scale (Templeman-Kluit, 1974). Gordey and Makepeace (2003) later completed a Yukon-wide geological compilation, which updated lithological unit names in the HHH area.

The HHH property is located within the Yukon-Tanana Terrane (YTT) as shown on Figure 3. The YTT represents a continental arc that developed along the ancient Pacific margin of North America from Late Devonian to Permian. Figure 4 illustrates geology compiled by Gordey and Makepeace. The main lithological map suites are described in the Table I.



ANCESTRAL NORTH AMERICA	
<b>MP</b>	Mackenzie Platform
<b>SB</b>	Selwyn Basin
TERRANES	
Displaced Continental Margin	
<b>AA</b>	Arctic Alaska
<b>CA</b>	Cassiar
<b>PC</b>	Porcupine
Pericratonic Terranes	
<b>YT</b>	Yukon-Tanana / Slide Mountain
ACCRETED TERRANES	
<b>ST</b>	Stikinia / Cache Creek
<b>AX</b>	Alexander
<b>WR</b>	Wrangellia
<b>CG</b>	Chugach



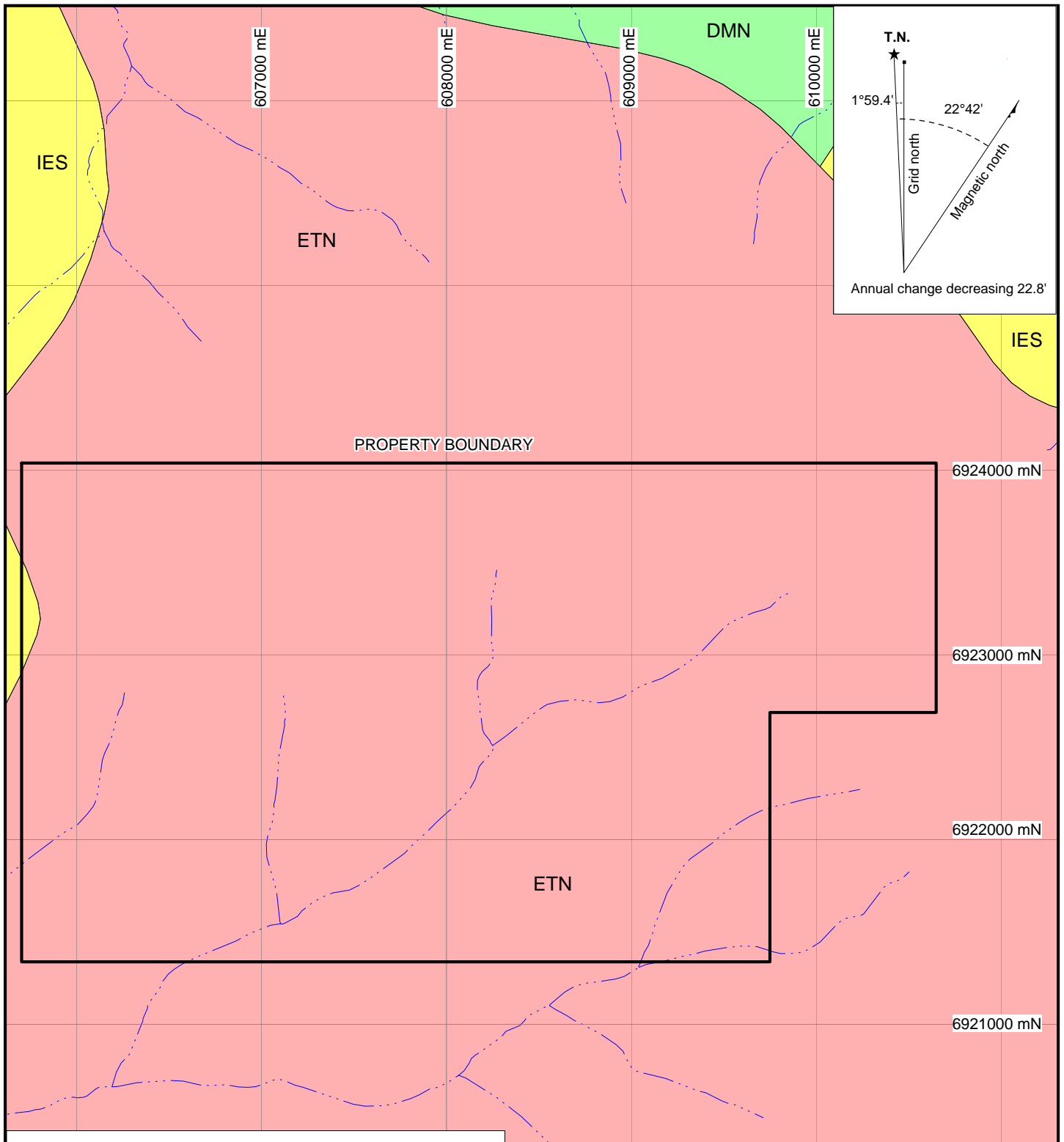
**WOLVERINE MINERALS CORP.  
STRATEGIC METALS LTD.**

FIGURE 3  
ARCHER, CATHRO & ASSOCIATES (1981) LIMITED  
**TECTONIC SETTING**  
HHH PROPERTY

0 200 km

UTM ZONE 7, NAD 83, 115J/07

FILE: ...2011\HHH\FIGURES\F_3_Tectonic_settings.wor	DATE: JAN 2012
---	----------------



- IES** LOWER EOCENE  
 IES: SKUKUM  
 various felsic volcanic dykes, plugs, domes, laccoliths and flows
- ETN** EARLY TERTIARY  
 ETN: NISLING RANGE SUITE  
 medium to coarse grained equigranular to porphyritic rocks of intermediate composition, fine to coarse grained, equigranular and porphyritic granitic rocks of felsic composition and felsic dyke rocks
- DMN** DEVONIAN, MISSISSIPPIAN AND OLDER  
 DMN: NASINA  
 graphitic quartzite, muscovite-quartz schist and marble

**WOLVERINE MINERALS CORP.  
STRATEGIC METALS LTD.**

FIGURE 4  
ARCHER, CATHRO & ASSOCIATES (1981) LIMITED  
**REGIONAL GEOLOGY**  
HHH PROPERTY

0  2 km

UTM ZONE 7, NAD 83, 115J/07

FILE: ...2011/HHH/Figures/F_4_Regional_Geology.wor	DATE: JAN 2012
--	----------------

**Table I– Lithological Units (after Gordey and Makepeace, 2003)**

<b>Map Suite</b>	<b>Age</b>	<b>Map Unit</b>	<b>Description</b>
Skukum	Lower Eocene	IES	Various felsic volcanic dykes, plugs, domes, laccolith and flows.
Nisling Range Suite	Early Tertiary	ETN	Medium to coarse grained equigranular to porphyritic rocks of intermediate composition, fine to coarse grained, equigranular and porphyritic granitic rocks of felsic composition and felsic dyke rocks.
Nasina Assemblage	Devonian, Mississippian and Older	DMN	Graphitic quartzite, muscovite-quartz schist and marble.

The region is underlain by DMN that has been intruded by ETN. DMN and ETG are unconformably overlain or intruded by an assemblage of volcanic and sub-volcanic rocks (IES).

### **PROPERTY GEOLOGY**

Systematic geological mapping has not been conducted on the HHH property. The property geology described below is based on published mapping (Templeman-Kluit, 1974).

The property is mapped as ETN intrusive rocks that are unconformably overlain by IES along the western property boundary. No faults are mapped on the property.

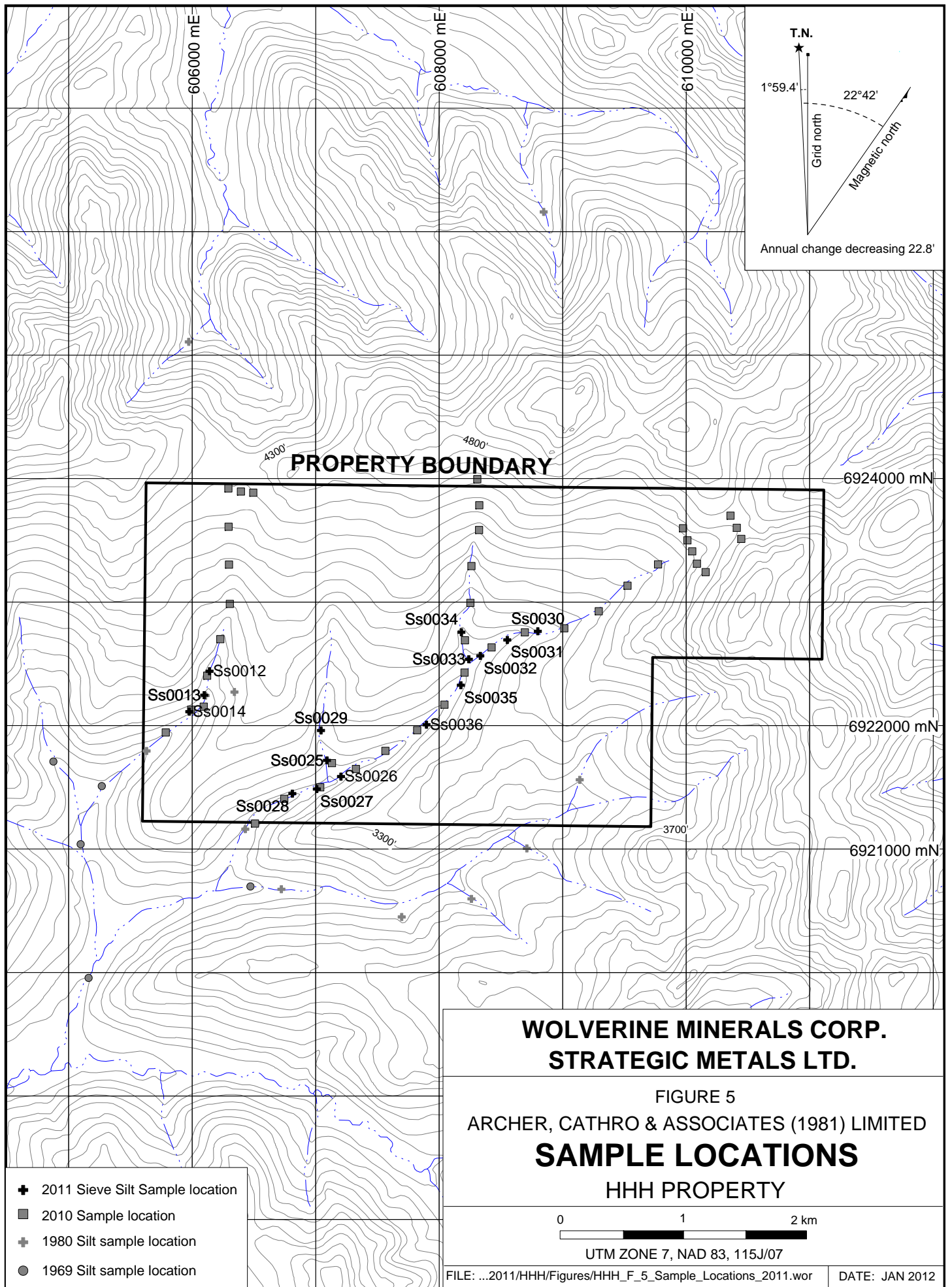
There is no known mineralization on the HHH property.

### **SIEVE SILT GEOCHEMISTRY**

In 2011, Wolverine collected 15 sieve silt samples from the property. Sample locations are plotted on Figure 5. Certificates of Analysis are provided in Appendix II.

W.R. (Bill) Gilmour from Discovery Consultants of Vernon, British Columbia provided instructions and equipment for collecting the samples. The crew collected up to three kilograms of material from specific locations based on flow rates and geomorphological characteristics. Each sample was placed into a large heavy-plastic bag and then double-bagged for safe transport. Sample sites are marked with aluminum tags inscribed with sample numbers and affixed to 0.5 m wooden lath that were driven into the ground. All sample locations were recorded using hand-held GPS units.

The sieve silt samples were sent to Acme Labs in Vancouver, B.C. where they were dried and sieved to -80 mesh. Special instructions were given to sieve entire sample weight, not only 0.5 kg, which is standard practice at Acme. Once sieved, the sample was divided using a micro splitter to produce a 30 g sub-sample that was analyzed by aqua regia digestion and ultra-trace inductively coupled plasma-mass spectrometry.



- ✚ 2011 Sieve Silt Sample location
- 2010 Sample location
- ✚ 1980 Silt sample location
- 1969 Silt sample location

**WOLVERINE MINERALS CORP.  
STRATEGIC METALS LTD.**

FIGURE 5  
ARCHER, CATHRO & ASSOCIATES (1981) LIMITED  
**SAMPLE LOCATIONS**  
HHH PROPERTY

0 1 2 km

UTM ZONE 7, NAD 83, 115J/07

The sieve samples yielded background values for most elements including gold and lead. Zinc values were moderately elevated up to 229.2 ppm.

### **DISCUSSION AND CONCLUSIONS**

The HHH property lies within the Dawson Range Gold Belt, which hosts a number of gold occurrences that are associated with young intrusions such as the Coffee Gold project of Kaminak Gold Corp. and the Sonora Gulch project of Northern Tiger Resources Inc. These gold projects were found using pathfinder elements for gold mineralization, specifically arsenic and antimony. Due to low density of samples and extensive soil depths on the property, future work may be warranted on a low priority basis depending on future economics and results from nearby exploration programs.

Future work should be conducted on a moderate priority basis and may include mapping and prospecting in conjunction with deep auger soil sampling near historical gold and lead values.

Respectfully submitted,

ARCHER, CATHRO & ASSOCIATES (1981) LIMITED

Andrew Mitchell, B.Sc.

## REFERENCES

- Archer, A. R. and Onasick, E.P.  
 1980 NAT Joint Venture Final Report. Internal report prepared by Archer, Cathro & Associates Ltd. for Chevron Canada Limited and Armco Mineral Exploration Ltd.
- Cathro, R.J.  
 1969 Summary Report for the Dawson Range Joint Venture. Internal Report prepared by Archer, Cathro & Associates (1981) Limited
- Friske, P.W.B., Hornbrook, E.H.W., Lynch, J.J., McCurdy, M.W., Gross, H., Galletta, A.C. and Durham, C.C.  
 1986 Regional stream sediment and water geochemical reconnaissance data (115J); Geological Survey of Canada, Open File 1363.
- Gordey, S.P. and Makepeace, A.J. (compilers)  
 2003 Yukon digital geology, version 2.0, Geological Survey of Canada, Open File 1749 and Yukon Geological Survey, Open File 2003-9 (D).
- Smith, H.  
 2011 Assessment report describing 2010 geochemical sampling on the HHH property prepared for Wolverine Mineral Corp. and Strategic Metals Ltd.
- Templeman-Kluit, D.J.  
 1974 Reconnaissance Geology of Aishihik Lake, Snag and Part of Stewart River map areas, West Central Yukon; Geological Survey of Canada, Map 17-1973.

**APPENDIX I**  
**STATEMENT OF QUALIFICATIONS**

## **STATEMENT OF QUALIFICATIONS**

I, Andrew Mitchell, geologist, with business addresses in Whitehorse, Yukon Territory and Vancouver, British Columbia and residential address in Vancouver, British Columbia, hereby certify that:

1. I graduated from the University of British Columbia in 2010 with a B.Sc. in Earth and Environmental Sciences.
2. From 2010 to present, I have been actively engaged in mineral exploration in Yukon Territory.
3. I have interpreted all data resulting from this work.

Andrew Mitchell, B.Sc.

**APPENDIX II**  
**CERTIFICATES OF ANALYSIS**



1020 Cordova St. East Vancouver BC V6A 4A3 Canada

Acme Analytical Laboratories (Vancouver) Ltd.

www.acmelab.com

Client: Archer, Cathro & Assoc. (1981) Ltd.
1016 - 510 W. Hastings St.
Vancouver BC V6B 1L8 Canada

Submitted By: Joan Mariacher
Receiving Lab: Canada-Whitehorse
Received: August 05, 2011
Report Date: September 13, 2011
Page: 1 of 2

CERTIFICATE OF ANALYSIS

WHI11001021.1

CLIENT JOB INFORMATION

Project: HHH
Shipment ID:
P.O. Number
Number of Samples: 15

SAMPLE DISPOSAL

STOR-PLP Store After 90 days Invoice for Storage
DISP-RJT-SOIL Immediate Disposal of Soil Reject

Acme does not accept responsibility for samples left at the laboratory after 90 days without prior written instructions for sample storage or return.

Invoice To: Archer, Cathro & Assoc. (1981) Ltd.
1016 - 510 W. Hastings St.
Vancouver BC V6B 1L8
Canada

CC: Heather Smith

SAMPLE PREPARATION AND ANALYTICAL PROCEDURES

Table with 6 columns: Method Code, Number of Samples, Code Description, Test Wgt (g), Report Status, Lab. Rows include: Dry at 60C (15 samples), SS80 (15 samples), 1F03 (15 samples, 1:1:1 Aqua Regia digestion Ultratrace ICP-MS analysis, 30g test weight, Completed report status, VAN lab).

ADDITIONAL COMMENTS



This report supersedes all previous preliminary and final reports with this file number dated prior to the date on this certificate. Signature indicates final approval; preliminary reports are unsigned and should be used for reference only. All results are considered the confidential property of the client. Acme assumes the liabilities for actual cost of analysis only. Results apply to samples as submitted. \*\* asterisk indicates that an analytical result could not be provided due to unusually high levels of interference from other elements.



Acme Analytical Laboratories (Vancouver) Ltd.  
 1020 Cordova St. East Vancouver BC V6A 4A3 Canada  
 Phone (604) 253-3158 Fax (604) 253-1716

www.acmelab.com

Client: **Archer, Cathro & Assoc. (1981) Ltd.**  
 1016 - 510 W. Hastings St.  
 Vancouver BC V6B 1L8 Canada

Project: HHH  
 Report Date: September 13, 2011

Page: 2 of 2 Part 1

CERTIFICATE OF ANALYSIS

WHI11001021.1

Method	1F30	1F30	1F30	1F30	1F30	1F30	1F30	1F30	1F30	1F30	1F30	1F30	1F30	1F30	1F30	1F30	1F30	1F30	1F30	1F30	
Analyte	Mo	Cu	Pb	Zn	Ag	Ni	Co	Mn	Fe	As	U	Au	Th	Sr	Cd	Sb	Bi	V	Ca	P	
Unit	ppm	ppm	ppm	ppm	ppb	ppm	ppm	ppm	%	ppm	ppm	ppb	ppm	ppm	ppm	ppm	ppm	ppm	%	%	
MDL	0.01	0.01	0.01	0.1	2	0.1	0.1	1	0.01	0.1	0.1	0.2	0.1	0.5	0.01	0.02	0.02	2	0.01	0.001	
550012	Soil	1.99	16.21	9.27	106.8	64	14.5	6.3	416	2.24	4.6	12.2	4.3	9.5	15.1	0.54	0.19	0.30	38	0.27	0.039
550013	Soil	2.54	17.94	9.67	118.4	93	16.4	6.8	437	2.40	4.4	15.0	2.9	8.7	18.0	0.66	0.19	0.39	38	0.32	0.044
550014	Soil	1.62	16.89	10.45	116.8	114	16.5	6.4	373	2.17	3.4	22.6	1.5	7.4	20.0	0.55	0.16	0.38	34	0.37	0.045
550025	Soil	1.45	14.38	9.98	89.5	68	14.8	7.0	381	2.12	4.1	12.1	3.1	7.7	16.5	0.46	0.15	0.36	39	0.32	0.039
550026	Soil	1.71	14.33	12.37	127.6	112	12.6	5.4	382	1.86	3.3	10.5	1.5	6.6	14.6	0.87	0.13	0.39	29	0.28	0.041
550027	Soil	1.78	14.25	12.22	154.1	118	12.8	5.1	446	1.80	3.3	12.0	2.6	7.9	14.4	1.31	0.13	0.49	28	0.27	0.042
550028	Soil	1.85	15.42	12.19	170.9	120	13.4	5.7	487	1.97	3.1	13.4	0.5	7.9	15.4	1.20	0.14	0.44	31	0.29	0.043
550029	Soil	1.86	14.80	9.51	132.7	96	15.0	6.2	414	2.09	3.7	13.8	1.4	9.1	15.8	0.71	0.14	0.37	36	0.28	0.038
550030	Soil	1.01	12.67	10.27	107.8	79	12.6	5.9	281	1.85	3.5	5.4	2.1	4.7	13.7	0.53	0.15	0.40	35	0.25	0.042
550031	Soil	1.53	17.60	12.55	184.4	121	16.4	7.9	637	1.95	4.5	8.6	2.2	7.0	16.6	1.53	0.19	0.51	35	0.29	0.052
550032	Soil	2.12	17.70	12.24	181.1	123	16.2	7.9	751	1.96	4.2	9.6	6.3	10.5	16.3	1.72	0.18	0.46	33	0.28	0.049
550033	Soil	2.35	23.02	16.89	213.4	435	20.8	7.3	899	2.02	4.1	36.0	1.8	11.8	23.1	1.39	0.20	0.64	26	0.45	0.058
550034	Soil	1.60	19.53	14.33	165.7	314	17.5	5.9	397	1.83	3.5	21.7	3.1	9.0	19.9	0.72	0.17	0.75	26	0.39	0.047
550035	Soil	2.10	19.94	12.81	229.2	214	20.3	7.3	566	1.99	4.5	14.5	3.3	8.1	18.6	1.29	0.18	0.45	32	0.35	0.057
550036	Soil	2.19	19.29	16.15	216.6	213	16.3	6.6	501	1.99	3.9	14.4	2.0	9.3	18.8	1.17	0.17	0.48	29	0.35	0.054



Acme Analytical Laboratories (Vancouver) Ltd.  
 1020 Cordova St. East Vancouver BC V6A 4A3 Canada  
 Phone (604) 253-3158 Fax (604) 253-1716

www.acmelab.com

Client: **Archer, Cathro & Assoc. (1981) Ltd.**  
 1016 - 510 W. Hastings St.  
 Vancouver BC V6B 1L8 Canada

Project: HHH  
 Report Date: September 13, 2011

Page: 2 of 2 Part 2

CERTIFICATE OF ANALYSIS

WHI11001021.1

Method	Analyte	1F30	1F30	1F30	1F30	1F30	1F30	1F30	1F30	1F30	1F30	1F30	1F30	1F30	1F30	1F30	1F30	
		La	Cr	Mg	Ba	Ti	B	Al	Na	K	W	Sc	Tl	S	Hg	Se	Te	Ga
Unit		ppm	ppm	%	ppm	%	ppm	%	%	%	ppm	ppm	ppm	%	ppb	ppm	ppm	ppm
MDL		0.5	0.5	0.01	0.5	0.001	1	0.01	0.001	0.01	0.1	0.1	0.02	0.02	5	0.1	0.02	0.1
550012	Soil	44.8	21.1	0.28	77.7	0.060	<1	1.49	0.005	0.05	0.2	2.2	0.10	<0.02	24	0.8	0.03	5.9
550013	Soil	52.5	22.8	0.31	89.4	0.064	<1	1.66	0.008	0.06	0.3	2.6	0.11	0.03	25	0.9	<0.02	6.0
550014	Soil	60.7	22.8	0.29	94.2	0.053	<1	1.69	0.009	0.06	0.2	2.7	0.11	0.03	34	1.3	<0.02	5.5
550025	Soil	37.2	21.8	0.32	86.4	0.062	<1	1.54	0.008	0.05	0.3	2.2	0.10	0.02	22	0.4	<0.02	5.6
550026	Soil	46.3	18.8	0.24	65.5	0.041	<1	1.25	0.011	0.04	0.3	2.0	0.10	0.03	35	0.5	0.03	4.6
550027	Soil	45.8	20.0	0.24	65.6	0.044	<1	1.31	0.006	0.05	0.3	2.0	0.10	0.03	37	1.1	<0.02	4.7
550028	Soil	49.2	20.6	0.25	73.2	0.047	<1	1.46	0.009	0.05	0.3	2.2	0.11	0.03	30	1.0	<0.02	5.0
550029	Soil	37.3	22.8	0.27	83.6	0.061	<1	1.58	0.006	0.05	0.3	2.5	0.09	0.02	28	0.7	0.03	5.4
550030	Soil	25.7	21.7	0.30	62.9	0.046	<1	1.34	0.006	0.04	0.2	1.9	0.09	0.02	24	0.5	0.02	4.5
550031	Soil	35.0	27.7	0.34	77.9	0.055	<1	1.43	0.006	0.05	0.3	2.3	0.12	0.03	28	0.7	0.04	5.8
550032	Soil	38.9	25.8	0.32	76.5	0.053	<1	1.36	0.005	0.05	0.4	2.2	0.12	0.02	27	1.0	0.04	6.0
550033	Soil	99.2	36.2	0.29	100.4	0.047	<1	1.73	0.006	0.07	0.4	4.3	0.13	0.04	70	1.7	0.03	6.4
550034	Soil	76.0	28.3	0.29	84.9	0.048	<1	1.47	0.006	0.06	0.3	3.6	0.11	0.03	43	1.4	<0.02	6.1
550035	Soil	53.1	36.8	0.32	87.6	0.054	<1	1.54	0.006	0.05	0.3	2.9	0.12	0.03	48	1.1	<0.02	6.0
550036	Soil	55.3	27.0	0.29	84.9	0.049	<1	1.50	0.006	0.05	0.4	2.8	0.12	0.03	44	1.1	0.03	6.1



Acme Analytical Laboratories (Vancouver) Ltd.

1020 Cordova St. East Vancouver BC V6A 4A3 Canada

Phone (604) 253-3158 Fax (604) 253-1716

www.acmelab.com

Client: Archer, Cathro & Assoc. (1981) Ltd.

1016 - 510 W. Hastings St.

Vancouver BC V6B 1L8 Canada

Project: HHH

Report Date: September 13, 2011

Page: 1 of 1 Part 1

QUALITY CONTROL REPORT

WHI11001021.1

Method	1F30	1F30	1F30	1F30	1F30	1F30	1F30	1F30	1F30	1F30	1F30	1F30	1F30	1F30	1F30	1F30	1F30	1F30	1F30	1F30	1F30
Analyte	Mo	Cu	Pb	Zn	Ag	Ni	Co	Mn	Fe	As	U	Au	Th	Sr	Cd	Sb	Bi	V	Ca	P	
Unit	ppm	ppm	ppm	ppm	ppb	ppm	ppm	ppm	%	ppm	ppm	ppb	ppm	ppm	ppm	ppm	ppm	ppm	%	%	
MDL	0.01	0.01	0.01	0.1	2	0.1	0.1	1	0.01	0.1	0.1	0.2	0.1	0.5	0.01	0.02	0.02	2	0.01	0.001	
Pulp Duplicates																					
550028	Soil	1.85	15.42	12.19	170.9	120	13.4	5.7	487	1.97	3.1	13.4	0.5	7.9	15.4	1.20	0.14	0.44	31	0.29	0.043
REP 550028	QC	1.90	15.04	12.07	169.1	131	13.1	5.7	473	1.91	3.1	13.5	2.9	8.3	15.4	1.27	0.13	0.52	30	0.29	0.047
Reference Materials																					
STD DS8	Standard	11.64	109.9	110.3	293.5	1553	39.0	8.0	585	2.26	26.9	2.4	91.7	5.9	54.4	2.07	4.34	5.75	37	0.63	0.070
STD DS8 Expected		13.44	110	123	312	1690	38.1	7.5	615	2.46	26	2.8	107	6.89	67.7	2.38	5.7	6.67	41.1	0.7	0.08
BLK	Blank	<0.01	<0.01	<0.01	<0.1	<2	<0.1	<0.1	<1	<0.01	<0.1	<0.1	<0.2	<0.1	<0.5	<0.01	<0.02	<0.02	<2	<0.01	<0.001



Acme Analytical Laboratories (Vancouver) Ltd.

1020 Cordova St. East Vancouver BC V6A 4A3 Canada

Phone (604) 253-3158 Fax (604) 253-1716

www.acmelab.com

Client: **Archer, Cathro & Assoc. (1981) Ltd.**

1016 - 510 W. Hastings St.

Vancouver BC V6B 1L8 Canada

Project: HHH

Report Date: September 13, 2011

Page: 1 of 1 Part 2

QUALITY CONTROL REPORT

WHI11001021.1

Method		1F30	1F30	1F30	1F30	1F30	1F30	1F30	1F30	1F30	1F30	1F30	1F30	1F30	1F30	1F30	1F30	
Analyte		La	Cr	Mg	Ba	Ti	B	Al	Na	K	W	Sc	Tl	S	Hg	Se	Te	Ga
Unit		ppm	ppm	%	ppm	%	ppm	%	%	%	ppm	ppm	ppm	%	ppb	ppm	ppm	ppm
MDL		0.5	0.5	0.01	0.5	0.001	1	0.01	0.001	0.01	0.1	0.1	0.02	0.02	5	0.1	0.02	0.1
Pulp Duplicates																		
550028	Soil	49.2	20.6	0.25	73.2	0.047	<1	1.46	0.009	0.05	0.3	2.2	0.11	0.03	30	1.0	<0.02	5.0
REP 550028	QC	49.7	20.4	0.26	74.6	0.046	<1	1.42	0.009	0.05	0.3	2.3	0.11	0.03	26	1.0	<0.02	5.1
Reference Materials																		
STD DS8	Standard	12.3	111.8	0.57	242.1	0.102	2	0.83	0.080	0.39	2.5	2.0	4.83	0.15	188	4.9	4.33	4.4
STD DS8 Expected		14.6	115	0.6045	279	0.113	2.6	0.93	0.0883	0.41	3	2.3	5.4	0.1679	192	5.23	5	4.7
BLK	Blank	<0.5	<0.5	<0.01	<0.5	<0.001	<1	<0.01	<0.001	<0.01	<0.1	<0.1	<0.02	<0.02	<5	<0.1	<0.02	<0.1

ARCHER, CATHRO & ASSOCIATES (1981) LIMITED  
1016 – 510 West Hastings Street  
Vancouver, B.C. V6B 1L8

Telephone: 604-688-2568

Fax: 604-688-2578

AFFIDAVIT

I, Joan Mariacher, of Vancouver, B.C. make oath and say:

That to the best of my knowledge the attached Statement of  
Expenditures for exploration work on the HHH 1-63 mineral claims  
on Claim Sheet 115J/7 is accurate.

  
Joan Mariacher

Sworn before me at Vancouver, B.C.

this 15th day of April 2011.

  
Barrister & Solicitor

**IAN J. TALBOT**  
*Barrister & Solicitor*  
261 East 5th Street  
North Vancouver  
British Columbia  
Canada V7L 1L8



Statement of Expenditures  
HHH 1-63 Mineral Claims  
April 15, 2011

Labour

H. Smith (geologist) January to April 2011 – 8 hrs @ \$90/hr	\$ 806.40
R. Phillips (field assistant) September to December 2011 – 3 hrs @ \$65/hr	218.40
T. Epp (field assistant) July 2011 – 2 days @ \$328/day	734.72
B. Alladice (field assistant) July 2011 – 2 days @ \$304/day	<u>680.96</u>
	2,440.48

Expenses

Field room and board – 4 mandays @ \$125/manday	560.00
Capital Helicopters	3,228.75
ALS Chemex	<u>884.88</u>
	4,673.63

Total \$7,114.11

# CAPITAL HELICOPTERS (1995) INC.

Suite 3 - 25 Pilgrim Place, Whitehorse, Y.T. Y1A 6E6  
 Phone: (867) 668-6200 Fax: (867) 668-6201  
 capitalheli@polarcom.com



**Charter and Contract Service**

## INVOICE

NO. 11306-11311

DATE 16/07/2010

PAGE 1 of 1

SOLD TO  
 Archer Cathro  
 Suite 1016, 510 West Hastings  
 Vancouver, B. C. V6B 1L8

SHIP TO  
 Archer Cathro  
 Suite 1016, 510 West Hastings  
 Vancouver, B. C. V6B 1L8

ITEM NO.	QUANTITY	UNIT	DESCRIPTION	GST	PST	UNIT PRICE	AMOUNT	
July 7	4.1	hrs	DDD Klaza camp-S/O and P/U Klotassen 1.2 Selwyn, 2.9	G	MMM	1,025.00	4,202.50	
July 8	3.6	hrs	EEE Klaza camp-S/O and P/U Klotassen 1.4 Selwyn 2.2	G	MMM	1,025.00	3,690.00	
July 9	5.2	hrs	QQQ Klaza camp-S/O and P/U Klotassen 2.8 Selwyn 2.4	G	KKK	1,025.00	5,330.00	
July 10	3.4	hrs	CCC Klaza camp-S/O and P/U Klotassen 1.4 Selwyn 2.0	G	OOO	1,025.00	3,485.00	
July 12	1.8	hrs	1.0 BBB 0.8 Klaza camp-S/O and P/U Klotassen 1.8 Selwyn 1.0	G		1,025.00	1,845.00	
July 14 <sup>13</sup>	5.2	hrs	HHH Klaza camp-S/O and P/U Klotassen 3. Selwyn 2.2	G	JJT	1,025.00	5,330.00	
July 15 <sup>OK</sup>	2.8	hrs	BBB Klaza camp-S/O and P/U Klotassen 2.8 Selwyn 1.	G		1,025.00	2,870.00	
	26.1							
			G - GST 5.00%					
			GST				1,337.63	
✓ 14.4 Klotassen - 14760. ✓ 11.7 Selwyn - 11992.50 MAOV								
Capital Helicopters (1995) Inc. GST: #899587984								
Thank You! Your Business Is Appreciated! Fuel Price includes Federal and Yukon Tax							<b>TOTAL</b> ↓	28,090.13

3.8 HA BBB - 4089.75  
 1.4 ✓ CCC - 1506.75  
 1.2 ✓ DDD - 1291.50  
 1.4 ✓ EEE - 1506.75  
 3.0 ✓ HHH - 3228.75  
 0.8 ✓ III - 861.00  
 2.8 ✓ QQQ - 3013.50  
 2.2 ✓ JJT - 2367.75  
 2.4 ✓ KKK - 2583.00  
 5.1 ✓ MMM - 5488.88  
 2.0 ✓ OOO - 2152.50



ALS Canada Ltd.  
 2103 Dollarton Hwy  
 North Vancouver BC V7H 0A7  
 Phone: 604 984 0221 Fax: 604 984 0218 www.alsglobal.com

To: STRATEGIC METALS LTD.  
 C/O ARCHER, CATHRO & ASSOCIATES (1981) LIMITED  
 1016-510 W HASTINGS ST  
 VANCOUVER BC V6B 1L8

**INVOICE NUMBER 2111792**

BILLING INFORMATION	
Certificate:	<b>VA10098842</b>
Sample Type:	<b>Soil</b>
Account:	<b>MTT</b>
Date:	<b>29-JUL-2010</b>
Project:	<b>KLOTASSIN</b> <i>AR</i>
P.O. No.:	HHH
Quote:	ALSM-CW10-010-F
Terms:	<b>Net 30 Days</b> <span style="float: right;">C1</span>
Comments:	

ANALYSED FOR			UNIT	TOTAL
QUANTITY	CODE	DESCRIPTION	PRICE	
40	PREP-41	Dry, Sieve (180 um) Soil	0.96	38.40
8.04	PREP-41	Weight Charge (kg) - Dry, Sieve (180 um) Soil	1.80	14.47
40	Au-ICP21	Au 30g FA ICP-AES Finish	11.06	442.40
40	ME-ICP41	35 Element Aqua Regia ICP-AES	4.92	196.80
40	GEO-AR01	Aqua regia digestion	2.45	98.00

*Klotassin  
NAD*

To: STRATEGIC METALS LTD.  
 ATTN: JOAN MARIACHER  
 C/O ARCHER, CATHRO & ASSOCIATES (1981) LIMITED  
 1016-510 W HASTINGS ST  
 VANCOUVER BC V6B 1L8

SUBTOTAL (CAD)	\$	790.07
R100938885 HST BC	\$	94.81
<b>TOTAL PAYABLE (CAD)</b>	<b>\$</b>	<b><u>884.88</u></b>

Payment may be made by: Cheque or Bank Transfer

Beneficiary Name:	ALS Canada Ltd.
Bank:	Royal Bank of Canada
SWIFT:	ROYCCAT2
Address:	Vancouver, BC, CAN
Account:	003-00010-1001098

Please Remit Payments To :  
**ALS Canada Ltd.**  
 2103 Dollarton Hwy  
 North Vancouver BC V7H 0A7