

ARCHER, CATHRO & ASSOCIATES (1981) LIMITED  
1016 - 510 West Hastings Street  
Vancouver, B.C. V6B1L8

Telephone: 604-688-2568

Fax: 604-688-2578

---

**ASSESSMENT REPORT**

describing

**GEOCHEMICAL SAMPLING**

at the

**EEE PROPERTY**

EEE 1-28      YD57141-YD57168

NTS 115J/01

Latitude 62°03'N, Longitude 138°06'W

located in the

Whitehorse Mining District  
Yukon Territory

prepared by

Archer, Cathro & Associates (1981) Limited

for

**WOLVERINE MINERALS CORP.**  
and  
**STRATEGIC METALS LTD.**

by

A. Mitchell, B.Sc. Geology  
January 2012

## **CONTENTS**

INTRODUCTION	1
PROPERTY LOCATION, CLAIM DATA AND ACCESS	1
HISTORY AND PREVIOUS WORK	1
GEOMORPHOLOGY AND CLIMATE	2
REGIONAL GEOLOGY	3
PROPERTY GEOLOGY	3
SIEVE SILT GEOCHEMISTRY	3
DISCUSSION AND CONCLUSIONS	4
REFERENCES	5

## **APPENDICES**

I	STATEMENT OF QUALIFICATIONS
II	CERTIFICATES OF ANALYSIS

## **FIGURES**

<u>No.</u>	<u>Description</u>	<u>Follows Page</u>
1	Property Location	1
2	Claim Locations	1
3	Tectonic Setting	3
4	Regional Geology	3
5	Sample Locations	3
6	Gold Geochemistry	3

## **TABLES**

I	Lithological Units	3
---	--------------------	---

## **INTRODUCTION**

The EEE property was staked to cover an anomalous gold value reported from historical stream sediment sampling. The property lies within the Dawson Range Gold Belt of western Yukon (Figure 1). Wolverine Minerals Corp. can earn a 100% interest in the property subject to an option agreement with Strategic Metals Ltd.

This report describes a one day exploration program that was conducted by Archer, Cathro & Associates (1981) Limited in summer 2011 on behalf of Wolverine. The work was performed on August 4 and comprised sieve silt geochemical sampling. The author interpreted all data from this project and his Statement of Qualifications is in Appendix I.

## **PROPERTY LOCATION, CLAIM DATA AND ACCESS**

The EEE property consists of 28 contiguous mineral claims, which are located on NTS map sheet 115J/01 at latitude 62°03' north and longitude 138°06' west (Figure 1). The property covers an area of approximately 570 ha (5.7 sq. km). The claims are registered with the Whitehorse Mining Recorder in the name of Archer Cathro, which holds them in trust for Strategic. Specifics concerning claim registration are tabulated below, while the locations of individual claims are shown on Figure 2.

<u>Claim Name</u>	<u>Grant Number</u>	<u>Expiry Date*</u>
EEE 1-28	YD57141-YD57168	April 15, 2013

\* Expiry date does not include 2011 work that has not yet been filed for assessment credit.

Access to and from the property was provided by a Bell 206B helicopter owned and operated by Capital Helicopters (1995) Inc. of Whitehorse, from a temporary base at Rockhaven Resources Ltd.'s Klaza property located near the former Mount Nansen Mine. The Klaza property lies about 45 km to the east of the EEE property and 70 km by road west of the community of Carmacks.

## **HISTORY AND PREVIOUS WORK**

In 1969, Archer Cathro performed regional exploration in the Dawson Range district for the Dawson Range Joint Venture. During that program, four stream sediment samples were collected from the area now within the EEE property. Samples returned between 6 to 20 ppm copper, 10 to 15 ppm lead and no molybdenum (Cathro and Culbert, 1969). No gold analyses were done during this program

In 1974, Archer Cathro again conducted regional exploration in the Dawson Range district for the Klotassin Joint Venture (KJV). KJV was made up of Newconex Canadian Exploration Ltd., Marietta Resources International Ltd., and Molybdenum Corporation of America. Work performed included 1:50,000 scale reconnaissance-style prospecting, mapping and geochemical sampling; however, no samples were collected from the EEE property (Cathro, 1974).

**WOLVERINE MINERALS CORP.  
STRATEGIC METALS LTD.**

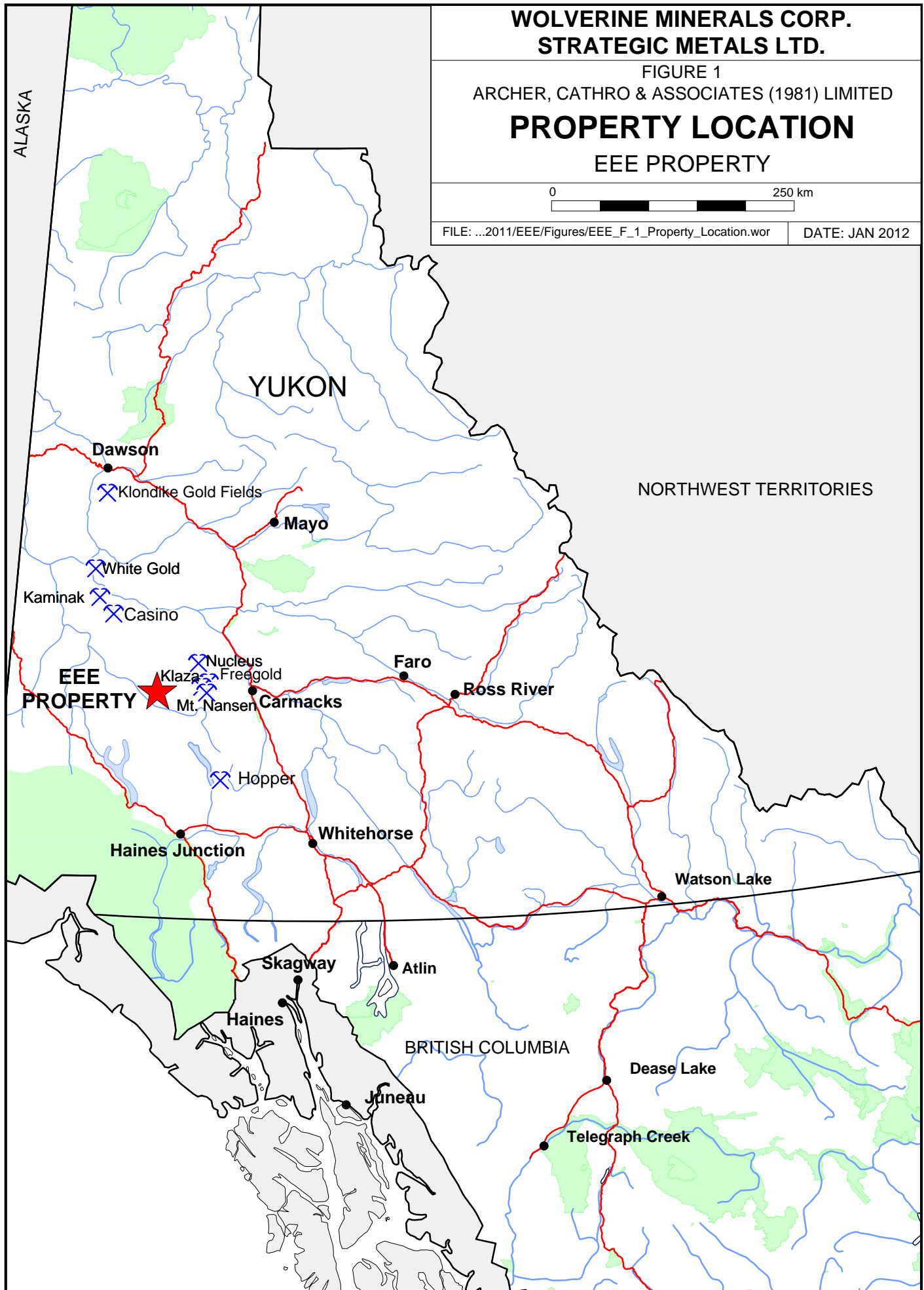
FIGURE 1  
ARCHER, CATHRO & ASSOCIATES (1981) LIMITED

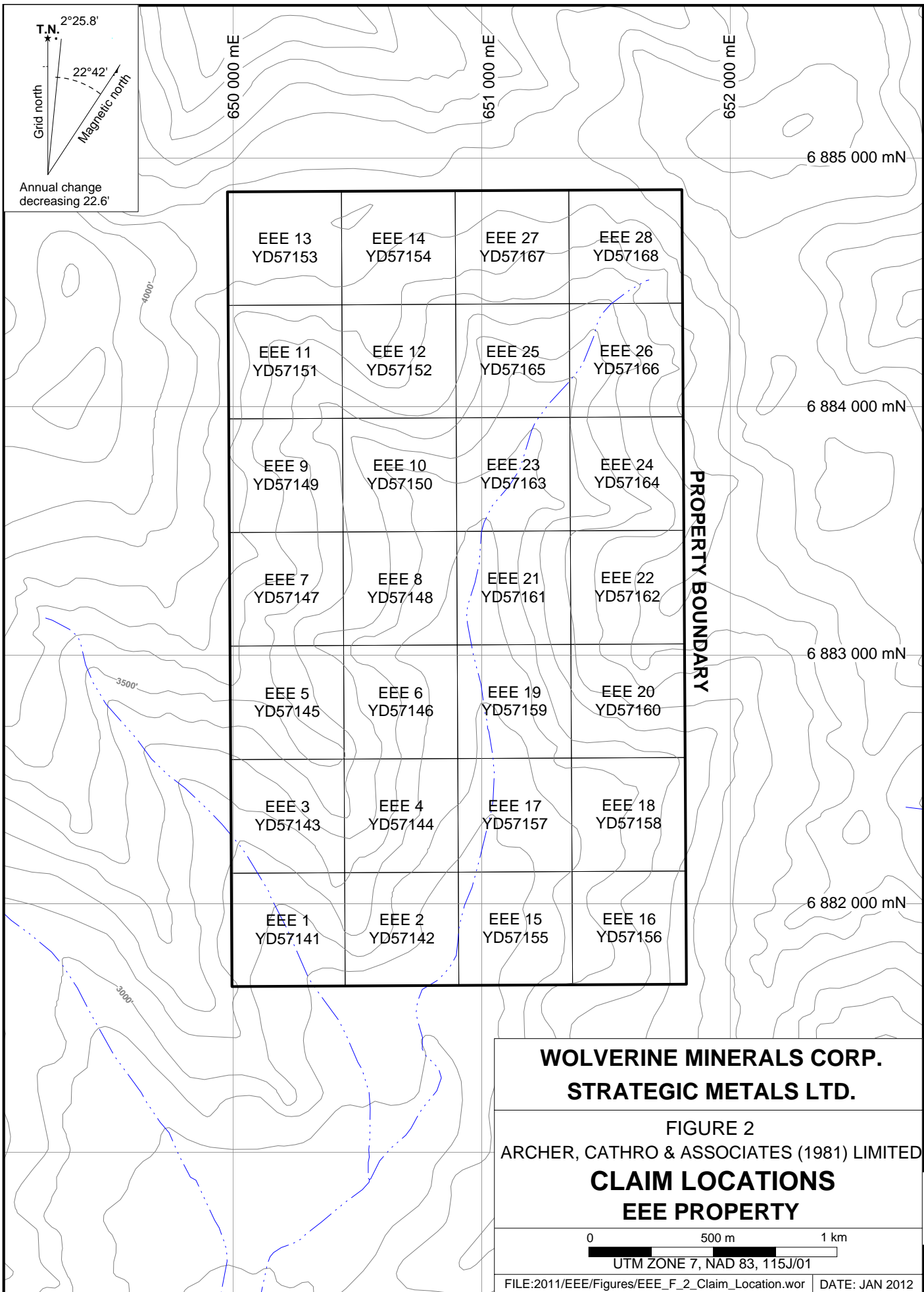
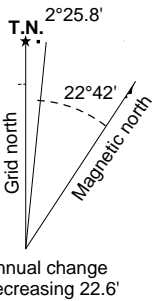
**PROPERTY LOCATION**  
EEE PROPERTY

0 250 km

FILE: ...2011/EEE/Figures/EEE\_F\_1\_Property\_Location.wor

DATE: JAN 2012





**WOLVERINE MINERALS CORP.  
STRATEGIC METALS LTD.**

FIGURE 2  
ARCHER, CATHRO & ASSOCIATES (1981) LIMITED  
**CLAIM LOCATIONS  
EEE PROPERTY**

0 500 m 1 km  
UTM ZONE 7, NAD 83, 115J/01

FILE:2011/EEE/Figures/EEE\_F\_2\_Claim\_Location.wor DATE: JAN 2012

In 1975, Archer Cathro continued its exploration on behalf of KJV. One stream sediment and four soil samples were collected from the EEE property. These samples were analyzed for copper, molybdenum, lead and zinc. No gold analyses were done during this program. Results from this work returned background values for all elements (Cathro, 1976).

In 1980, Archer Cathro did work in the Dawson Range as part of the NAT Joint Venture (NAT JV), which comprised Chevron Canada Limited and Armco Mineral Exploration Ltd. Part of the NAT JV program involved reanalyses of over 5000 previously collected geochemical sample splits for gold, silver, arsenic and lead. One of the stream sediment samples previously collected from the EEE property area yielded 66 ppb gold (Archer and Onasick, 1980).

In 1986, the Geological Survey of Canada (GSC) conducted a low-density stream sediment and water sampling survey on NTS map sheet 115J (Friske et al., 1986). Only two samples were taken in the vicinity of the current EEE property. These samples returned 6 ppb gold, 38 ppm copper, 13 ppm lead and 72 ppm zinc and 1 ppb gold, 16 ppm copper, 7 ppm lead and 52 ppm zinc.

Strategic staked the EEE claims in April 2010 to cover the drainage that yielded the historical value of 66 ppb gold. That year, Strategic completed one day of soil geochemical sampling, which yielded background to moderately anomalous values for gold (up to 29 ppb), arsenic (up to 44 ppm), copper (up to 49 ppm), lead (up to 27 ppm) and zinc (up to 86 ppm). Silt samples returned background to weakly anomalous values for copper (up to 38 ppm) and zinc (up to 69 ppm), while gold, arsenic, lead and all other gold pathfinder elements returned background values (Smith, 2011). Wolverine signed an optional purchase agreement with Strategic in September 2010.

### **GEOMORPHOLOGY AND CLIMATE**

The EEE property is situated in the southern part of the Dawson Range on a tributary of Maloney Creek, which flows into the Nisling River and ultimately into the Pacific Ocean.

The property is centred over the headwaters of the geochemically anomalous creek. Elevations range between 880 m to 1190 m above sea level (asl). Outcrop is limited to locally steep sections of the drainage and atop its surrounding ridges.

Treeline in the area is approximately 1400 m above sea level. Lower elevations are characterized by thick buckbrush, moss and spruce stands, while higher elevations feature spruce and balsam trees with an understory of moss.

The climate in the EEE area is typical of northern continental regions with long, cold winters, truncated fall and spring seasons and short, mild summers. Although summers are relatively mild, arctic cold fronts often cover the area and snowfall can occur in any month. The property is mostly snow free from mid May to mid October.

## **REGIONAL GEOLOGY**

In 1973, the GSC published a geological map of the Snag area (NTS map sheet 115J) at 1:250, 000 scale (Templemen-Kluit, 1973). In 1975, KJV performed a 1:50, 000 scale geological mapping of Regional Area 'D', which includes the EEE property (Cathro, 1976). Gordey and Makepeace (2003) later completed a Yukon-wide geological compilation, which updated the lithological unit names in the EEE area.

The EEE property is located within the Yukon-Tanana Terrane (YTT) as shown on Figure 3. The YTT represents a continental arc that developed along the ancient Pacific margin of North America from late Devonian to Permian. Figure 4 illustrates geology as compiled by Gordey and Makepeace (2003). The main lithological units are described in the Table I.

**Table I – Lithological Units (after Gordey and Makepeace, 2003)**

<b>Unit Name</b>	<b>Age</b>	<b>Map Name</b>	<b>Description</b>
Whitehorse Suite	Mid-Cretaceous	mKgW	Biotite-hornblende granodiorite, hornblende-quartz diorite and hornblende diorite; leucocratic, biotite-hornblende granodiorite.
Nisling Assemblage	Late Proterozoic and Paleozoic	PPN	Dark grey to brown, biotite-muscovite-quartz-feldspar schist, quartzite and micaceous quartzite, garnetiferous; felsic chlorite-biotite orthogneiss; rare amphibolite; minor two-mica gneiss and hornblende-diorite gneiss.

## **PROPERTY GEOLOGY**

No detailed (greater than 1:50,000 scale) geological mapping has been done on the EEE property. Based on published data discussed in the previous section, all exposures on the property are assigned to the Nisling Assemblage or Whitehorse Suite.

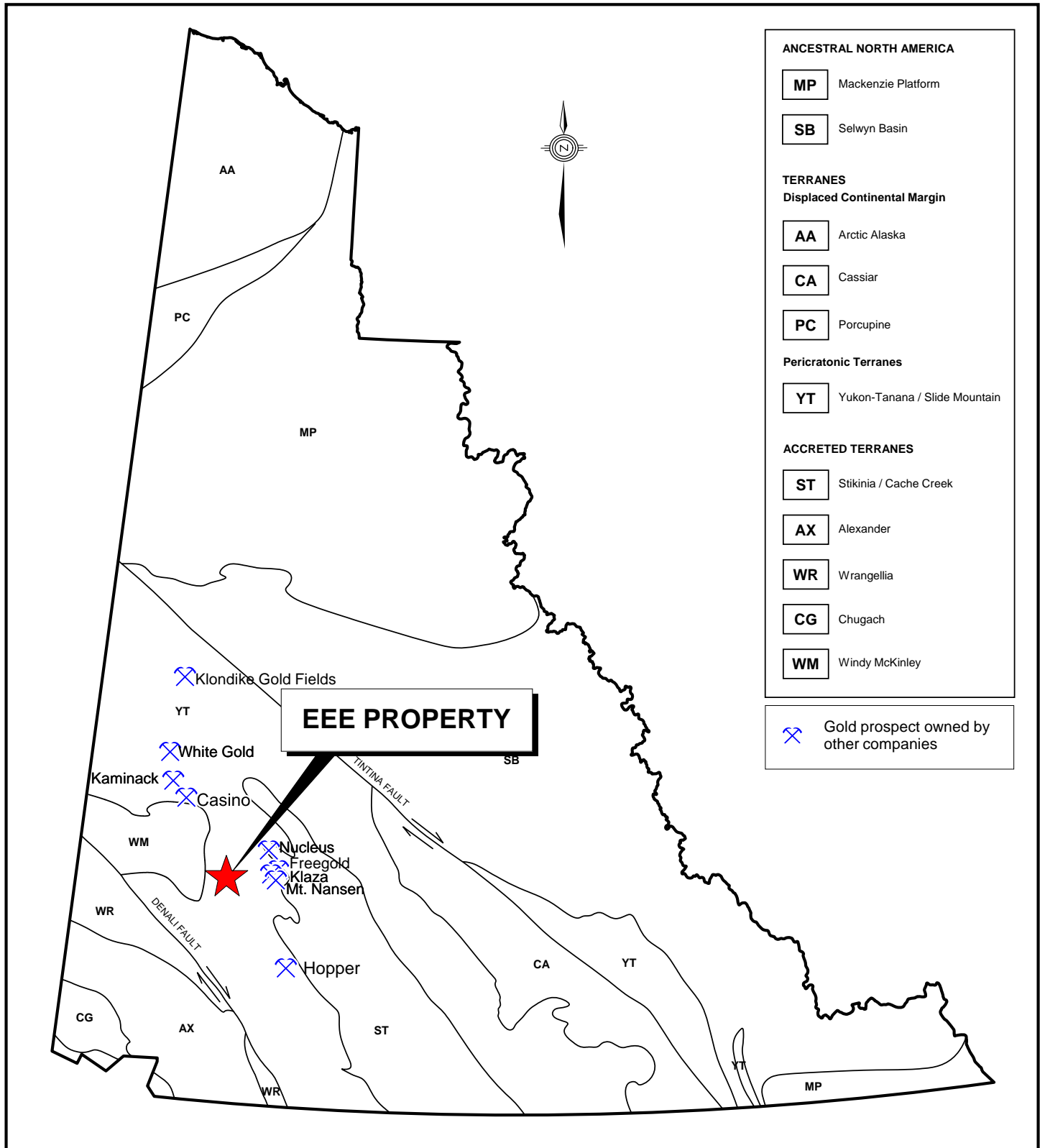
Basement rocks belonging to the Nisling Assemblage have been mapped in a small area in the northern part of the property and have been described as brown to grey weathering, biotite schist and chlorite-muscovite-biotite schist (Cathro, 1976). Most of the property is underlain by Whitehorse Suite granodiorite and hornblende granodiorite that have intruded into the Nisling Assemblage.

There is no known mineralization on the property.

## **SIEVE SILT GEOCHEMISTRY**

In 2011, Wolverine collected 10 sieve silt samples from the property. Sample locations are plotted on Figure 5, while results for gold are illustrated thematically on Figure 6. Certificates of Analysis are provided in Appendix II.

W.R. (Bill) Gilmour from Discovery Consultants of Vernon, British Columbia provided instructions and equipment for collecting the sieve silt samples. The crew collected up to three kilograms of material from specific locations based on flow rates and geomorphological

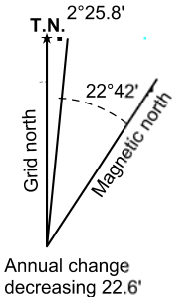
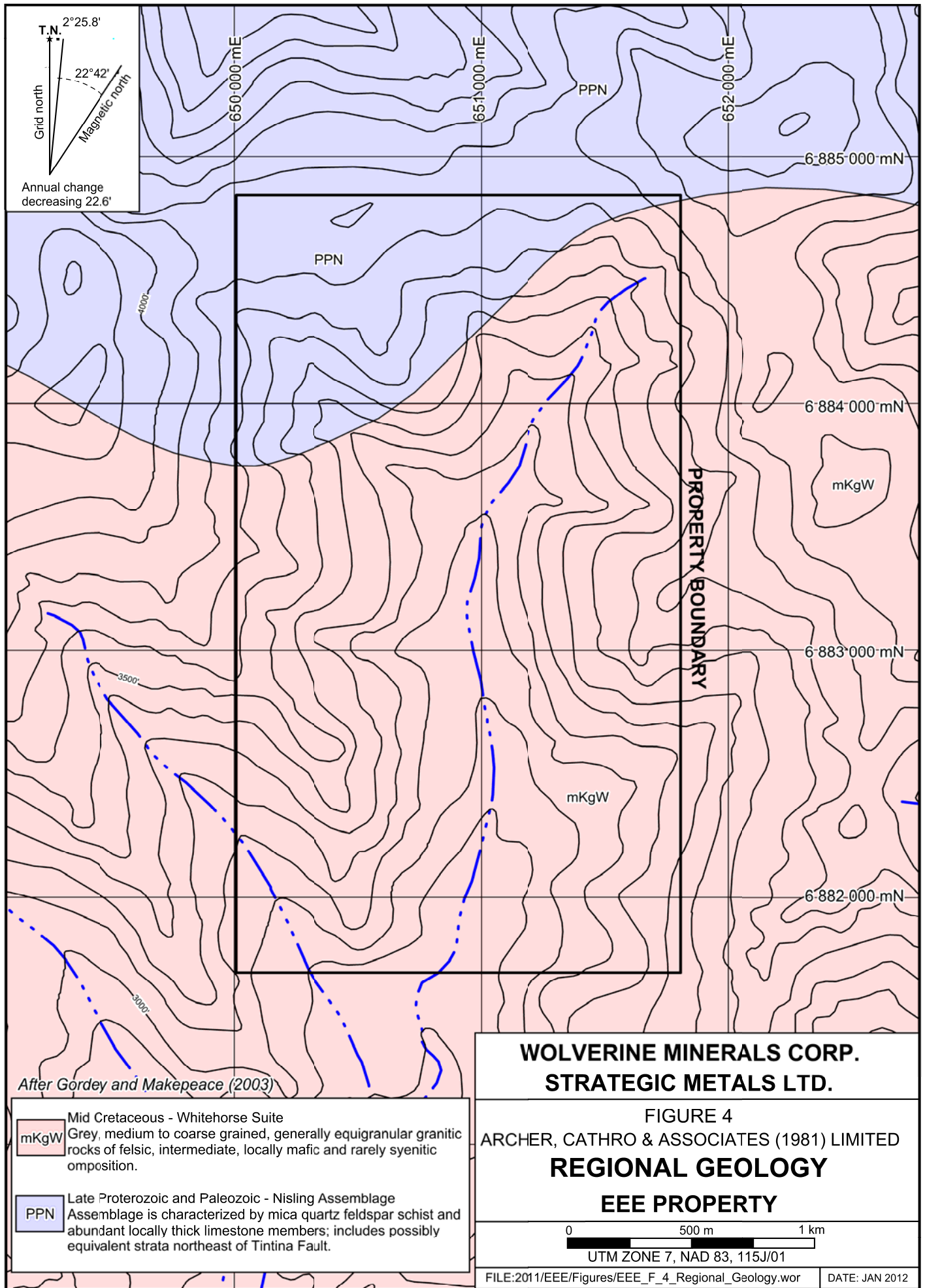


**WOLVERINE MINERALS CORP.  
STRATEGIC METALS LTD.**

FIGURE 3  
ARCHER, CATHRO & ASSOCIATES (1981) LIMITED  
**TECTONIC SETTING**  
EEE PROPERTY

0 200 km

UTM ZONE 7, NAD 83, 115J/01



After Gordey and Makepeace (2003)

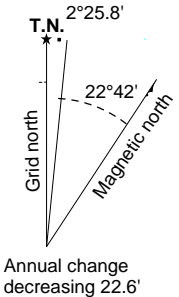
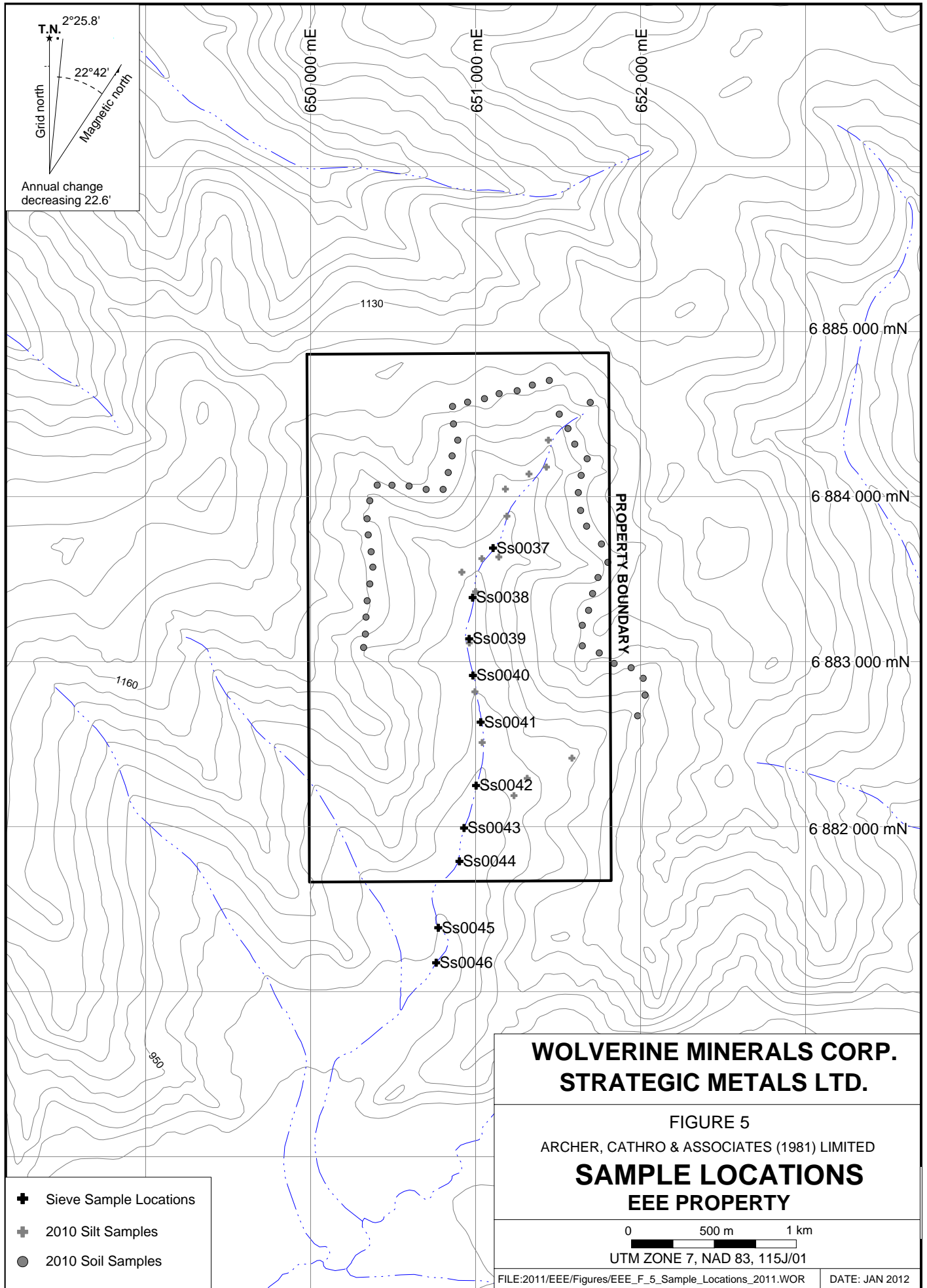
mKgW	Mid Cretaceous - Whitehorse Suite Grey, medium to coarse grained, generally equigranular granitic rocks of felsic, intermediate, locally mafic and rarely syenitic composition.
PPN	Late Proterozoic and Paleozoic - Nisling Assemblage Assemblage is characterized by mica quartz feldspar schist and abundant locally thick limestone members; includes possibly equivalent strata northeast of Tintina Fault.

**WOLVERINE MINERALS CORP.  
STRATEGIC METALS LTD.**

**FIGURE 4**  
ARCHER, CATHRO & ASSOCIATES (1981) LIMITED  
**REGIONAL GEOLOGY**  
**EEE PROPERTY**

0                      500 m                      1 km  
UTM ZONE 7, NAD 83, 115J/01

FILE:2011/EEE/Figures/EEE\_F\_4\_Regional\_Geology.wor      DATE: JAN 2012



- ✚ Sieve Sample Locations
- ✚ 2010 Silt Samples
- 2010 Soil Samples

**PROPERTY BOUNDARY**

Ss0037

Ss0038

Ss0039

Ss0040

Ss0041

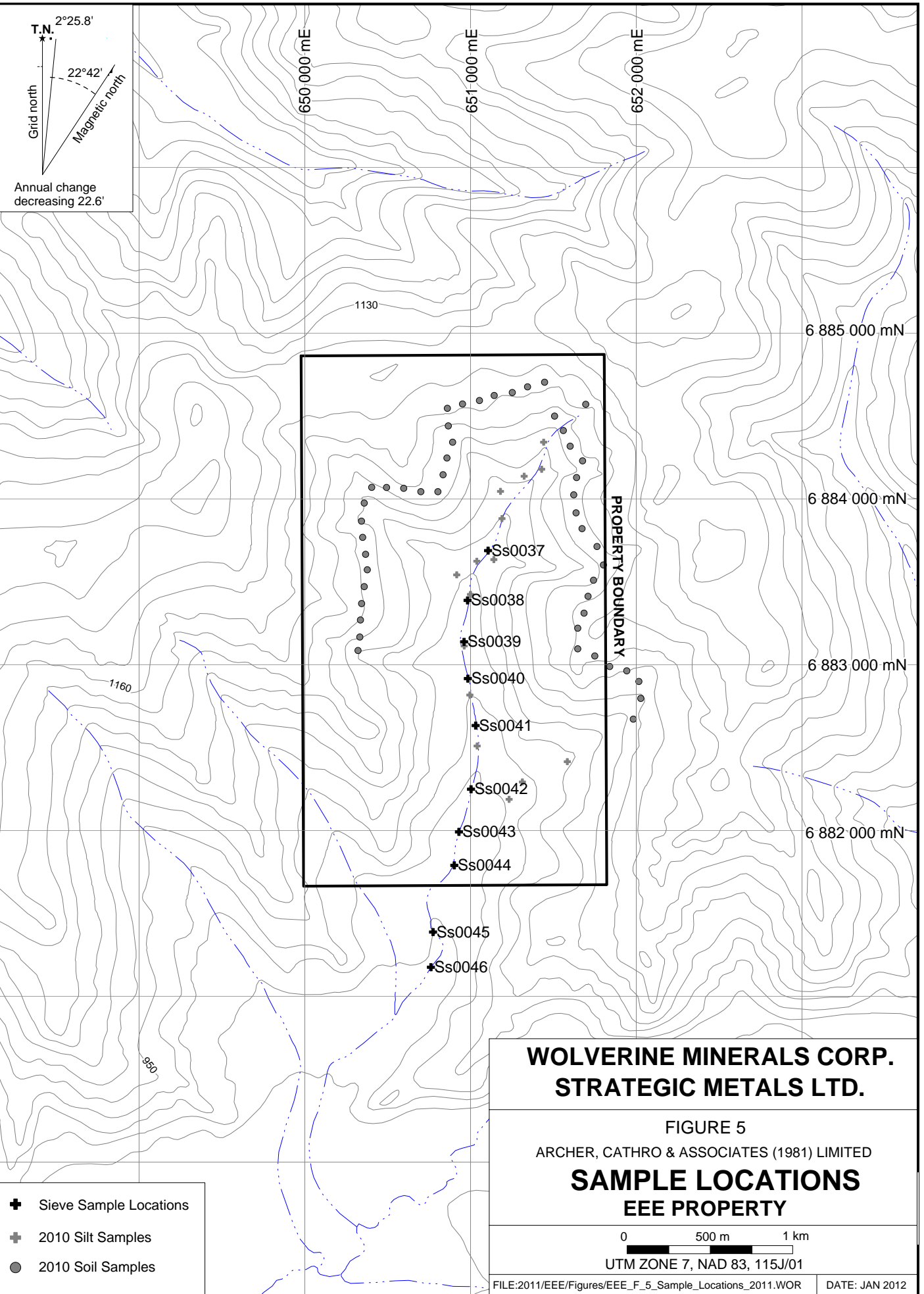
Ss0042

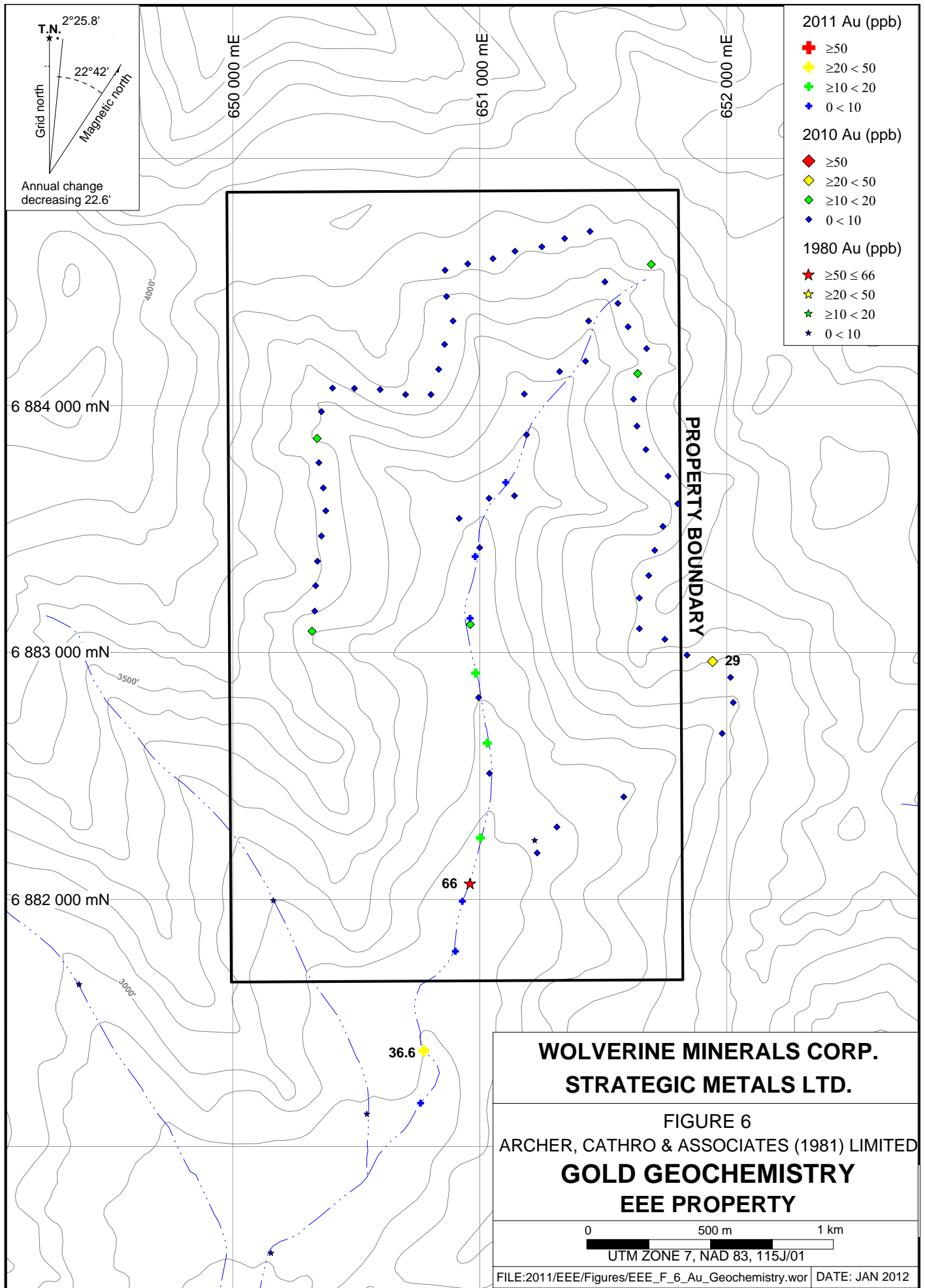
Ss0043

Ss0044

Ss0045

Ss0046





characteristics. Each sample was placed into a large heavy-plastic bag and then double-bagged for safe transport. Sample sites are marked with aluminum tags inscribed with sample numbers and affixed to 0.5 m wooden lath that were driven into the ground. All sample locations were recorded using hand-held GPS units.

The sieve silt samples were sent to Acme Labs in Vancouver, B.C. where they were dried and sieved to -80 mesh. Special instructions were given to sieve entire sample weight, not only 0.5 kg, which is standard practice at Acme. Once sieved, the sample was divided using a micro splitter to produce a 30 g sub-sample that was analyzed by aqua regia digestion and ultra-trace inductively coupled plasma-mass spectrometry.

Samples returned background to moderately anomalous values for gold (up to 36.6 ppb) and background values for arsenic (up to 9.4 ppm), copper (up to 26.13 ppm), lead (up to 4.93 ppm), zinc (up to 65.5 ppm) and all other pathfinder elements for gold.

### **DISCUSSION AND CONCLUSIONS**

Sieve silt geochemistry performed by Wolverine on the EEE property identified a moderately anomalous gold value located immediately south of the property, but was unable to confirm the historical 66 ppb gold value. Due to low density of sample coverage and sporadic moderately anomalous gold-in-silt values, future work may be warranted on a low priority basis depending on future economics and results from nearby exploration programs.

If additional work is conducted, it should include mapping and prospecting to determine if quartz-feldspar porphyry dykes, sills and breccias (which are significant mineralizers on nearby properties) are present on the EEE property.

Respectfully submitted,

ARCHER, CATHRO & ASSOCIATES (1981) LIMITED

Andrew Mitchell, B.Sc. Geology

## REFERENCES

- Archer, A. R. and Onasick, E.P.  
 1980 NAT Joint Venture Final Report. Internal report prepared by Archer, Cathro & Associates Ltd. for Chevron Canada Limited and Armco Mineral Exploration Ltd.
- Cathro, R.J. and Culbert, R.E.  
 1969 Summary report on the 1969 field program. Dawson Range Joint Venture Project, Yukon Territory.
- Cathro, R.J.  
 1974 Regional Exploration in the Dawson Range District, Yukon for Klotassin Joint Venture. Internal report prepared by Archer, Cathro & Associates Ltd.
- Cathro, R.J.  
 1976 1975 Regional Exploration in the Dawson Range District, Yukon for Klotassin Joint Venture. Internal report prepared by Archer, Cathro & Associates Ltd.
- Friske, P.W.B., Hornbrook, E.H.W., Lynch, J.J., McCurdy, M.W., Gross, H., Galletta, A.C. and Durham, C.C.  
 1986 Regional stream sediment and water geochemical reconnaissance data (115J, 115K (E1/2)); Geological Survey of Canada, Open File 1363.
- Gordey, S.P. and Makepeace, A.J. (compilers)  
 2003 Yukon digital geology, version 2.0, Geological Survey of Canada, Open File 1749 and Yukon Geological Survey, Open File 2003-9 (D).
- Smith, H.  
 2011 Assessment report describing 2010 geochemical sampling on the EEE property prepared for Wolverine Mineral Corp. and Strategic Metals Ltd.
- Templeman-Kluit, D.J.  
 1973 Snag; Geological Survey of Canada, Map 16-1973, scale 1:250 000.  
 1974 Reconnaissance Geology of Aishihik Lake, Snag and Part of Stewart River map areas, West Central Yukon; Geological Survey of Canada, Map 17-1973.

**APPENDIX I**  
**STATEMENT OF QUALIFICATIONS**

## **STATEMENT OF QUALIFICATIONS**

I, Andrew Mitchell, geologist, with business addresses in Whitehorse, Yukon Territory and Vancouver, British Columbia and residential address in Vancouver, British Columbia, hereby certify that:

1. I graduated from the University of British Columbia in 2010 with a B.Sc. in Earth and Environmental Sciences.
2. From 2010 to present, I have been actively engaged in mineral exploration in Yukon Territory.
3. I have interpreted all data resulting from this work.

Andrew Mitchell, B.Sc. Geology

**APPENDIX II**  
**CERTIFICATE OF ANALYSIS**



1020 Cordova St. East Vancouver BC V6A 4A3 Canada

Acme Analytical Laboratories (Vancouver) Ltd.

www.acmelab.com

Client: Archer, Cathro & Assoc. (1981) Ltd.
1016 - 510 W. Hastings St.
Vancouver BC V6B 1L8 Canada

Submitted By: Joan Mariacher
Receiving Lab: Canada-Whitehorse
Received: August 09, 2011
Report Date: September 10, 2011
Page: 1 of 2

CERTIFICATE OF ANALYSIS

WHI11001029.1

CLIENT JOB INFORMATION

Project: EEE
Shipment ID:
P.O. Number
Number of Samples: 10

SAMPLE DISPOSAL

STOR-PLP Store After 90 days Invoice for Storage
DISP-RJT-SOIL Immediate Disposal of Soil Reject

Acme does not accept responsibility for samples left at the laboratory after 90 days without prior written instructions for sample storage or return.

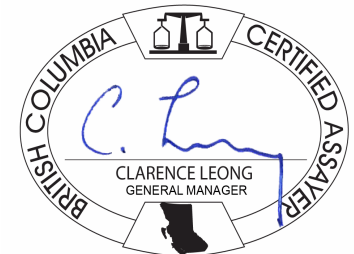
Invoice To: Archer, Cathro & Assoc. (1981) Ltd.
1016 - 510 W. Hastings St.
Vancouver BC V6B 1L8
Canada

CC: Heather Smith

SAMPLE PREPARATION AND ANALYTICAL PROCEDURES

Table with 6 columns: Method Code, Number of Samples, Code Description, Test Wgt (g), Report Status, Lab. Rows include: Dry at 60C (10 samples), SS80 (10 samples), 1F03 (10 samples, 1:1:1 Aqua Regia digestion Ultratrace ICP-MS analysis, 30g test weight, Completed report status, VAN lab).

ADDITIONAL COMMENTS



This report supersedes all previous preliminary and final reports with this file number dated prior to the date on this certificate. Signature indicates final approval; preliminary reports are unsigned and should be used for reference only. All results are considered the confidential property of the client. Acme assumes the liabilities for actual cost of analysis only. Results apply to samples as submitted. \*\* asterisk indicates that an analytical result could not be provided due to unusually high levels of interference from other elements.



Acme Analytical Laboratories (Vancouver) Ltd.  
 1020 Cordova St. East Vancouver BC V6A 4A3 Canada  
 Phone (604) 253-3158 Fax (604) 253-1716

www.acmelab.com

Client: **Archer, Cathro & Assoc. (1981) Ltd.**  
 1016 - 510 W. Hastings St.  
 Vancouver BC V6B 1L8 Canada

Project: EEE  
 Report Date: September 10, 2011

Page: 2 of 2 Part 1

CERTIFICATE OF ANALYSIS

WHI11001029.1

Method	1F30	1F30	1F30	1F30	1F30	1F30	1F30	1F30	1F30	1F30	1F30	1F30	1F30	1F30	1F30	1F30	1F30	1F30	1F30	1F30	
Analyte	Mo	Cu	Pb	Zn	Ag	Ni	Co	Mn	Fe	As	U	Au	Th	Sr	Cd	Sb	Bi	V	Ca	P	
Unit	ppm	ppm	ppm	ppm	ppb	ppm	ppm	ppm	%	ppm	ppm	ppb	ppm	ppm	ppm	ppm	ppm	ppm	%	%	
MDL	0.01	0.01	0.01	0.1	2	0.1	0.1	1	0.01	0.1	0.1	0.2	0.1	0.5	0.01	0.02	0.02	2	0.01	0.001	
550037	Soil	0.17	11.44	3.06	42.8	54	13.7	6.0	195	1.53	2.9	0.7	0.6	3.5	29.8	0.10	0.12	0.06	35	0.47	0.076
550038	Soil	22.93	26.13	4.93	65.5	110	19.7	12.7	>10000	2.33	9.4	9.5	9.7	3.7	71.5	2.25	0.27	0.12	56	0.72	0.082
550039	Soil	0.51	10.46	3.03	42.5	46	11.9	6.8	475	1.86	3.5	3.1	0.9	5.2	29.5	0.13	0.13	0.07	47	0.43	0.089
550040	Soil	0.35	7.92	3.56	38.3	43	9.7	5.7	246	1.81	3.7	2.2	12.3	6.6	26.1	0.10	0.13	0.07	45	0.42	0.088
550041	Soil	0.35	6.76	2.92	36.2	35	8.0	5.8	173	1.92	3.4	2.6	16.2	8.1	22.3	0.06	0.12	0.07	56	0.38	0.091
550042	Soil	0.32	6.85	3.23	39.0	31	9.1	6.0	222	1.96	3.7	2.2	15.8	9.2	24.7	0.08	0.13	0.07	54	0.43	0.102
550043	Soil	0.28	9.31	3.43	39.3	37	10.2	6.2	161	1.59	2.7	3.4	2.1	7.6	28.1	0.11	0.13	0.07	40	0.46	0.096
550044	Soil	0.20	6.04	2.73	32.6	24	7.9	5.2	176	1.43	4.2	1.0	1.8	5.6	19.4	0.05	0.11	0.05	31	0.32	0.072
550045	Soil	0.28	8.58	2.98	36.0	70	9.3	6.9	345	1.83	4.1	2.5	36.3	6.0	29.2	0.07	0.12	0.07	48	0.41	0.087
550046	Soil	0.36	12.93	3.80	41.9	48	10.4	6.8	286	1.72	4.7	2.9	2.0	5.2	30.8	0.11	0.17	0.09	40	0.43	0.077



Acme Analytical Laboratories (Vancouver) Ltd.  
 1020 Cordova St. East Vancouver BC V6A 4A3 Canada  
 Phone (604) 253-3158 Fax (604) 253-1716

www.acmelab.com

Client: **Archer, Cathro & Assoc. (1981) Ltd.**  
 1016 - 510 W. Hastings St.  
 Vancouver BC V6B 1L8 Canada

Project: EEE  
 Report Date: September 10, 2011

Page: 2 of 2 Part 2

CERTIFICATE OF ANALYSIS

WHI11001029.1

Method	1F30	1F30	1F30	1F30	1F30	1F30	1F30	1F30	1F30	1F30	1F30	1F30	1F30	1F30	1F30	1F30	1F30	
Analyte	La	Cr	Mg	Ba	Ti	B	Al	Na	K	W	Sc	Tl	S	Hg	Se	Te	Ga	
Unit	ppm	ppm	%	ppm	%	ppm	%	%	%	ppm	ppm	ppm	%	ppb	ppm	ppm	ppm	
MDL	0.5	0.5	0.01	0.5	0.001	1	0.01	0.001	0.01	0.1	0.1	0.02	0.02	5	0.1	0.02	0.1	
550037	Soil	12.6	27.4	0.50	102.0	0.064	<1	0.99	0.016	0.06	0.3	2.6	0.04	<0.02	11	0.1	<0.02	3.5
550038	Soil	18.1	33.7	0.60	355.7	0.074	<1	1.16	0.020	0.07	0.5	3.6	0.12	0.04	21	0.5	<0.02	4.7
550039	Soil	13.6	24.1	0.44	99.0	0.069	<1	0.85	0.016	0.05	1.4	2.2	0.04	<0.02	<5	0.3	<0.02	3.3
550040	Soil	15.6	20.2	0.38	89.3	0.071	<1	0.76	0.015	0.04	2.2	2.1	0.03	<0.02	9	<0.1	<0.02	3.0
550041	Soil	16.1	18.3	0.32	74.7	0.075	<1	0.67	0.014	0.04	4.3	1.8	0.02	<0.02	<5	<0.1	<0.02	3.2
550042	Soil	18.8	20.0	0.35	79.3	0.078	<1	0.67	0.015	0.04	3.0	1.9	0.03	<0.02	<5	<0.1	<0.02	3.2
550043	Soil	19.1	21.3	0.40	103.7	0.067	<1	0.79	0.017	0.04	1.3	2.2	0.04	<0.02	11	0.1	<0.02	2.9
550044	Soil	11.4	14.6	0.36	66.9	0.048	<1	0.68	0.013	0.04	<0.1	2.0	0.03	<0.02	5	<0.1	<0.02	2.5
550045	Soil	13.4	17.5	0.34	86.3	0.073	<1	0.75	0.016	0.04	0.6	1.9	<0.02	<0.02	6	0.1	<0.02	3.0
550046	Soil	12.6	19.3	0.40	100.8	0.072	<1	0.88	0.017	0.05	0.5	2.5	0.05	0.03	8	0.2	<0.02	3.4



Acme Analytical Laboratories (Vancouver) Ltd.

1020 Cordova St. East Vancouver BC V6A 4A3 Canada

Phone (604) 253-3158 Fax (604) 253-1716

www.acmelab.com

Client: **Archer, Cathro & Assoc. (1981) Ltd.**

1016 - 510 W. Hastings St.

Vancouver BC V6B 1L8 Canada

Project: EEE

Report Date: September 10, 2011

Page: 1 of 1 Part 1

# QUALITY CONTROL REPORT

WHI11001029.1

Method	1F30	1F30	1F30	1F30	1F30	1F30	1F30	1F30	1F30	1F30	1F30	1F30	1F30	1F30	1F30	1F30	1F30	1F30	1F30	1F30		
Analyte	Mo	Cu	Pb	Zn	Ag	Ni	Co	Mn	Fe	As	U	Au	Th	Sr	Cd	Sb	Bi	V	Ca	P		
Unit	ppm	ppm	ppm	ppm	ppb	ppm	ppm	ppm	%	ppm	ppm	ppb	ppm	ppm	ppm	ppm	ppm	ppm	%	%		
MDL	0.01	0.01	0.01	0.1	2	0.1	0.1	1	0.01	0.1	0.1	0.2	0.1	0.5	0.01	0.02	0.02	2	0.01	0.001		
Pulp Duplicates																						
550039	Soil	0.51	10.46	3.03	42.5	46	11.9	6.8	475	1.86	3.5	3.1	0.9	5.2	29.5	0.13	0.13	0.07	47	0.43	0.089	
REP 550039	QC	0.46	10.83	3.22	41.3	55	11.5	6.4	440	1.82	3.6	3.2	45.6	5.2	29.4	0.13	0.13	0.07	44	0.46	0.093	
Reference Materials																						
STD DS8	Standard	13.17	120.7	118.9	314.0	1700	36.8	7.4	596	2.43	28.2	2.8	106.6	7.0	70.3	2.59	4.72	6.83	42	0.73	0.080	
STD DS8 Expected		13.44	110	123	312	1690	38.1	7.5	615	2.46	26	2.8	107	6.89	67.7	2.38	5.7	6.67	41.1	0.7	0.08	
BLK	Blank	<0.01	<0.01	<0.01	<0.1	<2	<0.1	<0.1	<1	<0.01	<0.1	<0.1	<0.1	<0.2	<0.1	<0.5	<0.01	<0.02	<0.02	<2	<0.01	<0.001



Acme Analytical Laboratories (Vancouver) Ltd.

1020 Cordova St. East Vancouver BC V6A 4A3 Canada

Phone (604) 253-3158 Fax (604) 253-1716

www.acmelab.com

Client: **Archer, Cathro & Assoc. (1981) Ltd.**

1016 - 510 W. Hastings St.

Vancouver BC V6B 1L8 Canada

Project: EEE

Report Date: September 10, 2011

Page: 1 of 1 Part 2

# QUALITY CONTROL REPORT

WHI11001029.1

Method		1F30	1F30	1F30	1F30	1F30	1F30	1F30	1F30	1F30	1F30	1F30	1F30	1F30	1F30	1F30	1F30	
Analyte		La	Cr	Mg	Ba	Ti	B	Al	Na	K	W	Sc	Tl	S	Hg	Se	Te	Ga
Unit		ppm	ppm	%	ppm	%	ppm	%	%	%	ppm	ppm	ppm	%	ppb	ppm	ppm	ppm
MDL		0.5	0.5	0.01	0.5	0.001	1	0.01	0.001	0.01	0.1	0.1	0.02	0.02	5	0.1	0.02	0.1
Pulp Duplicates																		
550039	Soil	13.6	24.1	0.44	99.0	0.069	<1	0.85	0.016	0.05	1.4	2.2	0.04	<0.02	<5	0.3	<0.02	3.3
REP 550039	QC	13.7	24.1	0.44	100.7	0.068	<1	0.83	0.016	0.05	1.4	2.3	0.04	<0.02	6	<0.1	<0.02	3.2
Reference Materials																		
STD DS8	Standard	15.5	117.5	0.62	288.0	0.120	2	0.95	0.094	0.43	2.8	2.2	5.00	0.17	193	4.7	4.82	4.5
STD DS8 Expected		14.6	115	0.6045	279	0.113	2.6	0.93	0.0883	0.41	3	2.3	5.4	0.1679	192	5.23	5	4.7
BLK	Blank	<0.5	<0.5	<0.01	<0.5	<0.001	<1	<0.01	<0.001	<0.01	<0.1	<0.1	<0.02	<0.02	<5	<0.1	<0.02	<0.1

QW2978

ARCHER, CATHRO & ASSOCIATES (1981) LIMITED  
1016 – 510 West Hastings Street  
Vancouver, B.C. V6B 1L8

Telephone: 604-688-2568

Fax: 604-688-2578



AFFIDAVIT

I, Joan Mariacher, of Vancouver, B.C. make oath and say:

That to the best of my knowledge the attached Statement of Expenditures for exploration work on the EEE 1-28 mineral claims on Claim Sheet 115J/1 is accurate.

  
Joan Mariacher

Sworn before me at Vancouver, B.C.

this 15th day of April 2011.



Barrister & Solicitor

**IAN J. TALBOT**  
Barrister & Solicitor  
281 East 5th Street  
North Vancouver  
British Columbia  
Canada V7L 1L0

Statement of Expenditures  
EEE 1-28 Mineral Claims  
April 15, 2011



Labour

H. Smith (geologist) January to April 2011 – 1 hr @ \$90/hr	\$ 100.80
September to December 2010 – 2 1/2 hr @ \$75/hr	210.00
C. Chung (geologist) January to April 2011 – 20 hrs @ \$85/hr	1,904.00
September to December 2010 – 5 1/2 hr @ \$75/hr	462.00
T. Epp (field assistant) July 2011 – 1 day @ \$328/day	367.36
B. Alladice (field assistant) July 2011 – 1 day @ \$304/day	<u>340.48</u>
	3,384.64

Expenses

Field room and board – 2 mandays @ \$125/manday	280.00
Capital Helicopters	1,506.75
ALS Chemex	<u>1,389.65</u>
	3,176.40

Total

\$6,561.04

# CAPITAL HELICOPTERS (1995) INC.

Suite 3 - 25 Pilgrim Place, Whitehorse, Y.T. Y1A 6E6  
 Phone: (867) 668-6200 Fax: (867) 668-6201  
 capitalheli@polarcom.com



**Charter and Contract Service**

## INVOICE

NO. 11306-11311

DATE 16/07/2010

SOLD TO

Archer Cathro  
 Suite 1016, 510 West Hastings  
 Vancouver, B. C. V6B 1L8

SHIP TO

Archer Cathro  
 Suite 1016, 510 West Hastings  
 Vancouver, B. C. V6B 1L8



ITEM NO.	QUANTITY	UNIT	DESCRIPTION	GST	PST	UNIT PRICE	AMOUNT
July 7	4.1	hrs	DDD Klaza camp-S/O and P/U Klotassen 1.2 Selwyn 2.9	G	MMM	1,025.00	4,202.50
July 8	3.6	hrs	EEE Klaza camp-S/O and P/U Klotassen 1.4 Selwyn 2.2	G	MMM	1,025.00	3,690.00
July 9	5.2	hrs	QQQ Klaza camp-S/O and P/U Klotassen 2.8 Selwyn 2.4	G	KKK	1,025.00	5,330.00
July 10	3.4	hrs	CCC Klaza camp-S/O and P/U Klotassen 1.4 Selwyn 2.0	G	OOO	1,025.00	3,485.00
July 12	1.8	hrs	1.0 BBB 0.8 Klaza camp-S/O and P/U Klotassen #8 Selwyn 1.0	G		1,025.00	1,845.00
July 14/13	5.2	hrs	HHH Klaza camp-S/O and P/U Klotassen 3. Selwyn 2.2	G	JJJ	1,025.00	5,330.00
July 15 OK	2.8	hrs	BBB Klaza camp-S/O and P/U Klotassen 2.8 Selwyn 1.	G		1,025.00	2,870.00
	26.1						
			G - GST 5.00%				
			GST				1,337.63
<p>Handwritten notes: 14.4 Klotassen - 14760.00, 11.7 Selwyn - 11992.50, NAO ✓</p>							26252.50

Capital Helicopters (1995) Inc. GST: #899587984

Thank You! Your Business Is Appreciated! Fuel Price includes Federal and Yukon Tax

COMMENTS

TOTAL

28,090.13

3.8	NA	BBB -	4089.75
1.4	✓	CCC -	1506.75
1.2	✓	DDD -	1291.50
1.4	✓	EEE -	1506.75
3.0	✓	HHH -	3228.75
0.8	✓	III -	861.00
2.8	✓	QQQ -	3013.50
2.2	✓	JJJ -	2367.25
2.4	✓	KKK -	2583.00
5.1	✓	MMM -	5488.88
2.0	✓	OOO -	2152.50



ALS Canada Ltd.  
 2103 Dollarton Hwy  
 North Vancouver BC V7H 0A7  
 Phone: 604 984 0221 Fax: 604 984 0218 www.alsglobal.com

To: STRATEGIC METALS LTD.  
 C/O ARCHER, CATHRO & ASSOCIATES (1981) LIMITED  
 1016-510 W HASTINGS ST  
 VANCOUVER BC V6B 1L8

**INVOICE NUMBER 2111758**

**BILLING INFORMATION**

Certificate: **VA10098841**  
 Sample Type: **Soil**  
 Account: **MTT**  
 Date: **30-JUL-2010**  
 Project: **KLOTASSIN** *AD*  
 P.O. No.: **EEE**  
 Quote: **ALSM-CW10-010-F**  
 Terms: **Net 30 Days** C1  
 Comments:

		ANALYSED FOR			
QUANTITY	CODE	DESCRIPTION	UNIT PRICE	TOTAL	
63	PREP-41	Dry, Sieve (180 um) Soil	0.96	60.48	
10.66	PREP-41	Weight Charge (kg) - Dry, Sieve (180 um) Soil	1.80	19.19	
63	Au-ICP21	Au 30g FA ICP-AES Finish	11.06	696.78	
63	ME-ICP41	35 Element Aqua Regia ICP-AES	4.92	309.96	
63	GEO-AR01	Aqua regia digestion	2.45	154.35	

*1/20/10 in 1A 10*

SUBTOTAL (CAD) \$ 1,240.76  
 R100938885 HST BC \$ 148.89  
**TOTAL PAYABLE (CAD) \$ 1,389.65**

To: STRATEGIC METALS LTD.  
 ATTN: JOAN MARIACHER  
 C/O ARCHER, CATHRO & ASSOCIATES (1981) LIMITED  
 1016-510 W HASTINGS ST  
 VANCOUVER BC V6B 1L8

Payment may be made by: Cheque or Bank Transfer

Beneficiary Name: ALS Canada Ltd.  
 Bank: Royal Bank of Canada  
 SWIFT: ROYCCAT2  
 Address: Vancouver, BC, CAN  
 Account: 003-00010-1001098

Please Remit Payments To :  
**ALS Canada Ltd.**  
 2103 Dollarton Hwy  
 North Vancouver BC V7H 0A7

