

ARCHER, CATHRO & ASSOCIATES (1981) LIMITED
1016 - 510 West Hastings Street
Vancouver, B.C. V6B1L8

Telephone: 604-688-2568

Fax: 604-688-2578

ASSESSMENT REPORT

describing

GEOCHEMICAL SAMPLING

at the

AAA PROPERTY

AAA 1-28 YD56303-YD56330

NTS 115I/04

Latitude 62°12'N; Longitude 137°51'W

located in the

Whitehorse Mining District
Yukon Territory

prepared by

Archer, Cathro & Associates (1981) Limited

for

WOLVERINE MINERALS CORP.
and
STRATEGIC METALS LTD.

by

A. Mitchell, B.Sc. Geology
January 2012

CONTENTS

INTRODUCTION	1
PROPERTY LOCATION, CLAIM DATA AND ACCESS	1
HISTORY AND PREVIOUS WORK	1
GEOMORPHOLOGY AND CLIMATE	2
REGIONAL GEOLOGY	3
PROPERTY GEOLOGY	3
SIEVE SILT GEOCHEMISTRY	4
DISCUSSION AND CONCLUSIONS	4
REFERENCES	6

APPENDICES

I	STATEMENT OF QUALIFICATIONS
II	CERTIFICATE OF ANALYSIS

FIGURES

<u>No.</u>	<u>Description</u>	<u>Follows Page</u>
1	Location	1
2	Claim Locations	1
3	Tectonic Setting	3
4	Regional Geology	3
5	Sample Locations	4

TABLES

I	Lithological Units	3
---	--------------------	---

INTRODUCTION

The AAA property was staked to cover a strongly anomalous gold value reported from historical stream sediment sampling. The property lies within the Dawson Range Gold Belt of western Yukon (Figure 1). Wolverine Minerals Corp. can earn a 100% interest in the property subject to an option agreement with Strategic Metals Ltd.

This report describes sieve silt sampling conducted on August 4, 2011 by Archer, Cathro & Associates (1981) Limited on behalf of Wolverine. The author interpreted all data from this project and his Statement of Qualifications is in Appendix I.

PROPERTY LOCATION, CLAIM DATA AND ACCESS

The AAA property consists of 28 contiguous mineral claims, which are located on NTS map sheet 115I/04 at latitude 62°12' north and longitude 137°51' west (Figure 1). The property covers an area of approximately 570 ha (5.7 sq km). The claims are registered with the Whitehorse Mining Recorder in the name of Archer Cathro, which holds them in trust for Strategic. Specifics concerning claim registration are tabulated below, while the locations of individual claims are shown on Figure 2.

<u>Claim Name</u>	<u>Grant Number</u>	<u>Expiry Date*</u>
AAA 1-28	YD56303-YD56330	April 15, 2013

* Expiry date does not include 2011 work that has not yet been filed for assessment credit.

Access to and from the property was provided by a Bell 206B helicopter owned and operated by Capital Helicopters (1995) Inc. of Whitehorse, from a temporary base at Rockhaven Resources Ltd.'s Klaza property located near the former Mount Nansen Mine. The Klaza property lies about 30 km southeast of the AAA property and 70 km by road west of the community of Carmacks.

HISTORY AND PREVIOUS WORK

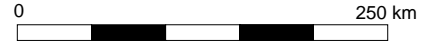
In 1969, Archer Cathro performed regional exploration in the Dawson Range district for the Dawson Range Joint Venture. During that program, one stream sediment sample was collected from what is now the AAA property. That sample returned 15 ppm copper, 13 ppm lead and nil molybdenum (Cathro and Culbert, 1969). No gold analyses were done during this program.

In 1974, Archer Cathro conducted regional exploration in the Dawson Range district for the Klotassin Joint Venture (KJV). KJV was made up of Newconex Canadian Exploration Ltd., Marietta Resources International Ltd., and Molybdenum Corporation of America. Work performed included 1:50,000 scale reconnaissance-style prospecting, mapping and geochemical sampling. KJV collected eight soil samples and one stream sediment sample from the current AAA property. Soil samples were routinely analyzed for copper and often for molybdenum, lead and zinc. No gold analyses were done during this program. Samples collected from the current AAA property returned up to 26 ppm copper with no reported molybdenum, lead or zinc. The

**WOLVERINE MINERALS CORP.
STRATEGIC METALS LTD.**

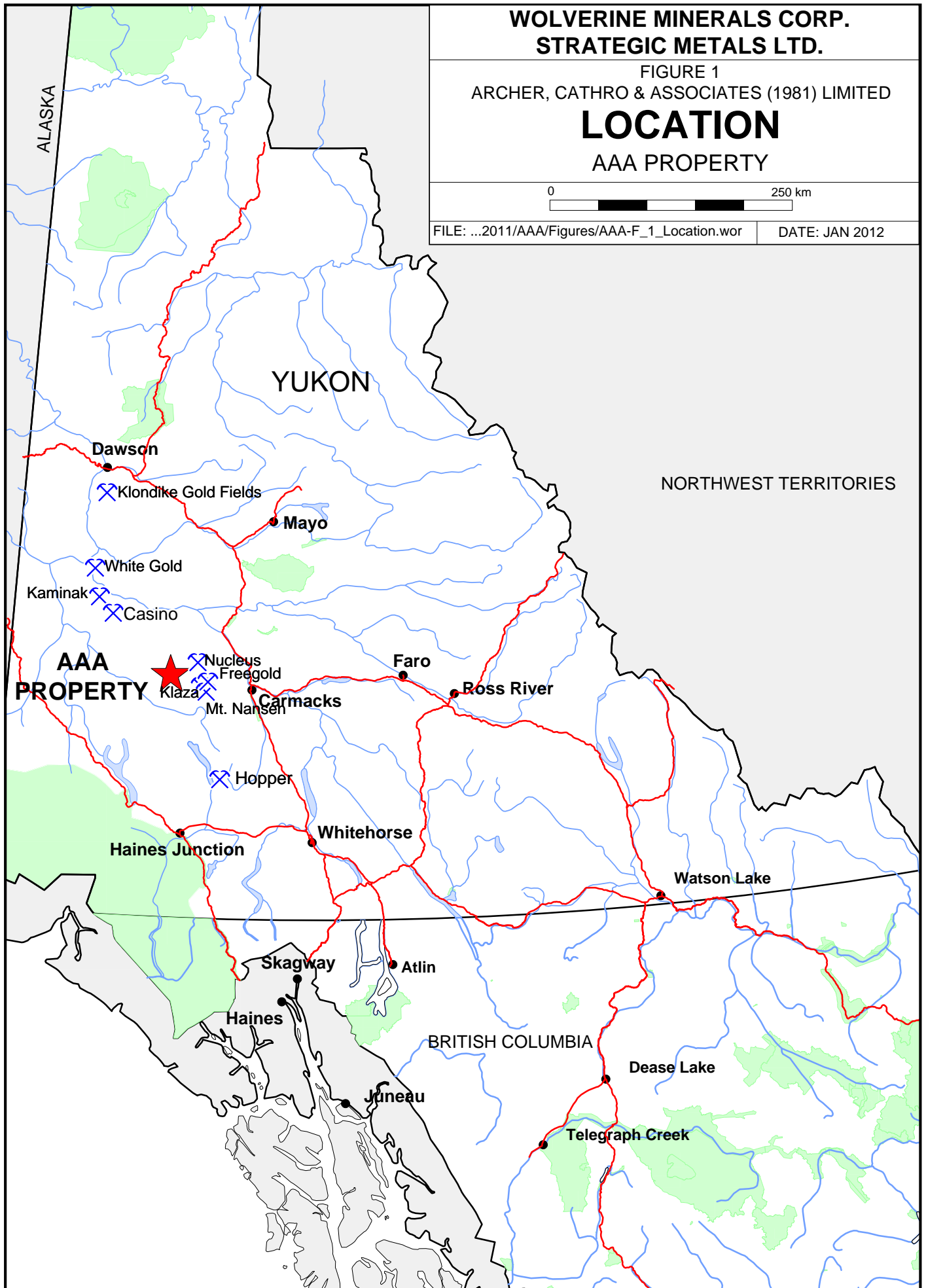
FIGURE 1
ARCHER, CATHRO & ASSOCIATES (1981) LIMITED

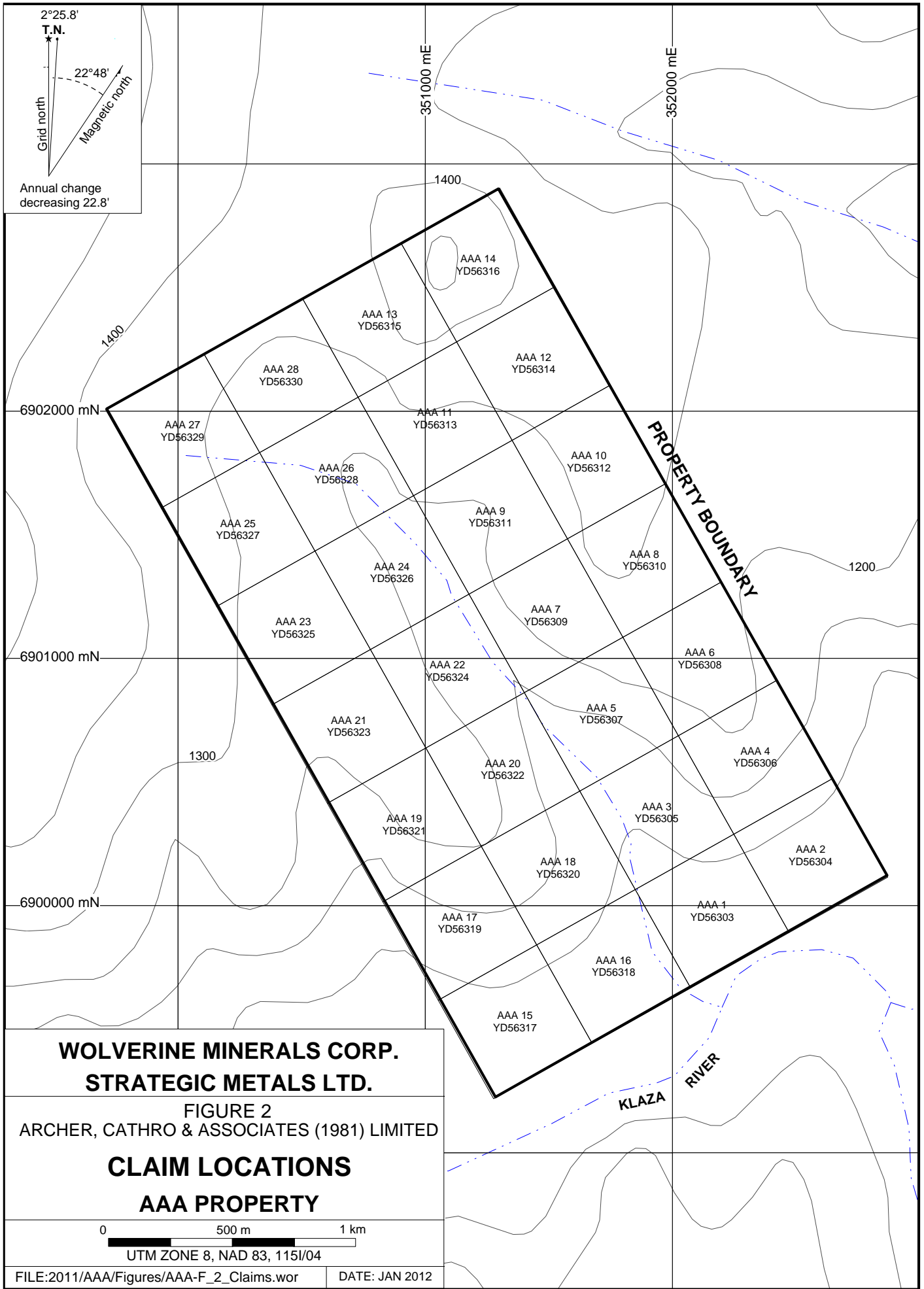
LOCATION
AAA PROPERTY



FILE: ...2011/AAA/Figures/AAA-F_1_Location.wor

DATE: JAN 2012

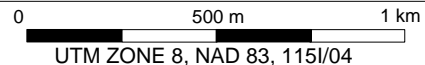




**WOLVERINE MINERALS CORP.
STRATEGIC METALS LTD.**

FIGURE 2
ARCHER, CATHRO & ASSOCIATES (1981) LIMITED

**CLAIM LOCATIONS
AAA PROPERTY**



UTM ZONE 8, NAD 83, 1151/04

stream sediment sample returned 7 ppm copper, nil molybdenum, 10 ppm lead and 41 ppm zinc (Cathro, 1974).

In 1975, Archer Cathro continued its exploration on behalf of KJV. Seventeen soil samples and one stream sediment sample were collected from the current AAA property. These samples were analyzed for copper, molybdenum, lead and zinc. Again, no gold analyses were done during this program. Results from this work yielded background to moderately anomalous values. Peak soil sample values were 41 ppm copper, nil molybdenum, 58 ppm lead and 95 ppm zinc. The stream sediment sample returned 8 ppm copper, nil molybdenum, 10 ppm lead and 41 ppm zinc (Cathro, 1976).

In 1980, Archer Cathro did work in the Dawson Range as part of the NAT Joint Venture (NAT JV), which comprised Chevron Canada Limited and Armco Mineral Exploration Ltd. Part of the NAT JV program involved reanalyses of over 5000 previously collected geochemical sample splits for gold, silver, arsenic and lead. One of the stream sediment samples previously collected from the AAA property yielded 750 ppb gold (Archer and Onasick, 1980).

In 1985, the Geological Survey of Canada conducted a low-density stream sediment and water sampling survey on NTS map sheet 115I (Friske et al., 1985). Only one sample was taken from creeks draining the area of the AAA property. It returned background values for gold (2 ppb), arsenic (3.3 ppm), copper (13 ppm), lead (2 ppm) and zinc (34 ppm).

Strategic staked the AAA claims in March 2010 to cover the drainage that yielded the historical value of 750 ppb gold. That year, Strategic completed one day of soil geochemical sampling, which yielded: moderately anomalous gold (up to 24 ppb), copper (up to 46 ppm) and zinc (up to 95 ppm) values; weakly elevated arsenic (up to 14 ppm) values; and weakly to strongly anomalous lead (up to 58 ppm) values (Smith, 2011). Wolverine signed an optional purchase agreement with Strategic in September 2010.

GEOMORPHOLOGY AND CLIMATE

The AAA property is situated in the southern part of the Dawson Range and is drained by creeks that flow into the Klaza River, which is part of the Yukon River watershed. The property was glaciated during Pliocene to early Pleistocene (Duk-Rodkin, 1999). Ice movement in this area arcs from southeast to southwest following the same orientation as the Klaza River (Figure 2).

The property lies on a south facing slope of a moderately sized ridge. Two spurs extending off the ridge are separated by an unnamed creek. Elevations range from about 900 to 1525 m above sea level. Outcrop is moderately abundant atop the spurs and on steep slopes.

Treeline in the area is at approximately 1400 m above sea level. Lower elevations are characterized by buckbrush, moss and spruce trees. Moderate elevations are vegetated with scattered spruce and balsam trees with an understory of buckbrush and grass. Higher elevations feature a mat of moss and grass with rare low shrubs.

The climate in the AAA area is typical of northern continental regions with long, cold winters, truncated fall and spring seasons and short, mild summers. Although summers are relatively mild, arctic cold fronts often cover the area and snowfall can occur in any month. The property is mostly snow free from late May to late September.

REGIONAL GEOLOGY

In 1975, KJV performed 1:50,000 scale geological mapping of Regional Area 'C', which includes the AAA property (Cathro, 1976). In 1984, the Geological Survey of Canada published a geological map of the Carmacks area (NTS map sheet 115I) at 1:250,000 scale (Templeman-Kluit, 1984). Gordey and Makepeace (2003) later completed a Yukon-wide geological compilation, which updated the lithological unit names in the AAA area.

The AAA property is located within the Yukon-Tanana Terrane (YTT) as shown on Figure 3. The YTT represents a continental arc that developed along the ancient Pacific margin of North America from late Devonian to Permian. Figure 4 illustrates geology as compiled by Gordey and Makepeace. The main lithological units are described in the Table I.

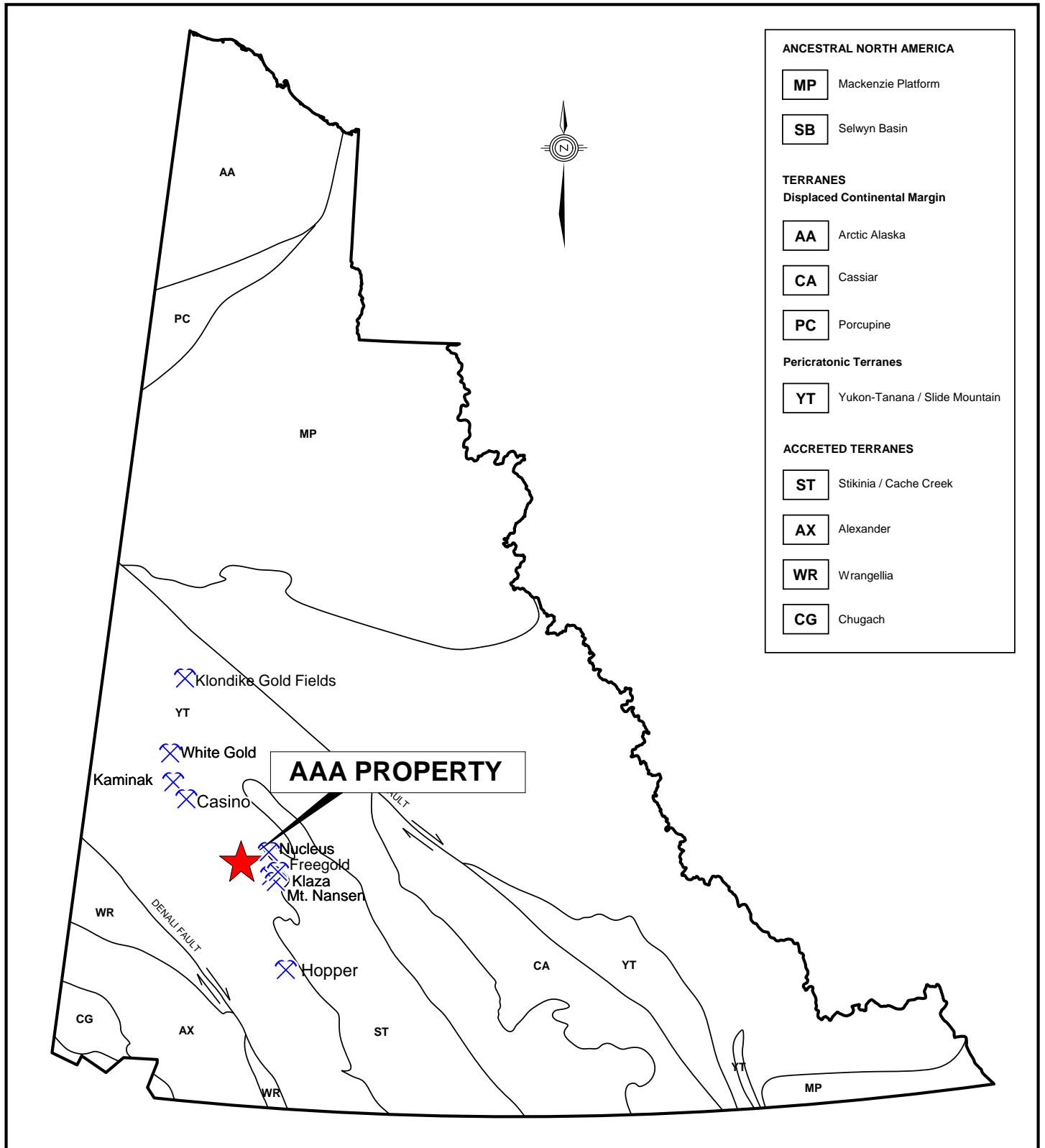
Table I – Lithological Units (after Gordey and Makepeace, 2003)

Unit Name	Age	Map Name	Description
Mount Nansen Formation	Mid-Cretaceous	mKN	Massive aphyric or feldspar-phyric andesite to dacite flows, breccia and tuff; massive, heterolithic, quartz- and feldspar-phyric, felsic lapilli tuff; flow-banded quartz-phyric rhyolite and quartz-feldspar porphyry plugs, dykes, sills and breccias.
Whitehorse Suite	Mid-Cretaceous	mKgW	Biotite-hornblende granodiorite, hornblende-quartz diorite and hornblende diorite; leucocratic, biotite-hornblende granodiorite.
Nisling Assemblage	Late Proterozoic and Paleozoic	PPN	Dark grey to brown, biotite-muscovite-quartz-feldspar schist, quartzite and micaceous quartzite, garnetiferous; felsic chlorite-biotite orthogneiss; rare amphibolite; minor two-mica gneiss and hornblende diorite gneiss.

PROPERTY GEOLOGY

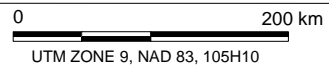
No detailed (greater than 1:50,000 scale) geological mapping has been done on the AAA property. Based on published data discussed in the previous section, all exposures on the property are assigned to the Nisling Assemblage, Whitehorse Suite or Mount Nansen Formation.

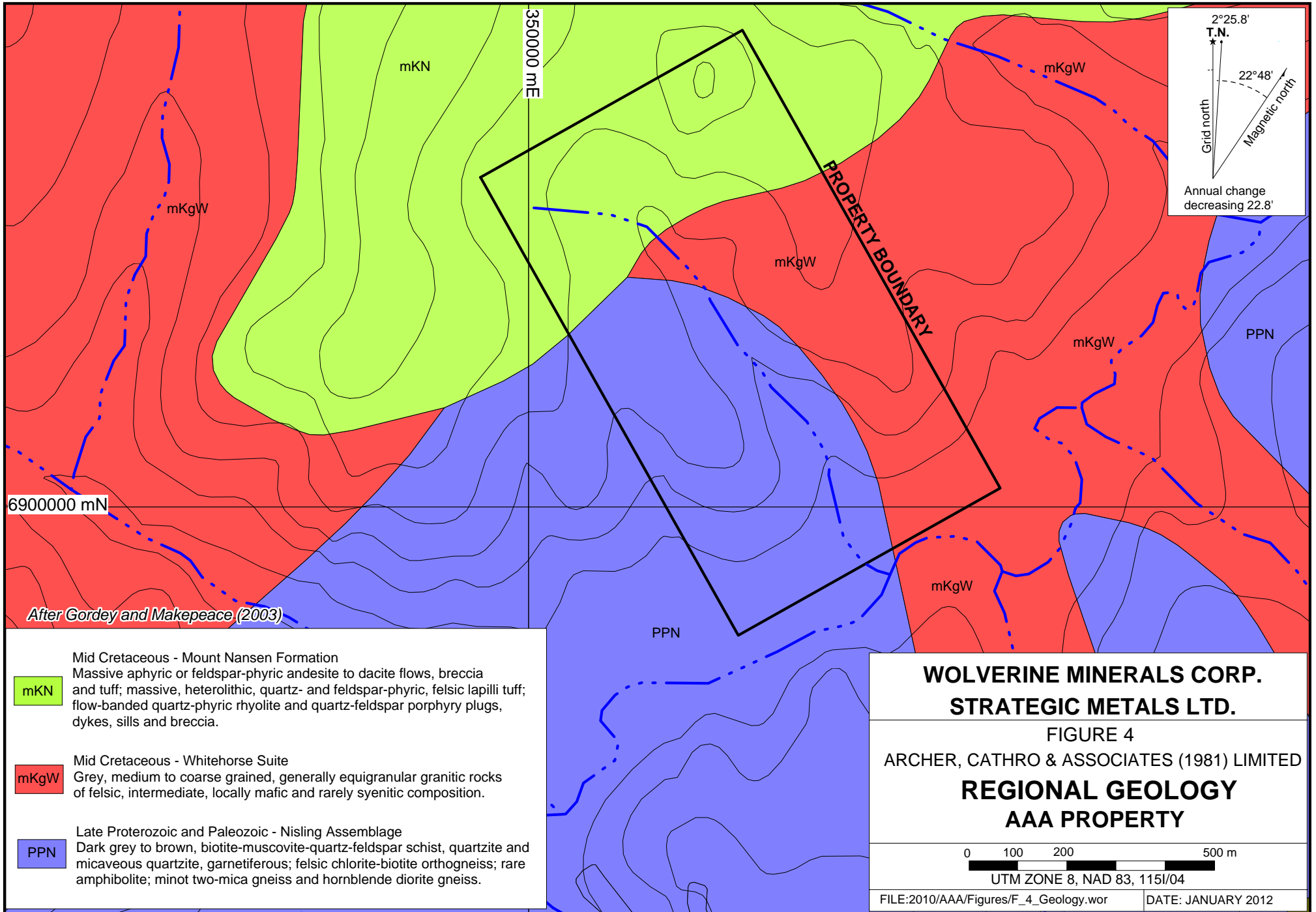
Basement rocks belonging to the Nisling Assemblage have been mapped in the southwestern part of the property and have been described as brown to grey weathering, biotite schist and chlorite-muscovite-biotite schist (Cathro, 1976). A large batholith of Whitehorse Suite granodiorite and hornblende granodiorite has intruded the Nisling Assemblage. A small portion of this batholith lies on the southeastern side of the property. An approximately 6000 m long by 2000 m wide body of Mount Nansen Formation forms the resistant ridge immediately north of the AAA



**WOLVERINE MINERALS CORP.
STRATEGIC METALS LTD.**

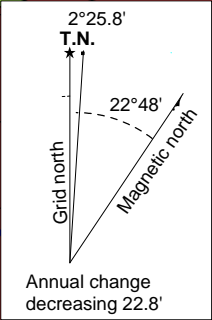
FIGURE 3
ARCHER, CATHRO & ASSOCIATES (1981) LIMITED
TECTONIC SETTING
AAA PROPERTY





6900000 mN

350000 mE



PROPERTY BOUNDARY

- mKN**
 Mid Cretaceous - Mount Nansen Formation
 Massive aphyric or feldspar-phyric andesite to dacite flows, breccia and tuff; massive, heterolithic, quartz- and feldspar-phyric, felsic lapilli tuff; flow-banded quartz-phyric rhyolite and quartz-feldspar porphyry plugs, dykes, sills and breccia.

- mKgW**
 Mid Cretaceous - Whitehorse Suite
 Grey, medium to coarse grained, generally equigranular granitic rocks of felsic, intermediate, locally mafic and rarely syenitic composition.

- PPN**
 Late Proterozoic and Paleozoic - Nisling Assemblage
 Dark grey to brown, biotite-muscovite-quartz-feldspar schist, quartzite and micaceous quartzite, garnetiferous; felsic chlorite-biotite orthogneiss; rare amphibolite; minor two-mica gneiss and hornblende diorite gneiss.

WOLVERINE MINERALS CORP.
STRATEGIC METALS LTD.

FIGURE 4
 ARCHER, CATHRO & ASSOCIATES (1981) LIMITED
REGIONAL GEOLOGY
AAA PROPERTY

0 100 200 500 m
 UTM ZONE 8, NAD 83, 1151/04

FILE:2010/AAA/Figures/F_4_Geology.wor DATE: JANUARY 2012

After Gordey and Makepeace (2003)

property, but lithologies comprising this body are not known. The Mount Nansen Formation appears to cap the Nisling Assemblage and Whitehorse Suite rocks.

A large fault mapped by KJV coincides with the Klaza River, south of the property. The sense of motion along this fault is not known.

There is no mineralization known on the property.

SIEVE SILT GEOCHEMISTRY

In 2011, Wolverine collected eight sieve silt samples from the property. Sample locations are plotted on Figure 5 and Certificates of Analysis are provided in Appendix II. W.R. (Bill) Gilmour from Discovery Consultants of Vernon, British Columbia provided instructions and equipment for collecting the samples. The crew collected up to three kilograms of material from specific locations based on flow rates and geomorphological characteristics. Each sample was placed into a large heavy-plastic bag and then double-bagged for safe transport. Sample sites are marked with aluminum tags inscribed with sample numbers and affixed to 0.5 m wooden lath that were driven into the ground. All sample locations were recorded using hand-held GPS units.

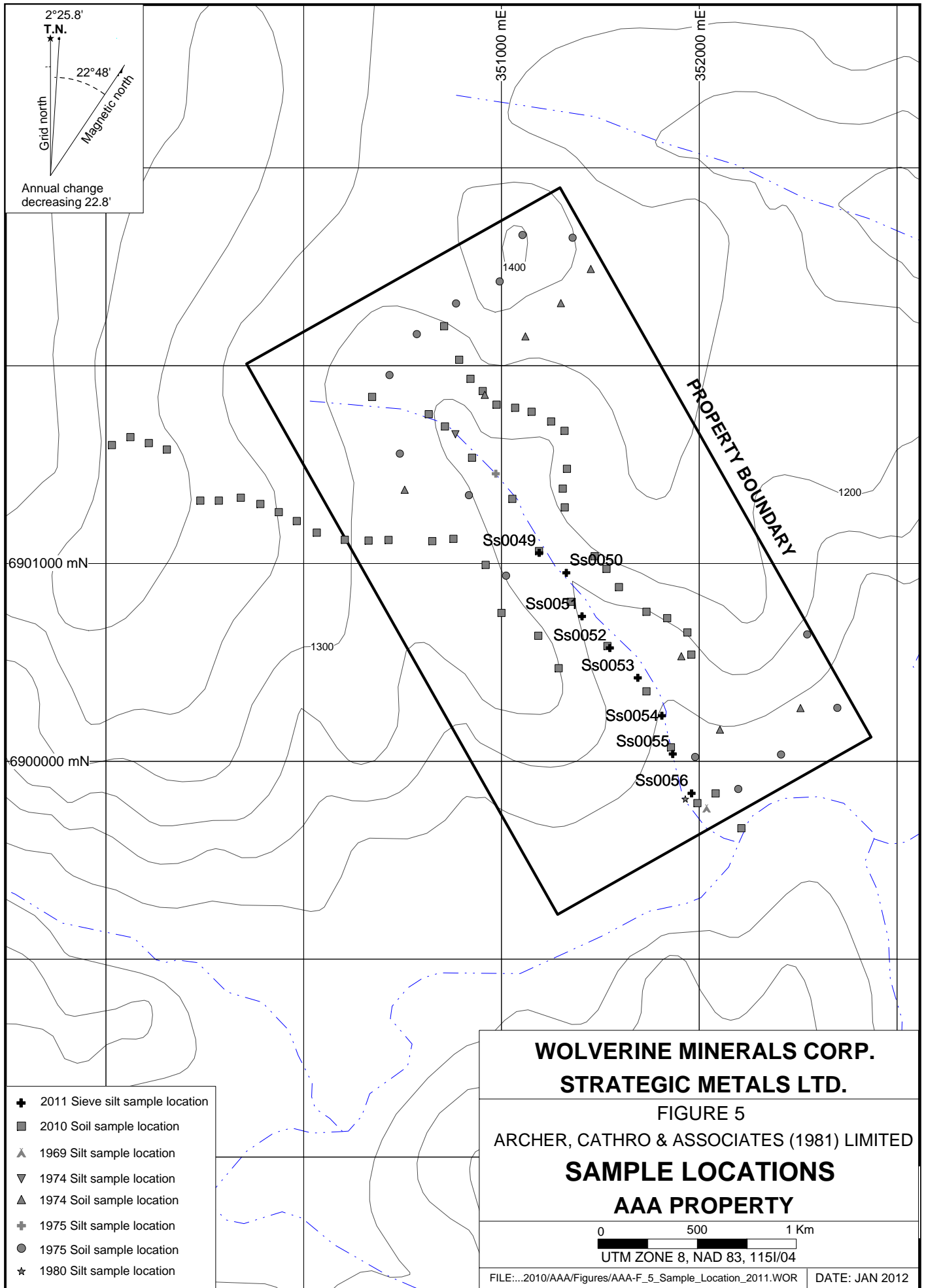
The sieve silt samples were sent to Acme Labs in Vancouver, B.C. where they were dried and sieved to -80 mesh. Special instructions were given to sieve entire sample weight, not only 0.5 kg, which is standard practice at Acme. Once sieved, the sample was divided using a micro splitter to produce a 30 g sub-sample that was analyzed by aqua regia digestion and ultra-trace inductively coupled plasma-mass spectrometry.

Samples returned background values for gold (up to 13.4 ppb), arsenic (up to 5.7 ppm), copper (up to 16.01 ppm), lead (up to 6.9 ppm), zinc (up to 57.2 ppm) and all other pathfinder elements for gold.

DISCUSSION AND CONCLUSIONS

Sieve silt geochemistry performed by Wolverine at the AAA property failed to confirm the 750 ppb gold stream sediment value. Due to the low density of sample coverage and probability of thick colluvium, there is a slight possibility that the original anomaly may still be valid. Future work may be warranted on a low priority basis depending on future economics and results from nearby exploration programs.

If additional work is conducted, it should include mapping and prospecting to determine if quartz-feldspar porphyry dykes, sills and breccias – which are significant mineralizers on nearby properties – are present on the AAA property.



2°25.8'
T.N.
Grid north
Magnetic North
22°48'
Annual change decreasing 22.8'

6901000 mN

6900000 mN

351000 mE

352000 mE

**WOLVERINE MINERALS CORP.
STRATEGIC METALS LTD.**

**FIGURE 5
ARCHER, CATHRO & ASSOCIATES (1981) LIMITED
SAMPLE LOCATIONS
AAA PROPERTY**

0 500 1 Km

UTM ZONE 8, NAD 83, 1151/04

- ⊕ 2011 Sieve silt sample location
- 2010 Soil sample location
- ▲ 1969 Silt sample location
- ▼ 1974 Silt sample location
- ▲ 1974 Soil sample location
- ⊕ 1975 Silt sample location
- 1975 Soil sample location
- ★ 1980 Silt sample location

Respectfully submitted,

ARCHER, CATHRO & ASSOCIATES (1981) LIMITED

Andrew Mitchell, B.Sc. Geology

REFERENCES

- Archer, A. R. and Onasick, E.P.
 1980 NAT Joint Venture Final Report. Internal report prepared by Archer, Cathro & Associates Ltd. for Chevron Canada Limited and Armco Mineral Exploration Ltd.
- Cathro, R.J. and Culbert, R.E.
 1969 Summary report on the 1969 field program. Dawson Range Joint Venture Project, Yukon Territory.
- Cathro, R.J.
 1974 Regional Exploration in the Dawson Range District, Yukon for Klotassin Joint Venture. Internal report prepared by Archer, Cathro & Associates Ltd.
- Cathro, R.J.
 1976 1975 Regional Exploration in the Dawson Range District, Yukon for Klotassin Joint Venture. Internal report prepared by Archer, Cathro & Associates Ltd.
- Duk-Rodkin, A.
 1999 Glacial limits map of Yukon Territory. Geological Survey of Canada Geoscience Map 1999-2.
- Friske, P.W.B., Hornbrook, E.H.W., Lynch, J.J., McCurdy, M.W., Gross, H., Galletta, A.C. and Durham, C.C.
 1985 Regional stream sediment and water geochemical reconnaissance data (115I); Geological Survey of Canada, Open File 1220.
- Gordey, S.P. and Makepeace, A.J. (compilers)
 2003 Yukon digital geology, version 2.0, Geological Survey of Canada, Open File 1749 and Yukon Geological Survey, Open File 2003-9 (D).
- Smith, H.
 2011 Assessment report describing 2010 geochemical sampling on the AAA property prepared for Wolverine Mineral Corp. and Strategic Metals Ltd.
- Templeman-Kluit, D.J.
 1984 Reconnaissance Geology of Lake Laverge (105E) and Carmacks (115I), Yukon Territory. Geological Survey of Canada Open File 1101.

APPENDIX I
STATEMENT OF QUALIFICATIONS

STATEMENT OF QUALIFICATIONS

I, Andrew Mitchell, geologist, with business addresses in Whitehorse, Yukon Territory and Vancouver, British Columbia and residential address in Vancouver, British Columbia, hereby certify that:

1. I graduated from the University of British Columbia in 2010 with a B.Sc. in Earth and Environmental Sciences.
2. From 2010 to present, I have been actively engaged in mineral exploration in Yukon Territory.
3. I have interpreted all data resulting from this work.

Andrew Mitchell, B.Sc. Geology

APPENDIX II
CERTIFICATE OF ANALYSIS



1020 Cordova St. East Vancouver BC V6A 4A3 Canada

Acme Analytical Laboratories (Vancouver) Ltd.

www.acmelab.com

Client: Archer, Cathro & Assoc. (1981) Ltd.
1016 - 510 W. Hastings St.
Vancouver BC V6B 1L8 Canada

Submitted By: Joan Mariacher
Receiving Lab: Canada-Whitehorse
Received: August 09, 2011
Report Date: September 10, 2011
Page: 1 of 2

CERTIFICATE OF ANALYSIS

WHI11001028.1

CLIENT JOB INFORMATION

Project: AAA
Shipment ID:
P.O. Number
Number of Samples: 8

SAMPLE DISPOSAL

STOR-PLP Store After 90 days Invoice for Storage
DISP-RJT-SOIL Immediate Disposal of Soil Reject

Acme does not accept responsibility for samples left at the laboratory after 90 days without prior written instructions for sample storage or return.

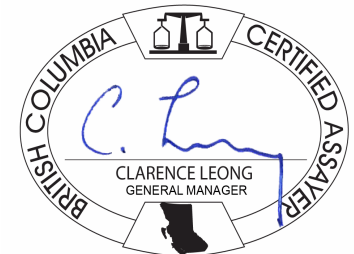
Invoice To: Archer, Cathro & Assoc. (1981) Ltd.
1016 - 510 W. Hastings St.
Vancouver BC V6B 1L8
Canada

CC: Heather Smith

SAMPLE PREPARATION AND ANALYTICAL PROCEDURES

Method Code	Number of Samples	Code Description	Test Wgt (g)	Report Status	Lab
Dry at 60C	8	Dry at 60C			WHI
SS80	8	Dry at 60C sieve 100g to -80 mesh			WHI
1F03	8	1:1:1 Aqua Regia digestion Ultratrace ICP-MS analysis	30	Completed	VAN

ADDITIONAL COMMENTS



This report supersedes all previous preliminary and final reports with this file number dated prior to the date on this certificate. Signature indicates final approval; preliminary reports are unsigned and should be used for reference only. All results are considered the confidential property of the client. Acme assumes the liabilities for actual cost of analysis only. Results apply to samples as submitted. ** asterisk indicates that an analytical result could not be provided due to unusually high levels of interference from other elements.



Acme Analytical Laboratories (Vancouver) Ltd.
 1020 Cordova St. East Vancouver BC V6A 4A3 Canada
 Phone (604) 253-3158 Fax (604) 253-1716

www.acmelab.com

Client: **Archer, Cathro & Assoc. (1981) Ltd.**
 1016 - 510 W. Hastings St.
 Vancouver BC V6B 1L8 Canada

Project: AAA
 Report Date: September 10, 2011

Page: 2 of 2 Part 1

CERTIFICATE OF ANALYSIS

WHI11001028.1

Method	1F30	1F30	1F30	1F30	1F30	1F30	1F30	1F30	1F30	1F30	1F30	1F30	1F30	1F30	1F30	1F30	1F30	1F30	1F30	1F30	
Analyte	Mo	Cu	Pb	Zn	Ag	Ni	Co	Mn	Fe	As	U	Au	Th	Sr	Cd	Sb	Bi	V	Ca	P	
Unit	ppm	ppm	ppm	ppm	ppb	ppm	ppm	ppm	%	ppm	ppm	ppb	ppm	ppm	ppm	ppm	ppm	ppm	%	%	
MDL	0.01	0.01	0.01	0.1	2	0.1	0.1	1	0.01	0.1	0.1	0.2	0.1	0.5	0.01	0.02	0.02	2	0.01	0.001	
50049	Soil	0.26	9.99	5.34	50.1	47	11.4	7.6	344	2.22	3.7	1.2	7.6	2.1	50.6	0.22	0.33	0.16	71	0.43	0.068
50050	Soil	0.44	16.01	6.90	57.2	67	17.8	9.2	450	2.31	5.7	1.0	1.5	2.2	72.4	0.29	0.53	0.36	65	0.57	0.066
50051	Soil	0.25	10.18	5.06	46.0	45	9.7	7.3	225	2.17	3.5	0.7	1.0	2.4	50.3	0.15	0.42	0.18	68	0.41	0.063
50052	Soil	0.32	16.00	6.00	49.7	60	12.2	8.4	313	2.03	4.7	0.9	1.9	2.4	64.6	0.20	0.50	0.20	57	0.49	0.061
50053	Soil	0.30	12.61	4.87	48.4	47	11.1	8.0	300	2.38	4.1	0.7	6.3	2.0	48.5	0.17	0.50	0.20	78	0.42	0.066
50054	Soil	0.24	8.97	4.11	44.6	31	8.9	7.1	230	2.26	3.1	0.6	1.7	2.2	42.1	0.12	0.42	0.16	73	0.36	0.062
50055	Soil	0.32	12.51	4.60	40.7	44	10.0	6.9	270	1.86	4.3	0.9	0.7	1.8	50.4	0.17	0.43	0.15	57	0.39	0.062
50056	Soil	0.22	10.27	3.09	38.9	32	7.2	6.9	199	2.06	2.9	0.7	13.4	1.6	41.1	0.10	0.30	0.31	70	0.39	0.077



Acme Analytical Laboratories (Vancouver) Ltd.
 1020 Cordova St. East Vancouver BC V6A 4A3 Canada
 Phone (604) 253-3158 Fax (604) 253-1716

www.acmelab.com

Client: **Archer, Cathro & Assoc. (1981) Ltd.**
 1016 - 510 W. Hastings St.
 Vancouver BC V6B 1L8 Canada

Project: AAA
 Report Date: September 10, 2011

Page: 2 of 2 Part 2

CERTIFICATE OF ANALYSIS

WHI11001028.1

	Method	1F30																	
		Analyte	La	Cr	Mg	Ba	Ti	B	Al	Na	K	W	Sc	Tl	S	Hg	Se	Te	Ga
		Unit	ppm	ppm	%	ppm	%	ppm	%	%	%	ppm	ppm	ppm	%	ppb	ppm	ppm	ppm
		MDL	0.5	0.5	0.01	0.5	0.001	1	0.01	0.001	0.01	0.1	0.1	0.02	0.02	5	0.1	0.02	0.1
50049	Soil	10.5	16.9	0.38	78.8	0.084	<1	0.86	0.027	0.07	0.3	1.9	0.07	0.03	24	<0.1	0.02	3.5	
50050	Soil	12.5	25.5	0.46	104.9	0.076	<1	0.99	0.031	0.08	0.3	2.6	0.08	0.03	31	0.2	<0.02	4.0	
50051	Soil	10.5	15.6	0.36	75.5	0.084	<1	0.87	0.029	0.07	0.3	1.9	0.06	0.02	20	<0.1	<0.02	3.4	
50052	Soil	11.9	19.3	0.46	100.5	0.074	<1	1.05	0.032	0.08	0.2	2.4	0.09	0.03	24	0.2	<0.02	3.8	
50053	Soil	10.0	16.7	0.36	81.4	0.091	<1	0.85	0.028	0.07	0.2	2.0	0.06	0.02	21	0.2	<0.02	3.8	
50054	Soil	9.7	15.3	0.33	69.4	0.087	<1	0.77	0.027	0.07	0.4	1.6	0.05	<0.02	17	0.1	<0.02	3.4	
50055	Soil	8.8	15.7	0.36	76.9	0.065	<1	0.82	0.029	0.07	0.1	1.9	0.06	0.02	16	0.1	<0.02	3.2	
50056	Soil	8.0	11.7	0.27	61.2	0.091	<1	0.65	0.028	0.05	0.2	1.3	0.04	<0.02	8	<0.1	<0.02	3.1	



Acme Analytical Laboratories (Vancouver) Ltd.

1020 Cordova St. East Vancouver BC V6A 4A3 Canada

Phone (604) 253-3158 Fax (604) 253-1716

www.acmelab.com

Client: **Archer, Cathro & Assoc. (1981) Ltd.**

1016 - 510 W. Hastings St.

Vancouver BC V6B 1L8 Canada

Project: AAA

Report Date: September 10, 2011

Page: 1 of 1 Part 1

QUALITY CONTROL REPORT

WHI11001028.1

Method	1F30	1F30	1F30	1F30	1F30	1F30	1F30	1F30	1F30	1F30	1F30	1F30	1F30	1F30	1F30	1F30	1F30	1F30	1F30	1F30		
Analyte	Mo	Cu	Pb	Zn	Ag	Ni	Co	Mn	Fe	As	U	Au	Th	Sr	Cd	Sb	Bi	V	Ca	P		
Unit	ppm	ppm	ppm	ppm	ppb	ppm	ppm	ppm	%	ppm	ppm	ppb	ppm	ppm	ppm	ppm	ppm	ppm	%	%		
MDL	0.01	0.01	0.01	0.1	2	0.1	0.1	1	0.01	0.1	0.1	0.2	0.1	0.5	0.01	0.02	0.02	2	0.01	0.001		
Pulp Duplicates																						
50051	Soil	0.25	10.18	5.06	46.0	45	9.7	7.3	225	2.17	3.5	0.7	1.0	2.4	50.3	0.15	0.42	0.18	68	0.41	0.063	
REP 50051	QC	0.27	11.22	5.49	47.2	47	11.5	7.9	247	2.27	4.0	0.8	0.7	2.6	51.3	0.15	0.46	0.29	68	0.43	0.065	
Reference Materials																						
STD DS8	Standard	13.17	120.7	118.9	314.0	1700	36.8	7.4	596	2.43	28.2	2.8	106.6	7.0	70.3	2.59	4.72	6.83	42	0.73	0.080	
STD DS8 Expected		13.44	110	123	312	1690	38.1	7.5	615	2.46	26	2.8	107	6.89	67.7	2.38	5.7	6.67	41.1	0.7	0.08	
BLK	Blank	<0.01	<0.01	<0.01	<0.1	<2	<0.1	<0.1	<1	<0.01	<0.1	<0.1	<0.1	<0.2	<0.1	<0.5	<0.01	<0.02	<0.02	<2	<0.01	<0.001



Acme Analytical Laboratories (Vancouver) Ltd.

1020 Cordova St. East Vancouver BC V6A 4A3 Canada

Phone (604) 253-3158 Fax (604) 253-1716

www.acmelab.com

Client: **Archer, Cathro & Assoc. (1981) Ltd.**

1016 - 510 W. Hastings St.

Vancouver BC V6B 1L8 Canada

Project: AAA

Report Date: September 10, 2011

Page: 1 of 1 Part 2

QUALITY CONTROL REPORT

WHI11001028.1

Method		1F30	1F30	1F30	1F30	1F30	1F30	1F30	1F30	1F30	1F30	1F30	1F30	1F30	1F30	1F30	1F30	
Analyte		La	Cr	Mg	Ba	Ti	B	Al	Na	K	W	Sc	Tl	S	Hg	Se	Te	Ga
Unit		ppm	ppm	%	ppm	%	ppm	%	%	%	ppm	ppm	ppm	%	ppb	ppm	ppm	ppm
MDL		0.5	0.5	0.01	0.5	0.001	1	0.01	0.001	0.01	0.1	0.1	0.02	0.02	5	0.1	0.02	0.1
Pulp Duplicates																		
50051	Soil	10.5	15.6	0.36	75.5	0.084	<1	0.87	0.029	0.07	0.3	1.9	0.06	0.02	20	<0.1	<0.02	3.4
REP 50051	QC	10.9	17.5	0.39	80.2	0.087	<1	0.87	0.028	0.07	0.5	2.0	0.06	0.02	17	0.1	<0.02	3.8
Reference Materials																		
STD DS8	Standard	15.5	117.5	0.62	288.0	0.120	2	0.95	0.094	0.43	2.8	2.2	5.00	0.17	193	4.7	4.82	4.5
STD DS8 Expected		14.6	115	0.6045	279	0.113	2.6	0.93	0.0883	0.41	3	2.3	5.4	0.1679	192	5.23	5	4.7
BLK	Blank	<0.5	<0.5	<0.01	<0.5	<0.001	<1	<0.01	<0.001	<0.01	<0.1	<0.1	<0.02	<0.02	<5	<0.1	<0.02	<0.1

Q28787

ARCHER, CATHRO & ASSOCIATES (1981) LIMITED
1016 – 510 West Hastings Street
Vancouver, B.C. V6B 1L8

Telephone: 604-688-2568

Fax: 604-688-2578

AFFIDAVIT

I, Joan Mariacher, of Vancouver, B.C. make oath and say:

That to the best of my knowledge the attached Statement of Expenditures for exploration work on the AAA 1-28 mineral claims on Claim Sheet 115I/4 is accurate.




Joan Mariacher

Sworn before me at Vancouver, B.C.

this 19th day of April 2011.


Barrister & Solicitor

IAN J. TALBOT
Barrister & Solicitor
281 East 5th Street
North Vancouver
British Columbia
Canada V7L 1L0

Statement of Expenditures
AAA 1-28 Mineral Claims
April 15, 2011

Labour

H. Smith (geologist) September to December 2010 – 4 1/2 hrs @ \$75/hr	\$ 378.00
January to April 2011 – 13 hrs @ \$90/hr	1,310.40
C. Chung (geologist) September to December 2010 – 3 hrs @ \$75/hr	252.00
T. Epp (field assistant) June 2010 – 1 day @ \$328/day	367.36
B. Alladice (field assistant) June 2010 – 1 day @ \$304/day	340.48
C. Beck (field assistant) June 2010 – 1 day @ \$304/day	340.48
	<u>2,988.72</u>

Expenses

Field room and board – 3 mandays @ \$125/manday	420.00
Capital Helicopters	1,091.96
ALS Chemex	1,148.07
	<u>2,660.03</u>
 Total	 <u>\$5,648.75</u>



CAPITAL HELICOPTERS (1995) INC.

Suite 3 - 25 Pilgrim Place, Whitehorse, Y.T. Y1A 6E6
 Phone: (867) 668-6200 Fax: (867) 668-6201
 capitalheli@polarcom.com



Charter and Contract Service

INVOICE

NO. 11327

DATE 30/06/2010

PAGE 1 of 1

SOLD TO

Archer Cathro
 Suite 1016, 510 West Hastings
 Vancouver, B. C. V6B 1L8

SHIP TO

Archer Cathro
 Suite 1016, 510 West Hastings
 Vancouver, B. C. V6B 1L8

ITEM NO.	QUANTITY	UNIT	DESCRIPTION	GST	PST	UNIT PRICE	AMOUNT	
June 26	2.6	hrs	YXY-Split ferry s/o Taylor p/u Nisling R area <i>666</i>	G		1,025.00	2,665.00	
June 27	1.0	hrs	YXY-Nansen-Klaza crk-AAA-s/o and p/u	G		1,025.00	1,025.00	
June 28	2.0	hrs	Nansen-s/o Taylor-p/u-FFF	G		1,025.00	2,050.00	
June 29	0.8	hrs	Nansen-s/o Taylor-p/u-DDD	G		1,025.00	820.00	
	<i>6.4</i>	ltrs	fuel@YXY	G		1.40	95.76	
			G - GST 5.00%				<i>6655.76</i>	
			GST				332.79	
Capital Helicopters (1995) Inc. GST #899587984								
Thank You! Your Business Is Appreciated! Fuel Price includes Federal and Yukon Tax							TOTAL	6,988.55

COMMENTS

A (AAA - 1091.96)
 DDD - 873.57
 FFF - 2183.92
 GGG - 2839.10

Kletnim - 6655.76





ALS Chemex

EXCELLENCE IN ANALYTICAL CHEMISTRY

ALS Canada Ltd.

2103 Dollarton Hwy
North Vancouver BC V7H 0A7

Phone: 604 984 0221 Fax: 604 984 0218 www.alschemex.com

To: STRATEGIC METALS LTD.
C/O ARCHER, CATHRO & ASSOCIATES (1981) LIMITED
1016-510 W HASTINGS ST
VANCOUVER BC V6B 1L8

INVOICE NUMBER 2103520

BILLING INFORMATION

Certificate: **VA10091011**
Sample Type: **Soil**
Account: **MTT**
Date: **14-JUL-2010**
Project: **Klatassin**
P.O. No.: **AAA**
Quote: **ALSM-CW10-010-F**
Terms: **Net 30 Days** C1
Comments:

ANALYSED FOR

QUANTITY	CODE	DESCRIPTION	UNIT PRICE	TOTAL
52	PREP-41	Dry, Sieve (180 um) Soil	0.96	49.92
9.32	PREP-41	Weight Charge (kg) - Dry, Sieve (180 um) Soil	1.80	16.78
52	Au-ICP21	Au 30g FA ICP-AES Finish	11.06	575.12
52	ME-ICP41	35 Element Aqua Regia ICP-AES	4.92	255.84
52	GEO-AR01	Aqua regia digestion	2.45	127.40

*Klatassin
NAD*

SUBTOTAL (CAD) \$ 1,025.06

R100938885 HST BC \$ 123.01

TOTAL PAYABLE (CAD) \$ 1,148.07

To: **STRATEGIC METALS LTD.**
ATTN: JOAN MARIACHER
C/O ARCHER, CATHRO & ASSOCIATES (1981) LIMITED
1016-510 W HASTINGS ST
VANCOUVER BC V6B 1L8

Payment may be made by: Cheque or Bank Transfer

Beneficiary Name: ALS Canada Ltd.
Bank: Royal Bank of Canada
SWIFT: ROYCCAT2
Address: Vancouver, BC, CAN
Account: 003-00010-1001098

Please Remit Payments To :

ALS Canada Ltd.

2103 Dollarton Hwy
North Vancouver BC V7H 0A7

