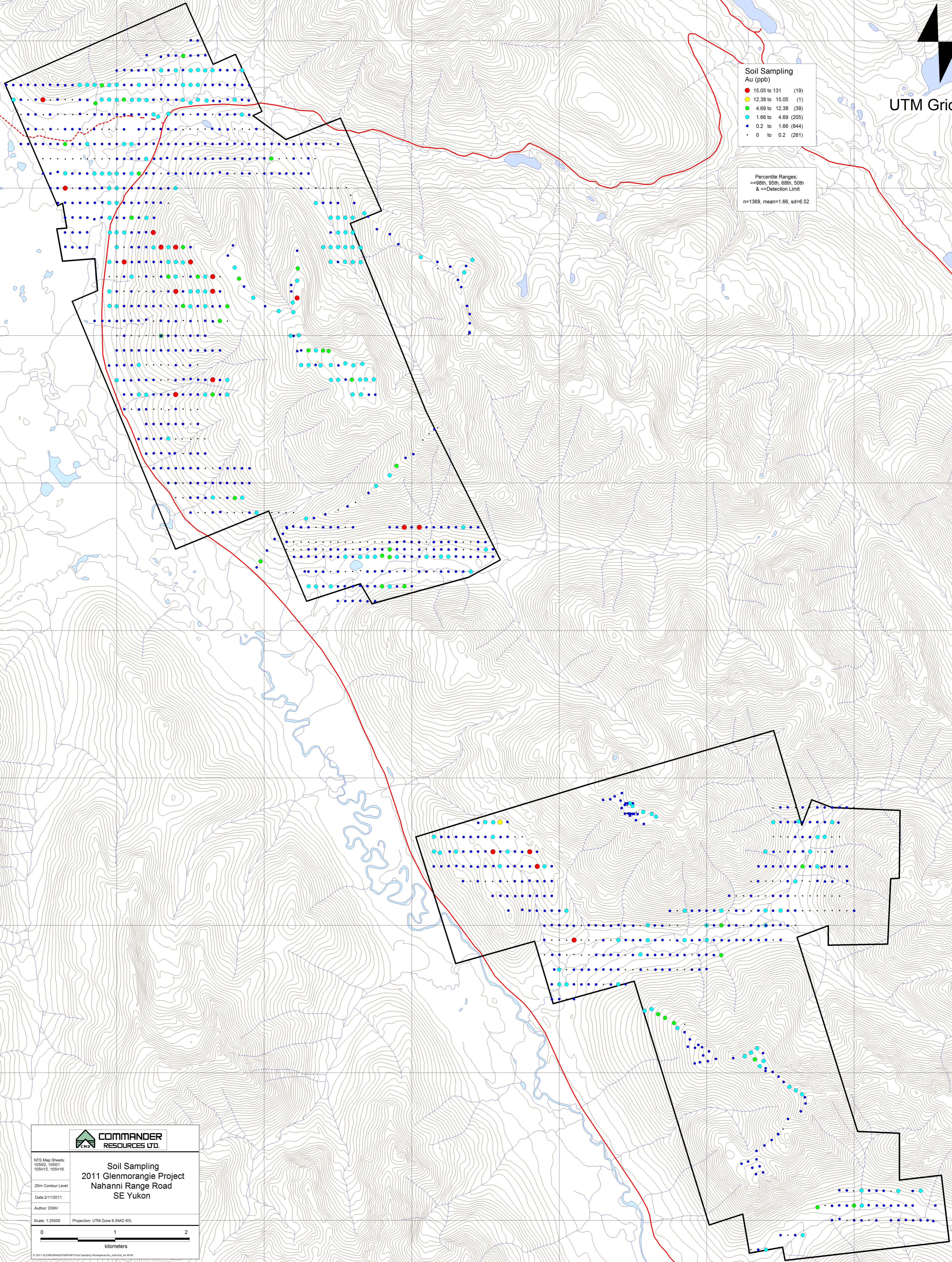


UTM Grid North

Soil Sampling Au (ppb)	
15.05 to 131	(19)
12.38 to 15.05	(1)
4.69 to 12.38	(39)
1.66 to 4.69	(205)
0.2 to 1.66	(844)
0 to 0.2	(261)

Percentile Ranges:  
>=98th, 95th, 68th, 50th  
& <=Detection Limit  
n=1369, mean=1.66, sd=6.52



NTS Map Sheets:  
10502, 10501  
105415, 105416

20m Contour Level

Date: 2/11/2011

Author: DWH

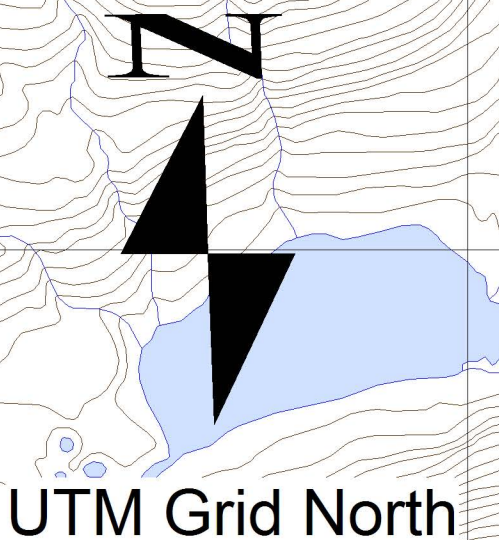
Scale: 1:25000

Projection: UTM Zone 9 (NAD 83)

0 1 2  
kilometers

© 2011 SLEBROOKSIDE INTERIOR CONSULTING PHOTOGRAPHY, INC. AND THE AUTHOR

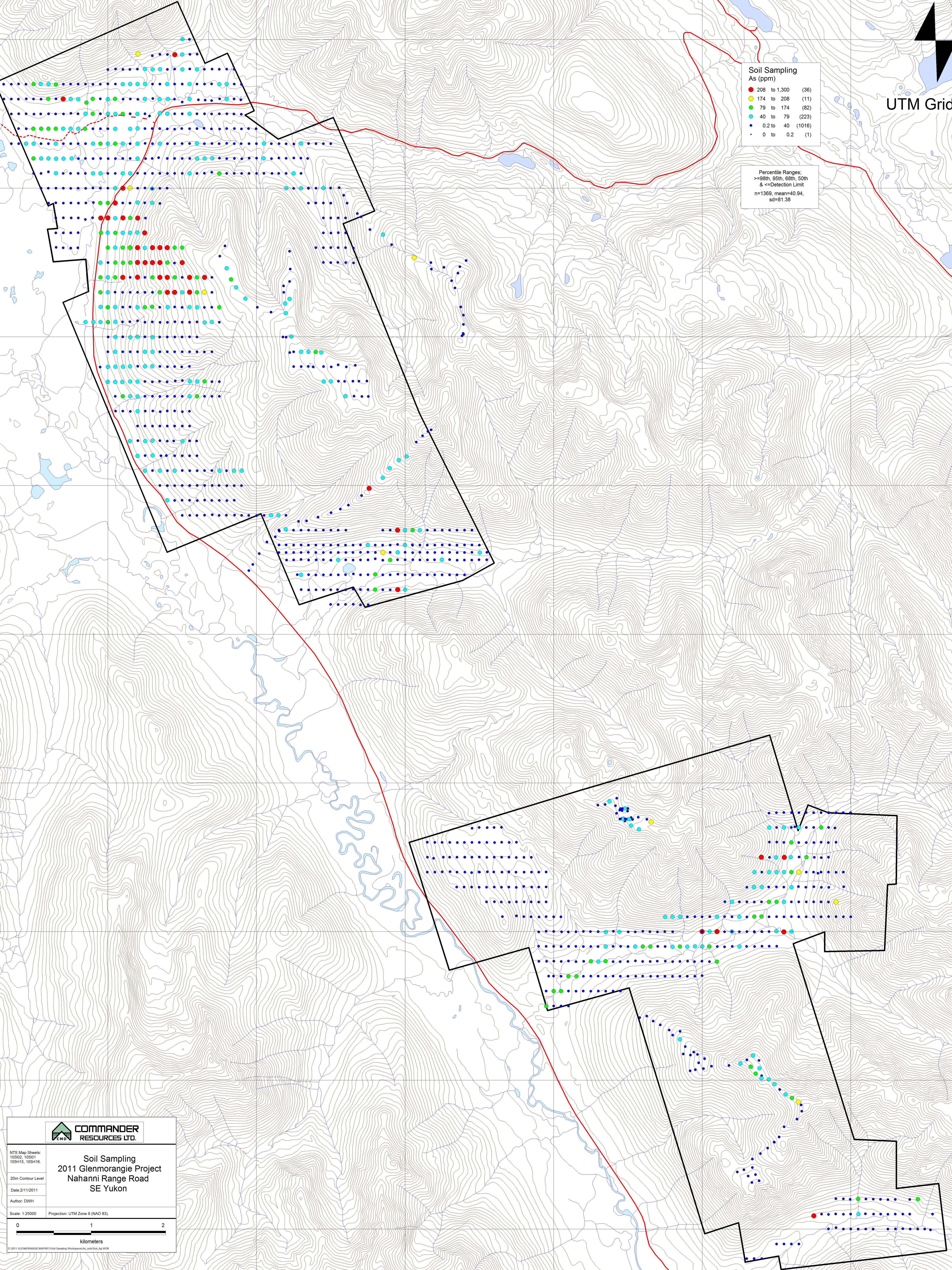
Map 1. Au Soil Results



Soil Sampling  
As (ppm)

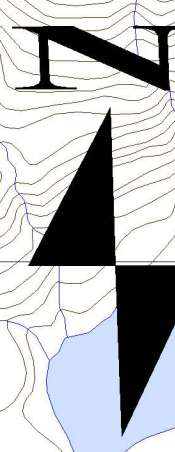
● 208 to 1,300	(36)
● 174 to 208	(11)
● 79 to 174	(82)
● 40 to 79	(223)
● 0.2 to 40	(1016)
● 0 to 0.2	(1)

Percentile Ranges:  
=>98th, 95th, 68th, 50th  
& <=Detection Limit  
n=1369, mean=40.94,  
sd=81.38



Soil Sampling 2011 Glenmorangie Project Nahanni Range Road SE Yukon	
NTS Map Sheets: 105H2, 105H1 105H15, 105H16	Author: DWH
20m Contour Level	Scale: 1:25000
Date: 2/11/2011	Projection: UTM Zone 9 (NAD 83)
0 1 2 kilometers	
© 2011 GLENMORANGIE WHISKY DISTILLERS ASSOCIATION, LIMITED. ALL RIGHTS RESERVED.	

**Map 2. As Soil Results**

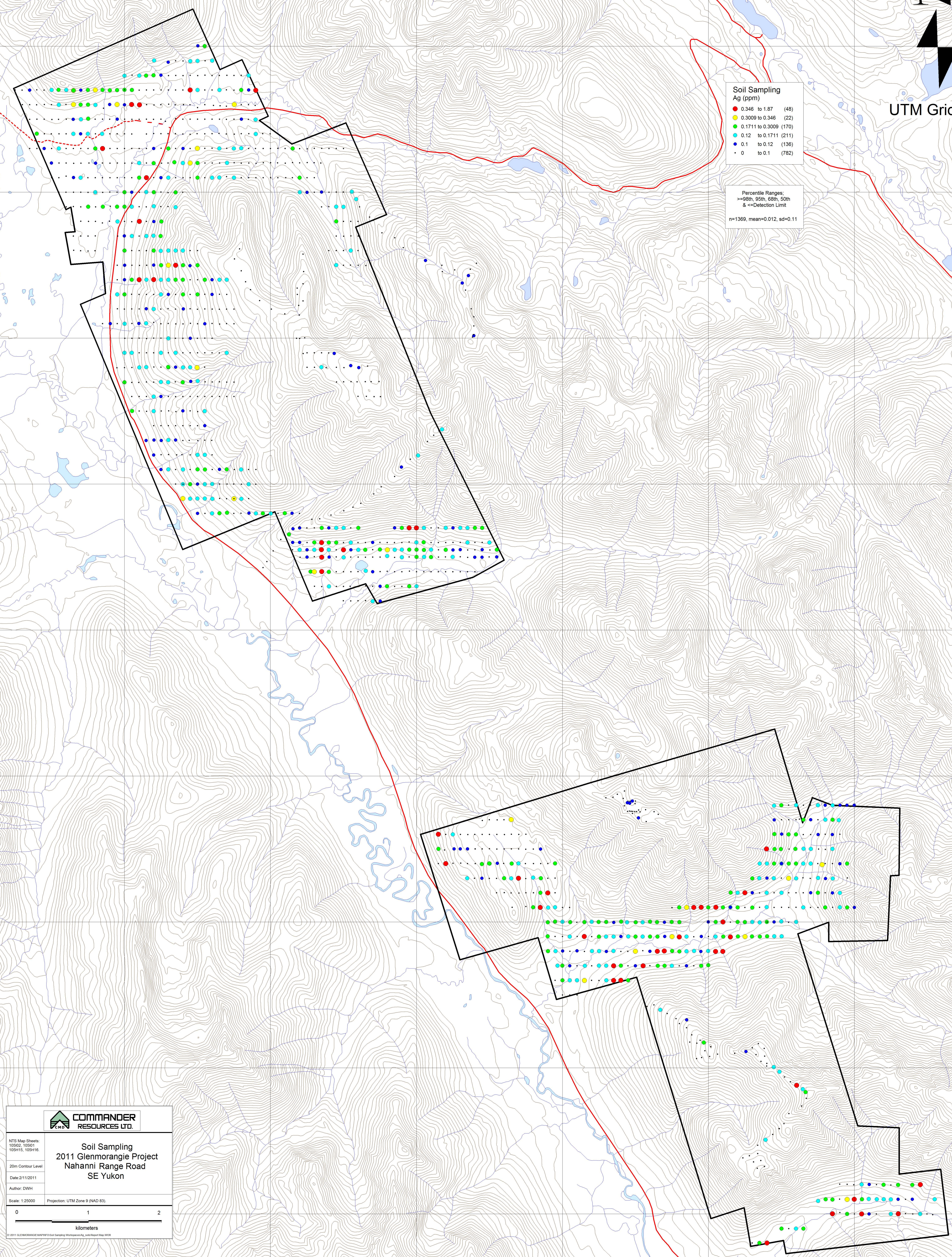


UTM Grid North

Soil Sampling  
Ag (ppm)

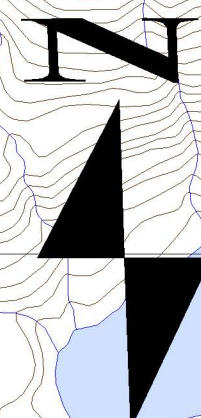
● 0.346 to 1.87	(48)
● 0.3009 to 0.346	(22)
● 0.1711 to 0.3009	(170)
● 0.12 to 0.1711	(211)
● 0.1 to 0.12	(136)
● 0 to 0.1	(782)

Percentile Ranges:  
>=98th, 95th, 68th, 50th  
& <=Detection Limit  
n=1369, mean=0.012, sd=0.11



Soil Sampling 2011 Glenmorangie Project Nahanni Range Road SE Yukon	
NTS Map Sheets: 10502, 10501 105115, 105116	20m Contour Level
Date: 2/11/2011	Author: DWH
Scale: 1:25000	Projection: UTM Zone 9 (NAD 83)
© 2011 GLENMORANGIE DISTRICT Soil Sampling Project. All Rights Reserved.	

Map 3. Ag Soil Results



UTM Grid North

Soil Sampling  
Cu (ppm)

78.5 to 407	(37)
68.4 to 78.5	(19)
39.4 to 68.4	(181)
28 to 39.4	(282)
0.2 to 28	(850)
0 to 0.2	(0)

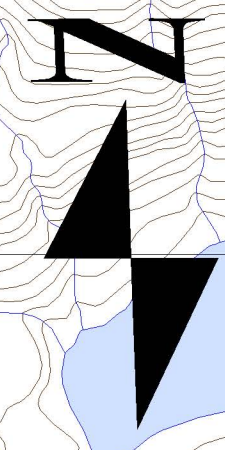
Percentile Ranges:  
=>98th, 95th, 68th, 50th  
& <=Detection Limit  
n=1369, mean=28.07,  
sd=24.56

Soil Sampling 2011 Glenmorangie Project Nahanni Range Road SE Yukon	
NTS Map Sheets: 10502, 10501 10515, 10516	20m Contour Level
Date: 2/11/2011	Author: DWH
Scale: 1:25000	Projection: UTM Zone 9 (NAD 83)
<small>0111 GLENMORANGIE 2011 Soil Sampling Map.mxd, 10/11/2011, 10:00 AM</small>	

Map 4. Cu Soil Results

6878000 mN  
6876000 mN  
6874000 mN  
6872000 mN  
6870000 mN  
6868000 mN  
6866000 mN  
6864000 mN  
6862000 mN  
6860000 mN

524000 mE  
526000 mE  
528000 mE  
530000 mE  
532000 mE  
534000 mE  
536000 mE  
538000 mE

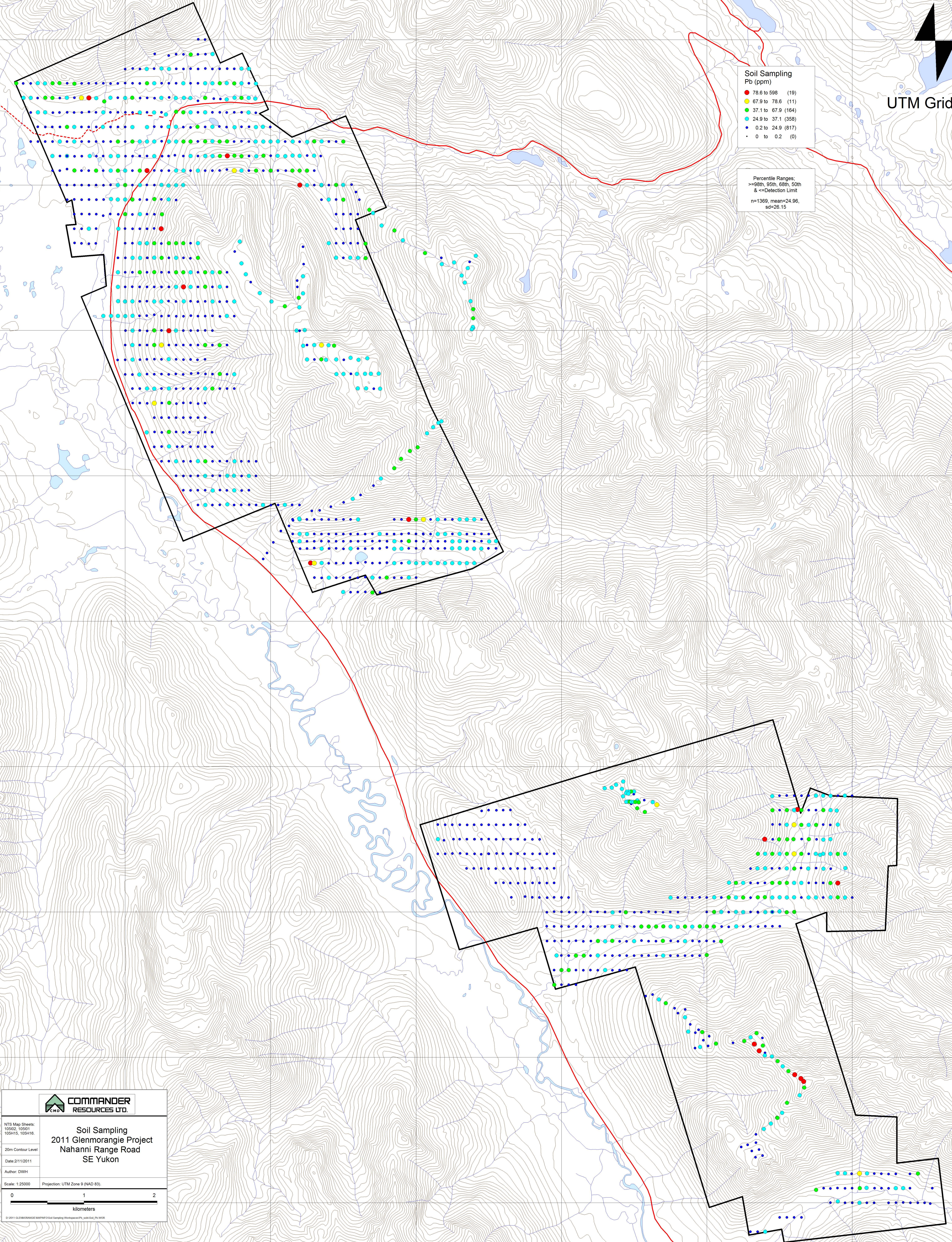


UTM Grid North

Soil Sampling  
Pb (ppm)

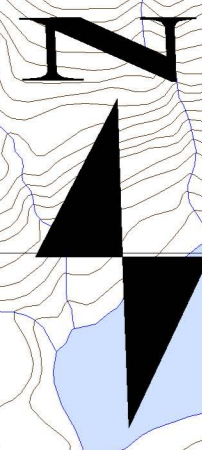
78.6 to 598	(19)
67.9 to 78.6	(11)
37.1 to 67.9	(164)
24.9 to 37.1	(358)
0.2 to 24.9	(817)
0 to 0.2	(0)

Percentile Ranges:  
>=98th, 95th, 68th, 50th  
& <=Detection Limit  
n=1369, mean=24.96,  
sd=26.15



Soil Sampling 2011 Glenmorangie Project Nahanni Range Road SE Yukon	
NTS Map Sheets: 10092, 10091 100415, 100416	
20m Contour Level	
Date: 2/11/2011	
Author: DWH	
Scale: 1:25000	Projection: UTM Zone 9 (NAD 83)
© 2011 Commander Resources Ltd. All Rights Reserved.	

Map 5. Pb Soil Results

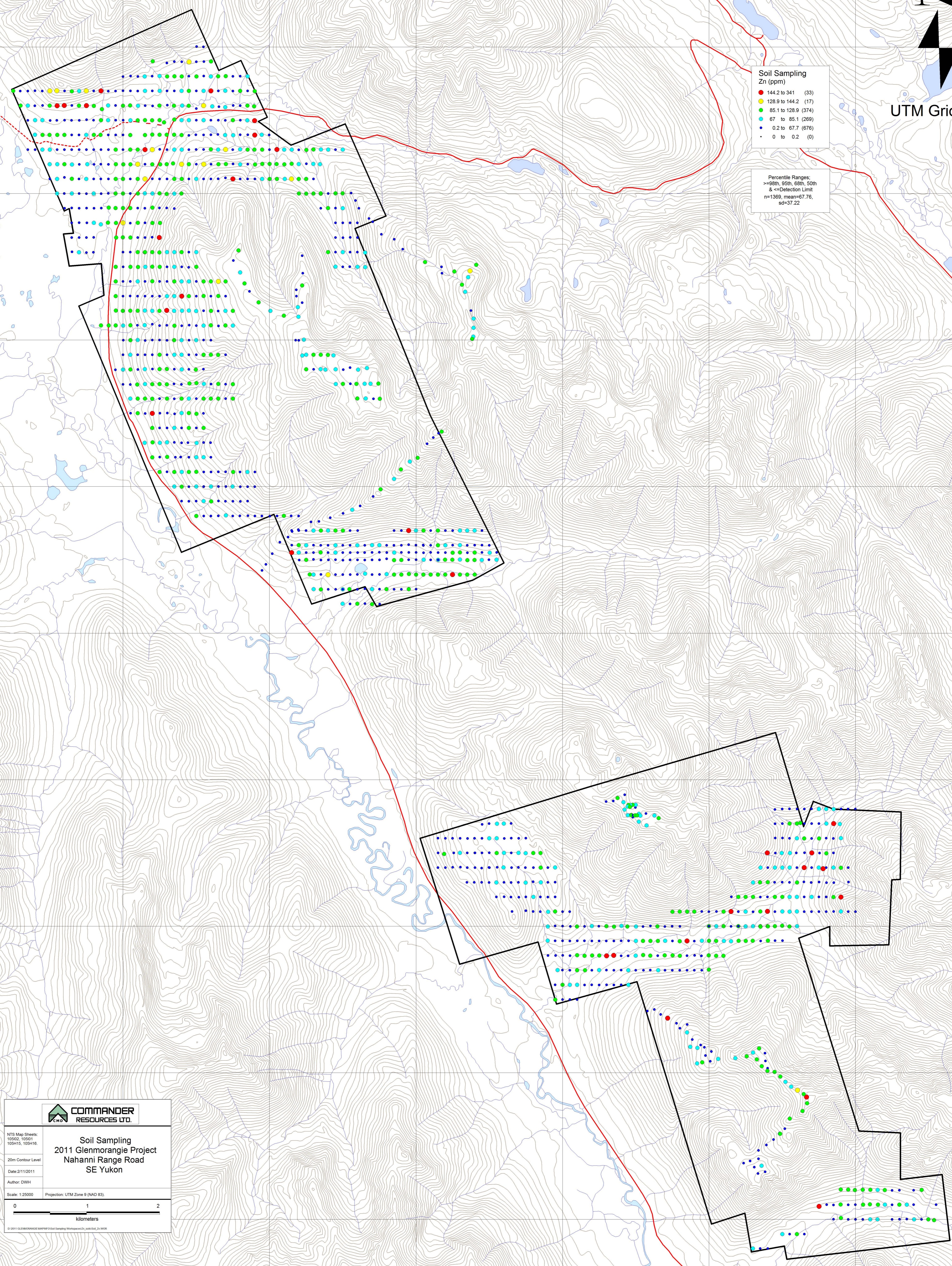



UTM Grid North

**Soil Sampling  
Zn (ppm)**

- 144.2 to 341 (33)
- 128.9 to 144.2 (17)
- 85.1 to 128.9 (374)
- 67 to 85.1 (289)
- 0.2 to 67.7 (676)
- 0 to 0.2 (0)

**Percentile Ranges:**  
->=98th, 95th, 68th, 50th  
& <= Detection Limit  
n=1560, mean=67.76, sd=37.22



 **COMMANDER  
RESOURCES LTD.**

NTS Map Sheets:  
10502, 10501  
10515, 10516

**Soil Sampling  
2011 Glenmorangie Project  
Nahanni Range Road  
SE Yukon**

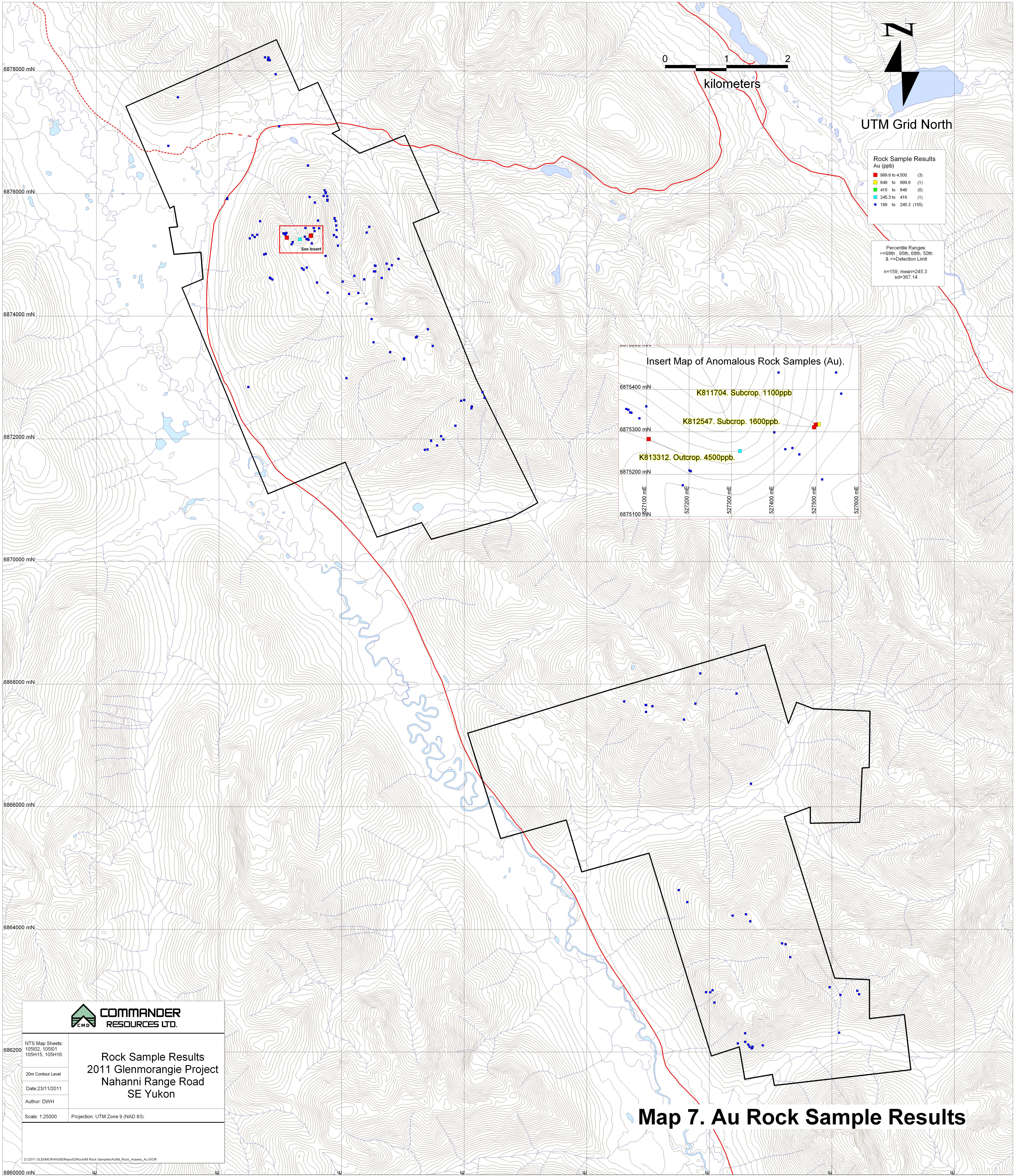
Date: 2/11/2011  
Author: DWH

Scale: 1:25000 Projection: UTM Zone 9 (NAD 83)

0 1 2  
kilometers

© 2011 GLENMORANGIE PROJECT SOIL SAMPLING WORKSHEET 20110212\_01.XDR

**Map 6. Zn Soil Results**

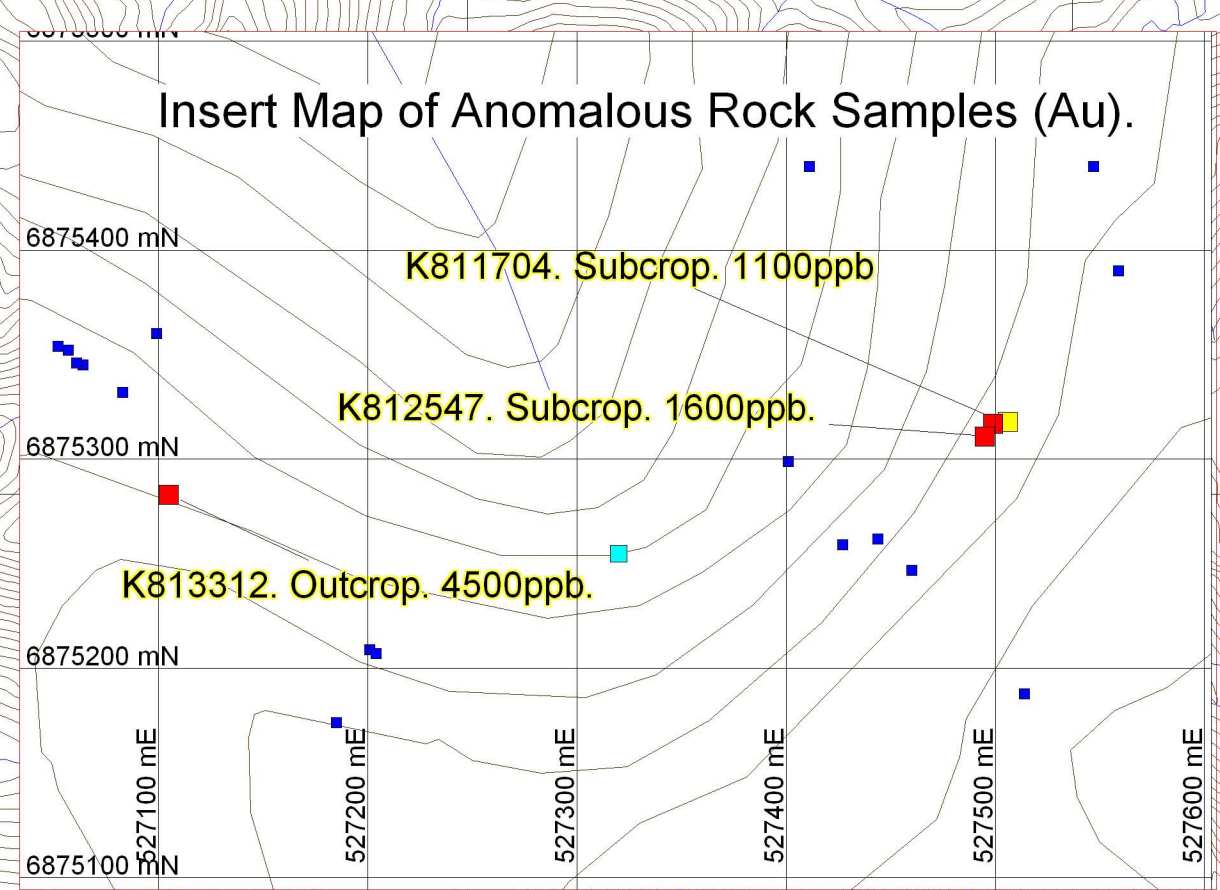


UTM Grid North

**Rock Sample Results Au (ppb)**

999.6 to 4,500	(3)
849 to 999.6	(1)
416 to 849	(0)
245.3 to 416	(1)
199 to 245.3	(159)

**Percentile Ranges:**  
 >=98th, 95th, 68th, 50th & <=Detection Limit  
 n=159, mean=245.3  
 sd=367.14



**COMMANDER RESOURCES LTD.**

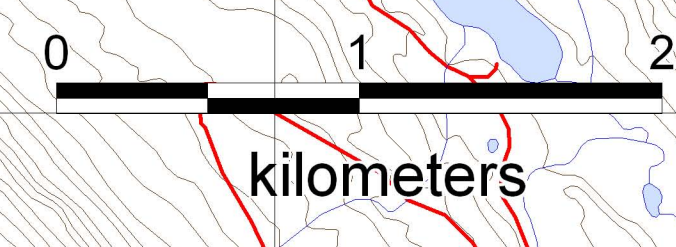
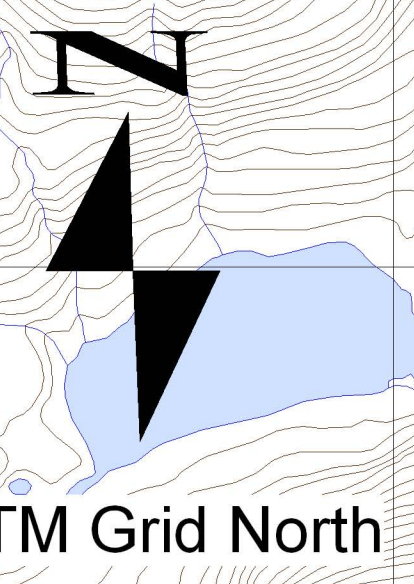
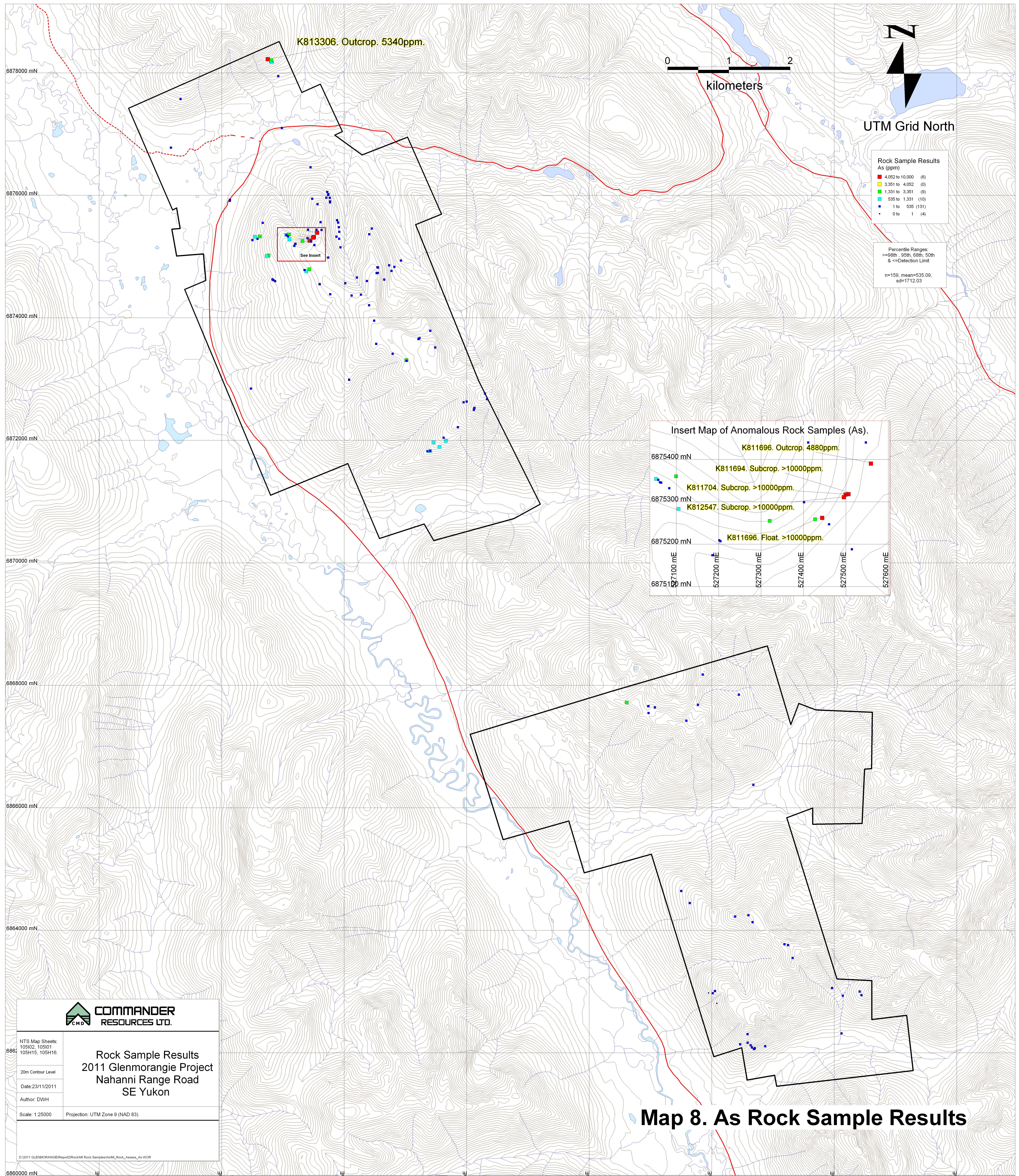
NTS Map Sheets:  
 105I02, 105I01  
 105H15, 105H16.

**Rock Sample Results  
 2011 Glenmorangie Project  
 Nahanni Range Road  
 SE Yukon**

20m Contour Level  
 Date: 23/11/2011  
 Author: DWH  
 Scale: 1:25000 Projection: UTM Zone 9 (NAD 83)

D:\2011 GLENMORANGIE\Report\Rock\Rock Samples\Au\MI\_Rock\_Assess\_Au.WOR

**Map 7. Au Rock Sample Results**



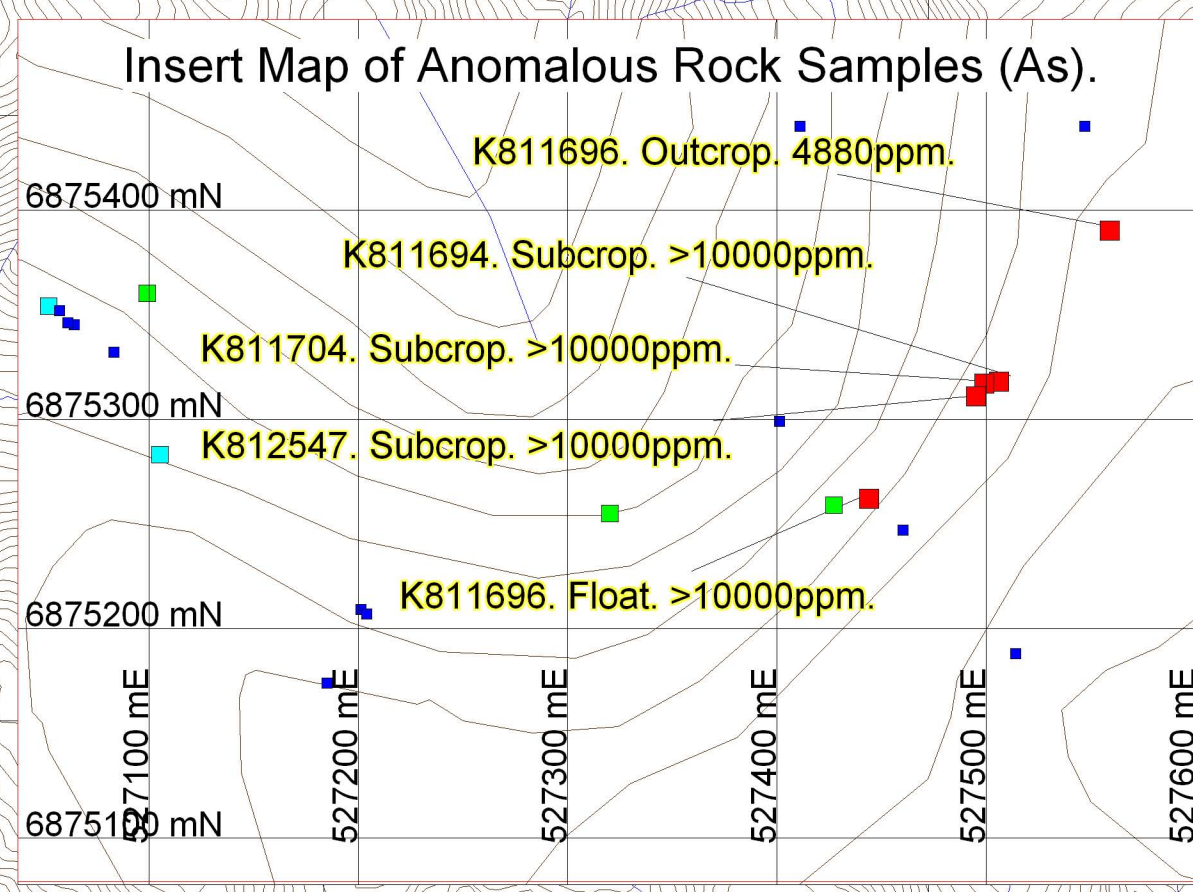
**Rock Sample Results As (ppm)**

4,052 to 10,000	(6)
3,351 to 4,052	(0)
1,331 to 3,351	(9)
535 to 1,331	(10)
1 to 535	(131)
0 to 1	(4)

Percentile Ranges:  
 >=95th, 50th, 50th, 50th  
 & <=Detection Limit  
 n=159, mean=535.09,  
 sd=1712.03

K813306. Outcrop. 5340ppm.

See Insert



**COMMANDER  
RESOURCES LTD.**

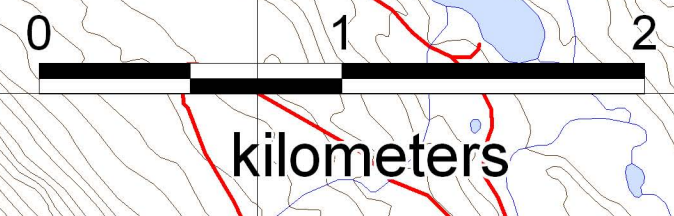
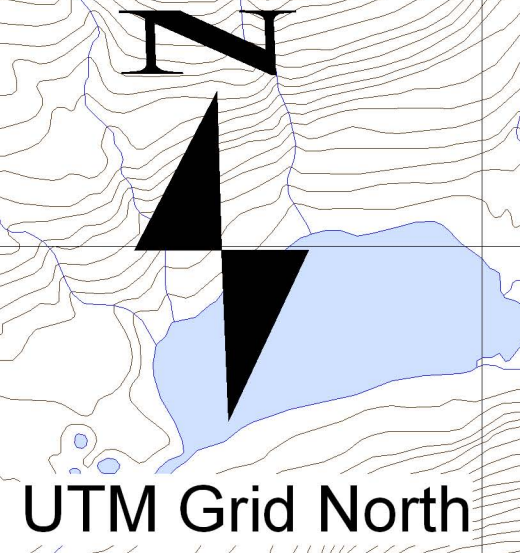
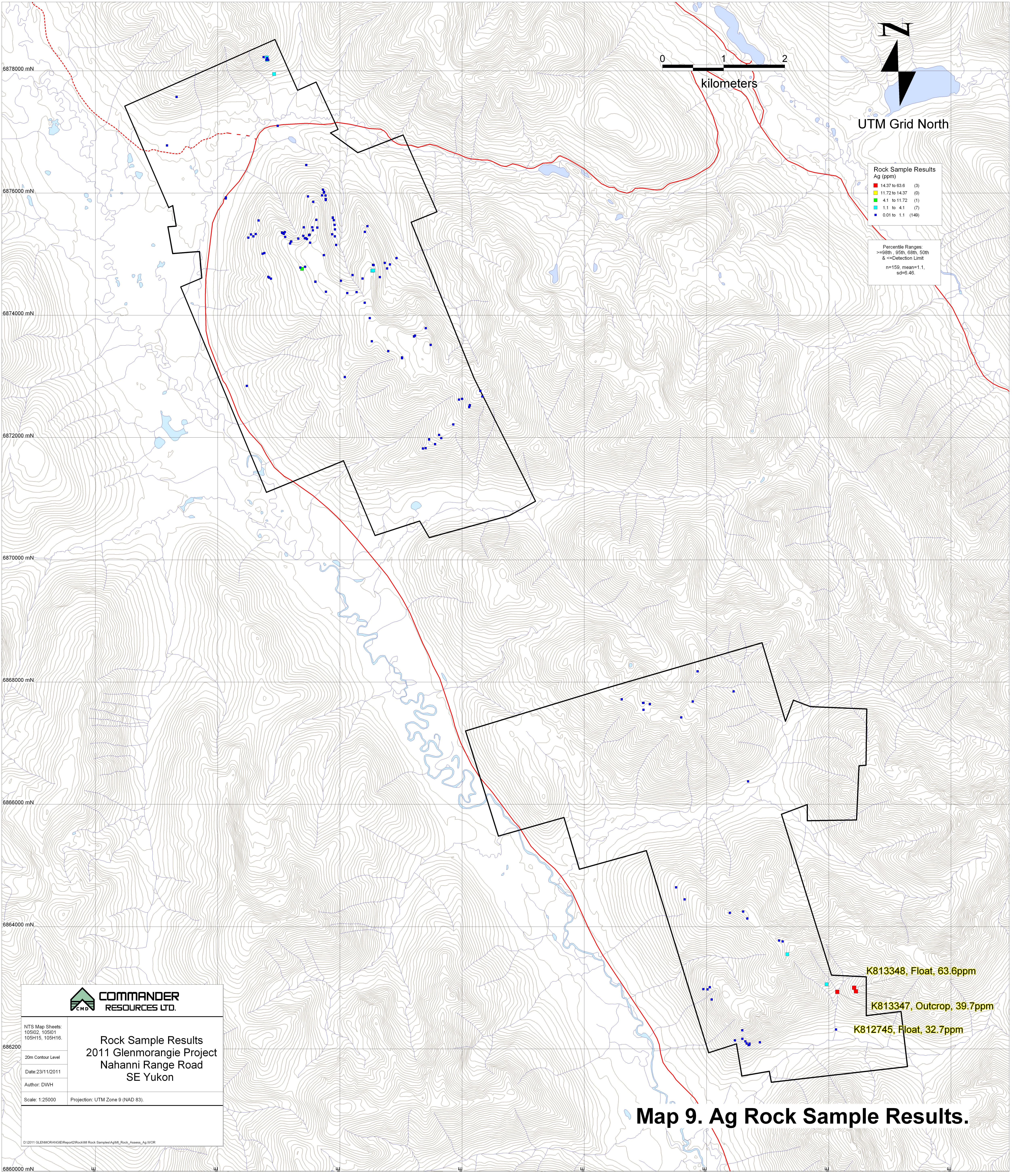
NTS Map Sheets:  
 105I02, 105I01  
 105H15, 105H16.

**Rock Sample Results  
 2011 Glenmorangie Project  
 Nahanni Range Road  
 SE Yukon**

20m Contour Level  
 Date: 23/11/2011  
 Author: DWH

Scale: 1:25000 Projection: UTM Zone 9 (NAD 83).

**Map 8. As Rock Sample Results**



**Rock Sample Results**  
Ag (ppm)

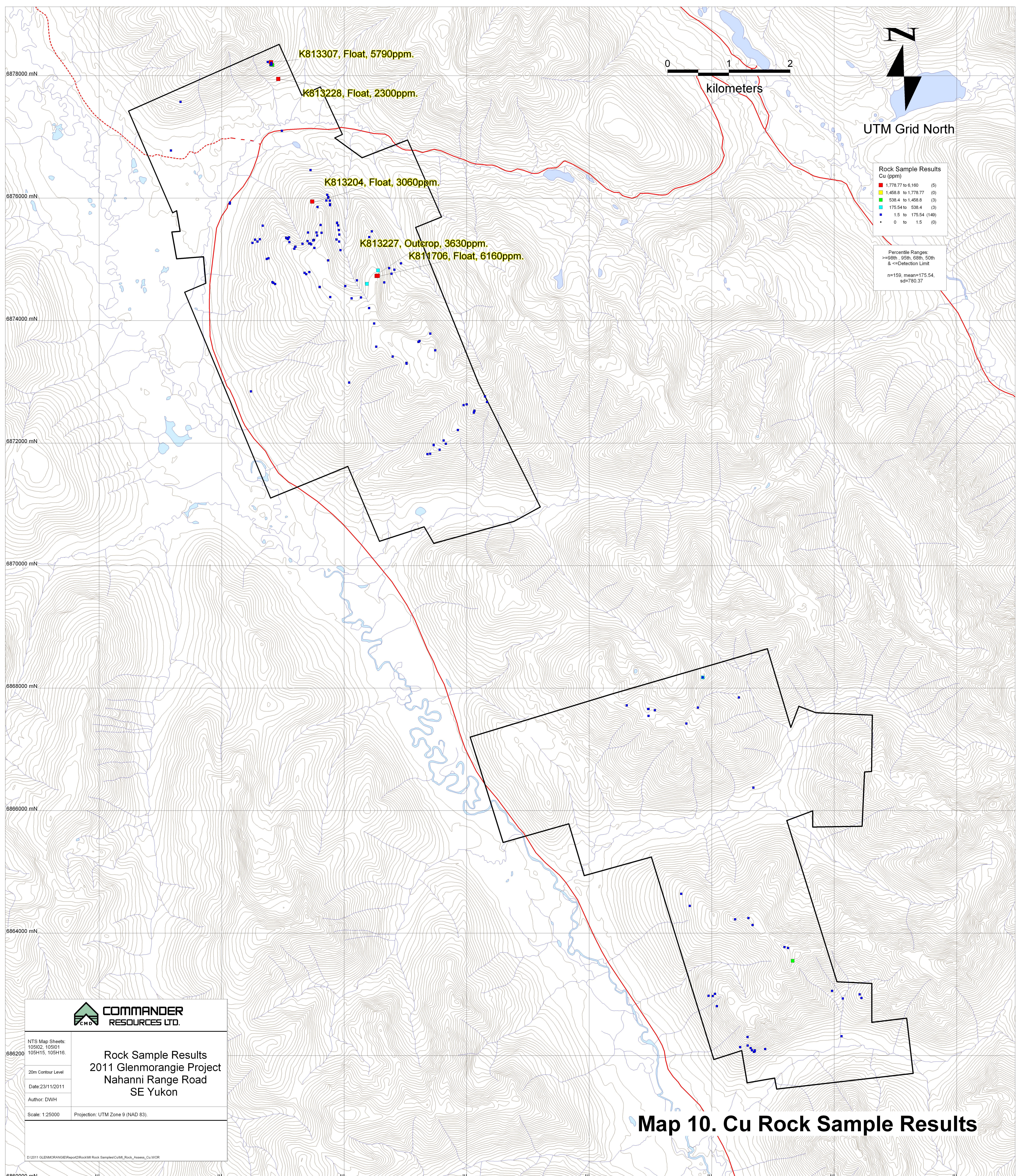
14.37 to 63.6	(3)
11.72 to 14.37	(0)
4.1 to 11.72	(1)
1.1 to 4.1	(7)
0.01 to 1.1	(149)

Percentile Ranges  
 >=99th, 95th, 50th, 50th  
 & <=Detection Limit  
 n=150, mean=1.1,  
 sd=6.46.

K813348, Float, 63.6ppm  
 K813347, Outcrop, 39.7ppm  
 K812745, Float, 32.7ppm

<p><b>Rock Sample Results</b>          2011 Glenmorangie Project          Nahanni Range Road          SE Yukon</p>	
NTS Map Sheets: 105I02, 105I01 105H15, 105H16	20m Contour Level Date: 23/11/2011 Author: DJWH Scale: 1:25000    Projection: UTM Zone 9 (NAD 83)
<small>D:\2011 GLENMORANGIE\Report\Rock\Map Rock Samples\Ag\MI_Rock_Assess_Ag WOR</small>	

**Map 9. Ag Rock Sample Results.**



**COMMANDER RESOURCES LTD.**

NTS Map Sheets:  
105I02, 105I01  
105H15, 105H16

20m Contour Level

Date: 23/11/2011

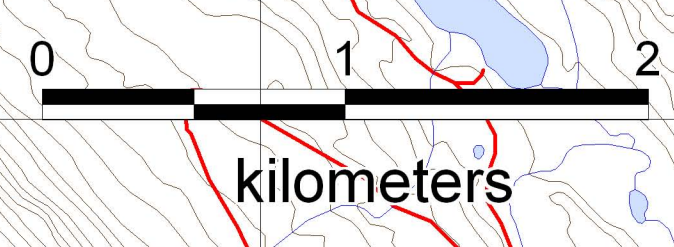
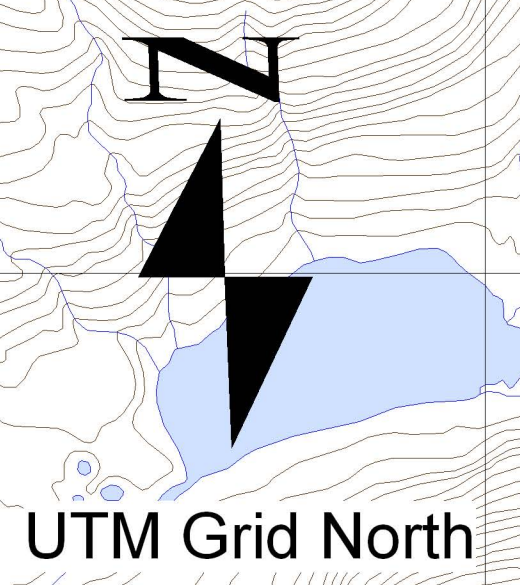
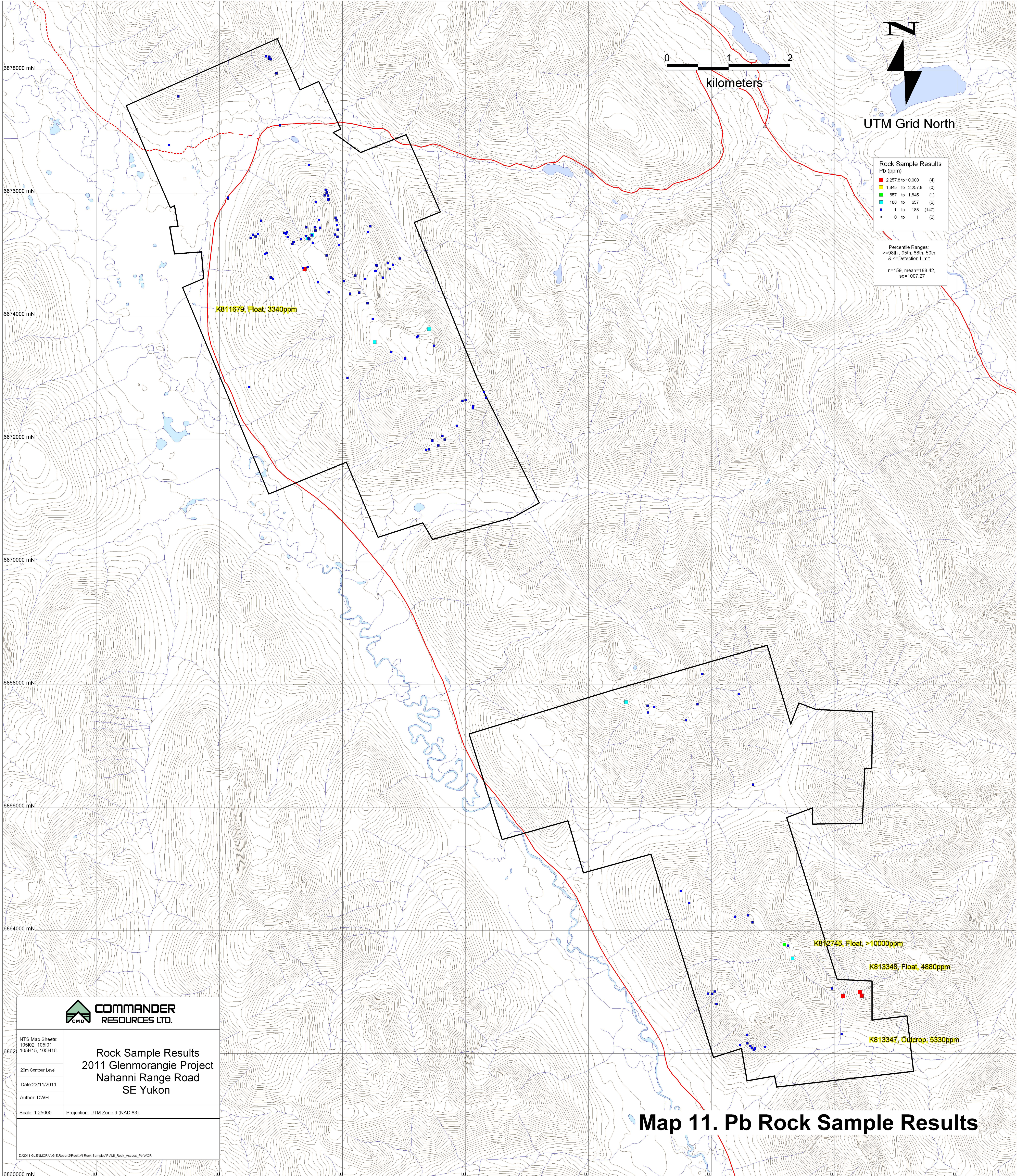
Author: DWH

Scale: 1:25000 Projection: UTM Zone 9 (NAD 83)

**Rock Sample Results  
2011 Glenmorangie Project  
Nahanni Range Road  
SE Yukon**

©2011 GLENMORANGIE/Report/2011/01/01/Rock\_Samples/Cu/ML\_Rock\_Assess\_Cu.WOR

**Map 10. Cu Rock Sample Results**



**Rock Sample Results  
Pb (ppm)**

2,257.8 to 10,000	(4)
1,845 to 2,257.8	(0)
657 to 1,845	(1)
188 to 657	(6)
1 to 188	(147)
0 to 1	(2)

**Percentile Ranges:**  
 >=98th, 95th, 50th, & <=Detection Limit  
 n=159, mean=188.42,  
 sd=1007.27

K811679, Float, 3340ppm

K812745, Float, >10000ppm

K813348, Float, 4880ppm

K813347, Outcrop, 5330ppm



**Rock Sample Results**  
 2011 Glenmorangie Project  
 Nahanni Range Road  
 SE Yukon

NTS Map Sheets:  
 105I02, 105I01  
 105H15, 105H16

20m Contour Level

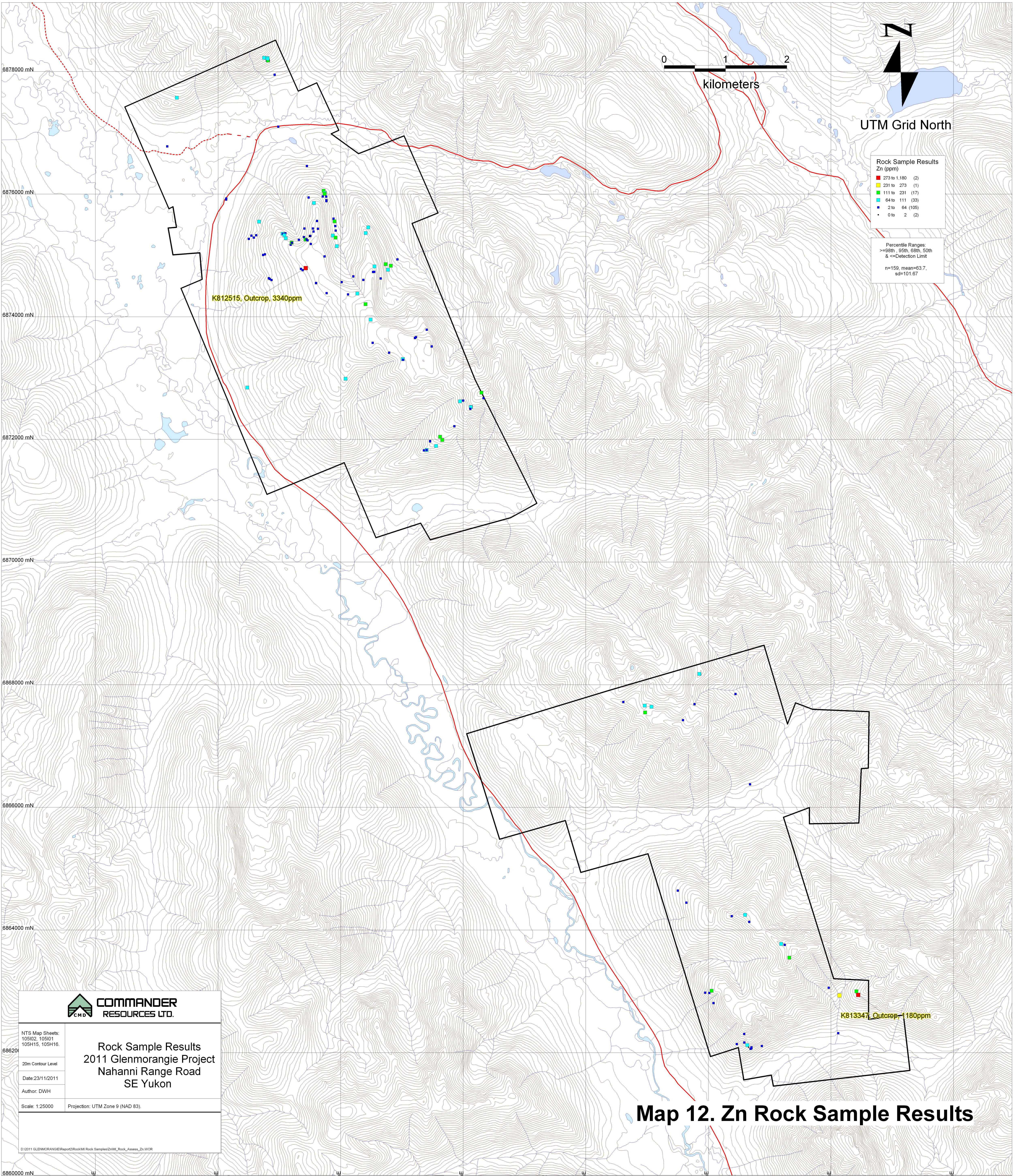
Date: 23/11/2011

Author: DWH

Scale: 1:25000    Projection: UTM Zone 9 (NAD 83)

**Map 11. Pb Rock Sample Results**

D:\2011 GLENMORANGIE\Report2\Rock\M Rock Samples\PM Rock\_Asses\_Pb.WOR



**Rock Sample Results Zn (ppm)**

273 to 1,180	(2)
231 to 273	(1)
111 to 231	(17)
64 to 111	(33)
2 to 64	(105)
0 to 2	(2)

Percentile Ranges:  
 >=98th, 95th, 50th, 50th  
 & <=Detection Limit  
 n=159, mean=63.7,  
 sd=101.67

K812515, Outcrop, 3340ppm

K813347, Outcrop, 1180ppm



**Rock Sample Results**  
 2011 Glenmorangie Project  
 Nahanni Range Road  
 SE Yukon

NTS Map Sheets:  
 105I02, 105I01  
 105H15, 105H16

20m Contour Level

Date: 23/11/2011

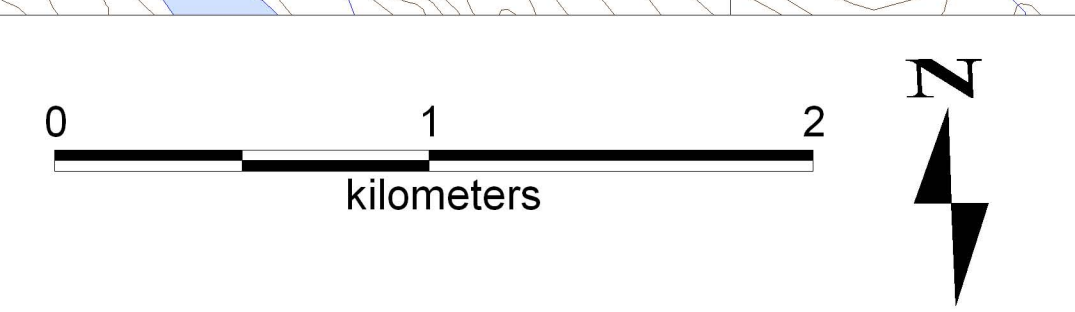
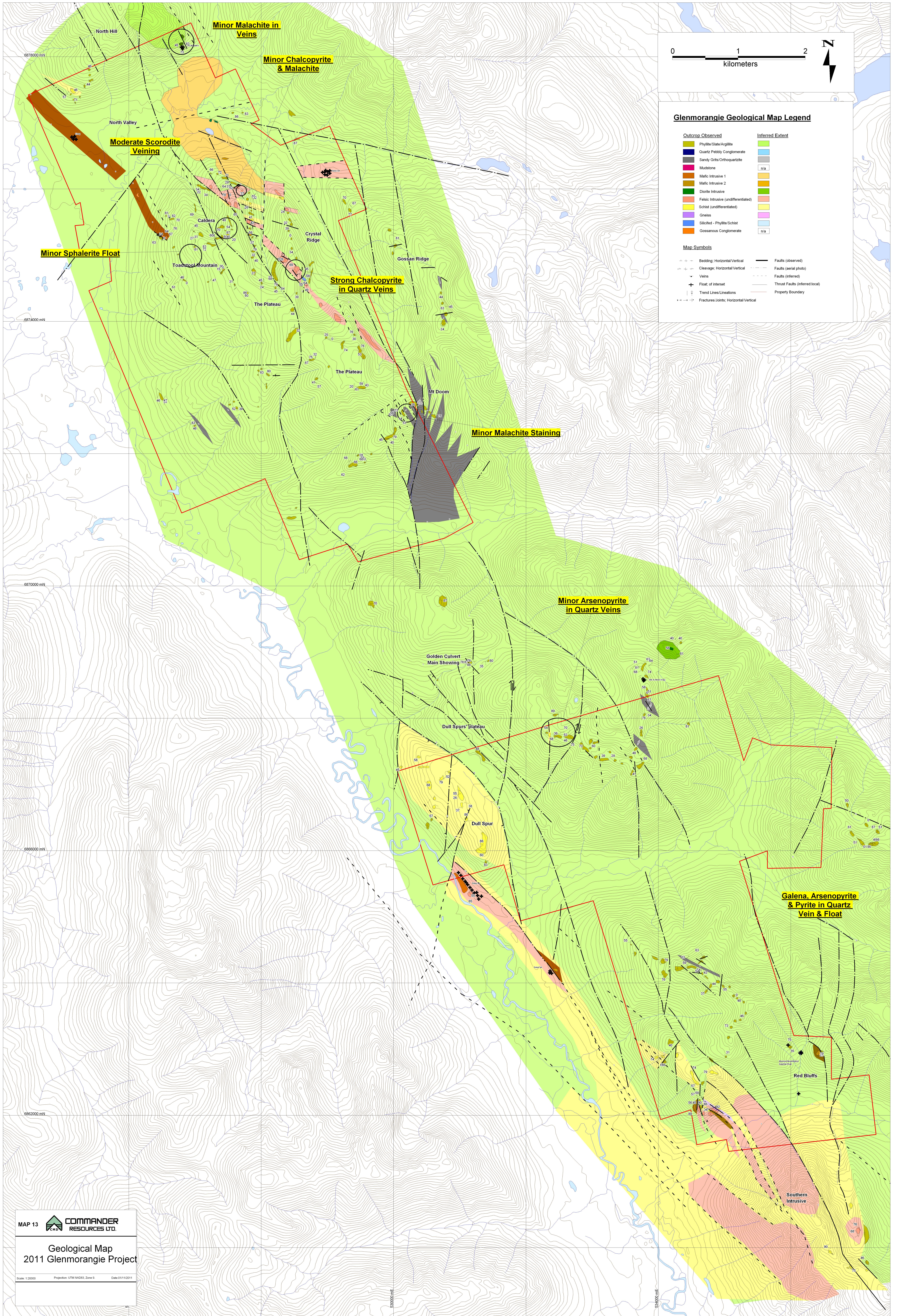
Author: DWH

Scale: 1:25000

Projection: UTM Zone 9 (NAD 83)

**Map 12. Zn Rock Sample Results**

D:\2011 GLENMORANGIE\Report\Rock\M Rock Samples\2\M\_Rock\_Assess\_Zn.WCR



**Glenmorangie Geological Map Legend**

Outcrop Observed	Inferred Extent
Phyllite/Slate/Argillite	Phyllite/Slate/Argillite
Quartz Pebbly Conglomerate	Quartz Pebbly Conglomerate
Sandy Grills/Orthoquartzite	Sandy Grills/Orthoquartzite
Mudstone	Mudstone
Mafic Intrusive 1	Mafic Intrusive 1
Mafic Intrusive 2	Mafic Intrusive 2
Diorite Intrusive	Diorite Intrusive
Felsic Intrusive (undifferentiated)	Felsic Intrusive (undifferentiated)
Schist (undifferentiated)	Schist (undifferentiated)
Gneiss	Gneiss
Silicified - Phyllite/Schist	Silicified - Phyllite/Schist
Gossanous Conglomerate	Gossanous Conglomerate
	n/a

**Map Symbols**

Bedding: Horizontal/Vertical	Faults (observed)
Cleavage: Horizontal/Vertical	Faults (aerial photo)
Veins	Faults (inferred)
Float: of Interest	Thrust Faults (inferred local)
Trend Lines/Lineations	Property Boundary
Fractures/Joints: Horizontal/Vertical	