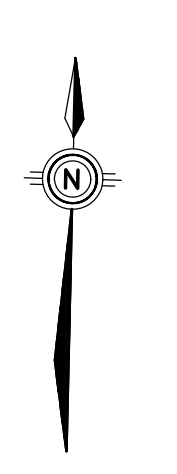
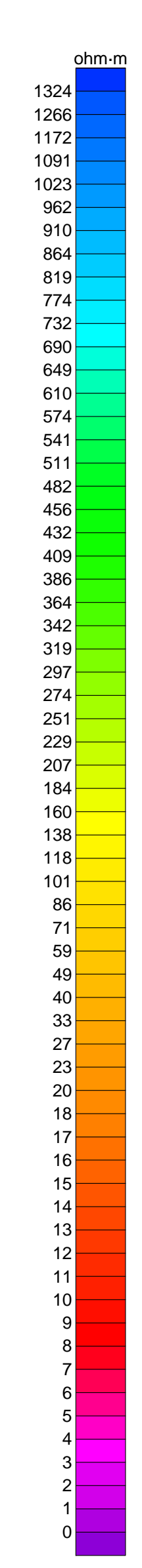


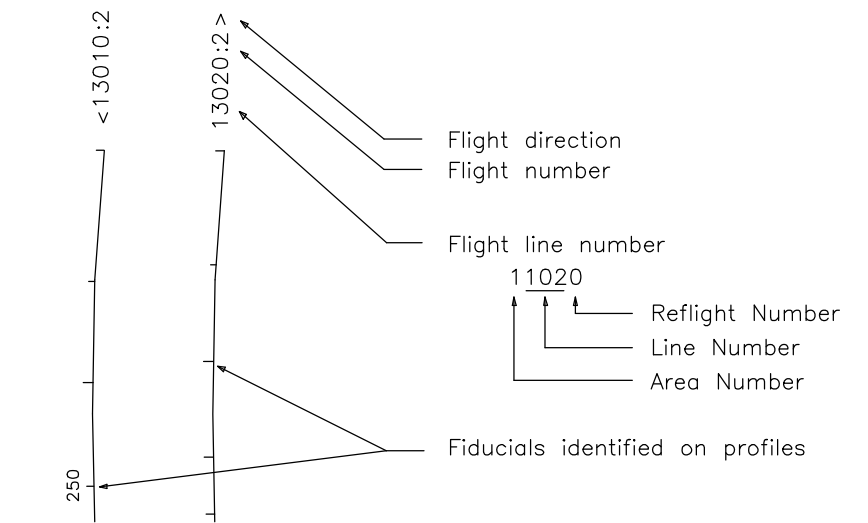
TECHNICAL SUMMARY

Navigation
Date reduction grid interval : 40 metres
Terrain clearance : 40 metres
Differentially-corrected GPS
Helicopter 60 m
Electromagnetic sensor 35 m
Magnetometer 35 m
Data sampling interval : 0.1 second
Magnetometer / sensitivity : Cesium / 0.01 nT
Electromagnetic system : DIGHEM[®]

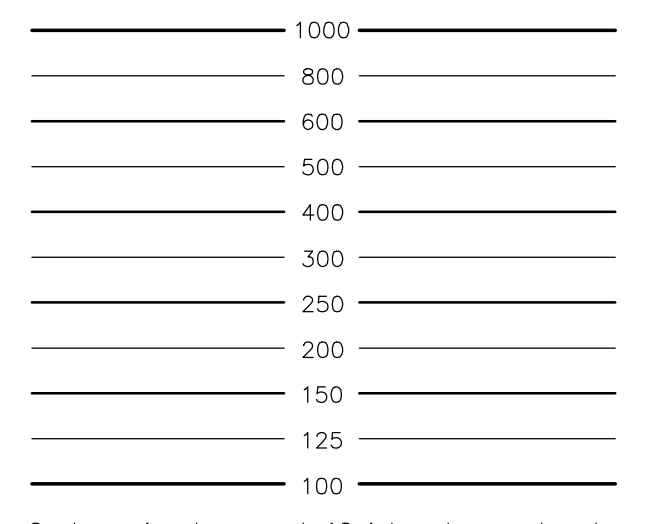


Frequency	Sensitivity	Coil Orientation
1000 Hz	.06 ppm	Vertical coaxial
5500 Hz	.12 ppm	Vertical coaxial
900 Hz	.12 ppm	Horizontal coplanar
7200 Hz	.24 ppm	Horizontal coplanar
56000 Hz	.50 ppm	Horizontal coplanar

FLIGHT LINES

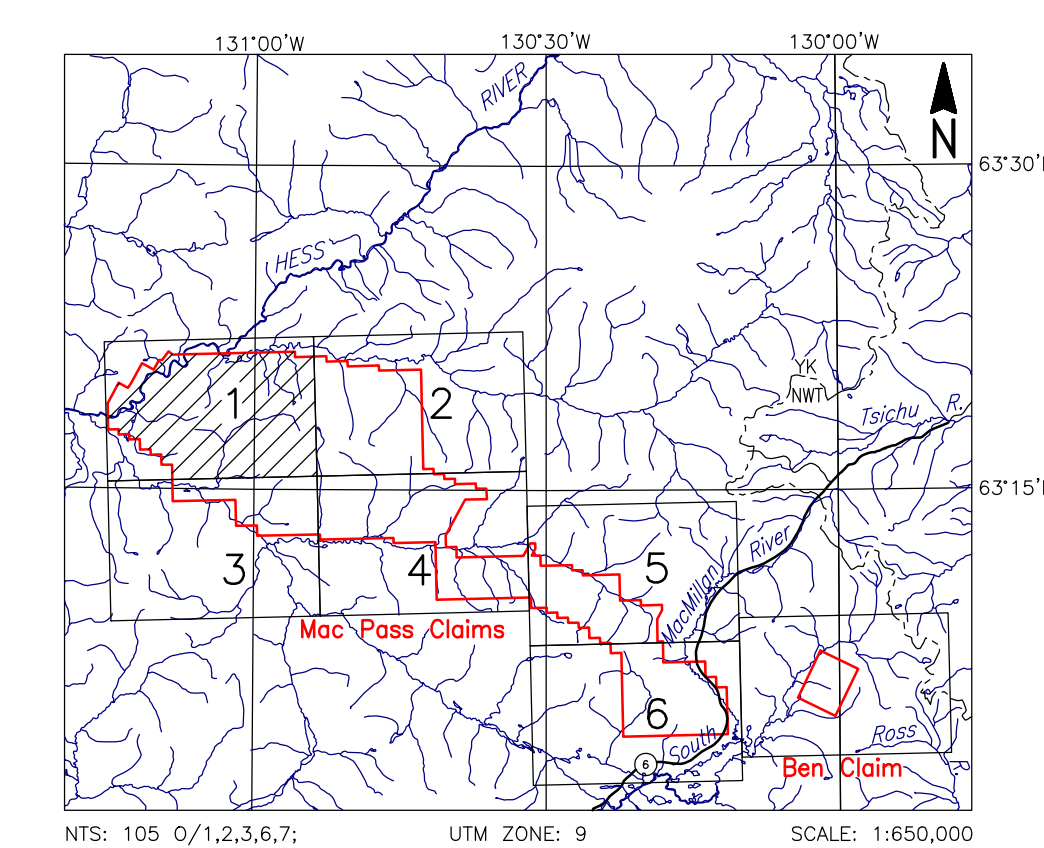


RESISTIVITY CONTOURS



Contours in ohm-m at 10 intervals per decade.
Apparent resistivity calculated using a pseudo-layer half-space model (Fraser 1978).

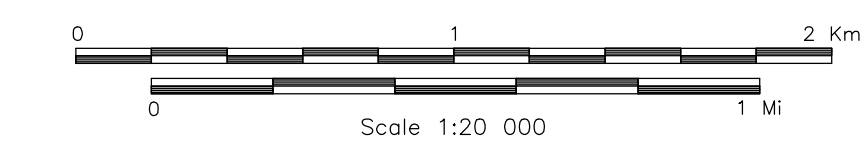
LOCATION MAP



COLORADO RESOURCES LTD.
MAC PASS CLAIMS, YUKON

APPARENT RESISTIVITY
900 Hz COPLANAR

FUGRO DIGHEM [®] SURVEY	NTS: 105 0/1,2,3,6,7	GEOPHYSICIST:
DATE: OCTOBER, 2011	JOB: 11046	SHEET: 1
Fugro Airborne Surveys		



FUGRO AIRBORNE SURVEYS

