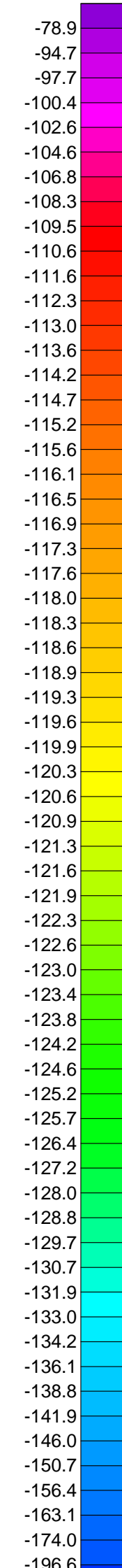
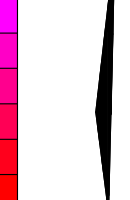


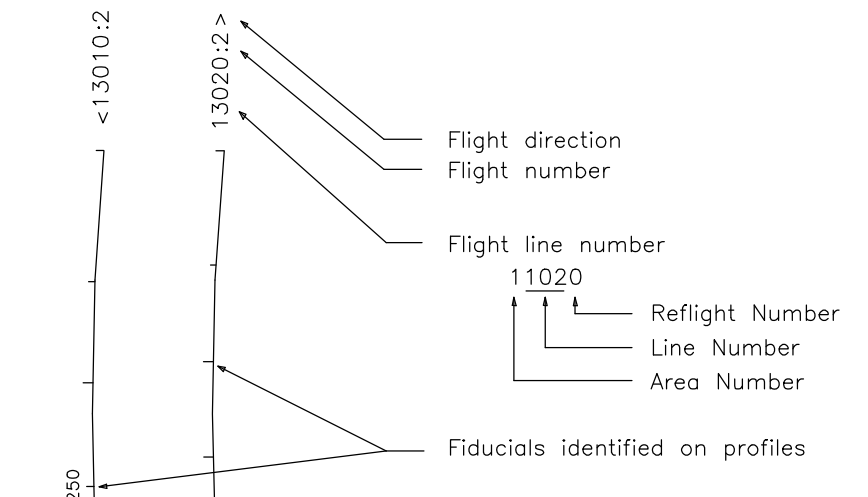
TECHNICAL SUMMARY

Navigation	Differentially-corrected GPS
Date reduction grid interval	40 metres
Terrain clearance	Helicopter 60 m
	Electromagnetic sensor 35 m
	Magnetometer 35 m
Data sampling interval	0.1 second
Magnetometer / sensitivity	Cesium / 0.01 nT
Electromagnetic system	DIGHEM [®]

Frequency	Sensitivity	Coil Orientation
1000 Hz	.06 ppm	Vertical coaxial
5500 Hz	.12 ppm	Vertical coaxial
900 Hz	.12 ppm	Horizontal coplanar
7200 Hz	.24 ppm	Horizontal coplanar
56000 Hz	.60 ppm	Horizontal coplanar



FLIGHT LINES

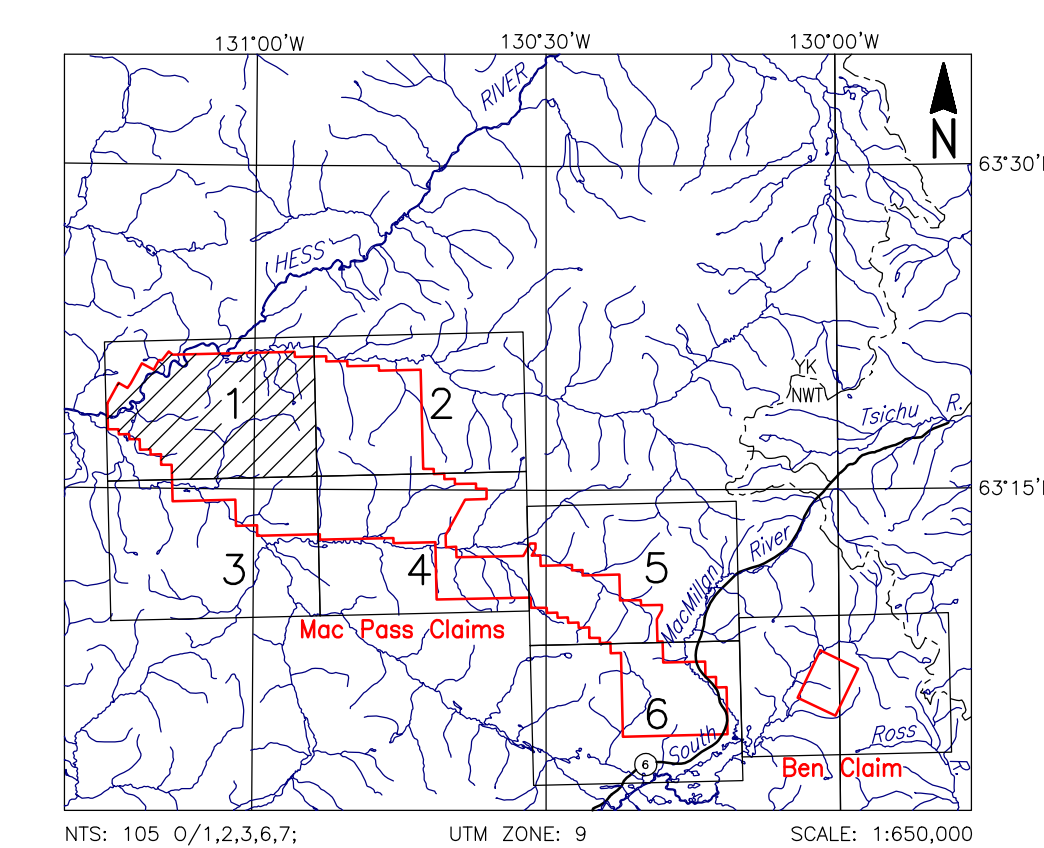


RESIDUAL MAGNETIC FIELD CONTOURS



Magnetic inclination within the survey area: 79 degrees N
Magnetic declination within the survey area: 23 degrees E

LOCATION MAP

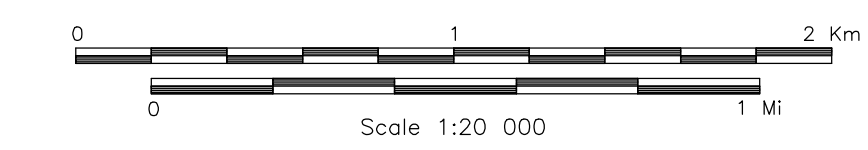


COLORADO RESOURCES LTD.
MAC PASS CLAIMS, YUKON

RESIDUAL MAGNETIC FIELD
IGRF Removed

FUGRO DIGHEM [®] SURVEY	NTS: 105 0/1,2,3,6,7	GEOPHYSICIST:
DATE: OCTOBER, 2011	JOB: 11046	SHEET: 1

Fugro Airborne Surveys



FUGRO AIRBORNE SURVEYS

