

**GEOLOGICAL AND GEOCHEMICAL
ASSESSMENT REPORT FOR ATLAS LICENCES**

MAYO MINING DISTRICT

YUKON TERRITORY

Claim Name		Grant No.
Atlas	1-6	YC 10589 – YC 10593

Owned by Overland Resources Yukon Limited and 18526 Yukon Inc

For work undertaken June 2010

By Overland Resources Yukon Ltd.

NTS 105K/16

635000E, 6987000N NAD83 Zone8

Prepared by: Alex Tolson, Project Geologist

Supervisor: Hugh Alan Bresser, Managing Director

Date: January, 2011

TABLE OF CONTENTS

INTRODUCTION.....	1
PROPERTY DESCRIPTION AND LOCATION.....	1
Claim Status	2
ACCESS, CLIMATE, LOCAL RESOURCES, INFRASTRUCTURE, PHYSIOGRAPHY	2
Access	2
Climate.....	3
Local Resources	3
Infrastructure.....	3
Physiography	3
Regional Geology.....	3
Prospect Geology.....	4
Work Conducted 2010	4
Sampling Methodology	4
Assay Methodology	4
Previous Investigations.....	5
Conclusions and Recommendations.....	5
Statement of Qualifications	5

Figures.

Location Map	1
Map of Claims	2

Appendices.

- A: Assay Certificates

- B: Claim Status

- C: Statement of Expenditure

- D: Map of sample locations and Zinc assay results

- E: Sample Description

INTRODUCTION

This report has been prepared in accordance with the guidelines outlined by Yukon *Energy Mines Resources* (EMR) to detail the representation work undertaken and submitted for assessment for the of group of quartz mining claims collectively known by as the Atlas Claims by Overland Resources Limited (Overland) in 2010.

Claim Name		Grant No.
Atlas	1 - 6	YC 10589 – YC 10593

Table1. List of Quartz Mining Claims subject of application for certificate of work owned by 90% Overland Resources Yukon Limited and 10% 18526 Yukon Inc

Work submitted for assessment on the purposes to EMR for the Atlas Claims was conducted during June 2010 by Overland on quartz mining claims, Atlas 1-6 (YC10589-YC10593).

PROPERTY DESCRIPTION AND LOCATION

The Yukon Base Metal Project is situated 110 km north of the town of Faro, Yukon (Figure 1) and consists of 517 full and fractional Quartz Mineral Claims covering approximately 9403 hectares within the Mayo Mining District (Figure 2). The Project is located within NTS map sheet 105K/16. The coordinates of the approximate center of the property are 62° 55' 33" N latitude and 132° 13' 7" W longitude (NAD 83, UTM Zone 8, 641 070 mE and 6 980 155 mN).



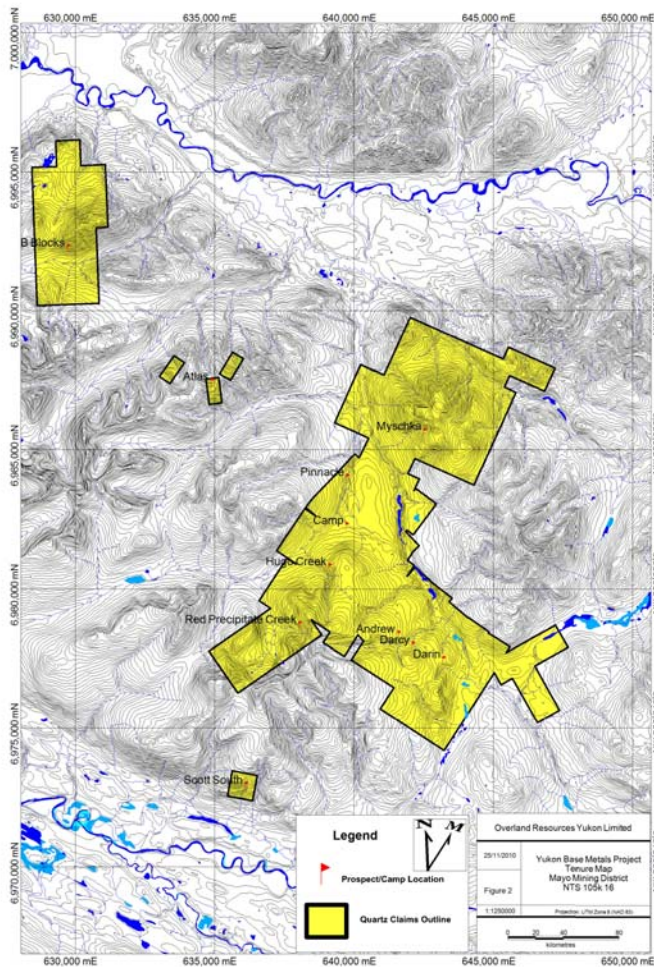


Figure 2. Overland Resources Limited quartz mining claims

Claim Status

The Quartz Mineral Claims that comprise the Yukon Base Metal Project are owned 90% by Overland Resources Yukon Limited and 10% by 18526 Yukon Inc. Overland Resources Yukon Limited has the responsibility of permitting, claim maintenance, assessment filing and reporting and associated fees.

The claims lie on crown land, and surface rights belong to the crown. They do not lie within or near any park, special management zones, first nation settlement lands or land selections. They are situated within traditional territories of three First Nations.

All claims are currently in good standing.

ACCESS, CLIMATE, LOCAL RESOURCES, INFRASTRUCTURE, PHYSIOGRAPHY

Access

The Yukon Base Metal Project is accessible by helicopter and short take off and landing-capable fixed-wing aircraft via a 400m unsealed airstrip located at 132°14'20" W and 62°56'20" N (UTM NAD83; 640,090mE and 6, 982,690mN). Heavy equipment and bulk supplies can be delivered to the property via an 85km winter trail which was re-established in winter 2008 from the North Canal Road at Dragon Lake.

Climate

Temperatures at the Yukon Base Metal Project typically range from 8°C to 26°C in the summer and from -30°C to +6°C in the winter. Annual precipitation ranges from 120mm to 200mm, including 0.8m to 1.5m of snow accumulation in the winter months.

Local Resources

No local communities or towns are within 50km of the Yukon Base Metal Project and as such all resources must be brought into the project area. Personnel for construction, mining, exploration, labour and support are available in the communities of Faro, Ross River and Watson Lake as well as the Territorial capital of Whitehorse. Faro and Ross River are 100km southwest and 115km south of the property respectively.

Infrastructure

Infrastructure near the Yukon Base Metal Project includes the Canol Road and Robert Campbell Highway. The Canol Road extends for 458km from the Yukon-Northwest Territories border to Johnson's Crossing on the Alaska Highway south of Whitehorse. Northeast of the Pelly River at Dragon Lake, the Canol road comes to within 60km of the Yukon Base Metal Project where the winter access trail into the property begins.

Both Ross River and Faro are serviced by electrical transmission lines sourced from the Aishihik hydroelectric facility to the west.

Physiography

The Yukon Base Metal Project is located within the South Fork Range of the Yukon Plateau, east of the Tintina Trench and west of the MacKenzie Mountains. The property occupies the west side of a wide valley, where elevations range from 1,000m to 1,800m above sea level. Several east flowing creek valleys cut moderate slopes across the Yukon Base Metal Project.

The vegetation at the Yukon Base Metal Project is alpine to sub-alpine with lower elevations being dominated by black and white spruce stands, typical of the Northern Boreal Forest.

REGIONAL GEOLOGY

The property is located within the Selwyn Basin of the Northern Cordillera; a continental margin rift-fill and cover sedimentary sequence off the coast of ancestral North America. Stratigraphic units on the Yukon Geologic Survey Map are of the Devonian Earn Group. These sediments represent an extensional conglomeratic sub-basin rift-fill sedimentation environment in response

late orogenic subsidence. Regionally the area has been intruded by Cretaceous felsic plutonism.

PROSPECT GEOLOGY

The Atlas Claims are dominantly underlain by a chert-clast bearing conglomerate and conglomeratic sandstone. It is an inhomogeneous polymict unit consisting predominantly of black, grey and white chert clasts with minor, $\leq 5\%$ mudstone and sandstone clasts. Ranging from well rounded, matrix supported conglomerate with clasts 3mm- 50mm, up to 10cm, to a sub-angular clast supported conglomerate with minor sandy matrix. All variants had moderate to strong gossanous limonite/hematite weathering.

Conglomerate is interbedded with chert, granulestone, mudstone and sandstone. Several distinct sandstone beds intercalated with mudstone had well preserved ripple marks and load casts indicating bedding is upright and younging to the north. Grey limestone with elongate chert nodules capped the local stratigraphy and was crystalline and crudely bedded.

WORK CONDUCTED 2010

Work included general prospecting, geological mapping and geochemical rock sampling.

All information and data documented in this report was obtained by employees or consultants employed by Overland Resources Yukon Limited with the exception of geochemical analysis, which were outsourced to ALS Chemex of Vancouver, B.C.

Sampling Methodology

Rock Samples

All rock samples were collected in the following manner

1. Location recorded by handheld GPS in NAD83 Zone 8
2. Representative sample exceeding 400g of bedrock collected using a standard geological rock pick style hammer.
3. Samples sealed in clear plastic sample bags with a distinct sample ID
4. Samples dispatched to analytical laboratory.

Assay Methodology

Rock samples were sent to ALS Labs in Whitehorse where all samples were weighed, dried and crushed to better than 70% -2mm then split to 250g and pulverized to better than 85% passing

75 microns. Samples were processed by aqua regia digestion and analyzed for a full element suite using ICP-MS and ICP-AES.

Previous Investigations

Documented historical work in the area includes geological mapping by Yukon Geological Survey compiled on a 1:1 000 000 map sheet of the territory.

Current Work for Assessment

General Prospecting

A geologist and field technician spend three days in the field undertaking field examinations and compiling information on the geology and general prospectivity of the area held under the Atlas claims.

Rock Sampling

A total of 13 rock chip samples were collected during prospecting across the licences by Overland (G0669501-G0669504, H031556-H031558, H031665, H031773-H031780). Sample locations and assay certificates included in appendices.

CONCLUSIONS AND RECOMMENDATIONS

The geology of the area contained under the Atlas claims closely resembles that of well known SEDEX districts in the Selwyn Basin. The Late Devonian, Earn Group stratigraphy hosts the Tom and Jason deposits within a similar sequence.

Analysis of rock samples collected as part of the 2010 programme returned elevated levels of Pb and Ag in sample H031556.

Additional regional stream sediment sampling followed up by contoured soil sampling over anomalous drainages and prospecting in areas of outcrop exposure is recommended.

STATEMENT OF QUALIFICATIONS

I, Alex Tolson the author of this report hereby certify that:

1. I am a graduate of the University of Western Ontario (2006) with an Honours Bachelor of Science degree in Geology and I have practiced my profession since 2004.

Dated at Vancouver, Canada, this _____ day of _____.

Appendix A: Assay Certificates



ALS Chemex

EXCELLENCE IN ANALYTICAL CHEMISTRY

ALS Canada Ltd.

2103 Dollarton Hwy

North Vancouver BC V7H 0A7

Phone: 604 984 0221 Fax: 604 984 0218 www.alschemex.com

To: **OVERLAND RESOURCES LTD.**
604 - 700 WEST PENDER STREET
VANCOUVER BC V6C 1G8

Page: 1
Finalized Date: 6-JUL-2010
Account: OVERRE

CERTIFICATE WH10083977

Project: YBMP

P.O. No.: 4

This report is for 11 Rock samples submitted to our lab in Whitehorse, YT, Canada on 21-JUN-2010.

The following have access to data associated with this certificate:

HUGH BRESSER

ALEX TOLSON

SAMPLE PREPARATION

ALS CODE	DESCRIPTION
WEI-21	Received Sample Weight
CRU-QC	Crushing QC Test
LOG-22	Sample login - Rcd w/o BarCode
CRU-31	Fine crushing - 70% <2mm
SPL-21	Split sample - riffle splitter
PUL-31	Pulverize split to 85% <75 um

ANALYTICAL PROCEDURES

ALS CODE	DESCRIPTION	INSTRUMENT
Ag-OG46	Ore Grade Ag - Aqua Regia	VARIABLE
ME-OG46	Ore Grade Elements - AquaRegia	ICP-AES
Pb-OG46	Ore Grade Pb - Aqua Regia	VARIABLE
Cu-OG46	Ore Grade Cu - Aqua Regia	VARIABLE
Zn-OG46	Ore Grade Zn - Aqua Regia	VARIABLE
ME-MS41	51 anal. aqua regia ICPMS	

To: **OVERLAND RESOURCES LTD.**
ATTN: HUGH BRESSER
2ND FLOOR
675 MURRAY ST
WEST PERTH WA 6005
AUSTRALIA

This is the Final Report and supersedes any preliminary report with this certificate number. Results apply to samples as submitted. All pages of this report have been checked and approved for release.

Signature: 

Colin Ramshaw, Vancouver Laboratory Manager



ALS Chemex

EXCELLENCE IN ANALYTICAL CHEMISTRY
ALS Canada Ltd.

2103 Dollarton Hwy
North Vancouver BC V7H 0A7
Phone: 604 984 0221 Fax: 604 984 0218 www.alschemex.com

To: OVERLAND RESOURCES LTD.
604 - 700 WEST PENDER STREET
VANCOUVER BC V6C 1G8

Page: 2 - A
Total # Pages: 2 (A - D)
Plus Appendix Pages
Finalized Date: 6-JUL-2010
Account: OVERRE

Project: YBMP

CERTIFICATE OF ANALYSIS WH10083977

Sample Description	Method Analyte Units LOR	WEI-21	ME-MS41	ME-MS41	ME-MS41	ME-MS41	ME-MS41	ME-MS41	ME-MS41	ME-MS41	ME-MS41	ME-MS41	ME-MS41	ME-MS41	ME-MS41	ME-MS41
		Recvd Wt. kg	Ag ppm	Al %	As ppm	Au ppm	B ppm	Ba ppm	Be ppm	Bi ppm	Ca %	Cd ppm	Ce ppm	Co ppm	Cr ppm	Cs ppm
		0.02	0.01	0.01	0.1	0.2	10	10	0.05	0.01	0.01	0.01	0.02	0.1	1	0.05
G0669501		1.33	0.03	2.16	2.2	<0.2	<10	170	0.45	0.38	1.15	0.06	40.1	7.0	14	1.09
G0669502		1.27	0.08	3.15	36.9	<0.2	<10	50	0.32	0.21	0.26	0.07	18.80	21.1	67	2.11
G0669503		1.31	0.13	3.25	30.0	<0.2	<10	50	0.34	0.54	1.24	0.18	9.92	22.5	97	4.27
G0669504		1.14	0.73	2.05	44.8	<0.2	<10	30	0.12	1.36	0.08	0.04	9.73	4.4	65	0.74
G0669505		2.52	80.1	0.03	45.8	<0.2	<10	30	<0.05	0.25	0.04	8.15	0.46	0.6	1	0.05
H031665		1.24	0.51	3.10	45.0	<0.2	<10	80	0.40	0.27	0.36	0.15	15.80	22.1	76	2.05
H031709		0.77	0.45	0.23	8.8	<0.2	<10	30	0.11	0.07	0.21	9.90	17.60	4.8	8	0.27
H031552		1.83	>100	0.53	69.3	<0.2	<10	50	0.26	12.30	2.05	684	12.70	129.5	7	2.88
H031553		1.45	94.3	0.06	176.0	<0.2	<10	10	<0.05	47.4	0.03	5.39	2.86	0.9	16	0.38
H031554		1.94	>100	0.08	>10000	0.2	<10	20	<0.05	4.48	0.01	101.0	2.62	117.5	1	0.22
H031555		1.80	>100	0.11	779	<0.2	<10	20	0.26	385	0.61	>1000	3.27	59.4	2	1.93



ALS Chemex
EXCELLENCE IN ANALYTICAL CHEMISTRY

ALS Canada Ltd.
 2103 Dollarton Hwy
 North Vancouver BC V7H 0A7
 Phone: 604 984 0221 Fax: 604 984 0218 www.alschemex.com

To: OVERLAND RESOURCES LTD.
 604 - 700 WEST PENDER STREET
 VANCOUVER BC V6C 1G8

Page: 2 - B
 Total # Pages: 2 (A - D)
 Plus Appendix Pages
 Finalized Date: 6-JUL-2010
 Account: OVERRE

Project: YBMP

CERTIFICATE OF ANALYSIS WH10083977

Sample Description	Method Analyte Units LOR	ME-MS41	ME-MS41	ME-MS41	ME-MS41	ME-MS41	ME-MS41	ME-MS41	ME-MS41	ME-MS41	ME-MS41	ME-MS41	ME-MS41	ME-MS41	ME-MS41	ME-MS41
		Cu ppm	Fe %	Ga ppm	Ge ppm	Hf ppm	Hg ppm	In ppm	K %	La ppm	Li ppm	Mg %	Mn ppm	Mo ppm	Na %	Nb ppm
		0.2	0.01	0.05	0.05	0.02	0.01	0.005	0.01	0.2	0.1	0.01	5	0.05	0.01	0.05
G0669501		6.0	2.66	8.94	<0.05	0.89	0.01	0.037	0.38	19.9	39.7	0.66	432	0.35	0.14	0.29
G0669502		62.4	5.32	11.00	0.08	0.04	<0.01	0.034	0.47	8.4	50.9	1.78	438	0.22	0.05	0.29
G0669503		35.8	3.96	11.55	0.14	0.09	<0.01	0.022	0.52	4.5	26.7	1.40	488	0.30	0.19	0.16
G0669504		86.3	5.65	7.26	0.10	0.04	<0.01	0.030	0.19	4.6	26.5	1.15	523	0.18	0.01	0.29
G0669505		914	0.09	0.84	0.25	<0.02	2.66	2.33	0.01	0.3	0.3	0.02	<5	0.06	<0.01	0.10
H031665		51.0	5.61	11.45	0.09	0.05	0.03	0.040	0.42	7.6	55.1	1.91	661	0.34	0.03	0.21
H031709		4.9	0.43	0.77	<0.05	0.14	0.18	0.081	0.11	8.6	1.9	0.02	129	0.17	0.01	0.13
H031552		>10000	8.15	1.95	0.15	0.11	0.47	0.650	0.16	5.4	13.4	0.22	1780	0.28	0.01	0.19
H031553		245	0.99	0.27	<0.05	<0.02	0.24	0.126	0.04	1.5	0.8	0.01	58	0.23	<0.01	0.15
H031554		1550	20.8	0.69	0.35	<0.02	1.17	1.685	0.04	1.4	1.1	<0.01	41	1.61	0.01	0.29
H031555		>10000	10.40	0.63	0.82	0.03	0.35	0.238	<0.01	1.5	0.4	0.04	1830	0.24	0.01	0.39



ALS Chemex

EXCELLENCE IN ANALYTICAL CHEMISTRY

ALS Canada Ltd.

2103 Dollarton Hwy

North Vancouver BC V7H 0A7

Phone: 604 984 0221 Fax: 604 984 0218 www.alschemex.com

To: OVERLAND RESOURCES LTD.
604 - 700 WEST PENDER STREET
VANCOUVER BC V6C 1G8

Page: 2 - C
Total # Pages: 2 (A - D)
Plus Appendix Pages
Finalized Date: 6-JUL-2010
Account: OVERRE

Project: YBMP

CERTIFICATE OF ANALYSIS WH10083977

Sample Description	Method Analyte Units LOR	ME-MS41	ME-MS41	ME-MS41	ME-MS41	ME-MS41	ME-MS41	ME-MS41	ME-MS41	ME-MS41	ME-MS41	ME-MS41	ME-MS41	ME-MS41	ME-MS41	
		Ni ppm	P ppm	Pb ppm	Rb ppm	Re ppm	S %	Sb ppm	Sc ppm	Se ppm	Sn ppm	Sr ppm	Ta ppm	Te ppm	Th ppm	Ti %
		0.2	10	0.2	0.1	0.001	0.01	0.05	0.1	0.2	0.2	0.01	0.01	0.2	0.005	
G0669501		2.5	420	9.9	25.0	<0.001	0.02	0.25	7.5	<0.2	0.8	60.7	0.01	<0.01	13.0	0.104
G0669502		38.5	330	8.9	33.3	<0.001	0.17	1.43	9.9	0.2	0.5	14.7	<0.01	0.01	4.3	0.151
G0669503		44.0	170	4.1	39.8	<0.001	0.05	1.09	13.6	0.3	0.9	73.5	0.01	0.02	2.8	0.288
G0669504		19.0	170	69.1	8.5	<0.001	0.09	4.09	7.3	0.3	1.5	3.4	<0.01	0.01	2.6	0.163
G0669505		1.0	30	>10000	0.4	<0.001	>10.0	604	0.1	52.6	1.9	2.8	<0.01	0.01	<0.2	<0.005
H031665		40.4	280	2970	24.9	<0.001	0.24	3.71	13.9	0.5	0.5	14.5	<0.01	<0.01	3.9	0.149
H031709		5.1	140	1750	5.8	<0.001	0.05	0.75	0.7	0.5	<0.2	18.6	<0.01	<0.01	4.4	<0.005
H031552		14.1	170	542	14.7	<0.001	7.63	5.01	1.0	12.6	107.5	34.2	<0.01	0.25	3.7	<0.005
H031553		1.2	20	>10000	2.9	<0.001	0.44	779	0.2	3.7	14.4	4.6	<0.01	0.32	0.4	<0.005
H031554		2.6	40	>10000	4.0	<0.001	9.64	4060	2.9	9.8	119.0	29.4	<0.01	0.01	1.8	<0.005
H031555		5.6	250	>10000	0.9	0.003	>10.0	28.9	0.3	80.0	5.5	7.8	<0.01	3.83	0.7	0.010



ALS Chemex

EXCELLENCE IN ANALYTICAL CHEMISTRY

ALS Canada Ltd.

2103 Dollarton Hwy
North Vancouver BC V7H 0A7

Phone: 604 984 0221 Fax: 604 984 0218 www.alschemex.com

To: OVERLAND RESOURCES LTD.
604 - 700 WEST PENDER STREET
VANCOUVER BC V6C 1G8

Page: 2 - D
Total # Pages: 2 (A - D)
Plus Appendix Pages
Finalized Date: 6-JUL-2010
Account: OVERRE

Project: YBMP

CERTIFICATE OF ANALYSIS WH10083977

Sample Description	Method Analyte Units LOR	ME-MS41	ME-MS41	ME-MS41	ME-MS41	ME-MS41	ME-MS41	ME-MS41	Ag-OG46	Pb-OG46	Cu-OG46	Zn-OG46
		Tl	U	V	W	Y	Zn	Zr	Ag	Pb	Cu	Zn
		ppm	ppm	ppm	ppm	ppm	ppm	ppm	ppm	%	%	%
		0.02	0.05	1	0.05	0.05	2	0.5	1	0.001	0.001	0.001
G0669501		0.13	1.90	41	0.33	11.60	45	23.0				
G0669502		0.25	0.54	114	0.10	8.35	78	0.9				
G0669503		0.32	0.26	183	0.25	6.11	72	1.9				
G0669504		0.04	0.29	116	0.12	2.67	39	1.0				
G0669505		0.33	<0.05	1	<0.05	0.09	1130	<0.5		>20.0		
H031665		0.15	0.45	131	<0.05	8.46	71	1.3				
H031709		0.03	0.25	2	<0.05	1.69	4820	4.5				
H031552		0.28	0.97	2	4.03	6.13	>10000	4.0	121		2.74	6.55
H031553		0.14	0.14	1	45.5	0.25	454	<0.5		1.175		
H031554		0.35	0.55	1	<0.05	<0.05	9200	1.8	318	6.56		
H031555		0.23	0.24	<1	370	0.97	>10000	1.0	248	10.80	1.145	10.70



ALS Chemex

EXCELLENCE IN ANALYTICAL CHEMISTRY

ALS Canada Ltd.

2103 Dollarton Hwy

North Vancouver BC V7H 0A7

Phone: 604 984 0221 Fax: 604 984 0218 www.alschemex.com

To: OVERLAND RESOURCES LTD.
604 - 700 WEST PENDER STREET
VANCOUVER BC V6C 1G8

Page: Appendix 1
Total # Appendix Pages: 1
Finalized Date: 6-JUL-2010
Account: OVERRE

Project: YBMP

CERTIFICATE OF ANALYSIS WH10083977

Method	CERTIFICATE COMMENTS
ME-MS41	Gold determinations by this method are semi-quantitative due to the small sample weight used (0.5g).



ALS Chemex

EXCELLENCE IN ANALYTICAL CHEMISTRY

ALS Canada Ltd.

2103 Dollarton Hwy

North Vancouver BC V7H 0A7

Phone: 604 984 0221 Fax: 604 984 0218 www.alschemex.com

To: **OVERLAND RESOURCES LTD.**
604 - 700 WEST PENDER STREET
VANCOUVER BC V6C 1G8

Page: 1
Finalized Date: 27-JUL-2010
Account: OVERRE

CERTIFICATE WH10083978

Project: YMBP

P.O. No.: 7

This report is for 105 Rock samples submitted to our lab in Whitehorse, YT, Canada on 24-JUN-2010.

The following have access to data associated with this certificate:

HUGH BRESSER

ALEX TOLSON

SAMPLE PREPARATION

ALS CODE	DESCRIPTION
WEI-21	Received Sample Weight
CRU-QC	Crushing QC Test
LOG-22	Sample login - Rcd w/o BarCode
CRU-31	Fine crushing - 70% <2mm
SPL-21	Split sample - riffle splitter
PUL-31	Pulverize split to 85% <75 um

ANALYTICAL PROCEDURES

ALS CODE	DESCRIPTION	INSTRUMENT
Ag-OG46	Ore Grade Ag - Aqua Regia	VARIABLE
ME-OG46	Ore Grade Elements - AquaRegia	ICP-AES
Pb-OG46	Ore Grade Pb - Aqua Regia	VARIABLE
Cu-OG46	Ore Grade Cu - Aqua Regia	VARIABLE
Zn-OG46	Ore Grade Zn - Aqua Regia	VARIABLE
ME-MS41	51 anal. aqua regia ICPMS	

To: **OVERLAND RESOURCES LTD.**
ATTN: HUGH BRESSER
2ND FLOOR
675 MURRAY ST
WEST PERTH WA 6005
AUSTRALIA

This is the Final Report and supersedes any preliminary report with this certificate number. Results apply to samples as submitted. All pages of this report have been checked and approved for release.

Signature: 

Colin Ramshaw, Vancouver Laboratory Manager



ALS Chemex

EXCELLENCE IN ANALYTICAL CHEMISTRY

ALS Canada Ltd.

2103 Dollarton Hwy
North Vancouver BC V7H 0A7

Phone: 604 984 0221 Fax: 604 984 0218 www.alschemex.com

To: OVERLAND RESOURCES LTD.
604 - 700 WEST PENDER STREET
VANCOUVER BC V6C 1G8

Page: 2 - A
Total # Pages: 4 (A - D)
Plus Appendix Pages
Finalized Date: 27-JUL-2010
Account: OVERRE

Project: YMBP

CERTIFICATE OF ANALYSIS WH10083978

Sample Description	Method Analyte Units LOR	WEI-21	ME-MS41	ME-MS41	ME-MS41	ME-MS41	ME-MS41	ME-MS41	ME-MS41	ME-MS41	ME-MS41	ME-MS41	ME-MS41	ME-MS41	ME-MS41	ME-MS41
		Recvd Wt.	Ag	Al	As	Au	B	Ba	Be	Bi	Ca	Cd	Ce	Co	Cr	Cs
		kg	ppm	%	ppm	ppm	ppm	ppm	ppm	%	ppm	ppm	ppm	ppm	ppm	ppm
		0.02	0.01	0.01	0.1	0.2	10	10	0.05	0.01	0.01	0.01	0.02	0.1	1	0.05
H031622		1.30	0.33	1.60	30.0	<0.2	20	100	0.44	0.29	0.43	0.45	20.0	14.0	42	4.63
H031623		0.97	0.04	2.45	5.0	<0.2	10	130	1.10	0.33	0.16	0.03	94.0	10.3	40	13.50
H031624		0.93	0.02	1.85	0.1	<0.2	<10	30	0.31	0.11	8.48	0.04	14.75	0.9	8	0.47
H031625		1.53	0.29	5.77	18.5	<0.2	<10	70	0.46	3.74	2.63	0.04	6.54	23.3	112	1.34
H031626		1.29	0.15	3.03	21.4	<0.2	<10	10	0.06	0.09	2.15	0.10	0.99	19.4	85	0.39
H031627		1.55	0.01	1.62	9.2	<0.2	<10	130	0.43	0.09	0.39	0.06	38.3	12.8	34	2.26
H031628		1.27	0.04	1.18	10.5	<0.2	<10	150	0.56	0.21	0.10	0.03	48.4	7.0	20	2.30
H031629		1.96	0.01	1.00	11.1	<0.2	<10	40	0.21	0.03	1.35	0.03	23.0	6.3	15	0.79
H031630		1.51	13.50	0.18	76.1	<0.2	<10	50	0.05	34.3	0.02	0.01	8.18	1.5	6	0.44
H031631		1.13	0.35	1.78	35.8	<0.2	<10	70	0.33	0.62	0.04	0.01	28.7	14.2	17	2.47
H031632		1.04	0.63	0.24	53.9	<0.2	<10	20	0.10	0.54	3.87	0.07	6.38	18.9	11	0.39
H031633		1.28	6.36	0.17	719	0.3	20	30	<0.05	2.83	0.02	0.17	5.64	19.0	8	0.43
H031634		2.29	>100	0.15	121.5	<0.2	<10	10	0.11	399	0.05	>1000	3.67	37.4	1	0.18
H031635		1.30	0.70	0.05	1.7	<0.2	<10	10	<0.05	0.75	0.22	1.40	5.23	0.7	19	0.18
H031636		1.69	12.00	0.42	1.7	<0.2	<10	40	0.17	5.04	0.66	71.7	9.26	11.9	23	0.67
H031637		1.50	47.5	0.28	4970	<0.2	<10	20	0.07	6.42	0.45	79.0	5.29	20.6	16	0.48
H031710		0.97	1.28	0.06	9.9	<0.2	<10	30	<0.05	0.21	4.19	235	2.73	25.6	4	0.18
H031711		1.01	0.40	0.38	11.7	<0.2	<10	440	0.09	0.14	0.02	0.68	5.62	1.4	20	0.94
H031712		1.29	0.25	0.75	6.4	<0.2	<10	260	0.19	0.17	0.03	1.23	12.50	4.2	20	1.71
H031713		0.98	0.06	0.80	5.4	<0.2	<10	110	0.15	0.11	0.02	0.09	26.2	3.8	20	0.59
H031714		0.99	0.11	1.88	21.4	<0.2	<10	170	0.56	0.37	0.21	0.17	57.8	12.0	20	1.56
H031715		1.11	0.20	4.48	21.9	<0.2	<10	190	0.33	0.36	1.90	0.08	11.40	31.2	120	3.86
H031716		0.87	0.05	0.11	4.4	<0.2	<10	40	<0.05	0.10	0.01	0.14	7.72	0.9	16	0.17
H031717		2.00	0.04	0.17	1.3	<0.2	<10	100	0.08	0.11	0.02	0.05	7.68	0.6	48	0.35
H031718		1.05	0.39	1.08	8.2	<0.2	<10	240	0.41	0.12	0.30	0.38	13.50	3.8	35	2.71
H031719		1.04	0.39	0.51	6.6	<0.2	<10	180	0.23	0.11	0.20	0.19	11.30	1.2	29	1.25
H031720		1.35	0.05	2.04	63.3	<0.2	<10	70	0.47	0.54	0.05	0.17	69.7	8.8	17	2.49
H031721		1.34	0.50	0.33	>10000	0.5	<10	40	0.16	8.98	0.01	0.04	10.75	186.0	6	1.05
H031722		0.65	0.02	0.08	107.0	<0.2	<10	20	<0.05	0.08	0.01	0.04	5.45	1.5	23	0.37
H031723		1.39	0.04	0.01	131.5	<0.2	<10	<10	<0.05	0.04	0.01	0.03	2.84	0.5	39	0.12
H031724		1.34	0.11	0.44	35.8	<0.2	<10	60	0.30	0.23	0.01	0.04	23.6	1.2	17	1.53
H031725		1.19	28.1	1.21	15.4	<0.2	<10	20	<0.05	0.42	0.02	6.00	12.85	1.6	43	0.44
H031726		1.15	0.40	0.42	21.1	<0.2	<10	60	0.16	0.29	0.04	0.42	18.70	3.1	13	1.23
H031727		1.28	0.21	0.28	22.0	<0.2	<10	40	0.12	0.12	0.02	0.06	14.25	2.3	10	0.76
H031728		1.22	0.08	0.22	2.4	<0.2	<10	40	0.10	0.12	0.03	0.22	15.60	3.6	12	0.66
H031729		1.17	0.68	0.09	24.0	<0.2	<10	30	0.05	0.07	0.01	0.07	6.83	1.5	18	0.38
H031730		1.19	0.05	0.19	4.4	<0.2	<10	40	0.10	0.11	0.02	0.16	18.15	3.3	11	0.48
H031731		1.67	0.03	0.11	2.8	<0.2	<10	30	0.06	0.03	0.01	0.03	6.80	1.2	18	0.45
H031732		1.68	0.02	0.07	2.3	<0.2	<10	20	<0.05	0.02	0.01	0.02	7.58	0.7	17	0.27
H031733		1.40	0.03	0.06	167.0	<0.2	<10	20	<0.05	0.04	0.01	0.05	5.17	2.0	18	0.26



ALS Chemex

EXCELLENCE IN ANALYTICAL CHEMISTRY

ALS Canada Ltd.

2103 Dollarton Hwy

North Vancouver BC V7H 0A7

Phone: 604 984 0221 Fax: 604 984 0218 www.alschemex.com

To: OVERLAND RESOURCES LTD.
604 - 700 WEST PENDER STREET
VANCOUVER BC V6C 1G8

Page: 2 - B
Total # Pages: 4 (A - D)
Plus Appendix Pages
Finalized Date: 27-JUL-2010
Account: OVERRE

Project: YMBP

CERTIFICATE OF ANALYSIS WH10083978

Sample Description	Method Analyte Units LOR	ME-MS41	ME-MS41	ME-MS41	ME-MS41	ME-MS41	ME-MS41	ME-MS41	ME-MS41	ME-MS41	ME-MS41	ME-MS41	ME-MS41	ME-MS41	ME-MS41	ME-MS41
		Cu ppm	Fe %	Ga ppm	Ge ppm	Hf ppm	Hg ppm	In ppm	K %	La ppm	Li ppm	Mg %	Mn ppm	Mo ppm	Na %	Nb ppm
		0.2	0.01	0.05	0.05	0.02	0.01	0.005	0.01	0.2	0.1	0.01	5	0.05	0.01	0.05
H031622		67.4	2.32	7.38	0.08	0.12	<0.01	0.037	0.34	10.5	36.0	0.50	826	2.14	0.06	0.24
H031623		24.0	3.47	8.66	0.14	0.36	<0.01	0.019	0.91	48.1	80.3	0.79	197	0.13	0.04	0.56
H031624		2.9	0.36	4.41	0.05	0.04	<0.01	<0.005	0.05	6.4	4.6	0.06	678	0.08	0.10	0.86
H031625		161.5	4.36	15.75	0.13	0.04	<0.01	0.030	0.65	2.9	25.5	1.40	159	0.23	0.47	0.18
H031626		92.5	1.51	5.10	0.07	0.03	<0.01	0.012	0.02	0.4	14.6	1.08	231	0.24	0.33	0.26
H031627		2.2	2.94	7.57	0.10	0.06	<0.01	0.021	0.40	19.3	31.3	0.67	339	0.20	0.04	0.65
H031628		5.8	1.69	3.80	0.08	0.13	<0.01	0.008	0.45	20.7	20.0	0.38	314	0.51	0.03	0.47
H031629		3.2	1.75	3.39	<0.05	0.03	<0.01	0.007	0.12	11.2	16.4	0.41	555	0.12	0.03	<0.05
H031630		32.7	3.39	0.48	0.05	0.02	<0.01	<0.005	0.12	3.9	0.6	0.01	105	0.21	0.01	0.07
H031631		30.6	3.99	5.40	0.08	0.19	<0.01	0.008	0.29	14.6	25.6	0.74	375	0.56	0.02	0.08
H031632		66.6	2.20	0.85	<0.05	0.02	<0.01	0.016	0.06	3.1	3.4	0.13	736	0.18	0.01	0.08
H031633		735	10.65	0.58	0.17	0.02	0.01	0.055	0.10	2.7	0.6	0.01	27	0.45	0.01	0.16
H031634		>10000	19.35	0.76	0.38	0.02	1.13	39.6	0.02	1.5	0.2	0.06	258	0.38	0.01	0.22
H031635		41.6	0.50	0.22	<0.05	<0.02	<0.01	0.052	0.02	2.4	0.2	0.01	161	0.19	0.01	0.05
H031636		236	2.66	1.52	0.05	0.02	0.04	0.474	0.12	4.3	5.5	0.15	512	0.22	0.01	0.07
H031637		290	7.40	1.07	0.10	0.02	0.13	0.488	0.09	2.8	3.1	0.11	952	0.15	0.01	0.10
H031710		73.6	0.63	15.55	0.26	0.08	25.2	0.751	0.03	1.1	0.6	0.01	419	0.11	0.01	0.08
H031711		37.2	1.57	1.55	<0.05	0.03	0.07	0.019	0.05	2.9	5.3	0.14	249	3.04	<0.01	<0.05
H031712		48.4	1.52	2.89	0.05	0.04	0.12	0.037	0.15	5.4	12.2	0.31	61	0.60	0.02	0.05
H031713		15.6	1.72	3.21	<0.05	0.02	<0.01	0.009	0.10	12.4	17.7	0.32	213	0.16	0.03	0.07
H031714		25.2	3.52	6.23	0.09	0.04	0.01	0.020	0.24	28.0	44.2	0.84	570	0.34	0.01	0.46
H031715		95.3	5.65	13.20	0.24	0.07	0.01	0.046	0.56	5.0	60.7	2.33	739	0.16	0.18	0.22
H031716		8.7	0.56	0.41	<0.05	<0.02	0.01	0.007	0.05	3.8	0.9	0.02	62	0.22	0.01	0.10
H031717		8.3	0.48	0.53	<0.05	0.04	0.01	0.011	0.06	4.5	1.3	0.03	42	0.31	0.01	0.11
H031718		38.9	2.12	4.91	0.07	0.10	0.01	0.024	0.25	6.9	19.8	0.53	268	1.65	0.03	0.21
H031719		17.5	1.11	2.18	<0.05	0.07	0.02	0.015	0.12	6.3	13.5	0.14	102	1.56	0.02	0.29
H031720		38.4	3.72	6.00	0.11	0.16	0.01	0.023	0.40	37.8	30.8	0.85	315	1.15	0.01	0.23
H031721		5.9	7.67	0.96	0.19	0.05	<0.01	0.072	0.12	5.2	2.5	0.04	31	0.36	0.02	0.50
H031722		3.8	0.52	0.28	<0.05	<0.02	<0.01	0.005	0.05	3.0	0.5	0.01	94	0.17	<0.01	0.11
H031723		3.1	0.42	0.10	<0.05	<0.02	0.01	<0.005	<0.01	1.6	0.1	<0.01	46	0.25	0.01	0.06
H031724		29.7	1.85	1.52	0.05	0.06	<0.01	0.019	0.20	11.9	5.5	0.07	71	0.31	0.01	0.30
H031725		88.1	2.74	4.01	<0.05	0.02	0.15	1.035	0.10	5.8	11.5	0.79	502	0.15	<0.01	<0.05
H031726		20.5	1.40	0.80	<0.05	0.02	<0.01	0.027	0.16	9.1	4.6	0.07	247	0.22	0.01	0.11
H031727		13.3	1.14	0.56	<0.05	0.03	<0.01	0.014	0.12	7.3	1.5	0.03	238	0.20	0.01	0.06
H031728		16.8	1.03	0.45	<0.05	0.02	<0.01	<0.005	0.12	8.1	1.0	0.02	329	0.18	0.01	0.07
H031729		6.1	0.60	0.19	<0.05	<0.02	<0.01	<0.005	0.05	3.6	0.5	0.01	311	0.22	<0.01	<0.05
H031730		10.3	1.04	0.47	<0.05	0.03	0.01	<0.005	0.04	8.0	1.6	0.02	389	0.18	0.02	0.15
H031731		4.4	0.62	0.30	<0.05	<0.02	0.01	<0.005	0.06	3.5	0.7	0.01	144	0.21	0.01	0.12
H031732		4.9	0.57	0.28	<0.05	<0.02	0.01	<0.005	0.05	3.9	0.5	<0.01	86	0.32	0.01	0.19
H031733		3.7	0.52	0.24	<0.05	<0.02	0.01	<0.005	0.05	2.7	0.3	<0.01	114	0.19	0.01	0.13



ALS Chemex

EXCELLENCE IN ANALYTICAL CHEMISTRY

ALS Canada Ltd.

2103 Dollarton Hwy
North Vancouver BC V7H 0A7

Phone: 604 984 0221 Fax: 604 984 0218 www.alschemex.com

To: OVERLAND RESOURCES LTD.
604 - 700 WEST PENDER STREET
VANCOUVER BC V6C 1G8

Page: 2 - C
Total # Pages: 4 (A - D)
Plus Appendix Pages
Finalized Date: 27-JUL-2010
Account: OVERRE

Project: YMBP

CERTIFICATE OF ANALYSIS WH10083978

Sample Description	Method Analyte Units LOR	ME-MS41	ME-MS41	ME-MS41	ME-MS41	ME-MS41	ME-MS41	ME-MS41	ME-MS41	ME-MS41	ME-MS41	ME-MS41	ME-MS41	ME-MS41	ME-MS41	
		Ni ppm	P ppm	Pb ppm	Rb ppm	Re ppm	S %	Sb ppm	Sc ppm	Se ppm	Sn ppm	Sr ppm	Ta ppm	Te ppm	Th ppm	Ti %
		0.2	10	0.2	0.1	0.001	0.01	0.05	0.1	0.2	0.2	0.01	0.01	0.2	0.005	
H031622		61.1	360	12.1	30.1	0.002	0.86	6.68	3.8	2.0	0.3	51.8	<0.01	0.10	3.0	0.040
H031623		31.8	310	11.7	82.2	<0.001	0.05	4.08	5.1	0.3	0.9	12.2	0.01	0.02	18.2	0.132
H031624		3.1	230	4.1	3.8	<0.001	0.02	0.42	1.9	0.2	0.3	339	0.02	0.01	4.7	0.032
H031625		47.3	370	8.7	26.2	0.001	1.41	3.08	7.2	1.3	0.7	69.6	<0.01	0.19	1.2	0.196
H031626		69.2	320	1.5	1.0	0.002	0.12	1.12	6.6	0.5	0.2	36.4	0.01	0.01	<0.2	0.182
H031627		25.1	480	7.0	31.0	<0.001	0.02	0.31	3.8	0.3	0.5	19.1	0.01	0.02	14.3	0.055
H031628		12.9	200	5.6	32.6	<0.001	0.02	1.21	2.0	0.2	0.4	16.4	<0.01	0.02	9.9	0.074
H031629		12.8	130	0.9	6.2	<0.001	0.09	0.52	1.4	<0.2	<0.2	47.3	<0.01	<0.01	8.4	<0.005
H031630		2.0	50	2930	7.5	<0.001	0.80	6.96	0.4	3.0	0.4	4.2	<0.01	0.91	2.0	<0.005
H031631		26.8	220	17.1	15.5	0.001	0.97	1.58	2.0	0.3	0.2	8.4	<0.01	0.02	13.3	<0.005
H031632		50.6	30	16.3	3.1	<0.001	1.00	0.77	1.4	0.6	<0.2	385	<0.01	0.11	1.8	<0.005
H031633		27.3	40	81.8	7.2	<0.001	>10.0	24.5	0.6	6.1	34.0	2.2	<0.01	0.03	1.5	<0.005
H031634		23.5	40	>10000	1.1	0.001	>10.0	31.9	0.4	41.2	>500	2.6	<0.01	2.04	1.1	<0.005
H031635		2.2	90	49.1	1.6	<0.001	0.08	0.35	0.2	<0.2	1.2	11.8	<0.01	0.01	0.7	<0.005
H031636		6.5	90	4960	6.3	<0.001	1.47	6.77	0.7	2.1	3.6	26.2	<0.01	0.60	4.2	<0.005
H031637		16.7	80	5680	5.7	<0.001	6.59	205	1.0	2.1	16.7	11.6	<0.01	0.11	1.7	<0.005
H031710		4.0	80	33.7	1.8	<0.001	3.33	2.14	0.6	7.2	2.5	125.5	<0.01	0.01	1.4	<0.005
H031711		19.9	60	18.8	3.4	0.001	0.19	1.28	2.0	2.2	0.2	12.2	<0.01	0.04	0.6	<0.005
H031712		30.9	40	9.0	8.3	0.001	0.51	0.47	2.4	1.4	0.3	24.1	<0.01	0.04	1.1	<0.005
H031713		10.7	100	8.2	7.2	<0.001	0.02	0.33	1.4	<0.2	0.2	5.5	<0.01	0.01	5.9	<0.005
H031714		18.9	320	10.1	15.0	<0.001	0.06	0.98	2.8	0.3	0.5	12.9	0.01	0.02	12.1	0.040
H031715		60.3	340	4.2	34.4	<0.001	0.14	0.95	14.0	0.5	1.3	65.2	0.01	0.01	2.7	0.292
H031716		2.5	30	5.1	2.8	<0.001	0.01	0.22	0.5	<0.2	<0.2	1.6	<0.01	0.01	2.0	<0.005
H031717		3.0	60	6.5	3.7	0.003	0.03	0.84	0.6	0.2	0.2	6.2	<0.01	0.04	1.1	0.007
H031718		17.7	360	6.2	23.7	0.002	0.53	2.32	2.8	2.1	0.3	40.2	<0.01	0.06	2.7	0.032
H031719		8.3	410	6.2	8.7	0.002	0.24	7.95	1.0	1.6	0.3	27.6	<0.01	0.07	1.9	0.013
H031720		30.6	440	13.8	25.2	<0.001	0.01	3.65	2.4	0.3	0.3	11.0	<0.01	0.06	15.9	0.006
H031721		13.3	130	35.5	8.0	<0.001	3.95	82.6	0.8	7.7	0.2	13.5	<0.01	12.30	7.7	<0.005
H031722		2.5	60	1.9	3.4	<0.001	0.01	3.15	0.4	<0.2	<0.2	1.2	<0.01	0.07	1.4	<0.005
H031723		1.8	40	2.5	0.3	<0.001	0.01	6.94	0.2	<0.2	<0.2	0.9	<0.01	0.02	0.4	<0.005
H031724		3.3	160	7.5	10.3	<0.001	0.11	2.33	1.0	0.2	0.4	3.9	<0.01	0.01	8.1	<0.005
H031725		8.6	120	9120	5.5	<0.001	0.34	20.3	2.3	0.3	14.2	2.2	<0.01	0.03	3.3	0.005
H031726		7.7	230	80.0	8.2	<0.001	0.18	6.14	0.8	<0.2	0.3	4.2	<0.01	0.01	6.1	<0.005
H031727		5.5	180	42.2	6.0	<0.001	0.14	10.90	0.7	<0.2	0.2	2.5	<0.01	0.01	4.6	<0.005
H031728		10.5	150	6.3	5.6	<0.001	0.08	5.86	0.6	<0.2	<0.2	2.5	<0.01	0.01	4.2	<0.005
H031729		3.8	50	9.3	3.1	<0.001	0.04	136.0	0.4	<0.2	0.2	1.4	<0.01	<0.01	1.7	<0.005
H031730		9.7	100	5.7	2.4	<0.001	<0.01	58.3	0.6	<0.2	<0.2	3.2	<0.01	0.01	5.4	<0.005
H031731		4.5	50	3.6	3.6	<0.001	<0.01	4.59	0.3	<0.2	<0.2	1.4	<0.01	<0.01	1.7	<0.005
H031732		3.6	60	3.7	3.1	<0.001	<0.01	3.63	0.3	<0.2	<0.2	1.2	<0.01	<0.01	1.7	<0.005
H031733		2.3	30	24.6	3.0	<0.001	<0.01	8.01	0.3	<0.2	<0.2	0.8	<0.01	0.07	1.1	<0.005



ALS Chemex

EXCELLENCE IN ANALYTICAL CHEMISTRY

ALS Canada Ltd.

2103 Dollarton Hwy
North Vancouver BC V7H 0A7

Phone: 604 984 0221 Fax: 604 984 0218 www.alschemex.com

To: OVERLAND RESOURCES LTD.
604 - 700 WEST PENDER STREET
VANCOUVER BC V6C 1G8

Page: 2 - D
Total # Pages: 4 (A - D)
Plus Appendix Pages
Finalized Date: 27-JUL-2010
Account: OVERRE

Project: YMBP

CERTIFICATE OF ANALYSIS WH10083978

Sample Description	Method Analyte Units LOR	ME-MS41	ME-MS41	ME-MS41	ME-MS41	ME-MS41	ME-MS41	ME-MS41	Ag-OG46	Pb-OG46	Cu-OG46	Zn-OG46
		Tl	U	V	W	Y	Zn	Zr	Ag	Pb	Cu	Zn
		ppm	ppm	ppm	ppm	ppm	ppm	ppm	ppm	%	%	%
		0.02	0.05	1	0.05	0.05	2	0.5	1	0.001	0.001	0.001
H031622		0.26	0.65	69	0.17	3.99	124	5.6				
H031623		0.61	1.57	34	0.65	7.16	82	14.6				
H031624		0.02	0.18	3	0.24	5.21	7	1.0				
H031625		0.23	0.14	189	0.26	4.89	63	0.6				
H031626		<0.02	<0.05	55	<0.05	4.00	26	0.5				
H031627		0.20	0.70	25	0.32	8.62	45	1.7				
H031628		0.21	0.52	13	0.17	3.30	34	5.2				
H031629		0.04	0.52	8	0.31	3.09	23	1.1				
H031630		0.10	0.12	1	0.13	1.15	6	1.0				
H031631		0.11	1.12	14	0.11	2.32	36	8.8				
H031632		0.02	0.30	2	0.14	10.70	7	0.5				
H031633		0.16	0.16	2	0.35	0.64	20	0.9				
H031634		0.29	0.73	1	0.07	1.61	>10000	0.7	456	2.50	2.60	7.93
H031635		<0.02	0.08	<1	0.49	1.09	185	<0.5				
H031636		0.07	0.47	6	0.12	3.61	4390	0.6				
H031637		0.07	0.16	8	0.28	4.31	6070	0.6				
H031710		0.03	0.14	<1	0.07	1.47	>10000	1.9				8.02
H031711		0.02	0.11	27	0.23	0.89	244	1.4				
H031712		0.05	0.19	30	0.08	1.61	417	2.0				
H031713		0.05	0.32	11	0.16	1.52	31	1.0				
H031714		0.12	0.89	25	0.15	6.25	68	1.4				
H031715		0.50	0.27	195	0.21	7.54	75	1.0				
H031716		0.02	0.18	1	0.12	0.47	36	<0.5				
H031717		0.04	0.26	5	0.10	1.00	9	1.7				
H031718		0.24	0.98	72	0.11	4.67	62	5.3				
H031719		0.09	0.49	24	0.18	2.69	16	3.0				
H031720		0.19	0.80	18	0.09	3.74	71	9.0				
H031721		0.05	0.52	3	0.13	1.41	4	2.4				
H031722		0.02	0.10	1	0.09	0.35	10	<0.5				
H031723		<0.02	<0.05	<1	0.22	0.28	3	<0.5				
H031724		0.07	0.55	4	0.13	1.69	31	2.5				
H031725		0.06	0.16	54	0.18	1.32	434	0.9				
H031726		0.07	0.54	4	0.12	3.07	35	0.7				
H031727		0.05	0.36	3	0.20	1.81	16	1.0				
H031728		0.07	0.30	2	0.12	2.13	21	0.8				
H031729		0.03	0.19	1	0.18	0.76	12	<0.5				
H031730		0.02	0.43	1	0.17	1.80	20	1.1				
H031731		0.04	0.21	1	0.23	0.63	5	<0.5				
H031732		0.02	0.12	1	0.22	0.46	4	<0.5				
H031733		0.02	0.11	1	0.25	0.48	15	<0.5				



ALS Chemex

EXCELLENCE IN ANALYTICAL CHEMISTRY

ALS Canada Ltd.

2103 Dollarton Hwy
North Vancouver BC V7H 0A7

Phone: 604 984 0221 Fax: 604 984 0218 www.alschemex.com

To: OVERLAND RESOURCES LTD.
604 - 700 WEST PENDER STREET
VANCOUVER BC V6C 1G8

Page: 3 - A
Total # Pages: 4 (A - D)
Plus Appendix Pages
Finalized Date: 27-JUL-2010
Account: OVERRE

Project: YMBP

CERTIFICATE OF ANALYSIS WH10083978

Sample Description	Method Analyte Units LOR	WEI-21	ME-MS41	ME-MS41	ME-MS41	ME-MS41	ME-MS41	ME-MS41	ME-MS41	ME-MS41	ME-MS41	ME-MS41	ME-MS41	ME-MS41	ME-MS41	ME-MS41
		Recvd Wt.	Ag	Al	As	Au	B	Ba	Be	Bi	Ca	Cd	Ce	Co	Cr	Cs
		kg	ppm	%	ppm	ppm	ppm	ppm	ppm	%	ppm	ppm	ppm	ppm	ppm	ppm
		0.02	0.01	0.01	0.1	0.2	10	10	0.05	0.01	0.01	0.01	0.02	0.1	1	0.05
H031734		1.67	0.17	0.07	9.6	<0.2	<10	30	0.05	0.36	<0.01	0.04	7.46	0.9	16	0.39
H031735		1.18	0.05	1.24	37.6	<0.2	<10	60	0.34	0.14	0.06	0.25	63.7	9.5	12	1.48
H031736		1.59	0.11	0.78	46.7	<0.2	<10	130	0.24	0.23	0.06	0.35	37.5	7.6	12	0.73
H031737		1.52	0.07	1.30	11.8	<0.2	<10	70	0.19	0.18	0.04	0.11	38.0	8.6	16	0.50
H031738		1.23	0.03	0.72	2.4	<0.2	<10	50	0.16	0.05	0.04	0.20	29.4	4.7	22	1.09
H031739		1.60	0.10	1.35	1.8	<0.2	<10	330	0.44	0.21	0.12	0.23	31.7	10.2	19	4.14
H031740		1.13	0.27	0.61	8.4	<0.2	<10	160	0.31	0.12	0.08	2.46	15.15	5.3	19	2.14
H031741		1.13	0.01	0.04	<2	<0.2	<10	100	0.07	0.01	>25.0	0.68	4.78	1.1	1	0.24
H031742		0.94	8.43	0.13	2910	<0.2	<10	150	<0.05	5.62	0.18	2.54	4.83	1.3	18	0.27
H031743		2.16	>100	0.04	31.9	<0.2	<10	20	<0.05	0.13	0.02	16.90	1.98	1.0	5	0.11
H031744		2.03	>100	0.31	828	<0.2	<10	60	0.14	480	0.01	0.76	7.79	0.4	1	0.29
H031556		0.81	2.04	0.32	19.8	<0.2	<10	160	0.45	2.46	0.01	0.39	23.1	13.1	11	1.29
H031557		1.29	0.71	0.35	69.8	<0.2	<10	360	0.43	0.34	0.03	0.50	5.87	5.7	25	3.47
H031558		1.06	0.12	0.72	2.1	<0.2	<10	320	1.06	0.48	7.14	0.93	15.60	12.6	8	0.70
H031559		0.87	0.20	0.70	3.1	<0.2	<10	550	0.38	0.29	0.05	0.08	25.1	3.7	10	1.44
H031560		1.60	0.13	0.18	5.7	<0.2	<10	70	0.11	0.20	0.24	0.03	14.05	3.6	8	0.27
H031561		1.10	0.08	0.29	3.1	<0.2	<10	30	0.09	0.16	0.44	0.04	8.13	1.0	12	0.35
H031562		1.01	0.04	2.64	7.0	<0.2	<10	40	0.56	0.05	0.07	0.02	91.9	13.6	29	0.97
H031563		1.43	0.09	0.14	2.8	<0.2	<10	360	<0.05	0.05	0.02	0.02	3.55	1.7	19	0.54
H031564		1.36	0.06	0.27	3.3	<0.2	<10	40	0.06	0.11	0.01	0.11	27.3	3.7	32	0.16
H031565		1.24	0.04	0.47	19.1	<0.2	<10	40	0.15	0.17	0.02	0.03	39.4	3.1	15	0.37
H031566		1.32	0.23	0.25	63.6	<0.2	10	40	0.42	0.27	0.03	0.04	20.9	4.1	11	0.68
H031567		1.03	0.06	0.59	11.8	<0.2	<10	40	0.21	0.09	0.17	0.16	23.6	7.9	11	0.91
H031568		1.51	0.04	0.17	7.7	<0.2	<10	50	0.06	0.04	0.30	0.16	3.76	2.1	20	0.16
H031569		1.20	0.12	0.48	12.9	<0.2	<10	30	0.10	0.38	0.29	0.10	8.80	2.1	16	0.19
H031570		1.22	1.25	0.11	153.5	0.2	<10	20	0.06	0.09	0.01	0.21	11.65	0.7	14	1.06
H031571		1.83	0.53	0.21	55.6	<0.2	<10	40	0.15	0.46	0.07	0.08	12.30	7.0	23	1.08
H031572		1.58	71.3	0.68	536	<0.2	<10	50	0.40	39.9	0.40	97.3	26.7	23.2	8	1.55
H031573		1.27	81.9	0.62	528	<0.2	<10	50	0.33	56.2	0.52	134.5	22.0	25.4	7	1.34
H031574		0.84	1.79	0.55	5.8	<0.2	<10	60	0.16	1.87	0.93	5.21	18.85	5.3	11	1.55
H031575		1.40	17.00	1.73	113.0	<0.2	<10	70	0.42	32.8	0.18	114.0	19.45	23.8	46	1.76
H031576		1.32	5.48	0.32	4.5	<0.2	<10	20	0.07	4.19	0.48	3.84	8.67	9.7	27	0.81
H031768		0.85	0.20	4.24	31.1	<0.2	<10	170	1.90	1.10	1.76	0.33	36.7	18.0	52	4.81
H031769		1.60	2.98	0.83	36.7	<0.2	<10	10	0.16	10.05	0.77	0.29	7.88	53.0	1	0.20
H031770		1.20	0.43	1.95	199.0	<0.2	<10	90	1.18	1.52	0.46	0.22	35.1	18.7	25	7.09
H031771		0.92	0.26	5.31	108.0	<0.2	<10	120	1.63	2.71	3.01	0.06	22.2	19.0	40	2.90
H031772		1.39	0.20	5.05	38.4	<0.2	<10	240	0.67	0.49	1.54	0.04	16.35	30.9	100	6.88
H031773		0.98	0.19	0.26	10.1	<0.2	<10	220	0.28	0.14	0.01	0.18	16.65	1.8	15	1.16
H031774		1.16	0.15	0.28	29.4	<0.2	<10	160	0.26	0.12	0.01	0.15	8.68	2.2	14	1.98
H031775		0.86	0.36	0.21	42.6	<0.2	<10	420	0.30	0.11	0.01	0.15	12.00	4.2	16	1.65



ALS Chemex

EXCELLENCE IN ANALYTICAL CHEMISTRY

ALS Canada Ltd.

2103 Dollarton Hwy
North Vancouver BC V7H 0A7

Phone: 604 984 0221 Fax: 604 984 0218 www.alschemex.com

To: OVERLAND RESOURCES LTD.
604 - 700 WEST PENDER STREET
VANCOUVER BC V6C 1G8

Page: 3 - B
Total # Pages: 4 (A - D)
Plus Appendix Pages
Finalized Date: 27-JUL-2010
Account: OVERRE

Project: YMBP

CERTIFICATE OF ANALYSIS WH10083978

Sample Description	Method Analyte Units LOR	ME-MS41	ME-MS41	ME-MS41	ME-MS41	ME-MS41	ME-MS41	ME-MS41	ME-MS41	ME-MS41	ME-MS41	ME-MS41	ME-MS41	ME-MS41	ME-MS41	
		Cu	Fe	Ga	Ge	Hf	Hg	In	K	La	Li	Mg	Mn	Mo	Na	Nb
		ppm	%	ppm	ppm	ppm	ppm	ppm	%	ppm	ppm	%	ppm	ppm	%	ppm
		0.2	0.01	0.05	0.05	0.02	0.01	0.005	0.01	0.2	0.1	0.01	5	0.05	0.01	0.05
H031734		11.0	1.03	0.26	<0.05	<0.02	0.01	0.007	0.05	3.5	0.4	<0.01	57	0.17	0.01	0.37
H031735		24.4	2.37	3.58	0.09	0.04	0.01	0.010	0.27	28.5	15.7	0.43	342	0.32	0.01	0.14
H031736		30.0	2.21	2.73	0.07	0.02	0.01	0.009	0.18	17.0	9.7	0.32	371	0.23	0.02	0.18
H031737		22.8	2.95	4.51	0.08	0.03	0.01	0.009	0.14	17.3	19.7	0.59	380	0.21	0.01	0.17
H031738		5.3	1.78	2.86	0.06	0.16	0.01	0.020	0.08	12.8	16.7	0.28	366	0.18	0.02	0.15
H031739		28.8	2.94	4.02	0.08	0.07	0.01	0.016	0.13	15.4	29.1	0.53	684	0.17	0.01	0.13
H031740		30.7	1.56	2.47	0.05	0.06	0.01	0.017	0.11	7.2	11.4	0.28	258	0.89	0.01	0.13
H031741		1.4	0.40	0.15	<0.05	0.02	0.02	<0.005	0.02	3.3	0.8	0.12	200	<0.05	0.02	0.25
H031742		352	2.24	0.49	<0.05	0.06	0.01	0.216	0.09	2.2	0.5	0.01	40	0.36	0.01	0.13
H031743		54.3	0.27	1.33	0.10	0.02	5.95	0.262	0.02	1.0	0.2	<0.01	23	0.10	0.01	0.12
H031744		1610	22.4	6.99	0.63	0.08	0.48	91.3	0.03	4.4	0.4	<0.01	8	0.28	0.01	0.31
H031556		62.8	4.41	0.82	0.07	0.06	0.11	0.380	0.09	9.9	3.6	0.03	485	1.61	0.01	0.19
H031557		92.7	8.77	2.05	0.13	0.06	0.23	0.070	0.09	2.7	0.8	0.02	190	7.25	0.01	0.16
H031558		37.7	2.93	1.91	0.07	0.11	0.03	0.068	0.29	7.2	3.9	0.38	1120	0.24	0.02	0.13
H031559		30.8	1.46	2.91	0.05	0.10	0.06	0.028	0.23	10.8	4.4	0.17	65	0.50	0.01	0.18
H031560		3.6	1.04	0.58	<0.05	0.14	0.02	0.033	0.10	5.2	0.5	0.01	400	0.21	0.02	0.12
H031561		3.1	0.97	0.64	<0.05	0.02	0.02	0.014	0.02	3.6	5.7	0.14	553	0.17	0.03	0.18
H031562		15.6	4.63	8.59	0.15	0.16	0.01	0.018	0.18	42.2	45.8	1.08	548	0.87	0.03	0.13
H031563		9.4	0.65	0.78	<0.05	<0.02	0.02	0.010	0.03	1.6	3.2	0.06	201	0.18	0.01	0.17
H031564		4.1	1.02	1.66	<0.05	0.20	0.01	0.017	0.01	12.3	6.0	0.08	285	0.52	0.03	0.11
H031565		11.5	1.06	1.88	0.06	0.11	0.01	0.012	0.10	17.8	7.6	0.19	152	0.29	0.01	0.16
H031566		10.6	1.57	0.87	0.05	0.04	0.01	0.015	0.15	9.6	1.0	0.02	285	0.25	0.02	0.12
H031567		8.3	1.50	2.00	0.05	0.04	0.01	0.010	0.14	10.3	8.7	0.19	591	0.18	0.02	0.13
H031568		2.7	0.56	0.58	<0.05	<0.02	0.01	0.006	0.02	1.8	3.1	0.07	298	0.19	0.01	0.11
H031569		7.5	1.30	1.70	<0.05	0.02	0.01	0.008	0.02	4.2	10.1	0.24	532	0.13	0.03	0.13
H031570		7.5	0.50	0.40	<0.05	0.04	0.01	0.009	0.08	5.4	1.1	0.01	62	0.15	0.01	0.12
H031571		60.0	2.64	0.65	0.05	0.03	0.01	0.010	0.15	5.5	1.2	0.04	94	0.25	0.02	0.16
H031572		9340	12.60	2.12	0.19	0.08	0.10	7.03	0.30	13.9	7.2	0.28	444	0.79	0.01	0.21
H031573		9190	16.40	1.99	0.24	0.07	0.14	8.60	0.27	11.8	6.5	0.26	548	0.65	0.02	0.26
H031574		67.4	2.61	2.03	0.07	0.02	0.01	0.144	0.07	9.0	6.8	0.25	587	0.17	0.01	<0.05
H031575		1195	5.52	5.41	0.11	0.05	0.03	2.49	0.18	8.5	28.5	0.85	586	0.30	0.02	0.40
H031576		432	3.64	1.26	0.07	<0.02	0.01	0.127	0.07	4.1	4.9	0.14	248	0.19	0.01	0.13
H031768		72.1	3.68	13.30	0.12	0.39	0.01	0.023	0.63	20.0	45.9	1.00	455	0.80	0.36	0.28
H031769		2090	38.1	4.56	1.04	0.05	0.02	0.147	0.01	4.2	2.4	0.02	205	0.46	0.03	0.60
H031770		113.5	3.69	6.24	0.11	0.60	<0.01	0.011	0.61	19.1	25.1	0.98	548	1.21	0.09	0.47
H031771		55.3	4.01	16.25	0.13	0.25	<0.01	0.014	0.55	11.3	22.9	0.58	337	1.23	0.28	0.63
H031772		174.5	5.78	17.95	0.19	0.03	0.01	0.040	1.58	8.1	51.4	1.70	381	0.31	0.25	0.22
H031773		43.1	1.31	1.20	0.05	0.05	0.04	0.016	0.10	9.1	1.3	0.02	51	0.91	0.01	0.06
H031774		27.7	2.77	1.11	0.05	0.04	0.02	0.014	0.10	5.0	1.6	0.02	80	1.25	<0.01	0.08
H031775		38.0	3.05	1.39	0.06	0.04	0.04	0.030	0.11	7.8	0.5	0.02	3790	1.43	0.01	0.07



ALS Chemex

EXCELLENCE IN ANALYTICAL CHEMISTRY

ALS Canada Ltd.

2103 Dollarton Hwy

North Vancouver BC V7H 0A7

Phone: 604 984 0221 Fax: 604 984 0218 www.alschemex.com

To: OVERLAND RESOURCES LTD.
604 - 700 WEST PENDER STREET
VANCOUVER BC V6C 1G8

Page: 3 - C
Total # Pages: 4 (A - D)
Plus Appendix Pages
Finalized Date: 27-JUL-2010
Account: OVERRE

Project: YMBP

CERTIFICATE OF ANALYSIS WH10083978

Sample Description	Method	ME-MS41	ME-MS41	ME-MS41	ME-MS41	ME-MS41	ME-MS41	ME-MS41	ME-MS41	ME-MS41	ME-MS41	ME-MS41	ME-MS41	ME-MS41	ME-MS41	
	Analyte	Ni	P	Pb	Rb	Re	S	Sb	Sc	Se	Sn	Sr	Ta	Te	Th	Ti
Units		ppm	ppm	ppm	ppm	%	ppm	ppm	ppm	ppm	ppm	ppm	ppm	ppm	ppm	%
LOR		0.2	10	0.2	0.1	0.001	0.01	0.05	0.1	0.2	0.2	0.2	0.01	0.01	0.2	0.005
H031734		3.0	30	25.2	2.7	<0.001	0.01	5.53	0.2	<0.2	0.2	1.0	<0.01	0.01	1.7	<0.005
H031735		22.0	370	5.5	13.1	<0.001	<0.01	1.01	1.4	0.2	0.2	9.8	<0.01	0.01	15.1	<0.005
H031736		15.0	330	13.1	9.1	<0.001	0.04	0.30	1.0	0.3	0.2	10.1	<0.01	0.01	9.3	<0.005
H031737		18.2	190	3.7	7.1	<0.001	0.01	0.22	1.8	<0.2	<0.2	4.3	<0.01	0.01	8.6	0.007
H031738		12.6	180	4.9	6.6	<0.001	0.03	0.41	1.2	0.2	0.2	5.6	<0.01	<0.01	7.5	<0.005
H031739		20.9	320	118.5	8.4	<0.001	0.02	0.90	2.3	0.2	0.3	14.2	<0.01	0.07	3.5	0.007
H031740		27.5	250	13.2	6.6	0.001	0.08	1.70	2.1	1.2	0.2	9.7	<0.01	0.05	1.7	<0.005
H031741		2.3	120	12.2	1.0	<0.001	0.01	0.15	0.9	0.3	<0.2	2190	<0.01	0.04	0.4	<0.005
H031742		3.1	60	442	5.1	<0.001	1.46	6.75	0.4	1.1	18.9	24.1	<0.01	0.02	2.0	<0.005
H031743		5.7	20	>10000	1.5	<0.001	8.40	267	0.2	1.4	0.9	5.8	<0.01	<0.01	0.4	<0.005
H031744		1.9	980	>10000	1.0	0.002	4.43	291	1.1	78.6	>500	63.8	<0.01	0.19	2.0	<0.005
H031556		42.1	500	3110	4.9	<0.001	0.04	8.14	3.8	1.0	23.2	3.7	<0.01	0.05	1.9	<0.005
H031557		68.7	860	307	5.9	0.003	0.02	21.0	2.2	5.7	2.2	7.7	<0.01	0.08	1.2	<0.005
H031558		28.9	600	125.0	13.8	<0.001	<0.01	0.19	8.5	0.4	1.7	32.5	<0.01	0.04	6.7	<0.005
H031559		11.7	320	68.6	17.0	0.002	0.01	0.35	2.1	0.8	0.8	10.6	<0.01	0.06	3.6	<0.005
H031560		7.5	150	122.0	5.7	<0.001	<0.01	0.58	1.2	<0.2	1.3	9.0	<0.01	<0.01	5.3	<0.005
H031561		2.6	140	135.0	1.7	<0.001	<0.01	0.37	0.7	<0.2	0.4	6.3	<0.01	<0.01	2.9	<0.005
H031562		36.6	340	26.5	9.4	<0.001	<0.01	0.34	2.3	0.2	0.4	8.2	<0.01	<0.01	18.8	<0.005
H031563		5.4	60	71.6	1.5	<0.001	<0.01	0.72	0.6	<0.2	0.3	4.4	<0.01	<0.01	0.5	<0.005
H031564		12.3	60	57.6	0.5	<0.001	0.01	0.25	0.9	0.2	0.7	3.9	<0.01	<0.01	4.8	<0.005
H031565		5.9	190	30.8	5.7	<0.001	<0.01	0.63	0.8	<0.2	0.3	2.3	<0.01	0.02	4.3	<0.005
H031566		8.2	180	31.6	8.8	<0.001	0.47	0.71	0.7	0.2	0.4	4.1	<0.01	0.02	9.0	<0.005
H031567		15.9	670	21.6	7.2	<0.001	0.04	0.43	1.0	<0.2	0.2	13.4	<0.01	0.02	9.1	<0.005
H031568		6.2	200	20.5	1.4	<0.001	<0.01	0.19	0.3	<0.2	0.3	12.2	<0.01	<0.01	1.0	<0.005
H031569		8.1	270	24.8	1.4	<0.001	0.05	0.54	1.0	<0.2	<0.2	12.9	<0.01	0.01	2.2	<0.005
H031570		2.2	20	25.6	5.1	<0.001	<0.01	12.45	0.3	<0.2	0.3	2.1	<0.01	0.02	1.7	<0.005
H031571		7.3	60	53.3	8.0	<0.001	1.34	14.85	0.5	0.3	0.3	4.4	<0.01	0.03	5.2	<0.005
H031572		42.0	160	2070	17.3	0.001	>10.0	6.35	1.8	6.1	133.0	13.2	<0.01	0.17	9.5	0.012
H031573		46.9	130	2960	15.3	0.001	>10.0	8.73	1.8	8.8	153.5	15.0	<0.01	0.24	8.1	0.008
H031574		9.4	100	524	4.6	<0.001	1.76	16.25	1.6	0.7	7.8	22.0	<0.01	0.02	4.9	<0.005
H031575		28.7	220	633	10.0	<0.001	2.51	1.56	3.4	2.0	24.1	7.1	0.01	0.13	7.3	0.071
H031576		19.6	90	145.0	4.3	<0.001	2.22	16.00	1.3	1.2	7.2	8.9	<0.01	0.02	2.4	<0.005
H031768		45.8	460	22.8	55.4	0.002	1.41	1.18	8.4	1.5	2.4	277	<0.01	0.08	14.4	0.127
H031769		23.2	830	13.4	0.5	0.001	>10.0	1.31	0.6	94.1	2.2	41.8	<0.01	1.51	2.7	0.014
H031770		54.6	510	19.7	58.8	0.003	1.38	0.37	3.9	2.4	4.4	52.2	<0.01	0.09	14.9	0.131
H031771		40.4	470	17.2	48.9	0.001	2.04	1.40	5.9	2.1	1.8	334	0.01	0.18	9.0	0.107
H031772		64.3	380	11.5	80.3	0.002	0.41	0.92	20.8	0.5	1.5	76.6	<0.01	0.02	5.1	0.227
H031773		18.8	140	11.6	5.1	<0.001	0.02	2.08	0.9	1.1	0.2	16.0	<0.01	0.06	1.9	<0.005
H031774		19.9	200	11.9	5.6	<0.001	0.01	3.01	2.1	0.8	0.2	3.9	<0.01	0.05	1.6	<0.005
H031775		32.8	660	7.2	5.9	<0.001	0.05	5.79	4.2	0.6	0.2	4.6	<0.01	0.03	1.3	<0.005



ALS Chemex

EXCELLENCE IN ANALYTICAL CHEMISTRY

ALS Canada Ltd.

2103 Dollarton Hwy

North Vancouver BC V7H 0A7

Phone: 604 984 0221 Fax: 604 984 0218 www.alschemex.com

To: OVERLAND RESOURCES LTD.
604 - 700 WEST PENDER STREET
VANCOUVER BC V6C 1G8

Page: 3 - D
Total # Pages: 4 (A - D)
Plus Appendix Pages
Finalized Date: 27-JUL-2010
Account: OVERRE

Project: YMBP

CERTIFICATE OF ANALYSIS WH10083978

Sample Description	Method Analyte Units LOR	ME-MS41	ME-MS41	ME-MS41	ME-MS41	ME-MS41	ME-MS41	ME-MS41	Ag-OG46	Pb-OG46	Cu-OG46	Zn-OG46
		Tl	U	V	W	Y	Zn	Zr	Ag	Pb	Cu	Zn
		ppm	ppm	ppm	ppm	ppm	ppm	ppm	ppm	%	%	%
		0.02	0.05	1	0.05	0.05	2	0.5	1	0.001	0.001	0.001
H031734		0.02	0.14	1	0.17	0.69	23	<0.5				
H031735		0.09	0.87	11	0.14	4.38	41	1.5				
H031736		0.06	0.79	7	0.14	3.96	50	0.8				
H031737		0.05	0.76	15	0.13	3.50	42	1.0				
H031738		0.03	0.52	8	0.14	3.62	46	5.6				
H031739		0.06	0.32	23	0.14	5.57	54	2.5				
H031740		0.09	0.23	27	0.13	3.59	127	2.4				
H031741		<0.02	1.21	2	0.10	4.86	49	1.1				
H031742		0.09	0.11	1	0.67	0.52	99	2.5				
H031743		0.54	0.07	<1	0.12	0.26	6930	0.8	107	>20.0		
H031744		0.04	1.12	4	0.13	1.12	1560	3.1	220	>20.0		
H031556		0.28	0.50	23	0.15	4.25	135	2.7				
H031557		0.41	0.81	95	0.14	4.66	177	3.9				
H031558		0.08	0.53	9	0.13	16.35	68	4.1				
H031559		0.08	0.43	21	0.11	3.02	48	4.7				
H031560		0.03	0.39	1	0.18	2.16	6	5.1				
H031561		<0.02	0.26	1	0.17	1.41	13	0.5				
H031562		0.05	0.89	17	0.12	3.22	90	7.1				
H031563		<0.02	0.06	4	0.18	0.32	13	0.5				
H031564		<0.02	0.38	9	0.14	2.96	26	6.5				
H031565		0.03	0.21	5	0.12	2.13	13	4.2				
H031566		0.07	0.51	2	0.29	2.20	13	1.9				
H031567		0.05	0.75	5	0.14	3.92	17	1.7				
H031568		0.02	0.16	1	0.18	1.24	7	<0.5				
H031569		<0.02	0.24	5	0.14	2.59	15	0.5				
H031570		0.04	0.16	1	0.23	0.72	20	1.8				
H031571		0.06	0.44	2	0.20	1.02	10	1.3				
H031572		0.13	1.02	8	0.10	3.70	7510	3.0				
H031573		0.13	0.92	7	0.09	3.96	>10000	2.6				1.065
H031574		0.12	0.37	11	0.09	6.39	333	<0.5				
H031575		0.14	0.64	42	0.52	7.08	3620	1.5				
H031576		0.09	0.27	16	0.16	2.68	160	0.5				
H031768		0.39	1.39	49	0.21	8.70	56	15.8				
H031769		0.04	5.64	2	<0.05	3.35	52	1.8				
H031770		0.58	1.51	25	0.24	8.13	52	23.7				
H031771		0.53	0.95	37	0.10	7.06	28	9.9				
H031772		0.58	0.52	197	0.05	7.82	75	0.6				
H031773		0.06	0.51	18	<0.05	2.90	47	2.4				
H031774		0.07	0.28	20	<0.05	2.05	61	2.3				
H031775		0.21	0.46	49	<0.05	2.66	159	1.9				



ALS Chemex

EXCELLENCE IN ANALYTICAL CHEMISTRY

ALS Canada Ltd.

2103 Dollarton Hwy
North Vancouver BC V7H 0A7

Phone: 604 984 0221 Fax: 604 984 0218 www.alschemex.com

To: OVERLAND RESOURCES LTD.
604 - 700 WEST PENDER STREET
VANCOUVER BC V6C 1G8

Page: 4 - A
Total # Pages: 4 (A - D)
Plus Appendix Pages
Finalized Date: 27-JUL-2010
Account: OVERRE

Project: YMBP

CERTIFICATE OF ANALYSIS WH10083978

Sample Description	Method Analyte Units LOR	WEI-21 Recvd Wt. kg	ME-MS41 Ag ppm	ME-MS41 Al %	ME-MS41 As ppm	ME-MS41 Au ppm	ME-MS41 B ppm	ME-MS41 Ba ppm	ME-MS41 Be ppm	ME-MS41 Bi ppm	ME-MS41 Ca %	ME-MS41 Cd ppm	ME-MS41 Ce ppm	ME-MS41 Co ppm	ME-MS41 Cr ppm	ME-MS41 Cs ppm
		0.02	0.01	0.01	0.1	0.2	10	10	0.05	0.01	0.01	0.01	0.02	0.1	1	0.05
H031776		1.01	0.02	0.48	0.9	<0.2	<10	210	0.21	0.13	0.05	0.02	7.03	1.9	12	1.89
H031777		1.23	0.03	0.13	3.5	<0.2	<10	170	0.14	0.06	0.01	0.01	2.76	0.2	14	0.84
H031778		1.29	0.02	0.07	2.2	<0.2	<10	150	<0.05	0.06	0.01	0.01	0.58	0.2	23	0.58
H031779		1.08	0.01	0.06	1.7	<0.2	<10	90	0.07	0.06	0.01	0.04	3.55	0.9	18	0.24
H031780		1.08	0.45	0.57	9.4	<0.2	<10	260	0.86	0.11	0.01	0.30	2.55	7.2	23	4.19
H031781		1.47	0.03	1.57	2.7	<0.2	<10	80	0.49	0.15	0.02	0.03	14.00	11.8	34	1.10
H031782		1.50	0.03	0.78	1.0	<0.2	<10	70	0.14	0.09	0.12	0.08	18.05	3.6	18	0.36
H031783		0.78	0.02	0.73	1.0	<0.2	<10	110	0.26	0.09	0.06	0.17	10.80	4.3	24	0.73
H031784		1.23	0.02	0.41	1.0	<0.2	<10	140	0.18	0.08	0.05	0.05	10.95	3.5	14	0.28
H031785		1.20	0.01	0.34	1.3	<0.2	<10	50	0.14	0.06	0.01	0.04	24.4	3.2	10	0.31
H031786		1.13	0.02	0.37	1.0	<0.2	<10	80	0.20	0.10	0.18	0.10	17.20	4.4	12	0.43
H031787		1.12	0.01	0.30	0.5	<0.2	<10	80	0.15	0.05	0.43	0.13	4.98	2.6	10	0.29
H031788		0.91	0.01	0.27	0.2	<0.2	<10	60	0.10	0.08	0.13	0.07	5.81	1.9	21	0.20
H031789		1.05	0.03	0.58	1.4	<0.2	<10	70	0.33	0.10	<0.09	0.06	8.30	4.8	15	0.91
H031790		1.16	0.01	0.69	0.7	<0.2	<10	50	0.14	0.05	0.42	0.05	5.67	3.4	15	0.29
H031791		0.96	0.01	2.09	0.1	<0.2	<10	150	1.01	0.48	0.03	0.07	4.21	20.6	29	2.75
H031792		1.07	0.02	0.22	3.2	<0.2	<10	80	0.15	0.07	0.15	0.18	10.15	2.9	12	0.27
H031793		1.20	0.03	0.12	1.5	<0.2	<10	70	0.06	0.03	0.02	0.03	1.46	0.8	12	0.10
H031794		1.00	0.04	0.80	0.1	<0.2	<10	60	0.15	0.11	0.52	0.04	5.06	3.6	14	0.39
H031795		1.55	0.05	3.53	4	<0.2	<10	510	0.66	0.02	11.80	0.10	49.3	38.7	337	2.58
H031796		1.12	0.07	0.13	0.2	<0.2	<10	60	0.12	0.03	5.95	0.03	16.60	1.4	8	0.18
H031797		1.59	0.01	0.29	<2	<0.2	<10	190	0.05	<0.01	>25.0	0.11	79.8	3.5	31	0.14
H031798		1.01	0.03	0.28	2.4	<0.2	<10	110	0.18	0.06	1.36	0.27	13.35	3.6	6	0.41
H031799		2.51	0.38	0.46	4.1	<0.2	<10	60	0.12	2.56	0.19	0.05	10.30	9.4	15	0.24
H031800		1.50	0.04	0.11	6.1	<0.2	<10	10	<0.05	0.10	0.06	0.01	2.69	2.0	21	0.09



ALS Chemex

EXCELLENCE IN ANALYTICAL CHEMISTRY

ALS Canada Ltd.

2103 Dollarton Hwy
North Vancouver BC V7H 0A7

Phone: 604 984 0221 Fax: 604 984 0218 www.alschemex.com

To: OVERLAND RESOURCES LTD.
604 - 700 WEST PENDER STREET
VANCOUVER BC V6C 1G8

Page: 4 - B
Total # Pages: 4 (A - D)
Plus Appendix Pages
Finalized Date: 27-JUL-2010
Account: OVERRE

Project: YMBP

CERTIFICATE OF ANALYSIS WH10083978

Sample Description	Method Analyte Units LOR	ME-MS41	ME-MS41	ME-MS41	ME-MS41	ME-MS41	ME-MS41	ME-MS41	ME-MS41	ME-MS41	ME-MS41	ME-MS41	ME-MS41	ME-MS41	ME-MS41	
		Cu ppm	Fe %	Ga ppm	Ge ppm	Hf ppm	Hg ppm	In ppm	K %	La ppm	Li ppm	Mg %	Mn ppm	Mo ppm	Na %	Nb ppm
		0.2	0.01	0.05	0.05	0.02	0.01	0.005	0.01	0.2	0.1	0.01	5	0.05	0.01	0.05
H031776		16.8	1.44	1.60	<0.05	0.04	<0.01	0.015	0.14	3.2	6.9	0.12	204	0.14	<0.01	0.16
H031777		6.3	0.66	0.43	<0.05	0.02	0.02	0.006	0.04	1.1	0.4	0.01	40	0.48	0.01	0.07
H031778		6.3	0.53	0.38	<0.05	<0.02	<0.01	0.006	0.04	0.2	0.3	0.01	41	0.25	<0.01	0.11
H031779		23.8	0.76	0.29	<0.05	<0.02	<0.01	<0.005	0.03	1.4	0.3	<0.01	50	0.27	<0.01	0.08
H031780		88.0	3.21	1.07	0.06	0.08	0.08	0.023	0.15	0.9	1.0	0.02	116	1.53	<0.01	0.10
H031781		8.9	3.40	7.03	0.06	0.15	0.02	0.026	0.15	6.4	39.6	0.53	304	0.10	0.02	0.13
H031782		6.4	2.00	2.74	<0.05	0.13	0.03	0.008	0.09	8.1	18.4	0.21	316	0.17	0.01	<0.05
H031783		5.9	1.67	3.03	<0.05	0.13	0.01	0.009	0.13	5.2	21.5	0.21	251	0.12	0.02	0.07
H031784		4.5	1.57	1.50	<0.05	0.13	0.01	0.009	0.11	5.2	7.4	0.10	239	0.12	0.01	0.06
H031785		4.0	1.29	1.61	<0.05	0.06	<0.01	0.007	0.10	11.3	4.8	0.08	238	0.19	0.02	0.11
H031786		7.0	1.83	1.52	0.05	0.08	0.01	0.013	0.13	7.9	4.8	0.08	291	0.12	0.01	0.07
H031787		5.0	1.35	1.13	<0.05	0.03	0.01	0.009	0.09	2.0	4.1	0.07	800	0.10	0.01	0.08
H031788		14.0	0.93	1.38	<0.05	0.02	0.01	0.010	0.06	2.3	4.2	0.14	691	0.16	<0.01	0.06
H031789		10.8	2.15	2.43	<0.05	0.08	0.01	0.015	0.12	3.8	11.7	0.19	588	0.21	0.02	0.07
H031790		6.1	2.86	2.47	<0.05	0.09	0.01	0.011	0.05	2.6	19.5	0.25	1320	0.23	0.01	0.07
H031791		19.9	5.00	6.40	0.08	0.06	0.02	0.037	0.31	1.8	39.9	0.64	276	0.08	0.01	0.13
H031792		5.8	1.48	0.77	<0.05	0.18	0.01	0.009	0.12	4.4	0.8	0.02	244	0.34	0.02	0.06
H031793		3.4	0.93	0.36	<0.05	0.06	0.02	<0.005	0.04	0.7	2.3	0.01	152	0.58	0.01	0.08
H031794		10.8	2.12	2.58	<0.05	0.08	0.01	0.007	0.09	1.9	11.7	0.24	178	0.11	0.01	<0.05
H031795		64.4	5.02	11.45	0.26	0.03	0.01	0.042	0.02	29.0	70.1	5.06	1140	0.17	0.02	0.15
H031796		122.0	0.54	0.57	<0.05	0.08	0.01	0.132	0.06	6.0	1.1	0.04	1420	0.12	0.01	0.07
H031797		7.6	0.86	1.27	0.10	0.03	<0.01	0.044	0.01	55.2	5.5	0.51	2640	0.14	0.02	0.16
H031798		3.6	1.21	0.89	<0.05	0.13	0.01	0.013	0.13	5.6	2.3	0.04	644	0.18	0.03	0.06
H031799		36.0	1.56	1.55	<0.05	0.07	<0.01	0.009	0.04	5.2	8.5	0.20	575	0.21	0.01	<0.05
H031800		5.8	0.57	0.29	<0.05	<0.02	<0.01	<0.005	<0.01	1.2	1.8	0.04	120	0.25	0.01	0.07



ALS Chemex

EXCELLENCE IN ANALYTICAL CHEMISTRY

ALS Canada Ltd.

2103 Dollarton Hwy
North Vancouver BC V7H 0A7

Phone: 604 984 0221 Fax: 604 984 0218 www.alschemex.com

To: OVERLAND RESOURCES LTD.
604 - 700 WEST PENDER STREET
VANCOUVER BC V6C 1G8

Page: 4 - C
Total # Pages: 4 (A - D)
Plus Appendix Pages
Finalized Date: 27-JUL-2010
Account: OVERRE

Project: YMBP

CERTIFICATE OF ANALYSIS WH10083978

Sample Description	Method Analyte Units LOR	ME-MS41	ME-MS41	ME-MS41	ME-MS41	ME-MS41	ME-MS41	ME-MS41	ME-MS41	ME-MS41	ME-MS41	ME-MS41	ME-MS41	ME-MS41	ME-MS41	
		Ni	P	Pb	Rb	Re	S	Sb	Sc	Se	Sn	Sr	Ta	Te	Th	Ti
		ppm	ppm	ppm	ppm	ppm	%	ppm	ppm	ppm	ppm	ppm	ppm	ppm	ppm	%
		0.2	10	0.2	0.1	0.001	0.01	0.05	0.1	0.2	0.2	0.2	0.01	0.01	0.2	0.005
H031776		5.8	750	5.8	8.1	<0.001	<0.01	0.13	1.7	<0.2	0.2	7.4	<0.01	0.02	2.5	<0.005
H031777		3.0	470	2.4	2.5	0.002	0.01	0.78	1.8	0.2	<0.2	21.8	<0.01	0.02	0.4	<0.005
H031778		1.6	60	4.6	1.6	0.001	0.01	0.21	1.0	<0.2	<0.2	3.9	<0.01	0.02	0.2	<0.005
H031779		3.8	110	2.6	1.6	<0.001	<0.01	0.21	1.0	0.3	<0.2	4.8	<0.01	0.03	0.2	<0.005
H031780		53.1	250	7.0	9.2	0.004	0.02	4.61	5.1	3.0	0.2	11.1	<0.01	0.06	1.9	<0.005
H031781		29.2	50	16.1	8.4	<0.001	<0.01	0.14	3.7	<0.2	0.7	5.1	<0.01	0.01	5.4	0.012
H031782		10.5	90	56.0	4.8	<0.001	<0.01	0.07	0.9	<0.2	0.3	24.0	<0.01	0.01	5.6	<0.005
H031783		10.2	50	15.4	8.3	<0.001	<0.01	<0.05	1.1	<0.2	0.3	6.6	<0.01	<0.01	4.5	<0.005
H031784		7.7	70	10.8	6.2	<0.001	<0.01	<0.05	1.0	<0.2	0.2	8.8	<0.01	<0.01	4.7	<0.005
H031785		5.7	90	13.2	5.3	<0.001	<0.01	0.09	1.1	<0.2	0.2	2.3	<0.01	<0.01	6.3	<0.005
H031786		8.8	80	12.9	7.1	<0.001	<0.01	0.05	1.4	<0.2	0.2	10.6	<0.01	<0.01	5.8	<0.005
H031787		5.8	70	14.0	5.1	<0.001	<0.01	<0.05	1.4	<0.2	<0.2	31.6	<0.01	<0.01	1.6	<0.005
H031788		11.2	60	3.7	2.9	<0.001	<0.01	0.06	1.3	<0.2	<0.2	12.2	<0.01	0.03	0.4	<0.005
H031789		11.4	90	7.9	6.6	<0.001	<0.01	0.23	2.1	<0.2	0.3	7.0	<0.01	0.01	4.9	<0.005
H031790		9.7	50	8.6	3.8	<0.001	<0.01	<0.05	1.8	<0.2	0.2	16.6	<0.01	<0.01	2.9	<0.005
H031791		36.3	230	5.5	20.0	<0.001	<0.01	<0.05	5.5	<0.2	0.5	9.1	<0.01	0.03	4.2	0.005
H031792		7.5	90	16.8	5.6	<0.001	<0.01	0.15	1.1	<0.2	0.2	18.1	<0.01	<0.01	4.9	<0.005
H031793		3.0	90	9.4	2.5	<0.001	<0.01	0.08	0.5	<0.2	<0.2	2.2	<0.01	<0.01	0.8	<0.005
H031794		11.3	170	7.0	4.7	<0.001	<0.01	<0.05	0.8	<0.2	0.2	35.5	<0.01	<0.01	3.2	<0.005
H031795		254	1510	2.7	1.2	0.001	0.01	0.17	17.1	0.6	0.7	1080	<0.01	<0.01	1.7	0.006
H031796		5.1	70	2.4	3.4	<0.001	0.01	0.06	2.6	0.4	<0.2	235	<0.01	<0.01	1.6	<0.005
H031797		41.2	170	1.1	0.9	<0.001	0.01	0.09	3.9	0.9	<0.2	836	<0.01	0.02	0.4	<0.005
H031798		7.3	90	6.7	7.1	<0.001	0.01	0.35	1.7	<0.2	<0.2	70.5	<0.01	<0.01	4.0	<0.005
H031799		9.3	230	64.5	2.4	<0.001	0.02	0.45	1.1	<0.2	<0.2	6.6	<0.01	0.09	1.9	<0.005
H031800		4.8	90	9.2	0.2	<0.001	0.01	1.76	0.4	<0.2	<0.2	2.7	<0.01	<0.01	0.7	<0.005



ALS Chemex

EXCELLENCE IN ANALYTICAL CHEMISTRY

ALS Canada Ltd.

2103 Dollarton Hwy

North Vancouver BC V7H 0A7

Phone: 604 984 0221 Fax: 604 984 0218 www.alschemex.com

To: OVERLAND RESOURCES LTD.
604 - 700 WEST PENDER STREET
VANCOUVER BC V6C 1G8

Page: 4 - D
Total # Pages: 4 (A - D)
Plus Appendix Pages
Finalized Date: 27-JUL-2010
Account: OVERRE

Project: YMBP

CERTIFICATE OF ANALYSIS WH10083978

Sample Description	Method Analyte Units LOR	ME-MS41	ME-MS41	ME-MS41	ME-MS41	ME-MS41	ME-MS41	Ag-OG46	Pb-OG46	Cu-OG46	Zn-OG46	
		Tl	U	V	W	Y	Zn	Zr	Ag	Pb	Cu	Zn
		ppm	ppm	ppm	ppm	ppm	ppm	ppm	ppm	%	%	%
		0.02	0.05	1	0.05	0.05	2	1	0.001	0.001	0.001	
H031776		0.04	0.14	7	<0.05	2.05	21					
H031777		0.04	0.26	6	<0.05	2.07	3					
H031778		0.02	0.22	3	<0.05	0.71	2					
H031779		<0.02	0.10	2	<0.05	2.31	12					
H031780		0.15	0.73	55	<0.05	13.80	312					
H031781		0.04	0.46	27	<0.05	2.06	67					
H031782		0.02	0.38	8	<0.05	2.21	48					
H031783		0.03	0.35	11	<0.05	1.71	48					
H031784		0.03	0.35	5	<0.05	1.68	32					
H031785		0.02	0.40	5	<0.05	1.69	22					
H031786		0.03	0.46	5	<0.05	2.24	52					
H031787		0.03	0.17	3	<0.05	3.50	42					
H031788		<0.02	0.07	6	<0.05	1.42	19					
H031789		0.04	0.40	8	<0.05	1.76	45					
H031790		0.02	0.28	7	<0.05	2.92	38					
H031791		0.12	0.37	19	<0.05	4.00	69					
H031792		0.03	0.46	3	<0.05	2.01	31					
H031793		0.02	0.14	2	<0.05	0.68	17					
H031794		0.02	0.12	6	<0.05	1.76	24					
H031795		0.02	0.50	119	<0.05	10.90	53					
H031796		0.02	0.10	1	<0.05	16.25	3					
H031797		<0.02	0.07	11	<0.05	24.4	17					
H031798		0.04	0.34	2	<0.05	2.84	37					
H031799		0.02	0.40	4	<0.05	2.11	34					
H031800		<0.02	0.10	1	<0.05	0.58	11					



ALS Chemex

EXCELLENCE IN ANALYTICAL CHEMISTRY

ALS Canada Ltd.

2103 Dollarton Hwy

North Vancouver BC V7H 0A7

Phone: 604 984 0221 Fax: 604 984 0218 www.alschemex.com

To: OVERLAND RESOURCES LTD.
604 - 700 WEST PENDER STREET
VANCOUVER BC V6C 1G8

Page: Appendix 1
Total # Appendix Pages: 1
Finalized Date: 27-JUL-2010
Account: OVERRE

Project: YMBP

CERTIFICATE OF ANALYSIS WH10083978

Method	CERTIFICATE COMMENTS
ME-MS41 ME-MS41	Interference: Ca>10% on ICP-MS As,ICP-AES results shown. Gold determinations by this method are semi-quantitative due to the small sample weight used (0.5g).

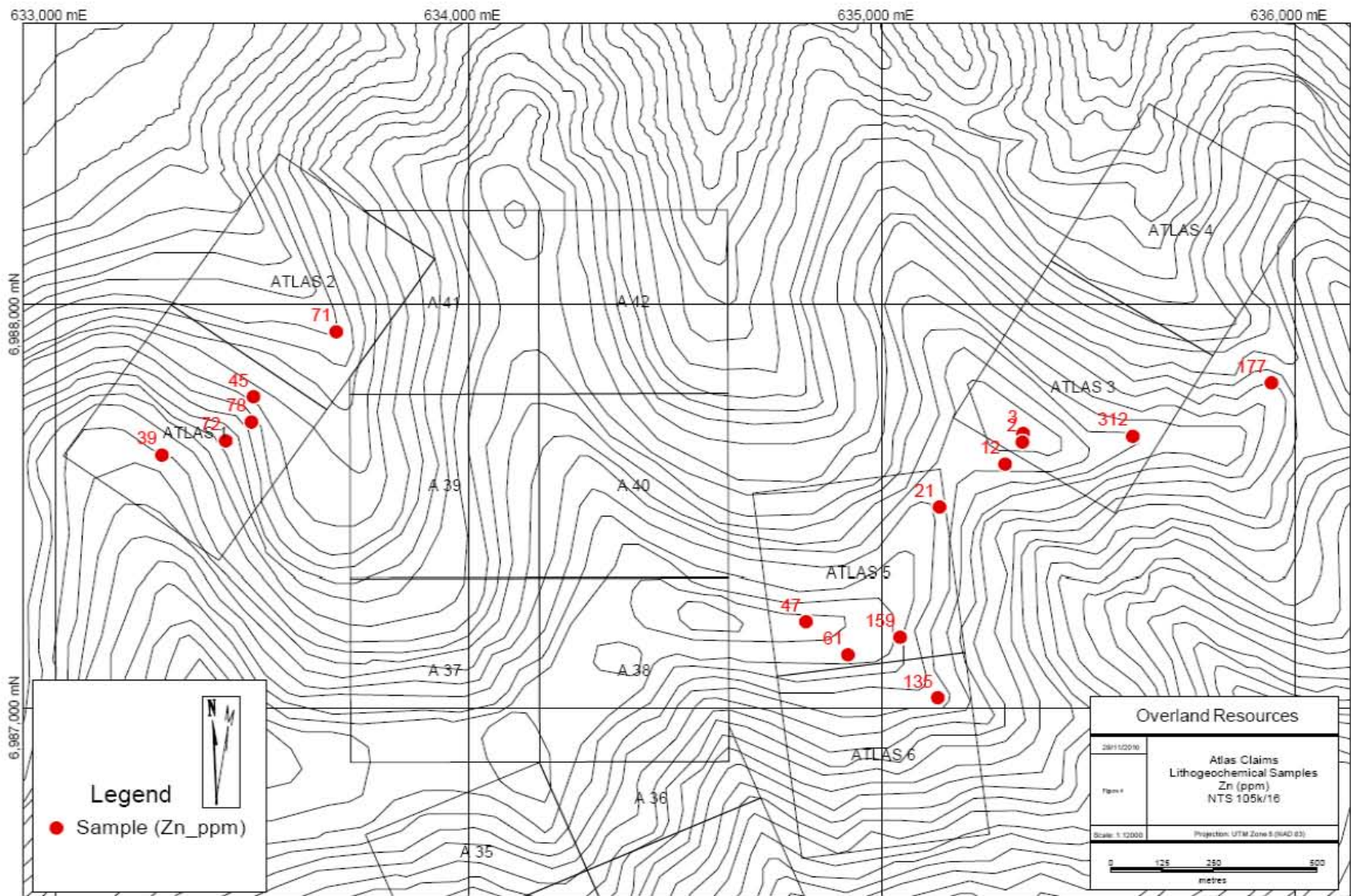
Appendix B: Claim Data

District	Grant #	Type	Name	#	Owner	Record Date	Expiry Date	Status	Map	Ops #
Mayo	YC10589	Quartz	Atlas	1	18526 Yukon Inc. - 10%, Overland Resources Yukon Ltd. - 90%.	7/31/2002	7/31/2010	Active	105K16	1500078017
Mayo	YC10590	Quartz	Atlas	2	18526 Yukon Inc. - 10%, Overland Resources Yukon Ltd. - 90%.	7/31/2002	7/31/2010	Active	105K16	1500078018
Mayo	YC10591	Quartz	Atlas	3	18526 Yukon Inc. - 10%, Overland Resources Yukon Ltd. - 90%.	7/31/2002	7/31/2010	Active	105K16	1500078019
Mayo	YC10592	Quartz	Atlas	4	18526 Yukon Inc. - 10%, Overland Resources Yukon Ltd. - 90%.	7/31/2002	7/31/2010	Active	105K16	1500078020
Mayo	YC10593	Quartz	Atlas	5	18526 Yukon Inc. - 10%, Overland Resources Yukon Ltd. - 90%.	7/31/2002	7/31/2010	Active	105K16	1500078021
Mayo	YC10594	Quartz	Atlas	6	18526 Yukon Inc. - 10%, Overland Resources Yukon Ltd. - 90%.	7/31/2002	7/31/2010	Active	105K16	1500078022

Appendix C: Statement of Expenditure

Item	Description	Expenditure
Geological Services		
	3 day field reconnaissance	\$2,935
	2 day compilation and interpretation	\$2,850
Sampling Crews		
	Rock sampling crew	\$825
Geochemistry		
	Rock	\$500
Freight and Transport		
	Helicopter	\$4,350
	Fixed wing	\$2,500
Total		\$13,960

Appendix D: Map



633,000 mE

634,000 mE

635,000 mE

636,000 mE

6,968,000 mN

6,967,000 mN

Legend

● Sample (Zn_ppm)



ATLAS 2

ATLAS 4

ATLAS 3

ATLAS 1

ATLAS 5

ATLAS 6

71

177

39

72

45

78

A 39

A 40

21

312

12

3

2

A 37

A 38

47

61

139

135

A 36

A 35

Appendix E: Sample Description

SAMPLE	EASTING (UTM)	NORTHING (UTM)	ELEV (m)	ROCK TYPE	ALTN	COMMENTS
G0669501	633480	6987775	1509	granite/granodiorite		v quick sample; bear in the area
G0669502	633475	6987712	1520	grey/brown mudstone	fe staining	fine laminations, qtz veinlets sub parallel to so
G0669503	633413	6987665	1562	dark grey sandstone	moderate silicic alt	massive beds, v quick sample; bear in the area
G0669504	633258	6987629	1621	mudstone, brown/grey	fe staining	massive beds, v quick sample; bear in the area
H031556	635136	6987028	1701	Conglomerate/Breccia	2-3% qtz veinlets	conglomeratic sandstone, gossanous with 2-3% thin irregular clear qtz veinlets cutting fabric, chert pebble supported with angular clasts in a sandy matrix
H031557	635943	6987809	1596	chert conglomerate	heavy fe oxidation	1m thick band of strong oxidation in conglomerate
H031665	633680	6987936	1402	fg mudstone		some graphitic float around but none visable in outcrop
H031773	634817	6997217		chert conglomerate	weak qtz veinlets	light brown ,matrix, black and grey chert clasts btw 5mm-2cm, some mudstone clasts, subrounded fragments
H031774	634918	6987135	1746	chert conglomerate	oxidation around fx planes, possibly pyritic due to small cubic holes, moderate qtz veinlets	tan chert matrix and sub angular-angular clasts of black and grey chert
H031775	635044	6987179	1732	chert conglomerate		crystallian/crustiform texture
H031776	635140	6987500	1694	mudstone		contact of black mudstone and chert 2m thick
H031777	635342	6987683	1708	chert	qtz stockwork, some red oxidation	black/white/grey colour
H031778	635340	6987662	1712	chert		black/white/grey/green colour
H031779	635298	6987607	1691	qtz vein	orange/brown rusting	large pod shaped outcrop with strong cleavage
H031780	635607	6987676	1665	chert conglomerate	limonite rusting	sub angular clasts (1-8cm) of chert and minor mudstone