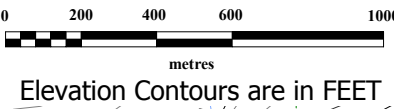


Coincident Anomaly	Nickel (ppm)	Copper (ppm)	Cobalt (ppm)
Rock Sample >95th Percentile	Rock Sample >95th Percentile	Rock Sample >95th Percentile	Rock Sample >95th Percentile
Soil Sample >95th Percentile	Soil Sample >95th Percentile	Soil Sample >95th Percentile	Soil Sample >95th Percentile
Silt Sample >95th Percentile	Silt Sample >95th Percentile	Silt Sample >95th Percentile	Silt Sample >95th Percentile

Lithology Legend	
Aplite (ap)	Limestone (ls)
Argillite (arg)	Massive Hematite (mxHS)
Basalt (bs)	Massive Magnetite (mxMG)
Black shale (shl bk)	Massive Sulphide (mxSX)
Chaotic Breccia (bhtc)	Metasomatised Sed. Rocks (mts)
Chert (cht)	Mudstone (msdt)
Conglomerate (cngl)	Phyllite (ph)
Diorite (di)	Quartzite (qtz)
Dolomite/Dolostone (dol)	Sandstone (sst)
Fault Breccia (ftbx)	Schist (sch)
Fault Gouge (ftg)	Shale (shl)
Gabbro (gb)	Shear Zone (sz)
Heterolithic Breccia (bht)	Siltstone (sits)
Heterolithic Breccia (platy) (PLATY bht)	Siltstone/Mudstone (sits/msdt)
Heterolithic/Homolithic Breccia (bht,m)	Slate (slt)
Homolithic Breccia (bhm)	Syenite (sy)
Homolithic Breccia (dolomitic) (bhmc)	Talus (talus)
Lamprophyre (lamp)	Vein (vn)
X Minfile occurrence/Showing	



RIMFIRE MINERALS CORPORATION
FRONTIER DEVELOPMENT GROUP INC.

WERNECKE PROJECT
Jazz-Thunder Mtn Geochemistry
Nickel-Copper-Cobalt

Date:	JAN 2008	Scale:	1: 20,000	MAP
U.T.M. Zone	UTM 8 - NAD83	Mining District	Mayo	
N.T.S.	106C,D,E,F	State/Province	Yukon	

6b