

095604



Assessment report

Son 4, Son 5, and Son 6 Fractional mineral claims

Grant # YC39676, YC39586 and YC39587

Mayo Mining Division, Yukon Territory

Latitude 63.57° N Longitude 135.15° W

NTS Map Sheet 105M-14

By

Dirk Moraal
Owner and operator

July 2006

EXPLORATION PROJECTS 2005

Deposit Class

- ▽ Volcanic associated
- ◇ Sediment associated
- △ Mafic/ultramafic associated
- ◆ Vein/breccia associated
- Skarn/replacement associated
- Industrial minerals
- ⊕ Wernecke breccia
- Porphyry/sheeted vein associated
- ★ Gemstones
- ◁ Placer/paleoplacer

Commodity

- Au
- Ag
- Cu
- Zn-Pb
- W
- Mo
- Ni/PGE
- Coal
- Uranium

Primary Map Features

- Highway
- - - Proposed Pipeline Route
- · - · - Proposed 1942 US Army Engineers' Surveyed Railway Route

Other Map Features

- ⊙ Capital city
- Communities
- Parks - Withdrawn Areas

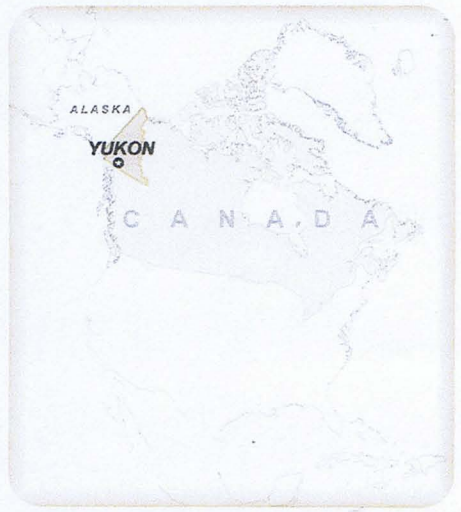
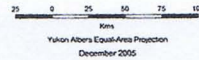
Electrical Power Infrastructure

Generating Station

- ⊙ Diesel
- ⊙ Hydroelectric

Transmission Line

- 138 kv
- <138 kv



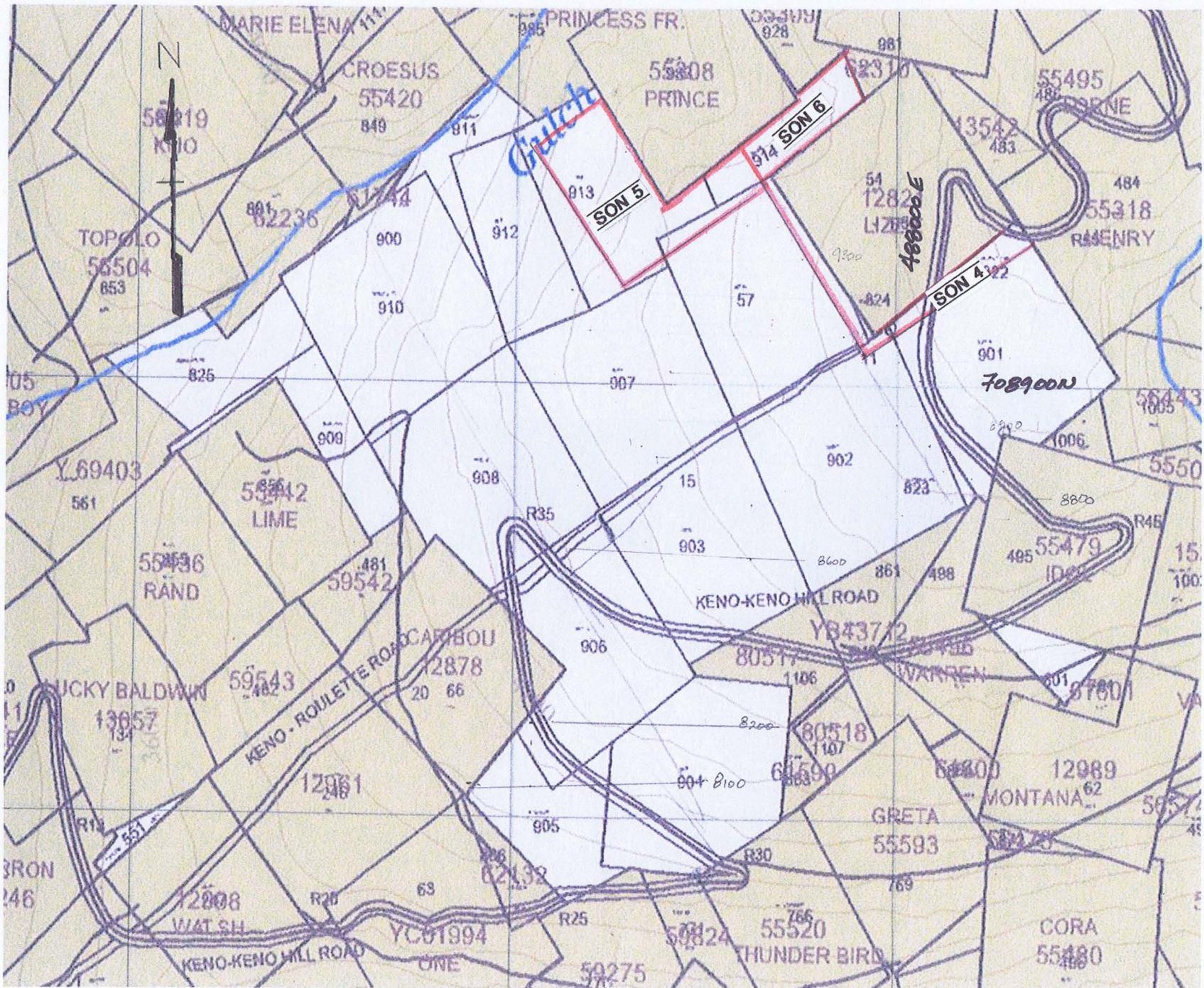


Table of contents

Location Map

Claim Map

Bibliography 4

Introduction 5

Location, access and topography 5

GPS positions of claim posts 5

Ownership and claim status 6

History and previous work 6

Work described in this report 6

Prospecting and geology 6

Map Legend 7

Geophysical work 8

VLF-EM 8

Magnetometer 8

Soil Sampling 9

Results 9

Summary and recommendations 10

Authors Qualifications 11

Costs 12

Appendices and Maps

Bibliography

Boyle, 11964, Lead Silver deposits, Keno Hill-Galena Hill Area

Fraser, D. C., 1969, Contouring VLF Data

Whittles, A. B., Prospecting with radio frequency EM-16 in Mountainous regions
Western Miner

Saydam and Boniwell, 1984, VLF Electromagnetic method.
A geophysical handbook fpr geologists

Smee, B, 2005, Theory behind the use of soil pH measurements as an inexpensive
Guide to buried mineralization, with examples

Jackson, F. J. 2003, What is pH and how is it measured. Hach Company

Introduction

The Keno Hill mining area was active from the early 1900's to after 1988, when most activity ceased due to metal prices, and other factors. An estimated 700 billion grams of silver was extracted from vein deposits on Galena, Sourdough and Keno Hills.

Production was from very rich silver –lead veins of small extent. Ground around these past producers was solidly held until relatively recently. Some of this open ground was re-staked as part of an exploration programme under a Y.M.I.P grant in 2005 to search for missed silver veins. The mineral claims covered in this report were staked to cover open ground adjacent to the Son and Mom claims.

Location Access and Topography

The Son 4, 5, and 6 consist of fractional claims adjacent the Son 1 and 3 claims and are situated on the south side above Ericsson Gulch on the south west slope of Keno Hill, across the valley from the Shamrock, a past producer.

Access from Whitehorse is by a paved highway to Mayo, a distance of 405 Km., thence to Keno City, distant 60 km on a maintained all weather road. From Keno City, the visitor ascends Keno Hill on the seasonal Keno-Keno Hill road, locally referred to as the Signpost Road, about 7 km. The Keno-Roulette 4x4 road branches off to the left. The claim is found about 200 m along this road.

The claims, at an average altitude of about 1140 m, is mainly above tree line and the ground is mostly covered with dwarf birch and willow. Alpine fir dot the landscape.

GPS positions of the claim posts

Two days time was spent locating old survey pins and monuments as well as surveying in new claim posts in order to fix the real boundaries of the fractions.

Post 1 Son 4	Zone 8	0487899 E- 7089069 N
Post 1 Son 5	Zone 8	0487646 E- 7089436 N
Post 1 Son 6	Zone 8	0487646 E- 7089436 N
Post 2 Son 5	Zone 8	0487272 E- 7089201 N
Post 2 Son 6	Zone 8	0487548 E- 7089574 N
SE corner Son 6	Zone 8	0487905 E- 7089667 N
NE corner Son 6	Zone 8	0487840 E- 7089772 N
SW corner 54 claim	Zone 8	0487661 E- 7089484 N
SE corner 54 claim	Zone 8	0487937 E- 7089114 N
SW corner Prince	Zone 8	0487388 E- 7089415 N
SE corner Prince	Zone 8	0487726 E- 7089660 N

Ownership and status

The No name Fraction is wholly owned by Dirk Moraal, Box 75, Tagish, Yukon. The claims are in good standing and have a recording date of September 1, 2005.

History and previous work

The Son 4, Son 5, Son 6 fractional claims have been inactive for a considerable time. No physical work was seen during the work period. A series of pickets suggesting a wide spaced grid were found on the claims.

Work described in this report

Work on these claims consists of surveying in the posts with a GPS receiver, a small grid of a cut baseline 100 m long, and 4 survey lines spaced 50 m apart, 44 soil samples, 440m of magnetometer survey, and 440m of VLF-EM electromagnetic survey at 5 m spacing, was carried out on the Son 6 claim. One 400 m line was surveyed at 5m with a magnetometer and VLF receivers, and was soil sampled at 10 m intervals. Son 4 was soil sampled at 10 m intervals to cover a soil anomaly found in 2005. The ground was prospected and mapped,

Prospecting and Geology

There were few outcrops noted on the claims. The ground appears entirely covered by overburden, consisting of clay, and glacial overburden, with large areas of phyllite, and thin bedded quartzite float. Only one old trench on Son 4 uncovered bedrock, consisting of bedded quartzite and graphitic phyllite. No sulphides were seen. A large fault cutting quartz sericite chlorite schist, crosses the eastern end of Son 6, but there was no associated manganese coating, which is the usual indicator of mineralization.

Map Legend

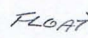
- 1 Pale blocky quartzite, minor graphitic schist
- 2 Quartz muscovite schist and quartz muscovite chlorite schist, grey phyllite
- 3 Graphitic phyllite
- 4 Grey to black flaggy quartzite, graphitic phyllite
- 5 Limestone
- 6 Undifferentiated, 1 to 5
- 7 Greenstone
- 8 Lamprophyre
- 9 Rhyolite and porphyritic Rhyolite


 Adit

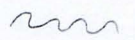
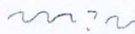
 Trench

 Bedding


 Foliation

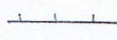
FL0AT  Area of float rock

 Area of outcrop

 Vein Fault, known
 assumed

 Building

 Shaft

 Survey line

 Claim posts

Geophysical anomaly, soil anomaly

Geophysical work

The operator surveyed the lines with a Sabre Model 27 VLF EM receiver and a Sharpe MF-1 fluxgate Magnetometer at 5 m intervals. 180 stations were read.

VLF Survey

VLF is a passive method, requiring only a receiver, and is flexible and independent from many of the operational headaches associated with more complex methods. As applies to exploration, the method detects resistivity contrasts, either from poor conductors such as horizontal beds, to solid metallic conductors such as sulphide veins.

The receivers are tuned to one of the powerful military transmitters used by submarine services of various countries. The horizontal ground wave from these transmitters becomes disturbed as it passes over a local feature which causes a secondary field to introduce a phase shift, and the field now becomes polarized. The receiver detects this secondary field as a change in the tilt angle of the resultant field and these changes are displayed as dip angles in degrees. These data are recorded for later treatment and plotting.

Generally, the data can be plotted directly, but often, due to the nature of the terrain being surveyed, various factors such as surficial conduction, slope of ground, resistivity of the host medium, etc., can have an undesired effect on the dip angles, and it becomes necessary to remove these to more clearly define the anomaly..

It is normal to treat the data with a transform algorithm, such as Fraser's Filter. Essentially, the filter ($x = [c+d] - [a+b]$) enhances anomalies with widths equal to or less than 5 times the filtered data station interval, transforming "crossover" points into peaks. This facilitates the contouring of the data, which simplifies picking out narrow conductors, or the edges of tabular bodies.

Magnetics

The Sharpe (now Scintrex) Fluxgate Magnetometer measures the vertical component of the earth's magnetic field. The instrument has a scale sensitivity of 20 gammas, but on a calm day, a good operator can interpolate to an accuracy of 5 gammas. Prior to a survey the instrument is set to a convenient scale value, normally 500 gammas, regardless of the total magnetic field, so readings are relative.

Survey method

After observing the magnetic activity is calm enough for a series of readings within the range of values expected on the property, the instrument is carried by a single operator, and line and station, relative magnetic intensity, and time is recorded, first along a base line in order to have fixed reference values to return to, then along survey lines.

Normally readings begin and end at a station of known value, and the series of readings is referred to as a "loop". After the survey, readings are corrected first for base shift, meaning the value to which all readings in a loop have varied from the base station reading, then, the amount of variation from start to end of the loop is apportioned to individual magnetic readings along the loop.

These corrected readings are then plotted in profile or as contour maps.

Soil Sampling

Soil samples were collected along the survey lines at 10 m interval. A hole was dug using a sturdy mattock, and about approximately 250 grams of material was placed in a Kraft soil bag as used by the mining industry. These samples were air dried, and sieved to -20 mesh size, to remove the rocks and roots. The samples were subsequently tested for pH.

Results

Magnetometer and VLF-EM surveys

Geophysical surveys were hampered by a very active magnetic environment due to atmospheric conditions, i.e. lightning, while the earth's magnetic field was subdued. Survey times were therefore limited to early mornings.

Raw VLF data was treated with Fraser's algorithm to convert "crossovers" to peaks to facilitate interpretation. The VLF-EM survey on Son 6 shows weak parallel conductors in the vicinity of the fault, coincident with the edge of an oval magnetic low in the centre of the grid.

The single survey line on Son 5 are presented as a profile. Magnetic values are very erratic, due to the small magnetic field amplitude of less than 50 gammas, which enhances any small variation in reading technique or magnetic field micro pulsations. The magnetic data was smoothed with a 3 point averaging filter, $(a + b + c / 3)$ which shows a coincident magnetic dipole co-located with a Fraser filter anomaly on profiles.

Magnetics

The magnetometer survey on Son 6 outlined an oval feature at the centre of the grid. This feature cannot be related to geology as the overburden is deep, but appears to follow the curvature of the fault. Magnetic field amplitude is only 120 gammas.

On the survey line at Son 5 the field has an amplitude of only 71 gammas, and shows a pronounced saw tooth pattern most likely caused by operator error and perhaps field micro-pulsations. Two areas of magnetic activity appear to be coincident with weak VLF EM anomalies

Corrected readings required the use of a simple 3 point average filter to smooth out the saw tooth effect caused by the instruments limitations. In this case, the range of values was only 5 times the instruments' sensitivity.

Soil sampling and pH testing

The operator is experimenting with the use of pH as a indirect and direct method of locating buried sulphide mineralization. The direct indicator would be a change in soil pH, while the indirect indicator would be a change in the concentration of pH sensitive cations such as Ca, Fe, and Mn.(Smee, 2005)

Like most methods employed in mineral exploration, however, pH will respond to other sub-surface features such as ground water and faults. Since ore on Keno Hill is normally associated with vein faults, it is hoped that this method will be effective there.

Smee (1983) suggests converting the results to Hydrogen + Mole to remove the log scale, before plotting. This is easily achieved by taking the anti log of the negative pH value.

Soil samples were tested using a modern microprocessor controlled pH meter, calibrated to industry standards, and a supply of distilled water.

Approximately a teaspoon of soil was mixed with 50 ml of distilled water for 2 minutes, before reading the pH. Roughly 50 to 60 soil samples can be tested per day by a single worker.

Mineralization is typically found below or very near a double peak response. However, due to the small size of the targets, getting this double peak anomaly requires intensive soil sampling and testing for pH. A 10 m interval is a compromise sampling interval, and a single H⁺ peak can be re-sampled at a later date to define the exact location of the sulphide vein.

Summary and recommendations

Results of exploration work on the Son 4, Son 5, and Son 6 fractional claims indicate a coincident VLF-EM, Magnetic and soil anomaly on Son 6 grid, a Hydrogen Mole and VLF anomaly on Son5 line 2400N at 1410E, and a 25m long pH anomaly on Son 4 in the vicinity of a previously (2005) located As Pb, soil anomaly. Since ore veins on Keno hill are very small, averaging 15m long, it is possible that sulphide mineralization may be found on the No name Fraction.

It is recommended that the grids be extended, and that soil samples with an anomalous pH be analyzed Ag and Pb. No other elements are thought necessary since pH has eliminated the need to analyse for indirect indicator minerals.

Author's Qualifications

I Dirk Moraal of Tagish, Yukon Territory
Certify that:

I am a professional prospector and have been active in the mining sector since 1969

I am the owner and operator of the No Name Fraction Quartz claim

This report is based on data gathered by myself on June 21 and June 22, 2006

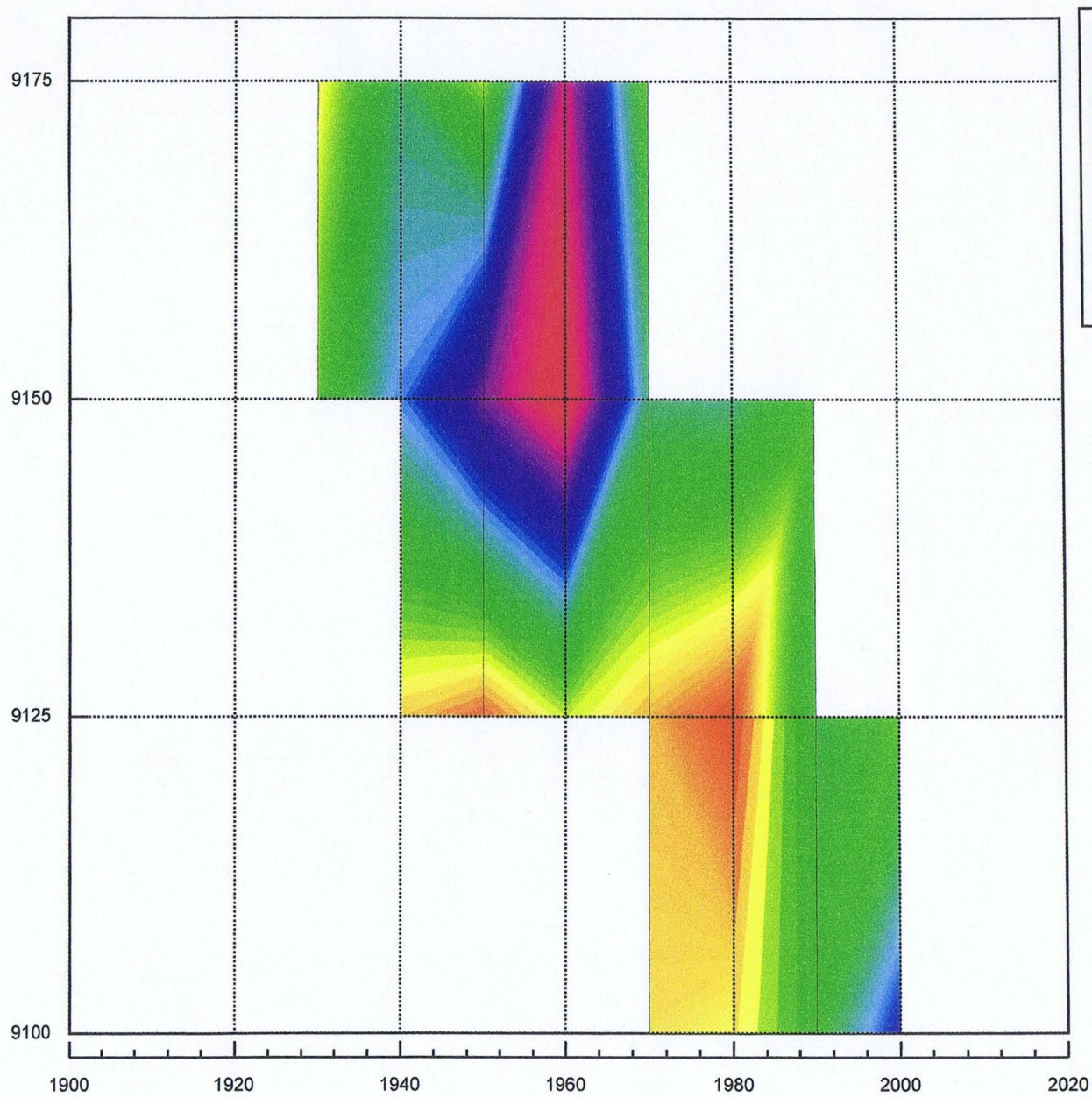
I am the author of this report which reflects the work performed, my understanding of the area and the methods used during the surveys



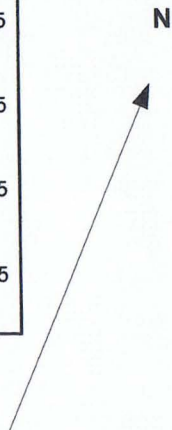
Dirk Moraal

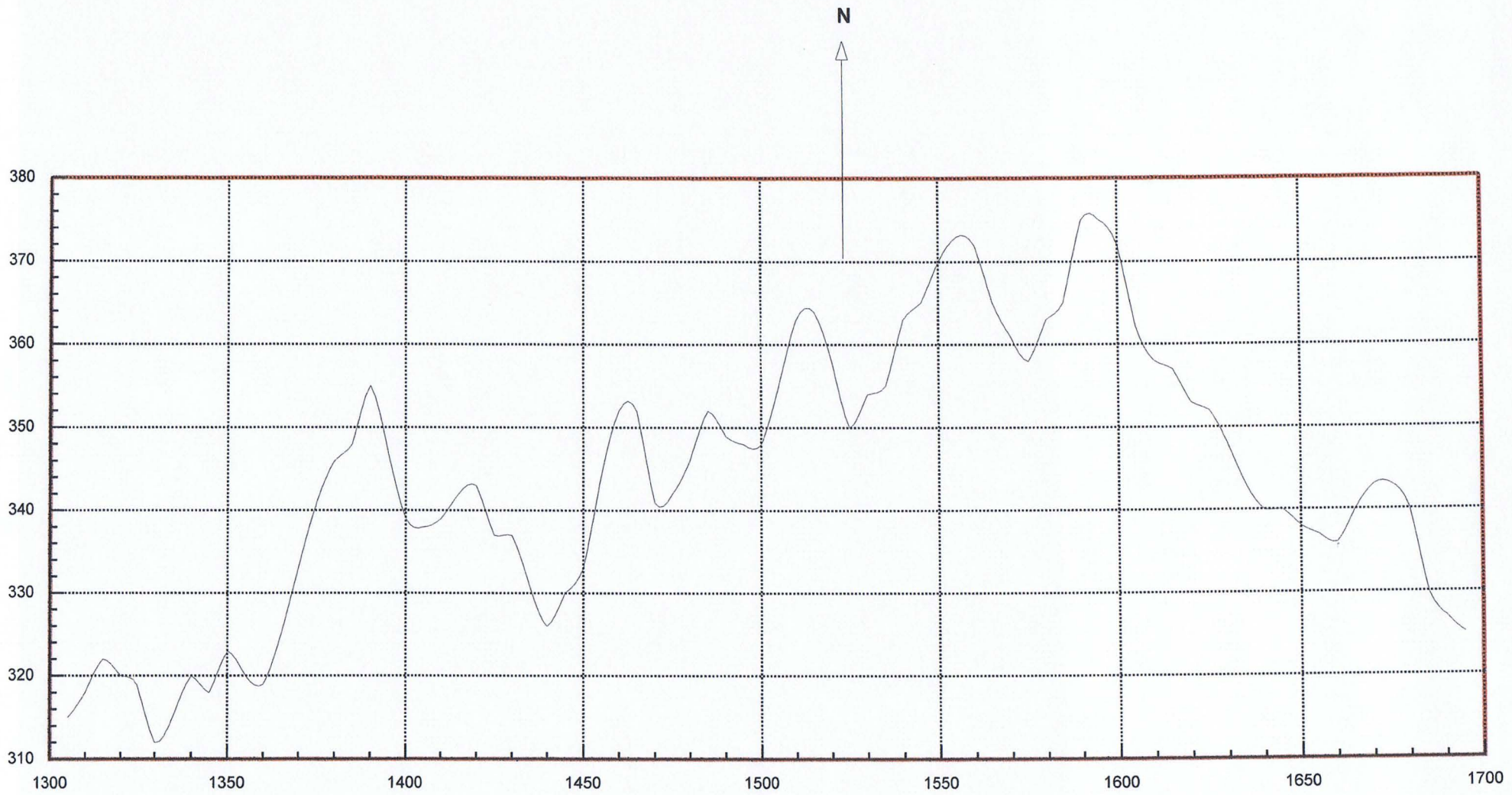
List of Costs

Dirk Moraal, prospector	2 field days @ \$275.00/day	\$550.00
	2 days testing for pH	\$550.00
	1 day data entry and plotting	\$275.00
Report writing	2 days @ \$275.00/day	\$550.00
Field expenses, fuel, food	\$ 150.00	\$150.00
Field supplies from stock	\$ 25.00	\$25.00
		<hr/>
		\$2100.00



Son 4
Soil pH

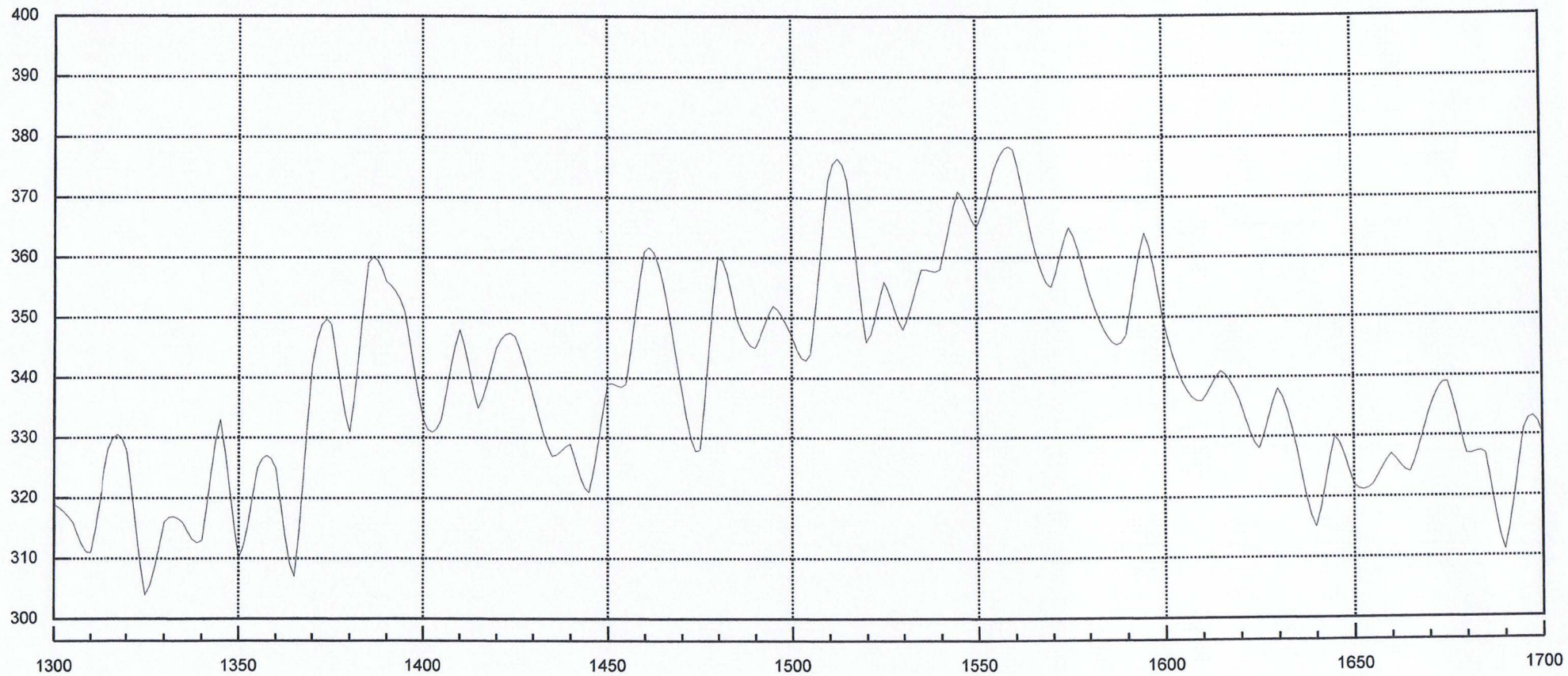




Son 5 Line 2400 N

Smoothed Magnetics, 3 pt running average

N

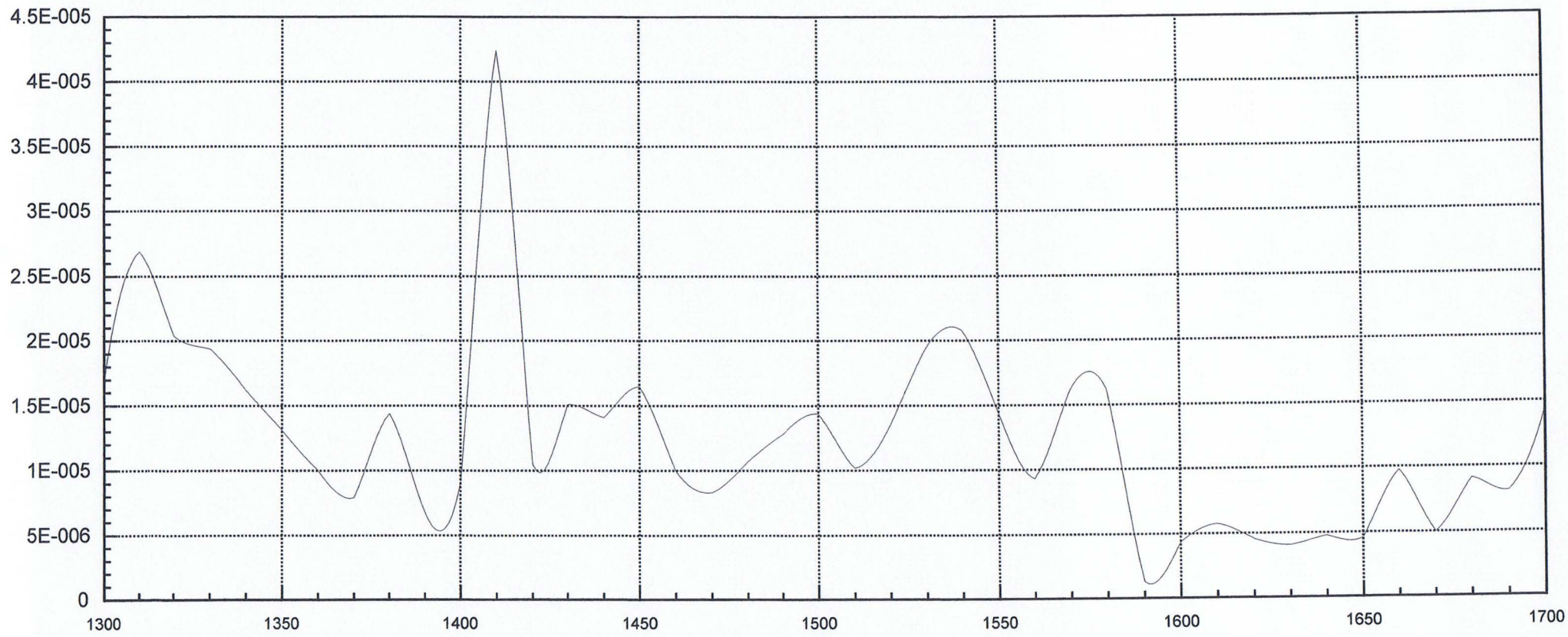


Line 2540 N Son 5 Fraction

Raw magnetic data (gammas)

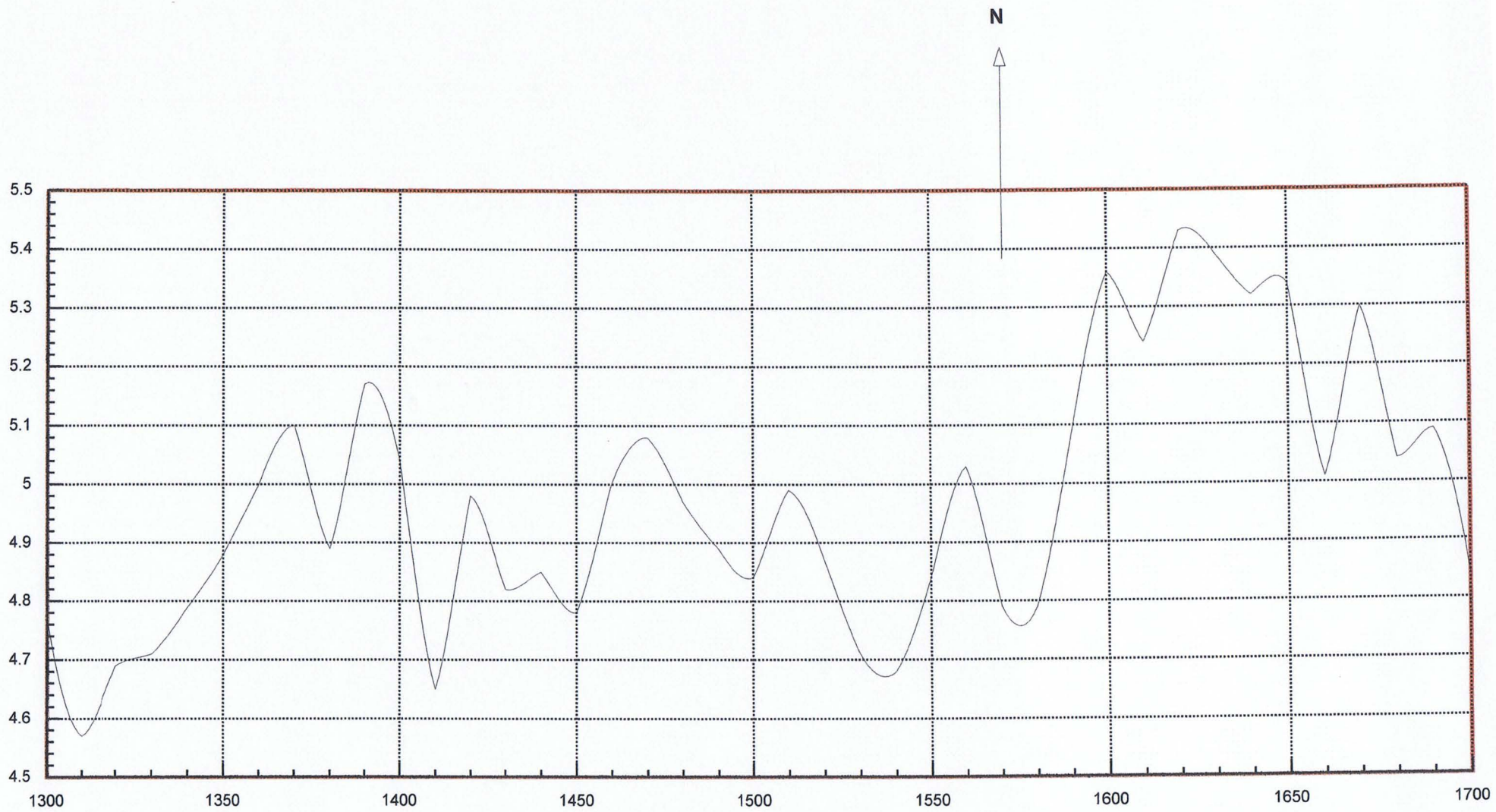
— Magnetics

N



Son 5, Line 2400

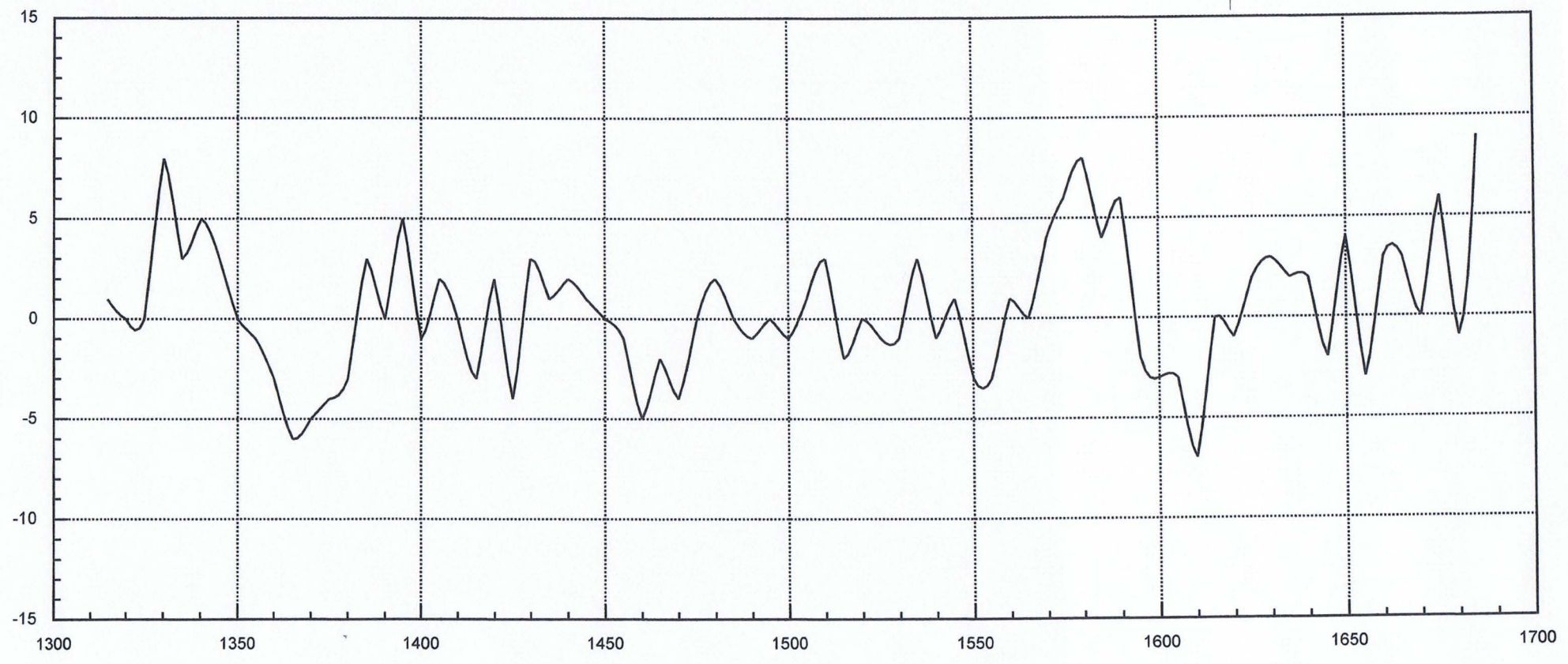
Hydrogen+ mole



Son 5

Soil pH

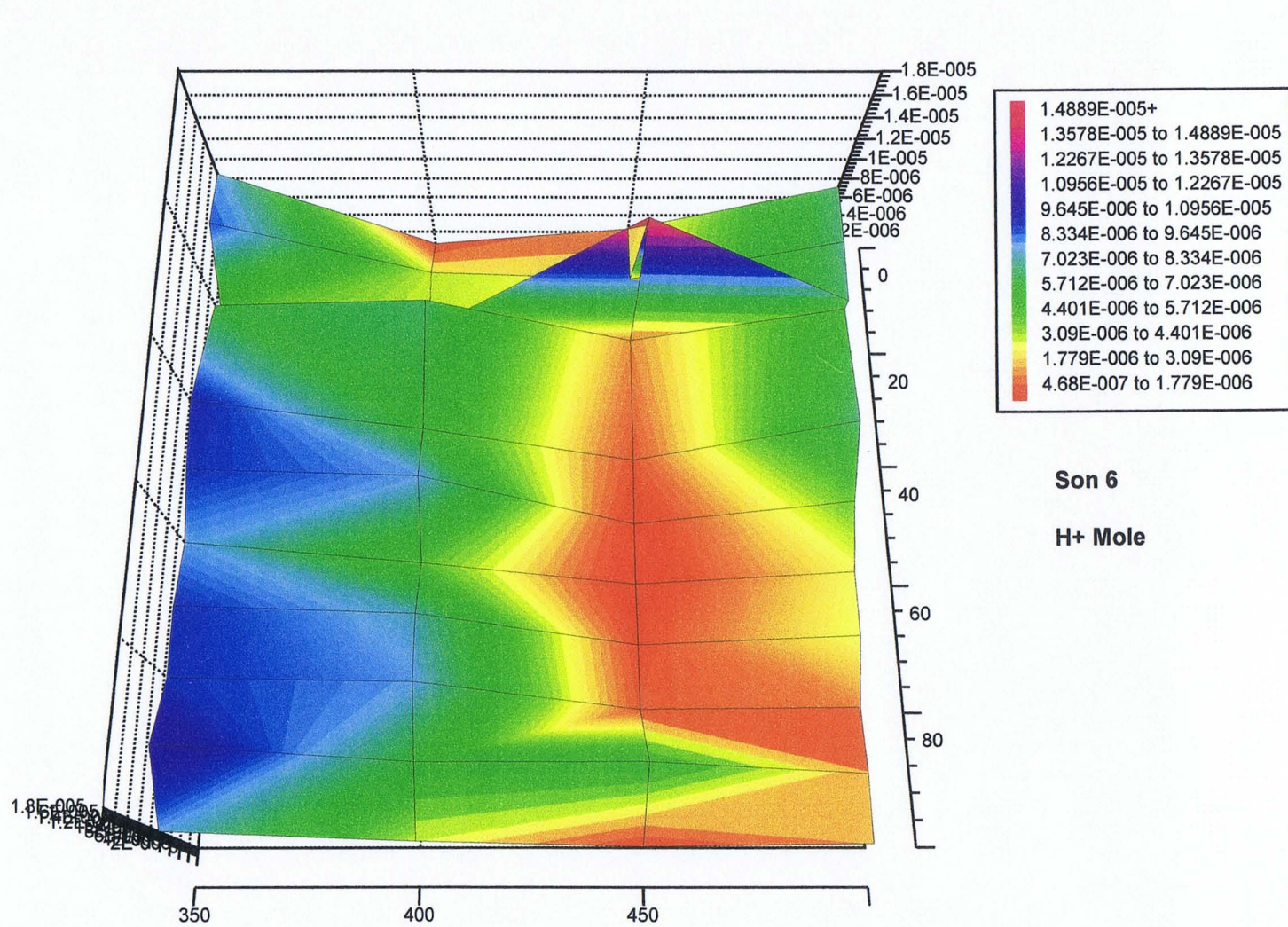
N

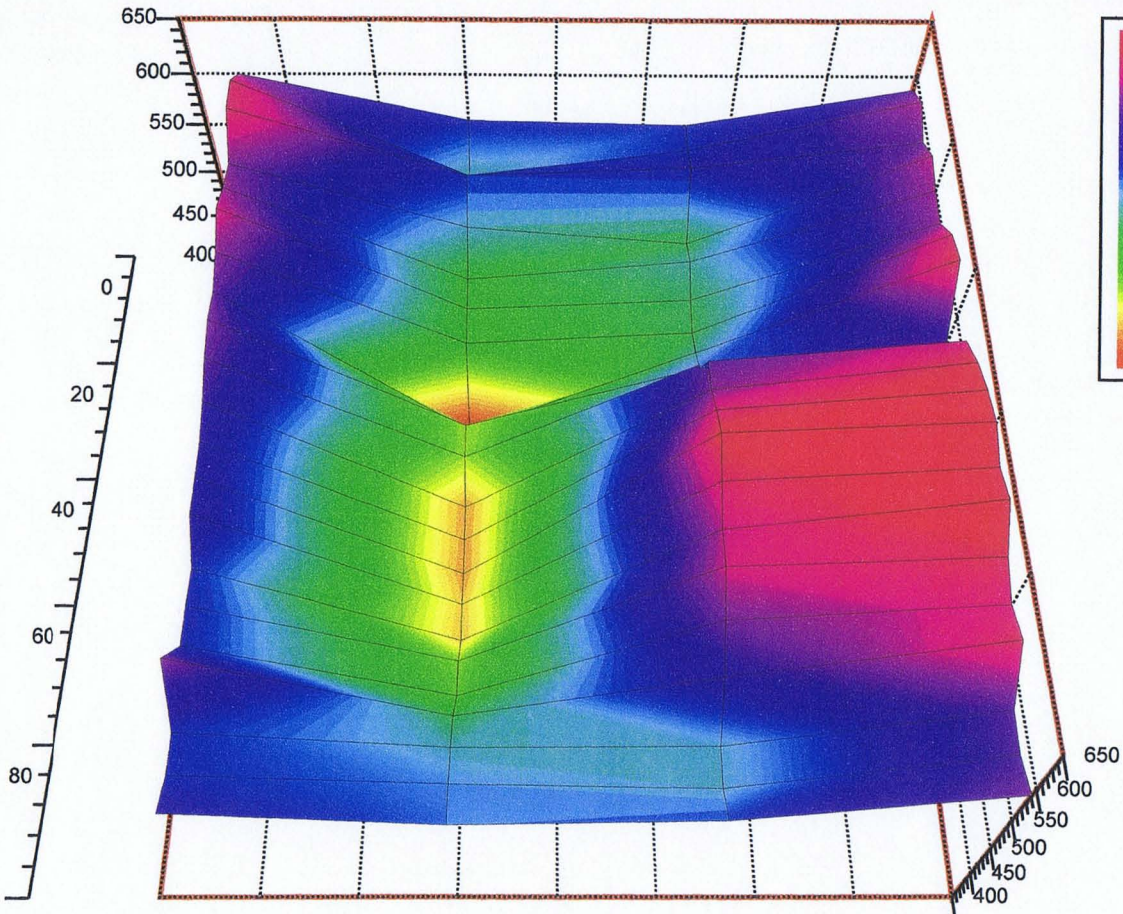


Line 2400 N Son 5 Fraction

VLF EM Fraser filter

— VLF EM

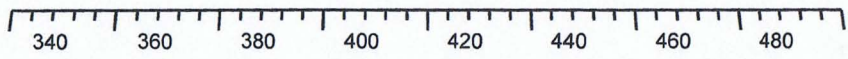


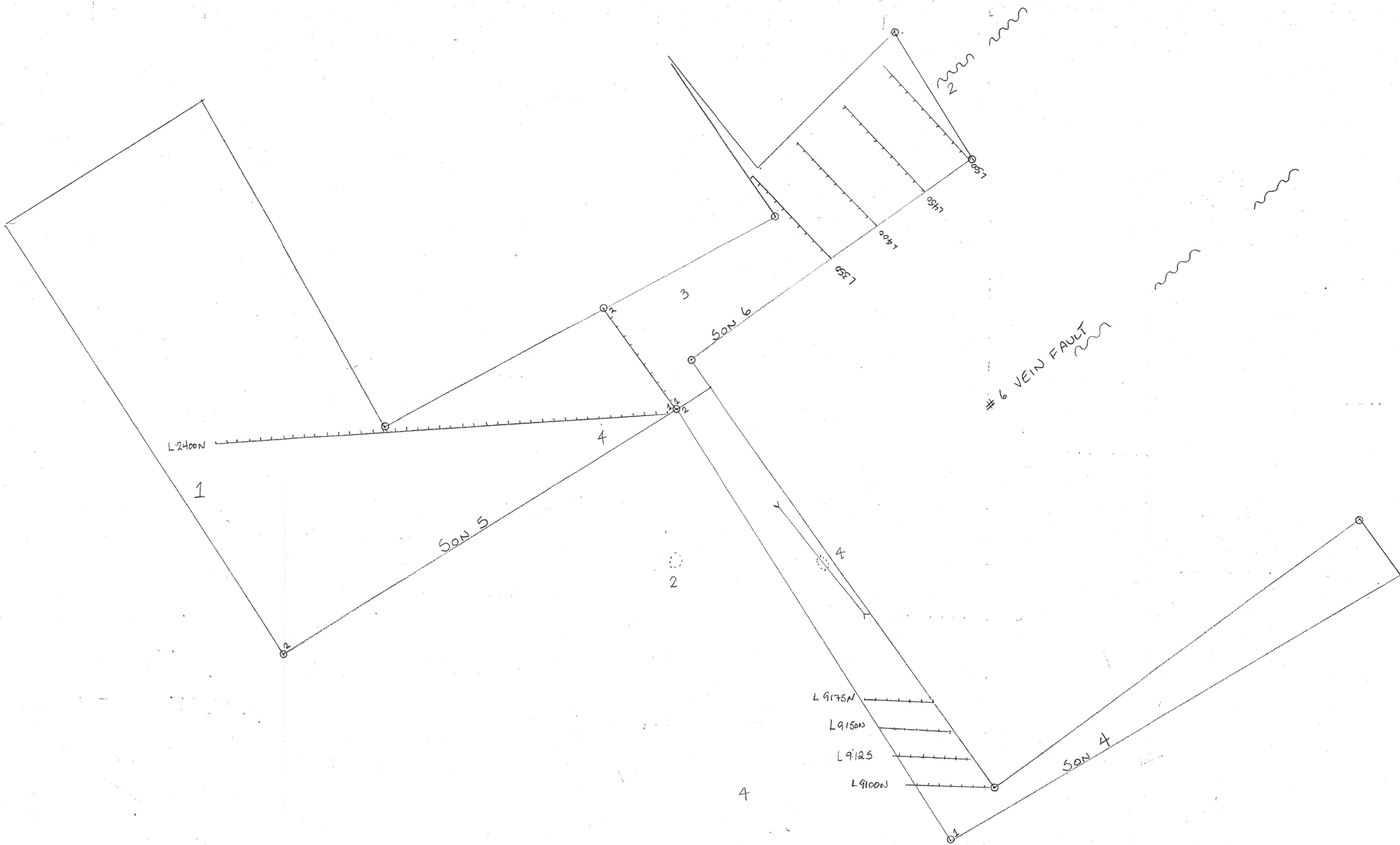
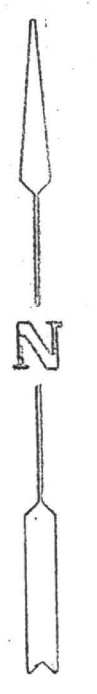


622.25+
604.5 to 622.25
586.75 to 604.5
569 to 586.75
551.25 to 569
533.5 to 551.25
515.75 to 533.5
498 to 515.75
480.25 to 498
462.5 to 480.25
444.75 to 462.5
427 to 444.75

Son 6 Fraction

Magnetometer Survey





SON 4, SON 5 and SON 6		
SCALE 1:2500	DRAWN BY EM	REVISED
BASE MAP		
DATE 07/06	APPROVED BY	DRAWING NUMBER