

ARCHER, CATHRO & ASSOCIATES (1981) LIMITED
1016 – 510 West Hastings Street
Vancouver, B.C. V6B 1L8

Telephone: 604-688-2568

Fax: 604-688-2578

ASSESSMENT REPORT

describing

2005 DIAMOND DRILLING

on the

MARG PROPERTY

Marg 1-144	YB02385-YB02528
145-178	YB02580-YB02613
179-190	YB02944-YB02955
191-290	YB03107-YB03206
291-370	YB03606-YB03685
Tudl 1-32	YA76768-YA76799

NTS 105M/15 & 16 and 106D/1 & 2
Latitude 64°01' N; Longitude 134°28' W

Mayo Mining District
Yukon Territory

prepared by

Archer, Cathro & Associates (1981) Limited

for

YUKON GOLD CORPORATION, INC.

R.C. Carne, M.Sc., P.Geo.
February 2006

TABLE OF CONTENTS

	<u>PAGE</u>
INTRODUCTION	1
PROPERTY, LOCATION AND ACCESS	1
2005 PROGRAM	1
GEOLOGY	3
MINERALIZATION AND RESULTS	3

LIST OF TABLES

I	Drill Hole Summary	2
II	Diamond Drill Hole Assay Summary	4

APPENDICES

I	CLAIM SUMMARY
II	AUTHOR'S STATEMENT OF QUALIFICATIONS
III	SYNOPTIC DIAMOND DRILL LOGS
IV	CERTIFICATES OF ANALYSIS
V	DETAILED ASSAY SUMMARY

FIGURES

<u>NO.</u>	<u>DESCRIPTION</u>	<u>FOLLOWING PAGE</u>
1	Location Map	1
2	Claim Location	1
3	Drill Section 1900E	3
4	Drill Section 1950E	3
5	Inclined Longitudinal Section	3

INTRODUCTION

The Marg property in central Yukon hosts a polymetallic volcanogenic massive sulphide deposit discovered in 1988. Diamond drilling in 1988-1990 and 1996-1997 totalled 23,034 m in 83 holes and outlined a NI43-101 compliant Indicated Resource of 4,646,200 tonnes grading 1.80% copper, 2.57% lead, 4.77% zinc, 65.08 g/t silver and 0.99 g/t gold plus an Inferred Resource of 880,800 tonnes grading 1.55% copper, 1.90% lead, 3.75% zinc, 50.42 g/t silver and 0.95 g/t gold (Holbek, 2005). Yukon Gold Corporation, Inc. purchased a 100% working interest in the property in 2005.

The 2005 exploration program consisted of four HQ/NQ diamond drill holes totalling 1184.6 m in length. This report documents the results of those four holes only. An exhaustive summary of previous work, regional geology and property geology as well as a resource estimate is given in Holbek (2005). The 2005 program was managed by Archer, Cathro & Associates (1981) Limited on behalf of Yukon Gold.

PROPERTY, LOCATION AND ACCESS

The Marg property is located in the Mayo Mining District in central Yukon, 42 km east of Keno City, Yukon at 64°01'N and 134°28'W on NTS map sheet 106D/1, 106D/2, 105M/15 and 105M/16 (Figure 1). Keno City is 415 km by all-weather highway from Whitehorse and 600 km from the deepsea port of Skagway, Alaska.

Access is by helicopter from the nearest road at Keno City or by fixed wing aircraft from Mayo (83 km) to a 380 m gravel airstrip on the property. A tote road was constructed from Keno City to the property in 1996.

The property consists of 402 contiguous claims that cover an 8403 ha area (Figure 2) in the Mayo Mining District. They are registered in the name of Yukon Gold Corporation, Inc., as listed in Appendix I.

The Marg property lies within a 1,830 square mile area of Class 'A' settlement lands owned by the Nacho Nyak Dun First Nation, most of whose members reside in Mayo. Should any of the claims forming the Marg property be allowed to lapse, the open ground will revert to the Class 'A' land block.

2005 PROGRAM

The work outlined in this report consists of four diamond drill holes (Holes 05-84 to 05-87) totalling 1184.6 m (Table I). The exploration program was carried out between September 27 and November 18, 2005. The work was managed by Archer Cathro and supervised by the author.

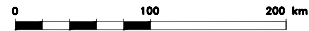
Appendix II contains the Author's Statement of Qualifications. The following Archer Cathro personnel were involved in the program:

YUKON GOLD CORPORATION, INC.

FIGURE 1

ARCHER, CATHRO & ASSOCIATES (1981) LIMITED

LOCATION MAP MARG PROPERTY

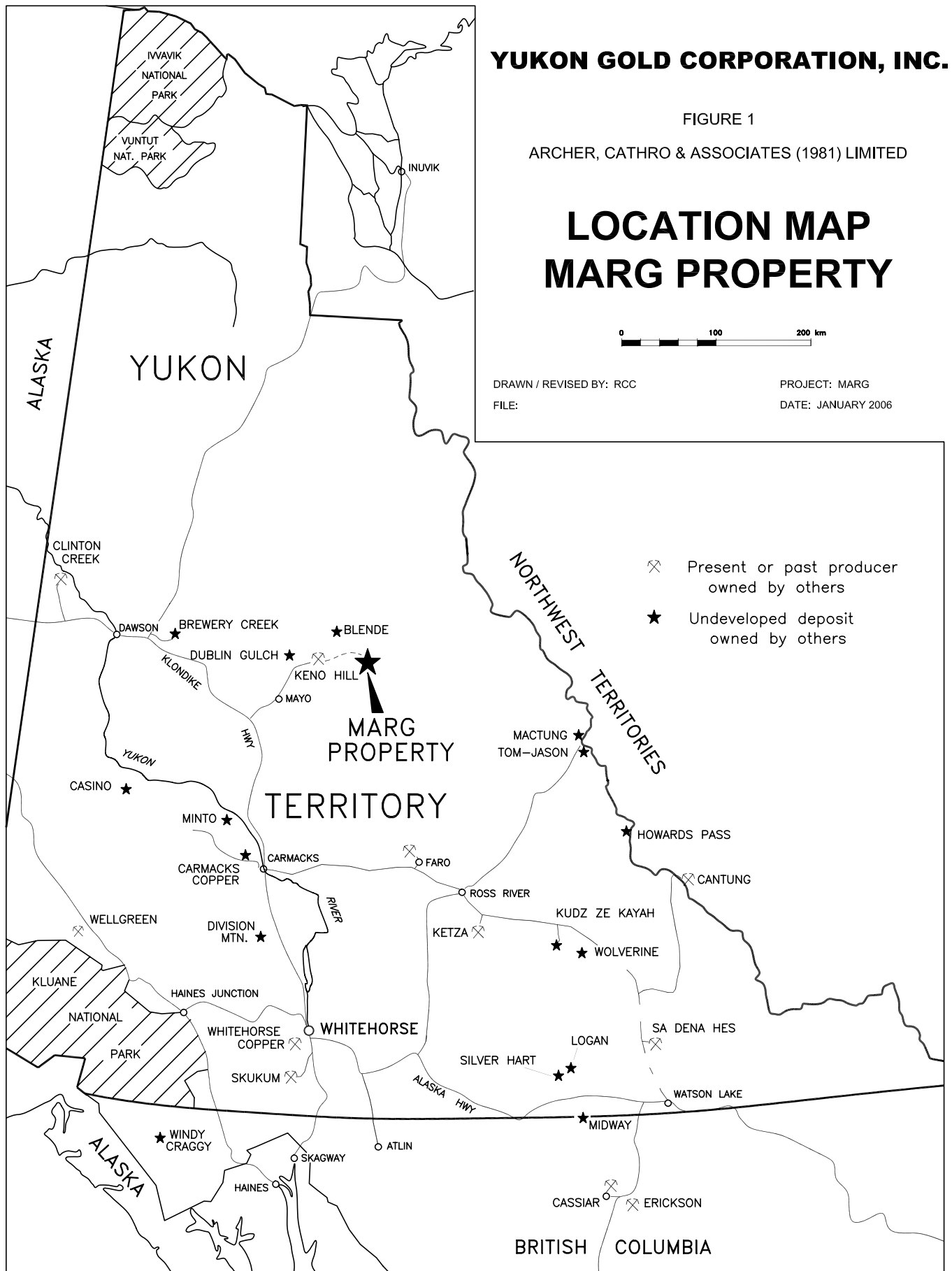


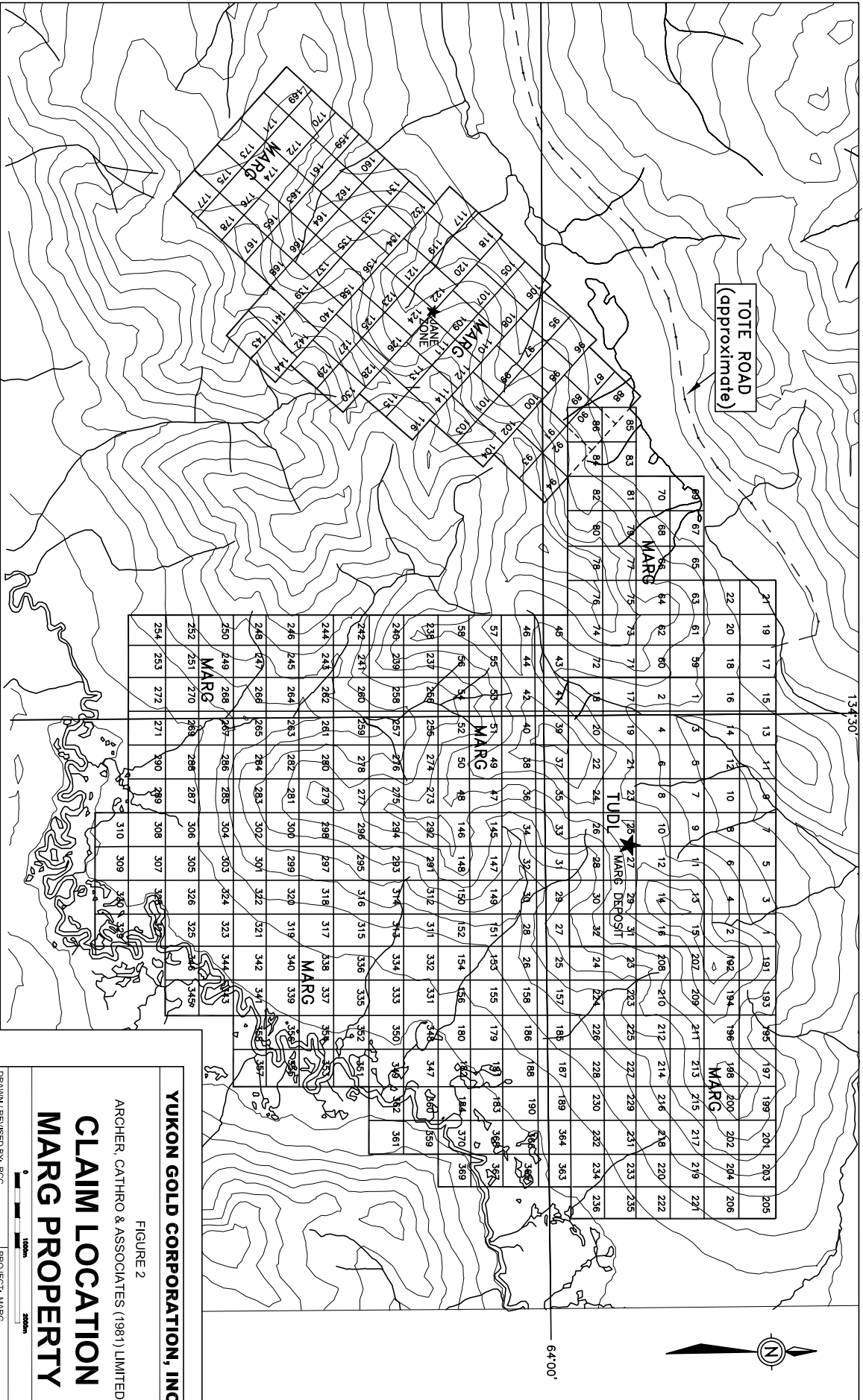
DRAWN / REVISED BY: RCC

PROJECT: MARG

FILE:

DATE: JANUARY 2006





TOTE ROAD
(approximate)



64°00'

YUKON GOLD CORPORATION, INC.

FIGURE 2

ARCHER, CATHRO & ASSOCIATES (1981) LIMITED

CLAIM LOCATION MARG PROPERTY

DRAWN/ REVISED BY: RCC

PROJECT: MARG

DATE: JANUARY 2006



Rob Carne	Project manager
Nicholas Mitchell	Senior geologist
Dirk Moraal	Camp manager
Ben Gelber	Carpenter during camp set up period
Matt Turner	Carpenter during camp set up period
Riley Gibson	Geological assistant
Beth Hunt	Cook

Drilling was contracted to E. Caron Diamond Drilling Ltd. of Whitehorse using a Longyear 38 wireline-equipped diamond drill. The drill was winterized and left on site. A summary of the drilling is given below.

TABLE I: DRILL HOLE SUMMARY

<u>Hole</u>	<u>Collar</u> <u>Northing</u>	<u>Collar</u> <u>Easting</u>	<u>Azimuth</u>	<u>Dip</u>	<u>Depth</u> <u>(m)</u>
05-84	99,940	1878	002°	-70°	221.76
05-85	100,065	1878	002°	-75°	191.10
05-86	99,884	1940	002°	-66°	444.09
05-87	99,884	1940	002°	-75°	327.66

A winch-equipped Caterpillar D3 bulldozer owned by Yukon Gold was used to construct one drill site and 50 m of access road, to plough snow and to move the drill between sites. The bulldozer, which was originally flown to the property by helicopter in 1996, was winterized and left on site.

Helicopter support was provided by Trans North Helicopters from a base in Mayo, Yukon using a combination of Bell 206, Bell 205 and AStar 350B2 depending on availability.

All core sampling, collection of geotechnical data and core logging was done on site. Mineralized intervals were split and one-half was sent to ALS Chemex Labs, North Vancouver, B.C. Blank samples consisting of barren limestone were routinely inserted into the sample stream. Duplicate samples collected by quartering core were sent to Acme Analytical Laboratories Ltd. in Vancouver. Reanalysis for results greater than 1% copper, lead or zinc were not completed at the time of this report. The drill core is stored on the property at the camp location.

Analytical procedures are summarized below as reported by ALS Chemex. At the laboratory, the core samples were weighed, dried and crushed to 70% minus 2 mm, before a 250 g split was taken and pulverized to better than 85% minus 75 microns. A 50 gram split of the pulverized fraction was dissolved in aqua regia and analyzed for copper, lead, zinc and silver using atomic absorption spectroscopy (AAS). A 30 gram split was analyzed for gold with a fire assay preparation and AAS finish. ALS Chemex operates according to the guidelines set out in ISO/IEC Guide 25 "General requirements for the competence of calibration and testing laboratories" and the company is certified to ISO 9002 by KPMG in Canada and other countries.

The duplicate samples were prepared at Acme using a process similar to Chemex. A 50 g split of the pulverized fraction was dissolved in aqua regia and analyzed for copper, lead, zinc and silver by the induced coupled plasma – mass spectrometry technique (ICP-MS). A 30 g sample was analyzed for gold using fire assay with an induced coupled plasma finish (ICP-MS).

GEOLOGY

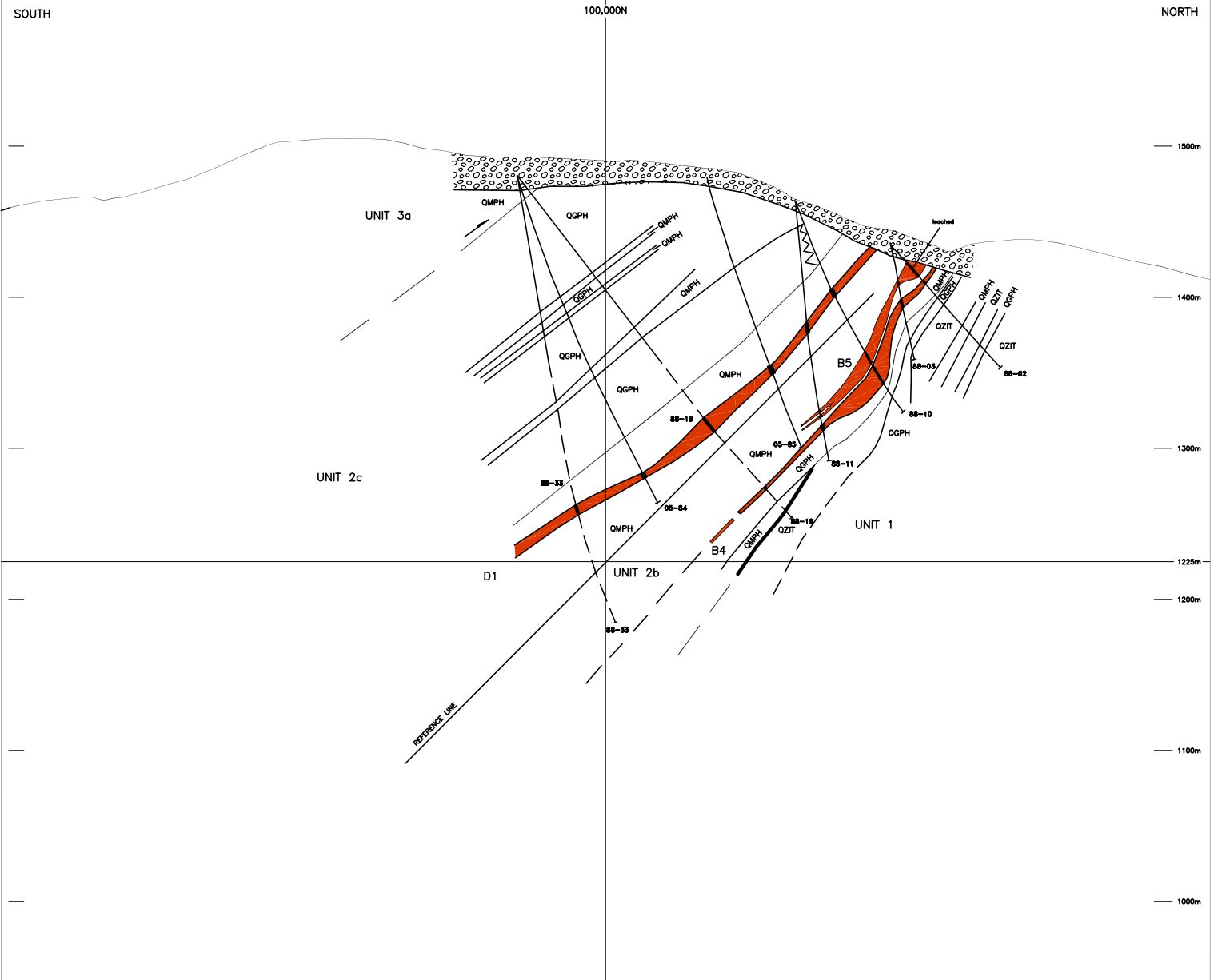
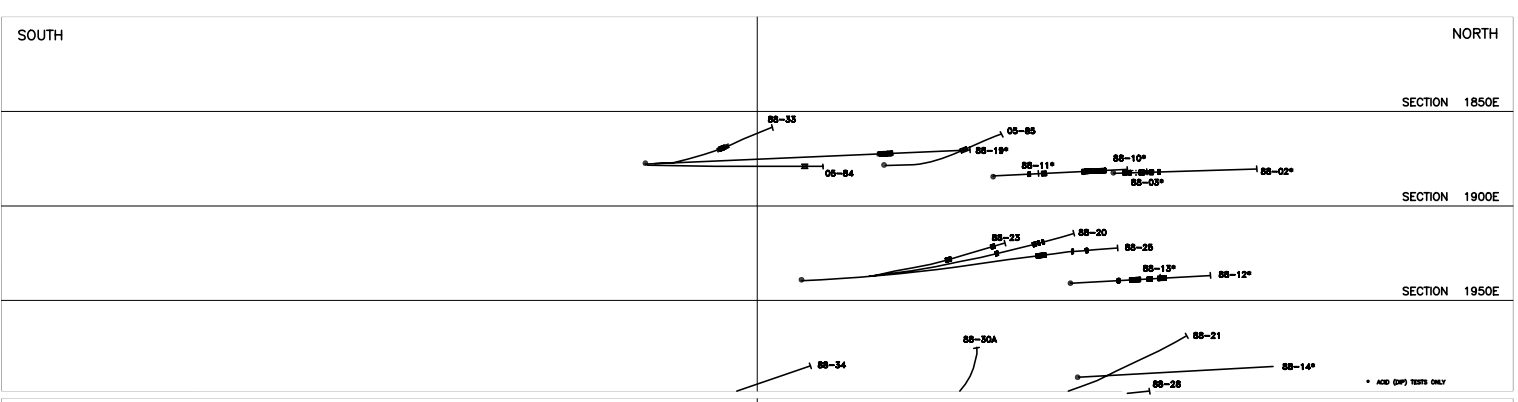
Geology of the Marg property and the immediate area is described in detail in Holbek (2005) and is only summarized here. Lithologies are divided into four major units which are repeated by southeast dipping thrust faults. The two major faults are the Tombstone Thrust and the Robert Service Thrust. One thrust panel contains the Marg Zone while the Jane Zone lies in a structurally lower panel. All rocks are lower greenschist metamorphic grade and, despite evidence of three or more phases of small scale deformation, the rocks within the thrust sheets appear to be largely homoclinal in nature. The thrust panel containing the Marg Zone is composed of repeated sequences of quartzite, quartz-sericite phyllite and black graphite phyllite. The quartz-sericite phyllite is probably the metamorphosed equivalent of felsic to intermediate submarine volcanic tuffaceous rocks. A radiometric age obtained from fission-track dating of zircons in quartz-eye quartz-sericite phyllite in drill core at the Marg Zone has yielded an Early Mississippian age.

MINERALIZATION AND RESULTS

The Marg deposit is a typical fine grained, polymetallic, massive sulphide assemblage comprised principally of pyrite with lesser sphalerite, chalcopyrite and galena. Mineralization is distributed in four relatively continuous, tabular, stacked, massive sulphide bodies, termed A, B, C and D Horizons, that occur within a 100 m thick succession of quartz-sericite phyllite and graphitic phyllite. The massive mineralized horizons are subparallel, striking approximately 060 to 090° and dipping between 20 and 50° south. Moving up section the horizons become richer in overall metal value from the A Horizon to the D Horizon. The mineralized horizons are up to 23 m thick, averaging 3 to 4 m and diamond drilling has traced mineralization for 1200 m along strike and to a depth of 700 m down the dip. The deposit remains open both at depth and along strike.

Geological settings of the four 2005 drill holes are shown on Drill Sections 1900E and 1950E (Figures 3 and 4) while the relationship of the mineralized intersections with those in nearby holes is illustrated in Figure 5. A summary of mineralized intersections is given in Table II. Synoptic logs of the drill holes are located in Appendix III while Certificates of Analysis are given in Appendix IV. A detailed assay summary is given in Appendix V.

Only the D Horizon was intersected by the 2005 drilling. Grades and thicknesses of the intersections are within the expected range based on results from adjacent holes. Intersections in Holes 05-84 and 05-85 lie within the area of Indicated and Inferred Resources (Holbek, 2005) while intersections in Holes 05-86 and 05-87 lie outside the Resource area.



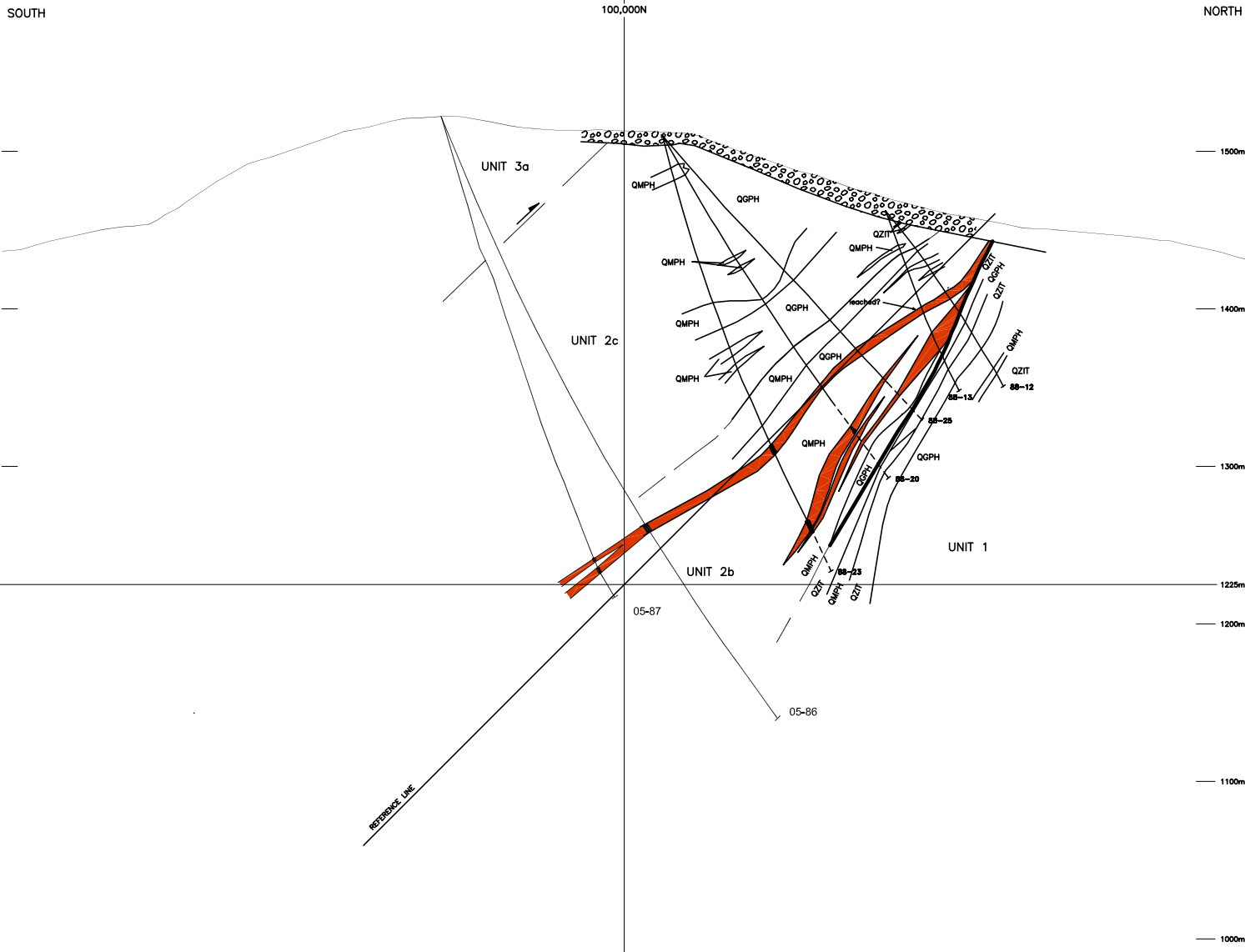
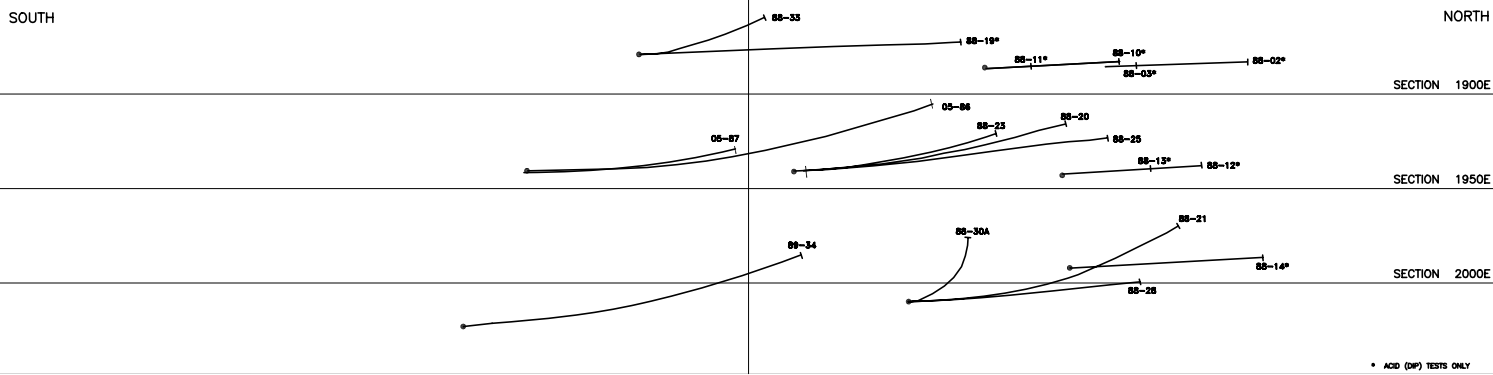
LEGEND	
	Overburden
	Quartz-Carbonate Phyllite
	Quartz-Sericite Phyllite
	Quartz-Chlorite Phyllite
	Quartz-Graphite Phyllite
	Quartzite
	Diamond Drill Hole on section
	Diamond Drill Hole extrapolated >25 m to section
	Lithological Contact (defined)
	Lithological Contact (assumed)
	Map Unit Contact
	Mineralized Interval
	Massive Sulphide Horizon

YUKON GOLD CORPORATION, INC.

FIGURE 3
 ARCHER, CATHRO & ASSOCIATES (1981) LIMITED
DRILL SECTION 1900E
MARG ZONE

0 50 100m

DRAWN / REVISED BY: RCC	PROJECT: MARG
FILE:	DATE: JANUARY 2006



LEGEND	
	Overburden
	Quartz-Carbonate Phyllite
	Quartz-Sericite Phyllite
	Quartz-Chlorite Phyllite
	Quartz-Graphite Phyllite
	Quartzite
	Diamond Drill Hole on section
	Diamond Drill Hole extrapolated >25 m to section
	Lithological Contact (defined)
	Lithological Contact (assumed)
	Map Unit Contact
	Mineralized Interval
	Massive Sulphide Horizon

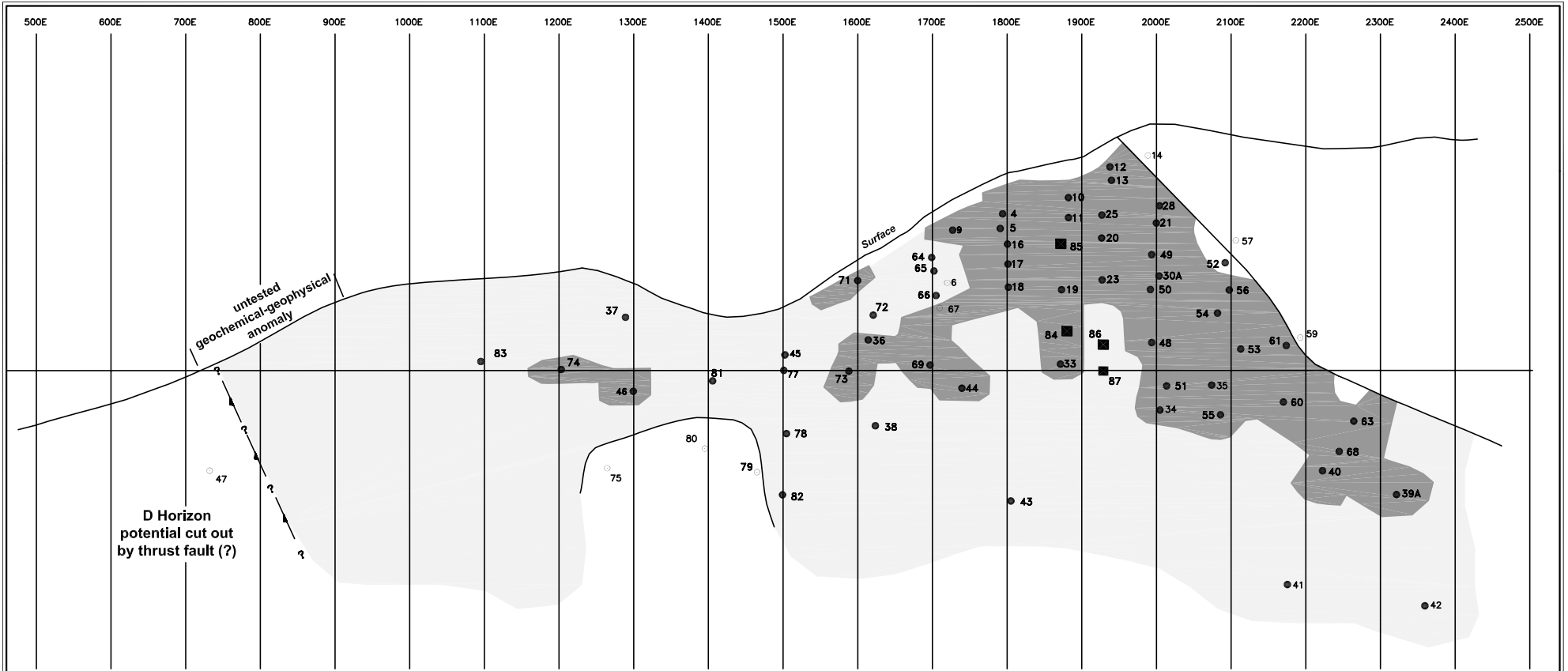
YUKON GOLD CORPORATION, INC.

FIGURE 4
ARCHER, CATHRO & ASSOCIATES (1981) LIMITED

**DRILL SECTION 1950E
MARG ZONE**

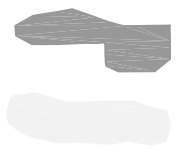
0 50 100m

DRAWN / REVISED BY: RCC	PROJECT: MARG
FILE:	DATE: JANUARY 2006



LEGEND

- 48 DRILL HOLE PIERCEMENT OF D HORIZON, PROJECTED TO REFERENCE PLANE
- 12 DRILL HOLE PIERCEMENT OF ABSENT D HORIZON, PROJECTED TO REFERENCE PLANE



2005 INDICATED AND INFERRED RESOURCE
IN ALL HORIZONS, PROJECTED TO REFERENCE PLANE

POTENTIAL RESOURCE

YUKON GOLD CORPORATION, INC.

FIGURE 5
ARCHER, CATHRO & ASSOCIATES (1981) LIMITED

INCLINED LONGITUDINAL SECTION
MARG ZONE D HORIZON

0 50 100 150 200m

DRAWN/REVISED BY: RCC	PROJECT: MARG
FILE:	DATE: JANUARY 2006

TABLE II: DIAMOND DRILL HOLE ASSAY SUMMARY

<u>Hole</u>	<u>Section</u>	<u>Horizon</u>	<u>From</u> <u>(m)</u>	<u>To</u> <u>(m)</u>	<u>Width</u> <u>(m)</u>	<u>Copper</u> <u>(%)</u>	<u>Lead</u> <u>(%)</u>	<u>Zinc</u> <u>(%)</u>	<u>Gold</u> <u>(g/t)</u>	<u>Silver</u> <u>(g/t)</u>
84	1900E	D1	215.07	218.24	3.17	2.17	2.45	5.04	0.64	57
85	1900E	D1	131.17	137.29	6.12	2.84	2.38	5.48	0.55	48
86	1950E	D1	293.41	297.00	3.59	2.19	2.89	5.81	0.84	69
87	1950E	D2	298.49	300.86	2.37	2.20	2.84	5.36	1.18	56
87	1950E	D1	306.43	309.13	2.70	2.08	1.93	4.02	0.71	48

Respectfully submitted,

ARCHER, CATHRO & ASSOCIATES (1981) LIMITED



R. C. Carne, M.Sc., P. Geo.

REFERENCES

Holbek, Peter. M

- 2005 Technical Report on the Marg Volcanogenic Massive Sulphide Property, prepared for Yukon Gold Corporation, Inc. 45 pp.

APPENDIX I
CLAIM SUMMARY

CLAIM SUMMARY

<u>Claim Name</u>	<u>Grant Number</u>	<u>Mining District</u>	<u>Expiry Date*</u>
Marg 1-86	YB02385-YB02470	Mayo	January 14, 2011
87-144	YB02471-YB02528	Mayo	September 14, 2006
145-158	YB02580-YB02593	Mayo	January 14, 2011
159-178	YB02594-YB02613	Mayo	September 14, 2006
179-190	YB02944-YB02955	Mayo	January 14, 2011
191-290	YB03107-YB03206	Mayo	January 14, 2011
291-308	YB03606-YB03623	Mayo	January 14, 2011
309-310	YB03624-YB03625	Mayo	January 14, 2008
311-328	YB03626-YB03643	Mayo	January 14, 2011
329-330	YB03644-YB03645	Mayo	January 14, 2008
331-370	YB03646-YB03685	Mayo	January 14, 2011
Tudl 1-32	YA76768-YA76799	Mayo	January 14, 2012

* expiry dates include 2005 work filed for assessment credit but not yet accepted.

APPENDIX II

AUTHOR'S STATEMENT OF QUALIFICATIONS

STATEMENT OF QUALIFICATIONS

I, Robert C. Carne, geologist, with business addresses in Whitehorse, Yukon Territory and

Vancouver, British Columbia and residential address in Burnaby, British Columbia, hereby certify

that:

1. I graduated from the University of British Columbia in 1974 with a B.Sc. and in 1979 with

a M.Sc. majoring in Geological Sciences.

2. I am a Professional Geoscientist registered with the Association of Professional Engineers

and Geoscientists of the Province of British Columbia (registration number 19868).

3. From 1974 to present, I have been actively engaged as a geologist in mineral exploration in British Columbia and Yukon Territory and on June 1, 1981 became a partner of Archer,

Cathro & Associates (1981) Limited.

4. I have personally participated in or supervised the field work reported herein and have interpreted all data resulting from this work.

Robert C. Carne, M.Sc., P.Geo.

APPENDIX III
SYNOPTIC DIAMOND DRILL LOGS

**SYNOPTIC LOG
MARG PROPERTY**

Hole: DDH 05-84 Zone: _____ Section: 1900E

Depth	114.9	130.1	145.4	160.6	175.9	191.1
Azimuth	2	1	358	359	357	359
Dip	-64.7	-66.3	-64.4	-63.1	-62.0	-62.0
Method						

Easting: _____ Northing: _____ Elevation: 1475m Depth: 236.82 m Logger: N Mitchell
 1878 99,940 Drilling Dates: Oct 13/05

From (m)	To (m)	Interval (m)	Unit	Comments	From (m)	To (m)	Interval (m)	Sample No.		Au ppm	Ag ppm	Pb %	Cu %	Zn %	Notes
119.11	130.33	8.92	QGPH												
130.33	134.61	3.21	QMPH												
134.61	137.28	2.29	QGPH												
137.28	143.56	6.13	QMPH												
143.56	170.96	25.14	QGPH												
170.96	171.71	1.01	QMPH												
171.71	187.30	13.01	QGPH												
187.30	199.94	10.36	QGPH												
199.94	209.27	6.40	QMPH	Disseminated sulphides	203.32	203.82	0.50	B375201		0.02	1	0.01	<0.01	0.01	
					203.82	204.72	0.90	B375202		0.02	<1	<0.01	<0.01	<0.01	
					204.72	205.22	0.50	B375203		0.03	<1	0.02	0.01	0.03	
					205.22	205.72	0.50	B375204		0.03	1	0.01	<0.01	0.01	
					205.72	205.72	0.50	B375205	Dup 204	<0.02	<0.1	<0.01	<0.01	<0.01	
					205.72	206.15	0.43	B375206		0.28	25	1.06	0.59	1.65	
					206.15	207.12	0.97	B375207		0.02	1	<0.01	<0.01	0.01	
					207.12	207.75	0.63	B375208		0.01	1	0.01	0.01	0.02	
					207.75	208.60	0.85	B375209		0.01	<1	<0.01	<0.01	0.01	
					208.60	209.27	0.67	B375210		0.02	<1	<0.01	<0.01	0.01	
					0.00	0.00	0.00	B375211	Blank	0.01	<1	<0.01	<0.01	<0.01	
209.27	210.12	0.85	SUMS	massive sulphides	209.27	209.60	0.33	B375212		0.79	48	2.21	0.55	3.98	
					209.60	210.31	0.71	B375213		0.09	2	0.03	0.01	0.06	
210.12	213.06	2.64	QMPH	faulted	210.31	211.53	1.22	B375214		0.12	1	0.01	<0.01	0.03	
213.06	215.19	2.13	QMPH		213.06	213.81	0.75	B375215		0.02	3	0.36	0.13	0.65	
					213.06	213.81	0.75	B375216	Dup215	0.02	3	0.30	0.18	0.57	
					213.81	214.13	0.32	B375217		0.05	30	2.92	0.50	4.10	
					214.13	215.07	0.94	B375218		0.06	10	0.33	0.14	0.57	
215.19	219.01	3.81	SUMS	massive sulphide	215.07	215.61	0.54	B375362		0.74	0.72	3.26	1.35	6.10	
					215.61	216.48	0.87	B375364		1.09	0.87	3.33	3.21	6.60	
					216.48	218.24	1.76	B375365		0.38	0.38	1.76	1.90	3.95	
					218.24	219.04	0.80	B375366		0.43	0.26	0.32	1.80	0.71	

SYNOPTIC LOG
MARG
PROPERTY

Hole: DDH 05-85 Zone: _____ Section: 1900E

Easting: _____ Northing: _____ Elevation: 1460m Depth: 191.10 Logger: N Mitchell
Drilling Dates: Oct 23/05

Depth	collar	11.1	26.1	41.1	56.1	71.1
Azimuth	2	360.3	358.6	356.6	355.9	354.3
Dip	-75.0	-74.2	-73.5	-71.9	-71.3	-71.4
Method	Icefield tool					

From (m)	To (m)	Interval (m)	Unit	Comments	From (m)	To (m)	Measured Interval (m)	Interval (m)	Sample No.		Au ppm	Ag ppm	Pb %	Cu %	Zn %	Notes
0.00	3.36	0.00	OB	OVERBURDEN NO RECOVERY												
3.36	6.18	2.53	QGPH													
6.18	16.26	8.96	QGPH													
16.26	17.49	1.02	QMPH													
17.49	23.90	5.98	QGPH													
23.90	32.55	7.50	QMPH													
32.55	39.41	6.38	QGPH	gradational contact												
39.41	41.91	2.46	QMPH													
41.91	50.31	8.17	QGPH													
50.31	53.25	3.02	QMPH	interbeds of QMPH												
50.31	56.03	2.65	QGPH	weak disseminated sulphides	53.44	54.20	0.79	0.76	B375243		0.02	1	<0.01	0.01	0.02	
56.03	59.39	3.02	QMPH													
59.39	61.13	1.02	QMPH													
61.13	66.04	4.68	QMPH													
66.04	69.25	2.83	QGPH													
69.25	72.07	2.61	QGPH													
72.07	101.19	27.12	QGPH	weak disseminated sulphides	84.43	84.91	0.52	0.48	B375244		0.01	2	<0.01	0.01	0.03	
					84.91	85.41	0.57	0.50	B375245		0.03	2	<0.01	0.01	0.03	
					85.41	85.93	0.63	0.52	B375246		0.01	2	<0.01	<0.01	0.02	
					85.93	85.93	0.63	0.52	B375247	Dup246	<0.01	0.3	<0.01	<0.01	0.02	
					89.00	89.50	0.51	0.50	B375248		0.04	2	<0.01	0.01	0.03	
					89.50	90.00	0.50	0.50	B375249		0.03	1	<0.01	0.01	0.04	
101.19	102.10	0.84	QGPH													
102.10	105.77	3.10	QGPH													
105.77	113.81	5.13	QMPH													
113.81	116.68	1.78	QMPH													
116.68	131.17	11.03	QGPH	faulted												
131.17	134.50	2.19	SUMS	massive sulphide	131.17	131.50	0.36	0.33	B375250		1.01	97	3.41	2.25	5.99	
					131.50	132.00	0.50	0.50	B375251		1.48	84	3.83	1.72	6.19	
					132.00	132.50	0.57	0.50	B375252		1.42	127	4.31	3.37	7.17	
					0.00	0.00	0.00	0.00	B375253	Blank	0.02	3	0.07	0.05	0.1	

SYNOPTIC LOG

MARG

PROPERTY

Hole: DDH 05-86 Zone: _____ Section: 1950EEasting: _____ Northing: _____ Elevation: 1525m Depth: 327.66 m Logger: N MitchellDrilling Dates: Oct 29/05

Depth	collar	91	150	197	212	227
Azimuth	2.0	1.9	1.9	1.9	353.9	352.8
Dip	-66.0	-64.6	-62.4	-60.5	-60.6	-60.4
Method	Icefield tool					

From (m)	To (m)	Interval (m)	Unit	Comments	From (m)	To (m)	Measured Interval (m)	Interval (m)	Sample No.		Au ppm	Ag ppm	Cu %	Pb %	Zn %	Notes
0.00	2.15	0.00	OVB	OVERBURDEN NO RECOVERY												
2.15	4.27	1.67	OVB	OVERBURDEN												
4.27	32.83	27.37	QGPH													
32.83	50.11	12.53	QGPH													
50.11	61.00	9.36	QGPH													
61.00	66.36	4.30	QGPH													
66.36	72.06	6.64	QGPH													
72.06	72.76	1.15	QGPH													
72.76	76.62	3.26	QGPH													
76.62	81.91	3.12	QMPH													
81.91	96.64	13.13	QGPH	fault breccia @ 88.52-89.1 m												
96.64	99.81	2.76	QGPH													
99.81	110.38	9.78	QGPH													
110.38	113.80	3.28	QGPH													
113.80	134.88	19.15	QGPH													
134.88	137.84	2.37	QGPH													
137.84	158.69	18.85	QGPH	minor faulting												
158.69	172.10	9.41	QGPH													
172.10	181.59	8.81	QGPH													
181.59	199.23	14.11	QGPH													
199.23	208.74	9.05	QMPH													
208.74	231.53	18.91	QGPH	diseminated pyrite	213.36	214.10	0.68	0.74	B375294		0.02	1	0.01	0.01	0.04	
					0.00	0.00	0.00	0.00	B375295	Blank	<0.01	<1	<0.01	<0.01	<0.01	
					218.54	219.15	0.61	0.61	B375296		<0.01	<1	0.01	<0.01	0.03	
					222.12	222.44	0.81	0.32	B375297		0.01	<1	0.01	<0.01	0.03	
					223.37	223.81	0.53	0.44	B375298		<0.01	<1	0.01	<0.01	0.02	
					223.37	223.81	0.53	0.44	B375299	Dup298	<0.01	0.7	0.02	0.02	0.05	
					226.52	227.02	0.56	0.50	B375300		<0.01	<1	0.01	<0.01	0.04	
231.53	250.29	17.44	QGPH													
250.29	288.89	36.51	CLPH													
288.84	289.52	0.55	QMPH		288.84	289.52	0.76	0.68	B375301		1.36	35	1.54	1.57	3.12	

SYNOPTIC LOG
MARGHole: DDH 05-87Section: 1950E

PROPERTY

Easting: 1940 Northing: 99,840 Elevation: 1525m Depth: 327.66 m Logger: N MitchellDrilling Dates: Nov 12/05

Depth	collar	47.6	59.8	72.0	84.1
Azimuth	2.0	3.5	3.5	2.0	2.1
Dip	-75.0	-73.8	-71.8	-71.7	-73.6
Method	Icefield tool				

From (m)	To (m)	Interval (m)	Unit	Comments	From (m)	To (m)	Measured Interval (m)	Interval (m)	Sample No.		Au ppm	Ag ppm	Cu %	Pb %	Zn %	Notes
0.00	4.00	0.00	OVB	OVERBURDEN												
4.00	5.87	0.88	OVB	OVERBURDEN												
5.87	36.37	27.13	QGPH													
36.37	52.08	14.21	QGPH	folded												
52.08	58.67	5.08	QGPH													
58.67	67.00	6.31	QGPH													
67.00	73.50	4.21	QGPH	strongly faulted												
73.50	80.41	5.02	QMPH													
80.41	91.40	8.31	QGPH													
91.40	107.29	14.58	QGPH													
107.29	109.44	1.43	QMPH													
109.44	144.48	33.76	QGPH	faulted												
144.48	169.45	18.16	QGPH													
169.45	222.11	45.92	QGPH													
222.11	236.70	13.12	QMPH													
236.70	277.67	27.76	QGPH													
277.67	288.96	8.13	QGPH													
288.96	298.49	8.91	CHPH													
298.49	300.86	1.99	SUMS	massive sulphide	298.49	299.31	0.54	0.82	B375327		0.9	56	3.3	2.8	5.79	
					299.31	300.00	0.72	0.69	B375328		1.48	55	1.87	2.64	5.01	
					300.00	300.86	0.86	0.86	B375329		1.22	58	1.42	3.06	5.23	
300.86	306.43	6.38	QMPH	thin massive sulphide bands	300.86	301.70	0.93	0.90	B375330		0.06	<1	0.02	0.02	0.06	
					300.86	301.70	0.93	0.90	B375331	Dup330	0.05	<1	<0.01	0.02	0.07	
					301.70	302.36	0.63	0.66	B375332		0.33	20	1.01	0.38	0.58	
					302.36	303.36	1.03	1.01	B375333		0.07	1	0.01	0.01	0.03	
					303.36	303.80	0.46	0.44	B375334		0.04	6	0.16	0.24	0.57	
					303.80	304.29	0.71	0.69	B375335		0.02	2	0.06	0.2	0.25	
					304.29	304.80	0.50	0.51	B375336		0.04	2	0.03	0.1	0.13	
					0.00	0.00	0.00	0.00	B375337	Blank	<0.01	<1	<0.01	<0.01	<0.01	
					304.80	305.41	0.60	0.55	B375338		0.02	1	0.01	0.02	0.03	
					305.41	305.88	0.49	0.47	B375339		0.24	14	0.15	0.35	0.63	

**SYNOPTIC LOG
MARG**

Hole: DDH 05-87 Section: 1950E

Depth	108.5	120.7	132.9	145.0	157.2
Azimuth	4.6	3.0	2.9	0.2	353.1
Dip	-71.1	-72.4	-71.1	-70.0	-69.8
Method	Icefield tool				

PROPERTY

Easting: 1940 Northing: 99,840 Elevation: 1525m Depth: 327.66 m Logger: N Mitchell
Drilling Dates: Nov 12/05

From (m)	To (m)	Interval (m)	Unit	Comments	From (m)	To (m)	Measured Interval (m)	Interval (m)	Sample No.		Au ppm	Ag ppm	Cu %	Pb %	Zn %	Notes
					305.88	306.43	0.48	0.53	B375340		0.41	20	0.38	0.69	1.24	
					305.88	306.43	0.48	0.53	B375341	Dup340	0.35	14	0.16	0.45	0.84	
306.43	309.13	2.60	SUMS	banded massive sulphide	306.43	306.81	0.56	0.48	B375342		1.01	93	1.54	4.21	7.11	
					306.81	307.36	0.60	0.55	B375343		1.1	58	2.14	1.99	4.11	
					306.81	307.86	0.48	0.50	B375344		0.71	42	1.92	1.92	4.32	
					307.86	309.13	0.74	1.27	B375345		0.46	33	2.27	1.23	2.95	
309.13	324.16	14.80	CLPH	thin massive sulphide bands	309.13	309.98	0.89	0.85	B375346		0.1	5	0.3	0.11	0.25	
					0.00	0.00	0.00	0.00	B375347	Blank	<0.01	<1	0.03	0.01	0.04	
					309.98	310.50	0.53	0.52	B375348		0.09	5	0.17	0.1	0.26	
					310.50	311.50	1.01	1.00	B375349		0.08	3	0.06	0.1	0.22	
					311.50	312.32	0.84	0.82	B375350		0.08	3	0.03	0.07	0.15	
					311.50	312.32	0.84	0.82	B375351	Dup350	0.08	2	0.02	0.05	0.09	
					312.32	313.14	1.06	0.82	B375352		0.08	1	0.02	0.03	0.08	
					313.14	314.14	1.00	1.00	B375353		0.08	<1	<0.01	0.01	0.03	
					314.14	315.11	1.04	0.97	B375354		0.02	1	0.03	0.07	0.09	
					315.11	316.16	1.00	0.95	B375355		0.01	2	0.05	0.15	0.2	
					316.16	317.17	1.01	1.01	B375356		0.03	2	0.06	0.04	0.17	
					0.00	0.00	0.00	0.00	B375357	Blank	<0.01	1	<0.01	<0.01	<0.01	
					317.17	317.54	0.42	0.37	B375358		0.36	1	0.02	0.03	0.06	
					317.54	318.37	0.81	0.83	B375359		0.02	1	0.01	<0.01	0.03	
					318.37	321.25	1.50	2.88	B375360		0.01	1	0.01	<0.01	0.04	
					321.25	321.75	0.58	0.50	B375361		0.04	2	0.01	0.01	0.21	
324.16	327.66	2.95	CLPH													
				EOH							Depth	181.6	193.8	205.9	218.1	230.3
											Azimuth	355.3	2.5	352.6	15.9(?)	352.9
											Dip	-68.1	-70.7	-70.3	-69.1	-68.2
											Depth	254.7	266.8	279.0	291.2	303.4
											Azimuth	350.6	348.7	346.6	344.6	343.0
											Dip	-68.0	-66.9	-66.1	-65.5	-65.2

APPENDIX IV
CERTIFICATES OF ANALYSIS



GEOCHEMICAL ANALYSIS CERTIFICATE



Archer, Cathro & Assoc. (1981) Ltd. PROJECT Marg File # AS07767

1016 - 510 W. Hastings St, Vancouver BC V6B 1L8 Submitted by: Archer Cathro

SAMPLE#	Cu ppm	Pb ppm	Zn ppm	Ag ppm	Au** ppb	Sample kg
G-1	2.2	2.9	46	<.1	<2	-
375205	21.8	66.3	105	.2	33	.69
375216	1836.8	3024.5	5748	2.8	19	1.03
375225	36.8	47.1	201	.3	42	.76
375237	55.9	35.5	173	<.1	25	.65
375247	56.4	7.9	196	.3	6	1.41
375257	>10000	7933.8	>10000	49.0	471	1.93
375267	287.6	315.8	782	.8	113	2.03
375279	170.4	157.4	683	.9	72	2.17
375289	396.1	536.4	1221	1.8	25	1.69
RE 375289	417.3	564.7	1273	1.8	26	-
375299	206.5	162.0	473	.7	6	.74
375309	>10000	5248.7	>10000	72.6	1180	.98
375321	442.9	914.2	1201	1.6	68	1.31
375331	60.6	217.0	709	.6	54	1.31
375341	1595.1	4472.7	8413	13.7	347	.71
375351	185.3	505.9	892	1.9	82	1.19
STANDARD DS6/OxF41	120.6	30.8	141	.3	800	-

GROUP 10X - 0.50 GM SAMPLE LEACHED WITH 3 ML 2-2-2 HCL-HNO3-H2O AT 95 DEG. C FOR ONE HOUR, DILUTED TO 10 ML, ANALYSED BY ICP-MS.
 (>) CONCENTRATION EXCEEDS UPPER LIMITS. SOME MINERALS MAY BE PARTIALLY ATTACKED. REFRACTORY AND GRAPHITIC SAMPLES CAN LIMIT AU SOLUBILITY.
 AU** GROUP 3B - 30.00 GM SAMPLE ANALYSIS BY FA/ICP.
 - SAMPLE TYPE: DRILL CORE R150 Samples beginning 'RE' are Reruns and 'RRE' are Reject Reruns.

Data by FA _____

DATE RECEIVED: NOV 30 2005

DATE REPORT MAILED: Dec 21/05





ALS Chemex

EXCELLENCE IN ANALYTICAL CHEMISTRY

ALS Canada Ltd.

212 Brooksbank Avenue

North Vancouver BC V7J 2C1

Phone: 604 984 0221 Fax: 604 984 0218 www.alschemex.com

To: ARCHER, CATHRO AND ASSOCIATES (1981)
LIMITED
1016-510 W HASTINGS ST
VANCOUVER BC V6B 1L8

Page: 1
Finalized Date: 2-DEC-2005
Account: F

CERTIFICATE VA05103915

Project: Marg

P.O. No.:

This report is for 18 Drill Core samples submitted to our lab in Vancouver, BC, Canada on 28-NOV-2005.

The following have access to data associated with this certificate:

AL ARCHER
VANCOUVER OFFICE

DOUG EATON
BILL WENGZYNOWSKI

JOAN MARIACHER

SAMPLE PREPARATION

ALS CODE	DESCRIPTION
WEI-21	Received Sample Weight
CRU-QC	Crushing QC Test
LOG-22	Sample login - Rcd w/o BarCode
CRU-31	Fine crushing - 70% <2mm
SPL-21	Split sample - riffle splitter
PUL-31	Pulverize split to 85% <75 um

ANALYTICAL PROCEDURES

ALS CODE	DESCRIPTION	INSTRUMENT
Ag-AA46	Ore grade Ag - aqua regia/AA	AAS
Pb-AA46	Ore grade Pb - aqua regia/AA	AAS
Zn-AA46	Ore grade Zn - aqua regia/AA	AAS
Cu-AA46	Ore grade Cu - aqua regia/AA	AAS
Au-AA25	Ore Grade Au 30g FA AA finish	AAS

To: ARCHER, CATHRO AND ASSOCIATES (1981) LIMITED
1016-510 W HASTINGS ST
VANCOUVER BC V6B 1L8

This is the Final Report and supersedes any preliminary report with this certificate number. Results apply to samples as submitted. All pages of this report have been checked and approved for release.

Signature: 



ALS Chemex

EXCELLENCE IN ANALYTICAL CHEMISTRY

ALS Canada Ltd.

212 Brooksbank Avenue

North Vancouver BC V7J 2C1

Phone: 604 984 0221 Fax: 604 984 0218 www.alschemex.com

To: ARCHER, CATHRO AND ASSOCIATES (1981)

LIMITED

1016-510 W HASTINGS ST

VANCOUVER BC V6B 1L8

Page: 2 - A

Total # Pages: 2 (A)

Finalized Date: 2-DEC-2005

Account: F

Project: Marg

CERTIFICATE OF ANALYSIS VA05103915

Sample Description	Method Analyte Units LOR	WEI-21	Au-AA25	Ag-AA46	Pb-AA46	Zn-AA46	Cu-AA46
		Recvd Wt. kg	Au ppm	Ag ppm	Pb %	Zn %	Cu %
		0.02	0.01	1	0.01	0.01	0.01
B375269		5.58	0.25	4	0.13	0.31	0.13
B375270		5.18	0.03	<1	0.03	0.09	0.05
B375271		1.42	0.11	<1	0.01	0.05	0.01
B375272		2.66	0.08	1	0.02	0.04	0.01
B375273		1.12	<0.01	<1	<0.01	<0.01	<0.01
B375274		4.44	0.04	1	0.02	0.06	0.01
B375275		1.24	0.01	1	0.02	0.06	0.02
B375276		4.20	0.03	1	0.02	0.05	0.01
B375277		5.12	0.10	4	0.07	0.13	0.03
B375278		2.56	0.08	1	0.02	0.03	0.01
B375280		5.52	0.10	15	0.36	0.64	0.58
B375281		4.64	0.01	<1	0.01	0.11	<0.01
B375282		1.92	0.01	<1	0.01	0.04	<0.01
B375283		4.88	<0.01	<1	<0.01	0.01	<0.01
B375284		4.38	<0.01	<1	<0.01	0.03	<0.01
B375285		2.52	0.01	<1	<0.01	0.02	<0.01
B375286		2.86	0.02	<1	0.01	0.02	<0.01
B375287		3.06	0.10	<1	0.01	0.05	0.01



ALS Chemex

EXCELLENCE IN ANALYTICAL CHEMISTRY

ALS Canada Ltd.

212 Brooksbank Avenue
North Vancouver BC V7J 2C1

Phone: 604 984 0221 Fax: 604 984 0218 www.alschemex.com

To: ARCHER, CATHRO AND ASSOCIATES (1981)
LIMITED
1016-510 W HASTINGS ST
VANCOUVER BC V6B 1L8

Page: 1
Finalized Date: 10-DEC-2005
Account: F

CERTIFICATE VA05103914

Project: Marg

P.O. No.:

This report is for 16 Drill Core samples submitted to our lab in Vancouver, BC, Canada on 28-NOV-2005.

The following have access to data associated with this certificate:

AL ARCHER
VANCOUVER OFFICE

DOUG EATON
BILL WENGZYNOWSKI

JOAN MARIACHER

SAMPLE PREPARATION

ALS CODE	DESCRIPTION
WEI-21	Received Sample Weight
LOG-22	Sample login - Rcd w/o BarCode
CRU-31	Fine crushing - 70% <2mm
SPL-21	Split sample - riffle splitter
PUL-31	Pulverize split to 85% <75 um

ANALYTICAL PROCEDURES

ALS CODE	DESCRIPTION	INSTRUMENT
Ag-AA46	Ore grade Ag - aqua regia/AA	AAS
Pb-AA46	Ore grade Pb - aqua regia/AA	AAS
Zn-AA46	Ore grade Zn - aqua regia/AA	AAS
Cu-AA46	Ore grade Cu - aqua regia/AA	AAS
Au-AA25	Ore Grade Au 30g FA AA finish	AAS

To: ARCHER, CATHRO AND ASSOCIATES (1981) LIMITED
1016-510 W HASTINGS ST
VANCOUVER BC V6B 1L8

This is the Final Report and supersedes any preliminary report with this certificate number. Results apply to samples as submitted. All pages of this report have been checked and approved for release.

Signature:



ALS Chemex

EXCELLENCE IN ANALYTICAL CHEMISTRY

ALS Canada Ltd.

212 Brooksbank Avenue

North Vancouver BC V7J 2C1

Phone: 604 984 0221 Fax: 604 984 0218 www.alschemex.com

To: ARCHER, CATHRO AND ASSOCIATES (1981)

LIMITED

1016-510 W HASTINGS ST

VANCOUVER BC V6B 1L8

Page: 2 - A

Total # Pages: 2 (A)

Finalized Date: 10-DEC-2005

Account: F

Project: Marg

CERTIFICATE OF ANALYSIS VA05103914

Sample Description	Method Analyte Units LOR	WEI-21	Au-AA25	Ag-AA46	Pb-AA46	Zn-AA46	Cu-AA46
		Recvd Wt. kg	Au ppm	Ag ppm	Pb %	Zn %	Cu %
		0.02	0.01	1	0.01	0.01	0.01
B375288		1.26	0.02	1	0.04	0.12	0.05
B375290		0.94	0.34	33	1.29	2.76	0.86
B375291		1.68	0.03	1	0.01	0.03	0.01
B375292		3.78	0.13	22	0.74	1.44	0.43
B375293		2.50	0.13	2	0.04	0.19	0.03
B375294		1.28	0.02	1	0.01	0.04	0.01
B375295		1.06	<0.01	<1	<0.01	<0.01	<0.01
B375296		1.08	<0.01	<1	<0.01	0.03	0.01
B375297		1.96	0.01	<1	<0.01	0.03	0.01
B375298		0.72	<0.01	<1	<0.01	0.02	0.01
B375300		1.42	<0.01	<1	<0.01	0.04	0.01
B375301		2.58	1.36	35	1.57	3.12	1.54
B375302		1.78	0.13	3	0.15	0.35	0.21
B375303		1.26	0.09	7	0.32	0.97	0.53
B375304		1.82	0.59	74	4.49	7.43	2.02
B375305		0.84	<0.01	<1	0.01	0.02	0.01



ALS Chemex

EXCELLENCE IN ANALYTICAL CHEMISTRY

ALS Canada Ltd.

212 Brooksbank Avenue

North Vancouver BC V7J 2C1

Phone: 604 984 0221 Fax: 604 984 0218 www.alschemex.com

To: ARCHER, CATHRO AND ASSOCIATES (1981)
LIMITED
1016-510 W HASTINGS ST
VANCOUVER BC V6B 1L8

Page: 1
Finalized Date: 5-DEC-2005
Account: F

CERTIFICATE VA05103913

Project: Marg

P.O. No.:

This report is for 8 Drill Core samples submitted to our lab in Vancouver, BC, Canada on 28-NOV-2005.

The following have access to data associated with this certificate:

AL ARCHER
VANCOUVER OFFICE

DOUG EATON
BILL WENGZYNOWSKI

JOAN MARIACHER

SAMPLE PREPARATION

ALS CODE	DESCRIPTION
WEI-21	Received Sample Weight
CRU-QC	Crushing QC Test
LOG-22	Sample login - Rcd w/o BarCode
CRU-31	Fine crushing - 70% <2mm
SPL-21	Split sample - riffle splitter
PUL-31	Pulverize split to 85% <75 um

ANALYTICAL PROCEDURES

ALS CODE	DESCRIPTION	INSTRUMENT
Ag-AA46	Ore grade Ag - aqua regia/AA	AAS
Pb-AA46	Ore grade Pb - aqua regia/AA	AAS
Cu-AA46	Ore grade Cu - aqua regia/AA	AAS
Zn-AA46	Ore grade Zn - aqua regia/AA	AAS
Au-AA25	Ore Grade Au 30g FA AA finish	AAS

To: ARCHER, CATHRO AND ASSOCIATES (1981) LIMITED
1016-510 W HASTINGS ST
VANCOUVER BC V6B 1L8

This is the Final Report and supersedes any preliminary report with this certificate number. Results apply to samples as submitted. All pages of this report have been checked and approved for release.

Signature: 



ALS Chemex

EXCELLENCE IN ANALYTICAL CHEMISTRY

ALS Canada Ltd.

212 Brooksbank Avenue

North Vancouver BC V7J 2C1

Phone: 604 984 0221 Fax: 604 984 0218 www.alschemex.com

To: ARCHER, CATHRO AND ASSOCIATES (1981)
LIMITED

1016-510 W HASTINGS ST

VANCOUVER BC V6B 1L8

Page: 2 - A

Total # Pages: 2 (A)

Finalized Date: 5-DEC-2005

Account: F

Project: Marg

CERTIFICATE OF ANALYSIS VA05103913

Sample Description	Method Analyte Units LOR	WEI-21	Au-AA25	Ag-AA46	Pb-AA46	Cu-AA46	Zn-AA46
		Recvd Wt. kg	Au ppm	Ag ppm	Pb %	Cu %	Zn %
		0.02	0.01	1	0.01	0.01	0.01
B375218		2.12	0.06	10	0.33	0.14	0.57
B375362		0.80	0.74	72	3.26	1.35	6.10
B375364		2.60	1.09	87	3.33	3.21	6.60
B375365		6.12	0.38	38	1.76	1.90	3.95
B375366		2.26	0.43	26	0.32	1.80	0.71
B375367		1.28	0.10	2	0.06	0.32	0.13
B375368		1.18	0.02	<1	0.01	0.01	0.03
B375369		0.96	0.02	<1	0.01	0.01	0.02



ALS Chemex

EXCELLENCE IN ANALYTICAL CHEMISTRY

ALS Canada Ltd.

212 Brooksbank Avenue

North Vancouver BC V7J 2C1

Phone: 604 984 0221 Fax: 604 984 0218 www.alschemex.com

To: ARCHER, CATHRO AND ASSOCIATES (1981)
LIMITED
1016-510 W HASTINGS ST
VANCOUVER BC V6B 1L8

Page: 1
Finalized Date: 2-DEC-2005
Account: F

CERTIFICATE VA05103051

Project: Marg

P.O. No.:

This report is for 51 Drill Core samples submitted to our lab in Vancouver, BC, Canada on 23-NOV-2005.

The following have access to data associated with this certificate:

AL ARCHER
VANCOUVER OFFICE

DOUG EATON
BILL WENGZYNOWSKI

JOAN MARIACHER

SAMPLE PREPARATION

ALS CODE	DESCRIPTION
WEI-21	Received Sample Weight
CRU-QC	Crushing QC Test
PUL-31	Pulverize split to 85% <75 um
SPL-21	Split sample - riffle splitter
CRU-31	Fine crushing - 70% <2mm
LOG-22	Sample login - Rcd w/o BarCode

ANALYTICAL PROCEDURES

ALS CODE	DESCRIPTION	INSTRUMENT
Ag-AA46	Ore grade Ag - aqua regia/AA	AAS
Cu-AA46	Ore grade Cu - aqua regia/AA	AAS
Pb-AA46	Ore grade Pb - aqua regia/AA	AAS
Zn-AA46	Ore grade Zn - aqua regia/AA	AAS
Au-AA25	Ore Grade Au 30g FA AA finish	AAS

To: ARCHER, CATHRO AND ASSOCIATES (1981) LIMITED
1016-510 W HASTINGS ST
VANCOUVER BC V6B 1L8

This is the Final Report and supersedes any preliminary report with this certificate number. Results apply to samples as submitted. All pages of this report have been checked and approved for release.

Signature: _____



ALS Chemex

EXCELLENCE IN ANALYTICAL CHEMISTRY

ALS Canada Ltd.

212 Brooksbank Avenue

North Vancouver BC V7J 2C1

Phone: 604 984 0221 Fax: 604 984 0218 www.alschemex.com

To: ARCHER, CATHRO AND ASSOCIATES (1981)

LIMITED

1016-510 W HASTINGS ST

VANCOUVER BC V6B 1L8

Page: 2 - A

Total # Pages: 3 (A)

Finalized Date: 2-DEC-2005

Account: F

Project: Marg

CERTIFICATE OF ANALYSIS VA05103051

Sample Description	Method Analyte Units LOR	WEI-21	Au-AA25	Ag-AA46	Cu-AA46	Pb-AA46	Zn-AA46
		Recvd Wt. kg	Au ppm	Ag ppm	Cu %	Pb %	Zn %
		0.02	0.01	1	0.01	0.01	0.01
B375306		2.10	1.02	111	2.87	5.10	8.64
B375307		1.66	1.34	72	2.98	1.66	4.42
B375308		0.92	1.28	72	1.57	2.21	4.67
B375310		1.48	0.81	74	1.85	2.74	5.04
B375311		3.02	0.48	36	2.04	1.54	4.68
B375312		0.86	0.32	6	2.39	0.07	0.40
B375313		1.52	0.05	<1	0.04	0.04	0.09
B375314		1.36	0.10	1	0.06	0.07	0.14
B375315		1.18	<0.01	<1	<0.01	<0.01	0.01
B375316		3.48	0.52	10	1.83	0.18	0.57
B375317		3.10	0.14	4	0.53	0.09	0.86
B375318		2.42	0.15	2	0.12	0.02	0.22
B375319		2.94	0.13	4	0.45	0.07	0.31
B375320		1.28	0.08	3	0.08	0.16	0.28
B375322		2.62	0.18	1	0.02	0.02	0.06
B375323		3.38	0.04	<1	0.01	0.01	0.03
B375324		3.34	0.06	1	0.03	0.02	0.06
B375325		3.62	0.06	2	0.05	0.05	0.16
B375326		3.66	0.07	1	0.03	0.03	0.07
B375327		1.30	0.90	56	3.30	2.80	5.79
B375328		2.08	1.48	55	1.87	2.64	5.01
B375329		2.32	1.22	58	1.42	3.06	5.23
B375330		1.42	0.06	<1	0.02	0.02	0.06
B375332		1.64	0.33	20	1.01	0.38	0.58
B375333		2.66	0.07	1	0.01	0.01	0.03
B375334		2.58	0.04	6	0.16	0.24	0.57
B375335		1.20	0.02	2	0.06	0.20	0.25
B375336		1.44	0.04	2	0.03	0.10	0.13
B375337		0.94	<0.01	<1	<0.01	<0.01	<0.01
B375338		1.14	0.02	1	0.01	0.02	0.03
B375339		1.50	0.24	14	0.15	0.35	0.63
B375340		0.76	0.41	20	0.38	0.69	1.24
B375342		1.54	1.01	93	1.54	4.21	7.11
B375343		1.92	1.10	58	2.14	1.99	4.11
B375344		1.62	0.71	42	1.92	1.92	4.32
B375345		2.16	0.46	33	2.27	1.23	2.95
B375346		2.06	0.10	5	0.30	0.11	0.25
B375347		0.94	<0.01	<1	0.03	0.01	0.04
B375348		1.08	0.09	5	0.17	0.10	0.26
B375349		2.60	0.08	3	0.06	0.10	0.22



ALS Chemex

EXCELLENCE IN ANALYTICAL CHEMISTRY

ALS Canada Ltd.

212 Brooksbank Avenue

North Vancouver BC V7J 2C1

Phone: 604 984 0221 Fax: 604 984 0218 www.alschemex.com

To: ARCHER, CATHRO AND ASSOCIATES (1981)

LIMITED

1016-510 W HASTINGS ST

VANCOUVER BC V6B 1L8

Page: 3 - A

Total # Pages: 3 (A)

Finalized Date: 2-DEC-2005

Account: F

Project: Marg

CERTIFICATE OF ANALYSIS VA05103051

Sample Description	Method Analyte Units LOR	WEI-21	Au-AA25	Ag-AA46	Cu-AA46	Pb-AA46	Zn-AA46
		Recvd Wt. kg	Au ppm	Ag ppm	Cu %	Pb %	Zn %
		0.02	0.01	1	0.01	0.01	0.01
B375350		0.94	0.08	3	0.03	0.07	0.15
B375352		2.32	0.08	1	0.02	0.03	0.08
B375353		2.60	0.08	<1	<0.01	0.01	0.03
B375354		2.76	0.02	1	0.03	0.07	0.09
B375355		2.44	0.01	2	0.05	0.15	0.20
B375356		2.78	0.03	2	0.06	0.04	0.17
B375357		0.84	<0.01	1	<0.01	<0.01	<0.01
B375358		1.06	0.36	1	0.02	0.03	0.06
B375359		2.40	0.02	1	0.01	<0.01	0.03
B375360		3.68	0.01	1	0.01	<0.01	0.04
B375361		1.82	0.04	2	0.01	0.01	0.21



ALS Chemex

EXCELLENCE IN ANALYTICAL CHEMISTRY

ALS Canada Ltd.
212 Brooksbank Avenue
North Vancouver BC V7J 2C1
Phone: 604 984 0221 Fax: 604 984 0218 www.alschemex.com

To: ARCHER, CATHRO AND ASSOCIATES (1981)
LIMITED
1016-510 W HASTINGS ST
VANCOUVER BC V6B 1L8

Page: 1
Finalized Date: 25-NOV-2005
Account: F

CERTIFICATE VA05101077

Project: MARG

P.O. No.:

This report is for 60 Drill Core samples submitted to our lab in Vancouver, BC, Canada on 18-NOV-2005.

The following have access to data associated with this certificate:

AL ARCHER
VANCOUVER OFFICE

DOUG EATON
BILL WENGZYNOWSKI

JOAN MARIACHER

SAMPLE PREPARATION

ALS CODE	DESCRIPTION
WEI-21	Received Sample Weight
CRU-QC	Crushing QC Test
LOG-22	Sample login - Rcd w/o BarCode
CRU-31	Fine crushing - 70% <2mm
SPL-21	Split sample - riffle splitter
PUL-31	Pulverize split to 85% <75 um

ANALYTICAL PROCEDURES

ALS CODE	DESCRIPTION	INSTRUMENT
Ag-AA46	Ore grade Ag - aqua regia/AA	AAS
Pb-AA46	Ore grade Pb - aqua regia/AA	AAS
Cu-AA46	Ore grade Cu - aqua regia/AA	AAS
Zn-AA46	Ore grade Zn - aqua regia/AA	AAS
Au-AA25	Ore Grade Au 30g FA AA finish	AAS

To: ARCHER, CATHRO AND ASSOCIATES (1981) LIMITED
1016-510 W HASTINGS ST
VANCOUVER BC V6B 1L8

This is the Final Report and supersedes any preliminary report with this certificate number. Results apply to samples as submitted. All pages of this report have been checked and approved for release.

Signature: 



ALS Chemex

EXCELLENCE IN ANALYTICAL CHEMISTRY

ALS Canada Ltd.

212 Brooksbank Avenue
North Vancouver BC V7J 2C1

Phone: 604 984 0221 Fax: 604 984 0218 www.alschemex.com

Client: ARCHER, CATHRO AND ASSOCIATES (1981)
LIMITED

1016-510 W HASTINGS ST
VANCOUVER BC V6B 1L8

Page: 2 - A
Total # Pages: 3 (A)
Finalized Date: 25-NOV-2005
Account: F

Project: MARG

CERTIFICATE OF ANALYSIS VA05101077

Sample Description	Method Analyte Units LOR	WEI-21	Au-AA25	Ag-AA46	Pb-AA46	Cu-AA46	Zn-AA46
		Recvd WL	Au	Ag	Pb	Cu	Zn
		kg	ppm	ppm	%	%	%
		0.02	0.01	1	0.01	0.01	0.01
B375201		1.28	0.02	1	0.01	<0.01	0.01
B375202		1.40	0.02	<1	<0.01	<0.01	<0.01
B375203		1.12	0.03	<1	0.02	0.01	0.03
B375204		0.80	0.03	1	0.01	<0.01	0.01
B375206		1.10	0.28	25	1.06	0.59	1.65
B375207		2.42	0.02	1	<0.01	<0.01	0.01
B375208		2.28	0.01	1	0.01	0.01	0.02
B375209		2.10	0.01	<1	<0.01	<0.01	0.01
B375217		0.70	0.05	30	2.92	0.50	4.10
B375210		1.52	0.02	<1	<0.01	<0.01	0.01
B375211		1.22	0.01	<1	<0.01	<0.01	<0.01
B375212		0.86	0.79	48	2.21	0.55	3.98
B375213		1.72	0.09	2	0.03	0.01	0.06
B375214		2.80	0.12	1	0.01	<0.01	0.03
B375215		1.20	0.02	3	0.36	0.13	0.65
B375219		1.24	0.21	5	0.04	0.04	0.07
B375220		1.30	0.28	2	0.08	0.02	0.13
B375221		0.84	0.01	1	<0.01	<0.01	<0.01
B375222		1.14	0.27	1	0.05	0.01	0.10
B375223		1.22	0.06	2	0.02	0.01	0.06
B375224		0.58	0.05	1	0.01	<0.01	0.02
B375226		1.36	0.06	1	0.01	0.01	0.02
B375227		1.10	0.04	1	0.01	<0.01	0.02
B375228		1.36	0.03	1	0.01	0.01	0.03
B375229		1.04	0.04	2	0.04	0.01	0.10
B375230		1.42	0.02	1	0.03	0.01	0.07
B375231		1.08	<0.01	1	<0.01	<0.01	<0.01
B375232		1.14	0.04	3	0.14	0.06	0.21
B375233		0.94	0.11	5	0.28	0.21	0.43
B375234		1.30	0.11	4	0.12	0.08	0.25
B375235		0.62	0.02	3	0.07	0.05	0.07
B375236		0.66	0.03	<1	<0.01	0.01	0.02
B375238		1.06	0.04	2	0.02	0.01	0.05
B375239		1.40	0.04	1	0.01	0.01	0.04
B375240		1.70	0.06	3	0.04	0.02	0.12
B375241		1.40	0.18	4	0.14	0.04	0.20
B375242		2.00	0.27	2	0.02	0.03	0.06
B375243		3.36	0.02	1	<0.01	0.01	0.02
B375244		1.98	0.01	2	<0.01	0.01	0.03
B375245		2.38	0.03	2	<0.01	0.01	0.03



ALS Chemex

EXCELLENCE IN ANALYTICAL CHEMISTRY

ALS Canada Ltd.

212 Brooksbank Avenue

North Vancouver BC V7J 2C1

Phone: 604 984 0221 Fax: 604 984 0218 www.alschemex.com

To: ARCHER, CATHRO AND ASSOCIATES (1981)

LIMITED

1016-510 W HASTINGS ST

VANCOUVER BC V6B 1L8

Page: 3 - A

Total # Pages: 3 (A)

Finalized Date: 25-NOV-2005

Account: F

Project: MARG

CERTIFICATE OF ANALYSIS VA05101077

Sample Description	Method Analyte Units LOR	WEI-21	Au-AA25	Ag-AA46	Pb-AA46	Cu-AA46	Zn-AA46
		Recvd Wt. kg	Au ppm	Ag ppm	Pb %	Cu %	Zn %
		0.02	0.01	1	0.01	0.01	0.01
B375246		1.26	0.01	2	<0.01	<0.01	0.02
B375248		2.46	0.04	2	<0.01	0.01	0.03
B375249		2.02	0.03	1	<0.01	0.01	0.04
B375250		1.96	1.01	97	3.41	2.25	5.99
B375251		2.06	1.48	84	3.83	1.72	6.19
B375252		3.12	1.42	127	4.31	3.37	7.17
B375253		1.18	0.02	3	0.07	0.05	0.10
B375254		2.42	0.71	101	5.05	3.05	8.13
B375255		3.14	0.76	67	2.20	3.44	5.72
B375256		1.34	0.43	51	1.90	3.79	5.64
B375258		2.68	0.28	35	2.74	1.47	7.21
B375259		5.74	0.49	31	0.80	3.82	4.39
B375260		6.50	0.27	29	2.05	2.21	5.14
B375261		2.68	0.34	21	1.01	3.15	3.04
B375262		1.38	0.32	12	0.26	2.15	1.72
B375263		1.24	<0.01	1	<0.01	0.02	0.01
B375264		0.96	0.77	18	1.06	0.63	1.92
B375265		2.16	0.18	4	0.40	0.18	0.84
B375266		2.50	0.15	3	0.09	0.11	0.23
B375268		4.12	0.15	1	0.01	0.02	0.05

APPENDIX V
DETAILED ASSAY SUMMARY

Drill Hole	Sample Number	Rock Type	From (m)	To (m)	Width (m)	Cu (%)	Pb (%)	Zn (%)	Au (g/t)	Ag (g/t)
DDH05-84	B375204		205.22	205.72	0.50	<0.01	0.01	0.01	0.03	1
	B375206		205.72	206.15	0.43	0.59	1.06	1.65	0.28	25
	B375207		206.15	207.12	0.97	<0.01	<0.01	0.01	0.02	1
	B375215		213.06	213.81	0.75	0.13	0.36	0.65	0.02	3
	B375217		213.81	214.13	0.32	0.5	2.92	4.10	0.05	30
	B375218		214.13	215.07	0.94	0.14	0.33	0.57	0.06	10
	B375362		215.07	215.61	0.54	1.35	3.26	6.10	0.74	72
	B375364		215.61	216.48	0.87	3.21	3.33	6.60	1.09	87
	B375365		216.48	218.24	1.76	1.90	1.76	3.95	0.38	38
	B375366		218.24	219.04	0.80	1.80	0.32	0.71	0.43	26
	B375219		220.54	221.04	0.50	0.04	0.04	0.07	0.21	5
	B375220		221.04	221.54	0.50	0.02	0.08	0.13	0.28	2
	B375222		221.54	222.04	0.50	0.01	0.05	0.10	0.27	1
	B375230		225.04	225.54	0.50	0.01	0.03	0.07	0.02	1
	B375232		225.54	226.04	0.50	0.06	0.14	0.21	0.04	3
	B375233		226.04	226.47	0.43	0.21	0.28	0.43	0.11	5
	B375234		226.47	226.94	0.47	0.08	0.12	0.25	0.11	4
	B375211	Blank Sample				<0.01	<0.01	<0.01	0.01	<0.1
	B375221	Blank Sample				<0.01	<0.01	<0.01	0.01	1
	B375231	Blank Sample				<0.01	<0.01	<0.01	<0.01	1

215.07m to 218.24m:
2.09% Cu, 2.02% Pb, 4.17% Zn,
0.59 g/t Au, 51 g/t Ag
over 4.0m

Drill Hole	Sample Number	Rock Type	From (m)	To (m)	Width (m)	Cu (%)	Pb (%)	Zn (%)	Au (g/t)	Ag (g/t)
DDH05-85	B375250		131.17	131.50	0.33	2.25	3.41	5.99	1.01	97
	B375251		131.50	132.00	0.50	1.72	3.83	6.19	1.48	84
	B375252		132.00	132.50	0.50	3.37	4.31	7.17	1.42	127
	B375254		132.50	133.00	0.50	3.05	5.05	8.13	0.71	101
	B375255		133.00	133.50	0.50	3.44	2.20	5.72	0.76	67
	B375256		133.50	134.00	0.50	3.79	1.90	5.64	0.43	51
	B375258		134.00	134.50	0.50	1.47	2.74	7.21	0.28	35
	B375259		134.50	135.50	1.00	3.82	0.80	4.39	0.49	31
	B375260		135.50	136.50	1.00	2.21	2.05	5.14	0.27	29
	B375261		136.50	137.00	0.50	3.15	1.01	3.04	0.34	21
	B375262		137.00	137.29	0.29	2.15	0.26	1.72	0.32	12
	B375264		137.29	137.50	0.21	0.63	1.06	1.92	0.77	18
	B375265		137.50	138.00	0.50	0.18	0.40	0.84	0.18	4
B375266		138.00	139.00	1.00	0.11	0.09	0.23	0.15	3	
B375268		139.00	140.00	1.00	0.02	0.01	0.05	0.15	1	
	B375253	Blank Sample				0.05	0.07	0.10	0.02	3
	B375263	Blank Sample				0.02	<0.01	0.01	<0.01	1

131.17m to 137.29m:
2.84% Cu, 2.38% Pb, 5.48% Zn,
0.55 g/t Au, 48 g/t Ag
over 6.1m

Drill Hole	Sample Number	Rock Type	From (m)	To (m)	Width (m)	Cu (%)	Pb (%)	Zn (%)	Au (g/t)	Ag (g/t)
DDH05-86	B375301		288.84	289.52	0.68	1.54	1.57	3.12	1.36	35
	B375302		291.41	292.46	1.05	0.21	0.15	0.35	0.13	3
	B375303		292.46	292.81	0.35	0.53	0.32	0.97	0.09	7
	B375304		293.41	293.99	0.58	2.02	4.49	7.43	0.59	74
	B375306		293.99	294.59	0.60	2.87	5.1	8.64	1.02	111
	B375307		294.59	295.00	0.41	2.98	1.66	4.42	1.34	72
	B375308		295.00	295.50	0.50	1.57	2.21	4.67	1.28	72
	B375310		295.50	296.00	0.50	1.85	2.74	5.04	0.810	74
	B375311		296.00	297.00	1.00	2.04	1.54	4.68	0.48	36
	B375312		297.00	297.26	0.26	2.39	0.07	0.40	0.32	6
	B375313		297.26	297.76	0.50	0.04	0.04	0.09	0.05	<1
	B375314		297.76	298.29	0.53	0.06	0.07	0.14	0.10	1
	B375316		298.29	299.89	1.60	1.83	0.18	0.57	0.52	10

293.41m to 297.00m:
2.19% Cu, 2.89% Pb, 5.81% Zn,
0.84 g/t Au, 69 g/t Ag
over 3.6m

Drill Hole	Sample Number	Rock Type	From (m)	To (m)	Width (m)	Cu (%)	Pb (%)	Zn (%)	Au (g/t)	Ag (g/t)
DDH05-87	B375327		298.49	299.31	0.82	3.30	2.80	5.79	0.90	56
	B375328		299.31	300.00	0.69	1.87	2.64	5.010	1.48	55
	B375329		300.00	300.86	0.86	1.42	3.06	5.23	1.22	58
	B375342		306.43	306.81	0.38	1.54	4.21	7.11	1.01	93
	B375343		306.81	307.36	0.55	2.14	1.99	4.11	1.1	58
	B375344		307.36	307.86	0.50	1.92	1.92	4.32	0.71	42
	B375345		307.86	309.13	1.27	2.27	1.23	2.95	0.46	33

298.49m to 300.86m:
2.20% Cu, 2.84% Pb, 5.36% Zn,
1.18 g/t Au, 56 g/t Ag
over 2.4m

306.43m to 309.13m:
2.08% Cu, 1.93% Pb, 4.02% Zn,
0.71 g/t Au, 48 g/t Ag
over 2.7m