

2005 DIAMOND DRILLING REPORT ON THE KALZAS TUNGSTEN PROPERTY

<u>Claim Name</u>	<u>Grant Number</u>
PAT	YA38160
BLACKIE	YA38161
DAVID	YA38162
WOLF 1 – 2	YA42732-YA42733
WOLF 4	YA42735
WOLF 7	YB03688
WOLF 9	YB03690

MAYO MINING DISTRICT
N.T.S.: 105M/07

Centred at: 63° 16' N and 134° 42' W

Owned by:
Copper Ridge Explorations Inc.
500 – 625 Howe Street
Vancouver, BC

Prepared by:
J. Greg Dawson, MSc PGeo.

July 20, 2006



Copper Ridge Explorations Inc.
500 – 625 Howe Street
Vancouver, B.C.
V6C 2T6

TABLE OF CONTENTS

TABLE OF CONTENTS	II
INDEX OF FIGURES	III
INDEX OF TABLES	III
INTRODUCTION	4
PROPERTY DESCRIPTION	4
LOCATION	4
CLAIMS	4
ACCESSIBILITY	5
PHYSIOGRAPHY, VEGETATION AND CLIMATE	6
HISTORY	7
SUMMARY OF KEY HISTORICAL RESULTS	7
Table I – Union Carbide Trench Results	7
Table III – Trench Assay Highlights	10
GEOLOGICAL SETTING	10
REGIONAL GEOLOGY	10
LOCAL GEOLOGY	11
DEPOSIT TYPES	11
MINERALIZATION	12
ALTERATION	12
2005 EXPLORATION PROGRAM	13
DIAMOND DRILL PROGRAM	13
DDH KZ 06-01	14
DDH KZ 06-02	14
DDH KZ 06-03	15
DDH KZ 06-04	15
DDH KZ 06-05	16
SAMPLING PROCEDURES AND APPROACH	17
SAMPLE PREPARATION, ANALYSIS AND SECURITY	17
INTERPRETATION AND CONCLUSIONS	18
ECONOMIC POTENTIAL	19
RECOMMENDATIONS	20
STATEMENT OF COSTS	21
STATEMENT OF QUALIFICATIONS	22
LIST OF REFERENCES	23
APPENDIX “A”	24
APPENDIX “B”	24

APPENDIX “C”	25
APPENDIX “D”	26
APPENDIX “E”	27

INDEX OF FIGURES

Figure 1: Kalzas Project Yukon location.....	5
Figure 2. Kalzas Project Claims.....	6
Figure 3. 2001 Trench Locations and Summary Results.....	9
Figure 4. 2005 Drill hole collar locations.....	14
Figure 5. South Upper Levels drill section - drill holes KZ05-01 to 03.....	15
Figure 6. Drill section - hole KZ05-04.....	16
Figure 7. Upper Levels drill section - hole KZ05-05.....	17

INDEX OF TABLES

Table I: Union Carbide Trench Results.....	7
Table II. 2001 Trench Assay Highlights.....	8
Table III. 2002 Trench Assay Highlights.....	10
Table IV. 2005 Drill Hole Locations.....	13
Table V. 2005 Drill Assay Highlights.....	13

INTRODUCTION

Copper Ridge Explorations Inc. acquired an option on the Kalzas tungsten-tin-silver property in July 2001. The deposit was discovered in 1978 and optioned to Union Carbide Corporation in 1981 during a period of high tungsten prices. From 1981 to 1984, Union Carbide carried out a program of geological mapping, soil, talus and rock sampling, airborne geophysics, bulldozer road building and trenching. This work was followed by the drilling of just two diamond drill holes. The Union Carbide work confirmed the presence of a large, porphyry-style quartz vein and stockwork tungsten deposit at the western end of Kalzas peak. With the significant drop in tungsten prices in the early 1980's, Union Carbide dropped its option. In its final report (Forster, 1985), Union Carbide referred to Kalzas as "*an exceptional exploration project with potential to be a world class, low cost producer*".

Most of the detailed records from the Union Carbide work are not available for review. However, summary assessment reports and a limited number of surface plans and drill sections have allowed a reasonable compilation of the Union Carbide work. Sampling by Copper Ridge in 2001 (Carlson, 2001) confirmed the large tungsten stockwork zone identified by Union Carbide and also encountered high tungsten grades over significant widths on surface. A follow-up program in 2002 took large samples over narrower widths in the high grade zones and confirmed the continuity of these zones on surface.

The 2005 drilling program was designed to test the continuity of the high grade zones at depth.

The 2005 program was operated by Copper Ridge Explorations Inc. The project was managed on site by Greg Dawson of Copper Ridge. Three members of the Pelly Crossing First Nations Band were hired, one as cook and two as labourers. These personnel were relieved as necessary by 3 employees of Aurum Geological. The drilling was conducted by Advanced Drilling of Surrey British Columbia and sample analysis was done by Acme Analytical of Vancouver British Columbia. Air support was provided by Trans North Helicopters based in Mayo, Sifton Air from Haines Junction and Alkan Air in Whitehorse. The cost of the 2005 program was \$229,190.

PROPERTY DESCRIPTION

Location

The Kalzas property is located in central Yukon Territory on the Kalzas Plateau south of the Stewart River, 70 km southeast of Mayo and 290 km north of Whitehorse. The claims are located in the Mayo Mining Division, NTS sheet 105M/07, centred at 63° 16' north latitude and 134° 42' west longitude, Yukon Minfile number 105M 066.

Claims

The property consists of 8 quartz mining claims located in the Mayo Mining Division, NTS 105M/7, as more fully described in Appendix "A". The claims are surrounded by Selkirk First Nations Class A land claim selection R-16A.

In July, 2001, Copper Ridge acquired an option on the Kalzas property whereby it could earn a 100% interest in the claims, subject to a 2% NSR, by spending \$300,000 in exploration on the property and issuing 200,000 shares and paying \$75,000 to the vendors over four and a half years. The option has now been exercised and Copper Ridge has a 100% undivided interest in the claims, subject to the NSR. Copper Ridge can purchase 1% of the NSR for \$500,000 and must issue an additional 200,000 shares to the vendors on a production decision.

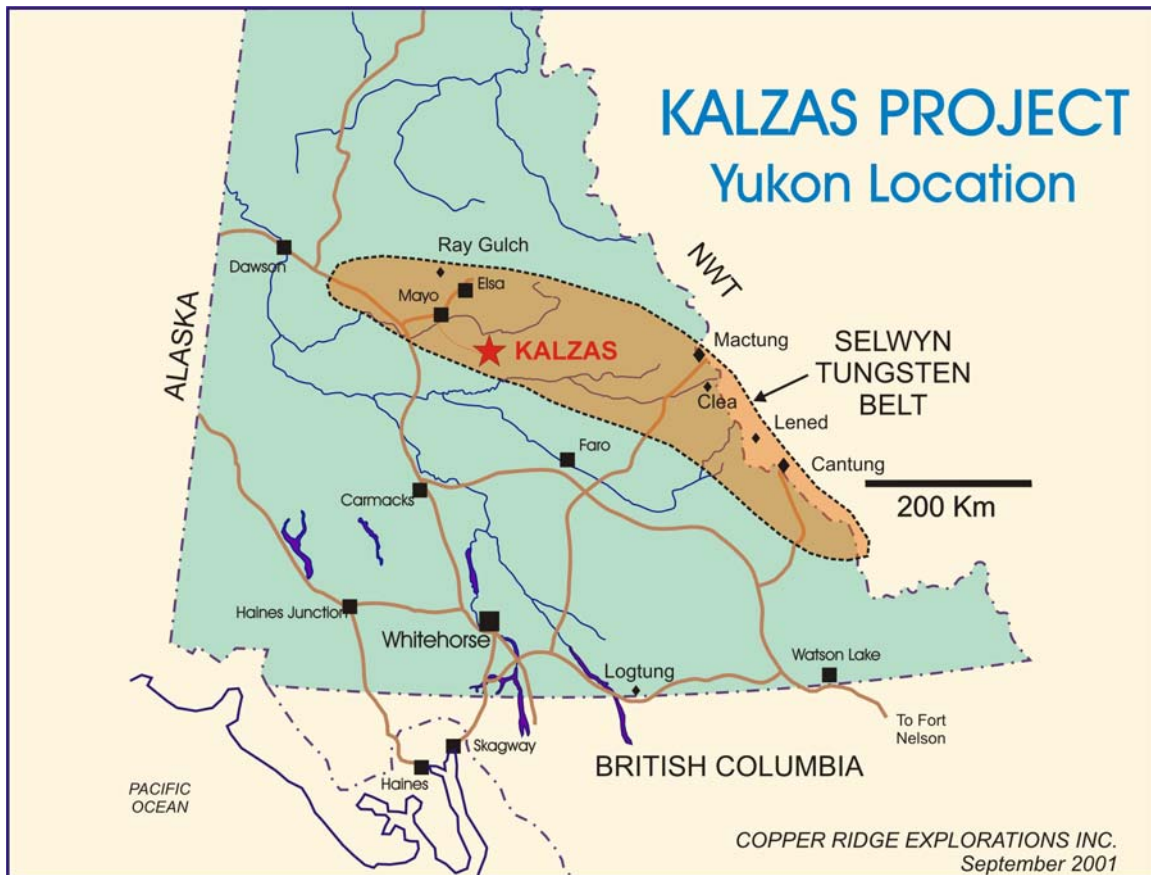


Figure 1: Kalzas Project Yukon location.

Accessibility

Access is by helicopter from Mayo. A serviceable airstrip exists on the property, accommodating up to a Twin Otter aircraft. Fuel and heavy equipment for the Union Carbide trenching and drilling programs were moved to the property on a 75-km winter road from Mayo. Bulldozer trails and trenches have been constructed over the main showing area, with access to the camp and airstrip.

For the current program, access was by fixed wing aircraft from Mayo using an Alkan Air Turbo Single Otter as well as a Trans North Jet Ranger Helicopter based in Mayo. During demobilization, when the Otter was not available, an Islander aircraft was chartered from Sifton Air.

Physiography, Vegetation and Climate

The claims are centred on the 1936 m western peak of the Kalzas Twins Mountain within the northern Yukon Plateau physiographic province. Big Kalzas Lake, 4 km to the south, has an elevation of 780 m. The camp and airstrip are located at about 1350 m elevation.

Most of the claim block is covered by talus, with some grass and moss on more stable slopes. Outcrop is limited to ridge crests and occasionally near the base of talus slopes. Sparse bush and alpine spruce occur below 1400 m. All of the key mineralization discovered to date is above tree line.

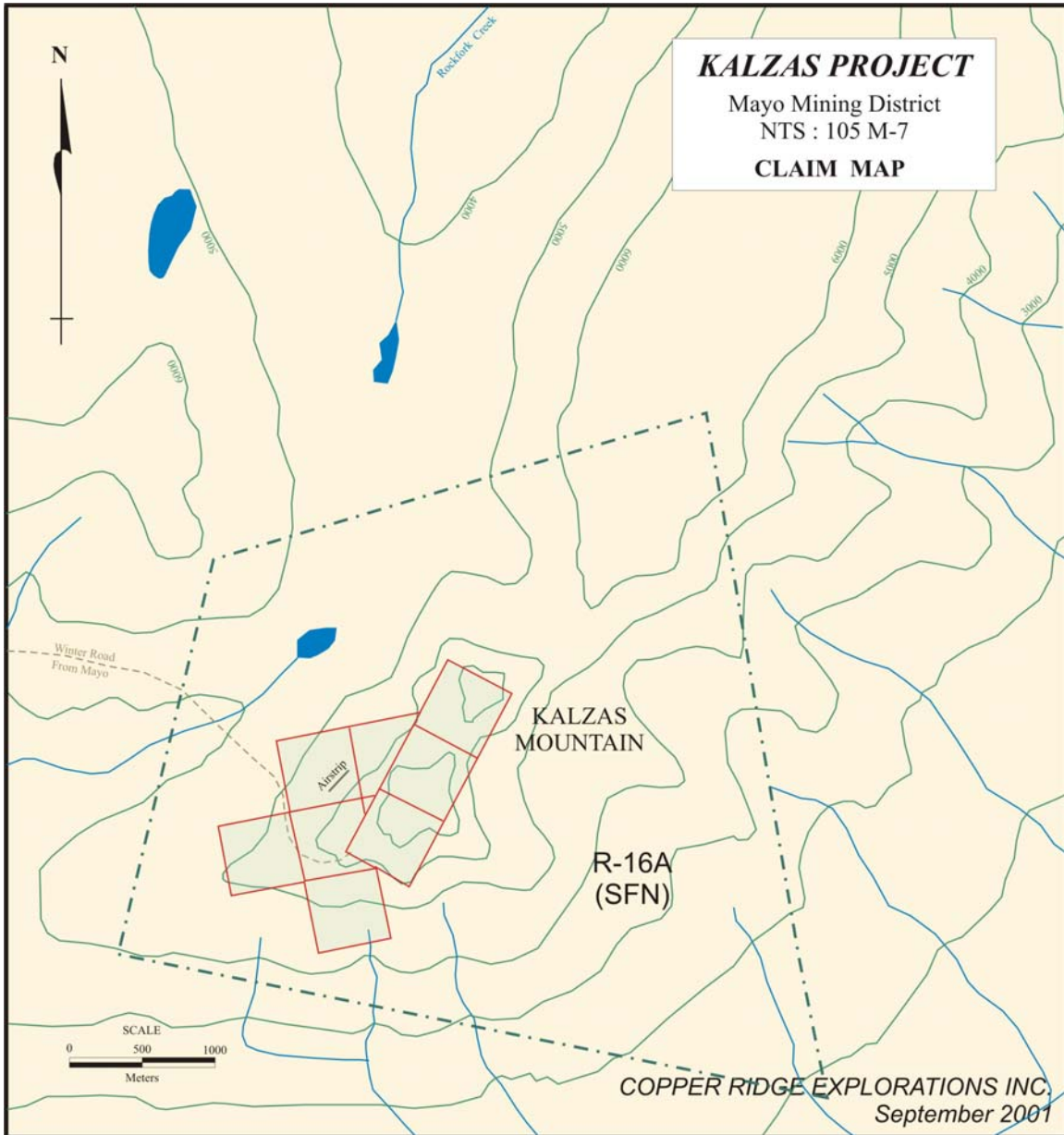


Figure 2. Kalzas Project Claims.

HISTORY

The property was discovered and staked in 1978 by prospector J.D. Randolph, who was initially investigating some high grade silver showings. In 1980, the property was optioned to Union Carbide Corporation. Union Carbide carried out prospecting, geological mapping, soil sampling and extensive rock sampling of mainly talus in 1981 and 1982. During this period, an aeromagnetic survey of the claim block and adjacent areas was flown. In 1983, a winter road was constructed from Mayo for transport of fuel and a diamond drill to the property. Road building and bulldozer trenching exposed extensive outcrop for sampling on the upper slopes of the mountain. An 840 m airstrip was constructed near the camp on the north side of the mountain. Late in the season, two core drill holes were completed for a total of 668 m.

It is believed the heavy equipment was demobilized during the following winter season. The property option was dropped by Union Carbide in 1984 because of the severely depressed tungsten market.

Except for small assessment work programs in the early 1990's, carried out by the property owner, no further significant exploration work has been done on the property until it was acquired by Copper Ridge.

Copper Ridge completed a one-week program of re-sampling core and trenches in August 2001. Subsequently, Copper Ridge focused on the high grade tungsten zones with a program of detailed trench sampling in August, 2002. A core drilling program, consisting of 397.4 m in 5 holes, was carried out in August, 2005, and is the subject of this report.

Summary of Key Historical Results

The initial work by Union Carbide defined a strong (+1,000 ppm W) tungsten anomaly in soils and talus fines with a dimension of 1,500 m long, in a northeasterly direction, by 300 to 900 m wide. This anomaly was surrounded and partially overlapped by anomalous values of silver and tin. Within this anomalous zone, sampling of the talus material was carried out in detail on some of the grid lines with 20 kg bulk samples along 20 m and 25 m intervals. Results are tabulated below:

Table I – Union Carbide Trench Results

Line	Station	Width (metres)	Quartz Veins WO ₃ (%)	Country Rock WO ₃ (%)
L43N	80W to 100W	20	.40	.26
	100W to 120W	20	1.18	--
	Average	40	0.79	--
L43N	150W to 175W	25	0.65	0.03
	175W to 200W	25	0.53	0.05
	200W to 225W	25	1.64	0.15
	225W to 250W	25	1.77	0.28
	250W to 275W	25	0.69	0.38
	275W to 300W	25	1.33	0.14
	300W to 325W	25	0.31	0.18
	325W to 350W	25	0.51	0.17
	Average	150	1.04	0.21

Line	Stations	Width (metres)	Bulk Rock WO3(%)	Bulk Rock Sn(%)
L43N	525W to 550W	25	0.24	0.07
	550W to 575W	25	0.38	0.04
	Average	50	0.31	0.055
L40N	175W to 200W	25	0.08	--
	200W to 225W	25	0.44	--
	225W to 250W	25	0.34	--
	250W to 275W	25	0.22	--
	275W to 300W	25	0.16	--
	300W to 325W	25	0.24	--
	325W to 350W	25	0.73	--
		Average	175	0.32

Union Carbide carried out subsequent sampling of bulldozer trenches through the central part of the deposit. However, except for a summary compilation map dated March 1984, the results of this later sampling are not presently available. Results from the two drill holes confirmed tungsten values on the same order of magnitude as the surface samples, although the first hole did not reach the target depth and the second hole tested the main zone at least 300 m below the surface exposure. Because of this, correlation of drill hole intercepts with specific surface zones is not possible. Unfortunately, most of the Union Carbide maps, data and interpretive reports are not available for review and likely have been lost from the record.

In August 2001, Copper Ridge re-sampled the main trench exposures and some of the remaining core stored on the property. Sampling was completed over 623 m of trenches with the collection of 127 chip samples. The samples averaged five meters in length and individual samples weighed two to four kg with chips averaging one to three cm in size. Selective samples were taken from the core remaining on the property from Union Carbide drill holes 83K-1 and 83K-2. A total of 59 samples were collected representing 129 m of core. The entire remaining half core was taken for analysis. The results obtained are summarized on Table II and Figure 3.

Table II: 2001 Trench Results Highlights

Trench	Width (m)	Grade (% WO ₃)
South Upper Road	66	0.493%
North Upper Road (east end)	16	0.306%
North Upper Road (middle)	8	0.705%
North Upper Road (west end)	70	0.427%
North Middle Road	20	0.268%
North Lower Road	66	0.429%

Previous trench sampling by Union Carbide produced results such as 0.86% WO₃ over 17 m, 0.32% WO₃ over 175 m and 0.21% WO₃ over 150 m. In the area of the Copper Ridge sampling, most of Union Carbide's trench values ranged from 0.15% WO₃ to 0.30% WO₃ over 20 to 60 m,

but exact comparisons cannot be made since the earlier sample markings have been lost. The nature of Union Carbide's sampling (individual sample widths and sample size) and the analytical method used are not known, although much of the analysis is thought to have been carried out by a field-portable X-ray Fluorescence (XRF) instrument.

Tungsten values from core re-sampled by Copper Ridge are lower than values obtained by Union Carbide. This is believed to be because the remaining core is incomplete: It is likely that high grade specimens have been selectively removed from these intervals for further geological study or simply for collection. Also, the core has been somewhat disrupted in its 20 years of exposure to the elements.

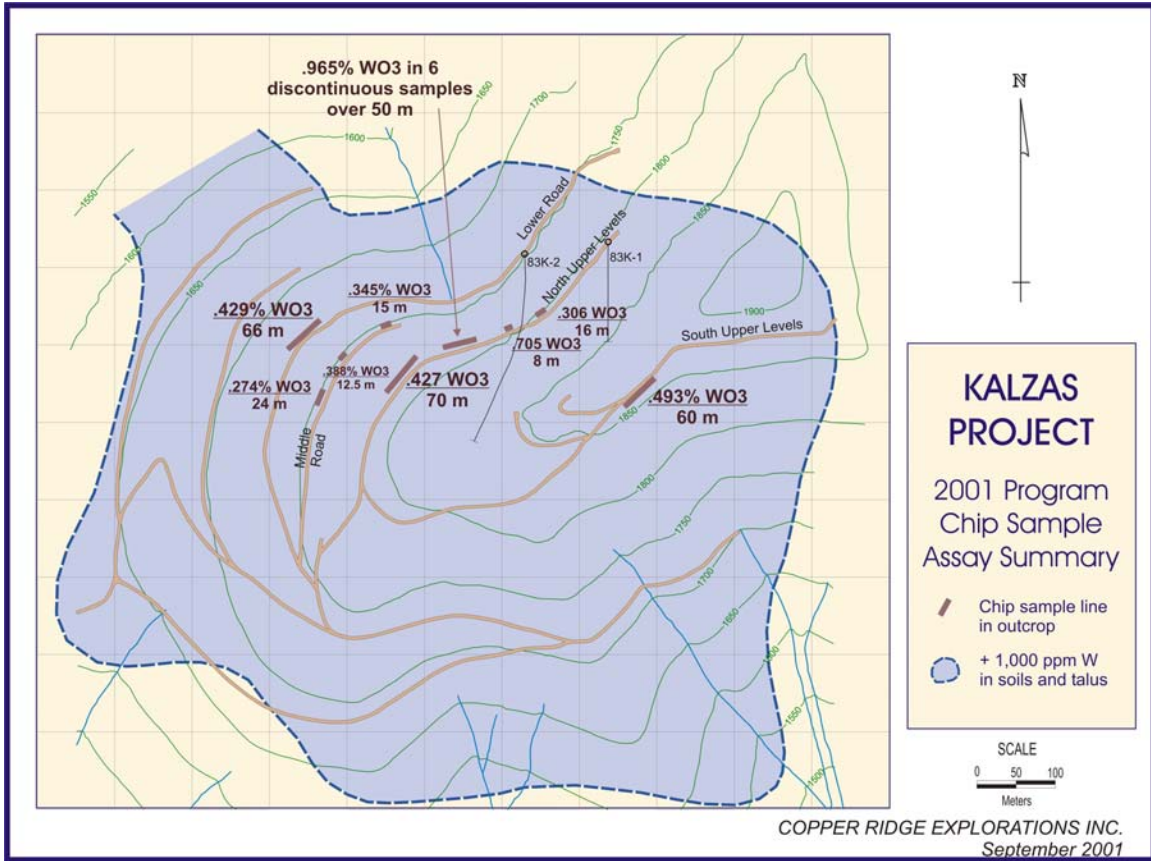


Figure 3. 2001 Trench Locations and Summary Results.

In 2002, Copper Ridge carried out additional trench sampling. Larger samples, approximately 8 kg, were collected over smaller intervals, mainly 1 m, in order to reduce the potential for the nugget effect. Results are summarized in Table III, below. Generally, this re-sampling confirmed the high grade tungsten values, but over narrower widths than the 2001 sampling. The location of the higher grade samples is shown in Figure 4.

Table III – Trench Assay Highlights

<u>Location</u>	<u>Length (m)</u>	<u>WO₃ (%)</u>
Lower Levels	4.0	0.539
Middle Road	2.0	0.605
Middle Road	3.0	0.783
Middle Road	1.2	1.211
Upper Levels	2.0	0.902
Upper Levels	1.0	1.097
Upper Levels	1.0	1.665
Upper Levels	8.0	0.608
Upper Levels	0.4	3.165
South Upper Levels	6.0	0.712
Including	2.0	1.669
South Upper Levels	2.5	1.266
South Upper Levels	15.0	0.597
Including	2.0	2.552
Including	6.0	1.219

GEOLOGICAL SETTING

Regional Geology

The Kalzas property is underlain by rocks of the Late Proterozoic Yusezyu Formation belonging to the Hyland Group (Roots, 1997). Regionally, these form the basal rocks of the Selwyn Basin. Selwyn Basin includes sedimentary rocks from Late Proterozoic to Jurassic in age, deposited on the continental margin of ancient North America and subsequently intruded by mid-Cretaceous S-type granitic rocks.

In the Kalzas region, deformation results primarily from the collision of arc and oceanic terranes to the west with ancestral North America. This occurred between Upper Jurassic and Early Cretaceous time. The result was telescoping of the sedimentary succession by a combination of imbricate faulting, folding and displacement on slaty cleavage. The rocks in the area are within the Robert Service thrust sheet. The Kalzas area is far enough removed from this thrust that its effects, shearing and foliation, are not a dominating feature as they are farther to the north, closer to the thrust plane.

The Yusezyu Formation is the only formation mapped in the vicinity of the Kalzas property. It is the oldest mappable unit in the Mayo map sheet and consists of metasandstone with grit, quartzite and phyllite, a distinctive black slate member and minor limestone and conglomerate.

Intrusive rocks in the area, including the MacArthur Batholith, 60 km to the west, are part of the 90 to 95 Ma Tombstone Intrusive Suite. Compositions range from granodiorite to quartz monzonite and leucocratic granite. Porphyritic phases are noted locally.

The large alteration zone at Kalzas combined with the interpretation of the aeromagnetic survey over the claim group suggests that a shallow, composite, pluton, likely belonging to the Tombstone Suite, occurs at depth below the property. The age of this intrusive is believed to be mid-Cretaceous Tombstone Suite equivalent from a K/Ar age determination of 90.9 +/-1.4 my from an altered, biotitic sample collected from Kalzas as reported by Lynch (1985). However, no intrusive rocks have been observed at Kalzas.

Local Geology

The property geology was mapped by Forster (1981) although subsequent refinements to this original mapping by Union Carbide, carried out from 1982 to 1984, are not available. Lynch (1985) completed his M.Sc. thesis on the property studying the mineralization and alteration.

Unaltered host rock for the Kalzas property consists of interbedded chloritic phyllite and feldspathic quartzite, with lesser amounts of siltstone, dark shale and quartz-feldspar pebble conglomerate. The phyllite consists of chlorite, sericite and quartz and often grades into siltstone. It is sometimes rusty weathering due to its minor pyrite content.

The quartzite consists of 80 to 90 percent quartz as coarse sand-sized grains, with the remainder of the rock consisting of feldspar with trace zircon and magnetite. Individual quartzite beds are up to 3 m thick and contacts with phyllite are typically sharp.

There are at least two conglomerate units within the property with rounded quartz clasts and up to 10 percent feldspar clasts.

Bedding typically strikes northwesterly with steep to vertical dips. Tight folding has been observed and bedding attitudes suggest a property-scale southeasterly plunging fold axis.

Deposit Types

Kalzas is located within the Selwyn Tungsten Belt (see Figure 1), host to some of the world's most significant tungsten deposits. These include MacTung, with a reported resource of 63 million tonnes grading 0.96% WO₃ and Cantung, currently in production, with a total (mined and un-mined) resource reported as 9 million tonnes at 1.42% WO₃. The Logtung deposit in southern Yukon, although predominantly scheelite mineralization, is a closer analogy to Kalzas as a porphyry-style stockwork deposit. Resources at Logtung have been quoted as 162 million tonnes grading 0.13% WO₃.

The Kalzas property also is located within the Tintina Gold Province, known for its intrusion related gold deposits ("IRGS") associated with 90 million year old intrusions, the same age as the hypothesized intrusion beneath Kalzas, as determined by age determination on alteration minerals. Significant IRGS deposits include the large tonnage, low grade Fort Knox Mine and Donlin Creek deposit in Alaska, the Brewery Creek Mine and Dublin Gulch deposit in Yukon. The Pogo deposit in east-central Alaska may also be a high-grade example of an IRGS deposit. Mineralization styles at these deposits vary greatly, but many, such as Fort Knox, Scheelite Dome and Dublin Gulch have associated tungsten mineralization.

Mineralization

Lynch (1985) reports wolframite occurring as coarse-grained bladed crystals within the sheeted veins and quartz stockworks. It also occurs as disseminations within the quartz-tourmaline greisens. Scheelite is much less abundant than wolframite and occurs as encrustations on wolframite and sometimes as large, euhedral crystals in quartz veins. Tin occurs as cassiterite in tabular crystals and amorphous masses, irregularly around the periphery of the wolframite zone.

The structural control of mineralization is not fully understood, but it is undoubtedly related to the regional structures that controlled emplacement of the underlying pluton. Interpretation of the airborne magnetic survey indicates regional east-west and northeast trending structures as well as a local radial fracture pattern related to intrusion of the pluton (Forster, 1984). Bedding throughout the mineralized zone is typically steeply dipping and strikes northwest, with a major anticline indicated having a fold axis at 125° with a plunge of 40°. This is parallel to the long axis of the mineralized system.

Many of the mineralized fractures and stockwork veins are steeply dipping and sub-parallel to the direction of the fold axis. Although the larger sheeted veins have many different orientations, the vast majority are oriented roughly perpendicular to the fold axis, striking 070° and dipping 35° to the northwest.

Alteration

Four roughly concentric alteration phases have been defined forming a northwest trending oval, generally concordant with the stratigraphy and approximately 2.5 km long. The core is a K-feldspar zone, followed by a wolframite zone, a quartz-tourmaline zone and the outermost quartz-sericite-pyrite zone.

The quartz-sericite-pyrite zone has a distinct whitish colour with rusty patches due to pyrite weathering. Weak and relatively minor stockwork and sheeted veining occurs. Sericitization is pervasive. Pyrite is typically less than 5% as disseminated, one to two mm cubes.

The quartz-tourmaline zone is distinguished by the presence of tourmaline but the absence of wolframite. Tourmaline occurs in sheeted veins, stockwork veins, in vein halos and as pervasive alteration of the host rocks. Stockwork veins are thin, typically one to five mm wide, forming a complex boxwork. The veinlets are vuggy and contain euhedral to subhedral quartz and tourmaline, with a complete gradation from pure tourmaline to pure quartz. Haloes to these veinlets typically consist of several mm of tourmaline, grading to sericite. Where stockwork is less intense, pervasive alteration occurs, with sericite dominating in the quartzitic units and tourmaline in the phyllites. In the larger sheeted veins, tourmaline occurs as acicular crystals of up to three cm in length.

The wolframite zone overlaps the core potassic zone and most of the surrounding quartz-tourmaline zone and is described below under “Mineralization”.

The core zone is characterized by K-feldspar and minor sulfides in sheeted veins and biotite in the wall rock. Biotite occurs preferentially in the quartzitic units, replacing chlorite. Biotite also occurs in sinuous micro-veinlets. Sulfides include pyrite, pyrrhotite, chalcopyrite, molybdenite, bismuthinite, galena and arsenopyrite. Other accessories include apatite and rutile.

2005 EXPLORATION PROGRAM

Diamond Drill Program

The purpose of the 2005 drill program was to test the depth extent and continuity of the high grade tungsten mineralization identified during Copper Ridge's 2001 and 2002 programs. For this purpose a fly portable drill equipped with thin wall BQ wireline tools was contracted from Advanced Drilling of Surrey British Columbia. The drill was mobilized to the site on August 8, 2005 and was demobilized on September 1.

The initial program proposal was to drill 750 m in 8 holes. Due to a combination of unexpectedly thick permafrost, drill breakdowns, minor drill crew injuries and the early onset of freezing conditions, only five holes for a total of 397.44 m were completed. Hole location data is summarized in Table IV and collars are located in Figure 4.

Table IV. 2005 drill hole locations and orientations.

Hole	Easting	Northing	Length (m)	Azimuth (deg)	Dip (deg)	Date Started	Date Completed
KZ 0501	514958	7015240	66.5	250	-45	11-Aug	14-Aug
KZ 0502	514939	7015221	62	250	-45	15-Aug	16-Aug
KZ 0503	514906	7015195	79.31	50	-45	17-Aug	18-Aug
KZ 0504	514878	7015240	89.02	140	-45	20-Aug	22-Aug
KZ 0505	514748	7015273	100.61	232	-45	25-Aug	27-Aug

Assay highlights are shown below in Table V. Summary drill logs and complete assay information are included in Appendix C. Assay certificates are included in Appendix D.

Table V. 2005 drill assay highlights.

Hole #	From(m)	Interval(m)	WO ₃ (%)*
KZ05-01	11.0	48.0	0.153
includes	29.6	11.4	0.304
and	29.6	8.4	0.393
and	29.6	2.4	0.688
and	36.1	1.9	1.122
KZ05-02	33.0	29.0	0.130
includes	50.0	2.1	0.391
KZ05-03	3.0	8.0	0.246
includes	28.0	2.0	0.240
	49.2	4.6	0.260
KZ05-04	16.0	5.5	0.221
	64.9	19.8	0.145
includes	64.9	3.6	0.231
KZ05-05	0.0	24.4	0.304
includes	7.0	7.0	0.419
and	9.0	8.4	0.533
and	9.8	0.5	1.220
and	16.9	0.5	1.390
	58.4	1.6	0.380
	84.0	1.0	0.720

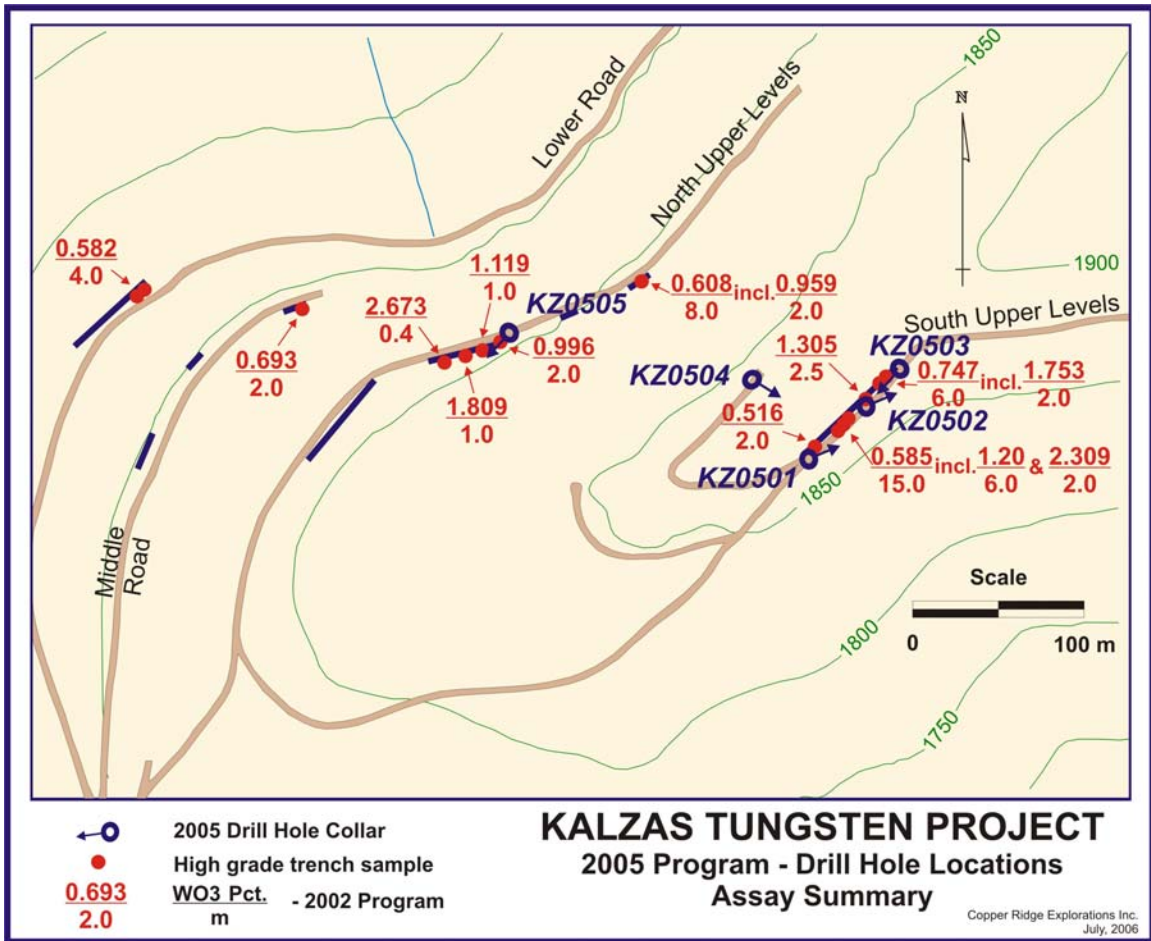


Figure 4. 2005 Drill hole collar locations.

DDH KZ 06-01

Hole KZ 06-01 was one of a fence of three holes drilled to test the down dip extension of the higher grade tungsten mineralization along the South Upper Trench (see Figure 4). The hole collared in siltstone, with local intervals of alteration and quartz veining. Quartzite occurs in the interval 27.6 m to 33.35 m, with increased intensity of quartz veining and tungsten mineralization. The interval 29.6 m to 32.0 m averaged 0.688% WO₃ over 2.4 m. Just below this, at 36.1 m, a 1.9 m sample assayed 1.122% WO₃. The overall mineralized interval, starting at 8.0 m, included 0.15% WO₃ over 48 m. The hole was terminated at 66.5 m.

DDH KZ 06-02

The second hole was drilled on the same section, approximately 30 m farther to the northeast. The hole was collared in quartzite but altered between siltstone and sandstone for most of the hole, terminating at 62.0 m. The highest assay was 0.391% WO₃ over 2.1 m starting at 50.0 m. The lower part of the hole averaged 0.129% WO₃ over 29.0 m, starting at 33.0 m.

DDH KZ 06-03

Hole 3 was drilled from approximately 45 m northeast of hole 2, on the same section and back towards holes 1 and 2. The hole encountered predominantly sandstone, with lesser siltstone, to its terminal depth of 79.3 m. Scattered high grade mineralization occurs throughout the hole. At 4.0 m, a 1 m interval assayed 0.52% WO₃ within an 8.0 m section of 0.245% WO₃. At 50.8 m, a 1.2 m section assayed 0.96% WO₃ within a 4.6 m section that averaged 0.260% WO₃. At 75.0 m, a 1.05 m section assayed 0.50% WO₃ within a section, to the end of the hole, of 9.76 m that averaged 0.211% WO₃.

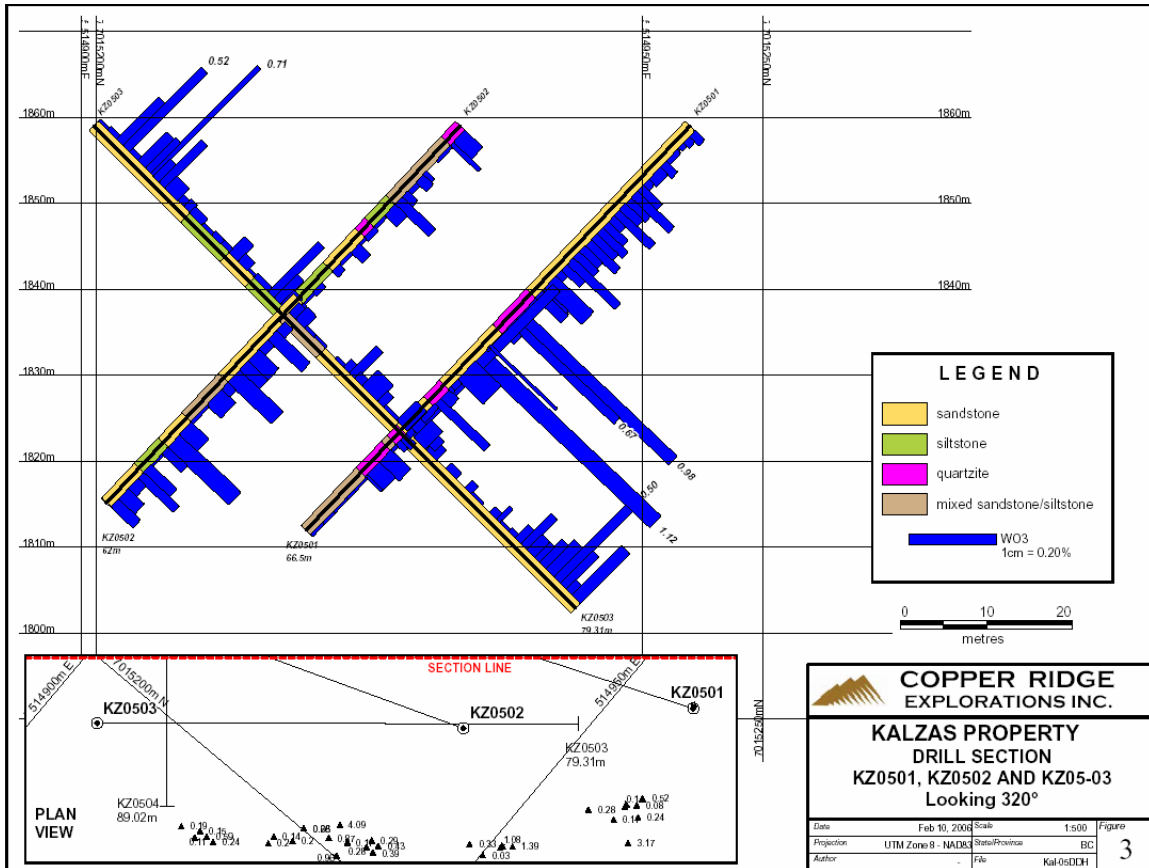


Figure 5. South Upper Levels drill section - drill holes KZ05-01 to 03.

DDH KZ 06-04

Hole 4 was drilled approximately 55 m northwest of the South Upper Levels drill section. The hole was oriented in a southeasterly direction in an effort to cut as many stockwork veins as possible. The hole was collared in sandstone and siltstone, to a depth of 70.05 m, where it encountered a 14.5 m band of quartzite. The hole ended at 89.2 m. At 16.0 m, the hole encountered increased quartz veining and alteration and averaged 0.221% WO₃ over 5.5 m. Just above the quartzite interval, the hole intersected two veins, with a 0.6 m interval, starting at 64.9 m, assaying 0.63% WO₃ and a 0.5 m interval, starting at 68.0 m, assaying 0.91% WO₃. The lower portion of the quartzite interval, starting at 74.0 m, averaged 0.145% WO₃ over 19.8 m.

Unfortunately, because of the orientation of the drill hole, it did not intersect as much of the “quartzite” unit and thus was possibly lacking in higher grade intervals.

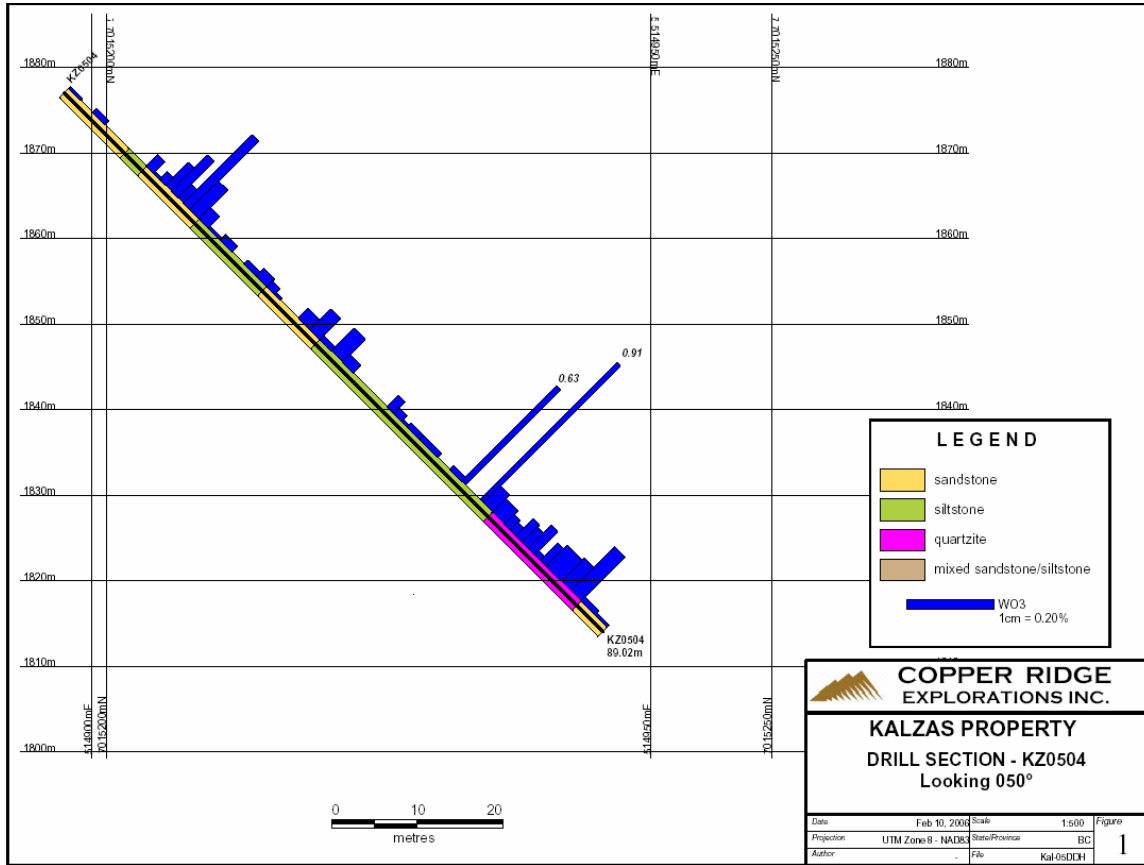


Figure 6. Drill section - hole KZ05-04.

DDH KZ 06-05

Hole 5, located on the Upper Levels trench, approximately 200 m northwest of the South Upper Levels section, tested the down dip extension of a quartzite exposure with high grade tungsten values in the surface trench. The hole was collared in a thick section of quartzite with some of the best mineralization encountered in the program. At 9.8 m, a quartz vein was encountered that assayed 1.22% WO₃ over 0.5 m, within a 7.0 m interval that averaged 0.42% WO₃. A second vein at 16.9 m assayed 1.39% WO₃ over 0.5 m, within an 8.4 m interval that averaged 0.53% WO₃. The entire 24.4 m of quartzite averaged 0.304% WO₃. The remainder of the hole was in siltstone, with minor quartzite, including a number of assays in the 0.1% to 0.3% WO₃ range, with one high assay of 0.72% WO₃ over 0.8 m, starting at 84.0 m. The hole ended at 100.6 m.

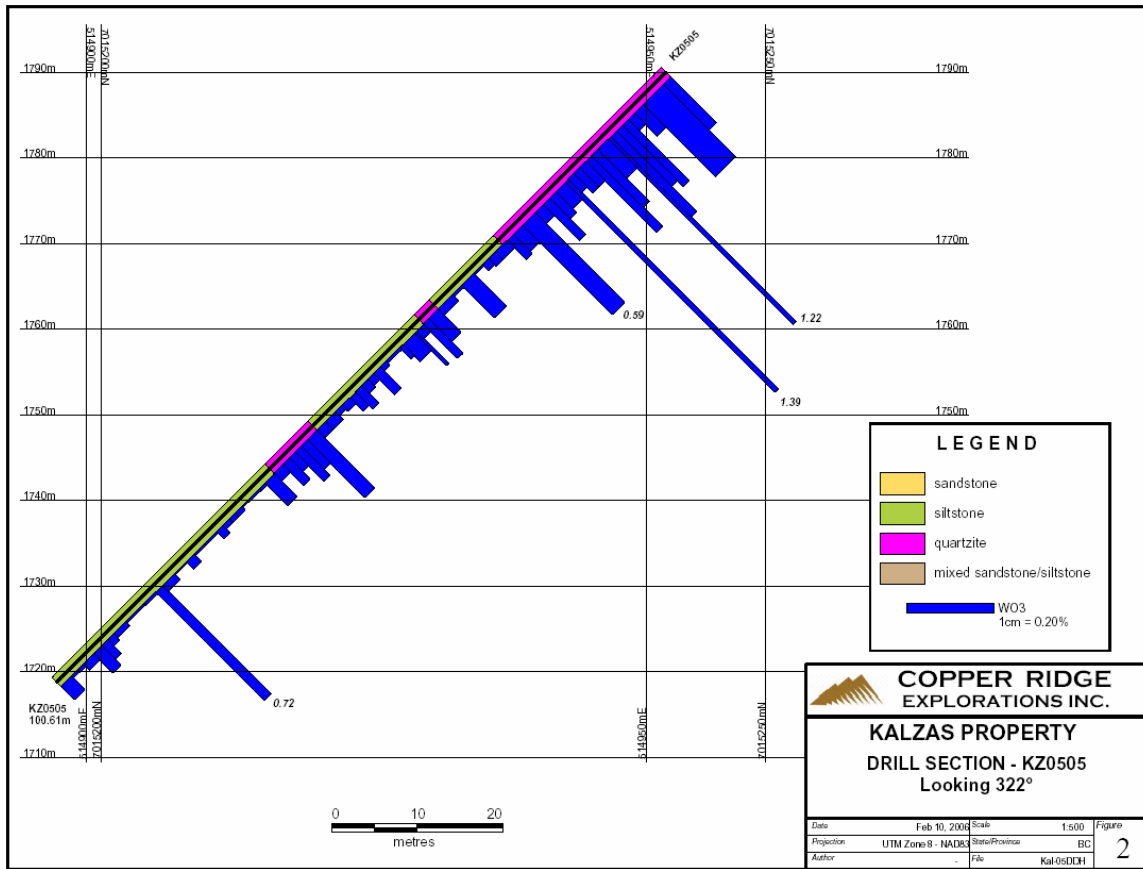


Figure 7. Upper Levels drill section - hole KZ05-05.

SAMPLING PROCEDURES AND APPROACH

In order to maximize the data obtained from the program, all of the core was split and sampled. Sample intervals ranged from about 10 centimetres, where individual veins were sampled, to about 3 m in un-mineralized siltstone. Sample intervals were marked on the core and on pre-numbered sample tags. The tags were made with 3 tear off numbers so that one tag could be put in the sample bag and one tag stapled in to the core box at the beginning of the sample interval. Occasionally, when a large quartz vein would occur at an angle to the core axis, a line to guide the sampler was drawn down the axis of the core. This was done to ensure that an equal amount of the vein was sampled and left in the box. The core was then split by a diamond saw.

SAMPLE PREPARATION, ANALYSIS AND SECURITY

Split samples were bagged in plastic sample bags and shipped to Acme Analytical Laboratories for analysis. The analytical method included trace element geochemistry by method 1DX and assay for tungsten by method W 7KP. A description of assay procedures and full analytical results are included in Appendix E.

INTERPRETATION AND CONCLUSIONS

Kalzas is a large, porphyry-style stockwork and sheeted vein tungsten deposit with accessory values in tin and silver. During the period 1981 to 1984, Union Carbide completed surface exploration, including prospecting, geological mapping, soil and rock geochemistry and an airborne magnetometer survey. Union Carbide subsequently carried out a program of road building and trenching over the mineralized zone and drilled two core holes. Union Carbide dropped its option on the property in 1984 as tungsten prices declined dramatically.

Union Carbide's exploration program, combined with Lynch's (1985) M.Sc. thesis on the property, demonstrated that Kalzas was a significant new, potentially world class tungsten discovery. Union Carbide showed the size potential to be in the hundreds of millions of tonnes, or a smaller tonnage at higher grades. However, the estimation of average grade proved to be a difficult issue for Union Carbide because of the perceived nugget effect created by the coarse wolframite mineralization in the sheeted veins. Average grades reported by Union Carbide are in the range of 0.2% WO_3 to 0.3% WO_3 , typically over widths of 50 to 75 metres. It appears that the Union Carbide work was focused on defining a resource of plus one hundred million tonnes.

Sampling by Copper Ridge in 2001 was directed at confirming the tungsten values and assessing the potential for economic values of tantalum mineralization. During the program, no tantalum minerals were identified and subsequently, analysis both by wet chemical methods and by neutron activation failed to detect significant tantalum values. The tungsten sampling program, however, demonstrated a significant increase over the Union Carbide results. The Copper Ridge averages are in the range of 0.3% WO_3 to 0.5% WO_3 over widths up to 70 metres. However, the results of the Copper Ridge sampling suggest that the nugget effect issue is a concern.

Copper Ridge's 2002 sampling program focused on the higher grade tungsten zones identified during the 2001 program. In order to provide a better estimate of grade, sample intervals were reduced to 1 m and sample size increased to 5 to 7 kg. Sampled areas were mapped in detail (Carlson, 2002).

Results of the 2002 program confirmed the potential for defining a small, high grade resource. In general, however, the detailed sampling demonstrates that the highest grades are over relatively narrow widths, ranging from 1 to 6 m. The highest, plus 1% WO_3 results are typically along zones dominated by tourmalinized quartzite with stockwork veining and usually one or more narrow quartz veins with visible wolframite. In other cases, high grade values occur in less altered phyllite or siltstone cut by wolframite-bearing quartz veins. Finally, some of the highest values are in zones with no obvious quartz veining.

The 2005 drill results confirm the association of the highest tungsten grades with "quartzite", zones of silicified and tourmalinized rocks that are superior hosts to the wolframite-bearing quartz veins and stockworks. Other narrow, high grade sections occur where larger quartz veins cut sandstone or siltstone. There is, unfortunately, insufficient data for precise correlation of specific high grade tungsten zones. However, in general, the drilling confirmed that the high grade zones do extend to depth.

While core recovery was generally good, it is clear that the combination of small sample size resulting from the narrow core diameter and the coarse crystalline nature of much of the wolframite mineralization that there is a significant potential for a nugget effect in the tungsten assays. In future programs, every effort should be made to use large diameter core, possibly HQ, or large diameter reverse circulation drilling for ongoing exploration of the Kalzas property.

The results suggest the potential to define one or more bodies of mineralization that range from 1 to 6 m in thickness and with lateral dimensions that could be in the range of tens to hundreds of m. Due to the nugget effect, it is possible that the grade is understated in the 2005 drill results. There is also potential for a much larger, bulk mineable and lower grade deposit to be delineated at Kalzas.

Although the main control on mineralization appears to be stratigraphic, with quartzite being an important host unit, there is not enough outcrop exposure along strike to confirm the lateral continuity of the high grade zones. However, if the quartzite is a product of hydrothermal alteration, including silicification, then structural controls on the high grade zone are likely to be of critical importance. Additional drilling will be required to examine the continuity of high grade zones at depth and along strike.

Should future sampling confirm results comparable to those obtained from the current program, including continuity along strike and at depth, there is a good potential to define a sufficient tonnage of near surface, open pit mineable mineralization that would justify a small, high grade mining operation or possibly a larger, bulk tonnage situation.

At other wolframite stockwork deposits similar to Kalzas, such as Panasqueira in Portugal, the highest grade tungsten mineralization typically occurs in the immediate cupola to the underlying intrusion. Although no detailed modeling of the aeromagnetic data has been carried out, some preliminary work by Union Carbide suggested that the underlying intrusion occurs at a reasonably shallow depth. One of Carbide's drill holes, on the north side of the mountain, drilled at an angle of -70° , reached a depth of 1,355 ft. (413 m) and did not encounter intrusive rocks. However, the potential for a significant, high grade discovery at or near the upper contact of the buried pluton remains an attractive exploration target. Deep drilling could perhaps be best carried out on the lower south slope of Kalzas Twins, where geophysical evidence suggests that the intrusive may be closer to surface.

Economic Potential

Union Carbide identified the broad, sheeted tungsten-bearing vein and stockwork complex over 1,000 m in length and over 500 m in width. The potential within this zone is to develop a deposit of potentially plus one hundred of millions of tonnes in size. Sampling suggests the grade of such a deposit could be in excess of 0.1% WO_3 . This would rank Kalzas as one of the largest tungsten deposits in the world.

Copper Ridge's sampling and evaluation over the past four years suggests that there is a realistic possibility of defining a resource on the order of several millions of tonnes of surface mineable tungsten mineralization at a grade of between 0.5% and 1.0% WO_3 or perhaps higher. This mineralization occurs in higher grade zones on the order of one to six m wide, of undetermined strike length and dip extension. Mineralized zones trend west-northwest, parallel to the main structural grain of the deposit and could extend for hundreds of meters. Drilling will be required to demonstrate grade continuity within these higher grade zones both at depth and along strike from sampled surface exposures.

RECOMMENDATIONS

A Phase I program of shallow, large diameter core drill holes is recommended to provide a three dimensional picture of tungsten mineralization and grades within the areas of higher grade tungsten values as defined by surface work. A program of twelve to fifteen holes of HQ core (approximately 6.35 cm diameter) would be required, with an average depth of 50 to 70 m. Consideration should also be given to drilling two or three deep tests on the south side of the mountain to test the cupola zone of the intrusion for possible high grade mineralization. The program would include a total of 2,000 m of drilling at an estimated budget of \$600,000.

If this program successfully confirms grades and depth continuity of the tungsten mineralization, it would lead to a pre-feasibility study that would include additional drilling to define tonnage and grade and a preliminary examination of engineering and metallurgical issues.

The proposed budget is shown in Appendix "B".

STATEMENT OF COSTS

Core Drilling Costs	\$91,528.31
Drill mobilization, supplies, fuel	\$51,995.23
Helicopter, fixed wing support	\$42,667.99
Contract geology	\$2,250.00
Contract labour	\$10,211.00
Camp, groceries, camp supplies	\$21,930.63
<u>Assaying</u>	<u>\$8,608.19</u>
Total	\$229,191.35

STATEMENT OF QUALIFICATIONS

I, John Gregory Dawson, do hereby declare that;

1. I am currently employed as Vice President Exploration for Copper Ridge Explorations Inc. of 500 - 625 Howe Street Vancouver, British Columbia V3J 3G8.
2. I graduated with a Bachelor Science degree from the University of British Columbia in 1987 and a Masters of Science degree from Queens' University in 1991.
3. I am a member of the Association of Professional Engineers and Geoscientists of British Columbia, Registration Number 19882.
4. I have worked as a geologist for a total of 19 years since graduation from University, and prior to graduation, as a student and or geotechnician for a period of 11 additional years.
5. I have read the definition of "Qualified Person" set out in National Instrument 43-101("NI 43-101") and certify that by reason of my education, affiliation with a professional association and past relevant work experience, I fulfill the requirements to be a "Qualified Person" for the purposes of NI 43-101.
6. I am not aware of any material fact or material change with respect to the subject matter of this report, the omission to disclose which makes this report misleading.
7. I am not independent of the issuer applying all tests in Section 1.5 of NI 43-101 in that I am an employee of Copper Ridge Explorations Inc and hold shares and options in the Company.

Dated this 20th day of July, 2006

John Gregory Dawson, P. Geo.

LIST OF REFERENCES

Carlson, Gerald G, 2001: Kalzas Project, Report on 2001 Field Program; Internal report prepared for Copper Ridge Explorations Inc., October 25, 2001, 24 p and appendices.

Carlson, Gerald G, 2001: Kalzas Project, Report on 2002 Field Program; Internal report prepared for Copper Ridge Explorations Inc., December 30, 2002, 21 p and appendices.

Forster, C.N., 1981: 1981 Final Report for the Kalzas Wolframite Prospect; Internal Union Carbide report, 14 p.

Forster, C.N., 1984: Kalzas Tungsten, Tin Property, Final Report of 1983 Program; Internal Union Carbide Report, 20 p.

Forster, C.N., 1985: 1984 Kalzas Report; Internal Union Carbide Report, 8 p.

Lynch, Joseph Vincent Gregory, 1985: Mineralization and Alteration Zonation of the Kalzas Wolframite Vein Deposit, Yukon Territory, Canada; M.Sc. Thesis, Washington State University, 123 p.

Roots, C.F., 1997: Geology of the Mayo Map Area, Yukon Territory (105M); Bulletin 7, Exploration and Geological Services Division, Yukon Region, Indian and Northern Affairs Canada.

APPENDIX "A"

PROPERTY

<u>Claim Name</u>	<u>Grant Number</u>
PAT	YA38160
BLACKIE	YA38161
DAVID	YA38162
WOLF 1 – 2	YA42732-YA42733
WOLF 4	YA42735
WOLF 7	YB03688
WOLF 9	YB03690

APPENDIX "B"

Proposed Budget

Mobilization/Demob Fixed Wing	\$75,000
Helicopter 20 hrs @ \$1000	\$60,000
Core Drilling 2000 m @ \$150/m	\$300,000
Vehicle rental	\$10,000
Fuel Diesel/ JP4	\$45,000
Analyses - 1000 samples @ \$15 ea.	\$45,000
Camp & food	\$36,000
Report & Drafting	\$8,000
Supplies, shipping, communications	\$15,000
Geologist	\$30,000
Geotechnician	\$20,000
Contingency @ 10%	\$66,000
TOTAL	\$600,000

APPENDIX “C”

Summary Drill Logs

SUMMARY LOG

Hole: KZ 0505

Zone: North Upper Level Samples:

NAD 83 Zone 8V

Azimuth	232.00	
Dip	-45.00	

PROPERTY

Easting (m):	Northing (m):	Elevation (m):	Length (m)
514748	7015273		

Logger: G Dawson

Dates: 25-Aug 27-Aug

Kalzas

From (m)	To (m)	Interval (m)	Unit	Comments	Altn	From (m)	To (m)	Interval (m)	Sample No.	Sum QZ Vn	QZ Vn %	W %	WO3 %	Interval m	WO3 %
0.00	27.80	27.80	QZT	SST almost entirely silicified and		0.00	1.20	1.20	297218	0.77	2.77	0.24	0.30		
				tourmalinized to QZT around abundant		1.20	4.50	3.30	297219			0.38	0.48		
				vns and vnlt											
1.52	1.57			Fault, v poor recovery: qz vn fragmts											
				and wolf xtal frags											
						4.50	6.00	1.50	297220			0.12	0.15		
						6.00	7.00	1.00	297221			0.06	0.08		
				at 7.3 m: v broken 4 cm "A" vn with		7.00	8.00	1.00	297222			0.32	0.40		
				poss wolf. xtals on fractures		8.00	9.00	1.00	297223			0.29	0.37		
						9.00	9.80	0.80	297224			0.42	0.53		
9.80	10.30			"A" vn at 5 d, trace wolf xtals on HW		9.80	10.30	0.50	297225			0.97	1.22		
				margin		10.30	12.00	1.70	297226			0.15	0.19		
10.67	12.50			qz vn rubble, much lost		12.00	13.00	1.00	297227			0.27	0.34		
				at 13.95: 2 cm "A" vn at 60 d xcuts		13.00	14.00	1.00	297228			0.37	0.47	7.00	0.41901
				vnlt with flecks of flourecent m		14.00	15.00	1.00	297229			0.10	0.13		
				material		15.00	16.00	1.00	297230			0.10	0.13		
				at 16.4: 1.5 cm "A" vn at 65 d with		16.00	16.90	0.90	297231			0.07	0.09		
				abnt trm xtals and on 1 cm wolf xtal		16.90	17.40	0.50	297232			1.10	1.39	8.40	0.53292
						17.40	19.00	1.60	297233			0.09	0.11	10.40	0.3806
						19.00	20.00	1.00	297234			0.11	0.14		
						20.00	21.00	1.00	297235			0.19	0.24		
						21.00	22.40	1.40	297236			0.06	0.08		
				at 22.4: irreg "A" vn at 0 - 5 d, ,5 cm		22.40	24.40	2.00	297237			0.47	0.59	24.40	0.30388
				wolf xtals partially alt to scheelite		24.40	26.00	1.60	297238			0.09	0.11		
						26.00	27.00	1.00	297239			0.10	0.13		
27.80	38.40	10.60	SLT	SLT with minor SST interbeds at 45 d		27.00	29.00	2.00	297240	0.2	1.89	0.04	0.05		
				(note: sampler ran samples 297240		29.00	30.00	1.00	297242			0.04	0.05		
				and 297241 together)		30.00	31.00	1.00	297243			0.03	0.04		
				at 31: 4 cm "A" vn at 75 d with poss		31.00	32.50	1.50	297244			0.01	0.01		
				small frags of wolf on HW		32.50	34.40	1.90	297245			0.17	0.21		
						34.40	36.00	1.60	297246			0.01	0.01		

From (m)	To (m)	Interval (m)	Unit	Comments	Altn	From (m)	To (m)	Interval (m)	Sample No.	Sum QZ Vn	QZ Vn %	W %	WO3 %	Interval m	WO3 %
						36.00	38.40	2.40	297247			0.03	0.04		
38.40	40.80	2.40	QZT	Strongly altered SST around qz vnlt stwk to		38.40	40.00	1.60	297248	0	0	0.12	0.15		
				QZT		40.00	40.80	0.80	297249			0.18	0.23		
40.80	58.40		SLT	Dominantly SLT with interbedded SST		40.8	42	1.20	297250			0.04	0.05		
				SST locally altered to QZ around qz											
				vns and stwk											
42.00	42.30			qz vn, no contact, poss wolf		42.00	42.30	0.30	297251			0.17	0.21		
						42.30	44.21	1.91	297252			0.09	0.11		
						44.21	44.70	0.49	297253			0.06	0.08		
						44.70	47.00	2.30	297254			0.01	0.01		
						47.00	48.00	1.00	297255			0.02	0.03		
						48.00	49.00	1.00	297256			0.11	0.14		
						49.00	50.00	1.00	297257			0.03	0.04		
						50.00	51.00	1.00	297258			0.04	0.05		
						51.00	52.00	1.00	297259			0.09	0.11		
						52.00	53.00	1.00	297260			0.07	0.09		
						53.00	54.30	1.30	297261			0.03	0.04		
54.30	55.30			"A" vn at 45 d, minimal trm, trace wolf		54.30	55.30	1.00	297262			0.02	0.03		
				on FW margin?		55.30	57.00	1.70	297263			0.04	0.05		
						57.00	58.40	1.40	297264			0.04	0.05		
58.40	65.50	7.10	QZT	Strong silicification and tourmalinization of SST		58.40	60.00	1.60	297265	0.34	4.79	0.30	0.38		
				to QZT around abundant qz vns and		60.00	61.00	1.00	297266			0.12	0.15		
				stwk. Strong Feox on fractures		61.00	62.00	1.00	297267			0.15	0.19		
						62.00	63.00	1.00	297268			0.07	0.09		
						63.00	64.00	1.00	297269			0.11	0.14		
						64.00	65.50	1.50	297270			0.04	0.05		
65.50	100.61	35.11	SLT	Banded SLT interbedded with local		65.50	67.00	1.50	297271	0.63	1.79	0.12	0.15		
				SST layers. Bedding at 40 d. Local		67.00	68.00	1.00	297272			0.01	0.01		
				moderate to strong alteration to		68.00	70.00	2.00	297273			0.01	0.01		
				QZT generally confined to areas		70.00	70.90	0.90	297274			0.01	0.01		
				around qz vining and stwk in QZT											
70.90	71.60			v strong sil around stkwk of "A" vns		70.90	72.00	1.10	297275			0.02	0.03		
				with 1 cm corroded wolf xtals?		72.00	73.00	1.00	297276			0.02	0.03		
						73.00	74.00	1.00	297277			0.02	0.03		
						74.00	75.00	1.00	297278			0.04	0.05		
						75.00	77.00	2.00	297279			0.01	0.01		
						77.00	78.80	1.80	297280			0.01	0.01		
78.80	79.60			strong sil around "A" vn at 5 d		78.80	80.00	1.20	297281			0.04	0.05		
						80.00	82.00	2.00	297282			0.01	0.01		
						82.00	84.00	2.00	297283			0.03	0.04		
				at 84.05 20 cm "A" vn at 50 d with		84.00	85.00	1.00	297284			0.57	0.72		

SUMMARY LOG

Hole: KZ0501

Zone: SUL

Samples:

Azimuth	248.00	
Dip	-45	
Core:	BTW	

NAD 83 Zone 8V

PROPERTY
Kalzas

Easting (m):	Northing (m):	Elevation (m):	Length (m):
514958	7015240	1859	

Logger: G Dawson

Dates: Aug 11 to Aug 14

From (m)	To (m)	Interval (m)	Unit	Comments	Altn	From (m)	To (m)	Interval (m)	Sample No.	Sum QZ Vn	QZ Vn %	Wolf %	W %	WO3 %	Interval m	WO3 %
0.00	27.60		SST	SST with abundant strong sil and trm alteration to QZT, minor interbeds of SLT	sil, trm, ser	0.00	1.00	1.00	297001	1.38	5		0.05	0.063		
				2.8 to 3.1: "A" vn at 50 degrees. Tr wolframite		1.00	2.00	1.00	297002				0.03	0.038		
						2.00	2.80	0.80	297003				0.02	0.025		
						2.80	3.10	0.30	297004				0.01	0.013		
						3.10	5.00	1.90	297005				0.02	0.025		
						5.00	6.00	1.00	297006				0.06	0.076		
						6.00	8.00	2.00	297007				0.04	0.050		
						8.00	9.00	1.00	297008				0.03	0.038		
						9.00	10.00	1.00	297009				0.10	0.126		
				at 10.5: 2cm qz vn at 45 degrees, 5 % wolframite as 1.5 cm xtals		10.00	11.00	1.00	297010				0.19	0.240		
						11.00	12.00	1.00	297011				0.10	0.126		
						12.00	13.00	1.00	297012				0.09	0.113		
						13.00	14.00	1.00	297013				0.18	0.227		
						14.00	15.00	1.00	297014				0.06	0.076		
						15.00	16.00	1.00	297015				0.10	0.126		
				16 to 20 .5: interbedded SLT, qz vns rare		16.00	17.00	1.00	297016				0.13	0.164		
						17.00	18.00	1.00	297017				0.11	0.139		
						18.00	19.00	1.00	297018				0.15	0.189		
						19.00	20.00	1.00	297019				0.09	0.113		
				20.5 22.5: strong alteration to QZT around about stwk of "A" vns		20.00	21.00	1.00	297020				0.10	0.126		
				at 21.3: 2 cm "vn" at 30 degrees with trace wolframite		21.00	22.00	1.00	297021				0.24	0.303		
						22.00	23.00	1.00	297022				0.09	0.113		
				22.5 to 26.6: interbeds of SLT at 30		23.00	24.00	1.00	297023				0.03	0.038		
						24.00	26.00	2.00	297024				0.19	0.240		
						26.00	26.30	0.30	297025				0.12	0.151		
						26.30	27.60	1.30	297026				0.13	0.164		
27.60	33.35		QZT	strong alt around abund vns except 27.6 to 29.6: banded SLT with bedding at 45 degrees		27.60	29.60	2.00	297027	0.43	7.5		0.02	0.025		
				at 30.6: 25 cm qz vn at 45 d, 1 % wolf.		29.60	31.00	1.40	297028				0.78	0.984		
				at 31.7: 7 cm vn at 45 d with tr wolf.		31.00	32.00	1.00	297029				0.53	0.668	2.40	0.6883
						32.00	33.35	1.35	297030				0.06	0.076		
33.35	42.60		SST	SST with local interbes of SST at 50 degress		33.35	35.30	1.95	297031	0.2	2.2		0.01	0.013		
						35.30	35.60	0.30	297032				0.34	0.429		
						35.60	36.10	0.50	297033				0.01	0.013		
						36.10	38.00	1.90	297034				0.89	1.122	8.40	0.39331
						38.00	41.00	3.00	297035				0.13	0.164	11.40	0.30419
						41.00	42.20	1.20	297036				0.02	0.025		
						42.20	42.60	0.40	297037				0.02	0.025		
42.60	45.30		QZT	SST strongly altered to QZT except for local SST interbeds		42.60	44.00	1.40	297038	12	4.4		0.05	0.063		
						44.00	45.00	1.00	297039				0.25	0.315		

SUMMARY LOG

Hole: KZ0502

Zone: SUL

Samples: 40.00

PROPERTY
Kalzas

Easting (m):	Northing (m):	Elevation (m):	Length (m):
514939	7015221	1856	62.00

Logger: G Dawson
Dates: August 15 to 16 /05

Azimuth	250
Dip	-45
Core:	BTW

From (m)	To (m)	Interval (m)	Unit	Comments	Altn	From (m)	To (m)	Interval (m)	Sample No.	Sum QZ Vn	QZ Vn %	Wolf %	W %	WO3 %	Interval m	WO3 %
0.00	2.50		QZT	SST strongly sil and trm altered to	Sil Trm	0	2	2.00	297054	0.15	6		0.09	0.113		
				QZT around qz vns		2	2.5	0.50	297055				0.14	0.177		
2.50	12.20		slt/sst	interbedded at 45 degrees. Locally		2.5	5	2.50	297056	0.07	0.7		0.01	0.013		
				strongly sil and trm altered to black QZT		5	6.7	1.70	297057				<.01			
				around qz vns		6.7	7.3	0.60	297058				0.04	0.050		
						7.3	8.5	1.20	297059				0.05	0.063		
						8.5	10	1.50	297060				0.02	0.025		
						10	11	1.00	297061				0.05	0.063		
						11	12.2	1.20	297062				0.17	0.214		
12.20	15.90		SLT	Dominantly SLT with minor interbedded	Ser, Sil	12.2	14	1.80	297063	0.04	1.1		0.06	0.076		
				SST		14	15.9	1.90	297064				0.01	0.013		
15.90	17.60		QZT	Strong alteration around low angle vn	Sil Trm	15.9	17.6	1.70	297065	0.01	0.6		0.02	0.025		
17.60	23.20		SST	locally strongly sil and trm altered to	Sil Trm	17.6	18.6	1.00	297066				0.01	0.013		
				black QZT		18.6	20	1.40	297067				0.06	0.076		
				bedding at 55 degrees		20	22	2.00	297068				0.01	0.013		
						22	23.2	1.20	297069				0.03	0.038		
23.20	28.40		SLT	SLT interbedded with minor SST,		23.2	25.1	1.90	297070	0.03	0.6		<.01			
				locally altered to QZT bedding at 50		25.1	26.6	1.50	297071				0.02	0.025		
				3 fault zones		26.6	28.4	1.80	297072				0.01	0.013		
28.40	41.50		SST	SST locally altered black to QZT	Sil, Trm, Ser	28.4	29.5	1.10	297073	0.34	2.6		0.02	0.025		
				around qz vns and vnits		29.5	30.5	1.00	297074				0.04	0.050		
						30.5	31.5	1.00	297075				0.07	0.088		
						31.5	33	1.50	297076				0.04	0.050		
						33	34.5	1.50	297077				0.17	0.214		
						34.5	36.1	1.60	297078				0.03	0.038		
						36.1	38	1.90	297079				0.1	0.126		
						38	39.5	1.50	297080				0.1	0.126		
						39.5	41.5	2.00	297081				0.22	0.277	8.50	0.16067
41.50	48.00		slt/sst	Interbedded SLT and SST, lamination		41.5	42.6	1.10	297082	0.03	0.5		0.04	0.050		
				at 50 degrees. Vns and vnits scarce		42.6	45.2	2.60	297083				0.07	0.088		
						45.2	48	2.80	297084				0.01	0.013		
48.00	52.10		SST	SST locally strongly altered to QZT	Sil Trm	48	50	2.00	297085	0.08	1.9		0.09	0.113		
				local bedding at 70 degrees		50.00	52.10	2.10	297086				0.31	0.391		
52.10	56.30		SLT	SST with bedding at 15 degrees	Ser, sil trm	52.10	53.15	1.05	297087	0.1	2.4		0.1	0.126		
						53.15	55.00	1.85	297088				0.01	0.013		
						55.00	56.30	1.30	297089				0.13	0.164		
56.30	61.89		SST	SST with local QZT around vns and	sil, trm ser	56.30	57.30	1.00	297090	0.18	3.2	Tr	0.18	0.227		
				vnits		57.30	59.00	1.70	297091				0.04	0.050		
				56.4 to 56.6: "A" vn at 0 degrees		59.00	60.70	1.70	297092				0.08	0.101		
				several 3 to 5 mm xtals wolframite		60.70	62.00	1.30	297093				0.11	0.139	29.00	0.1299

SUMMARY LOG

Hole: KZ0503 Zone: SUL Samples:
 NAD 83 Zone 8V
 Easting (m): Northing (m): Elevation (m): Length (m):
 514958 7015240 1862
 Logger: G Dawson
 Dates: Aug 17 to Aug 18

Azimuth	50.00	
Dip	-45	
Core:	BTW	

PROPERTY
Kalzas

From (m)	To (m)	Interval (m)	Unit	Comments	Altn	From (m)	To (m)	Interval (m)	Sample No.	Sum QZ Vn	QZ Vn %	Wolf %	w %	WO3 %	Interval m	WO3 %
0.00	15.00	15.00	SST	Weakly bedded, altered to black QZT	Sil, Trm	0.00	1.50	1.50	297101	0.31	2.1		0.01	0.01		
				around Qz vns and stockwork		1.50	3.00	1.50	297102				0.02	0.03		
				Vns and stwk, lack visible wolframite		3.00	4.00	1.00	297103				0.22	0.28		
				except as noted		4.00	5.00	1.00	297104				0.41	0.52		
				Local interbedded SLT at 55 degrees		5.00	6.50	1.50	297105				0.02	0.03		
						6.50	7.70	1.20	297106				0.15	0.19		
				7.7 to 8.5: interbed of SLT		7.70	8.50	0.80	297107				0.16	0.20		
				at 8.6: 5 cm "A" vn at 10 degrees with		8.50	9.00	0.50	297108				0.56	0.71		
				1 cm wolframite xtals		9.00	10.00	1.00	297109				0.09	0.11		
						10.00	11.00	1.00	297110				0.22	0.28	8.00	0.24558
						11.00	13.00	2.00	297111				0.06	0.08		
						13.00	14.00	1.00	297112				0.03	0.04		
						14.00	15.00	1.00	297113				0.04	0.05		
15.00	21.50	6.50	SLT	SST with minor interbeds of SST	Ser	15.00	17.00	2.00	297114	0.05	0.8		0.03	0.04		
				bedding at 30 degrees		17.00	18.70	1.70	297115				0.01	0.01		
				at 18.5: 5 cm "A" vn at 45 degrees		18.70	20.10	1.40	297116				0.02	0.03		
				20.1 to 21.0: fault Bx		20.10	21.50	1.40	297117				0.02	0.03		
21.50	25.60	4.10	SST	Locally silicified and tourmalinized to	Sil, Trm	21.50	23.00	1.50	297118	0.01	0.3		0.08	0.10		
				QZT around Qz vns and vnlt		23.00	24.50	1.50	297119				0.04	0.05		
						24.50	25.60	1.10	297120				0.01	0.01		
25.60	31.40	5.80	SLT	Bedding / lamination at 45 degrees		25.60	28.00	2.40	297121	0.07	1.2		0.02	0.03		
				occassional "A"vns		28.00	29.00	1.00	297122				0.26	0.33		
						29.00	30.00	1.00	297123				0.12	0.15	2.00	0.23959
						30.00	31.40	1.40	297124				0.07	0.09		
31.40	37.30	5.90	sst/slt	interbedded SST and SLT bedding at		31.40	32.50	1.10	297125	0.05	0.8		0.05	0.06		
				45 degrees. QZT alteration generally		32.50	34.00	1.50	297126				0.06	0.08		
				confined to around vns and vnlt in		34.00	35.50	1.50	297127				0.01	0.01		
				SST		35.50	37.30	1.80	297128				0.01	0.01		
				133 - 134 strg sil and trm and tr wolf?												
37.30	79.30	42.00	SST	SST locally interbedded with laminated		37.30	39.00	1.70	297129	1.67	4.0*		<.01			
				SLT. Core locally altered to QZT		39.00	40.40	1.40	297130				0.01	0.01		
				around Qz vns and stwk.		40.40	41.40	1.00	297131				0.04	0.05		
						41.40	42.40	1.00	297132				0.14	0.18		
						42.20	43.50	1.30	297133				0.03	0.04		
						43.50	46.00	2.50	297134				0.08	0.10		
						46.00	47.00	1.00	297135				0.05	0.06		
						47.00	49.20	2.20	297136				0.01	0.01		
						49.20	50.80	1.60	297137				0.10	0.13		
				50.8 to 52.0 "A" vn at 0 degrees		50.80	52.00	1.20	297138				0.76	0.96		
				true thickness ?? Abund wolf xtals		52.00	53.80	1.80	297139				0.09	0.11	4.60	0.26042
				towards footwall contact		53.80	54.00	0.20	297140				0.01	0.01		

SUMMARY LOG

Hole: KZ0504

Zone: SUL

Samples:

Azimuth	140.00	
Dip	-45	
Core:	BTW	

NAD 83 Zone 8V

PROPERTY
Kalzas

Easting (m):	Northing (m):	Elevation (m):	Length (m):
514878	7015240	1877	89.00

Logger: G Dawson

Dates: g 20 to Aug 22

From (m)	To (m)	Interval (m)	Unit	Comments	Altn	From (m)	To (m)	Interval (m)	Sample No.	Sum QZ Vn	QZ Vn %	Wolf %	W %	WO3 %	Interval m	WO3 %
0.00	9.90	9.90	SST	local alteration to QZT around rare vns and vnlt	Wk sil, trm	0.00	2.00	2.00	297162	0.02	0.2		0.01	0.013		
						2.00	4.00	2.00	297163				<.01			
						4.00	6.00	2.00	297164				0.02	0.025		
						6.00	8.00	2.00	297165				<.01			
						8.00	9.90	1.90	297166				<.01			
9.90	12.80	2.90		SLT, lamination/ bedding at 10 d.		9.90	12.80	2.90	297167				<.01			
12.80	21.50	8.70	SST	SST, locally strongly altered to QZT around qz vns and stwk		12.80	14.00	1.20	297168	0	0		0.06	0.076		
						14.00	15.00	1.00	297169	0.4	4.6		0.01	0.013		
						15.00	16.00	1.00	297170				0.04	0.050		
						16.00	17.00	1.00	297171				0.12	0.151		
						17.00	18.00	1.00	297172				0.19	0.240		
						18.00	19.00	1.00	297173				0.07	0.088		
				at 19.2: 10 cm "A" vn at 30 degrees one 1 cm wolframite crystal		19.00	20.00	1.00	297174				0.36	0.454		
				at 19.5 to 19.6: skim of "A" vn a 0 d abund 1cm wolframite xtals												
						20.00	21.50	1.50	297175	1	1.2		0.15	0.189	5.50	0.22125
21.50	32.80	11.30	SLT	bedding / lamination at 10 - 15 d.		21.50	23.00	1.50	297176				0.06	0.076		
				local silicification around low angle possibly bedding parallel qz vns		23.00	25.00	2.00	297177				0.01	0.013		
						25.00	27.00	2.00	297178				0.03	0.038		
						27.00	29.00	2.00	297179				<.01			
						29.00	31.00	2.00	297180				0.02	0.025		
						31.00	32.80	1.80	297181				0.04	0.050		
32.80	41.50	8.70	SST	local interbedding with SLT at 10 d locally altered to QZT around mod to strong development of qz vns and vnlt		32.80	34.00	1.20	297182	0.16	4.3		0.03	0.038		
						34.00	35.00	1.00	297183				0.01	0.013		
						35.00	36.50	1.50	297184				<.01			
						36.50	38.00	1.50	297185				<.01			
						38.00	39.90	1.90	297186				0.05	0.063		
						39.90	41.50	1.60	297187				0.11	0.139		
41.50	70.05	28.55	SLT	Bedding / lamination at 5 - 10 d. scattered vns and vnlt with narrow envelopes of QZT, but little stwk.		41.50	43.40	1.90	297188	0.55	1.93		0.02	0.025		
						43.40	45.20	1.80	297189			1	0.12	0.151		
						45.20	47.00	1.80	297190				0.04	0.050		
						47.00	49.00	2.00	297191				<.01			
						49.00	51.00	2.00	297192				<.01			
						51.00	52.60	1.60	297193				<.01			
						52.60	53.70	1.10	297194				0.06	0.076		

APPENDIX “D”

Assay Certificates



GEOCHEMICAL ANALYSIS CERTIFICATE



Copper Ridge Exploration Inc. PROJECT Kalzas File # A504981 Page 1

500 - 625 Howe St., Vancouver BC V6C 2T6 Submitted by: Greg Dawson

SAMPLE#	Mo ppm	Cu ppm	Pb ppm	Zn ppm	Ag ppm	Ni ppm	Co ppm	Mn ppm	Fe %	As ppm	U ppm	Au ppb	Th ppm	Sr ppm	Cd ppm	Sb ppm	Bi ppm	V ppm	Ca %	P %	La ppm	Cr ppm	Mg %	Ba ppm	Ti %	B ppm	Al %	Na %	K %	W ppm	Hg ppm	Sc ppm	Tl ppm	S %	Ga ppm	Se ppm	W* %	Sample kg
297001	1.4	14.5	63.6	7	1.8	1.6	1.3	44	.77	49.4	.4	11.4	3.8	3	.1	4.2	88.1	2	.02	.006	9	4.4	.03	20	.005	38	.17	.006	.10	>100	.05	.3	.2	.12	1	<.5	.05	.94
297002	2.5	28.9	16.3	13	.9	2.5	1.7	47	1.91	184.6	.9	7.9	6.0	5	.1	2.3	20.4	4	.01	.013	11	7.3	.05	58	.010	24	.26	.008	.18	>100	.08	.7	.3	.21	1	<.5	.03	1.51
297003	1.3	54.4	13.0	12	.4	1.6	1.1	41	2.11	155.5	1.1	3.9	8.0	5	.1	1.8	11.1	5	.02	.025	14	9.5	.07	49	.011	21	.35	.009	.24	93.5	.04	.8	.6	.24	1	<.5	.02	1.53
297004	4.0	6.5	18.7	2	.8	1.4	.5	23	.62	34.1	.1	6.9	.4	<1	<1	4.6	119.5	<1	<.01	.003	<1	4.3	<.01	2	.001	8	.02	.003	.01	>100	.03	.1	<.1	.06	<1	<.5	.01	.46
297005	1.8	33.9	13.9	13	.3	3.3	1.7	48	1.69	81.0	1.3	3.5	9.4	7	.1	1.8	20.1	5	.01	.019	22	8.7	.06	65	.010	31	.53	.014	.32	>100	.05	.9	.5	.24	1	<.5	.02	2.16
RE 297005	1.7	34.5	14.6	14	.3	3.5	1.8	43	1.69	82.8	1.3	4.1	10.1	8	.1	2.0	20.5	5	.01	.019	23	9.1	.07	68	.010	35	.55	.015	.33	>100	.05	1.0	.6	.25	2	<.5	.02	-
RRE 297005	1.8	37.9	13.9	13	.3	3.7	1.9	46	1.71	96.6	1.4	5.1	10.2	8	.1	2.0	17.8	5	.02	.020	23	9.6	.06	71	.011	34	.54	.016	.33	91.6	.03	1.0	.5	.25	1	<.5	.02	-
297006	2.2	25.0	35.6	15	1.1	2.6	1.5	49	2.14	218.2	.5	12.4	5.5	14	.1	3.3	57.1	2	.01	.016	12	6.3	.03	36	.005	23	.26	.024	.22	>100	.08	.5	.6	.35	1	<.5	.06	1.53
297007	2.3	19.4	18.4	7	.6	2.7	1.9	44	1.29	87.3	.4	17.5	4.1	3	.1	2.2	46.6	2	.01	.008	10	6.9	.04	37	.003	33	.31	.009	.21	>100	.09	.5	.4	.23	1	<.5	.04	2.96
297007	.7	381.3	9.3	12	.2	8.4	5.4	78	1.29	81.8	.8	9.2	5.1	5	.1	1.1	16.4	5	.01	.007	8	11.2	.13	38	.024	20	.83	.012	.31	>100	.05	1.0	.8	.34	2	<.5	.03	2.15
297009	1.8	11.3	53.5	9	1.5	3.0	1.8	80	1.16	137.6	.4	13.5	2.7	5	.2	5.9	73.0	2	.01	.008	7	6.3	.05	28	.003	28	.29	.005	.21	>100	.06	.5	.4	.11	1	<.5	.10	1.38
297010	5.9	48.9	75.9	169	2.1	9.0	4.2	135	1.71	129.0	1.5	13.8	7.6	12	.4	11.7	67.8	3	.04	.016	15	11.6	.09	50	.007	27	.35	.013	.24	>100	.06	.7	.7	.21	1	<.5	.19	1.86
297011	2.3	96.3	16.1	26	.3	14.3	7.4	107	2.32	76.1	1.3	2.9	8.4	4	.3	1.7	6.6	7	<.01	.011	16	11.9	.16	53	.039	14	.79	.007	.37	>100	.12	.9	1.0	.16	2	<.5	.10	1.54
297012	4.3	138.7	30.0	24	.2	16.7	9.0	122	2.46	45.7	1.4	9.5	9.1	3	.2	4.0	104.6	7	.01	.010	14	13.6	.16	53	.043	11	.88	.007	.41	>100	.11	1.1	1.2	.31	2	<.5	.09	1.61
297013	7.3	104.1	43.6	58	.3	16.9	5.8	135	3.56	294.3	1.6	7.6	10.8	2	1.4	8.7	34.2	3	<.01	.022	25	6.7	.04	47	.003	32	.57	.005	.26	>100	.07	1.0	.3	.06	2	<.5	.18	1.91
297014	1.4	147.8	24.3	17	.3	7.3	6.1	63	1.30	57.4	.7	7.7	4.1	4	.3	2.6	55.3	3	<.01	.007	8	7.7	.05	28	.005	16	.48	.004	.15	>100	.04	.7	.6	.27	1	<.5	.06	1.49
297015	1.9	86.9	17.6	22	.4	11.9	7.4	102	2.06	120.3	.9	6.5	7.4	7	.6	2.2	18.0	3	<.01	.014	12	8.0	.06	33	.004	29	.66	.005	.19	>100	.07	.9	.9	.20	2	.7	.10	1.56
297016	6.0	50.3	37.7	24	1.2	9.1	4.1	64	2.59	141.4	1.3	7.3	7.6	2	.4	6.2	97.9	3	<.01	.018	15	5.9	.04	49	.003	38	.45	.004	.19	>100	.05	.8	.3	.12	1	<.5	.13	1.38
297017	7.5	84.3	18.9	64	.3	14.9	10.8	276	4.34	418.5	2.3	9.4	15.2	1	.8	4.2	5.2	5	<.01	.031	30	6.3	.03	45	.004	27	.45	.004	.23	>100	.14	1.3	.3	.07	1	<.5	.11	1.56
297018	10.3	67.8	28.2	43	.5	13.8	5.7	89	3.55	146.8	1.7	6.5	10.8	2	.6	4.2	8.5	7	<.01	.022	23	7.9	.04	43	.003	39	.62	.003	.18	>100	.07	1.1	.3	.08	2	<.5	.15	1.72
297019	5.2	68.9	20.7	32	.3	10.1	4.5	66	3.47	150.0	1.3	6.7	10.4	3	.3	3.4	12.2	3	<.01	.017	23	6.5	.03	41	.003	47	.47	.004	.21	>100	.09	1.1	.3	<.05	1	<.5	.09	1.09
297020	3.6	38.5	46.1	15	.4	3.9	2.2	54	1.44	185.9	1.0	16.0	6.2	3	.3	4.8	65.3	1	<.01	.014	12	4.9	.02	25	.002	28	.23	.003	.14	>100	.07	.5	2	<.05	1	<.5	.10	1.59
297021	6.6	23.1	72.3	4	2.0	1.6	.8	93	.86	279.7	.7	16.2	4.4	2	.1	9.9	112.2	1	.02	.008	7	5.6	.03	17	.002	29	.20	.003	.12	>100	.05	.3	3	<.05	1	<.5	.24	1.86
297022	2.0	37.7	21.7	14	.3	1.8	.8	43	1.85	324.6	.7	9.1	6.3	2	.1	4.1	22.5	4	.01	.013	11	6.6	.03	46	.002	32	.33	.003	.21	>100	.06	.8	4	<.05	1	<.5	.09	1.57
297023	26.0	19.0	34.1	6	.3	4.3	1.7	49	1.52	283.0	1.3	9.6	10.8	2	<.1	2.2	55.1	5	.01	.009	23	8.9	.04	57	.005	20	.57	.005	.19	>100	.06	1.0	4	<.05	1	<.5	.03	1.25
297024	10.4	132.3	22.2	7	.4	10.8	6.8	102	1.54	81.7	1.8	5.9	9.9	3	<.1	2.5	41.1	7	.01	.011	22	11.9	.08	95	.013	11	.83	.005	.24	>100	.06	1.3	.6	.26	2	<.5	.19	3.13
297025	17.5	40.2	38.2	12	.3	2.5	1.1	59	2.21	83.7	1.0	4.8	5.4	1	<.1	4.4	39.3	1	<.01	.019	15	3.9	.01	30	.001	30	.21	.003	.09	>100	.07	.6	3	<.05	<1	<.5	.12	.66
297025	11.6	40.9	35.0	8	.3	3.3	1.2	55	1.78	173.1	1.6	9.5	10.3	2	.1	4.9	30.9	2	.01	.018	27	5.4	.02	26	.002	36	.42	.004	.15	>100	.05	.8	2	<.05	1	<.5	.13	2.12
297026	3.5	35.7	8.1	7	.2	3.2	.6	28	2.11	29.5	1.9	12.8	15.1	4	<.1	1.4	9.2	7	<.01	.020	41	10.2	.04	44	.010	17	.81	.005	.24	>100	.03	1.2	4	<.05	2	<.5	.02	3.21
297028	15.2	45.6	75.8	11	.9	3.5	1.1	452	2.44	205.9	2.0	7.7	9.7	3	.1	16.4	157.7	2	.01	.028	25	6.9	.02	28	.002	36	.27	.005	.14	>100	.05	1.3	6	<.05	1	<.5	.78	2.11
297029	9.8	25.8	45.3	9	.4	1.4	.5	172	1.41	227.4	1.0	10.2	6.0	2	.1	12.1	62.5	1	.02	.011	12	5.7	.02	25	.002	25	.23	.003	.14	91.7	.02	.6	6	<.05	1	<.5	.53	1.68
297030	7.5	48.4	28.0	16	.4	8.2	5.6	56	2.29	428.8	1.5	9.3	8.9	4	.3	4.8	9.4	6	.01	.014	19	12.0	.07	59	.015	24	.56	.004	.23	>100	.12	1.1	1.1	.10	2	<.5	.06	2.13
297031	2.5	42.5	5.4	30	.2	21.7	12.4	130	2.08	49.5	1.8	4.9	10.6	10	.6	2.5	9.1	14	.01	.017	26	18.6	.31	79	.047	10	1.22	.009	.53	73.3	.02	1.6	1.5	.34	3	<.5	.01	3.38
297032	104.5	20.2	392.3	8	7.7	3.2	1.1	209	1.04	93.3	2.4	74.4	6.8	2	<.1	46.3																						



SAMPLE#	Mo ppm	Cu ppm	Pb ppm	Zn ppm	Ag ppm	Ni ppm	Co ppm	Mn ppm	Fe %	As ppm	U ppm	Au ppb	Th ppm	Sr ppm	Cd ppm	Sb ppm	Bi ppm	V ppm	Ca %	P %	La ppm	Cr ppm	Mg %	Ba ppm	Ti %	B ppm	Al %	Na %	K %	W ppm	Hg ppm	Sc ppm	Tl ppm	S %	Ga ppm	Se ppm	W* %	Sample kg
297033	1.1	90.8	3.5	45	.1	29.4	11.8	20	1.05	33.1	1.7	2.6	10.8	3	3.4	1.3	2.7	4	.01	.011	20	5.7	.04	43	.006	10	.42	.007	.26	16.0	.01	1.0	.4	.86	1	.6	.01	.86
297034	1.1	33.2	7.9	29	.3	23.3	14.0	482	2.74	70.8	1.2	1.8	8.6	7	.1	1.1	9.5	15	.03	.018	12	19.9	.44	103	.038	5	1.12	.009	.46	>100	.05	1.6	2.8	.22	3	<.5	.89	2.99
297035	5.9	37.2	17.0	25	.7	3.7	1.2	58	3.55	265.6	.7	7.5	8.3	3	.1	7.2	23.4	3	.01	.018	12	7.0	.05	33	.005	17	.32	.005	.19	>100	.05	.8	.3	<.05	1	<.5	.13	2.92
297036	1.0	74.1	5.9	12	.2	23.3	14.0	69	1.56	17.3	1.2	1.1	10.1	6	.1	.5	6.3	8	.01	.010	17	13.0	.19	94	.034	7	.87	.007	.40	93.7	<.01	1.2	1.3	.39	2	<.5	.02	4.31
297037	1.1	34.9	2.8	4	.1	1.2	.5	13	1.35	19.6	1.2	2.1	17.0	2	<.1	.6	3.5	4	<.01	.011	46	4.9	.02	41	.004	10	.37	.005	.23	>100	.02	.8	.2	<.05	1	.5	.02	.82
297038	3.1	46.0	27.2	7	.2	1.6	.6	33	2.01	209.4	1.1	5.2	9.3	2	<.1	4.4	23.4	3	<.01	.013	16	6.4	.02	26	.004	22	.30	.004	.18	>100	.04	.9	.2	<.05	1	<.5	.05	2.21
297039	4.5	59.8	27.3	17	.2	2.8	1.8	119	2.41	205.3	1.0	7.8	6.2	1	<.1	4.9	61.5	1	<.01	.012	7	5.5	.02	20	.002	19	.26	.003	.16	>100	.03	.8	.3	<.05	1	<.5	.25	1.47
297040	2.0	75.0	6.0	22	.1	13.6	8.4	67	2.28	49.2	1.1	1.6	8.1	3	<.1	.8	5.9	8	.01	.015	13	10.8	.16	45	.015	11	.71	.007	.27	>100	.01	1.0	.9	.47	2	<.5	.02	4.13
297041	.7	142.4	2.8	20	.1	20.8	14.4	102	1.64	6.6	1.3	26.8	8.2	3	.1	.5	40.6	12	.02	.008	11	16.6	.27	60	.046	3	1.08	.009	.45	>100	.05	1.2	1.2	.55	3	<.5	.12	2.15
297042	.7	26.5	14.0	16	.5	1.8	1.3	31	.96	83.8	.4	6.2	6.2	3	.1	3.8	23.5	3	<.01	.007	11	6.7	.02	34	.002	22	.26	.005	.23	>100	.03	.5	.3	.26	1	.5	.02	1.67
297043	2.7	24.9	52.2	21	1.9	1.1	.5	25	1.44	668.4	.3	16.2	4.4	1	.2	12.6	70.0	2	<.01	.010	7	7.2	.01	31	.002	16	.17	.003	.13	>100	.11	.4	.2	<.05	1	<.5	.05	1.70
297044	1.3	23.9	14.9	18	.4	.9	.5	37	1.74	248.1	.4	5.0	4.8	3	<.1	4.2	12.3	3	<.01	.017	11	5.8	.03	47	.003	15	.24	.004	.18	>100	.04	.5	.3	<.05	1	.8	.04	1.52
297045	1.0	56.1	6.3	12	.3	1.9	1.0	27	1.56	76.6	1.6	1.0	17.9	2	.1	.7	1.8	8	.01	.016	37	11.0	.04	134	.015	8	.56	.005	.23	24.1	.01	1.1	.4	<.05	2	<.5	.01	1.27
297046	2.1	45.0	16.3	11	.3	1.4	.8	63	1.77	330.2	.5	8.0	7.1	2	<.1	4.3	23.9	3	<.01	.011	9	7.6	.02	28	.002	14	.22	.003	.16	>100	.02	.5	.3	<.05	1	.5	.10	3.18
297047	3.1	43.1	12.5	30	.2	3.6	1.4	59	2.68	110.3	.8	4.4	9.5	2	<.1	3.7	21.4	5	.01	.013	14	10.3	.08	47	.015	11	.46	.006	.27	>100	.05	.8	.7	.13	1	<.5	.08	2.45
297048	8.3	45.8	17.0	21	.3	3.9	1.7	38	2.49	168.2	.9	7.3	6.4	1	<.1	5.2	25.7	2	<.01	.017	11	4.5	.02	25	.003	27	.25	.004	.15	>100	.06	.5	.2	.08	1	<.5	.08	.44
RE 297048	8.0	44.0	16.1	20	.3	3.8	1.5	41	2.39	162.2	.8	6.9	6.0	1	.1	5.0	24.3	2	<.01	.016	10	4.3	.02	23	.003	26	.23	.004	.15	>100	.05	.5	.2	.07	1	<.5	.08	-
RRE 297048	7.0	47.1	16.8	28	.6	4.4	1.7	41	2.88	181.8	.9	5.4	6.3	1	<.1	4.9	27.8	2	<.01	.017	9	4.9	.02	25	.002	26	.22	.003	.13	>100	.05	.6	.2	.10	1	<.5	.10	-
297049	1.2	71.9	3.0	56	.1	33.7	17.2	106	2.24	13.6	1.3	.8	9.4	2	.7	.7	2.2	11	.01	.009	17	14.9	.27	57	.027	8	.95	.007	.41	34.1	.01	1.2	.9	.57	2	<.5	.01	1.75
297050	2.5	114.8	7.2	111	.2	45.6	20.9	303	2.52	8.2	1.9	5.0	8.8	3	.3	2.9	8.8	9	.03	.019	20	12.5	.24	66	.029	9	.70	.007	.40	10.0	.01	1.3	.7	.88	2	.6	.01	2.56
297051	2.8	46.9	7.4	51	.2	9.6	3.2	64	2.70	43.0	.6	3.1	7.0	2	.1	1.2	11.1	6	.01	.010	11	10.9	.08	35	.013	13	.58	.005	.20	36.5	.01	.9	.4	.19	1	<.5	.01	3.20
297052	1.1	65.0	2.5	47	.1	30.9	16.1	482	2.47	12.5	1.2	3.7	8.5	2	.1	.3	5.3	10	.02	.009	18	13.4	.31	69	.042	8	.86	.007	.47	29.7	<.01	1.1	1.0	.58	2	<.5	.01	3.89
297053	3.3	75.8	5.3	159	.1	35.2	22.1	50	2.22	28.7	1.4	2.3	8.6	2	.3	.7	1.8	6	.01	.012	17	8.0	.09	47	.020	12	.53	.004	.27	70.1	.02	.9	1.1	.58	1	<.5	.01	2.28
STANDARD DS6/CT-1	11.7	123.9	28.4	144	.3	24.8	10.7	704	2.81	20.7	6.6	46.0	3.0	38	6.0	3.5	5.0	56	.85	.078	13	187.3	.57	163	.079	16	1.90	.072	.14	3.9	.23	3.2	1.8	<.05	6	4.6	1.09	-

Sample type: DRILL CORE R150. Samples beginning 'RE' are Reruns and 'RRE' are Reject Reruns.



GEOCHEMICAL ANALYSIS CERTIFICATE



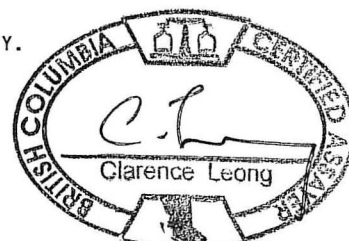
Copper Ridge Exploration Inc. PROJECT Kalzas File # A504982 Page 1

500 - 625 Howe St., Vancouver BC V6C 2T6 Submitted by: Greg Dawson

SAMPLE#	Mo	Cu	Pb	Zn	Ag	Ni	Co	Mn	Fe	As	U	Au	Th	Sr	Cd	Sb	Bi	V	Ca	P	La	Cr	Mg	Ba	Ti	B	Al	Na	K	W	Hg	Sc	Tl	S	Ga	Se	W*	Sample
	ppm	ppm	ppm	ppm	ppm	ppm	ppm	ppm	%	ppm	ppm	ppb	ppm	ppm	ppm	ppm	ppm	ppm	%	%	ppm	ppm	%	ppm	%	%	%	%	%	ppm	ppm	ppm	ppm	%	ppm	ppm	%	kg
297054	6.5	31.7	26.8	7	.3	3.5	.9	56	1.47	242.9	.8	5.7	8.4	3	<.1	6.4	19.8	2	.05	.013	19	5.4	.05	41	.003	31	.27	.004	.18	>100	.08	.7	.4	<.05	1	<.5	.09	1.83
297055	3.8	28.2	39.4	6	.8	2.1	.8	51	1.30	223.7	.6	9.0	5.3	1	.1	14.4	86.8	<.1	.01	.015	11	5.1	.02	18	.002	15	.09	.002	.05	>100	.10	.3	.2	<.05	<.1	<.5	.14	1.35
297056	1.7	39.6	5.8	22	.1	6.2	2.7	30	1.61	24.2	1.3	2.1	12.1	3	.2	.8	2.2	7	.01	.010	31	11.4	.10	51	.015	9	.71	.005	.24	63.0	.02	.9	.5	.07	2	<.5	.01	3.58
297057	3.2	51.4	3.9	63	.1	17.9	6.6	128	2.51	46.3	2.1	3.0	14.0	4	.2	.7	5.4	13	.01	.022	40	16.5	.31	84	.032	11	1.07	.007	.41	17.0	.01	1.2	1.1	.18	3	<.5	<.01	2.96
297058	16.0	26.6	20.7	20	1.6	5.4	1.6	65	2.25	76.0	1.2	167.8	5.5	3	<.1	6.1	407.9	8	.01	.020	15	10.5	.09	48	.015	11	.73	.004	.21	>100	.11	.9	.6	<.05	2	<.5	.04	1.13
297059	4.8	62.0	3.0	39	.1	15.3	6.1	79	3.42	105.7	1.7	2.4	11.7	3	<.1	1.8	4.9	14	.01	.030	31	15.7	.11	68	.016	6	.89	.006	.28	>100	.12	1.6	.7	.19	2	.5	.05	1.65
297060	5.3	16.1	7.4	9	.1	2.4	.8	33	1.49	89.9	1.4	1.7	13.8	2	.1	2.0	6.3	4	<.01	.015	45	7.3	.05	47	.011	13	.42	.004	.23	>100	.07	.9	.4	<.05	1	<.5	.02	2.54
RE 297060	5.7	15.9	8.0	9	.1	2.2	.8	33	1.51	92.4	1.4	1.2	14.0	2	<.1	2.0	6.7	4	<.01	.016	45	7.0	.05	46	.011	13	.41	.004	.22	>100	.08	.9	.4	<.05	1	<.5	.02	-
RRE 297060	5.1	16.0	7.7	9	.1	2.3	.7	31	1.48	91.1	1.4	1.8	13.9	2	.1	2.1	5.0	4	<.01	.016	44	7.2	.05	44	.012	16	.41	.004	.22	>100	.06	.9	.4	<.05	1	<.5	.02	-
297061	3.7	29.8	9.4	10	.1	1.5	.5	67	1.80	188.5	1.2	3.9	12.4	2	.1	2.8	12.0	5	<.01	.017	36	7.4	.03	55	.005	28	.38	.005	.23	>100	.10	1.1	.3	<.05	1	<.5	.05	1.63
297062	17.7	44.5	51.3	29	.4	4.8	1.2	69	3.78	254.8	1.4	6.5	8.9	2	.1	8.5	40.4	3	<.01	.037	19	6.6	.03	33	.005	19	.29	.003	.16	>100	.15	1.3	.3	<.05	1	<.5	.17	1.91
297063	8.5	60.3	22.4	25	.3	4.7	1.4	52	4.19	353.9	2.1	5.2	13.3	2	.1	3.1	10.7	8	<.01	.038	35	10.2	.04	61	.009	16	.54	.004	.21	>100	.16	1.3	.5	<.05	2	<.5	.06	3.15
297064	1.2	39.9	3.6	15	.1	1.6	.5	17	2.65	278.7	1.7	.9	17.6	4	.1	1.0	1.5	7	<.01	.020	49	8.9	.03	50	.005	11	.36	.005	.24	48.6	.04	1.1	.4	<.05	1	<.5	.01	3.32
297065	2.2	43.6	8.8	10	.1	1.7	.6	28	1.83	236.1	.7	2.7	6.1	3	<.1	2.0	8.1	3	.01	.010	12	8.5	.03	39	.002	28	.28	.002	.17	>100	.06	.8	.3	<.05	1	<.5	.02	3.21
297066	3.4	50.9	5.0	23	.3	2.7	.9	34	2.50	2209.0	3.1	6.3	16.1	9	1.2	3.3	.7	12	<.01	.022	55	14.2	.07	112	.021	13	.65	.007	.35	21.1	.02	1.7	.8	<.05	2	.6	.01	1.63
297067	3.1	49.0	20.0	33	.3	2.8	.8	40	2.33	882.7	1.4	8.3	10.1	2	.4	3.1	11.3	3	<.01	.018	29	5.9	.03	79	.003	28	.31	.004	.20	>100	.14	1.0	.4	<.05	1	<.5	.06	2.52
297068	2.2	23.0	9.8	9	.2	11.7	.5	23	.98	1019.5	2.2	2.1	11.1	4	.1	1.6	2.9	6	.01	.010	33	10.4	.03	88	.015	8	1.01	.003	.14	30.2	.02	1.2	.5	<.05	2	<.5	.01	2.71
297069	6.1	51.1	32.4	26	.6	2.4	1.0	30	1.96	380.2	1.5	5.4	11.3	2	.1	9.8	10.7	3	<.01	.020	26	7.9	.03	42	.004	21	.33	.003	.20	>100	.09	1.0	.3	<.05	1	<.5	.03	1.85
297070	3.5	43.1	4.3	5	.1	1.4	.4	16	1.20	201.5	1.7	2.3	17.7	3	.1	.9	3.6	4	<.01	.010	51	6.3	.02	42	.004	12	.30	.004	.19	24.1	.02	.9	.3	<.05	1	<.5	<.01	2.70
297071	1.6	60.9	9.1	13	.2	1.5	.6	19	2.34	475.1	2.1	2.9	18.0	3	.1	1.8	24.0	10	<.01	.017	48	10.4	.03	67	.006	15	.42	.005	.24	78.0	.05	2.1	.4	<.05	1	<.5	.02	2.99
297072	4.7	65.1	9.1	17	.2	2.9	1.2	18	2.50	379.2	2.5	2.8	15.0	4	.1	2.6	2.6	7	<.01	.026	43	10.9	.04	59	.011	16	.46	.005	.23	34.2	.02	1.6	.4	<.05	2	<.5	.01	3.01
297073	4.4	53.0	7.5	8	.2	1.9	.8	26	1.69	97.1	.7	3.0	7.7	1	<.1	1.3	4.2	3	<.01	.008	16	8.0	.03	25	.005	14	.56	.003	.17	>100	.06	.8	.3	<.05	1	<.5	.02	1.53
297074	5.4	63.5	7.5	11	.1	1.4	.6	28	2.36	65.5	1.0	3.0	11.4	1	<.1	1.5	5.9	3	<.01	.017	28	7.1	.02	39	.003	21	.42	.004	.20	>100	.10	1.0	.3	<.05	1	<.5	.04	1.78
297075	7.7	66.1	9.8	6	.1	3.5	.8	21	1.64	89.4	1.0	1.6	10.0	1	<.1	1.9	2.9	5	<.01	.011	19	8.5	.03	25	.006	9	.48	.002	.13	>100	.06	.8	.3	<.05	2	<.5	.07	1.31
297076	2.5	40.9	5.7	7	.2	10.6	1.1	44	2.42	51.1	1.1	2.8	9.6	1	<.1	1.8	3.5	8	.01	.019	19	10.1	.04	31	.005	6	.99	.002	.12	>100	.09	1.2	.3	<.05	2	<.5	.04	2.18
297077	9.8	43.1	66.5	12	1.5	2.5	.8	72	1.73	132.3	1.0	14.4	9.4	3	<.1	5.3	163.0	5	.02	.014	16	7.9	.02	26	.002	17	.38	.002	.12	>100	.10	1.0	.3	<.05	1	<.5	.17	2.50
297078	4.1	51.5	10.1	16	.2	7.4	1.2	35	2.46	226.4	1.5	3.1	11.4	2	<.1	2.2	11.7	4	.01	.022	22	8.8	.03	40	.003	11	.69	.003	.14	>100	.08	1.3	.3	<.05	2	<.5	.03	2.55
297079	4.9	37.5	31.8	17	.3	4.1	1.0	51	2.11	97.0	1.0	4.4	9.0	3	.1	3.0	115.9	3	<.01	.016	27	6.4	.02	27	.003	20	.48	.003	.15	>100	.08	1.0	.4	<.05	1	<.5	.10	2.08
297080	4.5	62.9	20.8	13	.5	3.2	1.0	74	2.28	263.9	.9	11.3	8.7	1	<.1	2.8	25.7	3	.01	.014	15	7.6	.03	69	.002	14	.53	.002	.14	>100	.09	.9	.9	<.05	1	<.5	.10	.41
297081	6.8	71.2	55.3	16	.3	3.8	3.1	64	2.76	139.8	1.0	6.8	6.4	2	<.1	6.5	90.9	3	.01	.020	11	7.0	.03	22	.003	19	.29	.002	.14	>100	.08	1.0	.3	<.05	1	<.5	.22	3.02
297082	3.9	52.4	16.5	17	.3	3.5	1.0	32	2.37	48.5	1.5	4.0	12.5	2	<.1	3.0	25.8	6	<.01	.021	41	6.9	.02	29	.004	12	.67	.003	.18	>100	.09	1.2	.3	<.05	2	<.5	.04	1.80
297083	7.3	72.9	5.6	17	.1	3.4	1.2	44	4.38	98.0	1.5	3.2	11.7	2	.1	1.6	4.3	7	<.01	.040	36	9.6	.02	28	.004	8	.59	.004	.15	>100	.16	1.2	.3	<.05	2	<.5	.07	3.19
297084	1.3	31.9	7.5	6	.2	11.2	1.5	42	1.54	32.6	1.0	1.7	8.4	6	<.1	.8	7.0	8	.01	.015	22	11.3	.03	47	.005	13	1.12	.002	.11	29.5	.02	1.7	.3	<.05	2	<.5	.01	3.77
297085	13.3	127.5	14.7	20	.4	7.0	3.1	77	4.68	197.1	1.8	6.1	8.7	2	.2	1.7	16.2	4	<.01	.048	27	6.3	.02	22	.003	24	.56	.002	.12	>100	.14	1.5	.2	<.05	2	<.5	.09	2.69
STANDARD DS6/CT-1	11.7	123.9	29.9	143	.3	25.1	11.0	706	2.82	20.8	6.6	49.6	3.2	41	6.1	3.4	5.1	57	.86	.077	16	188.0	.58	167	.082	17	1.92	.073	.15	3.4	.23	3.4	1.8	<.05	6	4.1	1.04	-

GROUP 1DX - 15 GM SAMPLE LEACHED WITH 90 ML 2-2-2 HCL-HNO3-H2O AT 95 DEG. C FOR ONE HOUR, DILUTED TO 300 ML, ANALYSED BY ICP-MS.
(>) CONCENTRATION EXCEEDS UPPER LIMITS. SOME MINERALS MAY BE PARTIALLY ATTACHED. REFRACTORY AND GRAPHITIC SAMPLES CAN LIMIT AU SOLUBILITY.
W* GROUP 7KP - 0.25 GM SAMPLE BY PHOSPHORIC ACID LEACHED, ANALYSIS BY ICP-ES.
- SAMPLE TYPE: DRILL CORE R150 Samples beginning 'RE' are Reruns and 'RRE' are Reject Reruns.

Data FA DATE RECEIVED: AUG 25 2005 DATE REPORT MAILED: Sept 16/05



All results are considered the confidential property of the client. Acme assumes the liabilities for actual cost of the analysis only.



SAMPLE#	Mo ppm	Cu ppm	Pb ppm	Zn ppm	Ag ppm	Ni ppm	Co ppm	Mn ppm	Fe %	As ppm	U ppm	Au ppb	Th ppm	Sr ppm	Cd ppm	Sb ppm	Bi ppm	V ppm	Ca %	P %	La ppm	Cr ppm	Mg %	Ba ppm	Ti %	B ppm	Al %	Na %	K %	W ppm	Hg ppm	Sc ppm	Tl ppm	S %	Ga ppm	Se ppm	W* %	Sample kg
297086	9.3	222.5	48.1	37	7.2	11.8	13.1	9188	4.99	165.3	1.4	6.1	6.9	11	1.5	5.6	37.3	10	.01	.029	12	11.2	.12	728	.036	10	1.26	.003	.28	>100	.08	1.7	19.3	<.05	3	<.5	.31	2.27
297087	8.6	114.7	98.5	30	3.5	7.0	9.3	7047	3.57	243.8	2.2	3.1	15.5	13	.6	3.2	7.8	6	<.01	.052	51	5.1	.03	339	.006	21	.51	.005	.27	>100	.09	2.0	26.4	<.05	1	<.5	.10	1.72
297088	1.3	57.9	5.7	15	1.3	3.6	4.3	1578	3.34	31.9	1.2	1.1	18.1	5	.1	.4	1.4	5	<.01	.019	45	4.9	.03	204	.007	11	.55	.002	.25	55.7	.02	1.5	2.4	.07	1	<.5	.01	3.08
297089	10.6	79.9	23.7	30	.8	7.1	3.8	566	4.53	175.5	1.8	1.9	15.8	3	.2	3.0	1.7	6	.01	.043	48	6.3	.04	149	.008	24	.57	.003	.29	>100	.12	1.8	2.8	<.05	1	<.5	.13	2.11
297090	12.2	63.7	54.9	16	.3	2.9	2.0	112	3.19	320.5	1.3	2.5	6.1	2	.3	4.9	62.2	1	<.01	.040	13	4.6	.02	17	.002	33	.22	.002	.10	>100	.07	.7	.3	<.05	1	<.5	.18	1.94
297091	6.2	91.8	8.5	25	.6	11.1	3.9	183	5.45	89.7	1.4	5.8	7.1	1	.1	1.8	1.3	7	.01	.036	14	9.9	.02	33	.005	9	.91	.002	.10	>100	.09	1.1	.6	<.05	2	<.5	.04	2.12
297092	2.5	47.0	6.4	12	.3	10.2	1.8	91	3.07	63.9	.9	1.8	7.5	2	<.1	1.3	1.7	13	.01	.017	16	12.3	.03	38	.007	13	.96	.002	.15	>100	.04	1.2	.3	<.05	2	<.5	.08	2.05
297093	7.1	56.3	23.6	19	.5	6.7	1.9	65	4.40	113.8	1.8	7.0	12.2	3	.1	2.1	19.0	5	.01	.054	30	6.0	.03	33	.004	24	.47	.002	.13	>100	.15	1.1	.2	<.05	1	<.5	.11	1.92
STANDARD DS6/R-2a	10.7	126.6	33.9	146	.3	24.8	10.7	721	2.84	20.5	7.2	46.0	3.4	43	6.2	3.8	5.6	57	.86	.084	16	177.7	.60	169	.080	17	1.96	.075	.15	3.6	.22	3.3	1.8	<.05	6	4.5	.09	-

Sample type: DRILL CORE R150.



GEOCHEMICAL ANALYSIS CERTIFICATE



Copper Ridge Exploration Inc. PROJECT Kalzas File # A505253 Page 1

500 - 625 Howe St., Vancouver BC V6C 2T6 Submitted by: Greg Dawson

SAMPLE#	Mo ppm	Cu ppm	Pb ppm	Zn ppm	Ag ppm	Ni ppm	Co ppm	Mn ppm	Fe %	As ppm	U ppm	Au ppb	Th ppm	Sr ppm	Cd ppm	Sb ppm	Bi ppm	V ppm	Ca %	P %	La ppm	Cr ppm	Mg %	Ba ppm	Ti %	B ppm	Al %	Na %	K %	W ppm	Hg ppm	Sc ppm	Tl ppm	S %	Ga ppm	Se ppm	W* Sample %	kg
297101	3.1	23.5	6.8	5	.1	4.6	.9	25	1.00	28.6	1.2	5.6	10.0	4	.1	.9	3.9	7	.24	.012	25	7.6	.03	29	.009	11	.55	.012	.13	24.5	.03	1.0	<2.05	1	<.5	.01	1.95	
297102	9.6	72.6	9.3	9	.2	4.5	1.4	21	2.36	77.7	1.3	7.5	11.9	2	<.1	2.1	18.7	5	.01	.018	27	6.9	.03	29	.006	19	.41	.003	.17	74.1	.04	1.0	<.3.05	1	.5	.02	2.03	
297103	5.7	40.0	15.2	11	.2	2.6	.8	49	2.82	109.4	.9	5.5	7.9	1	.1	2.0	16.3	2	.02	.022	16	4.1	.01	20	.001	25	.20	.002	.10	>100	.11	.9	<.2.05	<1	<.5	.22	1.60	
297104	9.7	56.5	23.7	22	.2	3.1	1.0	59	5.81	180.5	1.0	7.1	5.3	1	.1	3.7	16.7	<2.01	.073	11	4.4	.01	23	.001	13	.19	.001	.08	>100	.30	.7	<.1.05	<1	<.5	.41	1.50		
297105	2.0	28.6	5.8	3	.1	1.2	.5	17	.79	50.7	.5	3.5	8.3	1	<.1	1.5	16.4	3	.01	.007	19	5.4	.01	20	.003	15	.29	.002	.10	98.8	.04	.6	<.2.05	1	<.5	.02	2.06	
297106	3.9	40.8	26.9	10	.7	2.8	.9	67	2.11	64.8	1.2	6.5	8.5	1	<.1	3.9	58.3	<2.01	.024	19	4.5	.01	17	.002	29	.16	.002	.08	>100	.10	.8	<.1.05	<1	<.5	.15	1.81		
297107	4.6	60.2	15.0	7	.1	3.0	1.1	36	2.48	105.1	2.1	4.7	18.2	2	.1	2.2	9.5	<3.01	.029	51	5.6	.02	37	.006	19	.35	.003	.19	>100	.17	1.1	<.3.05	1	<.5	.16	1.40		
297108	153.2	29.8	449.8	10	2.2	3.1	1.4	217	1.78	115.4	3.5	292.7	9.5	1	<.1	44.2	>2000	<1.01	.019	24	2.0	.01	11	.001	42	.11	.003	.04	>100	.10	.9	<.1.05	<1	.6	.56	1.04		
297109	5.6	42.3	16.0	8	.1	2.4	.8	31	3.06	101.4	2.0	4.7	17.9	1	.1	2.2	14.0	<5.01	.039	49	6.8	.03	33	.007	13	.41	.003	.18	>100	.23	1.4	<.3.05	1	<.5	.09	1.98		
297110	7.4	46.9	33.8	22	.3	3.2	.7	54	3.66	211.6	1.3	9.7	9.9	1	.1	4.5	59.7	1	.01	.044	23	3.6	.01	18	.001	37	.20	.003	.07	>100	.18	.7	<.1.05	1	<.5	.22	1.62	
297111	3.7	23.9	19.0	9	.2	2.9	.8	42	1.91	58.8	1.5	3.5	11.7	2	<.1	1.8	11.4	8	.01	.019	25	11.7	.08	31	.020	9	.74	.002	.19	>100	.17	1.2	<.5.05	2	<.5	.06	3.44	
297112	21.1	33.3	24.7	10	.8	1.9	.5	20	2.19	75.8	1.1	7.2	12.9	1	<.1	5.8	113.0	<3.01	.021	23	5.8	.01	19	.004	22	.25	.002	.11	>100	.12	.9	<.2.05	1	<.5	.03	1.77		
297113	6.6	30.0	14.4	8	.1	2.2	.5	20	1.83	58.2	1.0	5.7	10.7	1	<.1	2.8	25.1	12	.01	.011	19	8.2	.02	17	.004	14	.39	.002	.10	>100	.13	.8	<.2.05	1	<.5	.04	1.56	
297114	2.9	43.8	10.6	8	.1	1.7	.5	12	2.00	80.4	1.5	1.8	19.2	2	<.1	2.0	.9	<5.01	.021	49	6.5	.02	46	.007	20	.39	.004	.23	>100	.13	1.2	<.3.05	1	<.5	.03	3.49		
297115	3.4	87.5	8.6	8	.1	1.1	.4	10	1.73	308.5	1.9	3.6	17.9	2	<.1	2.1	3.3	<5.01	.013	44	7.4	.03	50	.008	14	.35	.003	.21	60.3	.04	1.3	<.4.05	1	.5	.01	2.30		
297116	10.4	57.2	11.6	10	.2	1.1	.4	13	1.71	197.3	1.3	5.4	15.6	2	.1	2.0	7.1	<5.01	.012	37	7.2	.02	31	.007	10	.28	.003	.15	70.0	.03	.9	<.2.05	1	<.5	.02	2.79		
297117	6.9	67.2	18.3	20	.2	2.2	1.2	30	3.18	305.8	1.5	5.1	11.5	2	.1	3.7	26.5	<4.01	.013	22	4.7	.02	24	.004	18	.35	.003	.15	>100	.07	1.2	<.2.05	1	<.5	.02	1.80		
RE 297117	6.8	65.6	19.3	18	.2	1.8	1.2	30	3.09	296.9	1.5	6.0	11.8	2	<.1	3.7	26.8	<4.01	.013	23	5.2	.02	24	.004	23	.35	.003	.15	>100	.10	1.2	<.3.05	1	<.5	.02	-		
RRE 297117	6.9	71.0	20.9	20	.2	2.4	1.1	35	3.42	314.6	1.6	4.6	13.2	2	.1	4.0	29.4	<4.01	.014	26	5.7	.03	28	.004	24	.42	.003	.17	>100	.07	1.3	<.3.05	1	<.5	.02	-		
297118	4.9	34.9	63.2	10	1.5	1.7	.5	37	1.95	201.7	1.0	10.0	10.7	1	<.1	7.6	176.5	<4.01	.018	19	4.8	.02	22	.003	16	.30	.002	.12	>100	.11	.9	<.2.05	1	<.5	.08	2.54		
297119	1.3	30.2	8.0	6	.2	1.5	.5	25	1.87	31.1	.9	3.5	12.5	1	<.1	.8	9.5	<5.01	.016	29	6.1	.02	26	.004	12	.39	.002	.13	>100	.11	.9	<.2.05	1	<.5	.04	2.22		
297120	1.9	29.3	5.5	7	.1	1.2	.4	19	1.14	53.3	.6	2.6	9.3	1	<.1	1.0	1.3	<4.01	.005	18	7.0	.02	26	.005	19	.40	.002	.14	19.9	.02	.9	<.3.05	1	<.5	.01	1.68		
297121	7.8	34.5	11.1	8	.2	2.3	.5	19	1.33	79.8	1.9	3.0	18.7	2	<.1	1.2	5.2	<6.01	.016	52	7.3	.02	34	.007	11	.47	.003	.17	66.5	.03	1.2	<.3.05	1	<.5	.02	3.73		
297122	13.3	67.5	17.8	27	.2	8.3	2.0	77	5.89	209.0	2.5	4.5	16.1	2	.1	3.1	1.2	<5.01	.045	41	6.0	.03	31	.008	12	.50	.003	.19	>100	.23	1.8	<.4.05	1	.5	.26	1.60		
297123	17.5	33.7	34.5	12	.5	2.7	.7	51	3.08	177.9	1.8	6.0	15.1	2	.1	2.9	86.6	<3.01	.027	39	3.2	.02	25	.003	21	.33	.002	.13	>100	.18	1.2	<.2.05	1	<.5	.12	1.98		
297124	10.9	41.2	17.6	11	.3	2.3	.7	29	2.89	88.4	1.7	3.4	17.9	2	.1	1.7	23.1	<4.01	.026	44	4.7	.02	31	.005	20	.33	.003	.17	>100	.17	1.0	<.3.05	1	<.5	.07	2.32		
297125	4.8	32.1	23.5	19	.4	2.1	.7	28	2.27	115.2	1.3	3.7	11.0	2	<.1	2.8	81.3	<4.01	.016	21	5.8	.01	23	.003	19	.35	.002	.11	>100	.12	1.1	<.2.05	1	<.5	.05	1.87		
297126	4.1	32.8	12.5	12	.3	2.6	1.0	29	2.06	124.7	1.4	5.0	10.3	2	<.1	1.6	15.6	4	.01	.030	25	5.5	.02	29	.003	24	.32	.003	.15	>100	.16	1.1	<.2.05	1	<.5	.06	2.20	
297127	1.1	38.4	5.5	12	.1	1.5	.5	10	2.02	102.9	1.2	3.5	17.8	1	<.1	.8	5.8	<5.01	.015	41	6.8	.02	34	.005	10	.31	.004	.17	55.8	.04	1.0	<.3.05	1	<.5	.01	2.69		
297128	1.2	19.4	4.1	11	.1	1.7	.6	21	1.35	165.1	1.4	28.4	15.1	3	.1	1.2	54.5	<4.01	.017	40	6.5	.04	61	.009	10	.36	.004	.22	35.0	.03	1.3	<.4.05	1	.5	.01	2.91		
297129	4.3	278.4	3.0	16	.1	13.6	7.4	45	1.26	118.9	2.0	2.0	11.8	6	<.1	.3	2.4	6	.08	.060	22	11.1	.11	49	.022	5	.82	.005	.24	4.5	<.01	1.6	.7	.31	2	<.5	<.01	2.77
297130	.6	109.7	3.5	5	.2	3.8	2.0	31	1.24	2840.4	1.4	8.6	11.8	7	.3	6.4	4.6	4	.01	.012	28	8.4	.04	76	.012	9	.52	.006	.22	19.2	.01	1.4	.4	.09	2	.5	.01	2.08
297131	3.7	75.8	13.6	20	.2	1.3	.8	31	3.20	1497.3	.9	9.2	8.3	1	.3	7.5	27.6	<2.01	.012	11	4.9	.03	27	.003	14	.26	.003	.17	>100	.15	1.0	<.3.05	2	1	.7	.04	1.65	
297132	8.5	53.1	26.3	32	.4	4.6	1.9	51	3.75	641.9	1.9	9.7	14.0	1	.3	7.1	33.3	<1.01	.029	29	3.1	.01	27	.001	22	.26	.003	.12	>100	.16	1.1	<.2.05	<1	<.5	.14	1.79		
STANDARD D	11.5	122.4	30.3	142	.3	24.6	10.7	703	2.80	21.2	6.7	47.0	3.0	40	6.0	3.4	5.2	55	.85	.078	15	183.2	.57	165	.081	19	1.90	.072	.14	3.6	.22	3.3	1.7	<.05	6	4.5	1.07	-

Standard is STANDARD DS6/CT-1.

GROUP 10X - 15.0 GM SAMPLE LEACHED WITH 90 ML 2-2-2 HCL-HNO3-H2O AT 95 DEG. C FOR ONE HOUR, DILUTED TO 300 ML, ANALYSED BY ICP-MS.

(>) CONCENTRATION EXCEEDS UPPER LIMITS. SOME MINERALS MAY BE PARTIALLY ATTACKED. REFRACTORY AND GRAPHITIC SAMPLES CAN LIMIT AU SOLUBILITY

W* GROUP 7KP - 0.500 GM SAMPLE BY PHOSPHORIC ACID LEACHED, ANALYSIS BY ICP-ES.

- SAMPLE TYPE: DRILL CORE R150 Samples beginning 'RE' are Reruns and 'RRE' are Reject Reruns.

Data h FA _____

DATE RECEIVED: SEP 2 2005 DATE REPORT MAILED: Sept. 21/05





SAMPLE#	Mo ppm	Cu ppm	Pb ppm	Zn ppm	Ag ppm	Ni ppm	Co ppm	Mn ppm	Fe %	As ppm	U ppm	Au ppb	Th ppm	Sr ppm	Cd ppm	Sb ppm	Bi ppm	V ppm	Ca %	P %	La ppm	Cr ppm	Mg %	Ba ppm	Ti %	B ppm	Al %	Na %	K %	W ppm	Hg ppm	Sc ppm	Tl ppm	S %	Ga ppm	Se ppm	W* %	Sample kg
297133	4.9	45.7	9.6	20	.2	2.5	.8	45	3.02	318.3	1.1	5.6	9.9	2	.1	3.4	4.7	3	.01	.023	20	5.1	.03	22	.003	24	.30	.003	.16	>100	<.01	1.0	.2	<.05	1	<.5	.03	2.66
297134	2.6	38.4	16.8	17	.2	2.5	1.4	38	2.35	277.8	.8	4.1	7.6	1	.1	4.6	16.1	2	.01	.015	12	5.3	.02	21	.002	18	.24	.003	.14	>100	.01	.7	.2	<.05	1	<.5	.08	4.45
297135	3.1	46.3	8.7	17	.3	2.3	.8	37	4.09	196.6	1.1	4.7	10.8	1	<.1	3.7	3.8	7	.01	.021	15	7.2	.02	32	.004	20	.40	.003	.19	>100	.02	1.2	.3	<.05	1	<.5	.05	1.53
297136	1.0	22.0	3.7	12	.1	1.9	.7	28	2.45	21.2	1.4	1.1	15.6	3	<.1	1.1	.9	9	.01	.013	38	9.2	.04	56	.008	8	.42	.006	.22	14.8	.01	1.1	.5	<.05	1	<.5	.01	3.50
297137	3.6	57.6	26.8	51	1.2	4.9	1.9	74	4.34	1206.1	1.5	7.5	9.6	2	.2	9.0	24.3	3	.01	.026	18	4.5	.02	50	.003	15	.25	.004	.13	>100	.04	1.0	.3	.06	1	<.5	.10	2.51
297138	4.8	12.7	104.0	10	.8	1.6	.4	474	1.00	75.8	1.2	6.1	1.3	2	.1	18.4	353.2	<1	.01	.005	2	3.7	<.01	6	<.001	10	.04	.004	.02	97.2	.02	.5	.8	<.05	<1	<.5	.76	2.20
297139	1.7	50.4	14.8	56	.3	8.9	2.3	72	3.69	103.0	1.0	3.1	10.2	8	.1	5.6	3.7	3	.01	.024	17	5.1	.03	54	.002	21	.30	.006	.20	>100	.02	1.2	.3	.07	1	<.5	.09	2.00
297140	2.4	46.3	8.8	96	.1	11.7	4.6	70	1.89	28.3	1.4	2.9	9.6	12	.1	4.6	6.0	7	.02	.018	16	12.5	.15	65	.025	10	.58	.009	.29	63.2	.01	1.2	1.0	.28	2	<.5	.01	1.38
RE 297140	2.3	47.6	8.5	97	.1	11.9	4.9	72	1.90	27.8	1.3	3.0	9.1	12	.1	4.5	5.8	7	.02	.017	14	12.6	.15	63	.023	8	.56	.008	.28	59.6	.01	1.3	1.1	.28	2	<.5	.01	-
RRE 297140	1.0	52.7	6.0	32	.1	10.2	4.7	65	2.08	31.1	1.4	2.6	10.2	14	<.1	1.4	4.3	8	.02	.019	15	11.3	.14	57	.025	10	.60	.009	.29	45.1	<.01	1.3	1.1	.33	2	<.5	.01	-
297141	2.4	11.7	4.8	10	.1	1.4	.5	36	1.24	87.4	.9	3.2	11.4	7	<.1	1.1	9.5	3	<.01	.012	22	4.7	.03	57	.005	12	.23	.006	.19	>100	<.01	.8	.3	.14	1	<.5	.05	2.60
297142	.4	115.9	3.2	46	<.1	30.6	15.3	189	2.12	9.1	2.5	18.8	12.9	9	.3	.4	28.9	9	.02	.017	21	11.8	.25	44	.040	8	.82	.007	.39	3.3	<.01	1.3	1.1	.39	2	<.5	<.01	2.51
297143	.7	126.1	10.2	9	.2	4.5	3.3	38	.97	33.6	1.0	2.8	8.0	12	<.1	1.5	13.9	4	.02	.011	14	8.3	.04	29	.008	12	.48	.012	.17	>100	.03	.9	.6	.23	1	<.5	.03	2.93
297144	.5	63.9	4.9	24	<.1	29.8	18.0	333	1.68	5.3	2.0	1.6	11.4	8	2.8	.4	1.7	12	.02	.010	17	16.4	.27	49	.044	6	1.07	.012	.39	5.0	<.01	1.6	1.2	.50	2	<.5	<.01	2.35
297145	4.2	15.2	22.1	6	.5	2.3	.9	41	.80	69.4	.4	2.9	5.0	7	.1	2.1	15.6	2	.01	.007	9	5.9	.04	29	.002	29	.28	.010	.20	>100	.03	.6	.4	.07	1	<.5	.04	1.89
297146	1.1	47.6	4.2	9	.1	3.4	1.8	44	1.63	34.0	.7	1.2	9.0	5	<.1	1.3	2.4	6	.01	.009	19	7.4	.05	45	.005	26	.39	.005	.23	70.3	.01	1.1	.5	.12	1	.5	.01	2.96
297147	1.1	199.8	5.0	66	<.1	26.0	15.8	58	1.24	12.6	3.3	.8	14.7	10	5.9	.5	1.0	9	.01	.015	28	12.5	.13	61	.023	7	1.06	.010	.32	11.4	<.01	1.8	1.8	.27	2	<.5	<.01	2.45
297148	2.1	61.3	4.4	18	.2	8.3	4.5	44	1.89	61.4	1.1	2.2	10.2	3	.4	2.4	7.9	5	.01	.011	14	8.0	.04	34	.005	18	.48	.007	.19	>100	.01	1.0	.4	.20	1	<.5	.03	1.70
297149	2.5	12.3	9.7	7	.3	2.0	.6	41	.99	65.9	1.4	3.9	13.1	5	<.1	2.6	8.8	2	.01	.018	33	5.8	.01	44	.001	30	.25	.005	.18	>100	.02	1.0	.2	<.05	1	<.5	.07	.65
297150	.9	99.3	6.0	14	.1	7.4	4.4	44	1.47	55.5	1.6	1.8	13.3	4	.1	1.6	2.3	8	.01	.012	26	10.4	.09	53	.016	11	.64	.007	.28	46.8	<.01	1.4	.7	.12	2	<.5	.01	2.67
297151	2.7	57.9	9.2	8	.2	5.5	5.1	44	1.14	115.8	1.5	4.3	12.3	10	1.6	2.8	9.9	5	.01	.014	25	8.9	.08	47	.018	22	.50	.008	.26	>100	.02	1.2	.9	.09	1	<.5	.02	1.96
297152	5.8	235.8	7.1	16	.2	5.3	2.4	38	2.95	79.5	1.6	2.5	13.9	3	.2	6.2	1.6	5	<.01	.021	33	7.2	.02	44	.006	16	.41	.004	.21	>100	.03	1.2	.9	<.05	1	<.5	.07	1.76
297153	13.1	9.2	69.1	5	.5	1.5	.6	71	.70	28.5	.7	3.0	1.8	1	.1	9.7	191.4	<1	<.01	.004	5	6.1	<.01	4	.001	14	.04	.003	.02	>100	.01	.3	.7	<.05	<1	<.5	.16	1.46
297154	12.7	27.8	32.2	15	.9	3.3	1.1	45	1.86	283.6	1.0	6.1	7.2	2	.1	10.1	26.7	3	<.01	.022	16	5.6	.02	27	.002	30	.29	.003	.20	>100	.01	.8	.3	<.05	1	<.5	.08	1.67
297155	2.0	14.7	34.3	21	.8	1.8	.7	49	1.40	368.4	.6	8.5	4.2	2	.2	11.2	45.8	1	.01	.019	10	5.3	.02	19	.002	18	.19	.002	.14	>100	.02	.6	.3	<.05	<1	<.5	.08	1.62
297156	2.2	5.6	34.4	10	.7	.9	.4	37	.70	91.8	.6	6.1	3.6	2	<.1	10.3	74.3	2	.01	.008	11	5.2	.03	19	.002	19	.26	.003	.18	>100	<.01	.5	.2	<.05	1	<.5	.12	2.00
297157	1.9	8.3	48.2	36	.6	1.9	.7	49	.76	107.6	.3	13.1	3.2	3	.1	9.8	58.8	2	.02	.007	9	5.5	.02	25	.001	20	.21	.004	.14	87.5	.02	.4	.3	<.05	1	<.5	.15	2.33
297158	1.3	22.2	103.0	18	1.2	2.0	.8	119	1.26	378.7	.6	9.2	5.4	4	.1	23.5	148.9	2	.04	.016	11	4.8	.01	20	.001	31	.18	.003	.12	>100	.03	.7	.2	<.05	1	<.5	.40	1.96
297159	2.1	16.7	53.3	14	1.0	1.8	1.0	57	.96	132.1	.4	8.4	4.1	3	.1	9.6	65.7	2	.01	.008	10	4.0	.02	21	.002	23	.19	.003	.14	>100	.02	.4	.3	<.05	1	<.5	.17	1.75
297160	6.1	12.3	23.7	9	.8	1.4	.6	27	.94	98.0	.5	5.1	6.1	5	.1	2.9	9.5	2	<.01	.009	16	5.5	.02	43	.003	17	.25	.004	.19	>100	.03	.5	.3	<.05	1	<.5	.05	1.59
297161	10.5	51.0	28.9	26	.5	5.4	2.7	91	2.50	247.8	1.8	7.2	12.9	2	.2	7.0	20.6	2	<.01	.028	26	4.8	.02	27	.002	35	.29	.004	.15	>100	.02	.8	.2	<.05	1	<.5	.26	2.28
STANDARD DS6/CT-1	11.4	122.5	30.2	143	.3	24.4	10.7	704	2.81	21.0	6.7	47.6	3.0	39	6.0	3.6	5.1	55	.85	.076	14	184.6	.57	164	.079	16	1.89	.070	.14	3.5	.23	3.3	1.7	<.05	6	4.4	1.09	-

Sample type: DRILL CORE R150. Samples beginning 'RE' are Reruns and 'RRE' are Reject Reruns.



GEOCHEMICAL ANALYSIS CERTIFICATE



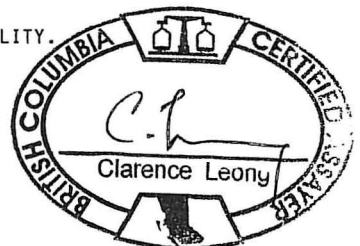
Copper Ridge Exploration Inc. PROJECT Kalzas File # A505254 Page 1

500 - 625 Howe St., Vancouver BC V6C 2T6 Submitted by: Greg Dawson

SAMPLE#	Mo	Cu	Pb	Zn	Ag	Ni	Co	Mn	Fe	As	U	Au	Th	Sr	Cd	Sb	Bi	V	Ca	P	La	Cr	Mg	Ba	Ti	B	Al	Na	K	W	Hg	Sc	Tl	S	Ga	Se	W*	Sample
	ppm	ppm	ppm	ppm	ppm	ppm	ppm	ppm	%	ppm	ppm	ppb	ppm	ppm	ppm	ppm	ppm	ppm	%	%	ppm	ppm	%	ppm	%	ppm	%	%	ppm	ppm	ppm	ppm	%	ppm	ppm	%	kg	
297162	2.9	55.0	5.4	14	.2	6.8	2.3	38	2.71	51.4	.9	5.9	8.9	2	<.1	1.5	2.7	3	.02	.021	24	6.8	.02	34	.005	20	.31	.005	.16	58.9	.02	.9	.3	<.05	1	<.5	.01	1.62
297163	2.9	36.2	11.8	13	.2	3.9	1.7	43	1.73	35.9	1.7	2.3	11.5	16	.1	1.4	2.6	5	.01	.036	40	8.5	.05	99	.009	15	.47	.009	.28	29.8	.02	1.2	.6	.07	1	<.5	<.01	2.93
297164	2.9	31.9	10.9	10	.2	2.1	.8	39	1.90	98.2	.7	3.2	6.9	2	<.1	2.3	11.5	3	<.01	.012	17	5.3	.03	26	.003	16	.28	.003	.16	>100	.03	.6	.3	<.05	1	<.5	.02	2.46
297165	3.2	22.5	4.0	12	.2	2.7	.9	32	1.34	75.9	.6	2.0	5.4	2	<.1	.9	1.7	5	.01	.005	13	8.1	.02	25	.003	13	.53	.004	.13	18.6	.02	.7	.2	<.05	1	<.5	<.01	3.06
297166	3.2	46.3	5.0	38	.1	7.7	2.6	92	3.15	66.3	1.3	2.0	11.5	5	.1	1.1	.9	7	<.01	.019	28	9.8	.04	47	.003	12	.50	.005	.19	11.6	.02	1.3	.4	<.05	1	<.5	<.01	2.65
297167	1.5	28.7	5.4	23	.2	5.2	3.3	91	2.55	26.0	1.8	2.7	17.7	8	<.1	.9	1.4	4	<.01	.030	52	5.2	.03	67	.005	11	.47	.008	.25	12.9	.02	.9	.3	<.05	1	<.5	<.01	4.78
297168	5.9	43.2	10.6	13	.2	2.8	1.3	37	2.92	87.6	.7	4.1	6.9	2	.1	1.5	7.2	2	<.01	.025	14	5.0	.02	30	.002	16	.25	.002	.13	>100	.08	.8	.2	<.05	1	<.5	.06	1.97
297169	5.3	52.4	7.6	19	.6	6.7	2.9	76	2.79	39.8	1.1	1.7	8.7	9	.1	1.2	1.3	11	.01	.027	17	13.5	.16	84	.029	17	.94	.005	.33	66.3	.02	1.7	.8	.06	3	<.5	.01	1.82
RE 297169	5.2	52.8	7.9	19	.6	7.3	2.8	75	2.77	39.4	1.1	1.3	9.0	9	.1	1.2	1.3	11	.01	.027	18	13.5	.16	87	.030	16	.98	.005	.34	68.8	.01	1.7	.8	<.05	3	<.5	.01	-
RFF 297169	5.8	53.6	8.1	21	1.1	7.6	3.1	79	2.92	39.0	1.1	2.0	9.2	9	.1	1.2	1.8	11	.01	.028	19	15.2	.17	92	.033	16	1.01	.005	.34	82.7	.02	1.8	.9	<.05	3	<.5	.01	-
297170	7.8	22.0	30.8	13	.3	3.0	1.6	43	2.04	197.5	1.0	8.5	11.1	3	.2	2.2	15.8	2	<.01	.021	34	5.3	.04	43	.003	26	.37	.004	.20	>100	.08	.9	.3	<.05	1	<.5	.04	1.80
297171	10.5	70.3	17.0	18	.2	5.1	3.0	49	4.98	192.1	1.8	3.7	15.8	3	.2	1.9	1.9	3	<.01	.043	38	4.7	.02	36	.002	21	.44	.003	.17	>100	.14	1.2	.2	<.05	1	<.5	.12	1.63
297172	20.4	66.8	35.6	15	.2	3.8	1.5	58	3.76	239.1	2.2	6.7	13.0	4	.1	5.4	15.2	1	<.01	.031	34	2.9	.01	28	.001	52	.30	.003	.11	>100	.09	1.1	.2	<.05	1	<.5	.19	1.88
297173	6.3	45.5	25.0	7	.7	2.4	1.3	27	2.08	246.7	2.0	16.1	16.8	2	.1	7.7	223.6	2	<.01	.016	47	3.7	.01	28	.001	38	.24	.004	.15	>100	.09	.7	.2	<.05	1	.7	.07	1.50
297174	141.5	48.9	171.6	18	.8	4.7	1.7	81	4.72	183.9	2.2	9.9	13.0	2	.1	15.0	270.3	2	.01	.054	42	3.6	.02	47	.002	48	.31	.004	.15	>100	.09	1.1	.2	<.05	1	<.5	.36	2.12
297175	15.0	33.0	59.3	11	.4	3.0	1.4	48	3.13	195.2	1.4	7.8	11.1	4	.1	8.4	24.8	5	.01	.030	31	6.4	.05	56	.006	27	.41	.003	.22	>100	.09	1.4	.5	<.05	1	.6	.15	1.57
297176	8.6	25.5	14.1	7	.2	2.9	.6	23	2.35	69.3	2.4	7.4	18.3	4	<.1	2.4	24.3	7	.01	.032	59	6.8	.04	67	.010	21	.59	.005	.29	>100	.08	1.6	.4	<.05	1	<.5	.06	2.34
297177	3.1	17.3	9.3	6	.1	1.5	.5	12	1.28	42.6	1.9	2.8	18.7	6	<.1	1.5	1.7	6	<.01	.024	63	6.4	.03	79	.007	21	.45	.005	.27	63.8	.01	1.3	.3	.06	1	<.5	.01	3.38
297178	2.6	90.3	11.4	9	.2	3.7	1.3	40	2.11	14.4	1.5	2.3	16.2	4	<.1	.7	20.3	8	.01	.019	44	11.1	.09	169	.017	20	.77	.006	.31	>100	.03	1.2	.5	<.05	2	<.5	.03	3.18
297179	1.5	156.8	7.2	21	.2	7.3	2.7	63	2.09	30.8	1.5	2.6	12.1	4	<.1	.6	12.1	9	.01	.014	26	13.0	.13	88	.030	11	.84	.004	.30	16.5	<.01	1.1	.7	.09	2	<.5	<.01	3.34
297180	4.4	35.9	12.4	11	.2	4.0	1.1	32	2.18	38.8	1.7	3.8	18.1	5	<.1	.9	4.2	8	.01	.025	52	8.6	.07	268	.016	18	.66	.005	.29	>100	.03	1.4	.5	<.05	2	<.5	.02	3.71
297181	4.0	27.7	16.5	10	.4	3.2	1.1	40	1.50	62.0	1.9	3.0	17.1	5	<.1	1.6	15.0	6	.01	.014	49	9.4	.09	385	.018	19	.73	.005	.27	>100	.04	1.0	.5	<.05	2	<.5	.04	2.89
297182	5.6	45.3	12.7	13	.4	3.6	1.2	41	2.69	125.6	1.7	7.0	13.6	2	.1	1.8	13.4	9	.01	.030	33	9.0	.04	119	.007	26	.56	.004	.22	>100	.08	1.4	.5	<.05	1	<.5	.03	1.57
297183	2.2	26.1	7.7	12	.2	2.1	2.3	30	1.68	85.5	.6	11.4	7.9	2	<.1	1.2	11.7	4	<.01	.011	17	7.4	.04	44	.008	24	.36	.003	.19	76.0	.01	.8	.4	<.05	1	<.5	.01	1.55
297184	1.4	13.1	3.0	20	.1	4.5	1.4	55	1.64	15.7	1.2	3.3	8.1	3	<.1	.3	8.2	8	.01	.010	18	12.1	.15	55	.040	4	.89	.005	.31	9.1	.01	1.0	.7	<.05	2	<.5	<.01	2.66
297185	3.0	29.3	4.0	19	.1	3.3	1.0	40	2.32	22.5	.9	1.2	12.6	3	<.1	.6	1.4	6	<.01	.013	26	9.0	.10	81	.023	19	.54	.005	.30	54.4	.03	1.0	.5	<.05	2	<.5	<.01	2.49
297186	2.9	23.8	20.2	11	.3	1.6	.7	51	1.77	68.1	1.0	2.5	8.3	5	<.1	1.8	61.7	3	<.01	.019	20	7.5	.02	49	.007	16	.30	.004	.17	>100	.02	.7	.3	<.05	1	<.5	.05	3.36
297187	6.2	31.2	21.7	13	.2	2.3	1.0	63	2.49	101.6	1.1	2.4	7.5	1	.1	1.9	28.6	3	<.01	.021	16	6.2	.02	25	.004	19	.27	.003	.11	>100	.04	.8	.2	<.05	1	<.5	.11	2.43
297188	1.8	73.5	7.6	6	.3	1.6	.7	29	2.88	19.5	1.6	2.1	18.5	5	<.1	.6	3.6	9	<.01	.023	47	8.6	.03	80	.009	13	.65	.005	.24	>100	.03	1.5	.4	<.05	2	.7	.02	3.29
297189	7.4	35.9	23.2	30	.2	2.9	.8	58	2.32	268.1	1.6	19.7	13.4	2	.2	2.1	162.8	4	<.01	.023	36	5.3	.02	54	.004	25	.41	.003	.17	>100	.06	1.1	.4	<.05	1	<.5	.12	2.88
297190	9.4	44.5	10.3	17	.2	2.5	.7	29	2.47	128.6	1.8	4.2	16.1	3	.1	1.3	11.0	5	<.01	.022	44	6.5	.02	55	.005	18	.47	.004	.22	>100	.06	1.1	.3	<.05	1	<.5	.04	3.35
297191	.7	60.6	3.5	22	.1	9.5	5.0	149	2.31	7.6	1.5	5.2	10.6	5	<.1	.1	6.2	19	.01	.012	27	25.5	.49	103	.095	4	1.50	.007	.86	3.0	<.01	1.8	1.7	.23	4	.5	<.01	3.23
297192	3.3	27.2	5.4	10	.1	2.1	.9	44	1.77	79.3	2.0	2.2	16.7	3	<.1	.6	2.1	11	.01	.021	50	13.4	.12	107	.031	15	.76	.005	.37	5.1	<.01	1.5	.7	.06	2	<.5	<.01	3.48
297193	1.6	23.6	3.8	7	.1	1.6	.7	36	1.11	25.2	1.8	2.7	18.4	2	<.1	1.0	2.4	8	.01	.012	54	11.1	.12	59	.031	7	.65	.006	.36	11.0	.01	1.0	.6	<.05	2	<.5	<.01	2.48
STANDARD DS6/CT-1	11.4	122.4	29.8	143	.3	24.7	10.7	703	2.81	20.8	6.6	47.4	3.1	40	6.1	3.6	5.1	55	.85	.077	14	184.2	.57	164	.079	16	1.89	.072	.14	3.6	.23	3.3	1.7	<.05	6	4.4	1.03	-

GROUP 1DX - 15.0 GM SAMPLE LEACHED WITH 90 ML 2-2-2 HCL-HNO3-H2O AT 95 DEG. C FOR ONE HOUR, DILUTED TO 300 ML, ANALYSED BY ICP-MS.
(>) CONCENTRATION EXCEEDS UPPER LIMITS. SOME MINERALS MAY BE PARTIALLY ATTACKED. REFRACTORY AND GRAPHITIC SAMPLES CAN LIMIT AU SOLUBILITY.
W* GROUP 7KP - 0.500 GM SAMPLE BY PHOSPHORIC ACID LEACHED, ANALYSIS BY IC-ES.
- SAMPLE TYPE: DRILL CORE R150 Samples beginning 'RE' are Reruns and 'RRE' are Reject Reruns.

Data 1 FA _____ DATE RECEIVED: SEP 2 2005 DATE REPORT MAILED: Sept. 21/05





SAMPLE#	Mo ppm	Cu ppm	Pb ppm	Zn ppm	Ag ppm	Ni ppm	Co ppm	Mn ppm	Fe %	As ppm	U ppm	Au ppb	Th ppm	Sr ppm	Cd ppm	Sb ppm	Bi ppm	V ppm	Ca %	P %	La ppm	Cr ppm	Mg %	Ba ppm	Ti %	B ppm	Al %	Na %	K %	W ppm	Hg ppm	Sc ppm	Tl ppm	S %	Ga ppm	Se ppm	W* %	Sample kg
297194	16.9	19.2	207.2	12	1.6	2.2	.5	24	1.45	81.0	1.9	9.9	15.4	3	<.1	8.1	365.8	1	.01	.025	49	4.3	.02	26	.001	28	.23	.003	.13	>100	.12	1.0	.1	<.05	1	<.5	.06	1.88
297195	9.7	63.0	15.5	11	.2	4.2	1.3	25	2.03	241.1	1.8	4.6	14.0	2	<.1	2.0	8.5	5	<.01	.020	38	5.8	.02	43	.006	17	.29	.003	.13	>100	.07	1.0	.3	<.05	1	<.5	.03	2.19
297196	9.8	18.9	11.1	3	.3	2.0	.7	21	1.02	438.1	1.4	6.0	13.4	3	.1	1.6	11.5	4	<.01	.018	45	5.5	.03	62	.005	31	.34	.005	.19	74.7	.05	1.5	.4	<.05	1	<.5	.01	1.94
297197	3.8	30.9	14.4	6	.6	1.8	.5	21	1.49	2244.4	1.9	15.9	15.9	2	.3	3.7	14.8	4	<.01	.014	46	5.0	.03	94	.006	15	.33	.004	.21	>100	.07	1.0	.5	<.05	1	.5	.02	3.52
297198	2.3	25.1	5.4	7	.2	1.8	.5	20	.88	165.0	1.7	1.7	16.8	3	.1	.6	1.6	4	<.01	.013	51	6.2	.04	56	.009	13	.40	.004	.24	>100	.04	1.0	.5	<.05	1	<.5	.02	5.37
297199	.9	194.7	2.3	39	.1	6.4	2.8	32	1.20	59.1	2.4	1.1	17.3	3	<.1	.2	1.8	7	<.01	.014	54	10.5	.10	57	.022	7	.60	.005	.28	5.2	.01	1.2	.7	.07	1	<.5	<.01	3.14
297200	5.1	16.8	8.8	9	.2	1.7	.7	12	.89	104.7	1.8	2.0	16.1	2	.1	1.1	3.0	4	<.01	.017	49	5.9	.03	55	.006	21	.39	.004	.23	>100	.04	1.1	.4	<.05	1	<.5	.02	3.58
297201	16.0	23.3	45.6	8	.9	1.5	.5	232	1.65	156.6	1.3	4.0	8.0	1	.1	4.7	94.6	1	<.01	.027	26	4.5	.01	22	.002	22	.17	.004	.09	>100	.07	.7	.4	<.05	<.1	<.5	.50	.95
297202	.8	88.7	3.0	15	.3	13.3	7.7	43	2.12	21.7	1.9	2.0	13.6	4	.1	.5	3.3	13	.01	.013	31	16.4	.14	112	.030	7	.87	.005	.32	8.8	.01	1.4	.9	.24	2	<.5	<.01	4.18
297203	1.9	31.1	17.6	9	.5	1.9	.7	321	1.94	143.3	1.6	4.1	8.4	1	.1	1.9	55.6	3	<.01	.021	25	4.6	.02	20	.002	22	.21	.004	.09	>100	.06	1.2	.6	<.05	1	<.5	.72	.88
297204	2.4	37.4	3.7	8	.2	2.1	.6	36	2.19	26.8	1.6	9.1	16.3	2	<.1	.8	35.6	9	<.01	.018	42	9.6	.03	40	.010	10	.54	.004	.19	>100	.09	1.1	.4	<.05	2	<.5	.09	2.70
297205	6.9	26.9	12.8	11	.2	2.0	.8	37	2.42	91.5	.9	1.8	9.7	1	<.1	1.6	41.4	2	<.01	.027	20	4.6	.01	32	.002	23	.22	.002	.10	>100	.11	.7	.2	<.05	1	<.5	.07	3.46
297206	1.6	40.7	8.3	13	.3	2.5	.9	50	2.88	57.8	1.1	994.2	10.6	1	<.1	.9	4.2	10	.01	.027	19	7.0	.02	30	.002	15	.50	.002	.12	>100	.09	1.2	.3	<.05	2	<.5	.05	1.59
297207	2.9	24.7	11.8	6	.3	2.1	1.8	33	1.20	61.1	.8	4.1	9.2	2	<.1	2.2	64.1	4	.01	.010	14	6.3	.02	26	.002	14	.34	.002	.10	>100	.08	.9	.2	<.05	1	<.5	.04	1.60
297208	2.2	27.5	36.9	21	.3	2.8	1.8	44	1.24	81.3	.7	2.5	5.7	2	.1	3.0	65.6	1	<.01	.012	12	5.6	.03	13	.002	15	.21	.003	.10	>100	.04	.5	.2	<.05	1	<.5	.09	1.57
297209	1.4	28.5	11.1	10	.1	2.1	1.1	29	1.10	69.6	.6	3.3	5.1	1	.1	1.5	15.6	2	<.01	.010	9	3.7	.01	8	.001	13	.11	.002	.05	>100	.04	.4	.1	<.05	<.1	<.5	.08	1.89
297210	2.9	29.6	24.5	13	.3	2.1	.8	35	1.80	92.3	.8	4.1	6.6	1	.1	2.4	57.7	2	.01	.017	10	4.7	.02	14	.001	21	.19	.002	.10	>100	.03	.5	.2	<.05	1	<.5	.12	1.61
297211	7.6	21.6	26.4	7	.2	1.1	.6	21	1.01	166.0	.8	3.2	6.9	1	<.1	2.1	34.1	2	<.01	.013	11	4.8	.02	14	.002	23	.18	.003	.10	>100	.05	.6	.2	<.05	<.1	<.5	.02	1.83
297212	2.7	43.5	15.4	15	.2	2.6	1.4	76	1.89	112.1	.8	5.3	6.6	1	.1	1.8	21.2	1	<.01	.017	9	4.6	.02	14	.002	15	.19	.002	.09	>100	.05	.5	1.3	<.05	1	<.5	.09	1.76
297213	3.1	24.8	29.1	13	.1	2.3	1.0	24	1.18	69.1	.7	3.3	6.4	3	.1	2.2	40.8	1	<.01	.014	12	4.1	.01	8	.001	12	.08	.002	.04	>100	.04	.4	.1	<.05	<.1	<.5	.11	2.35
297214	3.9	43.3	7.8	10	.1	1.7	1.5	34	1.72	45.1	.8	1.4	7.1	1	<.1	1.5	9.4	4	.01	.012	15	7.4	.02	18	.002	14	.39	.002	.12	>100	.03	.9	.3	<.05	1	<.5	.12	3.08
RE 297214	3.8	42.0	7.8	10	.1	1.7	1.4	35	1.73	45.1	.9	2.2	7.4	1	<.1	1.5	9.5	3	.01	.012	16	7.1	.02	18	.002	15	.38	.002	.12	>100	.03	.9	.3	<.05	1	<.5	.12	-
RRE 297214	3.9	43.0	7.4	10	.1	1.3	1.4	35	1.75	45.9	.8	2.0	7.3	1	<.1	1.3	8.7	2	.01	.012	14	6.8	.02	16	.001	11	.33	.002	.11	>100	.04	.9	.3	<.05	1	<.5	.12	-
297215	4.3	55.5	32.3	21	.4	4.1	3.7	127	2.12	80.4	1.0	20.0	4.4	1	.1	4.2	184.9	2	<.01	.018	6	5.3	.02	33	.001	10	.22	.002	.08	>100	.07	.8	.7	<.05	1	<.5	.23	2.56
297216	1.5	64.9	6.3	11	.4	1.9	1.5	26	2.74	17.9	1.2	1.9	15.7	1	<.1	1.0	3.8	9	<.01	.012	34	9.0	.02	50	.006	9	.67	.005	.21	55.7	.03	1.3	.4	<.05	2	<.5	.02	3.47
297217	.8	27.5	6.1	5	.1	1.7	1.3	44	1.74	59.0	1.2	.6	16.5	2	.1	1.0	1.4	5	.01	.017	44	6.9	.03	29	.004	7	.54	.003	.13	56.8	.02	1.2	.3	<.05	1	<.5	.01	4.19
STANDARD DS6/TLG-1	11.5	122.8	29.9	142	.3	24.7	10.8	707	2.82	20.8	6.6	46.2	3.1	39	6.1	3.5	5.0	56	.86	.076	15	184.6	.58	160	.082	17	1.91	.070	.14	3.5	.22	3.3	1.7	<.05	7	4.4	.08	-

Sample type: DRILL CORE R150. Samples beginning 'RE' are Reruns and 'RRE' are Reject Reruns.

GEOCHEMICAL ANALYSIS CERTIFICATE



Copper Ridge Exploration Inc. PROJECT Kalzas File # A505255 Page 1

500 - 625 Howe St., Vancouver BC V6C 2T6 Submitted by: Greg Dawson

SAMPLE#	Mo ppm	Cu ppm	Pb ppm	Zn ppm	Ag ppm	Ni ppm	Co ppm	Mn ppm	Fe %	As ppm	U ppm	Au ppb	Th ppm	Sr ppm	Cd ppm	Sb ppm	Bi ppm	V ppm	Ca %	P %	La ppm	Cr ppm	Mg %	Ba ppm	Ti %	B ppm	Al %	Na %	K %	W ppm	Hg ppm	Sc ppm	Tl ppm	S %	Ga ppm	Se ppm	W* %	Sample kg
297218	1.6	13.7	178.5	6	4.7	.9	.6	79	.97	214.3	.5	18.0	3.8	2	<1	17.2	169.3	1	.01	.005	8	5.9	.02	56	.004	20	.17	.005	.18	>100	.02	.4	.4	.15	1	1.1	.24	1.43
297219	54.2	84.6	146.2	67	20.9	7.7	12.3	13782	3.49	287.2	1.2	5.4	3.5	24	2.3	18.6	109.6	1	.01	.031	6	5.7	.01	399	.001	13	.12	.006	.10	>100	.05	.7	59.2	<.05	1	<.5	.38	.71
297220	14.1	41.4	24.9	29	1.4	3.3	3.1	1262	2.24	302.6	.9	6.7	7.7	4	.8	6.6	38.1	2	.01	.015	16	7.8	.02	69	.002	24	.30	.003	.15	>100	.01	.7	1.3	<.05	1	<.5	.12	1.96
297221	6.4	30.7	16.3	6	.5	1.1	.9	102	1.10	239.7	.8	7.3	9.8	3	.1	3.4	14.3	3	.01	.010	25	7.6	.02	37	.003	33	.36	.006	.20	>100	<.01	.8	.4	<.05	1	<.5	.06	1.97
297222	21.7	52.9	79.3	33	1.2	3.4	1.9	1027	4.06	681.7	1.6	12.0	12.6	5	.8	14.6	15.0	1	.01	.044	30	5.1	.02	118	.001	52	.29	.004	.14	>100	<.01	.8	.9	<.05	1	<.5	.32	1.84
297223	10.8	38.6	65.7	30	.3	3.6	.8	157	3.17	268.5	2.2	3.9	18.5	6	.2	12.0	18.5	<1	.01	.045	46	3.4	.01	45	.001	32	.37	.007	.11	>100	.02	.8	.2	<.05	1	<.5	.29	.88
297224	8.0	42.4	181.8	17	1.9	2.3	.6	142	2.51	271.8	1.4	21.8	10.7	6	.1	15.8	226.8	<1	.01	.034	22	3.9	.01	40	.001	24	.24	.003	.09	>100	.02	.7	.2	<.05	1	<.5	.42	1.44
297225	11.7	27.0	65.5	19	.4	2.1	.9	707	2.71	174.0	.8	5.4	1.3	1	.2	12.4	89.6	<1	.01	.024	2	6.7	<.01	9	<.001	5	.05	.017	.01	>100	<.01	.5	.9	<.05	<1	<.5	.97	.91
297226	3.5	18.5	46.9	9	1.3	1.0	.8	50	1.21	293.7	.4	10.8	4.7	1	.1	9.7	57.5	<1	.01	.013	11	6.7	.01	20	.001	18	.10	.007	.06	>100	<.01	.3	.1	<.05	<1	<.5	.15	3.06
297227	1.9	4.5	81.1	1	2.7	.7	.4	101	.32	318.8	.5	8.3	4.0	2	<1	13.0	105.6	<1	.04	.004	10	8.0	.01	8	.001	24	.05	.011	.04	85.0	.05	.2	.2	<.05	<1	<.5	.27	1.53
297228	12.0	35.9	42.6	21	.4	1.7	.5	116	3.31	240.5	1.2	9.7	16.4	2	.1	9.3	60.0	2	<.01	.036	25	7.1	.01	28	.002	36	.24	.004	.15	>100	<.01	1.0	.2	<.05	1	.5	.37	1.85
297229	7.7	29.2	41.7	7	.7	.7	.4	50	1.34	359.8	.5	11.8	8.9	1	.1	7.9	54.7	1	.01	.010	15	7.3	.02	50	.002	24	.21	.003	.15	>100	<.01	.5	.4	<.05	1	<.5	.10	1.73
297230	3.0	13.6	46.6	10	1.1	.8	.3	39	.94	386.0	.5	10.4	10.1	2	.1	8.5	63.8	1	.01	.011	18	6.5	.02	32	.002	28	.21	.005	.16	>100	.02	.6	.2	<.05	1	<.5	.10	1.68
297231	6.7	7.9	95.4	4	1.3	1.1	.5	60	.57	217.5	.5	12.4	5.8	2	.1	12.9	224.3	1	.01	.009	16	7.5	.02	24	.003	54	.22	.005	.13	>100	.02	.6	.3	<.05	1	<.5	.07	1.90
297232	8.7	12.3	57.2	15	.7	1.3	.6	613	1.62	297.4	.9	8.2	4.4	3	.1	9.9	57.8	1	<.01	.012	8	8.9	<.01	67	.001	23	.05	.004	.10	>100	<.01	1.0	.6	.17	<1	<.5	1.10	.93
297233	4.1	7.4	40.5	3	.7	.5	.4	37	.55	208.5	.4	6.8	6.1	2	<1	5.8	69.0	1	.01	.007	14	6.4	.02	35	.002	31	.21	.003	.18	>100	<.01	.5	.2	.06	1	<.5	.09	3.11
297234	9.6	8.2	54.8	3	1.2	.7	.5	63	.42	387.0	.5	13.1	8.1	3	<1	7.4	74.5	1	.01	.009	25	5.7	.01	37	.002	53	.23	.003	.17	>100	<.01	.6	.2	<.05	1	<.5	.11	1.26
297235	2.0	7.6	20.4	1	1.5	.6	.7	41	.35	240.0	.3	7.2	5.3	2	<1	8.1	86.5	1	.04	.010	13	6.3	.02	18	.002	28	17	.003	.12	99.8	.02	.6	.2	<.05	1	<.5	.19	1.70
297236	9.6	9.0	87.1	4	1.7	.5	.5	24	.70	513.4	.5	7.7	8.3	3	<1	8.5	79.4	2	<.01	.010	20	6.3	.01	43	.003	46	.25	.004	.20	>100	<.01	.8	.2	.06	1	<.5	.06	2.26
297237	3.8	13.4	96.9	8	1.7	1.6	.8	129	1.01	159.3	.5	4.6	2.9	4	.1	14.5	156.6	<1	.04	.012	5	7.7	<.01	14	.001	14	.04	.002	.02	90.6	.01	.3	.2	<.05	<1	<.5	.47	3.26
297238	5.7	43.8	21.3	14	.1	3.4	1.2	32	1.53	228.2	1.1	6.4	11.4	2	.1	2.7	34.2	2	<.01	.015	28	7.0	.01	21	.002	20	.48	.003	.11	>100	<.01	1.0	.2	<.05	1	<.5	.09	1.33
297239	8.7	89.3	23.8	25	.2	4.8	1.7	30	3.71	284.6	3.1	7.1	15.9	3	.1	3.4	17.7	1	.01	.048	39	4.3	.01	31	.001	26	.84	.003	.10	>100	<.01	1.8	.1	<.05	1	<.5	.10	1.87
297240	5.8	86.3	14.4	10	.1	1.2	1.5	28	1.95	163.7	2.3	5.3	17.4	3	<1	3.0	21.2	4	<.01	.023	44	6.1	.02	67	.004	18	.41	.006	.18	>100	<.01	1.6	.2	<.05	1	<.5	.04	2.86
297242	11.7	75.9	17.2	14	.1	2.2	.7	20	2.70	271.9	2.9	13.6	14.7	4	.1	3.2	15.1	2	<.01	.022	33	3.4	.01	25	.002	27	.65	.006	.10	>100	<.01	2.1	.1	<.05	1	<.5	.04	1.84
297243	10.3	70.0	15.7	16	.1	1.8	.6	21	3.68	168.8	3.3	8.0	17.7	6	<1	1.7	2.8	2	<.01	.033	39	4.6	.01	37	.002	29	.63	.004	.10	>100	<.01	1.8	.1	<.05	1	<.5	.03	1.67
297244	2.9	35.4	6.1	4	.1	1.3	.3	8	.71	43.9	1.7	3.9	17.4	4	<1	1.1	7.8	3	<.01	.011	52	4.8	.01	42	.003	7	.57	.004	.12	19.6	<.01	1.0	.2	<.05	1	<.5	<.01	2.50
297245	39.2	53.4	49.1	14	.2	2.1	.6	104	1.99	163.5	2.4	9.3	9.7	4	<1	6.1	160.4	2	<.01	.033	26	3.5	.01	28	.002	22	.31	.004	.09	>100	<.01	1.4	.2	<.05	1	<.5	.17	3.29
297246	3.9	53.5	2.9	7	.1	.6	.3	5	.89	30.8	1.6	2.3	21.1	2	<1	1.2	1.1	5	<.01	.010	57	8.4	.03	46	.011	11	.42	.006	.26	55.2	<.01	1.2	.4	<.05	1	<.5	.01	2.55
297247	6.2	58.0	6.6	12	.1	1.6	.4	21	2.09	95.2	2.2	11.5	17.1	3	<1	1.6	6.9	9	<.01	.029	44	9.7	.03	48	.008	13	.51	.004	.20	>100	<.01	1.8	.3	<.05	2	<.5	.03	4.38
297248	9.0	84.0	22.4	23	.9	2.9	1.6	221	3.95	195.3	1.9	10.3	10.4	4	.1	4.6	59.7	3	<.01	.043	21	7.2	.03	119	.005	22	.51	.004	.18	>100	<.01	1.9	1.2	<.05	1	<.5	.12	2.73
297249	7.2	76.3	52.7	26	.2	1.5	.6	85	2.20	362.3	1.2	6.3	6.9	1	.2	5.4	44.2	1	<.01	.022	14	2.5	.02	20	.002	21	.21	.002	.11	>100	<.01	1.0	.2	<.05	1	<.5	.18	.95
297250	5.1	61.4	13.1	5	.1	.7	.3	19	1.30	151.0	1.8	6.5	19.0	2	.1	2.4	3.6	4	<.01	.018	52	5.9	.03	47	.006	22	.41	.005	.23	>100	<.01	1.4	.3	<.05	1	<.5	.04	1.58
RE 297250	5.4	66.4	13.4	6	.1	.8	.3	20	1.38	160.6	2.0	7.5	20.7	2	.1	2.5	3.7	4	<.01	.020	56	6.1	.03	49	.006	25	.44	.004	.25	>100	<.01	1.5	.3	<.05	1	<.5	.04	-
RRE 297250	5.4	68.3	13.8	6	.1	1.0	.4	22	1.58	165.6																												



SAMPLE#	Mo ppm	Cu ppm	Pb ppm	Zn ppm	Ag ppm	Ni ppm	Co ppm	Mn ppm	Fe %	As ppm	U ppm	Au ppb	Th ppm	Sr ppm	Cd ppm	Sb ppm	Bi ppm	V ppm	Ca %	P %	La ppm	Cr ppm	Mg %	Ba ppm	Ti %	B ppm	Al %	Na %	K %	W ppm	Hg ppm	Sc ppm	Tl ppm	S %	Ga ppm	Se ppm	W* %	Sample kg
297251	2.2	19.5	14.2	3	.1	1.1	.8	131	.62	25.9	.9	9.5	3.9	1	.1	3.1	172.6	1<.01	.007	13	2.5	.01	12	.002	7	.13	.003	.07	87.1	.04	.4	1<.05	<1	<.5	.17	.61		
297252	17.8	81.3	16.2	34	2.0	4.1	1.2	82	3.57	173.9	1.3	12.8	9.0	4	.4	3.3	15.3	3<.01	.037	23	4.8	.02	38	.002	14	.34	.003	.12	>100	.17	1.2	3<.05	1	<.5	.09	.92		
297253	23.3	50.0	57.4	27	.3	2.6	.9	28	2.76	350.4	1.5	48.1	9.3	1	.2	9.3	490.9	2<.01	.018	29	4.8	.01	30	.001	25	.23	.003	.11	>100	.12	1.2	2<.05	1	<.5	.06	2.95		
RE 297253	23.2	50.3	57.3	26	.3	2.7	.9	28	2.79	350.7	1.5	36.9	9.4	1	.2	8.7	486.0	2<.01	.018	30	4.7	.01	32	.001	26	.23	.002	.11	>100	.11	1.1	2<.05	1	<.5	.06	-		
RRE 297253	23.6	51.3	65.6	26	.4	2.9	1.0	32	2.73	338.9	1.7	31.6	9.9	2	.2	11.4	525.6	3<.01	.018	31	5.1	.02	43	.002	33	.33	.003	.15	>100	.10	1.3	3<.05	1	<.5	.06	-		
297254	3.3	70.4	5.7	14	.1	5.1	1.0	11	2.71	39.8	1.6	3.3	13.9	2	<.1	.7	4.7	20<.01	.015	36	12.4	.02	45	.004	8	.90	.003	.15	16.5	.01	2.3	3<.05	3	<.5	.01	1.36		
297255	10.4	71.9	9.9	16	.1	1.7	.6	19	2.24	114.4	1.4	14.0	11.4	4	.1	2.9	20.2	9<.01	.022	30	7.8	.03	48	.004	37	.52	.004	.21	>100	.06	2.0	3<.05	1	<.5	.02	1.63		
297256	14.7	47.8	18.1	48	.4	3.5	.9	35	4.32	151.9	2.6	14.1	9.2	1	.2	2.8	28.8	33<.01	.049	21	10.7	.02	24	.006	12	.46	.002	.11	>100	.30	2.5	3<.05	1	<.5	.11	1.25		
297257	7.0	60.9	5.4	19	.1	3.8	.8	27	3.24	54.6	1.6	8.7	10.6	3	<.1	1.1	6.7	19<.01	.021	27	12.6	.04	47	.008	7	.85	.003	.18	>100	.05	1.8	3<.05	3	<.5	.03	1.95		
297258	9.4	57.0	7.0	15	.2	1.6	.7	28	2.78	61.9	1.6	16.0	14.1	2	<.1	1.8	13.5	11<.01	.024	37	8.9	.04	42	.009	17	.57	.003	.20	>100	.10	2.1	4<.05	2	<.5	.04	1.53		
297259	13.2	54.2	21.5	19	.2	2.7	.9	58	2.87	184.2	1.9	11.1	10.5	2	.1	3.9	50.0	3<.01	.036	28	4.8	.03	23	.004	38	.48	.003	.10	>100	.16	1.6	6<.05	1	<.5	.09	1.65		
297260	11.5	70.8	6.1	11	.1	1.5	.9	31	2.74	145.8	2.2	21.2	12.7	2	<.1	4.1	94.7	12<.01	.023	31	7.5	.05	29	.006	33	.59	.003	.17	>100	.13	2.2	3<.05	2	.6	.07	1.64		
297261	3.6	15.7	10.2	27	.1	3.6	.5	30	1.94	45.0	1.8	3.3	22.0	3	.1	3.4	1.0	3<.01	.024	68	3.5	.02	44	.005	14	.35	.003	.17	>100	.09	1.0	2<.05	1	<.5	.03	2.09		
297262	6.1	12.6	22.4	3	.2	.9	.2	16	.54	34.0	.6	5.4	2.3	<.1	<.1	8.8	207.5	1<.01	.006	7	1.3	.01	5	.001	13	.06	.002	.03	>100	.06	.4	1<.05	<.1	<.5	.02	1.66		
297263	11.5	42.1	17.3	5	.1	.9	.4	12	.92	120.4	1.5	9.9	15.1	2	<.1	7.4	8.2	2<.01	.012	41	4.3	.02	30	.002	45	.30	.003	.15	>100	.09	1.2	2<.05	1	<.5	.04	2.79		
297264	13.0	53.4	33.0	6	.1	1.8	.5	28	.92	48.1	1.9	8.9	15.6	4	<.1	4.9	89.1	2<.01	.019	50	3.8	.02	37	.003	26	.42	.003	.12	>100	.10	1.1	1<.05	1	<.5	.04	2.71		
297265	19.5	39.3	56.3	12	.6	1.0	.4	196	1.88	197.8	2.3	20.2	11.3	4	.1	12.2	147.8	2<.01	.038	34	5.5	.02	46	.004	26	.32	.003	.14	>100	.07	1.6	2<.05	1	<.5	.30	2.78		
297266	11.1	73.4	58.6	12	.3	1.0	.4	38	1.53	255.9	1.2	18.0	8.6	3	.1	8.0	106.8	1	.01	.015	23	2.2	.02	22	.001	29	.23	.002	.12	>100	.07	1.1	2<.05	1	<.5	.12	1.53	
297267	4.3	28.8	19.1	4	.1	.8	.6	38	1.22	103.2	1.6	9.4	10.3	3	<.1	3.5	11.8	2	.01	.021	26	5.9	.02	34	.003	31	.34	.003	.15	>100	.06	1.1	3<.05	1	<.5	.15	1.55	
297268	13.1	26.7	21.5	4	.2	.6	.4	21	1.20	89.3	1.7	6.8	10.7	3	<.1	3.1	26.8	1	.01	.032	22	1.7	.02	22	.001	22	.24	.002	.12	>100	.11	1.2	2<.05	1	<.5	.07	1.52	
297269	6.9	58.3	16.2	23	.1	1.7	.8	48	2.36	76.9	1.5	9.7	10.7	3	.1	4.3	27.5	1	.01	.036	26	4.6	.02	30	.001	28	.28	.002	.15	>100	.11	1.1	3<.05	1	<.5	.11	1.69	
297270	3.2	45.9	15.1	9	.1	1.2	.7	40	1.32	98.2	1.5	24.1	11.2	4	<.1	3.5	39.3	5	.01	.021	30	6.5	.10	48	.017	17	.71	.003	.27	>100	.13	1.2	5<.05	2	<.5	.04	2.80	
297271	42.1	73.3	35.6	9	.3	1.3	.6	64	1.97	46.2	2.0	13.8	16.2	3	<.1	4.4	206.7	4<.01	.027	50	6.3	.04	45	.007	16	.57	.004	.19	>100	.12	1.4	3<.05	1	.5	.12	2.61		
297272	8.2	111.2	18.7	6	.1	1.2	.5	13	2.68	46.8	1.5	8.8	16.2	2	<.1	2.0	22.3	3<.01	.016	44	3.3	.02	38	.003	18	.42	.004	.16	84.1	.03	1.1	2<.05	1	.5	.01	1.85		
297273	9.2	73.3	9.8	12	.2	1.5	.7	10	2.88	29.9	1.5	2.9	16.1	4	<.1	2.0	1.7	4<.01	.029	42	7.3	.02	95	.006	16	.55	.004	.19	42.7	.03	1.3	2<.05	1	.5	.01	3.34		
297274	3.2	66.5	4.9	9	.2	1.8	.4	7	1.89	11.0	1.5	3.9	16.7	6	<.1	.5	5.1	5<.01	.015	49	7.3	.02	135	.012	9	.51	.004	.19	2.2	.01	1.0	3<.05	2	.5	<.01	1.52		
297275	6.3	43.4	7.0	9	.1	1.8	.7	19	1.81	39.6	1.0	3.3	12.1	3	<.1	1.4	15.3	4<.01	.020	26	8.2	.05	44	.007	28	.54	.004	.23	>100	.04	1.1	4<.05	2	<.5	.02	1.79		
297276	3.7	46.3	5.5	9	.1	1.1	.6	19	1.80	65.0	.8	5.5	9.1	2	<.1	2.4	30.3	2<.01	.022	18	3.6	.03	39	.005	18	.30	.003	.14	>100	.06	.8	3<.05	1	<.5	.02	1.81		
297277	2.7	41.1	11.3	9	.1	.9	.5	8	2.09	66.8	1.5	2.4	20.4	5	<.1	1.7	2.5	5<.01	.026	54	6.0	.03	116	.005	23	.46	.004	.22	>100	.05	1.3	3<.05	1	.5	.02	1.75		
297278	7.2	45.5	13.9	12	<.1	1.7	.7	23	2.37	78.0	1.2	6.4	16.7	1	<.1	2.2	16.2	1<.01	.028	44	1.9	.01	19	.001	43	.19	.003	.08	>100	.13	.7	1<.05	<.1	<.5	.04	1.72		
297279	3.3	39.4	9.3	10	.1	1.4	.6	18	2.57	43.2	1.4	6.3	19.9	3	<.1	1.4	20.0	5<.01	.035	49	6.5	.03	99	.004	25	.44	.005	.24	77.0	.04	1.3	.2	.07	1	<.5	.01	3.96	
297280	1.1	24.0	4.4	2	.2	.3	.4	5	.68	6.7	.7	2.5	12.8	2	<.1	.9	3.4	2<.01	.011	55	2.5	.01	41	.005	7	.27	.004	.18	46.9	.03	.5	2<.05	1	<.5	.01	2.73		
297281	1.6	72.2	6.2	9	.2	1.0	.7	17	3.47	49.7	.7	3.6	10.0	6	<.1	1.7	13.1	5<.01	.024	23	7.7	.02	54	.003	19	.36	.003	.15	>100	.11	1.0	2<.05	1	<.5	.04	1.99		
297282	1.2	10.3	3.6	10	.1	.7	.5	8	1.31	6.1	.9	1.5	15.1	4	<.1	.6	2.5	3<.01	.020	51	4.0	.02	48	.007	6	.24	.004	.16	6.7	<.01	.6	3<.05	1	<.5	<.01	3.06		
STANDARD DS6/R-2a	11.3	122.3	29.9	143	.3	25.1	10.8	707	2.82	21.1	6.7	50.3	3.1	41	6.1	3.6	5.1	56	.86	.078	15	185.6	.58	164	.084	18	1.91	.073	.16	3.5	.23	3.3	1.7	<.05	6	4.4	.09	-

Sample type: DRILL CORE R150. Samples beginning 'RE' are Reruns and 'RRE' are Reject Reruns.



SAMPLE#	Mo ppm	Cu ppm	Pb ppm	Zn ppm	Ag ppm	Ni ppm	Co ppm	Mn ppm	Fe %	As ppm	U ppm	Au ppb	Th ppm	Sr ppm	Cd ppm	Sb ppm	Bi ppm	V ppm	Ca %	P %	La ppm	Cr ppm	Mg %	Ba ppm	Ti %	B ppm	Al %	Na %	K %	W ppm	Hg ppm	Sc ppm	Tl ppm	S %	Ga ppm	Se ppm	W* %	Sample kg
297283	3.4	73.8	7.4	37	.1	2.3	.5	17	3.22	132.6	1.2	4.0	15.6	3	.1	3.1	8.2	4<.01	.032	48	5.6	.02	39	.003	11	.26	.003	.15	>100	<.01	.9	.2	<.05	1	.6	.03	4.05	
297284	2.7	71.2	13.2	19	.1	1.5	.5	517	2.59	107.1	1.1	3.4	11.1	3	<.1	4.0	78.4	4<.01	.016	37	5.8	.02	58	.004	13	.42	.008	.26	>100	<.01	1.2	.2	<.05	1	<.5	.57	1.70	
297285	2.2	57.8	3.9	31	.1	6.2	.7	24	3.85	18.0	1.4	1.1	15.3	4	<.1	1.0	2.2	8<.01	.026	52	8.8	.02	56	.004	7	.64	.009	.30	33.2	<.01	.8	.3	<.05	2	.5	.01	3.14	
RE 297285	2.5	60.2	4.1	33	.1	6.1	.8	23	3.92	17.8	1.4	1.2	16.0	4	.1	1.0	2.2	7<.01	.027	51	8.7	.02	52	.004	7	.70	.009	.29	31.8	<.01	.8	.3	<.05	2	.5	.01	-	
RRE 297285	2.6	56.6	4.0	30	.1	5.5	.8	23	3.85	18.9	1.3	1.3	15.6	4	<.1	1.1	2.5	6<.01	.028	53	8.3	.02	52	.003	6	.61	.008	.26	43.5	<.01	.7	.3	<.05	2	.6	.01	-	
297286	1.3	97.1	2.1	13	.2	30.4	17.1	55	2.43	5.9	2.1	1.1	17.1	8	2.4	.2	2.2	6<.01	.020	40	10.0	.17	77	.003	4	1.08	.013	.28	7.2	<.01	.9	1.0	.79	3	<.5	<.01	5.04	
297287	21.6	102.8	4.3	34	.1	4.7	.8	25	4.27	71.7	1.8	1.6	16.0	5	<.1	1.0	3.0	6<.01	.036	48	9.2	.03	80	.005	11	.60	.008	.25	>100	.01	1.2	.3	<.05	2	<.5	.02	3.82	
297288	12.0	71.5	8.6	41	.1	4.8	1.1	31	5.90	263.5	2.9	5.7	17.7	4	.1	3.8	3.1	6<.01	.075	52	10.1	.03	77	.006	16	.65	.006	.28	>100	.02	1.8	.3	<.05	1	.5	.03	1.90	
297289	8.3	51.0	9.0	15	.1	1.1	.6	28	2.05	295.8	1.3	7.1	7.6	1	<.1	4.2	35.7	2<.01	.019	18	6.9	.04	24	.003	29	.36	.002	.20	>100	.01	.9	.3	<.05	1	<.5	.07	1.55	
297290	5.5	31.1	13.4	19	.1	2.2	1.7	28	1.76	137.2	1.1	2.9	8.6	3	.1	2.8	18.8	2<.01	.018	19	6.8	.03	22	.002	45	.32	.003	.15	>100	.01	.8	.2	<.05	1	<.5	.10	2.26	
297291	4.6	77.8	7.6	28	.1	4.6	1.1	26	3.29	209.2	1.4	4.1	14.7	2	.1	3.3	7.0	5<.01	.026	46	7.5	.03	56	.005	17	.54	.005	.29	>100	.01	1.4	.2	<.05	2	.6	.03	2.70	
297292	8.9	71.7	4.8	20	.1	2.7	.8	20	2.83	99.3	1.1	3.4	12.1	5	<.1	1.8	3.7	4<.01	.017	31	8.2	.03	76	.007	16	.63	.005	.27	71.9	<.01	1.2	.3	<.05	2	.5	.01	1.52	
297293	3.8	73.1	7.8	3	.1	1.1	1.0	11	1.96	11.9	1.0	1.2	11.1	14	<.1	.7	1.4	6<.01	.014	34	10.1	.03	120	.007	10	.68	.004	.20	18.7	<.01	1.2	.3	<.05	3	.6	.01	2.06	
297294	14.0	72.5	11.4	19	.1	5.5	1.3	32	4.01	116.9	2.0	3.3	11.1	4	.1	2.0	24.4	11<.01	.030	26	10.0	.03	55	.007	14	.94	.004	.18	>100	<.01	2.2	.3	<.05	3	.7	.07	2.76	
STANDARD DS6/R-2a	11.2	119.2	28.3	140	.3	24.5	10.5	708	2.83	20.8	6.5	47.3	3.2	42	6.0	3.5	4.9	56	.86	.079	15	185.3	.58	165	.086	17	1.94	.075	.17	3.2	.22	3.3	1.7	<.05	6	4.2	.09	-

Sample type: DRILL CORE R150. Samples beginning 'RE' are Reruns and 'RRE' are Reject Reruns.

APPENDIX “E”

Analytical Methods

Sample Preparation – The core samples are crushed to 70% passing through a 10 mesh screen. A 250 g split is then pulverized to 95% passing a 150 mesh screen.

1DX – A 0.5 g sample is dissolved in aqua regia in a 95oC bath and then analyzed for 36 elements by ICP-MS.

W 7KP -