

**095533**

September 1, 2010

**Geological Assessment Report**

**Work Applied to claims:**

HRS3-5 YD07736-38

HRS7-13 YD07740-46

GR Group1-4 YD07747-50

10 claims

On and near Dominion & Portland Creeks

Map Sheet 115O /15

UTM to access: 608000/7081000

**Dawson Mining District**

**Claims Owner: Sylvain Montrueil  
Report Composed by: Erini Petroutsas**



## Table of Contents

<b>Introduction &amp; Objectives</b>	3
<b>History &amp; Geology</b>	3
<b>Geological Data Description</b> See specimen pics, corresponding to samples sent for assay Sept. 2010	
<b>Sample List</b>	4
<b>Sample Locations Map &amp; Claims Map</b>	7
<b>Expenditure Statement</b>	9
<b>Assay Results</b>	10
<b>Conclusion &amp; Recommendations</b>	12
<b>Statement of Qualifications</b>	13

## Introduction & Objectives:

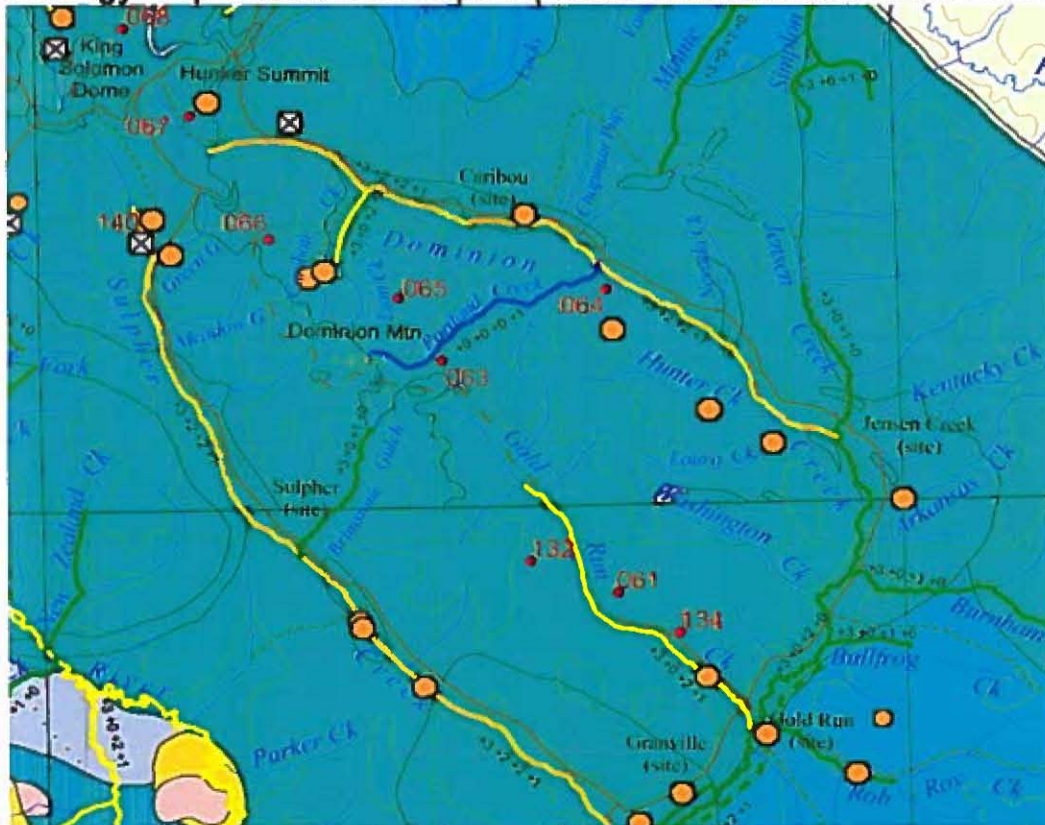
Samples taken in bulk from selectively uncovered areas of bedrock & native vein. Processed by washing, splitting, crushing then assay.

## History:

The Coarse Gold (CAU) property comprises 166 claims encompassing 18.46 acres, 7.47 hectares on an un-glaciated portion of the Klondike Plateau near Dawson in west central Yukon, Canada. This block of claims was the focus of an exploration program during 2009-10 funded, staked and worked by Sylvan Montrueil and Erini Petroutsas.

The claims lie over placer leases that have been heavy gold producers<sup>1</sup>, but very little hard rock exploration has been done over the last century even though the location is central to where the "mother load" of Dominion, Sulphur and Gold Run Creeks is presumed to exist. This report is a compilation of previously reported work on the claims and a detailed description of the 2009 and 10 work program that will focus on following up leads from assay results showing gold.

**Geology:** YTp- Pltonic rocks superimposed on Nassina & Klondike Schist Subterrane.



*For more detailed geology & history on the area see the full CAU Grouping Report.*

<sup>1</sup> Resource Appraisal Map for Placer Gold in the Stewart River & Dawson Areas. G.W. Lowey, S. Deforest and P. Lipovsky. Indian and Northern Affairs Exploration & Geological Division. 2002. Open File 2002-6. See also Endnote 1.

See also: Percentage of Total Placer Gold Production (1978-2003) By Region. Bill LeBarge, *Placer Geologist*, Yukon Government. Open File 2001-34.

Specimen Pictures corresponding to samples sent to assay Sept.2010



HRS5

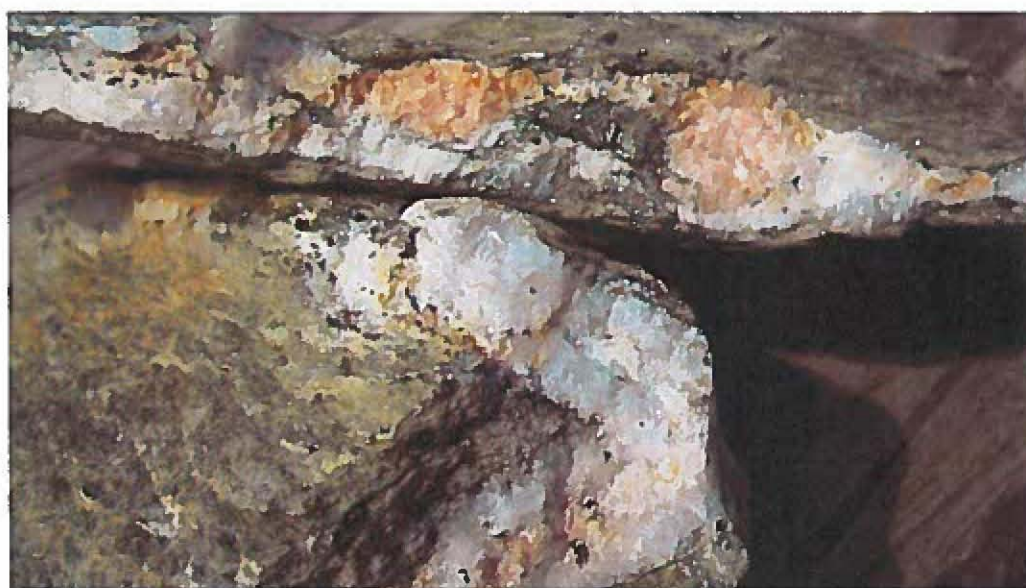


R3 trench

Specimen Pictures corresponding to samples sent to assay Sept.2010



R4 trench. Quartz and galena.



Portland & Dominion Veins, PDPitQV

Specimen Pictures corresponding to samples sent to assay Sept.2010



Schist surrounding rose quartz veins on Portland at Dominion system. PPit sample.



Outcrop on the nose where Coarse Gold Creek meets Dominion. Sulphides.

Specimen Pictures corresponding to samples sent to assay Sept.2010



MCau. Schist from the mouth of Coarse Gold Creek.



Specimen Pictures corresponding to samples sent to assay Sept.2010



CE samples, Caribou End.



Hi Mag Hill

Specimen Pictures corresponding to samples sent to assay Sept.2010



Remnant at the top of hill west of Caribou that shows high magnetic abnormalities. Sample O75.



Abundant red quartz outcropping along top and sides of ridge of himag hill. The water below near the headwater of Dominion Creek is very red.

Specimen Pictures corresponding to samples sent to assay Sept.2010



Gold removed from powdery schist surrounding quartz veins in Red Zone, Paris.



Specimen Pictures corresponding to samples sent to assay Sept.2010



Red Zone trench.



Specimen Pictures corresponding to samples sent to assay Sept.2010



Hard Rock Shaft



HRS1 claim

Specimen Pictures corresponding to samples sent to assay Sept.2010



Specimen Pictures corresponding to samples sent to assay Sept.2010



TLM. A zone of highly calcitic quartz surrounded in fine talc.



Schist from Almanda claim, on Almanda Creek.

## Geological Data Description:

### Sample List for CAu Group August 2010

Assay #	Description	Analysis	GPS name
		Sampling from July 16th 2010 with Mike Glynn Paris 5-10 claims and AuR 15-16 inclusive (\$4,800 was submitted as cost July 2010)	
HRS1	Dominion Creek Paris5S	Qz muscovite schists w fresher qz concordant to schistosity. Feldspar, py cubes, greenish sericitic layers.	HRS1
HRS2	Soil	Decomposed bedrock. Dark red, brown. From HRS trench 2009. 75cm wide sample.	HRS2
HRS3	Rock	Qz rich with lenses of high grade schist facies, muscovite, chlorite, pyrite, mica, possibly garnet or cuprite.	HRS3
HRS4	Rock	Chalcopyrite rich Qz vein, chlorite, sulfide and calcite zones. Test for chalcocite, sylvanite, petzite and platinum.	HRS4
HRS5	Rock	Qz lenses cut with syenitic sericite schist. Red tinge and well formed pyrite cubes embedded.	HRS5
PIM1	Dominion Creek at 72 Pup Rock	Vein system, trench begins at bottom of a placer pit(2009). Qz on fault zone with carbonaceous graphitic schists weathering to clay. Pyrite and other mineralization visible at contact. Test for arseno,chalcopyrite, calchocite and gold.	PIM1
RZM1	Red Zone Rock & clay	Trench 2010, west side of Dominion Creek. Strike 138 degree. 20 meters long, 1.5m long, 3m deep hand dug. Test for sulphides, minerals, wide mesh for gold.	RZM1
RZM2	Rock	Black quartz, red coated, mica schists. Powdery housing for qz veins bulging from all along the trench could be talc. Very little oxidization in sulphides.	RZM2
TLM1	Paris1 Powdery rock	Taken from trench 2010, strikes 135 degrees. Rusty portions of Qz vein & Qz/Ca breccia. Visible aspy in qz. Trench was hand dug at bottom of an existing placer pit in June.	TLM1
TLM2	Rock	Calcite quartz blebs up tp 20cm, no talc in the horizon zones. Alteration and some breccia fabric.	TLM2
TLM4	Powdery rock	Blebs/balls of Qz swell up to 30cm. A sample from the altered zone which is roughly 18m long. Some light green and redish-brown staining along relic bedding.	TLM4
R1M	Robinson Ridge Rock	Trench 2009 10m long,1.5m wide, 108 degrees cutting chlorite schist, variably folliated. Some	R1M

Sample List for CAu Group  
August 2010

slicken slips and talc observed in zone of most intense crenulations. Quartz barrels of milky bull qz 10cm to 40cm in widths. Some weathered out Py cubes. Small reconcentrations of FePy's in/on mafic minerals along foliation.

R2M	Rock	Trench 2009 10m long, 1.5m wide, 3m deep. 108 degrees. Surface floating Qz trending 200 SSW (In pit also). Wall rocks same on both sides of QV /Swells-Klondike schist, chloritic med green with some brown weathering in more Fe rich horizon. Variably foliated and crenulated. Qz swarms/ barrels, mainly bull widths up to 50cm. Average 20 cm. Some zones of higher chlorite & mica contents oxidizes under horizontal contacts.	R2M
R3M	Rock	Trench 2009 9m long, 1.75m wide, 3m deep. Exposing 55cm wide Qz vein cutting Qz rich foliated feldspathic Klondike schist bedding identical on either side of the QV. QV strikes 200 SSW, dips near vertical 70deg to the east.	R3M
R4M	Rock	Quartz vein strikes 200deg. Close to the vertical dip, sulphides in Qz vein near margin with west wall. Sample taken perpendicular to vein. Sulphides include pyrite, galena, manganese. Some graphitic coatings/smears at oxidized zones of mineralizations. Test for arsenopy. Taken from a 10m by 2.3m deep. Wall rocks are Qz Kspar schists.--Specimin Pic--	R4M

15 samples selected for assay. August 16th 2010

Samples taken by hand trenching below existing pacer pits at mouth of Portland Creek  
June 10-12, 2010  
Exploration Manager and Assiatant

PDPitQV	Rock	Uncovered vein system of sericite muscovite coated quartz, crystallized with rose calcite staining. Well formed pyrite, chalcopyrite and syenite flakes in schist as well as Qz/Calcite. On Paris1. Sampling is of the housing contact schist. Which is composed of Qz layers with sulphide minerals. Mineral test. Wide mesh. --Specimin Pics-PDPitQv - PDPITQv2 --	PPIT
---------	------	--	------

1 sample selected for assay. August 16th 2010

Sample List for CAu Group  
August 2010

Sample taken by hand trenching around outcrop at mouth of Coarse Gold Creek  
June 8th 2010  
Exploration Manager (Sylvain)

CAuNose Rock	Outcropping Qz veins running through and with sedimentary schistose layers of sulphide rich forest green schists.--Specimin Pic--	CAu23
--------------	---	-------

1 sample selected for assay. August 16th 2010

Samples taken from reevaluation of 2009 hoe trenches with hand picks, Caribou Creek  
May 14-15th 2010  
Exploration Manager and Assiatant (Erini)

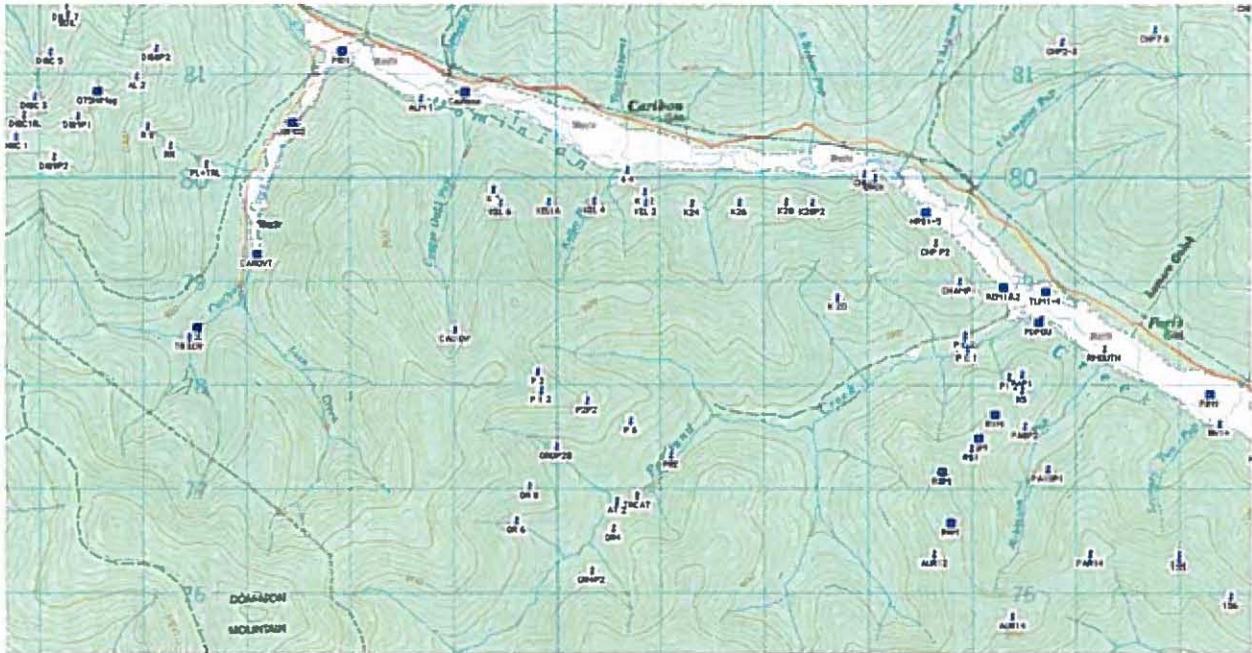
M01	Dominion at Caribou Creek Red Zone Fe	Qtz muscovite schist secondary Qz zones concordent with schistosity Fe2/Pyrites along margins. Less in the pure quartz zones. Wide mesh assay for possible visible Au.	M01
JSM02	Rock	Felsemer, muscovite, biotite schist, 50% Qz. Pyrite chalcopryrite and possibly other minerals.	JSM02
JSM03	Rock Trench 2009	Felsemer dark chlorite, biotite schist. Dyke like, sericite. Less alteration in this zone. Red tinge, Py veining into Qz breccia.	JSM02
CARQV	Rock	Bull Qz vein subcrop from Pit 2009. Galena blob w chalcopryrite, pyrite, limonitic zones around mineralization, some coating of sericitic schist blackened.	CARQV
CE	Rock Trench 2009	Follated Qz muscovite schist with 3cm wide Qz vein, galena & pyrite concentrated at vein margins. Whole rock assayed. --Specimin Pic-CE-- Secondary Qz enrichment area cutting bedrock. Strike N-30deg West dipping at 20deg.	CE

5 samples selected for assay. August 16th 2010

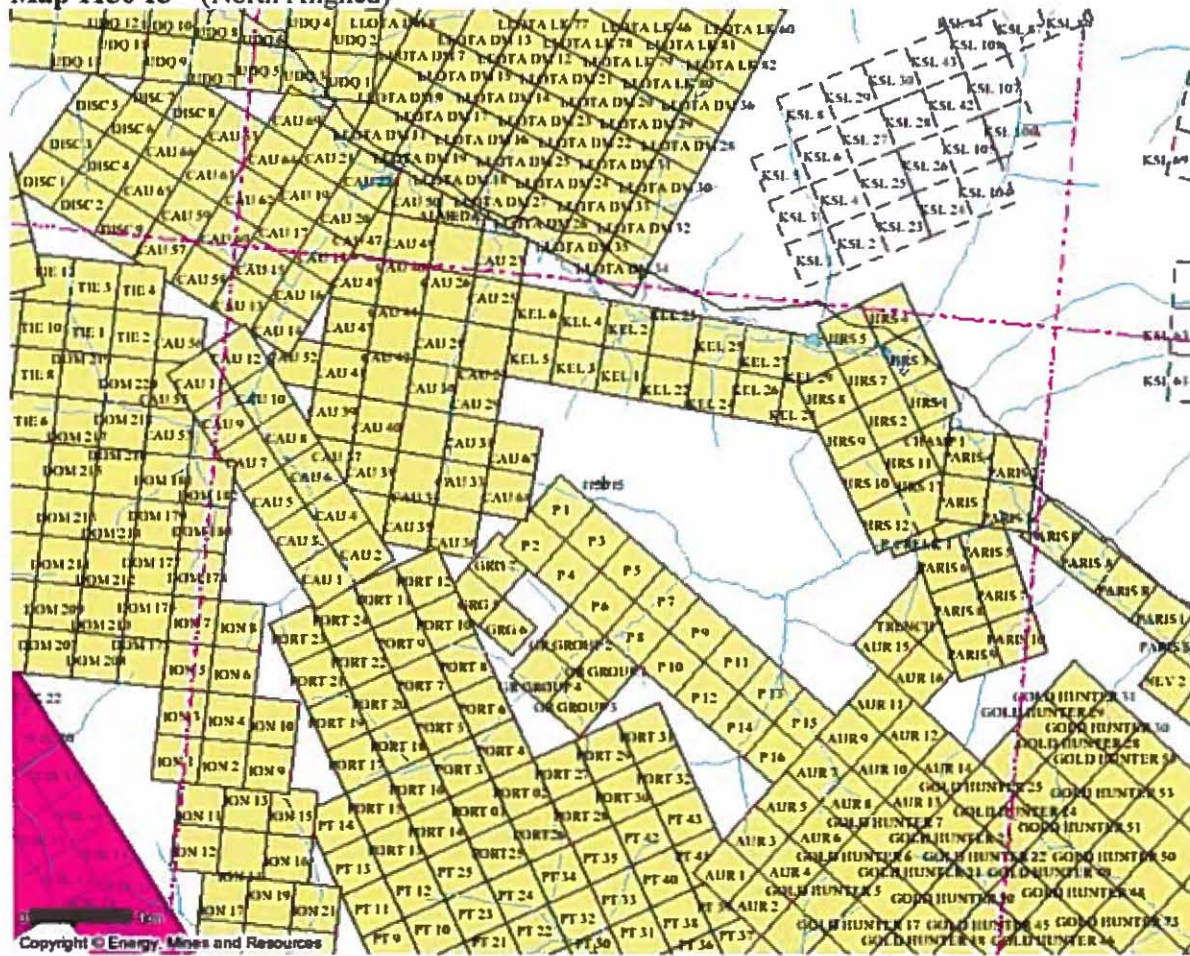
Samples taken from prospecting and hand digging on HI-Mag Hill, West of Caribou  
July 26-27th 2010

075HiMg Rock	Quartz in sericite schist with oxidized pyrite and well formed blocks of iron or epidote, brownish-red staining. Sample taken from the top of the hill, where an unweathered remnant of ultramafic layer reamins, the qz taken is from below this outcrop, in the sericitic Klondike schist.--Specimin	075
--------------	--	-----

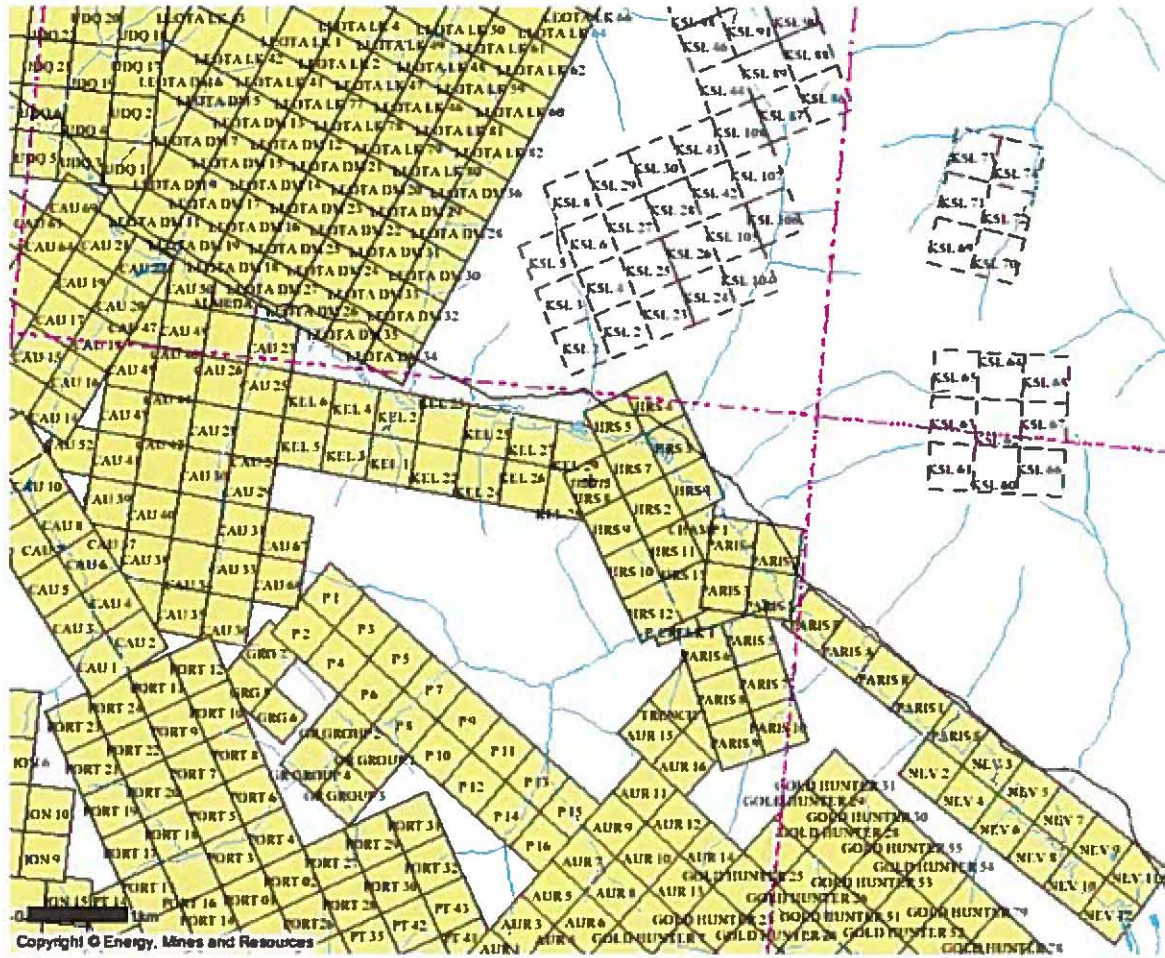
**22 samples selected to submit for assay**



Map 1150 15 (North Aligned)



Western part of the property starts with Disc 1. Discovery Pup, (being the 1st creek gold was found on Dominion) & the head of Dominion Creek.



Eastern part of property.

Cost Assessment for CAU claim group on works completed until Sept. 2010

Daily wage \$350 Sylvain Montrueil+ \$275 wage for geo assistance and safety, Erini Petroutsas. Camp fees included.

Samples taken in bulk from selectively uncovered areas of bedrock & native vein. Processed by washing, splitting, crushing and panning then assay.

<b>Date</b>	<b>Labour</b>	<b>Description</b>	<b>Cost</b>
May 14-15th	EM & Assistant	Further trenching into previous trenches #CC3&4. With hand tools, Caribou Creek. CAU 53&54.	1,250
June 8th	EM	Prospecting mouth of Coarse Gold Creek. Heavy greenstone. CAU23&24	350
June 9th		Prospecting QV up Coarse Gold CAU30 samples of the decomposed bedrock.	350
June 10-12th	EM&A	Hand trenching bedrock veins at the bottom of large mined placer pits. Portland at Dominion. Paris1 ParisP, ParisI.	625
June 18th	EM&A	Hand trenching the redzone on Paris 3. See pic. Sampling of zone & processing.	625
June 19th	EM&A	Pick and shovel trenching on Hrs 1&2, pictures of inside the old shaft, sampling from entire area. Uncover area of talc.	625
July 26th	EM	Prospecting, digging and sampling on the hi-mg hill west of Caribou Creek.	350
August 16th	EM&A	Processing & organization of specimens for assay.	625
August 21-22nd	EM&A	Prospecting new claims at Keller, western edge of claims and processing of samples.	1,250
			<b>6,050</b>
9 day Quad		\$150/day rental	1,350
		Exploration expenses summer 2010, CAU Grouping	<b>7,400</b>

\$7,400 was put toward renewal of claims listed on cover page.

# Assay Results: Returned December 10th, 2012



## Certificate of Analysis 10-360-02862-01

Castillon Resources Ltd.  
3151RV 3rd Ave  
Whitehorse, Yukon Y1A 1G1

Sample	Sample Type	As	Ag	Al	Ar	Ba	B	Ca	Co	Cu	Cr	Cs	Fa	K	La
Designation	Type	ppb	ppm	%	ppm	ppm	ppm	%	ppm	ppm	ppm	ppm	%	ppm	ppm
3-000 N	Rock	207	1.0	4.90	9	1901	-2	0.07	-0.5	4	299	4	1.45	4.99	11
1-000 N	Rock	18	0.8	6.52	6	1142	-1	0.07	-0.5	7	186	7	2.21	2.14	24
1-010 N	Rock	81	-0.5	5.52	-1	2046	-2	0.02	-0.5	4	125	1	1.12	1.11	19
4-000 N	Rock	34	-0.5	7.61	-3	2904	-2	0.15	-0.5	8	119	7	2.94	2.94	16
4-000 H-Z	Rock	13	0.7	6.75	10	1309	-3	0.20	-0.5	6	140	5	2.33	1.11	13
5-000 N	Rock	7	1.0	6.77	-1	1924	-2	0.04	-0.5	4	144	2	1.64	2.17	21
5-000 N	Rock	32	0.6	4.16	230	1103	-2	0.14	-0.5	13	204	11	1.41	2.02	21
5-010 N	Rock	29	1.0	4.86	10	2000	-2	0.03	-0.5	12	214	29	2.79	1.06	21
4-000 N	Rock	-5	0.7	6.51	-5	1941	-2	0.10	-0.5	6	105	7	2.63	2.04	19
5-0 N	Rock	13	0.7	4.00	-5	2630	-2	0.04	-0.5	2	163	5	0.71	1.66	19
6-0 N	Rock	49	0.6	6.18	-5	1901	-2	0.04	-0.5	6	120	1	2.07	4.04	15
6-000 N	Rock	6	0.8	6.34	-5	2241	-2	0.04	-0.5	5	110	1	2.42	3.25	11
6-000 N	Rock	47	-0.5	6.26	-3	2087	-2	0.00	-0.5	5	112	11	2.49	4.55	11
TL-1	Rock	-7	1.0	5.70	-3	202	-2	3.65	-0.5	14	324	7	3.32	1.24	23
TL-2	Rock	34	-0.5	1.30	42	70	-2	6.40	-0.5	30	1627	11	6.92	0.00	43
TL-3	Rock	30	-0.5	0.40	-5	20	3	2.06	-0.5	20	1728	32	5.04	0.04	25
TL-4	Rock	15	0.7	0.37	44	29	-2	1.30	-0.5	62	1220	16	4.41	-0.00	40
TL-5	Rock	65	1.0	0.37	393	20	-2	1.62	-0.5	73	1515	8	6.00	-0.00	41
TL-6	Rock	53	1.1	0.23	148	41	-2	2.75	-0.5	80	840	16	1.83	0.02	34
TL-6	Rock	14	0.8	0.27	-5	16	-2	2.77	-0.5	47	620	12	2.60	-0.01	53
TL-7	Rock	9	1.1	0.23	10	14	-2	2.01	-0.5	65	802	27	5.00	-0.01	-10
TL-8	Rock	10	1.0	0.35	-5	10	-2	0.49	-0.5	10	1181	10	3.70	-0.00	34
TL-9	Rock	72	4.9	0.66	33	11	-2	4.17	-0.5	70	1264	24	7.49	-0.00	-10
TL-10	Rock	12	0.7	1.71	10	36	-2	5.84	-0.5	16	1121	10	1.77	0.04	22
TL-11	Rock	-5	0.7	1.06	-5	104	-2	7.60	-0.5	29	977	3	3.30	0.07	23
TL-12	Rock	9	1.1	1.23	42	100	-2	6.29	-0.5	10	524	1	1.75	0.00	21
TL-13	Rock	7	1.1	0.80	8	122	-2	6.29	-0.5	17	523	2	1.45	0.07	18
TL-14	Rock	6	1.0	2.48	30	112	-2	7.12	-0.5	10	770	1	2.20	0.00	25
TL-15	Rock	11	1.3	2.75	-5	431	-2	6.25	-0.5	10	620	11	4.57	0.00	25
RZ-1	Rock	7	0.6	1.07	-5	204	-2	1.49	-0.5	9	100	3	1.03	0.07	40
RZ-2	Rock	9	1.1	1.00	-5	324	-2	1.46	-0.5	11	251	11	2.56	2.56	20
RZ-1	Rock	9	1.4	1.00	-5	320	-2	0.79	-0.5	6	238	21	1.93	2.37	20
RZ-4	Rock	10	1.5	5.23	-1	107	-2	1.21	-0.5	7	236	11	1.71	1.62	20
RZ-3	Rock	10	1.6	5.01	-3	106	-2	1.29	-0.5	20	207	10	2.71	2.30	17
RZ-6	Rock	11	1.6	4.80	-3	200	-2	1.30	-0.5	12	254	10	2.29	2.30	43
RZ-7	Rock	12	1.3	5.91	9	101	-2	1.10	-0.5	6	241	10	2.72	2.25	10
RZ-8	Rock	9	2.1	4.00	-5	100	-2	0.90	-0.5	6	266	10	1.82	1.00	20
RZ-9	Rock	12	1.2	4.27	-5	111	-2	0.82	-0.5	6	226	10	1.34	2.70	14
RZ-10	Rock	14	1.0	4.34	-5	109	-2	0.56	-0.5	4	200	10	2.02	1.91	10
RZ-11	Rock	15	1.0	4.64	-5	100	-2	0.24	-0.5	4	273	10	2.15	1.90	10



## Certificate of Analysis 10-360-02862-01

Castillon Resources Ltd.  
3151RV 3rd Ave  
Whitehorse, Yukon Y1A 1G1

Sample	Sample Type	Mg	Mn	Mo	Ni	P	Pb	Sr	Ta	Tb	Ti	V	W	
Designation	Type	ppm	ppm	ppm	%	ppm	ppm	ppm	%	ppm	ppm	ppm	ppm	
2-000 N	Rock	0.67	172	4	0.04	-1	153	34	-5	-2	30	0.16	-10	-10
1-000 N	Rock	0.56	125	9	1.00	-1	634	10	-5	-1	65	0.50	-10	-10
1-010 N	Rock	0.55	94	9	0.79	-1	211	10	-5	-1	46	0.17	-10	-10
4-000 N	Rock	1.08	200	4	2.61	-1	344	6	-5	-1	56	0.24	-10	-10
4-000 H-Z	Rock	0.51	277	3	3.20	-1	360	5	-8	-1	101	0.10	-10	-10
5-000 N	Rock	0.17	301	13	3.02	-1	300	17	-5	-5	134	0.17	-10	-10
5-000 N	Rock	0.59	441	10	0.01	20	1001	6	-5	-1	82	0.27	-10	-10
5-010 N	Rock	0.54	139	12	0.44	14	563	13	-5	-1	116	0.25	-10	-10
5-000 N	Rock	1.60	201	4	1.70	-1	320	3	-5	-1	47	0.19	-10	-10
5-0 N	Rock	0.10	44	3	0.01	-1	210	11	-5	-1	36	0.06	-10	-10
6-0 N	Rock	0.71	372	3	0.03	-1	200	10	-5	-1	51	0.14	-10	-10
6-000 N	Rock	0.61	243	3	0.03	-1	290	3	-5	-1	40	0.14	-10	-10
6-000 N	Rock	0.61	200	3	1.26	-1	370	25	-5	-1	30	0.16	-10	-10
TL-1	Rock	1.59	800	9	0.63	35	640	4	-3	-2	107	0.12	-10	-10
TL-2	Rock	-10	900	1	-0.01	1007	10	-2	13	-1	174	0.04	-10	-10
TL-3	Rock	-10	1272	1	-0.01	1114	-10	-2	12	-1	190	-0.01	-10	-10
TL-4	Rock	-10	300	-1	-0.01	1100	-10	-2	9	-1	45	-0.01	-10	-10
TL-5	Rock	-10	634	-1	-0.01	1005	-10	-2	13	-1	43	-0.01	-10	-10
TL-6	Rock	-10	1799	-1	-0.01	1117	-10	-2	7	-1	92	-0.01	-10	-10
TL-6	Rock	-10	970	-1	-0.01	932	-10	-2	5	-1	80	-0.01	-10	-10
TL-7	Rock	-10	1623	-1	-0.01	1019	-10	-2	6	-1	100	-0.01	-10	-10
TL-8	Rock	-10	1630	-1	-0.01	954	-10	-2	9	-1	204	-0.01	-10	-10
TL-9	Rock	-10	1801	1	-0.01	950	-10	-2	9	-1	112	-0.01	-10	-10
TL-10	Rock	0.11	770	1	0.02	146	11	-2	8	-1	200	-0.01	-10	-10
TL-11	Rock	0.25	1230	2	0.02	405	10	-2	8	-1	210	-0.01	-10	-10
TL-12	Rock	0.79	1692	1	0.02	452	13	-2	7	-1	200	-0.01	-10	-10
TL-13	Rock	2.41	1630	1	0.02	100	10	6	-1	-1	244	-0.01	-10	-10
TL-14	Rock	7.67	1704	2	0.00	406	123	-2	7	-1	125	0.02	-10	-10
TL-15	Rock	5.62	2146	2	0.04	307	366	-2	8	-1	104	0.13	-10	-10
RZ-1	Rock	0.40	630	16	2.80	4	314	20	-5	-1	50	0.00	-10	-10
RZ-2	Rock	0.81	701	5	0.06	-1	236	23	-5	-1	43	0.11	-10	-10
RZ-3	Rock	0.35	110	6	1.09	-1	216	44	-5	-1	41	0.13	-10	-10
RZ-4	Rock	0.35	325	7	2.34	-1	264	45	-3	-1	49	0.09	-10	-10
RZ-5	Rock	0.71	1707	6	1.62	-1	300	26	-3	-1	51	0.30	-10	-10
RZ-6	Rock	0.30	3205	6	0.04	-1	414	20	-5	-1	30	0.11	-10	-10
RZ-7	Rock	0.74	230	3	2.32	-1	290	3	-5	-1	30	0.00	-10	-10
RZ-8	Rock	0.51	430	3	1.02	-1	301	40	-5	-1	41	0.00	-10	-10
RZ-9	Rock	1.57	1730	3	0.34	-1	422	1	-5	-1	42	0.17	-10	-10
RZ-10	Rock	0.70	200	4	1.22	-1	306	6	-5	-1	37	0.11	-10	-10
RZ-11	Rock	0.90	430	3	1.02	-1	300	-2	-5	-1	31	0.11	-10	-10





## Certificate of Analysis

**10-360-02862-01**

Castellan Resources Ltd.  
3151BV 3rd Ave  
Whitehorse, Yukon Y1A 1G1

Sample Description	Sample Type	Ag		Mo		Ni		P		Pb		Sb		Sr		Tl		Y		W	
		30-4A-TR	%	30-4A-TR	ppm	30-4A-TR	%	30-4A-TR	ppm	30-4A-TR	ppm	30-4A-TR	ppm	30-4A-TR	ppm	30-4A-TR	ppm	30-4A-TR	ppm	30-4A-TR	ppm
MCAY	Rock	2.18	643	3	0.77	<1	578	6	<3	<3	60	0.23	<10	35	<10						
GA (MHI)	Rock	1.06	580	2	2.04	<1	132	24	<3	<1	49	0.12	<10	12	<10						
Pave EM 1-A	Rock	0.91	1125	3	0.02	<1	79	9	<3	<3	71	<0.01	<10	19	<10						
PDM 1-B	Rock	0.57	601	2	0.02	<1	49	173	<3	<1	41	<0.01	<10	17	<10						
075	Rock	0.90	146	3	0.12	<1	89	<2	<3	<1	25	0.01	<10	3	<10						
076	Rock	0.19	143	3	2.04	<1	126	15	<3	<1	46	0.06	<10	3	<10						
CAM-23	Rock	0.80	630	3	0.39	<1	318	5	<3	<1	39	0.15	<10	18	<10						
KEL-29	Rock	0.49	190	3	2.27	<1	325	10	<3	<1	68	0.16	<10	13	<10						
PD Pit QV	Rock	1.24	526	3	2.01	<1	393	1	<3	<1	39	0.25	<10	25	<10						
CARQV	Rock	0.83	36	1	0.07	<1	50	8415	<3	<1	12	<0.01	<10	1	<10						
PG-1-10 KCR	Rock	0.45	190	4	2.39	<1	346	10	<3	<1	272	0.21	<10	30	<10						
GC Road	Rock	0.20	304	20	1.34	<1	170	36	<3	<1	76	0.09	<10	7	<10						
Alameda	Rock	4.87	930	4	0.33	13	200	<2	<3	<1	138	0.91	<10	130	<10						
RZAM	Rock	0.19	94	1	0.04	<1	45	16	<3	<1	9	0.01	<10	3	<10						
EDM1	Rock	0.60	687	7	1.30	<1	234	22	<3	<1	30	0.13	<10	24	<10						



## Certificate of Analysis

**10-360-02862-01**

Castellan Resources Ltd.  
3151BV 3rd Ave  
Whitehorse, Yukon Y1A 1G1

Sample Description	Sample Type	Zn		Zr	
		30-4A-TR	ppm	30-4A-TR	ppm
MCAY	Rock	100	56		
GA (MHI)	Rock	68	44		
Pave EM 1-A	Rock	11	24		
PDM 1-B	Rock	20	24		
075	Rock	25	32		
076	Rock	11	65		
CAM-23	Rock	83	57		
KEL-29	Rock	56	62		
PD Pit QV	Rock	92	44		
CARQV	Rock	4	23		
PG-1-10 KCR	Rock	49	46		
GC Road	Rock	61	26		
Alameda	Rock	191	29		
RZAM	Rock	6	23		
EDM1	Rock	94	91		

**Conclusion & Recommendations:** Though gold was witnessed as being panned from crushed outcrop of the RZ (Red Zone), the sampling results do not show encouragement. 3 areas of the TL (Talc Zone) show #'s above 50 ppb Au, but this is below our target level. Sample# 075 from the HiMag Hill near Discovery Pup returned 68ppm Au, PDPitQv on Portland Creek returned 60 ppb Au. Still more exploration needs to be done in these areas to return more promising results, or we can cross them off the list. CARQV returned 78 ppb of Au. This area is what we will be focusing on as a target during 2011 exploration.

## **Statement of Qualifications**

### **Sylvain Montreuil:**

Quartz vein prospector in the Klondike drainage and Indian River, also 60 Mile, Stewart, Peel and Porcupine rivers for over 20 years. Has been involved in the targeting, prospecting, finds and mining of successful mines all over the Klondike Plateau.

Professionally called upon to stake claims, perform surveys, carry out soil & rock sampling programs and assist geologists with scintillometer and magnometer surveys. For clients as well as on his own ventures he has been responsible for claim recording and groupings, exploration programs and general property management to maintain claims in good standing by shafting, trenching or drilling.

A ticketed heavy equipment mechanic, welder and millwright. Former partners and employers include Joel White, A1Cat mining, Dave Farley (family), Marty Knutsen, Bob Canamol and most recently Mark Pocklington of GoldBank mining, for whom Sylvain helped target, stake and lead an exploration program on the Leota claim block, that led to the projects successful listing on the TSX venture exchange. Mark Pocklington can be contacted for reference at 1-867-333-9578

### **Erini Petroutsas:**

Has been employed 7 consecutive summers in the Dawson area as a gold prospector in the field and geo-tech for drill programs.

Employment experience has included being assistant to Joanna Hodge PhD Geology; Erin O'Brian Masters Geology; Ken Galambos Geologist; Chris Ashe Masters Ultramafic Geology; Keven Brewer MBA & Geologist. References can be requested from any of the above professionals.

095533

September 1, 2010

Assessment Work for Recording on:  
CAU Grouping Claims:

HRS 3-5  
YD07736-YD07738

HRS 7-13  
YD07740-YD07746

GR Group 1-4  
YD07747-YD07748 <sup>50 EP</sup>

File to be attached to (2) previous workings reports for the Coarse Gold Property  
submitted by Sylvain Montrueil, Claims Owner.

Written by Erini Petroustas

Assay results will be submitted.



Cost Assessment for CAU claim group on works completed until Sept. 2010

Daily wage \$350 Sylvain Montrueil+ \$275 wage for geo assistance and safety, Erini Petroutsas. Camp fees included.  
 Samples taken in bulk from selectively uncovered areas of bedrock & native vein. Processed by washing, splitting, crushing and panning then assay.

<b>Date</b>	<b>Labour</b>	<b>Description</b>	<b>Cost</b>
May 14-15th	EM & Assistant	Further trenching into previous trenches #CC3&4. With hand tools, Caribou Creek. CAU 53&54.	1,250
June 8th	EM	Prospecting mouth of Coarse Gold Creek. Heavy greenstone. CAU23&24	350
June 9th		Prospecting QV up Coarse Gold CAU30 samples of the decomposed bedrock.	350
June 10-12th	EM&A	Hand trenching bedrock veins at the bottom of large mined placer pitts. Portland at Dominion. Paris1 ParisP, ParisI.	625
June 18th	EM&A	Hand trenching the redzone on Paris 3. See pic. Sampling of zone & processing.	625
June 19th	EM&A	Pick and shovel trenching on Hrs 1&2, pictures of inside the old shaft, sampling from entire area. Uncover area of talc.	625
July 26th	EM	Prospecting, digging and sampling on the hi-mg hill west of Caribou Creek.	350
August 16th	EM&A	Processing & organization of specimens for assay.	625
August 21-22nd	EM&A	Prospecting new claims at Keller, western edge of claims and processing of samples.	1,250
			<b>6,050</b>
9 day Quad		\$150/day rental	1,350
		Exploration expenses summer 2010, CAU Grouping	<b>7,400</b>

Sample List for CAu Group  
August 2010

Assay #	Description	Analysis	GPS name
Sampling from July 16th 2010 with Mike Glynn Paris 5-10 claims and AuR 15-16 inclusive (\$4,800 was submitted as cost July 2010)			
HRS1	Dominion Creek Paris5S	Qz muscovite schists w fresher qz concordent to schistosity. Feldspar, py cubes, greenish sericitic layers.	HRS1
HRS2	Soil	Decomposed bedrock. Dark red, brown. From HRS trench 2009. 75cm wide sample.	HRS2
HRS3	Rock	Qz rich with lenses of high grade schist facies, muscovite, chlorite, pyrite, mica, possibly garnet or cuprite.	HRS3
HRS4	Rock	Chalcopyrite rich Qz vein, chlorite, sulfide and calcite zones. Test for chalcocite, sylvanite, petzite and platinum.	HRS4
HRS5	Rock	Qz lenses cut with syenitic sericite schist. Red tinge and well formed pyrite cubes embedded.	HRS5
PIM1	Dominion Creek at 72 Pup Rock	Vein system, trench begins at bottom of a placer pit(2009). Qz on fault zone with carbonaceous graphitic schists weathering to clay. Pyrite and other mineralization visible at contact. Test for arseno,chalcopyrite, calchocite and gold.	PIM1
RZM1	Red Zone Rock & clay	Trench 2010, west side of Dominion Creek. Strike 138 degree. 20 meters long, 1.5m long, 3m deep hand dug. Test for sulphides, minerals, wide mesh for gold.	RZM1
RZM2	Rock	Black quartz, red coated, mica schists. Powdery housing for qz veins bulging from all along the trench could be talc. Very little oxidization in sulphides.	RZM2
TLM1	Paris1 Powdery rock	Taken from trench 2010, strikes 135 degrees. Rusty portions of Qz vein & Qz/Ca breccia. Visible aspy in qz. Trench was hand dug at bottom of an existing placer pit in June.	TLM1
TLM2	Rock	Calcite quartz blebs up tp 20cm, no talc in the horizon zones. Alteration and some breccia fabric.	TLM2
TLM4	Powdery rock	Blebs/balls of Qz swell up to 30cm. A sample from the altered zone which is roughly 18m long. Some light green and redish-brown staining along relic bedding.	TLM4
R1M	Robinson Ridge Rock	Trench 2009 10m long,1.5m wide, 108 degrees cutting chlorite schist, variably folliated. Some slicken slips and talc observed in zone of most	R1M

Sample List for CAu Group  
August 2010

intense crenulations. Quartz barrels of milky bull qz 10cm to 40cm in widths. Some weathered out Py cubes. Small reconcentrations of FePy's in/on mafic minerals along foliation.

R2M	Rock	Trench 2009 10m long, 1.5m wide, 3m deep. 108 degrees. Surface floating Qz trending 200 SSW (in pit also). Wall rocks same on both sides of QV /Swells-Klondike schist, chloritic med green with some brown weathering in more Fe rich horizon. Variably folliated and crenulated. Qz swarms/ barrels, mainly bull widths up to 50cm. Average 20 cm. Some zones of higher chlorite & mica contents oxidizes under horizontal contacts.	R2M
R3M	Rock	Trench 2009 9m long, 1.75m wide, 3m deep. Exposing 55cm wide Qz vein cutting Qz rich folliated feldspathic Klondike schist bedding identical on either side of the QV. QV strikes 200 SSW, dips near vertical 70deg to the east.	R3M
R4M	Rock	Quartz vein strikes 200deg. Close to the vertical dip, sulphides in Qz vein near margin with west wall. Sample taken perpendicular to vein. Sulphides include pyrite, galena, manganese. Some graphitic coatings/smears at oxidized zones of mineralizations. Test for arsenopy. Taken from a 10m by 2.3m deep. Wall rocks are Qz Kspar schists.-- <b>Specimin Pic</b> --	R4M

15 samples selected for assay. August 16th 2010

Samples taken by hand trenching below existing pacer pits at mouth of Portland Creek  
June 10-12, 2010  
Exploration Manager and Assiatant

PDPitQV	Rock	Uncovered vein system of sericite muscovite coated quartz, crystallized with rose calcite staining. Well formed pyrite, chalcopyrite and syenite flakes in schist as well as Qz/Calcite. On Paris1. Sampling is of the housing contact schist. Which is composed of Qz layers with sulphide minerals. Mineral test. Wide mesh. -- <b>Specimin Pics-PDPitQv - PDPITQv2</b> --	PPIT
---------	------	--	------

1 sample selected for assay. August 16th 2010

Sample taken by hand trenching around outcrop at mouth of Coarse Gold Creek

Sample List for CAu Group  
August 2010

June 8th 2010  
Exploration Manager (Sylvain)

CAuNose Rock                      Outcropping Qz veins running through and with                      CAu23  
sedimentary schistose layers of sulphide rich  
forest green schists.--**Specimin Pic--**  
1 sample selected for assay. August 16th 2010

Samples taken from reevaluation of 2009 hoe trenches with hand picks, Caribou Creek  
May 14-15th 2010  
Exploration Manager and Assiatant (Erini)

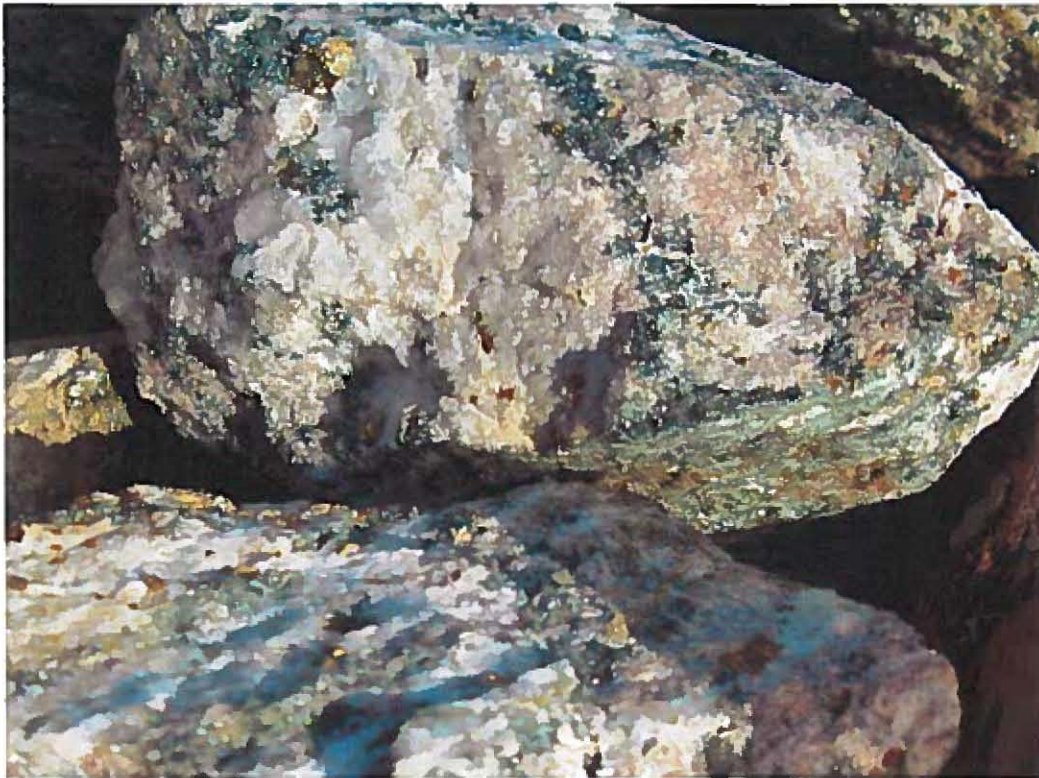
M01	Dominion at Caribou Creek Red Zone Fe	Qtz muscovite schist secondary Qz zones concordent with schistosity Fe2/Pyrites along margins. Less in the pure quartz zones. Wide mesh assay for possible visible Au.	M01
JSM02	Rock	Felsemer, muscovite, biotite schist, 50% Qz. Pyrite chalcopyrite and possibly other minerals.	JSM02
JSM03	Rock Trench 2009	Felsemer dark chlorite, biotite schist. Dyke like, sericite. Less alteration in this zone. Red tinge, Py veining into Qz breccia.	JSM02
CARQV	Rock	Bull Qz vein subcrop from Pit 2009. Galena blob w chalcopyrite, pyrite, limonitic zones around mineralization, some coating of sericitic schist blackened.	CARQV
CE	Rock Trench 2009	Folliated Qz muscovite schist with 3cm wide Qz vein, galena & pyrite concentrated at vein margins. Whole rock assayed. -- <b>Specimin Pic-CE--</b> Secondary Qz enrichment area cutting bedrock. Strike N-30deg West dipping at 20deg.	CE

5 samples selected for assay. August 16th 2010

Samples taken from prospecting and hand digging on Hi-Mag Hill, West of Caribou  
July 26-27th 2010

075HiMg Rock                      Quartz in sericite schist with oxidized pyrite and                      075  
well formed blocks of iron or epidote, brownish-  
red staining. Sample taken from the top of the  
hill, where an unweathered remnant of ultramafic  
layer reamins, the qz taken is from below this  
outcrop, in the sericitic Klondike schist.--**Specimin  
Pic--**  
1 sample selected for assay. August 16th 2010  
**22 samples to submit for various assay**

Specimen Pictures corresponding to samples sent to assay Sept.2010

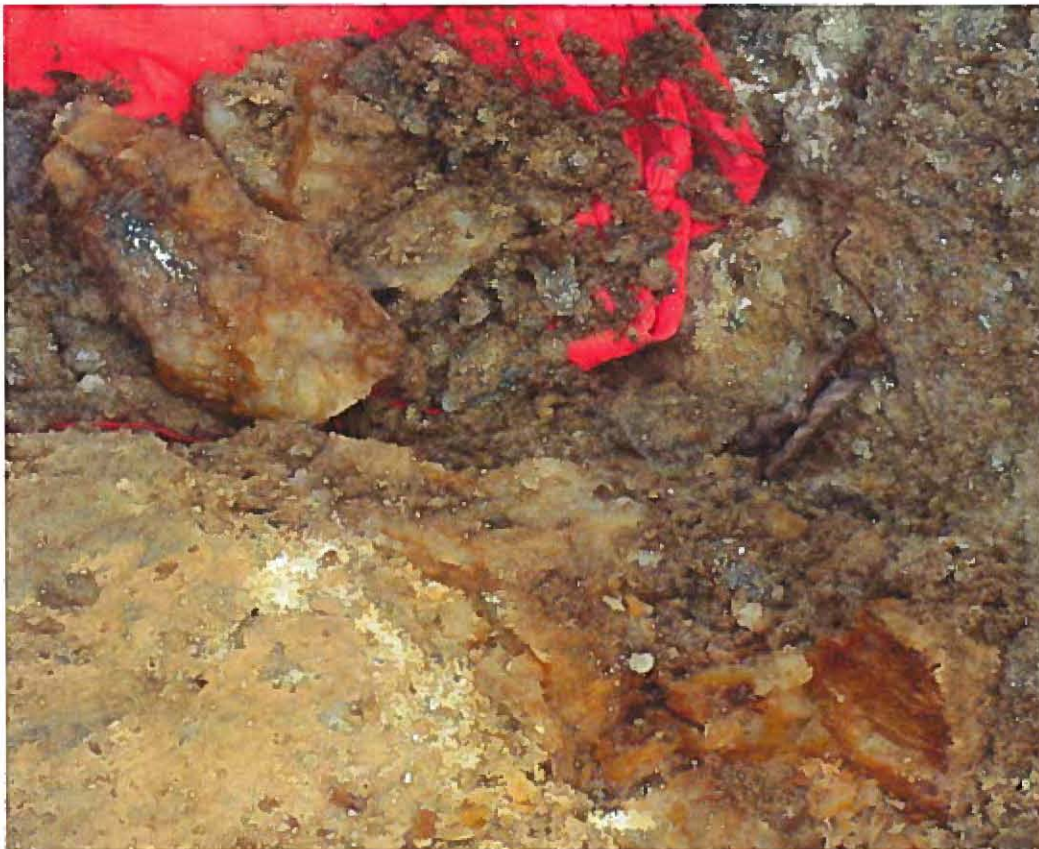


HRSS



R3 trench

Specimen Pictures corresponding to samples sent to assay Sept.2010



R4 trench



Portland & Dominion Veins, PDPitQV

Specimen Pictures corresponding to samples sent to assay Sept.2010



Schist surrounding rose quartz veins on Portland at Dominion system. PPit sample.



Outcrop on the nose where Coarse Gold Creek meets Dominion. Sulphides.

Specimen Pictures corresponding to samples sent to assay Sept.2010



MCau. Schist from the mouth of Coarse Gold Creek.



Specimen Pictures corresponding to samples sent to assay Sept.2010



CE samples, Caribou End.



Specimen Pictures corresponding to samples sent to assay Sept.2010



Ultramafic remnant at the top of hill west of Caribou that shows high magnetic abnormalities. Sample O75.



Abundant red quartz outcropping along top and sides of ridge of himag hill. The water below near the headwater of Dominion Creek is very red.

Specimen Pictures corresponding to samples sent to assay Sept.2010



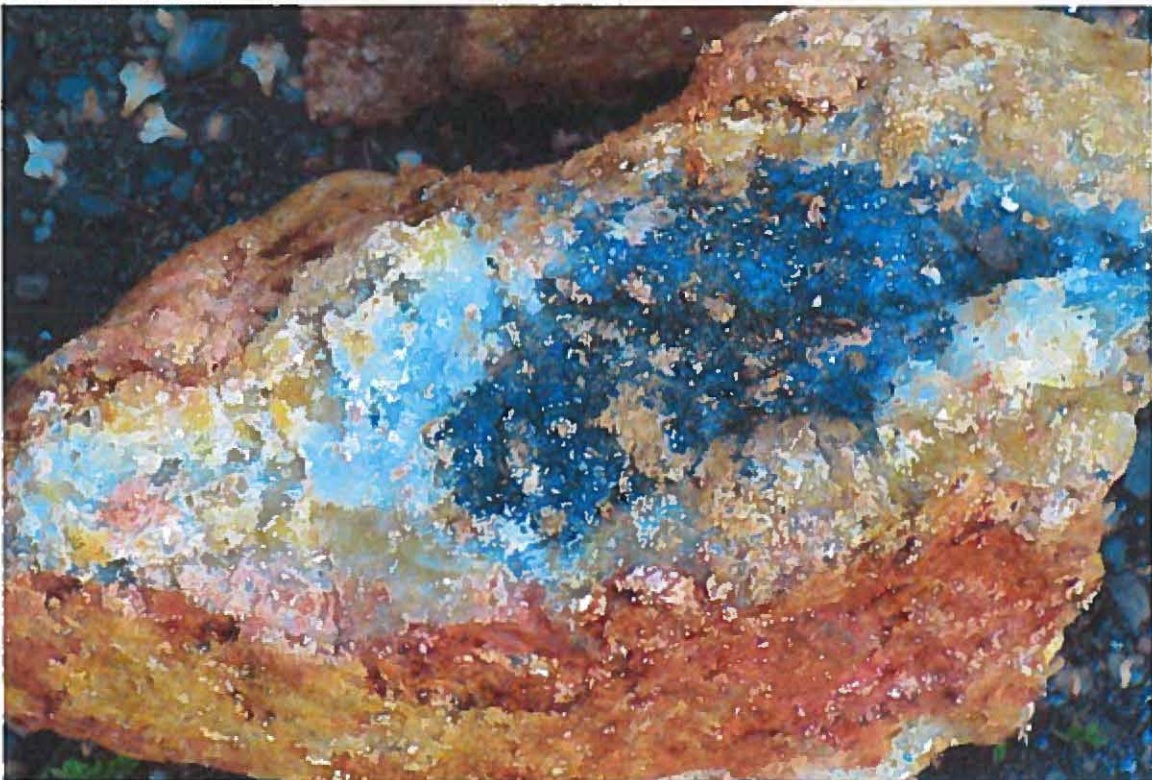
Gold removed from powdery schist surrounding quartz veins in Red Zone, Paris.



Specimen Pictures corresponding to samples sent to assay Sept.2010



Red Zone trench.



Specimen Pictures corresponding to samples sent to assay Sept.2010



Hard Rock Shaft



HRS1 claim

Specimen Pictures corresponding to samples sent to assay Sept.2010





TLM



Schist from Almanda claim, on Almanda Creek.

## Statement of Qualifications

Sylvain Montreuil: Q.P

Has been chasing quartz veins for a long time in the Klondike drainage and Indian River, also 60 Mile, Stewart, Peel and Porcupine rivers. Sylvain came here in 1985, attracted by the geology and nature. He has been involved in the prospecting finds and mining of successful mines all over the Klondike Plateau. References can be provided.

During a 30 year prospecting career he has been called upon to stake claims, perform surveys, carry out soil & rock sampling programs and assist geologists with scintillometer and magnometer surveys. For clients as well as on his own ventures he has been responsible for claim recording and groupings, exploration programs and general property management to maintain claims in good standing by shafting, trenching or drilling.

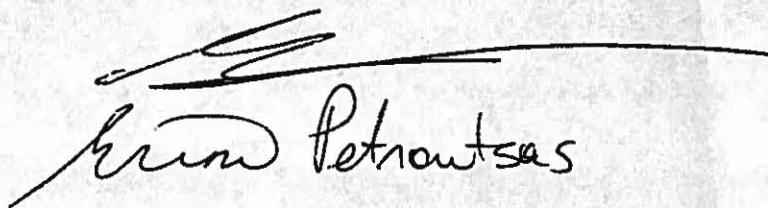
A ticketed heavy equipment mechanic, welder and millwright, Sylvain is a handy man to have in the bush as well as a passionate observer of the earth formations and geology that leads to mineralization, especially gold in the Klondike.

Erini Petroutsas

Have been employed 7 consecutive summers as a prospector in the field and geotech; Diploma from Yukon College in Business.

I am a silent partner in this venture, which I view as an educational experience to enhance my knowledge of geology and geography by research and recording.

All information in this report taken from sources has been footnoted. Opinions and classifications have been obtained from Yukon geologists.



Erini Petroutsas