

**Soil Sampling and Prospecting Report on
the Strike 101-114 Claims
Dawson Mining District
Yukon Territory**

**Latitude 63°10'00"N, Longitude 139°10'00"W
UTM:7008478N, 593600E, NTS: 1150/03**

for

**ATOCHA RESOURCES INC.
Suite 2300 – 1066 W. Hastings Street
(Oceanic Plaza)
Vancouver, BC V6E 3X2**

by

**J. T. Shearer, M.Sc., P.Geo.
2550 Tyner Street,
Port Coquitlam, BC
V3C 2Z1
604-970-6402**

jo@HomegoldResourcesLtd.com

August 2, 2010

Fieldwork completed between June 1 and June 15, 2010

TABLE OF CONTENTS

	<u>Page</u>
LIST OF FIGURES and TABLES.....	ii
SUMMARY	iii
INTRODUCTION	1
LOCATION and ACCESS.....	4
PROPERTY, LIST OF CLAIMS.....	7
FIELD and ANALYTICAL PROCEDURES	9
REGIONAL GEOLOGY	10
LOCAL GEOLOGY	12
GEOCHEMISTRY	14
CONCLUSIONS and RECOMMENDATIONS	17
REFERENCES.....	18
APPENDICES	
Appendix I Statement of Costs 2010	20
Appendix II Statement of Qualifications	21
Appendix III Assay Certificates.....	22
Appendix IV Waypoint List.....	36

LIST OF ILLUSTRATIONS and TABLES

ILLUSTRATIONS

	<u>Page</u>
FIGURE 1	Location Map, 1:500,000 iv
FIGURE 2	Tintina Gold Province 2
FIGURE 3	Access Map 3
FIGURE 4	Claim Map, 1:50,000 5
FIGURE 4a	Detail Claim Map 6
FIGURE 5	Google Image of Area 8
FIGURE 6	Regional Geology, 1:125,500 11
FIGURE 7	Local Geology 13
FIGURE 8	Location and Results of Soil Sampling 15
FIGURE 9	Local Airborne Magnetic Results 16

TABLES

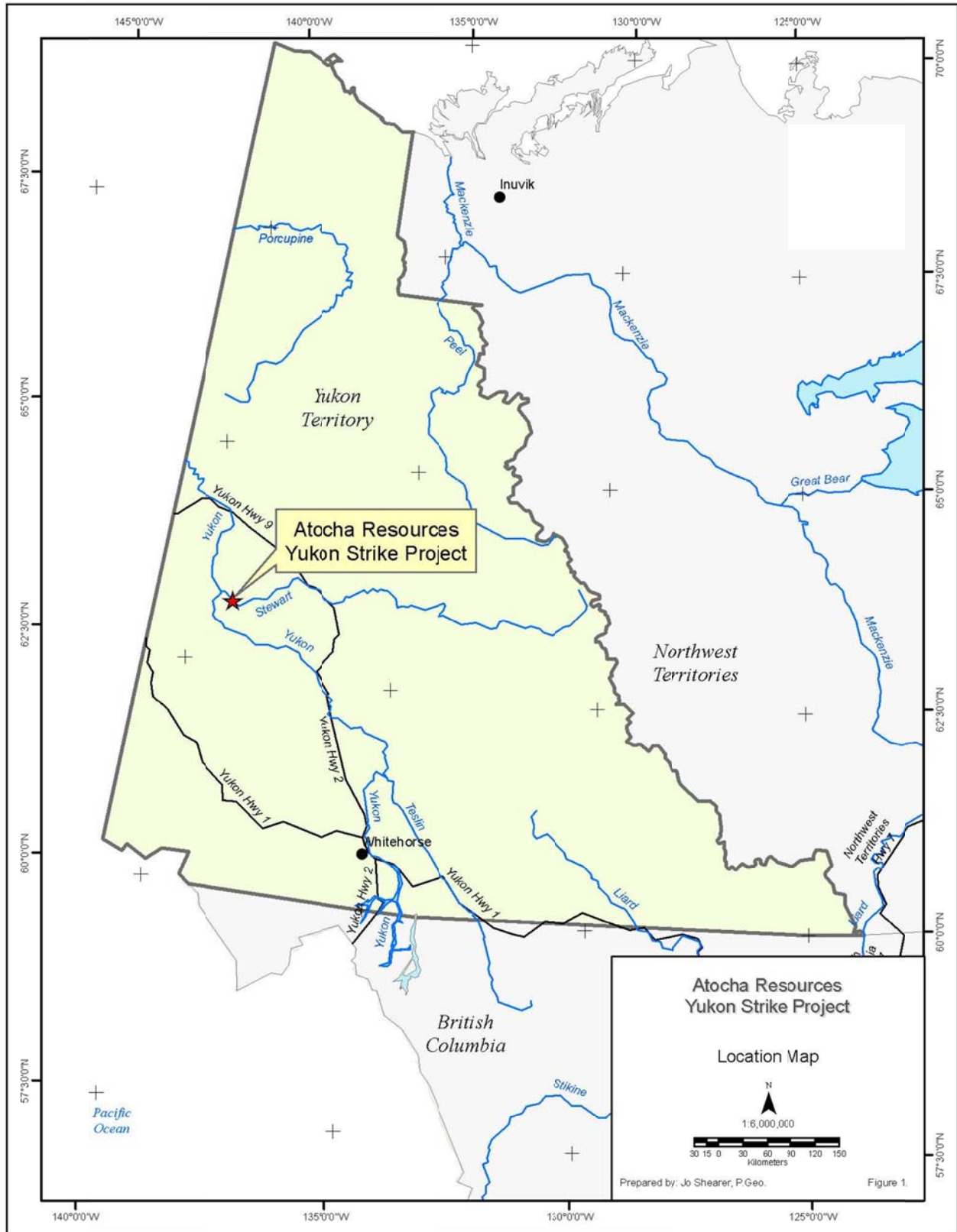
	<u>Page</u>
TABLE I	List of Claims 7

SUMMARY

- (1) The Strike 101-114 Mineral Claims are located 95km south-southeast of Dawson City, Yukon.
- (2) Access in 2010 was by helicopter from Dawson City and the Quartz Creek Airstrip.
- (3) The Claims are underlain by Devonian to Mississippian meta-volcanics (mafic schists and amphibolite to gneiss) and meta-sediments (interbedded quartzites and pelitic schists) with an Early Jurassic granodiorite pluton to the south side of the claims.
- (4) The long, straight northeast trending creek (Simmons Creek) south of the property is known to contain minor placer gold concentrations.
- (5) A small program of soil sampling and prospecting was completed in June 2010.
- (6) Slightly anomalous soil values were encountered on the east end of the property, perhaps associated with a northwest trending linear. Soil values ranged up to 30ppb Au.
- (7) A follow-up program of soil sampling, prospecting and geological mapping is recommended on the eastern portion of the claims in the vicinity of the anomalous soil samples possibly related to a northwest trending minor structure and lithological boundary.

Respectfully submitted,

J. T. Shearer, M.Sc., P.Geo.

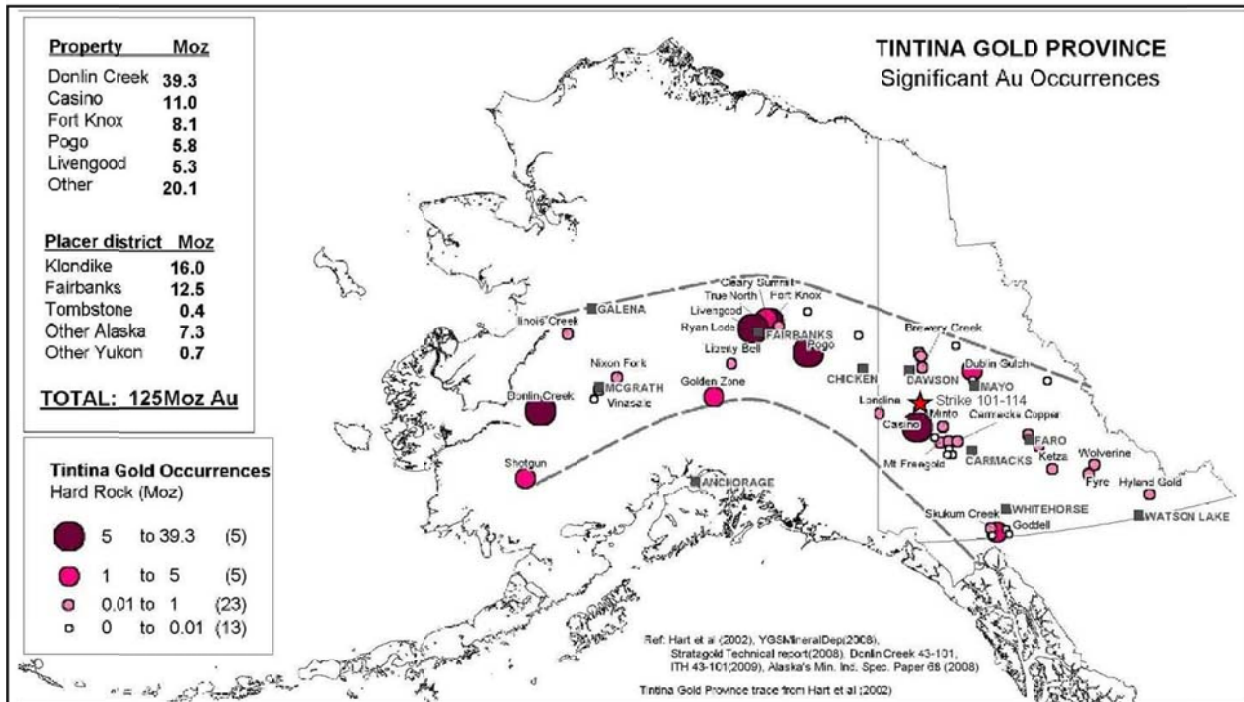


INTRODUCTION

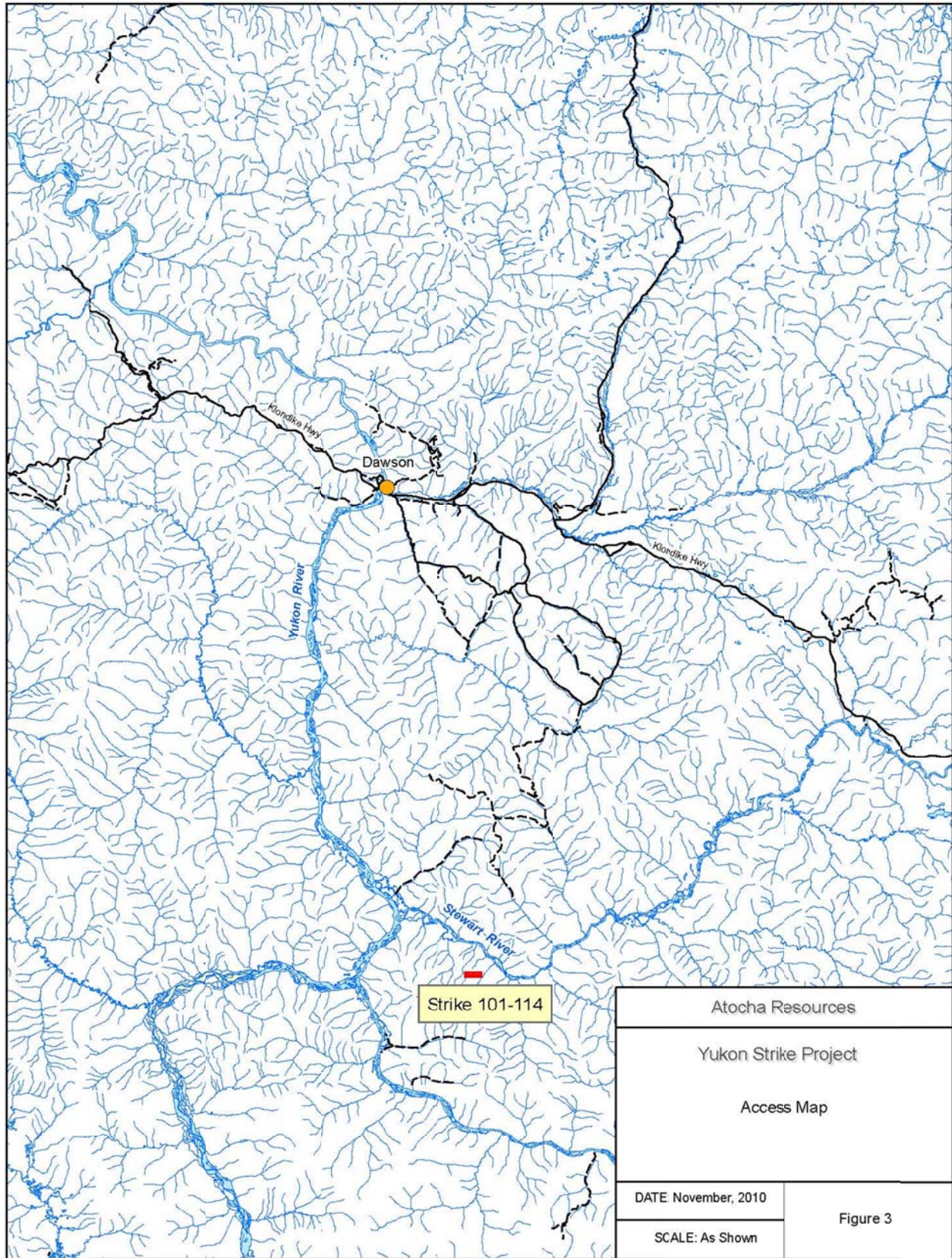
During the Spring of 2010 Atocha Resources Inc. engaged J. T. Shearer, M.Sc., P. Geo, (B.C. and Ontario) to complete prospecting and soil sampling surveys on their Yukon Quartz claims approximately 15 km from the eastern border of Underworld Resource's (UW) White Gold property (approximately 95 km south of Dawson City). The claim block totals 14 quartz claims.

Regionally, mineralization at the nearby White Gold Deposit is controlled by prominent structures and was in part discovered using relatively detailed soil sampling. The alteration associated with mineralization in the area is very subtle and difficult to recognize in hand sample. Gold values show a close association with pyrite. Gold thresholds in soils are consistently low in the area having greater 15ppb Au being considered anomalous.

At the Golden Saddle Zone, the gold values are strongly tied to the local structure and host rock rheology. In particular, mineralization occurs along a series of NE oriented structures with local enrichments along NW oriented ultramafic units (serpentinite and/or meta-pyroxenites) that are interpreted to have been emplaced along Jurassic (or older) thrust faults.



Atocha Resources	
Yukon Strike Project	
Tintina Gold Province reported hard rock and placer gold occurrences (>125Moz) through Yukon and Alaska	
DATE: November, 2010	Figure 2
SCALE: As Shown	

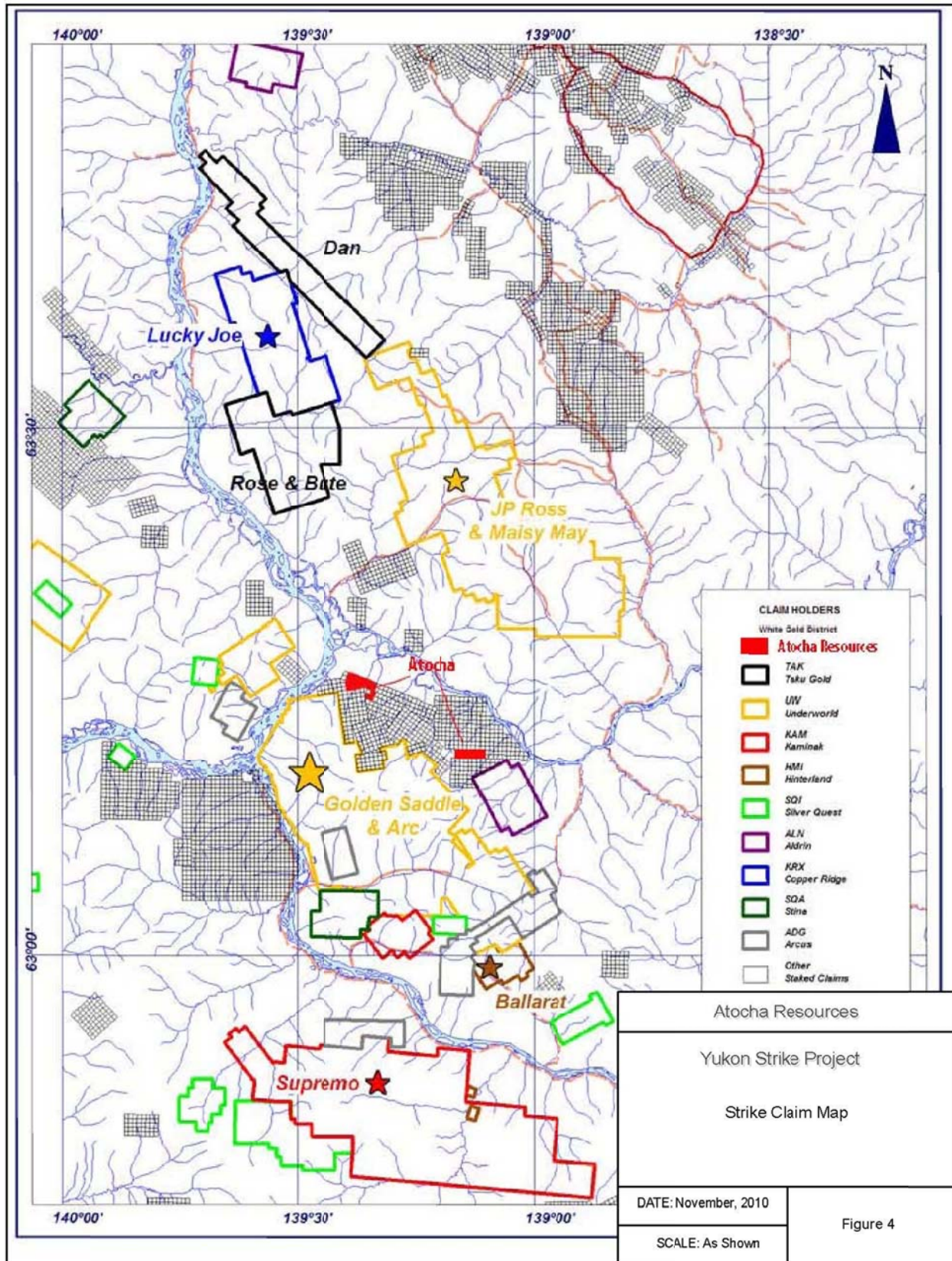


LOCATION and ACCESS

The claims are immediately south of the Stewart River about 95km south-southeast of Dawson City, Yukon.

Access currently is best by helicopter from Dawson or the Quartz Creek Airstrip.

The nearby development work at the Golden Saddle Zone by Kinross is by barge out of Dawson for heavy equipment and helicopter. Numerous active placer mines are located on the south side of the Klondike gold fields, a distance of about 10km north of the Strike 101-114 property (Figure 3).



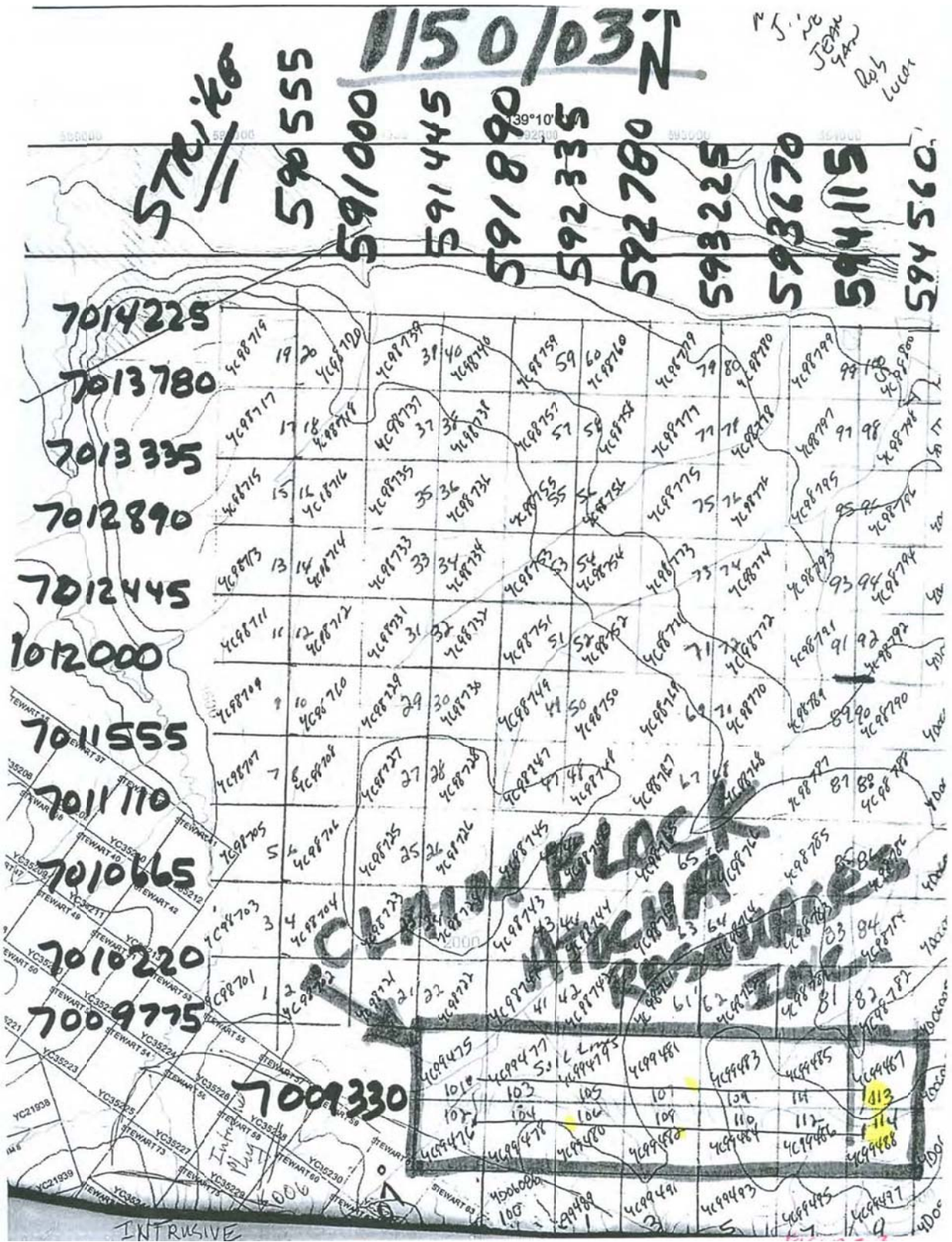


FIGURE 4a Detail Claim Map

PROPERTY (List of Claims)

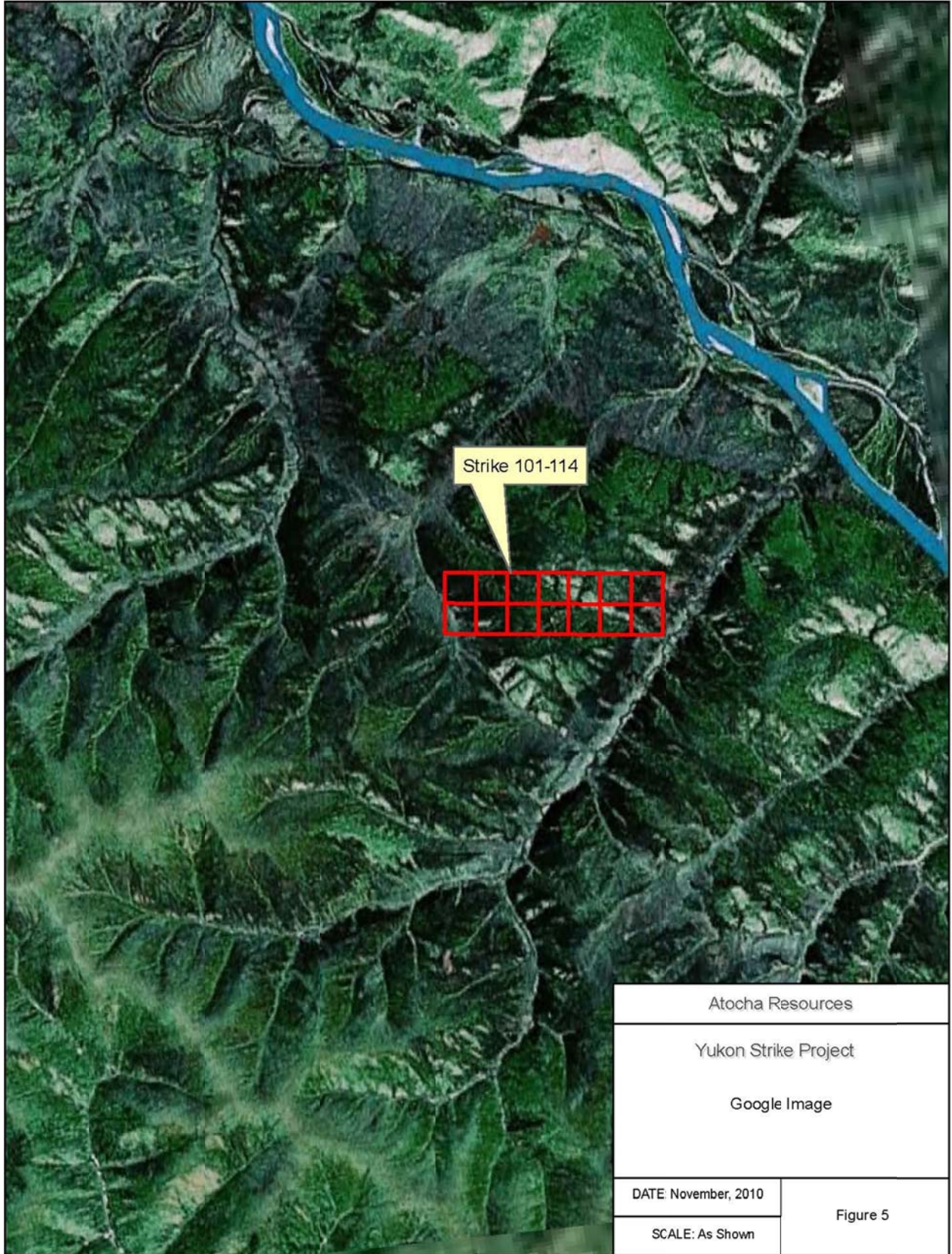
Table I
List of Claims

Grant Number	Claim Name	Map Sheet	Date of Location	* Current Anniversary Date	Current Owner
YC99475	Strike 101	1150/03	June 20, 2009	June 30, 2014	Atocha Resources Inc.
YC99476	Strike 102	1150/03	June 20, 2009	June 30, 2014	Atocha Resources Inc.
YC99477	Strike 103	1150/03	June 20, 2009	June 30, 2014	Atocha Resources Inc.
YC99478	Strike 104	1150/03	June 20, 2009	June 30, 2014	Atocha Resources Inc.
YC99479	Strike 105	1150/03	June 20, 2009	June 30, 2014	Atocha Resources Inc.
YC99480	Strike 106	1150/03	June 20, 2009	June 30, 2014	Atocha Resources Inc.
YC99481	Strike 107	1150/03	June 20, 2009	June 30, 2014	Atocha Resources Inc.
YC99482	Strike 108	1150/03	June 20, 2009	June 30, 2014	Atocha Resources Inc.
YC99483	Strike 109	1150/03	June 20, 2009	June 30, 2014	Atocha Resources Inc.
YC99484	Strike 110	1150/03	June 20, 2009	June 30, 2014	Atocha Resources Inc.
YC99485	Strike 111	1150/03	June 20, 2009	June 30, 2014	Atocha Resources Inc.
YC99486	Strike 112	1150/03	June 20, 2009	June 30, 2014	Atocha Resources Inc.
YC99487	Strike 113	1150/03	June 20, 2009	June 30, 2014	Atocha Resources Inc.
YC99488	Strike 114	1150/03	June 20, 2009	June 30, 2014	Atocha Resources Inc.

* Upon acceptance of the assessment work documented in this Assessment Report

Mineral Title in the Yukon is governed by the Quartz Mining Act.

The property consists of 14 quartz claims owned 100% by Atocha Resources Inc. as illustrated on Figure 4 and 4a.



FIELD and ANALYTICAL PROCEDURES

Soil Sample locations were marked with a handheld GPS (Garmin model GPSmap 765) unit (refer to Appendix IV).

Soil samples were collected with a grubhoe from a depth of 10cm to 25cm depending on the depth of the organic layer. Most soil samples were taken from the “B” horizon which in this area varied from reddish brown to yellow in colour.

The soil samples were transported by J. T. Shearer to the Chemex (ALS) prep lab in Whitehorse, where they were air freighted to the main Laboratory in Vancouver. Each soil sample was dried and sieved to -80mesh. Gold was determined by AA and the remaining elements by ICP.

The northernmost soil line is located along the claim line. Sample ST-01 is at the initial post of Strike 113 and 114.

REGIONAL GEOLOGY

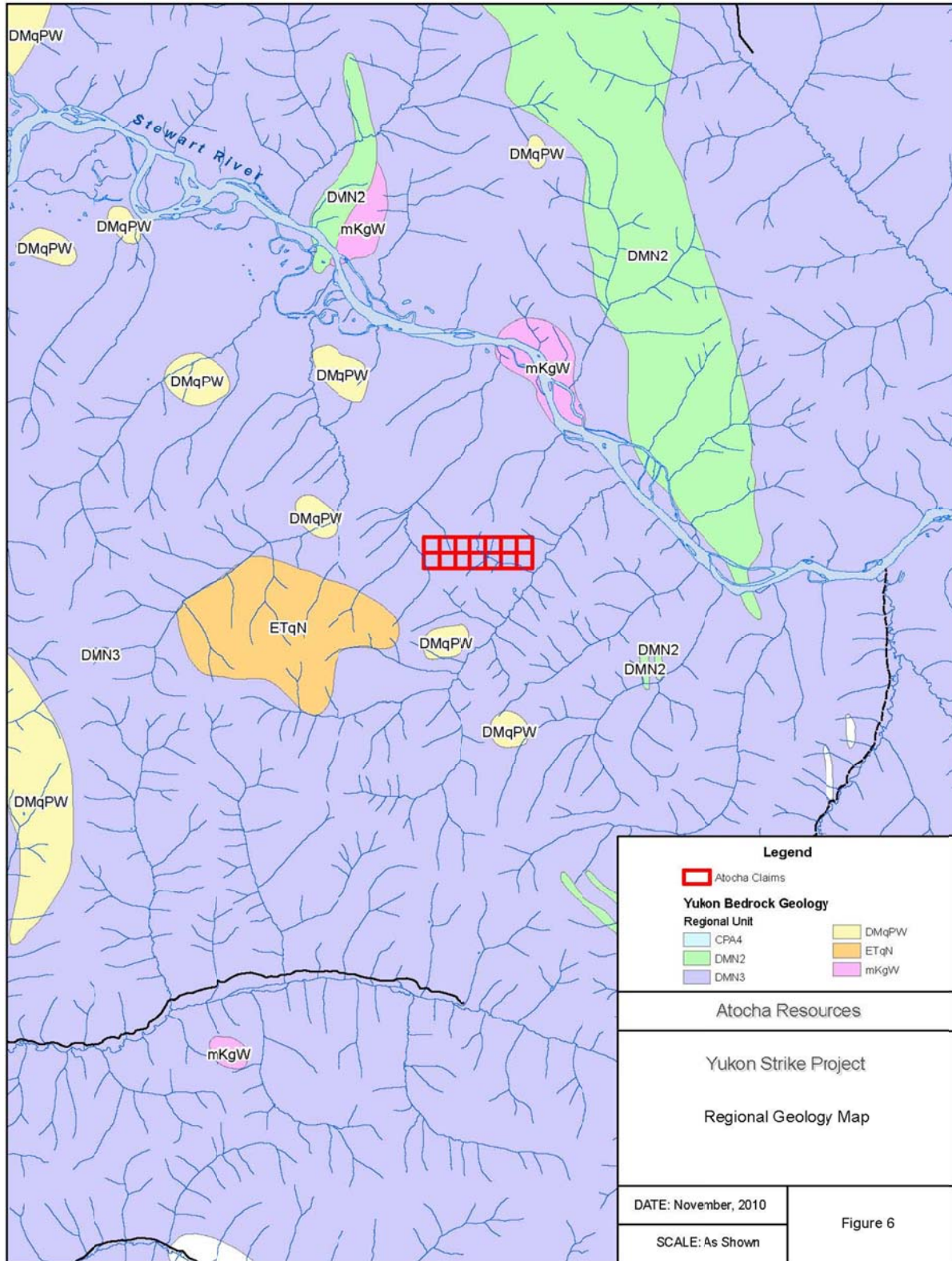
The property is situated within the Yukon-Tanana Terrane (YTT), which spans part of the Yukon Territory and east-central Alaska. This terrane is part of the Intermontane superterrane, and is bounded to the northeast and southwest by the right-lateral Tintina-Kaltag and Denali-Farewell fault systems (Figure 1). Between late Palaeozoic and early Cenozoic the Canadian Cordillera was accreted to the western margin of the North American craton. Many of the accreted terranes consist of island-arc and oceanic juvenile rocks, but there are also terranes of older pericratonic affinity (Colpron, Nelson and Murphy 2006). The largest of these accreted pericratonic terranes is the YTT. The origin of these pericratonic terranes is not well understood, but they have isotopic and provenance ties to Archean and Proterozoic cratonic source regions. In the mid-Palaeozoic, the YTT rifted southward and westward away from the north-west margin of Laurentia, in conjunction with the opening of the Slide Mountain Ocean (Nelson, et al. 2006, Berman, et al. 2007, Colpron, Nelson and Murphy 2006). Quartz-rich schists and gneisses are the result of continental margin-type deposition of sediments during this period.

Reversal of subduction and closure of the Slide Mountain ocean began in the mid-Permian with re-suturing of the YTT occurring near its point of origin in the early Mesozoic (Colpron, Nelson and Murphy 2007). The Laurentian margin and the YTT both host late Devonian to early Mississippian and Permian igneous rocks. Mid Cretaceous intrusive rocks, also found intruding YTT, have commonly been associated with mineralization in the Tintina Gold Province, an arcuate zone that stretches across Alaska and western Canada hosting known mineral deposits like Pogo, Fort Knox, and Dublin Gulch. The Tintina Gold province contains at least an estimated 125Moz of gold occurrences (Hart et al., 2000).

Due to the lack of exposure of the poly-deformed meta-igneous, meta-volcanic, and metasedimentary rocks of the YTT, it has until recently been one of the most enigmatic and poorly understood terranes of the Canadian Cordillera (Ryan 2003). However, in the last decade more geological mapping in the Stewart River area has been undertaken by the Geological Survey of Canada as a part of the NATMAP program, (Ryan and Gordey 2005). This mapping provides the most recent, regional scale mapping information in the Stewart River area.

The lowermost unit in the Stewart River map area is a Middle Palaeozoic metasiliciclastic rock unit dominated by psammites and quartzites correlating to the Snowcap assemblage elsewhere in the YTT (Colpron, Nelson and Murphy 2006, Berman, et al. 2007). The Snowcap assemblage is interpreted as a metamorphosed continental margin and consists mostly of meta-sedimentary quartzites, psammites, oolitic calc-silicic schists along with amphibolites and minor ultramafic rocks (Ryan and Gordey, 2001). Stratigraphically above the siliciclastic rocks is a unit of intermediate to mafic metavolcanic rocks including amphibolites and orthogneisses representing a continental arc system. That the mafic orthogneisses and the potassic augen gneisses may comprise a subvolcanic intrusive complex of late Devonian to Mississippian granite, tonalite, diorite, monzogranite, and granodiorite intrusions (Ryan and Gordey 2001, Berman, et al. 2007). Other rocks include carbonaceous pelite, chert and minor quartzite of the Nasina assemblage (Colpron, Nelson, and Murphy 2006). To the north of the Stewart River area is the Permian Klondike schist. The Klondike schist is a highly fissile muscovite/chlorite-quartz schist primarily of volcanic protoliths (Mortensen 1992, Berman, et al. 2007). The basement was metamorphosed during the Permian. Thrust faulting in the Jurassic created km-scale stacked thrust sheets marked along strike with thin m-scale lenses of commonly magnetic ultramafic rocks (MacKenzie 2008). This thrust event overprinted the Permian metamorphic fabric and was followed by subsequent deformation associated with late Cretaceous normal to dextral faulting. Younger intrusive rocks include

granodiorite of Jurassic and mid Cretaceous age, and upper Cretaceous Carmacks Group consisting of dacites, andesite, basalt and minor rhyolite (Ryan et al., 2003).



LOCAL GEOLOGY

Within the claim area the geology appears to consist principally of meta-volcanic, meta-sedimentary, and Jurassic intrusive units based on Geological Survey of Canada mapping performed by Ryan and Gordey (OF4641, 2004). The specific units of interest are:

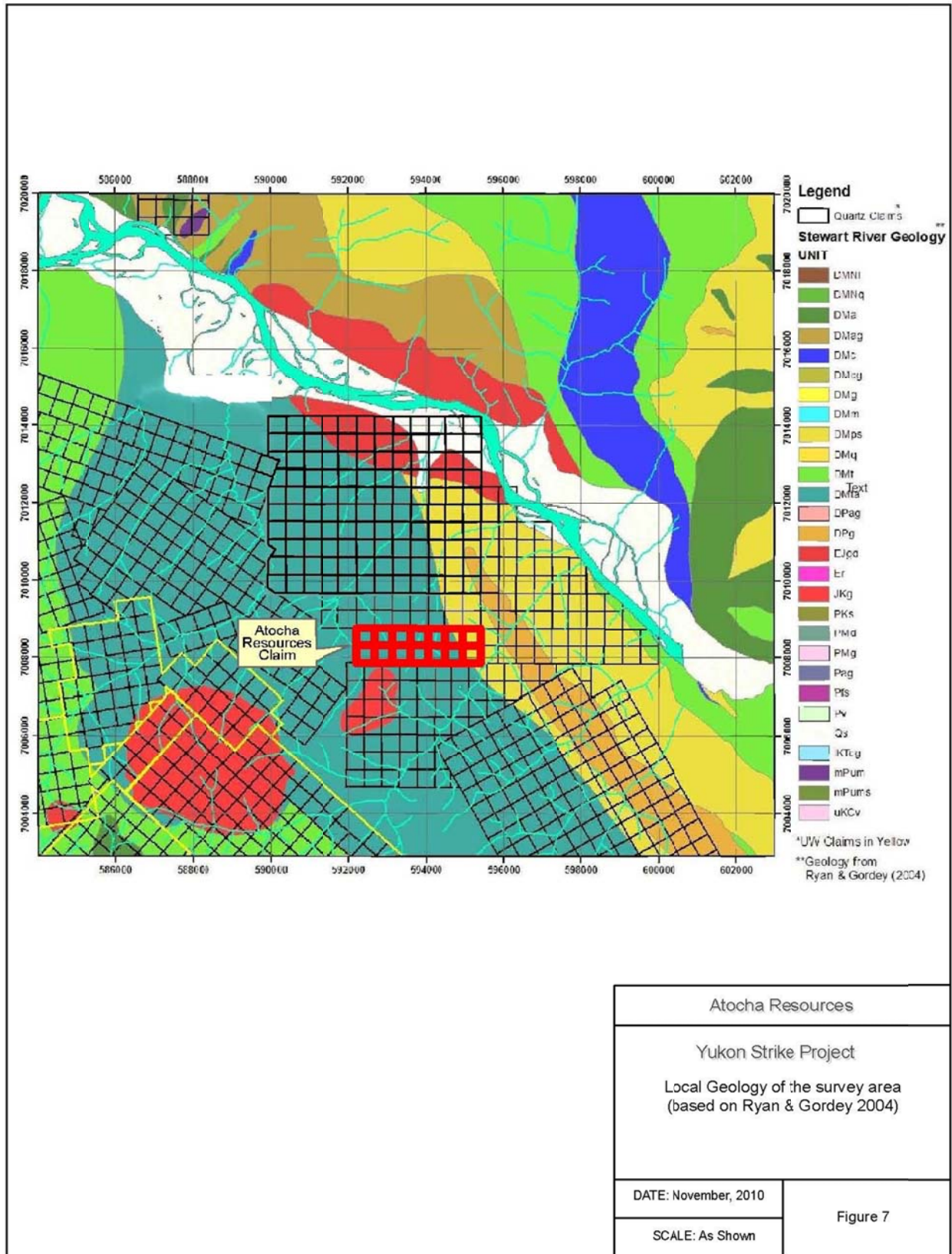
DMta – Devonian to Mississippian mixed meta-volcanics. Primarily mafic schists and amphibolite gneiss.

DMq – Devonian to Mississippian meta-sediments. Primarily interbedded quartzites and pelitic schists.

EJgd – Early Jurassic granodiorite.

Structures are noted in the immediate area, however, it should be noted that the Geological Survey of Canada mapping is coarse and should only be used for an initial review of the geology of the Stewart River area. Detailed mapping using available bedrock, float, geochemistry, and geophysical information should be conducted to better refine the geology of the survey area.

Mapping/prospecting was completed during the soil sampling program. In the eastern part of the claims near soil sample ST-034, float (near bedrock?) consisted of kaolinitic intrusive, mafic-rich, highly foliated to gneissic (dioritic provenance). Moving to the east, float observed was entirely rusty, slightly kaolinized foliated granodiorite. At a point 100m north of ST-033, the angular float changes to a fine grained, black, biotite schist.



GEOCHEMISTRY

Soil Sampling

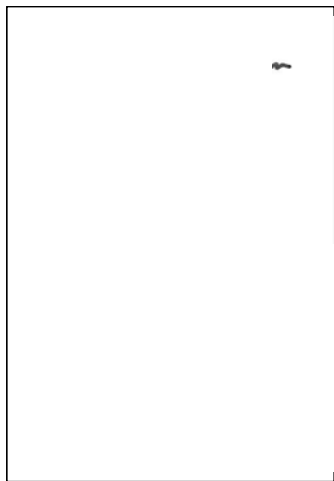
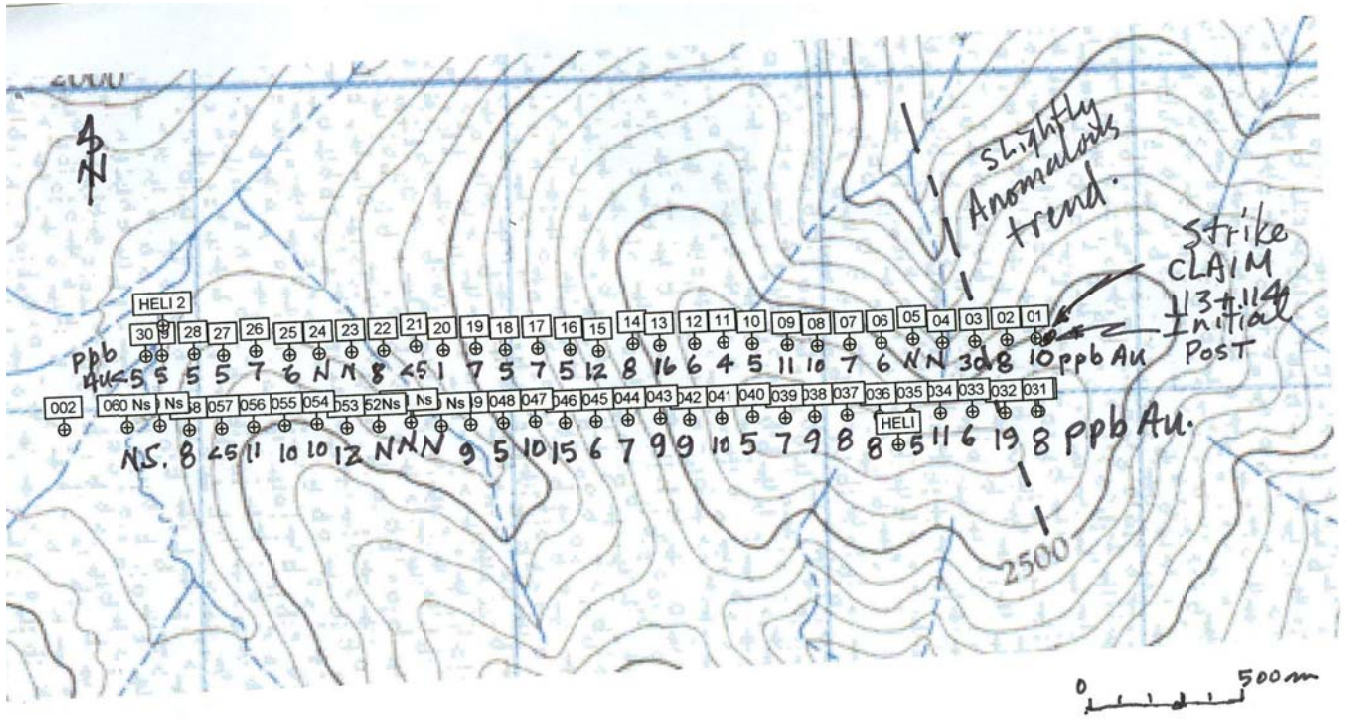
Soil geochemistry, particularly for gold, was utilized by Underworld and the original vendor of the White Gold property to outline the mineralized area which has become the White Gold discovery.

Samples were delivered to the newly opened ALS-Chemex prep facility in Whitehorse. Gold values range from <0.005ppm (detection limit) up to 0.030ppm Au. The areas of higher values above 0.015ppm Au are associated with slightly elevated Barium. Further evaluations will be by follow-up soil profiles and prospecting.

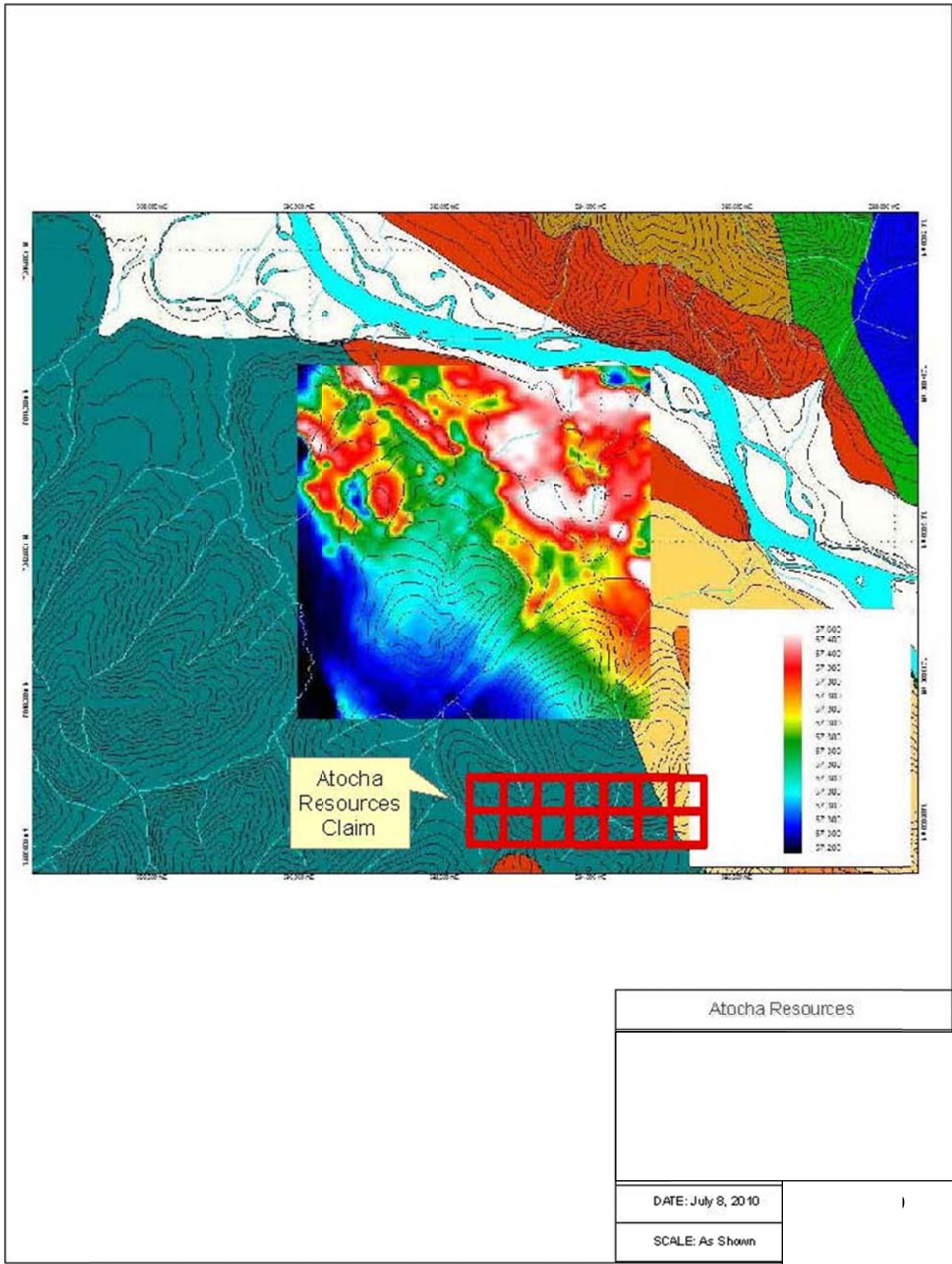
The program is being carried out under the supervision of J. T. Shearer, M.Sc., P.Geo.

Soil sample results are plotted on Figure 8.

A low level magnetic survey just to the north of the Strike 101-114 (Figure 9) clearly defines the granodiorite (EJd). Its contact with the DMta and Dmq units are also local magnetic highs and is likely reflecting a sulphide bearing hornfelsed halo at the contact. The survey also defines a series of NW and NE oriented magnetic highs in the NW quadrant of the survey area. They are interpreted to be 1.) an intrusive dike swarm, likely coeval with the EJd; and/or 2.) potential ultramafic units. Furthermore, they appear to be cross-cut by a NE oriented structure (Figure 9). At White Gold, the gold mineralization is strongly tied to the local structure and host rock rheology. And at Golden Saddle mineralization occurs along a series of NE oriented structures with local enrichments along NW oriented ultramafic units (serpentinite and/or meta-pyroxenites) that are interpreted to have been emplaced along Jurassic (or older) thrust faults.



Atocha Resources	
Yukon Strike Project	
Location and Results of Soil Sampling	
DATE: November, 2010	Figure 8
SCALE: As Shown	



CONCLUSIONS and RECOMMENDATIONS

The Claims are underlain by Devonian to Mississippian meta-volcanics (mafic schists and amphibolite to gneiss) and meta-sediments (interbedded quartzites and pelitic schists) with an Early Jurassic granodiorite pluton to the south side of the claims. A small program of soil sampling and prospecting was completed in June 2010. Slightly anomalous soil values were encountered on the east end of the property, perhaps associated with a northwest trending linear. Soil values ranged up to 30ppb Au.

Overall, to the north a magnetic survey was the most useful data available and defined a series of NE and NW magnetic highs as well as a potential structure(s) in the NW quadrant of the survey area. Based on the surveys and available geologic data the eastern portion of the soil of the survey area, the NW quadrant in particular, is interpreted to be the most prospective locations in the survey area. Follow-up work is recommended in the eastern portion of the claims as follows:

- 1) Detailed mapping/prospecting – Detailed mapping in the area to better define bedrock lithologies and potential structure. The Geological Survey of Canada mapping is a good first pass, but it is coarse and misses a lot of details. Along those lines, and assuming the Geological Survey of Canada mapping is fairly accurate, sample all rock found. The alteration associated with mineralization in the area is very subtle and difficult to recognize in hand sample. Furthermore, the Au shows a close associate with pyrite.
- 2) Soil sampling – Detailed grid soil sampling should be conducted, particularly over the granodiorite. This is by far the best exploration tool in the area, and can help define bedrock geology. Au thresholds are consistently low in the area (>15 ppb anomalous). If an anomaly is defined, follow up with trenching and or drilling.
- 3) Lidar –A Lidar survey of the area is recommended in the future. Not only will it give a better topographic control in the area (approximately 2m contours), but can also be converted into a detailed DEM for structural and lineament interpretation of the area. The survey sees through the vegetation.
- 4) Work Together – The best results can be collected by combining the respective claim blocks.

Respectfully submitted,

J. T. Shearer, M.Sc., P.Geo.

REFERENCES

- Berman, R.G., J.J. Ryan, S.P. Gordey, and M. Villeneuve. "Permian to Cretaceous polymetamorphic evolution of the Stewart River region, Yukon-Tanana terrane, Yukon, Canada: P-T evolution linked with in situ SHRIMP monazite geochronology." *Journal of Metamorphic Geology*, 2007: 802-827.
- Colpron, M., J. Nelson, and D.C. Murphy. "A tectonostratigraphic framework for the pericratonic terranes of the northern Canadian Cordillera." In *Palaeozoic Evolution and Metallogeny of Pericratonic Terranes at the Ancient Pacific Margin of North America*, by Maurice Colpron, 1-24. 2006.
- Colpron, Maurice, JoAnne I. Nelson, and Donald C. Murphy. "Northern Cordilleran terranes and their interactions through time." *GSA Today*, 2007: 4-10.
- Duk-Rodkin, A. *Glacial limits of Stewart River, Yukon Territory (115-O&N)*. Open file 3801, scale 1:250,000, Geological Survey of Canada, 2001.
- Dusel-Bacon, C. "Palaeozoic tectonic and metallogenic evolution of the pericratonic rocks of east-central Alaska and adjacent Yukon." In *Palaeozoic Evolution and Metallogeny of Pericratonic Terranes at the Ancient Pacific Margin of North America*, by M Colpron and J. Nelson, 25-74. Geological Association of Canada Special Paper 45, 2006.
- Hart, C.J.R., T. Baker, and M. Burke. "New exploration concepts for country-rock-hosted, intrusion related gold systems: Tintina gold belt in Yukon." *British Columbia and Yukon Chamber of Mines Cordilleran Roundup*. 2000. 145-172.
- Johnston, S.T. *Geological compilation with interpretation from geophysical surveys of the northern Dawson Range, central Yukon (115J/9 & 10; 115I/12)*. Open file 1995-2, Indian and Northern Affairs Canada, 1995.
- MacKenzie, D.J., Craw, D. "The Otago schist, New Zealand and the Klondike schist, Canada: a comparison of two historic gold fields." *AusIMM Conference*. 2007. 189-198.
- MacKenzie, D.J., Craw, D., Mortensen, J. "Structural controls on orogenic gold mineralization in the Klondike Goldfields, Canada." *Mineralium Deposita*, 2008: 350-366.
- Mortensen, J.K. "Pre-mid Mesozoic tectonic evolution of the Yukon-Tanana terrane, Yukon and Alaska." *Tectonics* 11, 1992: 836-853.
- Mortensen, J.K., R. Chapman, W. LeBarge, and E Crawford. "Compositional studies of placer and lode gold from western Yukon: Implications for lode sources." *Yukon Exploration and Geology* 2005, 2005: 247-255.
- Nelson, J.L., M. Colpron, S.J. Piercey, C. Dusel-Bacon, D.C. Murphy, and C.F. Roots. "Palaeozoic tectonic and metallogenetic evolution of pericratonic terranes in Yukon, northern British Columbia and eastern Alaska." In *Palaeozoic Evolution and Metallogeny of Pericratonic Terranes at the Ancient Pacific Margin of North America*, by M Colpron and J Nelson, 323-360. Geological Association of Canada Special Paper 45, 2006.
- Ryan, J.J. "Bedrock geology of Yukon-Tanana terrane in southern Stewart river map area, Yukon Territory." *Geological Survey of Canada Current Research*, 2003: 13p.
- Ryan, J.J. "Update on bedrock geological mapping of the Yukon-Tanane terrane, southern Stewart River map area, Yukon Territory." *Geological Survey of Canada Current Research*, 2003: 7p.

Ryan, J.J., and S. Gordey. "Geology of the Thistle Creek area (115-O/3), Yukon Territory. Scale 1:50,000." Open file 3690, 2001.

Ryan, J.J., and S. Gordey. Geology, Stewart River area (115-N, 115-O and part of 115-J). Yukon Territory. Open file 4970, scale 1:250,000, Yukon Geological Survey, 2005.

Ryan, J.J., and S. Gordey. "New geological mapping in Yukon Tanana terrane near Thistle Creek, Stewart River map area, Yukon Territory, ." Geological Survey of Canada Current Research, 2001a.

APPENDIX I

STATEMENT of QUALIFICATIONS

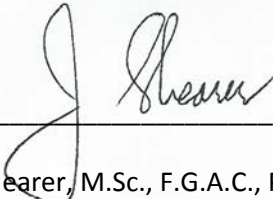
AUGUST 2, 2010

STATEMENT of QUALIFICATIONS

I, JOHAN T. SHEARER, of 3572 Hamilton Street, in the City of Port Coquitlam, in the Province of British Columbia, do hereby certify:

1. I am a graduate of the University of British Columbia (B.Sc., 1973) in Honours Geology, and the University of London, Imperial College (M.Sc., 1977).
2. I have over 35 years experience in exploration for base and precious metals and industrial mineral commodities in the Cordillera of Western North America and Superior Province in Manitoba and Northern Ontario with such companies as McIntyre Mines Ltd., J. C. Stephen Explorations Ltd., Carolin Mines Ltd. and TRM Engineering Ltd.
3. I am a fellow in good standing of the Geological Association of Canada (Fellow No. F439) and I am a member in good standing with the Association of Professional Engineers and Geoscientists of British Columbia (Member No. 19,279) and a member of the CIMM and an elected fellow of the Society of Economic Geologists (SEG Fellow #723766). I am also registered with the APGO of Ontario, Registration #1867.
4. I am an independent consulting geologist employed since December 1986 by Homegold Resources Ltd. at #5-2330 Tyner St., Port Coquitlam, B.C.
5. I am the author of the present report entitled "Soil Sampling and Prospecting Report on the Strike 101-114" for Atocha Resources Inc. dated August 2, 2010.
6. I have visited the property between June 1 and June 15, 2010. I have carried out prospecting and sample collection and am familiar with the regional geology and geology of nearby properties. I have become familiar with the previous work conducted on the Strike Project by examining in detail the available reports and maps and have discussed previous work with persons knowledgeable of the area.

Dated at Port Coquitlam, British Columbia, this 2nd day of August, 2010.



J. T. Shearer, M.Sc., F.G.A.C., P.Geo.
Quarry Supervisor #98-3550
August 2, 2010

APPENDIX II

STATEMENT of COSTS

AUGUST 2, 2010

Statement of Costs
Strike 101-114 Claims
2010

J. T. Shearer, M.Sc., P.Geo., Geologist, 3 days @ \$700/day	\$ 2,100.00
Sampling, \$40 per sample x 56 Samples by Coeur de Bois Contracting (Whitehorse)	2,440.00
Helicopter, 2.6 hrs., Fireweed Helicopters	3,407.04
Hotel, Meals, Truck, Homegold	400.00
Assays, ALS-Chemex Labs	1,501.32
Report, Word Processing, etc.	1,050.00
Grouping and Filing	N/C
Total	\$10,898.36

APPENDIX III

ASSAY CERTIFICATES

AUGUST 2, 2010



Certificate of Analysis

10-360-02735-01

Inspectorate America Corporation
 #200 - 11620 Horseshoe Way
 Richmond, British Columbia V7A 4V5 Canada
 Phone: 604-272-7818

<p>Distribution List Attention: Johan T. Shearer Unit 5, 2330 Tyner Street Port Coquitlam, B.C. V3C 2Z1 Phone: (604)970-6402 EMail: jo@homegoldresourcesltd.com</p>	<p>Submitted By: Homegold Resources Unit 5, 2330 Tyner Street Port Coquitlam, B.C. V3C 2Z1</p> <p>Attention: Johan T. Shearer</p> <p>Project: Strike 101 Description:</p>	<p>Date Received: 08/23/2010 Date Completed: 09/13/2010 Invoice:</p>											
	<table border="1"> <thead> <tr> <th>Samples</th> <th>Type</th> <th>Preparation Description</th> </tr> </thead> <tbody> <tr> <td>36</td> <td>Soil</td> <td>SP-SS-1K/Soils, Humus Sediments 1kg dried, sieved and riffle split</td> </tr> </tbody> </table>	Samples	Type	Preparation Description	36	Soil	SP-SS-1K/Soils, Humus Sediments 1kg dried, sieved and riffle split	<table border="1"> <thead> <tr> <th>Method</th> <th>Description</th> </tr> </thead> <tbody> <tr> <td>50-AR-UT</td> <td>50 Element, Aqua Regia, ICPMS, Ultra Trace Level</td> </tr> <tr> <td>Au-1AT-AA</td> <td>Au, 1AT Fire Assay, AAS</td> </tr> </tbody> </table>	Method	Description	50-AR-UT	50 Element, Aqua Regia, ICPMS, Ultra Trace Level	Au-1AT-AA
Samples	Type	Preparation Description											
36	Soil	SP-SS-1K/Soils, Humus Sediments 1kg dried, sieved and riffle split											
Method	Description												
50-AR-UT	50 Element, Aqua Regia, ICPMS, Ultra Trace Level												
Au-1AT-AA	Au, 1AT Fire Assay, AAS												

The results of this assay were based solely upon the content of the sample submitted. Any decision to invest should be made only after the potential investment value of the claim or deposit has been determined based on the results of assays of multiple samples of geologic materials collected by the prospective investor or by a qualified person selected by him and based on an evaluation of all engineering data which is available concerning any proposed project. For our complete terms and conditions please see our website at www.inspectorate.com.

By 
 David Chiu, BC Certified Assayer



#200 - 11620 Horseshoe Way
Richmond, British Columbia V7A 4V5
Canada

Certificate of Analysis

10-360-02735-01

Homegold Resources
Unit 5, 2330 Tyner Street
Port Coquitlam, B.C. V3C 2Z1

Sample Description	Sample Type	Au Am-IAT-AA ppb	Ag 50-AR-UT ppm	Al 50-AR-UT %	As 50-AR-UT ppm	Ba 50-AR-UT ppm	Be 50-AR-UT ppm	Bi 50-AR-UT ppm	Ca 50-AR-UT %	Cd 50-AR-UT ppm	Ce 50-AR-UT ppm	Co 50-AR-UT ppm	Cr 50-AR-UT ppm	Cu 50-AR-UT ppm	Cu 50-AR-UT ppm
STF 1	Soil	14	0.25	1.13	11.5	392	0.7	0.24	0.19	0.18	38.00	14.8	25	7.4	37.7
STF 2	Soil	15	0.36	0.94	13.4	414	0.6	0.24	0.18	0.20	37.03	12.6	18	5.3	30.9
STF 3	Soil	<5	0.22	1.16	16.9	226	0.7	0.22	0.17	0.16	41.17	12.3	24	6.2	36.9
STF 4	Soil	12	0.37	1.48	16.1	245	0.6	0.25	0.10	0.16	39.02	13.0	33	4.4	29.3
STF 5	Soil	<5	0.21	1.68	16.5	204	0.5	0.26	0.13	0.16	24.62	13.6	29	2.0	23.6
STF 6	Soil	<5	0.22	1.21	11.1	178	0.3	0.19	0.18	0.12	29.30	9.1	25	1.6	22.3
STF 7	Soil	<5	0.24	1.40	20.5	262	0.7	0.32	0.12	0.15	41.86	18.4	30	4.1	39.6
STF 8	Soil	39	0.20	1.38	12.2	213	0.7	0.31	0.10	0.13	44.85	13.3	38	5.9	31.1
STF 9	Soil	10	0.26	1.11	13.4	213	0.5	0.20	0.13	0.15	31.36	13.4	44	4.2	29.1
STF 10	Soil	23	0.29	1.11	10.1	215	0.4	0.16	0.18	0.07	20.24	9.7	23	0.9	25.2
STF 11	Soil	<5	0.46	1.70	12.9	214	0.4	0.25	0.13	0.09	18.30	10.2	30	1.1	19.2
STF 12	Soil	<5	0.27	1.15	12.5	223	0.4	0.19	0.14	0.08	18.85	9.4	27	0.8	16.9
STF 13	Soil	<5	0.23	0.95	28.1	232	0.5	0.29	0.05	0.10	42.90	4.9	22	3.0	41.6
STF 14	Soil	<5	0.23	2.28	12.8	246	0.4	0.19	0.10	0.10	19.59	10.7	35	0.7	24.8
STF 15	Soil	9	0.20	0.87	9.6	117	0.2	0.24	0.13	0.12	30.25	6.7	19	1.1	17.4
STF 16	Soil	<5	0.36	2.20	11.8	202	0.6	0.21	0.09	0.08	24.05	11.3	38	0.8	31.1
STF 17	Soil	<5	0.24	1.66	15.8	256	0.4	0.27	0.11	0.10	31.41	12.0	32	1.4	26.8
STF 18	Soil	<5	0.26	1.73	13.6	281	0.5	0.25	0.10	0.18	21.94	14.7	34	1.0	33.4
STF 19	Soil	<5	0.22	1.47	14.4	242	0.6	0.21	0.16	0.23	35.63	21.1	31	2.6	30.1
STF 20	Soil	<5	0.18	1.69	11.3	193	0.5	0.22	0.17	0.10	30.38	20.1	35	2.5	30.8
STF 21	Soil	<5	0.19	1.39	12.1	220	0.5	0.24	0.15	0.10	32.79	15.9	36	2.8	34.2
STF 22	Soil	<5	0.33	1.63	11.8	307	0.5	0.24	0.20	0.14	36.74	21.1	36	3.0	33.4
STF 23	Soil	<5	0.27	1.86	10.6	237	0.5	0.22	0.15	0.14	27.22	16.6	35	2.1	28.1
STF 24	Soil	<5	0.35	1.47	9.5	227	0.5	0.23	0.13	0.14	36.94	14.5	32	3.6	25.3
STF 25	Soil	<5	0.40	1.77	12.4	320	0.4	0.24	0.24	0.12	33.72	13.4	35	2.8	25.8
STF 26	Soil	14	0.63	1.88	14.2	615	0.5	0.28	0.31	0.35	37.64	18.6	31	2.6	35.4
STF 27	Soil	21	0.90	1.36	9.2	550	0.5	0.25	0.45	0.54	32.61	21.2	27	2.4	41.9
STF 28	Soil	6	0.36	1.18	10.6	197	0.5	0.23	0.13	0.18	34.70	12.4	33	3.7	40.0
STF 29	Soil	<5	0.89	0.62	6.3	219	0.2	0.17	0.20	0.21	15.67	4.8	14	1.2	22.1
STF 30	Soil	<5	0.67	0.48	15.8	368	0.3	0.27	0.30	0.37	27.64	7.4	12	0.5	30.5
STF 31	Soil	8	1.11	1.30	11.3	876	0.8	0.28	0.85	0.66	39.30	13.3	34	2.2	51.9
STF 32	Soil	<5	0.36	1.49	11.1	219	0.4	0.22	0.32	0.16	32.25	15.2	32	2.9	25.2
STF 33	Soil	<5	0.37	1.35	10.5	176	0.3	0.18	0.30	0.20	29.10	11.6	29	1.8	23.2
STF 34	Soil	<5	0.77	1.44	10.1	395	0.5	0.29	0.30	0.41	32.48	12.8	24	2.1	40.1
STF 3 June	Soil	9	0.88	1.87	13.7	628	0.5	0.26	0.28	0.26	33.26	11.1	32	2.3	40.3
STF Stream Sed	Soil	<5	0.48	1.16	19.7	225	0.3	0.19	0.23	0.19	31.21	9.9	27	2.5	24.2



#200 - 11620 Horseshoe Way
Richmond, British Columbia V7A 4V5
Canada

Certificate of Analysis

10-360-02735-01

Homegold Resources
Unit 5, 2330 Tyner Street
Port Coquitlam, B.C. V3C 2Z1

Sample Description	Sample Type	Fe 50-AR-UT %	Ga 50-AR-UT ppm	Ge 50-AR-UT ppm	Hf 50-AR-UT ppm	In 50-AR-UT ppm	K 50-AR-UT %	La 50-AR-UT ppm	Li 50-AR-UT ppm	Mg 50-AR-UT %	Mn 50-AR-UT ppm	Mo 50-AR-UT ppm	Na 50-AR-UT %	Nb 50-AR-UT ppm	Ni 50-AR-UT ppm
STF 1	Soil	3.39	4.4	-0.05	-0.02	0.04	0.28	19.7	8.4	0.40	503	3.73	-0.01	1.3	25.8
STF 2	Soil	3.02	4.0	-0.05	-0.02	0.05	0.19	19.0	5.1	0.27	547	2.54	-0.01	1.0	21.4
STF 3	Soil	3.56	4.4	-0.05	-0.02	0.04	0.29	21.3	7.8	0.41	364	2.29	0.01	1.4	25.7
STF 4	Soil	3.72	6.0	-0.05	-0.02	0.05	0.29	19.3	10.5	0.47	337	7.78	-0.01	2.0	31.2
STF 5	Soil	3.99	6.0	-0.05	-0.02	0.05	0.13	12.1	12.9	0.45	488	5.25	-0.01	1.4	24.4
STF 6	Soil	2.53	4.8	-0.05	-0.02	0.02	0.11	14.8	8.1	0.44	167	2.33	0.01	1.3	21.3
STF 7	Soil	3.61	5.0	-0.05	0.02	0.05	0.23	21.3	10.6	0.45	487	2.31	-0.01	1.4	35.0
STF 8	Soil	3.42	5.0	-0.05	-0.02	0.02	0.41	21.6	6.1	0.47	289	2.94	-0.01	1.9	43.0
STF 9	Soil	3.00	3.8	-0.05	-0.02	0.02	0.21	15.2	9.0	0.51	260	3.27	-0.01	1.1	47.0
STF 10	Soil	2.60	3.6	-0.05	-0.02	0.02	0.04	10.2	11.0	0.51	147	0.97	-0.01	0.7	21.1
STF 11	Soil	3.09	5.9	-0.05	0.03	0.02	0.04	9.1	11.8	0.41	256	2.04	-0.01	1.1	19.5
STF 12	Soil	2.46	5.1	-0.05	0.03	0.02	0.02	9.4	11.0	0.44	176	1.32	0.01	0.8	19.1
STF 13	Soil	2.76	3.9	-0.05	-0.02	0.02	0.16	22.0	2.8	0.18	92	2.74	-0.01	0.7	18.1
STF 14	Soil	3.32	5.1	-0.05	0.08	0.02	0.03	9.7	14.2	0.57	194	1.17	0.01	1.0	21.1
STF 15	Soil	1.94	5.9	-0.05	-0.02	0.02	0.10	15.4	4.2	0.28	155	2.71	-0.01	0.9	12.6
STF 16	Soil	3.13	5.6	-0.05	0.12	0.02	0.03	12.2	12.9	0.52	191	1.09	0.01	0.8	24.2
STF 17	Soil	3.19	5.2	-0.05	-0.02	0.02	0.10	16.0	11.8	0.48	225	1.83	-0.01	0.9	25.5
STF 18	Soil	3.22	5.1	-0.05	-0.02	0.02	0.06	10.5	12.4	0.47	300	1.81	-0.01	1.3	26.2
STF 19	Soil	3.26	4.6	-0.05	-0.02	0.02	0.24	17.3	16.3	0.50	461	1.21	-0.01	1.5	33.9
STF 20	Soil	3.48	4.8	-0.05	0.03	0.02	0.22	15.1	14.2	0.55	432	1.38	0.01	1.5	32.8
STF 21	Soil	3.40	4.8	-0.05	0.04	0.02	0.24	16.1	12.2	0.54	266	1.44	0.01	1.4	32.3
STF 22	Soil	3.62	5.5	-0.05	-0.02	0.02	0.26	17.8	12.0	0.57	789	2.15	0.01	1.8	32.0
STF 23	Soil	3.74	5.3	-0.05	-0.02	0.02	0.17	13.2	14.2	0.55	524	2.63	0.01	1.6	29.1
STF 24	Soil	3.68	6.1	-0.05	-0.02	0.02	0.29	18.3	7.2	0.43	330	2.50	-0.01	1.8	33.0
STF 25	Soil	3.65	6.5	-0.05	-0.02	0.02	0.25	16.2	8.6	0.57	286	2.36	0.01	2.0	30.4
STF 26	Soil	3.22	5.9	-0.05	-0.02	0.02	0.19	18.3	8.5	0.46	590	2.50	0.02	1.3	26.5
STF 27	Soil	2.30	4.5	-0.05	-0.02	0.02	0.15	15.3	5.6	0.36	1354	1.67	0.01	0.9	29.9
STF 28	Soil	3.35	4.8	-0.05	-0.02	0.02	0.24	17.0	7.7	0.42	216	3.29	0.01	1.2	31.6
STF 29	Soil	1.28	2.1	-0.05	-0.02	0.01	0.08	7.7	2.0	0.13	92	1.10	0.02	0.6	11.8
STF 30	Soil	1.85	0.9	-0.05	0.02	0.01	0.03	13.4	1.2	0.09	184	1.42	0.02	0.5	16.7
STF 31	Soil	3.03	5.4	-0.05	-0.02	0.02	0.16	19.9	8.1	0.51	449	5.32	0.01	1.2	37.4
STF 32	Soil	3.19	5.6	-0.05	-0.02	0.02	0.18	16.6	11.3	0.52	309	2.67	0.01	1.8	25.8
STF 33	Soil	3.00	4.9	-0.05	-0.02	0.02	0.19	15.6	8.8	0.50	201	1.86	0.01	1.5	22.4
STF 34	Soil	2.30	5.0	-0.05	-0.02	0.02	0.12	16.4	7.3	0.36	323	1.69	0.02	1.1	25.2
STF 3 June	Soil	3.06	6.2	-0.05	-0.02	0.02	0.15	15.8	9.1	0.43	219	2.81	0.01	1.3	25.4
STF Stream Sed	Soil	2.54	4.1	-0.05	-0.02	0.02	0.15	15.5	7.1	0.36	175	2.65	0.01	1.2	20.3



INSPECTORATE

#200 - 11620 Horseshoe Way
Richmond, British Columbia V7A 4V5
Canada

Certificate of Analysis

10-360-02735-01

Homegold Resources
Unit 5, 2330 Tyner Street
Port Coquitlam, B.C. V3C 2Z1

Sample Description	Sample Type	P 50-AR-UT ppm	Pb 50-AR-UT ppm	Rb 50-AR-UT ppm	Ko 50-AR-UT ppm	S 50-AR-UT %	Sb 50-AR-UT ppm	Sc 50-AR-UT ppm	Se 50-AR-UT ppm	Sm 50-AR-UT ppm	Sr 50-AR-UT ppm	Ta 50-AR-UT ppm	Te 50-AR-UT ppm	Tb 50-AR-UT ppm	Ti 50-AR-UT %
STF 1	Soil	521	17.6	42.7	<-0.01	<-0.01	1.11	5.6	0.7	0.6	16.9	<-0.01	0.07	6	0.065
STF 2	Soil	595	20.6	29.0	<-0.01	0.02	1.11	5.7	0.9	0.6	18.5	<-0.01	0.10	4	0.034
STF 3	Soil	628	16.0	39.5	<-0.01	0.01	0.59	4.6	1.0	0.7	13.7	<-0.01	0.12	7	0.071
STF 4	Soil	533	18.8	41.7	<-0.01	0.01	0.56	3.9	0.9	0.8	12.6	<-0.01	0.08	6	0.066
STF 5	Soil	544	15.6	21.1	<-0.01	<-0.01	0.07	2.7	0.5	0.6	14.0	<-0.01	0.10	3	0.042
STF 6	Soil	422	12.0	16.2	<-0.01	0.01	0.15	3.0	0.4	0.5	16.6	<-0.01	0.12	3	0.069
STF 7	Soil	430	20.2	34.6	<-0.01	0.01	0.71	4.0	0.8	0.5	15.3	<-0.01	0.16	7	0.061
STF 8	Soil	617	22.0	17.9	<-0.01	<-0.01	0.33	3.3	0.6	0.7	17.0	<-0.01	0.13	7	0.077
STF 9	Soil	451	15.3	35.3	<-0.01	<-0.01	0.27	2.9	0.6	0.5	15.6	<-0.01	0.15	4	0.056
STF 10	Soil	355	11.3	6.9	<-0.01	<-0.01	0.25	2.3	0.4	0.3	16.1	<-0.01	0.14	3	0.037
STF 11	Soil	193	13.6	8.5	<-0.01	<-0.01	0.14	2.9	<-0.2	0.7	13.2	<-0.01	0.18	3	0.042
STF 12	Soil	119	11.3	6.3	<-0.01	<-0.01	0.10	2.6	<-0.2	0.6	14.2	<-0.01	0.23	3	0.044
STF 13	Soil	372	30.6	27.6	<-0.01	0.01	1.53	2.8	1.5	0.4	23.0	<-0.01	0.47	8	0.024
STF 14	Soil	152	12.5	7.2	<-0.01	<-0.01	0.22	3.1	0.5	0.6	13.7	<-0.01	0.06	3	0.059
STF 15	Soil	355	13.2	23.5	<-0.01	0.01	0.65	1.7	0.5	1.3	14.9	<-0.01	0.09	1	0.059
STF 16	Soil	119	13.0	6.9	<-0.01	<-0.01	0.41	4.5	0.3	0.7	10.8	<-0.01	0.09	4	0.064
STF 17	Soil	255	31.1	18.0	<-0.01	<-0.01	1.44	3.8	0.7	0.5	17.5	<-0.01	0.07	5	0.050
STF 18	Soil	254	23.5	12.3	<-0.01	<-0.01	0.75	2.8	0.6	0.5	12.4	<-0.01	0.06	2	0.046
STF 19	Soil	562	14.9	32.7	<-0.01	<-0.01	0.07	3.0	0.5	0.5	13.9	<-0.01	0.04	4	0.068
STF 20	Soil	478	13.1	29.6	<-0.01	<-0.01	0.11	3.6	0.7	0.5	18.3	<-0.01	0.11	5	0.079
STF 21	Soil	322	12.8	32.1	<-0.01	<-0.01	0.28	4.0	0.5	0.6	17.5	<-0.01	0.04	6	0.088
STF 22	Soil	592	14.0	37.7	<-0.01	0.01	0.09	4.1	0.6	0.6	21.4	<-0.01	0.06	5	0.102
STF 23	Soil	511	14.2	23.5	<-0.01	0.01	0.07	3.1	0.5	0.6	18.3	<-0.01	0.10	3	0.082
STF 24	Soil	1155	12.7	47.4	<-0.01	<-0.01	0.20	4.0	0.5	0.6	16.6	<-0.01	0.16	7	0.094
STF 25	Soil	874	13.1	44.9	<-0.01	0.02	<-0.05	3.5	0.6	0.6	23.4	<-0.01	0.13	5	0.107
STF 26	Soil	733	38.9	30.1	<-0.01	0.03	0.53	3.4	0.9	0.5	35.4	<-0.01	0.09	2	0.045
STF 27	Soil	771	21.2	33.2	<-0.01	0.04	0.16	2.6	1.1	0.4	39.6	<-0.01	0.09	1	0.026
STF 28	Soil	510	15.7	33.2	<-0.01	0.02	0.20	2.9	0.8	0.8	16.1	<-0.01	0.11	2	0.062
STF 29	Soil	601	94.9	8.0	<-0.01	0.09	0.20	0.6	0.7	0.2	21.5	<-0.01	0.10	<-0.2	0.016
STF 30	Soil	705	38.3	2.9	<-0.01	0.14	0.45	0.9	1.6	0.2	28.4	0.02	0.14	0	0.014
STF 31	Soil	811	43.6	23.4	<-0.01	0.08	0.60	3.9	1.5	0.9	40.4	<-0.01	0.09	1	0.030
STF 32	Soil	580	15.3	33.0	<-0.01	0.02	0.29	3.9	1.0	0.5	20.6	<-0.01	0.11	5	0.088
STF 33	Soil	514	14.5	29.3	<-0.01	0.03	0.22	2.6	0.7	0.5	20.8	<-0.01	0.10	2	0.084
STF 34	Soil	413	42.9	21.6	<-0.01	0.02	1.36	3.1	0.6	0.4	24.3	<-0.01	0.10	1	0.047
STF 3 June	Soil	665	50.0	24.9	<-0.01	0.03	0.96	3.5	0.6	0.6	32.8	<-0.01	0.12	2	0.044
STF Stream Sed	Soil	776	25.4	21.8	<-0.01	0.02	0.43	2.9	0.8	0.4	19.8	<-0.01	0.10	3	0.052



#200 - 11620 Horseshoe Way
 Richmond, British Columbia V7A 4V5
 Canada

Certificate of Analysis

10-360-02735-01

Homegold Resources
 Unit 5, 2330 Tyner Street
 Port Coquidam, B.C. V3C 2Z1

Sample Description	Sample Type	Tl	U	V	W	Y	Zn	Zr
		50-AR-UT ppm 0.05	50-AR-UT ppm 0.05	50-AR-UT ppm 1	50-AR-UT ppm 0.05	50-AR-UT ppm 0.05	50-AR-UT ppm 1	50-AR-UT ppm 0.5
STF 1	Soil	0.32	3	65	1.32	179	84	1.7
STF 2	Soil	0.25	3	45	1.76	232	84	0.8
STF 3	Soil	0.33	3	56	1.58	173	91	1.6
STF 4	Soil	0.35	2	74	0.61	108	111	1.7
STF 5	Soil	0.15	1	69	3.46	65	97	1.0
STF 6	Soil	0.15	1	59	1.42	68	69	1.2
STF 7	Soil	0.33	2	62	1.35	121	99	1.7
STF 8	Soil	0.42	2	59	1.57	140	112	0.9
STF 9	Soil	0.27	2	53	2.37	101	95	0.7
STF 10	Soil	0.08	1	46	2.59	56	57	1.1
STF 11	Soil	0.11	1	69	2.82	36	62	2.1
STF 12	Soil	0.10	1	57	1.49	32	54	2.3
STF 13	Soil	0.27	2	50	1.99	104	59	-0.5
STF 14	Soil	0.08	1	70	1.63	33	62	3.6
STF 15	Soil	0.13	1	52	2.10	38	56	0.5
STF 16	Soil	0.08	1	66	1.90	56	54	6.5
STF 17	Soil	0.17	1	66	0.71	59	82	1.8
STF 18	Soil	0.10	2	68	1.59	59	80	1.1
STF 19	Soil	0.28	2	60	1.76	96	114	0.9
STF 20	Soil	0.23	1	64	1.92	67	105	1.8
STF 21	Soil	0.25	2	67	1.54	77	102	2.3
STF 22	Soil	0.26	2	71	1.82	97	102	1.3
STF 23	Soil	0.19	1	71	1.21	59	99	1.1
STF 24	Soil	0.27	1	67	3.25	84	98	1.7
STF 25	Soil	0.29	1	72	2.00	76	100	1.0
STF 26	Soil	0.22	2	57	1.46	148	98	-0.5
STF 27	Soil	0.16	3	38	1.18	155	84	-0.5
STF 28	Soil	0.20	2	59	3.31	92	104	0.6
STF 29	Soil	0.05	2	13	3.05	71	40	-0.5
STF 30	Soil	-0.05	2	15	1.81	113	37	0.5
STF 31	Soil	0.17	6	53	1.77	221	109	0.6
STF 32	Soil	0.20	1	67	1.95	83	95	1.7
STF 33	Soil	0.15	1	61	1.74	64	76	0.8
STF 34	Soil	0.14	2	49	1.78	124	74	0.5
STF 3 June	Soil	0.19	2	59	2.83	130	92	-0.5
STF Stream Sed	Soil	0.18	2	56	0.44	101	81	0.6

Data Page 4 of 4



INSPECTORATE
 #100 - 11620 Horseshoe Way
 Richmond, British Columbia V7A 4V5
 Canada

Certificate of Analysis

10-360-02735-01

Homegold Resources
 Unit 5, 2330 Tyner Street
 Port Coquitlam, B.C. V3C 2Z1

Sample Description	Sample Type	An An-1AT-AA ppb	Ag 50-AR-UT ppm	Al 50-AR-UT %	As 50-AR-UT ppm	Ba 50-AR-UT ppm	Be 50-AR-UT ppm	Bi 50-AR-UT ppm	Ca 50-AR-UT %	Cd 50-AR-UT ppm	Ce 50-AR-UT ppm	Co 50-AR-UT ppm	Cr 50-AR-UT ppm	Cu 50-AR-UT ppm	Cu 50-AR-UT ppm
QC/1008-00937-001-BLK		5	<0.01	<0.01	<0.1	-5	<0.05	<0.01	<0.01	<0.01	<0.02	0.1	1	0.05	0.2
STF 1	Soil		0.25	1.13	11.5	392	0.7	0.24	0.19	0.18	38.00	14.8	25	7.4	37.7
STF 1 Dup			0.29	1.13	11.3	386	0.7	0.23	0.18	0.17	38.20	14.3	25	7.4	36.8
STD-ME-6 expected			101												6130.0
STD-ME-6 result			>100	1.15	267.4	11	0.2	5.89	0.56	32.60	8.25	<0.1	29	0.3	6202.9
STF 19	Soil		0.22	1.47	14.4	242	0.6	0.21	0.16	0.23	35.63	21.1	31	2.6	30.1
STF 19 Dup			0.19	1.53	14.4	237	0.5	0.19	0.16	0.23	34.67	20.8	31	2.6	29.7
STD-ME-6 expected			101												6130.0
STD-ME-6 result			>100	1.24	272.1	13	0.2	5.80	0.58	30.94	8.57	<0.1	30	0.3	6420.0
QC/1008-00937-006-BLK			<0.01	<0.01	<0.1	-5	<0.05	<0.01	<0.01	<0.01	<0.02	<0.1	-1	<0.05	<0.2
STD-DS-1 expected			0.47	4.48	6930.0	221						9.5			27.1
STD-DS-1 result			0.51	0.38	7077.3	28	0.4	0.08	6.04	1.19	24.11	9.4	19	1.9	28.5
STF 1	Soil	14													
STF 1 Dup		7													
STD-Oxid67 expected		1817													
STD-Oxid67 result		1574													
STF 19	Soil	<5													
STF 19 Dup		<5													



#200 - 11620 Horseshoe Way
Richmond, British Columbia V7A 4V5
Canada

Certificate of Analysis

10-360-02735-01

Homegold Resources
Unit 5, 2330 Tyner Street
Port Coquitlam, B.C. V3C 2Z1

Sample Description	Sample Type	Fe	Ga	Ge	Hf	In	K	La	Li	Mg	Mn	Mo	Na	Nb	Ni
		50-AR-UT %	50-AR-UT ppm	50-AR-UT ppm	50-AR-UT ppm	50-AR-UT ppm	50-AR-UT %	50-AR-UT ppm	50-AR-UT ppm	50-AR-UT %	50-AR-UT ppm	50-AR-UT ppm	50-AR-UT %	50-AR-UT ppm	50-AR-UT ppm
QCV1008-00917-0001-BLK		<0.01	<0.05	<0.05	<0.02	<0.01	<0.01	<0.2	<0.1	<0.01	<1	<0.05	<0.01	<0.05	<0.2
STF 1	Soil	3.39	4.4	<0.05	<0.02	0.04	0.28	19.7	8.4	0.40	503	3.73	<0.01	1.3	25.8
STF 1 Dup		3.30	4.4	<0.05	<0.02	0.04	0.27	19.7	8.2	0.39	516	3.68	<0.01	1.3	25.5
STD-ME-6 expected															
STD-ME-6 result		5.58	4.0	<0.05	0.18	0.46	0.08	3.7	9.0	0.81	1789	21.79	0.05	0.1	29.1
STF 19	Soil	3.26	4.6	<0.05	<0.02	0.03	0.24	17.3	16.3	0.50	461	1.21	<0.01	1.5	33.9
STF 19 Dup		3.51	4.6	<0.05	<0.02	0.03	0.24	17.1	16.1	0.52	447	1.20	0.01	1.4	33.2
STD-ME-6 expected															
STD-ME-6 result		5.75	4.0	<0.05	0.19	0.44	0.09	3.8	10.1	0.86	1834	21.07	0.06	0.1	28.4
QCV1008-00917-0004-BLK		<0.01	<0.05	<0.05	<0.02	<0.01	<0.01	<0.2	<0.1	<0.01	<1	<0.05	<0.01	<0.05	<0.2
STD-DS-1 expected										2.76	437				48.7
STD-DS-1 result		3.09	1.3	<0.05	0.10	0.06	0.12	11.9	2.2	2.32	414	4.66	<0.01	<0.05	50.9



Certificate of Analysis

10-360-02735-01

Homegold Resources
Unit 5, 2330 Tyner Street
Port Coquitlam, B.C. V3C 2Z1

Sample Description	Sample Type	P	Pb	Rb	Ra	S	Sb	Sc	Se	Sn	Sr	Ta	Tb	Tl	Ti
		50-AR-UT ppm	50-AR-UT ppm	50-AR-UT ppm	50-AR-UT ppm	50-AR-UT %	50-AR-UT ppm	50-AR-UT ppm	50-AR-UT ppm	50-AR-UT ppm	50-AR-UT ppm	50-AR-UT ppm	50-AR-UT ppm	50-AR-UT ppm	50-AR-UT ppm
		5	0.2	0.1	0.01	0.01	0.05	0.1	0.2	0.2	0.2	0.01	0.01	0.2	0.005
QCV1008-00917-0001-BLK		<5	<0.2	<0.1	<0.01	<0.01	<0.05	<0.1	<0.2	<0.2	<0.2	<0.01	<0.01	<0.2	<0.005
STF 1	Soil	521	17.6	42.7	<0.01	<0.01	1.11	5.6	0.7	0.6	16.9	<0.01	0.07	6	0.065
STF 1 Dup		500	17.4	41.1	<0.01	<0.01	1.11	5.7	0.7	0.6	16.4	<0.01	0.07	6	0.063
STD-ME-6 expected			10200												
STD-ME-6 result		365	>10000	3.1	0.01	2.72	399.36	3.6	2.2	1.7	25.0	<0.01	1.37	1	0.070
STF 19	Soil	562	14.9	32.7	<0.01	<0.01	0.07	3.0	0.5	0.5	13.9	<0.01	0.04	4	0.068
STF 19 Dup		556	14.3	31.3	<0.01	<0.01	<0.05	3.0	0.5	0.5	14.4	<0.01	0.04	4	0.068
STD-ME-6 expected			10200												
STD-ME-6 result		371	>10000	3.3	<0.01	2.89	436.81	3.6	2.0	1.6	27.1	<0.01	1.37	1	0.079
QCV1008-00917-0006-BLK		<5	<0.2	<0.1	<0.01	<0.01	<0.05	<0.1	<0.2	<0.2	<0.2	<0.01	<0.01	<0.2	<0.005
STD-DS-1 expected		340	13.8												
STD-DS-1 result		266	13.0	5.6	<0.01	2.96	100.09	6.5	0.8	1.1	61.3	<0.01	0.12	3	<0.005



#200 - 11620 Horseshoe Way
 Richmond, British Columbia V7A 4V5
 Canada

Certificate of Analysis

10-360-02735-01

Homegold Resources
 Unit 5, 2330 Tyner Street
 Port Coquitlam, B.C. V3C 2Z1

Sample Description	Sample Type	Tl 50-AR-UT ppm	U 50-AR-UT ppm	V 50-AR-UT ppm	W 50-AR-UT ppm	Y 50-AR-UT ppm	Zn 50-AR-UT ppm	Zr 50-AR-UT ppm
QC V1008-00917-001-BLK		0.05	0.05	1	0.05	0.05	1	0.5
STF 1	Soil	-0.05	-0.05	-1	<-0.05	<-0.05	-1	-0.5
STF 1 Dup		0.32	3	65	1.32	179	84	1.7
STD-ME-6 expected		0.32	3	63	1.33	176	83	1.6
STD-ME-6 result		0.22	1	41	1.39	61	5170	4.4
STF 19	Soil	0.28	2	60	1.76	9.6	114	0.9
STF 19 Dup		0.28	2	56	1.67	9.2	115	0.8
STD-ME-6 expected							5170	
STD-ME-6 result		0.21	1	43	1.58	6.2	6173	4.5
QC V1008-00917-006-BLK		-0.05	-0.05	-1	<-0.05	<-0.05	-1	-0.5
STD-DS-1 expected		20.00					206	
STD-DS-1 result		18.75	1	49	6.80	10.2	218	3.1



ALS Chemex

EXCELLENCE IN ANALYTICAL CHEMISTRY

ALS Canada Ltd.

2103 Dollarton Hwy
North Vancouver BC V7H 0A7
Phone: 604 984 0221 Fax: 604 984 0218 www.alschemex.com

To: HOMEGOLD RESOURCES LTD.
UNIT 5, 2330 TYNER ST.
PORT COQUITLAM BC V3C 2Z1

Page: 1
Finalized Date: 21-JUN-2010
Account: MWE

CERTIFICATE WH10072924

Project: Atocha Strike
P.O. No.:
This report is for 55 Soil samples submitted to our lab in Whitehorse, YT, Canada on 8-JUN-2010.

The following have access to data associated with this certificate:
J. SHEARER

SAMPLE PREPARATION

ALS CODE	DESCRIPTION
WEI-21	Received Sample Weight
LOG-22	Sample login - Rcd w/o BarCode
SCR-41	Screen to -180um and save both

ANALYTICAL PROCEDURES

ALS CODE	DESCRIPTION	INSTRUMENT
Au-AA23	Au 30g FA-AA finish	AAS
ME-ICP41	35 Element Aqua Regia ICP-AES	ICP-AES

To: HOMEGOLD RESOURCES LTD.
ATTN: J. SHEARER
ELEKTRA GOLD
UNIT 5, 2330 TYNER ST.
PORT COQUITLAM V3C 2Z1

This is the Final Report and supersedes any preliminary report with this certificate number. Results apply to samples as submitted. All pages of this report have been checked and approved for release.

Signature:


Colin Ramshaw, Vancouver Laboratory Manager

WH10072924 - Finalized

CLIENT : "MWE - Homegold Resources Ltd."

of SAMPLES : 55

DATE RECEIVED : 2010-06-08 DATE FINALIZED : 2010-06-21

PROJECT : "Atocha Strike"

CERTIFICATE COMMENTS : ""

PO NUMBER : ""

SAMPLE	Au-AA23	ME-ICP41	ME-ICP41	ME-ICP41	ME-ICP41	ME-ICP41	ME-ICP41	ME-ICP41	ME-ICP41	ME-ICP41	ME-ICP41	ME-ICP41	ME-ICP41	ME-ICP41	ME-ICP41	ME-ICP41	ME-ICP41	ME-ICP41		
DESCRIP	Au	Ag	Al	As	B	Ba	Be	Bi	Ca	Cd	Co	Cr	Cu	Fe	Ga	Hg	K	La		
TI	ppm	ppm	%	ppm	ppm	ppm	ppm	ppm	%	ppm	ppm	ppm	ppm	%	ppm	ppm	%	ppm		
ST 1	0.01	<0.2		1.9	18	<10	260	<0.5	<2	0.13	<0.5	8	36	22	3.4	10	1	0.09	20	
ST 2	0.008		0.2	1.73	16	<10	220	<0.5	<2	0.19	<0.5	11	35	21	3.71	10	1	0.19	20	
ST 3	0.03		0.5	1.88	13	<10	570	<0.5	<2	0.28	<0.5	10	33	32	3.11	10	1	0.13	20	
ST 4																				
ST 5																				
ST 6	0.006		0.2	1.92	18	<10	210	<0.5	<2	0.18	<0.5	9	31	15	3.91	10	<1	0.16	10	
ST 7	0.007		0.3	1.63	24	<10	340	<0.5	<2	0.25	<0.5	8	28	16	3	10	1	0.06	10	
ST 8	0.01	<0.2		1.82	19	<10	300		0.6	<2	0.23	<0.5	13	34	35	3.48	10	1	0.05	20
ST 9	0.011	<0.2		2.04	11	<10	290	<0.5	<2	0.14	<0.5	9	35	24	3.75	10	1	0.05	10	
ST 10	0.005	<0.2		1.79	16	<10	190	<0.5	<2	0.18	<0.5	8	36	17	3.31	10	1	0.04	10	
ST 11	0.014	<0.2		1.79	9	<10	260	<0.5	<2	0.14	<0.5	6	29	16	3.13	10	1	0.12	10	
ST 12	0.006	<0.2		2.07	13	<10	240		1	<2	0.05	<0.5	14	45	55	5.51	10	1	0.28	30
ST 13	0.016		0.2	1.46	13	<10	340	<0.5	<2	0.13	<0.5	6	27	21	2.94	<10	1	0.18	20	
ST 14	0.008		0.2	1.47	9	<10	370	<0.5	<2	0.2	<0.5	9	31	33	3.75	10	1	0.38	20	
ST 15	0.012		0.3	1.65	11	<10	450	<0.5	<2	0.21	<0.5	10	51	38	3.93	10	1	0.44	20	
ST 16	0.005	<0.2		1.75	11	<10	390	<0.5	<2	0.39	<0.5	10	37	23	3.08	<10	1	0.11	10	
ST 17	0.007	<0.2		1.87	8	<10	380	<0.5	<2	0.24	<0.5	9	39	25	3.68	10	<1	0.57	10	
ST 18	0.005		0.2	1.73	6	<10	490	<0.5	<2	0.31	<0.5	10	36	24	3.31	10	<1	0.4	10	
ST 19	0.007	<0.2		1.69	11	<10	330	<0.5	<2	0.34	<0.5	9	31	20	2.78	<10	1	0.09	10	
ST 20	0.01	<0.2		1.46	6	<10	360	<0.5	<2	0.38	<0.5	7	28	17	2.52	<10	<1	0.09	10	
ST 21	<0.005	<0.2		0.89	5	<10	370	<0.5	<2	0.24	<0.5	6	16	19	2.01	<10	1	0.26	20	
ST 22	0.008	<0.2		1.82	17	<10	560		0.7	<2	0.6	<0.5	9	34	42	3.31	<10	1	0.11	20
ST 23																				
ST 24																				
ST 25	0.006	<0.2		1.75	9	<10	280	<0.5	<2	0.79	<0.5	12	33	30	3.11	10	1	0.05	10	
ST 26	0.007		0.2	1.6	8	<10	300	<0.5	<2	0.71	<0.5	9	33	33	2.75	<10	1	0.05	10	
ST 27	0.005	<0.2		2.23	8	<10	310	<0.5	<2	0.41	<0.5	10	54	31	3.39	10	1	0.21	20	
ST 28	0.005	<0.2		2.57	3	<10	180	<0.5	<2	0.77	<0.5	13	28	26	2.97	10	1	0.04	10	
ST 29	<0.005	<0.2		2.66	9	<10	230		0.5	<2	0.38	<0.5	13	95	27	4.13	10	<1	0.14	10
ST 30	<0.005	<0.2		4.24	2	<10	650		0.5	<2	0.72	<0.5	19	29	50	6.62	10	1	1.24	20
ST 31	0.008		0.3	1.88	13	<10	220	<0.5	<2	0.14	<0.5	8	33	19	2.78	10	1	0.06	10	
ST 32	0.019	<0.2		0.72	6	<10	160	<0.5	<2	0.07	<0.5	2	15	6	0.92	<10	<1	0.06	20	
ST 33	0.006	<0.2		1.87	9	<10	210	<0.5	<2	0.22	<0.5	12	31	14	3.21	10	1	0.12	10	
ST 34	0.011		0.2	1.51	11	<10	300		0.5	<2	0.23	<0.5	9	24	27	3.38	<10	1	0.19	20
ST 35	0.005	<0.2		2.5	22	<10	300		0.6	<2	0.28	<0.5	11	24	52	5.02	10	1	0.91	30
ST 36	0.008		0.2	2.36	14	<10	260	<0.5	<2	0.15	<0.5	9	35	26	3.63	10	1	0.07	10	
ST 37	0.008		0.2	1.87	14	<10	310		0.6	<2	0.27	<0.5	10	37	31	3.15	<10	1	0.05	20
ST 38	0.009	<0.2		2.18	11	<10	400		0.6	<2	0.16	<0.5	12	41	30	3.54	10	1	0.15	20
ST 39	0.007		0.2	2.33	14	<10	250		0.7	<2	0.08	<0.5	12	45	43	4.22	10	1	0.09	10

ST 40	0.005 <-0.2	2.12	9 <10	370 <-0.5	<-2	0.08 <-0.5	9	48	29	4.25	10	1	0.64	20	
ST 41	0.01 <-0.2	2.07	22 <10	380	0.7 <-2	0.21 <-0.5	11	43	32	4.62	10	1	0.47	20	
ST 42	0.009 <-0.2	1.89	15 <10	410	0.6 <-2	0.18 <-0.5	10	40	29	3.6	10	1	0.28	10	
ST 43	0.009 <-0.2	1.55	8 <10	390	0.5 <-2	0.26 <-0.5	9	31	21	2.84 <-10		1	0.12	20	
ST 44	0.007 <-0.2	1.76	9 <10	370	0.5 <-2	0.39 <-0.5	13	32	24	2.85 <-10	<-1		0.07	10	
ST 45	0.006 <-0.2	1.49	6 <10	320 <-0.5	<-2	0.36 <-0.5	9	32	28	3.42 <-10		1	0.28	20	
ST 46	0.013	0.2	1.77	9 <10	550	0.5 <-2	0.46 <-0.5	9	35	31	3.26	10	1	0.13	20
ST 47	0.01	0.2	1.96	22 <10	440	0.6 <-2	0.38 <-0.5	10	41	32	3.94	10 <-1		0.5	20
ST 48	0.005 <-0.2	1.71	22 <10	310	0.9 <-2	0.29 <-0.5	13	49	45	4.79	10	1	0.5	10	
ST 49	0.009 <-0.2	1.3	3 <10	450	0.7 <-2	0.45 <-0.5	12	27	44	3.77 <-10		1	0.38	30	
ST 53	0.012 <-0.2	1.56	11 <10	300 <-0.5	<-2	0.93 <-0.5	10	30	29	2.72 <-10		1	0.03	10	
ST 54	0.01 <-0.2	1.56	11 <10	290 <-0.5	<-2	0.71 <-0.5	10	31	33	2.82 <-10	<-1		0.05	10	
ST 55	0.01 <-0.2	2.1	3 <10	190 <-0.5	<-2	0.85 <-0.5	15	87	57	3.03	10	1	0.01	10	
ST 56	0.011 <-0.2	1.67	11 <10	280	0.5 <-2	0.42 <-0.5	9	40	36	3.01 <-10	<-1		0.03	20	
ST 57	<-0.005 <-0.2	2.57	9 <10	440	0.6 <-2	0.5 <-0.5	15	47	29	4.17	10	1	0.22	20	
ST 58	0.008 <-0.2	1.97	11 <10	300	0.5 <-2	0.6 <-0.5	12	43	34	3.45	10	1	0.17	20	

ME-ICP41 Mg %	ME-ICP41 Mn ppm	ME-ICP41 Mo ppm	ME-ICP41 Na %	ME-ICP41 Ni ppm	ME-ICP41 P ppm	ME-ICP41 Pb ppm	ME-ICP41 S %	ME-ICP41 Sb ppm	ME-ICP41 Sc ppm	ME-ICP41 Sr ppm	ME-ICP41 Th ppm	ME-ICP41 Ti %	ME-ICP41 Tl ppm	ME-ICP41 U ppm	ME-ICP41 V ppm	ME-ICP41 W ppm	ME-ICP41 Zn ppm
0.42	256		2 <0.01		22	350	15	0.01 <2		4	20 <20		0.06 <10	<10			72
0.44	754		3 <0.01		23	940	15	0.01 <2		4	20 <20		0.11 <10	<10		86 <10	79
0.37	340		3 0.01		22	810	37	0.02 <2		4	30 <20		0.07 <10	<10		62 <10	73
0.38	431		2 <0.01		22	1700	18	0.01 <2		3	17 <20		0.11 <10	<10		78 <10	81
0.39	369		2 <0.01		16	730	23	0.01 <2		4	20 <20		0.07 <10	<10		65 <10	63
0.45	490		2 0.01		25	520	13	0.01 <2		5	21 <20		0.08 <10	<10		61 <10	71
0.42	302		2 <0.01		22	480	13	0.01 <2		3	15 <20		0.06 <10	<10		67 <10	75
0.45	217		1 <0.01		21	450	12 <0.01	<2		3	16 <20		0.06 <10	<10		61 <10	67
0.42	152		1 <0.01		17	280	10 <0.01	<2		3	13 <20		0.09 <10	<10		68 <10	54
0.38	371		2 <0.01		46	360	18 <0.01	<2	2	7	12 <20		0.1 <10	<10		95 <10	153
0.32	103		2 <0.01		17	460	19 <0.01	<2		3	17 <20		0.05 <10	<10		53 <10	68
0.44	276		2 <0.01		30	740	9	0.01 <2		5	17 <20		0.1 <10	<10		61 <10	105
0.51	268		2 0.01		35	530	13	0.01 <2		6	19 <20		0.14 <10	<10		72 <10	98
0.52	421		1 0.01		25	370	10 <0.01	<2		6	30 <20		0.1 <10	<10		62 <10	58
0.59	412		2 0.01		27	380	11	0.01 <2		5	22 <20		0.16 <10	<10		71 <10	93
0.54	517		2 0.01		22	310	12	0.01 <2		5	26 <20		0.16 <10	<10		68 <10	69
0.51	300		1 0.01		23	380	6 <0.01	<2		4	26 <20		0.1 <10	<10		60 <10	49
0.47	303		1 0.01		19	600	7 <0.01	<2		4	28 <20		0.09 <10	<10		50 <10	48
0.19	178		4 <0.01		17	640	4	0.01 <2		3	28 <20		0.04 <10	<10		29 <10	46
0.44	374		1 0.01		30	320	18	0.01 <2		8	38 <20		0.06 <10	<10		59 <10	73
0.73	359		1 0.03		25	710	8	0.02 <2		5	48 <20		0.09 <10	<10		66 <10	63
0.65	339		1 0.02		25	790	7	0.01 <2		5	39 <20		0.1 <10	<10		57 <10	62
0.92	284		1 0.01		27	340	8 <0.01	<2		6	29 <20		0.16 <10	<10		74 <10	70
1.09	232 <1		0.02		16	550	4 <0.01	<2		6	59 <20		0.15 <10	<10		72 <10	49
1.33	345		1 0.01		37	200	9	0.01 <2		7	26 <20		0.12 <10	<10		82 <10	69
2.04	960 <1		0.02		12	930	7	0.01 <2		4	54 <20		0.51 <10	<10		101 <10	147
0.43	219		1 0.01		16	190	16 <0.01	<2		3	17 <20		0.08 <10	<10		64 <10	45
0.08	72		2 <0.01		8	350	13	0.01 <2		1	18 <20		0.03 <10	<10		31 <10	18
0.44	600		1 <0.01		16	940	12	0.01 <2		3	19 <20		0.07 <10	<10		73 <10	62
0.38	413		2 0.01		18	730	10	0.01 <2		6	17 <20		0.09 <10	<10		57 <10	67
0.66	827		2 <0.01		14	1080	8	0.06 <2		9	14 <20		0.21 <10	<10		69 <10	176
0.44	244		1 0.01		16	290	10	0.03 <2		4	17 <20		0.07 <10	<10		72 <10	56
0.55	293		1 0.01		24	300	9	0.01 <2		6	24 <20		0.1 <10	<10		66 <10	61
0.56	258		1 0.01		31	240	11	0.01 <2		5	18 <20		0.11 <10	<10		69 <10	76
0.39	291		2 <0.01		39	400	16	0.01 <2		5	14 <20		0.07 <10	<10		87 <10	102

0.58	274	2	<0.01	26	700	14	0.01	<2	5	13	<20	0.17	<10	<10	95	<10	111
0.56	330	2	0.01	37	880	14	0.01	<2	6	21	<20	0.12	<10	<10	85	<10	124
0.55	246	1	0.01	31	390	18	0.01	<2	5	17	<20	0.12	<10	<10	70	<10	90
0.45	260	1	0.01	21	480	10	0.01	<2	4	23	<20	0.09	<10	<10	58	<10	62
0.49	439	1	0.01	21	470	8	0.01	<2	4	29	<20	0.09	<10	<10	62	<10	55
0.46	263	2	0.01	29	790	10	0.01	<2	5	26	<20	0.11	<10	<10	62	<10	87
0.5	319	2	0.02	25	540	11	0.01	<2	6	35	<20	0.09	<10	<10	65	<10	65
0.63	360	2	0.02	31	650	14	0.01	<2	6	25	<20	0.15	<10	<10	71	<10	93
0.46	467	3	0.01	39	1190	29	0.01	<2	8	22	<20	0.11	<10	<10	76	<10	140
0.27	539	4	0.01	32	1080	9	0.02	<2	8	35	<20	0.05	<10	<10	51	<10	96
0.57	420	1	0.03	24	790	7	0.02	<2	5	55	<20	0.08	<10	<10	60	<10	53
0.67	459	1	0.03	27	950	8	0.01	<2	5	43	<20	0.1	<10	<10	57	<10	66
1.17	300	<1	0.02	65	1160	<2	<0.01	<2	8	44	<20	0.16	<10	<10	61	<10	44
0.59	312	1	0.02	24	420	7	<0.01	<2	8	36	<20	0.1	<10	<10	65	<10	48
1.16	521	1	0.02	26	500	7	0.01	<2	10	35	<20	0.14	<10	<10	80	<10	66
0.9	451	1	0.02	27	750	6	0.01	<2	6	45	<20	0.16	<10	<10	67	<10	62

APPENDIX IV

WAYPOINT LIST

AUGUST 2, 2010

Waypoint List

Map Name : 115003.GIF
Map File : C:\Documents and Settings\Anna\My Documents\MAPS\115003.MAP

Datum : NAD83

Strike

Waypoint File : C:\Documents and Settings\Anna\My Documents\ 101-114 sampling 115-0-3.wpt

6/7/2010 6:15:37 PM

Num	Name	Zone	Easting	Northing	Alt(ft)	Description
01		7V	594560	7009330		05-JUN-10 07:27
02		7V	594463	7009327	2521	05-JUN-10 11:15
03		7V	594360	7009323	2415	05-JUN-10 11:25
04NS		7V	594257	7009322	2337	05-JUN-10 11:27
05NS		7V	594164	7009334	2404	05-JUN-10 11:36
06		7V	594061	7009320	2498	05-JUN-10 11:52
07		7V	593957	7009325	2561	05-JUN-10 12:00
08		7V	593861	7009318	2598	05-JUN-10 12:05
09		7V	593759	7009324	2619	05-JUN-10 12:10
10		7V	593656	7009332	2621	05-JUN-10 12:15
11		7V	593559	7009335	2620	05-JUN-10 12:19
12		7V	593465	7009333	2624	05-JUN-10 12:41
14		7V	593267	7009337	2465	05-JUN-10 12:50
15		7V	593161	7009320	2346	05-JUN-10 12:58
16		7V	593062	7009323	2257	05-JUN-10 13:00
17		7V	592959	7009326		05-JUN-10 13:10
18		7V	592859	7009329	2095	05-JUN-10 13:10
19		7V	592763	7009335	2028	05-JUN-10 13:12
20		7V	592665	7009331		05-JUN-10 13:29
21		7V	592566	7009340	1891	05-JUN-10 13:29
22		7V	592464	7009333		05-JUN-10 13:47
23NS		7V	592361	7009332		05-JUN-10 13:53
24NS		7V	592261	7009325	1787	05-JUN-10 13:53
25		7V	592165	7009323	1795	05-JUN-10 13:59
26		7V	592056	7009334	1791	05-JUN-10 14:04
27		7V	591959	7009330	1787	05-JUN-10 14:08
28		7V	591859	7009335	1797	05-JUN-10 14:13
29		7V	591762	7009328	1732	05-JUN-10 14:19
30		7V	591706	7009327	1692	05-JUN-10 14:21
13		7V	593358	7009330		07-JUN-10 11:13
END		7V	606600	7071350	2228	04-JUN-10 13:27
HELI		7V	594115	7009005	2699	05-JUN-10 10:53
HELI 2		7V	591769	7009425	1648	05-JUN-10 15:18
T		7V	605198	7070601	2199	04-JUN-10 10:04

Map Feature Waypoints

Waypoint List

Map Name : 115O03.GIF
Map File : C:\Documents and Settings\Anna\My Documents\MAPS\115O03.MAP

Datum : NAD83

Waypoint File :

6/7/2010 2:05:12 PM

Num	Name	Zone	Easting	Northing	Alt(ft)	Description
1	001	7V	594560	7009099		05-JUN-10 7:27:17AM
2	002	7V	591445	7009100	1129	05-JUN-10 7:30:02AM
3	031	7V	594556	7009098	2636	05-JUN-10 11:02:27AM
4	032	7V	594451	7009101	2661	05-JUN-10 11:12:40AM
5	033	7V	594352	7009100	2662	05-JUN-10 11:22:04AM
6	034	7V	594248	7009100	2636	05-JUN-10 11:31:31AM
7	035	7V	594150	7009102	2653	05-JUN-10 11:45:48AM
8	036	7V	594051	7009099	2674	05-JUN-10 12:10:11PM
9	037	7V	593950	7009099	2704	05-JUN-10 12:19:58PM
10	038	7V	593850	7009100	2689	05-JUN-10 12:33:52PM
11	039	7V	593749	7009100	2710	05-JUN-10 12:41:34PM
12	040	7V	593650	7009101	2693	05-JUN-10 12:52:30PM
13	041	7V	593550	7009101	2628	05-JUN-10 1:03:49PM
14	042	7V	593446	7009100	2527	05-JUN-10 1:17:33PM
15	043	7V	593349	7009100	2401	05-JUN-10 1:26:09PM
16	044	7V	593250	7009100	2300	05-JUN-10 1:36:39PM
17	045	7V	593151	7009093	2205	05-JUN-10 1:46:55PM
18	046	7V	593047	7009098	2166	05-JUN-10 1:56:24PM
19	047	7V	592951	7009100	2091	05-JUN-10 2:02:49PM
20	048	7V	592849	7009098	1991	05-JUN-10 2:11:00PM
21	049	7V	592746	7009093	1883	05-JUN-10 2:19:31PM
22	050 Ns	7V	592649	7009089	1838	05-JUN-10 2:28:12PM
23	051 Ns	7V	592550	7009103	1815	05-JUN-10 2:31:38PM
24	052Ns	7V	592445	7009098	1855	05-JUN-10 2:42:36PM
25	053	7V	592348	7009093	1920	05-JUN-10 2:50:06PM
26	054	7V	592247	7009106	1955	05-JUN-10 3:01:29PM
27	055	7V	592147	7009103	1956	05-JUN-10 3:10:07PM
28	056	7V	592045	7009100	1942	05-JUN-10 3:18:51PM
29	057	7V	591945	7009098	1834	05-JUN-10 3:27:34PM
30	058	7V	591843	7009097	1771	05-JUN-10 3:37:03PM
31	059 Ns	7V	591746	7009105	1688	05-JUN-10 3:46:26PM
32	060 Ns	7V	591643	7009103	1689	05-JUN-10 3:50:22PM
33	2M4565 339	7W	577981	7102560		04-JUN-10 8:35:07AM

Map Feature Waypoints