

ARCHER, CATHRO & ASSOCIATES (1981) LIMITED
1016 - 510 West Hastings Street
Vancouver, B.C. V6B1L8

Telephone: 604-688-2568

Fax: 604-688-2578

ASSESSMENT REPORT

describing

GEOCHEMICAL SAMPLING

at the

KKK PROPERTY

KKK 1-70 YD55901-YD55970

NTS 115J/09

Latitude 62°36'N; Longitude 138°05'W

located in the

Whitehorse Mining District
Yukon Territory

prepared by

Archer, Cathro & Associates (1981) Limited

for

CENTRAL RESOURCES CORP.

and

STRATEGIC METALS LTD.

by

H. Smith, B.Sc. Geology, P.Geo.
November 2010

CONTENTS

INTRODUCTION	1
PROPERTY LOCATION, CLAIM DATA AND ACCESS	1
HISTORY AND PREVIOUS WORK	1
GEOMORPHOLOGY AND CLIMATE	3
GEOLOGY	3
PROPERTY GEOLOGY	4
REGIONAL MINERALIZATION	4
STREAM SEDIMENT AND SOIL GEOCHEMISTRY	5
DISCUSSION AND CONCLUSIONS	6
REFERENCES	7

APPENDICES

I	STATEMENT OF QUALIFICATIONS
II	SAMPLING AND ANALYTICAL PROCEDURES
III	CERTIFICATES OF ANALYSIS

TABLES

I	1969 Geochemistry	1
II	1974 Geochemistry	2
III	Lithological Units	4

FIGURES

<u>No.</u>	<u>Description</u>	<u>Follows Page</u>
1	Property Location	1
2	Claim Locations	1
3	Tectonic Setting	3
4	Geology	3
5	Sample Locations	5
6	Gold Geochemistry	5
7	Molybdenum Geochemistry	5
8	Lead Geochemistry	5
9	Zinc Geochemistry	5

INTRODUCTION

The KKK property lies near the centre of the Dawson Range Gold Belt of western Yukon. It is in the headwaters of Butterfield Creek, a historical placer gold producer, and is situated immediately south of the Sonora Gulch property, which is a drilled prospect that hosts a number of gold-copper-molybdenum showings. Exploration in 2010 at the KKK property focused on evaluating its gold potential. Central Resources Corp. can earn a 100% interest in the property subject to an option agreement with Strategic Metals Ltd.

This report describes a one day exploration program that was conducted by Archer, Cathro & Associates (1981) Limited in summer 2010 on behalf of Central Resources. The work was performed by a three person crew on July 9 and comprised geochemical sampling. The author directed the program, and her Statement of Qualifications is in Appendix I.

PROPERTY LOCATION, CLAIM DATA AND ACCESS

The KKK property consists of 70 contiguous mineral claims, which are located on NTS map sheet 115J/09 at latitude 62°36' north and longitude 138°05' west (Figure 1). The property covers an area of approximately 1420 ha (14.2 sq km). The claims are registered with the Whitehorse Mining Recorder in the name of Archer Cathro, which holds them in trust for Strategic. Specifics concerning claim registration are tabulated below, while the locations of individual claims are shown on Figure 2.

<u>Claim Name</u>	<u>Grant Number</u>	<u>Expiry Date*</u>
KKK 1-70	YD55901-YD55970	April 15, 2011

* Expiry date does not include 2010 work that has not yet been filed for assessment credit.

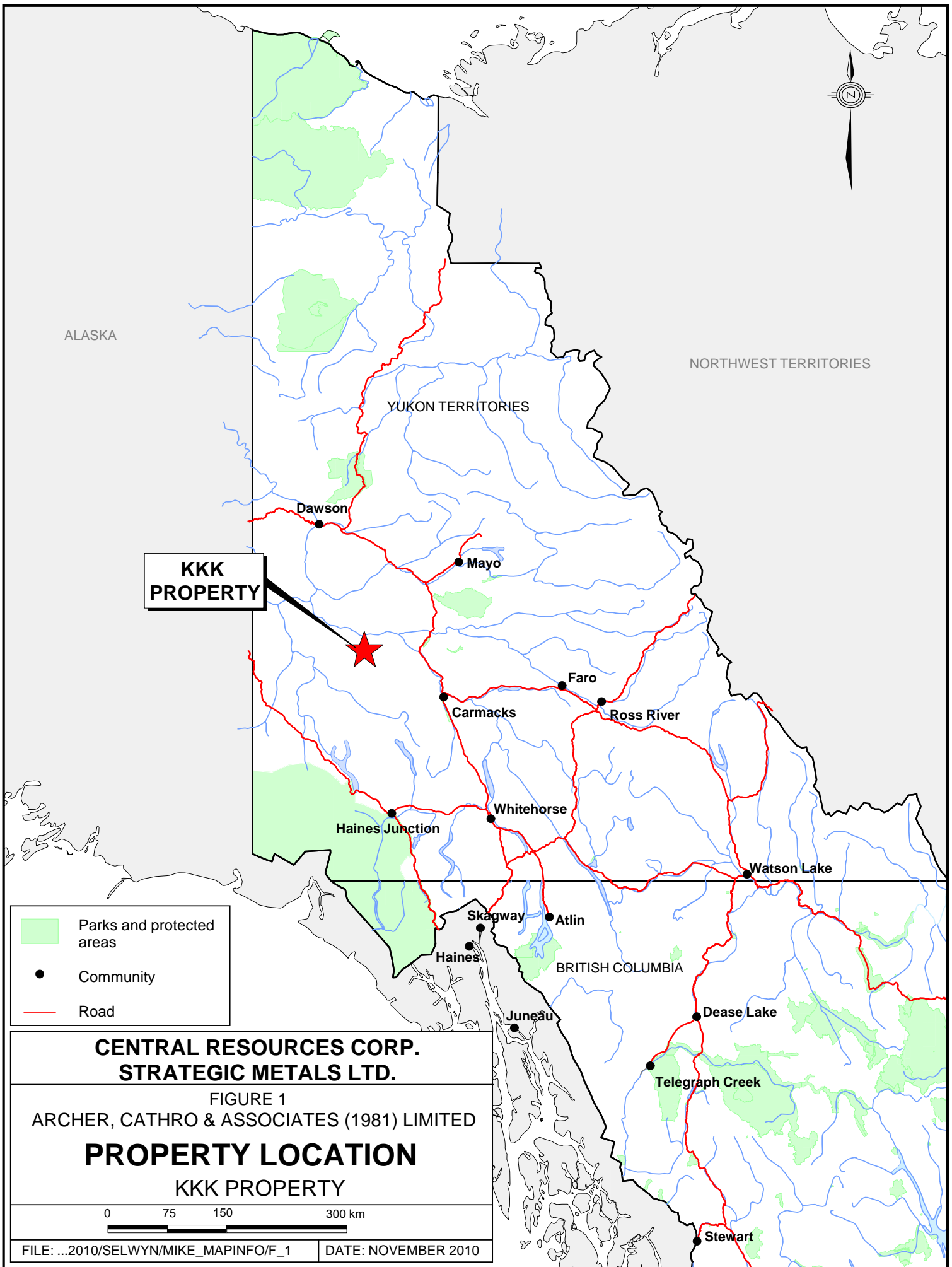
Access to and from the property was provided by a Bell 206B helicopter owned and operated by Capital Helicopters (1995) Inc. of Whitehorse from a temporary base at the Klaza Property near the former Mount Nansen Mine. The Klaza property is located 70 km to the southeast of the KKK property and 70 km by road west of the community of Carmacks.

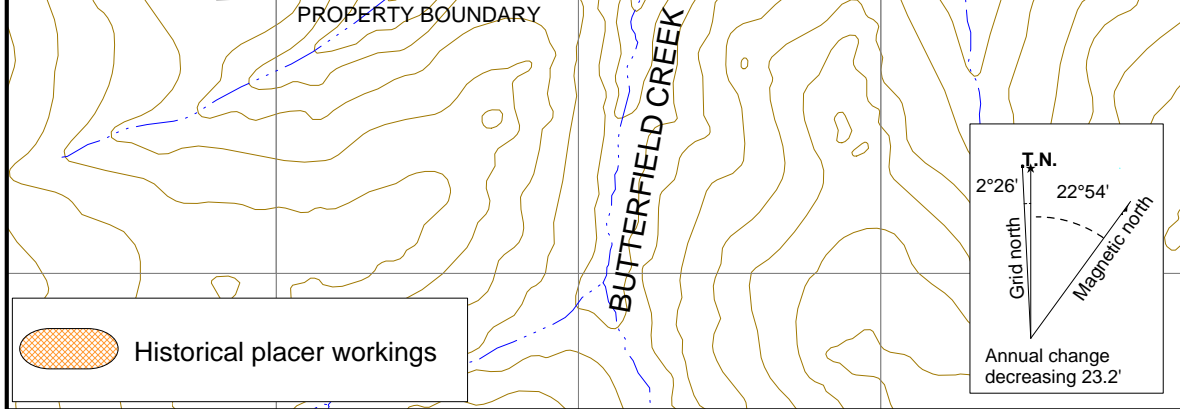
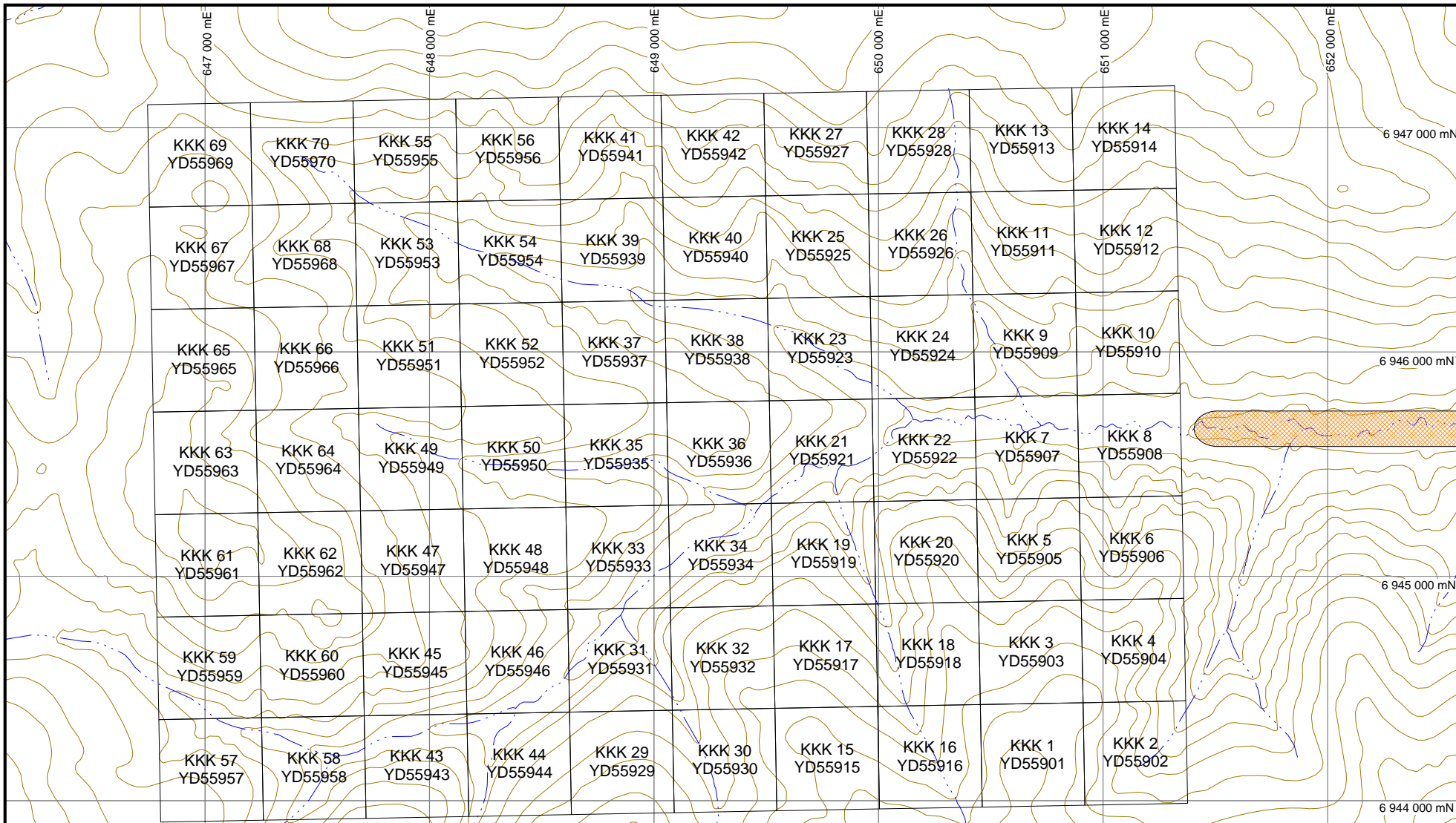
HISTORY AND PREVIOUS WORK

In 1969, Archer Cathro performed regional exploration in the Dawson Range district (including the area now covered by the KKK property) for the Dawson Range Joint Venture. Stream sediment sampling on what is now the KKK property comprised fifteen samples. These samples were analyzed for copper, molybdenum and lead (see Table I below).

Table I – 1969 Geochemistry

Element	Low (ppm)	High (ppm)	Average (ppm)
Copper	8	24	12
Lead	13	25	17
Molybdenum	nil	nil	nil





**CENTRAL RESOURCES CORP.
STRATEGIC METALS LTD.**

FIGURE 2
ARCHER, CATHRO & ASSOCIATES (1981) LIMITED

CLAIM LOCATIONS
KKK PROPERTY

0 ————— 1 km
UTM ZONE 7, NAD 83, 115J/09

FILE: ...2010/SELWYN/KKK/F_2_CLAIMS DATE: NOVEMBER 2010

In 1974, Archer Cathro conducted regional exploration in the Dawson Range district for the Klotassin Joint Venture (KJV). KJV was made up of Newconex Canadian Exploration Ltd., Marietta Resources International Ltd., and Molybdenum Corporation of America. Work performed included 1:50,000 scale reconnaissance-style prospecting, mapping and geochemical sampling (Cathro, 1974). KJV collected 61 soil samples and three stream sediment samples from the current KKK property. Those samples were analyzed for copper, molybdenum, lead and zinc. Results from 1974 sampling are displayed in Table II below.

Table II – 1974 Geochemistry

Sample Type	Element	Low (ppm)	High (ppm)	Average (ppm)
Soil	Copper	4	24	10
	Molybdenum	0	2	0.5
	Lead	12	40	26
	Zinc	39	98	65
Stream Sediment	Copper	nil	13	5
	Molybdenum	nil	nil	nil
	Lead	16	40	25
	Zinc	52	83	63

KJV identified a 1000 by 2000 m zone of weak propylitic alteration in the centre of the current KKK property. Jarosite, hematite and pyrite were reported within this zone of alteration (Cathro, 1974).

In 1980, Archer Cathro did work in the Dawson Range as part of the NAT Joint Venture (NAT JV), which comprised Chevron Canada Limited and Armco Mineral Exploration Ltd. Part of the NAT JV program involved reanalyses of over 5000 previously collected geochemical sample splits for gold, silver, arsenic and lead. None of the soil samples collected from the KKK property were reanalyzed, but sample splits from the three stream sediment samples yielded 5 to 20 ppb gold (Archer and Onasick, 1980). NAT JV followed up those results with a number of reconnaissance soil samples. The most anomalous gold-in-soil value was 219 ppb.

In 1986, the Geological Survey of Canada (GSC) conducted a low-density stream sediment and water sampling survey on NTS map sheet 115J (Friske et al., 1986). A sample taken from Butterfield Creek (Figure 2), within the current KKK property, returned 95th percentile gold (28 ppb), with background values (compared to regional thresholds established for NTS map sheet 115J) for other elements on the property including copper (7 ppm), molybdenum (1 ppm), lead (11 ppm) and zinc (55 ppm).

The Yukon Minfile for NTS map sheet 115J shows historical placer gold workings on Butterfield Creek immediately down stream from the KKK property (Figure 2). Placer mining was performed from 1939 to 1957 (Debicki, 1959).

Strategic staked the KKK property based on the historical geochemical results, its favourable its geological setting, and proximity to historical placer workings and known mineral occurrences.

Central Resources signed an optional purchase agreement with Strategic in June 2010.

GEOMORPHOLOGY AND CLIMATE

The KKK property is situated in the central part of the Dawson Range and is drained by creeks that flow into Hayes Creek, which is part of the Yukon River watershed. The area escaped Pleistocene glaciation and as a result the landscapes are mature with dendritic drainages forming radial fans off the flanks of upland domes.

Butterfield Creek easterly across the property and is fed by a number of tributaries. Elevations range from about 760 to 1310 m above sea level. Outcrop is rare.

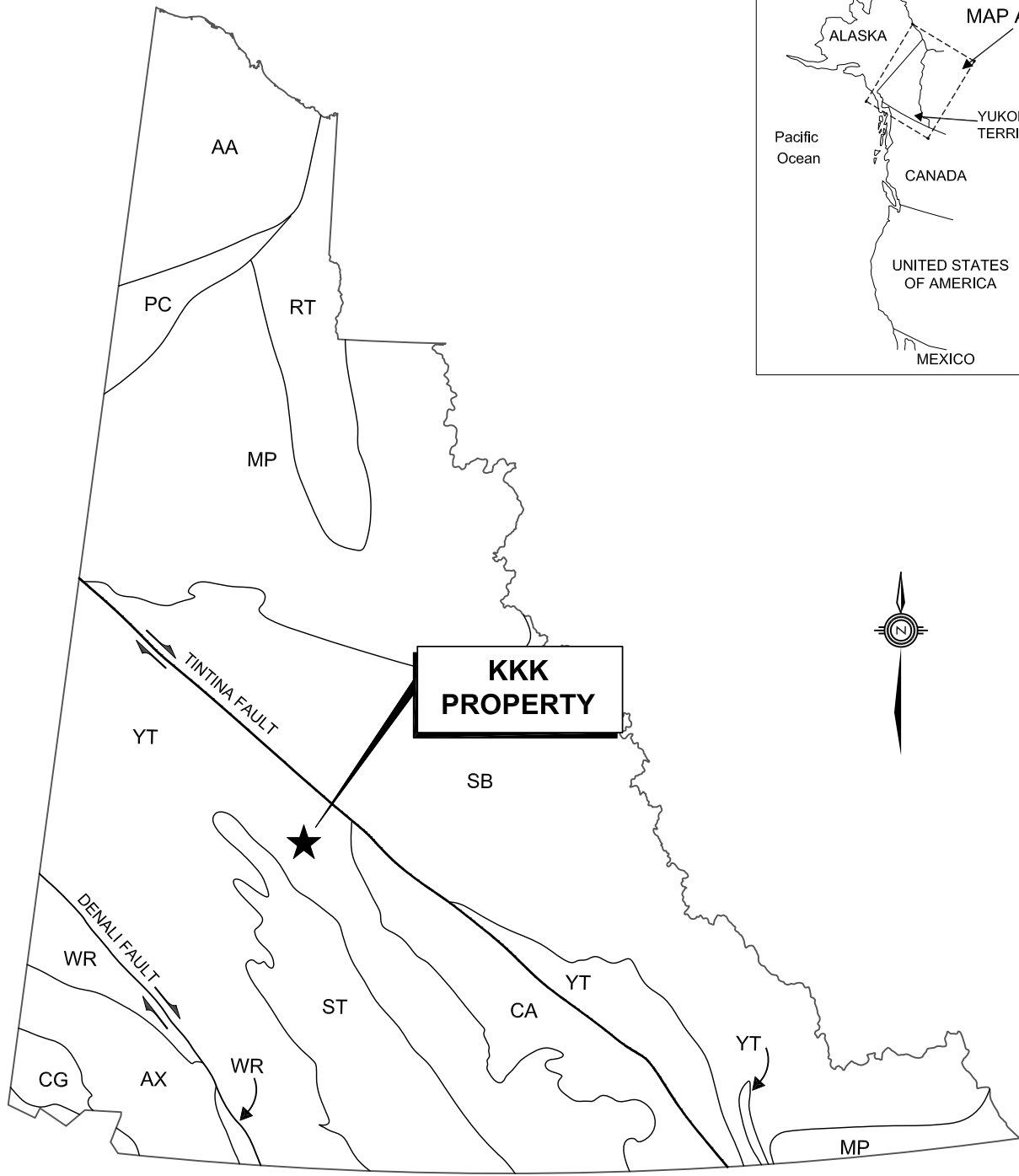
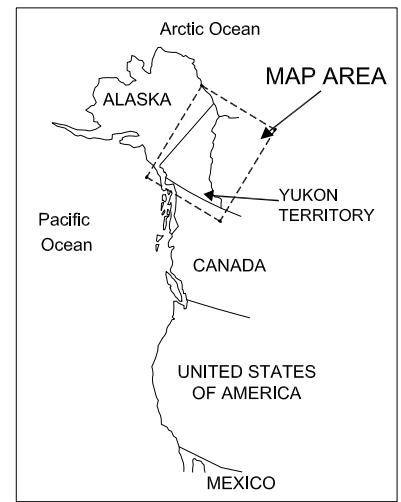
Most of the property lies below treeline and is thickly vegetated with poplar and spruce trees surrounded by an understory of buckbrush, moss and Labrador tea. An old forest fire burn covers the southeastern most corner of the property. Permafrost is prevalent on north facing slopes and where moss and organic matter exceed 50 cm thickness.

Climate in the KKK area is typical of northern continental regions with long, cold winters, truncated fall and spring seasons and short, mild summers. Although summers are relatively mild, arctic cold fronts often cover the area and snowfall can occur in any month. The property is mostly snow free from late May to late September.

GEOLOGY

In 1974, the Geological Survey of Canada published a geological map of the Snag area (NTS map sheet 115J) at 1:250,000 scale (Templeman-Kluit, 1974). Also in 1974, KJV performed 1:50,000 scale geological mapping on 115J/09 (Cathro, 1974). In 1995, the Yukon Geological Survey performed 1:100,000 scale geological mapping of 115J/9 and 10 and 115I/12, an area that includes the KKK property (Johnston, 1995). Gordey and Makepeace (2003) later completed a Yukon-wide geological compilation, which updated the lithological unit names in the KKK area.

The KKK property is located within the Yukon-Tanana Terrane (YTT) as shown on Figure 3. The YTT represents a continental arc that developed along the ancient Pacific margin of North America from late Devonian to Permian. Figure 4 illustrates geology as mapped by KJV. Rock types described during 1974 mapping have been re-assigned to equivalent map units from the current Yukon Geological Survey geological compilation. The main lithological map suite is described in the Table III.



ANCESTRAL NORTH AMERICA

- MP Mackenzie Platform
- SB Selwyn Basin
- RT Richardson Trough

TERRANES

DISPLACED CONTINENTAL MARGIN

- AA Arctic Alaska
- CA Cassiar
- PC Porcupine

PERICRATONIC TERRANES

- YT Yukon-Tanana / Slide Mountain

ACCRETED TERRANES

- ST Stikinia / Cache Creek
- AX Alexander
- WR Wrangellia
- CG Chugach

**CAPITAL RESOURCES CORP.
STRATEGIC METALS LTD.**

FIGURE 3
ARCHER, CATHRO & ASSOCIATES (1981) LIMITED

**TECTONIC SETTING
KKK PROPERTY**

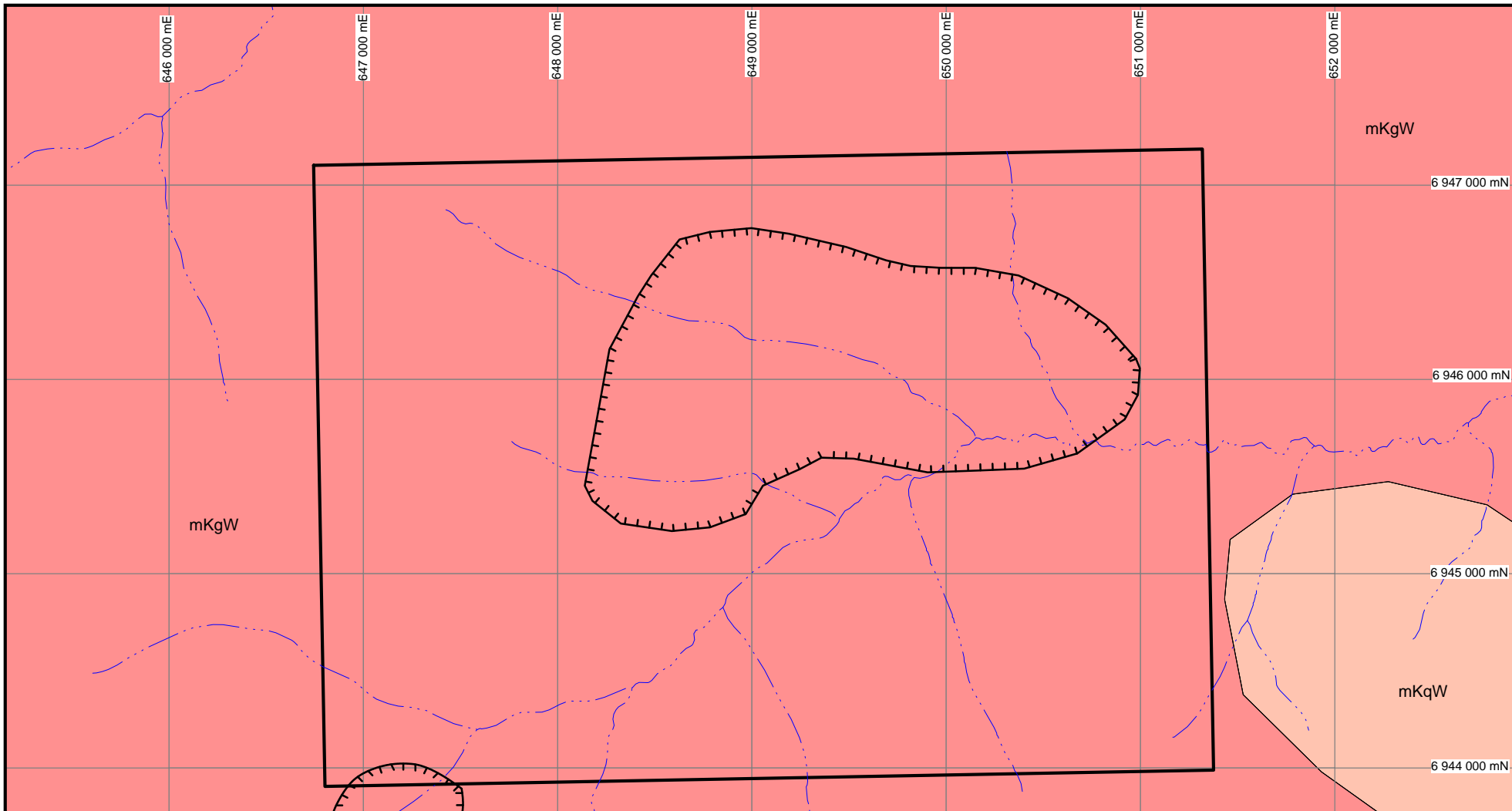


DRAWN BY: M.Kammerer

PROJECT: JJJ

FILE:P:\2010\SELWYN\JJJ

DATE: 2010



Propylitic alteration zone

MID CRETACEOUS

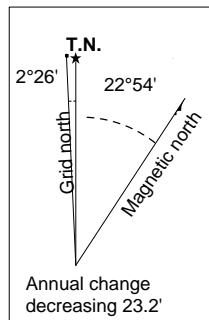
WHITEHORSE SUITE

mKgW

Biotite-hornblende granodiorite, hornblende-quartz diorite and hornblende diorite; leucocratic, biotite-hornblende granodiorite with sparse grey-pink potassium feldspar phenocrysts.

mKqW

Grey, medium to coarse grained, biotite-quartz monzonite, biotite granite and leucogranite, and porphyritic biotite leucogranite.



After Cathro (1974) and Gordey and Makepeace (2003)

**CENTRAL RESOURCES CORP.
STRATEGIC METALS LTD.**

FIGURE 4
ARCHER, CATHRO & ASSOCIATES (1981) LIMITED

GEOLOGY

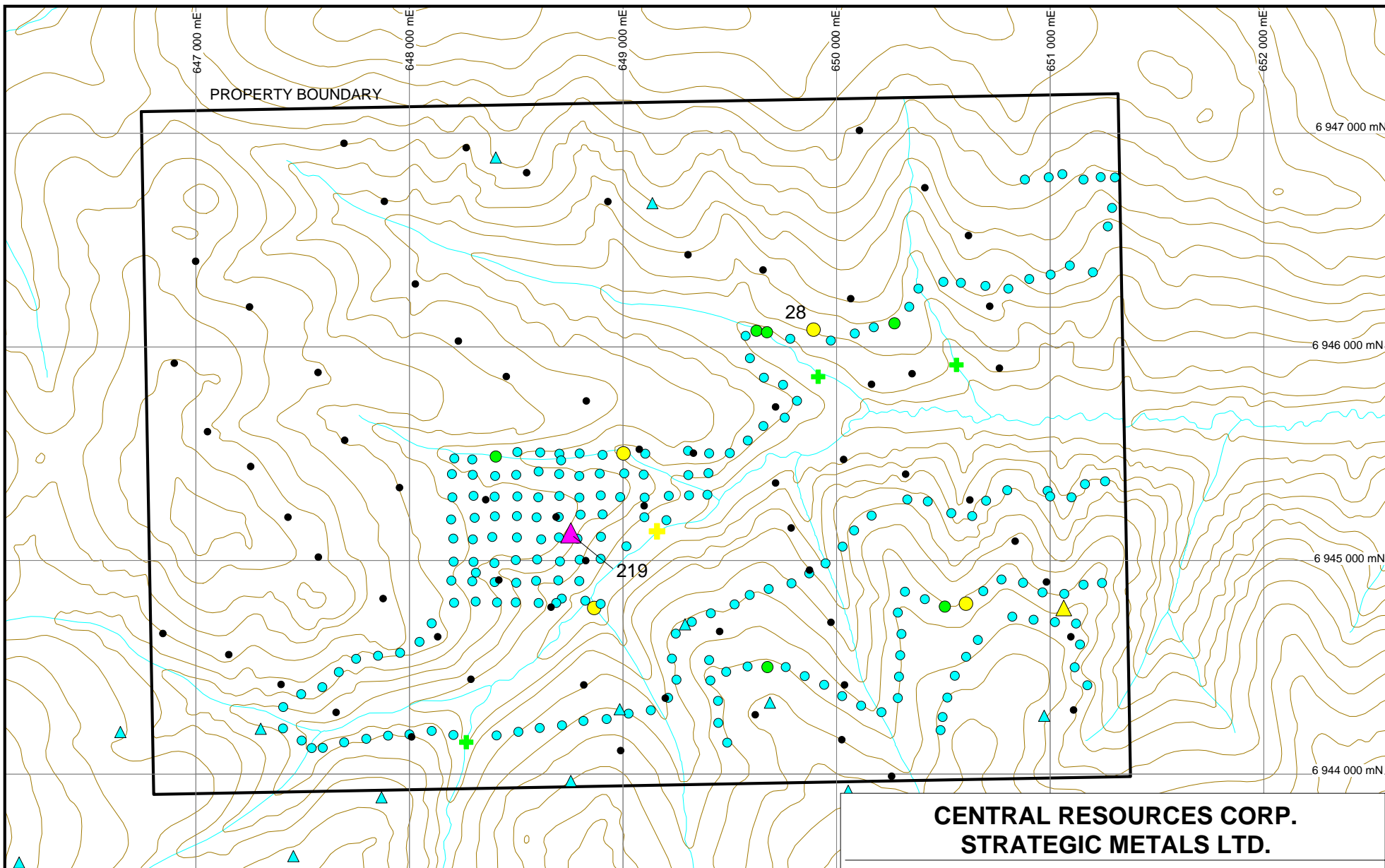
KKK PROPERTY

0 1 km

UTM ZONE 7, NAD 83, 115J/09

FILE: ...2010/SELWYN/KKK/F_4

DATE: NOVEMBER 2010



2010 Soil Au (ppb)

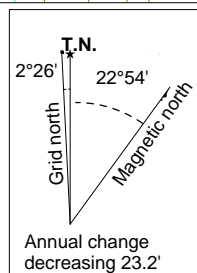
- $\geq 20 < 28$
- $\geq 10 < 20$
- $\geq 0 < 10$

Historical Soil Au (ppb)

- ▲ $100 \geq 219$
- ▲ $50 \geq 100$
- ▲ $20 \geq 50$
- ▲ $10 \geq 20$
- ▲ $0 \geq 10$

1974 Silt Au (ppb)

- + $10 \geq 20$
- + $5 \geq 10$
- + $2 \geq 5$
- + $0 \geq 2$
- 1974 Soil sample - not analyzed for Au



**CENTRAL RESOURCES CORP.
STRATEGIC METALS LTD.**

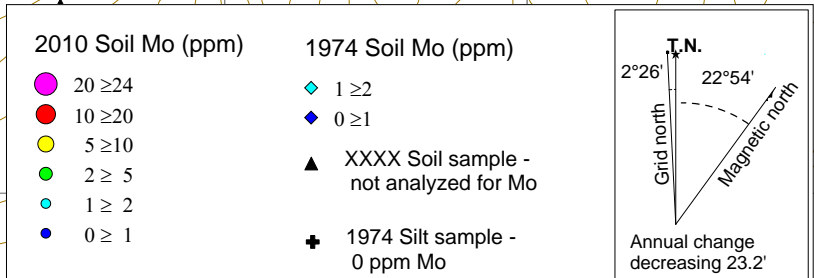
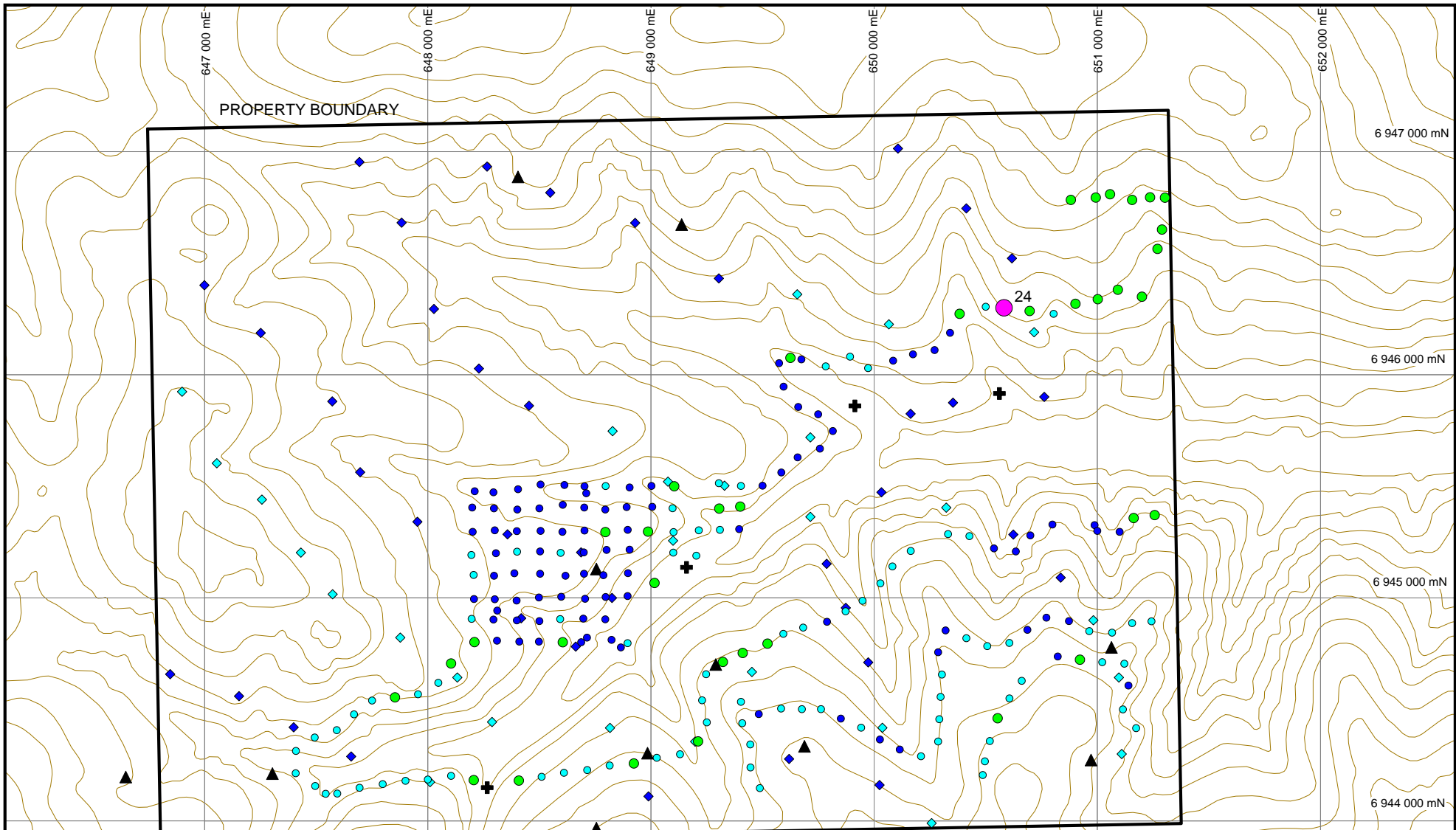
FIGURE 6
ARCHER, CATHRO & ASSOCIATES (1981) LIMITED

GOLD GEOCHEMISTRY
KKK PROPERTY

0 1 km
UTM ZONE 7, NAD 83, 115J/09

FILE: ...2010/SELWYN/KKK/F_6

DATE: NOVEMBER 2010

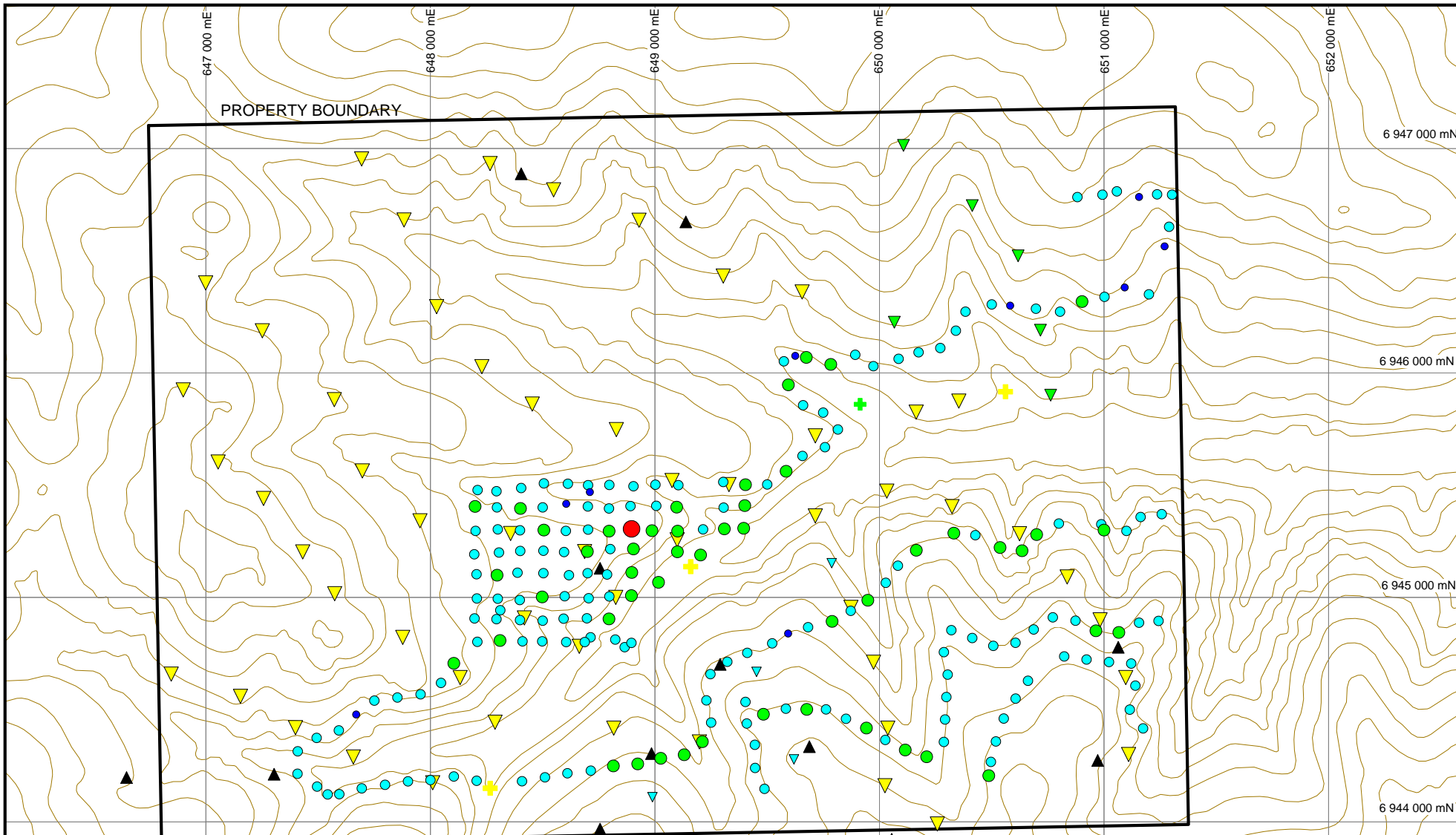


**CENTRAL RESOURCES CORP.
STRATEGIC METALS LTD.**

FIGURE 7
ARCHER, CATHRO & ASSOCIATES (1981) LIMITED
MOLYBDENUM GEOCHEMISTRY
KKK PROPERTY

UTM ZONE 7, NAD 83, 115J/09

FILE: ...2010/SELWYN/KKK/F_7	DATE: NOVEMBER 2010
------------------------------	---------------------



2010 Soil Pb (ppm)

- 100 ≥ 152
- 50 ≥ 100
- 20 ≥ 50
- 10 ≥ 20
- 0 ≥ 10

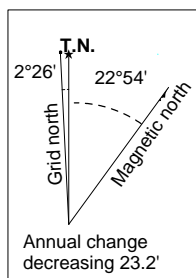
1974 Soil Pb (ppm)

- ▼ 20 ≥ 50
- ▼ 10 ≥ 20
- ▼ 0 ≥ 10

1974 Silt Pb (ppm)

- ✚ 20 ≥ 40
- ✚ 10 ≥ 20
- ✚ 0 ≥ 10

▲ XXXX Soil sample - not analyzed for Pb

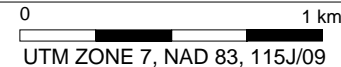


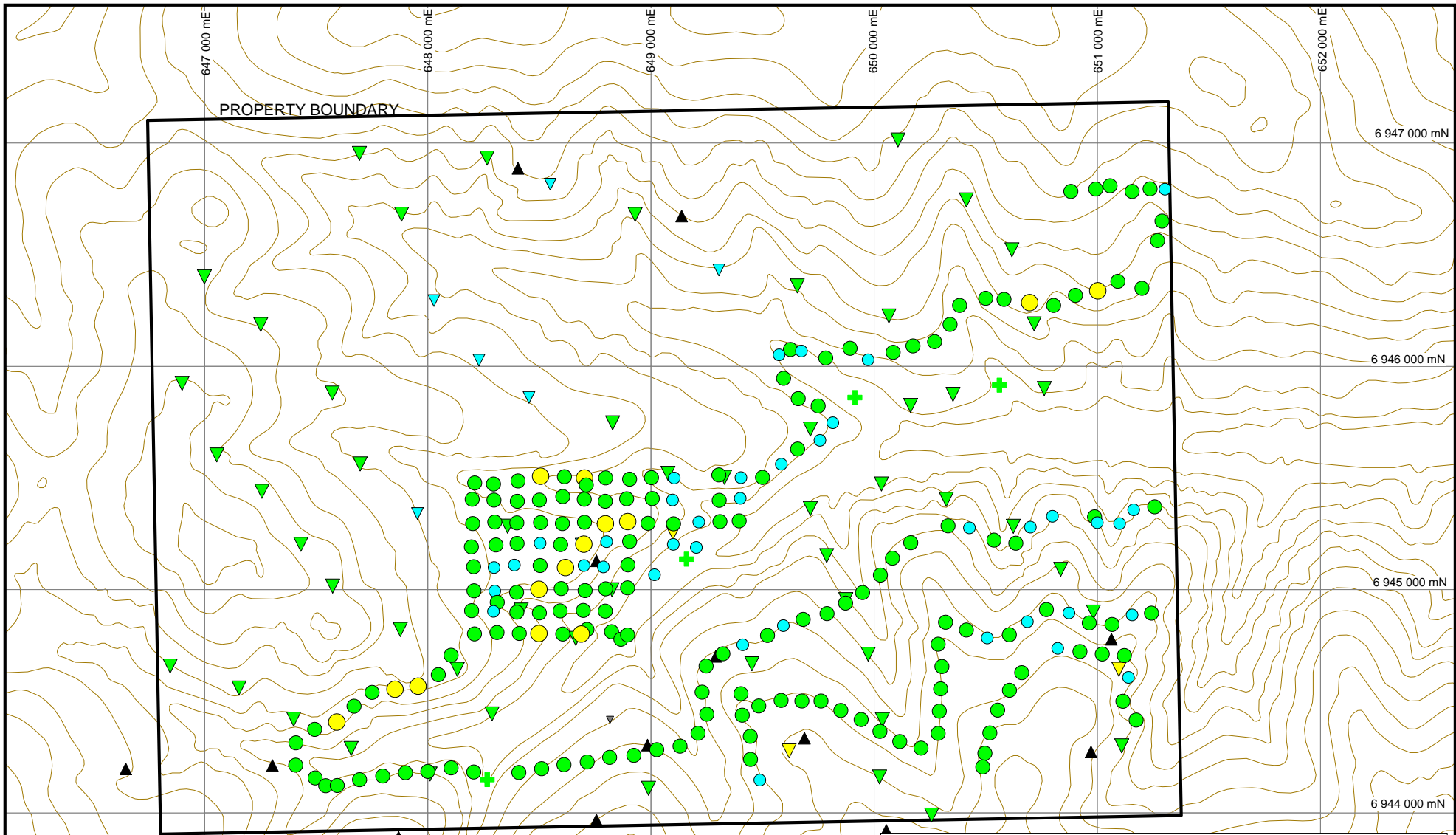
**CENTRAL RESOURCES CORP.
STRATEGIC METALS LTD.**

FIGURE 8
ARCHER, CATHRO & ASSOCIATES (1981) LIMITED

LEAD GEOCHEMISTRY

KKK PROPERTY





2010 Soil Zn (ppm)

- 100 ≥ 171
- 50 ≥ 100
- 20 ≥ 50
- 10 ≥ 20
- 0 ≥ 10

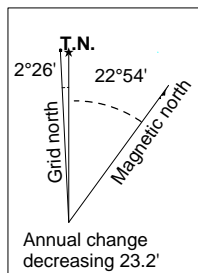
1974 Soil Zn (ppm)

- ▼ 100 ≥ 131
- ▼ 50 ≥ 100
- ▼ 20 ≥ 50
- ▼ 10 ≥ 20
- ▼ 0 ≥ 10

1974 Silt Zn (ppm)

- ✚ 50 ≥ 83
- ✚ 20 ≥ 50
- ✚ 10 ≥ 20
- ✚ 0 ≥ 20

▲ Historical Soil sample - not analyzed for Zn



**CENTRAL RESOURCES CORP.
STRATEGIC METALS LTD.**

FIGURE 9
ARCHER, CATHRO & ASSOCIATES (1981) LIMITED

ZINC GEOCHEMISTRY

KKK PROPERTY

0 1 km
UTM ZONE 7, NAD 83, 115J/09

Table III– Lithological Unit (after Gordey and Makepeace, 2003)

Map Suite	Age	Map Unit	Description
Whitehorse Suite	Mid-Cretaceous	mKgW	Biotite-hornblende granodiorite, hornblende-quartz diorite and hornblende diorite; leucocratic, biotite-hornblende granodiorite with sparse grey-pink potassium feldspar phenocrysts.
		mKqW	Grey, medium to coarse grained, biotite-quartz monzonite, biotite granite and leucogranite, and porphyritic biotite leucogranite.

PROPERTY GEOLOGY

No detailed geological mapping has been done on the KKK property. Based on data discussed in the previous section, all exposures on the property are assigned to the Whitehorse Suite.

The dominant structural feature in the vicinity of the KKK property is the northwest-striking Big Creek Fault. This steeply dipping feature is poorly understood but appears to have played an important role in localizing mineralization in the district. It lies three kilometres east of the KKK property.

Mapping and prospecting in 1974 identified a broad zone of propylitic alteration in the centre of the property which is accompanied by jarosite, magnetite and pyrite mineralization. Elsewhere in the Dawson Range, this type of alteration and mineralization is often related to younger (Late Cretaceous?) intrusive activity. No plutons of this age have been identified on the property, but they could be present as narrow dykes or at depth.

REGIONAL MINERALIZATION

There are numerous mineral deposits within the Dawson Range that are associated with large scale structural features (including the Big Creek Fault) and young intrusions. The three properties that most closely resemble the setting of the KKK property are: Sonora Gulch (Northern Tiger Resources Ltd.), Nucleus (Northern Freegold Resource Ltd.) and Coffee (Kaminak Gold Corporation).

Northern Tiger's Sonora Gulch property lies directly north of the KKK property. Soil sampling at Sonora Gulch has identified numerous gold-copper-molybdenum geochemical anomalies (specifically the Nightmusic and Amedius zones). Gold-in-soil values range up to 2340 ppb with an average of 56 ppb, copper-in-soil results range up to 1870 ppm with an average grade of 145 ppm and molybdenum-in-soil values range up to 231 ppm with an average of 11 ppm (Hayes, 2010). Sonora Gulch reportedly hosts mineralization within structurally controlled veins, skarns and replacement and stockwork style settings related to Mid-Cretaceous Whitehorse Suite intrusions. Recent drill results from the Sonora Gulch property include:

- 5.0 g/t gold, 11.9 g/t silver and 0.23% copper over 26.6 m (Nightmusic Zone) including 25.8 g/t gold and 6.5 g/t silver over 4 m; and
- 1.0 g/t gold and 6.9 g/t silver over 64 m (Amedius Zone).

Northern Freegold's Nucleus property is located about 50 km southeast of the KKK property. The Nucleus Deposit has an inferred resource estimate of 1,004,454 ounces grading over 0.4 g/t gold (Craig, 2010). It hosts skarn, breccia, stockwork and polyphase veining mineralization. There are two main mineralizing events at the Nucleus property. The first event is structurally controlled mineralization associated with the 125 Ma. Big Creek Fault and the second event is porphyry-epithermal and related to the 75 Ma. emplacement of an intrusive body (Bennett, Colpron and Burke 2010).

Kaminak Gold Corporation is actively exploring its Coffee property, which also lies within the Dawson Range, 70 km northwest of the KKK property. Kaminak has recently identified a granite-hosted environment for gold mineralization at its "Kona Zone" on the Coffee property. The granite has been described as equigranular and non-magnetic with a primary composition of plagioclase, potassium feldspar, quartz, biotite and hornblende. Alteration within the mineralized zone typically consists of clay, sericite and limonite. The depth of supergene oxidation is approximately 60 m. Gold is hosted in near-vertical brittle structural zones within the granite. Sulphides are dominated by pyrite, which occurs as disseminations replacing mafic minerals and less commonly as veins, fracture fillings and sulphidic-matrix in fault breccias. Drill highlights at the Kona Zone include 2.2 g/t gold over 57 m and 1.9 g/t gold over 23 m, respectively. The Kona Zone has been described as a gold system with arsenic and antimony pathfinders (Carpenter, 2010).

STREAM SEDIMENT AND SOIL GEOCHEMISTRY

Previous soil sampling on the KKK property consisted of six, approximately northwest oriented sample lines spaced 500 to 1000 m apart as well as numerous, erratically spaced sample locations. All samples were analyzed for copper, molybdenum, lead and zinc. Gold results were only reported for the erratically spaced samples. Gold values were low with the exception of one sample that returned 219 ppb gold. Values for other elements were also low with peak values of 24 ppm copper, 2 ppm molybdenum, 40 ppb lead and 98 ppm zinc.

In 2010, soil samples were taken using hand held augers from an 800 by 1000 m grid, centred on the highest historical gold value, and from four contour soil lines elsewhere on the property (Figure 5). Results for gold, molybdenum, lead and zinc are plotted on Figures 6 to 9, respectively. Sampling and Analytical Procedures for 2010 samples are described in Appendix II, while Certificates of Analysis are in Appendix III.

A total of 214 soil samples were collected in 2010. These samples returned: background to weakly anomalous results for gold (up to 28 ppb); background to weakly anomalous values for molybdenum except for an isolated strongly anomalous value of 24 ppm; weakly to strongly anomalous lead (up to 152 ppm); and background to weakly anomalous values for zinc (up to 171 ppm). Copper and arsenic values were background levels with peak values of 37 and 15 ppm respectively.

No clusters of anomalous values have been defined thus far on the property, but a number of single point anomalies have been identified. The highest gold-in-soil value (28 ppb) lies in the northeastern part of the property in an area where other samples returned background to weak elevated response for gold. The strongly anomalous molybdenum-in-soil value (24 ppm) also lies in the northeastern part of the property in an area where most of the samples yielded between 2 and 5 ppm molybdenum. The highest lead-in-soil value (152 ppm) lies within the soil sample grid in the central part of the property. There is little correlation between metals in the anomalous samples.

DISCUSSION AND CONCLUSIONS

The KKK property lies within the Dawson Range Gold Belt, which hosts a number of gold deposits and occurrences that are directly associated with Mid to Late Cretaceous plutons and large structural features. The KKK property is underlain by a Mid Cretaceous Whitehorse Suite pluton and lies within three kilometres of the Big Creek Fault. A zone of propylitic alteration may be evidence of Late Cretaceous intrusive activity. Although no gold mineralization has been identified on the KKK property, the geological setting resembles that at the nearby Sonora Gulch, Nucleus and Coffee properties.

Geochemical sampling at the KKK property has identified strongly anomalous single point values for gold, molybdenum and lead. Based on the low sample density in many parts of the property and somewhat encouraging results from previous programs, the KKK property warrants additional work. Exploration elsewhere in the Dawson Range has shown that soil geochemical response is very subdued unless the samples are collected near the soil-bedrock interface. Thus, future work at the KKK property should continue to focus on deep auger soil sampling. This sampling should be performed at 100 m spacings on heights of land (ridges and spines) and at 100 by 200 m spacings on contour lines north of Butterfield Creek. This program would comprise approximately 800 soil samples.

Detailed mapping and prospecting on the KKK property should be deferred until the results from soil sampling are known.

Future work should be conducted from a temporary fly camp on the KKK property. Ideally the camp would be moved to and from nearby properties also being explored by Central Resources. If a three person crew is performing the work, the program should take about eight days including mobilization and demobilization of the camp and crew. If soil sampling produces significant results, follow up work should include mapping and prospecting, which could be completed from Carmacks using daily helicopter setouts and pickups.

Respectfully submitted,

ARCHER, CATHRO & ASSOCIATES (1981) LIMITED

Heather Smith, B.Sc. Geology, P.Geo.

REFERENCES

- Archer, A. R. and Onasick, E.P.
 1980 NAT Joint Venture Final Report. Internal report prepared by Archer, Cathro & Associates Ltd. for Chevron Canada Limited and Armco Mineral Exploration Ltd.
- Bennett, V., Colpron, C., and Burke, M.
 2010 Current thinking on Dawson Range tectonics and metallogeny. Yukon Geological Survey Miscellaneous Report 2.
- Carpenter, R.
 2010 Kaminak Gold Corporation's website: www.kaminak.com. Project pipeline: http://www.kaminak.com/projects/core_projects/yukon_gold/
- Cathro, R.J.
 1974 Regional Exploration in the Dawson Range District, Yukon for Klotassin Joint Venture. Internal report prepared by Archer, Cathro & Associates Ltd.
- Craig, S.
 2010 Northern Freegold Resources Ltd.'s website: www.northernfreegold.com. Properties: Nucleus Zone.
- Debicki, R.L.
 1959 Yukon Mineral Industry 1941 to 1959. Compiled and edited by R.L. Debicki.
- Friske, P.W.B., Hornbrook, E.H.W., Lynch, J.J., McCurdy, M.W., Gross, H., Galletta, A.C. and Durham, C.C.
 1986 Regional stream sediment and water geochemical reconnaissance data (115J); Geological Survey of Canada, Open File 1363.
- Gordey, S.P. and Makepeace, A.J. (compilers)
 2003 Yukon digital geology, version 2.0, Geological Survey of Canada, Open File 1749 and Yukon Geological Survey, Open File 2003-9 (D).
- Hayes, G.
 2010 Northern Tiger Resources Ltd.'s website: www.northern-tiger.com/s/Sonora.asp
- Johnston, S.T.
 1995 Geological compilation with interpretation from geophysical surveys of the northern Dawson Range, Central Yukon (115J/9 & 10; 115I/12). For Exploration and Geological Services Division, Yukon, Indian and Northern Affairs Canada, Open 1995-2(G).
- Templeman-Kluit, D.J.
 1974 Reconnaissance Geology of Aishihik Lake, Snag and Part of Stewart River map areas, West Central Yukon; Geological Survey of Canada, Map 17-1973.

APPENDIX I
STATEMENT OF QUALIFICATIONS

STATEMENT OF QUALIFICATIONS

I, Heather Smith, geologist, with business addresses in Vancouver, British Columbia and Whitehorse, Yukon Territory and residential address at #604-175 West 1 Street, North Vancouver, British Columbia, V7M 3N9 do hereby certify that:

1. I graduated from the University of British Columbia in 2006 with a B. Sc in Geological Sciences.
2. From 2004 to present, I have been actively engaged in mineral exploration in the Yukon Territory, British Columbia and Northwest Territories.
3. I am a Professional Geoscientist (P.Ge.) with the Association of Professional Engineers and Geoscientists of British Columbia (Member Number 150000).
4. I have personally directed the fieldwork reported herein and have interpreted all data resulting from this work.

Heather Smith, B.Sc., P.Ge.

APPENDIX II
SAMPLING AND ANALYTICAL PROCEDURES

2010 Soil Geochemical Samples

All 2010 soil sample locations were recorded using hand-held GPS units. Sample sites are marked by aluminum tags inscribed with the sample numbers and affixed to 0.5 m wooden lath that were driven into the ground. Soil samples were collected from 10 to 30 cm deep holes dug by hand-held auger. They were placed into individually pre-numbered Kraft paper bags.

The soil samples were sent to ALS Chemex, where they were dried, screened to -180 microns, dissolved in aqua regia solution and then analyzed for 35 elements using the inductively coupled plasma with atomic emission spectroscopy technique (ME-ICP41). An additional 30 g charge was further analysed for gold by fire assay with inductively coupled plasma-atomic emissions spectroscopy finish (Au-ICP21).

APPENDIX III
CERTIFICATES OF ANALYSIS



ALS Canada Ltd.
 2103 Dollarton Hwy
 North Vancouver BC V7H 0A7
 Phone: 604 984 0221 Fax: 604 984 0218 www.alsglobal.com

To: ARCHER, CATHRO AND ASSOCIATES (1981)
 LIMITED
 1016-510 W HASTINGS ST
 VANCOUVER BC V6B 1L8

Page: 1
 Finalized Date: 3-AUG-2010
 Account: F

CERTIFICATE VA10100090

Project: SELWYN
 P.O. No.: KKK
 This report is for 109 Soil samples submitted to our lab in Vancouver, BC, Canada on 22-JUL-2010.
 The following have access to data associated with this certificate:
 JOAN MARIACHER BILL WENGZYNOWSKI

SAMPLE PREPARATION	
ALS CODE	DESCRIPTION
WEI-21	Received Sample Weight
LOG-22	Sample login - Rcd w/o BarCode
SCR-41	Screen to -180um and save both

ANALYTICAL PROCEDURES		
ALS CODE	DESCRIPTION	INSTRUMENT
Au-ICP21	Au 30g FA ICP-AES Finish	ICP-AES
ME-ICP41	35 Element Aqua Regia ICP-AES	ICP-AES

To: ARCHER, CATHRO AND ASSOCIATES (1981) LIMITED
 ATTN: JOAN MARIACHER
 1016-510 W HASTINGS ST
 VANCOUVER BC V6B 1L8

This is the Final Report and supersedes any preliminary report with this certificate number. Results apply to samples as submitted. All pages of this report have been checked and approved for release.

Signature: 
 Colin Ramshaw, Vancouver Laboratory Manager



ALS Canada Ltd.
 2103 Dollarton Hwy
 North Vancouver BC V7H 0A7
 Phone: 604 984 0221 Fax: 604 984 0218 www.alsglobal.com

To: ARCHER, CATHRO AND ASSOCIATES (1981)
 LIMITED
 1016-510 W HASTINGS ST
 VANCOUVER BC V6B 1L8

Page: 2 - A
 Total # Pages: 4 (A - C)
 Finalized Date: 3-AUG-2010
 Account: F

Project: SELWYN

CERTIFICATE OF ANALYSIS VA10100090

Sample Description	Method Analyte Units LOR	WEI-21	ME-ICP41	ME-ICP41	ME-ICP41	ME-ICP41	ME-ICP41	ME-ICP41	ME-ICP41	ME-ICP41	ME-ICP41	ME-ICP41	ME-ICP41	ME-ICP41	ME-ICP41	ME-ICP41
		Recvd Wt. kg	Ag ppm	Al %	As ppm	B ppm	Ba ppm	Be ppm	Bi ppm	Ca %	Cd ppm	Co ppm	Cr ppm	Cu ppm	Fe %	Ga ppm
		0.02	0.2	0.01	2	10	10	0.5	2	0.01	0.5	1	1	1	0.01	10
CC93308		0.32	<0.2	2.78	9	<10	300	0.7	<2	0.26	<0.5	11	32	14	3.79	10
CC93309		0.24	<0.2	2.08	2	<10	360	0.8	<2	0.20	<0.5	9	20	9	3.20	10
CC93310		0.28	<0.2	3.06	7	<10	190	1.0	<2	0.17	<0.5	11	29	8	4.20	10
CC93311		0.24	<0.2	1.70	9	<10	220	0.6	<2	0.14	<0.5	6	23	10	3.52	10
CC93312		0.34	<0.2	1.56	6	<10	120	<0.5	<2	0.12	<0.5	6	17	6	2.77	10
CC93313		0.30	<0.2	2.13	6	<10	260	0.6	<2	0.30	<0.5	7	24	9	3.87	10
CC93314		0.34	<0.2	1.35	4	<10	170	<0.5	<2	0.13	<0.5	3	13	6	1.76	10
CC93315		0.32	<0.2	2.54	7	<10	230	0.6	<2	0.13	<0.5	10	28	12	4.40	10
CC93316		0.30	<0.2	2.25	4	<10	310	1.1	<2	0.27	<0.5	9	21	8	3.07	10
CC93317		0.32	<0.2	1.55	3	<10	490	0.9	<2	0.67	<0.5	6	15	10	2.50	10
CC93318		0.30	<0.2	2.28	5	<10	590	1.4	<2	0.78	<0.5	9	21	14	3.80	10
CC93319		0.34	<0.2	2.36	4	<10	550	0.6	<2	0.25	<0.5	11	28	13	3.80	10
CC93320		0.26	<0.2	3.10	8	<10	290	0.7	<2	0.31	<0.5	10	28	13	4.34	10
CC93321		0.26	<0.2	2.10	4	<10	300	1.0	<2	0.32	<0.5	8	15	7	3.47	10
CC93322		0.26	<0.2	2.16	6	<10	190	0.8	<2	0.17	<0.5	11	16	9	3.61	10
CC93323		0.26	0.2	1.28	2	<10	740	1.1	<2	1.05	<0.5	7	16	10	1.91	<10
CC93324		0.34	<0.2	2.04	8	<10	170	0.5	<2	0.11	<0.5	5	22	9	3.10	10
CC93325		0.26	<0.2	1.92	6	<10	1130	2.6	<2	0.60	<0.5	5	17	17	2.57	<10
CC93326		0.24	<0.2	1.66	7	<10	130	0.8	<2	0.16	<0.5	6	14	5	2.92	<10
CC93327		0.32	<0.2	2.06	12	<10	180	0.7	<2	0.11	<0.5	7	25	9	3.44	10
CC93328		0.36	<0.2	1.93	9	<10	130	0.6	<2	0.12	<0.5	6	25	7	2.87	10
CC93329		0.30	<0.2	2.08	12	<10	180	0.6	<2	0.18	<0.5	7	24	8	3.32	10
CC93330		0.28	<0.2	2.18	12	<10	190	1.2	<2	0.15	<0.5	8	29	13	3.00	<10
CC93331		0.26	<0.2	2.18	14	<10	160	0.8	<2	0.11	<0.5	6	17	7	3.46	10
CC93332		0.28	<0.2	1.42	9	<10	130	0.8	2	0.14	<0.5	6	15	6	2.84	10
CC93333		0.28	<0.2	2.19	7	<10	100	0.9	<2	0.11	<0.5	11	13	9	3.51	10
CC93334		0.26	<0.2	2.42	9	<10	230	0.8	<2	0.17	<0.5	8	27	10	3.68	10
CC93335		0.32	<0.2	1.80	5	<10	600	1.5	<2	0.69	<0.5	6	16	11	2.83	10
CC93336		0.30	<0.2	1.63	8	<10	120	0.8	<2	0.17	<0.5	8	10	7	2.90	10
CC93337		0.28	<0.2	1.92	8	<10	240	0.7	<2	0.11	<0.5	6	13	6	3.75	10
CC93338		0.28	<0.2	1.82	11	<10	180	0.5	<2	0.11	<0.5	7	22	9	3.66	10
CC93339		0.32	<0.2	2.75	12	<10	190	0.6	<2	0.14	<0.5	8	29	11	3.70	10
CC95160		Not Recvd														
CC95161		Not Recvd														
CC95162		Not Recvd														
CC95163		Not Recvd														
CC95164		Not Recvd														
CC95165		Not Recvd														
CC95166		0.30	0.2	1.16	5	<10	320	0.6	<2	0.90	<0.5	7	16	13	2.53	<10
CC95167		0.24	0.2	1.60	5	<10	360	0.6	<2	0.61	<0.5	4	26	17	1.55	10



ALS Canada Ltd.
 2103 Dollarton Hwy
 North Vancouver BC V7H 0A7
 Phone: 604 984 0221 Fax: 604 984 0218 www.alsglobal.com

To: ARCHER, CATHRO AND ASSOCIATES (1981)
 LIMITED
 1016-510 W HASTINGS ST
 VANCOUVER BC V6B 1L8

Page: 2 - B
 Total # Pages: 4 (A - C)
 Finalized Date: 3-AUG-2010
 Account: F

Project: SELWYN

CERTIFICATE OF ANALYSIS VA10100090

Sample Description	Method Analyte Units LOR	ME-ICP41	ME-ICP41	ME-ICP41	ME-ICP41	ME-ICP41	ME-ICP41	ME-ICP41	ME-ICP41	ME-ICP41	ME-ICP41	ME-ICP41	ME-ICP41	ME-ICP41	ME-ICP41	ME-ICP41
		Hg ppm	K %	La ppm	Mg %	Mn ppm	Mo ppm	Na %	Ni ppm	P ppm	Pb ppm	S %	Sb ppm	Sc ppm	Sr ppm	Th ppm
CC93308	1	0.08	10	0.58	719	1	0.01	17	240	14	0.01	<2	4	27	<20	
CC93309	1	0.17	20	0.44	903	1	0.01	10	250	15	0.02	<2	3	23	<20	
CC93310	1	0.13	20	0.61	775	1	0.01	12	600	19	0.01	<2	4	16	<20	
CC93311	1	0.09	20	0.31	446	2	0.01	9	510	16	<0.01	<2	3	14	<20	
CC93312	1	0.12	10	0.30	470	2	0.01	6	240	14	<0.01	<2	3	13	<20	
CC93313	1	0.11	30	0.48	834	2	0.01	8	270	15	<0.01	<2	4	29	<20	
CC93314	1	0.07	20	0.18	209	1	0.01	4	190	9	<0.01	<2	2	13	<20	
CC93315	1	0.12	20	0.52	636	1	0.01	13	520	15	0.01	<2	5	13	20	
CC93316	1	0.12	20	0.51	429	<1	0.01	9	360	20	0.02	<2	3	21	20	
CC93317	1	0.18	20	0.39	605	1	0.01	6	340	14	<0.01	<2	3	57	20	
CC93318	1	0.19	50	0.53	1965	1	0.02	11	990	21	0.03	<2	7	67	40	
CC93319	1	0.15	20	0.53	1160	1	0.02	15	270	14	<0.01	<2	4	28	<20	
CC93320	1	0.13	20	0.69	483	1	0.02	16	320	12	<0.01	<2	5	26	20	
CC93321	1	0.15	30	0.55	908	1	0.01	8	460	23	<0.01	<2	4	26	30	
CC93322	<1	0.15	10	0.46	1530	1	0.01	9	1060	16	0.01	<2	3	13	<20	
CC93323	1	0.16	10	0.29	584	1	0.02	7	750	23	0.04	<2	7	87	<20	
CC93324	1	0.08	10	0.32	325	1	0.01	9	250	14	0.02	<2	3	12	<20	
CC93325	1	0.22	50	0.29	590	<1	0.02	16	380	23	0.02	<2	7	72	40	
CC93326	1	0.12	20	0.28	395	<1	0.02	6	590	21	0.01	<2	2	13	<20	
CC93327	<1	0.11	10	0.36	425	<1	0.01	11	290	21	0.01	<2	3	12	<20	
CC93328	<1	0.10	10	0.37	333	<1	0.01	10	260	11	<0.01	<2	3	13	<20	
CC93329	<1	0.09	10	0.35	591	<1	0.02	10	290	12	0.01	<2	4	18	<20	
CC93330	<1	0.08	10	0.49	452	<1	0.02	17	200	21	0.01	<2	3	16	20	
CC93331	<1	0.10	10	0.34	476	<1	0.02	8	380	14	0.01	<2	3	11	20	
CC93332	<1	0.11	10	0.29	395	2	0.01	7	320	12	0.01	<2	4	14	20	
CC93333	<1	0.12	20	0.35	1505	4	0.01	6	770	15	0.01	<2	5	7	<20	
CC93334	<1	0.11	30	0.50	850	1	0.02	10	500	18	0.02	<2	4	17	30	
CC93335	1	0.18	40	0.43	961	1	0.02	7	620	17	0.03	<2	5	57	30	
CC93336	<1	0.14	40	0.41	1235	3	0.01	4	480	19	0.01	<2	2	11	40	
CC93337	1	0.21	20	0.43	939	1	0.02	3	780	14	0.01	<2	5	10	20	
CC93338	1	0.12	10	0.39	928	1	0.01	9	580	18	0.01	<2	3	12	<20	
CC93339	<1	0.08	10	0.42	433	1	0.02	14	300	24	0.01	<2	3	14	<20	
CC95160																
CC95161																
CC95162																
CC95163																
CC95164																
CC95165																
CC95166	<1	0.13	40	0.44	699	2	0.03	9	970	9	0.05	<2	5	71	<20	
CC95167	<1	0.12	20	0.38	278	<1	0.02	10	700	13	0.06	<2	5	58	<20	



ALS Canada Ltd.
 2103 Dollarton Hwy
 North Vancouver BC V7H 0A7
 Phone: 604 984 0221 Fax: 604 984 0218 www.alsglobal.com

To: ARCHER, CATHRO AND ASSOCIATES (1981)
 LIMITED
 1016-510 W HASTINGS ST
 VANCOUVER BC V6B 1L8

Page: 2 - C
 Total # Pages: 4 (A - C)
 Finalized Date: 3-AUG-2010
 Account: F

Project: SELWYN

CERTIFICATE OF ANALYSIS VA10100090

Sample Description	Method Analyte Units LOR	ME-ICP41	ME-ICP41	ME-ICP41	ME-ICP41	ME-ICP41	ME-ICP41	Au-ICP21
		Ti %	Ti ppm	U ppm	V ppm	W ppm	Zn ppm	Au ppm
		0.01	10	10	1	10	2	0.001
CC93308		0.07	<10	<10	77	<10	73	<0.001
CC93309		0.03	<10	<10	55	<10	55	0.001
CC93310		0.04	<10	<10	69	<10	73	<0.001
CC93311		0.07	<10	<10	76	<10	51	0.001
CC93312		0.05	<10	<10	62	<10	46	0.001
CC93313		0.05	<10	<10	92	<10	64	0.001
CC93314		0.04	<10	<10	51	<10	29	0.001
CC93315		0.09	<10	<10	89	<10	67	<0.001
CC93316		0.03	<10	<10	46	<10	58	0.001
CC93317		0.04	<10	<10	44	<10	58	0.001
CC93318		0.04	<10	<10	58	<10	94	0.001
CC93319		0.07	<10	<10	72	<10	67	<0.001
CC93320		0.09	<10	<10	76	<10	82	0.001
CC93321		0.03	<10	<10	48	<10	84	<0.001
CC93322		0.03	<10	<10	53	<10	96	<0.001
CC93323		0.01	<10	<10	35	<10	55	<0.001
CC93324		0.03	<10	<10	72	<10	41	0.003
CC93325		0.02	<10	<10	34	<10	53	<0.001
CC93326		0.01	<10	<10	38	<10	55	<0.001
CC93327		0.02	<10	<10	55	<10	46	0.001
CC93328		0.04	<10	<10	61	<10	46	<0.001
CC93329		0.03	<10	<10	66	<10	54	0.002
CC93330		0.04	<10	<10	56	<10	48	0.002
CC93331		0.03	<10	<10	61	<10	46	0.002
CC93332		0.03	<10	<10	47	<10	41	<0.001
CC93333		0.01	<10	<10	46	<10	81	0.001
CC93334		0.04	<10	<10	67	<10	70	<0.001
CC93335		0.03	<10	<10	37	<10	73	0.001
CC93336		0.03	<10	<10	41	<10	60	<0.001
CC93337		0.07	<10	<10	76	<10	73	<0.001
CC93338		0.05	<10	<10	75	<10	60	<0.001
CC93339		0.03	<10	<10	75	<10	65	<0.001
CC95160								
CC95161								
CC95162								
CC95163								
CC95164								
CC95165								
CC95166		0.05	<10	10	44	<10	62	0.012
CC95167		0.05	<10	<10	42	<10	47	<0.001



ALS Canada Ltd.
 2103 Dollarton Hwy
 North Vancouver BC V7H 0A7
 Phone: 604 984 0221 Fax: 604 984 0218 www.alsglobal.com

To: ARCHER, CATHRO AND ASSOCIATES (1981)
 LIMITED
 1016-510 W HASTINGS ST
 VANCOUVER BC V6B 1L8

Page: 3 - A
 Total # Pages: 4 (A - C)
 Finalized Date: 3-AUG-2010
 Account: F

Project: SELWYN

CERTIFICATE OF ANALYSIS VA10100090

Sample Description	Method Analyte Units LOR	WEI-21	ME-ICP41	ME-ICP41	ME-ICP41	ME-ICP41	ME-ICP41	ME-ICP41	ME-ICP41	ME-ICP41	ME-ICP41	ME-ICP41	ME-ICP41	ME-ICP41	ME-ICP41	ME-ICP41
		Recvd Wt. kg	Ag ppm	Al %	As ppm	B ppm	Ba ppm	Be ppm	Bi ppm	Ca %	Cd ppm	Co ppm	Cr ppm	Cu ppm	Fe %	Ga ppm
		0.02	0.2	0.01	2	10	10	0.5	2	0.01	0.5	1	1	1	0.01	10
CC95168		0.28	<0.2	1.62	11	<10	480	0.6	<2	0.53	<0.5	10	26	12	2.85	<10
CC95169		0.40	<0.2	1.43	9	<10	570	0.8	<2	0.51	<0.5	9	23	12	2.90	<10
CC95170		0.36	<0.2	1.38	10	<10	530	<0.5	<2	0.32	<0.5	6	22	7	2.53	10
CC95171		0.30	<0.2	1.24	6	<10	310	0.8	2	0.20	<0.5	6	14	6	2.39	<10
CC95172		0.36	<0.2	1.18	5	<10	400	1.1	<2	0.27	<0.5	6	11	5	2.31	<10
CC95173		0.30	<0.2	1.80	9	<10	400	1.2	<2	0.40	<0.5	10	26	12	3.38	10
CC95174		0.28	<0.2	1.29	6	<10	380	1.1	<2	0.31	<0.5	10	20	8	2.86	<10
CC95175		0.34	<0.2	1.92	10	<10	320	1.0	<2	0.37	<0.5	11	32	14	3.35	<10
CC95176		0.30	<0.2	1.64	5	<10	260	1.1	<2	0.08	<0.5	7	13	6	3.00	<10
CC95177		0.40	<0.2	1.16	10	<10	230	0.9	<2	0.32	<0.5	7	18	10	2.37	<10
CC95178		0.24	<0.2	1.34	6	<10	710	0.5	<2	0.27	<0.5	5	17	6	2.20	<10
CC97627		0.32	<0.2	1.73	4	<10	480	1.3	<2	0.19	<0.5	5	8	3	2.38	<10
CC97628		0.34	<0.2	2.50	12	<10	200	1.0	<2	0.23	<0.5	9	31	8	4.01	10
CC97629		0.30	<0.2	1.82	12	<10	170	0.7	<2	0.14	<0.5	8	30	15	3.56	10
CC97630		0.32	<0.2	1.90	10	<10	150	<0.5	<2	0.12	<0.5	6	26	8	3.67	10
CC97631		0.32	<0.2	1.94	5	<10	300	1.0	<2	0.47	<0.5	7	15	7	3.16	10
CC97632		0.28	0.2	1.57	5	<10	230	0.9	<2	0.27	<0.5	6	12	6	2.78	10
CC97633		0.34	<0.2	2.44	9	<10	210	1.4	<2	0.30	<0.5	9	28	12	3.42	10
CC97634		0.32	0.3	1.88	5	<10	330	1.3	2	0.68	<0.5	8	20	12	2.61	10
CC97635		0.38	<0.2	1.58	5	<10	320	0.9	<2	0.82	<0.5	7	15	17	2.68	10
CC97636		0.32	0.2	2.51	9	<10	280	0.9	<2	0.22	<0.5	11	23	13	3.72	10
CC97637		0.30	<0.2	2.37	5	<10	200	1.3	<2	0.23	<0.5	6	11	10	3.06	10
CC97638		0.30	<0.2	2.09	8	<10	170	0.7	<2	0.17	<0.5	8	20	10	3.15	10
CC97639		0.32	<0.2	2.27	6	<10	310	0.7	<2	0.16	<0.5	9	19	11	3.65	10
CC97640		0.28	<0.2	2.95	10	<10	290	0.8	<2	0.26	<0.5	11	33	13	4.17	10
CC97641		0.30	<0.2	2.44	10	<10	250	0.8	<2	0.19	<0.5	10	30	15	3.30	10
CC97642		0.26	<0.2	2.24	10	<10	230	0.8	<2	0.14	<0.5	9	23	11	3.75	10
CC97643		0.32	<0.2	1.74	10	<10	190	0.8	<2	0.16	<0.5	6	22	11	2.98	10
CC97644		0.36	<0.2	1.87	6	<10	560	1.4	<2	0.89	<0.5	8	22	15	2.60	10
CC97645		0.36	<0.2	1.29	6	<10	80	<0.5	<2	0.10	<0.5	4	16	8	2.33	10
CC97646		0.32	<0.2	2.25	9	<10	140	<0.5	<2	0.10	<0.5	5	25	10	3.43	10
CC97647		0.38	<0.2	2.01	11	<10	190	0.7	<2	0.12	<0.5	6	24	10	2.99	10
CC97648		0.34	<0.2	1.60	6	<10	360	1.1	<2	0.32	<0.5	8	16	9	2.72	<10
CC97649		0.32	<0.2	1.82	2	<10	400	1.5	<2	0.38	<0.5	7	19	12	2.78	10
CC97650		0.28	<0.2	1.44	12	<10	70	<0.5	<2	0.06	<0.5	4	16	9	2.93	10
CC97651		0.32	<0.2	2.51	15	<10	280	0.7	<2	0.16	<0.5	9	35	13	4.54	10
CC97652		0.24	<0.2	2.91	9	<10	200	0.7	<2	0.14	<0.5	12	34	12	4.11	10
CC97653		0.24	<0.2	1.59	4	<10	210	0.5	<2	0.19	<0.5	6	19	9	3.18	10
CC97654		0.26	<0.2	1.45	3	<10	160	0.5	<2	0.22	<0.5	6	18	7	2.40	<10
CC97655		0.26	<0.2	2.04	12	<10	120	<0.5	<2	0.08	<0.5	5	21	10	4.28	10



ALS Canada Ltd.
 2103 Dollarton Hwy
 North Vancouver BC V7H 0A7
 Phone: 604 984 0221 Fax: 604 984 0218 www.alsglobal.com

To: ARCHER, CATHRO AND ASSOCIATES (1981)
 LIMITED
 1016-510 W HASTINGS ST
 VANCOUVER BC V6B 1L8

Page: 3 - B
 Total # Pages: 4 (A - C)
 Finalized Date: 3-AUG-2010
 Account: F

Project: SELWYN

CERTIFICATE OF ANALYSIS VA10100090

Sample Description	Method Analyte Units LOR	ME-ICP41	ME-ICP41	ME-ICP41	ME-ICP41	ME-ICP41	ME-ICP41	ME-ICP41	ME-ICP41	ME-ICP41	ME-ICP41	ME-ICP41	ME-ICP41	ME-ICP41	ME-ICP41	ME-ICP41
		Hg ppm	K %	La ppm	Mg %	Mn ppm	Mo ppm	Na %	Ni ppm	P ppm	Pb ppm	S %	Sb ppm	Sc ppm	Sr ppm	Th ppm
CC95168		<1	0.14	20	0.53	712	<1	0.02	14	600	22	0.02	<2	5	54	<20
CC95169		<1	0.14	20	0.45	768	<1	0.02	14	600	17	0.01	<2	5	45	<20
CC95170		<1	0.09	10	0.41	315	<1	0.02	11	370	10	0.01	<2	3	27	<20
CC95171		<1	0.12	10	0.27	463	<1	0.01	7	180	12	<0.01	<2	3	18	<20
CC95172		<1	0.18	10	0.24	575	<1	0.02	4	340	16	0.01	<2	5	23	<20
CC95173		<1	0.22	20	0.47	713	<1	0.02	13	260	12	0.01	<2	10	29	<20
CC95174		<1	0.21	10	0.32	937	<1	0.02	9	210	20	0.01	<2	7	22	<20
CC95175		<1	0.25	20	0.52	645	<1	0.02	15	240	13	0.01	<2	9	25	20
CC95176		<1	0.17	20	0.34	486	<1	0.01	4	400	25	<0.01	<2	4	14	30
CC95177		<1	0.16	10	0.26	743	2	0.02	9	210	46	0.01	<2	6	26	30
CC95178		1	0.08	10	0.23	1115	1	0.02	8	200	20	0.01	<2	3	19	<20
CC97627		<1	0.17	10	0.39	916	<1	0.01	3	300	30	<0.01	<2	3	14	30
CC97628		1	0.10	20	0.59	548	1	0.02	13	520	11	0.01	<2	5	19	20
CC97629		<1	0.14	20	0.41	686	1	0.01	9	390	22	<0.01	<2	3	14	30
CC97630		<1	0.08	10	0.36	367	1	0.01	8	350	18	0.01	<2	3	14	<20
CC97631		1	0.15	40	0.62	982	<1	0.02	7	800	15	<0.01	<2	5	32	30
CC97632		<1	0.14	20	0.29	599	1	0.01	5	400	23	0.01	<2	3	22	20
CC97633		<1	0.10	20	0.54	525	<1	0.02	15	290	14	<0.01	<2	4	26	20
CC97634		<1	0.11	40	0.41	1320	<1	0.02	9	1010	24	0.04	<2	4	52	20
CC97635		<1	0.24	30	0.46	886	1	0.01	10	480	23	0.02	<2	5	61	30
CC97636		1	0.17	30	0.69	586	1	0.01	13	360	15	<0.01	<2	5	20	30
CC97637		<1	0.15	20	0.42	470	1	0.01	6	260	19	<0.01	<2	4	18	40
CC97638		<1	0.09	20	0.39	691	1	0.01	11	310	18	<0.01	<2	3	16	20
CC97639		1	0.12	10	0.36	1250	1	0.01	10	330	18	<0.01	<2	4	18	30
CC97640		1	0.13	10	0.83	475	<1	0.01	16	370	12	<0.01	<2	5	26	<20
CC97641		<1	0.08	20	0.46	625	<1	0.01	17	580	14	<0.01	<2	4	18	<20
CC97642		<1	0.12	20	0.45	762	1	0.01	14	640	15	<0.01	<2	4	14	<20
CC97643		1	0.05	100	0.29	517	1	0.01	9	490	15	<0.01	<2	3	18	20
CC97644		1	0.15	30	0.41	793	1	0.01	11	870	18	0.03	<2	4	81	20
CC97645		<1	0.05	10	0.24	228	<1	0.01	7	170	11	<0.01	<2	2	11	<20
CC97646		<1	0.06	10	0.31	356	<1	0.01	9	350	15	<0.01	<2	3	11	<20
CC97647		1	0.08	10	0.37	441	<1	0.01	11	240	17	<0.01	<2	3	13	<20
CC97648		1	0.11	20	0.33	1195	1	0.01	9	430	28	<0.01	<2	4	32	30
CC97649		<1	0.17	40	0.31	1210	1	0.01	9	700	25	0.01	<2	5	34	40
CC97650		<1	0.06	10	0.20	307	1	0.01	6	320	13	<0.01	<2	2	8	<20
CC97651		1	0.08	10	0.44	592	1	0.01	14	990	18	<0.01	<2	4	16	<20
CC97652		1	0.06	10	0.46	593	1	0.01	18	270	15	<0.01	<2	4	14	<20
CC97653		<1	0.10	20	0.27	711	1	0.01	11	310	16	<0.01	<2	3	17	<20
CC97654		<1	0.13	10	0.36	393	<1	0.01	9	130	17	<0.01	<2	2	21	<20
CC97655		1	0.05	10	0.30	454	1	0.01	9	560	16	<0.01	<2	3	8	20



ALS Canada Ltd.
 2103 Dollarton Hwy
 North Vancouver BC V7H 0A7
 Phone: 604 984 0221 Fax: 604 984 0218 www.alsglobal.com

To: ARCHER, CATHRO AND ASSOCIATES (1981)
 LIMITED
 1016-510 W HASTINGS ST
 VANCOUVER BC V6B 1L8

Page: 3 - C
 Total # Pages: 4 (A - C)
 Finalized Date: 3-AUG-2010
 Account: F

Project: SELWYN

CERTIFICATE OF ANALYSIS VA10100090

Sample Description	Method Analyte Units LOR	ME-ICP41	ME-ICP41	ME-ICP41	ME-ICP41	ME-ICP41	ME-ICP41	Au-ICP21
		Ti %	Ti ppm	U ppm	V ppm	W ppm	Zn ppm	Au ppm
		0.01	10	10	1	10	2	0.001
CC95168		0.03	<10	<10	49	<10	64	0.001
CC95169		0.03	<10	<10	49	<10	62	<0.001
CC95170		0.05	<10	<10	60	<10	50	0.003
CC95171		0.02	<10	<10	39	<10	42	0.002
CC95172		0.01	<10	<10	35	<10	45	<0.001
CC95173		0.05	<10	<10	62	<10	55	<0.001
CC95174		0.03	<10	<10	51	<10	46	<0.001
CC95175		0.07	<10	<10	62	<10	59	0.001
CC95176		0.02	<10	<10	35	<10	54	<0.001
CC95177		0.02	<10	<10	38	<10	45	<0.001
CC95178		0.02	<10	<10	45	<10	36	0.001
CC97627		0.02	<10	<10	23	<10	61	<0.001
CC97628		0.06	<10	<10	69	<10	58	0.002
CC97629		0.03	<10	<10	62	<10	64	0.010
CC97630		0.04	<10	<10	72	<10	50	0.003
CC97631		0.04	<10	<10	44	<10	73	0.001
CC97632		0.02	<10	<10	52	<10	53	0.004
CC97633		0.04	<10	<10	59	<10	61	<0.001
CC97634		0.02	<10	<10	41	<10	64	0.001
CC97635		0.05	<10	<10	41	<10	83	0.001
CC97636		0.07	<10	<10	60	<10	73	<0.001
CC97637		0.02	<10	<10	36	<10	59	0.003
CC97638		0.04	<10	<10	63	<10	50	0.001
CC97639		0.03	<10	<10	60	<10	70	<0.001
CC97640		0.08	<10	<10	82	<10	69	0.001
CC97641		0.06	<10	<10	67	<10	61	0.002
CC97642		0.06	<10	<10	65	<10	79	<0.001
CC97643		0.07	<10	<10	73	<10	49	0.016
CC97644		0.02	<10	<10	43	<10	63	0.024
CC97645		0.05	<10	<10	66	<10	36	0.001
CC97646		0.04	<10	<10	79	<10	50	<0.001
CC97647		0.03	<10	<10	62	<10	48	0.001
CC97648		0.02	<10	<10	39	<10	66	0.001
CC97649		0.02	<10	<10	34	<10	63	<0.001
CC97650		0.07	<10	<10	105	<10	43	0.002
CC97651		0.06	<10	<10	94	<10	65	<0.001
CC97652		0.08	<10	<10	86	<10	82	0.001
CC97653		0.05	<10	<10	65	<10	57	0.003
CC97654		0.02	<10	<10	45	<10	40	<0.001
CC97655		0.04	<10	<10	83	<10	63	0.006



ALS Canada Ltd.
 2103 Dollarton Hwy
 North Vancouver BC V7H 0A7
 Phone: 604 984 0221 Fax: 604 984 0218 www.alsglobal.com

To: ARCHER, CATHRO AND ASSOCIATES (1981)
 LIMITED
 1016-510 W HASTINGS ST
 VANCOUVER BC V6B 1L8

Page: 4 - A
 Total # Pages: 4 (A - C)
 Finalized Date: 3-AUG-2010
 Account: F

Project: SELWYN

CERTIFICATE OF ANALYSIS VA10100090

Sample Description	Method Analyte Units LOR	WEI-21	ME-ICP41	ME-ICP41	ME-ICP41	ME-ICP41	ME-ICP41	ME-ICP41	ME-ICP41	ME-ICP41	ME-ICP41	ME-ICP41	ME-ICP41	ME-ICP41	ME-ICP41	
		Recvd Wt. kg	Ag ppm	Al %	As ppm	B ppm	Ba ppm	Be ppm	Bi ppm	Ca %	Cd ppm	Co ppm	Cr ppm	Cu ppm	Fe %	Ga ppm
		0.02	0.2	0.01	2	10	10	0.5	2	0.01	0.5	1	1	1	0.01	10
CC97656		0.26	<0.2	1.69	5	<10	220	0.7	<2	0.32	<0.5	7	23	9	2.84	10
CC97657		0.26	<0.2	1.89	11	<10	210	0.6	<2	0.18	<0.5	7	24	10	3.55	10
CC97658		0.24	<0.2	1.39	8	<10	110	<0.5	<2	0.09	<0.5	4	15	7	2.45	10
CC97659		0.24	<0.2	1.47	6	<10	100	<0.5	<2	0.11	<0.5	3	15	7	2.05	10
CC95127		0.28	<0.2	0.75	3	<10	230	1.5	<2	0.18	<0.5	3	5	2	1.66	<10
CC95128		0.32	<0.2	1.16	3	<10	370	1.0	<2	0.41	<0.5	8	13	9	2.79	<10
CC95129		0.34	<0.2	1.86	3	<10	230	0.9	<2	0.25	<0.5	9	12	6	3.85	10
CC95130		0.28	<0.2	1.17	3	<10	180	0.9	<2	0.26	<0.5	8	14	10	2.65	<10
CC95131		0.32	<0.2	1.44	6	<10	140	1.1	<2	0.16	<0.5	7	14	8	3.41	<10
CC95132		0.30	<0.2	1.81	9	<10	160	0.8	<2	0.21	<0.5	9	25	13	3.16	10
CC95133		0.34	<0.2	2.45	15	<10	160	0.8	<2	0.18	<0.5	10	51	36	3.56	10
CC95134		0.30	<0.2	2.66	12	<10	270	0.9	<2	0.45	<0.5	11	42	31	3.58	10
CC95135		0.32	<0.2	1.91	11	<10	190	0.5	<2	0.14	<0.5	9	21	12	4.12	10
CC95136		0.30	<0.2	2.53	7	<10	210	0.9	<2	0.35	<0.5	12	25	14	4.02	10
CC95137		0.36	<0.2	1.69	6	<10	110	0.9	<2	0.21	<0.5	7	13	18	2.95	10
CC95138		0.34	<0.2	2.86	8	<10	180	1.2	<2	0.34	<0.5	12	15	22	4.38	10
CC95139		0.30	<0.2	2.46	7	<10	130	0.8	<2	0.26	<0.5	9	17	8	3.63	10
CC95140		0.32	0.2	2.42	7	<10	90	0.7	<2	0.23	<0.5	9	21	32	3.97	10
CC95141		0.38	<0.2	3.02	7	<10	190	1.0	<2	0.35	<0.5	13	21	8	4.90	10
CC95142		0.34	<0.2	3.14	9	<10	170	1.0	<2	0.25	<0.5	10	16	7	4.22	10
CC95143		0.36	<0.2	2.19	10	<10	210	0.6	2	0.23	<0.5	10	41	22	3.63	10
CC95144		0.42	<0.2	1.73	6	<10	190	1.2	<2	0.43	<0.5	6	11	11	2.70	10
CC95145		0.26	0.2	2.34	4	<10	370	1.7	<2	1.05	<0.5	4	13	17	2.70	10
CC95146		0.44	<0.2	1.25	4	<10	260	0.8	<2	0.38	<0.5	4	10	6	2.18	<10
CC95147		0.30	<0.2	2.03	9	<10	100	0.9	<2	0.14	<0.5	8	18	8	3.55	10
CC95148		0.36	<0.2	1.47	7	<10	120	0.5	<2	0.15	<0.5	5	17	6	2.68	10
CC95149		0.32	<0.2	1.75	9	<10	180	0.5	<2	0.19	<0.5	6	22	9	2.87	10
CC95150		0.30	<0.2	2.24	5	<10	200	0.8	<2	0.27	<0.5	10	14	8	3.60	10
CC95151		0.32	<0.2	2.34	12	<10	190	0.7	<2	0.17	<0.5	9	32	13	3.50	10



ALS Canada Ltd.
 2103 Dollarton Hwy
 North Vancouver BC V7H 0A7
 Phone: 604 984 0221 Fax: 604 984 0218 www.alsglobal.com

To: ARCHER, CATHRO AND ASSOCIATES (1981)
 LIMITED
 1016-510 W HASTINGS ST
 VANCOUVER BC V6B 1L8

Page: 4 - B
 Total # Pages: 4 (A - C)
 Finalized Date: 3-AUG-2010
 Account: F

Project: SELWYN

CERTIFICATE OF ANALYSIS VA10100090

Sample Description	Method Analyte Units LOR	ME-ICP41	ME-ICP41	ME-ICP41	ME-ICP41	ME-ICP41	ME-ICP41	ME-ICP41	ME-ICP41	ME-ICP41	ME-ICP41	ME-ICP41	ME-ICP41	ME-ICP41	ME-ICP41	
		Hg ppm	K %	La ppm	Mg %	Mn ppm	Mo ppm	Na %	Ni ppm	P ppm	Pb ppm	S %	Sb ppm	Sc ppm	Sr ppm	Th ppm
		1	0.01	10	0.01	5	1	0.01	1	10	2	0.01	2	1	1	20
CC97656		<1	0.10	20	0.51	607	1	0.01	12	360	14	<0.01	<2	4	27	30
CC97657		<1	0.11	20	0.41	441	3	0.01	12	310	13	<0.01	<2	4	19	20
CC97658		<1	0.06	10	0.27	444	<1	0.01	5	310	11	<0.01	<2	2	11	<20
CC97659		<1	0.05	10	0.20	305	<1	0.01	5	220	13	<0.01	<2	2	12	<20
CC95127		<1	0.19	20	0.09	829	<1	0.01	2	200	27	<0.01	<2	3	31	40
CC95128		<1	0.22	50	0.36	1020	1	0.01	8	300	20	<0.01	<2	8	28	30
CC95129		<1	0.33	30	0.77	1140	1	0.01	6	380	12	<0.01	<2	10	20	60
CC95130		<1	0.23	20	0.36	706	1	0.01	7	240	15	<0.01	<2	6	18	30
CC95131		<1	0.16	40	0.38	525	<1	0.01	8	170	14	<0.01	<2	6	16	30
CC95132		<1	0.28	10	0.62	667	<1	0.01	13	260	11	<0.01	<2	8	19	20
CC95133		<1	0.07	20	0.70	315	<1	0.02	27	140	11	<0.01	<2	9	21	<20
CC95134		1	0.07	30	0.70	550	<1	0.03	22	280	10	<0.01	<2	10	43	20
CC95135		<1	0.08	10	0.40	927	2	0.01	12	380	12	<0.01	<2	5	13	<20
CC95136		<1	0.41	20	0.97	939	1	0.02	16	340	11	<0.01	<2	11	24	30
CC95137		1	0.21	10	0.54	346	24	0.01	6	240	9	<0.01	<2	6	14	20
CC95138		<1	0.43	10	1.16	1310	2	0.02	9	740	15	0.01	<2	12	22	40
CC95139		<1	0.16	10	0.77	552	1	0.02	9	140	11	0.01	<2	7	22	20
CC95140		<1	0.14	20	0.81	786	4	0.02	10	250	24	0.01	<2	7	19	40
CC95141		<1	0.52	10	1.19	1285	2	0.02	8	690	10	0.01	<2	14	20	50
CC95142		<1	0.46	20	1.08	1100	2	0.02	8	380	9	0.01	<2	14	20	40
CC95143		<1	0.09	20	0.67	476	2	0.02	22	180	10	0.01	<2	8	23	20
CC95144		<1	0.22	60	0.39	644	2	0.02	6	330	9	0.02	<2	9	27	20
CC95145		<1	0.20	140	0.33	623	3	0.02	9	760	10	0.06	<2	12	59	20
CC95146		<1	0.14	50	0.26	462	2	0.02	4	310	13	0.02	<2	7	28	20
CC95147		<1	0.26	10	0.55	483	2	0.02	6	150	10	0.01	<2	8	13	20
CC95148		<1	0.13	30	0.32	385	2	0.01	7	180	9	0.01	<2	4	16	20
CC95149		<1	0.11	20	0.45	473	2	0.01	11	210	10	0.01	<2	4	19	<20
CC95150		1	0.24	10	0.84	727	2	0.02	8	170	13	0.01	<2	7	21	<20
CC95151		1	0.12	10	0.57	447	2	0.02	19	270	11	0.01	<2	5	18	<20



ALS Canada Ltd.
 2103 Dollarton Hwy
 North Vancouver BC V7H 0A7
 Phone: 604 984 0221 Fax: 604 984 0218 www.alsglobal.com

To: ARCHER, CATHRO AND ASSOCIATES (1981)
 LIMITED
 1016-510 W HASTINGS ST
 VANCOUVER BC V6B 1L8

Page: 4 - C
 Total # Pages: 4 (A - C)
 Finalized Date: 3-AUG-2010
 Account: F

Project: SELWYN

CERTIFICATE OF ANALYSIS VA10100090

Sample Description	Method Analyte Units LOR	ME-ICP41	ME-ICP41	ME-ICP41	ME-ICP41	ME-ICP41	ME-ICP41	Au-ICP21
		Ti %	Ti ppm	U ppm	V ppm	W ppm	Zn ppm	Au ppm
		0.01	10	10	1	10	2	0.001
CC97656		0.06	<10	<10	49	<10	66	0.003
CC97657		0.05	<10	<10	78	<10	59	0.001
CC97658		0.07	<10	<10	72	<10	48	0.003
CC97659		0.04	<10	<10	57	<10	32	<0.001
CC95127		0.01	<10	<10	14	<10	37	0.013
CC95128		0.03	<10	<10	42	<10	51	0.007
CC95129		0.08	<10	<10	64	<10	77	0.028
CC95130		0.04	<10	<10	41	<10	49	<0.001
CC95131		0.03	<10	<10	51	<10	68	<0.001
CC95132		0.10	<10	<10	59	<10	66	0.001
CC95133		0.14	<10	<10	87	<10	59	0.011
CC95134		0.13	<10	<10	77	<10	63	0.002
CC95135		0.08	<10	<10	85	<10	79	<0.001
CC95136		0.15	<10	<10	84	<10	84	0.002
CC95137		0.06	<10	<10	53	<10	58	<0.001
CC95138		0.11	<10	<10	86	<10	100	<0.001
CC95139		0.06	<10	<10	68	<10	64	<0.001
CC95140		0.06	<10	<10	75	<10	78	<0.001
CC95141		0.15	<10	<10	102	<10	103	<0.001
CC95142		0.16	<10	<10	80	<10	98	<0.001
CC95143		0.12	<10	<10	76	<10	62	<0.001
CC95144		0.06	<10	<10	47	<10	61	<0.001
CC95145		0.02	<10	<10	37	<10	59	<0.001
CC95146		0.02	<10	<10	34	<10	45	<0.001
CC95147		0.09	<10	<10	62	<10	72	<0.001
CC95148		0.05	<10	<10	40	<10	51	<0.001
CC95149		0.08	<10	<10	57	<10	50	<0.001
CC95150		0.07	<10	<10	66	<10	71	0.001
CC95151		0.08	<10	<10	66	<10	65	<0.001



ALS Canada Ltd.
 2103 Dollarton Hwy
 North Vancouver BC V7H 0A7
 Phone: 604 984 0221 Fax: 604 984 0218 www.alsglobal.com

To: ARCHER, CATHRO AND ASSOCIATES (1981)
 LIMITED
 1016-510 W HASTINGS ST
 VANCOUVER BC V6B 1L8

Page: 1
 Finalized Date: 1-AUG-2010
 Account: F

CERTIFICATE VA10099462

Project: SELWYN
 P.O. No.: KKK
 This report is for 113 Soil samples submitted to our lab in Vancouver, BC, Canada on 21-JUL-2010.
 The following have access to data associated with this certificate:
 JOAN MARIACHER BILL WENGZYNOWSKI

SAMPLE PREPARATION	
ALS CODE	DESCRIPTION
WEI-21	Received Sample Weight
LOG-22	Sample login - Rcd w/o BarCode
SCR-41	Screen to -180um and save both

ANALYTICAL PROCEDURES		
ALS CODE	DESCRIPTION	INSTRUMENT
Au-ICP21	Au 30g FA ICP-AES Finish	ICP-AES
ME-ICP41	35 Element Aqua Regia ICP-AES	ICP-AES

To: ARCHER, CATHRO AND ASSOCIATES (1981) LIMITED
 ATTN: JOAN MARIACHER
 1016-510 W HASTINGS ST
 VANCOUVER BC V6B 1L8

This is the Final Report and supersedes any preliminary report with this certificate number. Results apply to samples as submitted. All pages of this report have been checked and approved for release.

Signature: 
 Colin Ramshaw, Vancouver Laboratory Manager



ALS Canada Ltd.
 2103 Dollarton Hwy
 North Vancouver BC V7H 0A7
 Phone: 604 984 0221 Fax: 604 984 0218 www.alsglobal.com

To: ARCHER, CATHRO AND ASSOCIATES (1981)
 LIMITED
 1016-510 W HASTINGS ST
 VANCOUVER BC V6B 1L8

Page: 2 - A
 Total # Pages: 4 (A - C)
 Finalized Date: 1-AUG-2010
 Account: F

Project: SELWYN

CERTIFICATE OF ANALYSIS VA10099462

Sample Description	Method Analyte Units LOR	WEI-21	ME-ICP41	ME-ICP41	ME-ICP41	ME-ICP41	ME-ICP41	ME-ICP41	ME-ICP41	ME-ICP41	ME-ICP41	ME-ICP41	ME-ICP41	ME-ICP41	ME-ICP41	
		Recvd Wt. kg	Ag ppm	Al %	As ppm	B ppm	Ba ppm	Be ppm	Bi ppm	Ca %	Cd ppm	Co ppm	Cr ppm	Cu ppm	Fe %	Ga ppm
		0.02	0.2	0.01	2	10	10	0.5	2	0.01	0.5	1	1	1	0.01	10
CC96651		0.30	0.2	1.99	6	<10	510	0.8	<2	0.54	<0.5	8	18	6	3.30	10
CC96652		0.30	<0.2	1.70	5	<10	520	1.0	<2	0.23	<0.5	7	16	5	3.23	10
CC96653		0.30	<0.2	1.96	4	<10	330	0.9	<2	0.27	<0.5	14	17	6	3.63	10
CC96654		0.32	<0.2	2.41	8	<10	230	0.7	<2	0.25	<0.5	11	27	11	3.47	10
CC96655		0.22	<0.2	2.15	12	<10	170	<0.5	<2	0.06	<0.5	7	29	10	4.66	10
CC96656		0.26	<0.2	2.18	9	<10	330	<0.5	<2	0.21	<0.5	8	29	11	3.27	10
CC96657		0.28	<0.2	1.66	4	<10	190	0.5	<2	0.09	<0.5	8	13	5	3.09	10
CC96658		0.28	<0.2	2.39	7	<10	310	0.7	<2	0.19	<0.5	8	35	6	4.04	10
CC96659		0.28	<0.2	0.99	3	<10	460	0.7	<2	0.20	<0.5	6	8	3	2.33	<10
CC96660		0.26	<0.2	1.48	6	<10	260	0.5	<2	0.11	<0.5	6	12	3	3.06	<10
CC96661		0.28	<0.2	2.46	7	<10	360	0.6	<2	0.32	<0.5	10	21	10	4.58	10
CC96662		0.26	<0.2	1.71	4	<10	230	0.5	<2	0.16	<0.5	7	18	5	2.70	10
CC96663		0.24	<0.2	2.54	12	<10	170	<0.5	<2	0.08	<0.5	11	32	8	4.19	10
CC96664		0.26	<0.2	1.88	6	<10	330	0.5	<2	0.65	<0.5	8	25	11	2.73	10
CC96665		0.30	<0.2	1.02	5	<10	200	1.2	<2	0.21	<0.5	11	7	10	4.13	<10
CC96666		0.34	<0.2	1.68	3	<10	500	1.1	<2	0.67	<0.5	10	13	9	3.95	10
CC96667		0.28	<0.2	2.06	4	<10	270	0.9	<2	0.44	<0.5	9	15	7	3.90	10
CC96668		0.24	0.2	1.49	<2	<10	240	<0.5	<2	0.75	<0.5	7	16	6	1.98	10
CC96669		0.26	0.2	2.02	4	<10	250	0.8	<2	0.93	<0.5	5	20	18	1.63	10
CC96670		0.24	<0.2	2.68	13	<10	180	0.6	<2	0.11	<0.5	8	32	10	4.25	10
CC96671		0.30	<0.2	2.60	14	<10	330	0.7	<2	0.19	<0.5	11	22	10	4.77	10
CC96672		0.30	<0.2	1.25	8	<10	260	0.8	<2	0.29	<0.5	8	12	3	3.02	<10
CC96673		0.26	<0.2	1.97	6	<10	420	0.5	<2	0.23	<0.5	9	20	6	3.60	10
CC96674		0.34	<0.2	1.12	8	<10	210	0.5	<2	0.25	<0.5	8	9	5	3.02	<10
CC96675		0.32	0.2	1.27	5	<10	320	0.7	<2	0.67	<0.5	6	10	6	2.43	<10
CC96676		0.26	<0.2	1.24	8	<10	710	0.8	<2	0.39	<0.5	9	15	6	3.28	<10
CC96677		0.22	<0.2	1.97	6	<10	580	0.5	<2	0.33	<0.5	9	25	8	3.51	10
CC96678		0.24	<0.2	1.36	5	<10	510	0.5	<2	0.29	<0.5	8	15	6	3.22	10
CC96679		0.30	0.2	1.83	8	<10	450	0.5	<2	0.24	<0.5	14	66	37	3.25	10
CC96680		0.30	<0.2	2.95	9	<10	200	0.8	<2	0.11	<0.5	13	24	12	6.34	10
CC96681		0.26	<0.2	1.58	5	<10	370	0.9	<2	0.30	<0.5	10	18	9	3.67	<10
CC96682		0.30	<0.2	2.07	6	<10	450	0.7	<2	0.58	<0.5	11	20	10	4.23	10
CC96683		0.32	<0.2	1.68	6	<10	350	0.6	<2	0.56	<0.5	11	24	15	3.52	<10
CC96684		0.28	<0.2	1.46	5	<10	530	0.5	<2	0.69	<0.5	7	17	7	2.60	<10
CC96685		0.26	<0.2	1.89	8	<10	480	0.6	<2	0.20	<0.5	8	22	12	3.43	10
CC96686		0.24	<0.2	1.73	8	<10	860	0.9	<2	0.60	<0.5	10	24	14	3.17	<10
CC96687		0.30	0.2	1.67	8	<10	500	1.1	<2	1.41	0.5	8	21	21	2.21	10
CC96688		0.22	0.2	1.28	3	<10	350	0.5	<2	0.30	<0.5	6	18	8	2.39	<10
CC97425		0.30	<0.2	2.93	11	<10	330	0.9	<2	0.25	0.5	9	34	14	4.17	10
CC97426		0.30	<0.2	1.97	11	<10	420	0.6	<2	0.27	<0.5	7	20	9	3.15	10



ALS Canada Ltd.
 2103 Dollarton Hwy
 North Vancouver BC V7H 0A7
 Phone: 604 984 0221 Fax: 604 984 0218 www.alsglobal.com

To: ARCHER, CATHRO AND ASSOCIATES (1981)
 LIMITED
 1016-510 W HASTINGS ST
 VANCOUVER BC V6B 1L8

Page: 2 - B
 Total # Pages: 4 (A - C)
 Finalized Date: 1-AUG-2010
 Account: F

Project: SELWYN

CERTIFICATE OF ANALYSIS VA10099462

Sample Description	Method Analyte Units LOR	ME-ICP41	ME-ICP41	ME-ICP41	ME-ICP41	ME-ICP41	ME-ICP41	ME-ICP41	ME-ICP41	ME-ICP41	ME-ICP41	ME-ICP41	ME-ICP41	ME-ICP41	ME-ICP41	
		Hg ppm	K %	La ppm	Mg %	Mn ppm	Mo ppm	Na %	Ni ppm	P ppm	Pb ppm	S %	Sb ppm	Sc ppm	Sr ppm	Th ppm
		1	0.01	10	0.01	5	1	0.01	1	10	2	0.01	2	1	1	20
CC96651		<1	0.16	50	0.50	477	<1	0.02	7	660	16	0.02	<2	5	48	20
CC96652		<1	0.14	70	0.39	607	<1	0.02	6	290	20	<0.01	<2	4	26	20
CC96653		1	0.21	50	0.52	1130	<1	0.02	5	930	15	0.01	<2	5	19	20
CC96654		1	0.13	30	0.53	501	1	0.02	13	760	14	0.01	<2	4	26	20
CC96655		<1	0.08	10	0.42	954	1	0.01	9	720	16	0.01	<2	4	9	<20
CC96656		<1	0.14	10	0.58	367	<1	0.02	15	210	10	<0.01	<2	4	22	<20
CC96657		1	0.15	20	0.33	543	1	0.01	4	480	12	<0.01	<2	3	11	<20
CC96658		<1	0.14	40	0.54	550	2	0.01	10	530	14	<0.01	2	4	23	20
CC96659		<1	0.18	20	0.18	570	<1	0.01	<1	600	15	<0.01	<2	4	21	20
CC96660		1	0.17	10	0.30	480	<1	0.02	2	520	19	0.01	<2	3	12	<20
CC96661		1	0.24	40	0.61	772	<1	0.02	9	560	13	<0.01	<2	5	29	20
CC96662		<1	0.11	10	0.38	368	<1	0.01	7	290	13	<0.01	<2	3	16	<20
CC96663		1	0.15	30	0.52	698	1	0.01	13	950	15	<0.01	<2	4	11	20
CC96664		1	0.08	40	0.51	428	<1	0.02	10	620	10	0.02	<2	6	59	20
CC96665		<1	0.15	50	0.19	2110	<1	0.01	3	800	31	<0.01	<2	5	15	40
CC96666		<1	0.32	70	0.46	983	<1	0.02	6	720	19	0.01	<2	8	44	40
CC96667		1	0.21	30	0.52	595	<1	0.01	6	380	18	0.01	<2	5	54	20
CC96668		<1	0.15	50	0.41	1215	<1	0.02	5	1070	9	0.05	<2	4	63	<20
CC96669		<1	0.16	190	0.41	198	<1	0.01	9	670	12	0.09	<2	9	87	50
CC96670		<1	0.08	10	0.46	454	1	0.01	13	480	14	<0.01	<2	4	15	<20
CC96671		1	0.12	30	0.62	952	<1	0.02	9	530	15	<0.01	<2	7	19	20
CC96672		<1	0.22	30	0.31	829	<1	0.01	4	330	16	<0.01	<2	4	19	20
CC96673		<1	0.20	20	0.50	993	1	0.02	8	280	13	<0.01	<2	4	24	<20
CC96674		<1	0.10	30	0.26	755	3	0.01	2	810	14	<0.01	<2	2	22	20
CC96675		<1	0.18	60	0.41	513	<1	0.02	4	980	11	0.02	<2	5	104	20
CC96676		<1	0.17	20	0.23	804	<1	0.01	6	370	22	0.01	<2	4	36	<20
CC96677		<1	0.15	30	0.45	504	<1	0.02	10	310	13	<0.01	<2	4	26	<20
CC96678		<1	0.19	30	0.30	955	<1	0.01	6	310	16	<0.01	<2	3	28	<20
CC96679		<1	0.12	40	0.51	655	<1	0.02	22	330	12	<0.01	<2	5	23	20
CC96680		<1	0.21	40	0.55	946	3	0.01	6	830	22	<0.01	<2	7	15	50
CC96681		1	0.21	40	0.49	870	<1	0.02	7	950	17	<0.01	<2	5	21	30
CC96682		1	0.29	20	0.54	895	1	0.02	7	330	18	<0.01	<2	5	60	20
CC96683		<1	0.13	30	0.58	1670	<1	0.02	13	1020	12	0.01	<2	6	47	20
CC96684		<1	0.16	20	0.34	375	<1	0.02	5	700	18	0.03	<2	4	60	<20
CC96685		<1	0.09	10	0.29	510	2	0.03	12	230	28	0.02	<2	3	20	<20
CC96686		<1	0.13	20	0.37	724	2	0.06	15	300	24	0.02	<2	5	44	<20
CC96687		<1	0.23	20	0.49	684	1	0.04	15	260	21	0.04	<2	4	246	20
CC96688		<1	0.15	10	0.30	666	1	0.03	10	200	14	0.01	<2	2	28	<20
CC97425		1	0.11	30	0.50	290	3	0.03	18	450	20	0.01	<2	4	23	20
CC97426		1	0.22	10	0.50	856	1	0.03	13	320	13	0.01	<2	4	21	<20



ALS Canada Ltd.
 2103 Dollarton Hwy
 North Vancouver BC V7H 0A7
 Phone: 604 984 0221 Fax: 604 984 0218 www.alsglobal.com

To: ARCHER, CATHRO AND ASSOCIATES (1981)
 LIMITED
 1016-510 W HASTINGS ST
 VANCOUVER BC V6B 1L8

Page: 2 - C
 Total # Pages: 4 (A - C)
 Finalized Date: 1-AUG-2010
 Account: F

Project: SELWYN

CERTIFICATE OF ANALYSIS VA10099462

Sample Description	Method Analyte Units LOR	ME-ICP41	ME-ICP41	ME-ICP41	ME-ICP41	ME-ICP41	ME-ICP41	Au-ICP21
		Ti %	Ti ppm	U ppm	V ppm	W ppm	Zn ppm	Au ppm
		0.01	10	10	1	10	2	0.001
CC96651		0.04	<10	<10	50	<10	74	0.001
CC96652		0.03	<10	<10	47	<10	62	0.001
CC96653		0.12	<10	<10	57	<10	84	0.003
CC96654		0.08	<10	<10	65	<10	73	0.002
CC96655		0.12	<10	<10	96	<10	70	0.001
CC96656		0.09	<10	<10	66	<10	61	0.003
CC96657		0.06	<10	<10	50	<10	54	0.001
CC96658		0.07	<10	<10	66	<10	61	<0.001
CC96659		0.02	<10	<10	30	<10	51	<0.001
CC96660		0.03	<10	<10	39	<10	58	<0.001
CC96661		0.07	<10	<10	65	<10	86	0.001
CC96662		0.04	<10	<10	50	<10	40	<0.001
CC96663		0.06	<10	<10	69	<10	76	0.001
CC96664		0.08	<10	10	57	<10	52	0.001
CC96665		0.04	<10	10	37	<10	90	<0.001
CC96666		0.06	<10	<10	51	<10	85	0.011
CC96667		0.04	<10	10	55	<10	68	<0.001
CC96668		0.07	<10	<10	31	<10	70	0.004
CC96669		0.05	<10	10	49	<10	52	0.002
CC96670		0.10	<10	<10	83	<10	62	0.001
CC96671		0.08	<10	<10	79	<10	113	<0.001
CC96672		0.04	<10	<10	39	<10	61	<0.001
CC96673		0.06	<10	<10	60	<10	61	<0.001
CC96674		0.01	<10	<10	41	<10	56	0.002
CC96675		0.04	<10	<10	34	<10	63	0.001
CC96676		0.02	<10	<10	45	<10	55	0.005
CC96677		0.07	<10	<10	66	<10	56	<0.001
CC96678		0.04	<10	<10	49	<10	47	<0.001
CC96679		0.11	<10	<10	70	<10	47	0.001
CC96680		0.04	<10	<10	81	<10	117	<0.001
CC96681		0.09	<10	<10	51	<10	82	0.001
CC96682		0.09	<10	<10	70	<10	72	<0.001
CC96683		0.08	<10	<10	56	<10	75	0.020
CC96684		0.04	<10	<10	39	<10	64	0.001
CC96685		0.02	<10	<10	50	<10	63	<0.001
CC96686		0.04	<10	<10	51	<10	49	<0.001
CC96687		0.01	<10	<10	35	<10	41	0.003
CC96688		0.03	<10	<10	46	<10	32	<0.001
CC97425		0.07	<10	<10	86	<10	53	<0.001
CC97426		0.06	<10	<10	52	<10	58	0.002



ALS Canada Ltd.
 2103 Dollarton Hwy
 North Vancouver BC V7H 0A7
 Phone: 604 984 0221 Fax: 604 984 0218 www.alsglobal.com

To: ARCHER, CATHRO AND ASSOCIATES (1981)
 LIMITED
 1016-510 W HASTINGS ST
 VANCOUVER BC V6B 1L8

Page: 3 - A
 Total # Pages: 4 (A - C)
 Finalized Date: 1-AUG-2010
 Account: F

Project: SELWYN

CERTIFICATE OF ANALYSIS VA10099462

Sample Description	Method Analyte Units LOR	WEI-21	ME-ICP41	ME-ICP41	ME-ICP41	ME-ICP41	ME-ICP41	ME-ICP41	ME-ICP41	ME-ICP41	ME-ICP41	ME-ICP41	ME-ICP41	ME-ICP41	ME-ICP41	
		Recvd Wt. kg	Ag ppm	Al %	As ppm	B ppm	Ba ppm	Be ppm	Bi ppm	Ca %	Cd ppm	Co ppm	Cr ppm	Cu ppm	Fe %	Ga ppm
		0.02	0.2	0.01	2	10	10	0.5	2	0.01	0.5	1	1	1	0.01	10
CC97427		0.30	<0.2	2.68	5	<10	400	0.9	<2	0.39	<0.5	12	23	11	4.58	10
CC97428		0.30	<0.2	2.83	6	<10	330	0.8	<2	0.37	<0.5	13	21	12	5.21	10
CC97429		0.32	<0.2	2.47	5	<10	250	0.6	<2	0.33	<0.5	12	36	18	3.92	10
CC97430		0.32	<0.2	2.43	8	<10	330	0.5	<2	0.38	<0.5	12	32	15	3.73	10
CC97431		0.28	<0.2	2.67	3	<10	400	0.9	<2	0.35	<0.5	13	19	13	4.95	10
CC97432		0.30	<0.2	2.98	9	<10	280	0.7	<2	0.31	<0.5	14	38	25	4.63	10
CC97433		0.34	<0.2	2.28	13	<10	360	0.6	<2	0.33	<0.5	12	38	17	3.77	10
CC97434		0.38	0.3	1.89	7	<10	270	0.8	<2	0.65	<0.5	10	24	18	3.39	10
CC97435		0.30	0.2	2.72	9	<10	180	0.8	<2	0.29	<0.5	14	36	20	4.00	10
CC97436		0.32	<0.2	1.03	5	<10	320	0.6	2	0.47	<0.5	6	10	8	2.41	<10
CC97437		0.34	<0.2	1.91	3	<10	500	1.2	<2	0.65	<0.5	8	18	10	3.22	<10
CC97438		0.28	<0.2	1.30	2	<10	370	0.5	<2	0.54	<0.5	7	11	6	2.96	10
CC97439		0.36	<0.2	1.70	5	<10	280	0.6	<2	0.51	<0.5	10	19	9	3.28	10
CC97440		0.34	<0.2	1.41	2	<10	240	0.5	<2	0.31	<0.5	10	16	7	3.13	10
CC97441		0.30	<0.2	2.05	3	<10	200	<0.5	<2	0.32	<0.5	7	25	11	2.35	10
CC97442		0.32	<0.2	1.85	5	<10	240	0.6	<2	0.34	<0.5	10	20	8	3.20	10
CC97443		0.30	<0.2	1.82	7	<10	170	<0.5	<2	0.17	<0.5	9	25	11	3.49	10
CC97444		0.26	<0.2	1.55	3	<10	230	0.6	<2	0.39	<0.5	7	20	9	2.49	10
CC97445		0.32	<0.2	1.67	3	<10	240	0.5	<2	0.37	<0.5	9	35	8	3.07	10
CC97446		0.40	<0.2	1.96	6	<10	210	0.5	<2	0.42	<0.5	12	25	9	3.58	10
CC97447		0.26	<0.2	1.75	5	<10	250	0.6	2	0.62	<0.5	9	20	9	2.86	10
CC97448		0.30	<0.2	1.83	3	<10	170	0.7	<2	0.23	<0.5	10	16	6	3.14	10
CC97449		0.34	<0.2	2.28	8	<10	330	0.8	<2	0.22	<0.5	12	23	8	3.75	10
CC97450		0.28	<0.2	1.99	3	<10	220	0.7	<2	0.21	<0.5	9	22	7	3.02	10
CC97451		0.28	<0.2	2.28	6	<10	410	0.7	<2	0.29	<0.5	10	21	9	3.86	10
CC97452		0.28	<0.2	2.62	8	<10	350	0.9	<2	0.24	<0.5	11	26	12	4.05	10
CC97453		0.30	<0.2	2.25	7	<10	230	0.5	<2	0.14	<0.5	8	29	12	2.91	10
CC97454		0.34	<0.2	2.33	5	<10	160	1.0	<2	0.09	<0.5	7	19	8	2.92	10
CC97455		0.32	<0.2	2.75	6	<10	220	0.7	<2	0.20	<0.5	11	27	12	4.12	10
CC97456		0.30	<0.2	2.01	4	<10	360	0.9	<2	0.21	<0.5	7	13	4	3.26	10
CC97457		0.28	<0.2	2.10	7	<10	130	0.5	<2	0.17	<0.5	6	19	9	3.34	10
CC96359		0.20	<0.2	1.31	4	<10	470	0.7	<2	0.72	<0.5	17	13	8	4.80	10
CC96360		0.40	<0.2	1.66	5	<10	320	0.6	<2	0.39	<0.5	9	20	5	3.95	10
CC96361		0.28	<0.2	1.93	7	<10	260	0.7	<2	0.27	<0.5	9	26	6	3.33	10
CC96362		0.30	<0.2	1.86	6	<10	310	0.7	<2	0.38	<0.5	8	23	12	3.04	10
CC96363		0.28	<0.2	0.78	4	<10	460	0.8	<2	0.32	<0.5	4	9	4	2.10	<10
CC96364		0.30	<0.2	1.18	3	<10	240	<0.5	<2	0.17	<0.5	4	12	4	2.61	<10
CC96365		0.16	0.5	1.87	3	<10	510	1.0	<2	0.98	<0.5	5	18	12	2.34	<10
CC96366		0.26	<0.2	1.67	6	<10	280	<0.5	<2	0.14	<0.5	4	17	4	3.00	10
CC96367		0.34	<0.2	1.77	7	<10	330	1.0	<2	0.17	<0.5	10	16	5	3.89	10



ALS Canada Ltd.
 2103 Dollarton Hwy
 North Vancouver BC V7H 0A7
 Phone: 604 984 0221 Fax: 604 984 0218 www.alsglobal.com

To: ARCHER, CATHRO AND ASSOCIATES (1981)
 LIMITED
 1016-510 W HASTINGS ST
 VANCOUVER BC V6B 1L8

Page: 3 - B
 Total # Pages: 4 (A - C)
 Finalized Date: 1-AUG-2010
 Account: F

Project: SELWYN

CERTIFICATE OF ANALYSIS VA10099462

Sample Description	Method Analyte Units LOR	ME-ICP41	ME-ICP41	ME-ICP41	ME-ICP41	ME-ICP41	ME-ICP41	ME-ICP41	ME-ICP41	ME-ICP41	ME-ICP41	ME-ICP41	ME-ICP41	ME-ICP41	ME-ICP41	
		Hg ppm	K %	La ppm	Mg %	Mn ppm	Mo ppm	Na %	Ni ppm	P ppm	Pb ppm	S %	Sb ppm	Sc ppm	Sr ppm	Th ppm
		1	0.01	10	0.01	5	1	0.01	1	10	2	0.01	2	1	1	20
CC97427		1	0.37	40	0.94	1240	1	0.03	17	580	17	0.01	<2	6	27	30
CC97428		<1	0.67	50	1.14	1030	2	0.03	15	1000	13	0.02	<2	7	27	30
CC97429		<1	0.21	20	0.81	603	1	0.03	22	430	10	0.01	<2	6	30	<20
CC97430		<1	0.17	30	0.75	658	1	0.03	18	760	8	0.01	<2	5	32	<20
CC97431		<1	0.73	30	1.04	1180	1	0.03	14	740	10	0.01	<2	7	30	20
CC97432		<1	0.25	30	0.97	852	1	0.03	24	610	10	0.01	<2	7	24	20
CC97433		<1	0.18	20	0.71	640	1	0.03	23	370	11	0.01	<2	7	31	<20
CC97434		<1	0.11	50	0.62	932	1	0.03	16	900	16	0.03	<2	6	43	20
CC97435		1	0.08	10	0.63	439	1	0.03	25	570	18	0.01	<2	4	23	20
CC97436		1	0.13	50	0.36	576	1	0.01	8	720	15	0.01	<2	4	63	20
CC97437		1	0.17	50	0.55	856	1	0.01	10	600	16	0.01	<2	7	69	20
CC97438		<1	0.16	20	0.50	901	1	0.01	5	710	15	0.01	<2	4	38	<20
CC97439		1	0.15	30	0.57	799	1	0.01	8	800	15	0.01	<2	5	36	<20
CC97440		1	0.16	20	0.47	866	1	0.01	8	690	15	<0.01	<2	4	23	<20
CC97441		<1	0.09	20	0.57	283	1	0.02	11	530	12	<0.01	<2	4	23	<20
CC97442		<1	0.13	20	0.51	599	1	0.01	10	770	14	<0.01	<2	4	24	20
CC97443		1	0.11	10	0.48	539	2	0.01	10	420	13	<0.01	<2	3	16	<20
CC97444		1	0.15	40	0.38	795	2	0.02	7	830	15	0.05	<2	3	37	<20
CC97445		1	0.16	30	0.61	993	1	0.01	12	750	14	<0.01	<2	4	32	<20
CC97446		<1	0.15	10	0.70	1730	1	0.01	11	560	15	<0.01	<2	4	29	<20
CC97447		1	0.14	30	0.54	635	1	0.02	10	710	14	0.02	<2	5	39	<20
CC97448		1	0.18	20	0.46	1225	1	0.01	8	670	22	<0.01	<2	4	17	20
CC97449		1	0.12	10	0.46	987	2	0.01	12	580	30	<0.01	<2	3	21	<20
CC97450		1	0.10	30	0.46	615	1	0.01	9	420	22	<0.01	<2	4	19	20
CC97451		1	0.15	20	0.66	1045	1	0.01	10	700	34	<0.01	<2	4	21	20
CC97452		1	0.16	100	0.58	512	2	0.01	13	310	20	<0.01	<2	5	27	20
CC97453		1	0.07	10	0.56	385	1	0.01	16	170	12	<0.01	<2	4	17	<20
CC97454		<1	0.14	10	0.47	488	1	0.01	9	200	19	<0.01	<2	3	13	20
CC97455		1	0.27	10	0.81	774	1	0.01	17	470	14	<0.01	<2	5	19	20
CC97456		1	0.27	20	0.50	638	1	0.01	6	280	19	<0.01	<2	4	16	20
CC97457		<1	0.14	20	0.42	662	1	0.01	9	660	19	0.01	<2	3	12	<20
CC96359		<1	0.15	80	0.37	2590	<1	0.02	8	980	13	0.06	<2	5	61	20
CC96360		1	0.24	20	0.66	543	<1	0.02	8	980	12	0.01	<2	4	23	20
CC96361		1	0.13	20	0.52	553	<1	0.01	9	400	17	0.01	<2	3	25	20
CC96362		1	0.20	60	0.52	863	<1	0.01	8	1240	16	0.05	<2	5	37	<20
CC96363		<1	0.14	30	0.21	843	<1	0.01	4	590	22	<0.01	<2	3	25	20
CC96364		1	0.15	10	0.22	465	<1	0.01	4	280	15	0.01	<2	2	17	<20
CC96365		1	0.15	120	0.40	619	<1	0.01	8	1120	13	0.10	<2	6	91	20
CC96366		1	0.11	10	0.33	302	<1	0.01	5	240	12	0.01	<2	3	14	<20
CC96367		1	0.20	20	0.33	1070	<1	0.01	7	710	21	0.01	<2	5	13	20



ALS Canada Ltd.
 2103 Dollarton Hwy
 North Vancouver BC V7H 0A7
 Phone: 604 984 0221 Fax: 604 984 0218 www.alsglobal.com

To: ARCHER, CATHRO AND ASSOCIATES (1981)
 LIMITED
 1016-510 W HASTINGS ST
 VANCOUVER BC V6B 1L8

Page: 3 - C
 Total # Pages: 4 (A - C)
 Finalized Date: 1-AUG-2010
 Account: F

Project: SELWYN

CERTIFICATE OF ANALYSIS VA10099462

Sample Description	Method Analyte Units LOR	ME-ICP41	ME-ICP41	ME-ICP41	ME-ICP41	ME-ICP41	ME-ICP41	Au-ICP21
		Ti %	Ti ppm	U ppm	V ppm	W ppm	Zn ppm	Au ppm
		0.01	10	10	1	10	2	0.001
CC97427		0.21	<10	<10	78	<10	105	0.001
CC97428		0.25	<10	<10	91	<10	123	<0.001
CC97429		0.14	<10	<10	83	<10	71	<0.001
CC97430		0.13	<10	<10	74	<10	73	0.005
CC97431		0.22	<10	<10	82	<10	106	<0.001
CC97432		0.18	<10	<10	94	<10	84	0.001
CC97433		0.14	<10	<10	74	<10	67	<0.001
CC97434		0.08	<10	<10	58	<10	73	0.002
CC97435		0.09	<10	<10	71	<10	61	0.003
CC97436		0.05	<10	<10	35	<10	67	<0.001
CC97437		0.06	<10	<10	47	<10	91	0.001
CC97438		0.07	<10	<10	48	<10	85	0.009
CC97439		0.09	<10	<10	57	<10	92	0.002
CC97440		0.10	<10	<10	55	<10	80	0.001
CC97441		0.12	<10	<10	56	<10	68	0.003
CC97442		0.10	<10	<10	57	<10	73	0.006
CC97443		0.08	<10	<10	68	<10	59	<0.001
CC97444		0.05	<10	<10	44	<10	64	0.001
CC97445		0.10	<10	<10	61	<10	76	<0.001
CC97446		0.14	<10	<10	67	<10	88	0.002
CC97447		0.09	<10	<10	48	<10	76	0.001
CC97448		0.07	<10	<10	48	<10	72	0.009
CC97449		0.04	<10	<10	61	<10	78	0.001
CC97450		0.07	<10	<10	56	<10	64	0.002
CC97451		0.09	<10	<10	71	<10	91	0.003
CC97452		0.12	<10	<10	79	<10	83	0.001
CC97453		0.08	<10	<10	64	<10	47	0.001
CC97454		0.03	<10	<10	45	<10	64	<0.001
CC97455		0.15	<10	<10	74	<10	81	0.001
CC97456		0.05	<10	<10	46	<10	70	0.004
CC97457		0.07	<10	<10	65	<10	60	0.001
CC96359		0.05	<10	10	37	<10	77	0.007
CC96360		0.14	<10	<10	66	<10	89	0.001
CC96361		0.07	<10	<10	58	<10	67	0.001
CC96362		0.07	<10	10	48	<10	72	<0.001
CC96363		0.02	<10	<10	27	<10	49	<0.001
CC96364		0.02	<10	<10	41	<10	44	0.001
CC96365		0.03	<10	<10	36	<10	71	0.004
CC96366		0.06	<10	<10	65	<10	43	<0.001
CC96367		0.04	<10	<10	48	<10	80	0.001



ALS Canada Ltd.
 2103 Dollarton Hwy
 North Vancouver BC V7H 0A7
 Phone: 604 984 0221 Fax: 604 984 0218 www.alsglobal.com

To: ARCHER, CATHRO AND ASSOCIATES (1981)
 LIMITED
 1016-510 W HASTINGS ST
 VANCOUVER BC V6B 1L8

Page: 4 - A
 Total # Pages: 4 (A - C)
 Finalized Date: 1-AUG-2010
 Account: F

Project: SELWYN

CERTIFICATE OF ANALYSIS VA10099462

Sample Description	Method Analyte Units LOR	WEI-21	ME-ICP41	ME-ICP41	ME-ICP41	ME-ICP41	ME-ICP41	ME-ICP41	ME-ICP41	ME-ICP41	ME-ICP41	ME-ICP41	ME-ICP41	ME-ICP41	ME-ICP41	ME-ICP41
		Recvd Wt. kg	Ag ppm	Al %	As ppm	B ppm	Ba ppm	Be ppm	Bi ppm	Ca %	Cd ppm	Co ppm	Cr ppm	Cu ppm	Fe %	Ga ppm
		0.02	0.2	0.01	2	10	10	0.5	2	0.01	0.5	1	1	1	0.01	10
CC96368		0.30	<0.2	2.74	9	<10	600	0.8	<2	0.41	<0.5	11	28	12	4.92	10
CC96369		0.36	<0.2	1.50	6	<10	490	0.5	<2	0.37	<0.5	7	17	3	3.19	10
CC96370		0.26	<0.2	2.03	8	<10	360	1.1	<2	0.31	<0.5	10	17	6	5.10	10
CC96371		0.22	<0.2	2.16	10	<10	280	1.0	<2	0.17	<0.5	10	24	8	3.72	10
CC96372		0.26	<0.2	2.23	10	<10	140	0.5	<2	0.12	<0.5	5	21	5	2.66	10
CC96373		0.20	<0.2	1.72	6	<10	320	0.6	<2	0.45	<0.5	10	19	8	3.01	10
CC96374		0.36	<0.2	2.14	5	<10	220	0.5	<2	0.50	<0.5	10	22	7	3.89	10
CC96375		0.32	<0.2	3.73	8	<10	360	1.5	<2	0.44	<0.5	16	24	15	7.80	20
CC96376		0.26	<0.2	2.81	6	<10	540	1.1	<2	0.60	<0.5	17	24	19	7.21	10
CC96377		0.34	<0.2	0.96	<2	<10	230	<0.5	<2	0.45	<0.5	5	8	2	1.69	<10
CC96378		0.30	<0.2	1.99	6	<10	280	0.6	<2	0.41	<0.5	7	24	16	2.98	10
CC96379		0.26	0.2	2.46	9	<10	200	0.7	<2	0.17	<0.5	9	30	9	3.62	<10
CC96380		0.28	<0.2	3.14	12	<10	220	1.0	<2	0.20	<0.5	14	22	11	7.73	10
CC96381		0.32	<0.2	1.38	14	<10	510	0.5	<2	0.37	<0.5	10	37	18	3.11	10
CC96382		0.24	<0.2	1.81	6	<10	630	0.6	<2	0.40	<0.5	9	25	6	3.83	10
CC96383		0.34	<0.2	1.82	8	<10	510	0.5	<2	0.42	<0.5	8	29	10	3.19	10
CC96384		0.24	<0.2	1.45	4	<10	450	0.8	<2	0.80	<0.5	6	13	7	2.52	<10
CC96385		0.32	<0.2	2.48	8	<10	240	0.9	<2	0.38	<0.5	14	24	15	5.76	10
CC96386		0.24	<0.2	1.32	5	<10	290	0.6	<2	0.52	<0.5	6	11	3	2.47	10
CC96387		0.22	<0.2	2.45	5	<10	270	0.9	<2	0.77	<0.5	10	26	25	4.22	10
CC96388		0.28	<0.2	1.10	8	<10	870	1.0	<2	0.35	<0.5	8	11	5	2.98	<10
CC96389		0.34	<0.2	1.12	7	<10	510	1.0	<2	0.30	<0.5	8	17	6	3.24	<10
CC96390		0.26	<0.2	1.79	5	<10	510	0.7	<2	0.25	<0.5	9	17	6	4.30	10
CC96391		0.30	<0.2	2.41	10	<10	370	1.0	<2	0.26	<0.5	11	17	13	6.16	10
CC96392		0.28	<0.2	1.84	3	<10	280	0.7	<2	0.37	<0.5	11	25	10	3.62	10
CC96393		0.26	<0.2	1.40	3	<10	340	0.5	<2	0.54	<0.5	5	16	6	2.29	10
CC96394		0.28	<0.2	1.42	6	<10	440	<0.5	<2	0.20	<0.5	5	18	9	2.00	<10
CC96395		0.24	0.2	1.26	8	<10	140	0.5	<2	0.09	<0.5	7	18	6	2.05	<10
CC96396		0.30	<0.2	1.98	13	<10	210	0.7	<2	0.21	<0.5	10	41	20	2.99	<10
CC96397		0.30	<0.2	0.62	8	<10	270	0.6	<2	0.19	<0.5	2	10	3	1.18	<10
CC96398		0.28	0.2	2.44	8	<10	140	0.7	<2	0.23	<0.5	11	21	9	4.13	10
CC96399		0.34	<0.2	1.45	9	<10	250	0.7	<2	0.21	<0.5	8	26	11	2.91	<10
CC96400		0.30	<0.2	1.44	6	<10	280	1.2	<2	0.36	<0.5	10	18	10	3.15	<10



ALS Canada Ltd.
 2103 Dollarton Hwy
 North Vancouver BC V7H 0A7
 Phone: 604 984 0221 Fax: 604 984 0218 www.alsglobal.com

To: ARCHER, CATHRO AND ASSOCIATES (1981)
 LIMITED
 1016-510 W HASTINGS ST
 VANCOUVER BC V6B 1L8

Page: 4 - B
 Total # Pages: 4 (A - C)
 Finalized Date: 1-AUG-2010
 Account: F

Project: SELWYN

CERTIFICATE OF ANALYSIS VA10099462

Sample Description	Method Analyte Units LOR	ME-ICP41	ME-ICP41	ME-ICP41	ME-ICP41	ME-ICP41	ME-ICP41	ME-ICP41	ME-ICP41	ME-ICP41	ME-ICP41	ME-ICP41	ME-ICP41	ME-ICP41	ME-ICP41	ME-ICP41
		Hg ppm	K %	La ppm	Mg %	Mn ppm	Mo ppm	Na %	Ni ppm	P ppm	Pb ppm	S %	Sb ppm	Sc ppm	Sr ppm	Th ppm
		1	0.01	10	0.01	5	1	0.01	1	10	2	0.01	2	1	1	20
CC96368		<1	0.25	30	0.71	939	<1	0.01	15	640	14	0.01	<2	7	34	20
CC96369		1	0.23	20	0.46	804	<1	0.01	5	500	12	0.01	<2	4	28	<20
CC96370		1	0.47	20	0.71	1390	<1	0.01	7	750	21	0.01	<2	7	26	20
CC96371		<1	0.11	20	0.41	573	<1	0.01	10	240	16	<0.01	<2	7	17	20
CC96372		1	0.07	10	0.24	265	<1	0.01	6	280	14	0.01	<2	3	13	<20
CC96373		1	0.14	60	0.46	1550	<1	0.01	7	730	20	0.03	<2	5	36	30
CC96374		<1	0.18	30	0.62	790	<1	0.01	7	970	16	0.02	<2	5	36	20
CC96375		1	0.95	60	1.42	1615	<1	0.02	11	1510	19	0.02	<2	16	30	60
CC96376		1	0.65	40	1.10	2080	<1	0.02	10	1380	16	0.02	<2	13	45	40
CC96377		1	0.14	40	0.36	369	<1	0.02	3	860	7	0.02	<2	3	30	<20
CC96378		1	0.12	30	0.53	264	<1	0.03	12	770	11	0.01	<2	6	30	20
CC96379		<1	0.11	20	0.53	468	<1	0.01	13	360	15	0.01	<2	4	16	20
CC96380		1	0.22	40	0.66	1450	<1	0.01	9	860	25	0.01	<2	10	18	50
CC96381		<1	0.16	20	0.38	586	<1	0.01	13	340	19	0.01	<2	3	30	<20
CC96382		1	0.19	20	0.49	984	<1	0.02	11	420	16	0.01	<2	4	27	<20
CC96383		1	0.17	20	0.59	525	<1	0.02	14	430	11	0.01	<2	5	25	<20
CC96384		1	0.20	70	0.44	531	<1	0.02	6	960	14	0.04	<2	6	119	20
CC96385		1	0.27	50	0.65	991	<1	0.01	10	1580	19	0.01	<2	9	20	40
CC96386		<1	0.16	40	0.49	612	<1	0.01	4	750	12	0.02	<2	4	35	20
CC96387		<1	0.23	60	0.86	907	1	0.02	13	1060	16	0.02	<2	10	65	40
CC96388		1	0.14	40	0.16	1005	<1	0.01	3	430	35	0.02	<2	5	37	20
CC96389		<1	0.17	30	0.19	785	<1	0.01	6	290	34	0.01	<2	4	26	30
CC96390		1	0.25	30	0.50	995	<1	0.01	8	400	20	0.01	<2	4	20	20
CC96391		1	0.42	40	0.65	1310	<1	0.01	6	1950	152	0.01	<2	8	14	30
CC96392		1	0.19	20	0.59	703	<1	0.02	10	900	13	0.01	<2	4	24	20
CC96393		<1	0.14	50	0.41	349	<1	0.02	5	900	12	0.05	<2	4	39	20
CC96394		1	0.10	10	0.24	278	2	0.01	12	140	14	0.01	<2	2	18	<20
CC96395		<1	0.09	10	0.19	490	1	0.01	9	360	33	0.01	<2	2	15	20
CC96396		<1	0.18	10	0.54	312	1	0.02	23	100	22	0.01	<2	5	19	20
CC96397		1	0.11	10	0.11	288	1	0.01	5	120	37	0.01	<2	2	34	60
CC96398		1	0.14	20	0.59	652	1	0.02	12	1140	20	0.02	<2	4	13	<20
CC96399		1	0.15	10	0.47	492	2	0.02	14	210	14	0.01	<2	5	16	<20
CC96400		1	0.23	20	0.46	728	1	0.02	11	350	19	0.02	<2	8	22	20



ALS Canada Ltd.
 2103 Dollarton Hwy
 North Vancouver BC V7H 0A7
 Phone: 604 984 0221 Fax: 604 984 0218 www.alsglobal.com

To: ARCHER, CATHRO AND ASSOCIATES (1981)
 LIMITED
 1016-510 W HASTINGS ST
 VANCOUVER BC V6B 1L8

Page: 4 - C
 Total # Pages: 4 (A - C)
 Finalized Date: 1-AUG-2010
 Account: F

Project: SELWYN

CERTIFICATE OF ANALYSIS VA10099462

Sample Description	Method Analyte Units LOR	ME-ICP41	ME-ICP41	ME-ICP41	ME-ICP41	ME-ICP41	ME-ICP41	Au-ICP21
		Ti %	Ti ppm	U ppm	V ppm	W ppm	Zn ppm	Au ppm
		0.01	10	10	1	10	2	0.001
CC96368		0.08	<10	<10	77	<10	102	0.003
CC96369		0.07	<10	<10	51	<10	59	<0.001
CC96370		0.15	<10	<10	72	<10	116	<0.001
CC96371		0.04	<10	<10	60	<10	96	<0.001
CC96372		0.05	<10	<10	58	<10	36	0.004
CC96373		0.06	<10	<10	51	<10	69	0.002
CC96374		0.11	<10	<10	67	<10	93	0.001
CC96375		0.31	<10	<10	128	<10	159	<0.001
CC96376		0.22	<10	<10	121	<10	135	0.009
CC96377		0.06	<10	<10	27	<10	59	<0.001
CC96378		0.13	<10	<10	56	<10	77	0.002
CC96379		0.07	<10	<10	63	<10	61	0.002
CC96380		0.08	<10	<10	100	<10	171	<0.001
CC96381		0.04	<10	<10	51	<10	45	<0.001
CC96382		0.07	<10	<10	65	<10	68	0.001
CC96383		0.10	<10	<10	57	<10	58	<0.001
CC96384		0.04	<10	10	37	<10	69	0.003
CC96385		0.09	<10	<10	85	<10	111	<0.001
CC96386		0.08	<10	<10	37	<10	77	0.026
CC96387		0.12	<10	10	72	<10	96	0.003
CC96388		0.01	<10	<10	35	<10	56	<0.001
CC96389		0.02	<10	<10	38	<10	55	<0.001
CC96390		0.06	<10	<10	63	<10	80	<0.001
CC96391		0.11	<10	<10	75	<10	131	<0.001
CC96392		0.11	<10	<10	60	<10	80	0.002
CC96393		0.06	<10	<10	56	<10	70	0.002
CC96394		0.02	<10	<10	43	<10	33	0.001
CC96395		0.02	<10	<10	34	<10	37	0.006
CC96396		0.09	<10	<10	68	<10	51	0.001
CC96397		0.01	<10	<10	15	<10	23	<0.001
CC96398		0.05	<10	<10	63	<10	86	<0.001
CC96399		0.06	<10	<10	55	<10	54	<0.001
CC96400		0.04	<10	<10	50	<10	64	<0.001

Q287A2

ARCHER, CATHRO & ASSOCIATES (1981) LIMITED
1016 – 510 West Hastings Street
Vancouver, B.C. V6B 1L8

Telephone: 604-688-2568

Fax: 604-688-2578

AFFIDAVIT

I, Joan Mariacher, of Vancouver, B.C. make oath and say:

That to the best of my knowledge the attached Statement of
Expenditures for exploration work on the KKK 1-70 mineral claims
on Claim Sheet 115J/9 is accurate.


Joan Mariacher

Sworn before me at Vancouver, B.C.

this 19th day of April 2011.



Barrister & Solicitor

IAN J. TALBOT
Barrister & Solicitor
281 East 5th Street
North Vancouver
British Columbia
Canada V7L 1L8

Statement of Expenditures
KKK 1-70 Mineral Claims
April 15, 2011

Labour

H. Smith (geologist) September to December 2010 – 9 1/2 hrs @ \$75/hr	\$ 1,806.00
January to April 2011 – 1 hr @ \$90/hr	100.80
N. Sheshi (field assistant) July 2010 – 3 days @ \$336/day	1,128.96
B. Alladice (field assistant) July 2010 – 3 days @ \$328/day	1,102.08
C. Beck (field assistant) July 2010 – 3 days @ \$304/day	<u>1,021.44</u>
	5,159.28

Expenses

Field room and board – 9 mandays @ \$125/manday	1,260.00
Capital Helicopters	5,381.25
ALS Chemex	<u>4,820.61</u>
	11,461.86
 Total	 <u>\$16,621.14</u>

CAPITAL HELICOPTERS (1995) INC.

Suite 3 - 25 Pilgrim Place, Whitehorse, Y.T. Y1A 6E6
 Phone: (867) 668-6200 Fax: (867) 668-6201
 capitalheli@polarcom.com



Charter and Contract Service

INVOICE

NO. 11352

DATE 23/07/2010

PAGE 1 of 1

SOLD TO

Archer Cathro
 Suite 1016, 510 West Hastings
 Vancouver, B. C. V6B 1L8

SHIP TO

Archer Cathro
 Suite 1016, 510 West Hastings
 Vancouver, B. C. V6B 1L8

ITEM NO.	QUANTITY	UNIT	DESCRIPTION	GST PST	UNIT PRICE	AMOUNT
July 16	2.8	hrs	ccc 1.1 000 1.7	G	1,025.00	2,870.00
July 17	2.5	hrs	ccc.9 000 1.6	G	1,025.00	2,562.50
July 18	2.1	hrs	kkk 2.1	G	1,025.00	2,152.50
July 19	3.4	hrs	## 2.0 ferry to McQuest 1.4 LLL	G	1,025.00	3,485.00
	<u>10.8</u>		G - GST 5.00% GST			<u>11070.</u> 553.51
	8.8		Selagin 9020.00			
	2.0		Klatswin 2050.00			
Capital Helicopters (1995) Inc. GST: #899587984						
Thank You! Your Business Is Appreciated! Fuel Price includes Federal and Yukon Tax						
					TOTAL	11,623.51

HA 2.0 CCC 2177.50

HA 2.6 KKK 2798.25

HA 2.4 LLL 2583.00

HA 3.8 000 4089.75

CAPITAL HELICOPTERS (1995) INC.

Suite 3 - 25 Pilgrim Place, Whitehorse, Y.T. Y1A 6E6
 Phone: (867) 668-6200 Fax: (867) 668-6201
 capitalheli@polarcom.com



Charter and Contract Service

INVOICE

NO. 11306-11311

DATE 16/07/2010

PAGE 1 of 1

SOLD TO

Archer Cathro
 Suite 1016, 510 West Hastings
 Vancouver, B. C. V6B 1L8

SHIP TO

Archer Cathro
 Suite 1016, 510 West Hastings
 Vancouver, B. C. V6B 1L8

ITEM NO.	QUANTITY	UNIT	DESCRIPTION	GST	PST	UNIT PRICE	AMOUNT
July 7	4.1	hrs	DDD Klaza camp-S/O and P/U Klotassen 1.2 Selwyn 2.9	G	MMM	1,025.00	4,202.50
July 8	3.6	hrs	EEE Klaza camp-S/O and P/U Klotassen 1.4 Selwyn 2.2	G	MMM	1,025.00	3,690.00
July 9	5.2	hrs	QQQ Klaza camp-S/O and P/U Klotassen 2.8 Selwyn 2.4	G	KKK	1,025.00	5,330.00
July 10	3.4	hrs	CCC Klaza camp-S/O and P/U Klotassen 1.4 Selwyn 2.0	G	OOO	1,025.00	3,485.00
July 12	1.8	hrs	BBB Klaza camp-S/O and P/U Klotassen 1.8 Selwyn 1.0	G		1,025.00	1,845.00
July 14/13	5.2	hrs	HHH Klaza camp-S/O and P/U Klotassen 3. Selwyn 2.2	G	JJJ	1,025.00	5,330.00
July 15 OK	2.8	hrs	BBB Klaza camp-S/O and P/U Klotassen 2.8 Selwyn 1.	G		1,025.00	2,870.00
	26.1						
			G - GST 5.00%				
			GST				1,337.63
<p>Handwritten notes: 14.4 Klotassen - 14760.00, 11.7 Selwyn - 11992.50, NAOV</p>							
Capital Helicopters (1995) Inc. GST: #899587984							
Thank You! Your Business Is Appreciated! Fuel Price includes Federal and Yukon Tax							
COMMENTS						TOTAL ↓	28,090.13

3.8 NA BBB - 4089.75
 1.4 J CCC - 1506.75
 1.2 J DDD - 1291.50
 1.4 J EEE - 1506.75
 3.0 J HHH - 3228.75
 0.8 J III - 861.00
 2.8 J QQQ - 3013.50
 2.2 J JJJ - 2367.25
 2.4 J KKK - 2583.00
 5.1 J MMM - 5488.88
 2.0 J OOO - 2152.50



ALS Canada Ltd.

2103 Dollarton Hwy
North Vancouver BC V7H 0A7
Phone: 604 984 0221 Fax: 604 984 0218

www.alsglobal.com

To: ARCHER, CATHRO AND ASSOCIATES (1981) LIMITED
1016-510 W HASTINGS ST
VANCOUVER BC V6B 1L8

INVOICE NUMBER 2114507

BILLING INFORMATION	
Certificate:	VA10100090
Sample Type:	Soil
Account:	F
Date:	3-AUG-2010
Project:	SELWYN Ak
P.O. No.:	KKK
Quote:	ALSM-CW10-030-F
Terms:	Net 30 Days
Comments:	C1

QUANTITY	CODE	ANALYSED FOR	DESCRIPTION	UNIT PRICE	TOTAL
103	PREP-41		Dry, Sieve (180 um) Soil	0.96	98.88
31.68	PREP-41		Weight Charge (kg) - Dry, Sieve (180 um) Soil	1.80	57.02
103	ME-ICP41		35 Element Aqua Regia ICP-AES	4.92	506.76
103	GEO-AR01		Aqua regia digestion	2.45	252.35
103	Au-ICP21		Au 30g FA ICP-AES Finish	11.06	1,139.18

Selwyn Ak

To: ARCHER, CATHRO AND ASSOCIATES (1981) LIMITED
ATTN: JOAN MARIACHER
1016-510 W HASTINGS ST
VANCOUVER BC V6B 1L8

SUBTOTAL (CAD) \$ 2,054.19
R100938885 HST BC \$ 246.50
TOTAL PAYABLE (CAD) \$ 2,300.69

Payment may be made by: Cheque or Bank Transfer

Beneficiary Name: ALS Canada Ltd.
Bank: Royal Bank of Canada
SWIFT: ROYCCAT2
Address: Vancouver, BC, CAN
Account: 003-00010-1001098

Please Remit Payments To :
ALS Canada Ltd.
2103 Dollarton Hwy
North Vancouver BC V7H 0A7



ALS Canada Ltd.

2103 Dollarton Hwy
North Vancouver BC V7H 0A7
Phone: 604 984 0221 Fax: 604 984 0218

www.alsglobal.com

To: ARCHER, CATHRO AND ASSOCIATES (1981) LIMITED
1016-510 W HASTINGS ST
VANCOUVER BC V6B 1L8

INVOICE NUMBER 2111339

BILLING INFORMATION	
Certificate:	VA10099462
Sample Type:	Soil
Account:	F
Date:	1-AUG-2010
Project:	SELWYN <i>AM</i>
P.O. No.:	KKK
Quote:	ALSM-CW10-030-F
Terms:	Net 30 Days
Comments:	C1

QUANTITY	CODE	ANALYSED FOR	DESCRIPTION	UNIT PRICE	TOTAL
113	PREP-41		Dry, Sieve (180 um) Soil	0.96	108.48
32.70	PREP-41		Weight Charge (kg) - Dry, Sieve (180 um) Soil	1.80	58.86
113	ME-ICP41		35 Element Aqua Regia ICP-AES	4.92	555.96
113	GEO-AR01		Aqua regia digestion	2.45	276.85
113	Au-ICP21		Au 30g FA ICP-AES Finish	11.06	1,249.78

Sum NAD

To: ARCHER, CATHRO AND ASSOCIATES (1981) LIMITED
ATTN: JOAN MARIACHER
1016-510 W HASTINGS ST
VANCOUVER BC V6B 1L8

SUBTOTAL (CAD) \$ 2,249.93
R100938885 HST BC \$ 269.99
TOTAL PAYABLE (CAD) \$ 2,519.92

Please Remit Payments To :
ALS Canada Ltd.
2103 Dollarton Hwy
North Vancouver BC V7H 0A7

Payment may be made by: Cheque or Bank Transfer
Beneficiary Name: ALS Canada Ltd.
Bank: Royal Bank of Canada
SWIFT: ROYCCAT2
Address: Vancouver, BC, CAN
Account: 003-00010-1001098