

ARCHER, CATHRO & ASSOCIATES (1981) LIMITED
1016 - 510 West Hastings Street
Vancouver, B.C. V6B1L8

Telephone: 604-688-2568

Fax: 604-688-2578

ASSESSMENT REPORT

describing

GEOCHEMICAL SAMPLING

at the

GGG PROPERTY

GGG 1-32 YD57237-YD57268

NTS 115J/02

Latitude 62°11'N, Longitude 138°52'W

located in the

Whitehorse Mining District
Yukon Territory

prepared by

Archer, Cathro & Associates (1981) Limited

for

WOLVERINE MINERALS CORP.
and
STRATEGIC METALS LTD.

by

C.J. Chung, B.Sc. Geology, GIT

April 2011

CONTENTS

INTRODUCTION	1
PROPERTY LOCATION, CLAIM DATA AND ACCESS	1
HISTORY AND PREVIOUS WORK	1
GEOMORPHOLOGY AND CLIMATE	2
REGIONAL GEOLOGY	2
PROPERTY GEOLOGY	3
REGIONAL MINERALIZATION	3
STREAM SEDIMENT AND SOIL GEOCHEMISTRY	4
DISCUSSION AND CONCLUSIONS	5
REFERENCES	6

APPENDICES

- I STATEMENT OF QUALIFICATIONS
- II SAMPLING AND ANALYTICAL PROCEDURES
- III CERTIFICATES OF ANALYSIS

FIGURES

<u>No.</u>	<u>Description</u>	<u>Follows Page</u>
1	Property Location	1
2	Claim Locations	1
3	Tectonic Setting	2
4	Property Geology	2
5	Sample Locations	5
6	Gold Geochemistry	5
7	Arsenic Geochemistry	5
8	Copper Geochemistry	5

TABLES

I	Lithological Units	3
---	--------------------	---

INTRODUCTION

The GGG property lies within the Dawson Range Gold Belt of western Yukon. It was staked to cover an anomalous gold value reported from historical stream sediment sampling. Wolverine Minerals Corp. can earn a 100% interest in the property subject to an option agreement with Strategic Metals Ltd.

This report describes a one day exploration program that was conducted by Archer, Cathro & Associates (1981) Limited in summer 2010 on behalf of Strategic Metals. The work was performed on June 26 and comprised geochemical sampling. The author interpreted all data from this program, and her Statement of Qualifications appears in Appendix I.

PROPERTY LOCATION, CLAIM DATA AND ACCESS

The GGG property consists of 32 contiguous mineral claims, which are located on NTS map sheet 115J/02 at latitude 62°11' north and longitude 138°52' west (Figure 1). The property covers an area of approximately 650 ha (6.5 sq. km). The claims are registered with the Whitehorse Mining Recorder in the name of Archer Cathro, which holds them in trust for Strategic Metals. Specifics concerning claim registration are tabulated below, while the locations of individual claims are shown on Figure 2.

<u>Claim Name</u>	<u>Grant Number</u>	<u>Expiry Date*</u>
GGG 1-32	YD57237-YD57268	April 15, 2011

* Expiry date does not include 2010 work that has not yet been filed for assessment credit.

In 2010, access to the property was with a Bell 206B helicopter owned and operated by Capital Helicopters (1995) Inc. of Whitehorse, from a temporary base at the Klaza property located near the former Mount Nansen Mine. The Klaza property lies about 85 km to the southeast of the GGG property and 70 km by road west of the community of Carmacks.

HISTORY AND PREVIOUS WORK

In 1969, Archer Cathro performed regional exploration in the Dawson Range district for the Dawson Range Joint Venture (DRJV). During that program, three samples were taken in the vicinity of the current GGG property. Two of these samples were from a creek draining the property. Those samples returned 11 and 16 ppm copper, 15 and 17 ppm lead and nil molybdenum. The third sample that was taken from a drainage to the northwest yielded 30 ppm copper, 19 ppm lead and nil molybdenum (Cathro and Culbert, 1969).

In 1980, Archer Cathro did work in the Dawson Range as part of the NAT Joint Venture (NAT JV), which comprised Chevron Canada Limited and Armco Mineral Exploration Ltd. Part of the NAT JV program involved reanalyses of over 5000 previously collected geochemical sample splits for gold, silver, arsenic and lead. Only one of the previously collected samples was taken within the GGG property area. That sample yielded 89 ppb gold. Five other samples were collected from different drainages in the vicinity of the property. Those samples all returned

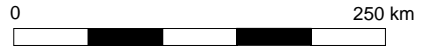
**WOLVERINE MINERALS CORP.
STRATEGIC METALS LTD.**

FIGURE 1

ARCHER, CATHRO & ASSOCIATES (1981) LIMITED


PROPERTY LOCATION

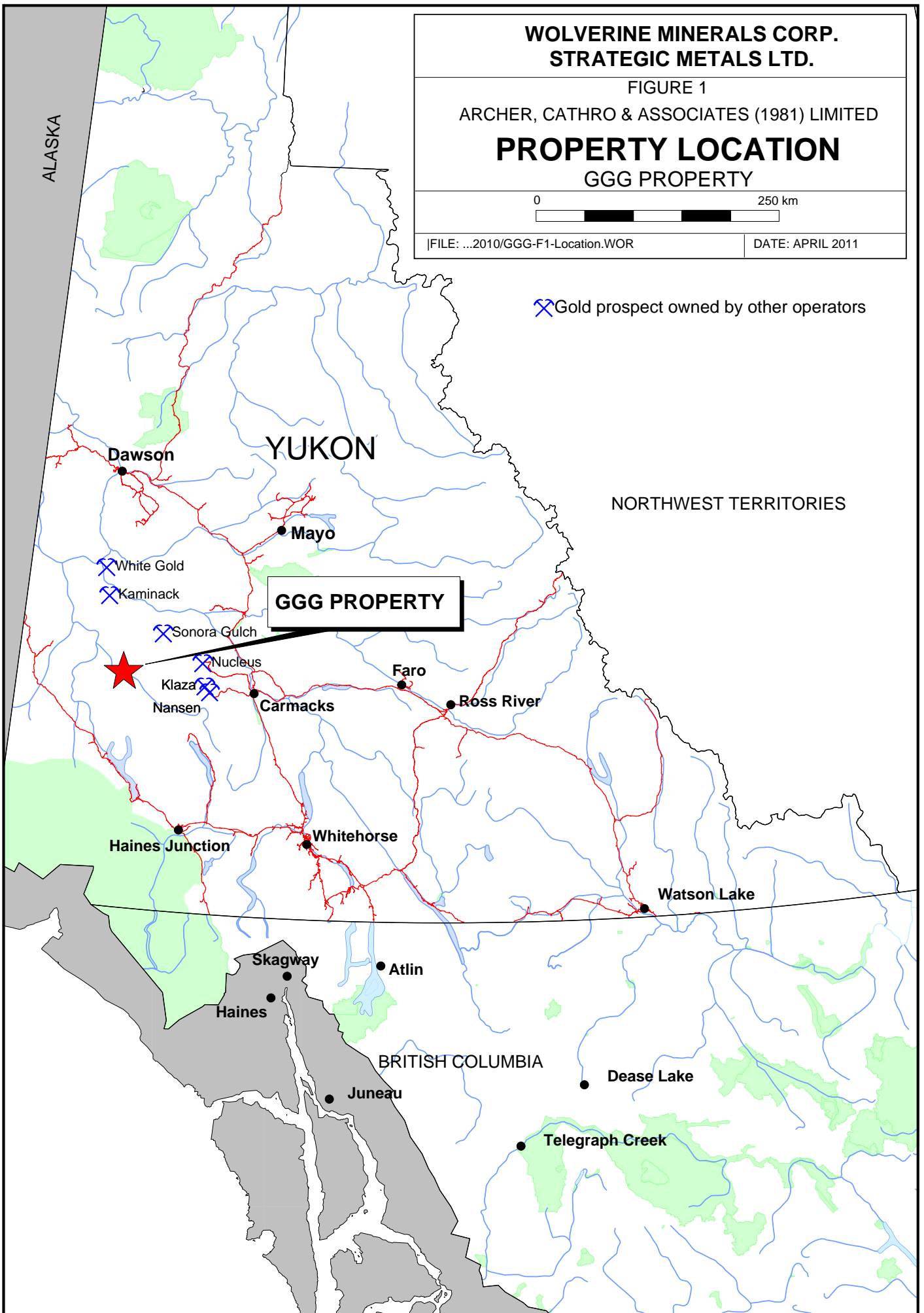
GGG PROPERTY

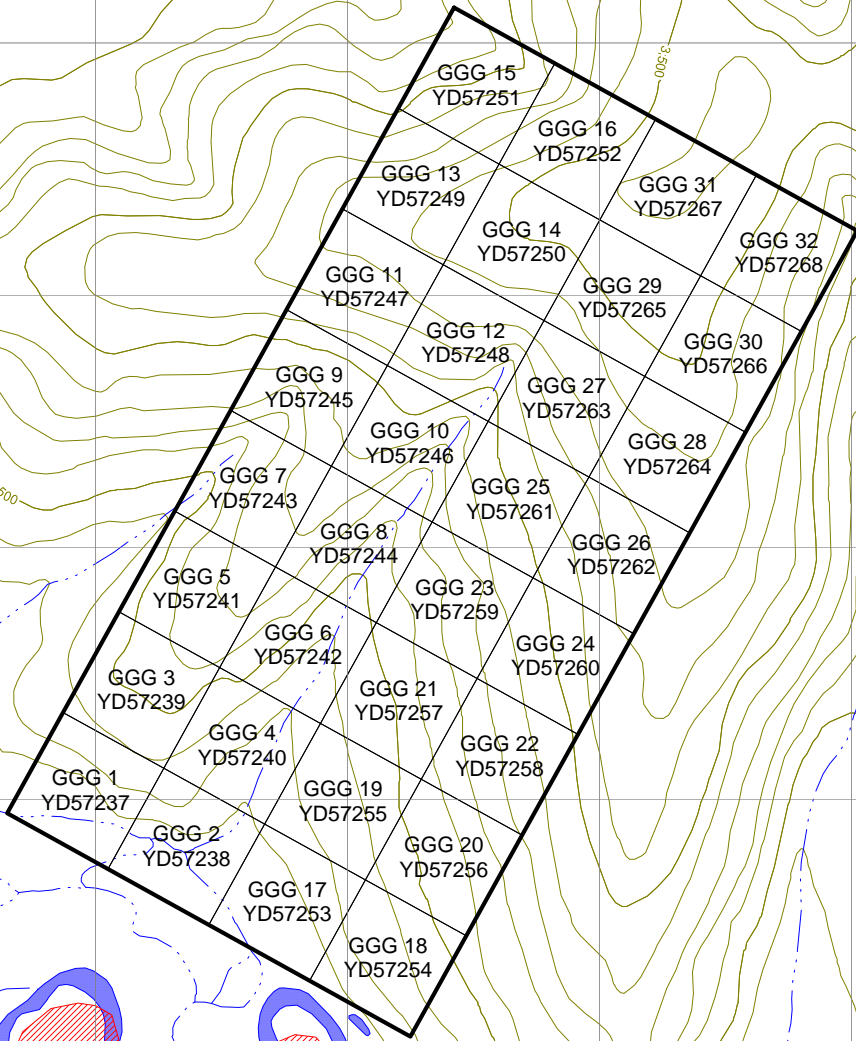
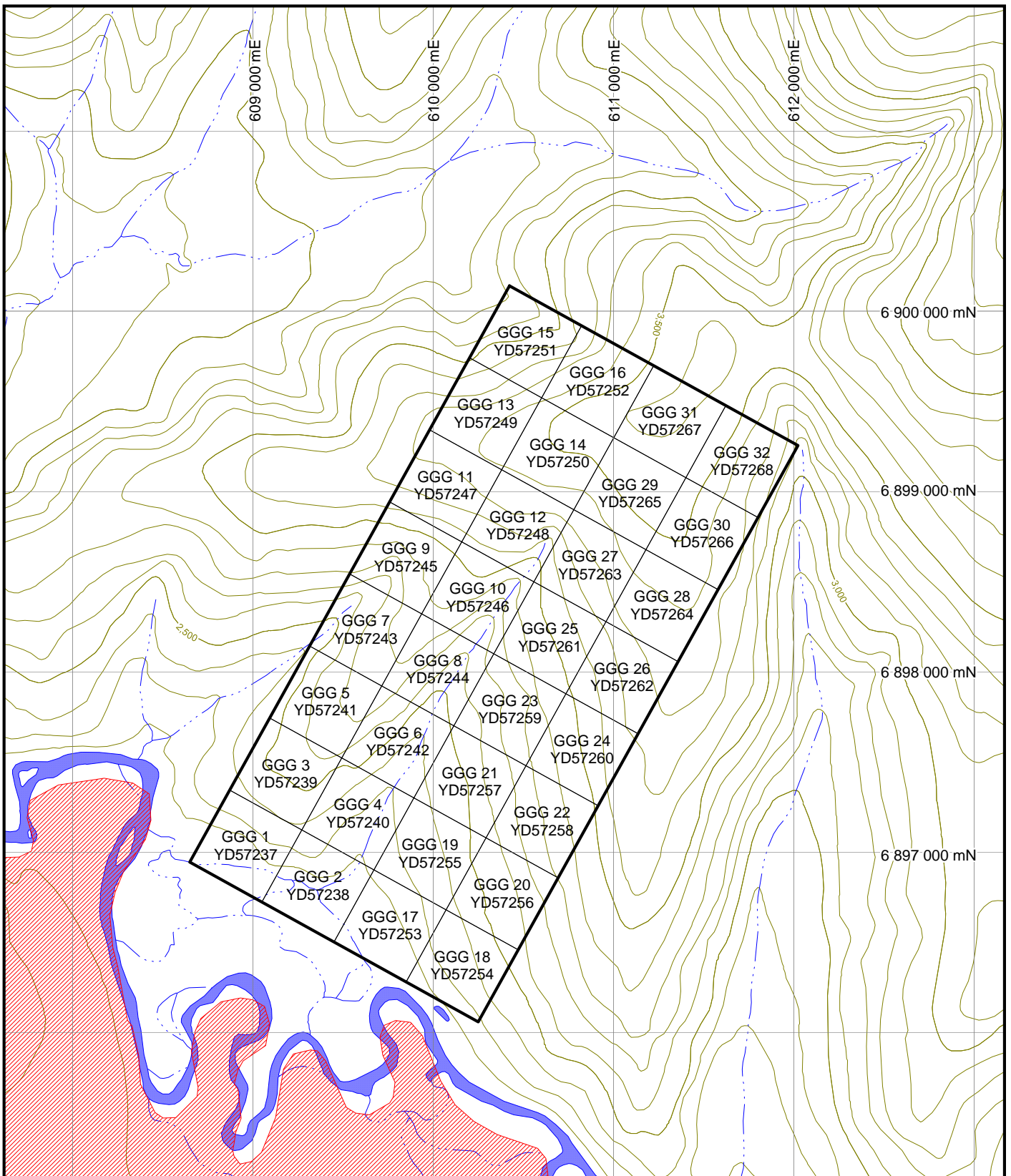


FILE: ...2010/GGG-F1-Location.WOR

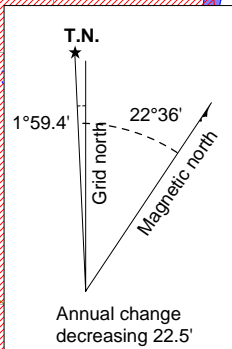
DATE: APRIL 2011

 Gold prospect owned by other operators





First Nation Land



**WOLVERINE MINERALS CORP.
STRATEGIC METALS LTD.**

FIGURE 2
ARCHER, CATHRO & ASSOCIATES (1981) LIMITED
CLAIM LOCATIONS
GGG PROPERTY



background values for gold (Archer and Onasick, 1980).

In 1986, the Geological Survey of Canada conducted a low-density stream sediment and water sampling survey on NTS map sheet 115J (Friske et al., 1986). Four samples were taken in the vicinity of the current GGG property, but none of them was from the drainage that produced NAT JV's anomalous gold result. All four of the GSC samples returned background values for all metals.

Strategic Metals staked the GGG claims in March 2010 to cover the drainage that yielded the historical value of 89 ppb gold. Wolverine signed an option purchase agreement with Strategic Metals in September 2010.

GEOMORPHOLOGY AND CLIMATE

The GGG property is situated in the southern part of the Dawson Range. It is located on the headwater of a creek that flow southwest into the Nisling River, which is part of the Yukon River watershed. Elevations in the immediate area range between 670 m alongside the Nisling River to 1100 m atop a ridge at the head of the creek. Outcrop is rare and is limited to the creek gully.

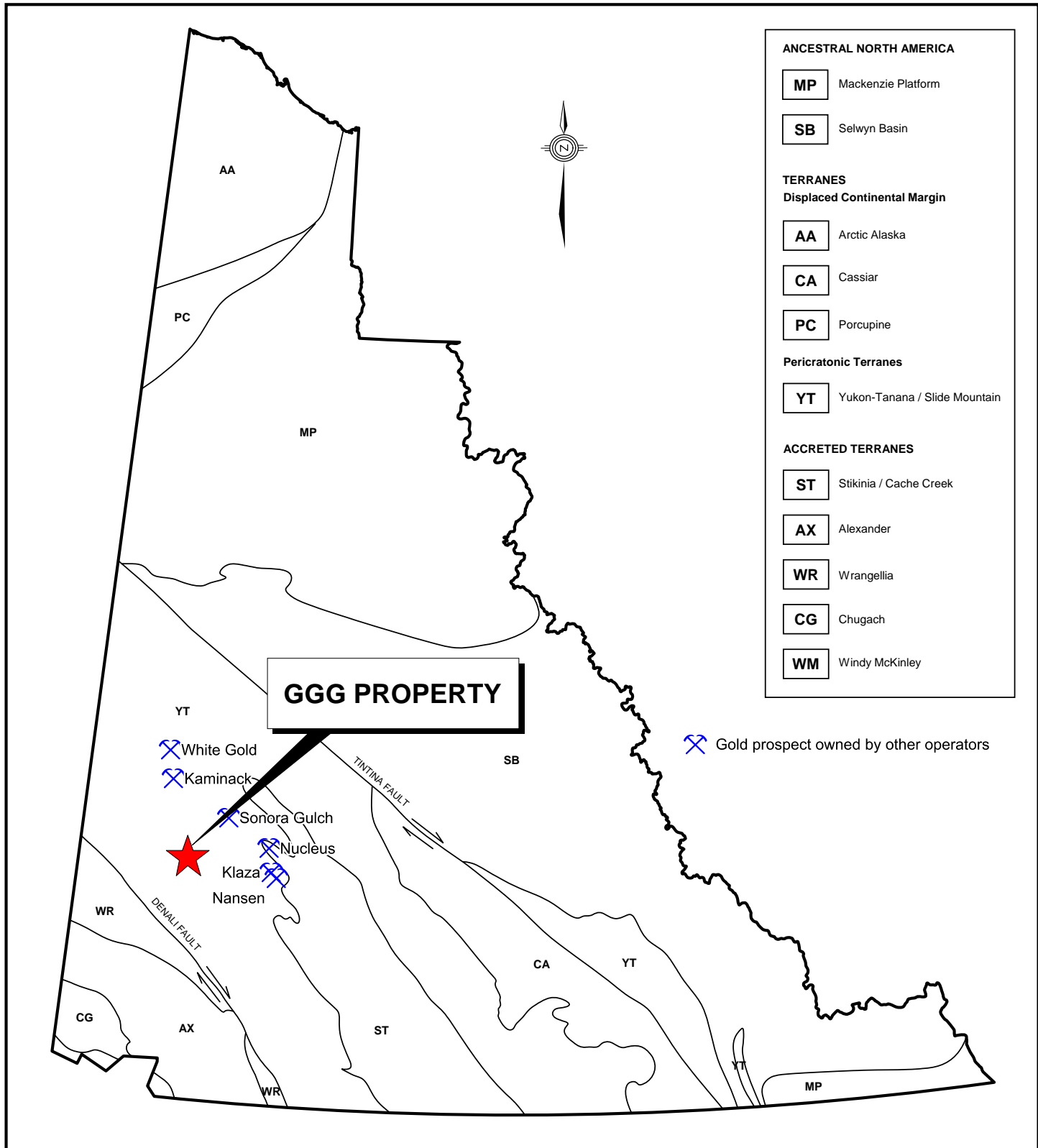
Treeline in the area is approximately 1400 m above sea level. Lower elevations are characterized by buckbrush, moss and spruce stands. Most of the property is vegetated with scattered spruce and poplar trees with an understory of buckbrush and grass.

The climate in the GGG area is typical of northern continental regions with long, cold winters, truncated fall and spring seasons and short, mild summers. Although summers are relatively mild, arctic cold fronts often cover the area and snowfall can occur in any month. The property is mostly snow free from late May to late September.

REGIONAL GEOLOGY

In 1973, the Geological Survey of Canada published a geological map of the Snag area (NTS map sheet 115J) at 1:250 000 scale (Tempelmen-Kluit, 1973). Gordey and Makepeace (2003) later completed a Yukon-wide geological compilation, which updated lithological unit names in the GGG area.

The GGG property is located within the Yukon-Tanana Terrane (YTT) as shown on Figure 3. The YTT represents a continental arc that developed along the ancient Pacific margin of North America from late Devonian to Permian. Figure 4 illustrates geology as compiled by Gordey and Makepeace (2003). The main lithological units are described in Table I.

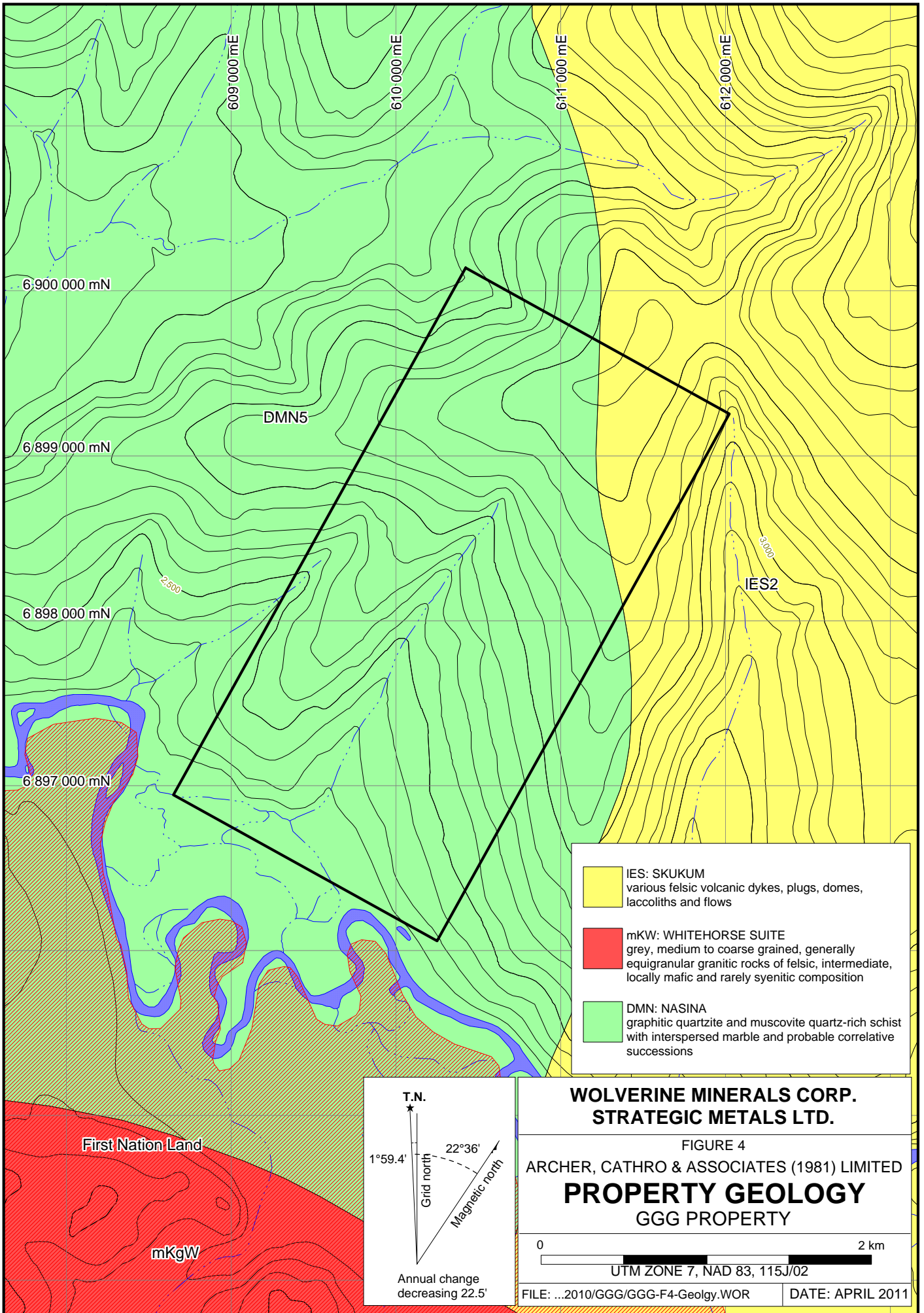


**WOLVERINE MINERALS CORP.
STRATEGIC METALS LTD.**

FIGURE 3
ARCHER, CATHRO & ASSOCIATES (1981) LIMITED

**TECTONIC SETTING
GGG PROPERTY**

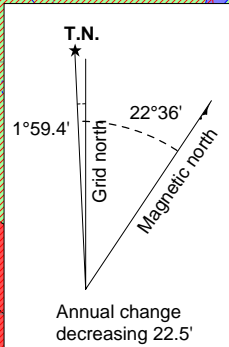
0 200 km



- IES: SKUKUM**
 various felsic volcanic dykes, plugs, domes, laccoliths and flows

- mKW: WHITEHORSE SUITE**
 grey, medium to coarse grained, generally equigranular granitic rocks of felsic, intermediate, locally mafic and rarely syenitic composition

- DMN: NASINA**
 graphitic quartzite and muscovite quartz-rich schist with interspersed marble and probable correlative successions



WOLVERINE MINERALS CORP.
STRATEGIC METALS LTD.

FIGURE 4
ARCHER, CATHRO & ASSOCIATES (1981) LIMITED
PROPERTY GEOLOGY
GGG PROPERTY

0 2 km

UTM ZONE 7, NAD 83, 115J/02

FILE: ...2010/GGG/GGG-F4-Geology.WOR DATE: APRIL 2011

Table I – Lithological Units (after Gordey and Makepeace, 2003)

Unit Name	Age	Map Name	Description
Skukum	Lower Eocene	IES	Various felsic volcanic dykes, plugs, domes, laccoliths and flows. Heterogeneous intermediate to felsic, hornblende-feldspar porphyritic tuff, flow breccia; volcanoclastic mudstone, sandstone and conglomerate; aphanitic to feldspar porphyritic dacite flows and dykes; flow-banded rhyolite and felsic dykes and sills.
Whitehorse Suite	Mid-Cretaceous	mKgW	Grey, medium to coarse grained, generally equigranular granitic rocks of felsic, intermediate, locally mafic and rarely syenitic composition. Biotite-hornblende granodiorite, hornblende-quartz diorite and hornblende diorite; leucocratic, biotite-hornblende granodiorite.
Nasina Assemblage	Devonian, Mississippian and Older	DMN	Graphitic quartzite and muscovite quartz-rich schists with interspersed marble and probable correlative successions. Black-weathering, massive dark grey to black strongly graphitic quartzite with lesser grey micaceous quartzite and quartz mica schist; commonly shows alternating light and dark grey colour lamination.

PROPERTY GEOLOGY

No detailed geological mapping has been done on the GGG property. The following description of property geology is based on published data discussed in the previous section.

The GGG property is mostly underlain by Nasina Assemblage (DMN). This unit is capped or intruded by Skukum volcanics (IES) to the northeast. A Whitehorse Suite granodiorite and hornblende granodiorite (mKgW) stock lies about 1500 m south of the property.

There is no known mineralization on the property.

REGIONAL MINERALIZATION

There are numerous mineral deposits within the Dawson Range that are associated with young intrusions. A nearby property whose geological setting resembles the setting of the GGG property is the Coffee, the location of which is shown on Figure 1.

Kaminak Gold Corporation is actively exploring its Coffee property, which lies about 80 km north-northwest of the GGG property. In March 2011, SRK Consulting released a NI43-101 technical report on the Coffee property. The following descriptions of geology, mineralization and geophysical signature are based on information summarized from that report.

Six distinct zones (Supremo, Latte, Double Double, Kona, Americano and Espresso) have been identified on the Coffee property.

The Supremo Zone hosts gold mineralization that has been characterized by three distinct styles:

- 1) Multi-episode hydrothermal breccia that yields 5 to 60 g/t gold.
- 2) Pervasive hydrothermal alteration, which yields 2 to 10 g/t gold.
- 3) Andesite and dacite dykes, which utilized the same structures as the mineralized fluids. These dykes are altered and can be barren or gold rich.

The best drill intersection from this zone was 17.1 g/t gold over 15.5 m. Geophysical surveys conducted over the Supremo Zone identified distinct north-south and northeast-southwest magnetic high features.

At the Latte Zone, gold mineralization is oxidized near surface and is hosted by brecciated biotite schist that has been partially replaced by muscovite, quartz and sulphide minerals including pyrite, arsenopyrite and chalcopyrite. Gold is associated with a hydrothermal assemblage including the sulphide minerals, barite, monazite, apatite, and zircon. Grades are typically less than 5 g/t gold, but mineralization occurs over broader intervals than at the Supremo Zone. The best drill intersection was 1.08 g/t gold over 83.93 m. Geophysics identified a strong east-west trending magnetic feature across this zone.

The Double Double Zone also hosts gold mineralization within mafic schists, but those schists contain a higher percentage of tremolitic amphibolite and plagioclase. They also exhibit secondary aplite and epidote. Gold mineralization is related to breccia- and silica-alteration. The best drill intersection from this zone was 6.3 g/t gold over 35 m. Geophysics has identified northeast splays off the Latte Zone that trend through the Double Double Zone.

The Kona Zone comprises gold mineralization hosted within granite. The granite has been described as equigranular and non-magnetic with a primary composition of plagioclase, potassium feldspar, quartz, biotite and hornblende. Alteration within the mineralized zone typically consists of clay, sericite and limonite. Gold is hosted in near-vertical brittle structural zones. Sulphides are dominated by pyrite, which occurs as disseminations replacing mafic minerals and less commonly as veins, fracture fillings and sulphidic-matrix in fault breccias. The best drill intersection from this zone was 2.2 g/t gold over 56.75 m.

The Espresso Zone is a newly discovered zone that is also intrusive hosted.

The Americano Zone comprises granite hosted gold mineralization within two parallel northeast trending structures. These structures are sulphidic and clay altered and are thought to be brittle fault zones. The best drill intersection from this zone was 2.36 g/t gold over 18 m.

STREAM SEDIMENT AND SOIL GEOCHEMISTRY

Previous stream sediment sampling in the GGG area was done at low density, generally one sample per creek and one per associated tributary. Only one sample was previously collected

within the bounds of the current GGG property. That sample returned 89 ppb gold. Other historical samples taken in the vicinity yielded background values for all elements.

A total of 54 samples were taken in 2010. Of these, eight were stream sediments and 46 were soils samples. Sample locations and results for gold, arsenic and copper are plotted on Figures 5 to 8, respectively. Sampling and Analytical Procedures for 2010 samples are provided in Appendix II, while Certificates of Analysis are given in Appendix III.

The samples returned background to weakly anomalous values for gold (up to 12 ppb), copper (up to 47 ppm) and arsenic (up to 20 ppm). Gold and arsenic values appear to weakly correlate in the northwestern part of the property. Values for other gold pathfinder elements, including antimony, were background for the district.

DISCUSSION AND CONCLUSIONS

The GGG property lies within the Dawson Range Gold Belt, which hosts a number of gold occurrences associated with young intrusions. Recent discoveries at the Coffee property were made using geochemical sampling for gold and its pathfinder elements, specifically arsenic and antimony.

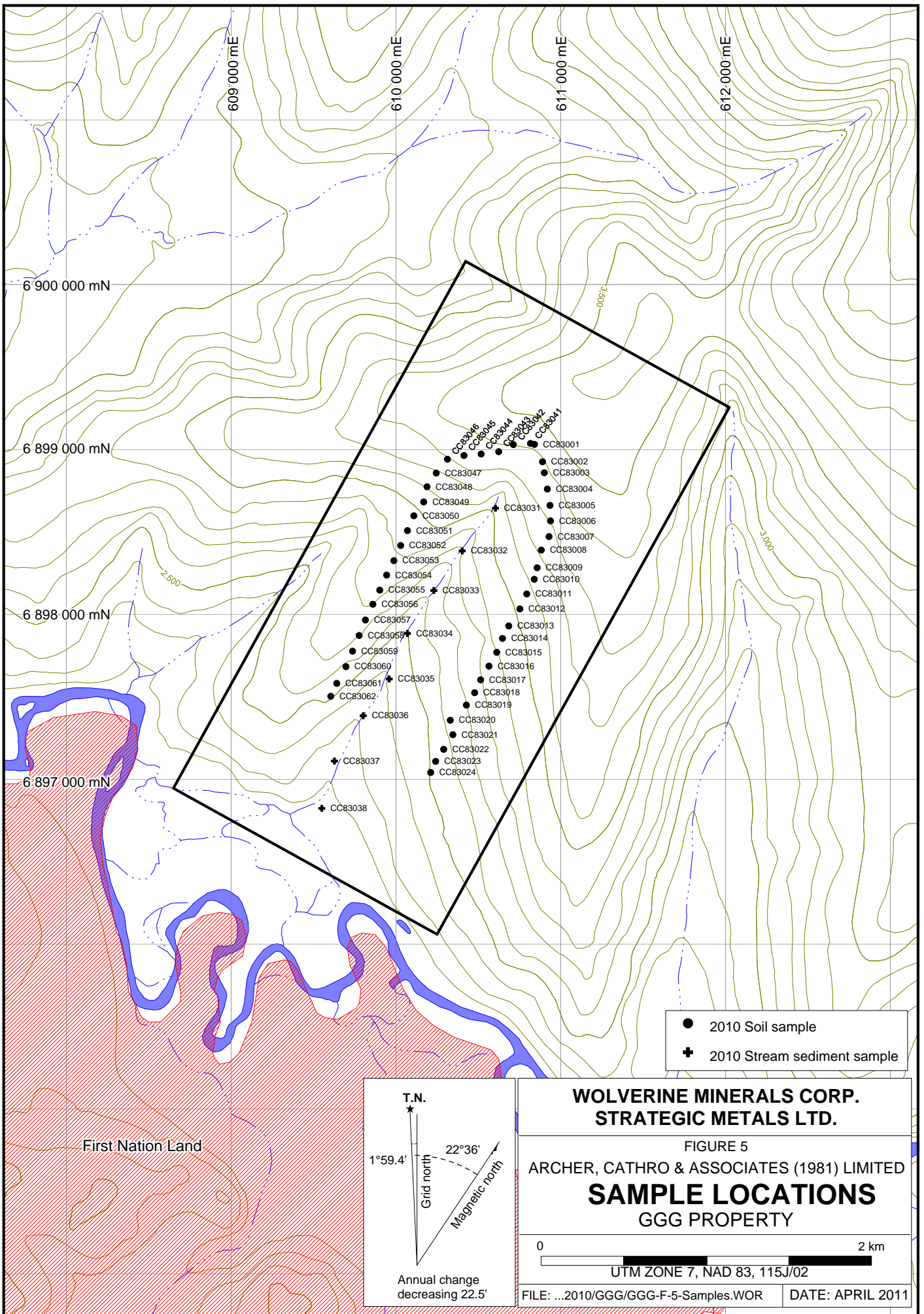
Preliminary soil geochemistry performed by Strategic Metals at the GGG property returned some slightly elevated values for gold, arsenic and copper. Despite these relatively subdued results, the property still has some potential because sample density is low and sampling conditions were difficult. Future work is warranted on a low priority basis.

Areas with weakly anomalous gold and arsenic values should be the main focus for future work. Closely spaced, deep auger grid soil sampling should be done first, and if strong anomalies are outlined, it should be followed up with geological mapping and prospecting.

Respectfully submitted,

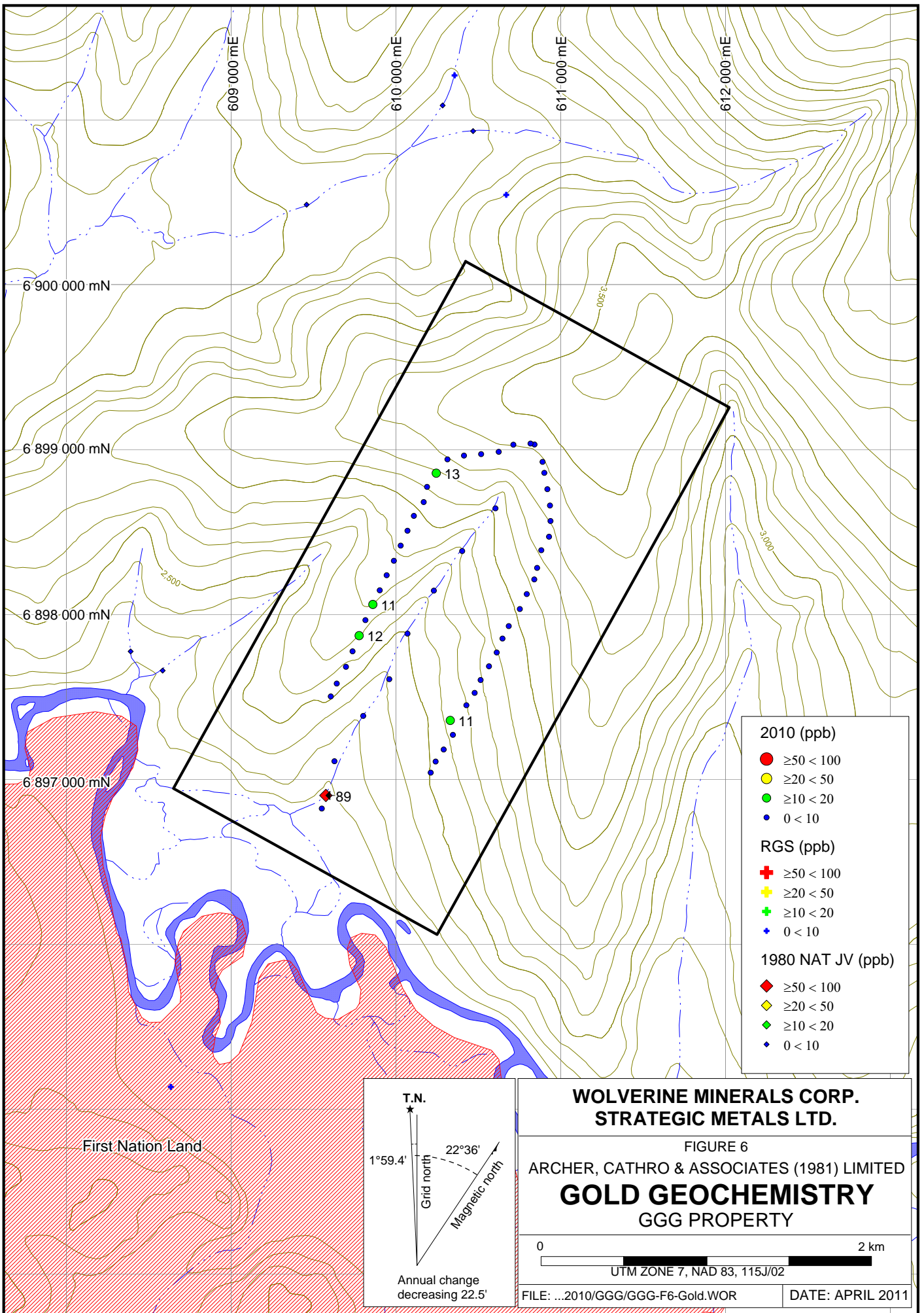
ARCHER, CATHRO & ASSOCIATES (1981) LIMITED

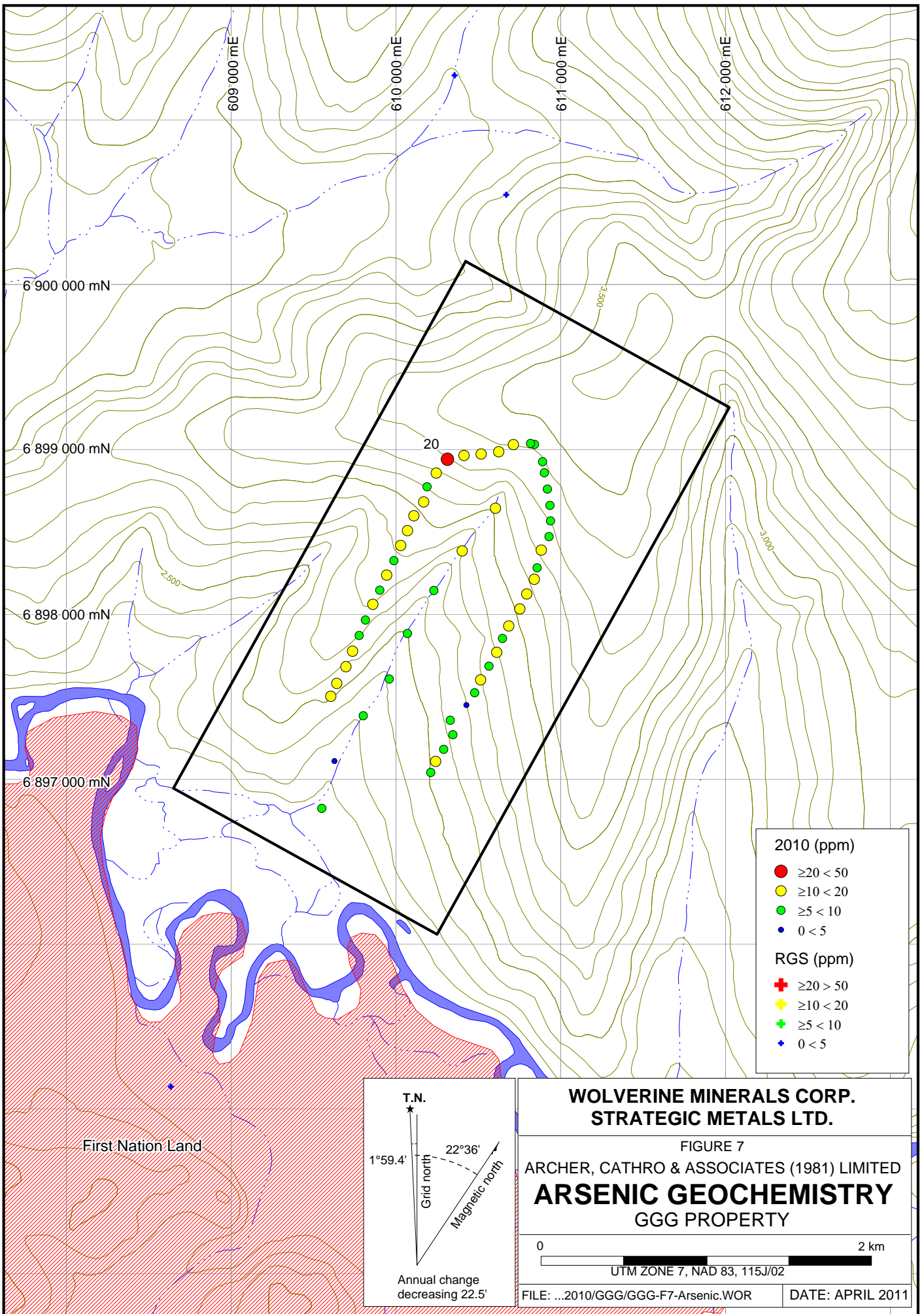
Crystal J. Chung, B.Sc., GIT

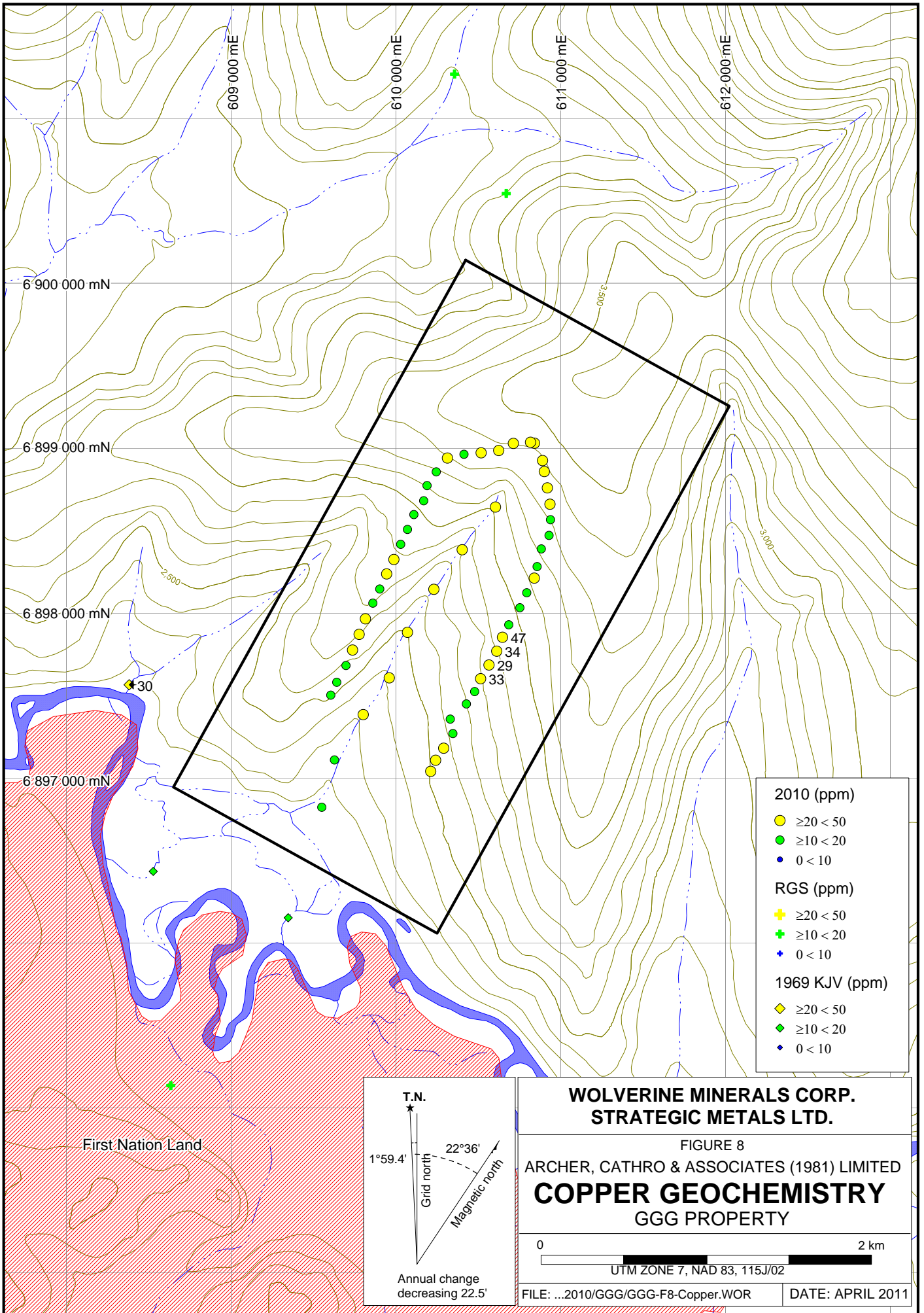


**WOLVERINE MINERALS CORP.
STRATEGIC METALS LTD.**

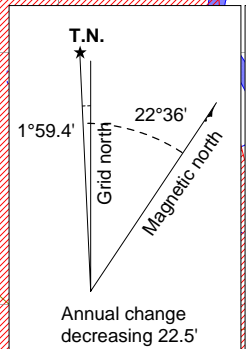
FIGURE 5
ARCHER, CATHRO & ASSOCIATES (1981) LIMITED
SAMPLE LOCATIONS
GGG PROPERTY







2010 (ppm)	
●	≥20 < 50
●	≥10 < 20
●	0 < 10
RGS (ppm)	
+	≥20 < 50
+	≥10 < 20
+	0 < 10
1969 KJV (ppm)	
◆	≥20 < 50
◆	≥10 < 20
◆	0 < 10



**WOLVERINE MINERALS CORP.
STRATEGIC METALS LTD.**

FIGURE 8
ARCHER, CATHRO & ASSOCIATES (1981) LIMITED
COPPER GEOCHEMISTRY
GGG PROPERTY

0 2 km

UTM ZONE 7, NAD 83, 115J/02

FILE: ...2010/GGG/GGG-F8-Copper.WOR DATE: APRIL 2011

REFERENCES

- Archer, A. R. and Onasick, E.P.
 1980 NAT Joint Venture Final Report; Internal report prepared by Archer, Cathro & Associates Ltd. for Chevron Canada Limited and Armco Mineral Exploration Ltd.
- Cathro, R.J. and Culbert, R.E.
 1969 Summary report on the 1969 field program; Dawson Range Joint Venture Project, Yukon Territory.
- Friske, P.W.B., Hornbrook, E.H.W., Lynch, J.J., McCurdy, M.W., Gross, H., Galletta, A.C. and Durham, C.C.
 1986 Regional stream sediment and water geochemical reconnaissance data (115J, 115K (E1/2)); Geological Survey of Canada, Open File 1363.
- Gordey, S.P. and Makepeace, A.J. (compilers)
 2003 Yukon digital geology, version 2.0; Geological Survey of Canada, Open File 1749 and Yukon Geological Survey, Open File 2003-9 (D).
- SRK Consulting Engineers and Scientists
 2010 Technical Report for Coffee Gold Project, Yukon Territory, Canada; Report prepared for Kaminak Gold Corporation.
- Tempelman-Kluit, D.J.
 1973 Snag; Geological Survey of Canada; Map 16-1973, scale 1:250 000.
 1974 Reconnaissance Geology of Aishihik Lake, Snag and Part of Stewart River map areas, West Central Yukon; Geological Survey of Canada, Map 17-1973.

APPENDIX I
STATEMENT OF QUALIFICATIONS

STATEMENT OF QUALIFICATIONS

I, Crystal J. Chung, geologist, with business addresses in Vancouver, British Columbia and Whitehorse, Yukon Territory and residential address in Burnaby, British Columbia do hereby certify that:

1. I graduated from the University of British Columbia in 2005 with a B.Sc. majoring in Earth and Ocean Sciences (Geology).
2. From 2004 to present, I have been actively engaged in mineral exploration in British Columbia, Alaska and the Yukon Territory.
3. I am a Geoscientist in Training (GIT) with the Association of Professional Engineers and Geoscientists of British Columbia (Member Number 138321).
4. I have personally reviewed and interpreted all data resulting from this work.

Crystal J. Chung, B.Sc., GIT

APPENDIX II
SAMPLING AND ANALYTICAL PROCEDURES

2010 Soil Geochemical Samples

All 2010 soil sample locations were recorded using hand-held GPS units. Sample sites are marked by aluminum tags inscribed with the sample numbers and affixed to 0.5 m wooden lath that were driven into the ground. Soil samples were collected from 10 to 30 cm deep holes dug by hand-held auger. They were placed into individually pre-numbered Kraft paper bags.

The soil samples were sent to ALS Chemex, where they were dried, screened to -180 microns, dissolved in aqua regia solution and then analyzed for 35 elements using the inductively coupled plasma with atomic emission spectroscopy technique (ME-ICP41). An additional 50 g charge was further analysed for gold by fire assay with inductively coupled plasma-atomic emissions spectroscopy finish (Au-AA24).

2010 Stream Sediment Geochemical Samples

Stream sediment geochemical samples were only collected from the main unnamed creek that drains the property area. Sample locations were recorded using handheld GPS units and were marked with orange flagging tape labelled with the sample number. Stream sediment samples were collected by hand and were placed into individually pre-numbered kraft paper bags.

The soil samples were sent to ALS Chemex, where they were dried, screened to -180 microns, dissolved in aqua regia solution and then analyzed for 35 elements using the inductively coupled plasma with atomic emission spectroscopy technique (ME-ICP41). An additional 50 g charge was further analysed for gold by fire assay with inductively coupled plasma-atomic emissions spectroscopy finish (Au-AA24).

APPENDIX III
CERTIFICATES OF ANALYSIS



ALS Chemex

EXCELLENCE IN ANALYTICAL CHEMISTRY

ALS Canada Ltd.

2103 Dollarton Hwy

North Vancouver BC V7H 0A7

Phone: 604 984 0221 Fax: 604 984 0218 www.alschemex.com

To: STRATEGIC METALS LTD.

C/O ARCHER, CATHRO & ASSOCIATES (1981)

LIMITED

1016-510 W HASTINGS ST

VANCOUVER BC V6B 1L8

Page: 1

Finalized Date: 15-JUL-2010

Account: MTT

CERTIFICATE VA10091012

Project: Klatassin

P.O. No.: GGG

This report is for 54 Soil samples submitted to our lab in Vancouver, BC, Canada on 6-JUL-2010.

The following have access to data associated with this certificate:

JOAN MARIACHER

BILL WENGZYNOWSKI

SAMPLE PREPARATION

ALS CODE	DESCRIPTION
WEI-21	Received Sample Weight
LOG-22	Sample login - Rcd w/o BarCode
SCR-41	Screen to -180um and save both

ANALYTICAL PROCEDURES

ALS CODE	DESCRIPTION	INSTRUMENT
Au-ICP21	Au 30g FA ICP-AES Finish	ICP-AES
ME-ICP41	35 Element Aqua Regia ICP-AES	ICP-AES

To: **STRATEGIC METALS LTD.**
ATTN: JOAN MARIACHER
C/O ARCHER, CATHRO & ASSOCIATES (1981) LIMITED
1016-510 W HASTINGS ST
VANCOUVER BC V6B 1L8

This is the Final Report and supersedes any preliminary report with this certificate number. Results apply to samples as submitted. All pages of this report have been checked and approved for release.

Signature:

Colin Ramshaw, Vancouver Laboratory Manager



ALS Chemex

EXCELLENCE IN ANALYTICAL CHEMISTRY

ALS Canada Ltd.

2103 Dollarton Hwy
North Vancouver BC V7H 0A7

Phone: 604 984 0221 Fax: 604 984 0218 www.alschemex.com

To: STRATEGIC METALS LTD.

C/O ARCHER, CATHRO & ASSOCIATES (1981)

LIMITED

1016-510 W HASTINGS ST
VANCOUVER BC V6B 1L8

Project: Klatassin

Page: 2 - A

Total # Pages: 3 (A - C)

Finalized Date: 15-JUL-2010

Account: MTT

CERTIFICATE OF ANALYSIS VA10091012

Sample Description	Method Analyte Units LOR	WEI-21	Au-ICP21	ME-ICP41	ME-ICP41	ME-ICP41	ME-ICP41	ME-ICP41	ME-ICP41	ME-ICP41	ME-ICP41	ME-ICP41	ME-ICP41	ME-ICP41	ME-ICP41	ME-ICP41
		Recvd Wt. kg	Au ppm	Ag ppm	Al %	As ppm	B ppm	Ba ppm	Be ppm	Bi ppm	Ca %	Cd ppm	Co ppm	Cr ppm	Cu ppm	Fe %
		0.02	0.001	0.2	0.01	2	10	10	0.5	2	0.01	0.5	1	1	1	0.01
CC83001		0.20	0.001	<0.2	2.88	8	<10	170	0.5	2	0.24	<0.5	11	46	28	3.34
CC83002		0.20	0.007	<0.2	2.41	9	<10	200	0.5	<2	0.42	<0.5	10	47	24	2.98
CC83003		0.30	0.002	<0.2	2.39	6	<10	160	<0.5	<2	0.34	<0.5	10	43	23	3.00
CC83004		0.24	0.004	<0.2	3.36	8	<10	350	0.6	<2	0.42	<0.5	13	32	26	3.81
CC83005		0.22	0.002	<0.2	2.81	5	<10	140	0.5	<2	0.23	<0.5	12	44	21	3.25
CC83006		0.16	<0.001	<0.2	2.56	7	<10	140	0.5	3	0.20	<0.5	8	38	18	3.41
CC83007		0.24	0.001	<0.2	2.13	8	<10	120	<0.5	2	0.24	<0.5	7	32	15	2.82
CC83008		0.22	0.009	<0.2	2.32	10	<10	120	<0.5	2	0.30	<0.5	9	37	16	3.13
CC83009		0.24	0.003	<0.2	2.37	7	<10	140	<0.5	3	0.28	<0.5	9	38	19	2.83
CC83010		0.28	0.003	<0.2	2.68	10	<10	160	<0.5	3	0.34	<0.5	11	41	20	3.17
CC83011		0.26	0.002	<0.2	2.81	10	<10	150	0.5	2	0.29	<0.5	10	39	19	3.35
CC83012		0.26	0.002	<0.2	2.47	10	<10	140	<0.5	<2	0.28	<0.5	8	37	18	3.04
CC83013		0.34	0.004	0.2	2.45	10	<10	150	<0.5	<2	0.30	<0.5	7	37	17	2.96
CC83014		0.20	0.002	1.2	2.91	7	<10	220	0.5	3	0.23	0.8	13	43	47	3.07
CC83015		0.20	<0.001	0.5	2.13	10	<10	160	0.5	2	0.27	0.6	20	42	34	2.60
CC83016		0.22	0.009	0.2	2.08	5	<10	160	<0.5	<2	0.26	<0.5	26	45	29	2.76
CC83017		0.30	0.005	<0.2	2.84	10	<10	220	0.5	<2	0.42	<0.5	15	84	33	3.23
CC83018		0.30	0.001	<0.2	2.36	9	<10	160	<0.5	3	0.33	<0.5	8	43	13	2.77
CC83019		0.32	0.003	<0.2	2.13	4	<10	140	<0.5	5	0.33	<0.5	10	45	17	2.57
CC83020		0.20	0.011	<0.2	2.36	9	<10	180	<0.5	3	0.45	<0.5	9	47	19	2.82
CC83021		0.22	0.006	<0.2	1.93	6	<10	180	<0.5	3	0.49	<0.5	8	39	17	2.44
CC83022		0.26	0.002	<0.2	2.40	7	<10	230	0.5	2	0.56	<0.5	12	52	25	2.67
CC83023		0.22	0.005	<0.2	1.99	10	<10	210	<0.5	<2	0.54	<0.5	13	47	26	2.32
CC83024		0.24	0.003	<0.2	2.22	6	<10	220	0.5	4	0.53	<0.5	12	51	28	2.40
CC83031		0.26	0.001	0.6	1.96	18	<10	180	<0.5	3	0.96	<0.5	8	30	33	2.66
CC83032		0.24	0.001	0.3	2.52	14	<10	240	0.6	3	0.92	<0.5	11	29	25	2.69
CC83033		0.26	0.002	0.2	2.12	9	<10	210	0.5	3	0.92	<0.5	9	29	23	2.21
CC83034		0.28	0.002	0.3	2.02	8	<10	240	<0.5	<2	1.02	<0.5	10	31	25	2.36
CC83035		0.30	0.002	0.3	1.95	9	<10	260	<0.5	2	1.02	<0.5	10	37	23	2.20
CC83036		0.30	0.004	<0.2	1.84	5	<10	250	<0.5	<2	1.02	<0.5	11	45	21	2.25
CC83037		0.26	0.002	<0.2	1.23	3	<10	140	<0.5	<2	0.73	<0.5	8	31	16	1.76
CC83038		0.36	0.003	<0.2	1.16	7	<10	120	<0.5	<2	0.68	<0.5	8	29	19	1.94
CC83041		0.22	0.002	<0.2	2.14	8	<10	160	<0.5	2	0.32	<0.5	10	41	26	2.88
CC83042		0.20	0.003	<0.2	3.09	12	<10	180	0.5	2	0.24	<0.5	12	45	28	3.40
CC83043		0.16	0.002	0.3	2.65	13	<10	160	0.6	2	0.23	<0.5	16	41	28	3.66
CC83044		0.20	0.002	0.2	2.17	15	<10	160	0.5	<2	0.34	<0.5	9	38	22	2.95
CC83045		0.22	0.003	0.2	2.15	18	<10	130	<0.5	<2	0.27	<0.5	7	33	17	2.86
CC83046		0.24	0.007	0.2	2.42	20	<10	180	<0.5	<2	0.34	<0.5	11	38	20	2.87
CC83047		0.20	0.013	0.2	2.48	14	<10	190	0.5	<2	0.37	<0.5	11	41	16	3.03
CC83048		0.22	0.003	<0.2	2.38	9	<10	140	<0.5	<2	0.28	<0.5	8	35	14	2.93



ALS Chemex

EXCELLENCE IN ANALYTICAL CHEMISTRY

ALS Canada Ltd.

2103 Dollarton Hwy
North Vancouver BC V7H 0A7

Phone: 604 984 0221 Fax: 604 984 0218 www.alschemex.com

To: STRATEGIC METALS LTD.
C/O ARCHER, CATHRO & ASSOCIATES (1981)
LIMITED
1016-510 W HASTINGS ST
VANCOUVER BC V6B 1L8

Page: 2 - B
Total # Pages: 3 (A - C)
Finalized Date: 15-JUL-2010
Account: MTT

Project: Klatassin

CERTIFICATE OF ANALYSIS	VA10091012
-------------------------	------------

Sample Description	ME-ICP41	ME-ICP41	ME-ICP41	ME-ICP41	ME-ICP41	ME-ICP41	ME-ICP41	ME-ICP41	ME-ICP41	ME-ICP41	ME-ICP41	ME-ICP41	ME-ICP41	ME-ICP41	ME-ICP41
	Ga	Hg	K	La	Mg	Mn	Mo	Na	Ni	P	Pb	S	Sb	Sc	Sr
	ppm	ppm	%	ppm	%	ppm	ppm	%	ppm	ppm	ppm	%	ppm	ppm	ppm
	10	1	0.01	10	0.01	5	1	0.01	1	10	2	0.01	2	1	1
CC83001	10	<1	0.08	10	0.68	346	<1	0.02	27	520	10	0.01	<2	5	21
CC83002	10	<1	0.07	10	0.70	427	<1	0.02	25	690	9	0.01	<2	7	34
CC83003	10	<1	0.06	10	0.62	394	<1	0.02	23	710	7	0.01	<2	6	25
CC83004	10	<1	0.28	10	0.96	576	<1	0.02	17	660	9	0.01	<2	9	46
CC83005	10	<1	0.06	10	0.62	456	<1	0.01	20	480	8	0.01	<2	6	20
CC83006	10	<1	0.05	10	0.58	287	<1	0.02	20	350	10	0.02	<2	4	19
CC83007	10	<1	0.05	10	0.48	243	<1	0.02	15	480	9	0.02	<2	4	19
CC83008	10	<1	0.06	10	0.56	294	<1	0.01	19	760	8	0.01	<2	4	19
CC83009	10	<1	0.05	10	0.58	313	<1	0.02	17	500	5	0.01	<2	5	22
CC83010	10	<1	0.06	10	0.61	351	<1	0.02	22	580	10	0.01	<2	5	26
CC83011	10	1	0.06	10	0.55	322	<1	0.02	18	660	8	0.01	<2	5	24
CC83012	10	<1	0.06	10	0.55	282	<1	0.01	18	560	7	0.01	<2	4	23
CC83013	10	1	0.05	10	0.57	264	<1	0.01	20	710	8	0.01	<2	4	22
CC83014	10	<1	0.06	10	0.51	466	<1	0.02	30	820	11	0.03	<2	4	22
CC83015	10	<1	0.06	10	0.44	1375	1	0.02	32	1150	10	0.05	<2	3	28
CC83016	10	<1	0.05	10	0.52	1665	<1	0.02	27	670	8	0.03	<2	4	25
CC83017	10	<1	0.05	10	0.76	662	<1	0.02	113	640	7	0.02	<2	7	33
CC83018	10	<1	0.05	10	0.57	289	<1	0.02	36	490	3	0.01	<2	4	24
CC83019	10	1	0.05	10	0.58	352	<1	0.02	33	520	6	0.01	<2	4	24
CC83020	10	<1	0.05	10	0.59	315	<1	0.02	37	670	8	0.01	<2	5	31
CC83021	<10	<1	0.05	10	0.53	350	<1	0.02	22	590	6	0.01	<2	4	32
CC83022	<10	<1	0.05	20	0.70	489	<1	0.02	31	870	3	0.04	<2	5	35
CC83023	10	<1	0.05	20	0.56	595	<1	0.02	31	760	5	0.03	<2	4	37
CC83024	10	<1	0.05	20	0.58	447	<1	0.02	36	820	6	0.04	<2	5	44
CC83031	<10	<1	0.08	10	0.43	441	<1	0.02	24	1080	11	0.07	<2	3	70
CC83032	10	<1	0.10	20	0.52	818	<1	0.02	23	970	9	0.06	<2	4	59
CC83033	10	<1	0.06	20	0.46	432	<1	0.02	23	920	8	0.08	<2	3	54
CC83034	<10	<1	0.07	20	0.49	679	<1	0.02	25	1070	6	0.09	<2	3	58
CC83035	10	<1	0.06	20	0.50	595	<1	0.02	30	980	5	0.09	<2	4	57
CC83036	<10	1	0.06	20	0.58	688	<1	0.02	34	970	6	0.09	<2	4	58
CC83037	<10	<1	0.04	10	0.46	383	<1	0.03	20	810	4	0.05	<2	3	41
CC83038	<10	<1	0.05	10	0.47	215	<1	0.03	19	810	6	0.04	<2	3	37
CC83041	10	<1	0.07	10	0.64	354	<1	0.01	24	660	7	0.01	<2	5	24
CC83042	10	<1	0.10	10	0.71	333	<1	0.01	29	450	9	0.01	<2	5	20
CC83043	10	1	0.06	10	0.59	642	<1	0.02	22	390	11	0.01	<2	5	22
CC83044	10	1	0.06	20	0.63	347	<1	0.02	18	420	7	0.01	<2	6	28
CC83045	10	<1	0.05	10	0.59	247	<1	0.02	19	480	6	0.01	<2	4	19
CC83046	10	<1	0.05	10	0.67	355	<1	0.02	23	570	5	0.01	<2	4	25
CC83047	10	<1	0.05	20	0.66	400	<1	0.02	19	460	5	0.01	<2	5	35
CC83048	10	1	0.05	10	0.61	235	<1	0.02	15	430	7	0.01	<2	4	25



ALS Chemex

EXCELLENCE IN ANALYTICAL CHEMISTRY

ALS Canada Ltd.

2103 Dollarton Hwy
North Vancouver BC V7H 0A7

Phone: 604 984 0221 Fax: 604 984 0218 www.alschemex.com

To: STRATEGIC METALS LTD.
C/O ARCHER, CATHRO & ASSOCIATES (1981)
LIMITED
1016-510 W HASTINGS ST
VANCOUVER BC V6B 1L8

Page: 2 - C
Total # Pages: 3 (A - C)
Finalized Date: 15-JUL-2010
Account: MTT

Project: Klatassin

CERTIFICATE OF ANALYSIS VA10091012

Sample Description	Method Analyte Units LOR	ME-ICP41	ME-ICP41	ME-ICP41	ME-ICP41	ME-ICP41	ME-ICP41	ME-ICP41
		Th	Ti	Ti	U	V	W	Zn
		ppm	%	ppm	ppm	ppm	ppm	ppm
		20	0.01	10	10	1	10	2
CC83001		<20	0.13	<10	<10	77	<10	62
CC83002		<20	0.13	<10	<10	70	<10	56
CC83003		<20	0.13	<10	<10	70	<10	56
CC83004		<20	0.18	<10	<10	104	<10	72
CC83005		<20	0.13	<10	<10	77	<10	59
CC83006		<20	0.14	<10	<10	82	<10	58
CC83007		<20	0.12	<10	<10	68	<10	51
CC83008		<20	0.12	<10	<10	74	<10	59
CC83009		<20	0.13	<10	<10	67	<10	55
CC83010		<20	0.13	<10	<10	75	<10	60
CC83011		<20	0.13	<10	<10	78	<10	59
CC83012		<20	0.13	<10	<10	75	<10	60
CC83013		<20	0.13	<10	<10	74	<10	61
CC83014		<20	0.11	<10	<10	70	<10	71
CC83015		<20	0.06	<10	<10	55	<10	61
CC83016		<20	0.10	<10	<10	62	<10	53
CC83017		<20	0.10	<10	<10	78	<10	56
CC83018		<20	0.12	<10	<10	67	<10	50
CC83019		<20	0.12	<10	<10	66	<10	49
CC83020		<20	0.11	<10	<10	68	<10	56
CC83021		<20	0.10	<10	<10	60	<10	46
CC83022		<20	0.10	<10	<10	67	<10	51
CC83023		<20	0.08	<10	<10	56	<10	46
CC83024		<20	0.08	<10	<10	59	<10	45
CC83031		<20	0.05	<10	<10	55	<10	66
CC83032		<20	0.06	<10	<10	58	<10	76
CC83033		<20	0.05	<10	<10	45	<10	63
CC83034		<20	0.05	<10	<10	46	<10	67
CC83035		<20	0.05	<10	<10	45	<10	60
CC83036		<20	0.06	<10	<10	46	<10	59
CC83037		<20	0.07	<10	<10	40	<10	42
CC83038		<20	0.09	<10	<10	48	<10	44
CC83041		<20	0.13	<10	<10	70	<10	55
CC83042		<20	0.14	<10	<10	74	<10	60
CC83043		<20	0.14	<10	<10	87	<10	57
CC83044		<20	0.12	<10	<10	68	<10	47
CC83045		<20	0.11	<10	<10	66	<10	45
CC83046		<20	0.11	<10	<10	62	<10	53
CC83047		<20	0.12	<10	<10	69	<10	51
CC83048		<20	0.11	<10	<10	68	<10	47



ALS Chemex

EXCELLENCE IN ANALYTICAL CHEMISTRY

ALS Canada Ltd.

2103 Dollarton Hwy

North Vancouver BC V7H 0A7

Phone: 604 984 0221 Fax: 604 984 0218 www.alschemex.com

To: STRATEGIC METALS LTD.

C/O ARCHER, CATHRO & ASSOCIATES (1981)

LIMITED

1016-510 W HASTINGS ST

VANCOUVER BC V6B 1L8

Project: Klatassin

Page: 3 - A

Total # Pages: 3 (A - C)

Finalized Date: 15-JUL-2010

Account: MTT

CERTIFICATE OF ANALYSIS VA10091012

Sample Description	Method Analyte Units LOR	WEI-21	Au-ICP21	ME-ICP41	ME-ICP41	ME-ICP41	ME-ICP41	ME-ICP41	ME-ICP41	ME-ICP41	ME-ICP41	ME-ICP41	ME-ICP41	ME-ICP41	ME-ICP41	
		Recvd Wt. kg	Au ppm	Ag ppm	Al %	As ppm	B ppm	Ba ppm	Be ppm	Bi ppm	Ca %	Cd ppm	Co ppm	Cr ppm	Cu ppm	Fe %
		0.02	0.001	0.2	0.01	2	10	10	0.5	2	0.01	0.5	1	1	1	0.01
CC83049		0.22	0.003	<0.2	3.08	15	<10	230	0.5	<2	0.35	<0.5	10	42	18	3.65
CC83050		0.20	0.002	<0.2	2.28	10	<10	160	<0.5	<2	0.33	<0.5	9	35	17	2.91
CC83051		0.20	0.006	<0.2	1.98	11	<10	110	<0.5	<2	0.26	<0.5	8	32	14	2.91
CC83052		0.20	0.004	0.2	2.32	10	<10	160	0.5	<2	0.28	<0.5	9	38	18	2.96
CC83053		0.22	0.003	<0.2	2.58	8	<10	200	<0.5	<2	0.39	<0.5	12	50	21	3.08
CC83054		0.22	0.004	0.2	2.07	11	<10	130	<0.5	<2	0.26	<0.5	8	35	20	2.85
CC83055		0.26	0.002	<0.2	2.11	8	<10	150	<0.5	<2	0.23	<0.5	10	39	17	2.89
CC83056		0.22	0.011	0.2	2.02	13	<10	120	<0.5	<2	0.23	<0.5	9	33	16	2.85
CC83057		0.24	0.006	<0.2	1.80	9	<10	150	<0.5	<2	0.41	<0.5	9	37	26	2.69
CC83058		0.26	0.012	<0.2	1.83	7	<10	150	<0.5	<2	0.31	<0.5	9	36	22	2.49
CC83059		0.24	0.007	<0.2	1.73	14	<10	160	<0.5	<2	0.29	<0.5	9	38	23	2.63
CC83060		0.20	0.004	<0.2	1.60	11	<10	130	<0.5	<2	0.24	<0.5	9	34	17	2.43
CC83061		0.20	0.002	0.3	1.73	11	<10	160	<0.5	<2	0.24	<0.5	8	30	12	2.48
CC83062		0.20	0.002	0.4	1.61	17	<10	240	<0.5	<2	0.29	<0.5	7	42	14	2.43



ALS Chemex

EXCELLENCE IN ANALYTICAL CHEMISTRY

ALS Canada Ltd.

2103 Dollarton Hwy

North Vancouver BC V7H 0A7

Phone: 604 984 0221 Fax: 604 984 0218 www.alschemex.com

To: STRATEGIC METALS LTD.

C/O ARCHER, CATHRO & ASSOCIATES (1981)

LIMITED

1016-510 W HASTINGS ST

VANCOUVER BC V6B 1L8

Project: Klatassin

Page: 3 - B

Total # Pages: 3 (A - C)

Finalized Date: 15-JUL-2010

Account: MTT

CERTIFICATE OF ANALYSIS VA10091012

Sample Description	Method Analyte Units LOR	ME-ICP41	ME-ICP41	ME-ICP41	ME-ICP41	ME-ICP41	ME-ICP41	ME-ICP41	ME-ICP41	ME-ICP41	ME-ICP41	ME-ICP41	ME-ICP41	ME-ICP41	ME-ICP41	
		Ga	Hg	K	La	Mg	Mn	Mo	Na	Ni	P	Pb	S	Sb	Sc	Sr
		ppm	ppm	%	ppm	%	ppm	ppm	%	ppm	ppm	ppm	%	ppm	ppm	ppm
		10	1	0.01	10	0.01	5	1	0.01	1	10	2	0.01	2	1	1
CC83049		10	<1	0.06	10	0.73	385	<1	0.02	21	530	7	0.01	<2	5	28
CC83050		10	<1	0.05	10	0.62	265	<1	0.02	16	540	5	0.01	<2	4	25
CC83051		10	<1	0.04	10	0.50	230	<1	0.02	15	420	5	0.01	<2	3	21
CC83052		10	<1	0.04	10	0.58	300	<1	0.02	17	390	6	0.01	<2	5	22
CC83053		10	<1	0.08	10	0.86	352	<1	0.03	24	460	3	0.01	<2	6	37
CC83054		10	1	0.05	10	0.55	240	<1	0.02	20	420	4	0.01	<2	5	20
CC83055		10	1	0.05	10	0.59	280	<1	0.02	18	310	2	0.01	<2	5	20
CC83056		10	1	0.04	10	0.50	206	<1	0.02	20	480	5	0.01	<2	4	16
CC83057		<10	<1	0.05	10	0.61	332	<1	0.02	20	610	4	0.01	<2	6	28
CC83058		<10	<1	0.04	10	0.53	252	<1	0.02	18	310	4	0.01	<2	4	24
CC83059		<10	<1	0.04	10	0.51	288	<1	0.02	20	380	5	0.01	<2	5	22
CC83060		<10	<1	0.03	10	0.48	283	<1	0.01	17	230	4	0.01	<2	5	20
CC83061		10	<1	0.03	10	0.47	211	<1	0.02	15	280	4	0.01	<2	3	20
CC83062		<10	1	0.03	10	0.55	210	<1	0.02	21	400	3	0.01	<2	3	23



ALS Chemex

EXCELLENCE IN ANALYTICAL CHEMISTRY

ALS Canada Ltd.

2103 Dollarton Hwy

North Vancouver BC V7H 0A7

Phone: 604 984 0221 Fax: 604 984 0218 www.alschemex.com

To: STRATEGIC METALS LTD.

C/O ARCHER, CATHRO & ASSOCIATES (1981)

LIMITED

1016-510 W HASTINGS ST

VANCOUVER BC V6B 1L8

Project: Klatassin

Page: 3 - C

Total # Pages: 3 (A - C)

Finalized Date: 15-JUL-2010

Account: MTT

CERTIFICATE OF ANALYSIS VA10091012

Sample Description	Method Analyte Units LOR	ME-ICP41	ME-ICP41	ME-ICP41	ME-ICP41	ME-ICP41	ME-ICP41	
		Th	Ti	Tl	U	V	W	Zn
		ppm	%	ppm	ppm	ppm	ppm	ppm
		20	0.01	10	10	1	10	2
CC83049		<20	0.11	<10	<10	78	<10	63
CC83050		<20	0.11	<10	<10	62	<10	47
CC83051		<20	0.11	<10	<10	68	<10	41
CC83052		<20	0.10	<10	<10	67	<10	44
CC83053		<20	0.13	<10	<10	64	<10	46
CC83054		<20	0.11	<10	<10	66	<10	42
CC83055		<20	0.11	<10	<10	64	<10	40
CC83056		<20	0.10	<10	<10	62	<10	37
CC83057		<20	0.12	<10	<10	63	<10	44
CC83058		<20	0.10	<10	<10	59	<10	40
CC83059		<20	0.10	<10	<10	58	<10	39
CC83060		<20	0.09	<10	<10	55	<10	34
CC83061		<20	0.09	<10	<10	60	<10	34
CC83062		<20	0.07	<10	<10	57	<10	42

QW28783

ARCHER, CATHRO & ASSOCIATES (1981) LIMITED
1016 – 510 West Hastings Street
Vancouver, B.C. V6B 1L8

Telephone: 604-688-2568

Fax: 604-688-2578



AFFIDAVIT

I, Joan Mariacher, of Vancouver, B.C. make oath and say:

That to the best of my knowledge the attached Statement of
Expenditures for exploration work on the GGG 1-32 mineral claims
on Claim Sheet 115J/2 is accurate.


Joan Mariacher

Sworn before me at Vancouver, B.C.

this 15th day of April 2011.


Barrister & Solicitor

IAN J. TALBOT
Barrister & Solicitor
281 East 5th Street
North Vancouver
British Columbia
Canada V7L 1L8

Statement of Expenditures
GGG 1-32 Mineral Claims
April 15, 2011



Labour

C. Chung (geologist) January to April 2011 – 12 hrs @ \$85/hr	\$1,143.40
T. Epp (field assistant) July 2011 – 2 days @ \$328/day	734.72
B. Alladice (field assistant) July 2011 – 2 days @ \$304/day	680.96
C. Beck (field assistant) July 2011 – 2 days @ \$304/day	680.96
	<hr/>
	3,239.04

Expenses

Field room and board – 6 mandays @ \$125/manday	840.00
Capital Helicopters	2,839.10
ALS Chemex	1,198.59
	<hr/>
	4,877.69

Total	<hr/>
	<u>\$8,116.73</u>

CAPITAL HELICOPTERS (1995) INC.

Suite 3 - 25 Pilgrim Place, Whitehorse, Y.T. Y1A 6E6
 Phone: (867) 668-6200 Fax: (867) 668-6201
 capitalheli@polarcom.com



Charter and Contract Service

INVOICE

NO. 11327



SOLD TO

Archer Cathro
 Suite 1016, 510 West Hastings
 Vancouver, B. C. V6B 1L8

SHIP TO

Archer Cathro
 Suite 1016, 510 West Hastings
 Vancouver, B. C. V6B 1L8

ITEM NO.	QUANTITY	UNIT	DESCRIPTION	GST	PST	UNIT PRICE	AMOUNT	
June 26	2.6	hrs	YXY-Split ferry s/o Taylor p/u Nisling R area <i>666</i>	G		1,025.00	2,665.00	
June 27	1.0	hrs	YXY-Nansen-Klaza crk-AAA-s/o and p/u	G		1,025.00	1,025.00	
June 28	2.0	hrs	Nansen-s/o Taylor-p/u-FFF	G		1,025.00	2,050.00	
June 29	0.8	hrs	Nansen-s/o Taylor-p/u-DDD	G		1,025.00	820.00	
	<i>6.4</i> 68.4	ltrs	fuel@YXY	G		1.40	95.76	
			G - GST 5.00%				<i>665.76</i>	
			GST				332.79	
Capital Helicopters (1995) Inc. GST: #899587984								
Thank You! Your Business Is Appreciated! Fuel Price includes Federal and Yukon Tax							TOTAL	6,988.55

A (AAA - 1091.96
 DDD - 873.57
 FFF - 2183.92
 GGG - 2839.10)

Kletnim - 6655.76 NAOY



ALS Chemex
EXCELLENCE IN ANALYTICAL CHEMISTRY

ALS Canada Ltd.
2103 Dollarton Hwy
North Vancouver BC V7H 0A7
Phone: 604 984 0221 Fax: 604 984 0218 www.alschemex.com

INVOICE NUMBER 2103554

BILLING INFORMATION	
Certificate:	VA10091012
Sample Type:	Soil
Account:	MTT
Date:	15-JUL-2010
Project:	Klatassin <i>AK</i>
P.O. No.:	GGG
Quote:	ALSM-CW10-010-F
Terms:	Net 30 Days
Comments:	C1

QUANTITY	CODE	ANALYSED FOR DESCRIPTION	UNIT PRICE	TOTAL
54	PREP-41	Dry, Sieve (180 um) Soil	0.96	51.84
12.84	PREP-41	Weight Charge (kg) - Dry, Sieve (180 um) Soil	1.80	23.11
54	Au-ICP21	Au 30g FA ICP-AES Finish	11.06	597.24
54	ME-ICP41	35 Element Aqua Regia ICP-AES	4.92	265.68
54	GEO-AR01	Aqua regia digestion	2.45	132.30

To: STRATEGIC METALS LTD.
ATTN: JOAN MARIACHER
C/O ARCHER, CATHRO & ASSOCIATES (1981) LIMITED
1016-510 W HASTINGS ST
VANCOUVER BC V6B 1L8

Joan Mariacher
N/A

SUBTOTAL (CAD) \$ 1,070.17
R100938885 HST BC \$ 128.42
TOTAL PAYABLE (CAD) \$ 1,198.59

Payment may be made by: Cheque or Bank Transfer

Beneficiary Name: ALS Canada Ltd.
Bank: Royal Bank of Canada
SWIFT: ROYCCAT2
Address: Vancouver, BC, CAN
Account: 003-00010-1001098

Please Remit Payments To :
ALS Canada Ltd.
2103 Dollarton Hwy
North Vancouver BC V7H 0A7

