

ARCHER, CATHRO & ASSOCIATES (1981) LIMITED  
1016 - 510 West Hastings Street  
Vancouver, B.C. V6B1L8

Telephone: 604-688-2568

Fax: 604-688-2578

---

**ASSESSMENT REPORT**

describing

**GEOCHEMICAL SAMPLING**

at the

**FFF PROPERTY**

FFF 1-60 YD55841-YD55900

NTS 115J/08

Latitude 62°18'N, Longitude 138°23'W

located in the

Whitehorse Mining District  
Yukon Territory

prepared by

Archer, Cathro & Associates (1981) Limited

for

**WOLVERINE MINERALS CORP.**  
and  
**STRATEGIC METALS LTD.**

by

C.J. Chung, B.Sc. Geology, GIT

April 2011

## **CONTENTS**

INTRODUCTION	1
PROPERTY LOCATION, CLAIM DATA AND ACCESS	1
HISTORY AND PREVIOUS WORK	1
GEOMORPHOLOGY AND CLIMATE	2
REGIONAL GEOLOGY	2
PROPERTY GEOLOGY	3
STREAM SEDIMENT AND SOIL GEOCHEMISTRY	3
REGIONAL MINERALIZATION	4
DISCUSSION AND CONCLUSIONS	4
REFERENCES	6

## **APPENDICES**

I	STATEMENT OF QUALIFICATIONS
II	SAMPLING AND ANALYTICAL PROCEDURES
III	CERTIFICATES OF ANALYSIS

## **FIGURES**

<u>No.</u>	<u>Description</u>	<u>Follows Page</u>
1	Property Location	1
2	Claim Locations	1
3	Tectonic Setting	2
4	Regional Geology	2
5	Silt Sample Locations	3
6	Gold Geochemistry	3
7	Arsenic Geochemistry	3
8	Copper Geochemistry	3

## **TABLES**

I	Lithological Units	2
II	Klaza property diamond drilling highlights	4

## **INTRODUCTION**

The FFF property lies within the Dawson Range Gold Belt of western Yukon. It was staked to cover an anomalous gold value reported from historical stream sediment sampling. Wolverine Minerals Corp. can earn a 100% interest in the property subject to an option agreement with Strategic Metals Ltd.

This report describes a one day exploration program that was conducted by Archer, Cathro & Associates (1981) Limited in summer 2010 on behalf of Strategic Metals. The work was performed on June 28 and comprised geochemical sampling. The author interpreted all data from this program, and her Statement of Qualifications appears in Appendix I.

## **PROPERTY LOCATION, CLAIM DATA AND ACCESS**

The FFF property consists of 60 contiguous mineral claims, which are located on NTS map sheet 115J/08 at latitude 62°18' north and longitude 138°38' west (Figure 1). The property covers an area of approximately 1200 ha (12 sq. km). The claims are registered with the Whitehorse Mining Recorder in the name of Archer Cathro, which holds them in trust for Strategic Metals. Specifics concerning claim registration are tabulated below, while the locations of individual claims are shown on Figure 2.

<u>Claim Name</u>	<u>Grant Number</u>	<u>Expiry Date*</u>
FFF 1-60	YD55841-YD55900	April 15, 2011

\* Expiry date does not include 2010 work that has not yet been filed for assessment credit.

In 2010, access to the property was with a Bell 206B helicopter owned and operated by Capital Helicopters (1995) Inc. of Whitehorse, from a temporary base at the Klaza property located near the former Mount Nansen Mine. The Klaza property lies about 65 km to the southeast of the FFF property and 70 km by road west of the community of Carmacks.

## **HISTORY AND PREVIOUS WORK**

In 1969, Archer Cathro performed regional exploration in the Dawson Range district for the Dawson Range Joint Venture (DRJV). During that program, four stream sediment samples were collected from within the current FFF boundary. These samples returned between 10 to 11 ppm copper, 17 and 20 ppm lead and nil molybdenum (Cathro and Culbert, 1969).

In 1980, Archer Cathro did work in the Dawson Range as part of the NAT Joint Venture (NAT JV), which comprised Chevron Canada Limited and Armco Mineral Exploration Ltd. Part of the NAT JV program involved reanalyses of over 5000 previously collected geochemical sample splits for gold, silver, arsenic and lead. Twenty-one samples (18 soil samples and 3 stream sediment samples) previously collected from the FFF property area yielded up to 118 ppb gold (Archer and Onasick, 1980).

In 1986, the Geological Survey of Canada conducted a low-density stream sediment and water

**WOLVERINE MINERALS CORP.  
STRATEGIC METALS LTD.**


FIGURE 1  
ARCHER, CATHRO & ASSOCIATES (1981) LIMITED

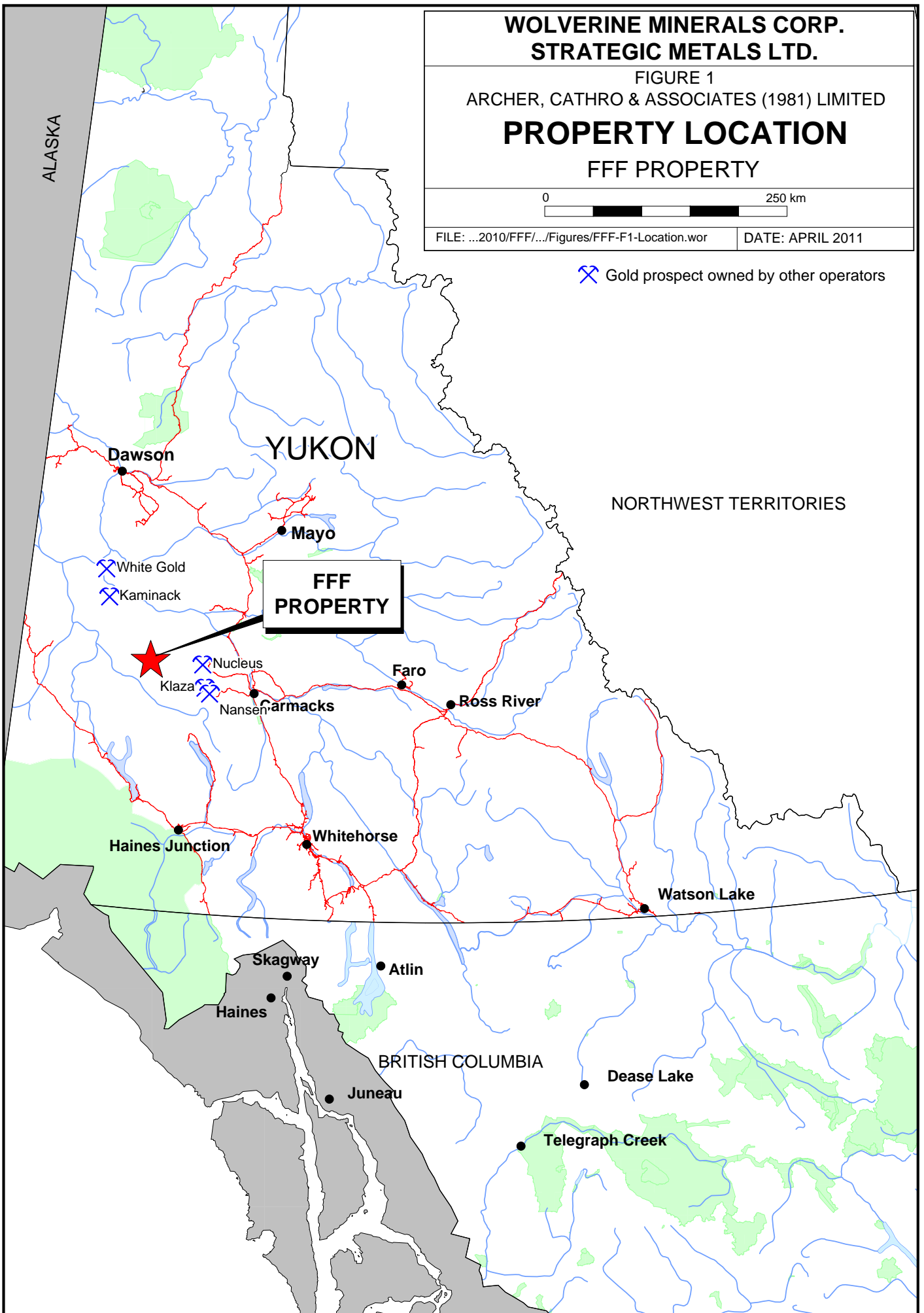
**PROPERTY LOCATION  
FFF PROPERTY**

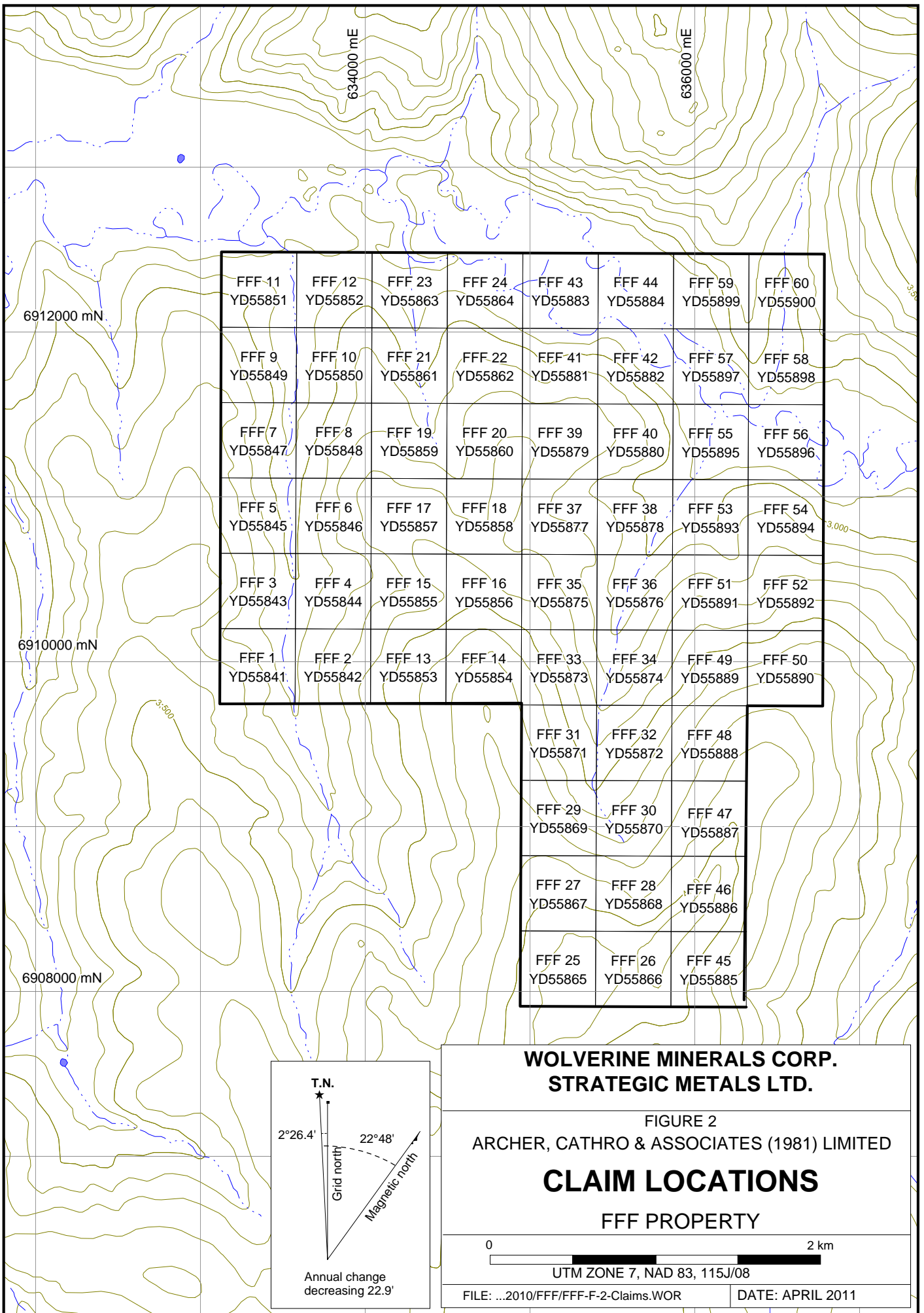


FILE: ...2010/FFF/.../Figures/FFF-F1-Location.wor

DATE: APRIL 2011

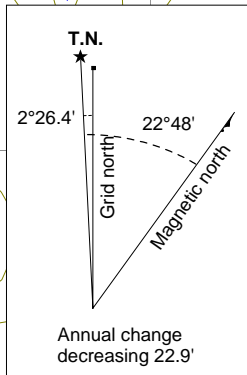
 Gold prospect owned by other operators





FFF-11 YD55851	FFF 12 YD55852	FFF 23 YD55863	FFF 24 YD55864	FFF 43 YD55883	FFF 44 YD55884	FFF 59 YD55899	FFF 60 YD55900
FFF 9 YD55849	FFF 10 YD55850	FFF 21 YD55861	FFF 22 YD55862	FFF 41 YD55881	FFF 42 YD55882	FFF 57 YD55897	FFF 58 YD55898
FFF 7 YD55847	FFF 8 YD55848	FFF 19 YD55859	FFF 20 YD55860	FFF 39 YD55879	FFF 40 YD55880	FFF 55 YD55895	FFF 56 YD55896
FFF 5 YD55845	FFF 6 YD55846	FFF 17 YD55857	FFF 18 YD55858	FFF 37 YD55877	FFF 38 YD55878	FFF 53 YD55893	FFF 54 YD55894
FFF 3 YD55843	FFF 4 YD55844	FFF 15 YD55855	FFF 16 YD55856	FFF 35 YD55875	FFF 36 YD55876	FFF 51 YD55891	FFF 52 YD55892
FFF 1 YD55841	FFF 2 YD55842	FFF 13 YD55853	FFF 14 YD55854	FFF 33 YD55873	FFF 34 YD55874	FFF 49 YD55889	FFF 50 YD55890

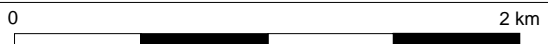
FFF 31 YD55871	FFF 32 YD55872	FFF 48 YD55888
FFF 29 YD55869	FFF 30 YD55870	FFF 47 YD55887
FFF 27 YD55867	FFF 28 YD55868	FFF 46 YD55886
FFF 25 YD55865	FFF 26 YD55866	FFF 45 YD55885



**WOLVERINE MINERALS CORP.  
STRATEGIC METALS LTD.**

FIGURE 2  
ARCHER, CATHRO & ASSOCIATES (1981) LIMITED

**CLAIM LOCATIONS  
FFF PROPERTY**



UTM ZONE 7, NAD 83, 115J/08

sampling survey on NTS map sheet 115J (Friske et al., 1986). Only two samples were taken in the vicinity of the current FFF property. These samples returned 0.5 ppb gold, 11 ppm copper, 5 ppm lead and 57 ppm zinc, and 32 ppb gold, 11 ppm copper, 8 ppm lead and 64 ppm zinc. The more gold-rich of those samples was taken near the site that produced the 118 ppb gold value reported by NAT JV.

Strategic Metals staked the FFF claims in March 2010 to cover geochemically anomalous drainages. Wolverine signed an option purchase agreement with Strategic in September 2010.

### **GEOMORPHOLOGY AND CLIMATE**

The FFF property is situated in the southern part of the Dawson Range. It covers the headwaters of three creeks that flow northwards into the Klotassin River, which is part of the Yukon watershed. Elevations on the property range between 884 m at the Klotassin River valley floor to 1250 m atop a ridge at the head of the easternmost creek. Outcrop is limited to creek gullies.

Treeline in the area is approximately 1400 m above sea level. The property is vegetated with scattered spruce and poplar trees with an understory of buckbrush and grass.

The climate in the FFF area is typical of northern continental regions with long, cold winters, truncated fall and spring seasons and short, mild summers. Although summers are relatively mild, arctic cold fronts often cover the area and snowfall can occur in any month. The property is mostly snow free from late May to mid-October.

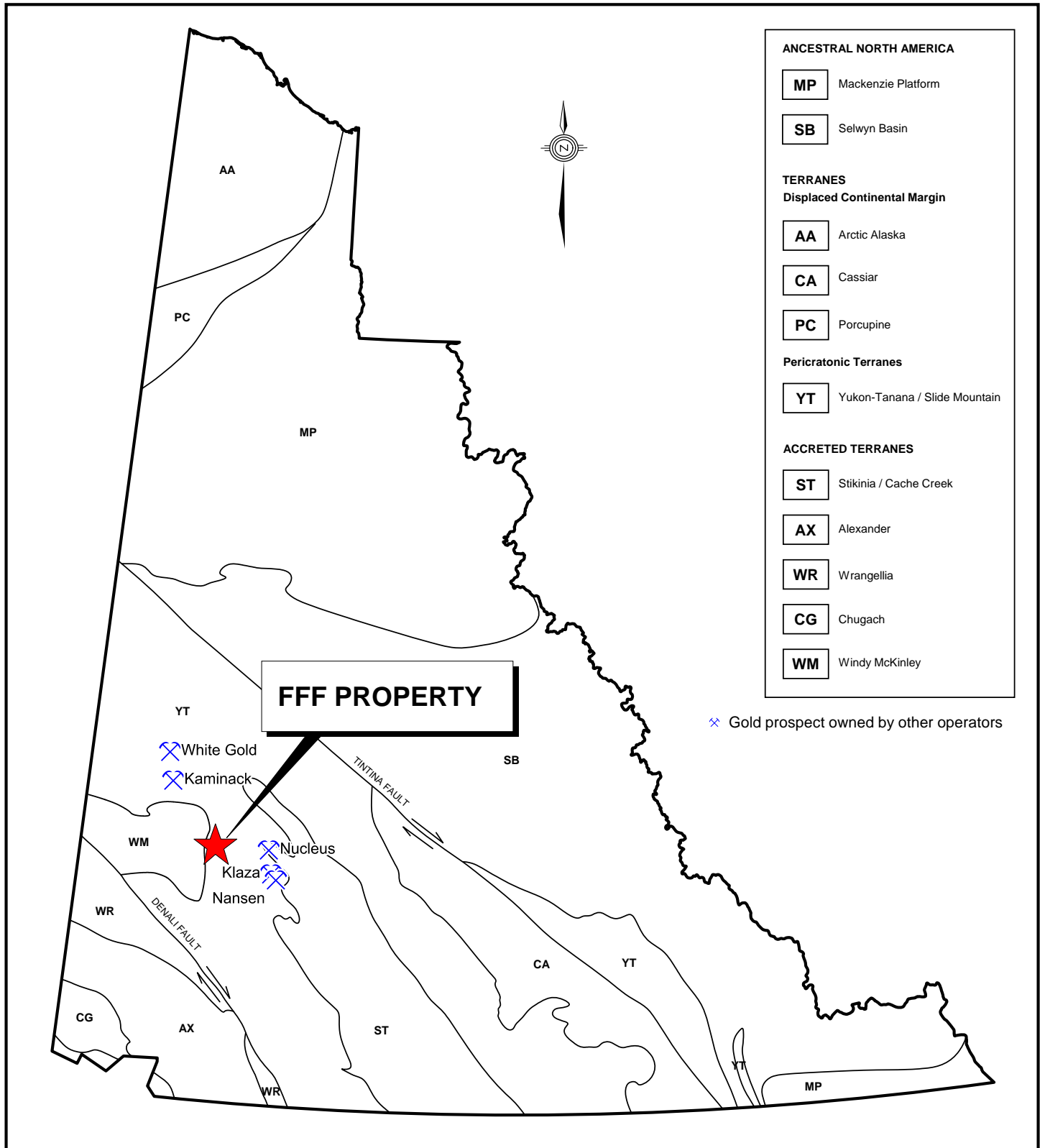
### **REGIONAL GEOLOGY**

In 1973, the Geological Survey of Canada published a geological map of the Snag area (NTS map sheet 115J) at 1:250 000 scale (Tempelman-Kluit, 1973). Gordey and Makepeace (2003) later completed a Yukon-wide geological compilation, which updated lithological unit names in the FFF area.

The FFF property is located within the Yukon-Tanana Terrane (YTT) as shown on Figure 3. The YTT represents a continental arc that developed along the ancient Pacific margin of North America from late Devonian to Permian. Figure 4 illustrates geology as compiled by Gordey and Makepeace (2003). The main lithological units are described in the Table I.

**Table I – Lithological Units (after Gordey and Makepeace, 2003)**

<b>Unit Name</b>	<b>Age</b>	<b>Map Name</b>	<b>Description</b>
Skukum	Lower Eocene	IES	Various felsic volcanic dykes, plugs, domes, laccoliths and flows.
Carmacks	Upper Cretaceous	uKC1	A volcanic succession dominated by basic volcanic strata, but including felsic volcanic rocks, dominantly at the base of the succession, and locally basal clastic strata. Augite olivine basalt and breccia; hornblende



- ANCESTRAL NORTH AMERICA**
- MP** Mackenzie Platform
  - SB** Selwyn Basin
- TERRANES**
- Displaced Continental Margin**
- AA** Arctic Alaska
  - CA** Cassiar
  - PC** Porcupine
- Pericratonic Terranes**
- YT** Yukon-Tanana / Slide Mountain
- ACCRETED TERRANES**
- ST** Stikinia / Cache Creek
  - AX** Alexander
  - WR** Wrangellia
  - CG** Chugach
  - WM** Windy McKinley

⊗ Gold prospect owned by other operators



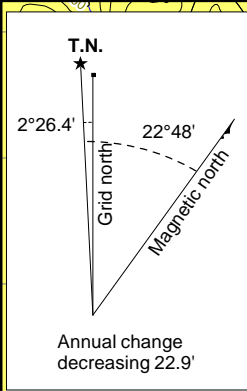
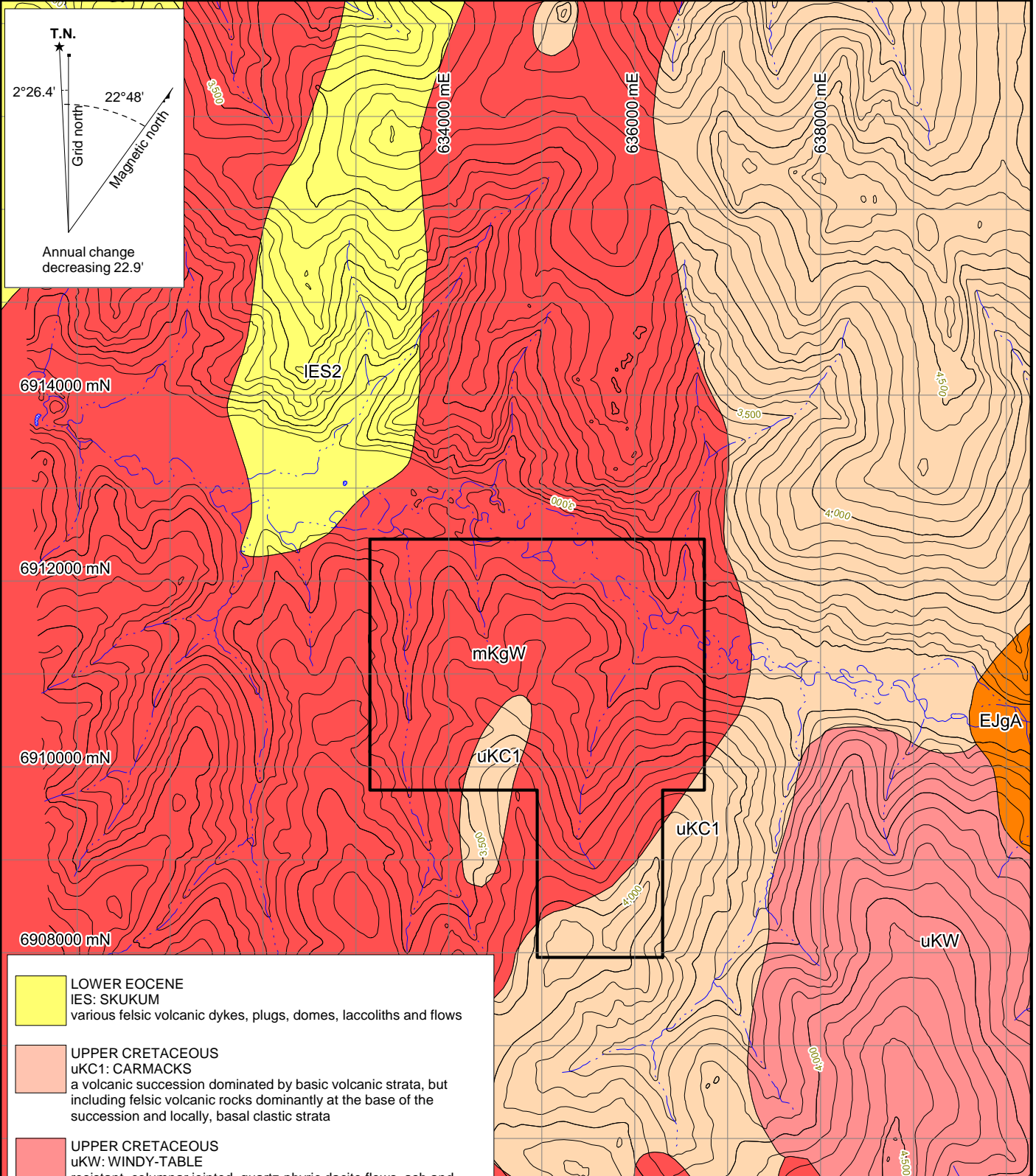
**WOLVERINE MINERALS CORP.  
STRATEGIC METALS LTD.**

FIGURE 3  
ARCHER, CATHRO & ASSOCIATES (1981) LIMITED

**TECTONIC SETTING**  
FFF PROPERTY

0 200 km

FILE: ...2010/FFF/FFF-F-3-Tectonics.WOR      DATE: APRIL 2011



- LOWER EOCENE**  
 IES: SKUKUM  
 various felsic volcanic dykes, plugs, domes, laccoliths and flows
  
- UPPER CRETACEOUS**  
 uKC1: CARMACKS  
 a volcanic succession dominated by basic volcanic strata, but including felsic volcanic rocks dominantly at the base of the succession and locally, basal clastic strata
  
- UPPER CRETACEOUS**  
 uKW: WINDY-TABLE  
 resistant, columnar jointed, quartz-phyric dacite flows, ash and lapilli tuff; maroon weathering, basal sedimentary and epiclastic rocks; dacite flows and flow breccia; brown basalt flows; includes dykes of quartz feldspar porphyry (80 ma approx)
  
- MID-CRETACEOUS**  
 mKgW: WHITEHORSE SUITE  
 grey, medium to coarse grained, generally equigranular granitic rocks of felsic, intermediate, locally mafic and rarely syenitic composition
  
- EARLY JURASSIC**  
 EJgA: AISHIHIK SUITE  
 medium- to coarse- grained, foliated biotite-hornblende granodiorite; biotite rich screens and gneiss schlieren; foliated hornblende diorite to monzodiorite with local K-feldspar megacrysts; may include unfoliated monzonite of the Long Lake Suite

**WOLVERINE MINERALS CORP.  
STRATEGIC METALS LTD.**

FIGURE 4  
ARCHER, CATHRO & ASSOCIATES (1981) LIMITED

**REGIONAL GEOLOGY**  
**FFF PROPERTY**

0  4 km

UTM ZONE 7, NAD 83, 115J/08

			feldspar porphyry andesite and dacite flows; vesicular, augite phyric andesite and trachyte; minor sandy tuff, granite boulder conglomerate, agglomerate and associated epiclastic rocks.
Windy-Table	Upper Cretaceous	uKW	Resistant, columnar jointed, quartz-phyric dacite flows, ash and lapilli tuff; maroon weathering, basal sedimentary and epiclastic rocks; dacite flows and flow breccia; brown basalt flows; includes dykes of quartz-feldspar porphyry.
Whitehorse Suite	Mid-Cretaceous	mKgW	Biotite-hornblende granodiorite, hornblende-quartz diorite and hornblende diorite; leucocratic, biotite-hornblende granodiorite.
Aishihik Suite	Early Jurassic	EJgA	Medium- to coarse-grained foliated biotite-hornblende granodiorite; biotite rich screens and gneiss schlieren; foliated hornblende diorite to monzodiorite with local K-feldspar megacrysts; may include unfoliated monzonite of the Long Lake Suite.

### **PROPERTY GEOLOGY**

No detailed geological mapping has been done on the FFF property. The following description of property geology is based on published data discussed in the previous section.

Most of the property is underlain by the Mid-Cretaceous Whitehorse Suite granodiorite and hornblende granodiorite (mKgW). This unit is covered by a succession of basic volcanic strata and felsic volcanic rocks belonging to the Carmacks Group (uKC) to the south. A smaller body of uKC is also present in the centre of the property area.

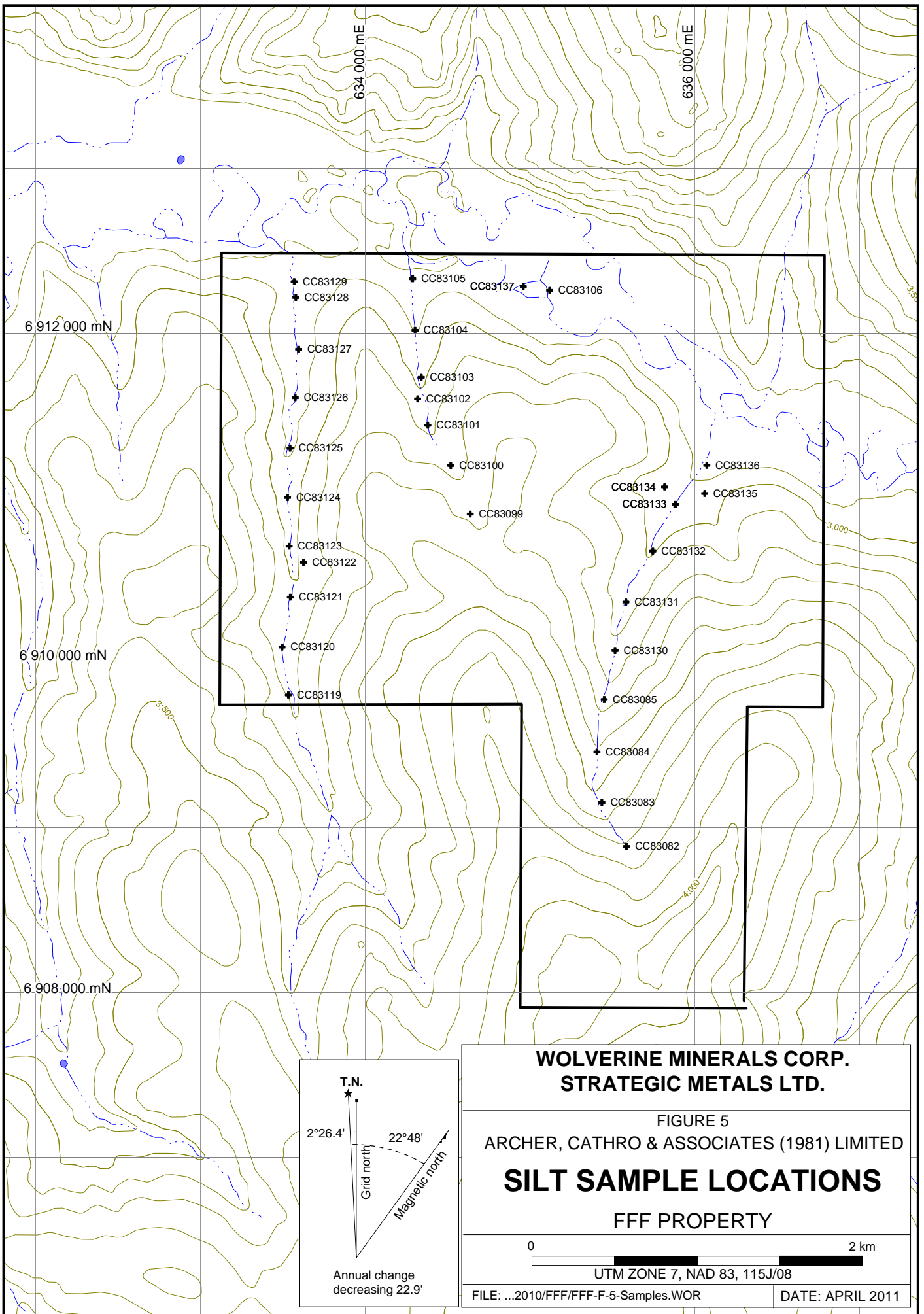
There is no known mineralization on the property.

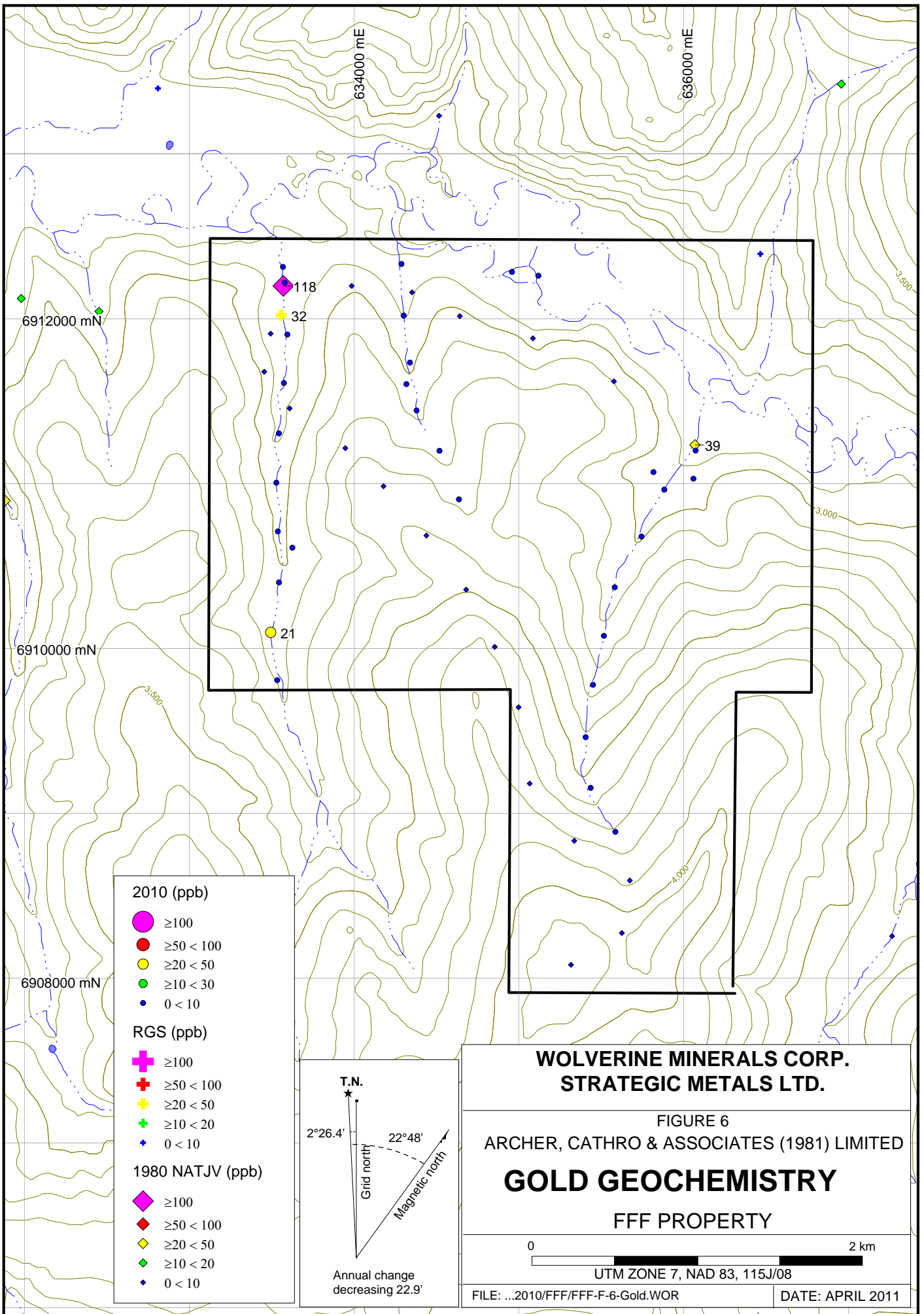
### **STREAM SEDIMENT AND SOIL GEOCHEMISTRY**

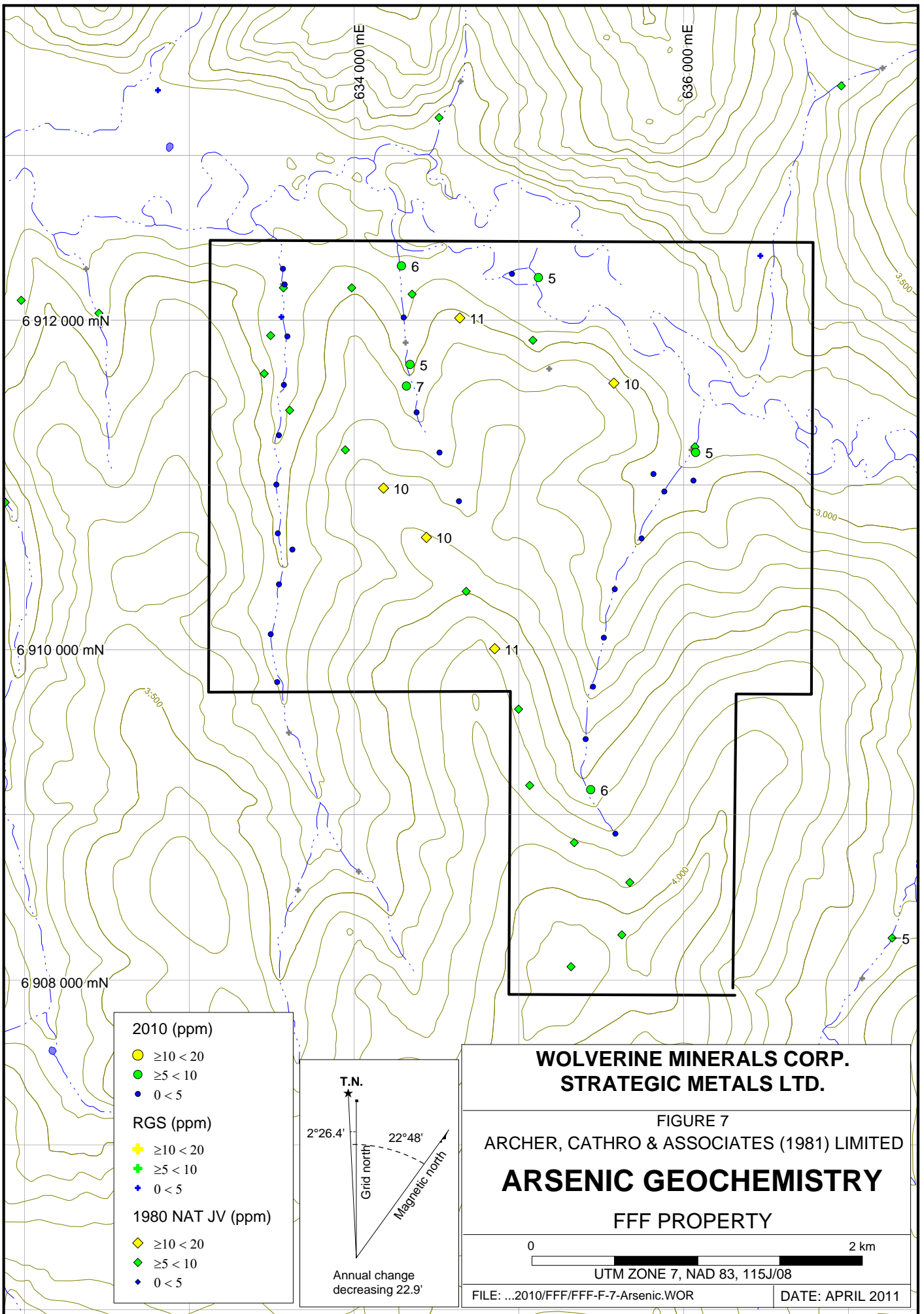
Historical soil and stream sediment sampling in the area was done at low density, with a minimum separation of about 200 m between sample sites. Stream sediment samples were collected along the three creeks draining the property. In general, gold, arsenic and copper values are background to weakly anomalous compared to regional backgrounds, but data includes three moderately to strongly anomalous values between 32 and 118 ppb gold.

A total of 31 stream sediment samples were taken in 2010. These samples were taken along the three main creeks and their tributaries. Sample locations and results for gold, arsenic and copper are plotted on Figures 5 to 8, respectively. Sampling and Analytical Procedures for 2010 samples are provided in Appendix II, while Certificates of Analysis are given in Appendix III.

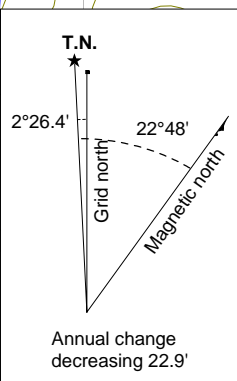
The samples returned near background values for arsenic (up to 11 ppm) and copper (up to 33 ppm). Gold values were low with the exception of one sample that yielded 21 ppb. That sample was taken in the headwaters of the creek that produced the highest historical gold values.







- 2010 (ppm)**
- $\geq 10 < 20$
  - $\geq 5 < 10$
  - $0 < 5$
- RGS (ppm)**
- ✦  $\geq 10 < 20$
  - ✦  $\geq 5 < 10$
  - ✦  $0 < 5$
- 1980 NAT JV (ppm)**
- ◆  $\geq 10 < 20$
  - ◆  $\geq 5 < 10$
  - ◆  $0 < 5$



**WOLVERINE MINERALS CORP.  
 STRATEGIC METALS LTD.**

FIGURE 7  
 ARCHER, CATHRO & ASSOCIATES (1981) LIMITED

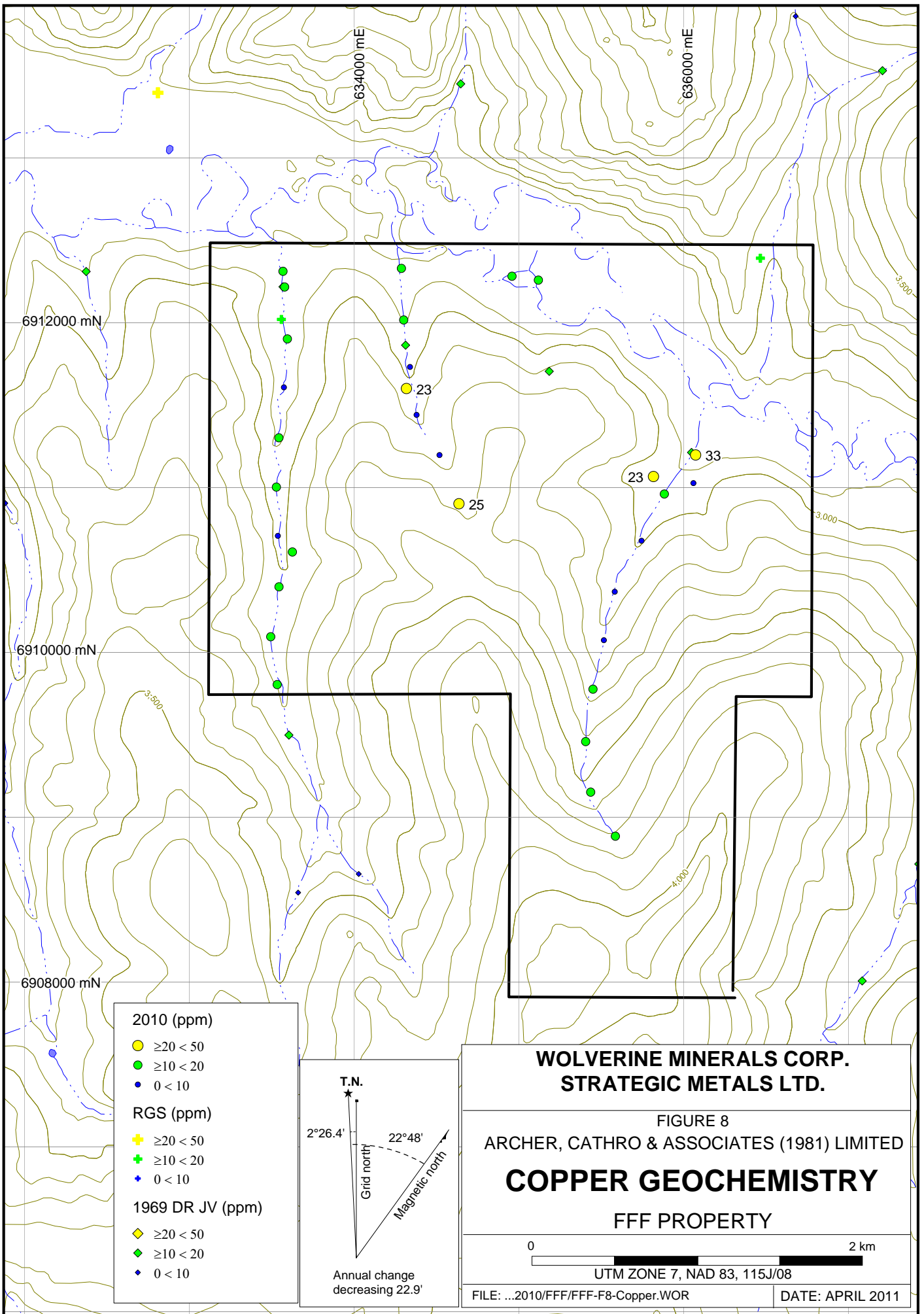
**ARSENIC GEOCHEMISTRY**

FFF PROPERTY

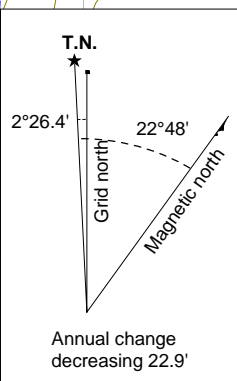
0  2 km

UTM ZONE 7, NAD 83, 115J/08

FILE: ...2010/FFF/FFF-F-7-Arsenic.WOR      DATE: APRIL 2011



- 2010 (ppm)**
- $\geq 20 < 50$
  - $\geq 10 < 20$
  - $0 < 10$
- RGS (ppm)**
- ✚  $\geq 20 < 50$
  - ✚  $\geq 10 < 20$
  - ✚  $0 < 10$
- 1969 DR JV (ppm)**
- ◆  $\geq 20 < 50$
  - ◆  $\geq 10 < 20$
  - ◆  $0 < 10$



**WOLVERINE MINERALS CORP.  
STRATEGIC METALS LTD.**

FIGURE 8  
ARCHER, CATHRO & ASSOCIATES (1981) LIMITED

**COPPER GEOCHEMISTRY**

FFF PROPERTY

0  2 km

UTM ZONE 7, NAD 83, 115J/08

FILE: ...2010/FFF/FFF-F8-Copper.WOR      DATE: APRIL 2011

## **REGIONAL MINERALIZATION**

There are numerous mineral deposits in the Dawson Range that are associated with multiple episodes of intrusive activity, specifically related to late stage quartz-feldspar porphyry dykes intruding Mid-Cretaceous Whitehorse Suite granodiorite. One example of this style of mineralization occurs at the nearby Klaza Property.

At Klaza, soil geochemistry and excavator trenching have lead to the discovery of a series of northwest (300°) trending gold-silver veins hosted within Whitehorse Suite granodiorite. Highlighted intervals from trenching include: 1.34 g/t gold and 10.5 g/t silver over 48.76 m; 1.01 g/t gold and 15.5 g/t silver over 78.03 m; 35.1 g/t gold and 72.5 g/t silver over 1.03 m; and 6.50 g/t gold and 9.8 g/t silver over 4.30 m (Turner, 2010).

In 2010, drilling was performed to test the sub-surface extension of vein mineralization identified in excavator trenches. The drilling successfully intersected zones of vein, breccia and porphyry style mineralization associated with a series of narrow, discontinuous quartz-feldspar porphyry dykes. The age of these dykes is not known; however, based on crosscutting relationships they are younger than the granodiorite. Drill results from the recent drilling are shown in Table II below (Turner, 2010).

**Table II – Klaza property diamond drilling highlights**

Hole ID	From (m)	To (m)	Interval (m)	Gold (g/t)	Silver (g/t)
KL-10-03*	62.08	112.36	50.28	1.10	23.5
Including	62.08	64.75	2.67	2.41	130.1
Including	86.93	106.68	19.75	2.29	36.1
Including	86.93	89.55	2.62	13.05	143
KL-10-05	20.41	48.90	28.49	0.77	14.8
Including	20.41	24.38	3.97	4.57	51.6
KL-10-05	79.20	81.16	1.96	1.47	95.1
KL-10-06	21.64	25.00	3.36	32.52	34.3
KL-10-07	128.00	164.50	36.50	3.23	117.7
Including	134.00	149.30	15.30	7.20	260.0
Including	138.50	139.50	1.00	39.3	709
Including	146.77	149.30	2.53	24.7	1087.0

## **DISCUSSION AND CONCLUSIONS**

Preliminary soil geochemistry performed by Strategic Metals at the FFF property returned somewhat encouraging results, especially considering the small number of samples collected. The property remains an interesting prospect because of the unexplained 118 ppb gold stream sediment value, the prospective underlying geology, and recent exploration results from the Klaza property and other nearby prospects.

Future work is warranted on the FFF property. This work should include mapping, prospecting and closely spaced, deep auger grid soil sampling. Mapping and prospecting should focus on determining if quartz-feldspar porphyry dykes, sills and breccias are present on the property.

Respectfully submitted,

ARCHER, CATHRO & ASSOCIATES (1981) LIMITED

Crystal J. Chung, B.Sc., GIT

**REFERENCES**

- Archer, A. R. and Onasick, E.P.  
1980 NAT Joint Venture Final Report; Internal report prepared by Archer, Cathro & Associates Ltd. for Chevron Canada Limited and Armco Mineral Exploration Ltd.
- Cathro, R.J. and Culbert, R.E.  
1969 Summary report on the 1969 field program; Dawson Range Joint Venture Project, Yukon Territory.
- Friske, P.W.B., Hornbrook, E.H.W., Lynch, J.J., McCurdy, M.W., Gross, H., Galletta, A.C. and Durham, C.C.  
1986 Regional stream sediment and water geochemical reconnaissance data (115J, 115K (E1/2)); Geological Survey of Canada, Open File 1363.
- Gordey, S.P. and Makepeace, A.J. (compilers)  
2003 Yukon digital geology, version 2.0; Geological Survey of Canada, Open File 1749 and Yukon Geological Survey, Open File 2003-9 (D).
- Tempelman-Kluit, D.J.  
1973 Snag; Geological Survey of Canada, Map 16-1973, scale 1:250 000.
- Turner, M.  
2010 News Release for Rockhaven Resources Ltd. August 4, 2010 and November 1, 2010. [www.rockhavenresources.com](http://www.rockhavenresources.com)

**APPENDIX I**  
**STATEMENT OF QUALIFICATIONS**

## **STATEMENT OF QUALIFICATIONS**

I, Crystal J. Chung, geologist, with business addresses in Vancouver, British Columbia and Whitehorse, Yukon Territory and residential address in Burnaby, British Columbia do hereby certify that:

1. I graduated from the University of British Columbia in 2005 with a B.Sc. majoring in Earth and Ocean Sciences (Geology).
2. From 2004 to present, I have been actively engaged in mineral exploration in British Columbia, Alaska and the Yukon Territory.
3. I am a Geoscientist in Training (GIT) with the Association of Professional Engineers and Geoscientists of British Columbia (Member Number 138321).
4. I have personally reviewed and interpreted all data resulting from this work.

Crystal J. Chung, B.Sc., GIT

**APPENDIX II**  
**SAMPLING AND ANALYTICAL PROCEDURES**

## **2010 Soil Geochemical Samples**

All 2010 soil sample locations were recorded using hand-held GPS units. Sample sites are marked by aluminum tags inscribed with the sample numbers and affixed to 0.5 m wooden lath that were driven into the ground. Soil samples were collected from 10 to 30 cm deep holes dug by hand-held auger. They were placed into individually pre-numbered Kraft paper bags.

The soil samples were sent to ALS Chemex, where they were dried, screened to -180 microns, dissolved in aqua regia solution and then analyzed for 35 elements using the inductively coupled plasma with atomic emission spectroscopy technique (ME-ICP41). An additional 50 g charge was further analysed for gold by fire assay with inductively coupled plasma-atomic emissions spectroscopy finish (Au-AA24).

## **2010 Stream Sediment Geochemical Samples**

Stream sediment geochemical samples were only collected from the main unnamed creek that drains the property area. Sample locations were recorded using handheld GPS units and were marked with orange flagging tape labelled with the sample number. Stream sediment samples were collected by hand and were placed into individually pre-numbered kraft paper bags.

The soil samples were sent to ALS Chemex, where they were dried, screened to -180 microns, dissolved in aqua regia solution and then analyzed for 35 elements using the inductively coupled plasma with atomic emission spectroscopy technique (ME-ICP41). An additional 50 g charge was further analysed for gold by fire assay with inductively coupled plasma-atomic emissions spectroscopy finish (Au-AA24).

**APPENDIX III**  
**CERTIFICATES OF ANALYSIS**



# ALS Chemex

EXCELLENCE IN ANALYTICAL CHEMISTRY

ALS Canada Ltd.

2103 Dollarton Hwy

North Vancouver BC V7H 0A7

Phone: 604 984 0221 Fax: 604 984 0218 www.alschemex.com

To: STRATEGIC METALS LTD.

C/O ARCHER, CATHRO & ASSOCIATES (1981)

LIMITED

1016-510 W HASTINGS ST

VANCOUVER BC V6B 1L8

Page: 1

Finalized Date: 14-JUL-2010

Account: MTT

## CERTIFICATE VA10091010

Project: Klatassin

P.O. No.: FFF

This report is for 31 Soil samples submitted to our lab in Vancouver, BC, Canada on 6-JUL-2010.

The following have access to data associated with this certificate:

JOAN MARIACHER

BILL WENGZYNOWSKI

## SAMPLE PREPARATION

ALS CODE	DESCRIPTION
WEI-21	Received Sample Weight
LOG-22	Sample login - Rcd w/o BarCode
SCR-41	Screen to -180um and save both

## ANALYTICAL PROCEDURES

ALS CODE	DESCRIPTION	INSTRUMENT
Au-ICP21	Au 30g FA ICP-AES Finish	ICP-AES
ME-ICP41	35 Element Aqua Regia ICP-AES	ICP-AES

To: **STRATEGIC METALS LTD.**  
**ATTN: JOAN MARIACHER**  
**C/O ARCHER, CATHRO & ASSOCIATES (1981) LIMITED**  
**1016-510 W HASTINGS ST**  
**VANCOUVER BC V6B 1L8**

This is the Final Report and supersedes any preliminary report with this certificate number. Results apply to samples as submitted. All pages of this report have been checked and approved for release.

Signature:

Colin Ramshaw, Vancouver Laboratory Manager



# ALS Chemex

EXCELLENCE IN ANALYTICAL CHEMISTRY

ALS Canada Ltd.

2103 Dollarton Hwy  
North Vancouver BC V7H 0A7

Phone: 604 984 0221 Fax: 604 984 0218 www.alschemex.com

To: STRATEGIC METALS LTD.  
C/O ARCHER, CATHRO & ASSOCIATES (1981)  
LIMITED  
1016-510 W HASTINGS ST  
VANCOUVER BC V6B 1L8

Page: 2 - A  
Total # Pages: 2 (A - C)  
Finalized Date: 14-JUL-2010  
Account: MTT

Project: Klatassin

<b>CERTIFICATE OF ANALYSIS</b>	<b>VA10091010</b>
--------------------------------	-------------------

Sample Description	Method Analyte Units LOR	WEI-21	Au-ICP21	ME-ICP41	ME-ICP41	ME-ICP41	ME-ICP41	ME-ICP41	ME-ICP41	ME-ICP41	ME-ICP41	ME-ICP41	ME-ICP41	ME-ICP41	ME-ICP41	ME-ICP41
		Recvd Wt. kg	Au ppm	Ag ppm	Al %	As ppm	B ppm	Ba ppm	Be ppm	Bi ppm	Ca %	Cd ppm	Co ppm	Cr ppm	Cu ppm	Fe %
		0.02	0.001	0.2	0.01	2	10	10	0.5	2	0.01	0.5	1	1	1	0.01
CC83082		0.16	0.004	<0.2	1.82	3	<10	170	<0.5	<2	0.68	<0.5	10	55	14	1.94
CC83083		0.18	0.006	<0.2	1.56	6	<10	150	<0.5	<2	0.54	<0.5	10	25	12	2.59
CC83084		0.12	0.008	<0.2	1.54	3	<10	170	0.5	<2	0.94	<0.5	11	68	19	2.21
CC83085		0.12	0.007	<0.2	1.27	4	<10	240	0.5	<2	0.97	<0.5	10	40	17	2.45
CC83099		0.22	0.007	<0.2	1.34	<2	<10	300	<0.5	<2	0.62	<0.5	8	24	25	1.36
CC83100		0.22	0.006	<0.2	0.93	4	<10	190	<0.5	<2	0.46	<0.5	4	14	9	1.35
CC83101		0.28	0.009	<0.2	0.88	4	<10	180	<0.5	<2	0.52	<0.5	6	12	7	2.00
CC83102		0.20	0.006	0.5	2.75	7	<10	440	0.5	<2	1.16	<0.5	11	31	23	2.99
CC83103		0.30	0.007	<0.2	0.89	5	<10	170	<0.5	<2	0.50	<0.5	6	12	6	1.77
CC83104		0.22	0.004	<0.2	1.19	3	<10	190	<0.5	<2	0.61	<0.5	7	18	11	1.75
CC83105		0.28	0.007	<0.2	1.67	6	<10	260	<0.5	<2	0.55	<0.5	9	29	19	2.33
CC83106		0.34	0.004	<0.2	1.39	5	<10	140	<0.5	<2	0.65	<0.5	10	42	14	2.45
CC83119		0.24	0.005	<0.2	1.33	3	<10	150	<0.5	<2	0.62	<0.5	9	25	13	2.24
CC83120		0.24	0.021	<0.2	1.24	4	<10	130	<0.5	<2	0.62	<0.5	8	24	10	2.12
CC83121		0.22	0.008	<0.2	1.27	3	<10	130	<0.5	<2	0.59	<0.5	9	23	11	2.19
CC83122		0.24	0.006	<0.2	1.29	4	<10	230	<0.5	<2	0.75	<0.5	9	28	13	2.14
CC83123		0.24	0.008	<0.2	1.21	2	<10	130	<0.5	<2	0.56	<0.5	8	22	9	2.01
CC83124		0.22	0.005	<0.2	1.43	3	<10	170	<0.5	<2	0.69	<0.5	9	27	14	2.34
CC83125		0.26	0.005	<0.2	1.41	3	<10	160	<0.5	<2	0.66	<0.5	9	26	13	2.31
CC83126		0.32	0.005	<0.2	1.16	2	<10	130	<0.5	<2	0.51	<0.5	8	21	9	1.91
CC83127		0.24	0.007	<0.2	1.42	4	<10	160	<0.5	<2	0.65	<0.5	9	27	13	2.26
CC83128		0.18	0.008	<0.2	1.55	4	<10	180	<0.5	<2	0.72	<0.5	10	29	16	2.40
CC83129		0.24	0.008	<0.2	1.52	3	<10	180	<0.5	<2	0.74	<0.5	9	29	15	2.40
CC83130		0.14	0.006	<0.2	1.10	3	<10	150	<0.5	<2	0.51	<0.5	7	27	8	1.96
CC83131		0.22	0.005	<0.2	1.07	3	<10	140	<0.5	<2	0.42	<0.5	7	20	7	1.94
CC83132		0.22	0.009	<0.2	1.46	4	<10	420	<0.5	<2	0.36	<0.5	11	10	6	3.85
CC83133		0.20	0.007	<0.2	1.54	4	<10	270	<0.5	<2	0.51	<0.5	10	30	18	2.32
CC83134		0.14	0.006	<0.2	1.38	2	<10	330	0.5	<2	0.68	<0.5	8	31	23	1.59
CC83135		0.20	0.006	<0.2	1.16	3	<10	140	<0.5	<2	0.47	<0.5	8	28	9	1.95
CC83136		0.22	0.006	0.2	2.11	5	<10	340	0.6	<2	0.68	<0.5	12	53	33	2.86
CC83137		0.24	0.006	<0.2	1.54	4	<10	150	0.5	<2	0.71	<0.5	10	45	19	2.52



# ALS Chemex

EXCELLENCE IN ANALYTICAL CHEMISTRY

ALS Canada Ltd.

2103 Dollarton Hwy  
North Vancouver BC V7H 0A7

Phone: 604 984 0221 Fax: 604 984 0218 www.alschemex.com

To: STRATEGIC METALS LTD.  
C/O ARCHER, CATHRO & ASSOCIATES (1981)  
LIMITED  
1016-510 W HASTINGS ST  
VANCOUVER BC V6B 1L8

Page: 2 - B  
Total # Pages: 2 (A - C)  
Finalized Date: 14-JUL-2010  
Account: MTT

Project: Klatassin

CERTIFICATE OF ANALYSIS	VA10091010
-------------------------	------------

Sample Description	Method	ME-ICP41	ME-ICP41	ME-ICP41	ME-ICP41	ME-ICP41	ME-ICP41	ME-ICP41	ME-ICP41	ME-ICP41	ME-ICP41	ME-ICP41	ME-ICP41	ME-ICP41	ME-ICP41	
	Analyte	Ga	Hg	K	La	Mg	Mn	Mo	Na	Ni	P	Pb	S	Sb	Sc	
	Units LOR	ppm	ppm	%	ppm	%	ppm	ppm	%	ppm	ppm	ppm	%	ppm	ppm	ppm
		10	1	0.01	10	0.01	5	1	0.01	1	10	2	0.01	2	1	1
CC83082		10	<1	0.04	10	0.89	239	1	0.03	30	900	5	0.01	<2	5	58
CC83083		<10	<1	0.04	10	0.56	345	1	0.03	15	930	5	<0.01	<2	5	48
CC83084		<10	<1	0.06	10	0.89	263	1	0.02	39	1060	4	0.02	<2	6	89
CC83085		<10	<1	0.09	10	0.64	436	1	0.01	26	970	6	0.02	<2	6	82
CC83099		<10	<1	0.07	10	0.40	398	1	0.01	11	800	6	0.05	<2	4	69
CC83100		<10	<1	0.06	10	0.29	273	1	<0.01	7	690	4	0.01	<2	3	34
CC83101		<10	<1	0.05	10	0.30	444	1	<0.01	7	780	3	0.01	<2	3	35
CC83102		10	<1	0.10	30	0.59	1115	1	0.01	19	880	7	0.06	<2	6	62
CC83103		<10	<1	0.05	10	0.31	574	1	<0.01	7	800	3	0.01	<2	3	31
CC83104		<10	<1	0.06	10	0.44	422	1	0.01	10	760	4	0.02	<2	4	36
CC83105		<10	<1	0.07	10	0.55	375	1	0.01	15	660	7	0.03	<2	6	36
CC83106		<10	<1	0.06	10	0.82	427	1	0.02	28	1010	6	0.02	<2	4	67
CC83119		<10	<1	0.05	10	0.69	356	1	0.01	22	920	4	0.01	<2	4	44
CC83120		<10	<1	0.05	10	0.64	431	1	0.01	20	1040	5	<0.01	<2	4	39
CC83121		<10	<1	0.06	10	0.67	396	<1	0.01	21	910	4	<0.01	<2	4	37
CC83122		<10	<1	0.06	10	0.59	332	1	0.01	19	860	5	0.02	<2	4	58
CC83123		<10	<1	0.05	10	0.63	317	<1	0.01	19	880	4	0.01	<2	4	35
CC83124		<10	<1	0.06	10	0.73	406	1	0.01	23	880	4	0.02	<2	4	46
CC83125		<10	<1	0.06	10	0.72	361	1	0.01	22	900	5	0.01	<2	4	44
CC83126		<10	<1	0.06	10	0.59	233	1	0.01	17	830	4	<0.01	<2	4	30
CC83127		<10	<1	0.07	10	0.70	315	1	0.01	20	860	5	0.01	<2	4	41
CC83128		10	<1	0.08	10	0.75	419	<1	0.02	23	850	6	0.02	<2	5	48
CC83129		<10	<1	0.08	10	0.73	440	1	0.01	23	890	5	0.01	<2	5	47
CC83130		<10	<1	0.06	10	0.55	272	1	0.01	19	860	4	<0.01	<2	4	36
CC83131		<10	<1	0.05	10	0.53	278	<1	0.01	16	760	4	<0.01	<2	3	27
CC83132		10	<1	0.18	30	0.63	313	1	<0.01	6	670	11	<0.01	<2	5	26
CC83133		<10	<1	0.09	20	0.60	300	1	0.01	19	780	7	0.03	<2	6	39
CC83134		<10	<1	0.08	10	0.45	173	1	0.01	17	700	7	0.06	<2	6	70
CC83135		<10	<1	0.05	10	0.57	240	<1	0.01	21	810	3	<0.01	<2	3	31
CC83136		10	1	0.09	20	0.87	332	<1	0.02	37	1010	8	0.05	<2	8	55
CC83137		<10	<1	0.07	10	0.87	422	2	0.05	33	1030	8	0.03	<2	5	72



# ALS Chemex

EXCELLENCE IN ANALYTICAL CHEMISTRY

ALS Canada Ltd.

2103 Dollarton Hwy  
North Vancouver BC V7H 0A7

Phone: 604 984 0221 Fax: 604 984 0218 www.alschemex.com

To: STRATEGIC METALS LTD.  
C/O ARCHER, CATHRO & ASSOCIATES (1981)  
LIMITED  
1016-510 W HASTINGS ST  
VANCOUVER BC V6B 1L8

Page: 2 - C  
Total # Pages: 2 (A - C)  
Finalized Date: 14-JUL-2010  
Account: MTT

Project: Klatassin

CERTIFICATE OF ANALYSIS	VA10091010
-------------------------	------------

Sample Description	Method Analyte Units LOR	ME-ICP41	ME-ICP41	ME-ICP41	ME-ICP41	ME-ICP41	ME-ICP41	
		Th	Ti	Ti	U	V	W	Zn
		ppm	%	ppm	ppm	ppm	ppm	ppm
		20	0.01	10	10	1	10	2
CC83082		<20	0.09	<10	<10	67	<10	61
CC83083		<20	0.12	<10	<10	76	<10	60
CC83084		<20	0.06	<10	<10	55	<10	69
CC83085		<20	0.04	<10	<10	48	<10	62
CC83099		<20	0.04	<10	<10	39	<10	49
CC83100		<20	0.04	<10	<10	29	<10	48
CC83101		<20	0.04	<10	<10	28	<10	48
CC83102		<20	0.08	<10	<10	68	<10	77
CC83103		<20	0.05	<10	<10	28	<10	50
CC83104		<20	0.07	<10	<10	37	<10	58
CC83105		<20	0.09	<10	<10	62	<10	65
CC83106		<20	0.07	<10	<10	58	<10	63
CC83119		<20	0.09	<10	<10	48	<10	55
CC83120		<20	0.09	<10	<10	46	<10	51
CC83121		<20	0.09	<10	<10	46	<10	55
CC83122		<20	0.06	<10	<10	42	<10	61
CC83123		<20	0.09	<10	<10	41	<10	52
CC83124		<20	0.10	<10	<10	49	<10	61
CC83125		<20	0.09	<10	<10	49	<10	59
CC83126		<20	0.08	<10	<10	41	<10	49
CC83127		<20	0.10	<10	<10	49	<10	58
CC83128		<20	0.10	<10	<10	54	<10	63
CC83129		<20	0.10	<10	<10	52	<10	60
CC83130		<20	0.06	<10	<10	43	<10	51
CC83131		<20	0.07	<10	<10	40	<10	48
CC83132		<20	0.04	<10	<10	73	<10	64
CC83133		<20	0.08	<10	<10	57	<10	67
CC83134		<20	0.05	<10	<10	45	<10	73
CC83135		<20	0.08	<10	<10	42	<10	52
CC83136		<20	0.09	<10	<10	77	<10	89
CC83137		<20	0.08	<10	<10	59	<10	68

ARCHER, CATHRO & ASSOCIATES (1981) LIMITED  
1016 – 510 West Hastings Street  
Vancouver, B.C. V6B 1L8

Telephone: 604-688-2568

Fax: 604-688-2578

AFFIDAVIT



I, Joan Mariacher, of Vancouver, B.C. make oath and say:

That to the best of my knowledge the attached Statement of Expenditures for exploration work on the FFF 1-60 mineral claims on Claim Sheet 115J/8 is accurate.

  
Joan Mariacher

Sworn before me at Vancouver, B.C.

this 15th day of April 2011.



Barrister & Solicitor

**IAN J. TALBOT**  
*Barrister & Solicitor*  
281 East 5th Street  
North Vancouver  
British Columbia  
Canada V7L 1L8

Statement of Expenditures  
 FFF 1-60 Mineral Claims  
 April 15, 2011



Labour

H. Smith (geologist) January to April 2011 – 1 1/2 hrs @ \$90/hr	\$ 151.20
September to December 2010 – 1 hr @ \$75/hr	84.00
C. Chung (geologist) January to April 2011 – 8 1/2 hrs @ \$85/hr	809.20
T. Epp (field assistant) July 2011 – 2 days @ \$328/day	734.72
B. Alladice (field assistant) July 2011 – 2 days @ \$304/day	680.96
C. Beck (field assistant) July 2011 – 2 days @ \$304/day	680.96
	<u>3,141.04</u>

Expenses

Field room and board – 6 mandays @ \$125/manday	840.00
Capital Helicopters	2,183.92
ALS Chemex	<u>687.05</u>
	3,710.97

Total \$6,852.01

# CAPITAL HELICOPTERS (1995) INC.

Suite 3 - 25 Pilgrim Place, Whitehorse, Y.T. Y1A 6E6  
 Phone: (867) 668-6200 Fax: (867) 668-6201  
 capitalheli@polarcom.com



**Charter and Contract Service**

## INVOICE

NO. 11327  
 DATE 30/06/2010  
 PAGE 1 of 1

SOLD TO

Archer Cathro  
 Suite 1016, 510 West Hastings  
 Vancouver, B. C. V6B 1L8

SHIP TO

Archer Cathro  
 Suite 1016, 510 West Hastings  
 Vancouver, B. C. V6B 1L8

ITEM NO.	QUANTITY	UNIT	DESCRIPTION	GST	PST	UNIT PRICE	AMOUNT	
June 26	2.6	hrs	YXY-Split ferry s/o Taylor p/u Nisting R area <i>666</i>	G		1,025.00	2,665.00	
June 27	1.0	hrs	YXY-Nansen-Klaza crk-AAA-s/o and p/u	G		1,025.00	1,025.00	
June 28	2.0	hrs	Nansen-s/o Taylor-p/u-FFF	G		1,025.00	2,050.00	
June 29	<del>0.8</del> 68.4	hrs ltrs	Nansen-s/o Taylor-p/u-DDD fuel@YXY	G		1,025.00	820.00	
	<i>6.4</i>		G - GST 5.00% GST	G		1.40	95.76	
							<i>6655.76</i>	332.79
Capital Helicopters (1995) Inc. GST: #899587984								
Thank You! Your Business Is Appreciated! Fuel Price includes Federal and Yukon Tax							<b>TOTAL</b>	6,988.55

A (AAA - 1091.96  
 DDD - 873.57  
 FFF - 2183.94  
 666 - 2839.10)

*Kletwin - 6655.76 NAOY*



# ALS Chemex

EXCELLENCE IN ANALYTICAL CHEMISTRY

ALS Canada Ltd.  
2103 Dollarton Hwy  
North Vancouver BC V7H 0A7  
Phone: 604 984 0221 Fax: 604 984 0218 www.alschemex.com

To: STRATEGIC METALS LTD.  
C/O ARCHER, CATHRO & ASSOCIATES (1981) LIMITED  
1016-510 W HASTINGS ST  
VANCOUVER BC V6B 1L8

INVOICE NUMBER 2103470

**BILLING INFORMATION**

Certificate: VA10091010  
 Sample Type: Soil  
 Account: MTT  
 Date: 14-JUL-2010  
 Project: Klatassin  
 P.O. No.: FFF  
 Quote: ALSM-CW10-010-F  
 Terms: Net 30 Days  
 Comments: C1

QUANTITY	CODE	ANALYSED FOR	DESCRIPTION	UNIT PRICE	TOTAL
31	PREP-41		Dry, Sieve (180 um) Soil	0.96	29.76
6.86	PREP-41		Weight Charge (kg) - Dry, Sieve (180 um) Soil	1.80	12.35
31	Au-ICP21		Au 30g FA ICP-AES Finish	11.06	342.86
31	ME-ICP41		35 Element Aqua Regia ICP-AES	4.92	152.52
31	GEO-AR01		Aqua regia digestion	2.45	75.95

*Klatassin*  
*APR*

To: STRATEGIC METALS LTD.  
ATTN: JOAN MARIACHER  
C/O ARCHER, CATHRO & ASSOCIATES (1981) LIMITED  
1016-510 W HASTINGS ST  
VANCOUVER BC V6B 1L8

Please Remit Payments To :  
**ALS Canada Ltd.**  
2103 Dollarton Hwy  
North Vancouver BC V7H 0A7

SUBTOTAL (CAD) \$ 613.44  
R100938885 HST BC \$ 73.61  
**TOTAL PAYABLE (CAD) \$ 687.05**

Payment may be made by: Cheque or Bank Transfer

Beneficiary Name: ALS Canada Ltd.  
Bank: Royal Bank of Canada  
SWIFT: ROYCCAT2  
Address: Vancouver, BC, CAN  
Account: 003-00010-1001098

